



Weather shot:
God's blessings...
Page 12



Focus on Faith:
Men and women...
Page 3



Muleshoe Heritage Center report...
Page 7

Muleshoe Journal



Striving to be your source for local news

75¢

Volume 90, No. 32

www.muleshoejournal.com

Muleshoe, Texas

August 13, 2009

It's time to be 'mule headed' in Muleshoe

By Larry Thornton
Managing Editor

If you've never thought of mules as being "party animals," the Muleshoe Chamber of Commerce & Agriculture is going to do its best to change your mind this weekend.

After much fanfare,

the 2009 Mule Days is set to kick off Saturday with a wide variety of events scheduled for across the Bailey County seat.

And while a parade celebrating the animal that had such an impact on the settlement of the west is the norm, this

year's event will feature a returning event... a mule rodeo scheduled for 11:30 a.m. at the Dusty Rhodes Arena, east of Muleshoe on Hwy. 84, adjacent to the Muleshoe Livestock Auction.

Lunch is provided at the arena.

Among this year's events are:

- Pancake breakfast, 7-11 a.m., Oneita Wagnon Senior Citizen Center, 319 S. Main

- Parade, 10 a.m., Main Street then back up First Street. The theme for this year's parade is

"Mules Makin' History." All types of entries are welcome. Entry forms are available at the Muleshoe Chamber of Commerce & Agriculture Office. The entry deadline is Wednesday, Aug. 12.

Participants need not have long ears and a

"stubborn" disposition... except in certain equine categories.

As usual, the parade will line up at 9:30 a.m., at the south end of Main, at the Old Boy Scout Grounds.

Prizes to be awarded

Continued on page 2



County attorney resigns

By Larry Thornton
Managing Editor

The Bailey County Commissioners' Court accepted the resignation of County Attorney Jeanine Backus during Monday's regular meeting, effective Friday, Aug. 14

Although the first-term county attorney cited "family reasons" as the basis for the resignation, the action came a couple of weeks after the commissioners' court rebuffed her request for a salary increase, due in large part to her "lack of experience."

At its July 27 special meeting, Backus requested that her position's salary be increased to \$48,500, of which \$32,250 would be paid by the State of Texas, and the remaining \$16,250 would come from Bailey County. With benefits, Bailey County officials said the county attorney would be receiving approximately \$60,000.

During the discussion

that followed the county attorney's request, Precinct 3 Commissioner Joey Kindle raised the issue of Backus' experience, noting that she only had a year's experience before being elected to the position. Others on the court voiced agreement.



Jeanine Backus being sworn into office.

According to County Judge Sherri Harrison, the court has the option of appointing a replacement from among the few attorney's residing in Bailey County, or the county may contract with another county — such as Lamb County, as it has been required to do in the past.

Should a local attorney

accept the appointment, the judge said, the individual would have to file to run in the next county election.

The commissioners' court also set the proposed tax rate for the upcoming fiscal year, and held a budget workshop.

"I'll tell you right now," Harrison said at the beginning of the budget workshop, "we can't do the effective rate."

According to the judge, the effective rate is .6925 per \$100 in valuation.

While Judge Harrison said the county's proposed budget was based upon a 95 percent rate of tax collection, she indicated that she didn't think the county would do that well.

"Raises are out the door," she added, an issue which Precinct 4 Commissioner Juan Chavez expressed disagreement with for the one or two county employees receiving the \$7.25 federal minimum

Continued on page 2

Are you ready for Mule football?

If you're not ready... get ready, because the state champion Muleshoe Mules have been working hard in preparation for their hometown fans. "Meet the Mules" is set for Aug. 18, at 7 p.m. Pictured above, Juan Sanchez runs for daylight during the recent "Black and White" scrimmage. On the left, quarterback Jared Skipworth takes a snap and looks downfield for a receiver.

Photographs by Stacy Conner

MEDC, council work to increase Muleshoe's business opportunities

By Larry Thornton
Managing Editor

The City of Muleshoe's efforts to attract business opportunities and residents to Muleshoe were evident at Monday's regular meeting of the city council.

Early in the meeting, Carol Pirie of the Texas Film Commission presented Mayor Pro Tem Irene Mason with a certificate proclaiming

Muleshoe as a "Film Friendly" community for the efforts it made through the Muleshoe Economic Development Corporation's to bring various portions of the film industry to town.

Pirie said Muleshoe was one of about 20 Lone Star communities to receive the designation to date.

She expressed her appreciation for the

council's passage of an ordinance intended to facilitate the industry's use of locations in and around Muleshoe.

In response to other efforts by the MEDC and its director, Janet Claborn, the city council approved a recommendation that the city submit an application seeking designation as a "Certified Retirement Community."

As part of the application process, a committee will gather information highlighting the reasons Muleshoe should receive the CRC designation, and point out areas the city and local organizations needs to improve to attract retirees to the community either as tourists or potential residents.

"It sounds like an

Continued on page 3



Carol Pirie, on the right, presents Mayor Pro Tem Irene Mason with the "Film Friendly" certificate.



It's here... at least in part

Lt. Benny Parker, Chief Brian Frieda and City Manager David Brunson watched as the first of the police department modules arrived and were set in place Tuesday.

Bailey County commissioner hospitalized after alleged firearm incident, standoff

Bailey County Precinct 3 Commissioner Joey Kindle is receiving treatment at an undisclosed hospital, according to Sheriff Richard Wills Monday, following an incident at the commissioner's residence on Saturday, Aug. 8.

According to the sheriff, a report was initially received at the Muleshoe Police Department of the

commissioner allegedly pointing a firearm at one of his sons, shortly before noon Saturday.

At the time of the report, the sheriff said the family member had reportedly left the residence, located west of Maple in Bailey

County, and was not in danger, but that Kindle was reported as still being inside the residence in possession of several firearms.

County law enforcement officers were dispatched to the scene, and the sheriff said assistance from other area law enforcement officers was requested as a precaution.

Continued on page 2

Fresh Flowers Great Prices! Free Local Delivery

Carolyn's Floral & Gifts 106 E. American Blvd. • 272-5911
Mon thru Sat 10-6 • Sun 1-6



Alzheimer's Support Group

The Alzheimer's Support Group meets the second Thursday of each month in the Park View Nursing Care Center's conference room at 12 noon. Lunch is provided. For more information, call Debbie Floyd, at the Bailey County Office of Aging, 272-3647, or Joy Stancell at Park View, 272-7578.

Softball tourney

The Muleshoe Softball League will be hosting a tournament during Mule Days, Aug. 15. This tournament will be co-ed, with the possibility of a separate men's and women's tournament.

The entry fee is \$175 per team. Contact Patty Banks at 272-5831 Eufemia Torres at (806)729-8790 or Carl Patterson at 946-8854 for additional information.

'Meet the Teacher'

"Meet the Teacher" will be held on Thursday, Aug. 20, from 5:30-6:30 p.m. at Dillman Elementary, and from 6-7 p.m. at DeShazo Elementary.

Lazbuddie school registration

The Lazbuddie Independent School District will be holding registration Thursday and Friday, Aug. 20-21, from 8 a.m. to 3 p.m.

Blood drive

Immaculate Conception Catholic Church of Muleshoe will be sponsoring a blood drive on Sunday, Aug. 16, from 8:30 a.m. until 1:30 p.m. To schedule an appointment to donate, go to www.bloodhero.com. The sponsor code is "imac."

1974 class reunion

The Muleshoe Class of 1974 will be holding its 35th class reunion at the Muleshoe Country Club on Aug. 29. Registration and visiting is at 5 p.m.; dinner and a program at 7 p.m.; and dancing from 8:30 p.m. until midnight. Send RSVP to Troy Scott or Brenda Black.

Primitive Baptist Church meeting

Muleshoe Primitive Baptist Church will hold its annual two day homecoming meeting Aug. 22-23, at the church, located on First Street, across the street from the Muleshoe Area Medical Center.

The meeting will begin Friday evening with a sandwich supper, followed by worship services.

On Saturday, services will begin at 10 a.m., followed by a covered dish lunch at the church at noon.

There will be afternoon and evening services. On Sunday, services will again begin at 10 a.m., and will conclude with lunch at noon. The public is invited to attend.

MHS class of '96

The Muleshoe High School Class of '96 will be holding a class reunion on Labor Day weekend, Sept. 4-5.

Anyone with any information regarding former students from that class are asked to contact one of the following people: Sharon (Johnson) Villa at (806)315-0366, Summer (Gibbins) McCowen at (361)523-9728, Sarah (Villareal) Santos at (806)946-9210 or Johnny Rodriquez at (210)829-8795.

Getting ready for the Mules!
It's never too early to start planning a football celebration in Muleshoe. The annual "Meet the Mules" night for the defending state champion Mules has been set for Aug. 18 at 7 p.m. at the football stadium, according to Superintendent Dr. Gene Sheets.

Muleshoe Journal USPS 367820
Established Feb. 23, 1924 Published by Panhandle Weeklies, LLC.
Every Thursday at 201 W. Ave. C, P.O. Box 449, Muleshoe, TX 79347.
Periodicals paid at Muleshoe, TX.
Postmaster: Send address changes to the Muleshoe Journal, P.O. Box 449, Muleshoe, TX 79347.
We are qualified members of the Panhandle Press Association, West Texas Press Association and Texas Press Association
Sandra Aven, Publisher © 2009
saven@hearstnp.com
Larry Thornton, Managing Editor
editor@muleshoejournal.com
Terry Brewster, Ad Representative
adsales@muleshoejournal.com
Ad Design / Classified Advertising
advertising@muleshoejournal.com
classifieds@muleshoejournal.com
Subscriptions:
By Carrier Yearly — \$27
Bailey County, by mail — \$29
Elsewhere — \$40
By E-mail — \$22
Advertising rate cards on request

Advertisers should check their ad the first day of insertion. The Journal will not be liable for failure to publish an ad or for a typographical error or errors in publications except to the extent of the cost of the ad for the first day of insertion. Adjustment for errors will be limited to the cost of that portion of the ad where the error occurred.

Commissioners' court...

Continued from page 1
wage.

"We ought to call it the 'maximum wage,'" Chavez said, "because that's all we're going to give them."

However, Precinct 1 Commissioner Butch Vandiver disagreed. "As tight as things are now, I think we need to leave it alone," he said, suggesting that it wouldn't be fair to the county's other 50 employees, even if they were already at a pay scale higher than the federal minimum.

Kindle...

Continued from page 1

Among the assisting officers were negotiators with the Lubbock County Sheriff's Department, the sheriff said, who were reportedly able to talk the commissioner into leaving the residence.

According to the sheriff, alcohol was a contributing factor in the incident.

Sheriff Wills said following his department's investigation, the information received would be turned over to Dist. Attorney Kathryn Gurley, who would determine if criminal charges were warranted.

Kindle has served as the precinct 3 county commissioner since his initial election in 1985.

Mule Days...

Continued from page 1 for the parade include:

- Best Theme Float — prize is \$100 Mule Bucks
- Other prizes will be awarded for the following: Best Tractor, Best Antique Vehicle, Best Child's Entry, Best pair of Mules, Most Stubbhorn Mule, Prettiest Mule, Best Team of Mules, Longest Ears Mule, Best Costume Mule, and Shortest Mule.

Buckles with a \$250 retail value will be awarded for first place in each event.

Rosette ribbons go to second and third place winners. And, a saddle with retail value of \$1,020 will go to High Point Overall Winner.

Events for the Mule Rodeo include: Team Roping, Calf Roping, Steer Daubing, Pole Bending, Barrel Race, Sled Pull, Pick Up Race, Flag Race, Hide Race and Coon Mule Jumping.

There will also be muleshoe pitching and miniature golf at the Mule Putt Golf Course next to the Bailey County Coliseum.

Don't forget your photos at the Journal
Do you have any blank spots in your photo albums?
Photographs that have been submitted for publication in the Muleshoe Journal may be picked up during regular business hours.
At this time, a large number of photographs have been accumulated, at the Journal office, and may include your missing photographs.

recommendation of the county judge, the court set the proposed tax rate at .7472 per \$100 valuation. While this rate could be lowered when the rate is formally set, following the Aug. 20 and 31 public hearings, setting the proposed rate at the effective rate wouldn't have allowed it to be raised, she pointed out.

Among the reasons for the proposed increase, the judge said were:

- The strong possibility of lower tax collections
 - The large decrease in amount of interest the county receives on sales tax dollars
 - A significant decrease in the amount of prisoner board revenue received by Bailey County during the past year, and
 - The increase in expenses by the Bailey County EMS.
- In other business, the commissioners' court:
- Tabled a decision on contracting for forensic pathology services.
 - Approved the June county treasurer's report, and received the July report.
 - Approved payment of county bills totaling \$181,750.47.
 - Approved receipt of a "chapter 19" grant totaling slightly less than \$900 for the county assessor's office.

BOOTS SHOES CLOTHING
Work & Dress Casual & Athletic Western & Athletic

GENERAL STORE
SINCE 1963

1405 West American Blvd.
Muleshoe, Texas
806-272-MULE (6853)

Lance Insurance
Competitive Rates, Variety of Leading Companies
For Home, Auto, Commercial and Crop
806-227-2466

McDaniel's APPLIANCE
1020 Main Street, Clovis, NM
505-762-4481 or 800-682-7891

Time for new appliances?
WE ARE YOUR HOMETOWN WHIRLPOOL DEALER.

WE NOW CARRY SPEED QUEEN!

Names Numbers
www.namesnumbers.com

Whirlpool

OIL PAINTING INSTRUCTION
In Plainview

Beginners to Accomplished Students

Classes start Aug. 25
16 Week Semester
Tues. 6-9 p.m.

17 Year Experience
Reasonable Rates

Contact Glenn Lyles
806-293-7339

Need Braces?
Now offered at
J.W. HALTOM
Family Dentistry & Orthodontics

Come in for an Ortho Consult for only \$99!

- Invisalign, the new invisible braces now offered!
- Adults and children welcome!
- Convenient, no interest payment plan!

320 E. 8th St.
385-6935
Monday - Thursday 8 to 5
Friday 8 to noon

J.W. Haltom, Jessica Haltom, Amber Garcia & Erika Trotter

WIRELESS THAT COSTS LESS. PERIOD.

AUGUST BACK TO SCHOOL SPECIAL!

FREE ACTIVATION with a School Supply Donation!

Help us support our local schools with a DONATION of 3 school supplies (\$10 value), and we'll WAIVE THE ACTIVATION FEE on a new calling plan.

Save \$25!

MOTOROLA ROKR U9
ONLY \$29.95
While supplies last.

SLIM DESIGN AND PACKED WITH FEATURES!

- Stereo Bluetooth
- Zoom Camera
- Audio Player
- 25MB Internal Memory
- 2GB Expansion Slot
- Email Access
- Crystal Talk

OUR BEST PLAN IS ONLY \$39.95 mo

- 1000 Anytime Minutes with **FREE** Nationwide Long Distance
- **FREE** Unlimited Night & Weekend Minutes with **FREE** Nationwide Long Distance
- **FREE** Unlimited Mobile-to-Mobile
- **FREE** Carryover Minutes
- **FREE** Loyalty Minutes

EXTRAS - AVAILABLE ONLY AT PLATEAU!

FREE & LOYALTY CARRYOVER MINUTES UNLIMITED CELL PHONE TEXT SITES \$4.99

NEW SITE CELL TOWER
BRADY
Located near Brady Ave. in SW Clovis, NM. Provides coverage to the Curry County Fair Grounds Events Center and the SW Clovis area.

www.plateauwireless.com
877-PLATEAU (752-8328)

PLATEAU Wireless

VISIT PLATEAU TODAY AND SAVE RIGHT AWAY!

Muleshoe Five Area Telephone Coop. 302 Uvalde (806) 272-7700	Frona WT Services 1010 Columbia (806) 250-5555
--	--

Contract Term: Two years. Early termination fees: \$100 per year, maximum of \$200 and is prorated. Night and Weekend hours are Monday through Thursday 7:00 PM through 6:59 AM and Friday 7:00 PM through Monday 6:59 AM. When outside the designated home area, Roaming: \$.50 per minute with Free Long Distance. Additional taxes, fees, and surcharges may apply. Carryover Minutes: unused plan minutes are carried over month to month. Loyalty Minutes: 30 minutes after one year of service, 60 minutes after three years of service and 100 minutes after five years of service. Carryover and Loyalty Minutes are removed on the date of disconnect and/or forfeited in the event of suspension/termination for nonpayment. Plan only available on GSM phones. Certain Restrictions Apply. Offer ends 8/31/09.

Men and woman are uniquely 'gifted' by God

I am blaming this easily misunderstood column on a morning of lawn mowing. I try not to, but I usually end up thinking when I mow. Whether it's good thinking or not is open to question.



Focus On Faith
Curtis Shelburne

Following the mower, I found myself mulling over some issues related to "masculinity/femininity" as I remembered a conversation with a friend several years ago, a fellow from another state, who had a new boss — a very, uh, shall we say, "formidable" woman.

Among my friends are some Type A "alpha" males who are really fine folks, but I've known a few of the breed who were either just too much trouble to be around or downright scary. But I never met one half as scary as a Type A alpha

male who happened to be female.

This guy had found one. Or had been found by one. He was sure of it because he was pretty much in the grip of her claws and teeth. He was not alone. She was terrorizing most of her underlings, evidently trying to do her best to prove that she could be meaner, coarser, crueler, nastier, and more vicious than any male boss you can imagine.

It should be obvious that neither gender (I prefer to think only in two) has any corner on mean, nasty, and vicious individuals. I've never

known my friend to be "sexist" or overly sensitive, though most folks are a tad tender when they've just been cut to shreds.

But it seemed to him that his new boss was actually feeling a need to be even meaner and coarser than a rotten male boss because she felt a need to somehow "compensate" for being a woman. She wanted to show she could "out-man" any man.

That's when I realized that both my friend and I have a higher opinion of women than this high octane gal holds.

We found ourselves thinking about the many amazing ladies we've known — smart, talented, beautiful in all the ways that matter, the kind of people that any man (who is not an idiot) would be happy to work

for, the kind of quality people anyone of either gender would do very well to aspire to BE.

Why would a woman such as my friend's boss have such a low opinion of her gender? Why would she want so badly to be a man, and a sorry one at that?

I'm tempted to say that women of the finest sort are not equal with men, they are better. But, as tempting as it is, that's wrong thinking, too.

The point is that the best men and women are remarkable not because they have melded into one sexless gender neutral PC blob, but because they bring the best of God-given masculinity and femininity with them as their quality and integrity bless everyone around them, men and women.

As usual, our society "dumbs down" what is good by sullyng it, robbing it of color and beauty in the name of "equality," rather than celebrating what is different but truly excellent in its own rite.

Both masculinity and femininity, each far deeper than differences in plumbing, bring something needed and wonderful to all of life, including the workplace.

We're all poorer if we respect ourselves — and our Creator — so little that we feel a deep need to deny what He has created us to be.

ESTATE AUCTION
LIVING ESTATE OF VELMA JONES AND OTHERS
SATURDAY, AUGUST 15, 2009 - 10:30 CST
613 W. AVENUE F, MULESHOE, TX

- ♦ APPLIANCES - HOTPOINT 2 DOOR REF. G.E. WASHER (LIKE NEW) G.E. ELEC. DRYER, DO NOT MATCH MICROWAVE. SMALL UPRIGHT DEEP FREEZE
- ♦ FURNITURE - DINING ROOM ROUND WALNUT TABLE AND 6 CHAIRS AND CHINA CABINET, MAPLE DROP LEAF TABLE AND 4 CHAIRS, SPINET STYLE WURLITZER MAPLE PIANO: LIVING ROOM: RECLINER, LARGE 1970 ENTERTAINMENT CENTER, 2 SPOT CHAIRS, GOLD SPOT CHAIR, ALL KINDS OF LIVING ROOM TABLES, COLLECTIBLES: FIGURINES LOTS OF NICK NACK, PLAY DOLLS, PORCELAIN DOLLS, ORGAN, FOOT STOOL W/ BALL AND CLAW FT. QUILTS, CONSOLE RADIO SINGER TREADLE SEWING MACHINE WOOD HANDLE TOOLS CROSS CUT SAW, ALL OTHER KIND OF TOOLS, BEDROOM: 3 PC WATERFALL DESIGN BEDROOM SUIT, DARK WOOD BED, NIGHT STANDS, DRESSER BASE, FULL AND QUEEN BOX SPRINGS AND MATTRESS (LIKE NEW) (3) 3 DRAWER OAK CHEST W/MATCHING DESK, MISC: DISHES, COPPER BOTTOM PANS, BOOKS, CHRISTMAS DECOR, WOOD TV TRAYS, KEY BOARD, FANS, KIRBY VACUUM CLEANER, TOWELS, GLASSES, MAPLE POLE LAMP BAR HEIGHT METAL GLASS TOP PATIO TABLE AND 4 CHAIRS
- ♦ VEHICLE - 1995 BUICK CENTURY 4 DOOR MAROON IN COLOR

PICTURES WWW.WJAUCTION.COM
NO BUYER PREMIUM VIEWING ON FRIDAY 9 TO 5
TERMS: CHECKS CASH VISA MASTER CHARGE 2% SERVICE CHARGE ON ALL CREDIT CARDS WITH REWARDS CARDS

W & J AUCTIONS
4205 S. PRINCE, CLOVIS, NM · 800-822-1243
TX LICENSE #11077715577

Muleshoe City Council takes action...

Continued from page 1
incredible opportunity to showcase the community," Mason said.

In other business, the council:

- Set the city's proposed total tax rate for next year at .7573 per \$100 valuation during Monday's regular meeting.

The action, which followed the recommendation of City Manager David Brunson, includes no increase in revenue from last year,

is less than the city's total effective rate of .7634 per \$100 valuation, and won't require the city to hold public hearings prior to its final approval.

This year's proposed tax rate, as is the current rate, includes a maintenance and operations rate of .6550 per \$100 valuation, and a debt service rate of .1023.

- Approved an interlocal agreement with the Texas Municipal League

Intergovernmental Employee Benefits.

- Approved an ordinance annexing lots owned by Gary Hooten in the Richland Heights Addition.

- Noted that the first two of six modules for the new police department building are due to arrive in Muleshoe on Tuesday, Aug. 11.

- Note that the mayor pro-tem has been selected as the second vice president for TML Region III.



Workers prepare to set the first police department module in place Tuesday.

BIG VALLEY PRE-OWNED SUMMER SELL DOWN!

2008 DODGE RAM 1500 MEGA CAB LARAMIE 4WD HEMI! ONLY \$26,450! or \$361⁰⁰ +ttl A MONTH!¹
Stock# YP198432

POWER WINDOWS & LOCKS! CD! TILT! CRUISE! LEATHER! SLIDING REAR WINDOW! THE PERFECT TRUCK!

2006 FORD F350 CREW CAB 4WD DIESEL! ONLY \$24,925! or \$341⁰⁰ +ttl A MONTH!¹
Stock# XPB41192

6 - SPEED! BED COVER! LOW MILES! READY TO PULL!

1. Payment based on 20% Down 6.99% APR for 72 months plus tt&l with approved credit.

HURRY IN! TAKE A TEST DRIVE TODAY!

BIG VALLEY PORTALES
1115 N. Chicago (575) 356-8581

Limited time only

SONIC BURGER & SHAKE

\$2.99 PLUS TAX

TRY ANY FLAVOR INCLUDING OUR NEW PEACH SHAKE

Regular Size Shake
Triple-Patty Burger - includes Angus, Double-Patty and Everyday Value Menu
Burger, Add-Ons, Combos, Excludes Cream Cheese Shakes and SONIC Blast® Treat

AVAILABLE AT ALL SONIC DRIVE-INS

Subscribe!

Notice of Public Hearing on Budget

The Bailey Central Appraisal District will hold a public hearing on a proposed budget for the 2010 fiscal year.

The Public Hearing will be held on August 27, 2009 at 12:30 pm at 302 Main Street, Muleshoe, Texas.

A Summary of the appraisal district budget follows:

The total amount of the proposed budget is \$295,000.

The total amount of increase over the current year's budget is \$1,300.

The number of employees compensated under the proposed budget is 4 full time.

The number of employees compensated under the current budget is 4 full time.

The appraisal District is supported solely by payments from the local taxing units served by the appraisal district.

If approved by the appraisal district board of directors at the public hearing, this proposed budget will take effect automatically unless disapproved by a majority of the governing bodies of the county, school districts, cities, and towns served by the appraisal district.

A copy of the proposed budget is available for public inspection in the office of each of those governing bodies of the county, school districts, cities, and towns served by the appraisal district.

A copy of the proposed budget is available for public inspection in the office of each of those governing bodies. A copy is also available for public inspection at the appraisal district office.

Published in the Muleshoe Journal August 13, 2009.

Senior Citizen News

By Laverne Wimm

Saturday! Mule Days! Begin your day with a pancake breakfast at the Oneita Wagnon Senior Center. We will be serving from 7-11 a.m.

The menu is pancakes, different variety of syrups, bacon, sausage, orange juice, milk and coffee. Hope to see you here. Come eat breakfast, then watch the parade, play dominoes, eighty or just visit.

All of you Bunco players mark your calendars for Tuesday, Aug. 18. Call a friend and be sure to be here at 10 a.m. We appreciate Interim Home Health for their assistance.

Thursday, Aug. 20, will be a big day for us. The birthday party will be at noon. Hope all of you with birthdays in August have received a call inviting you to come

and let us honor you for another birthday.

Also, on Thursday, there will be a Health Fair at the center hosted by South Plains Association of Governments Area Agency on Aging.

Make plans to come by and take advantage of all the booths that will be available. There will be diabetes, nutritional, cholesterol, hearing, and bone density screening. The service will be available from 10:30 a.m. until 1 p.m. So come on in and use this service.

You can stay and enjoy a game of Bingo after lunch. We have a great time. Prizes and refreshments are furnished. LaShea Mason with Nurscare is our Bingo caller and we really appreciate and enjoy her.

My appreciation to all of you volunteers that filled in for me last

Thursday, Friday, and Monday, while I was out with illness in my family. May God bless you. It is really nice to live in Muleshoe where friends help in time of need.

Menu for Aug. 17-21:
Monday, Aug. 17 — Chicken stuffing casserole, potatoes, salad, cranberry sauce, wheat rolls and cake.

Tuesday, Aug. 18 — Ground beef and Spanish rice, hominy casserole, salad, wheat roll and apple crisp.

Wednesday, Aug. 19 — Grilled steak, gravy, green beans and potatoes, salad, wheat roll and peach cobbler.

Thursday, Aug. 20 — Hamburgers, pasta salad, fruit and cookies.

Friday, Aug. 21 — Fish or chicken strips, gravy, beans, coleslaw, cornbread and fruit salad.

NEWSPAPER POLICIES

EDITORIALS are the opinion of the newspaper. They are written by staff members of the Muleshoe Journal. They are not signed because they express the position of the publisher, owners and the newspaper staff.

LETTERS TO THE EDITOR are written by readers of the newspaper. They are brief expressions of opinion, most concerning issues of local interest. Letters must be legible. They may be edited for content, length and space, or number of endorsements. All letters must be signed by the writer and must include a daytime telephone number for verification. Third party and unsigned letters will not be published.

COLUMNS are the personal opinion of the writer whose byline appears. Columns from readers should address an issue of local concern and general interest. Columns may be edited for content, length and space.

Letters to the Editor and Columns can be sent to:

Editor - Muleshoe Journal

P.O. Box 449, Muleshoe, Texas 79347

FAX 806.272.3567 or e-mail editor@muleshoejournal.com

BAILEY COUNTY DEVOTIONAL PAGE

"THE FIVE AREA TELEPHONE COOPERATIVE, INC."
West Plains Telecommunications, Inc.
Five Area Systems, Inc. • Plateau Wireless
Five Area Long Distance • Five Area Internet
302 Uvalde Muleshoe, USA (806) 272-5533

5A COMMUNITY ORGANIZATION

Serve Wholeheartedly, as if you were serving the Lord, not men. Ephesians 6:7

MULESHOE VALLEY INC.
2601 W. American Blvd. P.O. Box 631 Muleshoe, Texas
(806) 272-4266 Mobile (806) 946-8763 mviinc@fivearea.com

McDONALD'S OF MULESHOE
1315 W. American Blvd. • 272-3333
Open at 5 AM every day! i'm lovin' it

PAGO FEED YARD, INC.
Commercial Cattle Feeders
P.O. Box 956, Friona 265-3281
Feller Hughs - Mgr.

MAPLE COOP GIN
927-5501
Maple, Texas

Pizza Hut
1412 W. American Blvd. Muleshoe • 272-4213
Open: Sun.-Mon. 11AM-11PM
Lunch Buffet: Sun.-Fri. 11:30 AM-1:30PM
Monday Night Buffet: 6-8PM
PIZZA HUT WING STREET IS HERE!
"Gather round the Good Stuff"

2800 West American Blvd. Muleshoe 272-4296
Ray Lee EQUIPMENT CO., LTD.

MULESHOE PEA & BEAN, INC.
1680 CR 1044, Muleshoe • 272-5589
Nicky & Chad Nickels

United Supermarkets

IRRIGATION PUMPS & POWER
Zimmatic W. Hwy. 84 272-5597
CENTER PIVOTS

Muleshoe Journal
www.muleshoejournal.com
201 W. Ave. C, Muleshoe
806.272.4536 FAX 806.272.3567

Int-rim HEALTH CARE
110 E. Ave. C Muleshoe 272-5549
www.InterimHealthcare.com
LeAnn Altman • Olivia Barrera • Arlene Brozek
Brenda Testerman RN • Kristy Peck, LVN

Lowe's MARKETPLACE
401 W. American Blvd. • Muleshoe • 272-4585

Facts About The BIBLE BY JOHN LEHT

501

This is a dramatized version of facts taken from the Book of Genesis. Intending to show some of the customs of those ancient and traditional times.

JACOB'S TOIL

WHEN THE TIME CAME FOR JACOB TO CHOOSE A WIFE, ISAAC SENT HIM TO HIS KINSMAN LABAN, SO HE WOULD NOT CHOOSE A HEATHEN MAIDEN. NOW...

...THE JOURNEY HAS BEEN AN ARDUOUS ONE FOR JACOB HAS OBEYED THE INSTRUCTIONS OF HIS FATHER ISAAC, AND GONE OFF OF HIS WAY TO AVOID ANY CONTACTS WITH THE CANNANITES ON HIS TRIP...

SOON NOW, I SHOULDST COME TO HARAN WHERE MY KINSMAN LABAN DWELLETH.

...AS JACOB APPROACHES THE OUTSKIRTS OF HARAN...

THIS IS THE TOWN WHERE MY KINSMAN LIVES - I SHALL INQUIRE OF HIM!

MY BRETHREN, OF WHAT TOWN BE YE?
OF HARAN ARE WE.

KNOW YE LABAN THE SON OF NAHOR?
WE KNOW HIM.

IS HE WELL?
HE IS WELL.

AND BEHOLD HERE COMETH HIS DAUGHTER, RACHEL NOW - WITH LABAN'S SHEEP.

Next Week: A helping hand

This devotional & directory is made possible by these businesses who encourage all of us to attend worship services.

ASSEMBLY OF GOD
FIRST ASSEMBLY OF GOD
Pastor Ryan Pate
521 South First Street
272-3017
S.S. 9:45 am,
W.S. 10:30 am & 6:00 pm,
Wed. 7:00 pm
EL BUEN PASTOR
415 E. Ave. F - 272-5455
Pastor Domingo Luna -
272-4542
S.S. 9:45 am, W.S. 11 am &
6 pm; Wed. 7 pm

BAPTIST
CALVARY BAPTIST
1733 W. Ave. C.
Rev. Jeff Coffman
CIRCLE BACK BAPTIST
Intersection FM 3397 & FM
298
FIRST BAPTIST
220 West Ave. E
Dr. Stacy Conner
FIRST BAPTIST
Lazbuddie • 965-2126
PRIMERA IGLESIA BAUTISTA
223 E. Ave. E
Interim Rev. Troy Smith
PRIMITIVE BAPTIST
621 South First
Elder Bernard Gowens, Min.
PROGRESS BAPTIST
Progress, TX
PROGRESS SECOND BAPTIST
Arthur Hays, Min. - 1st & 3rd
Sundays

RICHLAND HILLS BAPTIST
Bro. Larry Thornton
17th & West Ave. D
S.S. 10 am; W.S. 11 am &
6 pm; Women's Bible Study
Thurs. 6 pm
www.rhbc-muleshoe.org
TRINITY BAPTIST
314 E. Ave. B - Bennie
Wright, Min.

God Bless You!

CATHOLIC
IMMACULATE CONCEPTION
CATHOLIC CHURCH
805 E. Hickory
Leonardo Pahamtang, Min.

EPISCOPAL - CHARISMATIC
ST. CLEMENTS CHURCH
COMMUNION OF CHRIST
THE REDEEMER
Hwy. 214 South • 272-5954
Father Sergio Leal
Sun. W.S. 10:30 am

CHRISTIAN
TRINITY CHRISTIAN CENTER
1723 W. American Blvd.
272-3877
Reydon Stanford, Pastor
Sun. W.S. 10:30 am
CENTRO CRISTIANO
117 E. Birch St.
Hermanos Barron
S.S. 10 a.m.; W.S. 11 a.m. &
6 p.m.; Wed. 7 p.m.

CHURCH OF CHRIST
LARIAT CHURCH OF CHRIST
Wesley Roach, Min.
S.S. 10 a.m.; W.S. 11 a.m. &
6 p.m.; Wed. 7:30 p.m.
LAZBUDDIE CHURCH OF CHRIST
Nathan Crawford, Min.
S.S. 9:30 am; W.S. 10:20 am
& 5 pm; Wed. 7 pm

MULESHOE CHURCH OF CHRIST
22nd & W. American Blvd.
S.S. 9:30 am; W.S. 10:20 am
& 6 pm; Wed. 7:30 pm
16th & AVE. D
CHURCH OF CHRIST
Curtis Shelburne, Min.
272-4619
S.S. 9:30 am; W.S. 10:30 am;
Growth Gr. 1:30 pm;
Wed. 7:00 pm

LUTHERAN
ST. JOHN LUTHERAN
Lariat, TX • David Symm, Min.
S.S. 10:30 am; W.S. 9:30 am

METHODIST
FIRST UNITED METHODIST
507 W. 2nd St.
S.S. 9:45; W.S. 11:00;
Praise & Prayer 6 PM;
Wed. 6 PM Youth Activities;
Sun. 5 PM Jr. High Bible
Study; 6 PM Sr. High Bible
Study
Pastor Monty Leavell,
272-5517

LAZBUDDIE METHODIST
S.S. 9:30 am; W.S. 10:30 am
Pastor Ken Peterson
965-2121
EL DIVINO SALVADOR U.M.C.
619 E. 5th Street & Ave. G,
Fernando Sanchez, Pastor
272-6888

PENTECOSTAL
UNITED PENTECOSTAL LIGHTHOUSE
207 East Ave. G
1-800-454-6051
S.S. 10 am; Thursday,
Bible Study 7 pm

INTER DENOMINATIONAL
NEW COVENANT
Plainview Hwy.
Steve Claybrook, Pastor
W.S. 10 am; Wed. 7 pm
MULESHOE COWBOY FELLOWSHIP
710 E. American Blvd.
Steve Friskup, Minister
272-5199
Service: 7:30 p.m. Thursday

If you have changes to make to church information, please contact the Journal at 272-4536.

Antiques & Fine Things
2104 W. American Boulevard
Muleshoe • 272-4217
Trollbeads
every story has a bead

TEXAS FARM BUREAU INSURANCE CO. **FARM BUREAU INSURANCE**
1612 W. American Blvd., Muleshoe • 272-4567

CENTRAL COMPRESS & WAREHOUSE
SUDAN, TEXAS

Deaf Smith County Grain, Inc.
Cliff A. Skiles, Jr.
Jeb S. Skiles

McCORMICK SEEDS, INC.
400 East Ash • 272-3156
Muleshoe, Texas
A COMPLETE LINE OF FIELD SEEDS
Tim McCormick

ST. BANK MEMBER FDIC
202 South First 272-4515

Lial's TORTILLA FACTORY
105 E. Ash St., Muleshoe • 272-5772
Phillipians 4; "I can do all things through Christ who strengthens me."

MULESHOE ANIMAL CLINIC
GENERAL PRACTICE
M V S MULESHOE VET SUPPLY
1430 US Hwy. 84, Muleshoe Office: 272-3061

LAW OFFICE OF TINA DAVIS-RINCONES
CRIMINAL-PROBATE-FAMILY LAW
101 S MAIN, MULESHOE • 272-7776

BOEHNING DAIRY
690 CR 45, Earth
"MILK - A PART OF EVERYTHING THAT IS GOOD!"

BCEC BAILEY COUNTY ELECTRIC COOPERATIVE ASSOCIATION
Muleshoe — 272-4504 Morton — 266-8600

WAYNE COPLEY TRUCKING
CALICHE, SAND & ROCK PRODUCTS
P.O. Box 63 Muleshoe, Texas 79347 (806) 272-3697 Mobile: (806) 946-8072

J&S Dairy
1260 CR 1038, Muleshoe 272-7706

BAILEY COUNTY DEVOTIONAL PAGE

Obituaries

Eddie Alair

Funeral services for Eddie Alair, 55, of Fredericksburg, were held Monday, Aug. 10, at First Baptist Church Springlake with Glen Harlan of Springlake and Ken Peterson of Lazbuddie officiating.

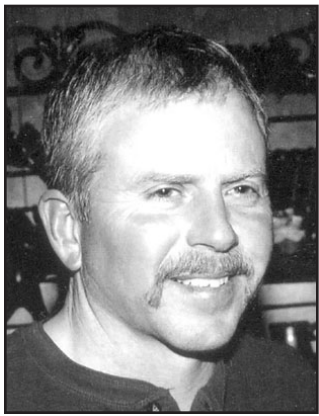
Burial followed in Springlake Cemetery.

Alair died on Aug. 6, 2009, in Fredericksburg. He was born on May 18, 1954, in Littlefield.

He had been a resident of Fredericksburg since 2006 moving from Springlake. He was a 1972 graduate of Springlake High School, a member of the American Motorcycle Association, and worked as a tractor mechanic.

Alair was preceded in death by his father — Thomas Alair, Sr., and a sister — Nancy Denton.

Survivors include Sheri Young of Fredericksburg;



Eddie Alair

three sons — Trey Alair of Lazbuddie, Jesse Alair of Earth and Schuler Underwood of Fredericksburg; a daughter — Wendy Roman of Big Spring; his mother — Louise Alair of Springlake; two brothers — Jimmy Alair of Katy, and Johnny Alair of Springlake; and three grandchildren

Memorials may be sent to the American Diabetes Association, 8008 Slide Rd., Lubbock, Texas.

Dean Gilliam

Funeral services for Dean Gilliam, 66, of Morton, were held on Thursday, Aug. 6 at the First Mission Baptist Church of Morton with Larry Gilliam officiating.

Burial followed in Morton Memorial Cemetery.

Gilliam died on Wednesday, Aug. 4, 2009, in Levelland. He was born on Jan. 28, 1943, to Emory Clinton and Lena Elsie Gilliam in Muleshoe, and married Kathy Turney in Morton on Nov. 23, 1972.

He was preceded in death by his parents, and three brothers — Jimmy, Jerry and Lester Gilliam.

Gilliam was a member of the First United Methodist Church in Morton. He was a 1960 graduate of Three Way High School.

He was employed by the Wildlife & Fish Department for more than 33 years, stationed at the Muleshoe Wildlife Refuge.

Survivors include his wife — Kathy of Morton; a son and his wife — Douglas and Thea Gilliam of Cleburne; a sister — Linda Butler of Marble Falls; four brothers — Gilbert Gilliam of Farwell, Wayne and Vester Gilliam of Morton, and Carlton Gilliam of Mineral Springs, Ariz., and a grandson.

Soil, water conservation association to meet Aug. 19

The South Plains Association of Soil and Water Conservation Districts (SPASWCDS) will meet Aug. 19, beginning at 9:30 a.m. at PYCO Industries, located at 2901 Ave. A in Lubbock.

The featured program speaker is Lacey Frazee, executive director of the American Museum of Agriculture. Located in Lubbock, the American Museum of Agriculture displays machinery and artifacts dating back to pioneering years of agriculture in the region.

Speakers during the business session who will update SWCD directors on state and national soil and water conservation programs

and issues include Aubrey Russell, member of the Texas State Soil and Water Conservation Board, Area I; Scott Buckles, vice president of the Association of Texas Soil and Water Conservation Districts, Area I; Rex Isom, executive director, Texas State Soil and Water Conservation Board; and State Conservationist Don Gohmert, USDA-NRCS.

Counties which SPAWCDS serves include Bailey, Lamb, Hale, Floyd, Motley, Cottle, Hardeman, Foard, Cochran, Hockley, Lubbock, Crosby, Dickens, King, Yoakum, Terry, Lynn, Garza, Kent, Stonewall, Gaines, Dawson, Borden, Scurry and Fisher.

Weddings

Terrell, Coffman exchange wedding vows

Beth Terrell and James Coffman, both of Arlington, were united in holy matrimony on July 11, 2009, at Calvary Baptist Church in Muleshoe, with the Rev. Jeff Coffman officiating.

Jamie DiBello served as maid of honor, with Travis Thompson serving as best man.

Maci Adkins, Kaelee Abbey, Alysa Terrell and KaLynn Coffman served as bridesmaids, with Kendall Johnson, Logan White, Jubal Terrell and Brandon White serving as the groomsmen.

Jubal Terrell sang, "Love Is Not A Fight," by Warren Barfield.

The bride is the daughter of Delynda and Ricky

Terrell of Blossom.

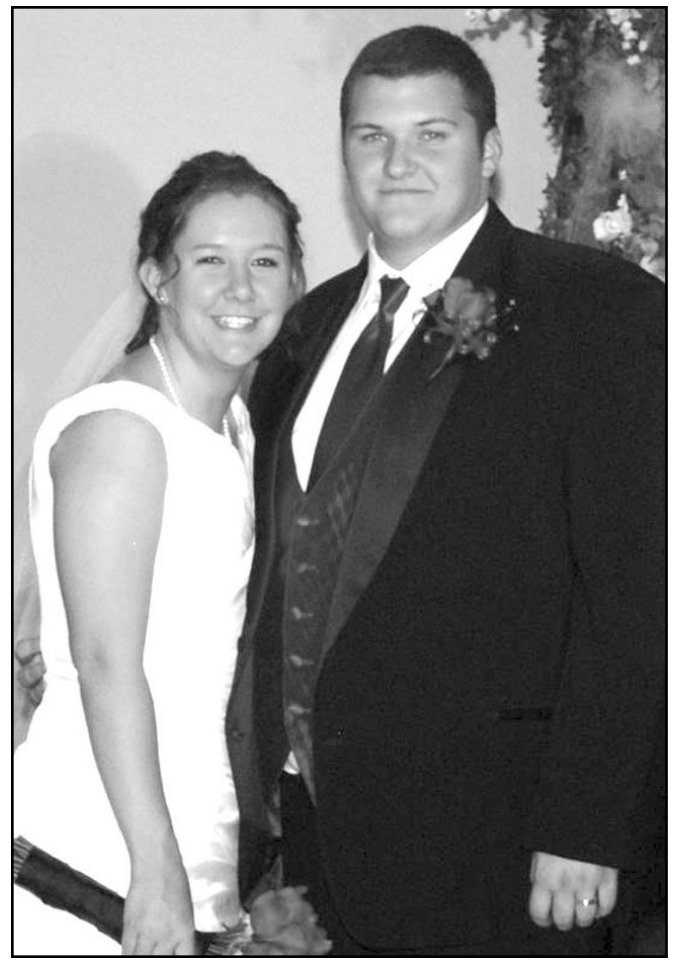
The groom is the son of Jeff and Judy Coffman of Muleshoe.

Following tradition, the bride wore "something new" — her wedding gown, and carried an old blue handkerchief she had borrowed from her granny.

The bride graduated from Paris High School in 2007, and is a general study major at Arlington Baptist College.

The groom graduated from Muleshoe High School in 2007, and is a music ministry major at Arlington Baptist College.

Following their honeymoon in San Antonio, the couple will reside in Arlington.



Mr. and Mrs. James Coffman

Gore, Pendleton united in holy matrimony

Tamara Gore and Tim Pendleton, both of Lubbock, were united in matrimony on Aug. 1, 2009, at Westmont Christian Church in Lubbock with the Rev. Benny Baker officiating.

Tabitha Haynie served as the matron of honor, assisted by bridesmaids Brittany Gore, Amy Hall, Mindy Gore and Ashtyn Ammons. Sierra Baker served as the flower girl.

Casey Jones served as best man, assisted by groomsmen Jordan McFerrin, Will Green, Dustin Walker and Chad Hammond.

The bride is the daughter of Rusty and Gwenna Gore of Sudan.

The groom is the son of Jerry and Louise Pendleton of Levelland.

The bride's dress was a David's Bridal Strapless Ivory satin gown featuring a champagne color ribbon below the form fitted bodice that wrapped around to the back and laced up the gown. The entire gown featured a sequenced lace overlay with flowers in the lace with a semi long train. The fingertip length veil was also adorned with the flower lace.

The groom wore a black pin-striped tuxedo with an ivory vest and tie.

The bride carried "something old" — a veil worn by the mother of the groom; "something new" — her wedding gown; "something borrowed" — a slip worn by the bride's sister on her wedding a year ago; and "something blue" — a blue garter. The also bride carried a bouquet of red

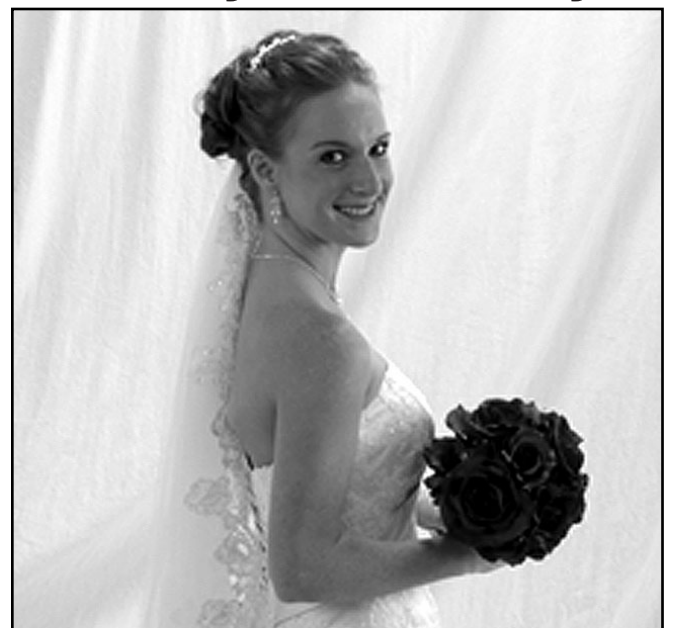
roses created by the her mother.

Following the ceremony, a formal reception was held at the Westmont Christian Church followed by a dance at the Radisson Hotel.

The couple honeymooned in Nassau, the capital of the Bahamas.

The bride is a graduate of Sudan High School, Texas Tech University with a BA in communication studies, and is attending West Texas A&M University, where she plans to graduate with an MBA in December.

The groom is a graduate of Levelland High School and Texas Tech University with a BA in English. He



Mrs. Tim Pendleton

also has an EMT basic certification from South Hub City Vertical, and Plains College, and is currently applying a South Plains Fire Academy graduate. at the Lubbock Fire Department.

2009 Property Tax Rates in the CITY OF MULESHOE

This notice concerns 2009 property tax rates for the CITY OF MULESHOE. It presents information about three tax rates. Last year's tax rate is the actual rate the taxing unit used to determine property taxes last year. This year's *effective* tax rate would impose the same total taxes as last year if you compare properties taxed in both years. This year's *rollback* tax rate is the highest tax rate the taxing unit can set before taxpayers can start tax rollback procedures. In each case these rates are found by dividing the total amount of taxes by the tax base (the total value of taxable property) with adjustments as required by state law. The rates are given per \$100 of property value. This notice contains a summary of actual effective and rollback tax rates' calculations. You can inspect a copy of the full calculations at 302 Main St., Muleshoe, TX 79347. This notice was prepared by Kaye Elliott, Chief Appraiser, on August 7, 2009.

LAST YEAR'S TAX RATE

Last Year's Operating Taxes	\$783,250
Last Year's Debt Taxes	\$122,331
Last Year's Total Taxes	\$905,581
Last Year's Tax Base	\$119,580,185
Last Year's Total Tax Rate	0.757300/\$100

THIS YEAR'S EFFECTIVE TAX RATE

Last Year's Adjusted Taxes (after subtracting taxes on lost property)	\$905,580
/This Year's Adjusted Tax Base (after subtracting value of new property)	\$118,532,712
=This Year's Effective Tax Rate	0.763900/\$100

THIS YEAR'S ROLLBACK TAX RATE

Last Year's Adjusted Operating Taxes (after subtracting taxes on lost property and adjusting for any transferred function, tax increment financing, state criminal justice mandate and/or enhanced indigent health care expenditures)	\$783,250
/This Year's Adjusted Tax Base	\$118,532,712
=This Year's Effective Operating Rate	0.660700/\$100
x1.08=This Year's Maximum Operating Rate	0.713500/\$100
+This Year's Debt Rate	0.102700/\$100

=This Year's Rollback Rate 0.816200/\$100

STATEMENT OF INCREASE/DECREASE

If CITY OF MULESHOE adopts a 2009 tax rate equal to the effective tax rate of 0.763900 per \$100 of value, taxes would increase compared to 2008 taxes by \$4,031.

SCHEDULE A: UNENCUMBERED FUND BALANCES

The following estimated balances will be left in the unit's property tax accounts at the end of the fiscal year. These balances are not encumbered by a corresponding debt obligation.

Type of Property Tax Fund	Balance
Maintenance & Operation	-0-
Interest & Sinking	-0-

SCHEDULE B: 2009 DEBT SERVICE

The unit plans to pay the following amounts for long-term debts that are secured by property taxes. These amounts will be paid from property tax revenues (or additional sales tax revenues, if applicable)

Description of Debt	Principal or Contract Payment to be Paid from Property Taxes	Interest to be Paid from Property Taxes	Other Amounts to be Paid	Total Payment
Certificates of Obligation	\$55,651	\$60,757	-0-	\$116,408
Total required for 2008 debt service				\$116,408
-Amount (if any) paid from funds listed in Schedule A				-0-
-Amount (if any) paid from other resources				-0-
-Excess collections last year				-0-
=Total to be paid from taxes in 2008				\$116,408
+Amount added in anticipation that the unit will collect only 93.000000% of its taxes in 2008				\$6,127
=Total Debt Levy				\$122,535

Muleshoe Memorial Park Cemetery, Inc.

This is to remind you of the **Annual General Membership meeting** of the Bailey County Cemetery Association.

The meeting, which was originally scheduled for Saturday, August 15th, has been postponed due to a time conflict with Mule Days activities. The meeting is now scheduled for **Saturday, August 22nd**, at 10 a.m. and will be held at the Bailey County Coliseum meeting room.

It is very important that all persons with an interest in the Bailey County Cemetery attend this meeting in order to allow the following business to be conducted:

- Election of Directors
- Amendment to By-Laws.

Please make an effort to attend.

Thank you,

The Board of Directors

Engagements

Recio, Gonzales engagement announced

Lucy Recio announces the engagement of her daughter, Gloria Recio of Muleshoe, to Gonzalo Lozano, Jr., also of Muleshoe.

The prospective bride is a graduate of Muleshoe High School.

She is employed as a secretary at Muleshoe State Bank.

The prospective groom is the son of Gonzalo and Rebeca Lozano.

He is also a graduate of Muleshoe High School, and is employed as an installation tech with Reach Broadband of Muleshoe.

The wedding has been set for Sept. 12, 2009, at



Gloria Recio of Muleshoe, to Gonzalo Lozano, Jr.

5 p.m., at New Covenant Church. A reception will follow the ceremony, at the Lozano residence in Muleshoe.

Smith, McCracken engagement announced

Jerry and Donna Smith announce the engagement of their daughter, Tazia Smith of Nashville, Tenn., to Kelly McCracken of Oliver Springs, Tenn.

The prospective bride is a graduate of the First Baptist High School of Lazbuddie, and West Texas A & M University of Canyon.

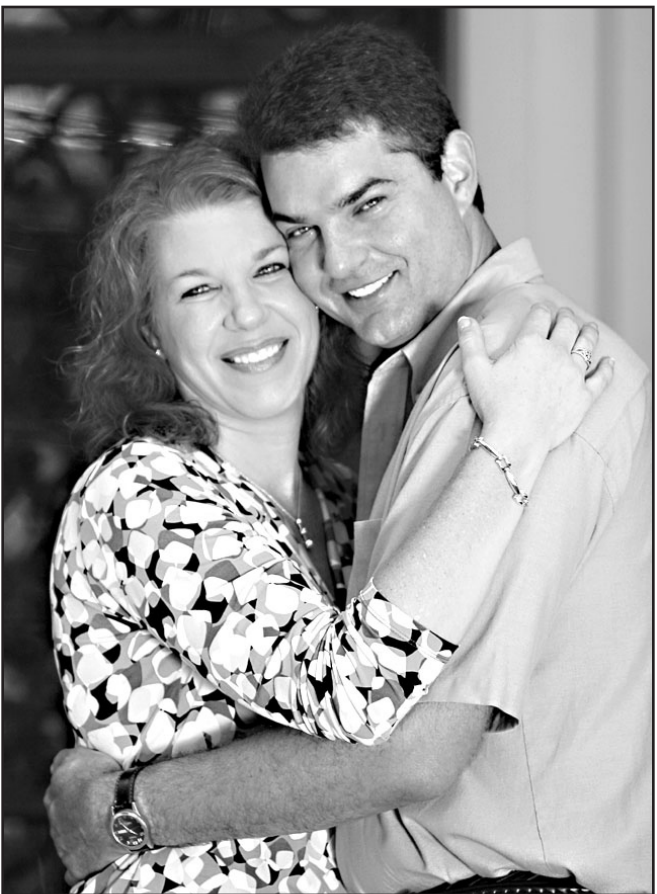
She is self-employed as a bookkeeper.

The prospective groom is the son of Tom and Shirley McCracken.

He is a graduate of Lenoir City High School, Lenoir City, Tenn., and Roane State Community College of Harriman, Tenn.

The prospective groom is employed by Glaxo-Smith Kline Pharmaceuticals of Knoxville, Tenn., where he is a senior product release specialist.

The wedding ceremony



Tazia Smith and Kelly McCracken

has been set for Saturday, Sept. 5, 2009, at 2 p.m., at Clovercroft Chapel in Franklin, Tenn., with a reception to follow.

The prospective groom is a widower and has two sons, Bryce, 6, and Kyle, 2.

Immunization clinic set

There will be a student immunization clinic on Friday, Aug. 14, from 9-11 a.m., in the Watson Junior High nurse's office.

New Texas law requires all seventh grade students to have the Tdap booster, Meningitis, and a Vericella (chicken pox) booster.

The cost is \$10 per shot.



Kyra Lynn Kimbrough, to Eric Alan Washington.

Kimbrough, Washington engagement announced

Mr. and Mrs. Muleshoe. Kyle Kimbrough, of Bertram announce the engagement of their daughter, Kyra Lynn Kimbrough, to Eric Alan Washington.

The prospective groom is the son of Mr. and Mrs. Mark Washington, of Muleshoe.

The couple will be married on Sept. 6, 2009, at the First United Methodist Church of

A reception will follow at the Muleshoe Country Club.

The prospective bride is a graduate of Muleshoe High School and will further her education at San Diego University.

The prospective groom is also a graduate of Muleshoe High School and is serving in the United States Marine Corps.

Givens, Cass announce engagement

Jennifer and Warren A. Givens of Muleshoe announce the engagement of their daughter, Rachel Givens of Lubbock, to Ele Cass, also of Lubbock.

The prospective groom is the son of Jenna and Kemp Cass of Lubbock.

The couple will be married Sept. 26, 2009, at the Wind Power Museum in Lubbock.

The prospective bride is a 2009 graduate of Wayland Baptist University. She is employed by the Lubbock



Rachel Givens and Ele Cass

City Secretary's Office. The prospective groom is employed by Irwin Steel Erectors. He is a 1998 graduate of Trinity Christian.

2009 Property Tax Rates in MULESHOE AREA HOSPITAL DIST.

This notice concerns 2009 property tax rates for the MULESHOE AREA HOSPITAL DIST. It presents information about three tax rates. Last year's tax rate is the actual rate the taxing unit used to determine property taxes last year. This year's effective tax rate would impose the same total taxes as last year if you compare properties taxed in both years. This year's rollback tax rate is the highest tax rate the taxing unit can set before taxpayers can start tax rollback procedures. In each case these rates are found by dividing the total amount of taxes by the tax base (the total value of taxable property) with adjustments as required by state law. The rates are given per \$100 of property value. This notice contains a summary of actual effective and rollback tax rates' calculations. You can inspect a copy of the full calculations at 302 Main St., Muleshoe, TX 79347. This notice was prepared by Kaye Elliott, Chief Appraiser, on August 7, 2009.

LAST YEAR'S TAX RATE

Last Year's Operating Taxes	\$956,952
Last Year's Debt Taxes	\$298,067
Last Year's Total Taxes	\$1,255,019
Last Year's Tax Base	\$313,754,766
Last Year's Total Tax Rate	0.400000/\$100

THIS YEAR'S EFFECTIVE TAX RATE

Last Year's Adjusted Taxes (after subtracting taxes on lost property)	\$1,261,133
/This Year's Adjusted Tax Base (after subtracting value of new property)	\$324,564,475
=This Year's Effective Tax Rate	0.388500/\$100

THIS YEAR'S ROLLBACK TAX RATE

Last Year's Adjusted Operating Taxes (after subtracting taxes on lost property and adjusting for any transferred function, tax increment financing, state criminal justice mandate and/or enhanced indigent health care expenditures)	\$961,576
/This Year's Adjusted Tax Base	\$324,564,475
=This Year's Effective Operating Rate	0.296200/\$100
x1.08=This Year's Maximum Operating Rate	0.319800/\$100
+This Year's Debt Rate	0.091000/\$100
=This Year's Rollback Rate	0.410800/\$100

STATEMENT OF INCREASE/DECREASE

If MULESHOE AREA HOSPITAL DIST. adopts a 2009 tax rate equal to the effective tax rate of 0.388500 per \$100 of value, taxes would increase compared to 2008 taxes by \$14,333.

SCHEDULE A: UNENCUMBERED FUND BALANCES

The following estimated balances will be left in the unit's property tax accounts at the end of the fiscal year. These balances are not encumbered by a corresponding debt obligation.

Type of Property Tax Fund	Balance
Maintenance & Operation	-0-
Interest & Sinking	-0-

SCHEDULE B: 2009 DEBT SERVICE

The unit plans to pay the following amounts for long-term debts that are secured by property taxes. These amounts will be paid from property tax revenues (or additional sales tax revenues, if applicable)

Description of Debt	Principal or Contract Payment to be Paid from Property Taxes	Interest to be Paid from Property Taxes	Other Amounts to be Paid	Total Payment
Certificates of Obligation	\$150,000	\$130,333	-0-	\$280,333

Total required for 2009 debt service	\$280,333
-Amount (if any) paid from funds listed in Schedule A	-0-
-Amount (if any) paid from other resources	-0-
-Excess collections last year	\$2,166
=Total to be paid from taxes in 2009	\$278,167
+Amount added in anticipation that the unit will collect only 93.000000% of its taxes in 2009	\$20,937
=Total Debt Levy	\$299,104

The debt service tax revenue is used to pay for bonded indebtedness. The bonds were approved by the voters of this district.

FARM EQUIPMENT AUCTION Monday, August 17, 2009 — Sale Time 9:30 a.m.

Located: Spade, Texas 4 miles North on State Hwy 168, then 1/2 mile East on County Road 252; or from Olton, Texas 14 miles South on State Hwy 168, then 1/2 mile East on County Road 252.

Durham Farms -- Owner

The following will be sold at Public Auction. Call Fletcher Auctioneers (806) 787-3030.

SUPER SET OF EQUIPMENT. SOME ITEMS USED VERY LITTLE. DON'T MISS THIS ONE!!!

TRACTORS

- 1- 1992 John Deere 4960 D Tractor, MFWD, SG Cab, Air, Heat, Radio, 15 spd PS Trans, 18.4R42 Rear Rubber, 420/85R28 Frnt Rubber, DH, PTO, Wts., Long Axles, Fenders, 3 pt. 1,200 hrs on Transmission & Rear End Overhaul, SN 1527
- 1- 1973 John Deere 4430 D Tractor, Cab, Air, Heat, Radio, QR Trans, DH, PTO, 18.4-38 Rear Rubber, 11.00-16 Frnt Rubber, 7273 hrs, SN 16739
- 1- 1971 John Deere 4020 D Tractor, Console Model, Synchro Range Transmission, Hydraulic Remote, PTO, 3 pt, Front Weights, Fenders, 16.9-38 Rubber, SN 255281

COTTON HARVEST EQUIPMENT

- 1- KBH Cotton House Cotton Module Builder, Cab, Used 2 Seasons

EQUIPMENT

- 1- John Deere 1700 MaxEmerge Plus 8 row Planter, Sunco Trash Openers, 7' X 7' Bar, Double Boxes, Lock & Load Insecticide Lids, Double Press Wheel Attachments, Incorporator Closing, 350 Monitor, Low Usage, SN 705554
- 8- Press Wheel Drag Closing Units for John Deere 1700 Planter, Low Usage
- 1- John Deere 886 Cultivator, 7' X 7' Bar, Fenders, Knife Attachments
- 1- RAC 9 row Triple Bar Stiff Shank Rodweeder, Hyd
- 1- RAC 9 row Dbl 4X4 Bar Top Diamond Mast, 9' 1" X 3" shks, GWs, Coulters
- 1- Bigham Bros 9 row Paratill Plow Mounted on Triple Mga Bar, Markers & Coulters, Loaded, Very good

- 1- Bigham Bros Disc Lister on Mega Triple Bar, Coulters & BB Markers
- 1- Sam Stevens 9 row Double Stalkcutter, Angle Blades, Completely Reworked
- 1- Sam Stevens 17 row Tri-Fold Sandfighter, 7' X 7' Bar, 7 row Center
- 2- John Deere HX14 Shredders, 1 pull type, 1 3 pt. Used VERY Little
- 1- John Deere 60 Buster Planter, 4" X 7" Bar, Top Mast, FG Boxes, GOOD
- 1- John Deere 9 row lister, Double Gauge Wheels, Markers
- 1- John Deere 400 8 row Rotary Hoe
- 1- John Deere 155 Hydraulic Blade
- 1- John Deere 960 36 ft Field Cultivator, New Sweeps, Incorporators
- 1- Case IH 28 ft HD Tandem, Batwing Fold, New Disc, Model 480
- 1- Case 18 ft Offset Disc, New Discs, Mdl 760
- 1- Krause 21 ft Chisel Rig, Pull Type
- 1- Eversman 12 ft Tongue Pull Box Blade
- 1- Hamby 21 shank Chisel Rig, Triple Bar & Gauge Wheels, Incorporators
- 1- Bigham Bros 15 shank Chisel Rig, Triple Bar, Gauge Wheels, Incorporators
- 1- John Deere 11 shank V Ripper, Double Gauge Wheels
- 1- RAC 9 shank Ripper, Triple 4X4, LTM Double Gauge Wheels
- 1- Stanton 4 Row Plow Packer
- 1- John Deere 995 6 bottom Switch Plow
- 1- John Deere 4200 4 Bottom Rollover Plow, New Wings
- 1- Sam Stevens 3 pt Equipment Lift, Hyd

FUEL TANK TRAILERS - UTILITY

- 2- Lee 500 gal Fuel Trailers, Tandem Axle, Pump, LOW USAGE
- 1- 2007 Kearney 18 ft X 82 in. Utility Trailer with Pipe Top, Ramps

SPRAY RIG - TANKS

- 1- Wylie 3 pt Spray Rig, 500 gallon Tank Raven Monitor, 60 ft Boom, Hyd Fold
- 1- Wylie 1250 gallon Nurse Tank Pump with Honda Motor & Chemical Mixer
- 1- Wylie Front Mount Tank and Bracket, 300 gallon

- 1- 8000 series Front Mount Tank, 300 gallon, Ace Hydraulic Pump & Quick Fill Attachment, Weight Bracket
- 1- Fuel Storage Tank, 3000 Gallons, on skids

GRAIN CART - LIVESTOCK

- 1- Unverferth Model 325 Grain Wagon, Engine & Hyd Pump (Low Usage)
- Approx 20 16 ft Livestock Panels, Six Bar, Loop Leg

MISC

- 8- Lorenzo Mfg 2 Paddle Dikers
- 1- Pair RAC Double Gauge Wheels
- 2- Firestone 18.4R42 Rear Tires
- 1- 11R22.5 Tires (Pivot)

CONSIGNMENTS OF
LARGE ITEMS
WELCOME

(806) 787-3030

Check our Website:
www.fletcherauctions.com
Pictures on Website

Fletcher Auctioneers

Auctioneers * Real Estate Brokers Lic #7131

P.O. Box 609 - Wolfforth, Texas 79382

GUN SHOW!

Plainview, TX

Ollie Liner Center
2000 S. Columbia

Aug. 15-16 • Admission \$5
Sat. 9 am-5 pm • Sun. 9 am-4 pm

New & Used Rifles, Shotguns & Handguns
Large Selection of New & Used Rifles, Shotguns & Handguns
(918) 659-2201 • G&S Promotions

Buy
Sell
Trade

Guns,
Knives,
& Ammo

Heritage Board Report



Kay Mardis crosses the XIT's "T"

Hot irons at work

The Muleshoe Heritage Center board has instigated an unusual project... preserving some of the ranching heritage of the area through brands.

The first branding barbecue party was held at the center on Friday, July 31, with sponsors and family members doing the branding.

A large storage building at the center has been covered with antique siding and the building now looks like an old barn.

Brands of this area along with the date and a short history of the brand is placed on large wood pieces done in black metal. A block of wood placed above the brands is used for the branding.

The first brand placed on the old barn is the XIT (Ten in Texas) brand, as this was the first used in this area. The XIT Ranch was the largest ranch in the United States, and was made up of much of this area.

Branding irons were heated and Kay Mardis

representing Muleshoe State Bank, sponsor of the XIT brand, stepped up and did the first branding.

Other family members and sponsors continued the branding following a chuck wagon meal cooked by the heritage board president Tom Watson.

This is an ongoing project under the direction of Kenneth Henry. Because this area was settled early by ranchers, heritage board members are thrilled to preserve some of this historic era for posterity.

The second branding barbecue party will be held at the center on Friday, Aug. 14, at 6 p.m.

This will again include a chuck wagon barbecue meal followed by branding done by family members or sponsors.

To join the fun, guests are asked to contribute \$25 or \$15. to the heritage members for the meal. Reserve your place by calling the Heritage Santa Fe Depot by 5 p.m. on Thursday, Aug. 13.

Bridal Showers



Amy Sullivan and Don Burch



Jaimie Hough

Hough honored at shower

Jaimie Hough, the prospective bride of Jordan Saylor, and daughter of Rick and Carole Hough, Littleton, Colo., was honored with a bridal shower on Aug. 8, in the home of Ashley McElroy.

The prospective groom is the son of Scott and Sharla Saylor of Muleshoe

Hostesses for the event included Jacque Boutell, Paulette Foster, Tammy Jones, Cindy McAlpine, Jimmie Kay Moore, Tonya Pool, Margie Silguero, Terry Brewster,

Colleen Hailey, Patti Kent, Ashley McElroy, Anna Perez, Margaret Quintana, Lora Wallace, Brenda Clark, Adena Johnson, Melinda Locke, Amy Melendez, Danna Perez, Cleta Robertson and Lynda Washington.

The hostess gift was a Kitchen Aide™ mixer.

Special guests included Carole Hough, Mert Matens, June Saylor, and Danielle Morrison.

Sullivan honored with bridal shower

Amy Sullivan, the prospective bride of Don Burch, was honored on Saturday, Aug. 8, with a bridal shower in the home of Marca Morris of Lazbuddie.

Along with the bride, special guests included Jan Sullivan of Arlington, Kiley Crabb of Dallas, Vickie Burch of Plains, Brenna Burch of Lazbuddie and Lillian Street of Muleshoe.

Guests were served lemonade punch garnished with fresh fruit, grape salad and an assortment of cheese and crackers from a table

decorated with plum and brown table linens.

Hostesses for the event included Sarah Black, Janice Bradshaw, Claire Brown, Beckye Conklin, Sheryl Engelking, Paulette Foster, Stephanie Foster, Debbie Gallman, Ellen Gallman, Coralynn Jarman, Linda Martin, Marca Morris, Vicki Morris, Debra Redwine, Jana St.Clair, LaDonna Scott, Terry Thomas and Debbie Weir.

The couple will marry on Oct. 17, 2009, at Kerrville.

Thanks for reading!

Art Loft Galleries & Trés Chic Interiors

Bridal Selections

Tazia Smith & Kelly McCracken

Shower Date
September 3, 2009

Wedding Date
September 5, 2009

Daughter of Jerry & Donna Smith

1529 W. American Blvd., Muleshoe • 806.272.3485

CELEBRATE MULE DAYS

AUG. 15 - 3:00 P.M.

MULE SHOE

PITCHING TOURNAMENT

Jennyslipper Mule-Putt Golf Course

Doubles and Singles Cash prizes

1st place \$50, 2nd place \$25.00

\$10.00 entry fee

Open to public - 1:00 pm to 11:00 pm

Putt Golf 18 holes \$1.75 per game

1974 class reunion planned

The Muleshoe Class of 1974 will be holding its 35th class reunion at the Muleshoe Country Club on Aug. 29.

Registration and visiting is at 5 p.m.; dinner and a program at 7 p.m.; and dancing from 8:30 p.m. until midnight.

Send an RSVP to Troy Scott or Brenda Black.

Subscribe to the Journal!

Earn FREE[†] Mary Kay[®] products!

Why cut skin care or makeup from your budget or sacrifice quality when you can earn FREE[†] products throwing a Mary Kay party? Since I come to you, there's no hassling with store crowds or parking or trying to find a salesperson. I can offer free samples and recommend the products tailored to your and each of your friends' skin, styles and wallets! Contact me to set up your party today. That's Beauty on a Budget!

Janice Bradshaw
Independent Beauty Consultant
www.marykay.com/janicebradshaw
806-946-8254

[†] with \$200 in total sales and one booking

MARY KAY

Sue and I would like to express our appreciation to Yolanda and her crew for a job well done. Three years ago we started with a plan with Hugo Vasquez to do our remodeling project in three phases, last summer we completed phase 2 and shortly after phase 2 was completed Hugo became ill and passed away. After Hugo's death Sue and I questioned if it was best to continue on with phase 3 using Hugo Vasquez Construction. We visited Yolanda and she convinced us they could continue on and complete our phase 3. After we gave Yolanda and her crew the go ahead they were very accommodating and made sure it was all completed to our satisfaction.

If you are thinking about doing a remodeling project or just a project fixing up your home Sue and I would recommend Hugo Vasquez Construction. We wish the best to Yolanda and her crew.

This note of appreciation is paid for by Ronnie and Sue Holt.

Notice of Public Hearing on Tax Increase

The MULESHOE AREA HOSPITAL DISTRICT will hold two public hearings on a proposal to increase total tax revenues from properties on the tax roll in the preceding tax year by 2.960103 percent (percentage by which proposed tax rate exceeds lower of rollback tax rate or effective tax calculated under Chapter 26, Tax Code). Your individual taxes may increase at a greater or lesser rate, or even decrease, depending on the change in the taxable value of your property in relation to the change in taxable value of all other property and the tax rate that is adopted.

The first public hearing will be held on August 21, 2009 at 12:00 PM at Muleshoe Area Medical Center, Hospital Dining Room, 708 S. First Street, Muleshoe, TX .

The second public hearing will be held on August 27, 2009 at 6:00 PM at Muleshoe Area Medical Center, Hospital Dining Room, 708 S. First Street, Muleshoe, TX.

The members of the governing body voted on the proposal to consider the tax increase as follows:

- FOR: Board Members – Wayne Pierson, Bob Donaldson, Zona Gatewood, Scott Brown, and Bill Liles
- AGAINST: None
- PRESENT and not voting:
- ABSENT:

The average taxable value of a residence homestead in MULESHOE AREA HOSPITAL DISTRICT last year was \$50,373. Based on last year's tax rate of \$0.400000 per \$100 of taxable value, the amount of taxes imposed last year on the average home was \$201.49.

The average taxable value of a residence homestead in MULESHOE AREA HOSPITAL DISTRICT this year is \$55,927. If the governing body adopts the effective tax rate for this year of \$0.388500 per \$100 of taxable value, the amount of taxes imposed this year on the average home would be \$217.28.

If the governing body adopts the proposed tax rate of \$0.0400000 per \$100 of taxable value, the amount of taxes imposed this year on the average home would be \$223.71.

Members of the public are encouraged to attend the hearings and express their views.

Obituaries

Consuelo Hernandez

Funeral services for Consuelo Ortiz Hernandez, 84, of Lubbock will be held at 10 a.m., Friday, Aug. 14, at Our Lady of Guadalupe Catholic Church, with Father Andres Mendoza officiating. Burial will be at the Mt. Carmel Catholic Cemetery in El Paso

Hernandez died Monday Aug. 10, 2009. She was born on March 11, 1925. She was preceded in death by her parents, and husband Frank.

Survivors include her daughters and their husbands — Linda and David Pollock of Salinas, Calif., Anna and Armando Ruiz of Lubbock, and Yvette and David Quintana of Lubbock; three grandchildren, and a brother — Marcel Ortiz.



Got him!

It's time for the thud of helmets and pads to ring out over Muleshoe. Pictured above, Mule Eddie Herrera makes a tackle during the recent "Black and White Scrimmage."

Photograph by Stacy Conner

MULESHOE CATTLE MARKET

The Muleshoe Cattle Market is brought to you each week by Muleshoe Livestock Auction, located east of Muleshoe on U.S. 84. Muleshoe Livestock conducts sales every Saturday, beginning with hogs, sheep and goats at 10 a.m. and cattle following at approximately noon.

REPRESENTATIVE SALES - SAT., AUGUST 8, 2009

656 head of cattle, 74 hogs and 405 sheep and goats for a total of 1135 livestock. Market steady on most classes of cattle, except Packer Cows 1 - 2 lower.

FOR INFO. ON SALES OR TO CONSIGN CATTLE - 272-4201

Seller, City	#	Type	Wt	CWT or PH
DDD, INC., SHALLOWATER	RWF BULL CALF185\$290.00 PH
RAY MCKINNEY, LITTLEFIELD	CHAR BULL310\$123.00
WEAVER FARMS, MULESHOE	4 MXD BULLS393\$114.00
WEAVER FARMS, MULESHOE	4 BLK BULLS480\$108.50
RONNIE PIPKIN, SEMINOLE	2 CHAR STRS420\$110.00
ASHLEY HANLIN, LITTLEFIELD	BLK BULL450\$107.00
JCL, INC., SUDAN	11 BLK STRS460\$112.00
JCL, INC., SUDAN	8 BLK STRS551\$103.50
BUCK GOSSETT JR., ANTON	4 BLK BULLS518\$100.00
TAYLOR GRAY, PLANS	5 RED HFRS205\$290.00 PH
DDD, INC., SHALLOWATER	5 BLK HFRS240\$290.00 PH
DDD, INC., SHALLOWATER	3 CHAR HFRS190\$300.00 PH
WEAVER FARMS, MULESHOE	2 BLK HFRS353\$114.00
WEAVER FARMS, MULESHOE	4 BLK HFRS514\$95.50
RICKY DALE, MULESHOE	4 MXD HFRS354\$115.00
RICKY DALE, MULESHOE	4 MXD HFRS418\$106.00
RICKY DALE, MULESHOE	5 BLK HFRS518\$93.50
BRIAN CLEAVINGER, ANTON	5 CHAR HFRS425\$100.00
BUCK GOSSETT JR., ANTON	3 BLK HFRS458\$95.00
KENRAY, INC., SPRINGLAKE	7 BLK HFRS796\$85.00
RONNIE PIPKIN, SEMINOLE	CHARPAIR\$850.00
PAULA NIX, SPRINGLAKE	REDPAIR\$810.00
DAN BOWMAN, MORTON	WF COW1225\$52.00
J.D. CAGE, MULESHOE	3 RWF COWS1025\$50.00
H&H CATTLE, LITTLEFIELD	BLK COW1040\$50.00
SHANNON WEAVER, MULESHOE	BLK COW1210\$49.00
MATT PATTERSON, WHITEFACE	BLK COW1055\$48.50

Our BIG BOOK GIVEAWAY has started!



Newspaper Fun!

www.readingclubfun.com

Annimills LLC © 2009 V6-N33

Free entry forms are on our website.

When I'm bored and just hanging around, I like to get my guitar out and play some songs.



Beat Your Summertime Blues with Any Music You Choose!

Summertime Blues

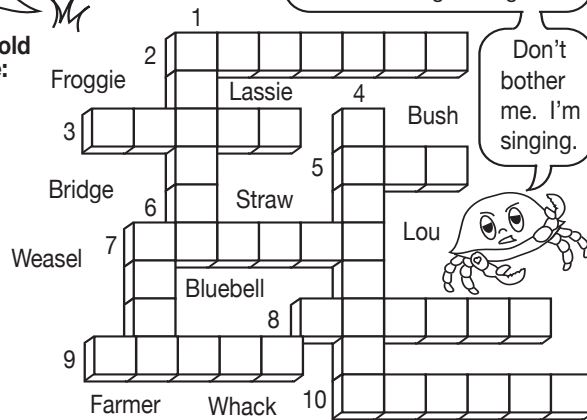
Are you "singing" the summertime blues? Lots of kids get the blues in the summer, but few will admit that they are ready to go back to school yet. Summertime blues may have you feeling bored, restless or a bit lonely. Some of us have larger problems...a hole in the pool liner, used up spending money, or friends away on vacation.

Well, you *really* can sing the blues. Years ago, people started singing about their troubles, about being poor, unloved, treated unfairly or about the hard work they had to do. This form of music, called the blues, is an African-American invention that developed in the 1800's during and after slavery. Blues music started in the countryside and spread to the cities. Many people enjoy this music with its bent pitches and mournful sound. The popular rock music that many people love to listen to on hot summer days has its roots in the blues music.

I like folk songs and games.

Do you remember these favorite old songs and games? Fill in the puzzle:

1. _____ In The Dell
2. _____ Went A Courtin'
3. Turkey In The _____
4. Bluebell, _____
5. Skip To My _____
6. Here We Go Round The Mulberry _____
7. London _____ Is Falling Down
8. Pop Goes The _____
9. Knick Knack (Paddy _____)
10. Did You Ever See A _____ ?

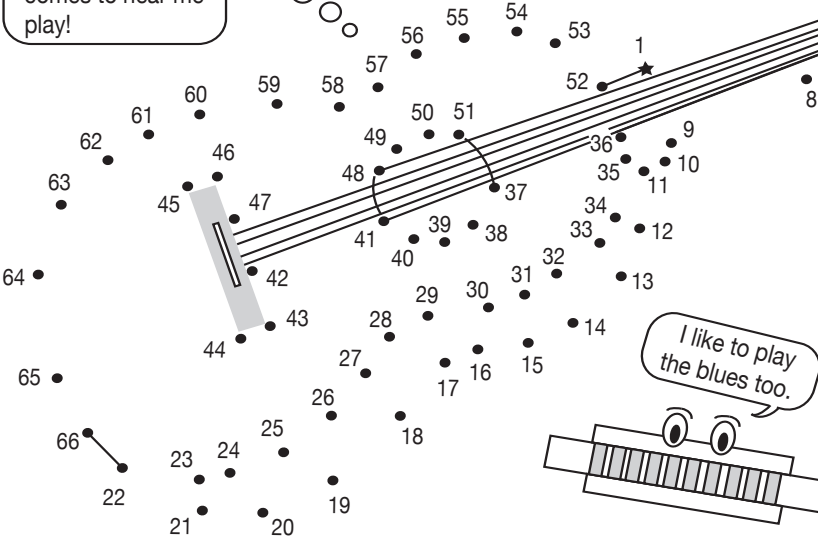


Don't bother me. I'm singing.

Playing the Blues!

The blues are played on many instruments. Connect the dots in the puzzle to see an instrument that a singer can carry around!

I hope B.B. King comes to hear me play!



I like to play the blues too.

No purchase necessary.

Enter the Reading Club Fun Book Giveaway

This summer we will give away dozens of books to encourage kids to read.

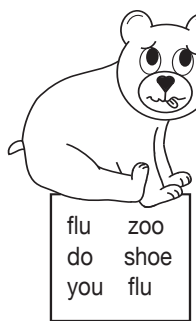
4 easy steps to enter!

1. sign on to our free reading club: www.readingclubfun.com
2. print out the entry form
3. have Mom, Dad or other adult (over 18) fill out the form and sign it
4. mail in your signed form to:

Reading Club Fun
P.O. Box 646
Canton, CT 06019

One entry per person per week. Up to 1 entry for 3 different children will be accepted in each envelope. (Hey, we all need to save money.) Entry forms will be included in the book giveaway for the week they are received: June 1st to Friday, August 28, 2009 the date of the final drawing. (Void where prohibited by law.) No P.O. Boxes accepted. Prizes returned by the U.S. Postal Service will not be remailed. Visit ReadingClubFun.com for more details.

Forest's "Got a Summertime Flu" Blues!



This morning I got up feeling lousy. Not because it was raining, oh no. Not because my toast burned. Not because the T.V. wouldn't work. I felt achy and feverish. So, I grabbed my guitar and wrote a song about how lousy I am feeling.

Can you help me finish my "blues" song by filling in one word at the end of each line?

Got up this morning,

Felt achy all over,

Can't go to the park,

Can't play with my friends,

I've got the summertime blues

I'll break this fever,

couldn't find my _____

I've got the _____

can't visit the _____

or eat lunch with _____

flu, flu, _____

if it's the last thing I _____

Newspaper Fun! Created by Annimills LLC © 2009

To place your ad here, call Terry at the Journal 272-4536

NEWTON APPLIANCE SERVICE

"We sell & service heating & air conditioning units"

NEW Crosley Appliances

Cedar Creek Antiques & Used Furniture

215 Main St., Muleshoe
Open Tues.-Fri. 10-5
806-272-3272

ALVARADO PARTY RENTALS

INFLATABLE BOUNCER
Safe - Affordable Fun For Kids!
BEST PRICES AROUND

272-5588
2 Hrs. \$50 - 4 Hrs. \$75 - 6 Hrs. \$100
8 Hrs. \$125
Birthday Parties • School Functions • Special Events
DELIVERY, SETUP & PICKUP
SE HABL A ESPAÑOL EDDIE & RACHEL ALVARADO
DJ SERVICES ALSO AVAILABLE



The Fair Store
120 Main 272-3500

To place your ad here, call Terry at the Journal 272-4536



FARMERS

Julie DeBruin Agent
Call for a free quote
AUTO • LIFE
HOME • BUSINESS
1602 W. American Blvd.
Muleshoe, Texas
272-7548
jdebriun@farmersagent.com

Cell phones in prisons mean business as usual for convicted criminals

Our nation faces a growing threat from crime syndicates and other dangerous felons that operate inside the very facilities meant to keep them and their illicit activities off our streets and out of our communities.

Imprisoned convicts coordinate murders, plot extortion schemes, and run drug trafficking, credit card fraud, and identity theft enterprises.

These dangerous operations are increasingly facilitated by contraband cell phones smuggled to inmates. This problem is growing at such an alarming rate that it threatens not only the lives of the security professionals who work in these American prisons, but the general public as well.

In 2008, correctional facilities across the nation reported startling numbers of confiscated phones. For example, the federal prison system located more



Kay Bailey Hutchison
UNITED STATES SENATOR, TEXAS

than 1,600 contraband communications devices, and in Texas alone, there were 1,162 cases.

This year, there are already nearly 700 illicit cell phone cases in Texas. These numbers are even more disturbing because they represent only the phones that were actually found.

Prisoners are using increasingly sophisticated methods to smuggle phones into correctional facilities and then conceal them from authorities. A single phone is often shared among many inmates, and just a few phones inside a prison can lead to coordinated attacks both inside and outside prison walls.

And we have seen how effective these tools are for spreading violence. Escape attempts coordinated by contraband cell phone have resulted in the deaths of corrections

officers. Prisoners have also used them to intimidate witnesses and local officials and to carry out assassination attempts.

In Maryland, a witness for an upcoming trial was gunned down in his front yard after a prisoner gave the murderer his address from a cell phone. At a recent Senate hearing, Texas state senator John Whitmire shared an account of how he was contacted by an inmate with an illicit phone, and how he and his family were subsequently subjected to harassment and death threats.

While the danger of inmates armed with cell phones is apparent, prisons are struggling to keep pace with the problem by using traditional security measures, such as trained dogs, handheld scanners, and metal detectors.

We must provide corrections officers with a comprehensive solution that includes the tools necessary to prevent the use of phones when they evade detection and discovery. To that end, law enforcement officers, corrections professionals, governors, and others working to address this problem have asked Congress and the Federal Communications Commission for authority to use cell phone signal jamming equipment.

Federal law prohibits the use of jamming devices in all but a few cases. Prohibiting intentional interference serves an important purpose because unregulated jamming technology could hamper commercial wireless operations and public safety communications.

That is why we must have a sensible process

to review devices and provide protections designed to minimize the chance of interference before permitting the use of jamming equipment.

In January, I introduced bipartisan legislation which allows correctional facilities to seek a conditional waiver from the Federal Communications Commission (FCC) to operate a wireless jamming device.

The Safe Prisons Communications Act creates a framework for the FCC to test and approve jamming equipment and to review applications from corrections facilities seeking to install cell phone jammers. Most importantly, to ensure the integrity of wireless networks for public safety and commercial wireless providers, and minimize any chance of interference, the legislation outlines the coordinated efforts from all stakeholders, including prisons and the telecommunication

providers. Some have suggested that there are alternatives to jamming technology. But many of these technologies present problems for corrections departments because of their high cost, or because they may be useful at detecting phones, but not preventing their use.

With lives on the line, Congress has a responsibility to ensure that all available technologies that can prevent the actual use of cell phones in prisons are available to the hard-working men and women on the front lines.

Prisons are meant to stop the commission of crimes, but cell phones inside prisons mean business as usual for dangerous felons. America's dedicated law enforcement and corrections professionals need this important capability, and they are counting on Congress to help them meet this challenge.



The Sudan Buzz

Buzzing away...
By Norma Burnett



Well we received another little shower Sunday night, not much but every drop is appreciated. Seems like we've had our share of grass fires here lately.

Sometimes, it seems as if anytime we have a strike of lighting it starts a grass fire and our firemen are out fighting the fires.

We need to thank all of the guys on the fire departments for all that

they do for all of us. They put their lives on the line every time a call goes out for them to go fight a fire. So thank you to all of the firemen.

To all that are sick and in the hospitals hope your are feeling better.

Sympathy is expressed to the Clyde Flowers family.

Let me know if you have any news. See ya' next week.

First day of Vacation Bible School

Pictured on the right, Isaas Gonzales recites a Bible memory verse during the first day of Vacation Bible School at the First United Methodist Church on Sudan. Standing beside him on his left is teacher Shannon Black and on the right is Kayla Tolbert.

Angie Carson said, that there were around 40 children who attended the first day of Bible school.

It will continue through Friday, Aug. 14, from 2-4 p.m. each day.

All children, Kindergarten through sixth grade are invited to attend.



Buzz-A-Licious Recipes

Baked Bean Casserole

- 4 cans of pork and beans
- 1 cup barbecue sauce, any brand
- 6 slices bacon, cut into pieces
- 1 medium bell pepper, cut into slices
- 1 medium onion, sliced into rings

Cook bacon slowly with pepper and onions until vegetables are tender. Pour off grease. Put beans and barbecue sauce in baking dish and add bacon and vegetables and bake in 350 degree oven until bubbly.

"Listen, my son, to your father's instruction and do not forsake your mother's teaching. They will be a garland to grace your head and a chain to adorn your neck..."
Proverbs 1:8-9, NIV

LLANO HOMES, LLC
If you can dream it we can build it!
Larry Sawyer 806-523-1627
Travis Nolte 806-773-5533
Building new homes in your area.

La-Tea-De
Tearoom, Cafe Gift Shoppe
Parties • Catering • Bridal Registry • Balloons
Floral Arrangements • Purses • Jewelry
NOW OPEN - Monday thru Friday
Wednesday and Thursday 5 pm - 8 pm
Closed Saturday and Sunday
Hwy 84, Sudan • 806-227-2404

State Farm®
Providing Insurance and Financial Services
Home Office, Bloomington, Illinois 61710

Nobody takes care of you like State Farm®
Jan McCrary
Agent
324 Phelps, P.O. Box 1189
Littlefield, Texas 79339
Bus: 806-385-4986
Fax: 806-385-4012
jan.mccrary.b32x@statefarm.com

SUDAN ISD
EXCELLENCE
IN
EDUCATION

WWW.SUDANISD.NET
Hwy. 303 PHONE: (806) 227-2431
SUDAN, TX 79371 FAX: (806) 227-2146

KING AG AVIATION, INC.

Specializing in Aerial Spraying - Insecticide, Herbicide & Seeding - Field Scouting Service
Johnny King Home (806) 227-2211
P.O. Box 189 Fax (806) 946-3659
Sudan, Texas 79371 Mobile (806) 946-7309
Business (806) 946-3399 Vernon Office (940) 552-6102

West Texas Born...
West Texas Strong...
West Texas Proud...
FIRST UNITED BANK EST. 1907
MEMBER FDIC
Bank Smart. Live Well. Enjoy the Ride.
www.FirstUnited.Net
Amarillo • Canyon • Dimmitt • Earth • Lamesa • Littlefield • Lubbock • Seagraves • Seminole • Sudan

In the fading twilight of life... Part 8

I never intended to write as much on this subject as I have, but there's no end to the things that can be said about it.

And it seems to me that a failure on the part of family members to work together and agree on the division of their properties causes about as much hard feelings as most anything.

I've spent a major portion of my life in

both formal and informal ways trying to promote peace and understanding amongst folks of nearly all conditions and circumstances of life.

And I don't hesitate to say that many of the troubles need not have happened.

So I thought you might give some attention to the way the folks I spoke of handled their affairs.

A brother called me and asked if I would

Something worth saying...
By Glen Williams

spend a few days visiting their churches in their area — in Florida. I had seen him somewhere at a meeting, but I knew very little about him, and virtually nothing about his family.

However, I was glad to go. I enjoyed visiting him and his family. And I stayed with him and his wife most of the time I was there.

One Saturday morning when I got up they had gone but left a note that said they would be back after while. When they came back they said we weren't going to church that morning — that they had a little family "get together" to attend. And they told me about it on the way.

Her parents had settled in that area many years before then.

And that's where they had raised their family, which consisted of three daughters, he was deceased and her mother was fairly active, but was "getting along in years."

They had settled on a five acre tract of land and started farming it.

They had a Chrysler automobile, and they had traded it for the five acres, and continued farming it raising fruit, row crops and cattle.

Evidently, they were industrious and good managers, for it wasn't long until they (the parents) bought another five acre tract, then another one, then another one, on and on through about a half century until at the time he died they owned more than 2,000 acres. Good country for farming or for ranching.

At the time I was there they were running about 1,000 head of cattle and were farming the rest of the land.

We went to a little restaurant where we met the other daughters and their mother. On the way they told me about their arrangements.

They had wanted to keep the operation together after his decease, so they set it up this way. For all practical purposes it was in operation before he died.

One of the girls was given responsibility for the operation of farming, another one had responsibility for the cattle, and the other one for keeping records and running errands.

Each of the three had a foreman to oversee them, that had been with the family for many years.

The mother owned the entire operation, and the children saw that she had access to any and all things she needed.

Each of the girls had husbands, children and families of their own. And that's where they got their living.

None of the proceeds from the cattle, the farming or any other proceeds of their total operation was used by any member of either families.

They consistently gave account of all proceeds and expenses. Their records were open for inspection by either of them at any time. And legitimate questions would be answered without delay.

They all met at the little restaurant, either every Saturday morning

Continued on page 12

Baby Showers



Kayla Purdy and Rylan Purdy

Purdy baby shower held

Rylan Charles Purdy, the son of Tyson and Kayla Purdy, was honored with a baby shower on Saturday, Aug. 1, in the home of Sherri Kennedy of Muleshoe.

Guest were served sausage balls, assorted breads, quiche and punch from a table decorated with daisies.

Special guest included Kayla Purdy, Cindy Purdy of Muleshoe, and Kim Kimbrough of Burnet, Liz Gilreath of Calera, Okla., and Nita Terry of Lubbock, Kyra Kimbrough of Burnet, Debbie Midgley of Durant, Okla., and Nancy Elliott of Lubbock, Jane Alexander of Lubbock, and Bayli Allegretto and Averi Cunningham, both of Lubbock.

The hostess gift was a gift card. Hostesses

for the occasion included Bernita Sheets, Dana Rasco, Melody Sheets, Sheri Hawkins, Carol Cox, Margaret Heathington, Suzanne Nichols, Ruth Locker, Lela Ann Smith, Pat Young, Sherri Kennedy, Barbara Finney, Deb Nitzel, Juana Shelburne, Christi Whitt, Joy Whitt and Leslie Dale.



Sharing a newspaper is a great way to spend time with your grandchildren!

Muleshoe Journal
201 W. Ave. C • PO Box 357 • Muleshoe, TX 79347 • (806)272-4536

Notice of Public Hearing on Tax Increase

The COUNTY OF BAILEY will hold two public hearings on a proposal to increase total tax revenues from properties on the tax roll in the preceding tax year by 7.898917 percent (percentage by which proposed tax rate exceeds lower of rollback tax rate or effective tax calculated under Chapter 26, Tax Code). Your individual taxes may increase at a greater or lesser rate, or even decrease, depending on the change in the taxable value of your property in relation to the change in taxable value of all other property and the tax rate that is adopted.

The first public hearing will be held on August 20, 2009 at 10:00 AM at Bailey County Courthouse, Commissioners Court Room, 300 S. First Street, Muleshoe, TX .

The second public hearing will be held on August 31, 2009 at 10:00 AM at Bailey County Courthouse, Commissioners Court Room, 300 S. First Street, Muleshoe, TX.

The members of the governing body voted on the proposal to consider the tax increase as follows:

FOR:	Judge Harrison, Commissioner Vandiver, Commissioner Grant, Commissioner Chavez
AGAINST:	None
PRESENT and not voting:	None
ABSENT:	Commissioner Kindle

The average taxable value of a residence homestead in COUNTY OF BAILEY last year was \$49,723. Based on last year's tax rate of \$0.730500 per \$100 of taxable value, the amount of taxes imposed last year on the average home was \$363.23.

The average taxable value of a residence homestead in COUNTY OF BAILEY this year is \$55,112. If the governing body adopts the effective tax rate for this year of \$0.692500 per \$100 of taxable value, the amount of taxes imposed this year on the average home would be \$381.65.

If the governing body adopts the proposed tax rate of \$0.747200 per \$100 of taxable value, the amount of taxes imposed this year on the average home would be \$411.80.

Members of the public are encouraged to attend the hearings and express their views.

Special Provisions if Applicable

Criminal Justice Mandate (use for counties, if applicable):
The Bailey County Auditor certifies that Bailey County has spent \$0 in the previous 12 months beginning 07/01/2008, for the maintenance and operations cost of keeping inmates sentenced to the Texas Department of Criminal Justice. Bailey County Sheriff has provided information on these costs, minus the state revenues received for reimbursement of such costs.

Enhanced Indigent Health Care Expenditures (use if applicable):
The COUNTY OF BAILEY spent \$1,494 from 07/01/2007 to 06/30/2008 on enhanced indigent health care at the increased minimum eligibility standards, less the amount of state assistance. For the current tax year, the amount of increase above last year's enhanced indigent health care expenditures is \$495.

Publication of Obituaries

Obituaries printed in the Muleshoe Journal are printed free of charge and contain the following types of information:

Date and details of funeral and place of burial; date and place of birth and parents names; date of marriage;

Limited biographical information, including the highest level of schooling achieved, service in the Armed Forces, profession (and retirement information if applicable); names of relatives who have preceded the person in death;

Names of survivors (including husband and wife, parents, in-laws, brothers, sisters, grandparents (only the number of grandchildren, great-grandchildren and great-great-grandchildren) will be included; and where memorials may be directed.

We will be pleased to run a one column black and white photo at no charge. A larger photo or a color photo will cause the obit to be paid.

Everything must be submitted by your funeral home.

MULE DAYS

Sponsored by Muleshoe Chamber of Commerce & Agriculture
(Remember to Shop with our Local Businesses)

Parade & Mule Rodeo
Saturday, August 15, 2009
"Load up your Mules lets Rodeo"
Parade
10 am
(Theme - Mules Makin History)

Prizes awarded in categories from best themed float to most stubborn mule.

Tractor Show
(at Courthouse after Parade)
Mule Rodeo
11:30 am
(Dusty Rhodes Arena) Lunch Available at Arena

"Don't Miss Out - We have a RED HOT Rodeo Clown"

Muleshoe Chamber of Commerce & Agriculture
Post Office Box 356, Muleshoe, TX 79347 • 806-272-4248
E-mail: chamber@fivearea.com

We're at Your Service

Visit the following businesses for quality service and customer satisfaction.

CABINETS LOOKING

A LITTLE TIRED?

Wills Doors & More

Ronnie Wills
806-441-0931

Richard Wills
806-773-1550

Custom Cabinetry & Remodeling
New Cabinets • Refacing Cabinets
Remodel Kitchens • Remodel Baths

20's Car Wash

Exterior Handwash
\$25.00

Interior Detail
\$25.00

By Appointment Only - 7 Days a Week
806-272-5761

If we can't fix it, throw it away!

Sheetrock, Drywalling, Tape & Bed, Patch Up Jobs, Acoustic & Paneling, Small Concrete Jobs, Picket Fences, Bathroom Remodeling, Floor Tile, Sky Lights, Carports, Garage Doors, Insulation, Etc. Add On's and Roofing - References Available

Handy Randy
We will travel!

Pager: 766-9342 Cell: 806-632-5261
Home: 806-385-3103 Member of BBB of Lubbock Littlefield, TX

Handyman General Construction

Call
Joe Garcia
575-714-0293
for estimate
jobs large or small

Jennifer's Record Keeping Service

Computerized Record Keeping Service

Jennifer Templeton Gresham
P.O. Box 106
Earth, TX 79031
phone: 806-257-2009
cell: 806-543-3975
jengre@amaonline.com

CLASSIFIEDS

Deadline is Monday at 5 PM to place a Classified ad. Call 272-4536.

PUBLIC NOTICE

Lee Lewis Construction, Inc. will receive proposals for the Muleshoe ISD DeShazo Elementary School - East Additions, Muleshoe Texas. Proposals are due by 3:00pm, Tuesday, August 18, 2009. No proposals will be accepted after this time. We specifically invite Small Business Concerns and Women Owned Business Concerns, and Small Business Concerns Owned/Controlled by Socially and Economically Disadvantaged Individuals.

Plans are available from: Lee Lewis Construction, Inc. 7810 Orlando Ave. Lubbock, Texas 79423 806-797-8400

Plans are available for viewing in the following locations:

AGC Plan Room – Lubbock
Dodge Plan Room – Lubbock
Dodge – Scan

A pre-proposal Conference will be conducted at 3:30PM, Wednesday, August 5, 2009 at the DeShazo Elementary School located between 3rd and 5th Street and Avenue C and D, Muleshoe, Texas.

Published in the Muleshoe Journal August 6, 2009 and August 13, 2009.

Muleshoe ISD is accepting bids for athletic supplies and equipment. Please send bids to David Wood, 514 W. Ave. G, Muleshoe, TX, 79347. We will accept bids until August 31, 2009.

Published in the Muleshoe Journal Aug. 13 and Aug. 20, 2009.

HELP WANTED

Samaritan Hospice Needs Self Motivated C.N.A.; Hospice experience preferred but not required. Call Bea 806-363-6085.

We are looking for energetic people to work in a fast paced environment. Taylor Petroleum is now hiring management and clerk positions. Competitive pay with health insurance available. Apply by sending resume by e-mail to slewis@taylorpetroleumco.com or to P.O. Box 9000, Amarillo, TX 79105. We are an Equal Opportunity Employer.

Experienced farm equipment service technician needed. Also need an equipment setup worker. Apply in person at C&H Equipment, Muleshoe, TX.

Cherry Tree Health Services, Inc. in Lubbock, TX has immediate opening for live-in companion care. Also seeking direct care staff. (806) 797-9859 hjohnson@cherrytreehealth.com

AGP Grain Marketing, LLC is looking for a Accounting Clerk to work in the Bovina, Texas office. Applicants must have some accounting background or experience. Experience with Microsoft Excel and Microsoft Word is a must. Please send resumé to the attention of Carrie Edwards, P.O. Box 850, Bovina, TX 79009.

Accounting Position available for area wholesale distribution company.

Selected individual will assist the Controller with every day accounting issues and special projects. Degree preferred, but may substitute relevant experience. Excellent salary and benefits including 401(k). Resumes to txemploymenttop@gmail.com. Applications accepted through August 15, 2009.

Girling Health Care, Inc. ATTENDANTS Seeking caring and dependable people to work in the homes of elderly and disabled clients in your area. We offer flexible part-time schedules. Must be 18 years with no criminal background. No experience or Certification needed. Fax Resume referencing Ad#9735 to (806) 747-0491 For an application, call (806) 747-0173 Apply online at www.girling.com or apply in-person at 5010 Kenosha Ave. Suite C in Lubbock E.O.E / MFDV

Prairie Acres Skilled Nursing Facility is accepting applications for the following position:

Bookkeeper, must have experience in A/P, A/R, and Payroll, prior Nursing Home billing experience a plus.

Please apply in person at or mail resume to: Nikki Brister, Administrator, 201 E. 15th St., Friona, TX 79035, E.O.E.

FOR RENT

516 W. Ave. E. 2BDRM/1BA, new paint, no appliances. \$420/mo., \$375 deposit plus first mo. rent. Tenant pays water/electric/gas. Avail. July 15.

Make a difference in a young child's life!

Be a Head Start Teacher with TMC Head Start Muleshoe Center for the 2009-10 Season.

- \$14 to \$15+ an hour with Bachelors/\$12+ an hour with Associates in Early Childhood or Child Development or a degree with at least 6 classes in Early Childhood or Child Development
- Full-time position
- Medical, dental, vision, life, long-term disability insurance
- Pension with matching funds offered
- Tuition Scholarship Program
- 11 paid holidays per year
- 2 weeks of paid annual leave per year
- Off from Thanksgiving through New Years Day

Please send resume to jim.rodriquez@mail.tmccentral.org or 806-763-9136 (fax), EEO

Call 272-5144 or 210-867-8911
513 & 519 W. Ave E, Two Homes - 2 bedroom, 1 bath. One Home - 2 bedroom, 2 bath, appliances included, tenant pays utilities. Each house \$525/month plus \$525 deposit. Call 956-821-3082 or 956-624-6805.

213 E. Elm, 3 bedroom, 1 bath, large den, carport. \$700/month, plus deposit, will consider owner finance to buy. 806-831-7434.

MOBILE HOME FOR SALE

2008 Oakcreek Mobile Home to be moved. 18x80, 3/2, fireplace, jacuzzi tub, \$65,000. Call 806-282-5050.

HOME FOR SALE BY OWNER

Corner double lot on East side of Muleshoe with 2 bedroom, 2 bath mobile home and 1 bedroom mobile home. \$13,000 cash. Call 806-672-9129.

2 bedroom, 1 bath, 2 living areas or 3rd bedroom, central air/heat, new roof & paint. \$55,000. 806-946-8826.

Muleshoe home for sale by owner on 16 acres, 3 bedroom, 1 bath, 806-549-9243.

2 Story House, Southwest of Sudan. Approx. 2860 sf, 4 bedroom, 2 bath, 2 fireplaces, 2 room basement, pool with wood deck, 2 car detached garage with gameroom & kitchenette. Outside newly remodeled and new roof. Call 806-893-0623.

Parkridge Area, 1103 W. Ave. J, very nice 3-2-2 brick, central A/H, new roof, FP, built-ins, carpet, tile, fans, fenced

yard, covered patio, Approx 1,434 sf. lvg area, \$90,000. Call 806-789-0451.

Nicely landscaped brick home on corner lot for sale. 3 bedroom, 2 bath, large living area, utility room, built ins, new windows, new heat and air, tankless hot water heater, automatic sprinkler system, fenced backyard, above ground swimming pool, two storage areas, large patio, separate office/bath 2300 sq. ft., asking \$130,000, 1801 W. Ave D, call 272-5758 or 946-9432.

FOR SALE

2006 Pontiac G6, V6, AM/FM/CD, 4 door, loaded, extra sharp, bucket seats. \$500 down. Call Johnny in Lubbock 806-549-6777.

1998 Chev Lumina, AM/FM, cold air, loaded, V6, 4 door, 25 MPG, \$1,950 OBO, starts and runs good. 806-744-3108 Lubbock.

If you are working and have income need a nice used vehicle with low payments call Johnny 806-549-6777.

1988 Olds. Cutlass Supreme. Runs good. \$1,200, OBO. 946-6593 or 272-3784.

1996 Rexall Airbus 31' Motorhome model M-5531, self contained, queen bed, new tires, 49,390 miles, \$12,300. 806-272-4234 or 806-790-5560.

A queen size pillow top mattress and foundation, in plastic from mfg \$125. 806-549-3110.

Double or full size pillow top mattress set, with warranty. \$115. 806-549-3110.

Memory foam mattress set, contours to body, relieves pressure points. Unused! \$375. 806-549-3110.

For Sale or Lease



406 West 5th Street

4 bdr, 2 bath, garage, 2,527 sf living area, central heat & air, fenced in backyard, 12x24 storage shed, covered front porch and back patio, close to DeShazo Elementary, Watson Jr. High and Muleshoe High. Call, 806-272-4446

Brand new ultra suede sofa set, complete 5 pc, stain resistant, \$490. 806-549-3110. Black iron bed, with or without canopy, can deliver, discounted \$199. 806-549-3110.

visit us on the web at www.muleshoejournal.com

REAL ESTATE

Byrd Realty
Ronald Byrd 575-760-1495 Licensed Broker
Crista Bass 806-946-7261 Sales Associate
Carleton Johnson 806-789-4289 Sales Associate
228 Main Street, Muleshoe, Texas
www.byrdrealestate.net

RESIDENTIAL

GARDEN HOME - Built in 2005 - gorgeous 2 bedroom, 2 bath brick home, appliances, central air and heat, utility, open floor plan, electric fireplace, large master bath w/whirlpool tub, large closets, 2 car garage, fenced backyard, storage building, call for more details!

NEW LISTING - Nice 3 bedroom, 1 3/4 bath brick home, new heat pump, new roof and approx. 400 sq.ft. of remodeled game/laundry room, all appliances, fireplace in master bedroom, large closets, extremely gorgeous fenced backyard with storage building, patio and tree house. All on corner lot. Call for more details!!!

PRICE REDUCED!!!! - DROPPED FROM \$110,000 TO \$78,000, Beautiful 3 bedroom, 1 bath, brick home, central A&H, appliances, lg. family room. Storage buildings, fenced backyard, single car garage, carpet. This is a MUST see home!

PRICE REDUCED!!!! - 3 bedroom, 2 bath brick home, central air and heat, built-ins, single car garage, nice fenced backyard.

Nice 3 bedroom, 2 bath brick home, built-ins, central air and heat, an extra room for bedroom, office, etc... large fenced backyard, call for more details.

NEW LISTING - Extremely gorgeous, 3 bedroom, 2 bath brick home, built-ins, lots of storage space, electric fireplace, sprinkler system, patio, storage building, great landscaping, 2 car garage, move-in ready, plus alot more, call today for an appointment.

NEW LISTING IN COUNTRY - 2 bedroom, 1 1/2 bath brick home, built-ins, utility, sun room, 2 car garage, 2 large barns, all on 3 acres.

NEW LISTING COUNTRY HOME ON HIGHWAY Very nice 3 bedroom, 1 3/4 bath home, central air and heat, appliances, lots of storage, large utility, 2 living areas, extra room with a 1/2 bath for a bedroom, office, etc..., gorgeous patio, storage building all on 10 acres.

COMMERCIAL

Bailey County - Produce Processing Facility-2400 sq. ft., cold storage, boxcar, truck loading dock, large shedded concrete area, all on 4.7 acre tract. Call for details.

120 W. Ave C, approx. 2100 sq. ft., building will make a nice office space, good location.

Newly remodeled office building, kitchen, 2 bath, lots of space and office room.

Two buildings available near downtown Muleshoe. One can be used as house or business and include large store building and 2 car garage. Contact: Carleton Johnson 806-789-4289.

FARM AND RANCH

128 acres w/ pivot. Will divide. Call Carleton Johnson 806-789-4289.

Just listed - 656 acres CRP, 2 years remaining on contract Bailey County.

Office: (806) 272-5380 Toll Free: 1-888-999-3846

Call 272-4536



Is it time to clean out the Garage? Sell those unwanted items here!

to place an ad

Black or white iron day bed, still boxed, \$199, twin mattress \$80, trundle \$99. New! 806-549-3110.

King size headboard, bed frame, dresser, mirror, nightstand, first \$690 gets entire set. 806-549-3110.

GARAGE SALE

Indoor Garage Sale at Carolyn's Florals & Gifts, 106 E. American Blvd., Friday & Saturday, August 14 & 15, 9 to 6.

LAND - (Frenship Tracts & lots of farms) for building, hunting or ag. (Also commercial bldgs) 3/2 Fixer upper on 1 A. S of Sudan \$20,000.00. Please call for a list. See our homes at FarrarandAssoc.com. 806-894-7099

FARRAR & ASSOCIATES
806-894-7099



Parmer County - Lazbuddie - 108 acres with 2 irrigation wells, with or without sprinkler, good soil, lays good.
Bailey County - West Camp area. 3 bedroom, 2 bath house with small barn on 20 acres \$75,000.
Bailey County C.R.P. - 354 acres, 1 year left on contract. Good grass cover, can be good improved pasture or return to dryland production.
Lamb County - Springlake area 2650 square feet on approximately 4 acres. Brick, 3 bedroom, 2 bath, good celler, 30x70 barn. Lots of trees provide good windbreak and lots of shade.
Southwestern Lamb County - near Pep 59 acres of grass formerly in C.R.P. has allotments and payments.
Northwestern Lamb County - 800 acres, 5 center pivot sprinklers, 14 wells. Can divide into 3 separate tracts.
Bailey County - West Camp area, 320 acres on pavement, non-irrigated, 1 stock well, 3 other wells located on property.
316 Main Street • Muleshoe, Texas
Office: 806-272-3100 Home: 806-965-2468
Website: www.vicoland.com



3/2 Brick Home Sudan. Well built home approx. 1734 sf on corner lot that is located only 3 blocks from Sudan ISD Campus in a nice quiet neighborhood. Central AC/HEAT, fireplace w/gas and neat floor plan. Priced at \$42,500.

201 Worth - 2-1/1 Remodeled 815 sq.ft. home in Sudan with recently replaced windows, siding, plumbing and updated interior. Living Room has hardwood floor and features an alcove for entertainment center. Detached garage and workshop also updated. New lower price of \$34,500.

506 Boesen - In Contract Well built home approx. 1245 ft² in Sudan, central heat & air, only 3 blocks from Sudan Campus. Nice sized Bedrooms with excellent closet space. Neat appearance, also has storm cellar. Priced at \$39,500.

Monty Edwards, Agent
(806) 786-5426



116 E. Ave. C • George Nieman, Broker • 272-5285 or 272-5286
CHECK OUR LISTING INFO., PHOTOS, ETC. ON-LINE AT WWW.NIEMANREALTY.COM HAVE BUYERS! NEED HOME AND LAND LISTINGS!!

RICHLAND HILLS • PARKRIDGE • HIGHLAND
• VERY NICE 4-4-2 Brick Home on corner lot, approx. 3500' lvg. area, Cent. A&H, built-ins, FP, auto. spkrlr., large finished basement!! MUCH MORE!! PRICE REDUCED \$249K!!
• NICE 2-1-3 carport Home, carpet, tile, fans, fenced yd., storage bldg. MORE!! \$45K!!
• NICELY REMODELED - 3-2-2 Brick Home, corner lot, Cent. A&H, built-ins, FP, approx. 2159' lvg. area, auto. spkrlr., add. lot w/stor/workshop Bldg.!! \$173,000 \$169,000!!
• 2 NICELY REMODELED DUPLEX UNITS & 1 NEW Duplex unit!! PRICED TO SELL!!
• BEAUTIFUL CUSTOM BUILT 3-2-2 Brick Home, built-ins, FP, isolated master, safe room, patio, nicely landscaped, spkrlr. sys., fenced yard!!
• NICELY REMODELED 3-2-2 Brick, new Cent. A&H, built-ins, FP, 3125' lvg. area, spkrlr. sys., fenced yard, MORE!! REDUCED \$200K
• NICE 3-1 3/4-1 Brick, Cent. A&H, cov. patio, fenced yd., \$75,000!!
• 3-2-2 Brick home on corner lot, approx. 2472' lvg. area, Cent. A&H, built-ins, jacuzzi tub in master, loads of storage, fenced yd., auto Spkrlr.!! \$140K!!
• NICE 3-2-2 Brick Home, Cent. A&H, built-ins, FP, cov. patio, fenced yard w/auto. spkrlr, storm shelter, stor. bldg.!! \$119,500!!
• NICE 3-2-1 Brick Home, Cent. A&H, built-ins, FP, office, auto. spkrlr., fenced yd., garage/workshop/storage bldg. in back yd.!! \$117,000!!
• 4 bedroom, 5.5 bath, 2 car garage, geothermal (cent. A&H), built-ins, FP, approx. 5100', loads of storage, workshop/storage, RV port, auto. spkrlr., REDUCED TO \$185K!!

COUNTRY CLUB
• VERY NICE 3-2-2 Brick, Cent. A&H, built-ins, FP, fenced yard, workshop/storage, 90'x130' corner lot!! \$77,000!!!

RURAL
• VERY NICE 4-3 doublewide (2006) on 7.38 acres, Cent. A&H, built-ins, FP, fenced yd., 25' x 40' Metal Bldg. septic system, domestic well, on pavement close to town!! \$452K \$130K!!
• NICE 3-1 1/2-1 Home, Cent. A&H, built-ins, hardwood & tile floors, astroturf in sunroom, fans, woodburning stove in sunroom, cellar, RV cover, 2 carports, 780' storage barn, corral, on 8 acres, fenced, 2161 Hwy. 70 East!! \$425,000 REDUCED \$115,000!!
• CLAY'S CORNER - VERY NICE 3-2-3/4-2 Home on 5 acres, approx. 2500' lvg. area, remodeled, Cent. A&H, built-ins, FP, whirlpool tub, fenced yard, 600' workshop/storage!! \$185K!!

COMMERCIAL
• NICE commercial bldg. w/approx. 3300' plus 1040' upstairs, Cent. A&H, 2 restrooms, MORE!! \$39,500!!
• NICE OFFICE/SHOP/WAREHOUSE on 7 acre on N. Hwy. 214, Cent. A&H, insulated shop & warehouse, has 1-3/4 bath & 1-1/2 bath!! MUCH MORE!! PRICED TO SELL!! \$85K!!
• 1900' Off. Bldg., 106' x 140' lot on Hwy. 70 and 84!! \$79,5K!!
• ANA'S BEAUTY SHOP—Approx. 1120' bldg., with or without furniture & fixtures!! PRICE REDUCED!!
• VERY NICE CHURCH BLDG. WITH PARSONAGE - Possible Owner Finance!! Price Reduced!!
• GOOD INCOME PROPERTY-LONG TERM LEASE-Approx. 8,075' office bldg. w/approx. 20,000' paved parking area!! PRICE REDUCED \$350K.
• 4.2 acre tract at edge of town, 40' x 60' metal insulated bldg., 2 other sheet iron bldgs., chainlink fenced area, numerous uses!! \$59K!!
• 100' x 140' tract, corner lot on Hwy. 84, 1760' Bldg., 1076' Bldg., 308' storage, & 2-56' x 22' metal canopies w/paved area!! \$35K!!
• FORMER RICHLAND HILLS TEXACO - 1414' Bldg. + 1080' canopy + 16,530' asphalt paving!!
• Approx. 5350' retail/warehouse bldg., with chainlink fenced area, 10' roll up door & entry door, corner lot!! \$45K!!
• Approx. 5840' warehouse bldg. on Hwy. 84, 12' roll up door & entry door!! 75'x100' lot!! \$40K!!

HIGH SCHOOL AREA
• NICE 2-1 1/2-1 Home, Cent. A&H, built-ins, FP, basement, screened patio, fenced yard, approx. 1762' lvg. area!! REDUCED \$82,000 \$75,000!!
• VERY NICE 3-2-2 Brick home, Cent. A&H, built-ins, FP, approx. 2336' lvg. area, auto. spkrlr, fenced yd, MORE!! \$125K!!
• NICE 3-2-1 carport home, cent. A&H, built-ins, fans, approx. 2072' lvg. area, cov. patio, auto spkrlr, fenced yd., 14'x24' stor bldg!! \$99.5K PRICE REDUCED TO \$95K
• 3-2-1 Brick home, total electric, Cent. A&H, (heat pump), built-ins, approx. 1318' lvg. area, fenced yd!! \$75K!!
• 3 bedroom, 1 3/4 bath, carport, central heat & air!! \$45K
• NICE 3 bedroom, 1 3/4 bath, carport, central heat & air. \$49,500.
• 2-1-1 Home, Cent. A&H, built-ins, cov. patio, fenced yd. workshop/storage!! MORE!! \$59,500!!



Photograph by Stacy Conner

God's goodness blesses all...

He causes his sun to rise on the evil and the good, and sends rain on the righteous and the unrighteous. — Matthew 5:45 NIV. The Muleshoe area has received significant blessing from above in recent weeks. Pictured above, the evening sun peeks through a column of rain Monday in the area of CR 303 and Hwy. 70.

New traffic laws set to go into effect Sept. 1

HB 2730 is the DPS's Sunset Legislation, and many of the DPS-related bills this session were included in HB 2730. Notable traffic laws that go into effect on Sept. 1 include:

Seatbelts

- HB 537 requires all occupants of a vehicle, no matter their age, to be secured by a safety belt, no matter where they are seated in the vehicle; changes the definition of a passenger vehicle to include a passenger van designed to transport 15 or fewer passengers including the driver; removes the current exemption for third-party Medicaid transportation provisions regarding the use of child passenger safety seats; and prohibits a motorcycle operator from carrying a passenger under the age of 5 unless the child is seated in a sidecar attached to the motorcycle.

- SB 61 amends the existing statute regarding child passenger safety seats. The bill requires that any child younger than 8 years of age be restrained in an approved child passenger safety seat unless the child is at least 4 feet, 9 inches in height. The fine is no more than \$25 for a first offense and \$250 for a second offense.

a new court cost for conviction of an offense under this section to be collected and used by TxDOT to buy safety seats for low income families.

The law becomes effective on Sept. 1, but tickets for this offense cannot be issued until June 1. Police officers are allowed to issue a warning before that date.

Driving

- HB 55 makes it illegal to use a wireless communication device in a school zone unless the vehicle is stopped or a hands-free device is used. Cities or counties wanting to enforce this law must post a sign at the beginning of each school zone to inform drivers that using a wireless communications device is prohibited and the operator is subject to a fine. It is a defense to prosecution if the operator was making an emergency call.

- HB 2730 increases the

penalties for driving while intoxicated with a child passenger by adding an automatic driver license suspension period for first-time offenders and an increased suspension period for repeat offenders. The driver license reinstatement fee for completing an education program will rise from \$50 to \$100. Closes a loophole so a person who commits an offense as a minor cannot circumvent the driver license penalty if the person turns 21 before their court date.

- HB 2012 creates two new punishment enhancements: a Class B misdemeanor if a person drives with a suspended license and without insurance; and a class A misdemeanor if the person driving without insurance or a valid driver license has an accident and someone is seriously injured or dies as a result of that accident.

- SB 129 authorizes

neighborhood electric vehicles to be operated on roads with a posted speed limit of 45 miles per hour or less. The bill authorizes driver license holders to operate NEVs without having a motorcycle endorsement, clarifies that drivers and passengers in such vehicles are not required to wear helmets and specifies that enclosed three-wheeled vehicles as described in the bill are authorized to operate in preferential lanes.

Something worth saying...
By Glen Williams

Continued from page 10
or every other Saturday morning (I don't remember which) and had breakfast together.

At that time they each gave account of their proceeds and expenses and any other things that had affected their operation.

They said their prayers, had a friendly visit and sat and discussed whatever they may have on their minds, as long as they so desired.

Then they looked forward to their next "get together."

As far as I could tell there was not any selfish motives among them. For there was no reason that they didn't have their own lives pretty well to themselves.

Thus the mother still owned the property, she could watch it grow and she knew she was free to do with it as she so desired.



Keeping an eye on local government.

2009 Property Tax Rates in COUNTY OF BAILEY

This notice concerns 2009 property tax rates for the COUNTY OF BAILEY. It presents information about three tax rates. Last year's tax rate is the actual rate the taxing unit used to determine property taxes last year. This year's effective tax rate would impose the same total taxes as last year if you compare properties taxed in both years. This year's rollback tax rate is the highest tax rate the taxing unit can set before taxpayers can start tax rollback procedures. In each case these rates are found by dividing the total amount of taxes by the tax base (the total value of taxable property) with adjustments as required by state law. The rates are given per \$100 of property value. This notice contains a summary of actual effective and rollback tax rates' calculations. You can inspect a copy of the full calculations at 302 Main St., Muleshoe, TX 79347. This notice was prepared by Kaye Elliott, Chief Appraiser, on August 7, 2009.

	GENERAL FUND	FARM MARKET ROAD
LAST YEAR'S TAX RATE		
Last Year's Operating Taxes	\$1,546,023	\$312,821
Last Year's Debt Taxes	\$344,568	\$0
Last Year's Total Taxes	\$1,890,591	\$312,821
Last Year's Tax Base	\$302,252,846	\$297,924,476
Last Year's Total Tax Rate	0.625500/\$100	0.105000/\$100
THIS YEAR'S EFFECTIVE TAX RATE		
Last Year's Adjusted Taxes (after subtracting taxes on lost property)	\$1,906,462	\$315,498
/This Year's Adjusted Tax Base (after subtracting value of new property)	\$321,396,946	\$317,299,379
=This Year's Effective Tax Rate for each fund	0.593100/\$100	0.099400/\$100
Total Effective Tax Rate	0.692500/\$100	
THIS YEAR'S ROLLBACK TAX RATE		
Last Year's Adjusted Operating Taxes (after subtracting taxes on lost property and adjusting for any transferred function, tax increment financing, state criminal justice mandate and/or enhanced indigent health care expenditures)	\$1,729,335	\$315,498
/This Year's Adjusted Tax Base	\$321,396,946	\$317,299,379
=This Year's Effective Operating Rate x1.08=This Year's Maximum Operating Rate	0.538000/\$100	0.099400/\$100
+This Year's Debt Rate	0.581000/\$100	0.107300/\$100
=This Year's Rollback Rate for each fund	0.115300/\$100	0.000000/\$100
This year's Total Rollback Rate	0.696300/\$100	0.107300/\$100

A county that collects the additional sales tax to reduce property taxes, including one that collects the tax for the first time year, must insert the following lines:

-Sales Tax Adjustment Rate	0.056400/\$100
=Rollback Tax Rate	0.747200/\$100

STATEMENT OF INCREASE/DECREASE
If COUNTY OF BAILEY adopts a 2009 tax rate equal to the effective tax rate of 0.692500 per \$100 of value, taxes would increase compared to 2008 taxes by \$25,210.

SCHEDULE A: UNENCUMBERED FUND BALANCES: GENERAL FUND
The following estimated balances will be left in the unit's property tax accounts at the end of the fiscal year. These balances are not encumbered by a corresponding debt obligation.

Type of Property Tax Fund	Balance
General Fund Maintenance & Operation	\$23,797
General Fund Debt Service (I&S)	\$19,420

SCHEDULE B: 2009 DEBT SERVICE: GENERAL FUND
The unit plans to pay the following amounts for long-term debts that are secured by property taxes. These amounts will be paid from property tax revenues (or additional sales tax revenues, if applicable)

Description of Debt	Principal or Contract Payment to be Paid from Property Taxes	Interest to be Paid from Property Taxes	Other Amounts to be Paid	Total Payment
Certificates of Obligation for Jail Construction	\$175,000	\$185,777	-0-	\$360,777
Total required for 2009 debt service				\$360,777
-Amount (if any) paid from funds listed in Schedule A				\$6,051
-Amount (if any) paid from other resources				\$13,368
-Excess collections last year				\$4,277
=Total to be paid from taxes in 2009				\$337,081
+Amount added in anticipation that the unit will collect only 95.000000% of its taxes in 2009				\$18,763
=Total Debt Levy				\$375,263

SCHEDULE A: UNENCUMBERED FUND BALANCES: FARM MARKET ROAD
The following estimated balances will be left in the unit's property tax accounts at the end of the fiscal year. These balances are not encumbered by a corresponding debt obligation.

Type of Property Tax Fund	Balance
Farm to Market Maintenance & Operation	\$61,815

SCHEDULE C: EXPECTED REVENUE FROM ADDITIONAL SALES TAX
(For hospital districts, cities and counties with additional sales tax to reduce property taxes)
In calculating its effective and rollback tax rates, the unit estimated that it will receive \$183,738 in additional sales and use tax revenues.
For County: The county has excluded any amount that is or will be distributed for economic development grants from this amount of expected sales tax revenue.

SCHEDULE D: STATE CRIMINAL JUSTICE MANDATE (FOR COUNTIES)
The Bailey County Auditor certifies that Bailey County has spent \$0 in the previous 12 months beginning 07/01/2008, for the maintenance and operations cost of keeping inmates sentenced to the Texas Department of Criminal Justice. Bailey County Sheriff has provided information on these costs, minus the state revenues received for reimbursement of such costs.

SCHEDULE E: ENHANCED INDIGENT HEALTH CARE EXPENDITURES
The COUNTY OF BAILEY spent \$1,494 from July 1, 2007 to June 30, 2008 on enhanced indigent health care at the increased minimum eligibility standards, less the amount of state assistance. For the current tax year, the amount of increase above last year's enhanced indigent health care expenditures is \$495.



The Muleshoe Booster Club

Invites you to
Join us in the Shade



As we Meet the 2009 Mules
West Stands – Benny Douglas Stadium
Tuesday, August 18, 2009
7:00 pm
Ice Cream, Watermelon & Drinks
We Hope to See You There!