

Weather

February 7 30 6
February 8 48 18 .03
February 9 40 11 .08
February 10 27 10

MULESHOE JOURNAL



20¢

'The Community of Opportunity Where Water Makes the Difference'

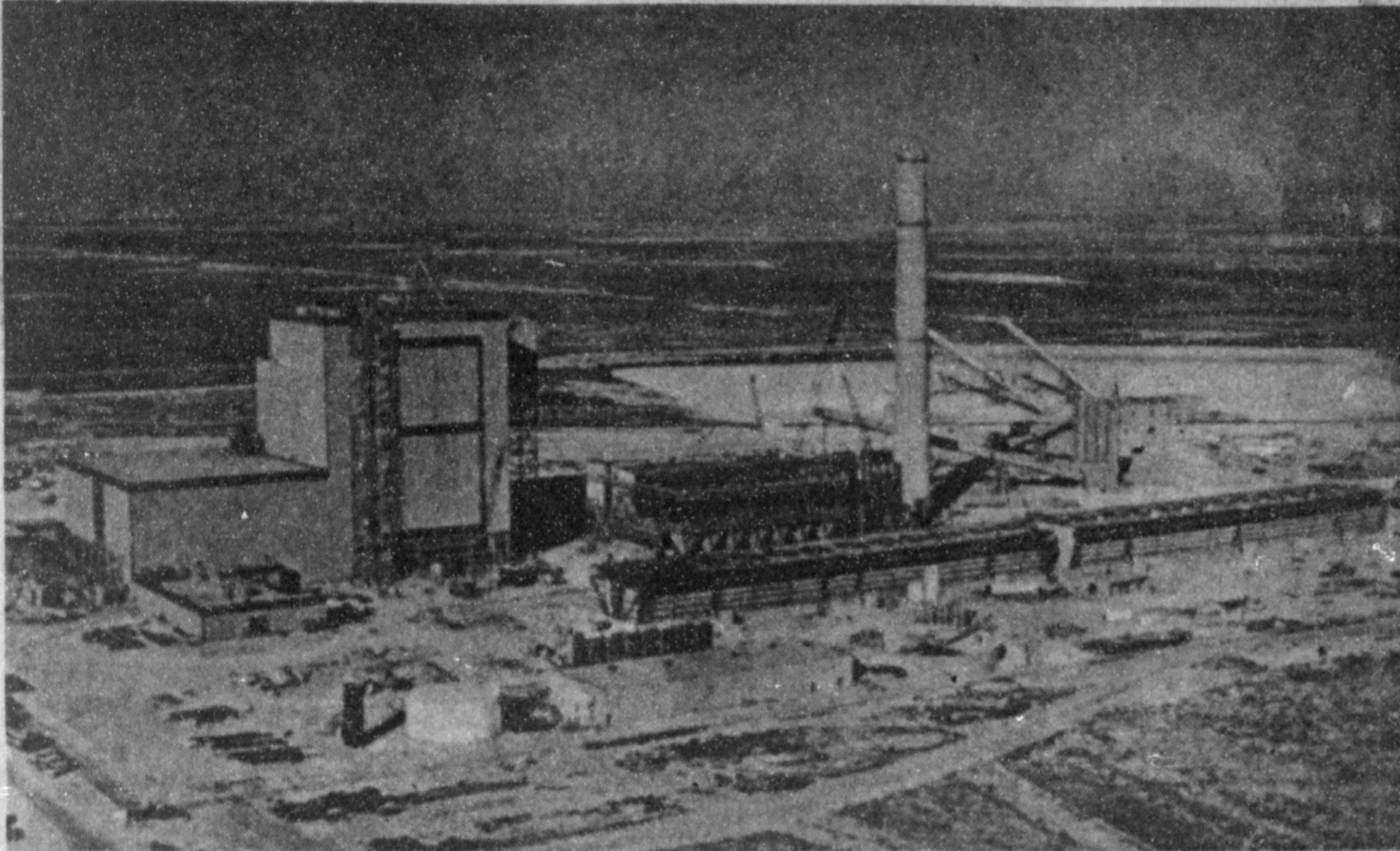
Volume 59, No. 6

10 Pages Today

Published Every Thursday at Muleshoe, Bailey County, Texas 79347

Thursday, February 11, 1982

First Coal Trains Arrive At SPS Tolk Plant



FIRST COAL TRAINS ARRIVE...Tolk Station, Southwestern Public Service Company's new coal-fired electric generating station is located 10 miles east of Muleshoe. The first 561,000 kilowatt generating unit is scheduled to be completed this summer. The second unit will go on line in 1985. Tolk is the second coal fired plant for SPS. The first, at Harrington Station is presently the largest of SPS' 10 generating plants.

110 Car Units Deliver 11,000 Tons

The first trainload of coal at Southwestern Public Service Company's new electric generating station near Muleshoe, Texas, was unloaded at the plant last week.

The new power plant is named Tolk Station, in tribute to Roy Tolk, recently retired chairman of the SPS board of directors and a current board member. Mr. Tolk threw the switch to dump the first car of coal.

Ben Green, plant manager, said the 110-car unit

train delivered approximately 11,000 tons of coal to the Tolk Station site.

With the arrival of additional shipments, about 200,000 tons of coal will be stored at the plant prior to start-up of the first generating unit in June of this year. The 200,000 tons is enough fuel to run the 561,000-kilowatt generator for approximately 60 days during the start-up phase while operating at considerably reduced loads.

Green said the coal-handling system at Tolk Station represents a departure from the system used at SPS's Harrington Station in Amarillo. During the unloading process the coal cars are turned upside down to dump the coal. The trains serving Harrington Station utilize coal cars that dump the coal through doors on the underside of the cars. Green said the coal cars used at Tolk will be lighter weight and capable of carrying more coal than the cars used at Harrington.

Tolk Station is the second coal-fired power plant for SPS. The first, Harrington Station, was completed in 1980 and is presently the largest of Southwestern's 10 generating plants.

The new plant will have a total capability of more than a million kilowatts when completed. The first 561,000-kilowatt unit is scheduled to go on line in July of this year and the

Cont. Page 6, Col. 3
**Bailey County
Electric Annual
Meeting Set**

The Annual Meeting of the Bailey County Electric Cooperative Association will be held Saturday, February 27, 1982, at the Bailey County Civic Center, Muleshoe, Texas.

A free luncheon will be served to the Cooperative members and their invited guests. The serving line will begin at 12:00 noon. You and your family have a special invitation to attend the meal and the Annual Meeting. You will pick up your lunch tickets when you register.

The meeting will begin at 1:00 p.m. Refreshments will be served.

Jennyslippers Plan Multiple Projects

The Women's Division of the Muleshoe Chamber of Commerce and Agriculture met Monday, February 8 at noon in the Civic Center. Special guests for the meeting were Sylvia Clark and Lisa Wright who are representatives of SPAG's Caprock Local Development Company. Ms. Clark is Director of Economic Development. She gave a short summary of the services provided by the company.

Big plans are underway for the Jennyslippers. They will be responsible for the decorations of the annual Chamber of Commerce and Agriculture Banquet, now scheduled for April 2. On the following Sunday, April 4, a visit to the Tolk Plant is scheduled.

Another project that has been undertaken by the Jennyslippers is a skating night, scheduled for April 16. They also approved a proposal to co-sponsor a Muscular Dystrophy Skate

Cont. Page 6, Col. 2

A-Thon with the Youth Activities Committee of Muleshoe. It was decided that any proceeds left after all bills were paid on the concession stand at this event would be donated to the Muscular Dystrophy fund.

A welcoming committee has been established by the Jennyslippers for new people in the community.

Cont. Page 6, Col. 1

Selective Service List Displayed At Courthouse

The Selective Service System is continuing to make available for public inspection lists of registrants and their tentative local board assignments. This is in keeping with the intent of Selective Service that its procedures be open to the public.

The list may be viewed at the County Courthouse.

The list covers registrations processed through September 30, 1981, and include men born in 1960, 1961, 1962 and 1963.

The requirement to register applies to U. S. citizens, and to aliens residing in the United States, born

on or after January 1, 1960. Men born in 1960 and 1961 were scheduled to register during July 19-80; men born in 1962 were scheduled to register in January 1981; those born in 1963 were scheduled to be registered during 1981. Men born in 1964 are required to register within 30 days of their 18th birthday. They may do so at any U. S. Post Office.

On January 7, 1982, President Reagan announced his decision to continue peacetime Selective Service Registration. In announcing his decision, the

Cont. Page 6, Col. 2

High Plains Cotton Prices Trend Lower

High Plains cotton prices were slightly lower during the week ended February 4, according to Mack Bennett, Area Director for USDA's Marketing Services Office at Lubbock.

Growers sold mixed lots of mostly grades 42 and 52, staples 31 and 32, mike 35-49 at about 44.75 cents per pound, down 55 points

from a week earlier. Grade 52 staple 32, mike 30-32 sold around 39.65 cents per pound, down 35 points from last week. This is about 210 points over the loan, Bennett said.

Supplies of cotton for sale remained heavy as classing totals at Lubbock passed previous records. Many growers turned to Commodity Credit for loans until heavy supplies can move into trade channels. An estimated 870,000 bales of High Plains cotton classed at Lubbock had entered the CCC loan program as of last week. These include Form A Form G and seed cotton loans.

The Lubbock Marketing Services Office classed 82,000 samples during the

Cont. Page 6, Col. 4

Cotton Producers To Receive \$530 Million In Deficiency Payments

Eligible upland cotton farmers soon will receive an estimated \$530 million in deficiency payments on their 1981 crop, according to Everett Rank, administrator of the U. S. Department of Agriculture's Agriculture Stabilization and Conservation Service.

Deficiency payments are

required under the 1981 upland cotton program because the average market price received by farmers during the 1981 calendar year was below the established target price of 70.87 cents per pound.

The 1981 national weighted average market price for upland cotton was 63.2 cents per pound; there fore eligible producers will be paid 7.67 cents per pound for their 1981 crop. Deficiency payments will be based on 1981 cotton planted acreage times the

payment yield for each farm as determined by ASCS.

The 1981 upland cotton crop totaled about 15.6 million bales or 7,509 million pounds. Deficiency payments will be made to upland cotton farmers who reported their 1981 crop acreage and filed an application for payment with their local ASCS office. Rank said the payment checks will be issued through local ASCS offices as soon as possible.

The final 1981 upland

cotton national program acreage is 12.8 million acres and represents the number of acres of a crop needed to meet estimated demand and assure desir-

Cont. Page 6, Col. 2

Mules Defeat Mustangs, Olton Stops Mulettes

The Muleshoe Varsity Mules slapped a resounding defeat on the Olton Mustangs last Friday night here in Muleshoe. While the Mustangs made a valiant attempt, the odds were stacked against them, as the Mules picked up an early nine point lead in the first quarter, which they gradually widened into an 18 point one at the end of the first half. The third quarter proved to be played in the same pattern and when the final buzzer sounded, the Mules led by 31 points to end the game with a 73-42 score.

The Mulettes lost out to the Olton Girl's Varsity by nine points with a final score of 49-40 in favor of

Cont. Page 6, Col. 1

82 Farm Program Outline Released

Farm program sign-up dates have now been set and are to run from February 16 to April 16.

Reduced acreage programs of 15 percent for wheat, cotton and rice and 10 percent for feed grains (corn, sorghum, barley, oats) are now in effect for 1982 crops. While participation in each program is voluntary, only farmers who take part will be eligible for target price protection and regular price support, or farmer-owned reserve loans. No direct payments will be made for the acreage reduction.

1982 Target prices and loan rates have increased. The following gives the commodity, the target price and the regular loan rate in that order: Wheat (bu) \$4.05, \$3.55; Corn (bu) \$2.70, \$2.55; Sorghum (bu) \$2.60, \$2.42; Sorghum (cwt) \$4.64, \$4.32; Barley (bu) \$2.60, \$2.08; Oats (bu) \$1.50, \$1.31; Rice (cwt) \$10.85, \$8.14; Upland cot-

ton (lb) \$.71, \$.5708.

Wheat and feed grains 1982 crop are eligible for immediate entry into the farmer-owned reserve program. There will be no cap on the amount of grain in the reserve, nor will farmers be required to sell their grain when the release trigger level is reached. Storage payments will be 26.5 cents per bushel for all crops except oats, which will receive 20 cents per bushel.

As before, the commodity is listed first, followed by the 1982 reserve loan rate and then by the 1982 trigger level: Wheat (bu) \$4.00, \$4.65; Corn (bu) \$2.90, \$3.25; Sorghum (bu) \$2.75, \$3.10; Sorghum (cwt) \$4.91, \$5.54; Barley (bu) \$2.37, \$2.65; Oats (bu) \$1.49, \$1.65.

Participating farmers must reduce their 1982 acreage planted for harvest from an established acreage base in order to qualify for program benefits. The

amount of the reduction is 10 percent for feed grains and 15 percent for wheat, cotton and rice. For each crop program, a producer's base acreage will generally be the higher of (1) his

Cont. Page 6, Col. 3



The Lazbuddie FFA will have their school stock show on Saturday, February 13, beginning at 1 p.m. Following the regular show, there will be a showmanship class for parents, which should prove to be a fun event.

Muleshoe FFA member, Starla Black, was reported to have won the Sheep Showmanship Award at the El Paso Stock Show on Monday, February 8. At presstime, further details

Cont. Page 6, Col. 1

Bus Driver Training Course Offered

On February 20, 1982, at 10 a.m. there will be a special speaker at the Muleshoe High School. He is Mr. D.R. Thomas, Special Agent for the Atchison, Topeka, and Santa Fe Railway Company. He will be presenting a short program, called Operation Life-saver, concerning Railroad Crossings. A film, "Lucky You", will be shown and

this will be followed by a question and answer period. It should take about an hour.

Mr. Thomas has given this program many times across Texas, and as a result of his work in this area, he was presented with the Texas Safety Award recently.

"We had a near collision, recently as one of our school buses was crossing a R.R. track", said David Gray, Bus Driving School instructor. "Whether you've driven for 1 year or 20 years, this program will be of special

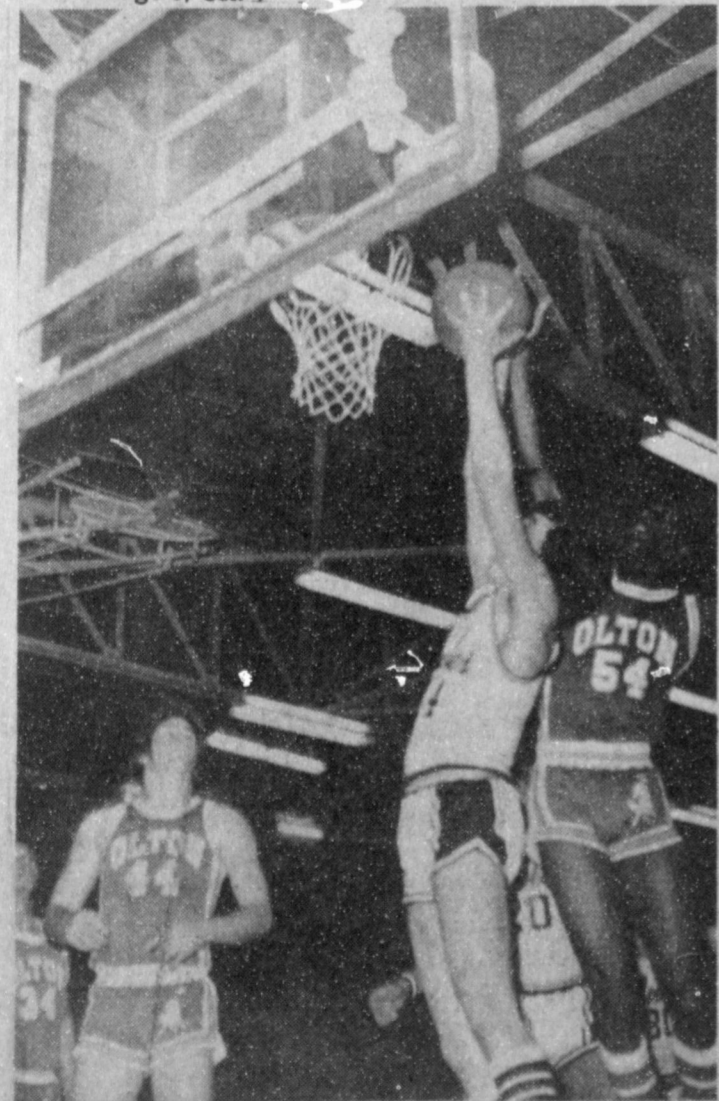
Seven Sentenced In 287th District Court

Seven persons who had previously been indicted by the grand jury appeared in 287th District Court last week before Judge Jack Young. All seven entered pleas of guilty.

James Lewallen, who was charged with burglary, was assessed a five year probated sentence. Miguel Huerta, charged with one count of burglary and two counts of theft was assessed a four year probated sentence on each count.

Kevin Williams was charged with burglary and assessed a three year probated sentence. Keith Smith was also charged with burglary and assessed

Cont. Page 6, Col. 3




MULES DEFEAT OLTON...Varsity Mules outdistanced the Olton Mustangs last Friday night in Muleshoe with a 73-42 win. Wayne Precure makes a bucket in this shot.




LAND BANK DIRECTORS...Muleshoe Federal Land Bank had their 1982 Stockholders meeting and election of directors. They are: (l to R) Jim Claunch, Director, Gorden Duncan, President, James Glaze, Vice President, William Gromowsky, Director and Bill Liles, Manager. Also elected as director, but not pictured was Arlin Hartzog.



Boneless Bottom Round or Rump
BEEF ROAST
\$1.99
lb.



Fresh Not Less Than 73% Lean
GROUND BEEF
\$1.29
lb.



USDA Grade A lb.
WHOLE FRYERS
59¢
lb.



Pib or Loin Center Cut
PORK CHOPS
\$1.99
lb.

Boneless Beef Bottom
ROUND STEAK
\$2.39
lb.

STEAK OR ROAST Eye of Round Boneless Beef
\$2.53
lb.

Jimmy Dean
SAUSAGE 1 lb. roll **\$1.59** 2 lb. roll **\$3.15**

32 oz. pkg. Hereford Corn
TORTILLAS **69¢**



US No. 1 Russet Baking
POTATOES
3.99
lb.

PEANUTS 1 lb. bag Fresh Roasted **\$1.19**



Red Emporer
GRAPES
88¢
lb.

CARROTS 2 lb. bag Rich In Vitamin A **79¢**

Shurfresh 1 1/2% Low Fat
MILK **\$1.88**
1 gal.

Laundry Detergent 35' Off Label
CHEER 84 oz. box **\$3.19**

2 lb. tub Margarine Lite Spread
PARKAY **\$1.39**

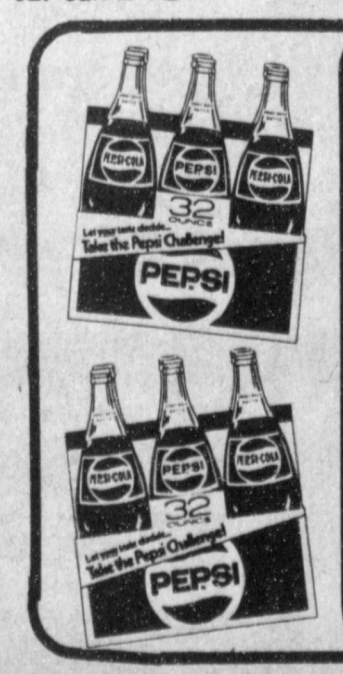
21 oz. can Comstock
CHERRY PIE FILLING **\$1.69**

13 1/2 oz. Shurfine Asst. Flavors
PIZZA **99¢**

Liquid Dish Detergent
JOY **\$1.49**
32 oz. btl.
27' Off Label



Del Monte
CATSUP **\$1.09**
32 oz. btl.



Buy One 32 oz. 6 pack of
PEPSI
at
\$3.59 Regular & Diet
Get Two Pepsi
6 Packs of Cans
FREE



SHOP RITE
DOUBLE STAMPS EVERY WEDNESDAY

Each of these advertised items is required to be readily available for sale at or below the advertised price in each store, except as specifically noted in this ad. We reserve the right to limit quantities. None sold to dealers.

PLAY

Put \$2,500 in your pocket...play
CASH KING

ODDS CHART EFFECTIVE JANUARY 20, 1982.

PRIZE VALUE	NUMBER OF PRIZES	ODDS FOR ONE GAME TICKET	ODDS FOR 20 GAME TICKETS PLUS 10 SAVER DISCS
\$1,000	2	1 in 187,143	1 in 18,714
100	70	1 in 18,715	1 in 1,871
10	140	1 in 9,358	1 in 936
5	300	1 in 4,367	1 in 437
2	1,200	1 in 1,092	1 in 109
1	12,772	1 in 108	1 in 10.8
TOTAL	13,889	1 in 95	1 in 9.5

Odds vary depending on number of Game Tickets you obtain. The more tickets you obtain, the better your chances of winning. Odds to obtain all ten (10) Saver Discs and qualify for Grand Prize Drawings are 1 in 25. Odds to win Grand Prize Drawings will depend on the number of Saver Discs redeemed.
Cash King Series #CK89 is being played in 13 participating stores located in New Mexico and Texas.
Scheduled termination date of this promotion is April 20, 1982. However, Cash King officially ends when all game tickets are distributed.

PRICES EFFECTIVE FEB. 7 THRU FEB. 13

6 oz. State Fair
CORN DOGS **\$1.79**

Mrs. Paul's 9 oz.
FISH STICKS **\$1.63**

Kraft American Singles 16 oz.
CHEESE **\$2.39**

Peyton's Del Norte Asst. Flavors 8 oz.
LUNCH MEAT **\$1.07**



Texas Sweet & Juicy
GRAPEFRUIT
4 ea. **\$1**

Punch-N-Grow Start Your Garden Now!
TRANS PLANTS **\$1.89** ea.



Fresh Green Stalks
CELERY
39¢
lb.

APPLES 3 lb. bag Washington Red Delicious **\$1.19**

Del Monte
FRUIT COCKTAIL **59¢**
17 oz. can

Shurfine
CAULIFLOWER 2 10 oz. **99¢**

8 oz. btl. Wishbone Deluxe French
SALAD DRESSING **69¢**

Buy One 32 oz. 6 pack of
PEPSI
at
\$3.59 Regular & Diet
Get Two Pepsi
6 Packs of Cans
FREE

This Coupon Good For 200 Extra S&H Green Stamps With The Purchase Of 5 LB. Bag Shurfine **SUGAR** Prices Effective Thru 2-13-82

This Coupon Good For 100 Extra S&H Green Stamps With The Purchase Of Kraft 32 oz. Jar **MIRACLE WHIP** Prices Effective Thru 2-13-82

This Coupon Good For 100 Extra S&H Green Stamps With The Purchase Of King Size **TIDE** 35' Off Label Prices Effective Thru 2-13-82

This Coupon Good For 200 Extra S&H Green Stamps With The Purchase Of 42 oz. Jewel **SHORTENING** Prices Effective Thru 2-13-82

Nursing Home News
By Joy Stancell

On Thursday morning, James Williams and members of the Nazarene Church came to have a devotional with the residents.

On Thursday afternoon, the Needmore Community Club hosted our monthly birthday party. Among our special guests were Cheryl Bellar, granddaughter of Cleo Bellar.

Friday morning, the residents had a 'group' meeting in the Day Room.

New Interest Rates, Penalties For Taxpayers

Agricultural producers and others who handle their own tax and Social Security reports face higher interest rates on delinquent taxes and penalties for failing to file certain information forms.

Beginning February 1, the Internal Revenue Service will start charging a 20 percent annual interest rate (up from 12 percent) on delinquent tax accounts as a result of the Economic Recovery Tax Act of 1981. At the same time, the IRS will also pay the same 20 percent interest on over-payments.

"The new, higher rates will apply to the underpayment of individual and corporate estimated taxes and most other tax law provisions imposing interest," points out Dr. Ashley C. Lovell of Stephenville, economist with the Texas Agricultural Extension Service, Texas A&M University System.

The new interest rate will be determined each Oct. 15 and will go into effect the following Jan. 1. It will be based on 100 percent of the average prime interest rate for the preceding month--September.

"The new 20 percent rate means that many taxpayers who previously borrowed from the U. S. Treasury through underpayments or by delinquent taxes will be reluctant to continue these practices," notes Lovell.

The new tax law also provides for a \$10 penalty per statement for taxpayers who fail to file information returns (Form 1099)

Residents attending were Margaret Beard, Bulah Connell, Lottie Hall, Jerry Mudgett, Russ Duncan, Marie Patton, Alma Henley, Ora Roberts and Alva Shofner.

Friday afternoon, the J.O.Y. Choir from the First Baptist Church came to have a singing with the residents. Everyone had a wonderful time singing old and new hymns. Refreshments of several varieties of homemade cookies and punch were served.

E. B. Wilson came Sunday morning to have Bible study with Mr. and Mrs. Brinker, Archie Scarlett, Marie Engram, Russ Duncan, Alma Henley and Ru-

with the IRS, adds the economist. The previous penalty was \$1 per statement.

Furthermore, the IRS may dock each taxpayer or income recipient \$5 if he does not use an identifying number (in many cases the Social Security number) on the various tax forms and returns.

Regarding the Form 1099s, these along with Form 1096 (summary and transmittal form) must be submitted to the IRS by Mar. 1. Information on the Form 1099s should be provided to income recipients by Feb. 1.

Form 1099s are information returns that are used to report total payments of \$600 or more during the tax year to another person in the course of trade or business. Several variations of Form 1099 relate to payments of interest, rent, royalties, fees, commission and other compensations for services to persons other than employees.

"Many agricultural producers make payments to others in their normal course of business, and these should be reported on a Form 1099," says Lovell. "An exception is if the recipient of a payment is a corporation."

Agricultural producers also have until Jan. 31 to file Form 943 (Employer's Annual Tax Return for Agricultural Employees). This is required if an employer withholds and pays Social Security taxes or if he withholds income taxes under voluntary withholding agreements on farm labor wages paid during the tax year. Timely tax deposits were made, an employer has until Feb. 10 to file Form 943.

Lovell suggests that farmers and ranchers consult their tax advisers and review the "Farmer's Tax Guide" and the "1981 Package X" available from the IRS to learn more about recent changes in tax laws and the various tax forms and deadlines for filing.

by McCamish.

Lorna Moravec came Tuesday morning to do manicures and to 'make-up' the residents.

Our new whirlpool bath is just about completed. It looks so nice. We invite you to come by and see it. The auxiliary is getting this put in for us with the money from the Christmas card projects.

Our thanks to Charles Long for fixing our ice maker.

Ora Roberts was visited by Mrs. Bradley, Mrs. Bellar, Mrs. Bruce Duncan, Eva Atwood, Cordelia Cochran and Russ Duncan.

Russ Duncan, Ora Roberts, and Mr. Freeman played dominoes and Bertie Hendrix, Alma Henley and Ora Roberts played Skip Bo.

Clara Weaver was visited by Cheryl last Sunday. Joe and Bobby visited this Sunday. Jimmy visited on Monday and Jerry Hutton visited Tuesday.

Marie Engram was visited by Mrs. Odom, Mrs. S. E. Goucher, Wilma Waddle, Maud Kersey, Beckie Vela, Juanita Flores, Mr. and Mrs. Kenneth Precure.

Ona Tiffie returned to the Nursing Home last week after having surgery on her hand in Lubbock. Welcome back, Ona.

Mr. Northcutt visited his wife, Laura Northcutt, on Tuesday.

Cleo Bellar went out with her family over the weekend.

Barbara-Lust and Bro. Louis Crenshaw came to have a singalong with the residents Wednesday afternoon.

Paul and Arlene Jones of Capitan, N.M. and Mr. and Mrs. D. B. Head visited Dottie Wilterding on Wednesday. Mr. and Mrs. Head brought Aunt Dot to the sing-a-long.

Effie Jennings was hospitalized Wednesday afternoon. Hurry and get well, Mrs. Jennings. We miss you.

On Wednesday morning, the residents met to make crafts. The project was copper plaques. Residents participating were Keith Fuller, Effie Smith, Edith Bruns, Russ Duncan, Marie Patton, Ora Roberts, Alma Henley, Rosemary Pool, Lura Northcutt, Archie Scarlett, Ruby McCamish. Our thanks to Marjorie Precure for helping us.

Statement Of Intent To Change Rates

General Telephone Company of the Southwest, in accordance with the Rules of the Public Utility Commission of Texas, hereby gives notice of the Company's intent to implement a new schedule of rates in Texas effective March 5, 1982.

The proposed changes in rates will affect all customer classes and are designed to increase the Company's intrastate revenue by 24 percent.

A complete set of revised rate schedules has been filed with the Public Utility Commission at Austin, Texas, and is available for public inspection in each of the Company's Business Offices in the State of Texas. A summary of the Company's rate filing has also been sent to the Mayor's Office of each affected Municipality.



Ruby Gore returned to the Nursing Home Wednesday after being hospitalized. Welcome back, Ruby.

We welcome our three new residents who are Elma Baker. He was born August 10, 1896 in Bowie. He is a member of the Church of Christ. Barbara Case was born March 27, 1892. She was born at Mt. Pleasant, Tex. She is a member of the Methodist Church. Harold Mardis was born June 6, 1896 in Kansas. He is a member of the Methodist Church. We welcome each one of you to our family.

Kathy Embry decorated our February birthday bulletin board Tuesday. It looks so pretty. We are really enjoying it. Thank you, Kathy. Books are the legacies that a great genius leaves to mankind.

Questions About Cancer Call Toll Free Number

HOUSTON-The statewide toll-free telephone service that answers Texans' questions about cancer has been refunded as part of a three-year contract from the National Cancer Institute (NCI).

The \$833,610 contract was awarded to the University of Texas .A. D. Anderson Hospital and Tumor Institute to continue its public education program, the Cancer Information Service (CIS), which operates the toll-free telephone line.

Since it began in 1975, the CIS staff of trained volunteers has assisted more than 40,000 Texans with their cancer questions and concerns.

The contract will enable CIS to continue its present activities and expand educational programs directed to minority audiences and

those at high risk for cancer.

The Texas CIS is one of 17 such regional centers established to help ease the public's fear of and confusion about cancer by providing rapid access -- via telephone line -- to the facts about the disease. The program is part of M. D. Anderson's Department of Public Information and Education.

"Early detection, successful treatment and even prevention of cancer depend greatly on each person's health habits and knowledge about the disease," said Dr. Charles A. LeMaistre, president of the UT Cancer Center. "CIS

helps bridge the gap between cancer knowledge and personal action by providing people with accurate, up-to-date cancer information and by helping make them aware of the methods for early detection and prevention that can help save lives."

The toll-free phone service operates from 9 a.m. to 5 p. m., Monday through Friday, in English and Spanish. Callers are given information over the phone and receive printed

material, if they request it. No caller is required to give a name or address.

CIS phone numbers are 792-3245 in Houston and 1-800-302-2040 in Texas.

MILITARY SUPERIORITY MOSCOW -- The Soviet Union will not allow the United States to achieve military superiority nor will it enter arms limitation talks if the United States speaks "from a position of strength," Defense Minister Dmitri F. Ustinov said recently at a parade observing the 64th anniversary of the Bolshevik Revolution.

Announcement...

Due to our severe cold weather and bad traveling conditions we were unable to conduct our seafood sale as scheduled. Next sale will be conducted the 6th of March. We apologize for any inconvenience this may have caused.

Simon Seafood

Boot & Shoe Repair
111 E. 4th

Special Savings For That Special Valentine!

Ladies "FANCY POCKETS" DENIM JEANS

Regular \$16 \$10⁸⁸

- Great Looking
- Great Selection
- Perfect For Your Valentine



Spring Fashion Colors LEVI BENDOVER SLACKS

Reg. \$21.95 \$19⁸⁸

- Black
- Brown
- Navy
- White
- Off White
- Lilac
- Salmon
- Iced Blue
- Clay Pink
- Wheat
- Heather Grey



AMERICAN TOURISTOR & SAMSONITE LUGGAGE

1/2 Price

Travel in style and save! You'll find many styles from famous makers to hold everything you need.



Adorable Dots: Ladies' Sleepwear by Russell-Newman

\$13 TO \$25

Beautiful sleepwear of satin and lace... what better way to capture her heart for Valentine's Day? Russell Newman's "Adorable Dots" sleepwear is creamy white satin with dainty red dots, highlighted with white lace and red satin trim. Choose from the teddy, baby doll, long gown, and long coat, all in sizes XS,S,M,L.

Red & White Heart ROMPERS & JUMPSUITS \$7 to \$10

Beautiful LADIES CAFTANS

Reg. to \$20 \$15⁸⁸



Anthony's
C.R. ANTHONY CO.

321 MAIN STREET • OPEN 9 to 6

Muleshoe Journal USPS 367-400
Established February 23, 1924. Published by Muleshoe Publishing Co., Inc. Every Thursday at 304 W. Second, Box 449, Muleshoe, Texas, 79267. Second class postage paid at Muleshoe, Texas 79267.
MEMBER 1981
TA
TEXAS PRESS ASSOCIATION
L.B. Hall, President
James Woods, Vice President
Shirley Farmer, News Editor
Bertie Harris, Secretary
Holly Millip, Advertising Manager
Randy Bennett, Bookkeeper
SUBSCRIPTIONS:
Muleshoe Journal and Bailey County Journal
Bailey and surrounding counties...\$10.50
Muleshoe Journal and Bailey County Journal
Elsewhere in Texas...\$11.95
Muleshoe Journal and Bailey County Journal
Outside of Texas...\$12.95
Yearly by Carrier...\$11.50
Monthly by Carrier...\$1.50
Advertising rate card on application

AUCTION
AUCTION SALE EVERY SUNDAY 2:00 P.M.
516 NORTH FIRST - MULESHOE, TEXAS
Come Rain, Snow, or Sunshine
NEW AND USED
FURNITURE, APPLIANCES, TELEVISIONS
AND LOTS MORE
CONSIGNMENTS WELCOME
Knowles Auction Service
516 NORTH FIRST MULESHOE, TEXAS PHONE 272-4993
OPEN: 9:00 A.M. TO 7:00 P.M.
CALL ANY TIME DAY OR NIGHT
Terms of Sale: CASH; All Accounts Settled Day Of Sale. Please bring your own checkbook.
LANNY KNOWLES MORTY BOND JACK KNOWLES
516 NORTH FIRST, MULESHOE, TEXAS P.O. BOX 104, MULESHOE, TEXAS 516 WEST POINT, MULESHOE, TEXAS
(903) 272-4993 (903) 272-2880 (903) 272-2880
LICENSE T&E 011-0991
Conduct Sales Of All Kinds - Call 806 272-4993 For Free Estimate

Statement Of Intent To Change Rates
General Telephone Company of the Southwest, in accordance with the Rules of the Public Utility Commission of Texas, hereby gives notice of the Company's intent to implement a new schedule of rates in Texas effective March 5, 1982.
The proposed changes in rates will affect all customer classes and are designed to increase the Company's intrastate revenue by 24 percent.
A complete set of revised rate schedules has been filed with the Public Utility Commission at Austin, Texas, and is available for public inspection in each of the Company's Business Offices in the State of Texas. A summary of the Company's rate filing has also been sent to the Mayor's Office of each affected Municipality.
GTE
General Telephone

Bridal Shower Fetes Miss Lavon Rhodes

Miss Lavon Rhodes, bride-elect of Curtis Hunt, was feted with a bridal shower Saturday, February 6, from 3-4:30 p.m. at the 16th and Ave. D Church of Christ.

Guests were greeted by the honoree, Mrs. Joe Rhodes and Mrs. Robert Hunt, and registered by Robin Burgess.

Sandra Graves, Jan Whitt and Cindy Turner served thumb print cookies, nuts and mints from crystal and silver appointments.

The serving table was covered with a net overlay over an apricot cloth. The cloth was trimmed with white satin wedding bells and love birds. An arrangement of yellow, bronze and apricot silk flowers

enhanced the table. The honoree's corsage was of apricot silk flowers.

Special guests included Mrs. Joe Rhodes, mother of the bride; Mrs. Robert Hunt, mother of the prospective groom; Tori Hunt and Mrs. Kim Black, sisters of the prospective groom; JoRhonda Rhodes, sister of the bride; and the prospective groom's grandmothers, Mrs. Ruth Hunt and Mrs. Selma Smith.

The hostess gift was a vacuum cleaner.

Hostesses for the occasion included Mrs. Arnold Prater, Mrs. Ronnie Black, Mrs. James Brown, Mrs. Curtis Smith, Mrs. Donald Prather, Mrs. Ed Northcutt, and Mrs. Eric Smith.

Also, Mrs. Jim Burgess, Mrs. Butch Vandiver, Mrs. Jack Hysinger, Mrs. Raleigh Mason, Mrs. Elbert Hamilton, Mrs. Robert Lunsford, Mrs. Ken Angeley, Mrs. Eugene Shaw, Mrs. Willie James, Mrs. Gerald Prater, Mrs. Merlyn Neel, Mrs. Russell Downey, Mrs. Ernest Ramm, Mrs. George Wheeler and Mrs. Bill Harmon.

Every cubic inch of space is a miracle.

-Walt Whitman.



SANDY ELKINS



MISS LAVON RHODES



BY SHERYL BORDEN

Convection ovens have become the "hottest" cooking item in the last several years. This is due in part to the fact that they are more versatile than radiant conventional ovens and, in most cases, cook food faster. The quality of certain foods, especially roasted meats and many baked products, is superior to foods prepared in a radiant oven. Sandy Elkins, Jenn-Air Demonstrator for Fields and CO., Lubbock, Texas will be the guest on "The Creative Woman" show on February 9 and 13, and will demonstrate and explain convection cooking. A pamphlet entitled "An overview of Convection Cooking" will be available for those interested in more information concerning this cooking principle.

Some quick and easy ideas for picture framing, especially suitable for budget decorating, will be presented by Mary Ellen Payne, Extension Home Economist for Lincoln County, Carrizozo. Mrs. Payne will talk about and illustrate ways to display photographs and drawings using "Quick Frames."

Connie Moyers, Consumer Service Representative for Southwestern Public Service Co., Clovis, will talk about two portable appliances that are common in many households—a fondue pot and a popcorn popper. She will talk about buying features and will

prepare two dishes that will be especially liked by youngsters. The recipes are quick and easy nutritious snacks and are called Axle Grease with Rocks and Backpack Snack. The recipes for both of these snacks will be available in a booklet from SPS entitled "Portable Medley."

For the next several weeks, we will have a special feature on the show. Jimmy Webb, CPA, with the public accounting firm of Holloman, Woodward, Widner and Webb in Clovis. He will present a different tax tip each week and it should prove very interesting and beneficial this time of the year.

"The Creative Woman" is seen on Channel 3 at 12:30 p.m. on Tuesdays and at 2 p.m. on Saturdays. The show is produced and hosted by Sheryl Borden for KENW-TV. Viewers outside Portales can request copies of printed materials by calling on KENW-TV's toll-free telephone numbers. These are New Mexico: 1-800-432-2361 and Texas: 1-800-545-2359. Portales and Roosevelt County viewers are asked to call 5622112. All callers should call Monday through Friday between 8 a.m. and 5 p.m.



The luffa gourd has a fiber network inside that makes an excellent scrubber for the kitchen. It is often used in place of a sponge in the bathtub.



It's Annual Meeting Time

Saturday February 13, 1982

At

Five Area Telephone Cooperative Building

(Behind the Bailey County Civic Center & Coliseum)

Registration 7:00 A.M. - 10:30 A.M.
Bar-B-Que Lunch Door Prizes



LIGHTHOUSE QUARTET...Saturday night, February 13, at 7:00 p.m., the Church of the Nazarene will have a special group in concert, the Lighthouse Gospel Quartet. The group is from Lamesa. There will be a fellowship afterwards at the Tr-County meeting room.

Talent Scholarships, Career Day Scheduled

Talent Scholarships and Career Day will be held at Eastern New Mexico University on Saturday, February 27, for seniors in New Mexico, Texas and Arizona.

Eighty \$200 scholarships totaling \$16,000 will be awarded to high school seniors in 26 different test areas that include accounting and business data processing, business education, business administration, industrial education, agriculture, English, dance and speech.

Other scholarship areas are social science, library science, Technical speech pathology and audiology, education, library science, Technical Institute and engineering, science, modern languages, journalism, radio and television, home economics, military science, mathematics, psychology, religion, music, art and drama.

While only seniors can

compete for scholarships, other high school students are invited to the ENMU campus to participate in the career portion of Talent Day.

An Educational Interest Inventory will be given to any student who would like to take it. The Educational Interest Inventory is designed to measure the relative interest a student has in 22 of the major areas of study common to most colleges. A \$2 fee will be charged to cover the cost of the test and a counselor from the testing department will discuss the results of the inventory with the students.

Students will have an opportunity to tour the ENMU Portales campus and talk with university personnel in a variety of areas. Dr. Jo Nell Brooks, director of Career Planning and Placement, will be a guest speaker.

Applications for Talent

Day are available from high school counselors and the ENMU Admissions Office. The application deadline is Feb. 19. Additional information may be obtained from high school counselors.

Texas Forestry Big Business

Forestry is big business in Texas, providing necessary products for daily life and employing more than 51,000 people, says a forestry specialist with the Texas Agricultural Extension Service, Texas A&M University System. Texas looms big in the forestry industry with 134 sawmills, 10 wood pulp mills, 18 veneer plants and 35 wood preserving plants located primarily in eastern areas. Cash receipts from timber sales totaled some \$391 million last year. Forestry firms own only about one-third of the commercial forest land in Texas while there are more than 100,000 small private timberland owners.

Assembly Youth Set Valentine Banquet

The youth group of First Assembly of God in Muleshoe was recently honored as the 1981 All District 'Group of the Year.' This is the highest honor awarded a youth group in the West Texas District, an area including 123 churches. It is based on an overall balanced participation in the District sponsored activities. Rev. David McNeely, district youth director, gave the group a trophy. Alma Pierson is the group's leadership sponsor.

Friday night, February 12, at 7:30 p.m., the youth group of First Assembly of God is having a Valentine banquet. The Special guest will be Rev. John Murdoch, sectional youth representative from Lubbock. John is noted for his humor and has earned the nickname "The Judge" for his portrayal of the presiding judge at Kangaroo Court during district youth camp. John and his wife, Sue, spend much of their time ministering to youth in monthly rallies and in the churches. Sue will be ministering in song during the banquet.

A king and queen will be selected from the following candidates:

For queen - Stacey Golaz, Tina Ruthardt; Casey Clements and Deena Burris. And for king, Preston Langsford, Donnie Burris, Jedon Ruthardt and Ricky Rasco.



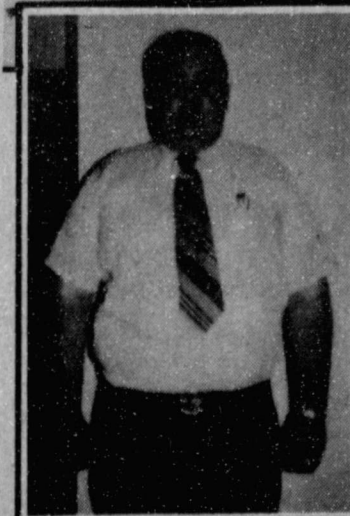
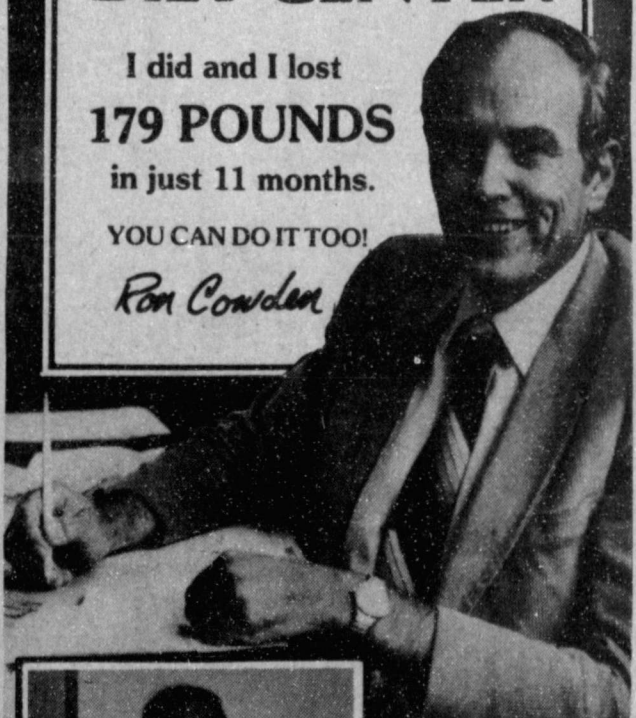
An ideal storage container for knitting needles is an empty aluminum foil box.

When you decide to lose weight, CALL DIET CENTER.

I did and I lost 179 POUNDS in just 11 months.

YOU CAN DO IT TOO!

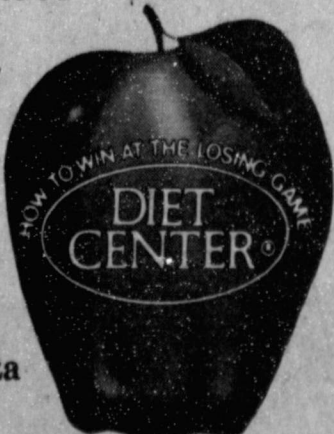
Ron Condon



"Diet Center offers the easiest weight-loss program I have ever undertaken, and I think I've tried them all. I experienced no dizziness, weakness or hunger pangs. My dangerously high blood pressure dropped to a normal level. My waist went from 57 inches to 34, and I learned how to maintain my ideal weight for the rest of my life! If you have a weight problem, I urge you to consider this nutritionally sound program... it works!"

NO SHOTS • NO DRUGS • NO CONTRACTS

CALL TODAY FOR A FREE INTRODUCTORY CONSULTATION IT COULD CHANGE YOUR LIFE.



Tradewinds Plaza 272-5487

Baker Furniture Of Bailey County Grand Opening

Continues

We Finance Our Own Accounts

Example :

Solid Wood Living Room Suite

Includes Sofa, Love Seat, Chair, 2 End Tables, 2 Lamps & Coffee Table

\$899.95

Tax 45.00

\$944.95

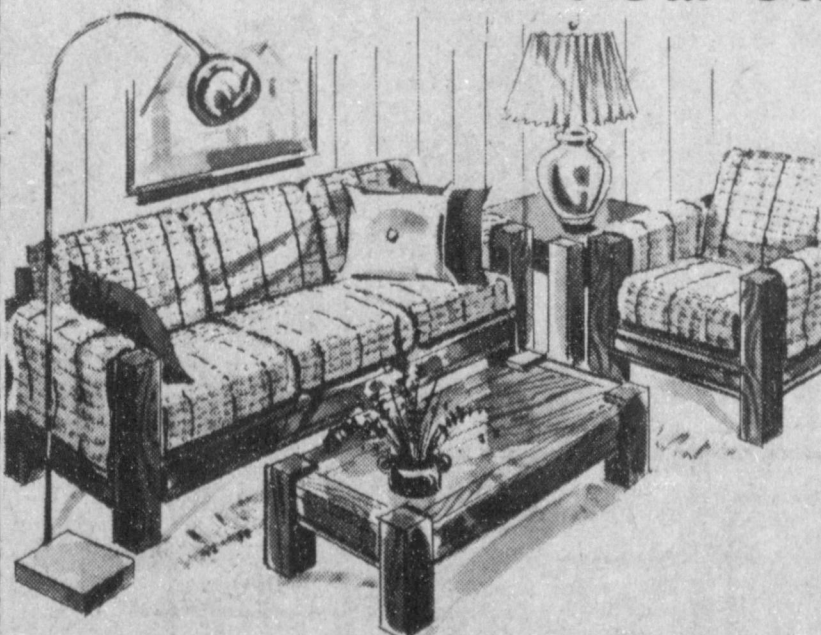
Down Payment 94.50

\$850.45

Total Finance Charge 85.05

Total Payments \$935.50

\$77.96 A Month For 12 Months



Free Delivery

- Instant Credit Policy -

1. Proof Of Identity

2. Proof Of Residence

3. Proof Of Employment

Baker Furniture & Carpet

106 E. Ave. B

Muleshoe

272-4000



BABY SHOWER—A baby shower honoring Timothy Wayne Madrid and his mother, Rhonda, was given Friday, February 5 in the nursery of the Trinity Baptist Church. Special guests included Timothy's brother, Steven, and his grandmother, Lela Sue King. Rhonda Carpenter and Bonnie Carpenter served punch and cookies from crystal appointments. The hostesses gave individual gifts.



Latest Arrivals

Timothy Wayne Madrid

Mr. and Mrs. Dennis Madrid are the proud parents of a son born at 8:58 a.m. January 20 at Cannon Air Force Base, Clovis, N.M.
The young man weighed

"A special reason why H&R Block should prepare your taxes."



The 1040A Express 24 hour turnaround on your 1040A Short Form.

The new two-page Short Form calls for up to 83 entries and may refer you to the instructions 16 times. When H&R Block prepares your 1040A Short Form, you'll get your return back in 24 hours, accurate and double-checked, ready for your signature. At a very fair price.

1040A Express Service. New from H&R Block.

H&R BLOCK
THE INCOME TAX PEOPLE

17 reasons. One smart decision.

224 W. 2nd
272-3332
Wkdays 9-6
Sat. 9-5

NON-DEDUCTIBLE COVERAGE

- FIRE • STORM • THEFT • HAIL
- LIGHTNING • VANDALISM
- EXTENDED COVERAGE



- HOMES • MOBILE HOMES
- CONTENTS • FARM BUILDINGS
- FARM MACHINERY • TOOLS
- IMPLEMENTERS • FENCES • FEED AND SEED

CONTACT YOUR HOCHHEIM AGENT

Barbara Scarbrough
Branch Manager
272-5093

Robert Wilson
272-4069

David Gowens
272-5419

HOCHHEIM PRAIRIE FARM
MUTUAL INSURANCE ASSOCIATION
Branch no. 87 Rt. 3 Box 63B
Muleshoe

From Journal Files

40 Years Ago

1942

Grocery specials for the first week in February include: large bottle of Catchup 10 cents, coffee 21 cents per pound, hominy 5 cents per can, cheese 28 cents per pound, No. 2 can of corn 8 cents.

30 Years Ago

1952

Bargains in grocery items included half or whole hams 59 cents per pound, sliced bacon 59 cents per pound, grapefruit 8 pound bag 33 cents, pork and beans 3 for 29 cents, No. 303 can beef tamales 30 cents, lettuce 10 cents per pound.

20 Years Ago

1962

In the classified section of the *Muleshoe Journal* a

EXPERT PROVIDES TIPS ON CHILDREN PICTURES

It doesn't take an expert or an expensive camera to take attractive pictures of your children, claims Doris Pinney, an internationally acclaimed professional photographer.

To prove her point, she recently put aside her professional equipment and spent some time using a Kodak Colorburst 350 instant camera. "I was delighted with the results," said Ms. Pinney. She advocates instant pictures "because children get excited when they see the pictures—adults too. It's instant gratification and a lot of fun for everyone."

"One of the secrets to great pictures is to move in close," states Ms. Pinney. "Many people attempt to photograph their children at too great a distance, thus losing details." The Kodak Colorburst 350 instant camera solves that problem with two built-in lenses: a close-up lens that lets you get as close as two feet from your subject and a normal lens that lets you take pictures from four feet to infinity.

Here are some additional tips that Ms. Pinney offers to help you take great pictures of the youngsters. . . Plan ahead. Captive subjects are much easier to shoot. For little babies, a bathtub or highchair are

2 bedroom house was listed to rent for \$35 per month, with city bills paid. You could also rent a 3 bedroom house, central heating and water bill paid for \$80 per month.

Advertised at the local grocery stores were bacon, 2 pound package 89 cents; bananas 7 and one half cents per pound; Pinkney sausage, 2 pound bag 49 cents; hamburger 49 cents per pound; lettuce 10 cents per pound; 3 pound can of Crisco 79 cents; club steak 69 cents per pound; Velveeta cheese 2 pound box 79 cents and potatoes 25 pound bag 59 cents.

10 Years Ago

1972

Valentine cakes, one layer, could be purchased for \$2.50 each.

Other listings included: efficiency apartments, cable TV, with maid service at \$22.50 per week.

Advertisements at a local variety store included: double knit, \$2.44 per yard rose bushes \$1.59 each; and dahlia bulbs package of two 79 cents.

Grocery items on sale included: Coca Cola 39



natural spots. A sandbox is great for pictures of the older kids.

Have your camera ready at all times. The built-in electronic flash on the Colorburst 350 instant camera makes spur-of-the-moment pictures a snap, indoors or outside on cloudy days.

Turn the camera for vertical or horizontal pictures—whichever fills the viewfinder best.



Water is pitch black at three thousand feet below the sea's surface. Not even a tiny bit of light can penetrate down more than half a mile.

All Friends & Relatives Of

Lola Crim
Are Invited

To A
Birthday Reception
Saturday February 13
First United Methodist
Fellowship Hall

2-5 P.M.

Come By For A Visit With Mother & Her Family.
Anna Lucy & Horace McAdams

Everett & Estelle McAdams

Ben McAdams

Julie & Raymond Jones

Ken & Ann McAdams

Dan & Jo Bray

Keith & Jo Bray

cents (King size 6-bottle carton); Nestles Quik 69 cents, 2 pound; bananas 5 cents per pound; fryers 29 cents per pound; paper towels 3 rolls for \$1; eggs 39 cents per dozen; fruit pies 29 cents each; flour 5 pound bag 35 cents and coffee 69 cents per pound.

SPS Promotes

Gibson, Jeans

Gary Gibson and Carl Jeans have been promoted to director of consumer services and director of management systems, respectively, at Southwestern Public Service Company, it was announced today by Bert Ballengee, SPS president and chief operating officer.

Jeans had served as general supervisor, management systems, during the past year, while Gibson had been manager of consumer services for a similar period.

Gibson started his SPS career as an engineer in the Company's Borger district in 1964. He served as power sales engineer and as manager of industrial services, before being named manager of consumer services.

A native of Borger, Texas, Gibson earned a bachelor of science degree in electrical engineering at Texas Tech University, and a master of business administration degree at West Texas State University. He is a member of the Texas Society of Professional Engineers.

Jeans became an SPS employee in 1966 as an engineer in the rates and budget department, subsequently serving as management information systems manager, and as business systems development manager, before becoming general supervisor, management systems.

A graduate of Kansas State University, Jeans earned a bachelor's and master's degree in industrial engineering. He is active in the Boy Scout and Goodwill Industries programs. Jeans is a native of Independence, Missouri.

Sudan News

By Evelyn Ritchie

The members of the Sudan FHA met Monday, January 18 at 5:30 p.m. with 12 members present. The group discussed the area and state convention to be held soon.

The area convention will be held in Amarillo on February 19 and 20 with state convention being held in Fort Worth April 29 and 30.

The Valentine's Day selling project was planned. Rhonda Pickrell presented the program on aerobic exercising.

Recently visiting with Mr. and Mrs. Martin Maxwell were Mrs. Lois Hicks of Richmond, Va. Mr. and Mrs. R. H. Middleton of Levelland, Harold Fox of San Jon, N.M. and Mrs. Vernadean Wright of Lubbock. Also, Mrs. Cora Adams of Plainview, who also visited Mr. and Mrs. Raymond Maxwell.

Visiting recently with Mr. and Mrs. Roy Day were their granddaughter, Mrs. Nickey Lou Logan and children of Breckenridge and his nephew, Mr. and Mrs. R. C. Day of Muleshoe.

Visiting Sunday in the home of Mr. and Mrs. George Collins were their children, Mr. and Mrs. A. M. Johnson and children of Bovina and Fred of Levelland.

Mr. and Mrs. Wayne Doty visited during the weekend in Odessa with their daughter, Mr. and Mrs. Billy Wayne Gore, Stephanie and Dennis. At the same time, the also visited in Hobbs, N. M. with their other daughter, Mr. and Mrs. Doyle Mapp and Amanda.

Mrs. Pearl Wright has been in Lubbock to be with her son and family, the Don Wright's. It was reported that Don died on

Monday night.

at their cabin.

Mr. and Mrs. Claud Kropp visited during the weekend with Mr. and Mrs. Tom Word in Lockney.

Mr. and Mrs. Jack Engstrom were in Amarillo on the weekend to be with their children and grandchildren when they observed their 50th wedding anniversary. Their children took them to lunch and also to a dinner theater.

Mrs. Wareena Roark has returned home from an extended visit with her children, the Dick Roarks in Alamogordo, N.M. and Mr. and Mrs. Billy Baker and family in Spearman. They also spent some of the time in the mountains

Mr. and Mrs. Wayne Whiteaker were in Lubbock Tuesday to be with her mother, Mayfair Graves, who underwent surgery on Monday at Methodist Hospital.

Jan Parker of Lubbock visited recently with her aunt and uncle, the Claud Kropps.

Mrs. Edna Bellamy is in Fort Worth to be with her son and family, the Ralph Bellamys as he remains a patient in critical condition following a car wreck.

Mr. and Mrs. Wayne Whiteaker were in Wolf-forth Wednesday to help celebrate the birthday of their daughter, Mrs. Venita Costello.



CASSETTE TO GIVE AWAY...Gymnasts from Hawkins and Purdy School of Dance and Gymnastics have extended the date to give away a Video Cassette Recorder until April 8. With each \$3 donation you will receive one chance on the cassette. (L-R) Jana Brown, Lesa Black, and Caroline Liles.

Tradewinds Plaza DIET CENTER 272-5487

Diet facts & fallacies

These nutritional tips brought to you by **DIET CENTER**

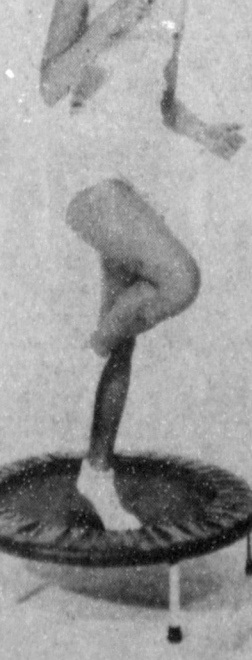


What new type of exercise is just as beneficial as running or biking, can be done by anyone, anywhere and is both fun and easy? It's rebound exercise—accomplished by bouncing on a mini-trampoline.

An interesting study, conducted by Dr. James White (University of California at San Diego) on a group of seventy women, compared the effects of daily treadmill running, stationery bicycling, jumping on a mini-trampoline and no exercise program at all. While all the exercises showed equivalent results, rebounding came out ahead

because none of the jumpers suffered the calf or leg injuries experienced by the runners and bikers. Most importantly, a 12-month follow up showed that over half of the jumpers had continued bouncing regularly compared to only 31 percent of the joggers and 5 percent of the bicycle riders. Diet Center recognizes the value of rebound exercise and recommends bouncing at least ten minutes daily to attain and maintain your good health!

EXERCISE!
TO LOOK AND FEEL YOUR BEST!

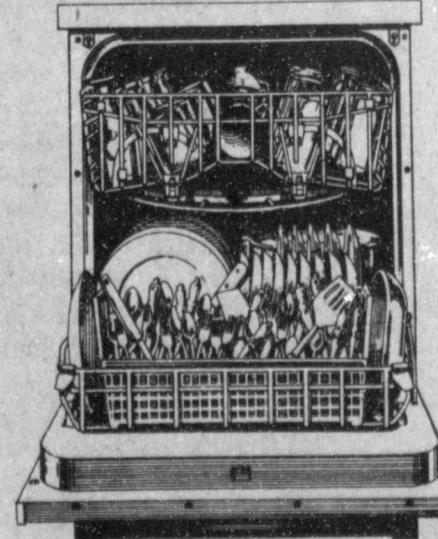


DIET CENTER DCX

Rebound Exerciser
The Diet Center XER SIZER offers you all the advantages of jogging in the comfort and privacy of your own home or office. Improve muscle tone, balance and coordination, expand lung capacity, stimulate blood circulation and relieve tension. The DCX is also an excellent aid to weight loss.



Get a \$40 rebate when you buy the newest KitchenAid Custom or Imperial dishwasher*



Model KDI-20
*KitchenAid rebate on Models KDI-20 & 60, KDC-20, 40, & 60.

\$599⁹⁵

We Have A Trained Technician To Service Our Products

Wilson

272-5531

Appliances

117 MAIN

Mules...

Cont. from Page 1

Olton: The Mullettes stayed within range of the Olton girls until the third quarter when Olton began to widen

Muleshoe...

Cont. from Page 1

on other students were unknown.

All parents and teachers are urged to attend a special PTA meeting scheduled for February 11, Thursday, at 7 p.m. in the Mary DeShazo cafeteria.

This is an urgent meeting and of extreme importance, if Muleshoe is to maintain an active PTA.

The filing deadline for Trustees of the Muleshoe Independent School District is March 3, 1982.

Trustee election will be held on April 3.

Wendy Stancell, daughter of Mr. and Mrs. Leamon Stancell, was named to the Dean's Honor Roll at Texas Tech for the 1981 fall semester.

She had a 4.00 grade point average.

Ray Briscoe of Muleshoe was a king candidate for Odessa College basketball homecoming on February 4. All candidates were presented at the halftime of the OC Wrangler-Western Texas basketball game.

The Muleshoe Square Dance Club will host a Valentine Dance Saturday, February 13, at the Bailey County Coliseum. Approximately 300 square dancers are expected to attend.

Admission is free, although with each \$1 donation, you will receive a ticket for the door prizes, which will include two cash door prizes.

Jennyslippers...

Cont. from Page 1

Marjorie Merritt is the chairman of this committee, which includes Linda Mullins, Linda Guelker and Nelda Merriott. Merchants who have not been contacted in connection with this, are urged to contact one of the committee members.

A report was made by the scholarship committee, Billie Downing and Shirley Farmer, regarding the proposed award to be given at the annual Chamber banquet. The report was approved and the committee advised to proceed with plans for this award.

the gap, ending the third with an eleven point lead with a 33-22 score. The Mullettes rallied briefly in the fourth, but failed to come up with the points necessary to overtake the Fillies.

Denise Wilson led the Mullettes in scoring with 12 points; with Marylyn Lewis and Kristi Henry following with eight and six respectively. Others scoring were Jill Turner, 2; Delia Shaw, 2; Cindy Turner, 4; Tori Hunt, 2 and Sherry Ellis, 4. Lewis fouled out.

Service...

Cont. from Page 1 President declared a grace period during which late registration would be accepted without penalty. That grace period extends through February 1982.

Anyone who was scheduled to register previously but has not yet done so is encouraged to register immediately at any U. S. Post Office in order to avoid any possible penalty.

For further information on this subject, contact Paul D. Aikin, State Director for the Selective Service System in Texas. He can be reached at telephone number 214-784-7593.

Bus...

Cont. from Page 1 benefit to us all. Attendance is not mandatory (unless you are enrolled in the bus driver certificate plan) but would be appreciated.

Gray will be teaching two courses in Bus Driving Training. One of these is a twenty hour basic course and the other is an eight hour refresher course. All bus drivers who have not participated in these courses previously should contact Gray at 272-4412 or 272-3080 for scheduling of their driving course. These will be held on dates beginning February 13 and ending February 23.

Payments...

Cont. from page 1 able carryover levels, Rank said.

The allocation factor for upland cotton is 93 percent and is computed by dividing the national program acreage for a crop by the estimated harvested acreage. Payments to producers who increased their 1981 planted acreage from the previous year will be reduced to reflect the allocation factor, Rank said.

Expert A Gossip: One who can give you all the details without knowing any of the facts.

-Times, Orangeburg, S.C.

Program...

Cont. from page 1

1981 planted acreage, or (2) the average of his 1980-81 planted acreages. Two bases will be established for feed grains -- one for corn and sorghum, and the second for barley and oats. For farms that have been following a definite crop rotation pattern, the established bases will reflect these rotations.

Land that is taken from production must be eligible cropland which is protected from wind and water erosion and devoted to conservation uses. It may not be mechanically harvested, except during the six principal growing months. Acreage which has already been planted to wheat, barley or oats and then designated as reduced acreage, may be cut for hay or grazed.

Neither offsetting compliance, nor cross-compliance will be required under any of the reduced acreage programs. This means that farmers owning or operating more than one farm will not be required to participate on all farms in order to qualify for program benefits on participating farms. And, farmers need not comply with other reduced acreage programs to be eligible for benefits

Tolk...

Cont. from page 1 second unit in July of 1985.

Commenting on the fuel supply, Green said, "We have enough coal under contract for the life of the plant, which is about 35 years."

The coal for both Tolk Station and Harrington Station is a low-sulphur, high-Btu coal from Black Thunder Mine in the Powder River Basin near Gillette, Wyoming.

Southwestern Public Service primarily provides electric utility service to a population of more than 1 million in a 45,000-square mile area of the Panhandle and south plains of Texas, eastern and southeastern New Mexico, the Oklahoma Panhandle and southwestern Kansas.

Court...

Cont. from page 1 a three year probated sentence.

Joe Bob Owen, Terry Burton and Jim Norman Jr. were all charged with burglary. They were assessed a \$500 fine each and drew a three year probated sentence.

on specific crops. In addition, current law provides that normal crop acreages, national program acreages, allocation factors, and voluntary reduction provisions are not applicable when reduced acreage programs are in effect.

The loan rate for 1982 crop, extra long staple (ELS) cotton is 99.89 cents per pound -- 175 percent of the upland cotton loan rate as determined by statutory formula. A recourse loan program for ELS and upland seed cotton will again be offered this year. Recourse loans must be repaid in the full dollar amount (principal plus interest).

Cotton...

Cont. from page 1 week ended February 4. This brought the season's total to 2,226,000 and compares with 1,589,000 classed by the same date a year earlier.

Predominantly, 40 percent was grade 52, 12 percent was grade 43, and 24 percent was grade 53. About 90 percent was reduced one grade because of bark. About eight percent was below grade.

Staples were predominantly 13 percent staple 29, 41 percent staple 30, 32 percent staple 31 and nine percent staple 32 for an average of 30.4 thirty-second of an inch.

Micronaire 35-49 was 20 percent, 33-34 was 15 percent, 30-32 was 30 percent, 27-29 was 22 percent and 26 or below was 13 percent for an average of 31.

Gins paid growers \$70 to \$100 per ton for cottonseed, mostly \$75 per ton.

Best Of Press

Time Keeper

No one goes before his time--unless, of course, the boss leaves early.

-Record, Columbia, S.C.

Acquisition

Some men are born with a will of their own. Others marry one.

-Spotlight, San Diego.

Firefighters

In Action



Twenty-five members and two visitors attended a regular business meeting on February 3, 1982, of the Muleshoe Volunteer Fire Department. One application was received for membership.

Earl Ladd Sr. reported that the 34th annual Lubbock Fire School has been set for April 12 through the 16.

The local Fireman's Ball was tentatively scheduled for April 24, and a family social was planned for the fifth Wednesday night in March.

The department received a donation from Bernard Phelps for a call to his farm west of Muleshoe.

Special recognition was given to volunteer fireman, Earl Ladd Sr. He is an associate of Earl Ladd and Sons in Muleshoe. Ladd and his wife, Clemmie, along with their sons, Earl Jr. and Johnny, moved to Muleshoe in 1935. In 1938, Ladd transferred his fire service membership to Muleshoe from Sudan.

Ladd has served some twenty years as fire chief, assistant chief and training officer and advisor for the regional training school at Lubbock. He was instrumental in helping to keep the Muleshoe Fire Department updated and operating as an efficient fire fighting unit.

A debt of appreciation is owed to this man who has given his time and service to his community and department.

FHA/HERO Chapters Meet February 19

The members from local FHA/HERO Chapters across the Panhandle-South Plains of Texas will be assembling in Amarillo February 19-20 for the annual convention.

The Friday night activities will all be at Amarillo High School. A banquet is scheduled for 6:00 p.m. in the cafeteria for members of HERO (Home Economics Related Occupations). Danny Marquez, vice president of HERO, will recognize the outstanding HERO members. Dean Bigham, Vocational Director for Amarillo Public Schools will speak on "Why Be a HERO?"

Tanya Tyer, area president from Hale Center, will preside at the meeting of delegates beginning at 8 p.m. Chapter delegates will elect new officers. Debbi Wilcox, area parliamentarian from Friona, will be in charge of the election.

Darlene Stovall, vice president of Encounter, will direct three workshops for advisors and members. The first will be for regular FHA members and advisors at 6:30 p.m. in the auditorium. The other two will be during the workshops to begin at 8:00 p.m.

These two will both be for HERO members only. Newly developed materials will be presented. The general theme for the meeting is Catch a Rainbow. The Pot of Gold Rainbow Workshop Session will feature 18 different topics.

The opening program will feature a performance by combined Area I FHA Choirs and the Boys Ranch Choir. Their selections will follow the

rainbow and patriotic theme. Directors will be Peggy Bain, Kress Choir and Band Director and Joe Shipp, Director of Boys Ranch Choir. Accompanists will be Martin Duckett, a student at Wayland Baptist University and Kathy Nite from Boys Ranch. During this performance the Tascosa High School JROTC will present the colors under the direction of Capt. Cecil B. Hawkins. The pledge of allegiance and the national anthem will be by the choir.

Miss Tyer will preside during the opening ceremony. To bring greetings will be Regina Croft, city FHA president from Caprock High School; Mrs. Debbi Annen, president of Area I Young Homemakers from Dimmitt and Mike Dixon, Area I FFA president from Spearman. Danny Marquez will respond to the greeters.

The stage guests, consisting of administrators and advisors of Area I FHA officers and special guests, will be introduced by Darlene Stovall, Debbi Wilcox and Donna Horn, area secretary - treasurer from Muleshoe.

Associate Justice John Thomas Boyd of the Seventh District Court of Appeals in Amarillo will speak on "Keeping Rainbows in Your Future."

The Canyon Show Choir, under the direction of Doug McCause will entertain and Berger FHA will present "From Rain to Rainbow."

A special recognition ceremony will be for FHA-HERO members who have achieved the highest level of Encounter Growth. Certificates and the torch insignia will be presented by Darlene Stovall, vice presi-

dent of Encounter from Hereford and Sheila Polk, state vice president of Encounter. About 100 people are expected to receive the award.

Area and State Honorary Membership will be presented by Tanya Tyer and other area officers. Receiving the area membership will be John Quinby, Vocational Director of Plainview Public Schools; Ken Helms, Vocational Director of Hereford Public Schools and Gene Tyer, Hale Center, father of the area president.

Receiving state membership will be Lanny Voss, Attorney at Law, Plainview; Mrs. Mary Harrison, HECCE teacher Coordinator, Canyon High School and Mrs. Joyce Tyer, Hale Center, mother of

the area president.

Sheila Polk, Area I state officer will install the new officers. The 1981-82 officers are: Tanya Tyer, president, Hale Center; Julie Harrison, Canyon; Danny Marquez, Littlefield; Becky Baxter, Shamrock and Kathryn Julian of Plainview -- all serve as vice presidents. Others are Donna Horn, Muleshoe, secretary-treasurer; Debbi Wilcox, parliamentarian; Sheila Polk, state officer, of Whittharal and Mrs. Ima Dora Haile, Texas Education, Plainview, Area Advisor.

Mate Makes Right

If a man gives in when he is wrong, he is wise. If he gives in when he is right, he is married.

-News, Dawson, Ga.



FILLIES DOWN MULETTES...Last Friday, the Mullettes suffered a 49-40 defeat at the hands of the Olton Fillies. Marylyn Lewis attempts to block a scoring shot by a Filly.

This week send our FTD Hearts & Flowers™ Bouquet.

Valentine's Day is Sunday, February 14.

You're sure to capture her heart with the romantic fresh flowers, Heart Strick Pin, and exclusive FTD Glass Heart Dish that make up our FTD HEARTS & FLOWERS™ Bouquet.



It's romantic. And says all the things you've been meaning to say. So call or visit us today. Because every Valentine deserves flowers.



Decorators Nursery & Floral 616 S. 1st 272-4340 or 272-3660



Helping you say it right.

PRICES EFFECTIVE FEB. 11-13, 1982 WHILE SUPPLIES LAST

LARGE SELECTION OF SCHRAFFT'S VALENTINE CHOCOLATES \$1.40 TO \$2.95

COOKED FOODS SPECIAL CHILI DOGS 39¢

Pepsi, Mt. Dew, Diet Pepsi, Diet Light 6 pk. cans. 99¢

Kraft Assorted Dips 5/\$1

Shurfine Colby Cheese 10 oz. pkg. \$1.09

Heinz Ketchup 32 oz. \$1.09

Bounty Towels 79¢

If it's Borden, it's got to be good

1857 BORDEN 1982

DELICIOUS BORDEN'S SHERBET 1/2 GAL. \$1.49

DELICIOUS BORDEN'S BUTTERMILK 1/2 GAL. \$1.09

BORDEN'S ICE CREAM 1/2 GAL. HD. CTN. \$1.59

BORDEN'S CHOCOLATE MILK QT. 69¢

REFRESHING 1 GALLON ALLSUP'S MILK \$1.99

ALLSUP'S CONVENIENCE STORES "THERE'S ONE NEAR YOU"

Enochs News
By Mrs. J.D. Bayless

Mr. and Mrs. Lindall Cagle from Tatum, N. M. visited in the Bill Key home Thursday afternoon. She is the former Helen Brinker from this area.

The Men's Day was observed at the Enoch's Baptist Church Sunday morning. Ted Belez led the singing with Paula Nichols at the piano. Chester Petree played two numbers "In That Great Mansion" and "Never Grow Old," on the organ. Paul Huff of Three Way sang a song he composed and played it on the guitar. Dr. G. O. Smith brought the message, "Jesus and You."

Mrs. Bonnie Long of Morton and Mrs. Bill Key visited Mr. and Mrs. D. F. Brinker at the West Plains Nursing Home in Muleshoe on Wednesday, January 20.

Jim Swanner of Muleshoe came by his aunt's home, Mrs. J. D. Bayless, and they drove to Lubbock on Friday afternoon to visit his mother, Mrs. Gracy Swanner at the West Texas Hospital where she had been a patient since Tuesday. They spent the night with his sister, Mrs. Avenell Moffitt. On Saturday morning, they visited Mrs. Pruda Coffman at South Plains Nursing Home.

Mr. and Mrs. Chester Petree visited their grandchildren in Clovis, N.M. in the past week. Beckie was having a birthday a few days ago.

Mrs. Winnie Byars and Mrs. Bill Key attended the tea at the Morton Civic Center at Morton for the outstanding pupils and teachers of our area. Laura Latimer, daughter of Mr. and Mrs. Charles Latimer, was chosen student from Three Way.

Slaton's "Wurst" Is Best

Slaton's 12th Annual St. Joseph's German Sausage Festival will be held February 21, starting at 11:00 a.m. The dinner will consist of 200 year old recipe of German Sausage, Sauerkraut, Mashed Potatoes, Green Beans, Cranberry Sauce, Homemade Bread and Cake served with Iced Tea and Coffee. Adults price \$4.00, with children under 10 at \$2.00. Dinner will be served from 11:00 to 3:00. German Sausage can be purchased

Mrs. Ima Robinson and Mrs. Bill Key visited Mrs. J. G. Johnson in Littlefield Saturday.

Rev. Mike Heady attended the Baptist Evangelism conference at Ft. Worth the past week. He spent the nights with his parents, Mr. and Mrs. L. T. Heady at Aledo. He also visited Mr. and Mrs. P. M. Cardwell.

Visiting Mr. and Mrs. Ted Belez last weekend was her mother, Mr. and Mrs. Staustine Hernandez and Sanda Lynn from Denver City.

Mrs. Winnie Byars, Mrs. D. L. Tucker, Mrs. Bonnie Long and Mrs. Bill Key visited Mrs. H. G. Pollard at Morton the past week.

Mrs. Clifford Snitker was admitted to the Methodist Hospital in Lubbock Wednesday for test and x-rays. She was dismissed Saturday.

Guests in the home of Mr. and Mrs. Brian Roberts last Sunday was her mother, Mrs. Mary Hargett and brother, Aaron, from Lubbock.

Visiting Mrs. Winnie Byars Saturday and Sunday were her sisters, Mrs. Ruby Nichols and Mrs. Essie Merl Payne of Lubbock.

Kim and Kerry Rowden of Lubbock came to Morton by bus Friday to visit their grandparents, the E. N. McCallis till Sunday afternoon and they took them home.

A cold front came through Monday with three inches of snow. Tuesday night, another cold front came through with snow flurries on Saturday and the temperature dropped to 2 degrees. On Sunday morning, then 10 and 6 degrees on Tuesday and Saturday morning.

Mrs. Bill Key and Mrs. Chester Petree and Mrs.

by the pound for \$2.50 per pound. Games for all ages will be featured across the street at St. Joseph's School "Fun Fest." A large country store will offer cakes, pies, pickles, bread and rolls, and added this year will be aprons and pot holders with German Sayings. 'Slaton's Wurst is Best' will be on German T-shirts, Macrame, German Steins, and cups will be on sale also. Drawings will be held at

Winnie Byars attended the Senior Citizen meeting and dinner at Morton Thursday and joined for another year.

Denise Quiram of Waco and Yvette Cox have returned home from a 2 weeks trip to Hawaii. While there, they visited Denise's brother, Dennis Quiram at the Army Schfield barracks. Some of the other highlights were swimming, seeing world surfing, boogie boarding at Waikiki Beach NCO Club. New Years Day they visited the Wheeler Air Force Base, also the Memorial at Pearl Harbor. They went soaring over north shore and mountains in a plane and other outings. They left Honolulu Wednesday.

The family gathering at the Bill Keys recently were her 4 sisters, Mr. and Mrs. J. P. Meeks, Phil and Shawn of Canadian; Mr. and Mrs. H. O. Huff and Markus; Mr. and Mrs. Paul Huff, Aaron and Chrystal of Maple; Mr. and Mrs. Bobbie Adams and Mrs. Bonnie Long of Morton and Mrs. Mamie Adams of Morton.

Yvette Cox will soon be going to Jessie Lee's Hair going to Jessie Lee's Hair designer school in Lubbock.

Lee Olan Chick of Borger came Tuesday and spent till Monday with his uncle, Mr. and Mrs. J. W. Layton.

Mrs. H. O. Huff spent Saturday til Thursday in Lubbock with Mr. and Mrs. Steve Huff to see her new grandbaby, Breana Ayn. She has a brother, Chad, two years old.

Mrs. Bill Key honored her husband, Bill, with a surprise birthday dinner Sunday, he was 65. Guests were their son, Mr. and Mrs. Sid Key, also his sisters, Mr. and Mrs. Robert Butler; Mr. and Mrs. Homer Howard of Littlefield; Mr. and Mrs. Larry Howard and son from Lubbock.

Everyone is invited to come and participate in a Festival Day Sunday, February 21, to benefit St. Joseph's School.

bock; Mr. and Mrs. Bobby Adams of Morton; Mrs. Bonnie Long of Morton. Bill had telephone calls from his grandsons, Louie and Kevin from Alaska and a sister, Mrs. Hubert Gammon of Weatherford, to wish him a happy birthday.

Mr. and Mrs. Bill Key and Mrs. Ima Roberts attended the Senior Citizen meeting in Levelland Friday.

Mr. and Mrs. Junior Austin and Jeff of Lubbock visited Mr. and Mrs. Johnny Cox and Mr. and Mrs. Jack Austin Sunday.

Visiting in the home of Mr. and Mrs. J. D. Bayless Saturday afternoon was Mrs. R. A. Hearrel of Cleburne and Mrs. Johnny Cox.

Jerry Nichols of El Paso came Thursday and spent the night with his parents, Donnie Nichols of Canyon, and a friend, A. J. Peters, came Thursday, and also visited his parents, Mr. and Mrs. Dale Nichols.

Mr. and Mrs. Brian Roberts drove to Lubbock Sunday afternoon to visit her mother, Mrs. Mary Hargett.

Robert Layton of Levelland visited his grandparents, Mr. and Mrs. J. W. Layton, Sunday. Visiting

on Thursday was her sister, Mr. and Mrs. Edward Crume.

Mr. and Mrs. Dale Nichols visited Mrs. Alma Still at the Levelland Hospital Sunday afternoon.

Guests in the home of Mr. and Mrs. Johnny Cox Friday till Sunday was his daughter, Mr. and Mrs. R. A. Hearrel and son, Raymond, from Cleburne.

Mrs. Donna Moon and children, Beckie and Kerri, of Portales, N.M. visited Mr. and Mrs. Chester Petree Sunday and attended church with them at the Baptist Church.

Mr. and Mrs. Buford Peterson spent Friday till Sunday afternoon with their daughter, Rev. and Mrs. Harold Abney and family at White Deer.

Mr. and Mrs. Robert George of Lubbock came by and her parents, Mr. and Mrs. E. N. McCall went with them to the

Capitan Mountains to the George's Cabin where they spent the weekend.

Mrs. J. D. Bayless received word her sister, Mrs. Ida Henderson of Azle was a patient in the St. Joseph hospital in Ft. Worth. Another sister, Mrs. Gracy Swanner of Lubbock is still a patient in West Texas Hospital. They are both very ill.

Gene Stroud of Dimmitt broke his foot recently and was a patient in the hospital in Amarillo. He also had pneumonia, but is now at home. His parents, Mr. and Mrs. Goldman Stroud visited him and his family Friday.

Mrs. Winnie Byars visited her daughter, the Henry Hardways, at Brownfield Friday. Her granddaughter Jerry Hardaway from West Virginia had come home.

Rev. and Mrs. Ray Cunningham of Fluvanna spent Friday afternoon till Saturday morning with her sister, the J. D. Bayless.

One Per Cent Sales Tax Remains In City Coffers

State Comptroller Bob Bullock Wednesday told officials in nearly 1,000 Texas cities who levy the one percent local sales tax their city coffers are safe from a legal challenge that could have forced the refund of millions in local tax revenue.

"The other shoe has fallen," Bullock said in announcing that U. S. Steel Corporation has dropped its appeal to a ruling upholding the way Texas local sales and use taxes are collected.

The corporation had attacked the constitutionality of the local option sales tax and State District Judge Hume Cofer ruled in favor of the state last April. If U.

S. Steel had pressed and won its appeal on Judge Cofer's ruling, bullock added, many cities might have faced economic chaos because city sales tax revenue would have been subject to claims for refunds.

Retailers in cities which have adopted the local sales tax collect the state four percent tax and an extra one percent tax, while only four percent state tax is collected in other cities and non-incorporated areas.

Texas cities, Bullock noted, received more than \$650 million last year in city sales tax rebates.

People who read carelessly, talk carelessly.

PROFESSIONAL CLEANING at DO-IT-YOURSELF PRICES!

Don't settle for less. Rug Doctor has the machine that will satisfy all your carpet cleaning needs around the home and office.

Rent The Rug Doctor. today at: Shop Rite



SAVE TIME, GAS, AND MONEY WITH A 2-WAY RADIO FROM Edwards Electronics

Announcing an Electronic Technological Breakthrough in UHF 2-way communication

• No skip interference
• Uncongested channels with FM clarity
• Business and personal use with 50 to 80 mile range
• For use in car, truck, boat or home
• Absolutely one of the most inexpensive UHF 2-way systems available

GMR-1 by **Standard Communications** is now available at the unbelievable price of **\$549.95**

WHILE CURRENT STOCK LASTS

Edwards Electronics
3111 34TH ST. • LUBBOCK, TX 79408
PHONE 806/797-3385
Mickey Conroy or Don Holloman Your 2-Way Radio Specialists

Pay-n-Save QUALITY AND SERVICE

PRICES EFFECTIVE FEBRUARY 8 THROUGH FEBRUARY 13, 1982. WE RESERVE THE RIGHT TO LIMIT QUANTITIES.

ALL PURPOSE GLADIOLA FLOUR 79¢ (5 LB. BAG)

GLADIOLA FLOUR 54¢ (25 LB. BAG)

DUNCAN HINES ASSORTED CAKE MIX 79¢ (18 1/2 OZ. BOX)

KLEENEX TISSUE 69¢ (200 CT. BOX)

SPECIALS FROM THE GROCERY DEPARTMENT

TOMATOES (18 OZ. CANS)	89¢
SALMON (MONEY BOY TALL CAN)	1.89
GATORADE (LEMON/LIME THIRST QUENCHER)	69¢
LYSOL (DISINFECTANT CLEANER)	98¢

MILNOT 2 89¢ (13 OZ. CANS)

NOODLES 69¢ (12 OZ. PKG)

GLADIOLA POUND CAKE MIX 89¢ (17 1/2 OZ. BOX)

CONCENTRATED ALL 1.69 (3 LB. 10 OZ. BOX)

COAST SOAP 99¢ (2 BATH BARS)

LETUCE 79¢

APPLES 69¢

WALDORF TISSUE 1.19 (6 ROLL PKG)

DAIRY AND FROZEN FOODS

BUTTERMILK (BORDEN CREAMY)	99¢
MILK (BORDEN CHOCOLATE)	59¢
ICE CREAM (BORDEN ASSORTED)	1.69
VELVEETA (CHEESE SPREAD)	2.99
MAZOLA (CORN OIL QUARTERS MARGARINE)	79¢
BISCUITS (KINGSNACK ASSORTED)	49¢

HEALTH AND BEAUTY AIDS

AGREE SHAMPOO (40% OFF LABEL OILY/GENTLE/REG.)	1.19
AGREE CONDITIONER (40% OFF LABEL REG./OILY/X-BOUY)	1.19
JOHNSON (PRO SHAVE/MENTHOL)	1.59
EDGE (X-MOIST/X-PROTECTION SKIN LOTION)	1.39

COFFEE CRYSTALS 3.89 (10 OZ. JAR)

WILSON SLICED BACON 1.49 (1 LB. PKG)

KELLOGG'S CEREAL 1.69 (BOX)

BANANAS 3 \$1 (3 LBS.)

PINEAPPLES 99¢ (EACH)

YAMS 49¢ (EACH)

HI-DRY PAPER TOWELS 49¢ (JUMBO ROLL)

2 LITER BOTTLE COKES 99¢ (EACH)

Cokes Sprite & Tab 32 oz. \$1.99

True Value HARDWARE STORES

TOOL VALUE OF THE MONTH

now 9.99 While Supplies Last

4-IN. HOME SHOP VISE
Heavy-duty construction. Chrome-plated handle & drive screw. Double-locking base swivels 360°. Built-in pipe jaws; 4-in. jaws. MV-440. Quantities Limited.

FAN-FORCED BASEBOARD HEATER \$36.99

Save energy—heat a small area, not your entire home! Thermostat control with positive OFF position. Lip-resistant metal case with efficient "Comfort Angle" reflector. *90 watts. 5119 BTU/hr. U.L. listed 10779.

TEXACO **Havoline Motor Oil**
10W30, 10W40 30W
LIMIT OF SIX EA. 99¢

Fry & Cox, Inc.
401 S. 1st 272-4511

EDITORIAL

Federal Vs State

President Reagan is engaged in a major effort to transfer back to the states some functions and social services the federal government assumed in the last few decades.

It's a logical goal. Few can even imagine the extent of the waste, incompetence and fraud now prevalent in countless numbers of federal programs. Not even the General Accounting Office or investigators for Congress have a clear idea of the extent of the waste.

That's basically because the federal government is too far away to administer handout aid and other social programs carefully. There are many examples of the lack of any close scrutiny (the lost money isn't coming out of an on-the-spot employer's pocket).

Consultants who had telephone credit cards have found they keep getting them (in the mail) years after leaving their jobs. Federal checks for various programs keep coming--and often being cashed--years after recipients have died.

All sorts of slicksters take advantage of a host of federal financing aids, college students, housing beneficiaries, welfare recipients, etc., etc. All these can be better checked by state agencies, who are so much closer to the scene. Only a few years ago, the secretary of HEW admitted his agency alone had wasted several billions in a twelve-months span.

Not all programs can be transferred to state and local authorities for administering, but many can. Those that can should be, and those which can be administered and watched on a county and person-to-person basis will be the most frugal, effective and efficient of our aid programs.

Federal Employees

President Reagan is reducing the number of federal employees on the government payroll. In the executive branch--which employs about three-fourths of all federal workers--the number of full time jobs has been lowered by 54,106 since Mr. Reagan imposed a hiring freeze after taking office.

The greatest number of job reductions has come in the Department of Defense, where the non-military job list has been almost halved.

But there are still many dead-weight bureaucrats, some mostly passing time until lush retirement benefits arrive. Here are a few examples of the number of employees working for various federal agencies: Veterans Administration--232,417 employees; Health and Human Services--155,666; Agriculture--128,595; Treasury--122,002; Interior--76,206; Transportation--59,456; Justice--55,173 and Tennessee Valley Authority--50,102.

Does anyone seriously think five or ten percent of these employees couldn't be eliminated, perhaps with increased efficiency? None need be fired. The job hiring freeze and natural retirement and attrition will accomplish this in time.

WASHINGTON NOTES

MAYORS' CONFERENCE

The U.S. Conference of Mayors accused President Reagan of using his long-range dream of a "new federalism" to draw the nation's attention away from current economic problems.

RECESSION TO END

A key government gauge of future economic health was reported on the upswing recently for the first time since July, and analysts agreed that an end to the recession, if not at hand, is coming into focus. There was little agreement, however, on how strong the recovery will be.

SHAKE-UP

President Reagan plans a \$50-billion-a-year program that would give the federal system its most radical shake-up since the Great Depression brought big government to Washington. Details were provided with the president's State of the Union speech.

DRUG AGENCY JOINS FBI

Attorney General William French Smith announced that the heavily criticized Drug Enforcement Administration, the No. 1 anti-narcotics agency for the last 8 1/2 years, would be placed under the control of FBI Director William Webster. At the same time, President Reagan nominated an FBI man, Francis M. Mullen Jr., to head the subordinated DEA.

TAPES REVEAL LITTLE

The pilot of the Air Florida jetliner that crashed into the Potomac River acknowledged his clearance for takeoff, but was never heard from again, airport tower tapes show. Transcripts of the tapes offered few clues as to why the 737 failed to gain proper altitude after lifting from National Airport and plunged into the river.

INSPECTS U.S. CARRIER

Two Soviet TU-95 Bear reconnaissance bombers penetrated deep into the U.S. air defense zone and closely inspected a new aircraft carrier undergoing sea trials 42 miles off the Virginia coast, the Pentagon said recently.

IN RED INK

The government spent nearly \$20 billion more than it took in last month, pushing the federal deficit for the first three months of fiscal 1982 to within \$10 billion of the red ink for all of last year, the Treasury Department reported recently.

© THE COMMERCIAL-APPEAL/UNITED FEATURE SYNDICATE
CAPNER



Letters To The Editor

Dear Editor:

Since I have been enrolled in Distributive Education and my civics class, I have heard a lot said about "Free Enterprise", "Private Enterprise" and "American Enterprise."

The American enterprise system plays an outstanding role in our entire economic structure. America is not the only country that has a sophisticated free enterprise system. Many countries like West Germany, Great Britain and Japan have a form of free enterprise.

We are a freedom-loving nation and the chief founders of the constitution designed our government that contains rights and freedoms to all citizens. "Free Enterprise" is being free of government control and regulations.

In America, the business owner and the consumer, or buyer, have certain freedoms and rights. The business owner has the right to own and operate his or her business. A store owner can control their hours of operation, where to locate the business, what will be sold and how much will be charged for each item. A privately owned business keeps all the profits and spends the profits without interference. He also assumes great risks of losing all his or her investments, of losing private monies put into the business, financial disaster or bankruptcy.

The enterprise system enhances the individual with a freedom of choice. In America, a consumer can shop for the best prices, the best services, the finest retail stores, or where there is the kind of merchandise you like. The reason this system is so unique is that not every country has free enterprise. For example, in Moscow, U.S.S.R., a city of several million people, has only a single department store. It is owned by the government. The Russian people have no freedom of choice. The people only buy what is available, when it is available, and at the price that is charged, the only other choice they have is not to buy at all.

The two main ingredients that make our American enterprise work are: (1) competition and (2) profits.

One of the sound controls our government exercises over business is to make certain competition is not stifled. The federal government has antitrust laws that guarantee that assure competition in the marketplace. In addition, businesses cannot unit to consolidate prices, control markets, set rates, or merge into large monopolizing corporations that can captivate competition. In fact, private enterprise cannot function without profits. Profit is the reward that endures from hard work, sound management, efficient performance and the risks that one takes when he or she enters into business. Profit is very essential because it enhances progress.

Who owns America? As a citizen, have you ever asked yourself, "Who owns America?" America is owned by the citizens. The government owns very little of our vast, beautiful country. People own the farms, ranches, the grazing lands, the mines, subdivisions for homes; and lots for homesites.

We, as Americans, are the ones who execute our economic decisions. If our economy prospers, we all prosper and if our country fails, we all fail together.

As Americans, and citizens, we should suppress and realize how fortunate we are to live in a country that enables us to strive for opportunities.

Lupe Rosales

Freon leak kills 3 sailors aboard the USS Balmbridge.

Westmoreland says CBS report inaccurate.

NEWS NOTES

HIJACKS BUS

EINDHOVEN, NETHERLANDS -- A French teenager, determined to see his girlfriend, hijacked a school bus full of students recently and forced the driver to drive through three countries to the girl's orphanage in the Netherlands, authorities said.

GROMYKO SAYS

GENEVA, SWITZERLAND -- Soviet Foreign Minister Andrei Gromyko accused the United States recently of using the Polish crisis to block new nuclear arms talks and said "the consequences" rest with Washington.

P.M. RESIGNS

DUBLIN, IRELAND -- Irish Prime Minister Garret FitzGerald resigned recently after his 6-month-old coalition government suffered a crucial budget defeat. President Patrick Hillery dissolved Parliament and called general elections for Feb. 18. FitzGerald called to offer his resignation shortly after Parliament rejected the government's austerity budget.

The Speaker Reports
by Bill Clayton

AUSTIN--Because of inflation, depleting natural resources, a rapidly expanding population, cut-backs in federal funds, and other factors, Texas is faced with reassessing many current state programs and policies regarding its natural resources. We must determine what steps need to be taken to help plan for the future of our great state.

Key ingredients for successful planning are collection and assessment of pertinent data. An organization which gives Texas a unique advantage in this regard is the Texas Natural Resources Information System (TNRIS).

TNRIS does not collect information per se, but catalogues and makes accessible the data collected by many of our state agencies, certain federal agencies and federal data bases, and private entities. In effect, TNRIS is a data management system which links data users with the organizations that collect the input data.

Data are organized in six major categories: water, socioeconomic, biological, meteorological, geologic and land resource, and base data. All of these data are stored in 300 automated and 150 other files in various formats including printed reports, photocopies, computer tapes, punched cards, aerial photography, microfilm, and computer graphics.

The system supports remote sensing data processing capabilities and hook-ups with federal data bases such as the NASA Manned and Unmanned Spacecraft. TNRIS is now developing a computerized Geographic Information System which provides computer processing of maps and other spatial data. This will become an analytical tool for handling TNRIS data.

Most requests for information to TNRIS are for data on water resources. Conveniently, the central office operates through the Texas Department of Water Resources.

This data management system is important because any action or project on natural resources in one area of our state usually has effects on other parts of the state. With TNRIS data many of these effects can be predetermined and plans can be made in view of them.

As data gathering and manipulation techniques become more sophisticated, state resource management becomes even more important. By largely gathering its own data, rather than depending strictly on federal data, our state is in the position of making better decisions for itself.

Another important advantage of having this system is that to plan for the future, especially in the area of natural resources, there are many conflicting opinions about what directions need to be taken. Accurate facts and figures provide parties with different concerns a common base of information on which to proceed toward an agreement.

Texas should know that this unique system is saving them many tax dollars and providing them and their state government with an excellent service. With the help of this service, Texas is in a fine position to plan for and achieve development, management, conservation and protection of the natural resources of this state.

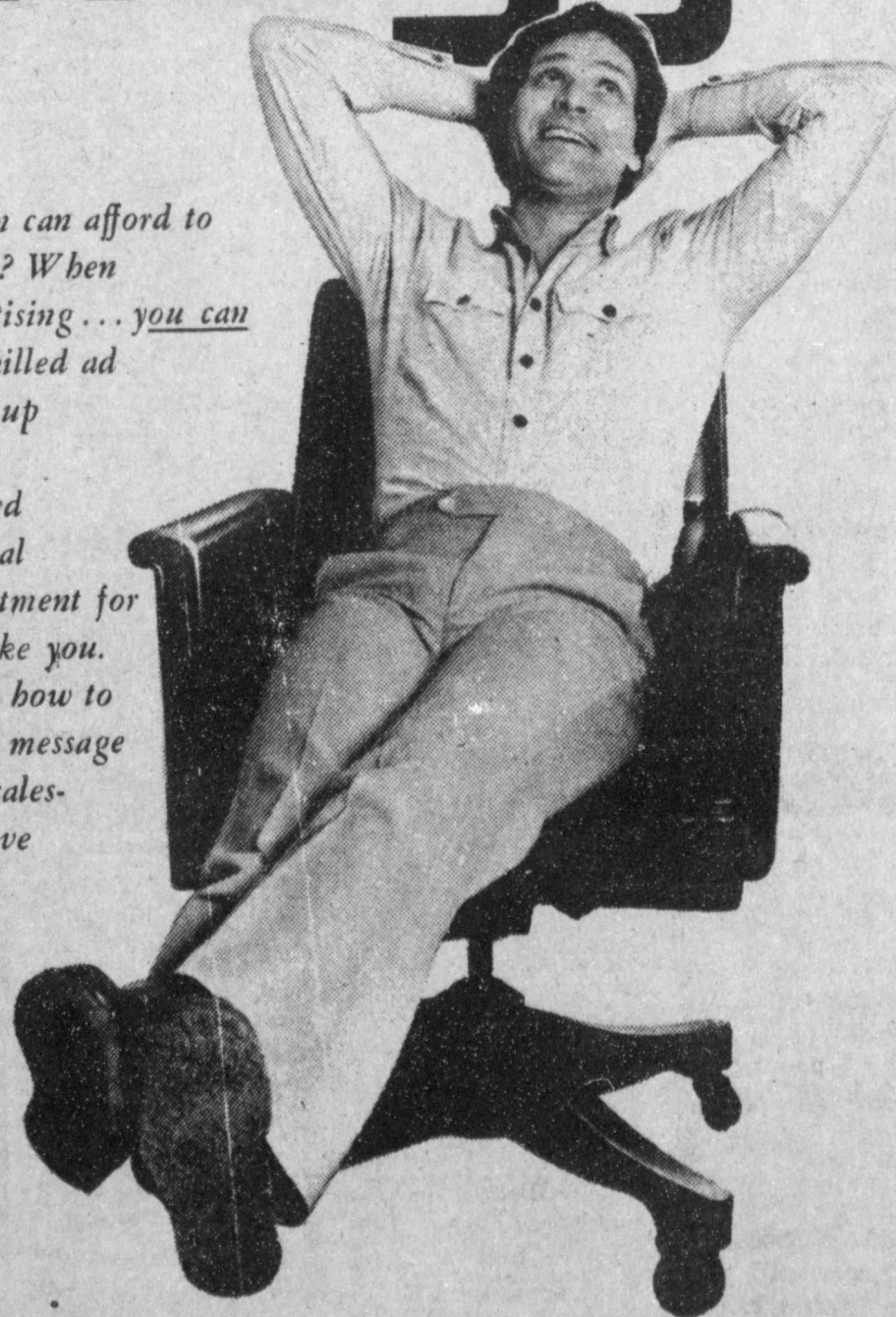
DEMOCRATS ATTACK

Congressional Democrats accused President Reagan of misleading the American people by certifying that El Salvador's government was making a "concerted and significant effort" to protect human rights.

The Bulletin out of business after 134 years.

save energy

What businessman can afford to sit back and relax? When it comes to advertising... you can... because our skilled ad people will make up the ads for you! We're fully staffed with a professional creative ad department for advertisers just like you. They'll show you how to turn your selling message into innovative, sales-building ads! Give us a call soon.



Call Today
272-4536

**Muleshoe & Bailey
County Journals**

Boy, These Maytags Are Really Built!

Your Authorized Sales & Service Dealer
HARVEY BASS
122 S. 1st
272-3030

Sportsman Complete & Balanced Nutrition Dog Food
PUPPY FOOD
27% PROTEIN
20 LB. Bag \$5.95

HI-PROTEIN DOG MEAL
26% PROTEIN
50 LB. Bag \$10.59

Five Point Dog Food
50 LB. Bag \$9.36
25 LB. Bag \$5.15
Alert

A&M Cat Food
10 LB. Bag \$3.45

BUYING? SELLING? CHECK OUT THE...

CLASSIFIED ADS

DEADLINE FOR CLASSIFIED ADS IS TUESDAYS AND FRIDAYS 11:00A.M

CLASSIFIED RATES
1st Insertion, Per Word -- \$.15
Minimum Charge-\$2.30
2nd Insertion Per Word--\$.13
Minimum Charge-\$2.00
CARD OF THANKS
Charged at Regular Classified Rates
CLASSIFIED DISPLAY
\$1.55 per column inch
BLIND AD RATES
50% More
DEADLINE FOR INSERTION
11 a.m. Tues. for Thurs.
11 a.m. Fri. for Sun.
WE RESERVE THE RIGHT TO CLASSIFY REVISE OR REJECT ANY AD. NOT RESPONSIBLE FOR ANY ERROR AFTER AD HAS RUN ONCE.

PERSONALS

LADIES: I have your favorite plasticware. One that's guaranteed against breaking, chipping or cracking under normal use and dishwasher safe. Interested in a party? Call Sandy, 272-4737. 1-6s-7c

WE BUY USED FURNITURE AND APPLIANCES
CALL 272-3030
HARVEY BASS APPLIANCE

1-18s-tfc

Custom farming, 8 row equipment. Reasonable rates. Call 272-5317 before 8 a.m. or after 7 p.m. 1-16s-tfc

A BEAUTIFUL and highly exciting Jean and Sportswear shop of your own. \$12,500 to \$16,500 includes inventory, fixtures, in-shop training, one paid airfare to Apparel Center and more. Over 100 nationally known brands such as Levi, Lee, Chic, Calvin Klein, Jordache, Zena. Call Now! Pacesetter Fashions, Inc. 1-800-643-6305. 1-6t-1tpts

LOST&FOUND

TRYING to locate a 12-gauge double barrel, barrels braced together on bottom side about 12" from end of barrels. Substantial reward for locating. 272-3714 2-5s-4tp

HELP WANTED

NOW HIRING: Charmec Energy. Day and night shifts. 272-5541. 3-6s-tfc

WANTED: Muleshoe resident for furniture store manager. Apply in person. Baker Furniture, 106 E. Ave. B. 3-6t-2tc

NEED EXTRA CASH? Several Avon routes available now in Muleshoe area. Call Nettie 272-3208. 3-4c-tfc

APARTMENTS

FOR RENT: 1 bedroom apartment. Has range, dishwasher, waste disposal, refrigerator and new carpet. Phone 272-4986. 5-6s-tfc

TOWN and COUNTRY REAL ESTATE
FARMS RANCHES HOMES
John W. Smith 272 4678, 272 5335

Large brick home over 2300 sq. ft. 3 bedroom, 2 baths, 2 car garage, fireplace, central heating and lots of extras.

Brick home in best of neighborhoods. Over 2000 sq. ft. 3 bedrooms, 2 baths, 2 car garage, fireplace, central heating and refrigerated air. Assumable loan of 9%.

Nice 3 bedroom, 2 bath brick home with fireplace. Has 2 car garage, covered patio, storm cellar and back yard fence.

Nice 3 bedroom, 2 bath stucco house with composition shingles. Has F.H.A. loan.

Stucco house painted inside and out. 3 bedrooms, 2 baths. All new carpet.

Small 3 bedroom home. Asbestos siding. F.H.A. loan. 8-5t-tfc

Smallwood Real Estate
232 Main
272-4838

3 bedroom, 2 bath, 1 car garage, brick, fenced back yard.

Duplex, 2 bedroom, 2 bath each, small down payment.

3 bedroom, 2 bath, 2 car garage, fenced back yard, 2,800 sq. ft.

8-4s-tfc
See or call Joe Smallwood. Broker

Henry Realty
2 bedroom completely remodeled, carpet, good location. FmHA Approved
Country living 3 bedroom, 2 bath, double garage, brick home on Hwy 2 miles from town. Immediate possession. 8-46t-8-46t-tfc

Small acreage 3 miles east of Muleshoe on highway.
111 W. Avenue B, Muleshoe
272-4581
8-44s-tfc

J. B. SUDDERTH REALTY INC.
Box 627
109 Fifth St.
Farwell, Texas 79325
Phone (806) 481-3288 or 481-9149

160 Acres, Lazbuddie area, lays good. Excellent water. Excellent terms. Priced to sell.

Many Farms, 160 to 1,000 acres, Too numerous to mention. In both Bailey and Parmer Counties. 8-4s-stfc

HOUSE FOR SALE: 3 BR, 1 1/4, LR, kitchen-dining combination, den, ample storage, corner lot, near 3 schools, 1928 sq. ft. living area, 621 West 6th. Phone 272-4732 days or 272-4827 evenings. 8-2s-tfc

FOR SALE: 3 bedroom, 2 bath, brick, living room, den with fireplace, office, Richland Hill. 272-4701. 8-21t-tfc

HOUSE FOR SALE: 2BR, 1B, garage, fenced back yard, good location. Call Call 272-3920, 418 Dallas. 8-3t-tfc

HOUSE AND 2 ACRES: 3 bedroom, 1 bath, newly remodeled inside. Outside needs more repair. 272-4552 or call Amherst, 246-3472, after 6:30. 8-4t-tfc

DENT & ASSOCIATES REAL--ESTATE

FARMS--RANCHES COMMERCIAL RESIDENTIAL

LEON DENT, broker
nites 272-3580

DON REMPE
nites 272-4643

1516 W. AMERICAN MULESHOE, TX. 79347
OFFICE 272-4296

LIST YOUR PROPERTY WITH US
8-6t-tfc

USED CARS-TRUCKS

1974 CHEVROLET VEGA. Needs motor. Good body and interior. 272-4552, or call Amherst, 246-3472, after 6:30 9-5s-tfc

SURPLUS JEeps, CARS, TRUCKS--inv. value \$2143, sold for \$100. For information on purchasing similar bargains call 602-998-0575 Ext. 0511. Call refundable. 9-6t-4tp

1977 Golden Eagle Jeep: CB, Pioneer Stereo, 4-ton winch with 150 ft. cable, new canvas top. \$4,200.00 See at 420 Temple, Sudan. 9-5t-4tp

13. PROPERTY FOR LEASE
Commercial building 30'x60' for rent 272-4878 after 6 p.m. 13-44s-tfc

FARM EQUIPMENT

1 used sidrol for sale. Phone 272-5134. 10-4t-5tc

FOR SALE OR TRADE

FOR SALE: Brand new gas cooker. In good condition. Call 272-4261. 11-2s-tfc

WATERBED FOR SALE: 2 matching night stands. Built in AM/FM Stereo. \$500. Call 925-6424. 11-6t-2tc

FOR SALE: Warm winter nest, furnished 2 BR trailer on lake LBJ with stove, refrigerator, washer, central heat and air. Nice. 272-5408. 11-2s-tfc

USED 50 hp. IV-8F, Vertical hollow shaft motor, new switch gear. \$8,145.00. Owens Electric, Hereford, Tx. 364-3572. 11-5t-tfc

FOR SALE: AKC registered toy poodle puppies, both male and female, white. Call 356-6942, Portales, N.M. 11-6s-2tc

LIVESTOCK

NOW STANDING: Registered AQHA Stallion, 'Lucky Bug Rex.' SI-88, Conformation, disposition, plus. Call 272-5317 after 6 p.m. 16-4t-tfc

HOUSEHOLD GOODS

BURROWS UPHOLSTERY AND FURNITURE REPAIR
209 W. 2nd
phone 272-4255
12-44s-1tc

MISCELLANEOUS

WANTED TO BUY--used aluminum pipe of all sizes. Also side roll sprinklers of all sizes. No quantities too large. Top prices paid. Stateline Irrigation 272-3819 or 272-3450 15-33t-tfc

GORDON PLUMBING
Licensed and bonded. New, repair, commercial work. Free estimates. 20% discount for senior citizens. 221 East 4th. 15-4s-tfc

FRANK'S REFRIGERATION APPLIANCE & SERVICE PARTS & REPAIR
315 W. 3rd Ph. 272-3822 15-7t-tfc

Want a propane system? check with SMITH LP GAS MULESHOE
15-30s-tfc

"WINDMILL DEALER NEEDED" LOWER YOUR ELECTRIC BILL

A dealer is **NEEDED NOW** for America's fastest growing Windmill Corporation, "America Wholesale Windmills, Inc." **ACT NOW** and become a part of the industry of the **FUTURE**. 40% Federal & State Tax credits available. Profit Potential **UNLIMITED** & virtually **NO COMPETITION**. Along with the purchase of a windmill, selected customers are **AWARDED** dealerships. Write today or call (Toll Free: 1-800-241-6759) to learn how "YOU" can become a part of this exciting and lucrative industry. (We only need 1 dealer for your area, so ACT NOW!!!) **AMERICAN WHOLESALE WINDMILLS* INC.** 2260 Northlake Parkway Suite 307 Tucker, Ga. 30084 10-5t-4ttc

ON TRADE SURPLUS
The nation recorded a fifth straight quarterly surplus in its foreign trade balance of payments in the July-September period, the government reported recently.

Mrs. Jack Furgeson is in

FOR INFORMATION CALL
Longhorn Alcohol Fuel Inc.
Rt. 3, Box 175 B
Muleshoe, Texas 79347
806/965-2365 or 965-2375 [Office]
Leon Wilson
Leon Wilson Wade Wilson
806/965-2373 806/965-2680

Alcohol Plant Stock
For Sale
20% Investment 20% Tax Credit
60% - Profit Potential - 60%
Plant is built - Will sell stock to raise operating capital
Good Markets for Alcohol and By-Products
FOR INFORMATION CALL
Longhorn Alcohol Fuel Inc.
Rt. 3, Box 175 B
Muleshoe, Texas 79347
806/965-2365 or 965-2375 [Office]
Leon Wilson
Leon Wilson Wade Wilson
806/965-2373 806/965-2680

Three Way News
By Mrs. H.W. Garvin

Mr. and Mrs. W. H. Latimer were in Lubbock Wednesday on business.

Mr. and Mrs. Marvin Long and daughter from Amarillo spent Saturday with the S. g. Longs

Mrs. Mark Corkery and daughter from Levelland spent the weekend with her parents, the Jack Furgesons.

Mr. and Mrs. George Tyson were in Lubbock Thursday night to play for the senior citizens dance.

Mr. and Mrs. H. C. Toombs were in Lubbock Wednesday on business.

The Three Way Junior High school basketball teams sponsored a tournament the past weekend.

The community received Snow Saturday which was welcomed very much by the farmers.

The Three Way Senior High school basketball teams played Anton at Anton Tuesday with Three Way girls winning and boys losing.

Mrs. H. W. Garvin visited her brother, the George Tysons, Sunday.

Mr. and Mrs. Jack Reeves and family spent Sunday in Plainview visiting his nephew, the Bobby Jack Reeves.

Mr. B. J. Emerson from Maple and Mr. and Mrs. Jim Emerson, spent the weekend in Lubbock with Dorothy Neutzler.

The Three Way Senior High School basketball teams played Bledsoe at Bledsoe Friday night, winning all games.

Mr. and Mrs. S. G. Long visited Mrs. H. W. Garvin Sunday night.

Mr. and Mrs. Robert Kindie, the James Kindie family, the Joey Kindie family, the Bobby Foley family, all from Maple and the Jerry Damron family from Needmore were dinner guests in the Bobby Kindie home Sunday.

Mr. and Mrs. S. G. Long spent the weekend in Canyon and Amarillo visiting their children and Mrs. Long's sister, who underwent surgery.

Lubbock to be with her granddaughter, Milissa Green.

The Three Way basketball teams played McAdoo Tuesday night on the home court winning all games. Three Way players were at Whitharral Friday night, and lost all games to Whitharral.

Mrs. Adolph Wittner and Mrs. Jack Furgeson spent Friday night in Lubbock with Mrs. Wittner's sister, Dorothy Neutzler.

Farmers are through pulling cotton. Gins are still ginning and farmers are busy plowing.

The community received from 3 to 5 inches of snow Tuesday night.

Mr. and Mrs. H. C. Toombs were in Lubbock

Saturday on business. Mr. and Mrs. W. H. Latimer were in Lubbock part of last week on business.

MEET THE CANDIDATES
Parmer County

Democratic Commissioner
Precinct 4

Raymond McGehee

VOTE FOR THE CANDIDATES OF YOUR CHOICE!

Rates for listing in the Journal's Political Column is: \$35 for all offices except those for City Council and School Board post which is \$15. This fee includes a front page announcement article and a one column photograph at the time the announcement is made, in addition to the listing in the Political column from the date of announcement until the final election.

Democratic
* County Clerk *
Barbara McCamish
* District Clerk *
Nelda Merriott
* County Treasurer *
Dorothy Turner
* Tax Assessor *
Kathleen Hayes

* Justice Of Peace *
Precinct No.1
Tana Holmes
Jack Bates

* County Commissioner *
Precinct No. 4
Rudolph Moraw
Frankie Dee Fine
Dale Middlebrooks

*287th Judicial District Judge *
Bailey & Parmer Counties
Jack D. Young

* County Judge *
Gordon H. (Corky) Green
Commissioner
Precinct No. 2
Glen Dalton Harris
Roy Whitt
Don Seales
William Carl Patterson
Charles Glover

Republican
* County Treasurer *
Jean Treadwell
* County Attorney *
Lamar Dee Treadwell

* County Judge *
Thomas S. Freeman
* Justice of Peace *
Precinct 1
Paulette Cuevas

Drake Services Held Tuesday

Services for John C. Drake, 63, were held at 2 p.m. Tuesday, February 9 at the First Assembly of God Church with Rev. Cliff Houghton pastor of the Assembly of God Church at Sudan and Rev. James Golaz, pastor of the First Assembly of God Church of Muleshoe, officiating.

Interment was in the Sudan Cemetery under the direction of Ellis Funeral Home. Drake died at 6:40 a.m. Sunday in West Plains Medical Center.

He was born December 31, 1918 in Conway, Arkansas and moved to Muleshoe in 1973 from Sudan. He married the former Beatrice Lambert May 16, 1975, in Lawton, Oklahoma. He was a butcher at Winkler Meat Company, a member of the Assembly of God Church, and a veteran of WWII, serving in the U. S. Navy.

Survivors include his wife, Bea; three sons, John L. of Wellman; Earl of Springhill, Louisiana, and Terry of Midland; four daughters, Mrs. Larry Vaughn of Hobbs, N.M.; Mrs. Wayne Cunningham of Levelland; Mrs. Eddie Perry of Portales, N.M. and Mrs. Howard Kelly of Shiprock, N.M.; three sisters, Mrs. George Hedcock and Mrs. Willard Pollard of Benton, Arkansas and Mrs. Raymond Goad of Carlisle, Arkansas;

one brother, Elbert of Five Points, California; 21 grandchildren and one great-grandchild.

MISSILE TEST FAILS
POINT MUGU, CALIF. -- A U.S. Navy Tomahawk cruise missile, aimed for a Nevada test site splashed down in the Pacific Ocean recently after an apparent engine failure, a Navy spokesman said.

SPC Financial Aid Area Workshop Set

Area high school seniors who are planning to attend college this fall and who are looking for financial assistance with their college bills can have many of their questions answered at a special Financial Aid Workshop being planned by South Plains College.

The workshop has been scheduled for 7 p.m. Feb. 25 in the Student Assistance Center on the College's Levelland campus.

According to Steve Beck, director of financial aid at SPC, the workshop is open to all area seniors and their parents. "We want everyone to know that regardless of where they are going to college, we can provide them with information about financial aid programs," he added.

Beck, who will direct the workshop, will cover the types of financial aid programs available to students, the application process and misconceptions about student financial aid.

Most financial aid programs at Texas colleges consist of loans, scholarships, grants and employment, Beck said. "It's important that students who are seeking financial aid begin the application process soon," Beck said. "Most colleges in Texas require that your application records and need assessment files be finalized by June 1 in order to award financial aid for the fall semester."



On April 12, 1776, North Carolina became the first colony to instruct its delegates to vote for independence in the Continental Congress.

The trouble with most public speakers is that they have little to say.

WHITE'S CASHWAY SUPERMARKET
MULESHOE, TEXAS

WE WELCOME WIC CARDS & USDA FOOD STAMPS

CHUCK ROAST **\$1.89** LB.



ALL BRANDS GRADE A BASTED **TURKEYS**

10-14 LB. AVG. **69¢**



2 LB. KRAFT **VELVEETA LOAF**

\$3.39



HORMEL CURE #1 **HALF HAM** **\$2.59** LB.

FARM FRESH, POND RAISED SMALL WHOLE **CATFISH** **\$1.89** LB.

BONELESS LEAN **STEW BEEF** **\$1.89** LB.

EXTRA LEAN **GROUND BEEF** **\$1.79** LB.

CHUCK **STEAK** **\$1.99** LB.

Announcing *Eat-at-Home Savings*

FROM CARNATION AND THIS STORE

Get up to **\$7.75**

CARNATION **EVAPORATED MILK** 13 OZ. **2/\$1**

CARNATION **COFFEE-MATE** 16 OZ. **\$1.69**

CARNATION **HOT COCOA MIX** 12 PK. **\$1.29**

WHITE SWAN **MACARONI & CHEESE** 7 1/2 OZ. **4/\$1**

CARNATION **INSTANT MILK** 8 QT. **\$2.99**

WHITE SWAN **CAKE MIX** 18 1/2 OZ. **69¢**

VAN CAMP **PORK & BEANS** 16 OZ. **39¢**

VAN CAMP **WEENEES** 7 1/2 OZ. **2/99¢**

AMERICAN BEAUTY INSTANT POTATOES 8 OZ. **49¢**

SUNSHINE VIENNA FINGERS 19 OZ. **\$1.19**

SWEET SUE CHICKEN & DUMPLINGS 24 OZ. **89¢**

VELVET OLEO SPREAD 2 LB. **89¢**

LARSON'S VEG-ALL 16 OZ. **49¢**

HEFTY TALL KITCHEN BAGS 15 CT. **\$1.09**

DOWNY FABRIC SOFTENER 64 OZ. **\$1.99**

SANICAT CAT LITTER 10 LB. **89¢**

CAMAY BATH SOAP 5 OZ. **2/\$1**

LONE STAR DOG FOOD 20 LB. **\$2.99**

Fresh Produce

3 LB. BAG RED DELICIOUS **APPLES** EACH **99¢**

COLLARD, MUSTARD OR TURWIP **GREENS** EACH **39¢**

ALL PURPOSE **POTATOES** 10 LBS. **\$1.39**

CHIQUITA GOLDEN RIPE **BANANAS** 3 LBS. **\$1**

CALIFORNIA ICEBURG **LETTUCE** LB. **49¢**

BELL FRESH GRM. PODS **PEPPERS** 6 FOR **\$1**

Health & Beauty Aids

CURITY SOFT PUFFS **COTTON BALLS** 100 CT. **99¢**

JERGENS ALOE & LANOLIN **LOTION** 8 OZ. **\$1.29**

PEPSODENT **TOOTH PASTE** 6 1/2 OZ. **\$1.39**

Frozen Foods

TOTINA PIZZA

- CHEESE 11 1/2 OZ.
- HAMBURGER \$1.19
- SAUSAGE 12 1/2 OZ.
- PEPPERONI OZ.

HUNGRY JACK MICROWAVE POPCORN 10 1/2 OZ. **\$1.19**

ORE IDA **TATER TOTS** 32 OZ. **\$1.10**

SENECA FROZEN **APPLE JUICE** 12 OZ. **89¢**

MARINA BATH TISSUE 4 ROLL **99¢**

CAMPBELL'S SOUP FOR ONE 3/\$1

DR. PEPPER OR SUGAR FREE **\$1.89** PLUS DEPOSIT 6 32 OZ.

BORDEN'S MILK \$1.09 1/2 GAL. HI PRO

BORDEN'S CHOCOLATE MILK 59¢ QT.

West Plains Medical Center Report

ADMITTED

Feb. 4-Aurora Elizarrarez, Sadie Howard, Nelda Mullins, April Bryant, Kay Knowlton, Twila Downing.

Feb. 5-Manjula Bhakta.

Feb. 6-Evette Freeman, Dustin Weir, V. G. Latham, Evelyn Latham, O. C. Hall.

Feb. 7-Sarah Kelton, A. B. Miller.

Feb. 8-Amanda Leal.

DISMISSED

Feb. 4-Cisco Roberts, Cindy Olevia, R. W. Caskill.

Feb. 5-Connie Bynum, Stacey Knowlton, Marty Long, Barbara Seaton.

Feb. 6-Janet Pyle and baby boy, April Bryant, Shirley Miraval, Alan Fine, Aurora Elizarrarez and baby boy, Susie Hernandez, Thelma Bartlett, Joe Pat Wagnon.

Feb. 7-Jason Brandon, Majula Bhakta, Effie Jennings.

Feb. 8-Americo Aguirre, Twila Downing.

"Here's #5 of my 17 reasons why H&R Block should prepare your taxes."



REASON #5: If the IRS audits your return, H&R Block goes with you at no extra cost.

An IRS audit can be an anxious time for any taxpayer. But, if you're audited, Block will go with you at no extra cost. Not as a legal representative, but to explain how your return was prepared. We're always ready to stand behind you, year-round.

H&R BLOCK
THE INCOME TAX PEOPLE
17 reasons. One smart decision.

224 W. 2nd
272-3332
Wklys 9-6
Sat. 9-5