



Meet the Mules!
Tuesday, Aug. 21, 7 p.m.
Watermelon and Homemade Ice Cream



Spinning Rowels:
What's real about reality TV?
Page 3



Municipal workers
honored by TCEQ
Page 7



Muleshoe Journal



Striving to be your source for local news

Volume 88, No. 33

www.muleshoejournal.com

Muleshoe, Texas

50¢

August 16, 2007



Photograph by Larry Thornton

A sign of the times...

A new "sign of the times" was put up Tuesday, commemorating Muleshoe's historic past, the achievements of the present, and its dreams for the future. Five Area employees Joseph Crandell and Joey Hargrove (not pictured) were busy Monday installing the sign for the Muleshoe Heritage Center's entrance off W. American Blvd. The property, which was the former location of Sain Irrigation, was purchased by the Muleshoe Heritage Foundation with funds donated by Ray and Donna West of Midland.

Commissioners' court, city proclaim Aug. 14 as Ray, Donna West Day

By Larry Thornton
Managing Editor

The Bailey County Commissioners' Court joined with the City of Muleshoe Monday, approving proclamations designating Tuesday, Aug. 14, as Ray and Donna West Day.

The Wests, who live in Midland, have been giving to the communities that nurtured them in their early years.

Theron "Ray" West graduated in 1954 from Muleshoe High School before moving away to attend the University of Oklahoma to become an engineer, he returned to Muleshoe in February 2007 to present the SPC Muleshoe Center with a \$100,000 check for nursing scholarships.

This action, along with the West's donation of \$100,000 used to purchase the property formerly owned by Sain Irrigation, at the entrance to the Muleshoe Heritage Center on American Blvd., was the basis for Monday's proclamations, and various receptions and gatherings at the Heritage Center and the Oneita Wagnon Senior

Citizen's Center.

In other business Monday, the commissioners' court:

- Set the proposed tax rate for FY2008 at .6833, which totals the Farm to Market Road fund of .0984, the general fund of .4741,

policy that would cap holiday hours personnel were allowed to accumulate at 30.

County Treasurer Shonda Black indicated that the primary problem arose from employees of the Sheriff's Department who aren't able to take holidays off and tend to accumulate the hours.

The employee would apparently receive pay for the hours that exceed the cap.

The court also discussed the issue of "comp" time, which has previously been addressed during the budget process, at which time the judge estimated it would take about \$51,000 to get reduce or eliminate the comp time that is currently on the books.

"I would like to see it go hourly, and we pay for the overtime earned," the judge said.

Black agreed, noting that the Texas Association of Counties recommends that counties eliminate the use of comp time.

- Received departmental reports, including a report from the Bailey County EMS which noted collections for the past month were \$22,053, and the amount billed for ambulance services was \$50,043.

Judge Sherri Harrison said she expected the EMS collections to increase as a contract with a new collection company had been signed recently.

- Approved the minutes from the July 9 regular meeting, and July 23 special meeting, and the Aug. 3 special meeting.

- Approved the June 2007 County Treasurer's report, and received the July 2007 treasurer's report.

- Briefly discussed the effectiveness of the no truck parking signs at the Bailey County Coliseum.

- Approved payment of county bills.

- Approved in-county travel forms.

- Reviewed the county's 911 road maps.



New "no parking" signs are in place at the coliseum.

and the county's debt service — also known as the interest and sinking fund — at .1108.

Public hearings on the proposed tax rate will be held on Aug. 23, at 6 p.m., and Aug. 27, at 10:30 a.m.

- Discussed changes to the county's employee pay

MISD approves 'goods in transit' resolution

Local Weather

Thursday

Mt. Sunny..... 91/61

Friday

I. T-Strms..... 87/61

Saturday

I. T-Strms..... 92/62

Sunday

I. T-Strms..... 92/63

Monday

Pt. Cloudy..... 92/62

Tuesday

Pt. Cloudy..... 94/61

Wednesday

Mt. Sunny..... 92/61

Give It A Thought

Even the sunshine appears dark when compared to your daughter's smile as she leaves for college.

Words to ponder from Beverly

Missed your paper?
Call the carrier Bobby Flores at 806-891-3950 (leave a message) or call the Journal at 272-4536, between 8:00 a.m. and 5 p.m.

By Larry Thornton
Managing Editor

Muleshoe Independent School District followed the lead of the City of Muleshoe and the Muleshoe Area Hospital District during its regular meeting Monday, approving a resolution that continues taxing "Goods in Transit."

Monday's action came after a presentation from Kay Elliott of the Bailey County Appraisal District concerning state legislation that set an automatic exemption in place and would have reduced the school district's tax revenue.

Initially passed as "economic development" legislation, the bill prohibits public entities from taxing commodities and materials



Superintendent Gene Sheets, board president David Tipps and board member Thurman Myers work through their computerized agendas during Monday's meeting.

intended for various manufacturing processes temporarily stored within the entities' jurisdiction.

However, because the loss of tax revenue from property that had been previously taxed, the state legislation allowed entities

with a populations less than 650,000 to block the exemption.

"There are some things that are being stored that could get an exemption if the resolution isn't passed," Superintendent Gene Sheets said.

Elliott said the enabling legislation started out as a "bracket bill" that only affected a few counties, but there were some changes made which affected the entire state.

Continued on page 7

Council receives report from Five Area

By Larry Thornton
Managing Editor

"This is about as good as you can get," Sandy Vandevender, general manager of Five Area Telephone Cooperative, told the Muleshoe City Council Monday, referring to the telephone company's ongoing efforts to replace the existing copper lines with fiber optic cable.

'It's the best thing we can do for our service area...' — Sandy Vandevender

Vandevender was speaking to the council at the request of Mayor Pro-Tem Earl Behrends, who expressed an interest in the cooperative's efforts at last month's regular meeting.

Vandevender said Five Area was "very excited"

proof' our city," Vandevender said.

Although the cooperative's copper telephone lines are still working, he said, the decision was made to update the lines in Muleshoe based at least in part on the potential for future services such as

Continued on page 12



Sandy Vandevender addresses the city council.



SHELBY MUSTANG
2007
IN STOCK NOW



1125 West American Blvd.
Muleshoe
272-4251
800-432-7617





Lazbuddie ISD to host cookout

The fourth annual community-wide "Back to School Cookout" has been set for Friday, Aug. 24, at 6 p.m., in the Lazbuddie School Cafeteria.

The annual event gives new staff members an opportunity meet other staff members and the friends and students of Lazbuddie ISD.

The evening's menu will include hamburgers, childdogs, chips and dessert.

Bailey County diabetes support group

The Bailey County Diabetes Support Group will meet on Tuesday, Aug. 21, at 6:30 p.m. in the dining room of Muleshoe Area Medical Center.

The program will be *Foot Care* presented by NursCare Home Health.

This program is free of charge to anyone interested. For more information, contact Mandi Seaton, Bailey County extension agent - Family and Consumer Sciences, 118 W. Ave. C., Muleshoe, TX 79347, 806-272-4583.

Reserved seating tickets

Reserved seat tickets for the 2007 Muleshoe Mules football season will go on sale Monday, Aug. 6. The tickets are \$25 for five home games.

Persons who held reserved seat tickets for the 2006 football season may purchase their seating options at the School district's administration office, located at 514 W. Ave. G, Monday through Friday, during regular business hours.

Beginning Monday, Aug. 27, all remaining tickets will go on sale on a first come, first serve basis.

Any reserved seats remaining after the season starts will be available at a cost of \$6 per game and may be purchased at the administration office on game day.

If you have questions concerning the ticket sales, contact Dana Rasco at 272-7400.

DeShazo Elementary registration set

Students needing to register for third through fifth grades at DeShazo Elementary may do so on Aug. 16-17, from 10 a.m. until 7 p.m.

New students will need to bring their birth certificate, social security card, and immunizations records.

School officials also note that school records or a report card from the school previously attended by the student would be helpful in the registration process.

Call 806-272-7364 for additional information.

Muleshoe Bible school offered

The First United Methodist Church of Muleshoe will be offering a new approach to Summer Bible School, Aug. 14-16... Bible School: Family Style!

The event will include supper each evening from 5:30 - 6 p.m., after which children going into Kindergarten through fifth grade will rotate between a lesson, crafts, music, and games.

There will be classes for students going into sixth through eighth grades as well.

And this year, there will be classes for adults, too. The adult classes include "How to give your children a blessing," "Discipleship 101," "Christian finance," "Fruits of the spirit for couples," "Christian parenting," and "Standing on the promises."

After the classes, the families will take part in a brief worship time, from 8:15-8:30 p.m.

Bailey County Cemetery meeting

A meeting of the Bailey County Cemetery Association has been set for Saturday, Aug. 18, at 10 a.m., at the Bailey County Coliseum meeting room. The meeting will include reports from the officers, directors and committees on the operation and maintenance of the cemetery, and the election of new directors. All members, friends and the community are asked to attend.

Thanks for reading!

AFFORDABLE BAIL BONDS

Bonding available for Parmer & Bailey counties.
806-481-3280
806-481-3281
806-272-6820
 7 days a week!

Muleshoe Fine Arts Boosters to meet

The Muleshoe Fine Art Booster club are sceduled to meet at 7 p.m., on Aug. 27, in the band hall. Parents with children in band, choir, speech, art, and debate are invited to attend. Elections for the 2007-08 board positions will be held during the meeting.

Drivers license office to be closed

The Bailey County Drivers License office will be closed on Aug. 16. It will reopen on Aug. 17, at 8:30 a.m.

Earth ranch rodeo set

Earth will be holding a ranch rodeo on Sturday, Aug. 18, beginning at 6 p.m., at the Earth Rodeo Area. Admission is \$6 for adults, and \$4 for school-age children. Events will include team penning, trailer loading, branding, wild cow milking and ranch bronc riding. For more information call Dakota Lewis at 806-638-0951.

Meet the Mules!

Meet the Mules has been scheduled for Tuesday, Aug. 21, at 7 p.m.. at the football stadium. Watermelon and homemade icecream will be served.

Three Way school reunion held

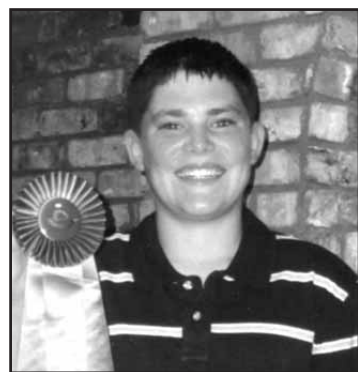
The Three Way School Reunion was held on Aug. 4 at the Park Plaza Holiday Inn in Lubbock.

Registration began on Friday and continued on Saturday with visitation taking place during the day.

A business meeting was held and the day concluded with a meal served in the atrium.

During the business meeting, alumni who served in the U.S. Armed Forces were recognized.

All graduating classes were recognized, along with the person who traveled the longest distance, Donna



LOGAN MASON

Mason wins San Antonio barrow carcass contest

Logan Mason, 15, the son of Shane and LeShea Mason of Lazbuddie, showed a Reserve Champion Spot Barrow at the 2007 San Antonio Livestock Show.

Logan received an \$8,000 scholarship with this honor.

The Reserve Champion Spot Barrow went on to compete in the carcass contest after the show, and won Grand Champion Barrow Carcass.

The spot barrow was bred and raised by Mason Brothers of Lazbuddie.

Correction...

Among the Watson Junior High cheerleaders who attended cheerleading camp recently at Lubbock were Tessa Garner and Mandy Scolley.

PORTALES HORSE SALE

Open Horse Sale & Tack Sale on the 3rd Saturday each month!

No pre-consignment necessary.

NEXT SALE: AUGUST 18

at Portales Livestock Auction

South Floyd Hwy., Portales, NM

Starting Time: 1 PM

Horses must have current Coggins and any health papers needed.

For more info., contact:
Randy Bouldin 505-760-6670
Monty Black 505-714-1177
Portales Livestock 505-356-8524

Check out our website!
www.muleshoejournal.com

Muleshoe Journal USPS 367820

Established February 23, 1924. Published by Lambai Publishing LP
 Every Thursday at 201 W. Ave. C, P.O. Box 449, Muleshoe, TX 79347.
 Periodicals Postage paid at Muleshoe, TX.
 POSTMASTER: Send address changes to the Muleshoe Journal, P.O. Box 449, Muleshoe, TX 79347.
 We are qualified members of:
 Panhandle Press Association, West Texas Press Association and Texas Press Association © 2007

Sandra Aven, Publisher
 saven@hearstnp.com

Leah Bell, General Manager/Ads
 ctyankee@fivearea.com

Larry Thornton, Managing Editor
 editor@muleshoejournal.com

Bookkeeping/Classified Advertising
 classifieds@muleshoejournal.com

SUBSCRIPTIONS:
 By Carrier Yearly - \$22.00
 Bailey County - By Mail - \$24.00
 Elsewhere - \$35.00
 By E-mail - \$22.00
 Advertising Rate Cards On Application

Member TPA 2007 TEXAS PRESS ASSOCIATION

PPA Panhandle Press Association

WEST TEXAS PRESS ASSOCIATION

Advertisers should check their ad the first day of insertion. The Journal will not be liable for failure to publish an ad or for a typographical error or errors in publications except to the extent of the cost of the ad for the first day of insertion. Adjustment for errors will be limited to the cost of that portion of the ad where the error occurred.

CALVERT

HOME HEALTH CARE, LTD.

Celebrating 20 years as the choice for quality home health care.

Littlefield Office:
 913 Phelps Avenue, Littlefield, TX 79339
 Phone: (806) 385-1904
 Fax: (806) 385-5905

Main Office:
 Calvert Home Health Care, Ltd.
 8004 Indiana Avenue, Suite B-15, Lubbock, Texas 79423
 Phone: (806) 747-8972
 Fax: (806) 747-8965

Grand Court Office:
 4601 71st Street, Suite 231
 Phone: (806) 785-4006
 Fax: (806) 785-4211

Ventura Place Office:
 3026 54th Street, Suite 315
 Phone: (806) 793-2662
 Fax: (806) 793-2636

Carillon Office:
 1717 Norfolk, Suite 2105
 Phone: (806) 281-6192
 Fax: (806) 791-3415

Elmbrook Estates Office:
 5301 66th Street, Room 1000, Lubbock, TX 79424
 Phone: (806) 783-8878
 Fax: (806) 783-8986

Petersburg Office:
 1520 Main Street, Petersburg, TX 79250
 Phone: (806) 667-1500
 Fax: (806) 667-9401

SHOT CLINIC

AT MHS NURSE'S OFFICE

FRIDAY

AUGUST 24

10 AM - NOON

MUST HAVE PARENT OR GUARDIAN WITH YOU IF UNDER AGE 18.

ALL SHOTS \$10 EACH

FOR MORE INFO, CONTACT
MICHELE BARTON, RN
AT 272-7303.

Park View Nursing Care Center worker speaks out

To the Editor:

To clarify the status of Park View Nursing Care Center, we want our community to know that Park View Nursing Care Center is thriving and continues to care for more than 50 residents.

The dedicated staff is committed to meeting the daily medical and social

Letter to the Editor

needs of each and every one of our residents.

The staff is stable and has many years cumulative experience with long-term care residents.

Our medical director, Dr. Michael Rice, who has vast

experience with long-term care residents and their particular needs, along with our local dedicated physicians, spearheads the care of the residents.

Various activities are offered to all residents and

are geared with helping the residents derive quality in their every day life.

Our facility has a strong local volunteer program with the volunteers providing entertainment, spiritual, and educational opportunities, as well as a weekly beauty shop with emphasis on hair and nail care.

Park View continues to accept new residents and has several inquiries on a frequent and regular basis.

Local folks caring for the local aged are still very much a part of everyday life at Park View Nursing Care Center.

Joy Stancell,
Muleshoe

What's real about reality television?

Sometimes, I wonder if life doesn't reflect television more than television reflects life.

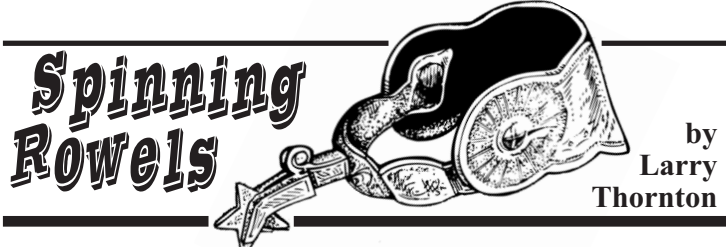
After all, how do you confine a group of strangers in a house, give them a set of rules that emphasizes any relationships they develop are merely part of a game, and call it "reality television?"

A recent news story indicated that the number of plastic surgery procedures were up because of "makeover" reality shows, which raises a question as to how "real" is the reality program when its purpose is to replace reality with plastic?

I'm reminded of a comedian's comments about her own trips to the "facial physician" in which she suggested something to the effect that so much of her skin had been pulled up, cropped off, and sewed up, that when she accidentally sneezed the person next to her was in danger of being covered in belly button lint.

The other evening, I sat down in the living room to watch a little television with my daughter when I realized I had left my glasses across the room, and asked her to hand them to me.

To a large degree as my



view of the world has become clearer over the years, my vision for all the area past the end of my fingertips has become fuzzier.

Anyway, as my daughter retrieved my spectacles — that translates as "eyeglasses" to the youngsters who haven't ever encountered somebody wearing black plastic frames taped together at the nosepiece — I realized that she was watching a reality show.

"Never mind," I said, "I'd prefer not seeing this show too clearly."

Can you imagine what the future will hold for us if the current trend of television programming continues?

• Big Brother 12.5 — On tonight's show, one of the house members learns that his campaign for Congress is at a standstill because his apology for actions taken as the temporary team leader irritated voters clear across the nation from the state he hopes to represent in the

U.S. House of Representatives.

• Survivor 1,106 — On tonight's show, the contestants learn that it doesn't matter who wins what, angers whom, or gets bitten by how many lethal insects.

The tsunami that formed after this morning's earthquake 1,000 miles away is going to not only make the day's competition tougher than expected, but is headed to their island faster than the camera crews' helicopters can warm up.

And tonight, we have the first episode of *The Ugly Duckling*, a spinoff of the hit television reality show *The Swan*.

Originally marketed as *The Swan: Bloopers and Blunders*, the show will highlight the various "Oops" and "Oh ohs" that occurred when the targeted female participant ended up looking like a cross between Carl Mulden and Jack Klugman on a bad nose hair day.

Time for new appliances? 

WE ARE YOUR HOMETOWN WHIRLPOOL DEALER.

McDaniel's  *We now carry Speed Queen!*

APPLIANCE 1020 Main Street, Clovis, NM 505-762-4481 or 800-682-7891

 **Lance Insurance**

Competitive Rates, Variety of Leading Companies For Home, Auto, Commercial and Crop

806-227-2466

Correction...

The Mini-Pros took the third place title at the recent little league tournament in Muleshoe.

The first place title went to the team from Seminole, and second place went to Littlefield.

The *Muleshoe Journal* apologizes for the error and any inconvenience it might have caused.

 **NOW OPEN!**

the SEWING ROOM

alterations, dressmaking, home decor

Gail Aukerman

111 S. 1st Street, Muleshoe
806-778-1829

Park View
Nursing Care Center

"A Commitment to Caring"

- Beautifully landscaped facility
- Two fireplaces to add to the "homey" feel of our facility
- Three sun rooms overlooking the park
- Game & activity rooms
- Spacious private & semi-private rooms
- Certified for Skilled Nursing Care

Call Sandy Z. Sandlin
Administrator

1100 W. Avenue J, Muleshoe • 272-7578

AUGUST BACK TO SCHOOL SPECIAL!

Free Activation with a School Supply Donation!

 **MOTOROLA RAZR \$59 Only**

OUR BEST PLAN ONLY \$39.95

- > 1000 Anytime Minutes with **FREE** Nationwide Long Distance
- > **FREE** Unlimited Night and Weekend Minutes with **FREE** Nationwide Long Distance
- > **FREE** Unlimited Mobile-to-Mobile
- > **FREE** Carryover Minutes
- > **FREE** Loyalty Minutes

NETWORK EXPANSION

NEW CELL SITE IS LOCATED AT:

- Corona — Located at 500 Franklin Street in Corona, NM. This site will provide coverage to the town of Corona and along Hwy. 54 in that area.

Bring in three school supplies — valued at \$10 or more — and receive FREE ACTIVATION on a new wireless plan. A \$25 VALUE!

TEXT MESSAGING ■■■ WEB BROWSING ■■■ PICTURE MESSAGING ■■■ WIRELESS

PLATEAU Wireless

www.plateauwireless.com 877-PLATEAU (752-8328)


Race to any Plateau Wireless store to sign up! Way To Go, Plateau!


Muleshoe Five Area Telephone Coop. 302 Uvalde (806) 272-7700	Muleshoe Connection Warehouse 117 Main St. (806) 272-5532	Frona WT Services 1010 Columbia (806) 250-5555
--	---	--

Contract Term: 2 years. Early termination fees: \$200 per year, maximum of \$400. Night and Weekend hours are Monday through Thursday 7:00 PM through 6:59 AM and Friday 7:00 PM through Monday 6:59 AM. When outside the designated home area, Roaming: \$3.50 per minute with Free Long Distance. Additional taxes, fees, and surcharges may apply. Carryover Minutes: unused plan minutes are carried over month to month. Loyalty Minutes: 30 minutes after one year of service, 60 minutes after three years of service and 100 minutes after five years of service. Carryover and Loyalty Minutes are removed on the date of disconnect and/or forfeited in the event of suspension/termination for nonpayment. Plan only available on GSM phones. Offer not available in all markets. Certain Restrictions Apply. Offer valid through 8/31/07.

THE HORIZON GOES ON FOREVER.

OWN YOUR SHARE OF IT.






FIRST AG CREDIT
PART OF THE FARM CREDIT SYSTEM

Entering our tenth decade in the lending business, we can provide you with everything you need from land and livestock to tools and tractors. We believe in being as diverse as Texas itself, after all, we're Texan, too.

Agribusiness Loans \ Home Loans \ Farm & Ranch Loans
Operating, Equipment & Livestock Loans \ Recreational Land Loans

Muleshoe 806.272.3010 | agmoney.com | 

Texas-Born 1916

Carolyn's to open Cannon AFB store

The Army Air Force Exchange of Dallas notified Carolyn Johnson on Friday, Aug. 10, that her store, Carolyn's Christmas Creations, has been awarded a contract to sell at the Cannon Air Force Base in Clovis, N.M.

Johnson, who was notified weeks earlier that her business was a finalist in the competition was exuberant about the contract which will bring about changes to her local operation.

According to Johnson, Tina Costilla, a four-year employee, will manage the base site in Clovis.

Decorator, Elaine Case, will supervise the set up of the store and merchandise display.

Bertha Gonzalez will assume duties as head teller previously held by

Costilla in Muleshoe. "We are excited about the prospect of serving the incoming 40,000 service personnel expected at Cannon between October and January," Johnson said. "This exposure should enhance our business locally."

Carolyn's will begin setting up the store next week in Clovis as well as opening a ladies boutique at its Muleshoe location.

Operation of the new facility at Cannon will begin Monday, Aug. 20.

Publication of Obituaries

Obituaries printed in the Muleshoe Journal are printed free of charge and contain the following types of information: date and details of funeral and place of burial; date and place of birth and parents names; date of marriage; limited biographical information, including the highest level of schooling achieved, service in the Armed Forces, profession (and retirement information if applicable); names of relatives who have preceded the person in death; names of survivors (including husband and wife, parents, in-laws, brothers, sisters, grandparents (only the number of grandchildren, great-grandchildren and great-great-grandchildren) will be included; and where memorials may be directed. We will be pleased to run a one column black and white photo at no charge. A larger photo or a color photo will cause the obit to be paid. Please keep in mind that everything must be submitted by your funeral home.

Bailey County Cemetery meeting set for Aug. 18

A meeting of the Bailey County Cemetery Association has been set for Saturday, Aug. 18, at 10 a.m., at the Bailey County Coliseum meeting room. The meeting will include reports from the officers, directors and committees on the operation and maintenance of the cemetery, and the election of new directors. All members, friends and the community are asked to attend.

Thanks for reading!

BAILEY COUNTY DEVOTIONAL PAGE

WESTERN DRUG
& Something Special Gifts
1411 W. American Blvd. 272-3106 Muleshoe

"THE FIVE AREA TELEPHONE COOPERATIVE, INC."
West Plains Telecommunications, Inc.
Five Area Systems, Inc., Plateau Wireless
Five Area Long Distance - Five Area Internet
302 Uvalde Muleshoe, USA (806) 272-5533

MCCORMICK SEEDS, INC.
400 East Ash • 272-3156
Muleshoe, Texas
A COMPLETE LINE OF FIELD SEEDS

United Supermarkets

Farmers Coop Ass'n of Sudan
P.O. Box 120 • Sudan, Texas
227-2461
Mobile: (806) 638-7692 FAX (806) 227-2102
Dennis Flowers, Gen. Manager Email: dflowers@fivearea.com

IRRIGATION PUMPS & POWER
Zimmatic W. Hwy. 84
CENTER-PIVOTS 272-5597

minsa CORPORATION
US Hwy. 84 East
Muleshoe • 272-5545

BCEC BAILEY COUNTY ELECTRIC COOPERATIVE ASSOCIATION
Muleshoe — 272-4504 Morton — 266-8600

MULESHOE PEA & BEAN, INC.
1680 CR 1044, Muleshoe • 272-5589
Ed, Nicky & Chad Nickels

MAPLE COOP GIN
927-5501
Maple, Texas

Deaf Smith County Grain, Inc.
Cliff A. Skiles, Jr.
Jeb S. Skiles

SPARKLE Cleaners
"WE CARE ABOUT YOU"
114 East Ave. C, Muleshoe
272-3570

MULESHOE TIRE
107 Main St., Muleshoe • 272-4594
After Hour Service: 946-7668

BOEHRING DAIRY
690 CR 45, Earth
"MILK - A PART OF EVERYTHING THAT IS GOOD!"

WAYNE COPLEY TRUCKING
CALICHE, SAND & ROCK PRODUCTS
P.O. Box 63 (806) 272-3697
Muleshoe, Texas 79347 Mobile: (806) 946-8072

A Lesson in Humility

by Max Lucado

Jesus...made Himself of no reputation...He humbled Himself and became obedient to the point of death, even the death of the cross. (Philippians 2:5, 7-8)

Deflating inflated egos is so important to God that he offers to help. He helped me. I recently spent a week on a book tour. We saw long lines and crowded stores. One person after another complemented me. For three days I bathed in the river of praise. I began to believe the accolades. All these people can't be wrong. I must be God's gift to readers. My chest puffed so much I could hardly see where to autograph the books. Why, had I been born two thousand years earlier, we might read the gospels of Matthew, Max, Luke, and John. About the time I wondered if the Bible needed another epistle, God shot an arrow of humility in my direction.

We were running late for an evening book signing, late because the afternoon signing had seen such long lines. We expected the same at the next store. Concerned, we phoned ahead. "We are running behind. Tell all the people we'll arrive soon."

"No need to hurry," the store manager assured.

"What about the people?"

"Neither one seems to be in a hurry,"

Neither one?

By the time we reached the store, thankfully, the crowd of two people had tripled to six. We had scheduled two hours for the signing; I needed ten minutes.

Self-conscious about sitting alone at the table, I peppered the last person with questions. We talked about her parents, school, Social Security number, favorite birthday party. Against my pleadings, she had to go. So I sat alone at the table. Big stack of Lucado books, no one in line.

I asked the store manager, "Did you advertise?"

"We did. More than usual." She walked off.

The next time she passed I asked, "Had other signings?"

"Yes, usually we have a great response," and kept going.

I signed all the books at my table. I signed all the Lucado books on the shelves. I signed Tom Clancy and John Grisham books. Finally a customer came to the table. "You write books?" he asked, picking up the new one.

"I do. Want me to sign it?"

"No thanks," he answered and left.

God hit his target. Lest I forget, my daily reading the next morning had this passage: "Do not be wise in your own eyes" (Prov. 3:7).

When you're full of yourself, God can't fill you.

But when you empty yourself, God has a useful vessel.

From *Cure for the Common Life* (Copyright W Publishing Group, 2006) Max Lucado

This devotional & directory is made possible by these businesses who encourage all of us to attend worship services.

ASSEMBLY OF GOD FIRST ASSEMBLY OF GOD 521 South First Street 272-3017 Jack Stone, Pastor • 272-3984 S.S. 9:45 am, W.S. 10:30 am & 6:00 pm, Wed. 7:00 pm	CATHOLIC IMMACULATE CONCEPTION CATHOLIC CHURCH 805 E. Hickory Leonardo Pahamtang, Min. EPISCOPAL - CHARISMATIC ST. CLEMENTS CHURCH COMMUNION OF CHRIST THE REDEEMER Hwy. 214 South • 272-5954 Father Sergio Leal Sun. W.S. 10:30 am	LUTHERAN ST. JOHN LUTHERAN Lariat, TX • David Symm, Min. S.S. 10:30 am; W.S. 9:30 am
BAPTIST CALVARY BAPTIST 1733 W. Ave. C. Rev. Jeff Coffman CIRCLE BACK BAPTIST Intersection FM 3397 & FM 298 FIRST BAPTIST 220 West Ave. E Dr. Stacy Conner FIRST BAPTIST Lazbuddie • 965-2126	CHRISTIAN TRINITY CHRISTIAN CENTER 1723 W. American Blvd. • 272-3877 Reydon Stanford, Pastor Sun. W.S. 10:30 am CENTRO CRISTIANO 117 E. Birch St. Hermanos Barron S.S. 10 a.m.; W.S. 11 a.m. & 6 p.m. Wed. 7 p.m.	METHODIST FIRST UNITED METHODIST 507 W. 2nd St. Spanish Service 8:30; S.S. 9:45; W.S. 11:00 Praise & Prayer 6 PM Pastor Monty Leavell, 272-5517 LAZBUDDIE METHODIST S.S. 9:30 am; W.S. 10:30 am Pastor Ken Peterson 965-2121
PRIMERA IGLESIA BAUTISTA 223 E. Ave. E Interim Rev. Troy Smith PRIMITIVE BAPTIST 621 South First Elder Bernard Gowens, Min. PROGRESS BAPTIST Progress, TX PROGRESS SECOND BAPTIST Arthur Hays, Min. - 1st & 3rd Sundays RICHLAND HILLS BAPTIST Bro. Larry Thornton 17th & West Ave. D S.S. 10 am; W.S. 11 am & 6 pm; Wed. 7 pm TRINITY BAPTIST 314 E. Ave. B - Bennie Wright, Min.	CHURCH OF CHRIST LARIAT CHURCH OF CHRIST Sam Billingsley, Min. S.S. 10 a.m.; W.S. 11 a.m. & 6 p.m., Wed. 7 p.m. LAZBUDDIE CHURCH OF CHRIST Nathan Crawford, Min. S.S. 9:30 am; W.S. 10:20 am & 5 pm; Wed. 7 pm MULESHOE CHURCH OF CHRIST 22nd & W. American Blvd. S.S. 9:30 am; W.S. 10:20 am & 6 pm; Wed. 7:30 pm 16th & AVE. D CHURCH OF CHRIST Curtis Shelburne, Min. 272-4619 S.S. 9:30 am; W.S. 10:30 am; Growth Gr. 1:30 pm; Wed. 7:00 pm	PENTECOSTAL UNITED PENTECOSTAL LIGHTHOUSE 207 East Ave. G 1-800-454-6051 S.S. 10 am; Thursday, Bible Study 7 pm INTER DENOMINATIONAL NEW COVENANT Plainview Hwy. Steve Claybrook, Pastor W.S. 10 am; Wed. 7 pm MULESHOE COWBOY FELLOWSHIP 710 E. American Blvd., Muleshoe Steve Friskup, Minister 272-5199 Service: 7:30 p.m. Thursday

1ST BANK MEMBER FDIC
202 South First 272-4515

Serve Wholeheartedly as if you were serving the Lord, not men. Ephesians 6:7
MV INC.
2601 W. American Blvd.
P.O. Box 631
Muleshoe, Texas
(806) 272-4266
Mobile (806) 946-6763
mvinc@fivearea.com

MULESHOE ANIMAL CLINIC
GENERAL PRACTICE
M S
1430 US Hwy. 84 • Muleshoe Office: 272-3061

McDONALD'S OF MULESHOE
1315 W. American Blvd. • 272-3333
Open at 5:00 a.m. every day! i'm lovin' it

Lowe's MARKETPLACE
401 W. American Blvd. • Muleshoe • 272-4585

Lazbuddie Feeders, Ltd.
"We make your dairy bull calves worth more!"
Lazbuddie, Texas
965-2435

HENRY INSURANCE AGENCY
Rama Smalling Agent
111 W. Avenue B
P.O. Box 563
Muleshoe, TX 79347
888-658-4581
(806) 272-4581
Fax (806) 272-5892

CENTRAL COMPRESS & WAREHOUSE
SUDAN, TEXAS

PACO FEED YARD, LTD.
Commercial Cattle Feeders
P.O. Box 956, Friona
265-3281
Feller Hughes-Mgr.

Pizza Hut
1412 W. American Blvd.
Muleshoe • 272-4213
Open: Sun.-Mon. 11 AM-11 PM
Lunch Buffet: Sun.-Fri. 11:30 AM-1:30 PM
Monday Night Buffet: 6-8 PM
"Gather round the Good Stuff"

J&S Dairy
1260 CR 1038, Muleshoe
272-7706

Lial's TORTILLA FACTORY
105 E. Ash St., Muleshoe • 272-5772
Phillipians 4: "I can do all things through Christ who strengthens me."

TEXAS FARM BUREAU INSURANCE Co.
1612 W. American Blvd., Muleshoe • 272-4567

LAW OFFICE OF TINA DAVIS
Criminal - Probate - Real Estate - Family Law
101 S. Main, Muleshoe • 272-7776

Interim HEALTHCARE
110 E. Ave. C
Muleshoe
272-5549
www.InterimHealthcare.com
Annette Orozco • LeAnn Altman • Kristen Meeks, RN-BSN • Myranda Whitte, RN-BSN • Kay Gray
Olivia Barrera • Arlene Brozek • Brandi Hamilton • Deena Hamilton • Twila Ratter

BAILEY COUNTY DEVOTIONAL PAGE

Obituaries

Rosemary Lopez

Church services for Rosemary Lopez, 43, of Muleshoe, were held on Friday, Aug. 10, at the Immaculate Conception Catholic Church of Muleshoe with Fr. Leo Pahamtang officiating.

Rosary was said on Wednesday, Aug 8, and Thursday, Aug 9, at Ellis Funeral Home Chapel.

Burial followed Friday's service in Muleshoe Memorial Park Cemetery.

Lopez died on Aug. 8, 2007, in Muleshoe. She was born on Sept. 20, 1963, also

in Muleshoe.

She was preceded in death by her mother, Felicitia Lopez, on June 11, 2002.

Lopez was a lifelong resident of Muleshoe where she graduated from Muleshoe High School. She was a member of the Immaculate Conception Catholic Church.

Survivors include her father — Jose D. Lopez of Muleshoe; two sisters — Linda and Helen Lopez, both of Muleshoe; and a brother — Henry Lopez of Muleshoe.

Dolores Orozco

Church services for Dolores Orozco, 80, of Muleshoe, were held on Monday, Aug. 13, at the Immaculate Conception Catholic Church of Muleshoe with Fr. Leo Pahamtang officiating.

Rosary was said on Saturday, Aug 11, at Ellis Funeral Home Chapel. Burial followed Monday's service in Bailey County Cemetery.

Orozco died on Thursday, Aug. 9, 2007, in Muleshoe Area Medical Center. He was born on Sept. 26, 1926, in Mercedes to Narcisco and Patricia Orozco.

He married Estanislada "Tanis" Vasquez in Weslaco on Sept. 16, 1947.

Orozco moved to the Muleshoe area, from Progreso, in 1956. He served in the U.S. Army during World War II, and was a farmer and a member

of Cursillitas at Immaculate Conception Catholic Church.

Orozco was preceded in death by his wife — Estanislada, on April 4, 2003; his parents; a daughter — Adela; a sister — Concepcion; and three brothers — Robert, Luciano and Esteven.

Survivors include six sons — Raynaldo of Lubbock, Lionel of Goodrich, Baldemar and Israel of Muleshoe, Mario of Portales, N.M., and Juan of Eules; three daughters — Noelia Flores and Belia Villa, both of Muleshoe, and Hilda Pacheco of Richardson; two brothers — Jose Orozco and Jose Maria Orozco, both of Muleshoe; 26 grandchildren and 37 great-grandchildren.

Memorials may be sent to the Muleshoe Public Library.

Ray Bara

Church services for Ray Bara, 50, of Muleshoe, were held on Monday, Aug. 13, at the Immaculate Conception Catholic Church with Fr. Leonardo Pahamtang and Allen Smyer officiating.

Rosary was said on Sunday, Aug. 12, at the Ellis Funeral Home Chapel.

Bara died on Aug. 8, 2007, in Covenant Medical Center of Lubbock. He was born on Oct. 7, 1956, in Muleshoe.

Bara married Sally Garcia in Muleshoe on June 5, 1975.

He was a lifelong resident of Muleshoe, and

maintenance director for Muleshoe ISD. He attended the Muleshoe Cowboy Fellowship.

He was preceded in death by his mother — Nicolas Bara, and two brothers.

Survivors include his wife — Sally Bara of Muleshoe; two daughters and their husbands — Yvonne and Manuel Martinez, and Ernestina and Roy Bara, both of Muleshoe; his father — Jacinto Bara of Vernon; three brothers — Roy Bara of Amarillo, Hector Bara of Weslaco and Gerald Bara of Vernon.

Floy Belle Hanson

Church services for Floy Belle Hanson, 85, of Lazbuddie, were held on Tuesday, Aug. 14 at the Lazbuddie Methodist Church with Glendall Smith officiating. Burial followed in Lazbuddie Cemetery.

Hanson died on Sunday, Aug. 12, 2007 in the Park View Nursing Care Center of Muleshoe. She was born on Jan. 6, 1922, in Lamesa, and married Walter Hanson in Clovis, N.M., on Feb. 27, 1949.

Hanson had lived in the Lazbuddie community since 1947, moving from Lamesa.

She graduated from Texas Tech with a degree in education, and taught school for 10 years. Hanson was a principal, a homemaker and a farmer's wife.

She was a member of the St. Martins Lutheran Church in Littlefield.

Hanson was preceded in death by her husband — Walter, in 1997.

Survivors include a son — James Hanson of Lazbuddie; a son and his wife — David and Jeanne Hanson of Midwest City, Okla.; three daughters and their husbands — F. Irene and Jerry Waggoner of San Antonio, J. Lynne and Roger Merys of Canon City, Colo; and M. Ellaine and Howard Calcote of Amarillo; two sisters — Vera Jackman of Houston and Joyce Rook of Amarillo; seven grandchildren and five great-grandchildren.

Memorials may be sent to Legacy of Love Hospice or the Muleshoe Public Library.

Drivers license office to be closed

The Bailey County Drivers License office will be closed on Aug. 16. The office will reopen on Aug. 17, at 8:30 a.m.

Complete Auto Repair

- Tune Ups
- Brake Service
- Computer Diagnostic Repair
- We Build Engines and Have Rebuilt Engines For Sale
- We Do On-The-Site Irrigation Motor Repairs

All Work Guaranteed
We Pick Up and Deliver!

Burton Service Center
803 W. American Blvd. • 272-5330
After hours: 946-8274 or 946-7996



MULESHOE FLAG FOOTBALL LEAGUE

7 ON 7 FLAG FOOTBALL



Season Schedule
2 Games per Sunday
15 12-Man Rosters
Referees
80 Yard Field

**PLAYOFFS AT THE END OF THE SEASON!
GET OFF THE COUCH
AND COME PLAY!**

Entry Deadline is Sept. 16
Season Starts Sept. 30
\$450 per Team - Ages 17+

For more information, contact:
**RAY (806) 535-3562 or
ROBERT (806) 566-8959**

2007 Precision Ag Expo to be held at Plainview

Farmers, agribusiness, representatives, crop consultants, ag researchers and others involved in crop production should be marking their calendars for the second TPPA Precision Ag Expo sponsored by the nonprofit association Texas Plant Protection Association (TPPA).

This daylong expo will be at the Ollie Liner Center in Plainview on Sept. 6.

Ray Smith, TPPA board chairman said, "TPPA sponsored the first TPPA Precision Ag Expo last June in Corpus Christi."

"Based on the excellent attendant interest and suggestions, our Expo Planning Committee has begun making plans for 2007," he added.

Due to its central location for West Texas farmers, Plainview has been selected as the site for the 2007 expo.

The expo agenda will include both classroom style presentations and "hands on" demonstrations and discussions in the field.

This will be an opportunity for learning about the latest precision ag practices and products from those that are leaders in working with this new technology.

For more information contact Curtis Preston Bailey County Extension, 806-272-4583, cp Preston@ag.tamu.edu or TPPA at 936-539-2349

Good Neighbor. GREAT RATES.

Looking for great rates and a secure place to grow your money? Call me today for more information about a CD from State Farm Bank®.

CERTIFICATES OF DEPOSIT



Mark W. Morton
State Farm Agent
Muleshoe, TX 79347-3642
Bus: 806-272-7519
mark.morton.cv5g@statefarm.com

90 Day	4.65% APY*
180 Day	5.00% APY*
1 Year	5.00% APY*
2 Years	5.30% APY*
3 Years	5.15% APY*
4 Years	5.00% APY*
5 Years	5.00% APY*



LIKE A GOOD NEIGHBOR, STATE FARM IS THERE.®

*Annual Percentage Yields as of 08/15/07. Rates subject to change without notice. Minimum balance to open an account and obtain the stated APY is \$500. Rates apply to deposits less than \$100,000. A penalty may be imposed for a withdrawal prior to maturity. Certificates automatically renew at maturity at the then-current rate for the same term.

FDIC MEMBER P051035 STATE FARM BANK • HOME OFFICE: BLOOMINGTON, ILLINOIS • statefarm.com® 08/05

SONIC'S 30th BIRTHDAY CELEBRATION!



Join us in celebrating
Saturday, Aug 18th

1/2 SINGLESONIC BURGERS
Price

LARGE DRINKS 99¢ **REGULAR FRIES 69¢**

THANKS MULESHOE FOR SUPPORTING SONIC FOR 30 YEARS!
59¢ **REGULAR VANILLA CONES**

REGISTER TO WIN

\$100 MY SONIC GIFT CARD

Special prices Aug 18th only not valid in conjunction with any other discounts or offers. Add Ons/Add Ins extra.

1633 American Blvd. • 272-3998 • MULESHOE



Register to Win - \$100 My Sonic Gift Card!

Name: _____
Address: _____
City: _____ ZIP: _____
Phone: _____ AGE: _____



Return entry to carhop. Winners will be notified by phone.

Golden Anniversary Celebration



The Prather Family

Come and celebrate with our family the 50th Wedding Anniversary of our parents
Donald & Norma Jo Prather
Saturday, August 18th
Muleshoe Heritage Depot
2:00-3:30 p.m.
No gifts, please. Casual dress.

Engagement



ASHLEY MUMAU AND CARL WEBER III

Mumau, Webber to wed

Betty Tohm of Muleshoe and Ricky Mumau of Hereford announce the engagement of their daughter, Ashley Mumau of Muleshoe, to Carl Weber III, also of Muleshoe.

The prospective bride is a 2007 graduate of Muleshoe High School, and is currently attending South Plains College majoring in a criminal justice. She is employed as a cashier at Villa Motel.

Diabetes support group meeting set

The Bailey County Diabetes Support Group will meet on Tuesday, Aug. 21, at 6:30 p.m. in the dining room of Muleshoe Area Medical Center.

The program will be *Foot Care* presented by NursCare Home Health. This program is free of charge to anyone interested.

For more information, contact Mandi Seaton, Bailey County extension agent – Family and Consumer Sciences, 118 W. Ave. C., Muleshoe, TX 79347, 806-272-4583.

Dollar General. The prospective groom is the son of Butch and Leona Webber of Lubbock, and Tina and Lonnis Hobbs of El Paso. He is employed as a shophand at Prairie View Dairy.

The wedding has been set for Sept. 9, 2007, at 2 p.m., at the Lubbock Courthouse, with a reception to follow at the Villa Motel.

Senior Citizen News

By Laverne Winn

Listen up everyone. It is election time for the Oneita Wagon Senior citizens' Center.

There will be one place on the board of directors that will need to be filled.

Kenneth Henry's term is expiring and he has stated he does not wish to run again.

Kenneth has been a very dedicated and valuable worker for the center.

The nominating petitions are ready for anyone wishing to nominate someone to run for the board.

Be sure you have visited with the person you nominate and they have agreed to serve a three year term on the board.

The nominating period will continue through Aug. 31.

If you have any questions on this, please come by and visit with us.

We have had several of

our senior citizens on the sick list this past week. We hope all of you are home and getting well. We miss you and hope to see you soon.

We want to remind all you senior citizens of the lunch served each day from 11:30 a.m. until 1 p.m. We invite you to come, bring a friend or family member with you and enjoy the good food and fellowship.

We ask for a \$3 donation for everyone 60 and over, and a \$5 donation for anyone under 60.

Our Tuesday night dances are a great hit with all our surrounding area friends and neighbors.

Sandy Vandevender, our great disc jockey, will be back with us on Tuesday, Aug. 21. He has all the good country and western music from the 50s and 60s.

Come join us for a night out. There is a pot luck supper break at 8:30 p.m., so

bring a dish and come and enjoy.

On Wednesday, Aug. 22, NursCare Home Health will bring a program on advance directives.

This should be a very informative and helpful program on having your business papers in order. So make plans to come and join us on this day.

Thursday, Aug. 23, will be our birthday party. All seniors with birthdays in August be sure and be at the center for lunch, and to be honored with cake and a card.

You should get a phone call about the party if we have you on our records. If you do not receive a call, you can come and let us put you in our records.

Menu for Aug. 20-24:

Monday, Aug. 20 — King ranch chicken, black-eyed peas, tossed salad, cornbread, and pudding.

Tuesday, Aug. 21 —

Baked ham with pineapple, sweet potatoes, greens, sliced tomatoes, wheat rolls, and sliced peaches.

Wednesday, Aug. 22 — Grilled steak, gravy, mashed potatoes, green beans, salad, wheat rolls, jello and fruit.

Thursday, Aug. 23 — Spanish beef and rice, pinto beans, salad, onions, pickles, cornbread, and coffee cake.

Friday, Aug. 24 — Fish or chicken strips, gravy, baked beans, coleslaw, cornbread, and fruit salad.

Blood drive set for Aug. 29

United Blood Services will be pulling into Muleshoe, for their annual "Labor of Love" crucial blood drive on Wednesday, Aug. 29, from 1-8 p.m., at the Oneita Wagon Senior Citizens Center, 319 S. Main.

Blood donors will receive a free cholesterol test and will have the opportunity to give either one or two units of blood.

United Blood Services uses a high-tech process that makes it possible for blood donors to give two units of red blood cells in only one visit to the blood drive, doubling the lifesaving effect of their generous gift.

Along with meeting the regular blood donor qualifications, double red cell donors must be: Men weighing at least 130 pounds, and be 5'1" tall and women must weight 150 lbs and be at least 5'5" tall.

You must be 17 years old, in good health, and have a picture ID.

TCE offering food safety program

Eating out has never been more popular. Almost half of the money we spend on food is spent away from home.

Each year, the Centers for Disease Control and Prevention estimate that approximately one in four Americans will get sick from eating contaminated food at home or at food service establishments.

Texas Cooperative Extension, Bailey, Cochran, and Hockley Counties are offering training to reduce the number of illnesses.

The food manager certification training

program, called "Food Safety: It's Our Business" seeks to reduce the risk of foodborne illness.

By taking the course, food service managers can receive the latest information on personal hygiene, how to use thermometers, how to store food safely, how to prepare and serve food properly and how to keep the food preparation areas clean and sanitized.

Participants can fulfill requirements for food manager certification if they pass the certification exam offered at the end of the

course.

The training session will be offered for \$89 on Sept. 13-14, from 8:30 a.m. to 5 p.m., at the Morton Activity Building, 200 B. West Taylor, in Morton.

The cost includes training materials and the State food manager certification examination. Deadline for registration is Sept. 6.

For more information contact Mandi Seaton, Bailey County extension agent – Family and Consumer Sciences, 306 West Second, Muleshoe, TX 79347, or call 806-272-4583.

Say HELLO to High-Speed Internet!



SIGN UP TODAY TO GET FREE INSTALLATION

with a one year commitment and the 3rd month of service free!

Total savings up to \$169⁹⁵

- 6 Speeds available to fit any need and budget
- Download photos and music quickly and easily
- No busy signals, never have to wait again
- No phone line or cable wire needed to receive service

Service is available within the city limits and the rural surrounding areas.



Call Today and Save!

1.800.963.4984

Rapid Communications 2007. For new residential customers only. Available services & pricing may vary and not be available in all areas. Credit for the 3rd month of service will be posted to your account and will appear on your third month's bill. Regular retail rates apply thereafter. Download & upload speeds are maximum speeds; they may vary & are not guaranteed. Franchise fees, taxes, installation, restrictions & other fees may apply, the actual amount depending on location & service ordered. If service is canceled before 12 months, a \$100 service charge will be applied to customer's account. A cable modem or network card may be required at installation. Minimum computer requirements may be required. Offer subject to change. Other restrictions may apply. RAPID08732

Diga HOLA al Internet de alta velocidad!



FIRME HOY PARA OBTENER LA INSTALACIÓN GRATIS

con una comisión de un año

¡Y el tercer mes de servicio es gratis!

Ahorre un total hasta de \$169⁹⁵

- 6 velocidades disponibles para ajustarse a cualquier necesidad y presupuesto
- Baje fotos y música rápidamente y fácilmente
- No hay señales de ocupado, ya no tiene que esperar más
- No necesita línea telefónica o alambrado de cable para recibir el servicio

El servicio está disponible en los límites de ciudad y los alrededores rural.



¡llame hoy y ahorre!

1.800.963.4984

Rapid Communications 2007. Para clientes residenciales nuevos únicamente. La disponibilidad de los servicios y precios pueden variar y no está disponible en todas las áreas. El crédito por el tercer mes de servicio será puesto en su cuenta y aparecerá en la tercera factura. Después se aplicarán las tarifas regulares. La velocidad para bajar y conectar son a máxima velocidad; éstas pueden variar y no están garantizadas. Hay cargos de franqueo, impuestos, instalación, restricciones y otros cargos pueden aplicarse. el monto actual depende de la ubicación y del servicio ordenado. Si el servicio es cancelado antes de 12 meses, un cargo de servicio de \$100 será agregado a la cuenta del cliente. Un modem para el cable o una tarjeta para la cadena pueden ser requeridos al momento de la instalación. Se puede requerir como requisito mínimo tener una computadora. La oferta está sujeta a cambios. Se pueden aplicar otras restricciones. RAPID08733

ALVARADO PARTY RENTALS

INFLATABLE BOUNCER
Safe - Affordable Fun For Kids!
BEST PRICES AROUND

272-5588
2 Hrs. \$50 - 4 Hrs. \$75 - 6 Hrs. \$100
8 Hrs. \$125

Birthday Parties • School Functions • Special Events
DELIVERY, SETUP & PICKUP
SE HABLA ESPAÑOL EDDIE & RACHEL ALVARADO
DJ SERVICES ALSO AVAILABLE

2231

RED WING SHOES

The Fair Store
120 Main 272-3500

NOW OPEN! NOW OPEN! NOW OPEN!

ADVANCED LUBE & CAR WASH

502 N. 1st, Muleshoe
OPEN AT 8:30 AM

Need an affordable oil change or detail car wash?
We pick up and deliver free of charge within the city limits! Call 272-5842 for service!

"Your One Stop Shop" for Oil Changes, Car Washes & Detail, U-Haul Rental, Boxes, Drinks & Snacks!

T-L Irrigation Systems
Dealer

PRECURE ELECTRIC
Carroll Precure - Owner
424 N. 1st, Muleshoe
272-4844

GENERAL ELECTRICAL CONTRACTING
• Residential • Commercial
• Irrigation

Decorators
Floral & Gifts

616 South First Street
Muleshoe, Texas
806/272-4340
www.decoratorsfloral.com

When the heat gets you down and you're wearing a frown...send yourself a plant, who says you can't?

Rent this space for only \$9-\$11.25 per week!
Call 272-4536 and ask how!

Rent this space for only \$9-\$11.25 per week!
Call 272-4536 and ask how!

Mules Fans

Advertise your business here!
272-4536

6 months \$11.25 week
12 months \$9.00 week

New Location!
115 S. Main Street

NEW! State of the Art Facial Chair & Pedicure Chair
1st Time Customers - 15% Discount

Family Hair Salon
Pat Young, Owner, M-F 9-5
Sherry Curtis, M-Tu-Th-F 9-5
Kayla Claybrook, M-F 9-5

Carolyn's Christmas Creations

106 E. American Blvd.
Muleshoe, Texas
272-5911
www.visitcarolyns.com
Open Daily

'Tis Always Christmas at Carolyn's!

LOWE'S MARKETPLACE

401 W. American Blvd.
Muleshoe, Texas
272-4585

BAILEY COUNTY ELECTRIC COOPERATIVE ASSOCIATION

305 E. Ave. B
Muleshoe, Texas
272-4504

SHIPMAN'S BODY SHOP, INC.

410 N. 1st Street
Muleshoe
272-4408

• 24 hr. Wrecker Service
• Complete Collision Repair
• Glass Work

Family owned for over 35 years
Garry Shipman

FARMERS LAURIE WINCHELL
Insurance Agent

Call for a free quote:
**HEALTH • AUTO
LIFE • HOME
BUSINESS**

1602 W. American, Muleshoe
272-7548 • FAX 272-4756

Do you think that you would... ...like a one room schoolhouse?

Newspaper Fun!
www.newspaperfun.com
Animills LLC © 2007 V4-N32

School Then and Now!

Teachers used to like to get apples! Why do we have to go to school? Some kids just don't get it! One new student in a kindergarten class thought that he was only going to attend school for one day. He didn't understand why he had to go back to school every day!

Well, you and I know it takes many lessons and a lot of work to learn to read and write. Teachers try to bring out the best of their students' talents and to encourage their love of learning. Lessons are planned to give us the skills we will need to run a household and to help lead our communities. A good education for all of our people can keep our nation strong.

Did you know that many years ago:

- housewives taught young children ABCs and some religion in their kitchens for a small fee? These were called "_____ Schools."
- teachers in schoolhouses were almost always men and were called _____?
- _____ working hard just to survive had to teach their children at home?
- _____ was very expensive and scarce?
- students used a flat, wooden board with a handle called a _____? A paper with a lesson was placed on it.

Can you find and circle at least six words that begin with "ch" as in the word "child?"

Many years ago it was hard to get a good education. People had to work long days just to survive. Rich people could hire tutors for their children at home or send them to craftsmen to learn a skill and be educated. Soon, people realized that the country was changing and that it needed people who could lead and do many kinds of jobs. Laws were passed that required all children to go to school so they would have the chance for a good education.

- rich families hired _____ to teach in their homes?
- some students had to _____ many miles in all kinds of weather to get to school?
- _____ often stayed home to learn skills for running a household: sewing, cooking, the alphabet, etc?
- students were lucky to have charcoal or _____ pens to write with?
- one way to teach reading was by using pictures in stories, called _____?

Then...or Now?

Schooling has changed throughout the years. Reading, writing and arithmetic are still the basis for a good education! But, demands on teachers, ways to teach and subjects taught are different. Computer classes anyone?

How are things different in our schools today? Draw a ring around 10 things we have or do NOW!

one room school	spankings for bad behavior!	media libraries	computers	pump for water
desks and chairs	teacher stays with families	hornbooks and benches	P.T.A.	paper scarce
students visit from other countries	total silence most of the time	teacher paid with food or wood	educational T.V.	every child goes to school
teachers continue their own studies at college	wood for heat	gym classes	no blackboards	special programs for the disabled

Sweating School! Forest is really sweating because school is starting tomorrow and he's lost his backpack. Can you help him find it?

Newspaper Fun! Created by Animills LLC © 2007

Extension agent talks about aging well in West Texas

Submitted by Mandi Seaton, Bailey CEA-FCS

Health

When we think of the word "age," the most common thought is the number of years lived.

However, as Americans continue to live longer, we also must think about how well we are living — how successfully we are aging.

Physical, mental, and emotional health are all interrelated and must be considered when discussing successful aging.

The first step to successful aging is to remain as physically healthy as possible for as long as possible.

Mary Herridge, a Gerontologist and Hill County extension agent, points out that poor health

is not a consequence of aging and being healthy is not just the absence of disease.

"A chronic illness may be considered unhealthy but, if managed properly, the person suffering from that illness may be able to lead a normal, healthy life," she said.

A healthy lifestyle may have a positive impact on a person at any age. Proper diet, exercise and preventive healthcare are three primary means to maintaining your physical health.

Successful aging is also tied very heavily to a person's mental health. Just

as with physical health, decline in mental health is not a consequence of growing older.

"Many clinicians and family members attribute an altered mental state to someone's age rather than recognizing symptoms of a disease and seeking treatment for it," said Andy Crocker, gerontology health specialist with Texas Cooperative Extension.

Something as simple as the wrong prescription in a pair of glasses may cause disorientation and then may be confused with dementia.

Crocker recommends keeping the mind active through stimulating activity

such as reading or word games or even talking with friends and neighbors about a current news event.

Emotional and spiritual well-being is key to any discussion regarding healthy aging. Social interaction is an important part of emotional health. Whether it's through volunteerism or a group of friends who meet on a regular basis, staying involved in society gives a sense of purpose: a reason to get out of bed in the morning and to stay both mentally and physically healthy.

Americans are still searching for the fabled "Fountain of Youth" and until someone finds it, we must try to do what we can to age well.

Texas Cooperative Extension — Bailey County, Aging Services of Bailey County, and Park View Nursing Care Center are hosting an Elder Care Conference called *Aging Well in West Texas*, on Saturday, Sept. 15, from 8:30 a.m. — 1 p.m. at the Bailey County Coliseum.

Speakers include Ken Horne, Dr. Victor Gutierrez, and Roy Puenta.

Topics to be covered are *End of Life Issues, Mental Health and Dementia*, and

Aging Issues.

There is no cost to attend. Lunch will be served.

Mark your calendar and make plans to attend.

For more information on aging well and/or the Elder Care Conference, contact Mandi Seaton, County extension agent — Family and Consumer Sciences, Texas Cooperative Extension, Bailey County at 272-4583 or Debbie Crabtree, Bailey County Aging Services at 272-43647.

DeShazo registration set for this week

Students needing to register for third through fifth grades at DeShazo Elementary may do so on Aug. 16-17, from 10 a.m. until 7 p.m.

New students will need to bring their birth certificate,

social security card, and immunizations records.

A report card from the school previously attended would be helpful in the registration process.

Call 806-272-7364 for additional information.

Don't forget your photographs...

The *Muleshoe Journal* publishes a large number of photographs — from wedding announcements to obituaries — along with related news stories. Sadly, many of these important photographs are never picked up from the news office. If you would like to retrieve a photograph that you've left with the newspaper, stop by during normal office hours.

Notice of Public Hearing on Tax Increase

The City of Muleshoe will hold a public hearing on a proposal to increase total tax revenues from properties on the tax roll in the preceding tax year by 7.87 percent (percentage by which proposed tax rate exceeds lower of rollback tax rate or effective tax calculated under Chapter 26, Tax Code). Your individual taxes may increase at a greater or lesser rate, or even decrease, depending on the change in the taxable value of your property in relation to the change in taxable value of all other property and the tax rate that is adopted.

The public hearing will be held on August 23, 2007 at 5:30 P.M. and August 30, 2007 at 5:30 P.M. at Muleshoe City Hall, 215 South First Street, Muleshoe, Texas.

The members of the governing body voted on the proposal to consider the tax increase as follows:

FOR: Mayor Cliff Black, Councilmen: Earl Behrends, Richard Orozco, Sharon Grant, Irene Mason
 AGAINST:
 PRESENT and not voting:
 ABSENT:

Comparison of Proposed Budget with Last Year's Budget

The applicable percentage increase or decrease (or difference) in the amount budgeted in the preceding fiscal year and the amount budgeted for the fiscal year that begins during the current tax year is indicated for each of the following expenditure categories:

Maintenance and operations	<u>6.38%</u> (increase)	or	<u> </u> % (decrease)
Debt service	<u> </u> % (increase)	or	<u> </u> % (decrease)
Total expenditures	<u>6.38%</u> (increase)	or	<u> </u> % (decrease)

Total Appraised Value and Total Taxable Value as calculated under section 26.04, Tax Code

	Preceding Tax Year	Current Tax Year
Total appraised value* of all property	<u>\$138,232,650</u>	<u>\$160,768,032</u>
Total appraised value* of new property**	<u>\$2,534,973</u>	<u>\$1,555,738</u>
Total taxable value*** of all property	<u>\$108,309,357</u>	<u>\$119,176,835</u>
Total taxable value*** of new property**	<u>\$2,278,875</u>	<u>\$1,443,771</u>

Bond Indebtedness

Total amount of outstanding and unpaid bonded indebtedness \$ 0.00

Tax Rates

Adopted tax rate for the preceding tax year \$.6603 per \$100 in value
 Proposed tax rate for the current tax year \$.6550 per \$100 in value
 Difference in the proposed tax rate and the adopted tax rate for the preceding tax year \$.0053 per \$100 in value

Percentage increase or decrease in the proposed tax rate and the adopted tax rate for the preceding tax year % Increase
 OR
0.1% Decrease

These tax rate figures are not adjusted for changes in the taxable value of property.

* "Appraised value" is the amount shown on the appraisal roll and defined by Section 1.04(8), Tax Code.
 ** "New property" is defined by Section 26.012(17), Tax Code.
 *** "Taxable value" is defined by Section 1.04(10), Tax Code.

Comparison of Residence Homestead Values

Average appraised and taxable values on residence homesteads are compared from the preceding tax year and the current tax year.

	Preceding Tax Year	Current Tax Year
Average residence homestead appraised value	<u>\$39,304</u>	<u>\$40,000</u>
Homestead exemption amount for the taxing unit (excluding special exemptions for persons 65 years of age or older or disabled)	<u>\$ -0-</u>	<u>\$ -0-</u>
Average taxable value of a residence homestead (excluding special exemptions for persons 65 years of age or older or disabled)	<u>\$39,304</u>	<u>\$40,000</u>

Comparison of Residence Homestead Taxes

The taxes that would have been imposed in the preceding tax year on a residence homestead at the average appraised value (excluding special exemptions for persons 65 years of age or older or disabled) are estimated to be \$259.52.

The taxes that would be imposed in the current tax year on a residence homestead appraised at the average appraised value in the current tax year (excluding special exemptions for persons 65 years of age or older or disabled), if the proposed tax rate is adopted, are estimated to be \$262.00. The difference between the amount of taxes on the average residence homestead in the current tax year, if the proposed tax rate is adopted, and the preceding tax year would be an increase of \$ 2.48 or a decrease of \$ in taxes.

Notice of Public Hearing on Tax Increase

The County of Bailey will hold a public hearing on a proposal to increase total tax revenues from properties on the tax roll in the preceding tax year by 5.15 percent (percentage by which proposed tax rate exceeds lower of rollback tax rate or effective tax calculated under Chapter 26, Tax Code). Your individual taxes may increase at a greater or lesser rate, or even decrease, depending on the change in the taxable value of your property in relation to the change in taxable value of all other property and the tax rate that is adopted.

The public hearing will be held on August 23, 2007 at 6:00 P.M. and August 27, 2007 at 10:00 A.M. at Bailey County Courthouse, Commissioners Court Room, 300 South First Street, Muleshoe, Texas.

The members of the governing body voted on the proposal to consider the tax increase as follows:

FOR: Judge Harrison, Commissioner Vandiver, Commissioner Grant, and Commissioner Chavez
 AGAINST:
 PRESENT and not voting:
 ABSENT: Commissioner Kindle

Comparison of Proposed Budget with Last Year's Budget

The applicable percentage increase or decrease (or difference) in the amount budgeted in the preceding fiscal year and the amount budgeted for the fiscal year that begins during the current tax year is indicated for each of the following expenditure categories:

Maintenance and operations	<u>9.388%</u> (increase)	or	<u> </u> % (decrease)
Debt service	<u> </u> % (increase)	or	<u>1.196%</u> (decrease)
Total expenditures	<u>8.192%</u> (increase)	or	<u> </u> % (decrease)

Total Appraised Value and Total Taxable Value as calculated under section 26.04, Tax Code

	Preceding Tax Year	Current Tax Year
Total appraised value* of all property	<u>\$289,766,358</u>	<u>\$342,128,572</u>
Total appraised value* of new property**	<u>\$3,875,608</u>	<u>\$3,263,289</u>
Total taxable value*** of all property	<u>\$255,811,472</u>	<u>\$296,106,683</u>
Total taxable value*** of new property**	<u>\$3,619,510</u>	<u>\$3,151,322</u>

Bond Indebtedness

Total amount of outstanding and unpaid bonded indebtedness \$ 4,220,000.00

Tax Rates

Adopted tax rate for the preceding tax year \$.7446 per \$100 in value
 Proposed tax rate for the current tax year \$.6833 per \$100 in value
 Difference in the proposed tax rate and the adopted tax rate for the preceding tax year \$.0613 per \$100 in value

Percentage increase or decrease in the proposed tax rate and the adopted tax rate for the preceding tax year % Increase
 OR
8.230% Decrease

These tax rate figures are not adjusted for changes in the taxable value of property.

* "Appraised value" is the amount shown on the appraisal roll and defined by Section 1.04(8), Tax Code.
 ** "New property" is defined by Section 26.012(17), Tax Code.
 *** "Taxable value" is defined by Section 1.04(10), Tax Code.

Comparison of Residence Homestead Values

Average appraised and taxable values on residence homesteads are compared from the preceding tax year and the current tax year.

	Preceding Tax Year	Current Tax Year
Average residence homestead appraised value	<u>\$38,998</u>	<u>\$40,000</u>
Homestead exemption amount for the taxing unit (excluding special exemptions for persons 65 years of age or older or disabled)	<u>\$ -0-</u>	<u>\$ -0-</u>
Average taxable value of a residence homestead (excluding special exemptions for persons 65 years of age or older or disabled)	<u>\$38,998</u>	<u>\$40,000</u>

Comparison of Residence Homestead Taxes

The taxes that would have been imposed in the preceding tax year on a residence homestead at the average appraised value (excluding special exemptions for persons 65 years of age or older or disabled) are estimated to be \$290.38.

The taxes that would be imposed in the current tax year on a residence homestead appraised at the average appraised value in the current tax year (excluding special exemptions for persons 65 years of age or older or disabled), if the proposed tax rate is adopted, are estimated to be \$273.32. The difference between the amount of taxes on the average residence homestead in the current tax year, if the proposed tax rate is adopted, and the preceding tax year would be an increase of \$ or a decrease of \$ 17.06 in taxes.

SPECIAL PROVISIONS IF APPLICABLE

Enhanced Indigent Health care Expenditures

The County of Bailey spent \$134.37 from July 1, 2005 to June 30, 2006 on enhanced indigent health care at the increased minimum eligibility standards, less the amount of state assistance. For the current tax year, the amount of increase above last year's enhanced indigent health care expenditures is \$3,275.01.

Lamplight By Larry Thornton

"Here I am! I stand at the door and knock. If anyone hears my voice and opens the door, I will come in and eat with him, and he with me." — Rev. 3:20, NIV

Have you ever gone to someone's house and knocked on the door, but they never came to answer it?

You know they are in there... maybe the television is on, or you can hear a radio, maybe you even noticed the telltale movement of a curtain as someone peeked out... but they don't answer the door.

Now, I admit that the majority of times I've encountered this, I been in possession of a document that ordered me to present a certain person's body before the court, but it isn't something limited to law enforcement officers or kids named "Erkel."

Many people remain lost, and doomed to the pits of hell, because they never answer the door when God knocks. But before we tell them "shame, shame," we need to remember that there are also a lot of Christians who think of salvation as just an inoculation against hellfire rather than a relationship with God.

Maybe you can look back this past week on your daily life and can remember a time when God knocked, but you didn't answer the door.

God continues to stand outside the door, wanting to come in and have fellowship with us. But we have to open the door, he will never push it open... he will never break it down.

While the apostle John was in exile on the Island of Patmos, God gave him a vision which he recorded, and which we call the Book of Revelation. In the early chapters of that book, John wrote about seven churches to whom Christ wrote, addressing many of the problems that continue to trouble his church.

One of those churches was at Laodicea, and as we've already read, God says he's standing at the door knocking... but this isn't a picture of a sinner in need of salvation, the Bible clearly shows that in these scriptures the people on the other side of the door are Christians.

Why don't people answer the door?

In many cases, they don't hear him knock. They may be too busy, wrapped up with their lives, that they are too busy to be concerned about God's purpose for their lives.

Maybe they're too deaf. Their hearts have hardened to God's voice and his message. A child with dirty ears may have trouble hearing a parent, but a Christian with a hardened heart has trouble hearing God.

Maybe they're just unwilling to respond. Some people hear God's knock, but still don't answer the door because they're unwilling to commit all of their lives to Christ.

Or, maybe they just don't care enough to respond. This, after all, was the reason for Christ's letter to Laodicea. He was saying

they were just going through the motions.

They were more interested in ritual and religion than they were in a relationship with God.

They might have been meeting, but they weren't truly worshipping.

Luke 9:62, NIV, says, *Jesus replied, "No one who puts his hand to the plow and looks back is fit for service in the kingdom of God."*

If such is the case of someone who sets other priorities above God, how do you think he feels about someone who even won't walk across a room, open a door, and invite him in?



Photograph by Larry Thornton

Wests greeted...

Ray and Donna West of Midland were honored at a reception Tuesday morning at the Muleshoe Heritage Center. Pictured above, Ray West talks to Bobbi Harrison.



10% OFF STOREWIDE

- CINCH SHIRTS & JEANS
- WRANGLER JEANS
- KIDS WRANGLER & CINCH JEANS

1405 W. American Blvd. Muleshoe, Texas • 272-6853
Sale Aug. 17 & 18 only

City council receives report

Continued from page 1 offering video services to Five Area customers.

Vandevender also noted that the batteries that are being installed inside local residence as part of the project would assure residents that in the event of a power outage residence's would still have "life line" services.

"You'll always have 911 on it," he said.

"It's the best thing we can do for our service area," Vandevender said.

And when asked how the company would be recouping its costs by Behrends, Vandevender assured the council that the funding came through a process that wouldn't directly impact local telephone customers.

Work in Muleshoe should be completed next summer,

he said.

In unrelated business, the city council adopted a proposed tax rate of .6550, that is expected to raise \$65,693, or 9.08 percent more than last year's budget, of which \$9,456.70 will be raised from new property.

According to City Manager David Brunson, the rate for the current year was .6603, and the effective rate is .6072.

Although there is an increase in revenue from last year, there would actually be a decrease in the city's tax rate.

"The tax revenue increase will be a small portion of the total budget," he said.

Thanks for reading!



A salon featuring the talents
Linda Flores, Anna Mendoza & Josie Ovalle

is opening for business
Monday, August 20!

We will be celebrating our
Grand Opening on Thursday & Friday,
Aug. 23 & 24. Please join us for
refreshments and door prizes!

1519 W. American Blvd.
272-7516

NOTICE OF PUBLIC MEETING TO DISCUSS BUDGET AND PROPOSED TAX RATE

The Muleshoe Independent School District will hold a public meeting at 7:00 p.m., August 27, 2007 in the School Administration Building, 514 W. Ave G, Muleshoe, TX. **The purpose of this meeting is to discuss the school district's budget that will determine the tax rate that will be adopted. Public participation in the discussion is invited.**

The tax rate that is ultimately adopted at this meeting or at a separate meeting at a later date may not exceed the proposed rate shown below unless the district publishes a revised notice containing the same information and comparisons set out below and holds another public meeting to discuss the revised notice.

Maintenance Tax \$ 1.0400/100 (Proposed rate for maintenance and operations)

School Debt Service Tax
Approved by Local Voters \$.2400/100 (proposed rate to pay bonded indebtedness)

Comparison of Proposed Budget with Last Year's Budget

The applicable percentage increase or decrease (or difference) in the amount budgeted in the preceding fiscal year and the amount budgeted for the fiscal year that begins during the current tax year is indicated for each of the following expenditure categories:

Maintenance and operations	1.79	% increase or	_____	% (decrease)
Debt service	51.00	% increase or	_____	% (decrease)
Total expenditures	52.79	% increase or	_____	% (decrease)

Total Appraised Value and Total Taxable Value (as calculated under Section 26.04, Tax Code)

	Preceding Tax Year	Current Tax Year
Total appraised value* of all property	\$ 276,858,887	\$ 319,041,405
Total appraised value* of new property**	\$ 3,749,067	\$ 3,280,822
Total taxable value*** of all property	\$ 215,712,082	\$ 243,569,143
Total taxable value*** of new property**	\$ 3,635,538	\$ 3,067,916

* "Appraised value" is the amount shown on the appraisal roll and defined by Section 1.04(8), Tax Code.

** "New property" is defined by Section 26.012(17), Tax Code.

*** "Taxable value" is defined by Section 1.04(10), Tax Code.

Bonded Indebtedness

Total amount of outstanding and unpaid bonded indebtedness* \$ 22,000,000

*Outstanding principal.

Comparison of Proposed Rate with Last Year's Rates

	Maintenance & Operations	Interest & Sinking Fund*	Total	Local Revenue Per Student	State Revenue Per Student
Last Year's Rate	\$1.37000	\$0.3000 *	\$1.670000	\$2,533	\$5,419
Rate to Maintain Same Level of Maintenance & Operations Revenue & Pay Debt Service	\$1.07625	\$.24389 *	\$1.32014	\$2,314	\$6,470
Proposed Rate	\$1.04000	\$.24000 *	\$1.28000	\$2,260	\$6,366

* The Interest & Sinking Fund tax revenue is used to pay for bonded indebtedness on construction, equipment, or both.
The bonds, and the tax rate necessary to pay those bonds, were approved by the voters of this district.

Comparison of Proposed Levy with Last Year's Levy on Average Residence

	Last Year	This Year
Average Market Value of Residences	\$39,230	\$46,782
Average Taxable Value of Residences	\$24,230	\$29,789
Last Year's Rate Versus Proposed Rate per \$100 Value	\$1.6700	\$1.2800
Taxes Due on Average Residence	\$404.64	\$381.30
Increase (Decrease) in Taxes	\$41.19	\$ (23.34)

Under state law, the dollar amount of school taxes imposed on the residence homestead of a person 65 years of age or older or of the surviving spouse of such a person, if the surviving spouse was 55 years of age or older when the person died, may not be increased above the amount paid in the first year after the person turned 65, regardless of changes in tax rate or property value.

Notice of Rollback Rate: The highest tax rate the district can adopt before requiring voter approval at an election is **\$1.2800**. This election will be automatically held if the district adopts a rate in excess of the rollback rate of **\$1.2800**.

Fund Balances

The following estimated balances will remain at the end of the current fiscal year and are not encumbered with or by a corresponding debt obligation, less estimated funds necessary for operating the district before receipt of the first state aid payment:

Maintenance and Operations Fund Balance(s)	\$0.000
Interest & Sinking Fund Balance(s)	\$0.000