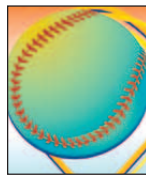




**Celebrate the Resurrection!**  
Area churches listed...  
Page 4



**Muleshoe area sports news...**  
Page 6



**Tornado and storm safety information...**  
Page 3, 12



# Muleshoe Journal



*Striving to be your source for local news*

Volume 88, No. 14

www.muleshoejournal.com

Muleshoe, Texas

50¢

April 5, 2007

## Information sought on local burglaries

The Muleshoe Police Department is seeking information concerning the burglary of several businesses that occurred Saturday and Sunday nights, March 31 and April 1, according to Lt. Bennie Parker.

A total of three businesses were burglarized on Saturday night, and two additional burglaries were committed on Sunday, Parker said Monday, bringing the total in the past two weeks to seven.

While the majority of the burglaries occurred at businesses located on West American Blvd., all of

them to date have been food establishments.

Individuals having information about the burglaries, along with individuals who have seen something out of the ordinary, are asked to contact the police department.

Parker also asks that local businesses make an effort to "double-lock" their buildings if possible, and implement other security measures if possible.

Business owners wishing to discuss the security of their establishments are also encouraged to contact the police department.

## Hospital district receives grant

Muleshoe Area Medical Center is the recipient of another \$50,000 grant from the Office of Rural Community Affairs, it was announced Monday.

The grant, which was written and submitted by Eileen Morton, RN, is for 10 new Versacare beds.

Using \$5,000 in matching funds from the hospital, two Transtar trauma room stretchers will also be purchased as part of the ORCA grant.

"As our community places greater demands on us for

inpatient and outpatient services, the greater the potential exists for patient dissatisfaction and loss of confidence due to actual and perceived problems," said Morton. "Given the challenges we already face which are confronting all small, rural hospitals, loss of confidence must be avoided."

"Beds and stretchers may not be a glamorous, high tech, sparkling piece of equipment, but without beds, you cannot have a hospital.

And if you do have beds,

they need to all be fully functional," she added.

"MAMC has an excellent medical staff that is caring, competent, and encourages teamwork," said Morton. "Over the past several years, focus has been on ancillary equipment upgrades to serve both inpatients and outpatients, including CT, ultrasound, telemetry, lab analyzers, fixed and portable radiology units, and teleradiography."

"We have a wonderful, active hospital auxiliary that has made many

contributions to our nursing area such as the purchase of ice machines, new window blinds for all patient rooms, and redecoration of two rooms," she added. "Now it is time to bring our patient beds from obsolescence to functionality and comfort."

Two years ago, the hospital district received a \$50,000 grant which was used to purchase 13 beds, leaving 12 of the hospital's old beds still to be replaced.

Morton also wrote the hospital district's Rural Health Networking grant.

## Traffic accident takes the life of Earth resident

Juan Juarez, Sr., 31, of Earth died as a result of a single vehicle accident on Hwy. 70, about four miles east of Muleshoe, Saturday evening.

Trooper Lacey Kirk investigated the accident, which occurred shortly before 9 p.m. on March 31.

Trooper Kirk said Sinada Nieto, 31, also of Earth, was driving a 2001 Ford Expedition westbound on Hwy. 70, headed into Muleshoe, when she drove off the shoulder on the right side, over corrected, and slid sideways across both

lanes of traffic and into the open field on the south side of the highway and rolled one time.

Juarez was thrown from the vehicle, and died at the scene.

Nieto was transported to University Hospital in Lubbock by helicopter.

Neither the driver nor the passenger were wearing their seatbelt.

## Sunrise Easter service set for Sunday

The Bailey County Ministerial Alliance's Easter celebration concludes Sunday, April 8, with a Sunrise service, at 7 a.m., by the tennis courts at the new city park, 16th and Ave. D.

Fr. Sergio Leal of St. Clements Episcopal Church of Muleshoe will be delivering the message.

Doughnuts, juice and coffee are to be served following the service at Richland Hills Baptist Church.

In case of inclement weather, the service will be moved to Richland Hills Baptist Church.

Prior to Sunday's special service, other special services planned for this week.

Among these are a combination "Maudy Thursday and Good Friday" service at the First United Methodist Church of Muleshoe on Thursday, April 5, at 7 p.m.

And at the First Baptist Church of Muleshoe, church officials said the sanctuary will be open from 9 a.m. until 3 p.m., on Friday, April 6, for prayer and meditation.



## Springtime in West Texas

Mixed signals is the only way to describe springtime in West Texas with both beautiful, warm sunny days and icy, cold and wet days tossed together. Pictured on the top left, beautiful flowers escaped last week's hail storm



Photographs by Larry Thornton



in Muleshoe. On the left, some of the hail collected on the roof of a local church, which bedecks a weed with a kind of icy beauty. While the early morning frost leaves interesting patterns on a car window.

## Celebrating our hope in Christ's resurrection

### Lamplight By Larry Thornton

While I enjoy several holidays, and love others, Easter is probably my favorite.

Sure I love Thanksgiving Day... I've always been a "big turkey" person, and the joy of the Christmas season with its focus on the birth of Christ, but where these holidays are to a large degree based in events past, Easter is a holiday that looks toward the future.

In the mid-1700s, Alexander Pope penned the words, "hope springs eternal," focusing on man's ability to look to better times in the future. But the truth is the only hope that truly matters is based not on man's ability but rather God's availability.

In his second letter to Thessalonica, the apostle Paul wrote, "May our Lord Jesus Christ himself and God our Father, who loved us and by his grace gave us eternal encouragement and good hope, encourage your hearts and strengthen you in every good deed and word," (2 Thess. 2:16-17, NIV).

Paul was referring to the eternal hope we have through the death, burial and most importantly... the resurrection of our Lord Jesus, the Christ... the Messiah.

God's anointed left the splendors of heaven to

briefly walk this earth and die a substitutionary death for all who placed their faith in the ability of his blood to cleanse them of their sins and make it possible for them to one day join him with his Father in heaven.

Instead of rotting in a tomb, as have the remains of men who have been worshipped over the centuries — both before and after Christ's incarnation, Christ left behind an empty tomb, giving us who believe in him our hope in the bodily resurrection.

Yes, "hope springs eternal," but that is only because Christ the King

made himself available to pay the ultimate penalty.

Christ not only died, he took our deaths upon himself. But Easter is about the fact that he not only died for us... he also lived for us.

Where our salvation is based in Christ's death, our hope of the future is rooted in the truth of his resurrection.

By conquering death and the grave, Jesus has told each of us that we can live forever... eternally.

If that isn't reason enough to celebrate this Sunday, I honestly don't know what is.

Thank you, God, for your risen Son.

## Local Weather

**Thursday**  
Mt. Cloudy..... 74/41

**Friday**  
T-Shwrs..... 59/39

**Saturday**  
Few Shwrs..... 57/33

**Sunday**  
Few Shwrs..... 62/39

**Monday**  
Mt. Sunny..... 74/50

**Tuesday**  
Mt. Sunny..... 79/40

**Wednesday**  
Sunny..... 76/46

## Give It A Thought

When people look at you in a funny way, you have to say to them, "Don't look at me with that attitude... please!"

Words to ponder from Beverly

**Missed your paper?**  
Call the carrier Bobby Flores at 806-891-3950 (leave a message) or call the Journal at 272-4536, between 8:00 a.m. and 5 p.m.



75 Years and Going Strong

# MULESHOE STATE BANK

Muleshoe Branch:  
272-4561  
101 W. American Blvd.  
Farwell Branch:  
481-9580  
801 Ave. A





### Alzheimer's Support Group

The Bailey County Alzheimer's Disease Support Group will be meeting on a new date and new time this month. The meeting will be Thursday, April 12, at noon, at Park View Nursing Home. The program will be presented by Roy Puento, a licensed social worker and nursing home consultant. Lunch will be served. For more information call Debbie Crabtree, Bailey County Aging Services, 272-3647, or Mandi Seaton, Bailey County extension agent - Family and Consumer Sciences, 272-4583.

### Meals on Wheels raffle

Bailey County Meals on Wheels is selling raffle tickets to help raise funds for the homebound food program. First place is a painting by a local artist, second place is a quilt and third place is a \$50 cash prize. The tickets are \$5 each, and the drawing is set for May 11. The painting and the quilt are available for viewing at the Bailey County Courthouse Aging Services office.

### AA meeting

Those looking for help with problem drinking can do so at open AA and Al-Anon meetings being held at 7 p.m. each Friday at the First United Methodist Church, at 507 W. Second. Please use the west side entrance. For information about these meetings call 806-965-2870.

### Cancer screening clinic set

The Don and Sybil Harrington Cancer Center Comprehensive Breast Center will conduct a breast cancer screening clinic at Muleshoe Area Medical Center on April 2 and 19. Funding is available through the Texas Department of Health for Texas residents who qualify for assistance. Call 806-356-1905 or 1-800-377-4673 for more information or to schedule an appointment.

### MHS Band Reunion

Former MISD students who were in band under the instruction of Anthony Gibson, and are interested in attending a reunion with him are asked to contact Fabian Martinez at 272-6707.

### Bogus, fraudulent checks

Bailey County Attorney Scott A. Say will be holding a meeting with Bailey County merchants to review changes in policies concerning the collection and prosecution of bogus and fraudulent checks, on April 24, at 3:30 p.m., at the Bailey County Coliseum. Say will also discuss plans to purchase bogus check collection software for the county to increase efficiency and simplify management of the collection process. Merchant concerns and questions will also be addressed at the meeting and merchants will have the opportunity to learn about vital information necessary to insure timely collection of such checks. County merchants who accept payments by check are encouraged to attend or to send a company representative responsible for check collections. Specific problems or concerns may be tendered in advance of the meeting by calling the County Attorney's Office a 272-4205.

### Youth Corps applications at NWR

The Muleshoe National Wildlife Refuge is currently accepting applications to fill one enrollee position in the Youth Conservation Corps Program. No prior work experience or special skills are required. The eight week program will be conducted from June 4 through July 27. To qualify, you must be 15 through 18 years of age and a permanent resident of the United States. The YCC program is a work-learn-earn program that develops in participating youth an understanding and appreciation of the Nation's environment and heritage. Applications may be requested by calling the refuge at 806-946-3341 and must be received by April 30. The successful applicant will be chosen in a random drawing.

### Diabetes support group

The Bailey County Diabetes Support Group will meet this month on Tuesday, April 17, at 6:30 p.m. in the dining room of Muleshoe Area Medical Center. The program will be "Monitoring Blood Glucose." Kristi Spies, pharmacist, will be the speaker. This program is free of charge to anyone interested. For more information, contact Mandi Seaton, Bailey County extension agent - Family and Consumer Sciences, 306 West Second, Muleshoe, TX 79347, 806-272-4583.

### Fine arts boosters

The Muleshoe Fine Arts Boosters will be meeting on April 6, at 7 p.m., at the band hall. All parents of fine arts students are encouraged to attend.

## Mule Moments

By Jessica Thornton

### Getting ready for college

Being a senior in high school involves a lot of things, but the main one is the wonderful task of visiting different college campuses. I had this experience this last weekend and let me tell you...I had a blast. I went to Wayland Baptist University in Plainview Friday and stayed until Sunday because I was having so much fun. Wayland was having their Spring Preview weekend, or as they call it "Big Weekend." After I arrived on campus and registered, I had the opportunity to experience what the classes were like and was able to sit in on a college class. On the schedule of events set for the two-day event were things that allowed the seniors visiting to see the sort of life they will soon be experiencing and what they need to prepare for. Another thing which I thought was pretty cool was the seniors had the chance to room with current WBU students and experience dorm life as well. I stayed with some fellow Muleshoe graduates who now attend Wayland. One of the girls who stays in the dorm in which I stayed made the comment that she "forgot I was a 'Big Weekender'" because I fit in so well and I got along with everybody living there.

Because of the constant rain on Friday the activities had to be moved indoors. That wasn't much fun, but they did reschedule the doubleheader baseball game scheduled for Friday. The baseball team ended up playing on Saturday so that was pretty cool. There was a concert Friday morning and Friday evening with one of the bands which was awesome. WBU made sure the activities scheduled were fun and helped seniors and transfer students with the applications to Wayland and helped them decide if Wayland was the right college for them. I know it is the right college for me, I didn't want to leave at all, but I had to come home and get back to reality and life in high school. While I don't have much longer before I'm living the college experience, I want to enjoy my remaining time in high school. College is going to be a big transition, and I just have to be patient until that time finally gets here.

"And the Word was made flesh, and dwelt among us, and we beheld his glory, the glory as of the only begotten of the Father, full of grace and truth."  
— John 1:14

### Complete Auto Repair

- Tune Ups
- Brake Service
- Computer Diagnostic Repair
- We Build Engines and Have Rebuilt Engines For Sale
- We Do On-The-Site Irrigation Motor Repairs

All Work Guaranteed  
We Pick Up and Deliver!

### Burton Service Center

803 W. American Blvd. • 272-5330  
After hours: 946-8274 or 946-7996

### Muleshoe Journal

USPS 367820  
Established February 23, 1924. Published by Lamb Publishing LP  
Every Thursday at 201 W. Ave. C, P.O. Box 449, Muleshoe, TX 79347.  
Periodicals Postage paid at Muleshoe, TX.  
POSTMASTER: Send address changes to the Muleshoe Journal, P.O. Box 449, Muleshoe, TX 79347.  
We are qualified members of:  
Panhandle Press Association, West Texas Press Association and Texas Press Association © 2006

**Jim Moser, Publisher**  
jmoser@jacksonconews.com  
**Leah Bell, General Manager/Ads**  
ctyankee@fivearea.com  
**Larry Thornton, Managing Editor**  
editor@fivearea.com  
**Bookkeeping/Classified Advertising**  
journal@fivearea.com

SUBSCRIPTIONS:  
By Carrier Yearly - \$22.00  
Bailey County - By Mail - \$24.00  
Elsewhere - \$35.00  
By E-mail - \$22.00  
Advertising Rate Cards On Application

"Advertisers should check their ad the first day of insertion. The Journal will not be liable for failure to publish an ad or for a typographical error or errors in publications except to the extent of the cost of the ad for the first day of insertion. Adjustment for errors will be limited to the cost of that portion of the ad where the error occurred."

### HEAVEN SCENT DRY CLEANERS

now has a drop off location in Muleshoe for dry cleaning & laundry service!

Drop off your dry cleaning and laundry at Art Loft on Tuesday or Friday by noon and we'll have your items returned by the next drop off date!

Heaven Scent - 481-3384 Art Loft - 272-3485

## FINANCIACIÓN

FINANCIA O REFINANCIA TU AUTO CON UNA COMPANIA EN QUIEN CONFIAS.

STATE FARM  
Auto  
Life  
Fire  
INSURANCE

# Bank

Para tu próximo préstamo de automóvil, busca el servicio que solo tu vecino de State Farm Bank® te puede dar. Para más información llámanos hoy mismo y habla con alguien que sabe lo mucho que tu automóvil significa para ti.

Mark Morton Insurance  
101 S Main, Muleshoe, TX  
272-7519

Member FDIC

Catch us on the web!  
www.muleshoejournal.com

## USED CAR BUYING MADE EASY BY TRUE PROFESSIONALS!

'03 MITSUBISHI LANCER ES  
Sik #75761  
**\$150**  
A MONTH\*

'05 CHEVY MALIBU MAXX LS  
Sik #7986  
**\$206**  
A MONTH\*

'05 FORD RANGER SXT  
Sik #790571  
**\$230**  
A MONTH\*  
Less than 9K miles!

'05 HONDA CIVIC LX  
Sik #790031  
**\$252**  
A MONTH\*  
Less than 10K miles!

'05 NISSAN ALTIMA 2.5S  
Sik #7924  
**\$254**  
A MONTH\*

'06 FORD FUSION SE  
Sik #790211  
**\$277**  
A MONTH\*  
Less than 9K miles!

'06 NISSAN ALTIMA 2.5S  
Sik #630061  
**\$293**  
A MONTH\*  
SUNROOF  
Less than 10K miles!

## BENDER HONDA-NISSAN

3000 MABRY DRIVE, CLOVIS, NM  
(505) 762-3701 OR TOLL FREE 888-968-3702  
View our inventory at:  
www.bendernissan.com or www.benderhonda.com

\* 10% down, 72 months@7.99% APR, WAC; Vehicles subject to prior sale; TT &L extra.



# Senior Citizen News

By Laverne Winn

The senior citizen's did it again. We had a great night out in Lubbock. We had a meal at Furr's, then on to the Cactus Theater for our entertainment.

Our heartfelt thanks to the Church of Christ for the use of their bus, and many thanks to Earl Behrends for doing a super job as the driver. Also thanks to the individuals who took vehicles so all who wanted

to go had a ride. Because of your help we had 51 senior citizens enjoying a night out.

Tuesday, April 10, Mandi Seaton, with the Bailey County Extension Office, will be here with her program on nutrition. She is always entertaining and has very good information for out senior citizens. So make plans to come join us for lunch and enjoy the program.

Remember, there is someone here every Tuesday taking blood pressure for those who need to keep a record on their blood pressure. They are usually here by 10:30 and stay until noon.

On Tuesday, April 17, SPAG will be holding a health fair here at the center. They will have booths for medication management, blood pressure, home safety, and screening for bone density, diabetes, nutrition, cholesterol, and hearing, and 211 Texas.

This should be very helpful to our senior citizens. Make plans to come in during the time from 10 a.m. until 2 p.m., on April 17.

Vista Care Hospice will be holding a domino tournament at the center on Wednesday, April 18,

beginning at 9 a.m. Tell a friend and come have fun with us.

Sandy, our great disc jockey, will be playing for the dance on Tuesday night. If you get a chance ask him about being in the tornado in Clovis. The tornado did a lot of damage to the center where he was playing on Friday night, March 23. We hope they will be back in service real soon. Until then we invite all the senior citizens to come, bring a dish for pot luck supper, and visit us on Tuesday night.

Our many appreciation goes to LeShea Mason, with NursCare, for calling Bingo for us on Thursday. She is very good and we all have a lot of laughs with her. Come for lunch and stay to play. The games begin at 1:30 p.m. and end about 3 p.m. Prizes and refreshments are furnished. The big prize is a free lunch if you win the black out game.

Menu for April 9-13:  
Monday, April 9 – Taco salad, rice, cheese, pinto beans, salsa, chips and

cobbler.  
Tuesday, April 10 — Meat loaf, potato salad, greens, wheat rolls and cookies.

Wednesday, April 11 — Chicken-fried steak, gravy, mashed potatoes, green beans, salad, wheat roll and iced cake.

Thursday, April 12 — Brisket, pinto beans, corn, tomatoes, onion, pickles, cornbread and chocolate pudding.

Friday, April 13 — Fish or chicken strips, gravy, tator tots, hushpuppies, coleslaw and fruit salad.

## Health fair set for April 17

The South Plains Association of Governments Area Agency on Aging will be holding a special health fair at the Oneida Wagon Senior Center, on Tuesday, April 17, from 10 a.m. until 2 p.m.

The program is open to the general public with strong emphasis for seniors age 60 and over.

Health screenings and checkups will be offered at no cost to seniors.

Visitors under the age of 60 will be charged a small fee on some of the screenings and checkups.

The health fair will offer the bone density checkup, blood pressure check, and screenings on cholesterol, nutrition, and diabetes.

Several booths will provide materials and information on medication management, home safety, Alzheimer's disease, and more.

The senior citizens is located at 319 S. Main Street in Muleshoe, and is open Monday through Friday, 8 a.m. until 4 p.m.

The center offers congregate meals, home delivered meals, recreation and transportation through funding from the county, private donations, and the Area Agency on Aging. Contact Laverne Winn, center director, at 272-4969 for more information.

The event is sponsored by the Area Agency on Aging (AAA), a program of the South Plains Association of Governments in Lubbock.

The agency provides several services to seniors including nursing home advocacy, information and assistance, care coordination, the caregiver program, and benefits counseling.

Funding for the agency's program and health fair is provided by funding from the Texas Department on Aging through the Older American's Act of 1965.

Call 1-888-418-6564 for information about the SPAG's programs and services of the Area Agency on Aging.

## FYI

If your college student is graduating or has made the Dean's or President's List, in order for that information to appear in the *Muleshoe Journal*, we must receive notice from the respective educational institution. Your son or daughter must sign a release so the information can be sent to us. Have them visit their bursar's office to sign a form indicating they wish to share their good news! Once permission to share information has been granted, the college or university should send the info via email to: editor@fivearea.com.

Federal Consumer Protection has confirmed the fuel saving described in this advertisement.

## Device may increase gas mileage

As described on ABC's 20/20 with John Stossel

NEW YORK - John Stossel of ABC's 20/20 invited Joel Robinson to describe why Federal Consumer Protection has confirmed the fuel saving claims of the Platinum Gas Saver, a low cost automotive accessory guaranteed to increase gas mileage.

With a simple connection to a vacuum line, the Gas Saver adds platinum vapor to the air and fuel entering the engine.

Since platinum allows fuel to burn at colder temperatures, the Gas Saver's platinum enables your engine to burn 90% of each gallon instead of the average 68% of each gallon, a 22% increase.

Because unburnt fuel is pollution, this 22% of each gallon normally burns when it reaches the platinum surfaces of the catalytic-converter-muffler.

Unfortunately, the fuel

that burns in the converter-muffler cannot improve miles per gallon.

But by enabling platinum to burn this fuel inside the engine, the Gas Saver is theoretically able to convert the burning of this fuel to 22% more miles per gallon. After a five year study, the government concluded: "Independent testing shows that the Gas Saver has received patents for cleaning out the carbon and raising octane, making the premium fuels unnecessary for most vehicles."

In addition, the Gas Saver has received patents for cleaning out the carbon and raising octane, making the premium fuels unnecessary for most vehicles.

Joe Robinson, the developer, commented: "Since the government concluded its study, we have sold a half million Gas Savers. To our surprise, more people buy the Gas Saver because it

extends engine life by cleaning out the carbon than buy it to increase gas mileage or to raise octane."

For further information call:  
**1-800-LESS-GAS**  
**1-800-537-7427**

### Test Data


Consumer Protection studied fuel saving test data on vehicles made by several auto makers using the Gas Saver. This is the data from a fleet of 15 identical 5-liter vehicles within the group.

Vehicle Number	Miles/gal. without Gas Saver	Miles/gal. with Gas Saver	Percentage Increase
59	12.0	17.8	48.3%
63	11.3	16.6	46.9%
53	14.1	20.7	46.8%
51	13.0	18.8	44.6%
56	12.2	17.1	40.2%
64	9.6	13.3	38.5%
60	13.3	17.9	34.6%
55	9.8	13.1	33.7%
68	14.3	18.4	28.7%
50	10.8	13.9	28.7%
62	14.1	17.6	24.8%
66	15.8	17.5	10.8%
57	14.4	15.9	10.4%
54	13.1	14.0	6.9%
65	12.9	11.3	-12.4%
Average	12.7	16.3	28.3%


# KNOWLEDGE AND PREPARATION ARE THE KEYS TO SEVERE WEATHER SAFETY

## Weather Advisory...


### SEVERE THUNDERSTORM WATCH

 Tells you when and where severe thunderstorms are more likely to occur. Watches are intended to heighten public awareness and should not be confused with warnings.


### SEVERE THUNDERSTORM WARNING

 Issued when severe weather has been reported by spotters or indicated by radar. Warnings indicate immediate danger to life and property to those in the path of a storm.

### TORNADO WATCH

 Tells you tornadoes are possible in your area. Remain alert for approaching storms. Watches are intended to heighten public awareness and should not be confused with warnings.

### TORNADO WARNING

 Issued when a tornado has been sighted or indicated by weather radar. Warnings indicate immediate danger to life and property to those in the path of a storm.

## What You Should Do...

- ☉ Watch the sky and listen to radio and television for further information. Remain alert for rapidly changing conditions.
- ☉ Know the area in which you live. Use a road map of your area to track storm path.
- ☉ If you can hear thunder, you are close enough to be struck by lightning. Take shelter inside sturdy structure.

- ☛ Go to safe shelter in a sturdy building.
- ☛ Continue to listen to radio and television for further information. Postpone outdoor activities if thunderstorms are imminent.
- ☛ Unplug appliances not necessary for obtaining weather information. Unplug air conditioners. Power surges from lightning can overload compressors.
- ☛ Avoid using telephone or appliances. Do not take a bath or shower. Use phone ONLY in an emergency

- ☛ Watch the sky and listen to radio and television for further information. Remain alert for rapidly changing conditions.
- ☛ Know the area in which you live. Use a road map of your area to track storm path from weather bulletins. Remember: Tornadoes occasionally develop in areas in which a severe thunderstorm watch or warning is in effect.

- ☞ In a home or building, move to a pre-designated shelter, such as a basement.
- ☞ If an underground shelter is not available, move to an interior room or hallway on the lowest floor and get under a sturdy piece of furniture. Stay away from windows.
- ☞ Get out of automobiles. Do not try to outrun a tornado in your car. Instead, leave it immediately.
- ☞ Continue to listen to radio and television for further information.

## Local Shelter Locations

**FIRST UNITED  
METHODIST CHURCH  
507 W. 2nd St.**

**MULESHOE  
PUBLIC LIBRARY  
322 W. 2nd St.**

**BAILEY COUNTY COURTHOUSE**

A Public Service Message from



**BAILEY COUNTY  
ELECTRIC  
COOPERATIVE  
ASSOCIATION**  
305 E. Ave. B, Muleshoe  
272-4504





### Lazbuddie students send help to New Mexico

The Lazbuddie ISD fourth-grade class took up donations for the tornado victims in Clovis and Logan, N.M., this past week. The students were able to raise over \$400 along with many canned food donations. Mrs. Jones, their teacher, took the students to Clovis on Friday and where the students helped the Salvation Army.

### Publication of announcements in the Journal

The Muleshoe Journal invites your news of weddings, engagements, showers, anniversaries and births.

In order to be fair to everyone, we must limit the amount of space for certain events.

For weddings and quinceaneras 25 column inches, which includes a photo if desired, is the limit. If the photo and announcement run longer, we reserve the right to eliminate parts of the story or the person placing the article may indicate which portions may be left out. However, if a longer write-up is desired, it may be purchased in the form of an ad.

For anniversaries, if two photos are included, the limit will be 25 inches. It will be 15 inches if only one photo is used. That space will be free for anniversaries of 50 years or more. A fee may be charged for other anniversaries.

Birth announcements with one-column photos are run free of charge with names of the immediate family, including

grandparents. Please understand that the permission of both parents is required for a birth announcement to be published.

Small stories describing showers are run free of charge after the fact and may include the names of the principals, items served at the showers, a brief description of the decor and the names of special or out-of-town guests.

It is the responsibility of the party providing the information to provide all of the information. News releases in which names were left out by the party providing the information will not be re-published free of charge.

A deadline of four months after an event will be the rule for free publication. Information must be received by Monday noon. However, publication cannot be guaranteed in the week it is provided.

Drop by for a form or send the information via e-mail to editor@muleshoejournal.com.

# BAILEY COUNTY DEVOTIONAL PAGE

**MCDONALD'S OF MULESHOE**  
1315 W. American Blvd. • 272-3333  
Open at 5:00 a.m. every day! **i'm lovin' it**

**MULESHOE VALLEY INC.**  
2601 W. American Blvd. P.O. Box 631 Muleshoe, Texas  
(806) 272-4266 Mobile (806) 946-8763 mvlinc@fivearea.com

**minsa CORPORATION**  
US Hwy. 84 East Muleshoe • 272-5545

**Pizza Hut**  
1412 W. American Blvd. Muleshoe • 272-4213  
Open: Sun.-Mon. 11 AM to 11 PM  
Lunch Buffet: Sun.-Fri. 11:30 AM to 1:30 PM  
"Gather round the Good Stuff"

**MAPLE COOP GIN**  
927-5501  
Maple, Texas

**Lazbuddie Feeders, Ltd.**  
"We make your dairy bull calves worth more!"  
Lazbuddie, Texas  
**965-2435**

**Little Real Estate & Appraisal Services**  
Residential • Commercial • Farm & Ranch  
Walter B. "Jack" Little  
**272-4805**  
MOBILE: 946-7965 FAX: 272-3729 1913 US 70-MULESHOE

**"THE FIVE AREA TELEPHONE COOPERATIVE, INC."**  
West Plains Telecommunications, Inc.  
Five Area Systems, Inc., Plateau Wireless  
Five Area Long Distance - Five Area Internet  
302 Uvalde Muleshoe, USA (806) 272-5533

**Lazbuddie Garage & Supply**  
Glenn, Adora, Terry and Lee Scott  
Specializing in irrigation motor parts and service since 1957  
AUTO PARTS P.O. Box 100 • Lazbuddie • 965-2188

**HENRY INSURANCE AGENCY**  
Rama Smalling Agent  
111 W. Avenue B P.O. Box 563 Muleshoe, TX 79347  
888-658-4581 (806) 272-4581 Fax (806) 272-5892

**Farmers Coop Ass'n of Sudan**  
P.O. Box 120 • Sudan, Texas  
227-2461  
Mobile: (806) 638-7692 FAX (806) 227-2102  
Dennis Flowers, Gen. Manager Email: dflowers@fivearea.com

**MULESHOE PEA & BEAN, INC.**  
1680 CR 1044 272-5589  
Muleshoe, TX

**Park View NURSING CARE CENTER**  
1100 W. Ave. J - Muleshoe, Texas 79347  
Phone (806) 272-7578 Fax: (806) 272-3514

**PACO FEED YARD, LTD.**  
Commercial Cattle Feeders  
P.O. Box 956 265-3281  
Friona, TX  
Feller Hughs-Mgr.

## Jesus: The Passover Lamb by Brandon Carpenter, former Muleshoe resident

Besides the significance of the resurrection of our Lord Jesus Christ, the celebration of Easter is a special reminder that Jesus is indeed a historical fulfillment of Old Testament type and prophecy. One special fulfillment of typology is that of the Jewish feast called Passover. When Paul reminded the Corinthians, "For Christ our Passover also has been sacrificed" (1 Corinthians 5:7), he identified Jesus as the antitype of the Passover lamb which was slaughtered every year during this great Jewish feast day. Although Passover is taught in Christian churches, especially during the Easter season, very little is known about Passover and its significance within the Hebrew religious culture.

Special instructions are given regarding Passover in Leviticus 23:4-14. The Feast of Passover was a week-long celebration and included three special days: The Feast of Passover, The Feast of Unleavened Bread, and The Feast of the Sheaf of First Fruits. The Feast of Passover has its origin in Egypt and is described in detail in Exodus 12:1-32. As instructed by Moses in Exodus 12:3-6a, the Israelites were required to take a lamb on the tenth day of Nisan. Nisan is the first month of the Jewish religious calendar and corresponds to April/May. The purpose for choosing a lamb on Nisan 10 was for inspection. The lamb had to be perfect — there could be no spot or blemish. Therefore, from Nisan 10-14 the lamb was examined for any blemish or imperfection prior to the day of Passover. As previously mentioned, Jesus is the fulfillment of this special requirement. Sent to be the Passover lamb, Jesus was inspected during this four-day period as well. During the last four days of His life, Jesus entered Jerusalem from Bethany each day beginning with His "triumphal entry" in Matthew 21 to teach and to be fully scrutinized by His people. Moreover, a glance through the gospel accounts show that Jesus was indeed inspected by various persons throughout this four-day period: Pilate (John 18:28, 38; 19:4-6), Herod (Luke 22:3-8-12), Annas (Luke 3:2; John 18:13, 24), Caiaphas (John 11:49-53; 18:13-14, 19-24, 28), Judas (Matthew 27:3-10); and the Centurion (Matthew 27:54). All had to confess that there was no fault in Jesus; He was innocent.

After the four-day inspection period, specific instructions regarding the lamb were given to the Israelites. Notice Moses' directives, "You shall keep it [the lamb] until the fourteenth day of the same month, then the whole assembly of the congregation of Israel is to kill it at twilight" (Exodus 12:6). "Twilight" literally means "between the evenings." Twilight would have included the time of mid-morning throughout the early afternoon prior to 6pm. Jesus, being the fulfillment of this great picture of redemption, was killed precisely at this time. On Nisan 14, Jesus was crucified at twilight. Hanging on the cross from 9am until 3pm, the "Lamb slain from the foundation of the world" hung on the cross "between the evenings." Moreover, the entire "assembly of the congregation" was involved in Christ's death — the Sanhedrin, the priests, and the people all cried out for His crucifixion.

Although Passover is somewhat understood within Christendom, little is taught about the Feast of Unleavened Bread. In the gospel accounts, this is actually the most common name for the Feast of Passover and is the most Holy day of the celebration. The Feast of Unleavened Bread began on Nisan 15 and is the central part of the entire Passover week. The Feast of Unleavened Bread was a seven-day celebration. The first day of this seven-day feast, Nisan 15 was an additional, special Sabbath day — a Holy day where labor was forbidden because of the Sabbath laws. It was for this reason that the Jews asked Pilate to remove the three bodies from the crosses before the end of the day of Passover (6 pm). Notice John's notation, "Then the Jews, because it was the day of preparation [Passover], so that the bodies would not remain on the cross on the Sabbath (for that Sabbath was a high day), asked Pilate that their legs might be broken, and that they might be taken away" (John 19:31). The common method of ending a crucifixion was by breaking the legs of those who were nailed to the cross. Without the use of his legs, the victim was prevented from pushing himself upward. Therefore, the tension could not be relieved from the strain on the muscles of the chest, bringing about suffocation to the victim. The legs of the two thieves were broken. However, Jesus was already dead by the time the soldiers came to Him — fulfilling the prophecy of the Psalmist in Psalm 34:20. Jesus' body was removed from the cross and placed in the tomb prior to Nisan 15. Thus, His body was in the tomb by the first day of the Feast of Unleavened Bread which was also a special Sabbath day. The primary characteristic of the Feast of Unleavened Bread was the removal of leaven (symbolic of "malice and wickedness" in 1 Corinthians 5:8) from every household. By being placed in the tomb after Passover, Jesus' death provided the atoning sacrifice that provides the means of removing the sins of the whole world. Moreover, Jesus said that He is the bread of life which will give eternal life to anyone who eats (John 6:51). Thus, Jesus is the complete fulfillment of the Feast of Unleavened Bread — He is the bread of life which was broken and buried; the One who removes the leaven of the world.

Although His sacrifice is efficacious, Paul states that without His resurrection from the dead, "Then our preaching is vain; your faith also is vain" (1 Corinthians 15:14). The resurrection of the Lord Jesus is the fulfillment of the final feast day within this Passover season — the Feast of First Fruits. Paul said in 1 Corinthians 15:20 that Christ's resurrection is the first fruits. The instructions for the Feast of First Fruits are given in Leviticus 23:9-14. This feast day occurred on the first Sunday following the Passover celebration — "the morrow after the Sabbath." The purpose of the first fruits celebration was to offer to Yahweh the first of the ripened barley which would soon be harvested. A person would go into the field, cut off one sheaf of barley, and bring it to the priest who would then wave the sheaf before Yahweh in thanks for the upcoming harvest. This single sheaf is the precursor of the harvest to come. Through His resurrection, Jesus Christ is then the representative sheaf, the first fruits. He is indeed the forerunner of the great harvest of the future where every redeemed saint will be resurrected. Jesus fulfilled this great feast day by rising from the dead on Sunday morning. The believer is not commanded to worship on the Sabbath (Saturday) as were the Jews. However, the reason that the Christian church primarily worships on Sunday is because the Feast of First Fruits predicted the resurrection of its Lord on Sunday morning (the day after the Sabbath — see Leviticus 23:11).

Thus, we see within the Passover celebration, the death, burial, and resurrection of the Lord Jesus Christ. He is the complete fulfillment of the feast days which were given to the Israelites many centuries before His birth. Altogether, there are seven feasts. Four have been literally, historically fulfilled by Jesus Christ in His first advent. There are still three which remain to be fulfilled — it makes sense that He will literally fulfill the last three during His second advent as He fulfilled the first four. Happy First Fruits everyone!!!

(Brandon attends Grace Church in Wichita Falls where he teaches several Bible studies. He is employed at MSU and works in the Testing Services office.)

This devotional & directory is made possible by these businesses who encourage all of us to attend worship services.

- |  |  |   |
|--|--|---|
| <p><b>ASSEMBLY OF GOD</b><br/>FIRST ASSEMBLY OF GOD<br/>521 South First Street<br/>272-3017<br/>Jack Stone, Pastor • 272-3984<br/>S.S. 9:45 am, W.S. 11 am &amp; 6:30 pm,<br/>Wed. 7:00 pm<br/><b>EL BUEN PASTOR</b><br/>415 E. Ave. F • 272-5455<br/>Pastor Domingo Luna - 272-4542<br/>S.S. 9:45 am, W.S. 11 am &amp; 6 pm;<br/>Wed. 7 pm</p>  | <p><b>TRINITY BAPTIST</b><br/>314 E. Ave. B<br/>Bennie Wright, Min.<br/><b>CATHOLIC</b><br/>IMMACULATE CONCEPTION<br/>CATHOLIC CHURCH<br/>805 E. Hickory<br/>Leonardo Pahamtang, Min.<br/><b>CHARISMATIC EPISCOPAL</b><br/>ST. CLEMENTS<br/>1536 W. American Blvd. • 272-5954<br/>Father Sergio Leal<br/>Sun. W.S. 10:30 am</p>  | <p><b>METHODIST</b><br/>FIRST UNITED METHODIST<br/>507 W. 2nd St.<br/>Spanish Service 8:30;<br/>S.S. 9:45; W.S. 11:00<br/>Praise &amp; Prayer 6 PM<br/>Pastor Monty Leavell, 272-5517<br/><b>LAZBUDDIE METHODIST</b><br/>S.S. 9:30 am; W.S. 10:30 am<br/>Pastor Ken Peterson • 965-2121<br/><b>EL DIVINO SALVADOR U.M.C.</b><br/>619 E. 5th Street &amp; Ave. G, Muleshoe<br/>Javier Careaga, Pastor • 272-6888</p>   |
| <p><b>BAPTIST</b><br/>CALVARY BAPTIST<br/>1733 W. Ave. C.<br/>Rev. Jeff Coffman<br/><b>CIRCLE BACK BAPTIST</b><br/>Intersection FM 3397 &amp; FM 298<br/>946-3676<br/><b>FIRST BAPTIST</b><br/>220 West Ave. E<br/>Dr. Stacy Conner<br/><b>FIRST BAPTIST</b><br/>Lazbuddie • 965-2126<br/><b>PRIMERA IGLESIA BAUTISTA</b><br/>223 E. Ave. E<br/>Rev. Greg Guzman<br/><b>PRIMITIVE BAPTIST</b><br/>621 South First<br/>Elder Bernard Gowens, Min.<br/><b>PROGRESS BAPTIST</b><br/>Progress, TX<br/><b>PROGRESS SECOND BAPTIST</b><br/>Arthur Hays, Min.<br/>1st &amp; 3rd Sundays<br/><b>RICHLAND HILLS BAPTIST</b><br/>Bro. Larry Thornton<br/>17th &amp; West Ave. D<br/>S.S. 10 am; W.S. 11 am &amp; 6 pm;<br/>Wed. 7 pm</p> | <p><b>CHRISTIAN</b><br/>TRINITY CHRISTIAN CENTER<br/>1723 W. American Blvd. • 272-3877<br/>Reydon Stanford, Pastor<br/><b>CHURCH OF CHRIST</b><br/>LARIAT CHURCH OF CHRIST<br/>Sam Billingsley, Min.<br/>S.S. 10 a.m., W.S. 11 a.m. &amp; 6 p.m.,<br/>Wed. 7 p.m.<br/><b>LAZBUDDIE CHURCH OF CHRIST</b><br/>Nathan Crawford, Min.<br/>S.S. 9:30 am; W.S. 10:20 am &amp; 5 pm;<br/>Wed. 7 pm<br/><b>MULESHOE CHURCH OF CHRIST</b><br/>22nd &amp; W. American Blvd.<br/>Minister Barry Wiseman<br/>S.S. 9:30 am; W.S. 10:20 am<br/>&amp; 6 pm; Wed. 7:30 pm<br/><b>16th &amp; AVE. D</b><br/><b>CHURCH OF CHRIST</b><br/>Curtis Shelburne, Min. • 272-4619<br/>S.S. 9:30 am; W.S. 10:30 am;<br/>Growth Gr. 1:30 pm; Wed. 7:00 pm</p> | <p><b>NAZARENE</b><br/>ROCA DE SALVACION<br/>814 W. Ave. C<br/>Pastor Rafael Quezada<br/>Sunday, S.S./W.S. 10:00 a.m.,<br/>Evening 6 p.m.; Wednesday,<br/>W.S. 7 p.m.<br/><b>PENTECOSTAL</b><br/>UNITED PENTECOSTAL<br/>LIGHTHOUSE<br/>207 East Ave. G<br/>1-800-454-6051<br/>S.S. 10 am; Thursday,<br/>Bible Study 7 pm<br/><b>INTER DENOMINATIONAL</b><br/>NEW COVENANT<br/>Plainview Hwy.<br/>Steve Claybrook, Pastor<br/>W.S. 10 am; Wed. 7 pm<br/><b>MULESHOE COWBOY</b><br/>FELLOWSHIP<br/>117 E. Birch Street, Muleshoe<br/>Steve Friskup, Minister<br/>272-5199<br/>Service: 7:30 p.m. Thursday</p> |

**Deaf Smith County Grain, Inc.**  
Cliff A. Skiles

**DODD COTTON GIN**  
2912 CR 504, Muleshoe • 965-2311 or cell 674-1457  
ROBERT BOOZER, MGR. BEVERLY TURNER, OFFICE MGR.  
Email: robertb@amazonline.com

**IRRIGATION PUMPS & POWER**  
**Zimmatic** W. Hwy. 84  
CENTER-PIVOTS 272-5597

**United Supermarkets**

**MULESHOE ANIMAL CLINIC**  
GENERAL PRACTICE  
**M S**  
1430 US Hwy. 84 • Muleshoe Office: 272-3061

**MCCORMICK SEEDS, INC.**  
400 East Ash • 272-3156  
Muleshoe, Texas  
A COMPLETE LINE OF FIELD SEEDS  
Jim McCormick

**AG AVIATION**  
2 1/2 miles North on HWY 214  
272-3066 FAX 272-8981  
P.O. Box 68 • Muleshoe, TX

**1ST BANK** MEMBER FDIC  
202 South First 272-4515

**FIRST UNITED**  
LITTLEFIELD BANKING CENTER 2003 Hall Avenue • 806-385-7181  
EARTH BANKING CENTER Main & Cedar • 806-257-3451  
SUDAN BANKING CENTER 300 Main • 806-227-2411  
The New Star Of West Texas

**CENTRAL COMPRESS & WAREHOUSE**  
SUDAN, TEXAS

**BCEC** BAILEY COUNTY ELECTRIC COOPERATIVE ASSOCIATION  
Muleshoe — 272-4504 Morton — 266-8600

**WESTERN DRUG**  
& Something Special Gifts  
1411 W. American Blvd. 272-3106 Muleshoe

**Lowe's MARKETPLACE**  
401 W. American Blvd. • Muleshoe • 272-4585

**Taqueria Guadalajara**  
Specializing in Jalisco Style Mexican Food  
DIFFERENT SPECIALS EVERY DAY!  
Open 7 days a week — 7 AM to 10 PM  
Orders to go: 272-4333 or 272-3328 — Drive-Thru Service  
1201 W. AMERICAN BLVD., MULESHOE

# BAILEY COUNTY DEVOTIONAL PAGE



# Obituaries

## Benjamin Yeager

Funeral services for Benjamin Allen Yeager, 71, of McKinney, were held on Sunday, April 1, at Turrentine-Jackson-Morrow Chapel with J. Cooper Young officiating. Burial followed at Ridgeview Memorial Park.

Yeager died on March 30, 2007, in McKinney. He was born on Jan. 3, 1936, in Amarillo to Robert Lee and Mary Lucille Yeager. On Feb. 15, 1975, he married Patricia Anne Chitwood in Muleshoe.

He served his country in the U.S. Army. Yeager owned a real estate company and was of the

Methodist faith. His parents preceded him in death.

Survivors include his wife — Patricia; two daughters and their husbands — Traci and Lanny Wilkinson of Grapevine, and Jennifer and Chad Williams of Muleshoe; a son and his wife — Dwain and Terri Hutton of New Braunfels; a sister — Hylasue and Basil Walker of Amarillo; a brother and his wife — Bob and Wynell Yeager of Belen, N.M.; and six grandchildren.

In lieu of flowers the family requests donations to the American Diabetes Association.

## Erma Templar

A graveside service for Erma D. Templar, 94, of Muleshoe was held on Saturday, March 31, at the Lazbuddie Cemetery with Don Sharp officiating.

Templar died on March 28, 2007, in Muleshoe. She was born on April 17, 1912, in Cyril, Okla., and married Floyd Templar in Plainview on May 4, 1930.

Templar had lived in Muleshoe for the past four years after moving from Lazbuddie. She moved to Lazbuddie in 1929 from Cyril, Okla. She was a member of the Muleshoe Church of Christ.

She was the operator and

cook of the North Lazbuddie Gin Cafe from 1963 to 1984.

Templar was preceded in death by her parents — O.G. and Ladocia Moser York; her husband — Floyd on Mar. 5, 1963; and three sons — Jack, Bill and Bob Templar.

Survivors include a son and his wife — Jerry and Linda Templar of Denton; a daughter and her husband — Pat and Wayne Clark of Lazbuddie; 11 grandchildren, 31 great-grandchildren, and eight great-great-grandchildren.

Memorials may be sent to the New Mexico Christian Children's Home.

## Juan Garcia

A church service for Juan Garcia, 90, of Muleshoe was held on Saturday, March 31, at the Immaculate Conception Catholic Church with Fr. Leonardo Pahamtang officiating. Burial followed in Muleshoe Memorial Park Cemetery.

Rosary was said on Friday, March 30, at the Ellis Funeral Home Chapel.

Garcia died on March 29, 2007, in his home. He was born on May 29, 1916, in Villanueva, N.M., and married Cleo Tilde Trujillo in Vaughn, N.M. in 1937. He later married Vicenta Velasquez in 1964 at Vaughn, N.M.

Garcia was preceded in death by both wives; two sons — Frank and Jose; a

daughter — Terry; and a brother.

Garcia had lived in Muleshoe since 1968, after moving from Hereford. He was a member of the Immaculate Conception Catholic Church.

Survivors include five sons — Miguel Velasquez of Española, N.M., Juan A. Garcia of Albuquerque, Jose Blas Garcia of Copperas Cove, Manuel C. Garcia of Monohans and Dickie Garcia of Killeen; five daughters — Libby Garcia of Taiban, N.M., Laura Garcia of Albuquerque, Rosie Garcia of Amarillo, Cordy Aguirre of Muleshoe and Liza Velasquez of Albuquerque; and 44 grandchildren.

## Juan Juarez, Sr.

Church services for Juan Juarez, Sr., 31, of Earth, were held on Wednesday, April 4, at the First Baptist Church of Earth with the Rev. Cecil Golden officiating. Burial followed in Springlake Cemetery.

Juarez died on Saturday, March 31, 2007, and was born on April 29, 1975, in Brownsville.

Juarez had lived in Earth since moving from Mercedes in 1990.

He was a member of the St. Mary Magdalen Catholic

Church in Earth, and had attended Springlake-Earth schools, and coached the Badgers in Little League Baseball in Earth.

Survivors include his sons — Juan Jr., Daniel Joe, and Zachary Lee Juarez, all of Earth; his parents — Procorro and Andrea Juarez of Earth; two sisters — Rosa Juarez of Earth and Elizabeth Rodriguez of Baytown; and five brothers — Antonio, Eduardo, Luis, Rogelio and Victor Juarez, all of Earth.

## Julie Gatewood

Funeral services for Julie Gatewood, 37, of Canyon were held on Wednesday, April 4, in Living Water Christian Fellowship with the Rev. Shane Nease, officiating. Burial followed in Dreamland Cemetery.

Gatewood died on Saturday, March 31, 2007. She was born on Dec. 2, 1969, in Belen, N.M., and married Mike Gatewood on Dec. 25, 1995.

She was a member of Living Water Christian Fellowship.

She was preceded in death by her mother — Pat Howard Pena.

## Meals on Wheels raffle is under way

Bailey County Meals on Wheels is selling raffle tickets to help raise funds for the homebound food program.

First place is a painting by a local artist, second place is a quilt and third place is a \$50 cash prize. The tickets are \$5 each, and the drawing is set for May 11.

The painting and the quilt are available for viewing at the Bailey County Courthouse Aging Services office.



JULIE GATEWOOD

Survivors include her husband — Mike Gatewood; two daughters — Michaela and Stephanie Gatewood of Canyon; two sons — Michael Allen of Amarillo and Daniel Wade of Arizona; her father — Felix Pena of Muleshoe; a stepbrother — Dick Pena of Muleshoe; four stepsisters — Morgan, Kelly, and Shawnee Pena, all of El Paso, and Toy Pena of Arizona.

**Thanks for reading!**

**EXPERT JEWELRY AND WATCH REPAIRING**

- Ring sizing - 2-3 days
- Ring re-mounting • Jewelry appraising
- All makes watch batteries • Faster service

*Celebrating 63 years*

**HOLMBERG JEWELRY**

*Jewelry Accents - Credit Program; Always go Days Same As Cash*

1908 N. Prince • Clovis, NM • 762-9376  
New Saturday Hours: 9:30 - 12:30

Visit our website:  
[www.muleshoejournal.com](http://www.muleshoejournal.com)

**Dunn's FISH FARM**

P.O. Box 85, Fittstown, OK 74842  
[www.dunnfishfarm.com](http://www.dunnfishfarm.com) • 800-433-2950

Channel Catfish, Bass, Hybrid Bluegill, Redear Bream, Coppernose Bluegill, Fathead Minnows, Koi, Crappie and Triplod Grass Carp are now available for Pond and Lake Stocking. A permit and 10 days notice are required for the purchase of Triplod Grass Carp.

- We furnish hauling containers!
- Live Delivery Guaranteed!
- Discounts/Special Deliveries on large orders!
- Turtle Traps, Fish Feeders, Fish Traps!
- Decorative Fountains, Aerators, Windmill Aerators!
- Vegetation Control, Pond Fertilizers, Floating Docks!

**DELIVERY WILL BE ON FRIDAY, APRIL 13TH**  
at the times listed for the following towns & locations:

PLACE	PHONE	TIME
Muleshoe-Muleshoe Feed Barn	272-5626	7:00-8:00 am
Sudan-Farmers Coop Sudan	227-2461	9:00-10:00 am
Plainview-Jalee's Outrigger, Inc.	293-5079	11:30-12:30 pm
Tulia-Big "N" Farm Store	995-3451	1:30-2:30 pm
Canyon-Consumers Fuel Assoc. Coop.	655-2134	3:30-4:30 pm

To place an order or for more information, call one of our Aquatic Consultants, your local dealer or email [sales@dunnfishfarm.com](mailto:sales@dunnfishfarm.com)  
Hrs: Mon-Fri. 7 am-6 pm, Sat. 8 am-5 pm CST  
1-800-433-2950 — Fax 1-580-777-2899 — [www.dunnfishfarm.com](http://www.dunnfishfarm.com)

**Dr. J.W. Haltom**  
*Family Dentistry & Orthodontics*

For A Limited Time  
**\$50 OFF**  
Crowns and Bridges

Erika Trotter, Amber Garcia, Jessica Haltom & J.W. Haltom

- Emergencies Seen Promptly
- Insurance Accepted
- Patient Financing
- Adults & Children Welcome
- Televisions & Head Phones In Treatment Rooms
- Relaxation Gas

**806-385-6935**  
320 East 8th Street, Littlefield, Texas

## Baby Showers



J'LAYNE KEMP

## Kemp baby shower held

A baby shower honoring J'layne Kemp was held on Saturday, Feb. 17, in the Trinity Christian Center fellowship hall in Muleshoe.

Table appointments included baby pink cloths, hurricane lamps with green apples and pink liquid.

The serving table was adorned with pink polka-dot hatboxes, pink netting, white baby roses and cherubs. Refreshments were pink and chocolate thumbprint cookies, and pink punch.

Hostess gift was a Fisher-Price® rainforest highchair.

Special guests included Renee' Niehus, Debbie Kemp, Jean Kemp, M'lynn Rogers, K'lann Niehus, Donna Pittman and Jackie

Whatley.

Hostesses for the event included Tiffany Hicks, Amy Barnes, Jane Foster, Louvenia Garlington, Tori Smith, Jennifer Andress, Linda Lee, Glenna Yell, Kendra Bruns, Joanna Martinez, Angie Morris, Charity Price and Tiffany Fullen.

BOOTS Work & Dress  
SHOES Casual & Athletic  
CLOTHING Western & Athletic

**GENERAL WILLIAMS STORE**

SINCE 1963

1405 West American Blvd. Muleshoe, Texas  
806-272-MULE (6853)

One for every charmed moment

**PANDORA Jewelry**

*As seen in Glamour, Oprah & Lucky magazines*

Antiques & Fine Things

2104 W. American Blvd., Muleshoe • 272-4217

Bridal Shower Selections

Pandora Easter Bunny & Egg charms have arrived!

**Muleshoe Cattle Market**

REPRESENTATIVE SALES  
SAT., MARCH 31, 2007

293 head of cattle, 68 hogs and 342 sheep and goats for a total of 703 livestock sold at the March 31 sale. Another wet Thursday & Friday slowed receipts down significantly. But what a great spring we're having!

FOR INFORMATION ON SALES OR TO CONSIGN CATTLE - 272-4201

Seller, City	#	Type	Wt.	CWT or PH
Rafael Lopez, Lazbuddie	8	Hol. bulls	193 lbs.	at \$110
Rafael Lopez, Lazbuddie	4	Hol. bulls	233 lbs.	at \$104
Patricia Azua, Sudan	1	Blk. bull	305 lbs.	at \$149
Travis Field, Dora, NM	2	Char. str	423 lbs.	at \$128
Travis Field, Dora, NM	3	Char. str	518 lbs.	at \$123
Travis Field, Dora, NM	3	BWF str	690 lbs.	at \$110
Lacy Vardeman, Slaton	2	Blk. bulls	513 lbs.	at \$115
Lacy Vardeman, Slaton	3	Blk. bulls	850 lbs.	at \$85
Yolanda Hererta, Hereford	1	Blk. str	710 lbs.	at \$105
Heinrich Siemens, Denver City	2	Blk. hfrs	393 lbs.	at \$118
Heinrich Siemens, Denver City	2	Blk. hfrs	430 lbs.	at \$117
Travis Field, Dora, NM	4	Blk. hfrs	569 lbs.	at \$107
Miguel Ramirez, Bovina	1	Blk. hfr	600 lbs.	at \$110
Carroll Cook, Friona	1	Blk. hfr	610 lbs.	at \$102
Larry Buckley, Littlefield	1	Blk. pair		\$730
Dan Bowman, Morton	1	Roan pair		\$840
Dan Bowman, Morton	2	Roan cows	1123 lbs.	at \$47.25
Joe Garcia, Albuquerque, NM	1	Blk. cow	930 lbs.	at \$48.50
Steve Busby, Springlake	1	Char. bull	1550 lbs.	at \$61.50
Samantha Southard, Elida, NM	1	Red bull	1550 lbs.	at \$61.50



# Sports

## Lady Mules fall to Lady Antelopes in 'heart breaker'

By Delton Wilhite  
Sportswriter

The Lady Mule softball team lost a heart breaker to the Abernathy Lady Lopes Tuesday. Abernathy used a six run seventh inning to catch the Lady Mules at 16 runs for each team. Abernathy scored in the top of the eighth and held the Lady Mules scoreless in the bottom of the inning.

The Lady Lopes went in order in the first and second innings. BreAnn Baca grabbed a pop fly at third to sit down the first batter. Morgan Smith struck out the second batter and the third Lady Lope drew a walk.

Jasmine Davenport threw a strike to Lupita Andrade at second to gun down the Lady Lope attempting to steal for the third out.

CiCi Reyna singled to left and moved to second on the first pitch to Davenport. Davenport smashed a double to the left field fence to score Reyna and put the Lady Mules on the board.



CHELSEE NICHOLS

### Nichols honored

Lazbuddie student athlete Chelsea Nichols, pictured above, was recently honored by the school for being named to the following teams:

- First Team All Region, Texas six-man Coaches Association.
- Second Team All State, Texas six-man Coaches Association.
- First Team All Region, TABC.
- First Team All State, TABC.

Baca singled down the right field line to score Davenport and put the Lady Mules up 2-0.

Abernathy went in order in the second inning. The Lady Mules exploded for five runs in the bottom of the second. Gabby Perez led off with a walk and moved to third on a double up the middle by Smith.

A double to center by Brittany Ambriz scored both Perez and Smith. Andrade doubled to left to bring Ambriz home. Andrade moved to third on a passed ball and scored on an error that allowed Reyna to reach first.

Reyna stole second and scored on a single to right by Davenport. The Lady Mules led 7-0 after two innings. The Lady Mules gave up a run in the top of the third on a passed ball to put Abernathy on the board.

The Lady Mules went in order in the bottom of third. The Lady Lopes scored four in the top of the fourth. Smith was the only Lady Mule to cross the plate in the bottom half of the inning. The Lady Mules led 8-5.

Abernathy sent 10 to the plate and scored four runs on just one hit in the fifth to take a short lived 9-8 lead.

The Lady Mules retook the lead in the bottom of the fifth. Reyna blasted a double to left to lead off for Muleshoe. She moved to third on an error that put Davenport on first and scored on an error on the catcher.

Davenport moved to second on the error and went to third on the

catcher's error. She stole home to put the Lady Mules up 10-9.

Abernathy scored one in the top of the sixth to tie the game. Smith walked to start the Lady Mule half of the inning. Ambriz reached on an error and moved Smith to second. A passed ball moved Smith and Ambriz up a base. Eagle drew a walk to load the bases.

An error on the left fielder allowed Smith and Ambriz to score. Eagle went to third and stole home to push the Lady Mule lead to 13-10.

Abernathy sent 11 to the plate in the top of the seventh and scored six runs on six hits. Perez reached on error to start the bottom half of the seventh.

Amber Fuentes sacrificed her to second. Smith drew a walk. Andrade tripled to left center to score Perez and Smith.

Eagle singled down the right field line to score Andrade. Eagle left on the first pitch to Reyna.

Reyna ripped a single to right and Eagle rounded second. She attempted to go home but was tagged out at the plate. The score was tied 16-16 and the game went to extra innings.

The Lady Lopes scored one run in the top of the eighth and the Lady Mules could not answer.

The loss dropped the Lady Mules to 1-2 in district. Their game with Dimmitt Saturday was rescheduled in Dimmitt Monday afternoon. The Lady Mules hosted the Littlefield Lady Cats Tuesday and travel to Abernathy April 6.

### Alzheimer's Support Group

The Bailey County Alzheimer's Disease Support Group will be meeting on a new date and new time this month.

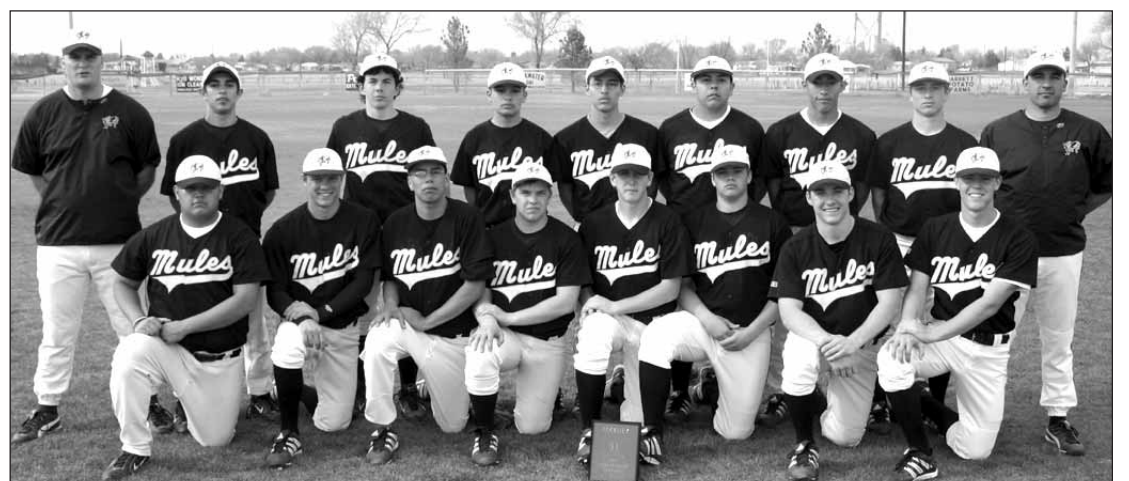
The meeting will be Thursday, April 12, at noon, at Park View Nursing Home. The program will be presented by Roy Puente, a licensed social worker and nursing home consultant. Lunch will be served.

For more information call Debbie Crabtree, Bailey County Aging Services, 272-3647, or Mandi Seaton, Bailey County extension agent - Family and Consumer Sciences, 272-4583.



### Beating the ball

Varsity Mule Timothy Conner slides into second base in front of the baseball during the recent game against the Dimmitt Bobcats. Photograph by Norm Brantley.



### Mules take tourney championship

The Varsity Baseball Team won the Field of Dreams Tournament Championship in Lockney on March 15-17. Pictured above, from left to right, are: Back row — Coach Boatman, Ray Ramirez, Marshal Head, Stephen Dominguez, Elias Alvarado, Ceasar Lopez, Victor Vasquez, Dusty Clayton and Coach Ramirez; and Front row — Junior Martinez, Brant Hamilton, Julio Bustillos, Matthews Richards, T.J. Brantley, Tanner Bales, Timothy Conner, Garrett Riley.

### Publication of Obituaries

Obituaries printed in the Muleshoe Journal are printed free of charge and contain the following types of information: date and details of funeral and place of burial; date and place of birth and parents names; date of marriage; limited biographical information, including the highest level of schooling achieved, service in the Armed Forces, profession (and retirement information if applicable); names of relatives who have preceded the person in death; names of survivors (including husband and wife, parents, in-laws, brothers, sisters, grandparents (only the number of grandchildren, great-grandchildren and great-great-grandchildren) will be included; and where memorials may be directed. We are pleased to run a one column black and white photo at no charge. A larger photo or a color photo will cause the obit to be paid. Please keep in mind that everything must be submitted by your funeral home.

## Support the Boosters Who Support Our Teams, Schools and Community!

**LOWE'S MARKETPLACE**  
401 W. American Blvd., Muleshoe

**BCEC**  
**BAILEY COUNTY ELECTRIC COOPERTIVE ASSN.**  
305 E. Ave. B, Muleshoe 272-4504

**FIVE AREA TELEPHONE COOPERATIVE**  
302 Uvalde Muleshoe, TX 272-5533

**Irrigation Pumps & Power**  
www.drippi.com  
West Hwy. 84 Muleshoe • 272-5597  
**Zimmatic**

**got milk?**  
**BOEHNING DAIRY FARMS**  
690 CR 45, Earth 965-2997

**Leal's RESTAURANT**  
1010 W. American Blvd. Muleshoe, Texas 272-3294  
"The Original - Since 1957"

**MULESHOE ANIMAL CLINIC & MULESHOE VET SUPPLY**  
1430 US HWY. 84, MULESHOE 272-3061 OR 272-4990

**MULESHOE VALLEY INC.**  
2601 West American Blvd. Muleshoe • 272-4266

**AGRILIANCE**  
Clovis Hwy. West Muleshoe • 272-4203  
Bruce Bruns, Location Mgr.

**MULESHOE TIRE**  
107 Main Street Muleshoe • 272-4594

**MULESHOE LIVESTOCK AUCTION, INC.**  
PO Box 754, Muleshoe 272-4201

**Chevron DALE OIL CO. INC.**  
413 W. American Blvd. Muleshoe • 272-5576

**WESTCARD**  
**Western "66"**  
607 N. 1st St. Muleshoe • 272-4556

All Major Credit Cards Accepted  
**ADVANCE TOWING & RECOVERY**  
24 Hr. Service  
Freddie Anzaldúa  
806-272-4007 or Cell 946-7216  
804-A W. American Blvd., Muleshoe

Available for any occasion!  
Rent by the hour for affordable fun!  
Have jumper, will travel!  
**ALVARADO PARTY RENTALS**  
(806) 272-5588

**CENTRAL COMPRESS & WAREHOUSE**  
205 Railroad Ave. Sudan, TX 227-2388

Dine In Carry Out or Have It Delivered!  
**Pizza Hut**  
Go Mules!  
272-4213  
1412 W. American Blvd. Muleshoe, Texas

**minsa**  
Hwy. 84 E. of Muleshoe • 272-5545

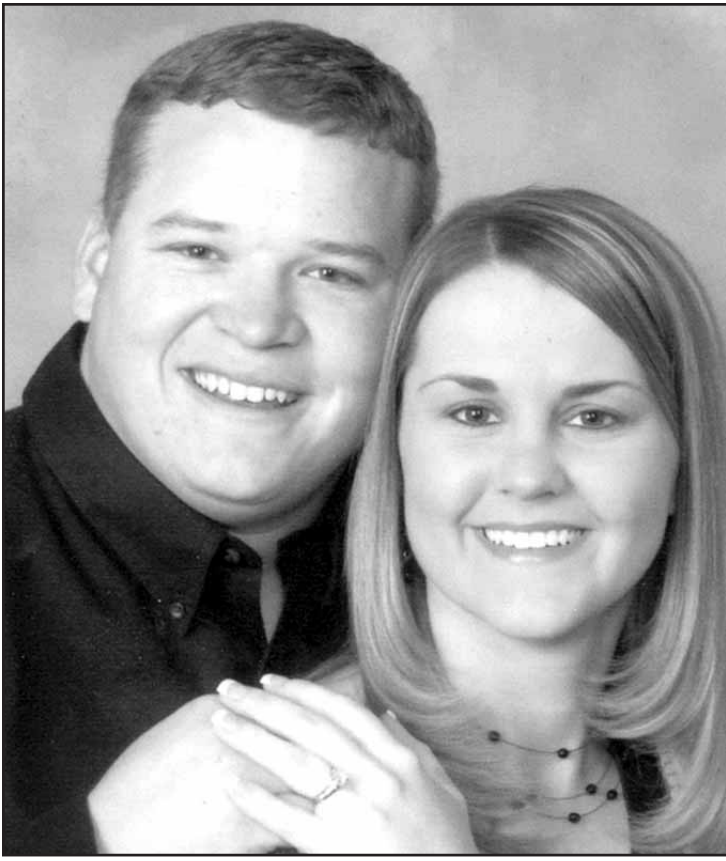
**West Camp Gin**  
350 FM 1731 Muleshoe, Texas 925-6681

# MULESHOE ATHLETES ARE #1!

**United Supermarkets**  
104 W. 9th St. Muleshoe, Texas 272-3120



# Engagements



LISA EDWARDS AND DANNON PROVENCE

## Edwards, Provence to wed

Mr. and Mrs. Gary Edwards of Earth announce the engagement and approaching marriage of their daughter — Lisa D'Nae Edwards, to Dannon Jacob Provence.

The prospective bride is a 2002 graduate of Sudan High School and is currently attending Texas Tech University Health Science Center. She will graduate in May 2008 with a masters in physical therapy.

The prospective groom is the son of Mr. and Mrs. Darren Provence of Sudan. He is a 2001 graduate of Sudan High School, graduated from Eastern New Mexico University in 2006 with a degree in business administration, and is currently attending Wayland Baptist University

to complete his teaching certification and masters in education.

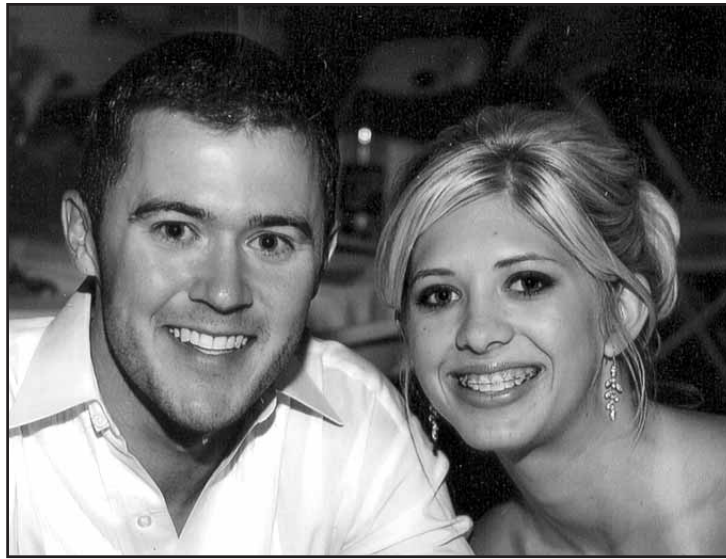
He is self-employed as a computer network technician.

Grandmothers of the prospective bride include Jonelle Bandy and LaRue Edwards, both of Sudan. Her grandfathers include the late Dewey Bandy, and the late Eugene Edwards.

The prospective groom's grandparents include Theron and Ann Hill and Paul Provence also of Sudan and the late Arlene Grigsby.

The wedding is set for Saturday, May 19, at 6 p.m., at the First Baptist Church of Sudan.

A reception will follow at the Sudan High School Commons Area.



LINCOLN RILEY AND CAITLIN ELYSE

## Buckley, Riley to wed

Mr. and Mrs. Darrell Buckley of Dimmitt announce the engagement of their daughter, Caitlin Elyse, to Lincoln Michael Riley, the son of Mr. and Mrs. Mike Riley of Muleshoe.

Grandparents are Libby Cleveland and the late Kenneth Cleveland, and the late Mr. and Mrs. Jimmy Buckley, all of Dimmitt.

Riley is the grandson of Mary Pool of Lubbock and the late Myron Pool II, and Mr. and Mrs. Claude Riley of Muleshoe.

The prospective bride is a 2003 graduate of Dimmitt High School and a May 2006 graduate of Texas Tech University with a

degree in human development and family studies.

While at Texas Tech, she was affiliated with the Delta Delta Delta social sorority. She will be pursuing an elementary teaching position this fall.

The prospective groom graduated from Muleshoe High School in 2002, Texas Tech University in May 2005, and is currently working on his master's degree.

He is employed as the wide receivers' coach with the Texas Tech Red Raider football team.

They plan to be married on Saturday, July 14, 2007, at the First United Methodist Church in Marble Falls.

## Letter to the Editor

### Former resident remembers assistance from Bailey County

**To the Editor:**  
It has been 18 months since Hurrigan Rita touched so many lives in Southeast Texas and I am one of those that it left a remarkable place in my life.

I have needed to let those from Bailey County Electrical Coop know how all of us appreciated the help we received from those men that worked so hard to restore our power.

I was raised in the Lazbuddie/Muleshoe Community and have lived in Mauriceville all of my adult life.

We were without power for 29 days and because of those men from your cooperative helping it would have been so much longer

and I will never forget their tireless work under conditions that still make me shudder when I let myself remember.

Your recent losses with the tornados last weekend have me praying for all of you and I hope there is help for those needy.

Please, if you could make sure those that helped us know they were so appreciated and will never be forgotten, it wasn't a small job trust me, we still are cleaning up damage and know it will be years before things look normal again.

Once again, we deeply appreciate you, Bailey County.

**Johnece Seaton Clark,  
Mauriceville**

## Cancer screening clinic set

The Don and Sybil Harrington Cancer Center Comprehensive Breast Center will conduct a breast cancer screening clinic at Muleshoe Area Medical Center on April 2 and 19.

Funding is available through the Texas Department of Health for Texas residents who qualify for assistance.

Call 806-356-1905 or 1-800-377-4673 for more information or to schedule an appointment.

## Lazbuddie ISD Driver's Education Class

Cost: \$205

Classroom portion: May 14-18, 21-25, 29 & 30

5:00 - 6:00 PM; Driving portion: June

Deadline to sign up: April 19, 2007

Parent's meeting: April 26, 2007 - 6:30 PM,

Lazbuddie Cafeteria

Call LISD Central Office at 965-2156.

[www.drippi.com](http://www.drippi.com)

**"SUPER WOMAN"**  
NEED A TEMPORARY HOUSEKEEPER?  
LAST MINUTE CHILD CARE?  
GOING ON VACATION AND NEED A PET  
OR HOUSE SITTER?  
CALL "SUPER WOMAN" TO SAVE THE  
DAY!

**POW!** **BANG!** **CRUNCH!**

ODD JOBS ARE MY SPECIALTY.  
WHAT YOU NEED DONE I CAN DO FOR YOU!

WHAT CAN "SUPER WOMAN" DO FOR YOU? CALL LESLIE RADFORD (AKA "SUPER WOMAN") AT 965-2846 (LEAVE MESSAGE)

REFERENCES & OTHER SERVICES AVAILABLE.

## Lazbuddie '3 on 3' tourney set

The Lazbuddie Longhorn Pride will sponsor a "3 on 3" Basketball Tournament on April 20-21 at the Lazbuddie High School Gymnasium.

Longhorn Pride is a program which promotes pride in students and the school, seeking to promote attendance, exemplary citizenship and academic success. The funds will be used to promote these behaviors at Lazbuddie Schools.

Games will begin at 5 p.m. on Friday, April 20, and will resume at 8 a.m. on Saturday, April 21.

Prizes will be presented to first and second place

teams in each division, depending on the number of entries.

Each team is guaranteed three games. The division played in will be determined by age of oldest team member.

Teams may consist of only four members.

The entry fee is \$50 per team if paid in advance, and \$55 if paid at registration. All entry fees must be paid before first game is played.

For additional information, including tourney rules and entrance forms contact the Lazbuddie Independent School District.

## Fine arts boosters club to meet

The Muleshoe Fine Arts Boosters will be meeting on April 6, at 7 p.m., at the band hall. All parents of fine arts students are encouraged to attend.

*"The celebration of our risen Lord is a wonderful time in the life of a Christian. Come share our joy in the resurrection."*  
**Bro. Larry Thornton, pastor**

**Richland Hills Baptist Church wishes you a joyous Easter, and invites you to attend it's Easter Sunday service.**

**SUNDAY SCHOOL — 10 A.M.  
WORSHIP SERVICE — 11 A.M.**

**1631 W. Ave. D • Muleshoe**

**FiberMax**  
FM 960 B2R

**PICK THE COTTON THE ONE TON CLUB PICKS.**

Go with a variety that's been proven to yield a ton of cotton fiber per acre. Ask your seed dealer or visit us at CottonExperts.com for more information.

**KEY ONE TON VARIETIES**  
FM 958LL | FM 955LLB2  
FM 989RR | FM 9060F  
FM 960B2R | FM 9063B2F  
FM 989B2R

**FiberMax**  
cotton seed

FROM THE FIELD TO MILLS WORLDWIDE QUALITY ALL-DOWN THE LINE

**Bayer CropScience**

©2006 Bayer CropScience, 2 T.W. Alexander Drive, Research Triangle Park, NC 27709. Always read and follow label instructions. For additional product information call toll-free 1-866-99-BAYER (1-866-992-2937) or visit our Web site at www.CottonExperts.com. BCSRFB0617

## "Learning All the Worth of Pain"

The tones ascend in the sanctuary, winged praises launched heavenward by the band of assembled worshippers.

*"When my love to Christ grows weak, / When for deeper faith I seek, / Then in thought I go to thee, / Garden of Gethsemane!"*

J. R. Wreford's familiar words lead them in praise,

Heaven's verdict concerning the work of our redemption—"It is finished"—and dies, the melody leads the celebrants from death back to life.

*"Then to life I turn again, / Learning all the worth of pain, / Learning all the might that lies / In a full self-sacrifice."*

"The worth of pain, the worth of pain . . ."

The words echo through the sanctuary and reverberate in the hearts of those present. They are more than empty words to the widow whose life has been so changed by the unwelcome hand of death. Those words are full of meaning to the middle-aged lady whose marriage has died a death just as painful as any physical demise. They mean something to the father who sings them and thinks of the pain of his drug addict son—and his own pain.

None of those singing are strangers to pain. Even the little ones understand skinned knees. Most of the older ones are well-decorated with unseen purple hearts bought by the deeper wounds of life.

On they sing of "the worth of pain," with the assurance of Heaven itself that, for those whose faith is placed in the Christ of Calvary, no pain need be meaningless.



**Focus On Faith**  
Curtis Shelburne

recalling the scenes of that dark evening in Gethsemane when the salvation of the world hung in the balance awaiting the decision of one weary figure.

Through the shades of Gethsemane, past its gnarled olive trees, the thoughts of the worshippers proceed until the eye of faith rests on one man suffering, weeping, praying alone.

The notes of the hymn lead the worshippers up the hill of Calvary to stand at the foot of the cross with Mary and John and the soldiers, a small band of people, a microcosm of humanity, some crying, some gambling, some taunting while the Author of life tastes death.

But as he pronounces

Curtis Shelburne is minister of the 16th & D Church of Christ in Muleshoe.

**Have you registered to vote!**



**ALVARADO PARTY RENTALS**

**INFLATABLE BOUNCER**  
Safe - Affordable Fun For Kids!  
BEST PRICES AROUND

**272-5588**  
2 Hrs. \$50 - 4 Hrs. \$75 - 6 Hrs. \$100  
8 Hrs. \$125

Birthday Parties • School Functions • Special Events  
**DELIVERY, SETUP & PICKUP**  
SE HABLE EN ESPAÑOL EDDIE & RACHEL ALVARADO  
DJ SERVICES ALSO AVAILABLE

1105

**RED WING SHOES**

**The Fair Store**  
120 Main 272-3500

**Muleshoe Bail Bonds Anzaldua Tax Service & Advance Towing (U-Haul service)**

One location. One office. One phone number.

**272-3001**  
Farwell-481.2245 Morton-891.0445  
804-A W. American Blvd., Muleshoe  
Notary Public service available.

**T-L Irrigation Systems Dealer**

**PRECURE ELECTRIC**  
Carroll Precure - Owner  
**424 N. 1st, Muleshoe 272-4844**

GENERAL ELECTRICAL CONTRACTING  
• Residential • Commercial • Irrigation

**Decorators Floral & Gifts**

616 South First Street  
Muleshoe, Texas  
806/272-4340  
www.decoratorsfloral.com

A green thumb beats a blue disposition every time!  
Brighten their day by sending them flowers or a beautiful plant. Guaranteed to turn frowns upside down!

Rent this space for only \$9-\$11.25 per week!  
Call 272-4536 and ask how!

Rent this space for only \$9-\$11.25 per week!  
Call 272-4536 and ask how!

**Muleshoe Fans**

Advertise your business here!  
**272-4536**

6 months \$11.25 week  
12 months \$9.00 week

**Manicures, Pedicures Chemical Peels Facials & Waxing Family Hair Salon**

115 S. Main • 272-5987  
Mon.-Fri. 9ish to 5ish  
Pat Young, Jamie Smyer, Sherry Curtis, & Kayla Claybrook

**Carolyn's Christmas Creations**

106 E. American Blvd.  
Muleshoe, Texas  
272-5911  
www.visitcarolyns.com  
Open Daily

*'Tis Always Christmas at Carolyn's!*

Where is Arid's Easter bonnet?  
Can you find it?

**Newspaper Fun!**  
www.newspaperfun.com  
Annimills LLC © 2007 V4-N13

**LOWE'S MARKETPLACE**

401 W. American Blvd.  
Muleshoe, Texas  
272-4585

**BCEC**

**BAILEY COUNTY ELECTRIC COOPERATIVE ASSOCIATION**

305 E. Ave. B  
Muleshoe, Texas  
272-4504

**SHIPMAN'S BODY SHOP, INC.**

410 N. 1st Street  
Muleshoe  
**272-4408**

• 24 hr. Wrecker Service  
• Complete Collision Repair  
• Glass Work

Family owned for over 35 years  
Garry Shipman

**Easter Is A Time For...**

We love decorating eggs for Easter. We use paints, dyes and stickers.

What Do People Do With Eggs?

nature clothes bells  
eggs parades candles

What Is The Biggest Egg In The World?  
Do you know what animal lays the biggest egg in the world today?  
Follow this color key and color in the egg to find out:  
P = Purple or Pink  
Y = Yellow  
G = Green  
B = Blue

Find and circle all these words that tell what people do with eggs:  
fry eat dye roll hunt hide toss paint hatch pickle deliver scramble decorate refrigerate

**Easter is a time for:**  
1. \_\_\_ to celebrate  
2. going to services at \_\_\_  
3. joy in the spring green of \_\_\_  
4. starting, new \_\_\_  
5. wearing new \_\_\_  
6. ringing \_\_\_  
7. dying and decorating \_\_\_  
8. singing Easter \_\_\_  
9. Easter egg \_\_\_  
10. baking hot cross \_\_\_  
11. Easter bunny bringing \_\_\_  
12. lighting \_\_\_  
13. gathering Easter \_\_\_  
14. visiting friends and \_\_\_  
15. marching in Easter \_\_\_

Ask Mom, Dad or another grown-up if it is okay to come to **visit our website to play our fun mini game.**

Visit our website to see the answers to the puzzles:  
**www.readingclubfun.com** Set goals and keep reading all year long. Join our new international reading club to help you meet your goals and have fun.

Peep! Where am I?

**FARMERS INSURANCE GROUP**  
Symbol of Superior Service

**FARMERS LAURIE WINCHELL**  
Insurance Agent

Call for a free quote:  
**HEALTH • AUTO LIFE • HOME BUSINESS**

1602 W. American, Muleshoe  
272-7548 • FAX 272-4756

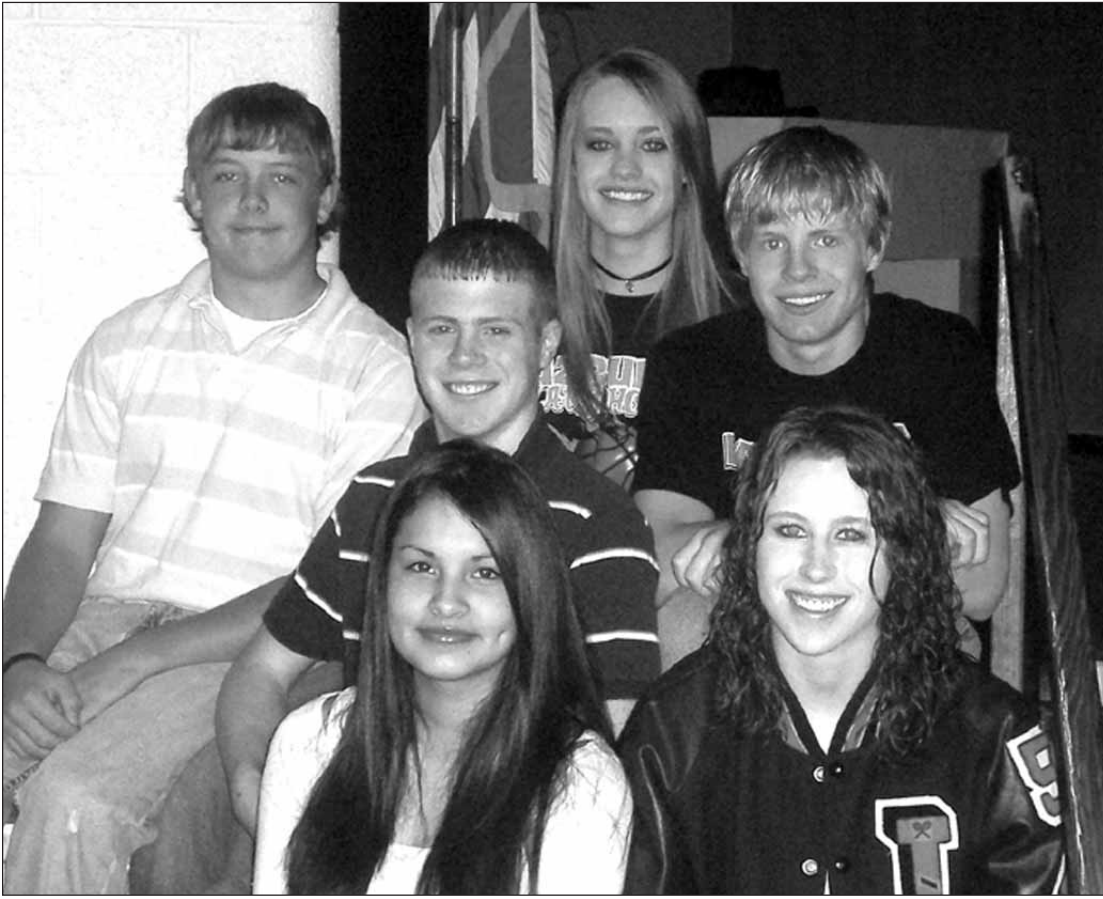
**Egg-citing Surprises**

Wow! How many chicks popped out of the first egg? Count the chicks and then find your colored pencils to color everything.

What happened to the Easter egg that was delivered ahead of time? Follow the dots to find out:

Newspaper Fun! Created by Annimills LLC © 2007





Pictured above, from left to right, are the regional qualifiers: Back row — Kayle Jesko and Brittney Schacher; middle row — Chase Timms and Jacob Schacher; and front row — Katie Chavez and Chelsee Nichols.

## Lazbuddie students place in UIL meet

Lazbuddie High School students competed in the district academic UIL meet on Thursday, March 22, at Lazbuddie.

### SPCAA seeks board member candidates

South Plains Community Action Association, Inc., is conducting a search for interested individuals to serve on the its board of directors.

Participation on the board is voluntary.

SPCAA provides reimbursement for travel, per diem and childcare.

SPCAA is a private non-profit organization with more than 35 years of experience helping people and changing lives, according to an organization representative.

The Minimum qualifications are:

- You must be 18 years of age or older.
- You must be a resident of the SPCAA area — Bailey, Cochran, Garza, Hockley, Lamb, Lynn, Terry, Yoakum, Lubbock, and the surrounding counties.
- You must be willing to serve a term of two consecutive years.
- You must be willing to attend the board of directors meetings every 10 weeks in Levelland.
- And, you must be willing to participate in committees and training sessions.

Interested individuals may call the SPCAA Community Services Division and ask for Adolfo Perez at (806)894-6104.

## Thanks for reading!



## WJHS Students of the Week

The Watson Junior High Students of the Week for the week of April 2, pictured above from left to right, are: Front row — Alexia Acosta, Luis Barcenas and Hector Flores; and back row — China Williams, Jeffrey Vasquez and Skyler Smith.

results from the Lazbuddie students:

In calculator applications, Chelsee Nichols placed third and will compete at regionals.

The calculator team of Chelsee Nichols, Regina Mata and Brianna Sanchez placed second.

In computer applications, Erica Derma placed fifth.

In computer science, Jacob Schacher placed second and Chase Timms placed third. Both will compete at regionals.

The computer science team of Jacob, Chase, Devlin Thompson and Jason Davis placed second.

In editorial writing, Chelsee Nichols placed fourth and is the alternate for regionals.

In feature writing, Chelsee Nichols placed fifth.

Literary Criticism - Katie

Chavez placed 3rd and will compete at regionals

The Literary Criticism team of Katie, Erica Derma and Monica Vera placed second.

In mathematics, Brittney Schacher placed fifth and Chelsee Nichols placed sixth.

The mathematics team of Brittney, Chelsee, Addie Treider and Erica Derma placed second.

In news writing, Brittney Schacher placed second and will compete at regionals and Chelsee Nichols placed fourth and is alternate for regionals.

In science, Kayle Jesko placed second and was top biology scorer and will compete at regionals

The science team of Kayle, Chase Timms, Addie Treider, Jacob Schacher, Devlin Thompson and Ryan Mason placed second.

## Motorists urged to observe 'signs of change'

Motorists should pay special attention to the 'signs of change' alerting them to work taking place on state roadways this week, National Work Zone Awareness Week.

The Texas Department of Transportation and federal transportation officials are urging drivers to obey work zone advisory signs not only during this national observance period, April 2-6, but at all times during travel.

"It's a team effort. TxDOT is pushing safety inside the work zone for our employees and increasing public awareness, but motorists need to do their part and stay alert when driving through construction zones and remember that there are people working in the vicinity," said Christy Johnson, TxDOT Lubbock district safety officer.

Texas no longer leads all states with 154 work zone fatalities as reported in 2005, the year for which the most recent statistics are available. But Texas does rank a close third behind California's 155 and Florida's 162 work zone fatalities for 2005.

Officials want to reduce that number and motorists can help by following these tips:

- Slow down, and pay attention to the signs.
- Expect the unexpected.
- Keep a safe traveling distance... do not tailgate.
- Obey road crew workers or flaggers.
- Stay alert and minimize distractions.
- Keep up with the traffic flow, and move to the other lane if possible.

• And, be patient and stay calm.

With nearly a 50 percent increase in work zone fatalities in the U.S. between 1997 and 2004, work zone safety continues to be a growing concern. In 2004, 1,068 work zone fatalities occurred.

Federal transportation safety officials estimate more than four out of every

five work zone fatalities are motorists... not workers. Nationally, this translates to one work zone fatality every 8.2 hours and one work zone injury every nine minutes.

"Working together is going to get our workers and the traveling public home safe to their families at night. That's what matters," Johnson said.

Time for new appliances? **Whirlpool** Home Appliances

**WE ARE YOUR HOMETOWN WHIRLPOOL DEALER.**

**McDaniel's** APPLIANCE 1020 Main Street, Clovis, NM 505-762-4481 or 800-682-7891 We now carry Speed Queen!

**Plateau's Safety & Security Plan**

**USF Offering ONLY \$19.95!**

The Plateau Safety & Security Plan includes:

- 100 Local Anytime Minutes
- FREE Nationwide Long Distance
- Caller ID
- Detailed Billing
- Carryover Minutes

Plateau is proud to participate in the USF Lifeline and Link Up programs. These programs assist eligible consumers to establish and maintain telephone service. For information on eligibility, please go to [www.plateautel.com/usf\\_offering.asp](http://www.plateautel.com/usf_offering.asp) or visit any Plateau store for details.

"A CLOSER CONNECTION" **PLATEAU** Wireless

[www.plateauwireless.com](http://www.plateauwireless.com)  
877-PLATEAU (752-8328)

<b>Muleshoe</b> Five Area Telephone Coop. 302 Uvalde (806) 272-7700	<b>Muleshoe</b> Connection Warehouse 117 Main St. (806) 272-5532	<b>Frona</b> WT Services 1010 Columbia (806) 250-5555
--	---	--

Contract Term: One (1) year. Activation Fee: \$25. Early termination fee: \$200 per year. A flat rate of \$ .60 per minute (includes Roaming and Long Distance) will apply when outside the rate plan's designated home area. Overage rate is \$ .50 per minute. Free Nationwide Long Distance is only available from the Local Plateau Calling Area. Additional taxes, fees, and surcharges may apply. Offer not available in all markets.

## Letter to the Editor

### Former resident remembers assistance from Bailey County

**To the Editor:**  
It has been 18 months since Hurrican Rita touched so many lives in Southeast Texas and I am one of those that it left a remarkable place in my life.

I have needed to let those from Bailey County Electrical Coop know how all of us appreciated the help we received from those men that worked so hard to restore our power.

I was raised in the Lazbuddie/Muleshoe Community and have lived in Mauriceville all of my adult life.

We were without power for 29 days and because of those men from your cooperative helping it would have been so much longer

and I will never forget their tireless work under conditions that still make me shudder when I let myself remember.

Your recent losses with the tornados last weekend have me praying for all of you and I hope there is help for those needy.

Please, if you could make sure those that helped us know they were so appreciated and will never be forgotten, it wasn't a small job trust me, we still are cleaning up damage and know it will be years before things look normal again.

Once again, we deeply appreciate you, Bailey County.

**Johnece Seaton Clark,**  
Mauriceville

# Say HELLO to High-Speed Internet!



**Rapid Communications**  
your local link to the world

## FREE INSTALLATION with a one year commitment!

- Loads faster than DSL or dial-up
- Always on connection, and no phone line needed
- Download photos and music quickly and easily
- No busy signals, never have to wait again

Ask about special savings for cable customers!



Call Today and Save!

# 1.800.963.4984

Rapid Communications 2006. For new residential customers only. Available services & pricing may vary and not be available in all areas. Download & upload speeds are maximum speeds; they may vary & are not guaranteed. Franchise fees, taxes, installation, restrictions & other fees may apply, the actual amount depending on location & service ordered. If service is canceled before 12 months, a \$100 service charge will be applied to customer's account. A cable modem or network card may be required at installation. Minimum computer requirements may be required. Offer subject to change. Other restrictions may apply. RAP12604



# Agricultural News

## Cotton Market Weekly

Cotton futures prices on the New York Board of Trade rose Thursday on follow-through buying from recent gains and stronger-than-expected weekly export sales.

The market quickly turned its attention from the export sales report on Thursday to Friday's release of the anxiously awaited Prospective Plantings report from USDA.

In 2007, the area planted to cotton in the United States is expected to shrink 20 percent from the previous year to 12.1 million acres, according to USDA.

The number was not a huge surprise to industry observers as cotton acres were widely anticipated to decrease significantly this year due to higher corn and soybean prices.

USDA now pegs total upland cotton acreage at 11.9 million, down 21 percent from last year and the lowest since 1989. Pima acres are estimated at 292,000, down 10 percent.

Growers in all cotton producing states are expecting lower cotton acreage this year as USDA showed the largest declines in Arkansas, Georgia, Louisiana, North Carolina, Mississippi, and Texas.

"Acres in Texas and Georgia probably were not cut as much as they should be," one analyst said. "But they really took a razor to North Carolina and Mississippi."

Growers in Texas, a state that produces more than 40 percent of the country's cotton, are expected to plant 5.7 million acres this year, down 11 percent from the 6.4 million acres planted in 2006. Georgia's planted acres are estimated at 1.2 million versus 1.4 million last year.

Although the release of USDA's planting intentions report has been highly anticipated by the cotton industry, most traders believe the actual planted acre figures will be significantly different.

"Trying to come up with an accurate forecast at this point, let alone on March 1 when the USDA data was compiled, is like trying to nail down jelly," a trader said.

"There are simply too many variables that can and will affect what ultimately is going to be planted, above all the weather," he said.

Meanwhile, USDA also

reported net export sales of U.S. cotton totaled 389,800 bales in the week ended March 22, a 45 percent increase from the previous week and an impressive 91 percent more than the four-week average.

China was back in the market in a big way with purchases totaling 201,900 bales.

Also showing solid sales performance were Turkey at 53,700 bales; Taiwan at 35,800 bales; and Indonesia and Pakistan with acquisitions of almost 25,000 bales each.

Export shipments of 223,300 bales were equal to the week earlier but six percent more than the four-week average. Major destinations included China, Turkey, Mexico, and Thailand.

"USDA's weekly export sales report was better than we've seen in some time, although many would argue that the data still could not be considered 'good' given how far the statistics are behind the pace required to hit the department's year-end target," one analyst commented.

There was a considerable rise in spot market sales as online trading by producers in Texas, Oklahoma, and Kansas totaled 40,227 bales in the week ended March 29 compared to 19,464 bales the previous week.

Average prices received by producers ranged from 43.39 to 47.37 cents per pound compared to 43.01 to 49.25 cents per pound the previous week.

## NRCS to provide federal funds to protect working farms, ranches

The USDA Natural Resources Conservation Service (NRCS) is accepting proposals until April 27, for the approximately \$1 million now available to protect agricultural land in Texas through the Farm and Ranch Lands Protection Program.

"This program helps communities preserve open space, wildlife habitat, and cultural resources," said Walt Douglas, NRCS acting state conservationist for Texas.

"This is an excellent way to keep prime farmland in agriculture and, at the same time, keep farming and ranching communities thriving by relieving development pressures," Douglas said.

Nationwide, \$69 million is available to all 50 states, the Pacific Islands, Puerto Rico and the Virgin Islands for FRPP projects in 2007.

NRCS is seeking proposals from local, state and federally recognized tribal governments and non-governmental organizations interested in working together to acquire conservation easements on farms and ranches.

Proposals postmarked or received at the NRCS state office in Temple by the close of business Friday, April 27, will be ranked and

considered for funding. Final project selections are expected to be announced in June.

Instructions for project proposals are available on the federal grants Web Site at <http://www.grants.gov>, and at <http://www.nrcs.usda.gov/programs/frpp>.

FRPP protects productive agricultural land by purchasing conservation easements to limit conversion of farm and ranch lands to non-agricultural uses.

NRCS provides up to 50 percent of the appraised fair market value of the conservation easement in this voluntary program. State, tribal and local entities can match that amount and they can include landowner donations in their match.

To date, NRCS and its sponsors in Texas entered 2,484 acres into four conservation easements through FRPP.

Nationwide, NRCS has closed 1,682 conservation easements covering 331,557 acres since the program began in 1996.

Among the changes made to FRPP in 2007 are:

- Easements must be closed within 18 months instead of the previously allowable two years.

- Cooperative entities must submit additional documentation on acres of wetlands and forested land. Additional documentation will be needed for cultural resources if the parcels are qualifying based on their historic or archaeological characteristics.

- Sponsoring entities must submit a list of alternative tracts of qualifying land in case a funded parcel is withdrawn from the program and the tract must be replaced from the list of alternatives.

For more information on FRPP, visit <http://www.tx.nrcs.usda.gov/programs/frpp/>.



SHEA SCOTT

### Scott receives superior rating

Shea Scott, a sixth grade student at Lazbuddie Junior High competed at the Pastoral competition at Texas Tech University in Lubbock March 24.

Shea received a superior rating on her piece. Shea will now compete at the state competition in Fort Worth this coming June.

Ashley Scott, a second grade student competed also and received an excellent rating on her piece.

Both girls are the daughters of Lee and Carolyn Scott.

### Diabetes support group to meet

The Bailey County Diabetes Support Group will meet this month on Tuesday, April 17, at 6:30 p.m. in the dining room of Muleshoe Area Medical Center. The program will be "Monitoring Blood Glucose." Kristi Spies, pharmacist, will be the speaker.

This program is free of charge to anyone interested. For more information, contact Mandi Seaton, Bailey County extension agent - Family and Consumer Sciences, 306 West Second, Muleshoe, TX 79347, 806-272-4583.

**Sunday, April 8 is Easter!**

**Happy Easter from the Dinner Bell family to yours!**

**The Dinner Bell**

**Easter Sunday Buffet**

**Steak & Mushrooms, Baby Back Ribs, Roast Beef & All the Trimmings**

(Plus, don't forget the Salad Bar!)

2103 W. American Blvd. • 272-4080

**Have a story or photo ideas? Let us know! 272-4536**

Deadline: 5 PM Monday - 272-4536

## More CLASSIFIEDS

### HELP WANTED

**Need a Better Job?**

**Now Hiring GREAT PEOPLE...**

**Great Benefits for Great People!**

- \$6.25 hr. (higher with qualified experience)
- Flexible hours
- Health benefits; life, medical, dental, prescription drug plan
- Paid Vacation, 401k plan & company stock plan

[www.TCFS.com](http://www.TCFS.com)

**Town & Country is a Going, Growing company...**

**Elevator Help Needed.** The AGP Grain Marketing elevators are in need of elevator help for various locations. Applicants must be at least 18 years of age and must pass a pre-employment physical and drug screen. Must be able to work in grain dust. If interested, please pick up applications at the main office in Bovina or call 806-251-1521 local, or toll free at 866-583-7362.

**Advertise!**

Looking for employment that offers a competitive salary, career opportunities, health, life, dental and vision insurance, an excellent retirement program, employer sponsored training and professional development, and a wellness program? The City of Muleshoe has openings in the Public Works and Police Departments. For requirements and application instructions, contact the Muleshoe City Hall, 215 S. First, Muleshoe, TX or the Texas Workforce Commission.

Park View Nursing Care Center, Muleshoe, is accepting applications for licensed nurses and CNA's. Various shifts available. For more info, contact Jodie Rose, 806-272-7578.

**UNDER NEW MANAGEMENT NOW HIRING**

**mins**

**MINSAS HAS SEVERAL POSITIONS AVAILABLE IN OUR PRODUCTION FACILITY.**

We are looking for hardworking individuals to fill several positions. Apply in person at Minsa or at WorkSource, 201 S. Main, Muleshoe. EOE.

Sonic Drive-In is now accepting applications for dependable, mature, enthusiastic, friendly crewmembers for all shifts, all positions. Manager Trainee needed. Apply in person, 1633 American. EOE.

FT Administrative RN needed at skilled non-profit, longterm care nursing home. Call for application, 806-285-2677. Runningwater Draw Care Center.

PT/FT medication aide. Apply in person at Runningwater Draw Care Center, 800 W. 13th, Olton. 806-285-2677.

LVN, 1st and/or 2nd shift. Apply in person at Runningwater Draw Care Center, 800 W. 13th, Olton. 806-285-2677.

*"The celebration of our risen Lord is a wonderful time in the life of a Christian. Come share our joy in the resurrection."*

**Bro. Larry Thornton, pastor**

**Richland Hills Baptist Church wishes you a joyous Easter, and invites you to attend it's Easter Sunday service.**

**SUNDAY SCHOOL — 10 A.M. WORSHIP SERVICE — 11 A.M.**

**1631 W. Ave. D • Muleshoe**



# CLASSIFIEDS

Deadline is Monday at 5 PM to place a Classified ad. Call 272-4536.

## PUBLIC NOTICE

### PUBLISHER'S NOTICE

All real estate advertising in this newspaper is subject to the Fair Housing Act which makes it illegal to advertise "any preference, limitation or discrimination based on race, color, religion, sex, handicap, familial status or national origin, or an intention, to make any such preference, limitation or discrimination." "Familial status includes children under the age of 18 living with parents or legal custodians, pregnant women and people securing custody of children under 18."

This newspaper will not knowingly accept any advertising for real estate which is in violation of the law. Our readers are hereby informed that all dwellings advertised in this newspaper are available on an equal opportunity basis. To complain of discrimination, call HUD toll-free at 1-800-669-9777. The toll-free telephone number for the hearing impaired is 1-800-927-9275.



## HELP WANTED

Accolade Home Care is currently seeking an enthusiastic/energetic RN to care for our clients in the Muleshoe area who is also interested in professional growth and advancement. We are honored to care for our employees & to serve our patients. We offer competitive salaries, benefit pkgs., supportive work environment, tuition asst. and online CE courses. Opportunities for advancement are offered to all who work hard with a great attitude. Happiness & joy are cornerstones of AHC. Please call Scott at (806)789-2174 or email myerss@fms-regional.com.

Receptionist needed for feedyard. Feedyard experience a plus. Apply in person at Castro County Feeders, 4 miles west of Hart on FM 145. No phone calls please.

**SOUTH PLAINS COLLEGE**  
EMPLOYMENT OPPORTUNITIES

**PART TIME JOB OPENINGS**  
\*\* MULESHOE RURAL NETWORK COORDINATOR  
\*\* ITV FACILITATOR

Complete job description & application at:  
www.southplainscollege.edu  
Submit to: South Plains College, HR, 1401 College Ave, Levelland, TX 79336, (806) 894-9611 ex. 2177. AA & EEO Edu. Institution TFN2-15

**Sanderson Grain in Springlake is accepting applications for PT scale/secretary/office help (male or female), and PT outside help from May 1,-Dec. 1, 2007. If interested, pick up an application in Springlake or call Brian Sanderson at 806-986-4236.**

CDL drivers w/ good records needed for 2007. Subject to DOT regs. and drug testing. Scott Johnson Farm Services. Call 806-481-6655.

## ESTATE SALE

### ESTATE SALE AMHERST

**3 Big Days! April 5, 6 & 7**  
9 AM - 4 PM  
ON CORNER OF 9TH & MADISON

House treasures, Coca Cola, furniture, refrigerator, dining table & chairs, new gift items, wicker furniture, mattress & box springs, TVs. Call for info - too much to list!

**Bill & JoJo's Estate Sales**  
806-252-0503

## REAL ESTATE

**Byrd Realty**  
Ronald Byrd  
Licensed Broker  
Crista Bass

228 Main Street, Muleshoe, Texas  
www.byrdrealestate.net

**New Listing** - Nice 3 bedroom, 2 bath brick home, sunroom, 2 fireplaces, built-ins, large master bedroom, lots of closet and storage space, indoor grill, finished basement, sprinkler system, storage building, fenced back yard, plus more.

**New Listing** - Country home on 30 acres, 3 bedroom, 1-3/4 bath brick home, 2-car garage, storage buildings, plus a lot more!

**New Listing** - Spacious 3 bedroom, 2-1/2 bath brick home with built-ins, island in the kitchen, den, living room, fireplace, refrigerated air/central heat, built-in tv, lots of closets and storage space, very nice large wood deck, pool, sprinkler system, storage building, 2 car garage, all on corner lot. Call and make an appointment today!

**Price Reduced!!** - Spacious 4 bedroom, 3 bath brick home, built-ins, refrig. air/central heat, 2 living areas, utility room, sunroom, built-in grill, fireplace, dining room, sprinkler system, fenced back yard, 2 car garage. Plus more!

Lazbuddie area, 2 bedroom, 1 bath brick home, built-ins, ref. air/central heat, 2-car garage, all on approximately 2-3 acres.

**NEED HOUSE LISTINGS! HAVE BUYERS! GIVE US A CALL!!**

**Very nice 4 bedroom/3-1/2 bath** - brick home, refrig. air central heat, lots of space, 2 car garage, fenced back yard, plus a lot more.

**New Listing** - Clay's Corner - 5 acre tract for sale.

**New Listing** - 3 bedroom, 2 bath brick home, cellar, corner lot, priced to sell.

**New Listing** - 320 acres, Clay's Corner Area. 2 valley circular sprinklers. 3 wells, Lays well.

**Home and 5 acres** - Very nice 3 bedroom, 1 3/4 bath home, built-ins, ref. air, central heat, sunroom with fireplace, patio, 2 car garage, 45 x 85 Quonset barn and more!

**Price Reduced** - Country Home on Hwy. Nice 3 bedroom, 2 bath brick home on approx. 3 acres, ref. air, central heat, lg. utility, fireplace, built-ins, spacious living area, finished basement, 2 car garage, 30 x 30 barn + more.

**Office: 272-5380** **Toll Free: 1-888-999-3846**

## HELP WANTED

### Regence Health Network, Inc. Women Infant Children's Program

Is now accepting applications for:  
**Nutrition Assistant**

In accordance with WIC guidelines, the Nutrition Assistant determines client eligibility based on residency and income. Other duties include filing, scheduling appointments, data entry and reception.

**Requirements:**  
High School diploma or equivalent. Excellent Customer Service Skills. Must have own vehicle, current driver's license/insurable. Bilingual in English/Spanish required.

**Applications accepted at the following location:**  
**223 E. Ave. B, Muleshoe**  
An Equal Opportunity Employer

**DRIVER**

**Jim Aartman Inc.**  
Food Grade Tanker Drivers

**LOCAL and OTR RUNS**

- Medical, Dental, Vision
- Excellent 401K plan
- Paid Holidays and Vacation
- CDL-A w/tank end. & 1 yr. exp.

**888-AARTMAN**  
EOE

PT LVN, 1st shift, flexible scheduling. Apply in person at Runningwater Draw Care Center, 800 W. 13th, Olton. 806-285-2677.

**PRESCRIPTIONS**

No prescription coverage? Can't afford your medication? You could qualify for free medication from pharmaceutical companies. For info, 800-816-5463.

**UNDER NEW MANAGEMENT**

**NOW HIRING**

**minsa**

MINSA IS ACCEPTING APPLICATIONS FOR 2 POSITIONS IN THE MAINTENANCE DEPT.

Some previous maintenance or welding experience preferred. Apply in person at MinSA or at WorkSource, 201 S. Main, Muleshoe, EOE.

**WANT TO BUY FURNITURE**

We buy used furniture, appliances and more. We'll take it off your hands and out of your way! Call 505-762-7838 or 505-714-2814.

## REAL ESTATE

**CASTRO CO. SECTION** - Choice land, strong water, large home, 4 large barns & shop bldgs., sprinklers & wells.

**CASTRO/HALE CO.** - Choice section, strong water, 1/2 mile sprinkler & irr. wells, pavement.

**CRP BUYERS: PARMER CO.** - two-480 acre tracts (one with active caliche pit).

**DEAF SMITH CO.** - 3 sections.

**SHERMAN CO.** - one section and 400 acres.

**CASTRO/SWISHER COUNTY LINES** - 856 acres, sprinkler irrigated, good water.

**LAMB CO.** - 160 acres divided by Hwy. 70.

**LAMB CO.** - 480 acres full dev., pvmt. and quarter divided by Hwy. 70.

**CHECK OUR WEBSITE** for data and pictures of many farms, ranches, feedyards, dairies and choice dairy locations with permits and acreages with homes.

www.scottlandcompany.com  
Ben G. Scott - Broker 800/933-9698 day/eve

**Cleavinger & Associates**  
Real Estate Just Became A Breeze

**Hart Farm** - These two half sections are 2 miles apart north and west of Hart. The north half section has 3 wells, 2 are 500 gpm and one is 200 gpm. The south section has 3 wells all about 500 gpm. All wells were metered in Nov. '06.

**Bailey County Farm** - 547 acres setup for cow/calf operation. Four center pivot sprinklers, four different improved grasses, four 200 gpm wells, permanent fencing, and a 2650 sq. ft. house. Adjacent to this property is an additional 160 acres that could be bought and another 160 acres that could be leased.

**Muleshoe** - 6000 sq. ft. space for lease on American Blvd. next to Dollar General and across the street from McDonald's. As is or build-out would be considered for a long term lease.

**Muleshoe Area Farm in Prime Dairy Location** - 1149 acres NE of Muleshoe. This farm consists of seven quarter sections that have been very well maintained with newer center pivot sprinklers all packaged for 700 gal/min.

**Lazbuddie** - 2451 County Road X: House and 8 acres of land two miles N of Lazbuddie. This is a well maintained country home with many updates and additions as well as a 50' x 60' shop building.

**Olton** - 160 acres NW of Olton. Lower Valley with 750 gpm packaged irrigation system. Olton both with 7 tower Valley sprinklers & 550 gpm packages.

**Lazbuddie Farm** - 1120 acres with center pivots on all quarters. Two beautiful homes and two miles of highway frontage.

**Dodd Farm** - 967 acres with center pivots 2 miles E of Dodd in a good water area. A very nice home and barn on the highway.

**Muleshoe** - 105 acres 3 miles E of Muleshoe. 50 acres under a pivot and 2 wells.

**623 W. American Blvd., Muleshoe, TX** - A thriving business in a progressive rural city. The business currently includes tree and plant sales, landscaping projects of all sizes, yard sprinkler planning and installation, and yard and tree spraying. Great opportunity!

**311 W. American Blvd., Muleshoe, TX** - An established business that carries everything for your farm animal needs. Currently, this business carries hay, Hi-Pro feed for large and small animals and a wide variety of animal care essentials. It is located in an area surrounded by feed yards, dairies and farmsteads.

**MIKE CLEAVINGER, ABR**  
**KELLER WILLIAMS REALTY**

4747 S. Loop 289, Suite 110  
Lubbock, TX 79424  
Cell: (806) 239-5139  
Office: (806) 771-7710

## FOR SALE

Can deliver QUEEN pillowtop/orthopedic mattress set. New in plastic. \$99. 806-549-3110.

Brand new micro fiber sofa & loveseat with 3 pc. table set. Never used, \$549. 806-549-3110.

## MISCELLANEOUS

**Rex Lowery Painting**  
Painting in the Muleshoe area over 40 years!  
FREE ESTIMATES  
Cell: 789-9142

**HENDERSON SERVICE CO.**  
272-4450  
55 years of experience!  
SERVICE MOST MAJOR BRANDS OF APPLIANCES.

**WINTER CLEARANCE SALE** - Heritage Thrift Shop, 402 Main, Muleshoe. All you can stuff in a brown paper bag for \$1. April 6 & 7.

## LAWN SERVICES

**Cutting Edge Lawn Service** - your local mowing, edging & weedeating specialist! Call Bryan @ 272-4930. First time customer discount!

**FRIESEN LAWN SERVICE**  
925-6789  
Cell: 806-470-0406

Happy Easter! God bless you & your families!

## REAL ESTATE

- Irrigated farms - Spade, Earth, Levelland, Plainview and Littlefield.
- Amherst - 2 irr. labors. 5/2/2 on 2 acres, \$43,000.
- Nice brick home, like new 30'x50' shop, garage, plus carport on 5 private ac., 2-1/2 mi. E. of 214 on FM 3305 (south of Muleshoe). REDUCED PRICE \$85,000.

**FARRAR & ASSOCIATES**  
806-894-7099

177 acres in Eastern Bailey County - Good upland bird potential with 68.9 acres in CRP (grass mix), 9.1 acres in playa lake area and balance of acres in cultivated non-irrigated farmland. \$325 per acre.

3 BR/2 BA/ 2 CAR GA - 1033 NE 1st, Earth, TX. Spacious brick home, 160 sq. ft. finished basement, large kitchen and living area, isolated master w/private bath. Great floor plan.

**Lutrick REAL ESTATE**  
806-687-7355

**BELL MOBILE HOMES**  
WHERE YOU BUY THE BEST FOR LESS

**SHIPLEY BROTHERS, INC.**  
806-894-7212  
806-894-8187  
806-894-1580

**New '07 16 wide 3+2.** Just \$214.93 monthly\* and 1300 down. \*Call (800) 830-3515 (se habla espanol) 24,600 to finance 9.5 APR 300 months WAC\*

Call our 24 hour credit Hotline to see if you qualify for a Home Loan. (800)375-8739.

1st time Home buyers or Single Parent Programs, E-Z Financing. (888) 539-7780 (se habla espanol)

New '07 5+3 only \$524.50 monthly\*, just 2400.00 down. \*(888) 539-7780 (se habla espanol) 62,500 financed amount, 300 month 9% WAC\*

Need A Home Now! We have over 50 to choose from and cheapest prices anywhere! Call Bell Mobile Homes, Everyone's Approved! **Guaranteed!** (800) 830-3515.

**DOUBLE/FULL** mattress set, \$99. **TWIN** mattress set, \$99. Both new in plastic. 806-549-3110.

**FOR SALE**  
2 Valley pivot systems with drops.  
1 Gifford pivot system with drops.  
Call 272-4515.

**Visco memory foam** mattress set. Conforms to body, never used. \$399. 806-549-3110.

**Round/oval wood** dining table & leaf with chairs. New in box, must sell this week, \$449. 806-549-3110.

**SACRIFICE 6 pc.** sleigh bedroom set. Still boxed. \$499. Can deliver. 806-549-3110.

**Gentle horses for sale**  
7 yr. old grade Quarter horse gelding. Neck reins, works pens and gates. Ropes wheat pasture cattle. \$1,500.  
7 yr. old BLM mustang gelding. Broke to saddle but needs riding time. \$500 OBO.

## REAL ESTATE

**Century 21 Gold Star Real Estate**  
803 West 1st Hereford, TX 79045  
Business: (806) 364-4561

**FOR SALE** - 3/2/1 brick home, 1816 W. Ave. C, Muleshoe. Very reasonably priced. 806-655-2563.

## REAL ESTATE

**Vic Coker Land Co.**  
Agricultural Real Estate

- Bailey County - Circle Back area - 3 bedroom, 2 bath brick home on 9.5 acres. Fenced, on pavement, 3 small wells. \$50,000.
- Earth Area - 20 acre. Fenced. Irrigated with a sideroll sprinkler, 3 wells.
- Home in Earth - Extra nice 3/2/2, finished basement, fireplace, covered patio, large yard with fruit trees. A very nice place.
- Lamb/Castro County Line - 316 acres north of Earth, 2 central pivots, 4 wells. Very productive.
- Lamb County - 156 acre part of Springlake, center pivot, 3 wells, 54 acres of irrigated.
- 1288 Acres in Southwestern Bailey County - 932 acres in C.R.P. through 2017. Balance is Native grass. New Mexico state line on the boundary. 6 miles of fence. Good domestic well. Quail, antelope, and other hunting. Excellent cash flow for a hunting retreat.
- Lamb County - Southeast of Amherst 922 acres, 310 acres of alfalfa. 5 center pivots, 42 acres of drip irrigation.
- Northwestern Lamb County - 160 acres, 2 wells, Center pivot, perimeter fence, 1/2 circle of improved grasses, good allotments.

316 Main Street • Muleshoe, Texas  
Office: 806-272-3100 Home: 806-965-2468  
Website: www.vicoland.com

**Nieman Realty**

116 E. Ave. C • George Nieman, Broker • 272-5285 or 272-5286

CHECK OUR LISTING INFO., PHOTOS, ETC. ON-LINE AT WWW.NIEMANREALTY.COM HAVE BUYERS! NEED HOME AND LAND LISTINGS!!

**RICHLAND HILLS**  
VERY NICE 3-2-2 Brick, Cent. A&H, built-ins, fireplace, utility, new paint, carpet, tile, atrium doors, blinds, 7 fans, cov. patio, stor. bldg., fenced yd.!! MORE!! \$145,000!!

**LENAU - COUNTRY CLUB AREA**  
3-2-2 Brick Home, Cent. A&H (elec. heat pump), built-ins, auto. opener, 3 fans, approx. 1717' lv. area, 90'x130' lot!! \$67.5K!!

PRICE REDUCED-VERY NICE 4-2 Mobile Home, Cent. A&H, built-in, 28' x 56', Mstr. bath has garden tub & separate shower, vaulted ceiling, storm windows & doors, large lot!!

NICE 3-1 Home, Cent. A&H, fenced yd. Stor. Bldg.!! PRICE REDUCED - \$46,900!!

**HIGH SCHOOL AREA**  
VERY NICE 3-1 1/2-1 Brick Home, Cent. A&H (elec. heat pump), stove, dishwasher, 6 fans, auto. opener, fenced yd., workshop/storage!! \$65K!!

3 bedroom, 2 bath Mobile home on 85'x140' lot, Cent. A&H, built-in, single car garage, shingle roof!! \$19,900!!

3-11/2-1 Caprt. Home on 2.24 ac. Disp. fenced yd., workshop/storage, 650 sq. ft. garage!!

ORIGINAL 1950's 2 BR/2 BA/2 CAR GAR 24 ac. 1550' structure (new) \$1,200,000!!

VERY NICE CHURCH BLDG. WITH PARSONAGE - MAY BE SOLD SEPARATE!! Priced to sell!!

GOOD INCOME PROPERTY-LONG TERM LEASE- Approx. 8,075' office bldg. w/ approx. 20,000' paved parking area!! \$400K

OASIS ICE CREAM-NICELY REMODELD - 800 sq. ft. Bldg., Cent A&H, updated electrical & plumbing, will sell without equipment!! \$55K!! For all!!

40' x 75' METAL BLDG.w/office & restroom on 2.91 acre tract at edge of town (Hwy. 84 & 70), domestic well & MORE!! \$85K!!

150' x 100' tract with an approx. 1600 building + approx. 1440' storage on corner of Hwy. 70, 84, & 214!! PRIME LOCATION!! \$45,000!!

100' x 140' tract, corner lot on Hwy. 84, 1760' Bldg., 1076' Bldg., 308' storage, & 2-56' x 22' metal canopies w/paved area!! \$49,5K!!

4.2 acre tract at edge of town, 40' x 60' metal insulated bldg., 2 other sheetrock bldgs., chainlink fenced area, numerous uses!! \$59K!!

Approx. 1274' Building, 75' x 140' lot, U.S. Hwy. 84!! \$39.5K!!

FORMER RICHLAND HILLS TEXACO - 1414' Bldg. + 1080' canopy + 16,530' asphalt paving!!

**FARMS**  
LAZBUDDIE AREA - 3-2-2 Home, Cent. A&H, built-ins, FP, deck, hot tub, cellar, stor. bldgs., on 2 acre tract!! \$95K!! Additional 156 acre farm w/circle sprinkler, 3-20 hp. sub. wells!! \$495 per acre!!

CLAY'S CORNER - 320 acres, 2 wells, 2 circle sprinklers, 3 bedroom 2 bath, 2 carport home!!

**RURAL**  
CLAY'S CORNER - VERY NICE 3-2-75-2 HOME on 5 acre tract, Cent. A&H (Elec. Heat Pump), built-ins, FP, 1100 sq. ft. new in 2005 plus additional updating w/carpet, tile, paint, fenced yd., cov. patio, 600' workshop/storage Bldg.!! Numerous other amenities!! \$189,500!!

SUDAN-NICE 4-2 Mobile Home on 94' x 140' lot, 1848' lv. area, Cent. A&H, built-ins, Mstr. bath has garden tub & separate shower, 1 car detached garage, deck w/hot tub!! \$49,9K!!

NICE 3-2-2 Home on 60 acre tract!! Central A&H, built-ins approx. 2575' lv. area, 10 hp, well, workshop, barns, corrals, fenced!! MORE!! \$130,000!!

PROGRESS - NICE 3-2 Mobile Home on 1.24 acres, approx. 1876 sq. ft., Cent. A&H, built-ins, FP, 5 fans, 2 carport, 1250' Metal shop, 160', 480', & 96' stor. bldgs., domestic well, fenced yd.!! MORE!! \$75K!!



# Jennyslipper News

By Nelda Merriott

The Jennyslippers met at the Girl Scout Hut at noon on March 27.

Among those attending were Dianne Thornton, Ellen Ladd, Elaine Parker, Ruby Green, Alene Bryant, Donna Kirk, Joy Stancell, Nancy Kidd, Wannie Frazier, Anna Bales and Clara Flores, our new

member, and guest Richard Hawkins.

Jennyslipper president Dianne Thornton called the meeting to order, and Nancy Kidd gave the invocation.

Our secretary and treasurer were not present so those reports were not given.

Richard Hawkins brought the program. His son, Cole,

is an eagle scout and has decided to do a project for the Mule-Putt miniature golf course.

He will build a bench for seating and also a cover for it and an existing bench. It will be made of treated wood, will be sturdy and will be very pretty.

The Jennyslippers appreciate this addition to

the Mule-Putt Golf Course as we continue to improve this facility for Muleshoe.

A workday has been set for Saturday, April 21 at 9 a.m., to clean and get the miniature golf course ready for a busy season.

Plans are to have a grand opening date of May 5 at 3 p.m. Requests have already begun coming in for birthday parties.

The Tour de Muleshoe will be on June 16 and the Jennyslippers are invited to operate a rest stop for the cyclists as we have in the past. Volunteering were Elaine Parker, Nelda Merriott and Ruby Green. Others may help also.

Jennyslippers are volunteering at the Muleshoe Chamber of Commerce & Agriculture office each afternoon, in the absence of a manager. Volunteers include, Alene Bryant, Donna Kirk, Nelda Merriott and Ruby Green.

Our April 23 night meeting will be held at the Richland Hills Baptist Church community room with special guest, Kathy Borne, a former Muleshoe High School graduate.

She is now a writer who has written several books, which include stories based on Muleshoe and its people.

The chamber's board of directors and their spouses will be dinner guests of the Jennyslippers.

The Jennyslippers also invite prospective members to attend and join the Jennyslippers.

A book signing at Carolyn's Christmas Creations on April 22 was discussed as a possibility.

Nancy Kidd announces that PUSH (People Understanding Severely Handicapped) will be here on July 10.

The Jennyslippers have hosted this group of cyclists for 18 years as they bicycle across the United States raising awareness and funds for the handicapped.

Ruby Green reports that the Jennyslippers have been asked to hold a walkathon to raise money for cystic fibrosis.

The group decided against this as our fundraisers should be to benefit Muleshoe. Members may donate individually.

The meeting adjourned.

**Thanks for reading!**



## Tigers visit the fire department

On Monday, March 19, 2007 the Tiger Cub Scouts, pictured above, were taken on a tour of Muleshoe's Earl Ladd Fire Station by J.O. Parker, where he showed them the fire trucks that are operated by local firefighters. Parker explained how each truck was used for a particular type of fire and accident, and showed them some of the equipment carried on the trucks and how it is used. Each of boys got to try on a fireman's coat and hat, and had the opportunity to see the equipment used to clean the hoses and how the hoses are rolled up to be ready for the next fire emergency. Parker also reminded the boys not to play with matches or fire of any kind.



**EASTER SPECIALS**

**ALL KID'S BOOTS & ATHLETIC SHOES ..... \$5 OFF**

**LADIES DRESS SANDALS ..... \$10 OFF**

**MEN'S BOOTS & DRESS SHOES ..... \$10 OFF**

**MEN'S CINCH & ROPER SHIRTS ..... \$10 OFF**

*Or let the Easter Bunny drop a sandal in your basket!*

**WILLIAMS GENERAL STORE**

1405 W. American, Muleshoe • 272-6853

# Keeping your head when tornadoes hit

Safety advice offered by Muleshoe Police Officer Steve Clifton

By Leah Bell

This tornado season has already devastated communities surrounding Muleshoe and Officer Steve Clifton is determined to help keep Muleshoe and Bailey County citizens safe.

His advice: Keep your head and know what actions to take in the event of an emergency.

Two weeks ago, Clovis, N.M., experienced the damage and destruction an F2 tornado can incur, and that same night, the Muleshoe Police Department was on call, weather-watching and preparing to alert the public to impending danger.

"What the public needs to understand is that calling the police department or 9-1-1 isn't their best option in case of tornadic activity," said Clifton. "While I get weather-related information sent to my phone from the National Weather Service in Lubbock, I don't get that information far enough in advance to effectively distribute it to the public over the phone," not to mention it ties up the lines for citizens experiencing non-weather related emergencies. Clifton suggests tracking severe weather through local TV and/or radio stations. "In virtually every case, their warnings are within a minute or two of those sent to me by the weather service."

Clifton also suggests that local citizens invest in a weather radio, available now at United Supermarkets and Connection Warehouse for around \$30-\$40.

"Weather radios can be programmed with Specific Area Message Encoder (SAME) codes for Bailey and surrounding counties," according to Clifton. What this means is that the weather radio won't sound an alert until a warning is issued by the National Weather Service for the counties programmed in by the radio owner.

SAME codes can be found on the web by visiting the National Weather Service in Lubbock at <http://www.srh.noaa.gov/lub/wxradio/samecode.htm>.

In the event of a tornado warning issued for Bailey County, Officer Clifton would like to remind citizens of Muleshoe that several locations around town serve as storm safety shelters, including the primary location at First United Methodist Church, 507 W. 2nd Street, and a secondary location at the public library, 322 W. 2nd Street. There are other locations should the need arise.

According to the Governor's Division of Emergency Management (GDEM), when preparing to take shelter, remember to pack the following in case a tornado does hit and emergency personnel cannot reach your location immediately: first aid kit, cash, road maps, battery operated radio and flashlight with extra batteries, important documents and records, photo IDs and proof of residence, a three-day supply of non-perishable food, one gallon of bottled water per person per day, coolers for food and ice storage, fire extinguisher, blankets, sleeping bags and extra clothing, extra medications and prescriptions, hearing aids and other special medical items, eyeglasses and sunglasses, toilet paper, clean-up supplies, duct tape, tarp, rope, can opener, knife, tools, booster cables, and supplies needed for babies, older adults and pets.

GDEM suggests that the perishable supplies and water be changed every six months.

Clifton concludes his safety lesson by reminding Muleshoe citizens that the police department is about to start testing emergency sirens in the city limits, weather permitting, at noon or in early afternoon a couple of days a week.

"We will not test the sirens if any type of inclement weather is pending so that we don't create unnecessary panic," said Clifton. Right now, the exact day(s) of testing are still to be determined by Chief Frieda.

# MULESHOE

Ford MERCURY

<b>2005 CHEVY IMPALA</b> <b>\$13,418</b>	<b>2006 CROWN VICTORIA</b> <b>\$13,933</b>
<b>2005 MERCURY GRAND MARQUIS</b> <b>\$14,724</b>	<b>2006 FORD FUSION</b> <b>\$14,853</b>
<b>2006 BUICK LaCROSSE</b> <b>\$14,885</b>	<b>2005 FORD EXPLORER</b> <b>\$16,787</b>

**"Overaged Inventory Must Be Sold At Wholesale Prices"** All vehicles + TT&L

## MULESHOE FORD-MERCURY

1125 W AMERICAN BLVD., MULESHOE • 272-4251 OR TF 800-432-7617