

50¢ PER COPY

MEMBER 2000
TPA
TEXAS PRESS ASSOCIATION

THE Lynn County News

VOLUME 97, NUMBER 15 • TAHOKA, LYNN COUNTY, TEXAS • THURSDAY, APRIL 13, 2000 • 8 PAGES PLUS INSERT



REGIONAL UIL QUALIFIERS - These ten Tahoka High School students have qualified to compete at the Region I Academic Meet to be held on the campus of Abilene Christian University Saturday, April 15. Qualifiers are (back) Jesus Rivera, Casey Jones, Jordan Sarchet and Travis Green and (front) Brady Raindl, Amada Aguilar, Nina Follis, Jon Luna, Chelsea White and James Moss. (LCN PHOTO)

Ten THS Students To Compete At Regional Academic Event

Ten Tahoka High School students will travel to Abilene Friday for the Region I Academic Meet on the campus of Abilene Christian University.

Four individuals who placed in the top three at the District Meet at Plains will compete as will two teams who earned first place plaques and the right to represent the district.

Tahoka placed third overall in the district competition with 194 points, behind Plains and Post, who had scores of 457 and 377, respectively.

"We have a lot of freshman and sophomore competitors, said UIL Coordinator Leah Taylor. "We were all pleased with the strong third place win at Plains."

Senior Brady Raindl placed in six events and qualified for regional competition in three, placing first in Feature Writing, second in Headline Writing, and third in Current Issues and Events. He placed sixth in both Editorial Writing and Persuasive Speaking. Raindl advanced to the State UIL meet in Feature Writing last year. This will be his fourth trip

to regional competition.

Senior Travis Green also qualified to compete at Region in three events. He took first place in Current Issues and Events, and third place in Science and Literary Criticism. He was also top scorer on the Chemistry portion of the Science Test.

Raindl and Green will be joined by Jordan Sarchet and James Moss to compete as a team in the Current Issues and Events contest. The team took first place at District.

Green will also compete as a member of the Science team. Other Science team members are senior Jesus Rivera, who placed second in the contest; and junior Casey Jones who placed fourth.

The Science team leaders who took 2nd, 3rd and 4th places tied with Plains for the Science Team championship. Both teams advance to the Region Meet in Abilene.

Junior Chelsea White qualified to compete at Region by placing third in the Editorial Writing contest.

In addition to clinching a spot on

the Science team, Jones also placed fourth in Number Sense. Sophomore Nina Follis is the first alternate to Region in Poetry Interpretation. She won fourth at District.

Junior Jon Luna and freshman Leigh McAfee were fourth and fifth respectively in Informative speaking.

Moss won a sixth place ribbon in Literary Criticism, Amada Aguilar sixth in Science, and Chelsey Miller sixth in Prose Interpretation.

Only first place teams advance to the Region Meet, according to Mrs. Taylor. Several THS teams came close to the top spot however.

The Number Sense team composed of Jones, Tonya Elrod and Bradley Paschal placed second. The Accounting team lead by La'Shea Pridmore, Michelle Martin, and Elrod placed third. The Literary Criticism team of Green, Moss, Jana Eudy and Brad Pebsworth placed third.

Other Science competitors include Sarchet, Klyssa Kelln and Carrie Gregory.

McAfee and alternate Brandon McCord also competed in Number Sense. Mickey DeLeon competed in Accounting, and Kelli Whitley, D'Lynn Stone, Matt Sanders and Solana Aguerro participated in Computer Applications.

Sarchet, Jones and Aguerro participated in Mathematics. Ready Writing competitors were Nicole Green, Kelia Graves, Kyle McInroe, and alternate Brandi Tekell.

Aguero, Randy Chapa, Nicole Green, Myra Martinez and alternate Kyle McInroe participated in Spelling and Vocabulary.

Speaking event participants were Kyle Bueermann, Informative Speaking; McInroe, Follis, and Pebsworth, Persuasive Speaking; Callie McKay and Eudy, Poetry Interpretation; and D'Lea Autry and Mandy Sanders, Prose Interpretation. Journalism contestants included Janet Dotson, Gregory, Raindl and Tiffany Morales in News; White and Keely Boone in Feature; Boone and Lana Cloe in Editorial and Pebsworth, Gardner and Gregory in Headline Writing.

Mrs. Taylor coaches the four journalism and four speaking events as well as Current Issues and Events. She also helps with Spelling and Literary Criticism.

Mrs. Alta Swindle, Ready Writing and Literary criticism coach, will also sponsor students at the Region meet. She also helps with Spelling.

Other coaches include Mrs. Betty Stennett, Science; Mrs. Carletta Renfro, Number Sense and Mathematics; Mrs. Debbie Varner and Mrs. Angela Ehlers, Computer Applications; and Mrs. Barbara Jaquess, Accounting.

Mrs. Dianna Curry assisted at the Region Meet.

Tornadoes Strike More In April, May, June

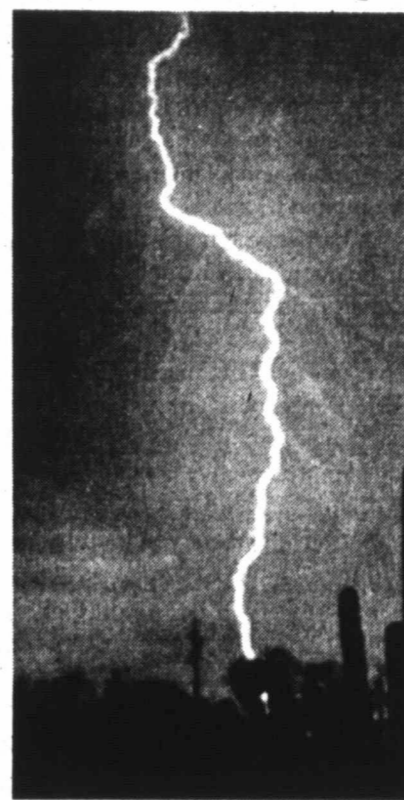
Tornadoes are a reality here on the South Plains and in Lynn County, especially during the spring and summer months. According to the National Weather Service in Lubbock, there have been a reported 35 tornadoes in Lynn County from 1950-1999. During that time period the numbers of tornadoes decrease significantly off the Caprock over the low rolling plains. "This is probably due in part to a very low population density over this area," the National Weather Service reported. Lamb and Hale counties have the greatest frequency with 70 and 105 tornadoes, respectively during the same 49-year period. Lubbock County is a close third, with 67 tornadoes or about 1.4 tornadoes per year.

In addition to the threat of tornadoes, a potential killer in all thunderstorms is lightning. In fact, in the average year, 100 to 200 people die from the effect of a lightning strike, according to NWS information. In many years this is more than either tornadoes or flash floods kill.

During a thunderstorm, avoid high ground, water and open spaces if outside. Anyone who carries a golf club, metal umbrella or other metal tools overhead is at greater risk. Don't stand near wire fences, television antennae, metal plumbing, railings and other metal objects that can conduct electricity to you from a distance. If you feel your hair standing on end during an electrical storm, you are about to become a lightning target. In this case, seek low ground or assume the fetal position on the ground. Immediately drop to your knees and bend forward with your hands on your knees.

If indoors during a storm, turn off all appliances and electronic devices, and stay inside until the storm passes. It is also a good idea to unplug computers, stereos and other expensive equipment, since even surge protectors can be overwhelmed by the 100 million volts of a lightning strike. Avoid using the telephone during an electrical storm, especially in rural areas.

However, lightning is sometimes



useful in storm spotting because it can illuminate funnels, tornadoes, or other cloud features at night.

On May 11, 1970, tragedy struck Lubbock, as an F5 tornado ripped through downtown Lubbock. Twenty-six were killed and at least 1500 more were injured. The National Weather Service estimated the tornado had winds in excess of 200 mph, and damaged or destroyed a large section of the city, mainly north and east of 19th Street and University Avenue.

In the few moments between 9:35 p.m. and the time the funnel lifted into the clouds, the tornado devastated the community along an 8-1/2 mile path. It wrought havoc along a track that was 1-1/2 miles wide in downtown Lubbock to one-fourth mile wide as it passed over the Weather Bureau Office located at the Lubbock Airport.

The Lubbock twister was responsible for \$125 million in damage with an estimated 15 square miles of the city damaged or destroyed.

Tornadoes in this region are more likely in May than in any other month. June has the second-highest total of tornadoes, followed by April.

The overwhelming majority (79%) of tornadoes occur in the three-month period from April 1 through June 30, according to information from the National Weather Service.

Tornadoes are much more likely to occur in the afternoon and evening hours. Although tornadoes have occurred at all hours of the day, the period from 2 p.m. until 11 p.m. is particularly dangerous, says weather bureau officials.

The number of tornadoes in the 24-county area (including Lynn County) served by the National Weather Service in Lubbock has been charted for each year from 1950 through last year. Many years bring 10-20 tornadoes to this area, but three years had more than 40 -- the worst year was 1971 (53 tornadoes), followed by 1991 (45 tornadoes) and 1995 (41 tornadoes).

May and June stand out as by far the most active months for all severe weather events -- including tornadoes, damaging thunderstorm winds (58 mph or greater), and large hail (3/4" or larger). In fact, 66% of all severe weather in this area occurs in May and June.

Severe Weather Tips

The National Weather Service in Lubbock has issued the following as Severe Weather Tips.

1. Develop a severe weather safety plan -- if severe weather strikes, know what to do and where to go whether you're at home, work, or school.

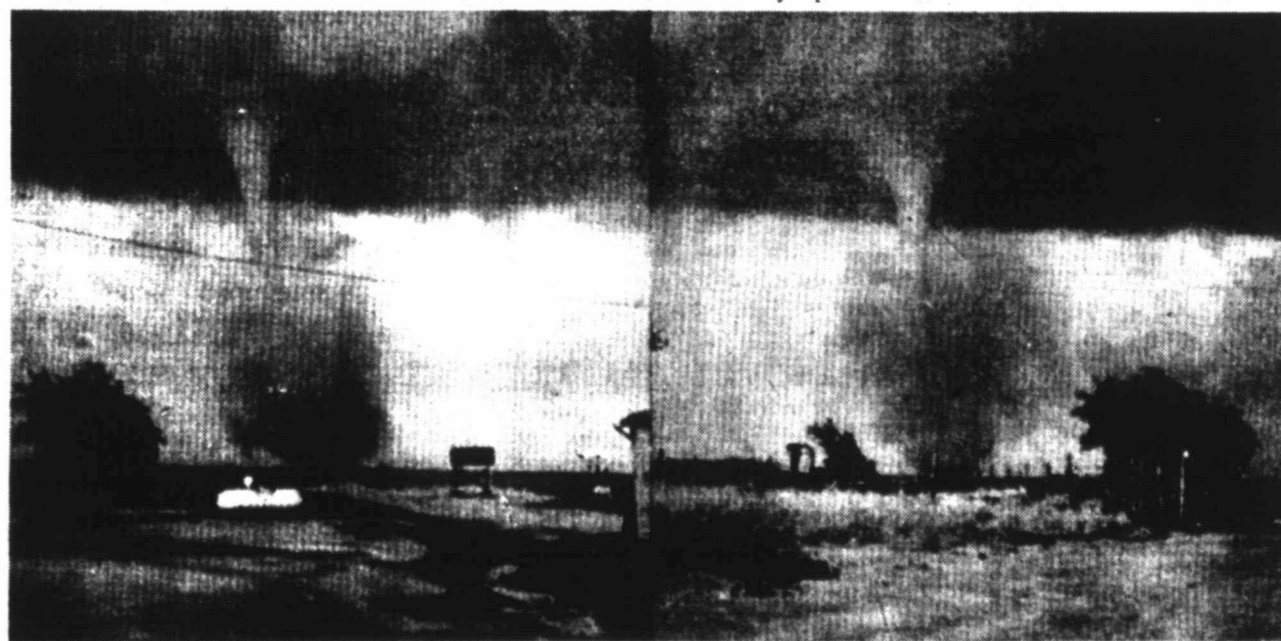
2. Practice your plan, and make sure smaller children know what to do in the event of a storm.

3. Stay in touch with the latest weather developments, especially during April, May and June.

4. In the event of a tornado, the safest place to be is below ground (basement, storm shelter, etc.).

5. If you cannot get underground, the next best place is a small, interior room away from windows on the lowest floor.

6. Evacuate mobile homes and automobiles -- they do not provide safety from the destructive force of a tornado's winds.



TORNADO! This tornado funnel skipped across Lynn County on June 13, 1968, a Saturday evening, causing damage in several areas. Photo was taken by Lenora Buzard, 2-1/2 miles north of Smith Grocery and Station.

Theft, Traffic Accident Are Investigated Here

One traffic accident, domestic trouble, and a theft report were among incidents investigated by Tahoka Police Dept. during the last week. Criminal mischief charges were pending against a Wilson man arrested after deputies went to the scene of a reported fight at Wilson.

In Wilson, a resident there said the other Wilson man damaged his fence, mostly by kicking it. Deputies arrested the accused man on outstanding traffic warrants from Lubbock.

Adam Chavarria, 29, of Tahoka was driving a 1989 Chevrolet Camaro which struck a parked car in the 1800-block of N. 2nd St. Saturday. The parked 1980 Buick was

owned by Bill and Doris Collins of Tahoka. The driver of the Camaro was treated at Lynn County Hospital for apparent minor injury.

A Tahoka man, age not listed, was reported as a suspect in the theft of \$50 from the home of Lonnie Rogers on N. 5th St. in Tahoka Friday.

In jail during the week were three persons for DWI first offense, three for criminal mischief, two for public intoxication, and seven others on charges of grand jury indictment for felony DWI, DWI plus striking an unattended vehicle, purchasing and supplying alcohol to a minor, driving while license suspended, minor in possession of alcohol and driving under the influence of alcohol, no

drivers license plus speeding and application to revoke probation on conviction for DWI.

Weather

Date	High	Low	Precip.
Apr. 5	86	36	
Apr. 6	89	46	
Apr. 7	81	51	
Apr. 8	63	40	
Apr. 9	77	40	
Apr. 10	87	45	
Apr. 11	62	54	.08"

Total Precip. for April: 1.77"

Total Precip. year to date: 5.90"

Total Precip. for 1999: 19.21"

WOODWORK by Dalton

I KNOW OF people who wear copper bracelets because they believe this will reduce arthritis pain. I'm not disputing this concept, because I say if they think they have less pain when wearing copper bracelets, they should wear them. But the Mayo Clinic Health Letter claims that "the most noticeable effect will be discolored skin, not pain relief."

This was one of the points made among 12 true or false questions sent to me by Mayo so that I will be intrigued enough to buy their monthly letter. I was tempted, because these things are interesting, whether they are the final authority or not. Anyway, here are some of the others, true or false, with their answers first, and some of my comments in parentheses:

Ulcers are contagious. Somewhat true. The discovery that bacteria are involved in peptic ulcers and can be treated with antibiotics is a recent advance in medicine. However, "catching" an ulcer is pretty unlikely. (Maybe you can catch ulcers, like insanity, from your kids).

You'll catch a cold if you go outside with wet hair. False! Getting a chill won't cause a cold since colds are caused by viruses. (Huh, I can catch a cold over the phone).

Aspirin protects against cancer. Possibly true. Recent studies suggest that the long-term use of plain aspirin can reduce the risk of colon cancer.

Drinking coffee will increase your risk of a heart attack. False. The link between coffee and heart health is not conclusive. (Coffee drinking can cause fainting spells, especially when the waitress hands you the bill for it).

Tea prevents cancer. Possibly true. Polyphenols in tea may prevent cancer development or spread. (I didn't know tea had any of those things in it).

Moisturizers should be applied to clean, dry skin. False. They work best with clean damp skin.

Heart attack victims should avoid sex. (Not unless you are really ugly). Mayo says "Not really. Once you are able to perform moderate physical activity, your doctor likely will OK your return to sexual activity, which is no riskier than a brisk walk, scrubbing the floor or climbing stairs." (I will manfully forego any further comment).

"I AM IN SHAPE," says the large person on Ave. P. "Round is a shape."

A
P
R

1
3

2
0
0
0

Lynn County Tornadoes Cause Five Fatalities In 85 Years

According to the National Weather Service, only 35 confirmed tornadoes have ravaged Lynn County in a 49-year period, from 1950 to 1999. Of these 35, only one caused severe damage, and that occurred on May 24, 1957, injuring one person and causing an estimated \$400,000 worth of property damage.

In the past 85 years, according to records prior to 1950, five fatalities in the county have been attributed as a direct result of tornadoes, and these occurred in 1915, 1924, and 1938. Since 1938, no deaths have reportedly occurred as a direct result of tornadic activity in Lynn County.

Following is a recap of the four major tornadoes in the county since 1915, reprinted from issues of *The Lynn County News* and excerpts from *Grassroots Upside Down: A History of Lynn County*:

June 28, 1915 - One fatality

One of the worst hail and windstorms, believed to have been accompanied by at least two tornadoes, struck Lynn County late Monday, June 28, 1915, leaving one dead and a trail of destruction over a wide area.

Nine miles north of Tahoka, W.H. Mears was watching the approaching storms from his front porch and saw his son-in-law's house, about a half mile away, disintegrate. He and his son prepared to give aid, then looked back to see their own house in a pile of rubble.

He and the boy crawled back, while being pounded by hail, rain, and wind, only to find his daughter, Ruby, 15, battered almost beyond recognition, and his wife likewise severely injured in a pile of house rubble.

Wading ice water half-boot deep, as soon as the storm abated, Mears loaded his injured daughter, wife, and battered son into a wagon and brought them to Tahoka where the girl died the next morning.

Crops were wiped out over a territory of at least 13 miles long and three miles wide. Several farm houses were completely destroyed and several buildings and homes in Tahoka damaged. T-Bar Ranch lost 12 windmills and several farmers lost mills also.

July 16, 1924 - One fatality

On July 16, 1924, a small tornado hit the farm house on the Sam Sanford farm, southeast of Draw, killing

George Brewer and injuring his young son. His wife and other two children, also in the house, were unhurt. The house was blown down, and Brewer was struck by falling timber. His back was broken and the skull on the back of his head was crushed.

J.E. Sherrill's barn, further to the north, was also demolished.

The cyclone swept southwest to northeast and affected only a very narrow strip of country.

A hard shower followed in the wake of the wind, with about a half inch of rain falling over a small territory.

April 26, 1938 - Three fatalities, nine injuries

Late Tuesday evening, April 26, 1938, a cyclone struck two communities in Lynn County, killing three people in the Draw community and injuring nine other county residents.

Killed in the Draw community about 6 p.m. that Tuesday were Mrs. V.O. Caswell, 22; John H. Walters, 15; and George Walters, 40, of Austin who was there visiting his uncle, M.B. Walters.

Scenes of horror marked the path of the tornado, which made its ap-

proach undetected by its victims until it was hard upon them.

Houses were reduced to splinters, automobiles were torn to pieces and scattered over the landscape or were twisted into almost unrecognizable masses, while some of the injured were hurled high into the air and carried many feet from the place where they were picked up by the terrific twister.

Apparently the twister first struck in the OK community, demolishing a

store and a number of houses. It moved in a northeasterly direction, and struck again in full force just west of Draw.

The first residence struck and demolished was that of Allen Moore, but the family had fled from the house and were scurrying to the storm cellar when the house crashed.

There were seven persons in the McKay house when the storm struck. It was reported that Mrs. McKay ran from the house toward a storm cellar

with her twins in her arms, but she was thrown down. The babies were torn from her grasp and one of them was seriously injured. The other miraculously escaped serious injury.

V.O. Caswell was on the front porch and Mrs. Caswell in the kitchen when the cyclone hit their home. Mr. Caswell stated that he was just in the act of taking hold of the door knob when everything turned dark and he remembered nothing more for an undetermined length of time.

When he regained consciousness, the house was gone, and the body of his wife was found a hundred yards away, almost buried in sand and mud, terribly mutilated.

George and John Walters and little Mary Belle Walters were in a car on the Walters farm when they suddenly found themselves in the power of the mad winds. The body of John was later found many feet from the wrecked car, with the body of George beneath it. The little girl had been picked up and carried high into the air before being deposited back on land, but apparently was not seriously injured.

Nineteen homes in the county were totally destroyed, as were many out-buildings, other farm places damaged, chickens stripped of their feathers, and some livestock killed.

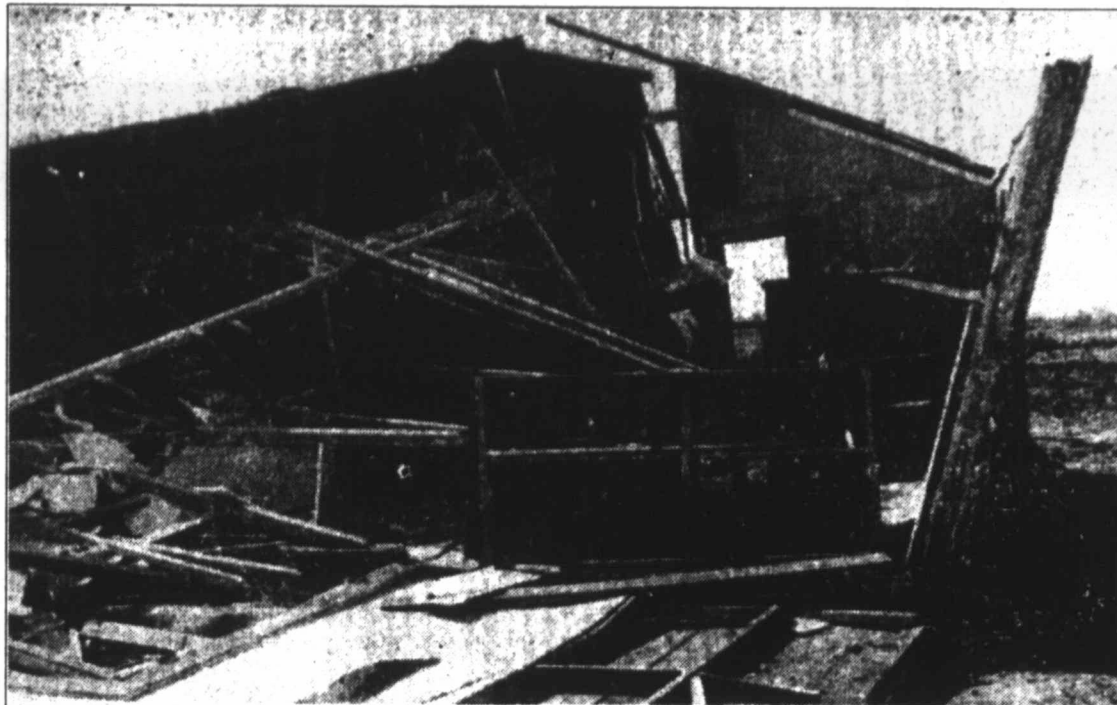
May 24, 1957 - No fatalities, one injury

The May 24 tornado swept across Tahoka and out across northeastern Lynn County into Crosby County on a Friday afternoon, about 1 p.m., leaving a trail of destroyed and damaged buildings. One person was injured as a result of the storm, and property loss was estimated at almost \$400,000.

Tahoka Fire Chief Lawrence Harvick was credited with giving the timely warning for residents to take shelter. The only injury reported was Mrs. S.A. Richards, who slipped and fell on wet ground following the storm, as she emerged from her cellar. She received a broken hip.

Totally destroyed were five houses in northeast Tahoka, two large cotton warehouses in Tahoka, and eight farm houses between Tahoka and northeastern Lynn near Slaton. More than 100 houses received some degree of damage, it was reported.

Heaviest damage was at Union Compress, where loss was estimated between \$100,000 and \$200,000. Six of the seven large cotton warehouses were damaged in varying degrees, and the large main press building was badly damaged.



CHURCH WRECKAGE - The Antioch Baptist Church was in the path of a destructive tornado which struck the Tahoka area on May 24, 1957. Shown here, the church building was totally destroyed, with part of the pews and the piano the only furnishings not demolished. The tornado did not cause any fatalities, but caused over \$400,000 in property damage in the area.

Senior Citizens MENU

April 17-21
Monday: Chicken w/Mushroom Sauce, Lima Beans, Mixed Vegetables, Tossed Salad/Italian Dressing, Wheat Roll, Pineapple Cake.
Tuesday: Chili w/Beans, Macaroni or Pea Salad, Cornbread, Cherry or Plum Cobbler.
Wednesday: Roasted Turkey, Sweet Potato, Green Beans, Tossed Salad/1000 Island Dressing, Wheat Roll, Cranberry Dessert or Cranberry Bread.
Thursday: Beef Stuffed Green Pepper, Hominy, Brussel Sprouts, Carrot Sticks, cornbread, Berry Cobbler.
Friday: Chicken Patty on Bun, Tater Tots or Fries, Carrots, Dill Pickle, Mustard, Pineapple Gelatin, Gingerbread.

**You are not alone
 COME JOIN
 SOME FRIENDS
 YOU HAVEN'T
 MET YET**

St. John Lutheran Church, Wilson
 (Block S. of 211, next to the school) 628-6573
 Sunday School 9:30; Worship 10:45
 Mel Swayer, Interim Pastor

Obituaries

Mary Correa

Services for Mary Belen Correa, 74, of New Home were held at 2 p.m. Wednesday, April 12 at the First Baptist Church with Rev. Allen Lee, pastor, officiating.

Burial was in Green Memorial Cemetery in Wilson.

She died Sunday, April 9, 2000, in Covenant Medical Center.

She was born June 27, 1925 in Uvalde and married Jimmy Correa on May 11, 1945 in Pearsall. She had lived in New Home since 1956, having moved there from Dilley. She was a homemaker and a member of First Baptist Church.

Survivors include her husband; four sons, Alfred Correa and Raymond Correa, both of New Home, Alex Correa of Lubbock and Jimmy Correa of Charlottesville, Va.; four daughters, Olga Hiracheta of Austin, Frances Caballero and Sylvia Correa, both of New Home, and Gloria Manheart of Little Rock, Ark.; a brother, Jesus Torres of Temple; a sister, Tanislida Riojas of Crystal City; 16 grandchildren; and 15 great-grandchildren.

ANSWERS ... about cancer screening guidelines

1-800-ACS-2345
www.cancer.org

Hope. Progress. Answers.

Early Voting Begins Next Wednesday

Early voting for area school and city elections begins next Wednesday, April 19 and continues through May 2 at designated early voting locations. Election day is Saturday, May 6.

Lynn County Hospital District, City of New Home, and City of Wilson have cancelled their respective elections, with the unopposed candidates in those uncontested races to be declared elected. The City of O'Donnell will have an election only for the one-year unexpired term on the city council, as the candidates for the two full terms and mayor are unopposed in their respective races. The unexpired term is the only contested race in that election.

Early voting locations for all local elections are as follows:

Tahoka I.S.D. and City of Tahoka: Early voting at Tahoka City Hall

Wilson I.S.D.: Early voting at Wilson I.S.D. Central Office

New Home I.S.D.: Early voting at New Home I.S.D. Superintendent's Office

O'Donnell I.S.D.: Early voting at O'Donnell I.S.D. Tax Office

City of O'Donnell: Early voting at O'Donnell City Hall

Tahoka Care Center News

by Barbara Stice

The residents here at Tahoka Care Center would like to thank Mrs. Peggy Barbee for her lovely donation of money to help buy benches and lounge chairs for our back yard. We could use more donations for this and would love for community members to come out and see our back yard.

Thank you Pat Hogg for your donation of gifts for bingo. Thank you Sherry Tilley for your gift to help with buying hats for the ladies for our Tea Party. It helps so much when people care.

The Tea Party will be Thursday, April 27 at 2 p.m. Family nNight will be at 6 p.m. April 20. Try and make it if you can.

We are still having good times with our bingo and domino games.

We are getting more flowers planted, but we could still use flower pots and help planting them. The residents are looking forward to spring and being out and about more.

There will be a volunteer meeting next Monday at 3:30. Come if you can. Volunteers plant seeds of love that help countless hearts to grow.

Trees Available From Arbor Day Foundation

Ten free shade trees will be given to each person who joins The National Arbor Day Foundation's campaign to encourage tree planting to commemorate the new millennium.

The ten shade trees are Red Oak, Sugar Maple, Weeping Willow, Green Ash, Thornless Honeylocust, Pin Oak, River Birch, Tuliptree, Silver Maple and Red Maple.

"These trees were selected to provide shade and beauty, and a variety of forms, leaf shapes, and beautiful fall colors," John Rosenow, the Foundation's president, said.

The trees will be shipped postpaid at the right time for planting in April or May with enclosed planting instructions. The six to twelve inch trees are guaranteed to grow or they will be replaced free of charge.

To become a member of the Foundation and receive the free trees, send a \$10 contribution to Ten Free Shade Trees, National Arbor Day Foundation, 100 Arbor Avenue, Nebraska City, NE 68410, by April 30.

No zany pictures -- No witty text --
 Just a sincere "Happy Birthday"
 to someone who's special to us!

WE LOVE YOU!

Marv, Stephanie and Carrie

"Charm is deceptive, and beauty does not last -- but a woman who fears the Lord will be greatly praised!"
 (Proverbs 31:30)

The best preparation for good work tomorrow is to do good work today.

—Elbert Hubbard

Tahoka Girl Scout Troop 297
 invites girls entering Kindergarten (August 2000),
 who are interested in Girl Scouts, to a

Daisy Party
 Thursday, April 27th
 4:00-5:00 p.m.
 at the Life Enrichment Center
 R.S.V.P. to Leann Duus 998-4347
 Parent must accompany daughter.

Mask Making Snacks Face Painting

T.L.C. - TENDER LOVING CARE
 A Personal Care Home for the Elderly
 (THE NURSING HOME ALTERNATIVE)
 Experience Small Town Care Given by People with Big Hearts in a Country Style Setting
 -- CERTIFIED NURSES AIDE --
 419 N. Main St. • New Home • (806) 924-7591
 Ambulatory or Non-Ambulatory Patients Welcome

Your HEALTH TIP

Calcium May Reduce Stroke Risk in Women

According to the 14-year study, women with higher dietary or supplemental calcium intake had a lower stroke rate. Daily intake over 600 mg. did not appear to reduce stroke risk further. Current recommendations are 1000 mg. for premenopausal and postmenopausal women on estrogen, and 1,500 mg. for postmenopausal women not taking estrogen. Apparently this is also enough calcium to lower stroke risk.

DAYTON PARKER

DAYTON PARKER PHARMACY
 Phone 998-5531 • PRESCRIPTIONS • Tahoka, Tx.

Many of our customers have inquired about HMO Blue.
WE NOW ACCEPT THIS PRESCRIPTION PLAN.

Revival

SWEET STREET BAPTIST CHURCH
 1300 Ave. J • Tahoka, Tx • 998-5310

April 16-19 • 7 p.m. each night

Morning Services at 11:00 a.m.

Music: **TUT JONES**

Evangelist: **JOEL HORNE**

Everyone Is Welcome!

A
P
R
1
3
2
0
0
0

LETTER TO THE EDITOR

Dear Editor:

The just-concluded cotton ginners convention in Lubbock should have been a sobering experience to area cotton farmers that prices received for their crop next fall are likely to be 20% lower than last year. The 1996 FAIR ("Freedom to Farm") Act, voted into law by incumbent Congressmen Combest, Thornberry, and Stenholm of our area cotton-growing districts, continues the downward spiral of raw cotton prices to probable CCC loan levels of 52¢ or less, depending on grade, next fall. Due to increasing Average World Price (AWP) fluctuations and declining U.S. prices, Producer Option Payments (POP) are likely to drop from the 20-22¢ range received in 1999 to a 1-4¢ range for this year's production.

These same Congressmen are about to vote on May 22 for granting permanent trade (formerly called "most favored nation") status, to Communist China. The passage of this legislation will seriously jeopardize the economic survival of our domestic cotton textile industry, including two area cotton farmer-owned spinning mills at Littlefield and New Braunfels, Texas, as well as a privately owned recently built

mill at Snyder. Within 5 years, these mills would be competing against slave-labor wages paid in China, when all import restrictions on Chinese textile imports would be removed. In return, the Chinese would reduce tariffs on U.S. motor vehicles and import more feedgrains, as well as a slightly larger quantity of U.S. raw cotton for a few years. However, area cotton farmers should be aware that the Chinese are the largest cotton producers in the world (17.5 million bales in 1999) and last year imported only 200,000 bales of extra-long staple and specialty cotton. Pakistan, second in world cotton production and a country producing cotton much like our West Texas growths, is much closer to Chinese textile mills, saving transportation costs, and has a cheaper-valued currency than the U.S. dollar, making it more likely that the Chinese will turn to that country for an additional cotton, just as Mexico has imported U.S. cotton due to proximity.

In summary, it appears that area cotton farmers are willing to return to Congress the same people that gave us "Freedom to Farm" and are about to vote against our only hope of additional future income from farmer-owned, value-added spinning mills. As in the case of GATT and NAFTA trade agreements, we will be giving away many of our existing domestic cotton mills in exchange for a "pig in a poke." At least NAFTA offered the Texas cotton farmer a

geographic advantage in selling raw cotton to Mexican mills, even though much of that cotton is promptly shipped back into the U.S. as finished garments. Even Mexican mills may be endangered due to Chinese labor and currency advantages. Therefore any small, short-term increases in raw cotton exports to China as a result of the May 22 congressional vote are likely to be greatly outweighed by loss of West Texas cotton sales to domestic and Mexican mills over time. Possibly Congressmen Combest, Thornberry, and Stenholm fail to realize their districts are dependent on cotton farmers, not auto workers, for their continued economic health. Thus far, Congressman Thornberry's aides have not responded to my request for specific information regarding how his upcoming vote to grant the Communist Chinese government permanent trade status will benefit the cotton farmers of his 13th Congressional District, which includes Lynn County.

Sincerely,
A. L. Wuenschke
Lynn Co. Cotton Farmer

Patsy Sanders Re-Elected As CA Director

Patsy Sanders was recently re-elected as a board member of Communicating for Agriculture (CA) at the organization's annual meeting on March 31 in Fergus Falls, Minn. Patsy and her husband Harold are cotton farmers in O'Donnell.

"Since joining the board nine years ago, Sanders has demonstrated experience and strong leadership. Her input on the state of Texas and national issues continues to be important for CA," said Wayne Nelson, CA president.

Michael Braude, president and CEO of the Kansas City Board of Trade (KCBT) was the featured speaker at the meeting, which drew near 200 people for the presentation. Braude announced his final year at the helm of the KCBT after serving 17 years.

Braude also told the gathering that free trade is vital to American farmers. "Government policy has to eliminate distortions, aggressively

Congressman To Address AgTexas Stockholders

Representative Larry Combest, House Agriculture Committee Chairman, will speak at the AgTexas Farm Credit Services 66th Annual Stockholders' Meeting this Saturday, April 15 at the Lubbock Memorial Civic Center, 1501 6th Street in Lubbock. Registration will begin at 10 a.m. with the business meeting scheduled at 11 a.m. Lunch will be served following the meeting.

Congressman Combest will discuss agricultural industry challenges and legislation issues with the area producers.

AgTexas Farm Credit Services, the merged entity of Lubbock Production Credit Association and Stephenville Production Credit Association, provides credit to over 1400 stockholders in a 23-county area. The cooperative has 12 lending offices, including local offices located in Brownfield, Levelland, Lubbock, Ralls, Seminole, and Tahoka.

The Annual Meeting will include reports from management concerning the financial performance of the cooperative and a report from the board of directors. AgTexas returned \$2,750,000 to its stockholders in 1999 through its Patronage Distribution.

reduce trade barriers, get rid of sanctions, and give farmers the tools and opportunity to earn a good income," Braude said.

Other board members reelected included Keigh Hubel, Marshall, Minn. and David Ramey, Glen Ellen, Calif.

Headquartered in Fergus Falls, Minn. Communicating for Agriculture is a national non-partisan, non-profit membership organization serving the rural self-employed in 50 states. Successful ongoing programs include legislative presence in Washington, D.C., international exchange programs, and member benefit programs.

Lynn County Merchants Appreciate Your Business!

BID NOTICE

In accordance with article 2372z, Section 1: Notice is hereby given that sealed bids will be accepted by the Lynn County Commissioner's Court in the County Judge's office until 10:00 A.M. April 17, 2000 to sell for cash or certified check to the highest bidder: 1985 Chevrolet Pickup.

This vehicle may be seen at the Lynn County Precinct 1 building in Wilson, Texas. Bids will be opened at 10:00 A.M. on Monday, April 17, 2000 in Commissioner's Court in the County Judge's office.

Lynn County Commissioner's Court reserves the right to reject any and all bids.
/s/ J.F. Brandon, Lynn County Judge
14-2ic

NOTICE OF TRUSTEE ELECTION (AVISO DE ELECCION REGENTES)

To the Registered Voters of New Home I.S.D., Texas: (A los votantes registrados del New Home I.S.D. Texas.) Notice is hereby given that the polling places listed below will be open from 7:00 a.m. to 7:00 p.m. on May 6, 2000, for voting in a trustee election to elect two full term trustees.

(Notifiquese, por las presente, que las casillas electorales sitadas abajo se abrirán desde las 7:00 a.m. hasta las 7:00 p.m. el 6 de mayo de 2000 para votar en la Elección para elección de regentes.)

LOCATION OF POLLING PLACES: (DIRECCION DE LAS CASILLAS ELECTORALES:) New Home High School Library Early voting by personal appearance will be conducted each weekday at New Home High School Superintendent's Office between the hours of 8 a.m. and 4 p.m. beginning on April 19, 2000 and ending on May 2, 2000.

(La votación adelantada en persona se llevará a cabo de lunes a viernes en New Home High School Superintendent's Office entre las 8 de la mañana y las 4 de la tarde empezando el 19 de abril 2000 y terminando el 2 de mayo, de 2000.)

Applications for ballot by mail shall be mailed to: (Las solicitudes para boletas que se votarán en ausencia por correo deberán enviarse a:) Kay James, P.O. Box 248, New Home, TX 79383.

Applications for ballots by mail must be received no later than the close of business on April 28, 2000.

(Las solicitudes para boletas que se votarán en ausencia por correo deberán recibirse el fin de las horas de negocio el 28 de abril de 2000.) Issued this the 10 day of April 2000. (Emitida este día 10 de Abril, 2000.)

/s/ Kay James, Presiding Officer (Oficial que Preside) 15-1ic

NOTICE OF TRUSTEE ELECTION (AVISO DE ELECCION REGENTES)

To the Registered Voters of Tahoka I. S. D., Texas: (A los votantes registrados del Tahoka I.S.D. Texas.) Notice is hereby given that the polling places listed below will be open from 7:00 a.m. to 7:00 p.m. on May 6, 2000, for voting in a trustee election to elect two (2) trustees at large.

(Notifiquese, por las presente, que las casillas electorales sitadas abajo se abrirán desde las 7:00 a.m. hasta las 7:00 p.m. el 6 de Mayo de 2000 para votar en la Elección para dos regentes "at large".)

LOCATION(S) OF POLLING PLACES: (DIRECCIONES) DE LAS CASILLAS ELECTORALES:) Tahoka School Cafeteria, 2123 N. 3rd Street, Tahoka, Texas (Cafeteria de la Escuela, 2123 N. 3rd Street, Tahoka, Texas)

Early voting by personal appearance will be conducted each weekday at (La votación adelantada en persona se llevará a cabo de lunes a viernes en) Tahoka City Hall, 1612 Lockwood, Tahoka, TX (Tahoka Oficina de la Pueblo, 1612 Lockwood, Tahoka, TX) between the hours of 8 a.m. and 5 p.m. beginning on April 19, 2000 (entre las 8 de la mañana y las 5 de la tarde empezando el 19 de Abril 2000) and ending on May 2, 2000. (y terminando el 2 de Mayo, de 2000.)

Applications for ballot by mail shall be mailed to: (Las solicitudes para boletas que se votarán en ausencia por correo deberán enviarse a:) Jerry Webster, P.O. Box 300, Tahoka, TX 79373-0300.

Applications for ballots by mail must be received no later than the close of business on April 28, 2000.

(Las solicitudes para boletas que se votarán en ausencia por correo deberán recibirse el fin de las horas de negocio el 28 de Abril 2000.) Issued this the 6th day of April 2000. (Emitida este día 6th de Abril, 2000.)

/s/ Greg Henley, Presiding Officer (Oficial que Preside) 15-1ic

Information's pretty thin stuff, unless mixed with experience. —Clarence Day

These Tahoka Firms Are Sponsoring This

FARM NEWS

AgTexas Farm Credit Services (AgTexas FCS) formerly PCA

Don Boydston

First Texas Federal Land Bank Assn.

Clint Robinson, President

Farmers Co-op Association

No. 1

Lynn County Farm Bureau



Own a piece of the action from Field to Fabric



Cooperative options allow you to be involved all the way from growing cotton to the finished product.

It's Your cotton ... Your Future and Our Priority!

NEW HOME CO-OP GIN

924-7556

(Or Toll-free 888-924-7556)



FOR SALE BY OWNER: 3-2-2. Two living areas, area, storage house. Gc 8th. 998-5312, 795-973

FOR SALE BY OWNER: attached garage on 5 a Tahoka on Hwy. 87; 4435/4600.

HOUSE FOR SALE: 2-car garage, fenced back yard, new carpet. 6339. 2321 Lockwood.

FOR SALE: 2 bedroom Central heat and air. No fenced backyard. Call 5

HOUSE FOR SALE: 3 bedroom, 1 1/2 bath, and air. New carpet an yard, two storage buildir 4609 after 5:30 p.m. or

FOR SALE BY OWNER: approx. 4,000 square feet office, dining area, kitchen. Chainlink dog approx. 20x30 with RV car, swimming pool with ered cooking area. Spri pointment only; call 81 998-4549.

FOR SALE BY OWNER: 1729 N. 7th Brick, 4 BR, 3 living area, firep lot, large patio well. Approx. 3 Shown by ap SAM ASH 998-46 998-4

REAL ESTATE: ATTRACT Brick, 4 Be office, 2 ba central heat/a new roof ir new kitchen € in 199 Located at 15 Call for app

Call Us To List Prope

PEBSW Southwest R 1801 N. 7th Stre Day 806-99 Night 806-9

The City of O'Donn Experience preferred but Apply at 615 8th Street in

Sealed bids for the cot tej will be received at th Texas 79373 until 3:00 p. Subsequently, bids wil opening will be returned u

Sealed bids shall be ac Lockwood, Tahoka, Texas Bid documents may b Group, Inc., 2525 74th St deposit of \$150.00 per set The Owner reserves th

TO THE CUSTOMER MANDATORY: The Texas Natural Resourc dards and has determined i sure. Nitrate is used in fert animals and generally gets in drinking water have cau of age. The serious illness i Nitrite interferes with the o in that symptoms can devel of days. Symptoms include advice should be sought im encourage parents and othe drinking water. Local and 5 ing alternate sources of drin at 10 parts per million (pp TNRCC has also set a drink toxicity of nitrate and nitrite nitrate and nitrite at 10 ppm little to none of this risk and

