





## Josset club meets with Mrs. Owens

Josset Extension Homemakers Club met April 9 in the home of Augusta Owens with Edna Anderson, president, presiding.

Mrs. Owens read the poem, "Make Yourself a World of Love." Afterwards, all repeated the TEHA prayer.

Roll call was answered by 13 members by answering "Are you a good listener?" Minutes of the last meeting were read and approved and the treasurer's report was given.

The Council report was given by Earmel Bevel. She told about the district meeting to be in Anson April 17. Many signed up to go.

Lou Gilly, extension agent, gave the program on, "Communication: The Tie That Binds the Family." A slide was shown and literature given out with the program. Communication is a must for family and friends in order to know how to interact with each other.

Those attending were Lou Gilly and the following members: Edna Anderson, Phylesia Bailey, Earmel Bevel, Joyce Davis, Sarah Hodge, Margaret Jones, Reatha Mullins, Gladys O'Neal, Mildred Robertson, Hazel Thomas, Martha Toliver and Margaret Wall.

Next meeting will be May 14 in the home of Margaret Jones.

Thank you for reading The Haskell Free Press.



Jo Kellie Spraberry  
Joseph William Swinney

## Engagement of couple announced

Jap Spraberry of Stamford and Jo Ann Williams of Rochester have announced the engagement of their daughter, Jo Kellie Spraberry, to Joseph William Swinney. He is the son of Mr. and Mrs. Bill Swinney of Haskell.

Their wedding will be in July. The bride-elect will graduate this year from Rochester High School. The prospective bridegroom is a 1988 graduate of Haskell High School. He is employed by Western Pipe and Pivot of Rochester.

## --Market Report-- Haskell Livestock Auction

The sale at Haskell Livestock Auction Saturday was on a run of 1,488 head of cattle.

Cows: fat 50-54; cutters 53-59; canners 42-52.

Bulls: bologna 66-70; feeder 75-85; utility 56-62.50.

Steers: 200-300 lbs. 135-165; 300-400 lbs. 130-150; 400-500 lbs. 115-130; 500-600 lbs. 95-110; 600-700 lbs. 87-97; 700-800 lbs. 82-87.50; 800 lbs. up 76-83.50.

Heifers: 200-300 lbs. 125-135; 300-400 lbs. 110-125; 400-500 lbs. 100-115; 500-600 lbs. 86-100; 600 lbs. up 75-84.50.

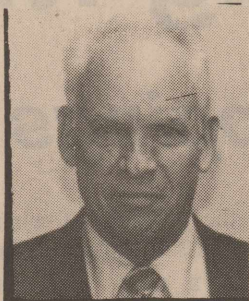
Bred heifers: medium frame 600-885.

Bred cows: young to middle age 750-800; aged or small 550-650.

Cows with calves: young and iddle age 825-1050; small or aged 550-700.

Thank you for reading The Haskell Free Press.

## PHARMACY TOPICS



By Elbert Johnson,  
Registered Pharmacist

Scientists at Cambridge University have managed to grow hair in a test tube. It may be 10 years before this research can be turned into a preventive or cure for baldness dermatologists say.

Study at Long Island Jewish Medical Center confirmed that eating a cup of yogurt a day really does cut down on the recurrence of yeast infections. Plain yogurt with active cultures is best.

Easy treatment for TMJ: applying a spray coolant, fluorimethane. Tests at University of Southern California School of Dentistry found it as effective as an injection of anesthetic and easier to use.

Short women have a greater heart attack risk than tall ones, according to a study by the Boston University School of Public Health. Researchers and doctors don't know why.

Disposable contact lenses should never be worn longer than recommended by eye doctors. The New England Journal of Medicine reports a greater risk of eye infections with extended-wear lenses worn too long.

Contact lens wearers know they'll find the comfort drops, saline solution and cleaners they need at

Free Prescription Delivery

**Johnson**

Prescription Pharmacy  
418 N. 1st, Haskell  
864-3331, Nights 864-3439

## Alzheimer's group meets each month

The Haskell Alzheimer's Disease Support Group which was organized in August of last year has been meeting every month and for those who have been unable to attend, but are interested in attending, the meeting date and time is each third Thursday evening at 7 p.m. at the conference room of the First National Bank in Haskell.

Since the coordinator has been out of town, the news has not made the media, and we want to mention that we had an informative meeting held by District Attorney John Fouts, with explanations concerning correct procedures involving directives to physicians in regard to health care of the relative involved. Our thanks to Mr. Fouts and also to Margaret Wall for supplying and serving the refreshments for the above mentioned meeting.

Also, we want to commend Marc and Melisa Robison for their program concerning "Decisions Made Early" and answers to questions pertaining to final arrangements, donation of body parts, and all types of services which are readily available through a funeral director.

The meeting was well attended, and our thanks go to Mrs. Charles Davis of Rule for providing and serving refreshments to the honored guests and members of the group.

Encouragement is extended to any person who is a care giver of a shut-in, anyone who is concerned for an Alzheimer affected person, stroke victim, or their spouse, family member or associate, to try to arrange time once a month to "come away" for a brief period of fellowship with others who are sharing a burden also. There also is a chance for some group or organization to aid in volunteering to stay with someone for a couple of hours and give the care-giver a chance to attend these meetings. Civic organizations take heed.

## Family birthdays observed

A birthday reunion was held Saturday and Sunday in the home of Delma and Doll Williams near Rule.

All of Mrs. Williams' brothers and sisters were present, including Birdie Culbreth who will be 100 years old April 25 and still lives alone in Haskell.

Other family members having April birthdays are Vernon Bruce of Richmond, Rollo Harrell of Plainview, Doll Williams of Haskell and Buddy Miles of Aspermont.

There were 38 present. Nieces and nephews came from St. Louis, Mo., Clute, Richmond, Pasadena, Atlanta, Ga., Madisonville, Abilene, Dallas, Big Spring, Austin, Ackerly and Munday.



Kathleen King and Kevin Williams

## King, Williams to marry July 6

Joe Bob and Linda King of Haskell announce the engagement of their daughter, Kathleen, to Kevin Williams, son of Don and Jane Williams of Okemos, Mich. Kathleen is the granddaughter of Juanita Rhea of Haskell.

Kathleen graduated from the University of Texas at Arlington with a degree in journalism and is currently pursuing her master's degree in English. She is a litigation assistant in the office of the State Attorney General in Anchorage, Alaska.

Kevin earned a degree in special education from Michigan State University and then graduated from Williamette University College of

Law. He is an associate attorney with a law firm in Anchorage.

The wedding will take place July 6 in Lexington, Mich.

## First playnight to be Saturday

The season's first playnight by the Haskell Horse Club will be Saturday night.

It will begin at 8 at the Haskell County Arena and all interested persons are invited.

Thank you for reading The Haskell Free Press.

## Hearing Loss Is Not A Sign Of Old Age.

Chicago, Ill.- A free offer of special interest to those who hear but do not understand words has been announced by Beltone. A non-operating model of the smallest hearing aid Beltone has ever developed will be given absolutely free to anyone requesting it.

It's yours for the asking, so send for it now. It is not a real hearing aid, but it will show you how tiny hearing help can be. The actual aid weighs less than an eighth of an ounce, and it fits completely into the ear canal.

These models are free, so we suggest you write for yours now. Again, there is no cost, and certainly no obligation. Although a hearing aid may not help everyone, more and more people with hearing losses are being helped. For your free sample send your name, address, and phone number today to: Department 06650, Beltone Electronics Corporation, 4201 West Victoria Street, Chicago, Illinois 60646.

## Notes From The Rolling Plains

(Note: The following is one of a series of stories by noted wildlife photographer Wyman Meinzer offered by Haskell Save-A-\$ for your enjoyment.)

A cool wind brushed our backs as my friend, Knute, and I trudged toward the yawning abyss of Palo Duro Canyon. Parking our vehicle upon the plains above the canyon, our purpose was to hike into the upper reaches of this panhandle jewel and photograph the rocky phenomenon within its holds. Water falls trickled over trassic sandstone overhangs and canyon wrens chirped their echoing tunes during the next few hours that we descended through the Red River canyon. Stopping occasionally for a drink and once for a lunch break, we also took a few moments to relieve ourselves of the heavy packs and climb through the entanglement of grape vines and sumac to inspect the rocky cliffs that loomed high above. Hoping to find a yet undiscovered relic of Native American rock art, we were only greeted with an occasional etching from neexplorers, some dating back to 1902 and none later than 1925. Were we the only ones to see these names since that time? It wouldn't surprise me as the ascent to these hidden undercuts was an effort to remember. Soon the sun began its arc to the western horizon and we quickened our pace on down the canyon. My primary goal was to photograph the great Colorado juniper trees that grew in the deep recesses of Palo Duro. Many centuries ago, when the climate was much cooler than today, these large junipers stretched from the Rocky Mountains to the Texas plains. Now, the only reminder of that era are the forests of these trees in the cooler reaches of New Mexico. That is besides those that have survived in Palo Duro. Because of the cooler temperatures in the canyon floor, a fairly large number of these cool weather junipers still survive in this region. Soon the rocky cliffs glow in a show of light orange as the sun nears the summit of the canyon walls. We stood in a forest of these impressive trees, some looming 50 to 80 feet above our heads. With a circumference too large for a man to embrace with both arms, these trees are a priceless relic from another era.

Wyman Meinzer

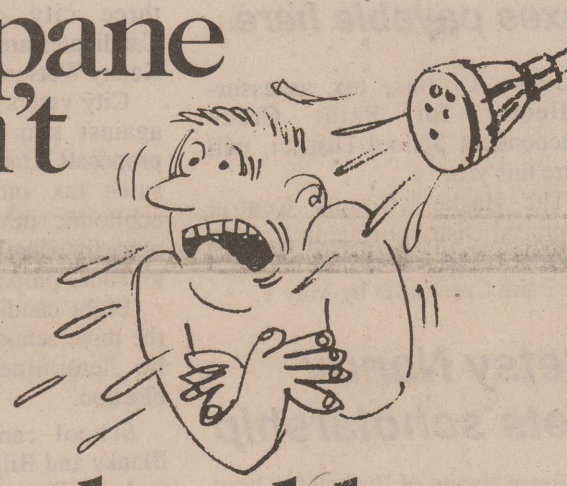
## HASKELL SAVE-A-\$

For All of Your Fuel & Lubrication Needs  
Just East of Smitty's Auto Parts - 864-2146  
We Sell Conoco Lubricants



HOTTEST BRAND GOING®

# Propane won't give you the cold shoulder.

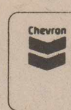


If you've ever had an electric hot water heater, you probably know what it's like to take a cold shower.

With an efficient propane gas water heater, the risk of running out of hot water is greatly reduced. Propane works quickly.

and a propane water heater recovers quickly. In addition, a propane water heater can provide you with twice as much hot water at a lower cost per gallon than electricity.

Switch to a propane gas water heater. You'll save energy, money...and goose bumps.



LP GAS

**Warrengas**

YOUR DOLLAR GOES FURTHER ON WARRENGAS

## Haskell Butane

817-864-2424 Rex & Camin Pittman 817-864-3915  
Hwy. 277 S. Owners Haskell

\$2.99

CHICKEN COUNTRY BASKET

FOUR CHICKEN FILLET STRIPS, GRAVY, FRIES, TEXAS TOAST



THIS WEEK'S

DQ

VALUE

ON SALE AT DAIRY QUEEN APRIL 15-28, 1991

\$2.49

GRILLED CHICKEN SANDWICH

FEWER THAN 300 CALORIES!



® Reg. U.S. Pat. & Tm. Off. Am. D.Q. Corp. \*TM Reg. U.S. Pat. & Tm. Tx. D.Q. Op. Coun. © Tx. D.Q. Op. Coun. At participating Dairy Queen stores.



# Haskell well represented in regional track meet

Haskell sends its finest athletes to Abilene this weekend to compete in the region 1-2A track and field meet at ACU's Elmer Gray Stadium.

Johnie Billington, district 7-2A champion in both the 100- and 200-meter dashes, will lead the Indian team.

Also representing the Indians will be Mitch Mayfield in the 110-meter hurdles and Chad Gibson in the discus. Both finished second in the district meet two weeks ago.

Regina Dever and Trece Burson lead the Maidens. Both are district champions, Dever in the 400-meter dash and Burson in the 1600-meter run.

Dever also will compete in the long jump and Shelia Unger will compete in the 800-meter run by virtue of second-place district finishes. Also competing for the Maidens will be the district second-place 1600-meter relay team of Teresa Diaz, Holly Hobgood, Unger and Dever.

Billington warmed up for the regional event by taking first places in the 100- and 200-meter dashes at a regional qualifiers' meet in Levelland last Saturday. He had times of 10.6 in the 100 and 22.1 in the 200. His best times for the year are 10.39 and 21.66.

Gibson also competed in the Levelland meet, coming in sixth in

the discus with a throw of 119-6, considerably below his season-best 131-6.

Mayfield did not compete in Levelland. His best time in the 110-meter hurdles is 15.90.

The Maidens did not compete in a regional qualifier's meet.

Dever's best time in the 400-meter dash has been 59.44 and her top long jump effort was 17-3 3/4.

Burson's best time in the 1600-meter run was the 5:53.26 she ran in winning district. Unger's best in the 800 was 2:30.01, also recorded in the district meet.

The best time for the Maiden mile relay team was 4:16.35.

The regional meet gets underway at 6 p.m. Friday with finals in the long jump (girls) and the 3200-meter run for girls. The boys' 3200 finals will begin at 6:15 and the boy's long jump finals at 8 p.m.

All other Friday events will be preliminaries, beginning with the girls' 400-meter relay at 6:30.

First preliminary race in which a Haskell athlete will be competing will be the girls' 800-meter run at 6:45 (Unger).

Other preliminaries Friday will include the boys' 110-meter hurdles (Mayfield) at 7:15, the boys' 100-meter dash (Billington) at 7:40, the girls' 400-meter dash (Dever) at 8:15, the boys' 200-meter dash (Billington) at 9, and the girls'

1600-meter relay (Diaz, Hobgood, Unger, Dever) at 9:15.

There will be no preliminaries in the girls' 1600-meter run (Burson) or the boys' discus (Gibson). Finals in the discus will be Saturday morning, beginning at 9, and the girls' 1600 finals will be at 5 that afternoon.

Here is the schedule for Saturday afternoon's finals in the running events as they pertain to local athletes:

- 3:10 p.m.: 800-meter run (girls).
- 3:30: 110-meter hurdles (boys).
- 3:40: 100-meter dash (boys).
- 4:20: 400-meter dash (girls).
- 4:55: 200-meter dash (boys).
- 5:00: 1600-meter run (girls).
- 5:25: 1600-meter relay (girls).

## Concert features Brass Orchestra

The Jubilation Brass Orchestra will present a free concert in the auditorium of the First Baptist Church at 7:30 p.m. Friday.

The "Brass" tours internationally and assists churches in developing their own instrumental programs.

Home base for Jubilation Brass is Howard Payne University in Brownwood. The players are directed by Doyle Combs.

# AFA sets public meeting

The American Family Association of the Rolling Plains will sponsor a meeting tonight to inform the public on directive abstinence sex education in the public schools. The meeting will begin at 7 in the Haskell National Bank community room.

Mrs. D'Ann Pierce of Spur will be the speaker. She is the teacher-coordinator for the Teen Pregnancy Program, sex education teacher and counselor in the Spur ISD.

Mrs. Pierce has used the directive abstinence program Teen-Aid for four years in the school. The pregnancies have dropped from nine to one during that time. She says the Teen-Aid program is a major factor in this success.

All interested persons are encouraged to attend tonight's meeting to learn about an approach that is being effective in solving this national problem.

Mrs. Pierce also will speak at 10 a.m. today to school personnel at the same location.

For more information, call 997-2652.

# --School Menu--

April 29-May 3  
BREAKFAST

**Monday:** Juice or fruit, cereal, buttered toast, milk.

**Tuesday:** Juice or fruit, oats, buttered toast, milk.

**Wednesday:** Juice or fruit, cinnamon toast, peanut butter sandwiches, milk.

**Thursday:** Juice or fruit, biscuits with gravy, sausage, milk.

**Friday:** Juice or fruit, cereal, buttered toast, milk.

LUNCH

Elementary School

**Monday:** BBQ weiners, creamed potatoes, vegetable sticks, buttered hot rolls, fruit, milk, juice.

**Tuesday:** Chicken on bun, tater tots, pickle spears, lettuce and tomatoes, sunshine bars, milk, juice.

**Wednesday:** Enchilada casserole, fried tortillas with hot sauce, pinto beans, sliced pears, milk, juice.

**Thursday:** Pizza, buttered corn, cole slaw, frosted Jello, milk, juice.

**Friday:** Cheeseburgers, french fries, lettuce and tomatoes, pickles and onions, ice cream, milk, juice.

LUNCH

High School

**Monday:** Hamburgers or chicken on bun, french fries, salad bar, sliced peaches.

**Tuesday:** Hamburgers or burritos, french fries, buttered corn, salad bar, peanut butter and crackers, apple sauce.

**Wednesday:** Hamburgers or corn dogs, tater tots, pork and beans,

salad bar, cinnamon rolls.

**Thursday:** Hamburgers or steak fingers with gravy, french fries, creamed potatoes, salad bar, buttered hot rolls, fruit.

**Friday:** Cheeseburgers or nachos, french fries, pinto beans, salad bar, ice cream.

Milk and tea offered daily.

## Deadline near for registration

Next Tuesday (April 30) is the deadline for ex-students and teachers of Haskell County rural schools to register for this year's reunion meal.

The reunion will be May 25 at the Haskell Memorial Civic Center, beginning at noon.

The meal will be served at 6 p.m. Visitors are welcome.

Tickets for meals and badges will be issued that day at the Civic Center.

For more information, contact Bobbie Wood, 864-3834.

Johnson



Bobbie Johnson

Owner

Photographer

West Side of Square • Haskell

## Bar T Brangus

Annual Female Sale

Sat., May 4 - 11 a.m.

At the ranch on Hwy 380,  
3 miles east of Aspermont

Registered Commercial

Brangus females

817- 989-2919 or 989-2835

## Homeowners insurance discounts from State Farm.

For qualified homeowners, we offer discounts which can make our already low premium even lower.

Call for details.  
**BRIAN BURGESS, AGENT**  
705 North Avenue E.  
Haskell, Texas 79521  
Off. 864-3250



State Farm Fire and Casualty Company  
Home Office: Bloomington, Illinois

## REPORT OF CONDITION

Consolidating domestic subsidiaries of the

FARMERS NATIONAL BANK of Rule City  
Name of Bank of City  
in the state of TEXAS, at the close of business on March 31, 19 91  
published in response to call made by Comptroller of the Currency, under title 12, United States Code, Section 161.  
Charter Number 14539 Comptroller of the Currency Eleventh District

## Statement of Resources and Liabilities

		Thousands of dollars
ASSETS	Cash and balances due from depository institutions:	
	Noninterest-bearing balances and currency and coin	597
	Interest-bearing balances	0-
	Securities	6,354
	Federal funds sold	3,725
	Securities purchased under agreements to resell	0-
	Loans and lease financing receivables:	
	Loans and leases, net of unearned income	7,558
	LESS: Allowance for loan and lease losses	151
	LESS: Allocated transfer risk reserve	0-
	Loans and leases, net of unearned income, allowance, and reserve	7,407
	Assets held in trading accounts	0-
	Premises and fixed assets (including capitalized leases)	138
	Other real estate owned	78
	Investments in unconsolidated subsidiaries and associated companies	0-
Customers' liability to this bank on acceptances outstanding	0-	
Intangible assets	337	
Other assets	18,636	
Total assets	18,636	
Losses deferred pursuant to 12 U.S.C. 1823(j)	0-	
Total assets and losses deferred pursuant to 12 U.S.C. 1823(j)	18,636	

LIABILITIES	Deposits:	
	In domestic offices	17,122
	Noninterest-bearing	2,084
	Interest-bearing	15,038
	Federal funds purchased	0-
	Securities sold under agreements to repurchase	0-
	Demand notes issued to the U.S. Treasury	0-
	Other borrowed money	0-
	Mortgage indebtedness and obligations under capitalized leases	0-
	Bank's liability on acceptances executed and outstanding	0-
Subordinated notes and debentures	0-	
Other liabilities	144	
Total liabilities	17,266	
Limited-life preferred stock and related surplus	0-	
EQUITY CAPITAL	Perpetual preferred stock and related surplus	0-
	Common stock	50
	Surplus	200
	Undivided profits and capital reserves	1,120
	LESS: Net unrealized loss on marketable equity securities	0-
	Total equity capital	1,370
	Losses deferred pursuant to 12 U.S.C. 1823(j)	0-
Total equity capital and losses deferred pursuant to 12 U.S.C. 1823(j)	1,370	
Total liabilities, limited-life preferred stock, equity capital, and losses deferred pursuant to 12 U.S.C. 1823(j)	18,636	

We, the undersigned directors, attest to the correctness of this statement of resources and liabilities. We declare that it has been examined by us, and to the best of our knowledge and belief has been prepared in conformance with the instructions and is true and correct.

*[Signatures]*  
Directors

Mary Lou Landes  
Name  
Vice President  
Title

of the above-named bank do hereby declare that this Report of Condition is true and correct to the best of my knowledge and belief.

*Mary Lou Landes*  
Signature  
April 18, 1991  
Date



R.C. Young Seed Co.

624-27TH STREET LUBBOCK, TX 79404-1498 806/744-1408

# ORO Seeds

- Kow Kandy - Hybrid Sorghum-Sudangrass
- Hybrid Forage Sorghum - Red-topped Kandy
- Hybrid Grain Sorghum - ORO G (Maize)
- Early Extra Grain Sorghum
- Hybrid Pearl Millett - Horse Chew

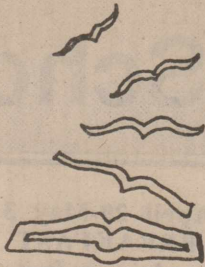
PRODUCT AVAILABLE AT:

# MODERN WAY FOOD STORE

Store Phone 817-864-3763  
Haskell, Texas



## Give Us Books Give Us Wings



**By Marsha G. Whittemore**  
Dear young readers and the young at heart: It has been nice that much interest has been shown for books, writing and this column. Keep your interest high in writing and remember your teachers have information that will help you in your writing needs.

I had a nice surprise telephone call last month from Mr. Pete Huntsman of Broken Arrow, Okla., while he visited his mother in Rochester. He's a subscriber and avid reader of *The Haskell Free Press*.

Remember the book, *Broken Arrow Boy*, I reviewed Feb. 26? Adam Moore had written and illustrated his book about the accident he had when he fell and stuck an arrow in his head. Adam lives in Broken Arrow and attends the same church where the Huntsman family goes. Mrs. Huntsman taught Adams' Sunday School class at that time.

I've told you about the Broken Arrow families that you may realize, although our world is large, we can be brought closer through published words be it newspapers, books, magazines or letters.

It is thrilling to know many of you have expressed your desire to write someday. You could start now. Letters are an excellent way to begin. Write your grandparents or friends, and make your daily happenings an interesting story.

Do your mom and dad work? Write to them. If you have gathered flowers or built a boat, tell what color, the kind, and how big in vivid details. Parents are good to practice on whether they're at work or not.

Read lots of books. Especially the kind you would like to write. Dennis Vollmer, age 6, wrote and illustrated *Joshua Disobeys*. Remember? He had been exposed to lots of books and art.

Now, we will look through the north window of the tower. Remember the countryside is cold, pale blue and you can count on finding witches, wizards and dragons. All the trolls and giants of fairy tales were in the north country. Princesses too.

**CHILDREN'S BOOKS:**  
*Sleeping Ugly* by Jane Yolen and pictures by Diane Stanley.

Princess Miserella was beautiful on the outside, but inside where it was hard to see, she was the meanest, wickedest and most worthless princess around.

Jane Yolen, author and editor for children with a versatility that has caused her to be called "America's Hans Christian Anderson," is a gifted and natural storyteller.

*Jumanji*, written and illustrated by Chris Van Allsburg.

Left on their own for an afternoon, two bored and restless children found more than they bargained for in a jungle game.

This mysterious and mystical story has a good lesson in its pages. Might be fun to see if you can find it.

*The Witch of Blackbird Pond* by Elizabeth George Speare.

Kit Tyler, granddaughter of the late Sir Francis Tyler, moved by boat from the turquoise bay of Barbados, her home, to the bleak line of shore surrounding the gray

harbor of Connecticut Colony in America.

Sick at heart, she wondered if her only aunt and uncle, who were unaware of her coming, would welcome her, especially when they knew she befriended a witch.

The story takes place in 1687, but even today, the Great Meadows still stretch quietly along the Connecticut River. A few real people walk through the imaginary story. Important men of their time, and the freemen's struggle to preserve their charter is known to every school child in Connecticut.

A wholesome, heart-warming story any age will enjoy.

## Hospital memorials

Nored and Durene Boone in memory of Glenn Caddell and Bill Holden.

Arthur McDonald in memory of Jim Alvis.

Leonard McDonald in memory of Jim Alvis.

Dr. Bill McSmith in memory of Bill Holden.

Mrs. Joe Cloud in memory of Novis Ousley.

Zelma Price in memory of Bill Holden.

Mr. and Mrs. Lynn Pace Jr. in memory of Satch Lusk, Bill Holden and Sonny Pittcock.

## Buffalo Gap At Festival next weekend

The 1991 Buffalo Gap Art Festival will return to the Live Oak trees of the Perini Ranch at Buffalo Gap on Friday, Saturday and Sunday, April 26-28.

One of the area's most popular springtime family events, the Buffalo Gap Arts Festival, in its 14th year, is the major fundraiser for the Museums of Abilene, a nonprofit, art, history and children's museum.

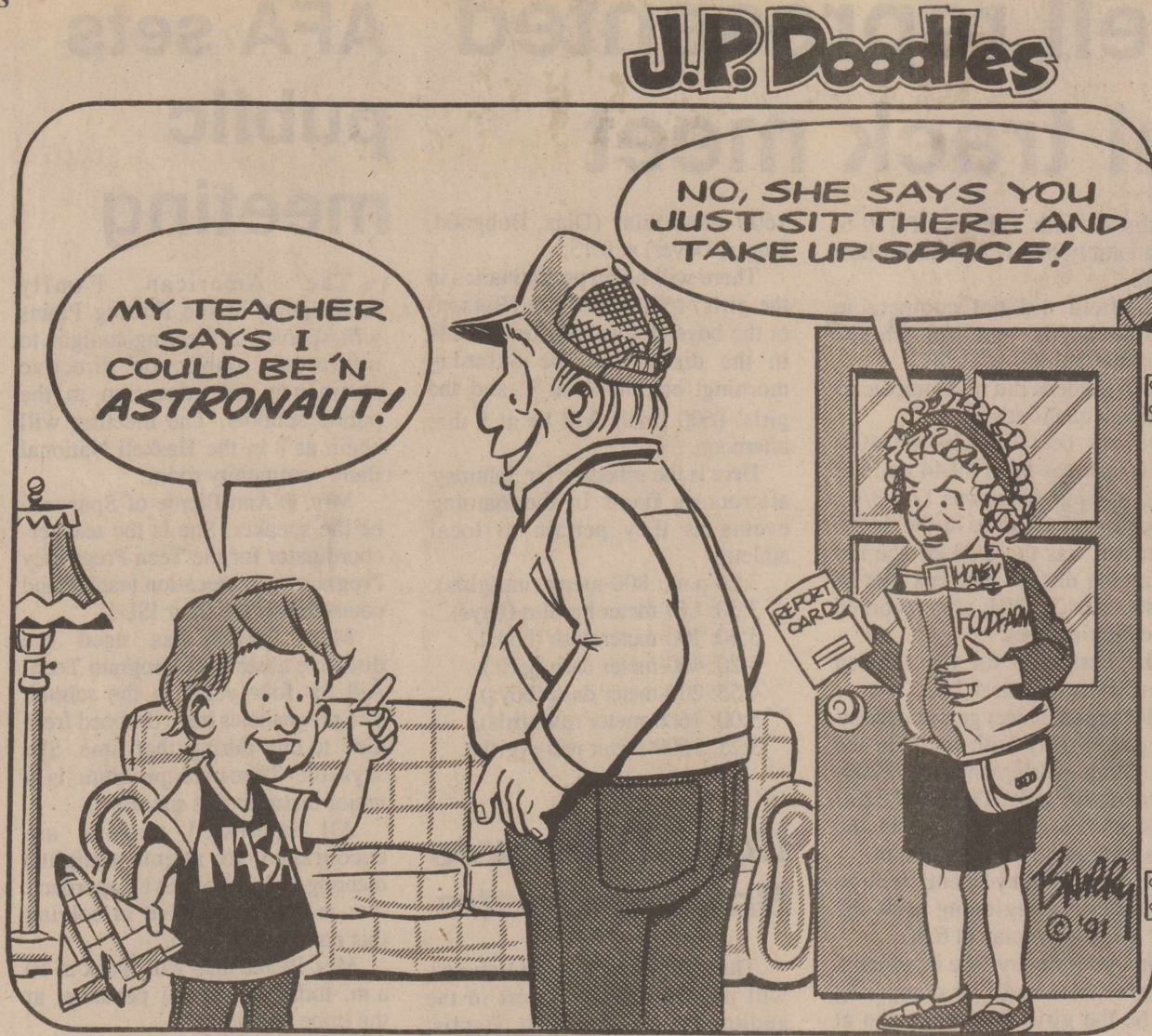
The fun-filled outdoor excitement comes complete with banners flying, bands playing, wagon rides, great food, a children's area and the sale of original art.

Activities begin at 7 p.m. Friday (April 26) with a wild west theme, complete with a live band and a western buffet. Guests may preview the art, take a wagon ride, dance, enjoy superb food and relax by the campfire.

Saturday's schedule will run from 10 a.m. to 6 p.m. and Sunday's from 11 a.m. to 5 p.m.

## Enrollment up for minorities

Black and Hispanic students accounted for 40.5 percent of the 15,628 student increase in enrollment last fall at Texas public community colleges and technical institutes.



## --From Out of the Past--

From the Files of The Haskell Free Press

April 29, 1971

Tommy McAdams, assistant coach, was elevated to head football coach at Haskell High, replacing C. T. (Sonny) Everett, who has accepted the head football coaching position at Sweetwater.

Clifford Campbell placed first in the shot put with a toss of 52 1/2 feet for the class AA regional title and will go to the state meet in Austin May 7-8.

New officers of the Little League Ladies Auxiliary are Helen Bartley, president; Jo Long, vice president; Carolyn Pippin, secretary-treasurer; and Lena Tidwell, reporter.

Haskell County Sheriff Garth Garrett and Deputy Olen King were in Austin last week from Monday through Friday attending the 17th annual homicide seminar.

Terry K. Diggs, Pamela E. Reeves, William J. Kemp and Roger S. Livengood are among students to be named on the Dean's List at Texas Tech University.

Alexia Mayfield and Pauletta Wilfong of Weiner first in debating at the regional meet in Stephenville. They will go the state meet May 1 in Austin.

Ben Brock has been named dean of the new junior college at Snyder which will open this fall. He is a graduate of Haskell High School, class of 1941, and the son of Mrs. Robert L. Brock of Haskell and the late Mr. Brock.

April 27, 1961

According to a tabulation of out-of-town checks received by local stores last Dollar Day, April 18, the majority of shoppers attracted by the monthly event were from four area towns. Customers from Knox City and Munday accounted for 56 percent of the day's business volume for which payment was made by check. Checks given by Rule and Stamford customers accounted for 30 percent, with the remaining 14 percent coming from six other area towns.

Shelby J. Harris, son of Mr. and Mrs. Shelby Harris of Haskell, has been promoted to Colonel in the U.S. Air Force.

Diane Reid of Rochester was named cheerleader in spring elections held Wednesday at North Texas State College. She is a sophomore speech and drama major.

G. C. Eggleston, Joe Matura and Jerry Wilcox led the O'Brien High School fifth six weeks honor roll with all A's in their five subjects.

Mr. and Mrs. Richard Spinks, who have been living in Clifton, Ariz., for the past two years, have moved back to Haskell to make their home.

Smith-Toliver Chevrolet Co. was host to approximately 180 persons, including business and professional men, shop owners and automotive service men from over Haskell County at an appreciation dinner Wednesday night in the American Legion building.

Jo Ann Griffith, senior in Paint Creek High School, will receive the state Future Homemaker degree Friday at the state meeting of Future Homemakers of Texas in Dallas.

April 24, 1942

A student pilot training at

Stamford Arledge Field bailed out of his plane a few miles north of Rule Wednesday evening and made a safe parachute landing. The plane crashed and was demolished on the J. R. Barbee farm.

Opening of Barnes Grocery and Market is scheduled April 25 in the post office building, first door west of the American Railway Express office.

J. E. Walling Jr., Mrs. Viars Felker and Lottie Mae Thompson made a business trip to Fort Worth and Dallas this week.

Curtis Pogue from Sheppard Field, Wichita Falls, visited his parents, Mr. and Mrs. W. S. Pogue, during the weekend.

Ray Buford from Duncan Field, San Antonio, spent the weekend with his parents, Mr. and Mrs. Sam T. Buford.

Curtis Cross, who is assigned to a U.S. Gunnery School at Harlingen, has been promoted to the rank of corporal.

Mmes. Calvin and Elzie Whately of Pampa and Mrs. A. B. Burt are visiting relatives and friends in Haskell this week.

April 23, 1931

Two prisoners who were being held in the county jail on charges of burglary and theft, made their escape from jail last Thursday night after they had broken through the brick outside wall of the jail.

J. E. Reeves of Munday has been appointed as manager of Grissom's Store, to succeed E. C. Hunter.

G. W. Waldrop of the G. W. Waldrop Furniture Co. of Abilene and a former citizen of Haskell, has been elected vice president of the Retail Furniture Dealers Association of Texas.

Mrs. Bruce W. Bryant and daughter, Mrs. Virgil Reynolds, visited Judge Bryant at Austin the first of the week. Judge Bryant has been in Austin since the first of the year, having accepted the position of first assistant to Attorney General Allred.

Ben Bagwell has announced the opening of Ben Bagwell's Men's Furnishings Store in Haskell.

Mr. and Mrs. Lee Glazener of Chillicothe were in the city the first of the week visiting old friends. Mr. Glazener was formerly connected with the Haskell Motor Co., having moved to Chillicothe about a year ago.

April 29, 1911

The Franklin Tent Theatre will open Monday night and run moving pictures for a few days until the dramatic company that is engaged to open the season here arrives.

Haynes Hambleton is having a nice residence built in the south part of town.

W. F. Drucesedow and Henry Drucesedow have a cotton chopper and called at the Free Press Friday morning and placed an ad with us. They say they ran the machine Thursday and 26 farmers came to see it work.

The Elks Lodge of Haskell has jurisdiction of all this section of Central West Texas, and is destined to be one of the biggest lodges in the West.

E. H. Morrison and family of Graham came over Saturday in their

auto and spent Sunday with Mrs. J. S. Rike and other relatives.

W. L. Hill of Rule passed through Haskell Wednesday on his way home from a business trip to Denton County.

Mr. and Mrs. Ed Ellis of Rule have returned from a two weeks visit to Dallas.

April 27, 1901

Mrs. H. R. Jones left Thursday on a visit to Marlin, and will also visit in Austin before her return.

B. T. Lanier was in town Wednesday and said there was a big crop of wild plums in the plum thickets along the Brazos.

W. T. Hudson and S. Cummings took a bunch of about 1,000 head of young cattle to King County this week where they have arranged to have them pastured.

H. S. Post bought four sections of land this week for ranch purposes. He says this finally ties him to Haskell County.

## City voters...

Continued from page 1

50 percent.

While passage of this proposal would not result in additional revenue for the city, it would redistribute the tax burden to a larger group since all citizens, not just property owners, would be paying the \$70,000. Also helping pay would be tourists, out-of-town shoppers and others who make local purchases while visiting or passing through Haskell.

Absentee property owners might get a break in that their property taxes would be reduced, while they would not be paying a local sales tax.

If passed, the property tax decrease would be effective with the city's next fiscal year, beginning Sept. 1. But the tax would not be implemented until Jan. 1 and would not be reflected in the city's sales tax receipts until March. This procedure could cause some cash flow problems since most property taxes are received from October through January, while sales taxes are received throughout the year. It would take a full 12 months of sales tax collections for city revenue to even out.

## -LETTERS-

### Likes columns

Editor: I was born and raised in Haskell and while I have been gone many years The Haskell Free Press has always allowed me to keep in touch with events in my hometown.

I have especially enjoyed the addition of "Happenings" by Lois Redwine and "From Inside Out" by Mary Kaigler to The Free Press.

Thanks and keep up the good work.

Eloise Charboneau  
Midwest City, Okla.

## plain talk

BY WENDELL FAUGHT

A state policeman in New Jersey cannot wear a Rolex watch while on duty.

A directive from the top brass at the New Jersey State Police is quite plain: "The wearing of unreasonable jewelry is prohibited; i.e. Rolex watch."

But it's not for the same reason that Jesus wouldn't wear a Rolex on his television show.

The state has a policy of reimbursing employees for personal property damaged in the line of duty. Last October, a state policeman broke his Rolex while making an arrest and it cost the state \$900 to get it repaired.

-0-

If you've already mastered the spelling and pronunciation of the last name of the first Democratic candidate for president--Paul Tsongas--you might want to start working on his middle name.

It's Efthemios.

-0-

The two faces of the media were never more obvious.

While many of them deplore the hatchet job Kitty Kelley did on Nancy Reagan, they still run lengthy articles on her book, revealing all the gory details.

-0-

Quotable: "We were happily married for eight months. Unfortunately, we were married for four and a half years." ... Progolfer Nick Faldo.

-0-

Graduation speakers for New Hampshire colleges are usually easy to find for the year preceding the state's presidential primary.

Four years ago, Gov. Mario Cuomo of New York spoke at Franklin Pierce Law Center, Sen. Bob Dole spoke at Daniel Webster College and Vice President George Bush at the University of New Hampshire.

With no hot primary looming, the pickings this year are thin. Franklin Pierce will settle for federal Judge Helen Nies, Daniel Webster will hear New Hampshire's own Warren Rudman and UNH will have Secretary of Education Lamar Alexander.

-0-

While political activity may be slow next year in New Hampshire, it won't be in California.

"It's the next California gold rush," says *Campaign & Elections* magazine in reference to the possibility of a dozen candidates for the two U.S. Senate seats which will be up for grabs in 1992. Predictions are that as much as \$75 million will be spent in primary and general election campaigns.

Add to this situation, the fact that California will gain seven new congressional seats through reapportionment and it's understandable why armies of consultants, pollsters and media advisers are headed west.

-0-

Mickey Mantle said on the Larry King show the other night that he made about a million dollars in salary during his 18-year career with the New York Yankees.

A fairly good ballplayer today can make that in a couple of months.

## -BIRTHS-

Shelly and Daniel Acosta of Stamford are proud to announce the arrival of their son, Brett Macklin, born Feb. 20 at 6:22 p.m. in Wichita General Hospital. He weighed 8 pounds, 13 ounces and was 20 inches long.

Paternal grandparents are Pauline and Joe Perez of Stamford. Maternal grandparents are Linda and Jerry Briscoe of Haskell.

Paternal great-grandparents are Julia and Edward Ramos of Othello, Wash., and Candy Acosta of Stamford.

Maternal great-grandparents are Addie and I. T. Briscoe of Haskell and Ruth and Joe Howard of Rochester.

## Philharmonic

The Abilene Philharmonic Orchestra will present its final pops concert of the season, "A Potpourri of Symphonic Warhorses," on Saturday, April 27, at 8:15 p.m. in the Abilene Civic Center.

## THE HASKELL FREE PRESS

Established January 1, 1886  
PUBLISHED EVERY THURSDAY  
401 S. First St.  
P. O. DRAWER 1058 HASKELL, TEXAS 79521

Don Comedy.....Publisher  
Wendell Faught.....Editor  
Lisa Shaw.....Business Manager  
Mickey Holloway.....Production

Second Class Postage Paid Haskell, Texas 79521

(USPS 237-040)  
SUBSCRIPTION RATES:

In Haskell and adjoining counties, one year, \$12.00; six months, \$10.00; two years, \$23.00; Elsewhere in Texas, one year, \$15.00; six months, \$13.00; two years, \$29.00; outside Texas, one year, \$17.50; six months, \$15.50, two years, \$34.00.

NOTICE TO PUBLIC: Any erroneous reflection upon the character, reputation or standing of any firm, individual or corporation will be gladly corrected upon being called to the attention of the publisher.

POSTMASTER: Send address changes to The Haskell Free Press, P.O. Box 1058, Haskell, TX. 79521-1058.





# M SYSTEM

Your Friendly

## SUPERMARKET

Haskell, Texas  
 Open 7 days a week  
 Monday-Saturday 7:30 a.m. til 8 p.m.  
 Sundays 8 a.m. til 7 p.m.

### DOUBLE COUPONS 7 DAYS A WEEK!

We will redeem your manufacturers' cents-off coupons for double their face value up to 50¢ when the product is purchased. We will double only one coupon per item. All others redeemed at face value. Limit one coupon per item. Coupon not to exceed value of item. This policy does not include "Free" coupons, cigarette and tobacco, or refund coupons. Offer good for a limited time only. Super value offer from M-System in Haskell.

### We Gladly Accept Food Stamps

Prices Good  
 April 24-April 28



QUALIFIED

We reserve the right to limit quantities.



SOFT ABSORBENT  
**Scottie**  
 LASTS LONGER!  
 1000 Sheets Per Roll  
 4 ROLLS  
 SOFT ABSORBENT  
**Scottie**  
 4 Roll Pkg. **\$2.09**

PINK OR WHITE, 2-Bar Pack  
 Dove Soap 4.75-oz. **\$1.99**

Crunchy  
 cheez  
 doodles



**\$1.39**



Dawn or Ivory  
 Liquid Detergent

**\$1.99**

42 oz bottle.....

# Food Specials

### Dairy and Frozen Food!

- SHEDD'S Soft Margarine, 1-lb. Tub **99¢**
- COUNTRY CROCK DAIRYGOLD Half-Gallon **99¢**
- BUTTERMILK **99¢**
- Specials from Gandy's!
- GANDY'S FROZEN YOGURT Half-Gallon **\$3.25**
- GANDY'S 12-oz. Cottage CHEESE **99¢**
- 19-oz. to 24-oz., Asst. Pies Mrs. Smith's **\$3.19**

Frozen  
**ORANGE JUICE**  
 CITRUS HILL  
 12-oz. Can

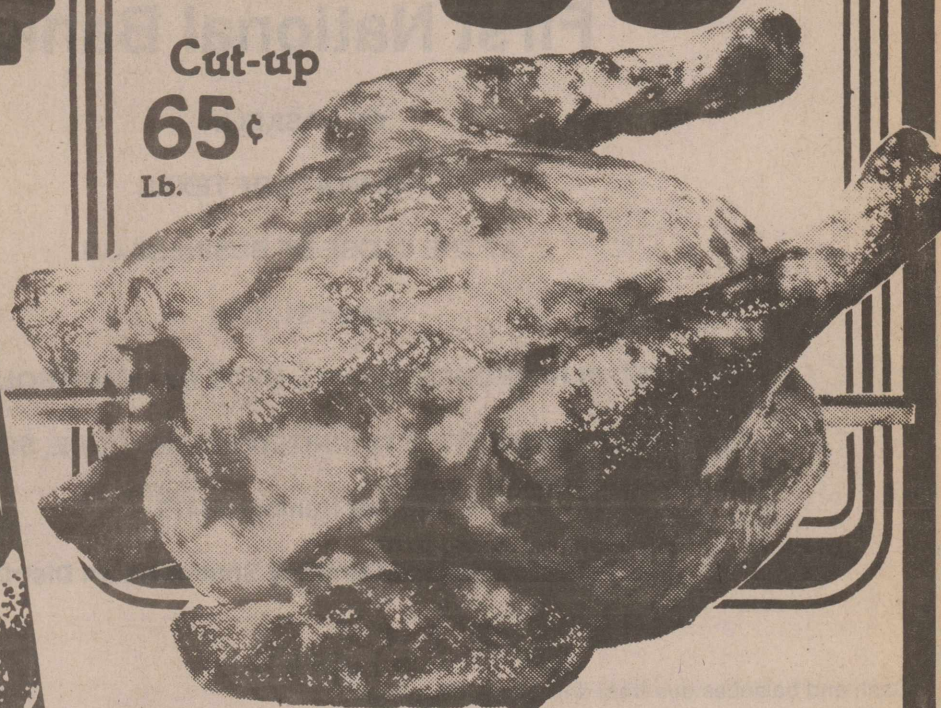
**79¢**



Pilgrim's Pride  
**FRYERS**

Whole Pound **55¢**

Cut-up **65¢**  
 Lb.



### Farm Fresh Produce!

- NO. 1 BAKING RUSSETT Potatoes 5-lb. Bag **99¢**
- NO. 1 WHITE ONIONS Lb. **3/99¢**
- CRISP, CELLO PACKAGE Carrots 3 1 lb bags **99¢**
- RED ROME APPLES 2 Lbs. **\$1.00**
- FRESH JUICE LEMONS 4 for **99¢**
- RED OR GREEN LEAF Lettuce 2 Bunches **99¢**



- HONEY NUT CEREAL Cheerios 14-oz. Box **\$2.99**
- 1.55-oz. Asst. Candy Bars Hersheys 3/\$1.00
- MRS. BUTTERWORTH Syrup 24-oz. Bottle **\$2.69**
- ULTRA TIDE 96-110 OZ. **\$6.59**



**TEXSUN**  
 Pink Grapefruit Juice  
 Unsweet  
 46-oz. Can **99¢**

Hunt's BARBECUE SAUCE  
 Assorted Varieties  
 18-oz. Plastic Bottle **79¢**



### Market Specials!

- HORMEL BLACK LABEL Sliced BACON 1-lb. Pkg. **\$2.19**
- Good for Barbecuing! Beef Shoulder STEAK Pound **\$2.29**
- HORMEL SMOKED, 1-lb. Package WRANGLERS **\$2.39**
- BONELESS CHUCK STEAK Pound **\$1.99**
- BONELESS BEEF Stew Meat Pound **\$1.99**
- LEAN PORK STEAK Pound **\$1.49**
- CHUCK ROAST Pound **\$1.89**
- HORMEL Light and Lean FRANKS 1-lb. Pkg. **\$1.99**
- FRYER PARTS Family Pack Drumsticks or Thighs **59¢**

Pound.....

**59¢**

### Health & Beauty Aids

- EYE DROPS, 5-oz. Bottle MURINE **\$2.69**
- 24-ct. Repatabs Chlortrimeton **\$7.49**
- 5-oz. OINTMENT Neosporin **\$3.09**
- Shampoo or Conditioner, Agree 7-oz. Bottle **\$1.99**
- 24-Ct. Tablets or Caplets MOTRIN **\$2.39**



# Alaskan students respond to Haskell couple's cards

Students at Nuigut Trapper School in far north Alaska now know something about Haskell--and a lot of other places in the lower 48--thanks to Charles and Leatrice Swinson. And the Swinsons now know a good bit about them.

The Haskell couple responded to an ad in a national magazine in which the students advertised for post cards. They wanted post cards from all states to assist them in their social studies.

The Swinsons sent them some post cards from Haskell. They also gathered up a bunch of post cards they had received from other places. The package was accompanied by a letter from the Haskell couple giving the students some information about this area.

They never expected to receive a reply. But they did.

In fact, there were two letters of reply, plus a post script. One letter came from the teacher, another from a student and the post script from an entire class. The letters gave the Swinsons an insight into the way of life in the Eskimo country of northern Alaska.

The letters follow:

**From the teacher:**

Dear Friends:

A hearty, big-as-the-Arctic-sky thank you from the teacher! You have made our classroom come alive. I wish you could see it. The walls are covered with your postcards and pictures and letters.

We have shells from a beach in Hawaii, horse chestnuts from Nebraska and a box of toys arrived from Montana. The students are poring over maps and charting the number of postcards from each state.

You were wonderful to take the time to write and describe your special place on this planet. You have made geography come alive for these kids and in the process have made them feel very special about where they live and who they are.

We haven't quite reached our goal of every state yet but I'm sure we will by year's end and I thank you for being part of it.

Sincerely,  
Mary Ann Holmquist

**From the student:**

Dear Charles and Leatrice: Thank you for all your postcards and letters. We received so many letters that we don't have time to write each of you. We like the pictures and what you shared about where you live. We're learning a lot about our country.

Many of you asked questions about where we live. It is cold in the winter here. Sometimes we have blizzards and it gets to -60 degrees (-90 with wind chill). But even when it's cold we just put on our parkas and go outside. When our river freezes in November it becomes our ice road to the Arctic Ocean and Prudhoe Bay.

In summer (June-August) it gets warmer and the snow melts. We go on the river in boats to our fishing camps. Then the tundra is soft and boggy to walk on. In the summer the sun never sets.

Our village has about 350 people. We have three little grocery stores, a school, a health clinic and a fire department. Our houses are wooden and painted red, green,

yellow and blue. Most of them are one story and they are built on stilts because of the permafrost.

Our village has no main water or sewer system. Instead we get water delivered to a tank in our house by the water truck. But we do have sinks and faucets and showers. When the water goes out of the drain it goes under the house and freezes.

For a toilet we have a "honeybucket". It's a plastic lined bucket that sits under the toilet and when it gets full we take it out to a box in front of the house and they pick it up and bring it to the dump.

Sincerely,  
Dorcas Tukle

**From the class:**

Our school has about 120 kids, from three years old to high school. We have a gym, a swimming pool and a sauna. The school is open every night for recreation time. We like to play basketball and swim. We also like to ride snowmobiles.

In the summer we play by the river, and fish and hunt with our parents. We learn to speak our language in school and our elders teach us at home, too. We have many Eskimo customs like a blanket toss to celebrate a successful whale hunt.

We like living in the Arctic. Thank you for telling us what you like about where you live.

Quyanaq,

(The post script was signed by 14 students with last names of Pausanna, Taalak, Kovalsky, Tegose, Tukle, Taleak, Ipalook, Ahmakak, Nukapigak, Bennett, Vukapigak, Oyagak, Matlllameak.)

# Spring flowers topic for gardeners

The Haskell Garden Club met April 11 in the Community Room of Haskell National Bank with 11 members present. Roll call was answered with each member giving a favorite annual. Minutes were read with approval and the financial report was given.

It was decided that on May 9, a wildflower tour to Abilene would be taken. Each member will take a sack lunch.

The topic of the day was "April Showers Bring May Flowers." Mrs. Dee Sprayberry told about "annuals from seed to bloom." She told how to plant them in containers and plant in the ground in four to six weeks.

Juanita Rhea told about the Texas Blue Belles. They were hybridized by the Japanese. They are a hardy plant and require little water. They are truly a beautiful plant.

Lorene Dewey's part as "The

Birds That Came to Dinner." Birds need plenty of water and shelter. They add color, music and amusement to gardens. They eat lots of insects and draw interest all the year round. The dove symbolizes love and peace, mocking bird brings music and the cardinal and blue jay bring color, lastly the robin entertains.

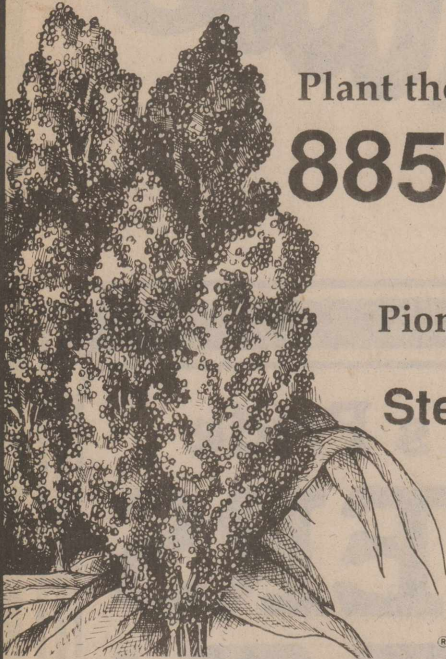
Horticulture was brought by Linda King, Juanita Rhea, Gladys O'Neal, Neat Bevel, Mollie Carlisle, Dee Sprayberry and Helen Cox.

Linda King brought pictures showing the flowers of Fairbanks and Anchorage, Alaska. She told of the beautiful landscaping and how perfect the climate is for growing flowers.

Juanita brought each member a blue bell cutting.

Strawberry shortcake was served by the hostesses, Leone Pearsey and Juanita Rhea.

## StressTakers. YieldMakers.



Plant the Newest Leaders:  
**8855 • 8493**

See your local  
Pioneer representative:

**Steve Alsbrook**  
864-2906



Registered trademark of Pioneer Hi-Bred International, Inc., Des Moines, IA. All sales are subject to the terms of labeling and sale documents.  
© 1990 Pioneer Hi-Bred International, Inc.

### IRBY DANCE

Friday, April 26, 1991  
8:00-12:00

Music by:  
**ROLAND SMITH**

Members and Guests Welcome

### Tower Drive-In Theater Showing this weekend April 19-20-21

Hwy. 6 - Ph. 997-2124 - Rule, Tx.

Schwarzenegger  
is  
Kindergarten  
Cop

As an undercover cop...  
he's in a class by himself.

Rated PG-13

## You own your Farm . . . why rent your Health Insurance

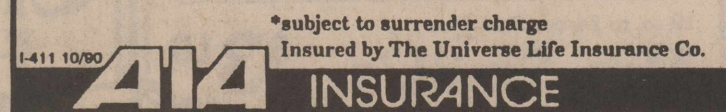
There's a reason the Texas Wheat Producers Association sponsors AIA Health Insurance. It's because this major medical plan was designed by farmers and ranchers like yourself.

AIA's Universal Plan for Health is the first health plan that accumulates cash value.\* A portion of your premiums accumulate in an interest bearing account.

An AIA agent representing the Texas Wheat Producers Association will be in Haskell County calling on you during May. To take advantage of special rates during the TWPA enrollment period, speak to an agent and ask to view our video presentation.

Your opportunity will only last until May 31, 1991.

For more information, call toll-free 1-800-635-1519



## Report of Condition First National Bank

OF HASKELL

IN THE STATE OF TEXAS

AT THE CLOSE OF BUSINESS ON

March 31, 1991

PUBLISHED IN RESPONSE TO CALL MADE BY COMPTROLLER OF THE  
CURRENCY, UNDER TITLE 12, UNITED STATES CODE, SECTION 161.

Charter Number 18479

Comptroller of the Currency Southwestern District

ASSETS		Thousands of dollars
Cash and balances due from depository institutions:		
Noninterest-bearing balances and currency and coin	.....	801
Interest-bearing balances	.....	288
Securities	.....	3,309
Federal funds sold	.....	1,475
Loans and lease financing receivables:		
Loans and leases, net of unearned income	.....	11,019
LESS: Allowance for loan and lease losses	.....	153
Loans and leases, net of unearned income, allowance, and reserve	.....	10,866
Premises and fixed assets (including capitalized leases)	.....	604
Other real estate owned	.....	124
Other assets	.....	582
<b>TOTAL ASSETS</b>	.....	<b>18,049</b>
LIABILITIES		
Deposits:		
In domestic offices	.....	16,860
Noninterest-bearing	.....	1,209
Interest-bearing	.....	15,651
Other liabilities	.....	81
<b>TOTAL LIABILITIES</b>	.....	<b>16,941</b>
EQUITY CAPITAL		
Common Stock	.....	875
Surplus	.....	650
Undivided profits and capital reserves	.....	(417)
Total equity capital	.....	1,108
<b>TOTAL LIABILITIES AND EQUITY CAPITAL</b>	.....	<b>18,049</b>

I, Janet Thane, Cashier of the above-named bank do hereby declare that this Report of Condition is true and correct to the best of my knowledge and belief.

/s/ Janet Thane  
March 16, 1991

We, the undersigned directors, attest to the correctness of this statement of resources and liabilities. We declare that it has been examined by us, and to the best of our knowledge and belief has been prepared in conformance with the instructions and is true and correct.

Directors  
/s/ Burnell Gilleland  
/s/ Robert C. Hobgood  
/s/ Kim Morris



## No digging zone!

Call before you dig into someone else's conversation.

If you're planning to do any kind of underground digging, give a quick call to your telephone company. It can save time, trouble and interrupted conversation for unsuspecting telephone users.

Maybe someone's just about to pop the question. Or get a great job offer. Then the line goes dead because you cut into their telephone cable.

The telephone company has a free service

designed to help prevent these accidents. Just call us 72 hours before the start of construction. By calling your local GTE office, you can help to ensure trouble-free service.

So if you're putting in fence posts, building a shopping center or expanding a roadway, call us. We'll come right out and mark the precise location of the underground telephone cable . . .

so you won't cut in on someone's important conversation.



THE POWER IS ON



# Haskell firemen attend convention

Twelve firemen, their wives and friends attended the 105th semi-annual Mid-West Texas Firemen's and Fire Marshall's convention in Colorado City April 13.

Speaker for the convention was Rep. Robert Jannell. He spoke on the new school bill just passed by the legislature.

Sam Watson was presented his past president's pen by Trudy Wood of Snyder. Elevated to president was Perry Thompson of Anson, first vice president Jerry Dirky of Snyder, second vice president Gerald Barnett of Hamlin, third vice president Clayton Finch of Colorado City, fourth vice president Roy Trussell of Haskell, chaplain Jerry Stocks of Haskell and secretary treasurer Linda Mathis of Colorado City.

During the memorial service, eight past firemen from Haskell were recognized: Charles Reed, Clay Smith, J. B. Gipson, Chester Hodgins, Bob Segoe, Jim Alves, Satch Lusk and Tom Watson. Lee Hollar of Rochester also was remembered.

The memorial service was dedicated to Tom Watson. At the closing of the service, the wreath was presented to Sam Watson to place on his father's grave.

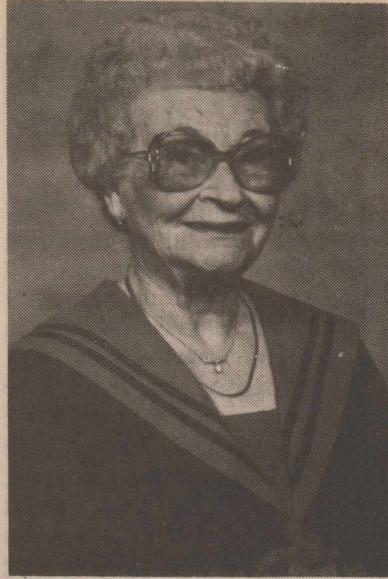
During the races, Haskell won first in the pumper contest and second in the 6-man hose lay. Team members included Randy Shaw, Johnny Campbell, Roy Trussell, Jerry Stocks, Kenny Watson, Sam Watson and Billy Tatum.

## Baseball players to meet Monday

Parents of Haskell tee-ball and coach pitch players will meet at 7 p.m. Friday at the Haskell National Bank community building.

"The purpose of the meeting is to organize the two groups, set practice times and dates and enlist coaches," said Jill Druessedow, Little League board member.

An information packet will be given to parents to help them in working with their children and to reinforce the practice drills.



Erma Liles

## Erma Liles honored on birthday

Erma Liles' 80th birthday will be long remembered by her.

About 150 friends were on hand Saturday (April 20) to help the Weinert woman celebrate.

The party was in her home and was hosted by Mr. and Mrs. Kip Derrick, Kristy and Kirk, of Fort Worth, Fannie May Barton of Haskell, Helen Turnbough of Weinert and Jeanne Perry, Carter Brooks and Jodie Brooks of Stamford. Mary Martin and Betty Sanders furnished organ music.

Among the guests was Mrs. Liles' only living aunt, Alma Kiesling of Vernon.

Mrs. Liles was born five miles west of Weinert on April 20, 1911, the daughter of Mr. and Mrs. Fred Monke. She attended school at Myers and graduated from Haskell High School. She also graduated from West Texas State University in Canyon and taught school at Myers, Weinert, Pampa and Knox City.

She still manages her farm and travels extensively. She has visited Europe five times.

It's the law: Report child abuse and neglect. Child Abuse Hotline, 1-800-522-3511, 24 hours a day.

# Scouters attend training

Five local Scouters attended the scoutmasters' basic training in Buffalo Gap this spring and were present at graduation exercises April 7.

Robert Cass, pack leader for pack 136, Haskell; Paul Brown, Webelo den leader for pack 136, Haskell; Marvin McFadden, scoutmaster of troop 136, Haskell; Waller Overton, scoutmaster of troop 148, Paint Creek; and Bill Gant of Rule spent the weekend with classroom instruction, an adventure trail and an overnight backpacking trip to culminate the five-day and two-night training course.

The training course, commonly known as Timber Tag in the Chisholm Trail Council, is designed to instruct Scout leaders in organization, basic Scouting skills and operating an active Scout unit. Although it is primarily designed for the Boy Scout program, many Cub Scout and Webelo leaders benefit from the instruction.

Bill Gant has been on numerous Timber Tag staffs through the years and has served in almost every position from Scoutmaster to cook. Marvin McFadden and Waller Overton have served on the Timber Tag staff for the past four years and are graduates of Timber Tag 63.

At the close of this session, Marvin McFadden was selected senior patrol leader for the next course scheduled for this fall. The senior patrol leader is responsible for the course itself, selecting his staff from available Scouting volunteers and developing the instruction.

Any Scouters interested in attending the next Timber Tag should notify the Boy Scout office in Abilene or Marvin McFadden in Haskell.

Thank you for reading The Haskell Free Press.

# Land bank reports good year in 1990

The Federal Land Bank Association (FLBA) of Haskell has reported net earnings of \$165,619 for 1990.

"We were able to achieve growth in loan volume at a time when many borrowers are continuing to reduce their long-term real estate debt load to improve their earnings capability," said Bullinger.

The FLBA announced that variable rates to stockholders was decreased to 9.75 percent, effective April 1. In addition, the association has added a new, 15-year fixed rate loan program to its menu of services.

"The lower variable rate, along with our fixed rates of three, five, 10 and now 15 years, give our member-borrowers the flexibility to select the type of financing best suited to their individual situations," Bullinger said.

The FLBA of Haskell receives its funds through the 10th district Farm Credit Bank, one of the strongest banks in the nationwide Farm Credit System. The FLBA reported a net worth of \$4,570,927 at the end of 1990. With a capital position of 15.46 percent of risk-adjusted assets, the association easily exceeds the regulatory capital minimum of 7 percent.

The association's loan volume increased from \$35,804,500 on Dec. 31, 1989, to \$36,101,600 on Dec. 31, 1990. Bullinger attributed the loan volume increase primarily

to renewed interest in land purchases and the new loan programs and rates offered through the association.

"We were able to achieve growth in loan volume at a time when many borrowers are continuing to reduce their long-term real estate debt load to improve their earnings capability," said Bullinger.

The LBA of Haskell is one of 50 FLBAs in Alabama, Louisiana, Mississippi and Texas that are a part of the 10th Farm, Credit District. The association serves approximately 550 members in Haskell, Jones, Baylor and Knox counties, from its offices in Haskell.

Over 60 percent of all teen runaways grew up in abusive homes.

**MAJOR MEDICAL INSURANCE**

Paying too much?  
Get MY quote.

For costs, benefits, exclusions, limitations and renewal terms contact:

**HESS HARTSFIELD**  
Haskell, TX  
864-2665

**VERY Competitive Rates.**  
Underwritten by:  
Golden Rule Insurance  
Form 7756-C

We would like to express our thanks to everyone for the flowers, food, and cards that we recieved when our mother passed away. Thank you for your kindness, prayers, and thoughts. A special thanks to the pallbearers, Dr. McSmith, and the nurses and aides of the Rice Springs Care Home who took such good care of our mom. And a very special thanks to Katherine and Philip for the beautiful services. May God Bless All Of You.

The Neathery Family

We would like to thank everyone who has been so nice to us during Novis' illness and death. Every kindness is much appreciated.

May God Bless You.

The Novis Ousley Family

**JAMES CASTAGNA & JEFF GREGG**  
Certified Public Accountants

Computerized Tax Returns and Bookkeeping  
Auditing, Financial Statements and Estate Work

SEYMOUR OFFICE      HASKELL OFFICE  
115 W. McLain Street      316 1/2 North First  
817-888-5539      817-864-3931  
8-5 M-F      10-4 Thursday  
(After Hours by Appointment)

**This Weekend You Can Save \$500-\$1,000-\$2,000**

**7.9% APR\* 48 Months**

**COME SEE US!**

**All F-Series Supercab XLT with 527A Package**  
Your Delivery Price **\$14,925**

With This Equipment		Sticker Price
Air Conditioning	Sliding Rear Window	18,267.00
Power Steering	4.9L I6 4 Sp. AT	1,500.00
AM/FM Stereo with Cassette	Cloth Bench Seat	1,842.00
Deluxe Wheels	Cruise/Tilt	<b>14,925.00</b>
Ch. Rear Step Bumper	Power Win./Locks	<b>YOUR DELIVERED PRICE</b>
	Much More	Available for immediate Delivery

1989 Olds Cutless Ciera <b>\$8,450</b>	1990 Pontiac Grand AM LE <b>\$10,250</b>	1990 Mercury Cougar <b>\$11,995</b>
1989 Ford Supercab XLT <b>\$12,995</b>	1989 Pontiac Grand AM LE <b>\$9,150</b>	1990 Ford Crown Victoria <b>\$12,650</b>

**Bill Wilson Motor Co.**  
Your Transportation Headquarters for over 45 years  
Hwy 277 South Haskell, Texas  
817-864-2611  
1-800-749-5576

\*With Approved Credit Does Not Include Tax, Title & License

FORD  
MERCURY  
LINCOLN

**ALLSUP'S**

HASKELL #91  
RULE #153

POP Special      APRIL 21 to APRIL 27

Enjoy **Coke** 6 pk, 12 oz cans **\$1.99**

**Cheetos** REG. \$1.79  
**\$1.39**

**RUSSET POTATOES**  
U.S. No. 1 5 lb. BAG **59¢**

**MELLO CRISP BACON** LB. PKG. **\$1.09**

**SAUTEEYA SAUSAGE** **89¢**

**ALLSUP'S CORN DOGS** **2/99¢**

**Wolf Chili w/ beans** 19 oz. **\$1.49**

**HAM, EGG & BISCUIT** **79¢**

CRISCO	SHURFINE SALTINES
3 Lb. <b>\$1.99</b>	16 OZ. <b>2/ \$1.00</b>
Page Paper Towels <b>2/ \$1.00</b>	LIBBY'S POTTED MEAT 3 OZ. <b>3/ \$1.00</b>

HOT FOODS MENU		AVAILABLE AT ALL ALLSUP'S LOCATIONS
BARBECUE BEEF SANDWICH	99¢	9 PIECE BOX CHICKEN \$4.99
BARBECUE PORK RIBS (L.B.)	\$3.99	BEEF & CHEESE CHIMICHANGA \$1.19
BARBECUE WHOLE CHICKEN	\$3.99	CORN DOG (MEAT) 69¢
ALLSUP'S BURRITO	79¢	DELICIOUS HAMBURGER 59¢
BREAKFAST BURRITO	99¢	WILSON HOT LINKS 99¢
BURRITO BEEF & SALSA	\$1.19	SAUSAGE ON A STICK \$1.59
DELICIOUS CHEESEBURGER	79¢	SAUSAGE & BISCUIT 79¢
CHICKEN FRIED STEAK	\$1.59	SAUSAGE, EGG & BISCUIT \$1.09
3 COUNT CHICKEN STRIPS	\$1.49	SAUTEEYA SAUSAGE \$1.09
W/POTATO WEDGES/ CHICKEN (2 PCS) BISCUIT	\$1.99	4 COUNT STEAK FINGERS \$1.00

CALL-IN ORDERS WELCOME      CHECK OUR WEEKLY SPECIALS



# Women tour Albany area

A dozen members of the progressive Study Club had a very unusual Texas Heritage program Saturday, April 13, when for several hours they were really at home on the range."

Leaving from the Community room at 8:30 a.m., they drove to Albany where they were met by Polly Wheeler and several other members of the Albany Study Club at the Old Jail Museum. Joan Farmer, the archivist, dressed

pioneer style, walked the guests through the two-story jail and told the history of the restoration of the building and how it became an endowed museum which makes it possible for unusually fine collections--particular art--to be displayed on a rotating basis.

Mrs. Farmer told about some of the infamous inmates, how vigilantes influenced events, and bits of Schackelford County history. The museum contains a

fine library of historical volumes. Additional space has been added for community use. The well-appointed grounds also testify to the cooperative pioneer spirit and wisdom of the planners.

A tour of several unique shops was next. Everyone was welcomed and received "red carpet" treatment. Several shops were opened just for the group. At the last one, a tea room, lunches, which had been ordered by the club tour director, Jerene Couch, were selected.

The next stop was the Albany Study Club's own building, located on the west side of the main street. Several other club members appeared to serve tea and coffee. Mrs. Wheeler told how the building was once a general store, belonging to her grandparents at a time when many products were sold from barrels. She told how the club women had worked to get a roof on the building and make it into an attractive and useful meeting place, another good example of the pioneering spirit.

The group and several hostesses drove about 26 miles to the Watt Matthews' Lambshead Ranch. A stop at Stonehouse, recently restored, produced the "home on the range" reality. Soon after walking around headquarters, the ladies were surprised and immensely pleased that Mr. Matthews, who is 92 and not very well, appeared and greeted everyone. He insisted that the herd of buffalo kept for the Fandangle was not far away. He and his nurse-caregiver-driver in the Bronco led the group "over hill and dell" until the herd could be seen.

The tour continued good many more miles among blue-flowered hills to the ranch home of Margaret Putman, where she was brought as a bride many years ago. One Haskell car developed engine trouble and had to be left on the Matthews' ranch. Joan Farmer made room for four more in her car. Mr. Matthews called Mrs. Putman and was quite disturbed because the owner of the car had locked it and he couldn't see about getting it fixed.

The group enjoyed light refreshments and cold drinks, a walking tour of the creek area and family cemetery, and stories of Indian days. The hostesses' duties ended when one car led the others to the road that would soon connect with the Throckmorton highway. Arrival time at the Community Room was 7 p.m.

## -Green Thumb-

By Gladys O'Neal

What a month April is! Daffodils, early tulips, flowering shrubs and earliest perennials--all of their prime, it seems to me, it's a waste to be anywhere except in the garden from dawn to dark.

Every season, we who love flowers and gardening, nurture the earth and inevitably learn a little more. With me, it is an ongoing process of trial and joyful discovery. The older I get, I find a simple joy in growing flowering perennials.

Defined loosely, perennials are plants that die back every year, generally in winter, and come back the next year, typically in spring.

Unlike annuals, which we like to plant in masses, the secret to enjoying perennials to their fullest is planting them in small clumps, in combination with other perennials. That is truly a key to beauty, because perennials bloom for a short period of time, about three to six weeks.

So to keep a bed colorful through the seasons, it is best to select plants with staggering bloom times. With planning, we could have blooms every month except possibly December and January. Eventually, nearly all perennials will need to be divided, or they get so crowded that there will be no flowers or small ones. But as long as they are divided, and shared, you will have better flowers and have the joy of sharing with those you love.

It's important to learn as much as possible about each perennial you plan to grow. How tall, how wide, when does it bloom, does it like sun or shade? Ask all of these questions; they will help you to know where to plant and what to combine. It has been said: "Combination is the key to beauty."

Hints:  
Potted plants look so pretty on an outside porch railing. A problem could be keeping them from falling. So drive sturdy three-inch nails in the top of the railing, and set the potted plants over the heads of the nails, with the nail extending through the opening at the bottom.

Worms won't bother your tomatoes or bell pepper plants if you simply put 1/4 teaspoon cornmeal at the roots.

A few mothballs buried just below the surface will shoo them away, if cats are mistaking flower boxes for litter boxes.

An old rake without a handle can find new use around the house. Secure it to a wall with the tines facing out to serve as a tool rack.



## Heads business group

Lois Richardson of Kids' Duds succeeded Conrad Rowe of the Sport About as president of the Haskell Business Association when the organization elected officers April 11.

## Arts and Crafts Sale

Sat. May 4, 9:00 - 5:00

Sun. May 5, 1:00 - 5:00

## Just in time for Mother's Day!

We have a great selection of beautiful hand crafted gifts for Mom. Choose from grapevine wreaths & swags, quilt dolls, mop dolls, Americana folk art, decorative pillows, carousels, many wood craft items etc. . .

307 N. Ave G - or by appt. phone 864-8059

# Heritage program to honor families

Texas farmers and ranchers once again have an opportunity to preserve their families' agricultural heritage as participants in the Texas Family Land Heritage Program.

The Texas Department of Agriculture is attempting to locate 100 Texas farms and ranches which have been continuously owned and operated by members of the same family for 100 years or more.

The program is designed to recognize much more than mere ownership. It seeks to chronicle the uniquely personal histories of agricultural productivity in the state, a proud record which might otherwise be lost forever.

Since its institution in 1974, more than 2,500 properties have been enrolled in the program throughout the state.

Each participant who qualifies in the program receives a certificate of honor in the name of the land.

Under provisions of the program, Texas residents who own agricultural land may apply if they

can trace the line of ownership from the first family member to the present either through direct relatives or by marriage.

The land, which must be currently productive, must also fit the old U.S. Census definition of a farm: 10 acres or more with agricultural sales of \$50 or more a year; or if less than 10 acres, sales of at least \$250 a year.

If all of the land has ever been rented outside the family, it will not qualify. Also, owners must live on the land and work the property or, if living elsewhere, must actively manage the day-to-day operation.

Texas residents who own property they think may qualify can obtain application forms and information about the program from the county judge or from any Texas Department of Agriculture district office or the main Austin TDA office, P.O. Box 12847, Austin, TX 78711.

## Sale • Sale • Sale Continues

Merchandise Regrouped and Reduced Further

Sportswear Coordinates

Sportswear Separates

Cotton Knits and Poly Blends

50% to 75% Off

and Less

Dresses and Sleepwear

Shop today for choice of styles and sizes

THE *Personality* SHOPPE  
"Smart Wear for Women"

## -Marriage Licenses-

A marriage license to Mickey Todd Harris and Linda Michelle Briscoe, both of Haskell, was the only one issued last month by the office of Rhonda Moeller, county clerk.

## Toll free

Veterans living outside the local Waco calling area can call the VA regional office by dialing 1-800-827-2012.

## Ruth Y. Ackers, DPM Foot Specialist, Total Foot Care

I am back in practice. I am located at 3110 S. Clack, Suite E., Abilene, Texas. My office hours are from 8:30 a.m. to 5:00 p.m. Monday through Friday by appointment.

Telephone: 915-691-9154

## 64 & Holding A free Senior Seminar sponsored by

HENDRICK MEDICAL CENTER

Tuesday, April 30, 1991

9 a.m. - 4 p.m.

Abilene Civic Center Conference Room

Box Lunch Available -- \$4.00

Please RSVP 915-670-2431

by Friday, April 26th.

### Discussions include:

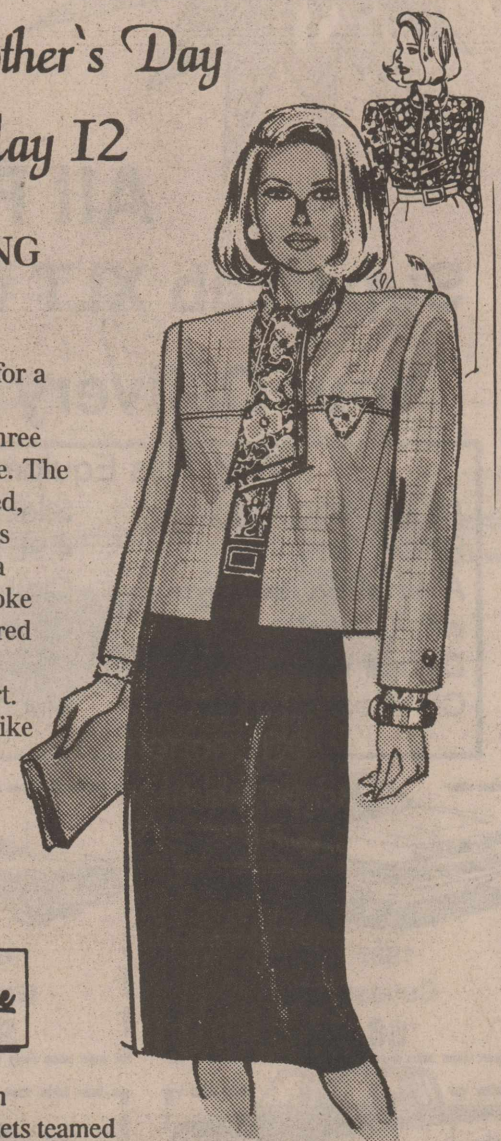
- Estate Planning
- Living Wills
- Medicare
- Long Term Care
- Critical Care
- Social Security
- Medigap Insurance
- Medicaid & other State Programs

## Spring Favorites for Mother's Day May 12

### SMASHING TRIO!

You're suited for a promotion in Henry-Lee's three piece ensemble. The short fully lined, yellow jacket is detailed with a top-stitched yoke and front. Paired with the navy self-belted skirt. Both in linen like poly/ rayon. Underneath a silky poly print blouse. Sizes 8 to 20.

Henry-Lee



Great Selection  
Long-line Jackets teamed  
with one piece dresses  
Petite Dresses 6 to 14

### Browse

New Spring and Summer Fashions  
Exciting and Colorful  
Layaways Welcomed

THE *Personality* SHOPPE

"Smart Wear for Women"



A message from the  
ABILENE EYE INSTITUTE

&

CATARACT SURGERY CENTER

DEDICATED TO EXCELLENCE

We specialize in cataract surgery with intraocular lens implant and routinely use the small incision phacoemulsification technique. We have 2 modern, fully equipped operating rooms each with its own Zeiss operating microscope and Phacoemulsifier. We also have an observation room so that family and friends may view the surgery while it is happening. Our ambulatory surgery center is State licensed and Medicare approved. We have performed over 3,000 cataract implant operations since 1987. Our doctors accept Medicare Assignment and we think you will find our fees very competitive with most hospitals. Our friendly, dedicated staff is available to answer any of your questions. If you need transportation, we can help.

Robert W. Cameron, M.D., F.A.C.S.  
Paul B. Thames, M.D., F.A.C.S.  
Vincent J. Priestner, M.D.  
Kerry C. Preston, O.D.

2120 Antilley Road, Abilene, TX 79605  
3/10 mile west of Humana Hospital  
915-695-2020 or 1-800-692-2020



# SAVE NOW!

## AND BEAT THE PRICE HIKE!

We have done our best to hold the line with our subscription prices. However, the U. S. Postal Service has again hit the newspaper industry with another increase in mail rates. Mail rates for newspapers increased again in February and we are forced to raise our subscription rates.

But, you can renew now at the present low rate and SAVE! During our Special Offer, it makes no difference when your subscription expires, it can be extended for up to THREE YEARS.

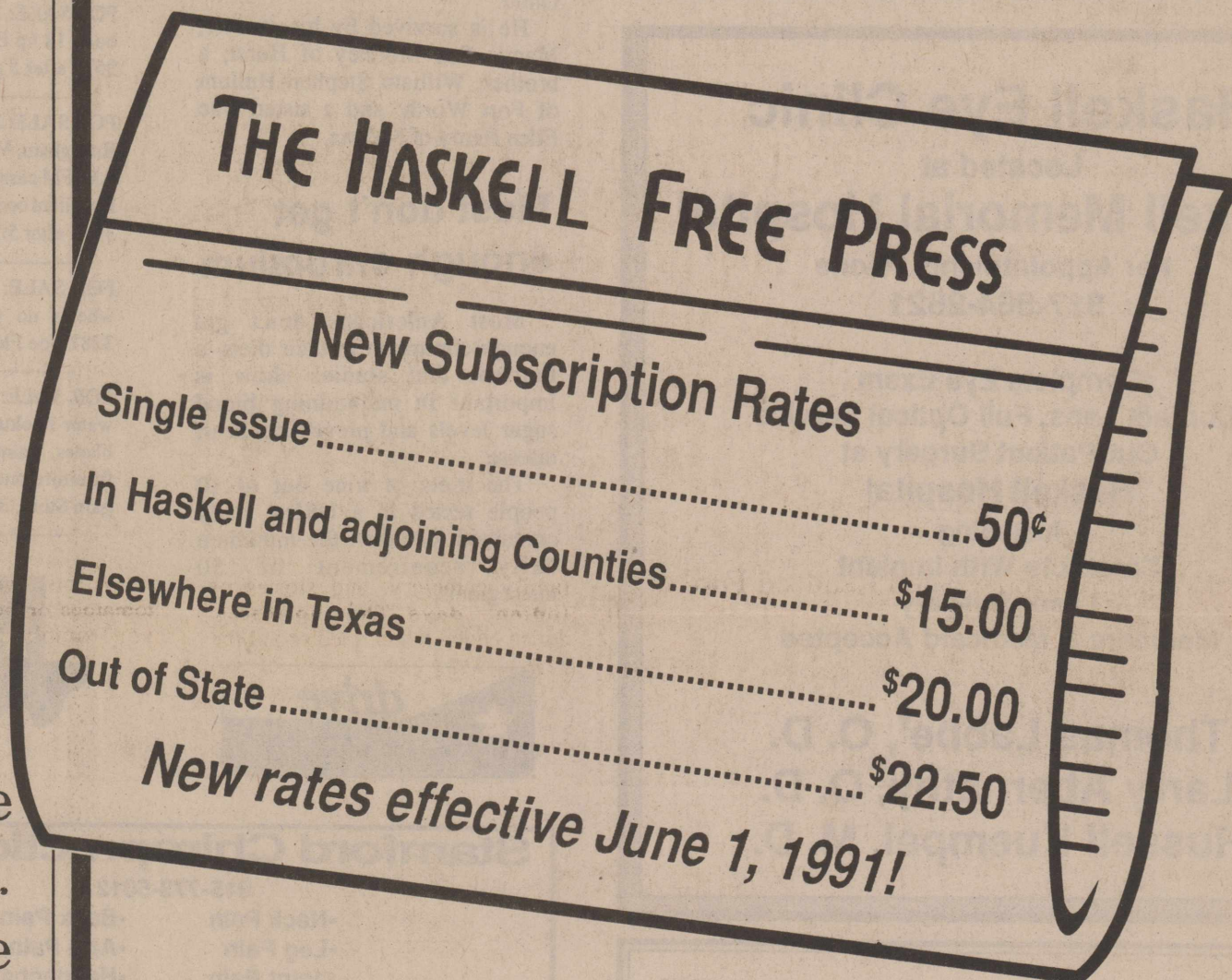
We urge you to take advantage of this special offer and SAVE NOW!

## Current Subscription Rates

SUBSCRIBE NOW AND SAVE!

Single Issue .....	35¢
In Haskell and adjoining Counties .....	\$12.00
Elsewhere in Texas .....	\$15.00
Out of State .....	\$17.50

*These rates good until June 1, 1991!*



## Recording the history of Haskell County since 1886.

*The only newspaper in the world that cares about Haskell, Texas!*

## HASKELL FREE PRESS

P. O. Box 1058 • 401 South First  
Haskell, Texas 79521-1058



# --Obituaries--

## Lillie Mae Ray

Lillie Mae (Kelly) Ray of Rule died April 14 at Brazos Nursing Home in Knox City. She was 90.

Funeral services were April 17 at the Church of Christ in Rule with John Greeson and Dale Huff officiating. Burial was in Rule Cemetery, directed by McCauley-Robison Funeral Home.

Pallbearers were H. V. Woodard, R. E. Speer, Ronnie Landes, Marvin Burgen, Junior Camp and Travis Boyd.

Born Nov. 20, 1900, in Lipan, Texas, Mrs. Ray was a long time resident of Rule where she was a member of the Church of Christ and the Rebekahs. She married Joe Aud Ray in Morgan Mills, Texas, on July 21, 1917. He preceded her

in death.

She is survived by a sister, Mary Delanie Camp of Rule, and three grandchildren, Twila Faye Turpen and Duane Walker, both of Albuquerque, N.M., and Sue Bradham of Yakima, Wash.

In addition to her husband, a daughter, Juanita Francis Travis Walker, preceded her in death.

## Lula Smith

Lula (Mrs. Charles E.) Smith died Friday at her home in Haskell. She was 86.

Funeral services were Sunday afternoon at the First Baptist Church with the Rev. Jim Turner officiating. Burial was in Willow Cemetery, directed by Holden-McCauley Funeral Home.

Pallbearers were Allen

Strickland, Raja Hassen, James Davis, Billy Jack Ray, Jimmy Owens, David Davis, Alvin Sherman and Wallace Bird.

Honorary pallbearers were Dr. Bill McSmith, Loid Renfro, R. L. Stephenson, Frank Jirsik, Pete Mullins, Fred Brown, Dr. Joe Thigpen and members of the Business Men's Bible Class.

Mrs. Smith was born Feb. 18, 1905, in Waco. She married Charles E. Smith in Waco on June 2, 1930. He survives her. She had been a resident of Haskell since 1931 where she was a member of the First Baptist Church and the Order of the Eastern Star.

In addition to her husband, she is survived by a son, Charles W. Smith of Abilene; a daughter, Danna R. Hooper of Austin; seven grandchildren; and seven great-grandchildren.

She was preceded in death by a son, Bobby D. Smith.

## Joseph E. Hullum

Joseph Edward Hullum of Hurst died Tuesday, April 16, in North Hills Medical Center in Hurst. He was 45.

Graveside services were conducted Thursday afternoon at the Rule Cemetery with the Rev. J. R. Williams officiating. Burial was under direction of McCauley-Robison Funeral Home of Rule.

Mr. Hullum was born Aug. 16, 1945, in Stamford. He was a self-employed photographer, a member of the Broadway Baptist Church of Fort Worth and the Screen Actors Guild.

He is survived by his mother, Mamie Sue Mooney of Hurst; a brother, William Stephen Hullum of Fort Worth; and a sister, Sue Ellen Henry of Nacona.

## Most don't get enough chromium

Most Americans don't get enough chromium in their diets, a nutrient that studies show is important in maintaining blood sugar levels and preventing heart disease.

The diets of nine out of 10 people tested in a USDA study contained less than the minimum daily requirement of 50 micrograms.

# CLASSIFIEDS

## For Sale

COMPLETE RV PARTS service and repair. Driveshaft repair, power takeoff. Sales and service. Longhorn Trailer and Body Co., Wichita Falls, TX, 1-800-772-0855 or 817-322-5259. 51tc

FOR SALE: Air Conditioner filters, water cooler pads, pumps, motors, floats, tubing or whatever you need to "Beat the Heat" at Frazier's Appliance and Furniture, 864-2756, Haskell. 14tc

FOR SALE: 6" field cultivator sweeps. Special price thru April \$3.29 each while supply lasts. Richardson Case IH, 864-3474 or 1-800-243-7110. 16-17c

BOOT SALE still in progress. Hunt for the colored tags! Heads or Tails Western Wear, 707 S. Av E, Haskell. 15-17c

FOR SALE: 1977 Datsun B210. 1979 Buick Regal. 906 N Av K, after 5 p.m. 15tc

FOR SALE: 1982 Coachman travel trailer. 29'. Call 817-864-2569. 16-19p

FOR SALE: 1983 Ford Ranger pickup. 10,000 miles on complete overhaul. Standard, air, new AM/FM stereo tape radio, campershell. Avg. 20 mpg. \$3000.00. 1976 Walk-thru boat and trailer, motor needs overhaul, boat cover, \$1500.00. 817-864-3882. 16tc

CHEMICAL SPRAYER PARTS. Richardson Case IH is stocking spray tips, fittings, hoses, and pumps for your farming needs. 864-3474 or 1-800-243-7110. 16-18c

JUST ARRIVED: New Pro 38 handheld scanner. New low price, \$119.95. Walling TV, Radio Shack dealer. 16-17c

FOLD-OVER ROW MARKERS. Built to last. \$595.00/set. Richardson Case IH 864-3474 or 1-800-243-7110. 16-17c

FOR SALE: White crib, 2 strollers, changing table, bed rail, other baby items. Blue sofa sleeper, recliner, lamps, apt. refrigerator, stove. Call 864-3085 anytime. 17p

FOR SALE: Cord + of mesquite firewood. Call 864-3365. 17p

SWEET POTATO SLIPS. 25 for \$2.50; 100 for \$8.00. H. A. Wilson, Rochester, 743-3556. 17p

FOR SALE: No. 1 rye hay. 4 ft. bales. Call W. T. Adkins, 743-3289. 17-18c

## For Sale

FOR SALE: 1975 Chevrolet Monte Carlo. J. B. Kirby, 864-3459. 17-18p

FOR SALE: 24" chisel sweeps, \$13.95. Allison Farm Supply, Haskell. 864-3036. 17c

## Lost & Found

LOST: Last Friday. Grey and white male bobtail cat. If found or if you have seen this cat, please call Pam Thigpen 864-2088. 17c

## Jobs Wanted

LOT SHREDDING. Septic tank pumping. Call Tony Williams, 864-3674 anytime. 43tc

WATER WELL DRILLING. Lic. #1578. House wells, test holes, W. P. Hise. 817-864-3727 day or night. 12tc

FAST, RELIABLE, Guaranteed, service to Haskell, Stamford and Hamlin and surrounding areas for General Electric, Whirlpool, Sears, Kenmore, Kitchenaid, Maytag and most other brands of refrigerators, freezers, dishwashers, washers and dryers and gas and electric ranges. Anderson Appliance Service, Haskell, Texas 817-864-3545. Factory authorized for G.E. and Hotpoint and RCA warranty repairs. 18tc

HOUSE LEVELING. Floor bracing. Free estimates. References. Call 915-773-5197. Ask for David Lee. 27tc

Call RODELA PLUMBING for all your Plumbing Service and Repairs, 864-2460 Office or 864-3629 Home. Roto Rooter Service, 4 N. Ave B. 31tc

LAWN MOWER repair shop. Repairs lawn mowers, tillers, golf carts, and etc. Used lawn mowers for sale. 1303 N. Av F, in alley. 864-3321. 16-19p

BEAT THE HEAT, So call now! Call early to get your water coolers or your Whirlpool A/C's serviced! We also stock all the parts if you do it yourself. Call or come to Frazier's Appliance and Furniture, 864-2756, Haskell. 14tc

WILL DO MOWING and yard work. Contact Jonathan Lindsey at 864-8074. 17c

WILL DO BABYSITTING in my home. Neoma Kirby, 864-3459. 17-18p

Thanks for your prayers, cards, calls, flowers, food and visits after my surgery.

Cliff Nicholson

## Haskell Eye Clinic

Located at

### Haskell Memorial Hospital

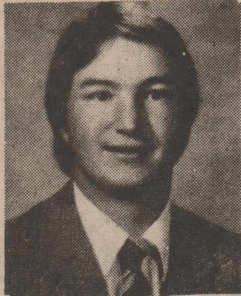
For Appointments Phone  
817-864-2621

Complete Eye Exam  
Contact Lens, Full Optical Service  
Out-Patient Surgery at  
Haskell Hospital  
Including  
Cataracts With Implant  
Laser Surgery  
Medicare & Medicaid Accepted

Thomas Labbe', O. D.  
Larry Abernathy, O. D.  
Russell Kuempel, M. D.

## TAX PLANNING

Written By  
Gerald Rodgers CPA



### BREAKING EVEN

If you got a large tax refund when you filed your 1990 tax return, you made an interest-free loan to Uncle Sam last year. If your return showed tax due, you may have found it difficult to pay the additional amount owed. You may even have had to pay a penalty in addition to the tax due.

The solution to both these problems is to adjust your income tax withholding so that you "break even" (or come close to it). You can do this by changing your Form W-4, Employee's Withholding Allowance Certificate, with your employer.

Most people realize that they must complete a W-4 at the start of employment. However, you can also change your W-4 at any time. The purpose of the W-4 is to assist your employer in withholding the correct amount of taxes from your wages. This provides for "paying as you go" instead of paying your entire tax liability when you file your tax return.

Ideally, your tax withholding should match the tax you owe. That's why it is important to claim all, but not more than, the personal allowances you are entitled to on your W-4. (The number of personal allowances claimed on your W-4 will not necessarily be the same as the number of exemptions you are allowed on your tax return).

On your W-4 you can claim one personal allowance for yourself, one for a spouse, and one for each dependent. If you have large itemized deductions, losses from self-employment, farming or rentals, or other adjustments to income, you may be entitled to claim additional allowances. Your tax advisor can assist you by analyzing your income and deductions to target the correct withholding.

Be aware that if you claim more than 10 withholding allowances on your W-4, your employer must send a copy to the IRS.

## RODGERS & COMPANY

Certified Public Accountant  
20 Southwest Third Street  
Hamlin, Texas



## Stamford Chiropractic Clinic

915-773-5012

- Neck Pain
- Back Pain
- Leg Pain
- Arm Pain
- Joint Pain
- Headaches

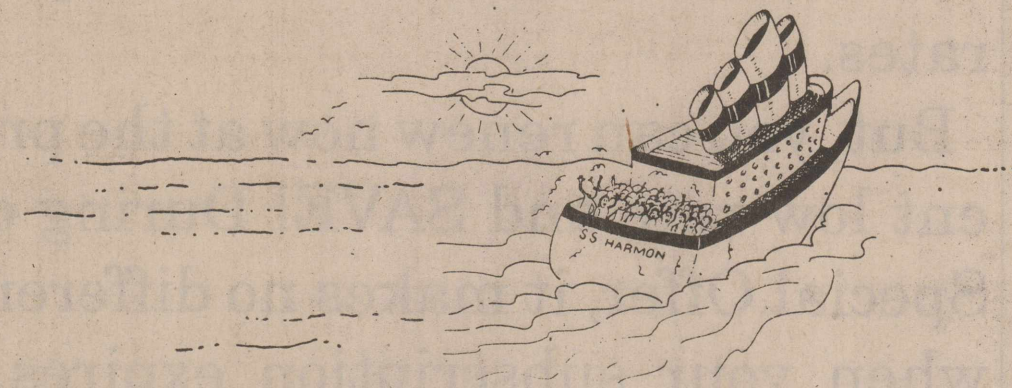
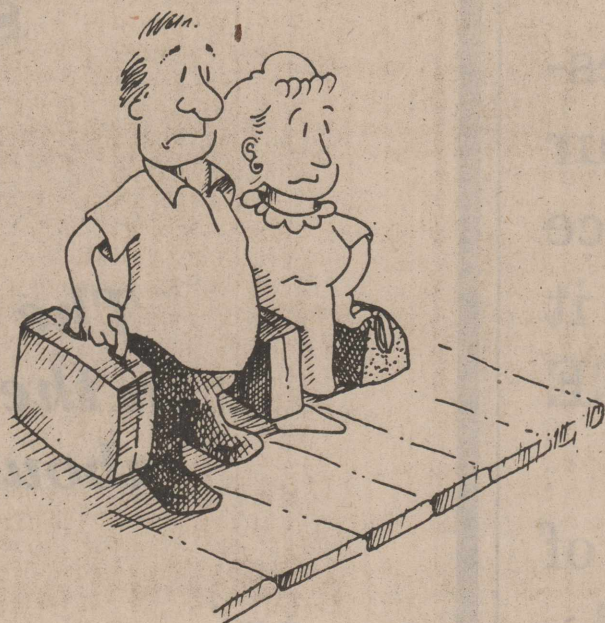
Dr. Stephen Hambricht  
1511 Columbia, Stamford

—Office Hours—

Mon.-Fri. 9-12, 1-5 and Sat. 9-12

We accept Medicare, Workers Comp.,  
Personal Injury and most personal insurance.

# Don't miss the boat...



Call Today To Enjoy The Exciting World Of Harmon Cable

CNN, HBO, ESPN, The Nashville Network, TNT,  
The Disney Channel, and Much Much More!

Order Cable Today and Receive Free Installation

(some restrictions apply, a refundable equipment deposit may be required.) Offer does not apply to Additional Outlet installation.

LAST CHANCE

Phone # (800) 527-4331

902 N. Swenson Stamford

**Harmon Cable**  
Communications



# Shop the Haskell Free Press

# CLASSIFIEDS

### Garage Sales

**GARAGE SALE:** Sat., 8 to 5 at 605 Sunny in Rule. Some furniture and misc. 17c

**GARAGE AND BAKE SALE:** Sat., 27th. 9:30 to 7:00 P.M. 17p

**YARD SALE:** 100 S Av L. Friday and Saturday. 17c

### Wanted

**WANTED TO BUY:** Ranch oak wagon wheel style furniture. Call 817-849-9641, Throckmorton. 17c

**WANT TO RENT** or long term lease. 3 bedroom house central heat/air preferred. Call Ronnie at Knox County Hospital, 658-3906. 17-18c

### Miscellaneous

**HOME DECORATORS.** Painting -Insulation. Free estimates. Phone 743-3550. Bobby O'Neal. Rochester. 31fc

### Help Wanted

**BEVERLY ENTERPRISES,** Munday Nursing Center now taking applications for weekend RN coverage, 10-6 LVN shift and part time nurse aide positions. Competitive (plus) wages. Please call Charlotte Welch, RN, or Rachel Gray, LVN, at 817-422-4541 for details. 14fc

**CORRECTIONAL OFFICER TRAINING** Certify as Correctional Officer. Qualify for employment with Texas Department of Criminal Justice state prison units. Western Texas College, Snyder, offers choice of locations, class times and dates. Abilene class meets Tues. & Thurs. evenings and Saturdays for 9 weeks at CJC campus. Total Tuition \$350. Applications available April 22-May 3 at Chamber of Commerce, 341 Hickory 10 a.m.-6 p.m. Snyder class meets on WTC campus 8 a.m. to 5 p.m. for 18 days. Total Tuition \$300. Applications available April 22-May 3 at WTC campus, Snyder 8 a.m. to 4 p.m. For more information call 915-573-8511, ext. 391. 16-17c

**THE CITY OF RULE** is accepting applications for Asst. Water Superintendent. Applications should be in the City Hall by May 7, 1991. For more information contact the city hall at 997-2214.

**PAINT CREEK ISD** announces an opening for a bookkeeper. Persons interested in applying may contact Jerry Morgan at 864-2471. 17-18c

### For Rent

**FOR RENT:** 1 bedroom furnished duplex, \$200.00 a month. Call 864-8905. 28fc

**HOUSE FOR RENT:** 1006 N. Av F. Unfurnished, \$200.00 month. \$100.00 deposit required. Call 864-2258 or 864-3429. 13fc

### Real Estate

**FOR SALE: REDUCED:** Great home for a family with children. 1 block from Elementary school. 3 bedroom, 2 bath, den, kitchen, living room, covered patio, carport, cellar and fenced-in backyard. Hot tub and sprinkler system. 606 S. 6th. 817-864-2718 or 817-864-3915. 27fc

**FOR SALE:** 3 bedroom brick house. 1, 3/4, 1/2 baths. Large living, dining area. Big kitchen, breakfast area. Den, utility room. Hobby room or office. New central electronic air cleaner, heat, cooling. Cellar, well, new sprinkling system. Good carpet, custom made drapes. Large sun porch. 2 car garage. Many extras. 1606 North Avenue F. 864-2530. REDUCED PRICE. 14-17p

**FOR SALE:** 3 bedroom, 3 bath, 2 1/2 car garage on half acre with 4 pecan trees, water well and satellite dish. All built-in appliances. Assume 9 3/4% FHA loan. 864-8905. 6fc

**FARM FOR SALE:** 100 acres 5 miles south west of Haskell. Contact Ed Melton, 915-672-9622, Abilene, Texas. 15-18p

**FOR SALE BY OWNER:** 2000+ sq. ft. home, possible rent house, 2 shops with office, 6 acres. Water wells, fruit trees, calf pens, garden area. Call 864-3835 days or 864-8131 after 5 p.m. 16fc

**FOR SALE: BY OWNER:** 3 bedroom, 3 bath brick home on corner lot near schools. 2550 square ft. spacious open living, dining kitchen den. Fireplace, water well, pecan trees and extras. 607 N. Av G. Call 864-2414. Shown by appointment. 16-19p

**FOR SALE BY OWNER:** Brick 3 bedroom 1 1/2 bath. 1502 Adams, Rule, Texas. Storm cellar, fenced. See to appreciate. Call 997-2756. 17fc

following:

Bids submitted, conformity with specifications, quality of article supplied, terms of delivery, terms of warranty offered.

All bids submitted should include and take into account the aforementioned considerations reserved by the court in its evaluation of the bid proposals received. Any bidder not meeting a particular specification may list the exception on a separate sheet of paper for the consideration of the Court and submit the same with the bid proposal.

The Court reserves the right to accept or reject any and/or all bids, to waive any informality in bids, and accept in whole or in part such bid or bids as may be deemed in the best interest of, and the most advantageous to Haskell County.

All bid proposals must be sealed and submitted to Haskell County Commissioners Court, office of the County Judge, Haskell County Courthouse, Haskell, Texas 79521.

A complete list of specifications may be obtained from the office of the County Judge and will be furnished by mail upon request. Please submit your bid with a trade-in allowance of one 140G motor grader, serial #72V10393 and without trade-in. The possible trade-in may be seen by contacting Ronnie Chapman, Commissioner, Precinct #2, Haskell County, Texas. Order of Haskell County Commissioners Court By: B. O. Roberson, County Judge. 16-17c

### NOTICE OF OPPORTUNITY

Notice is hereby given that Aspermont Small Business Development Center, Inc., is seeking financial assistance from the U. S. Department of Transportation under Section 18 grant program. Grant funds will be used to continue providing rural public transportation on demand responsive and a fixed schedule based on location with a 24-hour advance notice. Services are available in Haskell, Jones, Kent, Knox, Stonewall and Throckmorton counties. Special provisions for the elderly and handicapped are available. The

system will charge a small fee, however, some passengers may qualify for fare subsidy.

A copy of the grant proposal is available for inspection by the public at 650 Washington Street, Aspermont, Texas 79502, Monday through Friday, 9:00 a.m. to 4:00 p.m.

If requested, a public hearing will be held on May 20, 1991 at the address below. Submit request for public hearing in writing to 650 Washington Street, Aspermont, Texas 79502 prior to May 15, 1991. Don Mullis, Executive Director 17-18c

### NOTICE OF SCHOOL TRUSTEE ELECTION (ADVISORIO DE ELECCION PARA ESCOLARES)

To the registered voters of Haskell, Texas: (A los votantes registrados del Haskell, Texas.)

Notice is hereby given that the polling places listed below will be open from 7:00 a.m. to 7:00 p.m. on May 4, 1991, for voting in a school trustee election, to elect three trustees. (Notifique, por las presente, que las casillas electorales sitadas abajo se abriran desde las 7:00 a.m., hasta las 7:00 p.m. el 4 de mayo de 1991 para tres nuevas voten en la eleccion para escolares.)

Location of polling place: Community Room, Haskell National Bank; and the Weinert School house. (Direccion de las casillas electorales: Community Room, Haskell National Bank; and the Weinert School house.)

Absentee voting by personal appearance will be conducted each weekday at the Administration

**Two bedroom 1 bath stucco, carpet, ceiling fan, central H/A, garage, water well and 5 storage bldgs. Owner financed.**

**Two bedroom 1 bath frame, carpet, furnace, evap. cooling, and carport. Owner would finance.**

**Two bedroom 1 bath stucco, carpet, ref. air, furnace heat. 1 bedroom house in rear.**

**Arrowhead Motel, 277 S. Make an offer.**

**Frances Arend Real Estate & Insurance**  
Medicare Supplement, Life Hospitalization  
817-864-3880  
817-864-3156 14c

### Apartments For Rent

2 bedroom, 1 bath, carpeted. 700 sq. ft. Call Haskell National Bank 864-2631.

### LORAIN JOHNSON, BROKER

**NORTHWEST PART of Haskell. Brick 3 bedroom, 1 3/4 baths. Many extras at a sacrificed price.**  
**FOR RENT: 3 bedroom. 507 North Avenue L.**  
**3 bedroom, 2 bath, \$900.00. Munday.**  
**Clean 2 bedroom, 302 Sunny Avenue, Rule.**  
**WANTED: A few good listings.**  
**FOR RENT: 2 bedroom apartment.**  
**GREATLY REDUCED: 4 bedroom, 2 bath. Located on 17 acres. 8 miles N.W. of Haskell.**  
**COMMERCIAL BLDG. in downtown Haskell. 40' front.**  
**NICE LAKE HOUSE at Veda's with boat house. A good buy.**  
**FOR SALE: 3 bedroom on large corner lot, large att., double garage with shop space, fenced yard. Reduced.**  
**TWO WATERFRONT adjoining lots with lake house, large shop and carport. Lakeshore Sites. Reduced.**  
**VEDAS. 2 bedroom double garage, large covered patio. Private boat dock. A beautiful lot.**

**JOHNSON REAL ESTATE**  
864-2951

### Public Notices

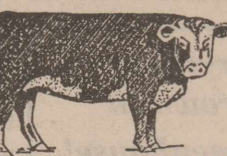
**PUBLIC NOTICE**  
Haskell County Commissioners Court will accept bids until 10:00 A.M., Monday, May 13, 1991, at the office of the County Judge for a new Motor Grader. The unit must be new and current year model and must be fully serviced and ready for use upon delivery. The award will be based upon the

### Decker Electric

Residential Commercial  
Call for free electrical inspection  
**864-8926**  
We appreciate your business! 38fc

### SELLING HASKELL FOR OVER 25 YEARS

**Hartsfield Realty**  
South Side of Square  
**864-2665**  
BUYING OR SELLING A HOME OR BUSINESS? We have skilled realtors to help you in every way from a market analysis to the closing. Over 25 years selling Haskell County.  
We have listings for over ten three-bedroom, one four-bedroom and one five-bedroom home ready for occupancy. The following homes are just a few of what we have to offer. Please call us for details!  
HASKELL  
★ FARM FOR SALE: 161.7 acres northwest of Haskell, 160 cultivated cotton land. Call for details.  
★ EVERYTHING YOU NEED IN A HOME. Three bedroom, two bath, finished basement, central heating and cooling. Comes with three lots, fenced yard and water well.  
★ RENTAL PROPERTY. Furnished duplex in good condition and in good location for only \$15,000.  
★ NOSTALGIC TWO-STORY on North Avenue F. This three-bedroom, two bath has beautiful woodwork with wall paper, beveled glass front door, pocket doors between living and dining, new central heating and cooling, built-in kitchen and much more. Priced to sell.  
★ Call us about our many other listings. We have homes and businesses available to meet your need and budget.  
Hess Hartsfield, Broker 864-2004  
Mary Rike 864-2332  
Dorothy Hartsfield 864-2069  
Esther Conn 658-3904  
Pat Speer, GRI 864-2318



### National Anxiety 4th

### Hereford Female Sale

Selling 135 Females • Cows & Calves • Bred Heifers  
Monday, May 6 • 12:30 p.m.  
Scurry Co. Coliseum & Ag Complex  
On East U. S. Hiway 180

For more information call David Moore—(915) 576-3684 office; 576-2205 home

### Allison Farm Supply

1002 N. First St • Haskell • 817-864-3036

### CHICK DAYS!

Baby Chicks will be here Saturday, April 27

POULTRY SUPPLY HEADQUARTERS  
•Feed  
•Feeders  
•Watering Supplies



### TexSCAN

Statewide Classified Ad Network  
Advertise in 279 Texas newspapers for \$250.  
Reach more than 3 MILLION Texans.  
Call this newspaper for details.

**MAKE A FRIEND...FOR LIFE!** Scandinavian, European, Yugoslavian, Australian high school exchange students...arriving August...HOST FAMILIES NEEDED! American Intercultural Student Exchange. Call toll-free 1-800-SIBLING.

**I'VE LOST 40 lbs in nine weeks!** Need 10 overweight people to lose weight and launch local introduction of revolutionary program. Karry 602-222-5451.

**PIONEER STEEL BUILDINGS** 20x20 Carport...\$1,175; 12x15x7 Storage...\$1,395; 24x30x10...\$3,378; 30x40x10...\$4,350; 30x60x12...\$6,395; 40x75x12...\$8,795. Financing available. All sizes. 1-800-637-5414.

**HAPPY JACK MANGELOTION:** Promotes healing & hair growth to any mange or hot spot, on dogs & horses without cortisone. At Farm-land/Double Circle Co-Ops & Better Feed Stores.

**1991 PALM HARBOR DOUBLEWIDE** \$250.67/month. Visit the factory, save thousands. Free factory tours. Eliminate the middleman. \$24,900, 10% down, 240 months, 12.25% APR 1-800-880-SAVE.

**ADOPTION: MOMMY/DADDY** and baby makes 3! The only thing missing from our happy home is a child to share it with. If you can help us adopt a newborn, please call Charles/Tina collect 212-737-3824.

**\$ LOCAL ROUTE \$** The fastest growing multi-billion dollar industry ever!

No selling! Handle name brand products such as Frito-Lay, Ocean Spray, Welch's, etc. Census shows part time earnings of \$38,000 per year. Requires cash investment of \$21,540. Call 1-800-225-9733, Operator 6.

**COVENANT TRANSPORT** hiring tractor trailer drivers \*1 yr. O.T.R. Experience \*Single 19-22¢ \*East Coast Pay \*Incentive pay \*Benefits package \*Minimum Age 23 \*Teams 27-31¢ \*1-800-458-1344.

**ADOPTION: LOVING COUPLE** Diane, Joe, little doggie and giant teddy bear open our hearts for baby or two. Expenses paid. Call collect 718-268-3145.

**CONVERT MOBILE HOME** axles to trailers. Use 24-ply 14.5 aircraft tires, only \$24.95. Many other sizes. 1-800-828-3350. GENSCO, Box 14628, Houston, Texas 77221.

**YOU CAN SAVE** both money and the environment with our energy and water saving products. Free catalog, Blue Planet, P.O. Box 213, Boston, MA 02115, 1-800-626-4059.

**82 YEAR OLD** plumbing, electric & A/C business for sale in Uvalde. Growing city in prime hunting and recreation area. Owner retiring. Possible financing. 512-278-5224.

**WE PAY TOP DOLLAR** for clean cars and pickups. Will come to your area. Call Kenneth Howell, 915-263-0747, Howell Auto Sales, Big Spring, Texas.

**ATTENTION RNS AND LVNS.** We are now hiring at VA Medical Center, Kerrville, Texas. Excellent salary and benefits. Contact Nurse Recruiter at 512-896-2020 Extension 150.

**WE HAVE AN EXCELLENT** part-time job opportunity for you, trimming photographs. Easy work! Great pay! 1-800-755-3449

**WE NEED RELIABLE PEOPLE** a few hours a day to assist high school and college students with scholarship applications. 1-800-775-7178

**MODELS WANTED:** Adult, teen, children. Be pictured in publication sent to model agencies nationwide. Send SASE to: The Right Look, Box 65600-187, Lubbock, Texas 79464.

**44 SPOT RAIL SIDING** on U.P. with 30 acres on I-20. Big Spring, Texas. Rail-Highway Terminal-Manufacturing Plant-Motel? Call 1-800-274-4599.

**DEHULLED BUFFALOGRASS SEED:** Beautiful lawns. Ecologically safe. Less watering. Less mowing. Half pound \$29.95 (500 sq.ft.). Frontier Hybrids, Box 177, Abernathy, TX 79311. 1-800-872-0522.

**WORKING PARTNER** to handle hottest vending item in Holiday Inns, etc. \$5,000 cash produces average monthly income of \$558. 1-800-654-2419.



# Happenings...

by Lois Redwine

Shari Richards of Maceio, Alagoas, Brazil has been in the states for several weeks visiting daughter and son-in-law, Joy and Greg Crook and new grandson, Coleman Gregory in Irvine, Ca. She then visited her mother, Lois Sherman in Haskell and is presently visiting son, Mike, daughter-in-law Judy and grandchildren, Kevin, Laura and Emily in Grand Prairie. She and husband, Don, have served the Southern Baptist Convention in Brazil for two years and will be there two more. Don is Director of Evangelism and Shari is Director of Religious Education. She is the daughter of the late Kenneth Sherman.

Charlene Del Valle has returned to her home in Rule. She and her husband, Carl, have been living in Pennsylvania where he is employed. He is expected home in a month. Mrs. Del Valle is the daughter of Chester and Juanita Cunningham.

Norris Cunningham, Jr., wife,

Kathy and daughter, Chrissy of Arlington visited in Haskell with the Chester Cunningham family and C. R. and Bea Messenger. Norris is the nephew of Mrs. Messenger and Mr. Cunningham. He is employed by Bell Helicopter.

Michael Felker and wife, Liz of Lubbock spent Sunday with his mother, Mattie Felker English.

Naomi Schwab of Ft. Lauderdale, Fla. is in Haskell for an extended visit with her sister, Ann Darnell and brother, Albert Barnett and other relatives and friends. She is a former Haskell resident.

Helen Pinkard, Marilyn Martin, Frances Davis from Rule and Anita Herren attended the State Porcelain Art Convention in Waco. Mrs. Herren sustained a fall while there and sustained severe facial bruises.

Dorothy Nell Hinds of Mineral Wells spent the weekend with her sister, Beulah Toliver. Mrs. Hinds is the former Dorothy Lowell.

Fadwa Hassen and son, Raja, have been to the Dallas Market,

shopping for Hassen's Dept. Store.

Hosting a bridal brunch recently in Abilene at McCloskys for DeAnn Comolli, were great aunts, Anita Herren and Elizabeth Whitworth and aunts, Nancy Comolli and Carolyn Dycus. Following the brunch, Miss Comolli and James Glenn Reynolds II, were married in the Chapel on the Hill at ACU. Attendants included the bride's cousins, Anne and Amy Comolli of Alaska and second cousin, Brooke Silvi of Germany. The bride is the daughter of Dr. and Mrs. Kent C. Comolli, Brownwood and the groom is the son of Mr. and Mrs. James G. Reynolds, Ft. Worth. After the wedding, some of the wedding party relaxed at dinner. Attending were Bobby, Nancy, Anne and Amy Comolli, Carlyn and A. M. Dycus, Leslie and Brooke Silvi, Dr. and Mrs. Kent Comolli, Mr. and Mrs. James G. Reynolds and Mrs. Jenner. Dr. Comolli is the son of the late Mary Frances Collier Comolli and the grandson of the late Mr. and Mrs. Jess Collier.

Theresa Wash of Stamford and Wanda Watson visited in Bastrop with Mrs. Watson's daughter and son-in-law, Becky and Bert Pardue.

Earmel Bevel and Faye Bledsoe attended the All Sports banquet in Rochester last week. The banquet was dedicated to the late Royce Speck. Joel Bevel, life long friend of Mr. Speck, read the dedication. George and Faye Gray and

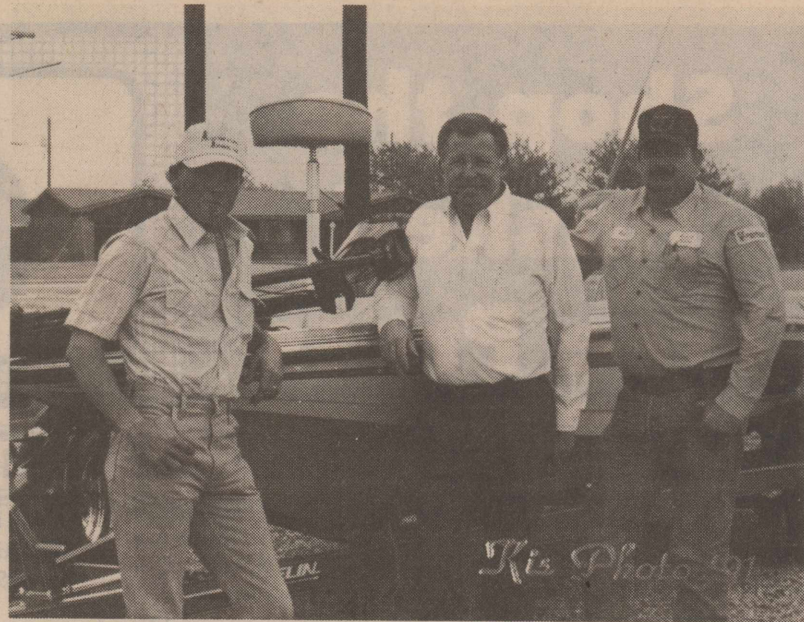
Myrtle Turnbow attended a musical in Knox City.

Visiting with E. L. and Bernice Hilliard were Mrs. Hilliard's brother and sister-in-law, Joe and Joan Kolosa of St. Paul, Mn. While here, the Hilliards treated them to square dancing in Old Glory and a weekend at Lake Amisted near Del Rio. They stayed in son, Ronald's mobile home on the lake and made a trip to Ciudad Acuna, Mexico. The Kolosas continued on to McAllen and the Hilliards returned home.

Estelle Burson has entered Hendrick Medical Center for more chemotherapy treatment.

The Haskell Country Club is hosting a Handicap Golf Tournament Sunday, April 28.

Mrs. James Whitaker took her husband to Big Spring to the VA Hospital for a checkup. They then went to Midland to see their children, Mr. and Mrs. Luther Odom and family and Mr. and Mrs. Bo William Swinger and family. They are the grandchildren and great grandchildren of the late Mr. and Mrs. Major Lewis.



Haskell Marine has been one of the sponsors of the Haskell Bass Club for the past four years. Keith Hannsz, right, owner, donated the use of a 1991 Javelin Bass Boat with 150 Johnson Fastrike motor for the club's open tournament. This year's winner was Tony Isbell, left. Standing between them is Von Marr. Tony qualified by catching the most weight of fish in a designated two-day period.

Thank you for reading the Haskell Free Press

## Old Glory sets monthly musical

Old Glory's monthly musical will be Saturday at the Community Center in Old Glory. "The Best Little Concession Stand in Texas" will open at 6 p.m. and the music will begin at 7.

Interested musicians and singers may call 989-2925 or 989-2760.

There will be no admission charge and the public is welcome. Concession stand proceeds will go to offset the Community Center expenses.

## Buckle Up!

Texas Coalition for Safety Belts

## -HOSPITAL-

### Medical Patients

Ethel Greeson, Rule  
Virgil Wall, Haskell  
Bill St. John, Haskell  
Nellie Ash, Haskell

### Dismissals

Albie Metecha, Audrey Comedy,  
Linnie Hickman, Frances  
McDonald.

## Tired of getting just Channels 9,12, & 32 ?

Contact F & D Electronics for a satellite system that will give you all the channels you want.

We have a system that will fit your budget. Financing programs available.

## F & D Electronics

512 N. 1st  
Haskell, Texas  
864-2536

## Dillon Greenhouse

Bedding Plants • Hanging Baskets • Herbs

Tomatoes • Peppers

Eggplants

6/\$1.00

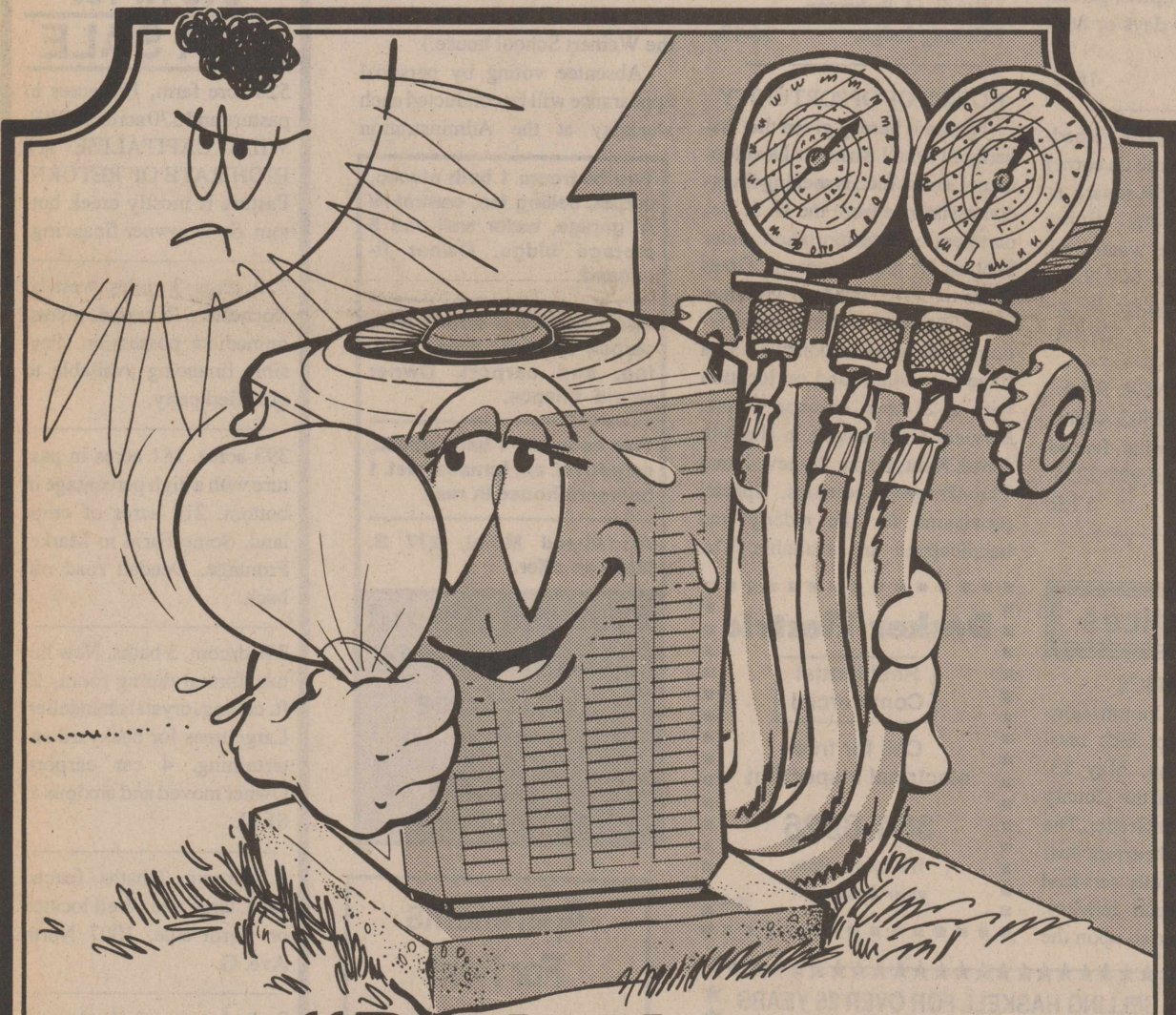
Everything

is grown in

our Greenhouse!

Open 10 to 6 Mon. thru Sat. • Closed Sundays  
4 miles East of Knox City • Hwy 222

817-658-3605



# "Protect your air conditioner from summer heat..."

## have it serviced now by a qualified dealer!"

Your cooling and heating dealer will:

- Check refrigerant levels
- Clean or replace filters
- Inspect the fan motor and belts
- Clear coils of debris
- And look for any potential problems



WEST TEXAS UTILITIES COMPANY

An Equal Opportunity Employer

**WTU**

A Member of The Central and South West System

WTU reminds you that a pre-season checkup by your cooling and heating dealer will help extend the life of your unit.

Sliced Bacon No. 1 Lb. **\$1.39**

Pork Chops Mixed Lb. **\$1.69**

Pork Sausage Store Made Lb. **\$1.29**

American Cheese Sliced or Chunk Lb. **\$1.99**

Green Texas Cabbage Lb. **10¢**

Strawberries 10 oz. Frozen Box **2 for 99¢**

Folgers Coffee 13 oz. **\$1.89**

Kraft Caramels 14 oz. Bag **\$1.49**

Welch White Grape Juice 24 oz. Bottle **99¢**

Crisco Large 4 1/2 Lb. Can **\$3.39**

Wolf Chili 19 oz. Can **99¢**

Best Maid Dill Relish 12 oz. Jar Reg. \$1.29 **Buy 1 Get 1 Free**

# POGUE GROCERY

-Extra Parking Behind The Store. Home Owned and Operated- 113 North Avenue E Phone 864-2015 Haskell, Texas

Thurs. Fri. Sat. Specials