



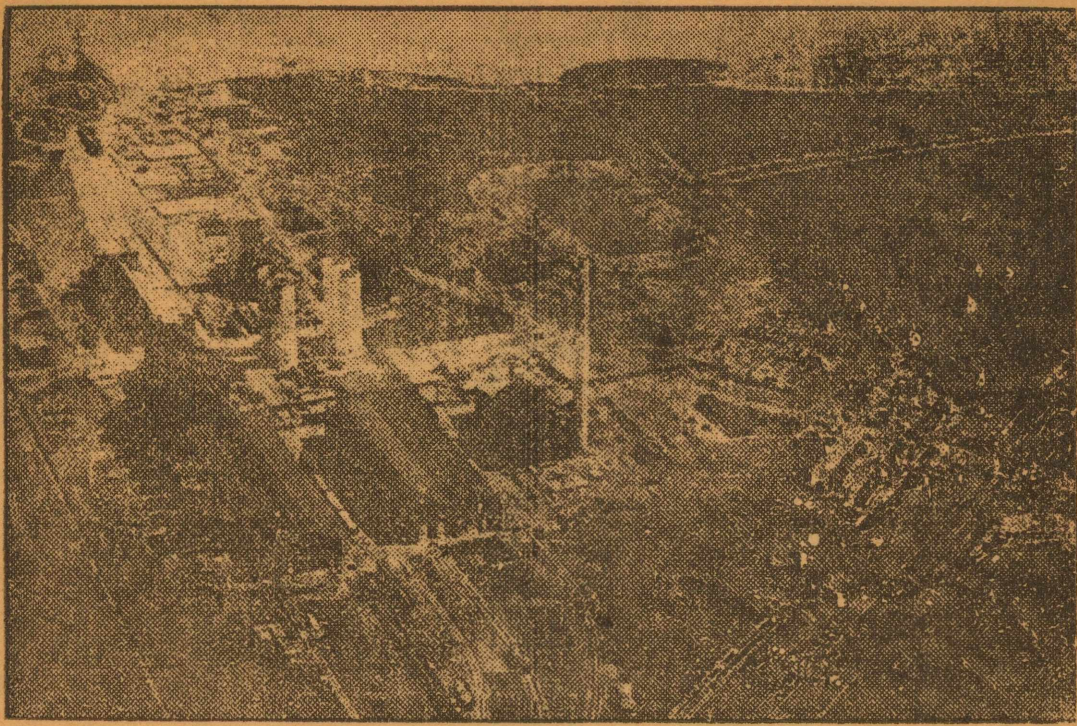








### CHEMICAL COMPANY FACTORY NEARING COMPLETION



Construction of the huge chemical plant of the Southern Alkali Corporation at Corpus Christi is progressing ahead of schedule and it is expected the plant will be in operation by September 1. Building of the plant has been the largest construction project underway by a private organization in the southwest during the last year.

### Corpus Christi Plant Is The Largest Project In South

By W. P. ELLIOTT

Corpus Christi, June 8.—All buildings but one for the huge chemical plant which the Southern Alkali corporation is building here have been completed. Construction work is so far advanced as that only a most serious disorganization would delay the anticipated date of September 1 as the time for combined operation of all units.

Construction of the plant has been the largest enterprise of its kind carried on by a private organization in the southwest during the year.

The Southern Alkali corporation was organized in 1931 by the Pittsburgh Plate Glass company and the American Cyanamid for the purpose of constructing and operating a plant for the manufacture of soda ash and caustic soda in the south. Corpus Christi was selected as the most logical and promising location for the plant, following exhaustive surveys made by the market analysis and engineering staffs of both parent companies.

**Natural Advantages Many**  
The raw material available, cheap fuel, distribution and labor facilities were the primary factors which influenced the selection of Corpus Christi as the plant location. Practically unlimited quantities of high grade raw materials are found within an economic transportation radius of Corpus Christi, including materials not only for the manufacture of alkalis but also for the production of other heavy chemicals and a number of products which require alkali or its derivatives as process intermediates.

Fuel, such as natural gas, is available in steadily increasing quantities at nearby fields. Distribution to the existing markets and the logical potential centers of heavy chemical consumption is well balanced among rail connections to the west, deep sea transportation to the eastern seaboard and to export markets, barge transportation by way of the intra-coastal waterways to gulf coast ports and the vast area served by the Mississippi river and its tributaries. The labor supply is adequate in every respect with a wage scale in proportion to the relatively low cost of living prevailing in this section of the country.

Two subsidiaries to Southern Alkali were organized in order to avoid a topheavy operating structure. The Southern Minerals corporation proceeded to acquire and develop the necessary raw material and fuel deposits and the Southern Pipe Line corporation occupied itself with the development of means of delivering raw materials and fuel to the plant site.

**Preliminaries Completed in 1933**  
All preliminary work had been completed by the summer of 1933 and suitable sources of raw materials and fuel had been acquired and developed to the point where production was possible. Rights-of-way had been acquired and necessary surveys completed for the pipe lines to carry brine, gas and water to the plant site.

A 350-acre tract of elevated land on the main line of the Missouri Pacific with adequate tide water frontage had been purchased and arrangements completed for rail and deep water connections. The boards of directors of the two

parent companies, after a survey of prevailing economic conditions, decided that the outlook was sufficiently bright to warrant an immediate start on construction.

Last July, an organization was assembled and work was started. Since that time all phases of the program have progressed with a speed and co-ordination which is eloquent testimony to the thorough manner in which the preliminary work was carried on.

The plant is so laid out as to permit future expansion without interruption to production and without affecting the basic operating scheme. The various buildings form a hollow square and may be enlarged several hundred feet in all external directions. One side of each building is served by the yard track system while cross overs at each end allow flexible switching distribution. The system proved its value during construction in the handling of many pieces of heavy equipment which otherwise would have required special rigging.

**Equipment Being Tested**  
All pipe lines have been completed, tested and now are undergoing experimental operation tests. All buildings with the exception of the transit sheds on the docks have been completed and all of the major pieces of equipment including tanks with most of the distribution piping and conveyors have been installed. Boilers have been dried out and are in a position to deliver steam.

All of the electrical distribution system has been placed in operation and it remains only for sufficient permanent electrical load to be connected in and around the plant to warrant putting the company generating units on the line.

The only heavy construction remaining to be completed consists of the end sections of the concrete deep water dock. Progress here is timed to coincide with operation of the dredge which has recently completed the extension of the ship channel from the port of Corpus Christi and which now is working on the company's 800 to 1700-foot turning basin which will allow two ships to navigate with a draft up to 30 feet.

The two-story office building, recently completed, will be ready for occupancy as soon as the furnishings are installed. It is in the Spanish type of architecture and will house the main laboratory and offices.

The next month or two will be devoted almost entirely to the installation and adjustment of control equipment.

**Duval County Salt Used**  
Salt, one of the primary raw materials to be used in the plant, will be transported in brine form 61 miles from Duval county to the plant site by a cast iron pipe line with mechanical joints. As a result of a fortunate topographical coincidence the pipe follows practically an air line between the two locations without the use of high head syphons while a difference in elevation of approximately 450 feet provides ample head for gravity flow. At the plant the line empties into a 3,000,000-gallon shell-lined earthen reservoir which, coupled with the volume of brine in the line itself, provides a reserve against any normal interruption of production at the wells.

Lime, the other primary raw

material, is obtained by burning calcium carbonate in both vertical and rotary kilns as an integral part of the manufacturing process. A practically inexhaustible dual source of calcium carbonate is available in high grade limestone from the Balcones fault area between Corpus Christi and San Antonio and in extensive beds of marine shell many miles in extent which lie in the some waters on which the plant site fronts.

Gas is supplied through a welded steel line from company owned fields only 6 miles from the plant. Millions of cubic feet of gas will be consumed daily.

**Fresh Water Used for Machines**  
Fresh water for the process and boilers as well as for cooling purposes in certain places where it is not advisable to use sea water, is supplied through another cast iron pipe line from a pumping station on the Nueces river, 13 miles from the plant. Sea water for primary cooling will be taken from the deep water ship channel leading to the plant.

The plant has been developed to date with a low percentage of serious industrial accidents for heavy construction of its nature. The record is a tribute to the careful engineering which preceded construction, to equally careful scheduling of erection work so that a mechanical failure would endanger few men, and to a rigorous safety program maintained since the work was started. Visitors at the plant have been amazed at the clean condition of floors and the grounds while actual construction work was underway but the cleanliness was only one factor in the safety program.

### Barrow-Parker Film To Be Shown Here

We're Not Dressing"—a Bing Crosby Picture Scheduled

A moving picture showing the Louisiana slaying of Clyde Barrow and Bonnie Parker is to be a feature of La Vista program this coming week. It will be shown Tuesday with the regular prices prevailing rather than the "bargain night" prices. On the same program will be the picture "Uncertain Lady."

Interviews with friends of the noted Barrow and Parker are included in the picture.

Today and tomorrow Frank Buck noted animal man, is seen in "Wild Cargo." "Gordon of Ghost City", with Buck Jones is the new serial starting today.

Sunday and Monday Clark Gable and Claudette Colbert will be seen in "It Happened One Night". On Wednesday and Thursday the Bing Crosby—Burns and Allen picture, "We're Not Dressing", will complete a week of unusually good productions.

**Glasscocks Home for Summer**  
Mr. and Mrs. Ray Glasscock returned last week to spend the summer with his mother, Mrs. R. E. Glasscock. Mr. Glasscock is coach in the Comanche High School.

It is our impression that Mr. Insull has been photographed now in every possible attitude except Telling All.—Detroit News.

**DRINK WATER WITH MEALS GOOD FOR STOMACH**  
Water with meals helps stomach juices, aids digestion. If bloated with gas add a spoonful of Adlerika. One dose cleans out poisons and washes BOTH upper and lower Bowels. Corner Drug Store, Inc. J-4

### Mexico City Wants 1935 Lions Club World Convention

All Texas Might Expect To Profit Because of Tourist Traffic To Mexico Capital

The Lions Club of McCamey is making efforts to secure for Mexico City the 1935 convention of Lions International, according to a recent story in the San Angelo Morning Times. The McCamey dispatch to the Times was as follows:

"Members of the McCamey Lions Club, at their regular weekly luncheon Tuesday voted to lend their support to the Mexico Lions Club in its effort to secure the 1935 Lions International Convention for Mexico City, and the local club secretary was authorized to wire the Mexico City club informing them of the willingness of the local club to be of any assistance possible in helping to secure the conclave."

"It is the belief of the local club that should Mexico City get the convention, Texas as a whole will profit in various ways from the huge crowds of tourists who will flock through the state en route to the convention city."

"The International convention has never been held in the south. The McCamey club plans on making a concerted drive to get the 245 Lions Clubs in Texas to support Mexico City. This year's convention will be held in Grand Rapids, Michigan, in July."

**San Angelo Club Elects**  
Sam Thorne, manager of Walker-Smith Co., wholesale grocery firm, was selected recently to direct the activities of the San Angelo Lions Club for the coming year. Dean Chenoweth, managing editor of the Standard and Times, will be the vice-president, and W. P. Barnes, lessee of the shoe department of the Robertson Co., is second vice-president.

The Cowboy Entertainers, popular West Texas musicians, are in Mineral Wells at the state convention of the organization this week. The club had its regular weekly luncheon this week at the Boy Scout encampment at Camp Louis Farr, near Mertzon.

Typewriter Ribbons, Carbon Paper, Sales Pads, Adding Machine paper. THE NEWS.

### Classified Ads

LOST—on highway between Junction and Sonora—a black hat box with Tarlton and Texas Tech stickers. Reward. Geneva Curry, 2304 Leon St., Austin 32-1tp

FURNISHED apartment for rent. Phone 40. F. J. Wood.

**L. W. ELLIOTT**  
ATTORNEY-AT-LAW  
Will practice in all state and federal courts  
SONORA, TEXAS

### T. C. U. SELECTS SECOND YEAR MAN TRACK CAPTAIN

The first sophomore to be elected track captain at Texas Christian University in a decade is the distinction attained by Louie Trainer, son of Mr. and Mrs. J. W. Trainer, according to a publicity bulletin from the college. Trainer was elected co-captain with George Kline of Gregory.

The bulletin continues: "Trainer ran up a total of 30 points in conference competition this season in the 100-yard and 220-yard dashes and the quarter-mile. He also ran as the anchor man in the spring relay team."

"Louie will make a better record next year than he did this", Mack Clark, T. C. U. track coach, predicts. "He was in his first year


of college competition this season and lacked the experience to do the best of which he is capable. He will roll up many a point for the Purple and White in 1935, is my guess."

News want ads get results.

LIGHT  
**HAULING**  
— — —  
**Beamon Speed**  
PHONE  
**106**

**BARBECUE**  
and Celebration  
**CAMP ALLISON**  
**June 12 and 13**  
Dancing, Speeches, Racing, Ball Games

"SAN ANGELO'S SWEET AIR DENTIST"  
**DENTIST WHO DOES NOT HURT**




Smiles Dentist  
HOURS—Daily, 9 a. m. to 6 p. m. Mon., Wed., Fri., 9 a. m. to 5 p. m.  
No Appointments Necessary

Painless Sweet Air Extractions Free With Other Work.

Plates That Fit Completed in One Day If Desired.

Broken Plates Repaired.

Loose Plates Tightened.



**TEETH THAT FIT**  
**WHITE BRAUTIES**

**DR. HARRIS**  
Chad. & Twining (Over City Drug No. 1)

**ATLAS REDWOOD TANKS**

NOW COST NO MORE THAN ORDINARY TANKS!

3 to 5 Times Longer Life

**Storage Tanks.. 15- to 250-Gallon CAPACITY**

**West Texas Lumber Co.**  
W. E. CALDWELL, Mgr. SONORA, TEXAS

**SONORA WOOL & MOHAIR CO.**

SONORA, TEXAS

Fireproof Building that will accommodate 1,500,000 pounds of wool and mohair

**WOOL BAGS, SEWING TWINE, FLEECE TWINE BRANDING FLUID**

**Liberal Allowances on Wool and Mohair**

**OFFICERS**  
Ed C. Mayfield, President, W. A. Miers, Vice-President, J. N. Ross, 2nd Vice-President  
R. A. Halbert, 3rd Vice-President, Fred T. Earwood, Executive Vice-President  
W. J. Fields, jr., Manager

**DIRECTORS**

Ed C. Mayfield  
W. A. Miers  
J. N. Ross  
E. F. Vander Stucken  
Sam Karnes

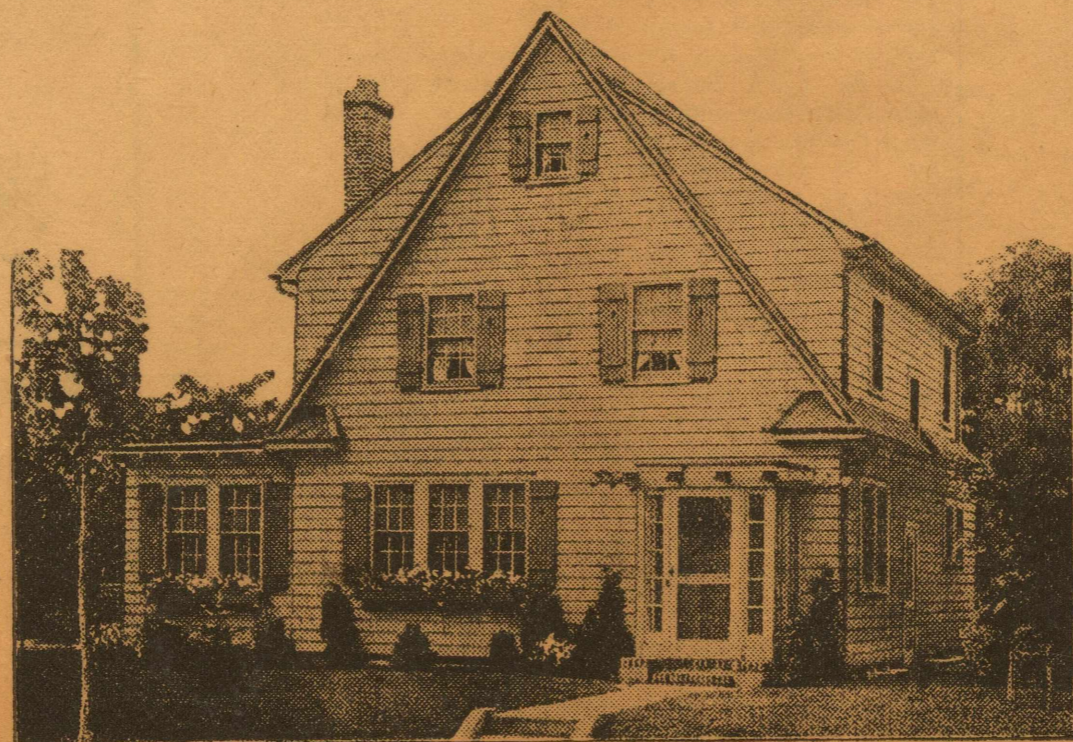
Roy Aldwell  
Sam Allison  
Dan Cauthorn  
E. D. Shurley  
Ben F. Meckel

R. A. Halbert  
Fred Earwood  
Joe Vander Stucken  
L. W. Elliott  
C. T. Jones

# The DOOR IS CLOSED!

## ...to You

## and Your Goods



but it CAN be opened  
for you and Your Merchandise!

*Talk to  
Sutton County  
People Regularly  
in the NEWS...*

Whether the Sutton County resident is one who lives on a ranch of many sections, in a town residence or has both town and country homes he is a genuinely worthwhile prospect for the stock and services that Sonora business men have to offer. He may not buy in great quantities or in large dollar-and-cent amounts but he's a "prospect" every day in the year and he can be influenced to buy what the Sonora merchants want to sell....

The NEWS is your medium of expression. It goes to people in town and out. A message about what you have that the Sutton County resident NEEDS will bear fruit IF you tell him regularly enough to "drive home" the thought that the merchandise you have is what he needs. His door is closed to you—from a standpoint of personally soliciting his trade—but through the advertising columns of the NEWS you can go into his home, tell him what you have and point out the merits of what you want to sell.

## The Devil's River News

READ IN SONORA AND SUTTON COUNTY HOMES --- IT IS YOUR SALES VEHICLE

