

MANDELL CLOTHING & DRY GOODS COMPANY
CLOVIS, NEW MEXICO

RE-ORGANIZATION SALE

Beginning March 14th and Continuing Until March 27th

This Company has just been reorganized. To expedite the prompt settlement of affairs and get things in such shape that the new management can convert the stock on hand into entirely new goods and continue to raise the standard of its store, it becomes necessary to quickly change into cash as much of present stock as possible. Therefore, during this Reorganization Sale every bit of merchandise in the store, whether spring goods or left from last season, is being offered for rapid disposal at extraordinary savings.

BUY WHILE THIS OPPORTUNITY LASTS! --- IT WILL PROVE REAL ECONOMY!

Sheeting and Tubing

- 9-4 Bleached Sheeting—Black Hawk brand—a very fine quality— **52c Yd.**
- 10-4 Bleached Sheeting, Same Brand— **53c Yd.**
- 9-4 Unbleached Sheeting, same Brand— **49c Yd.**
- 36-Inch Pillow Tubing. **32c Yd**
- 42-Inch Pillow Tubing— **36c**

MUSLIN

- 36-Inch Unbleached Muslin, Black Hawk brand, heavy quality. **17c Yd.**
- 26-Inch Bleached Muslin, Gold Coin— **17c Yd.**
- 36-Inch Bleached Muslin, Hawk Brand, fine quality— **20c Yd.**
- 33-Inch Indian Head **27c Yd**

PERCALE

- 25-Inch Percale in dress and shirt patterns, special— **11c Yd.**

WHITE GOODS

- 36-Inch Pajama Check, good quality for underwear and gowns— **19c Yd.**
- 40-Inch Linweave Batiste, good for infants' dresses and underwear— **39c Yd.**
- Excellent quality nursery Batiste— **32c Yd.**
- Greenfield Long Cloth, fine for night wear— **21c Yd.**
- Berkeley No. 100, very fine Cambric, Special— **34c Yd.**

EXTRA SPECIAL

- 66x84 bed Blankets, heavy quality, beautiful patterns and colors, Special— **\$3.95**

Men's Overalls

Good heavy white back Denim, high back— **\$1.39**

MEN'S KHAKI PANTS

This is a good heavy weight Khaki and a wonderful value at— **\$1.48.**

Men's Texas Red Duck Pants, \$2.50 value, Special— **\$1.98.**

ADORABLE RECENT ARRIVALS INCLUDED IN THIS

Sale of Silk Dresses

AT PRICES SO SENSATIONALLY LOW THEY HARDLY SEEM POSSIBLE.

Never has there been offered a better value than this sale of Spring Dresses. Fashioned of Roshanara, Flat Crepe, Jacquard Crepe and Crepe de Chine they offer quality unusual at this price. The very newest fashions are represented in the charming models which come in all the latest shades, including Poudre Blue, Radio Blue, Biege, Navy, Brown and Black.

Values up to \$17.50.

\$10.75

In this array of lovely silk dresses you will find the season's best styles; copies of higher priced dresses, all in beautiful new shades, fashioned with panels, draping circular skirts, or straight line effects. They are trimmed with buttons, lace, ribbon or pleating and come in Canton Crepe, Crepe de Chine, Flat Crepe and Taffeta, all exceptional values at the price.

Values up to \$27.50.

\$16.75

ATTRACTIVE NEW SPRING

Coats

-At Popular Economy Prices

In time for immediate wear as well as throughout the entire season comes this marvelous offering of Spring's foremost styles and values at an exceptional price. Scores of styles featuring the new silhouettes, new sleeves, new lengths, new trimmings and new colors await your selection. The fabrics are Heather, Polaire, Casha, Plaid, English Cloth and Cameline; the shades, tan, gray, blue—mixtures, plaids and stripes in a pleasing variety.

\$9.85

and up.

Suits

at Far Less Than Their Worth

Fashion unmistakably points to suits for the smartly attired Spring Maid. The models in this sale are tailored in the newest Jacket lengths from the boyish modes to the knee line. Many are trimly braided, others distinctively self-trimmed—all are astonishing values at the price.

\$19.85

and up.

DRESS GOODS

Wm. Anderson Crest o Weave Crepe, in all new spring colors **98c Yd.**

Mercerized Basket Weave Suiting—Late Spring Novelty guaranteed fast color— **59c Yd.**

Reliable Mercerized Suiting. Fine line of colors, guaranteed sun and wash proof— **38c Yd.**

Good quality staple checked Apron Gingham— **19c Yd.**

27-inch Dress Gingham. While it lasts— **12 1-2c Yd.**

Cheviot — Heavy Shirting Cheviot in blue, grey, tan and fancy stripes— **21c Yd.**

32-inch Red Seal Gingham—a nice assortment to choose from at— **29c Yd.**

Wm. Anderson's Dixiana Voie Just the thing for ladies' and girls' dresses in a good assortment of colors— **52c Yd.**

Percale—36-inch Percale in a good quality and nice assortment of patterns— **17c Yd.**

SILKS

—that will make adorable Spring Dresses.

40-Inch Radium Silk, in white and flesh, a very fine grade for underwear— **\$2.29 Yd.**

40-Inch Crepe de Chene in all colors; good, heavy quality— **\$1.68 Yd.**

A wonderful assortment of Printed Crepe in all new color combinations— **\$2.79 Yd.**

12 Momme Jap Pongee— **79c Yd.**

Sheets and Pillow Cases

81-90 good serviceable quality Sheets— **\$1.05.**

81-90 Economy Sheets— **\$1.39.**

42x36 Rose Brand Pillow Cases, special— **29c.**

... This sale is only the beginning of what the new management intends to do in this store. Here you will always find the latest and best quality merchandise at moderate prices. A very close affiliation with a large wholesale house will enable us to always offer exceptional values. A constant endeavor to bring better quality merchandise at lower prices into the community is the one helpful service we intend rendering our customers. Only your patronage will enable us to prove these statements.

The Thief-- That is Hard to Catch!



—Ordinary thievery is easily detected, but not the theft of NERVE ENERGY. Healthy eyes use but 10 per cent of the body's nerve force, while overstrained eyes sometimes steal 50 per cent. Exhaustion or breakdown results. To prevent this thievery—

HAVE YOUR EYES EXAMINED.
WORRELL'S OPTICAL SHOP
C. E. WORRELL, EYESIGHT SPECIALIST.
"IT'S THE BEST IN THE STATE."
CLOVIS, NEW MEXICO.



Hobbies of Our Senators.

Hunting is the only real outdoor sport, according to Senator Smith W. Brookhart, of Iowa, shown above. Almost every week he tramps miles through Maryland and Virginia hills with his dog and his gun in quest of game.

CLOVIS LOOTERS ESCAPE

New Mexico Authorities Believe Burglars Who Entered J. C. Penney Store In Clovis Have Escaped Into Mexico.

CLOVIS, New Mexico, March 14.—The J. C. Penney Company robbery, have escaped.

This was the belief of police here today who have exhausted every clue in connection with the burglary of the J. C. Penney store here on Wednesday night of last week when something over \$1,500 in merchandise was included in the loot.

Police now believe the burglars left the city immediately after the robbery, and within twenty-four hours had crossed into Mexico at Juarez, or are in safe distance of the border.

This deduction was reached Monday when it was learned that a car fitting the description of one sought here the day following the burglary had been seen close to Alamogordo, New Mexico, headed toward the border. Wires to El Paso authorities failed to catch this car.

Suspicion in connection with the robbery of the Penney store was cast upon two men and two girls who entered the place on the afternoon preceding the burglary and made a general survey of the stock, visiting its various departments and making only a small purchase.

The same parties were seen at midnight not far from the Penney store where the two girls got out of the car and the men drove off. The same car had been filled with gasoline earlier in the day and filling station employees described them as the same parties who visited the Penney store during the day.

It was this car and its occupants whom the police sought to intercept in its flight toward El Paso, but failed. The Penney stock is protected by burglary insurance.

TAX CUT MEETS DIFFICULTIES

President Coolidge's request Tuesday that Congress adopt immediately a resolution making effective the 25 per cent reduction in personal income taxes payable this year, now carried in the revenue bill, met with discouragement in the House that day when that body turned down an attempt to obtain such action. The president urged through a message to Congress that the proposed cut be made effective before Saturday when the first installments on taxes must be paid.

LENROOT QUILTS; LADD SUCCEEDS

Senator Lenroot, of Wisconsin, Tuesday resigned as chairman of the oil committee, it was announced from Southern Pines, N. C., where the Senator is resting from strenuous duties. Ill health was given as the cause of his resignation. Senator E. F. Ladd, of North Dakota, has been named to succeed him.

GIVE UP HOPE FOR MINERS

With the dead bodies of 127 miners already brought to the surface from the depths of No. 2 mine of the Utah Fuel Co., at Castle Gate, Utah, all hope has been abandoned that any of the remaining 173 are alive. General funeral services will be held later for all the victims.

COTTON GROWERS CONTEST

—Call and let us explain to you how and under what conditions we will furnish you seed and help you become a member of our Kash Cotton Growers Club in which you have an opportunity to win a single prize of \$87.50, or a double prize of \$175.00. Club limited to membership of one hundred.

BLACKWATER VALLEY STATE BANK MULESHOE, TEXAS (Guaranty Fund Bank)

for Economical Transportation



Blackwell-Buck Chevrolet Company
Clovis - - - New Mexico

A NEW SICKNESS AMONG BANKERS

Science is baffled, says a Wichita, Kansas, report. For years scientists have said that disease makes no distinction. But of late, young or old, disease has no friends, it has been said. But science, it appears, is wrong. A disease is now raging in Kansas which seems to affect bank-presidents only. Kansas bank presidents appear to be a sick lot.

J. Wirt Steele, in charge of the German relief campaign in this territory, recently wrote to twenty-seven bank presidents, asking them to serve as treasurer for the relief fund in their communities. Of the twenty-one answers received, every banker declined "because of his health."

MAY VOTE ON BONUS MONDAY

Terms of the new soldier bonus bill providing paid-up life insurance policies were agreed upon today by a sub-committee of the House ways and means committee and will be taken before that body for decision tomorrow.

Chairman Green announced he would attempt to have the measure acted upon next Monday by the House under suspension of the rules which would limit debate, prevent amendment and permit a vote in one day, according to Associated Press dispatches last night.

FOUR SONS DIE WITH MEASLES

Four sons of C. V. Burnett, of Red Lake, N. M., south of Clovis fifty miles, have died within two weeks of measles and pneumonia. A fifth has been very low but recovery is expected.

THEY ARE TO HOP OFF SATURDAY

The Army's around the world fliers will hop off on the first leg of their long journey from Los Angeles Saturday morning, and the success of their attempt to circle the globe depends entirely on weather conditions in danger zones. Once they are passed the War Department believes the flight will be completed.

The fliers are to arrive at Seattle March 24; Prince Rupert, B. C., April Chicago, Island of Attu, April 11; point in Japan, April 27; Calcutta, India, May 28; San Stefano, Turkey, May 29; London, July 1; Boston, August 2, and Washington not later August 10.

After try something big and fail sit tight and do nothing at all.

THE FARM.

QUARANTINE ORDER OF COTTON SEED.

The quarantine order affecting the importation of cotton seed into New Mexico prevents any seed from Texas, Oklahoma or other eastern states being brought into New Mexico without a permit from the Federal Horticultural Board.

This quarantine order is intended to protect the New Mexico cotton grower and the cotton growing industry. It is much more economical to prevent the introduction of cotton pests than it is to fight those pests after they have been introduced.

Permits to bring in seed will not be issued merely upon request, according to President H. L. Kent, of the New Mexico College of Industrial and Mechanical Arts. To do this would nullify the effect of the quarantine regulations.

Before permits will be issued the Federal Horticultural Board must know the origin of the seed, how it was handled after ginning, and have a chance to inspect the seed. Requests to import seed should be sent to President H. L. Kent, State College, New Mexico, accompanied by all the above information. This request will then be referred to the Federal Horticultural Board for action.

Indications now are that the chief shortage of cotton seed is in the northern counties of the cotton growing area.

TIME TO UNCOVER GRAPE VINES.

Grape vines which have been protected during the winter should be uncovered four or five weeks before the time for pruning. The pruning of vines is usually done just before the buds on the canes are ready to open. At the Experiment Station of New Mexico Agricultural College, which is at an altitude of 3,800 feet, the vines are uncovered about the first week in March, and pruned usually about the first week in April. In higher altitudes these operations will vary from two to five weeks, depending on the latitude and altitude.

The vines should be uncovered early to prevent the development of the base buds on the canes. If they are kept covered too late in the spring these buds will develop so much that they are too tender to withstand the radical change in temperature and will be partially or totally injured.

Growers should remember that the grapes produce their fruit on the current year's shoots which grow from the buds on last year's canes. These shoots, as a rule, are produced from the two or three base buds on the canes. For this reason every effort should be made to preserve and retard the development of these base buds as much as possible.

Test proves that the human voice can be transmitted only when the speaker's mouth is close to the transmitter. To speak four inches from the instrument is equivalent to lengthening the line more than 200 miles; two inches away, 128 miles. Lower pitched tones are transmitted better than those of a high pitch.

\$150,000,000 IS FORD'S FREIGHT

Over Half a Million Freight Cars Used In Year by Manufacturer.

DETROIT, Mich., March 12.—More than half a million freight cars, one-fifth the freight car ownership in the country, are used annually by the Ford Motor Company's main plants and various branches, according to figures just given out here.

The average freight charges paid through the Detroit offices direct to railroads, that paid by branches on minor shipments, and freight charges on direct shipments made from manufacturing institutions to branches approximates \$78,200,000 annually. Adding to this about \$75,000,000 paid by dealers on shipments of autos received by them, brings a conservative figure of \$150,000,000 paid every year in freight charges through the instrumentality of the Ford Motor Company.

An average of 860 car loads of freight are handled every day in and out of the Highland Park and River Rouge plants alone, and it is estimated that on the Ford Motor Company's account, 50,000,000 pounds of freight in car load lots are handled every day in the Detroit district.

Shipping space economies, effected through the company's unique methods are seen in the fact that while part shipments to the assembly branch plants are figured at 10 units per car in rail shipments of completed cars from the branches to the dealers, only six assembled Ford cars and trucks can be loaded into a standard 36-foot box car.

The larger part of the Ford freight is shipped with the Detroit, Toledo & Ironton, the Ford railroad, as either the initial or participating carrier, and special attention is paid to the classifying of all freight, so that not only the company but the dealer as well receives the benefit of expert services in freight classification and rate adjustments.

A Greek republic ought to get along pretty well, provided some of the Greeks don't strike oil.—Memphis Commercial Appeal.

The only time pedestrians have the right-of-way is when the ambulance is taking them to the hospital.—The Chickasha Star.

The oil field may look like a teapot but it has now assumed the appearance of a frying pan.—Charleston Gazette.

Of some reputations nothing is left but a grease spot.—New York Tribune.

PURINA

Poultry Raisers

Read this!

Out of every 100 chicks hatched 50 ordinarily die.

But, experience shows that when Purina Chick Startena is fed, 95% live and grow.

A fresh shipment of Chick Startena (containing buttermilk) has just arrived. Call today.

O. M. REESE PRODUCE CO.
200 to 206 West First.
Business Phone 133, Res. Phone 714-W
CLOVIS, NEW MEXICO

PURINA

AN OUTSTANDING EVIL.

IT is to be feared Congress will be so busy with taxation and the bonus and transportation questions that it will be unable to attend to a problem that is crying for solution: That of tax-exempt securities.

Tax-exempt securities, as most all now understands, work to send millions of dollars into idleness that ought to be flowing in regular industrial channels. Furthermore, they encourage extravagance on the part of states and municipalities that are intruded with the ease with which they can sell bond issues. Ultimately they will be prohibited and with the prohibition that will make men wonder that they were ever permitted.—Joplin News-Herald.

It is well to add that the income from money invested in tax-exempt securities escapes all forms of taxation, thus adding greatly to the tax burdens of others.

HOUSE FAVORS FORD'S OFFER

Henry Ford's offer for Muscle Shoals, pending before Congress for more than two years, was approved Monday by the House.

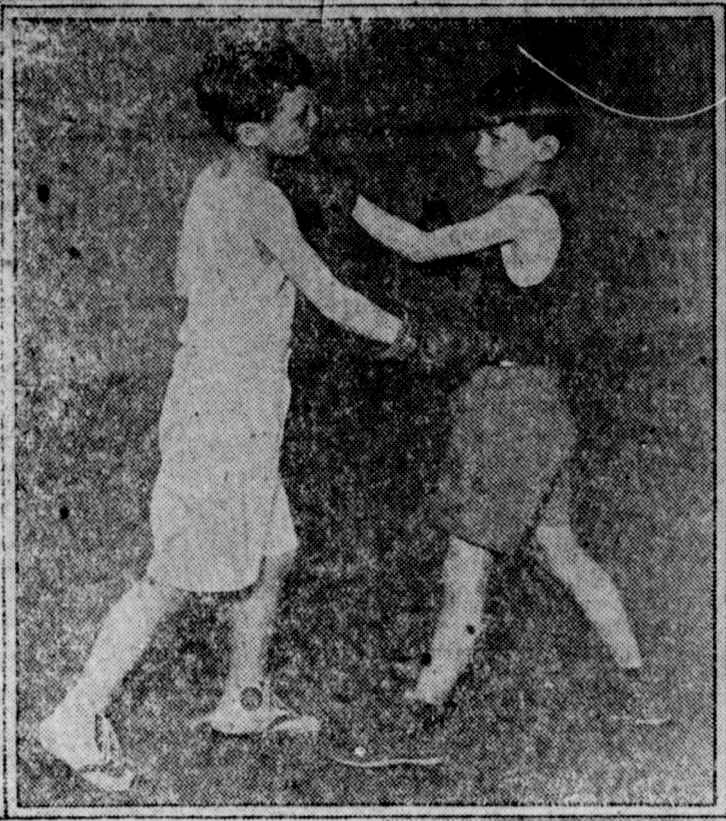
By a vote of 227 to 142, the McKinzie Bill, which would authorize acceptance of Ford's bid, was passed and sent to the Senate where there is uncertainty as to what action any will be taken on it at this session.

Continuously before the House for a week, the McKinzie measure was approved virtually in the form in which it was reported by the military committee, which had been introduced by Mr. Ford that he would take the government's nitrate and phosphate project on the Tennessee river and the terms embodied in the bill.

At any rate, Jesse James never raised a hood and tightened a spark plug and charged \$3.85.—Portland Telegram.

It seems impossible to arouse any popular pathos in connection with Mr. Fall's efforts to lift the mortgage from the old farm.—Washington Star.

SEND YOUR
ABSTRACT WORK
—TO THE—
Muleshoe Abstract Company.
A. P. Stone, Proprietor.
MULESHOE, TEXAS.



CAPITOL KIDDIES KEEP IN TRIM AT RACQUET CLUB.

Under the direction of Mr. Whipp, physical instructor, who has turned out many fine specimens of American youth, photo shows Eugene Meyer, Jr., whose father is head of the War Finance Corporation, sparring with Teddy Roosevelt III, who needs no introduction.

J. L. Taylor
BARBER SHOP
FIRST-CLASS WORK.
Laundry Agency.
All Kinds Tailor Work Done
Promptly, and like it ought to be done.
Bring Your Work To Us.

Arnold Morris
AUTOMOBILE REPAIRING AND ADJUSTMENTS
All Work Guaranteed
Muleshoe, Texas.
When we do your repair work it will be done right and in a hurry!
Try Us Out—We Will Make Good.

R. L. Faulkner & Company
Investments
FARMS, RANCHES AND LIVE STOCK.
Muleshoe, Texas.

Some big bargains to offer that will increase in value and make purchaser a good profit. Can sell you a farm or ranch of any size wanted.

Correspondence Promptly Answered.

When In Clovis Store Your Car In —THE—
NEW STATE AUTO GARAGE
REASONABLE RATES AND PROMPT SERVICE.

Fire proof building
We carry gas, oils, and a full stock of accessories.

PLAINS COUNTRY IS ON A BIG BOOM

From a Conservative View Point, the Plains Country Is Attracting Many Settlers.

(From The Lubbock Avalanche.)

MAX BENTLEY, staff correspondent for the Star-Telegram and other leading newspapers of the South, is possibly one of the conservative feature writers of the day, and he has spent much of his time for the past few months looking over the western part of the state and furnishing articles concerning the development of the west. In the Star-Telegram Wednesday he had quite a lengthy article dealing largely with the South Plains, but in a general way, West Texas. He says the immigration movement into West Texas has reached enormous proportions, but its magnitude had hardly dawned upon him until his recent trip to that section, when he was told Mr. Anton, the division superintendent of the Santa Fe Railroad, that during January twenty-two cars of immigrant outfits rolled daily thru the Sweetwater and Amarillo gateways, and he estimated that they handled only about one-third of the immigrant that have come to the South Plains section during that month, for the public highways are thick with trucks and old-fashioned covered wagons. This railroad official further enlightened the special writer by saying that in February, which is ordinarily the dullest season of the year, one day 235 freight cars or eight good trains were moving over their lines. The special writer says he visited twenty counties in West Texas and he did not travel by train, but went into every nook and corner of the country and saw things just as they were happening. He says it is hard for other than a West Texan to grasp just what is really going on in that country, and we might add to this statement that there are a lot of folks here right in the heart of Lubbock, who actually do not know what is going on, for they have not yet caught a vision of what is really going to come to pass in this great South Plains. The people of Lubbock cannot realize how big things are really becoming, they act like they are jaded, and cannot realize that the day of the one-horse express wagon is gone, and the high power truck era is here, or in other words that we must build big and strong and with a view to the future. The special writer stated all of the West is witnessing a heavy immigration, but the Plains section is the biggest attraction by far. He says the reason is logical and easily explained, and says that the honest to goodness truth of the matter is there is more tillable land in that section of the country and there is more of it offered for sale. It has heretofore been the home of the big rancher, and he has held intact immense tracts of land for ranching purposes, but the day is at hand when it is too valuable for him to hold longer as a grazing proposition, and the prices are too tempting for him to withhold, and so these great tracts of rich agricultural land are being sliced up and offered to the fellows who are rearing to break up and plant in cotton, corn and feed stuffs. As a result of this there are new houses dotting the whole country, and one can station themselves on some of the highest points and count possibly a hundred new homes being erected on the farms around him. Of course all of this settlement has not come within the past six months. Last year saw a good immigration to this country, and the farmers who came are mostly satisfied, or they are at least anxious to remain in this country, for you seldom ever hear of anyone moving away from this part of the state. The fact that there were a few people in this country last year is shown by the figures of the gins of this country when it is known that upwards of a hundred and fifty thousand bales of cotton were ginned on the South Plains last fall and was sold for more than twenty million dollars, including the seed. It is hard to estimate the cotton acreage in this section for the coming year, but many are putting it

at more than a million acres, and they claim that this is a very conservative estimate.

Mr. Bentley also took some notes on the financial side of the subject and compiled a few figures that read almost unreasonable to the average person, and in an average country, and under ordinary conditions. But this is not an ordinary country. It is an exceptionally rich country. It is very largely undeveloped, but it is developing mighty fast. The scribe puts this to his readers: "There is a bank at Muleshoe, Bailey county, capital \$25,000, deposits \$215,000, also one at O'Donnell, \$10,000 capital stock, and whose December 31 statement showed \$420,365 in deposits, \$335,963 cash on hand, \$40,743 cotton acceptances and only \$24,884 in loans. The September 14 statement showed \$70,000 deposits, \$26,000 in cash and \$51,000 in loans. Ninety per cent of the old mortgages in this community have been lifted in the past three months, and nobody is borrowing," said the cashier of this bank. Another bank at Wilson, population 200, had deposits of \$218,516, cash amounting to \$135,665, and only \$36,187 in loans. Still another bank at Idalou, population 400, had \$400,000 on deposit. For three years Terry county has increased by 100 per cent the amount of land put into cultivation, and 1924 will be the fourth year straight. Eighty per cent of Plains lumber yards are practically out of lumber. When the new town of Levelland, county seat of Hockley county, decided to build a brick schoolhouse to serve a district of 130,000 acres, there was not one dissenting vote. When 1923 opened the site of the town of Wofforth, Lubbock county, was merely a prairie. Now it has a gin, brick school house and 90 families living within or adjoining the townsite.

"On the first day of last August, there was not a stick to mark the site of Amhurst, Lamb county. Now it has 500 population and a \$60,000 brick hotel—and the Kansas City Night Hawks are going to play at the 'grand opening' this month.

Cotton was successfully raised in Bailey county last year and it is estimated that over ten thousand acres will be planted in cotton in that county this season.

"Every acre of tillable land of the Capitol Syndicate ranch, extending into five counties, is going on the market; 500,000 acres to be sold. The Chamber of Commerce at Hereford is spending \$5,000 this year in two farm publications and addressing its advertising messages to cotton farmers. In 1922 three bales of cotton were raised there; for 1924 more than 30,000 acres in cotton is already pledged. Amarillo has no gin, but 15,000 acres to cotton in 1924 has been pledged. One thousand farmers attended a recent cotton meeting at Texhoma, representing seven Texas and three Oklahoma counties; and pledges to plant 25,000 acres to cotton were given. Cotton culture has been heretofore unknown in that district. Five gins are to be built.

"Negotiations are in progress for cotton gins at Elkhart, Kansas, and Lamar, Colo. Elkhart is 70 miles to the north of Dalhart, and Lamar is 100 miles north of Elkhart. Randall county, without a gin, has already pledged 6,000 acres to cotton and expects 17,000 acres. Plainview has imported seven Japanese families to develop the truck industry on Hale Co. irrigated land, and has leased to them—not sold—48 acres for that purpose. Last year one American farmer at Plainview took \$7,000 from five acres of truck. The University of Texas has 311,000 acres of tillable land in Andrews, Dawson, Gaines and Martin counties, in the very path of immigration, which is now leasing for grazing at 16 1-2 cents per acre."

GIANT "PIPE ORGAN" IS MADE OF BARBED WIRE

A giant "pipe organ" with a strange medley of notes is formed by the long barbed wire fence that guards the 1000-foot bluff at the summit of Stone Mountain, near Atlanta, Georgia, says Popular Mechanics Magazine, which continues:

"The hollow iron posts supporting the wires of the fence have in them slits of about half an inch on the side facing the bluff. These form a series

of whistles when struck by the wind and as the slits are at varying heights and every shift of the wind includes a new group of posts, a wierd, ever-changing sound is produced.

"The fence was ordered built after several persons had fallen to the rocks nearly 1,000 feet below. On the side of the bluff Gutzon Borglum, the American sculptor, is now engaged in cutting a mammoth memorial to the Southern Confederacy."

DUN'S WEEKLY REVIEW.

For the Journal.

With conservatism still the predominant sentiment, a rapid growth of business is not to be expected. March opened with a number of favorable indications, but conditions remain uneven and there has been no change from the policy of buying only as the need arises. The disinclination to extend commitments very far into the future is general, yet progress this year, if irregular, has been on a solid basis. There is an absence of speculative operations even in lines where the largest gains are seen, as in the steel industry and the stability of most commodity prices is an encouraging phase. Easing in some manufactured goods has come because of a lagging demand, or because of declines in raw materials, but that there has been less than the usual price unsettlement is shown by the slight variations in Dun's Index Number. With a close balance between production and consumption, most markets are holding steady and buyers are not influenced now as they were at this time last year by fears of a shortage of supplies. That purchasing, though mainly in moderate sized lots and for early requirements, has been very large in the aggregate is evidenced by the record freight car loadings, while bank clearings also show that there is a big turnover of merchandise. Current business lacks the feverish activity that prevailed a year ago, but it also lacks the unwholesome tendencies that marked the earlier movement and which led to a setback in many quarters.

Mr. Bryan continues to resent the theory that man sprang from an ape, but we have seen many men who do not appear to have sprung far enough.—Boston Shoe and Leather Reporter.

New York hopes to be dry before the Democratic convention meets, but it expects to be by the time the convention adjourns.—San Diego Scripps-Pain's Service.

The Original Fall was occasioned by an apple. There was no oil at that time.—Associated Editors (Chicago).

Meeting Men's Needs

WE MAKE IT OUR BUSINESS. ANYTHING MAN OR BOY WANTS.

SEASONABLE CLOTHING AT REASONABLE PRICES

If It's a Suit of Clothes, Overcoat, Shirts, Gloves, Shoes, Sweaters, Hats, Neckties, Socks, Underwear or Caps that you want, they can be found in our complete stock of Men's and Boys' Wearing Apparel.

...In Our...

...Grocery Department...

We carry a full stock of everything the city dweller or the farmer will need. We carry the very best brands of goods that always give satisfaction—and they are priced right.

Our new Spring stock is arriving and we can show you many of the newest goods for Spring wear.

SEE US FOR EVERYTHING YOU NEED.

M. P. SMITH

YOUTH KISSES SLAIN GIRL

As a means of asserting his innocence in connection with the slaying of Nancy Boots, 19-year-old Reading, Pa., girl, Samuel Green, who is held for investigation, a few days ago walked to the girl's body as it lay in a morgue and kissed her lips.

The girl on her death bed had said she shot her self accidentally. Green was found in the mountains after her death. Conflicting circumstances led the authorities to hold Green, but his act in the morgue is a strong point in his defense.

CORRESPONDENTS WANTED.

The Muleshoe Journal wants correspondents from all neighborhoods of the county. To all regular correspondents the Journal, stamps and paper will be sent free. Let us hear from you for next week's paper.

If either political party wishes to plug the spout of the oil can there are plenty of small potatoes.—Detroit News.

A. R. MATTHEWS
Physician and Surgeon.
Muleshoe - Texas.

WHITE FRONT GARAGE
A. W. COKER, PROPRIETOR.
Ford Parts, Gas, Oil, Accessories and Service.
Best Tires and Tubes on the market.
Muleshoe, Texas.

C. D. Gupton & Son

—DEALERS IN—

A General Line of Staple and Fancy GROCERIES

HIGHEST MARKET PRICE PAID FOR PRODUCE AND HIDES.
Muleshoe, Texas.

We carry the very best Standard Lines that are dependable and give satisfaction.

Our prices are always right and we give prompt Service.

Trade In Muleshoe and Make Muleshoe Grow!

FOSTER'S WEATHER FORECAST

(For the Journal.)

WASHINGTON, March 15.—For 1924-25 crop weather and crops, North America cannot expect better than 10-year average. For the States cotton and corn are far in advance of every other, while Canada has but one choice and that is wheat. I must frankly say to the farmers in the States that your poorest prospects lie in wheat. Those who have sown winter wheat west of longitude 92 can not quit till they see what spring weather has in store for them. Cotton States should put all their eggs in one basket, stake everything on cotton and then adopt intensive farming; double their efforts at good cultivation. Scrape up every particle of good soil that is going to waste and put it on your cotton lands. Stop wear-out your land by taking everything off the soil and putting nothing on.

This is not the time for a tariff war between the Provinces and the States. The States would better abandon winter wheat for the next two years. As a general proposition winter grain in the States will not pay for 1924 and 1925. With those conditions before us a tax, by the States on Canadian grain, will be more of a tax on the people of the States than on the Canadian farmers. For 1924 and 1925 the States will not produce more than enough winter wheat to feed their own people. In very many things these States and their neighboring provinces are in the same boat, and we shall avoid selfishness toward our Canadian neighbors that has ruined all of Europe.

Storms of last half of March will develop near an average of force, probably a little greater and therefore a little more moisture may be expected than the general trend of the season indicates. That gives a

little better encouragement for growing crops last half of March. Watch the monthly chart. When temperatures on large parts of the continent appear to be running high it often indicates severe storms to follow, and we must get some severe storms in order to get moisture. The March chart indicates high temperatures on most of the continent 24 to 27, falling immediately after. That is encouraging to those who want rain.

First half of April appears very quiet. Not much rain is indicated. But last half of that month not only says very severe storms but during April 15 to 30 is the time for the breaking down of the drouth conditions that have prevailed for several months. Those fifteen days will most surely bring some very rough weather, particularly for that month which is usually inclined toward peace in weather matters. The most dangerous storms are expected near April 16, 19 and 25. April is not considered a tornado month nor a hurricane month, but you would better keep your weather eye on those dates.

No plant food of any kind can go through the roots of corn, wheat nor any kind of vegetation. All plant food must rise from the soil or come from the air and pass into the plant through the upper side of the leaf, and then the plant breathes out thru the under side of the leaf such matter as it can not turn into plant food. The kind of fertilizer Henry Ford wants to manufacture for the farmer is put into the soil, evaporates, rises enters the plant through the top sides of the leaves and is the very best. Acid and sand fertilizer is to soil just what bootleg whiskey is to man. I would advise the use of the Ford kind and dodge the other two.

When a man achieves greatness he tries to cover up his smallness.

Everyone has a reputation—but not all of them are worth keeping.

Once upon a time when a rainstorm came up just as you were starting home you found your umbrella at the office. Queer things will happen.

REFERENCES—Blackwater Valley State Bank, Muleshoe, Texas; Citizens Bank, Clovis, New Mexico.

Bailey County Elevator Company

RAY GRIFFITHS, MANAGER.

Dealers in Grain and Field Seeds

Muleshoe, Texas.

We have Blue Wagon Staple Cotton Seed at \$2.50 a bushel. It matures early and has long staple which brings a good price on the market.

Kafir, Milo Maize, Sudan, Red Top Cane and Other FIELD SEED.

NAME MULESHOE TICKLES HIM

Sport Writer of Fort Worth Record Mentions City Every Day.

Pop Boone, sport writer on the Fort Worth Lally Record, is so tickled over a town being named Muleshoe he just can't get over it and has something to say about this prosperous Plains city nearly every day. Here are some of his paragraphs:

"Speaking of Muleshoe, I received a letter yesterday from the little city up near the New Mexican line to the effect that should T. Goodbred get out of a baseball job this year he might get elected sheriff of Muleshoe sure-nough. According to this gent, who signed himself 'A Frienn,' Tiny has put Muleshoe on the map and the city appreciates it."

"Changin' th' subject, all the boys is complainin' about Peewee havin' his initials on the padlocks that fasten the locker doors in the clubhouse. I heard so much conversation about it that I looked at one of the locks and found the letters 'R. F. L.' on 'em. 'How come them's Peewee's initials?' I asked. And the sheriff of Muleshoe explained that Peewee claimed to live in Dayton, Ohio, but gets his mail at R. F. D. 31."

HOW TO MAKE CANDIDATE WHISKEY!

The following formula for the concoction of Candidate Whiskey has been received by The Journal, with a request that it be published prior to the primary for its stimulating effects:

"Chase a frog two miles and gather up his hops. Mix them with 5 gallons of liquid fire and strain it through the I. W. W. by-laws to give it the red color. Add two tablespoons full of Jamaica Ginger and 1 can of Red Devil Lye. Boil down to half. Push a live grasshopper into each bottle to give it the kick. If, after drinking, the candidate does not show symptoms of running well, there is no hope."

Fish flour manufactured in France is made from the non-edible fish that are found in the nets of trawlers. It is mixed with feed for poultry, rabbits, dogs, cattle, sheep and hogs.

The best cane suitable for making saxophone reeds is grown near Marseilles, France. The cane is bought by reed instrument makers and matured by them for about two years before using.

H. H. Hardin, Blacksmith
Ben Sudell, Welder

Muleshoe Blacksmith Shop and Welding Works

Acetylene Welding, General Blacksmithing, All Kinds of Cylinder Blocks Rebores, Batteries Repaired and built New, all Standard Parts. ALL WORK GUARANTEED.

FINE MANNERS; BAD HABITS

"HASN'T she charming manners?" One often hears that said of a woman whose gracious ways are a constant source of pleasure to others and who never enters a gathering that she does not leave behind her a trail of good feeling and good cheer.

What do charming manners amount to, anyway, if they do not become solidified into charming habits?

A manner may be assumed for one day. A habit is a way of daily life. It is quite possible to have good manners and bad habits, one way of living and appearing for the eyes of the public and a different way in the privacy of home.

A woman who has good manners and bad habits, wears her good clothes in public, and a slouchy garment and untidy head at home.

Quick to say to another woman, "How becoming your hat is!" or to a man acquaintance, "What a clever person you are!" she never thinks of paying anyone in her home a compliment.

Never does it occur to her that she might say a word of praise to her husband, who works like a slave to provide an attractive home for her, pretty clothes, much personal freedom and many pleasures. Her sense of appreciation is a surface manner she assumes only when she leaves her doorstep. Why waste praise on those in her own home?

Vivacious as she is whenever she goes out to a party where she becomes the center of attraction, she takes no trouble to exhibit a lively spirit to her husband and her children. Her eyes that laugh when she is chatting with others are dull enough in the presence of those who love her. The fetching little ways she has with other persons are saved for them—why waste her social ammunition on those whom she calls her own?

Do you not know that type of man who sweeps off his hat to every pretty woman of his acquaintance when he would not so much as touch the brim of it were he to encounter his wife.

On the tip of his tongue are a thousand compliments for other women, but never one for the one woman who would be made happy for a week if he were to give her a flattering word.

He will hang on the words of his feminine vis-a-vis at a dinner party, and when in his own dinner table, he will look fixedly at his plate or else yawn.

While all the women he meets socially are exclaiming: "Isn't he a delightful person—he has such charming manners," his wife, his mother and his sister know that he is a domestic bore.

He saves all his wit and lively conversation for places away from his own board and hearthstone. Why tell a humorous story to the members of his family—they would not appreciate it, anyway?

When he appears in society he is shaved and brushed and polished, and his clothes have just come from the tailor. It is worth while to take pains with your appearance, he believes, in order to win the favor of the gay old world.

But, walk in on him Sunday morning which he is dedicating to the family circle. He is slouching around in an old bathrobe. He has two days growth of beard on his face and for two cents worth of gas and one cent worth of soap, he could buy that bath, he would not think of dispensing with it if he were intending to spend that day otherwise than at home with his own womenfolk.

There is a certain risk in displaying manners that have nothing common with our habits.

If we do not watch ourselves, our habits will betray us, for they have become fixed in us and a part of our characters.

Good manners cannot be genuinely serviceable until they are merged into habits. Manners may be taken on and put off like a garment. Habits, on the contrary, are a way of life.

Attempting to cover up unpleasant habits with fine manners is a good deal like wearing a pair of gloves with holes in the fingers. So long as you keep your mind on the holes, you may conceal them. But forget yourself for a moment and make a gesture. Before you realize it you will have uncovered their unemended and unkempt state.—EDITH JOHNSON, in the Daily Oklahoman.

Mr. Fall saw no reason for incriminating himself when so many others appeared willing to attend to the matter.—Washington Star.



Belle of Wichita FLOUR

Made of Soft Wheat for all Kinds of Pastry.

RADIOGRAM—Extra High Patent Flour, made from Selected hard wheat.

BAKERS PRIDE—High Patent Flour Made from hard wheat from the great hard wheat belt of Kansas.

FOR SALE BY All Leading Grocers in MULESHOE AND HURLEY.

C. H. Long, Jobber



"GIT UP DAR, AN' DANCE!"

Don't you give ol' Trouble, Any time or chance; Joy picks de banjo— Git up dar an' dance!

Don't you stop to listen, Yo de howlin' of de Ha'nts; Joy picks de banjo— Git up dar an' dance!

—Atlanta Constitution.

WELCOME TO MULESHOE

GUPTON HOTEL On Main Street

HOT BISCUITS!

PLENTY EATS

AND

NICE ACCOMODATIONS TO SLEEP.

Another street improvement badly needed is the elimination of crooks on Easy Street.—El Paso Herald.

The golden rule always works, if given a fair chance.

W. G. Panter

Dealer In

Lands

MULESHOE, BAILEY COUNTY, TEXAS.

Shallow Water and Irrigated Lands in the famous

Blackwater Valley

We can sell you any size farm you want and one that will make you money.

I live 7 miles northeast of Muleshoe. Write me and I will send prompt answers.

R. B. CANFIELD.

Dealer In Lands.

—I can sell you a farm on ranch any size you want in the Famous Blackwater Valley where there is abundance of shallow water for irrigation. See me for lands that will make you money. Write, wire or come to my office and I will show you some BARGAINS!

Muleshoe, Texas.

Bailey, County.

R. L. BROWN

Real Estate and Farm Loans

Cotton Seed For Sale

...AT...
MULESHOE, TEXAS

—The Hub of all Cotton Production is around Muleshoe. Try our Blue Wagon and Mebane seed at \$2.50; and Mebane and Kasch gin-run, at \$1.50 per bushel, sacked. The best of each kind that can be bought.

