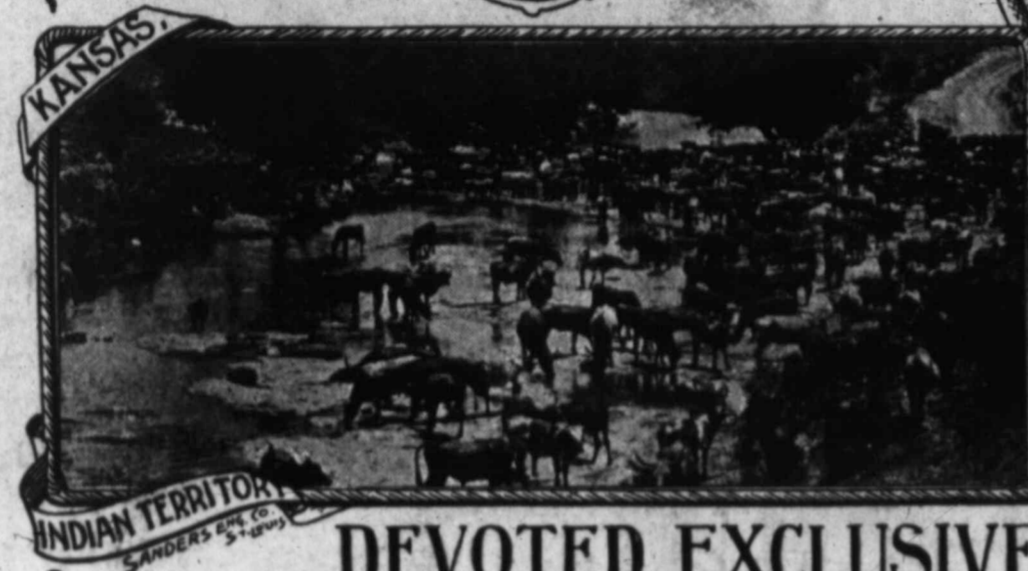


# The LIVESTOCK INSPECTOR

DEVOTED EXCLUSIVELY TO LIVE STOCK INTERESTS.



Seventh Year.  
Number 22

Woodward, Oklahoma and Kansas City, Missouri, February 15, 1902

Subscription } One Dollar per Year.  
Single Copy 5c.



STREET SCENE IN CHANDLER OKLA., DURING COTTON SEASON. (By Courtesy of the Chandler News.)

## SECRETARY'S REPORT.

Of the Eighth Annual Convention of the Oklahoma Live Stock Association at Wichita, Kan., February 11, 1902.

To the Officers and Members of the Association, GREETING:

Pursuant to the requirements of your organization I herewith submit for your consideration my Seventh An-

nual report of the records of your secretary during the year ending February 1st, 1902.

During the past year conditions have been far different from any heretofore encountered in the history of this organization. Owing to the growing scarcity of government lands, settlers from the east, not having the knowledge and experience gained by the residence in the west in a semi-arid district, have come upon and settled the government lands practically in-

cluding all the range counties in Oklahoma except Beaver county. Under these conditions it is little wonder that the Association has not made the growth commensurate with its benefits to the membership; yet notwithstanding, it has kept up its organization in a creditable manner and has even made some gains.

Another discouraging circumstance has been the severe drouth of the past season which made feed scarce and high priced, and cattle markets low in

proportion. With such narrow margin of profit it has been difficult to maintain the industry in the range counties as formerly.

In consequence of the settlement of the country many cancellations have been made necessary by the removal of cattlemen from our territory whose ranges were occupied by settlers. In lieu of these the Association has made gains in Beaver county, and south-

(Continued on page four.)

## South St. Joseph, Mo.

Receipts of cattle last week numbered 6,426, as compared with 6,889 for the previous week and 5,877 for the like week of a year ago. Choice, finished heaves were comparatively scarce while medium and partly-fatted steers were plentiful. Trading was uneven and the cold weather caused trains to arrive late, which made an unsatisfactory week's market for the selling interests. The very best class of cattle sold about 10c lower, and all other kinds 15 to 20c off. The good class of cows and heifers were in demand and prices advanced 25c, or at the high point of the season, and even the common and medium kinds sold freely at an advance of 10 to 15c, bulls sold 15 to 25c higher, and veals went at 25c better prices. The cold, stormy weather kept many prospective cattle buyers at home, and fair accumulations resulted from day to day. The good fleshy feeders held their own, as also did the choice yearlings, but all other kinds and calves were a drag on the market at 25c lower values.

Supplies of hogs reached a total of 50,310, as against 32,823 for the preceding week and 30,306 for the same week of a year ago. The marked increase in receipts of hogs was due greatly to the fact that prices hovered around and above the 600 mark, for which farmers are inclined to hold out for, but supplies will no doubt decrease when values reach a lower level. Packers continue to bear the market at every favorable opportunity. The quality of the hogs continues to run better and weights are on the increase. The week finished up about 5c lower.

Arrivals in the sheep department were 6,402, as lined up with 1,562 for the former week and 6,295 for the corresponding week of a year ago. The increase in supplies was due to a freer movement from Colorado, as the proportion of native offerings was quite small. The general quality of the western sheep and lambs was good to choice. Buyers had liberal orders on each day and wanted at the supplies at an advance of 15 to 25c, mostly 10 to 15c. The bulk of the lambs sold from \$6.00 to 6.15, with the best natives at 6.25. The few yearlings received brought 5.40, wethers went at 4.85 to 5.00 and ewes fetched 4.35 to 4.50.

FRIDLEY.

## Farm Telephones.

How to put them up—what they cost—why they save you money—all information free. Write for it to J. Andrae & Sons Co., 220 W. Water St. Milwaukee, Wis. t4



## The Best Saddle Wichita Union Stock Yards Co.,

WICHITA, KANSAS.

## THE MONEY.

... Prices right. ...

## R. T. PRAZIER'S FAMOUS PUEBLO SADDLES.

... Write for Catalogue. ...

R. T. FRAZIER,  
Pueblo, Colo., U. S. A.

## Paint Your Roofs WITH DONKEY PAINT

One Coat will last 5 Years

on metal, wood or felt. Rust proof and proof against moisture, acids, alkalis, ammonia, coal smoke, heat and cold. Good fire resistor, great preserver.

One gallon will cover 300 square feet of surface. Requires no thinning. Comes ready to apply. Write for our low cash prices and descriptive circular. THE KANSAS CITY ROOFING & CORRUGATING CO., 218-220 W. 3rd St., Kansas City, Mo.

When visiting Kansas City, stop at the BLOSSOM HOUSE, Opposite Union Depot.

Maj Girard sold a beef Tuesday that was fattened solely on Johnson grass roots, and if we have seen any fat beef lately this was one. Now it may be that short grass has been a blessing in disguise and that a new and valuable food for cattle has been discovered.—Abilene Reporter.

## St. Joseph Stock Yards Company,

ST. JOSEPH, MO.

We are in the Market Every Day for Cattle, Hogs and Sheep.

We are especially bidding for range cattle and sheep, both for slaughter and feeding. Located on fourteen railroads, and in the center of the best corn and live stock district of the United States, we are prepared to furnish a good market for all kinds of live stock. Our charges for yardage and feed are—

## YARDAGE:

Cattle, per head	25c	Horses, per head	20c
Hogs, per head	6c	Sheep, per head	5c

## FEED:

Corn, per bushel,	\$1	Hay, per hundred lbs	\$1.00
-------------------	-----	----------------------	--------

Our packers furnish a daily market for all kinds of cattle ranging from canners to export cattle. Look up your railroad connections, and you will find them in our favor.

G. F. SWIFT, President,

JNO. DONOVAN, Jr.,

Vice Pres. and Gen. Mgr.

M. B. IRWIN, Traffic Manager.

These are the days when special correspondents in Topeka and other Western towns sit in their offices by a red hot fire with a pipe of good tobacco and a jug full of imagination and send stories to the metropolitan press of the terrible loss of live stock on the range 200 miles away.—Ex.

## Robbins AND Alexander,

DEALERS IN

ALL KINDS OF CATTLE.

Special attention given to furnishing breeding bulls for ranchmen.  
UNION STOCK YARD WICHITA, KANSAS

Paugh & Co.,  
Live Stock

Commission Merchants.  
Union Stock Yards, Wichita, Kans.  
Correspondence solicited. Markets by Eagle and Drover's News sent free. Make your consignments to us. Special inducements to feeders.

E. J. HEALY & CO.,  
Live Stock Commission Merchants  
Union Stock Yards, Wichita, Kan.

Special inducement to feeders.  
Markets furnished on application  
Phone 305.

## The Best Saddle Wichita Union Stock Yards Co.,

WICHITA, KANSAS.

...Capacity 8,000 Cattle  
5,000 Hogs

Private Yards for Texans  
Perfect Sewerage and City Water  
All Pens Covered...

W. R. DULANEY,

Supt. of Stock Yards.

For Best Results Ship to

## ROGERS COMMISSION CO.,

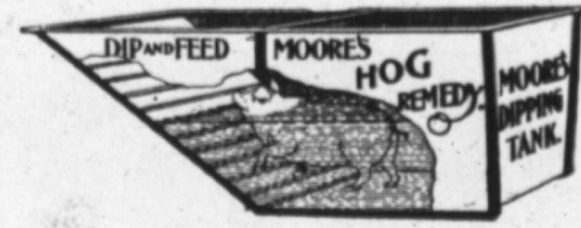
LIVE STOCK SALESMEN,

Stock Yards,

Kansas City.

MOORE'S  
HOG REMEDY

Used externally with dipping tank or sprinkler quickly cures MANGE and SCURVY and kills all FEVER GERMS, LICE and other vermin. Given internally in small doses weekly removes all



Worms, Cures Cough,  
Improves Appetite,  
Aids Digestion and  
Produces Flesh.

Every stockman knows when hogs are properly fed and kept free from lice, mange and worms, they grow and fatten, and bring a better price. Book on "Care of Hogs." Write for it today. Trial gallon Moore's Hog Remedy, at dealers or direct, prepaid on receipt of \$2.50. Call or address

Moore Chemical & Mfg. Co., 1501 Genessee Street,  
KANSAS CITY, MO.

## PECOS VALLEY LINES.

**For the Stockman:** The greatest stock raising country in the world. With a direct transportation route ABOVE THE SOUTHERN QUARANTINE line to and from all markets and the great pasture lands of the west and northwest.

**For the Homeseeker:** Cheap farming and grazing lands in the Pecos Valley of New Mexico. Lands under irrigation, producing the finest fruits, melons, alfalfa, celery, garden produce, etc. etc. Business opportunities of all kinds in a new and prosperous country.

**For the Health Seeker:** A climate already famous for its health promoting qualities. Altitude not too high, air pure and dry, temperature even with no extremes of heat or cold.

And the PLEASURE SEEKER will find something to see and something to do.

Southern Kansas Railway Company of Texas, Pecos and Northern Texas Railway Company, Pecos Valley and Northwestern Railway Company, Pecos River Railway Company,

Write for information.

Avery Turner,  
General Mn'gr,

Don A. Sweet  
Traffic Mn'gr.

AMARILLO, TEXAS.

# The Live Stock Inspector

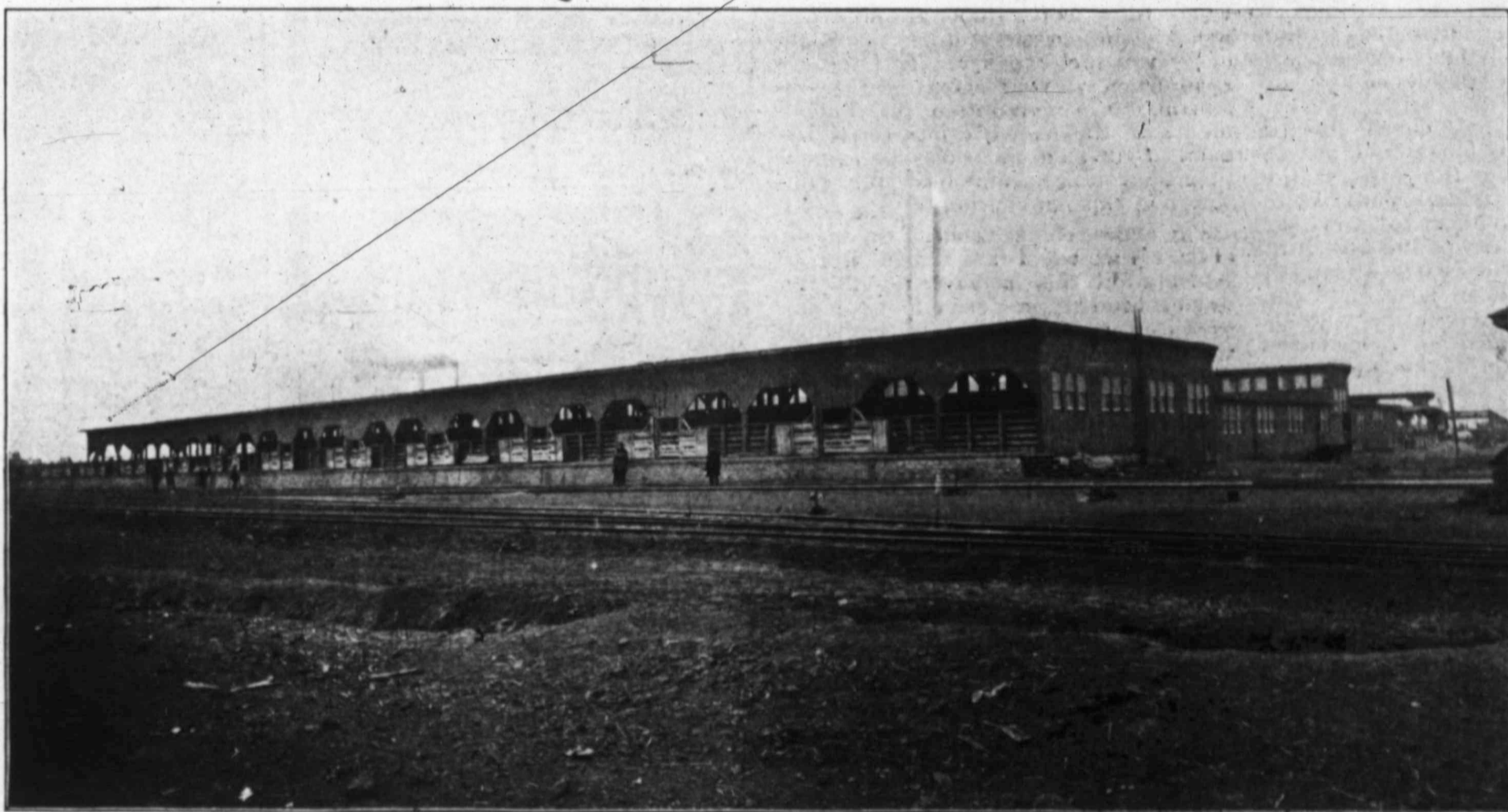
DEVOTED EXCLUSIVELY TO

## LIVE STOCK INTERESTS

Vol. 7, No. 22

WOODWARD, OKLA., FEBRUARY 15, 1902

Subscription, \$1.00



Unloading Docks for Sheep, St. Joseph Stock Yards.

When such representative Hereford breeders as Scott & March, C. A. Ward, Walter B. Waddle, Frank Rockefeller, Gudgell & Simpson, O. S. Steward & Hutcheon and Mrs. Cross announce that on February 6 and 27 they will sell at Kansas the best 200 head of Hereford to be sold during the year everywhere familiar with Hereford events will acknowledge their ability to deliver goods. From their herds which together jointly over 2500 head of registered cattle have come more prize winners, more foundation stock for coted breeding herds and more to head pure bred herds than any other equal number of herds in the state to-day. They are now offering 200 head that will meet any of the three requirements. All of these contributors with the exception of Mrs. and Mr. Rockefeller has participated in numerous sales during the season, but their consignments to sale have not suffered on this account. Since the 28th of last February they have been planning for this and many of the plums of their were reserved long ago for this event. Each contributor has but statement to make concerning offering and that is: "It is the best lot of cattle I have ever sold before the public with the best of

their breeding, and in one particular this sale differs somewhat from others of this season's combination sales and that is in the fact that with but a very few exceptions the entire lot of 200 head were bred by the consignors. Each participant who had out a show herd last fall has some of them listed for this sale. This is the yearly event upon which each contributor is staking his reputation as a breeder and anyone who knows any of these parties knows that they will eclipse their past achievements.

Gudgell & Simpson are selling 30 heifers and 10 bulls, all of their own breeding. The heifers are principally the get of Lamplighter and Beau Brunnel and in calf to Hartinet, Militant and Dandy Rex. The bulls will do good service in anybody's herd and it seems needless to add that the Anxiety 4th blood and type prevail. The Sunny Slope Farm's offering is in the main the get of Wild Tom, Keep On and Java, probably the greatest trio of bulls in service in one herd in the country. Ten of the heifers are by Java, the sire of the \$3150 Dolly 5th and many other females of the most desirable quality. Frank Rockefeller makes his first public offering in this sale. He has been a heavy purchaser at past sales and some indication of their kind may be gained from the statement that he paid an average

price of almost \$550 for them. It is quality of this kind that he will sell the 25th, 26th and 27th. Mrs. C. S. Cross is offering but three head but there is no discounting their quality. One is a yearling bull by Java which Mr. Stannard says is without doubt that great sire's best son. Steward and Hutcheon's consignment is all cattle bred by themselves. Their successful show herd of the past seasons has been drawn upon, and their offering may be counted upon to maintain the high average of excellence this great sale demands of its contributors. Mr. O. Harris is another who will part with some of his show stuff on this occasion. Ten head of his offering are heifers by Benjamin Wilton, whose get have probably won a larger amount of prize money the past two years than the get of any other Hereford bull. Mr. Harris' offering will be the largest and best ever sent out from this great breeding and show herd. Walter B. Waddell's offering is almost entirely of females, and a grand lot of females they will be, too. But few breeders can show as uniform and as generally desirable a lot of cattle as Mr. Waddell's present consignment. He bought the right kind of females and the right kind of bulls and he now offers the public the right kind of material with which to go and do likewise. Whenever you hear Scott &

March's names mentioned it is usually qualified with the remark that they have "mighty good cattle." Bulls and females from this herd will be found in almost all of the leading Hereford breeding establishments, and in this sale they are selling what they claim to be a better and more uniform lot than they were ever able to offer before.

Remember this is to be a sale of the best 200 Herefords to be sold this year and write Gudgell & Simpson, Independence, Mo., for a catalogue.

### The 8th Annual.

The Secretary's report was the only part of the program of the 8th Annual Convention we were able to secure in time for this issue of the LIVE STOCK INSPECTOR. Our next issue will contain a synopsis of what was done at the meeting and each issue thereafter will contain one or more of the papers read before the convention, thereby enabling all readers to save them in good manner for future reference. If you wish the complete report, subscribe now for this paper and you will get the entire proceedings including notes of the convention just held at Wichita, Kansas.

Give a hog good warm bedding and shelter and see if you don't get a good return for your trouble.

(Continued from first page.)

western Kansas about sufficient to offset the losses.

That the Oklahoma Live Stock Association is held in increasing estimation is evident from the manner in which its members have signified their staying qualities through the adverse circumstances surrounding them during the past year. A large proportion of the membership is shown slightly behind in their payments on the report of the Executive Committee yet an examination of the records will show that in a great majority of these cases there is only one payment due, or just enough to make it necessary to include them in the "Delinquent" list.

During the past year your Executive Committee has been vigilant and faithful and made a vigorous effort to serve the Association to the best of their ability. Coming as this does voluntarily from these officers who receive no compensation for their service, your organization is indebted to them for their disinterested and energetic service which should be properly recognized by you. Your president has been alert and ready at all times to perform the service entrusted to him as the chief of your organization, and richly merits your confidence and approbation.

Your Treasurer has cared for the funds placed in his hands and has cooperated in making the organization successful at all times. Your secretary has spared no effort to serve you and perform his duty to the best of his ability. During the past year an effort has been made to secure a consolidation on equitable terms with the Panhandle Stockmen's Association. A meeting was held of the two executive committees at Canadian and the matter carefully gone over in detail. While admitting the advisability and the advantage of a consolidation, our neighbors claim precedence in name, which, owing to the necessity of maintaining same in the Territory of Oklahoma on account of legislative influence and enactments could not be granted by your representatives. Therefore, the efforts have been fruitless up to this time. An invitation has been extended to our Panhandle friends to be present at this meeting and confer with you in regard to this matter, and it is to be hoped that some action will be taken, either direct or by authority vested in a proper committee especially delegated to bring about a consolidation of the two organizations, which will result in mutual benefit.

Owing to the need of a wider field in order to secure the enrollment of sufficient membership to maintain competent inspection without an increase of dues to memberships, your Executive Committee has proposed a change in the name of the organization to that of the Southwestern Cattlemen's Association. This action is taken in order to more thoroughly identify the range interests of western Kansas and western Texas and western Oklahoma whose plans and objects are similar and whose interests are all in accord by reason of being north of the great National Quarantine line. No argument is needed to show that in this suggestion of a change in name no particle of feeling or state pride will interfere with the success of the organization and it is already a well known fact which has been demonstrated by experience, that in order to maintain a successful organization of this character, more cattle is necessary than are found upon the ranges of Oklahoma alone or of south-western Kansas only, or of the Panhandle of Texas alone, but that with a consolidation of these interests an association may be maintained which will be in the highest degree beneficial to the owners of branded cattle north of the Federal quarantine line in the states and territory above named. This subject will come before you for consideration and should receive your careful attention before taking action upon same.

For some years past this organization has been a member of the National Live Stock Association and during

the past year has maintained its membership in same. At the recent annual convention of the National Association you were represented at Chicago by Messrs. J. R. Stinson, F. C. Burtis and your Secretary. In the discussion of measures beneficial to the live stock interests your influence was a factor and your organization assisted in doing its share towards securing such national legislation as the defeat of the Oleomargarine bill, the presentation of the lease law and other matters of general interest and importance.

Until this date no material changes have been found necessary in the operation of the constitution of your organization but it now would seem advisable on account of the advisability of making extended growth from those sections of the country devoted to raising domestic cattle, to incorporate a provision whereby the owners of unbranded cattle may become members without the payment of inspection fees and dues, thereby contributing to the strength of the organization in the maintenance of quarantine regulations while the members who desire inspection might have same through the usual channels heretofore provided, at no greater expense. This matter should receive your attention by referring to a committee on amendments to the constitution to report back to you such measures as in their judgment may seem best for your action at this convention.

The arrangement secured by cooperation with the Texas Cattle Raisers Association has remained effective during the shipping season of the past year and has been mutually beneficial to both organizations. Your inspector Mr. J. C. Whitehead, was on duty at Kansas City during this time and performed satisfactory service. For report of results on his work I respectfully refer you to the report of the Executive Committee heretofore submitted. As a fair estimate of the year's work, the value to the Association has been at the rates shown, \$974.85, to say nothing of the value not estimated of thefts not committed.

Regarding Quarantine: During the past year the action taken by your committee in urging better inspection along the line had its effect upon the Live Stock Sanitary Board of the Territory, and greater care has been exercised to the extent that not a case of Texas fever has been developed during the past summer north of the quarantine line. In the county of Greer only, a temporary quarantine has been instituted by the government on the report of inspectors showing existent *Boophilus Annulatus*. This quarantine will be maintained during the year but cattle may be moved from the county subject to Federal inspection at any time. It is largely due to the efforts of this organization and the influence it has brought into operation, that the Federal Quarantine line intersects Oklahoma, and it is due to this organization to say that the resultant benefits to the counties in Oklahoma and Kansas situate above the Federal Quarantine line, results in an annual saving to the owners of cattle in these counties in excess of one million, one hundred and fifty thousand dollars. This is a splendid showing and one which can scarcely be duplicated by any other organization of this kind in the country. That its value has been many times demonstrated in this proposition alone is too apparent to be for a moment contradicted. It, therefore, devolves upon those who receive the benefits to maintain the organization and every member has a right to be proud of the fact that he is not dodging the responsibility and expense incident to the maintenance of favorable conditions for profit in your business. This fact should constitute a membership in this organization a badge of honor which may be proudly worn.

The expenses of the Association have been kept at a minimum, as shown by the report of the Executive Committee. Nothing which could be accomplished has been left undone, and every effort has been put forth to increase the benefits to the members of

the Association. Frequent and hearty expressions of good will and substantial encouragement have been received and the outlook for the future is promising in the face of most adverse conditions. The financial statement of business done during the past year other than herein given is furnished in the report of the Execu-

tive Committee.

Your Secretary desires in this connection to extend thanks to each of you for co-operation and assistance in his duties, to which he has given his faithful attention during the past year.

Respectfully Yours,

W. E. BOLTON  
Secretary

Subscribe for the LIVE STOCK INSPECTOR, One dollar a year.

EVERGREENS  
Hardy sorts, Nursery grown, for wind-breaks, ornament and hedges. Priced \$1 to \$10 per 100-50 Great Bargains to select from. Write at once for free Catalogue and Bargain Sheet. Local Agents wanted.  
D. Hill, Specialist, Dundee, Ill.

FENCE! STRONGEST MADE.  
Built strong. Chicken-tight. Sold to the Farmer at Wholesale Prices. Fully Warranted. Catalog Free. COILED SPRING FENCE CO., Winchester, Indiana, U. S. A.

A FENCE MACHINE  
That combines Simplicity, Durability, Rapidity and Economy. The DUPLEX. It makes over 100 Styles, 50 to 70 rods a day, of Horse-high, Bull-strong, Pig and Chicken-tight Fence that combines Strength, Uniformity, Permanency, Reliability and Efficiency AT COST OF WIRE. Machine on Trial. Full information free. Wire of every description at Wholesale Prices. Write today. KITSELMAN BROTHERS, 1117 75th Street, Ind.

American Field and Hog Fence  
The best product of American skill in woven steel wire fence making. In rolls, ready to stretch and staple. The Fence of Economy. If your dealer hasn't it, write to American Steel & Wire Co., Chicago, New York, San Francisco, Denver.

THE KEITH HOUSE FURNISHINGS CATALOGUES

A Quarter Century Success THE NAME Robert Keith is a warrant of value.

will be mailed on REQUEST to buyers of reliable FURNITURE for all requirements CARPETS, ORIENTAL AND DOMESTIC RUGS, MATTINGS, LINOLEUMS, DRAPERIES, LACE CURTAINS, WINDOW SHADES AND OFFICE DESKS. Largest and most carefully selected stock in the U. S. We prepay the freight or fully equalize.

Cash Values not to be obtained elsewhere. Dept. B. Kansas City, Mo. Wholesale. Retail.

RUMELY  
Rear Gear to the Fore.  
This Traction Engine should receive the attention of all tractors. Investigate it. Modern in every part. Has all latest devices and appliances. Perfect in traction, unsurpassed in generating and supplying power. A full line of general and special purpose engines. Separators should interest you. The New Rumely is what you want. It threshes it all, cleans it all, saves it all. Catalog sent free. M. RUMELY CO., La Porte, Ind.

If You Love ROSES  
Write Today for our Catalogue. We Grow Flowers for SOUTHERN PLANTERS Haskell Ave. Floral Co. Dallas Tex.

SALZER'S New 20th Century OATS  
TEST YIELD 300 BUS. PER ACRE  
CLEAR THE TRACK!  
Here is the monarch—nothing like it on earth. Salzer's New 20th Century Oat takes the cake carries first prizes as the biggest yielder everywhere. The fact is, Salzer's oats are bred to produce. The U. S. Department of Agriculture claims that out of over 400 samples and kinds tested, Salzer's were the best. How do you like that? Mr. Farmer? Our new 20th Century Oat is bound to completely revolutionize oat growing and we expect dozens of farmers to report yield in 1902 running from 200 to 300 bushels per acre. Prior is dirt cheap. Be in the swim and buy this variety this spring to sell to your neighbors the coming fall for seed. It will surely pay you.  
Salzer's Marvel Wheat—42 bus. per Acre  
The only spring wheat on earth that will yield a paying crop north east south and west and in every state in the Union. We also have the celebrated Maccaroni wheat, yielding on our farms, 63 bushels per acre.  
SPELTZ  
The most marvelous cereal and hay food on earth, producing from 60 to 80 bushels of grain and 4 tons of rich hay per acre.  
VEGETABLE SEEDS  
We are the largest growers and our stock of earliest Peas, Beans, Sweet corn and all money making vegetables is enormous. Prices are very low. Onion seed 60 cents and up a pound. Catalogue tells.  
For 10c—Worth \$10  
Our great catalogue contains full description of our Beardless Barley, yielding 100 bushels, our Triple Income Corn, giving 400 bushels, our potatoes, yielding 60 bushels per acre, our grass and clover mixtures, producing 6 tons of magnificent hay, our Pea Oat, with its 8 tons of hay and Tonsite with 80 tons of green fodder per acre. Salzer's great catalogue, worth \$100 to any wide awake gardener or farmer with 10 farm seed samples—worth \$10 to get a start—is mailed you on receipt of 10c. postage.  
JOHN A. SALZER SEED CO., LA CROSSE, WISC.

**WANT COLUMN.**  
TWO CENTS A WORD.

"For Sale," "Wanted," "For Exchange," and small advertisements for short time, will be charged two cents a word for each insertion. Cash must accompany order.

**WANTED:** All readers to know that the use of this column only costs two cents per word. Send in your small ads.

**FOR SALE:** One vaccinating outfit complete, and 100 doses of vaccine virus, will sell all for only \$10.00 if taken at once. Address LIVE STOCK INSPECTOR, Woodward, Okla.

**FOR SALE CHEAP:**—25 acres of feed. Can winter about 350 or 400 head of steers, plenty of corn fodder and grass eight miles south of Higgins. Good running spring water. Will handle steers for \$3.00 per head. Address G. H. Griffin, Higgins, Tex.

**WANTED** to know the address of George Steere, formerly of Batavia, Ill. Importer to him. Address David B. Martin, Batavia, Illinois.

**C. P. SHIPLEY'S**

**BOOTS**

--and--

**SADDLES**

Are Winners.

Order Catalogues and Measure Black Today. Prices Right

OPPOSITE STOCK YARDS.

Kansas City, Mo.

**Sale Dates.**

Advertising for the following sale dates will appear in the LIVE STOCK INSPECTOR:

Colin Cameron—Herefords—Kansas City, May 7th and 8th, 1902.

National Hereford Exchange, T. F. B. Sotham:

Chicago, March 25—27, 1902;

Kansas City, April 22—24, 1902;

Omaha, May 27—29, 1902.

Chicago, June 24—26, 1902.

Criterion Sale, T. F. B. Sotham, Kansas City, Mo., Jan. 28—31, 1902.

A postal card, addressed to the Secretary of the Oklahoma Live Stock Association, Woodward, Okla., will bring by return mail a full set of blanks necessary for becoming a member of the Association, also full information pertaining to the same.

**J. W. Springer Speaks Out.**

Denver, Jan. 31.—John W. Springer, president of the National Live Stock Association, in an interview said:

"My attention has been called to the speech of Congressman Sibley of Pennsylvania, delivered in the House of Representatives at Washington, opposing all plans for irrigation in the western country and alleging as a reason that this aid to the western farmers in storing waters and reclaiming arid lands would ruin the eastern farmer and lower the value of farm lands throughout the East.

"The stock interests of the western country and the cotton-seed interests of the southern country were also appraised of the fact that on the same date the committee on Agriculture of the House of Representatives had heard the final plea of the dairy trust of the United States in efforts to close all the oleomargarine factories of high-priced butter, and it was asserted that this committee would recommend to the House of Representatives the passage of this rank piece of special legislation.

"The Associated Press also advised us that the sheep men of the western country were being denounced by all the protected manufacturers of the East for introducing what is known as the pure fiber bill, which is championed by the National Live Stock Association. The protected manufacturers of the East are all clamoring for free wool and shoe manufacturers of the East are clamoring for free hides.

**FREE HIDES AND WOOL OPPOSED.**

"Against all these powerful interests the National Live Stock Association is making the chief fight in behalf of all of the great western interests. We are opposing free wool. We are in favor of compelling the woolen manufacturers to label their goods for just the proportions of wool, cotton, shoddy, etc. they contain, in order that the purchaser of a suit of clothes may know just what he is buying.

"We also favor the Wadsworth bill, which compels every oleomargarine manufacturer to sell oleomargarine in one and two-pound packages, stamped inside and out with the word "oleo" in order that no one may be deceived as to the character of the goods he is buying.

"Our course is entirely consistent, and we propose to keep up the fight along these lines to the bitter end, thoroughly believing that ultimately all of the western interests must unite for their own protection, just as the East is to-day united and is largely against the West and its interests.

**FOR GOVERNMENT RESERVOIRS.**

"We are also in favor of the government building great storage reservoirs for the purpose of utilizing the great floods of water which annually go to waste and which cause such destruction of life and property in the lower states, believing that if we can reclaim 75,000,000 acres of the public domain we have added a wonderful heritage to the people yet to come in this magnificent country of ours.

"The National Live Stock Association stands for progress, and it also proposes to support both men and measures that we believe represent the greatest good to the greatest number, and we desire now to serve notice upon these mistaken eastern congressmen that we will not tolerate such narrow views as those expressed by this Pennsylvania congressman. We recommend to the people of this country that they support only men of broad-gauge policy, and men who are not afraid to stand up and represent all the states of this Union, and not be so narrow as to stand for the interests of the few as against the many."

**The Prime Steer.**

The work of making the prime steer begins with the selection of the animal to be fed. The most successful producers of beef are more discriminating in the selection of their feeders than ever before. Uniformity of condition, size, type and quality is especially de-

sired both by the producer and the packer. Prof. Herbert W. Mumford, chief of the department of animal husbandry at the Illinois College of Agriculture, in a recent lecture on characteristics of the prime steer gave a very lucid description of the type of animal most desired by the up to date dealers.

Prof. Mumford declares that the butcher does not demand the blocky parallelogram form so much as he does a highly developed loin, crops, back, thighs, twist and rump. These sections produce the high-priced cuts; the animal should also show good depth and breadth, furnishing a large surface for flesh without that tendency to be paunchy, which would be objectionable to the butcher. There should be a smoothness and roundness to the general outline and an absence of coarseness in the skin. The flesh should be thick and even throughout on the cheaper as well as the more valuable parts of the carcass.

Too much care can not be exercised in selecting the feeding steer. The quality of beef when the animal is finished depends largely upon the condition and quality of the animal when he is turned into the feed lot. The two principal advantages in fattening a steer are, first, to fill the animal inside and out with fat, that when dressed there will not be a high percentage of offal or waste, and, second, that the lean meat shall be rendered more tender, juicy and of better flavor by the distribution of fat throughout its substance.

"Desirable quality in flesh," said Prof. Mumford, "is indicated by a firm yet mellow and springy consistency of the flesh at the crops, along the back, at the loins and even on the sides, beneath the pressure of the outstretched hand. Good quality of flesh is indicated in the fat steers by the absence of ties and rolls, or patches of gaudy, flabby fat.

"A tendency to lay on fat in bunches and to roll at the loin indicates that during the fattening process the fat has been deposited in large masses and has not been distributed evenly throughout the animal, giving to the flesh that marbled character so necessary to the highest quality in beef.

"Undoubtedly, outstanding coarseness and lack of general quality in the live animal are inseparably linked with undesirable texture in the beef cut from such a beast. When the ends of the fingers are gently pressed in the flesh on the side of the beast in an effort to find the ribs there should be a firmness of flesh that does not admit of freely and easily forcing the fingers to the ribs and between them. A proper degree of firmness shows the presence of plenty of lean meat."

A steer such as Prof. Mumford pictures is sure to bring the top prices. In producing such an animal the first important work is in the selection. It would be well for breeders to keep a record of each bunch of steers finished to verify their judgment in selecting the animal to be finished.—Chicago Drivers Journal.

**Chief of Live Stock Has Not Been Selected.**

St. Louis, Mo., Feb. 5.—Paul Brown, chairman of the world's fair committee on agriculture, states that the announcement that John W. Springer, of Denver, Col., "had been induced to accept the position of Chief of the Live Stock Exhibit of the World's fair with the understanding that he would not be required to live in St. Louis" is a little premature.

"Mr. Springer's name has never been presented to the committee," said Mr. Brown. "For appointment, and the only way I can account for the publication in a dispatch to the papers from Denver, is the fact that W. B. Stickney of East St. Louis, I understand, is anxious for his appointment. However, Mr. Springer's name has never been mentioned in our committee."

Mr. Brown said that the name of General Manager Skinner of the Chicago Stock Yards, had been presented to the committee for the position in question, indorsed by the United States Live Stock Association.

**WE WANT MEN TO LEARN BARBER TRADE.**

We have facilities that save years of apprenticeship. If you want a comfortable business without capital, or steady employment at good salary, learn this trade; quickly and scientifically. Comparatively no expense. Anyone can learn.

Classes for Ladies in Hairdressing, Manicuring, Facial Massage and Chiropody.

For free catalogue and full particulars address nearest college.

**Agents Wanted.**

Representatives wanted to sell membership for a mercantile agency. Mention this paper. The Retail Credit & Collection Association, Boulder, Colorado.

**ALFALFA SEED**

From Locality where Grown in Greatest Abundance. Alfalfa, the king of drouth resisting forage plants. Pure and fresh 1901 seed, plump and vigorous, in car or bushel lots. Also all other field seeds. Write us for prices. McBETH & KINNISON, Garden City, Kansas.

**York-Kev Mercantile Co.**

Stores at Woodward, O. T., Klowa and Dodge City, Kas.

Dealers in all kinds of RANCHMEN'S GOODS.

**J. G. Peppard**

MILLET CANE SEEDS.  
CLOVERS TIMOTHY GRASS SEEDS

**SEEDS.**

Eight near Santa Fe Street, KANSASCITY, MO.

**Wichita Commercial College.**  
THIRD FLOOR SHEETS BLDG. E.H. ROBINS - Pres.

**SCOUR CURE**

(Dr. A. S. Alexander's Formula)

Used and recommended by Iowa Agricultural Station; "Uncle John" Lewis, Shadeland, Ind.; Thos. Clark, Beecher, Ind.; Riverside Hereford Cattle Ranch, Ashland, Nebr.; Andrew Thom, Bunker Hill, Ind.; Giltner Bros., Eminence, Ky.; B. C. Rhome, Rhome, Tex.; The Egger Hereford Cattle Co., Appleton City, Mo.; T. J. Wornall & Son, Liberty, Mo., etc., etc.

Price: \$1.00 per bottle, sufficient for 3 or 4 cases.

**"BLACKLEGINE"**

Pasteur Blackleg Vaccine, ready for use.

**Pasteur Vaccine Co.,**

Chicago - New York City - Omaha - Kansas City, Denver - Fort Worth - San Francisco.

Report of Deputy Live Stock Inspectors of Oklahoma, for Two Weeks Ending Jan 1, 1902.

Sec. 16, Chap. 31, Session Laws 1897, Statutes of Oklahoma: It shall be the duty of the inspectors provided for by this act to provide themselves with record books in which they shall record age, brand and color of all cattle slaughtered within their respective districts for the purpose of sale to the public, either wholesale or retail; \* \* \* any person offering the meat of cattle for sale without having them inspected as aforesaid, shall be deemed guilty of a misdemeanor, and upon conviction thereof be fined ten dollars for every animal so unlawfully slaughtered.

Order of Live Stock Sanitary Board April 5th, 1900: It is hereby made the duty of all deputy live stock inspectors in Oklahoma at the end of each week to transmit to the secretary of the Live Stock Sanitary Commission for file and to the Live Stock Inspector at Woodward, Oklahoma, for publication duplicate report showing in detail the number of animals inspected by him during the week recommended as fit for slaughter, with a complete description of the marks and brands on each animal so inspected, giving location of same

J. E. Chessher, Noble County. Red stag age 4 yr brand O r jaw Black and white cow age 8 yr brand J l h

Chas. E. Quinlin, Comanche Co. Red and white cow age 5 yr brand anchor l s Brown cow age 6 yr same brand Red heifer age 2 yr same brand Red steer age 3 yr same brand Red spot steer age 2 yr same brand 3 white face heifers age 2 yr same brand 2 red white face heifers age 2 yr same brand Red cow age 5 yr same brand Red white face cow age 5 yr same brand Red spotted cow age 6 yr same brand Light red heifer age 2 yr brand Y r s Red heifer age 2 yr brand X over Y r s Brown cow age 5 yr brand X over anchor l s Red heifer age 2 yr brand anchor l s Red and white steer age 2 yr same brand Black cow age 5 yr same brand Red cow age 6 yr same brand Brindle cow age 5 yr same brand Red cow age 6 yr Red cow age 5 yr Red and white steer age 2 yr same brand Brown cow age 7 yr brand J T l s Red and white steer age 2 yr brand anchor l s Red heifer age 2 yr brand same 2 red heifers age 2 yr same brand Red steer age 1 yr brand two half circles connected by bar l s Black cow age 6 yr brand R l s 8 sh Brindle cow age 5 yr same brand Red steer age 3 yr brand bar over A l s Red steer age 6 yr same brand

H. R. Roberson, Pawnee Co. Yellow cow age 10 yr brand two half circles l s White cow age 9 yr same brand Pale red cow age 10 yr same brand 2 red cows age 10 yr same brand 2 red steers age 2-3 yr brand E l h Pale red cow age 10 yr brand two half circles l s Brindle cow age 11 yr same brand, U l loin Roan heifer age 2 yr brand E l h Red steer age 2 yr same brand Red whiteface male age 4 yr brand O r h Red cow age 8 yr brand C r h Black heifer age 4 yr brand S r h White cow age 7 yr brand M over l s Roan cow age 6 yr same brand Red cow age 7 yr same brand

J. E. Chessher, Noble county. Brindle cow age 7 yr brand 10 l s Red and white steer age 2 yr brand P r j

W. L. Davis, Woods Co. Red heifer age 3 yr brand W over r s 3 red heifers age 2 yr brand H over r s Dun cow age 3 yr same brand Red and white cow age 3 yr same brand Brindle cow age 3 yr same brand

W. H. Hand, Canadian Co. Red cow age 2 yr brand N Black cow age 5 yr brand O H L Black cow age 4 yr brand L O ) ( Red cow age 6 yr brand O H Red cow age 4 yr brand L X Red cow age 4 yr brand L X Black cow age 5 yr brand half circle over in V Red cow age 6 yr same brand Roan cow age 7 yr same brand Roan cow age 4 yr same brand

Red cow age 5 yr same brand 2 red cows age 6 yr same brand Red steer age 3 yr " " Roan cow age 6 yr " " Black cow age 5 yr " " Black steer age 3 yr same brand Red steer age 3 yr same brand Red cow age 5 yr same brand Red cow age 7 yr same brand Red steer age 3 yr same brand Red steer age 3 yr same brand Red cow age 5 yr same brand Red cow age 4 yr brand J N Red cow age 5 yr brand N L Red cow age 6 yr brand O L N Red cow age 5 yr brand X O Black cow age 4 yr brand M J. E. Chessher, Noble County. Red cow age 5 yr brand B l h Red roan cow age 6 yr brand J l s Black steer age 3 yr brand half moon l s Black and white steer age 3 yr brand same 2 red steers age 3 yr same brand Spotted steer age 3 yr same brand Brindle steer age 3 yr same brand Roan steer age 3 yr same brand 5 red steers age 3 yr same brand Red and white steer age 3 yr same brand White steer age 3 yr same brand Red steer age 3 yr brand X in square l s 2 red steers age 3 yr same brand Roan cow age 4 yr brand bar through Spotted steer age 3 yr brand H l s Blue cow age 3 yr same brand Spotted heifer age 3 yr same brand Red cow age 4 yr L E F r s White steer age 3 yr brand H l s Roan steer age 6 yr same brand Red cow age 6 yr brand C C Y Red steer age 3 yr brand C C Y Red steer age 3 yr brand through V

2 red line-back steers age 3 & 4 brand half circle over 8 Red heifer age 1 yr brand 7 l White steer age 3 yr brand through top of A, diamond, through top of A Red white face steer age 3 yr brand P J connected l s Brown cow age 4 yr same brand Brindle cow age 4 yr brand half-circle over T Red heifer age 2 yr same brand Red heifer age 1 yr same brand White cow age 8 yr brand half-circle over B l s Spotted heifer age 2 yr same brand Spotted steer age 2 yr same brand Red cow age 8 yr brand K O l s Red heifer age 2 yr brand connected under Y Red steer age 1 yr same brand Red cow age 9 yr brand H l s Red steer age 3 yr same brand Red and white steer age 3 yr brand XXX Red steer age 3 yr brand ) ( l h XXX l h Light red cow age 6 yr brand T-H l s two parallel bars r s Red spotted cow age 6 yr brand L T r s 4 red steers age 3 yr brand 79 l h Red cow age 5 yr brand 79 l h Red spotted cow age 5 yr brand 79 l h Red steer age 3 yr brand dumb bell l h Spotted cow age 6 yr brand X l h Red cow age 6 yr brand over l l s White spotted cow age 5 yr same brand 2 white cows age 6 yr same brand Black cow age 6 yr same brand Brindle cow age 6 yr same brand Dun steer age 3 yr brand half circle in V r s

Light red cow age 5 yr same brand Brown cow age 5 yr brand frying pan r s & h Brown heifer age 1 yr same brand Red cow age 6 yr brand Y r thigh Red heifer age 1 yr brand X Y r th Roan heifer age 1 yr brand X T L l s E hip Red heifer age 1 yr brand T L l s E hip

D. E. Dyke, Greer County. Red steer age 3 yr brand slanted bars r s Red cow age 5 yr brand 1010 over r s Red steer age 2 yr brand slanted bars neck Red yearling same brand Black cow age 3 yr brand over J r s

Brown cow age 8 yr same brand Black cow age 3 yr brand T sh cross Black cow brand anchor l h Red steer age 3 yr brand UB l s Red steer age 3 yr brand slanted neck R l sh 2 red steers age 3 yr same brand Red steer age 3 yr brand bar through half circle Red cow age 7 yr brand R I C H l shoulder Red cow age 7 yr brand J T S l s Brindle cow age 6 yr brand over 5 l hip 2 red cows age 6 yr same brand Brindle cow age 6 yr brand 102 l sh & side White cow age 6 yr brand through H l l sh and s l Red cow age 3 yr brand 102 l sh & s l Red cow age 4 yr brand O l h 2 red steers age 3 yr brand J B r s Red cow age 6 yr brand C B r s White cow age 6 yr same brand Red steer age 2 yr brand H r h Red steer age 2 yr brand H l h 2 red cows age 7 8 brand l h Red steer age 3 yr brand F R A L l s Brown steer age 2 yr brand S S S l s Brown steer age 2 yr brand M A T l s

Brown cow age 3 yr brand il over l s Spotted cow age 9 yr brand LOX over Red cow age 9 yr same brand Red rter age 2 yr brand QH con h Red cow age 2 yr same brand Red cow age 4 yr brand LA over h Roan cow age 5 yr brand JH con hip Red cow age 9 yr brand P I C 2 Spotted cows age 2 yr brand 4X h Red cow age 2 yr brand ZX l thigh Black cow age 4 yr brand ZP l th Red cow age 2 yr brand over AM r s Red cow age 2 yr brand over O Z Red cow age 2 yr brand XAX over r s

Spotted cow age 7 yr brand T L r s White cow age 6 yr brand 6UP Brindle cow age 8 yr 5P Yellow cow age 8 yr brand S M Red steer brand A Red steer age 2 yr brand r h Red cow age 2 yr brand TOF r s Red steer age 4 yr brand R J con Red cow age 7 yr same brand Red cow age 3 yr same brand Red cow age 4 yr brand X l th Red cow age 2 yr brand X l th Spotted cow age 8 yr brand T l th Red cow age 6 yr brand X in square l s White steer age 2 yr brand N R l s Red steer age 2 yr brand S S S l s Black cow age 8 yr brand W over W l s Red cow age 6 yr brand A in bottom of square r s Spotted steer age 2 yr brand r s Red steer age 4 yr brand V crossed by X r s Black steer age 4 yr same brand Spotted cow age 8 yr same brand Black cow age 2 yr brand 23 r s Yellow cow age 5 yr brand E-E con r s Red steer age 2 yr brand X r s Red cow age 6 yr brand X-X r s Red cow age 6 yr brand P P Spotted cow age 2 yr brand diamond between two bars r s Red steer age 2 yr brand over N ET Red cow age 2 yr brand R U X l s Black steer age 2 yr brand X S l s Roan cow age 7 yr brand X S l s Brown cow age 5 yr brand J J l s

Red cow age 5 yr same brand Red cow age 4 yr brand J O 2 Red cows age 2 yr brand BB l s Red cow age 12 yr brand X A over l s Red cow age 5 yr brand R S E l s White cow age 8 yr brand IV l s Red cow age 7 yr same brand Red cow age 11 yr brand 7J Red cow age 9 yr brand Q T con Black cow age 2 yr same brand Red cow age 6 yr brand K K K l s Black cow age 6 yr brand 4T in circle l s Red cow age 4 yr same brand Red cow age 7 yr brand L 77 l s Brindle cow age 6 yr brand through C Red cow age 5 yr brand FM Red cow age 5 yr brand M

Australian Bacon for England.

As a result of inquiries made by the Victorian Minister of Agriculture of the Colonist, who was on a visit to England, the following reply has been published: "I advise that a small bonus be paid to farmers for a year or two, to encourage production. The demand here is for two classes of pigs only—first, those suitable for bacon, weighing 140 to 170 lbs, not fat. A long, lean side is necessary, which should net an average of 50 lbs. to 56 lbs, dressed. This sort are now arriving from New Zealand in the freezing chamber singed, not scalded, and are cured on this side. There is also a good demand for porkers weighing from 50 lb. to 70 lb. These are sold by the pork butchers, and should be scalded and not singed. There is a demand for this from September to March, but for bacon hogs all the year round." Why a bonus should be necessary to encourage dairy farmers who have every facility for pig fattening, to produce the animals for export is not clear.—Live Stock Journal

C. D. BUTLER,

Taxidermist and..... :.....Horn Novelty Worker.



All kinds of bird and animal mounting done All kinds of horn furniture such as hat racks foot stools, etc. Unfinished long horns purchased at highest market rates.

Address C. D. BUTLER, Horn Novelty Worker, 1048 Union Ave K. C. Mo.

Trade At Fulton's—It Pays.

FULTON

Sells the best High Grade Dependable

Clothing

for the least money possible and largest and most complete stock of

JOHN B. STETSON, KNOX, SAYLER, HAWIS

Hats in the West. "Small profits on a large scale" makes it to your financial interest to trade here. Mail orders receive prompt attention.

C. R. FULTON Wichita's Greatest Clothing Store

Poultry Department

While the poultry writers are discussing the incubator moisture problem the old hen is getting ready to hatch out her brood in the spring, and, unlike the aforesaid writers, is not losing a moment's sleep over this much talked of question.

Don't give your hens ice water these cold days. It is best to take the chill off of it.

Poultry does not feel cold so keenly as do human beings. The blood of poultry is five degrees warmer than that of an ordinary man. This is the reason why birds of all kinds consume more feed, according to weight, than do people or the brute creation. They need more fuel to keep up the heat. When allowed to sleep out of doors the call for fuel is still greater, so comfortable housing is good economy.—The Denver Field and Farm.

ANOTHER FAKE.

A fellow who calls himself a "chicken crank," from New Jersey, is very ingeniously trying to work papers for a lot of free advertising of a "recently discovered natural product," or words to that effect, that makes hens lay a fabulous number of eggs in a given time. It is an alleged albumen that is "mined" in South America, or some other far-off land. And as eggs are largely albumen, and as this natural product is albumen, if it is fed to the hen the only way she can get rid of it is to make it into eggs, and probably if she don't get rid of it she will die; but she prefers to lay eggs, and there you are. The scheme is an enticing one; a sort of perpetual motion applied to egg production! Of course, this is not all said in the chicken crank's ingenious advertisement, except between the lines.—Farm, Stock and Home.

[We heard of another crank who says that his father fed albumen to 100 hens and averaged 7 dozen eggs per day all winter, and another party averaged 200 eggs per day from 250 hens. This may be true, but we are a little doubtful and will have to be shown.]

The hen is sometimes hard to understand. I have a pen of them that are getting every care a hen could get, such as cut grease bone, vegetables and wheat, with a warm mash every morning, and they are not laying an egg. A neighbor has 15 hens which have to rustle their own feed and roost in an old dug-out that is leaky, filthy and everything that it should not be. She is getting five or six eggs per day. This is sometimes discouraging, but it is always the case at some time or other, with every bunch of fowls, and it is hard to say what caused it.

The February "American Boy."

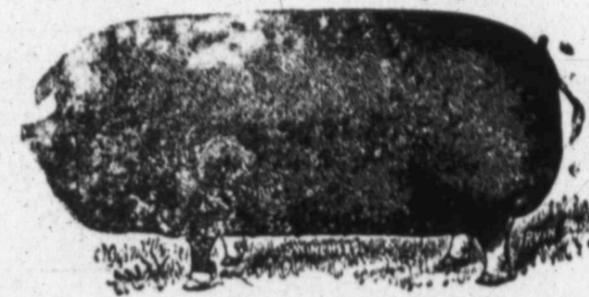
The February AMERICAN BOY (Sprague Publishing Co., Detroit, Mich.), comes to us suggestive of winter in its front cover illustration of Boys coasting. The stories in this number will prove highly interesting to a live boy, and will not prove uninteresting to grown up folks. They are: "The Great Kennebec Hill Race," "The Thrall Boys' Legacy," "Toby: A Story for Little Boys," "Fun and Profit in Trapping," "A Case of Mistaken Identity," "Trooper Stork," and "Working My Way Around the World."

Among the articles helpful to boys are: "Boys get Strong," "Some Boys I Have Seen," "Familiar talks with Boys," "For Boys to Think About," and "George Washington the Boy."

The well known special departments of this publication are as usual filled with well selected items of interest to boys, and all fully illustrated. The following titles merely suggest the varied contents of these departments: "A Talk With Buffalo Bill," "The Accord Wigwag Society," "An Ingenious Sale Wagon," "Home-made Moving Pictures," "A Model Office Boy," "A Boy Congress," "American Boy 'Shut Ins,'" "A Little Machinist," "Boys Doings," "The Bulldog and a Pig," "Tea or Papers?" "The Boy Photographer," "The Boy Candy Maker," "How to Start a Small Paper," "The Agassiz Association," "The Boy's Garden," and a whole page of delightful puzzles. Sixty-eight illustrations. \$1.00 per year. The SPRAGUE PUBLISHING Co., Detroit Mich.

BREEDER'S DIRECTORY

BRIGHTSIDE POLAND CHINA SWINE.



Are the best. Orders for young of either sex filled, and Pedigree furnished. All letters answered promptly. Pigs by express to all parts of Kansas and Oklahoma. Write immediately to U. H. SHULL, Manager, BRIGHTSIDE STOCK FARM, MULVANE, KANS.

Shorthorn Bulls



We breed Short-Horn Bulls from deepest strains of Bates cattle, using sires from such famous old and tried families as Wild Eyes, Kirk-Levington, Barrington, Rose of Sharon, Hilpa, Liverpools and Craggs.

No bulls on earth have greater power of transmitting the qualities that have made the Short Horn the leading beef breed of cattle. Our bulls are bred on Buffalo grass, and are not weakened for range purposes by being pampered.

Our ranch is on the Staked Plains, seventeen miles from Panhandle, Tex. Come and see us. H. T. GROOM Manager, Panhandle, Texas.

(Please mention this paper.)

Percheron Horses

YOUNG STALLIONS AND MARES FOR SALE REASONABLE. J. W. and J. C. ROBISON, Towanda, Kansas. IMPORTERS AND BREEDERS. Largest pure bred herd in the state.

Tell your friends the great value of the LIVE STOCK INSPECTOR. ONLY \$1

WM. POWELL,

Breeder of Registered Hereford Cattle.

The Home of the Hereford. Established 1868. Channing, Hartley Co., Texas.

My herd consists of 400 head of all the well known families of the breed. I have for sale at all times both Bulls and Heifers. Either singly or in car load lots. Correspondence solicited. 8-1

Prevent Blackleg

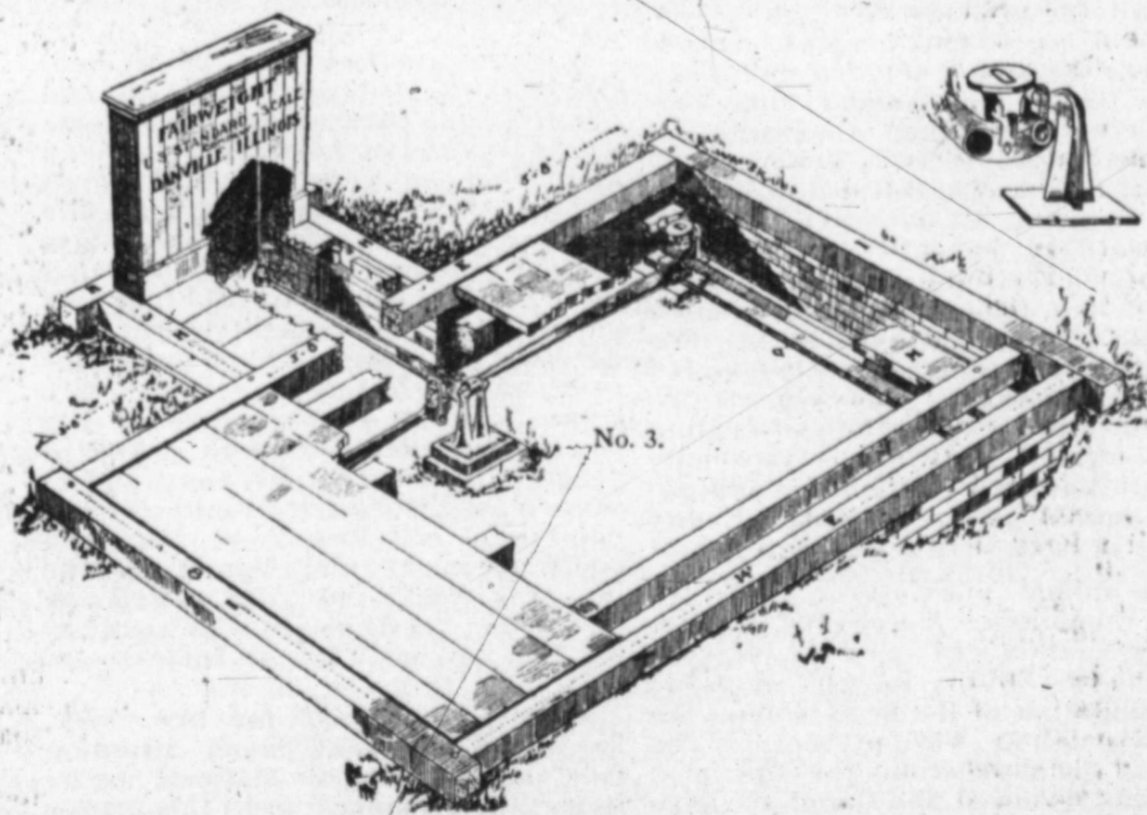
In Cattle by using Collier Williams Mixture. Easily applied and a sure preventive of Blackleg in cattle. For full information, price, etc., call on or address

COLLIER WILLIAMS, Woodward, Okla.

DILLARD SANITARIUM, GUTHRIE, OKLA.

Whiskey, Opium, Morphine, and Cigarette Habits Treated. (When writing mention this paper.)

Individual effort collectively exerted cannot fail to produce results. The Oklahoma Live Stock Association is best described by the above statement of facts. You should share its benefits.



The Fairweight Scale.

Every breeder and dealer in live stock as well as the growers and dealers in other farm products is interested in the above picture of the works of the Fairweight Standard Scales. The manufacturers have for their motto, "Not the cheapest but the best." They claim their scale is high grade in every sense. In construction it is supported on five piers in the bottom of the scale pit, thus relieving the outside frame of all strain, being entirely independent of it. The knife-edge bearings do away with all pencil points, used in some other scales which wear dull and break slowly. Accuracy is thus secured. The castings are all of the best material affording safety and strength. Compound beams and all other modern appliances made of the best material are included. The weigh beam is farther from the platform than in other scales thus doing away with the expense of extension levers. The platform may be constructed far enough from the office to weigh hay without load hanging on beam box. It will be noticed too, that these scales weigh entirely on the beam, the lower weights at the points being used only to balance the scale. Beam graduated on both sides, in nickel or brass, furnished when desired. The manufacturers also furnish building plans for foundation, framing, etc. Wagon scales are furnished from four tons capacity up. Our readers would do well to correspond with the manufacturers, the Fairweight Standard Scale Co., Danville, Ill.

ASK FOR ATLAS OATS WRITE US FOR SOUVENIR CATALOGUE OF PREMIUMS FOR ATLAS OATS COUPONS Our elegant assortment of Rogers Bros. A. 1 Silverware, Gold Rings, Silver Aluminum Novelties—Beautiful Works of Art—and Large List of Popular Books. All these premiums are of the highest standard and can not be compared with the common grade of premiums usually offered. KANSAS CITY OATMEAL and CEREAL CO. Kansas City, U. S. A

THE FLATO COMMISSION COMPANY. St. Joseph Stock Yards, Mo. CAPITAL - \$100,000. Cattle Salesman, W. S. WOOD. Hog and Sheep Salesman, J. P. CLAREY. H. L. FLATO, Manager. Consignments of all kinds Live Stock Solicited. Reference any bank in St. Joseph.

Subscribe for the Live Stock Inspector.

ow age 5 yr same brand  
ow age 4 yr brand J O  
cows age 2 yr brand BB 1 s  
ow age 12 yr brand XA ove

ow age 5 yr brand R S E 1 s  
cow age 8 yr brand IV 1 s  
ow age 7 yr same brand  
ow age 11 yr brand 7J  
ow age 9 yr brand 3T con  
cow age 2 yr same brand  
ow age 6 yr brand KKK 1 s  
cow age 6 yr brand 4T in cin

ow age 4 yr same brand  
ow age 7 yr brand L 77 1 s  
e cow age 6 yr brand  
h C  
ow age 5 yr brand FM  
ow age 5 yr brand M

ra lan Bacon for England.

result of inquiries made by the a Minister of Agriculture of who was on a visit to Eng following raly has been d: "I advise at a small boaid to farmers or a year or encourage p duction. The here is for two classes of pigs st, those suitable for bacon, 140 to 170 lbs, not fat. A n side is necessary, which et an average of 50 lbs. to 56 sed. This sort are now aron New Zealand in the freez- ber singed, not scalded, and l on this side. There is also emand for porkers weighing b. to 70 lb. These are sold ork butchers, and should be nd not singed. There is a or this from September to ut for bacon hogs all the year. Why a bonus should be y to encourage dairy farmers- e every facility for pig fat. o produce the animals for ex, t clear.—Live Stock Journal-

C. D. BUTLER,

rmist and::::  
::::Horn Novelty Worker.



f bird and animal mounting done of horn furniture such as hat racks, etc. Unfinished long horns purghest market rates.

C. D. BUTLER, Horn Novel- er, 1048 Union Ave K. C. Mo.

e At Fulton's—It Pays.

FULTON

he best High Grade De- le

othing

least money possible and and most complete stock of

. STETSON, KNOX, SAY- ER, HAWIS

the West. "Small profits rge scale" makes it to your al interest to trade here. ders receive prompt atten-

R. FULTON

's Greatest Clothing Store

THE LIVESTOCK INSPECTOR

PUBLISHED SEMI-MONTHLY BY W. E. BOLTON.

WOODWARD, OKLAHOMA. KANSAS CITY, MISSOURI.

Represented in Kansas City by Mrs. J. E. Reed and E. F. Halstead.

Represented in New Mexico by Geo. H. Hutchins, Carlsbad.

New York Office: 928 American Tract Society Building, W. B. Leffingwell, Manager.

Chicago Office: 35-37 Randolph Street, W. B. Leffingwell, Manager.

Mr. Leffingwell is authorized to accept advertisements for The LIVE STOCK INSPECTOR at our contract rates. Orders filed with him will receive our prompt and careful attention.

The only journal published in Oklahoma and the Indian Territory, devoted exclusively to live stock interests and stock farming.

Entered at the post-office at Woodward, Oklahoma, as second-class mail matter.

FEBRUARY 15 1902.

NOTICE TO SUBSCRIBERS.

REMITTANCES. In sending money to the LIVE STOCK INSPECTOR please observe that the Clearing House will not accept private checks at par. Remit by postal or express orders, eastern bank exchange, registered letter or if by private check add twenty-five cents for collection. Amounts of less than \$1 can be paid in postage stamps.

DISCONTINUANCES. Subscribers wishing the LIVE STOCK INSPECTOR stopped at the expiration of their subscription must notify us in writing to that effect otherwise we shall consider it is their wish to have it continued and we will make collection for the same.

CHANGES OF ADDRESS. When a change of address is ordered, both the new and old address must be given and notice sent two weeks before the change is desired. We require this on account of our heavy mailing list.

Official Organ of the Oklahoma Live Stock Association.

At News Depots, and On Trains.

Calendar for 1902 showing months from January to June with days of the week and dates.

WICHITA—By C. A. Tanner & Co., 122 North Main St. DENVER—By Hamilton & Kenarick News Co., 17th and Champa. ENID, OKLA.—Parker's Book Store. AMARILLO TEX.—Morgan Bros. News Co. For sale on all western Santa Fe trains, by Newsboys. For sale on U. P., Denver & Gulf trains, by Denver Ry. News Co.'s agents. Sold on K. C. F. S. & M., Mo. Pacific and St. L. & S. F. trains by the agents of the Van Nov News Co. OFFICERS OKLA. LIVE STOCK ASSOCIATION. Pres. Abner T. Wilson 1st Vice-Geo. Crowell 2nd Geo. W. Boyd Sec. W. E. Bolton Treas. John Gerlach EXECUTIVE COM. A. H. TANDY, J. R. STINSON, GEO. CARR, IRA EDDLEMAN, G. C. BROWN, ED T. DAVIS, TONK SMITH. Pres. and Sec'y ex-officio LIVE STOCK SANITARY COMMISSION OF OKLAHOMA. MEMBERS BOARD. W. E. Bolton, Pres. Woodward, Guthrie, Thos. Morris, Secretary, O. C. French, Guthrie, T. B. Ferguson, Ex-officio. The office of the Board is in Guthrie.

OKLAHOMA POULTRY ASSOCIATION, J. J. WALLACK, Pres., Oklahoma City. L. F. LAVERTY, Sec'y, Guthrie. ROBT. MORRIS, Vice-Pres., Guthrie. OKLAHOMA SWINE BREEDERS ASSOCIATION A. J. HENTHORN, Pres., Oklahoma City. C. S. WILLIAMS, Sec'y, North Enid. OKLAHOMA AGRICULTURAL, HORTICULTURAL AND IRRIGATION SOCIETY E. E. BOGUE, Pres., Stillwater. C. A. McNABB, Sec'y., Oklahoma City

THE LIVE STOCK INSPECTOR exercises great care in admitting advertisements to its columns. If any of our readers wish information regarding any advertisement or advertiser we would be glad to give same. If you wish to buy anything that is not advertised in our columns, write us and we will refer you to the best place to buy.

The general average at the Kriterion sales was \$341.60, in a total of \$62 855. Southam is an advertiser.

The cattle market in Chicago during January was the best of any first of the year month in the history of that market.

Of 3,890 convicts in the Texas penitentiary there is not a newspaper man or a printer, while there are lawyers, music teachers, ministers, doctors, bankers, cooks, photographers, barbers, barkeepers, and members of other professions and callings.—Ex.

Ten yearling steers of Hereford and Shorthorn blood, fattened, as an experiment in feeding at the University of Illinois, were recently slaughtered by a local butcher. The average live weight of these animals was 1,500 lbs., and the dressed weight 62.2 per cent of the original.

The Amarillo extension of the Choctaw road is completed to Texoma, on the line between Oklahoma and Texas, and it is announced that the road will reach Amarillo by April 1st. Some Greer county stockmen who want to ship cattle to New Mexico on account of better range, are waiting for this line to be completed.—Mangum Sun.

Pennsylvania is growing in importance as a beef-producing state. Many farmers in the central part of the state are abandoning dairying and are devoting their time to fattening young calves. The calves are bought late in the fall, housed and fed during the winter. In the spring they are turned out to pasture and sold at a good profit.

"Do you know," says the wise old merchant of long years experience in business, "I never would consent to have my name on a fence for advertising purposes." "Why?" Because three fourths of the names you see painted on fences and barns are of firms that have gone out of business. It's a fact. The next time you drive into the country just take notice and see if it is not so."

The management of the Santa Fe railway has decided to establish at Albuquerque the largest archeological and ethnological museum in the United States. The purpose of the venture is to provide a novel attraction at that place. The museum will contain a collection valued at between \$100,000 and \$150,000. The collections will be largely from the ruins of New Mexico and Arizona, but will include exhibits from almost every country of the globe.—Exchange.

An humble boy with shining pail went gaily singing down the dale, to wh re the cow with brindle tail, on clover her palate did regale. A bumble bee did gaily sail far over the soft and shadowy vale, to where the boy with shining pail was milking the cow with the brindle tail. The bee lit down on the cow's left ear, her heels flew up through the atmosphere and through the leaves of the chestnut tree the boy soared into eternity.—Ex.

An Ogden man, says the Denver Record Stockman, has brought a penitentiary suit against the Union Pacific. He seeks to recover damages to the amount of \$3,400 for a carload of horses, which he claims to have shipped from Ogden to Clarion, Iowa, but which he alleges never reached the destination. It is said that not a single trace of the stock can be found anywhere, and the carload has disappeared as completely as though the earth had opened and swallowed it.

Recently five or six 4 year-old steers out of the bunch being fed by Pyle & Edwards near Lelia, have died rather mysteriously. Yesterday Capt. A. J. Barnett told our reporter he believed he had discovered the cause of their death. In examining the meal cake being fed to the steers he found numerous bits and strips of steel in various shapes and sizes. The cake seems to be full of these particles, and Capt. Barnett took a handful from only a small quantity of the cake. How the metal bits came to be in the cake can only be surmised.—Clarendon Stockman.

A great work is being undertaken by the American Federation of Labor—one in which every person is directly interested, whether or not a member of the organization. All people who favor good government should read the plan proposed in American Federationist, published as an extra number by Geo. H. Shibley, Washington, Dec. Send ten cent for this copy to the above address; read it carefully when you get it, and if you are not satisfied come to the office of the WOODLAND NEWS and the publisher will hand you another dime. Stamps may be sent for the Federationist. Read it and you will not regret it.

J. A. Stinson, of the firm of Stinson & Herring, was in our village Wednesday attending to some business in connection with their cattle range. Mr. Stinson says they have one car of wind mills and pipe at Lamar that they will put in on their school land in the southern part of Baca county. They recently leased all school land that was not taken in the south half of that county and will secure water in a section where heretofore there has been none, except surface water for a few days at a time. Their stock will feed on territory where the grass is fine because it has been grazed lightly. They have already gone to a great expense buying and leasing land, and will now put down numerous wells, all of which will add value to Baca county.—Cimaron News.

When raising live stock with a desire for profit, scrubs should not be taken into the calculation, for there is no profit in that sort of goods. Cattle and hogs are the kind most commonly kept, and they have been so far improved as machines for converting low priced farm produce in high priced marketable products, and the business has reached such a point in the adaptation of supply and demand, that profits accrue only when the improved sorts are used. Scrubs cannot compete with improved breeds in production of pork, beef, milk and butter, because they cannot make near so much from the same amount of feed. A good hog, for instance, will attain a weight of 250 to 300 pounds at nine months old, while a scrub must be fed a year and a half or two years to do the same. So it is with beef-making and dairying. This fact is especially well felt now that feed is twice as high, and animal products little, if any higher in price than a year ago.

The annual meeting of the Live Stock Commission Merchants' Protective association was held at Kansas City the first of this month. A large representation of the firms composing the association was present. The work of the association for the past year was reviewed and found to have been very satisfactory, and a spirit of unanimity pervaded the meeting that promised well for the future. The expense of the association was very small, considering the work accomplished. During the year one person was convicted and sent to the penitentiary and two others, arrested and indicted, are now awaiting trial. The association is in possession of a large amount of information, accessible to its members. It is the purpose of the association to pursue, with the utmost vigor, the object for which it was organized, the protection of its members from all forms of fraud and double-dealing in their business. The officers elected for the ensuing year were: M. P. Buel, president; J. N. Simpson, vice president; J. H. Waite, secretary and treasurer.

Publisher's Notes.

The 1902 Catalogue of the Robt. Keith Carpet & Furniture Co., of Kansas City, Mo., is a revelation in values to buyers of reliable furniture for all requirements. This concern has been eminently successful for the past twenty-five years and established a reputation as a recognized leader in its lines, excelled by no other similar business in the United States. Their Catalogue, picturing and pricing their extensive stock of Furniture, Carpets, Oriental and Domestic Rugs, Mattings, Linoleums, Draperies, Lace Curtains, Window Shades and Office Desks and furnishings will be sent upon request to any reader of this publication. Address Robert Keith Carpet & Furniture Co., Department B., Kansas City, Mo.

Scours is a troublesome disease among young cattle, and particularly among calves. Alexander's Scour Cure has been very successfully used during the last three years, and is strongly recommended by a number of well known stock raisers. Our old friends, the Pasteur Vaccine Company, are selling agents for Alexander's Scour Cure, and their advertisement will be found in another column. The remedy is cheap, and every stock raiser should buy a bottle, or see that his dealer has some in stock ready for immediate use when required. The Pasteur Vaccine Company will, upon request, send interesting literature with a long list of valuable endorsements. The Pasteur Vaccine Company also furnishes "Blacklegine" both for single and double treatment, "Blacklegine" being Pasteur Blackleg Vaccine ready for use as sold.

The Union Beef company of New York, which has been in business only two weeks, and started with 11 shops, has had such remarkable success that already three other shops have been acquired, bringing the total to date to 14. We understand that it is the intention of the company to rapidly add to the number of its shops until it has a chain of at least 50 and perhaps the enlargement will be continued until the company occupies the same position in this country that the Eastman's company fills in Great Britain.—Butchers' Advocate.

A girl, worshiped by a man, died. His love was stronger than death, and the girl came back to him in moments of ecstasy, and he held her pale hand and kissed her wan face, and loved her more than ever he loved her while she was upon this earth. In those days he led a careless life, knowing that there was no bonds to hold him to a narrow path. But when the girl was dead she never came to him unless his heart was pure and his hands were clean, and then the blessing of her coming covered him with a veil of peace. He chastened his heart and in those moments the girl would lay her hand in his and kiss him. Men who could not understand thought that the man was weak, but the man knew that it was the dead girl who was making him strong.—Chicago Inter Ocean.

Molasses, as a food for live stock, has not received as much attention from our experiment stations as its importance demands. In this matter France is in advance of us a little. In that country molasses has been successfully used, not only for its nutritive properties, but as a relish to cause stock to eat food otherwise distasteful, or so lacking in relish that animals will not eat enough of it. French feeders have found that ordinary food mixed with molasses quickly increases the weight of pigs, sheep and cows, and that cows thus fed give more milk than when no molasses is used. It is an excellent food for horses, and they soon acquire a great fondness for it and it seems to agree with them perfectly. Coarsest hay which will hardly be eaten at all without some sort of preparation, is made palatable by the addition of a little molasses, and horses will eat large quantities of it.—Farm and Ranch.



## The Exodus Northward.

While it is not exactly new, yet the recent heavy movement of cattle northward, combined with the outlook for those to follow on rise of grass in the spring, calls attention to the fact that land is becoming valuable, and the person who expects to remain in the cattle business must either own his pastures or be prepared to meet higher charges.

A correspondent of the Chicago Live Stock World has this to say concerning the movement of cattle northward:

"With the rise of grass an immense number of cattle will move northward from Texas, the territories and western Kansas to Montana and the Dakotas. George Addison, of Eureka, who is well posted on the situation, estimates the number at double that of last year. Not only are the cattle going north, but many southwestern ranchmen contemplate jaunts into the Northwest with the object of locating ranches up there. Some will leave Texas altogether, while others will buy cattle in Texas and send to Montana instead of to the territories. There are several reasons for this, one being the excellent condition of the range in Montana and another the increase of rents in the territory. This means that the region tributary to the Chicago market is being filled up with cattle from the Southwest and that for several years to come, at least, the supply will be abundant.

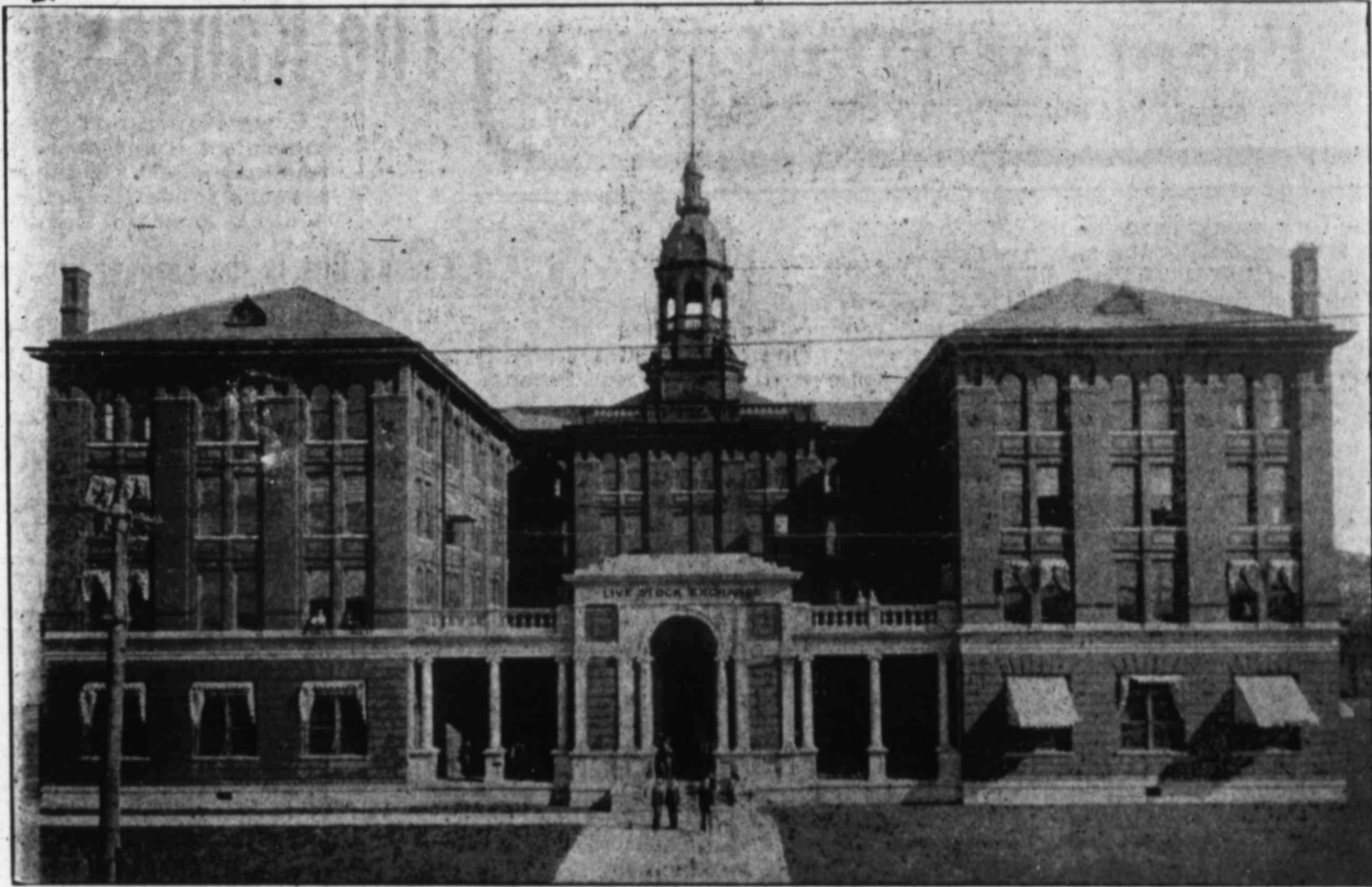
"The indications are that double the number of cattle sent from this region last year will move in that direction with the rise of grass this spring," said Mr. Addison. "Increased rents and drought in the territory is the cause. The cost of grassing Texas cattle in the territory now is about \$2 per head. Before rents went up no measuring was done, now every acre is charged for. Up in Montana and the Dakotas free range is available and the grass is abundant. It costs about \$90 a car to move the cattle, but as they go into Chicago after two years' grazing in the Northwest weighing 300 pounds more than if they were kept in the Southwest, cattlemen are not slow to realize the advantages of the change of location.

"Last year the cattle sent from Texas to western Kansas was forwarded to Montana because of the short crop here, and for several years to come the movement of young cattle over the same route is certain. One Texas company has been moving from ten to twelve thousand a year to Montana for three years past, and only a few days ago another company was formed with the same object. Russell Bros., of Menardville, Tex., leave on the 15th inst. for Montana to inspect the range there and secure a location.

The steady increase of bovine travel from the Southwest to Middle and Northwest during the past few years has been phenomenal. In 1900 42,334 cattle went direct from the Texas range to Montana, 25,000 to North Dakota and 35,446 to South Dakota, while in 1901 99,408 went to Montana, 42,730 to North Dakota and 71,285 to South Dakota, an increase of 57,074, or 134 per cent in the case of Montana, 17,730, or 68 per cent, in the case of North Dakota, and 35,799 in the case of South Dakota, or 100 per cent. In 1900 there was moved to other states, nearly all in the Chicago territory, from Texas, Colorado and Kansas, 656 cars, this movement increasing in 1901 to 3,337 cars. All of these cattle will eventually be marketed in Chicago.

"Iowa alone made a gain out of Kansas City from 2,245 cars in 1900 to 2848 in 1901, a gain of 503 cars, and was the only state in the corn belt showing an increase out of Kansas City. Chicago will get all these when finished for market.

"Mr. Addison is confident that these accretions to the cattle thus moved into Chicago territory from Texas will be doubled in 1902. Last year 30,000 head went direct from Kansas pastures to Montana and Dakota, mostly three-year-olds, and will go to market in another year, so that for three or four years at least this source of supply is assured."



EXCHANGE BUILDING, SOUTH ST. JOSEPH, MO. The handsomest Live Stock Exchange Building in the World

## Poll and Color of Angus Cattle.

A Texas correspondent inquires if the top of the head of an Angus bull is nearly straight and different from the steers and females of the same breed. It is curious how such inquiries originate. In the naturally polled (hornless) head the skull formation is different from that of the horned breeds. In the latter the top of the head is comparatively flat from horn to horn, although the top line sometimes rises into a little arch or oval shape. In the polled head the top of the skull rises more or less sharply to the center where it forms a little knob doubtless provided by nature as the weapon of offense and defense in place of the horns. This oval or angular shape of the top of the head varies in different animals, but there is no difference in this respect between the bulls of this breed and the females and steers. Some cattle are considerably higher on the poll than others, but this is a personal peculiarity, just as is a somewhat long and narrow head or a short and broad head. Our correspondent further inquires if the bulls of this breed show signs of horns or little nubs if they are pure-bred. These nubs, or scurs as they are properly called, do sometimes but not often occur on pure-bred animals of this breed, both bulls and females. They vary all the way from little wart-like excrescences to small horns firmly fixed to the skull, although the latter are of very rare occurrence. This manifestation represents the efforts of nature to hark back to the original horned type. It is a very interesting and convincing demonstration of the power of atavism. Bulls that show scurs are not eligible to registry in the American herd book.

A further inquiry calls for the different colors of this breed. The Angus cattle are almost uniformly black, with a little white on the belly, udder or scrotum. Occasionally an all-red calf is dropped, but not often. This red is a peculiar shade, not like the color of the Red Poll nor that of the short-horn. It is a rather light red and once seen can usually be identified. Occasionally the white on the belly "jumps the fence" and appears in the switch of the tail or on the hind legs around the ankles and in rare cases in spots on the body. Bulls with a noticeable amount of white above the underline or on legs or legs are not eligible to registry. Effort has been persistent for years to breed out the red color and white out-crop on legs or body above the underline and wholly to eliminate scurs, but the power of atavism is so persistent that the result aimed at has not been

entirely accomplished. It should be clearly understood that these "off colors" and scurs are of very rare occurrence and that the uniform black color and polled head are transmitted to grade progeny in from 80 to 90 per cent of the cases.—Breeder's Gazette.

## Live Stock Association Organized for Woods County.

Cleo Chieftain, Jan. 23d.

On last Monday afternoon, at two o'clock, the citizens of Cleo and surrounding country met at City Hall for the purpose of effecting permanent organization of Woods County Live Stock Association that had been put on foot the Saturday evening before. Meeting was called to order by the temporary chairman, Jos. J. Griffith, and with Walter L. Houts, temporary secretary.

Motion made and carried that the organization be confined to Woods county.

Motion made and carried that the meeting proceed to elect permanent officers of the organization. William W. Parsons was elected president of the association and John W. Bisnop secretary.

Motion made and carried that a committee of five be elected by the meeting as an executive committee. B. F. Farmer, John Walburn, John K. Glasgow, Louis Hiss and Clark Weaver were elected as that committee. The president and the secretary of the association were also constituted members of the executive committee.

Meeting then adjourned subject to the call of chairman.

The following is a list of those who have already joined the association:

Ava Evans, S. G. Sutterlin, Chas. E. Walker, Thos. M. Murray, Wylie Brown, John Walburn, W. H. Murphy, Joseph J. Griffith, J. E. Adams, John W. Bishop, C. L. Weaver, J. K. Glasgow, F. M. Doty, C. D. Farmer, B. F. Farmer, S. M. Barrett, Wm. W. Parson, Wm. Legg, N. A. Swartz, Jacob Frazier, M. L. Green, O. L. Beckwith, J. S. Guess, Philip Herald, H. R. Walters, E. S. Griffith, James Linville, J. L. Hughey, S. A. Crossman, Ellis J. Bryan, Bobbitt, R. D. Strohl, J. M. Snedeker, B. F. Martin, S. G. Rader, E. E. Christie, J. A. McMullen, W. M. Graham, J. H. Gambill, S. T. Martin, C. F. Gash, R. A. Murray, I. J. Gray, D. O. McGee, M. L. Sharrock, A. L. Sharrock, Thos. Daniel, E. J. Walker, J. M. Brisson, D. H. Denman, Boice Younts, Wm. Younts, O. F. Houts, W. L. Houts, C. R. Williams, E. D. Sells, Norton Bassett, J. O. Tignor, Z. M. Bardwell, J. Strohl, S. L. Pearson, J. M. Smith, E. Guess, J. W. Spearman,

J. H. Antrobus, S. U. Knott, U. G. Gredmund, W. H. Bradbury, J. F. Nasep, J. W. Francisco, W. D. Moore, Joe Porter, J. R. Green, G. O. Baxter, L. E. Bobbitt, W. L. Crane, C. W. Rank, J. Brown, H. P. Cunningham, E. E. George, E. T. Hixson, E. H. Mansfield, Lew Farmer, H. A. Parsons, W. S. Pursell, J. L. Gibbens, R. E. L. Hunter, L. C. Ross, W. M. Coston, G. W. Bockoven, A. Beck, J. L. Moore, L. A. Petet, J. S. Wade.

## Four to Eight Dollars per Head.

In estimating the value of the open markets, or the advantage of being north of the quarantine lines, Oklahoma cattle men have been conservative to a degree in estimating the value over those below the line at \$2 to \$3 per head more. Now comes this report from the Nashville (Tenn.) Banner, with a "raise" on these figures. If Tennessee cattle are worth that much more, with all due respect, it is safe to bet that Oklahoma cattle are worth at least 10 per cent more under the same conditions. But here is the evidence:

Official announcement was received by Live Stock Commissioner W. H. Dunn today, from the Bureau of Animal Industry at Washington, that Tip-ton and White counties had been placed above the national quarantine line. This action is worth thousands of dollars to the two counties, which are among the best cattle counties in the state, enhancing the value of the cattle from \$4 to \$8 per head. This is four counties that have been placed above the line during Capt. Dunn's administration, Lincoln and Cumberland having heretofore gone above. Cattle can now be shipped from these counties at any season without any restrictions whatever."

## At South St. Joseph.

Owing to a slight misunderstanding in regard to dates, the illustrations ordered by the St. Joseph Stock Yards Company failed to reach the LIVE STOCK INSPECTOR in time for the Convention issue, and therefore appear in this, the next one following. While it was a regrettable error for which blame attaches to no one, the INSPECTOR is pleased to be able to present them now and commend to your favorable consideration as shippers and producers, this lusty, vigorous and up-to-date market. If you have never been there, try a shipment and get acquainted. They will be pleased to show you, whether you are from Missouri, or Oklahoma, or any other section of this grand and glorious continent.

## From the Markets

Kansas City Office, 289 Live Stock Exchange.

Kansas City Stock Yards Feb. 8, '02  
Cattle receipts during the past week have been light but there was liberal proportion of desirable butcher steers offered and the packing trade has ruled quiet with sacrificing values. The top heavy cattle sold at \$6.25 and strictly prime export and shipping qualities would have sold up to 6.65 but the general run of prices denotes a 25 to 40 cent decline as compared with the high time in January. Receipts of cows and heifers were light and the high range of values of the past few weeks was fully maintained. Fair to prime killing heifers sold all the way from 3.75 to 5.30 with scattering single head sales up to 5.60; choice cows sold up to 5.00 and fair to good lots at 3.00 to 4.25.

There was no improvement in the common light stocker trade but heavy feeders for finishing purposes were active and higher than at any time since 1900. An Illinois patron took home some 1185-lb feeders at 5.50 that he thought it would pay to finish at that price and the bulk of the good to prime feeders sold above 4.50. Heavy branded feeders sold at 4.40 to 4.75.

The Southern meal fed cattle supply aggregated something over 3,000 head and to the full extent received exceptional attention. The kind offered, while not of the heaviest type, was popular and there was no lagging on the part of buyers. The top price was 5.15 and was established by a consignment of 1172-lb steers from the M. L. Trout feed lots at Roff, I. T., which also furnished the top Southern cattle at the St. Louis market on the same day at the same price. The bulk of the Southern cattle sales was made at from 4.50 to 5.00, including weight ranging largely from 900 to 1150 lbs.

Hog prices were subject to more or less violent changes during the week but the closing market is about like that of the preceding week. Heavy hogs sell at 6.30 to 6.40; mixed and medium packers at 6.00 to 6.35; lights at 5.35 to 6.10 and pigs at 4.50 to 5.35.

The sheep arrivals were light and three times as many would have been absorbed easily by the packing demand. The market advanced 10 to 15 cents during the week and prime native lambs sold up to 6.35, at the close Colorado lambs sold largely at 6.00 to 6.10 and while there were no yearlings offered choice lots would have realized 5.25 to 5.75. Choice native wethers are quotable at 4.75 to 5.00 and westerns at 4.50 to 4.90. Colorado ewes sold at 4.10 to 4.50. A commission firm's circular letter issued during the week says: "Indications are for a good market and we believe values will go considerably higher in the near future."

Receipts of live stock for the week were: 26,500 cattle, 60,000 hogs and 11,000 sheep as compared with 26,900 cattle, 47,000 hogs and 12,800 sheep for the preceding week and 31,600 cattle, 73,500 hogs and 17,200 sheep for the corresponding week last year.

F. H. B.

We assume that every man who is growing live stock for any purpose, whether he is breeding pure bred animals for sale as such, or whether he is growing commercial stock for the slaughter market, desires to progress. Unless he has lost ambition entirely he wants to do a little better next year than he did this. He wants to produce a little better stuff next year than this. To do this by the only way possible means the use of a really good sire, whose get will habitually be a little better than the dams are. Prof. Waters, of the Missouri Agricultural College, cites a striking instance of what we have in mind in speaking of a Jersey bull that was kept for two years in the college herd of registered Jerseys. The experience with the bull was that it never produced a

single calf that was better than its dam. As long as the bull remained the herd was at a standstill; no progress was made. At the end of two years another bull replaced him. He was not apparently a better individual, but he cost more money because he was a direct descendant of a family of large butter producers, was from a cow that had a large butter number of tested cows. He was at the head of the college herd three years, and during that time he did not in a single instance, fail to produce calves that were better than their dam. During the time he was kept in service the herd made steady progress. This instance illustrates a principle of universal application to all kinds of stock growing. It hits the range and ranchman who is content with a grade of bulls and even with a scrub, and who goes on year after year producing the same kind of, comparatively speaking, worthless cattle, when he might improve by the use of a good sire. It hits the farmer who is content to have his cows served by anything that will produce a calf and bring them in fresh it affords a reason why a man who has a good herd should see that the bull at the head of it is sufficiently good to make the young stock better each year, and it illustrates the problem that every breeder of pure bred stock of high class is constantly thinking about. The idea that is on his mind all the time is, "where can I get a bull that will make each calf better than his mother?" We don't need to urge the idea upon the well-informed breeder who is already growing cattle of high class. He knows the importance of it, and it is on his mind all the time; but there are a large number of other people who are growing stock who apparently do not give it a thought, and yet it applies to their case as well as to that of the owner of the most royally bred herd in the country. If one cannot feel the importance of trying to improve the stock he is handling he is in a rut that he had better get out of or else get out of business.—Live Stock Indicator.

The number of inhabitants to the square mile in the Territory of Oklahoma is about 16.

The Western Oklahoma Stock Growers' association of Beaver county offers a reward of \$25 for the arrest and conviction of any person who leaves camp fires burning or fires the range. A good idea.

### Progressive Live Stock Commission Firms.

When shipping to the Kansas City Stock Yards, remember the following progressive and reliable commission firms:

Evans-Snyder-Buel Commission Co.  
Campbell, Hunt & Adams.  
Barse Commission Co.  
Drovers Commission Co.  
Rogers Commission Co.  
Kansas City Live Stock Com. Co.

When shipping to the St. Joseph Stock Yards, remember the following progressive and reliable commission firms:

The Flato Commission Co.  
When shipping to the Wichita Union Stock Yards, remember the following reliable and progressive commission firms:  
E. J. Healy & Co.  
Paugh & Co.  
The Eldridge Commission Co.  
Union Live Stock Commission Co.  
Robbins & Alexander.

These firms have confidence in the cattle industry of the southwest and solicit your patronage.

## The Kansas City Stock Yards

Cover 160 acres of ground and are the most modern and convenient of any in the world. They are located near the wholesale district of the city, easily accessible to the business and residence portion by street railway and within eight blocks of the Union depot.

**Kansas City is the Largest Stocker and Feeder Market in the World**  
**While it is the Chief Packing Center of the Middle West.**

—INCLUDING HOUSES OF—

Armour Packing Company, Swift and Company, Schwarzschild & Sulzberger Co., Jacob Dold Packing Company, George Fowler, Son & Company, Limited, Cudahy Packing Company, Ruddy Bros. Packing Company, Etc.

And a full line of buyers for both domestic and export trade. All railroads centering at Kansas City have direct rail connection with the Kansas City Stock Yards.

**The Kansas City Stock Yards Offers More Advantages as a Market Than Any Like Institution in the Country.**

C. F. MORSE, E. E. RICHARDSON, H. P. CHILD, EUGENE RUST,  
V. P. & G. Mgr. Sec. & Treas. Asst. G. Mgr. Traffic Mgr.

**WHY ARE RESULTS SATISFACTORY ON STOCK SHIPPED TO**

### CAMPBELL, HUNT & ADAMS,

LIVE STOCK SALESMEN, CATTLE, HOGS AND SHEEP.  
KANSAS CITY, MO., AND EAST ST. LOUIS, ILL.

**BECAUSE STRICTLY COMMISSION, HANDLE NO STOCK OF THEIR OWN, THEREFORE CUSTOMERS GET FIRST PERSONAL SERVICE AND STRENGTH OF MARKET.**

W. A. Michael, A. T. Muston, H. S. Davis, E. E. Peters, J. A. Crane.

### DROVERS LIVE STOCK COMMISSION CO.

KANSAS CITY STOCK YARDS.

Rooms 135 to 138 Exchange Bld.

Consignments and Correspondence Solicited. Financial Assistance Given Responsible Parties. Market Reports Mailed Free on Application. Proceeds Remitted on Day of Sale. Buying of Stockers and Feeders a Specialty. Consign Your Next Shipment to Us.

GEO. R. BARSE, Pres. J. H. WAITE, Sec. and Treas.

### BARSE Live Stock Commission Co.,

Rooms 159-160, Live Stock Exchange, KANSAS CITY, MO.

Established 1871.

### → Money to Loan on Cattle. ←

Experienced Salesmen. Prompt Remittances. Correspondence and Consignments Solicited.

C. HOOD, President.  
L. A. ALLEN, Vice-President.

T. J. EAMAN Sec. & Treas.  
H. S. BOICE.

## The Kansas City Live Stock Com. Co.

Is one of the Oldest and Best Companies in Kansas City

—A good one to do business with.—

—They have ample capital and are perfectly reliable.—

—Twenty-five years in the trade

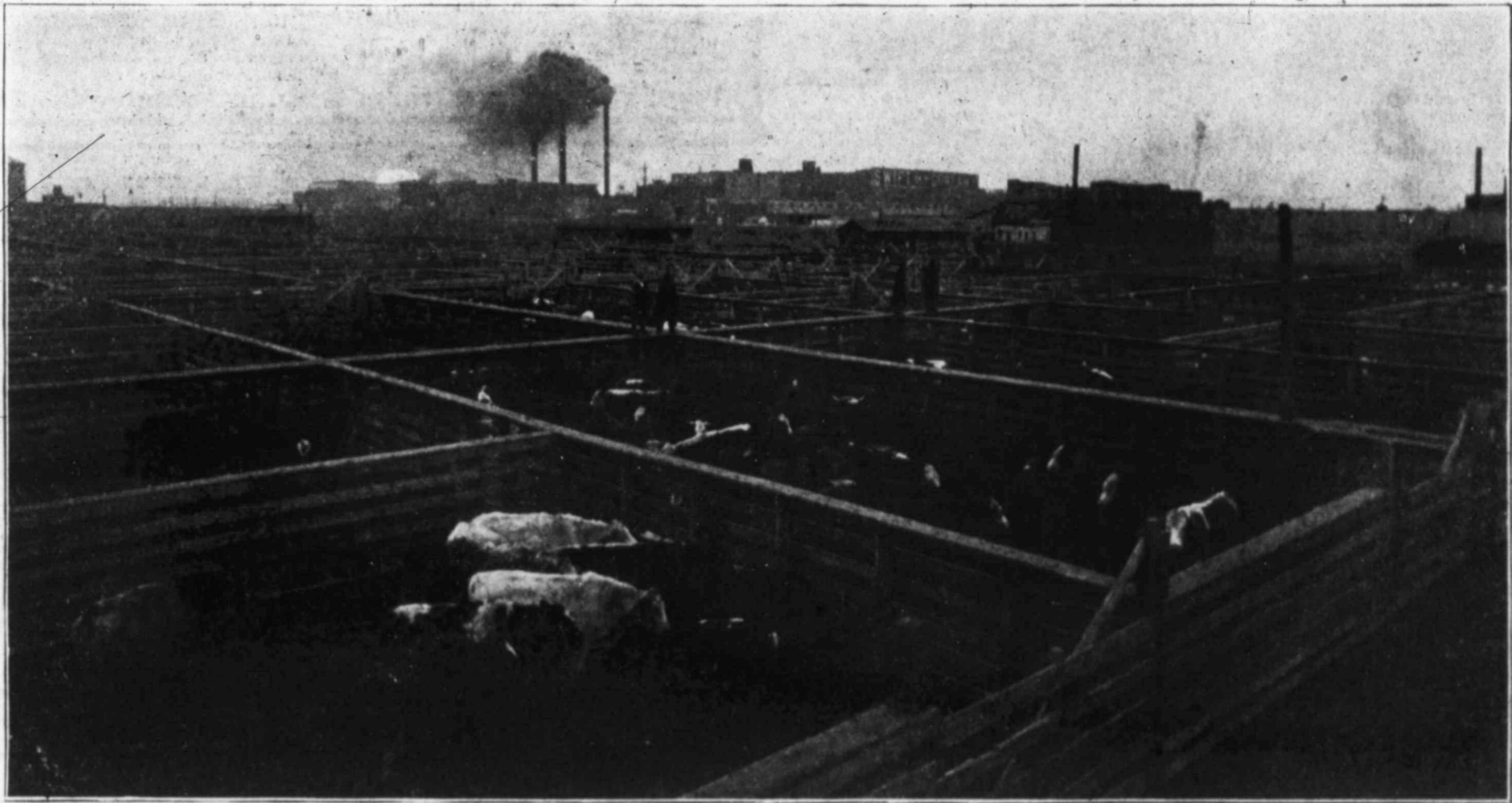
Write to them for information and ship to them for good results.

GEO. B. CAMPBELL, Cattle Salesman.  
L. A. ALLEN, Cattle Salesman.  
CHAS. W. CAMPBELL, Cattle Salesman.  
PEYTON MONTGOMERY,  
W. T. MCINTIRE, Sheep Salesman.  
J. T. MEGREY, Hog Salesman.

### KLONDIKE INCUBATORS and BROODERS

...Are the Best...

Latest improvements, strongest guarantee, easily operated. Write for free catalogue, which contains much valuable information. Address, Klondike Incubator Co., Box #21, Des Moines, Ia.



Some of the Pens at St. Joseph Stock Yards.

**General Summary for the Year 1901.**

The year 1901 was favorable, in the main, for agricultural pursuits, although marked by the least precipitation on record since the opening of the section. As compared with normal conditions for the past ten years, the average temperature was 1.1 degrees above, while the precipitation was 8.17 inches below the normal.

The average temperature for 1901 was 60.8 degrees; the maximum was 116 degrees at Wagoner on July 16th; the minimum was 15 degrees below zero, at Kenton, on December 14th; range for the year, 131 degrees.

The total annual precipitation was 22.78 inches; the greatest annual, locally, 38.21 inches at Tablequah; the least 12.55 inches at Beaver; the average total snowfall was 4.4 inches.

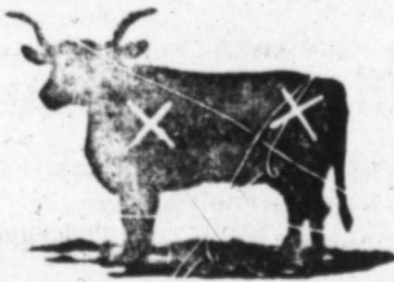
The average number of clear days was 215; partly cloudy, 77; days with .01 inch precipitation, 43.

The prevailing wind direction was south.

CHAS. M. STRONG,  
Section Director.

**T. C. SHOEMAKER.**

P. O. Address, 1416 Linwood Ave., Kansas City, Mo.  
Ranch address, Optima, Oklahoma.  
Range, head of Beaver, in Beaver Co., Okla.



OTHER BRANDS:



10 on left side



OTHER BRANDS.

**LS** On right side, seven under bit each ear.

**2** On both sides.

HORSE BRANDS.

**V** On right shoulder.

**MILLARD WORD.**

P. O. Address, Grand Day County, Oklahoma.  
Range, on South Canadian, Red Bluff and Mosquite creeks, in Day county.



Ear mark: Crop the left and swallow-fork the right.

**7** on left thigh.

**A. L. McPHERSON & SONS.**

P. O. Address, Woodward, Okla.  
Range, Canadian river northward, including Cottonwood Springs.



On left side or shoulder. Horses branded same as above. Range same as above.

**GEO. W. CARR.**

P. O. Address, Stone, O. T. Location of range on Turkey Creek, in Day county.



BRAND OF CATTLE.

**T** On Left Hip.

**7** On Left Hip.

All calves are branded same as cattle.

BRAND OF HORSES.

**T** On left thigh.

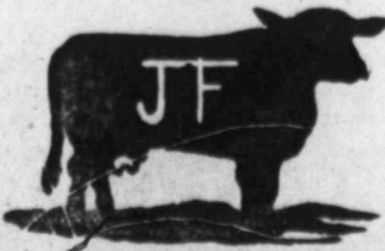
LOCATION OF RANGE SAME AS CATTLE.

**WHITE & SWEARINGEN.**

P. O. Address: Woodward, Okla.  
Range: On Sand creek, 5 miles north of Fort Supply.

**J. F. FULLER.**

P. O. Woodward, Range, eight miles east of Woodward on the North Canadian.



On right side or on right hip. Horses unbranded. Range same as cattle

**ISHMAEL & RUDOLPH.**

P. O. Kiowa, Kas.  
Range on Buffalo, in Woodward county.



EARMARKS: crop and split left. Horses: branded heart on left shoulder.

**J. L. SIMPSON,**

Hammond, Okla.



**S** left shoulder and side.  
**S** left shoulder and hip.  
**S** left loin.  
**S** left side.

Range, East Quartermaster Creek, Custer County, Okla. (Nov. 1, '99)

**STOCK BRANDS.**

One cut, one year, \$10; each additional brand on cut, same owner, \$5 per year; each additional brand requiring engraved block, one year, \$2. These prices include copy of paper one year to any address. Strictly cash in advance.

**F. D. WEBSTER.**

P. O. Address, Gage, Oklahoma.

Range, on Little Wolf east and south of Gage.



**F** On left jaw of all young stock.

**WB** on left hip.

**V** On left hip or shoulder.

**W** On left hip.

HORSE BRANDS:

**WB** On left shoulder.

Are you a member of the Oklahoma Live Stock Association? If not, why not?

**M. C. CAMPBELL.**

Owner and Manager, Wichita, Kansas. Range on Cimmaron, headquarters mouth of Snake creek, Clark county, Kansas.



Other brands, **M** on left shoulder of horses. Range same as cattle.

Every Art and Industry Has a Place.

An advance copy of the Classification Book for the Louisiana Purchase Exposition, at St. Louis in 1903, has been received. Fifty-three pages are required for a mere enumeration of the groups and classes of exhibits. The exhibits of the entire exposition are divided into fifteen departments, as follows: Education, eight groups; art, six groups; liberal arts, thirteen groups; manufactures, thirty-four groups; transportation, six groups; agriculture, twenty-seven groups; horticulture, seven groups; forestry, three groups; mining and metallurgy, five groups; fish and game, five groups; anthropology, four groups; social economy, thirteen groups; physical culture, three groups. The total shows 144 groups and 807 classes, and under each class is a possibility for a multitude of exhibits. Nothing reflects more clearly in so small a space the variety of human occupations or more comprehensively the broad scope of the great exposition which the people of St. Louis are preparing for next year. A place is provided for every conceivable product worthy of exhibition, and all nations of the world have been invited to take part. Acceptances have been received from many. The work of construction is progressing earnestly. The buildings will have an aggregate floor space of 200 acres and the grounds a total area of 1,000 acres. The money now available aggregates \$15,000,000, besides \$1,000,000 appropriated by the State of Missouri and various liberal sums from other states. The classification and the rules and regulations of the exposition will be mailed free on application to the Director of Exhibits, World's Fair, St. Louis.

Don't Ask for the Old Woman.

A good story is told in Missouri at the expense of its once-famous governor, Claiborne F. Jackson. Before he solved the enigma of love lock he had married five sisters—in reasonable lapses of consecutiveness. After one wife had been lost and appropriately mourned he espoused another, and he kept his courting within a narrow circle of his own relatives, for he rather liked the family. The antiquated father of these girls was almost deaf, and when the governor went to this octogenarian to ask for the surviving daughter the following conversation ensued: "I want Lizzie!" "Eh?" "I want you to let me have Elizabeth!" "Oh, you want Lizzie, do you? What for?" "For my wife!" "For life?" "I want to marry her!" "Oh, yes! Just so. I hear you, boy." "I'm precious glad you do," muttered the governor. "Well," slowly responded the veteran, "you needn't halloo so that the whole neighborhood knows it! Yes; you can have her. You've got 'em all now, my lad; but for goodness' sake, if anything happens to that 'ere poor misguided gal, don't come and ask me for the old woman!"—Ex.

J. H. Crowley, manager of the A. E. Reynolds big ranch near La Junta, Colorado, is feeding 100 high grade cattle on beets and reports that they are doing fine. He says beets are just the thing for cattle and sheep.

Coming Events.

- Central Shorthorn Breeders' association, Kansas City, February 4 and 5
- Oklahoma Live Stock association, Wichita, Kas., February 11 to 13.
- Manitoba Live Stock Breeders' association, Winnipeg, February 18 and 19.
- Illinois State Farmers' institute, Rockford, February 18 to 21.
- National Live Stock Agents' association, Fort Worth, Tex., March 10.
- Texas Cattle Raisers' association, Fort Worth, March 11 to 13.

Just Like You.

If you wanted a never failing well of good, pure water, wouldn't you have one drilled large enough and deep enough to tap a strong stream of living water? Well, other people think as you do. They are just like you in this respect. This fact affords a fine business opportunity. Buy one of our



**STAR**  
Drilling Machines  
and make such wells for yourself and others. There is more money in it than any business you can get into for the capital invested. We make the most complete line of well drilling machinery and supplies in the country. Send at once for large illustrated catalogue—free.

Star Drilling Machine Co., Akron, Ohio.

HENS EAT BUGS.



because they need animal food. Feed cut bone and get eggs when eggs are eggs. The **HUMPHREY** Green Bone and Vegetable **CUTTER** is guaranteed to cut more bone in less time and with less labor than any other cutter made. Get your money back if not perfectly satisfied. It's a rapid vegetable cutter, too. Send for handsome catalogue containing egg record blanks for a whole year. Every poultry keeper should get it. It's free.

Humphrey & Sons,  
Box 41, Joliet, Ill.

**29 Years Selling Direct.**




We are the largest manufacturers of vehicles and harness in the world selling to consumers, and we have been doing business in this way for 29 years.

**WE HAVE NO AGENTS** but ship anywhere for examination guaranteeing safe delivery. You are out nothing if not satisfied. We make 195 styles of vehicles and 65 styles of harness. Our prices represent the cost of material and making, plus one profit. Our large free catalogue shows complete line. Send for it.

**Elkhart Carriage & Harness Manufacturing Co., Elkhart, Ind.**

**\$35.00 Buys a Good Buggy.**



When you buy from first hands where an agent doesn't receive a profit. We have no agents. We sell direct to the user. That's the reason why we can sell this buggy for \$35.00 less than a dealer or agent can.

**Description:** Wheels and gear, hickory, double reach, ironed full length. (Wheel size wanted.) Axle 15-16 in. double collar. Body 18 to 24 inches wide, 54 in. long. Springs oil tempered. Seat has a high solid panel back, with springs in back cushion. Trimmings in green cloth or whip cord. (Rubber leather \$1.00 extra.) Carpet for bottom of body, storm apron and boot. Rubber top, nicely lined with regular top lining.

**NO MONEY.** We do not ask you to send one single cent with your order. When you receive the buggy look it over. If found just as described and perfectly satisfactory to you in every way and equal to buggies that are retailed for nearly twice our price, and a bargain, send us the money. If not satisfactory return it to us and **Our Guarantee** dealer and protects you against poor material and workmanship for two years. We guarantee safe delivery of every buggy. Our Vehicle Catalog illustrates the latest and most complete line of buggies, road wagons, phaetons, surreys, spring wagons, carts, harness and fly nets ever shown by one concern. It's free. Write for it now.

**MARVIN SMITH CO., 51 N. JEFFERSON STREET, CHICAGO, ILL.**

**SCALES FOR ALL PURPOSES.**



Before you buy see the most up-to-date scales on the market. **Compound beams, weighing all on the beams; steel levers, steel frames; concrete walls if desired.** Every modern appliance, with no objectionable features. Material and accuracy guaranteed. **High-class scales our specialty. Introductory prices where we have no agents.** Mention this paper.

**FAIRWEIGHT STANDARD SCALE CO., 22 Franklin St., Danville, Ill.**

<b>\$28.75</b> for Calumet check row corn planter with automatic reel and 20 rows of wire. Never mudders in hills and drills. We challenge the world with this planter. Will ship it on trial in competition with all others. We have 95 styles of Planter and Drills for field and garden.	<b>\$17.70</b> For 12-16 BALL BEARING. All steel disc harrow, cast iron running & best made. 3 sizes, disc 16 or 20 in. diameter. Pay double you get no better.	<b>\$7.50</b> for steel lever harrow, 10 ft. wide, 60 teeth, 3 sections; also 3 & 4 sections.	<b>\$5.25</b> buys this complete chest of 22 warranted tools and tool chest. 1 skew back hand saw, 2 ft. rule, try square, bit-brace, 9 bits, 2 chisels, 1/2 and 1 in. screw driver, 16 in. jack plane, block plane, pencil, gyp and wire cutter. Also set of 15 tools \$2.25; 46 tools and chest, \$10.75; 60 tools and chest, \$18.95. All warranted. We sell everything in carpenter's tools at 1/2 retail price. Write for our free catalogue. It will save you money.	<b>2.75</b> for genuine Electric Washer made of white cedar, enameled hoops, corrugated handle. Durable and strong. Saves 1/2 of the labor. 10 styles Washers, \$2.50 to \$5.75. Also Wringers.	<b>\$1.96</b> for 4 gallon Cedar Cylinder Churn. 56 gallon Barrel Churn \$4.90. All sizes at retail price.	<b>\$1.75</b> for this Scale. Weighs 1/4 oz. to 240 lbs. Steel bearings, brass beam, steel scoop. Warranted accurate. We have all kinds of scales.
--	--	--	---	--	---	---

Send for our Free 336-Page Catalogue. Send to-day. It will save you money. **MARVIN SMITH CO., 55-57-59 N. Jefferson St., Chicago.**

**BEST Passenger Service IN TEXAS 4 Important Gateways 4**



TEXAS AND PACIFIC RAILWAY

"NO TROUBLE TO ANSWER QUESTIONS"  
2—FAST TRAINS DAILY—2  
For St. Louis, Chicago AND THE EAST.

Supper New Pullman Vestibuled Buffet Sleepers, Handsome New Chair Cars (seats free.) Only Line Running Through Coaches and Sleepers to New Orleans without change.

Direct Line to Arizona, New Mexico and California  
E. P. TURNER, G. P. & T. A. Dallas, Tex.

**L. S. NAFTZGER, PRESIDENT. E. R. POWELL, VICE-PRESIDENT. J. M. MOORE, CASHIER.**

**Fourth National Bank OF WICHITA.**

CAPITAL, - \$100,000  
SURPLUS, - \$25,000

General Banking Business Transacted

**CANCER, Tumors, Eczema.**

Skin diseases and female diseases treated at home or office; No pain no knife, acid, caustic or burning plaster used; Patients not compelled to stay in Hospital but many return home the same day they are treated; Our home treatment is successful. Write for testimonials. Address,

**KANSAS CITY CANCER HOSPITAL CO.**  
Room 315, 1021 Grand Avenue.  
**DR. J. C. MCLAUGHLIN, Physician in Charge.**

**Seven Great Schools**

Chillicothe Normal College  
Chillicothe Commercial College  
Chillicothe Shorthand College  
Chillicothe Telegraphy College  
Chillicothe Pen-Art College  
Chillicothe School of Oratory  
Chillicothe Musical Conservatory


Enrolled last year 729 \$130 pays for 48 weeks board, tuition, room rent and use of textbooks. Write for free catalogue.

**ALLEN MOORE, Pres.,**  
Box P, Chillicothe, Mo.

**Lafe Burger**  
LIVE STOCK AUCTIONEER,  
Wellington, - Kansas.

Headquarters Wellington National Bank

Have conducted and am now booked for some of the largest sales in America. Thorough acquaintance with pedigree and individual merit. Extensive acquaintance with breeders. Write me before claiming dates. Dates made at this office.



**The Gallup Saddles**

have been on the market for nearly a third of a century, and are growing more popular as the years go by. Our new catalogues, showing all latest improvements and newest ideas in Saddles and Harness, sent free upon application.

**The S. C. GALLUP SADDLERY CO., PUEBLO, - COLORADO.**



**TWO MAMMOTH JACKS.**  
Weighing 3600 lbs, ages four and five years. First prize at Paris Exposition 1900. 13 jacks for sale. Also 35 jennies for sale, 21 bred this spring.

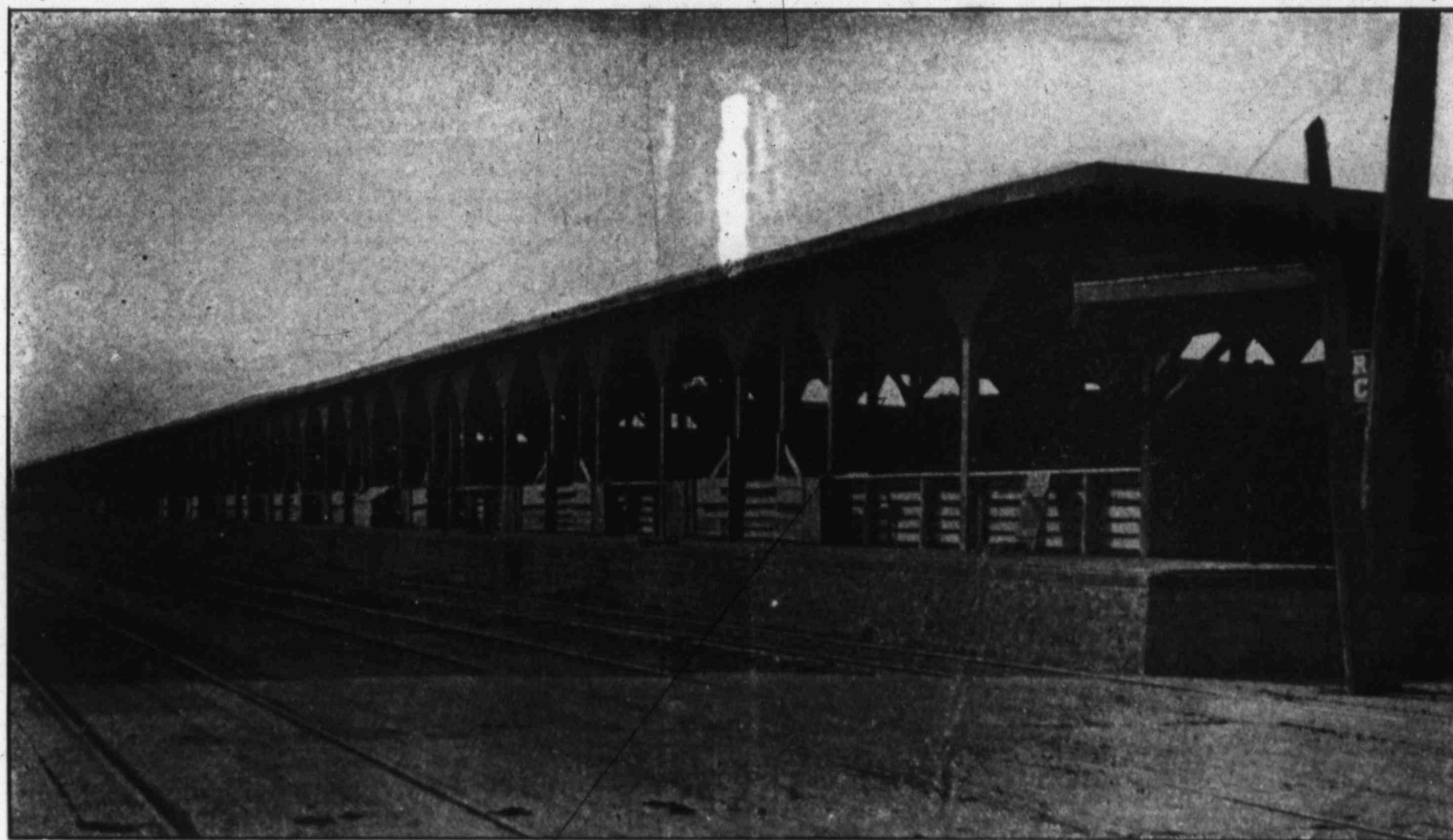
**S. O. HINGSTON,**  
RICHMOND, OKLAHOMA

**SHIP YOUR FURS AND SHEEP PELTS TO McMillan Fur & Wool Co., Minneapolis, Minn. WRITE FOR CIRCULARS**

**THE ELDRIDGE COMMISSION COMPANY,**

LIVE STOCK COMMISSION AGENT.  
**R. W. ELDRIDGE, Gen'l Mgr.**  
STOCKERS and FEEDERS BOUGHT and SOLD.  
Telephone 695  
Long Distance Equip't. Nat'l Bank for Commerce.

**STOCK YARDS, WICHITA, KANS.**  
Money Loaned on Cattle at Reasonable Rate of Int



UNLOADING DOCK FOR HOGS AT SOUTH ST. JOSEPH STOCK YARDS.

#### Reseeding the Range.

Articles in recent issues serve to reveal the deep and widespread interest at present in the problem of restoring the well-nigh barren ranges of the great West to their erstwhile verdure. Man is tremendously prodigal of Nature's provisions. He uses and abuses as if he thought these resources inexhaustible. Long ago farseeing minds perceived the impending certainty of a timber famine, as it is easy enough to calculate the annual consumption of lumber, and as surveys have put us in possession of a knowledge of the natural supplies, it requires only the mathematician to figure the length of time our supplies will last, our rapidly-growing population unless waste is ceased and steps are taken toward intelligent forestry. This means the conservation of our timber lands, the encouragement of the young growth and the setting out of forest trees that will help to supply the future needs of our population. Public attention has at last been claimed to this subject and there is hope of intelligent action that will safeguard the future, although it is difficult to impress on the present generation the necessity for taking any steps for the benefit of those who come after them.

The almost boundless stretches of unoccupied prairie land in the West and Southwest, which years ago supported the hordes of buffaloes that roamed wild and in later times furnished sustenance to teeming droves of domesticated cattle and great flocks of sheep, were grazed as if exhaustion of the grass were not possible. Greed not intelligence dictated the movements of those in charge of these great collections of stock, and they recked not of the future. But the evil of a former day is now visited on us, and the great plains which must be devoted in the future to the raising of meat with which to feed a hungry world are now found to be well-nigh robbed of their power to produce the succulent and flesh making grasses that once flourished in such luxuriance. The problem of restoring these great grazing grounds to their former capacity

to carry live stock has been engaging the consideration of public-spirited men for some time. The Department of Agriculture long ago began to devote attention to the subject, and a number of the transcontinental railroads, whose managers appreciate the bearing of the situation on their future profits, have been investigating, and in some instances experimenting with a view toward discovering some feasible and practicable way of reseeding the ranges so that they may be brought back to something like their former verdure and carrying capacity.

Among these roads is the Oregon Railway & Navigation Co., and it is now reported by Industrial Agent R. C. Judson, who has had charge of these experiments, that results thus far have been most successful. The plan was first conceived by Mr. Judson and the officials of the road entered into it with as much enthusiasm as he did. They placed a large tract of ground near Walla Walla, Wash., at his command and sent all over the world for seeds of various grasses and grains that might prove drought-resisting and productive under the conditions of the far West and Southwest. At the rate the grass was disappearing when the experiments were begun and is still disappearing the officials could see the time clearly when there would be no more stock shipments over their rails for the reason that there would be no grass on which to grow or fatten it. Mr. Judson's first efforts were confined to trials with our native grass seeds. They nearly all did well and larger areas were seeded and these also did well.

Now the scheme has grown to proportions far greater than conceived when the Oregon Railway & Navigation Co. first placed Mr. Judson in charge of its work. So clearly does it appear to the eyes of the officials of that corporation that a great work is to be done along this line that the assistance of all other vitally interested roads was enlisted, and together the mighty railway companies of the West and Southwest are to carry on an experiment farm that will dwarf anything of the sort in existence. A new tract of 3,000 acres has just been se-

cured for trials next spring and options have been taken on contiguous large areas, so that they may be available whenever wanted to go on with the work and enlarge its scope. The director of this gigantic "farm" has not yet been chosen, but it is thought that Mr. Judson will be selected. Much seed from Asia and Africa has already been received and will be sown as soon as possible.

But the whole plan as now outlined is even larger than this. Naturally the grasses that will do best in Oregon and Washington will not do in Texas, and therefore the completed idea is to establish 3,000-acre farms in ten or fifteen districts, the traffic of which is controlled by the corporations contributing to the fund that is to pay the expenses. It is the plan to start one of these each year until all are in working order and then draw on each annually for the seeds that will be required for the work of reseeding. Large acreages are to be seeded. The plan is not to put in small plots that might do well in one locality on account of some peculiarity of soil or elevation, but to cover at least 100 acres at each experiment with each sort of seed. In fact, the entire project is conceived on a most gigantic scale. It is related that the several states which will be directly benefited will in time be asked to contribute to the expense fund, but it is not to the state executives or legislatures that the railway corporations will first apply for assistance, but to Uncle Sam himself when they have pushed matters to a point where definite results may be seen. It is even stated that tentative advances already made have been met half way, which seems natural enough seeing that the Federal Government, through the Department of Agriculture, is already working along the same line. With two such forces as these working together it now seems a foregone conclusion that if there is any hope at all to reseed the Western ranges and make them as productive of grass as they were in the early days it will likely be realized, while the introduction of private effort into the matter promises a much earlier solution of this great problem

than seemed possible under the slow processes by which Governmental work of such character is conducted. —The Breeder's Gazette.

#### Short Horn Breeders Meet.

Kansas City, Mo., Feb. 4 —The attendance at the Shorthorn breeders' convention, which began a two days' session here this afternoon, was kept down to less than 100 by delayed trains and the severity of the weather. The sessions are being held in the fine stock pavilion at the stock yards.

G. M. Walden, president of the Kansas City Live Stock Exchange association, made the address of welcome. Mr. Walden said the losses of the men who lend money on cattle are almost entirely on poor cattle. Fine cattle stand the winter better than the scrubs, and in severe winter weather the high-bred cattle are the last to die.

T. J. Warnall responded briefly in a speech, in which he said the association now has 360 members and is growing steadily.

H. C. Duncan, of Osborne, Mo., president of the association, read the annual address. He said shorthorns have increased in favor and in price very materially in the last twelve months; the demand has not only been greater, but prices have been much higher than for the past fifteen years. The outlook is also brighter for the future, and with conservatism in the business and cautious breeding, he said, he could see no reason why shorthorn breeders should not continue to lead all other breeds of cattle in the future as in the past.

Addresses were also made by Geo. M. Remmel, expert in animal husbandry in the United States department of agriculture; S. C. Hanna, of Howard, Kans.; and S. S. Benedict.

The breeders attend a banquet at the Coates house tonight.

Range cattle over in the heads of Sand and Gallienas canons are said to be very thin, with some dead and others down. Scarcity of water as much as short grass is attributed as the cause of the condition of things there. —Cimaron News.



## FOR WOMEN

IN RANCH AND STOCK-FARM HOMES

[EDITED BY "AUNT MARY."]

[Note:—All readers of the Live Stock Inspector, especially lady readers, are invited to send letters for publication in this Department. Help us make this Department one of the best features of the Live Stock Inspector. Address all letters to Aunt Mary, care Live Stock Inspector, Woodward, Okla.—The Editor.]

If my heart were tender,  
If my heart were always tender  
I would speak but tender words,  
Filled with love as spring with wooing  
Of her happy mating birds,  
Harshness ne'er would seek expression  
Through my lips or through my pen;  
If my heart were always tender,  
I would love my fellow men.  
If my heart were always tender,  
I would pity those who sin;  
Though their hearts with crime were  
blackened,  
Mine in love would take them in;  
Though the shadow of their sinning  
Should hang o'er me while I live,  
If my heart were always tender,  
Tender deeds my hands would do,  
For no action is unkindly  
Born of loving thought, and true  
Thus in living would I follow  
Steps of Jesus, meek and mild;  
If my heart were always tender,  
I would be in truth, God's child.  
MARGARET A. RICHARD,  
Columbia, S. C.

### THE POWER OF MONEY.

One needs only to visit a great city of two and one-half millions to realize that money is power. Even in our own free America many women and children are working from twelve to fourteen hours a day, sewing in shops numbers of them huddled together in small rooms where the air is so foul that one going in from the outside feels that she cannot live in such an atmosphere. Here are boys and girls making cigars, paid only twenty-five cents a hundred,—poor, pinched, weak little things. Strong men—six of them—making caps of small pieces of cloth, said they could make three dozen a day if they worked twelve hours, and were paid twenty-five cents per dozen. Consider the bare possibility of men eking out a living at such wages. Can they ever rise to be men in the true sense of the word? Men, women and children are found working in cellars and rickety tenement buildings, under such unwholesome conditions that it is beyond comprehension how they live. Yet this is only a faint glimpse of the reality.

Today I said to a caller that I should go and get some embroidery silk and work on a quilt that she was admiring. Then came the thought to my mind: Can I spend time or money in such work when there is, to my knowledge, so much destitution all around me? I, who blame the moneyed powers for their oppression of the poor which drives men and women to desperation in their need of even bread? Would that legislators might be made to see the necessity of laws to protect the laboring people, and that the Golden Rule might be practiced, and the New Commandment, "Love ye one another as I have loved you."

JANE YENDA.

The foregoing letter is from a sweet-faced, pure-hearted, noble-minded western woman, temporarily in Chicago. She is used to every phase of life on a ranch, and we hope she will visit us often with her ready pen.

### THE DANGEROUS BISCUIT.

The newest novelty in the list of culinary menaces to life and health seems to be an explosive biscuit. A telegraphic report from New Jersey says a biscuit made in that state exploded in a girl's mouth, knocking out her front teeth and cutting her lips seriously.

\*\*\*\*\*

### LAUNDRY HINTS.

#### Washing Flannels.

The three main points to be observed in washing flannels are: Not to have the water too hot, not to have it too cold and not to rub soap on the fabric. Have a good suds comfortably hot to begin with and keep up the heat throughout the washing by adding hot water so that the last garments will not have to be washed in water colder than the first. Good flannel requires little rubbing. Lifting, squeezing and very light rubbing between the hands is usually sufficient. All rinsing waters should have the same temperature as the first suds. Flannels should not be dried out doors in freezing weather. Treat them as above directed and there will be no hard and shrunken flannels.

#### To Wash Silk Embroidered Doilies.

Have ready a suds of soft water. A little borax added to hard water will help it. Wash gently with the hands in two waters, or three if the pieces are badly soiled. Rinse in water in which there is the faintest tint of blue, spread out to dry a very little, roll while still quite moist and iron on wrong side. The effect will be lovely.

\*\*\*\*\*

### A BOYS LOGIC.

Yes, Sir, it's so! Just the best month of all—  
Febr'ary! Dead sore to-blow; sleet 'n' snow,—  
Things a boy likes. Skates an ice an' snowball—  
Febr'ary! I say, the whole month's a snow.  
That's what it is! There's Washin'ton's Birth-day.—  
Febr'ary! Dickens an' Dan'l Boone's Birthdays this month! An' mine! St. Valentine's Day.  
Febr'ary! Te'l you what, 'ts worth ten Junes!  
But now—see here! How they up an' cut short  
Febr'ary! Al'ays do that, sure as shot,  
With what boys like! Take days from the rest,  
they'd ort,—  
Febr'ary—tack 'em on to it! That's what!

\*\*\*\*\*

### PARAGRAPHS OF INTEREST.

A well-known authority on house furnishing says there is nothing so necessary in a room as some sort of couch. "A comfortable, convenient sofa is a positive means of grace. There is no doubt that the need of a rap is often mistaken for the longing to die."

Now that Beaumont (Texas) oil is being so much used as fuel, the western housewife's labors will be more and more reduced.

The keeping of a house includes the doing of many things which when done, are scarcely noticed by everybody. No doubt every woman who reads this has worked hard many a day and at the day's close felt that results hardly justified the expenditure of effort. Yet it is the perpetual keeping up with all these tiresome little duties which makes a house a lovely habitation. In this department of the LIVE STOCK INSPECTOR we want our readers to present their choicest ideas of how to accomplish much in little time and with the least possible expenditure of nerve force.

\*\*\*\*\*

### A RENEWED VALENTINE.

Vi-la, my lost wife, once more be mine!  
Answer me, dearest, my own Valentine!  
Love you I truly do. E'er since I were  
free,  
Eager I've wished that you'd come back  
to me.  
Next to the heaven that waits me above,  
Truly I prize your return to my love  
Is your heart mine yet? Dear, let's start  
anew,  
Never to part again, never to rue,  
Ever to live for love, ever be true!

\*\*\*\*\*

### ONE WAY TO HELP OTHERS.

A cold north wind is blowing, giv-

ing us all a chill feeling, no matter how often we say warm days will come again. I look from my window across the stretch of country to a line of brown hills. A blue mist is hanging round them, the sunshine and shadows are weaying pretty changeable patterns over them. How quiet they are, and have been all these years! Did our kind Father of lights make them so for a lesson of patience to our restless lives? If so, how much more do the lives of suffering men and women track us!

With such thoughts I turn to a letter handed me, bearing a new post mark. I know no one true, but I open it and there falls from the neatly folded sheet a Rose Geranium leaf with a few pressed flowers. Suddenly there is a warm glow over all my being, I forget the cold wind outside and the day is a changed one. So easily touched are our hearts by the kindness, the unselfish thought, of those around us. I read the letter, it was from a woman in far away New England of whom I had never heard, but who had found me through a friend of both. She told me of her sad, shut in life, days full of suffering, but lest her letter should cast a shadow on me she told of a sunny window full of flowers, and added a few lines telling her bright hope of one day meeting me in the Father's house, when she would be able to walk and never be sick again. I sat thinking of the two fold blessing that came to me today—kind thoughts and the flowers. In return she asked me for a letter and I shall write to my new friend, but can I give her as many lessons of love and patience as she gave me?

How easy it is to be kind to one another, yet money cannot buy it. Kindness comes down the ages, as a quiet river, blessing all whom it reaches, from the fountain of our blessed Jesus whose every thought was love for people. Do we reflect and pass on little acts and thoughts to each soul we meet.

"Have you had a kindness shown you?  
Pass it on.  
Twas not given for you alone—  
Let it travel down the years,  
Let it wipe another's tears,  
Till in heaven the dead appears—  
Pass it on."

PERMELIA RUCKER,  
Canadian, Texas.

\*\*\*\*\*

### SOME SIMPLE RECIPES.

Plain Cake:—4 cups flour; 2 teaspoonfuls baking powder; 2 cups sugar; 1 cup butter; 1 cup sweet milk; 4 eggs; any flavoring.

This makes a large loaf. One-half of each ingredient will make a very satisfactory small cake. Many varia-

tions may be used with this recipe. A little plain chocolate melted in half the batter will make a nice marble cake. A delicious cake will result by mixing in a cupful of English walnuts and raisins chopped together. Perhaps the very best results will follow grating part of the yellow rind of an orange into the batter, then using the remainder of the rind, with the juice for icing, thickening it with confectioners' sugar until thick enough to spread.

A Pretty Peach Dessert:—Take one cup of fine ripe peaches, cut into small pieces. Add one-half cup of powdered sugar and the white of one egg. Beat all together until thick and smooth. Place lightly in pretty glass dishes.

Prune Pie:—Prunes should be freely used in spring time. They make a wholesome and delicious pie. They should be stewed until soft, then cooled stoned and baked in an open crust or with cross strips of pastry. When baked in this way its attractiveness is heightened if served with whipped cream. Another excellent way is to bake with upper and under crust, having the prunes mashed fine, very sweet, and spiced with nutmeg, cloves and cinnamon.

Cake:—In the issue of March 15 one column will be devoted to the subject of cake. Each of our woman readers is requested to send one of her favorite recipes.

\*\*\*\*\*

### A CHEERY, CHATTY LETTER.

It gives me great pleasure to have an opportunity to make my little bow to the readers of a new Woman's Department. Any paper or magazine of this, the woman's age, would be peculiar, to say the least, without this important feature, for on this in a great measure depends the success of the periodical.

Under the management of your present editor, I feel sure the success of this department is assured, as it is not an experiment with her, for she has proved her ability in this line by actual, practical demonstration. But you know "one swallow does not make a summer" neither can one woman make a Home-department. So let us all start right in with the next issue and come here with our brightest ideas, our most successful experiences, our happiest thoughts and—yes—our hardest ridden hobbies and make this what it should be, the best part of this journal.

Wishing you one and all as well as the paper a long and happy life, I suppose I must retire; for the editor warned me I must confine my remarks to a paragraph. I wonder if she meant that I ever talk too much?

MARGARET FLINDT.

## PUBLIC SALE BATES BRED SHORT HORNS

FROM THE

### Staked Plains Herd

of B. B. & H. T. GROOM, MGRS., PANHANDLE, TEXAS.

On March 20th at the Fine Stock Sale Pavilion in Kansas City we will sell 45 head of highly bred Bates Short Horn cattle from our Staked Plains herd. Catalogue at sale.

B. B. & H. T. GROOM, Mgrs.

**Special Attention.** Col. Nelson will sell on Mar. 19th, at same place his entire herd, consisting of cattle of unexcelled blood lines and individual merit.

# THE CUTTER ANALYTIC LABORATORY.

(INCORPORATED)

Fresno, California.

ESTABLISHED 1898.

A thoroughly equipped Laboratory, amply supplied with the most efficient constructions of modern apparatus and instruments and in charge of expert bacteriologists.

**PRINCIPAL PRODUCTS: Live Stock Vaccines and Serums, Veterinary Remedies, Tuberculin and Mallein for Diagnostic Purposes.**

OFFICE AND LABORATORY, VETERINARY STABLE AND HOSPITAL, EXPERIMENTAL FARM AND PASTURE FOR SERUM ANIMALS.

1833-1835-1835½ Mariposa St. Corner B. and Kern Sts., (near) Diunba, Calif.

## AS TO THE BUSINESS WE ARE -- DOING. --

It is said that "a prophet is not without honor save in his own country," but we are glad to be able to state that it is in our own country, where the products of our Laboratory are best known, that we are doing the largest business.

About four years ago we commenced putting out Black Leg and Anthrax Vaccine and other veterinary products, in Fresno and adjoining counties, with results highly satisfactory to the users. As time passed, we not only had repeat orders from old customers but new business from their neighbors who had hitherto used foreign vaccine.

The territory in which we do business has increased steadily, so that now we are getting orders from all parts of California, also from Oregon, Washington, Nevada, New Mexico and Arizona.

## We Are Manufacturers, Not Selling Agents for a Foreign Concern,

and we are not trading on the name of a dead scientist to foster the sale of our products, they are winning their way on their own merits.

## Not Being Middlemen,

we are in the best position to guarantee the freshness of our vaccine and we can also be liberal in the matter of prices or exchange of fresh for old goods.

WRITE US when you have trouble of any kind with your horses, cattle, sheep, hogs or poultry. We are constantly experimenting to find means to combat the diseases of all domestic stock, and we shall be glad to give you the benefit of our researches.

Our equipment for this line of work is unsurpassed.

OUR SPECIALTIES: Anthrax and Black Leg Vaccines, Hog Cholera Serum, Cutter's Lump Jaw Cure, Cutter's Scour Cure Cutter's Antiseptic, Tuberculin and Mallien for diagnostic purposes.

## Black Leg Vaccine.

POWDER versus STRINGS.

We manufacture both Powder and String Vaccine, and extensive field experience has proven that OUR STRINGS ARE THE STRONGEST ON THE MARKET.

Where there are only a few head to be vaccinated, strings are convenient to use; but where a large number are to be vaccinated we strongly recommend our Powdered Vaccine, used with our regular outfit, as being the most expeditious method, and the immunity conferred thereby is more permanent.

IT IS EASY TO USE as it is ground fine and does not require filtering. This insures that none is filtered out and the calves get the full dose.

But whether you use Powder or String Vaccine, INSIST ON KNOWING THAT IT IS FRESH. Vaccine DOES deteriorate with age and should be stamped on back with date after which it should not be used. This date should be within six months from date of manufacture. REFUSE TO ACCEPT ANY NOT STAMPED OR THAT IS STAMPED MORE THAN SIX MONTHS AHEAD OF THE DATE OF YOUR PURCHASE.

OUR VACCINES ARE FRESH. Every package is stamped on back with date after which it should be returned for exchange for fresh vaccine.

OUR FRIENDS ARE AMONG THOSE WHO HAVE HITHERTO USED FOREIGN AND OTHER VACCINES, and we can refer to stockmen who have successfully revaccinated and stopped losses with our Vaccine after unsatisfactory trial of foreign and other vaccines.

### Note Our Prices. They Are Lower Than All Others.

SINGLE, per package, containing ten or more doses, according to age of animal.....	\$ 1 25
DOUBLE, per double package, containing ten to twenty doses, according to age of animals.....	1 75
STRINGS, per package of ten doses, including needle.....	1 25
Per package of 15 doses including needle.....	1 75
Per package of 25 doses, including needle.....	2 50
Per package of 50 doses, including needle.....	4 75
VACCINATING OUTFIT, complete, including syringe, for using single and double vaccine.....	4 00
BLACK LEG SYRINGE, with two needles and extra washers, all in metal case.....	3 00

TERMS: Cash with orders or we will send by express C. O. D. We prepay all charges. Special discount to users of 500 or more doses.

DO NOT DELAY VACCINATING—YOUR herd is LIABLE to attack NOW and if you delay vaccinating until after Black Leg has broken out you are almost sure of a 5 per cent loss, and as even a 1 per cent loss will cost more than vaccinating, it pays to vaccinate before trouble begins.

Write us for booklet on BLACK LEG and ANTHRAX. They are readable and interesting even if you apprehend no trouble from these diseases.

For references to successful users and for further particulars concerning these and our other products, Address.

# The Cutter Analytic Laboratory,

FRESNO,

CALIFORNIA.

Breeders Combination Sale  
OF  
**200-REGISTERED-200**  
-HEREFORDS.-

AT

Kansas City Tuesday, Wednesday and Thursday.  
February 25, 26 and 27, 1902.

120  
Females



80  
Bulls

...OF SERVICEABLE AND DESIRABLE AGES...

Last year we announced to sell at Kansas City each year on the above dates the best 200 Herefords that would be sold during the year. We propose to make this pledge good with choice selections from our herds that jointly number over 2500 head of registered Herefords.

## Contributors:

Scott & March, Belton, Mo.  
C. A. Stannard, Emporia, Kans.  
Walter B. Waddell, Lexington, Mo.  
Frank Rockefeller, Belvidere, Kans.

Gudgell & Simpson, Independence, Mo.  
O. Harris, Harris, Mo.  
Steward & Hutcheon, Greenwood, Mo.  
Mrs. C. S. Cross, Emporia, Kans.

FOR CATALOGUES ADDRESS

# Gudgell & Simpson,

Independence,

Missouri.