







**Christmas Gift Sale Begins**  
**Friday At 9 A. M. At Ware's In Friona.**  
**Shop Early For Wide Assortment**

# See our Wonder

**Make Your Christmas List From Our Wide  
 Items For Father And Brother . . . .**

Men's Long Sleeve  
**Sport Shirts**

3.98 Values \$3<sup>29</sup>  
 4.98 Values \$4<sup>29</sup>  
 5.95 Values \$4<sup>98</sup>

Men's White Manhattan  
**DRESS SHIRTS**

Reg Values To 3.98 \$2<sup>79</sup>

Men's Drip Dry  
**SHIRTS**

Reg. 5.95 Values \$4<sup>79</sup>

Men's Gray Chambray  
 And Khaki Shirts

Values To 3.98 \$2<sup>98</sup>

Men's  
**PAJAMAS**

Values To 5.95 \$4<sup>79</sup>

Men's  
**ROBES & PAJAMA SETS**

\$14<sup>95</sup>

Boy's Wash 'N Wear  
**PANTS**

Values To 4.95 \$2<sup>98</sup>

Boy's Dress  
**PANTS**

Size 6-16 Values To 6.95 \$2<sup>98</sup>

Boy's  
**Sport Shirts**

1.98 Values \$1<sup>69</sup>

2.98 Values \$2<sup>39</sup>

3.98 Values \$3<sup>39</sup>

Men's Gripper  
**SHORTS**

Values To 69¢

3 For \$1<sup>00</sup>

Men's Corduroy

**CAPS**  
**98¢**

Men's Dress  
**HATS**

Full Felts

6.95 And 7.95 Values \$4<sup>95</sup>

Men's Leather

**CAPS**  
**\$1<sup>79</sup>**

Boy's Texan

**JEANS**

Values To 2.98 \$1<sup>98</sup>

ONELOT

**Men's Slacks**

Values To 15.95 \$6<sup>95</sup>

Men's Curlee

**SPORT COATS**

Values To 35.00 \$24<sup>00</sup>

Boy's

**SPORT COATS**

Values To 14.95 \$7<sup>48</sup>

Men's Work Sport

**JACKETS**

Values To 25.00 \$14<sup>95</sup>

Men's Motorcycle

**JACKETS**

Values To 13.95 \$5<sup>00</sup>

ONELOT  
 Men's Dress  
**HATS**

Reg. 15.00 Values \$9<sup>95</sup>

Reg. 10.00 Values \$7<sup>95</sup>

**KHAKI**

Pants and Shirts

Test And Scott Brand

2 Pair For \$5<sup>00</sup>

2 SHIRT TO MATCH \$5<sup>00</sup>

Values To 2.98 Each

**Curlee Suits**

Values To 65.00 \$44<sup>50</sup>

**FLORSHEIM SHOES**

To Close Out At \$12<sup>90</sup>

Rand  
**SHOES**

Values To 14.95 \$5<sup>90</sup>

**Wa**



# Land of Gifts

Make Ware's Your Gift  
Headquarters For The Holidays

## Selection Of Items For The Entire Family Gifts For Mother And Sister . . . .

### Ladies Blouses

Values **\$3<sup>90</sup>**  
To 5.98

### Ladies Dresses

Values **\$19<sup>90</sup>**  
To 29.95

### Ladies Dresses

Values **\$15<sup>90</sup>**  
To 19.95

### Ladies Dresses

Values **\$12<sup>90</sup>**  
To 17.95

### Ladies Dresses

One Group **\$9<sup>90</sup>**  
To Close Out

### Ladies Sweaters

Values **\$9<sup>90</sup>**  
To 14.95

### Ladies Suede DRESS SHOES

Values To 14.95  
**\$7<sup>95</sup>**

### Suede

**FLATS**  
Black, Brown, Green  
Values To 8.95  
**\$3<sup>98</sup>**

ENTIRE STOCK

### Ladies Fall

Hats **1/4 Off**

### Girl's Car

### COATS

Values **\$7<sup>90</sup>**  
To 12.98

### Girl's Car

### COATS

Values **\$5<sup>90</sup>**  
To 8.98

### Girl's Dress

### COATS

Values **\$19<sup>90</sup>**  
To 24.95

Values **\$13<sup>90</sup>**  
To 17.98

Values **\$10<sup>90</sup>**  
To 14.95

### Girl's

### DRESSES

Values **\$8<sup>90</sup>**  
To 10.98

Values **\$6<sup>90</sup>**  
To 8.98

Values **\$3<sup>90</sup>**  
To 5.98

## VISIT OUR BARGAIN TABLE

For Real Values

Hundreds Of Assorted Items

Too Numerous To Mention

## FREE GIFT WRAPPING

ONE GROUP

### Men's Shoes

(33 Pair)

To Close Out **\$3<sup>00</sup>**  
Pair

36 Inch Wide

### Corduroy

Assorted  
Colors  
Values **79<sup>c</sup>**  
To 1.19 Yd.

One Group

### Piece Goods

Cotton Blends

Values **79<sup>c</sup>**  
To 1.29

One Group

### ITALIAN Velveteen

36 In. Wide  
Values **\$2<sup>00</sup>**  
To 2.98 Yd.

Gilbrae

### COTTONS

Values **49<sup>c</sup>**  
To 79<sup>c</sup> Yd.

Double Thread

### HAND TOWELS

17x27  
Reg. 59<sup>c</sup>  
**39<sup>c</sup>**

NYLON

### NET

72 In. Wide

Values **39<sup>c</sup>**  
To 69<sup>c</sup> Yd.

Single Control

### ELECTRIC Blankets

Reg. Price 19.95

**\$12<sup>90</sup>**

Light Weight

### Blanket

Satin Binding

Reg. 5.98

**\$3<sup>90</sup>**

### WOOLENS

56 Inches Wide

Values **\$2<sup>90</sup>**  
To 3.50 Yd.

# re's

NA





# Piggly Wiggly's Pick of the Week Values

Friona's Highest Quality Meat Market

<b>SAUSAGE</b>	Pinkney's Pure Pork	2 Lb Bag	<b>39¢</b>
<b>STEAK</b>	Fresh Pork	Lb	<b>39¢</b>
<b>ROAST</b>	Fresh Pork	Lb	<b>33¢</b>
<b>BEEF</b>	Fresh Ground Daily	Lb	<b>49¢</b>
<b>Club Steak</b>		Lb	<b>69¢</b>

Double  
S & H  
Green  
Stamps  
On All Purchases  
Over  
\$2.50  
Every  
Wednesday

... A selection of finest foods in all departments, chosen to bring you top quality at lowest possible prices! For consistent savings, week after week, shop Piggly Wiggly! You'll find that even with their most exciting low prices, Piggly Wiggly never compromises with quality! If we can't have the best foods for you at sale prices - we won't advertise the sale! So you can be sure of top values, better foods at Piggly Wiggly. Our quality is your greatest economy!

**Miracle Whip** Qt Jar **53¢**

Folger's All Grinds  
**Coffee** One Pound Vacuum Can **73¢**

Borden Tall Can <b>EVAPORATED MILK</b>	Food King 46 Oz Can <b>TOMATO JUICE</b>	Shurfine 20 Oz Jar <b>STRAWBERRY PRESERVES</b>
3 For <b>43¢</b>	<b>25¢</b>	<b>49¢</b>

Borden's Pound Box <b>DUTCH CHOCOLATE</b>	Sturgeon Bay <b>CHERRIES</b> No 303 Can	Rosedale Cut Green <b>BEANS</b> No 303 Can
<b>43¢</b>	3 For <b>69¢</b>	2 For <b>35¢</b>

<b>FROZEN FOODS</b>			
Borden Glacier Club <b>ICE CREAM</b>	Half Gallon		<b>59¢</b>
Lanes <b>MELLORINE</b>	Half Gallon		<b>49¢</b>
Hereford Eat More <b>Beef Steaks</b>	12 Oz Pkg		<b>59¢</b>
Blue Plate Breaded <b>SHRIMP</b>	10 Oz Pkg		<b>45¢</b>

**Bakerite** Shortening 3 Lb Can **59¢**

Garden Fresh Fruits And Vegetables

<b>APPLES</b>	Washington Extra Fancy Delicious	Lb	<b>19¢</b>
<b>ORANGES</b>	Sunkist Navel	2 Lb	<b>29¢</b>
<b>Sweet Potatoes</b>	Maryland Sweets	2 Lb	<b>23¢</b>
<b>POTATOES</b>	US No 1 Idaho Russett	10 Lb Bag	<b>65¢</b>

Supreme Applesauce  
**Cookies** One Lb Pkg **25¢**

Detergent - Giant Box  
**Energy** **53¢**

Niblet Whole Kernel		
<b>CORN</b>	12 Oz Can	<b>19¢</b>

Specials  
Begin  
Thursday  
December 3  
And  
Run Thru  
Wednesday  
(Double Stamp  
Day)  
December 9



**PIGGLY WIGGLY'S FRESH Christmas TREES**  
scent of the North Woods still in 'em

**piggly wiggly**  
The FRIENDLIEST Place to Shop

Phone 3001

Friona









# ATTENTION PARMER COUNTIANS

The State Board of Insurance has approved a Mandatory Safe Driving Insurance Plan, effective January 1, 1960. It is imperative that your local agent receive the following information for renewal of insurance on your private passenger automobile:

1. Full Name and Address
2. Date of Birth
3. Driver's License Number
4. Date and place of any accident occurring during the past thirty-six months.
  - (a) Name of driver when accident occurred.
  - (b) Was damage to property over \$25.00
  - (c) Did accident result in bodily injury or death
5. Date and place of any moving traffic violation, paid fine, or forfeited bail during the past Thirty-six months.
  - (a) Name of operator of vehicle when conviction occurred.
  - (b) Type of violation.

The above information is required of each member of your household who will drive your car.

We will be happy to assist you in filling out the necessary forms -- No obligation of course.

### RATE TABLE

This plan is based on a point system. Most moving traffic convictions count 1 point and accidents count 2 points. Under this Plan your rates will be determined by totaling the points of all drivers resident in your household.

Total Points	Rate
0	Standard Rate less 20%
1	Standard Rate
2	Standard Rate plus 20%
3	Standard Rate plus 40%
4	Standard Rate plus 60%
5	Standard Rate plus 80%
6 or more	Standard Rate plus 100%

It Will Facilitate Matters  
If This Information Is Compiled  
When Your Agent Calls  
On You.

## Your Parmer County Insurance Agencies -

### Graham-Magness Insurance

"Oldest Parmer County Agency"

-Cary Joe Magness-

-Farwell-



### Ethridge-Spring Agency

Insurance - Real Estate Loans

Dan Ethridge  
Frank A. Spring  
Bill Stewart

Phone  
8811  
Frona



### WILSON-BROCK Insurance Agency

"All Kinds Of Insurance"

Joe Wilson - Bovina - AD8-2252 Aubrey Brock



### Rushing Insurance Agency

General Insurance - Hi Plains Savings & Loan Agent

Phone 5301



Frona

### Aldridge Insurance Agency

"Across The Street From The Courthouse"

-Farwell-



### L & L Agency

Marvin Lawson - C. L. Lillard

• Real Estate • Insurance

Phone 4771

Frona

### Bovina Real Estate And Insurance

A. L. Glasscock

AD8-4382



Bank Bldg.

### Douglas-Bingham Land & Insurance Company

THE DEPARTMENT STORE IN  
REAL ESTATE - LOANS - INSURANCE

Phone 8711

Frona, Texas











# CLABORN

FUNERAL HOME  
& FLORISTS

Ph. 2311  
Ph. 3541

# FRIONA

## Wool, Mohair Props Set

Shorn wool incentive price of 62 cents per pound and a mohair support price of 70 cents per pound have been announced for the 1960 marketing year which begins April 1, 1960. These prices are the same as for the first five years of the program running from 1955 through the 1959 marketing years, according to A. B. Wotten, extension economist.

Yearly production of shorn wool is moving toward the 300-million pound goal set by the law. Estimated 1959 production is 252 million pounds, the highest since 1946, and compares to 234 million pounds in 1955, the first year of the wool payment program. Stock sheep numbers increased 3 per cent during 1957 and 4 per cent during 1958, and on Jan. 1, 1959 were the largest since 1948.

ASC offices are completing payments for the 1958 marketing year, the fourth year of the program. The shorn wool payment rate for the 1958 marketing year was 70.3 per

cent, the percentage required to bring the average price of 36.4 cents per pound of shorn wool, grease basis, up to the 62-cent incentive level. This results in a payment of \$70.30 for every \$100 received from the sale of shorn wool, Wooten noted. The payment rate on unshorn lambs was \$1.02 per hundred weight of live lambs marketed.

The payment rates for the 1958 marketing year were higher than anticipated because prices received by growers for wool declined to the lowest since 1941, reflecting the drop in wool prices in the world market of 40 per cent from mid-1957 through early 1959.

Through August 31, 1959, payments for the 1955, 1956, 1957 and 1958 marketing years were approximately \$207.8 million. A small percentage of 1958 payments is yet to be made. From this amount, approximately \$11.4 million was deducted for the self-help advertising and sales promotion program for lamb and wool being conducted by the American Sheep-Producers Council, Inc.

Weeds rob your livestock of good grazing and in addition use four to eleven times more water for growth than grasses. To have more grass for next year's grazing, G. O. Hoffman, extension range specialist, advises spraying with one pound of 2,4-D per acre. One application will usually give good weed control throughout the growing season. This method of pasture weed control method is economical, costing about \$2 per acre.

If you are trying to make money out of hogs, keep them cool, says T. D. Tanksley, extension animal husbandman. When the temperature is 90-100 degrees a hog eats twice as much to put on the same gain as he does when the temperature is 60-75 degrees, he adds.

**FOR SALE  
USED TIRES**  
For  
Plows And Trailers  
See  
**BOVINA  
TIRE SERVICE**  
AD 8-2801 Bovina

## Sheep Can Convert Grain, Grass and Roughage Into \$\$

The necessity of reducing certain crop acreages and turning more cropland to grass and legumes puts an emphasis on farm animals which can subsist on roughages along but also provides a profitable market for grain. Sheep production may help with these problems.

Sheep can convert tender grasses, a large variety of weeds and the usual crop residues into lamb and wool. Many farmers who make no attempt to harvest these forms of roughage can convert some of their acreage to sheep production with little additional cost.

Main requirements for a successful sheepman are having genuine interest in the animals and providing a suitable environment for them, says James A. Gray, extension animal husbandman. The advantages and disadvantages should be considered before a farmer undertakes sheep production.

Sheep will produce two crops

each year--lamb and wool and lambs will fatten on good pasture alone without supplemental feed. Adequate, but not elaborate, facilities are required and the animals are easily handled.

On the other hand, sheep must be protected from stray dogs and predatory animals. They are subject to both internal and external parasites, especially if heavy grazing on small acreages is practiced. Tighter fencing is required than for cattle and foot troubles are likely to develop if sheep are kept on wet or marshy pastures.

The number of sheep a farm will carry on a year-round grazing plan depends on size of pastures, amount of rainfall, soil fertility and amount of supplemental roughages available. Many farmers know the carrying capacity of their farms in terms of cattle. Ordinarily five to seven sheep will replace one cow, depending on size and breed of sheep.

## Hog Situation Looks Better

Better days may be ahead for hog producers. Farrowing intentions for December 1959-February 1960 are down four per cent from last year in the 10 Corn Belt States. If intentions are followed this will be the first reduction in two years and may stimulate a price increase.

Farrowing intentions for the period March 1960-May 1960 will be reported in December and if the number of pigs born in this quarter show a decline, then we can assume hog numbers have turned the corner and headed down, according to Lloyd Bergsma, extension livestock marketing specialist and John McHaney, extension economist.

In the 10 corn belt states, which accounted for 75 per cent of the total U. S. production in 1958, the number of sows farrowed or intended to farrow this fall (June through November) is five per cent larger than during the same months of 1958. This is 23 per cent larger than the 1948-57 average.

The hog-corn ratio has reached a level which would normally promote a reduction in hog numbers, noted the specialists. The current ratio of about 11.5 is the lowest during a fall breed-

ing season since 1955 when the fall hog-corn ratio dropped to 11.4. However, they said, the effect this lower hog-corn ratio normally has on farrowing intentions and hog numbers may be partially modified by the huge supply of feed grains and lower level of feed grain prices.

Hog slaughter during the first nine months of 1959 has been 14 per cent greater than in 1958. Slaughter for the last quarter of 1959 will come largely from the March-May pig crop which was up 9 per cent from last year. With the larger fall pig crop in 1959 slaughter can also be expected to continue high during the first half of 1960.

The specialists noted that for every 10 per cent increase in the number of hogs marketed there is usually a 25 per cent decrease in hog prices. If beef prices are relatively high, an increase in the consumption of pork can be expected. However, this increased consumption will not be enough to do more than keep hog prices from skidding much lower. With marketings expected to increase in 1960 as a whole, the specialists predict hog prices to average close to or a little below those of 1959.

This is not the time to expand your hog production, they added, but it is the time to improve breeding stock, become more efficient and to get ready for better hog prices in some early year following 1960.

Almost half of all persons known to have active tuberculosis are not in hospitals.

Texas' share of the 1960 upland cotton acreage allotment of 16 million acres will be 6,761,512 acres. It was announced by Secretary of Agriculture Ezra Taft Benson that alternate--Choice (B) -- farm allotments for the 1960 upland cotton crop will be 40 per cent larger than the "regular" Choice (A) allotments for the same farms. An acreage allotment of 22,243 acres will be in effect for the extra long staple cotton grown in Texas in 1960. The national marketing quota will be 66,590 bales with a 64,776 acre allotment.

Visual Care Contact Lenses  
**DR. B. R. PUTMAN**  
OPTOMETRIST  
Office Hours: 9-5 Sat. 9-1  
111 East 3rd St.  
Muleshoe, Texas

## CRANKSHAFT GRINDING

- COMPLETE AUTOMOTIVE MACHINE SHOP SERVICE
- COMPLETE STOCK OF AUTO PARTS
- EXPERIENCED PERSONNEL

## Elliott Auto Parts

311 W. Seventh Clovis, N. M.

"MORE THAN JUST A PARTS STORE"

See Stan for Precision Machine Work or your needs on GEAR HEAD REPAIR DRILLING B-J PUMPS Parmer County Pump Company -FRIONA-

## You Are Cordially Invited To WICKER-BROOKS JEWELERS

7th & Main

Clovis, New Mexico

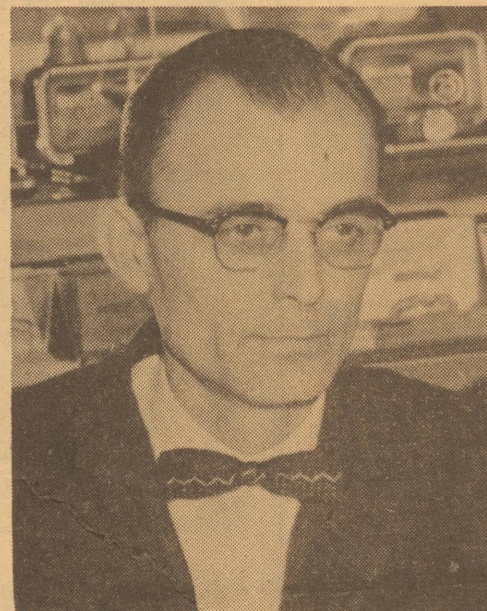
PO 3-9307



EXTERIOR VIEW OF WICKER-BROOKS JEWELRY STORE LOCATED IN THE STANLEY PAWOL PHARMACY BUILDING.



KATHLEEN WICKER SALES



WAYNE WICKER CO-OWNER AND MANAGER



WAYNE PERKINS REPAIR DEPT.

YOU ARE INVITED TO MAKE WICKER-BROOKS YOUR GIFT HQS

Check This List Of Famous Name Brands:

### WATCHES:

- ROLEX
- HAMILTON
- BULOVA
- ELGIN

### DIAMONDS:

- PRISM-LITE
- TRUE-LOVE
- LOVEBRIGHT

### COSTUME JEWELRY:

- NAPIER
- WHITING & DAVIS

We Invite Credit Accounts

## WICKER-BROOKS JEWELERS

7th & Main

Clovis, New Mexico

PO 3-9307



## Let 'er blow!

You're safe from windstorm damage

with a

### LOK-RIB STEEL BUILDING

**Greater Strength** — There's a big difference between light metal sheathing and LOK-RIB's heavy-duty 18 or 20-gauge steel panels bolted together. Let the wind howl — let the snow pile deep — let lightning strike — you can still enjoy peace of mind with your LOK-RIB.

**Exclusive V-Rib Construction** — This exclusive LOK-RIB feature provides the extra strength that lets you stop worrying while the weather plays havoc with ordinary buildings.

**Quick Erection—Low Cost** — The LOK-RIB Building goes up fast and easy — eliminates high framing costs because the LOK-RIB panels are both framing and sheathing. In 24, 32, 40 and 48 foot widths.

See us for all the facts on LOK-RIB Steel Buildings.

**Sneed Supply Co., Inc.**

PHONE 4170

MULESHOE

