

County Needs Blood — Mobile Unit Here TODAY

FIRST BAPTIST CHURCH

The Red Cross Bloodmobile, which has a contract with the Hansford County Red Cross Chapter, will be in Spearman today, July 10, for a blood drive to replenish the dwindling blood supply for Hansford County citizens.

Blood donated at the mobile today is for use (free, for service charge) in the hospital and in any other hospital in America... Hansford County citizens, to meet the county quota, of its citizens need to be donors.

Donors are asked to go to the First Baptist Church in Spearman between the hours of 9:00 a.m. and 2:30 p.m.

This blood program is a joint effort of the Red Cross, Hansford County Medical Center, the hospital, and the Red Cross Chapter. The program provides a safe and dependable supply of whole blood and blood products and furnishes services to meet all blood needs in a community, or the blood needs of individual donors and their families wherever they may be hospitalized.

In communities served by this program, physicians benefit by knowing that a safe, dependable supply of blood is available for treating their patients. Hansford Hospital benefits. Patients benefit by having their blood needs met without charge for the blood itself without the necessity of getting replacement donors.

The Red Cross Blood Program is financed as a cooperative venture.

The national organization finances certain portions of the program from funds contributed by all the chapters through the annual fund campaign.

Participating chapters budget for a portion of the expenses of the region and for their own expenses for the

program and include this as a part of their annual fund campaign goal.

Nationally and locally the American Red Cross is governed by volunteers, most of its duties are performed by volunteers and it is financed by voluntary contributions.

Hansford County citizens have fallen down greatly on blood donations the past two years. The county quota of blood has not been met.

If county citizens continue to show this lack of concern for the blood program, the county Red Cross Chapter stands the chance of being dropped from the blood program.

BLOOD---the magic medicine---comes only from people.

Roll up your sleeve and give a pint. It does not hurt one bit, and you will replace your own blood in 48 hours!

Thursday, today. Spearman First Baptist Church, 9:30 a.m. to 2:30 p.m.

39 Year Old Morse High School Closed

Recent action by the Morse Independent School District board of trustees will close the High School there and transfer the students to another institution.

Spearman has been named the receiving district according to Morse School Supt. Bob Wills, but no action will be taken until July 14 when the Spearman School Board will meet and officially accept the proposition. Following this meeting, the County School Board will meet and approve the contract.

"Our enrollment was decreasing," Wills said. "Our attendance dropped down so low we just could not justify it anymore."

This spring there were 18 high school students at Morse—five of whom were seniors. There were 86 students in the Morse School system this year but the number was expected to drop sharply because of a new transfer rule that would allow students to attend another institution if they were accepted by the receiving district. Had the school continued, there would be about 9 students in high school this fall.

Cost for transferring the students will be decided after Spearman accepts the proposition. It is expected that Spearman will not charge additional tuition.

Expenditures in the Morse district, Wills said, will be about the same. "We have one or two teachers we might eliminate but we have already signed contracts with them."

Budget for the institution has been at about \$156,000, he said, but that figure might be reduced to \$10,000 or \$15,000 in the coming years if the high school is not returned to Morse.

Trustees managed to squeeze by a \$150,000 bond issue proposition for the construction of a new cafeteria and auditorium in 1960. Wills said the structure would probably receive as much use from the grade school alone.

"We just have so few students," said Willard McCloy, board president, "we thought it impractical to maintain the high school. It was just done for a one-year period, but once it's gone, we will probably never get it back."

Robin Giblin, another board member, opposed the high school transfer because "I believe it might get better before it gets worse. I think now we will eventually lose the grade school too."

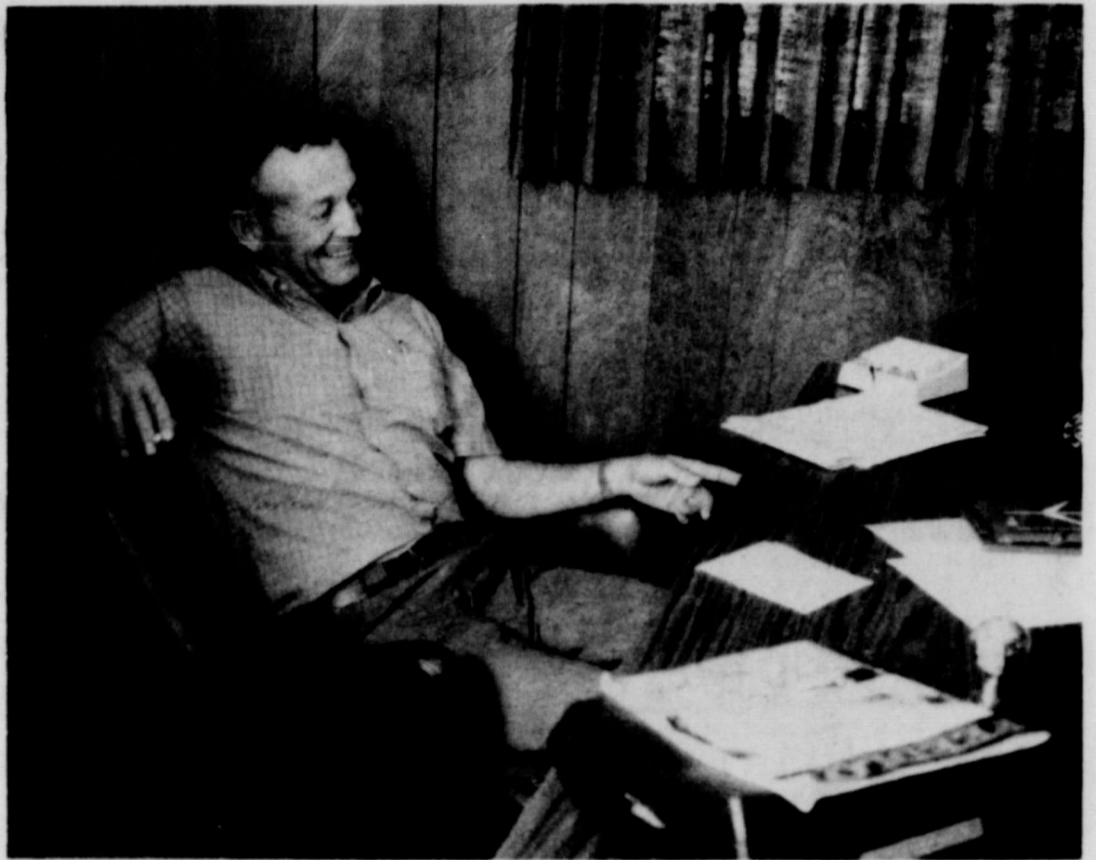
Giblin said he felt expenditures in the system would be about the same because they still have to maintain the school and an extra bus and "we will lose some ADA (average daily attendance) money that will go to Spearman."

R.C. Womble, vice president and long time member of the board said the action "looked like the best thing we could do for the good of the kids. There have been no new irrigation wells drilled and the price of wheat is going down--we don't have many new people coming in."

Womble said the trustees wanted to transfer the students to Spearman because it is a AA rated school, Gruver, which is about 10 miles closer to Morse, is an A rated institution.

Another former trustee, H. B. Parks, said he felt the action was "the only thing that they could do."

While the transfer action was for only one year, trustees contacted said they had little hope of ever returning the High School facility to Morse.



Palo Duro Feed Lots A Big, Busy, Place

If you want to see a feedlot in full swing, just drive out a bit South of Gruver and take a look at the Palo Duro Feed Lot.

When you enter the private office of Ed Rafferty, you'll be impressed with the decor and comfort of the accommodations. In fact, you'll find it hard to believe you're relaxing in the middle of a big busy feed lot.

You'll find Ed Rafferty a very pleasant host and the sort of man you get to know in a great big hurry. When you ask him about the history of Palo Duro Feeders, he'll "tell it like it is" or, at least that's the way he told it to this reporter.

Ed Rafferty built the feed lot in 1962. At that time, he could accommodate 400 head of cattle. The original lot was built with local labor.

Rafferty Feed Lot became Palo Duro Feeders on March fourteenth of this year when it became a corporation. Ed is President of Palo Duro Feeders and the other stockholders are John Daniel and Dale Hoover of Perryton, George Doshier of Vega and Don Hart of Gruver.

The big lot is just finishing up an expansion program and, at the present time, has over nine thousand head of cattle on feed. The expanded operation will accommodate 11,500 cattle.

Three wells on the premises supply water for the operation and the steam flake type feed mill has a capacity to feed 12,000 head.

The corporation has no farming interests and is devoted solely to the custom feeding of cattle.

During your conversation with Rafferty, he's sure to mention some of his employees such as Penny Davis, the bookkeeper, Jim Tiner, Richard King and Mike Trevino. He'll also tell you about Clyde Soaps who supervised the construction.

Palo Duro Feeders employs between 15 & 20 men in addition to the office staff.

Ed has been a native of Hansford County practically all his life. He went to school in Gruver. He most surely got a thorough education in one category and that's cattle because it certainly takes a lot of know how to direct an operation finishing out some 25,000 head of cattle per year.

After a pleasant visit with Ed Rafferty, take a trip around the 280 acre lot. You'll see cowboys on horseback herding cattle from place to place, feed trucks loading up in the feed mill and delivering feed to the numerous feeding troughs and the cattle lining up for feed.

As we drove away, I looked back at the billowing clouds over head and felt a cool breeze that seemed to say "All's well along the Palo Duro."

PATTERSON SERVING JAIL TERM

Hansford County Sheriff's officers Sunday evening apprehended William Patterson about 18 miles South of Gruver while he was hitchhiking to Borger.

A warrant for his arrest had gone out after he had been charged with taking clothes and money which did not belong to him. Patterson took clothes from one Leslie Barton and \$140.00 from another man. All three were farm hands employed by Nick Holt of Gruver.

Patterson was tried in County Court Monday when Judge J. H. C. Lee sentenced him to 30 days in jail plus fine and court costs.

The subject was convicted of stealing the clothes and will be charged later for theft of the money. Both the money and clothes were recovered.

Super Service Burglary

Hansford County Sheriff's officers and the Spearman Police Department are investigating a burglary which occurred sometime Monday night at Spearman Super Service.

The burglary was discovered by Floyd Cook when he arrived for work about 6:30 a. m.

Entrance to the building was gained through the bathroom window.

Taken in the theft was \$268.00 in cash from a tin box left in a filing cabinet.

Equalization Board Meeting In Morse

The Board of Equalization of the Morse Ind. School District will be in session on Tuesday, July 15, 1969, beginning at 10 A.M. at the Morse school building, for the purpose of hearing all protests and determining the valuation of property subject to taxation by the Morse Ind. School District.



The Do Si Do Square Dance Club will have its regular dance Saturday night at Community Building at 8 p.m.

Aaron Love will be calling. Everyone is invited.

Large Dual Gasser Opens New Field

Phillips Petroleum Company reported this week the opening of a large dual gas field in Hansford County. Phillips suggested a new field during the week.

Phillips reported Lower Morrow perforations between 7,149 feet for a rate of 183 million feet natural. The Morrow, perforated between 6848 to 6863 feet, yielded for 7.1 million feet of gas daily after stimulation and fracture treatment.

Phillips suggested Farwell as the designation for the new field opened up by the Anderson "F" location. The field is four miles from Morrow production, about three miles east of

nearest production which is in the shallow Texas Hugoton Field. The Lower Morrow is one of the largest potentials reported for the county.

Phillips has scheduled one-half mile west confirmation test to the new dual well but is waiting on a contractor.

The huge gasser was spudded February 28, drilling completed May 12 and the well was tested June 5.

Other Hansford County wells of interest include: Phillips Petroleum Co. No. 1 Collard "B" (1980 feet from south and east lines) Sec. 208, Blk. 2, GH&H Survey.

Sidwell Oil & Gas, Inc. No. 1 Holt (1319 feet from north and 1320 feet from east lines) Sec. 162 Blk. 2, GH&H Survey.

Gunshot Fatal To 16-Yr Old

Ricky Smith, 16, son of Mr. and Mrs. Ralph G. Smith of Dimmitt, who suffered a gunshot wound in the head in a hunting accident here Saturday, died Sunday in Northwest Texas Hospital in Amarillo.

Funeral services were held at 10 a.m. Tuesday in the First United Methodist Church in Dimmitt with the Rev. Jim Pickens, pastor, officiating. Burial was in Castro Memorial Gardens.

The Smith youth was rabbit hunting with four companions about 15 miles southwest of Spearman at the time of the accident. Riding in the back of a pickup, he stood up in front of the gun just as another youth fired at a rabbit. He was taken first to Hansford Hospital in Spearman, then flown to Amarillo in a private aircraft. The youth underwent surgery, but died early Sunday.

Born in Hereford, he was a junior at Dimmitt High School. The family was here over the holiday week end visiting Mrs. Smith's relatives. His mother is the former Avis Harbour, daughter of Mr. and Mrs. T.I. Harbour of rural Spearman.

Survivors include his parents, Mr. and Mrs. Ralph G. Smith and brother Stephen, all of Dimmitt; and grandparents, Mrs. Lurline Kendall of Hereford and Mr. and Mrs. T.I. Harbour, Spearman.

A scholarship memorial fund is being established for the deceased youth.

Pfc. Tommy Gibner Dies In Vietnam

For the second time in a period of two weeks, the Spearman community is in mourning for another one of its native sons who has given his life in the service of his country.

Official word was received by Mr. and Mrs. Woodrow Gibner Saturday evening that their son, Tommy, had been killed in action in Vietnam. The 21-year old Spearman soldier had been listed "missing in action" since June 30 when he went out on patrol from Cu Chi.

Sgt. Wall, a Guyton, Okla. based Army man, told the Gibner family Saturday night, that the body of their son had been discovered.

The Guyton Sgt. had delivered the same such news to another Spearman family on June 22 when Mr. and Mrs. Lloyd Buzzard were notified that their 21-year old son, Lynn, was dead from wounds received in fighting action near Saigon.

Both Pfc. Gibner and Pfc. Buzzard were members of the 1966 graduating class of Spearman High School.

While in high school, Tommy Gibner was active in band 4 years, choir 2 years, and manager for the Lynx basketball and football squads. Following graduation, he attended McMurry College at Abilene as a ministerial student. He was a member of the First United Methodist Church of Spearman and very active in the youth activities for the church.

He entered the service on October 14, 1968 and was shipped to Vietnam the past April where he was a member of the 1/505 Infantry, Company D, U. S. Army. He died on his 21st birthday.

Survivors include his parents, Mr. and Mrs. Woodrow Gibner, of Spearman, and a brother Lynn Gibner of Lubbock.

Funeral arrangements will be announced by Boxwell Brothers Funeral Home of Spearman pending the arrival of the body from Vietnam.

The Gibner family request

that friends wishing to honor the memory of their son with memorial gifts, do so by contributing to the Tommy Gibner Memorial Fund in care of the United Methodist Church. Offerings for this fund will be received by Jack McWhirter, Spearman, Texas. The funds will be used to purchase new songbooks for the church.

Rainfall 1.37 In.

Storm clouds drifted over the area Friday and before sunrise a long uncomfortable heat wave over the High Plains had been broken by cooling rains.

Temperatures had hovered at 100 degrees and above for about 10 days prior to the rains which left 1.15 inches in the official weather gauge Friday night and another .22 Saturday.

June ended with a total of 2.18 inches which brought the year's total to 8.21 inches through June.

The hottest day in June was the 28th when the thermometer soared to 102 degrees, but this record has been broken twice; on July 3 and 4 by a hot 103! On the 14th day of June the lowest temperature was recorded for the month, a cool 45 degrees.

The official weather chart for the month of July follows:

Date	HI	Low	Prec.
July 1	98	68	
July 2	101	70	
July 3	103	71	
July 4	103	71	1.15
July 5	101	67	.22
July 6	93	65	
July 7	90	65	
Rain total			1.37

MARKETS		
WHEAT	\$1.14	
MILO	1.88	
SOYBEANS	2.35	
OATS	.70	
CORN	1.18	
BARLEY	.82	

The average person has about

12 PINTS OF BLOOD

He gives ONE PINT-- 48 hours later-- he still has

12 PINTS OF BLOOD

Library Thrift Shop Having Half Price Sale

The Thrift Shop, operated by the Twentieth Century Club of Spearman, located in the local library building on Main Street, will be open Saturday, July 12. All prices will be cut in half, for this the last sale day until August 16. The shop will be closed following the Saturday, July 12 half price sale, until August 16, when it will reopen for the fall season.

The Twentieth Century Club is asking for fall clothing to be brought on August 16. Any other items are very welcome, and will be accepted on the reopening date.

One Club Tourney Is Friday

Friday, July 11 (tomorrow) members of the Hansford Golf Club are invited to participate in a "one club" tournament.

The off time is set for 8:30 p.m. A one dollar entry fee will be charged for the 9-hole tourney.

Both men and women are urged to come out and enjoy the fun. Players will choose one club with which they must drive, chip and put for the entire evening.

This tournament is one of a series planned this summer by the recreation committee. Tournaments are held every Friday at 6:30 p.m. Friday's play will take the place of one scheduled for the 4th and the next regularly scheduled tourney will be a Scotch doubles set for Friday, July 18th.

Members and non-members alike are invited to putting tournaments held each Tuesday night at Hansford Golf Club.

Mr. and Mrs. Wesley Weston and family are here visiting his aunt Mr. and Mrs. Homer Martin and her sister Rev. and Mrs. George Bollinger. They all attended the TEXAS show in Palo Duro Canyon Tuesday night. The Westons live in Jonesboro, Arkansas.

One Car Accident Tuesday

E. Elsie C. Dobbs, a Spearman resident, and her 16-year old grandson Benny of Amarillo were treated and released at Hansford Tuesday morning following a one-car accident.

Investigating officer, Patsy Tom Wicker, said the vehicle was traveling on FM road 759.

Mrs. Dobbs apparently lost control of her car. Mrs. Wicker said something seemed wrong with the steering. The car skidded back and across the highway severing before going into a ditch across the ditch and into a field. The vehicle was overturned and landed on its side.

Both passengers were treated for bruises and abrasions.

Childrens Story Hour Set For Saturday Morn

All children ages 5 thru 12 are invited to a story hour at Hansford Library Saturday July 12 at 9:30 a.m.

Mrs. Bill Sheets and Mrs. Joe Trayler will conduct the program.

This is a part of the summer program for children sponsored by Friends of the Library.

There is no charge for the story hour.

SENTENCED IN COUNTY COURT

In County Court Monday, Judge Johnnie C. Lee fined William Patterson \$75.80 plus a 30-day jail sentence. Patterson was being tried on theft charges.

He was charged with taking clothes and money from Leslie Barton in Gruver on July 4.

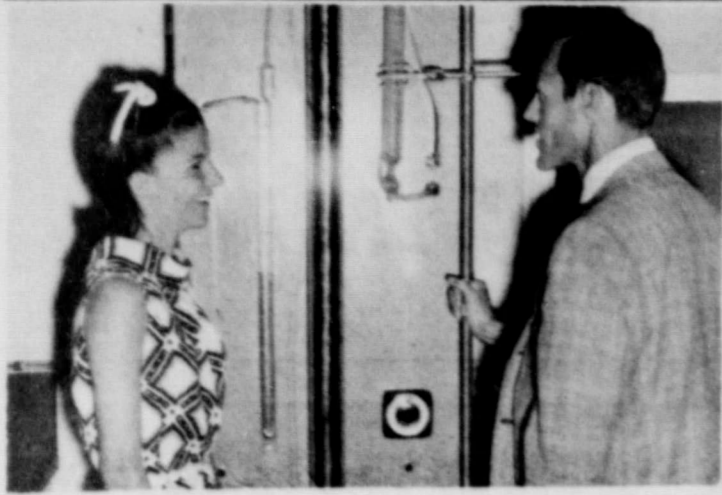
Both men are farm laborers, and give their address as Braunsville, Texas.

Mrs. Maebelle Lawrence of Plainview is visiting in the home of her daughter, Mrs. Porky Holland.

Ward Held In Custody

Lloyd Van Ward, a transient farm laborer who has been employed in the Gruver community, is in custody in Hansford County Jail in lieu of \$1,500.00 bond. Ward is charged with theft of a billfold belonging to John Coiner. Coiner and Ward have been working for John Robinson Farms, west of Gruver.

He was apprehended in Dalhart Monday and brought to Spearman by Hansford County Sheriff's officers. The billfold contained \$82.00 in currency, credit cards, etc. All but the money was recovered.



PARTICIPANTS in the 14th annual Junior Engineers' and Scientists' Summer Institute at New Mexico State University, Las Cruces, included Kandy Vaughn from Spearman. About 60 high school students from 16 states spent June 16-28 at NMSU becoming acquainted with various scientific and engineering areas. Career guidance was the purpose of the program.



YOUNG COWHAND, Speedy Hauffman is shown here on one of the cow ponies he rides with his father Gerald Hauffman who is the foreman of Circle Creek Ranch at Kaufman, Texas. The Hauffmans are former Spearman residents.

Spearman Group Recognized At "TEXAS" Show

The 1500 people who attended "T E X A S" last night had an unusual experience. They not only saw a show, they were in one. About half an hour before curtain time, a helicopter began to hover over the area. The announcement was made over the loud speaker that a well known photographer, Bill Rhew, who makes documentary films, was in the bird making a sequence of the Canyon and the theatre and the crowds and the backstage activities, for television. He had taken shots of the show from the ground on previous occasions. The helicopter was piloted by Joe Batson who uses it several times each year in the Canyon to take fireworks and heavy lights from the stage of the theatre to the top of the 600 foot bluff behind the stage. The fireworks are huge bombs which are shot from the top of the cliff.

from the greatest distance went to a young lady from Perth, Australia. For tickets to "T E X A S" write Box 268, Canyon, Texas 79015. There are performances each day except Sundays through September 1, Labor Day, 1968. At intermission, a group from the Baker and Taylor Drilling Company of Spearman was recognized from the stage. The people in this company are planning a group party to the show every week until everyone comes who wishes to.

Mr. and Mrs. Kiff White, Mary Sparks, Mr. and Mrs. Troy Sloan, Sue and Pat, Mr. and Mrs. Tommie White and children, Mr. and Mrs. James White, and Mr. and Mrs. Garland Head all attended the wedding of Miss Cathy Hall in Pampa Thursday evening July 3 at 8:00. Miss Hall is the granddaughter of Mr. and Mrs. Kiff White.

Visitors in the home of Mr. and Mrs. M. W. Walker over the weekend were Mr. and Mrs. Preston Treadwell, Matt and Annette of Amarillo.



P.O. Box 458 213 Main Street Spearman, Texas 79081

WILLIAM M. MILLER
Editor and Publisher

THE SPEARMAN REPORTER
Published every Thursday at Spearman, Texas. Second class postage paid at Spearman Post Office, 79081

Any erroneous reflection upon the character of any person or firm appearing in these columns will be gladly and promptly corrected upon being brought to the attention of the management.

SUBSCRIPTION RATE--Hansford, adjoining counties, \$7.00 yr. Other points, \$5.00 or in combination with The Hansford Plainsman, \$9.00 yr.

Advertising rates on request.

Visiting in the home of Mrs. Elsie Mathews and Karon over the past weekend were Mrs. Mathews sister, Mr. and Mrs. Warren Towe and 2 boys of Oklahoma City.

Linda Smith, daughter of Mr. and Mrs. Don Smith of Spearman, visited in her home over the 4th of July weekend. Linda is attending the summer session at Stillwater.

Mrs. Bob Wisdom and son Timmy recently visited with her parents, Mr. and Mrs. S. C. Melton in Olney, Texas. Mrs. Wisdom's son, Danny Wisdom of Los Angeles, Calif., is now in her home visiting.

Guy Dell White, daughter of Mr. and Mrs. Guy White of Spearman, is in Danville, Kentucky studying speech and drama at the Pioneer Playhouse during the summer stock season.

Mr. and Mrs. Lee Farren and son Ricky of Groves City, Pennsylvania, visited last week for about 5 days, in the home of his brother Mr. and Mrs. Paul Farren.

Mr. Bob Phillips and Bonnie Vernon were home visiting with their parents, Mr. and Mrs. Peter Vernon over the past weekend. Both the girls are attending summer school at Canyon.

AT LEAST

\$15000

WIN Free Cash JACKPOT DAY



LAST WEEK'S WINNER NO WINNER LAST WEEK

SHURFRESH COUPONS BRING YOU: SPORTS EQUIPMENT, LINENS, TOYS, GAMES FREE

Nothing to Buy... You do not have to be present to WIN

Register Just Once You're then in the "POT" for the weekly Award

Wonderful Cash Dollars

Birdseye Orange Drink	Parli 'Mexica' Style	T-BONE STEAK	Top Round	Boneless Stew
Awake 9 oz. Can 29¢	Dinner each 38¢		Boneless lb. \$1.49	Extra Lean lb. 89¢
Shurfine Whole Spear	Food King 10 oz. Sliced		Club Steaks	Pork Fritters
Broccoli 10 oz. 26¢	Strawberries 24¢	USDA Choice Beef	Boneless lb. \$1.89	Heat & Eat lb. 98¢
Honey Buns Merton's 'Ready to Eat' 9 oz.	25¢	\$1.19	Swiss Steak	Baby Beef Liver
Coffee Maryland Club 6 oz.	Peaches Del Monte Cling 24 can 26¢	RIB STEAK	Boneless lb. \$1.19	Fresh lb. 59¢
Dressing Merton's Fancy-quart 36¢	Crisco All Vegetable Shortening 9 lb. Can 78¢	USDA Choice Beef	SIRLOIN STEAK	
Margarine 3 for \$1 Shurfresh Corn Oil Yell-O-Quarters lb.	Coldpower Coldwater Detergent-giant Box 68¢	lb. \$1.09		\$1.09
Crackers Sunline HI-HO lb. box 38¢	Wrap Reynolds Aluminum Foil 12 x 25 34¢	GROUND BEEF		
Peas Del Monte Early Garden 303 Size Can 22¢	Towels Paper Scott's 'Jumbo Roll' 32¢	Fresh & Lean	BACON	Kornland Sliced lb. 59¢
LUNCHEON MEAT Wilson's 'Savory' 12 oz. Can 35¢		lb. 59¢		

FRESH PRODUCE		Shurfresh Sweet or Buttermilk Ovenready 10 to Pop-open Can	Gelatin All Flavors 3 oz. Box
PLUMS	Sunkist Large Juicy	Biscuits 4 for 29¢	JELLO 4 for 39¢
California Burmese "Red" lb. 19¢	ORANGES lb. 18¢	Imperial Cane	ORANGE DRINK
	California Crisp Green	SUGAR 5 lb. Bag 59¢	Shurfine Pineapple-Grapefruit or Mix-or-Match
	CABBAGE lb. 8¢	Liptons Brisk	46 oz. Can 4 \$1.
CELERY Green Pascal lb. 18¢	LETTUCE	4 lb. Box 39¢	
ONIONS California Large Sweet Red lb. 15¢	Large Solid Heads Iceberg lb. 12¢	Lanes Sherbet or Flavors	ICE CREAM Half Gallon 67¢
			Week-end Values for Thursday-Friday & Saturday
		COKES Regular or King Size Carton of 6 Plus Dep. 46¢	Cut Rate GROCERY

Fiddle-Free Color TV by RCA



106 E. Kenneth
PANHANDLE VETERINARY CLINIC
 Southwest of Spearman
 Phone 659-2100

8:30 a.m. to 5p. m.
T. R. LATTA, D.V.M.
H. B. RINKER, D.V.M.

GORDON CUMMINGS
 Refrigeration And Air Conditioning
 Phone 659-2721
 Phone 659-2441

WHITE HOUSE LUMBER CO.
 Building & Plumbing Supplies
 PHONE 659-2818

Boxwell Bros.
 Funeral Home
 Flower Shop
 Night Phone 659-2212
 Spearman, Texas

SERVICES
 BAKING & CAKES, Mrs. Gray Graver, 733-2514.
 48T-rtnc

REAL ESTATE
 SALE--8 bedroom brick. Fenced backyard. S. Dresen, Ph. 659-295-rtnc

REAL ESTATE FOR SALE
 Will sell you 3-bedroom house and lot, 60' x 140' for \$4,150.00 if you will do balance of work such as putting in street of foundation and utility lines.
 A man with good credit can buy this house for no down payment. House is located on North Brandt.
 For particulars call Russell Beckwith, 274-4795, Borger, Texas or see J. L. Brock at 206 Main, Spearman.
 25S-rtnc

FOR SALE--3 bedroom home, 730 Cotter Drive. Carpeted. Central heat. Phone 659-3190.
 26T-rtnc

FOR SALE--In Morse, 1 bedroom home (lubbock built house) large kitchen, air conditioner and stove. Call 878-2711, 878-2294, or 878-2707.
 32t-4tc

For Sale: 24'x 60' building in Hardesty, Okla. Good shape--divided into Apts. Will sell cheap.
 33T-1tc

FOR SALE
 FOR SALE---sundy clarinet, used 2 years, \$75. Also Buescher Saxophone \$70, need repair. Call 659-2632.
 28t-rtnc

IT'S inexpensive to clean rugs and upholstery with Blue Lustre. Rent electric shampooer \$1. Spearman Hardware.
 33T-rtnc

FOR SALE--Smith Corona Typewriter. Primary type size. Practically new. Phone 659-2942.
 33T-rtnc

For Sale or Rent: 1967 Nameo Mobil Home 12x60, Washer and Dryer. 3 bedrooms, Low equity. Call 338-6972 in Guymon or 659-9974 in Spearman and ask for Georgia McLeod. Or call 659-3656 after 1. J. L. Hamilton, 711 Sunset Lane, Sunset Villa #22, Guymon, Okla.
 31t-rtnc

FOR SALE: 1967 Town and Country Mobile Home 60' x 12; 4 bedroom 1 3/4 baths. Plumbed for washer and dryer. Carpet. Small equity and assume payments. Larry Sexton. 659-3536 after 6 p. m.
 32S-rtnc

FOR SALE--1965 Town and Country Mobile Home 60' x 12; 4 bedroom 1 3/4 baths. Plumbed for washer and dryer. Carpet. Small equity and assume payments. Larry Sexton. 659-3536 after 6 p. m.
 32S-rtnc

FOR RENT
 For Rent--Furnished 2 bedroom house, fenced yard, 221 S. Hazlewood. Contact Mrs. R. W. Bullard, 711 Sunset Lane Apt. # 23. Phone 338-7022. Guymon, Okla. Or call 659-3257 or 659-2248.
 31t-rtnc

FOR RENT: Furnished bachelor quarters, kitchen privileges. Call Jim McLain, 3418.
 32S-rtnc

FOR RENT---Two bedroom Trailer, 12x46. Call 659-3464.
 32-3to

FOR RENT--Furnished, clean air conditioned, TV's available. Downtown Apts. Phone 2269.
 10T-rtnc

FOR RENT--Furnished apt. 606 S. Bernice Street. Telephone 659-2652.
 2-rtnc

OFFICE SPACE FOR RENT
 16 SW Court St. Spearman, Tex. Phone 659-2180 or 659-2156
 23T-rtnc

House For Rent--6 room house. Will give a few months rent to repair house. Call 2148 after 6 p. m.
 33T-6tp

FOR RENT--2 bedroom furnished trailer. Call 3017 or 2770.
 33T-2tc

FOR RENT: 2 bedroom house, 112 S. Endicott. Phone 352-6574 in Amarillo.
 32T-rtnc

WANTED
 WANTED: Year round farm hand; must be experienced in irrigation and willing to work. Most Sundays off. House and pick-up furnished. Good wages and bonus. References Required. Loyall Turner. Call 659-3134 evenings. Rt. 3, Box 15, Spearman, Texas.
 rtn

DESIGNED FOR TEXAS
 Net \$800 to \$800 monthly for only a few hours work per week as the exclusive dealer for the exciting new UNO-TRON process. An outstanding opportunity with a yearly potential of over \$60,000 in your protected Territory. Total investment secured 100% by inventory only \$2,000. Write NAMS, 2018 Adolphus Tower, Dallas, Texas, 75202.

CANDY SUPPLY ROUTE:
 Unusual opportunity for man or woman to restock new type coin dispensers with high quality packaged food products. Handling brand names only. No selling. Dependable person can net VERY HIGH EARNINGS. Part or full time. Requires \$1150 to \$3250 cash secured by inventory and equipment. Write for personal interview, giving phone number to: STRATEGIC FRANCHISES 500 South Ervay - Suite 629 A, Dallas, Texas 75201. 33-2tp

WANTED--Good farmhand.
 Modern unfurnished house. Call 3416.
 33T-rtnc

WAITRESS WANTED--
 Must be neat and clean & experienced. Apply in person to Georgia McLeod at Miller's Cafe or call 3656 after 1 p. m.
 20T-rtnc

LEGAL NOTICE
NOTICE OF PUBLIC HEARING
 The Zoning Board of Adjustment of the City of Spearman, Texas will hold a Public Hearing on July 14, 1969, 6:30 p. m. at the City Hall, Spearman, Texas for the purpose of considering the application of Mr. Raymond Sparks to locate a mobile home at 515 S. Haney, Lot 3, Outlot #31, City of Spearman, Texas. The Zoning Board of Adjustment will determine if the request for a Non Conforming Use Permit will be granted.
 s/ Donald Denham
 Chairman, Board of Adjustment, Zoning Board of the City of Spearman, Texas.
 32T-33T-2tc

The Board of Equalization of the Morse Ind. School District will be in session on Tuesday, July 15, 1969, beginning at 10 A. M. at the Morse School building, for the purpose of hearing all protests and determining the valuation of property subject to taxation by the Morse Ind. School District.
 32S-2tc

We are happy to announce the Association of Dr. L. R. Ingram with Dr. E. E. Novak, General Dentistry 712 S. Roland Spearman, Texas Monday - Saturday 8:30 - 5: Phone 659-3315



Let Me See ... by Sybil

In a beautiful post card mailed July 4 from Manset, Maine my traveling friend, Mrs. G. E. Oakes said she was enjoying an interesting trip and seeing beautiful country--many historical places. Mrs. Oakes, who is spending a year traveling the USA with her sister said "remember me to everyone."

I don't guess we can be surprised nowadays at anything we see or read, but an article in Newsweek Magazine last week shocked me nevertheless. It stated that a legal secretary from Oakland, Calif. has gone so far as to hail the Deity into court for alleged mismanagement in "the maintenance and operation of the universe." In her suit, 32-year old Betty Penrose is seeking \$100,000 in damages resulting from a bolt of lightning that struck and burned her home nine years ago. She alleges that God did this "with full knowledge" --and "with malice and ill will."

The Sonoma County court clerk has issued a summons made out for "God, also known as Jehovah, also known as the Creator," which covers most of the defendant's aliases. If he fails to answer the summons, Miss Penrose's boss will seek a default judgment. Thus far, several people have got in touch claiming to be God, but Miss Penrose will not believe them. She is not out to prove that God exists. "I'm a Christian," she says. Rather, she hopes to recoup the earthly goods that God has seen fit to take away.

Taney urged his secretary to bring suit after learning that a 32-acre ranch near Sebastopol, Calif., had recently been deeded over to the Creator by folk singer Lou Gottlieb. The singer gave God the tract after county officials issued an injunction prohibiting him from allowing homeless hippies to set up camp among his rolling hills and redwoods. Gottlieb has already paid \$15,000 in fines; now, he says, officials will have to collect from God--which is exactly what Taney hopes to do. Since the Almighty owns the ranch, Taney argues, it can be attached if Miss Penrose wins her suit. Gottlieb maintains that "all land belongs to God", but Taney is interested only in that property in which God holds legal title.

Too Late To Classify
 MORSE TOMATO SHED--fresh, vine ripe tomatoes picked daily. Located on highway in to Morse. Joe and Irene Reeves. 33T-3tp
 Lots For Sale--Choice home building site, corner lot on Barkley, 100' x 150'. Lot 60' x 140' North Bernice. 260' fronting--Collard Street, 350' deep. 5 lots--50' x 100' fronting. Collard Street back to railroad. John R. Collard, Jr. 33T-3tc

If Taney fails to locate God, then he must ask a local judge to allow him to serve the summons by publishing it in the local newspaper. Several laymen have offered to defend God on the ground that it was his vengeance--not His negligence--that loosed the lightning bolt. All this leads me to believe more than ever that some people will stop at nothing to gain another buck. But this suing God business is something new and I wouldn't be a bit surprised if He doesn't send another lightning bolt. Except this time directed at people--not land. The case would be interesting to follow and I hope we can read about it as it progresses.

An American Automobile Association official started an argument when he claimed warnings about holiday hazards were scare stories and that lurid fatality forecasts made the public believe the highway death rate is going up. A little clarification is in order (like when the fellow was asked: "How's your wife?" and he said "Compared to what?") The argument was over holiday driving compared to the non-holiday type. He wanted to compare the accidents on a vehicle-mile basis. He was right about this--ten years ago there were 7.3 deaths for each 100 million miles driven on Texas highways. Last year this ratio was down to 5.5. On the other hand, Texas figures over a 5-year period show holiday travel 6% above normal, traffic deaths 22% above normal.

So if Texans insist upon running over one another, they'll have a nice place for it. State Highway Engineers estimate we'll put \$475 million in highway projects under contract this year. The old record was \$413 million in 1966.

Other interesting bits in-

fo I picked up this week was that knit apparel is an exciting part of the men's style scene this season with suits, slacks, shirts and ties playing roles. I nearly died laughing when I tried to image what Billy Miller, R. E. Sanders, or Junior Lusby would look like in close fitting knit suits. The community is so shocked and grieved to lose two fine, clean-cut young men to the war in Vietnam. Just Monday June 30 we buried Pfc. Lynn Buzzard and on Thursday we heard the news that Tommy Gibner was missing; on Sunday we knew that he too would be brought back to his home town for burial. These two young men were the same age; graduated with the class of 1966; served 40 miles from each other in Vietnam. Six other of their 1966 classmates have been wounded in that war. It is almost too much to bear. May God bless, and heal the many, many broken hearts caused by this great tragedy.

... we here highly resolve that these dead shall not have died in vain; that this Nation, under God, shall have a new birth of freedom; that this Government of the people, by the people and for the people, shall not perish from the earth."

Stinnett Sailor Serves Aboard USS New Jersey

USS NEW JERSEY (FH7NC) June 30--Seaman Apprentice Daniel H. Searcy, USN, son of Mr. and Mrs. L. H. Searcy of Stinnett, Tex., is serving aboard USS New Jersey, participating in the Pacific Midshipmen Training Squadron '69 exercises off the coast of Southern California. The exercise is a training operation involving midshipmen from the U. S. Naval Academy and Reserve Officer

Training Candidates from various U. S. colleges. The battleship is combining her own predeployment training with the operations of the squadron. After completion of shore bombardment practice missions, damage control drills and engineering casualty drills, the ship will visit San Francisco, Calif., Tacoma, Wash., Pearl Harbor, Hawaii, and San Diego, Calif. The ship is scheduled to deploy to the Seventh Fleet again this fall.

Parcel Post Weight Limit Now 40 Lbs.

The parcel post weight limit will be raised to 40 pounds for shipments between first-class post offices after July 1, Postmaster Jacobs announced today. The maximum parcel post weight limit will be increased from 30 pounds on shipments between the larger post offices in the third through eighth parcel post zones. (More than 150 miles.) On packages sent locally and to offices in parcel post zones one and two, the ceiling has been 40 pounds. The maximum size of packages sent between all first-class offices remains 72 inches in combined length and girth. The size limit on parcels sent to or from smaller offices, rural or star routes, military post offices, and all Alaskan and Hawaiian post offices stays at 70 pounds, with a combined length and girth of 100 inches. Postmaster Jacobs added, Public Law 89-593, enacted September 20, 1966, authorized the postal service to increase weight and size limits on shipments between larger cities. On July 1 of 1970 and 1971, the length and girth

limits are scheduled to rise to 78 and 84 inches, respectively, on shipments between first-class post offices.

Co-ops Urged To Study New Lending Law

COLLEGE STATION--Farm cooperatives that extend credit are being urged to study the new Truth in Lending law. The legislation was enacted by the last Congress and went into effect on July 1. Johnny R. Feagan, Texas Agricultural Extension Service economist in farm organization, emphasized that the government is not attempting to regulate the amount of interest or charges made to customers. Instead, the act simply enables customers to examine in detail the credit terms of the sale. Cooperatives that extend credit on sales will need to examine the law and make changes necessary to comply, the economist said. For those cooperatives that do not have a credit policy, it would be wise to establish one which will meet the regulations' requirements. Feagan said a cooperative is affected by the act if it extends credit up to \$25,000, along with a finance charge, to a person, or if credit is extended with no finance charge but repayment is to be made in more than four installments. He advised a cooperative that will come under the regulation to contact its auditor and avoid chances of penalty. The economist added that details on the new law can be had by writing for the pamphlet, "What You Ought To Know About Truth in Lending," Federal Reserve Regulation Z, Federal Trade Commission, Washington, D. C., 20580.

for Economical Transportation

CHEVROLET

Utility Express Truck
 Chassis Only \$550 f.o.b. Flint, Mich.

Farmers need power, and economy in a truck. They get both in the Chevrolet Utility Express Truck. In addition, this truck is speedy under load, saves much time and converts a long horse haul into a quick and easy job.

The chassis is built for hard work, fits any standard ton-truck body--whatever type suits your requirements--and is very economical in gasoline and oil consumption. Has modern equipment, including electric lights and starter, pump circulating cooling system, standard transmission--three speeds and reverse, demountable rims, and more strength and power than is required for its one-ton rating.

Every farm needs this truck and will quickly save its cost through increased haulage and marketing facilities, releasing the horses for other work.

See it at any Chevrolet dealer's show room.

Chevrolet Motor Company, Detroit, Michigan
 Division of General Motors Corporation
 In Canada--Chevrolet Motor Company of Canada, Limited, Ottawa, Ont.

Prices f. o. b. Flint, Michigan	
Superior Roadster	\$490
Superior Touring	495
Superior Utility Coupe	640
Superior 4-Passenger Coupe	725
Superior Sedan	\$795
Superior Commercial Chassis	395
Superior Light Delivery	495
Utility Express Truck Chassis	550

Fisher Bodies on all Closed Models

Five United States manufacturing plants, seven assembly plants and two Canadian plants give us the largest production capacity in the world for high-grade cars and make possible our low prices. Chevrolet Dealers and Service Stations everywhere. Applications will be considered from high-grade men only, for territory not adequately covered.

THE MODERN METHODS OF THE PALO DURO FEED LOTS ARE AS UP TO DATE AS THE PRESENT DAY LINE OF CHEVROLET TRUCKS. OUR BEST WISHES TO PALO DURO.

EXCEL CHEVROLET-OLDS.

S. HIWAY 207 Jeep

A weekly public service feature from the Texas State Department of Health

Accent on Health

I. F. PEAVY, M.D., Commissioner of Health

AUSTIN--A rose by any other name is still a rose, and a chigger--whether called a harvest mite or a red bug--still can give you sleepless nights and ceaseless spasms of itching misery.

The threat of chigger bites will last until cold weather cuts into their ranks, but there are some steps which can be taken to offset this threat, reports the Texas State Department of Health.

A few people have an apparent immunity to chigger attacks, but the vast majority of us are oh-so-susceptible.

They--the chiggers, have a special affinity for low, damp places covered with vegetation. Bermuda grass harbors them well, but for some unexplainable reasons they are not usually found in carpet grass.

Just for the record, it's the larvae which do the damage, attaching themselves with their mouthparts and sucking blood until they become engorged and fall off. The fiery itching is caused by an anti-coagulant material they inject into their victims.

Although adult chiggers are probably harmless to humans, their offspring can be serious as well as annoying. Not that they spread any specific disease--at least not in this country, but their bites demand scratching which frequently causes secondary infections in the form of sores and boils.

To find out if your backyard or your picnic area is infested with chiggers, stand a piece of black cardboard on end where you suspect they might be. If after a few moments you see tiny yellowish or pinkish mites accumulating on the upper edge, you'll know its time to check your supply of insect repellent.

Chiggers attack lizards, snakes, birds, and rodents with the same vigor and resourcefulness they display in attacking humans. They draw no distinction between

mankind and lesser animal species.

Light applications of sulphur dust on lawns and low branches of shrubs have been used successfully for years to control chiggers. Certain insecticides are very effective when used strictly according to directions.

But perhaps the biggest gun in the arsenal of chigger control are the repellent products which can be applied directly to exposed skin surfaces and to clothing. They come in spray, liquid and stick forms, and when properly used will keep most insects at arms' length.

TAX MAN SAM SEZ:

This week is our Nation's birthday. If you are pessimistic, and look at the fraction of one percent of Americans who act like idiots on the college campuses instead of pursuing their education, or those who try to reason with us with riots over every imaginable cause, you will probably conclude that our country has had it. If, on the other hand, you remember our government's Astronaut's accuracy, if you remember the wide margin we have in education over every other nation (in spite of the present college ruckus) and if you remember our fabulous economic power, you will recognize that in spite of thousands of defects, we have national, state and local governments that have unequalled capability. (In spite of the overemphasis of nonsense by loudmouths, we are a people of unequalled ability.) However, the best proof that our Nation will be around for a few more birthdays is demonstrated by Internal Revenue Service's continuing to collect 97% of our Federal taxes through voluntary compliance. Our people have unequalled morality. The average American may gripe

a great deal about the shortcomings of our governments and of our officials, and is sure we need to reform, but he is still willing to contribute his fair share of almost \$200 billion in Federal taxes. Apparently he thinks more of the establishment and the results he gets from it than the annihilist minded students that belong to the SDS.

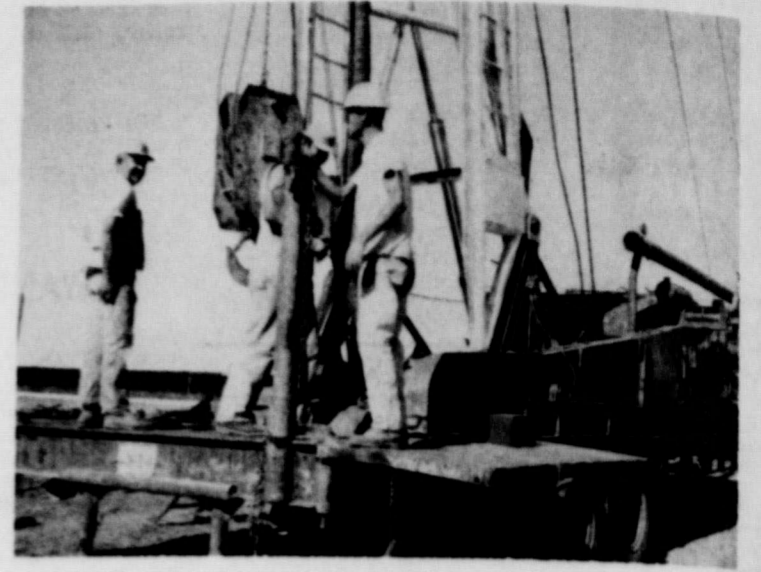
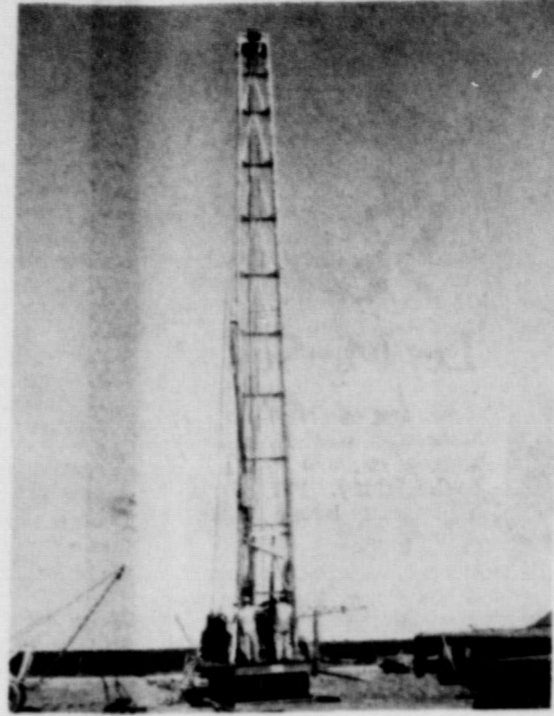
Larry Reed will be in Spearman July 17, 18 and 19. He is bringing his mother, Mrs. Pearl Reed a former Spearman resident, for a short visit. Mrs. Reed was Librarian for Hansford County Library for many years, and wants to visit the new Library and her many friends in Spearman. Mrs. Reed now resides in Nacogdoches, Texas.



Give the Greatest Gift...

BLOOD!

+ RED CROSS BLOOD PROGRAM



WE STAND READY TO SERVE YOUR NEEDS.

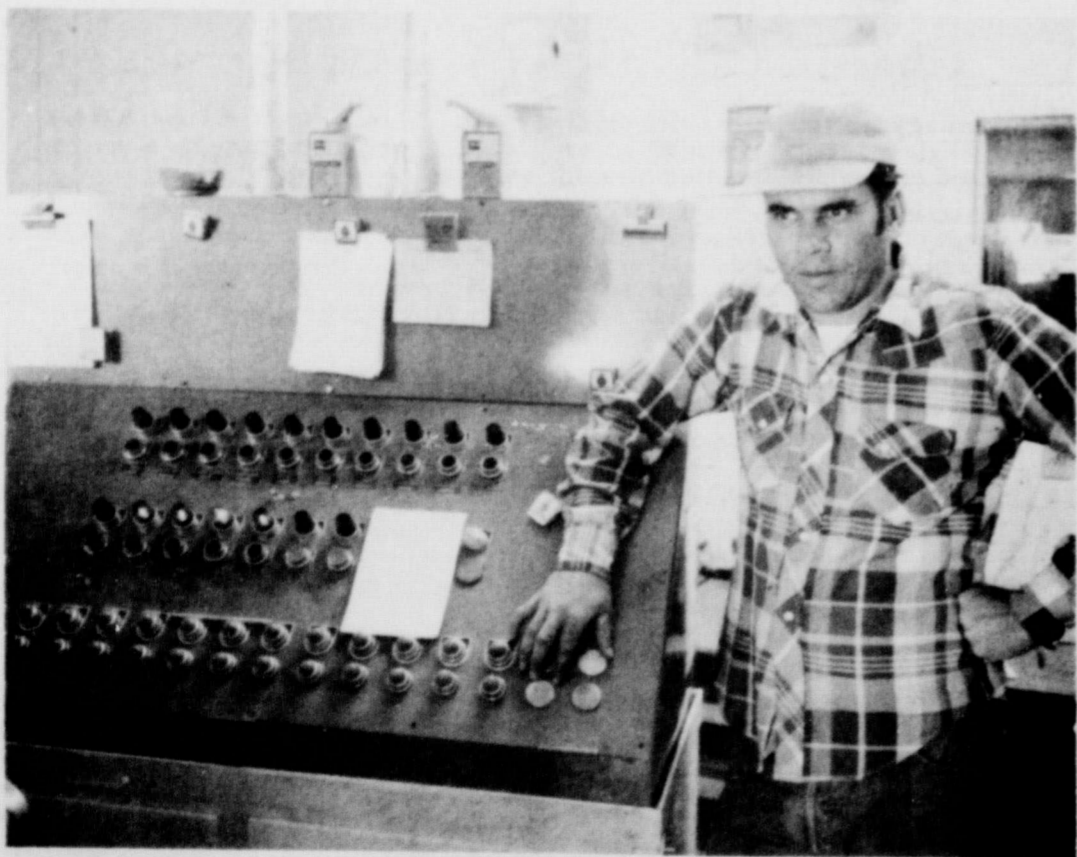
IT HAS BEEN OUR PRIVILEGE TO SERVE THE PALO DURO FEEDERS.

WE WOULD LIKE TO EXTEND OUR CONGRATULATIONS TO THE STAFF OF PALO DURO FEEDERS UPON THEIR MOVE OF PROGRESS.

ROY ROPER

YOUR WATER WELL DRILLING HEADQUARTERS

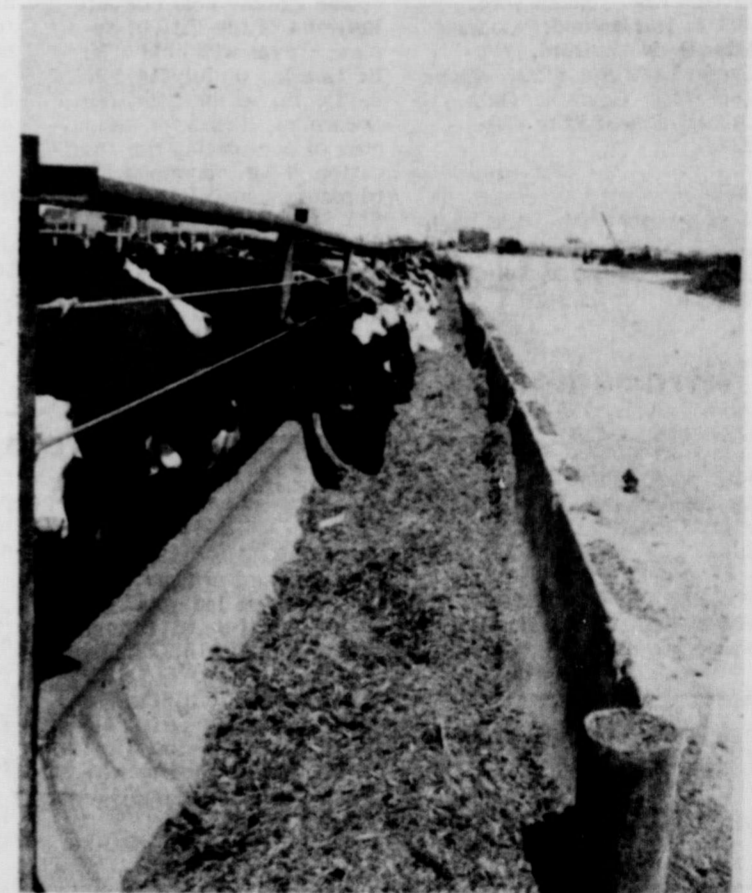
YOUR GROWTH HAS ALSO ADDED TO THE GROWTH OF HANSFORD COUNTY WE WISH TO SAY CONGRATULATIONS TO YOUR FINE STAFF.



IT'S ALWAYS A PLEASURE TO DO BUSINESS WITH YOU.

North Plains Electric

'Serving the North Plains'
PERRYTON, TEXAS



YES---WE ARE PROUD OF THE GROWTH OF THE CATTLE INDUSTRY IN HANSFORD COUNTY---AND WE SALUTE PALO DURO FEEDERS AND IT'S STAFF ON THE GROWTH OF THEIR FINE FEED LOTS IN THE HANSFORD COUNTY AREA.

JONES PIPELINE CO.

GRUVER TEXAS



BABE RUTH ALL STARS TO BEGIN PLAY OFF GAMES

All star players for the North Plains Babe Ruth League are named this week. The North Plains league consists of Stinnett, one team; Hamel, one team; and Spearman, 3 teams; Gold Sox, 2 teams; and Cardinals. The Cardinals won the league, losing only one game over two extra innings to the Gold Sox. North Plains all stars play

the Dumas all stars two out of three games with the winners going to Muleshoe July 14 to the all star tournament. The first game with Dumas will be Friday, July 11 at Spearman. The game starts at 7:30 p.m. The second game is at Dumas July 12 at 5 p.m. and will be a double header if necessary. All stars are: Grag & Swafford of Stinnett; Hamel &

McKinney of Fritch. From the Spearman Cardinal team: Phil Lair, Ricky Driscoll, Marvin Wilkerson & George Rex. Gold Soxers who made it are Joe Bob Grayson, Randy Schell and Gary Upchurch. Kim Brock, Ronnie Head, Bobby DeArmond and Jerry Pat Davis were selected from the Spearman Giant team. Alternates are Sursa, Jett

and Barker. Bob Driscoll will be manager for the All Stars with Bobby Joe Grayson and Bob Meek coaching. Driscoll and Meek this year managed the Spearman Cardinal team. Bobby Joe Grayson & Ben Upchurch were Gold Sox managers and Louis Lemons had charge of the Spearman Giant team.

Mrs. Louene Hutchison and her mother, Mrs. L. A. Monroe spent the long 4th of July weekend at their cabin near Taos, N. M. John Hutchison and a friend from Lubbock joined them there.

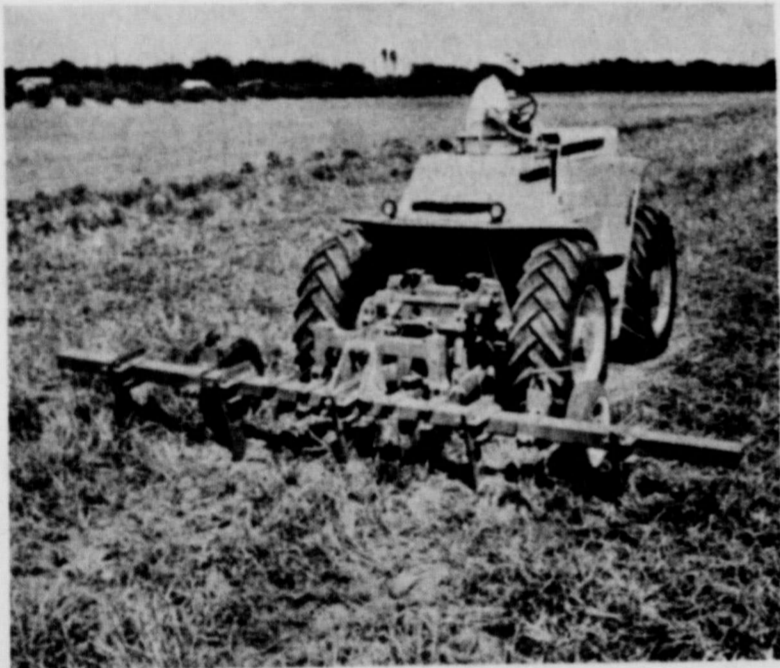
Mr. and Mrs. E. E. Gee of Amherst, Texas visited in the home of Mr. and Mrs. J. E. Taylor Friday. Mr. Gee is the father of Jerry Gee of Spearman.

Gary Carr, son of Mr. and Mrs. Cy Carr of Miami, Texas is visiting in the home of Mr. and Mrs. Garland Head, his aunt and uncle and Ronnie.

Larry Williams visited in Perryton over the 4th of July weekend.

Your Blood is Always Needed BE A BLOOD DONOR

BEFORE TURNING UNDER WHEAT STUBBLE...HAVE YOUR FERTILIZER SPREAD!



BETTER THAN COMMERCIAL FERTILIZER

Phosphorus and Nitrogen count most in this area... natural humus helps loosen soil... Residual effect continues up to 4 years... Analysis show the Phosphorus and Nitrogen content to be worth \$5.00 per ton in commercial fertilizer.

USE IN NEWLY LEVELLED SPOTS

Humus, Phosphorus and Nitrogen combine to help replace top soil from high points in the field... Helps create new top soil in less time... Works very well for irrigation purposes

\$2.00 PER TON PLUS 5c PER MILE PER TON FREIGHT.

PAY NOTHING NOW...NO INTEREST UNTIL AFTER MILO HARVEST!

We have enough spreading equipment to take care of your fields in a hurry... however, if you want this natural fertilizer, call us beforehand and let us know approximately the date and amount needed.

We suggest applying before turning under old crops to mix well with the soil... This fertilizer can be delivered economically within a radius of 35 to 40 miles from our plant.

SEE OR CALL PAUL LAUDICK OR JIM TUNE 435-5423 in Perryton

Wheatheart Feeders, Inc.

435-5423 PERRYTON, TEXAS

THE BLOOD MOBILE WILL BE IN SPEARMAN TODAY FROM 9:00 A.M.

TO

2:30 P.M.

AT THE

First Baptist Church

How to GIVE A UNIT of BLOOD 1 Make an APPOINTMENT 2 REGISTER 3 your TEMPERATURE is taken 4 Review MEDICAL HISTORY BLOOD PRESSURE is checked

5 RELAX for 7 minutes and... 6 JOIN OTHER DONORS for a snack. THAT'S IT! You'll be pleased with yourself because you helped Save a Life! RED CROSS BLOOD PROGRAM



Your contribution to the Red Cross now will enable our community to continue to benefit from its programs... the vital blood bank... aid to servicemen, veterans and their families...

BAKER & TAYLOR DRILLING CO.

SPEARMAN, TEXAS

Steve Hicks flew to Bridgeport Sun, to visit with his cousins, the Selz family.

Mr. Claud Smith, who has been a patient in Northwest Texas Hospital in Amarillo for the past several months, returned to his home this week. He is much improved.

Wednesday, July 16

8 99¢

KING SIZE WALLET CREATIVE COLOR PORTRAITS FOR ONLY

PHOTO HOURS 9 A.M. TO CLOSING

NO LIMIT

GET PICTURES MADE OF GRANDPA, GRANDMA, DAD, MOM AND ALL THE LITTLE ONES AT THESE SAME LOW PRICES!

SHUGART COLOR PHOTOS

Whites Auto



LITTLE LEAGUE ALL STAR TEAM--L to R: Kenneth Phillips, Carl D. Robinson, Roger Brown, Regie Robertson, Roy Avila, Jeff Beedy, Kim Archer, Larry Graham, Top row: Timmy Harper, Donnie Davis, Tommy Hanner, William Porter, Chris White, Mike Tucker, Mark Fox, Steve Lesly.

Garland Heads Host 4th Picnic

The Jonquil Flower Club held its annual 4th of July picnic at the country home of Mr. and Mrs. Garland Head, Friday.

Those attending enjoyed a cook-out. For dessert they had home made ice cream. A fireworks display followed the cookout.

Present for the affair were Mrs. Elsie Mathews and her daughter Karen and Mrs. Mathews sister and family, Mr. and Mrs. Warren Towe and 2 sons of Oklahoma City, Mr. and Mrs. Everett Tracy, Mr. and Mrs. Ed Garner and Ed's mother and father, Mr. and Mrs. Keith Garner of Jacksboro, Texas and Mr. and Mrs. Garland Head and Ronnie and their nephew Gary Carr of Miami, Texas.

Mr. and Mrs. John Pipkin, Richard Pipkin and Mrs. Bart Clifford spent the weekend in Amarillo with the Larry Stokes family. They enjoyed a 4th of July picnic in the park and a fireworks show.

Mrs. Clifford, who has been visiting here 3 weeks, caught the plane back to Ingersol, Canada. Her brother Richard went with her for a weeks visit.

Mr. and Mrs. Marvin Kunkel and family spent the 4th of July weekend at their cabin near Eagle Nest, N.M.

Mrs. Albert Mackie, her daughters, Patsy of Spearman and Mrs. John Allen and children of Andrews, Texas returned from a trip to visit relatives, Sunday evening.

They visited with Mrs. Mackie's daughter Mr. and Mrs. Terry Reeves in Dallas, and in Longview with her sister Mrs. J. A. Barnes, and other relatives there.

Mr. and Mrs. Albert Hohertz of Big Spring are visiting in the home of their son, Mr. and Mrs. Bobby Hohertz and children.

TOP O' TEXAS RODEO SET JULY 23-26

The Silver Anniversary Top o' Texas Rodeo, featuring top specialty acts, is scheduled in Pampa, July 23-26.

Door prizes will be awarded nightly, with the grand prize, a silver Ford Mustang, awarded on Saturday night to the lucky ticket holder.

A street parade at 4:00 p. m. on Wednesday, July 23 will get the rodeo underway, with nightly performances at 8:00 p. m.

Ela Beutler & Son of Elk City, Oklahoma will furnish the stock and direct the arena, where all of the regular RCA rodeo events will be included. A purse of \$3,850, plus all entry fees, will attract the top cowboys and cowgirls of the rodeo circuit. A special prize of \$250 will be awarded the All-Around Cowboy.

Another attraction will be an amateur bareback riding contest with a purse of \$200 plus entry fees.

J. W. Stoker, nationally famous trick rider and roper will be among the specialty acts. Stoker has worked rodeos and fairs throughout the nation and in many foreign countries.

Senator Clem McSpadden of Claremore, Oklahoma will return to describe all events. McSpadden gained a national reputation as a rodeo announcer, having worked 18 nationwide telecasts of professional rodeos on ABC's Wide World of Sports. He has been General Manager of the National Finals Rodeo for the past three years.

Buck LeGrand, famous rodeo clown and bullfighter, will be pleasing the audiences in his role of protecting the fallen cowboy from the enraged bull. LeGrand is one of the few rodeo clowns who is

equally adept at working either in or out of the barrel, fighting the bulls. He has been chosen to work the National Finals Rodeo for the past several years.

A miniature rodeo for children ages 5 through 15 will be held on Tuesday, July 22, with performances at 2:00 and 7:30 p. m.

Mr. Rex McAnelly, president, says ample free parking will be available. Tickets may be secured by writing the Top o' Texas Rodeo office, Box 1942, Pampa, Texas, or by phone, Code 806, MO4-3241.

PROFESSOR TO STUDY ORIGINS OF COUNTY NAMES

Mr. Donald A. Gill, Professor of English at El Centro College in Dallas, is preparing a study of the origins of the names of all towns, rivers, creeks, and other place names on the map of thirty-eight counties of the Panhandle-South Plains of Texas. Hansford County is one of those included in the study.

The study will serve as his dissertation for the Doctor of Philosophy degree in Linguistics from East Texas State University and will also be published in book form at a later date.

Gill, a fellow West Texan from Ropesville, received his Bachelor of Arts degree from West Texas State University in 1960 and his Master of Arts degree from the University of Colorado in 1966.

At this point in his study, Gill has exhausted his sources of recorded material and must rely on living sources to help him. Thus the citizens of Hansford County are asked to aid him in discovering the origins of names of the county.

Some of the name origins which he has already discovered are as follows:

Hansford County--for John M. Hansford

Bernstein--for John Bernstein, an early settler and land owner

Craver--for J. H. Craver and his son Lawrence, who established a ranch nine miles west of town in the early 1900's

Spearman--for Thomas C. Spearman, employee of the North Texas and Santa Fe Railroad

Other name origins which he has been unable to find are the following:

Frisco Creek

If any of our readers know the story of how the above places were named, please send your information to Donald A. Gill, 11135 Shortmeadow Lane, Dallas, Texas, 75218. Credit will be given in the study to those who contribute information.

Spearman Teacher Completes School

COLLEGE STATION--Walter A. Hull of 905 South Townsend, Spearman, is one of 119 vocational industrial education teachers who will complete requirements for public school certification Friday, (July 11)

Hull, an industrial cooperative training instructor, had to complete two summer schools at Texas A&M University.

The program is under the direction of A&M's Engineering Extension Service.

Instructor E. C. Fisher said most vocational industrial teachers come direct from industry. A&M's role is one of "preparing teachers to better instruct their pupils," Fisher said.

CONSOLIDATED REPORT OF CONDITION OF FIRST STATE BANK

of Spearman, Hansford, Texas 79081

at the close of business on June 30, 1969

State Bank No. 1107

Federal Reserve District No. 11

ASSETS	
Cash and due from banks (including \$114,073.19 unposted debits)	\$2,722,289.45
U. S. Treasury securities	1,414,495.00
Securities of other U. S. Government agencies and corporations	1,460,000.00
Obligations of States and political subdivisions	2,664,740.81
Other loans	5,828,666.51
Bank premises, furniture and fixtures, and other assets representing bank premises	97,701.25
Real estate owned other than bank premises	1.00
Other assets	206.75
TOTAL ASSETS	\$12,788,100.77

LIABILITIES	
Demand deposits of individuals, partnerships, and corporations	\$6,554,848.33
Time and savings deposits of individuals, partnerships, and corporations	3,662,976.74
Deposits of United States Government	53,610.91
Deposits of States and political subdivisions	1,039,884.55
Certified and officers' checks, etc.	101,641.42
TOTAL DEPOSITS	\$11,412,961.95
(a) Total demand deposits	7,405,657.44
(b) Total time and savings deposits	4,007,304.51
Other liabilities	109,024.70
TOTAL LIABILITIES	\$11,521,986.65

RESERVES ON LOANS AND SECURITIES	
Reserve for bad debt losses on loans	\$ 175,941.81
TOTAL RESERVES ON LOANS AND SECURITIES	\$ 175,941.81

CAPITAL ACCOUNTS	
Equity capital, total	\$1,090,172.31
Common stock-total par value	200,000.00
No. shares authorized 20,000	
No. shares outstanding 20,000	
Surplus	300,000.00
Undivided profits	590,172.31
TOTAL CAPITAL ACCOUNTS	1,090,172.31
TOTAL LIABILITIES, RESERVES, AND CAPITAL ACCOUNTS	\$12,788,100.77

MEMORANDA	
Average of total deposits for the 15 calendar days ending with call date	\$11,002,245.00
Average of total loans for the 15 calendar days ending with call date	5,602,559.80
Unearned discount on instalment loans included in total capital accounts	19,410.00

I, Freeman Barkley, Vice President & Cashier, of the above-named bank do solemnly swear that this report of condition is true and correct, to the best of my knowledge and belief.

Attest: Freeman Barkley

C. A. Gibner }
R. E. Lee } Directors
Peyton Gibner }

State of Texas, County of Hansford
Sworn to and subscribed before me this 7th day of July, 1969, and I hereby certify that I am not an officer or director of this bank.

My commission expires 6-1-71

Lynanne Maize, Notary Public

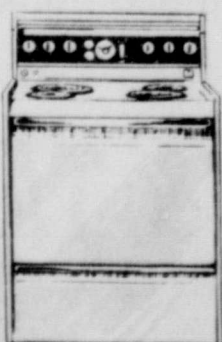
The Kitchen Ruler Stays Degrees Cooler

When she cooks with a flameless electric range. Summertime cooking can be a pleasure when you switch to a modern cool cooking electric range.

Flameless surface cooking units are in direct contact with pan bottoms so the heat goes into the pan and food... not into the kitchen air. And only flameless

electric ovens are insulated all around, including the bottom. See your electric appliance dealer soon for a cool cooking electric range.

You'll love it.



COMMUNITY PUBLIC SERVICE

Your Electric Light & Power Company





EVANGELIST, ED ROBB



MR. AND MRS. GENE MOORE Musicians

Crowds Pack Big Tent for Revival Services

In the dynamic manner of Billy Graham, Evangelist Ed Robb, of the Ed Robb Evangelistic Association of America, has been preaching repentance and rebirth and revival in Jesus Christ as approximately 500 people packed the big tent at 7th and 7th Street in Granger for the Community Evangelistic Crusade.

Gene Moore, associate evangelist, teamed up to sing many favorite hymns for the inspiration and enjoyment of the many who have been attending these evangelistic meetings. In addition to the evening services at 8 p. m., Evangelist Robb has also been conducting morning services at 10 a. m., at the First Christian Church in that city. Both the morning and evening services are supported by the Assembly of God, First Baptist, First Christian, Unity Methodist and Old Lutheran churches of Granger. Services continue to Sunday, July 13.

holt news

Mr. Phil Jenkins was host to a birthday dinner July 6 honoring her and Phil. Guests present were Mr. and Mrs. Jenkins and Kathy Jenkins of Amarillo and Mrs. Jenkins. On July 4 firemen enjoyed a fire on Saturday night at Mr. Richard Gaines and family were Mr. and Mrs. Gaines and family of Kansas, Mr. and Mrs. Mayfield of Stinson, Mr. and Mrs. Mayfield of Stinson, Mr. and Mrs. Owen Graf, Mr. and Mrs. Kirk, Mr. and Mrs. Reger, Debbie and Maude Rosson, Frank Gaines family

spent the week-end with the Richard Gaines'. Mr. and Mrs. Ray Moore are vacationing and visiting relatives in Jacksonville, Florida. Mmes. Mildred Chamberlain of Spearman and Maude Rosson were Thursday night guests of Bertha Jenkins. Mr. and Mrs. Ira Harbour and Ted were hostesses to a Fish Fry on Thursday night. Guests were, Mr. and Mrs. David Taylor and Erin of Dayton, Ohio, Mr. and Mrs. Glen Smith and family of Dimmitt, Mr. and Mrs. Donnie Jones and daughter of Morse, Mr. and Mrs. T. I. Harbour, Mr. and Mrs. Monty Harbour and family and Mr. and Mrs. Curtis Harbour. Mrs. Viola Fite, Mr. and Mrs. Homer Sanders and family of Spearman have spent a weeks vacation sight seeing and visiting relatives in Hohenwald, Tenn.

Mr. and Mrs. Joe Galloway and family of Sherman, Texas spent several days last week visiting his sister, Mr. and Mrs. Doyle Jackson and family. Mr. and Mrs. Dan Jackson recently visited their daughter, Mr. and Mrs. Oliver Leverton in Odessa, Texas, also visited relatives in Levelland. They also attended the Yearly children re-union.

Steve Richards of Ft. Riley, Kansas is visiting his grandparents, Mr. and Mrs. Wesley Jenkins. Mr. and Mrs. Elmer Griffin of Erick were Sunday night guests of Vernie Rosson of Spearman.

Mr. and Mrs. Russell Robinson of Pringle were Sunday night dinner guests of Mr. and Mrs. C. W. Kirk. Mrs. Willie Wallis of Spearman was hostess to a "42" party Saturday night. Guests were Mmes. Mildred Chamberlain, Addie Novak, Mabel Edwards, Alta Morse, Gladys Richardson, Myrtle DeArmond, and Margaret Shedeck of Spearman. Altha Groves of Spearman is visiting her uncle Bert Groves, who is very ill in the Hospital at Mesa, Ariz. He will be 86 years old July 30.

Mrs. Blanch Lamb of Spearman was Saturday night guest of her daughter Mr. and Mrs. Tip Collingsworth of Perryton.

Mr. and Mrs. Joe Mack Close and family of Spearman and Mrs. Fronye Close are spending a weeks vacation sight seeing and visiting relatives Mr. and Mrs. Gerald Harris and family of Olathe, Colo.

The past week-end the Holt Community got a little over an inch of wonderful rain.

Sound That Trumpet By Chet Wise

It's not at all uncommon to tune in a radio station and hear that familiar throaty sound that can only be the voice of the one and only Louis Armstrong known to millions as "Satchmo" or just plain "Satch". You may not believe it but Louis Armstrong has passed his sixty ninth birthday and is still going strong. Louis was born in the year of nineteen hundred on the fourth day of July. You might say he was weaned on the music of Basin Street because he was born in the City of New Orleans.

Louis Armstrong is far more than just a musician. He's a faultless trumpet player with a unique singing voice that embodies everything that is real, vital and gay in the world of jazz. His first spot in the limelight was probably not one of self choice. It happened on the New Years Eve in nineteen thirteen when Louis decided to celebrate by firing off a gun. He was immediately arrested for packing a shooting iron inside the city limits and was forthwith slapped in the waifs home for a years discipline. When he went into the institution, he had an overwhelming ambition to sing bass in the glee club, but instead he was given a bugle and a trumpet. Pretty soon, he was playing both instruments by ear and by the end of the year he had become leader of the band. He left that waifs home with the firm ambition to become a really great musician. During the forthcoming few years he sold newspapers and coal but he devoted all his spare time to studying the great jazz trumpeters of the Crescent City. He practically worshipped Bunk Johnson and Joseph "King" Oliver. Someone finally introduced him to King Oliver and the King took him under his wing as a student. It was under his tutelage that Satch developed his distinctive trumpet style and that famous guttural singing voice. In 1918 King Oliver left the Kid Ory band and took off for Chicago. Louis took his place. Later on he joined the famous Marable Riverboat band and after a couple of years rejoined Oliver in Chicago. He worked with many of the great jazz leaders of the nineteen twenties including Fletcher Henderson. In early nineteen thirty, Louis took over Luis Russels Orchestra and soon became the sensation of this country as well as Europe. He began his recording career in nineteen thirty five and has long been one of the top favorites in the recording field. Some of his most remembered recordings are, "Georgia On My Mind", "Because of You", "Peanut Vender", "Rockin Chair", "Sincerely", "Sugar Foot Strut", "Your Cheatin Heart" and "Mack the Knife". In a line of work that tends to wear down much younger men, Satchmo seems to be a constant bundle of energy and talent.

Mrs. Walter Wilmeth is enjoying a visit with her daughters, Agnes and Juanita, who have been in her home visiting for several days.

Mrs. John Berry visited last week in the home of her sister and family, Mrs. W. L. Campbell of Fort Worth.

Mr. and Mrs. Ed Dumbauld and son Mark of Alexandria, Ohio visited in the home of her sister, Mr. and Mrs. Charley West, last week.

Visiting in the home of his grandmother, Mrs. Mabel Edwards, for most of the summer is Lee Van Cleave of Bell, Calif.



This Oldsmobile is a Great Success!

WE ARE SOLD OUT OF OUR 1924 Olds... but look what we have this week...

- 68 Pontiac Tempest - Lemans Coupe V8, 3 speed, radio and heater....\$2495.00
- 67 MUSTANG COUPE V8, Automatic, power and air low mileage.....\$2095.00
- 67 Chevrolet 1/2 ton pickup custom cab V8, automatic, power steering...\$1695.00
- 65 CHEVROLET 1/2 ton pickup 6 cyl. 4 speed.....\$1095.00
- 64 MERCURY 2 dr. hard top full power and air.....\$995.00
- 61 INTERNATIONAL PICKUP V8, 3 speed\$425.00

Excel Chevrolet-Olds.
HIGHWAY 207, SPEARMAN, TEXAS
Jeep
PRODUCT OF GENERAL MOTORS

a SIX Sedan at \$1135

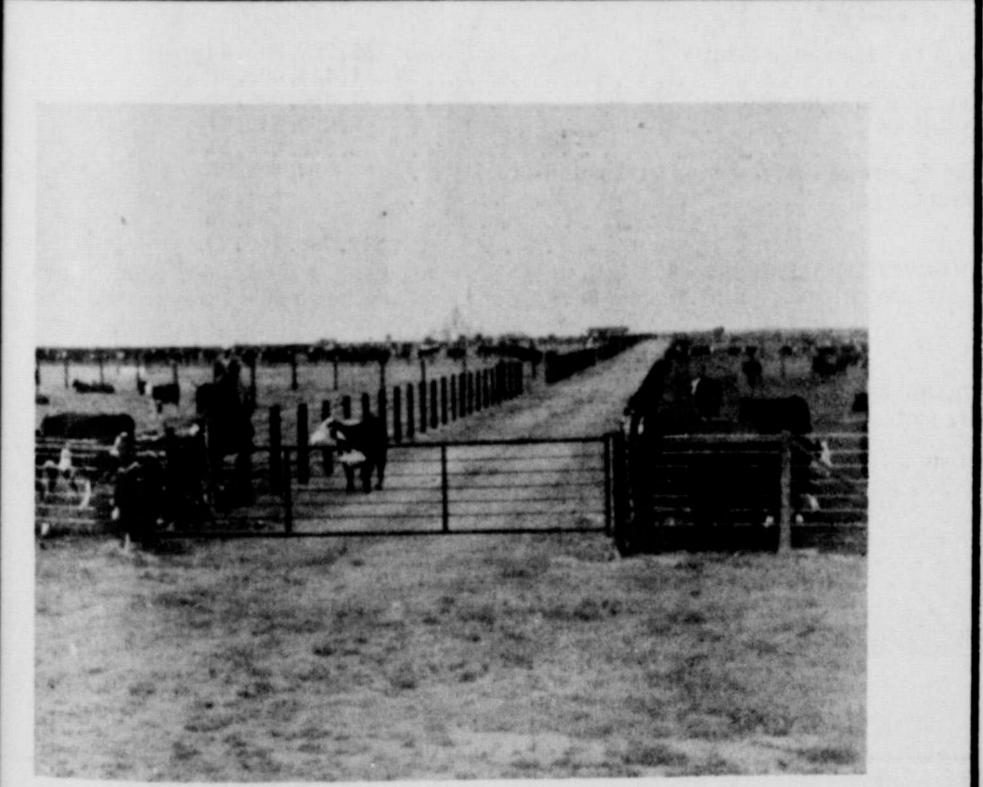
Roadster	- - -	\$ 785
Touring	- - -	795
Sport Touring	- - -	915
Cab	- - -	985
Coupe	- - -	1075

The G. M. A. C. extended payment plan makes buying easy. All prices f. o. b. Lansing. Tax and spare tire extra.

Genuine Oldsmobile parts can be purchased from any Oldsmobile dealer in any part of the United States, at a standard price established by the factory, without the addition of any sales tax, handling or transportation charges. Every Oldsmobile dealer has a master parts price list issued by us, which is always open for owners' inspection.

The following certified accessories, specially designed for perfect fit and quick installation on the Oldsmobile Six, can be procured from any Oldsmobile dealer in the U. S. all these net prices, complete with necessary attachments:

Front Bumper	- -	\$15.00
Rear Standard Bumper	15.00	
Rear Sport Bumper	-	15.00
Radiator Cap, with Bars	2.50	
Road Spot Light	-	5.00
Windshield Cleaner	-	1.25
Rear View Mirror	-	1.75
Trunk Rails (set of four)	6.80	
Sport Tire Carrier	-	7.50
Trunk Platform	-	7.00
Enameled Steel Trunk	25.00	
Windshield Wings (pair)	17.00	
Running Board Step Plates (pair)	- -	4.75

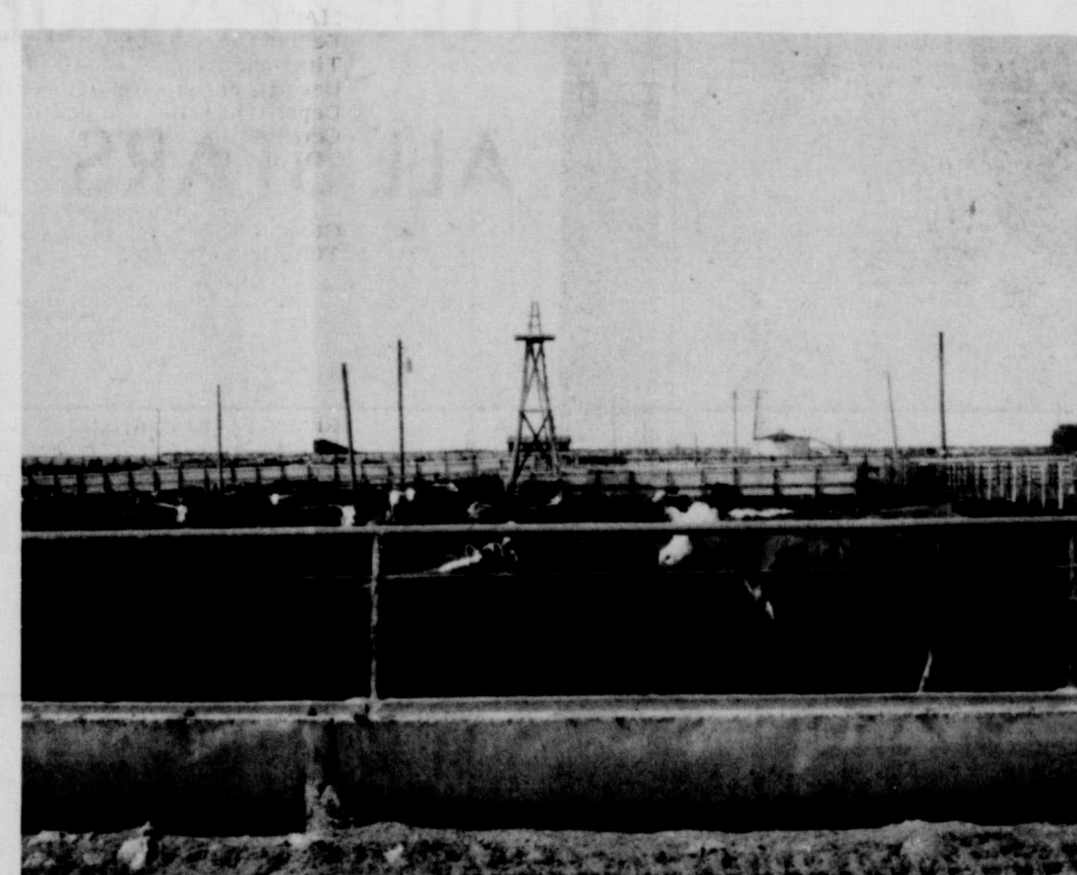


OF COURSE --- WE ARE PROUD OF THE PALO DURO FEEDERS, & IT HAS BEEN A PLEASURE TO DO BUSINESS WITH YOUR FINE STAFF.

Panhandle Pipe & Steel

BORGER, TEXAS
SERVING SPEARMAN & HANSFORD COUNTY FOR OVER 30 YEARS

Mr. and Mrs. Keith Garner of Jacksboro, Texas visited in the home of their son Ed Garner 5 days the past week.



WE APPRECIATE DOING BUSINESS WITH SUCH FINE FOLKS AS THE ONES ASSOCIATED WITH PALO DURO FEEDERS.

WHEN FOLKS LOOK BACK IN HISTORY TO THE REASONS FOR THE GROWTH OF HANSFORD COUNTY ONE OF THE MOST MENTIONED NAMES WILL BE PALO DURO FEEDERS.

R. L. MCCLELLAN & SONS INC.

YOUR CASE IMPLEMENT DEALER
SPEARMAN, TEXAS

GOOD LUCK LITTLE LEAGUE ALL STARS

Beat Dumas - at Dumas - Monday Night

GAME TIME

8:00 P.M.

AT DUMAS

BACK THE

LITTLE LEAGUE ALL STARS

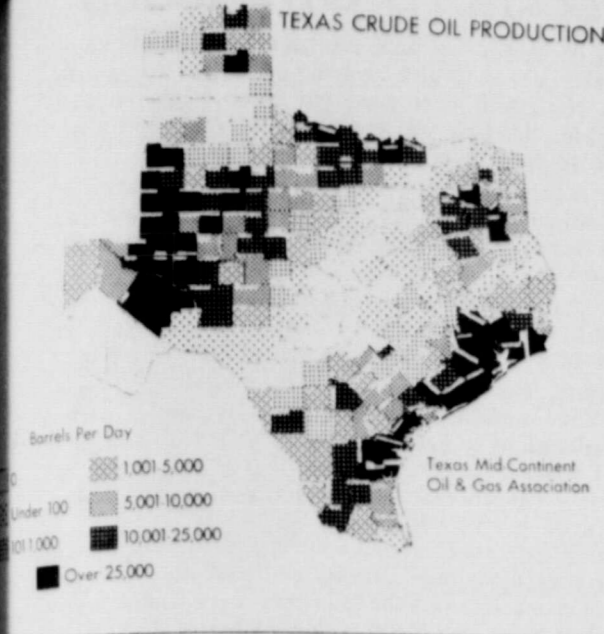


LITTLE LEAGUE ALL STAR INFIELD--Bottom L to R: Kenneth Phillips, Roy Avila, Chris White, Roger Brown. Top: Timmy Harper, Carl D. Robinson, Mike Tucker, Jeff Beedy.



OUTFIELD ALL STARS--Bottom L to R: Regie Robertson, Kim Archer, Larry Graham, Tommy Hanner. Top: Donnie Pauls, Mark Fox, William Porter, Steve Lesly.

Martin Trucking Co.	Daco Lease & Well Service	North Plains Truck & Imp.
Thomas Cleaners	Baker & Taylor Drilling Co.	Spearman Redi - Mix
Hackley Clinic	Crawford Implement Co.	RAYS CHEVRON SERVICE
Hansford Feedyards Inc.	Pierce Water Well Service	CUMMINGS REFRIGERATION



Hansford County produces 4,142 bbls. Oil Per Day

Hansford County, the nation's leading producer, has yielded more than 21 billion barrels of oil during the past 79 years of recorded production, according to the Texas Mid-Continent Oil & Gas Association. This has meant a statewide production of income which averages about \$1 billion a year. With the state's 254 counties producing crude oil, each one of the state is marked with prolific fields. The daily oil production is more than 1.1 million barrels. This investment is needed to find new oil fields to replace those now being depleted, says Corbin J. Robinson, Association president. By the end of this year the demand for oil will have doubled. In 1960 and 1960, some 1 billion will have to be found to find enough energy to run our present standard of living and guarantee national security. Clearly, energy today needs to be found which will stimulate drilling of more wells, reserves are shrinking. Hansford County, which had recorded production of 4,142 barrels in 1967, has had a total oil output of 22,082 barrels up to the begin-

of America. Eleven officers and 2 Pro Tems were present with 4 members on the sidelines. Also attending were two visitors from Gruver, Jeffie Mae Hoy and Elsie Mae Peddy. Initiation ceremonies will be held by the OES August 1, with a practice session held on the evening of July 29 at 8:00 p.m. August 1 is the next regular meeting time. Minnie Jones, Millie Craig and Thelma Scott served refreshments in the dining room following the meeting.

BOB JONES ENSEMBLE TO APPEAR

A unique program of sacred music will be presented by the Bob Jones University Ensemble at the Community Bible Church of Gruver on Saturday, July 12, at 8:30 p.m. The public of Spearman has been invited to attend the service. Dick Hester, who is in charge of this talented group, will bring a brief Gospel message. A native of Florida, Mr. Hester is a graduate student pursuing the master of divinity degree in the School of Religion. Other members of the ensemble include Mrs. Hester; Miss Sheryl McCauley of Michigan; Todd Gillespie of Illinois; Steve Thomas of Texas; and Miss Lorna Walker of South Carolina. The young people are typical of Bob Jones University, Greenville, S.C., which draws its student body of nearly 4,000 from every state in the Union and about 25 foreign countries and territories. Typical, too, of the institution is the spiritual and musical quality of their program. These musicians offer a combination of vocal selections including quartets, trios, duets, and solos. Both well-known and seldom-heard selections will be presented - all of them especially adapted for this ensemble.

Visiting in the home of Mr. and Mrs. L.D. Mead is their son's family, Mr. and Mrs. Robert Mead and sons Mark and Michael of Omaha, Neb.

OES PLANS INITIATION CEREMONIES

The Order of the Eastern Star, 721, met Friday evening July 4 in the Masonic Lodge Hall for a regular meeting, opening with the regular ritualistic opening. Worthy Matron Thelma Scott and Worthy Patron Preston Scott were the presiding officers. This was the first meeting for the new officers of the OES for the new year. A patriotic message was read from Robbie Yates, Worthy Grand Matron, commemorating the 4th of July observance of the Independence of the United States

T.G.&Y. 5¢ TO 51¢ STORES

STORE HOURS:
MON. - FRI.
8:30-6:00
SATURDAY
8:30-8:00

119 Main Spearman, Texas

PRICES GOOD THROUGH SATURDAY

WHILE QUANTITIES LAST

STYLE HAIR SPRAY
Regular & Hard to Hold. Contains Proteins. Adds beauty as you spray.
13 oz. Size
47¢ Each
LIMIT 2 99c Size

6-12 INSECT REPELLENT
8.5 SIZE
Keeps Bugs From Biting!
Apply on skin to repel mosquitoes, ticks, black flies, gnats and chiggers.
Compare At \$1.19
78¢ LOW PRICE

WILD SWAMP SALE

Lisa Morray TOILETRIES
• PEACH MILK BATH
• SHAMPOO ASSORTMENT
• LOTION & RINSE ASSORTMENT
• PINK JASMINE BATH OIL
• BATH OIL ASSORTMENT
1/2 Gal. Size
YOUR CHOICE **74¢** Each
Compare At 99c each

ALUMINUM FOLDING CHAIRS
ALUMINUM FOLDING CHAISE LOUNGE
Model No. 616
72" x 25"
5 position - 6 x 16 Web. Lightweight. Durable Frame. Wide Webbing. Folds Quickly and Easily for Storage and Portability. Fully Assembled. Green and White.
\$4.88 Each
Compare At \$6.99

ALUMINUM FOLDING LAWN CHAIR
Light-Weight. Durable Construction. 30" High. 22" Wide. Fully Assembled. Green and White.
Compare At \$3.57 Model #533
2 FOR \$5.00 Each

Golden T SUNTAN LOTION
Compare At \$2.90
66¢

"Golden T" FACIAL TISSUE
Compare At 21c each
2 FOR 43¢

LIGHT BULBS
60 75 100 WATT
Compare At \$1.08
4 IN 57¢ PKG.



CATTLE - - - ADDING TO THE FUTURE OF HANSFORD COUNTY.

WE ARE PROUD OF PALO DURO FEEDERS FOR THEIR ADDITION TO THE GROWTH OF HANSFORD COUNTY.

WE ENJOY DOING BUSINESS

WITH YOUR FINE STAFF

Eddleman & Eddleman

TEXACO PETROLEUM PRODUCTS
GRUVER, TEXAS 733-2511



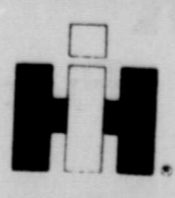
CONGRATULATIONS

TO THE PERSONNEL OF THE PALO DURO FEEDERS.

YOU ARE ADDING TO THE GROWTH AND DEVELOPMENT OF HANSFORD COUNTY WITH THE GROWTH OF YOUR FEED YARDS.

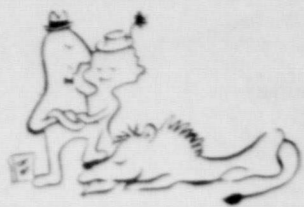
WE ENJOY DOING BUSINESS WITH SUCH FINE PEOPLE.

North Plains Truck & Imp. Inc. First to serve the farmer



SPEARMAN, TEXAS

WHEN'S YOUR BIRTHDAY?



If you were born under the Sign of LEO (July 24-Aug. 23)

YOU'RE THE TYPE who is born to rule. You're masterful, high-minded, ambitious... have a magnetic personality, more than your share of charm!

RED CROSS NEEDS YOUR TYPE. GIVE BLOOD

Mr. and Mrs. M.K. Campbell attended the show TEXAS in the Palo Duro Canyon on July 4th. The Campbells said there was a record crowd present.

Mr. and Mrs. James W. Walker visited over the July 4th weekend with their children and grandchildren in the home of their daughter, Mr. and Mrs. R.O. Wilson in Elkhart, Kansas. Enjoying a family get-together and picnic were Mr. and Mrs. R.W. Ellsaesser their daughter of Sublett, Kansas, their grandson, Mr. and Mrs. James Fitzgerald of Kansas City, granddaughter, Mrs. John Katz of Hays, Kansas, and their grandson who attends college at Manhattan, Kansas, Rod Wilson.

COUNTY AGENT'S REPORT

- By Robert Adamson

TIMED IRRIGATIONS KEY TO TOP CORN YIELDS

Irrigate corn so that it will continue optimum plant growth--that's the key in producing top yields.

Corn plants should never experience high moisture stress, says County Agricultural Agent Robert Adamson. Adequate soil moisture is especially important during tasseling, pollinating and grain filling. Lack of moisture during these plant growth periods will cut yields.

This means that adequate soil moisture is vital now and will be for the next four to five weeks. Most of the corn in the area is now in the early stages of these high moisture requirement periods. Irrigations applied 10 to 15 days prior to tasseling, during silking and pollination and during the milk to early dough stages of grain filling normally give good yield boosts.

Corn yields have been consistently good where high soil moisture levels were maintained from pre-tassel through pollination, explains the agent. At this growth stage moisture is rapidly taken from the soil for ear development. Damages from moisture shortages are often hidden and not evident until later. Moisture stress can delay silking and cause poor pollination. Moisture stress during pollination will limit the number of kernels set.

Severe wilting and rolling of the leaves are signs of inadequate moisture. Bleaching of the ends of top leaves are signs of increased moisture stress.

The three to four weeks following pollination is also a high moisture requirement period. This is when the blister, milk and soft dough stages of grain development occur. Grain weight increases rapidly so adequate moisture must be available for high grain production.

During tasseling, silking and pollinating, and early grain filling, only about one-half of the available soil moisture should be depleted before an irrigation is applied, cautions Mr. Adamson. As the grain hardens, moisture effects rapidly decrease. Near

maturity, 70 to 80 percent of the available soil moisture can be safely depleted.

Water requirements during these critical growth periods appear to be from three inches every 15 days up to five to six inches during the 15 days just prior to and during pollination. Special attention should be given soil moisture quantities and plant appearance during these high moisture requirement periods.

Where water is limiting, alternate row irrigations can be used to obtain greater mileage from irrigation water. Thus, fields will be covered more quickly, giving a yield response on more acres.

All plant processes must be operating at full speed and efficiency to produce maximum corn yields, contends the agent. The heavy moisture requirements that are occurring now and that will continue during the next four to five weeks should not be underestimated.

4-H News

The 4-H Cloverettes Clothing Group met Tuesday, July 8 at 3 p.m. in the HD Clubroom with leader, Mrs. Johnnie Lee.

Girls present were Denise Desimone, Susan McKay, and Johnette Lee.

The girls planned the making of their dresses for the 4-H Dress Revue to be held July 17.

Mrs. Hudson Enrolls For Tech Workshop

LUBBOCK -- Mrs. Frances Hudson of Spearman has enrolled in Texas Tech's Summer Wprkshop in Consumer Education sponsored by the School of Home Economics.

The workshop, scheduled July 7 through Aug. 8, consists of five one-week sessions which may be taken in whole or in part for graduate

credit. Nationally known leaders in the industrial and professional field will serve as consultants and lecturers.

Members of the Tech Home Economics faculty will conduct discussions on such subjects as: The Consumer and Clothing and Textiles, Major Home Appliances, Food and Nutrition, Management of Housing and Other Major Expenditures, Savings, Insurance and Investments, The Family As a Consumer, Consumer "Buyership" and Credit, and Money Management With Children and Youth.

Mrs. Hudson will participate in the July 7-11, and

July 14-18 sessions on Overview of Consumer Education Today and Consumer and Major Home Appliances.

Loredia J. Potts On Honor Roll

Loredia J. Potts of Spearman has been named to the Dean's Honor List at Sul Ross State University for the 1969 Spring semester.

Loredia is a senior at Sul Ross majoring in English. Her grade point for the spring semester was 3.8 and she ranked in the upper 5% at Sul Ross State University.

She is the daughter of Mr. and Mrs. H. E. Jenkins of Spearman, Texas.

Dellida Head, daughter Mr. and Mrs. Garland Head is visiting in Pampa in the home of her aunt and uncle Mr. and Mrs. Zane Hall.

Mr. and Mrs. Dean Meier and children have returned home from a 10 day trip to Lincoln, Neb. where they visited former residents of Spearman, Mr. and Mrs. Jimmy Kees and children. They also visited in Alva, Okla. with Mrs. Weese's parents, Mr. and Mrs. Clark Parsons and in Higgins with Dean's parents, Mr. and Mrs. W. J. Weese.

FOR THAT CROWNING TOUCH!

House Paint

LATEX House Paint

"STERLING 12 STAR" REGAL LITE LATEX HOUSE PAINT is a new concept in exterior house painting with many properties exceeding the corresponding features of conventional house paints; also suitable for painting fiberboard, masonry, brick, concrete blocks, asbestos siding and properly primed metal.

Here are exciting new colors for an exciting new kind of house paint--colors of proven performance that will enhance the beauty of your home and protect it for years.

White House Lumber Co.

WE TAKE THIS OPPORTUNITY TO SAY CONGRATULATIONS TO THE PERSONNEL OF PALO DURO FEEDERS. DOING BUSINESS WITH YOU IS A PLEASURE.

SPEARMAN REDI-MIX

SPEARMAN, TEXAS

THANKS TO ALL OF YOU---AT PALO DURO FEEDERS--WE ARE PROUD OF YOUR LARGE FEED MILL AND THE PROGRESS YOU HAVE MADE FEEDING CATTLE---YOU HAVE CONTRIBUTED A GREAT DEAL TO THE GROWTH OF HANSFORD COUNTY.

GRUVER LUMBER CO.

GRUVER, TEXAS

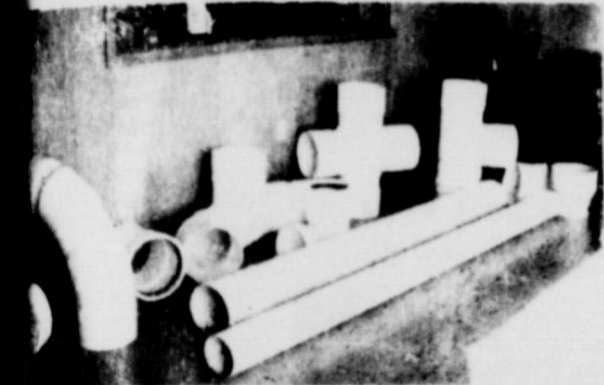
BIG DROP



GIVE BLOOD THRU RED CROSS

NOW . . . We can install a complete Plastic irrigation distribution system NO STEEL USED IN SYSTEM

except for pump stand & vent at well



Newly developedells, tee's end caps, crosses & risers of all plastic (at left) manufactured in our plant! We use



Certainteed Plastic Pipe

Rogers Sales & Service

Waka, Texas

PH. 435-4140

New Arrivals..

Mr. and Mrs. Robert Carthel announce the arrival of a son born July 5 at 9:15 p. m. in Hansford Hospital. Jason Lyn Carthel weighed 8 lbs. and measured 21 1/2 inches in length at birth.

Mr. and Mrs. Edward Earl George announce the arrival of a son born July 7 in Hansford Hospital at 5:10 p. m. weighing 7 lbs. 13 1/2 oz. and measured 20 inches in length.

Mrs. Bob Burke and son Terry, and two sisters of Berger spent last week in Cagle, Ark. visiting relatives.



HOSPITAL NEWS

Patients in Hansford Hospital are Jack Whitson, Patricia George and son, Nancy Cartiel and son, Linnie Clements, W. M. Lieb, Stella Martin, Ernest Baskin, Homer Bates, Doris Pipkin, Virtie Davis, Judy Casdorff, Lucy Alexander, Alma Remy, Birtie McNabb, Delpha Chambers, Luella Rook, Howard Goodrich, Walter Tyler.

Dismissed were Benny Grissom, Carolyn Savage, Dolly Baker, Maria Hermosillos, Juliet Boyd and Carl Galbreath.

Farmers Union Condemns Soil Bank Programs

The Board of Directors of Texas Farmers Union, meeting at a called session in Waco last Saturday, condemned all federal programs that retire entire farms, whether called "soil bank, land retirement, or easement plans." The resolution indicted soil bank-like programs as being of a distinct "disadvantage to commercial family farmers."

The resolution against soil bank programs asserted that these programs are expensive, damaging to the rural communities, and will "unquestionably create more cattle production resulting in an over-supply of beef and lower prices."

The Farmers Union policymakers supported supply management programs and stated that these programs would "be necessary so long as food and fiber are produced on the land." The resolution on this subject alleged that those who propose "phasing out" farm programs have "little insight into agriculture's role in the national or world economy, or are those who seek to serve a narrow self-interest."

The Board urged the ex-

ension and permanent adoption of the 1965 Farm Act, "with no substantive changes." The governing board of the statewide general farm organization urged its membership in counties which produce both cotton and cattle, to market their cottonseed through the cattle feeding operations, rather than making it available on a depressed market this fall. The resolution explained that a reduction in the support price on cottonseed would reduce cotton producer income from \$4 to \$5 a bale below last year.

Taking up research and promotion programs, the county Farmers Union presidents urged the Cotton Producers Institute to continue to place strong emphasis on the development of techniques that "will enable cotton to compete for markets because of properties that will be completely competitive with man made fibers."

Stating that the cost of handling cotton from the farmer to the textile mills is almost as much as the cost of producing cotton, the farm group urged the Cotton Producers Institute to initiate "immediate research on the reduction of costs incurred in the handling and processing stages between the farm gate and the ultimate consumer."

The Farmers Union Board of Directors questioned the wisdom of farmers financing costly programs to reduce cost of production and urged the Cotton Producers Institute to "deemphasize projects that are entirely devoted to the reduction of cotton production costs."

Turning to commodity promotion, the farm policymakers asserted that commodity promotion programs have historically resulted in little or no price increase to agriculture producers. They suggested that the millions of dollars that are annually being spent to promote various farm commodities be questioned in the light of scientific studies devoted to determining the various "promotability levels" for various farm commodities.

The Farmers Union Board resolved that the officials of the agricultural universities of Texas be encouraged to initiate research programs to determine levels of promotability for various farm commodities and urged farmers

to examine "what promotion programs are wasteful and of no benefit to the producer in terms of increasing price and income."

Turning to state issues, the Texas Farmers Union full Board of Directors endorsed Constitutional Amendment 2 which will authorize the issuance of bonds to finance the Texas Water Plan. The resolution urged the membership of Texas Farmers Union to actively support the passage of this Constitutional Amendment.

Looking toward the special session of the legislature, the Farmers Union directors endorsed passage of a corporate profits tax to finance needed state programs. The resolution stated that because of the present cost-price squeeze in agriculture, and accelerating real estate and property taxes, additional "ad valorem and sales taxes are particularly regressive and discriminatory against farm and ranch producers."

Plans for a membership expansion program into new areas of the state were announced at the day-long meeting which was held in Waco.

INSECTICIDE RESISTANCE MAJOR PROBLEM

COLLEGE STATION, June 26--Possibly the greatest problem facing cotton farmers today is insect resistance to insecticides, according to John G. Thomas, Extension Service entomologist at Texas A&M University.

At least 10 species of insects and mites, he says, have developed resistance to one or more organic insecticides since the early 1950's. Of these pests, resistance of the bollworm and tobacco budworm is the most serious. The budworm has been tough to control with chlorinated hydrocarbon chemicals since about 1960, and the bollworm also has come up with the high resistance to most of the formerly effective compounds.

Present indications of organophosphate resistance in the tobacco budworm are particularly disturbing, Thomas said.

Some of the problem can be traced to destruction of beneficial parasites and predators through unnecessary insecticide applications, he added. These natural control factors should be protected and encouraged as long as possible during the bollworm-budworm season.

Thomas emphasized that insecticide applications should be based on infestation counts and damage to squares and small bolls. When as many as 5 percent of the squares and small bolls show damage, apply insecticides to stop excessive yield losses.

When a chemical is applied, beneficial insect populations are sharply reduced. Further protection from damage will depend almost entirely on additional insecticide applications at intervals dictated by population counts.

"The grower should recognize, in most instances, that a minimum of three to five applications may be required to bring the infestation under control. If his potential yield is not sufficient to justify this expense,

then he probably should never make the first application. A single application may merely aggravate the situation and be of little benefit," Thomas said.

NON-TRAFFIC TOLL HIGH

Firearm accidents accounted for the greatest number of non-traffic rural deaths last year -- 49 persons were killed. Other major causes of the 297 deaths were burns, 54; falls, 44; tractor accidents, 33; drowning, 33; and farm machinery other than tractors, 22.

Most of the increase in 1968 is attributed to the increased number of deaths due to falls and tractor accidents. The only category that showed a marked reduction in fatalities was drowning. Thirty-three rural drownings occurred last year as compared to 41 in 1967.

Mrs. Burl McClellan and daughter Luanne, visited for several days this week in the home of Mr. and Mrs. Jim O. Davis, Day's brother.

CANTRELL'S FLYING SERVICE

Atrazine-Pre-Emergence Spraying
Crop Dusting

Charter Service

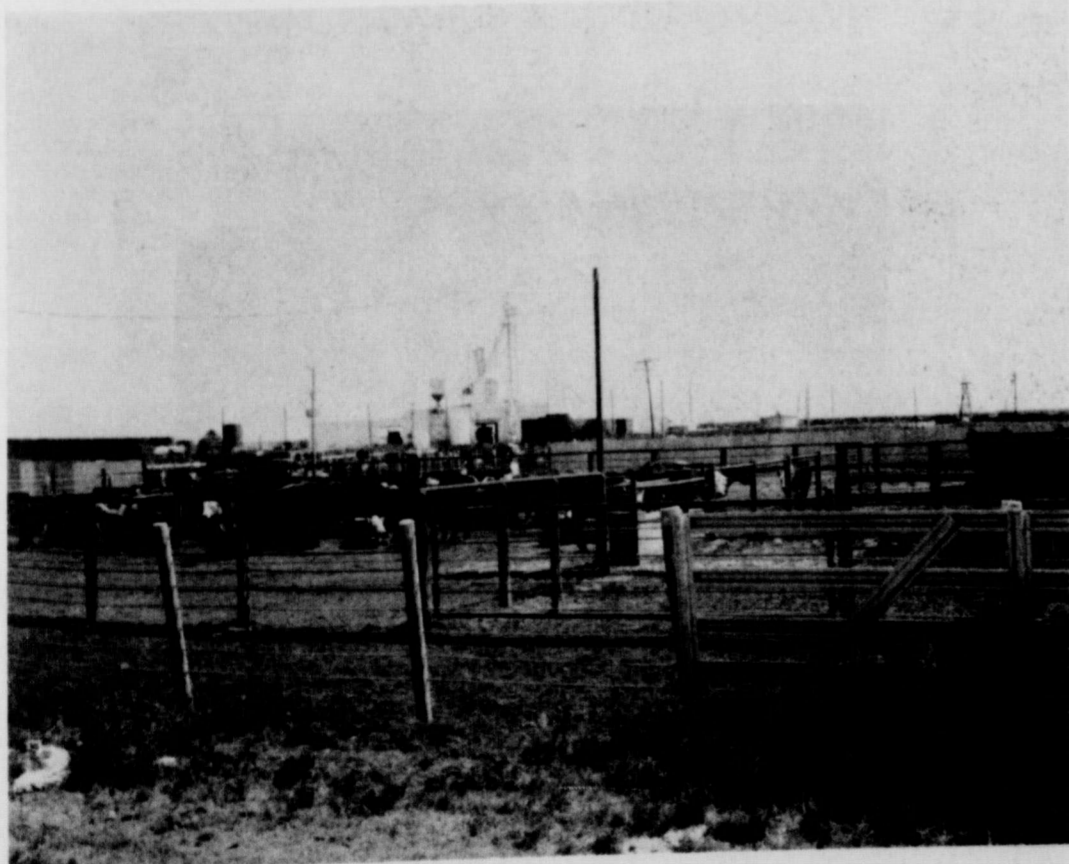
Air Ambulance

200 m.p.h. Airplane

Airplane Rental

Student Instruction

CONGRATULATIONS TO THE FINE STAFF OF THE PALO DURO FEEDERS.



IT'S SO NICE TO HAVE GOOD NEIGHBORS AND WE COULDN'T HAVE A BETTER ONE THAN THE FOLKS AT PALO DURO FEEDERS

EQUITY ELEVATORS

MCKIBBEN

WE ARE PROUD TO SUPPLY GRAIN FOR PALO DURO FEEDERS



CATTLE FEEDING IS "BIG BUSINESS" IN HANSFORD COUNTY AND WE WANT TO TAKE THIS OPPORTUNITY TO SAY OUR CONGRATULATIONS TO THE FINE PEOPLE AT PALO DURO FEEDERS.

HARVEY HOLT

ELECTRICAL CONTRACTOR

226 MAIN GRUVER, TEX.

PHONE 733-2412

CUSTOM FEEDERS



**SEE
US
TODAY**



PALO DURO FEEDERS

WITH CUSTOM DESIGNED PENS

PHONE 733-2628

HANSFORD COUNTY

Men
R. G.
ere c
M. L.
e Fir
urch
stant
Wiley
erge
Pfc.
the
y, en
ctobe
Viet
red
ent ou
ent n
e Spe
turne
Barn
at the
n. W
also
er, H
ck.
e Spe
urch
with a
Wed fi
chool
Funer
ere di
other
earn
mfor
Pallb
udy V
Brier
aries
ry Bu
ry H

Fu
In
Servi
asley
West c
10:31
y 15
lutch
Shirl
ciat
amro
A 59-
amro
a bor
A. S
to die
ld th
lutch
She i
ces a
om i
Spea
-
It, a
rt Th
pping
dren
90.