

DOLLAR DAY SPECIAL

U. S. POSTAGE
Sec. 3486 P. L. 48
Permit No. 21
PAID
Morton, Texas

LOCAL
BOXHOLDER
RURAL ROUTE
ROUTE STAR

edlines..

By Eddie Irwin

THOUGH Many of you, no doubt will still have that "what's the hurry" attitude, its time we go down to the business of really working on the Texas Last Frontier Fair.

IT'S TRUE... WE STILL HAVE some 18 or 19 days left, three weeks, until the Fair rolls around, but that isn't too much time to plan ahead for the part any individual, firm or club will play.

NO MORE WE... TALKING ABOUT THE directors, we think they'll take care of their job and do it well. They know, well enough, they have a lot of work to do. But we're speaking mainly of the individuals who will enter it into competition; the clubs that will sponsor concessions and exhibits, and the firms that will want to advertise their products with a mercantile booth. These are the ones who had better get to thinking, planning, and doing. For the success of the Fair depends not only on the directors, but on those who take part. Just to work up a quick exhibit to be represented, isn't to do right about this Fair. We ask for the most interesting kind of an exhibit you can work up. We ask that as many clubs as possible work up a booth. All of these things together will determine just how good the Fair is.

YOU MEMBERS of the Study Clubs that are going back to the regular meetings beginning this week next, be sure to bring up the subject right away and find out if they want to enter something, and the merchants, who have wholesalers who will help them should ask the salesman about it right away so that they can get the ball rolling.

MUCH IDEA what to expect as this Dollar Day is being published, the Fair Directors are meeting over at the Activities Building. If we can't get a story in this paper, about what further plans have been made, one thing we do know, for sure, the Fair will be better this year on one count, because there will be a carnival—that is a midway with rides. That should help to keep a lot of interest among the younger set.

WE'VE RUN INTO an old problem in our tournament playoff in the softball. The hour is so late at this time, the teams aren't really very excited about coming back to play the finals. After all it is now football season, and most of the boys playing on the teams are either fathers, or are still in school, or have a lot of work to do at this time of the year, other than to play softball.

HERE'S WHAT is being planned. The local playoffs will be finished by next Wednesday night, in all likelihood. So, Thursday night, we are planning to have the finals of the Invitational Tourney, with Byron Jackson vs. St. Elizabeth's, in a one or two game series, finish up on Thursday night, and end the softball for this year, all on the same night. So, we'd better plan to bring the family and come out for the weekend, and then on Friday, football season will officially start at all our area schools.

AND, this year, we will try to keep you a little better informed on the overall football picture from all four of our area schools that are playing football.

WOULDN'T BE playing football, once again they'll be starting their basketball practice early, expecting to field a rather top flight team in both girls' and boys' competition.

THIS WILL BE... A MOST interesting year in football for our four area schools. All but Bula have new coaches. At Three Way, Bill Woods, former Pettit coach, will be handling the Eagles in their tough six man conference. At Whiteface, Emmett Broderson, formerly of Levelland, will be brand new and will head his Amelone team into their Class B conference. At Morton, Alexander has the Indians hoped up about the possibilities of their winning in their new Coach C. Morrison, predecessor of one of the finest coaching records we ever have run across, will again feel himself and his Bula Bulldogs the object of all the wrath opposing teams can generate. For, as usual, they'll all be "after" the Bulldogs, and things might be pretty rocky ahead for the Bulldogs. But our hunch will continue to ride with Bula for a

ORDER CRACKDOWN ON LOCAL HOT RODDERS



VOLUME IV

MORTON, TEXAS, SUNDAY, SEPTEMBER 2, 1956

NUMBER 7

Maple, Whiteface In Finals of Softball Playoffs

Maple and Whiteface qualified to meet each other in the final round of the Morton Softball League playoff with victories last Thursday over Causey and Morton.

The final round of the league playoff will begin tomorrow night, (Monday) and final games will be played Monday, Tuesday and Wednesday if necessary.

Maple finished the regular season on top of the league and Whiteface finished third. Whiteface was the only league team to beat Maple in a regular league game.

Both of the winners were rather handily, Thursday night. Maple, in a 1-1 series tie with Causey, got 6 big runs in the second inning on a pair of homers and went on to shut out Causey, 9 to 0.

Causey got just four hits, all scattered singles off Don Lamm, the winners got 8 off Johnny Van, but it was errors that paved the way for the win. Causey was charged with four errors in the big six run second when every run was unearned. Altogether Causey came up with seven errors.

Whiteface ousted Morton in their series in two straight games. And, Thursday night they did it without any mercy, pounding out 15 hits. The winners started out in the top of the first inning with five straight hits before Carl Kernell could retire a batter. They continued the onslaught in nearly every inning.

Morton finally got to hurler Elvin Johnson for four walks, a scratch hit and an error in the 5th inning and came up with four tallies. But by that time, Whiteface was too far ahead to be slowed down.

Elvin and Barty Johnson were the big guns in the Whiteface attack. Barty had three singles. Elvin had a home run, triple, double and single. H. Riddle had three hits and John Andrews had two.

The game was featured by a rhymer as Morton, claiming that E. Johnson was illegally pitching, inserted a sideman hurler which drew complaints from Whiteface. It slowed the game a little and provided fans with something to talk about but had little effect on the final outcome of the game.

A financial report to the league showed the association about \$35 in the whole as the season drew to a close. Considering the fact that the softball ground installed a new diamond at considerable expense, the overall financial status was figured pretty good. The league operates on a donation basis during the regular season, charging only for tournament games.

WEEKEND WITH DAUGHTER

Mr. and Mrs. J. W. Pond have returned home from a weekend visit with their daughter and family. Mr. and Mrs. Don Bolls and children of Burleson, Texas. The Bolls were moving to Louisville, Kentucky.

HOME FROM CLOVIS VISIT

Miss Anna Pond is back home from a two weeks visit with her sister and family, the Bob Pemberton, of Clovis, N. M.

GUESTS OF J. W. PONDS

Rev. and Mrs. T. L. Pond of West Camp visited in the home of the former's brother, J. W. Pond and family.

FROM MRS. A. H. KING, the Americanism Chairman and Mrs. Clayton Carter, Regent, Lubbock chapter of the Daughters of the American Revolution, reminds us that the Week of September 16-22 is Constitution Week. They ask all clubs, churches, schools, and families to pause during the week to remember that this symbolizes the real birth of our nation. They also ask everyone to fly their flags, and if possible would like to see the various communities do something to observe the week.

The Canvas Cathedral Evangelist



Since 1947 many millions of persons heard him preach and almost 40,000 pledged themselves to active Christian service.

His current revival schedule includes crusades in Tyler, Tex., August 10-19; Tacoma, Wash., Sept. 7-16; Bakersfield, Calif., Oct. 5-14; Tulsa, Okla., Oct. 30-Nov. 4; Indianapolis, Ind., Nov. 13-18; and Raleigh, N.C., Nov. 27-Dec. 2.

The Tyler crusade will be held in Old Stewart Airport on Kilgore Highway, behind TV station KLTW, in the 18,000 capacity tent.

In Tacoma the revival will be held in the tent at South 38th Street at Sprague.

The Bakersfield meeting site will be at the New Fairgrounds, South P. Street.

Any or all neighboring communities are eligible to enter a display in this class. Each exhibit must show 15 kinds of agricultural crops "grown in the general community."

In the Women's Educational exhibit class, Mrs. James Cunningham is general Superintendent. It is open to girls and women's clubs, and all exhibits must be educational in nature.

For clothing and textiles, entries will be accepted from 1 until 5 p.m. on Thursday, Sept. 20th. All work must be completed and must be the work of the exhibitor. No professional work is acceptable, and all articles must have been made in the past three years.

Mrs. Vernon Blackley heads the Culinary exhibits. Professionals are barred.

The art division is divided into two major divisions, original art and crafts. No article will be accepted after 9:00 a.m. Friday.

Mrs. Jos Seagler, Director of Arts and Crafts Division of the Texas Last Frontier Fair, has reminded artists who plan to enter an article in that division, "now is the time to put the finishing touches on that painting you are planning to enter."

September 21 is just around the corner and we want to make a good show even better, Mrs. Seagler said.

Directors have ruled that no one may exhibit the same painting or craft that was entered last year; but the directors have opened a larger group of divisions enabling the show to carry many types of art work.

Oil paintings must be framed and wired for hanging; other paintings may be either framed or matted.

The division hopes to have more school children's art work on exhibit this year, Mrs. Seagler said.

"We are asking you teachers," she said, "to encourage the children to enter this competition. They will enjoy it, and so will you."

First Bale Premium Goes over \$400

The premium on the first reported bale of cotton produced and ginned in Cochran County this season climbed past \$400 on Friday.

The bale was produced by E. J. French, Jr., of the Whiteface community who lives east of the Alamo gin.

Woody Dickson, manager of the Alamo gin, said if the bale wasn't auctioned off by the Jaycees, the gin would give 50¢ a pound for it.

The bale was ginned at no charge in French and he was paid \$96.00 per ton for his seed, or double the going market.

Persons wishing to add to the premium may do so by contacting any Morton Jaycee or mailing their checks or merchandise orders to Box 545, Morton.

Jaycee members of the first bale committee are Maella Roberts, chairman, Bill Mohrwood, and Snooky Russell.

Bob Weatherly Is Manager of Economy Store

Bob Weatherly, formerly associated with Tarver 66 Service Station, has been named manager of the new Economy Store—featuring new and used furniture, on the Northwest corner of the square.

Weatherly, announcing the opening of the store this week, lists cotton puller's needs on special at the store along with a large variety of furniture—plus the availability of an experienced upholstery man.

Weatherly invites all his friends to drop by the new store and visit with him.

Total Vote 1544 In 2nd Primary

In case you've been wondering the total number of persons voting in the Second Democratic Primary in Cochran County, was 1544. The first Primary vote was 1700.

But, for the state records on vote cast, only 1511 will be counted. The basis for county totals to be used later in representation at party state conventions, etc., is the total vote cast in the Governor's race in each county.

HERE FOR WEEKEND

Mr. and Mrs. C. H. Stalcup of Irving, Texas are spending the weekend with their daughter and family, Mrs. S. B. Sims.

Rules Are Released For The "Last Frontier" Fair In Sept.

Fair catalogues were distributed to directors and other interested workers, Friday night at a general meeting of the Last Frontier Fair officials.

The catalogues, giving complete rules of the various fields in which entries will be accepted, are available, as long as they last, at the office of the County Agent and the H. D. Agent and the directors of the various departments will be glad to answer any questions concerning their department.

Menwhile, for the benefit of those who are mildly interested, but not yet expecting to enter any division of the fair, the following is a condensed view of the various departments, rules, and pertinent dates and times.

In the Agriculture class, over which Homer Thompson is serving as superintendent, the exhibitors will be assigned space in the County Barn by the Supt. Exhibits must be ready by 8 a.m., Sept. 21st. The agricultural exhibits are divided into four divisions: Crops, Fruits and Vegetables, educational, and Community. There are six classes of crops for which prizes will be awarded. There are three classes of Fruits and Vegetables.

For the Agricultural education booths, the exhibit may be entered by any group or organization but must be agricultural in nature. The top three awards are \$15; \$10 and \$5.

Any or all neighboring communities are eligible to enter a display in this class. Each exhibit must show 15 kinds of agricultural crops "grown in the general community."

In the Women's Educational exhibit class, Mrs. James Cunningham is general Superintendent. It is open to girls and women's clubs, and all exhibits must be educational in nature.

For clothing and textiles, entries will be accepted from 1 until 5 p.m. on Thursday, Sept. 20th. All work must be completed and must be the work of the exhibitor. No professional work is acceptable, and all articles must have been made in the past three years.

Mrs. Vernon Blackley heads the Culinary exhibits. Professionals are barred.

The art division is divided into two major divisions, original art and crafts. No article will be accepted after 9:00 a.m. Friday.

Mrs. Jos Seagler, Director of Arts and Crafts Division of the Texas Last Frontier Fair, has reminded artists who plan to enter an article in that division, "now is the time to put the finishing touches on that painting you are planning to enter."

September 21 is just around the corner and we want to make a good show even better, Mrs. Seagler said.

Directors have ruled that no one may exhibit the same painting or craft that was entered last year; but the directors have opened a larger group of divisions enabling the show to carry many types of art work.

Oil paintings must be framed and wired for hanging; other paintings may be either framed or matted.

The division hopes to have more school children's art work on exhibit this year, Mrs. Seagler said.

"We are asking you teachers," she said, "to encourage the children to enter this competition. They will enjoy it, and so will you."

If you know someone who paints, draws, carves or molds, please pass these words. And, bring your own entries. You may never be famous, but you may win a cash prize and carry home a ribbon.

Mrs. Seagler said she would be glad to answer any questions concerning your entry.

Judges will be South Plains Art Guild members, Thelma Lawrence, and Connie Martin of Lubbock.

The Flower Show is run on a very strict schedule. Exhibits can be entered from 9 a.m. to 11:30 a.m., Sept. 21. They must remain until the end of the show. Prizes will be awarded in case of a tie. Judging is from 1 p.m. to 3 p.m. and the doors will be opened to the public at 3 p.m.

The following general information is based on a night watchman will be on hand. Telephone service for local calls is available.

The Fair officially opens at 9 a.m. on September 21 and closes at 12 p.m. on Saturday, September 22nd.

The deadline for livestock entries is September 17.

In the mercantile department, a charge of \$25 per booth will be made. Exhibits may not be removed until Saturday at 10 p.m. All the expenses of construction are borne by the exhibitor, only the space is furnished.

Machinery and Implement dealers will be allotted space outside, at a cost of \$25.

Concessions are open to all clubs or organizations, at a cost of \$15 per stand, only the space is provided. The Club must construct and maintain its own concession. The types should be worked out with the general chairman, Bill Glasford.

"Texas Last Frontier" clubs & civic organizations desiring a concession stand at the Fair here, on Sept. 21 - 22, may contact Bill Glasford, general concession chairman, at the Tribune office, and ask for space.

No specific rules have been laid down by the fair directors concerning the concessions, except to point out that the carnival will be on certain concessions also during the fair.

All of these things are just general rules of the various divisions, and by no means does this include any of the divisions mentioned. It is cautioned to get a Fair Catalogue and read the rules carefully or check with the division superintendent. Failure to know of a printed rule is not cause to be allowed to compete without complying.

Back - to - School Is Reason For New Vigilance

City police and the Cochran County Sheriff's Department will combine to "turn on the heat" against hot rodders during the weeks that follow the opening of school it was warned this week.

Sheriff Hazel Hancock and City Secretary Joe Stappeler announced, after a conference Friday, they weren't going to wait until someone gets hurt, and they weren't going to "let someone off" easy. After the customary warning offenders will be ticketed and fined, the Sheriff said.

Sheriff Hancock added, with the schools filled with youngsters, and a lot of teen areas driving cars to school for the first time, the school area is a dangerous area for motorists. The said every effort will be made to help fast driving, with a particular emphasis in the school area.

Hancock also warned that the tickets issued against as demerits on driver's licenses. Many of the younger drivers have the mistaken opinion that licenses once obtained cannot be suspended except for certain types of violations. Such is not the case. A license can be suspended on the recommendation of any judge or officer, the State Highway Department. If a statement is received of safety in driving is restricted. In other words, excessive tickets for any moving traffic violation constitutes such a cause.

City Secretary Stappeler said the City Police would work with the Sheriff's Department to cut down these offenders and reckless drivers in the homes that a fine city safety record can be maintained.

M. E. Casey Opens Brand New Gin In Maple Area

M. E. Casey, whose gin at Maple was destroyed on a December afternoon last winter, is back in business again with an all new, all steel gin, ready for ginning of the 1956 crop.

Casey saw his gin go up in flames on a windy day last December after the last bale of cotton was ginned. The fire nearly wiped out a lifetime of work, but with the help of long time friends and business associates, he announced soon after the fire, he would be in business again.

Casey's new gin, featuring some of the most modern equipment in West Texas, features the 3-B M System, Murray Mitchell and Moss Constellation Equipment.

In an announcement ad inside, Casey and his wife, tell of the new gin and offer their heartfelt thanks to those who stood by them in their hour of tragedy last winter.

Sand Bluestem, One of Top Quality High Quantity, Natural Tall Grasses

A series of articles on natural grasses, prepared by the Phillips Petroleum and released through the local Soil Conservation will be published in the Tribune and Dollar Day Special in a series beginning this issue.

Some of the grasses to be talked about are to be found on the range today, principally short and mid grasses. Originally our range was covered with tall grasses and these have been grazed out. Nature has replaced this with mid grasses and shrubs and finally, after more intense grazing, we have short grass range with weeds and shrubs as invaders.

One of our natural tall grasses that we should see more of in this area is known as sand bluestem.

SAND BLUESTEM is a native, warm season, perennial tall grass with short, scaly, underground stems and roots that saturate the top two feet of soil and may reach depths up to twelve feet. It begins growth in early April and seed falls 2 to 3 feet tall appear from late August to October. The grass is sometimes called "turkey-foot" because the seed head usually branches into three parts resembling a turkey's feet. The young shoots are somewhat flattened at the base and the lower leaves are usually covered with silky hair. Sand bluestem grows in large clumps and is extremely leafy. The lower leaves of this native grass, and when dry, pulling off easily the at the base. Mature plants have a reddish cast above the first.

Bluestem is found in valley bottom-land sites almost to the Rio Grande. It grows on most all the better soils in the true prairie belt, especially in the eastern half of Oklahoma and the Flint Hills of Kansas.

Few if any of the prairie grasses can equal sand bluestem in the quality or quantity of forage produced. It is relished by livestock and usually eaten in preference to other grasses in the mixture. The ranch owners and abuse this native grass has been killed out or greatly reduced on most of the original area since 1885. If sand bluestem is never grazed shorter than six to eight inches during the growing season, the seed leaves left to promote fast regrowth and

Revival Is Set To Open at Maple Baptist

Rev. W. H. Hughes of the Maple Baptist Church announced this week a Revival meeting beginning Sunday, September 2nd, and continuing through September 9.

Rev. Fred Thomas of Jackson Ave. Baptist Church of Lovington, New Mexico will do the preaching and Tom Williams of Blisdon will serve as song director for the meeting.

Services will be held twice daily, at 10 a.m. and at 8:00 p.m.

The public is cordially invited to attend any or all of the services.

A special prayer service will be conducted each evening at 7:45.

"Stampmobile" Due Here Again On Sept. 19th

The S & H Green Stamp newest mobile unit will return to Morton Wednesday, Sept. 19. It was announced this week by Orville Tilson, owner - manager of the local Piggy Wiggly.

In making the announcement, Tilson said a number of area folks had been saving Green Stamps to redeem them for gift items, and now the opportunity is at hand for them to redeem them.

Persons desiring to redeem their stamps for any catalogue item may do so on that date. All that is necessary is to choose the item or items, have the correct number of completed books, and turn in the order to the driver in charge. Selection may be made from many items on the truck, but the individual will receive the chosen items by mail at no extra charge.

Little Folks School To Open Monday

The Morton Little Folks school, a kindergarten opened by Mrs. Joe Gipson, will open its doors for another season next Monday, Mrs. Gipson advised this week.

Parents are to bring their children to the school at 9 a.m.

Little Folks School To Open Monday

The Morton Little Folks school, a kindergarten opened by Mrs. Joe Gipson, will open its doors for another season next Monday, Mrs. Gipson advised this week.

Parents are to bring their children to the school at 9 a.m.

Little Folks School To Open Monday

The Morton Little Folks school, a kindergarten opened by Mrs. Joe Gipson, will open its doors for another season next Monday, Mrs. Gipson advised this week.

Parents are to bring their children to the school at 9 a.m.

Little Folks School To Open Monday

The Morton Little Folks school, a kindergarten opened by Mrs. Joe Gipson, will open its doors for another season next Monday, Mrs. Gipson advised this week.

Parents are to bring their children to the school at 9 a.m.

Little Folks School To Open Monday

The Morton Little Folks school, a kindergarten opened by Mrs. Joe Gipson, will open its doors for another season next Monday, Mrs. Gipson advised this week.

Parents are to bring their children to the school at 9 a.m.

Little Folks School To Open Monday

The Morton Little Folks school, a kindergarten opened by Mrs. Joe Gipson, will open its doors for another season next Monday, Mrs. Gipson advised this week.

Parents are to bring their children to the school at 9 a.m.

Back - to - School Is Reason For New Vigilance

City police and the Cochran County Sheriff's Department will combine to "turn on the heat" against hot rodders during the weeks that follow the opening of school it was warned this week.

Sheriff Hazel Hancock and City Secretary Joe Stappeler announced, after a conference Friday, they weren't going to wait until someone gets hurt, and they weren't going to "let someone off" easy. After the customary warning offenders will be ticketed and fined, the Sheriff said.

Sheriff Hancock added, with the schools filled with youngsters, and a lot of teen areas driving cars to school for the first time, the school area is a dangerous area for motorists. The said every effort will be made to help fast driving, with a particular emphasis in the school area.

Hancock also warned that the tickets issued against as demerits on driver's licenses. Many of the younger drivers have the mistaken opinion that licenses once obtained cannot be suspended except for certain types of violations. Such is not the case. A license can be suspended on the recommendation of any judge or officer, the State Highway Department. If a statement is received of safety in driving is restricted. In other words, excessive tickets for any moving traffic violation constitutes such a cause.

City Secretary Stappeler said the City Police would work with the Sheriff's Department to cut down these offenders and reckless drivers in the homes that a fine city safety record can be maintained.

M. E. Casey Opens Brand New Gin In Maple Area

M. E. Casey, whose gin at Maple was destroyed on a December afternoon last winter, is back in business again with an all new, all steel gin, ready for ginning of the 1956 crop.

Casey saw his gin go up in flames on a windy day last December after the last bale of cotton was ginned. The fire nearly wiped out a lifetime of work, but with the help of long time friends and business associates, he announced soon after the fire, he would be in business again.

Casey's new gin, featuring some of the most modern equipment in West Texas, features the 3-B M System, Murray Mitchell and Moss Constellation Equipment.

In an announcement ad inside, Casey and his wife, tell of the new gin and offer their heartfelt thanks to those who stood by them in their hour of tragedy last winter.

Sand Bluestem, One of Top Quality High Quantity, Natural Tall Grasses

A series of articles on natural grasses, prepared by the Phillips Petroleum and released through the local Soil Conservation will be published in the Tribune and Dollar Day Special in a series beginning this issue.

Some of the grasses to be talked about are to be found on the range today, principally short and mid grasses. Originally our range was covered with tall grasses and these have been grazed out. Nature has replaced this with mid grasses and shrubs and finally, after more intense grazing, we have short grass range with weeds and shrubs as invaders.

One of our natural tall grasses that we should see more of in this area is known as sand bluestem.

SAND BLUESTEM is a native, warm season, perennial tall grass with short, scaly, underground stems and roots that saturate the top two feet of soil and may reach depths up to twelve feet. It begins growth in early April and seed falls 2 to 3 feet tall appear from late August to October. The grass is sometimes called "turkey-foot" because the seed head usually branches into three parts resembling a turkey's feet. The young shoots are somewhat flattened at the base and the lower leaves are usually covered with silky hair. Sand bluestem grows in large clumps and is extremely leafy. The lower leaves of this native grass, and when dry, pulling off easily the at the base. Mature plants have a reddish cast above the first.

Bluestem is found in valley bottom-land sites almost to the Rio Grande. It grows on most all the better soils in the true prairie belt, especially in the eastern half of Oklahoma and the Flint Hills of Kansas.

Few if any of the prairie grasses can equal sand bluestem in the quality or quantity of forage produced. It is relished by livestock and usually eaten in preference to other grasses in the mixture. The ranch owners and abuse this native grass has been killed out or greatly reduced on most of the original area since 1885. If sand bluestem is never grazed shorter than six to eight inches during the growing season, the seed leaves left to promote fast regrowth and

Revival Is Set To Open at Maple Baptist

Rev. W. H. Hughes of the Maple Baptist Church announced this week a Revival meeting beginning Sunday, September 2nd, and continuing through September 9.

Rev. Fred Thomas of Jackson Ave. Baptist Church of Lovington, New Mexico will do the preaching and Tom Williams of Blisdon will serve as song director for the meeting.

Services will be held twice daily, at 10 a.m. and at 8:00 p.m.

The public is cordially invited to attend any or all of the services.

A special prayer service will be conducted each evening at 7:45.

"Stampmobile" Due Here Again On Sept. 19th

The S & H Green Stamp newest mobile unit will return to Morton Wednesday, Sept. 19. It was announced this week by Orville Tilson, owner - manager of the local Piggy Wiggly.

In making the announcement, Tilson said a number of area folks had been saving Green Stamps to redeem them for gift items, and now the opportunity is at hand for them to redeem them.

Persons desiring to redeem their stamps for any catalogue item may do so on that date. All that is necessary is to choose the item or items, have the correct number of completed books, and turn in the order to the driver in charge. Selection may be made from many items on the truck, but the individual will receive the chosen items by mail at no extra charge.

Little Folks School To Open Monday

The Morton Little Folks school, a kindergarten opened by Mrs. Joe Gipson, will open its doors for another season next Monday, Mrs. Gipson advised this week.

Parents are to bring their children to the school at 9 a.m.

Little Folks School To Open Monday

The Morton Little Folks school, a kindergarten opened by Mrs. Joe Gipson, will open its doors for another season next Monday, Mrs. Gipson advised this week.

Parents are to bring their children to the school at 9 a.m.

Little Folks School To Open Monday

The Morton Little Folks school, a kindergarten opened by Mrs. Joe Gipson, will open its doors for another season next Monday, Mrs. Gipson advised this week.

Parents are to bring their children to the school at 9 a.m.

Little Folks School To Open Monday

The Morton Little Folks school, a kindergarten opened by Mrs. Joe Gipson, will open its doors for another season next Monday, Mrs. Gipson advised this week.

Parents are to bring their children to the school at 9 a.m.

Little Folks School To Open Monday

The Morton Little Folks school, a kindergarten opened by Mrs. Joe Gipson, will open its doors for another season next Monday, Mrs. Gipson advised this week.

Parents are to bring their children to the school at 9 a.m.

Little Folks School To Open Monday

The Morton Little Folks school, a kindergarten opened by Mrs. Joe Gipson, will open its doors for another season next Monday, Mrs. Gipson advised this week.

Parents are to bring their children to the school at 9 a.m.

Little Folks School To Open Monday

The Morton Little Folks school, a kindergarten opened by Mrs. Joe Gipson, will open its doors for another season next Monday, Mrs. Gipson advised this week.

Parents are to bring their children to the school at 9 a.m.

Little Folks School To Open Monday

The Morton Little Folks school, a kindergarten opened by Mrs. Joe Gipson, will open its doors for another season next Monday, Mrs. Gipson advised this week.

Parents are to bring their children to the school at 9 a.m.

Little Folks School To Open Monday

The Morton Little Folks school, a kindergarten opened by Mrs. Joe Gipson, will open its doors for another season next Monday, Mrs. Gipson advised this week.

Parents are to bring their children to the school at 9 a.m.

Little Folks School To Open Monday

The Morton Little Folks school, a kindergarten opened by Mrs. Joe Gipson, will open its doors for another season next Monday, Mrs. Gipson advised this week.

Parents are to bring their children to the school at 9 a.m.

Little Folks School To Open Monday

The Morton Little Folks school, a kindergarten opened by Mrs. Joe Gipson, will open its doors for another season next Monday, Mrs. Gipson advised this week.

Parents are to bring their children to the school at 9 a.m.



2ND ANNUAL
 'TEXAS LAST FRONTIER'
F A I R



Friday & Saturday
 September 21 - 22



MAKE PLANS NOW TO ATTEND

Look What's New!

for BACK to SCHOOL

MONDAY SEPT. 3rd

... Dollar Day at St. Clair's Department Store, Morton



CHILDREN'S SCHOOL DRESSES

The newest fall styles by Cinderella... lovely selection of cottons and gingham in cotton plains, solids, stripes, and fancies, each with full let down hems, strong lasting stitches, roomy, generous full cut, long wearing fabrics... select yours today

\$1.98

others 2.98 - 3.98 - 4.98

Buy Now for School Wear

Boys' SCHOOL OXFORDS

Long wearing, sturdy construction... blacks or browns. The newest styles, just like Dad's

Sizes 8½ to 3... 2.98 - 6.95 pr.

Larger boys loafer or lace styles, blacks or browns

Sizes 2½ - 6... 4.98-5.95-6.95 pr.

Boys' Long Sleeve SPORT SHIRTS

See this selection of wonderful new fall colors and patterns... Many styles to choose from - all brand new, full cut, & sanforized shrunk, sizes 1 to 16 yrs... buy several now



A Real Value

1.98 each

Girls' Misses' and Ladies'



New Fall SWEATERS

Choose coat styles, slip over, turtle necks, in plains, fancies, and sequin trims... materials of rayon, nylon, wool orlons... long and short sleeve - all colors and styles. See them at St. Clair's today

1.98 to 12.95 ea.

Girls' Tennis Shoes
Good quality shoe, ideal for gym wear
only 2.98 pr.

Boys' Tennis Shoes
Buy now for school... or gym wear
Sizes 8½ to 12... 2.25
Sizes 12½ to 2... 2.49
Sizes 2½ to 6... 2.98

Men's Nylon Stretch SOCKS

All new fall patterns and colors... first quality

\$ Day Price 2 prs. 1.00

Just Right for Back to School

TEX' N' JEANS

Fully sanforized shrunk, zipper front, full cut, sturdy construction

Sizes 6 to 16 2.49 pr.

Slims for the small waisted, long legged boy, double knee

Only 2.98 pair

Boys' Fruit of the Loom Underwear
Stock up now for back to school... good quality, full cut, long wearing
BRIEFS 59c ea.
VESTS 39c each
T-SHIRTS 59c ea.

Men's Fruit of the Loom Underwear
Full cut, well made, broad-cloth shorts, boxer or gripper styles, buy several prs today
BRIEFS 69c ea.
T-SHIRTS 69c ea.
VESTS 49c ea.



Back to School \$ Day Specials Dan River Wrinkle Shed

PRINTS

Yes, this wonderful Dan River material actually sheds wrinkles, is much easier to wash, needs no starch, dries faster... and comes in all new fall patterns and colors... solids and fancies... regular 79c values

DOLLAR DAY

2 yds..... **100**

Cotton Prints

Sew and Save... buy these new fall cotton prints, 80 square, fast colors, full 36-inch material, ideal for back to school wear, regular 49c values

DOLLAR DAY

3 yds..... **100**

Choose Now While We Still Have Many Selections Children's COATS

For Dress, Play and Back to School

You'll want to select her fall coat now from our new and complete stock of beautiful styles and colors... choose 100 - per cent wool, wool and nylon, plain and fancy trims, milium insulated for added warmth... all sizes



Only 8.95 to 19.95



Boys' Blue Jeans

Sanforized shrunk, zipper fly, full cut, long wearing Jeans for hard school wear... sizes 6 to 12

\$ DAY SPECIAL 1.47 pr.

Full Bed Size Chenille Spreads

See our new styles and colors, ideal for hard wear for growing school children

\$ DAY PRICE 3.77 ea.

Boys' Nylon Stretch Socks

This is a wonderful value in a long wearing sock... all the new fancy patterns Stock up now

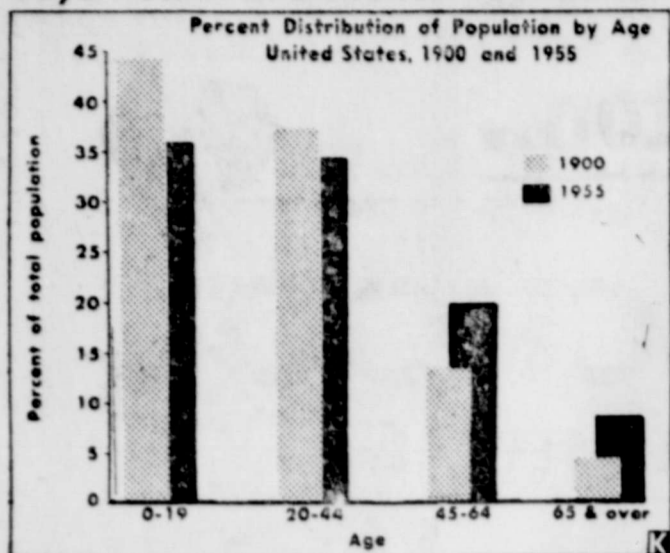
\$ DAY PRICE 39c pr.



Westside Square

Morton, Texas

Over-65 Group Less Dependent Says Health Information Foundation



While four times as many Americans 65 and over are living this year than were alive in 1900, the older group in general is becoming less of a burden on the rest of the population, according to a report from Health Information Foundation.

Marked declines in mortality rates, coupled with a lower birth rate and reduced immigration of young adults have resulted in slightly more than a four-fold increase since the turn of the century—from 3 million to over 14 million—in the number of Americans over 65. During this same period, the population as a whole has doubled.

On a percentage basis, 9 percent of all U.S. citizens today are past 65, compared with 4 percent in 1900, as seen in the graph above. Remarkable advances in medicine, including new drugs and medications, bring promise that the over-65 age group will in years increase even more in the years ahead.

It has been estimated that by 1975 we will have 21,000,000 citizens 65 years old or over. But there is evidence of "undue pessimism" about the problems of the aged, according to Foundation president George Bugbee. A recent study by the Twentieth Century Fund, he said, shows that while in 1890 every 100 workers supported 142 dependents, by 1975 it is estimated that every 100 workers will be supporting no more than 114 to 125 dependents. And since the over-65 citizens share in the ever-growing national prosperity, Mr. Bugbee added, "the financing of non-productive years after age 65 should become less and less an economic burden to the nation."

Enjoy Peaches . . . All Year 'Round



One sure way of enjoying peaches just the way you like them, when you like them, is to freeze them yourself now. Listen for hurrahs from the family when you produce a Vapocan of fresh-tasting, frozen peaches in mid-winter.

For best results, peel and pit peaches under cold running water. Slice or halve them directly into a solution of two tablespoons of ascorbic-citric acid per gallon of ice water. Remove after a few minutes and blot dry with paper toweling. Place peaches in a chilled bowl and add one-half cup sugar per quart of fruit. Mix well with a wooden spoon. Put peaches into square, waxed-board containers, press down the rigid plastic lid, and freeze immediately. The moisture-proof containers come in pint, pint-and-a-half, and quart sizes.

MANITOBA—Variety Vacation-land



Variety is the keynote of Manitoba as a holiday land—for here are found scenery and recreations to appeal to every vacationist.

The picturesque lakes of the southwest offer fishing, boating, swimming and sunbathing along fine, sandy beaches. At Riding Mountain National Park—high on its plateau above the western plains—holiday-makers may ride, golf, play tennis, roller-skate and dance, as well as enjoy all the water sports. The fabulous Whiteshell Forest Reserve combines fine fishing, magnificent scenery and glimpses of wild animal life.



Northern Manitoba, of course, with its fish-teeming lakes and streams, is a newly-discovered angler's paradise. For additional information, write to the Travel Bureau, Room 254, Legislative Building, Winnipeg, Manitoba, Canada.

DONALD DUCK by Walt Disney

SO LET'S CONTINUE THE FIGHT AGAINST POLIO AND OTHER CRIPPLING DISEASES! SUPPORT THE KENNY TREATMENT PLUS REHABILITATION! GIVE TO THE SISTER KENNY FOUNDATION!

Special prepared for the Elizabeth Kenny Foundation, National Headquarters, 2400 Fabry Tower, Minneapolis 2, Minn.

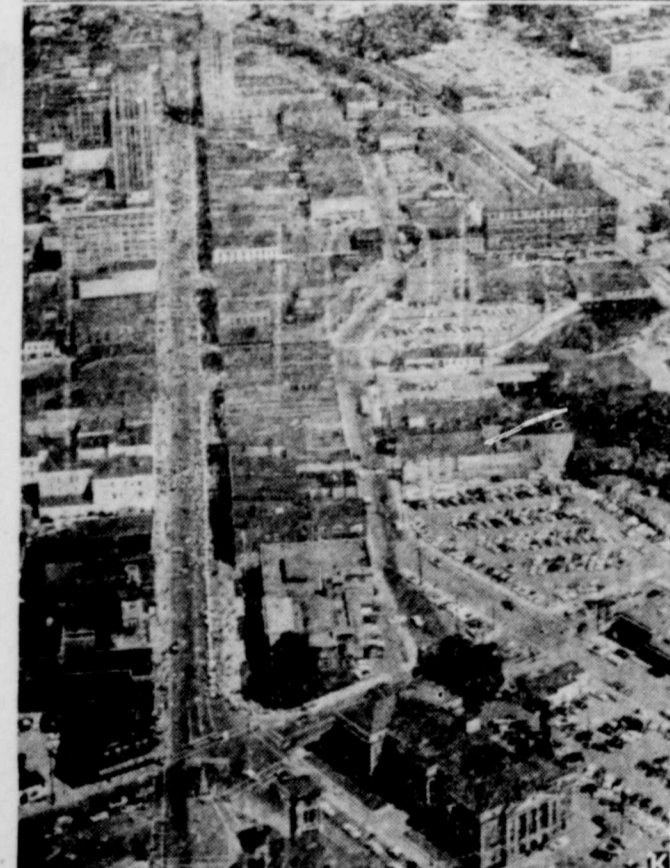


YOUNG AT 73—Still in the grueling business of testing automobiles at 73, Ab. Jenkins, veteran race driver, just set a new 24-hour stock car distance record on the Bonneville Salt Flats in Utah. Under sanction of the National Association of Stock Car Racing he drove a 1956 Pontiac which covered 2,841 miles at an average speed of 118.375 miles per hour.

Elizabeth Kenny Institute, Minneapolis, Minn., is the Elizabeth Kenny Foundation's International Training Center for Kenny Therapists. Free scholarships, two and one-half years for registered nurses and 18 months for physical therapists, provide this post-graduate training. Upwards of 150 Kenny Therapists already have been trained. More are needed.

The Elizabeth Kenny foundation provides the full Kenny treatment and rehabilitation for polio and other disabling disorders at no charge to patients hospitalized at Kenny facilities across the nation. This treatment is administered by graduate Kenny Therapists under medical supervision.

32,000 Attend Cereal Festival



Thirty-two thousand breakfast guests turned out for the Cereal Festival in Battle Creek, Michigan, held in honor of the 50th Anniversary of the Kellogg Company. The event, sponsored by the Battle Creek Chamber of Commerce, was held in the heart of the city's business district where 222 tables extended for almost a mile along Michigan Avenue. Celebrants, who were served Kellogg's cereals and cream, were garbed in 1926 vintage clothes, and the music, cars, songs, and antics of that era set the festival pace. Leading store windows featured historical displays, each depicting a year in the life of the Kellogg Company, and the avenue was strung with jumbo-sized cereal cartons and banners proclaiming the golden jubilee.

	MORTON, PCT. ONE	WHITEFACE, PCT. TWO	BLUESOE, PCT. THREE	NEELY WARD, PCT. FOUR	LEHMAN, PCT. FIVE	WHITE'S GIN, PCT. SIX	ASSESSOR BOX
FOR GOVERNOR:							
Ralph Yarborough	401	168	76	112	24	40	859
Price Daniel	392	92	50	50	10	17	657
FOR ATT. GOVERNOR:							
Ben Ramsey	648	264	91	117	28	53	1268
FOR STATE SEN:							
Will Wilson	502	131	77	84	21	28	44
Tom Moore	276	123	37	67	11	28	36
FOR STATE SEN:							
Carroll Cobb	424	153	54	90	21	35	28
Preston Smith	380	111	64	66	13	22	54
FOR TAX ASSESSOR COLLECTOR:							
W. J. (Dub) Hodge	448	59	32	111	15	23	30
Mrs. Otha Denny	359	206	96	53	19	34	55
FOR TREASURER:							
Mrs. Pat R. Smith	262	199	64	41	18	17	35
Bill A. Crone	540	63	64	122	16	40	50
FOR COMMISSIONER PCT THREE:							
G. D. Lewis				44		45	5
J. N. Foster				85		11	107

COUNTY SWITCHES JULY PRIMARY STAND; BACKS TWO STATE LOSERS — COBB AND YARBOROUGH

Close races and a heavy vote shared the spotlight in the Cochran County Second Primary balloting last Saturday as the County went "against" the eventual winner in two big races.

Mrs. Otha Denny, Bill A. Crone, and Commissioner J. N. Foster emerged winners in the county races but Cochran County supported Ralph Yarborough, the loser in the gubernatorial race and went for Carroll Cobb, who was defeated by Preston Smith in the Senatorial race from this district.

The Commissioner's race in Pct. 3 was the closest, J. N. Foster, running for his third elective term, but only his first 4-year-term edged G. D. Lewis by 13 votes, 107 to 94. The Bluesoe vote, which was by nearly an hour, the last vote to come in, kept folks in doubt and many went to bed believing Foster had lost. He led in the absentee box but trailed at White's Gin, the home box of Lewis. But when the Bluesoe vote was tabulated it gave Foster the nod.

The same thing happened in the County Assessor, Collector's race where Dub Hodge grabbed an early lead from Morton, added to it at Neely Ward saw it pared down with the posting of the absentee box, whittled again at Whiteface and Lehman and then shrink to a single vote lead when White's Gin reported. Then, with a one vote lead, Mrs. Denny's home box of Bluesoe gave her a strong majority and the victory.

Whiteface gave Mrs. Denny by far her heaviest percentage of victory.

The final vote was 822 to 718, or a 104 vote edge for Mrs. Denny.

In the Treasurer's race, Bill Crone got a handy margin over Mrs. Pat R. Smith, 895 to 636 to return him to office. Crone had been appointed to serve until election time. However, the election is only for a two year term and the incumbent will have to run again two years hence if he wants a four year term.

Ben Ramsey, unopposed, naturally got a good vote, polling 1288.

Will Wilson captured the county vote for Attorney General by a 309 vote margin and won out as handsily in the state results.

Smith carried only one of the six election boxes.

Yarborough posted a 202 vote margin in Cochran County, 859 to 657, but was beaten in the entire state by something over 3,000 votes in a tremendously tight race.

An almost identical situation prevailed on a smaller scale in the 28th District Senatorial race. Carroll Cobb carried Cochran County and all but two others in the race, but Preston Smith carried vote heavily Lubbock and a majority at Crosby County helped put him across.

Smith had carried Cochran County in the First Primary, but the Second Primary results were Cobb 805; Smith 710.

TRAILORS!

- ready to roll
- ready to assemble
- beds, Chassis

"If it's TRAILORS you want — we got 'em . . . in any form — come see and you'll buy."

See us before you BUILD or REPAIR

MORTON, TEXAS

MONDAY IS DOLLAR DAY on the Last Frontier

Worthwhile Reading . . .

... for your whole family in the world-famous pages of The Christian Science Monitor. Enjoy Erwin D. Canham's newest stories, penetrating national and international news coverage, how-to-do features, home-making ideas. Every issue brings you helpful easy-to-read articles.

You can get this international daily newspaper from Boston by mail, without extra charge. Use the coupon below to start your subscription.

The Christian Science Monitor
One, Norway Street
Boston 15, Mass., U. S. A.

Please send the Monitor to me for period checked.

1 year \$16 6 months \$8
3 months \$4

Name _____
Address _____
City _____ State _____ Zip _____

for . . .

Office Supplies

shop the TRIBUNE

and SAVE!

STAPLERS

TOT "50"	98c
APSCO (Standard)	\$2.35
SWINGLINE (No. 3)	\$4.25
10,000 BOSTITCH Staples	\$2.75

Note and Ledger BINDERS

B & P 9 1-4 x 11 7-8 in.	\$5.25
B & P 7 1-2 x 10 3-8 in.	\$4.50

- Typewriter Ribbons
- Ball Point Refills
- Adding Machine Paper
- Columnar Pads

Card Files — Metal

3 x 5 inches	50c
4 x 6 inches	85c
5 x 8 inches	\$1.10

CABINETS

3 x 5 (1600 card capacity)	3.25
----------------------------	------

THIS WEEK ON THE TELEVISION SCENE

KDUB - TV Channel 13

5:00 This Is The Life
5:30 Plainsman Parade
6:00 Lassie
6:30 Private Secretary
7:00 G. E. Theatre
7:30 Alfred Hitchcock
8:00 \$64,000 Challenge
8:30 Annie Oakley
9:00 Ed Sullivan
10:00 Judge Roy Bean
10:30 Local News
10:45 Wave, Wac, and Marine
11:45 Sign Off

MONDAY

6:45 Sign On
6:50 Advance Weathercast
6:55 Local News
7:00 Capt. Kangaroo
7:25 Cartoons
7:30 Capt. Kangaroo
7:55 Sing Song
8:00 Garry Moore
8:30 Godfrey Time
8:45 Godfrey Time
9:00 Notes of Harmony
9:15 Godfrey Time
9:30 Strike It Rich
10:00 Valiant Lady
10:15 Love of Life
10:30 Search for Tomorrow
10:45 TV Sermonette
11:00 Network News
11:10 Stand and Be Counted
11:30 As the World Turns
11:55 Johnny Carson Show
12:00 Noon News
12:15 House Party
12:30 Big Payoff
12:45 Godfrey Time
1:00 Strike It Rich
1:30 Brighter Day
1:45 Secret Storm
1:55 Edge of Night
2:00 Receipte Roundup
2:30 Movie Matinee
4:30 Western Theatre
5:30 Community Crossroads
5:50 What's Behind the News
6:00 News, weather, sports
6:15 Doug Edwards
6:30 Robin Hood
7:00 Charlie Farrell Show
7:20 Vic Damone
8:00 Studio 1 Sum. Theatre
9:00 Burns and Allen
9:30 Doug Fairbanks Presents
10:00 Confidential File
10:30 News, sports, weather
11:00 Murder is My Business
12:00 Sign Off

TUESDAY

6:45 Sign On
6:50 Advance Weathercast
6:55 Local News
7:00 Capt. Kangaroo
7:25 Cartoons
7:30 Capt. Kangaroo
7:55 Sing Song
8:00 Garry Moore
8:30 TV Time Out
8:45 Godfrey Time
9:00 A to Z
9:15 Godfrey Time
9:30 Strike It Rich
10:00 Valiant Lady
10:15 Love of Life
10:30 Search for Tomorrow
10:45 Hairdresser HILights
11:00 Network News
11:10 Stand and Be Counted
11:30 As the World Turns
12:00 Johnny Carson Show
12:30 Noon News
12:45 House Party
1:00 Big Payoff
1:30 Brighter Day
1:45 Secret Storm
1:55 Edge of Night
2:00 Receipte Roundup
2:30 Movie Matinee
4:30 Western Theatre
5:30 Community Crossroads
6:00 News, weather, sports
6:30 Name That Tune
7:00 Joe and Mabel
7:30 I Spy
8:00 \$64,000 Question
8:30 Do You Trust Your Wife
9:00 Phil Silvers
9:30 Navy Log
10:00 The Pendulum
10:30 News, sports, weather
11:00 Geisha Girl
12:00 Sign Off

WEDNESDAY

6:45 Sign On
6:50 Advance Weathercast
6:55 Local News
7:00 Capt. Kangaroo
7:25 Cartoons
7:30 Capt. Kangaroo
7:55 Sing Song
8:00 Garry Moore
8:30 Godfrey Time
9:30 Strike It Rich
10:00 Valiant Lady
10:15 Love of Life
10:30 Search for Tomorrow
10:45 TV Sermonette
11:00 Network News
11:10 Stand up and Be Counted
11:30 As the World Turns
12:00 Johnny Carson Show
12:30 Noon News
12:45 Houseparty
1:00 Big Payoff
1:30 A to Z
2:00 Brighter Day
2:15 Secret Storm

2:30 Edge of Night
3:00 Receipte Roundup
3:30 Movie Marquee
4:30 Western Theatre
5:30 Cartoon Theatre
6:00 News, weather, sports
6:15 Doug Edwards
6:30 Range Rider
7:00 The Millionaire
7:30 I've Got A Secret
8:00 U. S. Steel Hour
9:00 Frankie Laine
10:09 Confidential File
9:50 Crunch and Des
9:30 Range Rider
10:00 Political
10:15 TBA
10:30 News, Weather, Sports
11:00 Music Man
12:00 Sign Off

KCBD - TV Channel 11

THURSDAY

6:55 Program Preview
7:00 Today
8:00 Ding Dong School
8:30 Bandstand
9:00 Home
10:00 Tie Tac Dough
10:30 It Could Be You
11:00 Cook Book
11:30 Fashions
11:45 RFD 11
12:00 Serenaders
12:30 Tennessee Ernie
1:00 NBC Matinee
2:00 Queen For A Day
2:45 Modern Romances
3:00 Comedy Time
3:30 Stu Erwin Show
4:00 Western Adventure
5:00 Old Time Comedies
5:30 Frankie Carle
5:45 Hospitality Time
6:00 From Hollywood
6:30 News
6:35 Weather
6:40 Sports
6:45 Here's Howell
7:00 People's Choice
7:30 Captain Gallant
8:00 Dateline Europe
8:30 Science Fiction Theatre
9:00 Best of Groucho
9:30 Dragnet
10:00 Star Stage
10:30 News
10:40 Weather
10:45 Sports
10:50 Channel 11 Theatre
11:00 Channel 11 Theatre

FRIDAY

6:55 Program Preview
7:00 Today
8:00 Ding Dong School
8:30 Bandstand
9:00 Home
10:00 Tie Tac Dough
10:30 It Could Be You
11:00 Cook Book
11:45 RFD 11
12:00 Serenaders
12:30 Tennessee Ernie
1:00 NBC Matinee
2:00 Queen for a Day
2:45 Modern Romances
3:00 Comedy Time
3:30 Stu Erwin
4:00 Western Adventure
5:00 Rin Tin Tin
5:30 Eddie Fisher
5:45 Hospitality Time
6:00 From Hollywood
6:30 News
6:35 Weather
6:40 Sports
6:45 Here's Howell
7:00 Best In Mystery
7:30 Celebrity Playhouse
8:00 Cavalcade of Sports
9:00 Dr. Hudson's Secret Jnl
9:30 Life of Riley
10:00 From Hollywood
10:30 News
10:40 Weather
10:45 Sports
10:50 The Vise

SATURDAY

8:00 Howdy Doody
8:30 I Married Joan
9:00 Fury
9:30 Mr. Wizard
10:30 Mr. Wizard
11:00 Hopalong Cassidy
12:00 Million Dollar Movie
5:00 Playtime
5:45 News, Weather, Sports
6:00 Lone Ranger
6:30 Cisco Kid
7:00 People Are Funny
7:30 Western Marshall
8:00 Encore Theatre
8:30 Adventure Theatre
9:00 Rosemary Clooney
9:30 Lawrence Welk
10:30 News
10:40 Weather
10:45 Sports
11:00 Grand Ole Opry

SUNDAY

1:10 Sign On
1:15 Norman Vincent Peale
1:30 The Way
2:00 Frontiers of Faith
2:30 American Forum
3:00 Zoo Parade
3:30 This is the answer
4:00 Meet The Press
4:30 Roy Rogers
5:00 Topper
5:30 Frontier
6:00 Steve Allen Show
7:00 My Little Margie
7:30 Crossroads
8:00 Man Against Crime
8:30 The Men Called X
9:00 Highway Patrol
9:30 Mr. District Attorney
10:00 From Hollywood
10:30 News
10:40 Weather
10:45 Sports
10:50 Craig Kennedy

VISITING WITH DAUGHTER
Mr. and Mrs. Bill Weatherly of Socorro, New Mexico, are visiting

this week with their daughter Mrs. John E. (Tubby) Holloman and family.

VISIT IN PLAINVIEW
Barbara and Nancy Sanders spent the past week with the Joe Sanders of Plainview.

To Harvest King Cotton..



GET A 3-BALE

(With 5th Wheel)

A Satisfied Customer Is Our First Consideration

TRAILER

Complete With

TIRES

As LOW As

25000

GET A 3-BALE

"BEST YET TRAILER"

We have 3-bale (5th wheel) Cotton Trailers (FOR SHORT TURNING)

and regular Cotton and Grain Trailers

READY FOR DELIVERY

(COMPLETE with Passenger or Aircraft Tires)

BEST YET TRAILER COMPANY

South Avenue H Lubbock Phone SH 4-3131

ROSE THEATRE

MORTON, TEXAS

UNDAY - MONDAY

SEPTEMBER 2 - 3



TUESDAY - WEDNESDAY

SEPTEMBER 4 - 5

THE HOTTEST HUNK OF FILM HOLLYWOOD EVER SHOT!



THURSDAY - FRIDAY

SEPTEMBER 6 - 7



INDIAN DRIVE - IN

MORTON, TEXAS

SATURDAY - SUNDAY

SEPTEMBER 8 - 9

'ULYSSES'

-KIRK DOUGLAS

-SILVANA MANGANE

(IN TECHNICOLOR)

LADIES' Dresses

Wash silk material that you will want to see

MONDAY

1.98 ea.

ONE BACK LADIES' Fall Dresses

All new, fall dresses, and here are some real bargains, if you're early. Regular values up to 10.98

MONDAY

2 for 11.00

CANNON Towels

Full 20x40 inches, pretty selection, see them

MONDAY

3 for 1.00

SEW Back to School

Piece Goods

You'll want to check our big supply of Pongee, Dan River Gingham, and Drip 'n' Dry Cottons that are ideal for sewing blouses, dresses, skirts, and shirts.

MONDAY ONLY

69¢ yd.

MORNING GLORY Cotton

Get set for quilting now GOING MONDAY

2 lbs. 75¢

Use Our Lay-away

for DOLLS, and TOYS while our selections are COMPLETE



New

943 J. D. Economy Wagon \$125.00

953 J. D. Standard Wagon \$160.00

963 J. D. Heavy Duty Wagon \$175.00

16 & 18' Cotton Beds for above wagons available

Used Equipment

A. C. 2-row Combine \$300.00

COTTON HARVESTERS

REPAIRED Ready to Be Installed

McAlister-Huggins

Phone 4551 Morton, Texas

25-1fc

For Complete Television and Radio Repair Quality Service Electric Wiring City Electric Walt Sandefer

SEE IT TODAY!

RCA - VICTOR

for '56

AT



RCA Victor 21-inch Special \$17.99 Lowest price ever for RCA Victor 21-inch TV! Specially designed for all normal signal areas. Fast greenish, stand gracefully extra. 215500.

ROSE AUTO & APPLIANCE

Clarke's DOLLAR DAY advertisement featuring a smiling dollar character and a woman in a dress.

Monday, September 3

GIRLS' Blue Jeans

Just right for back to school wear, tough, long-lasting, values to 2.98

MONDAY

1.49 pr.

LADIES' Nylon Hose

First quality 51-15 hose, nice for gifts, get several pairs

MONDAY

79¢ pr.

LADIES' and CHILDREN'S Panties

Nylonized, run proof panties that are right for school

MONDAY

3 prs. 1.00

MEN'S and BOYS' Sport Shirts

Here are some real buys, be early, and get them for back to school and the rest of our certain hot weather

MONDAY

99¢ ea.

MEN'S Dress Straws

Out they go at bargain prices

1/2 price

MONDAY

BOYS' and GIRLS' Gym Shoes

Here are some tennis shoes that will be ideal for school, come by and see 'em first thing Monday.

MONDAY

99¢ ea.

MEN'S Dress Shirts

Choose white or colored, ideal for wear or giving

MONDAY

1.98 ea.

BOYS' Belts

Top grain steer hide belts that will give plenty of wear

MONDAY

49¢ ea.

Shoes

We have 'em for every member of the family

MONDAY

1.49 up

SPECIAL VALUES!

SCHOOL SUPPLIES

JUST RECEIVED!

-NOTEBOOKS

-TABLETS

-BOOK SATCHELS

-PENCILS

-CRAYONS

-FOUNTAIN PENS

-PASTE

-WATER COLORS

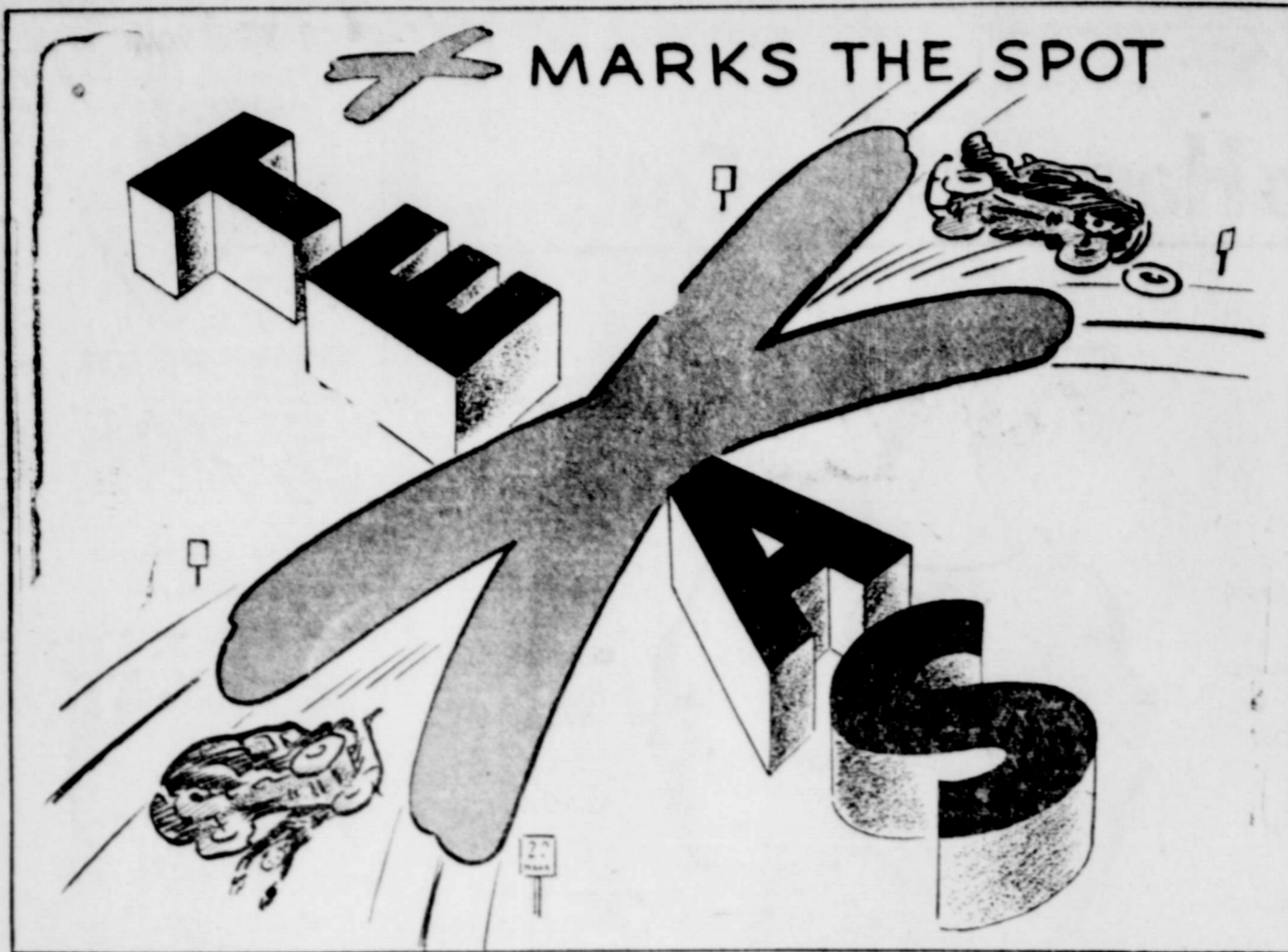
-SPELLING TABLETS

-RULERS

Clarke's Dry Goods

EASTSIDE SQUARE

IN MORTON



MARKS THE SPOT

V. G. PIERCE FAMILY HELD REUNION SUNDAY AT MACKENZIE PARK

The V. G. Pierce family reunion was held Sunday, August 26th at Mackenzie State Park in Lubbock. A total of 55 persons were present for the annual get-together but a number of the relatives were unable to attend.

Attending from Morton, were, of course, Mr. and Mrs. V. G. Pierce who reported one of the best get-togethers they have had, thoroughly enjoyed by all.

SUNDAY VISITORS

Mr. and Mrs. Raymond Solt of Cenic, N. M. visited in the home of Mr. and Mrs. J. L. Harris on Sunday afternoon.

VISITORS FROM CALIFORNIA

Mr. and Mrs. J. N. Bryant from Vallejo, California were overnight guests in the R. W. Hill home Friday night. They are old friends of the Hills, having known each other in Oklahoma, and also having formerly lived near Morton.

IS CRITICALLY ILL WITH LUEKEMIA

Gary Warton, 14 year old son of Mr. and Mrs. John Warton of Dallas, is reported critically ill with leukemia.

Gary is the grandson of Mr. and Mrs. F. F. Warton of Morton. His father, John Warton, was one of the volunteer firemen that was badly burned in the tragic Dallas refinery explosion about a month ago.

PROFESSIONAL

Photographers

— Here each Saturday from 1 to 5 P. M. —

LOCATION: Next door to Georgia's Beauty Shop—South of Signal Light, Morton—
BABY PICTURES OUR SPECIALTY
WEDDINGS, REUNIONS, INDIVIDUALS
NORMAN'S STUDIO
 Eastside Square Box 106
LEVELLAND

Whiteface Football Schedule Lists Six Conference Games

Fans of the Whiteface Antelopes will get ample opportunity to get a good look at them and size up their conference chances before the conference race gets started this year.

The Antelopes will play their last three games at home, all non-conference affairs. They open with a battle with Tatum, N. Mexico on September 7th, follow against Whitarral and Ropes.

The Antelopes, under a new coach, Emmett Braderson have six conference battles, three at home and three away. They meet New Deal, New Home, and Cooper on their own field and then journey to Meadow, Lorenzo and Wilson.

Here is the complete Antelope schedule:

- Sept. 7 — Tatum (H)
- Sept. 14 — Whitarral (H)
- Sept. 21 — Ropesville (H)
- Sept. 28 — Friona (T)
- Oct. 5 — Open Date
- Oct. 12 — Meadow (T) *
- Oct. 19 — New Deal (H) *
- homecoming)
- Oct. 26 — Lorenzo (T) *
- Nov. 2 — Wilson (T) *
- Nov. 9 — New Home (H) *
- Nov. 17 Cooper (H) *

* Conference games

Once again, we say "thank you" to all who encouraged and supported us during the past election campaign. Someone had to lose — and that fell our lot so . . . there's little more to say except congratulations to Mrs Otha Denny, we wish for her the best of luck while serving us as our . . .

TAX ASSESSOR - COLLECTOR

Sincerely,

DUB HODGE



PIGGLY WIGGLY, Morton, Texas

SPECIAL \$ DAY . . . while they last . . .

Nylon Body Guard Tires

(36-month Guarantee)

670 x 15 Black 18.72

(Exchange for your tire — Tax Included)

670 x 15 White Sidewall 22.50

(Exchange for your tire — Tax Included)

BATTERY BACK-TO-SCHOOL SPECIAL

Prepare Your Car or Pickup for quick starts on Cold Mornings

— This offer good for the Month of September Only —

6 - volt Battery, one year guarantee

Exchange 6.95

(for Fords and Chevrolets)

Other Batteries at Comparable Prices

LUPER TIRE SERVICE

● Guaranteed repairs and service on all types of tires.
 — Distributor for HASTINGS OIL FILTERS —
 — and GOULD BATTERIES

114 EAST WASHINGTON MORTON PHONE 2111

Announcing the Opening of... THE ECONOMY STORE

WESTSIDE SQUARE

Bob Weatherly, Mgr.

Morton, Texas

NEW and USED FURNITURE--Priced Right

Experienced

Upholstery

Man

Available

DROP BY AND

VISIT US

Right now we have

a good selection

of —

— CHAIRS

— DINETTE SUITS

— LIVINGROOM SUITES

— and a few BEDROOM SUITES

Mr. COTTON FARMER . . .

SEE US FOR COTTON PULLERS' NEEDS:

— COT PADS and MATTRESSES

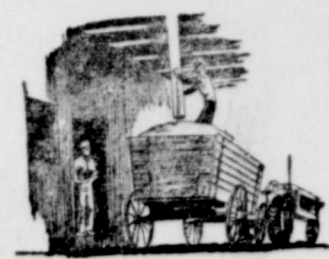
— NEW and USED FURNITURE

— WATER CANS

— COOKING UTENSILS

— AND OTHER NEEDED ITEMS

NOW OPEN...



the ALL NEW ALL STEEL

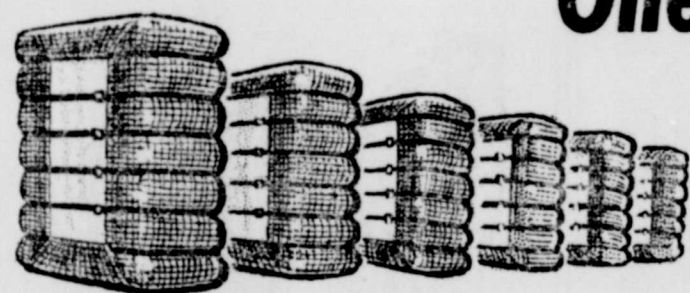


CASEY GIN



Maple, Texas

One Of The Most MODERN and COMPLETE Up-to-Date Gins In All West Texas



- Featuring the 3-BIG M System
- 490 MURRAY RECIPROCATING GINS
- MITCHELL SUPER CHAMP CLEANERS AND FEEDERS
- MITCHELL JIMBO BURR MACHINE
- MITCHELL 3 MILLION BTU DRYING SYSTEM
- MOSS CONSTELLATION LINT CLEANER

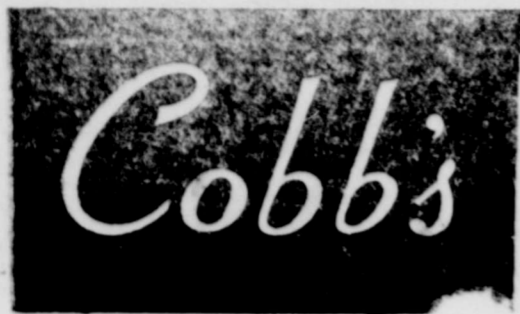
All new, Spiral Construction Lint Saw

We wish to express our appreciation and thanks to all our many friends and customers who have been so considerate since the loss of our plant on December 3rd, 1955.

COME BY AND VISIT WITH US

— M. E. and RUTH CASEY

Join the Crowds Monday at . . .



Westside Square Morton



Boys' SPORT SHIRTS

Long sleeve numbers ideal for back-to-school wear . . . come in COTTON plaid, chest stripes, tartan plaids, woven gaelic stripes, and COTTON club chest stripes . . . sizes 8 to 15

Regular 3.98 Values 2.67

Regular 2.98 Values 1.67

Girls' Nylon PANTIES

Lace trimmed, girls' nylon panties . . . come in nice assortment of colors . . . wonderful for back to school wear . . . sizes 4 to 14

DOLLAR DAY 2 prs. 1.00

Boys' Sport SHIRTS

Knit sport shirt with short sleeves . . . just right for starting the back to school youth in . . . assorted colors and broken sizes . . . be early for choice

DOLLAR DAY 1.00 ea.



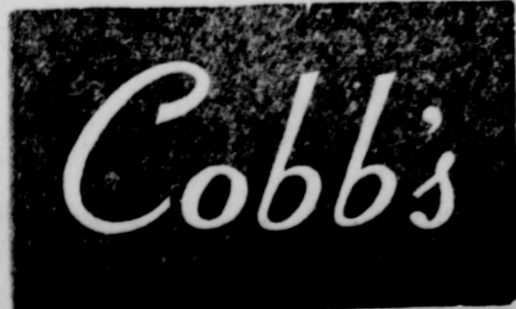
Special Purchase

Boys' Western JEANS

Purchased to offer you extra savings on back to school wear . . . tough 13 and 3-4 ounce denim, large pockets, bar tacked and rivets at points of strain, sanforized, sizes 7 to 12, regular 2-98

DOLLAR DAY 1.99 pr.

Join the Crowds Monday at . . .



WESTSIDE SQUARE MORTON

DOLLAR DAY SPECIAL

Ladies DRESSES

Lovely COTTONS, orlons, and linens . . . a wide arrangement of styles and colors . . . priced to please the smart Dollar Day shopper . . .

Values to 29.98 Now 7.00

Values to 14.98 Now 5.00

DOLLAR DAY SPECIAL

Ladies' Nylon PANTIES

A generous Dollar Day Special that will please the lucky buyer . . . 100 percent nylon panties — white only

Regular 1.00 3 prs. 2.00

at the house of famous brands . . .

DOLLAR DAY

Monday, September 3rd



Girls' School DRESSES

Wonderful gingham checks and patterns . . . a good assortment of colors for the early shoppers . . . each with collar and cuffs, ric-rac braid on tie, pockets and decorative front. Sizes 7 to 14

Dollar Day 4.99 each

Comfortable Fatigue Mats

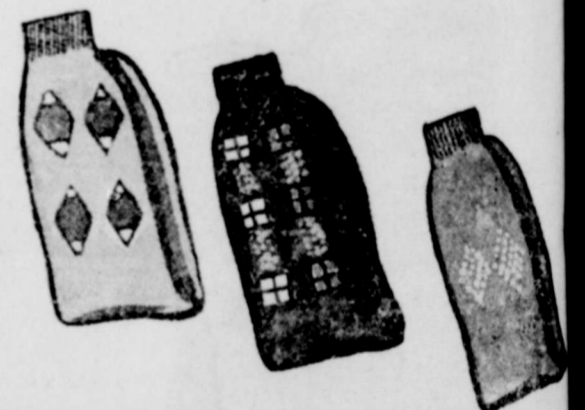
Drop one where you must stand, feel the difference immediately, 3-8 inch sponge rubber, non skid, machine washable, non absorbent, guaranteed by Good Housekeeping, made by General Tire and Rubber Co. come in assorted colors with wrought iron design

Size 18x30 inches . . . 1.69
Size 21x36 inches . . . 1.98

Clearance Ladies' Straw Sandals

Straw sandals that can worn from now through cold weather . . . come in pink and white — regular 6-98 values marked for

DOLLAR DAY 3.49 ea.



Girls' Triple Roll Socks

Made of soft, spun, combed COTTON, popular, pretty come in white only . . . sizes 8 to 11 — regular 69c values

47c pr.

Boys' Stretch Socks

Nylon stretch socks that we've special purchased offer you more savings back to school wear — long wearing, washes easily, no binding, regular 59c

38c pr.

Boys' Sport Shirts

COTTON short sleeve sport shirts that will fit the bill for back to school wear now, assorted colors and patterns

DOLLAR DAY

Regular 1.98 Val . . . 1.67

Regular 2.98 Val . . . 2.29

Men's Dress Straws

Choose a bargain, dress straw hats in brown, tan, and grey, all priced DOLLAR DAY 1/2 PRICE

Men's Socks

Argyle, comfortable, COTTON socks, assorted patterns, each pair a bargain for the man that appreciates the feel of COTTON, regular 55c values

DOLLAR DAY 39c pr.

One Group Ladies' Dresses

This consists of early fall COTTONS in plaid, gingham, and textured COTTONS, a wide range of styles, sizes 9 to 15, 10 to 20, and 12 1/2 to 24 1/2

5.98

Men's Socks

This includes nylon stretch socks and COTTON argyle socks, assorted colors and patterns

DOLLAR DAY 2 prs. 1.00

Just Arrived! Corduroy

New shipment, solid colors and printed, ideal for back to school sewing

1.29 - 1.59 yd.

Comal COTTONS and Bates disciplined prints in solid colors and prints

1.29 - 1.49 yd.

