

"By Helping Business You Help Yourself" The Floyd County Plainsman

Floydada, Floyd County, Texas, Thursday, March 7, 1940

Number 15

Farmers Should Know What to Expect Organization of Soil Conservation District In Floyd County

The Plainsman:
There has been confusion in the minds of many farmers during the past few weeks which has caused some of them to believe that perhaps the organization of a Soil Conservation District is a governmental agency to come in and take over the farm. This is not the case. The farmer should know what a Soil Conservation District is and what it can accomplish. It must be established by the legislature because it is a governmental subdivision. The question often comes up in the minds of farmers: "Can they levy taxes?" They can, but it is not provided in the act. The supervisors will decide on this, and they will also decide on the program that will be carried out and the use of planning and the Federal and State agencies.

The State Soil Conservation Act provides that one of the State Soil Conservation Board's duties and powers is "to secure the cooperation and assistance of the United States and any of its agencies, and of agencies of this State, in the work of such districts."

If the District requests assistance, other than assistance in preparing a program and plan, from the U. S. Department of Agriculture, a memorandum of understanding will be entered into between the Department and the District. Such a memorandum will be dependent upon the adequacy of the District Program and the availability of funds and personnel.

It is very important to explain to the farmers that the Department of Agriculture Soil Conservation technicians available through the Soil Conservation Service cannot assist farmers except in designated work areas such as Districts, camps, demonstration projects, or on farms which are selected as a joint demonstration between the Extension and Soil Conservation Service. If a District is created the service of technicians with the Soil Conservation Service will be made available.

Now as to what the Soil Conservation Service will make available to Districts having a memorandum of understanding with the United States Department of Agriculture and to which they are able to furnish assistance full-time, trained, experienced personnel to provide the following:

Detail conservation survey may of farm or ranch, showing the type of soil, degree of erosion, slope of land, and present use of land. Land use capability classes will also appear on this map.

Management survey of farm or ranch to find out available equipment, experience, and desire of farmer, type of farming practiced, acres of various crops, number and kind of livestock and needs of farmer to further assist in planning sound conservation farming system.

Land use map of farm or ranch mutually agreed upon shows field boundaries, land uses and acreage in each, location of proposed conservation measures when necessary.

Program of Conservation Operations for farm and ranch mutually agreed upon by farmers and ranchers in the District, provides for what both farmer and District have agreed to do. Using the measurements in combination with the land use map, makes it possible for the farmer to put into operation a soil and water conservation program over a period of years, aiding farmers in planning, designing and making out adequate conservation measures, such as water disposal systems, water facilities, strip cropping systems, diversions, contour tillage, protection of road ditches, re-locating field boundaries and private roads to better fit a system of conservation farming; preparation of drainage agreements, when necessary, between neighboring farms or county and state highway departments.

Assistance may be received by the CCC camps in those districts where CCC camps are located a limited amount of enrollee labor will be available to assist in establishing a portion of those jobs which will be the most difficult for the individual farmer or be of the greatest public benefit. The policy will be to furnish the greatest assistance to the maximum number of farmers possible within the camp work area.

WPA projects will also be sponsored through the District. The Emergency Relief Appropriation Act of 1939, provides for the sponsorship of WPA projects by Soil Conservation Districts when there is a need and it is advisable to establish such.

Districts will be in position to borrow equipment which may be available and needed within the District and the District will assume responsibility of operation and maintenance of such equipment as agreed upon between the District and the Department of Agriculture.

Another advantage, is working together makes it easier and cheaper for farmers to solve their soil and water conservation problems. For example, when cases come up and a terrace line in reality should cross the neighbor's farm to reach a desirable spillway, there is much benefit that can come from farmers working together in that way. Many other advantages could be listed, such as

The \$2,500 Home Is Here

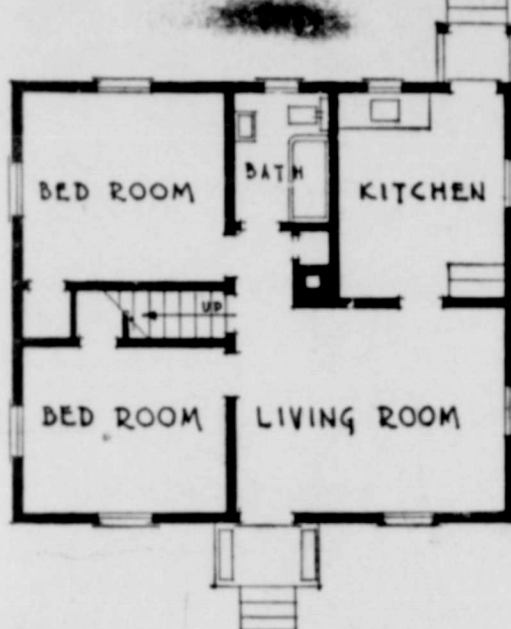


The outstanding event in the Nation's construction industry is the practical development of homes of the modern type which are within the financial reach of thousands of families with small incomes.

Costing \$2,750, including land valued at \$250, this property was financed with a \$2,500 mortgage insured by the Federal Housing Administration under Title I of the National Housing Act. The monthly payments over 15 years average less than \$21.

If the property were valued at \$2,750 by the FHA and were financed over a period of 25 years under Title II of the National Housing Act, an alternative plan, this property securing a \$2,500 mortgage could be bought with monthly payments under \$15. These figures exclude local taxes and hazard insurance.

Located in the environs of Annapolis, Md., this attractive home is one of many of its type being erected in that locality. The interior is as convenient as the exterior is attractive. Cross ventilation is provided in every room, while the kitchen is larger than that found in many more expensive homes. A built-in breakfast nook affords a convenient place for eating, as no dining room is provided. Although unfinished, the attic has already laid floors and at relatively small expense may later be developed into two additional rooms and bath or, in its present unfinished condition, used as a recreation room.



Water Board Met Wednesday in Amarillo

Directors of the Panhandle Water Authority met at the Amarillo Hotel Wednesday afternoon at 2 o'clock to hear reports from Carl Hinton, association secretary, on his work in connection with the lakes programs in Washington.

Extra benefits for the Plains area under the reclamation program were offered a setback Monday when the House appropriations committee in Washington rejected requests for a \$5,000,000 reclamation bureau fund to be used in developing small irrigation projects.

"But this doesn't have anything to do with our regular lakes program," Mr. Hinton said. "We merely had been promised a share in the reclamation program. We are hoping the Senate will reverse the House committee's action."

Directors from 34 Texas Panhandle and eastern New Mexico counties attended the meeting in Amarillo.

G. C. Tubbs, County Judge, and J. M. Wilson, attended the meeting and represented Floyd County.

Mr. and Mrs. A. J. Cline and Mr. and Mrs. Carl Smith attended the Fat Stock Show in Amarillo Tuesday.

The necessity of protection the farms on the upper portion of the slope before farms on the lower slope can be properly protected.

There are many other benefits that come from working together which the field man fully understands and can give the farmers adequate examples of how cooperation helps those who work together.

In checking the tax roll, it is estimated that at the Soil Conservation District election some 1200 eligible votes are possible and it must also be remembered that it takes a 75% majority before a district can be set up and that all landowners and their wives are eligible to vote if they have a poll tax receipt. The polls will open promptly at 7:00 a. m. and will close at 7:00 p. m. and it is hoped that the land-owners of Floyd County will take an interest in this election by casting a vote for or against the creation of a District so that a plate record may be received as to how the landowners of Floyd County regard the proposed District.

Miss Sarah Strain Becomes Bride of James Shepherd

Miss Sarah Strain and James Shepherd of Brownfield were united in marriage last Wednesday night at 9 o'clock at the home of Rev. G. W. Tubbs, the latter officiating at the ceremony. Mr. and Mrs. Shepherd will make their home in Brownfield.

Banquet Held Thursday Evening For Farmers and Merchants

A large crowd was present for the Farmers, Merchants Banquet which was held Thursday night at the Fellowship Hall at the First Christian Church.

Charmers representing 32 communities in the county were hosts at the banquet. With them were the members of the county ACA committee, members of all community committees, the county agent and the administrative assistant, Farm Security Administration officials and vocational agriculture instructors, REA and SCA officials.

Rev. O. E. Herring, pastor of the Lockney Methodist Church, delivered the invocation, and A. H. Kreis served as master of ceremonies, led a discussion of questions that had been dropped in a question box, the feature attraction of the evening. No long speeches were included on the program. Henry chacht made a brief opening talk following the introduction of guests and agencies.

Others on the program included C. H. Day, field officer for the State AAA; J. Lynn Mauk, district 2 field man from the State AAA office; V. L. Cade, district 2 committeeman from Lubbock for the AAA and K. J. Edwards of the Texas Extension service.

The banquet was planned by the Floyd County ACA committees to promote closer relationship and understanding between farmers and business men. The home demonstration clubs from Dougherty, McCoy, Sunny-side and Sandhill served the banquet.

2nd Sunday Sing- ing at South Side Baptist Church

The regular second Sunday Singing will meet Sunday afternoon at the South Side Baptist Church on Highway 28, at 2 o'clock. Everyone interested in good singing is invited to attend.

McCoy 4-H Club News

The McCoy 4-H Club boys are looking forward to a very progressive year. Club officers for 1940 are: Junior Cummings, President; Jim Wilson, Secretary Treasurer; Seth Johnston, Reporter.

The sponsors are Harvey Brock and H. D. Staples. The boys are entering the following projects: Jack Brock, registered heifer; Jim and John Wilson, registered cows; Carroll Johnston, registered heifer; J. T. Bevins, registered calf; W. H. Eubank, grade calf; Oran Eubank, grade Chester White pig; Seth Johnston, grade Chester White pig; and Junior Cummings, Chester White pig.

Local sponsor, Harey Brock, is planning to make a trip to South Texas for the purpose of purchasing a load of registered Jersey heifers.

All McCoy 4-H Club boys won 4-H pins last year.

JOHN I. HAMMONDS ON VACATION TRIP TO CALIFORNIA

John I. Hammonds left Monday for Los Angeles, California, where he will spend sometime on a vacation trip. Mr. Hammonds has been ill for several weeks and is making the trip on account of his health.

Miss Marylyn Fry, who is attending school at Lubbock Tech, spent the week end with her father, R. E. Fry.

NEW DAUGHTER ARRIVES

Mr. and Mrs. Bill Pattison are the parents of a daughter, born March 5, 1940, weight 7 1/2 pounds. She has been named Phyllis Jean. Mr. Pattison is employed with the Bishop Motor Company as book-keeper.

W. H. Henderson, M. L. Solomon and N. W. Williams visited in Memphis Sunday with relatives.

Texas Produces 513,000,000 Gallons Of Milk

Enough milk to fill Lake Dallas—513,000,000 gallons—was produced on Texas farms in 1939. While this seems like a large amount, W. V. Maddox, dairy manufacturing specialist for the Texas A. and M. College Extension Service, says that if all Texas' 6,172,000 people drank 91 gallons of milk during the year as recommended in the Texas Food Standard, production would have to be increased by nearly 50,000,000 gallons.



ROBERT FISHER
Candidate for Assessor and Collector
of Taxes Floyd County

Estimates on Soil Building Project For Floyd Co.

Special to the Plainsman:
An estimated \$647,916.48 will be offered to Floyd County farmers and ranchmen by the AAA in 1940 for compliance with the program and for putting into effect soil-building and range-improvement practices.

Only full cooperation with the AAA will result in the payments reaching this figure, since the amount is estimated on the basis of all farmers and ranchmen in the county earning all payments available, including maximum soil-building and range-building allowances, Fred Batty, chairman of the county Agricultural Conservation Association Committee, explained.

The chairman listed the amounts available as follows:
Cotton parity payments, computed at the rate of 1.55 cents per pound of cotton average yield, \$115,929.62.

Agricultural conservation payments for cotton, at the rate of 1.6 cents per pound, \$120,164.49.

Wheat parity payments, at the rate of 10 cents a bushel, \$144,495.74.

Agricultural Conservation payments on wheat, at the rate of 9 cents a bushel, \$129,374.09.

General crop payments, at the rate of 0.81 cents an acre, \$78,367.08.

Maximum soil-building allowance, \$53,799.24.

Maximum range-improvement allowance, \$5,785.72.

In addition, the county chairman pointed out, a certain amount is available for increases in small payments. Under the Agricultural Adjustment Act of 1938, if the total payments to a farm are less than \$200, the amount is increased according to rates set in a graduated scale.

In general, Batty explained, provisions for earning payments are the same as in 1939, but minor changes have been made in some provisions. The regulations set out that a producer, to be eligible for payment, must plant within the total of the acreage allotments of corn, cotton, rice, tobacco and wheat established for his farm and must not offset performance on the farm by overplanting the five commodities on other farms in which he has an interest.

Payments from the money set up as maximum range-improvement or soil-building allowances are made only to those farmers earning payments by doing approved conservation work, the chairman continued. In addition to the maximum soil-building allowance for each farm, the program this year includes a provision that each farm can earn up to \$30, at the rate \$7.50 per acre, by planting forest trees.

National Wildlife Week

When more than 11,000,000 Americans get behind a movement which is non-profit and non-political that's news! The National Wildlife Federation, formed for the purpose of unifying effort toward restoring the depleted natural resources of the United States, is certain that many persons will co-operate in the staging of the National Wildlife Week March 17 through the 23rd. This will be the third annual observance and wildlife stamps, the proceeds from which are used to finance the nationwide restoration program, will be on sale.

Mr. and Mrs. Virgil Crawford, of Brownwood, and Miss Dorothy Crawford, of Munday, spent the week end visiting their sister, Mrs. M. Marshall, and parents, Mr. and Mrs. S. M. Crawford of Dougherty.

Robert Fisher Seeks Office of Assessor-Collector

TO THE PEOPLE OF
FLOYD COUNTY:

After much encouragement from many of my friends, I have decided to announce my candidacy for the office of Assessor and Collector of Taxes.

I feel that I am well qualified to fill this office as I have had four (4) years of college training. My college work included four (4) years of special study in government. One course, A Study of County Government, included a detailed study of each county office; the duties and responsibilities that go with it; and the qualifications, constitutional and personal, that each officer would need to fill the office efficiently, honestly, and economically, at the same time giving the people the service they have a right to expect from any public employee.

I have taught seventeen (17) successful years in the rural schools of Texas, nine (9) of which have been in Floyd County.

If you people see fit to elect me to this office, I assure you that I will perform the duties of the office efficiently, honestly, and economically.

The support and influence of each person in Floyd County is earnestly desired, and it will be sincerely appreciated.

Yours truly,
ROBERT FISHER.
(Political Advertising)

4-H Boys of Texas Make Showing With Pigs

Texas' 4-H club boys were in the hog business in 1939 with 5,578 boys raising 13,541 swine.

Boys in 189 counties took part in the work. These figures, according to E. M. Regenbrecht, swine, husbandman of the Texas A. and M. Extension Service, do not include the large number of pigs still on feed, but only the number of demonstrations completed in 1939.

The demonstrations were aimed at the economical production of pork through use of practices and rations as recommended by Regenbrecht and county agricultural agents.

Totals for 1939 represent a 44 percent increase in the number of completed demonstrations over 1938.

Most of the hogs produced were marketed through commercial channels, but 5,172 pigs were exhibited in the 170 club livestock shows in Texas during the past year.

The 5,172 pigs exhibited collectively weighed 584,358 pounds and brought their owners \$32,401.08, plus premiums of \$5,600.

IRVIN ALLEN IS PLACED ON HONOR ROLL AT TEXAS CHRISTIAN UNIVERSITY

Irvin Allen of Floydada, son of Mr. and Mrs. Oliver Allen, junior in Texas Christian University, is on the scholastic Honor Roll for the first semester of 1939-40, as announced this week by Registrar Hutton.

Allen is one of 67 Juniors to win a place on the Honor Roll. The freshmen had 76 names on the roll, the seniors 75, and the sophomores 43.

Miss Virgie Frances Turner of Lubbock Tech College spent the week end with her parents, Mr. and Mrs. W. E. Turner.

Baby Chews and Tears Up Sheriff's Papers

EUGENE, ORE.—Serving legal papers on a seven-month-old baby was the unique experience of a deputy sheriff. It was necessary to serve papers on all heirs to an estate and the baby was one of the heirs. The baby accepted the document willingly and immediately started to chew it and tear it to pieces.

50-Year Mine Fire Checked at Last

May Smoulder for Some Time but Can't Spread.

NEW STRAITSVILLE, OHIO.—The "world's greatest mine fire," which has been burning here for more than 50 years, has been checked at last. The million-dollar project of barriers on which the Works Projects administration and the United States bureau of mines have been working since October 1, 1936, has been completed, according to Dr. Carl Watson, WPA administrator for Ohio, and the project headquarters has been closed. The fire, which is estimated to have destroyed \$50,000,000 worth of coal, may burn for another 50 years, but the barriers will prevent the flames from progressing farther toward the south, according to William J. Fene and J. H. Forbes, engineers of the bureau of mines. Nearly a billion dollars worth of coal, oil and other property between New Straitsville and the Ohio river, 65 miles away, were menaced by the fire before the barriers were built. Workers formed these barriers by cutting three tunnels, totaling nearly three miles in length, in strategic points just outside the fire area. The tunnels followed the coal veins, which were emptied of coal and filled with dirt and mud. The fire is said to have been started during the coal strike of 1894. It spread through an area of some 24 square miles in the vicinity of New Straitsville, and an additional 30 miles of crop lines. In addition to the destruction of coal, oil wells have been ruined and the surface part of the region made uninhabitable.

Copper Town Chuckles Over Joke on Easterner

BUTTE, MONT.—Roy Beadle still thinks he has the "prize" tourist story. It concerns a woman tourist from the East, who stopped him on the street, said she was interested in the copper mines around Butte, but that one thing puzzled her. "I heard a man say he worked on the night shift," she said. "Now what I want to ask is this—how in the world can they see to work in the mines at night when it gets dark?" Beadle observed the woman closely, perceived that she was serious, and said: "Have you ever been down in a mine?" When the woman shook her head, Beadle added: "Well, I advise you to take a trip through one, just to see how dark it gets, even in the daytime."

Finds Married Student Secures Higher Grades

CAMBRIDGE, MASS.—Being married is a good way to secure better grades, according to Mrs. Elise Fay Ware, a sophomore at Radcliffe college. Mrs. Ware is one of the five students at the college with a straight A average and she explains it simply. "You study better when you're married," she said, "if there's any formula for success in studies, that's it." "When I was a student in New York before my marriage, I didn't do so well. But now it's much easier. The reason is simply that when you're married you spend less time gadding about and being social. You just come home—and study. It's the settled life."

Cats, Heirs to \$41,000, Are Put on \$9 Allowance

MILWAUKEE.—Sarah B. Hathaway's cats, which once shared her \$41,000 estate, will have to get along on monthly allowances of \$9 each. The will of Miss Hathaway, who died in 1934, provided that her estate be used to support the cats. After their deaths, the will said, the remainder of her estate was to be divided among 11 nieces and nephews. Thirteen of the cats died and \$15,500 was divided among the heirs. Yesterday County Judge Charles Hansen ordered distribution of \$9,500 more of the estate among the heirs and ordered the executor to place each of the five remaining cats on a \$9 monthly allowance.

Young Seaman Is Honored But He Doesn't Know It

LONDON.—Unaware that he has been honored for gallantry, Dennis Bird, 19, is somewhere at sea with the navy. His parents have been informed that their son, formerly an officer on the steamer *Bosnie*, which was sunk by a submarine, has been awarded the Liverpool Shipwreck and Humane society medal and certificate for his "gallant attempt" to rescue a seaman.

NOTICE
Anyone who holds a note or account against P. M. (Pete) McDonald, deceased, late of Floyd County, Texas, will please present the same to Wilson McDonald by letter or in person at his home at Melissa, Texas. The account must be properly authenticated.
15-3tp WILSON McDONALD.

Mesdames Wilmer Jones, Bill Colston and G. C. Tubbs, made a business trip to Lubbock Monday.

Let Cavanaugh do your Printing.



SPRING ACCESSORY STARS!

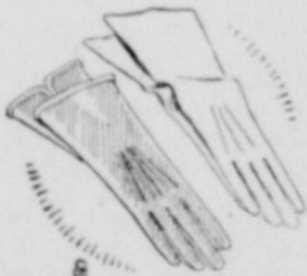
Spice for your Spring Suit! Gay accent for your dresses, your coat! Distinctive novelties to add a dashing touch to your smartest costumes for Easter!



BAGS

Patent and Fabric Bags. Roomy, convenient, zipper fastened bags of shiny patent, nicely fitted

\$1.00, \$1.98, \$2.98



Fabric Gloves

Soft, washable, in white and the newest pastels

79c, 99c, \$1.00



Spring Flowers

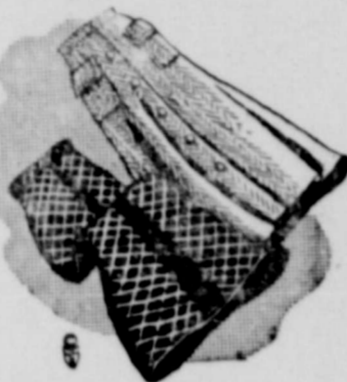
To bloom on suits, coats, hats! Violets, Gardenias, lots more

Each 50c
Costume Jewelry

Each \$1.00

STYLE SHOPPE

For suits and coats, Rhinestone studded novelties in gay colors.



WOOL SKIRTS

Plaids and solids \$2.98 to \$3.98
BLACK PLEATED SKIRTS—In Alpaca and Romain Crepe \$3.98

LADIES SLIPS

Crepe and Satin. New Camsole tops with lace trim \$1.98, \$2.98



Lorraine Trique Suede Slips

A perfect underwear fabric, will not run. Will not shrink. Will not sag. Price \$1.00



LADIES HATS

LADIES STRAWS—Flower and veil trim.

\$2.98 to \$4.98

SNAP BRIM—New felts in Pastel shades

\$1.98 to \$2.45

STRAW SAILORS—With and without veils.

\$1.98 to \$2.45



The EASTER PARADE Starts Here!

EASTER FASHIONS—An array of highly tempting models in Spring's newest fashions that enable you to buy many essentials for Easter and Spring and Summer wear at a fraction of usual prices.

Dress Makers Suits

Blacks and Navy with hair line stripes.

Price \$16.95

Spring Toppers

Blacks, Navy, solid colors and mixed tweeds.

\$7.95 to \$12.75



FLOWER FRESH BLOUSES

Add a touch of Spring to your suit with a dainty blouse or two. If you like ruffles and lace or sheer batiste, you'll find just what you want.

CHIFFON BLOUSES—In White and Pastel shades. Long and short sleeves \$2.98 to \$3.98

BATISTE BLOUSES—tucks and lace trim \$1.98, \$2.98

TAILORED BLOUSES—In Jersey and Crepe \$1.98



LADIES DRESSES

In Alpaca, Romain Crepes and new materials and in new spring Regular sizes 10 to 20; 38 to 44, nice range of half size dresses 16 1/2

Price \$7.95 to \$12.75



LADIES DRESSES

This group of dresses are in the gingham, spun rayon and printed crepe

Price \$2.98 to \$5.98

STYLE SHOPPE

"Always Showing Newest Things First"
Mrs. Mollie A. Morton, Owner Phone 17

FLOYD COUNTY PLAINSMAN

Published Thursday Each Week

M. B. CAVANAUGH, PUBLISHER

SUBSCRIPTION PRICES

Floyd County \$1.00; Outside Floyd County \$2.00

Second class matter June 23, 1930, at the post office at Floydada, Texas, under the Act of March 3, 1879.

ADVERTISING RATES GIVEN ON APPLICATION

NOTICE!

Reflections upon the character, standing or reputation of any person, firm or corporation which may appear in the columns of The Floyd County Plainsman will be gladly corrected upon its being brought to the attention of the publisher.

Political Announcements

Names appear below... The Floyd County... nomination for the office... which their name appears... to the action of the Demo... Primary Election of July 27th.

- County Clerk: **W. H. HOLMES**
- Commissioner Precinct Four: **J. (BUCK) NELSON**
- County Treasurer: **W. O. M. CONWAY**
- County Judge: **W. L. TUBBS**
- Representative: **W. S. CLARK, Re-Election...**
- Representative: **W. R. RANDERSON**
- Commissioner Precinct No. 1: **W. A. CUMMINGS**
- Representative: **W. M. FINKNER**
- Representative: **W. E. FOSTER**

- Assessor and Collector: **W. L. FROBASCO**
- Representative: **W. B. MARSHALL**
- Representative: **W. B. FISHER**
- County Attorney: **W. A. HOLMES**
- County Attorney: **W. L. (BUCK) SIMS**
- County Attorney: **W. A. HAMILTON**

- County School Superintendent: **W. L. GUFFEE**
- County Attorney: **W. A. STAPLETON**

Marshall of Lubbock, spent... with his parents, Mr. L. A. Marshall.

Carl Minor and son, Carl... made a business trip to Lubbock Monday.

L. SOLOMON JEWELER
Floydada, Texas

BE SURE TO INSIST ON **Ingersoll**



Ingersoll name on the... which or clock you buy... accuracy of dependa... ability in a timepiece... watches from... \$1.00... watches from... \$1.00

Floydada Insur-
Agency...

W. H. HENDERSON
OWNER

\$45,000,000 Loss in Property in 1939 From Accidents

By Capt. Chas. F. Lindsay
Texas Safety Council

We are accustomed, when discussing safety to think in terms of lives lost in automobile accidents—and properly so.

After all they are our greatest asset. Who knows the promise of future service that may have been in the mind of the little boy or girl whose career was ended by a thoughtless automobile driver along a heavy traffic lane?

This side of the picture cannot be overemphasized. But there is another side. It was impressed upon us recently by Pierce Brooks, President of the Texas Safety Council, who said:

"There is a very serious economic loss in these traffic accidents. Last year in Texas the property loss was in excess of \$45,000,000. Every dime of it was the result of a preventable accident. There is no such thing as an unavoidable accident."

"What we need is a safety-conscious driving public and a safety-conscious pedestrian public. What we need is a consciousness upon the part of our wives and mothers to the necessity of educating their children in the homes in the rudiments of safety."

"If a gang of armed bandits were running loose in Texas and inflicting an annual economic loss of more than \$45,000,000, the whole state would be up in arms. The whole state would be up in arms against this wanton waste of material resources. The majority of accidents are caused by unthinking drivers. More are caused by drunken drivers. The first can be reformed by education. The latter ought to have their licenses revoked, and, as the law provides, in aggravated cases, they ought to be sent down to Huntsville for a sojourn."

"It will never be possible to end all traffic accidents. The human equation is such that it can't be controlled to that degree. But we can make it so unpopular to drive unthoughtfully and to drive while drinking that these accidents can be so materially reduced that they will be negligible. We are making progress. We will make more progress as more citizens enlist."

Motor Association Manager Suggests First Aid School

Austin, March 6.—Texas truck drivers will become "Ambassadors of Goodwill" on the highways if Manager Lynn B. Shaw of the Texas Motor Transportation Association has his way about it.

Shaw said he planned to recommend to the Board of Directors that they sponsor a first aid school for all drivers of feet, and that when the training period is completed the drivers be equipped with first aid

Fluorescent Lighting Has 'Daytime' Effect

Fluorescent lighting, already widely used in stores, art museums, theaters and restaurants, will open up a hitherto untouched field of decorative colored lighting in the home of tomorrow.

So prophesies a prominent United States lighting consultant.

With fluorescent lighting augmenting, but not necessarily rivaling the present type of incandescent lamps, we may look for them to go hand in hand with each other in the homes of the future to achieve that soft warm daylight effect which best brings out the shades and tints of our home furnishings. Architects and builders already are beginning to appreciate the possibilities of fluorescent lighting in the home.

Because a daylight effect can be achieved easily with fluorescent lamps, they are especially effective for lighting bathroom mirrors, for powder rooms where makeup can be applied to look as it will look in daylight, for lighting pictures and tapestries, artificial windows, coves, niches and for unusual lighting effects in halls and living rooms. They also are proving acceptable for lighting work surfaces such as kitchen tables or desks.

Fluorescent light is achieved by transforming invisible ultra-violet rays into visible light by means of various chemicals. The chemicals are sprayed on the inside of the tubular lamps, and by the proper selection of chemicals, various colors are obtained. The lamps are available in the following standard colors, daylight, white, gold, red, blue, pink and green.

The new lamps are more efficient, producing white light, for example, while using one-third the electrical energy required for ordinary lamps. In such colors as blue and green, fluorescent lamps are up to 30 times as efficient as the incandescent variety.

Fluorescent lamps have a longer rated life and the colors endure for the life of the bulb, but the cost of the entire installation is higher since much of the equipment has not yet entered the mass production stage and might still be classed as tailor-made. The lamp itself costs approximately 10 times as much as the incandescent type does now, and each bulb must have its own operating mechanism, which sells for about \$1.50.

X-Rays of Old Paintings Help in Detecting Frauds

An exhibit of specialized X-ray films at Harvard university shows that several paintings, traditionally attributed to the Flemish master, Rembrandt, may really have been the work of his pupil, Ferdinand Bol.

On one disputed picture, a portrait of "Saskia," the underpainting is weak and experts believe Bol may have done that part of the work and Rembrandt finished it. The shadowgraphs show that Bol's underpainting usually was cruder and less decisive than the master's.

Harvard has more than 3,200 X-ray studies of paintings and they are expected to help in detecting forgery, determining authorship of pictures, and discovering whether they have been touched up.

One study reveals that the "Vision of a Monk" was painted about 1700, but that years later a pillar and an angel were added. An angel also was added to the Fifteenth Century picture, "Annunciation to the Madonna of Her Approaching Death."

The X-rays also reveal how artists change their minds while painting—rearranging figures or changing the pattern of the work-in-progress.

Wallpaper's Varied Uses

Wallpaper's primary use is as a covering for the walls, but there are many other functions this material may serve. Manufacturers are promoting the use of wallpaper as a ceiling covering on the basis that it substitutes decorative interest for bare white "nothingness." Rooms gain in unity and effectiveness, they say, by the use of an appropriate ceiling paper blending into the walls. The interior of cupboards offers opportunity for effective wallpaper use. Modern paper designs form excellent backgrounds for china, as well as emphasizing the character and color scheme of the dining room and kitchen. Clothes closets are now being wallpapered, either to carry on the treatment of the room or to contrast with it. Unfinished plaster closets appear bare and incongruous when closet doors are left open.

Historic Printing Press

Among the most interesting displays in the state house at Monterey, Mexico, is an historic printing press which several times saved the life of its owner, Samuel Bangs, the first printer in north Mexico. An itinerant printer, Bangs contracted in 1817 to print manifestos and hand bills for the small group of Mexicans who were trying to continue the revolution against Spain. When the enemy forces captured him his life was spared because he was the only man who could operate the press. He willingly went to work printing propaganda for the royal army and later was several times traded off with his press to other Mexican governors and groups of soldiers. The press he used eventually was taken to Monterey and is now carefully preserved.

OVER HALF A MILLION 1940 CHEVROLETS SOLD TO DATE

CHEVROLET'S FIRST AGAIN IN SALES
because
CHEVROLET'S FIRST AGAIN IN VALUE



Every 25 seconds of every day, Somebody buys a new Chevrolet!

Eye It..Try It..Buy It!

The 1940 Chevrolet gives higher quality at low cost! . . . Low Prices . . . Low Operating Costs . . . Low Upkeep.

No other motor car can match its all-round dollar value

ODEN CHEVROLET CO.

SALES AND SERVICE

PHONE 4

FLOYDADA, TEXAS

High Spots on Record-Breaking Run



Signs of the times in a motor age—these highway markers tell the story of a two-year, 100,000-mile truck test run recently completed by Chevrolet. In Canada, Mexico and every state of the Union, the truck operated on all types of highways and under every conceivable weather hazard, setting a new world mark for sustained and certified automotive operation, under the sanction and official observation of the American Automobile Association. The unit carried a 4,590-pound "payload." An average of 15.1 miles per gallon of fuel was maintained throughout the 100,000 miles, at an average operating speed of 33.07 miles per hour. Oil mileage was correspondingly high—1,072 miles per quart.

CLASSIFIED ADVERTISING

Our FLOWERS are FRESH and are BEAUTIFULLY ARRANGED. IOLLUMS, FLOYDADA FLORISTS

New Bulk SEEDS are now arriving at STAR CASH GROCERY, 1117

LANDS FOR LEASE
A few farm tracts to lease at reasonable prices for cash.
W. M. MASSIE & BRO.
Floydada, Texas. 11-tfc

We invite you to visit the greenhouse, PARK FLORISTS—Mrs. W. S. Goen. Phone 78. 46-tfc

For best and cheapest monuments, either in marble or granite. See S. B. McCLESKEY. 24-tfc

Think of SEEDS. Think of STAR CASH GROCERY. 11-tfc

Wheat Pasture, see J. C. Bolding. 2p

MUSCULAR BACKACHE - SORENESS - STIFFNESS PAINS-ACHES

If first good rubbings with soothing, warming Musterole don't bring you glorious relief from those torturing muscular aches and pains—due to cold—by all means see your doctor. But Musterole usually DOES THE WORK—Musterole gives quick relief because it's MORE than "just a salve." It's a wonderful soothing "counter-irritant" which penetrates the outer layers of the skin to help ease local congestion and pain. Used by millions for over 30 years! 2 strengths: Regular, Children's (mild) and Extra Strong, 40¢.



Better Than A Mustard Plaster!

Believe It or Not

You can now buy for \$1.00 enough genuine 100% Mineral Wells, Palo Pinto County, Texas, BAKERWELL dehydrated

mineral water crystals to make 20 gallons No. 4 strong mineral water. Why suffer from aches, pains and nervousness caused by acidity and constipation. BEWARE OF SUBSTITUTES. Call your local Drug, Department or Grocery Store or Bakerwell Mineral Water Co., Mineral Wells, Texas.

GAME PRESERVE DEMONSTRATION EXTENSION SERVICE TEXAS A&M COLLEGE

There are 79,280 of these signs designating the 27,362,395 acres of Texas land included in the game management demonstration plan. Altogether 22,692 farmers and ranchmen, plus 588 4-H club boys, are taking part in the movement which has as its aim the restoration of wildlife on Texas farms and ranches.

Surer, steadier food protection
with **TRU-ZONE COLD**
(Only Westinghouse has it)

Keeps Food Better... Days Longer!!

New TRU-ZONE COLD lets you select the exact amount of cold you need for your foods—then holds temperatures true, gives you the "right" cold and humidity for each specific type of food. Be sure to see this new feature! See the five distinct zones of cold!

1940 MODELS as low as \$117.75

Texas-New Mexico Utilities Company

WHY SUFFER Functional FEMALE COMPLAINTS

Lydia E. Pinkham's Vegetable Compound Has Helped Thousands!

Few women today do not have some sign of functional trouble. Maybe you've noticed YOURSELF getting restless, moody, nervous, depressed lately—your work too much for you—Then try Lydia E. Pinkham's Vegetable Compound to help quiet unstrung nerves, relieve monthly pain (cramps, backache, headache) and weak dizzy fainting spells due to functional disorders. For over 40 years Pinkham's Compound has helped hundreds of thousands of weak, rundown nervous women. Try it!

Miss Louise Hyatt spent the week end in Crosbyton visiting with her sister and family, Mrs. D. M. Shaw.

LET CAVANAUGH DO YOUR JOB PRINTING.

WHY suffer from Colds? For quick relief from cold symptoms take 666 Liquid, Tablets, Salve, Nose Drops



discovered

The use of Gas

has played an important part in the progress and development of our living standards. The Gas Range, Refrigerator, Water Heater, Furnace and Laundry Appliances go far toward making home a better place to live in.

Let GAS do the 4 Big Jobs

- Cooking . . . Water Heating . . .
- Refrigeration . . . House Heating

West Texas Gas Company

Natural Gas . . . Your Quick, Clean, Economical Servant

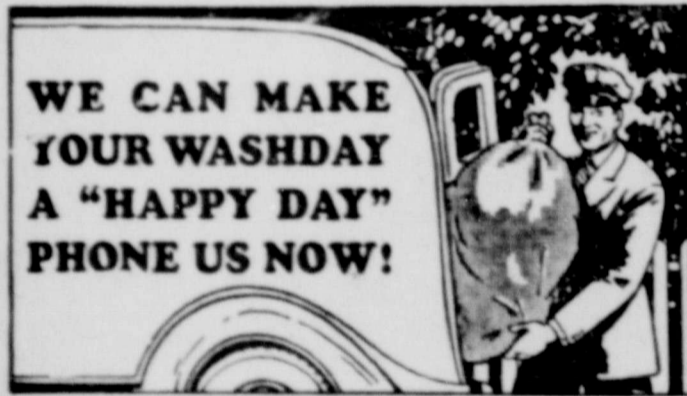
THE FIRST NATIONAL BANK

Floydada, Texas

1903—Time Tested Service—1940

FLOYDADA STEAM LAUNDRY

Phone No. 141



WE CAN MAKE YOUR WASHDAY A "HAPPY DAY" PHONE US NOW!

AVOID HOME LAUNDERING

And all its attendant worries!

Why spend another washday in a damp basement? We'll do your laundry just as cheaply and save your health and happiness.

FLOYDADA STEAM LAUNDRY

Pick-Up and Delivery! Phone 141

 * Help your teeth shine like the stars... use Calox Tooth Powder *



Many of Hollywood's brightest stars use Calox to help bring out the natural lustre of their teeth—and you can rely on Calox too. Pure, wholesome, pleasant-tasting, approved by Good Housekeeping Bureau. Five tested ingredients, blended according to the formula of a foremost dental authority, make Calox an economical tooth powder that can't harm tooth enamel. Get Calox today at your drug store. Five sizes, from 10¢ to \$1.25.

Copyright 1939 McKesson & Robbins, Inc.

STATE SOIL CONSERVATION BOARD OF TEXAS

NOTICE OF ELECTION ON CREATION OF PROPOSED FLOYD COUNTY SOIL CONSERVATION DISTRICT EMBRACING LANDS LYING IN THE COUNTY OF FLOYD, IN THE STATE OF TEXAS.

Estel Baker Will Play Guard on H-SU Grid

Ablene, Texas, March 6.—Spring grid training for the Hardin-Simmons University Cowboys will begin on March 11, and will climax by annual custom with the annual intra-squad game on H-SU Senior Day in April, Coach Frank Kimbrough announced today.

Backbone of the '40 eleven at Hardin-Simmons, as the Ranchers look toward fall, will be the 17 letter men from last year's team that won seven, tied one and lost to Loyola in an upset that cost a prospective Cotton Bowl bid.

Gone from the varsity ranks will be the seven 1939 seniors, all of whom lettered last year for the first time in Coach Kimbrough's five year regime at H-SU.

Seniors gridders were headed by Bulldog Turner, All America center, and Neal Davis, right end, both of whom earned three letters as Cowboys. Kirk McKinnon, backfield ace; Drate Cathey and Larry Cunningham, guards, and Joe Pee and Travis Green, tackles, complete the septette.

Turner will continue workouts with the Rancher squad this spring to condition for fall, when he is scheduled to report to the Chicago Bears of the national pro league, and Davis, who earned Little All America mention at end, will remain at H-SU next fall as freshman grid mentor.

Letter men are eight strong in the backfield, headed by Owen Goodnight Holland, and L. B. Russell, Hereford, pass and scout touchdown twins; Moon Mullins, Marshall, Sam Oatman Paducah, and Bud Vandever, Amarillo, all to be seniors, and Murray Evans, Burkburnett, Lloyd Flahie, Cross Plains and Dean Walsh, Ranger, juniors to be.

In the forward wall, veterans are Leslie Lewis, Decatur, who alternated at center last fall; Wilford Moore, Littlefield; Estel Baker, Floydada and Winston Tucker, Seymour, guards; Long John Treadaway, Nacogdoches, Robert Thompson, Haskell, and Bob Russ, San Angelo, tackles; H. C. Burrus, Big Spring, and Deward Marcum, Amarillo, ends.

All will be seniors except Thompson and Burrus, juniors.

Returning squad men with experience are Al Holman, Paint Rock center; J. S. Fikes, Anson guard; Ed Beeman, Barnhart; J. B. Heard, Hobbs, New Mexico; and Truett Rattan, Matador, tackles; D. A. Parker, Ozona and Woodrow Coats, Big Spring, end.

Coming up from last year's freshman squad, Coach Kimbrough smiles at the promise shown by several yannigans. Particularly E. C. "Jug" Bennett, Graham guard, and Tommy Chadwick, all around Colorado City back.

Rural People Use Considerable Building Material

Rural people in Texas used more than half a million dollars in 1939 to improve their kitchens, living rooms, and bedrooms.

Farm and ranch families should be sleeping more comfortably, preparing meals with greater convenience, and entertaining their friends with greater ease if reports received by Mrs. Bernice Claytor, specialist in home improvement for the A. and M. College Extension Service, are indicative. She says home demonstration club members and 4-H club girls spent \$524,636.18 to bring about these improvements.

Roughly speaking, approximately \$207,000 was spent on kitchens, \$102,000 on living rooms, and \$214,000 on bedrooms by both women and girls. With these funds approximately 15,000 bedrooms, 4,000 living rooms, and 11,000 kitchens were improved.

Increased use of cotton in the home was revealed in the 1939 reports. Where 73,668 pieces of bed linen were added in 1938, the 1939 figures rose to 96,420. Likewise increases were evident in the addition of other cotton articles such as dresser scarfs, bedspreads, and bedding protectors.

Figures for new cotton mattresses went past the 10,000 mark, with about two-thirds of this number purchased and a third made on the farm.

Let Cavanaugh do your Printing.

TO ALL PERSONS HOLDING LEGAL OR EQUITABLE TITLE TO LAND WITHIN THE proposed district, who are otherwise qualified voters under the general election laws of the State, and who reside within the proposed soil conservation district, comprising the territory, a description of which is attached hereto:

Notice is hereby given that on the 9th day of March, 1940, between the hours of 7 a. m. and 7 p. m. an election will be held in the said territory upon the proposition of the creation of the FLOYD COUNTY Soil Conservation District as a governmental subdivision and a public body, corporate and politic, under the provisions of the Soil Conservation Law of this State.

All persons holding legal or equitable title to land lying within the proposed soil conservation district, who live within the district, and are otherwise qualified voters, under the general election laws of the State, are eligible to vote. Only such persons are eligible to vote.

Eligible voters residing within the proposed district, shall cast their ballot at the designated voting box within precinct or territory as below described in which they reside.

Eligible voters who will be absent from their voting precinct on the day of the election may apply in person or in writing to the State Soil Conservation Board, 616-22 Professional Building, Temple, Texas, for absentee ballots. Each absentee voter shall state his name, residence, location, and acreage of land to which he holds legal or equitable title, and such other information as is required under the general election laws of this State.

Voting divisions and polling places for the election are as follows:

VOTING BOX No. 1
County Court Room, Floydada

Qualified voters residing in Dougherty, Antelope, Baker, Pleasant Hill, Lakeview, Starkey, McCoy, Allmon, Harmony, Sandhill, Floydada, Blanco, and Campbell School Districts.
J. T. McLAIN, Presiding Judge;
T. E. Leach, Clerk; W. F. Ferguson, Clerk.

VOTING BOX No. 2
Lockney Beacon Office, Lockney

Qualified voters residing in Erick, Pleasant Valley, Muncey, Aiken, Lockney, Ramsey, Roseland, Sterley, Lone Star, Providence, and Prairie Chapel School Districts.

F. L. BROWN, Presiding Judge;
Henry M. Schacht, Clerk; Robert W. Smith, Jr., Clerk

VOTING BOX No. 3
Cedar Hill School House

Qualified voters residing in Cedar, South Plains, Center, Fairview, Hillcrest and Liberty School Districts.

J. C. LACKEY, Presiding Judge;
C. V. Lemons, Clerk; T. S. Brown, Clerk.

VOTING BOX No. 4
Edgin School House

Qualified voters residing in Edgin and Fairmount School Districts.

J. A. TAYLOR, Presiding Judge;
Cecil Purcell, Clerk; Geo. H. Pigg, Clerk.

By direction of the State Soil Conservation Board.

V. C. MARSHALL,
Administrator.

FLOYD COUNTY SOIL CONSERVATION DISTRICT NO. 104

LEGAL DESCRIPTION. This district includes all the lands lying within the boundaries of the County of Floyd.

ACREAGE. This district includes 647,000 acres, more or less.

Texas Motor Ass'n Will Meet In Fort Worth May 16-18

Members of the Board of Directors of the Texas Motor Transportation Association will assemble in Fort Worth March 9th, to select outstanding leaders in the motor transportation industry as speakers at the association's convention to be held in Fort Worth May 16-18. President L. B. Brown of Houston announced this week.

The newest types of motor vehicles will be demonstrated during the convention, Brown said, and various public officials and truck operators will be asked to delve into the problems of the 7,000 pound load limit law. The Association is seeking the amendment of the law.

West Texas Chamber to Meet May 13, 14, and 15

Ablene, March 6.—Dates for the 1940 convention of the West Texas Chamber of Commerce have been set as May 13, 14 and 15. West Texans will gather in Big Spring on those dates for the 22nd annual convention of the regional organization.

Preliminary plans for the event were discussed at a recent meeting of Big Spring Chamber of Commerce representatives and WTCC officials. "Americanization" will be one of the central themes of the 1940 convention. The country's youth will participate through the cooperation of the Boy Scouts of America in an "Americanization parade". E. K. Fawcett, Del Rio, WTCC president, and a Scout leader for many years, made this suggestion several weeks ago and is calling upon area Boy Scout councils all over the West Texas territory to cooperate.

Second annual meeting of the Freight Equality Federation, statewide organization sponsored by the WTCC to seek parity in freight rates for Texas, will be held during the convention. The freight rate topic will be one of the principal discussions of the convention. J. M. Willson, Floydada, is president of the FEEF, which has a membership of 130 affiliated organizations.

HOMER McDONALD RETURNS HOME FROM MINERAL WELLS

Homer McDonald, who has been in Mineral Wells the past three weeks receiving medical treatment, returned home Tuesday. Mr. McDonald's condition is much improved. Mrs. McDonald, who went to Mineral Wells with her husband, returned home about a week ago.

MRS. GEO. B. MARSHALL ILL

Mrs. Geo. B. Marshall, wife of District Clerk Geo. B. Marshall, is seriously ill at the home of Mr. Marshall's parents, Mr. and Mrs. L. A. Marshall. Mrs. Marshall has been in ill health for several months, but for the past several days her condition has been considered serious.

Career Girl OF FIRST QUALITY

Sheer Hosiery

New Spring PALE-AS-MIST Shades!



So new for Spring—stocky misty shades to go with your . . . to make your legs look fully slim!

3-THREAD SHEERS AT A LOW PRICE!

69c

THE MARTIN DRY GOODS COMPANY

Spears & Daniels Automotive Rep.

Engine Tune-Up A Specialty. Telephone . . . LOCATED SOUTHEAST CORNER OF SQ

Put your money in the car that's BIG IN MORE THAN SIZE!



Try a new Ford yourself! Not only in actual measurements, but in looks and feel and ride and action, you'll find it bigger money's worth than you ever thought low price would buy!

BIG IN MEASUREMENTS! Longer and roomier than any Ford car has ever been. Up to 4 inches more legroom in sedans.

BIG IN RIDE! Springbase in a Ford is longer than in any other low-priced car. In addition, longer, softer springs (on 85 h.p. models) and improved, self-sealing shock absorbers give a soft but steady big-car ride.

BIG IN "FEEL"! Gears shift easily and quietly, with fingertip gearshift on steering post.

Brakes are the biggest hydraulics ever used on a low-priced car.

BIG IN ACTION! Learn for yourself what a difference 8 cylinders make . . . why they are used so extensively in the more costly cars. Own a Ford and you enjoy 8 cylinder performance . . . at low operating cost.

FORD V-8 DIFFERENT FROM ANY LOW-PRICED YOU'VE EVER SEEN

Bishop Motor Company

AUTHORIZED FORD DEALER — BARKER BROS. BUILDING