

City Commission Plans To Appoint Tax Equalization Board

Members of the City Commission are planning future action on formal appointment of a tax equalization board to review property listed on municipal roll and to adjust "inequalities in our renditions," Mayor Morris Newnham stated Wednesday.

"Little has been done in this important city revenue area for six or seven years," Mayor Newnham said, "and it now becomes a necessity for

the citizens of Ranger and their elected city officials to take such steps as may be required to remedy a number of gross inequalities."

He noted that a number of Ranger property owners have failed to make increases in values in their tax renditions after having made improvements, remodeled, etc. It also is important he added, that similar adjustments be made when property is transferred

or when dwellings or other structures are moved off taxable land within the city limits.

He also reminded merchants and business men occupying rental property that such tenancy does not exempt them from making a rendition on the value of equipment or stock which they own in or on the premises.

"I am asking," he said, "that Ranger citizens — now

and voluntarily — make changes in valuation of their properties, based on present day values. We are appealing to the civic pride and responsibility of property owners who are interested in the welfare of Ranger and who are certainly aware of present day expenditures required in furnishing the municipal services which benefit our citizenship."

The mayor pointed out that

many taxpayers have been making renditions based on the same valuations for 20 years or more. Property values, of course, have increased appreciably during the past two decades.

And, he added, this situation is the result of the general policy of city administrations not to readjust valuations after first rendered valuations had been placed on the tax rolls. Ranger city tax-

es are assessed on valuations rated at 25 percent of the actual worth of property owned.

"Fiscal responsibility requires that every citizen of Ranger become a ware of these tax inequities," Mayor Newnham declared, "and furthermore that we strive — voluntarily — to strengthen our structure through an honest re-appraisal of properties owned and subsequent reasonable

adjustments in individual valuations.

The City Commission has not appointed a tax equalization board in a number of years. However, Mayor Newnham emphasized, it is not the duty of the commission to act in the capacity of an equalization body.

"Equalization," he said "means just what it says. It doesn't necessarily mean to raise taxes. The true defl-

ation is to make taxes 'equal' — whether they be increased or lowered — based on true values."

Mayor Newnham also declared that the city has already taken steps to initiate effective action in collecting delinquent taxes.

The city is still maintaining a surplus in the general fund for the purpose of retiring bonded indebtedness incurred many years ago. In addition, all bills are being paid currently.

RANGER TIMES

Volume 43 Price 10 Cents RANGER, TEXAS, THURSDAY, JANUARY 9, 1964 NUMBER 38

Town talk

NEWS • NOTES • BRIEFS

WHEN YOU PUT four bulls, ranging from 3 to 5 years old, in a tandem trailer without much room to spare and hitch it to a pickup, well, you may have yourself a big load of trouble.

Rancher Buddy Ross of Strawn assured Monday that he can vouch for that statement.

In fact, he's still a bit aquiver after just such a situation which he encountered late one afternoon a few days ago.

Ross visited a pasture about 8 miles north of Strawn, loaded four Angus bulls into his 19-foot tandem trailer, put his 1963 Chevy pickup in low and headed southward on State Highway 16. The anti-social bulls weren't at all compatible, however, and about a mile later their scuffling unbalanced the trailer. It jerked loose from the hitch, turned over, deposited a couple bulls on the pavement, then righted itself in split seconds. The pickup nearly turned over but not quite.

The two bulls dumped out were injured, one of them badly cut in several places on his ebony carcass. Ross said Monday, however, that the bull is recovering from his traffic wounds.

Yes, and the trailer was very badly injured!

W. T. Eaton New Leader Ranger CofC

W. T. Eaton, manager of the district office of Lone Star Gas Company, will lead the Ranger Chamber of Commerce during 1964, Roy Plumley, manager, announced.

He was elected to the presidency of the local business men's civic group during a meeting of officers and directors held at the chamber of officers Monday evening.

The new top officer of the senior chamber was elevated to the post from the vice-presidency.

Also elevated during the halting was a Bill Collings, manager of Texas Electric Service Co., who will serve as vice president during current 1964.

New member of the CofC officers' slate is Dr. Theodore Nicksick, elected as treasurer during the Monday night business session. Dr. Nicksick is president of Ranger Junior College.

New President Eaton is now working on appointment of the chamber's standing committees and also will outline a program of activity for the year.

Carbon Couple Parents First Infant of 1964

Mr. and Mrs. Jerry Mehaffey of Carbon are the proud parents of the first baby of 1964 to be born in Ranger General Hospital.

The first arrival of the new year was born Tuesday at 8:24 p.m., a daughter weighing 7 lbs., 4 ozs.

It also was the first child of the couple, wed on Feb. 7, 1963.

Mrs. Mehaffey, the former Miss Lyla Houston of the Morton Valley community, formerly had been employed by Texas Electric Service Co. in Eastland. Mr. Mehaffey is a druggist in Gorman.

The father of the first-born infant in Ranger, a Navy reservist, served four years as a Navy air pilot.

Maternal grandparent is Mrs. Frankie Houston of the Morton Valley community and paternal grandparents are Mr. and Mrs. R. C. Mehaffey of Gorman.

Rewards for the honor of being the first infant born in Ranger General Hospital in 1964 include the following gifts, courtesy of local merchants:

A dozen diapers — Montgomery Ward.

A case of baby food — H. G. Adams Grocery & Market.

Two dollars worth of dry cleaning — Ranger Dry Cleaners.

A gown for the infant — Stiles Youth Shop.

A gift for mother or baby — J. C. Penney Co.

(Continued on Page 2)

RHS Cagers Win Olden Tournament

Coach Jack Duval's Ranger High Bulldogs hammered out an impressive 54 to 26 victory over the Olden High Hornets in Olden Saturday night to win the championship in the boys' division of the two-day invitational meet.

Johnny McGee was Ranger's top scorer, hitting the mesh for 21, during the final title contest. Olden's Clifford Thomas scored 11 points for the losing Hornets.

A girls' cage crew from Carbon won the tournament championship in the girls' division in the playoff final, topping a Rising Star sextet, 43-34.

In the girls' finals, Paula Norris led Carbon with 30 points and Judy Lewis hit 16 for Rising Star.

Carbon's boys, led by Tim Stacy with 14 points, defeated Rising Star, 47-45, in the consolation bracket. Terry Geyer hit 18 for Rising Star.

The Olden girls defeated Putnam, 43-18, for third place, with Dinah Garner netting 16 points. Sharon Petty hit 10 for Putnam.

Members of the 21-man RHS cage squad include three seniors — Ronnie Hinds, height 6 ft. 1 in., two-year letterman; Arthur Mendoza, 6-2, three years, and Jimmy Drennan, 5-10, one year.

Juniors include Jesse Renteria, 5-8, two years; Ray Newnham, 5-7½, two years; Billy Matthews, 6-0, one year, and Melton Kennedy, 6-2.

Sophomores are Johnny Mc-

(Continued on Page 5)

Officers Seek Phantom Youth In Area Holdup

Local and county law enforcement officers Wednesday were seeking a teen-age youth who scooped up \$155.11 from the cash register of the Blackwell Service Station, Highway 80 west, Ranger Monday at 2:30 a. m.

The hijacker held the night attendant, Thomas Hicklin of Ranger, at bay with a .22 caliber bolt action rifle.

Hicklin told Ranger Chief of Police Bill Ogden that the young bandit was on foot and escaped across a vacant lot east of the station and disappeared into the darkness.

Ranger Constable Ralph Veal and Sheriff Lee Horn of Eastland joined Chief Ogden in an investigation of the holdup Monday.

Hicklin hailed down Patrolman Bud Griffin as he was making his regular inspection round by the station at 2:58 a. m.

The youth took all the bills from the register, also the halves and quarters, but left the contents in the compartments holding the dimes, nickels and pennies.

Hicklin told officers the youth was between 15 and 17 years of age, had a pimply face, was about 5 feet, 6 inches tall and wore a brown jacket.

Fire Fighters Get 174 Calls During Year

The Ranger Volunteer Fire Department answered 174 alarms during 1963, Fire Chief Charlie Isbell reported Monday.

Of that total, 142 of the blazes occurred within the city limits and 32 were outside the Ranger municipal area.

But 22 of the calls, Chief Isbell said, were grass fires. "And about 100 of those grass fires," he emphasized, "were the result of carelessness."

Most of the grass blazes resulted from burning trash and refuse.

"Residents should be extremely cautious when burning trash during windy days," Chief Isbell said. "And during dry weather, it is very hazardous to be careless in burning trash, because grass can easily be ignited."

He urged Ranger householders and property owners to clean up areas around their trash barrels and to put covers on them to contain flying sparks.

Some of the other 22 conflagrations, involving destruction of residential properties, were set off as the result of flaming grass, Chief Isbell added.



RJC's ALBERT POZZI IS NAMED TO SLOT ON '63 ALL-AMERICA GRID PICK

Albert Pozzi, aggressive center and rugged defensive line-backer of the Ranger Junior College Rangers, has been named to the 1963 Junior College All-American team, it was announced Wednesday by Gerald Williams, football coach at the college.

The sensational 19-year-old, 215-pound sophomore lineman last fall surpassed his highly impressive grid prowess of a season earlier when he received honorable mention on the mythical national eleven selected annually by top experts from a bevy of the best pigskin stars of all junior colleges from coast-to-coast.

And, prior to winning the superior All-America rating, Pozzi also had been voted to a berth on the talent-studded all-star team of the Texas Junior College Conference.

The quiet-spoken, brown-eyed, brown-thatched pivot man on Coach Williams' 1962 and 1963 Ranger grid combat crews is a business administration major and plans to enroll at football-powered University of Texas, Austin, next fall. Pozzi also has aspirations to become a Longhorn pigskin under the ace tutelage of top-ranked Coach Darrell Royal. And he will could be eligible for Southwest Conference competition during the 1965 and 1966 campaigns.

Pozzi is 5 feet, 11 inches tall, hard-muscled, built like a rock. His superb action and drive as a bang-up blocking center and hard-hitting defensive line-backer have brought him his nationwide recognition.

Monday night, Pozzi — somewhat reluctantly, very humbly — commented on the All-America award. "I just

(Continued on Page 2)

RJC Students Car Wash To Aid Jiminez

The student council of Ranger Junior College is sponsoring a benefit "Car Wash" this weekend — Thursday, Friday and Saturday, Jan. 9, 10 and 11 — from 1 to 6 p. m. daily at the Armory.

Proceeds will go to a special fund for Celia Jiminez, an RJC student in 1962-63, who sustained very serious injuries in a recent automobile accident.

Wayne Thrasher, student council president, is urging students and citizens of Ranger to support this three day project. RJC students will call for and deliver cars anywhere in Ranger. Call MI 7-3235.

A minimum of \$1.00 has been set for the car washing, but donations above that are being accepted for the fund for Miss Jiminez.

Others wishing to contribute may send checks to Thrasher at Ranger Junior College. Make checks payable to "Celia Jiminez Fund."

Son of Strawnite Buried Following Mineral Wells Rites

Funeral services for Clark S. Ramsey, son of William G. Ramsey of Strawn, were held Monday afternoon at 2 o'clock at Baum-Carllock-Bumgardner Chapel in Mineral Wells.

Mr. Ramsey, 65, died Saturday at his home in Mineral Wells.

Other survivors are two daughters, Mrs. Leo Freeman of Mineral Wells and Mrs. A. L. Webster of Sherman; three sons, W. G. Ramsey of Springtown, Willard Ramsey of Mineral Wells and Tom Ramsey of Midland.

Tax Accountant In Ranger Saturdays

Clara Jacoby Watson, tax accountant, announces she will prepare income tax returns in Ranger every Saturday from 8:30 a. m. to 4:30 p. m.

Location at Max Jacoby residence, first house west El Rancho Coffee Shop, on Highway 80 west of Ranger.

Eastland Inebriate Fails To Burn Way Out Of Ranger Jail

An Eastland man was picked up in Ranger Friday by local police and jailed on a drunk charge.

This made the inebriated visitor extremely unhappy. In a drunken rage, he tore up everything in his cell in the city bastille, then climaxed the tirade by torching his mattress.

Firemen watered down the blaze — and the cell occupant — at 2:20 p. m.

The Eastlander then was arraigned in the court of Justice of Peace M. D. Underwood and transferred to the county jail at Eastland.

Mr. and Mrs. Sam Thomas of West Texas visited recently with his mother, Mrs. Eula Thomas of Ranger.

ATTEND FUNERAL

Mmes. Virga Higdon, Eunice Waddington, and Lottie Davenport were in Roscoe Tuesday to attend the funeral of Mrs. D. O. Hopkins of that town. The deceased is the mother of Mrs. B. H. Stewart of Fort Worth. Mrs. Stewart is the sister-in-law of Mrs. Davenport and Mrs. Waddington.

There are several hundred species of cactus native to Texas.



NEW PORTRAIT OF MR. AND MRS. H. A. MURPHY, well known in Ranger and Eastland, recently taken by Capps Studio in Ranger. Mr. Murphy, a retired city mail carrier at Eastland, was 72 years young on Dec. 27. He and his wife have enjoyed 43 happy years of marriage. Murphy retired from the postal service in 1946 and the couple moved to Ranger in 1957. They're parents of Mrs. Wesley Poyner of Ranger and Mrs. J. L. Stroud of Eastland and have seven grandchildren and, one great-granddaughter who is residing with her parents in Germany.

Firemen Extinguish Two Grass Blazes

Ranger Volunteer Fire Dept. members are continuing to battle grass fires.

Friday at 1:45 p. m. the fire fighters were called to extinguish a blaze at 415 Melvin, and Sunday at 2:38 p. m. they snuffed out a grass fire behind the Ranger post office.

MOVE RECENTLY

Mr. and Mrs. L. E. Carpenter recently moved from Ranger to Lometa where he has assumed work as the local preacher for the Church of Christ.

Mr. Carpenter had served Rusk church of Christ about two years.



BATTLING BULLDOG CAGERS — These peppy young Ranger High School cagers may be looking at the camera, but their eyes are on the coveted District 10-A basketball title. The torrid Bulldogs host Clyde in a conference scrap here Friday night. The squad, from left to right: Johnny McGee, Melton Kennedy, Billy Matthews, Arthur Mendoza, Leroy Pearson, Ronnie Hinds, Larry Monroe, David Mehaffey, Jessie Renteria and Coach Jack Duval. Back row: Larry Blackwell, Mike Landtroop, Terry Sutton, Bill Robinson, Jack Watson, Jerry Watson, Jimmy Drennan, Ray Newnham, David Dunson and Joel Jiminez, team manager.

BREAD of Life

Blessed be the Lord... there hath not failed one word of all his good promise, which he promised — I Kings 8:56.

His word is good; His word is true:

His promise faileth never: What He hath said, He'll surely do;

Then doubt no more forever.

Funeral Rites For McDonough Set Thursday

Funeral services for William C. McDonough, 89-year-old longtime resident of Ranger, will be held Thursday afternoon at 2:30 o'clock in Killingsworth Funeral Home Chapel.

Mr. McDonough died Tuesday morning at 10:30 o'clock in Edinburg.

Rev. Avery Sullivan, pastor, First Baptist Church, will officiate during the final rites and interment will be in Evergreen Cemetery with Killingsworth Funeral Home in charge of arrangements.

Pallbearers will be Alvie Reeves, Earl Brown, Victor Mathena, Lewis Green, J. B. Baker and C. E. Bell.

Mr. McDonough, who had made his home in Donna with a daughter since 1962, was born May 10, 1874. He married Lena Rivera Smith Feb. 4, 1895 in Henrietta. She died June 22, 1962.

The couple moved to Ranger in 1918.

Survivors are two daughters, Mrs. Felix L. McCurdy of Donna and Mrs. Herbert Christensen of Culver City, Calif.; two grandchildren and four great-grandchildren.

Lenzini Named To Premier Post

J. A. Lenzini, former Ranger resident who has been residing in Abilene since August 1, has been appointed chief dispatcher for McWood Corporation, owners of Premier Oil Refining Company. Lenzini assumed his duties in Ranger Dec. 26.

Well known in Ranger, the new chief dispatcher had worked in this area for Premier about 15 years before transferring to Houston about two years ago.

Mrs. Lenzini, the former Alice Joy Dodd of Ranger, and the couple's son, Tommy Joe, will join Mr. Lenzini here at the end of the first semester of school. Tommy is a high school junior in Abilene.

Cisco Brothers In Brawl; One Fined

A Ciscoan was jailed Saturday night about 11:30 p. m. and his brother received emergency treatment at Ranger General Hospital following a brawl at Bill's Truck Center, about seven miles east of Ranger on Highway 80.

Arrest was made by Constable Ralph Veal. One of the battling brothers was assessed a \$47.50 fine in Justice of Peace M. D. Underwood's court. The other received eight stitches.

WEATHER

BAUSTERY

Sunrise 7:22; set 4:55

Sunrise 7:23; set 4:56

Fishing: Good in A.M.

The Ranger Times

"Seeking Community Betterment Since 1919"
301 N. Street—Ranger, Texas Established June 1, 1919
Entered as second class matter at the postoffice at Ranger, Texas under the act of Congress of March 3, 1917.
Published Semi Weekly—Thursdays and Sundays
By Eastland County Newspapers, Inc.

One Week by carrier in city	.15
One month by carrier in city	.65
One year by mail on Ranger RFD Routes	3.50
One year by mail in county	4.95
One year by mail in state	4.95
One year by mail out of state	6.95
One year by mail out of state	6.95

NOTICE TO PUBLIC—Any erroneous reflection upon the character, standing or reputation of any person, firm or corporation which may appear in the columns of this newspaper will be gladly corrected upon being brought to the attention of the publishers.

CLASSIFIED

FOR SALE

FOR SALE: SPECIAL—Short sleeve sport shirts, various patterns, \$1.95; two for \$3.50. Army Surplus Store, Eastland, Texas.

HAVING A PARTY? Come by the Ranger Times office and pick up your Party Napkins.

FOR SALE: C 60 Wichtex double drum printing machine with spudding attachment. 4" to 7" tools. 3300 ft. 1/2" drilling line on SE Dodge truck. H. H. Daniels, phone PO 2-2459, Albany, Texas.

FOR SALE: Every family can own a GE home freezer. Upright models and chest type. Prices start at \$189.95. Use your credit at Goodyear Service Store, 736 E. Main, Eastland.

FOR SALE: See the new, 1964 General Electric TVs at Goodyear Service Store. Prices start at \$99.00. Large selection to choose from. Easy budget terms. Your TV trade-in will make the down payment. Payments as low as \$2 weekly. 308 E. Main, Eastland.

FOR SALE or Trade—Modern six unit motel with three bedroom residence. Located U. S. Highway 80, Eastland, phone MA 9-1328.

FOR SALE: 2 large bedroom house. Cooper addition on paved street. Servant quarters and double garage. MI 7-1586.

FOR SALE: Cordwood. Call Little David. MI 7-1688.

FOR SALE: 1955 Cadillac, clean, \$395. Garland Greenlee, MI 7-1914.

FOR SALE: Insulated hunting boots, \$14.95; insulated underwear, \$7.95 up; 30-30 shells, \$2.95 box; 30-06 shells, \$3.95; Hooded sweatshirts and all types gear, guns and ammo. Get ready now. We trade guns. Bruce Pipkin Sport Center, Eastland.

NOTICE: Let me figure your income tax. Will be in my office each Saturday. 309 Main St. Phone MI 7-3426. Novilla Templeton.

USED MOTOR Sale: Two 35 HP Johnson electric start motors, \$250 each; One Evinrude 34 HP electric start motor, \$275; 12 HP Wizard, \$80; 12 HP SeaKing, \$35; 25 HP Wizard, \$45; 7 1-2 HP Elgin, \$22-50; 10 HP Johnson, \$30; 10 HP Scott Attwater, \$37.50. Bruce Pipkin Sport Center.

WILL LOOK after elderly, invalids or shut-ins in the home, day time. Also light house keeping. Mrs. Ann Cork, 320 Hunt St.

NOTICE: Volume buying enables us to pass saving on to our customers. Large selection of General Electric television and stereo. Come in for demonstration—today. Goodyear Service Store, Eastland.

NOTICE: Clean, high tread used tires. Going at \$3.00 and up. Stop by your Goodyear Service Store—today! 308 E. Main, Eastland.

WHAT IS \$100 WEEKLY WORTH TO YOU? If you're friendly and easy to get along with, I'll show you how to average \$100 weekly! All you need is good health and a car. For personal interview, write Buford Denmark, P. O. Box 2447, Memphis, Tennessee 38102.

WANTED—Local agent for Fort Worth Star Telegram. Deliver morning, evening and Sunday. Write letter of application to Country Circulation Dept., Fort Worth Star Telegram.

WANTED: Listings of farms or ranches for sale or lease. Grady G. Baldwin, Realtor, 6428 Greenway Rd., Fort Worth, Texas.

C. E. MADDOCKS & CO. Insurance - Real Estate Phone MI 7-1171

YOUR Independent AGENT

The Greeks Didn't Even Have a Word For It—

Nor did the Romans. It was many centuries later that insurance, as we know it today, came into being.

Like so many good things of this day and age, we take insurance and the protection it provides, for granted.

The Week Ahead In Ranger

THURSDAY

Ranger Jaycees breakfast meeting at 8:30 a. m. in the RJC Cafeteria.

Oddfellows Lodge meets in the IOOF Hall.

Lions Club meets at 12 noon at the college cafeteria.

FRIDAY
Ranger High School basketball team hosts Clyde High teams at 6 p. m. at Recreation Bldg. gym.

SUNDAY
Attend the Church of your choice. You need the Church—and the Church needs you!

MONDAY
Band Booster Club meets at 7:30 p. m. for regular monthly session.

Athletic Booster Club meet 7:30 p. m. in RJC cafeteria.

CIO-AFL meets 7:30 p. m. at Union Hall.

Ranger Junior College basketball team hosts Decatur Baptist College at 7:30 p. m.

TUESDAY
Ranger School Board meets at 7:30 p. m.

Ranger Volunteer Fire Dept. meet at 7:30 p. m.

WEDNESDAY
Elks Club meets at 7:30 o'clock.

Rotary Club meets at 12 noon in the RJC cafeteria.

CHILDREN HOME
Mrs. Maude Perrin had all of her children home for the holiday season. They are Mr. and Mrs. Billy Jack Perrin and Tammie of Fort Worth; Mr. and Mrs. Tommy Perrin, La Lania and W. T. of Odessa; Mr. and Mrs. Marvin Tarver of Abilene; and Mr. and Mrs. Donald Perrin, Donna Kay and Donnie of Ranger.

More than 50 species of oak are natives of Texas.

Political Announcements

This newspaper is authorized to announce the following candidates for public office subject to action of the Democratic primary election on May 2, 1964.

For Constable, Precinct 2:
RALPH VEAL

For Commissioner, Precinct 1:
E. W. (Bud) GRIFFIN
O. R. (Ot) ERVIN
J. B. (Tip) ARTHUR

For Sheriff:
J. B. WILLIAMS
J. J. (Jake) HONEA

For Tax Assessor-Collector:
EDGAR ALTMOM

LOST: Envelope from studio in Midland with two negatives. If found please take to Capps Studio.

FOR RENT
FOR RENT: Three room furnished apartment. Bills paid. Call MI 7-1390.

FOR RENT: Newly papered unfurnished five room house. \$45 per month. Two bedrooms, fenced yard. 1413 South Seaman. MA 9-2526.

FOR RENT: Apartments large or small. Bills paid. 309 Elm.

FOR RENT: 3 room furnished apartment. Phone MI 7-1089.

FOR RENT: Small house on Winsett Springs Road. R. C. Wilson.

FOR RENT: 2 and 3 bedroom cottages with living room, kitchen and bath. \$30 per month and up. Inquire on premises. Park Cottages.

NOTICE: Check these low prices: GE vacuum cleaner, 38.88. Universal coffee maker, automatic, 16.95. GE portable radios, all transistors, 12.88; KM irons, 10.95. GE portable mixer, 13.95; (all colors); KM toasters, 9.95; electric blankets, 11.95; electric heaters, 10.95. See these specials and other great buys at Goodyear Service Store, Eastland.

FOR RENT: Dandy two bedroom furnished cabins with kitchenettes. Ideal for week-ends during winter. Good rates. Lynn's Lake Lodge, Lake Cisco. Phone HI 2-2064.

FOR RENT—Nice, large 6-room house. 900 Cypress. Phone MI 7-1791.

CARD OF THANKS
We wish to thank our neighbors, friends, relatives, the staff of Ranger General Hospital, and Drs. Watkins and Gohike for their acts of love and sympathy during the lengthy illness and recent death of our loved one, Mrs. P-tra Camacho. Also for the food and many floral tributes we express our appreciation.

The Camacho and Mendosa families

Albert Pozzi

don't know quite what to say, being from a small town and all that—but I'm truly grateful."

And then a reporter asked the somewhat bashful gridman what he thought made a good athlete. This inspired some enthusiasm, revealed his leadership trait, when he said quietly but with conviction: "Well, I think a good athlete really trains to be in the best possible condition, does his best and tries to succeed."

Coch Williams, beaming with understandable pride, said Pozzi is one of the finest athletes he has ever tutored.

"Certainly he's one of the best blocking centers I've ever coached," the RJC mentor declared. "He's up fast and dived in a hurry. His long snaphack is tops, too."

"Especially, Pozzi excels on defense. This explosive linebacker is really tough, has plenty of speed, uses his brain for his devoted training habits and outstanding qualities as a 'real leader.'"

The big rock in the Rangers' beefy forward wall for the past two autumn wars is a graduate of St. Joseph High School, Victoria. As a stellar double-threat on the St. Jo Flyers, Pozzi maneuvered at the same positions—center and defensive linebacker—which brought him his current All-America acclaim.

In addition to football, Pozzi also vigorously competes in track and field events. He pushes the shot and throws the discus.

The RJC gridman is the son of Mr. and Mrs. Joseph Pozzi of Victoria, has a brother, John Anthony, and a sister, Mary Sue, both of the home.

His hobbies, aside from gridiron action, are hunting and fishing. He's a big eater, especially relishes fried chicken. His favorite subject is math.

RJC's All-America Pozzi has been playing football for only four years, didn't get into combat until his junior year in high school.

But, as countless fans, friends and fellow teammates agree, it may be many a year before Albert Pozzi puts his cleats and moleskins a way for good.

Pozzi Third All America For College

Ranger Junior College has had the distinction of having three of its Purple & White grid stars named to the Junior College All-America team during the comparatively short span of 10 years.

Latest is Albert Pozzi, ace center and defensive linebacker, who was chosen for a starting slot on the 1963 national all-star selection.

Previously honored were George Boynton of Quanah, stellar halfback of the Ranger juggernaut of 1957, and Joe Angel of Birdwell, whose sensational guard play, won him a berth on the All-America eleven for 1953.

R. E. (Dick) Henderson, president of the board of regents of Ranger Junior College, lavishly praised the sharp grid play of RJC's new All-American Albert Pozzi.

"He's simply great," Henderson said.

First Baby
(Continued from Page 1.)

A gift for mother—D. E. Pulley Jewelry.

A 5X7 portrait—Capps Studio.

Birth announcement—Ranger Times.

Two pair of hose for mother—Smart Shop.

First permanent for baby—Vie's Beauty Salon.

First haircut for baby—Tony's Barber Shop.

The gifts were announced in a display advertisement, co-sponsored by the above-named firms, on Sunday, Dec. 29.

FRIENDS FETE GRAYS
Rev. and Mrs. W. A. Gray, former residents, moved back to Ranger Dec. 26 and are residing at 313 First St. Prior to their return, Rev. Gray had been pastor of the Church of God, Hereford, for about a year. Also living with the Grays are two grandchildren, Kenneth and Kay Kime.

The Gray family was pleasantly surprised Thursday evening, Jan. 2, with a housewarming by friends and members of the Ranger Church of God Church. "We are deeply grateful for this thoughtful-

ness," Rev. Gray said.

Col. James Stone, Carbon Native, Buried Monday

Funeral for Lt. Col. James S. Stone, USAF retired, Eastland County native, son of Mr. Overton Stone of Carbon and brother to Mrs. J. C. Poe of Eastland, was held Monday in Mosses Lake, Wash.

Burial was also in Mosses Lake, where Col. Stone died Friday, Jan. 3rd.

Born April 21, 1923 in Carbon, he was a member of the First Baptist Church in Carbon. A Carbon High School graduate, he attended Ranger Junior College briefly before enlisting in the Air Force in May, 1942. He received his pilot training at Marfa AFB, Tex., in 1943 and later duty assignments included tours in Newfoundland, Tripoli and South Africa. He also participated in numerous assignments in Europe, Korea, Japan and bases throughout the United States.

A Command pilot, he held several citations and commendations, and was retired from the Air Force Aug. 31, 1963 at Fairchild AFB, Wash. Col. Stone was married Sept. 10, 1945.

He is survived by his wife, Katherine; four sons, James Williams, Kenneth Alan, Eric Overton and Michael Lee; his father of Carbon; two sisters, Mrs. Poe of Eastland and Mrs. Thomas F. Ireland of Lubbock.

Cabeza de Vaca crossed the Southwest in 1536 on the way to New Spain.

The red maple is the most abundant maple in Texas.

erson, a former RJC coach, said. "He is an outstanding example of a top athlete, the combining intellect with determination and rugged combat ability."

"His personality and his character also are exemplary, and we know a bright future lies ahead for this student who is bringing great credit and recognition to our college."

"It is a great honor for Ranger Junior College to have one of its athletes named as an All-America football player," commented RJC President Theodore Nicksick. "Not only is it a deserved tribute for Albert Pozzi, but his recognition will bring our college nationwide publicity."

"Pozzi is one of the finest students we've ever known, and certainly there's none more deserving. He's All-American in more than just football," President Nicksick said.

Accent on Health
J. E. PEAVY, M.D.
Commissioner of Health

AUSTIN—Attention, youngsters who got new bikes or guns for Christmas. This story is for you.

They're beauties, aren't they—the bike, the gun? But do you understand the new responsibility they impose? They imply that you're well on the way to growing up.

When your parents gave you the bike, it was an expression of their respect for your understanding of traffic rules and signals.

They're betting your judgment is mature enough that you will ride only on the right side of the street with the flow of traffic, and that you will always walk your bike through heavy traffic!

Your parents—by their gift to you—demonstrated their belief that you have enough discretion to light up the bike when night-riding, not to ride double, and never hitch a ride behind a car.

They're counting on you to give proper hand signals and to ride single file when out with your bike-owning buddies.

If you got a gun for Christmas, your parents are—in effect—saying the same thing: that they trust your judgment and common sense.

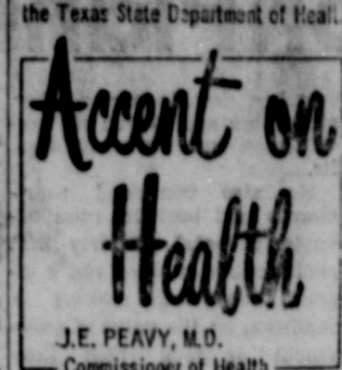
They know a gun is the weapon of a man, or a bright lad well along toward manhood.

If your parents are right, you will treat every gun as though it were loaded. You'll unload yours when it isn't in use, and you'll be constantly alert to muzzle direction when handling it.

A man who knows guns is always sure of his target before he shoots, and he never points at anything he doesn't intend to kill. Such a man has better judgment than to climb a tree or a fence with a loaded weapon.

A skilled gun handler like you want to become never shoots without checking the barrel for obstructions, and never shoots at flat hard surfaces or at water because of possibility of ricochet. He stores his ammunition and his

A weekly public service feature from the Texas State Department of Health.



AUSTIN—Attention, youngsters who got new bikes or guns for Christmas. This story is for you.

They're beauties, aren't they—the bike, the gun? But do you understand the new responsibility they impose? They imply that you're well on the way to growing up.

When your parents gave you the bike, it was an expression of their respect for your understanding of traffic rules and signals.

They're betting your judgment is mature enough that you will ride only on the right side of the street with the flow of traffic, and that you will always walk your bike through heavy traffic!

Your parents—by their gift to you—demonstrated their belief that you have enough discretion to light up the bike when night-riding, not to ride double, and never hitch a ride behind a car.

They're counting on you to give proper hand signals and to ride single file when out with your bike-owning buddies.

If you got a gun for Christmas, your parents are—in effect—saying the same thing: that they trust your judgment and common sense.

They know a gun is the weapon of a man, or a bright lad well along toward manhood.

If your parents are right, you will treat every gun as though it were loaded. You'll unload yours when it isn't in use, and you'll be constantly alert to muzzle direction when handling it.

A man who knows guns is always sure of his target before he shoots, and he never points at anything he doesn't intend to kill. Such a man has better judgment than to climb a tree or a fence with a loaded weapon.

A skilled gun handler like you want to become never shoots without checking the barrel for obstructions, and never shoots at flat hard surfaces or at water because of possibility of ricochet. He stores his ammunition and his

gun separately to avoid accidents.

It takes intelligence and a good judgment to follow the rules of bicycle and gun safety, to live up to the responsibilities ownership imposes.

Your parents are convinced you have the necessary qualifications.

Have you?

Vets Questions And Answers

Q—My husband was recently discharged from a VA hospital because of what the hospital said was "MHB." What does this mean?

A—The letters stand for "Maximum Hospital Benefit." This means that hospital offi-

cials believe that the patient's condition has improved to the point that additional time in the hospital would bring about no further improvement.

Hospital News

Patients in Ranger General Hospital Wednesday morning were: Mrs. Dortha Harris, Mrs. E. E. Neal, Mrs. Barbara King, Mrs. Dorothy Reid, Mrs. Ida Dorsey, Mrs. W. F. Goldesberry, Mrs. Harold Donica, Mrs. Nona Green, Mrs. Jerry Mehaffey and daughter, Mrs. Margaret Renteria, Mrs. Mary Fullum, Mrs. H. F. Brown, Mrs. Mary Hill, Mr. Roy Calvert, Mr. J. F. Francis, Mr. Elmer Abernathy, and Mrs. Letha Buckbee.

May Insurance Agency

INSURANCE—REAL ESTATE
W. J. Sipes Phone MI 7-3582

Because insurance is your safeguard against loss due to destruction to your property, be sure you have a sufficient amount to meet today's changing conditions.

This Hartford agency is ready to help you check up your insurance to make sure it is adequate. No obligation on your part. May we?

FURNITURE CARPET APPLIANCES

Quality Merchandise at Every Day Low Prices

FREE DELIVERY—NO CARRYING CHARGES ON FURNITURE and CARPETS FOR 1 FULL YEAR

Ranger Furniture Exchange
"BRASHIER'S"

123 N. Rusk Ranger Phone MI 7-1404

BUY! SELL! SWAP!
READ and USE THE

Get Cash for What You Want to Sell! Buy What You Need! Trade! Rent! Hire!

WANT ADS!

Big Coverage at Low Cost... as Little as 2c Per Word!
CLIP THIS FORM AND MAIL TO

Ranger Times, Box 118, Ranger, Texas
(WRITE ONE WORD ON EACH SHORT LINE)

6	12	18	24	30	36	42	48
---	----	----	----	----	----	----	----

SEND REMITTANCE WITH YOUR COPY

Amount _____

Run for _____ issues, beginning () Sunday () Thursday

CLASSIFIED ADVERTISING RATES: One insertion, 3c per word; two insertions, 5c per word; 3 insertions, 6c per word; and per month (8 insertions), 20c per word. Minimum (20 words or less), 60 cents.

Name _____
Address _____
City _____

THOUSANDS READ OUR CLASSIFIEDS EVERY WEEK!

WIN AS SA DOI PI MY M AL PI SK M CO A BL M CH O BA S Me B H A S

FREE!

WIN A 1964 GOLD CADILLAC OR \$5000⁰⁰ in CASH!



Prices Effective Thursday Thru Saturday

Check These Values!

WINSLOW ASPARAGUS Cut Green No. 1 Can	23c
SALAD OIL Food Mart 24 oz. Bottle	35c
DOLE HIWAHAN PINEAPPLE JUICE 46 oz. Can	39c
MYCO 11 OZ. MANDARIN ORANGES Can	29c
ALLEN'S NO. 300 PEAS & POTATOES 2 Cans	25c
SKINNER'S MACARONI 10 oz. Pkg.	21c
COMSTOCK APPLE PIE FILLER 25 oz. Can	41c
BLUEBERRY PY-O-MY MUFFIN MIX 12 oz. Pkg.	43c
CREAM SANDWICH OREO COOKIES 11-oz. pkg.	39c
BAGGIES SANDWICH BAGS 50 ct. Pkg.	29c
MCCORMICK'S BLACK PEPPER 4 oz. Can	39c
REGULAR AJAX CLEANSER 2 Cans	33c
SOAKY Liquid Fun Bath Ea.	69c

El Chico-Frozen Mexican Dinners 2 16-Oz. Pkgs.	89c
El Chico-Frozen Enchilada Dinners 2 12-Oz. Pkgs.	89c
El Chico-Frozen Cocktail Tacos 2 11-Oz. Pkgs.	99c
El Chico-Frozen Beef Enchiladas 18-Oz. Package	59c
El Chico-Frozen Beef Tacos 2 13-Oz. Pkgs.	99c
Dash DOG FOOD 6 1-lb. Cans	89c



Gold Cadillac Winner Mrs. N. H. Fleming



\$150 Winner

Mr. L. C. Smith



Chevrolet Malibu Chevelle Winner; Mrs. Pauline Laday



\$150 Winner—John Bailey



\$150 Winner—Mrs. Clara Harris



\$150 Winner—Tom Beasley



\$500 Winner—Mrs. H. B. Little

CHUCK ROAST	W. C. Q. Heavy Beef	Lb.	39c
ARM ROAST	W. C. Q. Heavy Beef Shoulder	Lb.	49c
GROUND BEEF	Worth Quality Ground Fresh	Lb.	39c

ARMOUR'S STAR PORK SAUSAGE Lb. Roll	29c	LEAN BEE FCUBES BONELESS STEW Lb.	59c
TASTE O' SEA FROZEN, FAMILY SIZE FISH STICKS Lb. Pkg.	59c	MRS. BURGESS—THIGS, BREASTS, DRUMSTICKS FRYER PARTS Lb.	59c
GIANT TIDE Detergent-10c off Label	Net	59c	
PET MILK Evaporated	8 Tall Cans	\$1 ⁰⁰	
ALL FLAVORS HI-C Drinks 46 oz. 3 Cans	89c	PLAIN NO. 300 ARMOUR'S CHILI WITH BEANS NO. 300 Can	39c
Pink Salmon No. 1/2 3 Cans	\$1	ARMOUR'S CHILI LIBBY'S NO. 302 Can	35c
LIPTONS TEA 1/4 Lb. Pkg.	39c	SAURKRAUT 2 Cans	29c



\$150 Winner—Mrs. Rosie V. Ward



\$200 Winner—MR. & MRS. R. H. Dixon

SNOWY BLEACH DRY BLEACH 16 oz. Package 39c

CLIP AND SAVE!
50 Bonus S&H Green Stamps with this coupon & purchase of Any 2 Pkg. of El Chico-Frozen MEXICAN FOOD
Void after Sat. Jan. 11, 1964

WORTH FOOD MART

CLIP AND SAVE!
50 Bonus S&H Green Stamps with this coupon & purchase of A Package of 12 Modern SANITARY NAPKINS
Void after Sat. Jan. 11, 1964

WORTH FOOD MART

CLIP AND SAVE!
25 Bonus S&H Green Stamps with this coupon & purchase of Six Bottle Carton of COCA-COLA
Void after Sat. Jan. 11, 1964

WORTH FOOD MART

CLIP AND SAVE!
100 Bonus S&H Green Stamps with this coupon & purchase of 4 2-Lb. Cans of CHASE & SANBORN COFFEE
Void after Sat. Jan. 11, 1964

WORTH FOOD MART

CLIP AND SAVE!
50 Bonus S&H Green Stamps with this coupon & purchase of Four 10 Regular Packages of ROYAL PUDDING
Void after Sat. Jan. 11, 1964

WORTH FOOD MART

PAIN RELIEVER EXCEDRIN 60 Tablets	69c
BATH OIL-REGULAR SOFTIQUE \$1.25 Size—Plus 10c Tax	99c

VAN CAMPS PORK & BEANS No. 300 4 Can	49c
MORGAN'S Pie Cherries No. 303 2 Cans	49c

BANANAS cabanu Flavor Packed Golden Pipe Lb.	10c
APPLES Extra Fancy - Crunchy Red Delicious Lb.	15c

ANJOU PEARS Extra Fancy Lb.	19c	FANCY FLORIDA "RED" GRAPEFRUIT Lb.	12c
FRESH CRISP GREEN CABBAGE Head Lb.	5c	FLORIDA CROOK NECK YELLOW SQUASH Lb.	19c
1-LB. CELLO BAG FRESH CARROTS 2 For	25c	CRISP AND CRUNCHEY PASCAL CELERY Stalk	15c
COMPLETION SOAP CHOICE BAR SOAP Reg. 2 Bars	39c	COMPLETION BATH SOAP CHOICE BAR SOAP 2 Bars	49c
REGULAR BARS PALMOLIVE SOAP 2 Bars	31c	TOILET SOAP REGULAR Cashmer Bouquet 2 Bars	21c
REGULAR BARS PALMOLIVE SOAP 2 Bars	21c	TOILET SOAP BATH Cashmer Bouquet 2 Bars	31c

PLAY GOLD RUSH BIG MONEY GAME

HOW TO PLAY

- 1 Pick up your FREE BIG MONEY CARD* at any Worth Food Mart. Then, with each visit to Worth, you will be given a FREE POINTS TICKET. During each contest week, Sunday thru Saturday, as many as two of your POINTS TICKETS showing the greatest number of points collected during that week will be punched on your BIG MONEY CARD. These POINTS TICKETS are worth from 5 to 100 points.
- 2 When your BIG MONEY CARD has a total of 100 points punched out, present it to the Store Manager who will remove the GOLD RUSH SEAL, showing the prize you will receive. You may win a 1964 Gold Cadillac, (or \$5,000 in cash) or a 1964 Chevrolet Malibu Chevelle, or \$1,000, \$500, \$200, \$150, \$100, \$25, \$10, \$5, or special award of a gold plated initial pen set with genuine cultured pearl.
- 3 YOU MAY WIN A SECOND TIME... your BIG MONEY CARD is entered in the GRAND DRAWING for many big prizes, including: 1964 Gold Cadillac, 1964 Chevrolet Malibu Chevelle and hundreds of other prizes to be given away on television.

*A limit of only one BIG MONEY CARD will be honored at each store visit.

1963 County Rains Near Inch Above Average, But 'Fell Wrong'

Rainfall in Eastland County during 1963 was almost an inch above average, even though most points in the state are reporting less than average totals.

Most agree, however, that the rains in this area came at not exactly the best times for farm crops.

Total for the year is 26.69 inches, .96 of an inch above the average of 25.73 inches. Heavy rains in May, August, September and November, all above average months, helped push the total up. All other months were below average in rain.

The county peanut crop this year was below average, County Agent J. M. Cooper said, but better than had been anticipated.

The early part of 1963 was the driest, with only .25 of an inch in January, .22 in February and .31 in March. Although some 3.41 inches fell in August, it was generally considered too spotted to offer much help for the crop.

DAUGHTER FOR HINKSONS

Mr. and Mrs. Ricky Hinkson of Fort Worth announce the birth of a daughter who arrived on Dec. 22. Mrs. Hinkson is the former Miss Beverly Craddock of Strawn, a graduate of Ranger Junior College.

Maternal grandparents are Mr. and Mrs. Guy Craddock of Strawn and paternal grandparents are Mr. and Mrs. Pat Hinkson of Strawn.

December was in extremely dry month with only .21 of an inch recorded — consisting of an inch and a half of snow, plus .15 and a .04 measurement, according to official records.

July was the near-moisturest month of the past year with only .11 of an inch measured.

ABILENE VISIT

Mrs. R. H. Hamrick and her mother, Mrs. F. E. Langston, spent Christmas Day in Abilene with their brother and son and his family, Mr. and Mrs. Finis Langston, Jr. and Ewing.



JIM ROBINSON, paratrooper stationed at Fort Sam Houston in San Antonio, spent the Christmas holidays in Ranger with his parents Mr. and Mrs. R. V. Robinson and other relatives. A graduate of Ranger High School, Jim entered the service last February.

Former Ranger Resident Weds

Miss Audrey D'Anne Lee of Houston, former Ranger resident, and Mr. Carl Yarleets, also of Houston, were united in marriage Friday evening, December 27, at 8 p. m.

The ceremony was solemnized at the home of the bride's aunt, Mrs. Audrey Stoker, 418 Electra Drive, in Houston. Rev. J. W. Sunday, pastor, Pines Presbyterian Church, officiated during the double ring ceremony.

The bride was given in marriage by her father, Grover C. Lee Jr., who is associated with The Ranger Times.

Mrs. Yarleets, a former student of Ranger Public Schools, is a graduate of Sam Houston State College where she received a degree in journalism. She is employed by the Journalism department of Rice University, Houston, and is also attending law school.

Mr. Yarleets is associated with the Bankers Life Insurance Co. in Houston.



MR. AND MRS. JOE DON-OWHO of Clovis, New Mexico visited their parents, Mr. and Mrs. Jack Donowho during the Christmas holidays.

WOODS GUESTS

Clyde and Erving Ivy, both of New Mexico were supper guests of Mr. and Mrs. H. O. Woods Saturday night. The two men, both former Ranger residents, were assisting their brother and family, the Buddy Ivys, in moving back to Ranger.

WHITE CHRISTMAS

Mr. and Mrs. Jesse White and Brad have returned from a Christmas vacation in Leighton, Alabama with her mother, Mrs. Ben P. Hatton. They also visited with all of Mrs. White's brothers and sisters who live in that area, among them Mr. and Mrs. Will Hatton and daughters, former Ranger residents.

Mr. White reported the weather in the "Deep South" was a bit unusual for that area. They drove in heavy snow nearly all the way to their destination, and indeed enjoyed a White Christmas. Since returning home, relatives report that a new release of thirteen inches of snow had fallen.

DINNER GUESTS

Christmas dinner guests in the home of Mr. and Mrs. Robert Carroll were the children, Mr. and Mrs. Ralph Franks, Mike and Cindy of Waco, Mr. and Mrs. Robert Lee Carroll, Judy and Sherry of Eastland, and Mr. and Mrs. Gene Gourley, Garland and Lacey of Ranger.

DOES GETTING UP NIGHTS MAKE YOU FEEL OLD?
After 24 hours of busy activity, irritations often occur and may make you feel tired and nervous from too frequent passages both day and night. Secondly, you may lose sleep and suffer from headaches, backache and feel generally depressed. In such irritation, CYSLEX quickly brings fast, relaxing comfort by soothing irritating areas in stress, acid urine and by analgesic pain relief. Get CYSLEX at drugstore. Feel better fast.

VOCATIONAL NURSING CLASS ENROLLING FOR NEW TERM

All persons interested in enrolling in the Vocational Nursing School of Cisco Junior College have been urged to make applications promptly, according to an announcement. The class will begin in February and consist of a 12 months course.

The enrollment fee may be paid out monthly, if desired, and student receive a monthly stipend while in training from the hospitals cooperating with the school.

To be eligible for the school, a person must be between the ages of 18 and 55, in good health, with at least two years high school education. Upon completing the course, students are eligible to take the state board examination to become licensed vocational nurses.

Graham Hospital in Cisco, Eastland Memorial Hospital, Ranger General Hospital and the Albany hospital cooperate with Cisco Junior College in making the training available.

Interested persons were urged to contact one of the following as soon as possible:

In Cisco — Mrs. Nova Graham, administrator, Graham Hospital; or Mrs. Veneta Mitchell, school instructor, 409

W. 12th Street after 5:30 p.m., or at the college on Fridays.

In Eastland — Mrs. Mary Sue Lee, director of nurses, or Leon Musgrove, administrator, Eastland Memorial Hospital.

In Ranger — W. J. Herrington, administrator, Ranger General Hospital.

READ THE CLASSIFIEDS

Clara Jacoby Watson

Experienced Tax

Accountant

Income Tax Returns

Phone MI 7-1213

Location:

Max Jacoby Residence

Hiway 80 West

First House West of El

Rancho Coffee Shop

Ranger, Texas

Office Hours:

8:30 a. m. to 4:30 p. m.

Every Saturday

ADVERTISING IS MY BUSINESS!



WHY NOT LET ME HELP YOUR BUSINESS?

GOOD NEWSPAPER ADVERTISING WILL GET RESULTS!

Call GROVER LEE... and SEE

Ranger Times - MI 7-1101

EASTLAND COUNTY TOTAL PRECIPITATION

From Official Records of Weather Bureau

Year	Jan.	Feb.	Mar.	Apr.	May	June	July	Aug.	Sept.	Oct.	Nov.	Dec.	Total
1911	.40	3.43	2.16	3.22			1.10	2.58	2.75	1.65	.50	4.58	22.37
1912	.15	3.65	1.97	1.24	2.67	3.50		4.00	2.50	.30	.60	2.20	22.78
1913	.50	.12	.50	2.10	3.65	5.66		.72	2.70	2.20	7.65	2.40	28.20
1914	.00	.00	.42	3.02	7.65	1.02	.40	7.83	.65	4.42	4.70	3.43	33.54
1915	.75	1.15	.75	5.26	.53	4.18	1.42	4.65	3.30	.25		1.70	23.94
1916	2.43		.45	4.45	4.15	1.83	.73	2.00	2.10	3.08	1.37	.00	20.79
1917	.65	1.00	.80	1.80	4.38	1.38	1.25	1.37	1.33	.05	.40		14.41
1918	.80		.60	2.35	4.00	1.97	.09	1.15	2.74	3.09	3.47	2.65	22.91
1919	3.32	.93	2.55	1.40	2.67	2.38	2.85	.88	2.60	6.57	2.45		28.60
1920	2.74	.88	.50	.10	9.40	2.43	2.82	5.28	5.78	1.97	3.54	.62	36.06
1921	1.38	2.51	1.64	.72	1.47	6.20	.39	.13	.76	.55	.15	1.55	17.45
1922	1.32	.68	3.08	10.68	9.35	1.58	1.25	.40	.13	2.34	3.33	.23	34.37
1923	2.20	3.07	2.36	4.71	.69	3.89	1.20	1.00	3.05	6.21	3.51	3.62	35.51
1924	.19	1.95	3.13	1.38	4.28	.85	.95	.84	4.50	.01	1.22	.52	19.82
1925	.71	.22	.13	2.42	5.17	2.95	3.04	1.71	2.29	2.29	1.78	.03	22.74
1926	2.66		3.28	4.29	2.03	4.03	4.38	2.28	.38	4.08	1.06	3.82	32.29
1927	1.07	1.38	1.35	2.14	2.03	3.94	2.52	1.85	3.43	2.97		1.13	23.81
1928	1.16	2.50	.65	2.05	6.42	3.71	3.90	4.15	1.33	1.23	2.25	1.38	30.73
1929	2.17	2.19	1.68	2.72	4.54	.02	.29	.15	1.60	2.56	1.21	.13	19.26
1930	.53	.10	1.53	.35	4.63	.71	1.43	2.20	1.52	8.15	1.89	1.37	24.41
1931	2.21	2.32	1.97	1.80	1.45	1.29	1.81	1.65	.16	10.12	1.55	4.17	30.50
1932	3.55	1.91	.26	3.97	4.78	5.23	3.34	2.24	6.78	.57	.41	3.19	36.23
1933	.39	2.80	1.68	.66	5.16	1.30	.54	1.39		.52	1.55	2.11	18.10
1934	1.52	1.20	3.72	3.25	1.51	.22	2.02		2.56		1.77	.15	17.92
1935	2.27	2.31	1.09	3.79	6.48	4.27	2.17	1.16	6.40	2.69	1.15	.81	34.59
1936	.34	.40	1.18	1.98	5.26	2.00	2.83	.09	13.42	3.34	.67	.78	32.29
1937	.50		4.48	.52	1.52	2.86	1.85	1.43	2.81	3.33	1.24	4.29	24.83
1938	3.29	.99	4.15	2.61	3.54	2.07	6.84	.04	1.60	.25	.92	1.21	27.51
1939	3.72	.77	1.22	1.02	6.61	5.25	1.46	3.42	.18	.93	3.12	.84	28.54
1940	.71	2.38	.35	5.38	5.87	10.40	.64	2.50	1.95	.33	6.04	3.68	40.23
1941	1.74	5.23	1.95	4.04	7.04	2.11	3.10	5.13	1.74	5.02	.28	1.28	38.66
1942	.41	.18	.64	10.73	4.51	3.03	.80	2.32	6.70	10.28	.30	1.38	41.28
1943	.35		3.19	.50	3.29	1.10	.16	.00	1.00	1.78	.10	2.72	14.19
1944	2.02	3.16	1.10	4.41	4.70	.08	2.10	4.18	1.37	4.77	2.43	2.78	33.10
1945	.93	2.62	3.98	3.41	2.90	5.46	3.38	1.20	2.10	4.01	.20	.90	29.03
1946	3.65	2.18	1.40	1.15	3.79	1.66	1.03	3.18	4.93	.60	2.45	2.00	28.02
1947	1.78		3.73	2.22	2.70	1.10	1.16	.28	.40	2.45	1.37	1.40	18.59
1948	.12	1.15	.43	1.75	3.00	3.01	1.49	.50	.22	1.40	.25	.78	14.10
1949	2.86	1.80	2.05	4.86	5.15	3.35	1.30	3.03	.85	3.95	.00	2.42	31.62
1950	.90	.80	.00	3.15	5.73	2.05	4.50	1.70	3.92	.29			23.04
1951	.20	1.32	1.21	1.75	3.88	3.38	1.12	.15	.46	3.88	.70	.20	18.25
1952	.34	.55	1.52	2.50	3.08	.41	.29	.21	3.52	.00	3.53	1.07	17.02
1953	.17	.51	1.62	2.07	4.35	1.36	3.15	1.84	.91	5.98	1.63	.78	24.32
1954	1.77	.42	.59	4.20	1.96	.00	1.05	.05	.71	2.78	2.22	.58	16.33
1955	.99	1.05	.12	1.06	7.20	4.36	1.56	.36	2.16	.62	.40	.11	19.99
1956	1.74	1.94	.10	3.30	2.50	.33	.30	.20	.44	2.05	1.58	2.99	17.47
1957	1.05	1.33	1.62	6.33	11.70	1.38	.75	.41	2.43	10.41	4.85	1.00	43.26
1958	1.70	1.09	2.33	2.67	3.07	4.32	5.12	3.31	1.98	.99	1.31	.70	28.59
1959	.06	.82	.33	1.91	3.86	8.87	3.07	1.02	3.00	4.59	.35	2.30	30.18
1960	3.09	1.53	1.14	2.36	2.23	1.21	1.91	3.79	2.36	1.89	.07	3.27	24.85
1961	5.14	2.13	1.15	.31	.98	7.63	5.86	.05	2.77	2.86	2.67	1.17	32.72
1962	.11	.16	1.39	2.51	.24	5.02	5.60	.27	4.88	3.48	1.13	.95	25.74
1963	.25	.22	.81	2.47	6.66	1.32	.11	3.41	3.84	1.65	5.84	.21	26.79
Avg.	1.37	1.38	1.59	2.87	4.08	2.56	1.74	1.77	2.45	2.74	1.67	1.61	25.83

RANGER DRIVE-IN

Highway 80 — East on Ranger Hill

ADULTS 50c KIDDIES UNDER 11 FREE

Boxoffice Opens 6:30 — Show Starts at 7:00

FRIDAY — SATURDAY — SUNDAY

JANUARY 10 — 11 — 12

SHOWDOWN



Coming — FRIDAY - SATURDAY - SUNDAY

JANUARY 17-18-19

Tony's got Women Trouble!



TONY CURTIS in

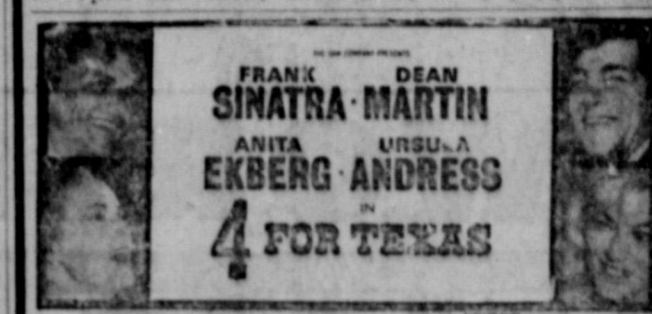
"40 POUNDS OF TROUBLE"

SUZANNE PLESCHETTE - CAROL BRIDGES - LARRY GREEN - WALLY WATKINS - EDWARD GIBSON - ANNIE STETSON - BOB WALKER - HOWARD HUGHES - MARION STERN - STIMPY WOOD

MONUMENTS

MAJESTIC

Open Thurs-Fri — 4:45; Show 5:00, 7:45, 9:30
Open Sat. 1:45; Show 2:20, 4:40, 7:00, 9:20



ADULT 75c DISCOUNT 50c CHILDREN 25c

Penneys

ALWAYS FIRST QUALITY

famous Adonna foundations reduced 20% ... and more!



SAVE 75c!
Cotton broadcloth; contour cups with center gore. AA, 30-36; A, 32-36; B, C, 32-38.

NOW 2 for 2.25

SAVE \$1!
Pre-shaped cotton bra; contour cups. Laminated straps. A, 32-38; B, 32-36; C, 32 and 34.

NOW 2 for \$3

REDUCED! ALL PENNEY SHEETS!

every one first quality!

Nation-wide Penney's
146



MRS. JERRY CLARK BRADFORD

Miss Culver, Mr. Bradford Repeat Wedding Vows in Rites, Dec. 28

Miss Nancy Virginia Culver and Mr. Jerry Clark Bradford were married December 28 at 6:30 in the evening in a double ring ceremony at the First Methodist Church. Bert Mercer, minister, of the First Street Church of Christ officiated.

The bride is the daughter of Mr. and Mrs. Albert L. Culver of Lampasas. She attended Southwest Texas State College in San Marcos and Nixon-Clay College in Austin. She was employed by The Abel

Stationers in Austin as a secretary.

Mr. and Mrs. J. C. Bradford of Rt. 3 Ranger are parents of the groom. He received his B. S. degree in Chemistry from Abilene Christian College. He is now doing graduate work at Texas A&M University. He is Technical Supervisor for the Texas Agricultural Extension Service at the Soil Testing Laboratory at A&M.

Miss Culver was given in marriage by her father. She

wore a full-length gown of white peau de soie with a detachable chapel length train. The jacket buttoned in front and was enhanced by long sleeves. The shoulder length veil was topped by a peau de soie headpiece. A single strand of pearls was worn at the neck. She carried a white Bible topped with a white orchid and streamers.

Mrs. Grey Hill of San Marcos served as matron of honor. Miss Sue Ellen Fuller, cousin of the bride, served as bridesmaid. They wore cranberry red satin dresses fashioned similar to that of the bride and carried nosegays of pink baby carnations.

Joe Bradford, brother of the groom of Ames, Iowa, attended as bestman, and Ted Lewis of Junction was groomsman. Lee Culver, brother of the bride, and Jon Darrow of Kermit were ushers.

Mrs. Tom Miessler of Houston, sister of the bride, was organist. "Oh, Perfect Love and 'The Lord's Prayer'" was sung by Don Cochran.

An arched candelabra flanked by greenery centered the back of the altar. White flowers were attached to the candelabra.

After the wedding ceremony, a reception was held in the church annex. The serving table was centered with a silver candelabra and white flowers.

Guests were registered by Mrs. Joe Bradford, sister-in-law of the groom. Members of the house party were Misses Nona Jane Cox, Regina Leatherwood, and Jan Witten; Mmes. W. R. Fuller and George Culver, aunts of the bride, and Mmes. D e a n Turner and M. M. Mullican and Janice Lyon of El Paso, cousin of the groom.

For going away costume, Mrs. Bradford was attired in a blue wool suit with a mink hat, and brown accessories.

After a wedding trip to the Gulf Coast, the couple will be at home at 104 Gilchrist in College Station.

Prenuptial parties given in honor of the bride included a miscellaneous shower given by Mrs. M. M. Mullican on November 29 at her home. Mrs. W. R. Fuller and her daughter Sue Ellen honored the bride with a tea on November 30. Saturday, December 21, Mrs. E. M. Carter and Mrs. J. D. Moffatt entertained with a tea in the Carter home.

Mr. and Mrs. J. C. Bradford were hosts for the rehearsal dinner at Martins, Lampasas.



MR. AND MRS. TOMMY SIPES

Miss Elaine Barrett, Former Rangerite, United in Marriage With Mr. Tommy Sipes of Abilene

Madge Elaine Barrett, a former Ranger resident, and Tommy Dean Sipes were married Jan. 1 in an afternoon double ring ceremony at Trinity Baptist Church, Abilene, with Rev. Howard Ingram, pastor, officiating.

Parents of Mrs. Sipes are Mr. and Mrs. Roy P. Barrett, 325 Westview, Abilene. Mr. Barrett is a former Ranger Junior College athletic coach who also was associated with Southwest Athletic Repair Co., Ranger, sport goods firm, until the spring of 1962. Mr. Sipes is the son of Mr. and Mrs. Worth Sipes of Brownwood.

Nuptial music was presented by Eloise Ford, organist, and Benny Mayo of Seminole and Mrs. Jack Lowe of McLean.

Given in marriage by her father, the bride wore a gown of lace and tulle over bridal satin designed with a scalloped neckline.

Her shoulder-length veil was attached to a crown of pearls and she carried gardenias encircled with pink carnations atop a white Bible.

Wanda Mills of Kermit was maid of honor. She wore an emerald green brocade dress styled with a scooped neckline, brief sleeves and a bell-shaped skirt. She carried a bouquet of pink carnations.

Winston Boulware of Brownwood was best man. Jack Sipes, brother of the bridegroom of Brownwood, and Roy K Barrett, brother of the bride were ushers.

Nancy Barrett, sister of the bride, lighted the candles. A reception followed the ceremony.

The couple will be at home after Jan 5 at 1934 Hickory in Abilene.

The bride was graduated from Ranger High School and is employed by Dr. Jack Edwards. The bridegroom attended Early High School and is serving with the United States Air Force. He is stationed at Dyess AFB.

TOWN TALK

(Continued from Page 1) back in Ranger writes Roy Payne from Kilgore down in East Texas. The Paynes have changed their mailing address from P. O. Box 1339 to P. O. Box 1362, Kilgore.

"And" Roy adds, "a happy new year to everyone!" Thank you, sir, and the same to you!

NEWSMAN HITCHED: Grover C. Lee, III, former Ranger and Strawn resident, ended his bachelorhood on Thanksgiving Day when he was wed to Miss Mary Louise Bryant in Inglewood, Calif.

The nuptial ceremony was solemnized at the L e n o x Methodist Church in Inglewood. Mrs. Lee is the daughter of Mrs. Sue E. Jones of that city.

Lee is the son of Grover C. Lee Jr. of Strawn and is associated with a chain of California newspapers, employed as an advertising manager. He served four years in the U. S. Navy prior to beginning his advertising career on an Oklahoma City newspaper.

THE CAST OF "Derrick Town" has begun rehearsing anew in preparation for Abilene Fine Arts Festival next spring.

The group was recently invited to restage the original musical, written by Dr. Macdon Sumerlin and Dr. Pete Palasota, which takes history of Ranger Oil Boom days as



Capps Studio Photo.

MRS. JIMMIE ARRENDALE, recent bride of the son of Mrs. Frank Arrendale of Ranger, and her husband are making their home in Dallas at 104 Annex Avenue after having returned from a wedding trip to Carlsbad Caverns. He is employed by Ray Smith Transport Company and Mrs. Arrendale is a member of the faculty of an elementary school in Dallas.

RELATIVES VISIT

Out of town relatives who visited with R. Lee Snyder in his home and at Western Manor during the holidays were his daughter, Mrs. Delilah White of Chicago, Illinois; his son and family, Mr. and Mrs. Jack Teddlie of Lubbock; his sister and family, Mr. and Mrs. G. C. Murray, and niece and family, Mr. and Mrs. Milton George all of Stephenville, and his sister, Mrs. Alice line of Fort Worth.

WEEKEND HERE

Mr. and Mrs. H. O. Woods, Jr. and daughters, Barbara and Gloria Jean, of Hobbs, New Mexico, spent the weekend in Ranger with his parents, Mr. and Mrs. H. O. Woods, Sr.



Capps Studio Photo.

KRISTY KAY is the three-month-old daughter of Mr. and Mrs. John Wylie. Maternal grandmother is Mrs. H. H. Vaughn. Paternal grandparents are Mr. and Mrs. T. C. Wylie and paternal grandmother is Mrs. Nona Leazar of Gorman.

SOCIAL CALENDAR

THURSDAY

The Dorcas Sunday School class of the First Baptist Church will meet at 2 p. m. Thursday, Jan. 9, in the home of Mrs. W. S. Adamson.

Rho Pi Chapter will meet in home of Mrs. Felton Huff.

FRIDAY

Ranger Garden Club will meet in the home of Mrs. L. H. Kay.

MONDAY

Eastern Star will meet at 7:30 p. m.

TUESDAY

Columbia Study Club will meet.

Rebekah Lodge will meet at the IOOF hall.

Ladies Bible Class of Mesquite and Rusk Church of Christ will meet at 2:30 p. m.

Ladies Auxiliary of the First Pentecostal Church will meet at 2 p. m.

Merrimen Baptist Ladies Bible Class will meet at 1:45 p. m.

WMU of Second Baptist will meet at the church.

JACOBY VISITORS

Mr. and Mrs. Max Jacoby have had numerous visitors during the holiday season. They include their son, M. M. Jacoby, pilot for Continental Air Lines and a resident of Pacific Palisades, Calif.; their daughter, Mrs. J. B. Asher and children of Lima, Peru; their son, Mr. and Mrs. Douglas Jacoby and family of Maud, Okla.; a daughter, Laverne Jacoby, Gerry and Bobby Hall of Orange; a daughter and family, Mr. and Mrs. Leo Watson and son of Fort Worth, and Mrs. Jacoby's sisters, Mrs. Otto Serber and Mrs. Pat Marshall, both of Mason.

VISITS HERE

Mrs. Alice Little and son, Richard Little, recently visited in Ranger with relatives which included Mr. and Mrs. H. V. Davenport, Sr., Mr. and Mrs. J. B. Craig, Mr. and Mrs. H. O. Woods, Sr., Mr. and Mrs. John Hamilton, Mr. and Mrs. Leonard Pounds and family, and Mr. and Mrs. Earl Brown.

Average annual rainfall at Phoenix, Arizona, is 7.62 inches.

CHECKERBOARD service bulletin



Facts...not "Chin Music" from 40 Purina Feeding Demonstrations!

There's a reason why Purina's "Built-in Roughage" self-feeding program is gaining in popularity wherever cattle are fed. And that reason is FACTS... supplied by the cattle themselves in hundreds of public feeding demonstrations throughout the West.

Here are typical facts from the heavy cattle feeding area of northern Colorado! An average of 49 recently-completed demonstrations there show the kind of results the average feeder can expect on Purina's "Built-in Roughage" program with milo and cottonseed hulls, barley or ground ear corn. Feeders can select from a number of Purina-approved "Built-in Roughage" rations, depending upon availability and prices of local grains.

In Colorado, 2,571 cattle (both heifers and steers) were fed an average of 122 days. Average daily gain for the steers was 2.79 lbs. and one pound of beef was produced on 8.55 lbs. total feed. Heifers gained 2.52 lbs. per day, made a pound of beef on 8.57 lbs. total feed.

These facts were gathered under practical conditions, with widely varying cattle and weather conditions. But all cattle were fed a "Built-in Roughage" ration formulated with Purina Special Steer Fatena.

The secret to "Built-in Roughage" feeding is Purina Special Steer Fatena. Ask for it at our store.

RATLIFF FEED & SEED

Highway 80 East Phone MI 7-1260
RANGER, TEXAS

a 7:30 a.m. appointment, truly had collided with a dog. "It was a big dog," he said. "Nearly as big as a shetland pony. I'll swear." The Times newsboy smiled to himself. Mightn't that lightweight Volkswagen have collided with a chihuahua? Or does an enterprising insurance man need a "big fair of specs?"

Lasting Impressions

THE THREE GREAT MENACES TO DRIVING TODAY — HIC, HIKE AND HUG.

Ranger Times commercial printing department, efficiently operated by Hale Dunson, a well known craftsman, recently added offset lithography equipment to improve its service to an increasing number of customers over the area. This new facility will make it possible for us to appreciably step-up our production. No matter how large or how small the job. The Times commercial printing department can handle it—quickly and economically. When you need printing, dial 7-1101 and we'll get our presses rolling!

SHORT SEASON — Here are a few excerpts from a hunter's diary:

Dec. 26: "Snowin'. Can't go huntin'."
Dec. 27: "Still snowin'. Can't go huntin'."
Dec. 28: "Still snowin'. Shot and mounted gran'pappy."

Our Ranger High School Bulldogs have resumed action on the basketball court. Let's show these lads we appreciate their fine efforts by backing them at every game — at home... and away. Let's win that 10-A title, Bulldogs!

The other day we saw Ranger's most honest man. He was putting a nickel in a broken parking meter!

Commercial Printing Dept.

★ Ranger Times ★

Phone MI 7-1101 Ranger

Loved Ones, Friends, Ex-Residents Truly Enjoy Their Hometown Newspaper!



A Newsy, Welcome

LETTER FROM HOME

TWICE EACH WEEK!

THE COST: LESS THAN A NICKEL PER ISSUE!

Yes, the old hometown lives fondly in the memories of all who move away. And what happens here — from major news to even trivial events — is always of especial interest. They hungrily devour every line — it's truly a welcome letter from home. Why not have your hometown newspaper mailed — twice weekly — to loved ones or good friends who are ex-residents. They'll be mighty glad you did!

USE THIS CONVENIENT ORDER FORM

Date _____

RANGER TIMES,
Ranger, Texas

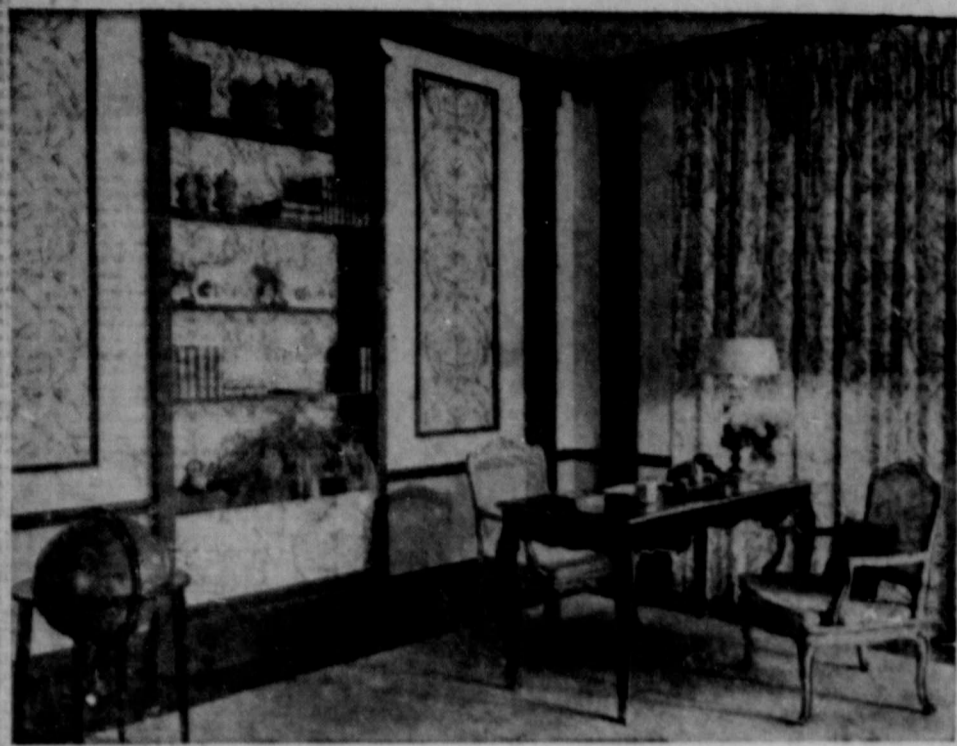
Enclosed find \$_____ to cover subscription(s) to Ranger Times for one year (104 issues) to be mailed to:

Name _____
Address _____
City _____

() Other names and addresses on sheet attached.

From _____
Address _____
City _____ State _____

SUBSCRIPTION RATES: One year by mail in Texas, \$4.95; outside Texas, \$6.95. Payable in advance.



ABOVE PICTURE shows how the artistic use of a fabric of rayon and Celanese acetate may be used as a sole decoration in a room. The delicately traced print in shades of yellow and beige travels from the very full draperies to the wall panels as insets and again as lining within the bookcases. Note how the walnut pilasters accentuate the white walls which set the background for a charming French provincial living room.

1920 Club Home Fashions Program To Be Presented at Brazda Home

A new Celanese color slide program on "Home Fashions" —featuring beauty, color, distinctive decor and personality—will be shown during a meeting of the 1920 Club Thursday, Jan. 9, in the home of Mrs. A. W. Brazda.

Mrs. W. C. Lummus and W. M. Brown will read the commentary on the 51 slides in the program.

The presentation is titled "Celanese Opens a Gateway Beauty for Your Home."

In addition to living room decor, other rooms in the program offer numerous sugges-

tions for unique window treatment, space-saving storage units, convertible winter-into-summer rooms, orderly rooms for the teenager, the skillful use of elegant fabric cover-up to hide architectural defects, dramatic color contrasts, and many other useful and novel ideas.

This presentation has been created in response to request for a program which will meet the requirements of different types of homes on various budget levels.

Members of the 1920 club are urged to enjoy this new

program which may be helpful in enabling members to adapt some of the unique decorating ideas to complement their own individual personalities.

HERE TEMPORARILY

Mr. and Mrs. Buddy Ivy and daughter of Farmington, N. M., have moved to Ranger temporarily while Mr. Ivy is undergoing medical treatment. Both Mr. and Mrs. Ivy are former Ranger residents, living in the Colony Community for a number of years. Mr. Ivy is the son of R. M. Ivy, Fort Worth resident, who lived in Ranger for a number of years. Mrs. Ivy is the former Miss Joyce Alderson, daughter of Barney Alderson, who with his wife recently moved to Ranger.

Townzen Family Moving to Bowie Later In Month

Mr. and Mrs. James Townzen and family will move from Ranger to Bowie later this month where Mr. Townzen has been promoted to the position of wire chief with Southwestern Bell Telephone Company.

Townzen assumed his new duties there Monday. He has been in the employ of Southwestern Bell since June 23, 1941, with exception of three and a half years when he was a member of the Navy Seabees, stationed in the South-Pacific during World War II. He returned to the phone company after his discharge on Dec. 26, 1945.

He and his wife, the former Miss Druanne Nicholson, were united in marriage on March 7, 1946. She is the daughter of Mr. and Mrs. G. D. Nicholson, former Ranger residents now making their home in Brownwood.

Townzen is a graduate of Ranger High School and has been very active in civic affairs. The family attends First Methodist Church.

The Townzens have three children. Terry, 19, is a sophomore student at Ranger Junior College. At mid-term he will enroll at North Texas State, Denton. Miss Pat Townzen, 17, is a junior at Ranger High School, and Lisa, 9, is a fourth grader in Young School. The two girls will enroll in the Bowie schools at mid-term.

Mrs. Geneva Freeman and daughter, Brenda, of Abilene spent Christmas with her mother and Grandmother, Mrs. Carmen Young and Mrs. Jim Brewer. Other guests in the Young home included her cousin, Carl Clemmer of Abilene, Mr. and Mrs. Skeet Hall and his mother, Mrs. Ida Hall all of Mineral Wells.



TOMMY WARFORD, son of Mr. and Mrs. A. W. Warford, spent the holidays in Ranger enjoying a visit with his parents and his sister, Linda. Young Warford is a law student at the University of Texas in Austin.

Benefit Supper Next Wednesday

Rho Pi Chapter of Beta Sigma Phi will sponsor a spaghetti supper Wednesday evening, January 15, at the Community Club House. Serving hours will be from 6:30 to 8:30 p. m.

The purpose of the affair will be to use a portion of the proceeds to assist Celia Jimenez in payment of her hospital bills acquired while she was receiving treatment for injuries sustained in a car accident in Fort Worth.

Tickets are adult, \$1; student 75 cents; children 50 cents. Tickets may be purchased from any member of the sorority.

VISIT MOTHER

Mr. and Mrs. Howard Frazier of Crane visited in Ranger during Christmas holidays with his mother, Mrs. Abbie Frazier.

RHS Cagers

(Continued from Page 1)
Gee, 6-1, one year; Larry Monroe, 6-0, and Lee Roy Pearson, 6-1. Only freshman on the Bulldogs varsity is Jerry Watson, who stands 6 feet even.

The B squad is composed of five sophomores — Terry Sutton, 5-9½, David Mahaffey, 5-11, Mike Landtroop, 5-9, David Dunson, 5-7½, and Jack Watson, 6-3. Freshmen are David Speed, 5-10½, Larry Blackwell, 5-10, Bill Robinson, 5-10, Ronnie Guess, 5-0, and Phil Brown, 5-4.

Joel Jimenez is team manager.

Members of the 1964 girls' basketball squad:

Mary Ann Herweck, guard, height 5 ft. 3 inches, senior;

Sue Graham, forward, 5-5, senior; Barbara Dawson, guard, 5-7, junior; Pat Townzen, guard, 5-6, junior; Cathy Rogers, forward, 5-2, sophomore; Jane Lewis, forward, 5-7, junior; Arma Woodruff, guard, 5-4, senior, and Sue Ann Stokes, forward, 5-2, junior. All lettered in basketball last season.

Other squad members are Owetta Warren, guard, 5-7, sophomore; Janis Black, forward, 5-8, sophomore; Charlotte Dunson, guard, 5-5, freshman; Gloria Renteria, guard, 5-3, freshman; Robbye Scoggins, forward, 5-3, freshman; Jacklyn Stevens, guard, 5-5½, freshman, and Latoria Stevens, forward, 5-5 1-2, sophomore.

more.
Jan Watkins is manager of the team.

Mr. and Mrs. H. S. Packwood of Lake Leon enjoyed a pre-Christmas dinner on the Sunday before Christmas with members of the family present for the occasion. They included the Packwoods' daughter and family, Mr. and Mrs. L. D. Summers and Vicki; a grandson and his wife, Mr. and Mrs. Sammy Summers; a granddaughter and family, Mr. and Mrs. J. B. O'Shields and son, Lyndle Ray, Mrs. Packwood's sister-in-law, Mrs. John Finto, and Mrs. Packwood's father, J. A. Stephenson, all of Ranger.

NOTICE of Annual Stockholders' MEETING

The annual meeting of the stockholders of the First Federal Savings and Loan Association of Ranger will be held Wednesday, January 15, 1964, at 1:15 p. m. in the office of said Association located at

204 Main St. Ranger

NICK MILLER'S January Clearance SALE

BEGINS FRIDAY JANUARY 10th

"THIS IS A STORE WIDE SALE-EVERY ITEM IS REDUCED IN PRICE"

Men's Suits -

33.75	were	\$45.00
41.25	were	\$55.00
44.95	were	\$59.95
52.45	were	\$69.95
56.25	were	\$75.00
63.75	were	\$85.00

Special Group Shoes

Jarman - Pedwin - Fairlane lace and slip-on
Values to 14.95 **\$7.95**
Choice

GROUP -

Men's Dress Hats -

Famous Brands - Values to 12.95
NOW **1/2** of Regular Price

Ladies -

ALL WEATHER COATS - SLACKS - BLOUSES - SWEATERS

3.30	were	\$ 4.95
3.98	were	\$ 5.95
4.60	were	\$ 6.95
5.30	were	\$ 7.95
5.98	were	\$ 8.95
6.60	were	\$ 9.95
7.30	were	\$10.95
8.65	were	\$12.95
9.98	were	\$14.95
10.65	were	\$15.95
11.30	were	\$16.95
12.65	were	\$18.95
13.30	were	\$19.95

ALL SALES FINAL

Men's Sport Coats -

18.75	were	\$24.95
22.45	were	\$29.95
26.25	were	\$35.00
29.95	were	\$39.95
32.25	were	\$42.95

Florsheim Shoes -

16.80	were	20.95 to 22.95
18.80	were	23.95 to 24.95
27.80	were	34.95

'Special Group' -

FLORSHEIM SHOES Broken Sizes

Values to 23.95 **\$12.95**
Choice

GROUP MEN'S -

Western Felt Hats -

7.45	were	\$ 9.95
9.70	were	\$12.95

All Ladies -

SLIPS

GOWNS

PETTISKIRTS

BED JACKETS

PANTIES

Famous Name Brand

25% Discount

NO APPROVALS

Men's Jackets -

'SPECIAL GROUP'

Including Suede Leather, Woolens, Nylons, Rayons
1/3 of Regular Price

Men's Slacks -

Regular Pleated and Plain Front Casuals -

3.75	were	\$ 4.98
4.49	were	\$ 5.95
5.25	were	\$ 6.95
5.95	were	\$ 7.95
7.20	were	\$ 9.95
9.70	were	\$12.95
11.20	were	\$14.95
12.70	were	\$16.95
14.95	were	\$19.95

Men's Vests -

5.30	were	\$7.95
5.98	were	\$8.95

Men's Robes -

3.98	were	\$ 5.95
4.60	were	\$ 6.95
5.98	were	\$ 8.95
6.65	were	\$ 9.95
8.65	were	\$12.95
9.98	were	\$14.95

Nick Miller
The Man's Store

Cisco

Men's Sport Shirts -

Regular Long Sleeves		
Long Sleeve Knits		
Short Sleeve Dress Shirts		
Short Sleeve Ban-Lons		
2.65	were	\$ 3.98
3.25	were	\$ 4.98
3.98	were	\$ 5.95
4.65	were	\$ 6.95
5.30	were	\$ 7.95
6.98	were	\$ 8.95
7.30	were	\$10.95

Men's Top Coats -

16.30	were	\$21.75
26.25	were	\$35.00
37.50	were	\$50.00

MEN'S

All Weather Coats -

"With zip out lining"

14.95	were	\$19.95
17.20	were	\$22.95
18.75	were	\$25.00

Luggage -

'Famous Name Brand'

10.98	were	\$14.95
11.98	were	\$15.95
12.70	were	\$16.95
14.95	were	\$19.95
18.70	were	\$24.95
20.65	were	\$27.50
22.45	were	\$29.95
24.70	were	\$32.95
29.95	were	\$40.00
31.90	were	\$42.50

NO REFUNDS

Men's Sweaters -

5.98	were	\$ 8.95
6.65	were	\$ 9.95
7.30	were	\$10.95
8.65	were	\$12.95
9.30	were	\$13.95
9.98	were	\$14.95
10.65	were	\$15.95
11.30	were	\$16.95

Men's Wool Shirts

AND TOPSTERS

'Famous Name Brands'

10.45	were	\$13.95
11.20	were	\$14.95
11.50	were	\$15.35
14.20	were	\$18.95

Men's Western Shirts

VALUES TO 4.95

Choice - - **\$3.39**

Boys Shirts -

White Dress Shirts - Sport Shirts
Sizes 12 to 20

Reduced 1/4
Of Regular Price

Vanette Hosiery -

VALUES TO \$1.95
Special Priced for This Sale

pair - **59¢**
2 Pairs - - **\$1.00**

NO RETURNS

RULES LISTED FOR PLANTING OF COASTAL BERMUDAGRASS

To insure the best possible chance of making planting of coastal bermuda grass a success the rules listed below should be followed, according to the Agricultural Stabilization and Conservation office.

Even under the best conditions new plantings of Coastal Bermudagrass will occasionally fail to become established. Poor weather conditions will some times cause a failure when everything has been done in a workmanship way. However, the great majority of poor stands can be traced to conditions which are under the control of the farmer. To insure the best possible chance of making a planting successful, follow these rules.

Plan ahead. Be ready when planting time comes. If you jump into the job with no forethought and unprepared, you are going to be disappointed.

Prepare a good seedbed well in advance of planting time. A good seedbed is one you would work up for planting any field crop. The land should be plowed in the fall,

kept free of winter weeds, and should be firm and moist at planting time.

Use good planting equipment. Some sprig planters are easier to use than others but any machine can be used that will place the sprigs at the right depth, distribute the right amount of sprigs uniformly, and cover them properly.

Use fresh, healthy sprigs. Poor quality sprigs cause many failures. Sprigs dug and left exposed to the sun and wind for longer than two hours make poor planting material. Research has shown that up to 95 percent of the sprigs will die if exposed for four hours in the heat of the day. A fresh supply should be dug each day — preferably in the early morning. They should be kept moist and covered in a shade until used. When hauled, sprigs should be tightly packed, sprinkled, and covered with a tarp. Baled sprigs are easier to handle and transport than bulk sprigs.

Plant sprigs in moist soil. Pack soil firmly around the

sprigs to cut out the air. Sprigs planted this way will remain alive for several days or even weeks. Planted in dry soil they must have rain within a few days.

Plant at right time. Sprigs may be planted anytime between the middle of February to the middle of June if other conditions are good. Early plantings usually do better.

Plant sprigs at the right depth — about 2 inches in most soils. It is best to leave one end of the sprig sticking out if possible.

Break soil crust with a rotary hoe or harrow if a hard rain falls before shoots have come out.

Keep the field clean. Control the competition. It is a good idea to mark the rows and cultivate until the runners begin to cover the middle. Stop mowing when the mower is clipping the Bermuda plants.

Don't plow the field after the grass has been planted. You may kill some weeks plowing but you will encourage many more than you kill. A good stand of Bermuda will take out the weeds.

Graze cautiously the first year — if at all. Close grazing during the year of establishment will retard root development and heighten the freezing out in the winter.

After establishment don't fail to fertilize the grass regularly. Always leave at least a 6 inch top growth for best production.

Courthouse Records

- Oil & Gas Leases
- Court Proceedings
- Property Transfers
- Marriage Licenses

Suits Filed
Bilhart Operating Co. Inc. et al vs. J. B. Alexander, for appointment of receiver to execute Oil and gas lease.

Marriage License
Buddy Frank Nip and Catherine Louise Casey.
James Leon Parker and Miss Cynthia Parker.

Instruments Filed
American Telephone & Telegraph Co. to State of Texas, quit claim deed.

Hugh M. Brown et ux to Cecil J. Maples, warranty deed.

H. A. Bible et ux to F. G. Wilson, warranty deed.

City of Ranger to the Public, certified copy ordinance.

Elgie M. Crisp et ux to Jimmy D. Wilson et ux, warranty deed.

Victor Cornelius to E. L. Parmer, warranty deed.

George McCarty Daniel to Varge D. Daniel, warranty deed.

Varge D. Daniel et ux to Myrtle Whitney, deed of trust.

Walter Duncan et ux to George W. Fields, lease.

W. F. Davenport to Texas Electric Service Co., easement right of way.

E. T. Adams to J. R. Rhyne et ux, release deed of trust and vendors lien.

First National Bank Cisco to Billy Joe Taylor et ux, release deed of trust and mechanics lien.

First Federal Savings and Loan Ranger to Olga Faye Ford, release deed of trust.

Florence C. Graves et al to Kizer Telephone Co., warranty deed.

Florence C. Graves to the Public, affidavit.

H. T. Gray et ux to Arnold J. Ashford, warranty deed.

H. T. Gray to Arnold J. Ashford, bill of sale.

Humble Oil & Refining Co. vs. James H. Turner, abstract of judgment.

Edgar G. Hafele to the Public, affidavit.

Mattie P. Hubbard to First Federal Savings and Loan Ranger, deed of trust.

Dr. Dick Hodges et ux to Texas Electric Service Co. easement of right of way.

K. C. Jones to Mose Nantz, release vendors lien.

Jack S. Jusey to Jack S. and Elva J. Josey Foundation, assignment of ORR interest.

Marjorie Jones vs. Billy Ray Jones to the Public, certified copy judgment.

Kansas City Life Ins. Co. to W. A. McIntire release deed of trust.

J. R. Lanier et ux to Mattie P. Hubbard, quit claim deed.

Tom Milder to William York, bill of sale.

W. F. Noss Jr. to O. P. Leonard, deed of trust.

G. S. Peak et ux to Norman Charles Owen et ux, warranty deed.

R. W. Patterson et ux to Fred G. Wilson, warranty deed.

E. L. Parmer to Victor Cornelius, deed of trust.

J. K. Rhyne et ux to First Federal Savings and Loan Ranger, deed of trust.

Harold L. Stedum et ux to Modern Home Construction Co., warranty deed.

Charles S. Sandler to Billy Joe Taylor et ux, release deed of trust.

Lawrence Schonersleht ux to L. J. Baggett et ux, warranty deed.

P. A. Truly to Texas Electric Service Co., easement right of way.

United States of America to Roland S. Bond, Jr. et ux, release tax lien.

Jim Underwood et ux to G. W. Fields, bill of sale.

Bertie J. Utley Individual and Independent executrix of estate of T. A. Utley, warranty deed.

W. B. Wright et al to W. M. Jarrell, oil, gas, mineral lease.

Jimmy D. Wilson et ux to Stephenville Savings and Loan, deed of trust.

A. D. Watson et ux to R. O. Watson to First Federal Sav-

ings and Loan, material mechanics lien and assignment. Mary Ann Handrick Zieheret vir to Standlee McCracken et ux, warranty deed.

Know Your Tree Doctor, Advises Service Official

COLLEGE STATION — Questionable tree doctors, who not only take citizens for tremendous amounts of money but may harm trees, are being reported from across the state, says Wendell Horne, plant pathologist with the Texas Agricultural Extension Service.

Unfortunately these so-called tree doctors also give reputable silviculturists a bad name, says the specialist. These operators usually claim that they have secret formulas that will cure ailing trees of all problems. He may drive nails into the tree or spread some "revitalizer" around them. When asked about his cure-all, he usually explains that it is so new that research has not heard about it as yet.

Horne recommends that an unbiased authority, such as the local county agricultural agent, be consulted to diagnose the tree's ailment before bargaining with people that make such claims. It is also advisable for the home-owner to inquire about the operator's qualifications to work on trees. Most of the questionable operators usually have no formal training in tree care or plant pathology. The reputable ones are always glad to give their background and qualifications to work on trees. to back-up their claims with scientific data, points out the specialist.

Home-owners are reminded by Horne that there are no miracle cures for tree ailments, and when new treatments are found, research and educational organizations immediately make the information available to the public without charge.

Before spending money for the treatment of trees, make sure you are dealing with a reputable operator, and make certain that you know what is affecting the trees, emphasizes the pathologist. Tree doctors who appear to be unrepentable should be reported to the Better Business Bureau or the local Chamber of Commerce, he suggests.

FIRST FEDERAL SAVINGS & LOAN ASSOCIATION OF RANGER

STATEMENT OF CONDITION

After the Close of Business December 31, 1963

ASSETS	
First Mortgage Loans	\$2,492,164.27
FHA Home Improvement Loans	41,715.34
Loans on Savings Accounts	61,731.45
Real Estate Sold on Contract	2,400.00
Real Estate Owned	7,071.86
Stock in Federal Home Loan Bank	27,200.00
Cash on Hand and in Banks	358,672.09
Furniture, Fixtures & Equipment	7,347.65
Prepayment of Federal Savings and Loan Insurance	18,082.66
Accrued Interest Receivable	9,063.99
Other Assets	175.70
	\$3,025,625.01

LIABILITIES	
Savings Capital	\$2,633,822.71
Advances by Borrowers for Taxes & Insurance	15,181.87
Advances from Federal Home Loan Bank	225,000.00
Other Liabilities	17,599.57
Specific Reserves	1,102.50
General Reserves and Surplus	132,918.36
	\$3,025,625.01



OFFICERS

L. R. PEARSON, President
F. P. BRASHER, Vice President
C. B. PRUET, Vice President
LESTER CROSSLEY, Sec'y-Treas.
MRS. REBA RAWLS, Asst. Sec'y-Treas.

DIRECTORS

L. R. Pearson
F. P. Brasher
C. B. Pruet
Dewey C. Cox, Jr.
Willard Swaney
J. E. Matthews
Lester Crossley

CURRENT 4 1/4% DIVIDEND

AGAIN IN 1964 IT'S RUBY SPRINGER INCOME TAX SERVICE

AT THE SAME PLACE

320 West Main Street
Ranger, Texas

Office will open 1 p.m. January 2, 1964
Office Open daily, 9 to 5 and Saturdays
9 to 12 noon.

COME IN EARLY — If a refund is due, you could probably use it NOW.

THANK YOU VERY MUCH

Ruby Springer Ranger, Texas
320 W. Main Phone MI 7-3230



The great highway performer



'64 Jet-smooth Luxury Chevrolet

What does it take to make a car a great highway performer?

If the car happens to be a '64 Chevrolet, one thing only. A highway.

You'll find everything else already neatly packaged for you—on the car exactly as you pick it off the showroom floor.

There's a choice of seven engines—all the way up to a twin-carb high-compression 425-hp V8*—and four transmissions, including a finely honed 4-speed stick shift.*

And underlying it all—a bump-skimming Jet-smooth ride that helps keep the performance great even when the highways aren't so great.

What about special performance equipment? Professional driving skills? Forget them.

Nobody has to doctor or coax or soup up these Chevrolets to get the best out of them. And that's really the test of a great highway performer: Just about anyone can get a kick out of driving one, just about anywhere, just as it comes out of the showroom.

Next time you're out your dealer's way, allow a few extra minutes to sample one of these highway performers on your own. A few are really all you'll need. That's enough time to do a lot of driving in a Chevrolet.



THE GREAT HIGHWAY PERFORMERS Chevrolet • Chevelle • Chevy II • Corvair • Corvette

See them at your Chevrolet Showroom

ANDERSON CHEVROLET COMPANY

111 S. AUSTIN

RANGER, TEXAS



King-Size savings with a gas dryer...only gas dries 5 loads for the cost of drying 1 load electrically. No wonder 91 out of 100 self-service laundries feature gas drying. You get long, safe, trouble-free service. And with gas white things won't yellow. So if a dryer's in the cards for you, deal yourself a winner with gas! Low prices during the LUCKY DEAL DRYER SALE at gas appliance dealers and Lone Star Gas.

FIVE NEW GAS AND OIL DISCOVERIES REPORTED

Five new oil and gas discoveries were made during 1963 in Eastland County, according to a year-end tabulation issued by Texas Railroad Commission at Abilene. This year's total was four more than the lone discovery during 1962 and exceeded the count for every year since 1956 when eight new strikes were reported.

Two of the completions were gassers and three were oil discoveries. All were in the regular field.

Eastland County's five 1963 new discoveries:

Callihan Interests, Inc., et al, No. 1 Ruth Willis, Section 10, Block 1, H&TC Survey, six miles north of Carbon, flowed 4,800,000 cubic feet of dry gas per day, from perforations at 2,829 to 2,931 feet. (Marble Falls Gas)

Tex-Star Oil & Gas Corp. No. 1 U. V. Hogz, William Sargent Survey, A-441, five miles northeast of Deadend, flowed 20.30 barrels of 42 gravity oil daily through a 12-64-inch choke and perforations at 3,297 to 3,305 feet, after treatment with 20,000 gallons of acid frac. Gas-oil ratio 300-1. (Marble Falls Lime)

Dale M. Thomson No. 1 N. B. Harris, Matt Finch Survey, re-entry four miles northeast of Eastland, pumped 15-16 barrels of 40 gravity oil, plus 60 per cent water, daily through perforations at 3,665 to 3,678 feet, after treatment with 1,000 gallons of acid. (Mississippian)

Lone Star Producing Co. No. 1 C. E. Phippen, TE&L Survey 3171, seven miles west of Cisco, absolute open flow of 1,320,000 cubic feet of gas per day through perforations at 3,943 to 3,946, 3,954 to 3,966 and 3,978 to 3,990 feet, after treatment with 4,000 gallons of acid. (Caddo)

Low Drilling Co., Inc. (formerly Jarrell and Stuck, et al) No. 1 G. M. Stephenson, Section 66, Block 4, H&TC Survey, four miles northeast of Cisco, pumped 25.58 barrels of 40 gravity oil daily through perforations at 3,569 to 3,573 feet. (Lake Sand)

EIGHTEEN DISCOVERIES FOR STEPHENS COUNTY, ACCORDING TO REPORT
Stephens County led the West Central Texas area in new oil and gas discoveries during 1963 with a total of 18 during the 12-month span. Nine were regular field strikes:

Socony Mobil Oil Co. No. 1 Bertram A. Elliott, N. R. Brister Survey, five miles southeast of Moran, pumped 26.04 barrels of 43.5 gravity oil daily from perforations at 3,630 to 3,641 feet. D u a 11 y completed from Caddo Lime as a gas well, with absolute, open flow of 1,200,000 cubic feet of gas per day. (Lake Conglomerate)

Rhodes Drilling Co. No. 1 Ruby Compton, Section 29, OAL Survey, seven miles east of Moran, flowed 129.6 barrels of 43.3 gravity oil daily through a 12-64-inch choke and perforations at 4,228 feet. Gas-oil ratio 947-1. (Ellenburger)

Burk Royalty Co. No. 1-B McCluskey, Section 2, T&NO Survey, A-1740, re-entry five miles north-northeast of Ivan, had a calculated, absolute open flow of 710,000 cubic feet of gas, plus four barrels of distillate per day, through perforations at 4,065 to 4,071 feet and 4,067 to 4,095 feet.

Eldorado Oil & Gas, Inc. No. 3-H Robertson, TE&L Survey 1152, one mile southeast of Crystal Falls, had an absolute, open flow of 22 million cubic feet of gas, plus 26.5 barrels of distillate daily from perforations at 3,732 to 3,733 feet. (Conglomerate)

Lone Star Producing Co. No. 1 Lucille B. Evans, Section 463, SPRR Survey, re-entry 25 miles southwest of Breckenridge, had an absolute open flow of 1,336,000 cubic feet of gas daily from perforations at 3,669 to 3,670 feet. (Bond Sand)

W. J. Rhodes No. 1 E. P. Aldin, Section 27, L&L Survey, re-entry four miles southwest of Breckenridge, pumped 40 barrels of 41 gravity oil, plus 50 per cent water, daily through perforations at 4,260 to 4,266 feet, after treatment with 10,000 gallons of acid. Gas-oil ratio 435-1.

A. V. Jones & Sons No. 1 E. H. Greer, Section 13, Block 8, T&P Survey, seven miles west of Breckenridge, had an absolute open flow of 6,200,000 cubic feet of gas per day. Gas-liquid ratio 300,000 per barrel. (Caddo)

J. K. Wadley & K. E. Jennings No. 3 T. P. Robertson, T&AL Survey 1155, 12 miles north of Breckenridge, pumped 10.40 barrels of 36 gravity oil daily from perforations at 3,339 to 3,346 feet, after treatment with 2,000 gallons of acid. Gas-oil ratio 7,060-1 Dually

(Caddo) Kent Production Co., Inc. (formerly W. M. Smith) No. 1 Winston Jones, Section 65, Block 6, T&P Survey, re-entry nine miles north of Ranger, pumped 42 barrels of 42 gravity oil daily, through perforations at 3,896 to 3,896 feet, after treatment with 250 gal-

lons of acid. (Ranger Sand) The other nine discoveries, fields as designated: Betty Jack — Circle C. Production, Inc. No. 1-B L. P. Martin, Section 1509, TE&L Survey, 10 miles northwest of Breckenridge, was completed as a dual gas discovery. Absolute, open flow of 4,250,

000 cubic feet gas daily from perforations at 4,025 to 4,029 feet. (Bend Conglomerate) Absolute, open flow of 3,100,000 cubic feet of gas daily from perforations at 4,183 to 4,196 feet. Gas-liquid hydrocarbon ratio of 478-1, gravity 62. (Mississippian) Ivan — Graridge Corp. No.

3-A Ed Ford, Section 1083, TE&L Survey, re-entry four miles east of Ivan, flowed 53 barrels of 41.4 gravity oil, plus 57 per cent water, daily through a 17-64-inch choke and perforations at 3,903 to 3,919 feet. Gas-oil ratio 12,293-1. Former Mississippian producer. (Bend Conglomerate)

Ruthy, West (Atoka Conglomerate) — Burk Royalty Co. No. 1-B McCluskey, Section 2, T&NO Survey, A-1740, re-entry five miles north-northeast of Ivan, had a calculated, absolute open flow of

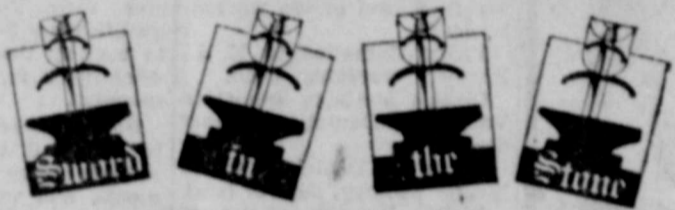
710,000 cubic feet of gas, plus four barrels of distillate, daily through perforations at 4,065 to 4,071 feet and 4,067 to 4,095 feet. (Atoka Conglomerate) Lee Ray (Mississippian) — (Continued on Next Page)

Win \$100⁰⁰ Cash... Play



You Can Win \$100⁰⁰ Cash!

Pull Sword out of Card. On the Sword you will find one of these four words: "SWORD" "IN" "THE" "STONE" When you have collected all four words, bring them to Safeway for your \$100.00 CASH PRIZE.



Thousands of \$1.00 Winners!

If the words "ONE DOLLAR" appear on the SWORD, redeem immediately for \$1.00 Cash Prize.



Shop Safeway and Save!

- Enriched Flour** Kitchen Craft, All-Purpose 10-Lb. Bag 89¢
- Salad Dressing** Piedmont, Smooth, delightful flavor. Quart Jar 35¢
- Campbell's Soup** Rich Tomato Soup. 3 No. 1 Cans 33¢
- Pinto Beans** Town House. Good cooks everywhere use them. 2-Lb. Cello Bag 19¢



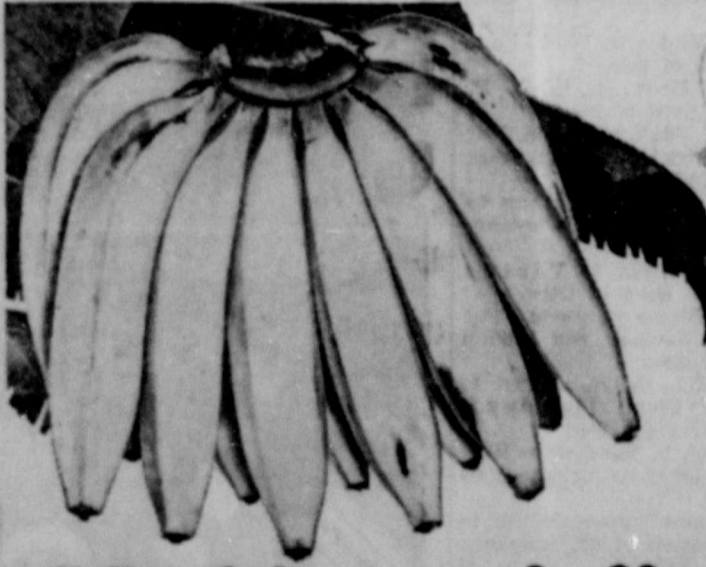
- Fresh! Bakery Specials!**
- Black Bread** Old World Black Bread, Skylark (Regular 23¢) 1-Lb. Loaf 19¢
 - Cinnamon Rolls** Mrs. Wright's 8-Count Package (2¢ Off) 1 1/2-Oz. Pkg. 23¢
 - Italiano Bread** D'Agostino, Leaf 1 1/2-Lb. 29¢
 - Gluten Bread** Skylark, 1-Lb. Loaf 39¢

Save Valuable Gold Bond Stamps!

This Coupon Worth 50 FREE GOLD BOND STAMPS
Plus your regularly earned Gold Bond Stamps with the purchase of Half Gallon Carton LUCERNE CHOCOLATE MILK
Coupon Expires January 11, 1964

This Coupon Worth 50 FREE GOLD BOND STAMPS
Plus your regularly earned Gold Bond Stamps with the purchase of 12-Oz. Can Fresh BEL-AIR ORANGE JUICE
Coupon Expires January 11, 1964

This Coupon Worth 50 FREE GOLD BOND STAMPS
Plus your regularly earned Gold Bond Stamps with the purchase of TWO — 1-Lb. Packages BUSY BAKER CRACKERS
Coupon Expires January 11, 1964



- Yellow Onions** U.S. No. 1, 3 Lb. 29¢
- Navel Oranges** Sunset, 1 Lb. 15¢
- Collard Greens** Sunset Fresh, 2 Bunches 25¢

Save on Safeway Fresh Fruits and Vegetables!

Bananas 10¢ Lb.

Golden Ripe Tropical Fruit. Ripened unhurriedly to preserve their natural flavor. Perfect for lunches, puddings and snacks.

Carrots 19¢ 2-Lb. Cello Bag

U. S. No. 1. Tops in Vitamin A. Adds flavor and color to your menu.



Redeem this Coupon for 100 FREE GOLD BOND STAMPS
with purchase of \$10.00 or more (Retailing Cigarettes)
Use No. 10000 & Coupon Expires December 31, 1963

This Coupon Worth 50 FREE GOLD BOND STAMPS
Plus your regularly earned Gold Bond Stamps with the purchase of 10-Lb. Bag U. S. No. 1 RED POTATOES
Coupon Expires January 11, 1964

Vets Questions And Answers

Q—When the VA forecloses on a GI home due to delinquent payments and then puts the reclaimed property up for sale, does the new purchaser also have to be a veteran?
 A—No. Repossessed homes may be sold to anyone. In fact, if a veteran sells a home for it

A—Outpatient treatment or treatment by an approved private physician as well as certain medicines are given without charge ONLY to veterans (either peace time or war time service) with a disability incurred or aggravated in service.
 Q—Do we have a reciprocal agreement with some Al-

COUNTY OIL —
 (CONTINUED)
 Lone Star Producing Co. No. 3-B Henry Compton, Section 35, Block 7, T&P Survey, re-entry 23 miles southwest of Breckenridge, flowed 108 barrels of 41 gravity oil in eight hours, through a 24-61-inch

THE RANGER TIMES
 Thursday, January 9, 1964
 Page Three
PALO PINTO COUNTY ALSO GETS FIVE NEW DISCOVERIES IN 1963
 Five strikes were reported by Texas Railroad Commission for adjoining Palo Pinto County — two oil wells and three gas producers. This was the same number recorded for the previous year 1962. The discoveries, all in the regular field, were: E. L. Wilson No. 1 Smith-Fox, Section 2599, TE&L Survey, one mile north of Oran, flowed two million cubic feet of gas per day through perforations at 4,298½ to 4,291½ and 4,396½ to 4,304½ feet. (Conglomerate) Dunham-Price, Inc. (formerly Anderson-Dunham, Inc.) No. 1-A C. P. Clayton, TE&L Survey 2012, A-592, six miles northeast of Graford, pumped 20.25 barrels of 40 gravity oil, plus 20 per cent water, daily through perforations at 4,393 to 4,398 feet, after treatment with 300 gallons of acid. Rayford B. Russell No. 1 F. W. Kendrick, Section 2597, TE&L Survey, A-668, 1 w o miles northeast of Oran, flowed 2,450,000 cubic feet of gas per day, plus 15.05 barrels of 46 gravity oil, through perforations at 4,368 to 4,378 feet. Dually completed from the lower Conglomerate. (Upper Conglomerate) Rayford B. Russell No. 1 F. W. Kendrick, Section 2597, T&L Survey, A-668, two miles northeast of Oran, flowed 4,600,000 cubic feet of gas, plus 10 barrels of 63 gravity distillate, daily through perforations at 4,599 to 4,606 feet. Dually completed from the upper Conglomerate. (Lower Conglomerate) Austex Oil Co. No. 1 Gardner-Stemmons, Section 45, Block 3, T&P Survey, three miles south of Brad, flowed 182 barrels of 42 gravity oil, daily through a 16-64-inch choke and perforations at 3,525 to 3,536 feet, after treatment with 500 gallons of acid. Gas-oil ratio 50-1. (Upper Conglomerate)

Sword in the Stone GAME

WIN FREE TRIPS to DISNEYLAND!

Complete the lower half of each card (back side) and deposit in the receptacle located at each Safeway Store for the Grand Prize Drawings.

ALL EXPENSE PAID TRIPS

5 day — 4 night expense-paid vacation, including round trip via jet, accommodations at Disneyland Hotel, meals and paid admission to Disneyland.

- Grand Prize — Winner will receive Trip for Four (4)
- Second Prize — Winner will receive Trip for Three (3)
- Third Prize — Three-Winners of Two (2) Trips each.

You May Be a Grand Prize Winner...

13 Free Trips to Disneyland!!

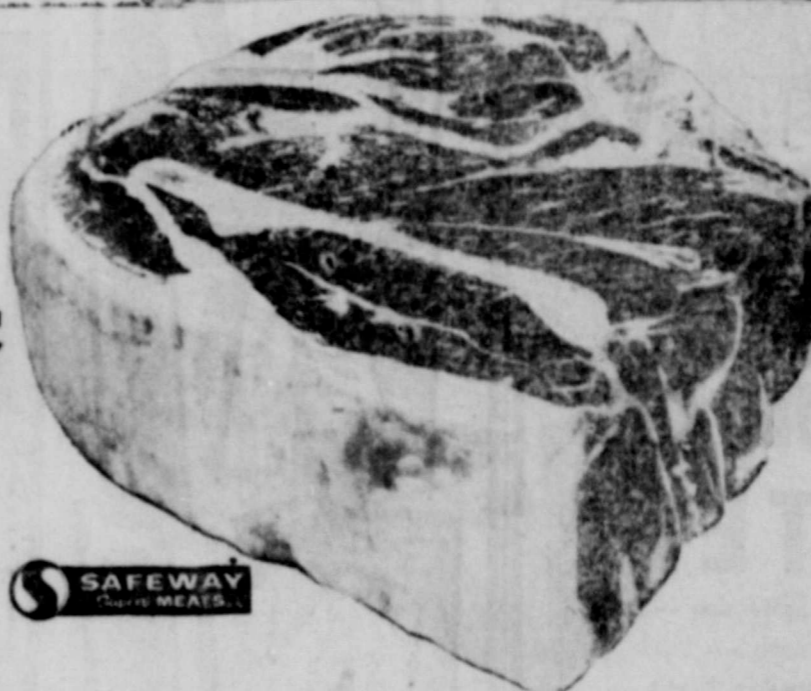
Featuring Safeway Superb Beef...

Chuck Roast

U. S. D. A. Choice Grade Heavy Beef. Tops in tenderness and flavor... Every cut close trimmed in the Safeway style that gives you more meat to eat for your money.

(Arm Roast U. S. D. A. Choice Grade Heavy Beef, Lb. 49¢) (Boneless Chuck U. S. D. A. Choice Grade Heavy Beef, Lb. 79¢) Lb.

39¢



FREE Sword in the Stone CARTOON RINGS

Featuring the stars of Walt Disney's full length cartoon movie, Mom! Ten different rings for the kids to collect and swap. Redeem the upper half of five cards for one FREE RING. These rings are featured exclusively at Safeway with our new exciting fun game "Sword in The Stone."

Rules of the Game
 One FREE "Sword in The Stone" card per store visit to adults only... Purchases not favored. No need to pass through checkout. Secure your FREE card at either end of checkout or from any store employee other than in meat department. Safeway employees, their immediate families, and children under sixteen years of age are not eligible to participate in game. Disfigured and mutilated cards are void. All \$100.00 winners must be verified.

Surplus Foods Are To Be Distributed

Dates for the distribution of USDA Surplus Foods for the month of January to residents of Eastland County have been announced by J. W. Eider, Sr., representative for the Eastland County Welfare Distribution Program. The commodities may be obtained at the center in Eastland on the following dates:
 Monday, Jan. 13—Residents of Eastland, Olden, and Hanger.
 Tuesday, Jan. 14—Residents of Pioneer, Rising Star, Okra, Carbon, Gorman, and Desdemona.
 Wednesday, Jan. 15—Residents of Cisco, Scranton, and Nimrod.

Annual growth in Texas national forests is estimated to be 300,000,000 board feet.

COMING TO FORT WORTH IN PERSON THE VIRGINIAN

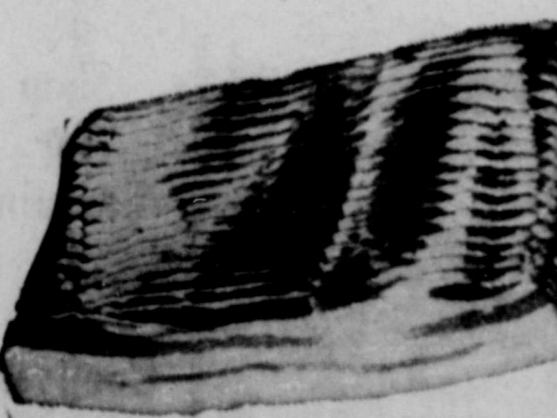


SONS of the PIONEERS IN EACH PERFORMANCE OF FORT WORTH STOCK SHOW RODEO JAN. 24 THRU FEB. 2 WORLD'S TOP COWBOYS

ARENA KACHINAS HENDRICKS "SCOTCH AND SODA" FAMILY'S

El Matador Rafaelle Zoppo RODEO TICKETS BY MAIL 30 GREAT PERFORMANCES Will Rogers Coliseum starting 8 P.M. Friday night, January 24. Matinee Show 10 A.M. Saturday morning, January 25. Mat 2 and 8 P.M. daily through Sunday, February 2. Reserved seats, Monday thru Thursday afternoons and Saturday morning, January 25, \$2.50 (Rows 1 thru 7) and \$2.00 (Rows 10 thru 12). All other seats, Friday, Saturday and Sunday afternoons, \$1.00 (Rows 1 thru 7) and \$1.50 (Rows 10 thru 12). Prices in double admission to South Shore Casino. Send check or money order. Specify exact performance. Address: Southwestern Exposition and Fair Grounds, P. O. Box 150, Fort Worth, Texas 76101.

FARM AND HOME SHOW SHOWING NEW THINGS FOR BETTER LIVING CARNIVAL MIDWAY ADMISSION TO GROUNDS FOR CHILDREN 25¢ Each Radio Ticket Includes Grounds Admission 60th LIVESTOCK EXPOSITION 10,000 HEAD OF FINE LIVESTOCK



Safeway Thick Sliced Bacon

In each bite, mild sugar cure blends with rich pork flavor to give old-time eating pleasure.

2 75¢

- Pork Roast Boston Butt, Semi-Boneless, Lb. 35¢
- Stewing Beef Boneless, Cubed, Perfect for an old-fashion stew, Lb. 79¢
- Quick Steaks Manor House Buttered Beef, Lb. 79¢
- Link Sausage Smoked, Endless Link Pork Sausage, Lb. 69¢
- Canned Picnic Armour's Star, (50 Free chops with coupon in ad) 3 Lb. Can \$1.99

This Coupon Worth 50 FREE GOLD BOND STAMPS Plus your regularly earned Gold Bond Stamps with the purchase of 3-Lb. Can Armour's Star CANNED PICNIC Coupon Expires January 11, 1964

- "Brisk" Lipton Tea! Lipton's Tea Orange Peppermint, Change-of-Face Drink, 16-Lb. Pkg. 85¢
- Lipton's Tea Bags Orange Peppermint, Tea-That-Tea Bags, 16-Ct. Pkg. 25¢
- Lipton's Instant Tea With Fresh-Brewed Flavor, 3 Oz. Jar 89¢

- Instant Coffee Maryland Club, Delicious Flavor, 4-Oz. Jar 95¢
- Maryland Club Coffee All Grinds, 1-Lb. (2-Lb. Can, \$1.41) Can 71¢
- Sunshine Cookies Chocolate, Chip cookies, 7½-Oz. Pkg. 29¢
- Orange Delight Minute Maid Frozen Orange Delight, 2 4-Oz. Cans 39¢
- Puffin Biscuits Sweetroll or Buttermilk or Betty Crocker Homestyle or Buttermilk, 3 4-Oz. Cans 29¢
- Canned Treat Armour's Star Product, Perfectly seasoned, 12-Oz. Can 47¢
- Corned Beef Hash Armour's Star, Rich in Flavor, 15½-Oz. Can 41¢

- Lifebuoy Soap Coral, For active people, 2 Bath Bars 33¢
- Lux Complexion Soap Green, 2 Bath Bars 29¢
- Lux Liquid Detergent, Pink mildness through it, 22-Oz. Plastic 61¢
- Swan Liquid Detergent, New Pink liquid for dishes, 12-Oz. Plastic 31¢
- Wisk Liquid Detergent, Blue Liquid laundry detergent, 32-Oz. Can 71¢
- All Extra Fluffy Detergent, Built in water softeners, 16-Oz. 27¢
- All Detergent Controlled suds for automatic washers, Giant Box 75¢
- All Detergent Controlled suds for automatic washers, 9-Lb. 13-Oz. Box \$2.09
- Surf Detergent All-Purpose with Ultra-Violet whiteners, Large Box 25¢
- Breeze Detergent Perfectly powered for everything you wash, Large Box 33¢
- Silver Dust Detergent Fortified with extra bleaching power, Large Box 33¢

- More Week End Specials!
- Fish Sticks Captain's Choice, Frozen, Precooked. Just heat and serve, 8-Oz. Pkg. 29¢
 - Margarine Patties Piedmont, Convenient pre-cut patties, 3 ½-Lb. Pkg. 25¢
 - Dried Prunes Town-House Breakfast Prunes, Sweet plump, full of "Natural Flavor", 1-Lb. Cellulose Bag 29¢
 - Pineapple Juice La Lani, Delicious tropical fruit flavor, 46-Oz. Can 33¢
 - Facial Tissues Truly Fine, 400-Ct. Box 17¢



SAFEWAY

AUSTIN — Austin has set back to being just the capital of Texas after nearly two hectic weeks news-wise as the vacation White House.

Dozens of top cabinet officers, military leaders and federal agency heads followed German Chancellor Ludwig Erhard and his advisors to the LBJ Ranch for conferences with President Lyndon Johnson.

Encouraging predictions of progress toward world peace emerged from the Presidents international discussions. The federal budget and economy were spotlighted in the domestic talks.

Before he departed White House sources gave these insights into the Presidents thinking:

He does not feel the U. S. can drag its feet until after elections this year before pressing for new peace breakthroughs.

He regards civil rights and the \$11,900,000 tax cut as legislative "musts." Also, he has expressed support for the medicare program of aid to the aged.

Reducing the budget to save money for essential human needs including education is regarded by the President as of concern to all Americans. He hopes cost cutting will serve as a pattern for future years.

Stimulus clearance and "a home for every American" are seen as goals of his administration. Some newsmen interpreted this as a likely 1964 campaign slogan.

Johnson hopes to steadily improve American prepared-

ness. But he is strong for elimination of military obsolescence, particularly the old bases and installations retained in the budget for political reasons.

Congressional leaders will run their own legislative show. But the new President won't hesitate to ask old congressional friends for what he thinks is needed.

Johnson hopes to draw on the talents of both business and labor to render public service.

He is concerned about unemployment and is calling for new solutions.

For the first time in 18 years the number of prisoners in the Texas Department of Corrections shows a decrease.

Department Director Dr. George Beto reports that the December 31 count was 12,150, compared with 12,203 the year before. Since 1945 there has been a steady climb in number of prison inmates.

Beto cited these reasons for leveling off: more adequate parole supervision; opening of a new first-offender unit; a pre-release program of preparing prisoners for freedom; an expanded trusty program; and overall improvement in the prison treatment program.

Prison chief said the reduction not only will save money on prison care but also in welfare funds spent on families of inmates, not to mention restoring prisoners to productive lives as citizens and taxpayers.

Farm products and livestock produced more than \$6,500,000 of the prison system's 1962 income, according to the auditor's report just released. Other sources were: manufacturing products, \$3,704,616; oil and gas leases, \$39,237; miscellaneous, \$3,287,167.

Report placed total income from farms and farm industries at \$10,144, 773, with expenses of \$14,304,734 for a deficit of \$4,159,961.

Manufacturing operations include license plates, shoes, textiles, clothing and other products.

Texas school income will be drastically reduced unless the Federal Power Commission sets an adequate price for gas

in the Texas Gulf Coast area and the Hugoton-Anadarko area of the Texas Panhandle, Attorney General Carr contends.

Carr has filed a petition to intervene in price hearings ordered by FPC to determine reasonable rates for sale of natural gas in the areas.

Earlier he filed briefs requesting FPC to set the price of all gas in the Permian Basin area at 21 cents MCF. The FPC staff sought a nine cents MCF rate for casing-head gas and 13.7 cents MCF for gas well gas.

Attorney General noted in his brief that Texas levies a 7 per cent occupation tax based on market value of the gas at the well head to help support state government.

He also pointed out that the University of Texas system owns more than 4,700,000 acres of land in the Permian Basin area. Bonus money and royalty income from this acreage goes to the permanent school fund for Texas education. More than 18,000,000 acres of state land are involved in the Gulf Coast hearing.

Governor Connally has proclaimed January 17 as Arbor Day in Texas. In a special observance the Texas Forestry Association will plant several pecan seedlings on the Capitol grounds.

The pecan is the State Tree of Texas.

will share with the national Democratic Committee \$237,000 contributed for tickets to the November 22 Kennedy-Johnson "welcome dinner" which never came off. Donors will get a record album of Kennedy's last speeches and souvenir programs which had been prepared for the event.

Officials of the Brotherhood of Locomotive Firemen and Enginemen believe a Texas law requiring "full crews" for trains will keep firemen here on the job in spite of a recent national arbitration board ruling aimed at elimination of some firemen from railroad crews.

But the Texas Railroad Association does not believe the

state law will prevail. Furthermore, it estimates the ruling will not immediately affect more than 20 of the 1,800 railroad firemen in Texas.

Col. Homer Garrison Jr., director of the Texas Department of Public Safety, issued a special warning to car owners that tough NEW amendments to the Texas safety responsibility law become effective on January 1.

Amendments require that drivers prove their ability to pay for damage to others in traffic accidents. All accidents resulting in \$100 or more damage, injury or death must be reported in writing to the

DPS within 10 days. Accidents not involving death or injury and resulting in as much as \$25 in damages also must be reported. But these do not come under the safety responsibility law.

Licenses will be suspended unless both operators and owners of cars in accidents coming under the law can prove adequate liability insurance coverage.

Minimum requirements are \$10,000 covering liability for one person; \$20,000 for two or more persons; and \$5,000 property damage. Otherwise they must establish financial responsibility, if they are at fault.

Farm-Fresh Flavor... Low In Calories



BUTTERMILK
Drink good-tasting, slimming Boswell's Buttermilk. It gives you high protein, vitamins and minerals while keeping calorie count low. Buy Boswell's Buttermilk today!

HAVE FUN ON SKATES

Saturday Morning Kiddies Session — 9:30
Two Sessions Afternoon — 2:30
Three Sessions Saturday Night
Skating Begins at 7:30 P. M.
Tuesday — Friday & Saturday Nights
Two Sessions Sunday Afternoon — 2:30
RENTAL SKATES AVAILABLE
LONE STAR SKATE
SERVICE PIPE LINE BLDG. — HWY. 80 WEST
RANGER, TEXAS

A SAD STORY

FOR SALE

Behind many "For Sale" signs there is a sad story: A family borrowed more than they could afford to pay for a home, or payments and interest rates were too high; the home had to be sold, often at a loss. This tragedy could often be avoided if the families would seek help from a home loan specialist, such as our Association.

We work with you to arrange for a loan that's as easy to handle as monthly rent.

FIRST FEDERAL SAVINGS & LOAN ASSOCIATION
204 Main Ranger, Texas MI 7-1611

JANUARY CLEARANCE SALE

WE MUST MOVE ALL G.E. APPLIANCES TV's and STEREO'S NOW...

YOUR GOOD YEAR SERVICE STORES IN EASTLAND

BUY NOW PAY LATER

FREEZERS, TV, DISHWASHERS, RANGES, WASHERS, DRYERS, REFRIGERATORS

DELUXE 4-SPEAKER STEREO

- 4-SPEED AUTOMATIC RECORD CHANGER
- DIAMOND STYLUS
- EXCLUSIVE C-100 GE CARTRIDGE
- AMPLE RECORD STORAGE

WITH AM/FM TUNER **179⁸⁸**

• 4-Speed Automatic Record Changer
• Diamond Stylus
• Exclusive C-100 G.E. Cartridge \$2.15 Weekly
• Ample Record Storage

129⁸⁸
PAY ONLY \$2 WEEKLY

FREE DISPOSAL

49.95 Value FREE with this G. E. PORTABLE DISHWASHER

3-WAY Wash Action

BUY NOW — PAY LATER!

G.E. REFRIGERATORS

Family Size Dial Defrost REFRIGERATOR

154²⁵ EXCH.

Pay \$2.00 Week

- Full width freezer and chiller tray
- Straight-line design
- 10 Cubic feet

- Big 12 Cu. Ft. Dial Defrost Refrigerator **\$188¹⁰**
- 11 Cu. Ft. 2-Door Automatic Defrost Refrigerator; Zero Def. Freezer, New ONLY **\$222²⁰**
- Giant 13 Cu. Ft. 2-Door, Automatic Defrost Refrigerator, Zero Def. Freezer .. **\$258²⁵**
- Giant 18.8 Cu. Ft. "Frost Guard" No Defrosting Anywhere, Ever! Roll-Out Freezer, Slide Out Shelves..... **\$578⁷⁰**

SAVE \$40.00 **219⁸⁸**
Pay Only \$2.75 Weekly

G.E. WASHERS

Big Capacity AUTOMATIC WASHER

148⁹⁰ EXCH.

Pay \$2.25 Wk.

- Porcelain Top and Tub
- Operates perfectly even with clothes out of balance

- Deluxe 12-Lb. Capacity, 2-Cycle Filter-Flw **\$178⁴⁵**
- 2-Speed, 2-Cycle, 12-Lb. Capacity Filter-Flw **\$198⁹⁰**
- Custom Multi-Cycle Filter-Flw with Exclusive G.E. Mini-Wash **\$224³⁵**
- Top-of-the-Line, 5-Cycle, All Features, Plus Mini-Wash **\$262¹⁰**

ASK ABOUT THE NEW G.E. JET-SWIRL FABRIC SOFTNER DISPENSER

G.E. DRYERS

DELUXE G.E. DRYER

128³⁵ Pay \$1.75 Wk.

- 115 or 230 volt
- 2 Heat Settings
- Safety Start Switch
- Porcelain Top and Drum

FREE Reg. 19.95 G.E. Hair Dryer with ALL models during sale!

- Deluxe Dryer, 2 Heat Selections, 110 or 230-Volt, ONLY **\$146⁴⁵**
- Custom Dryer, 2 Heat Selections, Deluxe Styling, ONLY **\$158⁹⁵**
- Custom, Fully Automatic, No Guess Work! ONLY **\$179⁹⁰**
- Top-of-the-Line, ALL Features, Fully Automatic, ONLY **\$222²⁰**

Personal TV

99⁹⁵

Buy Now Pay Later

BUY NOW! PAY LATER! **NO MONEY DOWN** **WITH YOUR OLD APPLIANCE TRADE-IN**

GOOD YEAR SERVICE STORE

306 East Main Street EASTLAND MA 9-2662

Shop for Bargains at the Goodyear Store in Eastland GO GO GO with Goodyear