

## Democratic Primary Is Set for Saturday

### Area Scouters Have Busy Schedule Ahead

The Northeast District of the Comanche Trail Council of the Boy Scouts of America will try again this weekend to conduct the District Camporee at Lake Daniels, near Breckenridge. The Camporee will begin Friday afternoon and continue all day Saturday.

### As I See Ranger

By Gene Townsend

The Ranger Garden Club is going to have a Rummage and Bake Sale beginning Saturday, May 7, at 9:30 a.m. at the J. D. Johnson Appliance Store.

I notice some work going on at the Railroad Crossing on Main Street. It looks like the Texas and Pacific Railroad Company is taking quick action on the proposal of the improvement in the crossing facilities. We received word from Gordon Smith, Resident Engineer for the Texas Highway Department, that the state had designated \$3500 to be used by the Highway Department for improving the signal system at the crossing.

There will be a Cemetery Working at the Alameda Cemetery Saturday, May 7. Everyone interested in the upkeep of the cemetery is invited and urged to attend. This is one of the oldest cemeteries in Eastland County.

A Cemetery Working will also be held at the Colony Cemetery Saturday morning. All interested persons are urged to come early and bring tools.

### Annual Mail Box Improvement Week Announced

The Post Office Department has designated the week of May 16 to 21, 1960, as Mail Box Improvement Week. This improvement program will include mail boxes on mounted city routes and star routes with collection and delivery service, as well as mail boxes on rural routes. Ella White, acting postmaster announced today.

The Department wishes to encourage patrons to provide suitable mail receptacles, erected and maintained for easy and safe accessibility, presenting a neat appearance, and affording protection to the mail. Boxes that are not properly erected, or not maintained in good serviceable condition retard the delivery of mail and expose it to the weather. Boxes that are no longer serviceable must be replaced.

Patrons of rural routes are required to provide mail boxes of the standard approved type. Patrons who are still using boxes of the old-fashioned type should not be required to discard them, provided they have been continuously in use by the same owner and at the same location for many years, if they are maintained in good serviceable condition and can be easily served by the carrier from his vehicle. Names of box owners should be inscribed on the side of the box visible to the carrier as he approaches, or on the door, if boxes are grouped. The box number may be inscribed on the box if desired. Boxes and supports should be kept painted. Postmaster and rural carriers will assist the cooperation of patrons to group boxes wherever practical, particularly where adequate turnouts can be provided.

Mail boxes on rural routes must be located on the right side of the road in the direction of travel of the carriers in all cases where traffic conditions are such that it would be dangerous for the carriers to drive to the left in order to serve the boxes, or where their doing so would constitute a violation of state or local traffic laws and regulations.

On mounted routes where door delivery is not authorized, the box need not necessarily be of the rural type, but should be of such design and construction that it will afford protection to the mail.

(Continued on page three)

### CONTESTED RACES ARE LISTED

Here is a list of all local and state contested races which Eastland County voters will decide on in Saturday's primary:

For County Sheriff—Lee Horn, J. B. Williams, W. E. (Bill) Reid and Oscar M. (Hop) White.

For Commissioner, Precinct 1—J. B. (Tip) Archer, O. R. (Ott) Ervin and E. W. (Bud) Griffin.

For State Representative—Don Kincaid, Paul Brasher and Scott Bailey.

For State Senate—Tom Creighton and Floyd Bradshaw.

For Congress—Omar Burleson, Roy Ekaggs, and R. M. Wagstaff.

For Constable, Precinct 1—J. H. (Hoover) Pittman and Porter O. Woods.

For Constable, Precinct 2—Ralph Veal and J. W. Vinson.

For County Commissioner, Precinct 3 (Rising Star)—L. J. (Buck) Collins, Ervin (Satch) Hull, Dennis Clark, Mark (Mutt) Clark, R. L. (Bob) Carter, Darrell W. White and C. F. (Doc) Hubbard.

For Attorney General—Waggoner Carr, L. (Bob) Looney, Will Wilson and Robert Everett.

For Court of Criminal Appeals—Jim D. Bowmer, Lloyd W. Davidson, and W. T. McDonald.

For Governor—Jack Cox and Price Daniel.

For Lt. Governor—Ben Ramsey and Don Yarborough.

For Supreme Court, Chief Justice—Robert W. Calvert and Robert G. Hughes.

For Comptroller of Public Accounts—Robert S. Calvert and B. I. Ramsey.

For Commissioner of General Land Office—Bill Allcorn and Jerry Sadler.

### You Can Help Name Johnson President

(An Editorial)

The office of President of the United States is both a high honor and an awesome responsibility. It is the one office above all others in our Democratic system for which the people should seek the man.

Throughout our Nation, Lyndon B. Johnson has been singled out—by editors, by writers, by government leaders, by the people themselves—as the ablest man of them all for the Presidency.

Since Lyndon Johnson is the ablest of them all, as we believe him to be, then we feel that the American people should call Lyndon Johnson to the Presidency. Lyndon Johnson is devoted to his Country and to his fellow men. He could not say no.

On May 7, every Texan will have the opportunity of announcing Lyndon Johnson's candidacy for him. On that date, Democratic precinct conventions will be held in every neighborhood in the State. This is a meeting every Democrat of us should attend with our poll tax receipt stamped to show that we voted in that day's primary.

This is our chance to speak significantly to a fellow Texan who has risen to a position of international prominence through proven ability. This is our chance to say that we want the ablest man for President—Senator Lyndon B. Johnson.

The individual citizen—multiplied—speaks with a mighty voice. It is a voice that cannot be denied.

(Continued on page three)



**TWINS**—The fish, and not the anglers, are the twins in mind here. O. H. Dick, left, and James Smith, right, are holding a 15-pound and a 16-pound yellow catfish which they took off their trotline at Lake Leon this past week. Fishing at the lake has been extremely good in the past few days. (Moderne Studio Photo).

### Estimated Vote Is 5,000 to 6,000

Saturday is the day that folks stop taking politics and do something about it. Voting begins in the Democratic primary at 8 a.m. here and elsewhere in the county and ends at 7 p.m.

A number of key offices are at stake in the primary and voting interest has been picked up considerably during the last few days. The primary will be the earliest ever held in Texas, but despite that fact some 5,000 to 6,000 voters are expected to go to the polls in Eastland County.

The Ranger voting box will be located in the City Hall this year, the courthouse in the ladies lounge, next to the sheriff's office.

A complete list of contested races is listed on the front page of today's paper. There are also 12 uncontested races, as follows: for U. S. senator, Lyndon B. Johnson; for Supreme Court associate justice, place 1, Clyde E. Smith; for Supreme Court, associate justice, place 2, Joe Greenhill; for railroad commissioner, Earnest O. Thompson; for state treasurer,

### Revival To Begin May 8, At The Second Baptist

The revival at the Second Baptist Church begins May 8 and continues through May 15. Services begin at 7:30 p.m. each night.

Evangelist will be Rev. Frank Brooks of New Hope Church. Tommy Shelton of Howard Payne College, Brownwood, will lead the singing.

Special nights are being planned. Everyone is cordially invited.

### Little League Schedule for 1960 Season

The Ranger Little League schedule has been released by Charles Meahaffey, president. Francis Cox, league secretary, prepared the schedule and it has been approved by all league officers and managers. Games will be played on Monday and Thursday nights.

- May 9 Braves vs. Yankees
- Indians vs. Dodgers
- May 12 Indians vs. Dodgers
- Yankees vs. Giants
- May 16 Yankees vs. Giants
- Dodgers vs. Braves
- May 20 Braves vs. Giants
- Yankees vs. Indians
- May 23 Braves vs. Indians
- Dodgers vs. Giants
- May 26 Dodgers vs. Indians
- Yankees vs. Braves
- May 30 Dodgers vs. Yankees
- Giants vs. Indians
- June 2 Braves vs. Dodgers
- Giants vs. Yankees
- June 6 Indians vs. Yankees
- Giants vs. Braves
- June 9 Giants vs. Dodgers
- Indians vs. Braves
- June 13 Braves vs. Yankees
- Indians vs. Dodgers
- June 16 Indians vs. Yankees
- Yankees vs. Dodgers
- There will be no games played the week of June 20 due to Boy Scout camp week.
- June 27 Yankees vs. Giants
- Dodgers vs. Braves
- June 30 Braves vs. Giants
- Yankees vs. Indians
- July 4 Braves vs. Indians
- Dodgers vs. Giants
- July 7 Dodgers vs. Indians
- Yankees vs. Braves
- July 11 Dodgers vs. Yankees
- Giants vs. Indians
- July 14 Braves vs. Dodgers
- Giants vs. Yankees
- July 18 Indians vs. Yankees
- Giants vs. Braves
- July 21 Giants vs. Dodgers
- Indians vs. Braves



**19-POUNDER**—Jack Chapman (left) and Larry Tate display a 19 pound yellow catfish recently landed at Lake Leon. Chapman and Tate are residents of Fort Worth, but are at the present time working in Ranger. They put the fish in a tub of water and carried it to Fort Worth to prove their fish story. (Staff Photo).

### Covered Sugar

By Mrs. Cublan Perry

Ever get to thinking about your summer wardrobe and, have another thought hit you right between the eyes? What about your personality? Maybe it needs a good old fashioned tune-up too!

I am sure mine does so guess had better get with it and try a few new and re-polished hints on charm as that seems to be the word of the year.

Think that I will start with some humility as that is the thing I lose most frequently. My sense-of-humor has been pushed aside for self-righteousness so I will have to make a switch around in them.

Self-righteousness does not wear well with tolerance so will just throw it aside.

New peace-of-mind goes with all ages and gives you so much to look forward to that I think I will grab a big hunk of that to go with the new patience that I am working so hard to obtain.

Right at this time the thing I am trying the hardest to lose with no success is the thing I hate most—a people-long-suffering. I am bog-

### NOTICE

The Sunday, May 8 issue of the Little Times will not be delivered until early Sunday morning due to our desire to get to our subscribers the latest election results which will not be final until late Saturday night.

Although the publication will be printed early Sunday morning, please set all other news and advertisements in at the regular time. Only space for the election results will be given a late deadline. Thank you.

### FILING CABINETS

All steel construction. For office or home. Letter or legal size; one, two, three and four drawer. Locks optional.

### THE RANGER TIMES

Killingworth's  
Enlarging Ranger since 1918  
in price — built to 50 years  
Phone MI 7-3221

### OFFICE CHAIRS

Enjoy the comfort and relaxation a posture chair can give you. Come in today. Or phone MI 7-1101  
THE RANGER TIMES

(Continued on page three)

god down with it and need a good swift kick somewhere to get it out of my system, but (don't you try it).

Ever since a teacher of mine once said in our English class that the word "good" was too easily to come by and actually meant practically nothing, I have never tried to acquire goodness; but the 25 Psalm (Surely goodness and a merciful shall follow me all the days of my life; and I will dwell in the house of the Lord for ever.) expresses it (goodness) in another way so after all these years think I might just strive a wee bit harder to claim a little for myself.

Since I find my best for living isn't—I probably need a big dose of sulphur and molasses and then I will get back the joy of just being alive of which I am usually blessed with!

Isn't it nice to have your 'phone ring and as you answer it have a cheery voice greet you, especially early in the morning? Just sets the tempo of ones whole day. You start singing about your every-day working tasks; then you get to thinking just what has made you so happy? Its then that you think of the cheery voice that set your whole day before you, bright and sunny.

### J. W. Vinson Issues Formal Announcement

The following political statement was issued today by J. W. Vinson, candidate for Constable of Precinct 2 of Eastland county in Ranger.

J. W. Vinson is 39 years old, is married and has four children, he is an active member of the Merriman Baptist Church.

He has lived in Ranger all his life and has been associated with Vinson Radio and TV Service for the past two years.

In making the statement Vinson said, "I am the father of two teenage children and feel that I understand and will be able to help with the teenage problem that may arise in Ranger."

I am personally acquainted with all the law enforcement officers in the Ranger area and will work in the best possible way to fulfill my duties as Constable.

I want to appeal to all the Christian voters of Ranger for their voice and support in the election.

In the many years that I have lived in Ranger I have never been under arrest or under suspicion of the law for any offense.

I am against the sale of Alcoholic Beverages of any kind in Ranger, legal or otherwise. I will vote against it as a voter, and will support it as an elected officer."



# The Ranger Times

"Seeking Community Betterment Since 1919"  
ELM STREET—RANGER, TEXAS ESTABLISHED JUNE 1, 1919  
Entered as second class matter at the postoffice at Ranger, Texas under the act of Congress of March 3, 1879.

TIMES PUBLISHING COMPANY  
Published Tri-Weekly—Tuesdays - Thursdays - Sundays  
JOE DENNIS and OUGUS DICK, Publishers  
GENE TOWNSEND, Editor

One week by carrier in city . . . . . 18  
One month by carrier in city . . . . . 65  
One year by mail on Ranger RFD Routes . . . . . 3.95  
One year by mail in county . . . . . 4.95  
One year by mail in state . . . . . 4.95  
One year by mail out of state . . . . . 6.95

NOTICE TO PUBLIC—Any erroneous reflection upon the character, standing or reputation of any person, firm or corporation which may appear in the columns of this newspaper will be gladly corrected upon being brought to the attention of the publishers.

## CLASSIFIED

PHONE MI 7-1101

All Classified Ads Must Be Paid For In Advance

### MISC. FOR SALE FOR LEASE

FOR SALE: 1958 Evinrude Lark motor, electric starter, 35 h.p. Real clean, contact Ranger Times.

FLOWERS for Mother . . . we have a beautiful selection of roses, hydrangeas, and pot plants. Bouquets. Equite selection of corsages. Flowers for every occasion. Ranger Floral. Mr. and Mrs. R. V. Mathena, 401 Main Street, Phone MI 7-1622.

HGE MAY PATIO SALE. New truck load of good seconds, reduced prices on no. one merchandise. Special offer on live and artificial plants. Horton Ceramics Factory Sales Room, Highway 80 East, Eastland, Texas. Open daily and Sunday afternoon.

FOR SALE: Johnson Grass Seed. Government inspected and tagged, pound 15c. Phone MI 7-1823.

RUBBER STAMPS—Fast service, reasonable prices, no order too large or too small to get our special attention. Ranger Times.

PLANTS FOR SALE: Red Cloud, Porter and Texas Sure Crop to main plants, also hot and sweet pepper plants. See Dick Pennington on Dealemona Highway, Gorman.

FOR SALE: Small house, easily enlarged. Good location. MI 7-1149

FOR SALE: 1956 Fairlane Ford, fordor. Radio and heater. Excellent condition. Reasonably priced. Dorthy Needham, Phone MI 7-1480.

FOR SALE: Bookkeeping supplies, post binders, indexes, receipt books, ledger sheets, storage files, sale book, order books, and many other items . . . at the Ranger Times office.

FOR SALE: New Secretarial Desk with typewriter storage. Beautiful No. 3 oak finish. Bargain priced. Ranger Times. Phone MI 7-1101.

### MISC. WANTED

WANTED: YARD WORK. Ambitious Young School boy wants yard work to earn money for Scout Camp Monday, Wednesday and Saturday afternoons. J. M. in y Gwyer, corner Strawn Road and Blundell.

### ACHING MUSCLES

Quickly relieve tired, sore, aching muscles with STANBACK Powders or Tablets. STANBACK'S S. A. (Synergistic Action) brings faster, more complete relief from pain. Remember . . . Snap back with STANBACK!

### The MODERN Pest Control

Offers FREE Estimates on Termites and Pest Control. Scientific methods. We have a complete line of insecticides. 302 Main Ph. MI 7-3422 Ranger

### Quick Relief of HEADACHE

For faster, more complete relief of headache, neuralgia, neuritis, pain, take STANBACK Tablets or Powders. STANBACK'S S. A. (Synergistic Action)—the combined action of several medically-approved ingredients in one easy-to-take dose—eases anxiety and tension, starts bringing relief right away. **STANBACK** **POWERS** **TABLETS** **POWERS** Visit Our Display Yard in EASTLAND before you choose your **MONUMENT** Located across street from Coats Furniture Co. Ph. MA 9-1091 — Eastland Willard Griffin, Dealer Built by: Riley-Gardner Memorial Co., Hamilton, Texas

### New! Gillette Adjustable Razor

9 Settings for Superb Shaves!  
NOW \$1.95 with new Super Blue Blades

**YOUR Independent AGENT**  
"SERVES YOU FIRST"  
AMERICA'S FORE FAMILY LIABILITY POLICY

**A \$10 insurance policy that every family should have**

You have a nice family, but that doesn't mean you may not wake up some morning facing a damage suit for thousands of dollars, for something your family has done.

Your child may hurt somebody with his bicycle. You may hit somebody with a golf ball. Your dog may bite somebody. Somebody may trip on your steps and break a leg.

For \$10 a year we can protect you against many kinds of lawsuits up to \$10,000\* with an America Fore Family Legal Liability Policy. It even pays medical fees up to \$250 for non-family injuries even if you are not legally liable. Ask us.

\* You can get higher limits if you want them.

**C. E. MADDOCKS & CO**  
Insurance - Real Estate  
207 Main Phone MI 7-1171

### Political Announcements

The Ranger Times has been authorized to announce candidates for public office in the Democratic first primary election May 7 as follows:

- FOR SHERIFF:** J. R. Williams, re-election; Lee Horn; W. E. (Bill) Reid; Oscar M. (Hop) White
- FOR TAX ASSESSOR-COLLECTOR:** J. C. Allison (re-election)
- FOR STATE REPRESENTATIVE 76TH DISTRICT:** Paul Brashear (re-election); Dan Kincaid; Scott Bailey
- FOR COUNTY COMMISSIONER PRECINCT NO. 1:** J. B. (Tip) Arthur; E. W. (Bud) Griffin; O. R. (Ott) Ervin
- FOR STATE SENATOR, DISTRICT 22:** Tom Creighton, Palo Pinto Co.; Floyd Bradshaw, Parker County
- FOR CONSTABLE, PRECINCT NO. 2:** Ralph Veal (re-election); J. W. Vinson
- FOR CONGRESS 17TH CONGRESSIONAL DIST.:** Roy Skaggs of Abilene; R. M. (Bob) Wagstaff; Omar Burleson



**VOTE FOR PAUL BRASHEAR**  
State Representative  
76th District  
'Qualified by Experience'  
(Pd. Pol. Adv.)

### WEEKLY CROSSWORD PUZZLE

Screen Comedian  
Here's the Answer

1. Depicted comedian	3. Susan Indian
2. Gang	4. As below (ab.)
3. Withdrawn	6. Wife of Zeus
4. Anatomical network	7. Smell
5. Bustle	8. Precious
6. Eastern way	9. Atlantic (ab.)
7. Bulgarian coin	10. German physicist (1841-1915)
8. Symbol for tellurium	11. Man's name
9. Commodities	12. Legal point
10. 101 (Roman)	13. Symbol for selenium
11. Lampreys	14. Spittle
12. Make bread	15. Abate
13. Merganser	16. Eddie
14. German river	17. Take care!
15. Chinese river	18. Idolizes
16. Affliction	19. Senior (ab.)
17. Measure of area	20. Russian city
18. Life has appeared in many a movie	21. Doctor (ab.)
19. Prohibits	22. Domestic slave
20. Chinese weight	23. Grates
21. Size of shot	24. Fruit drink
22. Musical drama	25. River island
23. Lukewarm	26. Creamy tale
24. Goddess of discord	27. Prodigal
25. VERTICAL	28. Farts of furnaces
26. Recover	

### Tomato Marketing Publication Is Released

East Texas green-wrap tomato growers should consider the potential of marketing pink tomatoes in view of recent industry developments.

Farmers in the Grand Saline area of Van Zandt county have successfully grown and marketed pink tomatoes for a number of years. On the other hand, acreage devoted to growing green-wrap tomatoes steadily declines each year and in 1958 was only a fraction of the 1946 acreage.

Farmers raising green-wrap tomatoes are caught in a squeeze by competition from California and Florida due to the relatively short shipping season. The low yields per acre are also responsible for the acreage decline. In 1958 California averaged nearly 20,000 pounds of tomatoes per acre while the average for East Texas was just over 2,500 pounds per acre.

"Marketing East Texas Tomatoes," L-472, a new leaflet written by extension specialists should be of interest to every tomato grower in this area. Pink tomato production and marketing factors are discussed in the leaflet.

In discussing markets for pink tomatoes, the leaflet says out-of-state markets provide the biggest potential. One pink tomato packing shed in East Texas has operated successfully for a number of years by selling most of its tomatoes in the Midwest.

The suburban population around East Texas is growing rapidly and provides an expanding market for pink tomatoes. Most East Texas grocery stores now feature "home-grown" pink tomatoes, but the amount they can use is limited.

If you are interested in the future of the green-wrap tomato industry in East Texas, or the potential of the pink tomato business, get a free copy of this leaflet from your local county agent.

ATTENR CHURCH SUNDAY

the Original  
**Lindy**  
UTILITY  
BALL POINT PENS  
NON-REFILLABLE  
America's Finest Writing Instrument

39¢

Perfect Balance Prevents Writing Fatigue

GIANT INK SUPPLY

BRILLIANT INK COLORS  
Color of Pen is Color of Ink

RED BLUE BROWN TURQUOISE  
BLACK GREEN LAVENDER YELLOW-GOLD

• Permanent • Non-Transferable • Non-Smudging  
• Ink meets Gov't. Spec. TT-1562

• Nationally Advertised • Unconditionally Guaranteed

Lindy PEN CO., INC. U.S.A.

## Ranger Times

ANNOUNCING OPENING  
**Monday May 9th**  
Ogden's MAYTAG  
COIN LAUNDRY

ONE FREE WASH LOAD—MONDAY ONLY  
16 MAYTAG MACHINES—4 DRYERS  
908 BLACKWELL ROAD—PHONE MI 7-1181  
WASHING 20c Load—DRYING 10c for 10 Min.  
PLENTY OF PARKING SPACE

Savings on Spring Specials  
JUST A FEW DAYS LEFT

Franciscan Earthenware Air Conditioners

**20% Off**  
OPEN STOCK SALE

SPECIAL 4000 CFM .. 114.95  
Installed ..... 129.95

BUY NOW AND SAVE  
High Trade-In Allowances for your Refrigerator, Washer, Dryer and Ranges

Arterburn's Hardware & Furniture  
120 MAIN, RANGER, TEXAS 945



the gift your favorite person deserves  
*Your Portrait*  
No other gift says so well, "from me—to you." No gift can duplicate it. No gift can please so much or mean so much! Let us make that special gift portrait for you now—and show you interesting ways to make it a memorable gift—in color or in a beautifully designed frame. Come in or phone for your appointment tomorrow.

## Capps Studio



Thrifty  
Magic  
in Meals  
for Mom!



**WORTH  
FOOD MART**

Prices  
Effective  
Thursday,  
Friday &  
Saturday

# FRYERS

Armour's Star Fancy  
Whole or Cut-Up ..... Lb. **33¢**

Franks Rath's Blackhawk Lb. **49¢**

Spare Ribs Small, Lean, Meaty Sides Lb. **49¢**

TASTE O'SEA FROZEN  
CATFISH FILLETS lb. pkg. **49¢**

TASTE O'SEA FROZEN  
FLOUNDER FILLETS lb. pkg. **59¢**

Worth Controlled Quality, Heavy Beef  
Chuck Roast Lb. **49¢**

Worth Quality, Really Fresh  
Ground Beef Lb. **39¢**

Fresh Country  
Large Eggs Dozen **35¢**

Lucky Strike, Light Meat  
Chunk Tuna 4 No. 1/2 Cans **89¢**

**Folger's Coffee** All Grinds .... **2 -Lb. Can 1 29**



Baby Food Gerber, Strained Varieties 12 4 1/2-Oz. Cans **89¢**

Pork & Beans White Swen 10 16-Oz. Cans **1 00**

Hi-C Drinks Grape, Orange or Pineapple-Grapefruit 3 46-Oz. Cans **79¢**

## DINNERS

Banquet Frozen, All Varieties 11-Oz. Pkg. **49¢**

Cream Pies

Johnson's Frozen, All Flavors 16-Oz. Pkg. **59¢**

Cinnamon Rolls

Mrs. Baird's Reg. 25c **19¢**

## STOPETTE

Roll-On Deodorant

Liquid or Lotion, Plus Tax 99c Size **79¢**

**Peaches** Hunt's Cling Sliced or 1/2's 4 No. 2 1/2 Cans **1 00**

*Finest, Freshest Vegetables!*

Lettuce Firm, Crisp 2 Large Heads **25¢**

Carrots Young, Tender 2 1-Lb. Cello Bags **19¢**

Red-Ripe Tomatoes Carton **19¢** Texas Crystal Wax White Onions 2 Lbs. **15¢**

Florida Golden Fresh Corn 3 Large Ears **25¢** Crisp, Red Winesap Apples Lb. **17¢**

**WORTH  
FOOD MART**

### Area-

(Continued from Page One)  
Each camp period begins on

**MAJESTIC**  
TODAY - FRI. & SAT.

MARLON BRANDO  
ANNA MAGNANI  
JOANNE WOODWARD



Tennessee Williams' **"THE FUGITIVE KIND"**  
Adults 75c  
STARTS SUNDAY

**TALL STORY**



Munday morning and closes following the noon meal on Sunday. Reservations are being made through Scoutmasters and Explorer Advisors at the Boy Scout Office in Brownwood.

Lowell Pouncey of Brownwood is Chairman of the Camping and Activities Committee. E. R. Weatherford of Breckenridge and Norton McCallough of Brownwood are Chairmen in the Districts.

"It is our hope that every Scout and Explorer will come to scout camp this summer", stated Pouncey.

Comanche Trail Council Ranks Fourth in Southwest  
Comanche Trail Council of the Boy Scouts of America ranks fourth among thirty-five Councils in Texas, Oklahoma and New Mexico for all-round program during the year of 1959. This report was released at the thirty-ninth annual meeting of Region Nine held in Dallas recently.

"There are 2322 Cubs, Scouts and Explorers in 123 Scouting Units sponsored by 81 churches and organizations led by 983 adults in the eight-county area served by the Council," according to Firman H. Smith of Brownwood, Chairman of the Organization and Extension Committee.

"We invite every boy to become a member, during this the golden anniversary year of Scouting, and we urge the sponsorship by churches and schools and other groups in the organization of new Cub Packs."

### Annual-

(Continued from Page One)

Where two or more boxes are grouped at one point, or the recipients are not directly in front of the residences, the names and addresses of the owners must be on the front of the boxes.

Postmaster White and all Post Office employees of the Ranger Post Office have asked the patrons on their routes to aid in the Mail Box Improvement Week.

### The Farm Bureau DOES NOT Endorse Any Candidates

Recently the Eastland County Farm Bureau organization received notice that a candidate for state representative from the 76th District has mailed out literature using the Farm Bureau letterhead. The Farm Bureau DOES NOT endorse any candidate for any governmental office. The Eastland County Farm Bureau encourages individual decision for candidates.

The Eastland County Farm Bureau has received this telegram from Mr. Bob Lilly, legislative director for the Texas Farm Bureau: "Voters of 76th District have recently received letter written by Texas Farm Bureau Legislative office. Suggest careful study of contents and date of such letter. Letter was designed to obtain vote on pending legislation during 56th session. The Texas Farm Bureau as an organization endorses no candidate. Signed, Bob A. Lilly."

We, the Eastland County Farm Bureau, hope this literature does not cause any misunderstanding. We knew nothing of this mailing until our members started receiving this information. We urge each member to study the contents of this literature carefully.

**Eastland County Farm Bureau**



Vote For  
**O. R. (Ott)  
ERVIN**  
for  
**Commissioner  
Precinct No. 1**

I have tried hard to visit everyone, those I have missed, has been pure coincidence. I would appreciate the vote and influence of all of you.

I have been retired by the Sinclair Oil Co. as of May 1, and can devote FULL TIME to this important office.

(Pl. Pol. Adv.)

## I Am a School Teacher, And Not a Lawyer.

There are thirty-one members of the Texas Senate. Twenty-one of these members are lawyers. Since it takes a two-thirds vote to get any bill up for consideration in the Senate, you can readily see that if the lawyers don't want to consider a bill, then it is impossible for a bill to pass.

Lawyers in the Texas Senate are eligible to take retainer fees from anyone while serving, whether there is a conflict of personal interest or public interest. You still remember that during the Insurance scandals of Texas, that one lawyer member of the Senate received \$10,000 to represent U. S. Trust and Guaranty, owned by A. B. Shoemaker. Shoemaker shot himself because he and his crooked friends were caught by the Bradshaw Insurance reform bills that were enacted by the Texas Legislature.

My opponent is a young lawyer and has never made a public statement to my knowledge to the effect that he would not accept retainer fees if he was elected as your State Senator. Good Friends, a Senator cannot serve two masters. He either serves the best interest of his people or he serves the selfish interests of the pressure groups that come before the legislature. I have not, and cannot legally accept the retainer fees. I would not even if I were eligible as is a lawyer. I do not believe that the people of this district want another lawyer in the Texas Senate.

—VOTE FOR—

**Floyd Bradshaw**  
FOR A SECOND TERM

And Help Repeal The 50c Adv. Junior College Tax and Replace It With Total State Aid.

(Pl. Pol. Adv.)



# Elect Don Kincaid Your State Representative

(Pd. Pol. Adv.)

## SLEEP 8 HOURS—WAKE UP TIRED?

Discover the Wonderful Blood-Strengthening\* Action Of This Women's Iron Tonic!

After a good night's sleep, do you still feel tired out? Often this run-down feeling is due to "Iron-Hungry Blood" (simple iron deficiency anemia). Then it's needless for most women to suffer such awful weariness.

Take Lydia E. Pinkham Tablets, only iron tonic made especially for women. Rich in iron, Pinkham Tablets start to

strengthen your blood within one day! Thus quickly help build rich, red blood... to restore strength and energy so you feel fine again fast! If your blood is so starved for iron that you just drag through the day, get wonderful Lydia E. Pinkham Tablets from any drug store today. Then just see if you don't soon feel like a "new" woman again.

**FEMALE AILMENTS**—Famous Lydia E. Pinkham's Vegetable Compound (Liquid) also brings blessed relief from the miserable discomforts of change-of-life and monthly pain.

## AROUND THE CAMPUS

Personality of the Week

**By James Swinney**  
Sam Owens, Personality of the Week, is attending the Ranger College Evening Division. A business administration major, he plans to attend North Texas State College after finishing at Ranger College.

In addition to attending college, Sam is employed by Montgomery Ward Company, where he has worked as receiving clerk for the past two years.

A car enthusiast, he can usually be found in his spare time with the wrench in his hand and with his head under the hood of his car. He enjoys music and prefers ballads

to rock-and-roll style of music. Sam Cook is his favorite recording artist. His favorite student has been a great help to the staff of The Ranger as one of the advertising salesmen, having spent many extra hours contacting and talking with Ranger business men.

The son of the G. W. Owens, Sam is a 1959 graduate of Ranger High School. He has lived in Ranger three years, moving to Ranger from Crane, Texas.

In a survey made recently at Ranger College, students and faculty members were asked what changes they would make if they could choose their physical character and personality traits. That the answers were both amusing and revealing is shown by the following replies:

Lesia R. Mobley: Have black curly hair and a dimpled chin.

Bill Tallion: Satisfied with the way he is.

Fat Blakely: Be taller and more handsome.

Robert Halenski: Be six feet four and weigh 240 pounds.

Wilbur Smith: Be more friendly, be a better conversationalist, be more of the studious type, and be big enough to put two boys down.

Wayne Cramer: Be six feet two, weigh 210 pounds, and be so mean that people would have to pay me to walk around Cell Block.

Fudge Richardson: Have my front tooth back.

Mrs. Hamick: Have the knack of a b convocation and the gift of laughter.

Booby Ned Lawdermilk: Be smarter and more punctual.

Ruth Scott: Be faster and three and one-half inches taller, weigh 210 pounds, be good-looking, and

be a good dancer.

M. Harold Little: Be six feet tall, have perfect eyesight, look like Clark Gable, be able to sing like Elvis Presley, and have Rockefeller's money.

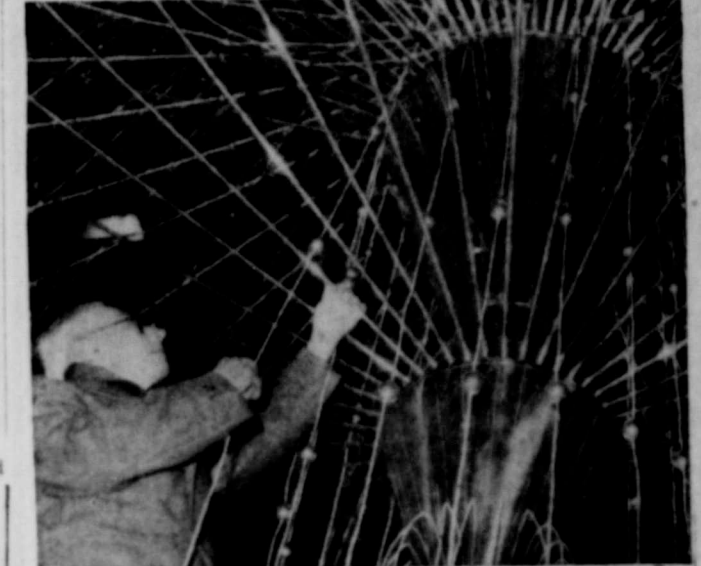
James Needham: Be three pounds heavier, have coal-black hair and blue eyes, have a solemn personality, and be able to see buried wire fences in the dark.

Charles Gies: Be six feet six, weigh 220 pounds, be muscle bound, have a really pleasing personality, and look like a millionaire.

Mr. Allsup: Be blond and somewhat slender, weigh about 150 pounds, and talk a little slower.

Mrs. James P. Morris: Be a tall blond.

Conch Puryear: Be fatter and not so good-looking.



**LIGHT HOUSEKEEPING**—Not intimidated by the maze of wires around him, Arthur Rollason makes adjustments on an Electrolux. Resembling a household chandelier, it bears thousands of bulbs, is 52 feet high and 72 across. It will illuminate a London arena for an electrical engineers' convention.



## FIRST OF THE MONTH SALE

- |                           |   |                 |        |
|---------------------------|---|-----------------|--------|
| <b>Pork &amp; Beans</b>   | Highway or Large Dry Lima Beans or Dry Backeye Peas. Mix 'em or Match 'em | 12 No. 100 Cans | \$1.00 |
| <b>Green Beans</b>        | Garden's cut. Easy to serve for your dinner vegetable.                    | 8 No. 103 Cans  | \$1.00 |
| <b>Folgers Coffee</b>     | Take advantage of fine quality coffee.                                    | 1.1b. Can       | 59¢    |
| <b>Del Monte Corn</b>     | Del Monte cream style golden dent corn.                                   | 6 No. 303 Cans  | \$1.00 |
| <b>Del Monte Peas</b>     | Del Monte Early Garden, wonderful flavor.                                 | 6 No. 303 Cans  | 1.00   |
| <b>Jell Well Gelatins</b> | Assorted flavors  | 4 1.5c. Pkg.    | 25¢    |

- CHERUB MILK**  
Evaporated for baby or baking. 3 14.5 Oz. Cans 39¢
- GRAPE JUICE**  
Tear Garden (See Off Label). Fruit of the vine flavor. 21 Oz. Bottle 29¢
- CRAGMONT BEVERAGES**  
\* Cream Soda \* Fruit Punch \* Grape \* Root Beer \* Lemon-Lime \* Orange \* Strawberry. Plus Deposit. 10¢
- BROCCOLI SPEARS**  
or Succotash. Best. Premium quality frozen. 3 10 Oz. Pkg. 59¢
- ICE CREAM**  
Lucerne Party Ride. Try our Fresh Peach flavor or choose from our large selection. 1/2 Gal. 69¢
- SUPURB DETERGENT**  
Here's a fine quality blue detergent that will make washing easier. Giant Box 59¢



**Safeway Heavy Beef Sale!**  
**Sirloin Steak**  
Lb. 89¢

**Pot Roast**  
Chuck Blade, U.S.D.A. Choice Grade Heavy Beef. Lb. 47¢

**Round Steak** U.S.D.A. Choice Grade Beef. Lb. 85¢

**Rib Roast** U.S.D.A. Choice Grade Heavy Beef. Lb. 79¢

**Rump Roast** U.S.D.A. Choice Grade Heavy Beef. Lb. 79¢

**T-Bone Steak** or Club U.S.D.A. Choice Grade Heavy Beef. Lb. 99¢

**Arm Roast** U.S.D.A. Choice Grade Heavy Beef. Lb. 55¢

**Short Ribs** U.S.D.A. Choice Grade Heavy Beef. Lb. 33¢

**25% OFF PASTRY SPECIAL!**

**JELLY SNAILS** 7 Oz. Pkg. 23¢

**Hamburger Buns** 1 1/2 Doz. 19¢

**Rye Bread** 1 1/2 Doz. 25¢

**Peach Pie** 1 1/2 Lb. Size 45¢

- |                          |   |     |
|--------------------------|---|-----|
| <b>Comet Cleanser</b>    | Cleans stubborn stains. 2 15 Oz. Cans           | 31¢ |
| <b>Personal Ivory</b>    | Toilet soap. 4 Bars                             | 25¢ |
| <b>Lava Soap</b>         | Best for use on oily hands. 2 1 1/2 Doz. Bars   | 23¢ |
| <b>Mr. Clean</b>         | All purpose liquid cleanser. 10 Oz. Bottle      | 39¢ |
| <b>Liquid Ivory</b>      | Detergent (See off label). 22 Oz. Can           | 57¢ |
| <b>Liquid Joy</b>        | Detergent. Kind to hands. 15 Oz. Can            | 37¢ |
| <b>Spic &amp; Span</b>   | Cleaner variety of uses. 14 Oz. Box             | 29¢ |
| <b>Crisco Shortening</b> | Gives you confidence in baking. 1 1/2 Cans      | 31¢ |
| <b>Fluffo Shortening</b> | Garden of Eatin' (See off label). 3 Lb. Can     | 61¢ |
| <b>Potato Chips</b>      | Starters, salted just right. 7 Oz. Pkg.         | 39¢ |
| <b>Shelf Paper</b>       | Full sized. 20 Doz. Box                         | 45¢ |
| <b>Pecan Sandies</b>     | Supreme cookies. 1 1/2 Doz. Box                 | 49¢ |
| <b>Cheez-It Crackers</b> | Swiss. 8 Oz. Box                                | 19¢ |
| <b>Ritz Crackers</b>     | Nutrition excellent with cheese. 1 1/2 Doz. Box | 35¢ |

- |                       |   |     |
|-----------------------|---|-----|
| <b>CHEER</b>          | Detergent, gets clothes clean. Large Box      | 32¢ |
| <b>DREFT</b>          | Germicidal Detergent. Large Box               | 33¢ |
| <b>IVORY SNOW</b>     | Soap powder, excellent for washing. Large Box | 32¢ |
| <b>TIDE</b>           | Detergent. Tide's in a ball. Large Box        | 32¢ |
| <b>DASH DETERGENT</b> | For automatic washers. Large Box              | 39¢ |
| <b>OXYDOOL</b>        | Detergent, makes dishwashing easy. Large Box  | 33¢ |

Steaks Call for Safeway Potatoes...

**POTATOES**  
White Rose U.S. No. 1 New crop California's finest. All purposes. Bake 'em, fry 'em or mash 'em. 10 Lb. Bag 69¢

For Mom on Her Day!

**Lettuce** Crisp and sparkling fresh. Each 15¢

**Onions** Yellow. 5¢

**Celery** Pascal, crisp and crunchy. Cello bag. Each 25¢

Chocolate Peanuts 7 1/2 Oz. 39¢

Adorn Hair Spray 3 Oz. \$1.65

Jergens Lotion 7 Oz. 55¢

Deep Magic Lotion 7 Oz. 55¢

Seamless Hosiery 2 Pkg. \$1.88

**SAFEWAY**  
Conveniently Located to Serve you at 504 E. Main, Eastland

**Hospital News**

Patients in Ranger General Hospital are:

E. O. Johnson, Ranger, medical.

Mrs. Frances Jameson, Ranger, medical.

J. R. Louch, Strawn, surgical.

Mrs. E. J. Callaway, Ranger, medical.

J. W. Henson, Ranger, medical.

Mrs. Florence Ross, Cisco, medical.

Mrs. Mary Loper, Eastland, medical.

M. F. Williams, Eastland, medical.

Frank Hoag, Cisco, medical.

Bonnie Ruth Midkiff, Moran, medical.

Vance Hauser, Ranger, medical.

Linda Zellars, Rising Star, medical.

Royce Fuller, Strawn, medical.

Mrs. R. J. Homes, medical.

Mrs. J. D. Hunt, Ranger, medical.

Mrs. Mack Couger and baby boy, Strawn.

Mrs. Mary Frye, Cisco, was dismissed.

**VOTE FOR**

**E. W. (Bud) Griffin**  
for  
**County Commissioner**  
OF PRECINCT 1  
Subject to action of the May 7 Democratic Primary

(Pd. Pol. Adv.)

**Helps Heal And Clear Itchy Skin Rash!**

Zemo—liquid or ointment—a doctor's antiseptic, promptly relieves itching, stops scratching and so helps heal and clear surface skin rashes. Buy Extra Strength Zemo for stubborn cases!

**zemo**

**MOTHER'S DAY SUNDAY MAY 8**

Make it a Great Day for

**Mother**

**Ship'n Shore**  
refreshing white pique scoop blouse 298

Want the crisp, cool look everyone envies in summer? Ship'n Shore makes it yours... with this lovely scoop of woven birdseye pique. So very new, with a concealed closing placed to-the-side... and butterfly button-tab. Wonderfully washable. Sizes 30 to 38. See our new casual Ship'n Shore shirts, too!

**Many other styles and makes - 3.98 - 6.98**

**The Globe Clothiers**  
220 Main Street Phone MI 7-1130



—Call MI 7-1101 for Classifieds—

**HOME FINANCING...  
TAKES PLANNING TOO!**



We'll plan the best financing for you, when you're ready to buy or build that home of your own. Let our experienced loan people work out a plan that may include principal, interest, taxes and insurance in monthly payments that are easy on the budget. Their knowledge of local conditions is at your service when you arrange home-financing here.

**First Federal Savings & Loan  
Association of Ranger**

ONLY 3% DOWN ON FHA LOANS

204 Main Ranger, Texas Phone MI 7-1611

**Xi Zeta Nu Chapter of Beta Sigma  
Phi Meets for Founder's Day Dinner**

The Xi Zeta Nu Chapter of the Beta Sigma Phi Sorority met Saturday, April 30, at 7:00 p.m. at the Lone Cedar Country Club for the Founder's Day dinner. Mrs. Dwayne Dennis, president,

introduced the speakers, Mrs. William Bourdeau and Mrs. D. C. Arterburn. Mrs. Bourdeau read the Founder's Day Pledge, which the group repeated in unison. Mrs. Arterburn read a letter from Walter W. Ross, founder of the Beta Sigma Phi.

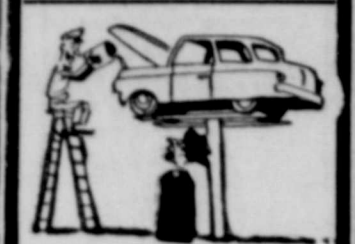
The table was laid with a white linen cloth and centered with an arrangement of 25 yellow roses. Three yellow candles, which were burning during the pledge, completed the arrangement.

The white place cards were inscribed with the Beta Sigma Phi emblem and had a yellow rose attached to the card.

Members and their guests attending were: Mr. and Mrs. Dwayne Dennis, Mr. and Mrs. Howard Oliver, Mr. and Mrs. William Bourdeau, Mr. and Mrs. Norman Huffman, Mr. and Mrs. D. C. Arterburn, Mr. and Mrs. Fred Lamb and Misses Eva and Norma Mills.

**GAS-TOONS**

—by—  
Buster Hazard



"We have the Latest Equipment to service your car."

It's not just our equipment... it's the way we use it that makes happy customers!

**HAZARD'S  
Premier Service**

Not a Filling Station... But a Service Station!  
801 - 80 Hwy. West

**Circle No. 4  
Meets Mon. In  
Arterburn Home**

Circle No. 4 of the Women's Society of Christian Service met in the home of Mrs. D. C. Arterburn, Monday, May 2, at 9:30 a.m.

Mrs. James Ratliff, president, called the meeting to order. The minutes of the last meeting was read and approved, and announcements were made.

Mrs. Theodore Nicksick was in charge of the program, "Crucifixion and Resurrection of Christ", taken from the book of Luke. Mrs. Ratliff led the group in the closing prayer.

Refreshments were served to the following: Mmes. James Townzen, Joe Collins, Roscoe Hopper, Charles Gann, Ratliff, Nicksick, David Allsup, and the hostesses, Mrs. Charles Milliken and Mrs. Arterburn.

ATTEND THE CHURCH OF YOUR CHOICE EACH SUNDAY



**FOUNDER'S DAY DINNER**—Members of the Rho Pi Chapter of the Beta Sigma Phi met April 28, for a Founder's Day Dinner. A ritual of jewels ceremony and pledge ritual were held after the dinner. From left to right are Mmes. Melvin Crouch, Byron Gailey, Linda Forney, Allen Rushing, Pat Collins, Sammie Elder, Edgar Black, Jasper

Williamson Roy Patterson, Charlie Rose, Jesse White, Jack Sledge David Allsup, Calvin Warren, Bill Eyley, Raymon Bryan, D. C. Arterburn, Jack Rawls, Breland Wallace, Houston Moore, and Dwayne Dennis. (Photo by Capps Studio).

**Debs Have  
Spaghetti Dinner  
Tuesday Evening**

The Debs, girls' social club at Ranger College, had a spaghetti dinner on May 3, in the home of Mrs. R. L. Hamrick, sponsor.

Members present were Odus Carwile, Addie Varner, Linda Durham, Christine Hutchinson, Beth Key, Maxine Vandergriff, Ruth Miller, P. Schmidt, Brenda Roberts, Sandy Taylor, Betsy Teinert, Arh Mangum, Mrs. R. L. Hamrick, sponsor, and Mrs. F. E. Langston, special guest.

**Founder's Day Program Observed by  
Rho Pi Chapter of Beta Sigma Phi**

The Rho Pi Chapter of the Beta Sigma Phi Sorority held their Annual Founder's Day program at King's Cafe Thursday, April 29. Mrs. Jesse White, president, was in charge.

The table was covered with a white linen cloth. Yellow rose buds in a black container, flanked with yellow candles formed the centerpiece.

The "Founder's Day Message" by Walter W. Ross, was read to the group by Mrs. David Allsup. Mrs. Jack Sledge read the "Founder's Day Pledge."

After dinner the group reassembled at the Community Clubhouse for the Ritual of Jewels and the Pledge Ritual. Those who received the Ritual of Jewels' degree in the candlelight ceremony, read by Mrs. White were Mmes. Houston Moore, Edgar Black, Pat Collins, Sammie Elder, Byron Gailey, Roy Patterson, Jack Rawls, Breland Wallace, and Jasper Williamson. Assisting Mrs. White were Mmes. Raymon Bryan, Allsup, Sledge, Calvin Warren, D. C. Arterburn, and Dwayne Dennis.

Mrs. Bill Eyley received the Pledge Ritual, which was read by Mrs. White.

The Heart to Heart theme was carried out in the decorations. The serving table was covered with a beige lace cloth, centered with an arrangement of hearts, which bore the insignia of Beta Sigma Phi. The clubhouse was decorated

**Dorothy Needham  
Honored With A  
Gift Tea Sunday**

Miss Dorothy Needham, bride-elect of Robert Watson, was complimented with a gift tea from 2 to 5 p.m. Sunday, May 1, in the home of Mr. and Mrs. Gene Watson, 1482 Rosewood, Abilene.

The dining table was covered with a white lace cloth over yellow. Refreshments of blue and white cake squares and punch were served.

**May-June Selling Spree**

New 1960 Chevrolet Pick-Ups, as low as . . . \$1723.00

New 1960 Chevrolet Tudor Sedans, as low as \$1911.00

New 1960 Corvair 500-Coupes, as low as . . . \$1762.00

ALSO

These Are Delivered Prices In Ranger

New 15-foot Cutter Runabout Boat, red and white, with Mark IIA Mercury Motor and Shoreline Trailer—Complete Rig Only \$1295.00

1946 Chevrolet One Ton Stake Commercial, only \$195.00

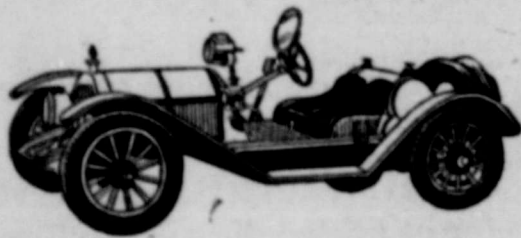
1958 Chevrolet Biscayne Fordor, white color, V-8 engine, Power-Glide, Factory Air, Radio, Tinted Glass, White Nylon Tires, only \$1395.00

24-HOUR WRECKER SERVICE

**Anderson Chevrolet Co.**

111 S. Austin RANGER, TEXAS Phone MI 7-1161

**DOES YOUR CAR  
DRIVE LIKE AN  
ANTIQUE?**



If so . . . just drive into our Humble Service Station and we will give your car an

**EXPERT**

**WHEEL BALANCING**

which will give you a smoother ride and easier driving.

WE GIVE

S & H

GREEN STAMPS



**CAMPBELL'S  
HUMBLE STATION**

Highway 80 & Main Ranger, Texas



SINCE 1884

. . . quality workmanship and efficient service, approved throughout this area.

**ALEX RAWLINS & SONS**

Designers and Builders of Monuments Since 1884  
Weatherford Phone LY 4-2726 Texas



- \* Watches
- \* Watch Bands
- \* Diamonds
- \* Pearls
- \* Silverware
- \* Clocks
- \* Costume Jewelry
- \* Charm Bracelets

AND MANY OTHER GIFTS—FROM . . .

**D. E. Pulley Jewelry**

Diamonds — Watches — Silverware  
203 Main Phone MI 7-1616

**Eastern Star  
Honors Mr. and  
Mrs. McGown**

Mr. and Mrs. George T. Guess and Mrs. O. B. Poyner honored Mr. and Mrs. G. C. McGown, retiring Worthy Matron and Worthy Patron, Order of the Eastern Star, with a covered dish dinner Tuesday night, May 3, at the Community Club House.

After the dinner, consisting of fried chicken, potato salad, vegetable salad, hot rolls and butter, and homemade ice cream and coffee, the guests played games of 42.

Those present were Mr. and Mrs. McGown, Mr. and Mrs. Dwayne Dennis, Mr. and Mrs. Byron Gailey, Mr. and Mrs. William Bourdeau and Mmes. Stella Blackwell, V. V. Cooper, Buck Wallace, Ted Bott, Lula Williams, R. E. Harrell, Ruby Springer, Winnie Cox, Ruth McKinzie, Nancy Storm, Mrs. Linda Forney, Reba Rawls, Miss Miriam Poyner, Jo Wayne and Pam Dennis, Donna Ruth and Dixon McKinzie, Butch and Joanne Guess, and the hostess, Mr. and Mrs. Guess and Mrs. Poyner.

— READ THE CLASSIFIEDS —

**O. K.  
Gro. & Mkt.**

501 W. Main - Ranger - Ph. MI 7-3477

BAIRD'S  
**Cinnamon Roll** Pkg. 19¢

Snider's **Catsup** 2 bottles 29¢  
Kuner's **Blackeye Peas** 303 can . . . . 15¢

McCormick Fluffy **Mashed Potatoes** pkg. . . . . 27¢  
Mile-Hi—303 Can **Cr. Style Corn** 2 for . . . . . 31¢

NEUHOFF CURED  
**Hams** 8 to 10-Lb. Whole Lb. 53¢

Keith's **Fish Sticks** pkg. . . . . 33¢  
Keith's **Lemonade** 2 cans . . . . . 25¢

Donald Duck Florida **Orange Juice** 5 cans . . . . . 1.00  
Patio **Mex. Dinners** box . . . . . 59¢

GERBERS **BABY FOOD** 10 For 89¢

No. 1 **RED-POTATOES** 10 Lbs. 59¢  
Fresh **Carrots** 2 cello bags . 15¢  
Fresh **Corn** 2 ears . . . . . 15¢

SELECTED **CHUCK-ROAST** Lb. 49¢

SELECTED **ECONOMY STEAK** Lb. 59¢  
SELECTED **VEAL CUTLETS** Lb. 89¢

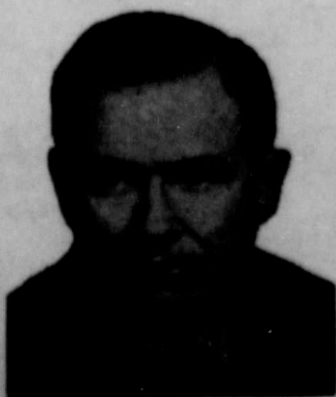
**CALF-LIVER** Lb. 49¢

FRESH **HAMBURGER** Lb. 49¢  
CEDAR FARM **BACON** 2 Lb. 98¢

**Pork Roast** lb. . . . . 39¢  
**Pork Steak** lb. . . . . 39¢

MONARCH TOMATO **MUSTARD SAUCE** **SARDINES** Large Can 33¢

Let's keep . . .



**OMAR  
BURLESON  
IN CONGRESS**

'A Splendid Record of Public Service'

(Pd. Pol. Adv.)



—Call MI 7-1101 for Classifieds—

## MONTGOMERY WARD

Ranger, Texas

### AN OPEN LETTER

TO THE PEOPLE OF RANGER AND VICINITY

A few days ago Mr. John Barr, Chairman of the Board of Montgomery Ward, asked every Ward Store Manager is "Satisfaction Guaranteed — or your money back" is a practice as well as a policy in our stores. He wanted to know if our salespeople actually refund your money cheerfully—with no strings attached—when you are not satisfied with a purchase. Whether you receive the courteous service you have every right to expect at Wards. I told him emphatically, yes!

This simple principle "Satisfaction Guaranteed — or your money back" is the rock on which our company was built. It is so much a part of Wards that I wonder if sometimes we take it too much for granted. Do we ever forget to do everything possible to insure your satisfaction with our merchandise . . . with Wards as a good place to shop? I sincerely hope not. But I realize that a Ward employee is just as human as the next fellow and just as likely to forget now and then.

I want you, our customers, to know that I am personally dedicated to your satisfaction with our merchandise. If ever you are not satisfied with your purchase for any reason, please be assured that you may return it for an exchange or a full refund. If you have any criticisms of Wards service, please let me know directly, and I'll personally set it right. We appreciate your business, and we want to do everything possible to continue to deserve it.

M. W. Terry

Store Manager

MONTGOMERY WARD

### Dairy Cattle Needs Individual Feeding Program

Feed bills for a dairy herd can rapidly eat into profits if you are not careful. The total feed consumed by a herd may average out about right, but each cow is an individual and needs to be fed accordingly, points out Shannon Carpenter, an associate extension county agent-dairying.

A herd of 50 cows being fed one pound per day per cow more than needed will increase your feed costs \$45 per month when grain is priced at \$60 a ton.

It costs even more to underfeed each cow by one pound grain per day, Carpenter continues. A cow underfed by one pound per day will produce at least two pounds less milk. At five cents per pound for milk, that amounts to a loss of \$150 a month with a 50-cow herd.

If one-half the cows in a 50-cow herd are overfed one pound per day and the other half underfed

one pound, the owner is spending \$97.50 more for feed each month than is necessary. The total pounds fed is right, but the pocketbook received as severe jolt.

A good pair of scales should prove to be a good investment, Carpenter adds. Weighing the feed will insure that each cow gets her share of the total and should increase the dairyman's income, concludes the specialist.

### Coastal Bermuda Continues to Make New Friends

Coastal Bermudagrass continues to make new friends because of its adaptability and high yielding characteristics, says George McBee, extension pasture specialist at College Station.

Spring, says the specialist, is the optimum time for planting Coastal in most sections of Texas. Fall plantings are considered best in far South Texas. Plantings made now will give the plants time to become established before the beginning of the summer season.

McBee offers these suggestions for the successful establishment of a Coastal Bermuda pasture. Plant fresh, good quality sprigs. Plant in a moist seedbed which has been well prepared and is clean, level and firm. Planting Coastal in established stands of other perennial grasses usually results in a poor stand he advises.

He suggests planting in 36 or 42-inch rows with the sprigs at 36-inch intervals in the row. This spacing will require about 9 bushels of sprigs an acre. Closer row spacing will require more sprigs but will mean a faster grown cover and less competition from weeds.

McBee recommends that fertilization be carried out in accordance with soil test findings. He says it's ideal to put the fertilizer in a band 3-4 inches to the side and below where the sprigs are placed. If weeds or other grasses are expected to give the Coastal stiff competition, it may be advisable to wait until the Coastal is growing to put down the fertilizer. He says never broadcast fertilizer on land to be planted to Coastal Bermudagrass.

Don't, says the specialist, let the cost of establishing a Coastal pasture be a deciding factor. Consider the cost as a long-time investment and prorated it over several years. In some sections, the relatively new grass has furnished more than 180 pounds of hay per day per acre during the peak growth periods. And, he adds it makes mighty good hay should growth provide a surplus above grazing needs.

Chiropractic Service  
1:00 to 5 p.m.  
Monday - Wednesday - Friday  
DR. E. R. GREEN  
455 Pine Ranger, Texas

OSCAR M.  
(Hop) WHITE  
wants to serve  
YOU  
as  
SHERIFF  
of  
Eastland  
County

Your Vote in the May 7th  
Primary will be appreciated.

(Paid Pol. Adv.)

### Sub Deb Club To Hold Mother's Day Tea Sunday

The Sub Deb Club of Ranger High School met Thursday evening, April 28, at the home of Norma Gayle Emfinger. Plans were made for the Mother's Day Tea to be held Sunday afternoon, May 8, from 4:00 to 6:00 p.m. at the Community Clubhouse.

Refreshments were served to the following: Norma Gayle Emfinger, Mary Kay Rush, Karen Killingsworth, Barbara Crabb, Sandy Cooper, Rita Joyce Underwood, Nellie Sue Vinson, Linda Drennon, Rita Sipes, Nancy Cantwell, Roselle Hattom, Sarah Johnson, Sue Cantwell, Alyce Pounds, Diane Cantrell, Kaye Hopper, Shelene Scott, June Loper, Bernita Gailley, Sandi Halbrooks, Donna Drennan, Sisay Blackwell, Linda Warford, Jeralyn Anderson, and the sponsor, Mrs. Marnie Ruth Hamrick.



Quality-crafted Towncrafts unconditionally guaranteed for 1 year. 17-jewel Swiss movements, non-tarnish yellow and white gold-plated cases. Lovely gift styles for everyone!

**18<sup>95</sup>**  
plus tax

SHOP PENNEY'S  
1022 Behler 1022 Behler

### WOMEN'S ACTIVITIES

Thursday, May 5  
The 1920 Club will meet Thursday, May 5, for a program on "Comparison of American and Italian Literature." Mrs. Theodore Nicksick will be program leader.

Thursday, May 5  
The Dorcas Sunday School Class of the First Baptist Church will meet in the home of Mrs. J. D. Tankersley, May 5, at 2:30 p.m.

Thursday, May 5  
The Martha Dorcas Sunday School Class of the First Metho-

dist Church will meet for their regular monthly meeting a n d luncheon, Thursday, May 5.

Thursday, May 5  
Ranger 100F Lodge meets Thursday at 8 p.m. Work will be done in the Initory Degree. The District Deputy from Albany will be present.

Monday, May 9  
The Hope Sunday School Class of the First Baptist Church will hold their class meeting, May 9, at 7:30 p.m. in the home of Mrs. J. C. Carter, 117 Mesquite St.

Wednesday, May 11  
A pre-school round-up will be held Wednesday, May 11, in the Ranger Clinic, from 1 to 2 p.m.



Elect  
ROY  
SKAGGS  
to  
CONGRESS

POSITIVE REPRESENTATION FOR ALL  
THE PEOPLE IS LONG PAST DUE

(Pd. Pol. Adv.)

### A Lot of Coverage



THAT'S what you get when you protect your investment in personal property (furniture, luggage, sports equipment, clothing, cameras, etc.) with a Personal Property Floater. This BIG insurance policy covers against fire, theft, most any peril you can think of . . . whether you're at home, out shopping or away on a trip. Ask us about this policy now.

**MAY INSURANCE AGENCY**  
INSURANCE - REAL ESTATE  
W. J. Sipes Opal King  
DON'T GIVE FIRE A PLACE TO START!

## Robinson Food Market

SPECIALS FOR

FRIDAY & SATURDAY, MAY 6-7, 1960

WE DELIVER

121 North Rusk St. Phone MI 7-3530

ARMOUR'S STAR THICK SLICED  
**Bacon 2 Lb. 99¢**  
Pkg.

FRESH GROUND  
**Meat 2 Lbs. 1.00**

FRESH HOME MADE ALL PORK  
**Sausage 2 Lbs. 89¢**

WHITE SWAN  
**Coffee 1-Lb. 69¢**

NABISCO VANILLA—Reg. 25c  
**Wafers 7 1/2-Oz. 17¢**  
Box

DONALD DUCK FROZEN ORANGE—6-Oz.  
**Juice 5 Cans 89¢**

**FRESH CORN . . . . . 2 ears 15c**

**FRESH YELLOW SQUASH . . . 2-lbs. 25c**

ALSO—FRESH STRAWBERRIES — GREEN ONIONS — NEW POTATOES

# PENNEY'S

ALWAYS FIRST QUALITY!

## BIG NEWS! MOTHER'S DAY GIFTS

for the world's most wonderful Mother, yours

SHOP PENNEY'S... YOU'LL LIVE BETTER, YOU'LL SAVE!



### DACRON POLYESTER NYLON-COTTON SLIPS

Shadow paneled, self-embroidered petti in specially finished soft and light batiste . . . in proportioned sizes. **398** each



### double protection against runs DOUBLE-LOOP GAYMODES

Penney's 60-gauge double-loops are twice as good, twice as sheer, twice as sturdy! Full-fashioned. Pale neutrals, newest fashion tints. **98¢** pair sizes 8 1/2 to 11



### COOL, SWEET SLEEPING IN COTTON BATISTE

Comb'd cotton batiste . . . print baby doll. A big Penney value now! Assorted colors. Soft, medium and large. Machine washable at med um setting, too! **298**

### GET TWO FOR THE PRICE OF ONE... PLUS A PENNY!

## REXALL 1¢ SALE

Our Stock Is Not Too Large . . . But We Do Have the Following and Numerous Other Items

- |  |                |
|--|----------------|
| Rexall Aspirin, 100's, Reg. 59c                              | 2 for 60c      |
| Glycerin Suppositories, adult or infant, Jar of 12, Reg. 53c | 2 for 54c      |
| Saccharin Tablets, 1 gr., 1000's,                            | 2 for 1.60     |
| Mi-31 Antiseptic Mouth Wash                                  | 2 for 90c      |
| Aerosol Shave Creams, Large cans                             | 2 for 99c      |
| Milk of Magnesia, pints                                      | 2 for 58c      |
| Rexall Vitamin C tablets, 100 mg., 100's,                    | 2 for 1.90     |
| Rexall Vitamin C tablets, 50 mg., 100's                      | 2 for 1.05     |
| Rexall Cod Liver Oil, pint                                   | 2 for 1.60     |
| Rexall Vitamin B1 tablets, 100's, 50 mg.                     | 2 for 4.50     |
| Rexall Beef, Wine and Iron Tonic, pints                      | 2 for 1.99     |
| Moth Fume Crystals, Reg. 79c                                 | 2 for 80c      |
| Pine Oil Disinfectant, pint                                  | 2 for 1.20     |
| Combination Syringe and Water Bottle                         | 2 for 4.30     |
| Rexall Petrofol Mineral Oil, pints                           | 2 for 64c      |
| Bath Scales, Reg. 8.50                                       | Now 4.88       |
| Rexall First Aid Kit, Reg. 2.95                              | Now 1.99       |
| Facial Tissues, colored or white,                            | 4 for 98c      |
| Bubble Bath, Reg. 1.00 box                                   | 3 for 98c      |
| Rexall Rubbing Alcohol, pints, Reg. 79c                      | 2 for 80c      |
| Rexall Baby Talc, 1-lb. cans, Reg. 89c                       | 2 for 90c      |
| Eudicane Suppositories, 12 for 1.30                          | Now 2 for 1.40 |

Save - Save **THREE MORE DAYS** Save - Save

## Crawford-Doss Rexall Drug

Main Street

Ranger



—Call MI 7-1101 for Classifieds—

NOTICE

DR. A. D. SCHMITT

Has opened his office in West Texas Clinic and Hospital building for general practice of medicine and surgery. Phone MI 7-3411

Circle No. 3 Meets In Home Of Mrs. Mills

Circle No. 3 of the Woman's Society of Christian Service of the First Methodist Church met Monday, May 2, in the home of Mrs. E. H. Mills.

The Circle chairman, Mrs. T. D. Stewart, presided over the meeting. The program, "Missions of Today" was led by Mrs. Stanley McAnelly. Mrs. Archie Robinson led the opening prayer.

The devotional, taken from Psalms 27 and Romans 1:16-17 was given by Mrs. J. D. Drennan. The theme was Faith, Love, and Service. She also gave a preview of "Goal of Our Quadrennium" for next year. "Goal of Our Quadrennium" for the current year was presented by Mrs. Stanley McAnelly. She discussed the "Spirit of Christ for all of Life's membership. Mrs. A. J. Ratliff reported on "Work Done by the World Federation of Methodist Women in America and Foreign Countries."

Mrs. May Hosts Circle No. 2 Monday, May 2

Mrs. C. E. May was hostess to Circle No. 2 of the Women's Society of Christian Service of the First Methodist Church when it met in her home Monday, May 2. Mrs. Beulah Harrison was co-hostess. Mrs. O. B. Poyner, chairman, led the opening prayer and presided over the meeting. The devotional was presented by Mrs. C. R. Shawfield. It was taken from the 14th chapter of Luke.

TRADE WITH YOUR HOMETOWN MERCHANTS

SPECIAL! Super Outside WHITE PAINT Reg. \$6.50 Value \$4.83 gal. AT THE HOUSE OF COLOR Hwy. 80 East

I GIVE YOU TEXAS

The first time I ever saw the name, "Moulton (Ty) Cobb", it was signed to a sports news story from the University of Texas where Cobb was a student. I was then editor of the Eastland Daily Jil Bell News and made use of all the articles he sent out, as did many other papers.

When an author visited Sir Walter Scott at his home, Abbotsford, the visitor suggested they view Melrose and quoted Scott's lines: "If you would see Melrose aright, Go visit it by the pale moonlight." Scott replied, "By all means, let us go. I myself have never seen

Melrose by moonlight." There is an old saying, "Experience keeps a dear school—but fools will learn in no other." Isn't it a fact, however, that experience is the only way a man can learn

anything—either your own experience or the experience of others?—(as, for example, in books, especially biography and history). And of the two methods, the smart man—as much as possible—learns from the experience of others. This is less painful.

Let Us Make You An Estimate Of The Cost I Wonder how much it cost... How many rooms does it have... Is there a dining room? Ranger Lumber & Supply Co.

Elect ASSOCIATE JUSTICE ROBERT W. CALVERT Chief Justice TEXAS SUPREME COURT

THANKS TO YOUR COOPERATION AND LOYAL SUPPORT— Alert, Fearless, Efficient LAW ENFORCEMENT for the Protection and Benefit of all Eastland County Citizens.

VOTE FOR J. B. WILLIAMS FOR RE-ELECTION AS YOUR EASTLAND COUNTY SHERIFF

Shop today... use a Wards credit plan... buy a complete, new, summer dress wardrobe... don't miss the most exciting dress event in Wards history!

WARDS W Bigger than ever! Greatest selection! Tremendous values! All occasion styles! Wards summer fashion pageant 300 dresses 5.98 to 16.98

GIVE MOTHER Flowers BOUQUETS CORSAGES POTTED PLANTS —from— Bettys Flower Shop 210 Main St. Phone MI 7-1811



### POLITICAL CALENDAR

Here are some important dates on the 1960 political calendar:

- April 16—Former non-residents or minors who shall have since become eligible to vote must obtain permission from county tax collector by this date.
- April 17 to May 3—Absentee voting for first primary.
- May 7—First primary election and precinct conventions.
- May 14—County convention.
- May 15-31—Absentee voting for second primary.
- June 4—Second primary.
- June 14—State convention.
- July 11—National Democratic Convention.
- Oct. 19 to Nov. 4, 1960—Absentee voting for general election.

### AS IT LOOKS FROM HERE

WASHINGTON, D. C. — Research has this information on Presidents. The youngest President was Theodore Roosevelt, age 42 years and 10 months when inaugurated. The youngest candidate was William Jennings Bryan, age 36 when nominated to oppose William McKinley in 1896. The oldest President to be inaugurated was William Henry Harrison at the age of 68 years and 23 days. The oldest President at leaving office was Andrew Jackson who was 2 days short of 70. President Eisenhower will break this record when he leaves office January 20 next year, at the age of 70 years and 98 days.

Of the 32 Presidents prior to President Eisenhower, 9 were Episcopalians; 7 were Presbyterians; 4 were Unitarians; 3, Methodist; 2, Baptist; 2 were members of the Dutch Reform Church. Coolidge was a Congregationalist; Garfield, Disciples of Christ. Hoover, Quaker. Three Presidents — Jefferson, Lincoln, and Johnson — were of no specific denomination. Only one Catholic—Alfred E. Smith—has received the nomination.

Seven Presidents were residents of New York; 6 of Ohio; 5, Vir-

### AS IT LOOKS FROM HERE

ginia; 3, Massachusetts; 3, Tennessee; 2, Illinois; and 1 each of California, Indiana, Louisiana, Missouri, New Hampshire, New Jersey and Pennsylvania.

Several Presidents — 13 in fact — have been elected without receiving a majority of the popular votes. These include Abraham Lincoln, Woodrow Wilson, and Harry S. Truman.

Twenty-four Presidents were lawyers and 5 were professional soldiers.

George Washington, who is said to have been the wealthiest man in the country in his time, left an estate valued at \$530,000. F. D. R. left the largest estate—\$1,085,500. The financial conditions of President Eisenhower and former President Hoover and Truman are not matters of public record. According to rumor, however, Mr. Hoover was a millionaire before taking office. Mr. Truman has made a million since leaving office, and Mr. Eisenhower is the first to become a millionaire while in office.

Only one man has been elected while serving in the Senate—Warren G. Harding (R-Ohio), elected in 1920. Only one—James A. Gar-

### AS IT LOOKS FROM HERE

field—has been elected while a Member of the House. John Quincy Adams was the only President to serve in the House after his term of office.

The longest nominating convention was the Democratic convention of 1924, which lasted for 14 days. It took 103 ballots to select a candidate—John W. Davis.

In the first Presidential election and in the next three thereafter, no distinct vote was made between votes for President and Vice President. The person receiving the highest electoral vote became President, and the second highest became Vice President.

The first American political parties formed with the election of 1796. Adams was the Federalist candidate and Jefferson the Anti-Federalist candidate. The Republican party today evolved from the Federalist party, and the Democratic party from the Anti-Federalists.

### Texas Rated Fifth In Percentage of Trained Teachers

In five years Texas has dropped from second to fifth place in the percentage of college trained teachers in its elementary schools, latest national rankings show.

Oklahoma now leads the nation with 99.6 of its elementary teachers having four or more years of college. Arizona, Florida, and New Mexico also lead Texas, which is fifth with 95.6 per cent.

Both the border states of Oklahoma and New Mexico, as well as nearby Arizona, have higher average teacher salaries than Texas. In 1953-54 Texas was in second

place. At that time, Arizona was first and Oklahoma was down in seventh position.

By 1958-59, the latest figures available, Oklahoma had vaulted to first place on the strength of higher requirements and better salaries. Only 80 of Oklahoma's 21,400 teachers do not have at least a bachelor's degree.

In Texas, records of the Texas Education Agency reveal that 1,772 out of the 82,088 total public school personnel did not have a college diploma in 1958-59. The majority of those were in the grades one through eight, where 1,509 teachers out of 49,828 failed to have degrees.

National rankings deal only with elementary teachers and with those having four or more years of col-

lege preparation, irrespective of degrees.

### Free Estimates On A New ROOF

Or Repair your old Roof Residential & Commercial

### Eastland - Ranger Roofing Co.

Noble Squires Eastland Ph. MA 9-2370

COME IN AND SEE OUR COMPLETE SELECTION OF FINE CARPET'S

Prices to fit every budget

We do our own installation

Ranger Furniture Exchange

"BRASHIER'S"

123 N. Rusk Ranger Phone MI 7-1404

OUR PROFESSIONAL Laundering WHAT IT MEANS TO YOU!

A SAVING EVERY WAY!

Send all your washables to us for the beautiful results that only professional laundering can give! Increase their life! Save your valuable time! Save on soaps, bleaches, starch! Save money too — by sending laundry to us!

DAILY PICK-UP AND DELIVERY

CISCO STEAM LAUNDRY

Phone Ranger 1048

See For Yourself THE QUALITY IN OUR NEW HOMES!

Now Under Construction

Choice Building Sites

Call MI 7-1127

C. B. PRUET

### Ralph Yarborough Report

The Youth Conservation Corps Bill, which I am co-sponsoring, is an important step toward meeting three basic problems of our times—juvenile delinquency, conservation of our natural resources and unemployment.

This proposal passed the Senate last year and is now under consideration by the House Education and Labor Committee. It basically provides:

- (1) Establishment of a work force of young men, ages 16 to 21, to perform conservation and improvement work in our forests and parks.
- (2) Affording many thousands of our young men, many of whom need a new purpose and interest in life, a chance to leave the circumstances which have led to delinquency and take a new start and fresh outlook.

It seems to me that few things are more important to Americans, as a free people, and to this nation, as a free country, than proper preservation of our natural resources. The Youth Conservation Corps bill will improve two of the most important resources our nation possesses—many of our young men and many acres of our national park and wilderness areas.

Patterned after the original Civilian Conservation Corps, the proposed new YCC provides for the employment of 50,000 young men the first year who are paid \$60 monthly plus food and shelter.

To see how this program benefited America in the past, one needs only look at the park improvements, the countless other public works projects still in use to see that the CCC made its worthwhile lasting mark on America. What isn't so easily seen, but is many times more important, is the beneficial result it had on the lives of many Americans.

To see how this new YCC program will benefit America in the future, one needs only to consider the tragically high rate of juvenile delinquency and the mass of work needed to put our national parks and our forest in good condition.

This program represents an investment in America's future which will be more than paid out in better citizens and improved parks and forests within a few years.

Electrolux VACUUM CLEANERS SALES AND REPAIRS JIM BLAIR Phone MI 7-1205

Re-elect Robert S. Calvert of Travis County State Comptroller

Keep an experienced man in this important State office. Now serving his 12th year as State Comptroller. Has worked in the Comptroller's office since 1930. Native Texan.

(Pl. Pol. Ad.)



FISHERMEN STILL BUY MORE THAN HALF OF ALL OUTBOARD MOTORS

A modern outfit, consisting of a 14-foot aluminum boat, and a 12-h.p. motor, enables the fisherman to reach distant waters swiftly, then throttle down for slow trolling.

We invite you to come in and see our large display of Boats, Motors, and all Fishing Necessities.

EVINRUDE ... first in outboard

L & J SUPPLY COMPANY

402 Main St. Phone MI 7-1377

FISHERMEN STILL BUY MORE THAN HALF OF ALL OUTBOARD MOTORS

A modern outfit, consisting of a 14-foot aluminum boat, and a 12-h.p. motor, enables the fisherman to reach distant waters swiftly, then throttle down for slow trolling.

We invite you to come in and see our large display of Boats, Motors, and all Fishing Necessities.

EVINRUDE ... first in outboard

L & J SUPPLY COMPANY

402 Main St. Phone MI 7-1377

SPECIAL SALE

ANGORA GOATS MUTTONS • NANNIES • KIDS • BILLIES

Consignments Solicited . . . Lots of Buyers

SATURDAY, MAY 14, 1960

Along with Regular Sheep and Goat Sale

SHEEP SALE STARTS 10:00 A.M. GOAT SALE STARTS AT 1:00 P.M.

- ★ Modern Facilities
- ★ Easy Loading & Easy Unloading
- ★ COURTEOUS SERVICE
- ★ AIR CONDITIONED ARENA
- ★ LOBBY
- ★ CAFE

Mr. Goat Man You Can Get Your Goats Here for Your Summer Pasture

Lampasas Auction

PHONE Chapel 2-3611 LAMPASAS, TEXAS

## Thinking Of A New Car?

Perhaps you didn't know, but Automobile Financing is another of our bank services available to you. Come in and let us tell you how a new or used car purchase can be financed most economically — The Bank way. Remember, it's always good to check with your bank first.



## Commercial State Bank

Member Federal Deposit Insurance Corporation

## WARDS PARADE OF POWER SALE

ALL MOWERS REDUCED

POWER EQUIPMENT TO SUIT ALL YOUR LAWN AND GARDEN NEEDS

24 IN. 22 IN. YOUR CHOICE

46<sup>88</sup> \$5 DOWN

Step-upping 24" or handy 22" mower. Clinton engines. Recoil starters. Wheels recessed for close side trim, staggered—can't scalp uneven lawns! Front-side discharge. Leaf mulcher included.

SALE! DO THE BIG JOB FAST!

24-in. self-propelled rotary FOR BIG LAWNS

EASY-STOW HANDLE

BIG 3 HP ENGINE

FULL 24-IN. CUT

FREE LEAF MULCHER

REG. 77.50

Real time and work-saver at a money-saving price. Sturdy 14-ga. steel deck. Staggered wheels for a velvety smooth cut.

99<sup>88</sup> \$5 DOWN \$5 a month

3 HP Clinton engine... handy recoil starter. No pushing—you just guide it. Wheels incl. \$5 down

SALE! 22" Rotary Tiller Big value! Low price!

VISIT WARDS GARDEN SHOP TODAY

DON'T DELAY... OPEN A LIBERAL WARDS CREDIT ACCOUNT



### Gorman Gatherings

Mr. and Mrs. Marvin Nix spent the weekend with their daughter-in-law, Mrs. Jerry Clark and Jimmy.

O. D. Tite of San Antonio spent the weekend with Mr. and Mrs. J. N. Ellison. He came for his family who have been visiting with Mrs. Hite's parent's the past week. Mr. and Mrs. Roy Rankin was in Dallas Sunday visiting friends



**Scott Bailey**  
for  
**State Representative**  
A Personal Message from Scott Bailey:

I am dedicated to the protection of individual rights. I can assure you that my actions will reflect the dictates of no special faction or group. I seek your support and the support of all who believe that hard work, honesty, and integrity in public office are essential to good government. It is my earnest desire to serve you to the best of my ability as your State Representative.

(Pd. Pol. Adv.)

and her sister and family, Mr. and Mrs. Cody Love.

Mr. and Mrs. Frank Roberts of Garland visited with relatives Mr. and Mrs. J. N. Ellison, Mr. and Mrs. T. H. Bennett, Mrs. Ruth Slaton and Mrs. Mattie Bennett. They also visited with Mr. and Mrs. Roy Rankin and Carol the past week.

W. L. Andurs was in Abilene this past week visiting his sister, Mrs. Bud Bowman.

Mr. and Mrs. J. E. Whiteside of Brownwood spend the weekend here last week.

Mr. and Mrs. L. N. Koen and son of Abilene were guests in the home of her parents, Mr. and Mrs. Jack Mauney.

Mr. and Mrs. Wylie Yeager of DeLeon were Sunday visitors in the home of her sister and brother-in-law, Mr. and Mrs. R. C. Boswell.

Mr. and Mrs. Roy Holliday and son of Houston visited in the home of his mother, Mrs. D. P. Holliday and his brother, L. D. and family.

Dale Gilmore spent the weekend with his sister and brothers, Miss Effie and D. Mr. and Mrs. Rayford Burgess, A. V. and Mr.

### Bible Study Is Taught by Mrs. C. N. Ellis

The Ladies of the Merriman Baptist Church met in the home of Mrs. Dorothy Capers, Tuesday, May 3, at 1:45 p.m., for their weekly Bible Study.

The meeting was opened with a prayer led by Mrs. A. E. Dawson. Mrs. C. N. Ellis gave the devotional, taken from the 18th and 19th chapters of Isaiah. The closing prayer was led by Mrs. Owen Falls.

Refreshments were served to Meses, G. D. Falls, Owen Falls, C. J. Cole, Dawson, W. S. Vinson, Jim Vinson, Bob Green, Ella, Sybil Whitehead, C. L. Pittman, and the hostess, Mrs. Capers.

and Mrs. Theron Gilmore.

Mr. and Mrs. G. D. Riley spent the weekend with their daughters and families, Mr. and Mrs. Tony Lamateo, Gene and Neill and Mr. and Mrs. Perry Perdue.



### Good Taste

By Emily Post

#### Tips In A Restaurant

Dear Mrs. Post: My husband and I frequently go out for dinner. We always understand that 15 per cent of the bill, excluding tax, is an adequate tip for service. Is this tip to be divided among all the men who serve the table? There is usually one waiter who takes the order and another who serves the meal. Recently, my husband was given the distinct impression (by one of our two waiters) that he should have been taken care of individually.

Answer: You give your tip to the waiter who brings your check, and he divides it with any who helped him serve. If you had wine and it was served by a special wine steward, you should give him a separate tip of about 10 per cent of his cost.

#### To Meet Daughter And Her New Husband

Dear Mrs. Post: I work in a city five hundred miles from my home town. As it will not be practical for me to go home to be married, I am going to be married in this city and my parents will come here for the wedding. After my marriage I plan to go home for a short visit. My mother would like to give a party after we get home and invite relatives and friends to meet my husband. Will you please tell me how these invitations should be worded?

Answer: Your mother would either write across her double visiting card: "To meet Mr. and Mrs. John Smith" and the time and date in the lower left hand corner, or else have the invitations engraved:

Mr. and Mrs. Henry Jones request the pleasure of your company at a reception to meet Mr. and Mrs. John Smith etc.

Drinking From A Cup  
Dear Mrs. Post: Which is more correct: to put the cup down on the saucer between sips or may it be held up between sips?

Answer: It is impossible to imagine the up-down, up-down motions that you suggest. Usually you hold the cup to your lips and take a few sips and then put it down, later on you do the same.

Taking Wedding Cake Home  
Dear Mrs. Post: I was invited to a large wedding reception recently. A very elaborate wedding dinner was served followed by wedding cake and coffee for dessert. As I could not eat the dessert, I asked the waiter for a paper napkin and a bag in which to wrap the cake and took my piece home with me to eat later. I was criticized for this.

Answer: You should not have taken cake served to you to eat at table, home with you. Wedding cake which is to be taken home is put into small white boxes and given to each guest as he (or she) is leaving the reception.

Receiving Telephone Calls In An

a flat tire. I called the A. A. A. and in a short time someone arrived to fix the tire. There was no charge for this, but what I would like to know is, should I have tipped the person who changed the tire for me?

Answer: If he gave you prompt and efficient service, it would have

been proper to offer him a tip, and then if there was a rule against his accepting it, he would have told you so.

Mrs. Post offers readers leaflets on a variety of subjects concerning etiquette. If you would like to have her leaflet E-20, entitled

"Visiting Cards and When to Leave Them," send 10 cents in coin to Dept. E. P., care of (this newspaper), P. O. Box 99, Station G, New York 19, N. Y. Mrs. Post is sorry she cannot answer personal mail. (Released by The Bell Syndicate)

### BANANZA SPLIT

### ICE CREAM

Here's a delicious new flavor combination from Boswell's. Rich banana-nut ice cream with strawberry and chocolate are combined in one delightful carton. A banana in flavor!



BUY A HALF GALLON TODAY!

### HUGE MAY PATIO ...

# SALE

because—it's "back to outdoor living." Horton Ceramics factor has just unloaded fresh new Spring designs in planters, jardineres, patio mugs and pitchers, large "man-sized" ashtrays.

New Shipment of Tropical Foliage and Various Plants and Flowering Specimens!  
It's time to redecorate your outdoor living areas and replenish your outdoor china accessories. Special low prices on large jardineres with wrought iron stands for patios and sun rooms. Select a jardenerie in your favorite color and have it planted with your favorite foliage! This service at special prices during May at Horton Ceramics factory sales room.

OPEN DAILY AND SUNDAY AFTER NOON'S

## horton ceramics

Highway 80 East

Eastland, Texas

### Super for Sandwiches



### Here's why I plant CERTIFIED SPANTEX peanut seed...



Because it certainly does my heart good to see a good crop come up... one I worked hard for and expect big things from.

That, friend, is why I plant CERTIFIED SPANTEX peanuts. But it does my wallet just as good too. You see, CERTIFIED SPANTEX means better germination... more tonnage per acre... higher grade peanuts... more mature kernels and thinner hulls.

#### And that spells P-R-O-F-I-T-S!

Neighbor, if you're out to cut costs and reap bigger profits this year... you'd better plant Certified Spantex—from Wilson County Peanut Co., where seed is their only business!

**RANGER PEANUT COMPANY**  
Ranger, Texas

### ELECT Tom Creighton



**STATE SENATOR**  
22nd SENATORIAL DISTRICT  
Sound—Aggressive—Fair

Paid For By Ranger Friends of Tom Creighton  
(Pd. Pol. Adv.)

**FOLLOW THE MAN WITH A PLAN!**

**JACK COX FOR GOVERNOR**

**VOTE SATURDAY MAY 7**

(Pd. Pol. Adv.)

**FOR POSITIVE REPRESENTATION VOTE FOR DON KINCAID for State Representative 76th District**

Eastland - Shackelford Callahan Counties  
(Pd. Pol. Adv.)

**BEFORE YOU BUY Check Our Deal On**

- FREEZERS
- REFRIGERATORS
- COMBINATIONS
- AUTOMATIC WASHERS
- DRYERS

Authorized Dealer for  
★ RCA WHIRLPOOL and  
★ AMANA

Low Down Payment  
Easy Terms  
Free Service

**Ranger Frozen Food Center**  
214 North Austin  
Ranger, Texas

All Conditioning—temperatures made to order—for all weather control. See The Dash Show Chevy Show in color Sundays, NBC-TV—the Pat Boone Chevy Showroom weekly, ABC-TV.

# BEST LIKED CHEVY



Nomad 4-Dr. 6-Pass. Station Wagon.

No wonder wagons are number one with so many buyers of 1960's number one seller! Count up the reasons yourself: WIDEST CARGO AREA in Chevy's field—a whopping 5½ feet wide... FULL COIL SUSPENSION that rides right loaded or light... BIGGEST CHOICE OF ENGINES AND TRANSMISSIONS including satin-smooth, shift-free TURBOGLIDE\*... and a long list of Chevrolet delights like ROOMIER BODY BY FISHER. Your dealer can show you that YOU CAN'T BUY ANY CAR FOR LESS UNLESS IT'S A LOT LESS CAR.



Save—right now—during the Spring Fever Selling Spree at your local authorized Chevrolet dealer's

## ANDERSON CHEVROLET COMPANY

111 S. Austin

RANGER

Phone MI 7-7181



—Call MI 7-1101 for Classifieds—

Don't Let a Faulty Title -

... push you off your land. And about the only way you can find out about your title is to get an abstract and have it examined by an attorney. If the title proves to be faulty in most cases he can cure the defects for you. Fortunately, most property owners have an abstract. If you do not, now is a good time to place your order while we are not too busy to give you prompt service. Some day you will have to have one, why not now?

EARL BENDER & COMPANY

Eastland, Texas (Abstracts since 1923)

Fishermen Don't Harvest Enough Fish from Lakes

Research has shown fisheries biologists that to maintain desirable fish populations, each year's crop of fish must be harvested either by fisherman or by some other means. Billy D. Cooper, aquatic biologist for the Game and Fish Commission, makes this statement in his very educational article, "Fish or Fishermen," in the April issue of TEJAS GAME AND FISH.

Sheldon Reservoir was the site for much of this research. It is the first lake of its size to be owned by the Commission. Since the Commission has complete authority over the lake, it decided to use

game management practices. Regulations on the lake were changed each year to give fishermen a chance to harvest more fish.

The size limit of large-mouth bass was removed, then the possession limit was raised and fishing hours were increased, and finally outboard motors were permitted on the lake. Biologists tried just about everything to help fishermen catch more fish. They worked with the water levels, removed undesirable species by nets and chemicals, controlled noxious vegetation, and even baited the piers.

"The only apparent conclusion which can be drawn from the work thus far at Sheldon," writes Cooper, "is that the average fisherman with a pole and line, in most cases, cannot adequately harvest the fish that are produced in our lakes each year, whether additional fish are stocked or not."

Public Asked For Views On Dove Seasons

South Texans want a longer or a delayed dove season this year, according to Ben F. Vaughn, Jr., member of the Game and Fish Commission.

At the last meeting of the Commission in Austin, Mr. Vaughn pointed to conditions in South Texas during the past open seasons, and urged the Commission to suggest to the U. S. Fish and Wildlife Service that different dates be adopted.

Others present at the meeting said that North Texas also would be interested in an extension of the dove season.

As a result, Howard Dodgen, executive secretary of the Commission, said that a study would be made and facts presented to the Fish and Wildlife Service, which finally sets the migratory bird seasons. Dodgen urged persons interested in both the North and South Texas zones to write their ideas to the Commission in Austin. He also is asking for a report which will be based on nest and bird counts.

Last season, North Zone hunters shot doves from September 1 to October 20. South Zone hunters had from October 1 to November 19, excepting in the whitening

territory, where the season closed November 16, because they were permitted to kill mourning doves three days during the whitening season in mid-September.

The bag limit last year on mourning doves was 10 day and 20 in possession.

AROUND THE CAMPUS

How to Have a Successful College Career By Pat Blakely

In order to succeed in college, you must apply yourself cheerfully in all activities; class-cutting is a good way to start. At the beginning of the school year, prepare a list of all possible excuses that you can use for missing classes. If you think carefully and work hard, you can have a list long enough to last an entire year.

If you do decide to go to class occasionally, remember one thing: never be on time. If you are absent enough, the teacher will be so glad to see you that she will scarcely remember you are late. If you ever go on time, it will spoil everything. The teachers will begin expecting you to be punctual, and this calamity can ruin a promising year.

If you are still wondering about some of the finer points of this system, here is another fine slogan to help you in your hours of meditation over falling grades: "If you don't succeed, try again." You, too, can be an accomplished college student. Forget your homework, cheat on tests, call your teacher names. You can succeed if you will just try. Little things like putting a skunk in the air-conditioner, throwing firecrackers into crowded classes, and throwing rocks at teachers do not seem very important; but if you work hard at these seemingly unimportant tasks, you will be amazed at the results.

Mesquite robs 55 million acres of Texas rangelands of precious moisture and plant nutrients each year. Range specialists of the Texas Agricultural Extension Service have just released a new publication—Mesquite Control—which is available from local county agents or the Agricultural Information Office, College Station. The different control measures for mesquite are discussed in detail in the publication. Ask for MP-386.

Spring is the optimum time for planting Coastal Bermudagrass in most sections of Texas. Fall plantings are considered best in far south Texas, says Geo. McBee, extension pasture specialist. He advises farmers and stockmen not to let the cot of establishing a Coastal pasture scare them off for it is a long-time investment. In some areas Coastal has produced more than 180 pounds of hay per day per acre during peak growth periods.

For farm machinery, more land or other equipment and education for the children, there is a sure way to have the money when it is needed—buy U. S. Savings Bonds regularly. New U. S. Savings Bonds pay 3 3/4 percent interest on every dollar invested when held to maturity.

TRADE WITH YOUR HOMETOWN MERCHANTS

SEE O. G. Lanier FOR OIL AND GAS LEASES AND REAL ESTATE WE BUY AND SELL Ph. MI 7-3450 - 113 S. Rusk Ranger, Texas

J. B. (TIP) ARTHUR

Asks re-election on the strength of his record FOR COUNTY COMMISSIONER Precinct 1 (Ranger, Olden, Eastland)

Bonded Indebtedness

Eastland County's bonded indebtedness has been reduced \$258,000 since Tip Arthur was first elected—from \$383,000 in 1955 to \$125,000 today.

Farm to Market Roads

Twenty miles of new Farm-to-Market Roads built in Precinct 1 since 1956. I earnestly solicit your vote and influence

(Pd. Pol. Adv.)



Paul Brashear



- Experienced
• Veteran
• Family Man

Supported

- Schools - Teachers
• Senior Citizens
• Agriculture

FRIENDS AND SUPPORTERS OF -

PAUL BRASHEAR

URGE YOU TO VOTE FOR HIS RE-ELECTION

LET'S CONSIDER THE RECORD -

- ★ PAUL BRASHEAR has served us in a job where seniority is a real investment... where experience counts. His representation has demonstrated his energy and ability in behalf of his district.
★ PAUL BRASHEAR voted against additional taxes on the automobile, feeling that this machine is already paying more than its share of the taxes.
★ PAUL BRASHEAR supported the fishing license increase because of the need of the fish and game department for more funds to improve our lakes and recreation programs. He voted for the boat safety law to make the lakes (and boats) safe for sportsman and the general public.
★ PAUL BRASHEAR has consistently used good judgment in every instance where legislation affecting REA and public utilities was concerned.
★ PAUL BRASHEAR has always sought to be a representative of ALL the people and has never been sponsored by any special interest group.
★ PAUL BRASHEAR is a veteran of World War II, a church member, active in community affairs, a Mason, a family man and a native of the district he serves. He is qualified by residence, education and experience to do the best job of representing all the people of the 76th District.

★ PAUL BRASHEAR has been instrumental in keeping the 91st District Court in Eastland County, and has prevented the introduction of legislation that would have tried to move the Court of Civil Appeals from Eastland County.

LET'S RETAIN THE MAN WHO HAS SERVED US WELL

(Paid for by Ranger Friends and Supporters of Paul Brashear)

Local AND LONG DISTANCE MOVING STORAGE



FREE ESTIMATES! A carton or a carload... we move it promptly, carefully. Storage facilities and service are the finest. Low rates. Insurance available. Ranger Transfer and Storage M. D. Underwood, Mgr. Phone MI 7-1344

Vote Saturday RE-ELECT GOVERNOR Price Daniel



Best for Texas For Unity, Progress, and Good Government SEE AND HEAR STATEWIDE TV FRIDAY, 6:15 P.M. WBAP-TV (Pd. Pol. Adv.)

—Call MI 7-1101 for Classifieds—



Senator Floyd Bradshaw Re-elect For A Second Term

I am seeking re-election to a second term as your State Senator.

I sincerely appreciate the support that you have given me in the past and thought that I would write you this last minute note before the election with the hope that you will approve of my past record.

When I was first elected to the Texas Legislature, the elderly people of my District were getting about \$23.00 per month average Old Age Assistance. I have helped raise that average to \$55.00 per month at the present time. By the addition of less than two per cent more money per year to this program I am told that the average payment can be moved up to \$65.00 per month. This will allow the maximum payments to run about \$75.00 per month.

As your State Senator I will continue to wholeheartedly support aid to the needy, schools, and other necessary State Programs.

If possible, be sure and vote on Saturday, May 7th.

Sincerely yours,

Floyd Bradshaw (Pd. Pol. Adv.)

RANGER DRIVE-IN

Box Office Opens 7:00—Show Starts at Dusk Adults 50¢—Kiddies Under 11 Free Only Eastland County Drive-In Open All Year THURSDAY - FRIDAY - SATURDAY



LAST TIMES SATURDAY

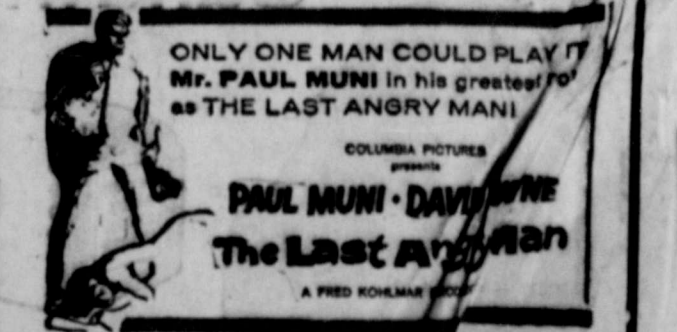
FREEVUE EVERY SATURDAY NITE

SUNDAY - MONDAY - TUESDAY



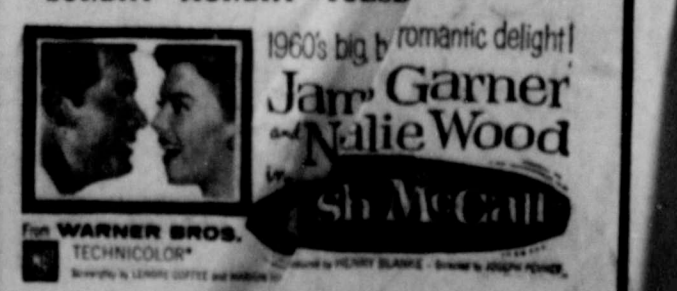
DIXIE Drive-In EASTLAND RANGER HIGHWAY

Box Office Opens 7:15 Show Starts 7:45 Box Office Closes 9:00 Admission 50¢ - Children Under 12 Free Each Wednesday Is Bargain Night - Adults 25¢ THURSDAY - FRIDAY - SATURDAY, MAY 5, 6, 7



PLUS: Color Cartoon and Sr. Reel

SUNDAY - MONDAY - TUESDAY MAY 8, 9, 10



PLUS: Color Cartoons

10th YI R Li Se Betty Is In It Into TJ Re