

Commercial Club Edition of THE LOCKNEY BEACON

Section 1

VOLUME 8

LOCKNEY, FLOYD COUNTY, TEXAS, THURSDAY, AUGUST 19, 1909.

NUMBER 6

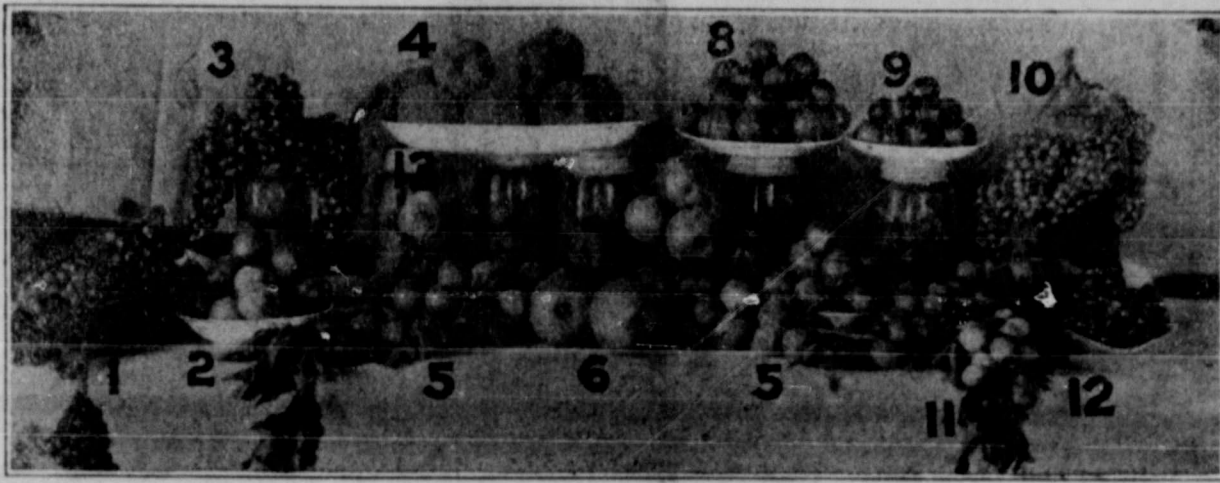
A Trip to Lockney.

Editor of Grit Tells of a Trip That Revealed Wonders—An Eye-Opener.

Tuesday evening Aug. 3 the Grit man boarded the train for Lockney, Floyd county. En route we fell in with Bell and Coryell county people going to the same destination. The trip going was pleasant one and the terminus of the railroad was reached at 9 o'clock Wednesday night Aug. 4. Old friends J. W. Norton and Downs were at the train their autos to meet the party. All being tired the night spent at Plainview. In the morning all arose feeling fresh and the trip to Lockney begun. This was a 17 mile which is made in 50 minutes one is really in a hurry.

Lockney was reached in due time and then the party drove away and Friday viewing the country. Of a truth it is a wonder to one not accustomed to Plains country. For miles one sees as fine land as found on God's green and every foot of it is just as so far as a new comer.

The only difference in being the improvements



An Assortment of Fruit From the Muncy Nurseries, Lockney, Texas, Arranged and Reproduced specially by Mr. Muncy for use on his letter heads.

and manner of cultivation. Each and every farm or ranch house has a well with windmill and wherever one of these conveniences are to be found you know that there is also to be found unlimited quantities of pure free stone water cold and refreshing of which one can drink to his capacity without any fear of bad results. This water is to be had in the Lockney country at a depth of from 60 to 175 feet owing to location. Right in the vicinity of Lockney it is only about 60 feet to this water. There are no dry wells—everyone is a live one and have never been known to vary in the least as to supply.

The Lockney country for as

much as 7 miles out is as thickly settled as this country and has as much if not more substantial improvements. The growing crop there this summer have the appearance of a good crop in this country about June the 15 or 20. Corn was in its glory so far as we could judge while the people there claim that this year is the poorest prospect they have had for many years.

The country is not a cotton country and is never recommended as such but that crop looks as well there as it does in this country and is much more promising. While it is just now putting on forms and of course its maturity depends largely on the lateness

of frost.

The People in that country tell us that they are in the midst of the driest year for some time past but that fact is not apparent to one going from here to that country.

Every acre of the land is just as good as the other and it is claimed that the land is 95 per cent tillable. The only mistake as to the printed literature that we have seen is that statement. If there is five per cent non tillable land in the Lockney country we failed to find it in two days auto ride.

Lockney is a town that has been 100 miles from a market up to the time the railroad reached

Plainview, yet is a substantial town in size between Crawford and McGregor. The people are of the highest type of manhood and womanhood—intelligence is the predominating feature among them.

Of course we cannot begin to describe the country and if we were to tell the truth as it actually exists our best friends would not believe it so the best we can say is that if you are interested and really want to know of the country call around at Grit office and we will tell you what we saw in as simple way as possible. Then if you care to know the truth we will tell you just how, when and where to go to find just what you ought to know.

Later on Grit will tell a few more things about the country and about some of the hospitable people living there.

It is not necessary to knock good old McLennan in order to say a good word for the Lockney country and we do not intend or purpose to do that at all. McLennan is good, in fact it cannot be excelled, so far as it goes, but there is yet a great deal to learn about the great state of Texas and Grit believes that if you are not absolutely married to what you have here that a trip to the Lockney country would be a source of information that would be of great benefit to any man woman or child. Call around and let's get acquainted with our neighbors who live 3000 feet above us.

"The Bachelors Did Their Duty Nobly"

Our whole ad, this week ought really to be taken up in expressing our thanks, appreciation and congratulations for the way our "Stove Contest" and "Baby Show" was attended by the mothers and children--and men, too--Saturday afternoon, last. As advertised, the stove was given to the little girl who, in the judgment of the judges, made the best bread--this good luck falling to little Miss Annie Cox, who now has the toy-stove in her playhouse at home. The gold necklace was given to the prettiest baby, the child of Mr. and Mrs. E. C. Cox. We want to thank Dr. Freeman for his appropriate words on the occasion and the judges for their kindnesses and time spent. We must tell you farmers, though of those

Cormick Row Binders and Imperial Wheat Drills

Lock for fear you might forget their superiority, and you women of those stoves of all descriptions in your room. Now, really if your old stove is not a good one it will save you money to buy one of our new "binders" and save that coal bill which will not fail to run up this winter. Then the Parlin-Orendorf and Imperial plows are what you need on that stubble, old land or sod this fall. Of course, if you are are preparing to begin plowing RIGHT NOW or as soon as possible in order to catch all you can of "next-year" crop. We'll be able to save you some money. See

P. THOMPSON

THE HARDWARE MAN

The check account puts system into your business. It lessens business friction by affording convenience and safety for all transactions. Men could run swiftly if it were not for the force of gravity and the resistance of the atmosphere. Every means to overcome these counteracting forces enables man to increase his speed. Just so in the business world, every method that saves time, insures accuracy and gives safety is hailed with enthusiasm. The check account will do all of these things for your business, and more. You cannot afford to go on in business and daily waste your efforts to overcome resisting forces when the check account puts these advantages at your command. It will be no experiment for you to employ the check account. Others have tried it and learned they could not get on half so well without it. You will appreciate our service.

THE FIRST NATIONAL BANK
LOCKNEY TEXAS

THE LOCKNEY BEACON
Homer Steen, Editor and Manager

Entered April 14th, 1902, as second-class mail matter, post office at Lockney, Texas, act of Congress of March 3, 1879.

TERMS OF SUBSCRIPTION

One Year.....	\$1.00
Six Months.....	50
Three Months.....	25

Display advertising rates on application. Bills due the first of each month.

Local notices, ten cents per line first insertion, five cents per line each subsequent insertion.

Boost for Lockney!

Don't be a drag. Join the Commercial Club and boost this great country.

Get in the ring. Lockney Commercial Club needs you.

Are you a builder? Join the Commercial Club and get busy.

Are you a member of Lockney Commercial Club? If not why not?

A man owes it to his home town to help with his money.

THIS EDITION

Of The Lockney Beacon has not long been in the making. In fact, we got the "inspiration" two weeks ago from the secretary of Lockney Commercial Club and began to put into print since last issue. True it is not a great thing, with its many faults of hurried work and rough out lines of the great country which it purports to show forth truthfully and consistently, but it may serve to bring men of brain, brawn and energy to our land and if it to any extent reaches this end the extra output, time and labor shall have been spent in a good way and shall not be begrudged.

MY TRIP DURING VACATION.
(By Miss Katie Freeman)

The evening of the 14th brought our departure from Galveston, waving good by to our newly made and much appreciated friends.

We started on our way back to north Texas passing through the city of Houston we could see but little of it as it was after night. Arriving in Fort Worth for late breakfast, after which we wended our way into the little town, our former home Era, Texas, where my grandmother yet lives, and in whose home we had a very welcome reception. We spent some weeks with her and the friends of old acquaintance.

On the eighth of June papa and I leaving my mother and sister yet with my grandma left for Gainesville arriving there at 4 P. M. spent the night with a friend of papas, Mr. W. H. Dougherty. On the morning of the 9th accompanied by some of papas friends we started to attend the Old Soldiers Reunion at Memphis, Tenn. On our way I saw many interesting things, especially in Arkansas. I saw there many swamps and dense forest of pine trees and many other kinds of trees. Just before arriving in Memphis we crossed the great Mississippi river which is many miles long and one mile wide, and every one that crosses this bridge pays 50 cents, this is the longest bridge in the United States. The Mississippi is the division between Tennessee and Arkansas. When you have crossed this bridge you enter into the beautiful city of Memphis. We arrived there for a late breakfast. We walked around. We went down to the river and saw a boat race, and saw boats landing.

We went through a boat. It has its library, dining room, bed rooms, kitchen and a beautiful porch which you can stand upon and look across the beautiful Mississippi and enjoy the breeze.

Central Plains College
Plainview, Texas

offers the following classes of work:—Classical, Scientific, Philosophical, Literary, Academic, Preparatory, Theological, Dress-making, Book-keeping, Shorthand, Typewriting, Telegraphy, Music, Art and Oratory.

Faculty of twenty members. Christian, non-sectarian, interdenominational, co educational. Equipment the best. Social environments pure and wholesome. Send for catalog.

L. L. GLADNEY, President
Plainview, Texas

We saw the United States Custom house. It is situated near the river. It has a most beautiful lawn and many large trees. We went from there back to the Hotel, stayed there until in the afternoon.

Then in the afternoon we took a street car and rode through part of the city. The streets were crowded with people. I saw many beautiful buildings. The hotel which we were stopping in was twelve stories high. I saw many buildings of 13 and 14 stories high. We went to one of the Parks there were many soldiers there some were there on cots. Memphis is a large and a magnificent city. We spent one day there. On the evening of 15 we left this crowded city and journeyed on to Nashville arriving there the next morning in time for a late breakfast. The depot at Nashville is a magnificent building, all the trains run under the depot. After breakfast we were walking around and we decided to go to the Capitol. This Capital is a fine building. The lawn, its monuments, and its trees are beautiful. A fine bronze statue of General Jackson adorns the ground on the east side. President James K. Polk and wife are buried on the grounds. W. M. Strickland was the architect of this magnificent building.

Walked down to the Cumberland river. Then we took a street car and rode out to the Nashville Bible School. This place is five miles from the city and is situated in a most beautiful place. The campus is very beautiful, its lawn and its large trees are very attractive. We visited Rev. Dr. Lipscom who is the founder of this institution.

I hope in my next to give you the country life in Kentucky and Tennessee as I saw it.

(To Be Continued)

CLUBBING OFFER

The Dallas Semi-Weekly Farm News makes a specialty of Texas news. Outside of this, it is unquestionably the best semi-weekly publication in the world. It gives news from all over the world, but particularly an unsurpassed news service of the great Southwest in general. Specially live and useful features are the Farmers' Forum. A page of little men and women. The Woman's Century. And particular attention is given to market reports. You can get the Sem Weekly Farm News in connection with The Lockney Beacon for only \$1.80 a year cash for both papers.

Subscribe now and get the local news and the news of the world at remarkably small cost.

LETTER TO JAS. DAGLEY.

Lockney, Texas.

Dear Sir: Todd & Downing, contractors and builders, Morgan City, La. have painted Devoe for 3 or 4 years. They say it takes less gallons Devoe than of any other paint they have used. That means that a job costs less with Devoe; not only for paint, for labor as well.

They paint nothing else, Devoe exclusively.

They have said nothing about the comparative wear of Devoe and others; oversight, may be; perhaps too soon for that. But Devoe is the strongest paint, that's why least gallons; best wear, same reason. Least cost and longest time between jobs.

Yours truly
F. W. DEVOE & Co.
P. S. E. P. Thompson sells our paint.

The greatest country in the world waiting for the tillers plow. Join the club and help bring more working farmers to the Lockney country.

DIRECTORY
Courts.

District Court convenes Monday after first Monday January and July.

L. S. Kinder, Judge.
L. C. Penry, Dist. Atty
W. B. Clark, Clerk.
A. C. Goen, Sheriff.

County Court convenes Monday in January, April and October.

F. P. Henry, Judge.
W. B. Clark, Clerk.
A. C. Goen, Sheriff.

Commissioners' Court in regular session 2nd. in February, May, August and November.

F. P. Henry, Presiding
D. C. Allmon, Com. P.
B. F. Sanders, "
W. B. Crabtree "
Geo. L. Fawver, "
Justice Court of Prec convenes the 3rd, 5th Saturday in each month
M. Livingston

Lodges.

Lockney Lodges, A. meet Saturday night of the full moon of each month.

The Lockney lodge meets every 2nd and day in each month.
John M. Hughes, Com. mander. Homer Ho

Lockney Camp No. O. W. meet 1st and day nights in each month.
S. A. Homer

Lockney Lodge, N. of P meet every Tuesday.
T. C. Bradley Com. mander.
S. A. Henry K

Lockney Local I socialists meet 1st each month at 2:30.
J.

I. O. O. F. meet day night in each month.
J. H. J. J.

Churches.

Church of Christ, 11: a. m. every Sunday.

Methodist, Christ, Rev. J. H. J. J. will preach Sundays at 11: a. m. every Sunday.

Prayer meeting every Wednesday.
Junior League, W. H. M. after 1st of each month.

1st Baptist, Preaching 10 o'clock every Sunday school 10 every Sunday.

H.

Farm day be Sunda

WE ARE IN THE DRUG BUSINESS FOR YOUR HEALTH AND OURS

Albert Randolph has just returned from Dallas where he has bought entire stock for the Petersburg Pharmacy and for our house in Lockney. We are therefore, better prepared than ever to take care of your drug wants on a "square deal" basis. Call for what you want when you want it.

RANDOLPH BROTHERS LOCKNEY TEXAS

with
the lad
We have
and ladies
Lion Special

WE WILL

Children
Perce
Ladies
Men's
Boy's sh

Call and Inspect Our

YOU

J. E. BEASLEY

Business Locals

UP-TO-DATE ABSTRACT.

Title to every piece of land in Floydada County.

TOM P. STEEN.
Floydada Texas

Patross Flour. Best on Seven Bros.

Keep your money at patronizing the Plainview Fence Company.

Will never stopurkickin' buy your cold drinks at BRIS' Confectionery.

See the line car at the garage trip to points by way of Will meet trains even-

Lockney Auto Line.

MILL.

Started our mill to be ready to make Saturdays.

RAMSEY BROS.

cross on left hip. for cattle with

J. J. NORRIS.

ckens, butter best market price our store.

J. A. BAKER.

os. will sell coal at \$11 per ton.

BRICK.

stone and let us figure

MYERS.

will sell coal at \$11 per ton.

AGENTS WANTED.

To sell our fence. Call or write us at once.

Plainview Wire Fence Co.
Plainview, Texas.

FOR SALE—Eight head of mules 3 to 7 years old, average 16 hands high—good shape. Apply to
J. G. WRIGHT,
Lockney, Texas.

Hogs for sale.—Apply to
J. J. DAY,
Floydada, Texas.

NOTICE

I am collecting the accounts of J. M. Crawford, deceased. Please call on me and settle if you know yourself to be indebted to him.

W. A. BREWSTER.

BUGGIES FOR SALE.

We still have some buggies—good second hand buggies—that we want to sell. If you want a good buggy see me.

E. M. ALFORD.

Local News

A. S. Love and family, left Thursday of last week for Fort Worth where Mr. Love has been given work by the Santa Fe and will make that place his home and headquarters. These people had made many friends in Lockney who regret to see them leave.

J. B. Downs, wife and daughter, R. E. Erwin, Miss Maggie Wright, J. W. Norton went for an outing on the caprock Sunday. They saw some beautiful scenery and spent a delightful day.

"SKUNKED" 2 to 0.

When the game was over Saturday evening the Lockney boys realized that they had been badly beaten by their own inability to hit safe. Both the Sandhillites and the locals played consistent ball, the visitors winning the first when they got two runs on errors.

The boys have played four games, having taken two each. Saturday at the picnic at Petersburg the tie will be played off.

KICKED OR PAWED IN THE FACE

Last Thursday W. M. Webb, of the Irick community caught up a yearling colt to doctor him for worms in his fore leg and was administering the medicine the last he remembers. The animal either kicked or pawed him so quick he could not remember which as he was unconscious for some eight or ten hours. The hurt was in the face above and just to the right of the mouth. He has been up since that day though the pain has been severe.

Miss Lila Dean Peace of Plainview, and Miss Wright, of Kress were visiting the family of Z. T. Riley the latter part of last week.

Dr. J. C. Dial, was in Lockney from Cone. He says that crops are fine and that health is "distressingly good" in his community.

J. E. Beasley last Saturday went to Plainview where he met his wife and family who are joining him to live at this place.

A. C. Goen was in Lockney Sunday from Floydada on business and pleasure.

Haggard
Waggon
Mexico, U
in which state
with friends and

J. W. McDonald,
New Mexico, has been
ney since last week.

Mrs. Ghent Carpenter and son were met at Amarillo Friday by Mr. Carpenter and accompanied home Saturday. They have been visiting in Bell county during the summer.

Mrs. Bert Broyles and her family with the exception of Bert himself, left last week for Portales to visit with her father and family.

Roy Brown and wife and sister, Miss Annie Higgins returned Friday from Portals, Elida and other points in New Mexico, where they have been visiting and prospecting.

W. E. Broyles is in Portales to be absent from Lockney some two or three weeks.

J. M. Douglas & Company showed in Lockney five nights last week to good sized crowds considering the numerous other attractions in town. The show was as good as the patronage, the comedy being well rendered through the week.

SPECIAL NOTICE

The third quarterly conference of the Lockney charge will meet at Ellen, Saturday August 21 at 11 A. M. G. S. Hardy will be there and preach, dinner will be on the ground, everybody are invited. Let all the Stuarts strive for a full quarter report, and all official members be present.

THOS. HANKS.

neighborhood
Saturday on business.

Bud Broyles and family left Saturday for Coryell and McLennan counties. They will visit for some time with their friends and relatives of old.

Mrs. J. M. Shafer, Tom Shafer and Ellis Carter, of Plainview, were in Lockney Wednesday night.

Mr. and Mrs. V. N. Dillard were accompanied home Thursday from Alton, Texas, by Mr. and Mrs. Ben Dodson and family who will visit at Lockney for awhile.

J. H. Byington and family leave today for Missouri on a pleasure trip to their old home.

Norton Baker left Sunday for Dallas to study photography under an artist in this line.

Robt Jones last Saturday bought a quarter section from Roy Brown, of east of Lockney twelve miles. The consideration is private. Robert says that crops so bountiful as are made this fall with so little rain, proves to him its the farming country of state.

Let J. L. Landrum do that building for you.

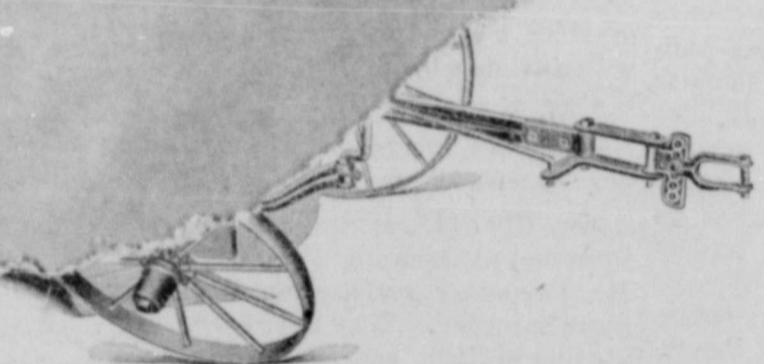
If you are in the market for an up-to-date residence see J. L. Landrum.

ill

you WANT it

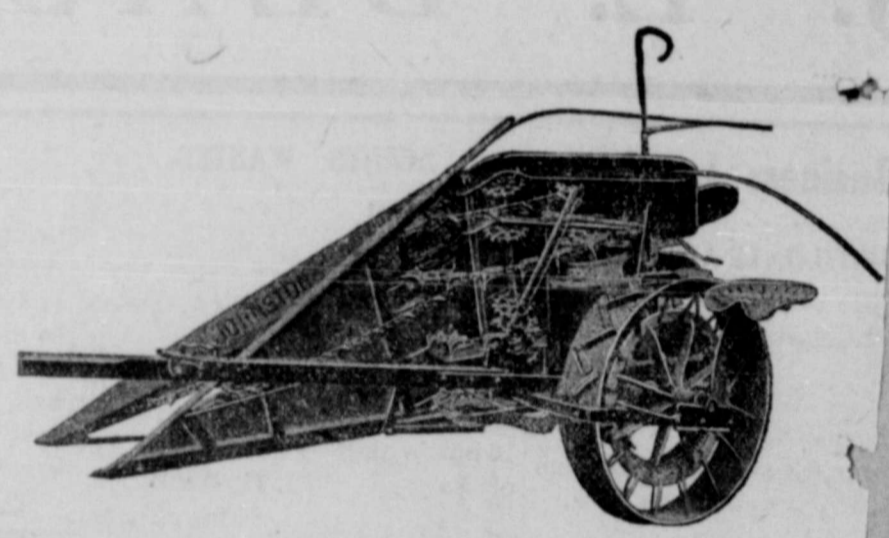
iron, hardware notions, and can

SHOW YOU



The John Deere Gang Plow

"The Old Reliable." When you want to plow this will take the ground.



The Johnson Row Binder

The best Row Binner on the mardet-no side nraft. It pr en its superiority last year in the field. A trial will convi you

OUR LINE OF BUCK STOV

is most complete. Everything from a range down. Make your wife happy by the purchas stove she will enjoy using, or matting, carpets, linoleum, art squares, rugs, household furni any kind you may need you can afford to buy at our store.

... .. REMEMBER—QUALITY CONSIDERED THE PRICE IS THE THING .

YOURS FOR BUSINESS

C. R. McCollum Hardware-Furniture

TAILORING WORK

Suits Cleaned and Pressed
Ladies Skirts a Specialty.
All work guaranteed.

J. A. DAVENPORT

Baker's Old Store Building.

ARTHUR B. DUNCAN
General Land Agent.

FLOYDADA, TEXAS.

Buy, sell and lease real estate on commission; Render and pay taxes for non-residents; Investigate and perfect titles; Furnish Abstracts of Title from Records.

Have had more than 20 years Experience with Floyd County lands. County Judge of Floyd County for 16 years. Now devoting whole time to land business.

Bring your lands with me if for lease. If you wish to see, write or phone me for all bargains.

RESPONSE SOLICITED

S. E. Corner Square
FLOYDADA, TEXAS.

WOODS & WIFE
Resident Dentist

in Lockney first in each month, regular week or longer if necessary. Office at Raneros.

BRAND IS



Have any stray cattle and, please notify me.
JIM GRIFFITH.

KELLEY,

JEWELER

Do all kinds of jewelry repairing at reasonable prices. Watches repaired, rings resawdered, sets replaced. Your work will receive careful attention. Give me a trial.

Lockney, Texas.

THE FORTWORTH
RECORD

A Cosmopolitan Semi-weekly news paper, Democratic, and
THE LOCKNEY
BEACON

BOTH, ONE YEAR, \$1.80

NOTICE

I am collecting the accounts of J. M. Crawford, deceased. Please call on me and settle if you know yourself to be indebted to him.

W. A. BREWSTER.

BUGGIES FOR SALE.

We still have some buggies—good second hand buggies—that we want to sell. If you want a good buggy see me.

E. M. ALFORD.

IN TOUGH SHAPE.

J. T. Livesay, who returned Saturday from Jackson county, Oklahoma, said things looked pretty gloomy in that portion of the new state. Hot and dry with crops scorched means little or no feed to be made this year in that section.

SILVERTON PICNIC.

Lockney was represented fairly well at the Silverton Picnic Friday and Saturday of last week and those who attended say it was a good one. The barbecue was especially good. Silverton has a good name as an entertainer and the record has not been lowered in this instance.

C. R. and O. R. McCollum left Saturday for St. Louis to do their fall trading. C. R. will go on from that place to Winfield, Alabama, to visit for a month with sisters near that place.

The \$3000 residence of J. A. Baker's is beginning to show up now. It will be one of the pretty ones in town.

BUMPER CROPS.

BURMINGTON, Colorado, Aug. 7.—S(Special.)—Bumper crops of grain are reported from all sections of eastern Colorado where dry farming operations have been carried on this year. The harvest in the dry farming districts along the lines of the Island-Frisco system, give a most remarkable evidence of the development of eastern Colorado that has been made possible thru the application of dry farming principal, of agriculture.

Three hundred thousand acres of so-called arid land in eastern Colorado, which last year produced practically nothing, has been transformed this year into fields of grain. It is estimated that the yield of wheat thruout this territory this year will average 25 to 50 bushels an acre. Some of the more enthusiastic dry farmers think this estimate is too conservative.

Its time to begin to think about planting trees. Lockney has lots of trees but needs more. The streets must be lined.

The boosters of the town of Montgomery, Ala., have erected a monster electrically illuminated sign bearing the name of their community on the roof of factory building facing the railroad. The sign is 75 feet high and 85 feet long, lit by 2600 lamps, and bears an immense key and the inscription, "Montgomery, Your Opportunity" with a sky rocket effect. The idea is to impress the name of thousands of passengers going by on the railroad and possible ignorant even of the name of the town—Scientific American.

W. L. Smith has almost completed his new residence in East Lockney.

Ed Jones, Floyd county man, left Tuesday for Oklahoma.

W. T. Brown, of Floydada, was in Lockney Tuesday visiting Robert Jones and wife.

A party at the home of Mr. and Mrs. J. J. Pounds, given by their daughter, Miss Nina, was enjoyed very much by a large number of friends Saturday night

T. E. OSBORNE
Contractor and Builder, plans and specifications furnished on short notice.

LOCKNEY TEXAS.

B. F. RIGDON

—The Tonsorial Artist—

First-class Barber
Work, and Baths in connection.

West Side Main St.—B. F. Rigdon
Proprietor.

ARTIE BAKER
SHOE SHINER

Delivers the goods when it comes to shinin' shoes. Stop in his stand in Vandergriff's Barber Shop. Price 10c.

! PHOTOGRAPHS !

PHOTOGRAPHS
Portraits, Views, Stamp and post card work done Local post cards a specialty

NORTON BAKER

See L. G. Neel for painting and paper hanging. All work guaranteed. Prices reasonable. Will do out of town work.
Lockney, Texas.

LOCKNEY TRANSFER
AND
LIVERY STABLE

Transfer on short notice. Good horses and rigs. Best feed to be had. Horses boarded by day, week or month.

ALFORD & SON Prop.

DENTAL NOTICE

Dr. A. R. Taylor, Dentist, will be in Lockney the first week in every month to do Dental Work. Persons desiring his services call at Red Cross Drug Store.

W. W. ALLEN

Contractor & Builder

Will furnish estimates on short notice and do work satisfactorily.

Lockney Texas.

Seven Bros. will pay the cash for hogs and cattle.
Lockney, Texas.

NORTHWESTERN NATIONAL LIFE INSURANCE COMPANY

MINNEAPOLIS

LEONARD K. THOMPSON, President

Record for 1908		January 1, 1909	
Total Income	\$1,491,494.01	Admitted assets	\$5,601,953.23
Excess of income over disbursements	471,989.90	Total paid policyholders	7,333,528.25
Paid policyholders and beneficiaries	713,502.33	Insurance in force	23,901,654.00
Increase in surplus	52,984.88	Surplus	203,805.57

The policies of the Northwestern National are the foremost exponents of all that is best in life insurance, the most liberal issued, simple agreements, easily understood by all who read them

DESIRABLE AGENCIES OPEN TO MEN OF ABILITY AND RELIABILITY

A. H. CHAMBERS, State Agent

519 WILLSON BUILDING

DALLAS TEXAS

LONE STAR AT SEATTLE.

TEXAS REPRESENTED ONLY BY
WILD BILL AND HIS BIG SHOW.

Seattle, Aug. 8.—The Lone Star State, while roming late in the program at the Alaska-Yukon Pacific Exposition, October 7th will never the less have a brilliant celebration. The Texas Society in the State of Washington is busy planning the entertainment of the Governor and his staff, and the date chosen is a propitious one, being at the close of the Live Stock Show, a feature of the Exposition which is of vital interest to the state of Texas.

At the present time thing that savors of the Plains at the Exposition is "Texas Bill and his Broncho Busters" on the Pay Streak, "but there is more of this more of the Lone Star State than broad-rimmed hats, buckskins and dancing Indians," said Hugh Fitzgerald, Editor in chief of the Dallas Times Herald, the other day, Texas is a great state commercially, with her thousand miles of water front on the gulf coast and 80 million acres of agricultural lands in the interior, continued Mr. Fitzgerald. With the completion of the Panama Canal, Texas will be 5,000 miles nearer the Pacific northwest by water than at present, and with

the 20th century refrigerator steambot, Texas beef and vegetables will find a ready market on the Gold Coast—while Pacific lumber will be returned to build the barns and granaries of her rolling prairies.

This is not an ideal dream but a present reality which will be realized in the present generation and one which the Alaska-Yukon Pacific Exposition will hasten."

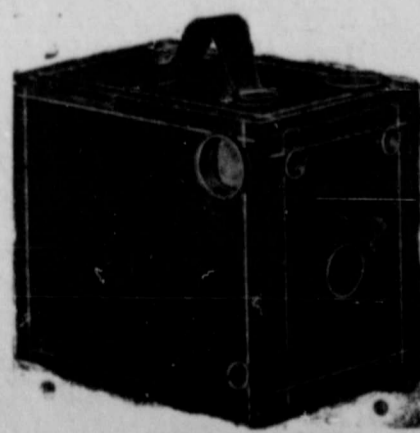
The Alaska-Yukon-Pacific Exposition offers all the pleasures of a delightful summer outing, with her cool, refreshing ocean breezes, mountain air and picturesque scenery, while the exhibits gathered from forests, fields, mines, and streams of the Pacific Northwest along with products of art from the Orient and the industrial ingenuity of the insular possessions of our country, from one grand panorama of the world's progress which to be appreciated must be seen. Here upon the shores of Lake Washington and Puget Sound are assembled the people from all quarters and corners of the globe, with their peculiar customs of manners dress and speech, visting with each other in a friendly rivalry of exploitation, and out of which the student, the business men and the tourist may each gather food for thought, items for profit and days of pleasure.

An October Journey to the Pacific Northwest will awaken Texans the fact that America and

Alaska each need the other in closer commercial relations and that Texas is the natural gateway to this union. The "Call of the Cascades" has been sounded and the Banquet of good things is now ready and waiting the advent of the Lone Star State visitors from the banks of the Rio Grands.

One-half an acre in the suburbs of Lockney, belonging to W. J. Myres, was sold by Wofford and Riley last week for \$1,200. This property had an excellent little cottage, and other improvements and the price demonstrates the moderate cost of a home in Lockney.

J. W. Blair was in Lockney the earlier part of the week on business and visiting with J. M. Muncy and family.



**YOU HAD BETTER
HURRY AND GET ONE OF
THOSE KODAKS
AND GET IN THE RING
BEFORE IT IS TOO LATE !!
KELLEY BROS.**

EIGHT DAY BARGAIN SALE

Not a faker, but genuine bargain offerings. Read the following prices. Bargains that are not made every week in the year. Do not miss this opportunity at the Cash Store

...August 21st to and Including August 29th...

10 ct. domestic at 7 1-2 c.	16 2-3 black lawn 131-2	Ladie's 50c. lisle hose 37 1-2
12 1-2 ct. " at 9 1-2 c.	20c. lawp. 12c	Ladie's 65c. lisle hose
18 2-3 ct. " at 15c.	25c. dinnities 16 2-3	lace all over 42c
30 c. sheeting, 80 inches wide 24 1-2c.	\$1.10 voile 91c	20c. hose 14c
\$1.50 counterpane \$1.00	15c. heather bloom 11 3-4	Children's hose reduced to cost.
\$2.50 counterpane 1.75	45c. " 33 1-3	Ladie's 15c. vests 9c
\$1.75 counterpane 1.25	60c. panama 47c	60c. belts 43c
35c. table linen 25c.	50c. skirt goods 36 3-4	40c. belts 26 1-2
60c. table linen 43 1-2c	16 2-3c. curtain goods 11c	\$1.75 gloves \$1.35
65c. table linen 47c	Best grade white satin 72 1-2	\$1.35 gloves 1.00
6 1-4c. calico 5c.	60c. silk 37	50c. collars 29
8 1-3c. calico 6 3-4c	50c. wash silk 30	35c. collars 19
8 1-3c. plaids 6 3-4c	12 1-2c. embroidery 10	Gent's ties 65c. at 42 1-2
10c. plaids 7 1-2c	15c. embroidery 12 1-2	Gent's hose 60c. 45
12 1-2c. bleached canton flannel 93-4c	Prices on laces and ribbon that will make your head swim	Gent's hose 50c at 37 1-2
15c. bleached canton flannel 11 3-4c	20c. hdkfs. 14c	Gent's hose 25c. 19c
10c. percale 7 1-2c	15c. hdkfs. 11c	Shirts \$1.50 \$1.14
12 1-2c. kimoni goods 9c	Fine net waists over silk 3.00	\$1.00 shirt .74
20c. gingham 15 1-3	Good grade silk gloves 37 1-2	\$1.75 shirt 1.39
\$1.75 lace curtains \$1.25	35c. lisle gloves 24c	\$2.00 shirts 1.47
\$2.50 lace curtains \$1.75	Mayflower \$2.00 shoe \$1.50	Gent's elastic gear drawers 47 1-2
10c. bastiste 7c.	Society Star \$3.50 shoe \$2.75	Gent's 50c. mesh shirts 39c
35c. dress goods 22 1-2	All other ladies shoes just as cheap or cheaper	Super Egyptian underwear 75c per suit.
65c. art linen 47 1-2	Ladie's 30c. hose 23c	Colored underwear per suit 75c.



A Fine Assortment OF LADIES DRESS GOODS

READ EACH ITEM CAREFULLY

C. R. McCollum D. G. Co.
STAR BRAND SHOES ARE BETTER

THIS SALE LAST EIGHT DAYS

N. H. Lewis & Co.
LOCKNEY
Floyd County, Tex.

Special agents for 40,000 acres of the finest alfalfa, corn, wheat and oat land in Floyd Co. Prices range from \$25 to \$50 per acre. Well improved. Write us for list of same.

TO TAKE OVER SYSTEM.

A dispatch from Amarillo, states that the South Western Telegraph and Telephone Company has bought of the North Western Texas Telephone Co., the lines running from Amarillo to Memphis and will begin at once to connect Memphis and Wichita falls, and put in a copper circuit from Amarillo to Dallas so that phone connection will be possible between the two points. Discussing this dispatch last week a prominent attorney of Plainview stated that he knew from fairly reliable sources that the whole North West Texas Telephone System had been bought by The South Western, which according to the report would change hands

on the fifteenth. The South Western Telegraph and Telephone Co., is a part of the Bell System.

Mrs. W. A. Shipley and daughter, Hallie, were in Lockney Monday from Floydada.

J. W. Adams and T. P. Adams, business men of Floydada, were in Lockney Wednesday.

Beasley does just what he says he will do—at and below cost till the new goods come.

Miss Irna Cromartie visited in Floydada Tuesday and Wednesday.

Chas. Boswell, who has a sod crop southeast of Lockney seven miles, says it will make fine feed.

THE COMMUNITY SMALL PARK.

Monitor: A very large number of American cities that were once small, but have become large, are regretting that in their early days they did not set aside lands or more lands—for park purposes. Even if they had not become nearly as large as they are today they would have in these parks almost priceless possessions. A very large number of American communities that are small and that expect to become larger are now planning to profit by the mistakes of their sisters. Even villages in many parts of the country are dedicating land within their limits to public purposes. The whole movement is the nature of a revival of the village green and company, and it is a movement that should be applauded.

The small park beautifies the community. This is as true of the village as it is of the metropolis. The open square has for years been one of the charms of New York, as the common has been one of the charms of Boston.

It is when communities are young that they should make provisions for small parks, and they are never too young to begin this or any other good work. The one regret with those cities already in possession of small parks is that they possess so few of them; and the best evidence of their value is the fact that the larger cities of the country, although better provided with small parks than they used to be, are moving for the acquirement of more of them.

Miss Pearl Byars is absent from Lockney visiting at Abilene.

Tom P. Steen, of Floydada, is in Lockney on business.

LOCKNEY COLLEGE & BIBLE SCHOOL

For young men and young ladies. A first-class primary and intermediate departments. We offer classes for all grades—not required. Full business special Vocal Music (Piano in town); good elocution; Teacher's course. Degrees conferred and students graduated. Large competent faculty. Good living arrangements at \$13 to \$13.50. New building entirely complete before opening Sept. 10. Send for catalogue.

Jas. L. German, Jr., President

WIDOW SEEKS HUSBAND.

New York, Aug. 7.—An Indianapolis widow has written a letter to the Commissioner of Immigration, requesting that her name be placed on file at Ellis Island for a desirable husband. The widow, whose name will be given to any unattached male person who is in earnest, writes that she has been informed that the benevolent American Government is furnishing brides for immigrants, and asked the Commissioner to file her name on the list of eligibles should any immigrant be seeking a mate of mature years. She describes herself as an unnumbered widow 35 years old, 5 feet 6 inches tall, weighing 160 pounds, of good appearance and address, thoroughly healthy and of amiable disposition.

A Ball game has been announced between Lockney Black Diamonds and the White Stars of Petersburg and Sandhill to be 3 o'clock Saturday evening at the ball park.

NEW SIDEWALKS.

J. L. Norris and B. F. Rigdon are this week laying side walks in front of their business houses on Main street.

The beginning of concrete side walks for Lockney is here, sixty feet of concrete helps but a business town laid with concrete would look better.

J. W. Sealy, of Temple, Texas, is prospecting in the Lockney country.

Lee Randolph Pharmacy, last week celebrated their opening at Petersburg by keeping three clerks busy waiting on the trade in that flourishing little burg. They have a large stock and should do well at that place.

It is not at all pleasant to read of the many sections over Texas, Oklahoma and in fact, the whole United States, where crops are making total failures, only one consolation can be indulged, that this section will be able to furnish its portion of the feed supply from our abundant harvest.

Commercial Club Edition of THE LOCKNEY BEACON

Section 2

VOLUME 8

LOCKNEY, FLOYD COUNTY, TEXAS, THURSDAY, AUGUST 19, 1909.

NUMBER 6

THE LOCKNEY COUNTRY

(Continued from p. 5 Section 1)

have houses of worship and organizations throughout the county, and as a general rule, every-body attends services. The people who live in Floyd County are known for their hospitality and sociability, while the larger part are native Texans, yet there are representatives from every state in the Union. You will find no rowdyism or lawlessness; there is practically no use for Jails. The ladies have their clubs and societies; the men have their lodges and institutions. The social conditions of Floyd County will compare most favorably with the best communities in other states. If you are sociably inclined you will find a hearty response in the Lockney Country.

The first thing that attracts the attention of the homseeker is the different varieties of soil. A rich, sandy loam, with clay sub-soil, gives place to that of a chocolate of great depth, changing again to a black loam, with clay sub-soil, all of which is easily broken and pulverizes very readily, and has the necessary properties to retain moisture to a

wonderful extent.

The country is comparatively level, but just rolling enough to give it good drainage and practically no waste land whatever.

The thoughtful farmer who contemplates settling in this attractive country, and who is desirous to know whether the water supply is sufficient for all the needs of his household and all the stock that can be raised on the land, also that it is healthful in quality, can rest assured that water in unlimited quantities and of unquestioned purity is awaiting a pump and windmill any where he desires to have it brought up on these broad Plains.

The water supply of this country is unexcelled and seldom equaled in any country, being the genuine freestone variety and found in unlimited quantities at a depth varying from 40 to 250 feet (in the Lockney country it is 50 to 60 feet) and it is as pure as any ever pumped from the earth. The country is underlaid with the sheet-water so that any number of windmill pumps working side by side will each throw a large, full stream, unaffected by the close proximity or number of pumps in action.

The climate is delightful and healthy. It is not far enough north to be disagreeable in winter and the elevation is such that

LOCKNEY NEEDS:

Some enterprises which would pay and which Lockney really needs;

500 quarter-section farmers.
Truck Farms.
Cannery.
Elevator.
Flour Mill.
Laundry.
Ice Plant.
Another good Hotel.
Another Bank
Loan and Building Co.
Wire Factory.

the summers are always pleasant. The nights are always cool. The altitude is ideal. The atmosphere never gets hot and oppressive but is light and bracing. The elevation makes the climate a specific for asthma, the light pure air bringing relief. And it may be added for the benefit of those who have been used to a lower altitude that the dryness of the atmosphere up here makes the cold seem less cold and the heat less hot than in the damp or humid air of a lower country. The high altitude 3,300 feet above the sea level, makes the summers here as cool as in the northern states, while more direct rays

of the southern sun which this region obtains from its lesser latitude serve to temper the winters so that winter rarely becomes very cold, and then only for very short periods. Mild, sunshiny winters and cool invigorating summers are a most rare and desirable combination.

C. R. McCollum Hardware & Furniture Company treated their customers Saturday to all the lemonade they could drink, just as a proof of appreciation. Lockney merchants still have souls that are not dried up and blown away and hearts as big and warm as the heart of a farmer. You don't have to take a drink of their ice-cold lemonade every time to find it out either, just price their goods for a change.

Misses Vera and Lollie Dillard, with Miss Nellie Siler, sisters of V. N. Dillard, of this place, arrived in town Saturday afternoon from Hereford on a visit. They left for Lubbock Tuesday in company with G. S. Wilson, to visit the family J. P. Posey east of that place, to return today and tomorrow leave for home at Hereford.

J. T. Shipley and family of Plainview spent Tuesday night in Lockney.

LIANO ESTACADO DAY

SOUTH PLAINS COUNTIES TO HAVE SEPERATE DAY AT DALLAS STATE FAIR--FLOYD COUNTY IN THE RING.

To a man interested in Floyd county or the South Plains, (the Lockney country) and for some reason can not come to see for himself, we will advise him to go to the Dallas Fair on Llano Estacado Day, which will either be the 3rd, 11th, or 14th day of the Fair, on this date you can see the products of the South Plains and see the prosperous south plains people to your full satisfaction. In this Llano Estacado Day specially set apart, will be specially represented eleven counties of the south plains, namely: Floyd Hale, Briscoe, Swisher, Lamb, Lubbock, Hockley, Terry, Crosby Lynn and Garza.

The Secretaries of the various commercila clubs in this section have gotten together on the proposition and Sydney Smith, Secretary of the Fair Association informs them one of the above dates is at their disposal and they intend to make it a "boosters" good and proper.

DIRECTORS

C. I. White
J. D. Griffith
W. C. Nichols

L. T. Lester
CANYON, TEXAS

Homer Howard
W. S. McNeil
Ghent Carpenter

Our Motto:

SAFETY RATHER THAN GREAT PROFIT

The First National Bank

LOCKNEY TEXAS

C. I. WHITE, President

J. D. GRIFFITH, Vice-President

GHEHT CARPENTER, Cashier

THE LOCKNEY BEACON
Homer Steen, Editor and Manager

Entered April 14th, 1902, as second-class mail matter, post office at Lockney, Texas, act of Congress of March 3, 1879.

TERMS OF SUBSCRIPTION

One Year.....	\$1.00
Six Months.....	50
Three Months.....	25

Display advertising rates on application. Bills due the first of each month.

Local notices, ten cents per line first insertion, five cents per line each subsequent insertion.

SOMETHING OF THE PRODUCTS

Of The Lockney Country--Unexcelled In Many Ways As The Farmer's Abode

There is no country on earth that promises greater possibilities diversified farming than Floyd county. The seasons are a month later here than about the Southern or Central in Eastern States North of Texas or in the also one month here, but they are also one month later in the fall, hence we have about the same proportion of other growing season here as in parts of the country.

Neither the seasons or the soil of the country must be held responsible for the failure of producing all kinds of crops, nor must they be given credit for all the success.

The air, the rainfall and the time of year that it comes, the method of cultivating and a score of other items must enter into the equation of crop production. Where one man fails, others will succeed. The soil, climate and season of Floyd county are adapted for a greater variety of farm garden and orchard products: Indian corn, kaffir corn, milo maize millet, oats, rye, barley, sorghum and wheat are some of the crops grown in the Lockney country.

All kinds of vegetables that are common to the semitropical climate do well here. Apricots, apples, blackberries, currants, dew-berries, grapes, peaches, pear, plums, and strawberries have been grown sufficiently to demonstrate beyond any question that they may be made to produce abundantly and produce good profit.

Shade and ornamental trees are thrifty and of rapid growth. The reader must consider that the stock men of this country, until only a few years ago, discouraged the small farmer and by their adverse reports created the impression abroad that the plains would never become a farming country, but it is different now.

It is needless to say that a soil that produces forage, grain and root crops in such

abundance as is produced here, certainly, with pure water, the healthy climate and short dry winters is an ideal place for the stock farmer.

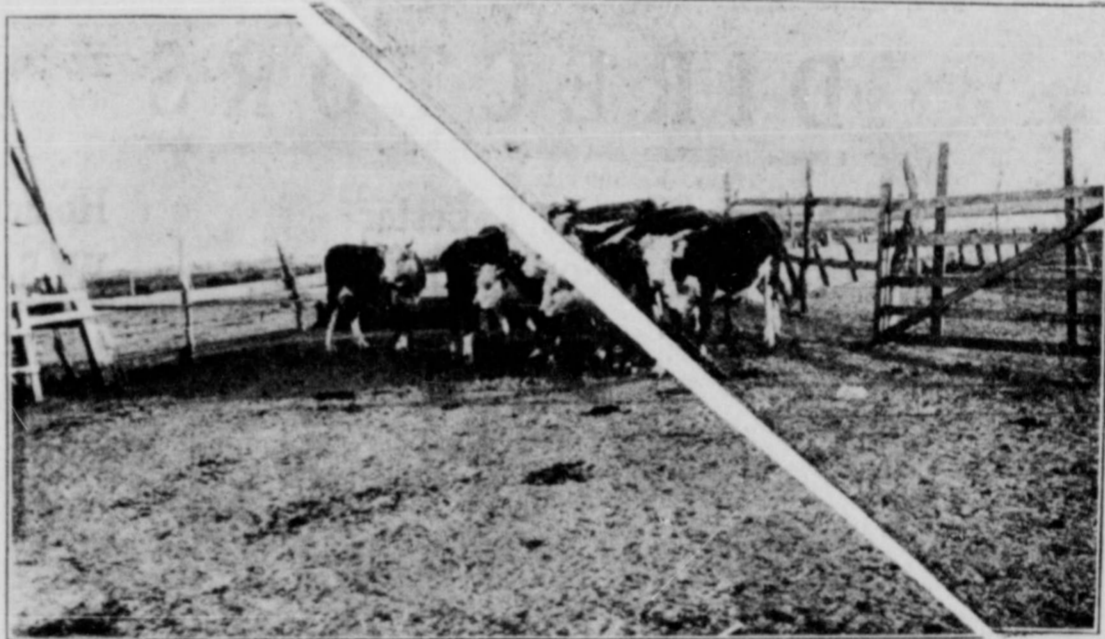
The day of the long horn Texas steer is past and he is gone with the Buffalos' and in his place is to be found the white face thoroughbred Hereford that brings three times the money on the market as the Long-horn did in the past.

For the raising of horses, mules and hogs, this country has no superior. As a pork producing Section it has in a few short years established a reputation, and the present grade of both hogs and cattle is not excelled in any place.

There has never been a failure of crops in this country since the small farmers began to come in, the soil has never failed to respond to even the most lax and careless tillage, of course, there has been shortage of one crop or another, as in all other regions, but farmers have always had enough for their own use, and some to spare. However, farmers who aim, one year with another, to get the best results for their labor, are the farmers who have given to the country its reputation, and their secret is summed up in two words, "good tillage."

The average quantities of the most common crops produced, to the acre are as follows:

Wheat, 15-40 bushels, Indian corn, 35-60 bushels, kaffir corn 40-60 bushels, maize, 45-60 bushels; and milo 4-6 tons of fodder; cotton, 1-2 to one bale, and broom corn, as fine as alfalfa has been tried it has proven successful as a hay crop, and extensively used here.



A bunch of thorough-bred Floyd County Herefords

John Ewing left Tuesday for Childress county, to visit for a month with former friends and relatives.

France and Alford Fry, of Hunt County, who have been visiting their uncle, R. F. Fry and family, left Thursday for home.

State Department Of Agriculture

Interested In Lockney Country. The State Department Of Agriculture, Austin

R. E. Erwin, Secretary of the Lockney Commercial Club is in receipt of the following letter, and requests all parties in the vicinity of Lockney that are interested along the lines indicated to be present on the 23rd and 24th of August, 1909, at the Commercial Club room and meet Prof. Malley and render him all the assistance possible in his investigation.

Commercial Secretary, Lockney, Texas,

My Dear Sir:—In line with my policy to give every portion of our state careful and scientific study, I have designated Prof. F. W. Malley of this department to make special investigation of the Panhandle country, with a view to publishing as complete a handbook or bulletin upon the soils and resources of that portion of the State as possible.

I have designated Prof. Malley to take his studies by topics, as follows: Soils, streams and water supply; timber and mineral resources; nurseries, orchards, and fruit crops generally, that succeed; same for truck crops; special attention to be given agricultural crops and live stock.

Now, what I wish to ask is, whether you are willing to take this matter in hand locally, block out the plan for these studies in your locality and country, and have the best men ready in each section that I have indicated to meet and discuss with Prof. Mal-

the nurseries in the territory visited, and will begin his work on this tour at Vernon, Texas, about the 13th of this month, and will

What's The Use ?=?



In Talking to a Fellow when you Haven't somethin' Good to tell him?

None--that's the reason we keep shouting that we handle "Lamm & Co's made-to-order--mad-to-wear clothing.

Boys, let us show

you our nice line of samples. You'll smile and we'll guarantee the rest

YOURS FOR BIZ
Dillard & Phillips

JOHN COWART DEAD

C. L. Cowart and T. E. Cowart went to Lubbock Wednesday in answer to a telephone message that T. E. Cowart's brother, John Cowart, of Lubbock, had died.

They accompanied the remains to Plainview, where they embalmed the body and shipped to the old home for burial.

The death was unexpected as neither of the Cowarts knew that their brother and cousin was sick until the report of the death.

BAILEY TO SPEAK.

Senator J. W. Bailey wired parties at Plainview, Texas, in answer to an urgent request that he would speak at that place Aug. 27, 1909 at 2:30 P. M.

L. H. Gunn and wife were in Lockney the latter part of last week visiting their daughter, Mrs. Ira Broyles. Saturday night and Sunday they visited at Plainview, returning to their breaks home from Lockney Monday.

J. C. Johnston left Wednesday for Lubbock to take up duties in the post office at that place. He knows the business and should be able to make good at the new post.

Geo. W. Brewster
...LAND COMPANY...

LOCKNEY, FLOYD COUNTY, TEXAS

Lands Bought and Sold
We Solicit Your Patronage

ly all data, and "to show him." You understand that my funds for gathern this information are limited, and hence I must ask your co-operation as far as possible in the matter of local expenses. I am only able to arrange for Prof. Malley's personal services and railroad expenses out of funds at my command. Therefore, the extent and completeness of his studies will depend upon the co-operation of the various localities.

Prof. Malley was on the faculty of our Agricultural College four years, has been president of our State Horticultural Society,--as also of the State Truck Growers Association,--and has had fifteen years practical experience as a farmer, and as a fruit and truck grower in Texas. He is well qualified to make the special investigations with reference to the Panhandle of Texas which I am anxious to have made.

Prof. Malley will inspect all of

reach your place on or about August 23rd.

Awaiting the favor of an early reply I am

Very Sincerely Yours
ED R. KONE.

W. O. Kelley went to Plainview Thursday to meet his sister Mrs. Annie Hodges, of Bellview, Clay county, who will visit the Kelley brothers for awhile.

HAVE YOU BEEN TO THAT

New Racket Store?

If you have not go and try it. You will find glassware, tinware and all kinds of notions at unreasonable low prices
KELLEY BROS.

Lockney College and Bible School

AN IDEAL SCHOOL FOR YOUNG MEN AND FOR YOUNG LADIES

All the leading courses taught, including Classic, Scientific, English, Bible, Business and Elocution. Bible study is not compulsory, though we encourage it and have classes in every grade. Instrumental music is taught in town by competent teachers. We encourage study of classical music only. Our vocal music department will have a specialist, Prof. J. F. Copeland.

THE EXCELLENT HEALTH AND MORAL SURROUNDINGS

taken with the courses afforded, the strong faculty and cheapness of board make a strong appeal for your boy or your girl to attend Lockney College and Bible School this term. Board will be for young men \$13, for young ladies \$13.50

Calendar for 1909-1910: Opening Friday, September 10th at 9 A. M. Christmas Holidays, December 24-28. Closing public program May 4-7

Write for Catalogue to **Jas. L. German Jr., Pres.** Lockney, Texas.

LOCKNEY TO THE FRONT.

This week we are sending a copy of our paper to every available address in the county besides our regular list. This means that a thousand homes will be reached by this method. Persons receiving this could confer a great favor on Lockney Commercial Club, themselves and ourselves by sending copies when through them to old friends or neighbors who may be interested in the West and Floyd county especially.

D. R. R. C. Andrews, of Floydada, was in Lockney Thursday on business.

Miss Myrtle Nix, of Chico, Wise county, is visiting her cousins, E. C. and J. F. Nix, at Lockney, before taking up work at Halecenter where she teaches in the public schools this year.

CONE JOHNSON.

Will speak at Plainview on Wednesday afternoon, August 25th. Editor Parker of the News informs the writer by telephone. They invite Floyd county people over to hear him.

J. B. Downs, of the J. M. Hughes Land Co., has made his headquarters at Plainview until the road shall have reached Lockney. He intends to meet them at the train and be able to entertain them like they should be while in that town.



Street Scene in Lockney.

FAIRVIEW TO HAVE NEW SCHOOL HOUSE.

Fairview school district has outgrown the shack on the bald prairie and has at last contracted for the construction of a substantial school building. This is to a house 30X40 with up-to-date fixtures, seats, etc.

J. L. Landrum, contractor, has secured the job and leaves Monday to begin its erection.

This means the limit of the constitution on taxes for school purposes but the education of the children of their community and the up-building of the school system of Texas is their object in this good move.

Osborne McCollum returned from the St. Louis Markets Wednesday evening.

FUTHER INFORMATION.

Concerning the Lockney country will be for the coming if any persons interested will write to the Secretary of Lockney Commercial Club. This organization is for this especial purpose—to let you know more of Floyd county and its advantages, and their secretary, Judge R. E. Erwin will be glad to write you personally and send literature.

The only judge in the baby contest who will ever look like anything any more is C. L. Cowart, who was appointed but could not serve on account of a rush in business at the time.

John Childers, of Texico, N. Mex., who formerly lived in this county, was shot and killed this week, he, also killing his assailant.

RANDOLPH BROTHERS

We have been located in Lockney for over two years and carry a full line of pure drugs, patent medicines, perfumery, toilet articles, stationery, College books, cigars, optical goods. Fit glasses, etc. Also, the Randolph Horse Colic cure. We do a good prescription business, are progressive and interested in upbuilding Lockney.

LOCKNEY, TEXAS

THE LOCKNEY BEACON
Homer Steen, Editor and Manager

Entered April 14th, 1902, as second-class mail matter, post office at Lockney, Texas, act of Congress of March 3, 1879.

TERMS OF SUBSCRIPTION

One Year.....	\$1.00
Six Months.....	50
Three Months.....	25

Display advertising rates on application. Bills due the first of each month.

Local notices, ten cents per line first insertion, five cents per line each subsequent insertion.

SOMETHING OF THE PRODUCTS

Of The Lockney Country--Unexcelled In Many Ways As The Farmer's Abode

There is no country on earth that promises greater possibilities for diversified farming than Floyd county. The seasons are about one month later here than in Eastern, Southern or Central Texas or in the States North of here, but they are the same later in the fall, hence the growing season here as in other parts of the country.

Neither the seasons or the soil of the country must be held responsible for the failure of producing all kinds of crops, nor must they be given credit for all the success.

The air, the rainfall and the time of year that it comes, the method of cultivating and a score of other items must enter into the equation of crop production. Where one man fails, others will succeed. The soil, climate and season of Floyd county are adapted for a greater variety of farm garden and orchard products: Indian corn, kaffir corn, milo maize millet, oats, rye, barley, sorghum and wheat are some of the crops grown in the Lockney country.

All kinds of vegetables that are common to the semitropical climate do well here. Apricots, apples, blackberries, currants, dew-berries, grapes, peaches, pear, plums, and strawberries have been grown sufficiently to demonstrate beyond any question that they may be made to produce abundantly and produce good profit.

Shade and ornamental trees are thrifty and of rapid growth. The reader must consider that the stock men of this country, until only a few years ago, discouraged the small farmer and by their adverse reports created the impression abroad that the plains would never become a farming country, but it is different now.

It is needless to say that a soil that produces forage, grain and root crops in such

abundance as is produced here, certainly, with pure water, the healthy climate and short dry winters is an ideal place for the stock farmer.

The day of the long horn Texas steer is past and he is gone with the Buffalos' and in his place is to be found the white face thoroughbred Hereford that brings three times the money on the market as the Long-horn did in the past.

For the raising of horses, mules and hogs, this country has no superior. As a pork producing Section it has in a few short years established a reputation, and the present grade of both hogs and cattle is not excelled in any place.

There has never been a failure of crops in this country since the small farmers began to come in, the soil has never failed to respond to even the most lax and careless tillage, of course, there has been shortage of one crop or another, as in all other regions, but farmers have always had enough for their own use, and some to spare. However, farmers who aim, one year with another, to get the best results for their labor, are the farmers who have given to the country its reputation, and their secret is summed up in two words, "good tillage."

The average quantities of the most common crops produced, to the acre are as follows:

- Wheat, 15-40 bushels, Indian corn, 35-60 bushels, kaffir corn 35-60 bushels, milo maize, 45-60 bushels; and milo, 4-6 tons of fodder; cotton, 1-2 to one and a half bales, and broom corn, 1-2 to one and a half tons grows in any country, as fine as here alfalfa has been tried it has proved as successful as a hay crop, and extensively used here.

State Department Of Agriculture

Interested In Lockney Country. The State Department Of Agriculture, Austin

R. E. Erwin, Secretary of the Lockney Commercial Club is in receipt of the following letter, and requests all parties in the vicinity of Lockney that are interested along the lines indicated to be present on the 23rd and 24th of August, 1909, at the Commercial Club room and meet Prof. Malley and render him all the assistance possible in his investigation.

Commercial Secretary, Lockney, Texas.

My Dear Sir:—In line with my policy to give every portion of our state careful and scientific study, I have designated Prof. F. W. Malley of this department to make special investigation of the Panhandle country, with a view to publishing as complete a handbook or bulletin upon the soils and resources of that portion of the State as possible.

I have designated Prof. Malley to take his studies by topics, as follows: Soils, streams and water supply; timber and mineral resources; nurseries, orchards, and fruit crops generally, that succeed; same for truck crops; special attention to be given agricultural crops and live stock.

Now, what I wish to ask is, whether you are willing to take this matter in hand locally, block out the plan for these studies in your locality and country, and have the best men ready in each section that I have indicated to meet and discuss with Prof. Mal-

What's The Use ?=?



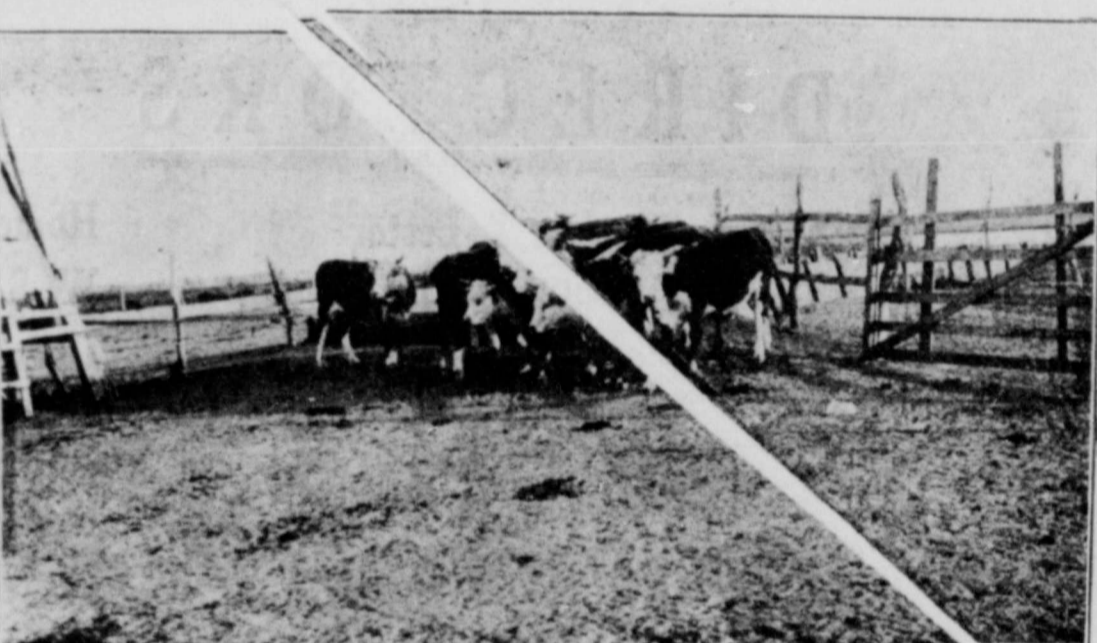
In Talking to a Fellow when you Haven't somethin' Good to tell him?

None---that's the reason we keep shouting that we handle "Lamm & Co's made-to-order---mad-to-wear clothing.

Boys, let us show

you our nice line of samples. You'll smile and we'll guarantee the rest

YOURS FOR BIZ Dillard & Phillips



A bunch of thorough-bred Floyd County Herefords

John Ewing left Tuesday for Childress county, to visit for a month with former friends and relatives.

France and Alford Fry, of Hunt County, who have been visiting their uncle, R. F. Fry and family, left Thursday for home.

ly all data, and "to show him." You understand that my funds for gathern this information are limited, and hence I must ask your co-operation as far as possible in the matter of local expenses. I am only able to arrange for Prof. Malley's personal services and railroad expenses out of funds at my command. Therefore, the extent and completeness of his studies will depend upon the co-operation of the various localities.

Prof. Malley was on the faculty of our Agricultural College four years, has been president of our State Horticultural Society, —as also of the State Truck Growers Association, —and has had fifteen years practical experience as a farmer, and as a fruit and truck grower in Texas. He is well qualified to make the special investigations with reference to the Panhandle of Texas which I anxious to have made. Prof. Malley will inspect all of

the nurseries in the territory visited, and will begin his work on this tour at Vernon, Texas, about the 13th of this month, and will

reach your place on or about August 23rd.

Awaiting the favor of an early reply I am

Very Sincerely Yours
ED R. KONE.

W. O. Kelley went to Plainview Thursday to meet his sister Mrs. Annie Hodges, of Bellview, Clay county, who will visit the Kelly brothers for awhile.

JOHN COWART DEAD.

C. L. Cowart and T. E. Cowart went to Lubbock Wednesday in answer to a telephone message that T. E. Cowart's brother, John Cowart, of Lubbock, had died.

They accompanied the remains to Plainview, wher they embalmed the body and shipped to the old home for burial.

The death was unexpected as neither of the Cowarts knew that their brother and cousin was sick until the report of the death.

BAILEY TO SPEAK.

Senator J. W. Baily wired parties at Plainview, Texas, in answer to an urgent request that he would speak at that place Aug. 27, 1909 at 2:30 P. M.

L. H. Gunn and wife were in Lockney the latter part of last week visiting their daughter, Mrs. Ira Broyles. Saturday night and Sunday they visited at Plainview, returning to their breaks home from Lockney Monday.

J. C. Johnston left Wednesday for Lubbock to take up duties in the post office at that place. He knows the business and should be able to make good at the new post.

Geo. W. Brewster
....LAND COMPANY....
LOCKNEY, FLOYD COUNTY, TEXAS
Lands Bought and Sold
We Solicit Your Patronage

HAVE YOU BEEN TO THAT
New Racket Store?
If you have not go and try it. You will find glassware, tinware and all kinds of notions at unreasonable low prices
KELLEY BROS.

Lockney College and Bible School

AN IDEAL SCHOOL FOR YOUNG MEN AND FOR YOUNG LADIES

All the leading courses taught, including Classic, Scientific, English, Bible, Business and Elocution. Bible study is not compulsory, though we encourage it and have classes in every grade. Instrumental music is taught in town by competent teachers. We encourage study of classical music only. Our vocal music department will have a specialist, Prof. J. F. Copeland.

THE EXCELLENT HEALTH AND MORAL SURROUNDINGS

taken with the courses afforded, the strong faculty and cheapness of board make a strong appeal for your boy or your girl to attend Lockney College and Bible School this term. Board will be for young men \$13, for young ladies \$13.50

Calendar for 1909-1910: Opening Friday, September 10th at 9 A. M. Christmas Holidays, December 24-28. Closing public program May 4-7

Write for Catalogue to **Jas. L. German Jr., Pres.** Lockney, Texas.

LOCKNEY TO THE FRONT.

This week we are sending a copy of our paper to every available address in the county besides our regular list. This means that a thousand homes will be reached by this method. Persons receiving this could confer a great favor on Lockney Commercial Club, themselves and ourselves by sending copies when through them to old friends or neighbors who may be interested in the West and Floyd county especially.

D. R. C. Andrews, of Floydada, was in Lockney Thursday on business.

Miss Myrtle Nix, of Chico, Wise county, is visiting her cousins, E. C. and J. F. Nix, at Lockney, before taking up work at Halecenter where she teaches in the public schools this year.

CONE JOHNSON.

Will speak at Plainview on Wednesday afternoon, August 25th Editor Parker of the News informs the writer by telephone. They invite Floyd county people over to hear him.

J. B. Downs, of the J. M. Hughes Land Co., has made his headquarters at Plainview until the road shall have reached Lockney. He intends to meet their at the train and be able to entertain them like they should be while in that town.



Street Scene in Lockney.

FAIRVIEW TO HAVE NEW SCHOOL HOUSE.

Fairview school district has outgrown the shack on the bald prairie and has at last contracted for the construction of a substantial school building. This is to be a house 30X40 with up-to-date fixtures, seats, etc.

J. L. Landrum, contractor, has secured the job and leaves Monday to begin its erection.

This means the limit of the constitution on taxes for school purposes but the education of the children of their community and the up-building of the school system of Texas is their object in this good move.

Osborne McCollum returned from the St. Louis Markets Wednesday evening.

FUTHER INFORMATION.

Cerning the Lockney country will be for the coming if any persons interested will write to the Secretary of Lockney Commercial Club. This organization is for this especial purpose—to let you know more of Floyd county and its advantages, and their secretary, Judge R. E. Erwin will be glad to write you personally and send literature.

The only judge in the baby contest who will ever look like anything any more is C. L. Cowart, who was appointed but could not serve on account of a rush in business at the time.

John Childers, of Texico, N. Mex., who formerly lived in this county, was shot and killed this week, he, also killing his assailant.

RANDOLPH BROTHERS

We have been located in Lockney for over two years and carry a full line of pure drugs, patent medicines, perfumery, toilet articles, stationery, College books, cigars, optical goods. Fit glasses, etc. Also, the Randolph Horse Colic cure. We do a good prescription business, are progressive and interested in upbuilding Lockney.

LOCKNEY, TEXAS

The Guest & Ramsey Annex

In the western suburbs of the city of Lockney

On a slope, and in the coming residence section---Well-drained, best location, Demands your attention when you are thinking of locating in the town.

Offers the Cheapest and Best Terms

That can be had anywhere if buyer will build. In fact, to the first ones coming we will sell on small monthly payments without interest. It interested, write

GUEST, RAMSEY & CO.

How
you'll
rest
Z

Talks by Lockney Farmers

A Few Letters From Successful Farmers, who, by Application Of Brain, Brawn and Forethought, Have Made Farming a Success on the Plains.

FARMING AND HOG

RAISING PAYS

Lockney, Tex., Aug. 9, '09.
Secretary Commercial Club,
Lockney, Texas.

Dear Sir:—In reply to your inquiry I am glad to advise that I have been a resident of Lockney and vicinity for over nineteen years, have been engaged in raising stock and farming. I think this is an ideal stock-farming country. I have devoted most of my attention to raising swine for the last three or four years. Last winter I sold over \$3000 worth of hogs, (\$2,594.13 of this amount came from the Armour Packing Co., of Fort Worth, Texas, the rest I sold at home.) The hogs were all my own raising and feeding and the profits derived were very satisfactory to me. I believe alfalfa to be a paying crop both for grazing and hay. I have found it to be very profitable for grazing.

Now in answer to your question, will farming alone pay in this country? It will, more especially when carried on scientifically, as for instance under the Campbell system or any system of intense cultivation (with the view of conserving the moisture.)

Now as to my own experience in farming, will say that I have planted eighteen crops here and have never made a total failure. The shortest crop I ever made was eleven years ago, the last ten crops have been good. I have about 400 acres of land in cultivation at present and expect to put in more. Have thrashed an average of 36 bushels of oats to the acre for the past three years. (This does not include the last crop.) My Indian corn, kaffir corn, milo maize and millet have made good crops under our ordinary mode of cultivation.

I have made one mistake in farming and believe most all of the farmers in this country are guilty of this same error, and that is we are all trying to cultivate too much land.

Yours very truly,
WM. MCGEEHEE.

AN ILLINOIS MAN IS PLEASED

Lockney, Tex., Aug. 10, '09.
Secretary Commercial Club,
Lockney, Texas.

Dear Sir:—In reply to your inquiry I advise that last August, while a citizen of Illinois, I purchased forty acres of land close in to Lockney. I moved to Lockney in January 1909. Soon after my arrival here I sold the forty

acres for a handsome profit and purchased 320 acres south-east of Lockney and I now have 280 acres planted in milo maize, kaffir and Indian corn and millet, all of which is fine and will make an abundant crop. While I have never harvested a crop in this country, from all indications I know that I will be satisfied with my year's labor.

I have found hogs to be a very profitable product and a business that I believe will be largely followed by the farmers of this country in the future, there being several that are raising them extensively now. From my investigation of conditions here I believe this to be an ideal stock-farming country. I find the people to be law-abiding, social and neighborly, and the citizenship of the Lockney country has more contented and thrifty people than any country I know of. I have made more money since I came to Lockney than I have made any ten years before in my life. I am delighted with the people, the country and its prospects and verily believe that this section of the Plains is destined to be the greatest country in the Southwest.

Yours very truly,
GEO. TUTTLE.



Some Thorough-Bred Durhams in Floyd County.

A 160-ACRE FARMER

I am 35 years of age and came to Lockney four years ago last January from Oklahoma and landed here with about \$275 in cash, two cows, a wagon and eight ponies. I purchased 160 acres of land seven miles of Lockney and have made five crops with the present crop, have paid for my place, have a substantial house on it, a good well and a windmill and all necessary modern farmer's implements.

I have twelve head of good horses and mules, twelve head of cows, some of them being good milk cows (was offered \$100 for two of them last year) have on my place at this time 20-head of good hogs.

My place is well fenced and cross-fenced. I have diversified and found that it pays. I have raised milo maize, Indian corn and kaffir corn, sweet potatoes, Irish potatoes, and all garden truck. I have on my place a four-acre orchard, consisting of 400 apple trees, 100 peach trees, 500 grape vines, with pears, plums, cherries and berries. The

first crop I made here I made 25 bushels of Indian corn on sod land, my milo maize, kaffir corn and millet crops have been good each year. I have 70 acres in millet this year that will bring \$1400. Sweet potatoes grow well here. I usually make about 300 bushels per acre, Irish potatoes also do well. Last year I cultivated eighteen rows 40 yards long and gathered 30 bushels of as fine as ever I saw.

Last year I sold at Lockney and Plainview \$556 worth of hogs, \$175 worth of millet seed, \$100 worth of millet hay, \$450 of Indian corn, \$165 worth of kaffir corn and milo maize, 5 head of cattle for \$100, a pair of mules for \$150, making a total of \$1,706 for one year. This was principally produced by myself and one hand for five months.

Melons grow exceptionally well here growing to weigh as much as 80 odd pounds. Two years ago I sold \$250 worth of melons and garden produce, but, at that time had not found a market for all that I raised and while I only had one and one-half acre in melons, I had to feed about one-half of my crop to my

hogs. The vegetable and garden truck do well here, and this is as fine a berry country as I have ever seen. Dew-berries of a fine quality continue to bear when they commence for as long as two months.

There is no question but when our land is properly cultivated will make any man with judgment and energy a good living and profit each year. I speak from experience as I have made easily \$6500 in the last 4 1-2 years, and I think it possible and also probable that a farmer can pay for a farm in Floyd county with two average crops, provided he uses good judgment in diversifying and tilling his land.

My place is not for sale, and I am well satisfied with the conditions here and expect to remain. Yours very truly,
W. S. MERCER.

A. B. BELL IS AN OLD-TIMER

Lockney, Texas, Aug. 16th, 1909,
Lockney Commercial Club,
Lockney, Texas

Gentlemen:—In reply to your

LOCKNEY AUTO GARAGE

UP-TO-DATE MACHINIST

Gasoline

Lubricating oil

Auto Accessories

LOCKNEY

..

..

..

TEXAS

I Buy and Sell

Feed, cows, Horses, and most anything else, and pay the cash. If you can't sell it to anybody else try me a round.

I also run a good wagon yard.

M. M. Day, at Lockney

C. A. WOFFORD.

Z. T. RILEY

CENTRAL PLAINS LAND CO.

Real Estate.

WOFFORD & RILEY, M'GRS.

A select list of best and cheapest lands, improved and unimproved on the Plains. We have a great many bargains on easy payments and long time.

LOCKNEY.....TEXAS

SEVEN BROTHERS

Dealers In

Staple and Fancy Groceries

Fresh Goods at All Times.

Lockney

-0-

Texas

WHO?

Lockney Tailoring Co. L. E. Weathers Prop. will "clean and press" your clothes right. See our line of samples before ordering that summer suit. We have something you want. We also handle magazines. See us.

LOCKNEY COLLEGE & BIBLE SCHOOL

For young men and young ladies. A first-class college; primary and intermediate departments. We offer Bible classes for all grades—not required. Full business course; special Vocal Music (Piano in town); good elocution instruction; Teacher's course. Degrees conferred and students graduated. Large competent faculty. Good boarding arrangements at \$13 to \$13.50. New building entirely complete before opening Sept. 10. Send for catalogue.

Jas. L. German, Jr., President

inquiry asking for my farming experience in Floyd county, have to say that I have lived here for 19 years, made 19 crops and have never made a failure. Made only two light crops during the time.

You of course, understand that a few years back when the country was very new and having no market, we did not attempt to raise anything but a feed crop, and, I have never failed in my

entire experience here to make sufficient feed. I have made four consecutive cotton crops and for the four years my average was one half bale to the acre. I think probably that this the present year is one of the hardest years that I have seen on the Plains, and cotton that has been properly cultivated bids fair to make a good crop this year.

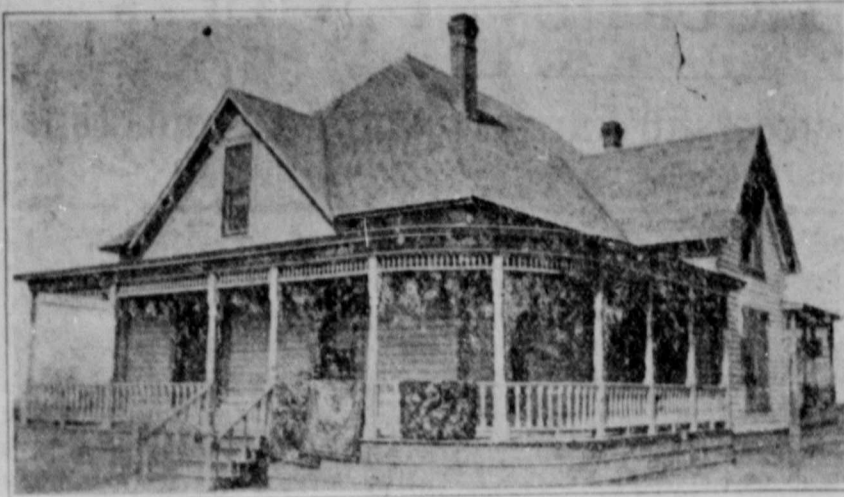
My maize and kaffir corn and (Continued page 8 this section)

Carruth & Pace

Phone 21

FRESH GROCERIES--THAT'S ALL

Lockney, Texas



Residence of Dr. C. I. White, President First National Bank.

Lockney College And Bible School

Something of Its Past, Present,
and Future--Faculty For 09-10.

This institution has been conducted under different names since 1894, having been first taught by J. D. Burleson of Lockney. During these years it has been presided over by men of no mean ability, such as N. L. Clark and G. H. P. Showalter.

It is now a chartered college which makes it a permanent institution of learning. The new, large durable concrete building with a boys dormitory and homes for young ladies; a large and competent faculty; greater energy and stronger efforts are to be put forth to place its merits before the people as an institution of learning.

This is not a local school only. It is for Lockney who built it, for the Plains of Texas in general, for the south and the west.

1909-1910 TERM

Commences Sept. 10th. The present faculty is: James L.

German Jr. A. A. President, Bible, Higher English, Greek, French.

Milton V. Showalter, L. I. A. B. Latin, Mathematics, Chemistry, Physics.

John C. Graham, A. B. History Business, Physiology, Civics.
Miss Amelia Turner, Reading, Arithmetic Geography.

Miss Ida waters, Primary Department.

J. Frank Copeland, Voice, Sight-singing, Harmony.

Miss Ola McCall, Elocution.

Mrs. Myra Graham, Assistant.
Charles McLaughlin, Spanish, Athletics.

Miss Jeanie Love, Piano in town.

We cannot urge too much on the recipients of this issue of this paper that a friend or relative back east or north or elsewhere would appreciate reading it and that it might be the means of interesting some of them in the plains of Texas, and Floyd County in particular.

George Harper is spending a short vacation with his father, J. B. Harper, and family.

DIRECTORY Courts.

District Court convenes ninth Monday after first Monday in January and July.

L. S. Kinder, Judge.
L. C. Penry, Dist. Atty.
W. B. Clark, Clerk.
A. C. Goen, Sheriff.

County Court convenes third Monday in January, April, July, and October.

F. P. Henry, Judge.
W. B. Clark, Clerk.
A. C. Goen, Sheriff.

Commissioners' Court meets in regular session 2nd. Monday in February, May, August, and November.

R. E. ERWIN

Attorney at Law, office in First National Bank Building. Practice in all courts. Lockney, Texas.

S. L. Rushing is having architects to make plans for a modern residence which he intends to have erected on his farm south east of town during the fall months. Mr. Rushing is one of our oldest settlers, is well-to-do, a living example of what thrift and energy will accomplish in Floyd county.

That the merchants of Lockney are truthful in their advertising in this paper we are safe in saying. For instance this week there are some very strong assertions and yet in the main they are true to a word, every one being carefully studied before being allowed to run.

Over-stating facts has greatly impaired the value of advertising of late years, and we want to rise the standard, as do our merchants. Get in the habit of believing what Lockney merchants advertise.

Editor of The Beacon will endeavor to send a copy of this issue of the Beacon to every family in Floyd county. The purpose of this edition is to get before the people of the entire country in a brief but true and correct manner the conditions, advantages present and future of Lockney and Floyd county. And we suggest that after you have read the paper that you mail it to some friend back at home, so that they at least, may know what kink of a country you live in and by this plan no doubt many will fall into the hands of parties interested in bettering their conditions and securing a home in a section that is truly great.

CLUBBING OFFER

The Dallas Semi-Weekly Farm News makes a specialty of Texas news. Outside of this, it is unquestionably the best semi-weekly publication in the world. It gives news from all over the world, but particularly an unsurpassed news service of the great Southwest in general. Specially live and useful features are the Farmers' Forum. A page of little men and women. The Woman's Century. And particular attention is given to market reports. You can get the Sem Weekly Farm News in connection with The Lockney Beacon for only \$1.80 a year cash for both papers.

Subscribe now and get the local news and the news of the world at remarkably small cost.

D. W. Kelley left Tuesday for Oklahoma on business to return next week.

N. H. Lewis & Co.
LOCKNEY
Floyd County, Tex.

Special agents for 40,000 acres of the finest alfalfa, corn, wheat and oat land in Floyd Co. Prices range from \$25 to \$50 per acre. Well improved. Write us for list of same.

KAFFIR CORN CHOPS IN KENTUCKY

IMPORTANT FEED CROP IS MAKING ITSELF KNOWN, WHEREVER THOROUGHbred STOCK ARE RAISED.

Dr. W. H. Freeman tells of a very interesting incident which occurred at Frankfort, Kentucky while he was absent from Lockney during the spring, which very aptly illustrates the feeding value of kaffir corn and what will be its commercial value when its worth is more fully known the world.

With a friend he was walking down the street when at a feed store he spied what he at once knew to be kaffir corn chops. Pointing at the sample he asked his friend, "what is this feed

he is selling?" The friend, not knowing called the proprietor who in turn did not know but explained that it was a very fine feed shipped from St. Louis to points in that region by the care load. It is superior he said to wheat and oat chops and was fed to the thoroughbred horses whenever obtainable. Dr. Freeman then, taking up the narrative explained to the Gentlemen that they were discussing kaffir corn chops, the banner feed crop of the plains of Texas, and a crop on which Nebraska, Kansas, Oklahoma, New Mexico and the plains of West Texas had a monopoly—a corner established by nature.

Such incidents only mark the beginning the feeding of the best forage crop grown. Only time can prove what the results to this section will be.



Plums are among Floyd Co's surest fruit crops.

GHENT CARPENTER Pres. CARL McADAMS V-Pres. JNO. H. FRY Treas. R. E. ERWIN Sec'y

LOCKNEY COMMERCIAL CLUB

Rooms in First National Bank Building
LOCKNEY, FLOYD COUNTY TEXAS

EXECUTIVE COMMITTEE

Ghent Carpenter Carl McAdams
J. N. Stalbird Wm. McGehee
M. Livingston B. F. Sanders
W. C. Nichols H. Howard
E. P. Thompson

The Secretary of the Club will take pleasure in answering any and all inquiries from those interested in the Lockney country.

...A Lot on Any Kind of Time...

If you will build a house on any lot in our Annex, we'll give you most any kind of time on it---not a cent down. INTERESTED? See

..... Guest, Ramsey & Company ..
LOCKNEY TEXAS

Business Locals

TRANSFER.

I am prepared to do all kinds of hauling and dray work on short notice.

R. W. CROSSWHITE.

AN UP-TO-DATE ABSTRACT.

Of Title to every piece of land in Floyd County.

TOM P. STEEN.
Floydada Texas

What do you need from our big new line of furniture in the special sale.

C. R. Mc. H. & Co.

LOST.—Kit of tools wrapped in cloth, on Lockney-Floydada road. Finder return to Wofford and Riley's office.

Try Albatross Flour. Best on earth.

Seven Bros.

Remember first sale Day August 11th.

C. R. Mc. H. & F. Co.

You will never stopurkickin' untill you buy your cold drinks at NORRIS' Confectionery.

LOST.—Between Lockney and C. F. Ramsey's farm Sunday, July 25, Black worsted coat. Finder return to Beacon office.

Call up the line car at the garage for a trip to points by way of Plainview. Will meet trains every day.

Lockney Auto Line.

Buy the new Johnston Corn Binders for simplicity, durability will cut where other binders fail. No side draft, light draft. See the sample.

C. R. Mc. H. & F. Co.

CONCRETE & BRICK.

We are concrete, stone and brick contractors. Let us figure on your next work.

SANDERS & MYERS.

Wanted.—Chickens, butter and eggs. Highest market price paid in trade at our store.

J. A. BAKER.

My brand is cross on left hip. Keep a look out for cattle with this brand.

J. J. NORRIS.

We mean business on our ten days sale.

C. R. Mc. H. & F. Co.

MILL.

We have started our mill to unning and are ready to make meal or chops Saturdays.

RAMSEY BROS.

Notice our ad in this issue.

C. R. Mc. H. & F. Co.

The Johnston Row Binders will do excellent work in your field.

C. R. Mc. H. & F. Co.

Farmers keep your money at home by patronizing the Plainview Wire Fence Company.

AGENTS WANTED.

To sell our fence. Call or write us at once.

Plainview Wire Fence Co.
Plainview, Texas.

D. Griffith & Bros. will sell coal out of the wagon at \$11 per ton.

A HEARSE.

We have just received a hearse to use in connection with our Undertakers business.

C. R. Mc. H. & Co.

D. Griffith & Bros. will sell coal out of the wagon at \$11 per ton.

LETTER TO DR. J. C. DIAL.

Lockney, Texas

Dear Sir: Ten years ago, there was one pure paint and 200 adulterated; there are now eight pure 200 adulterated, about half of the latter short-measure besides.

There is still but one best, and the difference is ten gallons. Devoe goes as far as eleven next-best—\$5—in every ten gallons.

A new word has come-up in paint: it is strong. Strong paint goes futher and wears longer; weak paint takes more gallons and wears out sooner.

The proper cost of a 10-gallon job is \$50. Paint that takes 11 gallons makes it \$55. Paint that takes 12 gallons makes it \$60. Paint that takes 13 gallons makes it \$65. Paint that takes 20 gallons it \$100.

The \$50 job wears twice as long as the \$100. These figures are not prices; they are round. The 10-gallon paint is Devoe.

Yours truly

48 F. W. Devoe & Co.
P. S. E. P. Thompson sells our paint.

Local News

L. T. Bourland came in one day last week with the cash for subscription and the good news that crops in his portion of the country are simply fine.

A Mr. Hind and wife, of Collin county, have been visiting with D. L. Armbrister, of the Lone Star neighborhood.

J. T. Livesay and daughter, Miss Reta, returned last Saturday from Jackson county Oklahoma.

Ray Pettit of Floydada, Editor of the Floyd county Hesperian, stopped over for awhile in Lockney, Saturday.

L. C. Penry, District Attorney L. S. Kinders, District Judge, H. C. Randolph, attorney of Plainview, stopped for supper in Lockney Saturday at the commercial. Lawyers, like other folks, enjoy a square meal.

Since W. C. Parkinson bought an automobile, sold it, and went to East Texas to marry, T. C. Bradley has bought a bicycle and will try the same trick, for which Z. T. Riley is good authority.

T. Z. Reed wants to advertise for help. He says he has some old hens that have been setting so long he has to "tail them up" every morning so they can go to the water trough for water. At the same time he robs the nests of any eggs they may contain and pays his grocery bills with the money. Its gotten to be profitable. He wants a good hand to apply at once.

Prof. J. F. Copeland returned Saturday from Chicago, where he had been taking a course in voice culture. He began Monday to take up his duties as instructor in The Lockney Singing Normal.

J. L. Hughes, of Fluvanna, Texas, is visiting with his brother, J. C. Hughes at Lockney. He says the track on the road from Snyder to Fluvanna lacked only about twelve miles of being completed.

R. G. Dun & Co's Representative, A. J. Herrington, spent the day with us this week getting Rating of merchants here.

A good proposition for the right man is, a dairy near Lockney. Such a farm would make good money by the time it could be put in.

Now is the very time for you to have that stationery printed

Remember the place

BEACON PUBLISHING COMPANY

LOCKNEY AUTO GARAGE

UP-TO-DATE MACHINIST

Gasoline

Lubricating oil

Auto Accessories

LOCKNEY

..

..

..

TEXAS

Star Windmills

Beautiful and Strong

Ten days sale--
An August Stimulater

Security Stoves

and Ranges--long life and even baking

....AN UNUSUAL OFFER....

Beginning August 11th and ending Saturday night August 21th

We have been arranging and stocking
up for sometime for this occasion . .

This is not a fake sale but a genuine business
proposition for ten days only. We shall allow
10 per cent off on all hardware and furniture
for cash. Understand, our entire stock, the
largest this side the railroad shall be offered.
To the party buying the largest bill of furniture
etc., can pick choice of our

best rockers free



Two cars good substantial Oak and Hardwood
Furniture. The largest line that has ever been
in Lockney

Dependable Goods

Matting and Carpets

Linoleum

Art squares and Rugs

Folding Beds

Dining Tables

Suites, Davenport

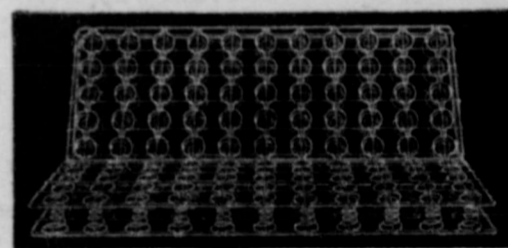
Iron Beds

Kitchen Cabinets

Buffets

Chiffoniers

Mattress Springs



Stoves and Ranges

Wagons, Buggies and Implements

Barb Wire

Windmills and Pipe

Leather Goods

Crockery and Graniteware

Guns---all kinds

C.R. McCollum Hardware-Furniture Co

Henney Buggies

Hickory wheels, Iron clad gear and bodies

AUGUST 14-Saturday
Lemonade--our treat

American Hog Fence

and Baker Perfect Barb Wire

Star Windmills

Beautiful and Strong

Ten days sale--
An August Stimulater

Security Stoves

and Ranges--long life and even baking

....AN UNUSUAL OFFER....

Beginning August 11th and ending Saturday night August 21th

We have been arranging and stocking
up for sometime for this occasion . . .

This is not a fake sale but a genuine business proposition for ten days only. We shall allow 10 per cent off on all hardware and furniture for cash. Understand, our entire stock, the largest this side the railroad shall be offered. To the party buying the largest bill of furniture etc., can pick choice of our

best rockers free



Two cars good substantial Oak and Hardwood Furniture. The largest line that has ever been in Lockney

Dependable Goods

Matting and Carpets

Linoleum

Art squares and Rugs

Folding Beds

Dining Tables

Suites, Davenport

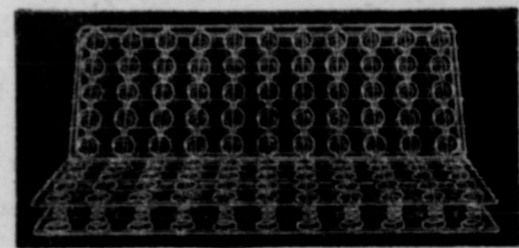
Iron Beds

Kitchen Cabinets

Buffets

Chiffoniers

Mattress Springs



Stoves and Ranges

Wagons, Buggies and Implements

Barb Wire

Windmills and Pipe

Leather Goods

Crockery and Graniteware

Guns---all kinds

C.R. McCollum Hardware-Furniture Co

Henney Buggies

Hickory wheels, Iron clad gear and bodies

AUGUST 14-Saturday
Lemonade--our treat

American Hog Fence

and Baker Perfect Barb Wire

THE BANK DRAFT

The bank draft is merely a check by one bank on another. Banks check against each other as you check against your bank. One bank has an account with another—a bank in a larger city. Its drafts are merely checks against the money deposited with the city bank. The draft is the safest way to send money through the mails, no matter to what part of the world. It is the best method to carry money on your person if you are taking a trip. The draft will be appreciated by the persons at the other end because there is less chance for any inconvenience in getting the money. At your end of the line there is also greater assurance that should any loss occur in the draft's transmission, you will be saved any red tape or delay in making the amount good. Buy a bank draft always. We protect our customers against loss and give you opportunity to deal with first parties.

The First National Bank

Lockney, Texas

THE LOCKNEY BEACON

Homer Steen, Editor and Manager

Entered April 14th, 1902, as second-class mail matter, post office at Lockney, Texas, act of Congress of March 3, 1879.

TERMS OF SUBSCRIPTION

One Year.....	\$1.00
Six Months.....	50
Three Months.....	25

Display advertising rates on application. Bills due the first of each month.

Local notices, ten cents per line first insertion, five cents per line each subsequent insertion.

THURSDAY, September 2, 1909.

Who said plow sod land deep the first breaking? Not me.

Students of the Lockney College and Bible School are arriving to take up the years' work.

Senator Bailey found his friends on the plains not as demonstrative as the "one-gallused" Arkansas Jeff Davis type down east.

D. H. L. Bonner, of near Tyler, will speak at Lockney soon. "Uncle Dick" is a home made man who believes in home as the center around which all else centers. He is a farmer, too, and a wise one. You must hear him.

Organizing farmers Institutes for the State Department of Agriculture is the work in which D. H. L. Bonner is engaged. Get on the live list by joining this institute and securing the benefits of all the researches of the Department of Agriculture in books and pamphlet form.

A most encouraging sign—farmers hauling out implements to use on the fall planting.

Over a \$600 run at C. R. McCollum's Hardware & Furniture store last Friday. That does not seem like hard times, though some "Nesters" do say it looks "squally"

RAILROAD TALK.

Mr. Edward Kennedy and his party consisting of his son M. V. Kennedy, W. E. Craddock, from Terrell, Texas, and W. E. Willet from Tennessee, passed through Silverton Monday enroute to Lubbock and other points on the Altus, Roswell & El Paso railroad. They left an appointment to meet the Silverton Committee on their return Wednesday. At the meeting Mr. Kennedy discussed with the committee the propriety of beginning the work on the cap rock and it was voted to leave the time of beginning that work to the discretion of Mr. Kennedy. He stated that he would be ready and the work would begin by the 15th of September. He stated that the contractors who took the work on the cap rock be required to give bond for its completion within a certain specified time. Mr. Kennedy also stated that Memphis had the money ready to buy the steel and ties as soon as the grade was ready for them.

It was also stated by Mr. Kennedy that his land on the west of Silverton would be plotted, advertised and a sale put on about the time the cap rock work begins.

When Mr. Kennedy first came to the people of Silverton, he stated that he was only a promoter of the A. R. & E. P. railroad and that he did not have the money to build it, but that he confidently believed he could get it. Now Mr. Kennedy states that he has past the stage of promoter and has secured money to build the road. The work of building this line of road is a herculean task and if Mr. Kennedy succeeds in accomplishing it he will prove his ability as a railroad promoter and builder.

When the work of laying steel from Memphis this way begins, (which Mr. Kennedy says must be done by next February) it will serve as the magic touch which will heal the wounded form of public confidence and make universal expectation to stand on tiptoe.—Silverton Enterprise.

The Beacon \$1.00 per year.

BOYS MAKE LONG JOURNEY

Judge Kinder came home from holding court at Silverton on Saturday. The news man met him and had an interesting talk on Monday. He returned to Silverton Tuesday morning. In talking with him he related that during last week an unusual occurrence happened at Silverton. Two little boys, aged five and seven, the sons of United States Marshall Abernathy, of Guthrie, Okla., passed through Silverton on horseback, on their way to Santa Fe N. M., a distance of more than four hundred miles. On this jaunt one of the little fellows is riding the horse ridden by President Roosevelt during the big wolf hunt in Oklahoma more than a year ago. This is a remarkable feat to be accomplished by two boys so small, and the more remarkable since they are traveling by themselves.—Plainview News.

According to newspaper reports these little men are nearly or quite at their destination now.

Water melon time! A water melon smiling on the vine haunts many a man's pillow in the Lockney country these days. Eat 'em by day and dream of them by night.

Col. Ike T. Pryor, of San Antonio, has been elected president of the Trans-Mississippi Commercial Congress.

W. M. Massie, of Floydada, bought 2600 bushels of kaffir corn from J. H. Shurbet Saturday.

From ten to fifteen acres of cotton on every farm in the Lockney country this fall, means if present prospects do not deceive, 1,000 bales of cotton to be ginned at Lockney.

Ten acres of cotton to the man is sufficient. If it makes good it's all he can handle alone and if it does not make good he has not lost the use of so much ground.

"I would not take half-a-bale per acre for my cotton crop if the frost stays off another month," a Lockney farmer was heard to say Monday. Asked how much he had, "twenty five acres" he said. He had too much cotton planted but he is lucky this year with cotton at 13 cents.

I claim I'm all the more a booster because I want these farmers to make this land grow the most it will.

J. M. Hughes, Office Mgr. J. B. Downs, Salesman

J. M. HUGHES LAND COMPANY

We handle lands on the Plains in large or small tracts at terms to suit purchaser. See or write us for a square deal

J. M. HUGHES LAND CO. Lockney, Tex.

ENTHUSIASM.

The Commercial Club Edition of The Lockney Beacon may do some good. Here's one letter we received.

Anna, Texas, August 20, '09
Editor of Beacon

Dear Sir,
Enclosed please find M. O. for 50 cents for which send your paper three months to each of the following gentlemen: B. H. Estep and G. A. Crovans, Anna, Texas, and oblige.

Your Commercial Club Edition of The Beacon has created much interest and enthusiasm with a number of our citizens. I think you will have some prospectors from this place soon.

Respectfully
J. M. ROBINSON.

B. F. RIGDON

The Tonsorial Artist

First-class barber work and baths in connection. West side Main Street

B. F. RIGDON, Proprietor

JOS. W. BAILEY.

All the cars in Lockney were pressed into service Friday to accommodate those who wished to hear Joe Bailey make his speech some of the cars making double round-trips.

Everybody says that Bailey made a good speech—and he did. That's characteristic of the man, however, and just as expected. He probably made a big number of converts while on this visit.

Farmers in the rain belt may proceed with their breaking. That means get busy, next year is coming.

Had you even thought of it? Not a piece of dirt in Floyd county in all these twenty long years that has been made to produce all it possibly could. What will raise when intense cultivation is practiced?

Walter Long and family of near Lockney, spent Sunday in the City enroute home from the east where they had gone to visit relatives.—Estelline Herald.

C. A. Wofford

Z. T. Riley

Central Plains Land Co.

REAL ESTATE

WOFFORD & RILEY MANAGERS

A select list of best and cheapest lands improved and unimproved on the Plains. We have a great many bargains on easy payments and long time. Lockney Texas.

Come to the Sale

At The

New Racket Store?

Our prices are the lowest that has ever been offered in the town. Come see for yourself. We are closing out racket goods and will put in jewelry and an up-to-date stationery and postcard parlor.

KELLEY BROS.

An Ideal Location For a Home

---in the City of Lockney---CITY of Lockney because that is what Lockney will be---not in ten years but SOON. Keep this in your mind when you think of buying property, and then think of the terms that we make on our property, and of the location, drainage etc., and you will be bound to look it over the second time---and build.

GET YOU A HOME NOW

The raise in values will make you money while you sleep.

YOURS TO TALK BUSINESS

GUEST RAMSEY & COMPANY

ARTIE BAKER SHOE SHINER

Delivers the goods when it comes to shinin' shoes. Stop in his stand in Vandergriff's Barber Shop. Price 10c.

! PHOTOGRAPHS !

PHOTOGRAPHS
Portraits, Views, Stamp
and post card work done
Local post cards a speciality

NORTON BAKER

THE FORTWORTH RECORD

A Cosmopolitan Semi-weekly news
paper, Democratic, and
**THE LOCKNEY
BEACON**

BOTH, ONE YEAR, \$1.80

MY BRAND IS



If you have any stray cattle
in my brand, please notify me.
JIM GRIFFITH.

Seven Bros. will pay the cash
for hogs and cattle.
Lockney, Texas.

Business Locals

Try Albatross Flour. Best on earth.
Seven Bros.

Farmers keep your money at home by patronizing the Plainview Wire Fence Company.

Call up the line car at the garage for a trip to points by way of Plainview. Will meet trains every day.

Lockney Auto Line.

My brand is cross on left hip. Keep a look out for cattle with this brand.

J. J. NORRIS.

4 Post cards for 5 cents at Norris's Confectionery.

Wanted.—Chickens, butter and eggs. Highest market price paid in trade at our store.

J. A. BAKER.

D. Griffith & Bros. will sell coal out of the wagon at \$11 per ton.

D. Griffith & Bros. will sell coal out of the wagon at \$11 per ton.

For first class carpenter work see J. L. Landrum.

You can get your home made cream at Norris' Confectionery.

A fresh line of Chocolate candy at Norris' Confectionery.

LOST—Between Plainview and Lockney on August 19, 1909, two notes on O. E. Kimmons \$430 each, one note on R. W. Snell for \$500, executed in favor of S. W. Snell. Finder will be rewarded. Address,

GEO. W. BREWSTER,
Lockney, Texas.

CONCRETE & BRICK.

We are concrete, stone and brick contractors. Let us figure on your next work.

SANDERS & MYERS.

AGENTS WANTED.

To sell our fence. Call or write us at once.

Plainview Wire Fence Co.
Plainview, Texas.

BUGGIES FOR SALE.

We still have some buggies—good second hand buggies—that we want to sell. If you want a good buggy see me.

E. M. ALFORD.

COAT LOST.

Somewhere between my place W. D. Zion's and the Puryear place, black Clay Worsted, size 42. Lost July 25. \$1 reward to return to Beacon office.

4t J. G. Gilbert.

LOST—Waltham 17 jewel, gold openfaced watch, size 18, somewhere in East Lockney or on the road to W. D. Zion's. Finder return to this office for reward.

AN UP-TO-DATE ABSTRACT.

Of Title to every piece of land in Floyd County.

TOM P. STEEN,
Floydada Texas

MILL.

We have started our mill to unning and are ready to make meal or chops Saturdays.

RAMSEY BROS.

Carbon or transfer paper in sheets 25X38 inches or 8 1-2X11 inches. Call at the Beacon office.

Local News

Uncle John Muncy was last Thursday night removed from Plainview to Lockney, having begun recovery from the abcess his lung. He is improving and will be up and about soon.

Miss Cora Smith, of south of town was hostess at the home of her father and mother, Mr. and Mrs. W. E. Smith, to a number of friends Saturday night.

Mrs. R. L. Underwood and Miss Vivian Norris returned home Sunday after a much enjoyed visit in with relatives and friends in Knox county.

Prof. J. L. German, President of the Lockney College and Bible School, left for a ten days absence Thursday last. He will stay a short time at Emma, Dickens and Lubbock.

M. E. Lawson, of Sandhill, spent Sunday in Lockney with T. Z. Reed and family.

G. E. Abbe, of McGregor, Texas, was prospecting over the Lockney country the latter part of last week.

J. W. Moore, of Whitfield, was in Lockney Saturday on business and visiting W. R. Stovall and family.

R. C. Forbis and a Mr. Byrdge, of Afton, Dickens county, stayed over in Lockney Friday night on their way home from Plainview where they had been on business.

Mrs. M. F. Huskey returned to Floydada Tuesday after spending some time in Wise county and a short time in Plainview. She is the daughter of J. H. Shurbet.

Mr. and Mrs. Ira Broyles' home was the scene of a most pleasant evening spent last Friday night when they entertained a number of their friends in their new home on College street.

Jos. E. Pitts, of Flodada, came up Saturday to Lockney.

J. L. Celsor returned Saturday from the north where he has been on business.

W. H. Dougherty, an old friend of Dr. W. H. Freeman, and interested extensively in Floyd county land, writes from Alaska that he is enjoying a most delightful outing in that great region.

J. F. Duck, of southeast of Lockney was in town Saturday on business.

W. T. Wright, who formerly lived at Moody, Texas, but who has moved to the Lockney country is improving his farm-ranch southeast of town. He is a worker and will make good in the Land of Progress.

C. Brown of the Beasley Mercantile establishment, made a business trip to Amarillo last week, returning home Sunday.

E. N. Darnell and son, Edward, of Childress county, are in Lockney. Mr. Darnell formerly lived at this place and is thinking of locating again in order to have advantage of the school. The son will attend Lockney College & Bible School.

L. G. Pierce, of Plainview, was in Lockney on business Monday.

New Line of Post-Cards

Just received and in the rack. Hundreds of the best of every kind. Two for five cents

FORGET THAT FRUIT we get in every
Fresh apples, peaches, bananas, oranges
limes, etc., and don't forget the best,

THE CITY CONFECTIONERY
LOCKNEY TEXAS "It's on Your Way."

THE LOCKNEY BEACON

Homer Steen, Editor and Manager
Entered April 14th, 1902, as
second-class mail matter, post
office at Lockney, Texas, act of
Congress of March 3, 1879.

TERMS OF SUBSCRIPTION
One Year.....\$1.00
Six Months.....50
Three Months.....25

Display advertising rates on applica-
tion. Bills due the first of each month

Local notices, ten cents per line
first insertion, five cents per line each
subsequent insertion.

D. H. L. Bonner. Hear him.

Do you love home? Then hear
Uncle Dick Bonner.

I love you plainmen, "but oh,
you people under the cap rock,"
we need you.

Good farmers make good citi-
zens, and these are the people
the Lockney country needs.

John G. Adams from that por-
tion of Arkansas "where the wo-
men go bare-footed one-half the
time," will sell out and come to
the plains of Texas just as soon
as he can. That's what he said
Tuesday while in Lockney. "I'll
move to some of these south
plains counties, probably Hale,
Floyd or Lubbock," were about
his words.

A Bakery that can furnish
Floyd and adjoining counties will
be the next new enterprise for
Lockney if somebody does not
butt in and put in some other
kind first. At any rate, a good
bakery is a "cinch."

The Beacon \$1.00 per year.

CONGRATULATIONS.

The letter below was crowded
out of last week's issue. It will
be appreciated by the people of
Lockney and surrounding terri-
tory. The letter has reference
to the 16 page Commercial Club
Edition:

Floydada, Texas, 8-23-09.
Editor Beacon:—I send hearty
congratulations to the Beacon
Editor, the Lockney Commercial
Club, and the people of Lockney
in general, on the magnificent
paper of last week's Beacon. It
is an exponent of the push, en-
ergy, intelligence, and public-
spirited progressiveness of the
place and people that sent it
forth.

Long and far may the Beacon
send its rays of light.

Yours very truly
W. B. CLARK.

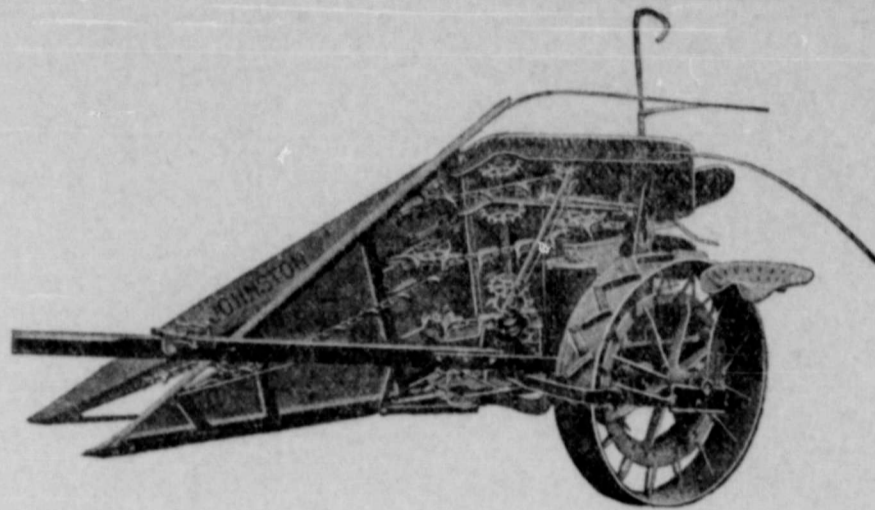
LOCAL SHOWERS

Local showers in the Lockney
country have made some farmers
smile, while the showers have al-
so held other farmers in vain sus-
pense hoping for the much need-
ed, long-looked for soaker.

Northwest, North and East of
Lockney for a short distance and
right in the town nice little show-
ers fell Monday and Tuesday
laying the dust and giving crops
a wonderful impetus. However,
this is only local and unless the
Southeaster that's blowing brings
a soaker we're still looking for a
rain.

J. W. Collins and family have
returned from Stephens county
where they have been visiting
for about a month. When Mr.
Collins went off some of his friends
didn't know whether or not he
would come back alive as he is
said to be bad on the cat-fish and
perch that abound in the Steph-
ens county streams.

The Johnston Corn Binders!



We have just put on our new attachment for cutting
low stuff and find that it works fine and will handle very
low feed. When you buy the Johnston you get a binder
without neck weight or side draft—light draft, very strong
and durable and the only Row Binder with adjustable
knotter that can be raised 14 inches for binding high
feed and corn near the center of bundle. Remember
that long feed bound close to the butts is much harder
to handle than low feed close to the top. You cannot
handle high feed successfully with any other binder out-
side the Johnston. We can show you in the field. Others
are pleased.

C. R. McCOLLUM HARDWARE-FURNITURE CO.

Meeting Of Clubs And Newspaper Men

To Take Place Tuesday Septem-
ber 7—Tulia The Place of Meeting
Delegates From Lockney.

The secretary of the Commer-
cial Club and the editor of The
Lockney Beacon are in receipt of
the following letter from the
secretary of the Tulia Club.

Dear Sir: The fall meeting of
the Federation of Commercial
Secretaries and Newspaper Men
of the Panhandle, Plains and
South Plains country will convene
at Tulia Tuesday morning at 9
A. M. September 7th, 1909. This
will be strictly a business meet-
ing to devise plans to better ad-
vertise our country and to co-op-
erate in any way to better our
condition generally.

The Tulia Commercial Club
will entertain the delegates elec-
ted to attend this meeting by the
various Commercial Clubs and
Newspapers and will leave noth-
ing undone to make their visit
among us pleasant and profit-
able.

Tulia Commercial Club,
JAMES FRYE, Sec'y

A good turn-out from the vari-
ous Clubs over the west is ex-
pected and much good to be de-
rived from the meeting. Lock-
ney's Club will be represented as
will The Lockney Beacon.

SHOES—A full house of the
famous Hamilton Brown.
E. L. AYRES & Co.

STATE SUES FOR 3,305 ACRES.

Austin, Texas.—Attorney Gen-
eral Davidson today brought suit
for the State for the recovery of
3,305 acres in five tracts in El
Paso county. In the suit H. C.
McGarty, Mrs. Louis Rowley and
her husband, John H. Rowley,
are made defendants. The pe-
tition alleges that H. C. McGarty
in 1906 made arrangements for
buying the land, taking one sec-
tion as a homestead section and
the other four as adjoining sec-
tions. In 1908 his claim was for-
feited by the Land Commissioner
on the grounds of non-occupation.
According to the petition, the
land was forfeited on April 16,
1908, and he has refused to va-
cate the lands since the time,
and now the Attorney General
prays that title be cancelled and
annulled and that the State be
given possession of the land,
with a reasonable rental of five
cents per acre from the time of
forfeiture to date of judgement.

Mrs. Lois Rowley and her hus-
band, John Rowley, filed on the
land following the forfeiture,
making application to the Land

Commissioner, and they are ask-
ed to establish their title, such
action on the part of the State
being an effort to protect them.

TO SEATTLE.

Miss Ethel Broyles received a
telegram from the Star-Telegram
at Fort Worth Monday, that she
had won in the subscription con-
test and would be one to make
the trip to the Seattle Exposition
and return by way of many
places of interest.

She leaves to day to join the
crowd of young ladies in Oklaho-
ma on the way to Salt Lake City,
one of the first places of interest.

J. M. Hughes Land Co. have
purchased another auto to accom-
modate their land business. The
new car is of the white 4-cylin-
der Buick style.

Jack Gilbert returned Monday
to Miles, Texas, after spending
a few days in Lockney on busi-
ness and pleasure. He was for-
merly a resident of the Lockney
Country, and sincerely wishes
he had never left it.

Don't Overlook the Fact that We Carry a Complete Line Of School Supplies

We have over \$400.00 worth of
the adopted book
transit and would
would favor us w

We assure you that no one can
give you better goods, lower pri-
ces, or treat you more courteously

Red Cross Drug Co.

RECTIGRAPH ABSTRACT COMPANY

The best, most accurate and up-to-date
methods of abstracting are used by the
We have complete abstracts of all lands and town lots in
the following counties: Floyd, Lubbock, Briscoe, Castro,
Lamb, Bailey, Hockley and Cochran. Give us your busi-
ness and get the benefit of the best.

A. E. BLACKWELL, Mgr., Floydada, Tex.
Office next door to First National Bank.

Central Plains College

Plainview, Texas

offers the following classes of work:—Classical, Scientific, Philosophical, Literary, Academic, Preparatory, Theological, Dress-making, Book-keeping, Shorthand, Typewriting, Telegraphy, Music, Art and Oratory.

Faculty of twenty members. Christian, non-sectarian, interdenominational, co educational. Equipment the best. Social environments pure and wholesome. Send for catalog.

L. L. GLADNEY, President

Plainview, Texas

TOM. P. STEEN

Abstracter

Two years as county surveyor and four years as county clerk, and having spent considerable time and labor in bringing an abstract of Floyd County lands down to date gives me an intimate knowledge of titles to Floyd County lands. get an abstract to your land so that if there be a defect in the title it may be remedied.

Floydada,

:-:

Texas.

YOUR DRUG BUSINESS

Is what we are after, with a complete line of Drugs, Stationery and Drugs Sundries. We have a nice line of post-cards, writing material and school supplies. Call in, at

RANDOLPH BROTHERS

LOCKNEY TEXAS

Norris Confectionery

FOR up-to-date fountain drinks, ice cream, candies, cigars, nuts, fruits; and in fact everything that a good confectionery should handle

Lockney

Texas

Carruth & Pace

Phone 21

FRESH GROCERIES--THAT'S ALL

Lockney, Texas

RETURN OF PROSPERITY IS REVEALED BY ARMY.

Washington, Aug. 24.

Returning prosperity is having its effect on recruiting men for the United States army to keep up the standard established during and following the panic of 1907, when splendid material was available from the ranks of the unemployed.

The authorized strength of the army today is 84,500 men, exclusive of the hospital corps, which numbers 3,500 men. As the terms of enlistment of the men expire it is no easy matter to induce desirable men to re-enlist. It will not be a hard matter, therefore, to reduce the size of the standing army in accordance with President Taft's wishes. Ostensibly the cause for this reduction is the difficulty of obtaining good men, but the real reason is one of economy.

Every man reduced means a saving of \$1,000 a year, and if the reduction proposed reaches 8,000 men by July 1 next, the total annual saving will amount to \$8,000,000 a year. President Taft has been insistent on reductions.

Necessary construction work of all kinds has been postponed and all question of other needful equipments has been deferred.

LETTER TO I. A. E. BOX

Lockney, Texas

Dear Sir: There are two sorts of paint: one to sell and make money, the other to paint and save money.

Who gets the money? The maker, of course; he pays the painter for doing the work, and the dealer for gallons of paint; and he pays the paint-manufacturer, gallons again; more gallons more money all around; for the owner to pay to the painter dealer and paint manufacturer.

What's the paint that saves money? Gallons again; less gallons, less money for paint, less money for wages; a gallon of paint is \$5 for wages and paint. Less gallons, less money to pay, \$5 a gallon.

Two sorts of paint: less gallons and more; less money and more; \$5 a gallon difference; two to one in gallons and money.

It costs twice as much to paint the average more-gallons paint as to paint Devoe. When the people find-out, it may not be quite so easy to sell extravagant paint by calling it "cheap."

Yours truly

F. W. DEVOE & Co.

P. S. E. P. Thompson sells our paint.

J. G. Adams has studied the drunkard well.

Messrs. Cooper and Crawford, of Plainview, were in Lockney Monday on business.

Pastor Thos. Hanks and wife spent Sunday night at home in Lockney.

C. W. Smith of the Mickey neighborhood, was in Lockney Monday on business.

One farmer and one boy in Floyd county this year raised all the truck and hogs that they could care for and came out financially ahead. They raised Kaffir corn, 1,000 bushels Indian corn on sod ground milo maize, millet, the millet selling for \$1,400.—Fort Worth Star-Telegram.

J. E. Beasley has just installed a new cash register in his store for the convenience of himself and their customers.

DISPERSION SALE.

Of Registered Poland-China hogs. Owing to a short grain crop I am now offering my entire herd of Poland-Chinas at a bargain prices.

The herd consists of Bred Sows Open Gilts, Fall Bars, spring pigs of both sexes, and the herd boar, Texas Keep On, No. 128193. This herd is all in good thrifty condition and parties more fortunate than I can profit by my loss. Come early and secure the ones you want. L. S. KENNEDY.

Mrs. G. A. White, of Fort Worth, Texas is in Lockney visiting her Aunt, Mrs. C. F. Ramsey, Sr.

J. L. Cromartie and family, of Tell, Childress county, Texas, are visiting C. F. Ramsey and family at Lockney. He is a nephew to Mrs. Ramsey.

E. C. Reagan, of the Sandhill neighborhood was in Lockney Monday.

D. B. Brown, was a Cedarhill farmer in Lockney on business Monday.

Col N. H. Lewis has 80 acres of bottom land in Arkansas that will make 75 bushels of corn to the acre year in and year out near city of 4,500 people—will trade for vacant lots in Lockney. N. H. LEWIS LAND CO.

W. V. Thornton returned Sunday evening from Des Moines, New Mexico, where he has a quarter section claim. Crops are late but fine in that country he says.

G. A. Lider, Chief Engineer on the Llano Estacado—Santa Fe extension, was in Lockney Monday evening.

Abe Vinyard left last Friday for Quinlan, Oklahoma, to take up a position on the railroad as agent.

T. Z. Reed and C. F. Ramsey followed J. W. Bailey to Amarillo, and listened to a speech he made at that place Saturday night. They returned home Monday.

J. R. Hitt and family, of Whitfield, visited the Rigdon and Reed families in Lockney last week.

Homer Pack, a prominent citizen of Hale county and Plainview died at Corpus Christi and was buried at Plainview Saturday.

A young man, Saunders by name preached an appreciated sermon at the college Sunday. He will probably attend school this year at L. C. & B. S.

DENTAL NOTICE

Dr. A. R. Taylor, Dentist, will be in Lockney the first week in every month to do Dental Work. Persons desiring his services call at Red Cross Drug Store.

DR. WOODS & WIFE

Resident Dentist

Will be in Lockney first Monday in each month, remain over week or longer if necessary. Office at Randolph Bros.

R. E. ERWIN

Attorney at Law, office in First National Bank Building. Practice in all courts. Lockney, Texas.

DIRECTORY

Courts.

District Court convenes 15th Monday after first Monday in January and July.

L. S. Kinder, Judge.
L. C. Penry, Dist. Atty.
W. B. Clark, Clerk.
A. C. Goen, Sheriff.

County Court convenes third Monday in January, April, July, and October.

F. P. Henry, Judge.
W. B. Clark, Clerk.
A. C. Goen, Sheriff.

Commissioners' Court meets in regular session 2nd. Monday in February, May, August, and November.

F. P. Henry, Presiding Judge
D. C. Allmon, Com. Prec. no. 1
B. F. Sanders, " " " 2
W. B. Crabtree, " " " 3
Geo. L. Fawver, " " " 4
Justice Court of Prec. no. 3 convenes the 3rd, Friday and Saturday in each month.
M. Livingston, J. P.

Lodges.

Lockney Lodges, A. F. & A. M. meet Saturday night on or after the full moon of each month C.

The Lockney lodge M. W. of A meets every 2nd and 4th Thursday in each month.

John M. Hughes, Council Commander. Homer Howard Clerk.

Lockney Camp No. 1280, W. O. W. meet 1st and 3rd Saturday nights in each month.

S. A. Henry, C. C.
Homer Steen, Clerk.

Lockney Lodge, No. 396, K's of P meet every Tuesday night.
T. C. Bradley C. C.
S. A. Henry K of R. S.

Lockney Local Lodge No. 311, socialists meet 1st Saturday in each month at 2: P. M.

J. T. HILL Sec.

I. O. O. F. meets every Thursday night in each week.

J. H. FOWLER N. G.
J. J. NORRIS Secy.

Churches

Church of Christ meet for admonition and Breaking of bread 11: a. m. every Lord's day.

Methodist Christian Church of Christ. Rev. Thos. Hanks, pastor, will preach 1st 2nd and 3rd Sundas at 11 and 8:30.

Sunday School at 10 o'clock.
Prayermeeting and song service every Wednesday evening at 8:30
Junior League Saturday at 3.
W. H. M. S. every Tuesday after 1st and 3rd SUNDAYS.
THOS. HANKS, Pastor.

1st Baptist Church of Christ Preaching every Sunday at 11 o'clock and at night. Sunday school 10 A. M. Prayer meeting every Tuesday night. A lecture every Saturday night.
H. A. THOMPSON, Pastor.

Farmers Union meets Saturday before the first and third Sunday in each month.

W. D. ZION, Secy.

CLUBBING OFFER

The Dallas Semi-Weekly Farm News makes a specialty of Texas news. Outside of this, it is unquestionably the best semi-weekly publication in the world. It gives news from all over the world, but particularly an unsurpassed news service of the great Southwest in general. Specially live and useful features are the Farmers' Forum. A page of little men and women. The Woman's Century. And particular attention is given to market reports. You can get the Sem Weekly Farm News in connection with The Lockney Beacon for only \$1.80 a year cash for both papers.

Subscribe now and get the local news and the news of the world at remarkably small cost.

Lockney College and Bible School--Chartered

James L. German, Jr. A. B. Pres.
Bible, English, Greek
Milton V. Showalter, A. B., L. I.
Mathematics, Latin, Sciences
John C. Graham, A. B.
Business, History, Sciences
Miss Amelia Turner
Intermediate Subjects
Mrs. Ida Waters
Primary Department

Mrs. Myra Graham
Assistant
Chas McLaughlin
Assistant
Miss Jeanie Love
Piano—in town
Miss Ola McCall
Expression
J. Frank Copeland
Voice, Sight-singing

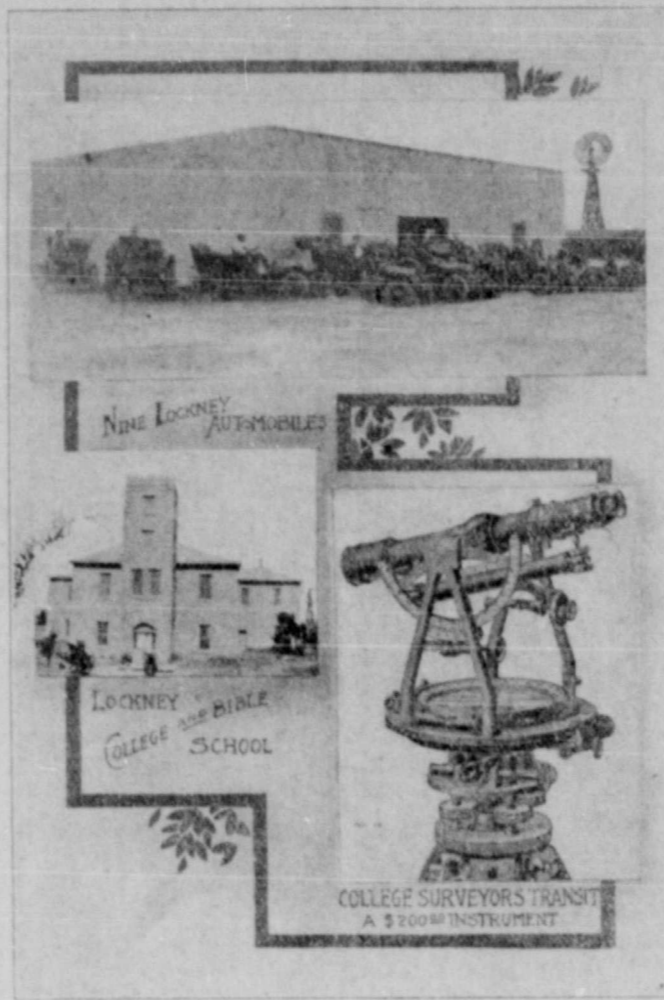
BOARD OF DIRECTORS

C. W. Smith, President
Dr. W. H. Freeman, V-Pres.
Homer Howard, Secretary

New buildings. Healthful climate. All literary courses; Special Schools of Bible, Business, Music and expression. For young men and young ladies.



These teachers are graduates. They were educated in leading colleges and universities. They are experienced teachers and well prepared to instruct those placed under them. We failed to get two of the pictures in the cut. We wish to state that Prof. — — Talley will assist in the business department. Two things deserve special attention: Prof. Talley will assist in the Business department, and Prof. Copeland has spent a large part of the summer at Chicago studying vocal music. Come to opening speaking and singing Sept. 10 9 a. m.



The College building is large and convenient. It will be warm in the winter and cool in the summer. The roof has been finished and fixed rain-proof. The walls have been "pointed" on the outside and other improvements made within. All but the first four grades will study in the large grades will study in the large study hall, equipped with nice chairs and tablet arms. There are separate stairways for boys and girls. Nine class rooms. Large business room. We offer diplomas to students in the Literary, Business, Elocution and Music departments upon graduation.



We have good arrangements made for boarding students. It was thought that the boys' dormitory would not be ready, but the trustees are repairing it and remodeling it so as to accommodate many of the boarding young men. The young ladies will board with Prof. German and others. With reference to rules of school, we have decided to let the resident students be under their parents except during school hours and to and from school. Boarding students are under rules all the time except when the faculty suspends them. We have three literary societies.

A. S. Love orders his paper sent to 1310 Denver Ave., North Fort Worth, Texas.

John Ewing returned from Childress county the latter part of last week.

WANTED—to sell a good horse. See W. O. Kelley, Lockney Texas.

J. C. Thomas, was in Lockney Tuesday on account of the rain and business.

School Dresses

Our Fall Goods are nearly all in here and in the shelves and we wish to inform you that we have one of the nicest lines of piece goods in town. Our stock of School-wear Clothes for children we draw your especial attention to. The patterns will please and make up well.

Dry Goods Notions

Of almost any and every line are in this stock and if you can't see what you want, call for it and we will do our best to fill your bill.

J. A. Baker,
Lockney, Texas

NOTICE TO PATRONS OF ROSE-LAND SCHOOL COMMUNITY

School will begin here Monday September 6th. All patrons and friends in the community are requested to be present Monday at 8 A. M.

Friends, this is an honorable duty you owe to your teacher and children, you show an interest in the school as that, as well as the home, training, helps to mould the children's future destiny.

We will have a talk on the relations which exist between patrons and teachers, also the possibility of partiality in school by teach. Respt.

R. I. MOON,
Teacher.

TO THE LADIES OF LOCKNEY AND VICINITY

Miss Minnie Sammann has just opened a dress making department at J. E. Beasley's store. Ladies call in to see her. Prices are reasonable and satisfaction guaranteed.

\$25 REWARD

For the recovery of one deep bay mare, six years old, will weigh 800 pounds, is broke to work and ride, foretop has been cut out, has wire mark on left fore leg, right hind foot is white, (she has no brand) I will pay \$25 for delivery to me at Floydada or \$10 for information that will lead to her recovery.

A. C. GOEN,
Floydada, Texas.

J. H. Elam and O. L. Howell were in Lockney Tuesday from Plainview showing the qualities of the Lambert automobile.

FARMERS BUYING BANK STOCK

New light has been thrown on the movement of farmers toward banking investments in the agricultural states by some recent investigations regarding the average holdings of these thrifty people. It has been widely heralded that the farmers are becoming stockholders of banks in large numbers, and while this is a fact they are not by any means large investors. A recent law of Kansas, for instance, requires that every director of a bank shall have at least \$500 worth of stock, five shares. In many of the small banks farmers have been dropped from the board because none held the requisite amount of stock and did not wish to purchase more. The average farmer stockholder has \$100 to \$200 of bank stock and is satisfied. He wants the glory of being a bank stockholder, and does not purchase so much for investments as for the notoriety it gives him.

It is not uncommon for banks in the wheat belt with \$10,000 capital to have forty stockholders all but three or four owning one share each. These stockholders take little interest in the bank and

are less a factor in management than is generally supposed. The cashier or president is the one-man power, and the stockholders are mere investors on a small scale. The western farmer is able to make more out of his money by buying land and putting it into crops than he can by loaning money through the bank at the rates now prevailing. He is able to buy more stock if he wishes, for many of the banks have rich farmers as stockholders but the banking profits are not now sufficient to induce well-to-do farmers to enlarge his holdings.—Finance.

Miss Minnie Sammann, who has been dress making at Plainview, has moved to Lockney and will continue the work at J. E. Beasley's store.

FREE.

A nice fall suiting dress pattern to the lady bringing us the most eggs during the month of September. Highest market price all the time.

J. A. BAKER.

Read The Beecon

A \$500.00 PIANO

Cash and other valuable prizes to be given away by the Conservatory of Music of Central Plains College

PLAINVIEW, TEXAS

If you have pluck and push you may win one of these prizes in a little while. Write for terms of contest and get into the race at once.

L. L. GLADNEY, PRES

AUTO OVERTURNS

Defective Wheels Give Way on Sharp Corner. Two Hurt

Thursday morning while John T. Shipley was turning the corner at W. E. Honea's place, south of town half a mile, in a Lambert car, with four passengers, the outside front and back wheels gave way and threw the car over on its side and throwing the passengers out.

The two Messrs. Martin, of Weatherford, and their wives were on the car returning home from Floydada where they had been visiting Mrs. W. M. Massie's family and J. G. Martin. Mrs. Massie is a daughter, Mr. Martin a son, of the elder Mr. Martin and wife.

The elder Mrs. Martin, who was on the outside as they turned the corner, was hurt rather badly, being bruised considerably about the face and body. J. T. has also a badly bruised ankle caused by being caught beneath the car. He says that as he felt the front wheel give way he knew it was going over and that was the last he remembered for several minutes. He thinks he must have involuntarily started to get out, thus accounting for his foot having been caught. Hugh Adams, who was driving a line car behind, brought them on into town where medical aid was given the wounded. The doctor did not ascertain that there were any internal injuries done, though in Mrs. Martin's case complications could set up that might prove serious.

MEETING OF COMMERCIAL CLUB

(Continued from 1st Page.)

ney in a very short time. Two of the best bakers in the west, M. Harmon and Mr. Hull will run it. That they are the best can be attested by every man who has eaten their bread in Lockney. This will go in in a very short time after the machinery can be gotten from Oklahoma.

More roads and better roads leading to Lockney were discussed and the matter of a cap rock road will be taken up at once to enable the people of the breaks better facilities for a market.

Other matters, which will develop into printable news later, were also discussed and action will be gone into at once on them.

Come witness these new patterns in piece dress goods and ladies and gents furnishings.
E. L. AYRES & Co.

Evangelist Smith and wife, of Plainview, were in Lockney Wednesday.

C. W. Smith, of Mickey, was in town Thursday forenoon on business.

N. H. LEWIS & COMPANY
LOCKNEY - FLOYD COUNTY - TEXAS

Special agents for 40,000 acres of the finest alfalfa, corn, wheat and oat land in Floyd Co. Prices range from \$25 to \$50 per acre. Well improved. Write us for list of same.

ROAD FROM FORT WORTH

Proposed To Extend West Through Lockney To Hereford And On To The Northwest

David G. Mayes, of Chicago, Trustee of the Seattle and Gulf Construction Co., was in Lockney some four weeks ago and talked with Ghent Carpenter, Cashier of the First National Bank for a short time concerning a road extending west from Fort Worth through many lower Panhandle towns, Lockney, Hereford and on Northwest to a Pacific outlet. He writes back as follows:

Chicago, Ill., August 26, 1909.
MR. GHENT CARPENTER
Lockney, Texas.

MY DEAR SIR:—Landed in Chicago a few days ago and made my report to the Seattle & Gulf Construction Co., and they were more than favorably impressed with the same.

They have instructed me to write you and say that the people back of them are willing to furnish the money or necessary funds providing necessary donations outlined are forthcoming. They will send the Syndicate's consulting engineer and right-of-way man there at once if you people are ready to do business. These men are high salaried men and the company are assured that you people are ready to do business they prefer to wait until some future time.

There are many railroad projects in view at present where they can use these men to advantage.

The syndicate backing the Seattle & Gulf Construction Co. have other projects, and they furnish the funds as they are presented in rotation, but we want to push ahead of the other fellow with this one.

You cannot afford to miss an opportunity like this, you need the road worse than the other fellow needs the investment, so act quick.

Yours very truly
DAVID G. MAYES,
Trustee, Seattle & Gulf Con. Co.

Tahoka and Lamesa are almost assured a railroad within the next sixteen months. The Lynn County News this week contains a letter from Chief Engineer Storey, of the Santa Fe, to T. J. O'Donnell, of Lamesa, that on condition of the bonus made to him by these people, being turned to the Santa Fe, they would build into these towns within one year after the deal was closed. As a matter of course these towns will come across and the road be built.

E. L. Ayres & Co. for Dry Goods and dry goods notions. A most complete stock.

**NORTH
MINNEAPOLIS**

Record for 1908

Total Income	\$1
Excess of income over disbursements	
Paid policyholders and beneficiaries	
Increase in surplus	

The policies of the Northwestern Mutual life insurance, the most liberal issued, read them

DESIRABLE AGENCIES OPEN TO MEN

A. H. CHAMBERS,

519 WILLSON BUILDING

A. G. McAdams Lumber Company

Lumber, Bois D'arc, Lath, Shingles,
Sash, Mouldings, Blinds, Doors And Paint
Lime, Cement and Brick
Screen Doors in every size.

Lockney.

-0-

Texas.

LOCKNEY LUMBER CO.

Has in stock a general line of dressed and undressed lumber ranging from windmill tower timber to finished stuff for cabinets

**Screen Doors, Windows, Sash,
Doors, Brick and Lime**

For your business, we are yours

LOCKNEY

O-O

TEXAS

THE INTERNATIONAL FAIR

From the announcement by President Brown of the attraction already arranged for and the preparations already made or being made there appears to be ample promise of a great San Antonio International Fair and Exposition next autumn.

All the buildings on the grounds will have been remodeled and freshly painted before the Fair opens, the grounds are to be beautified with plants and shrubs and walks made hard and smooth and everything put in fine shape before the exhibits are installed.

Greater efforts than ever before are being made for a splendid agricultural and live stock display and the merchants and business men of the city have promised a more active and generous co-operation in making the Exposition Hall an attractive re-

sort. The Mexican government is having a comprehensive exhibit of Mexican industries and resources assembled for the coming Fair, and will in addition send one of the best military bands with the compliments of the President.

BACK HOME.

A. J. Byars and family returned Tuesday from Clairemont, Rotan, Sweetwater, Nolan, Abilene Weatherford, and Hood county, a round which it took them twenty seven days to make. During the time they visited cousins, friends, brothers, sisters, sons and daughters, saw all kinds of country and crops, drank all grades of water, had a good time and returned home tanned and healthy.

Chas White, of Amarillo, was in Lockney Tuesday on business.

THE NORMAL SCHOOL.

The last news from the locating board of the State Normal to be located west of the 98th meridian, was that all towns except Amarillo, San Angelo, and Bronwood had been cut out of the running and that it now stands between these three.

They're all good towns and I certainly hope Amarillo will win but there were other towns on the list that looked much better to some people for the location of our educational institutions like this great one will be.

U. S. Crum worked hard all day Thursday up till the middle of the afternoon.

J. D. Childers is moving to Lockney to send his children to school this winter. He will live in the west part of town.