



# THE REPORTER-TELEGRAM

Evenings (except Saturday) and Sunday morning  
112 West Missouri :: Midland, Texas

JAMES N. ALLISON, Editor and Publisher

Entered as second-class matter at the post office at Midland, Texas, under the Act of March 30, 1879.

Subscription Price	Advertising Rates
One Year ..... \$7.00	Display advertising rates on application. Classified rates, 3c per word; minimum charge, 25c. Local readers, 10c per line.
Six Months ..... 3.90	
One Month ..... .65	

Any erroneous reflection upon the character, standing or reputation of any person, firm or corporation which may occur in the columns of the Reporter-Telegram will be gladly corrected upon being brought to the attention of the editor.

The publisher is not responsible for copy omissions or typographical errors which may occur other than to correct them in the next issue after it is brought to his attention, and in no case does the publisher hold himself liable for damages further than the amount received by him for actual space covering the error. The right is reserved to reject or edit all advertising copy. Advertising orders are accepted on this basis only.

### MEMBER ASSOCIATED PRESS

The Associated Press is exclusively entitled to use for publication all news dispatches credited to it or not otherwise credited in this paper and local news of spontaneous origin published herein. Rights of publication all other matter herein also reserved.

I tell thee, thou shalt not depart thence, till thou hast paid the very last mite.—Luke 12:59.

## "Fill Her Up!"

We have all heard so much about the tremendous problems of reconversion that we have felt it would be months, if not years, before we could again enjoy buying the most common-place prewar products. And then almost before the guns had stopped shooting, gasoline and fuel oil were off the ration list.

But the real point is that the oil industry, which had been called on to meet an unprecedented war demand, was ready at the drop of the hat to take on the full peacetime load of the greatest oil using nation in the world, plus the still great demands of the greatest mechanized Army, Navy and air fleet in the world. This is an accomplishment of private enterprise that is deserving of more than passing recognition.

Even during the war, the oil companies were preparing for peace. Their incentive and initiative had not been dulled by government ownership and control which was out of touch with civilian needs, and which it might have taken weeks or months, or even years to end.

It is worth remembering that American private enterprise, as typified by the oil industry, rendered unparalleled worldwide service in a global emergency and dropped back without a hitch to normal peacetime domestic service in a manner not duplicated by nations whose resources are the plaything of politics and government control.

## Truman vs. Roosevelt

For a true gauge of the difference between Franklin D. Roosevelt and Harry S. Truman, get out Roosevelt's message to the first session of the 79th Congress last January and compare it with Truman's recent message.

There wasn't anything in Truman's message that Roosevelt hadn't advocated before. But what a difference in the emphasis and in the way of saying it. The literary styles of the two men are as different as day and night, and that gives an insight into their characters. Roosevelt's sentences were apt to be long, with a lot of dependent phrases and clauses—some of them set off by dashes—and a good many semicolons; for Roosevelt was rather proud and conscious of his style.

Truman's sentences are short. Few sentences run over 30 words, and they're enumerations on a specific subject.

## Recruitment Drive Will Determine Fate Of Peacetime Draft

WASHINGTON —(AP)—The outcome of a forthcoming Army-Navy recruitment campaign, Capitol Hill believes, will determine the fate of compulsory peacetime military training legislation.

If the enlistment campaign, to be launched as soon as the Senate acts on a recruitment bill already passed by the House, can produce an estimated 1,500,000 men, including men already serving enlistments, it is almost certain there will be no universal training act now.

But if it falls short of Congressional expectations, the lawmakers either will have to pare down their present estimates of how big the postwar Army and Navy shall be, or face the alternative of a peacetime draft.

Congress Now Lukewarm  
Right now, the peacetime draft plan has but lukewarm backing in Congress.

The Army's spokesmen have told Congressional handlers of military matters they don't expect the recruitment drive to do the job.

Navy spokesmen have told Congress they are planning on a postwar fleet requiring from 500,000 to 600,000 men. The Army hasn't given its figures, but best estimates range from a regular force of 500,000 men if universal training is adopted to 1,000,000 if there is no peacetime draft.

Currently the Navy has approximately 300,000 men serving under enlistments. The Army's high was an estimated 419,000 in 1941, but most of those enlistments have expired.

## 154 Applications For Drilling In Week

AUSTIN —(AP)—The Oil and Gas Division of the Railroad Commission announced Saturday a total of 154 regular drilling applications for the past week. This brings the year's total to 5,958 as compared with 5,943 for the same period last year.

There were 80 oil well completions and 17 gas well completions for the week Sept. 17-22 which brings the year's total to 2,890 and 591 as compared with 2,557 and 214 respectively for last year.

The total average daily allowable for this week was 1,996,077, an increase of 4,701 over last week.

There are at least 250 different kinds of violets.

## Tommy's 66 Service Station

Phillips 66 Gas and Oil  
We do 3-day recapping  
We Fix Flats  
New Wonder Car Wash  
Phone 577 500 W. Wall

## Says Reconversion Progresses Swiftly

NEW YORK —(AP)—The National Association of Purchasing Agents reported Saturday that "reconversion" of war production plants was headed for another miracle of speed in change-over and operation, until labor's activities and demands slowed down both operations and confidence.

The survey added, however, that reconversion is proceeding rapidly, and expectations are very optimistic. Many purchasing agents believe industry will pass from reconversion difficulties into full postwar production in from three to six months.

Early letter carriers collected two cents for each letter delivered.

## Col. Lynch Approved As Ex-GI Advisor

AUSTIN —(AP)—Lt. Col. Raymond A. Lynch of the 36th Division has been appointed as an assistant to the attorney general. He will handle all matters relating to ex-service men working with the Veterans' State Service officer and Federal Veterans' aiding returning servicemen.

## Cotton

NEW YORK —(AP)—Cotton futures were steady in quiet trading Saturday. Oct. 22.75, Dec. 22.84, March 22.81.

## BET AT BELMONT TURF

NEW YORK —(AP)—Racing's first \$5,000,000-betting day was turned in Saturday at Belmont Park as 49,614 turf fans wagered \$5,016,745 on the eight-race card.



## AETNA LIFE Insurance Company

Laura Jesse, Agent  
207 First Nat'l Bank Bldg. --- Phone 114



## LIFE INSURANCE

Annuities and Endowments  
Civil Pilots Insurance  
The Largest Life Insurance Company Operating in Texas  
See LOU FRAZEN, Representing

## THE EQUITABLE LIFE ASSURANCE SOCIETY OF THE UNITED STATES

106 N. Loraine Office Phone 1678

## CALL

## Mayes Electric Co.

FOR YOUR ELECTRICAL NEEDS

Electrically At Your Service

CONTRACTING—WIRING—REPAIRING

Phone 328

106 So. Colorado

## TAYLORCRAFT

SALES and SERVICE  
Orders taken now for new Taylorcraft, deliveries expected to begin in September.  
Flight Instruction — Planes For Hire  
Or Rent — Humble Products

## MIDLAND COMMERCIAL AIRPORT

R. A. PLUNK, Operator  
1 Mile Southeast of Midland, Near Garden City Highway

**TAXI**  
CALL 80 or 600 — 24 Hours Daily  
PROMPT COURTEOUS EFFICIENT SERVICE  
**CITY CAB CO.**  
113 N. Colorado  
B. L. MASON H. G. NEWTON OTIS A. KELLY  
Owners

Repair and Remodel Before Winter  
EASY TERMS ARRANGED  
Ready to serve you with Coleman floor furnaces, brick siding, new stock Pittsburgh paints and wallpaper.  
**A & L HOUSING and LUMBER Co.**  
Always At Your Service PHONE 949

**RAMBOUILLET BUCKS FOR SALE**  
200 Top Quality Range Pure-Blood Yearling Rams, sired from the State's Best Studs!  
For Sale At  
**GREASEWOOD RANCH**  
P. O. Box 245 HUDSON HANKS Rankin, Texas

*Home*  
A RESTFUL HAVEN—TO ENJOY AND RELAX IN  
MAKE IT LOVELY—MAKE IT COMFORTABLE!

SPECIAL \$199.50  
Similar To Illustration.

WHAT KROEHLER 5-STAR CONSTRUCTION MEANS TO YOU...

- 1.. Hardwood Frames
- 2.. Non-sag Under Construction
- 3.. Soft Spring-filled Cushions
- 4.. Form-fitting Backs
- 5.. Quality Craftsmanship

Handsome-As-Can-Be KROEHLER Suite For Your Home Today and Tomorrow

There's more quality and more value in this suite than ever before built into a Kroehler. It's more comfortable and better looking than pre-war, because Kroehler engineers have developed new shaping and fitting in the seats and backs so they support you completely. Covered in heavy durable fabrics in your choice of the newest colors.

BUY ON OUR EASY BUDGET PLAN!

OTHER SUITES \$79.50 TO \$450.00

# BARROW

The Largest And Best Assorted Stock Of Furniture In West Texas

STRATOCRUISER WILL ACCOMMODATE 114  
SEATTLE —(AP)—The Stratocruiser, the peace-time version of the C97 military transport, incorporates many of the engineering features of the famous B-29 Superfortress and can accommodate up to 114 passengers, Boeing Aircraft Company officials revealed here Saturday.

NOW OPEN FOR BUSINESS at 301 EAST WALL  
Plenty of Money FOR ANY LEGITIMATE USE  
Specializing in INSTALLMENT LOANS  
Automobile and Household Appliance Loans Made Promptly  
**MID-LAND FINANCE CO.**  
J. H. BROCK, Mgr.—Phone 509

ATTEND THE  
**FIRST BAPTIST CHURCH**  
Main and Illinois Streets  
Vernon Yearby, Pastor  
9:45 a. m. Sunday School.  
10:30 a. m. Morning Worship  
Dr. I. L. Yearby (KORS)  
6:45 p. m. Training Union.  
8:00 p. m. Evening Worship  
Dr. I. L. Yearby (KORS)  
Note time of Morning Worship.  
Main at Illinois

## HEREFORD SADDLES

During the past week we shipped two saddles to New York State and one to Minnesota . . . and took care of some "home boys" too.

Besides the Hereford Brand saddles, we also are exclusive dealers in this area for Potts Ingerton saddles, made in Amarillo, and for Bill Wyatt saddles, Austin. These are all hand made and carry a liberal guarantee. See our wide selection of saddles and riding equipment — visitors welcome in our western equipment store.

## Leather Novelties

We receive each week a new assortment of leather novelties, including wallets, coin purses, ladies bags, compacts, brief cases, pigskin utility cases, key cases, tobacco pouches, hand tooled or beaded belts and many other useful and attractive articles. If you need a gift, select one of leather, with a western motif. It'll be appreciated by man, woman, boy or girl.

## T. PAUL BARRON

LEATHER NOVELTIES SADDLERY WESTERN GIFTS-CURIOS  
201 South Main Phone 691

SAFE BANKING FOR OVER 55 YEARS

THIS BANK HAS SERVED MIDLAND AND THIS WHOLE REGION SINCE 1890

and is prepared to make any loans consistent with sound banking.

We will be glad for you to talk over your post war plans with us.

# The First National Bank

Midland, Texas  
United States Depository — Member Federal Deposit Insurance Corporation

### Navy Plans To Use Jap Battleship To Test Atomic Bomb

NEW YORK—(AP)—The New York Times said in a dispatch from Tokyo Saturday the damaged 35,000-ton Japanese battleship Nagato, which was taken over by the U. S. Navy at the Yokosuka Naval Base, will be towed 500 miles to sea where an atomic bomb will be dropped on her in an experiment that may determine the future form of the world's navies.

After relating that the Nagato had withstood an attack by 500 United States Naval planes, the Times dispatch continues with regard to the atomic experiment:

"That is the present plan of the United States Navy which wants to ascertain these details: whether the bomb will cause the destruction of a single ship; what it will do to a task force; what effect it will have on the water."

Continuing, the Times dispatch says: "Reports from Hiroshima and Nagasaki indicate that the force of the explosion is up and out, not down. From the Navy's viewpoint, the most dangerous effect of the atomic bomb could be under water, where the pressure of water greatly magnifies the effect of a torpedo or a mine.

"It is not known whether the atomic bomb at sea will have the same effect because of the wide area for expansion as it does on land targets, where hills or mountains concentrate its power. There is a tentative theory that the effect of the atomic bomb on water will be mitigated."

Eating boiled potatoes, skin and all, gives extra returns in food value because of the measure of vitamins and minerals in the skin and close beneath.

### Judge Forfeits \$5.00 Rather Than Try Self

ALBUQUERQUE, N. M.—(AP)—Rather than try himself in police court, Judge E. C. Gober forfeited five dollars.

The turn about case occurred when Gober, rushing to preside at Police Court, parked his red truck in the alley.

Moments later the mayor followed by the city manager started for their homes to find their way barred by the truck.

A policeman was called and Gober forfeited his bond thus escaping trying himself.

### Dealt Rare '29' Hand Twice In 45 Years

SOUTH WINDSOR, ME.—(AP)—George T. Foster's second perfect "29" cribbage hand turned up 45 years after the first, which occurred when he was in the Philippines during the Spanish-American war as a U. S. Army corporal. Foster, who has played thousands of games since, was dealt the five of clubs, the five of spades, five of hearts, and jack of diamonds, with the five of diamonds turned up on the pack, for his second "29".

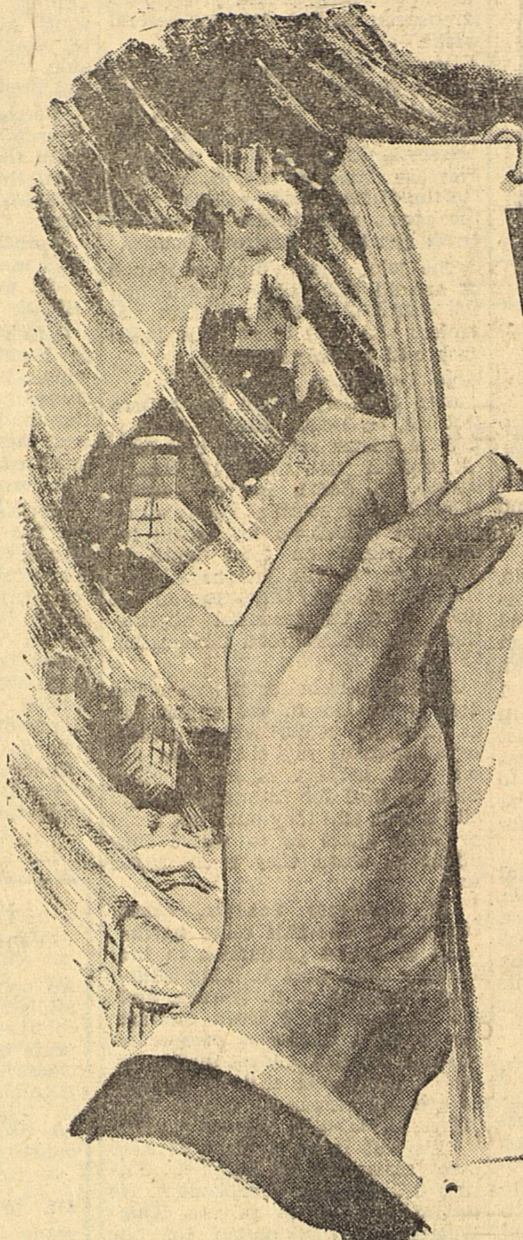
— Advertise or Be Forgotten

Does Your Car Need  
**SIMONIZING**  
4 HOUR SERVICE  
Phone  
**Mr. Runyan**  
No. 879-J  
Call For And Deliver

Building Restrictions To Be Lifted October 15th—You Should Soon Be Able To Build Any Size Home Desired!

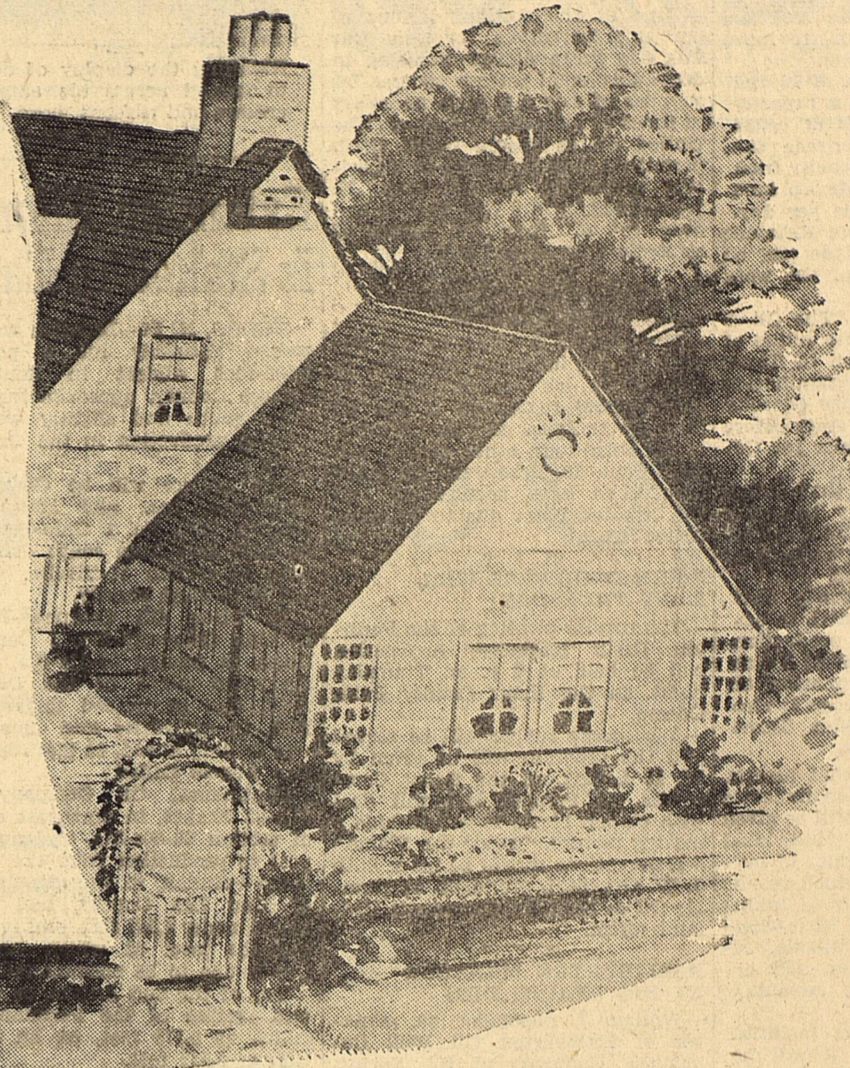
# NOW IS THE TIME TO

## Select Your LOT CAREFULLY



### FACTS about GRAFALAND

- Wide winding streets.
- Clear of utility poles.
- Arranged for staggering arrangement of homes.
- Restricted to better homes.
- Paving as soon as available.



## The Most Exclusive Residential Section Between Fort Worth and El Paso

Reprint from the Reporter-Telegram of Sept. 21, 1945.

### Thought And Planning Required Before Grafaland Could Be Opened

The opening of Grafaland as the most highly restricted and exclusive residential section between Fort Worth and El Paso is not the result of chance, but follows months of planning and consultations with experienced municipal engineers.

Barney Grafa, developer of Grafaland has opened five residential sections in the years he has been here, since 1927. All have been restricted and are from 95 to 100 per cent built up.

Grafa utilized his experience in making his plans for the opening of Grafaland which will within a matter of months, give planners precedent, be the site of some of the finest and most luxurious homes in Midland.

Grafa long has planned the opening of such an exclusive residential section as Grafaland but it was not until five blocks west of Midland High School and north of Highway Street that he was able to develop the exclusive residential section.

Citizens who are parents of children of elementary school age, or those who will find Grafaland an ideal location for their new homes as it is within nine blocks of every school in Midland.

Restrictions on building in Grafaland provide that each residence with other residences. No unsightly structures will ever be erected which will cause a loss in value to nearby homes.

Staggering Is Permitted Since restrictions permit the staggering of houses, citizens who erect their new homes in Grafaland will find they can use initiative and imagination in providing a perfect setting for their homes through landscaping.

The wide winding streets of the development have drawn praise from citizens who have visited the new residential section. Not one square street corner is found in the entire addition. Two parks have been provided for the enjoyment of those who will live in Grafaland.

Grafa will be glad to show interested citizens Grafaland and explain its advantages as site for a better home. He has his offices in the Thomas Building.

GRAFALAND is not just an idea that was hatched overnight . . . years of planning and preparation make this exclusive residential addition the reality of today. All of our years of experience in the real estate business, as well as the advice of other long experienced and successful operators, went into the planning of GRAFALAND. In GRAFALAND you are assured of every fine facility where you and your family can practice the art of gracious and serene living.

Select Yours Early For Choice Location

Join Those Who Have Selected Homesites In Grafaland; See - - - -

## BARNEY GRAFA, DEVELOPER

Office: Thomas Building

Telephone: 106

**CONSERVE FEED---**  
We've got to do it again!

1. Cull flocks and herds— feed only the good producers.
2. Don't overcrowd— birds or animals beyond limits of available space and equipment.
3. Avoid waste— Rats, over-full and non-protected feeders. Worm birds and pigs.
4. Fight disease and parasites— with a good sanitation program.

**Lewis**  
FEED & FARM SUPPLY  
PHONE 2011 MIDLAND TEXAS E. HWY 90

FOR GREATER TIRE SERVICE—  
**WHEEL BALANCING**  
—AND GREATER DRIVING COMFORT:—

Adds Thousands of Miles To Your Tires' Usefulness.

Wheel Balancing Done Scientifically By Experienced Mechanics

DRIVE IN TODAY

We Have A Good Stock of  
**3rd Grade Passenger Tires**  
**EVER-READY** AUTO SERVICE  
MARSHALL MOORE — KEITH M. STUART  
303 W. Wall Phone 72

# The Oil Pusher

By JAMES C. WATSON, Oil Editor

## MORE SIGNS OF FUTURE OF PERMIAN BASIN OIL

Recent actions and statements from several sources indicate the Permian Basin likely will experience a continuation of an active oil development and production program. Gulf Refining Company has contracted to spend approximately \$8,000,000 building 450 miles of loops between the Keystone field in Winkler County, and its seaboard terminal at Port Arthur, to move sweet oil from this region.

That new line will be of 10 and 12-inch pipe, will have a capacity of about 40,000 barrels of crude per day and will increase the concern's oil moving capacity from the West Texas-New Mexico area to about 115,000 barrels per day.

The loops will be from Keystone to Jenkins, Midland, Clyde and on to Port Arthur. Some of the work has started.

The Sept. 22 issue of "The Oil & Gas Journal" features the action of the Railroad Commission of Texas in making a detailed examination of the efficient productive capacity of various fields in the state before issuing the proration order for October.

The Journal sees in that action of the Texas regulatory body the possibility that "significant changes" may be made in the operations of the oil industry in Texas.

The publication reminds that "much of Texas" potential, in excess of recent record production rates, is contained in West Texas fields. Room for expansion of present productive acreage is also more abundant in West Texas than in any other area.

Continuing, the Journal asserts, "the Railroad Commission indicates that first consideration will be given to physical ability of individual fields to supply nominations of purchasers. This change, which results from the war emergency of taking whatever oil was needed from whatever source it was available, regardless of consequences, will accrue eventually to the advantage of West Texas.

"Additional pipe line facilities will be required and it will be necessary to accelerate exploration and development drilling. The deeper Devonian, Silurian and Ellenburger prospects, potential producers of sweet crude, will receive greater attention than during the war.

"Another indication that development of new sources of production of necessary raw materials inside the continental United States will

be carried forward, was contained in the recent message of President Truman, to Congress. In that outline of the program for his administration, he said in part: "We must proceed with all possible diligence not merely to restore those depleted resources to their former standards, but to make them greater and richer than ever before."

"One of the costliest lessons of our unpreparedness for this war was the great danger involved in depending upon foreign sources for supplies of raw materials necessary in times of national emergency. The United States should never again permit itself to be placed in a position where its defense may be jeopardized by the fact that it had been cut off from the source of strategic raw materials."

**PAW HOUSTON OFFICE WILL CLOSE SEPT. 30**

The District 3 office of the Petroleum Administrator for War, in Houston, which has directed wartime federal regulation of the oil industry in Texas and New Mexico, along with four other states, will close Sept. 30. Practically all PAW regulations have been lifted and the remainder are due to be eliminated soon.

**BASEIN ENGINEERS WILL MEET THURSDAY**

The regular meeting of the Permian Basin Engineers' Association will be held at 7 p. m. Thursday night, in the Ector County Park, Odessa.

A barbecue supper will be served and the program will be given by W. L. Loving, of the Cabot Companies, at Pampa, and will deal with carbon black. It will include a moving picture, "Inside the Flame."

Reservations should be made with J. W. Graybeal, president, at Humble Oil & Refining Company's Midland office.

**HALLIBURTON MANAGER AT BIG SPRING DIES**

William J. Alexander, 53, manager of Halliburton Oil Well Cementing Company at Big Spring, died early in the week from a heart attack while at work in the Howard County oil fields.

**STANOLIND ACQUIRES SOME HUMBLE LINES**

Stanolind Pipe Line Company is reported to have acquired the gathering system of the Humble Pipe Line Company in the Wasson, Waples-Platter and Ownby fields in Yoakum County.

The change in ownership is to be effective Nov. 1. Oil gathered by the system has been going to Stanolind's 16-inch trunk line from the Slaughter field to Drumright, Okla., for several months and purchase of the system indicates that Stanolind intends to continue to move considerable West Texas oil to the Middle West.

**SHELL TO BUILD ANOTHER PIPE LINE**

Shell Pipe Line Corporation will build a new 8-inch 27-mile pipe line from the TXL field in West Ector County to its Monahans station in Northeast Ward County.

The new unit will parallel Shell's 6-inch line now going southwest from the TXL district, by the Wheeler-Ellenburger field in East Winkler County, and the Monahans field in Northeast Ward. All those regions produce sweet oil and the rapidly increasing number of producers in TXL is necessitating the new line.

**PROGRAM ANNOUNCED FOR CONTRACTOR MEET**

Fifth annual meeting of American Association of Oilwell Drilling Contractors will be in Oklahoma City Oct. 1-2. Various committees will meet in the morning of Oct. 1, and full reports will be made at the afternoon session.

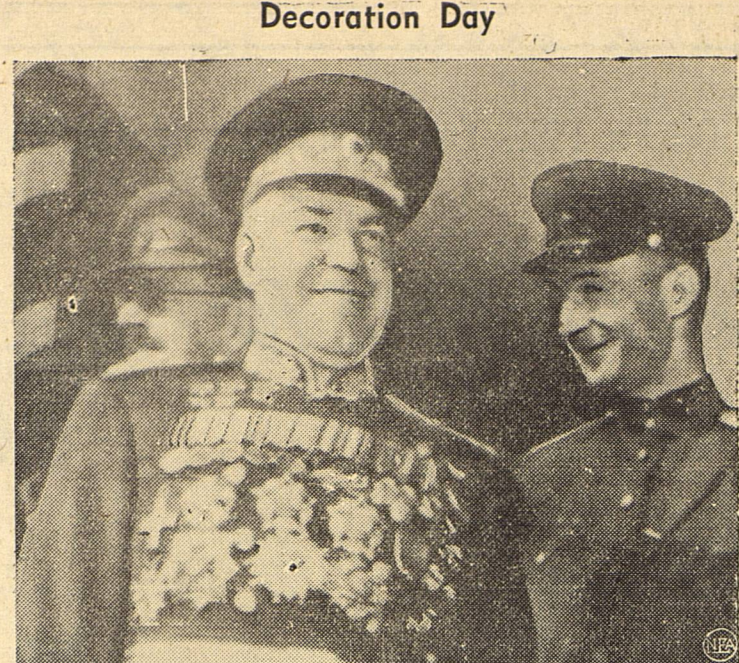
The annual banquet will be held on the night of Oct. 1, with Gov. Robert S. Kerr of Oklahoma as toastmaster.

The morning session Oct. 2 will offer papers on "Drilling Equipment Needs," by Douglas Ragland, Humble Oil & Refining Company, Houston; "Association's Accounting Program," by Leland Breckenridge, A.A.O.D.C., Dallas; "Safety in Drilling," by W. F. Burris and C. C. Weiss, Phillips Petroleum Company, Bartlesville, Oklahoma; and "Drilling Practices," by Ralph W. Marshall, Los Angeles, will preside.

**40-Acre Oil Leases \$375**

Near Conring No. 1 well, Presidio County, which has reached 4,523 feet and can penetrate several potential oil strata within the next 1,000 feet. Much gas already in evidence. This general area has been geologized by several of the Standard concerns and by other outstanding geologists who recommended that it be tested to 5,500 or 6,000 feet—convinced that an important oil pool might be opened there. This offer is strictly for those experienced in oil and recognize the uncertainty as well as the possibilities of leases in wildcat areas, having geological support. Seller reserves right to refund any purchase-money, without further liability, prior to reaching 4,750 ft.

Box 810, Alpine, Texas.



Rivalling the display of decorations that Hermann Goering used to spread across his ample front, is the collection of medals, crosses and ribbons worn by Russia's Marshal Zhukov at a recent review of Allied troops in Berlin.

## Decoration Day

## Extension Effort To Caprock Pool Is Staked In East Chaves County

HOBBES, N. M.—Location was reported Saturday for a possible 3,500-foot wildcat in Southeast Chaves County, approximately two miles south and slightly west of nearest production in the Caprock field.

The project will be George P. Livermore, Inc., and Malco Refiners, Inc., No. 1 Ohio-State, to be 1,980 feet from south and east lines of section 11-13S-31E. Drilling is to start shortly.

R. Olsen Oil Company-Blount Drilling Company No. 1 Caprock-State, in section 29-11S-32E, about six miles north of the Caprock field, had progressed under 3,494 feet, in anhydrite and lime, and was drilling ahead, at last report.

**In Granite Wash**

The Plymouth Oil Company No. 1-A Santa Fe, in section 13-15N-10W, in McKinley County, had reached 6,093 feet, in granite wash and shale, and was drilling ahead.

Richfield Oil Corporation No. 1 Coll, slated 9,000-foot wildcat in section 18-11S-27E, 17 miles east and south of Roswell, in Southeast Chaves County, had progressed to 3,467 feet, in lime and redrock, at last report, and was fishing for tools.

**Caprock Outpost Completed**

George P. Livermore, Inc., No. 1 McQueen-State, 1,980 feet from north and 660 feet from east lines of section 1-13S-31E, a southwest extension to production in the Caprock field, in Northwest Lea County, completed for an initial daily production of 45 barrels of oil, pumping, after a 70-quart shot in the red sand pay at 3,020-36 feet.

E. J. McCurdy No. 1 Pool, Chaves County wildcat, in section 21-11S-30E, had progressed under 3,640 feet, in lime, and was drilling ahead, with some sulphur water in the hole.

**Phillips Petroleum Company No. 1 Sims, in section 24-22S-37E, in Southeast Lea County, had swabbed dry on perforations at 6,390-6,410 feet, and then swabbed a small amount of salt water, with a trace of oil, and was continuing to swab to test.**

**PLENTY LUMBER TO BE AVAILABLE**

WASHINGTON (AP)—Lumber in almost pre-war quantities will flow to builders—if strikes do not interfere—when the ban comes off civilian construction October 15, lumber producers told the government Saturday.

**WASHNET DRY**

Eddy Wildcat Dry No. 1 Texas Gulf Producing Company-State, in northeast corner of section 2-19S-30E, Eddy County wildcat, has been plugged and abandoned on total depth of 3,310 feet. Salt water was encountered at that point. Only slight shows of oil was developed at any point in the project.

Sunray Oil Corporation No. 1-B Foster, in northeast quarter of section 34-17S-31E, exploratory effort in the Grayburg-Jackson district of North Eddy, had progressed under 3,269 feet in lime and anhydrite, and was drilling ahead.

E. S. Adkins No. 1 H. H. Bashor, in northeast quarter of section 23-12N-11E, Santa Fe County wildcat, reached a bottom of 977 feet, in

offer papers on "Drilling Equipment Needs," by Douglas Ragland, Humble Oil & Refining Company, Houston; "Association's Accounting Program," by Leland Breckenridge, A.A.O.D.C., Dallas; "Safety in Drilling," by W. F. Burris and C. C. Weiss, Phillips Petroleum Company, Bartlesville, Oklahoma; and "Drilling Practices," by Ralph W. Marshall, Los Angeles, will preside.

At the afternoon session on Oct. 2, P. H. Bohart, director of production, Petroleum Administrator for War, Washington, will talk on "The Petroleum Outlook." Glenn A. Campbell, Glenn Drilling Company, Tulsa, will speak on "Adaptation of Contract Drilling to Peacetime Operations." Fred M. Mayer, Continental Supply Company, Dallas, will discuss "Equipment Delivery Prospects." C. W. Alcorn, Houston, will preside. A barbecue at the Oklahoma City Golf and Country Club will be given at 6:30 by the Oklahoma City Arrangements Committee.

## Andrews And Reeves To Get Deep Explorations; San Andres Wildcats Are Staked In Yoakum And Terry

By JAMES C. WATSON Oil Editor

Locations for deep petroleum explorations in Southeast Andrews County and in South Reeves County, and for wildcats to the San Andres-Permian in East Yoakum County and in Southeast Terry County, were reported Saturday, to give the West Texas area one of the largest crop of new prospectors announced on one day, for several weeks.

**Placid Oil Company (H. L. Hunt, Dallas) and Gulf Oil Corporation No. 1 Thornberry, to be 660 feet from south and west lines of section 5, block A-42, psi survey, is slated as an exploration to the Silurian and possible deeper zones, near center of southwest quarter of Andrews County.**

The joint owners have a spread of around 5,000 acres surrounding the drillsite. It is likely that the project will drill to at least 12,000 feet, and possibly deeper.

**Argo To Deepen Roberts**

Argo Oil Corporation No. 1 Dora Roberts, in South Reeves County, 1,880 feet from south and east lines of section 294, block 13, H&G-N survey, in South Reeves County, about 25 miles south of Pecos, which has been shutdown for orders for several days, on total depth of 5,322 feet, in the Delaware sand, with considerable salt water in the hole, filed supplemental application with the Railroad Commission to deepen.

**Possible bottom for the re-newed hole is set out in the application as probably 10,000 feet.** Operator representatives say they have not set any definite objective, other than to drill for information—and oil—if any, and they have not made a public guess as to where they might be when they reach 10,000 feet.

**In Northeast Yoakum, about three and one-half miles northeast of closest production in the Ownby field, Carl B. King Drilling Company, J. E. Warren, and F. W. Dye No. 1 Irwin Stewart is to be a 5,500-foot prospector to test the San Andres section of the Permian. It will be in the northwest corner of section 382, block D, John H. Gibson survey.**

This test is on a block of 2,560 acres assembled by Ralph U. Fitting Jr., Midland Independent. He turned 2,040 acres to the King-Warren-Dye combination for the well and retained an interest in some of the properties in the block.

**Contributors Listed**

The test will be on acreage contributed by Forest Development Corporation. Other contributors include The Texas Company, Texas Pacific Coal and Oil Company, and Honolulu Oil Corporation. Shell

**IS THIS YOUR OPPORTUNITY?**

An opportunity is now open in Midland and the surrounding counties for a man of 35 to 60 years of age to sell the world's oldest and finest ELECTRIC HEARING AID.

**A NEW PROFESSION THAT IS RAPIDLY GROWING IN IMPORTANCE**

\$75 to \$150 weekly is being made by men in similar locations who are being thoroughly trained in a profession which will mean present and future security.

Apply in person or by letter to J. C. Hammer, West Texas Distributor for Acousticon, 23 East Harris, San Angelo, Texas.

**NOW AVAILABLE COMMERCIAL REFRIGERATOR EQUIPMENT**

Meat Cases  
Storage Coolers  
Vegetable Coolers  
Manufactured by Ed Friedrich Sales Corp.  
Write, Wire or Phone

**ARMSTRONG'S SUPPLY CO.**  
Lubbock, Texas.

**NOTICE....**

**BACK IN MIDLAND AND BACK IN THE LIFE INSURANCE BUSINESS**

**R. J. (DOC) GRAHAM, C. L. U!**

Representing  
Southwestern Life Insurance Company  
Phone 339

# "NOW OPEN"

To Serve You!

115 EAST WALL STREET

With A Large Variety of Merchandise for Your Car, Home, Ranch, Office and Sport

ENAMELS and FINISHES



**ICE BOXES OIL and GAS HEATERS**

**GAS WATER HEATERS AND RANGES**

**IS THIS YOUR OPPORTUNITY?**

An opportunity is now open in Midland and the surrounding counties for a man of 35 to 60 years of age to sell the world's oldest and finest ELECTRIC HEARING AID.

**A NEW PROFESSION THAT IS RAPIDLY GROWING IN IMPORTANCE**

\$75 to \$150 weekly is being made by men in similar locations who are being thoroughly trained in a profession which will mean present and future security.

Apply in person or by letter to J. C. Hammer, West Texas Distributor for Acousticon, 23 East Harris, San Angelo, Texas.

## A Large Quality Line of AUTO Accessories

- Almost Any Item You Can Think of for Your Car
- SHELF HARDWARE and TOOLS
- ASH TRAYS
- GLASSWARE
- CLOTHES HAMPERS
- KITCHEN EQUIPMENT
- PYREX WARE
- LIGHT BULBS
- WASTE BASKETS
- CHINAWARE

AND 1001 OTHER ITEMS

**KENYON ASSOCIATE STORE**  
HARDWARE & AUTO SUPPLIES  
George Phillips — W. N. (Bill) Cole  
115 East Wall

**- FREE -**

I will give free to all returning servicemen of Midland County a wallet-size photostat copy of their discharge.

**West Texas Reproduction Co.**  
L. T. BOYNTON, Owner  
209 North Colorado

**OLSCO SALES and SERVICE**

Complete Engineering Service — Controlled Gas Lift Systems

MIDLAND, TEXAS

P. O. Box 1027 J. B. Richards Phone 1228

**AGGIES SMASH ELLINGTON FIELD FLYERS, 54 to 0**

COLLEGE STATION —(AP)—The Texas Aggies launched their 1945 season here Saturday with a decisive 54 to 0 victory over the Ellington Field Flyers, scoring all their touchdowns via the ground, but gaining plenty of yardage by aerials.

**Cisco Loboos Beat Big Spring 12-0**

BIG SPRING—Cisco's Big Dam Loboos downed the Big Spring Steers, 12 to 0, Friday night in the Steer corral.  
Cisco scored on a sustained 61-yard drive in the second period for the first marker.

**Andrews And —**

(Continued from Page Four)

lower Permian section, where flowing oil was encountered, will both be tested.

The Texas Company No. 1 DeLoache, in northwest corner of labor 21, league 78, Reeves County School Land survey, two miles north of closest oil well on west side of Levelland field, in West-Central Hockley County, pumped 50 barrels of oil in 10 hours, with no water reported, from pay above total depth of 4,805 feet, and was to continue testing on the pump.

Magnolia Petroleum Company No. 1 Coble, in northwest corner of tract 34, league 68, Hardeman County School Land survey, and two miles south of production on west side of the Levelland area, swabbed dry to total depth at 4,800 feet, in lime, after swabbing out load following a 4,500 gallon acid treatment.

Cable Re-treats  
Operator let well set 5 1/2 hours and swabbed out five barrels of accumulated oil. The project is now treating with another shot of acid of 1,500 gallons.

Humble Oil & Refining Company No. 1 Buchanan, East Midland County wildcat in Baldridge survey No. 32-692, was to run a drillstem test on perforated section at 11,380-515 feet.

That zone had treated with 5,000 gallons of acid. Operator swabbed water down to 1,800 feet below surface, and the well failed to flow, and the test was ordered.

Through error, it was reported on Thursday, that this development was testing on perforations at 10,380-515 feet. That was just 1,000 feet too high up the hole.

Discovery Deepens  
The Atlantic Refining Company No. 1-A University, East-Central Crane County wildcat, in section 33, block 31, University survey, which discovered production in the Devonian and the Ellenburger, in drilling to 10,377 feet, was making new hole under 10,418 feet in dolomite.

The section from 10,377 feet downward will probably be tested in a day or so.

Continental Oil Company No. 1 Douglas, extreme northeast Martin County wildcat, in section 33, block 34, TP survey, T-3-N, had progressed below 7,074 feet, in shale and lime. Top of the Leonard sand was picked from samples at 6,509 feet, on an elevation of 2,716 feet.

Conoco No. 1 May, in section 10 block 7, EL survey, in Northeast Lynn County, had penetrated below 5,606 feet, in lime. Top of San Andres was picked at 3,505 feet, on an elevation of 3,045 feet.

Barnsdall Sets Pipe  
Barnsdall Oil Company No. 1 Williams, in West Lynn County, was bottomed at 3,900 feet, in San Andres lime, waiting for cement to set on 9-inch casing set on bottom with 800 sacks. When the plug cures operator will drill out and drill ahead to the contract depth 7,500 feet, or oil or gas in paying quantities.

Honolulu Oil Corporation No. 1 Altman, Northwest Garza County development, in section 1255, TT survey, had reached 8,611 feet, and was drilling ahead. Unofficial reports are that it is still in Pennsylvania lime and shale.

Gulf Oil Corporation No. 8-E Keystone, in section 13, block B-2, psi survey, south and east of proven production in the Keystone-Ellenburger field, in North Winkler County, had progressed to 9,883 feet, in lime, reportedly to be Simpson, middle Ordovician, and was trying to run a drillstem test.

Three efforts had already been made and failed for various reasons. The Ohio Oil Company No. 1 Evans, in section 27, block 40, psi survey, in Southeast Winkler, had penetrated past 6,720 feet, in lower Permian lime, and was continuing. No shows of oil or gas have been reported.

NELSON LEADS HOGAN IN SEATTLE TOURNAMENT  
SPOKANE, WASH. —(AP)—Ben Hogan of Hershey, Pa., knicked four strokes off par and two off Byron Nelson's advantage Saturday in the third round of the \$10,000 Esmeralda open golf tournament with a 68, making his total 204 to Nelson's 202 with one 18-hole circuit yet to go.

**Senators Win To Keep Hopes Alive**

PHILADELPHIA —(AP)—The Washington Senators kept alive their flickering hopes in the American League pennant race Saturday by nosing out the Athletics 2-0 as Rover Wolff chalked up his twentieth win of the year with a six-hit performance. The win was the first the Nats scored over Russ Christopher in four times this year.

The score:  
R. H. E.  
Washington ... 000 101 000—2 4 2  
Philadelphia ... 000 000 000—0 6 2  
Wolff and Ferrell; Christopher, Berry and Rosar.

**Dubiel Beats Red Sox For Yankees, 2-0-1**

BOSTON —(AP)—Walt Dubiel continued his mastery over Boston Saturday, defeating the Red Sox for the sixth time this year when he pitched the New York Yankees to a 2-1 victory in the opener of a three-game series.

**Cleveland Beats White Sox 11-0-1**

CLEVELAND —(AP)—Cleveland needed 11 innings Saturday to eke out a 2 to 1 victory over the Chicago White Sox in the next to last game on the home schedule. Steve Gromek held the Sox to seven hits. The Indians scored the clincher in the eleventh on Jeff Heath's single, a sacrifice by Al Cihocki, and Don Ross' single.

**Giants Defeat Braves By 3-2-2 Score**

NEW YORK —(AP)—Danny Gardella slammed a home run starting off the Giants' half of the ninth to break a 2-2 tie and give the New Yorkers a 3-2 victory over the Boston Braves Saturday in their opener of a three-game series.

The development of Palm Beach as a winter resort began in 1892.

**Longhorns Rally To Beat Bergstrom, 13-7**

AUSTIN —(AP)—Freddie Brechtel, last six minutes to defeat the massive Bergstrom Field Troop Carriers, 13-7, in the season's opener here Saturday.

**MIDLAND PLUMBING COMPANY**  
Plumbing - Heating - Fixtures  
C. E. SMITH and AL TRAUBER, Owners  
203 South Main Phone 1182

**YES, WE HAVE THEM!**  
Fluorescent Fixtures, Residential and Commercial  
Fluorescent Bed Lamps — Pin-Up Lamps  
Standard Residential Fixtures  
Let us figure your wiring job, complete with the fixtures you wish. Courteous service . . . competent workmen.  
**WHIGHAM ELECTRICAL CO.**  
219 So. Loraine Phone 117

Protect That Old Car With A  
**New Paint Job**  
Quality Work - Quick Service  
Satisfaction Guaranteed  
**BODY and FENDER REPAIR**  
Also Car Polishing  
**PRINGLE BODY & PAINT SHOP**  
807 E. Florida (Garden City Highway)

**BRIGHTEN YOUR HOME**  
with  
• Sherwin-Williams PAINTS AND VARNISHES  
• Newest Wallpaper Patterns  
• Complete Line Building Materials  
**Rockwell Bros. & Co.**  
112 West Texas Ave. Phone 48

**TELEPHONE OPERATORS**  
A DESIRABLE OCCUPATION FOR  
QUALIFIED YOUNG WOMEN  
SUBSTANTIAL PAY INCREASES  
HAVE RECENTLY BEEN AUTHORIZED  
Vacation With Pay  
Surroundings Comfortable and Pleasant  
Apply Chief Operator  
**Southwestern Bell Telephone Co.**  
Midland, Texas

**Just Received New Shipment**  
of  
**KEROGAS OIL RANGES**  
(5 Burners)  
Kitchen Tested For  
Superior Performance  
We Are Now Showing A Full Line Of  
**RADIANT ROOM GAS HEATERS  
AND BATHROOM HEATERS**  
We Have A Good Supply To Choose From  
**BASIN SUPPLY CO.**  
103 South Main Formerly Barron's Supply Midland

**We Aren't Exactly Ready — But Our Doors Are Open**  
Although we are not all straightened up and a lot of our fixtures, equipment, and stock is yet to arrive there has been such a demand for truck and tractor parts and service that we have decided to go ahead and open our doors and take care of you as best we can until such time as we can get everything in order. We expect to be ready for our formal opening in about two weeks, but in the meantime if we can be of service we invite you to call on us.

**We Expect To Meet Your Requirements In**

**INTERNATIONAL**  
Oil Field Equipment

**FARMALL**  
A Complete Line of McCormick-Deering Farm Equipment  
Jacuzzi Pumps and Pressure Systems

**Our Repair Shop Is Ready For Service**

In order to accommodate our friends and customers who have so urgently needed the services of our repair department we rushed it in shape first, and we are pleased to announce that we are now able to serve your truck and tractor needs with a crew of skilled mechanics and a complete parts department.

- Truck and Tractor Repair Service
- Electric Welding • Acetylene Welding
- And a Complete Line of Parts for International Trucks and McCormick-Deering Farm Equipment
- High Pressure Steam Cleaner for Cleaning Motors

We Have On Hand Plenty of  
**Genuine Sisal Binder Twine**  
6 BALL BALE . . . . . 6<sup>85</sup>

**NOW ON DISPLAY — READY FOR IMMEDIATE DELIVERY**

2 McCormick-Deering Corn Binders | 3 McCormick-Deering Milk Coolers  
Fully Equipped — Ready To Go | Two 4-Can Coolers — One 8-Can Cooler

Make Your Headquarters With Us When In Town.

**Wes-Tex Equipment Co.**  
International and McCormick-Deering Oil Field, Farm and Refrigeration Equipment Dealers  
105 N. Ft. Worth St. O. S. (Barney) Barnard Midland, Texas

**Tastiest Thirst-Quencher in Town**  
**Get KIST!**  
MIDLAND BOTTLING CO.  
R. B. DUNAGAN, Mgr.

# LOVE BRAVES AN ATOM BOMB

by OREN ARNOLD

**SAFETY IN THE WEST,**  
VIII

**THE STORY:** Carolyn and her husband, Bob, have a secret and the remaining portion safeguarded against danger. Leana Sorini comes to Carolyn's office. Carolyn overhears her impassioned plea to Robert to seize the power that is theirs. "Together we can be the man and the woman of the ages."

**AT** the end of Leana's melodramatic speech to Bob, Carolyn had wanted to interrupt. But a latent, creeping fear of the woman with the foreign name had somehow become intensified in that quarter-hour. It was a senseless fear, she told herself. Leana probably was just wrought up over everything.

But no; no, she wasn't either. She spoke too earnestly, too impressively; plainly she had been thinking all this out. Plainest of all now was the fact that Leana loved Dr. Robert Hale.

"She's crazy about him!" Carolyn half whispered to herself.

A flash of practical reasoning told her instantly to quit this strange new secretarial job and go back to her old position, in the bank or find a new routine somewhere with good, solid Ken Palmer. Ken, the kindly plodder who loved her sincerely, but who had no more color than the bookkeeper he was.

She knew in the same instant that she would never do that now. If all the X-999 in Bob's laboratory was about to blow up in her face she'd still stick to this new job, even though she couldn't have said why. Here was too much potential; a lot had already happened, and every hour gave promise of a great deal more. It was like being in a mystery play.

Intuition rather than practicality also prevented her from reveal-

### Amarillo Trounces Abilene, 33-12

**AMARILLO**—Amarillo's Golden Sandstorm firmly established itself as one of the top favorites to win state championship laurels when it handed Abilene, District 3-AA favorite, a 33-to-12 licking Friday night.

A capacity crowd of 12,500 watched the Sandies score 14 points in the first quarter, and 12 more in the second to lead Abilene 26 to 0 at the half.

Abilene came back strong in the second half, scoring six points in the third period and six in the final quarter while holding Amarillo to seven points in the last half.

The 3-AA team registered 12 first downs to Amarillo's 10 and made 122 yards on passing as compared to the Sandies' 94, but Amarillo outstruck the Eagles 164 yards to 90.

Odessa came back strong in the second half, scoring six points in the third period and six in the final quarter while holding Amarillo to seven points in the last half.

The 3-AA team registered 12 first downs to Amarillo's 10 and made 122 yards on passing as compared to the Sandies' 94, but Amarillo outstruck the Eagles 164 yards to 90.

### Odessa Bronchos Beat El Paso, 12-6

**ODESSA**—Although the Bronchos played better football than the record indicates, the stock of the Odessa Bronchos dropped on the District 3-AA market when El Paso High held the Ector County team to a 12-to-6 victory here Friday night on a rain-soaked field.

The Bronchos had been favored to overwhelm the Border City team.

The Vatican City state was named Feb. 11, 1929.

### McKENNEY ON BRIDGE

**By WILLIAM E. MCKENNEY**  
America's Card Authority

Lately I have noticed many experts using the Blackwood four-five no trump convention when it is obviously asking for aces or kings. The ordinary way to bid today's hand might be as follows: South, 1 diamond; North, 1 spade; South, 3 diamonds; North, 4 clubs; South, 4 hearts (a slam try bid); North, 4 spades; South, 6 spades; North, 7 spades.

East opens a diamond and the contract is defeated. If North and

Make Your Appointments NOW For  
**Christmas Photographs**  
Delay might mean disappointment—We will be unable to make December appointments...

**MIDLAND STUDIO**  
Phone 1003 For Portrait Appointment  
210 West Texas

### OUR BOARDING HOUSE with MAJOR HOOPLE OUT OUR WAY

—By J. R. WILLIAMS

IT'S A NOTE FROM MRS. COOPE... WHILE YOU WERE AWAY I MISSED THE DAILY UPROAR SO MUCH I GOT LONESOME AND WENT TO MY SISTER'S... TRY COOKING ON THE FRONT BURNER YOURSELVES A FEW DAYS!

EGAD! AREN'T WOMEN HEADLESS AND FLIGHTY? I'M ON SECOND THOUGHT THIS IS A CHANCE TO TEMPT YOUR PALATES WITH SOME OF MY RENOWNED GOURMET DISHES!

SUCH AS BOILED RICE? EVERYTHING YOU EVER COOKED REMINDED ME OF BURNING LIVERY STABLES!

OH, I WAS COOKIN' SOME PANCAKES, AN' HAD A LITTLE ACCIDENT!

WELL, SHUT TH' GAS OFF! DON'T BE TRYIN' TO COOK 'EM UP THERE!

IF YOU GET USED TO RIOTS YOU LIKE 'EM!

### BOOTS AND HER BUDDIES

—By EDGAR MARTIN

CATCH 'EM!

MY GOSH! W-WHAT WAS THAT?

ONE OF YOUR WEDDING PRESENTS!

NOW WHO WOULD HAVE SENT SUCH A THING BUT BOB?

WELL, THAT'S A NEW TWIST!

INSTEAD OF OUR PASSING JUDGMENT ON THE WEDDING GIFTS, THAT ONE DOESN'T SEEM TO THINK MUCH OF US!

### buy MEAD'S fine BREAD

**FRECKLES AND HIS FRIENDS**  
—By MERRILL BLOSSEY

MR. MC GOOSEY, THIS IS NO WAY TO CONDUCT A BUSINESS! GOOD DAY!

IF THE POLICE WERE ON THEIR TOES, SITUATIONS LIKE THIS WOULDN'T OCCUR!

POLICE STATION? LET ME SPEAK TO THE CHIEF!

CAPTAIN COOK ISN'T HERE AT PRESENT!

HE'S AT THE HIGH SCHOOL, ADVISING THE KIDS ON HOW TO CONDUCT SAFE AND SANE INITIATIONS!

### WASH TUBBS

—By LESLIE TURNER

I'VE GIVEN AIR INTELLIGENCE ALL THE INFORMATION I CAN THAT MIGHT HELP THE ARMY OF OCCUPATION, EASY...

LOOKS LIKE MY UNIT IS LEAVING 100 TONS INTO JAPAN WITH THE ARMY OF OCCUPATION.

IT'S HARD TO BELIEVE THAT BOB AND I ARE ACTUALLY RETURNING HOME TO THE STATES TONIGHT.

### RED RYDER

—By FRED HARMAN

TH' POSSES BACK, SHERIFF WONDER IF THEY FOUND TOLBOY'S KILLER.

DON'T LOOK LIKE IT, TOM!

NOPE, SHERIFF, HE GOT CLEAN AWAY!

THAT'S TOO BAD!

BUT WHEN WE FIND HIM---HE'LL SWING FOR IT!

YOUR TIE'S LOOSE, BLACK TOM, LEAVE ME FIX IT!

### ALLEY OOP

—By V. T. HAMLIN

I THOUGHT THAT SCIENTIFIC CHAP LOCKED UP HIS PLACE AN' LEFT TOWN... BUT I SEE LIGHTS UP THERE.

HE LEFT, ALL RIGHT, BUT TH' FELLER WITH BLACK WHISKERS IS STILL THERE.

YEH... AN HE HAD A COUPLE OF VISITORS TODAY... TOUGH LOOKERS, TOO!

'Y KNOW, IF I WAS O'D DOC WORNUS, I'D BE MORE CAREFUL WHO I LEFT MY GADGETS WITH... I DON'T LIKE THAT BOOM GUYS LOOKS.

OH, WELL, IT'S NONE OF OUR BUSINESS.

MEANWHILE: THE SCIENTIST AND HIS FRIENDS NEAR THEIR DESTINATION.

### Standings

American League			
Teams	Won	Lost	Pct.
Detroit	86	63	.577
Washington	86	66	.566
St. Louis	78	69	.531
New York	77	70	.524
Cleveland	71	70	.504
Chicago	71	78	.483
Boston	70	80	.467
Philadelphia	51	96	.347
National League			
Teams	Won	Lost	Pct.
Chicago	91	55	.623
St. Louis	90	57	.612
Brooklyn	82	66	.554
Pittsburgh	80	67	.544
New York	77	69	.527
Boston	64	84	.432
Cincinnati	60	86	.411
Philadelphia	45	105	.300

### Football Ruling Is Announced

Members of the executive committee of District 3-AA of the Texas Interscholastic League, at a meeting Saturday in Big Spring, established a rule in event of a tie for honors in the 1945 football campaign.

If a tie occurs, officials of the deciding contest will award the victory to the team which on the offensive took the ball inside its opponent's 20-yard line the most times.

Should there be a tie in the number of penetrations, the team gaining the most first-downs would be awarded the victory. In case of a tie also in this, the district title will go to the team gaining the most yardage in the contest.

V. Z. Rogers of Lamesa is chairman of the district and Frank Monroe of Midland is secretary. Superintendents of the seven schools in the district attended the session.

### Tigers Defeat St. Louis, 9-0

**DETROIT**—(AP)—Southpaw Hal Newhouser shut out the St. Louis Browns with four scattered safeties Saturday for his twenty-third victory, as the Detroit Tigers triumphed 9-0 to move the Bengals one step nearer to the American League flag.

The score: R. H. E.  
St. Louis..... 000 000-0 4 1  
Detroit..... 117 000 00x-9 10 0  
Muncief, Fannin, Lamachia, Zolcak and Muncuso; Newhouser and Richards.

### Joe Louis To Get Legion Of Merit

**NEW YORK**—(AP)—Technical Sgt. Joe Louis, heavyweight boxing champion, will be presented with the Legion of Merit in a ceremony Sunday at Fort Hamilton.

### CARNIVAL By DICK TURNER

“Now this is what we call a book!”

### League Bowling To Start Wednesday

League bowling for the 1945 season will start at 8 p.m. Wednesday at the Plamor Palace with eight teams entered in the city league. Following the bowling matches of October for the league will be elected.

Teams entered in the league are Robert Sinclair Service, Humble Oil Company, Weaver's Texaco Station, Houston Hill Contractors, Junior Chamber of Commerce, Service Club, West Texas Shell, and Shell Oil Company.

### Lubbock And Angelo Play To 13-13 Tie

**SAN ANGELO**—The San Angelo Bobcats tied a favored Lubbock Western team, 13 to 13, in a football classic here Friday night.

Dodson of Angelo threw a 15-yard pass to Renner in the first quarter to start the scoring. Early in the second the Westerners drove 49 yards for the tying touchdown. Lubbock tried to plunge for the conversion but failed.

Still in the second quarter, Lubbock drove half the field again for a marker, but the Bobcats came back in the fourth period for the tying touchdown.

South got to seven diamonds, West will open a spade and defeat them. If the hand is opened with a two-bid, and North and South are not playing the ace-showing convention in response to a two-bid, North will make a positive response of two spades. South now bids four no trump, which is obviously a Blackwood bid asking partner for aces. When South receives the information that his partner holds two aces, he bids five no trump asking for kings. North, with one king, bids six diamonds, and South can practically count 13 top tricks. He safely bids seven no trump, which cannot be defeated.

The expert using the Blackwood convention to a limited extent gains its advantages without experiencing the disadvantages involved in using it too often.

### Phillies Defeat Brooklyn 5-3

**BROOKLYN**—(P)—The Philadelphia Phillies ended a 15-game losing streak to the Brooklyn Dodgers by defeating the Flatbush clan 5-3 Saturday. Young Dick Maune held the Brooks to nine hits and drove in the final run.

**R H E**  
Philadelphia..... 000 203 000-5 8 1  
Brooklyn..... 000 021 000-3 9 3  
Maune, Karl and Seminick; Herring, Buker, Peacock, Lombardi and Sandlock.

### Joe Louis To Get Legion Of Merit

**NEW YORK**—(AP)—Technical Sgt. Joe Louis, heavyweight boxing champion, will be presented with the Legion of Merit in a ceremony Sunday at Fort Hamilton.

### League Bowling To Start Wednesday

League bowling for the 1945 season will start at 8 p.m. Wednesday at the Plamor Palace with eight teams entered in the city league. Following the bowling matches of October for the league will be elected.

Teams entered in the league are Robert Sinclair Service, Humble Oil Company, Weaver's Texaco Station, Houston Hill Contractors, Junior Chamber of Commerce, Service Club, West Texas Shell, and Shell Oil Company.

### SIDE GLANCES

“I'm sweating out my 50th mission in this thing!”



# NOTICE TO THE PUBLIC

I am now remodeling my meat plant at Stanton, Texas, making a modern and up-to-date plant in every way, which has been passed by

**STATE INSPECTOR**

this week.

I have served the people of Midland and Midland County for over 20 years with the best quality meat the country afforded.

For the last several months I have killed and delivered over 2,000 head of the famous Hill-fed cattle that no one yet has matched.

During this war I stayed with you when the going got rough. I would appreciate it if you would call for

**HITTSON'S QUALITY BEEF**

which is in the counters of practically every meat market in town. Every piece of meat you buy is guaranteed by me to be good quality.

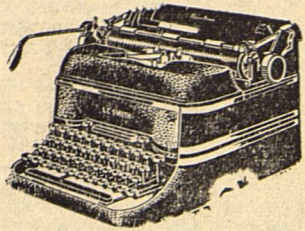
There Are Two Other Things I Want To **GUARANTEE**

(1) In buying your livestock, OUR CHECK WILL NEITHER BE COLD NOR DRY.

(2) And, WE WILL TELL YOU THE TRUTH.

Your Friend  
**W. M. (DICK) HITTSON**  
STANTON, TEXAS  
Phone 39 — Box 353

**Cardinals Down Cincinnati 9-4**  
ST. LOUIS—(AP)—The St. Louis Cardinals defeated Cincinnati in a National League game Saturday night, 9 to 4.  
The score: R H E Cincinnati ..... 100 020 001—4 12 0 St. Louis ..... 000 214 208—9 17 1 Heusser, Kennedy and Lakeman; Barrett and Rice.



**L. C. SMITH TYPEWRITERS**

- Corona Portables Now On Display
- Adding Machines
- Office Supplies

**RAY GWYN OFFICE SUPPLY**

Phone 173 215 W. Wall

## "T" Is For Tailor-Made

... Tailor-made fire insurance policies to fit your business and all personal needs. Planned insurance eliminates guesswork, increases protection and frequently saves money.

**SPARKS, BARRON & ERVIN INSURANCE AGENCY**  
Phone 79

## WE HAVE GOOD NEWS!

In the very near future we expect to be equipped to fill EVERY need of the motorist. We'll appreciate a visit — learn about things to come!

OPEN 7 A. M. TO 9 P. M.  
Make Our Place Your Texaco Headquarters  
**TRIANGE SERVICE STATION**  
302 East Wall Street  
HARVEY KISER — Phone 701 — FLOYD SHIPP



## EAT WITH US!

GET  
**GOOD FOOD  
GOOD SERVICE  
FAIR PRICES**

You're Always Welcome!

**WESTERN CAFE**

"The Home Of Hospitality"

110 South Main C. A. Hamilton, Owner

## YUCCA

West Texas Entertainment Castle

TODAY • WEDNESDAY

The Lifetime of TEXAS GUINAN



## RITZ TODAY TUESDAY

The Family Theatre

DOUBLE HORROR SHOW

WITH THE KINGS OF HORROR



HORROR NUMBER TWO



— NOTICE —

We are not in any way responsible for those who have a weak heart — or faint —

★ CAN YOU TAKE IT ★

COME EARLY FOR BEST SEATS  
NO ADVANCE IN PRICES

★ GRUESOME TWOSOME ★  
LATEST NEWS FLASHES

## • REX • TODAY MONDAY

Where The Big Pictures Return

BOB HOPE ★ Virginia Mayo  
Walter Brennan

THE PRINCESS AND THE PIRATE

(Bing Crosby's in it too)  
Wait and See  
IN TECHNICOLOR

## Pampa Harvesters Defeat Bulldogs In Opening Football Game Of Season

By CROM HOLMES

Midland High School's scrappy Bulldogs licked their wounds and bruises Sunday from the 25 to 6 loss to Pampa's Gold and Green Harvesters here Friday night and turned their eyes toward this week's contest with Austin High School of El Paso on the Midland field.

Wilbur Yeager, Bulldog quarterback, taken from the field in the second quarter of the Pampa game with a shoulder injury, was reported only slightly hurt and will be back in the lineup later in the season, although he will be kept out of the game Friday and the Plainview game the following week to allow full recovery. His right shoulder was knocked slightly out of place in making a tackle.

The Pampa-Midland game was highlighted by two out-of-the-ordinary Harvester touchdowns — one made on the first play of the game and one on almost the last play. Randall Clay, 170-pound Harvester halfback who lived up to his press notices as the "Pampa Express," took Halfback Danny Goode's opening kickoff on the ten yard line, skirted to the left, and sprinted 90 yards for a touchdown. The try for the extra point failed and the score stood, Pampa 6 and Midland 0, with the game less than a minute old.

The play startled Midland fans, but not the Bulldogs. They received the second kickoff on the 10, returned it five yards, then settled down for some offensive ball of their own which netted first downs on two successive plays. Fullback Bobby Drake picked up 10 yards on the first Midland run from scrim-

mage for a first down. Then Goode followed with an 11-yard run for another first down. The Pampa line braced for "three" downs and, after an exchange of punts, Midland received the ball again on its 20. Goode and Drake picked up another first down and a nip-and-tuck battle was on with neither team able to score through the rest of the first, the second, or the third quarters. The fireworks broke loose again in the fourth period.

**Wild Fourth Quarter**  
The period opened with Pampa on the Midland 6-yard line. Pampa crashed the line to the 2 but a Harvester backfield player was illegally in motion and Pampa was penalized 5 yards. On the next play the Plainsmen drew another penalty, 15 yards, for holding. A few minutes later with the ball on the 25-yard line, George Johnson, substitute back, threw a pass to Jim Wilson, another replacement back, in the end-zone for a touchdown. Clay's kick was low and the score stood: Pampa 12, Midland 0.

The Bulldogs received the kickoff and drew into Pampa territory where the MHS threat was halted momentarily, but Midland was not to be denied. Bobby Cole passed to Goode for 19 yards. Drake picked up six yards and Goode ran five for another first down. Goode followed through with a right-end sprint to the Pampa 5-yard line. Then the Bulldogs drew a 15-yard penalty for holding. Cole's pass from the 20 was incomplete and on the next play another Cole pass was intercepted by Russell Neef on the 12-yard line to halt the threat.

**Cole Scores For Midland**  
Johnson of Pampa hit the line on the next play for no gain. A penalty against Pampa on the play put the Harvesters back to the 1-foot line. Johnson punted to the 40 where Bobby Cole, Bulldog safety man, took the kick and skirted to the right for the Midland touchdown. Goode's kick was blocked and the score stood: Pampa 12, Midland 6.

Midland kicked off and on an exchange of punts, Pampa received the ball on the Midland 35-yard line and returned it to the Midland 22-yard stripe from where the Harvesters engineered their third touchdown. Clay plunged the ball for four gains which carried to the Midland six. Then Johnson tossed a short pass over the line to Clay for the touchdown. Clay's try for conversion was good. Pampa 19, Midland 6.

**Pampa Scores On Kickoff**  
Less than one minute remained in the game when Pampa kicked off again to the Bulldogs, and the Harvesters scored on the play seldom seen in a football game. The kickoff rolled over the Midland goal line. Several Midland players thought the other was going to cover the ball—which would have brought the ball out to the 20-yard line. But Bernie Brown, sub end, coming up the field fast for Pampa, covered the ball for a touchdown. Clay's try for point failed and the game was over. Pampa 25, Midland 6.

Midland made 5 first downs to 3 for Pampa and played a hard-up game throughout most of the contest, especially in the defensive department. Jimmy Edwards, Bulldog center, was outstanding as a line backer, figuring in a large share of the tackles.

**Stand Out On Offense**  
Goode, Cole and Drake played superior ball on the Midland offensive.

For Pampa Lonnie Williams, replacement end, and Carlton Brooks, guard, were outstanding in the line. Clay and Johnson were work-horses of the Pampa offensive, and Clay also stood out as a line backer.

Several light showers fell during the contest.

**MHS Band Performs**  
Tramp, the team mascot Boston Bulldog, lost throughout most of Friday causing a search by newsboys, students, and Midland women, finally came walking to the home of his owner, Bonnie Robertson, about 4 o'clock in time to be washed, groomed, and dressed for the game.

The game-at-a-glance:  
Midland ..... First downs ..... 8  
106 ..... Yards gained rushing ..... 175  
21 ..... Yards gained passing ..... 65  
1 of 2 ..... Passes completed ..... 2 of 3  
1 ..... Passes intercepted by ..... 1  
5 for 149 Punts, no. and yd. 6 for 216  
6 for 40 Penalties, yardage 11 for 105

Starting lineups:  
Midland Pos. Pampa  
Olliff ..... LE ..... Beard  
Mickey ..... LT ..... Terrell  
Kidwell ..... LG ..... Humphreys  
Edwards ..... C ..... Lockhart  
Scrogin ..... RG ..... Hood  
McNeal ..... RT ..... Williams, B.  
Henshaw ..... RE ..... Dunham  
Yeager ..... QB ..... Johnson  
Goode ..... LB ..... Neef  
Hightower ..... RHB ..... Clay  
Drake ..... FB ..... Vaughn

Score by periods:  
Pampa ..... 6 0 0 19—25  
Midland ..... 0 0 0 6—6

Scoring: Pampa: Touchdowns Clay (2), Williams, Brown. Points after touchdown—Clay, Midland, touchdown—Cole.

Substitutions, Midland—Stringer, Cole, Whitson, Bohannon. Pampa—Simpson, Bain, Wilson, Brown, L. Williams, Brooks.

Officials, John Hart, Lt. Siebert, A. V. Patterson, Fred McKinzie.

## Lamesa Loses To Brownfield 12-9

LAMESA—Brownfield tamed the Lamesa Tornado, 12 to 9, here Friday night. Brownfield led, 12 to 0, at the half but Lamesa scored a touchdown, extra point, and safety to dominate the play in the second period.

*The New Outlook for Autumn*

Yes, beautiful, colorful Autumn is here — bringing with it bright blue skies, brisk winds and the strong desire to dress up and live. We have planned a gala fall opening, presenting every smart fashion of this glorious new season — fashions designed to help you reap the fruits of joyous living. Be sure not to miss this outstanding collection of fashion-right suits, coats and dresses that you'll be seeing and wearing this autumn.

¾ length box coat. Black Persian trim. \$117.60

Wool gabardine suit. Saddle stitch trim. \$49.50

All-wool trimly tailored suit. Cinched-in waist. \$69.50

Silhouette in black crepe. \$35.00

**Dunlap's**





Lauern Tuttle Is Chosen Queen Of Dudley School In City Of El Paso

Word has been received here that Lauren Tuttle, daughter of Mr. and Mrs. D. E. Tuttle of El Paso and formerly of Midland, was elected queen of the Dudley School in El Paso. Lauern is seven years of age and is interested in music, dancing and her school work.

She is the granddaughter of Mr. and Mrs. John F. Price of Midland and Mr. and Mrs. N. P. Tuttle of Sweetwater.

Advertise or Be Forgotten

FOR SALE Electric Churn \$15.00 ROSS BRADY Phone 1076

FINE PHOTOGRAPHS COPY'S Marriage and Discharge Certificates Diplomas Deeds WATERS STUDIO 114 S. Main St.

PERFUME HATBANDS, TO ACHIEVE SUBTLE

By ALICIA HART NEA Staff Writer

Unless hair is shampoo-fresh, don't apply perfume directly to it. Perfume oils and hair oils—which troop out a day after locks are washed—are not always as friendly as you'd hope.

If you want a fragrant halo to captivate people, dunk your mesh hair-net—which you wash to keep fresh anyway—in a cologne rinse. Perfume-loving Carol Bruce, star of radio's "Sunday on the N-K Ranch," passes this one on, along with some more secrets on exploiting fragrances to better advantage.

She tucks perfume-soaked pellets inside her hat bands, gives more fragrant wads a home in her gloves until she's ready to wear them.

"Don't ever put perfume on any other clothing except tweeds and furs," warns Carol, who thinks only these two types can "take it." Even on these, she says, perfume should be sprayed sparingly.

Reminding you that there's a heavy fragrance which hovers in definitely around an empty perfume bottle, use yours, Carol begs, to sweeten up bureau drawers.

NETS AND GLOVES AURA OF SCENT



CAROL BRUCE: Perfume-wise.

Play Is Presented At North Elementary Assembly Program

A play, "Safety for Children," was presented by pupils of the second grade at the assembly program at North Elementary school Tuesday. Arrangements for the program were under the direction of Miss Lela Robins.

Characters in the play were: boy, Audie Thompson; girl, Suzanne Hood; automobile, Sidney Green; street car, David Stubbeman; traffic sign, Frank Mickiff; safety rules, Fredda Black, Judith Taylor, Sylvia Korenlein, Lockie Sue Griswold, George Ann Bennett and Jonanna Sewell.

Miss Quita Lain led the group in singing several songs after which Phyllis Murphy conducted a safety first program which was illustrated by posters made by Sammy Praehl, Patricia Murphy, Lorane Carlson, Beulah Pittman and Margie Gunter.

Songs used on the program were "When You Ride a Bicycle," "Johnny Go Right," and "America."

WATSON SCHOOL OF MUSIC HAS PROGRAM AT JHS ASSEMBLY

A musical program was presented by students of the Watson School of Music at a Junior High School assembly program given at the high school Friday afternoon. Twenty-seven students participated in the program.

Selections were presented as follows: "Faithful and True" (Mackie-Deyer), Estrellito Orchestra; piano, "Popping Mountain Brook" (Kern), Margbeth Carter; cornet, "Garnival of Venice" (arranged by Ramyer), W. L. Thompson Jr., with Wilma Dee Vaughan at the piano; piano trio, "Dance of the Rosebuds" (Keats), Anna Bess Doyle, Barbara Glenn Long, Glenda Hamilton; "Long, Long Ago" (an American Folk tune), violin choir; piano, "The Butterfly" (LaVale), Shirley Lee Winter; violin, "Fantasy on Scotch Folk Song" (Farmer), Velva Dee Pig; piano, "Kobold's Dance" (Krentzlin), John Van; Chinese fiddle and piano, "Traumerei" (Schuman), Miss Lydie Watson and Ned Watson; and "Skating in the Park" (Mackie-Deyer), Estrellito Orchestra.

A bit of sugar added to flower water will help in keeping stems and flower heads crisp and fresh.

Federation Day Will Be Observed At Meet Of 20th Century Club

Federation Day will be observed at a meeting of the Twentieth Century Club at 3:30 p. m. Tuesday at the home of Mrs. Louis Chase, 1105 West Missouri.

Talks on the program are: "History of the State Federation Clubhouse," Mrs. J. Howard Hodge; "South American Girl in the University of Texas," Mrs. W. G. Epley; and "International Relations," Mrs. J. D. Koenig.

Mrs. Joseph Mims will entertain with a vocal selection, "The Federation Song."

Midland Soldier Is Awarded Bronze Star

Frank H. Lanham, Jr., son of Mrs. Alpha J. Lanham of Midland, has been awarded the Bronze Star Medal for "meritorious service in sustained combat against the enemy."

Congratulations To

Mr. and Mrs. Russell Howard on the birth of a daughter in a Lubbock hospital.

OZARKA WATER CO. welcomes these new arrivals. Phone 111 and a bottle or OZARKA will be delivered to you free.—Adv.

Boy Scout Meeting Nights Announced

Midland boys who are not members of a Boy Scout troop are invited to visit with one or more of the seven Midland Scout troops when they have their meetings.

W. A. Martin, scout executive, said Saturday. Troop 51 meets at the Presbyterian Church Mondays; Troop 52 at the Scout Hall Mondays; Troop 53 at the Scout Hall Tuesdays; Troop 54 at the First Baptist Church Thursdays; Troop 85 Thursdays at the Presbyterian Church; Troop 151 at the Calvary Baptist Church Thursdays; and Troop 153 at the Scout Hall Thursdays. Scoutmasters are A. N. Griffith, Troop 51; Jack Cecil, Troop 52; Rex Russell, Troop 53; John Scrogin, Troop 54; Capt. Kenneth Howatt, Troop 85; Allen Heard, Troop 151, and Charles Shaw, Troop 153. All meetings begin at 8 p. m.

AREA P-TA MEETINGS ARE CONDUCTED BY MIDLAND WOMEN

Mrs. D. R. Carter, president of the 6th District Parent-Teacher Association, has returned from an active week in P-TA work.

She and Mrs. F. E. Holman of Taylor, state vice president, held a school of instruction in Abilene Tuesday and Wednesday. They also held a short inspirational service for the Abilene City Council of Parents and Teachers. Schools of instruction were also conducted by the women for schools in Abilene and Sonora.

Friday, Mrs. Carter was in charge of a district Board of Mongus meeting in the Cactus Hotel in San Angelo, at which 19 board members were present. Also assisting in the San Angelo session was Mrs. L. G. Byerley of Midland, a state vice president. Mrs. Byerley was in Lubbock Saturday for a similar meeting.

Previous to this week, Mrs. Carter had been in charge of meetings in San Angelo, Sterling City, Water Valley, Winters, Junction and Eldorado. New organizations were formed in Winters and Water Valley. Assisting in the Big Spring session was Mrs. Byerley.

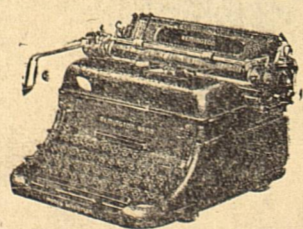
Other state and district officers of Midland are Frank Monroe, state recreation chairman, and Mrs. Waldo Leggett, district education chairman.

Room 5-C Has Charge Of Assembly Program For Junior High School

The assembly program for the fifth grades at John M. Cowden Junior High School this week was sponsored by room 5-C and directed by Mrs. Jessie Orth.

Clifford Baker announced the following program: Piano solo, Elizabeth White; song, Georgia Doyle, Barbara White and Carle Mae Lark; story, Ruby Lee Glenn; piano solo, Mona Sue Biggs; story, Lanetta Early; song, Nancy Warren and Frankie Speaker; poem, Georgiana Doyles; song, Buzzy Bray and Richard Burk; poem, Bill Aldrich; and song, Katherine Carter, Joyce Driffin and Shirley Sullivan.

Read the Classified Ads.



Remington Rand

- TYPEWRITERS Standard and Portable
• ADDING MACHINES
• FILING EQUIPMENT
• CALCULATORS Automatic Printing
• REPAIR SERVICE All Makes Typewriters and Office Machines

Paul C. Jordan

Authorized Agent Phone 935

REFRIGERATION REPAIR SERVICE

Commercial and Domestic

WE SERVICE ALL POPULAR MAKES

We Buy, Sell and Trade

COX APPLIANCE

615 West Wall Phone 454

OOPS! . . .

Youngsters really "fall" for these SNOW SUITS



Sanitized washable gabardine . . . brown, red and blue . . . Sizes 1 to 4 . . . full cut and zippered, to slip on over other clothes . . . snug knit at ankles and wrists . . . soft, warm lining. Girls' parka-style hood attached, boys' caps detached.

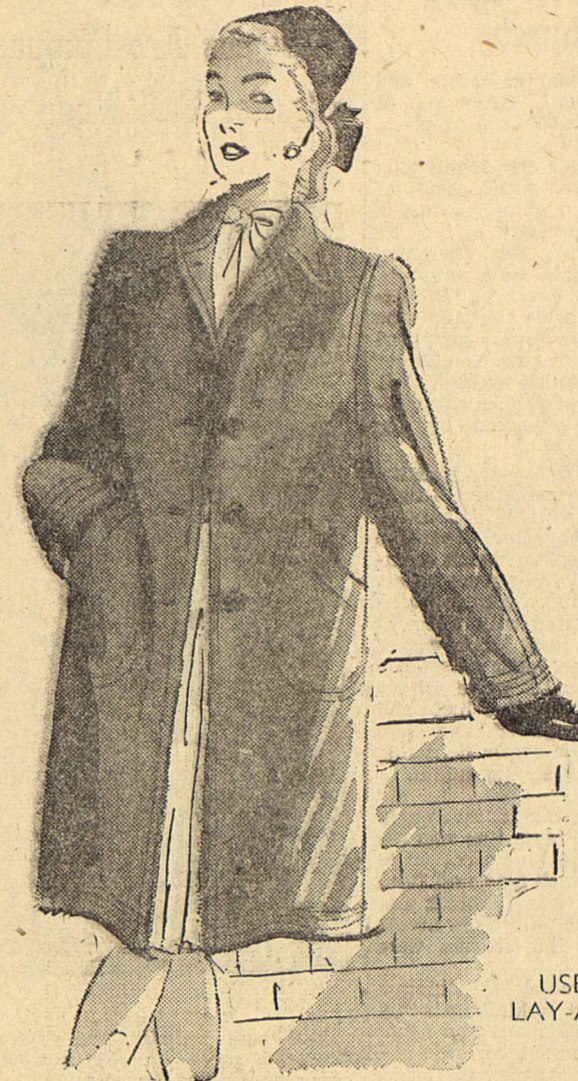
For Miss "Sugar and Spice" \$6.95

For Mr. "Ham-mers and Nails" \$4.98

Kiddies Toggery

109 N. Marienfield JOSEPHINE LIGON Phone 1691

Exquisite Coats



An Outstanding Selection Of Winter Coats — Fine Fabrics — Flattering Styles

Soft, supple wool fabrics, unsurpassed workmanship and lovelier, more flattering styles than ever in full length, full lined tweeds and new colors.

100% Wool Fabrics

A large selection of box and fitted styles, in sizes 14 to 44.

14.75 to 19.75

USE OUR LAY-AWAY



It's a Honey

FOR ONLY 24.75 TO 29.75

A two-button, double-breasted, form-fitting coat, fashioned of fleece fabric that boasts of 100% wool face (constituting 62% of garment and 100% cotton back), neatly tailored with fine velvet collar, in sizes 9 to 17.

Choice of black, colonial brown, club green, American beauty, and national blue.

BETTY ROSE

Fall Suits

Fine Fabrics . . . Impeccably

Tailored . . . Priced Right!

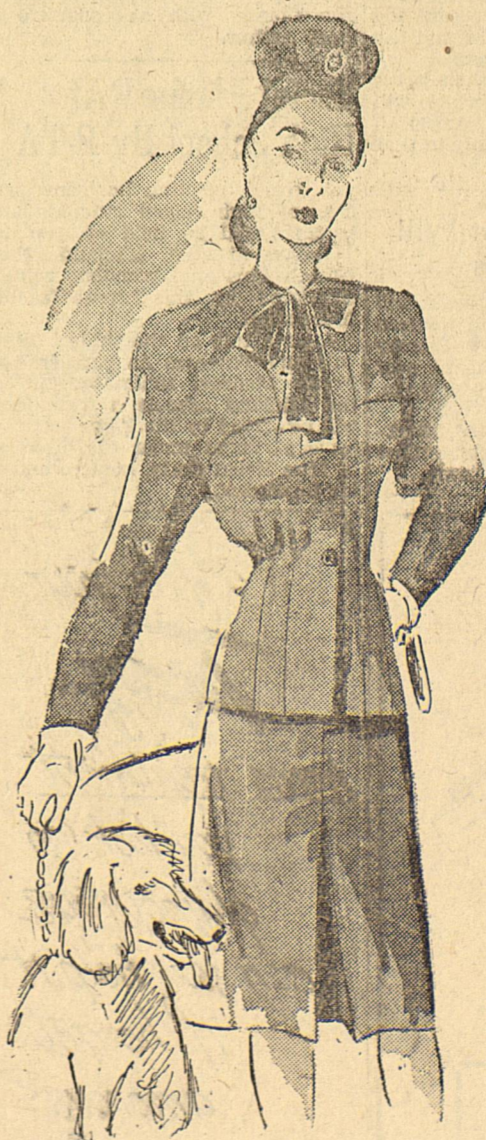
Suit days are here again . . . those wonderful brisk days when you can slip into a smartly tailored suit and look your very best right through the day and night.

Tailored and Fitted Styles

Fashioned from pre-shunk all-wool fabrics, cut to hold the shape—no bias or piecing. Sizes 9 to 20.

14.75 to 29.75

USE OUR LAY-AWAY



North Corner of Main and West Texas Streets

BOOKS

AT THE BOOK STALL Varied Titles of Interest

- SIXTY MILLION JOBS, by Henry A. Wallace 1.00 & 2.00
HOW TO START YOUR OWN BUSINESS by Walter F. Shaw and E. W. Kay 2.00
HOW TO GET THE JOB YOU WANT! by John W. Herdgen 1.00
ANYTHING A HORSE CAN DO (The Story of the Helicopter) by Col. H. F. Gregory 3.00
YOUR PERSONAL PLANE, by John Paul Andrews 2.50
THE SUPERFORTRESS IS BORN (The Story of the Boeing B-29) by Thomas Collison 3.00
FIGHTERS UP (The Story of American Fighter Pilots in the Battle of Europe) ed. by Arthur Gordon 2.50
SAFETY IN FLIGHT, by Jordanoff 3.00
AVIATION DICTIONARY, Illustrated, by Jordanoff 3.50

Book Review

"FOREVER AMBER"

by Evelyn Oppenheimer of Dallas, Texas

YUCCA THEATRE

Tuesday, September 25 10:00 a. m.

Tickets at The Book Stall Admission 75c

BOOK STALL First National Bank Building

**SPECIAL SUITS and DRESSES**  
Cleaned & Pressed  
**49c**  
**PETROLEUM CLEANERS**  
Next to Yucca

**Rental Time Is Changed On Books At Midland Library**

Time limits have been changed on a number of books at the Midland County Library and a number of new books has been placed on the fiction and non-fiction shelves.

Rental books changed to seven days: Archard, G. I. Nightingale; Best, Young'un; Carleton, Cry Wolf; Cox, Jade Venus; Fletcher, Lusty Wind for Carolina; Hancock, Nurse at Whittle's; Haycox, Bugles in the Afternoon.

Also: Jensen, Long Journey; Krutch, Samuel Johnson; Larrimore, Bugles in Her Heart; Lutz, All Through the Night; Norris, Burned Fingers; Papashvily, Anything Can Happen; Parkhill, Troopers West; Parrish, Poor Child; Seifort, Dr. Woodward's Ambition; and Wolfert, American Guerrilla in the Philippines.

Seven day books changed to two weeks: Brand, Heads You Lose; Bromfield, World We Live In; Burton, Shadow On the Cliff; Carr, She Died a Lady; Davenport, My Country; and Davis, Esme of Paris. Seven days to two weeks: Foslack, On Being a Real Person; Gill, Jugle Harvest.

Also: Hinkson, Golden Rose; Jameson, Cloudless May; Langley, Wait for Mrs. Willard; Macardle, Uninvited; Prouty, Now Voyager; Stevenson, Listening Valley; Thirkell, Headmistress; Wheatley, Sword of Fate; Woolcott, None But a Mile; and Yates, Murder By the Yard.

New books of note, non-fiction: Dobbie, Texan In England; DuBois, Plastics; Graham, Audel's Carpenters Guides; Holdridge, Northern Lights; Johnson, Treasury of Satire; Kains, 5 Acres and Independence; Lawrence, Star Dances; Lutz, Practical Landscape Painting; O. Henry, Memorial Award Prize Stories of 1945.

Also: Scheinfeld, You and Heredity; Singer, Spies and Traitors of World War II; Smirnitsky, Elementary Russian; Smith, Life In a Putty Knife Factory; Spencer, Guerrilla Wife; Townsend, How to Plan Your House; Ulen, Complete Swimmer; Ward, Literary Journey Through Wartime Britain; and Wernher, My Indian Family.

Fiction: Bailey, Wrong Man; Baldwin, Job for Jenny; Dern, County Seat; Ogilvie, Storm Tide; Partridge, January Thaw; Rhode, Shadow of a Crime; Popkin, Journey Home; and McCulley, Conger Kid.

**Episcopal Men's Club Will Give Barbecue Monday For Boy Scouts**

A barbecue honoring members of the Boy Scout troop and their fathers will be held at 6:30 p. m. Monday at Cloverdale Park. The Men's Club of the Trinity Episcopal Church will be host for the entertainment.

All members of the club are urged to be present and to bring their sons.

**Al Donahue And Band Will Play For Dances At Midland Air Field**

Al Donahue and his orchestra will play for dances at military personnel at Midland Army Air Field Oct. 3 and 4 at the Post Service Club.

Enlisted men and their guests will attend the entertainment on Wednesday and the Thursday night dance will be for officers and their guests.

**Elliott Roosevelt Case Goes To House**

WASHINGTON — (AP) — Amid Republican cries of "Whitewash," the House Ways and Means Committee voted Saturday to refer the Elliott Roosevelt "bad debt" case to the House without further investigation now.

Republican members wrote a minority report demanding further inquiry.

Committee Democrats pushed through 14 to 10 a motion by Chairman Doughton (D-NC) which: 1. Holds that John Hartford,

grocery chain official, is "justified" in claiming a tax deduction on \$196,000 he lost on a \$200,000 loan to the late President's son. Committee members estimated the deduction would mean about \$40,000 to Hartford in actual cash.

2. Sends to the House more than 800 pages of evidence and testimony regarding the case for filing as a public document.

Doughton told newsmen "This winds up the case." He added, however, that the committee might

**DETECTIVE BOOKS THUGS, GETS TAGGED HIMSELF**

LOS ANGELES — (AP) — Detective Sgt. V. R. Penny parker his car in a streetcar loading zone to arrest two pickpocket suspects.

When the prisoners were safely stowed away in the patrol wagon, he returned to his car.

A fellow policeman had tagged it for illegal parking.

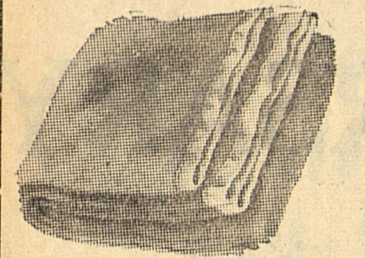
consider later the question of whether Elliott should pay income tax on the \$196,000.

**Welcome (To A) Home**

RIO DE JANEIRO — (AP) — A home for every Brazilian soldier incapacitated in the war and a home for the family of every Brazilian soldier and sailor killed in his country's service is the program being carried out by the Clube Militar, social organization of Brazil's army officers. Gen. Heitor Borges, president of the commission in charge of the program, estimates it will build 1,200 homes at a cost of \$1,500,000.

**Auto Washing and Greasing**  
HIGH PRESSURE CAR WASHER  
EXPERT LUBRICATION  
**MURRAY-YOUNG MOTORS, Ltd.**  
AUTHORIZED DEALER  
233 E. Wall Phone 64

**SPECIAL OFFER!**



\$1.00 Down will hold your All Virgin Wool Blanket until Nov. 15.

All-Virgin Wool Single; 72x90; 4-lb. weight. Superb quality; deep, soft nap. Rayon satin binding. French Blue, Mulberry, Rose, Green **1386**

Economy virgin wool single; 72 x 84; 3-lb. weight. All new wool. Moth-resistant AMUNO treated; replaced if moth damaged in 5 years. Rayon satin bound; Wine, Rose, Blue, Green **745**

We're shouting "Extra" about this blanket: long fiber; all virgin wool; soft nap; extra length. 72x90; full weight, 4 1/2-lb.; Rose, Green, Blue, Peach; 4-inch rayon satin binding. AMUNO treated to resist moths **1181**

**MONTGOMERY WARD**  
111 S. Main — Phone 2120

**Margo's 3-Pointer**

- STYLE
- COMFORT
- FIT



**BROWN ALLIGATOR CALF TIE \$6.95**

AAAA to B



**Everybody's**

A JO ANN SHOP



*We're Dressing Up This Season*

Coats that are smarter, more beautiful, more luxurious than ever . . . embodying all that is new — flattering body lines, exciting sleeve detail, impeccable workmanship.

**COATS and SUITS DESIGNED by**

- Jablow
- Fred A. Block
- Swansdown
- Jaunty Jr.
- Adele Simpson



Suit charmers that dictate Fall fashions . . . new lines, new smartness in the new silhouettes — trim flattering lines that you'll appreciate more each time you wear them.

**Gloved So Beautifully for Winter**  
distinctively designed by **Boyce**  
3-button length and smart shorties.

**Exciting Headliners**  
Youthful, flattering . . . designed to reap admiring glances

**Everybody's**

A JO ANN SHOP

**Cub Age Boys To Meet Monday Night**

A meeting of all boys of Cub age who attend South Elementary School and are interested in becoming Cub Scouts will be held at the school at 7:30 p. m. Monday. Fred Morrow is Cubmaster. Members of the Pack Committee are Dennis Murphy, Tommy White and Allen Heard. Den mothers are Mrs. Heard, Mrs. Murphy, Mrs. Walter Winge, Mrs. E. W. Kinkin, Mrs. Elmer Sellers, Mrs. W. J. Blansett.

The Cub packs are sponsored by the South Elementary P-TA.

**BOMB PACKING CRATES FOR SALE BY ARMY**

**BIG SPRING** — Two thousand bomb packing crates which total some 20,000 board feet of pine lumber will be placed on sale at the Big Spring Bomber School at 9 a. m. Monday in the post salvage yard.

The boxes, made of approximately half-inch pine and measuring 48 inches by ten by ten, total about ten feet of lumber each, and will be offered for 15-20 cents each, depending on their condition, according to salvage officers. The sale will end when the boxes have been sold.

An aspirin tablet in a vase of roses will help keep them fresh.

**Completes Training**



Daryl Neal Selby, S1/c, has completed his training as a signalman at the Bainbridge, Md., service school and now is in Shoemaker, Calif., awaiting assignment to a ship for overseas duty. He has been in the Navy since Jan. 11, 1945, and is the son of Mr. and Mrs. Earl Selby. Before entering the service, he attended Midland High School.

**Midland Soldier Services Jap Plane**

T/Sgt. Bryant H. Drury, son of Mr. and Mrs. B. H. Drury of Monahan, was a member of the crew which serviced the plane which brought the Japanese peace delegation to the Philippines. He has been overseas for 25 months and is entitled to wear the Asiatic-Pacific ribbon with three battle stars, the Philippine liberation ribbon and the good conduct medal.

**MAJOR KIPP JOINS TEXAS TECH STAFF**

**LUBBOCK** — Major Harold L. Kipp, director of ground training at the Midland Army Air Field for 37 months, has taken over duties as advisory counselor for ex-servicemen at Texas Technological College. Recently discharged from service, Major Kipp formerly served as associate professor of mechanical engineering at Texas Tech.

**BURNS CATERPILLAR WEB, APPLE BLOSSOMS APPEAR**

**CHICAGO** — (AP) — A month ago Lew H. Daughette applied a torch to a lower branch of an apple tree in his yard in suburban River Forest to burn away a web of caterpillars. Now apple blossoms have appeared along the length of the branch. No where else were there any buds.

**Coming Events**

**SUNDAY**  
Sandwiches and punch will be served to service men and their wives from 4 to 9 p. m. at the Salvation Army USO.

**MONDAY**  
The Woman's Auxillary of the First Presbyterian Church will meet for an inspirational meeting at 3 p. m. at the church. Mrs. Richard Peters will be leader of the program.

Circles of the Woman's Council of the First Christian Church will meet at 3 p. m.; Henderson, Mrs. W. M. Blevins, 401 North Marienfield; and Rijnhart, Mrs. G. H. Butler, 933 North Baird.

A meeting of the Woman's Society of Christian Service of the First Methodist Church will meet at 3:15 p. m. in the Scharbauer Educational Building. An executive board session will be held at 2:15 p. m.

The First Baptist WMU will meet in circles: Mary Martha, Mrs. Frank Monroe, 107 Riddles; Mary Elizabeth Truly, Mrs. B. C. Girdlex, 1900 West Missouri; Lockett, Mrs. W. B. Preston, 711 North Marienfield; Lottie Moon, Mrs. J. M. White, 2010 West Indiana; Annie Barron, Mrs. Vernon Yearby, 311 North Main; and Rebecah, Mrs. A. B. Clements, 506 West Louisiana.

Members of the YWA of the First Baptist Church will meet at 8 p. m. for formal installation services.

**TUESDAY**  
Mrs. Louis Chase will be hostess for a meeting of the Twentieth Century Club at 3:30 p. m. at her home, 1105 West Missouri.

A Chinese supper will be held at the home of Mrs. Holt Jowell, 705 North Pecos, for members of the Civic Music Club and their husbands.

The public is invited to attend a meeting of the Civic Theater at 8 p. m. at the Civic Auditorium.

Miss Evelyn Oppenheimer of Dallas will be presented in a review of the book "Forever Amber" at 10 a. m. at the Yucca Theater.

A social meeting for parents and high school students and teachers will be held at 8 p. m. at Midland High School.

**WEDNESDAY**  
The second and third grade girls of South Elementary Brownie group will meet at 3:30 p. m. at the home of Mrs. C. S. Longcope, 1204 South Main.

**THURSDAY**  
Mrs. John Redfern will present two reviews on the Midland County Library radio program over KCRS at 4 p. m.

**FRIDAY**  
Meses. B. C. Maley, J. D. Dillard and Leif Olson will be hostesses for the luncheon meeting for the Ladies' Association of the Midland Country Club at 1 p. m. at the Country Club. Bridge will be played during the afternoon.

The Belmont Bible Class will meet at the Scharbauer Educational Buildings of the First Methodist Church at 4 p. m.

Wives of military personnel will meet at 9:30 a. m. at the Salvation Army USO to make surgical dressings for the Midland Army Air Field Hospital.

**SATURDAY**  
The Moment Musical Club of the Watson School of Music will meet at 11 a. m. at the studio.

**ADD TWO NEW FLIGHTS**

**DALLAS** — (AP) — Braniff Airways will add two north-bound flights for increased service for Dallas, Amarillo and Colorado, T. E. Braniff, president, announced.

**J. & M. Birthday NEWS**

VOL. 1, NO. 1

MIDLAND, TEXAS

SEPT. 25, 1945

**LEADING LAUNDRY CELEBRATES ITS FIRST ANNIVERSARY**

**J. & M. STEAM LAUNDRY**  
MIDLAND, TEXAS  
September 23, 1945

**A PERSONAL STATEMENT BY THE OWNERS**

Mr. and Mrs. M. Id Land  
Midland, Texas

Dear Friends:

When this business was launched one year ago, we set our SERVICE standards as high as possible.

We knew then and we know now that our difficulties do not primarily concern you. That's our headache. What you want is quick, quality service. That's exactly what we want you to have.

The success of this enterprise has exceeded greatly our most optimistic hopes.

For this fact we would be ungrateful indeed if we failed to express, as well as we can, our real thanks for your loyalty, patience and good nature under conditions which have been very trying. We do thank you in all sincerity.

Any suggestions you have for improving our service to you will be gladly received and carried out with increasing speed allowed by our facilities.

On our first anniversary we look forward to many more years of increased efficiency, promptness and quality work which we hope will be all that you expect.

Service on your family laundry within 4 or 5 days. Not as rapid as we wish, but this time will be reduced as quickly as the available facilities permit.

Yours very truly,

(Signed)

T. L. DUNLAP  
ODIE MORRIS

A MODERN LAUNDRY — AT YOUR SERVICE

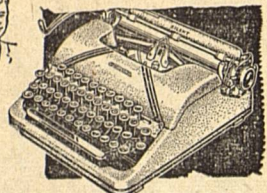
**Personal Shopper**

Let me shop for you in Houston. A postcard will bring details.

**Dorothy Meitzen**  
2410 Woodhead  
Houston 6, Texas

**CORONA PORTABLES**

We are taking orders now for Corona Portables. Expect delivery by Christmas.



Now On Display

**RAY GWYN OFFICE SUPPLY**

Phone 173 215 W. Wall

"Say It With Flowers"

**MIDLAND FLORAL**

Phone 1286

1705 W. Wall

**MEN . . .**

For Your

**Suit and Overcoat**

You Ought to See Our

**FALL SAMPLES**

From the Nation's Famous Mills

Special 3-Weeks Delivery Service To Ex-Service Men

As a special courtesy to newly discharged service men we offer three-weeks delivery service.

**CARL'S**

Just South of Post Office

For  
• **INCOME TAX SERVICE**

• **GENERAL INSURANCE**

• **REAL ESTATE LOANS**

Let Us Serve You!

**T. E. NEELY AGENCY**

Office: Crawford Hotel  
Phone 1850

**J. & M. Steam Laundry**

407 South Marienfeld Street

Phone 209

Farm Implement Firm Open For Business

The West-Tex Equipment Company, dealers in International Harvester farm implements and tractors, is now open for business at the concern's new 100-square-foot building at 105 North Fort Worth Street.

Henson Stationed At Camp Shelby

CAMP SHELBY, MISS. — Pfc. Alton Lee Henson, son of R. L. Henson of Midland, arrived here recently from Europe with the famed 95th Division. He is in an infantry unit and served in England, France, Belgium, Holland and Germany. Henson has the good conduct medal and the ETO ribbon with four battle stars.

Stubble Mulch Farming Pays

Stubble mulch farming has proved its value to Terry Elkin, cooperator with the Martin-Howard Soil Conservation District. Herd Midkiff, district supervisor, announced Saturday. Last year Elkin plowed part of one field with broad wing sweeps, leaving all the stubble on top. The rest of the field was bedded with a lister. Feed on the land plowed with sweeps is at least twice as good as that on the listed land.

R. E. Wolber also found stubble mulch plowing beneficial on his farm in the Valley View Soil Conservation Group. Wolber plowed a two-acre sudan patch with broad wing sweeps last year. Later he noticed that moisture was within two or three inches of the top while on listed land in another field the soil was dry for six or eight inches.

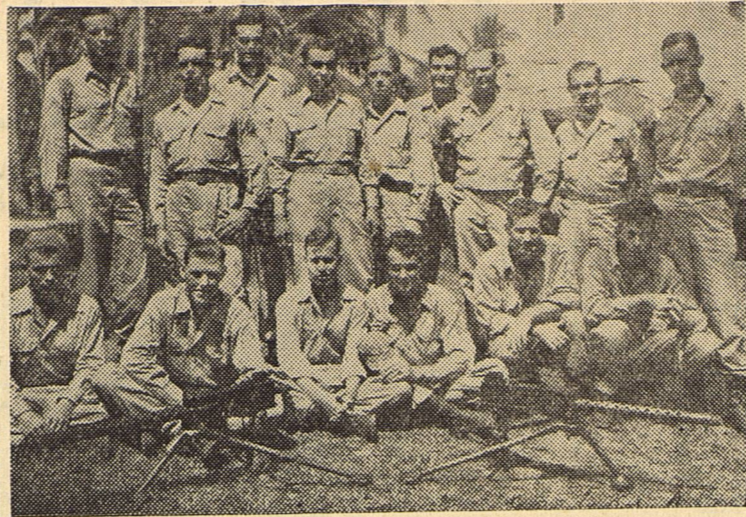
Cattle Brands Must Be Re-Recorded Now

Cattlemen who have not re-recorded their cattle brands with the county clerk have only this week to re-record them or face the possibility of losing them. The legislature passed a law in 1943 requiring the re-recording of all cattle brands by Oct. 1, 1945.

Texas War Workers Placed In New Jobs

AUSTIN (AP)—Of 57,424 Texas war industry workers laid off in 16 principal cities between Aug. 14 and Sept. 18 slightly more than half, or 29,424, have been placed in new jobs, the State Office of the War Manpower Commission reports.

Serves In Far East



Pfc. O. C. Collins, Jr., son of Mr. and Mrs. O. C. Collins of Midland, has served with the 41st Division on Zamboanga, Mindana and in the Philippines. He is seated second from the left. Collins is a graduate of the Midland High School and wears the combat infantryman badge. His wife and seven-months-old son, Allan Clay Collins, live in Midland.

JayCeers To Stage Rat Extermination Campaign In City

A rodent eradication campaign sponsored by the Junior Chamber of Commerce will be carried on here for two weeks starting Oct. 1, Carl Peay, chairman of the public health committee of the organization, announced Saturday.

An experienced exterminator employed by the state will arrive in Midland Oct. 1 to direct the campaign, A. A. Jones, chairman for the campaign, announced.

Citizens are asked to clean their alleys and premises this week in preparation for the work of exterminating the rodents, and those who are bothered by rats and mice around their homes are asked to write Graham Smoot, post office box 553, if they want to put out poison.

The exterminator and his crew will work the business section and other places where rats might be present in large numbers.

Dinah To Sing To GIs From Blimp Overhead

HOLLYWOOD (AP)—New ideas for the entertainment of returning servicemen are becoming a habit with the fairer sex.

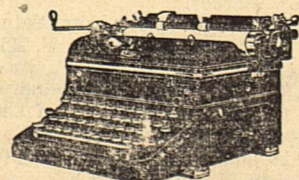
The latest ingenious bit has been added to the list of Dinah Shore. Dinah announces that when the next shipload of veterans arrives from overseas, she and a guitar player aboard a blimp will hover just above deck and welcome them home with song and music.

PUBLIC RECORDS

The following warranty deeds have been recorded recently at the office of County Clerk Susie G. Noble:

- James L. Hundle et ux to Ben Biggs, lots 1 thru 6, block 148, Southern Addition.
Maude Newnam to J. F. Friberg et al, lots 10, 11 and 12, block 31, West End.
John A. Griffin to K. E. Newell, 10 acres of land out of section 15, block 41, Township 2 South.
T. M. Frizzelle and wife to Charles J. Aiken, lot 2, block 52, West End.
T. M. Fizzelle and wife to B. G. Grafa, tract 16 and 5.7 acres of tract 10 Subdivision of City View Acres.
F. F. Elkin, Trustee to Etta Pearl Tidwell, lot 1, block 67, West End.
J. F. Friberg and wife to H. M. McReynolds, Jr., lot 7, block 54, West End.
C. D. Collier and wife to T. C. Carter and wife, lot 7, block 75 Southern Addition.
W. S. Hill and wife to George O. Austin, lots 7, 8 and 9, block 9 High School Addition.
J. F. Friberg and wife to W. N. Keisling, lot 12, block 54, West End Addition.
T. A. Matlock and wife to A. C. Matlock and wife, 2 acres out of the north one-half of the west one-half of the northwest one-fourth of section 3, block 39 township 2 South.
J. F. Friberg et al to W. L. Cole et al, part of lot 10, block 31, West End.
Midland Housing Co. to C. M. Dunagan, lot 7 and the west 10 feet of lot 8, block 42, West End.
C. V. Douglas et ux to T. D. Jones et ux, lot 6, block 182, Southern Addition.
First Baptist Church of Midland to O. V. Barker, all of the north 200 feet of the West one-half block 25, Homestead Addition.
Annie Ford to Lucille Ford Kerth, lot 4 and east 10 feet of lot 5, block 18, West End.
B. G. Grafa and wife to Hugh A. Tanner, lot 21, block 3, Country Club Heights Addition.
Ben Belt et ux et al to J. R. Martin, lots 7, 8 and 9, block 21, West End.
Mamie Moran Tolbert and husband to Jeff D. Langston and wife, 2 acres of land in a square out of the northeast part of block 1, of the East Front Addition.
Elmer Harrington and wife to Mrs. Claude Sanders, lots 16, 17 and 18, block 65, Original Town.
L. E. Stuart and wife to Norman M. Hulings Trustee, lot 4, block 15, High School Addition.
J. C. Velvin et ux to Kenneth C. Slough, lot 9, block 2, Elmwood Addition.
Barrow Furniture Co. to J. E. Simms, lot 9 and the South 75 feet of lots 10 and 11 and 10, block 15, West End.
C. H. Barnes and wife to T. A. Alderson, lot 15, block 94, Original Town.
Harriett Furlong Keeran et al to W. I. Bratt, block 128 and block 192, Southern Addition and West one-half block 6, Homestead Addition.
J. Howard Hodge and wife to Griffith Consolidated Realty Co., lot 1, block 34, Homestead.
J. L. Barber and wife to W. J. Sparks and W. R. Upham, 80 acres being the West one-half of the southeast one-fourth of section 23, block 39, township 1 S.
Roy A. Minear and wife to Vernon G. Hudson, W/2 of lots 5 and 6, block 31-A, Homestead Addition.
Geo. Beggs et al, Executors and Trustees of the Estate of John Scharbauer, Deceased to Beverage Sales Co., lots 16 and 17, block 51, Original Town.
W. R. Upham and wife to E. L. Hall, lot 8, block 142, Southern Addition.
George Beggs et al Executors and Trustees of the Estate of John Scharbauer, Deceased, to West Texas Housing and Development Co., lots 4, 5, 6, 7, 8 and 9, block 20, West End.
Vernon G. Hudson et ux to Roy R. McKee, lot 12, block 170, Southern Addition.
West Texas Housing and Development Co. to L. G. Yarbrough, lots 7, 8 and 9, block 20, West End.
W. R. Upham et ux to Norman T. Zachry, lot 18, block 121, Southern Addition.
Mrs. Aubrey Elliott to Sam Preston, N 1/2 block A, John and Moran Addition.
Mrs. Ruby Young et al to J. J. Willis, South 1/2 lot 2, block 37, Original Town.
E. G. Merritt et ux to Densil Webb and Altha Webb, lot 9, block 11, Midland Heights Addition.
D. M. Neatherlin et ux to A. D. Childress, lots 7, 8, 9, 10, 11 and 12, block 169, Southern Addition.
Mrs. Rosa Small Hawkins and husband to Ann Little, North 25 feet of lot 4, block 6, Belmont.
B. G. Grafa and wife to J. E. Fussell, lot 2, block 180, Southern Addition.
J. E. Freetag et ux to W. W. Crayton, lots 13, 14 and 15, block 105, Southern Addition.
Fluma Westron et al to Edgar Lee Helbert, lots 10 and 11, block 124, Southern Addition.
W. I. Pratt and wife to H. L. and E. L. Helbert, lots 7 to 12 inclusive, block 128, Southern Addition.
B. G. Grafa and wife to Cecil P. Pope and wife, tract 16 and 5.7 acres of tract 10, City Views.
J. M. Speed et ux to C. M. Lewis, lots 1, 2, 3, 4, 7, and 8, block 31 Midland Heights.
Ola Perrin to Wm. D. Strickland, lot 7, block 10, High School Addition.
W. R. Upham et al to George A. Cramer, South one-half tract one, Morningside Addition.
Richard Foley and wife to W. A. Yeager, lot 4, block 37, Original Town.
A. W. Logsdon and wife to Sch-lumberger Well Surveying Corp., lot 12, block 52, West End.
Paul Houston et ux to C. Estes David, lot 1, block 36, West End.
Frank Gowden et al to Sun Oil Co., lots 7, 8 and 9, block 95, West End.
B. G. Grafa et ux to G. H. Scott, lot 7, block 180, Southern Addition.
Fred Wemple, Jr., and wife to Magnolia Petroleum Co., lots 17 and 18, block 64, Original Town.
W. R. Upham et ux to Magnolia Petroleum Co., lots 8 and south 1/2 lot 9, block 29, partly in Original Town and partly in Homestead.
Frank Taylor et ux to H. M. McReynolds, Jr., East 40 feet of the West 100 feet of lots 15, 16, 17, and 18, block 145, Southern Addition.
R. E. Lea to S. M. Yudin, lots 1 to 8, inclusive, block 10 and lots 9 to 13 inclusive, block 10, Parklea Place.
R. E. Lea to S. M. Yudin, lots 1 to 14 inclusive, block 9, lot 10, block 12, lots 1 and 2, block 8, Park Lea Addition.
W. R. Upham et ux to Gus G. Foster, lots 11 and 12, block 81, Southern Addition.
H. W. Donohoo et ux to C. A. Carter, lot 12, block 36, West End.
P. M. Ragsdale et ux to Mrs. Kay Williams, south fifty feet of the north 100 feet of the NE/4, block 39, Homestead Addition.
R. E. Lea to Troy D. Etheredge, lots 1 and 2, block 19, Parklea Place.
R. E. Lea to Mrs. W. Bryant, lot 22, block 8, Parklea Place.
Mrs. Susie D. Harris to G. D. Thompson, lot 5, Greenhill's Re-Subdivision of tract 2, Carroll and Heights Addition.
R. E. Lea to Marie M. Franklin, lots 1 to 4, inclusive, block 5, Parklea.
B. G. Grafa et ux to Midland Oil Scouts Association, bldg. trustees, lots 3 and 4, block 7, Midland Heights Addition.
R. E. Lea to Dalton A. Reese, lots 10, 11 and 12, block 5, Parklea.
Mrs. Claude Sanders to Ralph Love, lots 15, 17 and 18, block 65, Original Town.
F. F. Elkin, Trustee to Henry G. Krauss, lots 7 to 10, block 58, West End and lots 7 to 12-inclusive, block 118, West End.
J. T. Williams to John D. Matthews, lot 3, block 3, S. W. Estes Addition.
R. L. Aiken et ux to J. W. Davis Collect, lot 7 and west one-half lot 8, block 110 West End.

ANNOUNCING The Re-Opening of our Service Department



EXPERT SERVICE ON ALL MAKES TYPEWRITERS ADDING MACHINES Call For JOHNNY DECKELMAN Service Mgr.

WEST TEXAS OFFICE SUPPLY 204 W. Texas — Phone 95 Authorized Dealers ROYAL TYPEWRITERS ALLEN-WALES & VICTOR ADDING MACHINES FRIDEN CALCULATORS

As Advertised in LIFE. I Pre-Test Poll-Parrots! Yes sir, the best base-runner on our team Pre-Tests Poll-Parrot shoes for your child. Wilson's shoes are shown with a price range of \$3.95 to \$4.95.

WILSON'S LAY-A-WAY Presents At Least Five Distinct Advantages. Your Coat Is Here! Your Suit Is Here! HATS BAGS. A truly varied collection for your early choice. \$1.95 to \$8.95. \$1.95 to \$10.95.

Colonel Vandiver Gets Post At MAAF

Lt. Col. Comer L. Vandiver has been appointed director of administration and services at Midland Army Air Field, succeeding Lt. Col. Laurence W. DeMuth. Colonel Vandiver served two years in the European theater of operations and received the distinguished unit citation and two battle stars.

Midland Schools Get New Bus Saturday

A new Chevrolet school bus was received Saturday by the Midland Independent School District to replace an old vehicle. It will be put in first-class condition and used as a spare in case one of the other six is out of service. The new bus will be put on the Pleasant Valley run.

Blessings on your DRY SKIN! Marie Earle NURIMOR! Let your dry skin luxuriate in the delicate oils it craves... the oils that Nurimor contains in quantity. Use just a little of this precious cream nightly—you'll find it richly rewarding in helping to smooth tiny lines and alleviate dryness. \$8.50, \$5.00, \$2.75 Plus tax.

FASHIONED BY PRINTZESS. SUIT MAGIC Created by Printzess. Suburb craftsmanship that gives slenderizing lines to the figure, whittles the waist and broadens the shoulders. That's a secret of Printzess tailoring. Add to this the fine fabrics, the hand-tailoring throughout the inside of the garment and the careful taping at points of strain to prevent stretching... As modern as a jet plane, our little felt pillbox is clean-cut and streamlined, with its only trim a row of brilliant jet discs. It's a hat to wear now, and all season long... In black and colors... 8.95. GRAMMER-MURPHEY Women's Wear Successor to J. C. Smith Ladies' Shop WE GIVE S&H GREEN STAMPS



**RAIL OFFICIAL PROMOTED**

ST. LOUIS —(P)—Promotion of C. W. Page from assistant to general superintendent of transportation for the Missouri Pacific lines was announced Saturday.

**NORMANDIE IS SURPLUS**

NEW YORK —(P)—The once proud liner Normandie, now a ghost ship gathering moss and barnacles, has been declared surplus by the Navy.

**Did You Know?**

That adrenal hunger may be mistaken for arthritis.

**Dr. Henry Schlichting Jr.**

Naturopathic Physician

1200 W. Wall — Midland

PORTRAIT and COMMERCIAL PHOTOGRAPHERS

ORDERS FOR CHRISTMAS SHOULD BE MADE NOW!

Phone 363-104 N. Main

**Mrs. Leland R. Croft**

Pupil of the Eminent Violinists

Claude Sammis Leon Sametini  
Paul Stoeving Francis Macmillan

Announces Opening of a Violin Studio

at

911 N. Sam Houston Telephone 1182  
ODESSA, TEXAS

**The Circus Is Coming**



Spangleland displays which thrill and astound are said to be numerous on the Cole Brothers Circus 1945 program. Such features as Con Colleano, the forward somersaulting star on the tight wire; the Orantos, breath taking high perch performers; and Gee Gee Engesser, the Roman standing rider pictured above are among the long list of circus stars.

**Cole Circus Will Arrive Saturday**

The Cole Brothers Circus will be in Midland Saturday to present two performances at the show grounds on Highway 80 just west of the city limits.

Trainloads of gilt, litter, spangles, clowns, wise old elephants with flopping ears, bands, animals and what-not, will steam into town before dawn and quietly proceed to install its encampment of 26 tents on the circus grounds where at 2 and 8 p. m. it will display its wares to youngsters of all ages.

The huge show will be here only one day. A concentration of thrilling attractions, with nearly 1,000 people which, of course, includes the 356 men and women acrobats and performers, three great herds of performing elephants, hundreds of menagerie animals, and other hundreds of handsome horses and ponies.

Many of the world's greatest spangleland stars will greet Midland circus patrons. Among them, Con Colleano, the greatest of all tight wire artists; the Orantos, the renowned troupe of high-perch performers; Ruth Nelson, the sensational rider of rearing and waltzing horses; the Justino Loyal troupe of bareback riding champions; the Slayman-Alli troupe of somersaulting Arabs; the Caudillo Sisters, Mexico's famous acrobatic troupe, and dozens of others of equal note.

Another highlight this year is the opening super-spectacle, the "Caliph of Bagdad," featuring Florence Tennyson, the noted opera star and a big ballet of beautiful dancing girls and, another, the aerial contingent, with a vast assemblage of spangleland's greatest

**Circulation Job**

CHENEVA, SWITZERLAND —(P)—From the beginning of the war to the end of May, 1945, the International Red Cross forwarded 1,233,333 books to prisoners of war camps throughout the world.

Marshmallows should be kept in a bread box both before and after

**Take Off Ugly Fat With This Home Recipe**

Here is an inexpensive home recipe for taking off unguily weight and help bring back alluring curves and graceful slenderness. Just get from any drugist, four ounces of liquid Barcol Concentrate. Add enough grapefruit juice to make a pint. Then just take two tablespoonsful twice a day. Wonderful results may be obtained quickly. Now you may slim down your figure and lose pounds of ugly fat without back breaking exercise or starvation diet. It's easy to make and easy to take. Contains nothing harmful. If the very first bottle doesn't show you the simple, easy way to lose bulky weight and help regain slender, more graceful curves, return the empty bottle and get your money back. Midland Drug Co. and all other druggists.

**MIDLAND SATURDAY 29 SEPTEMBER ON HIGHWAY NO. 80**

"All tents and properties 100% flameproof under federal specifications CCC746."

**Woman Suffrage Is Proposed For Japan**

By JAMES D. WHITE

SAN FRANCISCO —(P)—One of the more important stories out of Japan is mentioned only incidentally.

It is the report that American policy proposes, among other things, to institute woman suffrage in Japan.

No more fundamental change in Japanese life could be imagined, because it's pretty well agreed that a nation's place in civilized society usually corresponds roughly to the way it treats its women.

That's only one index, of course, but it's true that Japanese women are little more than servants without personal rights.

If Japanese women get the vote it could mean, in the long run, the liberation of exactly half the Japanese race.

**Tojo Presents His Medals To GI MP**

TOKYO —(P)—The envy of the rabid souvenir hunters in the American occupation Army is Pfc. Donald Kincaid of Dayton, Ohio, whose prize is General Hideki Tojo's complete set of campaign ribbons—given to Kincaid by the general himself.

Kincaid, a military policeman, was one of the several assigned to stand guard at the bedside of the war-making premier after his suicide attempt.

When the general's dress uniform was brought to him one day, Tojo removed his set of 24 ribbons and personally handed them to Kincaid.

Weaving is an industry older than man, since it was practised by spiders, caterpillars and birds before the advent of the human race.

**EXPERT GUN REPAIRING Phone 768-J**

Order Your **CHRISTMAS CARDS NOW!**

**RAY GWYN OFFICE SUPPLY**

Phone 173 215 W. Wall

**Furniture?**

If you need furniture or floor covering, shop here—we may have just what you need. We have a few lawn chairs left. Just received a large shipment of gas heaters—get yours now—"no certificate needed." Highest prices for used furniture. In our new location . . .

**Galbraith's**  
615 W. Wall Phone 746

**AMERICA'S FAVORITE SHOW**



This Year Excelling By Far Anything and Everything EVER BEFORE Presented by COLE BROS.

**CON COLLEANO**  
The WORLD'S GREATEST Tight-Wire Star Direct from England! The Stupendous & Dazzlingly Beautiful Super-Spectacle

**THE GUININGO LOYAL**  
Troupe of Sensational Somersaulting Bareback Riders A Pageant of Unsurpassed Marvels

**THE FLYING THRILLERS**  
Breath-Taking Flying Return Display

**SLAYMAN-ALLI ARABS**  
WHIRL-WIND Acrobats

**50 FAMOUS CLOWNS**

**BALLET OF THE ELEPHANTS**  
GREATEST ELEPHANT DISPLAY IN HISTORY

**M. L. E. CYSE O'DELL**  
Spangleland's FAMED AERIAL Gymnastic Stars

**350 ARENIC STARS AND PERFORMERS**  
MENAGERIE — COUNTLESS ANIMALS

**GIGANTIC RAILROAD SHOW**  
TWICE DAILY 3 and 8 P. M. POPULAR DOORS OPEN 2 and 7 P. M. PRICES

TICKETS (reserved and admission) on sale show day at Walgreen Drug Store, 122 W. Wall

**MICE HARVESTERS**

Mice are used as harvesters by the Eskimo. Instead of digging laboriously for the potato-like roots of the mushoo plant, the Eskimo waits until mice have dug and stored the roots. The Eskimo helps himself, but leaves enough for the mice and adds some dried fish for good measure.

USE **666**  
**COLD PREPARATIONS**  
LIQUID, TABLETS, SALVE, NOSE DROPS  
Use Only As Directed  
Read the Classified Ads.

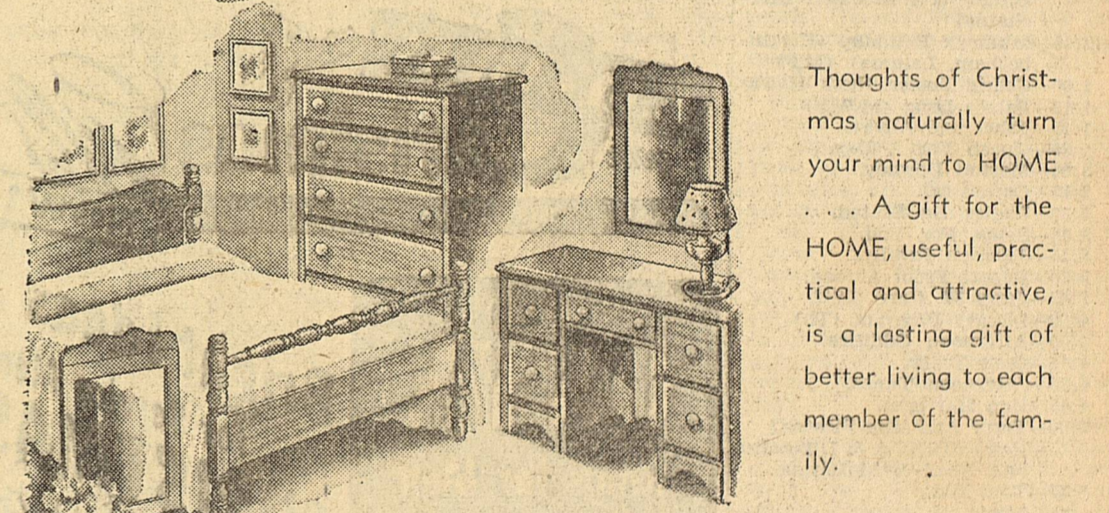
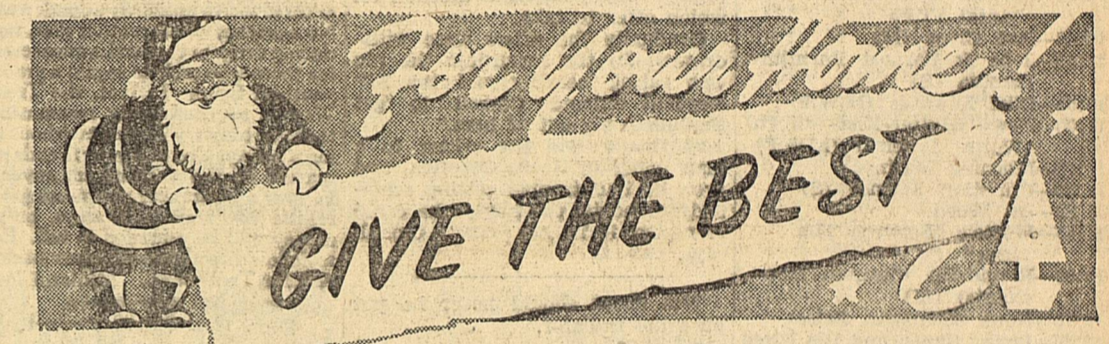


**FOR good, hot Fall meals** there's nothing like a sparkling clear Pyrex Double-Duty Casserole! Really two dishes for the price of one. Bottom serves as an open baker. Top is an extra pie plate. Used as covered casserole it keeps food hot on the table. Comes in 3 popular sizes.

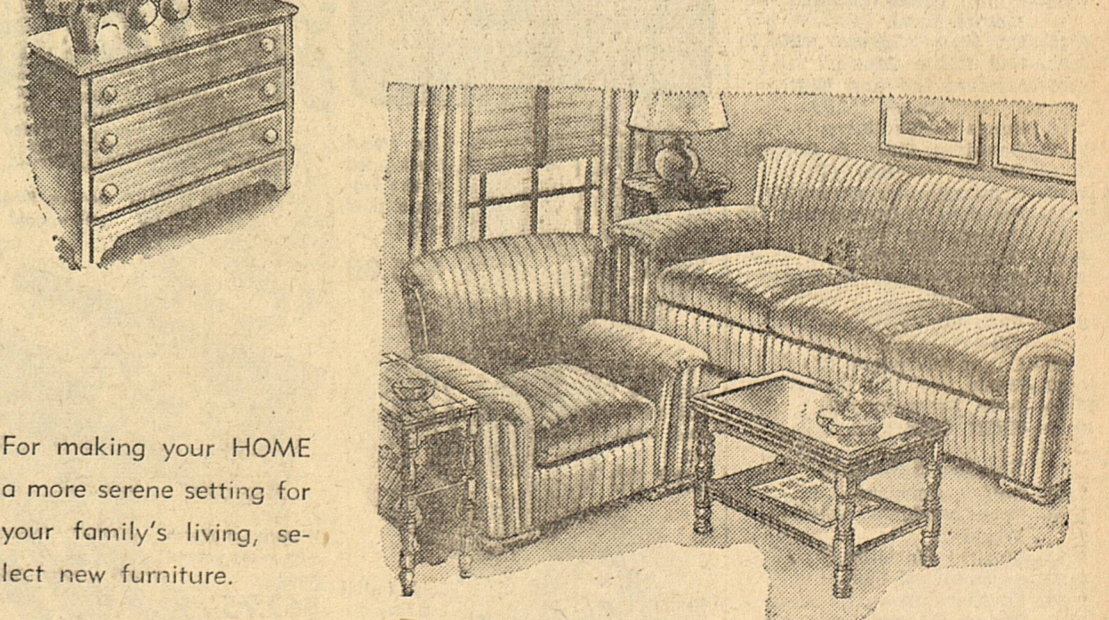
There's a **Ford** future!  
**MURRAY-YOUNG MOTORS, Ltd.**  
223 E. Wall Phone 64

**MIDLAND HARDWARE and FURNITURE CO.**  
106 N. Main Phone 1500

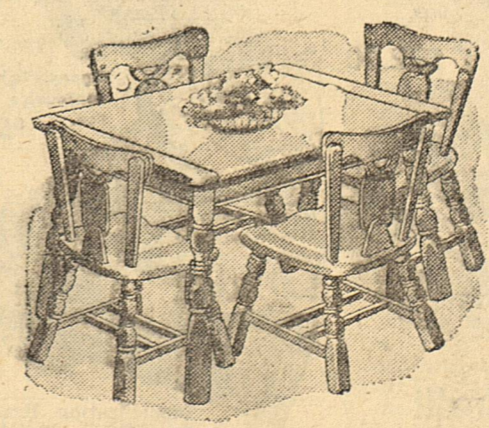
**IT'S NOT TOO EARLY TO BE Giving A Thought to Christmas!**



Thoughts of Christmas naturally turn your mind to HOME . . . A gift for the HOME, useful, practical and attractive, is a lasting gift of better living to each member of the family.



For making your HOME a more serene setting for your family's living, select new furniture.



At our store, in addition to full suites, you will find many occasional pieces, tables, chairs, mirrors and many others, which you will take pleasure in using in your HOME. Please feel free to browse around shopping here; it's still early enough to make leisurely satisfactory selections for Christmas. Come in — any time!

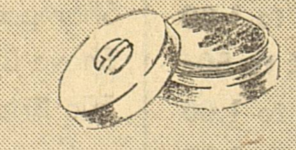
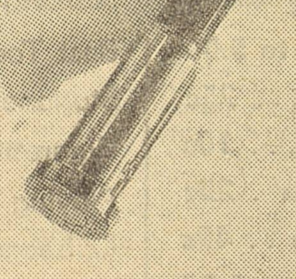
**MIDLAND HARDWARE & FURNITURE CO.**  
106 N. Main Phone 1500

**Germaine Monteil**

GIVES YOU HER NEW COLOR

**MUTED ROSE**

FOR THE NEW, FRAGILE, FEMININE LOOK



Not bold or brash, but subdued and naive is the way you should look this season. . . . Hardly made up at all, in fact. Monteil makes it easy for you with her new color, Muted Rose, in lipstick and cream rouge. Complement its soft pink loveliness with Monteil's Surf eye shadow.

Lipstick 2.00 Cream Rouge 1.25, 2.00 Eye Shadow 1.25



**Citizens Summoned For Grand Jury Duty**

Twenty Midland County citizens have been summoned to report at 10 a. m. Oct. 1 in the district court room for possible service as grand jurors for the next session of court.

Men summoned are W. A. Yeager, Fred S. Wright, E. E. Williams, T. R. Wilson, Miles E. Winter, Jack E. Wilkinson, H. H. Watson, W. R. Upham, Earl W. Statton, J. R. Martin, Don Davis, W. F. Hejl, R. S. Dewey, L. G. Mackey, John P. Butler, C. H. Shepard, L. P. Shiplet, Frank Cowden, M. D. Cox and J. P. Carson.

**MICHIGAN TULIPS**

**BIGGEST BARGAIN IN AMERICA**

75 BULBS \$1.69

FREE

SEND NO MONEY—ORDER NOW

Michigan Bulb Co., Dept. R-1035

48 Monroe Ave. N.W., Grand Rapids 2, Michigan

**KCRS**

Midland, Texas

1230 on your dial

FIRST IN NEWS  
FIRST IN ENTERTAINMENT

Mutual Broadcasting System  
The Texas State Network

WEEK OF SEPTEMBER 23 1945  
(Days of the week abbreviated)

**Week-Day Schedule**

6:45—Pep-Up Period.  
7:00—Lewis Feed Store (M,W,F)  
7:15—United, Inc. (S)  
7:15—Morning Varieties.  
7:30—News (Barrow Furniture) (M,W,F) (Midland Tire) (T,Th,S)  
7:45—Bread of Life.  
8:00—Breakfast Club.  
9:00—My True Story.  
9:15—Mrs. Buyer (S)  
9:25—It Really Happened.  
9:30—Music.  
9:45—Morning Devotional.  
10:00—News (Marshall Furniture) (M,F)  
10:15—Music. (W,F)  
10:30—Musical Quiz (Odessa Merchants) (T,F)  
10:40—Red Cross (M)  
10:45—Jobe & Earnest Furniture, Lamesa (S)  
10:55—Cliff Edwards (M,W,F)  
11:00—News (Butter-Kist) (T,Th) (Waites Jewelry) (M,W,F)  
11:15—Morning Matinee.  
11:30—Christian Science (S)  
11:30—Dr. Wood.  
11:45—White's "Between The Lines"  
12:00—Round-Up (Stanton Merchants) (M)  
12:15—News (Dunagan Sales)  
12:30—Pappy Smith and His Hired Hands (Ft. Stockton Merchants)  
12:45—Minimax Roundup (Higginbotham, Lamesa) (M,F)

1:00—Cedric Foster News (Iva's)  
1:15—Palace Drug (M,W,F)  
1:15—Ethel and Albert.  
1:30—Queen For A Day.  
2:00—Morton Downey.  
2:15—Orchestra.  
2:30—Ladies Be Seated.  
3:00—Songs For You.  
3:15—Johnson Family.  
3:30—Report From Abroad.  
3:45—Terry W. Carr. TSN.  
4:00—Library Program (Th)  
4:00—Afternoon Oddities  
4:15—Dick Tracy.  
4:30—Afternoon Tunes.  
4:45—Hop Harrigen.  
5:00—Terry And The Pirates  
5:15—News (TSN) A & L Lumber and Abell & McHargue.  
5:30—Tom Mix.  
5:45—Music.  
6:00—Fulton Lewis (Odessa Motors)  
6:15—Dr. Watt (Odessa) (MWF)  
6:30—Log Cabin Music.  
6:45—Masters Old and New (Everybody's) (M,F)  
7:00—Sinclair Headliners  
7:00—Dennison Gage & Cochran Really (Odessa) (F)  
7:15—News (Banner Creamery)  
7:30—Freedom Of Opportunity (F)  
7:45—United, Inc. (W)  
8:00—Gabriel Heatter.  
8:15—Harris-Luckett Variety Show (W)  
9:00—Varieties (T)  
9:30—Dance Orchestra (T)  
10:00—Music.  
10:30—7-Up Program (W)  
10:30—SIGN OFF.

**Sunday Schedule**

7:30—Coffee Concerts.  
8:00—Correspondents Around World.  
8:15—Musical Varieties.  
9:00—Assembly 'Of God.  
9:30—Southernaires.  
10:00—String Quartet.  
10:30—TSN News (Iva's Jewelry)  
10:45—Hawaiian Music.  
11:00—First Baptist Church.  
12:00—Luncheon Serenade.  
12:15—Masters Old and New (Everybody's)  
12:30—News (Jo Ann Shop and Everybody's)  
12:45—Hit Parade (Jo Ann Shop)  
1:00—Lutheran Hour.  
1:30—Musical Varieties.  
2:00—Melodies To Remember.  
2:30—Tabernacle Baptist (Crane)  
3:00—Rix Funeral Home.  
3:15—Music.  
3:30—M-K Ranch.  
4:00—Mary Small Revue.  
4:30—Musical Favorites.  
5:00—Philco Summer Hour.  
5:30—Sunday Evening Party.  
6:00—Opinion Requested.  
6:30—Ken Carson Show.  
7:00—News (Texas Electric) (Schlichting).  
7:15—Health In Action (Dr. Schlichting).  
7:30—First National Bank (Midland).  
7:45—Gabriel Heatter.  
8:00—First Baptist Church.  
9:15—Evening Reveries.  
9:30—Old Fashioned Revival Hour  
10:30—SIGN OFF.

**Atomic Bomb Processes As Fantastic As Fairy Tales Will Stay Secrets**

By HOWARD W. BLAKESLEE AP Science Editor

NEW YORK—The secrets of the atomic bomb are more fantastic than fairy tales and will remain secret for some time; what has been told, in the official release of Maj. Gen. L. R. Groves and Dr. H. D. Smyth, concerns only the principles of the bomb.

But this same report, without divulging how the seemingly impossible feats were done, tells what a few of them were.

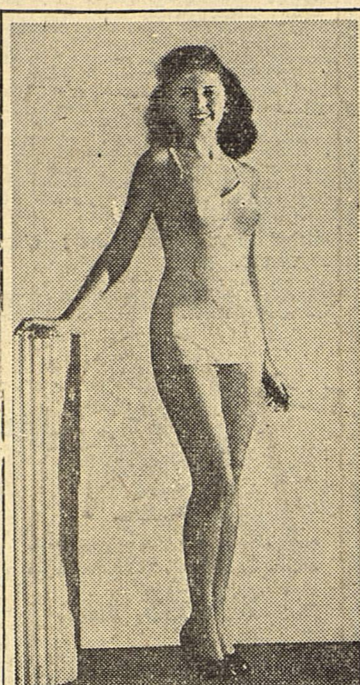
In the Tennessee plan the heavy metal, uranium, is converted into gas by mixing it with fluorine, the yellow gas used in the non-poisonous cooling system of most household refrigerators. This metallic gas is filtered through membranes called barriers, and in that process some of the uranium 235, which makes bombs and atomic fires for power, is separated from the common form of uranium 238.

The holes in these barriers must not average greater than 1/250,000,000th of an inch. There must be billions of these incredibly small holes in each membrane. And the barrier material has to be manufactured in large quantities of uniform quality. In Tennessee there are many acres of such barriers filtering out uranium 235.

**Pumps For Vacuum**

In this same filtering process pumps must be used to produce partial vacuum in the chamber holding the metallic gases. But never did pumps have to be as perfect as these. There must be no leaks and no corrosion.

One of the pumps made to meet these requirements runs by induction. It is completely enclosed, sealed so tightly that neither air nor any other gas can enter or get out. There are no wires outside power or supply sources. The pump motor starts or stops by electronic controls. In fact it would be easy with this kind of control to arrange a tube so that a person could start the motor by saying the word "Go."



**THEY USED TO CALL HER FATTY**

SHAW FIELD S. C. —(AP)—Come the next greased pig chase here, Pfc. Mickey Carroll can be counted out.

He caught the pig at the last one, then gleefully anticipated several offers made for the porker, which he housed in the Military Police supply room pending a decision on which offer to take.

Gradually the offers were withdrawn. In the meantime the pig was eating heartily and the MP sergeant ordered Carroll to "get that dirty pig out of here."

"I finally sold the critter to a man going to North Carolina, and even he had trouble getting somebody to hogtie the hog so he could transport it in his car," Carroll says.

Wet shoes should never be put on a hot radiator.

**Don't Forget The Boys Who'll Still Be Away Christmas**

**Send a MERRIER CHRISTMAS to Him Overseas**

Lighters 1<sup>06</sup> to 5<sup>5</sup>  
Billfolds \$3 to 12<sup>50</sup>  
Pocket Knives 4<sup>50</sup>  
Brass Cases All Purposes

**GEM SINGLE EDGE BLADES 5 for 23¢ PUT SEVERAL PACKS IN THE PACKAGE**

**DR. WEST'S Miracle-Tuft TOOTH BRUSH ALWAYS WELCOME .47**

**SEND HIM WILDROOT CREAM OIL FORMULA .79 FOR HIS HAIR**

**Eversharp Pen and Pencil Set 875**

**An Ideal Gift—Fountain Pens 360**

Christmas gifts for servicemen overseas must be mailed by October 15. Come to CAMERON'S for a grand variety of gifts that fit into the regulation package\* . . . gifts servicemen want, need, and can use . . . gifts that will mean a Merrier Christmas for your serviceman overseas. Anything listed in this ad meets postal regulations governing merchandise mailable to overseas stations.

\*Regulation Package: Under 5 pounds in weight and not exceeding 15 inches in length or 36 inches in combined length and girth.

**Gold Rim . . . Optical Ground Lenses Sun Glasses 12<sup>50</sup>**  
A "Must" For Every Service Man

**Gifts for the Man in Service**

**Briar Pipes . . . 1.00 to 12.50**  
GOOD PIPE TOBACCOS

1-lb. Granger . . . . . 79¢    1-lb. Velvet . . . . . 89¢  
1/2-lb. London Dock . . . . . 1.50    1/2-lb. West Port . . . . . 75¢  
1/2-lb. Christian Peper . . . . . 89¢

MANY OTHER MIXTURES TO CHOOSE FROM

**17-JEWEL WRIST WATCHES 39.50 to 59.50**

**Open Stock Suggestions — Boxed, Ready To Mail**

Tobacco Pouches 89c to 5.00  
Nasal Inhalers . . . . . 25c  
Styptic Pencil . . . . . 10c  
Red Arrow Foot Powder . . . 25c  
Red Arrow Foot Lotion . . . 49c  
Fruit Cake, sealed tin . . . 1.25  
Krank Tube Shave Cream 33c  
Hair Oil . . . . . 25c to 1.00  
Talc Powder . . . . . 25c to 50c  
Shave Lotion . . . . . 39c to 1.00  
Tooth Brushes . . . . . 25c to 1.00  
Gillette Razors . . . . . 49c  
Tooth Powder . . . . . 19c to 89c

Bost Tooth Paste . . . . . 39c  
Stationery . . . . . 59c to 1.29  
Cigarette Cases . . . . . 29c to 3.00  
Playing Cards . . . . . 39c to 89c  
Cribbage Boards and Set . . 1.50 to 5.00  
Dominoes . . set 60c to 10.00  
Shampoo . . . . . 25c to 1.00  
Shave Brush . . . . . 1.00 to 3.50  
50c Bristle Clothes Brush 29c

Large Selection of Peanut and Brittle Candies

A Perfect Shave is Perfectly Possible

TREAT YOURSELF with PERSONNA Precision Blades

PERSONNA HOLLOW GROUND

This superfine, hollow-ground blade costs a little more, but isn't it worth it to enjoy the finest possible shaving result? You'll prefer Personna for HOW GOOD your shaves can be . . . not how cheap. Fits any standard double-edge razor.

10 BLADES \$1 and worth it!

FINE AS A RARE JEWEL

Lovely Cuticles in a Jiffy

with Softol CUTICLE SET

SHAPES • SOFTENS REMOVES CUTICLES WITHOUT CUTTING

Ideal for home manicures and pedicures.

COMPLETE SET \$1.00 plus Fed. Tax

Softer, Whiter Hands in Half the Time

OR YOUR MONEY BACK!

**balm barr** for the hands

Faster-Working Richer in Lanolin

60¢ Plus Tax

**TAMPAX** MODERN SANITARY PROTECTION

NOW 29¢ FULL MONTH'S SUPPLY

Economy Box 98¢

3 SIZES: REGULAR, SUPER, JUNIOR

**LAY-AWAY your Christmas Gifts NOW!**

A SMALL DEPOSIT HOLDS ANY GIFT TILL CHRISTMAS

**Genuine ONYX Rings for Men**

A wide selection of the newest and smartest styles.

**Bright Ideas for Service Men's CHRISTMAS GIFTS MAIL**

Service Ring in yellow gold \$950

**Handsome Onyx ring in 10K yellow gold mounting. \$27.50**

**Waterproof Watch with sweep second hand \$69.75**

**Gold initial and fiery diamond set in Onyx. \$82.50**

**Cigarette lighters dependable action. \$500**

**Massive Initial Ring in yellow gold. \$27.50**

**Identification Bracelet in Sterling silver. \$16.50**

**Weekly Credit**

Prices Include Federal Tax.

**IVA'S CREDIT JEWELERS**

104 North Main

**1.00 Wine of Cardui 59¢**

**Pi. Petrogalar all numbers 89¢**

**50c U.S.P. Merrell's Milk of Magnesia 2 for 50¢**

**Start Taking Cold Vaccines NOW!**

**Lilley Entoral Capsules or S&D Vacagen Tablets 20 for 1.00**

1 pt. Nurses Brand Antiseptic Mouth Wash . . 49c

**DDT Household Spray Pints 69¢ Quarts 1.29 Metal Spray Guns 49¢**

2-Hole Zipper Notebook . . . . . 4.50    1-oz. Tube Toilet Lanolin . . . . . 23c  
Electric Broiler . . . . . 11.87    2.25 Harriett Hubbard Ayers Cream 1.49  
3.98 Overnight Case . . . . . 2.69    1.00 Kranks Lemon Cream . . . . . 79c  
3.10 Shopping and Utility Bag . . . . . 1.49    1.09 Boyers Face Powder . . . . . 79c

1.00 Mademoiselle Lacquer Pads . . . . . 89c  
Deluxe Cold Wave Charm Kurl . . . . . 98c  
75c Modart Fluff Shampoo . . . . . 59c  
75c Mar-O-Oil Foamy Shampoo . . . . . 49c

**TWO WELL-STOCKED STORES TO SERVE YOU!**

**CAMERON'S Central PHARMACY**

CRAWFORD HOTEL BLDG. PHONE 1882

**HOTEL DRUG**

SCHABAUER HOTEL BLDG. PHONE 385