

First worship God; he that forgets to pray, bids not himself good—morrow or good-day.—Randolph.

# The Midland Reporter-Telegram

The Best Investment for Your Advertising Dollar

VOLUME X

(P. MEANS ASSOCIATED PRESS)

MIDLAND, TEXAS, THURSDAY, JANUARY 12, 1939

16 PAGES TODAY

NUMBER 266

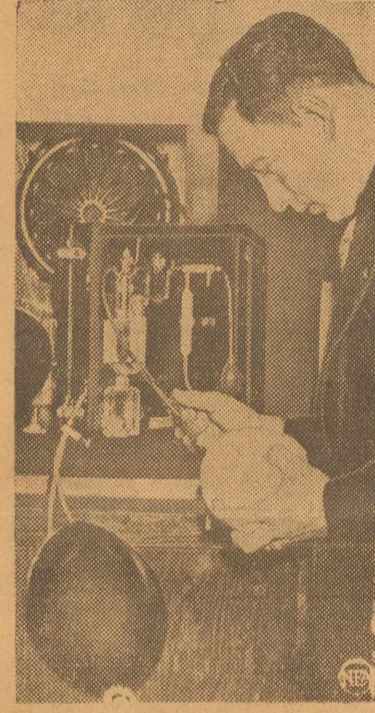
WEST TEXAS: Partly cloudy tonight and Friday, warmer in the southeast and south-central Friday.

## FRANKFURTER NOMINATION APPROVED BY SUB-COMMITTEE; HE MAKES STATEMENT

### Experiments



Most wee sma' hour motorists have been drinking, according to tests on volunteers by Nassau county, L. I., police, who use a new scientific schnapps-detector. Above, a woman driver blows up a toy rubber balloon. Below, the balloon's air is passed through chemicals whose reaction indicates the amount of alcohol—if any—recently consumed.



### Four Treated After Highway Accident Here

Four persons were given treatment for injuries sustained in an automobile accident in East Midland, on the Broadway of America, at about 8 o'clock this morning, none being hurt seriously.

Robert R. Desmond and wife of Cory, Penn., received cuts and bruises but were pronounced not seriously hurt, at a local hospital. At another hospital, Mrs. Jeanie Lugo and her four year old son, Earl, were treated, she suffering mostly from shock while the boy was cut about the face and somewhat bruised.

Reports said the car in which the Desmonds were riding passed a truck driven by John Beckley of Fort Worth, side-swiping the automobile in which Mrs. Lugo and son were riding, the three machines figuring in a smashup. The accident occurred during the drizzling rain, with visibility limited. Both the Desmond and Lugo machines were badly wrecked. Beckley assisted in seeing the injured persons to hospitals, a Barrow ambulance rushing them for emergency treatment.

### Spaniards 39-45 Ordered to Colors

BARCELONA, Jan. 12. (P.)—The Spanish government today ordered mobilization of all men between the ages of 39 and 45 in an effort to stem the insurgents' offensive in Catalonia.

### Talks Resumed by Premier, Dictator

ROME, Jan. 12. (P.)—Prime Minister Chamberlain's efforts to obtain from Premier Mussolini some indication of purposes of European dictators was resumed today when they were to meet at Palazzo Venezia. The talks began yesterday.

## BULLETIN

MEXICO CITY, Jan. 12. (P.)—The War Department announced today that General Saturnino Cedillo, who headed an unsuccessful revolt against the government last spring, was slain in a battle with federal troops yesterday.

## Explains His Civil Liberties Connections

### Admits Support of Klan, Nazi "Free Speech" Privilege

WASHINGTON, Jan. 12. (P.)—The senate judiciary sub-committee this afternoon approved nomination of Felix Frankfurter to the Supreme Court appointment.

### OUTLINES CIVIL LIBERTIES STAND.

WASHINGTON, Jan. 12. (P.)—Felix Frankfurter, testifying on his nomination for the Supreme Court, said today he thought it would be improper to express his personal views on matters affecting the court.

He read a brief statement before the senate judiciary committee saying he had taken the liberty of putting on paper his remarks.

"I of course do not wish to testify in support of my nomination," he added.

Under questioning Frankfurter testified that he had supported the rights of the Ku Klux Klan members and Nazi sympathizers to enjoy constitutional guarantees of free speech and free assembly.

"Civil liberties means liberties for those we like and those we don't like, or we don't test," he said, outlining his connection with the American Civil Liberties Union.

## Stock Show, Rodeo Prizes at Angelo To Exceed \$8,000

SAN ANGELO, Jan. 12.—With a total premium list in excess of \$8,000, catalogues for the Eighth Annual San Angelo Rodeo and Stock Show and Rodeo have been mailed over the Southwest, which plays each fall in Madison Square Garden, New York City, Boston and other major eastern cities.

Everett Colborn, manager of the corporation, has promised Culbertson, Deal, San Angelo show manager, the best of the firm's rodeo livestock for contests in which champions and top performers will be competitors.

In the stock show division, where the pride of West Texas sheep and cattle ranges are to be paraded, Mr. Deal said arrangements have been completed to have men with national reputations serve as judges.

Work has been completed on a new barn at the Fairgrounds to provide additional facilities for those exhibiting here. This need developed in 1938 when accommodations were crowded beyond capacity.

John P. Lee, pioneer ranchman of this section, is general chairman of the show, and Abe Mayer, banker and ranchman, is vice-chairman. Other members of executive group include H. E. McCullough, immediate past president of the B. C. D. W. I. Marshall, J. Willis Johnson, D. T. Jones, Arthur Broome, W. D. Taylor, Foster Rust, E. E. Young, and Deal.

The boys' fat stock show auction will be held Monday, March 6, final day of the show, and the registered Hereford auction will be on Saturday, March 4. Both are annual features of the local exposition.

## Woman Banker Is Named President

BIG SPRING, Jan. 12. (Sp.)—A woman will serve as president of the First National bank in Big Spring during 1939.

She is Mrs. Dora Roberts, pioneer Howard county ranch woman and holder of extensive oil and real estate properties. Mrs. Roberts was named at the bank directorate's annual meeting to succeed L. S. McDowell, who became chairman of the board.

L. S. McDowell Jr. was added to the directorate and others are: Robert T. Piner, Hardy Morgan, J. B. Collins and T. J. Good. Officers and directors of the State National bank remain unchanged. William S. Currie is president, T. S. Currie active vice-president and Robert W. Currie, vice-president and cashier.

## Tears for Spain Dim Her Sparkle



The sparkle of her nationally famed wit dimmed by tears, Dorothy Parker pleaded for aid for Spanish children. She is shown describing their plight to the Temporary National Economic Committee in Washington.

## Continued Drizzle Brings Rain Total to 3.64 Inches

Continued precipitation over a two day period, on the heels of a two and a half inch rain Saturday and Sunday, brought the total at the government gauge of the Southern Ice Company to 3.64 inches at one o'clock this afternoon.

At Liberty the cloudburst, which dropped more than seven inches in rain in two hours and continued in lesser volume Wednesday, filled streets and yards with eight to 10 inches of water. Rural roads in the area were impassable and travelers on the main highway were held up by high water.

T. E. Lewis, weather bureau observer, reported late Wednesday the Trinity River at Liberty was up 1.6 feet and still rising with its current increasing.

Hundred of acres of lowlands were inundated south of Liberty. Ranchers moved livestock to higher ground but no losses were reported. Debris swept down fences over wide areas and stacks of winter feed were destroyed partially.

Waters receded after covering for several hours the south Lib. (See RAIN, page 8)

## CONSERVATION WEEK REVEALS PROGRESS

FORT WORTH, Jan. 12.—Texas farmers now realize that each acre of the farm must be used for the crop it is best suited to produce.

Paul M. Walser, College Station, state coordinator for the Soil Conservation Service, said today in announcing the observance of Soil and Water Conservation Week proclaimed in Texas by Governor James V. Alfred for Jan. 8-14, inclusive.

More than 4,645 farmers who own or operate about 780,699 acres of land in Texas outside the High Plains have established, or are installing, complete conservation farming systems on their farms with the assistance of the technicians of the Soil Conservation Service, Mr. Walser said.

Texas farmers whose lands are situated in the 31 demonstration areas of the Service in Texas for Region 4 have moved forward rapidly with their conservation farming progress since the inception of the first demonstration project at Temple in December 1933, the regional coordinator pointed out.

"The treatment of each acre on the farm in accordance with its needs and adaptabilities is necessary if the land is to be kept permanently productive," Mr. Walser said. "A farmer may use his land incorrectly for a few years and realize a satisfactory income from it, but he cannot expect to maintain his land in a continuous productive condition if he fails to adhere to proper land-use principles."

In 1933 a survey of 60 farms in the Duck Creek watershed near Lindale showed that labor income on all of them was about equal. They were comparable in size and land use, type of farming, crops grown, soil type and degree of erosion.

## Wife of Steel Magnate Dies at New York Home

NEW YORK, Jan. 12. (P.)—Mrs. Charles Schwab, wife of the steel magnate and philanthropist, died today at her home in Manhattan. Mrs. Schwab, 79, had been in ill health for some time. She suffered a heart attack during the Christmas holidays.

She was the former Emma Eurana Dimkey of Loreta, Penn., and married Mr. Schwab in 1883. He often gave credit to Mrs. Schwab when praised for some accomplishment.

## Midland Woman Hurt As Father Killed In Highway Crash

BIG SPRING, Jan. 12.—W. P. Lantron, 78, of Lees community, was fatally hurt and five others were painfully or seriously injured as the result of an involved three-way automobile crash 14 miles west of here at noon Wednesday.

J. M. Lantron, son of the fatally injured man, suffered a fractured arm and Stephen G. Eagan, retired real estate man from Bedford, Conn., sustained a bad break of his left leg.

Paul Kroh, secretary to Eagan, E. L. Lantron, Berger, and his sister, Mrs. Edna Montgomery, Midland, were confined to hospitals with severe lacerations and bruises.

Mrs. J. A. Cryderman, Kansas City, Mo., Charles Angleton, Eldorado, Kan., and Mr. and Mrs. J. S. Houser, Crane, Mo., occupants of a third car, escaped without injury.

The elder Lantron died two hours after the mishap. He suffered a fractured skull, internal injuries and had his left leg badly mangled. He was rushed to the Malone & Hogan Clinic-Hospital for emergency treatment.

Mrs. Edna Montgomery, his daughter, was given treatment at the same hospital for a badly lacerated scalp and other injuries, and one of his sons, J. M. Lantron, was taken to the hospital for treatment of a fractured right arm and lacerations.

E. L. Lantron, other son, was suffering from a serious head injury at the Big Spring hospital as was Kroh. Eagan, also taken to the Big Spring hospital, sustained severe lacerations and a bad fracture to his left leg.

The injured were rushed to Big Spring by four cars which passed by at the time.

Officers investigating the crash, which occurred on a hill during a slow drizzle, said that the Lantron family was returning from Midland and attempting to pass the car driven by Mrs. J. A. Cryderman when the Eagan car loomed ahead.

The Lantron and Eagan cars collided, hurling the Lantron machine into that of Mrs. Cryderman. Eagan was enroute to California having retired from his Connecticut real estate business.

Officials, including the state highway patrol, the sheriff's department, county attorney and constable, investigated the crash.

Mrs. Montgomery is the wife of D. W. Montgomery, Midland trucking contractor. Mr. Lantron, until a few months ago, lived on a Midland county farm near Warfield.

### GAMES CHANGED

Change was announced today in next week's Industrial League basketball games. Instead of playing Monday night, the High School vs. Texas Company and the Atlantic vs. Service Drug will be played Tuesday night.

## PRESIDENT ASKS DEFENSE FUNDS OF \$525,000,000

### Fire Plows Through Plow Factory



Firemen from a dozen cities fought flames visible 30 miles when fire destroyed 15 abandoned plow factory buildings in Poughkeepsie, N. Y.

## Unconfirmed Report Says \$420,000 Is Paid for Open Hockley Acreage

By FRANK GARDNER

An unconfirmed report today stated that Stanolind Oil & Gas Company had completed a \$420,000 deal with Mrs. Sue Alice Staughter for approximately 1,400 acres in the Slaughter pool of southwestern Hockley Deal was said to involve a \$75 an acre cash and \$225 an acre of payment on unleased acreage, part of which offsets to the west Gulf Oil Corporation No. 2 Mallett Land & Cattle Company, northeast extender of the pool, and a smaller part in the southern portion of the pool.

In north central Dawson, Dawson, Tex. Oil Company No. 1 J. E. Neely had drilled to 3,370 feet in red rock.

Shell Petroleum Corporation No. 1 J. M. Ruys, extension test a mile southeast of the Bennett pool in Yoakum, pumped 37 barrels of oil and 59 barrels of water on last 24-hour test. It has been plugged back to 5,240 feet from 5,266 where water percentage was much higher.

On re-test after acidizing with 7,500 gallons, Honolulu Oil Corporation, Ltd. No. 1 R. M. Kendrick farthest east producer in the Denner pool of southern Yoakum, boosted natural potential from 528 to 2,116.80 barrels a day. The well is bottomed at 5,255 1-2 feet, plugged back from 5,269.

Loveington Bids Rejected  
Tide Water Associated Oil Com-

pany was high bidder on Tract No. 20, in the Lovington area of Lea county, N. M., at monthly State lease sale held Tuesday at Santa Fe, paying \$1,267.67 for 240 acres described as the east half of the east half, the southwest of the southeast and the southeast of the southwest of section 33-168-36E. Barnsdall Oil Company was the only other bidder, submitting bids of \$264.00 and \$300.00 for the tract. It is understood that the Land Commissioner rejected the bids, but they have been taken under advisement, and arguments are being heard today.

On the tract is Barndall No. 1 Humble-State, in the center of the northeast of the southeast of section 33, which tested dry at total depth of 4,997 feet and was shut down over a month ago because of expiration of original lease. The tract lies approximately three miles west of Skelly Oil Company No. 1-N State, first producer in the Lovington pool.

The Skelly well, located in the center of the northwest of the northeast of section 36-168-36E, today remained shut in, having built up 520 pounds pressure on casing in 30 hours. It is bottomed at 5,012 feet in lime, where it has been acidized with 7,000 gallons. On last test before it was shut in, the well swabbed and flowed 131 barrels of fluid, 14 percent basic sediment, in 18 hours, with gas estimated at 200,000 cubic feet daily.

Tide Water also was high bidder on acreage north of the Skelly No. 1-N State, paying \$941.76 for 80 acres in Tract No. 17, described as the northeast of the southeast of section 19 and the southwest of the southeast of section 23-168-36E.

Second oil producer for the pool was in prospect as Amerada No. 1-LA State, diagonal northwest offset to the Westmount discovery gasser two miles south of the Skelly producer, showed oil staining and porosity in lime cuttings from 4,664 to 4,730, with best part evident from 4,700-10. It is drilling ahead below 4,731 feet in lime. An east offset, Stanolind No. 1 State, is drilling at 4,860 feet in hard lime, with only showing reported from 4,650-50, where samples were tained and formation drilled soft.

Repello No. 1-182 State, a mile southeast of the Skelly No. 1-N, is drilling at 4,110 feet in anhydrite, apparently having missed gas sand found by other wells in the area.

### New Dunes Producer

New producer for the Dunes pool, eastern Crane, was indicated today as Standard of Texas No. 1-5 University filled 335 feet with oil in drilling to 3,203 feet in lime. First known pay was encountered from 3,167-37, and hole was reported filling gradually as drilling progressed.

A northeast outpost to the pool, Standard No. 1-4 University, is drilling at 1,935 feet in salt. Southwest of the pool, Magnolia No. 1-18 University had drilled to 750 feet in red rock. In the pool that sodding, seeding and furrowing of pastures coupled with rotated (See CONSERVATION, page 8)

## Minimum of Requirements Is Outlined

### Largest Peace-Time Appropriation in One Year Requested

WASHINGTON, Jan. 12. (P.)—President Roosevelt asked congress today for an immediate appropriation of \$525,000,000 as a "minimum of requirements" for bulwarking the nation's defense against "possibilities of the present offense against us."

In a special message, the President requested that the amount be appropriated at once, to be divided between the army and navy. The fund would include \$300,000,000 for a minimum increase of 3,000 in army plane strength.

He asked for \$27,000,000 to provide adequate "peace garrison for the Panama Canal," of which \$5,000,000 would be for immediate construction of necessary housing facilities.

The total request, which would be spent in a year, would boost the defense budget to \$166,155,800, the largest of any peace time outlay.

## Committee Favors WPA Cut Despite Roosevelt Urge

WASHINGTON, Jan. 12. (P.)—The house appropriations committee, contending that WPA rolls carry thousands neither rightly nor justifiably thereon, recommended today an appropriation of \$725,000,000 to keep the agency going until June 30.

The full committee thus went along with the sub-committee in revolt against the administration's spending program. President Roosevelt had requested an appropriation of \$875,000,000.

## Brass Rails Voted By House to End Three Ring Circus

AUSTIN, Jan. 12. (P.)—The house of representatives decided today to build a brass rail around desks of members, in an effort to make procedure as orderly as that in the senate.

Proponents of the resolution, adopted by a vote of 109 to 28, said the need was urgent because the public was calling the house a "three ring circus."

### INAUGURATION OF O'DANIEL AWAITED

AUSTIN, Jan. 12. (P.)—Flurry of organization completed, the legislature marked time with comparative incidental matters today, awaiting inauguration of W. Lee O'Daniel as governor next Tuesday.

After the new governor takes office, law makers hope to learn from him how they should devise revenue-getting methods to support his proposed gigantic old age pension program, it was generally reported.

## One Hundred Are Present at Meet Of Geologists Here

A crowd of approximately 100 persons Tuesday night heard M. G. Cheney, of Coleman, present a paper on the "Geology of North Central Texas" before the regular monthly meeting of the West Texas Geological Society.

A lively discussion followed Cheney's paper. At a business meeting preceding the main address of the evening, Charles D. Vortices, James FitzGerald and Cary P. Butcher were appointed to a nominating committee for election of 1939 officers at the next meeting.

A committee on field nomenclature also was named, consisting of Berte R. Haigh, John E. Adams, Ronald K. DeWolf, W. R. Bowden, Butcher, A. W. Wyatt and H. L. Beckmann.

### HERE FROM CORN BELT

Chas. Van Alstyne of Omaha and Louis Dinklage of Wisner, Nebraska, were here this morning, conferring with local cattlemen. They had been to Sweetwater and were en route to Amarillo, unable, they said, to find cattle at "their price."

### IS DISCHARGED.

H. P. Coupe of Odessa was discharged from a Midland hospital today following an operation several days ago.

# THE REPORTER-TELEGRAM

Evenings (except Saturday) and Sunday Morning  
MIDLAND PUBLISHING COMPANY, PUBLISHERS  
112 West Missouri, Midland, Texas

**E. PAUL BARRON** ..... Publisher

Entered as second class matter at the postoffice at Midland, Texas, under the Act of March 30, 1879

Subscription Price	Advertising Rates
Daily, by Carrier or Mail	Display advertising rates on application. Classified rate, 2c per word; minimum charge 25c. Local readers, 10c per line.
Per Year .....\$5.00	
Per Month ..... 50c	

Any erroneous reflection upon the character, standing or reputation of any persons, firm or corporation which may occur in the columns of The Reporter-Telegram will be gladly corrected upon being brought to the attention of the firm.

## Public Housing Program Gains Permanency

By **BRUCE CATTON.**  
A rule of politics is that changes come faster than public realization that the changes are here.

Depressions are in full swing before any but the best-trained economists know they are present. Recovery usually comes before any but a few realize it. The revolt against prohibition was full-blown before the average political figure knew it.

Thus changes in our economic and social life come in such a way that none but the closest students know they have occurred. A good example is public housing.

Ask the average person and he will say that public housing is a depression measure aimed at temporarily healing scars left by the buffets of economic disaster.

Is it that, or is it a permanent change in our manner of thinking about housing?

Let's see: There are now 171 county, municipal, or metropolitan housing authorities operating in the United States and its possessions, according to the National Association of Housing Officials.

Thirty-three states have passed laws which permit local governments to establish housing authorities, and 29 have set up agencies for development of low-rent housing projects. In 31 of the states, local governments are permitted to grant subsidies in the form of tax exemptions or direct grants to housing organizations. Indiana alone has 20 local public housing organizations.

That the conduct of public housing projects has become a recognized profession is attested by the mere existence of the association which compiled the figures.

Note that all these are state laws. They are not something passed by a single Congress which may change complexion in a few years and rescind them. They are the acts of widely diverse states.

Thus, while earnest folk debate the wisdom of the program, public housing itself is already an accomplished and growing fact. Nobody tries to forecast the future any more. It is more than most of us can do to keep up with the present.

## Likings and Leavings

Many things about totalitarian governments completely baffle anyone reared in the American tradition. One of them, unwillingness of dictatorial countries to allow certain people to leave their boundaries, was illustrated when British Bryan Grover sought reunion with his wife.

Grover, an oil man, worked in Russia and married a native girl. He went to Iran the next year to work. Russia refused readmittance. They wouldn't let his wife out to join him.

Then Grover staged a madcap airplane flight to Russia, was arrested and jailed. Now, after five years, Romeo has his Juliet and a Moscow promise that the two are to be free to go as they please. Only, however, because Russia was pleased by the Lochinvar-like stunt.

The story raises this question: why should a nation of 180,000,000 people have been so persistent in keeping one of its daughters from joining her husband?

In Europe, those who don't like the "atmosphere" can't leave. In the United States, they can—but they won't.

## Junkyards for Jalopies

If offered the choice of a stiff fine, a workhouse sentence, or losing a dilapidated automobile, most people would take the latter alternative.

Traffic violators in Cleveland are being given that selection, providing they have been piloting a jalopy. The idea belongs to Judge Joe Ackerman who sends the car off to the junkpile instead of sending the driver to a cell.

That's okay, too. Machines themselves are sometimes more responsible for accidents than their owners. Faulty brakes, a balky motor, worn tires, loose steering apparatus, and lack of good lighting can bring about some terrible catastrophes.

In the junkyard, the relics are of some good, at least. On the streets they are a menace. In the interest of traffic safety we could use a few more ideas like that of Judge Ackerman.

At least, drivers could look forward to the day when they wouldn't have to swallow the exhaust of these old cars in a traffic jam.

## SO THEY SAY

### Earmarking

(The Christian Science Monitor.)  
Ever since early English Parliaments exercised the right to say how taxes should be spent, the power of the purse has been the core of representative government. That the United States Senate is now moving to reassert that power over relief appropriations is big news.

Lump-sum appropriations by Congress, with the WPA Administrator or the President allotting funds at their own discretion, has actually reversed the power of the purse. Instead of the legislative branch being able to control political acts of the executive through control of finances the executive has had that power over the legislature. Right here lies far more danger to the independence of Congress than in the executive reorganization bill which so alarmed many Americans last year. Establishing an impersonal formula by which WPA funds can be earmarked on some basis of statistical need is at least as important as taking politics out of the local distribution of relief.

**CONSULT US**  
ON YOUR  
**BUILDING PROBLEMS**  
**A. & L. Housing & Lbr. Co.**  
"Always at Your Service"

## Present in the Visitors' Gallery



## JOHN T. FLYNN

By **JOHN T. FLYNN**  
NEA Service Staff Correspondent.  
In President Roosevelt's address to Congress he made frequent use of a word the full significance of which seems to have escaped most of the commentators. That word was "investment."

One can do wonders with a word. You can kill a politician by fixing on him the word "fascist" or "communist." In Russia they ruin a man by calling him a Trotskyite. And now the President plans, not to ruin, but to bless what most people call government spending, by calling it "government investment."

The idea behind this is to kill off the deficit. Conservatives clamor for the President to "balance the budget." Apparently he cannot balance the budget by spending less or taxing more. So he plans to balance it by calling spending by another name. He proposes to wipe out the deficit or at least much of it by a word.

It is not in the same class with expenditures where there is no prospect of return. A man who buys a pair of shoes to wear is spending money. And men who buy a machine to make shoes which he will sell and thus recover the cost of the machine, is investing money. That is true of the government as well as individuals.

THE trouble comes when we get around to putting this investment label on various expenditures. And what the President is

getting around to is the much advertised plan to lump together expenditures designed to improve the condition of the country, such as roads, soil conservation, defense, as investments when they are not. A public school is of course an "investment in social values" but it is not an investment in the sense in which that word is used in public finance.

The chief task of the Congress now must be to see that the nation's books are not tampered with to abolish a deficit by giving it a nice name. The greatest mistake any business man can make is to fool himself with his books. Our method of keeping the books of the national government is pretty bad as it is. It ought to be reformed.

WASHINGTON, Jan. 12. (AP)— Harry Hopkins seeking confirmation as secretary of commerce, slouched over the end of a senate committee table for four hours Wednesday, vigorously defending his record as administrator of work relief but admitting that he had made "mistakes"—two in particular.

"If I had the road to go over again, I would not have made any political speeches of any kind," he said, quickly adding:  
"But I do not withdraw one word of those speeches or indicate that I have changed any economic views."

He also told the senate's committee on commerce he now felt certain WPA officials in Kentucky should have been discharged for political activity in the democratic primary campaign last summer.

For the rest, he faced a group of frankly hostile senators and refused to concede that the record of WPA as a whole was anything but good.

In detail, Chairman Bailey (D-N.C.) and Senators Vandenberg (R-Mich.) and White (R-Me) went into past utterances of the nominee, his views on spending and other policies, and activities in WPA.

They expressed, either directly or by their manner of phrasing questions, disapproval of what they considered unjustifiable political activity in the dispensation of relief.

only \$37,000 in actual cash.

Despite this embarrassment, Col. A. P. Woodruff, secretary of the board of regents from 1882 to 1884, and his co-workers labored at the financial task and successfully launched the university on its career.

The treasury had not been able to accumulate the cash due to heavy expenses of government.

Despite provisions of the Congress of the Republic of Texas that the University of Texas be located near the nation's seat of government, it took a vote of the people nearly half a century later to establish the school at Austin.

About 1880, shortly before the school was started, Waco, Albany, Graham, Williams Ranch, Matagorda and other elites and communities put in strong bids through their legislators for the university.

After bitter defeat, the legislature left the issue to the people, an election was held and Austin won the location by an overwhelming vote.

The famed "40 acres" of the university's main school, campus which Dr. Rainey will soon become familiar, in reality covers an area of 221 acres.

Originally 40 acres were set aside for the campus by the Republic of Texas in 1839 but they have been added to several times.

Besides the main campus, the school owns 475 acres on the north and south banks of the Colorado river in Austin, a gift of the late George W. Brackenridge of San Antonio; seven acres in Galveston, location of the medical school; 400 acres northwest of Fort Davis in West Texas, site of the McDonald Observatory, and more than 2,000,000 acres of oil lands, also in West Texas.

Growth of the University of Texas is reflected in the following enrollment figures:

Year	Enrollment
1884	221
1900	1,005
1910	1,939
1920	4,090
1930	10,041
1938	10,021

When the founders of the University of Texas set about establishing it in 1829 they discovered that \$190,000 which the legislature was to have set aside for the school amounted to

## Rotarians Vote to Study Conservation Work First Hand

Plans for an excursion to points in Midland county for study of ranch and farm soil and water conservation work was favored by the Midland Rotary club today, after hearing an address by County Agricultural Agent S. A. Debnam on the subject. Fred Wemple proposed the trip, to take place Friday, January 27, as a means of acquainting business and professional men with accomplishments of the program.

Debnam, in his talk, traced the history of soil conservation, from early terracing by Chinese, told of similar efforts encouraged by George Washington and brought progress of such work down to date, when the federal government and extension services are working with counties in the greatest program of that nature ever undertaken.

Contour listing, as a means to conserve moisture and stimulate grass growth, already has proven successful, as borne out by rains of the past week, he said. Two large surface lakes, which have drained certain pastures southeast of Midland since early settlement here, failed to catch any water during these rains, the terracing work completed during the past few months retaining the water for grass growth rather than permitting the usual erosion.

Every inch of rain is worth \$3.64, Debnam said, quoting statistics worked out at the Spur experiment station.

Rotarian Lester Grant, manager of the McElroy Ranch near Crane, said that there were run on the ranch last summer 1512 miles of contour listing. He expressed strong faith in the method of retaining moisture for plant life.

Visitors at the meeting were Richard Grant, Rotarian J. W. Bateman of Abilene, C. B. Johnson of Carlsbad and R. E. Wertz of Amarillo.

## Speech Making Is Poor Policy, Says Hopkins to Senate

WASHINGTON, Jan. 12. (AP)— Harry Hopkins seeking confirmation as secretary of commerce, slouched over the end of a senate committee table for four hours Wednesday, vigorously defending his record as administrator of work relief but admitting that he had made "mistakes"—two in particular.

"If I had the road to go over again, I would not have made any political speeches of any kind," he said, quickly adding:

"But I do not withdraw one word of those speeches or indicate that I have changed any economic views."

He also told the senate's committee on commerce he now felt certain WPA officials in Kentucky should have been discharged for political activity in the democratic primary campaign last summer.

For the rest, he faced a group of frankly hostile senators and refused to concede that the record of WPA as a whole was anything but good.

In detail, Chairman Bailey (D-N.C.) and Senators Vandenberg (R-Mich.) and White (R-Me) went into past utterances of the nominee, his views on spending and other policies, and activities in WPA.

They expressed, either directly or by their manner of phrasing questions, disapproval of what they considered unjustifiable political activity in the dispensation of relief.

only \$37,000 in actual cash.

Despite this embarrassment, Col. A. P. Woodruff, secretary of the board of regents from 1882 to 1884, and his co-workers labored at the financial task and successfully launched the university on its career.

The treasury had not been able to accumulate the cash due to heavy expenses of government.

Despite provisions of the Congress of the Republic of Texas that the University of Texas be located near the nation's seat of government, it took a vote of the people nearly half a century later to establish the school at Austin.

About 1880, shortly before the school was started, Waco, Albany, Graham, Williams Ranch, Matagorda and other elites and communities put in strong bids through their legislators for the university.

After bitter defeat, the legislature left the issue to the people, an election was held and Austin won the location by an overwhelming vote.

The famed "40 acres" of the university's main school, campus which Dr. Rainey will soon become familiar, in reality covers an area of 221 acres.

Originally 40 acres were set aside for the campus by the Republic of Texas in 1839 but they have been added to several times.

Besides the main campus, the school owns 475 acres on the north and south banks of the Colorado river in Austin, a gift of the late George W. Brackenridge of San Antonio; seven acres in Galveston, location of the medical school; 400 acres northwest of Fort Davis in West Texas, site of the McDonald Observatory, and more than 2,000,000 acres of oil lands, also in West Texas.

Growth of the University of Texas is reflected in the following enrollment figures:

Year	Enrollment
1884	221
1900	1,005
1910	1,939
1920	4,090
1930	10,041
1938	10,021

When the founders of the University of Texas set about establishing it in 1829 they discovered that \$190,000 which the legislature was to have set aside for the school amounted to

# The Town Quack

After a dry spell, there's nothing as pleasant as a good rain, but after slopping around in the rain, mist and mud for a few days, a dry-land-lubber likes nothing better than a few rays of sunshine. That's how I am, I'll have to admit.

I read with interest in the Odessa New-Times the other day about the flood conditions in East Odessa. The next day, the following statement appeared in Editor Shuffler's column:  
"Exaggeration seems to be the order of the day in newspaper reporting, since the recent hail-storm and near flood in Odessa."

Well, Ralph, I want to commend you for this admission. However, as an Odessa visitor to a Midland pool hall Wednesday, the story wasn't exaggerated so much after all. Giving the name and guaranteeing the veracity of it, he said many people had to move out.

Well, Ralph, I want to commend you for this admission. However, as an Odessa visitor to a Midland pool hall Wednesday, the story wasn't exaggerated so much after all. Giving the name and guaranteeing the veracity of it, he said many people had to move out.

## Midweek Club and Guests Favored by Mrs. Hargrave

Mrs. Allan Hargrave was hostess to the Midweek club and a group of guests with three tables of bridge at her home, 213 South L street, Wednesday.

In the games, prize for high score among club members went to Mrs. J. B. Leonard and high score for guests to Mrs. Geo. Farley, former club member now of San Antonio, while floating prize went to Mrs. J. M. Armstrong.

Playing guests were Mmes. J. R. Martin, J. E. Simmons, Geo. Farley, and F. E. Weaver. Non-playing guests were Mrs. Bob Oakes and Mrs. Cecil Yaden.

A tea plate was served to guests and the following members: Mmes. J. A. Armstrong, W. L. Brown, Hugh Corrigan, I. E. Daniel, J. L. Greene, J. B. Leonard, M. D. Seif, Don Stivals, Fred Wright, and the hostess.

## German Paper Reports New Welding Process

BERLIN (AP)—Progress in machine construction with light metals is hailed as of utmost importance to Germany's four-year plan by the newspaper Deutsche Allegemine Zeitung.

German experiment stations, it reports having developed steel and welding processes which make three to five-millimeter plates sufficiently rigid for machine bodies. These produce less vibration than the old heavy castiron types plus smaller breakage danger and 30 to 50 per cent saving in weight—an important consideration in view of the scarcity of raw materials in Germany.

Doctors say your kidneys contain 15 miles of tiny tubes or filters which help to purify the blood and keep you healthy. Most people pass about 3 pints a day or about 3 pounds of waste.

Frequent or scanty passages with smarting and burning shows there may be something wrong with your kidneys or bladder.

An excess of acids or poisons in your blood, when due to functional kidney disorders, may be the beginning of nagging backache, rheumatism, leg pains, loss of pep and energy, itching at nights, swelling, puffiness under the eyes, indigestion and dizziness.

Don't wait! Ask your druggist for Doan's Pills, used successfully by millions for over 40 years. They give happy relief and will help the 15 miles of kidney tubes flush out poisonous waste from your blood. Get Doan's Pills.

It would be expensive—to miss the January Clearances of the many things you need, because wash-day didn't give you time! Be economical—let us do your laundry thriftily, and have time to save in the important store sales!

**JUST PHONE ---90---**

# MIDLAND STEAM LAUNDRY

**SPECIALS**

Friday and Saturday

Jan. 13th and 14th



# EXTRA! EXTRA!

From Florida! From California! From Arizona! From Texas!  
**THE FINEST PRODUCE IN THE WORLD!**  
**Conner Bros. Piggly Wiggly**

Have for this week-end the largest and best variety of FRESH FRUITS and VEGETABLES in Midland. Do not take our word for it, but come in to see for yourself. Read this list and select your items. Our variety includes the following: Acorn Squash, Cream Squash, Hubbard Squash, Italian Squash, Yellow Squash, White Squash, Green and Wax Beans, English Peas, New Potatoes, Cauliflower, Savoy Cabbage, Red Cabbage, Green Cabbage, Chinese Cabbage, Celery, Chinese Celery, Broccoli, Brussel Sprouts, Endive, Lettuce, Kohl Rabi, Oyster Plant, Egg Plant, Okra, Spinach, Bell Peppers, Carrots, Green Onions, Turnips and Tops, Radish, Beets, Swiss Chard, Collards, Mustard, Chili Peppers, Garlic, Tomatoes, Russet Potatoes, White and Yellow Onions, To-Peps, Avocados, Kumquats, Tangerines, Oranges, Apples, Bananas, Lemons, Grapefruit, Pineapple, Strawberries, Quince, Limes and Coconuts. With this variety, what more could you ask?

**LETTUCE**

CALIFORNIA  
ICEBERG  
SIZE  
FIVE

2

Large  
Heads  
for

**9<sup>c</sup>**

FRESH GREEN

**Broccoli lb. 13<sup>c</sup>**

EXTRA  
SPECIAL!  
BRUSSEL  
SPROUTS

POUND

**21<sup>c</sup>**

NEW RED POTATOES, lb. . . . 6c  
 RED RHUBARB, lb. . . . . 8c  
 YELLOW ONIONS, lb. . . . . 5c

**ORANGES**

TEXAS TREE-RIPENED  
FULL-O-JUICE  
DOZEN

**10<sup>c</sup>**

COCONUTS, 2 for . . . 25c  
 LEMONS, 360 size, dozen 29c  
 WINESAP  
 APPLES, 252 size, dozen 10c

CALIFORNIA

**Avocados**

3  
for

**19c**

**Potatoes**

U. S. No. 1, Mugged, Washed  
IDAHO RUSSETS  
10 POUND  
MESH BAG

**29<sup>c</sup>**

**GRAPEFRUIT**

TEXAS MARSH  
SEEDLESS  
SIZE 70

6 FOR

**19<sup>c</sup>**

**APPLES**

WINESAPS  
or  
ROME BEAUTY

Dozen

**25<sup>c</sup>**

NO. 2 CAN  
**PORK & BEANS, Jack Sprat, 2 for . . . 15c**  
 NO. 2 CAN  
**WAX BEANS, Yacht Club, 2 for . . . 25c**  
 NO. 2 CAN  
**TEXAS SPINACH, 2 for . . . . . 17c**  
 NO. 2 CAN  
**TURNIP GREENS, 2 for . . . . . 17c**  
 NO. 2 CAN  
**MUSTARD GREENS, 2 for . . . . . 17c**  
 NO. 2 CAN  
**STRAWBERRIES, Monarch, Each . . . 26c**  
 NO. 2 CAN  
**RED RASPBERRIES, Monarch, Each 24c**  
 NO. 2 CAN  
**GRAPEFRUIT, Monarch, Each . . . . 13c**  
 NO. 2 CAN  
**SLICED BEETS, Monarch, Each . . . . 13c**  
 NO. 2 CAN  
**TOMATOES, 3 for . . . . . 20c**  
 NO. 2 CAN  
**CORN, Kwality Brand, 2 for . . . . . 15c**  
 NO. 2 CAN  
**ENGLISH PEAS, Plymouth Maid, Each 12c**  
 NO. 2 CAN  
**GRAPEFRUIT JUICE, 3 for . . . . . 23c**  
 NO. 2 CAN  
**BLACKBERRIES, Texas, 2 for . . . . . 15c**  
 NO. 2 CAN  
**APPLE SAUCE, Monarch, Each . . . . 10c**  
 NO. 2 CAN  
**PINEAPPLE, Del Monte, 2 for . . . . 35c**  
 NO. 2 CAN  
**PITTED CHERRIES, Kuner's, 2 for . . . 25c**

NO. 2 CAN  
**BEANS & POTATOES, Pecan Valley, 2 15c**  
 NO. 2 CAN  
**GREEN BEANS, Lord Motts, 2 for . . . 25c**  
 NO. 2 CAN  
**KRAUT, Libby's or Kuner's, 2 for . . . 17c**  
 NO. 2 CAN  
**MISSION PEAS, 2 for . . . . . 25c**  
 NO. 2 CAN  
**PRIMROSE CORN, 2 for . . . . . 25c**  
 NO. 2 CAN  
**GRAND PRIZE APPLE JUICE, 2 for . 15c**  
 KUNER'S OR C. H. B.  
**TOMATO CATSUP, 14-oz. . . . . 12c**  
 ARMOUR'S, IDEAL, PARD OR RED HEART  
**DOG FOOD, 2 for . . . . . 15c**  
 MOUNTAIN BRAND  
**SOUR PICKLES, Quart . . . . . 13c**  
 RED SEAL  
**SHOE STRING POTATOES, 3 for . . . 25c**  
 3 BRANDS  
**TOMATO JUICE, 46-oz., Each . . . . 19c**  
 PRESERVED  

	ONE-POUND JAR	TWO-POUND JAR
<b>FIGS</b>	<b>20c</b>	<b>36c</b>

**SHELLED PECANS, Halves, lb. . . . 45c**  
**MIRACLE WHIP, Pt. 25c; Qt. . . . 35c**  
**COFFEE, Piggly Wiggly Brand, lb. . . 22c**  
**AMBASSADOR TISSUE, 2 Rolls . . . . 8c**  
 AUNT JEMIMA  
**PANCAKE FLOUR, Package . . . . . 13c**  
 FRESH  
**COUNTRY BUTTER, Pound . . . . . 19c**

ARMOUR'S STAR  
**LINK SAUSAGE, 1-lb. Box . . . . 23c**  
**FRESH COTTAGE CHEESE, lb. . . . 15c**  
**Choice Baby Beef Chuck Roast, lb. 15c**

SWIFT'S BROOKFIELD  
**SAUSAGE** Pound **19c**

**Armour's Banquet Sliced Bacon, lb. 25c**  
**Pure Pork Sausage** In the Bag POUND . . . . . **25c**

**EXTRA SPECIAL**  
**FRESH DRESSED HENS** Pound **20<sup>c</sup>**  
 Our poultry is dressed in our own poultry department.  
 EVERY HEN GUARANTEED

**Nice Lean Pork Chops, pound . . . 19c**  
 BALTIMORE  
**OYSTERS**  
 MEDIUM PINT **23c**  
 EXTRA LARGE PINT **33c**

### Program on Orient Is Presented by Fine Arts Club

Meeting at the home of Mrs. Fred Wilcox, 1811 W. Holloway, Fine Arts club heard a program consisting of four papers on the general subject of "The Orient."

"Behind the Far Eastern Crisis" was discussed by Mrs. Curtis Gilmore.

Mrs. J. Howard Hodge read the second paper, which had been prepared by Mrs. L. A. Absher, on "Japanese Boycott."

"Changing Shanghai" was the subject of Mrs. Charles Brown's paper.

Concluding discussion on the program was that of Mrs. E. C. Tucker on the Opium Trade.

Guest speaker for the afternoon was Mrs. F. H. Schouten, president of the City-County Federation, who explained the workings of the Federation and various events connected with it.

Two associate members of the club, Mrs. A. N. Hendrickson and Mrs. E. Hazen Woods, were present.

Regular members attending were: Mmes. Elliott H. Barron, T. Paul Barron, Tom C. Bobo, Charles Brown, W. Bryant, L. G. Byerley, Harvey Conger, Alden Donnelly, E. H. Ellison, Fred H. Fuhrman, W. H. Gilmore, J. Howard Hodge, George Kidd Jr., Roy Parks, Lem Peters, A. P. Shirey, Harvey Sloan, R. C. Tucker, J. M. White, Curtis Gilmore, O. J. Hubbard, Tom Sloan, and the hostess.

### Mexican Bridge Is Courtesy to Slam Club Wednesday

A Mexican bridge, with Mexican colors and designs carried out in tallies, table covers, and prizes, was a courtesy to the Slam club when Mrs. Morris Bridges entertained at the home of Mrs. J. C. Webb Wednesday afternoon at 2 o'clock.

In the afternoon's games, Mrs. W. G. Attaway was awarded prize for high score, Mrs. Webb for second high, and Mrs. B. T. Wallace for guest high and also for travel prize.

Guests were Mrs. R. R. Richter and Mrs. Wallace.

A Mexican plate was served at the refreshment hour.

Members present were: Mmes. G. W. Adams, Attaway, R. L. Bailey, Joe Dobson, Theo Ferguson, E. L. Jones, J. C. Moore, Cecil Pope, T. W. Taylor, J. C. Webb, and the hostess.

Next Wednesday the club will meet with Mrs. E. L. Jones hostess at the home of Mrs. R. R. Richter, 213 S. Big Spring.

### Billy Bob King Is Honoree at Birthday Party

Billy Bob King, son of Mr. and Mrs. W. C. King, was honored on his thirteenth birthday anniversary Tuesday with a party at the Log Cabin Inn.

Guests gathered at the Inn at 5:30 o'clock, where refreshment tables were decorated with balloons, green leaves, and berries. A four-tiered white birthday cake was lighted by the appropriate number of yellow candles.

After the refreshment course, the group went to the theatre.

Present were: The honoree, Billie Joe Howze, John Sindorf, Bobby Girdley, Wanda Jean Girdley, Frances Palmer, Colleen Oates, Norma Jean Stice, Elaine Hedrick, Mary Frances Barber, Belva Jo Knight, Henry Scott.

### Mrs. Brown to Talk Before Federation

Mrs. Charles Brown will make an address on "Italy and Fascism" at the meeting of the City-County Federation in the county courtroom at the court house Friday morning at ten o'clock. Mrs. Brown will speak as a representative of the Fine Arts club which is in charge of the program.

All individual and representative members of the Federation are urged to be present as important business matters are to be discussed.

### Newest Handkerchiefs.

New handkerchief designed especially for southern resort use are of tissue-sheer linen in deep pastels of green, blue, coral and yellow, in a new extra large size, 16 by 16 inches, finished with a wide border of Chinese spoking. Another new style, in a somewhat smaller size that will appeal particularly to swingsters, has a wide inside border of musical notes hand embroidered by Chinese craftsmen.

## Midseason Hats Forecast Spring Styles

By MARIAN YOUNG  
NEA Service Staff Correspondent

NEW YORK.—Directoire bonnets, turbans and pillboxes with wimples attached . . . mushroom shapes . . . feathers and veiling and ribbons for trimming . . . straws very fine or else very rough — midseason hats and early spring bonnets are new-looking and exciting.

"By Easter," says Juliette Nicole, one of New York's smartest modistes, "coiffures won't be up and hats will not be as tiny as they were last fall. Coiffures will be molded to show off the shape of the head. A hat will be a hat and not a wisp of felt or a miniature parakeet of flowers or something.

"It will be chic to have your hat contrast with, rather than match, your dress. Flowers and ribbons will be more widely used than fruit and feathers. The wimple will continue to flutter from streamlined turbans and pillboxes. Directoire bonnets will be extremely important. Mushroom shapes and old-fashioned sailors also will have their shape in the spring picture."

### FELT OR STRAW, THEY'RE BIGGER

There is more felt or straw per bonnet than there used to be. Profile hats have sweeping brims. Victorian sailors, real turbans and tricornes have replaced "doll" sailors, turbans and tricornes. For late spring and early summer picture hats will be popular.

In the Nicole collection a Directoire bonnet of black straw is tied under the chin with pale blue satin ribbons. A Directoire mushroom in navy straw is finished with yards and yards of navy veiling. And a white straw pillbox is trimmed with purple veiling on which fuchsia felt hearts are applied. Incidentally, the perfect pick-me-up for a winter wardrobe of which you are slightly tired is a white hat of straw or a silk or wool fabric.

Ultra chic is an autogiro model, made entirely of dusty rose feathers. The medium size sailor is trimmed with an upshooting autogiro-shaped feather fancy to match. A Victorian sailor has huge taffeta bows at the back, one pencil blue, the other cyclamen pink. If you think plain, tailored sailors are too severe for your features, try one dressed up with stunning taffeta bows.

### GLASSES FORBID LAVISH TRIMMING

If you wear glasses, beware of elaborately veiled or lavishly trimmed hats. Too much trimming plus your spectacles is likely to give your face and head a cluttered look. Narrow brims which do not cast a shadow across the glasses, plain turbans of stunning fabrics, neat but no severe little tricornes and pillboxes are your best bet.

If your face is quite long, look for brims, particularly those which sweep downward slightly on one side and up on the other, thereby making the face seem a bit wider. If your face is round and full, look for high, peaked crowns and



Here are four smart midseason hats, any one of which will add fresh interest to your winter wardrobe. The autogiro model, upper left, is made entirely of feathers in a soft shade of dusty rose with elaborate veiling in the same shade. The Directoire mushroom, upper right, is of navy straw. The white straw pillbox, lower left, is trimmed with purple veiling on which fuchsia felt hearts are applied. The Directoire bonnet, lower right, is of black straw with blue satin ribbons. Bonnets of this type are tremendously important.

other effects which add length. Small women, with tiny heart-shaped faces become lost under tremendous brims. And very large tall, broad-shouldered figures look pretty silly with doll hats on their heads.

### Midland Girl to Appear in Tech Play

LUBBOCK, Tex., Jan. 12.—Mary Kendrick, arts and sciences freshman of Texas Technological College, will appear in "Theatre of the Soul," the play to be presented January 17 at a meeting of the Stock and Buskin, dramatic organization, which is the daughter of Mr. and Mrs. J. L. Kendrick, 401 North Main street, Midland.

"Theatre of the Soul," written by Nikolai Nikolayevich Yevreinov and translated by Christopher St. John, depicts the reaction in the last five minutes of a man's life.

### Announcements

- FRIDAY**
- Bien Amigos club will meet with Mrs. Joe Ballanforte, 721 W. Kansas Thursday afternoon at 2:30 o'clock.
  - Thursday club will meet with Mrs. Overton Black, 102 E. Butler, Thursday afternoon at 3 o'clock.
  - Child Study club will meet with Mrs. P. A. Nelson, 805 W. Louisiana, Friday morning at 10 o'clock. All members are requested to bring toys for the toy lending library the club is soon to open.
  - Lucky Thirteen club will meet with Mrs. J. A. McClure, 403 North A street, Friday afternoon at three o'clock.
  - City-County Federation will hold its monthly meeting in the county courtroom Friday morning at 10 o'clock. Fine Arts club will present the program.
  - Women's Golf Association will meet at the Country Club for play Friday morning at 10:30 o'clock. Reservations for the luncheon afterward should be made with Mrs. C.

### For Bronchitis Coughs, Colds

Buckley's Mixture (triple acting) Quickly Loosens Things Up

It's different—it's faster in action—it's compounded on superior medical fact findings new in this country. By far the best-selling medicine for coughs and colds and Bronchitis in all of cold Canada. Right away that tightness begins to loosen up—the bronchial passages clear—you're happy and breathing easier. Satisfaction guaranteed by druggists everywhere or your money back. City Drug Store, Taylor Pharmacy. (Adv.)

**Opportunity . . .**

**Ross Secretarial School**  
OFFERING THE FAMOUS  
Byrne Simplified Shorthand and Typing  
Your opportunity to qualify for position in two to three months.  
Day and Evening Classes—Enroll Any Time  
208 Thomas Bldg.—Phone 1291

### Women of Christian Church Compliment Mrs. B. W. Stevens

Honoring Mrs. B. W. Stevens, active church worker who is soon to leave Midland to make her home at Wichita Falls, women of the First Christian church entertained at the home of Mrs. Charles L. Klapproth, 1011 W. Texas, Wednesday afternoon at three o'clock.

Games, under the direction of Mrs. J. K. Graves and Mrs. Glenn Brunson and Mrs. Clinton Myrick, furnished recreation during the afternoon.

Mrs. Stevens was presented with a Holland blanket from the group and with other miscellaneous gifts from friends outside the circle and the church.

A colorful salad plate was served at the tea hour.

Present were: The honoree, and Mmes. Geo. Ratliff, W. M. Blevins, L. E. Pemberton, Frank Ingham, Sidney Hall, Roy Jones, Charles Sherwood, Glenn Brunson, W. T. Schneider, J. K. Graves, S. E. Mickey, W. A. Chaney, L. L. Butler, G. H. Butler, Clinton Myrick, Ella Ragsdale, F. R. Schenck, John Casselman, R. D. McBrien, Horace Franklin, E. W. Reecer, B. H. Spaw, J. E. Pickering, Clement J. Buser, L. A. Denton, Joe Norman, Glenn Black, Charlotte Smith of El Paso, F. C. Cummings, L. A. Arrington, Charles Brown, M. A. Park, Miss Elma Graves and Mrs. Klapproth.

### Blue Is Featured In Appointments for Wednesday Bridge

Blue was dominant in appointments for the afternoon party with which Mrs. Frank Miller entertained the Wednesday Bridge Club at her home, 600 N. Marienfeld, Wednesday.

Complotters were favored in room decorations. Tallies featured blue, and prizes were wrapped in blue and gold.

Four tables of bridge were played. Awards went to Mrs. Hugh West for high score in the club, to Mrs. Jack Kelsey for high score among guests, and to Mrs. Alr Reese for high cut.

Guests were: Mrs. Curt Imman, Miss Dorothy Henderson, Mrs. Bill Pitzer, and Mrs. Kelsey.

Members present were: Mmes. W. M. Blevins, Louis Thomas, Reese, Charles Edwards, Jack Wilkinson, Ben Black, Donald M. Oliver, Barton Kidd, Ralph Geisler, West, Tom Sealy, Miss Lucile Thomas, and the hostess.

A salad course and dessert was served at the close of play.

A voracious appetite is the possession of the female spider, who is capable of consuming her mate.

The U. S. Government Printing Office has 406 linotype machines in constant use.

### Harvard Students Hunt Non-Existent Museum

CAMBRIDGE, Mass. (UP)—A fish story in The Crimson, Harvard undergraduate daily hooked scores of students.

The front page yarn reported discovery by Dr. Thomas S. Nett, Jr., head of the marine survey department, of three fish which could do everything except make speeches against the New Deal. Discovered in the Congo, the fish were reported on exhibition in the Museum of Geographical Exploration.

Readers sought the exhibition in vain. Investigation revealed there was no such museum, and that the fish, the explorer and the marine survey department also were figments of Harry S. Hayward, Jr.'s imagination. Hayward is a member of the senior class.

**SHANEEN**  
**Oriental Shop**  
Specializing in high grade handmade linens, fillet lace, handkerchiefs, Oriental and Chinese Rugs in all sizes. First Door South of Yucca. Phone 811

**T. L. Morgan, M. D.** Practice Limited to Ear, Eye, Nose & Throat Formerly in the Wilkerson Bldg.  
**Dr. V. P. Neissl** DENTIST Formerly in the LLANO HOTEL BLDG.  
**ANNOUNCE THE JOINT OCCUPANCY** of Suite 203-204 First National Bank Bldg. Phone 843

**Sensational! Thrilling! Breath-Taking!**  
**PHILCO MYSTERY CONTROL**  
tunes this New 1939 Philco from anywhere in your home . . .  
**without a single wire or connection of any kind!**

So small, so light, you can easily carry it in one hand!

**You change stations . . . control volume . . . turn the set off . . . with a mere flick of your finger!**

Here's the greatest radio invention since radio itself—Philco Mystery Control! Imagine the thrill of tuning this new Philco from any room in your home—upstairs, downstairs, even from the porch—without going near the radio! No more tiring effort when you want to change stations! Be among the first to know the convenience and complete enjoyment that Philco Mystery Control provides for you and your family . . . come in for a free demonstration—now!

**Come In . . . See It . . . Hear It . . . Try It!**  
Continuous Demonstration 9 A. M. to 9 P. M.

**EASY TERMS—Big Trade-Ins**  
Choose from 41 Philcos \$00.00 to \$600.00

**CARNETT'S RADIO SALES**  
407 WEST WALL—PHONE 133—MIDLAND

**BUY A PHILCO—The World's Most Popular Radio!**

**Constipated? You Should Get at the Cause!**

Lots of people think they can't be "regular" without frequent trips to the medicine chest. "I just dose up and get it over," they tell you. But doctors know they don't "get it over" at all—until they get at the cause of the trouble!

Chances are it's simple to find the cause if you eat only what most people do—meat, bread, potatoes. It's likely you don't get enough "bulk." And "bulk" doesn't mean a lot of food. It's a kind of food that isn't consumed in the body, but leaves a soft "bulky" mass in the intestines and helps a bowel movement.

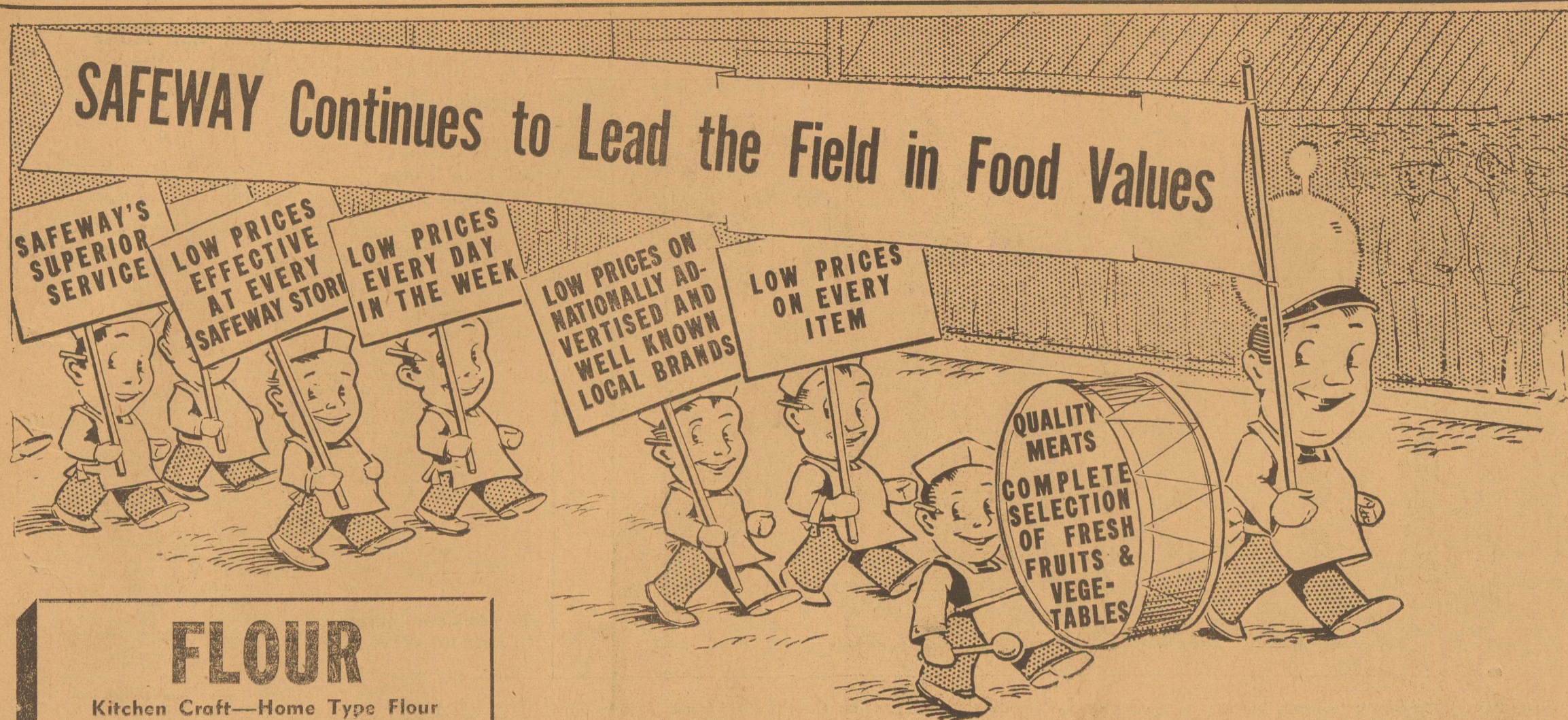
If that fits you, your ticket is a crunchy breakfast cereal—Kellogg's All-Bran. It contains the "bulk" you need plus the great intestinal tonic, vitamin B.

Eat All-Bran every day, drink plenty of water, and just watch the old world grow brighter!

Made by Kellogg in Battle Creek.

**CERTRUDE LOW**  
**SCHOOL OF DANCING**  
202 South Big Spring  
New classes starting now in BALLET, TAP, ACROBATICS, TOE, BALLROOM—SHAG and latest JITTERBUG Numbers.

**YES IT IS PROPERLY PASTEURIZED and FRIGID FILTRATION**  
Makes a **BETTER FLAVOR**  
—Ask for—**BANNER MILK**  
At Your Grocer's Or Phone 1137 For Delivery  
**Banner CREAMERY**



**FLOUR**  
 Kitchen Craft—Home Type Flour  
 12 lb. Bag 39c  
 24 lb. Bag 69c

48 lb. Bag \$1.25  
 Harvest Blossom

48 lb. Bag \$1.00  
 Gold Medal Flour

24 lb. Bag 85c  
 4 Crystal Glasses FREE

48 lb. Bag \$1.59  
 8 Crystal Glasses FREE

**Fruit Cocktail** Full o' Gold Brand No. 1 Tall Can **10c**

**Maximum Milk** 3 Tall Can **19c**

**Oxydol** Richer, Quicker Fluffier Suds Medium Package **19c**

**Matches** Favorite Brand Carton Six Boxes **15c**

**Butter** Mesa Gold Creamery Fresh Pound **25c**

**Oleomargarine** Best Spread 2 Pounds **25c**

**Pork and Beans** Van Camp's 3 Giant Cans **25c**

<p>Guaranteed <b>Fresh Eggs</b> Doz. <b>25c</b></p>	<p>Delicious Soda <b>Crackers</b> 2 lb. Box <b>13c</b></p>
<p>P &amp; G Soap 3 Bars <b>10c</b>                  Brer Rabbit No. 10 Pail <b>55c</b>                  Dreet Large Box <b>22c</b></p>	<p>Ruby Catsup 14 oz. Bottle <b>10c</b>                  Oleo Bluebonnet Brand lb. <b>17c</b>                  Delmaiz Niblets reg. Can <b>12c</b></p>

Scot Tissue 3 Rolls **25c** | Zee Towels 3 Rolls **25c**

Morrell's Skinned  
**HAMS**  
Whole or Half  
Pound **23c**

**Sliced Bacon**  
Armour's Star Pound **26c**

**Brookfield Patties**  
100% Pure Pork Sausage lb. Box **19c**

Pure Pork Sausage lb. <b>15c</b>	Fancy Sirlain Steak lb. <b>29c</b>
Pork Shoulder Roast lb. <b>17c</b>	Lean Strreaked Dry Salt Bacon lb. <b>13c</b>
Fresh Pork Chops lb. <b>19c</b>	Large Fat Hens Dressed and Drawn Each <b>65c</b>

Bologna Sliced or Piece lb. **10c**

**Grapefruit**

Texas Seedless 96 Size Dozen **19c**  
 64 Size 6 for **19c**

Fancy Winesap Apples 180 Size Doz. **15c**  
 Fresh Cabbage lb. **1 1/2c**  
 Brussel Sprouts lb. **10c**

Sunkist Oranges 288 Size Doz. **15c**  
 Russet Potatoes 10 Mesh lb. Bag **29c**  
 Cauliflower head **10c**

**Fresh Carrots**  
2 Large Bunches **5c**

Lux Toilet Soap 3 Regular Bars <b>19c</b>	White King Toilet Soap Regular Bar <b>5c</b>
Apple Juice Crystal Brand Giant Can <b>10c</b>	Grapfruit Juice TexSun Brand No. 2 Can <b>7c</b>
Dried Prunes 10 lb. Box <b>55c</b>	C. H. B. Tomato Juice 2 14-oz. Cans <b>15c</b>
Sleepy Hollow Syrup Quart <b>32c</b>	

Raisins Sunmaid Seedless 15-oz. Box <b>9c</b>	Lipton's Tea Yellow Label 1/4-lb. Pkg. <b>23c</b>
<b>COFFEE</b> Edwards Airway Pound Can <b>21c</b>	3 lb. Pkg. <b>42c</b>

**SAFEWAY** Fleischmann's YEAST 2 Cakes **5c**

**\$825,000 In WPA Projects Are Allotted**

**Weekly Report on Texas Shows Jobs For Over 2,500**

SAN ANTONIO, Jan. 12.—Approval of twenty-two Works Progress Administration projects, involving expenditures of \$536,267 in Federal funds and \$288,710 supplied by local governmental agencies, was announced today by Starnes S. Tucker, deputy state administrator. Projects approved, with amount of Federal funds, sponsor's funds, and number of workers to be employed, follow:

**BELL COUNTY**  
 TEMPLE. — Install water pressure pump, construct pump house, water lines, hydrants, poultry house, barn, feed lot, fences, oil storage house, electric line, extensions at Texas Agricultural Experiment Station No. 5 near city; Federal funds, \$5,134; sponsor's funds, \$4,070; workers, 42.

**BEXAR COUNTY**  
 COUNTY. — Elimination of insanitary devices in rural and suburban areas where sewer systems are impractical; Federal funds, \$42,892; sponsor's funds, \$33,850; workers, 84.

**CALDWELL COUNTY**  
 LULING. — Construct 20,800 feet of sanitary sewer lines throughout city; Federal funds, \$20,819; sponsor's funds, \$8,590; workers, 142.

**CASS COUNTY**  
 ATLANTA. — Widen, drain, grade, asphalt streets throughout city and construct concrete curbs and gutters; Federal funds, \$22,495; sponsor's funds, \$17,571; workers, 103.

**DALLAS COUNTY**  
 DALLAS. — Construct 2987 feet of storm sewer under Clarendon Drive at Cedar Creek; Federal Funds, \$17,379; sponsor's funds, \$10,116; workers, 117.

**COUNTY.** — Drain, grade, asphalt 9.5 miles of Lisbon Road, Belt Line Road, Bear Creek Road and Wintertogarden Road; Federal funds, \$104,363; sponsor's funds, \$70,292; workers, 363.

**HARRIS COUNTY**  
 HOUSTON. — Excavate shoulders and ditches, construct culverts on streets in Belmont and Foster Additions; Federal funds, \$15,739; sponsor's funds, \$3,735; workers, 76.

—Construct 2,762 feet of sanitary sewer lines on Hillsboro, Lathrop, Laredo, Boyles and Bonham Streets; Federal funds, \$7,486; sponsor's funds, \$3,323; workers, 42.

**HARRISON COUNTY**  
 COUNTY. — Clear, grub and fence 2.96 miles of farm-to-market road southeast of Marshall; Federal funds, \$2,442; sponsor's funds, \$468; workers, 30.

**JASPER COUNTY**  
 COUNTY. — Elimination of insanitary devices in rural and suburban areas where sewer systems are impractical; Federal funds, \$12,578; sponsor's funds, \$7,833; workers, 56.

**MCCULLOCH COUNTY**  
 COUNTY. — Clear, grub, fence, drain, grade, gravel 6.7 miles of Brady-Voca Road; Federal funds, \$25,692; sponsor's funds, \$13,857; workers, 73.

**MCLENNAN COUNTY**  
 HALLSBURG. — Construct new school building, including 6 classrooms and combination auditorium-gymnasium; Federal funds, \$9,740; sponsor's funds, \$9,702; workers, 7.

**PALO PINTO COUNTY**  
 COUNTY. — Gravel, construct bridges and drainage structures on farm-to-market roads near Gordon; Federal funds, \$29,086; sponsor's funds, \$9,283; workers, 115.

**ROCKWALL COUNTY**  
 ROYSE CITY. — Lower water, mains, construct settling basins and brick pump house at city waterworks; Federal funds, \$8,539; sponsor's funds, \$4,329; workers, 122.

**RUNNELS COUNTY**  
 WINTERS. — Asphalt streets throughout city; construct concrete curbs and gutters; Federal funds, \$24,144; sponsor's funds, \$15,501; workers, 82.

**SAN AUGUSTINE COUNTY**  
 COUNTY. — Clear, grub, fence, drain, grade 15.62 miles of farm-to-market roads in Precinct 3; Federal funds, \$44,137; sponsor's funds, \$8,231; workers, 262.

—Clear, grub, fence, drain, grade gravel 4.5 miles of farm-to-market road near San Augustine; Federal funds, \$10,669; sponsor's funds, \$3,044; workers, 104.

**SHELBY COUNTY**  
 COUNTY. — Clear, grub, fence, drain, grade, lay sand-clay surface on 15.4 miles of farm-to-market roads in Precinct 3; Federal funds, \$31,481; sponsor's funds, \$7,157; workers, 162.

—Clear, grub, fence, drain, grade gravel 19.2 miles of farm-to-market roads in Precinct 1; Federal

**Personnel Meeting Of Agricultural Workers to Be Here**

County agents and clerical workers from approximately half a dozen counties of this portion of district 6 are expected to gather here Friday for an all-day meeting. The gathering will be in the form of a training school to assist these workers in executing the necessary forms in the 1939 program.

J. W. Doak of College Station, district agent for the AAA, will be in charge of the convention, with both morning and evening sessions being held. Representatives are expected to be here from Martin, Ector, Andrews, Crane, and possibly Glasscock, in addition to Midland, according to County Agent S. A. Debnam.

**Presbyterian Field Worker Speaks Here Wednesday**

Miss Irene Hope Hudson, field worker from the Christian Education and Ministerial Relief of the Presbyterian church in Louisville, Ky., was speaker at a special meeting at the First Presbyterian church Wednesday evening. She discussed "Ministerial Relief"—telling of the annuity fund which the church is attempting to establish.

Mrs. Butler Hurley called the meeting to order and Frank Stubbsman presented a scripture reading and offered prayer preceding Miss Hudson's address. After her talk, the group addressed questions to her.

**County Agents to Fort Worth Meeting**

Miss Alpha Lynn, county home demonstration agent, and S. A. Debnam, county agricultural agent, will leave this afternoon for Fort Worth to attend the Texas Agricultural Workers' Association meeting Friday and Saturday. They will be accompanied by County Agent G. A. Bond of Martin county.

Headlining the two-day program will be such speakers as Undersecretary of Agriculture M. L. Wilson who will talk on the "New Department of Agriculture," Dr. Walter Prescott Webb, professor of history at the University of Texas, who will discuss "Southern Handicaps, Agricultural and Industrial," and Dr. Helen M. Strong, head of the Educational Relations, Soil Conservation Service, Washington, D. C., who will explain "The Woman's Part in Soil Conservation."

**ILL WITH FLU**

John P. Howe is ill at his home here, suffering from an attack of flu.

**"Blondie" in New Family Film Series At Yucca Friday**

The Bumsteads — Blondie, Dagwood and Baby Dumpling — are in the movies! The popular characters of Chic Young's famous comic strip will be seen in Columbia's "Blondie," first of a projected new series, coming Friday and Saturday, at the Yucca Theatre.

Portraying Blondie is Penny Singleton, vivacious young musical comedy star of "Good News," "Follow Through" and "Hey Nonny Nonny." Dagwood's role is taken by Arthur Lake, an old hand at portraying comic strip characters, whose most notable role previously was "Harold Teen." Seen as Baby Dumpling is four-year-old Larry Simms, a screen newcomer whose present major distinction is that he's the living image of his comic strip counterpart.

"Blondie" takes the Bumsteads over the well-known bumps, both financially and domestic. The complications are satisfactorily ironed out, however, and peace reigns again in the happy household. This after Dagwood spends a night in jail. Blondie wrestles with the suspicion of "another woman," and Baby Dumpling adds a touch of mischief here and there to confuse the hectic goings-on.

Directed by Frank Strayer, "Blondie" was adapted to the screen by Richard Flournoy. Besides the principals, the cast features Danny Mannert, Gordon Oliver, Dorotie Moore, Ann Doran, Richard Piske and Jonathan Hale.

**TARRANT COUNTY**

FORT WORTH. — Remodel Imhoff tank into primary settling tanks and rebuild effluent channels at sewage treatment plant in eastern part of city; Federal funds, \$34,514; sponsor's funds, \$18,801; workers, 80.

**TAYLOR COUNTY**  
 COUNTY. — Widen, clear, grub, fence, drain, grade, gravel farm-to-market roads near Lawn, Ovalo, Gulon and Bradshaw; Federal funds, \$12,698; sponsor's funds, \$5,097; workers, 75.

**YOUNG COUNTY**  
 COUNTY. — Grade, construct andstone base on 12 miles of State Highway 199 from Jean to Jack county line; Federal funds, \$19,329; sponsor's funds, \$20,010; workers, 155.

**DO YOU LACK PEP?**

Austin, Texas — Mrs. Fritz Lutaente, 2202 Garden St., says: "I had hardly any strength, scarcely ate anything, had lost weight and felt miserable. I used Dr. Pierce's Golden Medical Discovery and soon regained my meals, gained in weight and strength and felt as good as ever." Get this Golden Medical Discovery in tablets or liquid at your drug store today.

Bulldogs Prove Superiority in 33 to 18 Cage Win Over Odessa

Midland high school basketball team made the Midland team a stand-out. Coach Myer used his first string straight through without substitutions. While the Coleman men used seven in an effort to gain an advantage. Making nine points to Odessa's four in the first quarter, the Bulldogs held the lead throughout the game. At the half, the score stood 13 to 8 for the Bulldogs.

Table with 4 columns: Player Name, Fg., Ft., Tp., Pct. Rows include Midland players like Arrington, Gee, Ford, Dodson, Bryan and Odessa players like Moore, Mahoney, Callon, Sims, McCracken, Clendenen, Caudle.

Baylor Bears Go After Second Conference Win Against Aggies



The Baylor Bears will be out for the second win Thursday night when they invade College Station for a tilt with Hub McQuillan's Texas Aggies. Shown above is the Baylor team made up almost entirely of sophomores whom Coach Ralph Wolf is counting on to come through.

Dangers of Carbon Monoxide Poisoning Are Especially Prevalent at This Time of Year; Citizens Warned of Menace

Editor's Note: The following discussion of Carbon Monoxide gas and poison, presented by a health authority, is published here in view of its particular timeliness at this season.

I want to discuss with you the subject of Carbon Monoxide gas—its source, properties, effects, and prevention of poisoning. I know of no more appropriate time for such a consideration than now while we are in the midst of our winter.

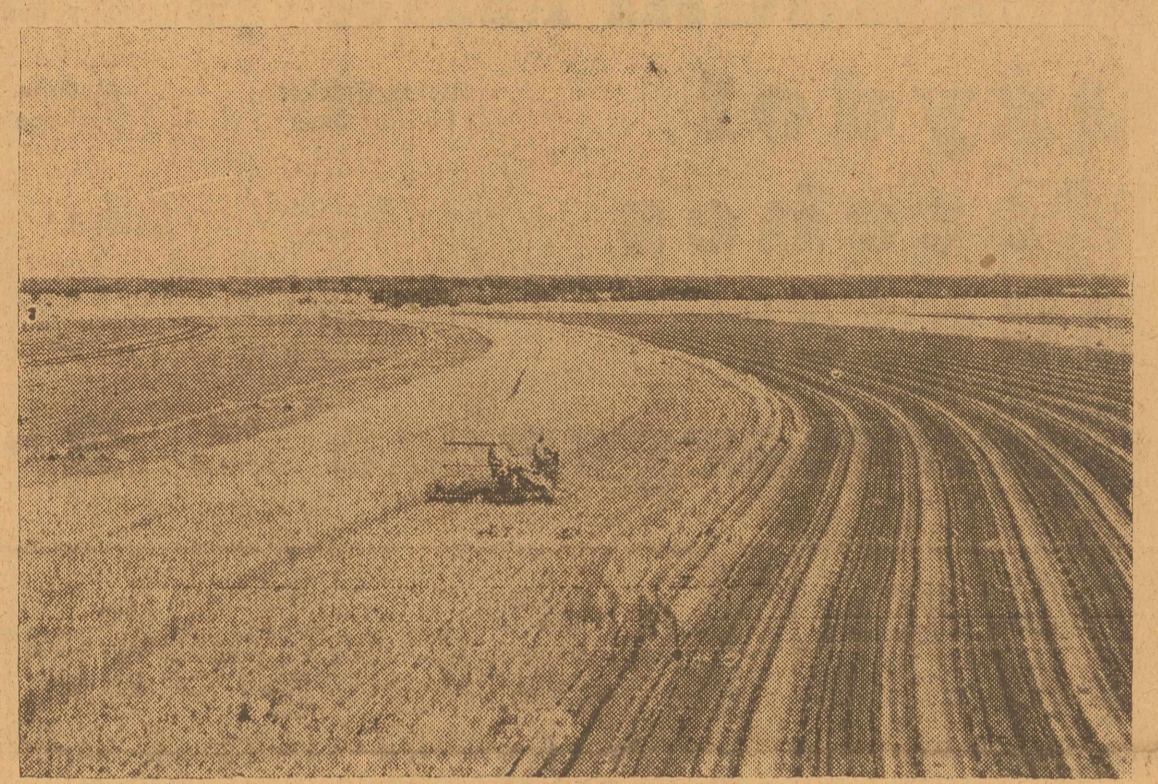
For me to say to you that Carbon Monoxide is poisonous would be nothing startling or helpful. Therefore, I shall only briefly remind you that it is a colorless, odorless, and tasteless gas which may result from the incomplete combustion of any carbonaceous fuel. The fuel may be natural gas, gasoline, kerosene, coal, oil or wood.

Many liberated in excess of fifteen hundred parts per million, and, strangely enough, it appeared that the more expensive the heater, the more serious the offender. Usually, these heaters were only out of adjustment, and when this condition was corrected, the carbon monoxide liberated would fall to thirty to fifty parts per million. Frequently, however, heaters are poorly constructed. These findings should emphasize the importance of buying appliances properly designed and constructed and of having periodic check-ups on the adjustment, such as all gas companies gladly furnish free to the consumer.

Advertisement for 'Have your RADIO Repaired' by Western Auto Associate Store, 107 S. Main, Phone 1228.

Conservation Practices Change the Texas Farm Pattern

Winter cold, insomnia, and a loss of interest in the problems of life. Some individuals go through the entire winter with a mild form of poisoning from this gas.



West and Central Texas farmers who have adopted complete and coordinated conservation farming systems on their lands have cooperated with nature by farming on the contour, substituting the gently curving lines of "streamlined" farming for the angular exactness of square fields and straight up and down hill rows.

Natural gas contains no carbon monoxide as such, but when this fuel is incompletely burned, large amounts of the toxic gas may be formed. Not only heating appliances but our private automobiles as well offer many opportunities for exposure to carbon monoxide. The most efficient motor fuels do not provide complete combustion. One pound of gasoline requires fifteen pounds of air for complete combustion, but the most efficient results are obtained with twelve to thirteen pounds of air to each pound of gasoline (80% efficiency).

West and Central Texas farmers who have adopted complete and coordinated conservation farming systems on their lands have cooperated with nature by farming on the contour, substituting the gently curving lines of "streamlined" farming for the angular exactness of square fields and straight up and down hill rows. This picture made on the farm of E. B. Sikes, near Brownwood, shows how the farming landscape has been changed since the adoption of such conservation practices as contour rows, strip crops and terraces.

Standards Set for Marriage by Aggies. COLLEGE STATION, (AP). — When Geoffrey Chaucer concluded: "Hard is his heart that loveth nought in May," he failed to take into consideration that some 600 years hence Texas Aggies might have some ideas on the subject. For when next May rolls around there will be some "hard hearts"—5,886 of them girls—on the campus of Texas A&M College unless certain clear-cut specifications are met by fair daisies matrimonially inclined.

Vast Improvement Program Will Make The Midland Country Club Into What the Sponsors Have Always Wanted It to Be

Father Creates Robot in Image Of Heroic Son

LONDON, U.P. — As a tribute to the memory of his son Jacques, who was killed in the World War while serving with the Canadian forces, 63-year-old Louis Fontaine, a French-Canadian living at Blackpool, has created a robot, the face of which is identical with that of his boy.

49 Per Cent Increase In Men on WPA Jobs

The number of men employed in the actual construction of Texas Works Administration rose 49 per cent in the last quarter of 1938. George M. Bull, Regional WPA Director, said today. The Regional Director reported to Administrator Harold Ickes that the gain in site employment in the seven states of the Fifth Region, which includes Texas, Arkansas, Colorado, Kansas, Louisiana, New Mexico and Oklahoma, amounted to 98.28 per cent for the period. Bull pointed out that in the last week of September, on which comparative figures are based, the new WPA program was already well underway in Texas.

By F. A. STACY At last, Midland is to have the kind of Country Club most of the members have always hoped for. In fact, it looks as if Midland is going to have a club far beyond the fondest dreams of even the most optimistic. Each day, as the huge Caterpillar tractor spins along dragging its load of twelve yards of dirt to build mountains and lakes, the picture changes from a neat little sand green course into a beautiful, well planned golf course, the equal and perhaps the superior of any in all this western country.

It takes very little imagination to visualize the golf course that is being built by Bredehusen, when you consider what a beautiful little spot it will make. Six of the nine greens surround the low land, old number two, three and nine fairways in the driest of weather were kept green by only a rain or two per year, if you put a little water on that very rich soil, you can readily see how quickly it will become a beautiful garden.

The greens are being constructed in the most modern design, planned to help keep down the cost of upkeep. This plan allows the fairway mowers to run over the turtle shaped "frog hair and shoulders" in much the same process as cutting the open fairways. These greens will feature above the surface of the surrounding groundtraps that also can be kept at a minimum cost. The only hand mowing that will be required on this entire course is the actual putting surface.

Advertisement for Jolley Beauty School, 14 N. Chadbourne, San Angelo, Texas. Special 10-Day Offer \$75.00.

Advertisement for Buddy's Flowers, 1200 W. Wall, Phone 1083. Beautiful Flowers For All Occasions.

Large advertisement for Baker Bros. Nursery, Midland, Texas. Features 'LANDSCAPING' and 'Adds to the Joy of Living and Increases Property Values'. Includes contact information for KGGK Mon.-Wed.-Fri. 10:30.

Advertisement for 'A NEAT APPEARANCE MEANS MUCH IN THE BUSINESS WORLD'. Includes text about leaving problems to them and contact information for Petroleu Cleaners.

Advertisement for Sparks & Barron, General Insurance & Abstracts—Phone 79. Features 'AFTER THE ACCIDENT... WHAT?' and 'Would it be court action against you... or against your family?'.

Advertisement for Primitive Oaks Of Ozarks Cut For Distillery, St. James, Mo. (U.P.). Giant oak trees in a 1,000-acre primitive Ozark forest...

Advertisement for 'NOTICE TO SUBSCRIBERS'. If you do not receive your Reporter-Telegram by 6:15 on week days or by 8:00 o'clock on Sunday morning, please call 80 or 500 and your missing copy will be sent to you immediately.

Advertisement for COMMERCIAL PRINTING CO., 112 West Missouri—Midland. Estimates Gladly Given. Experienced Craftsmen. Phone 7 or 8.

# Classified Advertising

**RATES AND INFORMATION**  
 2¢ a word a day.  
 4¢ a word two days.  
 6¢ a word three days.  
**MINIMUM charges:**  
 1 day 25¢.  
 2 days 50¢.  
 3 days 60¢.  
**CASH** must accompany all orders for classified ads, with a specified number of days for each to be inserted.  
 Classifieds will be accepted until 12 noon on week days and 6 p. m. Saturday for Sunday issues.  
 Proper classification of advertisements will be done in the office of The Reporter-Telegram.  
 Errors appearing in classified ads will be corrected without charge by notice given immediately after the first insertion.  
 FURTHER information will be given gladly by calling 7 or 8.

## NOTICE

Classified advertising is CASH WITH ORDER except to business establishments with an accredited rating. Please do not ask us to deviate from this regulation.

### 1—Lost & Found

LOST: Yellow Persian; blue green collar; name "skippy" Graham Mackey, 1405 West Illinois. (262-1)

### 2—For Sale

EXCHANGE 660 acres improved for small place and some cash. R. D. Hamlin, 4 miles west. (262-6)

HOUSES and lots; reasonable terms. Phone 1090. (262-1)

### 3—Furnished Apts.

CUT-RATE prices on apartments; Beautyrest mattresses. 321 South Baird. (262-6)

ATTRACTIVE duplex apartment; 3 rooms; private bath; Frigidaire; close in. 409 West Texas. (264-3)

HAVE remodeled my apartment house; see me in person for nice, clean apartments. Mrs. Connell, 121 North Big Spring. (264-3)

TWO-ROOM furnished apartment; utilities paid; \$5.00 week. 420 South Lorraine. (262-1)

NICELY furnished apartment; private bath; utilities paid; couple only; \$25.00 month. 309 North D. (262-3)

### 7—Houses for Sale

MODERN 5-room house, garage bedroom and bath; well located. 313 South N. St. (262-6)

### 10—Bedrooms

FOUR nice large bedrooms; connecting bath. 704 North Marientfeld. (263-6)

BEDROOM; private entrance; adjoining bath; telephone. 717 W. Storey, call 963 after 5. (263-6)

BRIGHTLY furnished bedroom; adjoining bath; telephone and private entrance. \$3.00 per week. Phone 810-J. 307 W. Florida. (262-6)

### 10-A—Room & Board

NICELY arranged for girls or men; lavatories in all rooms; close in; excellent meals. Rountree's Private Boarding House, 107 South Pecos, phone 278. (1-20-39)

ROOM and board for two men. 310 North Carrizo, phone 113. (264-6)

### 12—Situations Wanted

YOUNG couple wishes employment on ranch; excellent cook. 617 West Indiana. (264-3)

### 14—Personal

MADAM RAY NOTED Psychologist; your life problems solved scientifically; see the best. Room 236, Scharbauer Hotel. (265-6)

### 15—Miscellaneous

FURS FOR highest prices bring your FURS and DEAD WOOL to Central Wool & Mohair Co., Sweetwater, Texas. (262-6)

SINGER Sewing Machines and vacuum cleaners, sales and rent; repairs. 122 North Main, phone 43. (262-6)

The manner in which a cobra strikes is very different from the method of the long-tongued snakes, such as the rattler. The latter opens his mouth wide, and stabs the victim, while the former grasps the victim, and chews it momentarily.

**DR. J. O. SHANNON**  
 Veterinarian  
 Large and Small Animal Hospital  
 800 East Wall Street  
 Phone 1359

DAIRY PRODUCTS for **HEALTH & HAPPINESS**  
*Dairyland*  
 Pasteurized

## 50 State Counties in Fight on Paralysis

DALLAS—More than fifty Texas counties have mobilized in the national drive against infantile paralysis. Figures compiled at State headquarters, Santa Fe Building, Dallas, for the Celebration of the President's Birthday, show this mobilization to be well distributed throughout the state.

Headquarters operatives are confident that within the present week there will be at least one half of the 254 Texas counties signed up through the acceptance of county chairman appointments.

Organization of counties will continue under the direction of George Waverley Briggs, vice chairman, Dallas, who aims his drive to set up an organization in every county of the state. It is the intention of W. L. Clayton, Chairman, Houston, and his associates to make all county organizations permanent.

"Progressively, this fight against the 'maiming death' is becoming effectively and permanently organized," said Mr. Briggs. "Each year a wider area is being brought into active participation. To this complement, Texas, we feel, must contribute effective organization embracing all of its 254 counties."

Clarifying the program which Texas participates, Mr. Briggs said: "All net funds raised in this year's campaign will be divided; that is to say, one-half of the net proceeds will go to the National Foundation and one-half will be held in trust by the State Committee, for delivery to the permanent chapters of the National Foundation which, immediately upon the conclusion of this campaign for the Celebration of the President's Birthday, will be constituted to include each county in Texas. All successful birthday committee chairmen will be invited by the National Foundation to cooperate in the organization of these chapters. Thus until the disease is conquered, the fight on infantile paralysis will go

on permanently and aggressively, under the general direction, and with the continued aid, of the National Foundation, working steadily

in the National field, and likewise through permanent chapters in each state. Texas hopes to take, and maintain, the lead in this great hu-

manitarian effort." "Cocoanuts spread to all parts of the globe by floating."

It seems from the outer planets, the earth would go through all the phases from a thin crescent to a full disc, the same as our moon.

When placed in water, the roots of the soap plant, native of Colorado and Mexico, form suds for the washing of clothes.

**MOVE SAFELY BONDED—INSURED ROCKY FORD MOVING VANS**  
 Operating in Texas, California, Arizona, New Mexico, Colorado, Oklahoma, Kansas and Louisiana.  
 Storage—Phone 400—Midland

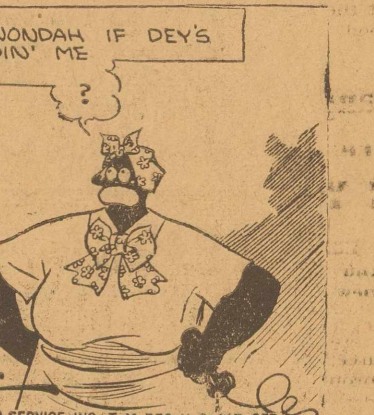
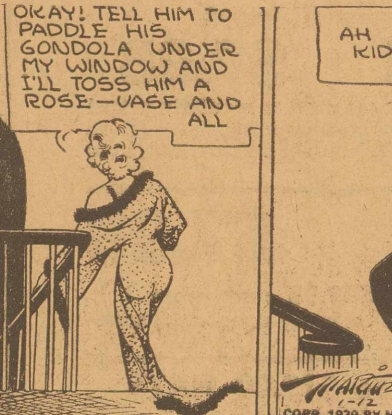
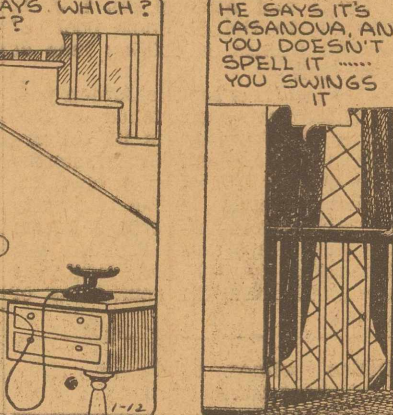
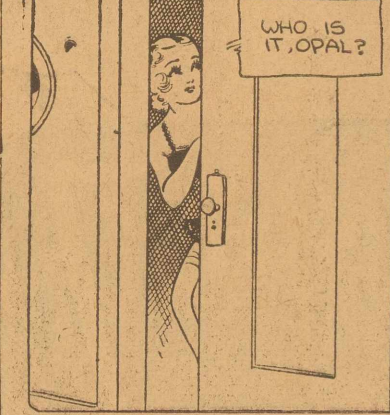
**Floor Coverings**  
 LINOLEUM BY THE YARD—Enough for an average size BATH \$2.80  
 Average Kitchen size—\$6.35  
 —15 Beautiful Patterns—  
 LINOLEUM RUGS  
 9x12 size \$5.95  
 7½x9 size \$4.95  
 6x9 size \$3.95  
 We will trade, or pay CASH for your old furniture. Bargains in all kinds of new FURNITURE  
**UPHAM FURNITURE COMPANY**  
 201 S. Main St. Phone 451

**GRADE A RAW MILK**  
**SCRUGGS DAIRY**  
 PHONE 9000

**ARE YOU PLANNING ON BUILDING OR BUYING A HOUSE?**  
 If so, the best way to pay it off is by **MONTHLY PAYMENTS!**  
 —We Make—  
**Federal Home Loan Bank & FHA Loans**  
 Call on us—we shall be glad to discuss your particular problems with you.  
**Midland Federal Savings & Loan Assn.**  
 Office at Sparks & Barron—Phone 79

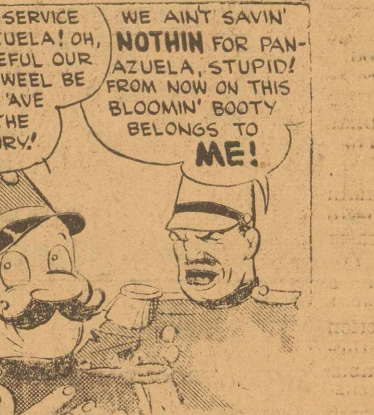
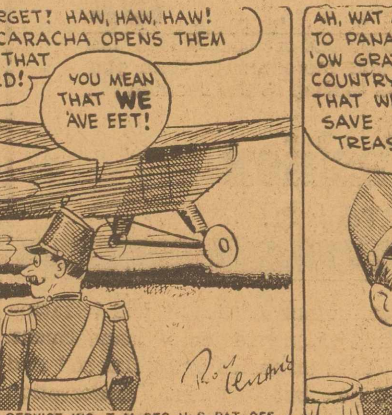
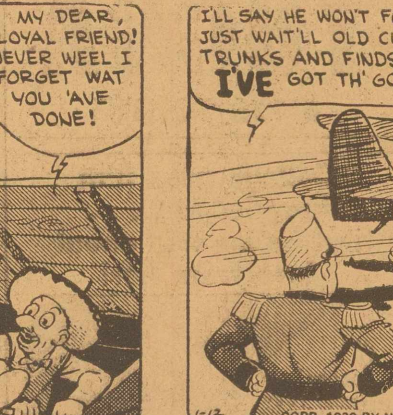
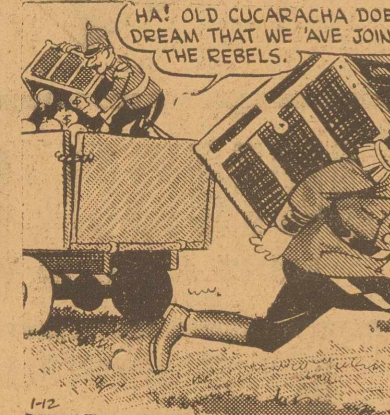
**COMPLETE TYPEWRITER SERVICE AND SUPPLIES**  
**WOODSTOCK TYPEWRITERS**  
**L. H. TIFFIN**  
 MIDLAND TYPEWRITER SERVICE  
 209 North Colorado—Phone 166

### BOOTS AND HER BUDDIES



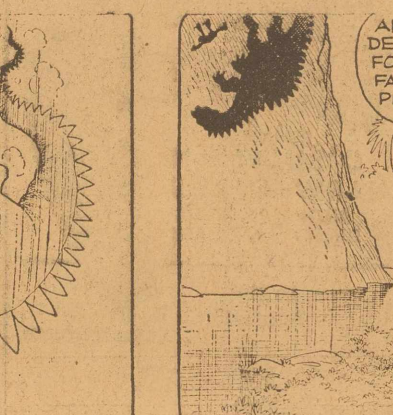
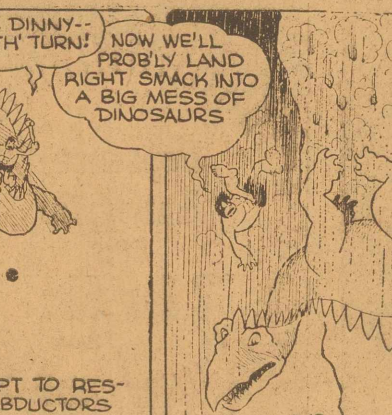
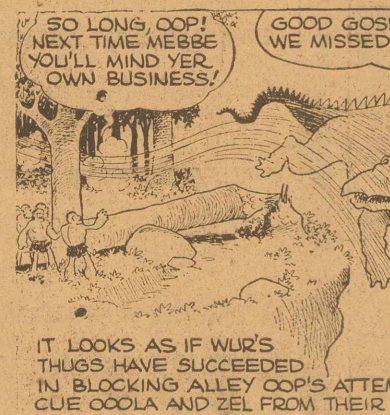
By EDGAR MARTIN

### WASH TUBBS



By ROY CRANE

### ALLEY OOP



By V. T. HAMLIN

### MYRA NORTH, SPECIAL NURSE



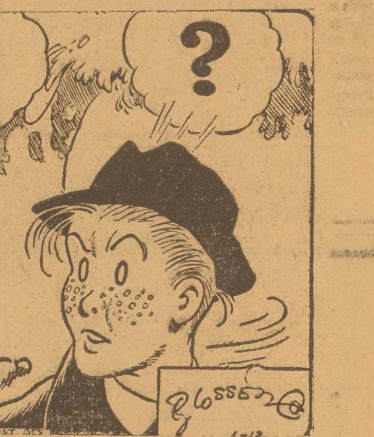
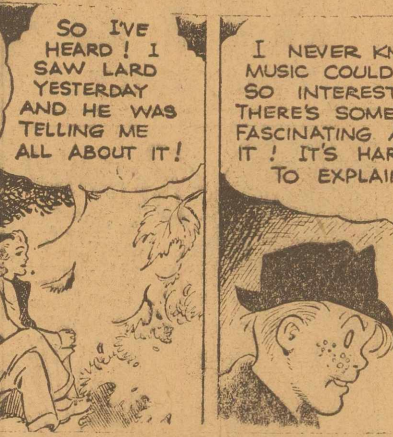
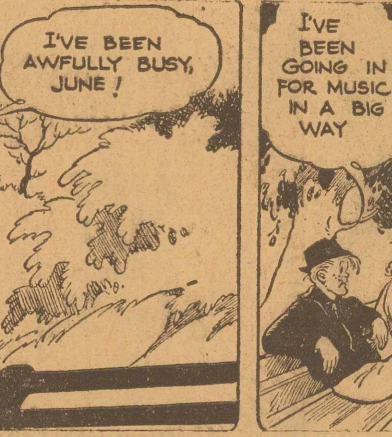
By RAY THOMPSON AND CHARLES COLL

**Hold Everything!**  
 "You can tell the public I owe my success to honesty, hard work, perseverance, and \$2,000,000 worth of real estate my father left me."

### Side Glances-----By George Clark



### FRECKLES AND HIS FRIENDS



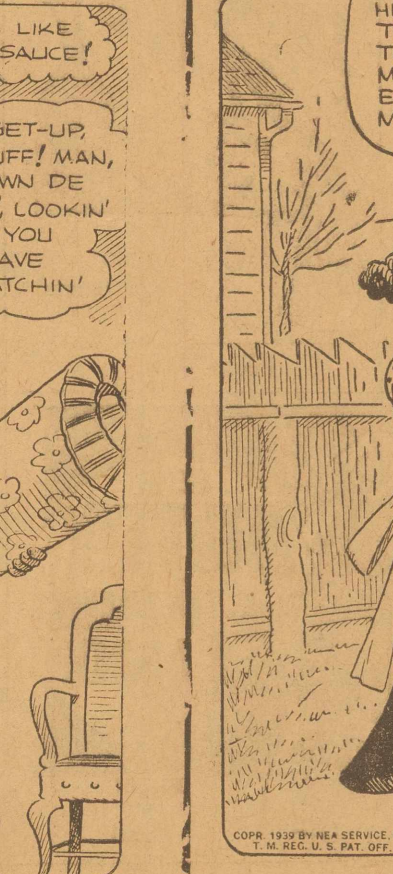
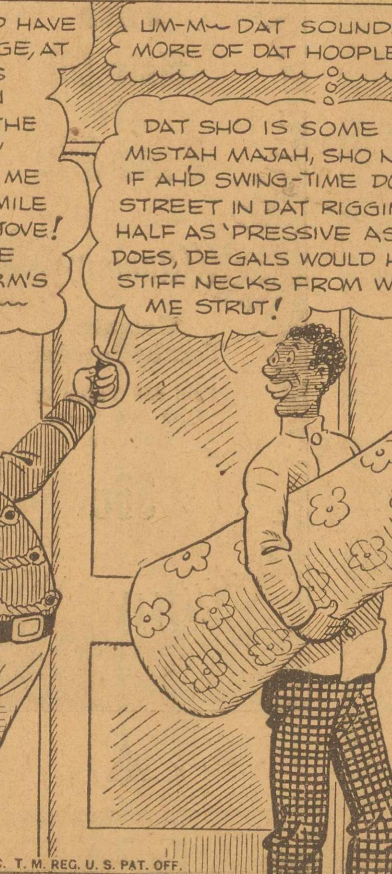
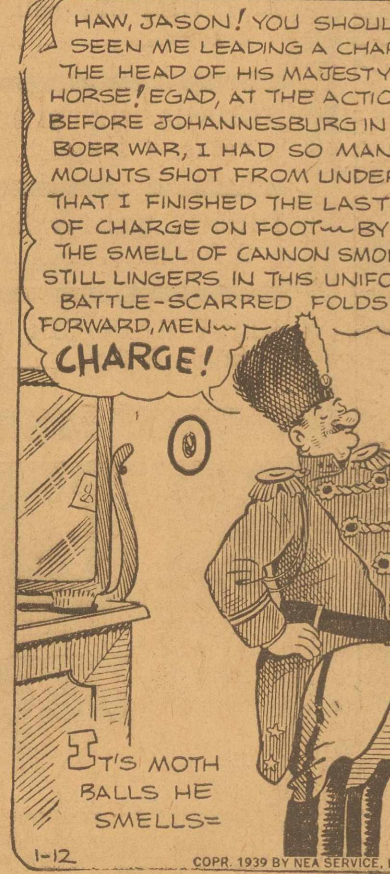
By MERRILL BLOSSER

### OUR BOARDING HOUSE

with

### MAJOR HOOPLE OUT OUR WAY

By J. R. WILLIAMS



IT'S MOTH BALLS HE SMELLS

BORN THIRTY YEARS TOO SOON

JR WILLIAMS

1-12

COPY, 1939 BY NEA SERVICE, INC. T. M. REG. U. S. PAT. OFF.

AUDITS SYSTEMS TAX SERVICE  
**HORTON & BIXLER**  
 ACCOUNTANTS AND AUDITORS  
 Midland Office, 207 Thomas Bldg., Phone 836  
 TEXAS OFFICES: NEW MEXICO OFFICES:  
 Big Spring Albuquerque  
 Lubbock Hobbs  
 Santo Fe

### the Fashion for Greater January Clearance Values

**NO MEND STOCKINGS**  
Irregulars of our regular  
\$1.35 numbers . . . . . **69c**

**NO MEND STOCKINGS**  
Irregulars of our regular  
\$1.15 numbers . . . . . **\$1**

**SMART WINTER DRESSES**  
In two sensational groups  
**\$3 \$5 \$7.98**

In the \$3 groups you will see dresses regularly priced to \$12.95 . . . in the \$5 groups, dresses regularly priced to \$19.95, and in the \$7.98 groups, dresses that were formerly priced to \$24.95.

**COATS \$7.98**  
Regularly priced \$19.95 and more  
(All other coats reduced in equally sensational manner.)

**Regular \$3.98 to \$10.00 HATS**  
We've grouped every hat in the store  
... at this one low sale price. **\$1**  
None excepted

At the Fashion you'll find dozens of other values just as great—that will save you more money than you have had any idea. It pays to shop at the Fashion . . . first.

**the Fashion**  
210 W. Texas St.

### Oil News—

CONTINUED FROM PAGE ONE

with 10 3/4-inch casing set at 807. Magnolia No. 12 W. P. Edwards, mile southeast extension test to the Waddell pool in Crane, had drilled to 1,265 feet in salt, and has 10 3/4-inch pipe set at 815.

**Andrews Wildcat Logs Show.**  
Showing of free oil was logged from 4,475-82 by Honolulu No. 1-18 J. E. Parker, central Andrews wildcat area. It is drilling ahead today at 4,493 feet in lime. The well previously had logged slight show of oil and gas at 4,415-23 and show of oil at 4,442-50.

In western Andrews, Richmond Drilling Company and Wright & McMillen No. 1 Bryant-Link Company is running a 1 1/4-inch casing, bottomed at 1,722 feet in anhydrite. Osage and Atlantic No. 1 J. L. Tippet, in the Seminole pool of central Gaines, is drilling lime at 5,042 feet.

Two locations for the Jordan pool of Ector have been staked by Kewanee Oil Company on its University "A" lease, comprising the northeast quarter of section 8, block 35, University lands, No. 3-A University is 330 feet from the north, 990 from the east line of lease, and No. 4-A University is 330 feet from the west, 990 from the south line of lease.

Dallas witnessed steady rain throughout the day, as did Austin.

### Eight Navy Ships Depart From Airport After Enforced Stay

Under leadership of Lieut. A. E. Dupuy, eight utility amphibians of the United States navy departed for Hensley Field this afternoon shortly before 2 o'clock, after a stay of approximately 40 hours at the Midland airport.

Scheduled for an overnight stay when they arrived here Tuesday afternoon, the ships were grounded up until after noon today because of bad weather.

With a personnel of 24 officers and men, the ships were part of the

navy sky fleet en route east and south to Cuba for war maneuvers. Lieut. Dupuy, speaking to a reporter, declared that he liked Midland, had enjoyed his stay here, and hoped to be back again soon. It was his second visit here, his first being made in a transport plane last summer.

### HAVE RELATIVES AS GUESTS.

Mr. and Mrs. J. Howard Hodge have had as their guests this week, Mr. and Mrs. Walter Scales of Ballinger and Mr. and Mrs. Homer Hodge of Winters. Mrs. Scales is a sister and the Winters man a brother of the host.

## THE ONE BIG BARGAIN EVENT of 1939 BEGINS TOMORROW MORNING

at 8:30

See Our 4 Page Ads Elsewhere in This Issue

Wadley's

A Big Event for Friday & Saturday, Jan. 13-14



Here it is . . . Buy one article at our regular low price and get another just like it for only 1c. This is a real opportunity that you can't afford to miss.  
We Reserve the Right to Limit Quantity

## GIANT JUMBO SODA 10c EACH OR 2 FOR 11c

BRING A FRIEND WITH YOU AND ENJOY THESE SODAS

<b>Pepsodent Antiseptic</b> 50c 2 for 51c	ALCOHOL, 50¢ size, 2 for <b>51c</b>	SHAMPOO, Zonite Antiseptic & Barcelona Castile, 2 for <b>59c</b>	<b>Milk of Magnesia</b> 50c 2 for 51c
<b>Listerine Tooth Paste</b> 25c 2 for 26c	ASPIRIN, 50¢ value, twice that for <b>51c</b>	HOSPITAL COTTON, lb. 49¢; 2 lbs. <b>50c</b>	<b>Fountain Syringe</b> \$1.00 2 for \$1.01
<b>Lucky Tiger</b> \$1.00 2 for \$1.01	SOLUTION 59, 50¢ seller, 2 for <b>51c</b>	BORIC ACID, 15¢ value, 2 for <b>16c</b>	<b>Tek Tooth Brush</b> 50c 2 for 51c
<b>Lucky Tiger</b> 50c 2 for 51c	TALCUM for men, 25¢ size, 2 for <b>26c</b>	MOTH BALLS, lb. 25¢; 2 lbs. <b>26c</b>	<b>Water Bottle</b> \$1.00 2 for \$1.01
<b>Fitch Hair Oil</b> 25c 2 for 26c	CASTOR OIL, 25¢ size, 2 for <b>26c</b>	Old Mission Crystals, lb. \$1; 2 lbs. <b>\$1.01</b>	<b>Pro-Phy-Lactic Tooth Brush</b> 50c 2 for 51c
<b>Colgate Tooth Powder</b> One 35¢ Value & One 20¢ Value Both for <b>36c</b>	IODINE, 25¢ bottle, 2 for <b>26c</b>	SHAV-AMI, 50¢ value, 2 for <b>51c</b>	<b>Epsom Salts</b> 25c 2 for 26c
	MINERAL OIL, May- flower, 59¢ size, 2 for <b>60c</b>	Respamol Cough Syrup, 50¢ size, 2 for <b>51c</b>	
	SHAVING LOTION, 50¢ size, 2 for <b>51c</b>	Norwich Nose Drop, 50¢ size, 2 for <b>51c</b>	
	BRACE HAIR TONIC, 50¢ bottle, 2 for <b>51c</b>	Jergens Face Cream, 25¢ value, 2 for <b>26c</b>	
	SHAVING CREAM, 25¢ size, 2 for <b>26c</b>	Initial Stationery, \$1 box, 2 for <b>\$1.01</b>	
	SHAMPOO, Lov-Ere Olive Oil, 49¢ seller, 2 for <b>50c</b>	St. Regis Tablets, 10¢ size, 2 for <b>11c</b>	
	Admiration Tonic & Shampoo, 59¢ value, 2 for <b>60c</b>	BLACK DRAUGHT, 25¢ bottle, 2 for <b>26c</b>	
	RAT NIP, 35¢ seller, 2 for <b>36c</b>	WILLIAMS TALC, 25¢ value, 2 for <b>26c</b>	
	NORALAGOR, \$1.00 value, 2 for <b>\$1.01</b>	CITROCARBONATE, \$1.00 seller, 2 for <b>\$1.01</b>	
	DRENE, \$2.25 value, 2 for <b>\$2.26</b>	PAPER NAPKINS, 10¢ package, 2 for <b>11c</b>	
	KEEN HAIR OIL, 50¢ value, 2 for <b>51c</b>		

# MIDLAND DRUG COMPANY

MIDLAND, TEXAS

### Conservation—

(CONTINUED FROM PAGE ONE)

grazing and other pasture management practices had brought livestock carrying capacities up 25 to 50 per cent, and in some cases as high as 100 per cent.

Concrete examples of the effectiveness of coordinated erosion control practices and the economic advantages accruing to farmers using these practices were cited by Mr. Walker from farmer reports reaching his office.

J. B. Nail, who farms 220 acres in the Lipan Flats of Tom Green county, attributed an average yield of 13 bushels of grain per acre to moisture conservation by the use

of contour cultivation and terracing and improved crop management. Yields on farms of similar soil and slope but without conservation treatment adjacent to Mr. Nail averaged five and eight bushels of grain per acre.

A 50 per cent increase in his oat yield was reported by Albin Milka, whose farm is in the Upper Concho section. He harvested 60 bushels of oats per acre compared with a 40-bushel-to-the-acre yield on an adjoining farm not terraced.

D. T. Jones said that moisture penetration tests made on his ranch near San Angelo showed that water penetrated to a depth of 24 inches on the pasture that had been contour ridged and listed, but that the moisture penetration was only 17 inches on an adjoining pasture not contour ridged or furrowed to catch and hold rainfall. "My pastures have 50 per cent more vegetative cover and forage value since I have practiced pasture improvement," Mr. Jones said.

H. H. Nixon, president of the Adams Creek Soil and Water Conservation Association, said that the use of terraces and other soil and water conserving practices on his farm near Vernon had made it possible for him to produce more than a half of a bale of cotton per acre in 1938 despite the fact that no effective rain fell between June 8 and November 3. Mr. Nixon said his yield was much greater than that realized from nearby land not given the benefit of conservation practices.

### Rain—

(CONTINUED FROM PAGE ONE)  
erty oil field road. Observers at Liberty said the threat of a Trinity flood would remain for at least 24 hours.

Around San Angelo, welcome rains up to four inches, plus scattered snowfalls, were reported. Inch rains fell at Texon, Morton, Burnhart, Big Lake, Eden, Brady, Menard, Forsan, Junction, Maryneal and Carlsbad. Rankin got a four-inch deluge. Snow fell at Fort Davis. Other sections of the West-Central Texas ranch country received needed moisture. Around Slaton and Lubbock snow melted as it hit the ground, while the rains extended west to Del Rio.

Big Spring reported .65 inch of rain; Plainview reported a light snow; Olney received a steady rain during the day; Houston had an inch and Brownwood reported rain amounting to nearly an inch and still falling. Culberson county (Van Horn) received more than an inch of rain the first since September; San Antonio, with a light fall, expected steady rains. Fort Worth and

## YUCCA ENDS TONITE

College gave him knowledge . . . . .  
But he learned about love from her!

Snappy love lines, racy situations!

**SPRING MADNESS**

MAUREEN O'SULLIVAN  
LEW AYRES  
RUTH BURGESS  
HUSSEY - MEREDITH  
MGM PICTURE

PLUS!  
Musical

FRI.-SAT.

As funny as a bride's first biscuits!

I'm in the MOVIES NOW!  
lovable Blondie steps right out of the funnies... into real life!

**Blondie**

with Penny Singleton - Arthur Lake  
Larry Simms - Gene Lockhart  
COLUMBIA PICTURES

PLUS!  
News  
Sport  
Cartoon

## RITZ TODAY ONLY

**BETRAYED**

by a cameo ring... on a dead man's hand... saved by an explosion of burning acid!

**SMASHING THE SPY RING**

with RALPH BELLAMY  
RAY BRAY  
BIS TOONEY  
COLUMBIA

ALSO!  
Selected Shorts

FRI.-SAT.

Heroes of the West... with Sheriff Gene out to save them!

**GENE AUTRY**

in "PRAIRIE MOON"

with SMILEY BURNETTE  
SHIRLEY DEANE  
A Republic Picture

PLUS!  
Cartoon and Serial

**Check COLD DISCOMFORTS**

AT the first sign of a cold, make up your mind to avoid as much of the sniffing, sneezing, soreness and stuffy condition of your nostrils as possible. Insert Mentholatum in each nostril. Also rub it vigorously on your chest. You'll be delighted with the way Mentholatum combats cold misery and helps restore comfort.

**MENTHOLATUM**  
Gives COMFORT Daily

CHAS. L. KLAPPROTH and R. W. HAMILTON  
Announce the Formation of a Partnership for  
**GENERAL LAW PRACTICE**  
301-302 Petroleum Bldg.  
Phone 190

**FASTEST SERVICE on the BEST BREAKFAST**  
In Midland  
Piggly Wiggly

**FLOWERS**

See our large assortment of flowers and blooming plants.

**MIDLAND FLORAL CO.**

FRED FROMHOLD, Owner  
Phone 1286—1705 W. Wall

Member of Florist Telegraph Delivery Assn.

**80 City Cabs, Inc. Motorcycle Delivery 7c**

OR  
**500**

PHONE



Every Shopper of **QUALITY FOODS** will welcome these Specials

OFFERED FOR FRIDAY & SATURDAY, JANUARY 13 & 14

We Reserve the Right to Limit Quantity

**PRODUCE DEPARTMENT**

**Bananas** Golden Ripe Fruit DOZEN **12c**

**Spuds** Washed Idaho Russets, 10 Pounds **27c**

**CAULIFLOWER** Per Head **17c**

**LETTUCE** Large, Firm Heads 2 for **11c**

**CELERY** Large, Well Bleached Stalks, 2 for **25c**

**ORANGES** 126 Size DOZEN **35c**

**ORANGES** 220 Size DOZEN **25c**

**APPLES** 100 Size, Extra Fancy Delicious, DOZEN **35c**

**APPLES** 138 Size Winesaps DOZEN **29c**

**Miracle Whip**  
Quart **36c**

**SMITH'S BEST FLOUR**  
6-lb. Sack **24c**  
24-lb. Sack **71c**  
48-lb. Sack **\$1.41**

**BANNER BUTTER**  
Lb. **28c**

**KETCHUP, Heinz 14-oz. 22c**

**SPAM . . . . . 33c**

Old Manse  
**GRAPE JAM, qt. . . 28c**

Premier No. 2  
**APPLE SAUCE . . . 14c**

No. 2 1/2 Del Monte  
**PEACHES, 2 for . . . 33c**

**LIFEBUOY SOAP**  
2 BARS  
**13c**

**PLUMS, Fresh, No. 2 1/2 . 15c**

VIENNA  
**SAUSAGE, 2 for . . . 13c**

**POTTED MEAT, 2 for . 5c**

**SUGAR**  
PURE CANE, CLOTH BAGS  
10 POUNDS **50c**

**EGGS**  
FRESH COUNTRY  
GUARANTEED **25c**

**DREFT**  
LARGE BOX  
**22c**

NORTHERN  
**TISSUE, 3 rolls . . . 19c**

MOTHER'S  
**OATS, Large Box . . . 27c**

**COFFEE**  
Chase & Sanborn  
Lb. **27c**

**CRACKERS, Saltine, lb. 15c**

No. 2 Can  
**TOMATOES, 2 for . . . 15c**

**CORN, No. 2 Can, 2 for . 15c**

**COMPOUND**  
Mrs. Tucker's  
4-lb. Cart.  
**45c**

**SALMON, 16-oz. . . . 11c**

No. 2 Can  
**SPINACH, 2 for . . . 15c**

**... Market Specials ...**

**HENS** Dressed, 3 to 4-lb. average, lb. . . . . **18c**

Baby Beef Shoulder Roast, lb. . . . . **15c**

Seven and Chuck Roast, lb. . . . . **16c**

Armour's Star or Banquet Bacon, lb. . . . . **27c**

Salt Pork Squares, pound . . . . . **14c**

Peyton's English Hand Sliced Bacon, lb. . . . . **25c**

Pork Steak and Roast, lb. . . . . **19c**

Spare Ribs and Backbone, lb. . . . . **23c**

Pork Cutlets, pound . . . . . **38c**

Pork Tenders, pound . . . . . **48c**

**HAMS** Ready Cooked, Ready to Serve, Halves, lb. **25c**

Full Cream Longhorn Cheese, lb. . . . . **16c**

**COTTAGE CHEESE** READY CREAMED PINT . . . . . **19c**

Minced Ham, pound . . . . . **25c**

Loin Steaks, pound . . . . . **25c**

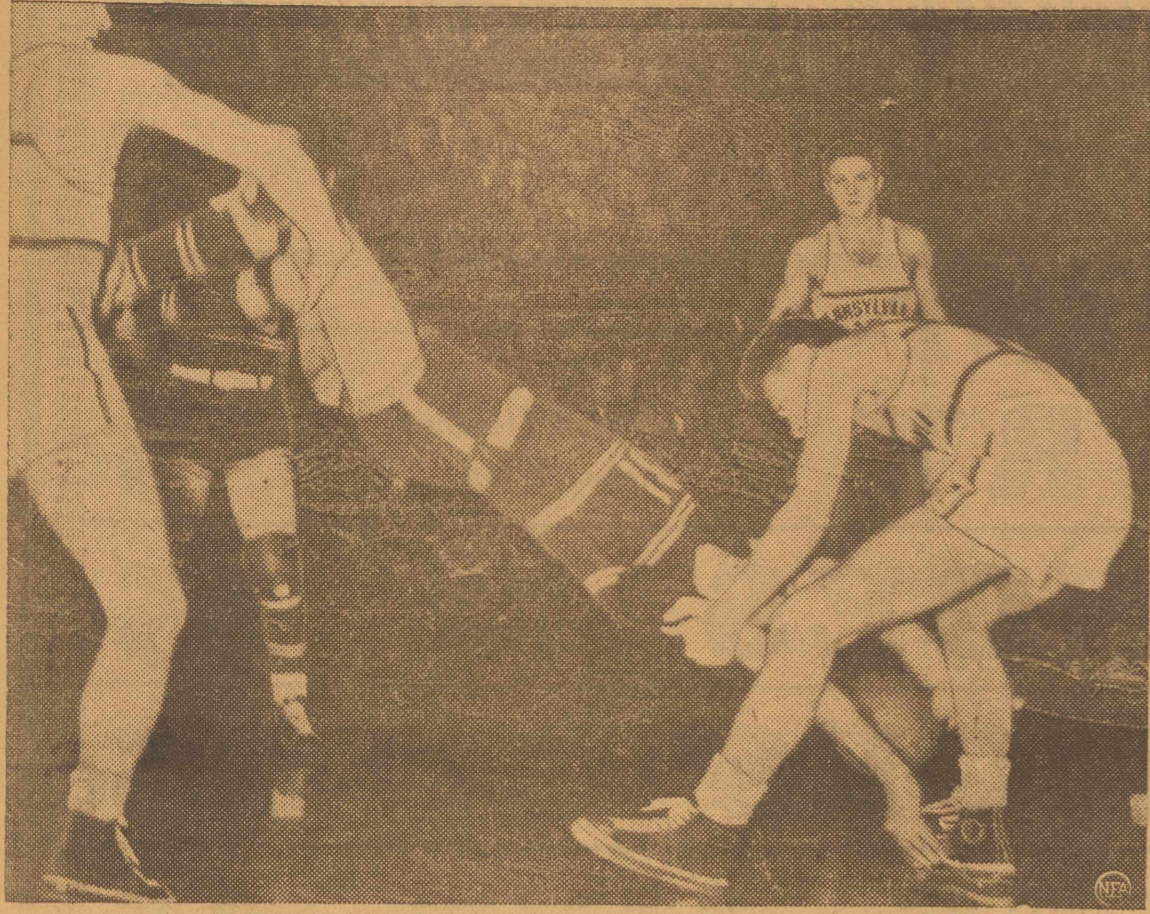
Round Steak for Frying or Swiss, lb. . . . . **26c**

Armour's Star Patties, pound box . . . . . **19c**

**WES-TEX FOOD MARKET**

MIDLAND

### Jeemy Londos Couldn't Do Any Better



Airplane spin on the basketball court at Philadelphia. When George DeWitt of Maryland, No. 31 in dark suit, ran into Gerry Seeders of Pennsylvania, right, in white suit, Seeders turned and whirled him through the air just as is done on the wrestling mat, the ball falling unnoticed and Seeders drawing a foul.

### Lewis the Lover



Sinclair Lewis, winner of Nobel and Pulitzer prizes in literature, appears headed for new laurels as an actor if his technique in kissing Flora Campbell, leading lady in Lewis' newest play, "Angela Is Twenty-Two," is an indication.

### Attorney General Murphy Sworn In



Former Michigan Governor Frank Murphy takes oath of office as the new attorney general while President Roosevelt looks on. Administering the oath is Supreme Court Justice Stanley Reed.

### At Home With the Frankfurters



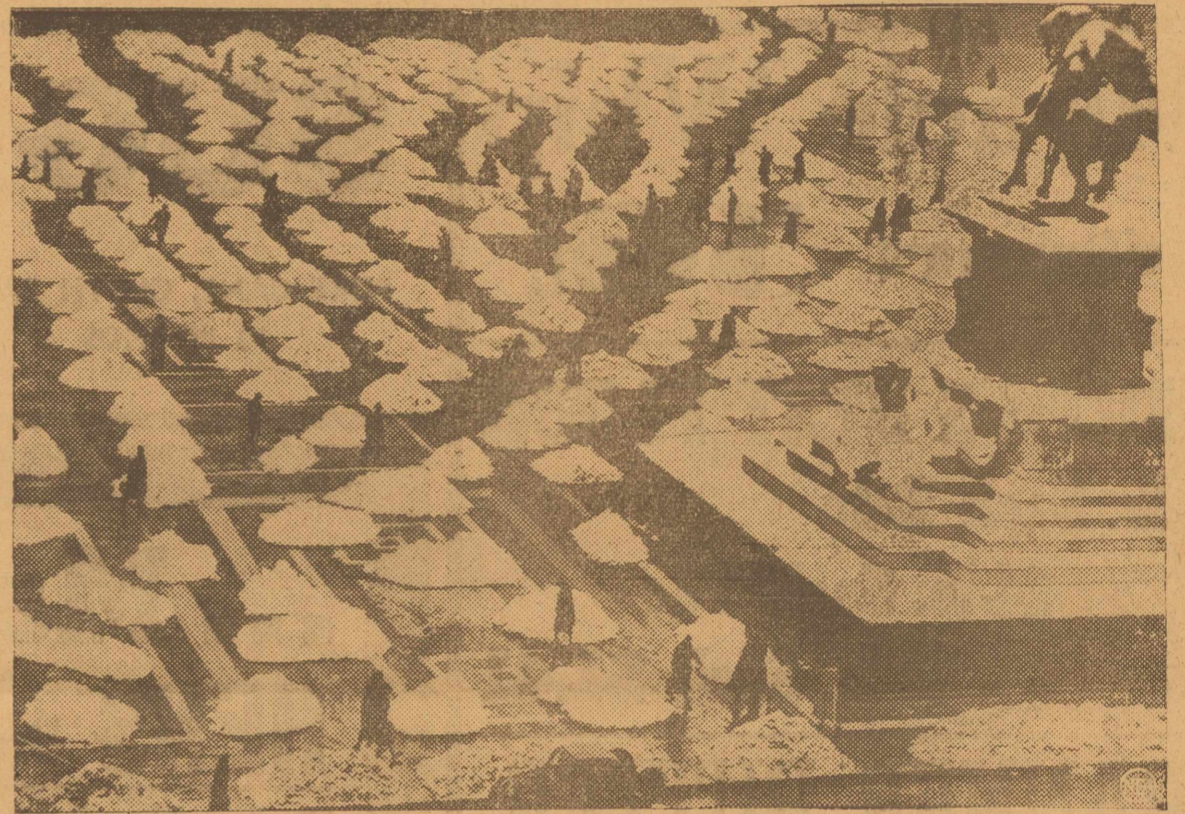
Felix Frankfurter and Mrs. Frankfurter in their home at Cambridge, Mass., after hearing the President had nominated Prof. Frankfurter to be a Supreme Court justice.

### Tunisians' Smashing Protest



Things Italian in Tunis were in danger when Tunisians demonstrated against Italy's demands for France's colonies, including Tunis. Here a group of Mobile Guards protect the Italian tourist agency, whose windows the demonstrators succeeded in smashing.

### How to Shovel Snow Artistically



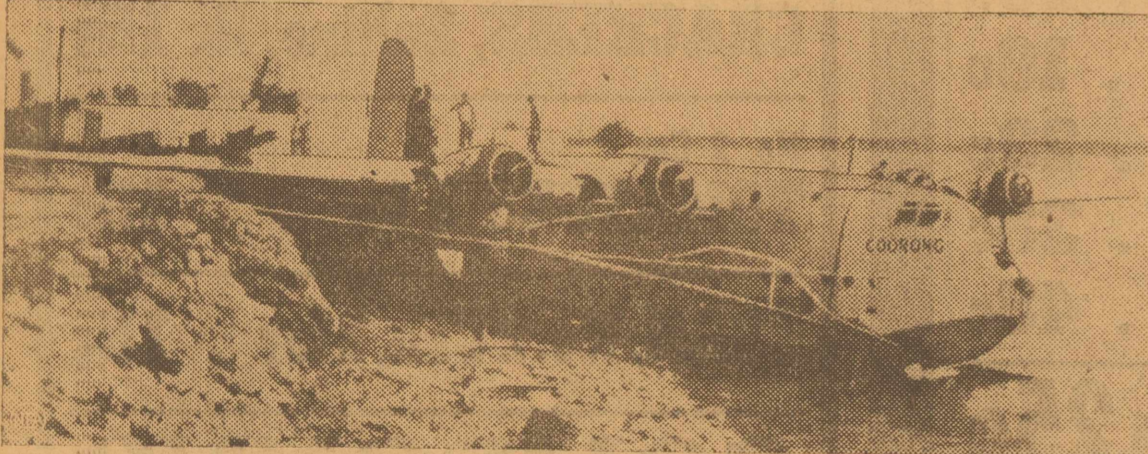
Like an elaborate setting for a complicated game of "fox and geese" is this spectacular arrangement of snow piles in Cathedral Square, Milan, Italy, after a heavy snowfall.

### Would Adolf Approve This? Court Official Up in the Air



Herr Hitler might not like just now—his favorite Leni Riefenstahl wearing a 100 per cent American cowgirl outfit on a ranch near Santa Barbara, Calif.

### Flying Boat's Wings Are Clipped



Great flying boats may be wrecked even when not in the air. In a curious accident the Australian Coorong, above, was torn from moorings at Darwin, Australia, flung ashore and wrecked by a gale.

### Border Clash



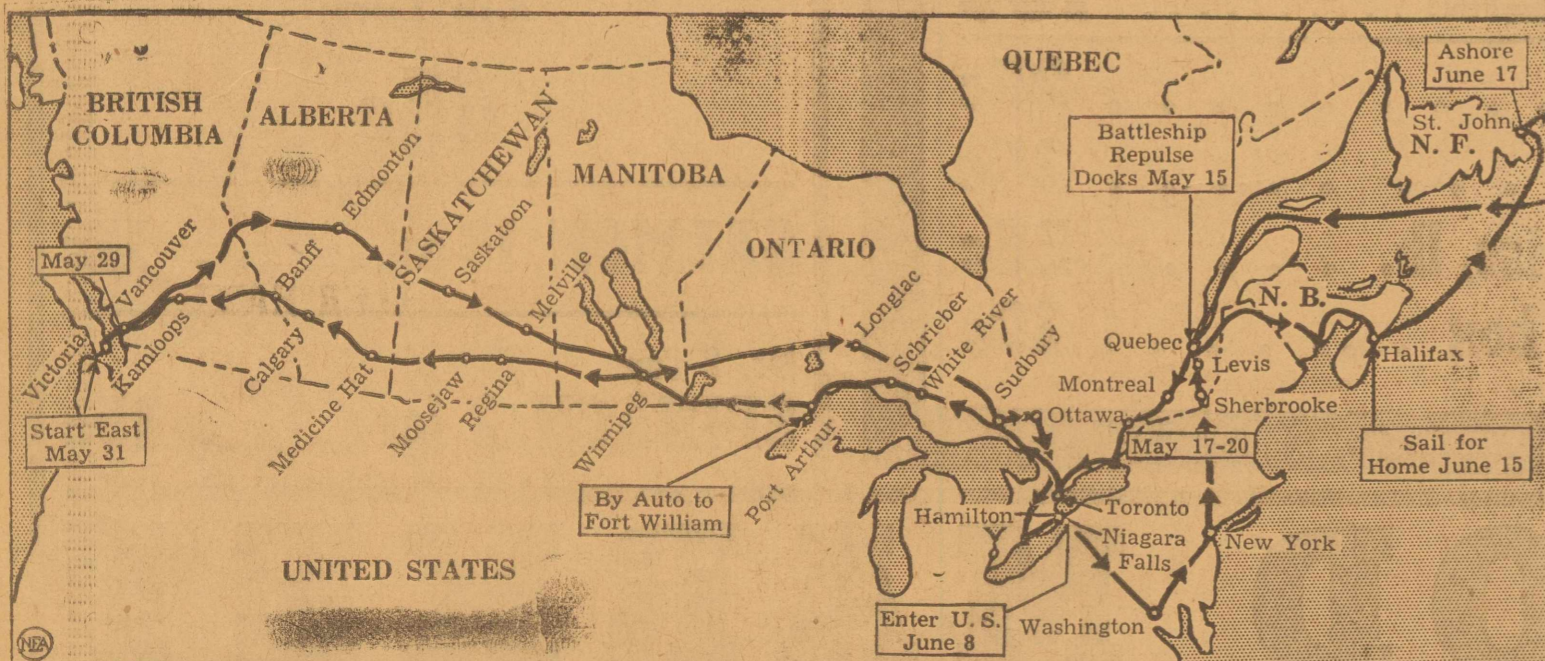
Map shows border town of Munkacs where Czechs attacking Hungarian forces are reported to have killed four officers and five soldiers.

### Leaves Post



Matt McGrath, Olympic champion who put the shot and threw the hammer in the 1908, 1912, 1920 and 1924 games, quits his post this year as New York police inspector in charge of Manhattan traffic. McGrath is one of a group being retired under the 63-year age limit.

### Mapping Next Summer's Visit of King and Queen



Back and forth across Canada will travel the royal train bearing King George VI and Queen Elizabeth of England next May and June. A quick side-trip to the United States, including a visit at the White House, is included in the itinerary. Arrows in above map show the royal route with main stops.

### STORIES IN STAMPS



### When Africa Discovered Its Gold and Diamonds

TURMOIL swept the whole of South Africa in 1867 with the discovery of diamonds near the Orange river. Native tribesmen were aroused and foreigners flocked to the scene to complicate the picture. Before long, blood soaked the ground and law was lost in the mad rush for wealth.

But diamonds were only the beginning. For years men had found gold in small quantities. In 1886 it was struck in abundance. Prospectors located rich lodes on the Witwatersrand. The diamond rush was a trickle compared to the boom that greeted the new Eldorado.

Caught in the maelstrom was President Paul Kruger of the Transvaal. Kruger hated the British. So when Cecil Rhodes turned up as one of the first to exploit the gold find, Kruger locked horns with him. The two men fought each other intermittently for many years. But it was useless to try to stem the tide of that rush. The foreigners surged in and stayed.

Today the Union of South Africa is still one of the richest diamond and gold-producing areas in the world. It produces approximately \$400,000,000 in gold annually, and more than 600,000 carats of diamonds. Nearly 50 per cent of the world's supply of gold comes from South Africa. Coal, iron ore, chromite, manganese, copper, asbestos, tin, silver, and platinum are mined as well. South Africa issues stamps in two languages, English and the old Afrikaander, due to the powerful Boer influence. Two current values showing South Africa's gold mines are shown above. (Copyright, 1938, NEA Service, Inc.)

Working on the belief that rule infractions are more easily noticed from a height, Referee Lloyd Beutal calls a foul from his vantage point on the balcony in an experimental basketball game at Nichols School in Buffalo. Ball boys handle the toss-up and out-of-bounds plays.

DEPENDABLE

# WADLEY'S ANNUAL JANUARY

## STOREWIDE CLEARANCE



Beginning  
**FRIDAY**  
JANUARY 13th  
8:30 A. M.

Beginning  
**FRIDAY**  
JANUARY 13th  
8:30 A. M.

Over the top with the biggest year's business in the history of this store, Wadley's winds up with the biggest sale it has ever offered to the public of West Texas.

### 165 Ladies', Misses' and Junior DRESSES

Go into this January Clearance at prices that will convert them into **CASH**

- Junior Sizes: 9 to 17
- Misses' Sizes: 10 to 20
- Ladies' Sizes: 36 to 44



#### Reichly, Le-Vine, Classy Jean, Nelly Don, Jean Carol

A minimum charge must be made for alterations at sale prices.

- One \$35.00 Dress priced at **\$19.95**
- Three \$27.50 Dresses **\$16.75**
- Two \$24.75 Dresses **\$13.75**
- 21 Dresses that were priced at \$19.95 are reduced for this sale to **\$12.50**
- 33 Dresses that were \$16.75, are priced for this January Clearance at **\$9.95**
- 16 Dresses, regularly priced at \$14.95, reduced to **\$8.65**
- 12 Dresses, regularly priced at \$10.95, reduced to **\$6.35**
- 10 Dresses, regularly priced at \$7.95, reduced to **\$4.95**
- 14 Dresses, regularly priced at \$5.95, have been reduced to **\$3.45**

#### Two and Three Piece Suits

That you will surely want at January Clearance Sale Prices.

Many of these of Gabardines in man-tailored styles, exactly as is being shown for Spring.

If you are interested in a suit, don't overlook these.

- Two regular \$59.00 suits priced at January Clearance for **\$34.50**
- Two \$37.50 Suits **\$22.75**
- Two \$27.50 Suits **\$14.95**
- Five \$16.95 Suits **\$9.95**
- Six \$12.50 Suits **\$7.75**

A minimum charge will be made for any alterations at sale prices.

#### MISSES' and CHILDREN'S DRESSES

##### Slacks, Slack Suits, Jodhpurs, Blouses

Every item in this department goes into this sale at prices that will make this the busiest department in the store.

- \$1.00 values in Dresses, Slacks, Blouses have been reduced to **73¢**
- \$1.95 values in Dresses, Slacks, Blouses and Jodhpurs reduced to **\$1.39**
- \$2.95 values in Dresses, Slacks, Jodhpurs, Sweaters, etc. **\$1.95**
- \$3.95 Slacks, Jodhpurs, Dresses, Sweaters, etc., reduced to **\$2.95**

Remember, every item in this department is priced at savings worthwhile for this big eight days' selling.

Almost a Hundred Thousand Dollars worth of dependable merchandise will be put on sale for eight days. And with only two or three exceptions, such as Stetson hats, Borsalino hats, Dorothy Gray and Dorothy Perkins toilet articles, whose terms of sale will not permit price reductions, every item in this, the biggest stock of Dependable Merchandise in all West Texas, will be offered without a penny profit.

To thousands of people all over West Texas, the mere announcement of Wadley's January Clearance Sale would be sufficient, for any one who has ever attended one of Wadley's Clearance Sales knows that it is a straight-forward stock-reducing sale held at the end of each season for a purpose.

**HERE IS WADLEY'S GUARANTEE:** Anything bought at this sale is a bargain; we guarantee it to be. If you don't think so after you have made the purchase, bring it back. Your money will be refunded.

You won't find any of that "all sales final" stuff here. If anything you buy at this store, at any time, is not satisfactory, we want it back. No sale is final here until the customer is satisfied.

**ALL SALE PRICES CASH ONLY.** This is one rule that we do make because no one could offer you the bargains you will find at this sale except for cash. These sales are held at the end of each season for the sole purpose of converting this merchandise into cash, and we believe that good merchandise is offered for less during these eight selling days than you will find anywhere in Texas or any place else.

**REMEMBER,** not just a few items "butchered for a bait," but with the four exceptions mentioned above, every dollar's worth of merchandise in this stock goes on sale at prices that have made Wadley's Clearance Sales known all over Texas and New Mexico.

### January Clearance

In the Ready-to-Wear Department brings the most outstanding bargains this store has ever offered.

The very warm fall and winter we have had has left us with by far the largest stock of good coats, suits and dresses that ever went into a January sale in this store.

The necessity of converting this merchandise into cash at some price forces us to take an absolute loss on a large part of this stock.



#### EIGHT GOOD FUR COATS LEFT

Who wants a good bargain in a good coat?

- One Black Skunk Chubby, size 16, was \$235.00; you save more than a hundred dollars. January Clearance Sale **\$129.00**
- One Grey Caracul, size 16, was \$189.50, and we offer this coat for these eight days selling at **\$99.00**
- One Black Pony, size 16, priced at \$189.50, and a real bargain at **\$99.50**
- One Black Pony, size 14, was \$125.00, for January Clearance **\$69.50**
- One Black Pony, size 12, was \$125.00, and you can buy it during this January Clearance Sale for **\$69.50**
- One Brown Lapin, size 16, was \$90.00, is cut exactly in half **\$45.00**
- One Brown Lapin, size 12, was \$95.00, again is cut just half **\$47.50**
- One Brown Lapin, size 16, was \$139.50, and this, too, is just half **\$69.50**

"Believe it or not," we are taking an actual loss of more than a hundred dollars on the coats advertised above.

These are all Marks coats and there isn't more reliable fur garments made.

#### We Don't Want to Carry a Winter Coat Over If Price Will Sell It

- One Black Printzess Coat with Silver Fox Collar, size 38, was \$69.00, January Clearance Sale **\$39.00**
- One Black Printzess Coat with Black Fox Collar, size 40, was \$69.00; your's for **\$39.00**
- One half size Black Printzess Coat, size 39, with Persian Lamb Collar, was \$49.50; priced for this January Clearance at **\$29.75**
- One size 20, Black Coat with Brown Mink Collar, was \$29.50; reduced to **\$16.95**
- One size 40, Black Hirschmauer Coat with Silver Fox trim, was \$39.50 **\$22.75**
- One Green Hirschmauer Coat with Beaver Collar, size 16, was \$39.00 **\$22.75**
- One Brown Tweed Hirschmauer with Raccoon Collar, size 12, was \$35.00 **\$19.50**
- One size 38, Brown Hirschmauer Coat with Raccoon Collar, was \$39.50 **\$22.75**

#### Every Coat Above Is Offered for Less Than Our Wholesale Cost.

- Four \$29.50 Untrimmed Sport Coats **\$16.75**
- Two \$35.00 Untrimmed Sport Coats **\$18.75**
- Eight \$16.75 Sport Coats **\$ 9.95**

**ANY CHILDS' OR MISSES' COAT IN THE HOUSE, REGARDLESS OF COST—JUST HALF PRICE**

#### Wash Dresses, by Nelly Don. Smocks, House Coats, etc.

Every Nelly Don dress in this stock is reduced for January Clearance.

- \$1.95 Dresses, Smocks, etc., every one guaranteed fast color **\$1.39**
- \$2.95 Smocks and Wash Frocks, all by Nelly Don, every one guaranteed fast to sun and laundry **\$2.25**
- \$3.95 Smocks, House Coats and Wash Frocks, by Nelly Don, fast colors, of course **\$2.95**
- \$4.95 Wash Frocks, Smocks, House Coats, etc., all by Nelly Don, priced at **\$3.35**

#### Beautiful Evening Gowns

At prices you will not be able to resist.

Don't look at these unless you want one, as you will surely be tempted.

Taffetas—Velvets—Moirés  
Metallics—Crepes

- Sizes range from 9 to 17 and 12 to 20
- SIX Evening Gowns were \$29.50 **\$16.75**
- THREE Evening Gowns were \$27.50 **\$14.75**
- TWO Evening Gowns were \$25.00 **\$13.75**
- FIVE Evening Gowns, were \$19.95 **\$11.75**
- FIVE Evening Gowns, were \$16.75 **\$9.95**
- SIX Evening Gowns, were \$14.95 **\$8.35**
- FOUR Evening or party dresses, \$12.75 values **\$7.65**
- THREE regular \$10.95 values **\$6.35**

One or two Evening Capes of Velvet, yours for much less than we paid for them.

It's hard for the public in general to believe, but it is a fact. During this January Clearance Sale this store will take an actual loss of from two to three thousand dollars. BUT, remember this: that if we carried this merchandise over to another year, we might have to take a much bigger loss than that.

## Addison Wadley Co.

A Better Department Store

Midland, Texas

DEPENDABLE

#### DOBBS HATS—MILLER HATS

EVERY ITEM IN THE MILLINERY DEPARTMENT AT SACRIFICE PRICES.

Just to make a long story short, we offer your choice in the millinery department at Just Half Price.

- \$10.00 DOBBS HATS **\$5.00**
- \$7.50 DOBBS HATS **\$3.75**
- \$5.00 DOBBS HATS **\$2.50**

And right through. Any lady's hat in the stock **JUST ONE HALF.**

HERE IT IS: THE FIRST BIG MERCHANDISING EVENT OF 1939 . . THE ONE TH

SALE PRICES  
CASH

**50 DOZEN  
Cannon Kitchen  
Towels**  
Size 15x30, super absorbent, white with colored border.  
EACH  
**5c**

EXTRA! EXTRA! 60 dozen slightly irregulars in Mojud regular \$1.35 sheerest daintiest of two-thread stockings, 45-gauge. For January Clearance we are happy to be able to offer this 60 dozen beautiful stockings at a price that will take these quickly.

All the wanted colors, sizes 8½ to 10½.

THE PAIR  
**79c**

30 Dozen Kayser 245x Slight Irregulars in the Dainty Two-Thread \$1.25 Sheer Dainty Hose  
This is the stocking of which we have a standing order with the factory for thirty dozen every month. Many customers buy these half dozen or more pairs when they are to be had. 69¢ the pair or  
**3 PAIRS for \$2.00**

**39-INCH  
Midvale  
Unbleached  
Sheeting**  
Extra full count, nice and smooth, regular 10¢ value.  
THE YARD  
**7c**

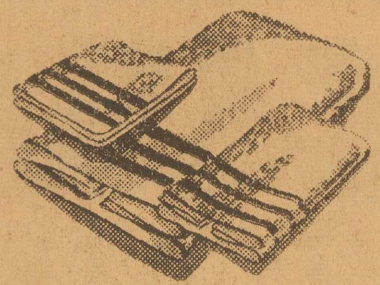
- ARTCRAFT, regular \$1.65 sheer stockings, the pair **\$1.29**
- ARTCRAFT, regular \$1.35 sheer stockings, the pair **\$1.00**
- ARTCRAFT, regular \$1.15 sheer stockings, the pair **89c**
- MOJUD, regular \$1.35 sheer stockings, the pair **\$1.00**
- MOJUD, regular \$1.00 three-thread service and sheer stockings, the pair **79c**
- KAYSER, No. 245x, regular \$1.25 sheer stockings, the pair **95c**
- KAYSER, No. 225x, dainty stockings, the pair **79c**
- VANITY FAIRS—in Longs, Shorts, and Regulars: \$1.35 values **\$1.00**
- \$1.15 values **89c**

ALL CHILDREN'S SOX—FAY STOCKINGS REDUCED FOR THIS SALE.

**3-POUND  
\$1.95  
Part Wool Double  
Blankets**  
Size 66x80  
Pastel Plaids  
THE PAIR  
**\$1.39**

STORE CLOSED  
THURSDAY

Wadley's January Clearance Features Cannon's Finest Towels at Splendid Savings.



Compare these prices with these same nationally-advertised towels elsewhere and you will appreciate more fully why Wadley's Clearance Sales are the one big bargain event of all West Texas.

- CANNON MOSAIC, one of the finest towels in the Cannon line, 24x48, regular \$1.00 values, in pastel shades, each **69c**
- FACE TOWELS to match regular 50¢ values, each **39c**
- WASH RAGS to match, regular 25¢ values, each **18c**
- CANNON'S MANHATTAN, deep tone reversible, size 24x48, one of the finest Cannon towels made, in Dubonnet, red, green, navy, brown and deep rose, regular \$1.00 values, each **69c**
- FACE TOWELS to match, regular 50¢ values, each **39c**
- WASH RAGS to match, regular 25¢ values, each **18c**
- BATH MATS to match, regular \$1.95 values, each **\$1.39**
- CANNON'S NEW MELODY, one of the most attractive towels in deep tones with contrast borders, size 22x44, regular \$1.00 value, in five deep colors, each **69c**
- FACE TOWELS to match, regular 50¢ value, each **39c**
- WASH RAGS to match, regular 25¢ values, each **18c**
- BATH MATS to match, regular \$1.95 values, each **\$1.39**
- CANNON STRAND, size 22x44, fine heavy quality, in deep tones with contrast borders, regular 69¢ values, each **43c**
- FACE TOWELS to match, regular 39¢ values, each **29c**
- WASH RAGS to match, regular 19¢ values, each **12c**
- CANNON NEW MELODY, floral pattern in pastel shades, size 24x48, regular 59¢ values, each **39c**
- FACE TOWELS to match, regular 35¢ values, each **25c**
- WASH RAGS to match, regular 15¢ values, each **10c**
- CANNON HE-MAN TOWELS, size 25x50, triple thread, one of the finest and best towels in a plain white that money can buy, a regular 69¢ value, priced special for this biggest bargain sale ever held in West Texas. Each **39c**
- CANNON PLAIN PLAIDS, size 22x44, double thread, one of the best values that we have ever offered at any time, a real towel, regular 29¢ values, each **19c**
- CANNON PLAIN WHITE, 18x36, double thread, Service towel, regular 25¢ value, each **15c**
- CANNON FINEST HUCK, with colored border, regular 25¢ value, size 17x34, fine closely woven huck, each **18c**
- A real value in a beautiful quality Plain Huck towel, size 14x26, our regular 2 for 25¢ value, priced special at, each **8c**
- 14x26 Soft Turkish Cosmetic or Shaving towel, white with colored border, each **5c**
- CANNON KITCHEN or Glass towel, size 15x30, a regular 10¢ value, priced to make this the biggest sale we have ever held, each **5c**
- CANNON ROMAN STRIPE WASH RAGS, a very special value for this January Clearance, 50 dozen to offer at, each **5c**
- CANNON PART LINEN Tulip design, Kitchen towels, a regular 25¢ item and a very outstanding value for this January Clearance, each **15c**

Misses' and Ladies' all-wool Sweaters at less than the makers' cost. About 5 dozen in all, every one a hundred per cent wool, sizes 12 years to 42, navy, brown, royal and wine, values to as much as \$1.95.  
January Clearance Sale **69c**

Notions, Fostoria, Gloves, Handkerchiefs, Underwear, Toilet Articles (except Dorothy Gray and Dorothy Perkins), Milo-Kleenex, Kotex, Gift Items, Floor Lamps, Bed Lamps, all are offered at a very splendid saving for this eight days.

STOREWIDE

Beginning  
**FRIDAY**  
JANUARY 13th  
8:30 A. M.

January Clearance Is Truly Bargain Time in  
SILKS, WOOLENS, LINENS, PRINTS,  
DRAPERIES, etc.

- Customers will come from a hundred miles or more from all over West Texas to take advantage of this one big bargain sale that is different.
- \$1.69 MARILLYN SATINS, reduced for this January Clearance to **\$1.19**
- \$1.69 BOXWOOD CREPE is reduced to the yard **\$1.19**
- \$1.39 FERNWOOD CREPE is reduced for this sale to **95c**
- \$1.39 MARILLYN CREPE, pure dye, pure silk, reduced for this sale to, the yard **95c**
- \$1.00 MARILLYN SPRING PRINTS, these just in, every piece guaranteed washable, the yard **75c**
- \$1.00 washable, pure dye crepes, the yard **69c**
- \$1.00 Dumaris MISTRAL CREPE, the yard **69c**
- 69¢ TALK OF THE TOWN PRINTS, the yard **43c**
- 79¢ TAFFETAS, extra quality, the yard **53c**
- Every yard of merchandise in this store is reduced for this January Clearance.
- 18 Pieces COTTON SUITING, every one guaranteed fast color, regular 29¢ and 35¢ values, reduced for this sale, the yard **19c**
- 13 Pieces Fast Color COTTON SUITINGS, regular 39¢ and 48¢ values, reduced for this sale, the yard **25c**
- DRESS CORDUROY, regular 79¢ value, priced to close at, the yard **45c**
- \$1.69 values in 50-inch woollens, the yard **\$1.19**
- \$1.95 values in 50-inch woollens, in both dress and coat weights, the yard **\$1.39**
- \$2.50 values in coats, plaids, and solids, reduced to the yard **\$1.69**
- A. B. C. PRINTS, the finest quality percales made, fast color, yard wide, the yard **14c**
- New Spring PRINTS, 64x64 count, guaranteed fast, yard wide, THE YARD **10c**

January Clearance of Drapery Damask, Linens, Crashes, Chintz, Cretonnes, Poplins, Sail Cloths, etc.

- 1 piece 50-inch Pure Linen, hand blocked designs, regular \$1.48 values, priced to close, the yard **79c**
- 4 pieces 50-inch Fieldcrest Printed Drapery Poplins, regular 85¢ values, the yard **63c**
- 5 pieces regular 69¢ values in Fieldcrest Printed Crash, 50 inches wide, the yard **43c**
- 5 pieces regular \$1.39 Drapery Damasks, all 50 inches wide, the yard **89c**
- 3 pieces regular \$1.48 values in 50-inch Drapery Damasks, the yard **95c**
- 48¢ Chintz and Cretonnes, the yard **35c**
- 39¢ Chintz and Cretonnes, the yard **29c**
- 29¢ Chintz and Cretonnes, the yard **22c**
- 25¢ Chintz and Cretonnes, the yard **19c**
- 19¢ Sunfast Cretonnes, the yard **15c**
- 2 pieces 36-inch Printed Terry Cloth, priced to move, was 48¢ the yard, Clearance Sale, the yard **29c**

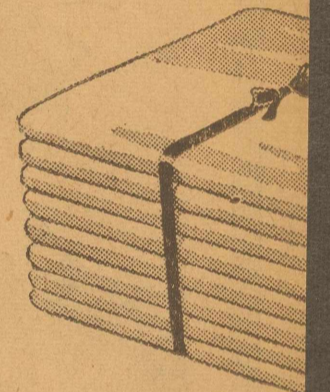


ALL WEST TEXAS LOOKS FORWARD twice each year, at the end of each season. The largest stock of dependable Dry Goods this eight days of selling, without a penny profit. NO SALE IS FINAL until the customer is satisfied. It must be a bargain, must be satisfactory, or your money will be refunded. SALES PRICES FOR CASH ONLY. No sale except for cash. Twice a year we offer this at prices to convert this into cash and we cannot afford to lose it. STORE WILL BE CLOSED ALL DAY THROUGHOUT the big sale, as a sale of this magnitude cannot be held more often. WAIT FOR THE BIG BARGAIN EVENT. The biggest sale this store has ever held, as the surplus convert this surplus into cash is stronger than ever. COME TO THIS SALE EXPECTING BARGAINS.

JANUARY SALE OF SHEETS, FROM CANNON

Buy a year's supply at these prices. You will make money.

81x99 PLOVER SHEETS made of genuine Garza bleached sheeting, regular 89¢ value, each **69c**



- 42x36 and 36x36 PLOVER PILLOW CASES, made of genuine Garza sheeting, each **17c**
- 31x99 CANNON FINE MUSLIN SHEETS, regular \$1.00 values, each **79c**
- 81x108 CANNON FINE MUSLIN SHEETS, regular \$1.19 values, each **85c**
- FINE PERCALE SHEETS and CASES  
This store sells more fine Percale Sheets and Cases than any store in West Texas. You lovers of fine Percale Sheets and Cases will be able to fill your needs at splendid savings at this January Clearance.
- 81x99 and 72x108 CANNON'S CAVALIER PERCALE SHEETS, plain hems, regular \$1.75 and \$1.85 values. **\$1.35**
- 81x108 CANNON CAVALIER PERCALE SHEETS, plain hems, regular \$1.95 values, each **\$1.43**
- 90x108 CANNON CAVALIER PERCALE SHEETS, regular \$1.95 values, plain hems, each **\$1.43**
- 42x38½ CANNON CAVALIER PERCALE CASES, plain hems, regular 39¢ value, each **29c**
- HEMSTITCHED PERCALE SHEETS and CASES  
81x99 and 72x108 hemstitched CAVALIER SHEETS, regular \$1.95 values, each **\$1.43**
- 81x108 Hemstitched CAVALIER PERCALE SHEETS, regular \$2.15 values, each **\$1.55**
- 90x108 Hemstitched CAVALIER PERCALE SHEETS, regular \$2.35 values, each **\$1.69**
- 42x38½ Hemstitched CAVALIER PERCALE CASES, regular 50¢ values, each **39c**

GARZA SHEETING AT JAN

- 10/4 Bleached Garza Sheeting, regular 35¢ value, yard **29c**
- 9/4 Bleached Garza Sheeting, regular 33¢ value, yard **27c**
- 8/4 Bleached Garza Sheeting, regular 29¢ value, yard **25c**

WE MUST CLEAR THE DECK . . OUR ENTIRE STOCK OF QUALITY FOOTWEAR

I. Miller . . Johansen . . Red Cross . . Personality . . Del-Mar . . Lady Fair and Others



- One lot of I. Miller's **\$8.75**
- One lot of I. Miller's **\$6.75**
- \$8.75 Johansen's **\$6.00**
- \$6.75 Johansen's **\$5.00**
- \$5.00 Del Mar's **\$3.95**
- \$3.95 Peter's **\$2.95**
- One Lot of Red Cross Shoes, pair **\$5.00**

LADIES' ARCH TYPE SHOES  
\$6.50 values **\$5.00**  
\$5.00 values **\$3.95**  
\$3.95 values **\$2.95**  
\$1.95 Comfort Shoes **\$1.50**

CHILDREN'S DRESS BOOTS  
Sizes 2½ to 6 **\$1.95**  
Sizes 6½ to 8 **\$2.25**  
Sizes 8½ to 11½ **\$2.95**  
Sizes 12 to 3 **\$3.95**

LADIES' SPORT OXFORDS  
\$5.00 values **\$3.95**  
\$4.00 values **\$2.95**  
\$3.00 values **\$1.95**

CHILDREN'S COWBOY BOOTS  
\$2.95 values **\$2.50**  
\$3.45 values **\$2.95**  
\$3.95 values **\$3.50**

**\$5.95 Ladies' and Misses' Riding Boots** **\$4.50**

Nothing excepted. Evening Sandals Daniel Green's Children's Tap Shoes Mrs. Day's Baby Shoes Propr-Bilt Shoes All go into this Store-wide Clearance.

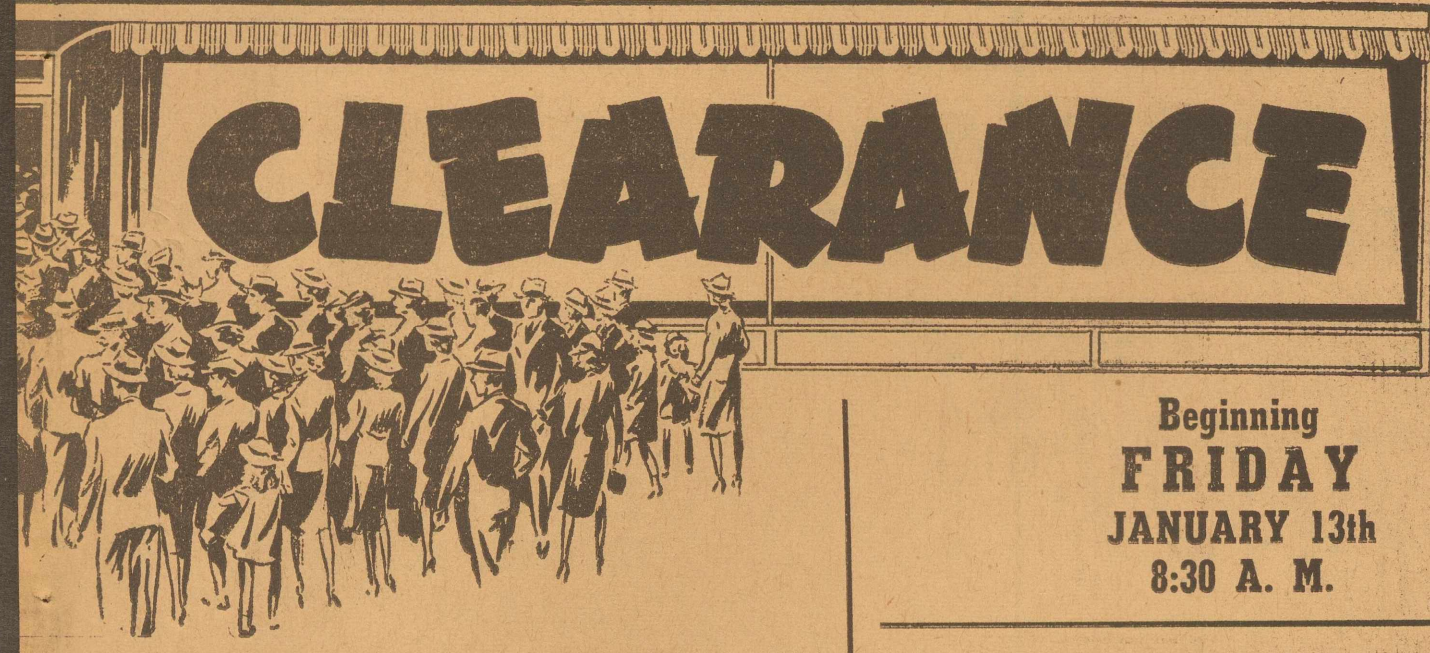
One Lot of CHILDREN'S SHOES Values to \$3.95 **\$1.00** Pr.

One Lot of Daniel Green COMFORT SHOES Values to \$5.00 **\$1.95** Pr.

Addison W

A Better Depa  
Midland,

# WHAT IS EAGERLY AWAITED BY THRIFTY SHOPPERS OVER ALL WEST TEXAS



## CLEARANCE

Beginning **FRIDAY**  
**JANUARY 13th**  
**8:30 A. M.**

### JANUARY CLEARANCE BRINGS YOU OUTSTANDING VALUES IN BEAUTIFUL BED SPREADS

- In chenilles and Bates spreads—every one fast color. 50 CHENILLE BED SPREADS, full double bed size, regular \$2.50 values, in five colors, priced special for January Clearance Sale, each **\$1.48**
- \$3.95 CHENILLE SPREADS, in double bed sizes, priced special for January Clearance, each **\$2.85**
- \$5.95 CHENILLE SPREADS in both single and double bed sizes, all white and colors, beautiful spreads at bargain prices, each **\$3.95**
- \$6.75 CHENILLE SPREADS in both single and double sizes, beautiful color combinations, each **\$4.45**
- \$8.75 CHENILLE SPREADS in double bed sizes, very outstanding values, each **\$5.35**
- \$10.00 CHENILLE BED SPREADS in beautiful colors, single sizes only, each **\$6.85**
- \$12.50 CHENILLE SPREADS are works of art, double bed sizes only, each **\$8.35**
- One only \$16.50 CHENILLE SPREAD in tan and brown combination. A real bargain in a double bed size **\$9.85**
- \$3.95 HOUSE and GARDEN SPREADS, by Bates, 86x105, each **\$2.85**
- \$3.50 BATES SPREADS, size 86x105, fast colors, each **\$2.45**
- \$2.50 CANNON SPREADS, 86x105, fast colors, each **\$1.69**
- 82x105 Jacquard fast color Bed Spreads, in rose, blue, green, and gold, each **59c**

### January Clearance Sale Brings You Bargains in VANITY FAIR, MUNSINGWEAR, KAYSER and BARBIZON UNDIES

- \$2.95 BARBIZON SLIPS **\$2.29**
- \$1.95 SLIPS **\$1.39**
- \$1.00 SLIPS **73c**
- \$2.00 Vanity Fair Undies **\$1.39**
- \$1.25 Vanity Fair, Kayser and Munsing Undies **95c**
- \$1.00 Vanity Fair, Kayser and Munsing Undies **73c**
- 50c Kayser, Munsing and Vanity Fair Undies **39c**

An unusually large selection of silk gowns and pajamas in the ready-to-wear section, go into this January Clearance.

A close out of curtains and panels. Space will not permit the itemizing of these, but we are determined to close out every pair if price will move them. 5 Beautiful Floor Lamps, every one carries the I. E. S. tag, three-way switch, a very outstanding value close out every pair if price will move them. EACH **\$5.95**

THIS BARGAIN SALE that comes just as Shoes, Ready-to-Wear, etc., going into that we have ever offered. Satisfied. Anything you buy at this sale must be refunded. can give the values that you will find at this entire stock (with two or three exceptions) charge anything at sale prices. FRSDAY. This is necessary to prepare for the "jumped up" overnight. OF ALL WEST TEXAS; and we promise you ks are far larger and the determination to er. AINS. You will not be disappointed.

### SHEETING AND PILLOW CASES AND GARZA

This January Clearance includes 60 dozen fine Percalé Sheets and Pillow Cases, plain hems and hemstitched, at real savings. 81x108 PLOVER SHEETS, made of genuine Garza bleached sheeting, regular **79c** \$1.00 values, each

CANNON LAVENLAWN, FINEST SHEETS and CASES. Cannon mills claim these are the finest percale sheets made regardless of price. They are truly beautiful. LAVENLAWN SHEETS and CASES in Hemstitched Only

- 72x108 LAVENLAWN FINEST PERCALE SHEETS, hemstitched, reg. \$2.95 values, each **\$2.19**
- 81x108 LAVENLAWN, CANNON'S FINEST PERCALE SHEETS, hemstitched, regular \$3.25 values, each **\$2.35**
- 90x109 LAVENLAWN FINEST PERCALE SHEETS, hemstitched, regular \$3.95 values, each **\$2.69**
- 42x38 1/2 LAVENLAWN CASES, hemstitched, regular 75c values, each **53c**

Our stock of percale sheets and cases is five times as large as ever went into a clearance sale. CANNON FINE MUSLIN SHEETS and CASES In Colors

Colored sheets and cases are very popular and the prices are only slightly higher than the plain white. Every Cannon product is fast color, of course.

- Peach, Green, Blue, Rose—Cases to Match
- 72x108 Colored CANNON SHEETS, regular \$1.35 values priced at, each **\$1.00**
- 81x108 CANNON COLORED SHEETS, regular \$1.48 values priced at, each **\$1.19**
- 42x36 CANNON COLORED PILLOW CASES, regular 35c values, each **28c**

### RY. CLEARANCE PRICES

- 10/4 Unbleached Garza Sheeting, regular 33c value, yard **27c**
- 9/4 Unbleached Garza Sheeting, regular 29c value, yard **25c**
- 8/4 Unbleached Garza Sheeting, regular 27c value, yard **23c**

### REDUCED TO A FRACTION OF THEIR FORMER PRICES FOR EIGHT SELLING DAYS

- One Lot of Ladies' and Misses' FOOTWEAR Values to \$6.75 **\$1.95 Pr.**
- One Lot of Men's Florsheim OXFORDS \$8.75 Values **\$5.00 Pr.**

# Wadley Co.

ent Store  
kas

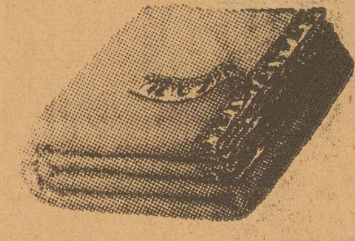
### Florsheim . . Friendly . . Fortune . . Carter's . . Peter's—All Included

- \$10.00 Florsheims **\$8.85**
- \$8.75 Florsheim's **\$7.85**
- \$5.00 Friendlys **\$3.95**
- \$4.85 Carter's **\$3.85**
- \$3.95 Peter's **\$2.95**
- \$7.50 Field Boots **\$6.00**

- BOYS' WEATHERBIRD OXFORDS: \$3.95 values \$3.50, \$3.45 values \$2.95, \$2.95 values \$2.50, \$1.95 values \$1.50
- MEN'S HOUSE SHOES: \$2.95 values \$2.50, \$1.95 values \$1.50, \$1.25 values \$1.00
- MEN'S WORK SHOES: \$6.95 values \$5.50, \$3.95 values \$3.45, \$3.45 values \$2.95
- BOY SCOUT OXFORDS: Sizes 2 1/2 to 6 \$4.00, Sizes 6 to 8 \$5.00

All Children's House Shoes Reduced

### MORE THAN 300 BLANKETS GO INTO THIS JANUARY CLEARANCE



- WITH WADLEY'S GUARANTEE THAT EVERY ONE OF THESE IS A REAL BARGAIN
- KENWOODS, ESMONDS, CHATHAMS, standard quality merchandise, priced to show a saving of from 25% to as much as 35%.
- KENWOOD FAMOUS and CLASSIC, 72x90, finest all wool blankets, regular \$13.75 values, about a dozen of these left, each **\$9.90**
- KENWOOD FAMOUS, size 66x90, for twin beds, five of these on hand as we write this adv. **\$8.75**
- Regular \$11.75 values, each **\$8.75**
- \$10.00 KENWOOD STANDARDS, size 72x84, about eight of these left, each **\$7.65**
- \$6.95 KENWOOD RELIANCE, size 72x84, only four of these left, each **\$4.95**
- \$12.50 ESMOND, Hudson Bay type, size 72x84, weighs 4 1/2 pounds, white with bright colored stripe borders, 100% wool, a very fine blanket, each **\$7.95**
- CHATHAM, 100% Wool, size 70x80 in pastel solids, satin bound, regular \$6.85 values, each **\$4.35**
- CHATHAM, 25% Wool, size 70x80, solid pastel shades and deep tones, taffeta bound, regular \$3.50 blankets and a very splendid value, priced special for this sale, each **\$2.45**
- 70x80 MELROSE Double Blankets, 25% Wool, taffeta bound ends, weighs 5 pounds, in pastel solids and deep tones, one of the best values in a good service blanket we have ever offered, priced special for this clearance, the pair **\$3.95**
- 70x80 Double JACQUARD COTTON BLANKET, weighs 5 1/2 pounds, one of the most wonderful values in a good cotton blanket we have ever offered, the pair **\$2.95**
- 66x80 JACQUARD SINGLE BLANKETS, a very splendid Fieldcrest blanket, five dark designs, regular \$1.95 value, each **\$1.39**
- 72x84 PART WOOL PLAID BLANKETS, regular \$2.95 the pair, weighs 3 1/2 pounds, sateen bound, each **\$1.95**
- 66x80 DOUBLE PART WOOL BLANKETS in pastel plaids, sateen bound, weighs 3 pounds to the pair, a very outstanding value, at this January Clearance, the pair **\$1.39**
- 66x80 INDIAN COTTON JACQUARD BLANKETS, regular \$1.39 value, each **95c**
- WOOL ARMY BLANKETS or camp blankets, in regulation O. D. khaki and grey, size 66x84, each **\$2.19**
- \$6.85 FRINGED ALL-WOOL CAR ROBES, in attractive Scotch plaids, each **\$4.35**
- \$4.50 FRINGED CAR ROBES, all-wool in Scotch plaids, each **\$3.45**
- \$10.00 SATEEN COVERED DOWN COMFORTS, the same nice full, fluffy, shed proof comfort that we have sold for years (18 just arrived), each **\$7.85**
- \$15.00 TAFFETA DOWN COMFORTS, the same superior quality, strictly sanitary and shed proof. Only four of these left, each **\$9.95**
- \$3.50 Sateen pure cotton filled Comforts reduced to **\$2.48**
- \$2.50 cotton filled Silkoline covered Comforts, reduced to **\$1.83**

### THROW RUGS BATHROOM RUGS—BATHROOM SETS

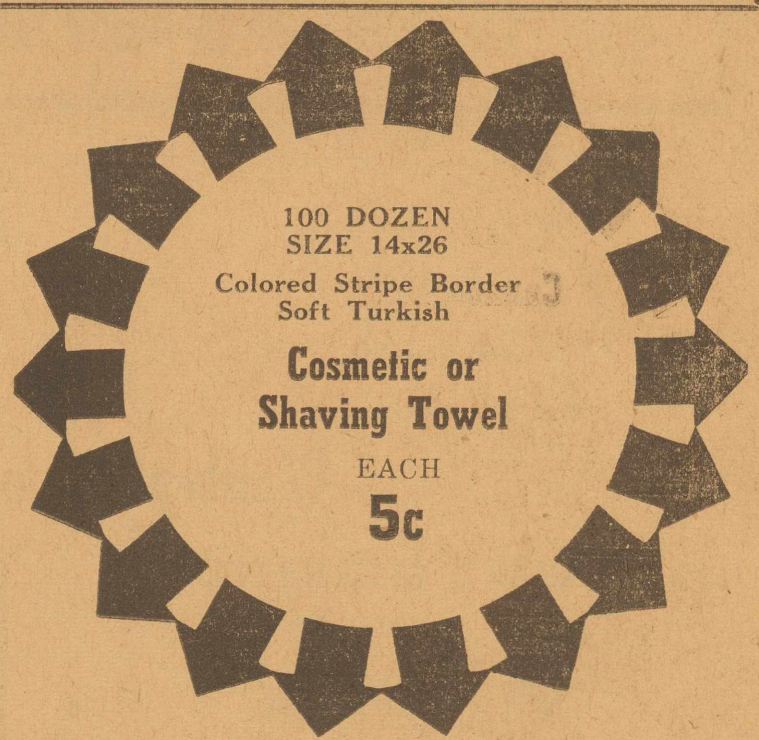
- One lot imported Belgium Throw Rugs, each **95c**
- One lot regular \$1.95 bathroom sets, mostly in red, the set **\$1.25**
- One lot, regular \$3.50 hand-made fast color bathroom rugs, oval, good size, each **\$1.95**
- Regular \$3.50 bathroom sets, all colors, set **\$1.95**

### BRIDGE AND BREAKFAST SETS AT RADICAL REDUCTIONS

- Three regular \$2.95 rayon damask Breakfast Sets, size 52x52, with six napkins, the set **\$1.95**
- Eight hand-made Bridge Sets, regular \$2.95 values at, the set **\$1.95**
- Six hand-made Bridge Sets, regular \$4.50 and \$4.85 values, the set **\$2.95**

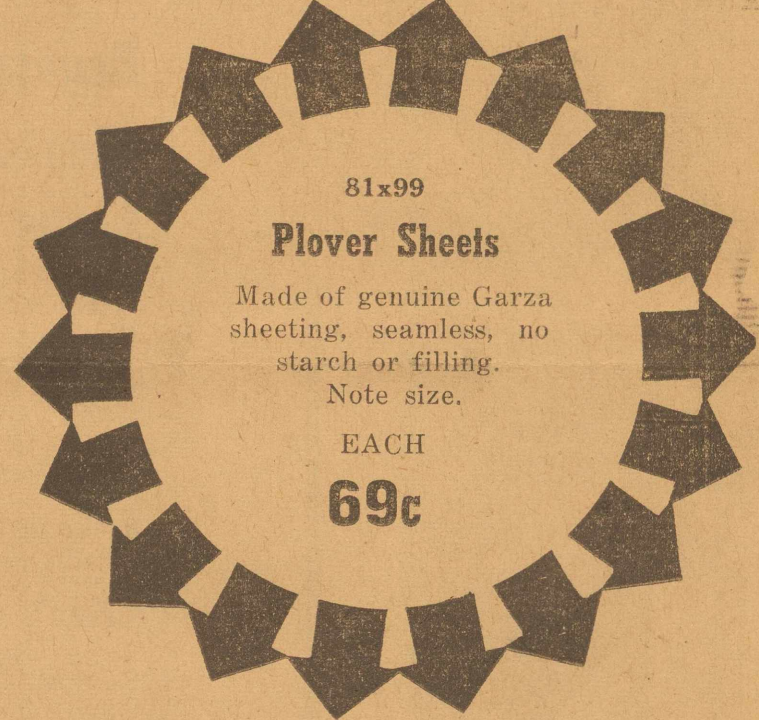
Space does not permit itemizing others of more than fifty in addition to the above, but every one is radically reduced and you will not be disappointed.

### SALE PRICES CASH



Truly, You Lovers of Beautiful Linens Welcome January Clearance, for bargains are galore in the linen section.

- One \$65.00 hand-made Banquet Set, every stitch hand-made, in one of the most beautiful sets we have ever offered. Cloth is 72x126 inches, with 12 large 20-inch napkins. Some one is truly going to get a real January Clearance bargain at, the 13-piece set **\$36.75**
- One \$35.00 nine-piece hand-made Service for Eight, a gorgeous piece of work, is offered to the first lucky customer at, the set **\$21.95**
- One \$39.00 13-piece hand-made Dinner Set, cloth size 72x90 with 12 large napkins, a real bargain at **\$26.75**



One \$25.00 finest Irish Linen Double Damask Banquet Set, cloth 70x122 inches, with 12 large 20-inch napkins, one of the most beautiful pure Irish Double Damask sets we have ever seen, the set **\$16.95**

- One \$18.50 hand-made 17-piece set at **\$12.90**
- Two Scranton Forest lace covers, regular \$4.50 values **\$2.95**
- Two Scranton Hostess lace covers, regular \$3.95, reduced to **\$2.65**
- One Scranton Princess Royal, regular \$10.00 lace cover, size 72x108 **\$6.95**
- Two Scranton \$7.50 Imperial lace covers, reduced to, each **\$4.95**
- Four 9-piece hand-blocked linen sets, regular \$6.75 values at, each **\$4.95**
- Three pure linen 17-piece sets, regular \$7.50 values, the set **\$3.95**
- Three regular \$6.95 nine-piece sets, cloth 63x80, with eight napkins, the set **\$4.95**



STORE CLOSED THURSDAY

DEPENDABLE

# WADLEY'S ANNUAL JANUARY

## STOREWIDE CLEARANCE



Beginning  
**FRIDAY**  
JANUARY 13th  
8:30 A. M.

Beginning  
**FRIDAY**  
JANUARY 13th  
8:30 A. M.

Wadley's January Clearance Sale Is One Sale That the Men Take Advantage of

**JANUARY CLEARANCE**  
of  
**MEN'S CLOTHING**

- Hart Schaffner and Marx
- Stein-Bloch
- Style-Mart

As a usual thing, the Men Folks do not pay a great deal of attention to sales, but they have learned that Wadley's semi-annual Clearance Sales are straight-forward, honest price-saving opportunities that come just twice a year.

That they will find a saving of from 25% to as much as 50% on standard, nationally-known and advertised lines of merchandise.

**Our Stock Is by Far Larger Than Ever Went Into a Clearance Sale Before**

**Store Will Be Closed All Day Thursday**

A sale such as this cannot be "jumped up" overnight; it takes time to prepare. There will be twenty thousand yellow tags and pin tickets showing exactly the price. And there is one thing we want you to know—**ANYTHING YOU BUY AT THIS SALE MUST BE SATISFACTORY OR WE WANT IT BACK.** No sale is final here until the customer is satisfied.

**A BIT PERSONAL**

I have been selling merchandise in Midland for more than 45 years. During that time I have never tried to sell "cheap" merchandise but have always tried to give honest value for the price paid.

Have conducted many, many clearance sales, etc., and it is with pride that I say that these have always been honest sales. Anything you buy at Wadley's Clearance Sales must be a bargain, must be satisfactory, or we ask you to bring it back, your money will be refunded cheerfully.

We, as a store, try to serve you in the very best way we know. We have made mistakes, for which we are always anxious to make amends, but we do believe that there isn't a store anywhere that tries harder to serve its customers in a more satisfactory manner than this one.

The entire sales force wishes you a Happy and Prosperous New Year.

**ADDISON WADLEY**

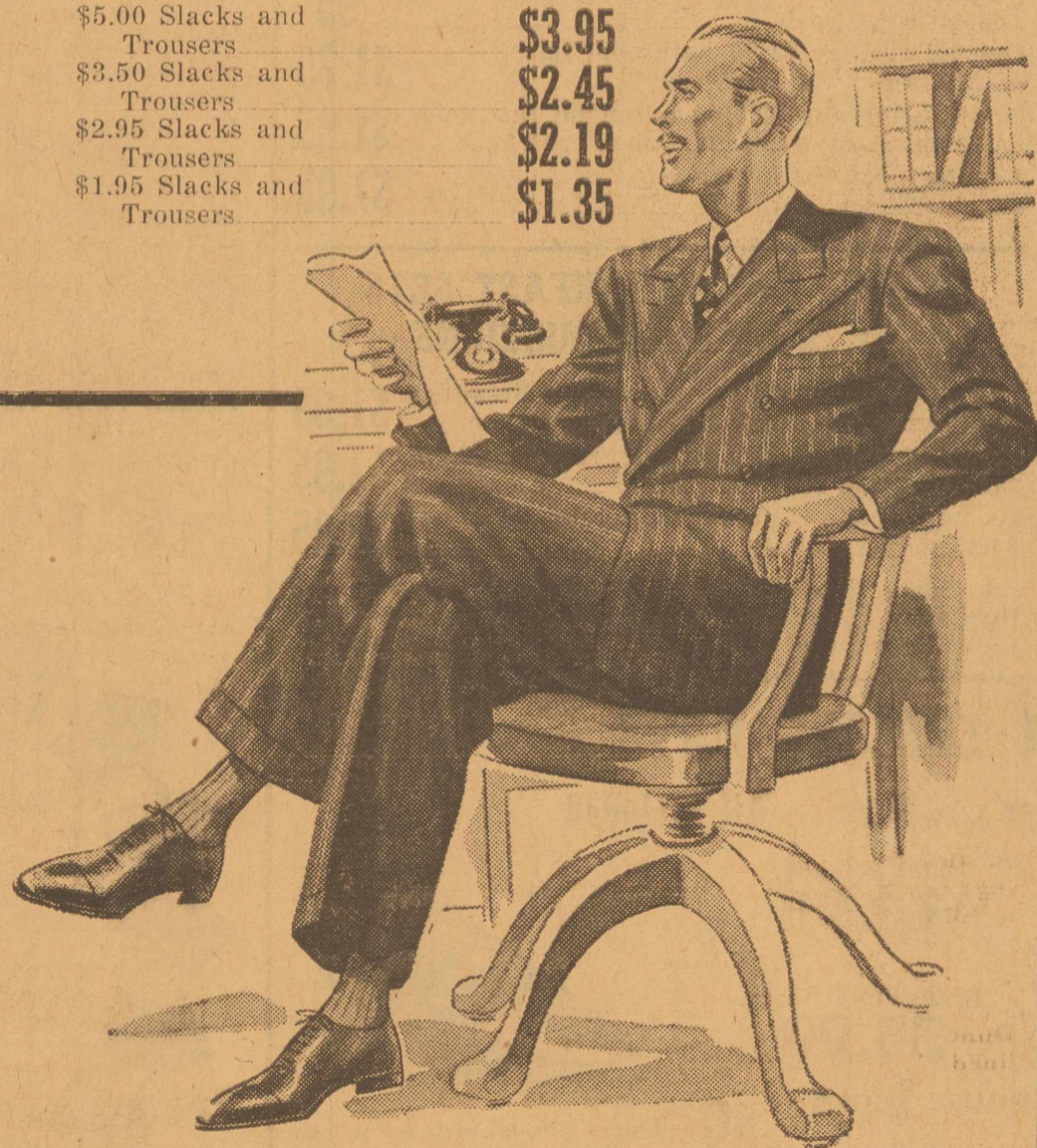
### Here is a chart of our stock of Fall Clothing that goes into this sale---

The clothing stock is almost twice as large as ever went into a Clearance Sale before, and you are assured of a larger selection.

Here is a size scale of the Men's Suits that go into this sale. Over a hundred of the best that money will buy.

<b>Regulars</b>	1 size 34; 2 size 35; 4 size 36; 19 size 37; 21 size 38; 23 size 39; 11 size 40; 5 size 42; 1 size 41; 1 size 44; 1 size 48.
<b>Shorts</b>	2 size 36; 2 size 37; 1 size 38; 1 size 39; 2 size 40; 1 size 42; 1 size 44.
<b>Longs</b>	1 size 37; 1 size 39; 1 size 40; 2 size 44.

\$24.50 STYLE MART SUITS, reduced to	<b>\$16.75</b>
Extra Pants—\$3.95	
\$29.50 STYLE MART SUITS, reduced to	<b>\$19.95</b>
Extra Pants—\$4.35	
\$35.00 HART SCHAFFNER & MARX SUITS, reduced to	<b>\$23.75</b>
Extra Pants—\$4.95	
\$50.00 STEIN-BLOCH SUITS, reduced to	<b>\$32.50</b>
<b>Men's and Young Men's SLACKS &amp; TROUSERS</b>	
Are all reduced for this January Clearance Sale	
\$10.00 All-Wool Gabardine Slacks have been reduced to	<b>\$6.75</b>
\$7.50 Slacks and Trousers have been reduced to	<b>\$5.35</b>
\$5.00 Slacks and Trousers	<b>\$3.95</b>
\$3.50 Slacks and Trousers	<b>\$2.45</b>
\$2.95 Slacks and Trousers	<b>\$2.19</b>
\$1.95 Slacks and Trousers	<b>\$1.35</b>



### YES SIR! DOBBS HATS ARE ON SALE

\$10.00 Dobbs Hats, reduced to	<b>\$7.35</b>
\$7.50 Dobbs Hats reduced to	<b>\$4.95</b>
\$5.00 Dobbs Hats reduced to	<b>\$3.95</b>
\$3.95 Berg Hats reduced to	<b>\$3.15</b>

INTERWOVEN SOX, HARTMAN LUGGAGE, BELBER LUGGAGE, YARDLEY ITEMS, HICKOK BELTS, CHENEY TIES, BOTANY TIES, VAL-A-PACS—ALL ON SALE AT SAVINGS THAT HAVE MADE THIS THE BIGGEST SALE EVENT IN ALL WEST TEXAS.

EXTRA! EXTRA! When Marshall Field & Co. went out of the handkerchief importing we bought a hundred dozen regular 25¢ men's colored border handkerchiefs. About half of these have been sold at 25¢ each. To make this a real Clearance Bargain and to close these, we offer them at, **10¢ EACH**

ALL OTHER HANDKERCHIEFS REDUCED

**REMEMBER:**

That every item in this stock, with two exceptions (Stetson and Borsalino Hats) is on sale at prices that show a saving of from 25% to 35% or more. Where else can your money earn any such interest?

### MEN'S OVERCOATS

Stein-Bloch, Hart, Schaffner & Marx and Stralbury Top Coats and Overcoats at savings up to as much as 35%.

Where else can you make an investment that will net you as much in savings and satisfaction?

Here is the stock: 1—34; 2—35; 5—36; 5—37; 7—38; 5—39; 3—40; 1—42; 1—46.

\$20.00 STRATBURY, Genuine Llama-Cuna, reduced for this January Clearance to	<b>\$12.95</b>
\$40.00 HART SCHAFFNER AND MARX Rarepack Coats, reduced to	<b>\$26.75</b>
\$45.00 HART SCHAFFNER & MARX, genuine Rarepack Coats, reduced to	<b>\$29.95</b>
\$45.00 STEIN-BLOCH, genuine Alpine Down Coats, reduced to	<b>\$29.95</b>

### YOUTHS' and BOYS' OVERCOATS

All go into this January Clearance at really worthwhile savings.

Here are the sizes in stock: 2—2; 1—3; 2—4; 4—5; 2—6; 2—7; 1—8; 2—13; 2—14; 1—16; 1—17.

\$6.85 COATS, reduced to	<b>\$4.35</b>
\$7.50 COATS, reduced to	<b>\$4.95</b>
\$8.50 COATS, reduced to	<b>\$5.35</b>
\$15.00 COATS, reduced to	<b>\$9.35</b>



### GLOVER and UNIVERSAL PAJAMAS

AT SAVINGS WORTH YOUR WHILE AT THIS JANUARY CLEARANCE. Stock is double ever to go into a Clearance Sale before.

\$10.00 PAJAMAS, reduced to	<b>\$6.95</b>
\$8.75 PAJAMAS, reduced to	<b>\$5.65</b>
\$5.95 PAJAMAS, reduced to	<b>\$4.35</b>
\$5.00 PAJAMAS, reduced to	<b>\$3.95</b>
\$4.50 PAJAMAS, reduced to	<b>\$3.35</b>
\$3.95 PAJAMAS, reduced to	<b>\$2.95</b>
\$2.95 PAJAMAS, reduced to	<b>\$2.19</b>
\$1.95 PAJAMAS, reduced to	<b>\$1.39</b>
BOYS' \$1.50 Pajamas	<b>\$1.19</b>
BOYS' \$1.00 Pajamas	<b>75¢</b>

### Field & Stream LEATHER COATS & JACKETS

ARE THE BEST, and never at any time has stock been so large as goes into this Clearance Sale.

\$25.00 Field & Stream Finest Coats	<b>\$16.75</b>
\$20.00 Field & Stream Coats	<b>\$13.75</b>
\$16.50 and \$17.50 Field & Stream Coats	<b>\$12.35</b>
\$15.00 Field & Stream Leather Coats	<b>\$10.75</b>
\$13.50 Field & Stream Leather Coats	<b>\$9.65</b>
\$12.50 Field & Stream Leather Coats	<b>\$8.75</b>
\$9.85 Test Leather Coats	<b>\$6.35</b>
\$7.50 Test Leather Coats	<b>\$4.95</b>
\$7.95 and \$8.50 All-Wool Jackets	<b>\$5.35</b>
\$6.50 All-Wool Jackets and Mackinaws	<b>\$4.65</b>
\$4.85 All-Wool Jackets and Mackinaws	<b>\$3.65</b>
\$2.95 Boys' Jackets	<b>\$2.35</b>

### Many Men Stock Up for the Year on ARROW SHIRTS at Clearance Sale

And they make a saving of from 20% to 35%. The selection you will find this year is far larger than ever went into a Clearance Sale.



THESE PRICES INCLUDE WHITE

\$3.50 ARROW SHIRTS on sale for these eight days at	<b>\$2.45</b>
\$2.50 ARROW SHIRTS, reduced for this January Clearance to	<b>\$1.83</b>
\$2.25 Arrow Shirts reduced to	<b>\$1.69</b>
\$1.95 Arrow Shirts reduced to	<b>\$1.48</b>

\$1.35 and \$1.65 MEN'S DRESS SHIRTS

One of the biggest values offered in this January Clearance Sale is about twenty dozen men's madras and broadcloth shirts, sizes 14 to 17, regularly priced at \$1.35 and \$1.65, that we offer at, each **95¢**

<b>JANUARY CLEARANCE OF BOYS' SHIRTS</b>	
\$1.50 Boys' Shirts reduced to	<b>\$1.19</b>
\$1.00 Boys' Shirts reduced to	<b>75¢</b>
85¢ Boys' Shirts reduced to	<b>59¢</b>
A few 50¢ Sport Shirts at	<b>39¢</b>

## Addison Wadley Co.

A Better Department Store

Midland, Texas

DEPENDABLE

# Many Outstanding Values in Our SEMI-ANNUAL APPRECIATION FURNITURE SALE

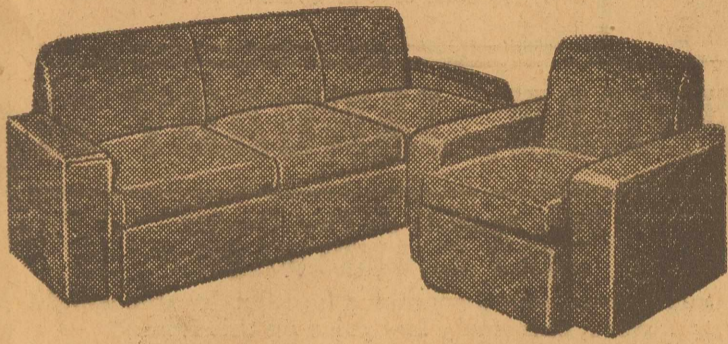
Which Starts Friday, January 13  
And Continues Through January 21

**THIS SALE IS FOR YOU!**  
Our Friends and Patrons  
All Over West Texas!  
DON'T MISS IT!

As an expression of our gratitude for the splendid business extended us in the past, we dedicate the many outstanding values offered during this sale to our many patrons—presenting a great selection of quality and seasonable merchandise at real savings. Take advantage of this opportunity and buy now your immediate and future needs in house furnishings, hardware, sporting goods and many other kindred items. Bargains for all throughout our store.

Every piece of furniture on our floors has a slashed price tag for this sale event. You couldn't find a more advantageous time to buy quality furniture for your home.

## LIVING ROOM SUITES



This 2-piece living room suite has a fine grade of velour upholstery in blue, burgundy, rust, green and brown. A suite built for service as well as for style. Regularly priced at \$79.50, marked down to clear at—

**\$64.50**

One of the finest tailored 2-piece living room suites of solid walnut frame, with beautiful antique velvet upholstery of the highest grade. A \$234.50 suite offered for

**\$159.50**

A 2-piece living room suite in an excellent grade of crushed mohair in blue and brown; no better suite can be bought at the price. A \$169.50 value for

**\$129.50**

A solid maple 2-piece suite in a high grade of upholstering and properly tailored; offered at a price that makes it a bargain for anyone. A \$105.50 value offered for

**\$82.50**

## SECRETARIES

A solid mahogany secretary desk; true in all its lines of the Winthrop design; no finer desk made; a \$109.50 value for

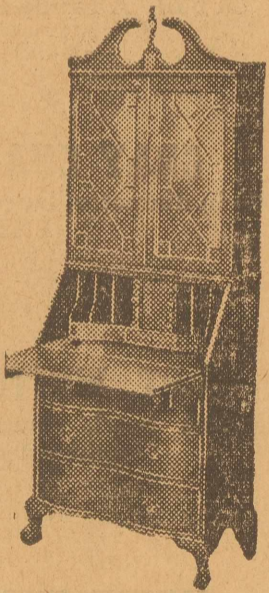
**\$82.75**

Another of the finer qualities of the Winthrop desk in solid mahogany; our appreciation has marked it down from \$74.50 to

**\$55.25**

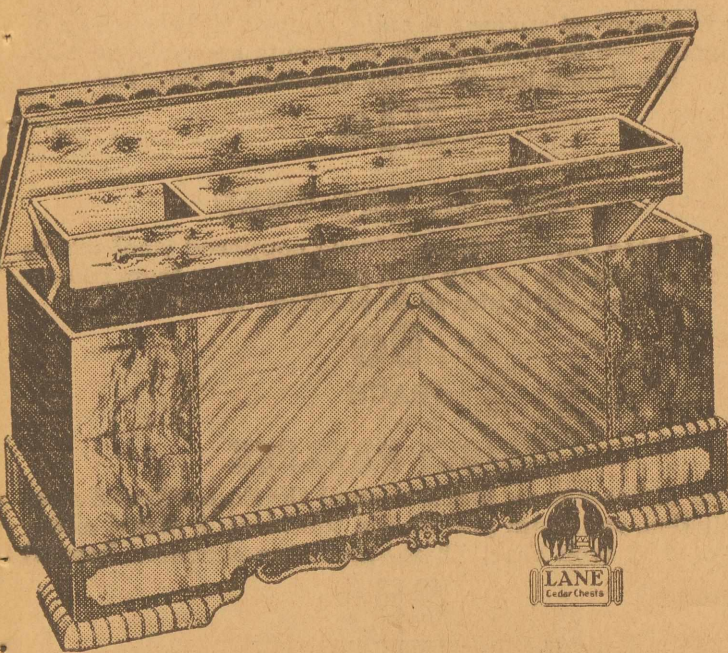
The splendid lines of this Winthrop design secretary desk is exemplified in this offer; a mahogany veneer that sold for \$48.50, marked down to

**\$36.25**



The famous line of Lane Cedar Chests in that well-known quality of cedar and construction are offered for clearance during this sale. A \$35.00 value offered for

**\$26.95**



## CARD TABLES

A group of substantial card tables; \$1.50 and \$1.75 values; take them at

**98c**

## MIRRORS

A large assortment of good round mirrors; 24-inch; regular price \$3.95; our appreciation calls for a sale price of

**\$2.75**

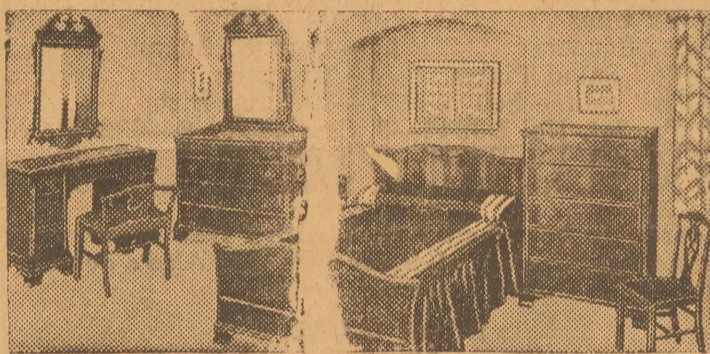
A group of mirrors framed to sit on the chest, or nice to use while shaving; \$1.50 value at

**\$1.00**

Mirrors for the closet doors; size 10x46 inches; regularly priced at \$1.50—now

**\$1.00**

## BEDROOM SUITES



A 4-piece blond maple bedroom suite that is extremely modern; solid wood; regular price is \$154.75. Our appreciation marks it down to

**\$117.25**

A solid walnut 4-piece bedroom suite in the highest quality of woods and workmanship; colonial design. It's a \$169.50 value marked down to

**\$124.95**

A colonial design solid walnut dresser suite with large roomy chest and large drawers in dresser. It's retail price is \$126.50, but you can buy it now for

**\$94.50**

You will have to see the many bedroom suites in the bleached blond and dark finishes of maple and walnut to appreciate their real values.

Another bedroom suite with large round mirror; nice heavy poster bed; the regular price is \$39.95; it can be yours for only

**\$32.50**

## RUGS

9x12 wool Axminster Rugs; highest quality and good colors; regular \$37.50 values

**\$34.50**

A large assortment of heavy twist weave rugs, size 27x52 inches; priced from \$6.50 to \$9.00; to go at

**\$4.75**

9x12 felt base rugs in many new patterns; priced up to \$7.95 to close out at

**\$4.75**

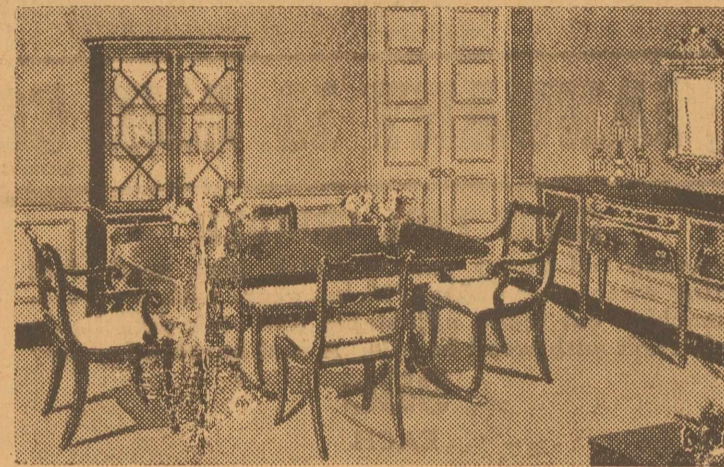
7½x9 felt base rugs in the quality and bright colors you will like; priced up to \$4.95 for only

**\$3.75**

6x9 felt base rugs for those small rooms and the kitchen; priced up to \$4.25 for

**\$3.25**

## DINING ROOM SUITES



A Duncan Phyfe dining room suite; nicely upholstered chairs; 8 pieces; was priced at \$120.00, but our appreciation brings it down to

**\$89.50**

6-piece solid oak dinette suites in the light oak finish; very attractive; a \$45.50 value reduced to

**\$36.50**

5-piece dinette in chrome and bakelite; natural finishes; something different and new; a \$66.50 value reduced to

**\$49.75**

We have many of these dinettes in the different colors and finishes; also, the maples and Swedish moderns; others in black and white, red and white; they all go in this sale at greatly reduced prices.

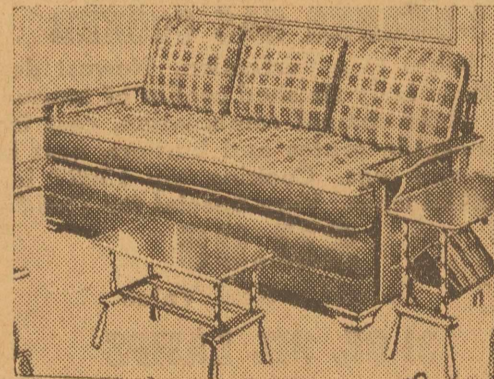
A junior dining suite; walnut finish; slightly shop worn; a \$72.50 suite marked down to

**\$39.50**

10-piece dining room suite; slightly used, but well cared for; it sold new for \$345.00, but you can take it for

**\$50.00**

## STUDIO COUCHES



Studio couches in the large roomy type; heavy grade velour upholstering; large bedding compartment; a \$57.75 value offered for

**\$49.75**

A studio couch in a fine grade of tapestry upholstering; the pillow type; makes twin beds; blue or brown; a \$39.75 value for

**\$34.75**

Duncan Phyfe sofa; high grade damask cover; neatly lined and tailored; an \$89.50 value for

**\$62.25**

## CHAIRS

Barrel Back Chairs in gold and silver damask; super sagless construction; down cushions; a \$54.50 value for

**\$39.50**



RECLINING LOUNGE CHAIR & OTTOMAN In a large variety of colors; finest velours; regularly priced at \$34.50, marked down to

**\$30.50**

LOUNGE CHAIR & OTTOMAN A correct posture chair; the highest grade of workmanship and upholstering; priced at \$42.50; appreciation brings it down to

**\$29.50**

## PLATFORM ROCKERS

In fine grade covers; the chair with all the comfort that can be expected of any chair. Our \$23.50 value has been reduced to

**\$17.95**

Our \$12.50 platform rocker is now

**\$10.50**

## TABLES

Drum top tables in walnut finish; just the table for the reading lamp; regular price is \$5.25, marked down to

**\$3.95**

Solid walnut comodes; ideal for side of bed and lamp; regular price \$12.50; appreciation takes it down to

**\$9.50**

Pie crust tables, tier tables, radio tables and magazine racks all go into this sale, together with end table and occasional tables.

Solid mahogany cocktail and solid walnut top coffee tables with removable trays; regular \$8.50 values reduced to

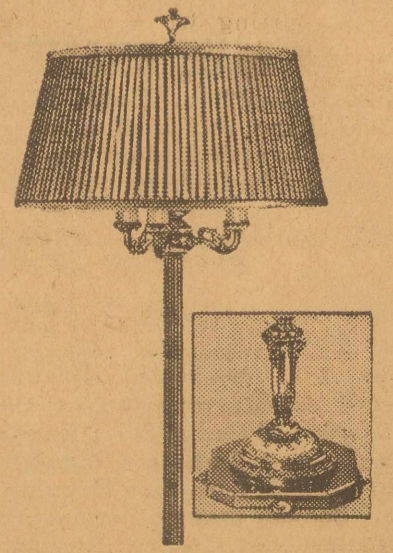
**\$6.95**

Solid walnut humidors; cedar and copper lined; bleached and dark finishes; regular price \$19.75 marked down to

**\$15.75**

## LAMPS

Many Fine  
FLOOR LAMPS  
TABLE LAMPS  
BED LAMPS  
and  
VANITY  
LAMP SETS



Go into this Appreciation Sale. Watch for the sale tags on these lamps AND SAVE!

**MIDLAND**  
HARDWARE & FURNITURE CO.  
MIDLAND, TEXAS

# OUR SEMI-ANNUAL APPROPRIATION

## HARDWARE

# SAVE!

# SALE

**8 DAYS**  
of  
**REAL BARGAINS**  
•  
**THESE LOW PRICES**  
**MADE POSSIBLE**  
**JUST FOR YOU**

**EVENT STARTS FRIDAY, JANUARY 13 AND CONTINUES THROUGH SATURDAY, JANUARY 21**

**KITCHEN TOOLS**  
Resupply your kitchen now at these special low prices. Your choice of the following items at only

**8c**  
EACH

- STRAINERS
- CAKE TURNERS
- SPOONS
- POTATO MASHERS
- APPLE CORERS
- LADLES
- MEASURING SCOOPS

Also, many other kitchen necessities at only 8¢ each.

**GAS HEATERS**

We have a good supply of heaters in a wide price range that will go into this sale. Look at the price tags for

**GREAT REDUCTIONS**

**"RADIO" FLOUR SIFTER**

Capacity 5 cups. Size: 6 inches high, 4 inches diameter. Two wire agitators, tin cup style handle, rolled top and bottom and heavily ridged. 14 mesh bright galvanized sieze.

For Only  
**9c**  
EACH

**5½-FT. IRON CORD SET**

Switchless iron cord set, strong flexible cord, bakelite plugs. Cord insulated with good quality material. A big value. Only

**19c**  
EACH

**ADJUSTABLE HACK SAW FRAME**

WITH BLADE

Size 14¼ in., steel frame, cadmium plated, rust proof, good quality blade. Get yours now at this special low price. Only

**25c**  
EACH

**4-Qt. Size "Prize" Pan POP CORN POPPER**

10-in. diameter, round sheet steel body, long metal sliding handle, designed for use over a stove, electric unit or open fire. Lid opened by operating a slide at end of handle. A big value on this popular corn popper.

**25c**  
EACH

**FURNITURE POLISH**

8-oz. Size 9¢ Each—32-oz. Size 19¢ Each  
A high quality polish made of finest oils, long recognized for their effectiveness in preserving and polishing highly finished wood surfaces.

**BLUE ENAMEL ROASTER**

Size 18¼x12 in. Holds 12-lb. turkey or 15-lb. roast. Oval shape, self basting cover, heavy steel base, raised bottom to prevent burning, large grooves for drippings, 2 welded handles on both top and bottom, close fitting rim grooves.—SPECIAL

**98c**  
EACH

**EXTRA SPECIAL VALUE**

Regular \$1.25 O'Cedar Polish 75¢  
O'Cedar Wax Requires No Rubbing  
1-qt. Size Regular 85¢ Now 65¢  
1-pt. Size Regular 50¢ Now 29¢  
See our many other savings in the polish and oil department.

**HAND TOOL GRINDER**

Attractive red glossy enamel finish, high grade fast cutting wheel, size 4x/ax5/16 in., gears with accurately machine cut teeth, adjustable tool rest, detachable steel crank with wood handle. A real bargain for only

**98c**  
EACH

SPRINGFIELD

**SINGLE SHOT, BOLT ACTION RIFLE**

22 Caliber. Length 37 Inches Overall. Take down 22 in. tapered round barrel—for 22 long rifle, 22 long or 22 short, high speed or regular cartridges. Positive ejector and double strength extractor. Rebounding safety lock, walnut finish pistol grip stock. Blade front sight sporting rear sight with elevation adjustment. Very Special for Only

**\$3.98**

MILLER'S—FALLS 70th Anniversary Special

**HAND DRILL**

Regular \$2.00 value. Complete with 8 drill points 1/16 in. to 11/64 in. diameter. Polished nickel plated steel frame, large hollow screw cap end handle. Side end and crank handle hardwood, mahogany lacquer finish. 3½-in. diameter gear, bright red, high gloss lacquer. Gear ratio approximately 4 to 1. All steel chuck. A

**\$1.25**  
EACH

SALE OPENING SPECIAL

**The Famous Keystone FOOD CHOPPER**

Big family size. A popular and most efficient chopper that fulfills your requirements. Made of high grade materials throughout. Four cutting blades; very fine to coarse. Large, wide handle and secure table grip. Hurry and get yours.

**89c**  
EACH

While They Last

Look at This Exceptional Bargain

**3-BURNER GAS COOKER**

Cooks and bakes to a perfection. Newest design, an efficient, attractively finished cooker of unusual merit. Black and white enamel combination, cast iron oven bottom, removable grates and burners, cast iron top, door frame and legs. Cooking top 13x27 in.—Oven 16x12x11 inches. Very Special for This Sale

**\$11.95**

Indeed a Real Value

**31-OZ. OIL LAMPS**

Large size, complete with burner, wick and chimney. One-piece crystal glass base with insert type collar, plain top chimney of good grade glass, strongly constructed burner. One-inch good quality wick, woven from high grade cotton. Exceptional value on this lamp. Extra parts for above lamp—31-oz. lamp fount, 39¢ each, high quality crystal glass, 1-piece; Plain Top Chimney, 9¢, high grade glass, good value; Lamp Burner, 9¢ each, throws a bright white light, a strongly made burner; 1-Inch Lamp Wick, 5 for 5¢, good quality cotton wick at exceptional savings.

**49c**  
EACH

**VICTOR MOUSE TRAPS**

Wood base, metal trigger, strong steel spring, positive action bait pedal. 5 for Only

**10c**

EXCEPTIONAL VALUE IN  
**The Popular "Noritake" CHINA DINNER SETS**

Composition of 63 Pc. Sets

- 8—10" Dinner Plates
- 8—6½" Bread & Butter Plates
- 8—Fruits
- 8—Tea Cups
- 8—Tea Saucers
- 8—7" Salad Plates
- 8—Coupe Spoons
- 1—14" Platter
- 1—11" Baker
- 1—Open Casserole
- 1—Sugar with cover
- 1—Creamer
- 1—Gravy Boat

Composition of 93 Pc. Sets

- 12—10" Dinner Plates
- 12—6½" Bread and Butter Plates
- 12—5¼" Fruits
- 12—Tea Cups
- 12—Tea Saucers
- 12—7¼" Salad Plates
- 12—7½" Coupe Soups
- 1—12" Platter
- 1—16" Platter
- 1—Gravy Boat
- 1—11" Baker
- 1—Covered Sugar
- 1—Creamer
- 1—Covered Dish
- 63 Pc. Set, No. D8244—8, Service for 8—\$22.50
- 63 Pc. Set, No. D8220—8, Service for 8—\$22.50
- 63 Pc. Set, No. J1241—8, Service for 8—\$22.50

It's easier to be a better cook with Pyrex ovenware. Imagine this large pie plate for only 19¢. Also a double duty casserole for 39¢.

DOOR MATS

- Cocoa 16"x28" \$1.19
- Cocoa 14"x24" 79¢
- Rubber 14"x22" 75¢

Sale opening special. Wear-Ever Sauce pan set, \$1.65 set. On a limited stock only.

Genuine Palmyra Scrub Brush, 8¢ each  
Rock Crystal and Other Glassware at reduced prices.

**Universal White, Red Trim ENAMELED WARE**

The most popular color for the kitchen. All first quality at low prices.

- Double Boiler
- Dish Pan
- Convex Kettles
- Covered Sauce Pan
- Tea Kettles
- Percolators

Sauce Pan Sets

EXTRA SPECIAL

**49c**  
EACH

Imagine an **ELECTRIC MIXER** for Only

**\$19.25**

A mixer for many uses. Mixes and beats more evenly—portable—use it anywhere—more power—new lovely streamlined beauty—easy to handle—Unlimited range of mixing speeds. Automatic power control—Full Power on all speed—Sturdily constructed. Packed 1 in carton.

**32-Piece Blue Willow DINNER SET**

A Real Value

**\$3.19**

SET

An attractive set of good quality dinner ware. A pleasing and popular pattern, adds distinction to any table setting. Buy Now.

**50-FT. WIRE CLOTHES LINE**

4 strands, hard-twisted, galvanized 20 gauge wire in coils. A big value in this item. Special

**9c**  
EACH

Extra Specials on First Quality  
**GRAY ENAMELWARE**

Seamless bowl, round enameled handle, durable weight ware, extremely low price on this item.

**9c**  
EACH

**1½-Quart Lipped SAUCE PANS**

Gray enamel. Seamless pan, nice handy size, round enameled sturdy handle. Real Value.

**9c**  
EACH

**2-QUART PUDDING PAN**

Gray enamel. Seamless, deep size, durable weight ware. A good quality pan at a real low price. For Only

**9c**  
EACH

**14-QT. DISH PAN**

Gray enamel. Deep seamless dish pan of substantial weight, wide rim, popular size. Special for only

**29c**  
EACH

**4-QT. COVERED KETTLE**

Gray enamel. Seamless kettle, enamel cover, wood grip on bail. A handy item at real savings. For only

**39c**  
EACH

**GRAY ENAMEL WASH BASIN**

12¾ in diameter, large size, good quality, enamelware. EXTRA SPECIAL

**15c**  
EACH

**1-PT. WHITE ENAMEL DIPPER**

Seamless bowl, round handle, handy size, durable weight ware. Here's a big saving.

**19c**  
EACH

**WHITE ENAMEL WASH BASIN**

Red trim. 11¼ in diameter. Seamless basin, wide rim, handy size, get yours now at the special bargain price. Special for Only

**25c**  
EACH

**SPRING CLOTHES PINS**

New improved spring. 4 coils, clamps tightly made of selected white birch, holds garments securely on line. Pin 3 inch length. Very special—1 Doz. for

**2½c**

**VICTOR RAT TRAP**

Wood base, metal trigger, strong coppered steel spring wire. Automatic spring lock prevents trap from releasing until placed in position. Special

**9c**  
EACH

**CORBIN PADLOCK**

Solid die cast case, black enamel finish, hardened steel shackles, cadmium plated, pin tumblers, 2 nickel silver keys, 1½ inch case, ¼ in. diameter shackle. Special

**65c**  
EACH

**MIDLAND HARDWARE & FURNITURE CO.**  
MIDLAND, TEXAS