

SONORA YOUTH CENTER

Pool - Snooker - Pin Ball
 Air Hockey - - Deutscher Ball
 Good Clean Family Entertainment
**GAMBLING & INTOXICATING LIQUOR
 NOT ALLOWED**
 Located On Main St. Sonora
 Open At 1 P.M. Daily
 Close At 9:30 P.M. Daily
 Except Wednesdays and Sundays
 Owners: Mr. & Mrs. H.E. Moore

The Railroad Commission today ordered oil production in the Goldsmith Field in Ector County changed from a reservoir allowable to a top per well rate of 73 barrels per day.
 Last April 19, Singletary conducted a Commission-called hearing to review the reservoir performance and redetermine the most efficient rate of oil and gas withdrawal from the field. Today's order, signed during the weekly conference an Oil and Gas Division matters, carries an effective date of Aug. 1.

Chairman Mack Wallace and Commissioners Jim C. Langdon and Jon Newton acted on the recommendation of Senior Engineer George F. Singletary Jr. of the Oil and Gas Division.

The Gulf Oil Corp. and other Goldsmith operators present at the April hearing requested the Commission to set the allowable at 73 barrels daily per well.

Also, they requested that the proration formula based on 100 per cent acreage.

Singletary reported to the Commission in his finding of fact that the present reservoir MER of 26,354 barrels daily is no longer applicable since the field is capable of producing only 20,000 barrels per day.

As of Jan. 1, 1977, the field has produced 293,623,326 barrels of oil, according to testimony filed at the April hearing.

Goldsmith Field Allowable Set

Texas Oil Facts Now Available

According to "77 Facts About Texas Oil and Gas," published for free public distribution by Texas Mid-Continent Oil & Gas Assn., the state's deepest is a 28,938-foot Wheeler County gas well.

Or, how about the number of Texas offshore wildcats drilled in 1976? That would be 147, according to "77 Facts," 136 of which were dry holes.

These are among the 77 highlight facts and figures about the Texas oil and gas industry included in the latest edition of the Association's annual

"Facts Series." The leaflet also points out that oil hunters spent \$2.2 billion in Texas drilling ventures last year, with \$745 million lost in dry holes.

For quick reference, "77 Facts" offers key statistics on all major phases of Texas oil and gas industry operations—historical, offshore, drilling, production, refining-processing, employment, economics, and taxation.

Copies of 77 Facts are free to the public upon request to the Association, 1341 W. Mockingbird Lane, Suite 1111-E, Dallas 75247.

April Shows Decline

Texas oil and gas wells produced 615,292,324 Mcf of gas in April 1977, down 0.78 percent from field runs a year earlier.

Marketed gas production totaled 515,762,580 Mcf and reflected a 1.5 percent decrease from the April 1976 volume. Marketed production is the total gas to transmission lines, carbon black and plant fuel and lease use.

Gas exported from Texas in April totaled 262,954,224 Mcf and included some 75,369,040 Mcf of imported gas.

Exports of Texas-produced gas in April totaled 187,585,184 Mcf and reflected a 4.4 percent decrease from the year-earlier month. Natural Gas Pipeline Co. of America was the month's largest exporter, moving 78,802,110 Mcf of gas of which 38,243,236 Mcf was Texas-produced gas.

Texas gas production in April 1977 came from 187,671 oil and gas wells.

★ Petroleum News

Drilling Applications Filed

Applications have been filed with the Texas Railroad Commission on the following drilling sites:

CROCKETT
Indian Wells Oil Co., Ozona, C.C. Montgomery Estate "11" no. 3, 19 miles southwest of Ozona, 7,000'.

Indian Wells Oil Co., Ozona, C.C. Montgomery "10" no. 1, 19 miles southwest of Ozona, 7,000'.

Delta-Suburban, Ozona (Canyon), Kincaid no. 5, one mile south-southwest of Ozona, 7,200'.

Delta-Suburban, Ozona, Meadows "1" o. 3, one mile south-southwest of Ozona, 7,200'.

Delta-Suburban, Ozona, Chandler no. 2, one mile west-southwest of Ozona, 7,200'.

Delta-Suburban, Ozona, Meadows "1" no. 4, one mile south-southwest of Ozona, 7,200'.

Delta-Suburban, Ozona, Friend no. 2, one mile southeast of Ozona, 7,200'.

Delta-Suburban, Ozona, Kincaid "A" no. 2, one mile south-southwest of Ozona, 7,200'.

C.F. Lawrence, Fergus, Half "65-E" no. 1, eight miles south of Iraan, 1,700'.

Robert M. Wynne, Farmer, University no. 3, 18 miles southeast of Big Lake, 2,300'.

Clayton W. Williams Jr., Wildcat, University "33-4" no. 1, 17 miles east of Sheffield, 1,500'.

Robert M. Wynne, Farmer, University "12-A" no. 4, 18 miles southeast of Big Lake, 2,300'.

Anderson Petroleum Corp., Ozona, J.S. Pierce no. 3-4, 23 miles southwest of Ozona, 7,000'.

James L. Lamb, Jr., Howard Draw, University no. 225, 15 miles northwest of Ozona, 1,500'.

Anderson Petroleum Corp., Ozona, Ira Carson no. 2-1, 24 miles southwest of Ozona, 7,000'.

SCHLEICHER
Cadaco Inc., Wildcat, Carlene Keel no. 3, 10 miles west of Eldorado, 7,900'.

Jay-Bo, Inc., Henry Speck, Mary Coupe no. 2, 10 miles southwest of Eldorado, 7,800'.

SUTTON
Windsor Gas Corp., Shurley Ranch, Duke Wilson "188" no. 4, 12 miles southwest of Sonora, 9,000'.

VAL VERDE
Resources Investment Corp., Wildcat, Mills "18" no. 1, seven and one-half miles northeast of Pandale, 15,500'.

The Land Bank

Long-term financing to help you reach your long-term goals.



Federal Land Bank of Sonora

A.E. Prugel, Mgr.
 387-2777

For all your commercial printing needs . . . Letterheads Envelopes Invoices Register Forms Statements Invitations

'Devil' Printing

387-2222

Complete INSURANCE SERVICE

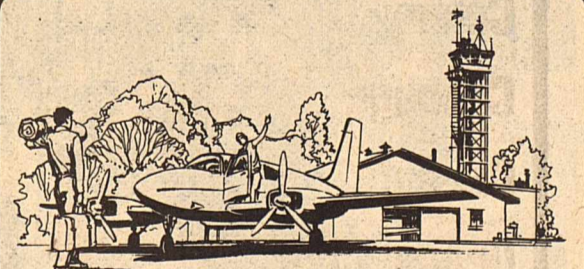
RESIDENTIAL COMMERCIAL INDUSTRIAL

ALL TYPES OF INSURANCE

WEB ELLIOTT AGENCY

209 E. Main

Sonora, Texas



Come fly with us and learn the thrill of it all!

Whether you're looking for a sight-seeing flight around our beautiful country-side, or you're eager to fly yourself . . . we've got what you want. We offer professional flight instruction and local flying. Let us show you how much fun it is to fly.

SONORA AERO SERVICE

Sonora Municipal Airport
 387-9927 or 387-2488

Circle Bar Welding Supply Company

6 miles East of Ozona on I 10 at Taylor
 Box Road on truck stop premises.

Offering an excellent line of welding and heliarc supplies and equipment.

Our pleasure is to serve your needs.

day - 392-3523

night - 392-3618

Devil's River News

Published in Sonora, Texas - "The Capital of the Stockman's Paradise"

Published Weekly on Wednesdays

Second Class Postage Paid at Sonora, Texas
 Exclusive newspaper serving Sutton County, rich ranching center of the Edwards Plateau in West Texas.

915 Phone 387-2222 - 220 NE Main, Sonora, Texas 76950. Entered as second class mail on October 18, 1890, at the Post Office at Sonora, Texas under the act of Congress of March 3, 1879.

Yearly Subscription Rates-Due Each September 1
 Sutton County, \$5.00 - Elsewhere in Texas, \$6.30
 Out of State, \$6.85

Wesley W. Burnett, Publisher
 Shirley Hill, Editor



TEXAS PRESS
 MEMBER 1977 ASSOCIATION

Announcing
 Our big and bright
 Open House

and an open invitation to all our friends in Sutton

County to join us Tuesday, July 12 starting at 3 p.m.

We're showing our new Sonora offices to everyone!!

FREE BAR-B-Q for you all starting at 6 p.m.

Please visit us and tour our brand new office

overlooking Sonora!

HNG Oil Company

Top of the hill just off HWY 277 and IH 10

FOODWAY

The Beef People

Your Neighborly Foodstores

A DIVISION OF WINNY-DIXIE
Prices Good thru Sat., July 9, 1977

Hickory Sweet
Sliced Bacon Lb. **\$1.19**

Reg., Thick or Beef
W/D Brand Bologna Lb. **99¢**

W/D Brand Reg. or
Beef Franks 12-oz. Pkg. **79¢**

Whiting Fish 1 1/2-Lb. Pkg. **\$1.09**

Fish Sticks 2-Lb. Pkg. **\$1.79**

USDA Choice Beef Full Cut Tenderized
Boneless Round Steak Lb. **\$1.88**

USDA Choice Beef "King of Roast"
Boneless Rump Roast Lb. **\$1.78**

Genuine Extra Lean
Ground Round Lb. **\$1.18**

USDA Choice Beef
Sirloin Steak Lb. **\$1.99**

USDA Choice Beef
T-Bone Steak Lb. **\$2.29**

USDA Choice Beef Full Cut
Boneless Round Steak Lb. **\$1.78**

USDA Choice Beef
Blade Chuck Roast Lb. **89¢**

USDA Choice Beef
Cubed Steak Lb. **\$1.98**

Pre Cooked French Fried
Shrimp Patties Lb. **\$1.49**

Plantation Beauty **Turkey Breast** Lb. **99¢**
Save 60¢ Lb. USDA Grade 'A' White Meat

W/D BRAND U.S. CHOICE
Boneless Chuck Steak Lb. **99¢**
Save 50¢ Lb.

Boneless Club Steak
USDA Choice Beef Well Trimmed Lb. **\$2.49**

Cattfish Steaks
Fresh Water Lb. **\$1.19**

Seven Bone Roast
USDA Choice Beef Lb. **99¢**

Ground Beef
W/D Brand Hand-Pak Fresh, Pure 5-10 Lb. Pkg. Lb. **69¢**

W/D BRAND U.S. CHOICE
Boneless Roast Lb. **99¢**
Save 40¢ Lb.

Genuine, Lean **Ground Chuck** Lb. **99¢**
Save 30¢ Lb.

Right Reserved to Limit Quantities No Sales to Dealers

Kountry Fresh **Produce**

Sweet & Juicy Southern Peaches 4 Lbs. **\$1**

California Long White All Purpose Potatoes 15-Lb. Bag **\$1.29**

Crackin' Good Toaster **Pastries** 2 10-oz. **\$1.00**

Thrifty Maid Tomato **Juice** 2 48-oz. Cans **\$1.00**

Astor Blended **Peas** 3 16-oz. Cans **\$1**

Crackin' Good Orleans **Wafers** 2 11-oz. **\$1.00**

Thrifty Maid Dinner **Mac. & Cheese** 4 7 1/4 oz. **\$1**

Featured Special! **Crisco** 3-Lb. Can **\$1.29**
Save 66¢

Jumbo **Viva Towels** 2 99¢
Rolls

Pabst Beer 12-Pk 12-oz. Cans **\$2.29**

Frozen Foods
Grand Prix **Vegetables** 3 16-oz. **\$1**

Thrifty Maid **Tomatoes** 4 16-oz. Cans **\$1**

Showboat **Pork & Beans** 5 14 1/2-oz. Cans **\$1**

Kraft Catalina or 1000 Island **Dressing** 2 8-oz. **\$1**

Fisher Boy **Fish Sticks** 3 8-oz. Pkgs. **\$1**

Tex-Sun **Orange Juice** 4 6-oz. Cans **\$1**

Astor Fruit **Cocktail** 3 15 1/2-oz. Cans **\$1**

Arrow Detergent 49-oz. Box **88¢**

Johnston Coconut or Chocolate **Cream Pies** 26-oz. **\$1.49**

Kold Kountry French Fries or **Tater Rounds** 16-oz. **39¢**

California Large **Avocados** 3 For **\$1.00**

Crisp Green **Celery** Large Stalk **39¢**

Fresh Green **Cabbage** Lb. **15¢**

Kountry Fresh **Carrots** 2-Lb. Bag **39¢**

Tropicana 100% Pure **Orange Juice** 2 Or. Cms. **88¢**

SALTINES
Crackin' Good **Saltines** 1-Lb. Box **37¢**

Dairy Foods
Kountry Fresh **Butter** 1-Lb. Pkg. **99¢**

Kraft Philadelphia **Cream Cheese** 8-oz. **59¢**

Kountry Fresh **Buttermilk** Half Gall. **69¢**

Colgate Toothpaste 5-oz. **69¢**

Right Guard Deodorant Bronze 3-oz. **79¢**

Hawaiian Tropic Lotion or Oil 8-oz. **\$1.99**

More Big Savings
Hi-C **Fruit Drinks** 2 48-oz. **\$1**

Armour Treet 12-oz. **99¢**

Friskie **Dog or Cat Food** 5 15 1/2 oz. **\$1**

Viatic Hamburger Sliced **Dills** 32-oz. Jar **69¢**

More Big Savings
Bath Size **Dial Soap** 3 For **\$1**

40-oz. **Bisquick** **\$1.09**

Thrifty Maid **Bartlett Pears** 2 29-oz. **\$1**

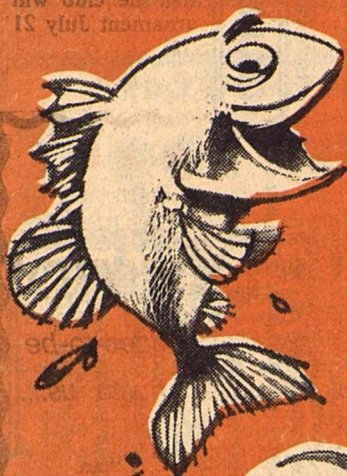
Big Red or Frostie Root Beer 64-oz. Btl. **79¢**

FOOD CENTER

Store Hours 7:00 a.m. - 7:00 p.m. Mon - Sat

Specials Good Thru
Tuesday, July 12, 1977

WHOPPER of a SALE



Lipton's Instant Tea
3 oz. **\$1.39**
Limit One

With 5⁰⁰ purchase excluding beer and cigarettes

Spam Luncheon Meat



12 oz. **99¢**



Van Camp's Pork N' Beans

15 oz. cans **4 \$1**

Swift Premium Vienna Sausage

5 oz. cans **4 \$1**



Swift Premium Potted Meat

3 oz. can. **5 \$1**



Hunt's Whole Tomatoes

15 oz. cans **3 \$1**



Hunt's Tomato Sauce

8 oz. cans **5 \$1**



Hunt's Tomato Ketchup

32 oz. jar **79¢**



Friskies Dog or Cat FOOD

15 oz. cans **5 \$1**



Heavy Beef Round Steak \$1.29 lb.

Heavy Beef Rump Roast \$1.49 lb.

Boneless Round Steak	lb.	1.39
Tenderized Round Steak	lb.	1.49
Heavy Beef Pike's Peak Roast	lb.	1.39
Boneless Lean Cutlets	lb.	1.89
Extra Lean Stew Meat	lb.	1.49

Blue Bonnet Margarine
1 lb. **39¢**
Totinos PIZZAS
13 oz. pkg. **69¢**

Gold Medal Flour 49¢

5 lb. limit one
With 5⁰⁰ purchase excluding beer and cigarettes

Betty Crocker Layer Cake Mixes 49¢

18 oz. box

Coors BEER 1.49

12 oz. 6 pk

Johnson's Baby Powder 99¢
Alka Seltzer 25 ct. bottle 69¢

Food Center

Home Owned and Operated

600 Crockett

Sonora, Texas

CLASSIFIED ADS

BUSINESS AND PROFESSIONAL DIRECTORY

BRONCO PHARMACY
We work with your doctor, for professional pharmacy needs.....
Your Pharmacist
Joe Klowski
Downtown, 387-3534

HOUSE PAINTING
Commercial Residential
Ranch
FREE ESTIMATES
Felipe "Tito" Vargas
Call 387-3205

CUSTOM Carpet Draperies
FREE ESTIMATES
BROWN FURNITURE CO
Ozona, 392-2341

TAN-DE BEAUTY SHOP
Sharon Kemp, Operator
Norma Virgen, Operator
511 E. 2nd 387-2216
Tuesdays-Fridays
MERLE NORMAN COSMETICS
Maxine Locklin,
Beauty Consultant
Bettye Stewart,
Beauty Advisor
Call for Appointments

JOHN'S BODY SHOP
387-2802
24 Hour Wrecker Serv.
387-2446
If no answer call
387-2313 ask for unit
208 or 387-2802.

MELVIN GLASSCOCK
SHELL STATION
Phone 387-2609
West U.S. 290 Sonora

For Your Listing In The
BUSINESS AND PROFESSIONAL DIRECTORY
CALL
387-2222

MARIO DURAN
Water Well Drilling
and Clean Outs
Phone 387-2752
SONORA

ENEDINA'S HAIR FASHIONS
330 SW Gonzales
387-2812
open Tuesday-Saturday

Dive into summer
with a new look!
Hair Bender
Jean Hughes,
Owner & Operator
Men's & Women's
Hair Styling
Call 387-2876
for appointment
413 Concho

Wanted To Buy
Want to buy six string flat
top guitar with small neck.
Call 387-3368 after 5 p.m.
tf45

Garage Sales
We're moving! Patio Sale.
Furniture, clothes, swings
and miscellaneous items.
Friday, Saturday, 110
Glasscock. 1c45

10 family garage sale.
Friday and Saturday, 9
a.m.-7 p.m. Clothes, mis-
cellaneous items and some
furniture. 102 Sawyer
Court. 1p45

Wednesday-Saturday,
Allison Trailer Park, 3rd
trailer on left. Clothes,
glassware, books, furni-
ture, motorcycle, and odds
and ends. 1p45

**Interested In Starting
New Church In Sonora.**
Contact Dale
Pendergras. Call collect
817-665-1296 or write
Rt. 1, Box 95B,
Gainsville, Texas
76240.

FOR SALE BY
West Texas Realty
3 B.R. 2 Bath Home
Plush Carpet, replace
New or Equity
call
Bob Kemper
387-3437
shown by Appointment
Only

American Antiques
By Sally
Now open in the
Nutmeg Tree, down-
town Christoval. Round
oak table, chairs, wash
stands, oak dressers
and much more. We
also specialize in strip-
ping, refinishing and
canning. Open 1-6 p.m.,
Thursday-Sunday or
call 896-2472. 3c43

FOR SALE
NEW 2 and 3 bedroom
homes from 1,000 to
1,700 square feet of floor
space, built under city
inspections.
1 1/2 or 2 full baths with
ceramic tile showers and
dressing tables. Large
kitchen-family room com-
binations. Lots of cabi-
nets and snack bar.
Built-in dishwasher and
range with hood. Utility
rooms or areas. All gas
or all electric. Central
heating. Fully carpeted
with window drapes
installed. Completely
finished and delivered to
any place in West Texas
area. Can also brick all
or part if desired and
include refrigerated air
all as an extra.

We invite you to come
and look at what we have
to offer. We have been in
this business for over 20
years and guarantee
satisfaction.
CALL
CRAIG HARDEGREE
Burley Lumber Company
San Angelo, Texas
655-3127

Garage Sales
206 Sawyer Drive. Friday
and Saturday. 9 to 6. 1c45

For Rent
Office space for rent or
lease. 18x40 building.
Brand new on 50x100 lot.
Wall to wall carpet, ref.
air, rest room. Lot
included. Call 387-3205 or
contact Tito Vargas. Can
be seen across from
Thorp's Laundry. tf44

Office space for rent. Call
Castle Court Corporation,
387-2461, between 9:00
and 5:00. tf51

Private trailer space for
rent, suitable for 60 or 70
ft mobile home. Call
387-2294. tf36

Office space for rent. Call
387-3619 or 387-
2809 afternoons. tf35

WEST TEXAS REALTY
Offers
New Homes For Sale
by
DAYTON HOMES

Meadow Creek Addition
3 & 4 Bedroom, 2 Bath
Ready For Immediate Occupancy

WEST TEXAS REALTY - 387-3437 (Day or Night)
DAYTON HOMES - 387-3651

Shurley Enterprises
Mini-Storages
8x12 - \$18.50 monthly;
12x24 - \$40.00 monthly.
Phone 387-3619 or 387-
2809 afternoons. tf35

Office space for rent. Call
387-2461, between 9:00
and 5:00. tf51

Office space for rent. Call
387-2461, between 9:00
and 5:00. tf51

Office space for rent. Call
387-2461, between 9:00
and 5:00. tf51

Livestock
Angus bulls. Yearling
2-year olds. Lots of length
and grain fed. JUNO
RANCH COMPANY Frank
Fish. Call 387-3980. tf17

Mobile Homes
1975 Lancer mobile home.
14x80. Three bedroom, 2
full baths. Completely fur-
nished. Call 512-683-5101.
2c44

1961 Midway Cottage
mobile home. 10 feet x 30
feet, must see to appre-
ciate. 1305 Mesquite St.,
\$3,000. 387-2406. tf42

ATTENTION MOBILE HOME BUYERS
All new 14 ft. wide mobile
homes including 1978
models now on display are
priced for immediate sale.
Free delivery and tie-down
for all out-of-town buyers.
REGENCY MOBILE HOMES
900 W. Ben White Blvd.
Austin, Texas
(512) 443-5653 5c41

For Sale
Westinghouse, 18,000
B.T.U. standard window,
refrigerated air-condition-
er.
Signature, coppertone gas
range. Both like new.
Phone 387-2704 after 5
p.m. nc45

1971 Mark IV mobile home
14x75. Three bedroom, 2
bath, central air and heat.
Small equity and closing
cost, take up payments.
For more information call
387-3541. After 5,
387-3427. 2c44

1961 Midway Cottage
mobile home. 10 feet x 30
feet, must see to appre-
ciate. 1305 Mesquite St.,
\$3,000. 387-2406. tf42

1961 Midway Cottage
mobile home. 10 feet x 30
feet, must see to appre-
ciate. 1305 Mesquite St.,
\$3,000. 387-2406. tf42

ATTENTION MOBILE HOME BUYERS
All new 14 ft. wide mobile
homes including 1978
models now on display are
priced for immediate sale.
Free delivery and tie-down
for all out-of-town buyers.
REGENCY MOBILE HOMES
900 W. Ben White Blvd.
Austin, Texas
(512) 443-5653 5c41

For Sale
Westinghouse, 18,000
B.T.U. standard window,
refrigerated air-condition-
er.
Signature, coppertone gas
range. Both like new.
Phone 387-2704 after 5
p.m. nc45

Like new. Sears Kenmore
gas dryer. 1974 model
used only one year.
Harvest gold. \$125. Call
387-2044. 1c45

Bed, dresser and corner
desk. Maple, excellent
condition. Bed has book-
case headboard. Call
387-2709. 1c45

Used Cars
1969 Cadillac Coupe de
Ville. 74,000 miles. Good
condition. See at 303 E.
2nd after 6 p.m. and on
weekends. tf42

1964 Buick Riviera, classic
and in good condition, has
all the extras except air,
two-door super sport.
Excellent engine. \$500.
387-2353 tf44

Used Trucks
1975 3/4 ton Ford Explorer
Pick Up. V-8, automatic,
power, air, good condition.
Call 387-2363, after 5:00 or
see at W.D. Crites Trailer
Park, Space B. 2p44

1970 Ford 1/2 ton pick up,
standard shift, good condi-
tion, nearly new tires and
battery. \$1,500. 387-2353
tf44

Used Trucks
1975 3/4 ton Ford Explorer
Pick Up. V-8, automatic,
power, air, good condition.
Call 387-2363, after 5:00 or
see at W.D. Crites Trailer
Park, Space B. 2p44

1970 Ford 1/2 ton pick up,
standard shift, good condi-
tion, nearly new tires and
battery. \$1,500. 387-2353
tf44


1977 1/2 ton Chevrolet
pickup. 1600 miles. Will
take trade on older pickup
or car. Contact John
Turman. 510 Martin or call
387-9934, 387-3447. Can
be seen at Sonora Arco
Station. tf42

1977 1/2 ton Chevrolet
pickup. 1600 miles. Will
take trade on older pickup
or car. Contact John
Turman. 510 Martin or call
387-9934, 387-3447. Can
be seen at Sonora Arco
Station. tf42

For A Better Used Car or Pickup
See
NELSON ST. CLAIR
Concho Buick - GMC
2400 Sherwood Way — San Angelo, Texas
PHONE 949-3797

VACATION!

This year take your vacation in cool,
Ford luxury and comfort...
LTD II Squire

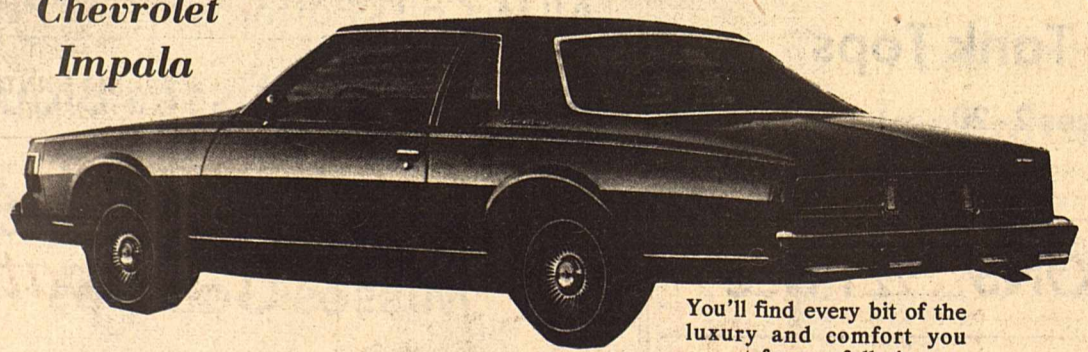


The mid-size wagon, with handsome wood grain finish, interior decor group, split bench seats, speed control, power driver seat, reclining passenger seat, power windows, power locks, power tail gate, deluxe luggage rack. Equipped with 400c.i.d engine, AM/FM tape, cargo area cover, radial tires, illuminated entry system, convenience, protection and light group and dual sport mirrors.

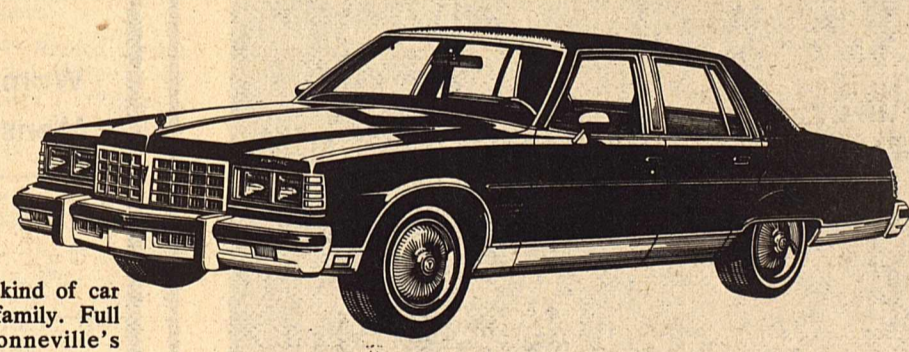
Beautiful Chamois Glow

See it today
Sonora Motor Co.
Downtown Sonora 387-3910

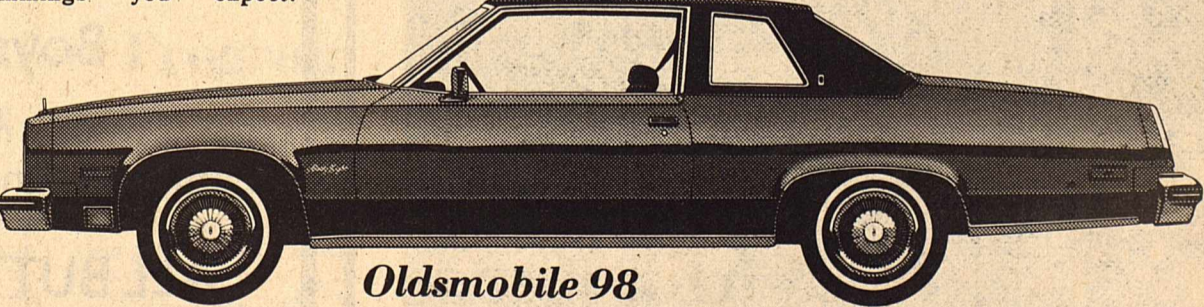
Full size luxury cars made for family budgets



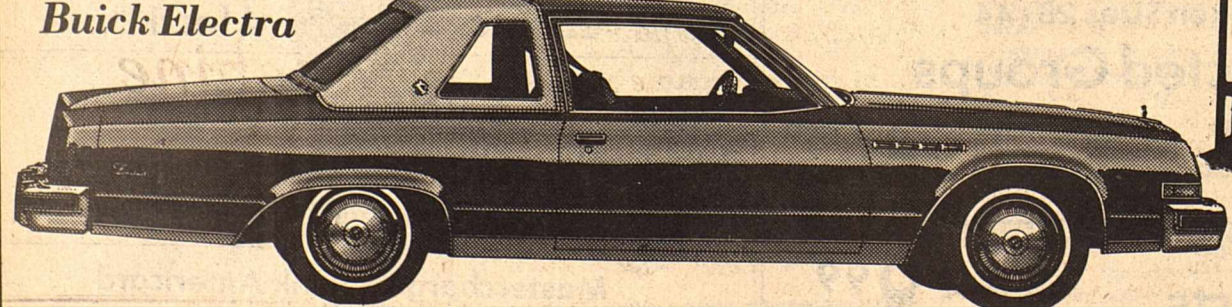
Chevrolet Impala
You'll find every bit of the luxury and comfort you expect from a full size car in the 1977 Impala, and at a price you can afford.



Pontiac Bonneville
Bonneville is your kind of car and built for the family. Full size is Pontiac Bonneville's trade-mark, complete with the trimmings you expect.



Oldsmobile 98
Everyone knows about the legend of the Oldsmobile 98...it's world-famous smooth ride, roomy interior and fine appointments. Made just for you.



Buick Electra
Here's one of the world's finest automobiles...and you'll be pleasantly surprised how easy it is to own the very best. Buick Electra has everything you want.

CHEVROLET BUICK PONTIAC OLDSMOBILE
KEN BRADEN
GM

Ken Braden Motors Inc.
IH-10 and Hwy 277 387-2529



Sonora's Boy Scout Troop 19 returned from Sol Mayer Camp last Saturday after a week at the camp. Scouts [left to right] Wallace Nations, Roy Hulsey, Myron Halford, Don Glass [assistant scoutmaster], Gary Robinson, John Reppond [scoutmaster], Rev. Jim Miles, John J. Reppond, John Mitchell, Sam Nations, Mike Glass and Louis Humphreys take time out for the photographer.

Scouts Attend Camp Sol Mayer

Sonora Boy Scout Troop 19 returned from the Sol Mayer camp last weekend with awards for each of the troop members at the week-long event. Wallace Nations earned the "mile swim merit badge, the only scout at the camp to achieve this award. Louis Humphreys was awarded the Order of Arrow in a special "tapped out ceremony." Other merit badge

awards: Indian Lore, Louis Humphreys; Cooking, Roy Hulsey, Don Glass, Myron Halford; Canoeing, Wallace Nations, Don Glass, Myron Halford, Sam Nations, John Mitchell, John J. Reppond; Swimming, Sam Nations, John Mitchell, Don Glass, Myron Halford, John J. Reppond, Wallace Nations, Louis Humphreys; Leatherwork, Gary Robinson, Mike

Glass, Roy Hulsey; Reptile Study, Mike Glass. Rev. Jim Miles served as camp chaplain and supervised Troop 19 through Thursday, when Troop 19 Scoutmaster John Reppond joined the troop at the camp.

YANKEE INGENUITY: The first patent granted an American invention was for a scythe-grinding machine in Massachusetts in 1645.

Bid Letting For Rest Area

Bids will be received July 26-27 for the construction of a water well for a future safety rest area on Interstate 10 in Sutton County. The well will be located about five miles west of Sonora. Joe W. Lane of Sonora is the State Department of Highways and Public Transportation engineer in charge of the project.

Real Estate Transfers

WD/VL- Dayton Homes Inc., to Michael N. Storey, et ux, Lot 18, Block 1, Meadowcreek Addition. Deed-Anne L. DeBerry et al to Archie D. Crenwelge, et ux, 5.61

acres out of South part of Sur. 106, Block B, HE&WT Ry. WD/WL-Floyd W. Hill to Gene Thompson et ux, Lot 6, Block 42-A, South Heights Addition. WD/VL- Ralph P. Mayer et ux to Geraldine Weingart, Lot 3, Block 2, Grimland Addition.

WD/VL-Richard E. Black et ux to Michael E. Sipes et ux, Lot 6 and SE/2 Lot 5, Block 41-A, South Heights Addition. WD-Joe David Ross et ux to Halliburton Company, 10.00 acres out of Survey 86, Block B, HE&WT Ry. WD-Wanda R. Neville et al to Patrick Don Cooper, Lots 11, 12, and 13, Block 4, Castle Hills Addition.

WD-VL-Dayton Homes Inc., to Robert E. Kemper et ux, Lot 3, Block 2, Meadowcreek Addition. WD-Billy Galbreath, Gdn., to Billy C. Gosney and Sammie Stewart, Lots 1,2,3, and NE 30' Lot 4, Block 7-E. Gift Deed-Pedro G. Chavez to Maria S. Chavez, Lot 16, Block 12, Loma Alto Addition.

"The ideal of calm exists in a sitting cat." Jules Renard

Doyle Morgan

Insurance — Real Estate

(yes, we sell life insurance)

213 E. Main
387-3912
Sonora, Texas

BRITAIN

Construction Company

GENERAL OILFIELD CONSTRUCTION

Radio Equipped Pumping Service
RRC - Permit 5387

Odessa Sonora
366-4491 387-2457

PEST CONTROL

Professional Quality
Fair Prices
Pecan Spraying
Industrial and Oilfield
Weed Control
Home & Industrial
Pest Control
Penn Baggett

Certified Pest Control Applicator
387-3455

In celebration of their
Fiftieth Wedding Anniversary,
Elizabeth and Jack Neill,
their children and grandchildren,
would like to invite
all their friends to join them on
Saturday evening, the ninth of July, 1977,
from eight until ten o'clock at the
Sonora Golf Club.
NO GIFTS PLEASE

<p>First Latin American Rev. Luis Estrada Sunday School 9:45 a.m. Worship 11:00 a.m. Training Union 5:30 p.m. Worship 7:00 p.m. WMU Monday 7:00 p.m. Wed. Services 6:00 p.m.</p>	<p>St. Ann's Catholic Church Rev. Louis B. Moeller Sat. Vigil Mass 7 p.m. Sunday Masses 8 a.m., 10 a.m., 12 p.m. Holy Day Mass 7 p.m.</p>	<p>Sonora Tabernaical United Pentacostal Rev. Kenneth Doyle, Pastor Sunday School 10:00 a.m. Worship 11:00 a.m. Eve. Worship 7:30 p.m. Wed. Services 7:30 p.m.</p>	<p>Church of God of Prophecy Kenneth Cook, Pastor Sunday School 10:00 a.m. Worship 11:00 a.m. Sunday Eve. 7:30 p.m. Wed. Eve. 7:30 p.m.</p>
<p>First United Methodist Church Rev. Paul Terry, Pastor Church School 9:45 a.m. Worship 10:45 a.m.</p>	<p>St. John's Episcopal Church Rev. Ray Nations, Rector Holy Com. 8 a.m., 11 a.m. 1st and 3rd Sundays Morn. Prayer 11 a.m. 2nd and 4th Sundays</p>	<p>Hope Lutheran Church John E. Haffermann, Pastor Sunday School 10:20 a.m. Worship 11:00 a.m.</p>	<p>The Church of the Good Shepherd Presbyterian The Rev. Jim Miles Sunday: Church School 10:00 a.m., Fellowship 10:45 a.m., Worship 11:00 a.m. (Communion on first Sunday of each month) Inquirer's Class 7:30 p.m. (Session and Diaconate meet at 7:30 on the 3rd Wed. of each month)</p>

This message and information is brought to you by the following merchants:

<p>The Ruth Shurley Jewelry</p>	<p>Kerbow Funeral Home</p>
<p>Neville's Your Complete Department Store</p>	<p>Southwest Texas Electric Coop, Inc. Owned By Those It Serves</p>

We're saving the Pecan trees as our new building comes to life

Growing with Sonora

First NATIONAL BANK

Sonora
387-2546

GOSNEY'S

Summer Sale

July 5, 6, 7, 8, 9

Wranglers, Levis

Special Assortment

Sizes 28 - 42
Patterns, Solids, Denims

8⁹⁹

All Bathing Suits

Womens, Girls, 1/2 Price
Mens, Boys

All White Purses 1/2 Price

All Boys' Tank Tops

Sizes 2 - 20
Campus Brand now 1/2 Price

ALL BUTTONS 1/2 Price

Men's Dress Slacks

Broken Sizes 28 - 44
Selected Groups
Values to 20.⁰⁰ now 1/2 Price

Special Assortment
Misses Skirts now 9⁹⁹

MANY MORE SALE ITEMS!

Acme Boot Closeouts

Infants..... 6.00
Boys..... 10.00
Mens..... 20.00

Odds 'n Ends

Shirts	Jewelry	1 ⁰⁰
Shoes	Blouses	
Shorts	Hand Towels	
Scarves	Washcloths	
All Straw Hats		

Reduced 20%

Misses Pants
Special Selection 9⁹⁹

One Group Men's Shirts
Sizes S-M-L-XL
Values to 20⁰⁰ 1/4 OFF

All McCall's Patterns 1/2 Price

One Group Misses Blouses
Sizes 6 - 20
Values to 18⁰⁰ now 6⁹⁹

Misses Gauchos
Values to 20⁰⁰ 1/2 Price

Conmar Zippers 4 for 1⁰⁰

Children's Wear

One Group
Summer Specials 1/2 Price

Mastercharge & Bank Americard
WELCOME
All Sales Final, Please