

Town Talk

NEWS \* NOTES \* BRIEFS

CONGRATULATIONS to these Ranger couples who'll be celebrating wedding anniversaries during the coming week:

- Monday, Nov. 22—Mr. and Mrs. James Ratliff. Tuesday, Nov. 23—Mr. and Mrs. Wesley Poyner. Thursday Nov. 25—Mr. and Mrs. Harold Turnipseed.

THE STRAWN High Greyhounds wound up their 1965 football season at Moran Thursday night with a 47-0 victory over Moran in a six-man grid duel.

Hale Dunson spotted this headline in the Abilene Reporter-News the other day: "HIT BY PIPE, CITY WORKER SAID 'FAIR.'" It tickled his funny bone.

BELATED but hearty congratulations to Mr. and Mrs. J. F. (Bill) Smith of Ranger (Continued on page 2)

297 Targets Shot Thursday Friday Nights

A total of 267 targets were shot during Thursday and Friday night action at the second annual turkey shoot of the Ranger Jaycees.

The event was to be concluded Saturday with firing from 9 a.m. until 9 p.m. in the E. L. Martin Bldg.

Top scoring marksman of the three-day turkey shoot was to be awarded an automatic .22 caliber rifle late Saturday afternoon.

In opening firing Thursday night—from 5 until 10 p.m.—winners of turkeys were Jake Jacoby, Eugene Franklin, Duke Dixon, Charles White and J. D. John Adair.

And Friday night there were a total of 133. Top shooters winning turkeys were Bill Beck, Eugene Hubler and Ray Hayhall, one gobbler each, and Dr. Luther Gohlke, two birds.

RANGER QUARTERBACK CLUBBERS MAP PLANS AT MEETING OF BOARD

Officers and directors of the newly-organized Ranger High School Quarterback Club met Thursday night in the library of the school and tentatively outlined a program for the coming year.

E. A. L. Lebrede, president, presided.

Recommendations of the board are to be submitted for the approval of the Club's membership at a meeting to be held in the library on Monday evening, Nov. 29, at 7:30 o'clock.

Coffee and cookies will be served and all interested sport fans are invited and urged to attend.

Other officers of the organization are Charles R. Mahaffey, vice president, and Mrs. Juanita Blackwell, secretary-treasurer.

Directors include Dr. W. P. Watkins, Gene Speed, Glen Wilson, Mr. McCoy, Tom Fox and Jasper Williamson.

RJC Cage Action Tuesday Evening

Coach Ron Butler's new edition of Ranger Junior College Rangers cage squad gets its first test of the season Monday night at Wichita Falls in a non-conference clash with Midwestern University.

The Purple & Whites make their home debut in the RJC gymnasium Tuesday night when they collide with Grayson County Junior College, Sherman-Denison.

Tip-off time is 7:30 p.m. Preceding the RJC - Grayson County contest, Ranger's first girls' basketball team will play a strong Woodson High School femme aggregation on the gym hardwoods beginning at 6 p.m.

Advance indication, on the basis of practice games with other collegiate basketball teams in the area, are that Coach Butler may be fielding one of the finest RJC round-ball teams in a number of years.

Here are the rosters of the RJC boys' and girls' basketball squads:

RANGERS — Oscar McClendon (42), 6-5, Houston; David Nowlin (35), 6-6, Breckenridge; Bob Hughes (22), 6, Syracuse, N. Y.; Joe Bond (34) (Continued on Page 2)



RON BUTLER RJC Basketball Coach



SARAH COOPER

Sarah Cooper Candidate For Queen Honor

By ROBBIE ROBINSON Sarah Cooper 18-year-old daughter of Mr. and Mrs. Guy Cooper, Route 2, Ranger, has been selected as Ranger Junior College's nominee for the Eastland County Pecan Queen. The queen contest will be held in Cisco on Dec. 10 during the Pecan Show, Dec. 10-11.

Miss Cooper is a 1966 graduate of Ranger High School where she held many honors and was very active. During her high school career she was a member of the band, and the Beta, FTA, FHA, FNC, and Drama Clubs. She was elected reporter of the senior class and band sweetheart in 1965 and received the DAR Good Citizenship Award.

At RJC, she is majoring in journalism and minoring in education. She is a member of the Debs, layout editor on the annual staff, and Student Council representative for the Methodist Student Movement organization. (Continued on page 2)

LIONS PLAN 'LADIES NIGHT' EVENT DEC. 16 AT PARAMOUNT HOTEL

Annual "Ladies Night" banquet of the Ranger Lions Club will be held Thursday evening, Dec. 16, in the club room of the Paramount Hotel.

Announcement of the date for the event was made during the Thursday noon luncheon and meeting of the civic group. Ernen Haby, president, presided during the brief business session.

Dan Mitchell, member of the Ranger High School faculty and highly talented guitarist, played several selections as entertainment for the noon meeting. He was introduced by Gerald Cumpston, who was in charge of the program for the day. During the meeting it was reported that last Friday night's pre-football game chili supper in the Hodges-Oak Park school cafeteria was a success and netted \$110.00 for the Lions Club's fund to buy glasses for needy children.

A total of 160 persons were served. Pies and cakes were donated by members of the Lions Club and the food was prepared by the ladies of the luncheon room of Hodges-Oak Park School. It was announced that since next Thursday—regular meeting day for the Ranger Lions—is Thanksgiving, there'll be no meeting. Next luncheon and meeting will be held on Thursday, Dec. 2.

Taxi, Theft Trials Set Monday in 91st Court

A dramatic courtroom scene typical of television fare is expected in 91st District Court in Eastland Monday when two Georgia men are tried for robbery with firearms.

The two, Chester (Buddy) Breeden, 28, and Tommy Smith, 20, both of Canton, Ga., were indicted for the theft at gunpoint of a taxicab belonging to S. B. (Fritz) Jones, several months ago.

Answering a call, Jones reportedly picked the men up and was forced to head east. Jones was able to get away from the pair at River Bridge just east of Weatherford, and an all-night manhunt ensued, but was unsuccessful. The pair eluded officers and were picked up a few days later in Louisiana, from which they were retrieved and returned to the Eastland County Jail on Sept. 12. They have been there since — and according to Sheriff L. E. Sublett, have attempted four separate jail breaks.

Drama is possible in the appearance of Jones who has been under a physician's care since the incident, and was a patient at Eastland Memorial Hospital at week's end. He is the state's chief witness and might possibly make his appearance in the courtroom on a stretcher if he is able to do that, the sheriff said.

Judge E. H. Griffen will preside in the absence of Judge J. Frank Sparks who is recovering from recent surgery. (Continued on page 5)

Two Indicted For Murders With Malice

Four indictments were returned Thursday at 12:35 p.m. by a 91st District Court Grand Jury — two were for murder with malice and two were for burglary.

The grand jury indicted two persons for murder with malice, one of them the uncle of a Dallas physician who was shot to death near Ranger Nov. 6 and the other the wife of a Ranger man shot to death Nov. 13.

Ivan J. Allen, about 70, earlier was accused of murder without malice in the rifle death of Dr. Albert Reidel, 37, of Dallas. However the grand jury's indictment claimed malice, District Attorney Perry Brown reported. The uncle was charged and (Continued on Page 2)

Mrs. Rodgers Is Buried In Final Service Friday

Funeral services for Mrs. Melinda May Rodgers, 84, a resident of Ranger for almost half a century, were held at 2 p.m. Friday at the Second Baptist Church with the Rev. Robbie L. Hobbs, pastor, officiating, assisted by the Rev. Robert Ferrell, Olden Baptist pastor.

Burial was in the Alameda Cemetery with the Killingsworth Funeral Home in charge of arrangements. Grandsons served as pallbearers. Mrs. Rodgers died at 9:15 a.m. Thursday at the Ranger General Hospital.

Mrs. Rodgers was born Dec. 29, 1880, in Navarro County and married Charles Montgomery Rodgers near Dublin March 5, 1898. He died July 14, 1941. She had lived in Ranger since 1920.

She was a member of Second Baptist Church. Surviving are four sons, Clyde M. and Dee W. of Ranger, Lee Roy of Sinton and W. R. (Pete) of Olden; five daughters, Mrs. Charles A. Russell of Henderson, Mrs. (Continued on page 2.)



1965 HOMECOMING QUEEN at Ranger Junior College was Miss Janet King, freshman, daughter of Mr. and Mrs. John E. King of Farmers Branch. (Cotton's)

NAME LEON TREECE AS CITY'S CIVILIAN DEFENSE LEADER

Leon Treece was appointed as civilian defense coordinator for the City of Ranger during the regular meeting of the City Commission held at City Hall Thursday night.

Also during the session the commission, re-affirming an earlier action officially hired Mrs. Waldine Kribbs as new city secretary effective Dec. 1.

Miss Kribbs will succeed Mrs. Avis Jones who submitted her resignation to the commission several weeks ago.

In other formal action the city governing body approved payment of routine bills.

ROTARY CLUB SEES FILM ON EDUCATION

A film emphasizing the importance of schools to the growth and development of the nation was shown during the Wednesday noon meeting and luncheon of the Ranger Rotary Club at the club room of the Paramount Hotel.

Larry Hunt, principal of Hodges-Oak Park School and program chairman for the day, presented the film which traced schools from the Colonial days up to the present.

John Foster, president, presided, and it was announced that a special ladies night event would be held probably near Christmas out at Lone Cedar Country Club. Herman Cupp will be program chairman during next Wednesday's noon luncheon.

Ranger Man Is Improving

Jerry Don Blacklock, who was critically injured in a car wreck last week, is reported to be improving in Hendrick Hospital, Abilene.

Ranger friends who visited him on Thursday said that he is out of the intensive care unit and attendants anticipate continued progress.

City's Application For Airport Aid Received By TAC

Formal application for a state grant to finance needed improvements at the Ranger Airport has been received and acknowledged by the Texas Aeronautics Commission in Austin.

Mayor Morris Newnham received official confirmation Friday morning in a letter from Antoni Bingelis, airport facilities supervisor of the TAC.

"The application from your community has been checked and is in order," Bingelis informed the Ranger mayor. "We will do our best to schedule your community for a public hearing at the earliest date possible."

Mayor Newnham said that complete details relative to the improvements to be made at the airport had not been fully completed. Improving and lighting the runways and enlarging the hangar facilities, however, are major phases of the project.

CHENA GILSTRAP WILL SPEAK AT 1965 GRID BANQUET ON DEC. 18

Chena Gilstrap, mentor of Arlington State College and one of the state's veteran football coaches, will be the featured speaker at the 1965 Ranger High football banquet, it was announced Friday.

The annual event, sponsored by the Bulldog Mothers Club, will be held at Lone Cedar Country Club on Saturday evening, Dec. 18, at 7:30 o'clock.

Plans for the banquet and program now are being completed.

Ward's Sets Up Post Office For Santa Claus Mail

Yes indeed there is a Santa Claus says Harold Turnipseed manager of Montgomery Ward's store in Ranger. He announced Friday that a "Santa Post Office" has been set up in the store where letters to old St. Nick may be mailed.

Small fries will receive replies sent from the famous Santa Claus Post Office in Santa Claus, Indiana.

"The special child in your life will be delighted with this positive proof that there is a Santa Claus," Turnipseed said.

Visit Ward's store for further details.

Final Rites For W. L. Mason Held Friday, Nov. 19

Funeral services for W. L. Mason, 90, who passed away in Norman, Okla., on Thursday, Nov. 18, were held in the Church of Christ, Apache, Okla. at 2 p.m. Friday.

Survivors include his widow, three daughters: Mmes. O. G. Lanier of Ranger; Wesley McCullough, Apache, Okla.; and Paul Bray, Fort Worth; four sons, A. L. Mason, Norman - Okla.; D. D., B. H. and M. D. of Los Angeles, Calif.; one brother, W. H. Mason, twelve grandchildren and 21 great-grandchildren.

Mr. Mason and his twin brother celebrated their 90th birthday together Sept. 16.

SHOP RANGER FIRST!

public hearing at the earliest date possible.

Mayor Newnham said that complete details relative to the improvements to be made at the airport had not been fully completed. Improving and lighting the runways and enlarging the hangar facilities, however, are major phases of the project.

NOTICE The FHA Bake Sale will be held at Johnson's Appliance Store on Main St., Wednesday, Nov. 24. Deadline for special orders is Monday evening, Nov. 22. Other pies and cakes available at above address.

ASC Coach Gilstrap is one of the most colorful members of his profession and is a widely known speaker.

Miss Seymour Candidate For Pecan Queen

Miss Donna Seymour, Ranger's reigning Rodeo Queen, will represent the Ranger Jaycees in the annual Eastland County Pecan Queen contest to be held at Cisco early in December in conjunction with the yearly pecan show. Miss Seymour, daughter of Mr. and Mrs. W. K. Seymour, 1203 Spring Road is a Ranger High School freshman.

The Ranger Rodeo Queen is an RHHS cheerleader. She is an active member of the Ranger Riding Club and her hobbies are swimming and dancing.

Miss Seymour attends First Baptist Church. She won the Rodeo Queen honor last summer during the Jaycees third annual rodeo and will reign until the 1966 event next July.



"And upon what income do you propose to support my daughter?" "Five thousand a year." "Oh, I see. Then with her private income of \$5,000 a—." "I've counted that in."

Ranger Woman Bags 10-Pointer

Mrs. Opal Marsh, owner and operator of Betty's Flower Shop, left a beauty shop Thursday afternoon at 5 o'clock and a few minutes later was on her way to an unplanned deer hunt.

In company with Mr. and Mrs. Jack O'Neill, Mrs. Marsh and her companions headed for the Scott Hart Ranch near Brad.

After they had arrived, O'Neill loaned Mrs. Marsh a rifle. She had fired one on previous occasions, but it had been some time since she'd had one in her hands.

"Now all you got to do," O'Neill told the flower shop owner, "is to get your buck right in the center of the cross hairs on the scope and pull the trigger."

A few minutes later, Mrs. Marsh sighted a buck about 140 yards away. She took careful aim and squeezed the trigger. The rifle bullet hit the buck behind the front shoulder and ripped through his heart.

He was a big 10-pointer and there was considerable amazement when the huntress brought in her kill to the Ranger Frozen Food Center.

"She didn't look like she'd been on a deer hunt," commented a worker. "She looked like she'd just been to a beauty shop!" (Continued on Page 2)

WEATHER

SUNDAY — Cold. Sun rises 6:46, sets 5:46. Moon rises 5:08 a. m. Fishing fair. MONDAY — Cold. Sun rises 6:47, sets 5:45. Moon sets 4:36 p. m. Fishing fair. TUESDAY — Sunny. Sun rises 6:48, sets 5:45. Moon sets 5:13 p. m. Fishing poor. WEDNESDAY — Mild. Sun rises 6:49, sets 5:44. Moon sets 5:56 p. m. Fishing poor.

RANGER TIMES

Established June 1, 1919 Entered as second class matter at the postoffice at Ranger, Texas under the act of Congress of March 3, 1879.

Published Semi Weekly—Thursdays and Sundays By Eastland County Newspapers, Inc. GROVER C. LEE, Editor

Table with subscription rates: One Week by carrier in city .15, One month by carrier in city .65, One year by mail on Ranger RFD Routes 3.50, etc.

NOTICE TO PUBLIC—Any erroneous reflection upon the character, standing or reputation of any person, firm or corporation which may appear in the columns of this newspaper will be gladly corrected upon being brought to the attention of the publishers

CLASSIFIED

For Sale

FOR SALE: Three farms. Good peanut allotment, plenty of water, well located. Rt. 2, Box 33, Gorman, Texas. 28-31

FOR SALE—Paper shell pecans, 3 lbs. for \$1.00. Bob Allen, Eastland Hill. 33

FOR SALE—Oats \$3 per hundred. Jessie Hathcock. Phone MI 7-3648. 14

FOR SALE: Good solid used tires, \$3.00—up. Horton Tire Service, Eastland. 15

FOR SALE: 670 x 15 four ply black tires, \$10.95 plus tax. Horton Tire Service, Eastland. 16

FOR SALE: Ranches and farms — 163, 290 and 753, east of Ranger, good deer country; 81.5 acres—real cow country; one mile east of Ranger; 186 acres, below lake, nice three bedroom home, peanut all; 40 acres, all, nice 1400 square feet home, near Carbon; 100 acres, well fenced, west of Ranger four miles; other larger tracts in this area. HOMES AND LOTS — Two bedroom, Cisco to rent; two bedroom, Cisco to sell; two and three bedrooms in Eastland; new three bedroom brick homes, P.H.A. or G.I. Loan; three acres, nice home sites, Olden; several lots, two houses in Ranger, \$2,500. Contact Buck White, Ranch and Farm Service, 231 N. Seaman, Eastland. Phone MA 9-2131, night MA 9-1973. 17

FOR SALE: Headquarters for famous Cedar Crest work shoes and boots. Black, brown, tan, rawhide, and rough out slip on Wellington boots. Several styles of lace up high top work and hunting boots. Also, steel toe an insulated boots from \$5.95 to \$12.95. Army Surplus Store, Eastland, Texas. 18

FOR SALE — Seven Poodle puppies, six weeks old. Two brown and five black. Call HI 2-3639, Cisco. 54

FOR SALE: 750 x 14 recaps. \$7.95 each. Horton Tire Service, Eastland. 19

FOR SALE: 1957 Ford, 6 cylinder, automatic transmission, clean. O. M. Franklin. 95tf

FOR SALE: 700 x 14 white-walls. New takeoff, \$15 each. Horton Tire Service, Eastland. 19

FOR SALE — Beauty shop, good location, reasonable rent, 311 W. Main, Eastland. Phone MA 9-1060 or MA 9-1926. 19

FOR SALE: 800/820/15 Seiberling four ply nylon tires, \$22.50 each. Horton Tire Service, Eastland. 19

FOR SALE: Household furniture and goods. Living room furniture, dinette, refrigerator, and range. See November 22, 23, 24 at Hwy. 80 East next door to Ranger Drive Inn, 2 miles on left, Ranger. 1tp

FOR SALE: Craftsman metal turning lathe, 12" swing, 24" center, 1 universal chuck, 1 adjustable chuck, milling machine attachment, drill chucks and other tools with instruction book. \$400.00. C. M. Rodgers, Ranger, Texas. Phone MI 7-1739. 25-29c

FOR SALE: Individual wishes to sell 1963 Ford, tudor, "four in the floor", with console and factory air. This car is like new. \$1,500 cash, no trade-in accepted. Phone MA 9-1731. 91

FOR SALE: Normalizer in A-1 condition. Call MI 7-1330 after 5:30 p. m. 26-28

FOR SALE: 140 ac. land net fences, good water, sandy. \$67.50. 150 ac. land some creek bot. but brushy, on pavement close in to town. \$85.00. 140 ac. land at the edge of town, good home & lots of cut. land suitable for improved pasture. \$23,500.00. 80 ac. Bot. land close in lots pecans \$250.00 per acre. 124 acres land at Olden some coastal, good water at shallow depth. Lge. house. \$14,750.00 Terms. 150 ac. well improved Peanut farm one owner for years good fences, water & a well kept place. Good terms. Extra nice 100 acre tract of land with Lge modern home some irrigated coastal. lots of pecan trees handy to town, and on the pavement. Central heat & air. Terms. 670 acres of land, good curly mesquite country. Make offer. 580 acre Comb. Farm & ranch. 95 ac. Peanuts, 45 coastal. 100 ac. pecan river bot. bal native grass. Running creek Irrigation possibilities. 5 rm & bath home. \$135.00 Terms. 127 acres sandy land farm Call on some peanuts \$125.00 ac. 1000 acres good comb ranch & farm. Plenty of water & good improvements 2 1/2% int. & good terms on bal. 5% int. We have many others from small farms on up to large ranches. Come in or call us today. All listings appreciated. 311 1/2 West Main Eastland, Texas Off. Phone MA 9-1725 M. L. TERRELL MA 9-1926 ROBERT KINCAID MA 9-2721

FOR SALE: 1957 Ford, 6 cylinder, automatic transmission, clean. O. M. Franklin. 95tf

FOR SALE: 700 x 14 white-walls. New takeoff, \$15 each. Horton Tire Service, Eastland. 19

FOR SALE — Beauty shop, good location, reasonable rent, 311 W. Main, Eastland. Phone MA 9-1060 or MA 9-1926. 19

FOR SALE: 800/820/15 Seiberling four ply nylon tires, \$22.50 each. Horton Tire Service, Eastland. 19

FOR SALE: Household furniture and goods. Living room furniture, dinette, refrigerator, and range. See November 22, 23, 24 at Hwy. 80 East next door to Ranger Drive Inn, 2 miles on left, Ranger. 1tp

FOR SALE: Craftsman metal turning lathe, 12" swing, 24" center, 1 universal chuck, 1 adjustable chuck, milling machine attachment, drill chucks and other tools with instruction book. \$400.00. C. M. Rodgers, Ranger, Texas. Phone MI 7-1739. 25-29c

FOR SALE: Individual wishes to sell 1963 Ford, tudor, "four in the floor", with console and factory air. This car is like new. \$1,500 cash, no trade-in accepted. Phone MA 9-1731. 91

FOR SALE: Normalizer in A-1 condition. Call MI 7-1330 after 5:30 p. m. 26-28

FOR SALE: 140 ac. land net fences, good water, sandy. \$67.50. 150 ac. land some creek bot. but brushy, on pavement close in to town. \$85.00. 140 ac. land at the edge of town, good home & lots of cut. land suitable for improved pasture. \$23,500.00. 80 ac. Bot. land close in lots pecans \$250.00 per acre. 124 acres land at Olden some coastal, good water at shallow depth. Lge. house. \$14,750.00 Terms. 150 ac. well improved Peanut farm one owner for years good fences, water & a well kept place. Good terms. Extra nice 100 acre tract of land with Lge modern home some irrigated coastal. lots of pecan trees handy to town, and on the pavement. Central heat & air. Terms. 670 acres of land, good curly mesquite country. Make offer. 580 acre Comb. Farm & ranch. 95 ac. Peanuts, 45 coastal. 100 ac. pecan river bot. bal native grass. Running creek Irrigation possibilities. 5 rm & bath home. \$135.00 Terms. 127 acres sandy land farm Call on some peanuts \$125.00 ac. 1000 acres good comb ranch & farm. Plenty of water & good improvements 2 1/2% int. & good terms on bal. 5% int. We have many others from small farms on up to large ranches. Come in or call us today. All listings appreciated. 311 1/2 West Main Eastland, Texas Off. Phone MA 9-1725 M. L. TERRELL MA 9-1926 ROBERT KINCAID MA 9-2721

FOR SALE: 1957 Ford, 6 cylinder, automatic transmission, clean. O. M. Franklin. 95tf

FOR SALE: 700 x 14 white-walls. New takeoff, \$15 each. Horton Tire Service, Eastland. 19

FOR SALE — Beauty shop, good location, reasonable rent, 311 W. Main, Eastland. Phone MA 9-1060 or MA 9-1926. 19

FOR SALE: 800/820/15 Seiberling four ply nylon tires, \$22.50 each. Horton Tire Service, Eastland. 19

FOR SALE: Household furniture and goods. Living room furniture, dinette, refrigerator, and range. See November 22, 23, 24 at Hwy. 80 East next door to Ranger Drive Inn, 2 miles on left, Ranger. 1tp

The Week Ahead In Ranger SUNDAY

Attend the Church of your choice. You need the Church and the Church needs you. Community Thanksgiving Service, First Baptist Church, 7 p. m.

MONDAY Bullock Quilting Club. WSCS, First Methodist Church meets at 3:30 p. m. for Study of Acts. Athletic Booster Club, 7:30 p. m. Fellowship Dinner, First Christian Church, 7 p. m.

TUESDAY 1947 Club meeting. Mmes. W. P. Watkins and James Ratliff hostesses. Volunteer Fire Department, 7:30.

WEDNESDAY Rotary Club, 12:05. FHA Bake Sale. Thanksgiving Service, New Hope Baptist Church (evening). Child Welfare Club, 3 p. m.

TOWN TALK

who celebrated another happy wedding anniversary on Thursday, Nov. 11. This reminder to Town Talker from their daughter, Mrs. H. D. Register of Hobbs, N. M.

SHOCKING statistic: "It took polio 33 years to kill as many people as automobiles do in one year," says Dr. Seymour Charles, president of Physicians for Automatic Safety, in the current issue of Pageant magazine. . . The Commercial State Bank, Ranger, has bill-fold size basketball schedule cards listing games of the Ranger Junior College Rangers and the RJC "Range-Anns," first femme cage aggregation in the history of our growing college.

Drop in at Commercial State and get yours. . . Kenneth Alford, head of the fine arts department of Ranger Junior College, and his fine choir will provide the entertainment for the annual Lions' "Ladies Night on Dec. 16. Should be a rare treat.

THIS interesting note from the columns of The Comanche Chief: Rev. B. L. McCord received a nine-year perfect attendance award Tuesday evening at the meeting of the Comanche Lions Club. The award was presented by the Lions district governor, Bill Longley. Rev. McCord formerly was pastor of Ranger's First Methodist Church and was active in the Ranger Lions Club.

INFORMANTS in the nearby Strawn-Mingus area inform that there's a new brand of beer about to make its debut — "Trigger," in bullet-proof cans. . . The Ranger High School Quarterback Club is a wide open organization which will support all junior and senior high athletic activities. Earl Lebrede, president of the newly-formed group, said Friday morning. "We want to emphasize that everyone is invited to join and to participate in this organization," he added. Membership cards will be available soon. . . One of the future projects of Southwestern Bell Telephone Co. will be reducing present eight-party lines to four parties. This project will cover a three-mile zone around Ranger in which about 70 families are served. This should be good news for those subscribers.

MANY HAPPY RETURNS We wish to thank our many friends for their response to the "Open House" for our parents last Sunday. You made it a wonderful day for them. The children of Rev. and Mrs. W. A. Gray.

BE WILLING to pay top price for land to lease for grazing cattle. Call MI 7-3268. 1tc

WANTED TO BUY: Electric or manual adding machine. Call MI 7-1289. 29tf

FOR RENT: Apartment for couple, 608 W. Plummer. 82

WONDERFUL OPPORTUNITY Woman active in WMU work presenting program of development to Baptist Churches. Reply to P. O. Box 118-E, Ranger, Texas.

HELP WANTED — Man or woman to supply Rawleigh products to consumers in Ranger or Eastland. Good time to start. No capital required. See C. S. Eldridge, Box 67, Desdemona, or write Rawleigh TX K 1022 815, Memphis, Tenn. 32

HELP WANTED — Man or woman to supply Rawleigh products to consumers in Ranger or Eastland. Good time to start. No capital required. See C. S. Eldridge, Box 67, Desdemona, or write Rawleigh TX K 1022 815, Memphis, Tenn. 32

HELP WANTED — Man or woman to supply Rawleigh products to consumers in Ranger or Eastland. Good time to start. No capital required. See C. S. Eldridge, Box 67, Desdemona, or write Rawleigh TX K 1022 815, Memphis, Tenn. 32

HELP WANTED — Man or woman to supply Rawleigh products to consumers in Ranger or Eastland. Good time to start. No capital required. See C. S. Eldridge, Box 67, Desdemona, or write Rawleigh TX K 1022 815, Memphis, Tenn. 32

HELP WANTED — Man or woman to supply Rawleigh products to consumers in Ranger or Eastland. Good time to start. No capital required. See C. S. Eldridge, Box 67, Desdemona, or write Rawleigh TX K 1022 815, Memphis, Tenn. 32

HELP WANTED — Man or woman to supply Rawleigh products to consumers in Ranger or Eastland. Good time to start. No capital required. See C. S. Eldridge, Box 67, Desdemona, or write Rawleigh TX K 1022 815, Memphis, Tenn. 32

HELP WANTED — Man or woman to supply Rawleigh products to consumers in Ranger or Eastland. Good time to start. No capital required. See C. S. Eldridge, Box 67, Desdemona, or write Rawleigh TX K 1022 815, Memphis, Tenn. 32

HELP WANTED — Man or woman to supply Rawleigh products to consumers in Ranger or Eastland. Good time to start. No capital required. See C. S. Eldridge, Box 67, Desdemona, or write Rawleigh TX K 1022 815, Memphis, Tenn. 32

HELP WANTED — Man or woman to supply Rawleigh products to consumers in Ranger or Eastland. Good time to start. No capital required. See C. S. Eldridge, Box 67, Desdemona, or write Rawleigh TX K 1022 815, Memphis, Tenn. 32

HELP WANTED — Man or woman to supply Rawleigh products to consumers in Ranger or Eastland. Good time to start. No capital required. See C. S. Eldridge, Box 67, Desdemona, or write Rawleigh TX K 1022 815, Memphis, Tenn. 32

HELP WANTED — Man or woman to supply Rawleigh products to consumers in Ranger or Eastland. Good time to start. No capital required. See C. S. Eldridge, Box 67, Desdemona, or write Rawleigh TX K 1022 815, Memphis, Tenn. 32

HELP WANTED — Man or woman to supply Rawleigh products to consumers in Ranger or Eastland. Good time to start. No capital required. See C. S. Eldridge, Box 67, Desdemona, or write Rawleigh TX K 1022 815, Memphis, Tenn. 32

HELP WANTED — Man or woman to supply Rawleigh products to consumers in Ranger or Eastland. Good time to start. No capital required. See C. S. Eldridge, Box 67, Desdemona, or write Rawleigh TX K 1022 815, Memphis, Tenn. 32

HELP WANTED — Man or woman to supply Rawleigh products to consumers in Ranger or Eastland. Good time to start. No capital required. See C. S. Eldridge, Box 67, Desdemona, or write Rawleigh TX K 1022 815, Memphis, Tenn. 32

HELP WANTED — Man or woman to supply Rawleigh products to consumers in Ranger or Eastland. Good time to start. No capital required. See C. S. Eldridge, Box 67, Desdemona, or write Rawleigh TX K 1022 815, Memphis, Tenn. 32

HELP WANTED — Man or woman to supply Rawleigh products to consumers in Ranger or Eastland. Good time to start. No capital required. See C. S. Eldridge, Box 67, Desdemona, or write Rawleigh TX K 1022 815, Memphis, Tenn. 32

HELP WANTED — Man or woman to supply Rawleigh products to consumers in Ranger or Eastland. Good time to start. No capital required. See C. S. Eldridge, Box 67, Desdemona, or write Rawleigh TX K 1022 815, Memphis, Tenn. 32

HELP WANTED — Man or woman to supply Rawleigh products to consumers in Ranger or Eastland. Good time to start. No capital required. See C. S. Eldridge, Box 67, Desdemona, or write Rawleigh TX K 1022 815, Memphis, Tenn. 32

HELP WANTED — Man or woman to supply Rawleigh products to consumers in Ranger or Eastland. Good time to start. No capital required. See C. S. Eldridge, Box 67, Desdemona, or write Rawleigh TX K 1022 815, Memphis, Tenn. 32

HELP WANTED — Man or woman to supply Rawleigh products to consumers in Ranger or Eastland. Good time to start. No capital required. See C. S. Eldridge, Box 67, Desdemona, or write Rawleigh TX K 1022 815, Memphis, Tenn. 32

HELP WANTED — Man or woman to supply Rawleigh products to consumers in Ranger or Eastland. Good time to start. No capital required. See C. S. Eldridge, Box 67, Desdemona, or write Rawleigh TX K 1022 815, Memphis, Tenn. 32

HELP WANTED — Man or woman to supply Rawleigh products to consumers in Ranger or Eastland. Good time to start. No capital required. See C. S. Eldridge, Box 67, Desdemona, or write Rawleigh TX K 1022 815, Memphis, Tenn. 32

HELP WANTED — Man or woman to supply Rawleigh products to consumers in Ranger or Eastland. Good time to start. No capital required. See C. S. Eldridge, Box 67, Desdemona, or write Rawleigh TX K 1022 815, Memphis, Tenn. 32

POSTMASTER OHR OFFERS CHRISTMAS MAILING TIPS; HEAVY MAIL VOLUME DUE

"Last Christmas the post office handled more mail than ever before, yet the operation was the most efficient in history," Postmaster Max Ohr said today.

Nationally about 99 per cent of the Christmas mail reached its destination before Christmas Eve.

"ZIP Code use and the cooperation of the public in mailing early were the main reasons for our success. With the same or better cooperation this year, we expect to handle an even greater volume of mail with less effort than during the 1964 Christmas rush."

Postmaster Ohr had advice which would help mailers prepare for the upcoming mailing season.

A. Up date last year's address list and include ZIP Codes. The phone book is usually a good source for local addresses. (Postmaster — if applicable mention that local ZIP Codes are listed in the yellow pages of your phone book.)

B. Prepare a gift list as soon as possible. Shop early to take advantage of full stock. Be sure to have on hand enough shipping materials, boxes, tape, wrapping paper, etc.

C. Use first class postage on greeting cards. This assures their being forwarded if the recipient has moved or that undeliverable cards will be returned if a return address is on the envelope.

The postmaster emphasized again this year that poorly wrapped and loosely packed cartons are the major cause of parcel post damage. He urged that cartons be packed tightly by using stuffing material to fill up the empty space around the merchandise. He also asked that all mailers make an effort to address their letters, cards and packages as clearly as possible and that they make every attempt to mail often, not waiting until the last minute to deposit all their gifts and greetings.

Ranger Mail Carriers Aid Rural Survey

Rural mail carriers of the Ranger Post Office are leaving some livestock survey cards along their routes. The distribution began Saturday.

"Information reported on these cards is used to set the yearly inventory of livestock and poultry on Texas farms," Postmaster Ohr explained.

Rural carriers distribute the cards at random in boxes along their routes.

"This means that not every box will get a card," said Ohr. "For this reason, it's important for everyone who gets a card to return it filled out so that USDA can get a true sample of the State's livestock holdings."

Carriers assisting with the survey are Wesley Poyner, Route 1; D. C. Singleton, Rt. 2 and R. D. Hatton Route 3.

Facts and figures secured in this survey are the basis for Texas and National pig crop report and inventories of livestock and poultry on farms as of the first of the year. Stockmen and many others use this information in making business decisions.

Survey results will be widely distributed through Texas Crop and Livestock Reporting Service releases, newspapers, farm magazines, radio, and television.

to the following Rangerites who'll be having birthdays during the coming week: Sunday—Mrs. H. E. Deal, Jimmy Brothers, T. Y. Sunday, Amelia Dell Williams, Midee Williams.

Monday—Mrs. Colene Pennington, Tommy Thomas, Mrs. J. F. Byas, Larry Butler Delbert Cozart Jr. Goldie Dodd.

Wednesday—Norman Carroll, Tony Taylor. Thursday—Stephen Milliken, Angela Williams, Ricky Hughes, Vicky Hughes.

Friday—Mrs. D. B. Morgan, Mrs. Nolan Carter, Mrs. Roger Martin, Becky Ogden, Lori LuWann Williamson, Manuel Hernandez Jr.

Saturday—Mrs. Jeanette Bell, Bob McCleskey, Rickey Bryan.

TICKETS for the coming 1965 Ranger High School football banquet out at Lone Cedar Country Club—Saturday, Dec. 18, 7:30 p. m. —are now on sale.

They may be secured from Mrs. Margaret Speed at the Ranger Clinic, Mrs. Louise McGee at the office of Dr. Lund, optometrist, or Mrs. Juanita Blackwell at Crawford - Doss Drug.

There were several plans of consolidation talked and studied for several weeks. The strength of the county unit, which operates in the Army in Cisco, has been cut by ten men to three officers and 47 men. This was done officially on Nov. 1.

Sgt. Estes reports that the unit has three officers and 53 men as of now. Under present regulations, they have a waiting list for recruits on pay status. The unit holds regular drills.

Captain Winford Hogan of Clyde is the commanding officer, and Bill McCutchen of Eastland and Dan Mitchell of Ranger, both lieutenants, are the other two officers.

BREAD of Life

But how hat God set the members every one of them in the body, as it hath pleased him. —1 Cor. 12:18.

The task Thy wisdom hath assigned, O let me cheerfully fulfill; In all my works Thy presence find, And prove Thy good and perfect will.

Final Rites For Atlee Stewart Held Thursday

Atlee Draper Stewart, 77, of Eastland was buried in Merriman Cemetery Thursday afternoon following funeral services held at 2:30 o'clock at Killingsworth Funeral Home Chapel.

Rev. K. C. Edmonds, retired Baptist minister of Ranger, officiated, and Killingsworth Funeral Home was in charge of arrangements.

Mr. Stewart died early Wednesday morning in Eastland Memorial Hospital following a lengthy illness.

The deceased, who had resided at 306 Plummer St. in Eastland for the past six years, was born Oct. 24, 1893 in Travis County and was a retired farmer and rancher. He was a member of the Christadelphian Church in Lampasas.

Surviving are a sister, Mrs. Elsie Brashears of Eastland, and a number of nieces and nephews.

Funeral services were held at 2:30 p. m. at Killingsworth Funeral Home in charge of arrangements.

Funeral services were held at 2:30 p. m. at Killingsworth Funeral Home in charge of arrangements.

Funeral services were held at 2:30 p. m. at Killingsworth Funeral Home in charge of arrangements.

Funeral services were held at 2:30 p. m. at Killingsworth Funeral Home in charge of arrangements.

Funeral services were held at 2:30 p. m. at Killingsworth Funeral Home in charge of arrangements.

Funeral services were held at 2:30 p. m. at Killingsworth Funeral Home in charge of arrangements.

Funeral services were held at 2:30 p. m. at Killingsworth Funeral Home in charge of arrangements.

Funeral services were held at 2:30 p. m. at Killingsworth Funeral Home in charge of arrangements.

Funeral services were held at 2:30 p. m. at Killingsworth Funeral Home in charge of arrangements.

Funeral services were held at 2:30 p. m. at Killingsworth Funeral Home in charge of arrangements.

Funeral services were held at 2:30 p. m. at Killingsworth Funeral Home in charge of arrangements.

Funeral services were held at 2:30 p. m. at Killingsworth Funeral Home in charge of arrangements.

Funeral services were held at 2:30 p. m. at Killingsworth Funeral Home in charge of arrangements.

Funeral services were held at 2:30 p. m. at Killingsworth Funeral Home in charge of arrangements.

Funeral services were held at 2:30 p. m. at Killingsworth Funeral Home in charge of arrangements.

Funeral services were held at 2:30 p. m. at Killingsworth Funeral Home in charge of arrangements.

Funeral services were held at 2:30 p. m. at Killingsworth Funeral Home in charge of arrangements.

Funeral services were held at 2:30 p. m. at Killingsworth Funeral Home in charge of arrangements.

Funeral services were held at 2:30 p. m. at Killingsworth Funeral Home in charge of arrangements.

Funeral services were held at 2:30 p. m. at Killingsworth Funeral Home in charge of arrangements.

Funeral services were held at 2:30 p. m. at Killingsworth Funeral Home in charge of arrangements.

Funeral services were held at 2:30 p. m. at Killingsworth Funeral Home in charge of arrangements.

Final Rites For Atlee Stewart Held Thursday

Atlee Draper Stewart, 77, of Eastland was buried in Merriman Cemetery Thursday afternoon following funeral services held at 2:30 o'clock at Killingsworth Funeral Home Chapel.

Rev. K. C. Edmonds, retired Baptist minister of Ranger, officiated, and Killingsworth Funeral Home was in charge of arrangements.

Mr. Stewart died early Wednesday morning in Eastland Memorial Hospital following a lengthy illness.

The deceased, who had resided at 306 Plummer St. in Eastland for the past six years, was born Oct. 24, 1893 in Travis County and was a retired farmer and rancher. He was a member of the Christadelphian Church in Lampasas.

Surviving are a sister, Mrs. Elsie Brashears of Eastland, and a number of nieces and nephews.

Funeral services were held at 2:30 p. m. at Killingsworth Funeral Home in charge of arrangements.

Funeral services were held at 2:30 p. m. at Killingsworth Funeral Home in charge of arrangements.

Funeral services were held at 2:30 p. m. at Killingsworth Funeral Home in charge of arrangements.

Funeral services were held at 2:30 p. m. at Killingsworth Funeral Home in charge of arrangements.

Funeral services were held at 2:30 p. m. at Killingsworth Funeral Home in charge of arrangements.

Funeral services were held at 2:30 p. m. at Killingsworth Funeral Home in charge of arrangements.

Funeral services were held at 2:30 p. m. at Killingsworth Funeral Home in charge of arrangements.

Funeral services were held at 2:30 p. m. at Killingsworth Funeral Home in charge of arrangements.

Funeral services were held at 2:30 p. m. at Killingsworth Funeral Home in charge of arrangements.

Funeral services were held at 2:30 p. m. at Killingsworth Funeral Home in charge of arrangements.

Funeral services were held at 2:30 p. m. at Killingsworth Funeral Home in charge of arrangements.

Funeral services were held at 2:30 p. m. at Killingsworth Funeral Home in charge of arrangements.

Funeral services were held at 2:30 p

ENJOY A BOUNTIFUL HARVEST

# For Your Thanksgiving

Double S&H Green Stamps with Purchase of \$2.50 or more on Wednesday

## Dollar Specials

Del Monte Pineapple-Grapefruit 46-oz. can  
**DRINK** can  
 Del Monte Pineapple 46-oz. can  
**JUICE** can  
 Northern Toilet 4-roll  
**TISSUES** pak

MIX OR MATCH  
**3 FOR \$1**

Del Monte Cut or Whole 303  
**GREEN BEANS** can  
 Del Monte Stewed 303  
**TOMATOES** can  
 Del Monte 2 1/2  
**PEACHES** can  
 Ocean Spray Cranberry 300  
**SAUCE** can

MIX OR MATCH  
**4 FOR \$1**

Hunt's 14-oz.  
**KETCHUP** btl.  
 Morton House 17-oz.  
**BAKED BEANS** can  
 Del Monte CS or WK 303  
**CORN** can  
 Sweet-Treet Sliced 300  
**PINEAPPLE** can  
 Libby's Vienna Reg.  
**SAUSAGE** can  
 Chef-Bardee 300  
**TAMALES** can  
 Del Monte Co. Gent. 303  
**CORN** can

MIX OR MATCH  
**5 FOR \$1**

Del Monte 303  
**SPINACH** can  
 Lucky Leaf 303  
**APPLESAUCE** can  
 Dixie Dandy Sweet 303  
**POTATOES** can

MIX OR MATCH  
**6 FOR \$1**

Van Camp 300  
**PORK & BEANS** can  
 Shurfine 303  
**PUMPKIN** can  
 Gold Tip Standard 303  
**TOMATOES** can  
 Allen Whole New 303  
**POTATOES** can  
 Carnation Tall  
**MILK** can

MIX OR MATCH  
**7 FOR \$1**



Armour's Broad Breast

# TURKEYS

**HENS 37¢** **TOMS 35¢**

10 to 14 Lb. Average Lb.  
 14 to 18 Lb. Average Lb.

FRESH SELECTED

# OYSTERS 89¢

Frozen Pkg.

Swift's — 4-6 Lb. Average  
**CHICKEN HENS** Lb. 39¢

Dandy  
**BEEF STEAKS** Lb. 59¢

**MOHAWK HAMS** 5-lb. Can \$4.49

SHURFINE  
**FLOUR** 39¢

5-lb. Bag  
 SUGARY SAM  
**Sweet Potatoes** No. 2 1/2 Cans \$1

Borden's NoncSuch  
**MINCE MEAT** 29¢

9-oz. Pkg.

AF — All Flavors  
**Mellorine** 3 1/2-Gal. Cartons \$1

AF Brand  
**Drinks** 28-oz. Bottle 10¢

**CASH SAVINGS ON QUALITY FOOD**

Shurfine — No. 300  
**Cranberry Sauce** Can 23¢

SHURFRESH SALTINE  
**Crackers** 1-lb. box 29¢

Del Monte — No. 303  
**Fruit Cocktail** Can 29¢

Contadina — No. 2 1/2  
**Spiced Peaches** Can 29¢

Maxwell House  
**COFFEE** 2-lb. Can \$1.29

Aunt Jemima — 5-lbs.  
**Corn Meal** Box 51¢

Reynolds Aluminum  
**FOIL** 25-ft. Roll 65¢

## JRB Quality Produce

Fresh Ocean Spray  
**CRANBERRIES** 1-lb. Pkg. 29¢

Fresh  
**RADISHES** Bun. 5¢ | **Green ONIONS** Bun. 5¢

**DELICIOUS APPLES** Extra Fancy Red Lb. 15¢

East Texas  
**YAMS** 2 Lbs. 19¢ | **Yellow ONIONS** Lb. 5¢

**CELERY**  
 PASCAL STALK  
**9¢**

Pioneer  
**Biscuit Mix** 2-lb. Box 53¢

Blue Bonnet — 22¢ Off Label  
**Instant Coffee** 6-oz. 79¢

Baker's Angle Flake  
**COCONUT** 7-oz. 39¢

V-8 — 46-oz.  
**Cocktail Juice** Can 39¢

French's Poultry  
**SEASONING** 1-oz. 19¢

French's Pumpkin Pie  
**SPICE** 1 1/2-oz. 33¢

Blue Bonnet — 2¢ Off Label  
**MARGARINE** lb. 29¢

Right Guard  
**DEODORANT** 4-oz. Can \$1

Kraft's  
**MARSHMALLOW CREME** pt. 19¢

**ROLLS** AF Frozen Pkg. 29¢

Pet Rize — 9-inch  
**Pie Shells** Pkg. of 2 41¢

Shurfine — 10-oz.  
**Strawberries** pkg. 33¢

Shurfine — 6-oz.  
**Orange Juice** 5 For \$1

SHURFROST  
**Pumpkin Pies** 29¢

Family Size Pie

**JRB SUPER MARKETS**  
 RANGER — EASTLAND — CISCO  
 We Reserve the Right to Limit Quantities — No Sales to Dealers

**J.R.B. BONUS STAMP COUPON**  
 100 Free S&H Green Stamps with purchase any buffet **HAM PIECE** (Void after Nov. 27, 1965)

**J.R.B. BONUS STAMP COUPON**  
 100 Free S&H Green Stamps with purchase of 1.19 24's **DRISTAN TABLETS** (Void after Nov. 27, 1965)

**J.R.B. BONUS STAMP COUPON**  
 50 Free S&H Green Stamps with purchase of Giant Gleem **TOOTH PASTE** (Void after Nov. 27, 1965)

**J.R.B. BONUS STAMP COUPON**  
 25 Free S&H Green Stamps with purchase of 2 1/2 can **Austex Tamales** (Void after Nov. 27, 1965)

**J.R.B. BONUS STAMP COUPON**  
 50 Free S&H Green Stamps with purchase quart Morton **Salad Dressing** (Void after Nov. 27, 1965)

**J.R.B. BONUS STAMP COUPON**  
 50 Free S&H Green Stamps with purchase 13-oz. Tom Scott **Mixed Nuts** (Void after Nov. 27, 1965)

**J.R.B. BONUS STAMP COUPON**  
 50 Free S&H Green Stamps with purchase of reg. or child's **BEN GAY** (Void after Nov. 27, 1965)

**FOR LEASE**

Major company service station in Eastland. Financial assistance available to qualified party. Contact  
**H. L. CAWTHON**  
Phone HI 9-2383 Breckenridge



**Thrill your Child with a letter from Santa**

Visit our Santa Post Office and select one of our gay, colorful letters and envelopes, FREE! Mail the letters you choose in our special mail box and we will have them sent from the famous Santa Claus Post Office in Santa Claus, Indiana. The special child in your life will be delighted with this positive proof that there is a Santa Claus.



You'll Like  
**WARD'S, Your Christmas Store!**



MR. AND MRS. DONALD O. KELLEY

**Another Deputy Is Needed**

(An Editorial)

Ordinary talk suggests, and statistics prove, that there has been an increase of crime in Eastland County. News accounts punctuate the increase.

Plas have been heard from competent law enforcement officials for funds to update their forces and provide the tools to combat modern crime. The Eastland County sheriff's department has been provided with some new equipment, including a tear-gas gun, road-block signs and miniature two-way radios.

And these are ideal pieces of equipment, but neither of them can arrest a prowler take a prisoner to Huntsville or Wichita Falls, or patrol at night. It takes manpower to do that.

And that's what Sheriff L. E. Sublett has asked for repeatedly — another deputy. Another man to assist with the regular duties and so that more night-time patrolling, a major crime preventive, can be done. Right now the sheriff and one deputy handle all the "outside" work which includes investigations, transportation of prisoners, delivering of citations, etc., with precious little time for patrolling the individual towns in the county.

The sheriff has been told that the constables in the various towns should be called on to help as needed. That won't work because constables aren't under the sheriff's jurisdiction, and he has no authority to request or demand their assistance, although they are most cooperative. And, too, they have their local jobs to do.

It is significant that Sheriff Sublett is not asking for luxury for his men or his office but rather for what he considers to be the bare minimum needed to operate his department. In a way, it is a pity that an elected official of a county that can boast of so many good things practically has to beg for funds to provide an absolutely essential service for the people who pay for it.

Surely the people of Eastland County would be horrified at the thought that our county might someday become one of those where it is not safe to be out of our homes at night. It has happened in much larger areas and smaller areas, and it can happen here.

This discussion is intended more as an expression of our views than a criticism of the commissioners court. All of us appreciate the fact that they have a big job to do in managing the affairs of our county.

**Airman Donald Kelley, Miss Jodie White Wed Friday, November 5th**

Miss Jodie White, daughter of Mrs. Clement Farris, of Strawn, became the bride of Airman 3rd Class Donald O. Kelley, son of Mr. and Mrs. W. A. Kelley of Olden, Friday, November 5.

The single ring ceremony took place in the new home of Raymond Boyd at Mings. Mr. Boyd, Church of Christ minister, performed the ceremony.

The bride's dress was of white winter wool and her accessories were white. A baby blue flower arrangement made her corsage.

The bride's mother wore a navy wool crepe with black accessories.

The mother of the groom was dressed in a pale blue knit suit with black patent accessories.

Those attending Mr. and Mrs. Kelly were Mrs. Farris and Mr. Ben Weekes.

An intimate reception at the home of Mrs. Farris, was held immediately following the ceremony.

**10 Student Nurses Attend LVNA Meet**

Ten student nurses in the Cisco Junior College vocational program attended the 16th annual meeting of the Licensed Vocational Nurses Association in San Angelo Oct. 31.

Those from the CJC class attending were Louise Kimmell and Chris Gaines, both of Cisco; Margaret Clemets and Johnnie Wilson, both of Ranger; Nona Harris, Eastland; Lorene Arledge, Mary Smoot, and Christine Graham, all of Cross Plains; Idelle Musgrove, Olden; and Frances McCree, Breckenridge. Instructor of these student nurses is Mrs. Venita Mitchell of Cisco.

A total of 121 students from 12 schools attended the meeting, held to honor all students in the LVNA.

**C. E. PAUL, D. C.**

Complete  
Chiropractic  
Health Service

Ave. I at 8th St.—(Hwy. 80)

Cisco, Texas

Phone HI 2-1677

**Win A Turkey**

For Thanksgiving, Christmas, New Year's (offer good now through Jan. 1)  
It's Simple: Roll 10 times against a full set of pins on five lanes. Men must knock down 8 pins each through. Women only 7 pins. Cost per round — \$1.  
ALSO  
A free turkey to every man who rolls a Turkey (three strikes in a row) — and a Double (two more) . . . . A Free Turkey to every woman who rolls a Turkey.

Bowl for Fun — and your dinner!  
at  
**FIESTA BOWL**  
Eastland

READ THE CLASSIFIEDS

**FREE**

**BEGINNING BOWLING INSTRUCTIONS**

**Adult — Beginners — New Comers**

**4 1-Hour Sessions BEGINNING FRIDAY NOVEMBER 26 AT 7 P.M.**

(Includes Free Bowling Instructions)

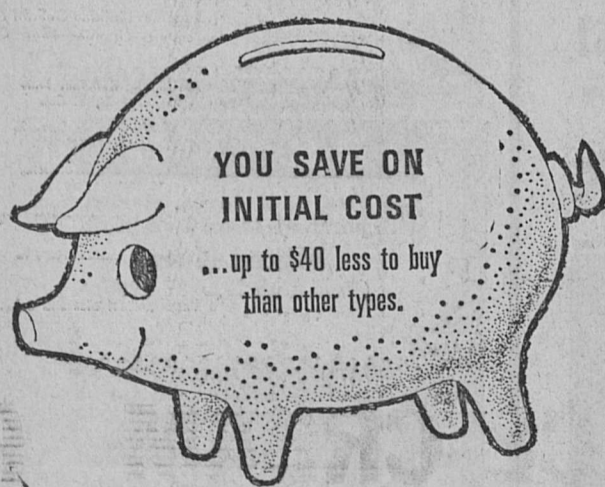
**Score Keeping — Techniques — Ball Handling COUPLES and INDIVIDUALS**

Purpose of this special instruction is to organize a regular Friday Night League of New Bowlers, so that couples and individuals, with related little experience, can have a night of their own for Bowling fun . . . a time and place to bowl with those of their own skills and experience. Instruction sessions will be on four Friday nights beginning Nov. 26, last one-hour each, and be composed of instruction and actual ball-handling, for beginners.

**FIESTA BOWL**

Eastland

**You save 2 ways when you buy an electric dryer now!**

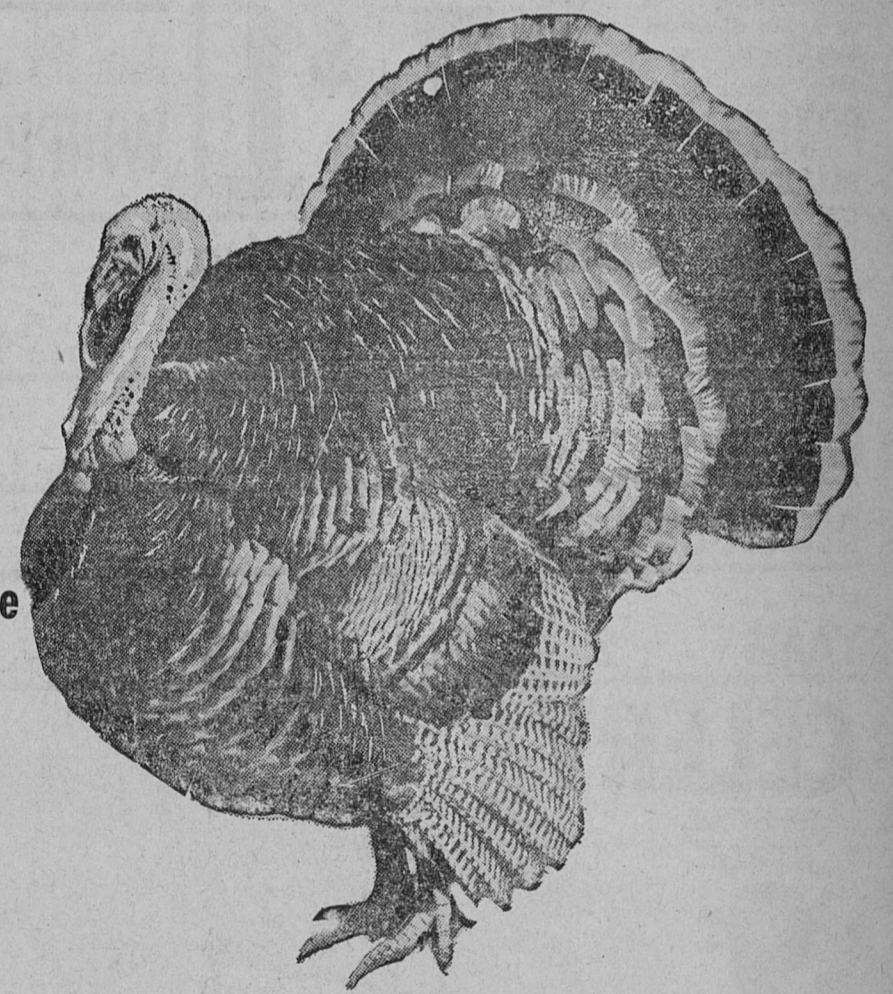


And, of course, you save clothes-line work and weather worries . . . enjoy the ease and peace-of-mind that come with flameless electric clothes drying. Your clothes last longer, too, dried in clean, gentle electric heat.



See the flameless electric clothes dryers now on display at your favorite appliance dealer's. Let your dealer show you how much you save by buying your electric dryer now . . . during the Fall Festival of Savings!

**"LET'S TALK TURKEY (About Tires)" We'll Give You The BIRD! (And the best Tire Deal Around!)**



**A FREE TURKEY WITH EVERY SET OF 4**

**SEE SEIBERLING QUALITY!**

All TIRES 1st QUALITY AND FULLY GUARANTEED

**ALL TIRES MOUNTED AND BALANCED FREE**

**HORTON TIRE SERVICE**

403 East Main — EASTLAND — MA 9-1420

**TEXAS ELECTRIC SERVICE COMPANY**

BILL COLLINGS, Manager Phone MI 7-1107

## Coronation At Olden Set For Monday Night In School Gymnasium

Marsha (Tammy) Moreland, daughter of Mr. and Mrs. M. F. Moreland will be crowned Queen of Olden High School in coronation ceremonies to be held in the high school gym on Monday, Nov. 22, at 7:30 p.m.

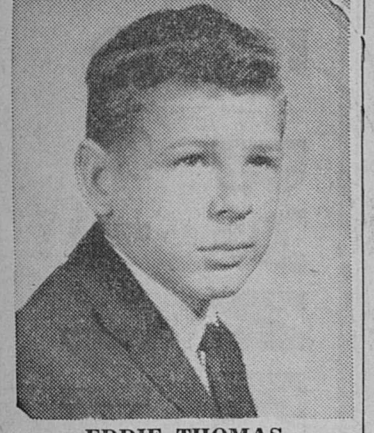


MARSHA MORELAND

In the same rites, Eddie Thomas, son of Mr. and Mrs. H. C. Thomas of Olden, will be crowned high school king.

Miss Moreland, a high school senior, is cheerleader for the Olden Hornets, member of annual staff, Future Homemakers (four years), Future Nurses, runner-up in the queen's contest last year, and class favorite last year. She is a member of First Baptist Church in Ranger.

Eddie, also a senior, is vice-president of Student Council, member of Annual Staff, two-year letterman in basketball, one year in tennis, three-year track star, and captain of Olden Hornet football team this year. He is a member of the First Baptist Church of Olden.



EDDIE THOMAS

### TAXI-THEFT TRIAL

(Continued from Page One)

Other cases set down for trial Monday include: William E. Hensley, DWI; Johnny Andrew Justice, DWI; Estes Eugene Agnew, DWI; E. J. McKellar, DWI; Lester R. Smith, DWI; Dennis Ray Bell, BWI, second offense; Ashford, theft; Sechrist, hunting deer at night; and Vasquez, making false statement in writing to Texas Unemployment Commission.

After Sheriff Sublett returned Breeden and Smith from Arcadia, La., he said they were in a group of four persons who had come to Eastland a few days earlier. Two of the four were captured at the scene of a burglary at the Old Rip Cafe on Highway 80 in the east edge of Eastland, the sheriff said. The two are Donald Shoemaker, 21, and Frankie Cross, 24, and their cases have been disposed of, he said. (Shoemaker is the Cross woman's nephew and Smith is her brother, he said.)

The sheriff and Deputies Loy Williams and J. L. Shook went to Weatherford and assisted in the gigantic search for Breeden and Smith. The two abandoned the auto taken at a point from Jones near Weatherford and later a pickup truck was reported stolen in Weatherford. Jones had taken the two men as passengers to Olden Friday night of Sept. 10, where he was reportedly robbed, bound, and placed on the back seat of his car as the robbers drove east on U. S. 80. He escaped from them at the restaurant at the west edge of the Brazos River bridge.

Civil cases set include: Alma Green vs. Liberty Mutual Ins. Co.; Clifton E. Jarrett vs. Ranger Peanut Co.; Swindale vs. Pollack Paper Co., all requesting juries; and Ledbetter vs. Carson, non-jury.

Called for possible jury service Monday are: Mrs. James A. Smith, Kenneth Pendleton, Mrs. W. A. Lewis, W. J. Sipes, A. F. Stevens, Nath Pirkle, George Falls, and Albert Hise, all of Ranger. J. D. Owens, B. B. Jackson, Chas. A. Chamberlain, Weldon Roach, Mrs. Emma Steel, C. T. Brown, C. E. Smith, J. T. Beggs, W. G. Reed, R. L. Shuitts, Mrs. Mary Holly, A. B. Jones and Aaron Gage, all of Rising Star. Mrs. N. C. Houston, L. E. Booth, Frances Monk, Earlene Gilmore, Billy Bacon, Mrs. Ellen Justice, Bill Mitchell, Mrs. Sam King, George Owens and V. C. Estes, all of Cisco. Jack Elliott, B. B. Cooper and Darrell Basham, all of Eastland. Truman Bryant of Carbon, Howard Wade, A. L. Williamson, P. E. Fox, and Mrs. R. O. Buckley, all of Deslemona. Lois Meazell of Olden.

The word salary comes from "salarium" meaning salt money, since Roman soldiers received part of their pay in salt.

## Scout Council Dinner Planned At TSC Nov. 22

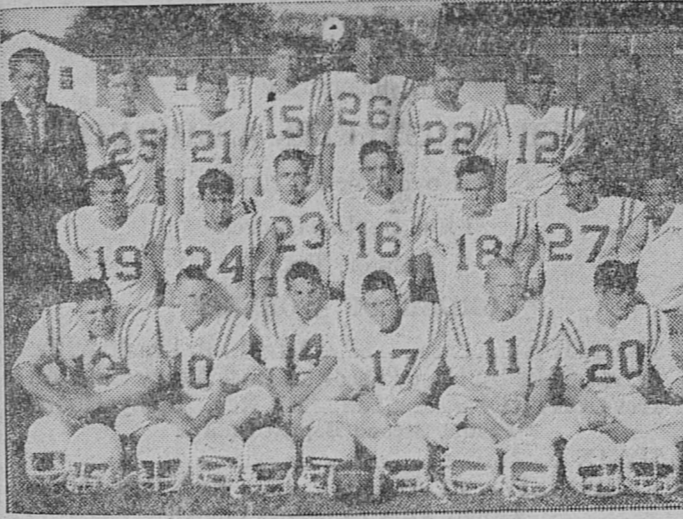
A district annual recognition dinner will be held Monday, Nov. 22, beginning at 7:30 p.m. in Tarleton State College, Stephenville for the Comanche Trail Council, Northeast District, Boy Scouts of America.

Main speaker will be W. D. Maxie of General Dynamics of Fort Worth, who will speak on "Mr. Boy Scout—William Granger."

Some 20 delegates from Eastland are expected to attend, according to Roland McFarland, district Scout executive.

Leaders will be recognized and officers will be elected for the coming year.

District Chairman Dr. Nathan Cedars will preside.



CARBON HIGH SCHOOL WOLVERINES — Back row, left to right, Dale Key, head coach, Ronnie Hughes, Danny Norris, Jerry Cook, Herbert Casey, Timmy Warren, Kelly Wyatt, Jimmy Hughes, assistant coach; middle row, l. to r., Jimmy Nelson, Ray Kanady, Alvie Allison, Larry Bryant, Danny Hobbs, Bruce Wyatt, Lester Swan, manager; front row, l. to r., Danny Williams, Rickie Pack, Weldon Kanady, Ronnie Lasater, Joe Fields, Harry Glenn Justice.

## Wolverines Win District; Face Gustine

The Carbon Wolverines finished the season with a perfect 10-0 record and won the district 8-B crown. The bi-district game with Gustine will be played at Comanche Thanksgiving night, Nov. 25, at 7:30 p.m. This promises to be one of the top six-man games of the season.

Gustine has a 9 - 1 record, beaten by Carbon only once. The Carbon team scored 443 points this season while holding the opponents to 108.

The winner of this game will play the winner of the Weir and Talpa game for the regional championship.

A crab's teeth are in its stomach.

### YOUNG FARMERS MEET

Eastland County Young Farmers will meet Monday, Nov. 22, at 7:30 p.m. in Olden Community Center, according to Winfred Parr, vocational agriculture teacher.

Guest speaker will be John Koester with Portland Cement Co. He will present a program on "Concrete Block Construction."

All interested persons are invited to attend the meeting.

### NOTICE

Water Well Service Pulling & Bailing  
30' Mast for 20' Pipe

A. O. HOOVER  
Olden, Texas  
Phone 2372

### Monuments

WEATHERFORD PHONE 4-2772

IF WE MAY ASSIST YOU, CALL US COLLECT OR MAIL THIS AD

NAME \_\_\_\_\_ PHONE \_\_\_\_\_

ADDRESS \_\_\_\_\_ CITY \_\_\_\_\_

All Stores Will Be **CLOSED** Thursday, November 25, Thanksgiving Day

# Wonderful Foods for Feasting

### Pantry Fillers!

**Del Monte Peas** 4 for \$1  
Early Garden, Tender and Sweet—No. 303 Can

**Tomato Juice** 2 for 65¢  
Del Monte, A wonderful refresher—46-oz. Can

**Toilet Tissue** 4 for 49¢  
Scott, White or Assorted Colors—Roll

**Cranberry Sauce** 2 for 49¢  
Ocean Spray, Jellyed or Whole—No. 300 Can

**Libby Pineapple** 4 for \$1  
★ Sliced ★ Crushed ★ Chunk—No. 1 1/2 Can

### Maxwell House

**Coffee** 2 lb. \$1.54  
Regular or Drip Grind (15¢ off label)

**Instant Coffee** 88¢  
Maxwell House, (10¢ off label), 6-oz. Jar

**Nestle's Morsels** 23¢  
Semi-Sweet, Chocolate, (2¢ off label), 6-oz. Pkg.

**Margarine** 33¢  
Bluebonnet, Whipped, (2¢ off label)—1-Lb. Ctn.

**Throat Lozenges** 59¢  
Listerine, Relieves throat pain 18-Count Pkg.

**Listerine** 59¢  
Mouthwash, Germ fighter, 7-oz. Bottle

### Favorite Holiday Produce!

**Pascal Celery** 10¢  
Crisp and crunchy. Adds flavor to your Holiday stuffing. Stalk

**Texas Yams** 3 lbs. 29¢  
From East Texas. Serve them candied.

**Bulk Nuts** 49¢  
★ Pecan ★ Walnut ★ Almonds ★ Brazil Nuts New Crop—Lb.

**Cauliflower** 25¢  
Delicate Flavor—Each

**Yellow Onions** 3 lbs. 19¢  
Adds zest to meat.

**Cucumbers** 3 for 25¢  
Perfect for salads—Each

### Stock Up Now!

**Pineapple Juice** 3 for \$1  
La Lani—46-oz. Can

**Apricot Halves** 4 for \$1  
Unpeeled, Town House—No. 303 Can

**Marshmallows** 25¢  
Fluff-Puff—16-oz. Bag

**Mixed Nuts** 49¢  
Tom Scott—1 1/4-oz. Can

**Salad Dressing** 39¢  
No. Made—Quart Jar

**Wishbone Dressing** 2 for 75¢  
Lo. Cal. ★ Italian ★ French ★ Gold Italian ★ Garlic—8-oz. Bottle

**Empress Olives** 45¢  
Stuffed Manzanilla—5-oz. Bottle

**Salad Olives** 4 for \$1  
Shasta—1 1/4-oz. Bottle

**Cream Style Corn** 6 for \$1  
Garden of Eatin' Golden, No. 303 Can

**Cut Green Beans** 4 for \$1  
Libby—No. 303 Can

**Golden Corn** 5 for \$1  
Highway, Whole Kernel—12-oz. Can

**Blackeye Peas** 6 for \$1  
Libby Fresh—No. 300 Can

**New Potatoes** 7 for \$1  
Highway, Whole—No. 300 Can

**Whole Tomatoes** 3 for \$1  
Del Monte—No. 303 Can

**Luncheon Napkins** 2 for 33¢  
Scotties, White or Assorted Colors, 50-Count Pkg.

**Facial Tissues** 2 for 49¢  
Scotties, White or Assorted Colors, 2-Ply—200-Count Box

**Lucky Whip** 53¢  
Topping, Quick and delicious, 10-oz. Can

**Pie Shells** 29¢  
Ole South, Frozen—TWO 9-inch shells, 10-oz. Can

**Birdseye Awake** 39¢  
Imitation Orange Juice, Pot. Can

### Coffee

Maxwell House, All Grinds, (7¢ off label)—1-Lb. Can 77¢  
[Edwards, All grinds, (5¢ off label)—1-Lb. Can 74¢]

### Gold Medal Flour

You'll bake everything better, 5 lb. 55¢  
Bag

### Fruit Cocktail

Town House, Good in salad or as dessert—No. 303 Can 4 for 89¢

### Reynolds Foil

Heavy Duty Aluminum, 18" x 25' Roll 59¢

### More Holiday Values!

**Cranberries** 29¢  
Ocean Spray—1-Lb. Pkg.

**Brussels Sprouts** 39¢  
Fresh and green—1-Lb. Pkg.

**Mushrooms** 39¢  
Gourmet's delight—Pint Ctn.

**Lettuce** 29¢  
★ Boston ★ Red ★ Romaine—Bunch

**Chestnuts** 45¢  
Serve them roasted—Lb.

**Red Rome Apples** 19¢  
Crisp and Firm—Lb.

**Smoked Picnics** Whole, 6 to 8-Lb. Avg.—Lb. 39¢

**Armour Canned Hams** Pear Shaped or Pullman, 3 lb. \$3.19

**Rath Canned Ham** Rath Blackhawk or Hormel, 8 lb. \$7.99

**Boneless Ham** Samuel's Chieftain, Half or Whole—Lb. \$1.35

**Boneless Roast** Chuck or Shoulder, U.S.D.A. Choice Heavy Beef—Lb. 75¢

**Chuck Steak** U.S.D.A. Choice Heavy Beef, Good pan fried—Lb. 69¢

**Quick Steaks** Veal or Pork—Lb. 79¢

**Fresh Oysters** Pacific Coast, Medium Size, 12-oz. Carton 89¢

**Fresh Oysters** Gulf Coast, Standard Size—12-oz. Ctn. \$1.15

**Karo Syrup** Blue Label, Use in baking—55-oz. Jar 75¢

**Karo Syrup** Red Label, Makes delicious frosting—32-oz. Jar 65¢

**Peas With Onions** Birdseye—10-oz. Pkg. 33¢

**Birdseye Corn** With Peas and Potatoes, 10-oz. Pkg. 33¢

**Peas & Potatoes** With Cream Sauce, Birdseye—8-oz. Pkg. 33¢

**Barbecue Sauce** Morlon's, So good on meats, 16-oz. Jar 39¢

**Angel Food Cake** 36¢  
Hostess, Perfect for icing or serve them plain, topped with Strawberries and Whipped Cream—10-oz. Cake

**Skylark Rolls** Brown 'n Serve, Twin or Cloverleaf (2¢ off label)—12-Ct. Pkg. 25¢

**Stuffing Bread** Mrs. Wright's—1 1/2-Lb. Loaf 28¢

**Anacin Tablets** 98¢  
Quick relief for headaches—100-Count Bottle

**Alka-Seltzer** 47¢  
For that upset feeling—Large Size

**Hair Spray** Truly Fine—14-oz. Can 67¢

**Hosiery** Susan Lane Seamless, Nude Heel—Fair 2 for 79¢

**Kodak Film** Black and White, VP-12 or VP-420—Roll \$1.22

**Kodak Film** Color, C-127 or C-420—Roll \$3.83

**Nut Cracker** For Holiday use—Each 39¢

### SPECIAL NOTICE!

By Popular Demand **BONUS BINGO**

Continues until Dec. 24, 1965

One FREE slip per store visit. No purchase required. No need to pass through checkstand. Secure your FREE slip at either end of checkstand or from any store employee other than in meat Department. Safeway employees and their immediate families are not eligible. You must be 16 or over to receive Bonus Bingo slips. Only bonafide Bonus Bingo slips issued by Safeway Stores, Inc. will be honored.

### Holiday Values!

## TURKEYS

U.S.D.A. Inspected... Grade A

**Fancy Toms** 16 to 24-Lb. Avg.—Lb. 35¢

**Fancy Hens** 10 Lbs. and Up —Lb. 37¢

**Chicken Hens** U.S.D.A. Inspected, Grade A, Fancy, 4 to 7-Lb. Avg.—Lb. 43¢

**Fryer Turkey** U.S.D.A. Inspected, Grade A, 7 to 9-Lb. Avg.—Lb. 49¢

**Manor House Ducks** U.S.D.A. Inspected, Grade A, 5 to 5 1/2-Lb.—Lb. 49¢

**Hormel Bacon** Sliced, Black Label, Delicious with eggs—1-Lb. Pkg. 75¢  
(Safeway Sliced Bacon... 1-Lb. Pkg. 73¢)

**Cube Steaks** Beef, For a quick and delicious meal—Lb. 99¢

**Link Sausage** Safeway, Pork—1-Lb. Pkg. 59¢

**Pork Picnics** Fresh Whole, 6 to 8-Lb. Avg.—Lb. 39¢

**Pork Sausage** Winsted's, Regular or Hot, 2-Lb. Pkg. 2.99¢

**Nabisco Cookies** Chocolate Pin Wheel 12/4-oz. Pkg. 49¢

**Evaporated Milk** Pot. Creamy and smooth, 14 1/2-oz. Can 3 for 47¢

**Chunk Tuna** Star-Kist, Light Meat 6 1/2-oz. Can 3 for \$1

**Uncle Ben's Rice** Converted Long Grain—14-oz. Pkg. 27¢

**Uncle Ben's Rice** Long Grain Wild—6-oz. Pkg. 65¢

**Pillsbury Cookies** 2 for 89¢  
★ Oatmeal Raisin ★ Butter Scotch Nut ★ Peanut Butter ★ Chocolate Chip ★ Sugar ★ Fudge Brownie—Reg. Roll

**Sour Cream** Lucerne—8-oz. Ctn. 27¢

**Lucerne Dips** Assorted—8-oz. Ctn. 2 for 65¢

**Egg Nog** Lucerne—Quart Ctn. 49¢

**Gelatin Salad** Lucerne, Holiday Delight or Cranberry-Orange—15-oz. Ctn. 39¢

**Fruit Cocktail** Del Monte, Delicious Fruit in Syrup—Buffet Can 2 for 35¢

**Del Monte Peas** Early Garden, Serve in salad—Buffet Can 2 for 35¢

**Sauerkraut** Del Monte, Serve with wieners, No. 303 Can 2 for 37¢

**Mince Meat** Borden's Non-such—7-oz. Pkg. 33¢

**Margarine** Imperial, Spreads easy—1-Lb. Ctn. 2 for 79¢

**Gladiola Flour** Makes perfect pies and cakes, 5 lb. 61¢

### Frozen Food Values!

## ICE CREAM

Lucerne Party Pride, Assorted Flavors, Delicious in so many ways—1/2-Gal. Ctn. 69¢

**Lucerne Sherbet** Party Pride, Assorted Flavors—1/2-Gal. Ctn. 59¢

**Peaches** Bel-air—12-oz. Pkg. 29¢

**Strawberries** Bel-air, Sliced 4 for \$1

**Grape Juice** Bel-air, 6-oz. Can 5 for \$1

**Bread Dough** Morlon's, Three 1-Lb. Loaves 49¢

**Bel-air Pies** Assorted Fruit, Mince or Pumpkin, 1 1/2-Lb. Pkg. 2 for 75¢

**Brussels Sprouts** Bel-air, 8-oz. Pkg. 3 for 89¢

**Asparagus Spears** Bel-air, 8-oz. Pkg. 39¢

**Potato Patties** or Hash Brown Bel-air, 12-oz. Pkg. 5 for 89¢

SAVE at SAFEWAY  
It takes less books to Get More Gifts with GOLD BOND STAMPS

Coupon Worth 25¢: FREE GOLD BOND STAMPS With the Purchase of 13-oz. Carton FRESH TOMATOES. Coupon Expires November 24, 1965.

Coupon Worth 75¢: FREE GOLD BOND STAMPS With the Purchase of Half or Whole SMOKED HAM. Coupon Expires November 24, 1965.

Coupon Worth 25¢: FREE GOLD BOND STAMPS With the Purchase of 10-oz. Bag Twin Pack MORTON POTATO CHIPS. Coupon Expires November 24, 1965.

Coupon Worth 25¢: FREE GOLD BOND STAMPS With the Purchase of 1/2-Pint Carton LUCERNE WHIPPING CREAM. Coupon Expires November 24, 1965.

Coupon Worth 25¢: FREE GOLD BOND STAMPS With the Purchase of 16-oz. Bottle S. P. ANTISEPTIC. Coupon Expires November 24, 1965.

Prices and Coupons Effective Mon., Tues. and Wed., Nov. 22, 23 and 24, in EASTLAND

We Reserve the Right to Limit Quantities. No Sales to Dealers.

# SAFEWAY

### 'SACRIFICE' IS TOPIC FOR BIBLE CLASS DISCUSSION

The Ladies Bible Class of Mesquite and Rusk Church of Christ met on Tuesday, Nov. 16, with the minister, Gary Beauchamp teaching the lesson.

The study opened with the question, "Where is the Lamb?" based on Genesis 22: 2, 8. Excerpts from the discussion: "As a test of Abraham's faith, God said to him: 'Take thy son Isaac whom thou lovest, get thee into the land of Moriah, and there offer him for a burnt offering.'"

As they reached the mount Isaac said: "Behold the fire and the wood, but where is the Lamb?"

Yes, where is the lamb? Isaac didn't realize that he was the lamb. Obediently Abraham and Isaac made preparation for the sacrifice. Although God stayed Abraham's hand before his son's life was taken, to understand our responsibilities today, we must know God's teaching concerning sacrifice.

Twenty-five items of food were brought to the store-room. Any article of food may be brought this week.

Sympathy cards were sent to Mrs. Dick Henderson, Fort Worth, and Mrs. Wayne Smith, Coleman.

Present for the meeting were Mmes. Lela Quinn, Tolia Norton, Mary Tucker, Eura Tucker, Cora Patterson, Maggie Heard, Winston Squy-

### Class Meets For Supper, Social In Elliott Home

Members of Friendship Class of First Methodist Church met in Fellowship Hall for a covered dish supper and fun party on Tuesday evening, Nov. 16. Hostesses were Mmes. Bill Collins and Cecil Louks.

Couples came dressed in their wife or husband's clothing, creating a scene that was mirth-provoking. Mr. Glyn Gilliam and Mrs. Cecil Louks were awarded plastic bags of nuts for the cleverest costumes.

Roses and chrysanthemums were used as table decorations.

Following the meal, guests played games, including, Skate Skill, What do You Really Know About your Mate?, and Memories.

Attending were Messrs. and Mmes. David Allsup, Joe B. Scott, Cecil Louks, Glyn Gilliam, Bill Collins, and Rev. Ray Willott.

### Birthday Club Honors Three At Lone Cedar

Mmes. Virgie Higdon and Dortha Harris were hostesses for the November meeting of Cedar Country Club on Tuesday evening.

Honorees for November were Mmes. P. M. Kuykendall, Iris Hummel, and Linda Forney.

A delicious meal and bingo was enjoyed by: Beauford Anderson, Messrs. and Mmes. D. T. Love, J. B. Craig, O. C. Warden, T. C. Wylie, Joe Collins, Mmes. Johnnie Pinto, Lottie Davenport, Audrey Yonker, J. P. Morris, two guests, Mrs. Stewart Doss of Dallas and Anice Locke, the honorees and hostesses.

### Birthdays Honored At Lone Cedar

Mmes. Virgie Higdon and Dortha Harris were hostesses for the November meeting of Cedar Country Club on Tuesday evening.

Honorees for November were Mmes. P. M. Kuykendall, Iris Hummel, and Linda Forney.

A delicious meal and bingo was enjoyed by: Beauford Anderson, Messrs. and Mmes. D. T. Love, J. B. Craig, O. C. Warden, T. C. Wylie, Joe Collins, Mmes. Johnnie Pinto, Lottie Davenport, Audrey Yonker, J. P. Morris, two guests, Mrs. Stewart Doss of Dallas and Anice Locke, the honorees and hostesses.

### Announcements Of Interest To Parents; Pupils

Ranger School Superintendent J. R. Clark calls attention to the following dates:

Nov. 24 — All schools out one hour early. Noon hour to be cut so that two hours can be taught in afternoon.

Nov. 25, 26 — Holidays.

Nov. 29 — Schools resume, usual time.

Dec. 7 — Retake of annual pictures of individuals moving to Ranger or whose pictures were bad.

### 1947 Club Meets Tuesday, Nov. 22

The 1947 Club will meet on Tuesday, Nov. 23, 4 p.m., in the home of Mrs. W. P. Watkins with Mrs. James Ratliff, co-hostess.

Following the invocation by Mrs. F. P. Brashier Jr. the program "How to be a more interesting woman" will be presented by Mrs. L. R. Gohlke.

Members who have not received yearbooks may get them at this meeting from Mrs. Joe Lenzini. Mrs. Jack Umberson will collect gifts for patients in Wichita Falls State Hospital.

### SCHOOL MENU

The school menu as released by James Clark for November 22- November 24.

Monday - Hamburgers on buttered buns, lima beans, cheese cubes, potato chips, pickles, lettuce tomato slices onion rings, fruit, ice cream and milk.

Tuesday - Turkey and dressing with giblet gravy and cranberry sauce, candied yams, green beans, congealed salad, hot rolls, butter and milk.

Wednesday - Turkey salad or pimento cheese spread sandwiches, dill pickles, potato chips, cookies, fruit and milk.

### FROM LOS ANGELES

Mr. and Mrs. Francis McHenry and daughter, Monette from Los Angeles, California are here for a visit with his parents, Mr. and Mrs. Ray McHenry.

### First Christian Ladies Meet For Monthly Program

The CWF of First Christian Church met in Fellowship Hall on Tuesday, Nov. 15, for the monthly luncheon and program. Mrs. J. D. Browning was hostess for the day. Mrs. Earnest Burke led the opening prayer.

The fellowship meal was followed by the business meeting and program. President, Mrs. B. G. Pirkle called for reports. Mmes. C. L. Dinsmore and Dick Jones, Secretary and Treasurer, respectively submitted encouraging reports.

Program Chairman, Mrs. Auda Lumas presented Mrs. Dinsmore who chose as her topic "Call to Be God's People-As Friends," based on John 15: 10-15. Mrs. Browning read the poem "Thanksgiving and Thankdoing" by Edgar A. Guest.

Those attending were Mmes. B. S. Dudley, Sr., John Eaves, Vergie Higdon, Lottie Davenport, Laura Mae Eaves, B. H. Mayfield, Lumus, Pirkle, Dinsmore, Burke, Jones, and Browning.

### Baptist Youth Spend Evening In Gibson Home

Mr. and Mrs. Clifford Gibson of Eastland County will to the polls on Tuesday, Nov. 23, to cast ballots in a marketing quota referendum for the next three crop years, according to a report by J. G. Meredith, county Agricultural Stabilization and Conservation Service office manager.

Voting will be from 8 a.m. to 6 p.m. at the Chamber of Commerce in Cisco, the ASC office in Eastland, the community club house in Nimrod, the Roach Motor Co. in Rising Star, the Carbon Trading Co. in Carbon and the Smith Chevrolet Co. in Gorman.

Eligible to vote are those who share in the 1965 crop peanuts on a farm on which the acreage harvested exceeded one acre. A landlord of a standing rent, cash rent, or fixed rent tenant is not eligible to vote.

At least two-thirds of the votes are favorable, quotas will be in effect for the 1966-1967 and 1968 crops; marketing penalties will apply to "excess" crops and price supports will be available to growers who plant within their allotments.

If more than one-third of the voters oppose, the quotas and penalties will not be in effect for the 1966 crop, and

### Marketing Quota Vote Scheduled For Tuesday

Mr. and Mrs. Clifford Gibson of Eastland County will to the polls on Tuesday, Nov. 23, to cast ballots in a marketing quota referendum for the next three crop years, according to a report by J. G. Meredith, county Agricultural Stabilization and Conservation Service office manager.

Voting will be from 8 a.m. to 6 p.m. at the Chamber of Commerce in Cisco, the ASC office in Eastland, the community club house in Nimrod, the Roach Motor Co. in Rising Star, the Carbon Trading Co. in Carbon and the Smith Chevrolet Co. in Gorman.

Eligible to vote are those who share in the 1965 crop peanuts on a farm on which the acreage harvested exceeded one acre. A landlord of a standing rent, cash rent, or fixed rent tenant is not eligible to vote.

At least two-thirds of the votes are favorable, quotas will be in effect for the 1966-1967 and 1968 crops; marketing penalties will apply to "excess" crops and price supports will be available to growers who plant within their allotments.

If more than one-third of the voters oppose, the quotas and penalties will not be in effect for the 1966 crop, and

### Eastside Church Banquet Is Held

Members of Eastside Baptist Church enjoyed a Thanksgiving Banquet on Wednesday, Nov. 17, 7:00 p.m.

The church dining room was beautifully decorated with pyrocnantha berries, persimmons, and autumn leaves sprayed gold.

Mr. Hobart Caraway offered the Thanksgiving prayer.

The menu of turkey, dressing, giblet gravy, green beans, salad, hot rolls, pie and coffee was served.

A delightful fellowship hour was enjoyed by more than fifty members and guests.

### Group Conducts Weekly Service At Rest Home

Worship services are conducted at Western Manor each Tuesday, from 7 to 8 p.m. W. E. Herweck is choirister, and Mrs. Mose Nantz is pianist. Ministers and laymen from this area bring messages. The response has been most gratifying.

Next Tuesday evening, Rev. L. R. Higgingbotham, pastor of Merriman Baptist Church will be the speaker.

### Hospital News . . .

Patients in Ranger General Hospital Saturday morning were as follows:

Mmes. D. C. Singleton, Sula Walton, Winnie Pirkle, Margaret Osterhout, Frances Carr, Mary Calvert, B. H. Hazard, Johnny Clements, Emma Green, Eunice Toon, H. F. Brown, Letha Buckbee, Jim Stewart and baby girl; Miss Donna Grissom.

Also G. O. Strong, D. D. Pickrell, Elmer Abernathy, Douglas Hall and Torribo Pedrosia.

### METHODIST LADIES BEGIN SPIRITUAL LIFE STUDY

The Women's Society of Christian Service, First Methodist Church, met in the Martha Dorcas class room at 3:30 p.m., Monday, Nov. 15.

The president, Mrs. Walter Daniels led the opening prayer.

Mrs. Ray Elliott was program leader, presenting the beginning of the spiritual life study, "Acts, Then and Now." Rev. Ray Elliott brought the message from the theme,

### 'FAITH IN ACTION' THEME OF 27th ANNUAL BANQUET

The 27th annual banquet for adult members of First Baptist Church was held in Fellowship Hall on Wednesday evening, Nov. 17.

Mr. F. P. Brashier, Sr. offered the prayer of thanksgiving.

Theme of the evening was carried out in programs and posters. Artistic use of seasonal fruits and flowers created a festive atmosphere for the traditional meal of "Turkey with the trimmings."

Sunday school superintendent, Rod Carter was Master of Ceremonies. He introduced Gerald Cumpston and L. C. Russell who, in turn, recognized officers, teachers, and

### THANKSGIVING SERVICE

Sponsored by  
RANGER MINISTERIAL ASSOCIATION  
November 21, 1965  
First Baptist Church  
Ranger, Texas  
ORDER OF WORSHIP

PRELUDE ----- Mrs. F. P. Brashier, Jr.  
WELCOME by Host Pastor --- Rev. Avery Sullivan  
INVOCATION ----- Rev. Robby Hobbs  
Pastor, Second Baptist Church

HYMN -----  
RESPONSIVE READING ----- Rev. Ray Elliott  
Pastor, First Methodist Church

HYMN -----  
THANKS-GIVING ----- Rev. Avery Sullivan  
OFFERTORY PRAYER ----- Rev. D. A. Lambert  
Pastor, Church of The Nazarene

OFFERTORY -----  
SCRIPTURE LESSON ----- Rev. J. C. Coleman  
Pastor, Church of God

PRAYER of THANKSGIVING ----- Rev. Ernest Burke  
Pastor, First Christian Church

HYMN ----- Choir  
Directed by Lee Russell

SERMON ----- Rev. Jack Heath  
Pastor, Eastside Baptist Church

BENEDICTION -----  
POSTLUDE ----- Mrs. F. P. Brashier, Jr.

### Marketing Quota Vote Scheduled For Tuesday

Mr. and Mrs. Clifford Gibson of Eastland County will to the polls on Tuesday, Nov. 23, to cast ballots in a marketing quota referendum for the next three crop years, according to a report by J. G. Meredith, county Agricultural Stabilization and Conservation Service office manager.

Voting will be from 8 a.m. to 6 p.m. at the Chamber of Commerce in Cisco, the ASC office in Eastland, the community club house in Nimrod, the Roach Motor Co. in Rising Star, the Carbon Trading Co. in Carbon and the Smith Chevrolet Co. in Gorman.

Eligible to vote are those who share in the 1965 crop peanuts on a farm on which the acreage harvested exceeded one acre. A landlord of a standing rent, cash rent, or fixed rent tenant is not eligible to vote.

At least two-thirds of the votes are favorable, quotas will be in effect for the 1966-1967 and 1968 crops; marketing penalties will apply to "excess" crops and price supports will be available to growers who plant within their allotments.

If more than one-third of the voters oppose, the quotas and penalties will not be in effect for the 1966 crop, and

### Eastside Church Banquet Is Held

Members of Eastside Baptist Church enjoyed a Thanksgiving Banquet on Wednesday, Nov. 17, 7:00 p.m.

The church dining room was beautifully decorated with pyrocnantha berries, persimmons, and autumn leaves sprayed gold.

Mr. Hobart Caraway offered the Thanksgiving prayer.

The menu of turkey, dressing, giblet gravy, green beans, salad, hot rolls, pie and coffee was served.

A delightful fellowship hour was enjoyed by more than fifty members and guests.

### Group Conducts Weekly Service At Rest Home

Worship services are conducted at Western Manor each Tuesday, from 7 to 8 p.m. W. E. Herweck is choirister, and Mrs. Mose Nantz is pianist. Ministers and laymen from this area bring messages. The response has been most gratifying.

Next Tuesday evening, Rev. L. R. Higgingbotham, pastor of Merriman Baptist Church will be the speaker.

### Hospital News . . .

Patients in Ranger General Hospital Saturday morning were as follows:

Mmes. D. C. Singleton, Sula Walton, Winnie Pirkle, Margaret Osterhout, Frances Carr, Mary Calvert, B. H. Hazard, Johnny Clements, Emma Green, Eunice Toon, H. F. Brown, Letha Buckbee, Jim Stewart and baby girl; Miss Donna Grissom.

Also G. O. Strong, D. D. Pickrell, Elmer Abernathy, Douglas Hall and Torribo Pedrosia.

### METHODIST LADIES BEGIN SPIRITUAL LIFE STUDY

The Women's Society of Christian Service, First Methodist Church, met in the Martha Dorcas class room at 3:30 p.m., Monday, Nov. 15.

The president, Mrs. Walter Daniels led the opening prayer.

Mrs. Ray Elliott was program leader, presenting the beginning of the spiritual life study, "Acts, Then and Now." Rev. Ray Elliott brought the message from the theme,

### 'FAITH IN ACTION' THEME OF 27th ANNUAL BANQUET

The 27th annual banquet for adult members of First Baptist Church was held in Fellowship Hall on Wednesday evening, Nov. 17.

Mr. F. P. Brashier, Sr. offered the prayer of thanksgiving.

Theme of the evening was carried out in programs and posters. Artistic use of seasonal fruits and flowers created a festive atmosphere for the traditional meal of "Turkey with the trimmings."

Sunday school superintendent, Rod Carter was Master of Ceremonies. He introduced Gerald Cumpston and L. C. Russell who, in turn, recognized officers, teachers, and

### Class Meets For Supper And Fun Tuesday 7 P. M.

The Willing Workers Class of First Methodist Church met in the home of Mrs. Ray Elliott on Tuesday, Nov. 16, 7 p.m. Mrs. Gaston Dixon was co-hostess.

Class president, Mrs. Walter Daniels offered the opening prayer.

Each member brought their favorite salad, which, served with pie, provided by Mrs. Dixon, was a delicious meal.

Mrs. Daniels presided over the business meeting. Get well cards were sent to Mrs. Beverly Dudley, Jr., and Gayle Speight.

An inspiring devotion a "Thanksgiving" was given by Mrs. Daniels.

Those attending were Mmes. Maude Brackett, Bess Brinneman, J. D. Drennan, Varnon Deffebach, Onis Littlefield, Chas. Mehaffey, Daniels, Misses Electra Pearson, Era Mills, Norma Mills, three guests, misses Bessie Leverett of Temple, Kim Collins and Mersha Elliott.

The Christmas social will be held in December; date to be announced.

### Dorene Hawkins Circle Meeting November 16

The Dorene Hawkins Circle of First Baptist Church met in the home of their chairman, Mrs. Roy McCleskey on Tuesday, Nov. 16, 2:30 p.m.

Mrs. Lloyd Clem read the calendar of prayer and Mmes. H. E. Brooks, Earl Horton, and H. B. Weathers offered prayers for our mission work around the world.

Mission Study Chairman, Mrs. Geo. Robinson reviewed chapters 2 and 3 of the Mission Study Book, "Which Way in Brazil?" A map with magnetized figures and small puzzle maps were used effectively in presenting the lesson.

Mrs. McCleskey conducted a short business meeting during which time reports were given and plans for participation in the forthcoming week of prayer were discussed. Mrs. W. E. Herweck led the closing prayer.

Refreshments of cake squares, coffee, and cold drinks were served to Mmes. J. W. Dillard, R. E. Barker, G. F. Williams Weathers, Horton, Clem, Brooks, Robinson, Herweck, and the hostess.

**LEARN MORE ABOUT THE BIBLE**

Enroll in a FREE undenominational Home Bible Study Course. For complete details and a free sample lesson send your name and address to:

Know Your Bible Campaign  
BOX 31  
RANGER, TEXAS

**SEIBERLING FIRESTONE COOPER**

The Reliable One  
**HORTON**  
Tire Service  
Eastland

**Be SURE about INSURANCE**

INSURE with us!

**PARENTS!**  
for safety's sake...

Support and encourage your youngsters' participation in the Junior Fire Marshal Program now under way in local elementary schools.

Sponsored locally by this agency and nationally by The Hartford Insurance Group, the Program teaches children life-saving lessons. How to protect themselves against fire, accident and other dangers... at home, at school, at play.

These lessons could save his or her life... and yours!

Representing  
**THE HARTFORD**  
INSURANCE GROUP,  
Hartford, Conn.

**Pickrell Insurance Agency**  
DAVID D. PICKRELL  
214 MAIN STREET RANGER, TEXAS

**Be SURE about INSURANCE**

INSURE with us!

**PARENTS!**  
for safety's sake...

Support and encourage your youngsters' participation in the Junior Fire Marshal Program now under way in local elementary schools.

Sponsored locally by this agency and nationally by The Hartford Insurance Group, the Program teaches children life-saving lessons. How to protect themselves against fire, accident and other dangers... at home, at school, at play.

These lessons could save his or her life... and yours!

Representing  
**THE HARTFORD**  
INSURANCE GROUP,  
Hartford, Conn.

**Pickrell Insurance Agency**  
DAVID D. PICKRELL  
214 MAIN STREET RANGER, TEXAS

**Be SURE about INSURANCE**

INSURE with us!

**PARENTS!**  
for safety's sake...

Support and encourage your youngsters' participation in the Junior Fire Marshal Program now under way in local elementary schools.

Sponsored locally by this agency and nationally by The Hartford Insurance Group, the Program teaches children life-saving lessons. How to protect themselves against fire, accident and other dangers... at home, at school, at play.

These lessons could save his or her life... and yours!

Representing  
**THE HARTFORD**  
INSURANCE GROUP,  
Hartford, Conn.

**Pickrell Insurance Agency**  
DAVID D. PICKRELL  
214 MAIN STREET RANGER, TEXAS

**MAJESTIC**

SUNDAY - MONDAY  
Sun. Open 12:45 - Shows 1:00 - 3:00 - 5:05 - 9:10  
Mon. Open 4:45 - Shows 5:15 - 7:15 - 9:20

the picture of the year!  
Richard Widmark Sidney Poitier

**The Bedford Incident**

TUESDAY - BARGAIN NIGHT  
All Tickets 25c  
Open 4:45 - Shows 5:00 - 7:05 - 9:15

**THE BUCCANEER**

THE PICTURE  
From The Master Motion Picture Maker!

WEDNESDAY thru SATURDAY  
Wed. Open 4:45 - Shows 5:00 - 7:25 - 9:50  
Thurs. - Fri. - Sat. Open 1:15 - Shows 2:25 - 4:50 - 7:15 - 9:40

SPECIAL THANKSGIVING MATINEES THURSDAY AND FRIDAY

ADULTS 75c - DISCOUNT 50c  
ALL CHILDREN UNDER 12 - 35c

They challenged the wilderness and conquered a dream!

**WALT DISNEY**  
DOROTHY McGUIRE and FESS PARKER  
OLD YELLER

PLUS WED. AT 6:35 & 9:02 and  
Thurs. - Fri. - Sat. at 1:40 - 4:05 - 6:30 - 8:55  
**WALT DISNEY'S 'Golden Horseshoe Revue'**

**BILL B. HART**

announces the association of  
**LEWIS BERRY,**  
Attorney  
in the practice of law in his offices  
in the  
**Exchange Building**  
Eastland

**Best Friend you've ever had . . .**

**COMMERCIAL STATE BANK Auto Loan**

CALL GYNN GILLIAM or JOHN ADAIR  
MI 7-3242 - RANGER

- Cash arranged in advance
- Terms geared to your income
- Fast service . . . no red tape
- Choose your own insurance agent
- Build valuable bank credit