

Help Build Ranger
By Buying Here!

Ranger Times

UNITED PRESS SERVICE BRINGS LATE NEWS OF THE WORLD TO TIMES READERS

Buy It In Ranger
And Help Business!

VOLUME XXIII

RANGER, TEXAS, THURSDAY EVENING, OCTOBER 16, 1941

PRICE 3c DAILY (5c ON SUNDAY)

NO. 96

CHINESE PRESS GUERRILLA WAR IN PROVINCES

By ROBERT P. MARTIN
United Press Staff Correspondent
SHANGHAI — Despite four years of frontal warfare and mopping up campaigns against guerrillas plus combined Japanese and Nanking political efforts, Chinese guerrillas continue to make all so called occupied zones "No Man's Land."

Recent withdrawals of Japanese troops for duty elsewhere have spurred Chinese resistance. Fighting in late summer extended over the entire south and central fronts, ranging across the provinces of Fukien, Chekiang, Anhwei, Kiangsi, Hunan, Hupeh and Honan. Fighting at times was within 50 miles of Shanghai, which is one of the Japanese strongholds, although this is unprecedented. Previously numerous skirmishes took place in that neighborhood.

One reason for increased Chinese attacks, it is believed, was the fact that the Japanese have been moving green and newly mobilized reserves and conscripts into the Yangtze river front. They replaced veteran troops who were moved northward, and the Chinese took advantage of these inexperienced Japanese troops.

Japanese Build Hospitals
India — that the Japanese anticipated heavy casualties in the coming months was seen by an official Japanese report that new hospitals are being constructed in Nanking, Hsuechow and Hangchow — three of the main Japanese garrison centers. In addition numerous base hospitals are being constructed throughout occupied areas, according to informed sources.

Travelers returning to Shanghai from North China report that the combined efforts of the army of occupation and the local Chinese administrations have proved unsuccessful. This resulted in the North China Political Affairs Committee, the Japanese sponsored Government of North China,

(Continued on page two)

Screw Worm Smear Is Very Popular

The use of the new combination screw worm treatment, known as U. S. Formula No. 62, is rapidly gaining in popularity among the livestock raisers of Eastland County, according to the county agent. So many are using the smear for treating fresh cuts and wounds and the treatment of actual screw worm cases that most of the dealers who handle screw worm remedies have found it necessary and profitable to stock the smear.

Screw worm smear No. 62 is not a commercial remedy. The formula was released by the U. S. Department of Agriculture for public use and can be mixed, sold and used by anyone. It kills screw worm maggots, protects wounds against reinfection, and does not injure the tissues of a raw wound as do many other remedies. It is usually less expensive than other remedies.

Livestock raisers of the county who have used the remedy according to the directions issued by the U. S. Department of Agriculture are getting excellent results with it.

Brrr and Boo!



No pre-Hallowe'en horror is this. It's just a photographer for Douglas Aircraft at Santa Monica, Calif., emerging from the plant's cold room, where temperatures have fallen to 104 below zero during tests of men and materials.

Morton Valley PTA Study Group Met 3:15 P. M. Tuesday

The Morton Valley Study Group of the P.T.A. met Tuesday, Oct. 14, at 3:15 o'clock in the High School auditorium. The meeting held by the president, Mrs. W. F. Crouch. The topic, "Does Money Make the Man?" was discussed by the group.

The study group meeting was followed by the Parent-Teacher meeting which was opened with the song "America," and prayer led by Mrs. R. H. Rucker.

A group of children from the first grades was presented by Miss Matthews in a play, "How We Start School Each Day." The membership chairman, Mrs. Josie K. Nix, reported only thirty-one paid members.

It was voted for the P.T.A. to give \$10.00 toward buying library books for the school. The president appointed five women to get books for the school. They were, Mrs. Josie K. Nix, Johnnie Harrison, J. C. Carter, Cecile Eubanks, and W. F. Crouch.

The P.T.A. carnival date was announced for Thursday night, October 30. Mrs. Eubank read the committee list for each booth. The committees were: hamburger stand, Mrs. Josie K. Nix, Mrs. T. L. Wheat and Mrs. J. C. Carter; doll stand, Mrs. Clint Jones, Mrs. J. W. Harrison and Mrs. Jake Garrison; side show, Mrs. R. H. Rucker, and Miss Matthews; bingo, Mrs. Thad Henderson, Mrs. Nita Fay McCauley, Mrs. Foust and Mrs. John Jones; fish pond, Mrs. J. B. Harbin and Mrs. C. R. Westfall; cake and pie walk, Mrs. W. F. Crouch, Miss Loma Fay Hearn and Mrs. H. Tankersley; grab box, Mrs. W. E. Tankersley, Mrs. Joe Butler and Mrs. O. Langlitz; grocery basket, Mrs. D. D. Franklin, Mrs. H. Adams, Mrs. A. F. Beck, Mrs. Joe Tow, and Mrs. Nonnie Smith; balloon darts, Mrs. Sam Jones; bean jar, Mrs. W. B. Peoples and Mrs. P. J. Carter; boxing, Mrs. Nonnie Smith, and a booth for the N.F.A. boys.

The first grade room won the \$2.00 premium for the most mothers attending in the two meetings.

Those present were Mmes. D. D. Franklin, H. C. Pounds, Cecile Eubanks, J. C. Carter, H. Adams, W. F. Crouch, Maynard, T. L. Henderson, T. L. Wheat, W. E. Tankersley, J. W. Harrison, Josie K. Nix, C. R. Westfall, H. Tankersley, Ed Castleberry, Lindley, O. Langlitz, Lester Trout, Till Harbin, J. B. Harbin, N. A. Smith, R. A. Maynard, P. J. Carter, W. B. Peoples, R. H. Rucker, Joe Tow, John Jones, Nita Faye McCauley, Foust, Misses Loma Fay Hearn, Avis Matthews, Mr. Nonnie Smith and Sam Jones.

Dr. W. L. Jackson Is Guest Speaker For College Class

Dr. W. L. Jackson of the Ranger Clinic was guest speaker for Speech 113 of Ranger Junior College, Wednesday afternoon, October 15, at 1:45. Dr. Jackson made a most interesting talk, by the request of the class, on the subject of "Blood." The types of blood were explained and the kinds of transfusions discussed. Four people in the class had their blood typed by Miss Todd, assistant at the Ranger Clinic.

Dr. Jackson, who has been closely associated with Ranger Junior College as a member of the school board and an interested patron, not only gave an interesting talk but permitted the students to ask questions at the end of the period.

L. H. Flewellen Is Lion Speaker Today

L. H. Flewellen was presented as guest speaker at the regular meeting of the Ranger Lions Club at noon today, and presented an interesting talk upon world conditions and the situation in Europe.

The speaker brought out many interesting facts about the present world conflict, analyzing events that have happened and explaining why some of them came about. His talk was enjoyed by all present.

GASOLINE CO. SAFETY MEET IS IN RANGER

With Plant No. 108 in charge and E. H. Everett acting as chairman, about 60 employees of the Ranger District of the Lone Star Gasoline Company held their regular monthly safety meeting Wednesday night at the Ranger Office Yard.

Chief George Murphy of the Ranger Fire Department was on the program with a talk on Fire Prevention and stressed the importance of full co-operation between the citizens and the fire department if Ranger is to keep the good fire insurance rate that it now enjoys. "We can't reduce the number of our fires by every one hoping, when he hears a fire-truck pass, that it isn't going to his home or store," J. D. Weaver of the Fire Department stated that most fires are caused by carelessness and that defective flues, grass fires, smoking, welding, and spontaneous combustion are the leading offenders. He also discussed the principles of the incendiary bomb now used in warring Europe.

Rolla Gordon discussed the factors effecting lubricating oil consumption and stated that scaled jackets, defective compressor valves, leaky piston rod packing, worn piston, rings, and cylinders, are the most common causes of excessive use of lubricating oil.

Harry Henry discussed the new Driver's License Law and the new law requiring the reporting to Austin of all automobile accidents resulting in death or property damage of more than \$50.00. J. M. Kinkle discussed the increase in the number of accidents and some of the things that might have caused this increase. "But the main reason why we had this increase, was because we haven't been giving the attention to details that we did last year when we made a perfect safety record."

J. A. Usery discussed the care of fire extinguishers and stressed some of their defects.

Sweet Potatoes, White Potatoes, Are Much Alike

In certain ways sweet potatoes and white potatoes are alike. They don't belong to the same biological family—but they're both bulky and starchy. And they'll substitute for each other in your meal plans. In fact, they're so much alike that the nutrition experts consider it bad form to serve them both at the same meal.

The standard ways to fix sweet potatoes are the same as for white potatoes. The experts say you can bake sweet potatoes, boil them, or steam them, fry them, or mash them. Besides, they are sweet enough to make delicious oven dishes.

"Candied Yams" are a favorite with many, and are easy to prepare. You make a syrup of sugar, corn syrup and butter. Have your sweet potatoes partly cooked and sliced. Put them in a baking dish and pour over the syrup, and put them in a slow oven for an hour or more.

Try an oven dish of sweet potatoes and apples or sliced pineapple. Or mash the sweets and brown them in a baking dish with bits of crisp bacon or salt pork. Perhaps you'd like to whip the sweet potatoes into a soufflé and top it with marshmallows. And, of course, you know you can make a sweet potato pie that's every bit as good as pumpkin pie.

Sweet potatoes seem to bring out the best in the flavor of many meats. Spread sweet potato slices over ham in a baking dish and cook them together. Or bake the sweets around spareribs or pork roast.

When you buy sweet potatoes see that they are smooth and firm. Odd-shaped sweets with large growth cracks take too much time to prepare. Sweet potatoes with cuts or bruises will spoil quickly. The sweet potato family is divided into two main groups. On one side there's the moist sweet potato with deep orange-colored flesh. It's often called a "yam"—though it has nothing to do with the true tropical yam. Then there's the dry sweet potato, with mealy pulp of a lighter yellow color.

THE WEATHER
WEST TEXAS—Cloudy, occasional rain except in extreme west portion, cooler in south portion tonight. Friday cloudy with local rains in east, warmer in west and north.



"Invading" soldiers advance through tear gas on an objective in mock attack on New York City where "much damage" was done before defenders got the upper hand.

89 Millions Spent On Army Camps In the Southwest

At the end of September, 1941, over \$89,000,000 in National Defense construction had been completed at various Army camps and stations in the five states of Texas, Oklahoma, Arizona and Colorado which make up the Eighth Construction Zone. The major part of this total is accounted for by troop housing projects at ten Army posts and cantonments.

One hundred fifty-nine million dollars of construction is now under way in these five states under the supervision of Col. Edwin V. Dunstan, Constructing Quartermaster for the Eighth Construction Zone with headquarters at Fort Sam Houston, Texas. Of this amount nearly \$130,000,000 is accounted for by the six ordnance projects which are under construction in Texas, Oklahoma, New Mexico and Colorado.

The remaining \$29,000,000 consists principally of miscellaneous construction to complete the facilities required at the various posts and cantonments. It also includes slightly more than \$1,000,000 which has been authorized for pre-planning surveys of sites for proposed new camps at or near Cookson Hills, Okla., Colorado Springs, Colo., Fort Huachuca, Ariz., and Paris, Bastrop and Waco, Texas.

The six ordnance projects with a combined valuation of \$130,000,000 account for well over four-fifths of the total now under construction. The newest and largest of these projects is the Oklahoma Ordnance Works Smokeless Powder Plant between Choteau and Pryor, Okla., on which work is just beginning. The estimated cost of construction of this project is over \$47,000,000. The Lone Star Shell Loading Plant near Texarkana, Texas, is nearly \$27,000,000. The Denver Ordnance Plant at Denver, Colo., is now estimated at \$21,000,000. Adjoining the Lone Star Plant reservation is the Red River Ordnance Depot which will cost approximately \$15,000,000. The Fort Wingate Ordnance Depot near Gallup, New Mexico, is estimated at over \$11,000,000. The San Jacinto Ordnance Depot on the Houston Ship Channel will exceed \$8,000,000. The Baytown Ordnance Works, a tool manufacturing plant, has just been completed at a construction cost of around \$3,000,000.

Orchards Should Have Care Now Says County Agt.

Orchards that are not properly cared for now cannot produce a profitable crop of fruit next year, according to the county agent. The trees are making fruit buds and storing up energy to produce the next crop. The best fruit growers have already cultivated their orchards shallow to kill all weeds and other vegetation and they will either grow a winter crop or keep the space between the trees clean cultivated. They are also planning to fertilize and to follow a complete spray schedule, controlling leaf curl, scale insects, brown rot, curculio, web worms, and other troubles.

A cover crop in the orchard during the winter, of vetch, small grain or Austrian winter peas, is recommended for those who can possibly do so.

Invaders!



"Invading" soldiers advance through tear gas on an objective in mock attack on New York City where "much damage" was done before defenders got the upper hand.

PRIORITIES ON DRILLING TOOLS LIFTED

FORT WORTH, Oct. 16.—The Federal Government today placed steel oil field equipment at the top of the priority lists, in order to speed drilling of 30,000 wild-cat wells, Robert E. Allen, director of defense oil production, stated here today.

Allen's statement was made before 300 of the nation's leading oil producers. The oil producers were here for a quarterly meeting of the Interstate Oil Compact Commission, with the meeting being climaxed by a drive by oil men to loosen the strings on priorities of steel for oil field exploratory equipment.

Hull Denies U. S. Had Any Part In a Panamanian Crisis

WASHINGTON, Oct. 16.—Secretary of State Cordell Hull today issued an emphatic denial of published reports that the United States helped to bring about the recent changes in the government of Panama.

Secretary Hull said that he was "profoundly shocked by glaring inaccuracies and willful misrepresentations set forth" in newspaper dispatches which suggested that the United States might have had a hand in the bloodless coup which resulted in overthrowing of the pro-Axis government of Panama and installation of a president more friendly to the Allied cause.

Jerry Railey Is President TWC Freshman Class

FORT WORTH, Texas, Oct. 16.—Jerry Railey, son of Mr. and Mrs. R. S. Railey, Eastland, has been elected president of the freshman class at Texas Wesleyan college, here.

The first year class is one of the largest in the history of TWC with 235 students enrolled. The freshmen had their first party of the Friday night on the campus, with Railey in charge.

He is seeking a bachelor degree with a major in speech. He is a member of the Texas Wesleyan college band, under the direction of William H. Howard. The band is making several trips to surrounding cities. Railey is also a member of the newly organized stage band of TWC.

Moving Pictures to Be Shown At A Parents' Meeting

Friday at 1:45 p. m. T. C. Williams, county school superintendent, will present educational moving pictures to the Parent Education Class of the Ranger Nursery School. The pictures will be shown at the school which is located in the Reavis Building on the corner of Pine and Marston Streets.

Ranger Resident To Be Buried Friday In Strawn Cemetery

Funeral services for Edward Lee Tittle, 71, of Ranger, who died Thursday, will be conducted at the Mt. Marion Cemetery in Strawn Friday afternoon at 2 o'clock, with Rev. W. H. Rucker, pastor of the First Baptist Church of Strawn, in charge. Killingsworth's is in charge of burial arrangements.

The deceased had lived in Ranger but one year and six months. He was a member of the First Baptist Church of Strawn. He was a veteran of the Spanish-American War.

Surviving relatives include one son, Robert Tittle of Strawn, and three daughters, Mrs. H. T. Carpenter, Tulsa, Okla.; Jackie Tittle, Ranger and Mrs. Lela Brown, Ranger.

Series "E" Defense Bonds Are Popular

WASHINGTON, D. C.—Series E Defense Savings Bond sales during five months of 1941 are 116 per cent ahead of sales in the corresponding 1940 period of Series D, or "baby" bonds, an almost identical security also intended for small investors.

Of the \$1,504,411,000 total Defense Savings Bond receipts since last May, when the Treasury's voluntary savings program was started, Series E Bonds account for \$571,216,706, or 38 per cent.

Returns on Series E Bonds for five months show a continuous increase over those of Series D from May through September 1940. In May the increase was 64 per cent. In June this rate doubled, going to 138 per cent in August and to 144 per cent in September.

President Confers On Japan's Crisis

WASHINGTON, Oct. 16.—President Roosevelt today cancelled his scheduled cabinet session and instead called a meeting with ranking State Department and military and naval advisors.

The meeting was called, presumably, because of the new crisis in Japan, caused by the resignation of Prime Minister Prince Konoye and his entire cabinet and indications that a strong pro-Axis cabinet would be named to succeed them.

Keeping A Sharp Watch On Rats

Farmers of Eastland county who are having an infestation of rats are requested to mail a card to Elmo V. Cook, county agent, Eastland, telling how bad the infestation is and how it compares with the last few years. This information will be used to decide whether there should be a rat control campaign in the county.

Many indications are that rats are on the increase in Eastland county, Cook thinks. If the infestation is general, rodent control specialists of the A. and M. College Extension Service will be called into the county to assist farmers and business men in putting on a control campaign.

GERMANS CONTINUE TO ADVANCE ON MOSCOW IN FIERCE, BLOODY FIGHT

County Farmers Asked To Help Defense Program

Eastland County farmers were asked today to do their part in the "Food for Freedom" campaign by increasing their production of milk by 1,728,000 pounds and eggs by 121,000 dozen in 1942. Tentative production goals set for the county were announced by the Eastland County USDA Defense Board as follows:

19,008,000 pounds of milk, an increase of 1,728,000 pounds over 1941.

931,000 dozen eggs, increase of 121,000 dozen over 1941.

Ten per cent increase over 1941 in number of hogs for market or to be slaughtered on the farm.

"These goals are minimum rather than maximum goals," R. R. Bradshaw, chairman of the county board, pointed out. "Perhaps the farmers of the county can produce more than enough to meet the goals. If they can, then that's all to the good. The county USDA Defense Board will consider the goals, which were submitted to us by the State USDA Defense Board and if the local situation seems to warrant increasing the goals or if it seems necessary to reduce some of them, then we will do so."

The principal factors to consider in setting the goals, the board chairman said, are the actual productive capacity and outlets in the county. It is important, he pointed out, that the state board and Secretary of Agriculture know definitely just how much production of the needed foods can be expected.

"We have been promised that the U. S. Department of Agriculture will use its powers to maintain fair prices for the products needed in the Battle of Food," Mr. Bradshaw declared. "Production of these foods is important—just as important as winning battles on the sea and on land. I know the Eastland County farmers will do their part in the production of the greatest food crop in American agricultural history."

The County USDA Defense Board will meet Friday, October 17, 1941, to study the tentative production goals set for the county. From that meeting will go a report to the state board stating the goals as agreed upon by the county group. From now until November 1 groundwork for the farm-to-farm canvass on production pledges will be laid. During the first three weeks of November, AAA county and community committeemen, working with and assisted by the USDA Defense Board, will contact every farmer and ranchman in the county with a farm plan sheet. In addition to information concerning allotments and soil-building allowance, etc., which has appeared on farm plan sheets in the past, the form this year will include a production pledge on the products needed in the Food for Freedom campaign, the county chairman said.

Rayburn Sees Big Majority for Arms Of Merchant Ships

WASHINGTON, Oct. 16.—Speaker of the House Sam Rayburn, Texas, predicted today that the administration's merchant ship arming resolution would pass the House of Representatives by tomorrow, with a majority of 100 to 150 votes.

Rep. Rayburn and House Democratic Leader John W. McCornack told reporters that they believed the cabinet crisis in Japan would contribute to a large extent to the majorities shown for ship arming legislation, upon which the house started debate today.

Farm Operator Is Filling Up Silo

Eastland County farmers who have gotten their crops off early are beginning to build terraces and many others who will finish harvest soon have indicated their intentions to build terraces by filing requests for running of terrace lines by the county agent.

The county agent reports that he has run previously or will run terrace lines during the week of October 18 for Frank Castleberry, G. A. Carmichael, Dr. Blackwell, J. E. Watson, C. C. Eubank, and Cady A. McDaniel.

Three From Ranger To Attend National Show In Missouri

Charles H. Bell, vocational agriculture teacher of Ranger High School, and two Future Farmers will leave early Saturday for Kansas City, Mo., where they will attend the American Royal Livestock Show and the national Future Farmers of America convention.

The three will leave Fort Worth Saturday morning, Oct. 19, at 7:45, arriving in Kansas City Saturday night at 8:45 o'clock. They will remain in Kansas City until 11:20 p. m. Wednesday, Oct. 22 and will arrive in Fort Worth at 12:40 p. m. on October 23.

Bell has been selected as one of four who will accompany 40 boys from 22 counties to the convention in Kansas City.

Those who will accompany him are Terrell Harbin and Lee Greer.

The Axis Armies drove the hard fighting Russian defenders back toward the imperiled capital of Russia today, which prompted Japan to seek a new government for a threatened showdown in the Far East.

Resignation of the cabinet of Japanese premier Prince Konoye and suggestions that a pro-Axis military government would take power in Tokyo to strike at Siberia if Russia fails to halt the Germans coincided with reports that diplomats and part of the Soviet government had left Moscow because of the threat of encirclement by the Nazi pincers movement.

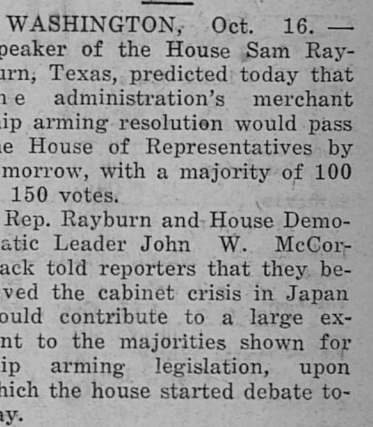
Radio broadcasts by the Moscow station described the danger to the capital as great after a Nazi tank break-through from the west, but told of stubborn resistance by the still unbroken Red Army, which is being aided in defense of the city by civilians.

Press dispatches direct from Moscow were sporadic and entirely disrupted for periods Wednesday night and Thursday, indicating the gravity of the situation in the Soviet capital, but the official Moscow radio continued to broadcast generalized reports from the war front.

Berlin dispatches, also, were vague, but indicated that the Nazi mechanized vanguard was within perhaps 50 miles of Moscow, having gained another 10 miles in bloody fighting. Some German sources sought to convey the impression that the Soviet capital was already encircled.

The government crisis in Japan remained to be clarified, but it was obviously encouraged by the German offensive against Moscow and brought Tokyo closer to a decision on whether to defy warnings of the United States and Great Britain against further forcible expansion in the Orient.

Salome Fun



Salome Fun

There may be those who think this a god idea. At Chelsea, England, fair a man wearing a mask of Winston Churchill characterizes Salome going into her dance and carrying the head of a well-known dictator.

THE PAY OFF

BY HARRY GRAYSON
NEA Service Sports Editor

NEW YORK.—Had the baseball people shortened their season a week, as they for years have been urged to do by sports writers, the world series would not have been interrupted by rain. The baseball grind could start a week later, too, to great advantage. Rain and cold frequently play havoc with clubs after they have trained in the sunny south. The baseball season would still be long enough. Because the world series overlaps the football campaign, interest in the fall show was gradually diminishing until the Tigers and the Reds restored it a year ago. Had the Cardinals won in the National League this year, the excitement would not have been so intense. It was the incredible Brooklyn fans and their Beautiful Bums coming through after a 24-year lapse that made the production this autumn.

BASEBALL men could lop two weeks off the schedule and still get in 154 games. They'd make just as much money, for clubs not smack dab in the race now only get it on Sundays, holidays and at night, anyway. Games are deliberately canceled for the purpose of creating double-headers. Thirty years ago—I think it was 1911, when the world series didn't start until Oct. 14, rain pelted the noble athletes until it was Oct. 26 before the last shot was fired. One of the principal reasons why football is such a tremendous draw is that it has a short season. The customers haven't time to come fed up.

Hanging Around



RED RYDER

By HARMAN



UNION NEWS

Mrs. T. S. Ramey of Desdemona spent last week with her mother, Mrs. W. U. Fox. P. A. Woods and family visited George Fox and family of Olden Sunday afternoon. The farmers are very busy taking up peanuts and getting them ready for the thresher. W. W. Terry who has been ill for the past two years, passed away October 5th. We extend our sympathy to the bereaved family, and ask God's blessings on each one of them. Mrs. James Griffin of Hobbs, New Mexico, returned home Wednesday. Mr. and Mrs. Jack Mace of Brownwood are still with Mrs. Mace's mother, Mrs. W. W. Terry.

Several from this community have gone west cotton picking. Miss Thelma Nabors of Abilene spent Saturday night and Sunday with her parents, Mr. and Mrs. L. R. Nabors. Mr. and Mrs. R. J. Fox of Leuders was here last week visiting their parents, Mrs. W. U. Fox and Mrs. P. G. Wright. Mr. and Mrs. Oliver Conet was shopping in Eastland Saturday. Mr. and Mrs. Bud Fox visited Mrs. Fox's parents, Mr. and Mrs. Murry of Carbon, Sunday. Mrs. R. L. Alford of Eastland visited her mother, Mrs. Latha Taylor, Tuesday.

Try Our Want Ads!

TRADERS' GROCERY & MARKET

SPECIALS FOR OCT. 17th and 18th
We Reserve the Right to Limit Quantities!
CORNER OF MAIN and RUSK STREETS
PHONE 191

Large Bologna Sliced Lb. 15c	Salt Jowls Lb. 14c	Small Lean Pork Chops Lb. 32c
Sugar Cured Bacon Sliced Lb. 25c	Mexican Hot Weiners Lb. 17c	No. 1 Dry Salt Bacon Lb. 16c
Beef Roasts Choice Cuts Lb. 23c	Fresh Country Eggs Doz. 29c	Fresh BALTIMORE Oysters
Sunbrite CLEANSER, 2 Cans 9c	Dairy Maid Baking Powder, Bowl Free 23c	OXYDOL Large Size 22c
Swift's Jewel Shortening, 4 Lb. Crt. 59c	CATSUP 14 Oz. Bottle 10c	Crystal White SOAP, Giant Bar 4c
P. H. P. LARD, 4 Lb. Cart. 55c	PEANUT BUTTER Qt. 25c	MATCHES 3 Boxes 10c
Sugar 10 Lb. Cloth Bag 59c	SPAGHETTI or MACARONI, 3 Boxes 10c	Gold Medal Flour 24 lbs. \$1.00
Folger's Coffee 1 Lb. Can 30c	Supreme Corn Meal 5 Lbs. 15c	Richwhip Filled Milk 2 Tall or 4 Small Cans 15c
Texas Famous CORN, 3 No. 2 Cans 25c	Swift's Premium Potted Meat, Can 5c	HOMINY 3 No. 2 1/2 Cans 25c
Cut Green BEANS, 3 No. 2 Cans 25c	Break o' Morn COFFEE, 1 Lb. Pkg. 16c	Phillips Pork & Beans 1 Lb. Can 5c
Sour KRAUT, 3 No. 2 Cans 25c	Salted CRACKERS, 2 Lbs. 15c	Small Lima BEANS, 3 Lbs. 21c
	PINTO BEANS, 3 Lbs. 15c	

ADMIRATION COFFEE
3 lb. Jar - 90c

Sweet Potatoes 5 lbs. 15c	Yellow Onions 3 bs. 10c	White Potatoes 10 lbs. 19c
Lemons 2 Doz. 25c	Rome Beauty Apples 2 Doz. 25c	Fresh Tomatoes 2 lbs. 15c

Chinese Press

(Continued from Page 1).

starting a drastic campaign to drive out the guerillas, which mainly consist of isolated units of the Communist army. The Japanese also swung into action in Hopeh, Chahar and Shansi border districts, where they reported wiping out thousands of Communists. The vernacular press in Peiping prominently reported various clashes, claiming big victories scored over so called Communist bandits.

Posters Warn of Communism
The newspapers also carry daily identical anti-Communist slogans with defamatory remarks directed against such Communist leaders as Chu Teh, Mao Tse-tung and Chow En-lai. Posters are seen along Peiping streets and on public vehicles emphasizing that "to suppress the Communists is the only alternative to self extinction." Vernacular newspapers in Peiping have revealed the proximity of the guerilla activities as they

report recent clashes 20 miles northwest of Hsuehchow, which is one of the Japanese strongholds on the Yellow river. Chinese and Japanese authorities have carried out their second census check of the year in Peiping and vicinity to prevent infiltrations. Severe punishment will be meted out against those sheltering any unregistered individuals or suspicious Chinese characters. All Chinese, including those working for Japanese and foreigners are required to obtain domicile per-

ALLEY OOP



mits entitling them to reside there.

Travelers arriving in Shanghai report that communication lines, particularly the railroad lines, are closely guarded against sabotage. Blackouts are enforced on all trains. Observation posts have been erected along all railroad lines, which at night with all shades drawn, also are guarded by deep ditches strongly barricaded with barbed wire.

Line Constantly Harried
Despite these precautions guer-

las continually dynamite small sections or remove the rails causing derailments. Especially on the main line between Shanghai and Nanking has the activity been heavy, and although trains continue to run daily, expect when halted by military movements, travelers report that Japanese are forced to take utmost precautions all the time.

Foreign observers in July anticipated Chinese attacks the moment the Japanese started withdrawing troops. However military

experts point out that the flow of military aid to China from the United States is still too thin to permit the Chinese to carry out a general offensive, although new weapons, especially munitions and light arms, would permit sporadic attacks on the wide front against isolated garrisons.

The Japanese command of the air would prevent the Chinese from massing enough troops, single area to carry out a major equipment and supplies in any offensive it is pointed out.

A&P ESTABLISHED 1876 FOOD STORES	MARVEL BREAD It's New! It's Enriched! THE LARGE 24 Oz. Loaf 10c	8 O'CLOCK COFFEE 3 Lb. Bag 53c 1 Lb. Bag 19c
ANN PAGE SALAD DRESSING . . . QT. 35c	1/2-Pint 13c Pint 21c	Jane Parker DONUTS Powdered or Plain Doz. 12c
Pure LARD 4 Lb. Cart. 55c	FLOUR 48 Lb. Bag \$1.49	DEXO 3 Lb. Can 63c
Soap GRAINS White 24 Oz. 15c	Sail Pkg. 15c	FLOUR 48 Lb. Cans \$1.29
BEANS With 2 No. 2 25c	Potatoes Cans 25c	IONA TOMATOES 3 No. 2 Cans 23c
VINEGAR Pure 10c	Cider, QT. 10c	HOMINY 3 No. 2 1/2 Cans 25c
MINCE MEAT A.&P. Pkg. 10c	Corn FLAKES 2 Large Pkgs. 15c	TEA Nectar 1/4 Lb. 17c
BEANS With 1 Lb. 5c	Pork Cans 5c	COCCOANUT 1 Lb. Bag 19c
White House MILK 6 Small 25c	3 Tall Cans 25c	CORN Iona No. 2 Can 10c
FRESH FRUITS and VEGETABLES	ORANGES Texas Dozen 19c	BEANS Pinto 10 Lbs. 45c
GRAPEFRUIT 2 For 9c	CABBAGE . . 2 LBS. 5c	Ann Page Apricot, Pineapple, Strawberry, Cherry . . . 1 Lb. Jar 19c
YAMS . . 5 LBS. 15c	CELERY Stalk 8c	PRESERVES 2 Jar 33c
POTATOES 10 Lbs. 19c	CARROTS 3 BUN. 10c	Harry Warner Market
		Baby Beef Chuck ROAST . . . LB. 21c
		Sack SAUSAGE . . . LB. 25c
		Baby Beef Short RIBS . . . LB. 18c
		Sugar Cured Sliced BACON . . . LB. 25c
		Tender PICNIC . . . LB. 25c
		Baby Beef Loin or T-Bone STEAK . . . LB. 32c
		Pork ROAST . . . LB. 25c

Inventory of All Trucks and Busses Is Now Underway

AUSTIN, Texas—An inventory of all trucks, busses and heavy truck trailers in Texas is underway for the United States War Department as a part of the national defense program.

The Texas truck and bus census, actively begun this week, is being compiled through joint efforts of the U. S. Public Roads Administration, the Works Projects Administration, and the Texas Highway Department. It is designed to give the War Department and defense agencies the

Relief for Miseries of HEAD COLDS

Put 3-purpose VA-tro-nol up each nostril. It (1) shrinks swollen membranes, (2) soothes irritation, and (3) helps clear cold-clogged nasal passages. Follow complete directions in folder.

VICKS VA-TRO-NOL

QUICK... RELIABLE SERVICE

Set Your Radio to Johnson Now... Enjoy the Thrills of Perfect Reception!

Phone 351-W for Free Tube Testing

JOHNSON RADIO SHOP
Located at My Residence
318 EAST MAIN ST.
2 Blocks East of Ratliff's Feed Store.

OUR DEMOCRACY — by Mat

SHOULDERING ARMS— AND RESPONSIBILITY.



HANDLING YOURSELF AND DEVELOPING LEADERSHIP— THE ARMY'S TEACHING THAT TO A MILLION AND A HALF YOUNG MEN SAVES LIFE TODAY AND GIVES THE LEADER QUALIFICATIONS OF THE LEADER OF TOMORROW.

HUGH A. DRUM MET SITUATION AND LICKED THEM



BORN IN MICHIGAN, COMMISSIONED SECOND LIEUTENANT FROM CIVIL LIFE IN 1898, LIEUTENANT GENERAL TODAY, IN COMMAND OF THE WHOLE FIRST ARMY— MAINE TO GEORGIA.

BORN IN MINNESOTA, PRIVATE SOLDIER, 1901, MAJOR GENERAL TODAY, THE 6TH ARMY CORPS IS HIS COMMAND.

Starring L.C.L. FREIGHT

LESS THAN CARLOAD SHIPMENTS

Yes, sir—the way we handle L.C.L. shipments is a "star service" in any transportation system. It's tops. A 7-star service that starts with free pick-up and delivery from door to door.

Coordinated TRAIN-TRUCK SERVICE with 7 Star Features

- ★ Free Pick-up and Delivery
- ★ Fast Overnight Service
- ★ Frequent, Dependable Schedules
- ★ Express Service at Freight Rates
- ★ Courteous, Unexcelled Service
- ★ Refrigeration Service... No Extra Cost
- ★ Extra Prompt C.O.D. Service

And may we remind you that our carload Freight Service is also second to none.

For High-Class Courteous Service, Please Call
B. A. TUNNELL, Agent
Phone 32
or ask any Texas and Pacific Employee

Apply NOW for training as a U. S. Army Aviation Cadet. Keep 'em Flying

THE TEXAS AND PACIFIC MOTOR TRANSPORT COMPANY

COORDINATED TRAIN-TRUCK SERVICE

throughout the entire nation.

Questionnaires were mailed October 6 to the owners of every truck, bus, or large trailer shown on state license records in the registration division of the Texas Highway Department here.

Owners are urged to promptly fill out the blanks and return them at once in order to make the census fully effective. If anyone desires assistance in making out his questionnaire, his County Agent will help him. The questionnaires need no postage as franked return envelopes accompany them. The information requested is a brief report on each truck or trailer's condition and capacity. Trailers with less than 3,000 pounds capacity, sedan delivery trucks, other light commercial vehicles, and station wagons are exempted.

The work of making the census in Texas is under the direct supervision of the Public Roads Administration, with headquarters in the Texas Highway Department building here. A force of some 200 Work Projects Administration workers in the state are engaged in the task.

"In the event of any extreme defense emergency, one of the major problems will be the coordination of the transportation facilities of the United States," officials of the Public Roads Administration here said.

"At present no detailed information about trucks and busses is available, although central authorities at Washington have complete data on railroads, airlines, airplanes, and water shipping. Yet motor vehicles have become a most significant part of our national transportation system," the officials pointed out.

"The War Department has recognized the problems that would be presented in such emergencies and is making every effort to avoid a repetition of the error made by England when she awoke, after the war was raging, to the role that trucks and busses can play in a transportation crisis," they added.

The inventory will also be very helpful in connection with any rental or leasing of such vehicles to supplement Army equipment that might become necessary.

One-Eighth of U.T. Male Students Are Taken from Class

AUSTIN, Texas—It looks as if the University of Texas has sent about one-eighth of its men students to military service or to jobs in the widening stream of defense industrial and business activity.

At least, its fall enrollment of men is down 13.3 per cent below last year at this time.

A 3 per cent increase is seen in the number of girls enrolled. Total registration this fall is down 8 per cent, to 9,411, or a slightly smaller decrease than has been apparent at other institutions throughout the country.

Enrollment of freshmen students was up 131, to total 1,735.

Due to their technical training for defense industries, engineering and business administration branches fared very well—the College of Engineering showing only a 4.9 per cent decline, and business administration picking up 0.8 per cent.

AT YOUR SERVICE

STORE OWNERS SALE

FOODS CLOVER FARM STORES MEATS

RED CUP COFFEE
Lb. 19c

CLOVER FARM COFFEE
1-Lb. Vacuum 29c

GOOD FOOD
Builds A Strong Nation

Grennan's Choc-O-Chip **COOKIES**
Package 15c

fresh from Keith's

TOKAY **GRAPES** 2 LBS. 15c
FRESH GREEN

CABBAGE
Per Pound 2 1/2c

LETTUCE HEAD 5c
IRISH COBBLER

POTATOES
10 Lbs. 17c

FANCY JONATHAN **APPLES** 2 DOZ. 25c
SWEET SPANISH

ONIONS
3 Lbs. 10c

NICE CLEAN **CARROTS** 3 BUNCHES 10c

YAMS LB. 2 1/2c

DELICIOUS HONOR BRAND FROSTED FOODS

MILK Clover Farm Evaporated 3 Tall or 6 Small Cans 23c

SOAP Clover Farm White Naphtha 6 Giant Bars 23c

CATSUP Glendale—Made of Red, Ripe Tomatoes and Pure Spices .14-Oz. Bl. Large 10c

Corn Flakes Clover Farm 2 Large 15c

CLOVER FARM PANCAKE FLOUR
20-Oz. Pkg. 9c

W-P BREAKFAST SYRUP
Pint 14c

NO WASTE, NO WORK, NO WORRY
"DEW-FRESH FLAVOR FROZEN IN"

RIPPLE WHEAT 2 Pkgs. 15c

BAB-O Grease Dissolving Cleanser Cleans Pots, Pans Like New 2 Cans 23c

CLOROX Bleaches, Disinfects, Deodorizes, Removes Stains Pint 12c

MOIST COCOANUT Clover Farm 4-Oz. Tin 9c

SALAD DRESSING Clover Farm Pint 21c

PALMOLIVE SOAP Made With Olive Oil 3 Bars 19c

KLEK Made Especially for Washing Dishes Large 19c

WESSON OIL For Shortening Frying or Salads Pint 27c

SNOWDRIFT Wesson Creamed 3 Lbs. 63c

KELLOGG'S CORN FLAKES
Large 9c

CHOICE MEAT CUTS

BROOKFIELD CHEESE 2 Lb. Box 65c
FREE CHEESE SLICER

BLUE BONNET—10 TO 12 LB. HAMS Half or Whole Lb. 27c

BACON Rath's Sliced, lb. 25c
Country Cure, lb. 25c

FANCY BEEF ROUND STEAK Per Lb. 29c

FANCY BEEF CHUCK ROAST Per Lb. 21c

CANADIAN BACON Per Lb. 49c

CLOVER FARM BUTTER Per Lb. 39c

Strawberries
Frosted
Red, Ripe and Juicy

Crossley's CLOVER FARM STORES

PHONE 60
WE DELIVER

Try Our Want Ads!

RANGER TIMES

TIMES PUBLISHING COMPANY, Publishers
 212-214 Elm Street, Ranger, Texas Telephone 224
 Published every afternoon (except Monday, Saturday and Sunday) and every Sunday morning.

Entered as second class matter at the postoffice at Ranger, Texas, under Act of March 3, 1879.

SUBSCRIPTION RATES
 Ranger Times (One Year by Mail in Texas) \$3.00

NOTICE TO THE PUBLIC
 Any erroneous reflections upon the character, standing or reputation of any person, firm or corporation which may appear in the columns of this paper will be gladly corrected upon being brought to the attention of the publishers.

Oil That Troubles the Waters

A new attempt is now under way to settle the oil controversy with Mexico, which has bubbled furiously for three years though it has been turbulent since 1917. Through the highest officials of the U. S. State Department, Mexico now offers to place \$9,000,000 in escrow pending final appraisal of the expropriated properties of certain American companies. If the companies accept, this sum would be regarded as preliminary to final settlement, the difference to be made up later either in oil or in dollars.

This proposal at least has the merit of definiteness, and it appears about the only means of approach to solution since private negotiations with Standard and several other companies broke down a year ago. In the meantime, however, the Sinclair interests have accepted \$8,500,000 for all their claims.

How close an approximation of justice would be done by accepting this tentative offer, and building a final settlement on it, is a matter of the utmost complexity. The affected companies, including in their idea of the value of their properties all the value of the oil reserves beneath them, have made estimates as high as \$150,000,000. Mexico has taken the position that she owes nothing for the value of oil in the ground, but that she should pay only for the surface properties of the companies. These one group of Mexican experts once appraised at \$40,000,000, but set off against that so much claims for taxes and back wages that the companies feared nothing at all would be left for them on such a basis. The present proposal would appear to guarantee against any such result as that, and to be roughly comparable to the settlement already accepted by Sinclair.

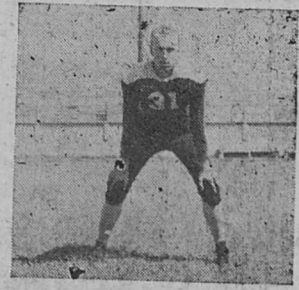
The tracing of this controversy down from the original concessions to American oil men in the early 1900's, the new Mexican constitution of 1917 which specifically reserved sub-surface resources to the people of Mexico, the Bucareli and Morrow agreements in 1924 and 1927, and the expropriation of 1938, is a matter now of history. The present situation is "not a theory, but a fact." Whether the proposal will prevent substantial and actual loss to the companies and American investors involved is the immediate question; whether it cheats them of profits they had every right to expect they were going to make in the future is something else again.

Only an independent, technically brilliant and highly disinterested expert can say whether substantial justice is contained in the new Mexican offer. In view of the desirability of settlement, however, in which not merely stockholders but all the peoples of both countries have an interest, the offer should have the gravest and most careful consideration from the longest possible point of view.

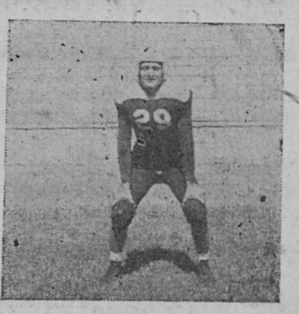
Bulldog Booster



Dr. G. C. Boswell, superintendent of the Ranger Schools.



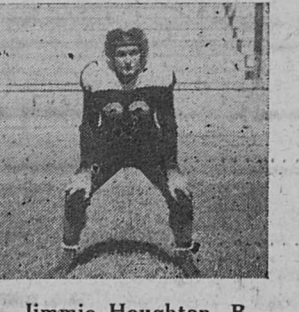
Bill Brown, B



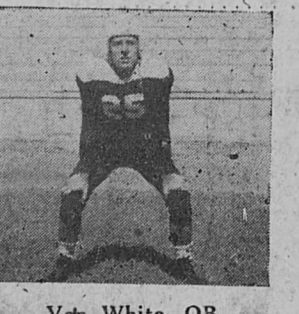
Tom Townzen, B



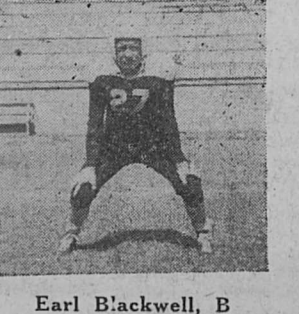
Billy Ray Elder, B



Jimmie Houghton, B



Ven White, QB



Earl Blackwell, B

FOOTBALL

RANGER BULLDOGS


VS.

Brownwood Lions

FRIDAY NIGHT - 7:45 PM

OCT. 17 AT BROWNWOOD

EVERY SATURDAY IS TRADES DAY IN RANGER



ENGLISH NOBLEMAN

Answer to Previous Puzzle

1 Pictured member of English royalty.	2 He made a recent visit to Canada.	3 Suffix.	4 Half an em.	5 Anger.	6 Whirlwind.	7 South America (abbr.).	8 Cuckoo.	9 Properties.	10 Through.	11 One who laces.	12 Worm.	13 Barter.	14 Either.	15 Indian mulberry.	16 is able.	17 Mine shaft hut.	18 Peri.	19 Near.	20 Arrived.	21 Biblical pronoun.	22 Kind of concrete.	23 Consumed.	24 Uncommon.	25 Kill.	26 Idol.	27 Colorless.	28 Suffix.	29 Sun god.	30 Taxi.	31 Partook.	32 He visited airdromes in.	33 Mystic word.	34 Snaky fish.	35 Lixivium.	36 Marsh.	37 Inner part.	38 Eagles' nest.	39 Accumulates.	40 Shifted.	41 Fume.	42 Possessing wings.	43 Hammer head.	44 Japanese seaweed.	45 Perceived.	46 By way of.	47 Finale.	48 Honey gatherer.	49 And (Latin).	50 Volume.
---------------------------------------	-------------------------------------	-----------	---------------	----------	--------------	--------------------------	-----------	---------------	-------------	-------------------	----------	------------	------------	---------------------	-------------	--------------------	----------	----------	-------------	----------------------	----------------------	--------------	--------------	----------	----------	---------------	------------	-------------	----------	-------------	-----------------------------	-----------------	----------------	--------------	-----------	----------------	------------------	-----------------	-------------	----------	----------------------	-----------------	----------------------	---------------	---------------	------------	--------------------	-----------------	------------

HORIZONTAL

1 Pictured member of English royalty. **ROYALTY**

2 He made a recent visit to Canada. **TRIP**

3 Suffix. **LY**

4 Half an em. **EM**

5 Anger. **ANGER**

6 Whirlwind. **WHIRLWIND**

7 South America (abbr.). **SA**

8 Cuckoo. **COO**

9 Properties. **PROPERTIES**

10 Through. **THROUGH**

11 One who laces. **SHOELACER**

12 Worm. **WORM**

13 Barter. **BARTER**

14 Either. **EITHER**

15 Indian mulberry. **MULBERRY**

16 is able. **ABLE**

17 Mine shaft hut. **BOILER**

18 Peri. **PERI**

19 Near. **NEAR**

20 Arrived. **ARRIVED**

21 Biblical pronoun. **HE**

22 Kind of concrete. **GRAVEL**

VERTICAL

23 Consumed. **CONSUMED**

24 Uncommon. **UNCOMMON**

25 Kill. **KILL**

26 Idol. **IDOL**

27 Colorless. **COLORLESS**

28 Suffix. **SUFFIX**

29 Sun god. **SUN**

30 Taxi. **TAXI**

31 Partook. **PARTOOK**

32 He visited airdromes in. **HE**

33 Mystic word. **MYSTIC**

34 Snaky fish. **SNAKE**

35 Lixivium. **LIXIVIAM**

36 Marsh. **MARSH**

37 Inner part. **INNER**

38 Eagles' nest. **EAGLES**

39 Accumulates. **ACCUMULATES**

40 Shifted. **SHIFTED**

41 Fume. **FUME**

42 Possessing wings. **WINGS**

43 Hammer head. **HAMMER**

44 Japanese seaweed. **WASABI**

45 Perceived. **PERCEIVED**

46 By way of. **BY**

47 Finale. **FINALE**

48 Honey gatherer. **HONEY**

49 And (Latin). **AND**

50 Volume. **VOLUME**

THE FOLLOWING BUSINESS FIRMS AND BULLDOG BOOSTERS INVITE YOU TO

ANDERSON - PRUET
SALES - CHEVROLET - SERVICE

A. & P. FOOD STORE
ARLIE CARVER, Manager. WHERE ECONOMY RULES

H. G. ADAMS GROCERY & MARKET
PHONE 21
WE WANT TO BUY YOUR CHICKENS - EGGS - CREAM

C. Y. BROWN LICENSED ELECTRICIANS
D. O. MOFFETT
GOOD SERVICE CAN'T BE CHEAP
PHONE 41 or 505-J.

BURTON-LINGO CO.
ANYTHING IN THE BUILDING LINE.

BROWN TRANSFER CO.
RAYMOND BROWN, AGENT T-P MOTOR TRANSPORT

LLOYD L. BRUCE
LIFE INSURANCE SERVICE.

CROSSLEY'S CLOVER FARM STORE
PHONE 60 FOR FREE DELIVERY

COMMUNITY PUBLIC SERVICE CO.
LEE DOCKERY, Manager.
"WIN OR LOSE BULLDOGS WE'RE WITH YOU."

COMMERCIAL STATE BANK
MEMBER OF F. D. I. C.

H. P. EARNEST, Consignee
TEXACO PRODUCTS

GHOLSON BARBER SHOP
L. E. GRAY, PROP. IT PAYS TO LOOK WELL.

GHOLSON HOTEL & COFFEE SHOP
BEHIND THE BULLDOGS... WIN OR LOSE.

THE GLOBE, Inc.

MRS. HARRELL'S CAFE
PLATE LUNCHEES - SANDWICHES - COLD DRINKS - CANDIES
ICE CREAM - SCHOOL SUPPLIES.
NEXT DOOR TO RECREATION BUILDING

IZETTA'S BEAUTY SHOP
PHONE 360
"THE BEST IN BEAUTY WORK" IS OUR MOTTO... OUR WORK SPEAKS FOR ITSELF.


JOY DRY CLEANERS
E. E. JOYNER. WE PICK UP and DELIVER.
GARMENT INSURANCE. PHONE 66

JOSEPH'S
DRY GOODS, READY-TO-WEAR, G-E ELECTRICAL APPLIANCES,
MAYTAG WASHING MACHINES and MAGIC CHEF STOVES.
PHONE 315 206-210 MAIN STREET


LEVELLE MOTOR CO.
SELLING FORD PRODUCTS IN EASTLAND COUNTY OVER 23 YEARS.

LOU & SON QUALITY MARKET
PHONE 202 - WE DELIVER ANYWHERE... ANYTIME
WALNUT and RUSK STREETS RANGER
PLENTY OF PARKING SPACE.


MORTON'S SERVICE STATION
NOXOUT GASOLINE - A PREMIUM PRODUCT - POPULAR
PRICED... ON HIGHWAY 80 WEST.



James Mitchell, E



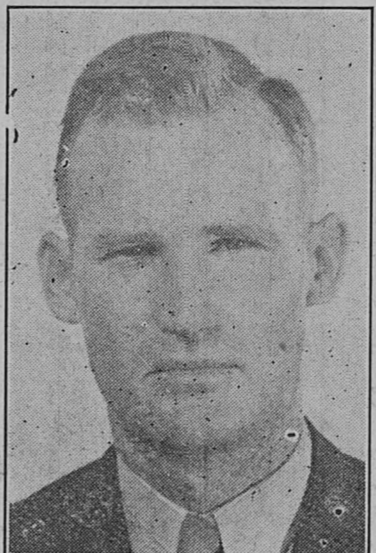
Walter Arterburn, E



William Lee, E

ALL

Head Coach



H. G. Jennings, head coach of Ranger High School.

OIL BELT DISTRICT 9-AA SCHEDULE

September 12 Gorman at Ranger Stephenville at Hico Mineral Wells at Sweetwater Burk Burnett at Cisco	September 27 Goose Creek at Stephenville	October 24 Ranger at Breckenridge Brownwood at Mineral Wells Cisco at Stephenville
September 19 Eastland at Ranger Graham at Breckenridge Mineral Wells at Vernon Sweetwater at Brownwood Cisco at Coleman Dublin at Stephenville	October 3 Clyde at Ranger Abilene at Breckenridge Weatherford at Mineral Wells Stephenville at Denison	October 31 Mineral Wells at Ranger Poly (Ft. Worth) at Breck
September 25 Big Spring at Brownwood	October 4 Sunset (Dallas) at Brownwood	November 7 Mineral Wells at Stephenville
September 26 Ranger at Weatherford Breckenridge at Wichita Falls Gainesville at Mineral Wells Cisco at Eastland	October 10 Stephenville at Ranger Breckenridge at Lubbock Cisco at Mineral Wells Brownwood at Kerrville	November 11 Ranger at Cisco Brownwood at Breckenridge
	October 17 Ranger at Brownwood Stephenville at Breckenridge Mineral Wells at Denison	November 20 Breckenridge at Mineral Wells Brownwood at Stephenville November 27 Breckenridge at Cisco

BULLDOG ROSTER

Name	Old Jersey	New Jersey	Wt.	Po.
W. Arterburn	22	22	133	E 1
W. Lee	36	36	171	E 1
J. Mitchell	35	35	174	E
K. Cole	30	37	143	E
O. L. Russell	20	20	135	E
J. Ownby	37	43	166	T 1
A. J. Williams	60	30	149	T 1
C. Dabbs	39	34	182	E 1
G. Brewer	55	28	136	T
C. Horn	26	40	144	G 1
Bill Thomas	77	39	158	G 1
F. Johnson	50	24	135	G 1
N. Dabbs	33	26	143	G
Bill Gray	38	41	158	C 1
Bud Hardin	28	33	143	C
B. Elder	40	42	165	B 1
J. Houghton	23	23	130	B
Bill Brown	31	31	143	B
T. Townzen	29	29	143	B 1
Earl Blackwell	27	27	143	B 1
Ven White	25	25	138	B
B. Woods	32	32	164	B
C. Floyd	88	38	145	B



Clarence Horn, G



Bud Hardin, C



Bill Gray, C



Alwyn Williams, T



John Ownby, T



Carson Dabbs, T

SEE THE GAME

MISSION GARAGE
BATTERIES CHARGED IN 30 MINUTES AT 17 MAIN ST. NICK GALLAGHER, Prop.

E. L. MARTIN CO.
FRIENDLY STORE... PHONE 79... 202 MAIN STREET.

J. E. MERONEY
OIL GASOLINE AIR AGENT PHONE 91 RANGER - EASTLAND - CISCO

J. MOORE AUTO MART
CHECKER SERVICE... JUST CALL 9511 DAY OR NITE VI AND RAYMOND ROGERS, MECHANICS, BILL JOHNSON LI ROSE AND HUGH MOORE SERVICE STATION ATTENDANTS. DAY 80 - DAY and NIGHT SERVICE - PHONE 9511

MONTGOMERY'S WESTERN AUTO STORE

WATSON & MILLS SERVICE STATION
100% TEXACO PRODUCTS ONIS MILLS - E. F. PENN

PARAMOUNT TAXI
PHONE 1 - JIM TOLAND

PARAMOUNT HOTEL
AIR CONDITIONED COFFEE SHOP. ALLEN SMITH, Manager.

POST OFFICE SERVICE STATION
A. L. STILES, Owner. TEXACO PRODUCTS - LUBRICATION SPECIALIST COURTEOUS SERVICE.

J. C. PENNEY CO.
GO TO SHOP AT PENNEY'S DRY GOODS, READY-TO-WEAR, MEN'S CLOTHING and SHOES.

RANGER JUNIOR COLLEGE
SATISFACTORY - WHOLESOME - EFFICIENT - HIGHEST RATING.

RANGER DAILY TIMES
PRINTERS - PUBLISHERS

RANGER LUMBER & SUPPLY CO.

HOME OWNED AND OPERATED CALVIN BROWN, Owner.

RANGER DRY CLEANERS
PHONE 452 HIGHEST QUALITY S. P. BOON PROMPT SERVICE

RANGER FLORAL CO.
PHONE 77 203 MAIN STREET "FLOWERS FOR EVERY OCCASION"

RANGER JEWELRY CO.
GIFTS FOR EVERY OCCASION PHONE 610 212 MAIN ST.

RANGER STEAM LAUNDRY
PHONE 134 COURTESY IS OUR MOTTO.

A. J. RATLIFF
FEED - SEED - FLOUR

RED HORSE SERVICE STATION
HIGHWAY 80 EAST - MAGNOLIA PRODUCTS BEN PATTERSON, Prop.

RED CHAIN FEED STORE
L. C. (LUM) LOVE WE BELIEVE IN YOU BULLDOGS.

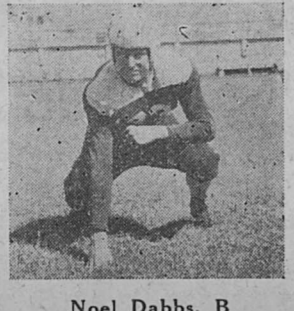
SCHOOLEY'S BAKERY
ASK FOR BIG JUMBO BREAD AT YOUR GROCERY.

TEXAS ELECTRIC SERVICE CO.

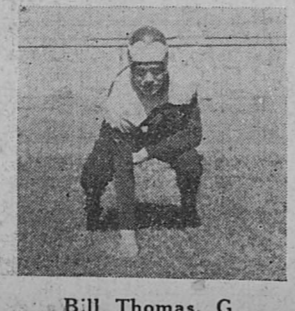
WILLIAMS HARDWARE & FIXIT SHOP
"WE FIX IT"



Kenneth Cole, E



Noel Dabbs, B



Bill Thomas, G

WANTED!
Everyone who has gray, faded, dry falling hair, itchy scalp and dandruff to use

PREACHERS
(Preparation)
Oil City Pharmacy

For More and Better Eggs, Feed

Purina Layena

Blacklock Feed Store
Free Egg Cartons!

Listen, Mister!
There is a difference in hair cut. A good one is a cut that suits the shape of your head and helps the hair lie neatly in place. Get your next one here and note the difference.

GHOLSON BARBER SHOP

FOR RENT!
2 - 3 and 4-Room Furnished or Unfurnished Apartments With Bath

GHOLSON HOTEL and JOSEPH'S FIREPROOF APARTMENTS

H. H. VAUGHN SERVICE STATION
100% T-P. Products
Distilled Water for Sale
Washing—Greasing—Storage

MONTANA TESTS WILD TURKEYS
HYSHAM, Mont.—Several dozen wild turkeys are running loose in this area. The birds about three-quarters grown, were released by the Western Wildlife League as an experiment to determine if they would thrive in the Yellowstone valley.

Bus Schedule
Chisholm Trail Coaches, Inc. The Direct Short Route Save Hours - Save Miles

Leave Ranger ... 9:50 A. M.
Leave Breckridge 10:35 A. M.
Ar. Vernon ... 1:15 P. M.
Ar. Amarillo ... 8:45 P. M.
Ar. Lubbock ... 5:15 P. M.
Ar. Altus, Okla. ... 8:00 P. M.
Ar. Lawton ... 9:00 P. M.
Ar. Wichita Falls ... 1:30 P. M.
Ride Chisholm Trail Coaches, Inc.

PARAMOUNT HOTEL
Dependable - Reliable
Courteous Service

RAY GRIMES
Owner and Operator
For Information Phone 8911

Try Our Want Ads:

An Invitation
To My Many Friends and Former Patrons
TEXACO PRODUCTS
Washing - Greasing

POST OFFICE Service Station
Phone 280 - A. L. Stiles, Owner

Expert Radiator Repair

Welding

COLLINS GARAGE
PHONE 221-J
Pine and Rusk Streets

FIRE PREVENTION WEEK
October 5-11

Defend Against Fires Insure Against Loss

See ME for COMPLETE PROTECTION

C. E. MAY
INSURANCE

TODAY IS TUESDAY

Does your car need oil?

When did you last put in a quart? You want to watch that oil, Mister,—burned out bearings sure cost a lot of money to replace...

EXPERT MECHANICAL WORK

C. J. MOORE AUTO MART
Highway 80 Phone 9511
DAY and NIGHT SERVICE

HEALTH IS A LIFE INVESTMENT

Guard it as close as you can. Let us explain about that "old toxic condition"; how dangerous it is etc.

If you have gall stones, or liver trouble of any nature... we have a special message for you. We remove them without knife or drugs.

YOUR CHIROPRACTOR

E. R. Green, D.C.
209 Main St. Ranger, Texas

World Events Never Created a Sensation Like This!

The "hard day at the office" is forgotten as the tempting pork loin roast you bring out assumes importance. The usual discussion of sports or world affairs is postponed as the tender meat breaks away under the work. Mealtime is the hour when you shine. The day's events try to rob you of the honors, but put them in their places with quality Powell's meat. You can be a heroine every day!

WE CARRY A COMPLETE LINE OF

School Supplies

A. H. POWELL GROCERY & MARKET
Phone 103 We Deliver

WALKER SERVICE STATION
FOR TEXACO PRODUCTS
BRUNSWICK TIRES WASHING - GREASING
AUTOMOBILE ACCESSORIES

W. O. Walker, Jr.
Owner
Highway 80 East

Get Your Car Ready for Winter

Avoid discomfort, delay and expensive repairs later by equipping and preparing your car NOW for safe, comfortable winter driving. Save on parts, supplies and accessories at our store.

Hot-Wave "DELUXE" HOT WATER HEATER
Extra smartness and comfort at exceptionally low cost. Fits all cars. Complete with all attachments and fittings.
Quiet oil-less motor. Conventional tubular construction. Rust-proof copper alloy core. Handsome, harmonizing finish.
\$6.79

MODERN HEATERS

MONTGOMERY'S WESTERN AUTO STORE
S. O. MONTGOMERY
Phone 300 Main St. Ranger

For Real Coney Islands

MRS. HIGDON'S CAFE

BRING YOUR FOOT TROUBLES TO US

Decide now that you are not going to suffer another day from restless foot troubles. Come to our Foot Comfort Department and let our specialist man tell you all about your foot necessities as there is a separate device or remedy to relieve and correct every form of foot trouble. Places you under no obligation to get a free demonstration. We sell Foot Comfort as well as shoes.

JOSEPH'S Shoe Dept.
206-12 Main St. Ranger Texas

SEE **BROWN'S** Transfer and Storage

For MOVING CONTRACT OPERATOR

T. & P. TRANSPORT
Phone 635

SERIAL STORY

MURDER IN PARADISE

BY MARGUERITE GAHAGAN

THE STORY: Mystery and murder come to quiet Paradise Lake when Maudie O'Connor and her school teacher daughter, Mary, discover the body of sophisticated Herbert Card. When local editor...

mind of better days when the Morris family had had enough money to be a power in the summer community. The moon was still painting the lake, but it had traveled some. If I couldn't make use of it I hoped Jeanie could.

—and I don't think she felt any pain. Maudie was always one to flee from the thought of suffering. "Although the body her poor head was beaten it must have hurt horribly."

ANOTHER MURDER CHAPTER VIII "I'd want to see that knocked, but young Tod Palmer. He had just come from the State Police Post where he had heard news important enough to start him on the hunt for Denny. Tod's weekly didn't play for scoops and even if he'd been on his own deadline he still would probably have hurried to Denny because you could see he thought Denny was tops among newspapermen.

Then, in the distance, I heard Finn McCool's grumble and Maudie's sharp answer. The tone in her voice bothered me. It didn't sound quite natural. As a rule the more McCool grumbled in his dour Scotty way the more tolerant and amused she became, but now she was sharp—sharp and frightened.

WELL, eventually we got it from her. She had started out to take McCool for his mighty constitutional, but the sight of the shadows and the moonlit road had brought back too much of the other night's horror, so she had turned and gone down to the dock. They had gone out in the boat and started in the general direction of the Morris end of the lake.

Officer John Antler had just received word that the city police had picked up Stush Veretti, and with the information the officers had collected, they could now place Veretti in the vicinity of Paradise Lake at the time of the crime.

She came from the path to the dock so I supposed she had been out rowing again. Blisters, probably, I thought. She wouldn't learn to take it easily at first.

"I wouldn't have seen the boat," McCool hadn't barked," she said, still pathetically shaken and with all her wise-cracking sophistication lost. "Finally I did see it near shore in the reeds. I knew it was drifting and I thought I could tow it back here and then whoever owned it could get it."

"And a city dick by the name of Sullivan said to tell you they were sure they would soon have the gun." Tod's face was still pale, but there was a softness about his lips that hadn't been there that morning when he had stood up at the inquest and provided Jeanie Morris with her alibi.

"Did you row around the whole lake?" I asked. But she wasn't smiling as she opened the door on the screened porch, pushed McCool in ahead. There were red splotches on her cheeks and her breath was coming in short gasps. I jumped up and went to meet her.

"Whatever was used certainly was effective," Maudie said in a voice that trembled. "She was alive."

"Sure," Denny said. "I knew they'd be able to hang it on that guy. Someone in town was sure to squeal on him." He looked like the cat that had swallowed the canary, he was so obviously pleased with himself. I couldn't help but laugh when he looked at me for approval.

Denny was beside me trying to drive the grim frozen look from her face with some witticism. "You've as good as lost your bet, Machuska," he said, putting an arm around her shoulder, "but don't worry, I'll still dine and wine you."

"Did she say anything?" Denny demanded. "And by the way Maudie, darling, where's the boat now?"

TOD said he couldn't stay and I hoped he was on his way down the road toward the Morris house. There alone, with its gingerbread trim, the house was a pathetic reminder of better days when the Morris family had had enough money to be a power in the summer community.

We stared at her and then I felt a little sick. She was terrified. I could see it in her tightly gripped hands and in the shivers that went over her well-padded frame.

"Maybe now you'll listen to me," she said, pushing her white curls away from her brow and adjusting her glasses. "Do you think the numbers boys had any reason to rub out poor Miss Millie?"

requires that all seed offered for sale for planting or sowing purposes must be tagged, giving commonly accepted name, germination percentage, mechanical purity and other information.

from the practice, by local as well as out of state firms and individuals, of "dumping" inferior quality of seed into the trade channels of Texas.

LOOK! — THERE'S HILDA WITH SOME DROP!

THAT'S THE THICKIE WHO STARTED 'BAGGA' AND HE'S DOWN! ALL RIGHT BY HIMSELF!



WE OUGHTA HAVE A LITTLE TALK WITH THAT JERK!

YEAH — I HAVEN'T HAD A DATE WITH HILDA SINCE HE STARTED 'BAGGA' — AND ALL YOU'VE HAD IS GRIEF!



MY FACE? WHAT COULD YOU DO TO IT THAT HAVN'T ALREADY BEEN DONE?



265526

12-13

COPYRIGHT, 1941, NEA SERVICE, INC.

MAKING AMERICA STRONG INDUSTRIAL PLANTS SPEED TURBINE PRODUCTION FOR TWO-OCEAN NAVY. FIRM TRIPLES OUTPUT OF TURBINES FOR NAVY'S WARSHIPS. THIS PLANT IS PRODUCING OVER A PERIOD OF ONLY 3 YEARS TURBINES CAPABLE OF DEVELOPING 13,833,000 H.P. — 1/3 THE ENTIRE U.S. STEAM GENERATING CAPACITY OF THE LAST 40 YEARS.

This is one of a series of illustrated articles designed to inform the public of the progress being made by American industry in providing the weapons for national defense. The facts presented have been gathered in surveys of leading defense industries and from other authoritative sources.

large turbine-producing firm to its stockholders. In answer to the Navy's call on this company for vastly increased production of turbines and other equipment for warships, it has greatly expanded its plant facilities and is now operating on a 24-hour-a-day schedule. In the 40 years of its existence, the central station industry has built up in this country an active steam-generating capacity of some 41,500,000 horsepower, the report states. And now this firm is engaged on a program calling for the delivery of steam turbines, for all purposes, amounting to more than a third of that total capacity. These huge turbines are to be installed in the numerous units of this country's two-ocean navy, now building. They are for propulsion and auxiliary equipment to drive battleships, cruisers, destroyers, aircraft carriers, net layers, mine layers, tenders and repair ships. Many of this plant's turbine workers voluntarily went without vacations to complete ahead of schedule turbine units for the recently launched battleships North Carolina, Washington, South Dakota and Massachusetts. This firm and others have pledged a maximum effort to deliver all Navy material ahead of schedule. Such pledges mean abnormally heavy loads on these plants. This remarkable output of turbines is being accomplished by great, concentrated effort on part of management and workmen. Multiple shifts, more efficient machine tools, plant training program is given in the following figures for the turbines which are the modern battleships: some 700 drawings by design engineers and the services of 4,000 skilled workmen and engineers are required for the construction of a turbine of the quadruple type used on men-of-war like the U.S.S. North Carolina.

Chickens - Turkeys

STAR SULPHUROUS COMPOUND given in drinking water or feed, destroys in the germ period—intestinal worms and worms that cause most all disease and loss in egg production. Also rid them of blood-sucking lice, mites, fleas and bluebugs. Then they will stay in good health and egg production at a very small cost. Money back if not satisfied. OIL CITY PHARMACY.

COLORADO POTATOES 10 Lbs. 19c. A Salute to America! CALIFORNIA BURBANK WASHED POTATOES 5 Lbs. 19c. Golden Bananas Dozen 10c. Extra Special Bacon Sliced Pound 29c. Sweet Potatoes 5 Pounds 12c. Campbell's Tomato Juice 3 14 Ounce Cans 25c. Swift's Premium Brisket Roast Lb. 12c. Swift's Premium Chuck Roast Lb. 23c. Swift's Premium Chicken Fry Steak Lb. 28c. Swift's Premium Veal Chops Lb. 29c. Swift's Premium Short Ribs Lb. 18c. Tenderized Picnic Hams Lb. 25c. F. O. Round Bone Steak Lb. 25c. Pork Sausage Lb. 18c. Canned Foods: Treet Can 29c, Kanner's Catsup Can 10c, Red Kidney Beans No. 2 Can 10c, Red Cherries No. 2 Can 17c, Marshmallows 1 Lb. 14c, Vanilla Extract 8 Ounce 15c.

GINGER SNAPS LB. 10c. BREAK-O-MORN COFFEE POUND 17c. AMBASSADOR TOILET TISSUE 4 ROLLS 19c. FOLGERS COFFEE 1 LB. 31c. LIGHT-CRUST FLOUR 24 LBS. 98c. LIGHT-CRUST CORN MEAL 10 LBS. 35c. GOLD CHAIN FLOUR 24 LBS. 98c. LIGHT-CRUST CORN MEAL 5 LBS. 19c.

FRESH FRUITS AND VEGETABLES TASTE BETTER SERVED WITH CARNATION MILK. JONATHAN APPLES DOZEN 15c. CELERY LARGE STALK EACH 10c. SEEDLESS TEXAS ORANGES DOZ. 15c.

Scenic Point Now Serving in Air-Cooled Dining Room. SOUTHERN FRIED CHICKEN, T-BONE STEAKS, SANDWICHES, VIRGINIA HAM STEAKS, COLD LUNCHEES, SIRLOIN STEAKS, COLD DRINKS. Catering To Parties. Good Food All Hours. Owner W. T. LUTON.

O. K. GROCERY MARKET 501 West Main St. Phone 214. Government Inspected Quality Meat.

BULLDOG - LION TICKETS ARE NOW ON SALE HERE; GAME CALLED FOR 7:45

Tickets for the Ranger Bulldog-Brownwood Lions football game, to be played in Brownwood Friday night, beginning at 7:45, have gone on sale here at the school tax assessor's office in the Recreation Building.

In forwarding the game tickets, Brownwood school officials warned Ranger fans to purchase their tickets before leaving home, because, they said, the large crowd expected at the game, and the confusion resulting from the federal tax payments, which cause more change-making at the ticket windows at the field, slow up entrance of the crowd to the stadium.

It was pointed out that the time for the game had been moved up from 8 o'clock to 7:45.

Austin Worth More Than Whole County

AUSTIN, Texas—Property in the city of Austin is worth \$12,000,000 more than all the property in Travis County, in which it is situated! That is, if you can believe county and city tax records.

This incongruity of the Texas tax structure was revealed by University of Texas Bureau of Municipal Research tax experts while preparing to hold the First Assessor's Institute here. Reason for the discrepancy is the fact that county and city tax boards each make their own assessments. Some counties have as many as eight layers of assessing boards, University officials said.

Freckles and His Friends — By Blosser

By PETER EDSON
Agriculture Department Floods Country
With Information, Bulletins, Radio Hours

One of a series of columns on government information service.

BY PETER EDSON
NEA Service Washington Correspondent

WASHINGTON.—Biggest single information service in Washington is that run by the Department of Agriculture. Its budget for the current year is \$1,894,994. It employs a staff of nearly 100 information specialists and their assistants. The Washington payroll is \$327,000.

The information department is so big it has a business office which selects personnel, runs the files and messenger service, and supervises the spending of \$1,550,111 a year for printing by both the Government Printing Office and outside jobs.

The department's publications number 25—magazines, yearbooks and reports.

In addition, the department will publish in an average year some 30 or more technical bulletins, passing on to scientists the results of agricultural research.

In addition, the department will publish annually about 12 million copies of farmers' bulletins and leaflets—four to eight-page pamphlets which give farmers the results of the scientific research in language they can understand. Also, to explain how the triple-A program works, how to borrow money from Farm Security, how to take out federal crop insurance, and so on.

In addition, there is an extensive press service, set up to make information available to the press associations, individual newspaper correspondents, farm papers, trade journals and technical publications. There are more than 30 principal sections in the Department of Agriculture. Half of them have press sections, ranging from two or three men to whole city rooms big enough to put out a metropolitan newspaper. There are at least 100 people in this press work, and that does not include the editors of the 25 publications or the editors of the leaflets. Just press contact men. On an average day, these press sections will grind out about six stories. The total number of releases for 1940 was 1900.

In addition, there is a radio section. It prepares the 15 to 30-minute programs broadcast five days a week as the National Farm and Home Hour. More than 100 stations carried this program last year.

In addition, there is a once-a-week program on consumer education carried by 47 stations.

In addition, scripts are prepared for seven-minute daily programs on useful information for farmers and scripts of information for home-makers. These are sent on request to the little independent stations, 294 getting the programs for the farmers, and 250 taking the stuff for the farmers' wives.

To list all the publications issued by the department would make the piece too long, and besides, anyone who is interested can get the list free, by writing to the Department of Agriculture and asking for the Monthly List of Publications and the Farmers' Bulletins list. But these publications run all the way from statistical indexes on crops, to magazines on agricultural research, home economics, information for consumers, fire control, forestry, land policy, rural electrification, soil conservation, and annual statistical reports.

THIS CURIOUS WORLD — By William Ferguson

Seed Should Be Treated Before They Are Planted

Eastland County farmers have been freshly reminded that a few cents spent for treating small grain seed before planting will earn dollars in increased yields.

Elmo V. Cook, county agent, is doing the reminding, and reports that the use of chemical treatments of planting seed increased several hundred per cent in Eastland County during the past year. Those who treated their seed reported good control of all diseases carried by the seed, such as head smuts. Also they got better results because mold bacteria that sometimes destroy the seed in the ground were killed by the chemical.

The standard treatment of small grain seed such as wheat, oats, barley and rye is one half ounce of NEW IMPROVED CERESAN per bushel of seed. The chemical is placed in a tight dry container with the seed and the container rotated until there is an even covering of the chemical dust on the seed. Ceresan can be bought from most seed dealers. The cost to treat a bushel of seed is less than five cents.

Farmers who wish to construct a seed treating machine for treating large quantities of seed can get a plan from the county agent.

Repaired Shoes

FREE INSPECTION!

Don't have to look unsightly now. New invisible half soles can't be told from new soles. Makes men's, women's and children's shoes look like new again. The best grade soles... the kind that wear longest—are featured at popular prices. The price you pay depends on the leather you choose. You will want to get new heels and laces at the same time. Get invisible half soles at—

Bell's Modern Shoe & Harness Shop
203A Main St. Ranger

CHUCK ROAST	Per Pound	21c	HOCKLESS PICNICS	LB. 2 TO 4 POUND AVERAGE	28c
VEAL ROUND STEAK	Per Pound	33c	VEAL SEVEN STEAK	LB.	25c
BLOCK CHILI	Per Pound	25c	BROOKFIELD PATTIES SAUSAGE	1-LB BOX	35c
DEER BRAND GRAPEFRUIT JUICE	Big 46 Oz. Cans	15c	CAMPBELL'S TOMATO JUICE	2 14 Oz. Cans	13c
HOMINY	Large Cans 3 For	23c	Orange Slices, Chocolates, Jelly Beans, Fudge, Queen Mixed CANDIES	1 Lb. Pkg.	10c
BEANS	Cut Green 2 No. 2 Cans	19c	BABY FOODS	Clapp's Strained 3 CANS	19c
Grape Juice	Royal Purple Bot.	25c	PRESERVES	K. B. Pure Fruit All Flavors 24 OZ. JAR	25c
Marshmallows	Angelus 1 Lge. Pkg.	10c	VACUUM SEALED SHORTENING BAKERITE	1-LB. CAN 27c 3-LB. CAN 69c	BOTH FOR 69c
MATCHES	6 Box Cart.	15c	SPINACH	3 No. 2 Cans	25c
Plymouth Coffee	Lb.	18c	TOMATOES	2 No. 2 Cans	15c
OXYDOL	Giant Pkg. 2 Bars Lava	63c	POTATOES	Idaho Russetts 10 POUND MESH BAG	25c
CATSUP	14 Oz. Bot.	10c	SOUP	Campbell's Tomato CAN	6 1/2c
PICKLES	Libby's Sour Qt. Jar	19c	FOLGERS COFFEE	LB.	30c
Pork & Beans	Phillip's No. 2 Cans	10c	VITAMIN FILLED RICHWHIP MILK	3 TALL CANS	21c
POTATOES	Idaho Russetts 10 POUND MESH BAG	25c	MAYFIELD CORN	2 NO. 2 CANS	15c
SOUP	Campbell's Tomato CAN	6 1/2c	JELL-O	PKG.	5c
FOLGERS COFFEE	LB.	30c	WOODBURY'S FACIAL SOAP	4 BARS	26c
HAPPY VALE PEAS	NO. 303 CAN	10c	TEXAS KING FLOUR	24 LBS. 79c 48 LBS. \$1.53	
TEXAS KING FLOUR	24 LBS. 79c 48 LBS. \$1.53		IDAHO RUSSET POTATOES	10 LBS.	19c
Kremel DESSERT	6 Boxes	25c	JONATHAN APPLES	DOZEN	15c
Handies	Facial Tissues 500 Count	19c	YAMS	5 POUNDS	15c
TAMALES	Rita Can	10c	TOMATOES	3 POUNDS	25c
COFFEE	Pipkin's Special Lb.	19c	RUTABAGA TURNIPS	POUND	3 1/2c
LAND-O-GOLD FLOUR	48 Lb. Sack	\$1 35	CALIFORNIA SUNKIST LEMONS	DOZEN	17c
Sioux Bee HONEY	5 Lb. Glass Jar	63c			
CRACKERS	2 Lb. Box	15c			
BUTTER	lb.	37c			
SPRUP	5 Lb. Bucket	29c			

Extra Energy! - Extra Healthfulness!

APPLES

IDAHO RUSSET POTATOES 10 LBS. 19c

JONATHAN APPLES DOZEN 15c

YAMS 5 POUNDS 15c

TOMATOES 3 POUNDS 25c

RUTABAGA TURNIPS POUND 3 1/2c

CALIFORNIA SUNKIST LEMONS DOZEN 17c

PIGGLY WIGGLY

A Complete Stock of Feed

WE BELIEVE WE HAVE IT A VISIT TO OUR STORE WILL CONVINC YOU

ANXIOUS TO SERVE YOU

A. J. Ratliff
Ranger
Phone 109

Society Notes

Mrs. Peterson Compliments Daughter

Mrs. Verne Peterson entertained at her home on Victory Street, Wednesday afternoon from 4 to 5 o'clock, honoring her small daughter, Sandra, on her 7th birthday.

The Halloween theme was carried out in decorations and tiny horns were given as favors.

After games and the opening of the birthday gifts, ice cream and cookies were served to the following: H. V. Davenport, Betty Lou Hagan, Cecilia Mooney, Betty Lou Kincaid, Jo Ann Lenzi, Dickie Powell, Nancy Barnett, Max Poyner, Gerry Wilson, Vickie Barnett, Tommy Powell.

NEGLECT MAY INVITE PYORRHEA

An Astringent and Antiseptic that must please the user or Druggist return money if first bottle of "LETO'S" fails to satisfy. OIL CITY PHARMACY

Tips On Heels



Children wear down heels faster. Bring their shoes here more often, for longer-lasting heels. Tips too.

GREER'S BOOT & SHOE SHOP
118 MAIN STREET

Coming To The Arcadia



Ann Sheridan slips on something loose in this sequence of "Navy Blues" her newest Warner Brothers picture which will be featured attraction of the Arcadia theatre program opening Friday. Jack Oakie, Jack Haley and Martha Ray are prominent in the supporting cast. Six of the celebrated Powers models will be seen as the Navy Blues Sextette. The group is headed by Texas' Georgia Carroll.

Martha Ann Station, David Martin, Martha Nann Thompson and Gerry Bob Greer.

Hodges Oak Park P.T.A. Meets

The Hodges Oak Park school Parents-Teachers association met at the school Tuesday afternoon at 3:30 o'clock with Mrs. L. C. Conrad, president, presiding.

The meeting was opened with the assembly singing of "America" after which, Rev. R. C. Edwards, guest speaker, spoke on "How to Create a Happy Family."

In a business meeting plans were made and committees appointed for the annual Halloween carnival which will be held soon.

Beauty Specialist At Izetta's

Mrs. Izetta Smith, has announced that today, Friday and Saturday, Mrs. Ella Durst, a skin specialist, will be at her shop where she will make appointments with patrons for free facials and skin analysis.

Mrs. Durst has had wide experience in analyzing skin and prescribing for its care. She will demonstrate the Princess Nyla line of cosmetics and those wishing an appointment for a free facial are urged to call 360 today, Friday or Saturday.

Ruth Class Entertained With Coffee

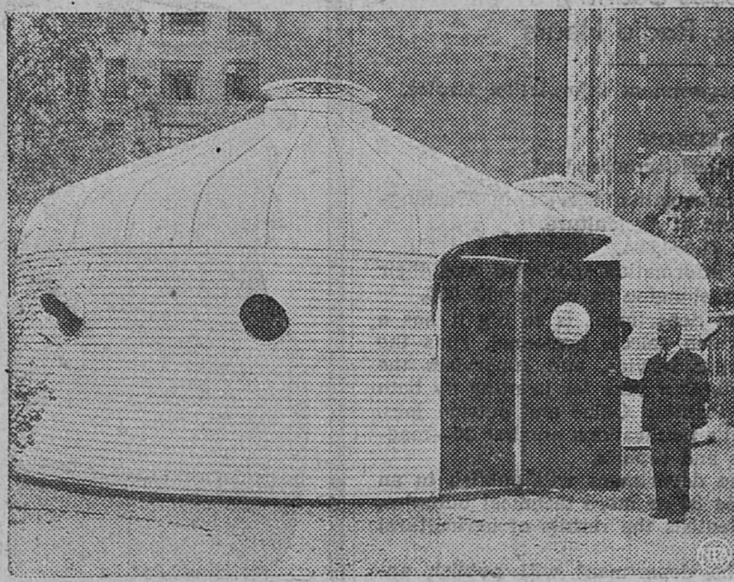
The Ruth Class of the First Baptist Church was entertained Tuesday morning with a coffee at 9:30 o'clock in the home of Mrs. David M. Phillips.

Fall flowers decorated the home and the lace covered coffee table was appointed with crystal and silver and centered by a pottery bowl containing a potted vine. Mrs. L. C. Harrison of Lone Oak, mother of Mrs. Phillips, presided at the silver service.

In a business meeting plans for the year were made and Fridays selected as visiting days for the group. All members are urged to make visiting a part of their program for the year. Plans were also made for a Halloween party to be held Thursday evening, October 23, at the home of Mr. and Mrs. J. D. Johnson.

Those present for the coffee and business meeting were: Mmes. Weaver Aishman, T. L. Juree, J. D. Johnson, T. L. Barton, Odell Cole, Jeff Rawls, Wilmot Simpson, Earl Ray, M. G. Martin, J. D. Spears, W. G.

Steel Grain Bins Transformed Into Defense Houses and Bomb Shelters



Newest, neatest trick of providing defense workers with quickly-built houses that are also pretty much bombproof comes from inventor R. Buckminster Fuller. Shown at New York's Museum of Modern Art display, the houses are nothing more than a couple of grain bins painted white. One bin, 20 feet in diameter, is a living room-bedroom combination. Curtains can block it into two rooms. A passage leads to the smaller bin, consisting of bedroom, kitchen and prefabricated bathroom. The houses are built from the top down, the roof being raised by a collapsible mast. Walls are attached in sections. A sealed sectional steel floor is bolted to the outer rims of the walls. These portable units cost about \$1500. While they couldn't take a direct hit, they are reportedly safe against bomb fragments and flying debris. Pictures show Fuller examining the bins and teeming just outside the kitchen.

Freckles and His Friends



Powell, R. R. Rogers, Bill Rainwater, J. L. Milner, J. R. Houghton, Hugh Smith, R. V. Robinson, Gail Towne, Phillips and Harrison.

Masquers Elect Officers

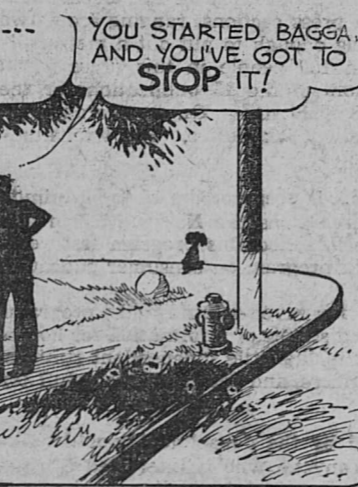
The Masquers, dramatic club of Ranger Junior College, held a call meeting Tuesday at 11:30 p. m. Business of the meeting was to accept the resignation of the elected president, Miss Margaret Watt, and to elect other officers. Miss Watt resigned as an officer due to the duties required in her employment but will remain an honorary member of the club.

Those chosen for office were: President, Sid Fowler; secretary-treasurer, Genevieve Boswell; reporter, Cia Faye Morgan; stage manager, Albert Bradford; property manager, Glenn Rex; costumer, Dolores Bishop.

Medical Branch of University Starts Fight Upon Fever

GALVESTON, Texas — The University of Texas Medical Branch here is launching a sweeping drive against tropical disease in the United States, especially in the Mexican Gulf Coast area eastward from Texas. Funds for this purpose have already been obtained from the Texas Legislature to begin work in this field. One step is to cooperate with the Dominican Republic Settlement Association by furnishing a specialist in tropical medicine as special adviser in public health. This arrangement will give the Texas school a field base for first hand-study of tropical disease.

By Blosser



Rep. Johnson Says U. S. Is At War

TAYLOR, Texas—U. S. Rep. Lyndon Johnson considers the United States already at war with Germany.

The Tenth district congressman warned an audience of sailors and ex-sailors not to be lulled by the fact that there has been no formal declaration of war.

"When President Roosevelt issued his historic 'shoot on sight'

orders, the people of this nation automatically became involved in an undeclared conflict," Johnson asserted. "Undeclared wars are very common these days."

Thus, he said, the need for unified support behind Mr. Roosevelt becomes more imperative than ever.

Johnson, unsuccessful senatorial candidate in a special election last June, lauded the Navy as "the potential savior of the last real democracy," and said its "greatest gift" was its present commander-in-chief, Mr. Roosevelt.

Of his senatorial campaign he quipped:

PERSONALS... Mrs. Bob Hansford has returned from Dallas, where she was called because of the serious illness of Mr. Hansford. Mrs. Hansford stated this morning that Mr. Hansford is improving slowly.

In America it is suggested that people eat less for their own good. In some foreign countries it's demanded that they eat less—if they know what's good for 'em.

ARCADIA LAST TIMES TODAY
Ronald COLMAN
"EVERY LIFE WITH CAROLINE"
with ANNA LEE

ALL WALL PAPER 1/2 PRICE
Higginbotham-Bartlett Co.
Phone 140
Ranger, Texas

They all Want JEWELRY

NO CHARGE FOR CREDIT
ELGIN De Luxe
DIA. RINGS \$195
DIAMONDS \$37.50
CHAIN SET TRAVEL KIT \$2.50 \$7.50
LAY IT AWAY FOR CHRISTMAS!
Buy Early for a Better Selection...
Bridal Pair \$39.75
MAN'S RING \$9.85
Sterling Set Pen & Pencil \$22.50 \$8.75
USE YOUR CREDIT!
LIGHTER \$2.95
LOCKET \$3.95
PATRICIA 17 jewels \$24.75
DEAN 15 jewels \$24.75
GODDESS OF TIME 17 jewels \$33.75
MINUTE MAN 17 Jewels \$33.75
CLOCKS From \$4.50
USE OUR LAY AWAY PLAN -- Its Convenient --
Ranger Jewelry Company
GIFTS FOR EVERY OCCASION
Phone 610 212 Main St. Ranger

Hallmark LUXURY SOFAS
MADE BY LEADING MAKERS...
PRICED TO SAVE YOU DOLLARS!
Buy AT SAVINGS ON WARDS SHIP-DIRECT PLAN!
Ask about the 57 Charming Room Settings, the 429 fine pieces available in Traditional, Modern and Early American Styles Save at Wards
Duncan Phyfe
Adam Sofa
Today's Modern
YOUR CHOICE 4 FINE STYLES
9000 f.o.b. factory
YOU'LL SAY "SHOULD BE \$120!"
In your choice of rich fabrics!
Some of America's foremost makers produced these sofas—used the fine materials and expert craftsmanship that have made them famous! See it for yourself in the authentic played legs of the Phyfe sofa—in the traditional luxury of the English lounge! All have the best spring construction, deep upholstery and exposed wood is solid mahogany.
\$9 a Month, Usual Down Payment and Carrying Charge
Home of Hallmark Quality Furniture
MONTGOMERY WARD