

BALLINGER DAILY LEDGER

VOLUME NO. 23. NUMBER 43.

BALLINGER, TEXAS, SUNDAY MORNING, MAY, 27, 1928

MEMBER INTERNATIONAL NEWS

HOME BEAUTIFUL TO OPEN TODAY

FARMERS PLAN TO TAKE G.O.P. MEET IN KANS.

(By International News Service)
 KANSAS CITY, May 27.—Prospects of Kansas City becoming a tented city during the Republican National Convention were seen this morning following telegrams stating that Middle Western farmers are on a march to this city, coming to the convention to demand a farm relief plank in the party platform.
 Earl C. Smith, Chicago, president of the Illinois Agricultural Association, has requested that large camping grounds be made available for the farmers.

100 SEARCH FOR OFFICER KILLER

(By International News Service)
 FT. WORTH, May 27.—A posse of 100 men are scouring this city tonight following reports that Tenola Moore, negro slayer of George Turner, city policeman, was seen here, disguised as a woman.
 Turner was shot down in cold blood several days ago while questioning the negro.

KNAPP CASE GOES TO JURY

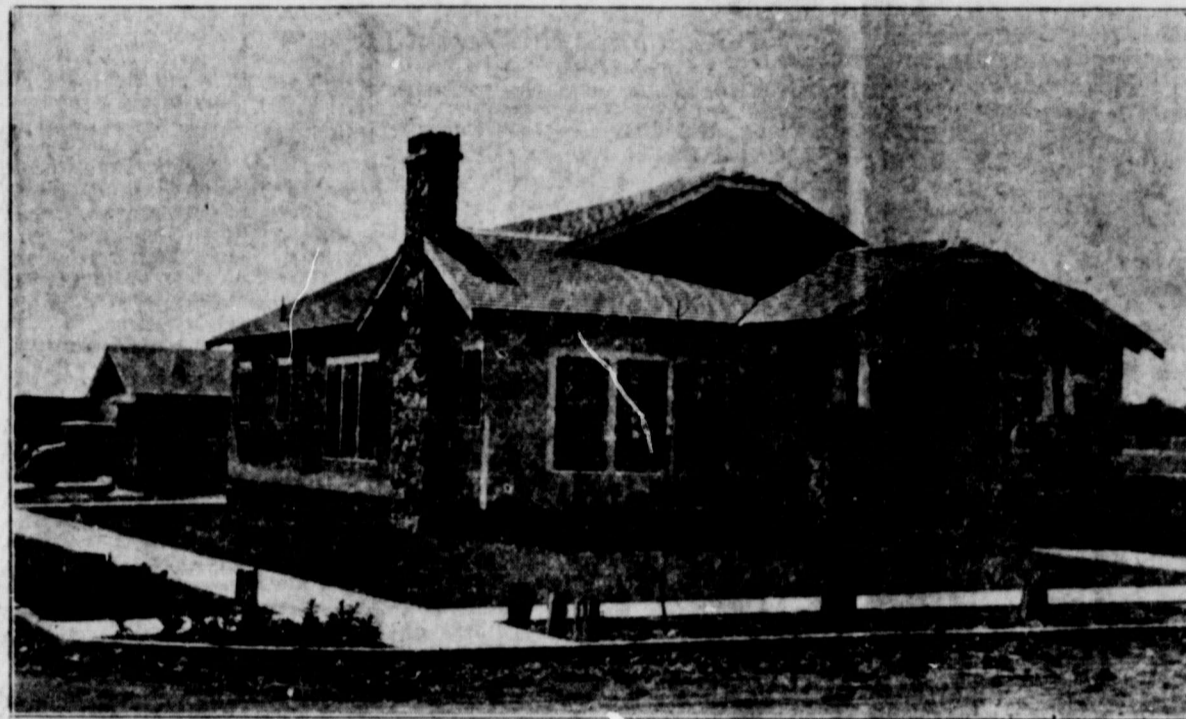
(By International News Service)
 ALBANY, N. Y., May 27.—Pictured as the victim of politics by defense lawyers and denounced as a defrauding, scheming woman by the prosecution, the case of Mrs. Florence E. Knapp, former secretary of state, charged with theft of census money, was given to the jury early yesterday evening.

OIL OPERATOR'S SON DIES AT MINERAL WELLS

Jack Agnew, son of B. L. Agnew, oil operator of this section, died in a Mineral Wells hospital Friday night following a tonsil operation, according to Bob Flasiq, local oil scout, who received a telegram late Saturday afternoon telling of funeral arrangements which had been made.
 Mr. Agnew is drilling a well on the Russell land, northwest of this city and north of the Colorado River. He has visited here on numerous occasions.
 The deceased was also the youngest brother of Gill Agnew, another son of Mr. Agnew, who had been in Ballinger during the past few weeks looking after oil interests here.
 Funeral services, Mr. Flasiq said, would be held at San Angelo Tuesday, interment to be made in a San Angelo cemetery.

DENY CHARGES LONDON PAPERS

(By International News Service)
 WASHINGTON, May 27.—Charges published in London newspapers that the United States marines in Nicaragua were guilty of pillage and acts of violence, were vigorously denied to night by Secretaries Kellogg of the state department and Wilbur of the navy department.



Home Beautiful in Wilke Terrace

When the doors of the "Home Beautiful" in Wilke Terrace are opened this afternoon at 1:30 o'clock for one week of public inspection, citizens of Ballinger and neighboring towns will have an opportunity to see the most modern and completely furnished house in the city. This house was recently completed for Brandon Wilke of this city, by J. M. Blackwell, local contractor, at a cost of several thousand dollars and furnished by the West Texas Utilities Company, Higginbotham Brothers & Company, and several other local firms.

The exterior of the house is of simple stucco build with the exception of the field-stone chimney and field-stone porch. Entering the front door one views a luxurious living room, 12 by 25 feet, completely furnished and with fixtures not equalled in any home in the city. The low swinging light fixtures are very attractive and probably gets the attention of the eye before any other article in the room. The fireplace is of field-stone with a mantle, built-in bookcases on either side and above, these cases are bungalow windows. The paper is called "wool flock" and is considered the best obtainable. It is attractively designed.

The wall-paper of the dining room is the same. This room is 12 by 14 feet with entrances from the living room through French doors, from the hall in the center of the house and from the beautifully arranged kitchen.

The sun parlor in the western corner of the house is entered from the living room by French doors. It has windows on every side and is arranged in a very alluring manner, suggestive of the excellent taste displayed throughout the beautiful home.

The guest room, entered from the hall and through a south outside door is 12 by 13 feet with a cedar-lined closet. There are gas connections in this room as well as in every other room in the house. The wall-paper of the guest room is of a very attractive design, while the floor, as of every room in the home, is of selected white oak.

In the attractively arranged hall is the telephone eye, and another cedar-lined closet. These closets are each large and roomy and there is an automatic light switch on each door which turns on the light as the door is opened and extinguishes it as it is closed.

FREE PRIZES TO BE GIVEN AWAY DURING OPENING

Free prizes will be awarded every day next week during the "Home Beautiful" inspection, it was announced Saturday afternoon by those in charge of the demonstration.
 At the front door as one enters is a desk which is to be used for registration and everyone entering the home is urged to sign his name. The prizes will be awarded from time to time during the inspection hours, it was announced.
 Almost every firm taking part in the furnishing of the home is posting prizes and practical home necessities will be presented the winners.
 Ask about the prize awards when you visit the home.

Dr. W. B. Halley, W. A. Nance and D. M. Baker left Saturday afternoon for Mineral Wells to represent the Ballinger Country Club in the West Texas Golf Tournament to be held here this week. Dr. Halley stated that the other two men would represent the club and he was merely chaperoning them on the trip.

There are also large closets in the bed room and bath room.

The bath room is equipped with the very finest of sanitary plumbing, with a full recess tub and other fixtures, including a built-in medicine cabinet and linen closet and drawers. There is a 4 1/2 foot tile baseboard in the kitchen. The bath room is 6 feet by 8 feet.

The bed room at the rear of the house is in a corner with large windows on two sides and an entrance from the hall. There is a large cedar-lined closet in this room. The size of the room is 13 feet by 14 feet.

The kitchen is 11 feet by 12 feet with attractive wall paper, very conveniently arranged built-in sink, kitchen cabinet and drawers. There is a breakfast room 6 feet by 8 feet east of the kitchen with well chosen light fixtures and wall paper. The floor of this room is covered with a fine grade of kitchen covering found only in the best homes.

There is a small service porch at the rear entrance with an entrance also to the basement, 14 by 14 feet with concrete floor and walls. Hot water reservoirs are located in the basement, which will be used also for a storeroom.

The light switches and openings are arranged in a most convenient manner in every part of the house, there being 60 openings. In the kitchen the ironing board is built in with a drawer below the board for the electric iron and the opening for the heating connection at the top of the board. Each window is equipped with a Luxor shade and elaborately designed curtains.

There is a double garage with a concrete floor sloping to the center which also may be used as a wash-rack for the automobiles. The garage is 18 by 18 feet. Sidewalks and curbs surround the house on each side.

FORMER DEPUTY SHERIFFS GUILTY

(By International News Service)
 BROWNSVILLE, May 27.—John Swanner and Jesse Rose, former Willacy county deputy sheriffs Saturday were found guilty in the federal court here of charges of intimidation of witnesses in a previous court trial.
 Judge A. B. Crane and Archie Clark, the other defendants in the case, were acquitted.
 Swanner and Rose were given 5-year probation sentences.

FIREMEN HURT IN BLAZE SAT.

(By International News Service)
 WICHITA FALLS, May 27.—Joe Moore and Smiley Turner, city firemen, were injured late Saturday afternoon and a damage of approximately \$80,000 resulted from a fire and explosion at the Landon-Hill and the Sherwin-Williams paint companies.

Be wise and advertise.

1,000 Men Searching for Colorado Bank Robbers

Amundsen to Start Search for Lost Ship

(By International News Service)
 LONDON, May 27.—Captain Roald Amundsen, famous Norwegian polar explorer, late yesterday afternoon agreed to lead the relief expedition into the Arctic wastes to search for the missing dirigible Italia.
 Dispatches from Oslo said the Norwegian government had requested Amundsen to make the expedition in an effort to locate General Umberto Nobile and his intrepid crew of 16 men.

NEW YORK, May 27.—Commander Richard E. Byrd, famous polar flyer, late Saturday afternoon said he saw no cause for grave concern over the missing Italia until it had been missing for more than 100 hours as the ship was able to cruise for that length of time.

LONDON, May 27.—The British government has ordered the steamer Hobby, now at Tromsø, to proceed immediately in the direction of Franz Joseph Land in search for the missing dirigible Italia.

ROME, May 27.—The City of Milan, the supply ship of the Nobile polar expedition, was scheduled to start at midnight tonight for North Cape, the location last given by the Italia when the final message from the ship's radio was picked up.

SLAYER'S SISTER IS BEING HELD

(By International News Service)
 KANSAS CITY, May 27.—Mary Hickman, 18, sister of William Edward Hickman, condemned slayer of little Marian Parker at Los Angeles, late yesterday evening was arrested on charges of defrauding several local stores.

M.E. BROTHERS HAVE GOOD MEET

The Brotherhood of the Methodist Church met Thursday night of last week in one of the best meetings the men have enjoyed this year. Instead of a formal banquet the men met in a social meeting and were served ice cream and home-made cake by the ladies of the Missionary Society.
 Misses Helen Williams and Jewell Chaney delighted the gathering with a group of songs that called for numerous encores. These young ladies are popular entertainers with the brotherhood and are often requested to sing for their meetings.
 After refreshments C. P. Shepherd, acting as master of ceremonies, introduced the visitors and a number of local men who in turn responded with short talks. Mr. Shepherd kept the meeting full of pep and fun and all entered into the spirit of the occasion, making it one of the most enjoyable evenings since the brotherhood was organized.

Earl Morley, president of the organization, stated that the next meeting would be held on the creek or river at a near date, and a real picnic dinner would be enjoyed with the members bringing their wives and members of their families.

Misses Evelyn Shepherd and Ruth Holliday, students of Simmons University, Abilene, are here spending the week-end with their families. They have as their guests, Misses Judie Jones and Sarah Elkins, also Simmons students. The young ladies will return to Abilene Monday afternoon.

OIL SCOUT ILL IN AN OKLAHOMA HOSPITAL

Sammie Shields, a local oil scout, working from Ballinger recently, is ill in a hospital at Sand Springs, Okla., according to a telegram received here late Saturday night by members of the firm for which Mr. Shields is a scout.
 Details of his illness were not given in the message.

Two Bowie county highways will be hard-surfaced; the contracts were let May 25.

Various posses which are scanning hill and dale in five states, augmented by airplanes, presented a picture of rugged warfare as they advanced in automobile, horseback and on foot in efforts to get the merciless bandit quartet dead or alive.

Rumors flew thick and fast over five states. One report said the bandits were being closed in on near Wallace, Kansas, where the bandits are said to have robbed a farmer and forced him to feed them at breakfast Saturday.

Another report said the gang held up the bank at Wymore, Nebraska.
 Other rumors traced the fleeing bandits to Colorado, Oklahoma and New Mexico.

The First National Bank at Lamar, Colorado, was held up by these bandits last Wednesday where \$20,000 in loot was taken after the killing of A. N. Parrish, the president, and his son, John, cashier of the institution. E. A. Kessinger and E. A. Lundgren were abducted as the bandits sped away.

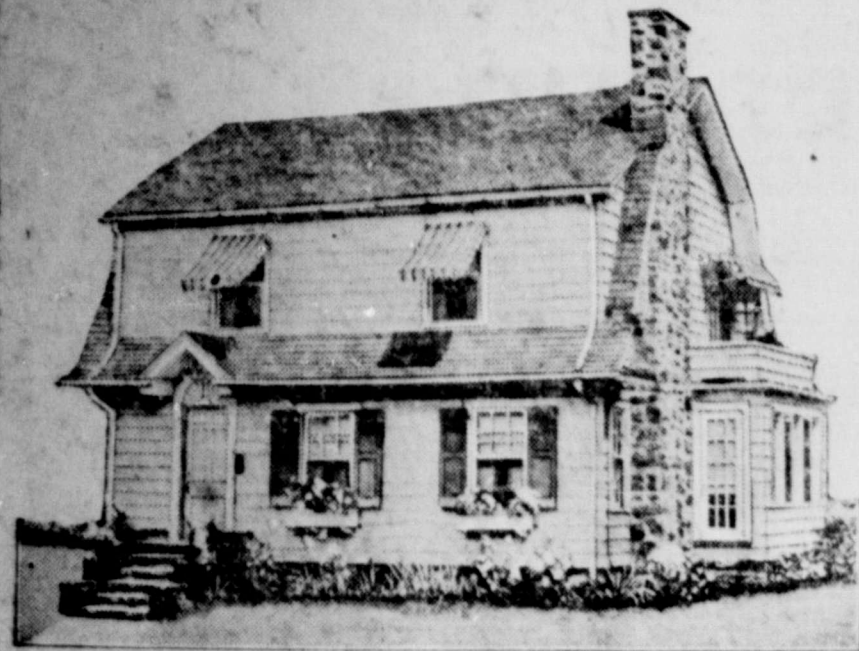
Later Lundgren was hurled from the car and severely injured. The fate of Kessinger is unknown.
 The body of Dr. W. W. Wineinger, of this city, who was kidnapped by the bandits to treat an injured member of the quartet, and later killed, has been found.

Misses Evelyn Shepherd and Ruth Holliday, students of Simmons University, Abilene, are here spending the week-end with their families. They have as their guests, Misses Judie Jones and Sarah Elkins, also Simmons students. The young ladies will return to Abilene Monday afternoon.

Clarence McCarver, student of Howard Payne College, Brownwood, has returned home after completing his sophomore year. Clarence is the son of Mr. and Mrs. W. C. McCarver of this city.

Miss Conuilla Mason, of Kingsville, formerly of this city, is here visiting friends for several days.

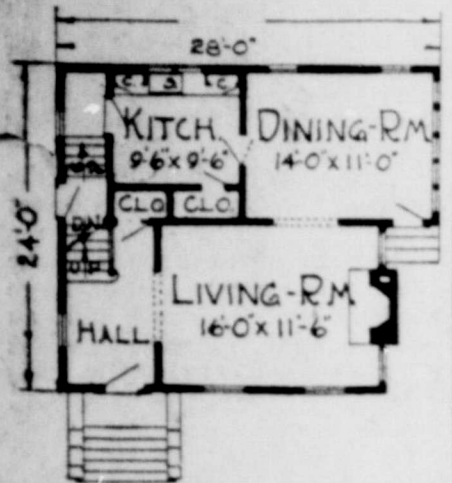
A 6 Room Home of Special Design



By W. A. RADFORD

Mr. William A. Radford will answer questions and give advice FREE OF COST on all subjects pertaining to practical home building, for the readers of this paper. On account of his wide experience as editor, author and manufacturer, he is, without doubt, the highest authority on all these subjects. Address all inquiries to William A. Radford, No. 1827 Prairie avenue, Chicago, Ill., and only inclose two-cent stamp for reply.

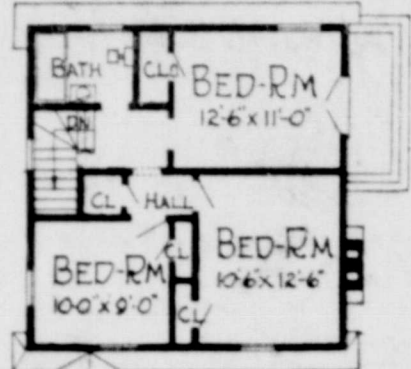
A small home at once unusual in appearance and pleasing to the eye is to be seen in the accompanying photograph. The unusual effect results from the side hang of the false roof from the second floor, which has been done in imitation of the Dutch colonial style of architecture. Though a false roof it is not subject to the



First Floor Plan.

criticism which might be expected to be made of it. In actual fact it adds to the appearance of the house, and the rough stone fireplace chimney com-

pletes a finishing touch of real merit. Though measuring but 28 by 24 feet on the foundation, this little house offers a surprising amount of roominess. On the first floor there is, in addition to a rather large entrance and stair hall, a living room of ample size, a dining room and kitchen with an



Second Floor Plan.

entry leading to the basement and service entrance. Not only that but there are also two good closets, one in the entrance hall and the other in the kitchen, which will be greatly appreciated by the housewife.

Above stairs there are three bedrooms, all of about the same size and all provided with roomy closets, a bathroom and, in the hall, a linen closet. All the bedrooms have good cross ventilation and all are well lighted. Though none of them, or any of the other rooms in this house, could be called large, they are of sufficient size to afford an ample measure of comfort for the average family and the whole arrangement possesses a coziness that adds much to the home-like effect.

Chicken Stuffed With Potatoes and Raisins

A large fowl of too uncertain an age to be safely baked may be appetizingly prepared in the following way, says the bureau of home economics:

- Plump fowl, weighing 4 to 6 pounds
- 4 or 5 medium-sized potatoes
- 1 cup raisins, without seeds
- 2 cups canned tomatoes
- 2 tablespoons chopped onion
- 2 tablespoons parsley
- Flour
- Butter
- Salt and pepper

Simmer a plump fowl weighing four to six pounds in a small quantity of salted water until tender. Remove it from the broth and set the fowl aside for stuffing. To the chicken broth add three cupfuls of canned tomato and two tablespoonfuls of finely chopped mild onion and let this sauce cook down. In the meantime prepare a stuffing for the chicken by cooking and mashing the potatoes and adding to them the raisins and enough milk to make the mixture like ordinary mashed potatoes. Tuff this while still hot into the body cavity and neck of the fowl. Crowd in all the stuffing possible and do not mind if it protrudes somewhat. Pour a little melted butter over the chicken and put it in the oven to brown. Thicken the tomato sauce to the consistency of a gravy and add two or three tablespoonfuls of finely chopped parsley and green pepper if desired. When the chicken and the surface of the potato stuffing have become delicately brown put the chicken on a large hot platter. Pour part of the sauce around it and serve at once.

Cherry Pie Can be Made During Winter Season

Cherry pie can be made in winter time if canned cherries are used. The bureau of home economics gives the following suggestions for making it:

Make an undercrust until it is delicately browned. Be careful not to let this crust become too brown, however, or it will be overcooked when the pie is baked. Strain the juice off of the canned cherries. If they are unsweetened mix the needed quantity of sugar with about one-half tablespoonful of cornstarch for each pie, and cook this with the cherry juice until it is thickened. Add one tablespoonful of butter and a few grains of salt, stir in the fruit, and put this filling into the prebaked pie crust. Moisten the rim, lay the top crust in place, and press the edges carefully together so that the juice will not leak out. Prick the top crust to allow the steam to escape. Bake the pie for about 20 minutes in a hot oven (450 degrees Fahrenheit), or until the upper crust is brown.

For cherry tart use pastry shells on the outside of tuffin pans, and fill with the fruit mixture. Serve at once, or to give an extra touch add a spoon-

ful of whipped cream or cover with meringue made of a stiffly beaten white of egg, one tablespoonful of sugar, a few grains of salt, and a drop or two of vanilla. To brown the meringue, return the tart to a very slow oven for 15 to 20 minutes.

Cooking Artichokes

Jerusalem artichokes may be boiled in their skins and peeled afterwards or peeled beforehand. Only a small quantity of water should be used. Small tubers will cook in 15 to 20 minutes. They may then be served with melted butter with a few drops of onion juice, in cream, in white sauce, or in a savory tomato sauce; or they may be scalloped in a white sauce with grated cheese and crumbs on top. Pared and sliced Jerusalem artichokes may also be cooked in milk in a casserole or a double boiler, or they may be simmered in meat broth.

WHAT CHILDREN NEED FOR HEALTH

Many Essentials for Good Nutrition Must Be Present.

(Prepared by the Bureau of Home Economics, United States Department of Agriculture.) Some of the nutritional and environmental needs of children were discussed in a talk recently given by Miriam Birdseye, extension specialist in nutrition, before the West Virginia State Nurses' association. Miss Birdseye said, in effect:

"Adequate food must be provided for children. This means that essential foods must be raised on the farm or available at all seasons of the year in nearby markets. Chief of these are milk and other good-quality proteins, butterfat, whole-grain products, vegetables and fruits, and pure water. Foods must be selected to meet the needs of the body at different ages and to come within the reach of the family purse. They must be prepared and seasoned to meet the needs of different age groups, combined into appetizing meals and served at regular hours. Food habits must be wisely trained.

"Other essentials for good nutrition must be present. These are sunshine, sleep, rest, fresh air, happy work and play, freedom from overwork, normal emotional life, wise parental guidance, protection from illness. A glance at this list shows that agriculture, medicine, sanitation, nutrition, home economics, and psychology all have their contribution to make. Specialized service is needed from a number of agencies, and on certain points several organizations can unite their efforts."

Be wise and advertise.

Rivers of Oil Flow Ceaselessly to Market in Buried Pipe-Lines



TEXAS TANK FARM

NEW YORK — From the oil fields of the United States, oil is flowing to market night and day through a vast system of underground pipe-lines. While the nation sleeps, these rivers of oil are forever rolling through their buried conduits from Texas, Oklahoma, Wyoming and all the great oil producing regions to the great cities and industrial centers.

These subterranean channels through which the great oil companies send their products to market represent an investment of many millions of dollars. The Sinclair pipe-line from the Rocky mountains to the Missouri river, 700 miles long, cost \$23,000,000, and has a capacity of 45,000 barrels of oil a day.

"The Sinclair pipe-line system, according to the annual report of the Sinclair Consolidated Oil Corporation, was 487 miles long in 1916 when the corporation was organized and is now 5,724 miles long. Trunk lines extend from the Great Lakes to the Gulf of Mexico connecting with the line from Wyoming near Kansas City. The system collects crude oil from more producing fields and delivers this oil direct to a greater number of consuming markets than any other

pipe-line in existence. Deliveries of crude oil through this system amounted to 25,956,000 barrels last year."

The tanks in the illustration form only a part of a Sinclair tank farm in Texas. They look like little beehives but in fact are 40 feet high by 120 feet in diameter and a ten-room house could be placed inside each one. Each holds 80,000 barrels of oil and the small group of tanks shown in the picture contains nearly 4,000,000 barrels.

ADDING MACHINE PAPER

100 rolls Adding Machine Paper for	\$9.56
50 rolls	\$4.90
25 rolls	\$2.50
12 rolls	\$1.45
6 rolls	.75c
2 rolls	.25c

BALLINGER PRINTING CO.

IRAAN—Iraan's \$20,000 school

building will be ready for use for the coming school session.

HASKELL—A contract has been awarded for the construction of a brick business building adjoining the city hall here.

CORPUS CHRISTI—Bids have been received for the paving of Port Avenue from Leopard Street to West Broadway.

Congratulations to Mr. Wilke and His

Home Beautiful

It was our pleasure to furnish all of the material in this modern home throughout.



Wm. Cameron & Co., Inc.
Quality Service

Congratulation

to Mr. Wilke on the opening of the

HOME BEAUTIFUL

When You Look Through this Beautiful Home Do Not Fail to Visit the Garage and Take a Look at the

DODGE BROTHERS

MOTOR CAR

The "Top Notch" in Speed, Pick-Up and Performance.

Makes the Home Complete

Home Motor Co.

DODGE BROTHERS MOTOR CARS

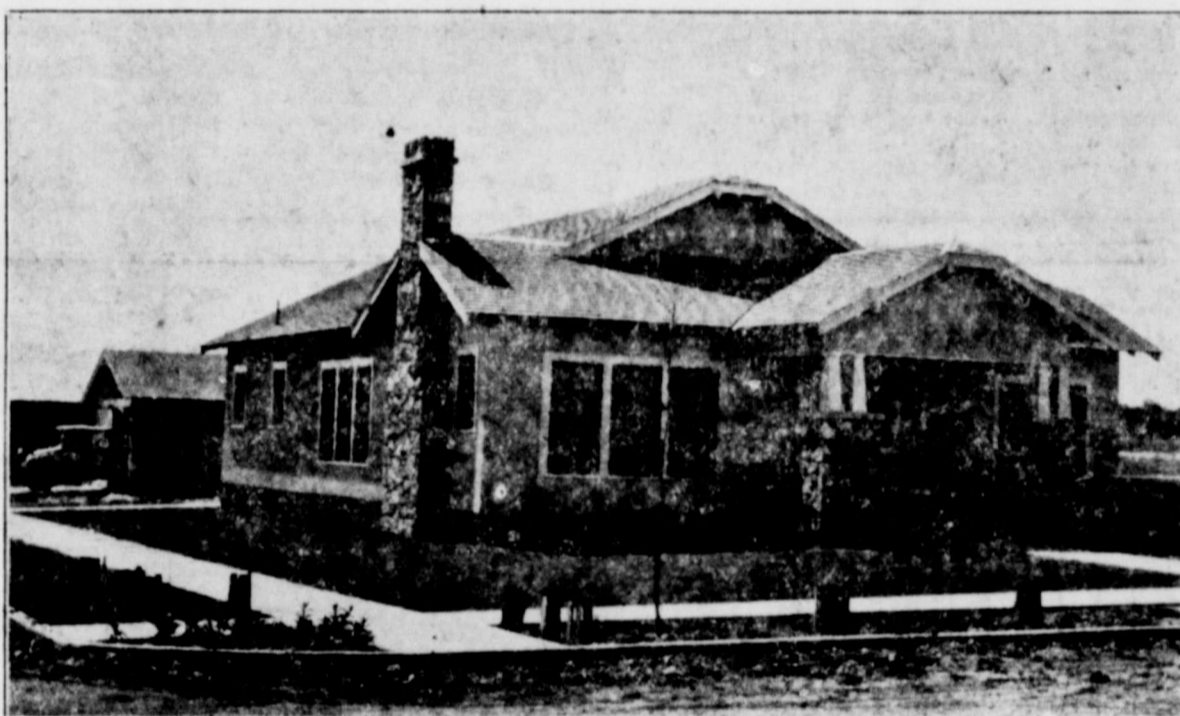
VISIT THE HOME BEAUTIFUL IN WILKE TERRACE

Beginning Sunday, May 27th at 2:00 o'clock p. m. the Home Beautiful in Wilke Terrace will be opened for the inspection of the public.

Mr. Wilke through the co-operation of Higginbotham Brothers & Co., and the West Texas Utilities Co., will open the first Home Beautiful ever seen in Ballinger.

Higginbotham Brothers & Co., have spared nothing in the furnishing of this home. The finest draperies, floor coverings, furniture, bed coverings, wall pockets, pictures, ornaments and everything that goes in a home will be attractively arranged for your inspection.

The West Texas Utilities Co., will make the home ablaze with lights. Beautiful electrical fixtures, Frigid-air, Electric Range, Washing Machine and many other beautiful electrical conveniences will be shown throughout the home.



Home Beautiful in Wilke Terrace

BAND CONCERT

Tuesday Night, 8:30 to 9:30

—on the lawn of the Home Beautiful by the Ballinger Booster Band.

HOURS

Sunday, May 27, and Sunday, June 3rd, from 2 to 6 p. m.

Week Days from 3 to 10 p. m. each day.

We invite you to visit the Home Beautiful and ask that you drive over all of Wilke Terrace. See the other buildings now under construction and the many beautiful and desirable lots still for sale. A representative will be glad to take you over the sub-division and show you any lot and give you prices and terms.

Many Beautiful Prizes Free Be Sure to Register

WILKE TERRACE

LOCAL BUSINESS FIRMS HAD PART IN WILKE HOME

Many Ballinger firms had a part in the construction and furnishing of the Wilke "Home Beautiful," which is officially opened at 2 o'clock this afternoon, according to B. N. Wilke, owner of the new house and co-partner in Wilke Terrace, one of Ballinger's newest restricted residential additions.

These firms all took much interest in this new venture in Ballinger, the first "home beautiful" here, and each one was very anxious for this effort to prove successful.

Firms aiding in the construction of the home and in furnishing it are as follows: Cameron Lumber Co., lumber and building material; Chas. Strom, cement and rock-mason contractor; J. M. Blackwell, building contractor; West Texas Utilities Company, electric stove and Frigidaire; Higginbotham Bros. & Co., all furniture and furnishings; Home Motor Company, Dodge Bros. cars; D. E. Moody Music Store, electric phonograph and piano; City Electric Company, who did the electric wiring; Guaranty Title Company, which concern prepared the abstracts on Wilke Terrace; DeMoyille Plumbing Company, plumbing work; West Texas Ice Company; Rummels County Co-operative Creamery, furnishing dairy products; Piggy Wiggy, furnishing the groceries in the pantry; and the Farmers & Merchants State Bank.

SANTA FE HAS CHEAP FARE TO BATHING REVUE

Scores of excursions are being planned into Galveston for the third International Pageant of Bahadritude and ninth annual Bathing Girls Revue which will be held in that city June 23, this year.

Never before has Galveston planned such an extensive program for the visitors to Galveston's super-spectacle which this year will attract foreign entries from fifteen countries and entries from virtually half the states, and entries from a score or more of the larger cities throughout the United States.

On Saturday afternoon June 2 at 5:00 o'clock the contestants will appear in miniature decorated floats, sport clothes or afternoon frocks will be worn and on June 3rd at 3:00 p. m. contestants will appear in fancy bathing costumes and on Monday, June 4th, the elimination contest for selection of Miss United States will be held at the city auditorium at 8:00 p. m. and June 5th at the city auditorium Miss United States will compete with all foreign entries for the title of Miss Universe. Contestants will appear in evening gowns and then in bathing costumes.

The Santa Fe has announced very low rates from all points on its line in Texas and will operate an excursion train, leaving Ballinger Saturday, June 2nd, and returning leave Galveston Sunday or Monday. The round trip fare from Ballinger will be \$10.10.

THROCKMORTON—Curbs and sidewalks were recently constructed on the court house lawn here.

SUPERSTITIOUS SUE



SHE HAS HEARD THAT—If you are pining to be married, for Pete's sake don't look inside a teapot, otherwise there's liable to be no wedding bells for you.

Higginbotham's Best May Be Seen in Home Beautiful

In furnishing the B. W. Wilke "Home Beautiful" in Wilke Terrace, one of the newest and most modern arranged additions in the city of Ballinger, Higginbotham Brothers & Company selected only the finest furniture and accessories for every room of the house. The placement of all this was completed late Saturday night and today provides an inviting spectacle for citizens of Ballinger and prospective home-builders.

The Home Beautiful idea is new to Ballinger, and those who arranged the furniture and fixtures for the new home took particular efforts to provide the correct thing for each room.

In the drapery department of the Higginbotham Bros. & Co. store here is Jimmie Ford. He is an interior decorator with a reputation in West Texas, and the draperies seen in this home were selected, cut-out and made by him. He directed the installation and saw to it that all were harmonized.

Mr. Ford also directed the installation of the pictures, the artificial flowers, the wall-sockets, ship-models, etc., selected at Higginbotham's Gift Shop. All these articles give the indefinable touch of artistry to each room of the house.

Every room, with the exception of the bath room, the breakfast nook and kitchen, is furnished with a fine Wilton rug. These are seen in the living room, the dining room, the sun-parlor, the guest room and the bed room. These rugs are of superb quality, each beautifully chosen to match its surroundings. In the kitchen a section of Armstrong linoleum is laid. The hard-wood floors of the bath room and breakfast nook are not covered but are highly polished.

Kreohler made, mohair upholstered mahogany living room furniture may be seen in the living room, the suite consisting of a divan and one club chair, a Coxwell chair, an antique walnut table and a tilt-top combination table and smoking stand in walnut.

The dining room is furnished with an 8-piece Spanish, solid walnut suite consisting of table, buffet, and six substantial dining chairs. The upholstery is of red mohair.

The guest room, probably the most interesting room in the house, has a 5-piece blended walnut bedroom suite composed of bed, chest of drawers and vanity, bench and rocker. The bed is equipped with a Sanidown mattress with bed spreads and pillows to correspond.

In the rear bedroom there is a

four-poster walnut suite, the bed equipped with a Haynes mattress, spreads and pillows to match. A chest of drawers, vanity and bench completes the suite.

The breakfast nook has a 5-piece green decorated suite, containing the table and four chairs.

The kitchen has built in fixtures, and other than the linoleum—the best grade obtainable—the West Texas Utilities Company is furnishing this part of the house.

The sun-parlor has a 3-piece fibre suite with flower stands and other accessories to match.

Neither time nor expense was spared in furnishing the Home Beautiful and it is believed that the house is due considerable attention from home-builders and prospective home-builders.

Higginbotham Brothers & Company is unusually anxious that visitors this week pay particular attention to the arrangement of the furniture and fixtures of this model home with the hope that they may thus render a worthwhile service to home-makers.

FANS SENT HERE BY AIRPLANE

When the West Texas Utilities Company began looking for a certain size oscillating fan in their large storeroom here, a number of which were to be used in the Wilke Home Beautiful, it was discovered there was no such fan in Ballinger and strenuous efforts were made to secure them from the Graybar Electric Co. of Fort Worth.

After a conversation between local Utilities employees and the Graybar sales manager, it was decided to send the fans here by the fastest route. A Fort Worth air transport company was called and at 11:45 o'clock Saturday morning the three fans were in Ballinger and thirty minutes later were installed in the home ready for use.

An airplane brought the fans to Brownwood where they were transferred to an automobile and on to Ballinger. The fans left Ft. Worth early Saturday morning and by noon were in this city and operating.

The Shell Pipe Line Company is building a new town in Scurry county at the location of its new pumping station on the line between McCamey, Texas and Healdton, Oklahoma.

Ledger advertising pays.

TELEPHONE CO. STARTS REPAIRS

Monday morning will find a work crew of the West Texas Telephone Company busy on the city communication system, M. C. Atkins, local manager, announced Saturday afternoon. This work is on the outside of the plant here and considerable improvements and repairs will be made.

The company only recently completed quite a number of improvements on the switchboard and in the office here. The work crew will now start stringing new lines and replacing old lines.

New cables will be strung in the alleys on Tenth and Eleventh streets, it was stated, replacing the street poles. Most of the lines west of Eighth Street will be run down the alleys instead of the streets. There are also some improvements to be made in the eastern part of the city, east of Eighth Street.

New cable lines, each of 50-pair, will be run to Hillcrest, and into Wilke Terrace, it was stated. The company also plans to install a new 200-pair cable to the corner of Eighth Street and Sharp Avenue.

FEDERAL JUDGES "FIRE" WHOLE PANEL OF JURORS AFTER BAD VERDICTS

(By International News Service) DULUTH, Minn., May 25.—Action rare in American jurisprudence was taken by United States District Court Judges William A. Cant and John B. Sanborn here recently when they dismissed the entire jury panel of the May term of court because juries returned verdicts which the court declared were not substantiated by the evidence, and ordered the entire criminal calendar held over until the September term of court.

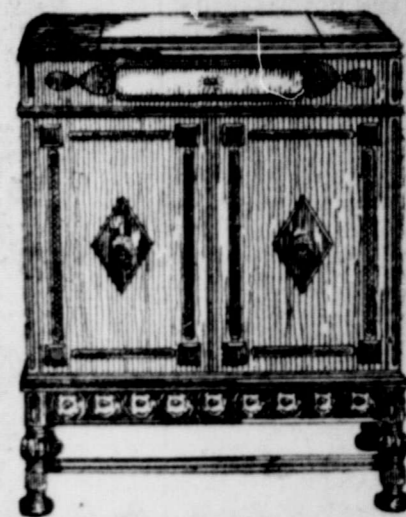
The court in a statement issued

by Judge Cant and concurred in by Judge Sanborn declared "the circumstances were of an extraordinary character and such as to call for prompt and vigorous action; that justice had been thwarted and that the conduct of

the jurors in certain cases had amounted to reproach to the administration of law."

Mr. and Mrs. Oscar Williams, of Abilene, are here visiting friends and relatives.

Columbia-Kolster Viva-tonal The Electric Reproducing Phonograph



"like life itself"

In this single instrument are combined the Columbia achievements in the reproduction of recorded music with the finest and latest development in power amplification, the Kolster Power Cone Speaker, giving marvelous tone. Plays any standard record. Batteries are eliminated. Equipped with five Cunningham tubes.



Model 90

List Price \$475

WHILE VISITING HOME BEAUTIFUL LISTEN TO THIS WONDERFUL MACHINE

D. E. Moody Music House

WE CONGRATULATE

Mr. B. N. Wilke

upon the opening of

HOME BEAUTIFUL

in the new sub-division

Wilke Terrace

We hope that all Ballinger people and those from the surrounding country will visit Home Beautiful during this week

FARMERS & MERCHANTS STATE BANK



Wilke's Home Beautiful

—is something anyone would appreciate

The Electrical wiring of this house is the workmanship of Joe Eubank and Ernest Straley—Electrical Contractors.

CITY ELECTRIC CO.

Phone 563



WE CONGRATULATE MR. B. N. WILKE

OWNER OF WILKE TERRACE ADDITION, ON THE COMPLETION OF HIS HOME BEAUTIFUL --- AND WE ARE PLEASED TO ANNOUNCE THAT WE HAVE EQUIPPED THIS HOME WITH ALL THE MODERN ELECTRICAL APPLIANCES --- THAT WILL MAKE ANY HOUSE A HOME



HOTPOINT

ELECTRIC RANGE
KNOW THE JOY OF REAL COOKING

The woman who has never used an Electric Range cannot really appreciate the cleanliness, the comforts and conveniences and the better tasting foods resulting from electric cookery. This joy can only come with actual experience.

Don't deny yourself the joys and comforts of Electric Cookery any longer. We have a complete selection of ranges, at all prices to meet every requirement.

Call at our display room and ask us to show you just what this modern, labor-saving Range means to you.

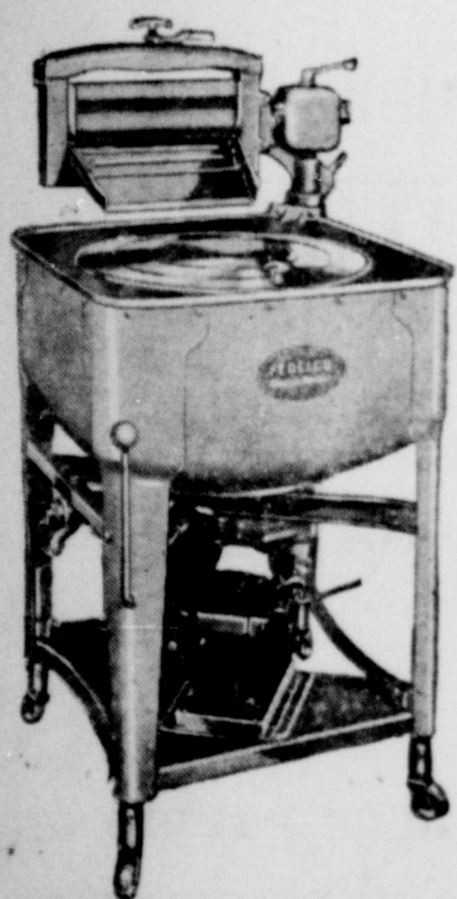
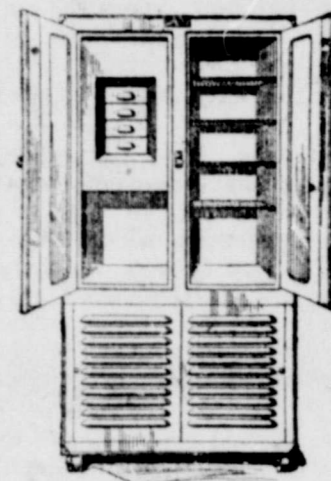
FRIGIDAIRE

IS OF PRICELESS VALUE
AS A PROTECTION TO HEALTH

Frigidaire maintains temperatures that keeps foods fresh and wholesome and gives vital protection to health. This is a service that cannot be appraised in dollars and cents.

Today more than half a million Frigidaires are supplying constant automatic refrigeration in homes, stores and hotels. New models now being demonstrated at our sales room.

Call at our office and see what a small down payment and easy monthly terms can be arranged to meet most any family budget.



FEDELCO ELECTRIC - WASHER

The Fedelco Washer embodies every outstanding feature of recent washer development. Every mechanical feature has been perfected for the simple, compact operating mechanism has given years of trouble-free service in electric washers.

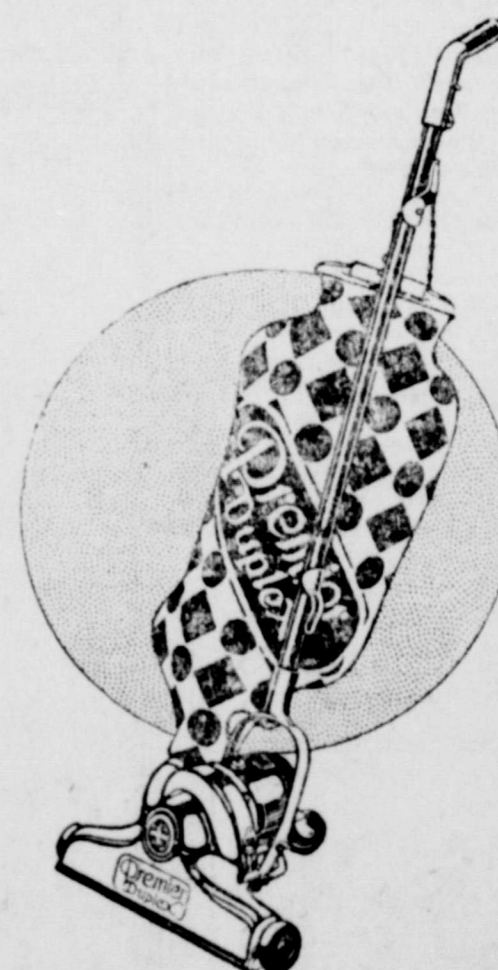
The Fedelco has the latest improvements of design and construction that appeal to the modern woman. This washer will win you with its unusual beauty, convenience, and simplicity. You will realize what a superior washer it is when you hear how quietly and smoothly it runs, see how quickly and thoroughly it does the work.

PREMIER VACUUM - CLEANER

Don't put up with ancient cleaning methods—own a cleaner that will get all the dirt, easily and quickly.

We will make you a very liberal allowance on your old cleaner, and our easy payment plan applies as well. The Premier Duplex cleans with double action. It has strong suction and a motor driven brush. Both working together get every thread and all the dirt.

Telephone us for demonstration without obligation on your part, and see what a small down payment and easy monthly terms can be arranged.



West Texas Utilities Company



First Presbyterian Church
9:45 a. m., Sunday school.
No church services until further notice.
4:00 p. m., Junior Christian Endeavor.
7:15 p. m., Intermediate Christian Endeavor.
E. W. McLAURIN, Pastor.

Episcopal Church
Sunday school at the regular hour.
Visitors are welcome.

Methodist Church
Sunday school at 9:45 a. m. Preaching by pastor at 11:00 a. m.
Senior Epworth League at 7:00 p. m.
Evening services at 8:00 o'clock by pastor.
Woman's Missionary Society Monday afternoon.
Prayer meeting every Wednesday at 8:00 p. m.
Everyone has a cordial invitation to worship with us. Strangers and visitors gladly received.
"The Church with a Message."
R. B. HOOPER, Pastor.

Eighth Street Presbyterian Church
Sunday school 9:45 a. m.
S. P. Hathaway, Superintendent.
Men's Bible Class, Palace Theatre.
Intermediate C. E. 7:00 p. m.
Mrs. M. J. Collins, superintendent.
Adult C. E. and Workers' Meeting Wednesday at 8 p. m.
If you have not a spiritual home you are invited to worship with us.
"A Friendly Church."
ALVIN O. RUE, Minister

First Christian Church
Broadway and Murrell.
Bible school, 9:45.
Morning worship 11:00 a. m. Sermon, "Lifting and Lifting."
Evening 8:00 o'clock. Sermon, "Far Sighted?"
ALFRED CRAGER, Minister.

Ballinger Baptist Church
9:45 a. m., Sunday school; E. E. King, superintendent.
11:00 a. m., preaching service, by pastor.
3:00 p. m., Sunbeam Band, Mrs. Velma Hale, leader.
7:00 p. m., meetings of the B. Y. P. U.'s. R. E. White, director.
8:00 p. m., preaching service, by pastor.
8:00 p. m., Wednesday, prayer meeting, followed by choir practice.
J. H. McCLAIN, Pastor.

Church of the Nazarene
(Corner of Ninth Street and Harris Avenue)
9:45 a. m., Sunday school. S. C. Chrisco, superintendent.
11:00 a. m., preaching
6:30 p. m., N. Y. P. S. A. D. Freeman, president.
6:30 p. m., Junior N. Y. P. S. Mrs. Irene Brown, president.
7:45 p. m., evening service. You are cordially invited.
W. LAWSON BROWN, Pastor.

Church of God
Sunday school, 10:00 a. m.
Preaching at 11:00 a. m.
Young People's Meeting, 7:00 p. m.
Evening service at 8:00 p. m.
Prayer meeting Thursday evening at 8:00 o'clock.
There will also be preaching each Saturday evening at 8:00 o'clock.

Everybody invited to attend.
O. R. WILLIAMS, Pastor.

Eighth Street Church of Christ
(Corner of Eighth Street and Bonsal Avenue)
Bible study, 9:45 a. m.
Preaching at 11:00 a. m. and 7:45 p. m.
Young people's meeting 7 p. m.
Prayer meeting, Wednesday at 7:30 p. m.
W. R. YOWELL, Minister.

Stenos Cry for More of It
We have a fresh shipment of that famous Carnation Carbon Paper, which bears the reputation of being the only paper on the market once used by stenographers that "they cry for more." Five cents the sheet in any amount and well worth double the price.
BALLINGER PRINTING CO.

GOREE—The local grain elevator will soon be housed in a new building of enlarged capacity.



**SAVE-A-LIFE
SAVE-A-SOUL**

Have your car inspected at the garage.

Have your life inspected at the church.

The Methodist Church an official inspection station for men and women.

Morning subject: "THE MISSING MAN."
Evening subject: "HELL."

Is there a hell? If so, what kind of a place is it? Who are going to hell? How can it be escaped?

**DO YOUR PART
HELP SAVE-A-SOUL**

**BIG CATHEDRAL
ATOP NOB HILL
COST \$4,000,000**

By Harry Bergman
(International News Service Staff Correspondent)

SAN FRANCISCO, May 27.—Atop fashionable Nob Hill in San Francisco workmen are laboring with stone and steel, concrete and plaster, to erect an edifice that is destined to be one of the architectural splendors of the modern age.
Two years ago in a drizzling rain, ground for the projected structure was broken to the accompaniment of a solemn prayer. It is estimated that in three and a half years the great building will stand completed. San Francisco then will see its dream realized in a gigantic church of medieval design, a house of worship, its towers shooting upward to the heavens with the imposing majesty characterizing the 12th century Gothic cathedrals, which still remain the architectural marvels of Europe.

To Cost \$3,600,000
The projected edifice, which is to be called Grace Cathedral, entails an expenditure of \$3,600,000. Its spires will rise to a height of 230 feet above street level and its nave will be 300 feet long from rose window to chancel window.

The spacious interior will have seating accommodations for 3,200 persons. Reared on one of San Francisco's famously high hills, the structure will stand out prominently against the background of the city's irregular skyline. Ships passing through the Golden Gate from all portions of the world will be within sight of the towers and spires of the cathedral.

Community Place
Grace Cathedral will be more than a church, according to the plans of its builders. It will be a community gathering place, where all sects, creeds and colors will be welcome.

It is being erected on a historic site. On the plot of ground where

the workmen are now toiling, there once stood the magnificent mansion of William H. Crocker, a noted figure in San Francisco's early life.

That was in San Francisco's heyday, when the city by the Golden Gate was beginning to develop its reputation as one of the artistic, literary and social centers of America. The Crocker home perished in the earthquake and fire of 1906 and the ground upon which it stood was donated to Grace Cathedral.

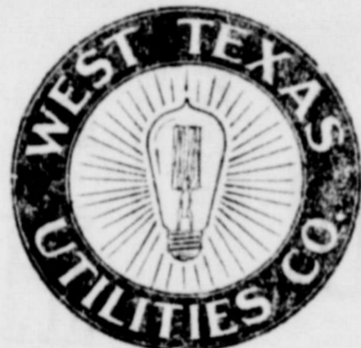
Engraved calling cards, business cards, wedding stationery, birth announcements, and correspondence stationery Ballinger Printing Co. 13-tfd

Could Qualify
Under the new rules, the Pasadena police department was trying out an applicant for a driving license. The man claimed to have driven an ambulance during the war.
"But," protested the sergeant in charge of the driving test, "this is not a war. I wonder if you know the difference between a regular driver and an ambulance driver?"
"You bet!" exclaimed the applicant. "When you're driving an ambulance, you've got to go back an' pick 'em up."

COLORADO—After being featured on a West Texas Chamber of Commerce district meet banquet menue eapons in this section have been sold out at a record price.

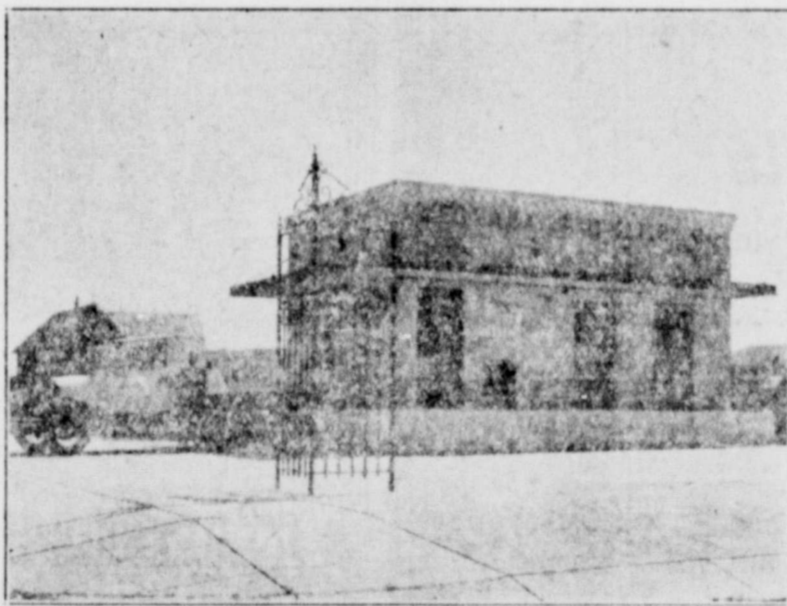
Congratulations
to the promoters of
Wilke Terrace
in the building of
Home Beautiful
We Furnished the Abstracts to
all Wilke Terrace addition
Guaranty Title Company

Abstracts of Title to all lands in Runnels County
CITY LOANS—FARM LOANS
Jas. A. Howerton, Manager
Ballinger State Bank Building
Phone 43



HEALTHFUL

WHOLESOME



-ICE-

-ICE-

And now comes the month of June, July and August and the time when we all appreciate ice. The greatest food preservative known to mankind is good ice, and it is good ice only that this institution manufactures and offers to its customers. Pure clean ice is ready for use at any and all times.

ECONOMICAL

**WE MAINTAIN A REGULAR DELIVERY
SERVICE IN WILKE TERRACE
TELEPHONE NUMBER
30**

DEPENDABLE

**West Texas Utilities
Company**

Utilities Company Has Light Fixtures in Home

To the West Texas Utilities Company, the Home Beautiful electrifying problem is not new; this company has supervised this work in other cities of West Texas, but the plan carried out in the Home Beautiful in Wilke Terrace is probably the most effective the company has ever done.

The fixtures from the front porch to the garage were all selected by specialists, by men who have studied illumination, heating, and cooling, and have arrived at a solution for most every kind of home built. The fixtures in this home were all purchased from the West Texas Utilities Company in Ballinger and installed by electricians of the company under the direction of home-lighting experts.

Commencing at the front entrance and porch there are two lights, a ceiling type, copper outdoor fixture, and a copper lantern and mail-box combination in copper which gives the desirable first impression of uniqueness.

In the living room there is a 5-light candle cluster fixture. All fixtures in this room are from the Moe-Bridge Company. There is a bridge lamp and a large floor lamp, with two-candle brackets on either side of the fireplace.

In the sun parlor which is entered from two French doors, there is one one-light fixture to match the wall-paper and other room furnishings. A bridge lamp adds the desired bit of color.

The dining room has a 5-light cluster, bronze finish, canopy ceiling light to match the other appointments of the living room and hall.

In the bed rooms, including the guest room, there are 3-light, ivory, hanging type lamps. The bath room has a white, enclosed ceiling unit, with the medicine cabinet equipped with a bracket of lights.

In the breakfast room is a semi-enclosed, decorated hanging type unit; in the kitchen is a white enameled, enclosed ceiling type

unit, and on the service porch is a plain ivory canopy fixture.

On the exterior of the garage entrance is an outside copper electric lantern.

The switch arrangement is declared to be one of the most convenient features of the home, being known as the 3-way switch. You may enter any room from one side, turn on the light, walk across the room and turn the light out. Each room has this novel arrangement, while on the doors of the cedar-lined closets is an automatic door switch which turns the light on as the door is opened and cuts off as soon as it is closed. Each room is equipped with a double-outlet base plug.

In the kitchen may be seen the Frigidaire, the Hotpoint electric range, the Fedeleco electric washing machine, and the Fedeleco vacuum cleaner, every article the latest word in electrical equipment.

The Frigidaire is an L-5 type machine, two doors, two-tone—gray and white—porcelain enamel inside and out, with large nickel hardware. The Frigidaire has seven cubic feet of food space and three ice trays, each capable of manufacturing 21 cubes of ice each from every two to four hours. Also with this modern refrigerator are individual dessert trays which fit the ice trays.

The Hotpoint electric range is an RA-99 model, all white, enameled oven, and equipped with one drawer for cooking utensils, a cooking chart, light over cooking space, oven regulator, day clock, salt, pepper, sugar and flour containers. The cooking space has three open burners and one clover-leaf cooker.

The new Fedeleco washer has a porcelain-lined tub, semi-soft ringer rolls with eight space ringer adjustments and sliding gear. All mechanism of this new machine is enclosed in grease for service of eight years. There is a 6-inch leg adjustment on the Fedeleco washer.

The new Fedeleco vacuum

cleaner is a straight-suction type cleaner and is extremely easy to handle. The motor on this machine is large enough to give good service on any kind of work which may come up in cleaning the Home Beautiful.

AIR TRAVEL CUTS TRANSPORTATION

(By International News Service)

(CLEVELAND, May 27.—Joseph Schaeffers, former local automotive engineer, now an airplane builder, recently returned from a three-month tour of England, France, Belgium and Germany, where he studied latest foreign development in aviation. He states that increased numbers of commercial aircraft being built in Europe, especially in Germany, have lowered cost of air travel to where it competes with continental railroads.

For instance, Schaeffers declared, the cost of transportation from Leipzig to Berlin—about 200 miles is only \$4.50 with prices gradually being lowered as more aircraft is built.

Frequent Service
An average of fifty planes per day arrive on the Berlin flying field, Schaeffers said.

"Sleeping accommodations are being put into use on longer trips of large passenger craft," Schaeffers continued. "Small planes used for transportation develop a speed of between 100 and 150 miles an hour. If they crash they escape with little damage but the bigger planes are sometimes damaged irreparably if forced down in a rough area."

German manufacturers are now experimenting with a new plane design suitable for sea landings, Schaeffers said. The engine is placed so high under the wing that the propeller cannot be damaged should the plane fall into a dive while landing. The cabin on the plane is forward of the wing and so built as to make the equilibrium almost perfect.

England Helps
In England the government is encouraging development of trained airplane pilots by furnishing planes to flying clubs in small cities, throughout the coun-

try, Schaeffers stated. Thus, in case of war, he said reserve air corps thus developed will be available and save the government expense of reserve air fleet.

PRESERVE FIRST U. S. LAW SCHOOL ON ORIGINAL SPOT

(By International News Service)

LITCHFIELD, Conn., May 27.—Lawyers of Connecticut intend to replace in the door-yard of the ancient Tapping Reeve homestead a little wooden building that housed the first law school on the western continent, and so

preserve in its original site the shrine to which attorneys from many states have travelled in days past. Judge Tapping Reeve founded the law school here in 1784 and his successors kept it running until 1883.

The original law school was an adjunct to Yale though far removed from the home of Old Eli, but the building today is owned by the local historical society, while Yale University owns the Tapping Reeve home. Restoration of the law school building, a slight wooden structure, to its old site will conform to the plan of making Litchfield as a whole a memorial to Colonial days.

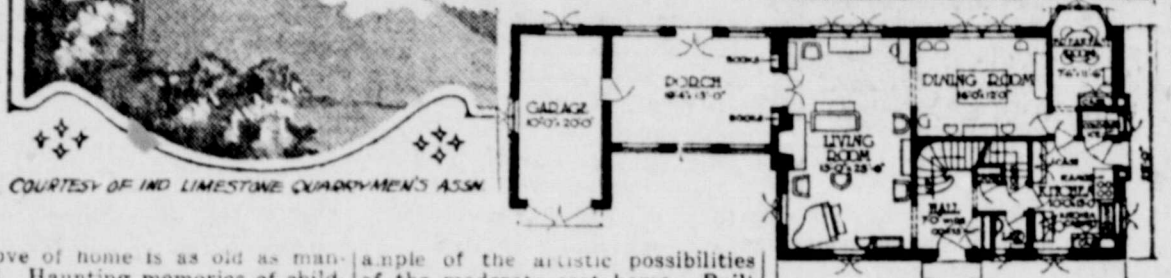
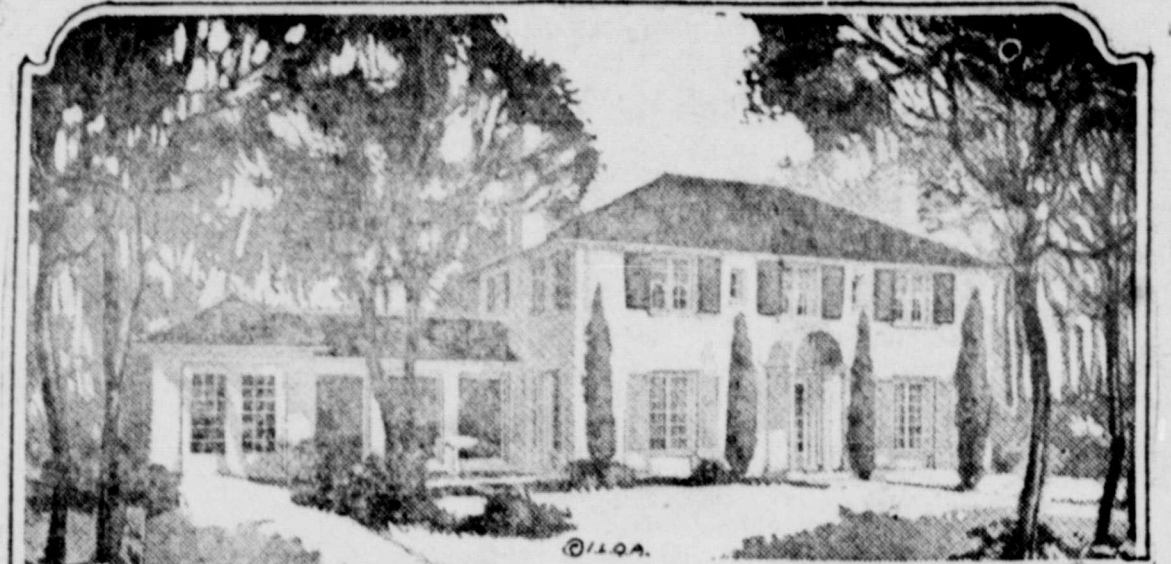
ADDING MACHINE PAPER

100 rolls Adding Machine Paper for	\$9.56
50 rolls	\$4.90
25 rolls	\$2.50
12 rolls	\$1.46
6 rolls	.75c
2 rolls	.25c
BALLINGER PRINTING CO.	

CHAPEL HILLS—Work has begun on construction of a bridge across the Brazos River between this place and Hempstead.

Ruled Index Cards 5x3 inches \$1.50 per thousand at Ballinger Printing Co. tfd

Picturesque Home at Moderate Cost



Love of home is as old as mankind. Haunting memories of childhood, carefree schooldays and happy home-comings—all make the heart swell with longing for the old homestead.

Improved economic conditions make it much easier to acquire a home today than it was ten, twenty or thirty years ago. Moreover, the moderate priced home is being built with all the perfection and beauty of the manor-house. Many homes are so built that they may go down to posterity, mellowed by memories of earlier days.

The picturesque Spanish house, here illustrated, is a striking ex-

ample of the artistic possibilities of the moderate cost home. Built of rough-sawed rustic buff Indiana limestone, it reflects a warm hospitality. It is rather unusually arranged. The enclosed porch or sun-room serves the dual purpose of porch and connecting loggia between the living room and garage. It has the added advantage of overlooking both front street and rear garden, set back far enough to assure privacy from the street. The house itself contains eight rooms and two baths, all conveniently planned for comfort and livability.

It is a substantial home that

combines the maximum of beauty with the minimum of cost.

THE HOME BEAUTIFUL

and all other homes in
WILKE TERRACE
now under construction
are being built by

J. M. Blackwell

Contractor

Phone 468

You are invited to inspect these buildings and especially the
HOME BEAUTIFUL

Be sure you visit the--

Home Beautiful

I am proud of my part in this modern home and especially invite you to examine the

Rustic Field Stone Work and Cement Work

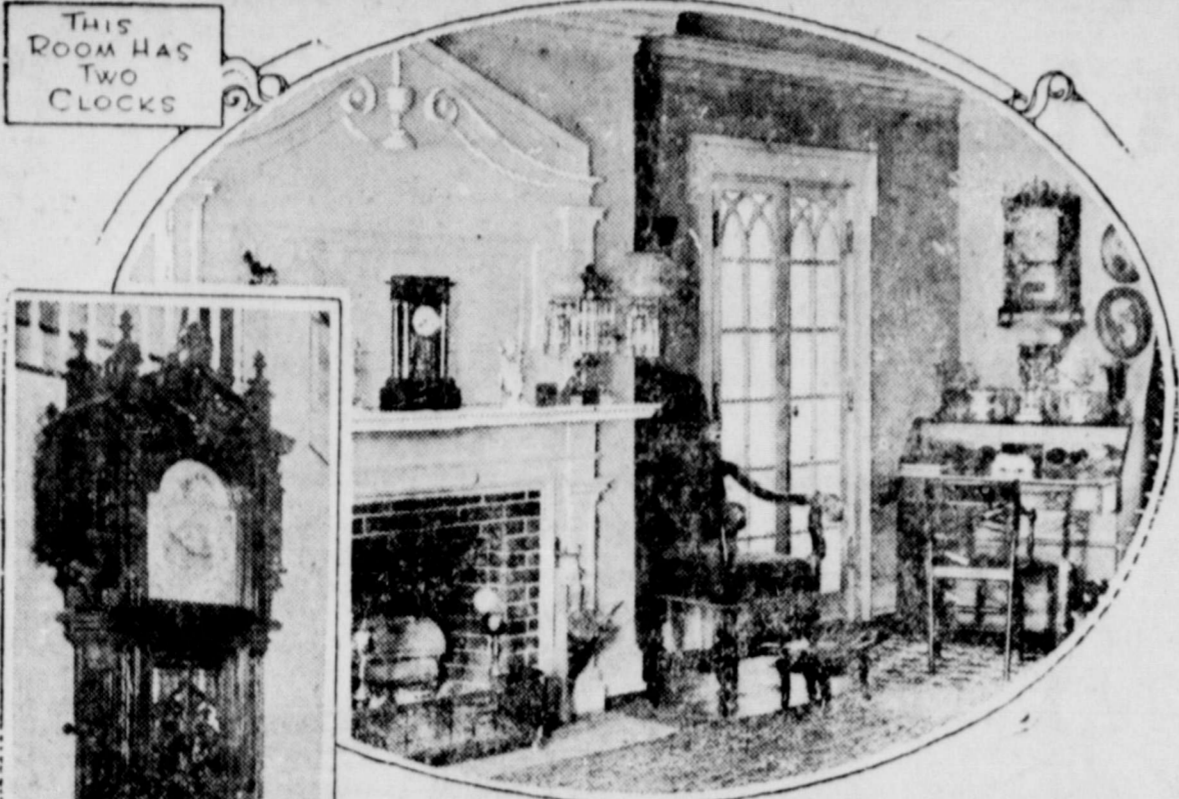
I am always glad to furnish estimates on all kind of Rock, Brick or Cement work

Chas. Strom

Phone 476

Clocks in Every Room is Vogue, Says Woman Decorator

THIS ROOM HAS TWO CLOCKS



A DECORATIVE HALL CLOCK.

CHICAGO—Time in every room in the house is fast becoming the vogue in the homes of the

The average home owner who previously had an alarm clock for general utility and a mantel time piece in the parlor, is realizing that good clocks are the cheapest investment he can make. As a result five or six clocks are now found in many homes. Some of the larger homes have ten and fifteen clocks.

"Importance and attractive decorative qualities of clocks are more and more being recognized by interior decorators," declared Miss Marian Gheen, president of the Women Interior Decorators Association of Chicago. "A clock should be an integral part of the living room decoration for the mantel shelf. There should be a floor clock in the hall, or one in a bracket in the reception room or in the dining room.

The decorator is sometimes amazed to find that the family timepiece has been relegated to the upper cupboard shelf and that there is no visible sign of one of the most important adjuncts to the day's work or play. There is a tendency among some classes to make home too pretty and not sufficiently comfortable. The first and last analysis of home-making is comfort. We think cheer and distinction must also be established, but comfort comes first. Therefore, clocks are one of the most essential requisites in a well-furnished home. "Practically every move we make is guided by time. We consult clocks innumerable times daily. It, therefore, follows that the kinds of timepieces we own are in a large measure an index to the efficiency and accomplishment of their own-

NOTED AUTHORS WILL ADDRESS NEWS EDITORS

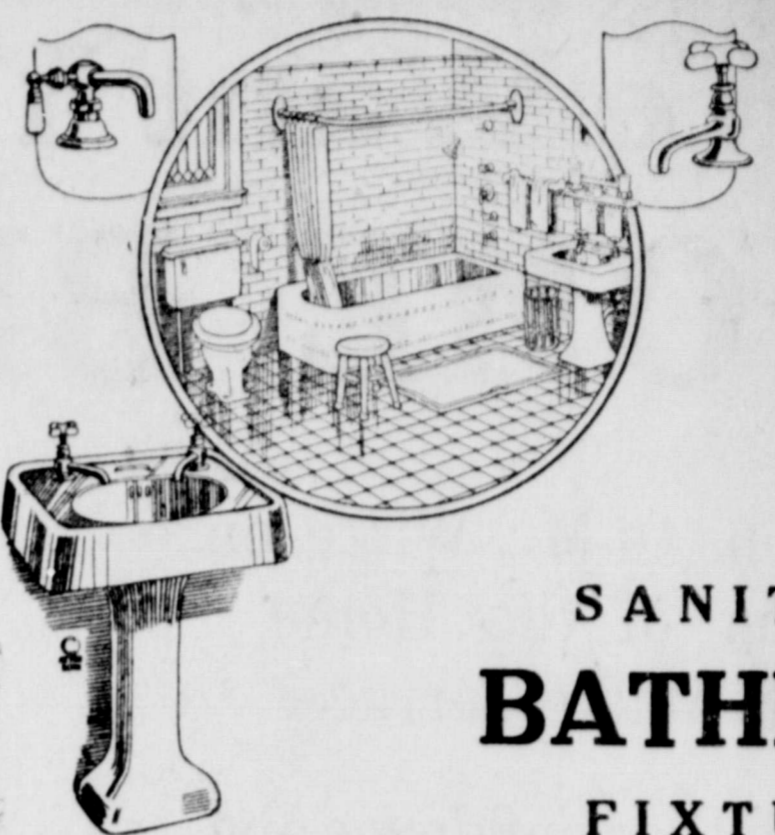
(By International News Service) FT. WORTH, May 26.—William Hard, well known political correspondent and author, of Washington, and M. E. Tracy, columnist, will be among the speakers to address the breakfast to be given at the Fort Worth Club on the morning of June 19 for state editors and

ANOTHER OIL PERMIT GRANTED BY MEXICO

(By Trens News Agency) MEXICO CITY, May 26.—Holland M. Wood has been granted an exploration and exploitation on petroleum lands acquired between May 1, 1917, and December 31, 1925. The title is published under number 296.

Be wise and advertise

Be wise and advertise.



Wilke's Home Beautiful Plumbing Was Equipped by DeMoville Plumbing Company

SANITARY BATHROOM FIXTURES

Is your bathroom up-to-date—bright and attractive in the sanitary, modern manner?

It costs little to make it so.

Let us show you some of the new styles in white enamel fixtures. We will be glad to suggest the best arrangements and give you an estimate of the cost.

WE DO PLUMBING REPAIRS

DeMoville Plumbing Co.

Telephone 288

You are Invited To Visit the HOME BEAUTIFUL

In Wilke Terrace

Sunday, May 27th and Sunday, June 3rd

2:00 p. m. to 6:00 p. m.

Open All Next Week

3:00 p. m. to 10:00 p. m.

Do Not Fail to Inspect the Pantry of Home Beautiful.

PIGGLY WIGGLY

VISIT THE HOME BEAUTIFUL

Sunday, May 27 to June 3

We especially invite you to look inside the Frigidaire and examine the products from our plant.

Runnels County Co-Operative Creamery

Makers of Algerita Ice Cream



We Want You to See the **HOME BEAUTIFUL**

Congratulations to Mr. Wilke on the opening of the Home Beautiful in Wilke Terrace.

We appreciate the confidence and honor of having been called on to furnish this beautiful home.



It will be a pleasure to have you visit this Home Beautiful and inspect the

Bed Rooms

Dining Room

Kitchen

Bath Room

Draperies

Floor Coverings

We will be very glad indeed to give you any information or to answer any question.



Our furniture and home furnishings department is in position to furnish you with that high standard of dependable artistic furniture that will please the most critical and exacting.

Our moderate prices will be pleasing indeed.



*"Home, Home, be it ever so humble
There is no place like home"*

We will be glad to furnish your home cheap for cash or on liberal installments.

Higginbotham Brothers & Co.

Home Furnishers