

FAIRBANKS MORSE  
GASOLINE ENGINES  
Centrifugal Pumps  
HALL HARDWARE CO.

# BALLINGER DAILY LEDGER

IRRIGATION PLANTS  
Estimates Furnished On  
Any Size Required  
HALL HARDWARE CO.

VOLUME 21, NUMBER 89

BALLINGER, TEXAS, SUNDAY MORNING, JULY, 25, 1926.

MEMBER ASSOCIATED PRESS.

## MOODY LEAD BEING CUT BY FERGUSON



Mrs. Miriam A. Ferguson, Second



Dan Moody, Leading

(By Texas Election Bureau)

DALLAS, July 25.—Whether Governor M. A. Ferguson and Attorney General Dan Moody would enter the run-off primary in August or whether Moody would have a clean majority on the final count in Saturday's primary election in Texas, was in doubt when the Texas Election Bureau suspended tabulations at 1:30 o'clock Sunday morning.

After holding a substantial lead over all five of his opponents, Moody's majority began dwindling after midnight. On the final tabulation his majority had disappeared entirely.

The returns from 206 out of 252 counties in the state, including nine counties with a complete tabulation, showed the following totals for candidates:

For Governor—Davidson, 49,188; Ferguson, 110,684; Johnson, 830; Moody, 157,433; Wilms, 639; Zimmerman, 1,035.

For Attorney General—Allred, 40,054; Brachfield, 38,630; Christopher, 13,317; Hornsby, 26,599; Irwin, 31,431; Pollard, 39,163.

For Treasurer—Ball, 41,115; Christian, 14,748; Garner, 10,556; Garrett, 22,857; Harris, 14,531; Hatcher, 60,360; Johnston, 18,484.

For State Superintendent of Public Instruction—Bennett, 45,986; Humphries, 45,023; Marrs, 100,253.

For Commissioner of Agriculture—Bolin, 45,671; Terrell, 136,756.

For Land Commissioner—Robinson, 96,164; Terrell, 85,726.

For Railroad Commissioner—Baughman, 37,168; Speer, 48,819; Terrell, 92,648.

For Judge of the Court of Criminal Appeals—Hawkins, 106,444; Pierson, 74,505.

Returns for forty-five counties, incomplete, showed the following totals in the Republican primary:

For Governor—Haines, 2,194; Scott, 1,825.

For State Superintendent—Garrett, 1,892; Linsey, 769.

Incomplete returns from the 10th Congressional District showed the following totals: Buchanan, 8,608; Hamilton, 8,856.

### LARGE CROWD GETS RETURNS FROM LEDGER

The largest crowd ever assembled in this city for the purpose of getting the election returns from a state election was present Saturday night on Hutchings Avenue in front of The Ledger building.

It was estimated that between 2,000 and 3,000 people spent from 7:30 o'clock until 12:30 o'clock on the street.

It was an enthusiastic crowd that heard the returns from the county and state and very frequently a number of yells and whoops would be heard from individuals when their candidates were reported to be leading.

News from the divorce court indicates that while Gen. Eric Ludendorff could fill the position of quartermaster general of the Kaiser's army, he never rose above the rank of corporal in his own home.—Seattle Times.

Scientists declare handshaking unsanitary, probably meaning germs are palmed off that way.—Omaha World-Herald.

"The Yanks are coming." If you don't believe it, look at the American League club standings.—Roanoke Times.

Liberty, was placed under arrest today.

Charged with cutting his wife's head off with a pocket knife, O. B. Long, a retired farmer of New

Metropolis, Ill., July 24.—

The man was arrested and placed in jail following the filing of murder charges.

Metropolis, Ill., July 24.—

Charged with cutting his wife's head off with a pocket knife, O. B. Long, a retired farmer of New

Metropolis, Ill., July 24.—

The man was arrested and placed in jail following the filing of murder charges.

Metropolis, Ill., July 24.—

Charged with cutting his wife's head off with a pocket knife, O. B. Long, a retired farmer of New

Metropolis, Ill., July 24.—

### TOTALS OF OTHER \$8,000 PAY ROLL STATE ELECTIONS TAKEN IN HOLDUP

The 1926 first primary is now over and a large number of the people are well satisfied with the outcome. During past years the governor's race was possibly comparable to the present one, but possibly did not carry as much interest.

Following are the election totals for the past eight years in the gubernatorial race and in the United States senatorial race:

- First primary, 1918—
- Hobby 2,239
- Ferguson 722
- Second primary—
- Only 200 votes cast.
- First primary, 1920—
- Neff 747
- Bailey 347
- Thomason 402
- Looney 235
- Second primary, 1920—
- Neff 1,221
- Bailey 700
- First primary, 1922—
- Neff 1,083
- Rogers 1,026
- Warner 165
- Wing 57
- United States Senate—
- Ferguson 752
- Thomas 616
- Ousley 457
- Mayfield 216
- Culbertson 195
- Henry 205
- Second primary, 1922, U. S. Senate—
- Ferguson 1,328
- Mayfield 1,524
- First primary, 1924—
- Barton 105
- Burkett 182
- Collins 76
- L. Davidson 970
- T. W. Davidson 252
- Dixon 7
- Ferguson 1,201
- Pope 48
- Robertson 1,035
- Second primary—
- Ferguson 2,626
- Robertson 1,759

Majority for Moody in Tom Green County

Special to The Ledger: SAN ANGELO, July 25.—Complete returns from 21 boxes of Tom Green county, gave Dan Moody, 1,323; Lynch Davidson, 390; and Mrs. Ferguson, 601.

Be wise and advertise

(By Associated Press)

HOUSTON, July 24.—Three masked men slugged and robbed G. W. Hewitt Jr., age 18, son of G. W. Hewitt of the Hewitt Construction Company, today. The hijacking occurred near the business district of the city.

The robbers escaped in an automobile with \$8,000 representing the payroll of the construction company.

The youth was not seriously hurt.

### RECORD VOTE INDICATES CITY'S GROWTH

Not only does the heavy vote polled in the two Ballinger boxes in yesterday's election indicate the intense interest in the governor's race, but it reflects the steady growth which Ballinger has been making during the last two years and indicates a substantial gain in population of this city.

The vote was the heaviest ever polled in any election held in this city.

A drive over the city brings one face to fact with many new homes which have been erected during the last two years, and all the old residences are occupied with from one to three and in some cases as many as four families. There are many citizens who have not been here long enough to be entitled to vote, but the increase made since the last election gives the city a new record.

### LOSES CAR ON ELECTION NIGHT

Lang Iden reported the loss of a Ford roadster parked on Hutchings Avenue during the election excitement Saturday night.

The car was parked on Hutchings near the Ballinger State Bank.

Walter Watson, city night patrolman, to whom the loss was reported, also said that several motor meters and one auto casing were lost Saturday night.

T. J. Gardner, former Ballinger citizen, is here from Newcastle

## MOODY LEADING IN RUNNELS COUNTY

Runnels county's complete vote, with the exception of two boxes, was known this morning at 3:00 o'clock, with candidates J. S. Neely, aspirant for the office of Runnels county for 1927-28.

Reports were checked up on 25 boxes, with Pony and Token still out.

The governor's race in this county showed the largest poll, the total of the five candidate being 4,180, with Dan Moody leading with 1,850 votes; Lynch Davidson, 770; Mrs. Kate M. Johnson, 2; Mrs. Edith E. Wilms, 0; O. F. Zimmerman, 2; and Mrs. Miriam A. Ferguson, 1,556.

In county races where there were only two candidates, the winner was decided in the returns of the 25 boxes.

W. A. Forzey, county clerk, won in his race over Mrs. Oscar Holliday, a little more than 3 to 1. Mr. Forzey had 2,959 votes, while Mrs. Holliday had 840.

Tax Collector W. L. Brown was re-elected over his opponent, G. W. Dunlap. This race went 2 to 1 in favor of Mr. Brown. The vote was: Brown, 2,652; Dunlap, 1,274.

M. C. Boyd, tax assessor, was leading by about 275 votes at 3:00 o'clock. David Holliday, Mr. Boyd's opponent, received 1,717 votes, with Boyd receiving 2,174.

J. E. Powell won over S. D. Williams, in the county surveyor's race by about 2 to 1. Mr. Powell received 2,261 votes and Mr. Williams received 1,179.

Willingham Wins Judge C. H. Willingham won in his race for re-election for Justice of the Peace, Precinct No. 1, over B. D. Duncan, a candidate for that office. The vote was 871 to 499 in favor of Judge Willingham.

Commissioners Races Only in Precincts Nos. 1 and 2, did the incumbents have opponents.

In No. 1, the Ballinger precinct, R. J. Deens was re-elected. He received 1,058 votes; his op-

ponent, R. L. White, receiving 337 votes.

In the Winters precinct, No. 2, D. W. Yeager was re-elected over J. S. Neely, aspirant for the office, the vote being: Yeager, 724; Neely, 348.

George Miller was re-elected commissioner from the Wingate precinct, No. 3, without opposition, as was I. A. Curry, of the Miles precinct, No. 4.

Public Weigher's Race O. R. Jonas and J. D. Coulter probably will go into the second primary in this race.

Jonas and Coulter are leading, with 568 and 282 votes, respectively. Toke Little was third with 242 votes.

It is probable that the Pony vote will change the weigher's race slightly but either Mr. Coulter or Mr. Little will be in the run-off with Mr. Jonas, it was indicated tonight. The Pony box was the only box left to be heard from in this race.

The votes of the other candidates in this race were: F. W. Kreidel, 177; and W. T. Nichols, 100.

Race for Congress According to reports received from surrounding counties in this district, Thomas L. Blanton was re-elected congressman by a overwhelming majority. In this county Blanton received 1,847 votes to J. R. Smith's 634.

Blanton carried Coleman, Taylor, Brown, Concho and Runnels counties. These were, however, all the counties that reports could be obtained from in the 17th district this morning.

	Moody	Davidson	Ferguson
Olfen	0	2	79
Hatchel	42	27	46
Brookshire	12	3	16
Wingate	72	42	61
Pearce S. H.	22	25	23
Benoit	25	9	32
Marie	36	4	11

(Continued on last page)

## Miss Key Does Much to Develop Runnels County

Miss Eula Key, county home trying and dairying, home improvement agent, working for the future of the farm life of Runnels county and this section of the state, under the direction of the Extension Department of A. & M. College, is one of the few outstanding civic leaders in rural affairs and within the short time of her service here she has aided materially in the development of the rural communities of Runnels county.

Miss Key has assisted in the work of the exhibits of the rural clubs and communities at the Runnels County Fair during the past two years.

Miss Key has assisted in the organization of many rural clubs, she has been material in the kitchen, biscuit and many other contests held in this county and district and one of her outstanding achievements is that she has as a member of one of her clubs, the winner of the district kitchen contest, Mrs. L. K. Parr, of the Spring Hill community, who won over entrants from some 40 counties in this district.

In all kinds of weather, Miss Key has visited the rural clubs over the county, giving lectures and demonstrations on home subjects, such as clothing, foods, canning, gardening, poultry and dairy work and home improvements.

Runnels county boasts of one of the liveliest home demonstration agents in Texas and the best in West Texas. Miss Key has very readily responded to calls for assistance in home work of the rural communities and every place where she has had a part and has worked she has been given nothing but the highest of praise from those interested in the work of the rural clubs and future development of the county and rural farm life.

Since coming to Ballinger, Miss Key has made many friends, both in the city and in the rural communities. Should she be transferred from this county to another, or should she be taken away from her work here, the loss of her services would be keenly felt by those of the county with whom she has worked during the past few months.

Following is a brief report of Miss Key's activities in Runnels county during the past year:

Eighteen clubs were organized in the county, with a total membership of 482 women and girls. These 18 clubs held 544 meetings during the past year and the total attendance was 3,339.

At these meetings, 1,825 demonstrations were given in clothing, foods, canning, gardening, poultry and dairying.

Distinctive Hand Painted Frock of Pink Chiffon



**INDIVIDUALITY** is achieved in the hand painted frock of chiffon worn by Dorothy Phillips. Success never came who recently returned to the farm via a Moore-Guthrie-Mayer contract after an absence of several years. The frock of short pink chiffon is hand painted in pastel shades in charming landscape design, with further novelty achieved in the very clear hand-painted waist and sleeves. The high slit at the natural waistline adds to its Parisian style. With this frock, Miss Phillips wears a soft white felt hat and white kid pumps.

A total of 22 beeves were canned, making 1,897 cans and jars of meat. The total number of cans of meats (chicken and beef), fruits and vegetables canned during the past year is 3,523.

Five members of the rural clubs of the county were entered in the district kitchen contest, with costs ranging from \$14.61 to \$38.40, and with the \$14.61 kitchen winning first place in the district, which is composed of about 40 counties.

Six communities entered the county biscuit contest. County and district winners in these contests received a free trip to the A. & M. College short course to be held at the college during the first week in August. They are also eligible for the statewide contests.

Two clubs encampments have been held in Ballinger, with Miss Key assisting the supervision of both gatherings. More than 1,500 were present at the two encampments, including the members, visitors and families of the clubbers.

Two short courses have been held with Miss Key assisting. More than 500 were present at these meetings. Demonstrations and lectures on dietetics, sewing, and home improvements were presented at these two sessions.

As a result of the canning demonstrations held in the various communities, 15 pressure cookers and 12 sealers have been purchased by families in this county.

### Berlin Exhibition Contains 19 American Paintings

BERLIN, July 21.—Nineteen paintings by American artists are exhibited at the International Modern Art Exhibition at Dresden, the first of its kind since 1912. The exhibition, for which a special building has been constructed, contains 993 paintings, portraits, drawings and sculptures of artists in twenty countries.

The American exhibits, furnished by various private collectors and dealers in the United States include oils by Jules Pascin, Rockwell Kent, Alfred Maurer, John Sloan, Maurice Becker and Leon Kroll.

HEREFORD, Tex.—The high tension electric transmission line from Canyon to this city has been completed by the Texas Utilities Company.

Ledger advertising pays.

### Members of This Club Swear at Penalty of a Punch

(By Associated Press)  
ALTON, Ill., July 24.—One way to curb the use of profane language is to "punch" the offender! This theory already has enlisted fifty-four members for the Hard Leather Club, who swear only with the understanding that a fellow member may take a poke at the swearer. Reports are that the theory works.

H. W. Robinson, a news dealer, conceived the idea of preventing offensive language near his place of business. Enlisting the aid of another man, he organized the Hard Leather Club. On application, others were taken in, until now fifty-four men and their wives and families are in the ranks against profanity in any form.

The punishment is simple—when a member swears and is

heard by another member, the second is privileged to take a punch at the offender. The only restriction is that the offending person must be hit about the shoulders. Wives are honorary members, being allowed to become active when they hear their husbands vituperate.



NEAT-APPEARING SALES-LADIES to sell Pickwick house and street frocks direct to wearer; easily earn \$35 weekly; work all or part time. Write today. Pickwick Mfg. Co., Fort Wayne, Ind. 25-1td

### HEAVY RAIN REDUCES VOTE IN MARIE BOX

C. Black, of Marie, came to Ballinger after the polls closed at that place Saturday afternoon and brought the election returns. Mr. Black reported a heavy rain in his part of the county Saturday and said that only 51 votes were polled in his box while about 70 should have been polled. Out of the fifty-one votes polled Moody received 31, Ferguson 11, and Davidson 3.

CHILDRESS, Texas—Natural gas from the Shamrock field, 65 miles North of here, is expected to be made available in this city by August 15th through a pipeline now building.

It's sweet of Americans to eat \$75,000,000 in candy every year.

Be wise and advertise.

## Mid-Summer Clearance On Dresses



Presenting a Remarkable Opportunity to supply your Dress Needs for your extended Vacation or early Autumn. Including all materials and wanted colors—

Georgettes

Flat Crepes

Taffeta

Crepe Elizabeth

Cantons

Crepe Romain

Without a doubt this is the greatest saving opportunity ever offered at The Hub in Dresses.

### Summer Hats

All Summer Hats must go in this clearing at sacrifice prices.

### Piece Goods

You will find some real values in our Piece Goods Department.

### New Fall Dresses

While visiting our sale you will have the opportunity of seeing a number of new Fall Dresses in Repauray and Attrayant Crepe.



—also the new things in Fall Hats, the extremely small French turbans and large floppy Felts, Moires and Velvet combinations.

## THE HUB

Everything to Wear

# Sale!

## Of Ladies' Shoes

In order to reduce our stock of Ladies' Shoes we are offering them at prices that will appeal to everyone.



White Shoes 1-3 Off

\$5.00 Shoes	.....	\$3.34
\$6.00 Shoes	.....	\$4.00
\$6.50 Shoes	.....	\$4.34
\$9.00 Shoes	.....	\$6.00
\$10.00 Shoes	.....	\$6.67



Many styles in Black Patent, Light Tan and Parchment Kid. \$5.00 to \$11.00 at

25% Off

Visit our store early while we have all lasts and sizes.

## THE HUB

Everything to Wear

## County's Progress Is Aided by Mr. Lehmborg

C. W. Lehmborg, county agricultural agent here for the past several years, is one of the most valuable assets of Runnels county and the city of Ballinger.

Mr. Lehmborg came to Ballinger when there was very little organization among the farmers and rural communities, but since that time he has done much to better that condition.

During the time he has labored in this county, Mr. Lehmborg has been of great assistance to the farmers, helping them in more ways than can be set down here, and answering every call that has been made on him. The agricultural industry of this section owes Mr. Lehmborg great credit for his activities in putting over needed projects, which without his aid would probably have been impossible of accomplishment.

Aside from assisting the farmers and rural communities in all their activities, the county agent has been of great aid to the Runnels County Fair in superintending the agricultural, livestock, and poultry departments. Mr. Lehmborg stepped right into this work when he came to Ballinger and since has continually worked for the progress of the fair and the further development of Runnels county.

Under the direction of the Extension Service of the U. S. Department of Agriculture, Mr. Add COUNTY'S Progress

Lehmborg has introduced many new methods of farming and conducting farm business among the farmers of this county. He has advocated making farm life more attractive and interesting for the youngsters in the rural sections so that instead of leaving their homes for the city and the bright lights, they will remain there and take up the work of their fathers in a much more progressive and productive way.

Following are a few of the things Mr. Lehmborg has accomplished since he became county agricultural agent of Runnels county:

Assisted organization of the County Agricultural Board, and planned five-year balanced farm program. This program has been going over in a very satisfactory way.

### Club Work

Twenty-seven clubs for boys were organized with a total membership of 978. Five inter-county training schools have been conducted, with 63 field schools in studying crops, soils, cultural methods, insects and pests. Fifty-seven contests in judging livestock, poultry and field crops have been held.

Pure bred animals have also been placed with the club members, to-wit: 38 pure bred dairy calves; 32 pigs; 41 sheep, and 3,274 chickens.

Purebred seed has been furnished to 87 members of the clubs and community and club exhibits shown during county fairs number 87.

Prizes won by club members total \$743.27, with the total productive value of the members being \$78,269.34. The average productive value per member totals \$80.03.

Two annual club encampments have been held with the total attendance being 1,500.

### Farm Engineering Work

Farms terraced 260; total acreage terraced 34,798.

Increased value and increased yields due to terracing \$5.00 per

acre; total increased value due to terracing \$173,990.

Irrigation projects put in 23, total acreage 1,021.

Drainage systems put in 17, total acreage covered 597.

Flood water reservoirs put in for irrigation purposes 7; irrigation capacity 300 acres.

Farmers short courses held 4, attendance 1,073. These short courses are directly responsible for selling home demonstration work to the people of Runnels county.

### Horticulture

Pecan budding demonstrations given, 23.

Orchard pruning and spraying demonstrations, 27.

Garden insect and pest control demonstrations, 49.

Attendance on these demonstrations, 1,057.

### Insect and Pest Control

During the grasshopper plague that hit the county in 1924 the county was organized into community units for the purpose of pooling their orders for poison, bran, molasses, etc., for the control of the pest. A central committee was organized to handle these materials through local dealers. Through co-operative shipments saved the farmers of the county on materials necessary to put over a successful fight to save the crop \$35,000.

### Disease Control

Cattle vaccinated for blackleg, 2,073.

Cases of colic treated, 67.

Cases of bloat treated, 43.

Cases of milk fever treated, 34.

Minor cases treated, 57.

We now have located in Runnels county two veterinarians who look after the more serious cases among livestock and relieve the agent of a great deal of this work.

### Poultry Improvement Work

During the past two years the county agent has conducted 57 community poultry culling demonstrations. During these demonstrations 6,793 birds were handled. Instructions in culling were given to over 2,000 people.

Gave 93 lectures on diseases, care and feeding of poultry.

### Turkey Pools

In cooperation with the Farm Bureau organized two turkey pools and assisted in shipping 8 carloads of turkeys. In the first pool 4 carloads of turkeys were sold co-operatively by the farmers for the Christmas market, making the farmers a clear profit of seven cents a pound over and above the local market or a net profit to the farmers on the four cars of \$3,850.

On the second pool of four carloads a clear profit to the farmers of 4 cents was made over and above local market, the profit on the four cars amounting to \$2800.

Total saving on the two pools amounted to \$6,650.

### Livestock Improvement

In co-operation with the banks of the county and especially with the First National Bank of Winters approximately two and a half carloads of pure bred livestock were shipped into the county.

In co-operation with J. D. Motley, secretary of the Runnels County Fair, assisted in organizing and putting over two of the best county fairs in West Texas. Carried county exhibits to the West Texas Fair at Abilene, and to the All-West Texas Exposition at San Angelo. Won second prize at Abilene, and first prize at San Angelo.

## DEMOCRATS IN PRECINCT MEET

The democrats of precinct No. 1, at a meeting held Saturday morning at the court house, condemned the Ferguson administration, according to a resolution that was passed by the precinct convention.

C. R. Crews, precinct chairman, called the meeting to order, and Dr. E. C. Baskin was elected temporary chairman. E. Shepperd was elected secretary.

The chair was authorized to appoint a committee of three to select delegates for the county convention to be held Saturday, July 31. The committee appointed was J. McGregor, John A. Weeks and Scott H. Mack.

The following were appointed delegates to the county convention: O. L. Parish, R. G. Erwin, Estes M. Lynn, B. C. Kirk, R. W. Earnshaw, Oscar Pearson, E. D. Walker, Dr. E. C. Baskin, M. McGregor and Chas. Ferguson.

The resolution adopted read:

"Be it resolved by the democrats of precinct No. 1 of Runnels county, Texas, in convention duly assembled, this, the 24th day of July, A. D. 1926, as follows:

"First, we re-affirm our faith in the principles of the democratic party, which principles have been declared by our party in state and national convention. "Second, we believe the welfare of our government, state and national, depends on our faithful adherence to the principles of government as set forth by our party.

"Third, it is with regret that we cannot approve the administration of our present governor; and especially do we regret that she did not voluntarily retire from office at the end of her present term as she had led us in the last campaign to believe she would do."

Democrats of precinct No. 24 met at 2:30 o'clock Saturday afternoon at the court house, with C. A. Dooe as temporary chairman. Dr. E. R. Walker was elected secretary.

The following delegates were elected to the county convention to be held July 31st at the court house: C. A. Dooe, Dr. E. R. Walker, A. J. Voelkel, I. F. Watson, J. A. Ostertag, E. A. Werner, Dr. S. B. Raby, Lou Mapes, J. H. Wilke, W. C. Jones, August Vogelsang and Edwin Day.

Governor M. A. Ferguson's administration was endorsed by the convention in no uncertain terms. The delegates were instructed to vote for Mrs. Miriam A. Ferguson in the county convention and to vote for delegates to the state convention who favored Gov. Ferguson.

AMHERST GIRL TO TEACH HERE DURING 1926-27 Special to The Ledger:

BELTON, Tex., July 25.—Miss Eloise Walker, of Amherst, who is now a student in Baylor College, has been elected to teach at Ballinger this fall.

Miss Walker is one of the 150 Baylor girls who have already secured positions for this fall through the aid of the Baylor College Teacher Placement Bureau. This bureau is maintained by the college for the benefit of its students, and is in charge of Dr. J. C. McElhannon, head of the department of education.

Last year the bureau was one hundred per cent successful in placing juniors and seniors who registered for positions.

Electric typewriter is perfected. Now for an electric gum chewer.

## Leper Baseball League Given Perpetual Trophy

HONOLULU, July 24.—Baseball players of the leper settlement at Kalaupapa now have a perpetual challenge trophy, gift of the baseball team of the University of California.

The patients at the leper settlement wrote the Honolulu Star-Bulletin asking a trophy. Cecil Benny, manager of the Hawaii Baseball League, gave a cup for

the winning team this year, and the University of California players, here for a summer series against Hawaiian teams, chipped in to buy another cup for perpetual challenge.

The trophy will be known as the California cup and bear the names of the members of the team donating it.

Clean Rags Wanted at Ledger office. tfd

## Just Arrived

A Large Assortment of

# PICTURES

in well known subjects: End of the Trail, Lone Wolf, Silence Broken, Holland Flower Girl, Lake Geneva, Land Scene, and many others too numerous to mention here.

# 35c

and up

# THE IVORY

EVERYTHING



## 2000 PIGGLY WIGGLY STORES Annual Sales-150 Million Dollars

### Second Largest Retail Distributor of Food Products in America

Today there are 2,000 Piggly Wiggly stores in 600 towns and cities. Today a full million families, possibly five million people are supplied with groceries, fruits, vegetables and meats by Piggly Wiggly. Can you picture 2,000 stores? Can you visualize 1,000,000 families?

The total sales in Piggly Wiggly stores last year amounted to 136 million dollars. This year, 1926, they will exceed 150 million dollars.

Piggly Wiggly is the second largest retail distributor of food products in America.

Seven hundred and fifty New Stores in 30 months! This is an average of 25 per month, one for each business day since January 1, 1924.

The statement above and other facts contained in this advertisement are not made in a spirit of boastfulness, but of thankfulness. The success and growth of Piggly Wiggly is due to the patronage of a million families a day, to whom Piggly Wiggly is grateful.

The Piggly Wiggly Store in Ballinger is owned and controlled by Sam Behringer, and at the same time enjoys the advantages of chain store buying power, methods, economies and advertising service.

Piggly is part and parcel of Ballinger. It has one store in Ballinger. Piggly Wiggly pays hundreds of dollars each year to Ballinger property owners; Piggly Wiggly employs five of Ballinger's people; Piggly Wiggly is a large taxpayer and a liberal contributor to all civic and charitable enterprises; Piggly Wiggly is a large purchaser of Runnels County goods and buys from Ballinger firms whenever possible.

The expectation to receive the patronage of you and your neighbors is reflected in the Piggly Wiggly policy—to earn the good will of those with whom we deal; to serve the public with pure and wholesome food, at the least possible expense, in the most convenient, courteous and efficient way, with the least waste and lost motion; to improve our opportunities and to rear from our daily work a structure which shall be known as all things best in business.

## An Investment The Greater Ballinger

Every dollar spent at home is an investment for local development. It comes back to you with interest in better stores, finer buildings, more public improvements and a larger and better community.

BUY AT HOME  
BANK AT HOME

**FARMERS & MERCHANTS**  
**BALLINGER STATE BANK TEXAS**

STRICTLY A BANKING INSTITUTION

**Ballinger Daily Ledger**

Published Every Day Except Sunday by The Ballinger Printing Company

Office of Publication, 711 Hutchings Avenue, Ballinger, Texas

Entered at the Postoffice at Ballinger as second-class mail matter.

Subscription, the year \$4.50

Member of The Associated Press  
The Associated Press is exclusively entitled to the use for republication of all news dispatches credited to it or not otherwise credited in this paper and also to local news published herein.

Don't rub the sore spots. Be charitable.

The man who runs for office bets his money on a basis of big odds, and plays a losing game.

We do not say it to encourage our republican friends, but Texas government will never be what it should be so long as the democrats maintain such an overwhelming majority.

The second primary rule is a flat failure and does not insure the selection of the best officers. We favor its repeal, or a change which will provide for a second choice in the first balloting.

Two years ago Ferguson received 1,119 votes in Runnels county. Robertson received 1,037, Lynch Davidson 895, and Whit Davidson 269. In the final Ferguson received 2,626 and Robertson 1,759. How do these figures tally with yesterday's returns?

It is quite an undertaking and an expensive one, to compile the election returns from twenty-seven precincts in this county, tabulate them, and at the same time receive returns from over the state on all candidates, get the figures in print and circulated among the readers within a few hours. At the same time calls must be answered from every corner of the county from parties eager to know who is who. It has been the policy of The Ledger for many years to give this service.

**REBUKED**

Dan Moody and Jim Ferguson had more at stake in the campaign which has just closed than candidates usually have in offering for office.

Not only is the loser to suffer defeat at the hands of the voters, but the loser must stand rebuked in the eyes of the world. This is made so by the wager, which many have seen fit to term it, and under the terms of which the loser is to hand back to the people the trust bestowed by the sovereign voters two years ago. According to their own proposition and agreement, Ferguson and Moody are to accept the result of the primary vote as an endorsement or disapproval of the work they have already performed. If Jim is the winner, he is to take it as a voice coming from the people, saying, "Well done thou good and faithful servant." If Dan runs ahead of Ferguson he is to hear the voice and Jim will hear the rebuke coming from the people saying, "Depart from me, I know ye not."

This is a political condition that never before obtained in Texas, and the result of the election gives the voters more for their money, so to speak, than ever before. It gives the voters an opportunity to discharge by their ballot a servant with whose services they are not satisfied, and that without waiting six months.

During the closing hours of the campaign Moody declared from the stump that he would live up to his part of the agreement. When pressed by reporters for an eleventh hour declaration on her challenge to the attorney general, Gov. Ferguson appeared somewhat irritated and replied by saying that her proposition on this question was made clear in her opening speech and she had nothing further to say on the subject. However, those on the inside at Austin believe the governor will live up to her wager and abide by results at the polls yesterday.

Thus the two candidates are running, not only to add more honor to their laurels, but are running to hold what they have. Who will win?

Be wise and advertise!

**CHURCHES**

**Eighth Street Church of Christ**  
Bible school 9:45 a. m.  
Communion 10:45 a. m.  
Preaching at 11:00 a. m.  
Prayer meeting Wednesday at 8:15 p. m.  
Ladies Bible Study Thursday at 4:00 p. m.  
The public is cordially invited.  
ELVIN BOST, Minister.

**First Presbyterian Church**  
9:45 a. m., Sunday school  
11:00 a. m. morning service  
8:15 p. m., evening service  
Prayer meeting Wednesday evening followed by choir practice.  
You are cordially invited to worship with us.  
E. W. McLAURIN, Pastor.

**Baptist Church**  
Bible school 9:45 a. m.  
Owing to the absence of the pastor there will be no preaching services at this church Sunday. However, Sunday school and young peoples' services will be held as usual at appointed hours.  
ALVIN SWINDELL, Pastor.

**Methodist Church**  
Sunday school at 9:45 a. m. Sam Behringer, superintendent.  
Dr. J. W. Hunt begins at the Methodist tabernacle today. Hear him this morning at 10:30. Evening service at 8:15 o'clock.  
A preacher who will entertain and inspire you. All this week at the tabernacle.  
You are urged to attend these services. A cordial welcome to all.

S. L. CULWELL, Pastor.

**Eighth Street Presbyterian Church**  
Sunday school 9:45 a. m. S. P. Hathaway, Superintendent. Let all members be present and on time.  
Morning worship at 11:00 a. m. Subject, "Filling Our Mission."  
Christian Endeavor at 7:00 p. m.  
Evening worship at 8:00 p. m. This hour will be turned over to the young people and will be an "Echo Meeting" of the Buffalo Gap Encampment. Appropriate music will be given and the following persons will speak: Mary Fawn Coulter, "Recreation of the Conference;" Elizabeth Coulter, "The Social Side of the Encampment;" Carmen Demmer, "The Educational Phase;" Eunice Lilly, "The Devotional and Inspirational Phase."  
Visitors and strangers will find a most cordial welcome at all services.

ALVIN O. RUE, Pastor.

**First Christian Church**  
Bible school 9:45 a. m.  
Morning service 11:00 a. m. Sermon subject, "Can the Moral be Saved?"  
Evening worship—Piano program, 8:15; worship, 8:30 o'clock. Sermon subject, "The Riddle of the Universe."  
Meeting of all members after service. Judge Crager will give his message that we had arranged for last week. The storm reduced our crowd half, and those present voted to have it this Wednesday night.  
"The Friendly Church."  
LESLIE G. SMYTH, Minister.

**Church of the Nazarene**  
Sunday school 9:45 a. m.  
Preaching at 11:00 a. m.  
N. Y. P. S. at 6:45 p. m.  
Preaching at 8:15 p. m.  
The evangelists were delayed on account of heavy rain and did not get here for the service last night, but telephoned from Brownwood and stated that they would be here for service Saturday at 8:15.  
You are cordially invited to attend these services.  
NELLIE A. HILL, Pastor.

**Take CARDUI THE WOMAN'S TONIC**

**SAN MARCOS**—A two-day meeting of the Texas Independent Telephone Association was held here July 15 and 16 at which discussions of methods for improving the telephone service made up the program.

**Plans for Fall Fair are Well Developed for '26**

The sixth annual Runnels County Fair will be formally opened on October 12, with a parade at 1:00 o'clock p. m., according to present plans of the Fair Association as announced during the past week.

A special committee is at work now on the parade for the opening day, and other committees are working on parades to be held every day during the entire four days of the 1926 fair. Floats will be decorated in the most elaborate colors and designs possible and there will also be several floats with nothing but agricultural displays.

The parades will be a feature of the four days fair this year. "Officials of the Runnels County Fair have done something that officials of other fairs which have failed to do," one of the officials declared Friday, "that is, they have not lost one minute in working for the 1926 fair after the close of the 1925 fair. They have spent much time on the plans for the 1926 fair since last year and plans are almost completed for the exhibition this year."

**School Day**  
School Day, the exact date of which has not been decided, will be the biggest day of the fair, it is planned. Every school in Runnels county is expected to be represented in this city on that date and there will be a monster parade with students from the various community schools taking part. This is expected to be the largest school parade ever held in West Texas.

Several bands will be in Ballinger on that date and will take part in the parade.

**West Texas Day**  
October 14 will be West Texas Chamber of Commerce Day, and more than likely it also will be Abilene, San Angelo and Coleman Day.

The district convention of the West Texas Chamber of Commerce will be held in Ballinger on this date and there will be a number of bands and visitors from out of the county in the city. College bands, from Abilene and Brownwood, are expected to be present together with bands from Coleman, Brady, Winters, Sweetwater, and the famous DeMolay Band from San Angelo.

**Many Exhibits**  
The association has not stopped in making arrangements for both county and community agricultural exhibits and merchants, manufacturers and jobbers have also asked for space in the coming exposition.  
This year's exhibits will be more numerous than they have been in the past and will be more numerous than they have been in the past and will be more attractive and interesting.

**Amusements**  
Amusements will feature this year at the fair. A more complete and much larger force of hippodrome performers have been secured for the work in front of the grandstand each afternoon and evening and not one of these performers have ever appeared before an audience in Ballinger. A complete change of acts is promised for every performance. The hippodrome acts this year will be much more entertaining and of a higher class than have ever been seen in any West Texas fair.

A complete carnival traveling in 28 railroad cars, with eight complete novel riding devices, has been contracted for the four-day show. This carnival will occupy all the space in the carnival grounds at Fair Park.

Street comedians have also been employed to work the streets of the business district during the four days and these are expected to attract much attention with their antics. There will also be clowns in Fair Park during all show hours.

Fireworks this year, following each evening's performance of vaudeville acts, will be much larger and more elaborate. The fireworks have proved to be such a drawing card during past fairs that it was decided this year to have this event on a much larger scale.

There will be several athletic events in the form of football games during this fair. Efforts are being made to secure a college game for one of the four days. It is certain that one or

two high school football games will be played before crowds at the park this year.

**The Pageant**  
Definite plans have not been made for the pageant, but it was announced that probably "A Pageant of the Nations" would be presented.

"In case the 'Nations pageant' is presented," one of the fair officials stated, "there will be more than 1,000 persons taking part in the program in native songs, costumes and dances. The contract has not been closed yet, but this probably will be the pageant we will offer."

No announcement has been made in regard to the concessions as yet, but it was announced that J. D. Motley, secretary of the Ballinger Chamber of Commerce and also secretary of the Runnels County Fair Association, would be in position to handle bids for concession rights within the near future.

**STATE FAIR OF 1926 TO CHRONICLE FORTY YEARS OF PROGRESS**

Great Educational Institution in streets in Every Line of Human Endeavor.

Nearly half a century of Progress and development in Texas and the Southwest will be chronicled through the fortieth annual State Fair of Texas to be held at Dallas, Oct. 9 to Oct. 24, 1926.

Premises and awards to be offered at the 1926 exposition emphasize departments significant of every activity carried on throughout the magnificent reaches of the great Lone Star State.  
Forty years ago—in 1886—the State Fair of Texas came into being. Every year since, under the direction of a group of far-sighted patriotic, earnestly loyal Texas business men, it has been demonstrated to hundreds of thousands of visitors, by means of comprehensive physical displays, the adaptability, productivity and efficiency of Texas and the Southwest.

Great Educational Institution. Educational in the broadest sense and co-operating with other Texas educational institutions—notably the Agricultural and Mechanical College—the State Fair of Texas runs the whole gamut of instruction to those who would find out, from agriculture—in which it is the ranking state—through the list, including cattle raising, dairying, general livestock production, manufacturing and exports, progress in the fine arts, the latest developments in implements and machinery of every description, port facilities, poultry production, mineral resources and mining development, progress in engineering and various classes of construction—every enterprise in which the human mind is interested.  
Operated with no thought save that which will come through development of Texas and the Southwest, the State Fair of Texas is entirely unselfish in its aims. With physical properties and equipment, including permanent buildings, valued at more than \$2,500,000, the home of the State Fair is the 167-acre Fair Park tract, owned by the City of Dallas and maintained as a public park the year round.

They asked Thomas Aloysius McGee, who had led old Grand Salina, what he thought of the Fair, after he'd visited there, and Thomas replied "It's sure been."  
It might be said that the State Fair of Texas is now fat, fat and forty. The fortieth annual exposition will be held at Dallas Oct. 9-24 next.

**Dinner-Horn**

When James Stephen HOGG, former governor of Texas, was a "one-galber" lad on a Wood county farm, he was summoned to his dinner by a dulcet blast from an old-fashioned cow-horn.  
J. P. Reeves of Hilsenia, longtime and consistent booster of Wood county's agricultural possibilities, has the horn, which he cherishes as an historic relic of Hogg and of early days in Texas.

When the Big Agricultural Day Dinner is given at the State Fair of Texas this year, the dinner will be summoned to the banquet just as Hogg was when a boy. A veteran bugler of the Civil War is said to be practicing a letter-day mess call on the handy instrument and this is to be a signal for the guests at the dinner to "come and get it."

Typewriter Ribbons 75c, all the time—think it over. Ballinger Printing Co

**Printing Replaces Pen on College Sheepskins**

(By Associated Press)  
ANN ARBOR, Mich., July 21.—Printing presses have supplanted penmen in inscribing the names of graduates of the University of Michigan upon their degrees.

Seven years of experiments preceded the handing out of the first printed sheepskin to a Michigan graduate. The first problem was the ink, the usual printers ink creating a smudge, failing to absorb properly and failing to dry properly. Finally an ink prepared for printing on celluloid solved the problem. Used on the vellum, it gives a brilliant black, not to be easily distinguished from the indelible inks formerly used by the penmen.

Then it was found that not only did the margins of a sheepskin vary as much as three-quarters of an inch, but that trimming the margins until they were square bettered the situation but little. Press registration was eventually accomplished by establishing colored points on the press by which the vellum was lined up, these points showing through. The vellum was then held in place and largely protected from soiling by a "frisket."

In printing in the lettering, forty-eight point Old English is used for the name and a script similar to the body of the diploma for the date. The cost of printing is estimated to be about a fourth of that of hand lettering.

**PERMIT IS SOUGHT TO COMBINE ROADS**

(By Associated Press)  
WASHINGTON, July 24.—Formal application for permission to merge the Kansas City Southern with the Missouri, Kansas & Texas, and the St. Louis Southwestern railroads, was filed today with the Interstate Commerce Commission.

HAMILTON—The Hamilton Chamber of Commerce has reorganized after a period of inactivity and has elected Chas. McMorris as secretary. E. H. Whitehead publicity manager of the West Texas Chamber of Commerce held this morning here.

**ANNOUNCEMENTS**

- For Congress, 17th District: J. R. SMITH
- For Representative, 92nd Dist.: O. L. PARISH
- For County Clerk: W. A. FORGEY
- MRS. OSCAR HOLLIDAY
- For County Treasurer: MRS. JENNIE KIRK
- For Sheriff: R. E. McWILLIAMS
- For County Judge: PAUL TRIMMIER
- For District Clerk: GEORGIA SINGLETARY
- For County Attorney: C. P. SHEPHERD
- For Tax Collector: W. L. BROWN
- G. W. DUNLAP
- For Tax Assessor: MIKE C. BOYD
- DAVID P. HOLLIDAY
- For County Superintendent: R. E. WHITE
- For Justice of the Peace, Precinct No. 1: B. D. DUNCAN
- C. H. WILLINGHAM
- For Commissioner Prec. No. 1: R. J. DEENS
- R. L. WHITE
- For Public Weigher, Prec. No. 1: TOBE LITTLE
- W. T. NICHOLS
- J. D. COULTER
- O. R. JONAS
- F. W. KREIDEL

**Special CHICKEN LUNCH SUNDAY**

**E. C. MOOR**  
Eighth Street  
Formerly Hopper's Cafe

**SPECIAL SUNDAY DINNER**

**50c**

Fried Chicken with Cream Sauce  
Vegetables  
Spaghetti Italian Cream Potatoes  
Fried Corn with Green Peppers  
Pear Salad  
Weeks' Banana-Nut Cream with Cake

**CITY CAFE**  
L. L. STROBLE

**ELECTED**

To Render Another  
**Forty Years**  
of  
**Safe Banking Service**  
in  
BALLINGER AND RUNNELS COUNTY

**THE FIRST NATIONAL BANK**  
OF BALLINGER  
Since 1886

# RUNNELS MAY PRODUCE 100,000, BALES IN 1926

Heavy showers throughout the county Saturday afternoon, falling on top of the rains earlier in the week, bring season sufficient for a heavy crop yield. A heavy feed yield will mature as the result of the rains, and barring devastation from insects Runnels county will produce the largest cotton and feed crops in its history.

The rain Saturday afternoon was scattered over the county and added to the coolness of the atmosphere. Torrid temperature was experienced in Ballinger shortly before noon until about 2:00 o'clock and then the cloudy sky burst open with a heavy shower which cooled off the voters who crowded the streets.

C. L. Baker, local cotton man, and one of the best authorities on crop conditions, stated Saturday afternoon that the county would produce between 85,000 and 100,000 bales of cotton this year, if present conditions prevailed until picking time.

"The crops in this county did not need the recent rains," Mr. Baker said, "they could have gone some two weeks longer without moisture. The rains will stop cotton from fruiting and will give more growth to the plants."

Mr. Baker thought the crop in this county was about 125 per cent normal.

C. W. Lehmborg, county agricultural agent, stated that cotton was in good condition today and that the fleas which have infested the fields of central, Southeast and East Texas were not doing any alarming damage to crops in Runnels county.

"If the rains continue there will probably be some damage by the leaf worm, which has been found in several localities," Mr. Lehmborg said.

The crops of this county are the best they have ever been and there is no reason why Runnels county should not produce one of

the largest cotton and feed crops in history," the agent declared.

Mr. Lehmborg stated that he expected Runnels county to produce as much as 72,000 bales or more this year.

W. C. Penn, another of the best informed cotton men in this section of the country, has just returned from Houston and Galveston, where he saw some fine crops.

"It's raining down there every day," Mr. Penn said, "but their crops are still in good condition and it must rain more there before the crops are ruined. The prospects in Runnels county are the best I ever saw."

"Farmers were in my office Saturday telling of their good crops and each one stated that he expected to make a bumper yield of both cotton and feed. The farmers are very jubilant over the prospects and unless some unforeseen pest comes into this section Runnels county will make the biggest crop in its history."

Mr. Penn believes the recent rains will be of much benefit to the crops.

"It has not rained too much in this section," he declared, "and I do not believe the rains will continue."

In regard to the low price of cotton, Mr. Penn said he did not look for an extremely low price this fall but that he believed it would stay around fifteen cents.

It is the general belief of the buyers and business men of this county that Runnels county will produce between 75,000 and 100,000 bales this year, and some have stated that they expect the cotton yield to exceed those figures.

Feed crops are all booming and there will be plenty of fodder on the farms this year if farmers store what they produce instead of selling it for a low price and then buying it back for twice the amount of what they received.

Sheepmen and cattlemen of Runnels county look for a good fall. Livestock is in good condition now and spring calves and lambs are all faring well in the pastures. Counties surrounding Runnels, with one or two exceptions, report crops to be in excellent conditions as well as the range and livestock.

## VOTING STRENGTH OF RUNNELS COUNTY

- Ballinger No. 1-765
- Hatchel, No. 2-190
- Benoit, No. 3-87
- Crews, No. 4-299
- Token, No. 5-114
- Truitt, No. 6-73
- W. Winters, No. 7-549
- Antelope, No. 8-99
- Pumphrey, No. 9-144
- Wingate, No. 10-310
- Baldwin, No. 11-98
- Wilmet, No. 12-196
- Cochran, No. 13-139
- N. Norton, No. 14-148
- Marie, No. 15-67
- Maverick, No. 16-122
- S. Norton, No. 17-140
- Pearce Sch. House, No. 18-119
- Brookshire, No. 19-33
- Miles, No. 20-484
- Rowena, No. 21-463
- Olfen, No. 22-110
- Pony, No. 23-123
- Ballinger No. 24-652
- Dale, No. 25-124
- E. Winters, No. 26-399
- Oak Creek, No. 27-45
- Total 6,092.

## Crack Austrian Football Team Broken by U. S. Tour

VIENNA, July 22.—The American tour of the Austrian Hakoah football team, the best players in the country, has had a sequel in the disintegration of the team. "Seven players, which can not be replaced, have refused to renew their contracts because they have got engagements in America," the club manager announced sadly. "That is the price we have to pay for their fine sporting feats."

AMARILLO—Construction of a transmission line by the Southwestern Public Service Company to connect Pampa, White Deer, and Panhandle with the Amarillo plant is to begin soon.

## THIS CITY IS HOME OF BLUE RIBBON CHILDREN

MANSFIELD, O., July 22.—Mansfield has been an attraction for child health workers of the world for the last six years and although it no longer is in the general limelight the work which directed attention here is being carried on just the same.

On April 26, 1920, the city was selected by the American Red Cross and the National Child Health Association as a center to develop "blue ribbon children," in a six-year experiment.

The procedure consisted simply of teaching elementary school children principles of right living—regular bathing, regular teeth brushing, regular eating and sleeping and the like.

When they reached a certain stage of perfection, as attested by physicians and dentists, they were given a blue ribbon. Four thousand children have been so tagged.

In the six years, there was almost a constant procession of health workers from the United States and foreign countries to see how the project worked out. The national organizations considered results so excellent that five other demonstrations immediately were opened in various sections of the country.

The experiment permeated Mansfield's civic life and when the crops of health workers left, the county and city health boards decided to carry on.

## Statue Shows Marquette Viewing Historical Spot

CHICAGO, July 22.—The first white man and likewise the first Christian missionary to view the site of Chicago, was honored recently by a bronze statue depicting Father Marquette holding high a cross. Louis Joliet, fellow explorer, and an Algonquin Indian, are at his side.

The last months of the explorer's life were spent in a little cabin on the Chicago River, not far from the site where his statue was unveiled. The cabin was five miles upstream from the spot where Marquette reared the first place of Christian worship within the present limits of Chicago, then an Indian hunting ground. Herman A. MacNeill, of New

York, the sculptor, also is especially noted for his Indian pieces, "The Moqui's Prayer for Rain," and "The Sun Vow."

A feature of the dedication was that although Marquette prospected commercial greatness for the place of his last labors, the goal at which he aimed was a spiritual one recently fulfilled by the International Eucharistic Congress.

BEAUMONT—The Magnolia Petroleum Company has just completed a new eight-inch pipe line from the Eldorado oil fields to a refinery at this place. The line is 265 miles long and has capacity of 30,000 barrels of oil a day.

The honeymoon's over when she chases him with the butcher

knife. We would like to suggest that a strong effort be made to elect legislators who will know a constitutional bill when they read it.—Tulsa World.

It's harder to keep a girl in clothes during the swimming season.

It may console Gen. Smelly D. Butler to reflect that he left Philadelphia before the deluge.—Lowell Evening Leader.

And it's spring in Kansas City, where a woman of 99 has had a permanent wave put in her hair.

Get today's news today—read The Daily Ledger.

# You Win

If You Are Protected By a Bank Account

We invite accounts regardless of their size and will lend you every assistance possible in making it grow.

## BALLINGER STATE BANK

# ELECTED

Just a few numbers

# HERRICK REFRIGERATORS

to go at

## 10% Reduction

We are closing out the season's purchases and this is your opportunity to get the Refrigerator you should have. Don't wait, you may be too late.

### OUR UNDERTAKING DEPARTMENT

has been moved into convenient quarters with all rooms in this department adjoining: Morgue Room, Lay-out Rooms, Waiting Room, Show Room, Chapel, and Bed Room.

We have also added a USED FURNITURE Department to our store and you will find some good values in used Dressers, Beds, Springs, Tables, Chairs, Buffets, etc.

We also have a number of Close-out Articles from our New Stock which are to be sold at Sacrifice Prices.

"A Business with Personal Service."

# KING-HOLT

FURNITURE AND UNDERTAKING CO.

## "Equal Rights to All Special Privileges to None"

This is good democratic doctrine. This holds good in the political world. It is just as good in the business world. The smallest member of your family will get the same treatment from us as the head of the family. The poorest person in the community will be accorded the same treatment as the wealthiest. The most ignorant will receive the same attention as the most highly educated.

## We Have Good Goods at Fair Prices

- |                                   |  |                               |
|-----------------------------------|--|-------------------------------|
| Shelf Hardware                    | Queensware                             | Glassware                     |
| Cooking Utensils                  | Lawn Mowers                            | Garden Hose                   |
| Guns and Ammunition               | Fishing Tackle                         | Camp Cots and Stools          |
| Ice Cream Freezers                | Water Coolers                          | Thermos Jugs                  |
| McCormick-Deering Farm Tools      | Bridge & Beach Cook and Heating Stoves | New Perfection Oil Stoves     |
| Majestic Ranges                   |  | Moon Brothers Buggies         |
| Keen Kutter Tools and Specialties |  | Aermotor Auto-Oiled Windmills |
| Weber and Mitchell Wagons         |  |                               |

You perhaps had some difficulty in deciding for whom to vote yesterday, but there should be no difficulty at all in this ticket. You can make no mistake on a single item here. In addition to this line of quality goods we back it with our personal service.

# Van Pelt, Kirk and Mack

Let us all get ready for the Runnels County Fair. It will be the best in all West Texas.

### Chevrolet Plant Breaks Record

The gigantic manufacturing organization of the Chevrolet Motor Company rose to new production in heights during June when it built 77,241 passenger cars and trucks, a greater number of units than the company ever had produced in a single month.

No other manufacturer of modern three-speed transmission automobiles has approached this production which culminates a series of monthly production records established by Chevrolet.

The aggregate production for the first half of 1926 was 384,573 cars and trucks. During the first half of 1925, Chevrolet's greatest year, the company produced 249,834 units, a total which was passed early in May of this year, which is 134,739 units less than the first six months of 1926 production.

The surprising growth of the Chevrolet Motor Co. is indicated by the fact that the production during the first half of 1926 equals the entire production during the first seven and one-half years in the company's history.

The Ballinger Auto Co., local dealers of the Chevrolet, announce that they will remodel their business house, putting in separate showrooms for Chevrolet cars. They plan to do this work as soon as plans for the rooms are okayed by them.

The following recent sales are announced:

P. C. Henry, Ballinger, roadster; A. B. Davis, Ballinger, coupe; Mrs. D. M. Hillyard, Winters, coach; J. E. Davis, Ballinger, truck; Geo. Kemp, Ballinger, light delivery; M. C. Atkins, Ballinger, coupe; Andy Spreen, Benoit, five-passenger landau; D. J. McLendon, Blackwell, Texas, roadster; Delbert Vancil, Ballinger, coupe.

Nowadays when a girl kisses and makes up again it only means the use of a lipstick.—Los Angeles Times.

Typewriter Paper \$1.00 per ream. Ballinger Printing Co.

### NAT'L. GUARD IS HOME FROM CAMP

After spending two weeks at Palacios, Company C of the 142nd Infantry of the Texas National Guard, returned to Ballinger Saturday on a special train composed of three coaches.

The special arrived in Ballinger at 2:10 o'clock Saturday afternoon.

Capt. Will C. McCarver, commander of the company, said the camp was one of the most successful ever held in Texas and that every member of the various companies making the trip seemed to have a very enjoyable time.

Other companies, from Brownwood, Coleman, Santa Anna and points along the Santa Fe made up the special train until it reached Brownwood, when it started dropping off cars.

Every member of the Ballinger company returned home feeling better after the two weeks spent on the coast enjoying army rations and cool swims in the Gulf of Mexico.

Capt. McCarver will call the local company for a regular drill.

Lieutenants John L. Clark and Ross Murchison were other commissioned officers in charge of the company.

### YOUTH CHARGED FALSE SWEARING

Charges were filed against Huey Gilbreth, age 26, of Mineola, Texas, here Friday for false swearing. The complaint was made in the name of I. N. Harrison, of Abilene.

Harrison, accompanied by his special prosecutor, E. S. Cummings, of Abilene, came to Ballinger Friday and after a conference with County Attorney C. P. Shepherd, the charges were filed.

Harrison charges that Gilbreth swore a lie when he swore that Miss Beatrice Harrison, aged 14 years, the daughter of Mr. Har-

rison, was over 18 years of age when she and E. E. Gilbreth, age 24, brother of the defendant, asked for a license to wed here on July 6. Gilbreth, it is alleged, swore that Miss Harrison was over 18 years old and, County Clerk W. A. Forgey issued the license to the couple.

Mr. Harrison, in relating the story to County Attorney Shepherd, says that on the night his daughter and Gilbreth left their home in Abilene and eloped that Gilbreth told them they were going to a show. Gilbreth left his hat at the house when they departed in order to make the parents believe they were to attend a show and return home afterwards, Harrison says.

A warrant was issued for the elder Gilbreth's arrest and his arrest is momentarily expected by local officers. As soon as he is apprehended, the county attorney stated an examining trial would be held in the justice court here, and Gilbreth will be placed under bond to await action of the grand jury.

Mr. Shepherd stated that in his experience of fourteen years as county prosecutor, this is the first case of this nature to be brought to his attention or filed in a court here.

The young married couple are now living in Oklahoma, so Harrison states.

"My daughter had already made preparations to enter McMurry College this fall," Harrison declared. "She was only awaiting the opening of the institution. I will prosecute this case to the finish," he continued.

It is now becoming quite evident that there were "jokers" connected with the Aimee McPherson kidnaping, but the ensuing publicity has been entirely genuine.—Sioux City Tribune.

One of the things that handicap Mussolini enforcing his nine-hour day is that the workers do no more than they did in eight.—Portland Express.

Since women have the habit of going to barber shops it is noted that barbers are becoming less talkative.—Dayton News.

Be wise and advertise.

## After the Election

The Eyes of the World Will Be On

for Economical Transportation



The \$645 Coach F. O. B. Flint, Mich.

The remarkable rise of Chevrolet proves that the Chevrolet Motor Company has correctly gauged the shift of public sentiment towards the most economical unit of transportation which also meets modern requirements as to quality.

Call at our showrooms, inspect the much-talked-of SUPERIOR models, and see why Chevrolet jumped from seventh to second place in sales. Learn how much daily utility and year 'round health and happiness you can obtain for a sum so low that almost any American family can easily finance the purchase.

Runabout	\$510
Coach or Coupe	\$645
Four Door Sedan	\$735
Landau	\$765
1/2-Ton Truck	\$395
1-Ton Truck	\$550

Small Down Payment  
Convenient Terms  
All prices f. o. b. Flint, Mich.

## Ballinger Auto Co.

QUALITY AT LOW COST



## Electrical Service the Burden Carrier!

FEW industries today serve as many different customers as your Electric Light and Power Company.

Thousands of homes, factories, and places of business are made happier, more comfortable and better places to live through the power of ELECTRIC SERVICE.

Electricity has taken from the burdened hands of womankind, the drudgery of physical toil—the vacuum cleaner has replaced the time worn broom, the electric washing machine has taken the blue out of blue Monday.

And all this has been accomplished through the efforts of the great burden carrier—Electricity.

Always at your service—night or day.

## West Texas Utilities Company

**Oldsmobile Shows the New 'Landau'**

The progressive developments of Oldsmobile engineers during the past year and the new values that are being offered in Oldsmobile for the coming year that result from the manufacturing economies and savings of the most successful year in Oldsmobile history being passed back to the buying public, are being displayed throughout the country for the first time in the new series "E" Oldsmobile.

The new series "E" Oldsmobile Six incorporates in its latest appointments and specifications many new features of recognized worth and improvements of demonstrated value. The results of the changes in this car are added power, longer life, smoother performance, new features of driving ease and security, better operating economy, and new body features and appointments.

One new body type is on display in the Oldsmobile series "E" line—a Landau.

While no drastic changes have been made in the outward appearance of the latest Oldsmobiles, numerous refinements have greatly added to its appearance and to the comfort and convenience of driver and passengers.

The more massive lines given by the raising and broadening of the radiator shell are further emphasized by new heavy full crown fenders equipped with larger skirts. These new tenders and skirts not only further beautify the cars, but also reduce the splash of water on the car body and windshield.

The new two-filament headlight bulbs are being used on all models. These eliminate the dangers of night driving by providing non-glare full illumination close to the car when in the "dim" position, and the same bright light but thrown forward on the road when on "bright." As an additional safety factor, the light control is placed at the steering wheel center. This permits the driver to operate the lights, off, on, bright, dim or parking without removing hands from the wheel.

Indirect lighting is a feature of

the new walnut-finished instrument panel by which all the instruments, artistically grouped, are individually and indirectly illuminated at night without glare. These instruments include, besides the conventional speedometer, oil gauge and ammeter, a fuel gauge, a carburetor choke button and a combination ignition switch and lock.

This latter is of entirely new design and is positive locking. The ignition lock must be released and the key removed before the switch can be turned on. When the ignition is turned off the ignition automatically is locked. The coil is built with the lock integral and is built in a steel case on the back of the instrument panel instead of at the side of the engine. This prevents a thief wiring around the lock.

Additional beauty has been given the bodies of the closed models. Rear seat cushions have been lowered 1 3/4 inches to increase headroom. This has been made possible by removing the tool compartment from under the rear seat to under the front seat, where they are more accessible to the driver.

All closed models except the new landau are finished in a durable and beautiful genuine mohair of taupe shade. The landau is upholstered in genuine gray mohair. High grade rugs and rubber mats are used on the floors, and the new metal fittings are of exclusive design in satin nickel.

Duco finish is used on all models. The touring and de luxe touring are Russian brown on the lower portion and moleskin grey on the upper above the moulding, which is black. The striping is red. The deluxe roadster has sea fog grey on the lower portion and ocean blue above the black moulding and burnt orange striping.

Coupe and deluxe coupe are Dagestan blue up to the black moulding, black above and are striped in ivory with a fabricoid covering over the metal sheathed rear quarters with landau bars. The coach and deluxe coach have the lower portion finished in Buckingham grey with pistachio green striping. The upper part is black. The sedan and deluxe sedan are aqua-marine blue be-

low the molding and black above with ivory striping.

Both coaches and sedans may be had, optional, in with the lower portion dawn mist and the upper dust proof grey with pistachio green striping.

The new landau sedan is finished in sea fog grey up to the lower molding, ocean blue between the lower and upper molding and a saddle over the hood and cowl, and black above. The rear quarter is finished in black fabricoid over metal sheathing and is equipped with landau bars.

The price of the new landau sedan is \$1190 f. o. b. Lansing, Michigan, fully equipped with front and rear bumpers, traffic light, black enameled steel trunk mounted on rigid platform, motor with locking bar cap, and option of natural wood or disc steel wheels, and the other regular equipment of all models, which includes gasoline gauge and automatic windshield cleaner.

The trouble with the teeth in the present dry law is they don't meet.—Oklahoma City Daily Oklahoman.

**Rumanian King Would See U. S. as Private Citizen**  
(By Associated Press)

BUCHAREST, July 25.—Should the King of Rumania go to the United States he should like to travel as a private citizen. Constant public receptions, in this royal view, "wear one out."

"I would want to give the American government the least trouble possible," King Ferdinand said, commenting on the uncertain possibility that he might join Queen Marie on her proposed Fall trip to the United States. "Receptions are trying for the persons who arrange them, and trying for those in whose honor they are given. One day's official reception in the United States would be quite enough, I think. The remainder of the time I should like to travel as a private citizen."

SAN MARCOS — A two-day meeting of the Texas Independent Telephone Association was held here July 15 and 16 at which discussions of methods for improving the telephone service made up the program.

"SOMETHING IS HAPPENING IN THE AUTOMOBILE WORLD"

# OLDSMOBILE ANNOUNCES

**ADDED POWER—LONGER LIFE  
SMOOTHER PERFORMANCE**

**ENLARGED ENGINE**—Enlarged in the bore of the cylinders from 2 3/4 inches to 2 7/8 inches increasing its displacement from 169 cubic inches to 185 cubic inches.

**DUAL AIR CLEANING**—In this new Oldsmobile, a master air cleaner eliminates the injurious particles from two-thirds of the air before it enters the carburetor directly—while the second cleaner, in connection with crankcase ventilation, cleans the balance of the air.

**CRANKCASE VENTILATION**—In all internal combustion engines water is formed by condensation. Cold engines do not burn all of the fuel on starting. This water and liquid fuel pass into the crankcase and form crankcase dilution. Excessive dilution is eliminated by crankcase ventilation. It draws off water vapor and unburned fuel that may have passed into the crankcase. Crankcase ventilation improves performance and gives longer life to the engine and oil.

**OIL FILTER**—An oil filter has been added to this Oldsmobile, prolonging still more the life of the engine and the useful life of the oil. Should the filter become clogged with sediment, the lubricating system functions in the common manner. All principal parts are pressure lubricated.

**HARMONIC BALANCER**—The Harmonic Balancer, developed by General Motors engineers, counter-acts vibration and gives Oldsmobile a smoothness you will quickly recognize when you take the wheel.

**HIGH VELOCITY HOT SECTION MANIFOLD**—Improved jacketing of the intake manifold by the heated exhaust manifold is effected in the vertical section of the intake passage above the carburetor. The intake manifold, being above the exhaust manifold and heated by it, retains the highly explosive state of incoming gases.

**NEW AXLE RATIO**—The gear ratio of the rear axle has been reduced to 4.73 to 1. This contributes to smoother performance in that fewer revolutions of the engine are required to drive the car a given distance, while the enlarged engine leaves a new surplus of power even after the change in gear ratio.

**DOMED SHAPED COMBUSTION CHAMBERS**—A slight change in the contour of the combustion chambers gives greater turbulence to the incoming gases. This change produces smoother engine performance and contributes materially to surplus power.

**TWO-WAY COOLING**—Now Oldsmobile offers "two-way" cooling, which incorporates the best features of the two accepted types—pressure cooling and thermo-siphon cooling. Parts at the point of greatest heat are cooled by the manifold method of circulation, while the slower thermo-siphon type of action, in which the rate of circulation is largely governed by the reaction of heat upon the water, maintains about the cylinders sufficient warmth for efficient operation. Here is a new type of cooling design, incorporating the best features of all past engineering in even temperature cooling control.

**OTHER IMPROVEMENTS**—Other changes, contributing added power, longer life and smoother performance, form a long list of features such as slight change of cam contour, double valve springs as in aircraft and racing car engines—and others equally important.

**GREATER ECONOMY**

**MANIFOLD DESIGN**—The manifold design also improves the operating economy of the Oldsmobile Series "E." On the General Motors Proving Ground, this car established new records for Oldsmobile operating economy.

The dual-air cleaning, the crankcase ventilation, the "two-way" cooling and other features that are attributes of longer life, power, efficiency and smoothness, are also factors of operating economy.

**Added Power : Longer Life :  
Smoother Performance : Added  
Driving Power Ease and Security :  
Greater Economy : Finer Appoint-  
ments : Added Beauty : At No In-  
crease in Standard Prices**

"...that the American family may have, at moderate investment, a car which gratifies their finer tastes as well as satisfies their every need....."

Today Oldsmobile keeps faith with its public trust—

—confirms its declaration of principles published a week ago.

—returns to you the benefits of manufacturing advantages and economies created by the greatest year in Oldsmobile history!

Today Oldsmobile presents brilliant progress without basic change in the car which has won its way to public preference by sheer surpassing merit—

—new features of known value—

—improvements of demonstrated worth—proved in tests on the General Motors Proving Ground to provide even livelier, smoother performance, even longer life,

even greater operating economy, than already characterize Oldsmobile Six!

Today this even finer Oldsmobile goes on display, and you are invited to see it—

—to view the beauty and luxurious new appointments of its Fisher Body—

—to go over the car, point by point, feature by feature—

—to know, as only seeing can tell you, what a truly great car this is!

Today, more than ever before—no matter what car you now favor or what price you are willing to pay—you owe it to yourself, your pocketbook and your sense of satisfaction to see the Oldsmobile Six.

**ADDED EASE AND SECURITY**

**THERMOSTATIC CHARGING CONTROL**—Oldsmobile now has thermostatic control on the generator that automatically increases the charging rate when the engine is cold and decreases the charging rate as the temperature rises. The spark control is full automatic.

**TWIN-BEAM LIGHT CONTROL**—Head lamps have double-filament bulbs, one filament for "bright action" and one for "dim action." On "dim action" the light is bright but thrown at a downward angle that protects the oncoming driver and gives ample vision to the Oldsmobile driver.

**STEERING WHEEL LIGHT CONTROL**—The twin beam Oldsmobile headlights are operated without the driver shifting his position, as the light control switch is a neat lever, exactly like the hand throttle, centered on the steering wheel.

**INSTRUMENTS INDIRECTLY ILLUMINATED**—From being the glass face of each instrument in the unit-grouped dash panel, an indirect light glows whenever any of the lights are lighted, illuminating each instrument without glare or reflection in the driver's eyes.

**INSTRUMENT PANEL FUEL GAUGE**—A reliable instrument board fuel gauge, now standard on all Oldsmobile body types, accurately indicates the supply of gasoline.

**THIEF-PROOF CAR LOCK**—A new design in thief-proof car locks is a feature of this Oldsmobile. With this thief-proof control the engine cannot be started when the key is left in the lock. Turning off the ignition positively locks the car and reduces the hazard of thieves who commonly "cut over" on other types of locks, for switch and coil are built integral in a vault-like steel housing. The ignition key also operates the door locks.

**NEW BEAUTY AND APPOINTMENTS**

**FISHER TWO-TONE DUCO BODIES**—Only seeing can give you a real appreciation of this truly fine car. New upholstery—new satin nickel fittings of period design. Large interior door handles, V. V. windshield, instruments unit grouped in a walnut panel centered on the satin finish black instrument board, walnut steering wheel, heavy rug and rubber mat floor coverings, deep spring-cushioned seats, at angles of greatest comfort. The hood line has been raised slightly, producing a longer and larger appearance. The radiator, finished in the new permanent-lustre chromium that is exclusively Oldsmobile's, retains its familiar beauty with slight change in the sweep of the symmetrical side lines. The fenders are now full-crown type, with additional dust shields in black enamel.

**NO STANDARD PRICE INCREASE**

**YOU GAIN BY THE BENEFITS OF SUCCESS**—All these features of greater value, and all those others that will impress you as you go over this Oldsmobile, point by point—are yours at no increase in Oldsmobile's low standard prices. The quality advances—but the low prices remain unchanged, with the exception of a ten dollar addition to the price of the DeLuxe Coach and the DeLuxe Sedan. And if you please, you may drive an Oldsmobile Series "E" as you pay for it from your income—on the G. M. A. C. plan of deferred payments. The Oldsmobile Series "E" may be had in ten body styles: the Standard Touring, \$875; the DeLuxe Touring, \$980; the DeLuxe Roadster, \$975; the Standard Coupe, \$925; the DeLuxe Coupe, \$990; the Standard Coach, \$950; the DeLuxe Coach, \$1050; the Standard Sedan, \$1025; the DeLuxe Sedan, \$1125; and the Landau, \$1190; all prices F. O. B. Lansing, Michigan. The DeLuxe types include special equipment attractive both in appearance and utility.

**THE NEW LANDAU**

**BUILT FOR THE MAN WHO COULD PAY MORE**—It has long been a fact that a certain number of people have recognized that all the qualities of luxury, which they instinctively prize, may now be enjoyed in a car moderate in size and moderate in price. To meet this demand Oldsmobile now introduces the new Landau—complete, tasteful and beautiful.

**First Public Showing----See It Monday**

**Ballinger Oldsmobile Co.**

BALLINGER,

TEXAS,



**Hudson and Essex  
In a New Finish**

Following close on the heels of a reduction in price of both the Hudson and Essex automobiles, comes the announcement that these popular, medium-priced cars are coming out in a new "dress" which will no doubt appeal to the motoring public.

New torpedo grey and Duo finish styles will replace the old style paint jobs. The Hudsons and Essexes are also coming fully equipped with extras and accessories, giving them a lead in both appearance and service among the most popular cars on the market.

W. E. Boswell, local Hudson-Essex dealer, has placed Runnels county in the lead on these makes since he accepted the agency here. He has delivered upwards of fifty cars, making Ballinger and Runnels county motorists stand up and take notice when it comes to choosing cars for service, appearance, and at a moderate outlay of cash.

**Greater Oakland  
Has New Features**

Advance information about the Greater Oakland Six shows the greatest number of changes of any of the new model cars that are being shown. Mr. Clayton, of the Clayton-Oakland Company, states that he expects to have the Greater Oakland on the floor for inspection about the first of August.

In addition to the standard Oakland features such as body by Fisher, harmonic balancer, four-wheel brakes, air cleaner and oil filter, seventy-seven changes of refinement have been added to the new type cars.

Perhaps the most welcomed refinement will be the rubber silenced chassis. This important improvement will do away with all noise, rattles and squeaks in the body and will give practically a noiseless car running at a high rate of speed. Duo finish in different colors will make each model very attractive and every one of the 77 changes will truly be a refinement to the already popular car.

The newest engineering feature

and what now is believed to be the most satisfactory road illumination for night driving, is the depressible beam headlamps of the Greater Oakland Six, operated by a foot control on the floor board which raises or lowers the light beams.

This new light not only affords oncoming motorists the courtesy of no glare or blinding lights, but also provides the driver the greatest convenience because it can be operated without shifting one's position or taking the hands from the wheel.

**Whippet Makes  
a Good Record**

Maintaining a road average of 42.9 miles an hour, a Whippet sedan, one of the new European type light cars built by Willys-Overland and now being shown in Ballinger by Stone-Sykes Motor Co., traveled 100 miles in 2 hours and 20 minutes. The trip gave the car full opportunity to demonstrate its ability on curves, over rough spots in the road and its high speed capacity on straight, level stretches of well-paved highway.

The maximum speed attained at any time during the run was 58 miles an hour and the minimum speed was 32 miles an hour on a curve.

To travel the distance covered by the Whippet, at night, with the only light on the road that from the headlights of the car itself, is a performance which would do credit to any light six and which is certainly an outstanding achievement for a light four-cylindered car.

It was a complete vindication of the ability of the power plant, for which the engineers claim the same high degree of power efficiency as that of the European light car motors which have always been known for their speed ability.

The Whippet measures only 5 feet 8 inches from the ground to the top of the roof. It is considerably lower than any other car built in this country. The result is that the center of gravity is low and this eliminates not alone side sway on curves but also cuts down all tendency of the car to throw itself over on the side when it is being driven at high speeds.

A noticeable achievement on the run was the gasoline con-

sumption, the average being 28 miles to the gallon despite the high speed at which the car was driven.



CARRYING her Patriotism to the beach, Kathleen Key designed and now wears a star-spangled red, white and blue bathing suit, which commands attention wherever it is seen. The Metro-Goldwyn-Mayer player has more than one reason for wearing the colors, since her illustrious ancestor, Francis Scott Key, was the author of the national anthem.

ABILENE—Plans are under way for the construction of a high tension electric transmission line from Quanah to Lawton, Oklahoma, thus connecting the properties of the West Texas Utilities Company with those of the Southwestern Light and Power Company.

Europe's slogan just now is "Say it with tears in your eyes."

More millions for prohibition. Our coast line is a cost line.

*Overland*

**Whippet**

**Scores A Big Hit**

The following telegram was received by the Willys-Overland Co., of Dallas from the Abilene dealer after showing the Whippet at that place Saturday.

Abilene, Texas, July 19, 1926.

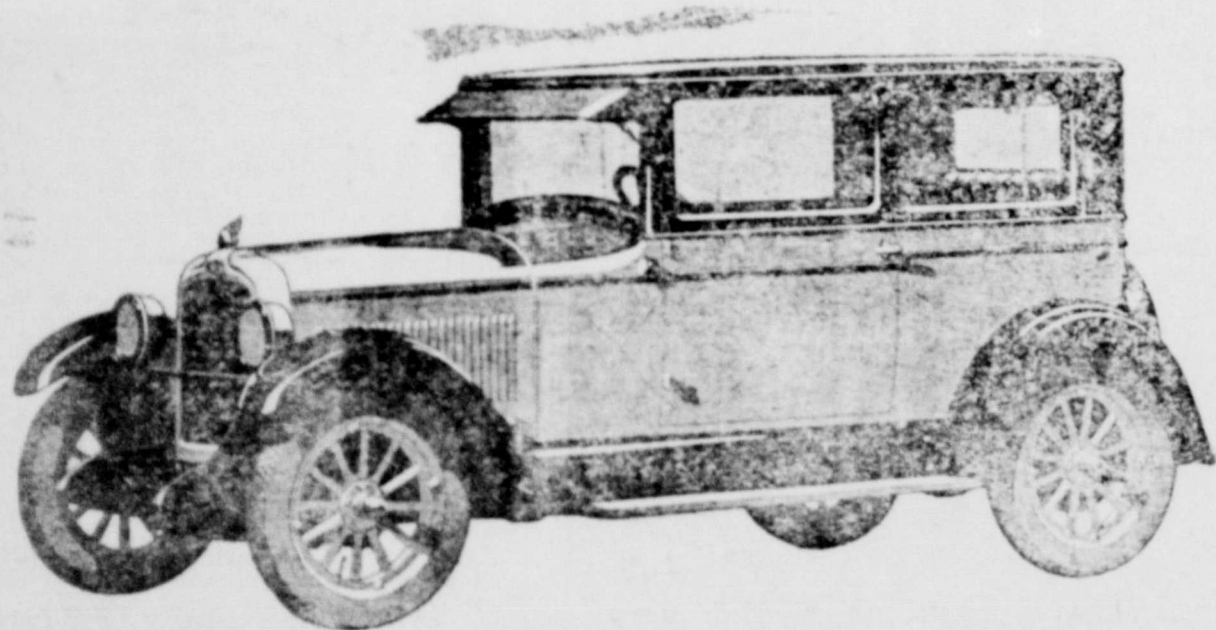
J. P. Gough,  
Willys-Overland, Inc.,  
Dallas, Texas

Whippet takes Abilene by storm. Thousands have visited our show room since opening. Fifty-six signed orders for Whippets. Public offering cash bonus for immediate delivery. Balance of line coming in for much favorable comment. Delivered one Seventy Sedan, one Seventy Coupe Saturday. Took orders for one Seventy Sedan, one Ninety Three Coupe. Will order train load if can get immediate delivery.

The Big Four Motor Company—Brown.

Let us show you this new wonder automobile.

**Stone-Sykes Motor Co.**



**PONTIAC SIX**

Quality Cars at Low Cost. Many New Closed Models Now On Our Floor Ready for Delivery

COMING AUG. 1st

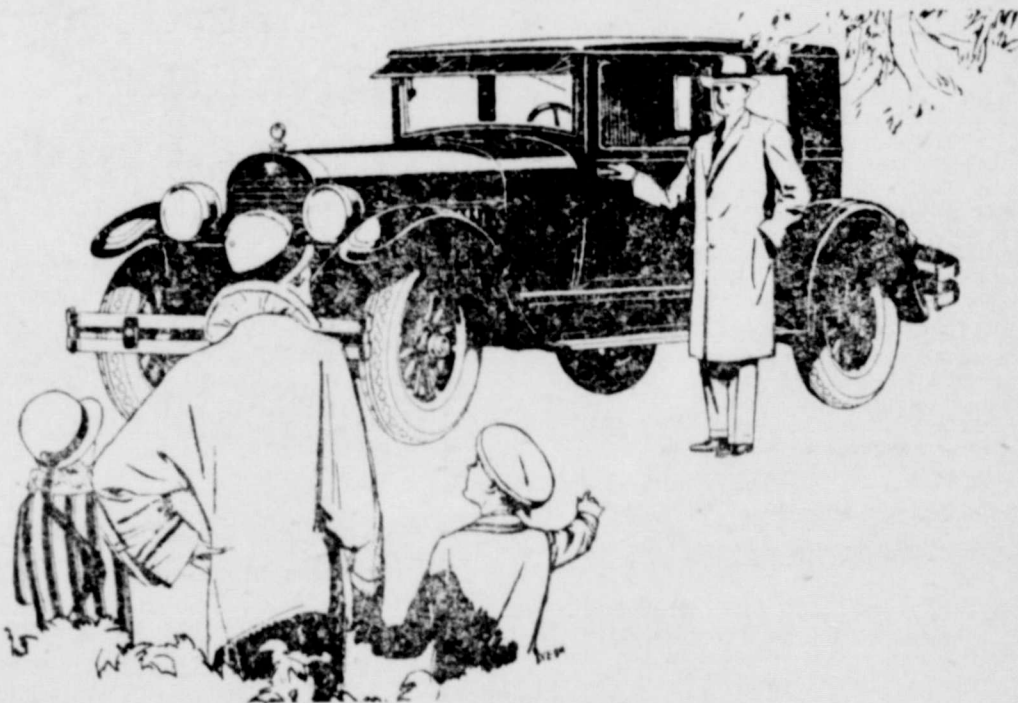
*The Greater*  
**OAKLAND SIX**

With 77 New Points of Refinement

**Clayton-Oakland Co.**

111 S. 7th St

Ballinger, Texas



**The New Hudson and  
Essex '27 Models**

**Torpedo Gray**

**Duco Finish**

See these new models at our display room or phone for a demonstration.

PRICES DELIVERED

Hudson Sedan, 7 passenger	\$1830
Hudson Brougham	\$1705
Hudson Coach	\$1410
Essex Coach	\$ 955

Equipment consists of bumpers, electric wind shield wiper, mirror, stop light, sun visor, and motor meter.

Many big bargains in second hand cars.

**W. E Boswell, Agent**



### Dodge Factory Saves Everything

To be able to rescue thousands of tons of iron, steel, lumber, paper and other materials, which are commonly referred to as waste or scrap, and reclaim it financially, is one of the problems of all industrial plants today. Such reclamation is a factor in keeping down costs of the finished product.

According to reports of the corporation, there was sold from the plant in 1925, waste material totaling \$1,500,000. Scrap iron, steel and non-ferrous metals form the bulk of such sales.

An amount nearly equal to this was saved in reclaiming various kinds of material for further use in the plant. Prices of this so-called waste material ranged from \$6 a ton for low grade iron scrap to \$1,000 a ton for metal having a tin content.

The largest item in this salvage operation is the collection of cast iron borings, turnings, flashings, steel sheet clippings and non-ferrous metals.

In the reclamation of boxes alone a saving which totals several hundreds of thousands of dollars annually is made. All boxes arriving at the plant from suppliers are turned over to a crew of men, who, with the aid of a portable grinder, erase all stenciling and other markings. These boxes then are utilized again in the shipment of service parts and other materials to dealers. An average of 4,000 boxes are reclaimed monthly.

The salvage department does not even overlook scrap paper. In 1925 enough of it was collected and baled to fill 41 freight cars.

Higginbotham Bros. & Co. are local agents for the Dodge Bros. automobile and Graham Bros. trucks.

T. J. Gardner, former Ballinger citizen, is here from Newcastle.

Robert Kirk returned home Saturday from Palacios, where he had been with a band from Lubbock attending the National Guard encampment.

Be wise and advertise.



Rev. J. W. Hunt, Preacher, Orator, Poet, and College President

J. W. Hunt was born of a Quaker family on an Indian reservation and reared on the wild plains of West Texas at a day when it was only a stockman's country. Like many other boys of his acquaintance he began his educational career by going to school in the morning and herding cattle in the afternoon.

In early young manhood he attended and graduated from a little Quaker college and then learned the printing profession. He was a pioneer in the newspaper business in Northwest Texas, but in 1903 yielded to a call to the ministry and was licensed to preach and joined the Northwest Texas Conference of the Methodist Church, South. For several years he was one of the leading pastors of that great and growing plains country over which he had ridden as a wild cowboy. He was known as "the cowboy preacher."

In 1922 Rev. Hunt was given the task of leading in the building of a Methodist college in Abilene, this project being the result of a far seeing vision of his of the educational opportunity of West Texas. This dream has

already become a reality and McMurry College is one of the most promising educational institutions of West Texas, due to his wise leadership and the cooperation of the citizens of Abilene and the Northwest Texas conference.

Dr. Hunt will be with the local pastor, Rev. S. L. Culwell in the revival services at the Methodist tabernacle all during this week. The public is invited to hear this gifted orator and native son of the great West. Services at 10 a. m. and 8:15 p. m.

W. D. Seales and family have returned from Corpus Christi and Oklahoma, where they had been visiting relatives for the past two weeks. "Crops in Texas are in an excellent condition," Mr. Seales stated, "but in Oklahoma there is only a crop of cotton stalks with not much fruit on them." The Seales family made the trip in their car.

Carl Black returned home from Palacios Sunday, where he went with a Brownwood band to help furnish music for the National Guard encampment.

### Ford's New Price in Reach of All

The recent reduction in the price of Ford cars brings this popular and most serviceable automobile down within reach of the man of modest means and promises to create a greater demand for the new type Ford this fall.

Local dealers throughout the country are prepared to handle the rush which is sure to follow in the wake of the harvest season. All makes of automobiles experience a lull in deliveries, and during the summer lull Ford dealers are laying in a stock of cars to meet the demand, and prompt deliveries are promised at least during the early fall season.

The Ford is not only the pioneer car, but Ford is the pioneer price fixer, and when there is a cut in automobiles the Ford takes the lead, and sets the price. It is not the Ford policy to cut the quality when a new price is made. On the other hand the old reliable stand-by can be relied on, and that dependable motor power and body stand-up is put into every Ford.

The Harwell Motor Company of this city, is making daily deliveries of new cars, and booking orders for future deliveries. The new price is in effect on all makes of Fords.

WHEELER, Tex.—A fact that was generally overlooked in connection with the recent eighth annual convention of the West Texas Chamber of Commerce was the fact that the Wheeler band was the youngest band at the convention, yet playing under the same conditions and before the same judges as the older organizations won the gold medal offered for highest score.

AMARILLO — The greatest wheat crop in years is now being threshed on the plains. The Santa Fe Railway reports that there is a great scarcity of cars to handle the crop despite the fact that they had concentrated 8,000 cars in anticipation of the

needs. Increasing use of combine harvesters and threshers has sped up the movement of grain and swamped the railway service.

LAMESA, Tex.—William A. Wilson, former secretary of the Munday Chamber of Commerce, has assumed his duties as secretary of the Lamesa chamber to succeed C. T. Watson resigned.

There is no way to make it rain, says a weather expert, but it seems to help some when you put on a white suit.—Norfolk Ledger-Dispatch.

Tom Puckett, of the Wilmeth country, was attending to business in Ballinger Saturday.

### Honor System Fails with Philippine Convicts

MANILA, July 23.—A policy of confining the worst Moro criminals from Mindanao and Sulu in Bilibid prison in Manila instead of at the San Ramon Penal Colony at Zamboanga, has been inaugurated. A dozen of the most desperate convicts have been brought here.

At the San Ramon colony the prisoners are placed on their honor to a large extent, with the result that many of them have escaped and formed outlaw bands which have terrorized the Moro country.

Be wise and advertise.

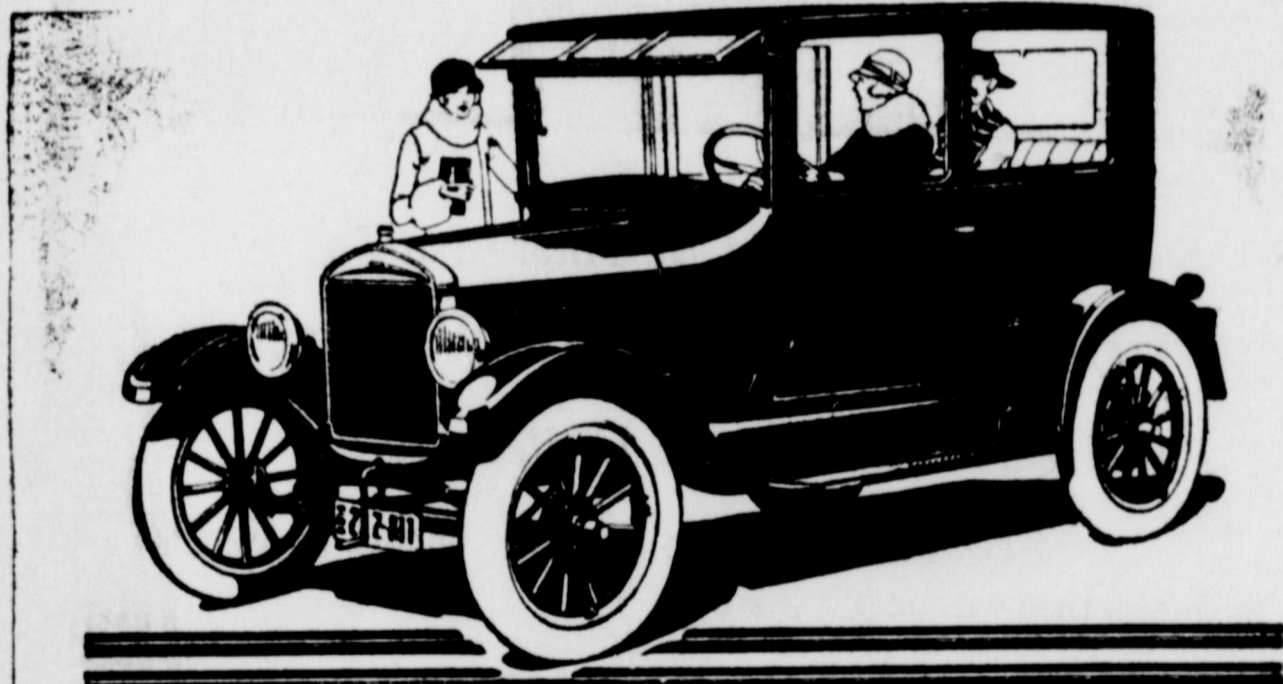
## We Were Elected

by the people of this trade territory as the Best Place to buy—

DRY GOODS, SHOES, LADIES AND MEN'S READY-TO-WEAR AND MILLINERY



G. A. Ladwig Dry Goods



### For Every Member of the Family to Enjoy

Here is a cozy, five-passenger closed car built to the highest Sedan standards. The whole family will enjoy the Ford Tudor Sedan in all weather.

Examine such features as the strong all-steel body, durable finish, large, well-built seats and attractive upholstery.

Ask the nearest Authorized Ford Dealer to show you the Tudor Sedan and explain the easy terms on which it may be purchased.

- Roadster ..... \$360
- Touring ..... \$380
- Coupe ..... \$485
- Tudor Sedan ..... \$495
- Fordor Sedan ..... \$545
- Truck ..... \$325
- Less Starter
- Truck ..... \$375
- With Starter

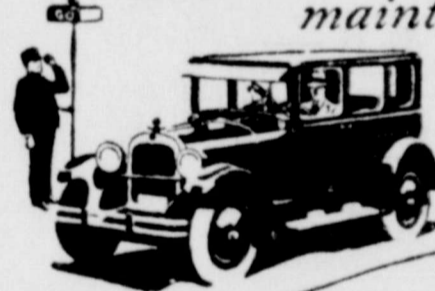
Starter and Balloon Tires, Standard Equipment, f. o. b. Factory



Harwell Motor Co.

## Good Through and Through

Details tell impressive story of quality standards strictly maintained



Unprecedented sales prove how well the public knows that Dodge Brothers Motor Car is sturdier and more dependable than ever before.

Delivers more miles at lower cost-per-mile. Stands up under harder going. Calls for fewer repairs. Provides greater safety. Excels in every quality that has earned its good name.

In fact, you have only to check any chassis part against its own past best—engine, axles, gears, bearings, frame, springs, shafts, electrical equipment—to prove how strictly and consistently Dodge Brothers have preserved and improved the basic goodness of their product.

Special Coupe .....	\$1,090.00	Roadster .....	\$1,035.00
Touring Car .....	\$1,038.00	Sedan .....	\$1,050.00
Delivered			

Higginbotam Bros. & Co.

DODGE BROTHERS MOTOR CARS

# QUEEN Theatre

Monday and Tuesday, July 26-27

Can a Woman Love Two Men at Once? See—

Mary Philbin in "STELLA MARIS"

loved by two men—in love with both—faces the terrible ordeal of making a decision, and then the wife of her chosen one tells her all—and shatters her girlish romance; but—Unity Blake—unloved, ugly down-trodden London slavey, makes the supreme sacrifice that love might live, in Wm. J. Locke's dramatic and most compelling story.

With ELLIOTT DEXTER, GLADYS BROCKWELL, and JASON ROBARDS

Woody Leading in Runnels County

(Continued from Page 1)

Maverick	15	15	35
N. Norton	49	21	36
Pumphrey	43	15	10
Crews	93	15	81
Baldwin	49	13	8
S. Norton	43	18	26
W. Winters	266	69	91
E. Winters	176	51	51
Wilmeth	67	21	24
Truitt	23	5	29
Victory	49	14	14
Miles	165	67	135
Ballinger No. 24	175	117	209
Cochran	33	12	28
Ballinger No. 1	322	161	174
Dale	29	19	50
Rowena	30	30	230

Offen	20	57	Blanton	37	44
Hatchel	91	16	Smith	75	39
Brookshire	21	4	Hatchel	22	6
Wingate	126	33	Brookshire	99	63
Pearce School House	62	7	Wingate	51	20
Benoit	40	10	Pearce S. H.	43	21
Marie	37	5	Benoit	43	21
Maverick	43	13	Marie	46	12
N. Norton	84	11	W. Winters	332	75
Pumphrey	49	9	E. Winters	220	50
Crews	133	33	Wilmeth	84	19
Baldwin	52	2	Maverick	39	20
S. Norton	58	19	N. Norton	54	42
W. Winters	339	53	Pumphrey	39	25
E. Winters	234	18	Crews	90	79
Wilmeth	79	18	Baldwin	57	10
Truitt	43	7	S. Norton	43	41
Victory	53	9	Truitt	46	9
Miles	228	88	Victory	52	15
Ballinger No. 24	399	97	Miles	260	65
Cochran	57	8	Ballinger No. 24	272	232
Ballinger No. 1	533	105	Cochran	49	17
Dale	66	12	Ballinger No. 1	404	238
Rowena	143	141	Dale	69	17
			Rowena	169	125

## Your Down Town Home

That is what we want our store to be to you.

### Our Fountain Service

is unexcelled and you will find any thing at our store that is carried by an up-to-date drug store.

STRAIN DRUG CO.

two out of 26 boxes, complete for both Mr. Miller and Perry John-Taylor county, gave Moody a majority in the governor's race and Thomas L. Blanton a majority in the race for congress from the 17th district.

The vote for governor was: Moody, 2,301; Ferguson, 902; and Davidson, 463. Blanton led with 2,931 votes to Smith's 807.

### Blanton Leads Smith in Coleman County

Special to The Ledger: COLEMAN, July 25.—Complete returns from 22 boxes, with five 42 small boxes out in Coleman county, gave Gov. Ferguson a lead, with Moody running second. The vote was as follows: Mrs. S. Norton, 1,226; Moody, 1,189; Davidson, 717.

In the race for congress, Tom Blanton has 2,155 votes, with J. R. Smith trailing with 616. The sheriff's race of this county is very close, with W. R. Hamilton leading with 1,066 votes; J. M. Martin is second with 1,060 votes, six behind the leader; and Sheriff J. A. Trammel third with 1,000 votes.

The district clerk's race is also very close. A. D. Burdick is leading W. E. Gideon with a few votes. The count shows: Burdick, 1,522; Gideon, 1,477.

### Bob Miller Loses in Concho; Ferguson Has Lead

Special to The Ledger: PAINT ROCK, July 25.—Complete returns from the entire county of Concho give Gov. Ferguson a slight lead over Dan Moody, with Lynch Davidson running third. Mrs. Ferguson received 615 votes, Moody 479, and Davidson 308.

Judge John W. Hornsby led in the attorney general's race with 237 votes, Alford was second with 219.

Thomas L. Blanton led J. R. Smith in the race for congress by about 600 votes. The count was: Blanton, 935; Smith, 289.

Sheriff R. M. (Bob) Miller was defeated by H. E. Warren for sheriff. Mr. Warren had about 20 votes majority over

### Ft. Benning Soldier Must Swim 50 Yards Any Stroke

(By Associated Press)

FORT BENNING, Ga., July 24.—The soldier at Fort Benning Infantry school who would avoid compulsory attendance at swimming classes must learn to swim fifty yards any stroke, and to cover sixty feet carrying a ten pound weight.

Compulsory attendance at swimming classes has been made the rule of all combatant troop units of the garrison and only soldiers who have demonstrated their ability to withstand the tests are relieved. The rule was put into effect upon consideration of the demonstrated usefulness of swimming in active operations.

Be wise and advertise.

More millions for prohibition. Our coast line is a cost line.

Weak, Ailing WOMEN should take

# CARDUI

A Purely Vegetable Tonic  
In Use Nearly 50 Years  
Sold Everywhere

## The Election Is All Over

But we are still in the race offering you the best Drug Service in West Texas—

# WEEKS DRUG STORE

Phone 12 and 13

Every Citizen Should Be Interested In

## Who is Governor of Texas

The Greatest State in the United States.

While we have the Best County in the State we should be interested in things that will help to make

### Ballinger and Runnels County

a better place to live.

- BETTER HOMES
- BETTER SCHOOLS
- BETTER CHURCHES
- BETTER ROADS
- BETTER STREETS
- BETTER CITIZENSHIP
- BETTER IMPROVED FARMS

and live stock, horses, cattle, sheep, hogs, chickens and turkeys. We want to do our part to help bring about these conditions. Always glad to see you.

# Higginbotham Bros. & Co.

Ballinger's Greatest Store