



PLAINS By Wendell Faught Talk

To mention the names of all those who are responsible for the very successful Livestock Show, which has its ninth annual run this weekend, would be a difficult task for fear of omitting someone.

But congratulations certainly are in order again for Leo White, the tireless county agent, whose efforts are so much appreciated by all us sideliners.

Dorothy Lowe says she thinks she's got that popular noontime TV program, "As the World Turns," all figured out. Upon explaining, she admitted that she's had a lot of help from Janelle Pierce.

When I lived in Plains before, I started making a list of real names of people who go by nicknames. Also, I noted the names of those known generally by initials only and also those with unusual names and how they came about.

I don't know what ever happened to the list, but when I found out the other day that Jack Pierce's name really isn't Jack, I decided to start all over. When completed, all information will be revealed publicly.

A half dozen cities in this area have announced in recent weeks their "Citizen of the Year" awards. To my knowledge, that's never been done in Plains.

To me, it seems that such an award would be highly appropriate here. Too much recognition cannot be given to those who devote so much time and effort to make Plains a better community. And, we're loaded with deserving possibilities.

I had a very interesting cup-of-coffee visit the other day with a couple of coaches from Texas A&M who were visiting West Texas in search of football talent for the ag school.

It's amazing how much these guys know about all football players in this area. Naturally, they expressed disappointment that Joe Don Marrow and Ray Faught already had signed with Texas Tech before they got a chance to talk with them.

There may be a lot of coffee drinkers in Plains, but we can't hold a candle for Morton if my evaluation is of value.

Since I have to travel through that town a couple of times a week, I coffee up there myself pretty often. The cafe I patronize always is loaded with coffee drinkers. I counted 'em the other day. There were 41!

We attended the annual mid-winter convention of the West Texas Press Association held Saturday and Sunday in Sweetwater. I used to attend these events with a great deal of regularity, but this was my first in several years.

It's always interesting to sound out feelings of others engaged in the same profession. After talking with several of these men and women, I am pretty well convinced that the people of Texas are ready for a sales tax. Everyone hates to see it coming, but it looks like one of those necessary evils. The extra money has to come from somewhere, and a sales tax apparently is the fairest and least painful of any.

Added taxes will hurt Texas. When I lived in Oklahoma, people used to drive across the river to stock up on cigarettes and to buy gasoline. Now you can buy both cheaper in Oklahoma. They still come to Texas to buy a lot of things, including automobiles and farm machinery, to avoid the two per cent sales tax.

But something has to give and Texans are going to have to cough up the money to offset the cost of services they enjoyed on deficit spending. It's a serious and painful problem.

We'll be hearing more and more about possible solutions during the weeks ahead. Everyone should be concerned.



VERNON ETHERIDGE... Best in the Cowboy Spirit

Etheridge Gets Gridiron Award

Vernon Etheridge, a three-year regular during the Golden Era of Plains football, was presented with the coveted Fighting Heart Award Saturday night

New Auto Firm Here Now Open

Plains gained another business this week with the opening of Short Motor Co. The business will sell all makes of used cars and new Chevrolets.

Owner of the firm is Virgil Short, a former Plains businessman who has been associated with the Chevrolet company in Denver City for some time. In addition to cars, the business maintains a modern service department.

Short Motor Co. is located in the building formerly occupied by Plains Motor Co., on the Brownfield Road.

Roadblock Nets \$348 for MOD Here Saturday

The local March of Dimes effort was enriched to the tune of \$348, 15 Saturday as a result of a roadblock manned by members of the Plains Lions Club.

Working in shifts, Lions stopped every car passing through the city and asked its occupants if they wished to contribute to the March of Dimes.

Workers expressed great satisfaction with the response. They said everyone cooperated real well, including many out-of-town travelers.

Farmers Union Meet Thursday

Members of the Yoakum County Farmers Union have been reminded of a special called meeting of the organization which will be held Thursday, Feb. 23, in the Clubroom. The meeting begins at 8 p. m.

Purpose of the special meeting will be to name delegates to the national convention which will be held March 13-16 in Washington, D. C.

Next week's meeting will take place of the regular March session.

The Plains Record

VOLUME 1

PLAINS, TEXAS, THURSDAY, FEBRUARY 16, 1961

NUMBER 8

Annual stock show set here for this weekend

Bi-District Tilt at Andrews

Plains Meets Coahoma Tuesday

Plains goes in quest of its fourth consecutive bi-district basketball championship Tuesday night when Coach Rip Sewell's Cowboys meet Coahoma at Andrews. The big game, matching the kings of districts 5-A and 6-A, begins at 8 p. m. in the Andrews High School gymnasium. Only one game will be played.

Cowboy fans will sit in the east stands.

Sewell warned Plains fans that his Cowboys were in for a hard time against the 6-A champions. They were undefeated in district competition, twice defeating Merkel, the team which was supposed to win the title.

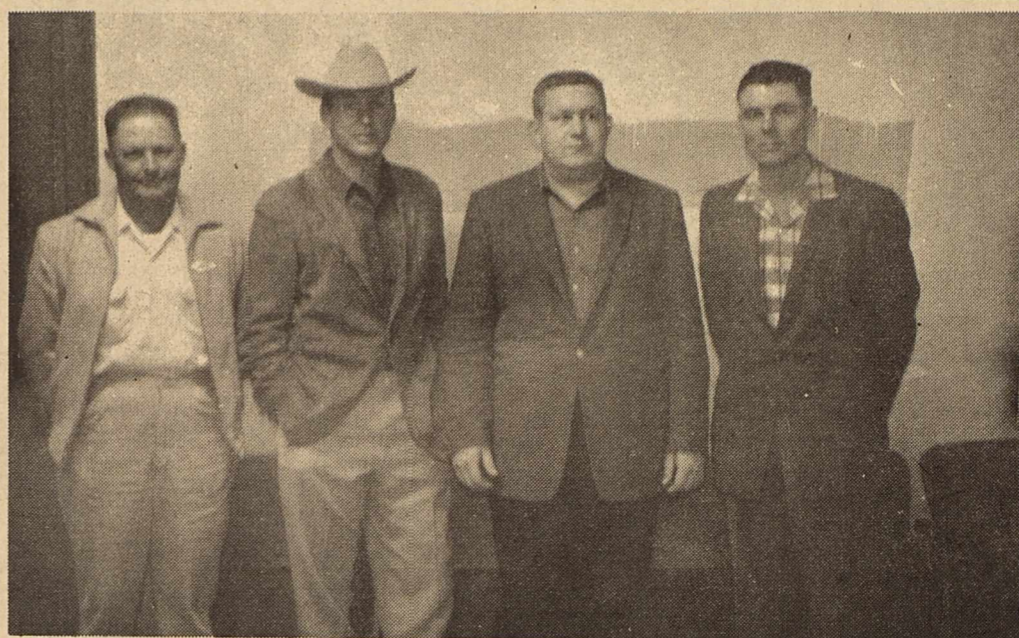
"Coahoma has a lot of height and the boys like to shoot. If they have a hot night, they can run off and leave anyone," Sewell explained.

The team is led by a pair of high scorers named Reeves, 5-10, and Ritcher, 6-0. The other starters measure 6-1, 6-2, and 6-3. Plains, on the other hand, has only one boy over six feet.

Precedent will ride with the Cowboys. Never have they lost a bi-district game to a 6-A champion. In 1958, the Cowboys beat Merkel, 60-40. In 1959, they took a 41-40 win over Roscoe and then last year they ran over Stanton, 59-43.

Winner of Tuesday's bi-district tilt will advance to the regional tournament in Lubbock which will be played a week from Saturday, Feb. 25. Should the Cowboys triumph, they will meet the winner of the bi-district between champions of 3-A and 4-A at 8 a. m. At the present time, Farwell and Sudan in 3-A and Silverton and Idalou in 4-A appear to be the list from which the first regional fee will come.

Important as far as Plains is concerned is the fact that the playoff games are coming at a time when the Cowboys are hitting their stride. After a slow start which saw their record tumble to 2-7 at one stage, (CONTINUED ON PAGE 2)



SUGAR BEET LEADERS---H. W. Taunton, left, and R. D. Romans, right, were elected as Plains representatives on the board of directors of the Gaines-Yoakum Sugar Beet Growers Association Monday night. They are shown here with Charles Nance, second from left, president of the organization, and John Cockerham, manager of the Seminole Chamber of Commerce.

Local Farmers Join Gaines Beet Growers

First concrete steps toward possible sugar beet production in the Plains area were taken Tuesday night when 18 local farmers joined the newly organized Gaines-Yoakum Sugar Beet Growers Association.

Sign-up members followed a highly informative session here at which officials of the Gaines County movement showed a film, discussed the proposed plans for a sugar beet program and answered questions concerning production and legislation.

The group here voted unanimously to combine forces with the organization, rather than set up a separate association.

Charles Nance, president of the association, explained what was being done in making pre-

parations for the anticipated sugar beet allotment release, while John Cockerham, manager of the Seminole Chamber of Commerce, discussed legislative problems faced by the group.

Cockerham pointed out that if and when new allotments are released, they will be given to refineries which then will contract with organized groups for production. Only these who

are members of an association are expected to share in the allotments.

The next few weeks may determine whether or not a sugar beet allotment for this area will come about. The present sugar act expires March 31 and Congress then must either ex-

tendit, enact a new one or alter the existing one.

Sugar beets have been grown for some time in the Hereford area, but the crop must be shipped to Rocky Ford, Colo., for refinery processing. Refinery companies are interest-

(CONTINUED ON PAGE 2)

Final Home Game to Be Saturday

Final home basketball game of the season is set for the Plains gym Saturday night when dangerous Lovington comes to town to give the playoff-bound Cowboys a severe test.

Lovington, one of the truly great basketball teams in this area, has lost but twice all season, once to mighty Seminole and once to Eunice's great outfit. The Wildcats split a pair of contests with Eunice and Plains fans still remember Eunice as one of the finest outfits ever to play here.

Final home basketball game of the season is set for the Plains gym Saturday night when dangerous Lovington comes to town to give the playoff-bound Cowboys a severe test.

For Beet Association

Farmers Sign

Memberships in the Gaines-Yoakum Sugar Beet Growers Association are now open to interested parties in the Plains area. Eighteen local farmers signed up following a meeting here Tuesday night.

Dues are \$30. The fee may be paid to either of the two local directors of the association, R. D. Romans and H. W. Taunton.

Money raised will be used to further the program of the association seeking a sugar beet allotment for this area. If and when an allotment is granted, only members of an organized association will be eligible to share in the program.

Members also have announced that if an allotment is received, the association will have a mass meeting and probably close memberships. In

Record Number Expected to Enter Animals in Show

Final preparations have been completed for this area's biggest annual event, the Yoakum County Junior Livestock Show. The ninth annual event begins Friday at the show barns in Plains and continues through Saturday afternoon when the sale brings things to a close.

A record number of entries is expected. Indications are that 170 animals will be entered. The list includes 32 lambs, 8 barrows, 29 steers and several registered Hereford breeding animals.

Judging gets underway at 1:30 Friday when fat lambs are judged by B. F. Yates, assistant county agent of Hale County. Swine will be judged later Friday afternoon and beginning at 9. Breeding cattle judging follows.

Several special awards will be given during the show. Murphy Luna will present Hereford heifer to the exhibitor of the Grand Champion. The Grand Champion exhibitor in the swine division will receive a gilt from Oscar Henard, while Gene Bennett will present a ewe lamb to the owner of the champion lamb.

Best showman in the swine division will receive an award from Rusty McGinty, top showman in the lamb division will receive an award from Dick McGinty, and the best showman in the steer division will receive an award from Pat Henard.

In addition to these awards, G. W. Cleveland will present a loving cup to the winner of the steer gain contest.

Exhibitors will be as follows:

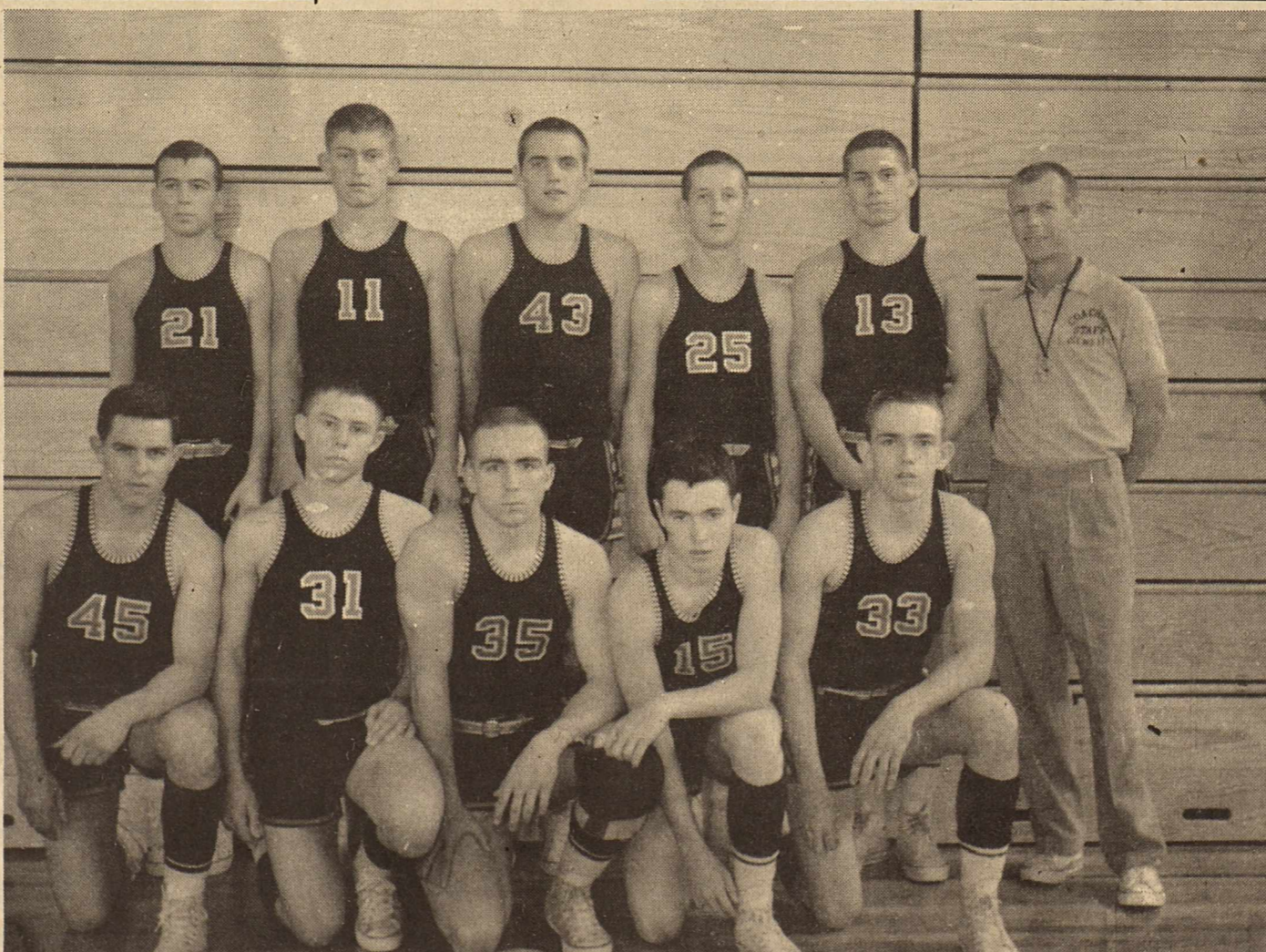
Lambs

Martin Bundick, Dan Field, Mike Field, Rickey Elmore, Garlon Jones, Jayne Jones, Juana Jones, Harry Longbrake, Terry Longbrake, Don Spence, Harold Lee Swann, Rex Swann, Billy Taylor, Bobby Taylor, Jimmy Taylor, Eddie Tingle, Boyce Trout, Cole Trout, Lynn Dale Trout, Reg Trout, R. J. Trout, Ricky Williams and Sam Williams.

Barrows

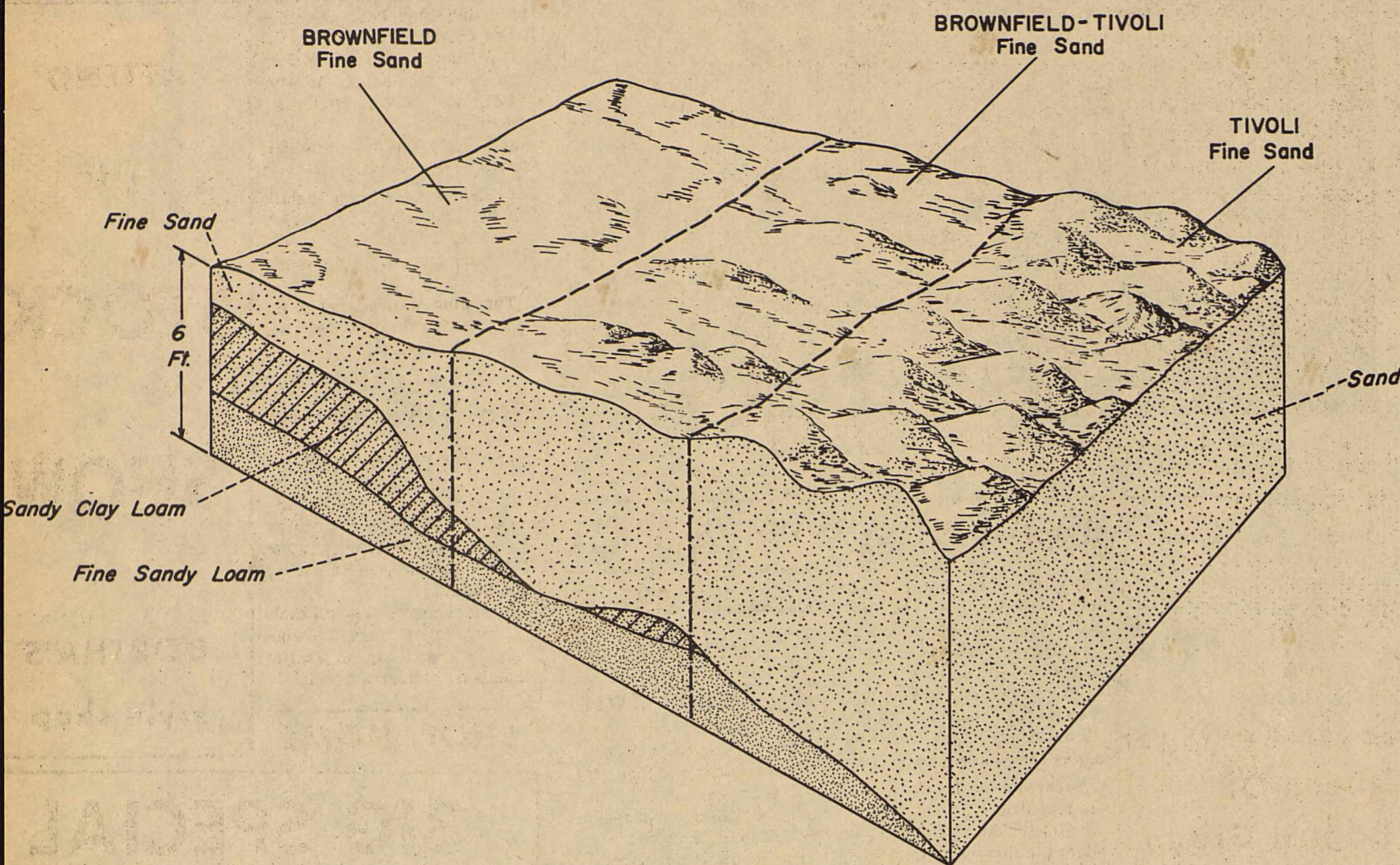
Gail Ancinec, Greg Ancinec, Byron Bass, Royce Blair, Fred Blount, Tommy Blount, Curt

(CONTINUED ON PAGE 2)



PLAINS COWBOYS---Here are the Plains Cowboys, who go after their fourth consecutive bi-district basketball title Tuesday night in a game against Coahoma at Andrews. They are, front row from left, Butch Hawkins, Steve McGinty, Dick Cooke, Mike Culwell, Ronnie Hendricks; back row, Mike Slink, Jerry Jones, Joe Don Marrow, James Alberding, Jack Meixner and Coach Rip Sewell.

BROWNFIELD-TIVOLI SOILS



County Soil Areas Defined

By BILL DITTEMORE
Soil Scientist, SCS

(This is the second in a series of soils survey articles dealing with the survey recently completed in the Yoakum Soil Conservation District.)

In this newspaper two weeks ago, there was a general soil map of the Yoakum SCD. This week we will give information on one of the general soil areas. These soil areas are named for the principal soil in the area.

The Brownfield-Tivoli soils area is in an area 4 to 8 miles wide all along the northern edge of the county. This area includes about 58,000 acres.

Brownfield soils have a surface layer 18 to 36 inches thick. The subsoil is a red sandy clay loam 2 to 4 feet thick.

Dune soils are Tivoli series. These Tivoli soils are nothing but thick dune sands. The above diagram depicts this soil area. These soils were formed from wind-deposited sands blown from the general area of Murphy Luna's place about 60 million years ago.

Principal vegetation on these soils are mainly sand bluestem,

giant dropseed, little bluestem, area is in the Sandhill range site and is in Land Capability Class VI. These soils are not too well suited to cultivation due to the deep sandy surface. The wind erosion hazard is severe. When these soils are plowed the soil will blow, shift, and leave the sandy clay loam subsoil bare. The subsoil will not readily take and store water is very infertile. This soil is best managed as rangeland.

In the Yoakum County Soil Survey Report, there will be a complete section on the use and management of rangelands. Sound range management practices require that grazing use be adjusted from season to season in accordance with the amount of forage produced. A good rule to take one-half and leave one-half. The amount of forage available also varies from range site to range sites.

Range sites are kinds of country that differ from each other in their ability to produce a significantly different kind or amount of original vegetation. There are nine different range sites in Yoakum County. They are: Hardland, Mixed Plains, Mixedland, Bottomland, Sandyland, High lime, Shallow land and Sandy flat.

There are numerous practices to increase grass production such as proper use which in short is take one-half and leave one-half. Deffered grazing is postponing grazing to increase the vigor of the plants so that they will make seed. Some of the range improvement practices are range seeding, brush control, development of livestock watering facilities, and fencing to control grazing.

Each of these range sites and range practices is discussed in detail in the Yoakum County Soil Survey Report.

Those in this area are particularly interested in a sugar beet allotment since it would give them another cash crop. They feel that West Texas is an ideal location for such a program since there are many thousands of acres of usable soil which has been virtually taken out of use due to restrictions on cotton. This area also has an abundant supply of water, a necessary prerequisite for beet production.

Nance explained the production angle. He said beets are planted about the same time as cotton, between mid-April and mid-May. It takes seven pounds of seed per acre and seed costs 65 cents a pound. Beets are not planted as deeply as cotton and the rows are closer together.

Beets require about as much water as cotton and at least as much fertilizer, he said.

They are harvested in the fall with a digger resembling a potato digger. In Hereford, he said, they use a one-row digger which costs about \$800. Weeds present serious problems in northern areas, but Nance said he believed it would be less of a problem here.

All promoters of sugar beets point out that they offer two crops in one. Good beets produce from 12 to 15 tons of tops per acre. Tops make excel-

lent livestock feed.

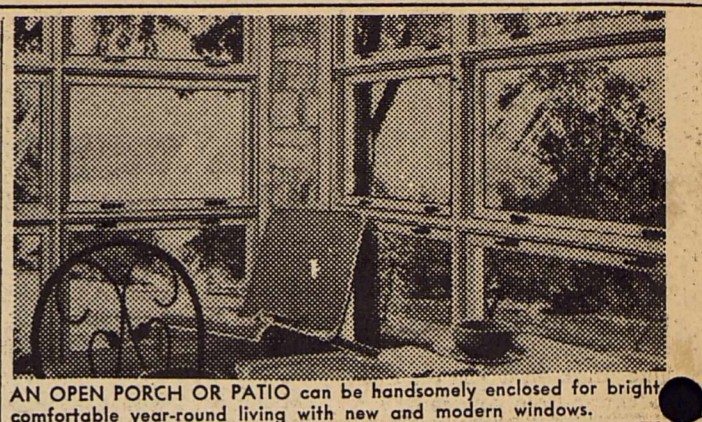
Another factor is that beets improve productivity of the soil. Surveys show that practically all land will produce from 15 to 20 per cent more with a follow crop.

Farmers growing beets will be required to rotate their land every four years. Thus, no farmer can request more acreage than 25 per cent of available land.

Stock Show--

(CONTINUED FROM PAGE 1)

Brown, Kenneth Brown, Roger Campbell, Bonnie Clananhan, Helen Clananhan, Mary Clananhan, Nancy Clananhan, N. C. Clananhan, Corky Coke, Neva Gilliam, Nita Gilliam, Jimmy Gray, Dean Haney, Oscar Henard, Beverly Jones, Garlon



AN OPEN PORCH OR PATIO can be handsomely enclosed for bright comfortable year-round living with new and modern windows.

Jones, La Juana Jones, Robert Jones, Clevey Kerby, Jimmy Kerby, Ann Kerrick, Gala Kerrick, Beverly Lowrey, Darrell Lowrey, Coy Lowrey, Jerry Lowrey, Melvin Lowrey, Roy Lowrey, Sharon Lowrey, Roger McCray, Johnnie Pippin, Mike Pippin, Sidney Pippin, Carolyn Richmond, Billy Taylor, Russell Richmond, Bobby Taylor, Jimmy Taylor, Eddie Tingle, Charles Tucker, Morris Jay Rushing, Peggy Rushing and Kent Welch.

Steers

Chip Bennett, Brenda Boyd, Deedra Boyd, Waymon Boyd, Cary Cooey, Dan Field, Mike Field, Dianne Fitzgerald, Linda Fitzgerald, Oscar Henard, Mike Loe, Tony McCray, Alton Earl McGinty, D'Lynn McGinty, Kenneth McGinty, Sylvia McGinty, Craig McPherson, Kathy McPherson, Michael McPherson, Gail O'Neal, Jimmy O'Neal, Pharon Pharr, Ty Earl Powell, Jack Sprawls, Janis Sprawls, Sharon Sprawls, Tom Sprawls, Morris Jay Rushing and Marsha White.

HEARTY CONGRATULATIONS

to the

Sponsors and Participants of the

8th Annual JUNIOR LIVESTOCK SHOW

—●—

PLAINS BEAUTY BAR

PLAINS, TEXAS

Congratulations

to the

Youth of Yoakum County

participating in the

JUNIOR LIVESTOCK SHOW

—●—

ATTEND THE SHOW

Friday and Saturday

—●—

Pic & Pay Grocery

J. S. Wagley, Owner

CATERPILLAR WORK

Little Giant Towner Plow

DEEP BREAKING

Call

JACK BECKHAM

GL 6-2693

Plains

TOM STERLING

IN 5-4311

West Lake

Best Wishes

for the

YOAKUM COUNTY

JUNIOR LIVESTOCK SHOW

Friday and Saturday

Plains Oil Co.

James Warren, Manager

Phone GL 6-3777

PLAINS, TEXAS

Sugar

(CONTINUED FROM PAGE 1)

ed in erecting several plants in the West Texas area if Congress allows the production.

One plant probably will be at Hereford, but others probably will follow. Seminole is working hard toward landing a refinery.

Sugar companies would like

GO!!

to the

JUNIOR LIVESTOCK SHOW

Friday and Saturday

CONGRATULATIONS TO OUR 4-H'ers ON THEIR MANY FINE ENTRIES THIS YEAR!

GOODPASTURE Grain & Milling Co.

Cowboys--

(CONTINUED FROM PAGE 1)

Plains has rebounded to post a 16-9 mark to date. The Cowboys have taken 11 of their last 12, losing only to Eunice during the period, and own 14 victories in their last 16 outings.

As a team, the club has averaged 46.8 points per game

while the opposition has scored at a 43.4 clip. Many of the wins have been by close margins, but the Cowboys have improved their offensive mark

considerably in recent games, scoring 72, 66 and 62 points in their last three contests.

Much of the extra scoring punch has come from the performances of team members who had not been scoring a great deal, Jack Meixner, enjoying a great year with an 18 plus average, has been a consistent scorer all season, but during the early part of the campaign, he had to carry most of the load.

At Sundown Tuesday, four starters scored in the double figures, although they played less than half the games, James

SHOP HOME

PHILLIPS 66-WHOLESALE

* BUTANE * GASOLINE * OIL * DIESEL FUEL

* TRACTOR TIRES

* BATTERIES

WILMETH OIL CO.

PHONE GL6-4238

PLAINS, TEXAS

We Have A Good Supply Of HYBRID GRAIN SEED

Terry County producers of Hybrid Grain Seeds are receiving wide acclaim. These seed are in demand, not only locally, but throughout our area. Seed growers — such as Purtell Seed Farms, Waters Bros., and Winfred Tucker — are having their seeds field tested in Old Mexico. Results of the tests will be announced at a later date. Test results, conducted in Old Mexico last year, gave locally produced seeds a 1 and 2 rating. According to the Texas Department of Agriculture,

Texas farmers are producing 30% more grain on the same acreage by the use of Hybrid Seed, than they did before Hybrids were introduced. And the outstanding quality of locally produced seeds has caused them to be in great demand outside our local area. All of our Terry County Seed Growers have received "tops" in the testing of their seeds. Give them a try, see if you don't think they are the best seeds for your farming operations.

THE SEEDS LISTED BELOW ARE CERTIFIED HYBRIDS:

- Purtell Seeds 610 & 620
- Waters Bros. 601, 610 & 660
- Winfred Tucker Seeds 608 & 610

We Also Have on Hand MARTIN'S, PLAINSMAN HYBRIDS and KAFARI, HEGARI, SUDANS, ALFALFA, BLACKWELL SWITCH AND BLUE PANIC GRASSES

Goodpasture Grain & Milling Co., Inc

PLAINS, TEXAS

Tsa Mo Ga Has Meeting Monday

Mrs. R. K. Field, program director of Tsa Mo Ga opened this week's program with a quote from Proverbs: "Master yourself and you can master anything."
She then presented Mrs. Garland Swann, who gave a reading by Sophie Kerr, "A Valentine for Uncle." Mrs. Swann said: "Dear Uncle Samuel, it's high time that you receive a valentine from your family."

Mrs. Bookout spoke on "What to do with our ex-Presidents." She gave some of James Farley's views as to the invaluable wisdom and experience of the ex-presidents which is now being wasted.
At present, the US has three ex-presidents, Herbert Hoover, Harry Truman and Dwight Eisenhower.
Mr. Farley's wish is that Con-

gress will pass a bill this session making all former presidents lifetime, non-voting Senators-at-large, keeping the wisdom and abilities in use after they leave the White House.
Mrs. Sherm Henard brought to mind of club members familiar quotes by giving an interesting part on "Meet the Most Quotable Notables." She said that these quotes are of generals, poets and presidents of the United States.
Mrs. M. W. Luna showed colored slides of the March of Dimes basketball game between Tsa Mo Ga members and Iota Pi Sorority members. The game was relived with fun and laughter. The clubs wish to thank the public for the wholehearted support on the project.
Mrs. Luna said that she would take orders for any of the pictures shown.

Mrs. Swann announced that Mrs. Johnny Moore, Jr. has accepted the Girl Scout Leader position with Mrs. Kenneth Hale as assistant leader.
The club expressed thanks to Mrs. Tommy McDonnell and Mrs. Dick McGinty as outgoing leaders. Highest ranking Girl Scout will again be sent to camp at Rio Blanco, Crosbyton, by the club.
Mrs. Bill Loyd was selected by the club as "Leadership Development Club Woman" to represent the club at the Caprock Convention, TFWC, to be

held March 28-29, in Lamesa. Hostesses, Mrs. Harvey Stotts and Mrs. Marion McGinty served refreshments of cherry pie, coffee, nuts and mints from a table centered with red carnations surrounded by red hearts and a cupid's arrow.

Joyce Kissinger Queen Of Baptist Group

Joyce Kissinger was crowned queen of the Baptist Training Union's "Valentine Varieties" banquet held Monday night.

The queen was escorted by Larry Coffman and crowned by Emery Longbrake.
Forty-one persons attended the banquet.

The welcome address was given by Mrs. Marshal, followed by the invocation by the Rev. C. J. Coffman.

Special varieties consisted of group singing, led by Doug Todd, musical pantomime by Billy Steward and John Robertson, musical special by Carolyn Murphy, Valentine Story by Darlene McDonnell, special pantomime by Betty Steward and a valentine reading by Mrs. Hinkle.

The "thank you" was given by Mrs. Ellison and the benediction by Emery Longbrake.

Special valentine menu consisted of cupid's fowl, love arrows, white roses, jellied hearts, hearts and flowers, cupid's delight and Goddess's nectar.

300 Attend Firm Opening

Approximately 300 persons attended the formal opening last Thursday of Plains Farm Supply, new John Deere dealer for this area.

Visitors saw the latest in John Deere tractors and other farm implements.

Thursday night, nearly 200 persons attended the film and free barbecue at the firm.



NEW OWNERS---Joy Hendricks, left, and Janet Bryson assumed management of the Elsorita Shop Saturday after purchasing the business from Othell Giles and Elsie Nordyke

Faye White Is Host to Club

Members of the Stanford Valley Club met Feb. 9 in the home of Faye White.
Eight regular members and two new members, Jo Ann Young and Dorothy Hickman, attended.
Judy Pool, county home demonstration agent, gave a demonstration on "Fabric Blends and Labels." The club voted to donate funds to the All-Faith Chapel for the mentally ill.
The club was to meet again Feb. 14 in the home of Mrs. John E. Fitzgerald.

Stock Show to Be Broadcast

Radio Station KSML, Seminole, will broadcast portions of the Yoakum County Junior Livestock Show in Plains Friday and Saturday.
Interviews with show officials and with grand champion winners are planned, as well as reports on various winners.

SHOP HOME

ATTEND THE STOCK SHOW DORTHA'S style shop

RUBBERIZED WALLHIDE WALL PAINT

Wont chip...peel...or crack!

Cogburn-Young Hardware

"WHERE YOUR \$\$\$ HAVE MORE \$\$\$"

PITTSBURGH PAINTS keep that look longer

1961 Motor Vehicle LICENSES

are now available at both Plains office and Denver City office and must be on vehicle by April 1st

Be sure to bring 1960 Registration Receipt and Certificate of Title

as it is a strict requirement that information from both be shown on 1961 Licenses Receipt

E. W. CRAIG Tax Collector

ANNOUNCEMENT change in ownership of THE ELSORITA SHOP

Justin McCarty

Toby Lane

Candy Jrs.

Mary Muffit

Claussner Hose

Bonnie Maid

Prissy Missy

Kabro

Futurama

Exquisite Form

Joy Hendricks and Janet Bryson have purchased The ELSORITA SHOP from Othell Giles and Elsie Nordyke.

It shall be our constant goal to continue to serve the women of the Plains area with the fashionable, high quality merchandise which has characterized The ELSORITA SHOP in the past.

Joy Hendricks THE ELSORITA SHOP Janet Bryson

Baptist Juniors Hold Meeting

Members of the Junior Training Department of the First Baptist Church held their monthly workshop at 5 p. m. Sunday.

They made plans for next month and had a period in which to study and discuss the duties of each officer.

Twenty juniors and five leaders attended.

Following the meeting, sandwiches, cold drinks and cookies were enjoyed. A game period followed.

From the meeting, the group went into the Training Union hour.

C. Murrell Thompson attended a meeting of Soil Conservation supervisors in Pecos Tuesday.

Harmon Meixner, student at McMurry College in Abilene, was a weekend visitor in the home of his parents, the Rev. and Mrs. R. H. Meixner.

Mr. and Mrs. Wendell Faught attended the mid-winter convention of the West Texas Press Association held Saturday and Sunday in Sweetwater.

Mrs. Sam T. Mosley of Hillsboro is visiting in the home of her son, Sam Mosley, and his family.

Judy Mosley was released from the Denver City hospital Tuesday.

HELP WANTED---Babysitter in my home each Wednesday. Call GL 6-8582.

Elsorita Shop Is Purchased By Local Pair

Sale of The Elsorita Shop to Joy Hendricks and Janet Bryson has been announced. The new owners assumed management of the store Saturday.

Former owners are Othell Giles and Elsie Nordyke, who opened the store last year.

The new owners said that no changes in the operation of the store would be made. The same merchandise will be handled and the same 9 to 6 hours observed.

More Color

Little things do much to bring elegance to bath decor. A small — but most important — thing is color, the key to creating a distinctive personality for the smallest room in your home.

In a recent report on color preference in the bathroom, Dial research laboratories discovered that homemakers have four pastel favorites: Pink, tan, blue and green — in that order. Dial notes these are excellent color choices because they give the bath a luxurious, fresh, airy look. Pastel shades recede, too, giving the room a look of spaciousness.

Everywhere in bath decor, these four colors today can be beautifully coordinated.

TOP FOOD BARGAINS

BACON, 2lb. slab 95¢

CHOICE BEEF

Round Steak, lb. 81¢

WINESAP

APPLES, lb. 19¢

ORANGES, lb. 7 1/2¢

LETTUCE, lb. 10¢

LONGHORN

Cheese, lb. 55¢

SHURFINE

New Potatoes, 2 for 29¢

SHURFINE BLACKEYED

PEAS, 2 for 29¢

FROZEN FOODS

BIRDSEYE 6oz.

Grape Juice 2 for 35¢

KEITH'S 10 oz.

Blackeyed Peas, 6 for 99¢

PATIO

ENCHILADAS, 49¢

BAR-T-RANCH 2 1-2 CAN

PEACHES 29¢

RED ROSE 12 oz. bag 10¢

POPCORN

Baby Pictures

(AGES 6 YEARS AND UNDER) Will Be Taken At Our Store All Day THURSDAY, FEBRUARY 23

Our photographer will use the newest of the automatic Baby Cameras, which capture natural living expressions and poses perfectly, which you never could have made before because of baby movements and blurs in the picture

You see NO PROOFS. You will not have to wonder how the proof will look finished because of this amazing equipment. We show you the finished picture of all poses taken of your child, for you to select your picture from.

One 5x7 Picture, Regular \$3.50 Value Extra 5x7 prints each \$1.50. Extra 8x10 prints each \$3.00 REMEMBER---NO OBLIGATION

Extra Special ONLY 49¢

PLAINS FROZEN FOODS

Recent Contracts Boost Yoakum Soil Practices

By WILSON DUKE

Interest in the Great Plains Conservation Program in the Yoakum Soil Conservation District continues to grow. Latest applications for participation in the program were received from James Sheek, Pat Swann and the Blue Bonnett Land Corporation.

This runs the total number of applications received to date to 67, covering a total of approximately 95,000 acres in the Yoakum District. At the present time, 30 contracts are in effect with local farmers and ranchers, cooperating with the Yoakum Soil Conservation District.

Most popular practices being carried out under the Great Plains Conservation Program continued to be brush control, pasture planting and underground irrigation pipelines.

Application of practices scheduled this spring on brush control include Johnny Fitzgerald, Ty Field, Clyde Coke and Chesley Bedford.

Pasture planting which consists primarily of sprigging Bermuda is scheduled for spring planting by H. M. Conner, Kenneth Nelson, Darwin Hobbs and Robert Long.

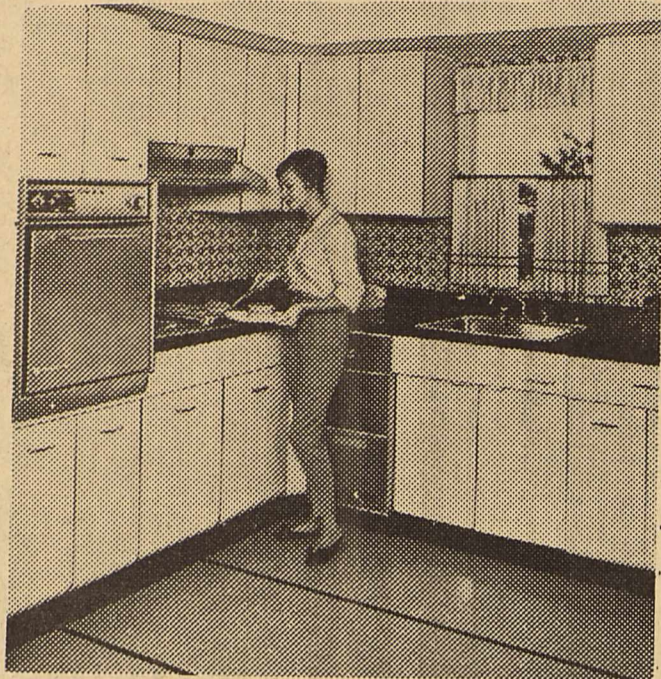
Underground Irrigation pipelines are to be installed this spring on Homer Sudderth, R. C. Trout, Charles Stewart, Robert Long and R. M. Jones farms. There are other practices under the Great Plains Conservation program that are available for cost-share payments, such as fencing, range seeding, and water facilities for livestock.

Anyone interested in the Great Plains Conservation Program are urged to contact one of his local Supervisors or one of the Soil Conservation Service technicians, so that his application will be on the register for eligibility purposes.

Modern architecture requires trees and shrubs and landscaping in general to provide warmth and naturalness to man-made buildings, according to the American Association of Nurserymen, whether they are homes, factories, or other structures.

Quick color for the garden can be obtained in spring and early summer by purchasing potted plants in flower or about to flower.

With some annuals, such as marigold, petunias, and zinnias, you'll have a head start on blooms of as much as six to eight weeks.



KITCHENS LOOK LARGER with built-in appliances, which in addition to creating the modern look, supply additional storage and work space. Shown here are such built-ins as an electric oven and companion surface burner, undercounter ice maker and disposal unit cabinets.

Bathroom Modernization Is One of Top Items in Many Improvement Plans

Two of the easiest ways to decide whether your home is modern or not are (1) to look at the kitchen and (2) to look at the bathroom!

When remodeling is undertaken, the bathroom is generally the last room to be considered — and it's a shame. For, the bathroom of today can be one of the most attractive rooms in a home.

The most important innovation of this modern era, as far as decorative bathrooms are concerned, is the color of fixtures. Now you can choose matched fixtures in almost every color anyone could desire.

There are so many colors in all the fixture and accessory lines, in fact, that an all-one-tone bathroom would not be difficult to achieve.

A modern bathroom will do more for you than just add to the beauty of your home, however. With plenty of convenient facilities, the family's morning and evening "line-up" will soon be a thing of the past.

When the bathroom is made more convenient and attractive, mothers often find it much easier to get the children to perform their "wash behind the ears" routines, too. And, al-

ways an important consideration is the increased re-sale value of your home when it has a modern bathroom.

When you get ready to remodel your bathroom, it would be wise to consider adding an

additional bath or half bath at that time. It is often less expensive to have the two jobs done at the same time, and is sometimes simpler if you plan to have the work financed. Most homes do, have the

space for this extra bathroom — in unused closets, under stair ways, in an unnecessary pantry, and sometimes even in an extra-large bedroom. If you are in doubt, a contractor can give you the answer and the estimates quickly.

The most important step toward making sure that yours is just the bathroom you want, is advance planning. Before any work begins, see to it that all the plans are on paper. It's much more economical to make changes on paper than after

Good Luck!

Here's Hoping This Is Your Most Successful Year Ever!



Cooke Lumber Co.

Best Wishes

for the Yoakum County

JUNIOR LIVESTOCK SHOW

Plains Electronics

RADIO and TV
TWO-WAY COMMUNICATIONS

SERVICE CALLS DAY OR NIGHT
PLAINS, TEXAS Phone GL 6-8374

'Remodel' Your Landscaping

Overgrown, outmoded landscaping on home property is an eyesore that reduces the value of land and homes in the immediate vicinity. Everyone has seen this in neighborhoods that have become run-down.

Remodeling of landscaping is a key step in home improvement, says the American Association of Nurserymen, homes in areas where the grounds are well-landscaped not only maintain but increase their values in the real estate markets, and they provide better and more relaxed "garden living" for the family.

Entire real estate developments or other residential areas can be upgraded or downgraded by the "looks" of the landscaping alone, apart of the quality of the home construction.

'Spare Those Trees' is Advice

Here's a word to homeowners — if there are trees on the property, try to save them — it will save you a great deal of expense later on.

Before leveling your yard for improvements be sure to call an arborist and have him make a thorough inspection of the trees.

Through his experience, he can designate those trees that should be saved, recommend measures for saving them to give your home that extra value.

Congratulations

to the
YOUTH OF YOAKUM COUNTY

participating in the

JUNIOR FAT STOCK SHOW

Friday and Saturday

WE ALSO SALUTE Members of the Yoakum County Livestock Improvement Association for their untiring efforts in making this show a top attraction for Plains, Texas.

CITY OF PLAINS

Lights - Water - Gas - Sewer



We Commend Yoakum County
4-H CLUB BOYS and GIRLS

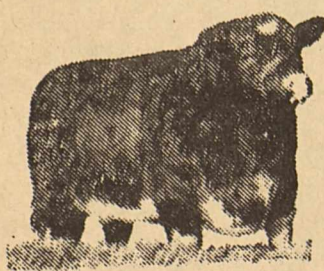
and the

YOAKUM COUNTY LIVESTOCK and
AGRICULTURE IMPROVEMENT Ass'n.

on the

Junior Livestock Show

FRIDAY and SATURDAY



T. W. CADENHEAD

SERVIS GAS

Plains Blasts Tahoka, Sundown

EFFICIENT FEEDING AND LIVESTOCK MANAGEMENT



By Dr. Gustav Bohstedt
Emeritus Professor of Animal Husbandry
University of Wisconsin

Disease-Free Pigs

Every ordinary swine herd is to some extent afflicted by diseases and parasites that cut profits from the producer's ledger.

Even under excellent management where pigs are ushered into the world free from disease, they may become contaminated the minute they come in contact with the exterior of their dam and with the customary bedding.

Recently it has become possible to develop an extraordinary herd by obtaining disease-free pigs. This is possible even from diseased stock. The sows are



Dr. Bohstedt

slaughtered late in pregnancy, about the 112th day, and the piglets are removed from the uterus to be placed in isolation brooders where they are fed sterile milk.

With our present knowledge of nutrition it is possible to give the piglets a good start in life. After four weeks without contact with other swine these pigs are put back on the farms. It is noted that the disease-free pigs have gained much more rapidly and more economically than ordinary pigs.

In raising disease-free pigs it is necessary to put them into thoroughly clean and disinfected quarters that have not been used for six weeks. Of course, there can be no contaminated pigs kept anywhere on the place.

These pigs are referred to as Specific-Pathogen-Free (SPF)

pigs, meaning they are free from virus pneumonia, atrophic rhinitis, cholera, brucellosis, leptospirosis, bloody dysentery, transmissible gastroenteritis, and parasites. It does not mean that all swine diseases are eliminated for them forever. Veterinarians may recommend certain vaccinations even for these disease-free pigs, especially vaccination for hog cholera.

Many farmers and breeders who have suffered serious disease losses will be interested in breaking the "carrier chain" for diseases in their herds by starting fresh with disease-free breeding stock.

Various laboratories have been licensed to produce "SPF" pigs as described here, and it is possible to use them for breeding. Naturally-farrowed herds raised from such stock must be proved free from the above diseases before they can be certified as pathogen-free.

Question: Why is it that pigs or lambs born in January or February always seem to be stronger and more vigorous than those born later on in the spring?

Answer: It seems that the unborn young benefit from the nutritional carry-over from the preceding pasture season, when sows and ewes store in their bodies many of the fine nutritional principles of pasture. For the late-born young these reserves have been largely exhausted.

PLANT NUT TREES

The gathering of nuts is one of the most fascinating experiences of childhood. Since many nut trees also are excellent shade trees, many more such trees could be planted on home properties with excellent results in almost every climate.

Plains completed its 5-A basketball campaign with an undefeated mark Tuesday night as the Cowboys ran over Sundown, 62-34, for their eighth win in a row.

The surging Cowboys had little trouble with the Roughnecks, jumping to a 24-1 lead in the first five minutes of play and then substituting freely as the score climbed.

At the end of the first period, it was 24-3 and by halftime the score was 34-14.

James Alberding continued his tormented scoring pace with a 17-point performance during the time he played. Three other boys scored in the double figures with Dick Cooke getting 11 and Mike Culwell and Jack Melxner 10 each. All played less than half the game.

At Tahoka Friday night, the Cowboys took another victory over the Class AA club, this time by a 66-49 score. Alberding exploded for 26 points and Melxner added 17 enroute to the convincing triumph.

The Cowboys struck early, building a 19-3 first-period lead, and then continued to lead comfortably throughout the contest.

Frank Greathouse paced Tahoka with 19 points.

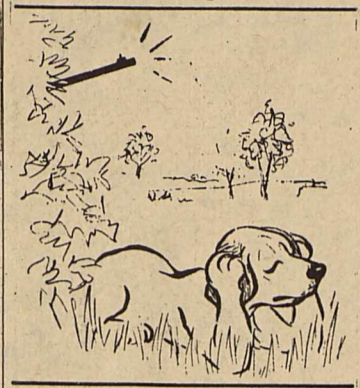
More shade is the advantage of standard size trees . . . and when there is enough space, are a fine choice.



PREVENT GUN SHYNESS

By Bob Bartos
Manager, Friskies Research Kennels
Gun shyness . . . fear of the noise of the gun . . . is not uncommon with the dog. It is usually an acquired affliction and it is more easily prevented than cured.

Here are a few important rules for prevention. Never take a brand-new dog out of his



shipping crate and fire a gun to test him. Tired and nervous from his trip and in unfamiliar surroundings, the steadiest dog can easily turn gun shy.

Don't take a new dog out with a group of hunters. A sudden bombardment of shots, together with the strangeness of his surroundings, may well cause him to panic.

Don't shoot over a young dog the first time he's out in the field. Wait 'til he's developed a real love of hunting. And when you do finally fire a shot, do it when the dog is well out in front of you and deeply engaged in the scent of some game. Once you've fired, keep right on walking as if nothing at all happened.

Don't shoot more than once or twice the first few days, lessening the distance between dog and gun a little each time out. Eventually, as game is actually shot for him, he'll understand what it's all about.

Some people get tiny puppies accustomed to sharp noises by rattling their pans just before they feed them. Once they're used to this sound and have come to associate it with food, fire a .22 blank pistol a distance away from them to announce chow time. It won't be long before noses will quiver with happy anticipation of food whenever you fire the pistol. Such anticipation will make your job easier, once field training begins.

Feeding Tip: Carry a pocketful of top-quality dog biscuits such as Friskies cubes when going afield with your dog. Dole these out sparingly during rest periods to supply nutrition and to encourage a bond of fellowship for you and your dog for the next foray.

Get Together For Good Eating

Pork chops seem to be on almost everyone's list of favorite meats. They are fun to prepare, too, because there are so many ways to cook them. Try combining pork chops with other foods to give them extra appetite appeal.

An especially tasty topping is prepared with apples, onion, garlic and catchup. It sounds different and it is! But the sauce is guaranteed to please any palate.

Braising is the cookery method for pork chops that is recommended by home economist Reba Staggs. Braising allows the flavor of the cooking liquid and seasonings to blend deliciously with the chops.

Here's a point of information about pork of which you may not be aware . . . today's pork is lower in calories. Leaner hogs are being produced and pork cuts are being trimmed more closely.

Pork Chop-Apple Delight

- 6 rib or loin pork chops, cut ¾ to 1 inch thick.
- 3 tablespoons flour
- 1 tablespoon lard or drippings
- ¼ cup chopped onion
- 2 cups thinly sliced unpared apples
- 3 tablespoons catchup
- 1 small clove garlic
- 1 teaspoon salt
- ¼ teaspoon pepper

Dredge chops in flour and brown in lard or drippings. Pour off drippings. Combine onion, apples, catchup and garlic. Add to chops. Sprinkle salt and pepper over chops and apple mixture. Cover tightly and simmer 45 minutes or until chops are done. 6 servings.

Easy, Repayment Terms for Paint Improvements

Did you know that you can "paint now, pay later"?

Painting and decorating contractors in many cities have their own finance plans which enable you to purchase their services on time just as you finance an automobile or major appliances.

Low interest Federal Housing Administration property improvement loans can be arranged for also. Known as Title One Loans, these deferred payment plans for painting are ever increasing in popularity.

three-year term.

Once you have decided on the project — painting the interior, the exterior, or both, get an estimate from a reputable contractor in your community. It's usually a good idea to have several bids and to check around with friends and neighbors on their experience with the various firms.

The next step is to apply to the lending institution yourself, or if you prefer, let the contractor do it for you.

Our Very Best Wishes

for a

Successful Show and Sale

Your fine entries represent many hours of work . . . Congratulations!

Alma's Restaurant

Plains, Texas

Good Luck!

Yoakum County

4-H CLUB MEMBERS

in the

9th Annual

Junior Livestock Show

Friday and Saturday



Modern Beauty Salon

We'll Be Seein' You

at the

JUNIOR LIVESTOCK SHOW

Congratulations and Best Wishes to every boy and girl participating

Buddy's Auto Parts

Plains, Texas

Our Congratulations

to the

Yoakum County 4-H Boys and Girls

on the 9th annual

Junior Fat Stock Show

To Be Held FEB. 17 & 18

Curry-Edwards Pharmacy

PLAINS, TEXAS

PLAN TO ATTEND THE OUTSTANDING

Junior Livestock SHOW and SALE

Annual Yoakum County Junior Fat Stock Show will offer some of the best quality Fat Calves, Pigs and Lambs available for purchase at Auction during the entire year.

FRIDAY & SATURDAY

at the County Livestock Exhibit Building

PLAINS, TEXAS

JUDGING SCHEDULE

Lambs and Pigs—1:30 p.m. Friday

Beef, Breeding Cattle—9 a. m. Saturday

HANK MATHEWS, AUCTIONEER

29 Calves 32 Lambs 89 Barrows

7 Breeding Animals

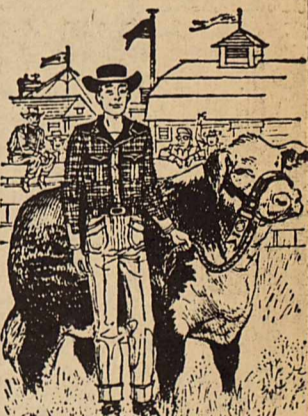
This Ad Sponsored by

Yoakum County Livtstock and Agriculture Improvement Association
Plains Chamber of Commerce — Plains Lions Club

We Heartily Endorse the County JUNIOR LIVESTOCK SHOW

CONGRATULATIONS AND BEST WISHES FOR GOOD LUCK

FRIDAY—SATURDAY



The Yoakum County Livestock and Agriculture Improvement Association is to be commended on their efforts to promote better agriculture and livestock methods in our county. The annual Livestock Show indicates progress that has been made, and increases interest in a better feeding program.

Attend the Show Friday and Saturday

PLAINS STATE BANK

Member Federal Deposit Insurance Corporation

Courtney Insurance Agency

NOW LOCATED IN THE OFFICE OF WILMETH TRACTOR

(Mollie Courtney-owner) Phone GL 6-2552

° Fire ° Casualty ° Automobile

After an absence of five years, I am back in the insurance business again, writing a good general line of insurance. I recall with pleasure my former years in the business and the many friends I made. Old friends and new friends are cordially invited to visit me.

ASK ABOUT OUR
Homeowners Policy
So much more insurance for your money

**TUNE TO
KSML
1250**

featuring all week
the
**Yoakum County
Livestock Show**

Interviews with Show
Officials and Exhibitors

Announcement Of Winners

Person-To-Person Talk With
Grand Champion Winner

**10 A.M. - 11 A.M.
2 P.M. to 3 P.M.**



80 h.p.

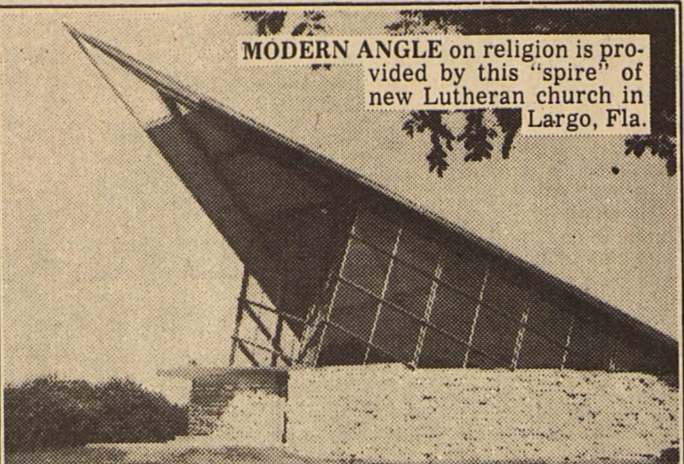
in the all-new John Deere FORTY-TEN

In Forty-Ten Series Tractors you'll find a dollar-producing combination of more usable power, speed, dependability, and long life . . . gasoline, Diesel, LP-Gas. Boost your grain production with the "4010" Standard, above . . . or for big-capacity general-purpose farming power, choose a "4010" Row Crop. Step up your earning power today with a "4010."

PLAINS FARM SUPPLY



People, Spots In The News



MODERN ANGLE on religion is provided by this "spire" of new Lutheran church in Largo, Fla.



POSTMAN gets clue to appropriate compartments in this Verona, Wis. mailbox.



LITTLE MISSES with no messes, smiling sisters tackle once-tricky task of saddle-shoe shining with new shoe-white applicator-package developed by Johnson's Wax for national distribution.

CLASSIFIED ADS

FOR SALE---Commercial corner lot on Highway 380, across street north of Alma's Restaurant. Curb and gutter paid. Contact Lawrence Mize, 407 North Oak Street, Carlsbad, New Mexico. Phone Tuxedo

CHEAP---The best bargain in the world today is a classified ad in these columns which will go into practically every home in this area for as little as 50¢.

YOU ARE one of hundreds who read the classified ads in The Plains Record. Your message can appear here for as little as 50 cents.

TAKE soil away the Blue Lustre way from carpets and upholstery. It's the finest. Rent our Blue Lustre electric shampoo machine. Cogburn-Young.

CARD OF THANKS
I wish to thank members of the Plains Fire Department for fighting the fire at my place last Thursday afternoon. Deeds of this nature make Yoakum County the best place in the world to live.
Vance Brown

CARD OF THANKS
We shall forever be grateful to all those who showered us with clothing and supplies following the fire which destroyed our trailer home.
James and Anita Diamond

Short Rib Menu Is Different, Economical
In planning your menus for the next week, why not try to include a cut of beef that you usually don't serve? Perhaps beef short ribs are one of these meat cuts that appear less frequently at your house.
Serve them soon, for they are economical . . . short ribs are on the list of less-demanded meat cuts. They are taken from the thinnest section of the ribs and contain alternate layers of lean and fat and a piece of the rib bone. Reba Staggs, authority on meat cookery, says that beef short ribs should be cooked by moist heat.

Short Ribs with Corn Meal Dumplings
3 pounds beef short ribs
2 tablespoons lard or drippings
3 cups water
1 package (1 1/2 ounces) dehydrated onion soup
1/2 cup diced celery
1/4 teaspoon thyme
Corn Meal Dumplings
Brown short ribs on all sides in lard or drippings. Pour off drippings. Add water, dehydrated onion soup, celery and thyme. Cover tightly and cook slowly 2 hours, or until tender. Drop Corn Meal Dumplings by spoonfuls on short ribs. Cover tightly, steam for 15 minutes. Thicken liquid for gravy, if desired. 4 to 6 servings.

Deep Breaking
12 TO 15 INCHES
\$4.00
15 TO 18 INCHES
\$5.00
Contact
M. A. Hinson
RT. 1
BROWNFIELD
PHONE 3983

Nutritious Liver Is Tasty With Cheese Topping

It's common knowledge these days that liver is one of the most nutritious foods. Nutritionists emphasize the importance of serving this variety meat often.
Growing youngsters especially need liver, although it may not be one of their favorite meats. By varying the methods of preparation, they will surely come to the table more eagerly.
Liver Bacon Fromage is a tasty liver variation with a topping of bacon and grated cheese. A touch of garlic salt is added to season.
Reba Staggs, home economist, states that liver is an excellent source of high quality protein, Vitamin A, riboflavin, niacin, iron, phosphorus, and other essential vitamins and minerals.

Such top food value at an economy price is reason enough for serving liver frequently. And it's good eating, too!

Liver and Bacon Fromage
4 slices bacon
1 pound beef liver, sliced 1/2 inch thick
3 tablespoons flour
1/2 teaspoon salt
1/4 teaspoon garlic salt
1/4 teaspoon pepper
1/2 cup grated American cheese
Cook bacon until crisp. Remove from frying-pan and drain on absorbent paper. Break into small pieces. Mix together flour, salt, garlic salt and pepper. Dredge liver in seasoned flour. Sprinkle any remaining flour over liver. Brown slowly on both sides in bacon drippings. Sprinkle grated cheese and bacon pieces on liver. When cheese is slightly melted, remove liver to a hot platter and serve immediately. 4 servings.

Will Your Grandchildren Salute the Soviet Flag?

"Never" you say. *But are you sure?* Nikita Khrushchev has said "Your grandchildren will grow up under Communism." Will you allow the Free World to die? Khrushchev says "Yes." RADIO FREE EUROPE says "No!" Here's your chance to stop the spread of Communist lies. Keep RFE on the air! It's the American people's counter-voice to Communism.
Mail your contribution to:
RADIO FREE EUROPE FUND
P. O. Box 1961, Mount Vernon 10, N.Y.
Published as a public service in cooperation with The Advertising Council.

The Plains Record

Published each Thursday at Plains, Texas

SUBSCRIPTION RATES:
\$3 a year in Yoakum and Terry Counties
\$4 a year Elsewhere

Foil Wraps Open-Face Sandwiches

We've long cherished ready-to-serve meats for convenience in making tasty lunch-box sandwiches. But that's only the beginning of the uses for these handy meats. With a variety of them in your refrigerator you're ready for any number of serving needs . . . whether it's a club luncheon, a family meal, or a more elaborate party with canapés and hors d'oeuvres.
Meat Salad Hideaways will be a big success with the gang at

any casual gathering. Prepared in smaller quantities for your family, but with enough for seconds, these open-faced sandwiches will be a welcome treat for Sunday night supper.
Canned luncheon meat is chopped and combined with cheese, olives, eggs and onion.
Mayonnaise and catchup is blended in and the mixture is spread on frankfurter buns. Reba Staggs, home economist, recommends these sandwiches as ideal for lunch, supper, parties and snacks. After a quick 10 minutes in a hot oven, they're ready to satisfy any hungry appetite.

Meat Salad Hideaways
1 can (12 ounces) canned luncheon meat, finely chopped
1/2 cup grated cheddar cheese
1/2 cup chopped stuffed olives
2 tablespoons finely chopped onion
2 hard-cooked eggs, chopped
3 tablespoons mayonnaise
3 tablespoons catchup
12 frankfurter buns
Combine meat, cheese, olives, onion, eggs, mayonnaise and catchup. Mix well. Spread each bun with approximately 1/2 mixture. Wrap each sandwich in foil and bake in a hot oven (400° F.) for 10 minutes. Yield: 12 sandwiches.

WE WILL BURY YOU!
Will you allow the Free World to die? Khrushchev says "Yes!" RADIO FREE EUROPE says "No!" Here's your chance to stop the spread of Communist lies. Keep RFE on the air! It's the American people's counter-voice to Communism.
Mail your contribution to:
RADIO FREE EUROPE FUND
P. O. Box 1961, Mount Vernon 10, N.Y.
Published as a public service in cooperation with The Advertising Council.

Our Sincere Congratulations

to the

4-H Club Boys and Girls of Yoakum County

on the

ANNUAL JUNIOR LIVESTOCK SHOW

FEB. 17 & 18

Moore & Oden

Dry Goods—Ready-to-Wear

BEST BRANDS FOODS LOWEST PRICES

CHUCK ROAST 53¢ SHURFINE 13 oz.
Peanut Butter 45¢ DOLE NO. 2 SLICED
Pineapple 37¢

PRIDE 59¢ FURNITURE POLISH 8 oz.	TISSUE 33¢ SOFLIN BATHROOM 4 ROLL PKG.
BEANS 29¢ LIBBY'S DEEP BROWN 14 oz.	JUICE 29¢ LIBBY'S TOMATO 4 1/2 oz.

SHURFINE, 5 lbs. FLOUR 39¢
CELLO CARTON Tomatoes 19¢
BABO, 2 for 25
SHURFINE SALT 9¢
AUNT JEMIMA, 10 lbs. Corn Meal 73¢
PET INSTANT 8 qt. Dry Milk 67¢
200 COUNT Kleenex, 2 for 25¢
CELLO Carrots, 2 for 25¢
SHURFRESH, 1 lb. CRACKERS 19¢
SHURFINE, 303 can Cherries 23¢
GREEN Onions, 2 for 15¢

PLAINS 1-2 GAL. Mellorine 49¢
RATH OR WILSON
Canned Ham, 3lbs. 2.89
RATH BLACK HAWK
BACON 1 lb. 63¢

HAWKINS FOOD MARKET
PLAINS "Your Friendly Cash Grocery" GL 6-3434