

News File
HC65m, Box 201
Oark, AR 72852-9501
8/27/2006
17

Volume 36, No. 35

Published Every Sunday at Muleshoe, Bailey County, Texas 79347

Sunday, August 24, 1997

PAGE 1

A QUICK READ OF LOCAL NEWS

Lazbuddie on the air

LAZBUDDIE — Lazbuddie High School will be one of the featured teams in High School Extra's six-man football preseason preview.

The Arlington-based TV show covers high school sports across the state and airs on Fox Sports Southwest.

The Longhorns, who return 10 starters from a 10-2 playoff team, are ranked second in state.

TV film crews stayed during the whole two-hour workout and interview several players. Scisson was told the preseason show would air sometime next month.

"When you have some success, you kind of expect something like this to happen," Scisson said. "I just hope we don't get a big head."

High School Extra airs on Friday night and twice on Sundays, at 11 a.m. and midnight.

Ghost still a mystery

The story about the ghost that haunts the Bailey County Jail won't die.

Originally reported in the Journal in April, the off-beat story made the national wire service and eventually ended up in Newsweek magazine.

The latest to show interest is "Unsolved Mysteries."

County Sheriff Jerry Hicks said he received a preliminary call Tuesday from a representative of the long-running NBC show.

The investigative series was looking at the possibility of doing a story about alleged jail and prison ghosts, Hicks was told.

When Hicks told the Journal about the alleged ghost sightings by prisoners, he thought it would make for interesting local reading.

The real mystery, he said, is why it continues to draw so much attention.

LOOKING AHEAD

'Meet the Mules' night Tuesday

Muleshoe High School is hosting "Meet the Mules" night 7 p.m. Tuesday at Benny Douglass Stadium.

The 1997 high school football, cross country and cheerleader squads and coaching staffs will be introduced.

The Mighty 'M' Band will also perform.

An open house will be held in the new band hall following "Meet the Mules."

MEETINGS

Monday — Muleshoe City Council, 6:30 p.m., City Hall. Items: budget workshop. Solid waste contract.

Monday — Muleshoe Independent School District Board of Trustees, 7 p.m., MISD business office. Items: Public hearing and adoption of 1997-98 budget.

Tuesday — Muleshoe Area Hospital District Board, 7 p.m., Muleshoe Area Medical Center. Items: Set the 1997-98 tax rate and adopt budget.

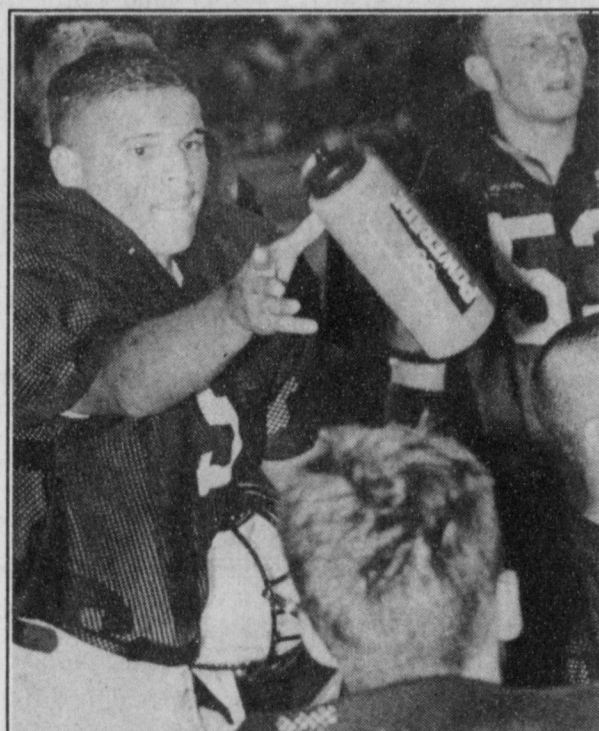
LOCAL WEATHER

	High	low	Rain
Wednesday	90	64	—
Thursday	93	65	.11
Friday	94	65	—
Year to date			17.22

ALL TEMPERATURES AND PRECIPITATION READINGS ARE FOR THE PREVIOUS 24 HOURS.

EXTENDED FORECAST

Partly cloudy with a chance of afternoon and evening thunderstorms through Tuesday. Lows in the 60s and highs around 90.



B.J. Gonzales passes the Poweraide

Mules get physical

By RICK WHITE
Managing Editor

FLOYDADA — The Muleshoe Mules found out what a year in the weight room can do.

Muleshoe consistently knocked Floydada off the ball and controlled the line of scrimmage Thursday during a two-hour scrimmage, which ended with both teams scoring twice.

Muleshoe showed the ability to move the ball consistently on the ground during the 80-play scrimmage, but still

proved vulnerable to the big play.

Junior tailback Gilbert Vela scored twice for Muleshoe. Floydada scored on two long passes, including on the final play of the night.

"I was pleased," said second-year Muleshoe head coach David Wood. "We were so much more physical than last year. We had some breakdowns, but I felt we dominated the scrimmage."

Wood also was pleased with the Mules' play in the junior

varsity and freshman scrimmages.

The teams alternated in 10 play series, starting at their own 30-yard line. The ball would be returned to the 30 if the teams failed to get a first down.

There were no special teams play.

Fullbacks Douglas Field and Greg Pena ran well behind senior guards Ricko Aguirre and Rodney Alanis and junior center Ismael "Itchy" Nunez.

see **MULES** on page 4



Three Way sophomore Daniel Reeves looks to make a block during Wednesday's practice

JOURNAL PHOTO BY RICK WHITE

ROUGH ROAD TO PLAYOFFS

■ Three Way competes in one of state's toughest districts

By RICK WHITE
Managing Editor

MAPLE — Three Way High will have to slip through a tough double-team block this year if it hopes to reach the state playoffs out of District 3-1A.

Blocking the Eagles' path are Lazbuddie and Whitharral, both ranked in the top 5 in at least one six-man football poll.

Playing in one of the toughest districts in the state is something second-year Three Way head coach Danny James said he can't worry about.

"Every year, you know who ever gets out of our district has a shot of going a long way," said

James, who also doubles as school principal.

Three Way hasn't qualified for the playoffs since 1987

James led the Eagles to a 7-3 record and a third-place finish in the district last year.

"I felt we had as good a shot as anybody last year," James said. "We just fell one game short."

In the normally wide-open six-man game, James remains a staunch conservative, preaching ball-control, mistake-free football. He believes shootouts belong in spaghetti Westerns.

"We just going to line up and run it at you," James said. "And if the defense moves up, we'll try to

chunk one over their heads."

The Eagles lost four seniors to graduation, including Jesus Perez, who was named all-state as a defensive back.

Perez was also one of the top offensive players in the league, splitting time between quarterback and running back.

"We don't have that kind of athlete this year," James said. "He could make things happen."

Three Way returns three starters on both offense and defense.

Senior Cody Wilson (6-0, 165) steps in at quarterback. James calls him one of the most consistent

see **THREE WAY** on page 4

Sorghum fungicide found in High Plains

LUBBOCK — Sorghum ergot, a fungal disease that attacks grain sorghum, has arrived on the Texas high Plains, one of the state's major areas of the crop's production.

Since Friday, three infestations have been identified and a fourth suspected site has been reported, said Dr. Harold Kaufman, plant pathologist with the Texas Agricultural Extension Service here.

Ergot was identified Aug. 15 in a forage sorghum field on the Crosby-

Floyd County line by Ron Graves, Extension Service integrated pest management agent. Kaufman identified another site the next day southwest of Lubbock. The same day, a crop consultant verified the disease in a site west of Plains in Yoakum County. A fourth site was reported Monday near Tulia, but hasn't been verified, Kaufman said.

The disease first appeared in Texas in March near Progresso, in the Lower Rio Grande Valley. Dr.

Thomas Isakeit, Extension Service plant pathologist at Weslaco, said the fields there apparently had been infected in late February or early March. By last month it had been identified in fields around Hillsboro and Uvlade.

Sorghum ergot produces spores which are airborne and can be quickly carried great distances by wind and rain.

see **ERGOT** on page 4

MHS band director banks on enthusiasm

By TERESA STONE
Journal staff writer

Anthony Gonzales views taking over as the Muleshoe High School band director as coming home.

It's the first job as a high school band director.

"It's nice to be home," said Gonzales, a



Gonzales

1987 graduate of Clovis High School. "It's very important to me to be close to family."

It was his father who passed his love of music down to him, Gonzales said.

Gonzales came to Muleshoe with quite a bit of respect for the band program after serving as assistant band director at A&M Consolidated High School in College Station, the head director at Lincoln Middle School in Abilene, and the head director at Workman Jr. High in Arlington.

"The band has consistently done well," Gonzales said. "I expect to keep up that tradition."

This year the Mighty 'M' Band will be participating in competitions in Lubbock and Denver City. A trip to an Albuquerque competition is also being seriously considered.

Gonzales is a baritone player and low brass specialist. He earned his music degree from then West Texas State University.

Another influence in Gonzales' life was his sixth-grade Clovis band teacher, Norville Howell. A former Muleshoe band director, Howell taught Gonzales the importance of being enthusiastic about making music.

Gonzales hopes to pass this on to his students.

"I get really excited when the kids are doing well. The kids can sense this. They feed off of my excitement. Once a

see **BAND** on page 6

AREA BRIEFS

Cemetery Association meeting

The Bailey County Cemetery Association will hold its annual business meeting and a workday Aug. 30.

The meeting will be 10-11 a.m. at the Bailey County Coliseum in the southwest meeting room.

Reports and election of officers will be conducted.

An afternoon work session at the cemetery is planned for 1:30 p.m. weather permitting.

Cleaning up grass trimmings and general maintenance will be conducted.

It is requested that you bring your own weed trimmer.

For additional information contact Gary Gilleland at 272-5268 or David Wyer at 272-4864.

South Plains College fall registration

South Plains College is holding evening registration for fall classes Thursday, Aug. 28 from 4-6:30 p.m. in the Women's Gym.

A registration permit is not required. Late registration will be Sept. 2-8. Evening classes in 24 college programs will be offered.

For more information, contact the SPC Office of Admissions and Records at 894-9611, ext. 2374 or 2375 or the SPC Office of Continuing Education at ext. 2341.

First Baptist offering bible study

First Baptist Church of Muleshoe is sponsoring an after school children's ministry.

Kid's First will start Tuesday, Sept. 9 and be held every Tuesday from 3:30-4:45 p.m. at the First Baptist Church Activity Center.

Children in grades 1-5 are invited to attend. The program will include bible study, activity time, recreation and refreshments.

For more information, call 272-4224.

Breast cancer screening Sept. 12

A Breast Cancer Screening Clinic will be held at Muleshoe Area Medical Center on Sept. 12.

Participants will receive a low-cost screening that includes a mammogram and instruction in self-examination by a registered nurse.

Total cost is \$75. Funding is available through the Texas Department of Health for Texas residents who qualify for assistance. All exams are done by appointment only.

For more information, call (806)359-4673 or 1-800-377-4673.

Muleshoe Cub Scouts meeting

The Muleshoe Cub Scouts are having a meeting for boys interested in joining.

The meeting will be at 7 p.m. Tuesday, Aug. 26 at the Scout Hut. Parents are invited to attend with their children.

For more information contact Bonnie Johnson at (806)385-7527.

Eastern NM Gospel Opry Sept. 6

CLOVIS — The Eastern New Mexico Gospel 'Opry' is scheduled for Sept. 6.

The show will feature Brenda Copeland, Charla Corn, A.J. Helm, Denim and Roses, Ginger Tull, Frances Davis, Mayme Day, and from Lubbock, Living Proof.

Live backup music will be provided by Cold Country.

Don't miss the Gospel Opry which will be at Lyceum Theatre, 411 North Main Street and begins at 7:30 P.M..

Advance tickets are available at Portales Pizza Hut, Lyceum Barber Shop, Cribb's Western Wear, Larry's, and at the Clovis/Curry County Chamber of Commerce.

For more information call Holly Rand at 505-763-3788 or visit the web site at www.3lefties.com/opry.

Ramirez attends Lions camp

KERRVILLE—Adam Ramirez, 12, son of Albert & Mary Ann Ramirez of Muleshoe, recently attended the Texas Lions Camp in Kerrville.

Sponsored by the Levelland Evening Lions Club, Ramirez participated in summer camp activities including horseback riding, swimming, field sports and a challenge course program.

Established in 1949, the Texas Lions Camp has given more than 40,000 physically disabled children, between the ages of 7-16, the opportunity to experience the joys of summer camp.

City purchases software system

By RICK WHITE
Managing Editor

The Muleshoe City Council Tuesday approved the purchase of a new computer software system and filled an open position on the economic development board during a regular meeting.

The system includes \$21,000 in billing and bookkeeping software, servers and printers, a maintenance contract and two hand-held meter readers.

The City will pay Incode of Lubbock approximately \$2,200 a month in a three-year lease-purchase agreement, \$1,000 a month more than it is paying for their current system.

The hand-held computers will be used for reading city water meters, allowing information to be entered on-site and then downloaded directly into the main computer.

"Anytime we can eliminate the chance of human error, it's a service to the customer," City

manager James Fisher said.

Fisher said it will also save time. Meter readings are currently entered by hand.

Wanda Hooten, president of the Muleshoe Industrial Foundation, was named to the Muleshoe Economic Development Board. She replaces J.B. Douglas, who recently moved away.

"I think this will help both boards work together," Fisher said while recommending Hooten.

The City Council oversees the Economic Development Board while the Industrial Foundation is a private entity.

Other board items included approving a Muleshoe Public Library policy manual and granted a request from the First Assembly of God of \$500 for advertising for a softball tournament held last weekend.

The money comes from the city's hotel/motel tax fund.



Reeves new Methodist minister

Brad Reeves is the new minister for First United Methodist Church in Muleshoe.

Sunday will be Reeves' first opportunity to preach to his new Christian family.

Reeves, his wife Sherrie, and their two children Andrew, 13, and Christie, 10, moved from Merkel, Texas where Reeves was a pastor for four years.

Reeves earned a Masters of Divinity from Asbury Seminary in 1983.

Reeves earned a Bachelor of Science in Crops/Agronomy from Texas Tech University prior to entering the seminary.

Finding common ground in his diverse educational choices Reeves said, "I'm still planting seeds of one kind or another."

Reeves has been ministering for the past 14 years across west Texas in Merkel, Borger, Earth and Darrouzett.

MULESHOE HERITAGE FOUNDATION NEWS

The Muleshoe Heritage Foundation Board met Aug. 18 at the Muleshoe Depot.

President Robert Shafer, called the meeting to order and led a discussion about the outdoor drama "Keepers of the Legends."

The board served a barbecue meal each night. It was suggested that next year a simpler meal, such as hot dogs, be served in order to make more profit.

Also, it was noted that Student-Community Action Club (SCAC) members were invaluable, as they set up chairs and were willing to help wherever needed.

Members voted to have the contents of the Janes ranch house and the old cook house appraised and insured.

Another motion was passed to check out the computer which may be given to the Center, or otherwise, to buy a computer in order to update records at the Center.

It was noted that the security system the Center recently purchased should be installed

by the end of the month. The UPS strike caused a delay.

Flyers about the Muleshoe Heritage Center are being designed and will soon be placed throughout the area.

People from the surrounding area said they were amazed that such a unique heritage center is located here, and yet they were not aware of it.

The Heritage Foundation is helping sponsor the "Tour de Muleshoe" which will be held Aug. 30.

The bike ride will begin at the Muleshoe Civic Center at 9 a.m. with riders coming from all over the United States.

The city of Muleshoe bought sacks for bike riders and a donation from the First Bank was received.

Souvenir T-shirts will be given to each rider.

A new addition this year will be the Lance Armstrong qualifying race.

This race for all ages will begin at Green Bros. on HWY 70 at 5:00 p.m. on Saturday.

This entails a separate fee.

HOSPITAL ADMISSIONS

The Muleshoe Area Medical center has reported admitting the following patients:

Aug. 15 — Santos Cuevas, Manuel Dehoyos, Juanita Jarman, Virginia Estrada

Aug. 16 — Santos Cuevas, Manuel Dehoyos, Virginia Estrada

Aug. 17 — Santos Cuevas, Manuel Dehoyos, Frank Odell, Virginia Estrada

Aug. 18 — Santos Cuevas, Maria Luisa Orozco, Frank Odell, Ina Wilemon, Tori Tosh, Virginia Estrada

Aug. 19 — Santos Cuevas, Bryan Garcia, Maria Luisa Orozco, Clementina Rivera, Paula Toscano, Roman Franco, Ina Wilemon, Tori

Tosh, Frank Odell, John Maddox

Aug. 20 — Santos Cuevas, Bryan Garcia, Miguel Martinez, Clementina Rivera,

Paula Toscano, Ina Wilemon, Tori Tosh, Grace Scarbrough, Frank Odell, John Maddox

Aug. 21 — Santos Cuevas, Bryan Garcia, Miguel Martinez, Clementina Rivera, Paula Toscano, Ina Wilemon, Tori Tosh, Grace Scarbrough, Elva Marts, Frank Odell, John Maddox, Fernando Mora.

SIMNACHER AG, INC.

Experts in the harvesting and sowing of native grasses

If you have any native grasses to harvest or sow, such as Blue Grama, Sideoats Grama, Plains Bristlegrass, Vinemesquite, Western Wheatgrass, Switchgrass, Big or Little Bluestem, or other native grasses, Please Call!

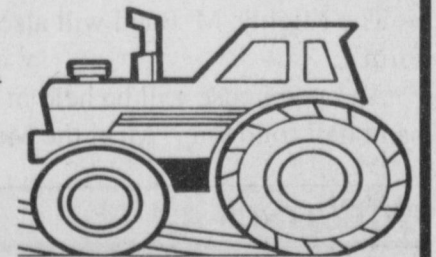
Most native grass seeds available at wholesale prices when purchased with turn key sowing jobs

DARWIN SIMNACHER
(505) 762-7817
FAX (505) 763-9115

VINCE SIMNACHER
(806) 946-3461
FAX (806) 946-3604

THOMAS SIMNACHER
(806) 285-2491

References Available Upon Request



All the Right Reasons to Shop North Plains Mall for Your Back To School Shopping Needs!

Be True To Your School - Turn in your North Plains Mall shopping receipts to the mall office, each mall receipt will add up for cash prizes for your favorite school. Each \$1 is worth 1 point towards the shoppers favorite school.

First Place: \$500 • Second Place: \$500 • Third Place: \$500 • Fourth Place: \$500 • Plus Several Gifts and Awards

One More reason to shop North Plains Mall: For every \$500 in mall receipts you receive a \$5 gift certificate. Bring your receipts to the mall office. Limited to one per customer. Deadline for receipts September 30, 1997

North Plains Mall will have weekly drawings for free gifts from the mall merchants. Register for drawings at any store in the mall.

North Plains Mall and Taco Box present Today's Kids - Birthday Club where your child will receive a free birthday gift! Sign up will start July 28th

2809 N. Prince
769-2308
10-9 Mon - Sat 12-6 Sunday
North Plains Mall

BAND

From page 1

band has enthusiasm there is no stopping it from accomplishing anything," Gonzales said.

Gonzales is adding a Spanish flare to the marching season, but doesn't want to limit the band to any one kind of music.

"Bands are about making music and a band should be able to play everything," he said.

THE JOURNAL
272-4536

Bailey County Journal USPS 040-200

Established March 31, 1963. Published by Triple S Publishing, Inc.
Every Sunday at 304 W. Second. Box 448, Muleshoe, TX 79347.

Second Class Postage paid at Muleshoe, TX.
POSTMASTER: Send address changes to the Bailey County Journal, P.O. Box 449, Muleshoe, TX 79347.

We are qualified members of:
Panhandle Press Association, National Newspaper Association,
West Texas Press Association and Texas Press Association

WEST TEXAS PRESS
ASSOCIATION

PPA

Panhandle Press Association

Scot Stinnett, Publisher
Lisa Stinnett, Vice-President/Comptroller
Rick White, Editor
Jessica Orozco, Classifieds
Pat Durben, Advertising

© 1990

SUBSCRIPTIONS: Muleshoe Journal and Bailey County Journal
By Carrier Yearly - \$22.00
Bailey County — by mail - \$24.00
Elsewhere - \$26.00
Advertising Rate Cards on Application

Advertisers should check their ad the first day of insertion. The Journals will not be liable for failure to publish an ad or for a typographical error or errors in publications except to the extent of the cost of the ad for the first day of insertion. Adjustment for errors will be limited to the cost of that portion of the ad where the error occurred.

Stone records two new albums

By **TERESA STONE**
Journal staff writer

A "good old fashion Southern Gospel singer" is how Jack Stone describes himself.

The pastor of the First Assembly of God church of Muleshoe, who claims "he just opens up and lets her fly," recently signed a recording contract with Crimsong Productions in Arkansas.

Stone and his wife Debbie traveled to Russellville, Ark. early this month to work on the new gospel album.

Before the three-day trip was finished, Stone had recorded enough songs for not just one, but two new albums.

The albums include old gospel favorites, as well as, new Christian songs.

One of the songs Stone recorded, "Old Gospel Ship," was included in a compilation CD that was released last week to more than 500 Christian radio stations and 200 churches of different denomi-

nations.

"This is a dream of Jack's and this dream couldn't have come true without the support of our church family," Debbie Stone said.

Wanda Kemp of Muleshoe provides the harmony and background on a song called "Heaven." Debbie plays the bass guitar on a few songs.

Local photographer Lonnie Adrian photographed Stone at two Muleshoe locations for the upcoming albums.

The lighted cross inside Richland Baptist Hills Church was the backprop for the album "For His Glory."

The front door of Mr. and Mrs. L.B. Hall's home was used for the cover of the second album "The Keeper of the Door."

Stone will perform Sept. 25 at the South Plains Fair in Lubbock.

No release date has been set.



Recording artist

Jack Stone, pastor of First Assembly of God church, recently recorded two new Christian music albums. This photo will be used on one of the album covers.



1225 W. American Blvd. • Muleshoe • 806-272-4251 or 800-43207616

1995 Ford Supercab XLT (V-8, Auto)	\$14,900
1995 Ford F150 (V8, Auto)	\$13,900
1992 Ford Explorer (4 door, 4x4)	\$11,900
1994 Ford F150 (Auto)	\$10,900
1995 Dodge Intrepid	\$10,500
1995 Nissan XE	\$9,900
1991 Ranger Pickup	\$5,900
1993 Mercury Topaz	\$5,900

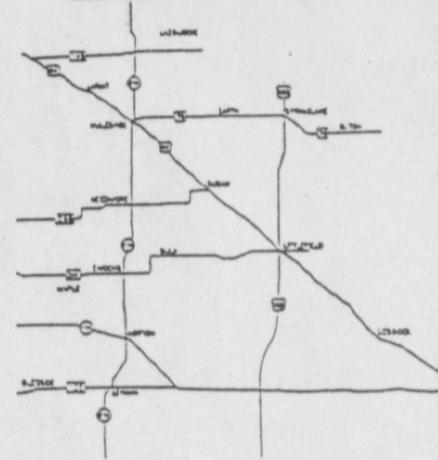
All Vehicles Listed have Low Miles & Ford Warranty.

We Want To Be Your Car or Truck Dealer!

FIVE AREA PAGING AVAILABLE NOW!



PRICE PLANS START AT \$6 PER MONTH



FIVE AREA AND WEST PLAINS SERVING AREA

5 COVERAGE PLANS TO CHOOSE FROM

1. LOCAL AREA COVERAGE
2. EXTENDED SOUTH PLAINS
3. TEXAS STATEWIDE.
4. REGIONAL
5. NATIONAL

CALL FIVE AREA SYSTEMS FOR INFORMATION
272-5533 OR 1-800-741-6925

ERGOT

From page 1

"Right now it's in the honeydew stage," Kaufman said of the infestations found on the High Plains.

"In this stage, it has sticky spores, but these spores will dry soon and the next shower that comes across it will turn it into the airborne stage and it will go everywhere."

Weather forecasts for the Lubbock and Amarillo areas were calling for probable thunderstorms and cooler temperatures Monday Tuesday.

The disease reduces grain yields, damages the quality of seed and is a threat to lucrative export markets. Quarantine restrictions are imposed against

it by many countries.

"This will probably not be a problem for regular commercial growers, unless they planted late," Kaufman said. "This fungus attacks (sorghum) flowers that aren't pollinated. The commercial sorghums pollinate themselves."

The problem will be with growers of seed used for planting the commercial crops, he said. "They are dealing with male-sterile female lines where you have strips of pollinators in the fields with bays of female lines between them." In the middle of the bays where the plane hasn't gotten to the flowers very well is where the major problem will be, he said.

The South Plains and Panhandle has an estimated 135,000 acres in sorghum seed production and probably another 500,000 acres in commercial sorghum production, said Dr. Darrell Rosenow, sorghum breeder with the Texas Agricultural Experiment Station at Lubbock. He said the ergot hasn't yet appeared in breeding or research plots at the Texas A&M University Agricultural Research and Extension Center here.

Sorghum ergot can be treated with the fungicide Tilt, under a crisis exemption granted earlier by the Texas Department of Agriculture, Kaufman said.

"Some seed companies have been waiting to treat, because treatments is expensive and the sorghum ergot hadn't been reported very close to us. They need to quit waiting, because it's here. If the predictions of rain and cooler wether materialize, sorghum that is flowering will be very susceptible.

"It is of great concern that seed production fields be sprayed," Kaufman stressed.



Ready to go

Several of these Muleshoe bike riders picture at the Muleshoe Heritage Center are planning to take part in the third annual Tour de Muleshoe Saturday, Aug. 30.

Tour de Muleshoe is bike ride for all ages

The third annual Heritage Foundation Tour de Muleshoe will begin at 9 a.m. Saturday, Aug. 30 at the Bailey County Coliseum.

Interested parties can register the day of the race between 7-9 a.m. at the coliseum.

With three tours rolling along scenic farmland and sandhills, bike riders can chose their level of participation: 10 miles, 40 miles, 100K.

Since this is not a race, riders will be encouraged to go as fast or as slow as they want.

The ten mile tour is flat with good shoulders.

The 40 mile and 100K rides begin with small rolling hills, followed by scenic sandhills, then small smooth ups and downs.

Support wagons will be furnished providing cold drinks, water, fresh fruit, shade and encouragement.

All participants are required to wear ANSI or Snell approved helmets.

On the morning of the race, all participants will be given a water bottle, ride number, route map, souvenir T-shirt and a ticket to the Spaghetti Dinner.

Extra tickets for the dinner can be purchased at the site.

Entry fee for the tour is \$20 per rider.

The tour is sponsored in part by Leal's Mexican Restaurant and McDonald's

Muleshoe's annual Mule Days Celebration

Saturday & Sunday, August 30-31 Labor Day Weekend

★ Project Graduation Million Dollar Hole-in-One Shootout

Saturday, August 30, 1 p.m.

Final Qualifiers will shoot on 8-30 at 1 p.m. for \$1 million! Unlimited attempts to qualify, balls are \$2, 3 for \$5, 7 for \$10

Putting Contest qualifying rounds 8-29, 3-8 p.m. and 8-20, 8 a.m.-Noon Final round begins at Noon, 8-30. 20 qualifiers have chance to win \$25,000 Sponsored by Lowe's Marketplace, Pay-n-Save, Leal's and Pizza Hut



★ Heritage Foundation Tour De Muleshoe

Saturday, August 30, 9 a.m.

The third annual Tour De Muleshoe rolls along scenic farmland and sandhills. It's not a race, enjoy yourself! Each entrant receives a ticket to the spaghetti dinner, from 12:30 a.m. to 20 p.m 100K, 40-Mile and 10-mile tours available.



★ 5th annual Muleshoe Rotary Club Team Roping

Saturday & Sunday August 30-31

Dusty Rhodes Arena is the site for one of the largest teamropings in the area. Saturday, No. 11, \$1,000 added. Sunday, Nos. 9, 8, 6, 5. Cliff Allen saddles to No. 6 winners; Running P saddles to Nos. 9, 8, and 5 winners.



★ Joe's Boot Shop World Championship

On-Foot Goat Team Roping

Saturday, August 30, all day

Eight age groups, no entry fees for this annual event. Practice runs Friday, August 29. Competition all day, Age group finalist rope for Floyd Mosier handmade world champion buckles at 5:30 p.m. Hats awarded to all age group winners and runners up. **Mechanical Mule Roping, \$1,000 prize** at 5:30 p.m. \$10 entry fee.

★ Mule Days Street Dance

Saturday, August 30, 9 p.m.-1 a.m.

100 block of Main Street. Featuring KKYC disc jockey. Sponsored by the Muleshoe Chamber of Commerce and Agriculture, Higginbotham-Bartlett Lumber and Bailey Gin Company.



Fritz and Mary's Amusements! • Saturday, August 30, Mule Lot
Orbitron and the Tiger Moonwalk. Try your skill in the Baseball Strike Zone and Football Toss. Hours of fun for the entire family!

Member
1997
TPA
TEXAS PRESS
ASSOCIATION

BAILEY COUNTY JOURNAL

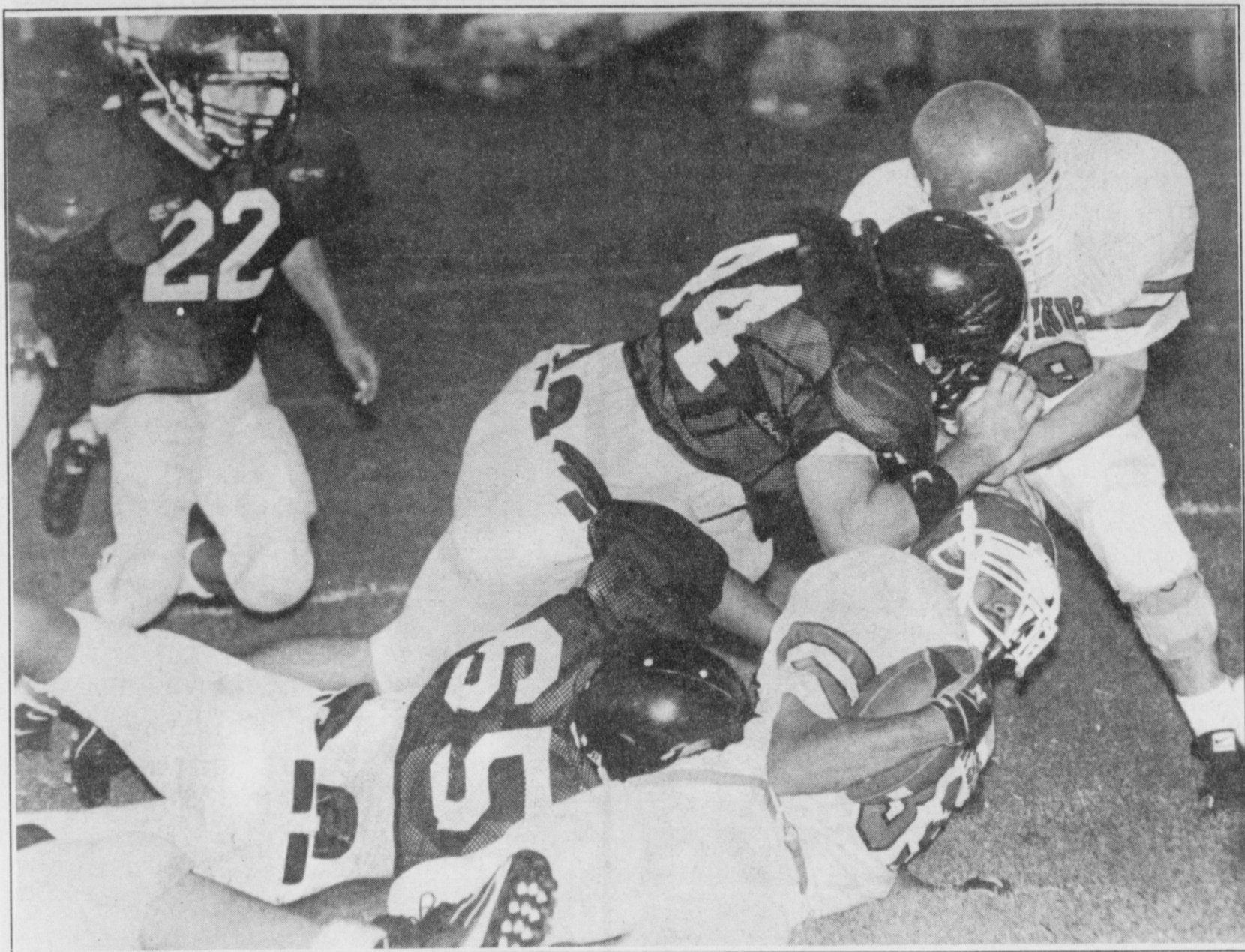
PPA
Panhandle Press Association

SPORTS EXTRA

Volume 36, No. 35

Published every Sunday at Muleshoe, Bailey County, Texas 79347

Sunday, August 24, 1997



Finishing touch

Muleshoe's Grg Pena (44) helps Michael Cortez (65) tackle a Whirlwind ball carrier Thursday during a preseason scrimmage at Floydada. The Mules host Morton this Thursday in their final scrimmage before opening their season Sept. 5 against Portales.

MULES

From page 1

Vela showed good quickness and balance and the ability to get outside.

Muleshoe scored on its second and third series.

Vela scored on a 12-yard run on the second series. The score was set up by a long pass play from backup quarterback Breck Brown to tight end Joe Garcia. Brown left the scrimmage later with a minor neck injury.

Vela capped a long drive with a 22-yard run in the third series.

Defensively, things started frighteningly similar to last year when Muleshoe gave up countless big plays.

Floydada ran sweeps on its first two plays and almost scored both times. The Whirlwinds ran out of an unbalanced line both plays, but it was adjusting to Floydada's speed that caused the biggest problem, Wood said.

"We just don't see that kind of speed in practice," Wood said. "So we're going to have to learn to play against it during scrimmages and games."

Muleshoe did a much better job against the sweep as the scrimmage wore on, but perimeter defense will be a season-long concern.

"We just don't have enough speed to make up for taking a false step," Wood said.

Both of Floydada's scoring plays came on quick slants.

Wood said it's a correctable problem.

Junior Matt Turney was a major force inside for the Mules. Moved nose tackle, Turney stuffed several running plays. "I think we found a place for him," Wood said.

"Today was a big step toward gaining some confidence," Wood said, "because we've got to play against somebody else and see how much we have improved since last year."

Floydada was improved from last year, according to Wood. The Whirlwinds finished 2-8 last year.

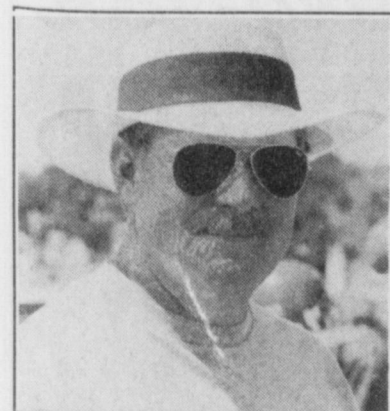
Muleshoe hosts Morton next Thursday in its final preseason scrimmage before opening the season Sept. 5 against Portales at Benny Douglass Stadium.

THREE WAY

From page 1

players he's ever coached.

Senior Randall Rodriguez (5-8, 170) was a two-way starter last year. He'll switch to fullback this year with moving Sammy Soliz (5-7, 150) moving in at tailback. Both will also play in the defensive backfield.



"Every year, you know whoever gets out of our district has a shot at going a long way."

— Danny James
Three Way coach

Junior Jonathan Kindle (6-1, 190) is the top returning receiver and will also play defensive end.

Gerald Perez (6-2, 205) was a part-time starter as a sophomore, will play middle linebacker and end.

Senior Russell Pollard (6-4, 150) is the backup quarterback and a defensive back and senior Gustavo Gutierrez (5-7, 135) plays center.

Sophomores Monty Kirby (5-10, 225), Daniel Reeves (5-10, 170) and Danny Kersey (5-9, 170) will also push for playing time.

THREE WAY EAGLES



Members of the 1997 Three Way Eagles are (back row, from left) Danny Kersey, Cody Wilson, Russell Pollard, Jonathan Kindle and Gerald Perez. (Front row) Daniel Reeves, Sammy Soliz, Gustavo Gutierrez, Randall Rodriguez and Monty Kirby.

"We lost a lot of leadership," James said. "But this bunch seems to be stepping up. We're going to have to come around early. We need the offense to have some success so we can gain some confidence in what we're doing."

It won't be easy. The Eagles' pre-district schedule includes 1996 play-off teams Groom and Wellman, plus New Mexico state champion Melrose.

Three Way, which is one of the smallest football-playing schools in the state, with a high school enrollment of 43, opens its season Sept. 6 with against Buena Vista.

THE JOURNAL
272-4536

Bovina Pump Co., Inc.

Announces New Ownership!

Duke Kirkland and Kirkland Pump Co., Inc. would like to announce their acquisition of Bovina Pump Co., Inc.

WE WILL OFFER FAST, FRIENDLY, QUALITY SERVICE!

Gearhead Repairs • P & R Surge Valve Sales
Pump Sales & Service • House Well Repairs
Welding • Machine Work

Bovina Pump Co., Inc.

(806) 238-1596 • 1100 W. Highway 86 • Bovina, TX

After Hours: Duke Kirkland (806) 481-9513 • Mobile (505) 760-3673

Would like to buy . . .

GOOD! USED APPLIANCES,
USED FURNITURE AND
USED BABY FURNITURE

Joe's Trading Post

217 N. 1st • Muleshoe

Mon-Sat. 9-6 • Sun 10-3 • Closed Tues

Trust Is More Easily Lost Than Established

Trust and respect. They are more easily lost than established.

I had an interesting lunch recently. I was sitting in a fast food restaurant when two brown trucks and brown-clad drivers, ten minutes apart, whipped in. It was the first day after the recent strike that United Parcel Service people were making the rounds. I found the reaction of the restaurant employees and patrons interesting.



Focus On Faith
Curtis Shelburne

Just before the first UPS guy walked in, I overheard one of the employees joke, "Well, I guess they're just making \$30 an hour now!" Laughter.

When the driver came in, he was greeted warmly. "Hey, glad to see you back at work!"

"Thanks! Believe me, it's good to be back at work!"

"Guess you guys are just making \$30 an hour now?" Oops. The joke was sharp enough to draw a little UPS brown blood.

The UPS guy managed a grin and a sardonic, "Yeah, we're making a million a year now."

It wasn't the first time that day the driver had heard something similar. The reaction was about the same when the second UPS guy arrived. And I guess it was pretty much the same all over the country.

Now, may I make this clear, I like these UPS guys (and so do the

restaurant employees). I know them both by name. One delivers my stuff; the other is a longtime friend. I'm very glad they're back at work. I doubt either of them would have chosen to strike. But the strike happened. And I didn't like it. I had trusted UPS and UPS people to get a job done. They always had, and suddenly they didn't. For whatever reasons, good or bad, they, their union, or their company betrayed my trust, trust they had worked hard to earn.

I could trust these guys and their company to be kind, courteous, and efficient, the very best in the business. When a package was being shipped to me by another courier, I hoped I would eventually get it. If UPS was bringing it, I knew I would get it. Other couriers leave Post It notes saying, "Sorry, we couldn't find you." UPS finds me. Like finding me was their business.

I thought I knew that these guys were already very well compensated for their work, that UPS was a great company to work for, a company that proved it's good business to pay top dollar for top people.

For these reasons and more, UPS had great public relations and respect (just the opposite of the Teamster's Union management which has never had or deserved either and which has just caused 15,000 UPS people to lose good jobs). I hope they can re-earn it.

If the stakes regarding trust are so high for a company running brown trucks, how high do you suppose they are for Christian churches and individuals trusted to deliver God's message of love to a hurting world?

Curtis Shelburne is minister of the 16th & D Church of Christ in Muleshoe.

MULESHOE JOURNAL CLASSIFIEDS

806-272-4536 • FAX 806-272-3567

ALLSUP'S ALWAYS Low Prices

ALLWAYS OPEN • ALLWAYS FAST

The Grocery Store for People on the GO!!!



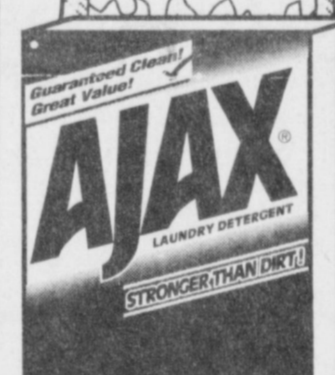
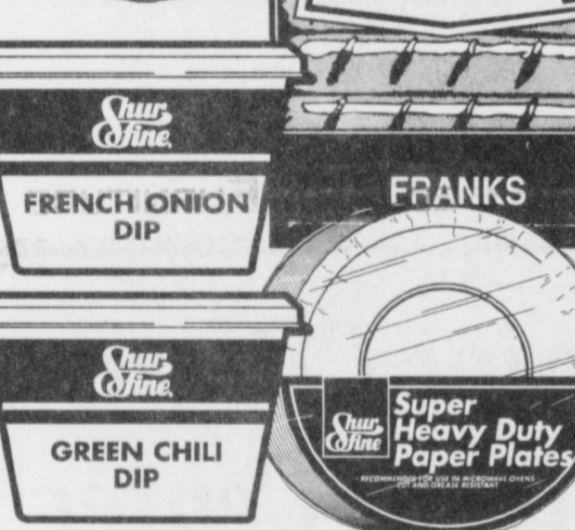
ALLSUP'S 1%
Light Milk
GALLON
\$1.99



ALLSUP'S
Whole Milk
GALLON
\$1.99



SHURFINE
Sour Cream
8 OZ.
89¢

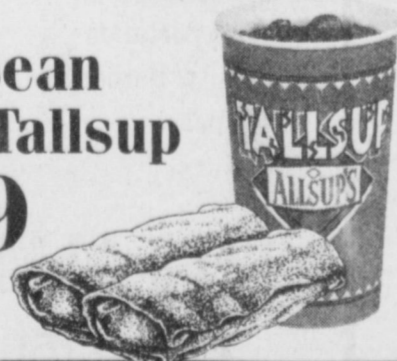


SHURFINE
GRADE A LARGE
Eggs
DOZEN
99¢

SHURFINE HEAVY DUTY Plates 40 CT. 9 INCH \$2.29	SHURFINE FRENCH ONION OR GREEN CHILI Dips 8 OZ. 79¢	SHURFINE HAMBURGER Dill Slices 32 OZ. \$1.09
DECKER Meat Franks 12 OZ. PKG. 39¢	SHURFINE STRIPED Shortbread Cookies 16 OZ. \$1.49	AJAX LAUNDRY Detergent 32 OZ. 99¢
LAY'S® OR WAVY LAY'S® REG. \$2.09 Potato Chips 2 FOR \$3.00	SHURFINE FUDGE Grahams Cookies 16 OZ. \$1.49	SHURFINE Charcoal Briquets 10 LB. BAG \$1.69
SHURFINE Buttermilk QUART 99¢	LANA'S EGG ROLL OR Southwest Roll 2 FOR 99¢	SHURFINE Charcoal Lighter QUART \$1.59

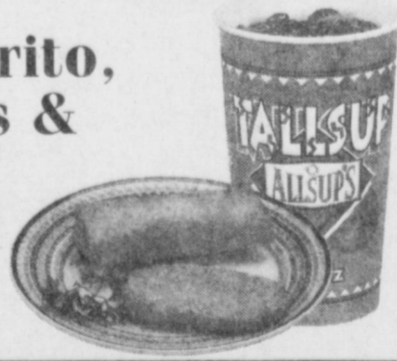
COMBO MEAL DEAL

2 Beef & Bean
Burritos & a Tallsup
\$1.99



BREAKFAST COMBO

Breakfast Burrito,
Hash Browns &
a Tallsup
\$1.99



ALL FLAVORS
Coca-Cola

6 PK. 12 OZ. CANS
\$1.49
3 LITER
\$1.99

SHURFINE
SUGAR
\$1.79
4 LB.

SUNNY
COOKIES
2/\$1
6 OZ. PKG.

SHURFINE
TUNA
79¢
6.9 OZ.

ALLSUP'S
ICE
\$1.09
8 LB. BAG.

CHECK YOUR FRIENDLY ALLSUP'S STORE FOR ADDITIONAL MARKDOWN SPECIALS!

Store #34 • 318 W. American Blvd
272-4862 • MULESHOE

PRICES EFFECTIVE AUGUST 24-30 • OFFER GOOD WHILE SUPPLIES LAST

MULE JUNIOR VARSITY



Members of the 1997 Muleshoe High School junior varsity football team are (back row, from left) Ryan Hodge, Rhett Kirby, John McClanahan, Kyle Hahn, Bret Clements, Matt Conklin, Rhett Green and Judd Glover. (Middle row) Jeff Bruns, Beau Henry, Jesse Reyes, Timothy Madrid, Clint Black, Billy Martinez, Mitch Mason and James Barrett. (Front row) John Michael Martinez, Marcos Soto, Lucio Soto, Russell Byers, Michael Dan Lopez, Tyson Purdy T.J. Hutto and Hadley Henderson.

School Menus

Aug. 25-29

Three Way Breakfast

Monday— Trix, pancake and sausage on a stick, graham crackers, juice, milk. **Tuesday**— biscuit, eggs, assorted cereals, juice, milk. **Wednesday**— oatmeal, Frosted Cheerios, toast, juice, milk. **Thursday**— French toast, Cocoa Puffs, graham crackers, juice, milk. **Friday**— Breakfast pizza, Apple Cinnamon Cheerios, graham crackers, juice, milk.

Lunch

Monday— Sub sandwiches, corn chips, fruit cocktail, milk. **Tuesday**— Taco Bell burrito, broccoli/cheese, salad, peach cobbler, milk. **Wednesday**— cheeseburger, crispy coar fries, apples, milk. **Thursday**— chicken strips, gravy, potatoes, sweet peas, wheat rolls, strawberry yogurt, milk. **Friday**— spaghetti with meat sauce, salad, corn, garlic bread, pineapple, milk.

Muleshoe High & Jr. High Breakfast

Monday— French toast, fruit or juice, milk. **Tuesday**— Breakfast hot pocket, fruit or juice, milk. **Wednesday**— Sausage biscuit, fruit or juice, milk. **Thursday**— Cheese toast, fruit or juice, milk. **Friday**— Breakfast burrito, fruit or juice, milk.

Lunch

Monday— Mexican pile-on, rice, pinto beans, lettuce and tomatoes, milk. **Tuesday**— Szechuan chicken, rice, egg roll, mixed veggies, milk. **Wednesday**— Baked potato, ham and cheese, mixed fruit, brownie, milk. **Thursday**— Corn dog, veggie soup, cinnamon roll, sliced pears, milk. **Friday**— Fish file, macaroni and cheese, hot roll, milk.

Breakfast

Monday— French toast, fruit or juice, milk. **Tuesday**— Breakfast hot pocket, fruit or juice, milk. **Wednesday**— Sausage biscuit, fruit or juice, milk. **Thursday**— Cheese toast, fruit or juice, milk. **Friday**— Breakfast burrito, fruit or juice, milk.

Dillman & DeShazo

Lunch

Monday— Nachos, rice, pinto beans, lettuce and tomatoes, milk. **Tuesday**— Pizza, tater tots, whole kernel cornapple slices, milk. **Wednesday**— Baked potato, ham and cheese, mixed fruit, brownie, milk. **Thursday**— Corn dog, veggie soup, cinnamon roll, sliced pears, milk. **Friday**— Fish file, macaroni and cheese, hot roll, milk.

Lazbuddie

Monday — Pizza, subs, corn dogs, macaroni & cheese, okra, vegetarian beans, cottage cheese, salad, fruit, jello and milk. **Tuesday** — Tacos, burritos, tuna croissant, hot pockets, french fries, green beans, gumbo, cottage cheese, salad, fruit, jello and milk. **Wednesday** — Hamburgers, egg rolls, BBQ sausage, beef tamale pie, chili, queso rice, peas, cottage cheese salad, fruit, jello and milk. **Thursday** — Fish sandwich, pizza, frito pie, swiss steak/rice, carrots, green beans, cottage cheese salad, fruit, jello and milk. **Friday** — Hot dogs, weiner wrap, sandwiches, chicken spaghetti, corn, mixed vegetables, squash, cottage cheese salad, fruit, jello and milk.



THREE WAY JUNIOR VARSITY

Members of the 1997 Three Way High School junior varsity football team are (back row, from left) Kasey Davis, Ernesto Navarro, Marvin McCaul, Scott Pollard and Carlos Contreras. Fernando DeLaRosa, Bobby Soliz, Joseph Hernandez, Eric Sowder and Michael Soliz.

LADIES GOLF ASSOCIATION NEWS

The Ladies Golf association of the Muleshoe Country Club met Wednesday, August 20th for their monthly luncheon and business meeting.

Anita Allgood, President, called the meeting to order.

Darlene Henry called roll and read the minutes from the last meeting.

The birthday ladies for August are Lynn Box, Sherri Shipman and Ronda Box.

Deborah Noble gave the treasure's report.

Linda Elder gave her report on the annual Ladies Partnership Tournament, August 16th.

33 teams from surrounding towns participated.

The participants remarked on the beauty of the Muleshoe golf course.

Special thanks to Pro, Jeff Baker who had the course trimmed for this event.

Winning Muleshoe ladies include Helen Templeton, Yolanda Phillips, Kay Fields, Jana St. Clair, Brenda Black, Laverne Winn, Jo Rempe, Jeanine Gunstream, and Linda Elder.

There were seven ladies who traveled to Canyon this month for the High Plains Association Playday.

Bringing home points for the local chapter were Laverne Winn and Linda Elder, both for low gross in their flight, and Cindy Baker, low

net of the field.

The next High Plains Playday will be Wednesday, Sept. 3 in Tulia.

Jeanine Gunstream presented the Playday awards

Low Putts for July 23rd were awarded to Claudine Elliott, Jeanine Gunstream, Helen Templeton, Linda Elder.

Best on Five Pars for July 30th were earned by Helen Templeton, Analita Haley, Jeanine Gunstream.

Best on Three Pars for August 13th were earned by Anita Allgood, Jeanetta Precure.

The door prize, won by Jo Rempe, was donated back to the association.

The ladies divided into teams and played a scramble. The winning team included Brenda Black, Heather Shipman, Deborah Noble and Linda Elder.

Those attending the luncheon were Jeanine Gunstream, Cindy Baker, Deborah Noble, Helen Templeton, Claudine Elliott, Cookie Bamert, Jo Rempe, Mary Holt, Ruby Hart, Anita Allgood, Darlene Henry, Tamy Black, Jana St. Clair, Brenda Black, Linda Elder, Sherri Shipman, Lynn Box, Judy Wilbanks, Heather Shipman, Yolanda Phillips, Jeanetta Precure, Argilee Miller.

NURSING HOME NEWS

Nancy Lemons directed the ceramic class Thursday morning. Residents participating were Rosie Sneed, Hazel Riddle, Bootie Tiller, Jackie Davenport, Florence Harvey, Pearlie Helmer, Aline Locker, Kathrine Rogers, Lora Dale, Lillie Wuerflein and Helen Tinskey also Nettie Quesenberry.

Ed Moore and Duane White brought us cantaloupe and watermelon last week. What a melon feast we have been having. "Melon, Melon every where and how we all did eat."

Rev. David McIntire, Glenda Jennings and Mrs. Parsley of Lazbuddie directed a memorial service for Mary Jennings.

Friday morning, Pat Watson and Nicole and Hailey Richards of Sudan directed a fun music therapy session.

Friday afternoon, Bob Phillips took up to see the "Fields of Flowers," a farm of acres of bright and colorful south of Olton. Residents going for the ride were Helen Tinskey, Aline Locke, Boatie Tiller, Jackie Davenport, Rosie Sneed, Nettie Quesenberry, Kathrine Rogers, Clara Lou Jones, Shonia Orazco (who was a tremendous help) and Joy.

Sunday afternoon, the new Covenant Church came for Church services.

Melvin and Wanda Griffin lead the Bingo games Saturday afternoon.

John Seaton returned to the HealthCare Center last week after being hospitalized in Lubbock. Welcome back John, we sure did miss you. Manual DeHoyus returned Monday. He had been in the local hospital.

Pat Watson, Beverly Wagnon, Mary Jo Burge, Ozell Cherry, Chickee and Joy shampooed and set the ladies hair Tuesday.

Joe Embry visited the Care Center Tuesday among those he visited were Bill Darnell, D. Clements and Aline Locke.

Harrold and Mary Jo Burge returned Sunday after visiting family in Colorado. There is no doubt that Hazel Riddle, Mary Jo's mother, gave them a warm welcome back.

Wednesday morning, Buster and Wanda Kittrill and Jane Reeder served coffee and doughnuts to our residents and directed the discussion on School days.

Buster, Loyce Kilings worth, Jim Claunch had us in a Gospel sing-spiration.

Glenda Jennings and Jonessa Brackman brought us music, song and entertainment Wednesday afternoon. Ruth Clements and Jean O' Brien also attended and participated.

Sam White went out with his family Wednesday morning for a visit.

Arnaed Beckett celebrated his birthday Wednesday, Aug. 20. He received cake birthday cards, visits and good wishes on "His" day.

Melba and Richard Cunningham visited D. Clements Wednesday afternoon.

Ozell Cherry and Michell served watermelon and grapes to the residents Tuesday afternoon.

Senior Citizen Resident Center

(Independent Living For Senior Citizens)

A nursing home is not necessarily the next step when you're no longer able to live on your own at home. There is an alternative that will let you retain your independence. If loneliness is as much a problem as frailty, consider the living arrangements at the **SENIOR CITIZEN RESIDENT CENTER**, a unique facility in Clovis, NM. Rates are \$1,100 per month and include the following:

- Private Bedroom
- Daily Housekeeping
- Linens Furnished
- Laundry Provided
- All Utilities
- Daily Activities
- Transportation
- Beauty/ Barber Shop
- Chapel
- Library
- Home Atmosphere
- 3 Meals Daily
- Good Country Food
- Between Meal Snacks
- Coffee Always Ready
- 24 Hour Health Services Staff
- Medications Monitored
- Emergency Call System
- 18 Landscaped Acres

2210 MABRY DRIVE

Call (505) 762-8052

For Information & Brochures!

Booths now available!

23rd Annual Clovis Jr. Woman's Club Arts & Crafts Fair

October 4th & 5th North Plains Mall Clovis, N.M.

To reserve your booth, call: Windy 505/683-5106

KIDS KLOSET

25% OFF

PRIOR EXPERIENCED WINTER CLOTHING

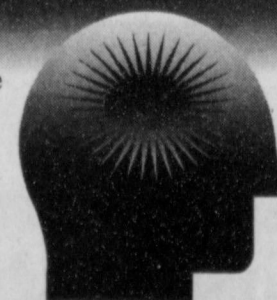
Consignments On Clothes, Furniture, Toys . . . ANYTHING TO DO WITH CHILDREN!

Hilltop Plaza, Next To Furr's Cafeteria Clovis, NM



Brain Attack Facts

- On average, someone suffers a stroke (brain attack) in the U.S. every minute
- Brain attacks killed about 149,780 Americans in 1993
- There are about 3.8 million stroke survivors
- From 1983 to 1993 brain attack death rates declined 23.5%



BAILEY COUNTY DEVOTIONAL PAGE

Risinger Plumbing
Serving Muleshoe Area
All Plumbing Repairs
272-6772

Springlake Potatoes, Inc.
P.O. Box 280 • Springlake, TX
262-5542

EASTER GRAIN, INC.
Easter 276-5255 Labuddie 965-2817

WEST CAMP GIN, INC.
Route 2 Box 1000
Muleshoe, TX • 925-6681
James Sheppard • Phyllis Sheppard

LLD LANDMARK LABEL & DESIGN
218 Main Street
(806)272-6767

IRRIGATION PUMPS & POWER
ZIMMATIC CENTER-PIVOTS
W. Hwy. 84 272-4483

MAPLE COOP GIN
927-5501
Maple, Texas

Leal's Tortilla Factory, Inc.
"Serving West Texas since 1957"
107 E. Ash 272-5772 Muleshoe, TX

O & C OSONS
Erection Sprinkler Ser. Welding & Repair & Assemble
Lupe Olivarez 272-5018 909 W. American Blvd. 272-3475

Discount Computer & Repair Service
CompuTeK
206 Main 272-5404
1-800-687-3816

BOBO INSURANCE AGENCY
108 E. Ave. C 272-4264

Shipman's Body Shop
Auto Painting • Wrecker Service • Free Estimates
Tractor Glass & Windshields
410 N. 1st Muleshoe, TX
272-4408 FAX 272-3366

SAIN IRRIGATION & MACHINES
Complete Pump Service
W. American Blvd. 272-4397
Walt Sain Muleshoe, TX 272-4148

Bob STOVALL Printing
Quality -- Service
221 E. AVE. B 272-3373
C.R. & EVA NELL DALE MULESHOE

TERRA INTERNATIONAL, INC.
272-4203
Muleshoe, Texas

RONNIE HOLT INSURANCE AGENCY
Specializing in Crop, Life & Health Insurance
Western 66 Office Bldg.
272-4271 Muleshoe, TX

PACO FEED YARD, INC.
Commercial Cattle Feeders
P.O. Box 956 265-3281
Frona, TX
Feller Hughes-Mgr.

Jarman Seed
PIONEER 801 W. American Blvd.
Muleshoe, TX • 272-5985

GOOD YEAR JAMES CRANE TIRE CO., INC.
107 Main 272-4594
Mike Hahn Muleshoe, TX

Facts About The BIBLE BY JOHN LEHTI

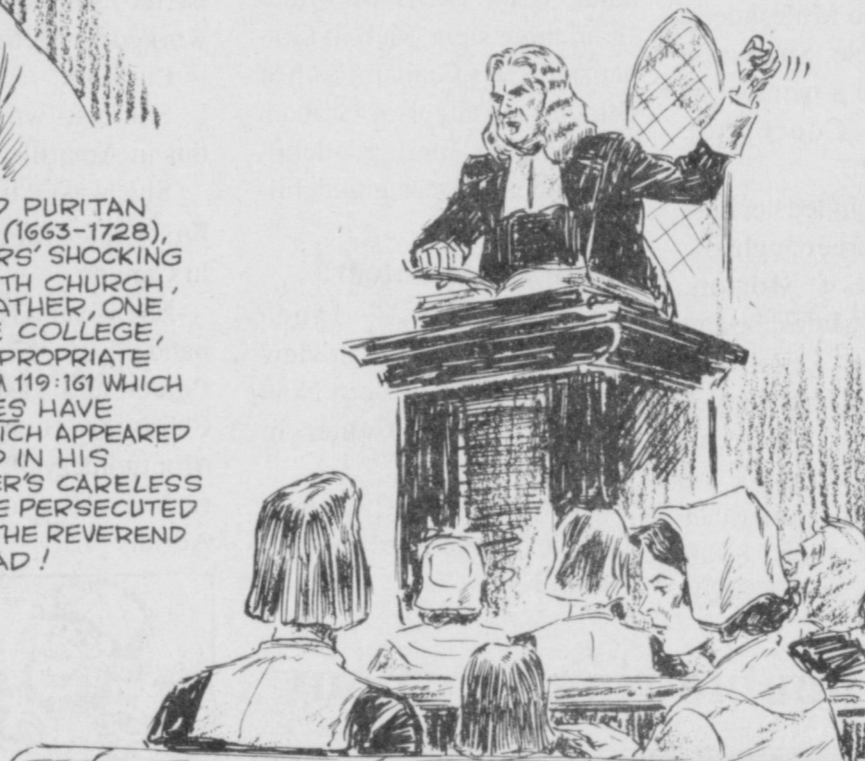
MURDERERS' BIBLES

THE BIBLE IS, AND PROBABLY ALWAYS WILL BE, THE WORLD'S BEST-SELLER! WITH SO MANY MULTIPLE PRINTINGS OVER THE YEARS, IT WAS ALMOST INEVITABLE THAT TYPOGRAPHICAL ERRORS SHOULD OCCUR!



TWO DIFFERENT EDITIONS ARE NICK-NAMED THE MURDERER'S BIBLE. IN ONE, WHAT SHOULD HAVE READ "LET THE CHILDREN FIRST BE FILLED" (MARK 7:27) WAS MISPRINTED TO READ "...LET THE CHILDREN BE KILLED." IN THE OTHER, THE ADMONITION THAT MURDERERS WERE TO BE PUT TO DEATH (NUMBERS 35:18) SCRAMBLED THE LINE TO READ "MURDERERS SHALL BE PUT TOGETHER."

IN 1702, THE OUTRAGED PURITAN MINISTER, COTTON MATHER (1663-1728), PREACHED AGAINST PRINTERS' SHOCKING MISTAKES IN BOSTON'S NORTH CHURCH, WHERE HE WAS PASTOR. MATHER, ONE OF THE FOUNDERS OF YALE COLLEGE, THUNDERED OUT A VERY APPROPRIATE TEXTUAL MISPRINT—PSALM 119:101 WHICH SHOULD HAVE READ, "PRINCES HAVE PERSECUTED ME..." BUT WHICH APPEARED IN THE BIBLE MATHER HELD IN HIS HAND, BECAUSE OF A PRINTER'S CARELESS WORK, AS: "PRINTERS HAVE PERSECUTED ME..." AND, ACCORDING TO THE REVEREND MATHER, INDEED THEY HAD!



NEXT WEEK: THE DEVIL TREMBLES!

SAVE THIS FOR YOUR SUNDAY SCHOOL SCRAPBOOK

This devotional & directory is made possible by these businesses who encourage all of us to attend worship services.

ASSEMBLY OF GOD
FIRST ASSEMBLY OF GOD
521 South First Street • 272-3017
Jack Stone, Min. • 272-3984
S.S. 9:45 a.m., W.S. 11 a.m. & 6:30 p.m.,
Wed. 7:30 p.m.

BAPTIST
CALVARY BAPTIST
1733 W. Ave. C. Rev. Jeff Coffman
CIRCLE BACK BAPTIST
Intersection FM 3397 & FM 298
Jessie Shaver, Min • 946-3676

FIRST BAPTIST
220 West Ave. E.
Stacey Conner, Min.
FIRST BAPTIST
Lazbuddie • 965-2126

PRIMERA IGLESIA BAUTISTA
223 E. Ave. B Roy Martinez, Min.
PRIMITIVE BAPTIST
621 South First
Elder Cleveland Bass, Min.

PROGRESS BAPTIST
Progress, TX
PROGRESS SECOND BAPTIST
Arthur Hays, Min.
1st & 3rd Sundays

RICHLAND HILLS BAPTIST
17th & West Ave. D
George Malis, Pastor
ST. MATTHEWS BAPTIST
Corner of W. Boston & W. Birch
Floyd R. Monroe, Min.

THREE WAY BAPTIST
927-5467
James Sinclair, Pastor
TRINITY BAPTIST
314 E. Ave. B
Robert Brown, Min.

CATHOLIC
IMMACULATE CONCEPTION
CATHOLIC
805 E. Hickory
Joseph Augustine, Min.

CHRISTIAN
THE CHRISTIAN CENTER
Morton Hwy. • 272-5105
Reydon Stanford, Min.

CHURCH OF CHRIST
LARIAT CHURCH OF CHRIST
Sam Billingsley, Min.
S.S. 10 a.m.; W.S. 11 a.m. & 6 p.m.,
Wed. 7 p.m.

LAZBUDDIE CHURCH OF CHRIST
Nathan Crawford, Min.
S.S. 9:30 a.m.; W.S. 10:20 a.m. & 5 p.m.;
Wed. 7 p.m.

MULESHOE CHURCH OF CHRIST
22nd & W. American Blvd.
John Knox, Min.
S.S. 9:30 a.m.; W.S. 10:20 a.m. & 6 p.m.;
Wed. 7:30 p.m.

SIXTEENTH & AVE. D CHURCH OF CHRIST
Curtis Shelburne, Min. • 272-4619
W.S. 10:30 a.m. & 6 p.m.;
Wed. 7:30 p.m.

LUTHERAN
ST. JOHN LUTHERAN
Lariat, TX
Richard Greenthaler, Min.
S.S. 10:30 a.m.; W.S. 9:30 a.m.

METHODIST
FIRST UNITED METHODIST
HISPANIC MINISTRIES
E. 5th and E. Ave. D
Pastor Benito Cavazos

FIRST UNITED METHODIST
507 W. 2nd St.
Pastor John Wagoner
LAZBUDDIE METHODIST
965-2121

EL DEVINO SALVADOR
814 W. Ave. C, Muleshoe, TX
Guadalupe Ballinas, Min.

NAZARENE
NEW VISION CHURCH OF THE NAZARENE
814 W. Ave. C • 272-3622
David R. McIntire

PENTECOSTAL
IGLESIA PENTECOSTAL UNDA
207 East Ave. G • 272-3636
Wencelado Trevino, Min.

INTER DENOMINATIONAL NEW COVENANT
Plainview Hwy. Jimmy Low, Min.
S.S. 9:30 a.m.; W.S. 10:15 a.m.;
Wed. 7 p.m.

KATS KORRAL
Family Restaurant
"Home Cooking"
121 Main • Muleshoe, TX • 272-5563

MULESHOE LIVESTOCK AUCTION
Muleshoe, TX • Sale Every Saturday
Clayton Myers • 272-4201

WINKLES TRUCKS, INC.
Box 757 (806) 247-2724
Frona, TX

Lowe's MARKETPLACE
401 W. American Blvd.
Muleshoe 272-4585

Decorators Floral & Gifts
616 South First 272-4340
Muleshoe, TX

SHERLEY-ANDERSON LAZBUDDIE ELEVATOR
965-2922 Lazbuddie, TX

1ST BANK MEMBER FDIC
202 South First 272-4515

WES-TEX FEED YARDS, INC.
Custom Cattle Feeding
272-7555 Muleshoe, TX

AMERICAN AVI West Hwy 84 272-4266 Muleshoe

BAILEY GIN COMPANY, INC.
946-3397
Sudan, TX
Peanut Hawkins, MGR

WESTERN DRUG
114 Main 272-3106 Muleshoe

B/S & More Family Fun Center
123 Main • Muleshoe • 272-3828

HERITAGE HOUSE INN
2301 W. American Blvd. 272-7575
Muleshoe, Texas
Clint & Evelyn Peat - Resident Owners
Reservations 1-800-253-5896

BRUCE, INC.
AIR CONDITIONING
Hwy. 214 North 272-5114
Muleshoe, TX
TACL-B003350C, LP08638

MULESHOE COOPERATIVE
GINS
P.O. Box 569
272-4794 Muleshoe, TX

MULESHOE AREA HEALTHCARE Center
"Committed to Caring"
106 W. Ave. H Muleshoe 272-7578

MULESHOE MOTOR CO.
1225 W. American Blvd. 272-4251

"THE FIVE AREA TELEPHONE COOPERATIVE ORGANIZATION"
West Plains Telecommunications Co.
Five Area Systems, Inc., Plateau Cellular Network
Five Area Long Distance - Five Area Internet
302 Uvalde Muleshoe, USA (806)272-5533

WANDA BROWND INSURANCE AGENCY
118 E. Ave. C Muleshoe 272-7548

Since 1957 - The Original
Leal's Mexican Restaurant
1010 W. American Blvd. 272-3294
Muleshoe, TX Victor & Debbie Leal

FIRST TEXAS FLBA MULESHOE
"Serving Farmer & Bailey Counties"
272-3010 • Fax 272-5388
316 Main • P.O. Box 424 • Muleshoe, TX

OBITUARIES

Joe Guadalupe Valero, Sr.

FARWELL— Joe Guadalupe Valero, Sr., 55, of Farwell died Aug. 18, 1997 at Plains Regional Medical Center in Clovis.

A rosary service was held Aug. 22 in Ellis Funeral Home Chapel. Mass was held Aug. 23



Joe Valero

in the Immaculate Conception Catholic Church in Muleshoe with Father Paul Terarietot officiating. Burial was in Muleshoe Memorial Park Cemetery under the direction of Ellis Funeral Home of Muleshoe.

Mr. Valero was born Feb. 12, 1942 in San Angelo. He married Anna Velia Salas Dec. 24, 1964.

He had been a Farwell resident since 1982, moving from Friona. He was a farmer and a Catholic.

Survivors include his wife Anna; four sons, Joe Valero, Jr. of Farwell, Michael Lewis Valero, Sr. of Clovis, Frank D. Valero of Farwell and Charles V. Valero of Farwell; two daughters, Diana Valero of Clovis and Mary Ann Valero of Farwell; three sisters, Emily Bara of Lubbock, Mary Valero of Tampa, Fla. and Ufemia Mo-

rales of Merkel; and five brothers, Mitch Valero of Muleshoe, Agapito Valero of Muleshoe, Jesse Valero of Sudan, Felix Valero of Abilene and Maurillo Valero, Jr. of Abilene.

Josefina Estrada

Josefina Estrada, 76, of Muleshoe died Aug. 20, 1997 at Methodist Hospital in Lubbock.

Mass was held Aug. 22 at the Immaculate Conception Catholic Church in Muleshoe with Father Ricardo Salditos of Morton officiating. Burial was in Muleshoe Memorial Park Cemetery under the direction of Ellis Funeral Home of Muleshoe.

Mrs. Estrada was born Aug. 27, 1920 in El Paso. She married Antonio Estrada July 27, 1947 in Lajunta Mexico Chua.

She moved to Muleshoe in 1980 from Maple. She was a homemaker and a member of Immaculate Conception Catholic Church.

Survivors included her husband Antonio; three daughters, Elia Sanchez of Morton, Martha Silvia of Muleshoe and Avelina Padilla of Levelland.

The family suggests memorials be made to Meals on Wheels (either Muleshoe or Levelland) or the American Diabetes Association, 8008 Slide Rd., Lubbock, TX 79424.



Lois G. Davis

DURANT, Okla. — Lois Graham Davis, 80, of Muleshoe died Aug. 14, 1997 at Texoma Medical Center in Denison.

Services were held Aug. 16 in Murray Chapel in Durant with the Rev. Phil McGehee officiating. Burial was in Rosehill Cemetery in Calera.

She is survived by her husband, Cecil Davis of Muleshoe; three sons, Melvin Graham and Gary Graham, both of Durant, and Stephen Graham of Arlington, nine grandchildren and nine great-grandchildren.

Linda Engle Poteet

PLAINVIEW — Linda Engle Poteet, 43, of Plainview died Aug. 17 at Eastern New Mexico Medical Center in Roswell.

She was involved in an auto accident between Roswell and Tatum, NM.

Services were held Aug. 21 at Lemons Memorial Chapel in Plainview with Rev. Kyle Streun of the First Baptist Church in Olton, assisted by Rev. B.J. Foster of Lubbock, former pastor of the Vega First Methodist Church, officiating. Burial was in Oldham County Memorial Park in Vega.

Mrs. Poteet was born May 28, 1954 in Big Spring. She married Tony Poteet Jan. 10, 1973 in Adrian, Texas.

She grew up in Adrian and graduated in 1972 from Adrian High School. After her marriage, she lived in Muleshoe.

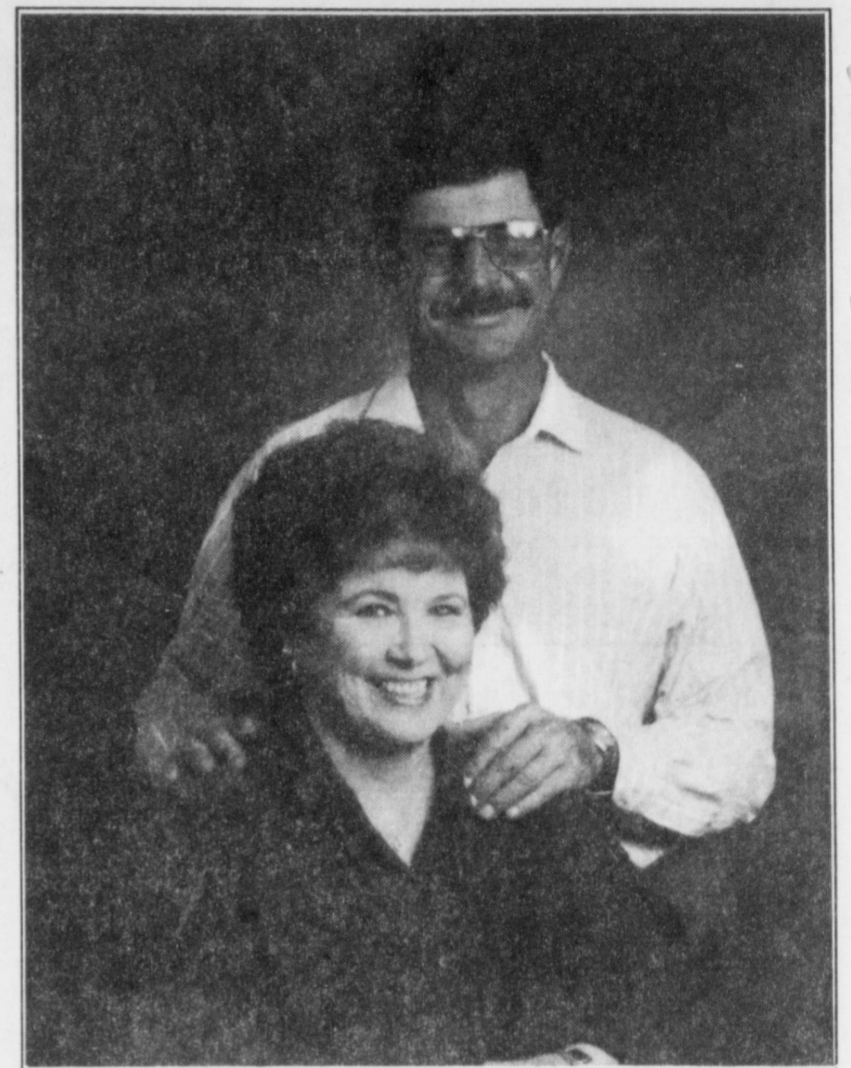
In 1976, she moved to Amarillo and to Canyon in 1986. She graduated from Amarillo College in 1996 and moved to Plainview. She recently completed her certification as a registered respiratory therapist and worked for Methodist Hospital in Lubbock.

She also worked at hospitals in Amarillo and Canyon.

She was a member of the First United Methodist Church in Canyon.

She is survived by her husband Tony; two sons, Lynn Poteet and Jason Poteet of Plainview; one sister, Nina Montgomery of Vega; and her father, Howard Engle of Adrian.

ENGAGEMENT



Savage — Adams

Shirley Savage of Littlefield, formerly of Muleshoe, and Bill Adams of Lubbock announce their engagement. The couple will marry at 7 p.m. Saturday, Aug. 30 at Parkview Baptist Church in Littlefield. Friends and relatives are invited. The bride-elect is employed by Lamb Healthcare Center. The future bride groom is self-employed.

If You Can't Come to Hearing Technologies We'll Come to You
 Our Hearing Aid Service Center is Coming to a location near you. Complimentary Hearing Evaluations
 We value your hearing as much as you do...
 ask about our low monthly payments!

 August 28, 1997 9am-12N
 Muleshoe Medical Center
 12 - 4pm - in Home Visits
 Call 363-9566 or 1800-808-0188

Baxter, Hinkson wed in double-ring ceremony

Becky Baxter and Trey Hinkson were married in double-ring ceremony May 31 performed at Our Redeemer Lutheran Church in Hutchinson, Kan.

Parents of the couple are Earl and Karen Baxter of Hutchinson, and Frank and Marilyn Hinkson of Cottonwood Falls, Kan.

The groom is the grandson of Frank and Lavonne Hinkson of Lazbuddie and Sam and Hester Barnes, formerly of Lazbuddie and Muleshoe.

The Rev. Tom Mendenhall officiated at the ceremony.

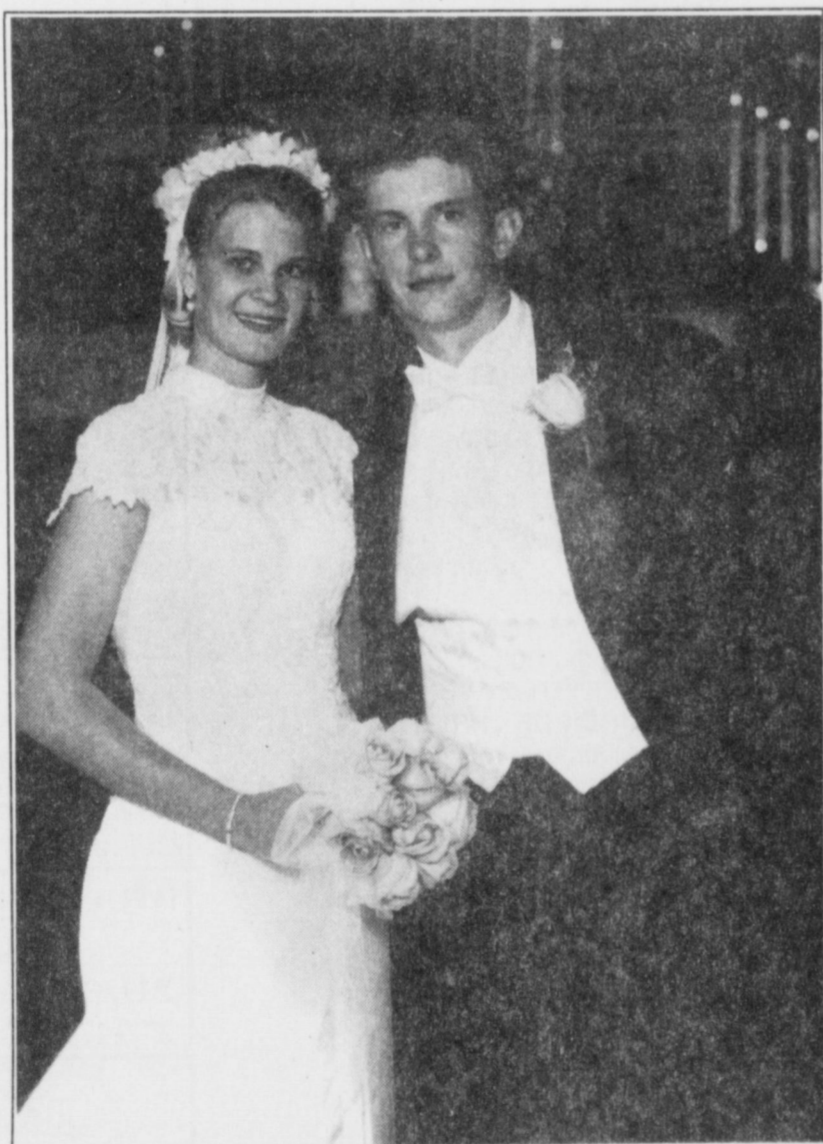
Matron of honor was Christy Moore of Hutchinson. Bridesmaids were Angela Morrison of Topeka, Tyla Hinkson sister of the groom of Cottonwood Falls, Michael Griffin of Denver, Colo. and Jennifer Gottlob of Wichita Kan.

Best man was Brandon Evans of Haviland, Kansas. Groomsmen were Mark Danford of Cottonwood Falls, Tim Lust cousin of the groom of Lubbock, Justin Griffin of Emporia and Jose Ibarra of Kansas City.

Brother of the bride, Brian Baxter of Brunswick, Maine and Bobby Simmons of Rose Hill, Kan. served as ushers.

Marilyn Hinkson sang "Love Remains" and "The Story of Love." Vicky Greenhaw of Hutchinson, organist, provided traditional wedding selections.

A reception was held in Fellowship Hall of the church immediately following the ceremony. A buffet and dance followed the reception at



Becky (Baxter) and Trey Hinkson

Tommassi's in Hutchinson.

A rehearsal BBQ was held in Fellowship Hall with the wedding party and relatives of the couple attending.

The bride is a graduate of Emporia State University, with a degree in Rehabilitation Services, completing her internship at the Resource Center of Independent Living in Emporia. The bride groom is a graduate of Mid-America Nazarene College, Olathe, Kan. and is teaching and coaching for the

Lansing School District.

After a wedding trip to the Pocono Mountains in Pennsylvania, the couple is at home in Lansing, Kansas.

Federal Land Bank Association
 316 Main St., Muleshoe
 806-272-3010
 Long Term Financing for Farms, Ranches, Rural Housing, Operating and Improvements.
 Current Variable Rate 7.95%.
 Fixed rates are available. Call for quote.
 A Property Rights Advocate and Equal Opportunity Lender.

The Caspian Sea, in Russia, is actually the world's largest lake.

Home Folks Caring For Folks At Home.



MULESHOE AREA HOME HEALTH

Agency

Featured Patient

Mrs. Phebe Gray is married to Jessie Gray. They have three children, June Patrick, C.R. Gray, and Geraldine Kiser. They have six grandchildren and one great grandchild.

Mrs. Gray enjoys knitting, sewing, crocheting, and loves to do crossword puzzles.

Mr. and Mrs. Gray belong to the 21st Street Church of Christ.

They think a lot of the staff at the MAHHA. Muleshoe is very lucky to have their services!



Mrs. Phebe Gray

To receive Home Health Services, talk with your physician or talk with hospital personnel when you are hospitalized.

24 Hour # 272-3346
 Local Nurse on call 24 hours a day to offer prompt service.

We accept Medicare, Medicaid and Private Insurance
It is Your Right To Choose The Home Health Agency You Prefer.



Affiliated with Lubbock Methodist Hospital Systems

New Out Of Hospital Advance Directives Now Available!



Journal classifieds

REAL ESTATE
AUTOMOBILES
HELP WANTED
GARAGE SALES

STOP & SHOP

Deadlines are 5 p.m. Monday and Thursday

Call 272-4536

Deadlines are 5 p.m. Monday and Thursday

FOR SALE
Gemeinhardt Flute, great condition., \$200. Call (806) 272-5105. 35s-11c

Furniture For Sale
Gorgeous sofa/ sleeper with large chair, off-white \$800 for both (paid \$1,500); wood desk \$100, wood chest of drawers w/mirror \$125, double bed with sheets and dust cover \$75, Macintosh computer w/ hard drive and laser printer, Pagemaker, many programs and graphics \$700. Portales (505) 356-4431 or (505) 784-4723. 35s-1tpd

Hesston swather Hydro 1014 swing 1986 and 1985 New Holland model 326 hay baler. (806) 927-5136. 35s-2tpd

HAY FOR SALE
Oat & Alfalfa. Good Horse Feed. 272-4589. By the ton or the bale. 32s-8tpd

For Sale- 1983 Ford T-Bird, new paint, new tires. Call 272-5319 34t-31c

HELP WANTED
The City of Muleshoe is taking applications for an employee in the public works department. Loader/backhoe experience definite plus. Applicants should have a good driving record and should have CDL. High school graduate/GED required. Upon employment, subject will be required to pass a drug test. Applications may be picked up at City Hall 215 South First Street, Muleshoe, Texas. The City of Muleshoe is an equal opportunity employer. 34t-11c

AD DESIGNER NEEDED
Mac knowledge, experience definite pluses. Must be able to work closely with other departments. Some sales req'd. Please call 272-4536 or mail resume to: Advertising P.O. Box 449 Muleshoe, TX 79347

HELP WANTED
JOBS! JOBS! JOBS!
TEXAS SESAME NOW HIRING FOR ALL POSITIONS. GREAT PAY!!! WITH OVER TIME!!! POSITIONS WILL GO FAST, APPLY NOW AT 1600 RAILROAD AVE., MULESHOE, TEXAS. NORTH OF SONIC, ACROSS TRACKS **272-4231**

NOW HIRING
MINSO SOUTHWEST CORP. HAS SEVEN POSITION OPEN IN PRODUCTION. GREAT PAY AND BENEFITS!! APPLY 1 1/2 MILES SOUTH OF MULESHOE. ON HWY 84, ACROSS RAILROAD TRACKS. **MONDAY, AUGUST 25 1-806-272-5545**

HELP WANTED
Entry level position in service department Diesel- Ag machine training helpful. Call Sam at 272-5514. 34t-11c

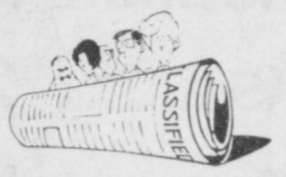
MOBILE HOMES
Better Living Homes 1997 Singlewide Mobile Home. \$19,000. Please Call (505)356-5448. 17t-11c

FLEETWOOD HOME CENTER
Portales Homes
97 MODEL CLOSEOUT
97 16x80 3 or 4 bedroom, 2 bath for only \$26,900. Pmts. only \$190.46 per mo. Only at Fleetwood Home Center. Plenty of other models also available. Includes delivery & set-up, air cond. & skirting. 10% down, 360 months, 8.75 APR. Pmt. subject to increase or decrease. **888-908-1200** Toll Free DL. 366

MISCELLANEOUS
We Are Back! Connie's Classic Canine. Call 272-3167 for app. 602 E. Chicago 35s-9tc

NEED TUPPERWARE?
Call Jan Springfield, 272-5827. 31s-11tc

PRIMESTAR
Call Gabriel Today Installation \$149 1 Month HBO & Cinimax 272-3072 or 1-888-763-1983 Toll Free • Pin 9240 16s-suntc



BETTER LIVING
Mobile Homes Sales
OPEN: Mon.-Sun • 8 A.M.-8 P.M.
DL Lic #00681
Nick Caro, Sales

MOBILE HOMES
Nice 1979 14x70 Redman mobile home trailer to be moved. Includes porches & new Carrier Heating and Cooling System. (Can be bought separately. 806-925-6664. 32s-tfc

Call Pat for your advertising needs. 272-4536.

BETTER LIVING
Mobile Homes Sales
OPEN: Mon.-Sun • 8 A.M.-8 P.M.
DL Lic #00681
Nick Caro, Sales
ATTENTION FIRST TIME BUYERS!
For a limited time ONLY! Land/Home Packages. 1997 2 bedroom and 1 acre of land. Only \$290/ Month. Don't Miss Out! With Approved Credit, Serial #0525, 9.95% ASK FOR NICK CARO
002 NM 467 (on the Clovis Highway) 1-800-404-1324 or (505) 356-5448

MOBILE HOMES
Hurry in to LUV Homes. Only a few homes left for \$449.00 and 899 down with low interest rates. Limited time only. Come see us at 4500 Mabry Dr., Clovis. 505-762-1211 or 1-800-306-1211.
LUV homes
CLASSIFIED SELLS!

MOBILE HOMES
LUV Homes, Clovis, Nm Newest Skyline Dealer 1998's are arriving now. Elegant & affordable. Come by 4500 Mabry Dr. (505) 762-1211 or 1-800-306-1211
LUV homes
REAL ESTATE

For Sale by Owner: 1912 W. Ave. H, 3 bdrm, 2 bath, 2 car garage, brick, new roof. Inside: new paint, remodeled, great location. **806-481-3872.** 25t-tfc

3 Houses and a lot for sale. For information call collect 910-904-1897. 30s-suntc

House For Sale By Owner. 5-2 3/4 bath. Over 2500 sq. ft. Central Heat & Air. **272-5479** 32t-8tpd

4-bdrm., 3-bath, 3,500 sq. ft. brick home in Littlefield. \$89,000. (806) 272-515. 35s-4tc

8 X10 & 10 X12 Storage Units, 400 W. Hwy 84 Sudan (806) 227-2325, (806) 933-4347 35s-8tpd

SERVICES
CUSTOM SWATHING & BALING \$12 a bale, David Schulte. 965-2489 or 647-7740. 16s-50tpd

Reg Day Care. 4 openings. CPR & First Aid Certified. Hot Meals. 18 months & up. For more information, 272-5866. 33s-7tc

BLANCHARD ROOFING & CONSTRUCTION
6120 Nashville Ave. Lubbock, TX 79413
Bonded/ Insured
Specializing in Wood Shingle Repair
33s-8tpd

WANTED
Care provider needed for Blanche Lenderson Sundays (8 a.m. - 5 p.m.). \$6 an hour. Apply in person at the office of Michael R. Caldwell, P.C., 113 W. Ave D, Muleshoe. References required. 25t-tfc

Place Your Classified Ad Today! 272-4536.

James F. Hayes & Co.
AGRICULTURAL REAL ESTATE SERVICES
3628 Acres of Native grass in Southwestern Bailey County. Good feed. 4 windmills, 4 submersible pumps. *NICE*
390 Acres with 3 bdrm Austin stone house. Stegall area. 70 acres of native grass. 320 Acres of CRP just renewed for 10 yrs @ \$39.50 per acre. House and 70 Acres can be sold separately.
654 Acres in southern Bailey County. Grain sorghum & wheat allotment. Signed into program.
240 Acres in Northwestern Lamb County near Bailey County line. Good Soil, Lays good, 3 wells.
Vic Coker, Agent
310 Main St. Suite 103 Muleshoe
Office 272-3100 Home 965-2468
WHEN LAND INVOLVES COWS AND PLOWS

Jo Ann Chester Realty
806-227-2368
BRICK — 3 bedroom, 1 3/4 bath, family room, w/fireplace, kitchen w/built-ins, dining, utility, double garage, central heat/air, fenced corner lot. **1815 W Ave I.**
BRICK — 3-1-1, 1200 sq. ft. with 300 sq. ft. Garage, dual fuel heat pump, storm windows, patio, fenced yard, near school. **318 W Ave. K.**

Nieman Realty
116 E. Ave. C • George Nieman, Broker • 272-5285 or 272-5286

RICHLAND HILLS
Nice 3-2-2 Brick, Cen. Heat Pump, built-ins, FP, fans, auto. sprinkler, stor. bldg, fenced yd. \$30's!!! RH-5
3-3-1 Brick, cent. Heat, Evap. Air, built-ins, 2000' + lv. area, fenced yd., stor. bldg, MORE!!! \$60K!!! RH-2
VERY NICE 3-2-1 Brick, Cent. A&H, built-ins, fans, new paint, carpet, & drapes, fenced yd. \$50's!!! RH-1
PARKRIDGE - NICE 3-2-2 Brick, Cent. A&H, built-ins, FP, cov. patio, fenced yd. \$50's!!!
NICE 3-2-3 Brick Home, Cent. A&H, built-ins, FP, storm cellar, stor. buildings, fenced yd., MORE!!! RH-4
HIGHLAND AREA
3-2-2 Brick, Cent. A&H, built-ins, gas log FP, fenced yd., stor. bldg., MORE!!! \$60K!!! HL-5
2-1-1 Home, vinyl siding, wall furnace heat, fenced yd. \$17,000!!! HL-1
BUSINESS FOR SALE-SNACK SHACK - Lot, Buildings, furniture, and fixtures!!!!
Commercial Bldg. & Lot, Approx. 1790' area, Numerous uses!! \$22K!!!

LENAU - COUNTRY CLUB AREA
2-1-1 Home, Wall Furnace Heat, Evap. Air, Fenced Yard!! \$20's!!! L-4
2-1-1 Carport Home, wall furnace, nice carpet, storm shelter, stor. bldg., fenced yd. \$20's!!! GC-3
NICE 3-2-1 Home, Elec. Heat pump, DW, nice carpet, fans, fenced yd., MORE!!! \$30's!!! L-2
2-1-1 Home, Cent. Heat, built-ins, Hardwood floors! \$19,500!!! L-3
HIGH SCHOOL
Very Nice 3-1-1- Brick Home, cent. Heat & Air, built-ins, fans, woodburning stove, nice carpets, storage bldg., fenced yd., More!!! \$40's!!! HS-7
3-2 Home, Cent. A&H, built-ins, fans, fenced yd., stor. bldg., MUCH MORE!!!! \$30's!!! HS-5
VERY NICE 3-2-1 Home on corner lot, Cent. A&H, built-ins, ceiling fans, fenced yd., stor. bldg.!! \$30's!!! HS-3
NICE 2-1-1 Brick, Heat Pump, nice carpets, well insulated, storm windows & doors. \$30's!!! HS6
RURAL HOMES
W. of SUDAN-NICE 3-3-2 Brick Home, 5 acre tract on Hwy. 298, Cent. Air & Heat, built-ins, large Quonset Barn, MORE!!!! \$95K!!!

MULESHOE JOURNAL CLASSIFIEDS 806-272-4536 • FAX 806-272-3567

CLASSIFIEDS
small ads **BIG** deals

Looking for a deal on wheels? Check the **CLASSIFIEDS**, first.

Call **806-272-4536** To Place Your Ad... **TODAY!!!**

Muleshoe Journal
304 West 2nd Street • P.O. Box 449 • Muleshoe, TX 79347
DEADLINES: Monday at 5 p.m. for Thursday Issue • Thursday at 5 p.m. for Sunday Issue

Read 'em and Reap!

WINTER

SAVINGS!

Prices Effective Aug. 20-26, 1997

MEAT

- SMALL PACK BONE-IN COUNTRY STYLE **PORK RIBS** LB. **\$1¹⁹**
- U.S.D.A. SELECT BEEF BONELESS **RUMP ROAST** LB. **\$1⁵⁹**
- ANY SIZE PACK U.S.D.A. SELECT BEEF **RIB-EYE STEAKS** LB. **\$3⁹⁹**
- U.S.D.A. SELECT BEEF BONELESS BOTTOM **ROUND ROAST** LB. **\$1⁷⁹**
- BEEF ULTRA LEAN **STEW MEAT** LB. **\$2²⁹**
- THIN CUT BEEF BONELESS **RIB-EYE STEAKS** LB. **\$4¹⁹**

- SMALL PACK BONELESS COUNTRY STYLE **RIBS** LB. **\$1³⁹**
- U.S.D.A. SELECT BEEF BONELESS BOTTOM **ROUND STEAKS** LB. **\$1⁹⁹**
- ANY SIZE PACK BEEF **CUBED STEAKS** LB. **\$2⁴⁹**
- ULTRA LEAN **GROUND BEEF** LB. **\$1⁹⁹**
- POPCORN SHRIMP** .. LB. **\$3⁹⁹**
- BAR S AMERICAN SLICED **CHEESE** LB. **\$2³⁹**
- BAR S JUMBO **MEAT FRANKS** ... 1 LB. PKG. **\$1¹⁹**

ALL TYPES COCA-COLA OR **DR. PEPPER** .. 3 LITER BTLs **2/\$3**



ALL TYPES DR. PEPPER OR **COCA-COLA**
6 PK. 12 OZ. CANS
\$1⁵⁹

- BAR S REGULAR OR POLISH SKINLESS **SMOKED SAUSAGE** 12 OZ. PKG. **\$1⁰⁹**
- BAR S PREMIUM **BEEF BIGGIES** ... 1 LB. PKG. **\$1⁸⁹**
- BAR S BONELESS **HALF HAMS** LB. **\$1⁹⁹**
- BAR S REGULAR OR THICK **MEAT BOLOGNA** 1 LB. PKG. **\$1³⁹**
- BAR S **COOKED HAM** ... 10 OZ. PKG. **\$2¹⁹**
- BAR S **SLICED BACON** 12 OZ. PKG. **\$1⁸⁹**

FROZEN & DAIRY

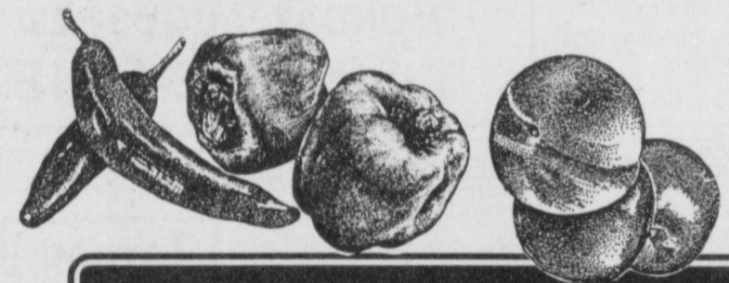
- SWANSON BEEF, CHICKEN, OR TURKEY **POT PIES** 7 OZ. PKG. **2/\$1**
- TOMBSTONE SUPREME, CHEESE, PEPPERONI, OR THREE CHEESE OVEN RISING **PIZZA** 30.95 OZ. PKG. **\$3⁹⁹**
- BLUE BUNNY **BANANA POPS** 12 CT. PKG. **\$1¹⁹**
- BLUE BUNNY **BOMB POP JR.** ... 12 CT. PKGS. **2/\$3**
- PARKAY SPREAD** 48 OZ. TUBS **2/\$3**
- KRAFT PARKAY REGULAR OR LIGHT QUARTERS **MARGARINE** 1 LB. PKG. **79¢**
- SLICED AMERICAN OR NACHO THE BIG! NACHO/ AMERICAN **BORDEN CHEESE** .. 12 OZ. PKG. **\$1⁸⁹**
- MINUTE MAID ASSORTED LEMONADE OR **PUNCH** 64 OZ. CTN. **\$1¹⁹**



Deli Lunchmeat

- TURKEY BREAST** lb. **\$2⁷⁹**
- JALAPENO LOAF** lb. **\$1⁷⁹**
- COOKED HAM** lb. **\$2⁷⁹**
- CHOPPED HAM** lb. **\$1⁷⁹**
- HAM & CHEESE LOAF** lb. **\$2⁹⁹**
- SALAMI** lb. **\$1⁷⁹**
- BOLOGNA** lb. **\$1⁷⁹**

Ask Market Personnel

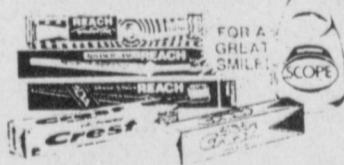


PRODUCE

- HATCH CHILE** 4 LBS. / **\$1**
- HOT JALAPENO, YELLOW HOT CARRIBE, SERRANO OR POBLANO **PEPPERS** 2 LBS. / **\$1**
- PEACHES** LB. **69¢**
- NECTARINES** LB. **69¢**
- SWEET & JUICY **ORANGES** 4 LB. BAG **\$1⁹⁹**
- RED OR YELLOW **BELL PEPPERS** **2/\$1**
- GREEN **ONIONS** 4 BUNCHES / **\$1**

HEALTH & BEAUTY

- REACH SELECTED VARIETIES **TOOTHBRUSH** **2/\$3**
- CREST SELECTED VARIETIES **TOOTHPASTE** .. 6.4 OZ. TUBES **\$1⁸⁹**
- SCOPE ORIGINAL MINT OR PEPPERMINT **MOUTHWASH** 36 OZ. BTL. **\$3¹⁹**



- AMERICAN BEAUTY ELBO-RONI OR LONG/THIN SPAGHETTI **PASTAS** 10 OZ. PKGS. **2/\$1**
- PREGO ASSORTED **SPAGHETTI SAUCE** .. 27.7-28 OZ. JAR **\$1³⁹**
- KRAFT PLAIN OR SMOKED **BARBECUE SAUCE** 28 OZ. BTL. **\$1⁹⁹**
- SWANSON CHUNK WHITE **CHICKEN** 5 OZ. CANS **2/\$3**
- EARLY CALIFORNIA SMALL, MEDIUM OR LARGE RIPE PITTED **OLIVES** 6 OZ. CAN **99¢**
- FRANCO AMERICAN SPAGHETTI O'S, GARFIELD PIZZA O'S, SPAGHETTI, OR TEDDY O'S **PASTAS** 14.7-15.2 OZ. **59¢**
- EARLY CALIFORNIA 4.25 OZ CHOPPED OR 2.25 OZ. SLICED RIPE **OLIVES** EACH **69¢**



- SANTA FE 8" **FLOUR TORTILLAS** ... 12 CT. PKG. **\$1¹⁹**
- DOUBLE STUFF OR REDUCED FAT/ REGULAR/ THING PRINT **OREO COOKIES** 20 OZ. PKG. **\$1⁹⁹**
- NESTLE BUTTERFINGER BB'S, BUNCH-A-CRUNCH, BABYRUTH, BUTTERFINGER, MILK CHOCOLATE, 100 GRAND, CRUNCH, WHITE CRUNCH, CHUNKY, OH HENRY! **CANDY BARS** ... SINGLE BARS **3/\$1**
- GERBER 2ND FOODS ASSORTED **BABY FOODS** ... 4 OZ. JARS **5/\$1**
- LUCKY LEAF REGULAR, CINNAMON OR CHUNKY **APPLE SAUCE** 6 PACK 4 OZ. **\$1⁶⁹**
- SUN-MAID **RAISINS** 6 PCK. 1.5 OZ. CTN. **\$1¹⁹**
- 100% VEGETABLE **V8 JUICE** 46 OZ. CANS **2/\$3**
- CAMPBELL'S **TOMATO SOUP** 10.75 OZ. CAN **59¢**
- SALSA CON QUESO OR MEDIUM/HOT/ MILD **TOSTITOS® SALSA** REG. \$2.19 **2/\$4**
- ASSORTED TORTILLA CHIPS **TOSTITOS®** REG. \$2.99 **\$1⁹⁹**



- ASSORTED HORMEL KID'S KITCHEN **MICROWAVE CUPS** 7.5 OZ. CUP **79¢**
- ASSORTED SQUEEZE DRINKS **BIG JUICY** 16 OZ. BTLs. **4/\$1**
- THICK 'N CHUNKY, MILD, MEDIUM, HOT, OR EXTRA MILD **PACE SALSA** 16 OZ. JAR **\$1⁸⁹**
- KRAFT REGULAR OR LIGHT **MAYO** 40 OZ. BONUS JAR **\$1⁹⁹**
- GLAD BAGS **LAWN & LEAF** ... 10 CT. PKG. **\$1⁹⁹**
- ANGEL SOFT WHITE **BATH TISSUE** .. 12 ROLL PKG. **\$2⁸⁸**
- SYLVANIA SOFT WHITE 40/60/75/100 WATT **LIGHT BULBS** 4 PACK **2/\$3**

WESTERN UNION MONEY TRANSFER™
"The fastest way to send money"

Lowe's

MARKETPLACE

401 W. American Blvd.
Muleshoe 272-4585

515 W. American Blvd.
Muleshoe 272-4406

WE RESERVE THE RIGHT TO LIMIT QUANTITIES IN TEXAS