

THE BORDEN STAR

VOLUME XVIII

AUGUST 15, 1990

Serving the Counties of Borden, Dawson, Garza, Howard, Lynn & Scurry

BORDEN SCHOOL FACES SEASON OF TRANSITION

LAMESA PRESS-REPORTER

The Borden County Schools have had their biggest turnover in faculty members in more than a decade, including the retirement of longtime Superintendent James McLeroy, but recently appointed Supt. Jimmy Thomas is confident that a successful transition will be made.

Arriving in Gail on Aug. 1 from a four-year tenure as superintendent in Meadow, the 35-year old administrator has been mostly involved in hiring new teachers and coaches and was just starting to work on the 1990-91 budget when he was interviewed last week.

It's a change for the Borden County Schools, probably their biggest turnover in 10 or 15 years." Thomas said. "They just went for so long with very little change at all. But I don't think you'll see that much difference.

"I feel that we have hired good teachers, and I just want to see the excellent tradition continue."

The new faculty members include football-basketball coach and history and physical education teacher Bobby Avery and tennis and girls basketball coach and mathematics and science teacher Chuck Jones, who both

come to Gail from Loop.

Jones' wife Ann will also teach science.

Others are third grade teacher Paula Miller, formerly of Post, reading teacher Karen Key and second grade teacher Pat Murphy, both Borden County residents, and fifth grade teacher Linda Montgomery, a recent Lubbock Christian University graduate.

Borden has 21 teachers, with nine on Level II of the career and seven on Level III. The district pays \$2,500 over the state minimum.

Thomas said the school will have an enrollment of about 200 students again this year and will continue its recent emphasis on developing students' compositional writing ability.

He said the gifted and talented program will concentrate on higher-level thinking skills and learning.

The superintendent and school board will probably finish work on the new budget by late this month, and Thomas did not yet know how much, if any, different it will be from the current \$2 million document.

The Borden County Independent School has approximately the same boundaries as the county and has enjoyed an increase in total property valuation from \$300 million for

REDELLE TO HEAD AG ENGINEERING

Dr. Donald L. Reddell, who has been a Texas A&M University faculty member since 1969, has been named head of the department of agricultural engineering.

The native of Tulia earned his bachelor's in agricultural engineering at Texas Tech in 1960. He received a master's in 1967 and doctorate in 1969, both in agricultural engineering at Colorado State University.

He was an engineer for the High Plains Underground Water Conservation District in Lubbock prior to attending graduate school.

Reddell's professional interests pertain to water issues. He has worked on modeling

1989-90 to \$326.7 million for 1990-91, primarily from improved oil prices.

Its tax rate is 46 cents per \$100 in valuation, and the superintendent said he did not know yet what the exact rate change would be.

Board members are president Jack McPhaul, vice president Joel Dennis, secretary Jon Monger, Tom Ed Vestal, Kenny Hensley, Randy Adcock and Scott Clayton.

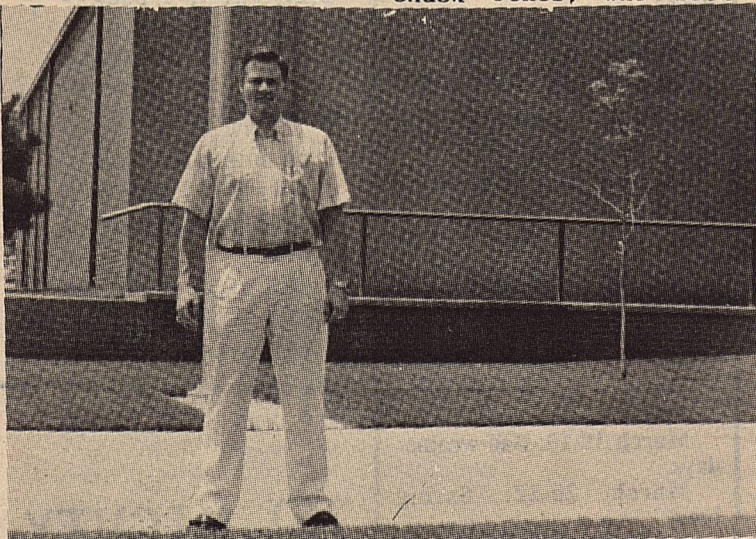


Dr. Donald Reddell

groundwater systems, surface irrigation hydraulics, automation of surface irrigation systems, irrigation scheduling, subsurface drainage, groundwater hydrology, movement of pollutants in ground water aquifers and waste management. He also has researched land disposal of wastes, soil and water engineering, statistical hydrology and systems analysis of water resource systems.

On a consulting basis, Reddell has worked in Texas, several other states and the Dominican Republic to design irrigation systems, to devise a method of disposing sludge from Houston on farmland, to construct a manure composting

Cont. to pg. 2



TRANSITION LEADER -- New Borden County School Superintendent Jimmy Thomas is leading a transition that has involved the retirement of previous superintendent and the hiring of several new staff members, but no alteration in the traditions of the district. (LP-R PHOTO)

4H NEWS

The Borden County 4-H Horse Project will conclude Monday night, August 20 with our end of summer county horse show and awards program.

4-Her's have been riding over the past 9 weeks to better their riding skills and improve their horses capabilities through weekly practices.

Jana Underwood serves as our Horse Project leader and Lisa Ludecke as our records keeper, we appreciate each of these ladies very much for donating their time each summer to assist us.

The show will begin at 6:30 p.m. and everyone is invited out to watch these 4-Her's as they show their horses on Monday night.

Appreciation is extended to the Commis-

sioner's Court and Jerry Kincheloe for assisting in preparing our county arena weekly for these horse practices.

REDELL

Cont. from pg.1

plant, to assess drainage and flood damages caused by a newly constructed highway and to project groundwater depletion in the High Plains.

He has received numerous awards for his professional papers. He was given the Distinguished Performance in Graduate Teaching Award in 1987 and the Distinguished Performance in research Award in 1980 by Texas A&M. Reddell is a member and honoree of many professional organizations and is listed in Who's Who in Technology and Who's Who in the South and Southwest.

Reddell is the son of Mr. and Mrs. K.T. Reddell of Gail.

The Borden Star
Publication No. 895520
(USPS 895-5200)

CO-EDITORS
Verna Adcock
Clarajane P. Dyess

Published weekly, except for Christmas and New Years, on Wednesday at Gail, Borden County, Texas 79738, Box 137 Kincaid Street Second Class postage paid at Gail, Texas.

Any errors that we make reflecting on the reputation or standing of any firm, corporation or individual that appear in the columns of the Borden Star will be gladly corrected when called to the attention of the staff.

Subscription Rates:
\$8.00 per year

Borden Star Owners:
Mr. R.D. Lewis, Mrs. Rich Anderson, Mrs. Pat Porter, Mrs. Bob Dyess, Mrs. Clarence Porter, Mr. Nathan Zant, Mrs. Joe Gilmore, Mrs. Sonny Tucker, Mrs. Doris Rudd, Mrs. Glen Toombs, Mr. T.L. Griffin, Mr. Eddie Simer, Mrs. Lorene Jones, Mr. Martin Parks, Mrs. Edna Miller, Mr. Dan K. Turner, and The Borden County I.S.D.

ATTENTION!

Everyone is invited to a Welcome and Get Acquainted Social at the Borden High School Cafeteria. Come have snacks and refreshments and meet our new superintendent and our other new staff people and their families. We will begin about 8 p.m. after the Sands - Borden Football Scrimmage Friday Night, August 24th.

AGENDA

THE BORDEN COUNTY INDEPENDENT SCHOOL DISTRICT BOARD OF TRUSTEES WILL MEET IN SPECIAL SESSION, WEDNESDAY, AUGUST 15, 1990 AT 6:00 P.M. IN THE BOARD ROOM.

OFFICIAL AGENDA:

1. Call To Order.....
2. Community Input From Visitors Who Have Announced.
3. Conduct Public Hearing on Tax Increase.....
4. Superintendent's Report.....
5. Adjournment.....

SCHOOL SUPPLIES

KINDERGARTEN

Round edge scissors
Crayons
Manuscript tablet
Pencil #2
School paste
Small box (to keep crayons, etc.)
Gym Shoes
Towel
Social Security No.

FIRST GRADE

Pencils (a small No. 2 lead and a large primary)
Tablet (First grade manuscript tablet)
Crayons
Scissors
Eraser (hard rubber)
Elmer's Glue
Rug or Towel
Canvas Shoes (for Gym)

SECOND GRADE

2 - No. 2 pencils
1 - box crayons
Elmer's glue
Notebook
Regular size notebook paper
Scissors
Eraser
Gym shoes
Ruler

THIRD GRADE

Loose leaf notebook
Notebook paper
1 Spiral notebook
4 No. 2 pencils
2 Red pens or 4 red pencils
1 1/2" ruler with inches on one side and metric on the other
1 small bottle of glue
1 box of crayons (any size)
2 folders

1990 FOOTBALL SCHEDULE

BORDEN COYOTES

Aug. 24	Sands	scrimmage	here	6:00
Aug. 31	Grady	scrimmage	here	6:00
Sept. 7	New Home		here	7:30
Sept. 14	Grady		there	7:30
Sept. 21	Wellman		there	7:30
Sept. 28	Loop		there	7:30
** Oct. 5	Klondike		here	7:30
* Oct. 12	Hermleigh		here	7:30
* Oct. 19	Ira		here	7:30
* Oct. 26	Trent		there	7:30
* Nov. 2	Lorraine		here	7:30
* Nov. 9	Highland		there	7:30
**District 6A games				

JR. HIGH

Sept. 20	Hermleigh	there	6:00
Sept. 27	Ira	there	6:00
Oct. 4	Trent	here	6:00
Oct. 11	Lorraine	there	6:00
Oct. 18	open		
Oct. 25	Highland	here	6:00

**Homecoming

Borden Co. Calendar

Aug. 17-24: Teachers' in-service and workdays.
Aug. 27: Classes begin.
Oct. 5: End of first six weeks.
Nov. 16: End of second six weeks.
Nov. 21-23: Thanksgiving holiday.
Dec. 20-Jan. 1: Christmas holiday.
Jan. 11: End of third six weeks.
Jan. 14: Teachers' workday.
Jan. 18: Stock show holiday.
Feb. 22: End of fourth six weeks.
March 1: Stock show holiday.
March 18-19: Bad weather days.
March 20-22: Spring break.
April 12: End of fifth six weeks.
May 24: End of sixth six weeks.
May 25: Teachers' workday.

GO MIGHTY
COYOTES!!!

MILK BID REQUEST

The Superintendent's Office, in behalf of the Board of Trustees of the Borden County Independent School District, will receive bids on milk (regular, low-fat, and chocolate) for the 1990-1991 school year.

The bid shall be addressed to Jimmy Thomas, Superintendent, Borden County Independent School District, Box 95, Gail, Texas, and shall be delivered in a sealed envelope marked "Milk Bid." Proposals should be received no later than August 20, 1990.

The right is reserved by the Borden County Independent School District to waive all formalities and to reject any and all bids.

It is anticipated that approximately 280 persons will be served daily. The term of service will be from August 27, 1990 to May 24, 1990.

AUTOMOBILE BID REQUEST

The Superintendent's Office, on behalf of the Board of Trustees of the Borden County Independent School District, will receive bids on a school car on August 20, 1990.

The proposal shall be addressed to Jimmy Thomas, Superintendent, Borden County Independent School District, Box 95, Gail, Texas and shall be delivered in a sealed envelope marked "Automobile Bid". Proposals will be received up to but no later than August 20, 1990. Bids received after that date will not be considered.

The right is reserved by the Borden County Independent School District to accept or reject any or all bids and to waive all formalities.

Specifications:

1987 Model Chevrolet Caprice 4-Door Sedan - Full Size A/c, power brakes, power steering, steel radial white wall tires, automatic transmission, radio (Am-FM) stereo with cassette tape, heater, tinted glass (all around), outside rearview mirrors/RC (right and left), cruise control, and electric door locks, V-8 Motor. 54,762 miles.

Vehicle may be inspected at Borden County I.S.D.

NOTICE OF VOTE ON TAX RATE

The Borden County Independent School District conducted a public hearing on a proposal to increase your property taxes by 14.9263 percent on August 15th, 1990 at 6:00 P. M.

The Borden County Independent School District Board of Trustees is scheduled to vote on the tax rate at a public meeting to be held on August 20th, 1990 at 8:00 P.M.

A G E N D A

THE BORDEN COUNTY INDEPENDENT SCHOOL DISTRICT BOARD OF TRUSTEES WILL MEET IN SPECIAL SESSION, MONDAY, AUGUST 20, 1990 AT 6:00 P.M. IN THE BORDEN COUNTY SCHOOL CAFETERIA IN GAIL, TEXAS.

OFFICIAL AGENDA:

- 1. Call To Order.....
2. Community Input From Visitors Who have announced.....
3. Conduct 1990-91 Budget Hearing.....
4. Adjournment.....

A G E N D A

THE BORDEN COUNTY INDEPENDENT SCHOOL DISTRICT BOARD OF TRUSTEES WILL MEET IN REGULAR SESSION, MONDAY, AUGUST 20, 1990 AT 8:00 P.M. IN THE BOARD ROOM.

TENTATIVE AGENDA:

- 1. Call To Order.....
2. Community Input.....
3. Read And Take Action To Approve Minutes of August 6, 1990 Board Meeting.....
4. Accept Bids On School Car.....
5. Accept Bids On Milk Products For 1990-91 School Year.....
6. Discuss And Take Action To Approve Payment of August Bills.....
7. Review And Address 1989-90 Official Accreditation Report.....
8. Review And Adopt 1990-91 Special Education Rules and Regulations Handbook.....
9. Discuss And Adopt 1990-91 Budget....
10. Discuss And Adopt 1990-91 Tax Rate..
11. Superintendent's Report.....
12. Adjournment.....

European Teens Seek Host Families In America

American Intercultural Student Exchange (AISE) is seeking host families for exchange students from Scandinavia, Europe, South America and Australia for the upcoming school year, 1990/91.

All AISE Students are between the ages of 15 and 17 years old. They are carefully screened and have studied English for many years. The students have medical insurance and provide their own spending money. The host family provides room, board and a supportive family atmosphere.

By opening your heart and your home to an exchange student you will be helping them fulfill their dream of spending a school year in America.

For further information about hosting a student call TOLL FREE 1-800-SIBLING or the State Coordinator Office listed below:

Diana Cooley (713) 933-8649 Or Eleanor Tatsch (after 5 PM) (817) 467-4619

A GREAT WORKOUT



CAN BE WIPED OUT BY THE RIDE HOME BUCKLE UP!

EMS NEWS DIABETES

Diabetes is a serious disease that affects some 10-12 million people in the United States. This accounts for 5% of the population. There are also those that are unaware that they are diabetics. Many diabetics try to take very good care of themselves by watching closely their food, especially sugar, intake and their insulin requirements, but sometimes this is hard to regulate properly. They may eat too much or too little or take too much or too little insulin. Exercise, stress and infections also affect their blood sugar levels and must be considered carefully.

It has recently been decided that diabetes is a far more complex disease than it was once thought. Diabetes is caused by a problem or malfunction of the pancreas in the tiny Islets of Langerhans. This is the area of the pancreas where insulin is produced. Insulin is a hormone that allows the body to utilize glucose or sugar in an efficient manner. Without it,

sugar cannot enter the cells of the body and they starve; therefore, it stays in the blood stream and dangerously high sugar levels result. This is known as diabetic ketoacidosis or hyperglycemia. This occurs when the individual is unaware of his condition or when knowing, he/she overeats and does not take proper amounts of insulin. Diabetic ketoacidosis or hyperglycemia can also be brought on by stress or infection. As the blood sugar rises to dangerously high levels, the diabetic will begin to pass excessive amounts of urine. He or she may also be quite nauseated and vomiting may occur. This, together with excessive urination, may cause dehydration. Diabetic ketoacidosis usually progresses gradually over a period of hours or days. As mentioned above, the person will pass excessive amounts of urine, complain of being extremely thirsty constantly, be excessively hungry, nauseated, may vomit, have abdominal pain, and

will have warm and dry skin from dehydration due to the loss of fluid. Their pulse rate may be rapid; they will have deep and rapid respiration with a fruity odor on their breath. Weakness and fatigue progressing gradually to coma are also symptoms of diabetic ketoacidosis.

If you suspect that a person is an a diabetic coma due to ketoacidosis or hyperglycemia, transport them to a medical facility immediately or call the EMS in Borden County for assistance. If able to do so, take their vital signs, pulse, pressure, and respiration rate. If they are in a coma, open their airway with a maneuver called the head tilt-chin lift and try to assess their respirations or breathing. To do the head tilt-chin lift, tilt the head by applying pressure on the forehead with one hand while placing the fingers of the other hand under the chin. Put them on the bone, not the soft part of the throat. You then lift the chin upward. This should open their airway. If they are not breathing, give them two breaths and begin CPR. Keep them lying flat with head and shoulders slightly elevated, taking care to keep their airway open. If vomiting occurs, turn their head to the side to prevent aspiration into the lungs. This is a life-threatening situation and the patient should be taken to the hospital as soon as possible. The Borden County EMS would be glad to respond to your aid.

Insulin shock occurs when a diabetic takes his insulin, but does not eat. Because of this his blood sugar falls to dangerously low levels. A normal blood sugar level is between 60 and 120. When the level falls below 60, there is an insufficient amount of sugar in the blood to maintain normal brain functions. The diabetic becomes weak and shaky, confused and disoriented, hungry; they may become hostile, belligerent and appear to be drunk. Insulin shock can lead to convulsions and coma in the later stages. This person needs SUGAR. If they are conscious, give them a drink or a piece of candy that contains sugar. There should be rapid improvement. Insulin shock left untreated can lead to death. The onset of insulin shock is sudden and rapid emergency care is critical! Death can occur within minutes if the person is not treated. If in doubt, administer sugar to the conscious diabetic. Even though a person in diabetic ketoacidosis already has

too much sugar in his blood, he/she will probably not be worsened by this amount of sugar. Insulin shock is a condition that requires sugar immediately or death may occur within minutes. It is a much more critical situation than diabetic ketoacidosis, but if sugar is immediately administered, you will see rapid improvement.

The Borden County EMS will be glad to respond to any need that you might have. Call us individually or call the Borden County Sheriff's Office and they will dispatch us.



The days of the mid-1930's Dust Bowl are long gone. In the decades since, the Texas High Plains have prospered agriculturally and risen to national importance with the production of crops such as grain, sugar beets, potatoes, carrots, lettuce, onions and castor beans, to name a few. The grit from dusty clouds pushed by northerners still causes folks to pull up stakes, but the old-timers tend to see a blessing in disguise. As one Panhandle native put it, "Heck, if it weren't for the dusters, everybody would want to live here."

Classified Ads

FOR SALE
1985 DOUBLE WIDE
MOBILE HOME. 3 bed,
2 bath, in Gail.
Lived in 4 years.
Like new. 1568 sq.
foot. Call: 817-647-
1919.

SHEAR COUNTRY
Back-To-School
SPECIAL
August 16-25
\$3 off Haircuts
\$5 off Perms

NOTICE: NEW PRICE
Haircuts For Men
Over 55-\$6.50
(Price not included
in SPECIAL)
CALL: Karen for
appointment
(915)856-4363

GOVERNMENT SEIZED-
Vehicles from
\$100.00. Miata's,
Corvettes, Mercedes
Jaguars, Porches &
other misc. con-
fiscated property
now being sold to
the general public.
For buyers guide
call (708) 355-9802
Ext.7585. Open 7
days 8:00 am to
11:00 pm.

FOR SALE
TRITICALE SEED
Clean and bagged
in 1990 crop.
Jerry Eaton -
806-439-6314.

Try TUMS

sodium free
calcium rich



(free single roll)
TUMS... More than just a great antacid.

Mail to: Tums Free Sample
P.O. Box 1119
Grand Rapids, MN 55745-1119

Please send my free sample!

Name _____

Address _____

City _____

State _____ Zip _____

Limit one per household. OFFER EXPIRES October 30, 1990.

NEW
RELEASES
VCR
RENTAL AVAILABLE

"THE TRADING POST"
New Location
IN GAIL

SPECIAL RATES FOR NINTENDO GAMES

2 DAYS---\$3 4 DAYS---\$5
7 DAYS---\$10

ONLY \$3.00
EACH

Grand Opening Set August 17 For San Marcos Factory Shops

A new showplace for Texas shoppers has arisen at the heart of the IH 35 Corridor between Austin and San Antonio as the 300,000-square foot San Marcos Factory Shops readies for its August 17 opening.

The manufacturers outlet center, developed by the Chicago-based Prime Group, Inc., will feature over 60 stores plus a 60,000-square foot V.F. Outlet.

The project will consist of four clusters built in the style of an authentic

southwestern village and feature the best in apparel, accessories and home furnishings at prices significantly below retail. A 10,000-square foot food court will allow shoppers a wide variety of meals while they visit the complex.

"San Marcos Factory Shops visitores will be able to get merchandise directly from the manufacturer at incredible savings," Abraham Rosenthal, Senior Vice-President of the Prime Group, Inc., said.

"Low prices combined with an upscale environment, San Marcos Factory Shops will change the way people look at outlets," Rosenthal said.

The Prime Group's first development, Warehouse Row, located in downtown Chattanooga Tenn., opened in the fall of 1989 to huge crowds and tremendous success and San Marcos Factory Shops, situated in one of the fastest growing tourism markets in America is expecting similar success.

COUNTY OF BORDEN I
STATE OF TEXAS I

LEGAL NOTICE

The Commissioners' Court of Borden County will hold a public hearing on the proposed budget for Borden County for 1991, beginning at 10:00 a.m. on Monday, August 27, 1990 at the Courthouse in Gail, Texas.

A summary of the proposed Borden County Budget is as follows:

Jury Fund -- \$1100.00
General Fund -- \$512,718.00
Road & Bridge Fund -- \$405,600.00
Permanent Improvement Fund -- \$35,000.00

This proposed budget does not include a salary or wage increase for county employees and elected officials.

Any interested persons is invited to attend and present oral or written comments. The proposed budget may be examined at the office of the County Clerk or the County Judge.

The proposed tax rate for 1990 is .25 per \$100.00.

BY ORDER OF THE BORDEN COUNTY COMMISSIONERS' COURT

Van L. York

Van L. York
County Judge
Borden County

NOTICE OF PUBLIC HEARING ON TAX INCREASE

The (County of Borden) will hold a public hearing on a proposal to increase total tax revenues from properties on the tax roll in (1989) by (14.28) fourteen and twenty-eight hundredth percent. Your individual taxes may increase at a greater or lesser rate, or even decrease, depending on the change in the taxable value of your property in relation to the change in taxable value of all other property.

The public hearing will be held on (August 22, 1990) at (9:30 a.m. in the Borden County Courthouse.

FOR the proposal: Van L. York, County Judge; Commissioners', Frank Currey, Larry Smith, Vernon Wolf, and Hurston Lemons.

AGAINST the proposal: None

PRESENT and not voting: None

ABSENT: None

The statement above shows the percentage increase the proposed rate represents over the (effective) tax rate that the unit published on (August 1, 1990). The following table compares taxes on an average home in this taxing unit last year to taxes proposed on the average home this year. Again, your individual taxes may be higher or lower, depending on the taxable value of your property.

	Last Year	This Year
Average home value	13403	14357
General exemptions available (amount available on the average home, not including senior citizen's or disabled person's exemptions)	2680	2871
Average taxable value	10723	11486
Tax rate	.24	.25 (proposed)
Tax	\$25.73	\$28.72 (proposed)

Under this proposal taxes on the average home would (increase) by \$ (2.99) or (11.62) percent compared with last year's taxes.

Comparing tax rates without adjusting for changes in property value, the tax rate would (increase) by \$ (one cent (\$.01)) per \$100 of taxable value or (4.16) percent compared to last year's tax rate. These tax rate figures are not adjusted for changes in the taxable value of property.

Branon Funeral Home

Service in this area since 1922.

Phone 872-8335 403 N. Austin, Lamesa



Go Back To School In Jeans

ROCKY MOUNTAIN CLOTHING CO.

Jeans

All Ladies Summer Wear 50% off



Western Wear
College Heights Shopping Center



Clown Trio To Provide Protection For Cowboys

SNYDER DAILY NEWS

"Bumble Bee" and "Boogie Man" will be joined by "Snuffy" when the AJRA National Finals Rodeo opens in the Scurry County Coliseum, this week.

They are the clowns, "Bumble Bee" Rick Chatman, "Boogie Man" Leon Coffee and "Snuffy" Chancellor. Chatman and Coffee return to the youth finals rodeo for the seventh consecutive year, joined for the first time by Chancellor.

They bring smiles to the faces of children of all ages but the clowns working the AJRA National Finals Rodeo have a much larger role than delighting the crowd. They are what stand between the cowboy and several thousand pounds of ornery bull.

Coffee, 37, of Austin, has been on the rodeo circuit since highschool. He was a bareback rider, a bull rider, a steer wrestler and a calf roper.

Coffee has worked the 1979 and '84 NFRs and has competed every year since 1983 on the Wrangler Bullfight tour. In 1983, he was voted the PRCA Clown of the Year.

His wife, Tammy Jo, is a former Miss Rodeo North Dakota.

Rodeo is becoming a Coffee family tradition as his daughters, Leigh Ann, 11, and Brandy Lynn, 9, are following their parents footsteps as goat tyers, breakaway ropers, pole benders and barrel racers in the AJRA.

Chatman, 32, was born and raised in Forth Worth.

Chatman was the 1979 Lone Star Circuit Clown of the Year and he hit the bigtime with appearances in the National Finals Rodeo in Oklahoma City in 1980 and '81.

In 1984, he returned for a third time to the NFR, having been honored with the

position by the election of the top 15 bullriders of the Professional Rodeo Cowboys Association.

He was also named the Wrangler World Champion Bullfighter that year.

Chatman began bullfighting and competing in 1975 when he was 17. In addition to rodeo, he was also an all-round athlete in track, pole vaulting and golf.

He continues to play racquet-ball, volleyball and basketball along with other physical conditioning necessary for agility in his profession.

Chancellor, 42, who hails from Fort Worth, began his rodeo clowning career at age 18. He took an eight-year "leave of absence" from the profession but returned in 1981.

Chancellor's specialty has always been working the barrel during the bull riding event. Tucked away in an open-ended barrel, he provides a mobile buffer for the rodeo bullfighter.

In addition, Chancellor delights crowds with his diminutive mule, "Horsefly," has his "chicken powered" vehicle called the hen-mobile.

The arena veteran was once in the business of making barrels for other rodeo clowns and has just about perfected his own 150-pound hidaway constructed of lightweight aluminum covered with layers of rubber tubes, foam rubber, tape and spray paint.

"It's a long way from my first one, which was a wooden-staved pickle barrel," said Snuffy. "I sure got banged up in that one."

The rodeo runs nightly at 8 o'clock from Tuesday through Saturday. Tickets are

\$6 for box seats, \$4 for general admission, and \$2 for children under age 12.

FOSTER HOME PROGRAM

CHILD NEEDS ADOPTIVE HOME

Children's Protective Services is seeking an adoptive home for a 5 year old girl named Christy. She is currently in a local foster home and parental rights are terminated. The following paragraphs are descriptive of Christy:

CHRISTY

The mischievous five year old girl climbs in and out of the chair, responding to the sound of her foster mother's voice. Her pixie-like brown eyes sparkle as she cheerfully plays a toy piano, but she seems uninterested in what is going on around her. Occasionally, she shares affection with her foster mother and caseworker.

But life is not always easy for Christy. She is an autistic-like child with the overall development of a thirteen month old. She has no verbal skills or awareness of danger. She is vulnerable to the world around her and needs the constant protection of loving parents.

Christy is learning sign language and is on seizure disorder medication. She responds well to her foster mother, who provides lots of toys, lots of hugs, and lots of consistency. Elaine Leonard, caseworker for Christy, believes



"with special care and training, Christy should be able to live productively."

Anyone interested in more information about

adopting Christy can call Nancy Miller at (915) 686-CARE. A study of the home and background checks will be required.

★ ★ ★ THE BORDEN STAR ★ ★ ★
1 year Subscription \$8.00 ★

BOX 137 GAIL, TEX. 79738

Name.....
Street.....
City..... State..... Zip.....



THE FIRST NATIONAL BANK

The Symbol of Banking in Big Spring



FULL SERVICE BANKING

Member F.D.I.C.

400 Main Street

267-5513

BIG SPRING, TEXAS

ASCS NEWS BY Jerry Stone

EMERGENCY HAYING AND GRAZING OF ACR & CU/PAY ACRES

Due to drought conditions experienced earlier in the crop year Borden County has been approved for emergency haying and grazing of ACR and CU for payment acres during the restricted five month period. Producers will be allowed to hay or graze for their own livestock or allow others to bale or graze the acre-age or lease the grazing rights to others as well as sell any hay produced at available market prices.

Restrictions are as follows: Cover must NOT be removed to the extent that the land is not adequately protected from wind and water erosion. Producers may not graze or hay wildlife food plots or small grain acreages on which a fee was paid to allow the cover to remain standing.

Prior to haying and/or grazing these acres producers are required to sign a register at the ASCS office requesting the benefit.

CRP WEED CONTROL

The Conservation Reserve Program requires program participants to maintain their stands of grass for the life of the 10 year contract. Participants are reminded to check their land now for excessive weeds. With the recent rains we have received, weeds are growing rapidly. Weed control on CRP is the responsibility of the producer regardless of whether ASCS cost shares the control measures or not. Both ASCS and SCS representatives will be making field visits periodically thur the year to evaluate grass conditions. Penalties or loss of program benefits can be applied if CRP land is NOT properly maintained. Please do not allow your CRP land to adversely affect the crops of your neighbors.

1988 AND 1989 OVERPAYMENTS

Many producers have recently received notices of 1988 and 1989 overpayments. The major reason that overpayments occurred was because both a disaster and deficiency payment were inadvertently made on the same pounds or bushels. Both the 1988 and 1989 overpayments are due July 31, 1990. However, producers have an additional 30 days from this date to pay these debts to avoid interest penalties. If not paid within the 30 day limitation then the debt will be transferred to a claim status and interest penalties will apply until the debts is settled which includes the first 30 day period as mentioned above.

CONSERVATION PLANS

When looking at obtaining new cropland either to operate or buy that is highly erodible, producers should make it a point to thoroughly review requirements already set-forth in a conservation plan developed through the Soil Conservation Service. This plan may not fit your farming operation. However, modification can be made to these plans if done timely.

FAILED ACRES

If a crop fails due to conditions beyond your control, you must report the acreage and disaster to this office before you destroy or make other use of the non-harvested acreage. This office will verify all disasters and will notify you in writing as to the disposition of your crop. If you have crop insurance, let your agent know so he can get an adjuster lined up. We will need a copy of the appraisal worksheet when you file your ASCS-574.

COMMODITY CERTIFICATES

Producers who still have generic commodity certificates are reminded that they should be sold or redeemed for cash before the expiration date on the certificate. Original holders may redeem certificates only at the county office where they are issued.



IF ONLY THEY CAME WITH INSTRUCTIONS.

American Red Cross

BORDEN COUNTY EMERGENCY NUMBERS

SHERIFF'S OFFICE 915-856-4311

EMTS

GAIL	PLAINS	FLUVANNA
Richard Laverty-EMT 915-856-4363	Frances Burkett-EMT-P 806-439-6683	James Aaron-EMT-I 915-573-7760
David Mayes-EMT 915-856-4446	Lance Telchik-EMT 806-439-6693	Mitey Bilano-EMT-P 915-573-7312
Royce Nance-EMT 915-856-4467		Freida Campbell-EMT-P 915-573-7342
Cameron Thompson-EMT 915-856-4382	CARE LINK 1-800-456-5465	Kent Holmes-EMT-P 915-573-4164
Buddy Wallace-EMT 915-856-4478	FLIGHT FOR LIFE 1-800-553-5333 Collect 806-796-6300	Nelva Jones-EMT-I 915-573-2426
John Wilson-EMT 915-856-4384	POISON CONTROL NO. 1-800-392-8548	Barbara Miller-EMT-P 915-573-7720
		Debi Parks-EMT 915-573-8615
		Judy Pylant-EMT-P 915-573-3486

Donations and Memorials may be mailed to:
Borden County EMS
Box 153
Gail, Tx. 79738

Can't Sleep?

Try Sominex. More people have trusted Sominex to help get a good nights sleep. Sominex contains the non-prescription sleep medicine doctors prefer.

And now, you're only 1 step away from getting a good nights sleep—introducing Sominex 1 caplet dose. For your FREE SAMPLE, mail this form to:

Sominex Free Sample, P.O. Box 1098,
Grand Rapids, MN 55745-1098

(based on cumulative sales).



Send me my FREE SAMPLE!

Name _____

Address _____

City _____

State _____ Zip _____

Limit one per household. Offer expires August 31, 1990.



Security State Bank

Big Spring, Texas

Member F.D.I.C.

1411 Gregg

Courthouse News

WHEREAS, On the 23rd day of July, 1990, the Commissioners' Court of Borden County, Texas, convened in Special Session at the Regular meeting place thereof in the Courthouse at Gail, Texas, the following members of the Court being present and participating, to-wit:

- VAN L. YORK COUNTY JUDGE, Presiding
- FRANK CURREY COMMISSIONER, Prec. #1
- LARRY D. SMITH COMMISSIONER, Prec. #2
- VERNON WOLF COMMISSIONER, Prec. #3
- HURSTON LEMONS, JR. COMMISSIONER, Prec. #4
- DOROTHY BROWNE COUNTY CLERK & EX-OFFICIO CLERK OF THE COMMISSIONERS' COURT

constitution a quorum, when the following proceedings were had, to-wit:

MINUTES APPROVED

Minutes of the meeting of July 9th, 1990 were read. Commissioner Smith made a motion to approve said minutes as read. Commissioner Currey seconded the motion.

Voting For: Commissioners Currey, Smith, Wolf and Lemons

Voting Against: None

CURRENT ACCOUNTS

Current accounts were examined. A motion was made by Commissioner Smith to pay said accounts. Motion was seconded by Commissioner Wolf.

Voting For: Commissioners Currey, Smith, Wolf and Lemons

Voting Against: None

MUNICIPAL SOLID WASTE LANDFILL

Commissioner Smith made a motion that Borden County go on record AGAINST the development of a regional Municipal Solid Waste Landfill in Mitchell County because of high cost and impracticality in hauling to same and the environmental problems it may cause this region. Motion was seconded by Commissioner Currey.

Voting For: Commissioners Currey, Smith, Wolf and Lemons

Voting Against: None

ELECTION JUDGES

A motion was made by Commissioner Currey to appoint Election Judges and Alternate Election Judges as shown on the following Order. Commissioner Lemons seconded the motion.

Voting For: Commissioners Currey, Smith, Wolf and Lemons

Voting Against: None

Be it further ordered that in pursuance to Art. 3.09, Texas Election Code, the clerk of this court shall cause a certified copy of this order to be served by registered mail on all Precinct Judges within twenty (20) days from the date of this order.

The above order being read, it was moved and seconded that same do pass. Thereupon, the question being called for, the following members of the Court voted AYE:

Commissioner Frank Currey Commissioner Vernon Wolf
 Commissioner Larry D. Smith Commissioner Hurston Lemons, Jr.

and the following voted NO:

PASSED, APPROVED, AND ADOPTED, this the 23rd day of July, 1990.

Van Lyak
 County Judge
Frank Currey
 Commissioner, Precinct No. 1
Larry D. Smith
 Commissioner, Precinct No. 2
Vernon Wolf
 Commissioner, Precinct No. 3
Hurston Lemons, Jr.
 Commissioner, Precinct No. 4

COUNTY BUDGET

County budget discussed. Budget hearing set for 10:00 a.m., August 27, 1990 in the Borden County Courthouse.

ADJOURNMENT

Commissioner Currey made a motion to adjourn at 4:10 p.m. Motion was seconded by Commissioner Wolf and approved unanimously.

THE FOREGOING MINUTES READ AND APPROVED THIS THE 13TH DAY OF AUGUST, A.D. 1990.



George Washington's horse was named Lexington.



Buckle Up!

Texas Coalition for Safety Belts

U.S. Postal Service STATEMENT OF OWNERSHIP, MANAGEMENT AND CIRCULATION <i>Required by 39 U.S.C. 3685</i>				
1A. TITLE OF PUBLICATION The Borden Star		1B. PUBLICATION NO. 8 8 9 5 5 2 0		2. DATE OF FILING 8-8-90
3. FREQUENCY OF ISSUE Weekly except for Christmas & New Year		3A. NO. OF ISSUES PUBLISHED ANNUALLY 50	3B. ANNUAL SUBSCRIPTION PRICE \$8.00	
4. COMPLETE MAILING ADDRESS OF KNOWN OFFICE OF PUBLICATION (Street, City, County, State and ZIP+4 Code) (Not printers) The Borden Star, Box 137, Gail, Texas 79738				
5. COMPLETE MAILING ADDRESS OF THE HEADQUARTERS OF GENERAL BUSINESS OFFICES OF THE PUBLISHER (Not printer) Clarajane Dyess, Editor - Borden Star, Box 137, Gail, Texas 79738				
6. FULL NAMES AND COMPLETE MAILING ADDRESS OF PUBLISHER, EDITOR, AND MANAGING EDITOR (This item MUST NOT be blank)				
PUBLISHER (Name and Complete Mailing Address) The Borden Star, P. O. Box 137, Gail, Texas 79738 Mrs. Clarajane Dyess, Route 1, Box 141, O'Donnell, Texas 79351				
EDITOR (Name and Complete Mailing Address) Mrs. Clarajane Dyess, Route 1, Box 141, O'Donnell, Texas 79351				
MANAGING EDITOR (Name and Complete Mailing Address) Mrs. Verna Adcock, P. O. Box 324, Gail, Texas 79738				
7. OWNER (If owned by a corporation, its name and address must be stated and also immediately thereunder the names and addresses of stockholders owning or holding 1 percent or more of total amount of stock. If not owned by a corporation, the names and addresses of the individual owners must be given. If owned by a partnership or other unincorporated firm, its name and address, as well as that of each individual must be given. If the publication is published by a nonprofit organization, its name and address must be stated.) (Item must be completed.)				
FULL NAME COMPLETE MAILING ADDRESS				
Mr. R.D. Lewis P.O. Box 316 Gail, Tx. 79738	Mrs. Clarence Porter P.O. Box 35 Vealmoor, Tx. 79720	Mrs. Doris Rudd HC 61, Box 10 Gail, Tx., 79738	Mrs. Lorene Jones P.O. Box 132 Gail, Tx. 79738	Mr. Dan K. Turner Rt. 1, Box 134A O'Donnell, Tx. 79351
Mrs. Rich Anderson P.O. Box 136 Gail, Tx. 79738	Mr. Nathan Zant Vealmoor, Tx. 79720	Mrs. Glen Toombs HC 61, Box 6 Fluvanna, Tx. 79517	Borden County I.S.D. P.O. Box 95 Gail, Tx. 79738	
Mrs. Pat Porter P.O. Box 47 Vealmoor, Tx. 79720	Mrs. Joe Gilmore 811 W. 7th Street Big Spring, Tx. 79720	Mr. T.L. Griffin Gail Route, Box 90 Coahoma, Tx. 79511	Mr. Martin Parks Star Route 1, Box 20 Fluvanna, Tx. 79517	
Mrs. Bob Dyess Route 1, Box 141 O'Donnell, Tx. 79531	Mrs. Sonny Tucker Knott Route, Box 88 Big Spring, Tx. 79720	Mr. Eddie Simer Gail Route, Box 446 Big Spring, Tx. 79720	Mrs. Edna Miller HC 61, Box 30 Fluvanna, Tx. 79517	
9. FOR COMPLETION BY NONPROFIT ORGANIZATIONS AUTHORIZED TO MAIL AT SPECIAL RATES (Section 423.12 DMM only) The purpose, function, and nonprofit status of this organization and the exempt status for Federal income tax purposes (Check one)				
<input checked="" type="checkbox"/> (1) HAS NOT CHANGED DURING PRECEDING 12 MONTHS		<input type="checkbox"/> (2) HAS CHANGED DURING PRECEDING 12 MONTHS		(If changed, publisher must submit explanation of change with this statement.)
10. EXTENT AND NATURE OF CIRCULATION (See instructions on reverse side)		AVERAGE NO. COPIES EACH ISSUE DURING PRECEDING 12 MONTHS	ACTUAL NO. COPIES OF SINGLE ISSUE PUBLISHED NEAREST TO FILING DATE	
A. TOTAL NO. COPIES (Net Press Run)		600	600	
B. PAID AND/OR REQUESTED CIRCULATION				
1. Sales through dealers and carriers, street vendors and counter sales		14	14	
2. Mail Subscription (Paid and/or requested)		490	490	
C. TOTAL PAID AND/OR REQUESTED CIRCULATION (Sum of 10B1 and 10B2)		504	504	
D. FREE DISTRIBUTION BY MAIL, CARRIER OR OTHER MEANS SAMPLES, COMPLIMENTARY, AND OTHER FREE COPIES		10	10	
E. TOTAL DISTRIBUTION (Sum of C and D)		514	514	
F. COPIES NOT DISTRIBUTED				
1. Office use, left over, unaccounted, spoiled after printing		86	86	
2. Return from News Agents				
G. TOTAL (Sum of E, F1 and 2-should equal net press run shown in A)		600	600	
11. I certify that the statements made by me above are correct and complete		SIGNATURE AND TITLE OF EDITOR, PUBLISHER, BUSINESS MANAGER, OR OWNER <i>Clarajane Dyess</i>		