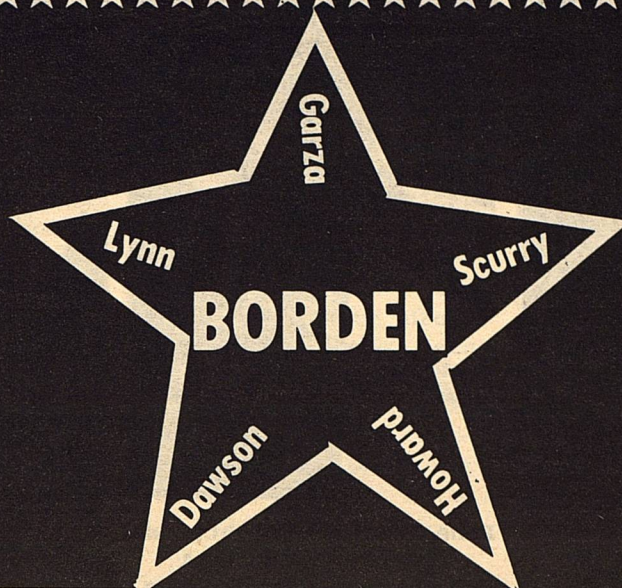


# THE

VOLUME XIV



# STAR

April 29, 1987

Serving the Counties of Borden, Dawson, Garza, Howard, Lynn & Scurry



TOM MAYNARD-Speaker for the FFA-FHA Banquet.

## BANQUET SPEAKER

Gail..Tom Maynard, a past state vice president of the Texas Future Farmers of America and coordinator of Texas Tech's Ambassadors for Agriculture addressed the Borden County FFA's annual awards program held Tuesday night, April 21.

In 1983-84, Maynard served as vice president of the Texas Future Farmers of America, the nation's largest FFA state association.

As state vice president, Maynard travelled more than 20,000 miles motivating and encouraging younger members of the 59,000 member association.

The FFA is a national youth organization for students of vocational agriculture and the agricultural sciences.

Maynard has been a

speaker for the Ambassadors for Agriculture since 1983 and coordinator since 1984.

According to Associate Dean of Agriculture Sciences, Marvin J. Cepica, the Ambassadors for Agriculture are a group of students majoring in some phase of agriculture who offer their services as speakers to various organizations, speaking on behalf of the agricultural industry.

The Ambassadors also give motivational speeches and leadership training to youth groups.

Maynard also serves

as executive producer and anchorman for the Ambassadors' weekly talk show, "Food, Fiber and You" which airs on Lubbock public television.

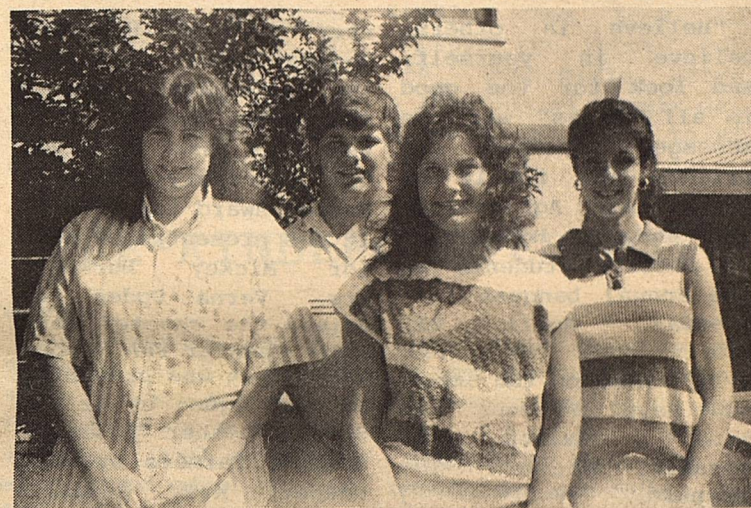
He was recently appointed to the staff of the FFA's national leadership conference, the Washington Conference Program.

Maynard, a graduate of Cal Farley's Boys Ranch near Amarillo, graduated from Texas Tech this past December with a degree in animal production. He is pursuing post-graduate studies in agricultural education.



Mrs. Verna Ogden was presented the Honorary FHA Member Award during the annual FFA-FHA Banquet last Tuesday. The presentation was made by Kristi Stone.

Story pg 2



QUALIFIES FOR STATE UIL COMPETITION: Lynn Herridge, Gerry Smith, Kelli Williams and Joanie Wilson all qualified for state competition in business.

## ADVANCE TO STATE

Six business students traveled to Levelland Friday, April 24 with Mrs. Netta Jarrett to participate in the Regional U.I.L. Contest. Joanie Wilson placed 2nd in typewriting; Kelli Williams placed 1st in shorthand; Lynn Herridge placed 3rd in shorthand, and Gerry

Smith placed 3rd in accounting. Lisa Powell placed 6th in shorthand and Michael Murphy tied for 5th place in accounting.

Kelli, Lynn, Joanie, and Gerry will compete in the state meet in Austin on May 9.

These students are to be commended for their fine efforts.

## LAMESA FARMER AGAINST PAYMENT LIMITS

Memphis-The worst thing Congress could do would be to "gut" the current farm program by further limiting producers' access to its benefits, National Cotton Council witnesses told a House Agriculture subcommittee this week.

Council President Aven Whittington, a Greenwood, Miss., producer, said USDA's proposal for re-defining a "per-

son" for program payments would undermine the effectiveness of a cotton program that has been carefully shaped and is working as designed.

Frank Jones, Lamesa, producer, told the subcommittee the Council opposes payment limits in all forms.

"They are inequitable because they discrim-

con't to pg 8

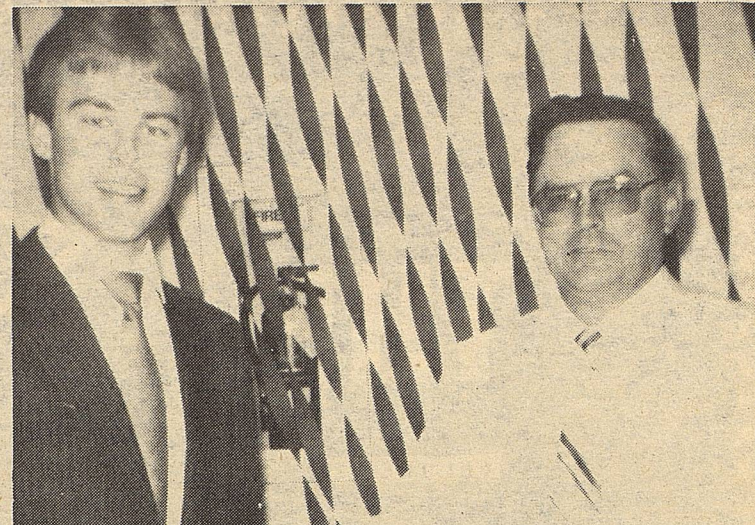




Kelli Williams, FHA Sweetheart and Michael Murphy FHA Beau were presented at the Annual Banquet. Kelli competed in the district Sweetheart Contest, placing 2nd.



Rene Telchik (right) was presented the FHA Encounter Award by Kelli Williams.



Van York was recipient of the Honorary Chapter Farmer Award during the FFA-FHA Banquet. The plaque was presented by Mickey Burkett.

## FHA FFA-FHA BANQUET

"Believe in others, believe in yourself, and look for the good in all things" was the message received by friends and family of Vocational Agriculture and Future Homemakers of America students at the annual banquet last Tuesday, April 21. "Your rise or fall will depend on the image you have in your own mind," advised the speaker, Mr. Tom Maynard.

Everyone awaits every year with anticipation to see who receives the

very popular Honorary Chapter Farmer Award and the Honorary Chapter FHA Member Award. This year Van York received the Honorary Chapter Farmer Award for 1986-87. It was presented by senior Mickey Burkett. Mrs. Verna Ogden received the coveted Honorary Chapter FHA Member Award. It was presented to Mrs. Ogden by Kristi Stone. Other Honorary Chapter Farmers are Sid Reeder, K.T. Reddell, Dee Poston, Johnny Kite, Joe Canon, Wilson Harrison, Ab Hendley, James Hodge, Ben Jarrett, James McLeroy, John Dennis, Weldon Hancock, Elmer McClurg, Mickey McMeans, Buster Taylor, Brent Murphy, Ross Westbrook, Fred Ridenour, Don Cox, Ralph Miller, Ed Rinehart, Charles Green, Jerry Stone, Kent Holmes and Bill Phinizy. Other Honorary Chapter Members are Mr. and Mrs. Vivian Clark, Mr. and Mrs. Bill Stephens, Mrs. Wesley Graves, Mr. and Mrs. W. F. Johnson, Mrs. Bonnie Brumley, Mrs. Sue Janes Mayes, Mrs. Maxine Anderson, Mrs. Peggy Westbrook, Mr. and Mrs. Pat Porter, Mr. and Mrs. Staggs, and Mr. and Mrs. Ben Jarrett.

Gerry Smith gave the invocation. Kelli Williams and Kristi Stone led the opening ceremony. Michael Murphy welcomed guests and family of members. Linda Sternadel gave the special theme....a

poem "The Rainbow" in keeping with the banquet theme. Robert Buchanan introduced the speaker, Tom Maynard. Mr. Maynard is a 1982 graduate of Cal Farleys Boys Home and represents the Texas Tech Ambassadors of Agriculture.

Kelli Williams was presented as FFA Sweetheart by Will Phinizy. Kelli competed in the District Sweetheart Contest, placing 2nd. She is the daughter of Mr. and Mrs. Kenneth Williams. Michael Murphy was presented as FHA Beau by Rene Telchik. He is the son of Mr. and Mrs. Brent Murphy. Agriculture teacher, Mr. Buddy Wallace recognized outstanding FFA Members by accomplishments as follows: Swine Production-Randell Hollis, Sheep Production-Michael Murphy.

Beef Production-Kerry Fryar, Diversified Livestock-Gerry Smith. The Star Chapter Farmer Award went to Will Phinizy, presented by Gerry Smith. The Star Greenhand Award went to James Smith and was presented by Shannon Bond. The FHA Encounter Award was presented to Rene Telchik by Kelli Williams.

Special thanks was given by Rene Telchik, John Stephens and Tammy Johnson. The closing ceremony was led by Mickey Burkett. Lynn Herridge gave the benediction. Mrs. Julie Cooper, FHA teacher and Mr. Buddy Wallace, Vo.Ag. teacher are both to be commended for the leadership and examples they afford these young people.

**THE BORDEN STAR**  
Publication No. 895520  
(USPS 896-520)  
Publication No. 895520

Editor  
Barbara Anderson

Published weekly, except for Christmas and New Years, on Wednesday at Gail, Borden County, Texas 79738, Box 137, Kincaid Street, Second Class postage paid at Gail, Texas.

Any errors that we make reflecting on the reputation or standing of any Firm, Corporation, or individual that may appear in the columns of The Borden Star will be gladly corrected when called to the attention of the staff.

Subscription Rates:  
\$8.00 per year

Ad. rate: \$2.00 a column inch  
Classified ads: 15 cents a word  
Legal Notices: 20 cents a word

Borden Star Owners:  
James McLeroy, Barbara Anderson, Doris Rudd, Pat Porter, Bob Dyess, Edna Miller, Ruth Weathers, Mrs. Nathan Zant, Sonny Tucker, Eddie Simer, Loreen Jones, Martin Parks, Dan Turner, Lela Porter, Marge Toombs.

## Annals

Annals are now on sale in Mrs. Briggs office. They will be on sale until May 14 for \$6.50.

May 1987

Sunday	Monday	Tuesday	Wednesday	Thursday	Friday	Saturday
APRIL 1987 S M T W T F S 1 2 3 4 5 6 7 8 9 10 11 12 13 14 15 16 17 18 19 20 21 22 23 24 25 26 27 28 29 30	JUNE 1987 S M T W T F S 1 2 3 4 5 6 7 8 9 10 11 12 13 14 15 16 17 18 19 20 21 22 23 24 25 26 27 28 29 30				1 Bad Weather Day Regional Tennis Regional Track	2
3	4	5	6	7	8	9
10	11	12	13 Grandparents Tea 2:30 p.m.	14 Spring Band Concert 7:00 p.m.	15 Bad Weather Day State Tennis State FFA Convention-San Angelo AMMO BASKET DAY	16
17 MOTHERS DAY	18	19	20	21	22	23
24	25 Awards Banquet 7:00 p.m.	26	27	28	29 End of Semester	30 Teacher Workday Senior Trip
31 SACCALAUREATE 11:00 a.m.					H.S. Graduation 8:00 p.m.	Jr Hi Graduation 8:00 p.m.



# JUNIOR HIGH DOMINATES TENNIS TOURNAMENT

The Borden Star, Wed. April 29, 1987...3

Borden Junior High traveled to Lamesa Saturday for the 1987 District Tennis Tournament and came away with three of the four titles. They were also runner-up in two of the titles they won. Eight graders Cole Vestal and Shane Kemper won the boy's doubles title as they won all their matches in straight sets. In the first round, they received a bye due to their number two seeding. They then played Grady, a 6-1, 6-2 winner over Sands. Cole and Shane won the first set 6-2 before being taken to a tie-breaker in the second set. Borden held off two set points to win the tie-breaker 8-6 and the match 6-2, 7-6. In the semi-finals they defeated Dawson's number two team who had defeated O'Donnell in the quarter-finals. Again Borden won the first set easily 6-1, before struggling in the

second set. Still they closed out the set with a 6-1, 7-5 win. In the finals, Cole and Shane met Dawson's number one team, who were winners over Grady in their semi-final. The first set went to a tie-breaker but was dominated by Borden 7-0. The second set was a little easier and Shane and Cole captured the district doubles title 7-6, 6-3. Also playing in the boy's doubles were David Buchanan and Heith Gammons. They won their first match over O'Donnell by a 6-0, 6-1 score. Then in the quarter-finals, they dropped a 6-1, 6-0 match to the Dawson team. In boy's singles competition, Rich Holzmann finished fourth with two wins and two losses. In the first round, he defeated O'Donnell by a convincing 6-0, 6-0 score. In the quarter-finals, he again won 6-0, 6-0

over Klondike. Then in the semi-finals, he met the number one seed from Grady and lost 6-2, 6-0. In the third place match he played Dawson. Rich won the first set 6-3 but dropped the next two sets 3-6, 0-6 to settle for fourth place. Shawn Lewis also competed in singles but dropped his first match to Grady 6-2, 6-0. In the girl's division, there was some good news and some better news. The good news was that Borden won first and second places in both singles and doubles. The better news is that none of Borden's participants were eighth graders and will all return again next year. Shayne Hess and Shara Woodward dropped just two games in reaching the finals against Kristin Kilmer and Kistin Monger. In their quarter-final match against Sands, Shayne and Shara Dee

won 6-0, 6-0. In their semi-final they met Grady and won 6-1, 6-1. Kristin and Kristin won their first round match over Sands 6-0, 6-0. In the quarter-final they defeated O'Donnell 6-3, 6-2. Then in the semi-final they made it an all Borden final by defeating Dawson 6-1, 6-2. Shara Dee and Shayne, who won fourth last year as sixth graders, made the experience pay off as they won the doubles title over two other seventh graders, Kristin and Kristin, 6-4, 6-2. In the singles bracket, Amanda Anderson, a seventh grader, and Leslie Fryar, a sixth grader, won the top two spots. Both girls only began playing ten-

nis less than one month ago. Amanda won her first match over Grady by a 6-1, 6-2 score. In the semi-finals she defeated Dawson by a 6-3, 6-2 score, to place her in the finals. Leslie defeated another girl from Grady by a 6-0, 6-0 score to set up her semi-final against O'Donnell. Leslie won the first set 6-1 but lost the second set 4-6 to set up a third set. Leslie won it 6-1 to make it an all Borden final in singles also. In the final, Amanda won the first set 6-1 but Leslie came back to capture the second set 6-4. Both girls, after a long day of tennis decided to play the third set at a later date.

## PRE-KINDERGARTEN DAY

Parents,

Pre-Kindergarten day will be Friday, May 8. All pre-school children who will be five years of age on or before September 1, 1987, are invited to attend school on this date. The Kindergarten class will be the hosts. Meals will be provided by the school. Please contact the bus driver in your area if you would like for your child to ride the bus, or the parent may bring the child to school. If your child rides the bus, please send a note with the name of the child and parents, address, and phone number. This is very important in order to

contact you if necessary, and to send you beginning school information later in the summer.

Registration cards will be provided for each child. If you bring your child you may wish to bring immunization records and birth certificate. If the parent elects not to visit the school on this date, please return the registration card, birth certificate and immunization records when your child reports to school in September.

Thank you  
Ben Jarrett

## REGULAR SHCCCL BOARD MEETING

The Board of Trustees of the Borden County Independent School District met in a regular meeting on April 23, 1987 at 8:00 p.m.

After routine business of minutes and bills, the Board approved a recommendation by the Superintendent to send out bid invitations for the purpose of purchasing two new

school buses. A year-to-date financial report was given and the official budget was amended. The attendance was given at 157 in elementary and 63 in high school-- total 220.

It was reported that the high school literary students had won the overall academic trophy in the district contest.

The Superintendent School Calendar 1987-1988

recommended that all support personnel presently employed by re-hired. The Board approved the rehiring of support personnel as long as the administration is satisfied with their performance.

The school calendar was approved as recommended by the Superintendent.

There being no further business, the meeting was adjourned.

1987  
First Day of School - Sept. 1  
Thanksgiving Holidays - Nov. 26-27  
Christmas Holidays - Dec. 23-31

November 1987						
SUN	MON	TUES	WED	THURS	FRI	SAT
1	2	3	4	5	6	7
8	9	10	11	12	13	14
15	16	17	18	19	20	21
22	23	24	25	26	27	28
29	30					
2nd Six Weeks - 30 days						

August 1987						
SUN	MON	TUES	WED	THURS	FRI	SAT
1	2	3	4	5	6	7
8	9	10	11	12	13	14
15	16	17	18	19	20	21
22	23	24	25	26	27	28
29	30					
1st Six Weeks - 29 days						

September 1987						
SUN	MON	TUES	WED	THURS	FRI	SAT
6	7	8	9	10	11	12
13	14	15	16	17	18	19
20	21	22	23	24	25	26
27	28	29	30			
2nd Six Weeks - 29 days						

October 1987						
SUN	MON	TUES	WED	THURS	FRI	SAT
4	5	6	7	8	9	10
11	12	13	14	15	16	17
18	19	20	21	22	23	24
25	26	27	28	29	30	31
3rd Six Weeks - 29 days						

November 1987						
SUN	MON	TUES	WED	THURS	FRI	SAT
1	2	3	4	5	6	7
8	9	10	11	12	13	14
15	16	17	18	19	20	21
22	23	24	25	26	27	28
29	30					
4th Six Weeks - 29 days						

December 1987						
SUN	MON	TUES	WED	THURS	FRI	SAT
4	5	6	7	8	9	10
11	12	13	14	15	16	17
18	19	20	21	22	23	24
25	26	27	28	29	30	31
5th Six Weeks - 29 days						

January 1988						
SUN	MON	TUES	WED	THURS	FRI	SAT
3	4	5	6	7	8	9
10	11	12	13	14	15	16
17	18	19	20	21	22	23
24	25	26	27	28	29	30
31						
6th Six Weeks - 29 days						

X Teacher Workday   
 \* Teacher Inservice   
 O Holiday   
 △ End of Six Weeks   
 □ End of Semester  
◇ Bad Weather Day

## SCHOOL MENU

SCHOOL LUNCHES  
May 4-8, 1987

Monday	Burritos Ranch Style Beans Vegetable Salad Fruit Milk	Salad Bar
Tuesday	Hamburger Steak Mashed Potatoes Green Beans Jello Hot Rolls Milk	Salad Bar
Wednesday	Oven Cooked Chicken Mashed Potatoes Vegetable Salad Fruit Hot Rolls Milk	Salad Bar
Thursday	Pizza Vegetable Salad Buttered Corn Fruit Milk	Salad Bar
Friday	Hamburgers French Fries Lettuce Brownies Milk	Salad Bar



# Extension Home Economics

By: Kandy K. McWhorter

## WHEN THE FREEZER FAILS

As the season for violent weather approaches, it is time to think about the consequences of power outages. You can use candles when the lights go out, and batteries for the radio; but what can you do about the food in your freezer?

The first thing you do is find out how long it will be out. If it is anything less than a day or two, do not worry.

Freezers are well insulated and each item of frozen food acts as a block of ice that keeps surrounding food cool. A well stocked freezer should stay frozen two days. A half-stocked freezer should last a day.

As long as the freezer is not running, keep it closed as much as possible. Each time you open the door, warm air rushes in, reducing the freezer's effectiveness.

If the power will be off for a few days, you should try to divide up the food among your friends' freezers or possibly rent space in a commercial freezer or cold storage plant.

In case of emergency, put dry ice in your freezer but use caution. Dry ice should never be touched with your hands because it freezes everything it touches and you could sustain burns.

If you use dry ice, put a

layer of cardboard over the freezer items and put the ice on top of that. This should keep your food cold for a few days.

When the power returns, the food should be checked carefully. You may safely re-freeze meat or poultry that still contains crystals. If the meat and poultry are only cool feeling, you should cook them immediately. Throw out any food that has even a slightly unusual color or odor.

As the storm season approaches, arm yourself with knowledge and common sense. You and your food may last longer.

## SPORTS CLUB "SPRING SPRINTS"

The Sports Car Club of America will sponsor Spring Sprints '87 in Big Spring on May 2 & 3 at the Howard Co. Industrial Park, according to Michael Johns of Dallas, Race Chairman for 1987. These are Regional-National, Texas West Texas Regions competing in this race.

Saturday, May 2 the regional races will take place with practice and

qualifying runs starting at 8 a.m. The Regional Races, which are 15 laps will begin at 2:15 p.m.

Sunday, May 3 the national races will be run with practice and qualifying races starting at 8 a.m. The National Races, which are 23 laps will begin at 12:45 p.m.

Racers will be coming into Big Spring from all over the U.S. to participate in this race.

For more information contact Joyce McKinstry Race Registrar, at 214/350-3033 or Chamber office, 915/263-7641.



Trust in the Lord with all your heart and lean not on your own understanding; in all your ways acknowledge him, and he will direct your path.  
Proverbs 3:5-6

## This Land Is Your Land

Garry Mauro

Texas Land Commissioner



Texas' oil and gas industry has weathered the storm and it appears to be rebounding, if the results of the semi-annual Oil and Gas Lease Sale at the General Land Office are any indicator of industry trends.

The April 1987 sale brought in \$6.6 million to the state in total bids on 30,285 acres of state land, nearly three times more than the last sale. In fact, it is the best sale since October 1985.

But, this cautious optimism at the General Land Office is not only based on the April lease sale—a number of other recent factors also support this conclusion.

There has been an increase in the seismic permitting of state-owned minerals in recent weeks—incomes from this source have doubled. And the stabilization of oil prices to around \$18 a barrel—a rise of 54 percent since August 1986—is another positive indicator.

Another factor is the jump in tracts nominated for by oil and gas industry representatives for this sale over the last sale. That figure has risen from 165 at the last sale to 224 at this latest sale. That's a 36 percent increase in six months.

And, the University of Texas Board for Lease Sale in January tallied more than \$3 million with an average per acre bonus of \$276—one of the best in its history—showing a 234 percent increase since that board's last lease sale in October 1985.

These key industry indicators point to the turnaround in the oil and gas industry, not back into the "boom" era, but to more stable times.

**TOP DOLLARS PAID**  
For Oil and Gas Minerals  
Producing and Non-Producing  
Write: MINERALS P. O. Box 7522,  
Midland Texas 79708 Or Call: (915) 684-4110

**The First National Bank - of O'Donnell**

We want to meet the financial needs of this community -

**Come in and visit with us**

We now have safety deposit boxes.  
MEMBER FDIC

**PICK YOUR DIAMOND**

College Heights Shopping Center  
April 30, May 1 & 2

Coming This Thursday-Friday and Saturday

**HANEY'S.....**

**SPRING JEWELRY SHOW**

Our salesmen will be in our store April 30, May 1 & 2 with a large assortment of jewelry. Loose diamonds, mountings, diamond and precious stone rings, bracelets, earrings, pendants, and nugget jewelry, all **65% off**

Freeform Ring 2 Diamonds - 15 DTW Retail \$440 Cost \$154.	Gen's Nugget Ring Retail \$540. Cost \$189.	1/2 Carat Diamond Drop Retail \$1710 Cost \$599.	U.S. Coin Pendant 6 Diamonds - 18 Carat Retail \$500 plus coin Cost \$175. plus coin	U.S. Coin Ring 26 Diamonds - 57 Carat Retail \$2360 plus coin Cost \$826 plus coin	1/2 Carat TW Diamond Studs Retail \$1080 Cost \$379.
7 3 mm Solid Rope Bracelet 4.2 DTW \$86.90	24 1 5 mm Solid Rope Necklace 3.4 DTW \$99.	18 3 mm Solid Rope Necklace 10.6 DTW \$211.	7 1 5 mm Solid Rope Bracelet 1.2 DTW \$24.95	7 1 4K Gold Nugget Bracelet Retail \$360 Cost \$125.	Marquise Band Ring 7mg. 750TW Retail \$1950 Cost \$679.
					Ring Guard Retail \$2740 14 Baguettes Cost \$959. 90 DTW

**HANEY'S**

Open 6 days a week for your shopping convenience  
College Heights Shopping Center, Snyder, TX.

•LAWAYAY •MasterCard •VISA •Discover



# GLCBE THEATER SEEKS MEMBERS

Odessa--Several area actors have accepted positions with the newly formed Globe Summer Repertory Theatre Co. Open auditions for additional members are slated for 2 p.m., Saturday, May 2, and 7 p.m. Sunday, May 3 at the Globe Theatre.

The company will present "110 in the Shade" and "Dames at Sea" in repertory June 19-July 19. Roles and chorus parts are available for "110 in the Shade." Both shows will be presented in repertory this summer by company members, June 19-July 19.

Dr. Charlotte Whitaker is the musical director for the company. Choreographer for "Dames at Sea" is Toni Stice. Members already selected for the acting company include Patsy Allen, Dale Jenkins, Keith Pearson, Dana Ritter and Euster Tie-man.

Actors, singers, and

dancers auditioning for the company should be prepared to read and sing. A pianist will be available to accompany the musical portion of the audition. Roles and chorus parts are available for actors and singers who can play in age ranges from late-teens through late seventies.

"110 in the Shade" by N. Richard Nash with music by Harvey Schmidt and lyrics by Tom Jones, is the musical version of Nash's Broadway hit, "The Rainmaker." Set during a paralyzing drought, the musical brings together a smooth talking con man who promises rain for the community and love for an innocent young woman.

"Dames at Sea" by George Haimsohn and Robin Miller with music by Jim Wise is a musical based on the campy nostalgia of the Hollywood musicals of the 1930's. The show tells how a

hometown girl who comes to New York to make it big on Broadway saves the show she is in by stepping into the starring role at the last minute.

For additional information about auditions or the plays, call the Globe Theatre at 915-332 1586.

## FEDERAL LAND BANK

Austin--The Federal Land Bank of Texas will offer long term loans to purchase rural real estate beginning May 1. These loans will feature a 10-year fixed rate.

Donald R. Rogge, president of the bank, which is the state's largest agricultural lender, said the interest rates

on these loans will be 8 7/8 percent for farm loans and 9 1/8 for farm related business loans and rural home loans.

Rogge said the program, the first of its kind offered by the bank, should encourage new purchases of agricultural real estate thereby helping to strengthen declining land values in Texas.

The bank official also announced a reduction in the bank's

The Borden Star, Wed. April 29, 1987...5

variable interest rates for existing borrowers. The new rates, to take effect June 1, 1987, will be 10.125 percent interest on farm and ranch loans and 10.50 percent on rural residence and farm-related business loans.

The new program will fix the rates for 10 years and be matched by a 10-year security purchased by the bank at the time the loan is con't to pg. 8

## PRAYER CORNER

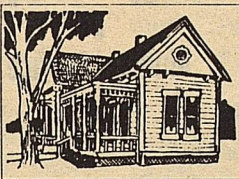
Love is patient, Love is kind. It does not envy, It does not boast, It is not proud. It is not rude,

It is not self-seeking, It is not easily angered, It keeps no record of wrong.

Love does not delight in evil, but rejoices with the truth. It always protects, always trusts, always hopes, always perseveres. Love never fails.

1 Corinthians 13: 4-8

### EXENCIONES DE RESIDENCIA



### PUEDEN REDUCIR LOS IMPUESTOS DE SU CASA

**Una exención de residencia** reduce sus impuestos sobre la propiedad porque reduce el valor imponible de su residencia. Por ejemplo, si su casa tiene un valor estimado de \$50,000 y usted califica para una exención de \$5,000, sus impuestos se calcularán como si su residencia tuviera un valor de sólo \$45,000.

**Usted califica** para una exención de residencia si para el 1° de enero ya era usted dueño de su casa y la ha utilizado como su residencia principal. No importa si su residencia es una casa, un condominio o una casa remolque.

**Hay exenciones** que reducen los impuestos escolares para todos los propietarios de residencias. Hay exenciones adicionales para propietarios que tienen 65 años de edad o más y para los que están incapacitados. Los condados, ciudades, distritos escolares, y distritos especiales pueden ofrecer otras exenciones a los propietarios. Todos estos gobiernos locales ofrecen exenciones a los veteranos incapacitados.

**Las solicitudes** para exenciones se hacen en la oficina del distrito de valoración (*appraisal district*), la cual se ubica en la dirección escrita abajo. En esta oficina se encuentran formularios en español para solicitar las exenciones.

Si usted recibió una exención para su residencia actual en 1986, no es necesario hacer una solicitud nueva para 1987, a no ser que el distrito de valoración la requiera.

Sin embargo, si usted cumplió 65 años de edad o quedó incapacitado antes del 1° de enero, debe solicitarla de nuevo para recibir las exenciones adicionales.

Si usted no ha recibido una exención para su residencia o acaba de comprar su residencia, necesita hacer una solicitud para 1987.

**El límite de tiempo** para solicitudes es el 30 de abril de 1987. Si usted necesita más tiempo, comuníquese con su distrito de valoración antes de esta fecha.

Para más información, usted puede obtener una copia gratuita de un folleto en español, *Los Derechos, Remedios y Responsabilidades del Contribuyente de Impuestos*. Se encuentra esta folleto en su distrito de valoración, o por medio del State Property Tax Board en Austin.

(space for appraisal district address, telephone, hours)



Box 15900 Austin, TX 78761-5900

Un servicio público de este periódico

# REVIVAL

## FIRST BAPTIST CHURCH

Gail, Texas

May 10-14

11:00 Sunday Morning

6:00 Sunday Night

7:00 Each Night

## JOHN STEPP

evangelist

## GARY NEWMAN

singer

God can give your life meaning.

Come see how!

nursery provided



# ASCS NEWS

By Jerry Stone

## HAYING AND GRAZING ACR?

That is exactly right. The County Committee has requested and has received approval for Borden County producers to hay and graze ACR land anytime during the year. Approval was granted based on hay quantity and quality losses due to excessive rains last fall and the late freeze damage of small grains a month ago.

This is a major change from what we have been telling you. Immediately, you may turn cattle in on land designated as ACR with a small grain cover or you could choose to bale the small grain cover. Baling of small grains must be done prior to May 1. Spring seeded crops may be planted and grazed or baled anytime during the year.

Before you begin haying or grazing ACR land, please note the following rules and restrictions:

1. ACR Land may be grazed by your livestock or another producer's livestock with your permission.
2. ACR Land may be mechanically harvested for hay, green chop or ensilage for your livestock, or another producer's livestock for current or future use.
3. Producers shall not charge for grazing ACR

or for the value of the vegetative growth mechanically harvested when used by another producer.

4. Producers may charge only for installing temporary fences or pumping water for grazing, or cutting, raking, baling or other steps in mechanical harvesting.
5. You must file a request at the ASCS Office to request special haying and grazing of ACR.

### NOTE TO LANDLORDS:

ACR Land is required for participation in the 1987 program. Now we are releasing these acres for haying and grazing immediately. You are just as entitled to hay or graze these acres as your operator if you have cattle. If you do not have cattle, you may not take 1/4 or 1/3 of the hay or grazing as rent and try to sell it to anyone else. If you have any questions, let us know.

### CERTIFY SMALL GRAINS

Producers with small grains planted are reminded to report their acreages of wheat, barley, oats, and rye regardless of the inten-

ded use by Friday, May 1. Please come in NOW if you have any of the following:

1. Small grains for harvest.
2. Small grains cover on ACR
3. Small Grains for Grazing or Baling only.
4. Small Grains for a conserving use.

The disposal date for small grains is also May 1. To keep it out of the grain classification, a small grain must be clipped, grazed out, or baled prior to May 1. Another popular option to keep small grains out of a grain classification is to pay us \$10 to leave it to reseed itself. This option also must be requested by May 1.

If you have any small grains planted, even on turnrows, you need to report these acres by May 1. With the limited cross compliance this year, wheat on turnrows not handled properly could affect your cotton and grain sorghum participation adversely. Please come in now.

### CRP

A fifth CRP signup is scheduled for July 20-31. Watch for further details.

### OATS EXCEPTION

Cross compliance requirements for oats have been lifted for 1987.

This means you may now participate in the wheat, cotton, or grain sorghum programs even if the acreage of oats is in excess of the oats base for the farm. Limited cross compliance continues to be in effect for all other program crops, including barley.

## TSCRA OPPOSES EMINENT DOMAIN BILL

TSCRA is asking its members to contact their state lawmakers in Austin immediately to request their vote against a critical eminent domain bill, says John E. Birdwell, TSCRA president.

Senate Bill 611, by Lyon, would grant the state or its permittees the power of eminent domain for the purpose of obtaining access to land dedicated to the permanent school fund, he said. These condemnation proceedings could be bought without the consent of the land-owner and without reasonable financial protection for him. The bill, if passed, would even afford access across one land-owner's property to reach state minerals under the surface property owned by others.

This bill could open up the land acquired through condemnation by the state to public hunting which would adversely affect landowners in the area who

rely on hunting leases to supplement their ranching income. In addition, it raises certain questions of trespass on private property if the state allows hunting on acquired lands without proper fences.

SB 611 passed the Senate March 26 and was reported favorably from the House Environmental Affairs Committee as

amended on April 14.

"This misguided legislation, if passed, could have major property rights implications for landowners," Birdwell said. "TSCRA respectfully requests all landowners to immediately contact their state senators and representatives. They need to vote against this bill. If it does pass the Legislature, we urge all members to contact the governor to urge him to exercise his veto power."

**Briggs Welding & Muffler Service**

267-1488  
267-1380  
Big Spring, TX 79720

501 N. Birdwell  
Across From  
Auction Barn

**Clairborne's THRIFTWAY**

Visit Our Deli

Party Trays    Pastries    Custom Cakes

710 N. 4th    Lamesa

**BUDDAS BILL BAILEY AT STUD**  
Futurity Winning Son OF DOC'S BUDDA  
Call (915) 3994724.

**MOBIL HOLMES**  
Low--Down Payments repossessed.  
Call collect (806) 763-4051

**FOR SALE LIKE NEW -WILDCAT- 4-WHEELER (Spray Rig)**  
(915) 856-4462

**HOUSE**  
Take Over Payments 2 & 3 bedroom home  
Call Collect 806 763 4051

**FOR SALE**  
Need to Sell: 14X64 trailer house \$5000 or best offer.  
Call (915) 573-9412

**GOVERNMENT HOMES** from \$1 (U repair). Delinquent tax properts.  
Call 1-619-565-1657  
Ext. H 3435TX for current repo list.

**THE FIRST NATIONAL BANK**

The Symbol of Banking in Big Spring



**FULL SERVICE BANKING**    Member F.D.I.C.

400 Main Street    267-5513    BIG SPRING, TEXAS



# COUNTY AG-AGENT REPORT

DENNIS POOLE

## PROGRAMS FOR FAILED WHEAT

Recent freezing temperatures have damaged much of the Texas wheat crop. Farmers participating in the 1987 wheat program who feel the freeze has destroyed potential grain production may not be aware of the farm program alternatives available to them. Prevented planting or failed acreage provisions allow, under certain conditions, the farmer to dispose of the wheat and plant the failed wheat acreage to any other crop. The second crop acreage will not count for any farm program participation purposes. To qualify for this provision, two conditions must be met:

(1) The crop failure must have occurred prior to that crop's certification date. Those dates for wheat are either May 1 or May 15 depending on your area of the state.

(2) The second crop must be planted prior to the normal planting date of a second crop in a double cropping situation. That is, if wheat is normally harvested on May 15, one could possibly plant the second crop on May 20. If the second crop in a failed acreage situation is planted before this date, it would qualify under these provisions, and not be considered planted for farm program purposes. Normal spring planted crops have no double cropping alternative, so in the event of a failed spring planted crop, any second crop would automatically meet these requirements.

An example should help

clarify this situation. Assume a farmer has a 100-acre wheat base and a 100-acre cotton base. Having decided to participate in the farm program, he plants his permitted 72.5 acres of wheat and 75 acres of cotton. The remaining acreage, 52.5 acres, is devoted to ACR (set aside). On March 30, assume the wheat received freeze damage to the extent that any grain production was impossible or, at least, doubtful. The farmer may then file both acreage certification and failed acreage forms with the local ASCS office prior to the normal certification date. This will assure that he receives all program benefits on the wheat acreage, provided he continues to meet other program requirements.

The farmer, in this example, could then cut the wheat for hay, or simply plow it out, and plant a second crop such as cotton on the 72.5 acres prior to the normal second crop planting date, and continue to receive all program benefits on the 75 acres of cotton and the deficiency payment on wheat. There are no restrictions as to what can be planted on this acreage. Planting cotton on those 72.5 acres will not place the farmer in violation of either the cotton or wheat program for 1987. Under these procedures, the 72.5 acres of cotton planted on wheat base, for all intents and purposes, are "invisible" or "ghost" acres.

The second crop, under these provisions,

receives no program protection; i.e., no CCC loan access, diversion payments, or deficiency payments.

Before making any final decisions about implementing this alternative, producers should present their plans to the local ASCS in order to file the proper forms and receive ASCS approval.

## HEAVY DAMAGE TO TEXAS WHEAT

The Texas wheat crop suffered a severe blow from unusually cold weather about a week ago, and the Texas Agricultural Extension Service is continuing to work with farmers in assessing the situation.

"Without question, there has been widespread damage, particularly in south central parts of the state where the crop was in the booting to heading stage," says Dr. Travis Miller, Extension agronomist. "We could see losses of 40 to 60 percent in areas where the grain head or reproductive parts of the plant were frozen. If flowering parts freeze, grain kernels will not form. Frozen heads will look white or bleached."

In areas where the crop was not as far along, the freezing weather caused other types of damage. "Across the Rolling Plains and northern Texas, we are seeing widespread plant damage, particularly frozen nodes (plant joints connecting sections of stem)." "If the nodes or stems appear darkened and water soaked, then they likely are damaged."

If the plant stem is filled with water, then there was structural damage from the freeze. "All this will affect grain size later on and will lead to smaller heads or possibly sterile heads. Also, freezing of nodes and stems will likely lead to lodging problems

The Borden Star, Wed. April 29, 1987...7

later in the season as the crop moves toward maturity."

"Check the plant's flowering parts where wheat is close to heading. Look for the three anthers (male parts of the flower that produce the pollen) and check the color. If they are yellow to light green in color, the plant should pollinate and produce a grain head. If the anthers appear white, bleached or shriveled, there is some freeze damage."

Once farmers have assessed their situations, what are their options?

One option is to harvest the wheat for hay. For the best quality hay, wheat should be cut while in the boot stage.

Regarding replanting the land to another crop or other decisions, farmers are advised to consult the Agricultural Stabilization and Conservation Service office.

## The growing exotic livestock industry

By Mike Jones

It is no secret that our state leaders are caught in a political quagmire of shrinking revenue, rising costs of basic state services and a still-sluggish economy. A number of lawmakers have gone hunting for new revenue with proposals to encourage the development of new industries. Many of those lawmakers might be surprised to find out that one of the new industries with the greatest potential is the growing market for exotic venison.

"Exotic game is not new to the Lone Star State," said Mike Moeller, TDA's deputy commissioner. "Texas ranchers began importing axis deer from Europe more than 50 years ago. Today, according to some unofficial estimates, there are more than 500,000 exotic game animals roaming Texas, more than any other state. This imported wildlife includes sika deer and fallow deer from Europe, axis deer and blackbuck antelope from India, nilgai antelope from Africa and wild boar from Russia."

"Raising exotic animals for slaughter is a large and profitable business in West Germany, New Zealand and Great Britain. The market for wild game meat is also growing in the United States among calorie-conscious consumers," Moeller said.

"Exotic deer ranchers point to the fact that a six-ounce serving of venison or antelope has one-third the caloric content of beef. Wild game meat is only three percent fat, and most types of exotic game meat are lower in cholesterol than any domestic meat, including chicken."

Many exotic game ranchers also say their livestock is one of the few agricultural products for which demand exceeds supply. Ranchers say the capital investment, overhead and labor costs for exotic game are relatively modest compared to more

traditional types of agriculture. Because most exotic game can survive on mostly grass diets, ranchers do not have to use antibiotics or steroids to fatten their livestock. Exotic game ranchers also say the average price for wild game meat is about \$2 per pound (dressed). That figure looks impressive when one considers that prices for most traditional crops have fallen by 50 percent over the last six years.

The small cadre of Texans who have jumped into the exotic game business face some bureaucratic roadblocks, according to Moeller. "Although the Texas Parks and Wildlife Commission considers exotic game to be livestock, the State Health Department is not required to inspect exotic game meat. Game ranchers say inspections are needed to keep unscrupulous salesmen out of the exotic game business. The health inspections would also provide necessary guarantees to the nation's restaurant buyers who are the chief customers for exotic game meat."

"Another problem facing exotic game ranchers comes from their local taxing authorities," Moeller said. "Many county appraisal districts now assess land used to raise exotic game based on its market value rather than its agricultural value. The resulting property taxes virtually prohibit the establishment of new exotic game-only operations. The Texas Legislature will consider legislation to correct this problem during the current session."

Despite these problems, raising exotic game animals can prove to be a profitable alternative for ranchers. Exotic game animals have adapted well to the terrain of Central and South Texas.

"At a time when some so-called experts are ready to bury agriculture," Moeller said, "exotic game ranching is one business in which farmers and ranchers can bag some badly needed dollars."

## WHITE FUNERAL HOME

"We care for yours as we would have ours cared for"

O'DONNELL

TAHOKA

510 8th

428-3313

1821 Main

998-4433

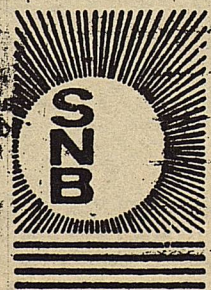
Owners-Billie & Donnie Everett, Gail, Tx

We're proud to be a part of the area since 1905

# Snyder National Bank

This is your Bank

Member FDIC 1715 25th 573-2681





### AGAINST FARM BILL

con't from pg. 1  
inate against the commercial farmer in favor of the part-time farmer, inefficient because they target benefits to the least efficient and restrict benefits to the most efficient...and hamper the farm program's administration by encouraging production outside the program."

To illustrate the detriments of payment limitations, Jones referred to a Council economic study which showed Beltwide results on farm sizes ranging from 250 acres to 5,000 acres and assuming USDA average yields, production costs, and producer prices at current levels.

For a 250-acre farm, net returns would be negative both with a payment and without a payment. With USDA's proposed single \$50,000 payment, Jones said a 500 acre farm would show only a marginal profit.

"A 1,500 acre cotton farm would be put in a maximum loss situation because \$50,000 would be insufficient to compensate for idling 25% of its acreage," Jones said. A \$100,000 limit would allow the farm's participation in the acreage reduction program, but a \$250,000 limit would be required for it to reach its profit potential, he added.

The study revealed that a 5,000-acre farm also would suffer a net loss unless it could qualify for multiple payments totaling at least \$250,000.

"These results demonstrate clearly that virtually every size cotton farm would be adversely impacted by the Department's restrictive proposal for re-defining a person," the chairman of the Council's Producer Steering Committee testified.

Jones said the impact of payment limits is magnified by the fact that many cotton farms grow crops that also contribute toward reaching the limit.

"Arbitrary and restrictive payment limits ignore the structural realities in production agriculture and encourage the establishment of welfare farmers whose viability depends on continuous and significant government aid," Jones stated.

Whittington warned that further payment limitations, particularly those imposed under USDA's new definition of a person, would undermine the current cotton program's effectiveness.

Some of those would be denied payments include:

- o relatives and neighbors who farm separately but occasionally exchange labor and equipment,
- o non-operating landlords (retirees, widows, out-of-state landowners, the disabled, children named in trusts, etc.),
- o young people trying to enter into a family farm business, and
- o farm laborers who rent or lease part of a farm worked on in the past year.

### FEDERAL LAND BANK

cont. from pg. 5  
made. The rate will convert to the bank's variable rate at the end of the 10 years.

Farmers must qualify under the Land Bank's usual credit standards and use the money for new land purchases only.

Rogge said he hopes other lenders would

follow the Land Bank's lead and develop programs of their own to provide credit at reasonable rates and terms for the purchase of Texas rural land.

The Federal Land Bank and 44 Federal Land Bank Associations located throughout Texas have

\$2.38 billion in loans outstanding on 37,000 loans to approximately 100,000 Texas farmers and ranchers.

Those interested in more information should contact their local Federal Land Bank Association, the bank president said.

### Branon Funeral Home

Service in this area since 1922.

Phone: 872-8335

403 N. Austin - Lamesa

# ALL LEATHER ROPERS

# 39<sup>95</sup>



Pig Skin  
Black and Brown

## Why Pay More For Synthetic Boots! Compare Quality and Price

Bar H Bar Ropers  
39.95 - 49.95 - 59.95

Other Brands  
79.95-99.95

1. Handmade for superior fit
2. Fully lined with soft glove leather
3. Heavy 100% leather insole
4. Heavy 100% leather sole
5. Full steel shank - no synthetics
6. Heavy duty toe box

1. Synthetic insole
2. Cork filler
3. Soft toe



# -H-

## Western Wear

SNYDER  
College Heights Shopping Center

### WESTERN SEED & DELINTING Certified Cotton Seed

Paymaster 145, 303, 404, 792  
Coker 3131, S110, 500  
Terra 383, SR-10, SR-482  
SP-21, SP-215, CAMD-E  
CAB-CS

COTTON  
PLANTING SEED

ACID  
DELINTING

Wheat  
Grain Sorghum  
Hay Grazer

### Wheat & Oats Cleaning

LAMESA, TEXAS  
RON BUTLER

BUSINESS PHONE  
(806) 872-8896  
(806) 872-5388

RESIDENCE PHONE  
(806) 872-5271