


**Ashmore & Associates**  
 1224 North Hobart  
 NBC Plaza 2, Suite 11  
 Pampa, TX • 806-688-7081  
 www.ashmoreassociates.com  
 INSURANCE AGENCY, LLC

HOME • HOME • RV • BOAT  
 FURNITURE • COLLECTIBLE ART  
 MOTORCYCLE • FIGHTERS  
 TRUCK • FARM/RANCH  
 WORKERS COMP  
 COMMERCIAL  
 LIFE HEALTH



Jim Bruton

We're Not Kidding!  
 Largest Selection of U  
**DOUG BOY**  
 CORNER OF HWY 60 @ HWY 70 • 806-669-  
 Visa & Mastercard Accepted

\*\*\*\*\*  
 0000471 12/31/2008  
 HERITAGE MICROFILM  
 4849 21ST AVE SW  
 CEDAR RAPIDS, IA 52404 6-309

**UTL**  
 & GRAVEL, LLC  
 120 S. HOBART  
 Pampa, Texas  
 806.669.0158

# The PAMPA NEWS

Volume 105 • No. 30      Weekend Issue      Saturday and Sunday, August 15-16, 2009      50¢ Daily • Weekend \$1.50

## St. Vincent's school closes after 50 years

BY BETSY PHILLIPS  
 editor@thepampanews.com

After 50 years in the community, St. Vincent de Paul School has closed its doors due to lack of enrollment.



staff photo by Randy Pribble

The closure is effective immediately. According to school officials, the word came down from the Amarillo diocese late Monday. "We're all really sad, Principal Amy Unruh said Friday. The school received an accreditation last year that is good for the next ten years, and was just recently licensed for day care. According to Unruh, there are eight staff members that will no longer have jobs and the children will have to transition into public school.

Unruh said they knew enrollment was down and thought they may have to cut the upper classes, but the closing came as a shock. Unruh has been at the school since 1995 and taught the fourth grade until she became principal.

SCHOOL cont. on page 3

St. Vincent de Paul School has closed its doors after 50 years in Pampa.

**Back to School Special**  
 You pay the flooring & installation costs and we pay the taxes through August!

**The Floor Store**  
 2110 Ferrytan Parkway  
 665-4455

**CHILDERS BROTHERS INC. HOUSE LEVELING**  
 Uneven Floors  
 Floor Bracing  
 Cracks In Bricks  
 Sticking Doors & Windows  
 Interior Wall Cracking  
 FREE ESTIMATES  
 1-800-299-9563  
 WWW.CHILDERSLEVELING.COM

**Watch for our huge Garage Sale!**  
 Discontinued & Small Quantities...  
 Starting at 50¢ sq ft on Laminate & Tile  
**ONE STOP FLOORING**  
 1533 N. HOBART  
 MONDAY-FRIDAY 9-5  
 SATURDAY 10-1

M#10341 • LICENSED • INSURED  
**BOB'S PLUMBING**  
 PAMPA, TEXAS  
 806-669-1940  
 CELL# 806-584-0809  
 HOURS MON-FRI 8-6 • SAT 8-12  
 EMERGENCY ANYTIME  
 OWNERS: BOBBY FAIRES / DUECE FAIRES

**Sentry Self Storage**  
 24 hr Controlled Access  
 24 hr Video Surveillance  
 Personal & Commercial  
 665-1000

**VISION SOURCE**  
 FAMILY EYE CARE  
 OPTICAL  
 KIDS SEE FREE  
 1324 N. BANKS  
 806.665.0771

**AMMONS CONSTRUCTION**  
 Roofing Siding  
 Custom Homes  
 Window Replacement  
 Remodeling & Additions  
 806.669.7777  
 ammonconstruction.com

**Vision**  
 COMPUTER SERVICES  
 havecomputerproblems.com  
 806-665-HELP(4357)  
 Combs-Worley Building  
 120 W Kingsmill Ave  
 Suite 303

**Jasper ROOFING**  
 Located in McLean since 1988  
 Work Guaranteed • Bonded  
 Free Estimates  
 Metal • Composition  
 Wood • Shakes • Decro  
 Pickle Jasper Sr. 1-800-678-9395  
 Pickle Jasper Jr. 1-800-678-5361

**M & H Leasing**  
**TOP OF TEXAS**  
 Support  
**Harvester Football!**  
 1945 N. Hobart • 665-2061

## Sheriff seizes 76 starving horses

DENTON (AP) — Animal control officers are seizing 76 emaciated Arabian horses from an equestrian farm near the North Texas town of Pilot Point.

Denton County Sheriff's spokesman Tom Reedy says the horses are being moved Friday to a nearby ranch after they were found in various stages of starvation. That's despite bales of high-quality hay on the property.

He added that deputies acting on an anonymous tip also found stalls filthy with

HORSES cont. on page 3



staff photo by Betsy Phillips

Pampa police serve a warrant at a home at 511 S. Gray Friday afternoon. Thousands of dollars worth of stolen tools were recovered.

## PPD recovers stolen property

During an investigation of a reported burglary at 113 W. Thut where several thousand dollars worth of tools were reported stolen.

Pampa Police learned that many of the stolen tools were at 511 S. Gray.

Friday at approximately 2:08 p.m. members of the Pampa Police Special Response Team and Criminal Investigation Division, executed a search warrant at that residence.

Most of the stolen tools were recovered. Three subjects were found in

BURGLARY cont. on page 3

## CC building programs for local student careers

BY DAVID BOWSER  
 dbowser@thepampanews.com

Clarendon College officials are trying to build a number of programs that will position their students for new careers as the economy turns around.

"We just started a nail tech program," said Raymond Jaramillo, the dean of the Pampa center. "We're running that in the cosmetology building. We're running that program from 5 p.m. to 10 p.m., three nights a week."

Speaking to the Gray County Commissioner's Court Friday, Jaramillo

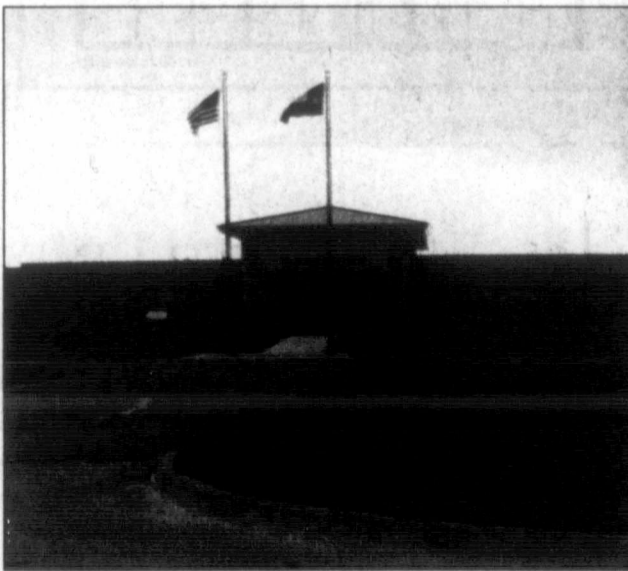
indicated the school is starting a number of new programs this fall and have more scheduled for the spring.

Jaramillo said there are about 25 people in the cosmetology program. In nail tech, he said they have 11, and they are about to enroll another 27.

Those numbers aren't quite where they should be, Jaramillio said, because grants for students wanting in the program won't be available until the fall semester begins.

"They should be registering at the end of this month," Jaramillio said.

CLARENDON cont. on page 3



Clarendon College Pampa Center

## Drought worst in history in parts of Texas

DALLAS (AP) — The most parched areas of Texas have been wilting in the blistering heat for two years, but only now is it now official: This is their worst drought in history.

Texas state climatologist John Nielsen-Gammon said Friday that at least nine of the 254 counties in

Texas — the nation's most drought-stricken state — are suffering through their driest conditions since modern record-keeping began in 1895.

Making matters worse are the relentless 100-degree days across the southern portion of Texas that has been under drought con-

ditions since September 2007.

The impact has been felt most by farmers and ranchers in the nation's No. 2 agriculture-producing state. Texas officials estimate statewide crop and livestock losses from the drought at \$3.6 billion.

"We've had some dry

spells, but not as bad as this," said Rod Santa Ana with the Texas AgriLife Extension Service. "It hurts bad. A lot of these cotton fields didn't even come up. It's just bare ground. You'd never know cotton was even planted there."

The worst hit counties are Bastrop, Caldwell and

Lee in Central Texas, and Victoria, Bee, San Patricio, Live Oak, Jim Wells and Duval in south-central Texas, Nielsen-Gammon said. He studied precipitation over several three-year periods and concluded the historic drought level in

DROUGHT cont. on page 3

**MORLEY** 274-5000  
 BORGER 701 N. MAIN  
 G. I. Joe: Rise of The Cobra  
 Funny People  
 The Ugly Truth  
 G-Force (Digital 3D)  
 My Sisters Keeper (Digital)

**HOUSE HUNTERS- REALTOR**  
 Linda Laycock BROKER 662-1312  
 Larry Hadley ASSOC. 662-2779  
 Jordan Oneal ASSOC. 680-9622

**CHAMBER LUNCHEON**  
 Tuesday, August 18 @ 11:45  
 Sponsored by Harvester Lanes - CATERED by The Plaza  
 Speaker will be Julie Ramsey of Cross Texas Transmission  
 Please RSVP by Monday Aug. 17 to 669-3241



# For the record

## PAMPA FORECAST

Sunday	Monday	Tuesday
High 90 Low 65	High 86 Low 68	High 90 Low 67

**Saturday Night:** A 20 percent chance of showers and thunderstorms before 1 am. Partly cloudy, with a low around 70. South southwest wind between 15 and 20 mph, with gusts as high as 25 mph.

**Sunday:** A 20 percent chance of showers and thunderstorms after 1 pm. Partly cloudy, with a high near 90. West southwest wind 5 to 15 mph becoming east. Winds could gust as high as 20 mph.

**Sunday Night:** A 20 percent chance of showers and thunderstorms. Mostly cloudy, with a low around 65. East southeast wind around 10 mph.

**Monday:** A 20 percent chance of showers and thunderstorms. Mostly cloudy, with a high near 86. Northeast wind around 10 mph.

**Monday Night:** A 20 percent chance of showers and thunderstorms. Mostly cloudy, with a low around 68. East northeast wind around 10 mph becoming south southeast.

**Tuesday:** Partly cloudy, with a high near 90. South southwest wind between 10 and 15 mph, with gusts as high as 20 mph.

© This information brought to you by...

**PRESTIGE**  
**AUTOBODY & ACCESSORIES**  
 101 S. HOBART 806-665-3500  
**TRUCK TENTS - PERFECT FOR CAMPING OR HUNTING IN CAMO**

**Sudoku**

Answer to yesterday's puzzle:

3	4	8	6	5	9	7	1	2
7	6	9	3	1	2	8	4	5
5	1	2	7	4	8	3	6	9
4	9	3	8	2	1	6	5	7
1	5	6	4	3	7	9	2	8
2	8	7	5	9	6	1	3	4
9	3	4	1	7	5	2	8	6
8	7	5	2	6	3	4	9	1
6	2	1	9	8	4	5	7	3

1			4		2			
		5	3					
8			6					7
	7		1	2	6			
			4					
	6			8				5
4	8			7				3
			3	4	9			8
		2						

Level: Advanced

## Obituaries The are no obituaries today

### TODAY IN HISTORY

Today is Saturday, August 15, the 227th day of 2009. There are 138 days left in the year.

Highlights in history on this date:

1057 - Macbeth is killed in battle by Malcolm, son of late king Duncan, near Aberdeen, Scotland. In 1047, Macbeth killed Duncan to grab the Scottish throne. The fight for the crown continued for generations.

1498 - Grenada is sighted by Christopher Columbus. He sails past the island without landing and gives it the name Concepcion.

1658 - Sweden's King Charles X begins second war with Denmark and lays siege to Copenhagen.

1834 - South Australia Act is passed by Britain's Parliament, allowing for establishment of colony there.

1865 - Sir Joseph Lister, a British surgeon, discovers the antiseptic process and reduces postoperative patient mortality to less than 15 percent in one year.

1914 - The Panama Canal is officially opened.

1920 - Polish Marshal Jozef Pilsudski crushes Soviet troops in the Battle of Warsaw, blocking their march on western Europe.

1945 - Korea is liberated from 35 years of colonial rule with Japan's defeat in World War II. The peninsula is divided into the communist North and capitalist South.

1947 - After 200 years, India becomes independent from British rule with Jawaharlal Nehru as prime minister. Pakistan, a new country is carved out of India.

1950 - A magnitude 8.4 earthquake kills 200 people and destroys 30,000 square miles (76,800 square kilometers) of land in Assam, northeast India.

1955 - Indian independence day is marked with an invasion of Portuguese Goa where 5,000 Indians, advocates of passive resistance, walk into the fire of Portuguese police. Thirteen Indians are killed and 100 injured.

1962 - The Netherlands and Indonesia settle West New Guinea dispute.

1965 - Four days of rioting begin in Los Angeles, what becomes known as the Watts Riots, that leave more than 30 dead and hundreds injured.

1971 - Bahrain gains independence from Britain.

1974 - Wife of South Korea's President Park Chung-Hee is killed in Seoul by assassin's bullet evidently intended for her husband.

1975 - Bangladesh's founding father, Sheik Mujibur Rahman, is assassinated with most of his family in a successful military coup.

1982 - South Korea frees 1,251 convicted criminals and 35 jailed political dissidents in a general amnesty, celebrating its liberation from Japanese colonial rule in August 1945.

1990 - Iraqi President Saddam Hussein offers to withdraw from Iranian territory and release prisoners of war in bid to win favor with Tehran against United States.

1991 - U.N. Security Council authorizes Iraq to export US\$1.6 billion of oil to finance desperately needed food, medicine and emergency supplies.

1994 - Carlos the Jackal, freelance terrorist, is arrested in Sudan and flown to Paris for trial. He is eventually sentenced to life in prison by a Paris court for the 1975 murders of two French secret agents and an alleged informer.

1996 - In a sign that Bosnia's wartime isolation is over, Sarajevo's battered airport welcomes its first commercial flights in more than four years.

1998 - A car bomb in Omagh, Northern Ireland, kills 29 people and injures 370.

1999 - An armed group kills 29 people in southwestern Algeria in the worst violence since President Abdelaziz Bouteflika took office in April.

2000 - A group of 100 separated family members from North Korea arrive in South Korea for temporary reunions with relatives they haven't seen for half a century; a group of 100 South Koreans also visits the North.

2001 - The death toll in the ambush of a refugee train by Angolan rebels rises to 252 after rescue workers identify 100 more bodies.

2002 - Police in Zimbabwe begin arresting white farmers who defied a government order to leave their farms.

2003 - The U.S. closes the Washington, D.C. offices of two Iranian opposition groups after determining that they were aliases of the Mujaheddin al-Khalq, an organization designated as a terrorist group by the U.S. State Department.

2005 - On the first day of Israel's Gaza pullout, thousands of Israeli troops hand out eviction notices to sobbing settlers and help some pack, but also scuffle with crowds of protesters who are resistant to leave.

2006 - The British Defense Ministry says more than 300 British soldiers who were executed by the military for cowardice during World War I will be pardoned.

2007 - India celebrates the 60th anniversary of its independence from British rule a day after Pakistan celebrates. Pakistan's independence came a day earlier than India's so that the last British viceroy, Lord Louis Mountbatten, could attend both ceremonies.

2008 - Leftist Fernando Lugo becomes Paraguay's president, ending six decades of one-party rule.

Today's Birthdays:  
 Napoleon Bonaparte, French emperor (1769-

1821); Sir Walter Scott, Scottish novelist-poet (1771-1832); Ethel Barrymore, U.S. actress (1879-1959); T(homas) E(dward) Lawrence (of Arabia), British soldier and author (1888-1935); Julia Child, English TV chef (1912-2004); Oscar Peterson, Canadian jazz pianist (1925-2007); Linda Ellerbee, U.S. author/journalist (1944-); England's Princess Anne (1950--); Alejandro Gonzalez Inarritu, Mexico-born film director (1963--); Debra Messing, actress (1968--); Ben Affleck, actor (1972--).

*Thought For Today:*

*We must not read either law or history backward — Helen M. Cam, English historian and educator (1885-1968).*

**B & G Electric**  
 REGION-WIDE, 24 HOURS  
 (806) 665-4418

**Calvary Assembly of God**  
*The Church Built on Love.*

**Service Times**  
 Sunday School 9:45am  
 Worship Service 11:00am  
 Children's Church 11:00am  
 Evening Service 6:00pm  
 Wed. Service 7:00pm

Pastor Karel & Vanissa Cantrell  
 P.O. Box 1837 • 1030 Love • Pampa, TX 79066 • (806)669-7207

**Weekly Special**  
**Tile**  
**Instock**  
**Starting**  
**at**  
**\$1.49** sqft  
**cash & carry**

**One STOP Flooring**

1533 N. HOBART • 806-665-8955  
 MONDAY-FRIDAY 9:00-5:00 • SATURDAY 10:00-1:00

## LAST MINUTE CLASSIFIED LINE ADS

The Pampa News is not responsible for the content of paid advertisement

1987 BUICK Century. 69,350 Miles. Call 440-2351.

AFTER SCHOOL program for K- 5th grade available at First Baptist Church Daycare. In-cludes pickup up from grade schools in Pampa, open Spring break and most scheduled holidays and snow days. Register today. 203 N. west 669-3529

BOB'S ROOM One, Men's Hair Cuts. NBC Plaza, 1224 N. Hobart, Tues.-Fri. 10-6. Bob Jeffers, 440-4113.

COMBS WORLEY Barber Shop, 120 W. Kingsmill, Open Tues.-Fri. 7-4, 806-663-0020.

COME JOIN the class of 1974 for their 35th year reunion homecoming weekend. We will meet at Dyers Bar B Que Hwy 60 W on Fri. September 18th @ 5 pm. Following we will attend the Pampa Vs. Perryton football game at 7:30 pm. Call 806-224-8552 for head count.

DONATE USED Eyeglasses to the Lion's Club!! Boxes located at The Pampa News-403 W. Atchison, Drs. Simmons & Simmons-1324 N. Banks and Broome Optical-1916 N. Hobart.

FIRST BAPTIST Child Development Center is growing & has openings for lead & asst. teachers. Great work environment & benefits. Exp. pref. 203 N. West 669-3529 tbruce1@fbcpampa.org

HELP WANTED- Outside sales/ustomer service representative, see help wanted ads for more details.

IT'S JELLY time!! St. Paul Methodist Church is having theirjelly fundraiser. uuuuummm!! Don't miss out on this wonderful jelly. Several flavors including Cherry, Peach and more. Come by Rheams Diamond Shop at 111 N. Cuyler

DANCE ACADEMY of Pampa, under the direction of Deanna McGill, Fall Registration Thurs. Aug. 20, 4-6:30pm., Coronado Center, Ste. 1-D next to Avenues. 662-9499 for more info

CERAMIC TILE. Keith Taylor, 874-1779 lv. msg.

PAMPA SHRINE Club We Cater!! 50-200 people. (approx 3000 sq ft) available for rent. Weddings, Banquets, Company Parties or Family Reunions. Kitchen facilities avail. at no extra chrg. Call Ben Watson 665-3359 to reserve!

PAMPERED PETS Grooming! Call Missy, 662-1236.

VISION SOURCE Family Eye Care Optical. Kids See Free. 1324 N. banks 665-0771

WAREHOUSE CLEARANCE Sale, new items added weekly, Johnson Home Furnishings.

**LONESTAR DANCE ACADEMY PANHANDLE**

**Grand Opening!**

**Let's Dance!**

Registration Thursday, August 20 4:00 to 7:00 pm !!

Classes begin Monday, August 31

The Official School of

**LONESTAR Ballet Jazz Tap Hip Hop Musical Theatre**

Experience Outstanding Performing Opportunities:

*The Nutcracker* *Academy Unleashed Live at the Globe* *Our First Annual Recital* *Cinderella* *Dance Academy Students*

Call (806) 372-2463 for more information

# Colonial BancGroup shut by regulators

WASHINGTON (AP) — Regulators on Friday shut down Colonial BancGroup Inc., a big lender in real estate development that buckled under the collapse of the market. It was the biggest U.S. bank to fail this year, with about \$25 billion in assets.

The Federal Deposit Insurance Corp. was appointed receiver of Montgomery, Ala.-based Colonial. The agency approved the sale of Colonial's \$20 billion in deposits and about \$22 billion of its assets to BB&T Corp. The failed bank's 346 branches in Alabama, Florida, Georgia, Nevada and Texas will reopen at the normal times starting on Saturday as offices of BB&T, the FDIC said.

BB&T, based in Winston-Salem, N.C., operates throughout the Southeast and is considered among the nation's stronger regional banks.

The failure of Colonial is expected to cost the deposit insurance fund an estimated \$2.8 billion.

The bank was a major lender to developers in Florida and Nevada and was hit hard by the collapse of the real estate market in those states.

Colonial, founded in 1981 by longtime president and CEO Robert E. Lowder, saw its fortunes crumble over the past two

years as its stock price plunged from around \$25 in 2007 to less than 50 cents this year.

Lowder stepped down in May as new management took control under a plan for a \$300 million investment led by Taylor, Bean & Whitaker Mortgage Co. of Ocala, Fla., an investment designed to make Colonial eligible for \$550 million in federal bailout funds.

But the deal fell through and federal agents raided the Ocala headquarters of Taylor, Bean & Whitaker.

Colonial said early this month there was "substantial doubt" that it would be able to continue as a going business.

Colonial has been under a criminal investigation by the Justice Department in connection with alleged accounting irregularities at its division in Orlando, Fla., that provides financing for mortgage lenders, and a civil probe by the Securities and Exchange Commission concerning accounting issues and the bid for federal bailout funds.

Alabama banking regulators met with Colonial officials earlier this week. Late last month, they had ordered the company to submit a plan detailing how it would build up its capital reserves. Also this week, Colonial said

in a regulatory filing that it wouldn't be able to file a second-quarter financial report because of the alleged accounting problems. The company said it didn't know at this point how much money it lost in the April-June quarter.

Colonial's troubles mounted on Thursday as a federal court in Miami froze \$1 billion of its assets in response to a lawsuit

filed by Bank of America Corp. The suit said Colonial appeared on the verge of collapsing and an emergency order freezing assets was needed.

The suit alleges that Colonial refused to return funds it had held for Charlotte, N.C.-based Bank of America when a mortgage and loan transaction was terminated.

## Drought

cont. from page 1

those counties.

Roughly half the state is under some form of drought. About 26 percent — a large swath of Central and South Texas — is suffering through the worst two categories of drought. Texas is the only state in the U.S. with areas enduring the worst category, according to the latest U.S. Department of Agriculture Drought Monitor map. Small areas in Minnesota, Wisconsin and Hawaii are in the second-worst category.

For the first time since 1904, the entire cotton crop was wiped out this year in Kleberg County, which borders two of the historically drought-stricken counties in South Texas and has seen only 2 inches of rain since January. The county typically gets 27 to 28 inches of rain in a 12-month period and produces between 30,000 and 40,000 acres of cotton.

Larry Falconer, an AgriLife Extension economist in Corpus Christi, estimated the economic hit to Kleberg County alone at about \$50 million.

In nearby Nueces County, 95 percent of the cotton crop failed, and more than 90 percent failed in San Patricio County.

The heat has made the drought even more unbearable. There have been 57 days over 100 degrees in the San Antonio area this year and 54 days in the Austin area. Both typically see an average of about 12 days.

Jim Wells County has seen 78 days over 100 (up from an average of 20), Live Oak Canyon has had 71 (up from 36), and Victoria has had 33 (up from 5).

"Everywhere down here has been hurting," said Roger Gass, a weather service meteorologist in Corpus Christi.

While about half of the state isn't experiencing drought, the rest is suffering. Austin's Lake Travis is at its third-lowest level ever and has closed all its boat docks. Wildlife has been creeping into developments in search of water, and cities across the state are restricting water usage. Kerrville even shut down the city pool.

Conditions should improve in September, but for many farmers and ranchers it won't really matter.

"If you're crops already failed, it doesn't matter how much rainfall you're missing from here on out," Nielsen-Gammon said.

## Burglary

cont. from page 1

the home at the time that the warrant was served. They were identified and

released pending further investigation.

## Horses

cont. from page 1

feces and urine.

Reedy said the farm resembled "a concentration camp for horses."

Reedy says the owner, Gordon Dennis Key, will be arrested on charges of

cruelty to livestock. A message left at his home by The Associated Press was not returned.

Pilot Point is 43 miles northwest of Dallas.

## Clarendon

cont. from page 1

The head of the Pampa campus said they should expand their welding program later this month when they get the old incubator building finished.

"We have to get a building permit before we can do anything to it," Jaramillio said.

They have an architect to handle the project. "Once we get architectural drawings laid out," Jaramillio said, "then we'll get quotes and we'll start on getting that building ready."

Because of the time squeeze, Jaramillio said he's talking to a welding company about rent space at their shop for a month in order to get the building ready.

"The last thing I'm going to do is put off the beginning of the semester," Jaramillio said.

He said there are about 14 enrolled in welding.

"But we're still pushing and still recruiting," he said.

Jaramillio said he expects to have 17 enrolled by the time school starts.

The welding program has acquired some new equipment in anticipation of a growing program.

Jaramillio said he's also met with National Oil Well about using any material that they have that students could weld on.

"We are trying to move as fast as we can," Jaramillio said, "but we're not trying to move so fast that we blow something up."

He said the college has some other programs that they'd like to get started in the Spring. One of those programs is a computer graphics program.

Jaramillio said he's also trying to be the Pampa Center certified by state law enforcement officials so students can be trained at Pampa and not have to go to Amarillo.

State Rep. Warren Chisum, R-Pampa, has expressed interest and offered his help, Jaramillio said.

"We've got his support on this," Jaramillio said.

The Clarendon College-Pampa Center official said he's also planning on get the curriculum certified for paramedics.

"We want to get that going this year," Jaramillio said.

He said he's also working with state correctional officials to get classes in the Jordan Unit.

"We have started going back in there as of last week to test some of these inmates," Jaramillio said.

He said he hopes to have a program in place by Aug. 26.

Jaramillio said he expects to have about 70 students at the prison for the first semester this fall. He explains that he's just trying to get the program started.

## School

Both her daughters went to school there.

"I've always been proud to be part of this school," Unruh said. "It's not like a job, it's like a home — and the students aren't just students, they're our family."

"We've had so many good kids come through," she continued, "the top two student who graduated from Pampa High this year were our students."

It's also very late in the year for the teachers who have been laid off due to the closure to secure other positions.

Unruh said has a husband who's employed, so she's luckier than some other employees.

Theresa Martinez has been teaching at St. Vincent's since 1986. She recently had knee surgery, and said she doesn't know what she's going to do next.

Father Francis Perez has been out of town and won't return until Wednesday. Until then, the employees won't know if they will receive a severance package, or what it will be.

Rachel Resendiz has been the school secretary for the past five years, but she's been involved at St. Vincent's since her 21-year-old daughter was three.

"I always thought the day my youngest daughter left the school, so would I," Resendiz said. "It's not a high-paying job, but I love the school and I intended to work there until I retired."

"It's like a wall of shock in front of me and I can't get past it yet. We care for

cont. from page 1

our students." All three women agree it's tough economic times that led to the school's demise.

"We have a lot of families where one parent is now unemployed," Resendiz said. "They can't afford to pay."

"We have hopes of reopening," Unruh said, "if we have the numbers. It just seems kind of bleak once you close the doors."

Parents who had children enrolled in St. Vincent's need to contact the Pampa Independent School District office 669-4700, for enrollment information.

Editor's note: If you have memories or concerns about the closing of St. Vincent's, E-mail your comments to editor@the-pampanews.com

**READ IT ONLINE**

Access a complete issue of **The Pampa News** every day, Monday through Saturday, on your computer!



Call Kera at 669-2525 for subscription details.

**Pampa ISD Events for the Week of August 17-21**

Watch this space every Sunday for a weekly listing of non-athletic events from every campus in our school district

**Pampa High School**  
August 20 • Mission Impossible Camp For Freshmen • 6 pm

**Pampa Junior High School —**  
**Please attend the Parent Meetings for general information and your child will receive their schedule as well.**  
August 17 • 6th Grade Parent Meeting • 6:30 pm • Auditorium  
August 18 • 7th Grade Parent Meeting • 6:30 pm • Auditorium  
August 20 • 8th Grade Parent Meeting • 6:30 pm • Auditorium

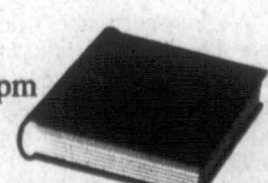

**Austin Elementary**  
August 21 • "Meet the Teacher" • 12:00-2:00 pm (Please bring labeled school supplies at this time)  
August 21 • Sign up for the Austin Booster Club & Cafeteria Personnel will be available to collect lunch money • 12:00-2:00 pm

**Lamar Elementary**  
August 21 • "Meet the Teacher" • 3:00-4:00 pm


**Travis Elementary**  
August 18 • Class Lists Posted • 4:00pm  
August 21 • "Meet the Teacher" • 2:30-3:30 pm (You may bring school supplies at this time)

**Wilson Elementary**  
August 18 • Booster Club Meeting • 6:00 pm  
August 20 • "Meet the Teacher" • 5:00-6:00 pm  
August 21 • "Meet the Teacher" • 12:00-1:00 pm

For the most up-to-date Pampa ISD information, Go to the school website at HYPERLINK "http://www.pampaisd.net" From the parent connection drop-down menu, click on the District Event Calendar

Preserve your most Precious moments.



coupon

Free 8x10 with paid session fee exp. 8/31/09

207 Cuyler 669-1441 www.myshutterbug.com

**Shutterbug Photography**

657

**Y**ur life may change...

marriage ...



...new house



children ...



...but we will still be here for you!

Call on your friends & family who will support all of life's little changes!

**NATIONAL BANK OF COMMERCE**  
An Office Of First National Bank Waupaca, Wisconsin

PAMPA • 1224 N. HOBART • 669-0922  
SHARROCK • 305 N. MAIN • 256-2181  
CHILDRESS • 501 COMMERCE • 848-837-2514  
www.fnbwaupaca.com Member FDIC

# Stallings, Dunn wed

Audrey Katherine Dunn of Abilene and Levi Jade Stallings of Clyde were married on Sat July 25, 2009 at First Baptist Church in Pampa.

They were accompanied by their parents Mr. and Mrs. Dwayne Dunn of Bay City and Mr. and Mrs. Mark Stallings of Clyde.

Reverend Less Thomason, grandfather of the groom, officiated the ceremony.

Maid of honor was Meagan Clark of Pampa.

Bridesmaids were Jackie Gerber of Lubbock, Kaylee Keith of Amarillo, Sarah Cameron of Abilene, and Serene Sepeda of Roby.

Flower girl was Avery Stallings Brown, niece of the groom.

Best man was Lance Cockrell, stepbrother of the groom, of Clyde.

Groomsmen were Will Stallings, Casey Walton, and Garret Poole. The ring bearer was Baylor Monte Mayor. Ushers were Josh Akens, Kris Akens, and Zach Green. The reception was held at the Americ Inn Event Center. Bride is a 2006 Pampa Graduate. She is attending college at Hardin Simmons University in Abilene with plans to graduate in 2010 with a Bachelor of Science



in Nursing Degree.

Groom is a 2005 graduate of Clyde High School and is attending Tarleton University and is employed at Wagley Construction

in Abilene. They honeymooned in Ruidoso, N.M. Plan to make their home in Abilene.

# Respite for reptiles as demand drops for skins

NEW ORLEANS (AP) — As conspicuous consumption loses some of its cachet during the recession, the swamp's most conspicuous consumers have less to fear from humans.

Instead of taking the half-million alligator eggs from marshes and swamps that they had in recent years, alligator farmers are expected to pull in 30,000 this year, with a final tally in December. And state wildlife officials expect the 2009 harvest of adult gators, which begins Aug. 26, to amount to a small fraction of last year's 35,500.

Nobody's buying, said Rapides Parish nuisance-alligator control officer Ron Guy. He's among more than 60 people around the state who get called if a gator wanders out of its bayou and into a local golf course or backyard. Their pay is the right to sell the skins.

Gators brought Louisiana farmers and hunters \$71 million in 2007, modest revenue even at that peak. This year, revenue is expected to be closer to \$10 million in 2009, a drop like locals say they've never seen.

"My father was in the fur and alligator business. I started buying fur and alligators when I was 13 years old," said Wayne Sagrera, 65, who has about 75,000 alligators at Vermilion Gator Farm Inc. in Abbeville. "I've seen some slowdowns. But nothing to compare to this."

The people who are still buying expensive accessories have shifted away from conspicuous consumption — for instance, Jimmy Choo is selling obvious faux-crocodile as well as the real thing, fashion consultant Robert Burke said.

"There's certainly a sensitivity in the luxury mar-

ket of anything that is too much luxury, and alligator would fit into that category," Burke said.

His income from hauling off nuisance alligators let Guy leave construction work six years ago, but he's back now — and running out far less often for alligators.

"Instead of going on every call as soon as it comes in, you prioritize them," Guy said. "If it's under a car in the Sonic parking lot, you've got to go."

Demand for crocodilian leather, including the large alligator and crocodile skins used for handbags and the caiman leather used for cowboy boots, dropped more than 40 percent worldwide between the first quarter of 2008 and first quarter of 2009, according to Choon Heong Koh, executive director of Singapore tannery Heng Long International Ltd.

Demand for small, farmed hides used for watchbands fell even more dramatically — 80 percent or more, he said in an e-mail to The Associated Press.

Luxury watches are "such a high-end item — when those people stop spending money you get real nervous," said Dave Travers, owner of Sebring Custom Tanning in Sebring, Fla.

Even John Price — whose Insta-Gator Ranch and Hatchery in Covington gets 40 percent of its income from tours, including egg-hatching tours that start in mid-August each year — has suffered. He usually raises about 1,500 alligators a year to sell their hides. Instead of collecting 1,500 eggs this year from the wild, he collected 200 — and those are largely for people who want to hold eggs while they hatch.

"We have customers who have booked the right to hatch an alligator. I don't want to call them back and say, 'Sorry, we're not doing it,'" Price said.

About 30 of those 200 'gators will wind up back in the wild. As part of the program that brought alligators back from the brink of extinction, Louisiana's 59 licensed alligator farmers must return about 15 percent of those they raise to the swamps they came from.

That's about the same share that would survive non-human predators during their first four years in swamps and marshes.

## SOMETHING WORTH SHARING

We're proud of the news coverage we've received, and we hope to build upon these accomplishments. We know that our success is your success. Thank you.

Edward Jones ranked "Highest in Investor Satisfaction with Full Service Brokerage Firms," according to the J.D. Power and Associates 2009 U.S. Full Service Investor Satisfaction Study<sup>SM</sup>.

Edward Jones received the highest numerical score among full service brokerage firms in the proprietary J.D. Power and Associates 2009 Full Service Investor Satisfaction Study<sup>SM</sup>. Study based on responses from 4,438 investors measuring 21 investment firms and measures opinions of investors who used full-service investment institutions. Proprietary study results are based on experiences and perceptions of consumers surveyed in March - April 2009. Your experiences may vary. Visit [jdpower.com](http://jdpower.com).



### SmartMoney, June 2009

Edward Jones was named the No. 2 full-service brokerage firm in the June 2009 edition of *SmartMoney* magazine. The magazine lauded the firm for growing its number of financial advisors in a down market. The firm, with a reputation for excellent client service, also managed to lead the pack in stock picking. The firm consistently has been ranked highly in the *SmartMoney* survey as No. 2 in 2008 and No. 1 in 2007 and 2005.

### FORTUNE Magazine, Jan. 26, 2009

For the 10th year, Edward Jones was named one of the "100 Best Companies to Work For" in America by *FORTUNE* magazine in its annual listing. The firm ranked No. 2 overall and No. 1 on the magazine's Best Large-sized Company list. These 10 *FORTUNE* rankings include top 10 finishes for seven years and consecutive No. 1 rankings in 2002 and 2003.



**Ben Watson**  
Financial Advisor  
408 W Kingsmill Suite 197A  
Pampa, TX 79065  
806-665-3359



**Tom Reynolds**  
Financial Advisor  
1540 North Hobart  
Pampa, TX 79065  
806-665-7173



**Duane Harp**  
Financial Advisor  
1921 North Hobart  
Pampa, TX 79065  
806-665-6753

[www.edwardjones.com](http://www.edwardjones.com) Member SIPC

**Edward Jones**  
MAKING SENSE OF INVESTING

## SHAPE YOUR FUTURE

at Clarendon College Pampa Center

Classes  
Begin  
Wednesday,  
August 26

## Fall Registration

Monday, August 24  
Tuesday, August 25  
6:00 - 8:00 pm  
Clarendon College - Pampa Center  
1601 W. Kentucky

View a course schedule online at  
[www.clarendoncollege.edu](http://www.clarendoncollege.edu)

For more information call the CC-Pampa Center at  
**806.665.8801**

**CLARENDON COLLEGE**  
Pampa Center

Opening Doors. Changing Lives

## THE PAMPA NEWS

403 W. Atchison • Pampa, TX 79065  
806-669-2525 • 800-687-3348  
Fax: 806-669-2520

Randall Pribble  
Publisher

[rpribble@thepampanews.com](mailto:rpribble@thepampanews.com)

ReDonn Woods  
Advertising Manager  
[advertising@thepampanews.com](mailto:advertising@thepampanews.com)

Betsy Phillips  
Editor  
[bphillips@thepampanews.com](mailto:bphillips@thepampanews.com)

Sue Pribble  
Advertising Representative  
[advertising1@thepampanews.com](mailto:advertising1@thepampanews.com)

David Bowser  
Reporter  
[dbowser@thepampanews.com](mailto:dbowser@thepampanews.com)

Beverly Taylor  
Classified Advertising  
[classified@thepampanews.com](mailto:classified@thepampanews.com)

Marcus Elkins  
Press Supervisor  
[press@thepampanews.com](mailto:press@thepampanews.com)

Kera Kent  
Circulation  
[circulation@thepampanews.com](mailto:circulation@thepampanews.com)

Chico Ramirez  
Circulation Supervisor

Carrie Hair  
Accounting  
[bookkeeper@thepampanews.com](mailto:bookkeeper@thepampanews.com)

This newspaper (UPS 781-540) is published daily, except Sundays, Thanksgiving and Christmas Day, by The Pampa News. Periodicals postage paid at Pampa, Texas. Postmaster: Send address changes to The Pampa News, P.O. Drawer 2198, Pampa, TX 79066-2198.

All carriers are independent contractors and The Pampa News is not responsible for advance payments of two or more months made to the carrier. Please pay directly to the Pampa News any payment that exceeds the current collection period. There are no mail subscriptions available within the city limits of Pampa. Mail subscriptions must be paid three months in advance.

© 2009 The Pampa News

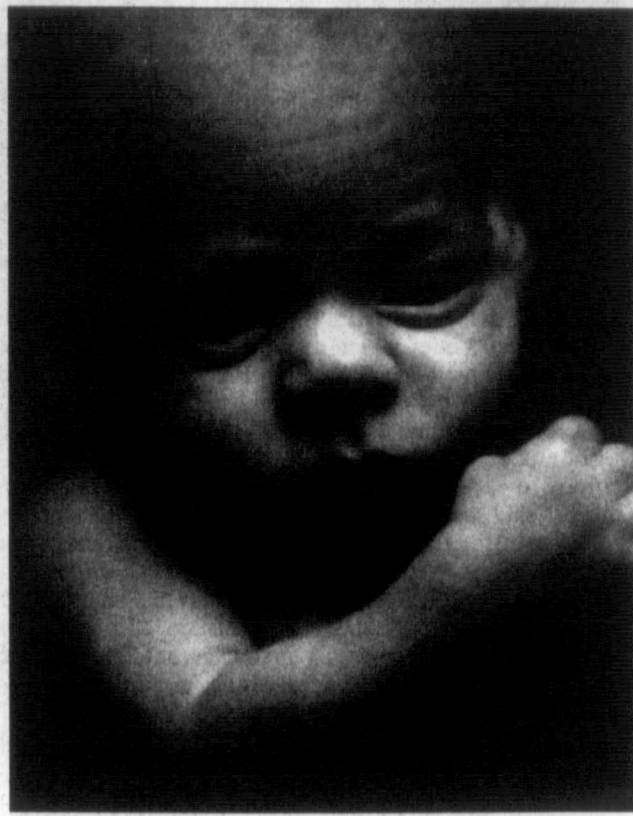
# Around town

## Samuel Wyatt Nonhof

Samuel Wyatt Nonhof was welcomed by his parents Patrick and Kamron Nonhof of Borger April 12, 2009.

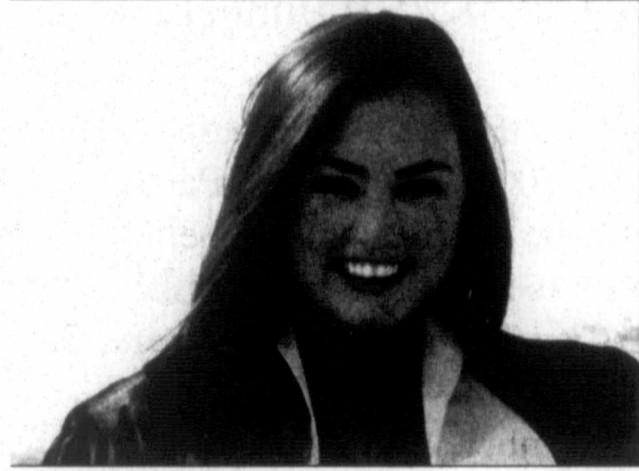
At birth, Samuel weighed 1 pound, 14 ounces and was 14 inches long.

He was also welcomed by his grandparents Randy and Pam Harris of Pampa, and Martin and Rose Nonhof of Houston and great grandparents Betty Harris and the late Bill Harris, and Bill and Betty Stevens.



Samuel Wyatt Nonhof

## Willett becomes physician Assistant



Heidi Marie Willett

On July 9, Heidi Marie Willett of Midland, was among a class of 36 physician assistant students who participated in a White Coat Ceremony at the University of Texas Southwestern Medical Center Department of Physician Assistant Studies. Heidi graduated from Texas A&M University with a B.S. in Biology. She is the daughter of Ron and Cassie Willett of Midland and the granddaughter of Frances Scott of Pampa and Joe and Loretta Kitten of Slaton.

## Landsverk named All-American Scholar At-Large

The United States Achievement Academy announced that Michael Landsverk of Pampa has been named and All American Scholar At-Large Award winner. Landsverk will appear in the All-American Scholar official yearbook which is published nationally. He is

a student at Pampa High School.

The Academy recognizes fewer than 10 percent of all high school students. Criteria for selection are a student's grade point average, student achievements and a well-balanced schedule of academics and extracurricular activities.

Michael Landsverk is the son of Linda Lantz of Pampa, and hte grandson of the late Bette Fitzgerald of Pampa and the Late John Lantz of Abilene.

## WEEKLY MENUS

### Pampa Meals on Wheels

Regular  
Monday, August 17

Barbecue  
Potato salad  
Baked beans  
Pudding

Tuesday, August 18

Hamloaf  
Hominy casserole  
Zucchini/tomatoes  
Pineapple

Wednesday, August 19

Chicken nuggets  
Baked potato  
Peas/carrots  
Peaches

Thursday, August 20

Sheperd's Pie  
Pickled beets  
Corn  
Jell-O

Friday, August 21

Baked chicken  
Sweet potatoes  
Peas  
Applesauce

### Pampa Senior Citizens Inc.

Monday

Chicken fried steak or chicken spaghetti  
Mashed potatoes  
Beets  
Spinach  
Beans  
Slaw, tossed salad or Jell-O salad  
German chocolate cake or cherry cream pie  
Hot rolls or corn bread

Tuesday

Chicken salad or beef enchiladas  
Potato wedges  
Cheese hominy  
Green beans  
Slaw, tossed salad or Jell-O salad  
Strawberry cake or chocolate Sundae Cups  
Hot rolls or corn bread

Wednesday

Roast beef brisket with brown gravy or cook's choice  
Mashed potatoes  
California blend  
Corn

Beans  
Slaw, tossed salad, Jell-O salad  
Boston Cream pie or cherry cheese cake

Thursday

Chicken strips or beef stir fry/ rice  
Tator tots  
Carrots  
Peas  
Beans  
Slaw, tossed salad or Jell-O salad  
Funfetti cake or butter-scotch icebox pie  
Hot rolls or corn bread

Friday

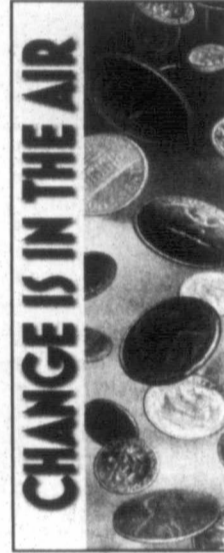
Catfish and hushpuppies or Spaghetti and meatballs  
Potato wedges  
Broccoli spears/ cheese sauce  
Beans  
Slaw, tossed salad or Jell-O salad  
Brownies or tapioca cups  
Garlic bread sticks, hot rolls, corn bread

## Ward graduates from Baylor

Michlle Laine ward graduated May 15, 2009 with a degree in mechanical engineering from Baylor Univerisy in Waco.

She was active in both ASME and SWE, where she graduated magna cum laude with a 3.9 grade average. After graduation she began working for the Boeing Company.

Ward is the daughter of Marvin and Martha Ward of Waxahachie, and granddaughter of Vera Plunk and Kenneth and Viola Ward of Pampa.



**We are now open to the community!**

Serving Pampa and Gray County

- Checking Accounts • Savings Accounts
- ATM/Debit cards • Credit Cards
- Online Banking • Overdraft Protection
- Consumer Loans (secured/unsecured)



**Pamcel Community Federal Credit Union**  
1939 N. Hobart • 688-7041

## CHAUTAUQUA 2009 FUN RUN/WALK & 5K

**CHAUT**

PAMPA REGIONAL MEDICAL CENTER

**AUQUA**

Central Park - Pampa, TX

(Corner of Georgia & Mary Ellen)

Labor Day September 7th

Registration Begins: 7:00 a.m.

Fun Run/Walk Begins: 8:00 a.m.

5K Begins: 8:20 a.m.

Register by Mail by Sept 1:

Fun Run/Walk - \$4  
5K - \$9

Register Day of Race:

Fun Run/Walk - \$5  
5K - \$10

Sponsored by

**Pampa Regional Medical Center**

All Participants Receive a T-Shirt  
All Entry Fees are Donated to United Way

Mail Entry Form To: Pampa Regional Medical Center

Attention: Terry Barnes • 663-5874

One Medical Plaza • Pampa, Texas 79065

Last Name \_\_\_\_\_ First \_\_\_\_\_

Age \_\_\_\_\_  Male  Female

City & State \_\_\_\_\_

Check One:  5K  Fun Run

T-Shirt

Youth Med  Youth Large  Adult Small  
 Adult Med  Adult Large  Adult X-Large

**Dr. Jill R. Terry**  
Obstetrics & Gynecology

Residency: Wayne State University/  
Detroit Medical Center

Internship: St. John Detroit  
Riverview Hospital

D.O.: University of North Texas  
Health Science Center

B.A.: Taylor University, Upland, Indiana

**NOW ACCEPTING PATIENTS**

3023 N. Perryton Parkway #101 • Pampa, Texas  
806-665-0801

Family Medicine Center  
Amarillo • Canyon • Pampa

# Lowe to guide education board through hot issues

AUSTIN, Texas (AP) — As Gail Lowe takes the helm of the State Board of Education, the turmoil-laden panel that has long been a battleground in the fight between social conservatives and liberal watchdogs, the incoming chairwoman is decidedly unapologetic about her conservative Christian views.

Lowe was appointed to the spot last month by Gov. Rick Perry to replace former chairman Don McLeroy, whose appointment to a second term as chairman was rejected by the state Senate.

"This country was founded on Judeo Christian principles and to say otherwise is to deny what is very unique about our country," Lowe said in a recent inter-

view with The Associated Press. "The principle of church and state would say the government cannot mandate anyone can or cannot belong to any particular church."

Gov. Rick Perry surprised observers with his selection of Lowe, 52, a mild-mannered, small-town newspaper publisher who acknowledges she's not a "broad visionary" but more of a nuts-and-bolts person. She'll replace McLeroy, an ardent conservative targeted by critics for his outspoken views on creationism and support of teaching students weaknesses of evolutionary theory.

Debates under McLeroy's watch made the Texas board a national target of editorials and

opinion pieces, including a New York Times editorial in which writers called the Texas panel "scientifically illiterate" and charged that they "fumbled" a revision of science curriculum standards. Ultimately, McLeroy lost a bid to maintain a curriculum requirement that students be taught weaknesses in evolution.

Mild mannered and matronly, Lowe is seen by some as a calming influence, who will be better equipped to guide the board through passionate debates, including the upcoming adoption of science textbooks and social studies curriculum updates.

She's quickly mastered parliamentary procedure, an area that has hampered the board in the

past, and she "is always well prepared, she's read the agenda and thought through the issues," said Debbie Graves Ratcliffe, a spokesman for the Texas Education Agency.

"As a professional communicator, she can do a good job summarizing lengthy discussions to clarify what the upcoming decision is," she said.

Still, critics say Texas students will be getting more of the same with Lowe, who believes students should be taught biblical motives of the country's founding fathers.

"I think essentially we're going to see the same thing," said Dan Quinn, a spokesman for the Austin-based Texas Freedom Network, a watchdog group. "We'll still see our kids and classrooms dragged into the middle of the culture wars."

Since she was elected to

the board in 2002, Lowe has consistently voted with the panel's conservative faction, from her opposition to including contraception information in health textbooks to criticizing textbooks that she believed did not adequately challenge the theory of evolution.

"Most members of our board are people of faith, only some of us have a faith that is attacked, singled out because of the types of churches we go to," said Lowe, who grew up in the Methodist Church but is now active in a small nondenominational church in Lampasas.

"Religious expression is something that has been deemed very important, but I don't believe in either the science curriculum or in social studies, we are pushing a particular religious belief system."

The SBOE sets school

curricula, selects textbooks and manages the multi-billion dollar Permanent School Fund for the state's more than 4.6 million students. Turmoil has already emerged in the social studies discussions and with months left in the process, could become more heated.

The latest hubbub has been over proposals to minimize the importance of civil rights leaders Cesar Chavez and Thurgood Marshall in social studies classes.

Panelist David Barton, an evangelical Republican activist who was appointed by Lowe, said Chavez "lacks the stature, impact and overall contributions of so many others."

Lowe agrees.

Marshall and Chavez are "not particularly known for their citizenship," Lowe said.

## ON VACATION WITH THE PAMPA NEWS! - FOSS LAKE, OKLAHOMA



A group of happy young people from Pampa recently spent five days at Foss Lake, OK, camping, swimming, jet skiing, and tubing. The group included (front row, from left) Corby Snapp (holding Ricky), Madi Mendoza, Ashton Snapp, (middle row, from left) K'Lyn King, Chelsea Farmer, Chelsey Whinery, Celby Snapp, Clay Snapp, (back row from left) Colton Ewing and Bradon Mendoza.



Remember to take a copy of The Pampa News with you on your getaway. Take a photo of family and friends holding the newspaper. We'll print your picture in the newspaper. So, whether you are going to Paris, France or Paris, Texas (or Clarendon for that matter) ... take us along for the ride! Remember to: Identify every person in the photograph from left to right, front row first; Give us some information about the trip and the landmark in the photo; Give us a name of a contact person and a telephone number/email address. To see your photo in the paper faster, email the photo and information to: [rpribble@thepampanews.com](mailto:rpribble@thepampanews.com).



## Notice of Public Hearing of The City of Pampa Proposed 2009-2010 Budget

Notice is hereby given that a public hearing will be held on the proposed 2009-2010 City of Pampa Operating Budget. The hearing will be held by the City Commission on the 1st day of September 2009 at 5:00 P.M. in the City Commission Chambers, City Hall, 200 W. Foster, Pampa, Texas.

All tax payers and members of the public are encouraged to attend the public hearing and express their views.

A copy of the 2009-2010 proposed budget is on file in the Office of the City Secretary for public review.

D-43 August 16, 2009



## NOTICE OF PUBLIC MEETING TO DISCUSS BUDGET AND PROPOSED TAX RATE

The Grandview-Hopkins ISD will hold a public meeting at 7:00pm August 25, 2009 in Board Room at Grandview-Hopkins

11676 FM 293 Groom, Texas

The purpose of this meeting is to discuss the school district's budget that will determine the tax rate that will be adopted. Public participation in the discussion is invited.

The tax rate that is ultimately adopted at this meeting or at a separate meeting at a later date may not exceed the proposed rate shown below unless the district publishes a revised notice containing the same information and comparisons set out below and holds another public meeting to discuss the revised notice.

Maintenance Tax	\$ 0.97 /\$100 (Proposed rate for maintenance and operations)
School Debt Service Tax	
Approved by Local Voters	\$ 0.00 /\$100 (proposed rate to pay bonded indebtedness)

### Comparison of Proposed Budget with Last Year's Budget

The applicable percentage increase or decrease (or difference) in the amount budgeted in the preceding fiscal year and the amount budgeted for the fiscal year that begins during the current tax year is indicated for each of the following expenditure categories:

Maintenance and operations	1.68 % increase	or	0.00 % (decrease)
Debt service	0.00 % increase	or	0.00 % (decrease)
Total expenditures	1.68 % increase	or	0.00 % (decrease)

### Total Appraised Value and Total Taxable Value (as calculated under Section 26.04, Tax Code)

	Preceding Tax Year	Current Tax Year
Total appraised value* of all property	\$ 154,554,198.00	\$ 157,019,208.00
Total appraised value* of new property**	\$ 55,920.00	\$ 286,990.00
Total taxable value*** of all property	\$ 138,305,608.00	\$ 131,042,294.00
Total taxable value*** of new property**	\$ 55,920.00	\$ 286,990.00

\* "Appraised value" is the amount shown on the appraisal roll and defined by Section 1.04(8), Tax Code.  
 \*\* "New property" is defined by Section 26.01(2)(17), Tax Code.  
 \*\*\* "Taxable value" is defined by Section 1.04(10), Tax Code.

### Bonded Indebtedness

Total amount of outstanding and unpaid bonded indebtedness\* \$ 0.00

\* Outstanding principal.

D-45 Aug. 16, 2009

# 24 MONTH PRICE GUARANTEE

**BUNDLE UP & SAVE** WATCHING YOUR BUDGET? FOR THE NEXT 24 MONTHS, YOU CAN COUNT ON THE SAME, **\$99/MO.** LOW PRICE. WE GUARANTEE IT!

Plus, there's no extra equipment to lease or buy.

- WHOLE-HOUSE STANDARD CABLE SERVICE**  
Watch the most popular cable networks and local channels. Cable ONE offers something for everyone in the family.
- STANDARD INTERNET THAT'S NEARLY 90X FASTER THAN DIAL-UP**  
Enjoy a blazing fast connection and hassle-free online access that's always on, always fast, always easy.
- CABLE ONE ECONOMY PHONE**  
With unlimited local calling, you can talk as long as you like to friends and family without paying anything more.

## CABLE ONE

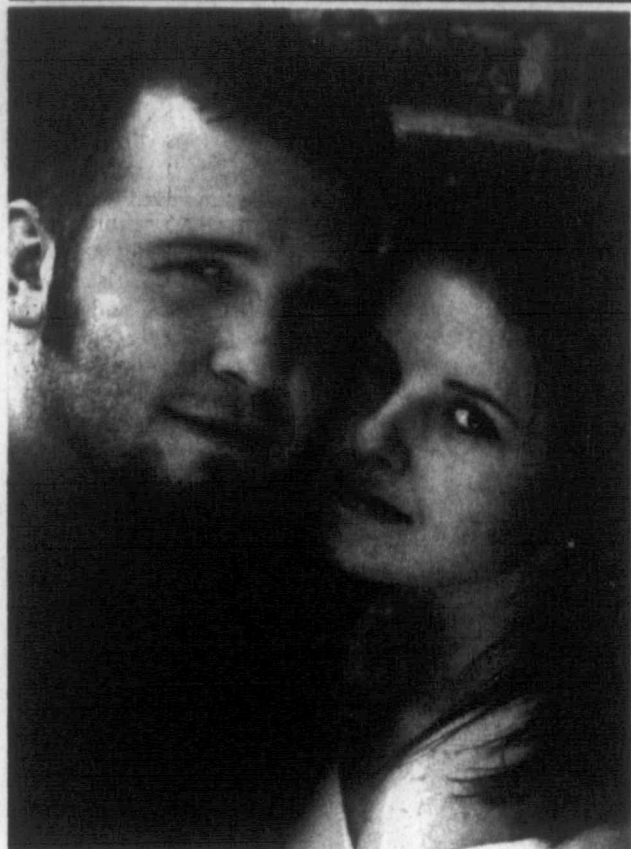
So don't wait! Call now & we'll take care of everything!

**1-888-216-5524**

[www.cableone.net](http://www.cableone.net)

\*Promotional rate quoted good for the first twenty-four months when you subscribe to our Standard Video, Standard Internet and Economy Phone services bundle. Taxes and fees are not included in above rate. Offer is available through subscription to a 24 month agreement secured with a credit card or direct pay. Long distance service is defined as calls made outside your local exchange area. Long distance calls within the continental US are provided at 10 cents per minute. Rates for calls outside the continental US vary. Guarantee does not include the cost of long distance calls, 411 or other operator assisted calls. Other levels of service are available. Cable ONE manages speed and usage of internet services to provide the best experience for all customers. Please read our Acceptable Use Policy for details. Call for additional details and restrictions.

Brando  
 M  
 en  
 an  
 Jimm  
 Cantrell  
 pleased  
 engagen  
 Brando  
 Jessica  
 Springs,  
 the bric  
 Jerrold  
 Jessica  
 High Sc  
 attended  
 and rec  
 in Com  
 is curre  
 MDA of  
 Grand  
 groom a  
 Cook o  
 Late C  
 McElroy  
 Sea  
 from  
 groc  
 fee f  
 SEAT  
 Leaders  
 green cit  
 America  
 fee, and  
 the U.S.  
 But th  
 try has b  
 bringin  
 sively lo  
 and ban  
 dum in  
 the 20-c  
 measure  
 Tuesday,  
 marginal  
 industry  
 outspend  
 about 15-  
 If the t  
 eco-cons  
 Seattle,  
 will be  
 where.  
 In Cali  
 facturers  
 Oakland  
 Beach a  
 banned  
 bag make  
 officials  
 report de  
 ronmenta  
 the incre  
 sacks.  
 200  
 200  
 200  
 200  
 200  
 1997  
 1997  
 1997  
 1997  
 1997  
 1997



Brandon McElroy and Jessica Jerrold

## McElroy, Jerrold engagement announced

Jimmy and Kathy Cantrell of Pampa are pleased to announce the engagement of their son Brandon McElroy to Jessica Jerrold of Colorado Springs, Co. Parents of the bride Jim and Kelly Jerrold of Kiowa, CO. Jessica is a 2003 Kiowa High School graduate she attended colleg at UCSS and received a Degree in Communications. She is currently employed at MDA of Colorado.

Grandparents of the groom are Stan and Betty Cook of Pampa and the Late OJ and Mildred McElroy of Ft Cobb, OK

## Seattle is front line in grocery bag fee fight

SEATTLE (AP) — Leaders of this famously green city last year passed America's first grocery bag fee, and other cities around the U.S. quickly followed.

But the plastics industry has been fighting back, bringing lawsuits, aggressively lobbying lawmakers and bankrolling a referendum in Seattle to overturn the 20-cent charge. The measure goes before voters Tuesday, and polls show marginal support after the industry spent \$1.4 million, outspending supporters about 15-to-1.

If the bag fee fails in an eco-conscious city like Seattle, observers say, it will be a tough sell elsewhere.

In California, bag manufacturers successfully sued Oakland and Manhattan Beach after those cities banned plastic bags. The bag makers complained that officials didn't prepare a report detailing the environmental impact, such as the increased use of paper sacks.

## Policy requires proven Grand Canyon mine claims

FLAGSTAFF, Ariz. (AP) — The reclassification of nearly 1 million acres of land around the Grand Canyon to prevent new mining claims comes with a fundamental change in how the U.S. Forest Service does business with mining companies.

Companies that file to do exploratory drilling and other projects on more than 560 square miles of the Kaibab National Forest now must prove they have valid existing rights to their claims. That could include providing evidence that the mineral has been discovered at the surface with sufficient quality and quantity.

That wasn't the case before Interior Secretary Ken Salazar last month blocked any new mining claims on the land for a two-year period. He took the action to slow a flurry of new uranium mining operations planned in the Grand Canyon area while the Interior Department studies whether the land should be permanently withdrawn from mining activity.

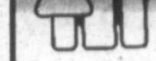
Conservationists are worried that new mining will harm the environment around the canyon. Mining companies say they'll do a much better job preventing

problems today than in decades past, when uranium mines led to widespread contamination.

Salazar also reclassified 990 square miles under the control of the U.S. Bureau of Land Management. Unlike the Forest Service, the BLM has discretion in either taking the company's word that its claims are valid or conducting a review, said Jeff Garrett, a BLM geologist in Phoenix.

The change affects as many as 10,000 existing mining claims on federal lands for all types of hard-rock exploration around the Grand Canyon and some 1,100 uranium mining claims within five miles of the canyon.

## FORD FAMILY CHIROPRACTIC



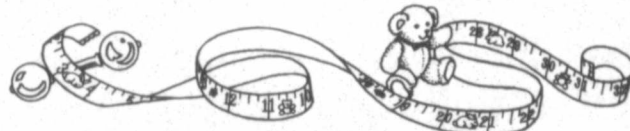
REHABILITATION & WELLNESS CENTER

701 N. Price Rd  
Pampa, TX  
(806) 665-7261

Services Include:

- State of the Art Modern Chiropractic Care
- New digital X-ray services
- Surface EMG
- Computerized muscle strength & range of motion testing
- Personalized therapeutic rehabilitative exercise program
- Digital orthotics casting
- Soft tissue & myofascial release (medical massage) techniques
- Spinal distraction/decompression for disc problems
- Licensed physical therapist
- Weight loss program
- Cold laser therapy
- Children's activity area

Dr. Mark W. Ford, Jr. • Dr. Lance Krogh  
Josh Link MPT



## Mother's Day Out at First Christian Church is back!!

Pre-registration will be August 20 & 27  
10:00-11:30 & 1:30-2:30  
in the First Christian Church Fellowship Hall

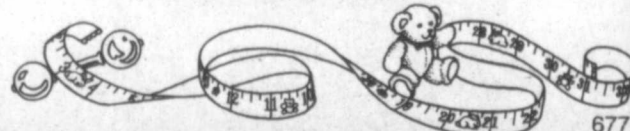
There will be a \$25.00 non-refundable registration fee, per family, due at the time of registration.

Class will begin Tuesday, September 1 & then every Tuesday and Thursday from 9am to 3pm.

Per child fees for the 2009-2010 year will be:

\$15.00 a day for one child  
\$14.00 a day for two siblings  
\$13.00 a day for three or more siblings (lunch is included)

for further information, please call 806-669-2440



## Extra! Extra! Extra!

### Xtra Auto Center Specials

2005 Chevrolet Cavalier 40K miles	\$5,995 <sup>00</sup>
2003 Cadillac DeVille	\$6,450 <sup>00</sup>
2003 Dodge Caravan	\$4,995 <sup>00</sup>
2001 Buick Park Avenue	\$4,995 <sup>00</sup>
2000 Ford Focus SE	\$4,995 <sup>00</sup>
1997 Ford Mustang GT (Low Miles)	\$7,995 <sup>00</sup>
1997 Plymouth Grand Voyager	\$3,450 <sup>00</sup>
1996 Toyota Camry	\$2,995 <sup>00</sup>
1994 Ford Explorer	\$2,450 <sup>00</sup>
1991 Buick Park Avenue (Nice)	\$2,450 <sup>00</sup>

**XTRA AUTO CENTER**

Buy Here - Pay Here

807 W. Foster • 665-XTRA (9872)

720



## Your Neighborhood Bank First State Bank of Miami

Miami Bank  
806-868-2771  
PO Box 8



Pampa Bank  
806-665-3669  
120 W Kingsmill

# SALES TAX HOLIDAY

## HURRY IN NOW... THIS TAX HOLIDAY ENDS SOON

# WE WILL PAY THE TAX ON ALL FURNITURE PURCHASES

\*DOES NOT APPLY TO PREVIOUS ORDERS OR PURCHASES. IN STOCK MERCHANDISE ONLY.

Texas

MON - SAT 9:00 AM TO 5:30 PM

## FURNITURE

1415 N. HOBART • 665-1623

6 MONTHS NO INTEREST FINANCING WITH APPROVED CREDIT

# Around town

## Kinman, Stowers to wed Sept. 26

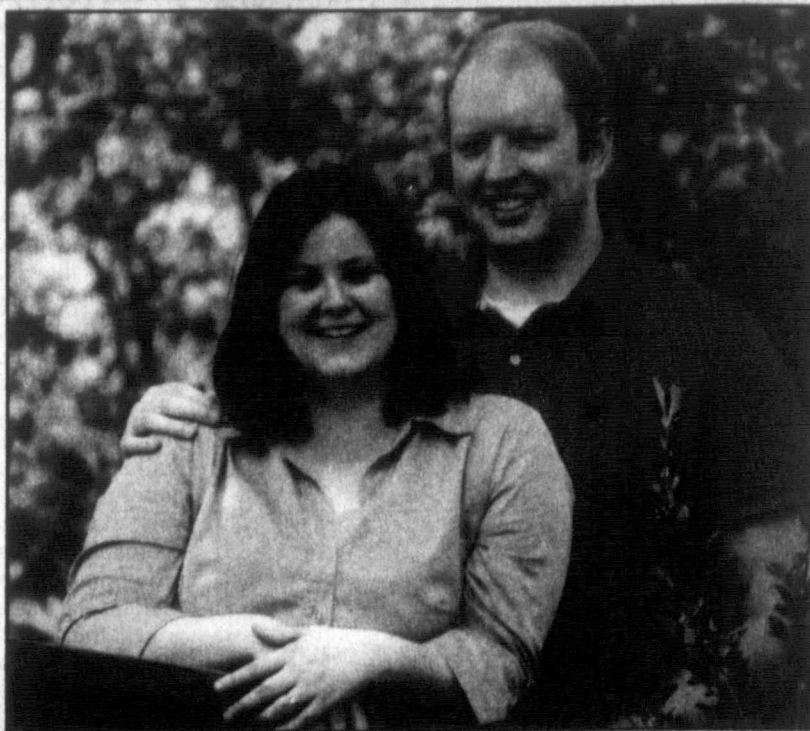
Richard and Janet Stowers (parents) and Dick and Dot Stowers (grandparents), and the late Guy and Patti Leach of Pampa are proud to announce the engagement of their son Sean Stowers to Danielle Liane Kinman of Midland. Parents of the bride to be are John and Dorothy Kinman and the late Cathy Kinman of Knott, Texas. Grandparents of the bride Lowell and Martha Kinman of Monohans, Vicki

Barnes of Cuero, and the late Dan and Mary Barnes of Cuero. The bride to be is a 2000 graduate of Lamesa High and holds a Bachelor in Art in Communication from the University of Texas at the Permian Basin graduate of 2003 and is currently employed in the Loan Department at the Community National Bank in Midland.

The groom to be is a 2000 graduate of Pampa High and

holds a Bachelor of Business Administration in Management Information Systems and Accounting from Texas Tech University graduate of 2005 and is currently employed by System Analyst/Programmer at Key Energy Services and Accounting Intern at Dawson Geophysical in Midland.

The wedding will be September 26, 2009 at St. Luke's United Methodist Church in Midland.



Danielle Kinman and Sean Stowers



### New Arrival

Kurt and Jill West are proud to announce the birth of their baby boy John Kristian West. He was born on July 25, 2009 at 12:31 a.m. at Pampa Regional Medical Center in Pampa. His birth weight was 8 lbs. 4 oz and he was 21 inches long. He was welcomed home by his grandparents, Dale and Bobbie West of Pampa and Clovis and Barbara Miller of Cheyenne.



### Welcomed Home

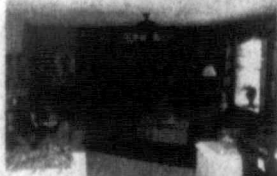
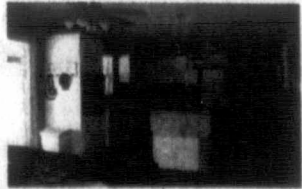
Timothy and Angie Brunson are proud to announce the birth of their baby boy Corrik Michael Brunson. He was born on July 6, 2009 at 01:01 a.m. at BSA Hospital in Amarillo. His birth weight was 8 lbs. 3 oz. and he was 20 1/4 inches long. He was welcomed home by his grandparents Michael and Joan Brunson and Dennis and Jan Edmondson, all of Pampa.

## Beautiful Home, big lot, great location!



2706 N DUNCAN ST. PAMPA, TX 79065  
MLS #08-7886

Beautiful and inviting home on large lot. Updated and well maintained. Heating and a/c units replaced in 2005. Jenn-air range and glass cooktop, flooring and downstairs paint new in 2004. Master bedroom offers a cozy sitting area. 450 s/f of the basement is finished. Very large storage closet as well in bsmt. Rock fireplace in den. Large covered patio. 8x14 storage bldg.



Any Pampa Real Estate Agent is authorized to show this home.

A phone for every style.

# Get the best selection of full-keyboard phones.

Only from AT&T.



\$2999

AFTER MAIL-IN REBATE  
\$50 mail-in rebate AT&T Promotion Card with minimum \$20/mo data plan required and 2-year wireless service agreement.

### LG NEON™

Full keyboard, email, Internet, and organizer  
Downloadable games and music ringtones



\$2999

AFTER MAIL-IN REBATE  
\$50 mail-in rebate AT&T Promotion Card with minimum \$20/mo data plan required and 2-year wireless service agreement.

### SAMSUNG PROPEL™

Slider with full keyboard  
Integrated GPS with AT&T Navigator™



\$7999

AFTER MAIL-IN REBATE  
\$50 mail-in rebate AT&T Promotion Card with minimum \$20/mo data plan required and 2-year wireless service agreement.

### MOTOROLA KARMA™

Full slide-out keyboard  
Quick access to social networking folder (Facebook, MySpace™)



FREE SHIPPING | 1.866.MOBILITY - ATT.COM - VISIT A STORE

#### AT&T STORES

Pampa 2131 Perryton Pkwy., (806) 665-0500

ALSO AVAILABLE AT SELECT

Rebate not available



\*AT&T imposes a Regulatory Cost Recovery Charge of up to \$1.25 to help defray costs incurred in complying with obligations and charges imposed by State and Federal telecom regulations; State and Federal Universal Service charges; and surcharges for government assessments on AT&T. These fees are not taxes or government-required charges.

Offer available on select phones. Coverage is not available in all areas. See coverage map at stores for details. Limited-time offer. Other conditions & restrictions apply. See contract & rate plan brochure for details. Subscriber must live & have a mailing addr. within AT&T's owned wireless network coverage area. Up to \$36 activ. fee applies. Equipment price & avail may vary by mark & may not be available from independent retailers. Early Termination Fee: None if cancelled in the first 30 days, but up to \$35 restocking fee may apply to equipment returns; thereafter up to \$175. Some agents impose add'l fees. Unlimited voice services: Unltd voice svcs are provided solely for live dialog between two individuals. No additional discounts are available with unlimited plan. Offnet Usage: If your mins of use (including unltd svcs) on other carriers' networks ("offnet usage") during any two consecutive months exceed your offnet usage allowance, AT&T may at its option terminate your svc, deny your cont'd use of other carriers' coverage, or change your plan to one imposing usage charges for offnet usage. Your offnet usage allowance is equal to the lesser of 750 mins or 40% of the Anytime mins incl'd with your plan (data offnet usage allowance is the lesser of 6 MB or 20% of the KB incl'd with your plan). AT&T Promotion Cards: LG NEON price before AT&T Promotion Cards, minimum \$20/mo data plan required, & with 2-year svc agreement is \$129.99. Samsung Propel price before AT&T Promotion Cards, minimum \$20/mo data plan required, & with 2-year svc agreement is \$79.99. Allow 60 days for fulfillment. Card may be used only in the U.S. & is valid for 120 days after issuance date but is not redeemable for cash & cannot be used for cash withdrawal at ATMs or automated gasoline pumps. Card request must be postmarked by 09/24/2009 & you must be a customer for 30 consecutive days to receive card. Sales tax calculated based on price of unactivated equipment. Facebook is a registered trademark of Facebook, Inc. ©2009 AT&T Intellectual Property. Service provided by AT&T Mobility. All rights reserved. AT&T, the AT&T logo and all other marks contained herein are trademarks of AT&T Intellectual Property and/or AT&T affiliated companies. All other marks contained herein are the property of their respective owners.





# Sports

## Top 'O Texas Rodeo Friday night results

### BULL RIDING

CHANDLER BOWNS - LUBBOCK - 85 POINTS  
BRODY OLIVE - FORD, KS - 79 POINTS

### STEER WRESTLING

DUSTIN LANHAM - AMARILLO - 4.0 SECONDS  
CASEY COLEMAN - PAMPA - 5.7 SECONDS  
DUSTY MANSFIELD - GROOM - 6.3 SECONDS

### BAREBACK BRONC RIDING

SCOTTY HARMAN - NORCATOR, KS - 71 POINTS  
CASEY MOREMAN - AMARILLO - 69 POINTS

### RANCH BRONC RIDING

TYE LOOPER - STERLING - 72 POINTS  
JEREMY REYNOLDS - CHANNING - 65 POINTS

### CALF ROPING

MARTIN POINDESTER - SEYMOUR - 9.8 SECONDS  
CHARLIE RUUSELL - SHAMROCK - 10.6 SECONDS  
JAKE BOOZE - MIAMI - 13.0 SECONDS  
JIM LOCKE - MIAMI - 14.4 SECONDS  
LONDON DUNCAN - FOSTER, OK - 27.0 SECONDS

### MUTTON BUSTIN'

1ST - COLBY BRITTEN - GROOM - 61 POINTS  
2ND - CADEN ENSEY PAMPA  
3RD - GARRETT HATFIELD - PAMPA

### BREAKAWAY ROPING

LARI DEE GUY - ABILENE - 2.6 SECONDS  
CHRISTIRE HENDLEY - CANYON - 2.9 SECONDS  
K RAE HENDLEY - LUBBOCK - 3.2 SECONDS  
LESLIE LEWIS - PORTALES - 3.3 SECONDS  
JACKIE HOBBS - ABILENE - 3.4 SECONDS

### DOUBLE MUGGING

TANNER COCHRAN, R J BECCO, CASEY TRIMBLE - 48.22 SECONDS  
TANNER COCHRAN, AARON HUNT, JEREMY PRITCHETT - 53.19 SECONDS  
CASEY TRIMBLE, TYE POWELL, BRETT POWELL - 62.28 SECONDS  
JEREMY TAYLOR, JUSTIN TAYLOR, TANNER COCHRAN - 71.10 SECONDS  
TOBY LEBLANC, WILLIE SHAW, GARRETT SCRIBNER - 72.54 SECONDS

### SADDLE BRONC RIDING

CODY ANTHONY - MONAHANS - 75 POINTS  
BRETT OLIVE - FORD, KS - 72 POINTS  
TANNER NOLAND - HAYS, KS - 71 POINTS  
BRAD GOERING - HAYS, KS - 70 POINTS

### TEAM ROPING

BRUNO PAOLIELLO / BRANDON BROWN - 6.1 SECONDS  
CARL VIGIL / DAVE WINDSOR - 7.0 SECONDS  
BRUNO PAOLIELLO / JARED STOKER - 11.0 SECONDS

### BARREL RACING

JEAN WINTERS - DALHART - 16.73 SECONDS  
LESLEY CHESTER - PAMPA - 17.16 SECONDS  
BRITTANY YOUNG - ALVA, OK - 17.19 SECONDS  
CALLIE ANN NUCHOLS - CANYON - 17.52 SECONDS  
BAILEY BRYSON - DALHART - 18.20 SECONDS  
SONYA HOLDER - PAMPA - 18.88 SECONDS  
MANDY MANLEY - PAMPA - 19.58 SECONDS  
DIANE MARTIN - ULYSSES - 22.48 SECONDS  
SHARAE DUNCAN - FOSTER - 23.34 SECONDS  
CARLOTTA BAGGA - LAVERNE - 27.33 SECONDS

## Woods builds a 4-shot lead in the PGA

CHASKA, Minn. (AP) — Whether it was the annihilation at the '97 Masters or the rout at Pebble Beach, Tiger Woods' highlight reel at the majors is well known. Ditto for when he just didn't have it, like that British Open last month.

But has there ever been a time, Woods was asked, that he, well, choked?

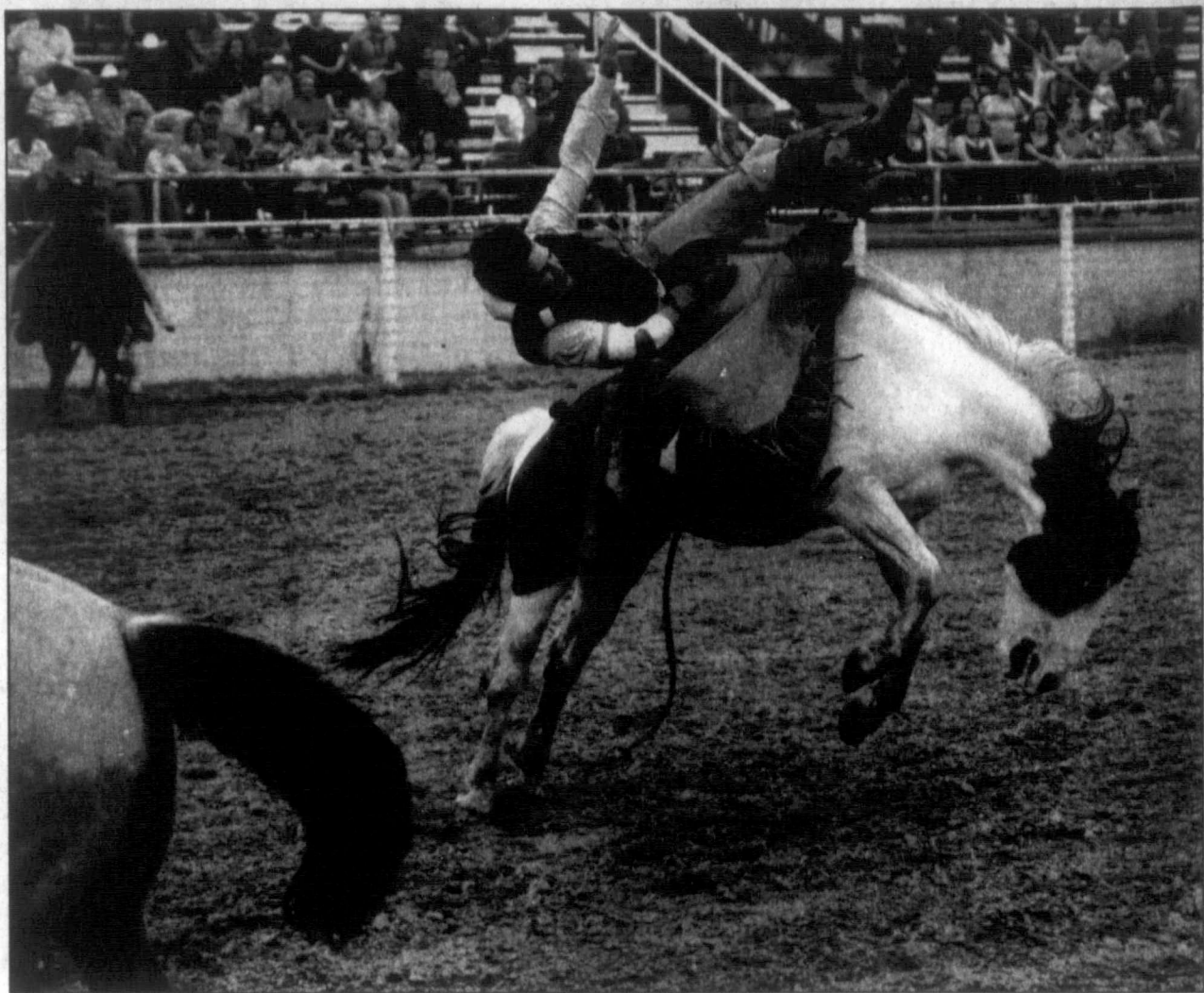
Woods thought for all of about a nanosecond, then shook his head no.

"If Tiger plays the

golf he's capable of on the weekend," Pdraig Harrington said, "he'll be a winner."

Sure looks that way.

Woods separated himself from the pack with a run of three straight birdies on the back nine at the PGA Championship, finishing with a four-shot lead. It's his largest margin after two rounds at a major since the 2005 British Open at St. Andrews, when he led by five.



Action continues at the the Top 'O Texas Rodeo tonight at 7 p.m.

staff photo by David Bowser

## Martinez keys 6-run 9th, Red Sox beat Rangers 8-4

ARLINGTON, Texas (AP) — Victor Martinez looks like he'll fit right in during another pennant race in Boston.

The transplant from Cleveland had his biggest hit since being traded to the Red Sox, a go-ahead double with two outs in a six-run ninth inning that gave Boston an 8-4 victory over the Texas Rangers on Friday night.

The win extended Boston's lead over Texas in the wild card to 1½ games.

Boston needed Martinez's hit because pinch-runner Clay Buchholz was thrown out at home as the tying run after a double by Dustin Pedroia.

Buchholz, a starting

pitcher, hesitated between second and third base when Texas left fielder David Murphy leaped to try to catch Pedroia's drive at the wall. Murphy quickly retrieved the ball and threw to Michael Young, whose relay beat a sliding Buchholz. The Red Sox ended up with runners at second and third, and Martinez followed with the go-ahead hit.

"I saw three pitches and finally got a fastball right down the middle and I got a good swing at it," Martinez said. "My teammates have made it easy for me to fit in."

Boston finished off Texas closer Frank Francisco with Jason Bay's RBI single and a two-run home run

by J.D. Drew. Francisco (2-2), who blew his third save in 19 chances, gave up seven hits and six runs. It was the first time he's allowed more than four hits or four runs in 203 major league appearances.

"I don't want anyone at my locker so beat it," Francisco said.

The Rangers had won 72 straight games at home when leading after eight innings. The last time they blew such a lead was September 2007.

"It doesn't really affect us," said Young, who had a two-run homer and three RBIs. "We have so much confidence in the back end of our bullpen. It's a fluke when this happens."

Red Sox reliever Takashi

Saito (3-3) got the win after pitching a scoreless eighth. Jonathan Papelbon pitched a scoreless ninth, an anticlimactic non-save situation after the drama the preceded it.

Red Sox manager Terry Francona said, "That was probably one of the more exciting innings I've been a part of."

David Ortiz, dropped to Andruw Jones put the Rangers back on top at 3-2 in the bottom of the sixth with a bloop single off Jon Lester, who struck out the side in three of his six innings and finished with 11 strikeouts.

# Back to School Special

PE-gray t-shirt and forest mesh short

# \$14.99

Includes name on back of shirt & initials on shorts

New Harvester merchandise arriving soon. Stadium chairs, Beanies, T-Shirts & Caps. EZ-Care LS embroidered shirts, Polo Shirts, & much more...COME CHECK US OUT!!!!!!!!!!!!

## T-Shirts & More

111 Kingsmill Ave. • Pampa, TX • 665-3036

www.towerproductsinc.com/tshirts-more

Top  
Hatters

# Quality Sales

669-0433  
www.qualitysalespampa.com

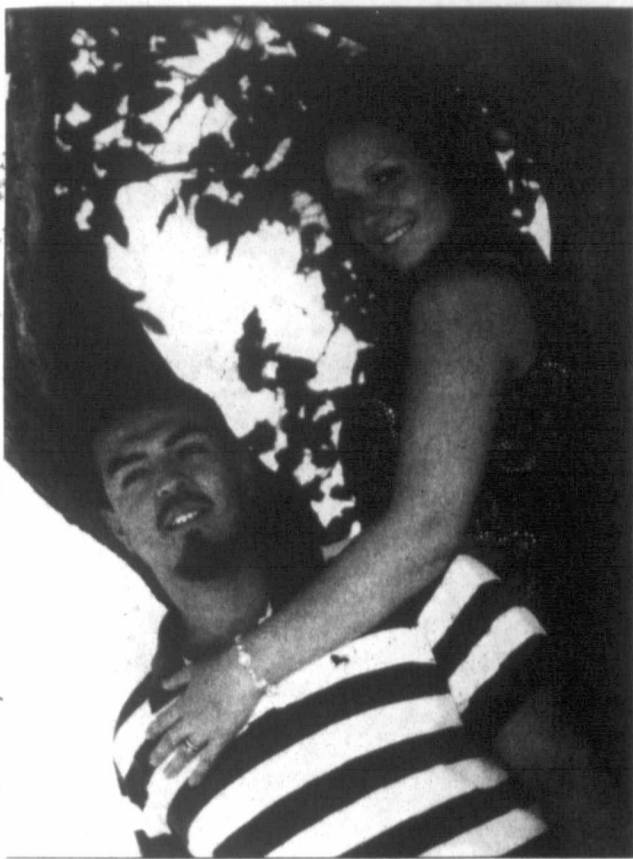
1401 N HOBART  
PAMPA, TEXAS

Photos courtesy of Shutterbug Photography

Go-Valve

Hidden Hills

Hoagies Deli



## Luster, Resendiz to wed

Denise Taylor and (the late) Kevin Taylor and David Luster of Pampa, are pleased to announce the engagement of their daughter Chelsea Luster to Jaime Resendiz of Pampa. Parents of the future groom are Jose and Rosa Resendiz of Pampa. They plan to wed on September 19, 2009 at Highland Baptist Church in Pampa.

Jaime Resendiz and Chelsea Luster

## Notice of Public Hearing on Tax Increase

The City of Pampa will hold two public hearings on a proposal to increase total tax revenues from properties on the tax roll in the preceding tax year by 2.56 percent (percentage by which proposed tax rate exceeds lower of rollback tax rate or effective tax rate calculated under Chapter 26, Tax Code). Your individual taxes may increase at a greater or lesser rate, or even decrease, depending on the change in the taxable value of your property in relation to the change in taxable value of all other property and the tax rate that is adopted.

The first public hearing will be held on September 1, 2009 at 5:00 p.m. at City Hall, 200 W. Foster, City Commission Chambers, Pampa, Texas 79065.

The Second public hearing will be held on September 18, 2009 at 4:00 p.m. at City Hall, 200 W. Foster, City Commission Chambers, Pampa, Texas 79065.

The members of the governing body voted on the proposal to consider the tax increase as follows:

For: Bill Allison Robert Dixon  
Brad Pingel Neil Fulton

Against:

Present and not voting:

Absent: Mayor Lonnie Robbins

The average taxable value of a residence homestead in City of Pampa last year was \$42,003. Based on last year's tax rate of \$0.66500 per \$100 of taxable value, the amount of taxes imposed last year on the average home was \$279.32.

The average taxable value of a residence homestead in City of Pampa this year is \$45,656. If the governing body adopts the effective tax rate for this year of \$0.61131 per \$100.00 of taxable value, the amount of taxes imposed this year on the average home would be \$279.10

If the governing body adopts the proposed tax rate of \$0.62693 per \$100.00 of taxable value, the amount of taxes imposed this year on the average home would be \$286.23

Members of the public are encouraged to attend the hearings and express their views.

D-46 August 16, 2009



submitted photo

Tyler Smith, 13, of Pampa, won 2nd Place in the 13th annual XIT Mud Bog, 35 and under stock class. The event was held in Dalhart on Aug. 8.

ADVERTISE IN  
THE PAMPA NEWS  
669-2525



## Kids See Free at Vision Source

Free thin and safe single vision lenses  
with Frame Purchase

Disney, Pez, Nine West, Nickelodeon

- Most insurance accepted
- Outside Rx welcome

DRS. SIMMONS & SIMMONS  
1324 N. BANKS • PAMPA, TX  
665-0771

## HOT WEATHER GOT YOU DOWN?

Why not beat the heat

& let Merlin and his staff at Keyes handle all of your pharmacy needs. Plus, as a customer you'll enjoy our free delivery and feel comfortable knowing we are here for you day and night.

**KEYES PHARMACY**  
928 NORTH HOBART  
806-669-1202



1051 N. Price Rd. • PAMPA, TEXAS



GIFT CARDS  
AVAILABLE

# Wrangler® & Rodeo... ...they just Go Together



\*Purchase any Wrangler® Cowboy Cut product or 20X by Wrangler® of \$35 or more and receive 1 Pampa Rodeo Ticket (valued at \$8.00)

**Pampa's Top of Texas Rodeo - Aug 13 • 14 • 15 7:00 pm**

\*subject to availability

Quantities Limited to Stock on Hand • Valid Only at Your Pampa Gebos's

FARM • PET • WESTERN

# Comics

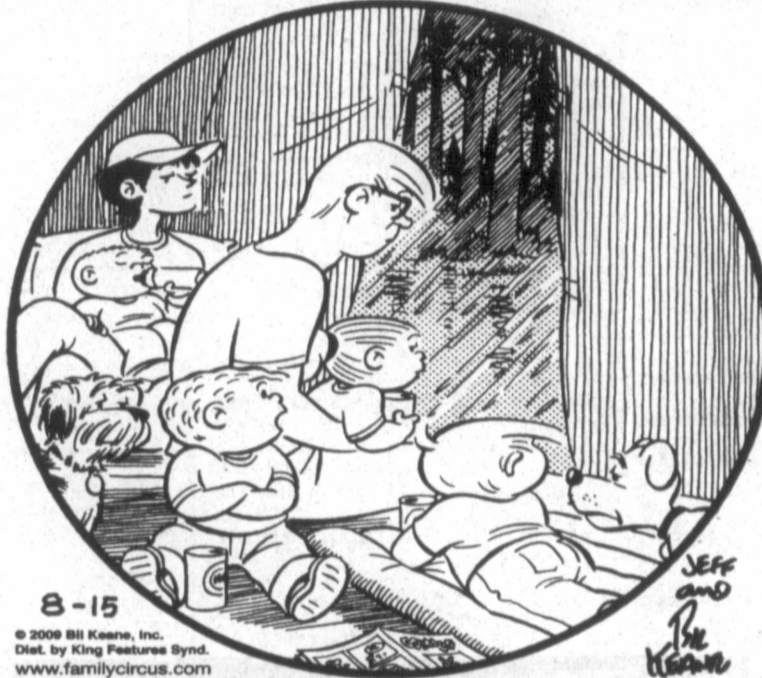
Marmaduke



"The barbecue sauce on your whiskers kind of spoils your alibi."

## THE FAMILY CIRCUS

By Bil Keane



"The weatherman on TV didn't say anything about this, Daddy. Can we sue him?"

### Daily Crossword Puzzle

#### CROSSWORD

By THOMAS JOSEPH

ACROSS 42 Crew

1 Matching members

5 Casual eateries

10 Shop holder

12 Operative

13 Allergy sound

14 Blush's kin

15 Arg. neighbor

16 Giant Mel

18 Conk out

19 "Street-car" cry

21 Hawk

22 Spot for some bettors

24 Some love songs

25 Divert

29 Stadium group

30 Less complex

32 Cry of insight

33 B & B

34 Horse-shoe shape

35 "Gigi" star

37 Get excited

39 Tree part

40 Cut off

41 Fills

S	A	G	A	S	L	E	G	U	P
I	R	E	N	E	A	R	E	N	A
G	O	T	T	A	S	I	T	I	N
N	U	T	R	O	S	E	T	T	E
A	S	H	S	R	O	H	A	S	
L	E	E	S	G	E	N	E	S	
L	A	D	D	O	G				
S	E	X	E	S	T	O	G	S	
T	E	A	G	I	N	O	R	E	
A	N	D	O	R	R	A	D	E	N
R	O	O	N	E	V	I	S	A	S
T	R	U	C	E	A	R	O	S	E
S	A	T	E	S	L	A	N	E	S

#### Yesterday's answer

11	Shark's	27	Summer
12	need	28	droner
13	17 Rest	29	Big fish,
14	20 Diane	30	e.g.
15	and	31	Almanac
16	Cheryl	32	fill
17	21 Travel	33	Clarinet
18	needs	34	parts
19	23 Odd	35	Signs
20	25 African	36	Common
21	expanses	37	bill
22	26 Needing	38	Music's
23	change	39	Yoko

NEW CROSSWORD BOOK! Send \$4.75 (check/m.o.) to Thomas Joseph Book 2, P.O. Box 536475, Orlando, FL 32853-6475

1	2	3	4	5	6	7	8	9
10			11			12		
13						14		
15			16	17			18	
19		20				21		
	22					23		
		24						
25	26					27	28	
29				30				31
32			33				34	
35		36			37	38		
39					40			
41						42		

### For Better Or Worse



Zits



Garfield



Beetle Bailey



Marvin



B.C.



Haggar The Horrible



Peanuts



Blondie



Flo & Friends





# Dear Abby...

By Pauline & Jeanne Phillips

DEAR ABBY: I am a 20-year-old student who has lived in an apartment with my current roommate, "Karen," for 18 months. We get along well.

For the past nine months, Karen has been dating a man who has begun spending almost every night in our apartment. So far, I have tolerated the situation because they're not disruptive.

I recently visited Karen's boyfriend's apartment for the first time. Abby, no wonder he's here every night. I thought I was touring a vacant apartment. His kitchen has absolutely nothing in it, and the living room is mostly unfur-

nished and totally unlit. In addition, he has no phone or Internet service.

Since then, I haven't been able to get it off my mind. I don't want to ruin what is otherwise a good situation, but how do I put my mind at ease? I can't put my finger on what's bothering me, but it doesn't "feel" right. -- STEAMED IN WASHINGTON, D.C.

DEAR STEAMED: You have described a young bachelor who doesn't cook, who probably has eaten most of his meals "out," and who has not developed a strong nesting instinct, either. (He could also not have much money.) But keep your

eyes and ears open, and if anything else about your roommate's boyfriend bothers you, mention it to her.

DEAR ABBY: In the past you have printed letters from readers describing acts of kindness for others. Not long ago, my husband (who is in the military) and I went out to dinner after our first obstetric appointment. We had a lovely time; our server was also a pregnant Army wife and we chatted about due dates, deployments, our husbands' jobs, etc.

At the end of the meal no check was delivered to our table. Our server

explained that the couple behind us had paid for it as a way to say thank you for my husband's service and congratulations on the baby. We were very touched. I wish they hadn't left before we did so we could have thanked them.

My husband and I stopped at the market before going home. A man approached us and asked if we had any spare change because his kids were hungry and payday was a few days off. Because someone had done something nice for us that night, I decided to pay it forward and help him out -- so I gave him all the money I had in my purse.

Someone touched our lives in a positive way, and I'm so glad we could help someone in return. I hope this letter inspires someone else to do the same.

-- ARMY WIFE AT FORT BLISS, TEXAS  
DEAR ARMY WIFE: So do I. And to that I'd like to add that helping others does not necessarily have to involve giving money. It can be as simple as approaching members of the military and thanking them for their service or volunteering time to work in a shelter or a food program to help the destitute.

DEAR ABBY: I was in a major department store, carrying a designer handbag, when a woman I didn't know approached me and asked if my bag was real or a knockoff. I was at a loss for words. The rudeness of that woman floored me.

I was always taught to be polite and not ask nosy questions. How would you have handled

it? -- OFFENDED IN ARKANSAS  
DEAR OFFENDED: If the handbag was genuine, I would have told the woman it was. And if it wasn't, I would have told her where to find one like it.



# The Pampa News Classifieds

### 1 Public Notice

#### Aviso Publico de No Discriminar en Programas Educativos

1. El Distrito Independiente Escolar de Pampa ofrece programas vocacionales en agricultura, tecnología en agricultura, Negocio, economía, Tecnología y Oficios de Industria. La admisión a estos programas se basa en interés y capacidad, edad apropiada, y espacio de clase disponible.

2. Es norma de PISD de no discriminar por motivos de raza, color, origen nacional, sexo o impedimento, en sus programas, servicios o actividades vocacionales, tal como lo requieren el Título de la Ley de Derechos Civiles de 1964, según enmienda, el Título IX de las Enmiendas en la educación, de 1972, y la Sección 504 de Ley de Rehabilitación de 1973, según enmienda.

3. Es norma de PISD de no discriminar por motivos de raza, color, origen nacional, sexo, impedimento o edad, en sus procedimientos de empleo, tal como lo requieren el título de la Ley de Derechos Civiles de 1964, según enmienda; el Título IX de las enmiendas en la Educación de 1972, la ley de Discriminación por Edad, de 1975, según enmienda, y la Sección 504 de la Ley de Rehabilitación de 1973, según enmienda.

4. PISD tomara las medidas necesarias para asegurar que la falta de habilidad en el uso de la lengua inglesa no sea un obstáculo para la admisión y participación en

### 1 Public Notice

todos los programas educativos y vocacionales. 5. Para información sobre sus derechos o procedimientos para quejas, comíquese con el Coordinador del Título IX, Evan Smith en 321 West Albert, Pampa, TX 79065, 806-669-4700, y/o el Coordinador de la Sección 504, Michelle Wilson en 321 West Albert, Pampa, TX 79065, 806-669-4700.

D-41 Aug. 16, 2009

### Public Notification of Nondiscrimination in Career and Technology Education Programs

1. Pampa Independent School District offers career and technology education programs in Agricultural, Business, Home Economics, Technology and Industrial Trades. Admission to these programs is based on interest and aptitude, age appropriateness, and class space available.

### 10 Lost/Found

REWARD OFFERED  
Lost Tri-Color male Bassett Hound, from 2400 13th. Cherokee. Call 662-5241.

13 Bus. Opp.  
GREAT Investment opportunity Howardwick Convenience store. 665-1875, 806-383-1985.

14a Air Cond.  
BROWNING Heating & Air Cond., 665-1212. Free est. on new equip. We service all brands!

14c Carpentry  
Carpentry, Roofing, Replacement Windows, steel siding & trim. Continuous gutters. Jerry Nicholas 669-9991, 662-8169

CUSTOM Building and Remodeling. Additions, Kitchens & Bathrooms, Shawn Deaver Constr. 662-2977

OVERHEAD DOOR REPAIR Kidwell Construction. Call 669-6347.

RICHARD'S General Carpentry, Roofs, Painting, Building & Remodeling, Fences & Sheetrock. 806-273-2333, 886-2367

PROLINE Window & Door Installation. Pella, Andersen & top brands. Fin. Avail. Free est. 665-7590

BEST Price! Custom made fences, carpents, stor. bldgs., decks, painting. Free est. Finance avail. 665-7590.

### 14e Carpet Serv.

NU-WAY CLEANING SERVICE  
Bob Marx Owner-Operator. Call 665-3541.

14h Gen. Serv.  
JOE Johnson's Fence repair or build new & storage buildings. 665-5839.

14s Plumbing/Heat  
JACK'S Plumbing, 715 W. Foster, 665-7115.

14u Roofing  
WENDELL'S ROOFING CO.  
Metal Roofs, Composition Roofs and Built-Up Roofs. Free Estimates. 806-665-7648, or toll free 888-664-7648.

NEELEY ROOFING  
Mike Neely, Wellington, TX. All Types of Roofing. All Work Guaranteed. Fully Insured. Free est. 806-205-0608

COX Fence Company.  
Repair old fence or build new. Free estimates. Call 669-7769.

PANHANDLE HOUSE LEVELING  
Floor or roof sagging, walls cracking, doors dragging, bricks cracking. Call us 1st! (806)669-0958

HUTCHINSON County  
Painting, sheet rock, texturing, roofing, fencing, remodeling. Call 806-274-0231.

SOEIS FENCING. New Fence / Fence Repairs. Free estimates. 806-486-1368, 662-2473

PROLINE Window & Door Installation. Pella, Andersen & top brands. Fin. Avail. Free est. 665-7590

BEST Price! Custom made fences, carpents, stor. bldgs., decks, painting. Free est. Finance avail. 665-7590.

### 14h Gen. Serv.

HANDYMAN Special-ist. Remodeling, fences, carpentry, painting, rental property renovations. 438-5179.

14s Plumbing/Heat  
JACK'S Plumbing, 715 W. Foster, 665-7115.

14u Roofing  
WENDELL'S ROOFING CO.  
Metal Roofs, Composition Roofs and Built-Up Roofs. Free Estimates. 806-665-7648, or toll free 888-664-7648.

NEELEY ROOFING  
Mike Neely, Wellington, TX. All Types of Roofing. All Work Guaranteed. Fully Insured. Free est. 806-205-0608

COX Fence Company.  
Repair old fence or build new. Free estimates. Call 669-7769.

PANHANDLE HOUSE LEVELING  
Floor or roof sagging, walls cracking, doors dragging, bricks cracking. Call us 1st! (806)669-0958

HUTCHINSON County  
Painting, sheet rock, texturing, roofing, fencing, remodeling. Call 806-274-0231.

SOEIS FENCING. New Fence / Fence Repairs. Free estimates. 806-486-1368, 662-2473

PROLINE Window & Door Installation. Pella, Andersen & top brands. Fin. Avail. Free est. 665-7590

BEST Price! Custom made fences, carpents, stor. bldgs., decks, painting. Free est. Finance avail. 665-7590.

### 21 Help Wanted

NOTICE  
Readers are urged to fully investigate advertisements which require payment in advance for information, services or goods.

CERTIFIED Pharmacy Tech needed  
\*Full time, \*No Sundays! \*No Phone Calls. Please! Mail Resume to  
Keyes Pharmacy 928 N. Hobart Pampa Tx 79065 or fax to 806-669-0957

CNA'S  
\$8.50 to \$10.61 hour with health insurance available. Community Care Center of Clarendon. Call for apt. 806-874-5221.

NURSING LVNs / CNAs  
IMMEDIATE OPENINGS on most shifts. Must be TEXAS State Certified, or possess State license. Competitive rates! Must be able to pass background check & drug screen. EOE. Call (806)665-5746 or apply in person at CORONADO HEALTHCARE CENTER, 1504 W. Kentucky Ave., Pampa.

AG and C.P. Sales person needed!  
Established farm and lawn and garden dealership looking for career minded individual to fill sales and customer support position. Great company, good pay, benefits. Clean driving record and background check required. Send resume to: 12098 East Frederic, Pampa, TX 79065.

PRN CNA's for (am & pm)  
1 FT LVN for (am)  
1 FT LVN for (pm)  
PT Activities Asst.  
Apply  
McLean Care Center, 605 W. 7th, McLennan 806-779-2469 fax 779-2515 email Candy.Brancum@csnhc.com

CHURCH Day Care is accepting appli. for Assistant Director. Benefits, pd vac., great work environment. Exp pref. Resume to Po Box 621, Pampa, TX 79066

OUTSIDE SALES/customer service representative. Must have transportation, be honest, dependable, self motivated, and friendly. Experience not necessary, but must be a quick learner. Send resume to Vision Computer Services, PO Box 1760, Pampa, TX 79066

BOOKKEEPER Wanted. Experience Required. Excel computer program a must. White House Lumber Co. 220 E. Foster. 665-8475.

THERAPIST TECHNICIAN I FIR / PAMPA \$8.43 per hour  
Texas Panhandle MHMR is in need of applicants who have a high school diploma / GED. Must have a minimum of eighth grade reading-comprehension level as evidenced by score on the Adult Basic Learning Examination (ABLE) test and a valid Texas Drivers License and be insurable under the agency vehicle policy. Prefer experience working with individuals in therapeutic activities and would be interested in assisting persons with mental retardation in day program and residential settings.  
Shift available:  
40 hrs / week  
8am-5pm  
Sat. & Sun.  
12am-(midnight)-8am  
Mon. & Tues.  
Apply at  
TPMHMR  
901 Wallace  
Amarillo, TX 79106  
806-358-1681  
Download application at:  
www.tpmhmr.org  
An Equal Opportunity Employer  
Drug Free & Smoke Free Workplace  
Pre-Employment Drug Screening Req.

Shift available:  
40 hrs / week  
8am-5pm  
Sat. & Sun.  
12am-(midnight)-8am  
Mon. & Tues.  
Apply at  
TPMHMR  
901 Wallace  
Amarillo, TX 79106  
806-358-1681  
Download application at:  
www.tpmhmr.org  
An Equal Opportunity Employer  
Drug Free & Smoke Free Workplace  
Pre-Employment Drug Screening Req.

Shift available:  
40 hrs / week  
8am-5pm  
Sat. & Sun.  
12am-(midnight)-8am  
Mon. & Tues.  
Apply at  
TPMHMR  
901 Wallace  
Amarillo, TX 79106  
806-358-1681  
Download application at:  
www.tpmhmr.org  
An Equal Opportunity Employer  
Drug Free & Smoke Free Workplace  
Pre-Employment Drug Screening Req.

Shift available:  
40 hrs / week  
8am-5pm  
Sat. & Sun.  
12am-(midnight)-8am  
Mon. & Tues.  
Apply at  
TPMHMR  
901 Wallace  
Amarillo, TX 79106  
806-358-1681  
Download application at:  
www.tpmhmr.org  
An Equal Opportunity Employer  
Drug Free & Smoke Free Workplace  
Pre-Employment Drug Screening Req.

Shift available:  
40 hrs / week  
8am-5pm  
Sat. & Sun.  
12am-(midnight)-8am  
Mon. & Tues.  
Apply at  
TPMHMR  
901 Wallace  
Amarillo, TX 79106  
806-358-1681  
Download application at:  
www.tpmhmr.org  
An Equal Opportunity Employer  
Drug Free & Smoke Free Workplace  
Pre-Employment Drug Screening Req.

Shift available:  
40 hrs / week  
8am-5pm  
Sat. & Sun.  
12am-(midnight)-8am  
Mon. & Tues.  
Apply at  
TPMHMR  
901 Wallace  
Amarillo, TX 79106  
806-358-1681  
Download application at:  
www.tpmhmr.org  
An Equal Opportunity Employer  
Drug Free & Smoke Free Workplace  
Pre-Employment Drug Screening Req.

Shift available:  
40 hrs / week  
8am-5pm  
Sat. & Sun.  
12am-(midnight)-8am  
Mon. & Tues.  
Apply at  
TPMHMR  
901 Wallace  
Amarillo, TX 79106  
806-358-1681  
Download application at:  
www.tpmhmr.org  
An Equal Opportunity Employer  
Drug Free & Smoke Free Workplace  
Pre-Employment Drug Screening Req.

Shift available:  
40 hrs / week  
8am-5pm  
Sat. & Sun.  
12am-(midnight)-8am  
Mon. & Tues.  
Apply at  
TPMHMR  
901 Wallace  
Amarillo, TX 79106  
806-358-1681  
Download application at:  
www.tpmhmr.org  
An Equal Opportunity Employer  
Drug Free & Smoke Free Workplace  
Pre-Employment Drug Screening Req.

Shift available:  
40 hrs / week  
8am-5pm  
Sat. & Sun.  
12am-(midnight)-8am  
Mon. & Tues.  
Apply at  
TPMHMR  
901 Wallace  
Amarillo, TX 79106  
806-358-1681  
Download application at:  
www.tpmhmr.org  
An Equal Opportunity Employer  
Drug Free & Smoke Free Workplace  
Pre-Employment Drug Screening Req.

Shift available:  
40 hrs / week  
8am-5pm  
Sat. & Sun.  
12am-(midnight)-8am  
Mon. & Tues.  
Apply at  
TPMHMR  
901 Wallace  
Amarillo, TX 79106  
806-358-1681  
Download application at:  
www.tpmhmr.org  
An Equal Opportunity Employer  
Drug Free & Smoke Free Workplace  
Pre-Employment Drug Screening Req.

Shift available:  
40 hrs / week  
8am-5pm  
Sat. & Sun.  
12am-(midnight)-8am  
Mon. & Tues.  
Apply at  
TPMHMR  
901 Wallace  
Amarillo, TX 79106  
806-358-1681  
Download application at:  
www.tpmhmr.org  
An Equal Opportunity Employer  
Drug Free & Smoke Free Workplace  
Pre-Employment Drug Screening Req.

Shift available:  
40 hrs / week  
8am-5pm  
Sat. & Sun.  
12am-(midnight)-8am  
Mon. & Tues.  
Apply at  
TPMHMR  
901 Wallace  
Amarillo, TX 79106  
806-358-1681  
Download application at:  
www.tpmhmr.org  
An Equal Opportunity Employer  
Drug Free & Smoke Free Workplace  
Pre-Employment Drug Screening Req.

Shift available:  
40 hrs / week  
8am-5pm  
Sat. & Sun.  
12am-(midnight)-8am  
Mon. & Tues.  
Apply at  
TPMHMR  
901 Wallace  
Amarillo, TX 79106  
806-358-1681  
Download application at:  
www.tpmhmr.org  
An Equal Opportunity Employer  
Drug Free & Smoke Free Workplace  
Pre-Employment Drug Screening Req.

Shift available:  
40 hrs / week  
8am-5pm  
Sat. & Sun.  
12am-(midnight)-8am  
Mon. & Tues.  
Apply at  
TPMHMR  
901 Wallace  
Amarillo, TX 79106  
806-358-1681  
Download application at:  
www.tpmhmr.org  
An Equal Opportunity Employer  
Drug Free & Smoke Free Workplace  
Pre-Employment Drug Screening Req.

Shift available:  
40 hrs / week  
8am-5pm  
Sat. & Sun.  
12am-(midnight)-8am  
Mon. & Tues.  
Apply at  
TPMHMR  
901 Wallace  
Amarillo, TX 79106  
806-358-1681  
Download application at:  
www.tpmhmr.org  
An Equal Opportunity Employer  
Drug Free & Smoke Free Workplace  
Pre-Employment Drug Screening Req.

Shift available:  
40 hrs / week  
8am-5pm  
Sat. & Sun.  
12am-(midnight)-8am  
Mon. & Tues.  
Apply at  
TPMHMR  
901 Wallace  
Amarillo, TX 79106  
806-358-1681  
Download application at:  
www.tpmhmr.org  
An Equal Opportunity Employer  
Drug Free & Smoke Free Workplace  
Pre-Employment Drug Screening Req.

Shift available:  
40 hrs / week  
8am-5pm  
Sat. & Sun.  
12am-(midnight)-8am  
Mon. & Tues.  
Apply at  
TPMHMR  
901 Wallace  
Amarillo, TX 79106  
806-358-1681  
Download application at:  
www.tpmhmr.org  
An Equal Opportunity Employer  
Drug Free & Smoke Free Workplace  
Pre-Employment Drug Screening Req.

Shift available:  
40 hrs / week  
8am-5pm  
Sat. & Sun.  
12am-(midnight)-8am  
Mon. & Tues.  
Apply at  
TPMHMR  
901 Wallace  
Amarillo, TX 79106  
806-358-1681  
Download application at:  
www.tpmhmr.org  
An Equal Opportunity Employer  
Drug Free & Smoke Free Workplace  
Pre-Employment Drug Screening Req.

Shift available:  
40 hrs / week  
8am-5pm  
Sat. & Sun.  
12am-(midnight)-8am  
Mon. & Tues.  
Apply at  
TPMHMR  
901 Wallace  
Amarillo, TX 79106  
806-358-1681  
Download application at:  
www.tpmhmr.org  
An Equal Opportunity Employer  
Drug Free & Smoke Free Workplace  
Pre-Employment Drug Screening Req.

Shift available:  
40 hrs / week  
8am-5pm  
Sat. & Sun.  
12am-(midnight)-8am  
Mon. & Tues.  
Apply at  
TPMHMR  
901 Wallace  
Amarillo, TX 79106  
806-358-1681  
Download application at:  
www.tpmhmr.org  
An Equal Opportunity Employer  
Drug Free & Smoke Free Workplace  
Pre-Employment Drug Screening Req.

Shift available:  
40 hrs / week  
8am-5pm  
Sat. & Sun.  
12am-(midnight)-8am  
Mon. & Tues.  
Apply at  
TPMHMR  
901 Wallace  
Amarillo, TX 79106  
806-358-1681  
Download application at:  
www.tpmhmr.org  
An Equal Opportunity Employer  
Drug Free & Smoke Free Workplace  
Pre-Employment Drug Screening Req.

Shift available:  
40 hrs / week  
8am-5pm  
Sat. & Sun.  
12am-(midnight)-8am  
Mon. & Tues.  
Apply at  
TPMHMR  
901 Wallace  
Amarillo, TX 79106  
806-358-1681  
Download application at:  
www.tpmhmr.org  
An Equal Opportunity Employer  
Drug Free & Smoke Free Workplace  
Pre-Employment Drug Screening Req.

Shift available:  
40 hrs / week  
8am-5pm  
Sat. & Sun.  
12am-(midnight)-8am  
Mon. & Tues.  
Apply at  
TPMHMR  
901 Wallace  
Amarillo, TX 79106  
806-358-1681  
Download application at:  
www.tpmhmr.org  
An Equal Opportunity Employer  
Drug Free & Smoke Free Workplace  
Pre-Employment Drug Screening Req.

Shift available:  
40 hrs / week  
8am-5pm  
Sat. & Sun.  
12am-(midnight)-8am  
Mon. & Tues.  
Apply at  
TPMHMR  
901 Wallace  
Amarillo, TX 79106  
806-358-1681  
Download application at:  
www.tpmhmr.org  
An Equal Opportunity Employer  
Drug Free & Smoke Free Workplace  
Pre-Employment Drug Screening Req.

Shift available:  
40 hrs / week  
8am-5pm  
Sat. & Sun.  
12am-(midnight)-8am  
Mon. & Tues.  
Apply at  
TPMHMR  
901 Wallace  
Amarillo, TX 79106  
806-358-1681  
Download application at:  
www.tpmhmr.org  
An Equal Opportunity Employer  
Drug Free & Smoke Free Workplace  
Pre-Employment Drug Screening Req.

### 21 Help Wanted

NOTICE  
Readers are urged to fully investigate advertisements which require payment in advance for information, services or goods.

CERTIFIED Pharmacy Tech needed  
\*Full time, \*No Sundays! \*No Phone Calls. Please! Mail Resume to  
Keyes Pharmacy 928 N. Hobart Pampa Tx 79065 or fax to 806-669-0957

CNA'S  
\$8.50 to \$10.61 hour with health insurance available. Community Care Center of Clarendon. Call for apt. 806-874-5221.

NURSING LVNs / CNAs  
IMMEDIATE OPENINGS on most shifts. Must be TEXAS State Certified, or possess State license. Competitive rates! Must be able to pass background check & drug screen. EOE. Call (806)665-5746 or apply in person at CORONADO HEALTHCARE CENTER, 1504 W. Kentucky Ave., Pampa.

AG and C.P. Sales person needed!  
Established farm and lawn and garden dealership looking for career minded individual to fill sales and customer support position. Great company, good pay, benefits. Clean driving record and background check required. Send resume to: 12098 East Frederic, Pampa, TX 79065.

PRN CNA's for (am & pm)  
1 FT LVN for (am)  
1 FT LVN for (pm)  
PT Activities Asst.  
Apply  
McLean Care Center, 605 W. 7th, McLennan 806-779-2469 fax 779-2515 email Candy.Brancum@csnhc.com

CHURCH Day Care is accepting appli. for Assistant Director. Benefits, pd vac., great work environment. Exp pref. Resume to Po Box 621, Pampa, TX 79066

OUTSIDE SALES/customer service representative. Must have transportation, be honest, dependable, self motivated, and friendly. Experience not necessary, but must be a quick learner. Send resume to Vision Computer Services, PO Box 1760, Pampa, TX 79066

BOOKKEEPER Wanted. Experience Required. Excel computer program a must. White House Lumber Co. 220 E. Foster. 665-8475.

THERAPIST TECHNICIAN I FIR / PAMPA \$8.43 per hour  
Texas Panhandle MHMR is in need of applicants who have a high school diploma / GED. Must have a minimum of eighth grade reading-comprehension level as evidenced by score on the Adult Basic Learning Examination (ABLE) test and a valid Texas Drivers License and be insurable under the agency vehicle policy. Prefer experience working with individuals in therapeutic activities and would be interested in assisting persons with mental retardation in day program and residential settings.  
Shift available:  
40 hrs / week  
8am-5pm  
Sat. & Sun.  
12am-(midnight)-8am  
Mon. & Tues.  
Apply at  
TPMHMR  
901 Wallace  
Amarillo, TX 79106  
806-358-1681  
Download application at:  
www.tpmhmr.org  
An Equal Opportunity Employer  
Drug Free & Smoke Free Workplace  
Pre-Employment Drug Screening Req.

Shift available:  
40 hrs / week  
8am-5pm  
Sat. & Sun.  
12am-(midnight)-8am  
Mon. & Tues.  
Apply at  
TPMHMR  
901 Wallace  
Amarillo, TX 79106  
806-358-1681  
Download application at:  
www.tpmhmr.org  
An Equal Opportunity Employer  
Drug Free & Smoke Free Workplace  
Pre-Employment Drug Screening Req.

Shift available:  
40 hrs / week  
8am-5pm  
Sat. & Sun.  
12am-(midnight)-8am  
Mon. & Tues.  
Apply at  
TPMHMR  
901 Wallace  
Amarillo, TX 79106  
806-358-1681  
Download application at:  
www.tpmhmr.org  
An Equal Opportunity Employer  
Drug Free & Smoke Free Workplace  
Pre-Employment Drug Screening Req.

Shift available:  
40 hrs / week  
8am-5pm  
Sat. & Sun.  
12am-(midnight)-8am  
Mon. & Tues.  
Apply at  
TPMHMR  
901 Wallace  
Amarillo, TX 79106  
806-358-1681  
Download application at:  
www.tpmhmr.org  
An Equal Opportunity Employer  
Drug Free & Smoke Free Workplace  
Pre-Employment Drug Screening Req.

Shift available:  
40 hrs / week  
8am-5pm  
Sat. & Sun.  
12am-(midnight)-8am  
Mon. & Tues.  
Apply at  
TPMHMR  
901 Wallace  
Amarillo, TX 79106  
806-358-1681  
Download application at:  
www.tpmhmr.org  
An Equal Opportunity Employer  
Drug Free & Smoke Free Workplace  
Pre-Employment Drug Screening Req.

Shift available:  
40 hrs / week  
8am-5pm  
Sat. & Sun.  
12am-(midnight)-8am  
Mon. & Tues.  
Apply at  
TPMHMR  
901 Wallace  
Amarillo, TX 79106  
806-358-1681  
Download application at:  
www.tpmhmr.org  
An Equal Opportunity Employer  
Drug Free & Smoke Free Workplace  
Pre-Employment Drug Screening Req.

Shift available:  
40 hrs / week  
8am-5pm  
Sat. & Sun.  
12am-(midnight)-8am  
Mon. & Tues.  
Apply at  
TPMHMR  
901 Wallace  
Amarillo, TX 79106  
806-358-1681  
Download application at:  
www.tpmhmr.org  
An Equal Opportunity Employer  
Drug Free & Smoke Free Workplace  
Pre-Employment Drug Screening Req.

Shift available:  
40 hrs / week  
8am-5pm  
Sat. & Sun.  
12am-(midnight)-8am  
Mon. & Tues.  
Apply at  
TPMHMR  
901 Wallace  
Amarillo, TX 79106  
806-358-1681  
Download application at:  
www.tpmhmr.org  
An Equal Opportunity Employer  
Drug Free & Smoke Free Workplace

**AUCTION!**

**CANNON SALES, INC.**

Wednesday & Thursday  
October 14 & 15, 2009  
Ochiltree Expo Center  
Perryton, Texas • 9 AM Local Time

WELL TEST UNITS, PRODUCTION GAS UNITS, OIL & GAS SEPARATORS, HEATER TREATERS, TANKS, BIODIESEL STORAGE TANKS (ALL NEW!)  
WELL SERVICE RIGS & TOOLS, FORKLIFTS, CRANES, BACKHOES, TRUCKS, TRAILERS, COLLARS, CREW CAB PICKUPS, REAL ESTATE.

Select Consignments Being Accepted. (2) Yards: Perryton, Texas & Pampa, Texas.  
Contact Ron Meissner @ 903-235-7805 or 830-537-5770. Fax: 830-537-5703



Becky Baten 669-2214  
Heldi Chronister 665-6388  
Darrel Sehorn 669-6284  
Linda Burt 664-3931  
Rod Donaldson 663-2800  
JUDI EDWARDS GRI, CRS  
BROKER-OWNER 665-3687

Roberta Babb 665-6158  
Joan Mabry 669-3201  
Sandra Bronner 665-4218  
Dennis Edmondson 669-6582  
Maxine Watson 662-9052  
MARILYN KEAGY GRI, CRS  
BROKER-OWNER 665-1449

Selling Pampa Since 1952  
669-2522 • 2208 Coffee & Perryton Pkwy.

Address	Price	Bri/Baths	gsad/sq.ft.
345 Winter Qtrs	250,000	3/2	2425
2600 Dogwood	179,000	3/2	2300
2521 Dogwood	169,900	3/2	2167
2132 Mary Ellen	168,000	3/2.5	2728
1406 Lynn	157,500	3/2	1632
2104 Lea	155,000	4/2	2613
1729 Grape	154,900	3/2	2058
2314 Fir	149,500	3/1.75	1895
2735 Aspen	147,500	3/2	2248
1907 Evergreen	145,900	3/1.75	2075
1841 Grape	137,900	3/1.75	1824
2338 Fir	130,000	3/2	1678
1521 N. Christy	129,500	3/1.75	1679
1237 Christine	129,000	4/2.75	2872
1825 N. Zimmers	129,000	3/1.75	1873
1308 Charles	114,900	4/1.75	1858
2700 Comanche	110,000	4/1.75	1913
1125 Harvester	109,000	2/1.75	1479
2319 Mary Ellen	105,000	3/2	1891
2229 Evergreen	102,800	3/1.75	1875
712 Mora	99,500	3/2	1535
1100 Christine	98,250	3/2	1724
1608 N. Nelson	98,000	2/2	1476
1125 Willow	95,000	3/2	1341
2204 Lynn	89,500	3/1.75	1534
1806 N. Nelson	75,900	3/2	1130
1105 Charles	72,500	3/1.75	1240
2214 Duncan	69,900	3/2	1092
401 Powell	69,900	3/1.75	1000
2630 W. Harvester	68,000	3/2	1700
1905 N. Banks	62,000	2/1	1270
1908 N. Wells	58,500	3/1	1372
2241 Hamilton	57,000	3/1	972
400 Doucette	55,000	3/1.75	1176
717 N. Wells	42,900	2/1	896

**Pampa Realty Inc. 669-0007**  
**Pampa MLS & Amarillo MLS**

Jim Davidson (BKR/OWNER) .....662-9021  
Rebecca Akins .....662-2190  
Robert Anderwald .....665-3357  
Katrina Bigham .....898-8510  
Donna Courter .....595-0779  
Twila Fisher (BKR) .....440-2314  
John Goddard (BKR) .....595-1234  
Linda Lapacka .....662-9611  
Zeb Sailors .....664-0312  
Sandra Schuneman (BKR) .....662-7291

Visit CENTURY 21 COMMUNITIES™ on AOL@keyword:CENTURY 21  
Average 1 Home & 1 Month Represents an Average Based on Homes Bought or Sold Through CENTURY 21 Homes during 1999.  
©1997 Century 21 Real Estate Corporation and "Equal Housing Opportunity" and "Equal Housing Opportunity" are trademarks of Century 21 Real Estate Corporation. Equal Housing Opportunity. Each OFFICE IS INDEPENDENTLY OWNED AND OPERATED.

AUSTIN SCHOOL DISTRICT North and North East			
3 Cypress Point	\$497,000	4/2.5/3 - 3179 SF/GCAD	
11998 White Acres	\$288,900	4/3/2 - 2626SF/Bldg on 1 acre New House	
367 Winter Quarters	\$235,000	4/4/2 - 3500 SF/Owner + 15 acres	
2369 Beech	\$215,000	3/2.5/2 - 3327SF/GCAD	
2701 Beech Ln	\$199,000	4/3.5/2 - 3710 SF/GCAD	
1301 Mary Ellen	\$175,000	4/2.75/2 - 2900 SF/GCAD	
1221 N. Christine	\$174,000	5/2.5/2 - 3087 SF/GCAD	
2518 Evergreen	\$172,900	3/2/2 - 2331 SF/GCAD	
1819 Evergreen	\$152,500	4/1 - 75 - 75/2 - 2315 SF/GCAD	
2735 Aspen Dr	\$147,500	3/2/2 - 2248 SF/GCAD	
2235 Christine	\$142,000	3/2.5/1 - 2526 SF/GCAD	
1301 Charles	\$140,000	4/2/2 - 1732SF/GCAD	
1826 Williston	\$119,900	4/2/2 - 2590 SF/GCAD	
2201 N. Chestnut	\$99,500	3/1.75/2 - 2148 SF/GCAD	
405 E. Linda Dr	\$99,500	2/1.5/2 - 1856 SF/GCAD	
1209 Williston	\$89,900	2/1.75/1 - 1846 SF/GCAD	
1445 N. Russell	\$73,000	3/1.75/2 - 1504 SF/GCAD	
1715 Williston	\$70,000	3/1.5/1 - 1634 SF/GCAD	
1117 Garland	\$49,500	3/1/1 - 1370SF/GCAD	

1133 S Banks	\$51,000	2/2/2 - 1008 SF/GCAD Mobile Home	
1032 S Christy	\$49,500	3/1.75/1 - 985 SF/GCAD	
1048 Neel	\$40,000	3/1.75/1 - 1277SF/GCAD	
1200 S Hobart	\$39,000	3/1/2 - 1154 SF/GCAD	
411 Ward	\$25,000	2/1/0 - 723 SF/GCAD	

2132 Lynn	\$159,000	3/1.75/2 - 2484 SF/GCAD	
1601 N. Dwight	\$129,000	3/2/2 - 1613 SF/GCAD	
2120 Lynn	\$114,000	3/1.75/2 - 1872 SF/GCAD	
2112 Lynn	\$98,500	3/2/2 - 1520 SF/GCAD	
2101 N. Wells	\$85,000	3/1.75/2 - 1435 SF/GCAD	
1912 N. Christy	\$77,500	3/2/1 - 1134 SF/GCAD	
1820 N. Wells	\$77,000	4/1/0 - 1368 SF/GCAD	
2109 Zimmers	\$73,000	3/1.75/2 - 1128 SF/GCAD	
1801 N. Banks	\$69,900	3/1.5/1 - 1196 SF/GCAD	
2233 Christy	\$69,000	3/1/1 - 1040 SF/GCAD	
1024 Terry	\$65,000	4/2/0 - 1483 SF/GCAD	
800 N. Wells	\$55,900	3/2/0 - 1248 SF/GCAD	

**Century 21 We make home loans easy.**  
Same-day loan decision or we'll pay you \$250  
Call now for a pre-approval loan decision  
We guarantee you will close on time  
**(888) 883-2086**

**21 Help Wanted**

TRALEE Crisis Center seeks Educator to organize, implement and maintain its Sexual Assault Prevention Program. 20 hrs. per week. Education degree, bilingual a plus! Applicants are subject to background check. Great part-time job for retired teacher. Send resume to P.O. Box 2880, Pampa, TX 79066. Resume deadline-Friday, August 21. EOE.

**21 Help Wanted**

RETIRED Couple or Single to manage apt. complex, some experience req. 665-1875.

**69 Misc.**

FURNITURE CLINIC 52 Yrs Experience Furniture Repair 662-6357

**69a Garage Sales**

GARAGE Sale 1008 Crane Sat. & Sun.

**95 Furn. Apts.**

EFF. Apts. \$150 week, \$600 month, all bills paid. Cable & Tv. Also houses & trailers. 669-3221.

**98 Unfurn. Houses**

2 bdrm 1 bath. 1132 Terrace. 3 bdrm 1 bath. 1116 Sierra. 806-440-4714.

**BI-LINGUAL SALES PERSON NEEDED**

If you are fluent in both written and verbal English and Spanish & have good people skills, this may be a rewarding job for you! The Pampa News / El Puente de Pampa needs an Advertising Representative. Some sales exp. necessary, but not mandatory. Pay is commission based with a base salary in the beginning until account list is established.

Send resume to: Publisher 403 W. Atchison Pampa, TX 79065 No phone calls please

**50 Building Suppl.**

White House Lumber 101 S. Ballard 669-3291

**60 Household**

MOVING Sale: Aug. 14-30. Used tires, oak table & chairs, dresser, stands, much more. Call 806-440-0079.

**69 Misc.**

ADVERTISING Material to be placed in the Pampa News MUST be placed through the Pampa News Office Only.

**ATTENCION!!**

Para sus ventas en Los Clasificados del Viernes y La Edicion del Fin de Semana, tambien incluye las ventas de Ultimos Minutos (Ciudad Breve) Ventas para el Viernes tiene que estar a lo mas tardar el Jueves para las 4 de la tarde,

**ATTENCION!! DEADLINE CHANGE**

for Classified Line Ads for Fri. & Weekend Edition (Sat.-Sun.) this also includes Last Minute Ads (City Briefs)!!  
Fri. Deadline is Thurs. before noon.  
Weekend Edition (Sat.-Sun.) deadline is Thurs. before 4pm.

Gail Sanders Broker  
**OnePlus REALTY**  
669-7000

**1820 COFFEE**

Completely updated 3/2/CP, central H/A, storage bldg. Move in ready. Great location in Austin schools, MLS 09-8317

**NEW LISTINGS**

**2128 DWIGHT**  
3/1/1 new paint, flooring, roof, ready to move in. Beautiful hardwood floors, central H/A. Travis School.

**100 ACRES +/-**

E. Harvester location. Great homesites. Development potential. Call and lets talk, might sell in smaller tracts.

**TEN-COUNT 'EM--YEP, THERE'S 10**

Brand new houses in North Pampa. Various floor plans. Now is the time to choose your colors and carpet. Financing available WAC.

**806 E. HARVESTER**

Older fixer-upper home on 1.3 acres +/- zoned multi-family. Beautiful view of Red Deer Creek. Only \$35,000.

**EAST HARVESTER**

11 acres +/- known as "The Summit". Platted and zoned for Garden Homes. Would be excellent location for large home with privacy.

**301 S. CUYLER**

Large corner fenced paved lot with 5500+ sqft building. Shop with 4 hydraulic auto lifts, showroom, 2 offices. Great for use car lot, mechanic shop, body shop, you name it.

**HIGH TRAFFIC**

Corner lots located at Henry & Hwy 60. Zoned commercial. Great location for storage units, warehouse, etc.

**9 ACRES +/-**

2 miles from Price Road. Country living at its finest. 2 houses, barn, storm cellar, fenced for livestock. Live in one house and rent the other to help pay for the property. Good well water. Call Gail today!

**8.7 ACRES +/-**

Unimproved land in West Pampa, Agricultural zoning. Lost of possibilities. Development potential.

**4.5 ACRES +/-**

Zoned for Retail, Offices, etc. Centrally located near new construction.

We are pleased to Welcome Tisha Holman as an agent for OnePlus Realty. Call her at 669-7000 or on her cell phone at 210-414-4868 for all of your real estate needs

**First Landmark Realty**

665-0717  
2545 Perryton Pkwy. in the Pampa Mall

**New on the Market**  
Beautiful custom built 3 bedroom brick plus office or could be 4th bedroom. Nice entry. Living room has tray ceiling and w/ fireplace. Beautiful tile in kitchen area. Breakfast eating bar. Beautiful landscaped yard, sprinklers. Lots of amenities in this home. Call Irvine for an appointment. 8363

**Aspen Street**  
Very nice floor plan includes 4 bedrooms. 2 Full baths. Large living room has w/ fireplace. Formal dining room. Spacious kitchen. Lots of storage skylights in sun room. Great family home. Call Irvine for details. 8387

**Grape Street**  
Owner has reduced the price on this 3 bedroom brick, 1 3/4 bath home. Large formal living room, den, utility room, basement. Beautiful front entry patio is screened for easy entertaining. Double car garage. Great location. Call to see. 7608

**Outside city limits**  
Looking for 4 bedrooms-Look no further Large living room has double w/ fireplace

One of a kind Large 2 bedroom brick. 2 full baths. Fireplace. Formal dining room. Beautiful crown molding throughout tons of storage. Detached double car garage. Owner has reduced the price to \$74,000. Won't last long on the market at the reduced price. Call to see. 8282

One of a kind Large 2 bedroom brick. 2 full baths. Fireplace. Formal dining room. Beautiful crown molding throughout tons of storage. Detached double car garage. Owner has reduced the price to \$74,000. Won't last long on the market at the reduced price. Call to see. 8282

One of a kind Large 2 bedroom brick. 2 full baths. Fireplace. Formal dining room. Beautiful crown molding throughout tons of storage. Detached double car garage. Owner has reduced the price to \$74,000. Won't last long on the market at the reduced price. Call to see. 8282

One of a kind Large 2 bedroom brick. 2 full baths. Fireplace. Formal dining room. Beautiful crown molding throughout tons of storage. Detached double car garage. Owner has reduced the price to \$74,000. Won't last long on the market at the reduced price. Call to see. 8282

One of a kind Large 2 bedroom brick. 2 full baths. Fireplace. Formal dining room. Beautiful crown molding throughout tons of storage. Detached double car garage. Owner has reduced the price to \$74,000. Won't last long on the market at the reduced price. Call to see. 8282

One of a kind Large 2 bedroom brick. 2 full baths. Fireplace. Formal dining room. Beautiful crown molding throughout tons of storage. Detached double car garage. Owner has reduced the price to \$74,000. Won't last long on the market at the reduced price. Call to see. 8282

One of a kind Large 2 bedroom brick. 2 full baths. Fireplace. Formal dining room. Beautiful crown molding throughout tons of storage. Detached double car garage. Owner has reduced the price to \$74,000. Won't last long on the market at the reduced price. Call to see. 8282

One of a kind Large 2 bedroom brick. 2 full baths. Fireplace. Formal dining room. Beautiful crown molding throughout tons of storage. Detached double car garage. Owner has reduced the price to \$74,000. Won't last long on the market at the reduced price. Call to see. 8282

One of a kind Large 2 bedroom brick. 2 full baths. Fireplace. Formal dining room. Beautiful crown molding throughout tons of storage. Detached double car garage. Owner has reduced the price to \$74,000. Won't last long on the market at the reduced price. Call to see. 8282

One of a kind Large 2 bedroom brick. 2 full baths. Fireplace. Formal dining room. Beautiful crown molding throughout tons of storage. Detached double car garage. Owner has reduced the price to \$74,000. Won't last long on the market at the reduced price. Call to see. 8282

One of a kind Large 2 bedroom brick. 2 full baths. Fireplace. Formal dining room. Beautiful crown molding throughout tons of storage. Detached double car garage. Owner has reduced the price to \$74,000. Won't last long on the market at the reduced price. Call to see. 8282

One of a kind Large 2 bedroom brick. 2 full baths. Fireplace. Formal dining room. Beautiful crown molding throughout tons of storage. Detached double car garage. Owner has reduced the price to \$74,000. Won't last long on the market at the reduced price. Call to see. 8282

One of a kind Large 2 bedroom brick. 2 full baths. Fireplace. Formal dining room. Beautiful crown molding throughout tons of storage. Detached double car garage. Owner has reduced the price to \$74,000. Won't last long on the market at the reduced price. Call to see. 8282

One of a kind Large 2 bedroom brick. 2 full baths. Fireplace. Formal dining room. Beautiful crown molding throughout tons of storage. Detached double car garage. Owner has reduced the price to \$74,000. Won't last long on the market at the reduced price. Call to see. 8282

One of a kind Large 2 bedroom brick. 2 full baths. Fireplace. Formal dining room. Beautiful crown molding throughout tons of storage. Detached double car garage. Owner has reduced the price to \$74,000. Won't last long on the market at the reduced price. Call to see. 8282

One of a kind Large 2 bedroom brick. 2 full baths. Fireplace. Formal dining room. Beautiful crown molding throughout tons of storage. Detached double car garage. Owner has reduced the price to \$74,000. Won't last long on the market at the reduced price. Call to see. 8282

One of a kind Large 2 bedroom brick. 2 full baths. Fireplace. Formal dining room. Beautiful crown molding throughout tons of storage. Detached double car garage. Owner has reduced the price to \$74,000. Won't last long on the market at the reduced price. Call to see. 8282

One of a kind Large 2 bedroom brick. 2 full baths. Fireplace. Formal dining room. Beautiful crown molding throughout tons of storage. Detached double car garage. Owner has reduced the price to \$74,000. Won't last long on the market at the reduced price. Call to see. 8282

One of a kind Large 2 bedroom brick. 2 full baths. Fireplace. Formal dining room. Beautiful crown molding throughout tons of storage. Detached double car garage. Owner has reduced the price to \$74,000. Won't last long on the market at the reduced price. Call to see. 8282

One of a kind Large 2 bedroom brick. 2 full baths. Fireplace. Formal dining room. Beautiful crown molding throughout tons of storage. Detached double car garage. Owner has reduced the price to \$74,000. Won't last long on the market at the reduced price. Call to see. 8282

One of a kind Large 2 bedroom brick. 2 full baths. Fireplace. Formal dining room. Beautiful crown molding throughout tons of storage. Detached double car garage. Owner has reduced the price to \$74,000. Won't last long on the market at the reduced price. Call to see. 8282

One of a kind Large 2 bedroom brick. 2 full baths. Fireplace. Formal dining room. Beautiful crown molding throughout tons of storage. Detached double car garage. Owner has reduced the price to \$74,000. Won't last long on the market at the reduced price. Call to see. 8282

One of a kind Large 2 bedroom brick. 2 full baths. Fireplace. Formal dining room. Beautiful crown molding throughout tons of storage. Detached double car garage. Owner has reduced the price to \$74,000. Won't last long on the market at the reduced price. Call to see. 8282

**BENT CREEK APARTMENTS**

\*Lovely 2 & 3 Bdr. Apts  
\*All Single Story Units  
\*Electric Range  
\*Frost-Free Refrigerator  
\*Blinds & Carpet  
\*Washer / Dryer Con- nec.  
\*Central Heat / Air  
\*Walk-in Closets  
\*Exterior Storage  
\*Front Porches  
HUD ACCEPTED  
1400 W. Somerville Pampa, TX 806-665-3292

**COURTYARD APTS ALL BILLS PAID**

No Sec. Deposit No App Fees  
New 1 brm @ \$500/mo  
(817)909-4766

**LAKEVIEW Apt. 1 & 2 bdr. unfurn. apt. Call for availability. Ref. & deposit req. 669-4386**

**LARGEST Apts. in Pampa. Reduced rates. Work crews welcome. Call 665-1875.**

**MOVE IN SPECIAL**

Large 1 bdrm apt. w/ lots of closet space. Stove & Refrigerator furn. Water Paid. 2 bdrm duplex. Washer Dryer hookups. Call 665-4274, 665-1875.

**PAM APTS**

200 N. Wells  
ONE & TWO BDR. UNFURNISHED

THE Schneider House, now leasing apts., 1 & 2 bdr., utilities incl. 120 S. Russell or 665-0415.

**98 Unfurn. Houses**

PICK up rental list, in Gray Box, at 125 S. Houston, Pampa.

**LARGE 2/3 bedroom houses for rent. Reasonably priced. 665-1875.**

**FOR RENT 2 bdr., 1 ba. house. Call 662-9669.**

**NICE 2 bdr., 1 ba., in Lefors. Stove, refrig., washer / dryer, dishwasher, micro. Owned by Lefors ISD. 835-2533 or pick up application at Business Office, 209 E. 5th, Lefors**

**103 Homes For Sale**

1501 N. WELLS 3/1.75/2 1916 sq. ft., basement, wonderful built-ins w/ plenty of stor. Corner lot. New tile. New back fence. \$135k

# Around town

## BIRTHDAY SURPRISE



Recently, the employees of First State Bank of Miami, Pampa location, planned a 50th birthday party for co-worker Tandra Rogers. Tandra surprised them by showing up dressed for the part. Pictured left to right is Judy Harrington, Mary Clark, Linda Crawford, Cindy Kimball, Tandra Rogers, Judy Clendennen, Heather wills and Debra Sigala.

## CHC RESIDENT OF THE MONTH

Bob Ousley is the Coronado Health Care Resident of the month.

Bob has been a Pampa resident for about 62 years.

He worked at Untied Supermarket for about nine years.

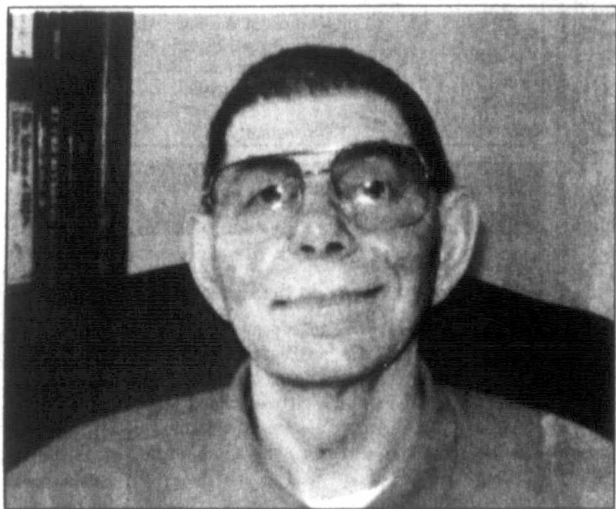
He has been in the grocery business for close to 50 years.

His past hobby was going to car shows, showing off his classics.

Before he got into hot rods, he was on a Thursday night men's bowling league.

He enjoyed working out in the public.

He is currently involved



Bob Ousley

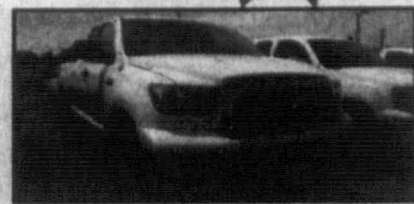
in resident council, ring toss, basketball, horse-shoes, bingo bible study, church services and social events at Coronado Health Care.

## BACK-TO-SCHOOL SAVINGS

### 2008 Toyota Tundra

4x4  
DVD  
•STK #3855A

**\$26,999**

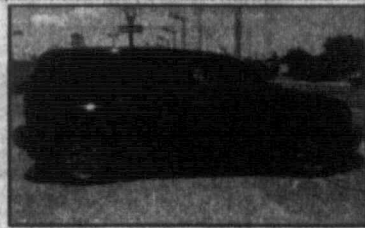


### 2009 Chevrolet HHR

9k Miles  
Black

•STK #3851A

**\$14,444**

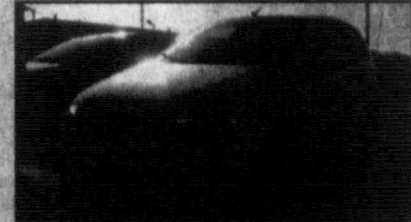


### 2008 Chevrolet Aveo

5 Dr Hatch Back  
White

•STK# 3807A

**\$10,490**

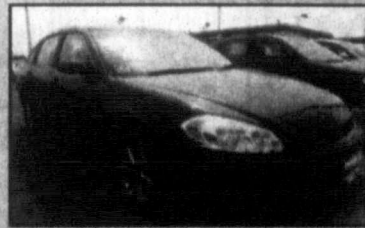


### 2008 Chevrolet Impala

4 Dr Sedan  
Gray

•STK #3843A

**\$13,852**



### 2008 Pontiac G6

29K Miles • White • #3842B

\$11,245

### 2003 Chevy Tahoe

1500 4 WD • Gold • #G09016A

\$11,995

### 2007 Buick Lucerne

4 Dr Sedan • White • #T09020A

\$12,999

### 2002 Chevy Silverado

1500 • White • Reg Cab • #T09001B

\$6,845

### 2006 Chevrolet Cobalt

4 Dr Sedan LS • Gold • #T08312A

\$7,854

### 2002 Toyota Camry LE

31 mpg • 4 Dr Sedan • White • #T09052A

\$6,695

### 2008 Toyota Sienna

29K • Room For All! • #G09042A

\$19,995

### 2003 Toyota Rav4

Sun Roof • One Owner • #T09064A

\$9,995

### 2007 Hyundai Sonata

4 Dr Sedan • Dark Cherry • #C07212A

\$9,495

## CULBERSON - STOWERS

805 N HOBART • 665-1665

Mon - Fri 8 am - 6 pm • Sat 9 am - 3 pm

[rstowers@culbersonautos.com](mailto:rstowers@culbersonautos.com)

729

# Cash For Clunkers (CARS) Program!

Cash for Clunkers

Up to

**\$4,500\***

off a new, more fuel-efficient vehicle!

plus!

Dealer Discounts

Owner Loyalty Rebates

Factory Rebates & Incentives

FEDERAL  
VOUCHERS  
COULD EXPIRE  
ANY DAY!  
GET YOURS  
NOW!!

JUST ANNOUNCED, GM SUPPLIER PRICING FOR EVERYONE!



New 2009  
Chevrolet

**Malibu**

New 2009  
Chevrolet

**Aveo**

New 2009  
Chevrolet

**Cobalt**

New 2009  
Chevrolet

**Impala**

MOST VOUCHERS  
\$3500-  
\$4500  
VARIES BY TRADE IN



New 2009  
Pontiac

**G-3**



New 2009  
Pontiac

**G-6**



New 2009  
Pontiac

**Vibe**

# CULBERSON - STOWERS

805 N HOBART • 665-1665

Mon - Fri 8 am - 6 pm • Sat 9 am - 3 pm

[rstowers@culbersonautos.com](mailto:rstowers@culbersonautos.com)



742