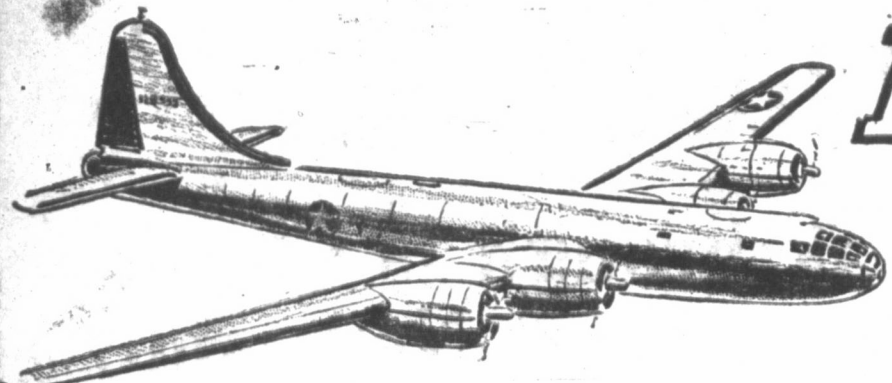


Believe It or Not! *SAYS RIPLEY*

IT COSTS THE U.S. TWICE AS MUCH TO FIGHT THE JAPS!

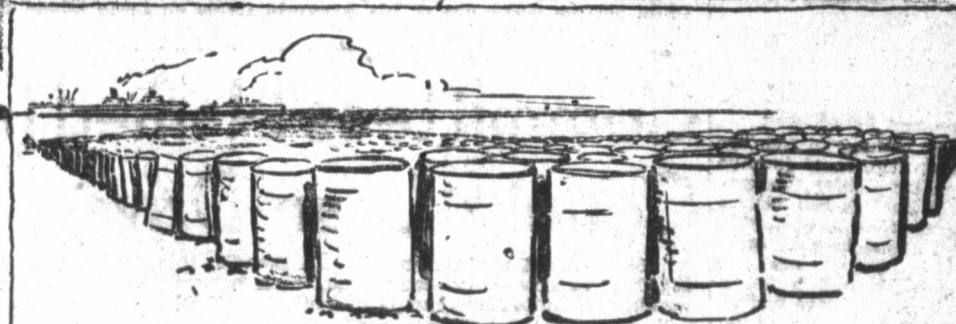


"B29's" USED TO BOMB TOKYO
EACH COST \$600,000 ⁰⁰ IN WAR BONDS



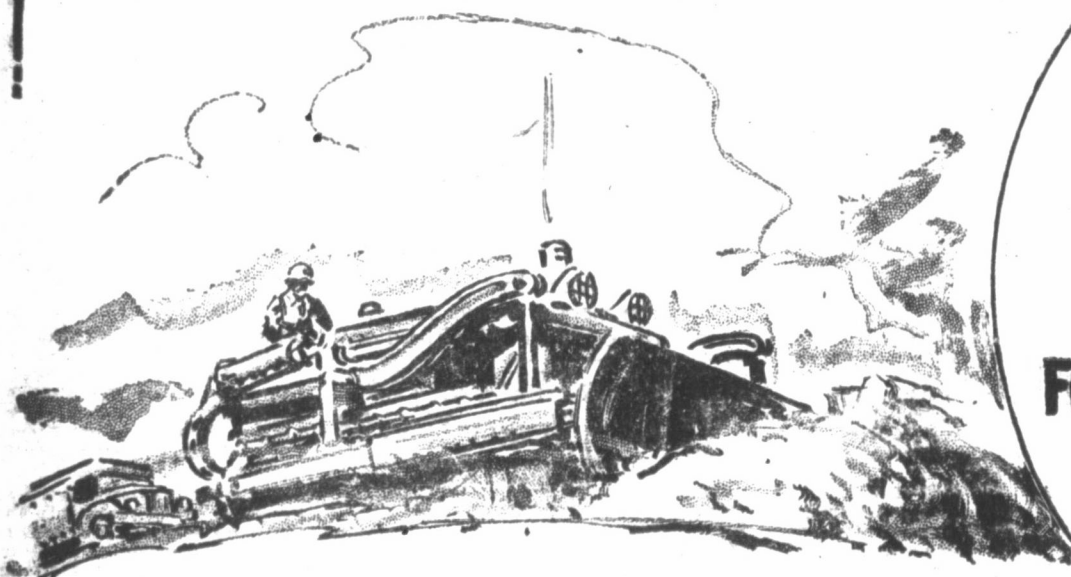
THE WAR IS COSTING U.S. OVER 10 MILLION DOLLARS AN HOUR!

\$175,000 IS SPENT EVERY MINUTE!
\$3,000 EACH SECOND!



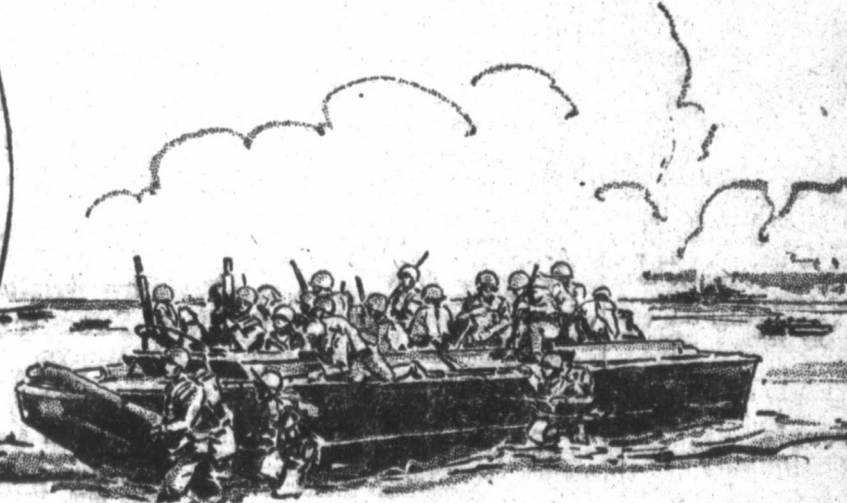
35,000,000 GALLONS OF GASOLINE ARE BEING SHIPPED OVERSEAS EVERY DAY!

ENOUGH TO RUN THE AVERAGE CAR FOR THE NEXT 48,000 YEARS



EACH OF THE THOUSANDS OF **TANK DOZERS** USED TO LEVEL OFF LANDING FIELDS AND BUILD ROADS COST APPROXIMATELY \$67,417⁰⁰

DO YOU NEED ANY MORE REASONS FOR BUYING AN EXTRA WAR BOND?



"ALLIGATORS" USED IN GREAT QUANTITIES IN THE PACIFIC COST \$30,000⁰⁰ EACH

Southwestern Public Service Co.

Simmon's Children's Wear

106 S. Cuyler Phone 329

Friendly Men's Wear

111 N. Cuyler Phone 167

Murfee's

"Pampa's Quality Department Store"

The Diamond Shop

"Leading Jewelers of the Panhandle Since 1926"

Gilbert's

"Progressing With Pampa"

Ideal Food Stores

No. 1—220 N. Cuyler No. 2—306 S. Cuyler

Cabot Companies

"On the Front Line in the Battle of Production"

Texas Gas and Power Corp.

First National Bank

General Atlas Carbon

Behrman's

"Exclusive But Not Expensive"

Texas Furniture Co.

"Quality Home Furnishings"

NON-RATIONED
LOS ANGELES. — (AP) — A dog's dream of a night in a shoe store came true for Dutch, a four-month-old poodle, left behind by his master, Peggy Lewis, 18.

But the day limited the evening's entertainment to knowing one pair of non-rationed Christmas slippers.

If your hair style isn't becoming to you, you're coming to us.

Personality Beauty Shop
109 W. Foster Phone 1172

Amazing results shown in improving the Looks... boosting VITALITY!



1—Promote the flow of vital digestive juices in the stomach

2—Energize your body with RICH, RED BLOOD!

Improper diet, overwork, undue worries, colds, the flu or other illness often impairs the stomach's digestive functions and reduces the red-blood strength.

A person who is operating on only a 50 to 75% healthy blood volume of a stomach's normal capacity of only 50 to 75% normal is severely handicapped.

At such times Nature needs extra help to restore its balance and function properly. Undigested food places a tax on the system... insufficient blood strength is a detriment to good health.

If you are subject to poor digestion or suspect deficient red-blood as the cause of your trouble, yet have no organic complication or focal infection, SSS Tonic may be just what you need!

SSS Tonic is especially designed (1) to promote the flow of VITAL DIGESTIVE JUICES in the stomach and (2) to build-up BLOOD PRESENTS when deficient.

These two important results enable you to enjoy the food you do eat... to make use of it as Nature intended. Thus you may get new vitality... pep... become animated... more attractive!

Build Sturdy Health and Help America Win

Thousands and thousands of men have testified to the benefits SSS Tonic has brought to them and scientific research shows that it gets results—that's why so many say "SSS Tonic builds sturdy health—makes you feel like yourself again." At drug stores in 10 and 20 oz. sizes. C.S.S. Co.

SSS TONIC
helps build STURDY HEALTH

BGK Sorority Concludes Series of Rush Parties at Tea in Posey Home

Rush parties for the BGK sorority were completed last week for members and guests. The parties were extended over a period of two weeks and were climaxed with a formal tea held in the home of Mrs. Turney Mullinax Saturday evening.

A theatre party was held Nov. 9. The guests assembled at the home of Mrs. Chas. Ashby. They were greeted by Mrs. Ashby and the co-hostesses for the evening, Mrs. Erwin Thompson and Mrs. John Adams. Each guest and member then attended a theatre thereafter returning to the Ashby home.

Refreshments were served buffet style and a color scheme of red, white and blue with a patriotic motif was used with a centerpiece of small American flags on a tablecloth of alternating woven stripes of red, white and blue crepe paper completed the decorations.

The next party was held Nov. 15th in the City club rooms. Booths were intricately arranged for the various games and members and guests rotated from booth to booth, playing the game of their choice. Clever signs advising the particular "fun qualities" of each game were hung in conspicuous places and a "Crying Chair" was provided for losers to "weep in".

Hostesses for this event were Misses Adelen Brazil, Valerie Dyson, Mmes. Freda Barrett and Mary Jean Haw.

The final party for this season was the tea held in the home of Mrs. Turney Mullinax, 801 E. Kingsmill Saturday evening. Co-hostesses for this event were Mmes. Bob Triplehorn, N. L. Nicholl and Wayne Phelps.

The house was decorated with

Japanese, Germans, Italians, Among Types of People Discussed at Meeting

Miss Virginia Vaughan discussed "National Types of People" when members of Upsilon chapter of Beta Sigma Phi sorority met in the Gray county home demonstration office last night with Mrs. Herman Gaudle, Mrs. Pauline Gaskins and Miss Millicent Schaub as hostesses.

In giving comment on several national types of people Miss Vaughan first discussed Japan. She said:

"While Japan is superficially the most progressive Westernized Oriental nation, if one takes into account its highly efficient factories and such like evidences of business acumen, he will find that Japan is fundamentally a traditional-breed. The Japanese have had instilled into them, for a thousand years, the concept that the most supreme honor, in or out of the universe, is for one to sacrifice one's life for his emperor, and that if one loses face, the only method of amending the disgrace is the commission of hara-kiri.

"They have not been able to adapt the inner workings of their minds and spirits to the same degree as their conformity to other outward Occidental traits would indicate.

"The subtlety of the Japanese mind is most plainly to be observed in its art. The highly civilized charm of delicacy and reticent suggestion, the intricacy of minute and perfect carving, satisfy the most artistically precise esthetic.

"When Japan was opened to Western influences, her remarkably short time elapsed between the first acquaintance and its whole-hearted acceptance of the more obvious means revealed to it, of increasing the power of the Japanese Empire. The Japs correlated a highly-developed militaristic mind with power and strength. The aim of the Japanese is to arouse every citizen to a sense of duty but the Japanese program in its entirety is hidden behind the inscrutable Oriental countenance. It depends upon youth's enthusiasm for strength and zealous idealism. He who captures imagination or youth captures the future.

"In Japan, the educational system is a reflection of the militarist autocratic social theory upon which the social structure is founded. The schools are little autocracies. They believe that the human mind is flexible enough to embrace any doctrine that promises better things for it. The country desires recognition," Miss Vaughan said.

She next told how the German, paradoxical in nature and marked by variety and contrasts, due to the particularism and sectionalism of his country, has imposed upon himself the discipline, organization and willing acceptance of authority which is essential to sublimate a tendency to individualism and liberty.

"The German is perceptive and ponderous in his thinking which results in indecision because of an excessive cultivation of knowledge. This quality of considering all the angles of a problem makes him impressionable to external influences, intellectually plastic but inhibited in his free expression of thought.

"He epitomizes thoroughness and efficient adaptation of means to ends. His industry, persistence and patient perseverance are coupled with a reverence for knowledge and science; and their application to the

Tuberculosis Test Will Be Given to Junior High Pupils

Junior High School Parent Teachers association held its regular meeting Thursday in the Junior High auditorium. When members heard the report of the room mothers committee concerning the health project for the year.

Mrs. S. T. Beauchamp, chairman of room mothers, reported that every child in Junior High would be tested for tuberculosis. All tests which begin Dec. 4, will be given and inspected by graduate nurses selected or approved by the Gray county tuberculosis association.

Mrs. A. A. Proctor reported on the state convention of Parents and Teachers which was held in Ft. Worth, Nov. 8 and 9. Mrs. M. E. Cooper gave the devotional.

How Sluggish Folks Get Happy Relief

JOAN BLONDELL
Famous Hollywood screen star says:
"You bet I use Arrid! Some people may not like to talk about under-arm perspiration, but it's lots worse than the pruritus of Arrid."

New Cream Deodorant
Safely helps Stop Perspiration

- Does not irritate skin. Does not eat dresses or men's shirts.
- Prevents under-arm odor. Helps stop perspiration safely.
- A pure, white, aniseptic, stainless vanishing cream.
- No waiting to dry. Can be used right after shaving.
- Awarded Approval Seal of American Institute of Laundering—harmless to fabric. Use Arrid regularly.

39¢ Also 59¢ jars
THE LARGEST SELLING DEODORANT

FOR MEN ONLY

Scientists have now found that men who are run down and no longer have the ability to enjoy life as they once did, may be suffering from a deficiency of certain essential vitamins and hormones. Multivitamin especially may be the victims of this embarrassing condition. Tromon, the new medical discovery, combines the necessary vitamins and hormones that may make it possible for you to get a kick out of life again. If taken in sufficient quantities, to make up your vitamin-hormone deficiency, Tromon may stimulate your vitality, give you the nerve and zest of a much younger man. Added years may no longer deprive you of desired enjoyment once you begin to use Tromon. Note: Take directions on box. Tromon for sale at City Drug Co., Cresty Drug Co. and druggists everywhere.

Entre Nous Club Members Sew for Local Red Cross

Entre Nous club members met in the home of Mrs. O. H. Ingram Friday with Mrs. Alice Cockrell as co-hostess.

Mrs. Joe Lewis was in charge of a business session during which time the following officers were elected:

Mrs. Lucy Goad, president; Mrs. Norman Walberg, vice-president; Mrs. C. A. Tignor, secretary-treasurer and Mrs. W. D. Benton, reporter.

During the social hour members made "scuffles" for the Red Cross. Refreshments were served to the following:

Mmes. Joe Lewis, C. C. Stockstill, A. B. McAfee, W. D. Stockstill, J. C. Stroup, C. A. Tignor, Dave Turcott, Norman Walberg, C. A. Bowens, W. S. Tolbert, Dona Lee Stroup, W. D. Benton.

The next meeting will be held in the home of Mrs. J. C. Stroup.

—BUY MORE, AS BEFORE—

Couple Marry at PAAF Post Chapel

Pauline D. McCain, daughter of Mr. and Mrs. Arthur McCain of Hutsonville, Ill., became the bride of Flight Officer Joseph P. Fardle 3rd, son of Mrs. William Gard of West Union, Ill., at noon yesterday shortly after the bridegroom received his silver pilot's wings and officer's bars at Pampa army air field graduation ceremonies.

The ceremony was performed in the post chapel with Capt. Warren E. Murphy, chaplain, officiating. The bride was dressed in an aqua-blue dress trimmed in white lace, with brown accessories and corsage of white gardenias and pink rose buds. Matron of honor, the bridegroom's mother, wore a fuchsia crepe dress with black accessories and corsage of pink rose buds and white carnations.

Best man was Flight Officer Willard J. Paskett, classmate of the bridegroom.

—BUY MORE, AS BEFORE—
Commercial mail culture first began in New York state more than 100 years ago.

Why Millions Now Do This!

VICKS VA-TRO-NOL

It's so easy to get prompt, effective relief from distress of head colds with Vicks Va-Tro-Nol. Works right where trouble is to reduce congestion—soothe irritation—make breathing easier. Also helps prevent many colds from developing if used in time. Try it! Follow directions in folder.

SYMPATHY MOVE
CHIHUAHUA, Mexico, Nov. 21.—(AP)—The Electrical Workers union said it will stop work for five hours tonight in sympathy with a similar movement in Nuevo Laredo.

—BUY MORE, AS BEFORE—
When washing woollens never rub or twist them as they will shrink.

COLD USE 666
Cold Preparations as directed

Greenwich Village

Rockin' with Rhythm! Jumpin' with Joy!!!

REX Last Times Today

BETWEEN TWO WORLDS
PLUS Once Over Lightly

Scarlet CLAW
BEUL RATHBONE, NIGEL BRUCE, CHARLES ASTOR

CROWN—Now, Ends Wed. DOORS OPEN 6 P. M. Adm. 9c-25c

A Man... a Woman... and a Sinister Secret!
Franchot TONE - Veronica LAKE

"The HOUR Before The DAWN"
ALSO—FISH FRY AND SKI CHASE

FURR FOOD MID-WEEK SPECIALS

COFFEE Folger's 29¢ POUND

TOMATOES, Standard Pack, No. 2 can 10c

APPLE SAUCE, Libby's, No. 2½ jar 31c

PORK & BEANS, Phillips, 16-oz. can 10c

MILK, Maytime Sweet Condensed, can 19c

WAX PAPER, large roll 35c

SUPER SUDS, large box 23c

CRACKERS, 2-lb. box 27c

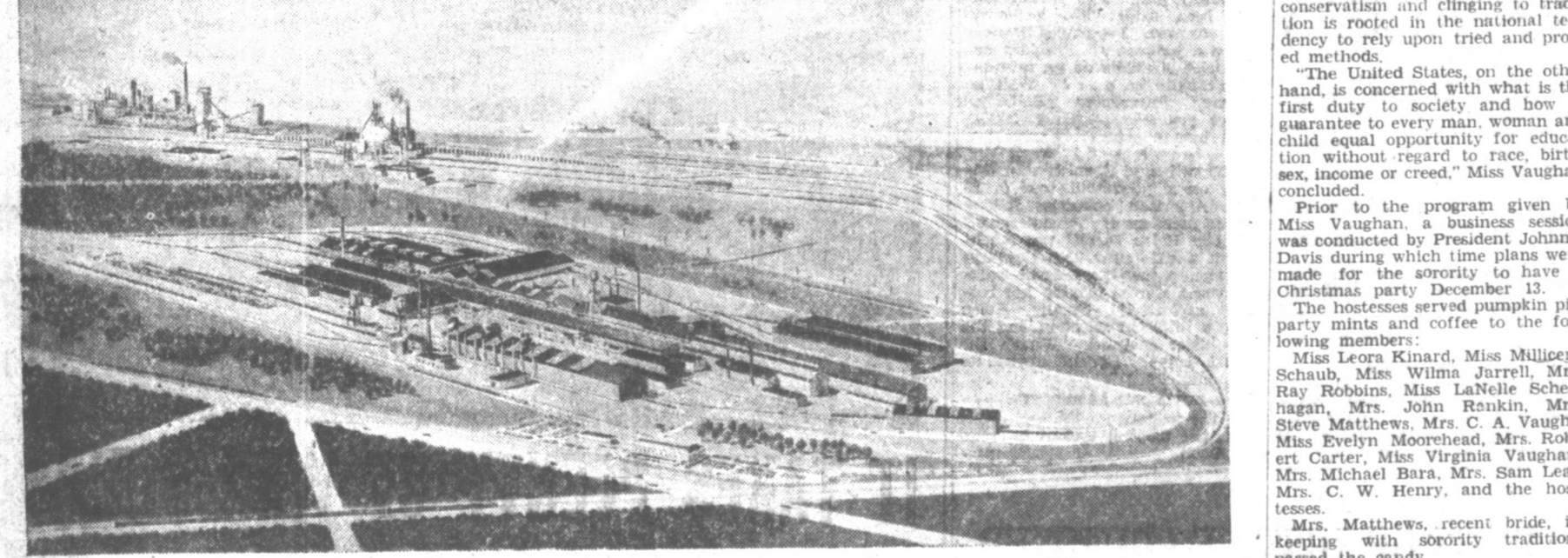
PINTO BEANS, 2 lbs. 15c

B A B - O, can 10c

ROAST Short Ribs of Beef lb. 18c

LIVER Fresh Pig Per lb. 18c

FURR FOOD
Prices Effective Tues. & Wed.



Deeply A Part of Texas

Steel-making is not only deeply a part of Texas—but a vital part of the whole Southwest and Gulf Coast Region.

- Texas and the South-Southwest consume too much steel to remain wholly dependent upon outside sources.
- Within the boundaries of Texas and nearby states are iron ore, coal, scrap iron, limestone, manganese, oil, and gas—the major raw materials of steel-making.
- Native manpower possesses the high aptitude and skill which entitle it to earn the wages of steel-making from mining the raw materials to finishing the steel.
- Steel-making speeds industrial growth. New steel-consuming industries have already been established in Texas and the South-Southwest. Many others will follow.
- Ten times as much of the cost of a ton of Texas-made steel remains at home than was the case when this steel was shipped in.

Yes, steel-making is permanently and deeply a part of Texas and surrounding states. It was planned that way by Sheffield as early as 1908. In April of 1914 B. P. (before Pearl Harbor) construction of the Sheffield Steel of Texas plant began. So sound and logical was this peacetime project that, when war came, it attracted the attention of authorities charged with the vital task of expanding steel production to meet the threat of global war.

In January, 1942 A. P. (1 month after Pearl Harbor) the War Production Board authorized expansion of Texas steel-making facilities. Since then the Defense Plant Corporation has completed additional units including two open-hearth furnaces, a blast furnace, coke ovens, a blooming mill, and an additional plate mill. Now in operation, these units more than double the capacity of Sheffield Steel of Texas production. It gives the Southwest its first fully integrated steel plant—a plant so arranged that it can swing almost overnight from wartime to peacetime steel products.

ARCO SHEFFIELD
Division of The American Rolling Mill Company
HOUSTON, TEXAS

SALES OFFICES: Industrial Road, HOUSTON • 1228 Hibernia Bank Bldg., NEW ORLEANS, LA. • 1016 Milam Bldg., SAN ANTONIO • 2112 Tower Petroleum Bldg., DALLAS

