

Mainly About People



TAKING UP THE SLACK—Being the mate of a "trouser woman," has its travel advantages as Mrs. O. W. Appleby, of French Lick, Ind., proves on her arrival in London. Eve Slack folds neatly into suitcase size and Joe carries the burden of matrimony.

Mr. and Mrs. O. W. Appleby have returned from French Lick Springs, Ind., where they attended a sales meeting of the Businessmen's Assurance Co.

Mr. and Mrs. Lawrence McBee and baby daughter, Karen Lettice, of Torrance, Calif., arrived early this morning to visit Mr. McBee's parents, Mr. and Mrs. Horace McBee, 408 N. Somerville, and to attend the wedding on Saturday of his sister, Miss Bonnie Nell McBee.

919 rug, antique lamp 100 years old. 515 Short. Ph. 1888-W.

Mr. and Mrs. A. L. Hollis, 1330 Maly Ellen, are parents of a son, born Saturday morning at Highland General Hospital. His name is Bobby Leonard and he weighed seven pounds, 10 ounces.

Bathinette, foot operated. Tiny Toy Shop, 105 W. Foster. Use our lay-away plan.

A daughter, Sarah Jane, was born Sunday morning to Mr. and Mrs. Clyde Pegram, 531 S. Ballard. She weighed eight pounds, 10 ounces.

Dick's Fireworks stand now open on Letors Highway.

Mr. and Mrs. Leon Esquivel, Canadian, have a new daughter, born Sunday night at Highland General Hospital. She weighed seven pounds, 10 ounces.

Miss Bonnie Nell McBee arrived in Pampa Thursday to visit with her parents, Mr. and Mrs. Horace McBee, 408 N. Somerville.

Odus Mitchell and son, Shields, were Pampa visitors last weekend. Mitchell is a former coach at PHS.

Shamrock Rolls Out Carpet For United Carbon Officials

SHAMROCK — (Special) — Shamrock rolled out the red carpet here Friday and Saturday for 22 officials of the United Carbon company, here to inspect the new carbon black plant east of Shamrock.

Arriving late Friday afternoon, the officials were entertained at a reception and dinner at the American Legion home Friday night, sponsored by the chamber of commerce.

Mayor Jack Montgomery delivered an address of welcome, and response was made by E. J. Butler, United Carbon vice-president from the Charleston, W. Va., head office.

Butler assured the group United Carbon is pleased with the reception and assistance Shamrockians have given the new project and pledged continued efforts to improve the business.

Great Thomas, personnel official of the company and public relations chief, made a few remarks pertinent to the local plant and introduced the other members of the official group.

One of the highlights was the showing of an 18-minute color film of the 1950 celebration of St. Patrick's Day, a gala occasion in the life of the town, which has its distinctive Irish name and tradition.

Norman Patrick, head of the chamber of commerce retailing committee, delivered the concluding remarks, again extending a welcome to United Carbon.

Officials of the company toured the plant at 10:30 Saturday morning, accompanied by Shamrock civic leaders.

Presently about 75 workmen are busily putting the finishing touches on the plant, which will employ 25 to 30 men continuously in actual operation. It will go into production by fall.



IT'S HITCHED TO THE STARS—Like a weird machine from another planet is the meteor camera built to catch "shooting stars" for Harvard University, Cambridge, Mass. The 5000-pound camera will be installed near Las Cruces, N. M., and is expected to photograph 40 times more meteors than sky cameras now in use. Here, Graham Wallace of Norwalk, Conn., operates the controls that aim the huge lens.

Three Are Fined In Corporation Court

Fines of \$15 were imposed upon two men in Corporation Court today, and one woman was fined \$10.

The men were arrested Saturday night by local police on charges of intoxication.

Court records show previous offenses for the woman, also charged with intoxication.

Pampa Pastor Is Meeting Speaker

Rev. Russell G. West, 709 N. Frost, will be one of the speakers at the 185th recorded annual conference of the Church of the Brethren to be held in San Jose, Calif., June 19-24.

About 5000 persons are expected to attend the conference.

ALLIED

(Continued from Page 1) the front except at one place — east of the Hwachon Reservoir.

They sacrificed approximately 40,000 troops in the last ten days, Van Fleet said, trying to keep the allies away from the triangle.

RED CHINA

(Continued from Page 1) of the Korean war going on for years, but "not the war." Marshals added any peace moves would have to come from the Communist side.

2 But at the same time, observers in Washington expect a statement on general terms for an end to the fighting in Korea will be issued by the United Nations governments allied in the war, and this will enlarge the chances for a settlement. The reasoning behind this is the Chinese Communists, having suffered tremendous losses of troops in Korea, might be receptive to a suggestion to end a fight they could not possibly win.

GENERAL

(Continued from Page 1) a 1949 document circulated to its representatives abroad. This paper anticipated the fall of Formosa to the Chinese Communists.

Wedemeyer said Acheson has a wrongly interpreted the Wedemeyer-Spruance-MacArthur proposals as the basis for General Marshall's 1945-46 mission to China.

WHITE DEER

(Continued from Page 1) of Cassin County Red Cross chapter were also reported this morning. They were:

George L. Summs, Panhandle, \$50; Mrs. Ralph E. Randall, Panhandle, \$15; L. A. Kerr, Amarillo, \$25; Bill Lewis, Amarillo, \$5; D. R. Richardson, \$3.75; and Clyde Fennell, \$5; making a total of \$102.75.

U. S. READY

(Continued from Page 1) The United States is ready to accept the responsibility during the committee's organizational meeting.

Meanwhile the work of rehabilitation was in full swing. As eighteenth by the thousands, drove through White Deer Sunday they saw carpenter gangs, crews at work. Debris was being hauled away in heavy-duty trucks to be burned. Workers and householders were repairing siding and shingling roofs.

CATTLEMEN

(Continued from Page 1) The cattlemen are studying the proposed regulation. It is expected that the regulation will be passed in the next few days.

How the cattlemen will react to the proposed regulation is still a matter of conjecture. Some believe it will be a direct threat to their livelihood, while others believe it will be a cause for relief.

Pampan Pleads Guilty

Donald Wood, Pampa, entered a plea of guilty to charges of driving while intoxicated in County Court today.

This is the first known offense for the Pampan who was fined \$100 and costs.

He was arrested by local police Saturday night.

To Drunken Driving

(Continued from Page 1) The area they hit includes the junction of the western Korea rail and highway routes with those leading across the isthmus to the east coast, easiest withdrawal point for Reds evacuating the triangle.

Other warplanes raided eight Fed air fields. Altogether 900 sorties were mounted by UN air forces Sunday through clouds and showers.

Air Conditioning CONTRACTORS

Design Installation Service
H. GUY KERBOW CO.
Phone 2808

FREE! FREE! FREE!

1951 HOTPOINT Refrigerator

SEE WEDNESDAY'S PAMPA NEWS

NOW!

3%

Current Semi-Annual Dividend Rate

Increased Profits

For SECURITY FEDERAL Customers

88,000 NURSES NEEDED

AGES 17 TO 55 Single or Married

PRACTICAL NURSING HIGH-PAYING CAREER

Earn this Cap Now... Quickly

WIN ADMIRATION AND RESPECT WHILE RELIEVING NATIONAL NURSE SHORTAGE

TRAIN IN YOUR SPARE TIME

Special Arrangements for Out of Town Student

SEND FOR FREE PAMPHLET TODAY

TEXAS SCHOOL OF PRACTICAL NURSING, INC.

Newspaper Box No. 991—Pampa, Texas

Fill out and mail your FREE booklet or practical writing.

Name _____

Address _____

City _____ State _____

Occupation _____ Age _____ Sex _____

I understand that this does not obligate me in any way.

Special arrangements for male students

BRADLEY

(Continued from Page 1) The Bradley family has a new daughter, born Sunday night at Highland General Hospital. She weighed seven pounds, 10 ounces.

U. S. READY

(Continued from Page 1) The United States is ready to accept the responsibility during the committee's organizational meeting.

WHITE DEER

(Continued from Page 1) of Cassin County Red Cross chapter were also reported this morning. They were:

CATTLEMEN

(Continued from Page 1) The cattlemen are studying the proposed regulation. It is expected that the regulation will be passed in the next few days.

United
PAMPA WAREHOUSE & TRANSFER
Local & Long Distance Hauling & Storage
Pampa's Only Cement, Kewanee
Phone 357 - Nite 525 - E. 1719

Bel-Aire

Coming To Pampa Soon

IT WILL SAVE YOU MONEY

Watch This Paper For Details

WATCH KPDN THIS WEEK-END

Legal Publications

NOTICE TO CREDITORS OF THE ESTATE OF J. RAY MARTIN, DECEASED.

Notice is hereby given that original letters testamentary upon the estate of J. Ray Martin, deceased were granted to me, the undersigned, on the 14th day of May, 1951, by the county court of Gray County. All persons having claims against said estate are hereby required to present the same to me within the time prescribed by law, my residence and post office address are 708 N. Frost St. Pampa, Gray County, State of Texas.

MARY E. MARTIN
Independent Executrix of the Estate of J. Ray Martin, deceased.

May 21-29-June 4-14

Look Your Best For Camera, Actress Urges



Realizing every woman wants to look her best when facing a camera, film actress Jan Sterling demonstrates helpful beauty tips taught her by studio make-up men. A bit of clown white, carefully blended along her cheekbones, adds interest to her facial planes (left); lipstick, skillfully applied with a brush, enhances her portrait-lovely mouth (upper center); and eye-shadow, smoothed on with a cautious finger, adds depth and radiance to her eyes (lower center). She poses for a still picture (right), confident of her make-up even beneath the glare of brilliant lights and the searching eye of the photographer's camera.

By JAN STERLING
Written for NEA Service

There's something about the searching eye of a camera that makes every woman want to look her best. This desire for portrait glamor seems to be universal—whether it's a graduate or bride recording an important milestone in her life; a teenager smiling her prettiest for her best beauty; a mother capturing her youth on film for her children to remember; or like me a movie actress posing for stills.

Special effects require special effort. There are tricks of lighting which every experienced photographer uses to enhance the loveliness of his subject—but his skill alone is not enough.

You must do your part as well, by choosing the correct clothes and hair-do and by giving a bit of extra attention to your make-up.

If you tend to be somewhat slap-dash about your everyday cosmetics, abandon this approach at picture-taking time. A smeary, wavering lipstick line may not look too outstandingly dreadful as you go about your daily tasks, but it'll scream for attention once it's caught on film.

If your attitude toward make-up is "the less the better," this theory, too, had best be discarded until after your trip to the photographers. Unassisted beauty which may look fresh, clean and natural in the flesh has a way of looking washed out when exposed to flash bulbs.

Women who insist upon facing the camera looking just as they do in private life, that their noses outshine their eyes or that their usually do may find, when their eyebrows seem to have disappeared.

The Pampa Daily News Women's Activities

PAMPA NEWS, MONDAY, JUNE 11, 1951 PAGE 3

Pitcock-Tillman Vows Exchanged

WHEELER—(Special)—Mrs. Ann Pitcock and Clifford Tillman, both of Wheeler, were married in Clovis, N. M., Sunday, June 3. Rev. D. H. McConnell, Methodist pastor, officiated.

The bride was attired in a suit of navy blue with white accessories and a corsage of white carnations. Mr. and Mrs. Carl Burkin of Amarillo accompanied the couple.

They will make their home in Wheeler where she operates Ann's Beauty Shop and he is associated with his father in the blacksmith business.



88TH BIRTHDAY—Mrs. Sarah McKeel of White Deer smilingly received the best wishes of her guests who called at her home Sunday, June 3, in celebration of her 88th birthday.

Everly Ready Class Of White Deer Meets In Wellington Rites

WHITE DEER — (Special) — The Everly Ready Sunday school class of the First Baptist Church held a business and social meeting Tuesday afternoon in the home of Mrs. E. S. Milton.

Mrs. Biggs Hora, president, was in charge of the devotional, and Mrs. Neal Edwards, teacher, directed several contests based on the Bible.

The next meeting will be on June 19 in the home of Mrs. Albert Matheson.

Others present were Mes. C. M. Estes, Roy Myers, Winfield Powers, Orman Bentley, Kenneth Guyer, Lloyd Collis, Dee Lemley, Mary Thornburg, E. E. Hicker, and Misses Claudia Everly and Virginia Milton.

Billie Ruth Trayler, Orvil Williams Marry

WHEELER — (Special) — The wedding of Billie Ruth Trayler, and Cpl. Orvil Williams has been announced. Vows were exchanged in Wellington, Tuesday, June 5, with the Rev. J. F. Michael officiating.

The bride, daughter of Mr. and Mrs. F. A. Trayler of Wheeler, is a member of the 1951 graduating class of Wheeler High School. She wore a pink taffeta street-length dress with white accessories and a corsage of white carnations. She was attended by her sister, Betty Jo, and Doris Magruder.

After a short wedding trip the couple will be at home in Colorado Springs, Colo., where he is taking his training in near by Camp Carson.

rect make-up. There's trickery in your eye-shadow box. Prominent eyes can be made to apparently recede when this make-up is smoothed on; average-looking eyes assume a new depth and radiance when lids are glossy and shaded.

With a few deft strokes of your eye-brow pencil, you can perfect a frame for your eyes. Just as surely as you make certain there are no straggly brows for the camera lens to pick up, make certain also that there are no sparse spots to give you an unfinished look. Particularly is it important, if your eye-brows end too soon, to blend out their curve with an eyebrow pencil.

To give your complexion a soft mat finish, apply a generous quantity of powder over your foundation. But avoid a pasty look by carefully brushing away the excess with a complexion brush or a fluff of cotton.

Complete your make-up by applying lipstick with a brush. If this technique is unhandy for you, practice at home for a few days until you've mastered it. Thin or too-full lips are particularly conspicuous when photographed; use your brush to broaden or narrow them as needed.

WE, THE WOMEN

NEA Staff Writer by BATH MILLET

WHAT MAKES YOU SURE? What makes you so SURE he doesn't love you as much as he used to?

He no longer tells you that you were the prettiest girl at the party? Well, maybe you've passed that stage—even in his eyes. But that doesn't mean he doesn't love you—all it proves is that he isn't blind.

He is frequently cross and irritable and he never used to be? That may just mean that because he does love you he has taken on a lot of responsibilities—more than he can shoulder easily—and what you call a grouch is the result of worry, not an indication that he no longer loves you.

He seldom tells you he loves you? That may mean nothing more than that he has told you so often that he loves you, he figures you know it by now—know it so well you haven't the slightest doubt and so don't need so much reassurance.

PUT ON A NEW RECORD

He doesn't pay much attention when you chatter on about what you've been doing all day? Well, maybe that is because your days are all so much alike he knows your evening recital by heart. Try doing something entirely out of the ordinary and see if you don't get some reaction when you tell him about that experience.

He never takes you out in the evening unless you make the plans ahead of time or suggest going some place when he comes home? That is just a typical husband's attitude. He figures if you want to go somewhere you'll say so. Men make the dates before marriage, but after marriage the majority of them leave the date-making up to the wife.

He never brings you little gifts at unexpected times—the

President Takes Yachting Cruise

WASHINGTON — (AP) — President Truman went aboard the yacht Williamsburg at 3 p.m. EST, yesterday for an overnight cruise on the Potomac River.

He took along a few personal friends and his naval aide, Rear Admiral Robert L. Dennison. Names of the guests were not announced. The yacht is due back this afternoon.

Way men in love are supposed to do, according to magazine fiction and soap operas? As long as he doesn't complain about things you buy for yourself, you've no kick coming. Sometimes he doesn't seem like the same person you married? He isn't. You aren't the same person he married either, are you?

Game Warden School To Open Tuesday

AUSTIN — (AP) — Three-day refresher schools for the state's 170-man game warden staff will begin Tuesday.

One-third of the force will be brought in each week for the next three weeks for instruction in the latest phases of law enforcement and to discuss common problems with headquarters officials.

Fiery, Smarting Itch of Common Skin Rash

Don't stand such torment another hour! Just smooth Resinol Ointment on your irritated skin at once. See how quickly its medically proven ingredients in formula bring blissful, long-lasting relief.



EXPECTING A BABY?

Mothers Friend helps keep skin soft & elastic. Soothes! Tones! Refreshes! Eases aching leg and back muscles.

WHEN YOU'RE EXPECTING a baby and your skin gets dry, tight and uncomfortable, rub gently with Mothers Friend to get quick relief. It soothes and refreshes—keeps skin soft and elastic—eases muscles fresh and strong. Relieves tingling, numbing and burning feelings in back and legs. Only Mothers Friend has this special soothing and refreshing action. Try it today. \$1.25 for generous size bottle at most drug stores.

Small size 50¢. Mothers Friend for over 75 years.

FREE! FREE! FREE!
1951 HOTPOINT Refrigerator
SEE WEDNESDAY'S PAMPA NEWS

Look Trim—wear a CHAMPION

Everyone is admired who has that youthful, streamlined figure. The Champion Support is a flexible, one piece band woven with a special surgical elastic—with no buckles. It's comfortable, easy-to-wear, feels right. Don't delay—Look Trim—Now.

HARVESTER DRUG
Double S&H Green Stamps on Prescriptions
Combs-Worley Building Phone 1250

Pampa's Largest PRESCRIPTION STORE PERKINS Drug Store
110 W. Kingsmill
Phone 940

THIS IS IT K P D N FRIDAY - SATURDAY - SUNDAY

FAST
Pure, dependable, reliable favorite of millions—It's the best aspirin at its best. 12 tablets 10c.

ST. JOSEPH'S ASPIRIN

THE ORIGINAL aspirin for children bearing St. Joseph's name. 1½ grain tablets assure accuracy. Orange flavored.

Bel-Aire
Coming To Pampa Soon
IT WILL SAVE YOU MONEY
Watch This Paper For Details

PHONE 801 *Montgomery Ward* 217 N. CUYLER

Wards June Savings

TYPICAL OF THE VALUES NOW AT WARDS — SALE ENDS JUNE 16

Men's Colorful New, Knit Sport Shirts
1.74 ea.

Cool, springy cotton knits—tops for warm-weather smartness and comfort. He'll like them for active sports and leisure time. Choose from stripes, plaids, solid shades and raschel knits. Many colors—some with luminous yarns that glow in the sunlight. Ribbed at waist for snug fit. Hand-washable.

MEN'S POPULAR ROMEO SLIPPERS
Far and away, the style most men prefer! No wonder... they're great for relaxing, driving, walking. Supple brown kid, with strong leather soles. 6 to 12.
4.49

CURVED-SEAT SHORTS—2 STYLES
Wards Curved-seats with the extra comfortable curved seat that's shaped to body lines. Boxer and yoke-front styles. Sanforized—less than 1% shrinkage.
74c ea.
All men's sizes

Create A 'Happy' Hall In Your Home

By JEAN SCOTT
 WASHINGTON, D. C. (AP)— Many hallways are given the "step-child" treatment merely because they are odd-shaped areas that are difficult to decorate. Yet hallways are tremendously important. Because they are the first sight that greets the eye when the outer door swings open, they give our friends and callers a mental yardstick by which to measure us. The fact that a hallway is difficult to decorate should merely serve as a challenge. Solving the problem successfully often means that you have an entranceway with more than usual character and charm.

One attractive apartment, for example, has a long hallway which runs at right angles to the front door. It was a problem to begin with a dark, unattractive and uninviting. Now, it delights the eye. One of its walls is painted a rich foliage green, while the ceiling, the woodwork, and opposite wall are done in white.

Two recessed areas each measuring three feet square and containing shelves—have been built into the green wall and finished in white enamel. These shelves hold skillfully arranged figurines and a profusion of red geraniums which not only invite the eye, but hold it against the white wall, a narrow table of gleaming mahogany stands beneath a handsome mirror. Twin vases, brimming with magnolia leaves, provide the table decoration. Fluorescent overhead lights give effective illumination.

If the lack of direct daylight in a long hallway disturbs you, remember that clear yellow walls will aid greatly in creating synthetic sunlight. With yellow walls, a white ceiling and a white trim—plus a cinnamon rug—you have an open invitation to key the color scheme to the russet tones. Against one wall, you might place a bench with bronze cushioning, flanked by small walnut tables which hold copper or bronze art objects.

Above the bench you might hang a bright tapestry piece or several colorful prints, ablaze with tawny tones of bitterweet, copper, bronze and maize, as well as deeper notes of henna and wood brown.

If you are plagued by a hallway with a dark and dust-catching under-stair region, you'll be interested in this solution. With wallboard the under-stair area was completely concealed. While the work was in progress,

a large shadow box was built into the new partition and two glass shelves were installed. Above the shadow box—behind the wallboard—lights were concealed by frosted glass. The shadow box area was then painted an eye-pleasing tint of coral which created a perfect setting for the plants, books and bibelots that were placed there. The surrounding wall area was painted a dramatic slate brown and the woodwork and ceiling were coated with a warm cream which blended with the natural wood color of the twin chests placed beneath the shadow box and the ladder back chairs on each side of them.

The rug tones of beige and coral blended with the other colors and showed to advantage against the deep brown of the floor.

No matter what device you use to lend design and beauty to your hall, just be sure that it belongs with your household and your way of life. Just as your living room should be a perfect setting for your every day living, your entrance hall should also be "in key." As you plan its redecoration, stand outside your door, ring the bell, anticipate with pleasure the sight that will greet your eyes when the door swings open!

Two recessed areas each measuring three feet square and containing shelves—have been built into the green wall and finished in white enamel. These shelves hold skillfully arranged figurines and a profusion of red geraniums which not only invite the eye, but hold it against the white wall, a narrow table of gleaming mahogany stands beneath a handsome mirror. Twin vases, brimming with magnolia leaves, provide the table decoration. Fluorescent overhead lights give effective illumination.

Young Ex-Convict To Start Preaching

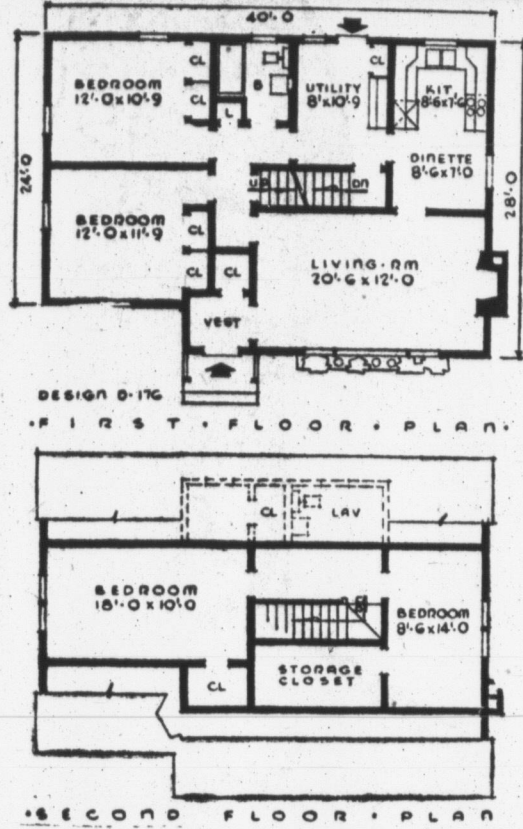
RANGER — (AP) — Jimmy Houghton is out of the penitentiary and determined, he says, to save souls instead of rob safes. The black-haired 28-year-old ex-convict was sentenced to an indefinite term last year after pleading guilty to several counts of robbery and burglary. More than 30 counts were stacked up against him.

At 8 p. m. today in Ranger's First Baptist Church, with pastor Ralph Perkins watching proudly, Houghton will be baptized, licensed to preach — and then will preach.

Pilot Dies In Crash Of Shooting Star Jet

WILLIAMS AIR FORCE BASE, Ariz. — (AP) — Capt. Charles John Webb, Perrin Field, Tex., died Friday in the crash of his F-80 Shooting Star jet. Webb was on temporary duty here.

His wife, Colleen Webb, and their two daughters live in near-by Chandler, Ariz.



The Dawson permits two additional bedrooms on the second floor, and by adding a dormer on the rear, a lavatory can be provided. Although there is a full basement, a utility room is placed between bath and kitchen, equipped with storage cabinet, coat closet and wall space for possible laundry equipment.

Kitchen cabinets are compactly grouped in one end of the room with dining space nearest the living room. Excellent circulation is obtained from hall which leads to all rooms.

The exterior of the Dawson has features, including a covered front stoop, flower pot shelf, shutters, wide siding and asphalt shingles.

The dimensions of this home are planned for 40 feet by 28 feet. Floor area totals 1,071 square feet with the cubage amounting to 23,394 cubic feet.

For further information about THE DAWSON write the Small House Planning Bureau, St. Cloud, Minn.

Trained observers can identify from airplanes forest oaks infested with oak wilt. The damaging disease usually shows up first in discolored branches near the top.

Native Wood Gaining In Popularity

American walnut and other native woods in warm natural finishes will be much in evidence among the new furniture now appearing in local retail stores.

More of this furniture will be in modern design, reflecting public acceptance of this practical and comfortable style. Shown in lesser amounts will be contemporary versions of Early American and traditional styles, with a sprinkling of French Provincial, Regency, and Directoire.

The predominant style note, however, and one which shows up in all price brackets, is the extra emphasis on the decorative qualities of wood. In most modern pieces, and in many contemporary styles as well, the wood grain is frankly revealed. Frequently the figure in the wood is used to add textural interest and to soften the straight lines and broad surfaces, or it is beautifully highlighted with a filler rubbed in.

One of the most widely used woods, because of its great variety of figure types, is American walnut. It appears in many tones of gray, in soft medium browns and in natural finishes that bring out the warm through-the-wood color and the character markings bestowed by nature.

Finishes generally are veering away from the very pale bleached effects in favor of the natural wood hues. These easy-to-care-for finishes range from fawn and sand to mellow golden brown. To dramatize the wood grain with a rose cast.

To dramatize the wood grain and the sleek lines of modern pieces more effectively, pulls are eliminated on many dressers and chests. Others, anticipating a metal shortage, use wood pulls, sometimes in a contrasting tone.

This year will see a larger percentage of simpler and less pretentious designs, in keeping with the trend to more comfort and greater informality in home furnishings.

ELECTRICAL TIPS FOR THE HOME

If You Expect to Spend Most of the Summer at Home...



DON'T think you have to sweat indoors simply because there are no facilities on the porch or terrace for ironing, cooking, eating, sewing, night-time recreation and entertaining.

DO transform the porch or lawn into an outdoor living area by installing handy outlets and circuits for convenient use of iron, roaster, table appliances, lamp, radio, sewing machine, etc.

Carrier Sets Record For Sea Crossing

SAN FRANCISCO — (AP) — The 27,000-ton aircraft carrier Philippine Sea came home through the Golden Gate yesterday, setting a speed record for the Japan-San Francisco crossing.

The Philippine Sea bettered by some five hours the previous speed record set last year by the Carrier Boxer, which made the crossing in seven days, 18 hours and 38 minutes.

The Neighbors... TAKE NOTICE!



with **SEIDLITZ** *Multifint* 2 COAT SYSTEM
 EXTERIOR HOUSE PAINT
 EXTERIOR HOUSE PAINT PRIMER
 BOTH PRODUCTS AVAILABLE IN 35 COLORS AND GLEAMING WHITE.

PAMPA GLASS & PAINT
 117 N. FROST PHONE 3908

Modernize Your Bathroom With Handy Plastic Tile

By MR. FIX
 Distributed by NEA Service

Lots of people are perfectly happy living in old houses until they start peering into brand-new ones, and then they get the natural urge to bring things in the old homestead up to date.

The bathroom seems to be the place where the comparison is most noticeable. While we haven't seen a bathtub ancient enough to be standing on legs in a long time now, there are plenty of bathrooms that would look young again in an awful hurry if the walls were tiled.

These days it isn't necessary to use heavy ceramic tile to get the effect you're after. There is tile made of aluminum and plastic, there's heavy, enameled wall covering in patterns that simulate tile, and there's a tempered hardboard covered with a tough plastic finish in a variety of patterns. Any of these can be installed by the Mr. Fix in your family if you can give him proper encouragement.

Least expensive is the enameled wall covering. This has a felt base, is something like linoleum, and is installed about the same way except that it goes on the wall instead of the floor. It usually comes in widths to equal wainscoting height (34 inches) and with it you'll need the base molding and cap strip of



the same material, as well as inside and outside metal corner strips.

The aluminum and plastic tiles come in individual pieces, about 5x6 inches or less, and are somewhat easier to install than the wall covering, which has to be cut out in wall-size pieces.

The individual tiles are easy to cut, and each type comes in half-sizes and strips to fit into odd corners. There are special moldings and cap strips, too, and the whole job goes on with a special cement.

Like the wall covering, the plastic-finished tempered hard-

Use Campaign Is Slated For Debate

DALLAS — (AP) — The possibility of a state-wide campaign to support USO's will be discussed here Wednesday at a meeting of representatives of community chests.

Lorin Joswell, president of the Fort Worth chest, is chairman of a committee of state chest representatives named after a recent Austin meeting.



There is No Substitute for the Cooling Beauty of Canvas Awnings

It's the touch of color that attracts the eye, the soft shade that tames the sun and makes interiors invitingly cool and pleasant. There is a style and pattern to suit every taste. Call us today. Find out how much you can get for so little

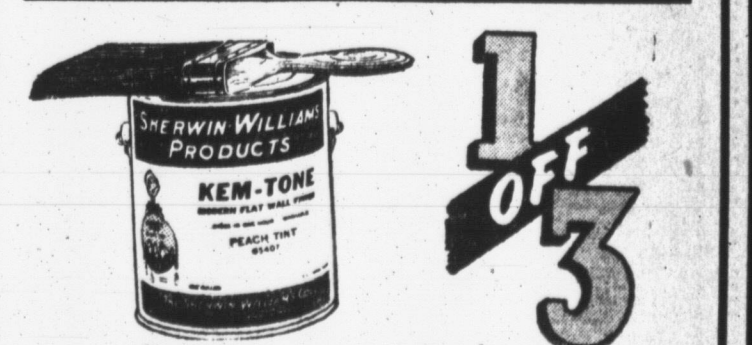
LINOLEUM ASPHALT TILE PAMPA TENT & AWNING
 317 E. Brown Phone 1112

Paint AND Wallpaper SALE

June 2 through June 16

Room LOTS \$1.28 \$1.58 \$1.88

All Our New 1951 Patterns 50% Discount



Close out of our complete stock of Kem-Tone Wall Paint during this sale. This is your chance to do your redecorating at a real saving.

CLOSE OUT

● Use Our Convenient Loan Service ●
 To Build That New Garage, or Add a Room To Your Home!
 ONLY 10% DOWN PAYMENT

The Panhandle Lumber Co., Inc.
 Pampa, Texas
 420 W. Foster Phone 1000

16 In. Red Cedar Shingles
 No. 2 Grade
Per Square \$9.60
 A roof that will last for more than 30 years.

PONDEROSA PINE
 1x8 ft. No. 4 and Better and 2x4, all Lengths, No. 4 and Better
Only 6 3/4c per board foot

1/4 INCH PANELWOOD
Only 10c Foot
 A Good Substitute for Plywood

2% CASH DISCOUNT allowed on all purchases of material amounting to \$10.00 or more.

We Are Conforming to Ceiling Prices
 Let us serve you!

LYNN BOYD
 "Good Lumber"
 805 S. CUYLER PHONE 900

Montgomery Ward

CATALOG ORDER DEPARTMENT
 217 N. CUYLER PAMPA PHONE 603

Beautiful Wallpaper That You Can Wash
 37c to 315 single roll

Latest designs—hundreds of them—at big savings, regardless of the price you choose to pay. Selection includes washable-fadeproof patterns for every room—all printed on fine, heavy stock for lasting beauty.

Wards Patterns are Always 1/2 to 1/3 Less

BPS FLORLUX
 THE FINEST SCUFF-PROOF FLOOR ENAMEL

● One Coat will cover any painted surface
 ● Fast drying—Waterproof
 ● Use it on floors, decks, steps, dadoes, porch and lawn furniture. On wood, metal or cement.

Only PER QUARTER GALLON
PATTERSON-SARGENT BEST PAINT SOLD
WHITE HOUSE PROPERTIES
 Across Street from Post Office Phone 50

Jackson Twins comic strip panels 1-4. Characters: Jackson, Janey, and a woman.

Jackson Twins comic strip panels 5-8. Characters: Jackson, Janey, and a woman.

Blondie comic strip panels 1-3. Characters: Blondie and Dagwood.

Blondie comic strip panels 4-6. Characters: Blondie and Dagwood.

Alley Oop comic strip panels 1-3. Characters: Alley Oop and a woman.

Alley Oop comic strip panels 4-6. Characters: Alley Oop and a woman.

Bo comic strip panels 1-3. Characters: Bo and a woman.

Bo comic strip panels 4-6. Characters: Bo and a woman.

SIDE GLANCES comic strip by GALBRAITH. Characters: A woman and a man.

SIDE GLANCES comic strip by GALBRAITH. Characters: A woman and a man.

Mutt & Jeff comic strip panels 1-4. Characters: Mutt and Jeff.

Mutt & Jeff comic strip panels 5-8. Characters: Mutt and Jeff.

Bugs Bunny comic strip panels 1-4. Character: Bugs Bunny.

Bugs Bunny comic strip panels 5-8. Character: Bugs Bunny.

Priscilla's Pop comic strip panels 1-3. Characters: Priscilla and a man.

Priscilla's Pop comic strip panels 4-6. Characters: Priscilla and a man.

OU TOUR WAY comic strip by J. E. WILLIAMS. Characters: A man and a dog.

OU TOUR WAY comic strip by J. E. WILLIAMS. Characters: A man and a dog.

Little Doc comic strip panels 1-3. Characters: Little Doc and a woman.

Little Doc comic strip panels 4-6. Characters: Little Doc and a woman.

Vic Flint comic strip panels 1-3. Characters: Vic Flint and a woman.

Vic Flint comic strip panels 4-6. Characters: Vic Flint and a woman.

Wash Tubbs comic strip panels 1-3. Characters: Wash Tubbs and a woman.

Wash Tubbs comic strip panels 4-6. Characters: Wash Tubbs and a woman.

Boots comic strip panels 1-3. Characters: A woman and a man.

Boots comic strip panels 4-6. Characters: A woman and a man.

Mickey Finn comic strip panels 1-3. Characters: Mickey Finn and a woman.

Mickey Finn comic strip panels 4-6. Characters: Mickey Finn and a woman.

Penny comic strip panels 1-3. Characters: Penny and a woman.

Penny comic strip panels 4-6. Characters: Penny and a woman.

Peckies comic strip panels 1-3. Characters: Peckies and a woman.

FUNNY BUSINESS comic strip by HERSCHBERGER. Characters: A man and a woman.

Peckies comic strip panels 4-6. Characters: Peckies and a woman.

FUNNY BUSINESS comic strip by HERSCHBERGER. Characters: A man and a woman.

"I forgot about cats when I got the idea of hitching him to the lawnmower!"

Best in the region... I raise... I'll kill... How meant... I'll kill... A.A.A.!

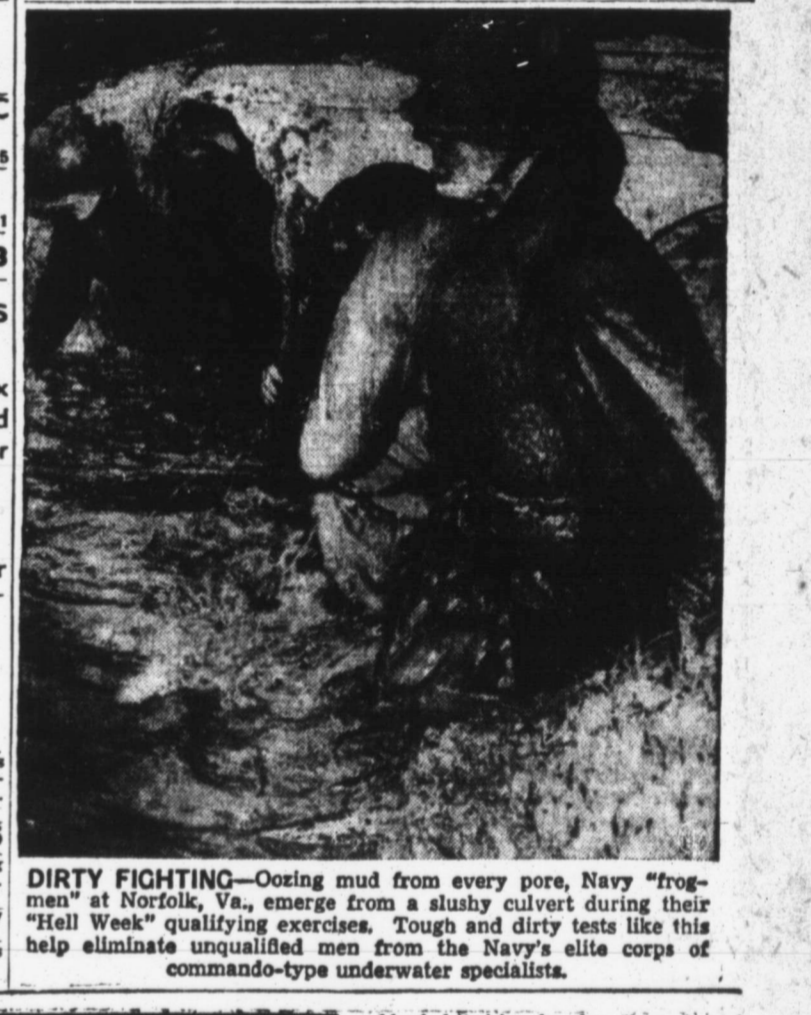
55 Bicycle Shops... JACK'S BIKES SHOP... 61 Mattresses... MADE TO ORDER... 70 Musical Instruments... KATON'S... 71 Bicycles... NO PEDDLING HERE... 75 Foods and Seeds... WE HAVE A GOOD ASSORTMENT...

EXTRA SPECIAL... 2 1/2 acres at South Edge of city with 6 room house and out-buildings... M. P. DOWNS AGENCY - Ph. 1264... REAL ESTATE... 103 Real Estate For Sale 103... ARE YOU IN THE MARKET FOR A HOME - SEE THESE...

118 Radiator Shops... EAGLE RADIATOR SHOP... 119 Service Station... LONG'S SERVICE STATION... 120 Automobiles For Sale 120... NASH SELECT USED CARS... WORDIE & JACK USED CAR LOT...



Remember the No. 113... Wrecker Service... PURSLEY MOTOR CO. Night Phone 1764J... LEWIS MOTORS... CORNELIUS MOTOR CO. APPROVED... Chrysler - Plymouth Service...



AW, GO CHASE YA-SELF!—Pandora, a privileged chimp at the Philadelphia Zoo, proves she isn't afraid of work by lying down right alongside it for a snooze... KILLER'S PACE BY JULIUS LONG... STANDING on the tank platform was Sonya Sareeta...

They'll Do It Every Time... By Jimmy Harlo... START IN BUSINESS FOR YOURSELF AND THE RELATIVES GIVE US A VERY WIDE BERTH—PLUS PLENTY SNICE COMMENTS—

By Jimmy Harlo... I'M GONNA HIDE—TELL HIM WE DON'T USE OIL—TELL HIM I'M IN BRAZIL... JUNIOR QUIT SCHOOL—TALK TO YOU PERSONAL COUGH TWIRK—

By Jimmy Harlo... WHO DOES YOUR MIRROR COUGH—

