



Today's Weather

HIGH 48 LOW 34

DOUG BOYD MOTOR CO.

CORNER OF HWY 60 @ HWY 70 • 806-669-6062 BUY HERE • PAY HERE • NO CREDIT CHECK • AREAS LARGEST SELECTION WWW.DOUGBOYDMOTORS.COM

VISA & MASTERCARD ACCEPTED

PHS Baseball

Harvesters fall to Wylie. SEE PAGE 9



THE PAMPA NEWS

Friday, March 17, 2006

Volume 101 • No. 1221

50¢ Daily • Sunday \$1.25

THE FLOOR STORE NOW AVAILABLE PROFESSIONAL CARET & UNUSUAL CLEANING SYSTEM... 2100A Perryton Pkwy • 665-4455

CHILDERS BROTHERS INC. HOUSE LEVELING Uneven Floors Floor Bracing Cracks In Bricks... 1-800-299-9563

THOMAS AUTOMOTIVE INC. Over 23 Years of Quality Service... 665-4851 217 E. HATCHISON

One STOP Flooring On Select Purchases We Offer 90 DAYS SAME AS CASH 6 MONTHS SAME AS CASH... 1533 N. HOBART

The POWER OF STEAM RUG RATS Professional Carpet & Air Duct Cleaning FREE ESTIMATES... 665-1976 or 662-9219

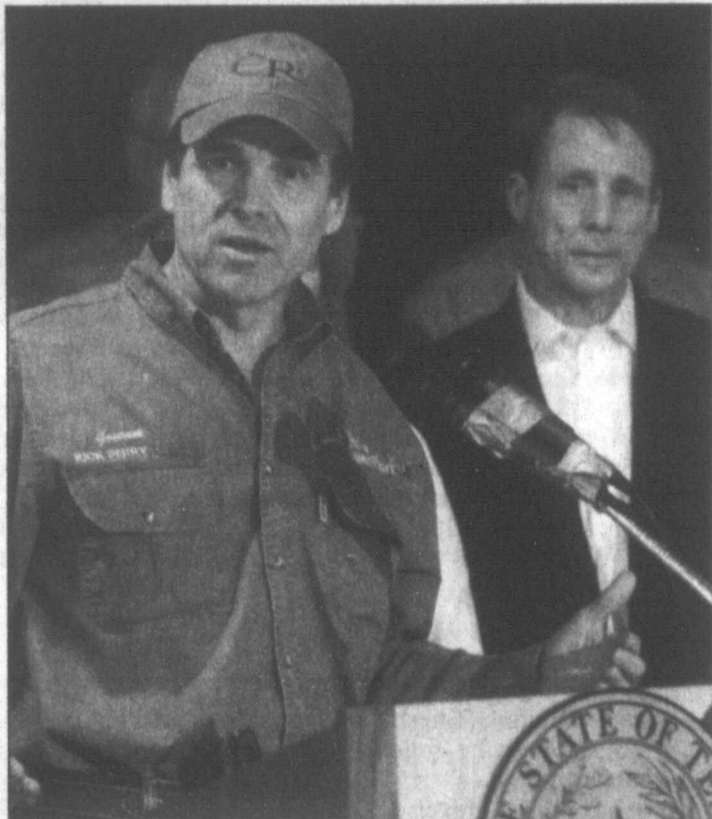
ALBRACHT CHIROPRACTIC OF PAMPA DR. JACK S. ALBRACHT PERSONAL & SPORTS INJURIES... 665-7161

MR10341 • LICENSED • INSURED BOB'S PLUMBING PAMPA, TEXAS 806-669-1940... OWNERS: BOBBY FAIRES / DUECE FAIRES

Shutterbug Photography For all your photography needs www.shutterbug.com Call Us Today... 806-681-2840/806-665-3348

It's Time to Plant Trees! West Texas Landscape 120 S Hobart St • 669-0158

FRIENDS OF THE PAMPA LIBRARY ANNUAL BOOK SALE MARCH 30TH - APRIL 2ND PAMPA LOVETT MEMORIAL LIBRARY 111 N. HOUSTON



Pampa News photo by DAVID BOWSER Texas Gov. Rick Perry talks about the fire-ravaged pastures of the eastern Texas Panhandle he flew over Thursday afternoon as State Sen. Robert Duncan, right, of Lubbock, looks on.

Perry views devastated area, calls it worst in state's history

By DAVID BOWSER Staff Writer

AMARILLO -- Gov. Rick Perry stopped in Amarillo Thursday afternoon long enough to describe the devastation he saw across the eastern Texas Panhandle following a week of wildfires that burned about a million acres or pasture land, numerous homes and was being blamed for 11 deaths. Calling it the worst range fire in the history of the state, Perry recounted seeing fire retardant dropped on the very doorsteps of homes in Skellytown by Texas Forest Service planes. He said that he had watched from the air as flames flared up again between Perryton and Canadian after the local Texas Forest Service coordinator said there was nothing but hot spots left in that area. Noting that in the past 12 months some five million acres of land had burned off in the state, destroying 399 residences and causing dozens of deaths, Perry said conditions for additional range fires remain ripe because of drought conditions. He commended the firefighters who

fought the blazes that have blackened some million acres now and called them heroes. Perry, noting that Pampa State Rep. Warren Chisum had in the past sponsored legislation to aid volunteer fire departments, said he expects when the Texas Legislature meets in 2007 in regular session to see aid to volunteer fire departments extended and expanded. "A lot of people want to help volunteer fire departments," Perry said. He offered no specifics. After talking with Dale Smith, a partner in McLean Feedyard, Gov. Perry said he hopes the U.S. Department of Agriculture has some money for livestock producers who have suffered losses from grass fires this year. Perry said the state's livestock industry has been negatively impacted by wildfires, but they will overcome those problems just like they have overcome drought and down markets in years gone by. "You can't crush the cattle industry in the

See PERRY, Page 3

Man jailed after woman hit, dog dies

By MARILYN POWERS Staff Writer

A Pampa man remains in Gray County Jail today on a 24-hour detainer after he was arrested and charged with cruelty to animals and assault causing bodily injury/family violence, according to jail records. Tristain Netters, 23, of 1825 Coffee was arrested after a woman involved in the incidents reportedly flagged down a passing Gray County Sheriff's deputy vehicle. Pampa Police Department was called at 3:18 p.m. to respond to the address, according to police reports. The woman alleged that Netters threw a puppy out the door of the residence after the puppy had eliminated waste inside the resi- See JAILED, Page 3

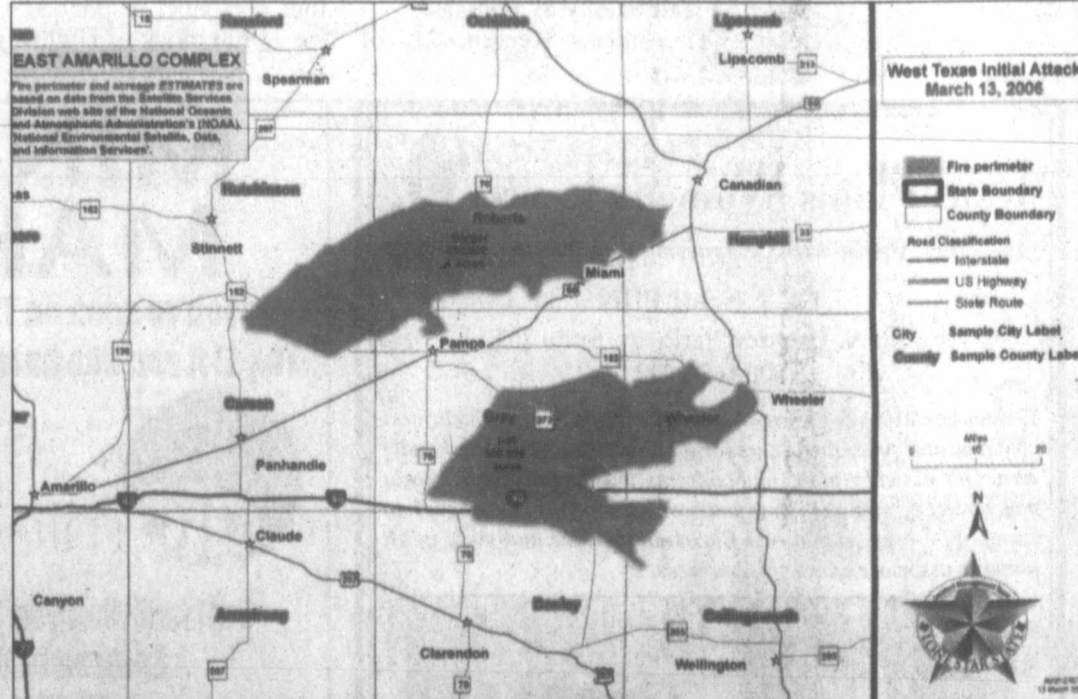
White Deer, Groom battle new fires



Pampa News photo by DAVID BOWSER Mary Leathers with the Texas Forest Service sets backfires in the thick, matted grass of CRP land seven miles south of U.S. Highway 60 between Panhandle and White Deer. Texas Forest Service Planes were called in to drop fire retardants on the billowing smoke late this morning.

By DAVID BOWSER Staff Writer

WHITE DEER -- White Deer and Groom Volunteer Fire Departments were out in the field this morning to battle a grassfire in the rain southwest of White Deer. Clayton White, chief of the Skellytown Volunteer Fire Department, and his crews were out with Terry Sargent, chief of the White Deer Volunteer Fire Department and the rest of his units, fighting a blaze north of the windmill farm on Carson County Road Y. A fire unit from the 6666 Ranch between Panhandle and Borger was headed for a new grass fire between Skellytown and White Deer about 11 a.m. today. While White Deer and Skellytown units made short work of the fire in the matted grass on Conservation Reserve See FIRES, Page 3



New fires add to toll of dangerous week

By MARILYN POWERS Staff Writer

Precipitation which moved into the Pampa area this morning failed to stop a new outbreak of wildfires as three near White Deer, one south of Groom and one north of Pampa were reported. The fire north of Pampa at 11 a.m. was north and east of Hidden Hills Golf Course, according to emergency radio broadcasts. The White Deer fires

burned approximately 200 acres and prompted the evacuation of one resident this morning, according to Texas Department of Public Safety Trooper Wayne Beigle of the DPS Amarillo office. One of the three White Deer fires was in the wind farm area northwest of town, Beigle said. Other fires continue to burn as the area nears the See TOLL, Page 3

Obituaries

Services tomorrow

**RILEY, Gussie Isaac** — Graveside services, 10 a.m., Fairview Cemetery, Pampa.  
**WILL, Herman Albert Jack** — Memorial services, White Deer Church of Christ, White Deer.

**Mark A. Buzzard, 75**

Mark A. Buzzard, 75, of Pampa, Texas, died March 14, 2006, at Yuma, Ariz. Services are pending with Carmichael-Whatley Funeral Directors.  
 Mr. Buzzard was born May 25, 1930, in Okmulgee, Okla. He had been a resident of Pampa since 1934, moving from Okmulgee. He graduated from Pampa High School in 1949. He married Mary Coffee on June 5, 1949, in Pampa. She preceded him in death on Feb. 7, 1997.



Buzzard

He later married Eunice Pauline Nash on Sept. 9, 1999, in Clovis, N.M.

He was an insurance agent for Allstate Insurance Company from 1959 until his retirement in 1986. He was a member and past master of the Pampa Masonic Lodge #966 AF&AM, and a member of the Knights Templar of Texas. He was a member of the Pampa Jaycees. He was a ham radio operator and a member of the Pampa Amateur Radio Club, call #WB50TF.

Survivors include his wife, Eunice

Buzzard, of the home; two daughters, Jana Meyer and husband Kent of Canyon and Cheri Ray and husband Randy of Shallowater; two sons, Charles Buzzard of Pampa and Danny Buzzard and wife Becky of Round Rock; eight grandchildren, Dane Kanro and wife Christi of Temple, Sean Ray of College Station, Taylor Meyer and Colton Meyer, both of Canyon, Annika Buzzard, Nicole Buzzard, Bryant Buzzard and Danielle Buzzard, all of Round Rock; and two great-grandchildren, Shelby Kanro and Lyndsey Kanro, both of Temple.

He was preceded in death by a daughter, Kim Buzzard in 1983

The family requests memorials be to Texas Scottish Rite Hospital for Children, 2222 Welborn St., Dallas, TX 75219.

The family will receive friends at the funeral home from 5-7 p.m. on Sunday, March 19, 2006.

—Sign the on-line register book at [www.carmichael-whatley.com](http://www.carmichael-whatley.com).

**Charles E. Harris, 80**

Charles E. Harris, 80, of Pampa, died Thursday, March 16, 2006, at the VA Hospital in Albuquerque, N.M. Services are pending with Carmichael-Whatley Funeral

Directors of Pampa.

—Sign the on-line register book at [www.carmichael-whatley.com](http://www.carmichael-whatley.com).

**Gussie Isaac Riley, 93**

**KRUM** — Gussie Isaac Riley, 93, of Krum died Wednesday, March 15, 2006, at Longmeadow Care Center in Justin. Services were scheduled for 11 a.m. today in First Baptist Church in Krum with the Rev. Ed Gatlin officiating.

Graveside services will be at 10 a.m. Saturday in Fairview Cemetery at Pampa with the Revs. Mylon Bruce and Chance Williamson officiating. Arrangements are under the direction of DeBerry Funeral Directors in Denton.

Mr. Riley was born Oct. 8, 1912, at Bradley, Okla., to Rueben J. and Sarah Julie Ann Dutton Riley. He married Esther Faye Jeffcoat on Feb. 14, 1932; she died in 1975. He later married Christine Pritchard in Pampa on May 5, 1978.

Mr. Riley was retired from Lane Wells Oil Company and Pampa Independent School District. He belonged to the Church of God

in Pampa for 60 years and attended Krum First Baptist Church for three years.

He is preceded in death by his parents; a daughter, Ruby Esther Riley Harris; a great-granddaughter, LaDawna Gail Williamson; and a step-daughter, Winona Pritchard.

Survivors include his wife, Christine Pritchard Riley of Mexia; daughters, Ada Marie Ince of Harrah Okla., Joyce Peltier of Lexington, Okla., and Judie Wilhoit of Krum; step-sons, Jerry Pritchard of Tulsa, Okla., and Gary Pritchard of Midland; step-daughters, Pat Gray of Mexia and Pam Hopson of Pampa; 17 grandchildren; 36 great-grandchildren; and 34 great-great-grandchildren. He is preceded in death by his parents, first wife, Esther Faye Jeffcoat Riley, daughter, Ruby Esther Riley Harris, great granddaughter, LaDawna Gail Williamson, step-daughter, Winona Pritchard.

**Herman Albert Jack Will, 94**

**SKELLYTOWN** — Herman Albert Jack Will, 94, of Skellytown, died March 12, 2006, at Skellytown.

Memorial services will be at 2 p.m. Saturday at White Deer Church of Christ in White Deer with Don Stone, minister, officiating. Cremation and arrangements are under the direction of Carmichael-Whatley Funeral Directors of Pampa.

Mr. Will was a farmer and rancher who came to Skellytown in 1933. He was born Oct. 4, 1911, at Saskatchewan, Canada, to Paul W. and Emily Schoer Will. In 1917, his family moved from Canada to South Dakota, living at various farms, before relocating to Melvin, Iowa, in 1930.

Mr. Will made his way to Texas in the late

1930s, taking a job with Willis D. Price on the Flying W Ranch. He worked for the Price family for 45 years prior to retiring. He continued to help out at the ranch until his death.

He married Effie Mae Meadows on Nov. 2, 1961; she died May 13, 1982.

Mr. Will was preceded in death by a sister, Stella Dillard.

Survivors include a nephew, Wilbur Smith of Borger.

The family requests memorials be to White Deer Church of Christ, 501 Doucette, White Deer, TX 79097; or to Cal Farley's Boys Ranch & Affiliates, 600 SW 11th Ave., Amarillo, TX 79101.

—Sign the on-line register book at [www.carmichael-whatley.com](http://www.carmichael-whatley.com).

Emergency Services

Pampa Police Department reported the following incidents for the 24-hour period ending at 7 a.m. today.

Eight traffic stops were made.

A traffic complaint was received from the 2600 block of Dogwood.

A vehicle accident was reported in the police department lobby.

Abandoned vehicles were reported in the 1000 block of East Frederic and the inter-

section of Kingsmill and Starkweather streets.

Agency assistance was reported in the 1800 block of Coffee, the 800 block of East Craven and Highway 60 East.

Found property was reported in the police department lobby.

Welfare checks were made in the 300 block of Canadian, the 200 block of South Nelson and the 300 block of Sunset.

One open door was checked.

A missing person call was received from the 500 block of Magnolia.

Suspicious person calls were received from the 300 block of North Christy, the 1300 block of Barrett and the 600 block of West Crawford.

Suspicious vehicle calls were received from the 1600 block of North Somerville and the 1000 block of East Frederic.

Narcotics violations were reported in the 100 block of South Starkweather and the 800 block of Duncan.

A civil matter was reported in the 600 block of North Christy.

Criminal trespass was reported in the 1100 block of Rider.

Criminal mischief was reported in the 1800 block of Chestnut.

Harassment was reported in the 2200 block of North Christy, the 1100 block of Prairie Drive and the police department lobby.

A disturbance was reported in the 1100 block of South Varnon.

A domestic disturbance was reported in the 900 block of East Francis.

Fraud was reported in the 100 block of South Russell.

Burglary was reported in the 1400 block of Market.

Theft was reported in the 900 block of South Nelson and the 1900 block of Zimmers.

Gray County Sheriff's Office reported the following arrests today.

**Wednesday, March 15**  
 Cody William Hopson, 22, of Pampa was arrested by GCSO for consumption of alcohol and disorderly conduct/language.

Eric Sean Lemons, 24, of Pampa was arrested by GCSO for possession of a controlled substance and a probation violation for possession of a controlled substance.

Ross Allan Archer, 24, of Jamesport, Mo. was arrested by Texas Department of Public Safety on a fugitive warrant out of Missouri for a stolen vehicle.

Josephine Braddock, 35, of Pampa was arrested by GCSO for possession of a controlled substance.

**Thursday, March 16**  
 Barbara Taylor, 41, of Liberal, Kan. was arrested in the 100 block of South Dwight by Pampa Police Department for possession of a controlled substance.

Terry Honeycutt, 37, of Pampa was arrested in the 100 block of South Dwight by PPD for possession of a controlled substance, prohibited weapon, no valid driver's license, failure to maintain financial responsibility and failure to appear.

Tristain Netters, 23, of Pampa was arrested in the 1800 block of Coffee by PPD for assault causing bodily injury/family violence and cruelty to animals.

Andrew Keeton, 21, of

Pampa was arrested by PPD for unauthorized use of a motor vehicle.

Tommy Ray Carver, 49, of Pampa was arrested in the 100 block of East Georgia by PPD for displaying expired registration, no valid driver's license and failure to appear.

Pampa Fire Department reported the following calls during the 48-hour period ending at 7 a.m. today.

**Wednesday, March 15**  
 10:15 a.m. — One unit and three personnel responded to the 400 block of Jupiter on a lifting assist.

11:18 a.m. — One unit and three personnel responded to the 200 block of North Russell on a medical assist.

10:51 a.m. — One unit and two personnel responded to McLean, Perryton and Booker on grass fire assistance.

11:28 a.m. — One unit and three personnel responded to the 1000 block of North Sumner on a lifting assist.

12:56 p.m. — One unit and three personnel responded to the 2600 block of North Hobart on a lifting assist.

10:39 p.m. — One unit and three personnel responded to the 2200 block of Beech on a lifting assist.

**Thursday, March 16**  
 9:59 a.m. — Four units and 11 personnel responded to the 800 block of Campbell on a structure fire.

4:25 p.m. — One unit and four personnel responded to the 11000 block of Highway

152 West on a medical assist.

Guardian EMS ambulance reported the following calls during the 48-hour period ending at 7 a.m. today.

**Wednesday, March 15**  
 9:25 a.m. — A mobile ICU unit responded to the 800 block of West 25th and transported a patient(s) to Pampa Regional Medical Center.

10:01 a.m. — A mobile ICU unit responded to the 400 block of Jupiter and transported a patient(s) to PRMC.

10:30 a.m. — A mobile ICU unit responded to County Road 9 1/2. No transport

11:16 a.m. — A mobile ICU unit responded to the 1000 block of North Sumner and transported a patient(s) to PRMC.

11:19 a.m. — A mobile ICU unit responded to the 200 block of North Russell and transported a patient(s) to PRMC.

12:44 p.m. — A mobile ICU unit responded to the 2600 block of North Hobart and transported a patient(s) to PRMC.

1:29 p.m. — A mobile ICU unit responded to PRMC and transferred a patient(s) to Northwest Texas Hospital in Amarillo.

1:48 p.m. — A mobile ICU unit responded to PRMC and transported a patient(s) to a local nursing facility.

See RECORD, Page 3

CITY BRIEFS

The Pampa News is not responsible for the content of paid advertisement

**\$200 REWARD** Missing Dandy, small white male Poodle. Needs medicine for heart. 898-4809, 662-7707.

**BIG MOVING** Sale. Fri 3-17. 2122 Beech. See classified.

**LOST LIGHT** brown Chihuahua in vicinity of 1800 Beech. Ans. to Fawn. Reward. 665-1083.

**MARCH MADNESS** Sale at Scrapbooking & More! 20-50% off. Now thru March 31st. Now available- Pampa Mascot Albums & paper! 273-7338, 1004 Megert in Borger!

**DANCE TO** Tommy Henson, Moose Lodge, Sat. 18th, 8 pm. Members & guests.

**THE SAME** Fire Photos that ran on the back page of Wed. Mar. 15th *Pampa News* will be published again on Sun., Mar. 19th.

**LIKE NEW** copier, 3 steel desks, 3 file cabinets, side chairs, desk mats. 662-8339.

**Breakfast Sampler**  
 2 eggs  
 2 bacon slices  
 2 sausage patties  
 hashbrowns  
 2 buttermilk pancakes

**Cooder's Dixie Cafe**  
 2537 Perryton Pkwy • 669-1000

**COUPON**  
**\$1 off any breakfast entree**  
 Breakfast served  
 6:30am to 11:00am  
 7 days a week  
 offer good only with coupon • expires soon

**Texas Plains Women's Center**  
 Treating Women With Compassion And Concern  
 Dr. J. Scott Ellis  
 3023 N. Perryton Parkway, Suite 205  
 806-665-9900

*The mission at Texas Plains Women's Center is to provide the best obstetric and gynecologic care for women in the Texas Panhandle area. Our patients' needs and concerns will be addressed openly and honestly, and with care and compassion. It is our goal to exemplify a professional and Christian attitude and ethic in all pursuits associated with this business.*

For More Information Please Call Or Come By Our Office

**MINERAL MAKEUP**  
 as you've seen on TV! (The Today's Show & The E! If you like bare essentials you will love)

**glo minerals**  
 Call And Mention This Ad And Ask to be Entered in the Drawing For A Glo Minerals Product

**trends**  
 1224 N. HOBART • NBC PLAZA ROOM 1  
 APPT ONLY 806-669-7272  
 HAIR & MAKEUP BY AMY

# Perry

Continued from Page 1

State of Texas," Perry says.

Despite his optimism, Perry said he was worried about getting disaster relief from the federal government.

He said relief promised for Hurricanes Katrina and Rita has been slow in coming.

Perry said he talked to President Bush Thursday morning before he flew over the Panhandle and told the President that the state needs the help that the federal government had promised.

He said the federal government had promised Texas that the costs of taking in victims from Hurricane Katrina, which hit Louisiana in September, would be reimbursed. He says the needs of the victims of Hurricane Rita,

which struck the Texas Gulf Coast, had not been met by the federal government in the same way as the victims of Katrina.

The governor said he's concerned about getting any help from the federal government, and he had expressed that concern in front of a Senate committee in Washington, D.C., earlier this month.

"The fact is the federal government has not lived up to its word," Perry said.

# Jailed

Continued from Page 1

dence. Netters then allegedly hit the woman in the face with his fist after she blamed him for not get-

ting the puppy outside in time to avoid having the waste inside the house, according to police reports.

The puppy died after the incident. The woman's injuries were reported as minor, according to police reports.

Bond on each of the charges against Netters was set at \$2,500, for total bond of \$5,000. A 31-day protective order was also placed against Netters in connection with the incident, according to jail records.

# Fires

Continued from Page 1

Program land northwest of White Deer, the Texas Forest Service called in air-drops of fire retardant on the CRP land southwest of town.

The fire southwest of White Deer was just north of Farm-to-Market Road 293 on the east side of Carson

County Road V.

Texas Forest Service officials said lightning may have been the cause of the two new fires in Carson County this morning.

White Deer units and firefighters from Groom along with Carson County road crews were battling a wall of roaring flames late this morning as Texas Forest Service crews on the scene called for air drops and set backfires.

The fire southwest of White Deer quickly spread across several sections of the thick grass on the CRP land.

Cold north winds fanned the flames although a light rain and sleet seemed to have little effect on the blaze. The thick gray smoke from the grass mixed with heavy gray clouds promising more rain as the acrid smell of smoke mixed with the sweet smell of rain.

# Toll

Continued from Page 1

end of its sixth day of wildfires, which began Sunday in Hutchinson and Gray counties.

The Texas Forest Service reports that as of Thursday, the Hutchinson County fire is approximately 50 percent contained and still active. The Interstate 40 fire in Gray County is approximately 70 percent contained.

Estimated acreage burned in the Hutchinson County fire is 450,000, an area 72 miles wide and 20 miles long. The Hutchinson County fire was responsible for the evacuations of Hoover,

Lefors, McLean, Miami, Old and New Mobeetie, Skellytown, Wheeler and Walnut Creek Estates in Pampa.

Eight residences were lost in McLean as a result of the fire, according to the TFS. Two homes at Walnut Creek Estates were damaged.

The fire which began near Interstate 40 in Gray County burned 350,000 acres, or an area 55 miles wide by 20 miles long. Ten homes have been lost in the fire, along with 80 vehicles and outbuildings.

A shift in the fire burning in Gray and Roberts counties caused it to begin moving northeast yesterday, toward Ochiltree and Lipscomb counties. Portions of Highways 70, 83 and 283 were closed for a time Thursday in connection with the fires.

The total number of fires in the Panhandle as of Thursday was 96, according to the TFS, representing 853,253 acres burned.

Firefighters from across the Panhandle and South Plains areas have responded to the fires, along with crews and equipment from Oklahoma and as far away as South Dakota. A convoy of South Dakota fire trucks and equipment traveled north on Highway 70 through Pampa this morning.

Airtankers have also been fighting the fires, dropping a total of 31,278 gallons of retardant on the Hutchinson County and I-40 fires as of Thursday.

The death toll for the fires remains at seven, with another four as a result of a traffic accident Sunday on Interstate 40. The accident, a nine-vehicle pileup, occurred as smoke from the fire reduced visibility to zero.

"GPS mapping of the burned area will begin today from the air," Beighle said. "This is the only way to get an accurate figure on the total acreage lost to area fires since last Sunday."

"There are still no-fly zones in the area, and this could hamper the mapping process, so we have no estimate of when this task will be complete," he said.

## Miami ISD board to meet Monday

MIAMI — The Miami Independent School District Board of Education will meet at 7 p.m. Monday in the school administration office.

General items to be covered include third- and fifth-grade TAKS reading results, a school rent house and a district UIL academic contest.

Financial reports will be heard concerning the cafeteria, transportation and taxes.

Business items include resignations and teacher contracts.

## Highland Baptist schedules revival

Highland Baptist Church will hold revival services Sunday, Monday, Tuesday and Wednesday at the church, 1301 N. Banks.

Darren Willis, pastor of New Hope Missionary Baptist church will be the preaching evangelist. Paul Searl of Highland Baptist Church will be music evangelist.

Sunday services are at 11 a.m. and 6 p.m. Monday through Wednesday services are at 7 p.m.

For more information, call 665-3300.

# Record

Continued from Page 2

11:37 p.m. — A mobile ICU unit responded to PRMC and transferred a patient(s) to NWTH.

Thursday, March 16

3:10 a.m. — A mobile ICU unit responded to the 1200 block of North Wells and transported a patient(s) to PRMC.

10:06 a.m. — A mobile ICU unit responded to the 800 block of Campbell on a fire standby.

4:34 p.m. — A mobile ICU unit responded to Highway 152 and transported a patient to PRMC.

10:40 p.m. — A mobile ICU unit responded to the 2200 block of Beech and transported a patient to PRMC.

Friday, March 17

1:54 a.m. — A mobile ICU unit responded to the 1300 block of West Kentucky and transported a patient(s) to PRMC.



**1 CONVENIENT**  
Free Computerized Estimates  
Free Pickup & Delivery  
Rent Car Service Available

**2 EXPERIENCED**  
Certified Technicians  
Kansas Jack Frame  
Unibody Alignment  
Paintless Dent Repair

**3 CONFIDENCE**  
Lifetime Warranty On Body  
Repairs & Diamond Paint  
Guaranteed Repair Shop For  
Most Insurance Companies

**Collision Repair Facility At**  
**Culberson - Stowers, Inc.**  
Monday - Friday 8:00am - 6:00pm  
805 N. Hobart • 665-1665 • 1-800-879-1665

## LUCKY DEALS FOR YOU!

**SALE GOOD MARCH 17th-20th**

---

**SPARE RIB TIPS**  
**99¢ LB**

---

**COOKS CORNED BEEF BRISKET**  
**\$1<sup>69</sup> LB**

---

**FARM RAISED BREADED CATFISH NUGGETS**  
**\$1<sup>49</sup> LB**

---

**HAAS AVOCADOS**  
**6 FOR \$1<sup>00</sup>**

---

**ASSORTED SQUASH**  
**2 LBS FOR \$1<sup>00</sup>**  
ACORN • BUTTERNUT • SPAGHETTI

---

**CELLO LETTUCE**  
**3 FOR \$1<sup>00</sup>**

---

**VALLE ROJO CHILE POD**  
8 OZ  
**2 FOR \$3<sup>00</sup>**

---

**MEDIUM SEEDLESS RED GRAPES**  
**99¢ LB**

---

**FRANK'S THRIFTWAY**  
"Pampa's Homeowned Since 1967"  
**300 E. BROWN 665-5451**  
Monday-Saturday 7am-8pm • Sunday 8am-8pm  
We Deliver Tuesday & Thursday ... Call For Details

# Viewpoints

## Pampa community is full of great mentors

A big illusion that we have today is that great mentors are not available or accessible.

We have somehow connected the highly visible and inaccessible pro athletes to be ideal great role models.

The truth is that Pampa has plenty of outstanding people that would make great mentors and are just waiting to be asked.

In the Greek tale, The Odyssey, while preparing to go off to war, King Odysseus of Ithaca entrusted the care and training of his only son to his wise friend Mentor.

It is in Mentor's character that we see the traits that we should

look for when choosing a mentor: content of character, breadth of experience, and quality contacts.

The first thing to look for in a mentor is the values that make up his/her character. Don't assume that your mentor has to look like you.

You can get more out of life by experiencing differences than you can similarities.

My mentor was a white male, 20 years older, and lived in the suburbs. I learned more from him about life than any other source. His character was soaked in the values that I admired.

The more time I spent with him,

the more his values became a part of me.

**David Cain**

Columnist



Secondly, look for a mentor that has a wide breadth of experience.

In order to share proper guidance, a mentor must have life experiences in the area of which he/she offers guidance.

The adage that declares "you

can't teach what you don't know, and can't show where you don't go" is very true with mentorship.

I've never golfed before, but imagine Tiger Woods' performance if he allowed me to counsel him on his game. It would be a disaster.

Lastly, look for a mentor that is willing to give you quality contacts. A great mentor will sacrifice his most valuable possession; time.

By spending a lot of time with a few people, a mentor can effectively change the world.

This centuries old method was perfected by the master mentor Himself, Jesus Christ: the world felt His impact because He spent a

lot of time with a few people, His disciples.

Pampa is full of great individuals that would make great mentors if given the chance. All you have to do is look around you.

Don't just choose a mentor because they are rich, poor, black, white, male, or female... choose a mentor because you admire their character, because you believe you can learn from their experiences, and because they are willing to invest their time in you.

*David Cain is facility general manager of Cabot Corporation's Pampa plant.*

## Today in History

By The Associated Press

Today is Friday, March 17, the 76th day of 2006. There are 289 days left in the year. This is St. Patrick's Day.

Today's Highlight in History:

One hundred years ago, on March 17, 1906, President Theodore Roosevelt first used the term "muck-rake" as he criticized what he saw as the excesses of investigative journalism in a speech to the Gridiron Club in Washington.

On this date:

In A.D. 461, according to tradition, St. Patrick — the patron saint of Ireland — died in Saul.

In 1776, British forces evacuated Boston during the Revolutionary War.

*'Television is a device that permits people who haven't anything to do to watch people who can't do anything.'*

— Fred Allen  
American comedian  
(1894-1956)

In 1910, the Camp Fire Girls organization was formed. (It was formally presented to the public on this date two years later.)

In 1941, the National Gallery of Art opened in Washington D.C.

In 1950, scientists at the University of California at Berkeley announced they had created a new radioactive element, "californium."

In 1956, 50 years ago, comedian Fred Allen died in New York City at age 61.

In 1958, the U.S. Navy launched the Vanguard I satellite.

In 1966, a U.S. midjet submarine located a missing hydrogen bomb which had fallen from an American bomber into the Mediterranean off Spain.

In 1969, Golda Meir became prime minister of Israel.

In 1992, 28 people were killed in the truck bombing of the Israeli embassy in Buenos Aires, Argentina.

Ten years ago: In Dunblane, Scotland, Queen Elizabeth II came with flowers and sympathy, as residents paused in silence to mourn 16 murdered children and their teacher.

Five years ago: OPEC decided to curtail its official output by 4 percent, or one million barrels of oil a day, in an effort to halt a recent slide in oil prices, a decision the Bush administration called "disappointing."

One year ago: Baseball players told Congress that steroids were a problem in the sport; stars Rafael Palmeiro and Sammy Sosa testified they hadn't used them while Mark McGwire refused to say whether he had. Rapper Lil' Kim was convicted of lying to a grand jury about a shootout outside a New York radio station. (Lil' Kim started serving her 366-day sentence just before her fourth album was released in September 2005.)

Stephane Lambiel of Switzerland won the men's title at the World Figure Skating Championships in Moscow. Diplomat and Pulitzer Prize-winning historian George F. Kennan died in Princeton, N.J., at age 101.

Today's Birthdays: The former national chairwoman of the NAACP, Myrlie Evers-Williams, is 73. Rock musician Paul Kantner is 65. Singer-songwriter Jim Weatherly is 63.



## The work of the citizen just never stops

I'm in the midst of rereading Victor Hugo's "Les Miserables," his great 19th-century novel and sermon on behalf of the poor and oppressed. If you haven't read it, I recommend it. Hugo was a great plotter and creator of mythic characters.

Both Hugo and Charles Dickens can give you a very vivid picture of what capitalism without a safety net was really like. That is appropriate, because there are some in our own country who seem to wish to remove the safety net and revert to the law of the jungle.

The misery that the Industrial Revolution wrought also gives you an understanding of why and how communism and socialism arose. I've concluded that most of human history is reaction, not initiative. Problems arise, and people react to them. Certainly socialism arose as a reaction to the misery caused by capitalism.

Unfortunately, socialism turned out to be nothing more than substituting state capitalism for private capitalism. It created its own brand of misery. Alas, few are the humans who can avoid making their high

place the lawless perch for winged ambition, to use the words of Alfred Tennyson.

We should all hang on to our ideals, but we should also be careful not to have extravagantly high expectations. There is no perfect system, no one answer, no ideology that will produce a human paradise, and no political messiah who will ride in and save us from ourselves.

If paradise there be, it will be found somewhere else besides Earth. We are stuck with ourselves, the human race, ever prone to fallibility and folly.

One of the reasons young people in particular need to read history and historical fiction is so they will realize that things we take for granted today all had to be fought for. If there were no environmental regulations, no health and safety regulations, no workers' compensation, no unemployment insurance, no Medicare or Medicaid, no food stamps, no Social Security and no public housing, then you would see what

capitalism was like in Hugo's time.

If you think coal mines are unsafe now, imagine how dangerous they were when no one dared tell the coal companies what they had to do. Most of this safety net is not that old. I've talked with retired coal miners who remember the time when they were paid 60 cents a ton to dig coal and had to buy their own equipment from the company store.

Male children were put to work on the slag heaps, and wives and female children were often put to work in textile mills. Long hours, low pay and no concern at all for the health and safety of the workers were the norm in those days.

Every benefit Americans enjoy today had to be fought for, sometimes politically, but often physically, as owners set thugs and murderers on people trying to form unions.

Unrestrained power, whether wielded by private individuals and corporations

or by government, nearly always produces evil and misery.

Thus the work of the citizen never stops. We are always trying to find that balance between public and private power, between production of wealth and a fair distribution of it. We are always forced to combat corruption, lawlessness and exploitation.

Our problem today is that so few people seem inclined to join the ranks of active citizenry, preferring instead to pursue their own private pleasures and ambitions.

Well, all I can say is that you will be governed — well or badly, and your only protection against bad government is participation in the political wars.

There is one other thing you can learn from history, and that is impermanence. What we have, we can lose. Status quo is the mother of all myths. So think about abandoning the couch and the remote and joining the rest of us on the barricades. It's certainly more interesting than reruns.

*Write to Charley Reese at P.O. Box 2446, Orlando, FL 32802.*

**Charley Reese**

Columnist



**THE PAMPA NEWS**  
403 W. Atchison • Pampa, TX 79065  
806-669-2525 • 800-687-3348  
Fax: 806-669-2520  
email: editor@thepampanews.com

**Publisher: Sean Smith**

Editor: Dennis Spies

Advertising Director: ReDonn Woods

Composing Supervisor: Brenda Cook

This newspaper (UPS 781-540) is published daily, except Saturdays, Thanksgiving and Christmas Day, by The Pampa News. Periodicals postage paid at Pampa, Texas. Postmaster: Send address changes to The Pampa News, P.O. Drawer 2198, Pampa, TX 79066-2198.

All carriers are independent contractors and The Pampa News is not responsible for advance payments of two or more months made to the carrier. Please pay directly to the Pampa News any payment that exceeds the current collection period. There are no mail subscriptions available within the city limits of Pampa. Mail subscriptions must be paid three months in advance.

© 2005 The Pampa News

## Texas Thoughts

By The Associated Press

A sample of editorial opinion around Texas:

■ **March 6**  
San Antonio Express-News on Texas redistricting:

How much partisanship is too much partisanship? The Supreme Court took up that question last week, hearing arguments about the constitutionality of a redistricting plan drawn up by Texas Republicans in 2003.

The last time the court heard a similar case, it deadlocked over how to define a standard for excessive partisan influence in the gerrymandering process.

The swing vote in that 2004 decision, Justice Anthony Kennedy, may

well find that a second redistricting after the 2000 census establishes the benchmark. The suppression of a unanimous determination by Justice Department staff attorneys that the redistricting plan violated the Voting Rights Act might bolster that finding.

If the high court deems the current Texas map unconstitutional, it could mean chaos. At best, some legislative districts would have to be redrawn for 2008 elections, only to be redrawn again after the 2010 census.

How much partisanship is too much partisanship? It may not make legal history, but most Texans would abide by former Supreme Court Justice Potter Stewart's definition of obscenity: You know it when you see it.

The Texas gerrymander is a political obscenity. And it didn't begin in 2003. The current Republican plan is no more egregious than the 1991 Democratic plan. That plan faced 10 legal challenges that dragged on for seven years.

The solution is to take redistricting out of the hands of partisan legislators and give it to a commission. State Sen. Jeff Wentworth has championed this approach since 1993. Unfortunately, too many colleagues in both parties are intoxicated with the power of drawing political boundaries.

Given the abuses of this power in Texas, the Supreme Court rather than state leaders unfortunately may have the final say about how they draw those boundaries.

LOVETT MEMORIAL LIBRARY

# Local librarian retiring, reception in offing

Anne Stobbe, director of Pampa's Lovett Memorial Library, will be retiring at the end of the month. Having taken the director's post in 1998, Stobbe has overseen many changes and improvements at the library.

One of her first obligations on accepting the Pampa position was to move the library from its temporary quarters back into the renovated building on Houston Street.

During her tenure, Stobbe has expanded the library's computer lab by securing a grant from the Bill and Melinda Gates Foundation. She has served as Harrington Users Group representative to the Harrington Library Consortium and on the Texas State Library and Archives Commission. She was elected treasurer of the District II Texas Library Association and is a past president of Altrusa International Inc., of Pampa. Stobbe holds a bachelor of arts



Anne Stobbe

degree from Hiram College and a master's of Library Science degree from the University of Pittsburgh. Her first position out of college was with

Gary Public Library in Gary, Ind.

After 10 years, Stobbe accepted a job as director of the Maud Preston Palenske Memorial Library in St. Joseph, Mich. This was followed by a position as assistant director of the Southwest Michigan Library Cooperative and then assistant coordinator of the Texas Panhandle Library System in Amarillo.

Stobbe has many professional affiliations. She is a member of the Texas State Library Database Evaluation Committee and is past councilor for the Texas Library Association District II as well as a past member of the Texas Library Association Literacy Committee.

The Lovett Memorial Library Board of Directors and the Friends of the Library are hosting a retirement reception honoring Stobbe from 2-4 p.m. March 26 in the Texas Room of the library. All who wish to honor Stobbe are welcome to attend.

## People in the news

NASHVILLE, Tenn. (AP) — Kenny Chesney will perform at football and soccer stadiums in several U.S. cities this year, including a July 8 show at Nashville's Coliseum.

"The last time I played this stadium was with George Strait," the 37-year-old country superstar said Thursday at the stadium where the Tennessee Titans NFL football team plays.

That concert was back in 2000, before Chesney became one of the top-selling touring acts of any musical genre. Last year he grossed \$63 million, fourth among all touring acts, and his attendance of 1.2 million was second only to U2.

Gretchen Wilson, Dierks Bentley, Big & Rich and Little Big Town will open the concert.

Chesney also will perform at professional football stadiums in Seattle (June 24), Boston (July 16), Detroit and Tampa, Fla., and at professional soccer stadiums in Dallas, Chicago, Columbus, Ohio, and Los Angeles. Dates weren't yet announced for all the shows.

Wearing a blue ball cap instead of his trademark cowboy hat, the Knoxville native said he's excited about the Nashville concert.

"It's been my hometown for 14 years," he said. Recalling one of his earliest performances in the city, at a

small club with a tip jar in front of him, he said, "Being able to do the kind of things we're doing today makes you very appreciative."

*'When it became obvious that it was not just a state dinner, it was more of a fund-raising event, that is the wrong purpose of why we are here.'*

— Joe Simpson  
Father of Jessica Simpson

WASHINGTON (AP) — Jessica Simpson loves President Bush. She's just not a big fan of Republican fund raisers.

The Hollywood starlet and tabloid cover girl was on Capitol Hill Thursday to lobby Congress for Operation Smile, an organization that provides reconstructive surgery to children with facial deformities. But all anyone wanted to know was why she turned down an invitation to attend a Republican fund raiser with Washington's top star — Bush.

"We went back and forth and we could never get the details worked out," said her father and manager, Joe Simpson. "When it became obvious that it was not just a state dinner, it was more of a fund-raising event, that is the wrong purpose of why we are here."

Still, he said of the president, "We are huge fans of him and of his family, his girls. Jessica loves the heck out of him."

In fact, he said they were still trying to squeeze in a meeting with the chief executive.

## Prairie Rivers Musical to end season Saturday

CANADIAN — Prairie Rivers Musical will present its last show of the season at 7:30 p.m. Saturday at Canadian Middle School Auditorium.

"It is hard to believe we are wrapping up seven successful seasons of Prairie Rivers Musical," said Jay Godwin, one of the original organizers of the show. "Our hats are off to our great base of fans from Western Oklahoma and the Texas Panhandle who have been so supportive."

The show continues a tradition of not charging for admission and is smoke and alcohol free. Comfortable theater seating is available for everyone.

Regular performers expected include Hank and Venita McPherson, George Briant, Dale and Kayla Jenkins, Wayne Wright, Phil Ridgway, Mary Lynn Schafer, Lonnie Cox and Godwin. Fiddle player David Jenkins will make an appearance.

First-time guests K.R. Henry of Fort Supply, Okla., and J.W. Lane of Allison are also committed to appear at this show. A group of very young clog dancers will demonstrate their skills at intermission.

Godwin reminds all, especially if the weather is threatening, to check the Web site [texasprairierivers.com](http://texasprairierivers.com) after 1 p.m. on Saturday. You can also call (806) 323-6213 to confirm the show is on schedule.

# TRUST...

## KEYES PHARMACY

928 NORTH HOBART  
LOCAL **806.669.1202**  
OUTSIDE PAMPA **800.842.3866**  
MONDAY-FRIDAY 8:30-6:00 • SATURDAY 8:30-1:00

"The Front Pocket Solution to the Back Pocket Wallet"

### TPK Back Saver Wallet™

Standard Back Pocket Wallet

Front Pocket Back Saver Wallet™  
Folds Thin and Flat

Each Wallet is Holding the SAME 16 Cards and 18 Bills

Stop sitting on the problem

- Folds flat when full
- Gold plated spring clip holds up to 30 bills
- Four pockets hold up to 24 cards
- Photo holder does not restrict use of pocket for your cards
- 3 year warranty

Made in the U.S.A.

Now Available At:

## Ford Family Chiropractic

Rehabilitation And Wellness Center

"I want to be your Family Chiropractor"

**Dr. Mark W. Ford, Jr.**  
**665-7261**  
103 E. 28<sup>th</sup> Ave. Pampa, Tx  
[www.fordfamilychiropractic.com](http://www.fordfamilychiropractic.com)

come enjoy the new lunch menu at

## Dos Caballeros

ALL LUNCH MENU ITEMS ONLY \$4.99

**TACO SALAD...** Flour Tortilla Bowl filled with Fresh Shredded Lettuce, Taco Meat, Cheese & Tomato.

**CRISPY RELLENO...** Anaheim Pepper Stuffed with Cheddar Cheese rolled in our Crispy Batter, on a bed of Our Chile con Queso Served with Beans & Rice.

**2 TACOS...** Two Crispy Tacos with a side of Beans & Rice.

**CHALUPA & TACO...** Bean & Cheese Chalupa with a Crispy Taco.

**2 CHICKEN FAJITA TACOS...** Soft Flour Tacos made with our Savory Chicken Fajita Meat served with a side of Beans & Rice.

**2 TAMALES...** Beef Tamales covered with our Chili served with a side of Beans & Rice.

**2 ENCHILADAS...** Beef Enchiladas topped with our Chile con Queso served with a side of Beans & Rice.

**MEXICAN POTATO...** Regular Baked Potato dressed with our Spicy Taco Meat & smothered in our Chile con Queso.

**SPAGHETTI...** A bowl of Traditional Spaghetti Pasta served with our own Magnifico Sauce.

lunch menu served Mon.-Fri. 11:00am-3:00pm

## switch to america's largest network\*

so reliable, you stay connected  
or we pay you back

Most Advanced  
**RAZR**  
Only  
**\$99.99**  
after \$100 mail-in rebate with 2-year service agreement

1.3 Megapixel Camera/Video  
Bluetooth  
Motorola RAZR V3c

**1500** anytime minutes  
**\$49.99** MO  
additional charges apply. see below.\*\*

Switch today  
**Get \$50** credit  
limited time offer

Camera phone  
Voice-activated dialing  
Speakerphone

Audiovox CDM8910

Color screen  
External caller ID  
Speakerphone

Kyocera SoHo

Unique pop-up screen  
Speakerphone

Samsung n330

limited time offer  
phones you'll love - just **99¢** each

Phone prices with 2-year service agreement.

for exclusive online deals [shop.alltel.com](http://shop.alltel.com)

Retail Stores	Authorized Agents
<b>Berger</b> 524 W. 10th St. (806) 273-2042  <b>Childrens</b> 2004 Ave. G N.W. (940) 937-8550  <b>Dumas</b> 1526 Guylene Plaza (806) 935-8307	<b>Hartford</b> 5158 N. 25th Hwy. (806) 364-1055  <b>Pampa</b> 1329 N. Hobart (806) 669-3435  <b>Wireless One</b> 1404 W. Wilson (806) 273-2339  <b>Childrens</b> Wireless One 2211 Ave. F N.W. (940) 937-8030
<b>Clarendon</b> Clarendon Outpost Co. (806) 674-5202  <b>Commerce</b> Intouch Phones 1905 Live Oak St. (936) 886-2301  <b>Dalhousie</b> Comm. Connection 515 Denrock (806) 249-9411	<b>Dumas</b> Access Wireless 624 E. 7th St. (806) 381-8811  <b>Wireless Comm.</b> 603 S. Danest Ave. (806) 935-1733  <b>Hartford</b> Whiteface Cellular 902 N. Lee St. (806) 363-2740  <b>Pampa</b> Comm. Connection 2145 N. Hobart St. (806) 669-1551  <b>Pampa Office Supply Co.</b> 215 N. Caylor Box 1302 (806) 669-3353  <b>RadioShack</b> 1820 N. Hobart (806) 669-2253  <b>Perryton</b> Perryton Office Supply 123 S. Main (806) 435-4812  <b>Silverton</b> Baron Gifts Rt. 1 Box 1328 (806) 823-2106  <b>Spearsman</b> Country Cellular 720 Hwy. 207 S. (806) 669-2541

\*Largest Network Claim: Claim based upon independent research analysis in December 2005, which compared marketed coverage patterns at the time of their creation of each wireless carrier without allowance for variations due to electrical interference, customer equipment, topography & each carrier's translation & defined preferences of their own internal engineering data. \*\*Federal, state & local taxes apply. In addition, Alltel charges a monthly connectivity, regulatory & administrative surcharge up to \$1.76, federal & state Universal Service Fund fees (both vary by customer usage); & a \$11 fee of up to \$1.54 (where \$11 service is available). These additional fees may not be taxes or government-required charges & are subject to change. Stay Connected: An automatic one-minute credit will be provided for any dropped voice call on the Alltel network. Not available on prepaid plans. No action is required by the customer to receive the credit. Total dropped calls will be reflected on the current month's billing statement. Dropped calls will not be credited when outside the Alltel network. Program may be discontinued at the discretion of Alltel. Coverage: Promotional minutes apply within the Greater Freedom calling area. Actual coverage area may vary. See coverage map at [stores.alltel.com](http://stores.alltel.com) for details. Usage outside of your calling plan is subject to additional roaming, minute & long-distance charges. \$99 Credit: Credit available for a limited time to new customers switching to Alltel in a former Western Wireless market with activation of a qualifying rate plan \$39.99 & higher & existing customers in former Western Wireless markets adding an additional line of service with a 2-yr service agreement. One credit per account, per billing period. Must be a customer for 30 days to receive credit. Credit will appear on customer's bill. Phone Promotions: Phones available at sale prices to new customers & eligible existing customers. Requires activation of a qualifying Alltel rate plan. Contact Alltel to determine if you are eligible. Phone Details: Phones & applicable rebates available for a limited time, while supplies last, with activation of a qualifying rate plan. Limit 1 rebate per qualifying purchase. Phone cannot be returned once mail-in rebate certificate has been submitted. Customer pays applicable taxes. See rebate certificate for details. Additional Information: Limited-time offer at participating locations. While supplies last. Credit approval & approved CDMA handset & PRL required. \$20 non-refundable activation fee applies per line. \$200 early termination fee may apply per line. Offers are subject to the Alltel Terms & Conditions for Communications Services available at any Alltel store or [alltel.com](http://alltel.com). Samsung Telecommunications America, L.P. Samsung is a registered trademark of Samsung Electronics America, Inc. & its affiliates. All product & service marks referenced are the names, trade names, trademarks & logos of their respective owners. Screen images are simulated.

## This Devotional Directory Is Made Possible By The Following Businesses Who Encourage All Of Us To Attend Worship Service

**Adventist**

Faith Advent Christian Fellowship  
324 Rider  
Adventist Seventh-day  
Leonard Cummings, Minister . . . .425 N. Ward

**Apostolic**

Pampa Chapel  
Rev. Ron Noble . . . . .711 E. Harvester

**Assembly of God**

Calvary Assembly of God  
Rev. Philip Elsheimer . . . . .Crawford & Love  
Carpenter's Church Assemblies of God  
Independent  
Fred C. Palmer, Minister . . . . .639 S. Barnes  
First Assembly of God  
Leland & Darlene Lewis . . . . .500 S. Cuyler  
New Life Assembly of God  
Harold & Wendy Eggert . . . . .1435 N. Sumner  
Skellytown Assembly of God Church  
Rev. Danny Trussell . . . . .411 Chamberlain  
First Assembly of God (McLean)  
Mahlan Richardson, Pastor . . . . .420 Main St.

**Baptist**

Alanreed Baptist Church  
Jim Bible . . . . .3rd Street  
Bible Baptist Church  
Bob Hudson, Pastor . . . . .500 E. Kingsmill  
Calvary Baptist Church  
Rev. Richard Bartel . . . . .900 E. 23rd St.  
Central Baptist Church  
Starkweather & Browning  
CornerStone Baptist Church  
Bro. Doug Hixson, Pastor . . . . .1304 N. Banks  
Fellowship Baptist Church  
George Turner . . . . .217 N. Warren  
First Baptist Church  
Rev. Johnny Funderburg . . . . .203 N. West  
First Baptist Church ( Mobeetie)  
Rev. Harvey Patterson . . . . .Mobeetie Tx.  
First Baptist Church (Lefors)  
Chris Webb, Pastor . . . . .315 E. 4th  
First Baptist Church (Skellytown)  
Fines Marchman . . . . .306 Roosevelt  
First Baptist Church (Groom)  
David Kelly . . . . .407 E. 1st.  
First Baptist Church (Wheeler)  
Pastor Dennis Williams . . . . .601 S. Main  
First Baptist Church (White Deer)  
Alan Wilson . . . . .411 Omohundro St.  
First Baptist Church (McLean)  
Pastor Kelly Raymond . . . . .206 E. 1st St.  
First Free Will Baptist  
731 Sloan St.  
**Grace Baptist Church**  
Bro. Kyle Ohsfeldt . . . . .824 S. Barnes  
Harvest Fellowship Church  
C.W. Parker, Pastor . . . . .1435 N. Sumner  
Highland Baptist Church  
Paul Nachtigall, Pastor . . . . .1301 N. Banks  
Hobart Baptist Church  
Rev. Jim Powell . . . . .1100 W. Crawford  
Iglesia Bautista Emmanuel (Bilingual)  
Guillermo "Willy" Jaramillo . . . . .1021 S. Barnes

Macedonia Baptist Church  
Rev. I.L. Patrick . . . . .441 Elm St.  
New Hope Baptist Church  
Pastor Darren Willis . . . . .912 S. Gray  
Primera Idlesia Bautista Mexicana  
Rev. Heliodoro Silva . . . . .1541 Hamilton  
Progressive Baptist Church  
Rev. Bob Davis . . . . .836 S. Gray

**Catholic**

Sacred Heart (White Deer)  
Rev. Mitch Przepiora . . . . .500 N. Main  
St. Mary's (Groom)  
Rev. Jose Palathara, CMI . . . . .400 Ware  
St. Vincent de Paul Catholic Church  
Rev. Francisco Perez . . . . .810 W. 23<sup>rd</sup>

**Christian**

Church of the Brethren  
600 N. Frost  
First Christian Church (Disciples Of Christ)  
Senior Pastor Barry Loving . . . . .1633 N. Nelson  
Hi-Land Christian Church  
Mike Sublett, Minister . . . . .1615 N. Banks

**Church of Christ**

Central Church of Christ  
Bryan Loughmiller, Minister . . . . .500 N. Somerville  
Church of Christ (Lefors)  
Gene Gee . . . . .215 E. 3rd.  
Church of Christ  
Rodney Tedford, Minister  
Mary Ellen & Harvester  
Church of Christ (Groom)  
Delton McGuire . . . . .101 Newcome  
Church of Christ (McLean)  
Jim Reyna . . . . .4th and Clarendon St.  
Church of Christ (White Deer)  
Don Stone . . . . .501 Doucette  
Southside Church of Christ of Pampa  
Frankie L. Lemons, Minister . . . . .738 McCullough  
Wells Street Church of Christ  
400 N. Wells  
Westside Church of Christ  
Dan Miles, Evangelist . . . . .1612 W. Kentucky

**Church of God**

Priest Park Church of God  
Eric Horton, Preacher . . . . .1123 Gwendolen

**Cowboy Church**

Cowboy Church in the Arena of Life at McLean  
Pastor, Ronnie Ferguson . . . . .420 Main St, McLean  
Great Plains Western Church  
Pastor, Joe Zillman . . . . .520 US Hwy. 287, Claude

**Episcopal**

St. Matthew's Episcopal Church  
Rev. Linda Kelly . . . . .727 W. Browning

**Interdenominational**

Trinity Church (McLean)  
Pastor: Larry Perkins . . . . .603 Commerce St.  
Crossroads Country Church  
Ray OQuin, Pastor . . . . .13801 Hwy 152

Lighthouse Covenant Fellowship  
Ed & Jennie Barker, Pastors . . . . .1733 N. Banks

**Jehovah's Witness**

1701 Coffee

**Lutheran**

Zion Lutheran Church  
Rev. Michael Erickson . . . . .1200 Duncan

**Methodist**

First United Methodist Church  
Rev. Jeff Taylor . . . . .201 E. Foster  
First United Methodist Church (Mobeetie)  
Dick Irvine . . . . .Wheeler & 3rd  
First United Methodist Church (McLean)  
Rev. Thacker Haynes . . . . .219 N. Gray  
First United Methodist Church (White Deer)  
Pam Lehman . . . . .101 W. 8th  
Groom United Methodist Church  
Rev. Tom Moore . . . . .303 E. 2nd  
Lefors United Methodist Church  
Rev. John M. Westman . . . . .311 E. 5th. Lefors  
St. Marks Christian Methodist Episcopal Church  
Rev. Raymond McKeever . . . . .406 Elm St.  
Paul United Methodist Church  
Rev. John Westman . . . . .511 N. Hobart

**Mormon**

Church of Jesus Christ of Latter Day Saints  
Bishop Steven Smith . . . . .29th & Aspen

**Nazarene**

Church of The Nazarene  
Rev. Lowell Schmidt . . . . .500 N. West

**Non-Denominational**

Bible Church of Pampa  
Bob Banks . . . . .300 W. Browning  
Body of Christ at Pampa  
210 N. Ward  
Iglesia Casa Del Alfarero  
Pastor Agustin Vasquez . . . . .500 N. Duncan  
Iglesia Nueva Vida - New Life Church - Bilingual  
Pastor Pedro Hernandez . . . . .801 E. Campbell  
Redeeming Grace Mission  
Liz Sculthrop, Mission Pastor . . . . .422 West St.  
Salvation Army  
Sgts. Gary & Patricia Steward. S. Cuyler at Thut  
Trinity Fellowship Church  
Lonny Robbins, Pastor . . . . .1200 S. Sumner  
Briarwood Full Gospel Church  
Rev. Lynn Hancock . . . . .1800 W. Harvester

**Pentecostal**

Faith Tabernacle  
Rev. Ben Corbitt, Pastor . . . . .610 Nalda  
First Pentecostal Holiness Church  
Rev. Albert Maggard . . . . .1700 Alcock  
Open Door Church of God in Christ  
Elder H. Kelley . . . . .402 Oklahoma St.

**Presbyterian**

First Presbyterian Church  
Dr. Edwin M. Cooley . . . . .525 N. Gray

**Southwest Collision**  
2525 W. Hwy. 152 • Pampa  
669-9997

**PAMPA NURSING CENTER**  
1321 W. Kentucky 669-2551  
Medicare  
Medicaid  
Special Alzheimers Care

**Culligan**  
314 STARKWEATHER 665-5729

**PARSLY'S SHEET METAL & ROOFING**  
214 E. Tyng  
669-6461  
Pampa, Texas

**RHEAMS DIAMOND SHOP**  
"May God Be With You During The Week"  
Ken & Stephanie Rheams

669-7171  
**Borger Hwy.- Pampa**  
JERRY E. CARLSON, INC.  
Jerry E. Carlson, Pres.

**TITAN SPECIALTIES, LTD.**  
11785 Hwy. 152  
Pampa, Texas  
665-3781

**LARRY BAKER PLUMBING HEATING & AIR**  
2711 ALCOCK TACLA003191 665-4392

**PAMPA OFFICE SUPPLY CO.**  
215 N. Cuyler 669-3353

**Texas PRINTING COMPANY**  
PHONE 806-969-7941  
318 N. BALLARD PAMPA, TEXAS

**JOHN T. KING & SONS**  
918 S. Barnes 669-3711

**Century 21 PAMPA REALTY INC.**  
312 N. Gray • 669-0007

Apartment Living For Seniors  
**PAM APARTMENTS**  
1200 N. Wells • 669-3353

**"Rock Bottom Prices"**  
1233 N. Hobart 665-0896  
Pampa, Tx.  
Albertsons Maxwell Carey - Store Director

**CURT B. BECK, P.E.**  
CONSULTING ENGINEER - POLLUTION AND ENERGY  
"When You Need To Know The Facts"  
HUGHES BLDG. SUITE 173A PAMPA, TEXAS 665-9281

**CLIFTON SUPPLY COMPANY**  
734 S. Cuyler 665-0089  
"We Now Handle Welding Supplies"

**H PAMPA REGIONAL MEDICAL CENTER**  
One Medical Plaza  
Pampa, Texas  
806-665-3721

**KEYES PHARMACY**  
"Your Key To Better Health"  
928 N. Hobart - Pampa, Texas  
669-1202 - Emergency 669-3559  
Merlin Rose R. Ph. - Owner - Pharmacist

2201 Perryton Pkwy.  
Jay Gist Pampa, Texas 669-CHIC (2442)  
Royce Jordan

**FORD FAMILY CHIROPRACTIC**  
Dr. Mark W. Ford, Jr.  
103 E. 28th Ave. Pampa, 806-665-7261

**SCHNEIDER HOUSE APARTMENTS FOR SENIORS**  
120 S. RUSSELL • 665-0415

**NATIONAL BANK OF COMMERCE**  
an office of First National Bank, Waupaca, WI  
Member FDIC  
1224 N. Hobart Pampa, Tx 806-665-0022  
501 Commerce St Childress, Tx 940-937-2514  
305 N. Main Shamrock, Tx 806-256-2181

**DEAN'S PHARMACY**  
2217 Perryton Pkwy. 669-6896  
Jim Pepper Pampa

**Gulberson - Stowers, Inc.**  
805 N. Hobart • (806) 665-1665  
rstowers@pan-tex.net

**ENGINE PARTS & SUPPLY**  
416 W. Foster 669-3305  
Local Company Serving Local Needs

**WAYNE'S WESTERN WEAR**  
1504 N. Hobart 665-2925

**THE PAMPA NEWS**  
"Your Hometown Newspaper"  
403 W. Atchison  
806.669.2525  
www.thepampanews.com

**GMC** WE ARE PROFESSIONAL GRADE  
**PONTIAC** "ACTION"  
**Cadillac** BREAK THROUGH  
**BUICK** DREAM UP  
**AN AMERICAN REVOLUTION**

**DORMAN TIRE & SERVICE CO., INC.**  
Herman Law 1800 N. Hobart Pampa, TX 665-5302

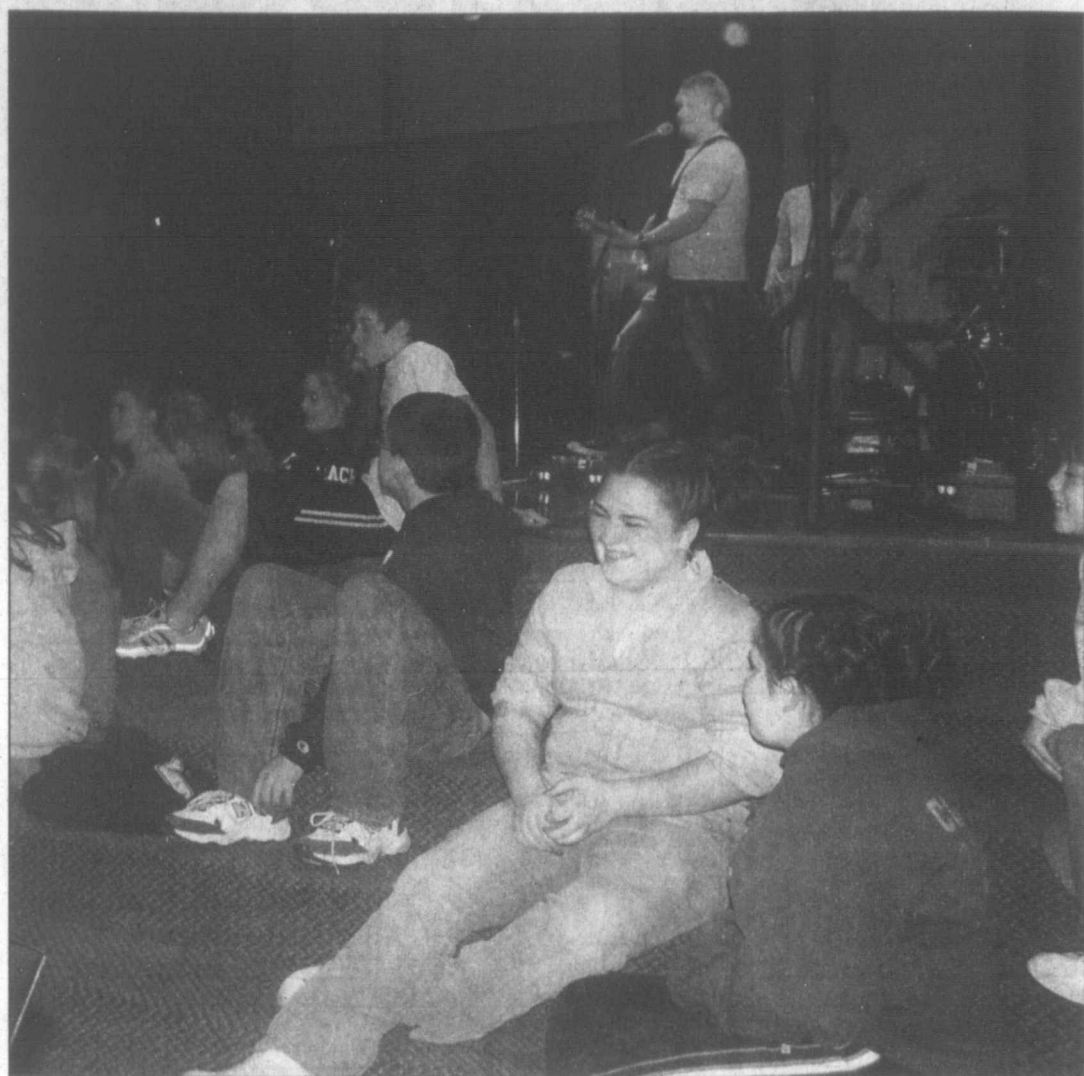
**Pampa Concrete Co., Inc.**  
220 W. Tyng Ave. • 669-3111

**The Panhandle's PREMIER GM DEALER.**  
805 N. Hobart • Pampa, TX  
(806) 665-1665

**JESUS CHRIST, THE SAME  
YESTERDAY, TODAY, AND FOREVER  
HEBREWS 13:8**

# Religion

## Disciple Now



Students fellowship while waiting for worship to begin during First Baptist Church's "Disciple Now Weekend" recently. Eighty-eight students from 18 to 11 years of age recently participated in First Baptist Church's "Disciple Now Weekend." The weekend theme was "Image is Everything," based on Psalm 139. "We live in a world today where students are many times driven to place their value on their performance and what others think about them," a press release from the church said. "The danger of following this formula though is most students end up with low self-esteem. Over the weekend, students were given hope and direction in how to avoid this 'self-image' trap." For more information about Disciple Now or other programs at Pampa's First Baptist, contact the church at 669-1155.

## Kutless to headline WBU concert

PLAINVIEW — Wayland Baptist University will be rockin' during Big Weekend, March 31-April 1, as the Christian rock band Kutless takes center stage at the annual concert event at 7:30 p.m., Friday in Harrah Auditorium.

Kutless will be in concert along with Falling Up, Disciple and Steller Kart as part of their "Hearts of the Innocent" tour.

Tickets are included with the registration fee for Big Weekend and will also be on sale at the University Bookstore in Plainview, at Lifeway Christian Store in Amarillo and Lubbock and at Mardel's in Lubbock. Tickets cost \$10.

The concert is the feature event for Wayland's college preview. High school juniors, seniors and college transfer students are invited to Wayland to experience college life on the WBU campus. Prospective students may sit in on college classes, attend chapel, audition for music, art and theatre, tryout for the cheerleading squad and the junior varsity basketball teams, attend an academic fair, watch a baseball

game and learn all about WBU.

Friday morning, prospective students are encouraged to attend classes and chapel with the afternoon set aside for fun and games. The concert takes place at 7:30 followed by a late-night breakfast where faculty and staff members serve students and prospective students in the cafeteria.

"That is actually my favorite thing," WBU Director of Admissions Jennifer Beal said of the late-night meal. "The best thing about Saturday is 'All About WBU' and the 'Academic Fair.' Those events give prospective students and their parents an opportunity to see what Wayland has to offer, and it gives them a chance to meet and visit with faculty and staff."

A special breakfast will be held for the parents where a panel consisting of parents of current students will discuss Wayland and answer questions from the parents of prospective students.

"Parents will be able to voice their concerns and make sure the needs that they have are being addressed,"

Beal said.

Wayland's offices will be open on Saturday to answer questions concerning financial aid, registration, admission requirements and other areas of concern.

Big Weekend will conclude with a Baptist Student Ministries praise service following dinner on Saturday.

Approximately 80 students have registered for the event so far.

Prospective students may register for \$25 which includes all meals, lodging and a concert ticket. Students may purchase a Big Weekend t-shirt for an additional \$8. Parents and sponsors may register for \$20 each. That price does not include lodging.

For more information, contact the Office of Admissions at 806-291-3500, 1-800-588-1928 or visit our Web site at [www.wbu.edu](http://www.wbu.edu).

## JUBILEE

## Goodlett to host jubilee, cookout

GOODLETT — Goodlett Gospel Jubilee will present Tim and Libby Thomas in concert at 7 p.m. April 1 at the Pease River Playhouse in Goodlett.

"The Thomases are a team devoted to spreading the gospel through music," a press release from organizers said. "They use a blend of sounds including adult inspirational, southern gospel, praise and worship and great hymns of the church. They keep a 180-date annual touring schedule across North America, playing churches, concert halls, conferences, women's retreats and revivals."

Libby Thomas has written a number of songs including "Simple Faith" and the duo just completed a fourth recording titled "Live in Branson" in both DVD and video format. The project is scheduled to air on TBN, GMT and other Christian networks in the spring.

The jubilee is a project of Mark Farr, pastor of Corinth Baptist Church in Eldorado, Okla., and Pease River Productions, Inc., a public charity. Farr scouts and books artists and Pease River provides the hall and handles production.

The Corinth Sisters host the jubilee, delivering southern gospel numbers in five-part harmony. The group consists of Donna Mefford, Geneva Smith, Terry Mefford, Beth Manney and Farr.

Admission to the jubilee is free. A cookout is scheduled prior to the concert at 5:30 p.m. at the Ole Town Cotton Gin. For reservations, call the gin at (940) 674-2477.



Jerry Smith will present The Isaacs live in concert at 7:30 p.m. March 25 at Borger High School auditorium in Borger. Admission to the concert is free. A family group, the Isaacs are based out of LaFollette, Tenn. This gospel group consists of Lily Isaacs, Ben Isaacs, Sonya Isaacs, Rebecca Isaacs Bowman and John Bowman.

## Church briefs

Highland Baptist Church, 1301 N. Banks, will hold revival services March 19-22. Services are scheduled at 11 a.m. and 6 p.m. Sunday and 7 p.m. Monday through Wednesday.

Darren Willis, pastor of New Hope Missionary Baptist Church, will be ministering during the services and Paul Searl will lead the music.

The services are open to the public. For more information, call 665-3300.

## AUTO PARTS

VACATION SEASON IS FAST APPROACHING  
... IS YOUR VEHICLE READY?

our knowledgeable staff is ready to help you with your automotive parts questions or needs come by today for a visit

## ENGINE PARTS & SUPPLY

Automotive Parts Distribution  
A Local Company Established In 1938

416 W. FOSTER

806.669.3305

E.P.S.

SERVING LOCAL NEEDS FOR 60 PLUS YEARS

with the

LARGEST INVENTORY IN THE AREA

including

AC-DELCO • WIX • MONROE • WAGNER

## The Phillips Family



March 19 - 22

Carpenter's Church  
639 South Barnes

Sunday 10:30 AM & 6:30PM

Mon-Wed 7:00PM

## Shepard's Crook Nursing Agency, Inc. Home Health Care

"Established 1988"

- SKILLED NURSING CARE
- HOME HEALTH AIDES
- PHYSICAL THERAPY
- ELDER WELLNESS PROGRAM
- CASE MANAGEMENT
- INTERNAL & IV INFUSION
- DIABETIC MANAGEMENT
- CARDIAC REHABILITATION
- WOUND CARE SPECIALIST
- MEDICARE-MEDICAIDE CERTIFIED



LICENSED BY THE TEXAS DEPT OF HEALTH

806-665-0356

916 N. CREST RD. SUITE 101 • PAMPA

806-273-2301

600 S. CEDAR • BORGER

806-358-9548

2920 UNIVEN • AMARILLO

806-256-5307

113 E. 3RD • SHAMROCK

806-874-1653

911 E. 2ND • CLARENDON

### "It Is Well With My Soul"

In 1873, Horatio Spafford decided to take his wife and 4 daughters on a vacation to Europe. An urgent business matter detained Spafford in New York, and he sent his family ahead on the French liner Ville du Havre, promising to meet them later. Unfortunately, their ship collided with another ship, and his four daughters perished. His wife survived and cabled him with the words, "Saved Alone." He booked passage immediately to join his wife in Cardiff, Wales, and one night, the ship's captain pulled him aside and said, "We are passing over the place where the Ville du Havre went down." Spafford went to his cabin and said to himself, "It is well; the will of God be done." He later wrote this great hymn based on these words.

Ref: Robert J. Morgan

This hymn history brought to you by



www.carmichael-whatley.com

TOP O' TEXAS MONUMENT CO.  
1600 DUNCAN • 665-4884

Fairview Cemetery Association  
1500 Duncan • 665-2412

"Serving Pampa for over 100 Years"

- Non Profit Association • Lot-Owner Owned Cemetery •
- Over 8,000 Undeveloped Spaces Available •
- We encourage you to compare lot prices and grave opening/closing costs.

# Dear Abby...

By Pauline & Jeanne Phillips

**DEAR ABBY:** My wife and I have been married just short of one year and are expecting our first child in about four months. Our marriage is a good one. We communicate well and love each other. There is one area, however, that continues to be problematic. I have been a youth basketball coach for three years. I was a coach before I met my wife and throughout our courtship. I have coached the same group of players, many of whose parents attribute their higher grades and better teamwork to their participation in the sport. My wife insists that I quit coaching these 11-year-olds once the baby arrives. Practice takes me away from home two hours, one night a week, and the games are two hours once a week. I don't think that's a lot because I'm home all of the other "free time." I love my wife and the fact that we will be parents. I don't think I'm asking too much when I tell her I'd like to continue coaching. I get a lot out of the experience and, honestly, I need some time to myself each week. Am I unreasonable or selfish in expecting her to support my coaching? I love her and she loves me -- but I love coaching, too. I think it makes a huge difference in the lives of my team members. -- **IN FOUL TROUBLE**

**DEAR IN TROUBLE:** Your wife may be a little insecure about her ability to handle motherhood. She needs you to acknowledge her feelings right now. Four hours of personal time a week may not seem too much to ask for. However, it might be better if you took a short leave of absence until the baby is on a regular schedule. I sincerely hope you'll return to coaching youth basketball in the future because you are doing a wonderful thing for those boys, and it's something they will carry with them for the rest of their lives.

**DEAR ABBY:** My husband and I have been married for two years. His ex-wife interjects herself into situations, such as visiting him in the hospital, and while there, attempts to run the show by questioning staff, etc. This makes me and my husband very uncomfortable. How should I handle this? -- **UNCOMFORTABLE IN KNOXVILLE**

**DEAR UNCOMFORTABLE:** The first thing to do is discuss the matter with your husband's physician. Next, bring it to the attention of the nursing supervisor on your husband's floor. Because of privacy issues, your husband's former wife is no longer entitled to the information she is demanding. Nor would she be able to visit your husband if his doctor ordered "No Visitors."

**DEAR ABBY:** When placing your wedding rings on your finger, which one goes first? Would it be the diamond engagement ring, because it goes closer to the heart, or would it be the band? -- **KAREN IN GEORGIA**

**DEAR KAREN:** Here's an easy way to remember: The wedding band goes closest to the heart. The diamond ring goes closest to the wallet.

**CONFIDENTIAL TO MY IRISH FRIENDS:**  
May you always have  
A sunbeam to warm you  
Good luck to charm you  
And a sheltering angel so nothing  
can harm you  
Laughter to cheer you  
Faithful friends near you  
And whenever you pray, heaven to hear you.

**HAPPY ST. PATRICK'S DAY!**

## For Better Or For Worse



## Zits



## Garfield



## Beetle Bailey



## Marvin

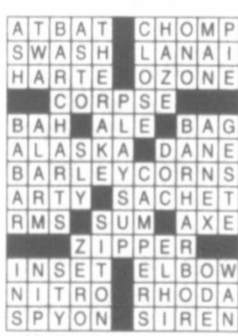


## Crossword Puzzle

### CROSSWORD

By THOMAS JOSEPH

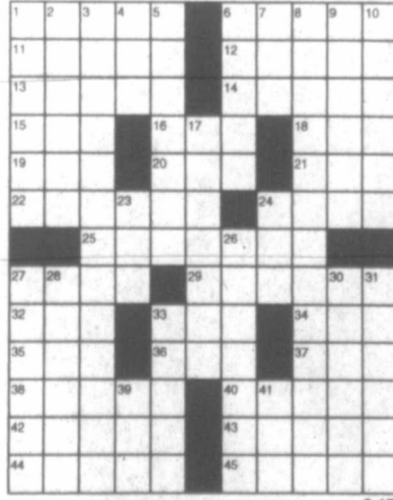
- ACROSS**
- 42 Ready to hit
  - 6 Loser to Truman
  - 11 Acid type
  - 12 Like lambs
  - 13 Mandolins' cousins
  - 14 Aquarium fish
  - 15 Cigar bit
  - 16 Cunning
  - 18 Suffers from Corp. VIP
  - 20 Fellow
  - 21 Be decisive
  - 22 Draws out
  - 24 Obligation
  - 25 Drunk
  - 27 Decree
  - 29 Fake
  - 32 Strange
  - 33 Neighbor of Ga.
  - 34 Overly
  - 35 Old's auto
  - 36 Every-body
  - 37 Campaigned
  - 38 Razz
  - 40 Hopping mad
- DOWN**
- 1 Regal home
  - 2 Tickled
  - 3 For sure
  - 4 Hydro-carbon suffix
  - 5 Rx amounts
  - 6 Eccentric
  - 7 Apple
  - 8 Way to
  - 9 Mesmerized
  - 10 Like
  - 11 Like
  - 12 Like
  - 13 Like
  - 14 Like
  - 15 Like
  - 16 Like
  - 17 Like
  - 18 Like
  - 19 Like
  - 20 Like
  - 21 Like
  - 22 Like
  - 23 Like
  - 24 Like
  - 25 Like
  - 26 Like
  - 27 Like
  - 28 Like
  - 29 Like
  - 30 Like
  - 31 Like
  - 32 Like
  - 33 Like
  - 34 Like
  - 35 Like
  - 36 Like
  - 37 Like
  - 38 Like
  - 39 Like
  - 40 Like



Yesterday's answer

- 1 Regal home
- 2 Tickled
- 3 For sure
- 4 Hydro-carbon suffix
- 5 Rx amounts
- 6 Eccentric
- 7 Apple
- 8 Way to
- 9 Mesmerized
- 10 Like
- 11 Like
- 12 Like
- 13 Like
- 14 Like
- 15 Like
- 16 Like
- 17 Like
- 18 Like
- 19 Like
- 20 Like
- 21 Like
- 22 Like
- 23 Like
- 24 Like
- 25 Like
- 26 Like
- 27 Like
- 28 Like
- 29 Like
- 30 Like
- 31 Like
- 32 Like
- 33 Like
- 34 Like
- 35 Like
- 36 Like
- 37 Like
- 38 Like
- 39 Like
- 40 Like

NEW CROSSWORD BOOK! Send \$4.75 (check/m.o.) to Thomas Joseph Book 1, P.O. Box 536475, Orlando, FL 32853-6475



## Marmaduke



## The Family Circus

THE FAMILY CIRCUS By Bil Keane



## B.C.



## Haggar The Horrible



## Peanuts



## Blondie



## Flo & Friends



Pa in

Des varsit woes 11. Pa Snyder The and l Burk Wyllie well. Bu gold, spirit said h

PO Ba

A B will leagu mach Pamp Club Base Kevin Mi the 5 while Baten Com Pitch Mi denta Spark Marr the c dren, and are m Bapti "I when Baten my Jeam coach Gard ing year abso looki the c

O

NO No

y-3 Yo Me Fo No

y-4 Ok W Tu SO Se

Oe At Lu

y-6 loss are c Fr O W Fe Co Tu M Co Se Lu Fe Tu O Co La M Su A



# Sports Day

## Pampa falls to Abilene Wylie 9-3 in Boomtown Classic tournament

By MICHAEL J. STEVENS  
Sports Editor

Despite a solid start to the season, the Pampa Harvester varsity baseball team has endured its share of struggles and woes since competing in the Snyder Tournament March 9-11. Pampa entered that tournament undefeated but the post-Snyder win column has been tough to find.

The Harvesters fell to Perryton on the road Tuesday, 5-3, and lost game one of the annual Boomtown Classic in Burk Burnett Thursday afternoon to Abilene Wylie, 9-3. Wylie got the best of Pampa in the Snyder tournament as well.

But before you fell sorry for the good guys in green and gold, you should know they are far from down. "The guys' spirit is still strong. They compete in every game we play," said head coach Clay Wilson. "They are far from down."

"That's the thing about these tournaments," Wilson continued. "You will always see each team's very best. This does nothing more than make us stronger and better prepared when district season starts."

In describing Thursday's loss to Wylie, Wilson said, "We played six of the best innings you've seen. I couldn't be more pleased with how our kids played."

Pampa was scheduled to face the host team, Burk Burnett, at 11:30 this morning. Again, Wilson pointed out, "I expect we will see Burk Burnett's ace pitcher this morning. I don't know a lot about the team, but do know the kid throws in the 90s."

Wilson said Bradley Johnson (0-1) would take the mound to start the game for Pampa.

The Boomtown Classic will conclude Saturday. The Harvesters start district play March 28.

## Gymnastic fantastic



Courtesy photo

Level 8 All-Around gymnast Madison Fatheree (left) and Level 7 gymnast MaKayla Hampton recently competed at the Texas Women's University state qualifying meet in Denton. The 11-year-olds train at Gymnastics of Pampa. "They are already very accomplished for their age," says coach Kristi Petty.

### POYC BASEBALL

#### Batens to lead youngsters

A husband and wife team will head up the T-ball league and the pitching machine league for the Pampa Optimist Youth Club baseball program this season, according to Baseball Commissioner Kevin Davis.

Misty Baten will handle the 5-6 year old T-ballers while her husband, Brent Baten, will be the Commissioner for the 7-8 Pitching Machine League.

Misty Baten has been a dental assistant for Dr. John Sparkman for eight years. Married almost 15 years, the couple has three children, Destry, 10, Clay, 7, and Jaycey, 5. The Batens are members of the Calvary Baptist Church.

"I played Optimist ball when I was a kid," Misty Baten said. "This will be my fourth year to coach. Jeanna Zuniga and I coached the Memory Gardens in the boys pitching machine league last year and had a blast. I absolutely love it! I am looking forward to being the commissioner for the

younger T-ballers."

Misty Baten has also been a coach in Optimist flag football and boys' third and fourth grade basketball.

Brent Baten has helped with every team their children have played on while working shift work as an operator for Celanese.

"It is rewarding for the kids, parents and coaches to be involved in T-ball," Misty Baten said. "It's all about the kids. That's why I'm here."

Registration for Optimist Baseball/Softball 2006 is set for March 21 through 24 from 5:30 to 7 p.m. at the Optimist Club.

T-ballers and pitching machine players are not required to try out and will be assigned to teams by a blind draw.

An organizational meeting for managers, coaches, league officials and interested parents will be held at 6:30 p.m. Monday, March 20 at the Optimist Club.

The Pampa Optimist Youth Club is a Pampa United Way agency.

## Montoya, Henderson and Abernathy win weekly scramble

Regular Senior Scramble  
Hidden Hills  
Golf Course  
March 15, 2006

1st Place (67)  
Pat Montoya  
Bob Henderson  
Bill Abernathy

2nd Place (67)  
Harley Knutson  
O.K. Lee  
Oscar Sargent  
Bill Brown

3rd Place (69)  
Bill King  
Ray Covalt  
Bob Adcock

4th Place (69)  
Tom Lindsey  
John Hervey  
Nathan Lancaster  
Callens George

Closest to the Pin  
Billie Mac Millican (#6)  
Pat Montoya (#18)

## Selig being careful in Bonds case

SCOTTSDALE, Ariz. (AP) — Commissioner Bud Selig is proceeding cautiously before deciding whether baseball should launch an investigation into allegations that Barry Bonds used performance-enhancing drugs for at least five seasons.

Selig dismissed a report in the New York Daily News, citing an unidentified baseball official, that the commissioner had already decided to investigate Bonds.

Bonds, who broke Mark McGwire's single-season record with 73 home runs in 2001, is accused in an upcoming book of using steroids, human growth hormone, insulin and other drugs for at least five seasons beginning after the 1998 season. Baseball did not have a joint drug agreement with the union banning steroids and other performance-enhancing substances until September 2002.

## CHL standings

### NORTHERN CONFERENCE

#### Northeast Division

	W	L	OTL	Pts	GF	GA
y-Bossier-Shreveport	37	14	8	82	204	160
Youngstown	21	33	5	47	192	225
Memphis	21	33	4	46	188	230
Fort Worth	16	35	8	40	145	225

#### Northwest Division

	W	L	OTL	Pts	GF	GA
y-Colorado	41	12	6	88	229	174
Oklahoma City	34	22	3	71	219	193
Wichita	32	18	7	71	207	185
Tulsa	28	25	5	61	194	201

### SOUTHERN CONFERENCE

#### Southeast Division

	W	L	OTL	Pts	GF	GA
y-Laredo	38	14	6	82	211	142
Austin	32	25	3	67	181	197
Rio Grande Valley	29	24	6	64	183	172
Corpus Christi	22	32	5	49	138	187

#### Southwest Division

	W	L	OTL	Pts	GF	GA
Odessa	32	20	6	70	197	178
Amarillo	29	25	3	61	184	187
Lubbock	26	27	4	56	162	178

#### y-clinched division

NOTE: Two points are awarded for a win, one point for loss in overtime or shootout. Overtime or shootout losses are only denoted in the OTL column, not the loss column.

#### Friday's Games

Odessa at Amarillo  
Wichita at Bossier-Shreveport  
Fort Worth at Lubbock  
Colorado at Youngstown  
Tulsa at Austin  
Memphis at Laredo  
Corpus Christi at Rio Grande Valley

#### Saturday's Games

Lubbock at Amarillo  
Fort Worth at Odessa  
Tulsa at Bossier-Shreveport  
Oklahoma City at Wichita  
Colorado at Youngstown  
Laredo at Austin  
Memphis at Rio Grande Valley

#### Sunday's Games

Amarillo at Lubbock

## Mexico eliminates U.S. from WBC

ANAHEIM, Calif. (AP) — Roger Clemens bid goodbye to baseball in uncharacteristic fashion — with a loss.

Oliver Perez and seven relievers combined to pitch a three-hitter, leading Mexico to a 2-1 victory over the Rocket and Team USA on Thursday night, eliminating the Americans from the inaugural World Baseball Classic and putting Japan in the semifinals.

Clemens pitched reasonably well, but received little offensive support as a lineup loaded with All-Stars failed to get the job done. He has said he would retire when the Classic was over. The 43-year-old right-hander did nothing to discourage that notion after facing Mexico.

"For me, right now, it's goodbye," he said in a brief statement issued through Team USA. "I felt great tonight and my body responded well. I'm very thankful for the opportunity to participate in this event. It made all the work I did in the last six weeks worthwhile."

At least one of his United States teammates isn't so sure.

"I just feel it," Derek Jeter said with a smile when asked if he thought Clemens would return.

Clemens, who has won 341 games and struck out 4,502 batters in 22 big league seasons, wasn't at his best, allowing six hits and two runs in 4 1-3 innings

with no walks and four strikeouts. He threw 73 pitches — seven below the maximum for the second round.

South Korea had a 3-0 second-round record in Group One, with Team USA, Japan and Mexico all going 1-2. Japan earned the second semifinal berth from the group by allowing the fewest runs in games between the tied teams.

Japan, which has already lost twice to South Korea in the Classic, faces its archrival in the nightcap of Saturday's day-night doubleheader in San Diego, with the Dominican Republic meeting Cuba in the opening semifinal game. The winners play Monday for the championship.

Meanwhile, Team USA members return to their major league teams to finish spring training expressing gratitude for this experience and sadness with the outcome.

"You know, there was a lot said about Team USA not really taking this seriously, but I can guarantee you there's a lot of guys hurting down in that clubhouse right now," manager Buck Martinez said.

Jake Peavy, who would have pitched in the semifinals, agreed, saying: "This is up there with anything that I've ever done. It's disheartening. There's a lot of emotional guys in the clubhouse. It's not easy to deal with."

Martinez said he thought Clemens threw the ball well, but was ready to come out of the game when the time came.

"Rocket looked at me and looked fatigued," Martinez said. "He says, 'What do you got out there?' That was a sign that he felt like I did. We probably had a better shot with a fresh arm out there."

Scot Shields entered with runners at first and third and one out, and Jorge Cantu's grounder drove in what

proved to be the winning run.

Perez allowed only one hit in three scoreless innings, and the Mexican bullpen retired 12 straight batters until Chipper Jones drew a one-out walk off Jorge De La Rosa in the ninth. "We just never got in the groove with the bats," Team USA manager Buck Martinez said, noting his team scored only eight runs in three second-round games.

## PAMPA OPTIMIST BASEBALL / SOFTBALL 2006

### SIGNUPS & TRYOUTS

...

Boys & Girls Ages 5-15  
Registration March 21-24  
5:30pm to 7:00pm  
Optimist Club Building

...

### EVERYONE MUST REGISTER

...

For More Information  
Ronnie Haynes 665-6859  
Kevin Davis 665-7843

# St. Patrick's Day

March 17th



*Irish Blessing*

*May your blessings outnumber  
The shamrocks that grow,  
And may trouble avoid you  
Wherever you go.*

.....

**Century 21** **PAMPA REALTY INC.**  
More POWER to you 312 N. Gray 669-0007

**Schneider House Apartments**  
Senior Living At Its Finest  
120 S. Russell • Pampa, TX • 665-0415

**Massage Therapy**  
Cathy Potter • RMT  
1221 N. Hobart • NBC Plaza II • Ste 9 • 669-0013

**Brown's SHOE**  
"We Measure Your Feet"  
1500 N. Hobart • 806-665-5691  
Mon-Sat 9am-7pm Sun 1pm-5pm

**H** PAMPA REGIONAL MEDICAL CENTER

**DORMAN TIRE & SERVICE CO., INC.**  
1800 N. Hobart  
665-5302  
665-6441  
800-665-5302

**NATIONAL BANK OF COMMERCE**  
an office of First National Bank, Waupaca, WI  
Member FDIC  
1224 N. Hobart Pampa, Tx 806-665-0022  
501 Commerce St Childress, Tx 940-937-2514  
305 N. Main Shamrock, Tx 806-256-2181

**FIRST STATE BANK OF MIAMI**  
Main Bank • 100 S. Main • Miami, TX • 806-868-2771 • Pampa Branch  
120 W. Kingsmill • Pampa, TX • 806-665-3669 • Member FDIC

**PEGGY'S PLACE**

Sunday, Monday, Tuesday Open 6AM-10PM  
Wednesday Through Saturday Open 24 HOURS

1801 ALCOCK • 665-7830

**One Medical Plaza**  
Pampa, Texas  
806-665-3721

Apartment Living For Seniors

**Pam Apartments**

1200 N. Wells • 669-2594

Tested and proven in 1000's of commercial & residential locations all across North America.  
**BATH FITTER®**  
of Amarillo  
1-888-465-4978 Toll Free

**Culberson - Stowers, Inc.**  
805 N. Hobart • (806) 665-1665  
rstowers@pan-tex.net

**THE PAMPA NEWS**

"Your Hometown Newspaper"

403 W. Atchison • 806.669.2525  
www.thepampanews.com

**PARSLEYS SHEET METAL & ROOFING**  
214 E. TYNG AVENUE  
800-442-4668 • 806-669-6461



**Johnson Home Furnishings**

801 W. Francis 665-3361

**LEFORS FEDERAL CREDIT UNION**  
835-2773  
117 W. 2ND STREET • LEFORS, TEXAS

**WARREN CHISUM**  
STATE REPRESENTATIVE

**Johnson Home Entertainment Center**

2211 Perryton Parkway 665-0504

**Communication Connection**  
Office: (806) 669-1551  
Mobile: (806) 662-2949  
Fax: (806) 665-0900  
Dish Network Provider  
Jenene Alvarado - Manager  
2145 N. Hobart Street Pampa, TX 79065

**B&B PHARMACY**

669-1076-OR-665-5788 EMERGENCY 665-2892  
300 N. Ballard

**5 Special Notices**

**ADVERTISING Material** to be placed in the Pampa News, **MUST** be placed through the Pampa News Office Only.

**10 Lost/Found**

**REWARD.** Lost Male Black Lab w/ one blue eye. Call 669-0869 or 664-3376.

\$200 Reward-Missing Dandy, small white male Poodle. Needs medicine for heart. Call 898-4809 or 662-7707.

**LOST** Himalayan Persian female cat, light gray. No collar. 600 bl. N. Dwight. Call 669-6763.

**FOUND** male dog in Northcrest area. Call 669-2835 leave message.

\$100 REWARD. Lost Male Black Lab w/ one blue eye. Call 669-0869 or 664-3376.

**FOUND** brown 3 month old puppy, 1100 block of E. Foster. Call 662-5245 lv. msg.

**13 Bus. Opp.**

**AREA REP-No Selling** Executive Level Income Invest \$13K for Accounts & Inventory 800-373-5470

**14d Carpentry**

**Carpentry, Roofing,** Replacement windows, steel siding & trim Jerry Nichol 669-9991, 662-8169

**OVERHEAD DOOR REPAIR** Kidwell Construction. Call 669-6347

**DIAMOND SERVICES COMPANY**

Due to expansion needing:  
**Heavy Equipment Operators**  
 Dozer, Motorgrader, Trackhoe

**Benefits include:**  
 Top Wages-Medical / Dental Insurance 100% of Employee & Family Paid-401K Plan Paid-Holidays-Safety Incentive-Vacation Uniforms-Car Hire-or Company Vehicles

Relocation allowance available  
 Relocation may not be required

Call 1-800-299-9873 for an application or e-mail info to Mark Campbell [mcampbell@diamond-services.com](mailto:mcampbell@diamond-services.com)

Diamond Services Company has been in business since 1958 in Woodward, OK [www.diamond-services.com](http://www.diamond-services.com)

**ENBRIDGE**

Enbridge Energy Company, Inc, a leader in natural gas industry, is currently seeking a Gas Measurement Supervisor for our AnadarkoSystem located in the Texas and Oklahoma Panhandle. The select candidate will safely and efficiently supervise 6 measurement techs, 2 communication techs and 1 flowal measurement analyst.

Qualified candidates will possess:  
 A minimum of a High School Education/GED  
 A minimum of 10 year experience in field gas measurement or related operations experience.  
 Good computer skills including a working knowledge of MS-Excel and MS-Access programs.  
 Able to work with electronic flow meters, applicable software and other related gas measurement equipment.

If you are interested in this opportunity, please forward your resume & salary history / requirements in confidence to:  
 Gas Measurement Superintendent  
 PO Box 2678  
 Palestine, Texas 75801

Enbridge is an Equal Opportunity Employer

**HAPPY BIRTHDAY** for Saturday, March 18, 2006:  
 You might want to think through your decisions with extra care. Unexpected developments frequently take you in new directions. Nevertheless, others find you unpredictable and sometimes react to that behavior. Arguments come from those you least expect. Work on seeing yourself as others do, and you will be a lot happier. If you are single, the odds of having a peaceful relationship aren't good. Expect excitement to surround you. If you are attached, a move or change in your home is likely. **SCORPIO** helps you see the high road.

The Stars Show the Kind of Day You'll Have:  
 5-Dynamic; 4-Positive; 3-Average; 2-So-so; 1-Difficult

**ARIES** (March 21-April 19)  
 ★★★★★ If you are willing to take in the big picture, you will be at the first step to achieving your desires. The path will suddenly seem clear. You will notice that the only person who challenges you is you. Tonight: Build your self-confidence.

**TAURUS** (April 20-May 20)  
 ★★★★★ If a friend is awry, you know how to handle it. It is clear that a partner or close associate could disagree with your logic. Don't make this a battle. Together you might come up with a better idea or plan. Tonight: Say yes to an invitation.

**GEMINI** (May 21-June 20)  
 ★★★★★ Deferring to others could be difficult under the circumstances. Use your imagination to get past an immediate issue. You might be a bit pushed by

**14d Carpentry**

**OWENS CARPENTRY**  
 Additions, remodeling, decks & porches. Over 20 yrs exp., 665-4722, 669-6720 Free Est.

**14e Carpet Serv.**

**NU-WAY** Cleaning service, carpets, upholstery, walls, ceilings. Quality doesn't cost...it pays! No steam used. Bob Marx owner-operator. 665-3541, or from out of town, 800-536-5341.

**14g Elec. Contr.**

**CAITFISH Electric & Industrial Contractor.** Serving oilfield, industrial, commercial, & residential, with over 15 years experience. Call Shane Kennedy at 663-0360.

**14h Gen. Serv.**

**COX Fence Company.** Repair old fence or build new. Free estimates. Call 669-7769.

IS your House or Foundation Settling? Cracks in bricks or walls? Door won't close? Call Childers Brothers, Inc. Stabilizing & Foundation Leveling. 1-800-299-9563 or 806-352-9563 Amarillo.

**D. R. Shelton**  
 Sheet rock, carpentry, painting, ceramic tile, free estimates, 806-664-4056.

**HANDYMAN**

Landscaping, Carpentry, Painting, Tree Trimming, Clean Up, Fencing, Most Odd Jobs. Call for Free Estimates. (806)662-7692

**HANDYMAN:** Painting, carpentry, fencing, welding, hauling, cleanup. No job too small! 662-2566.

**14r Plowing/Yard**

ALL types of yard, plowing, haul off and landscaping. Free estimates. Call 806-665-5529.

**21 Help Wanted**

**JANITORIAL** Service taking appl., drivers license required, will train. 669-9186, 665-2667.

**NOW HIRING FOR CAREER OPPORTUNITIES**

- \* Warehousemen/Delivery
- \* Pen Rider
- \* Mechanic Trainee
- \* Inside Sales
- \* Warehousing
- \* Staffing Coordinator
- \* Licensed Professional Counselor
- \* Part-time Clerical

Part-time and Full-time. Temp and Temp to Perm. Drug Screens Required. Never a Fee to Applicants. Apply Now!

**CRALL PRODUCTS**

Immediate Openings in ASSESSOR, ONAS Needed for All Shifts. McClain Care Center. Call 806-779-2469. Ask for Administrator Billy Ray Johnston

**CRALL PRODUCTS**

Immediate Openings • Welders • Painter/Sandblaster 40hrs + wk. Salary based on exp. Apply in Person: W. Hwy 152, Pampa

**CRALL PRODUCTS**

2930 W. Hwy. 152 ASME Code Welder-Fabricators for Pressure Vessels Needed. Apply in person or Fax resume to: 665-9736

**Summer Employment**

Fun Valley Family Resort, South Fork Colo. Needs students to work all types of jobs, kitchen, dining room, house keeping, stores, maintenance, horse wrangler & office. Salary, Room, Board, Bonus. For info. & appl. Write to Personnel Director, 6315 Westover Dr., Granbury Tx. 76049

**SUMMER EMPLOYMENT**

Fun Valley Family Resort, South Fork Colo. Needs retirees w/ own RV for all types of jobs. Office, house keeping, cooks, maintenance & RV parks. For info & application. Write to Personnel Director, 6315 Westover Dr., Granbury Tx. 76049

**KITCHEN help needed.**

Apply in person at Dyer's Barbeque, Pampa.

**DENTAL Assistant.**

Part Time (2 or 3 days per week) Experience desired, but not necessary. Send resume to Box 12 c/o The Pampa News P.O. Box 2198, Pampa Tx, 79066

**CDL position open.**

Dump truck experience preferred. Day hauls only. Pre-employment drug test is required. Apply in person. West Texas Landscape. 120 S. Hobart.

**FOUNTAIN help.**

Great hours. Clean, neat & dependable. Apply in person, Heard-Jones, Pampa

**DRIVERS NEEDED**

EXP. full-time Truck Drivers needed to haul crude oil. Must have a good driving record & at least 2 yrs. exp. on tractor trailer rigs. CDL, Tanker and HazMat endorsements will be required. Must be able to pass a DOT physical & drug screen. Local hauls and exc. benefits. Day Shift. \$500 sign-on bonus. Openings in the Pampa area. For an appl., phone: 1-800-451-1931 or 1-806-659-2571. Plains Marketing, L.P. An Equal Opportunity Employer, M/F.

**EXCEL Production**

is accepting resumes and/or application for an Exp. Field Pumpier. Individual must have knowledge and exp. in the operations of oil & gas wells, compressors & tank batteries. No phone calls will be accepted. Please bring resume or pick up application at 1050 N. Price Rd. or mail resume to:

Attn: Personal Excel Production P.O. Box 1800 Pampa, TX 79066-1800

SALES position available. Must have lifttruck experience and able to lift 50lb. A professional appearance is mandatory. Must have a valid drivers license. Pre-employment drug test required. apply in person. West Texas Landscape. 120 S. Hobart.

**CDL position open.**

Dump truck experience preferred. Day hauls only. Pre-employment drug test is required. Apply in person. West Texas Landscape. 120 S. Hobart.

**FOUNTAIN help.**

Great hours. Clean, neat & dependable. Apply in person, Heard-Jones, Pampa

**DRIVERS NEEDED**

EXP. full-time Truck Drivers needed to haul crude oil. Must have a good driving record & at least 2 yrs. exp. on tractor trailer rigs. CDL, Tanker and HazMat endorsements will be required. Must be able to pass a DOT physical & drug screen. Local hauls and exc. benefits. Day Shift. \$500 sign-on bonus. Openings in the Pampa area. For an appl., phone: 1-800-451-1931 or 1-806-659-2571. Plains Marketing, L.P. An Equal Opportunity Employer, M/F.

**21 Help Wanted**

**NOTICE**  
 Readers are urged to fully investigate advertisements which require payment in advance for information, services or goods.

**OUTREACH**

Health Services hiring home health providers in Pampa area. Must be 18 yrs. of age. No exp. necessary. Please contact Regina or Dee 800-800-0697. EOE.

**FT Pharmacy Technician** needed. Send Resume to Box 13 C/O of The Pampa News, PO Box 2198, Pampa TX 79066

**PT Evening Cook's** Helper is needed at St. Ann's Nursing Home. Must be able to work weekends. More info., call 537-3194, ask for Linda or Phyllis.

**SIVALLS Inc.** is looking for welder fabricators, and paint test service tech. Welding and drug tests req. Benefits: health ins., profit sharing, 401k, 8 paid holidays and 10 days vacation per year. 806-665-7111, Pampa.

**INNOVATIVE STAFFING SOLUTIONS, LLC**

1224 N. Hobart St., NBC Plaza II, Ste. 11 Pampa, TX 79065 Phone (806) 665-2991

**Full-Time Employment!**

Must be 18! Insurance Vacation Sick Leave Retirement Offered Bartlett Lumber 500 W. Brown Pampa

EXCEL Production is accepting resumes and/or application for an Exp. Field Pumpier. Individual must have knowledge and exp. in the operations of oil & gas wells, compressors & tank batteries. No phone calls will be accepted. Please bring resume or pick up application at 1050 N. Price Rd. or mail resume to:

Attn: Personal Excel Production P.O. Box 1800 Pampa, TX 79066-1800

SALES position available. Must have lifttruck experience and able to lift 50lb. A professional appearance is mandatory. Must have a valid drivers license. Pre-employment drug test required. apply in person. West Texas Landscape. 120 S. Hobart.

**FOUNTAIN help.**

Great hours. Clean, neat & dependable. Apply in person, Heard-Jones, Pampa

**DRIVERS NEEDED**

EXP. full-time Truck Drivers needed to haul crude oil. Must have a good driving record & at least 2 yrs. exp. on tractor trailer rigs. CDL, Tanker and HazMat endorsements will be required. Must be able to pass a DOT physical & drug screen. Local hauls and exc. benefits. Day Shift. \$500 sign-on bonus. Openings in the Pampa area. For an appl., phone: 1-800-451-1931 or 1-806-659-2571. Plains Marketing, L.P. An Equal Opportunity Employer, M/F.

**EXCEL Production**

is accepting resumes and/or application for an Exp. Field Pumpier. Individual must have knowledge and exp. in the operations of oil & gas wells, compressors & tank batteries. No phone calls will be accepted. Please bring resume or pick up application at 1050 N. Price Rd. or mail resume to:

Attn: Personal Excel Production P.O. Box 1800 Pampa, TX 79066-1800

SALES position available. Must have lifttruck experience and able to lift 50lb. A professional appearance is mandatory. Must have a valid drivers license. Pre-employment drug test required. apply in person. West Texas Landscape. 120 S. Hobart.

**FOUNTAIN help.**

Great hours. Clean, neat & dependable. Apply in person, Heard-Jones, Pampa

**DRIVERS NEEDED**

EXP. full-time Truck Drivers needed to haul crude oil. Must have a good driving record & at least 2 yrs. exp. on tractor trailer rigs. CDL, Tanker and HazMat endorsements will be required. Must be able to pass a DOT physical & drug screen. Local hauls and exc. benefits. Day Shift. \$500 sign-on bonus. Openings in the Pampa area. For an appl., phone: 1-800-451-1931 or 1-806-659-2571. Plains Marketing, L.P. An Equal Opportunity Employer, M/F.

**EXCEL Production**

is accepting resumes and/or application for an Exp. Field Pumpier. Individual must have knowledge and exp. in the operations of oil & gas wells, compressors & tank batteries. No phone calls will be accepted. Please bring resume or pick up application at 1050 N. Price Rd. or mail resume to:

Attn: Personal Excel Production P.O. Box 1800 Pampa, TX 79066-1800

SALES position available. Must have lifttruck experience and able to lift 50lb. A professional appearance is mandatory. Must have a valid drivers license. Pre-employment drug test required. apply in person. West Texas Landscape. 120 S. Hobart.

**FOUNTAIN help.**

Great hours. Clean, neat & dependable. Apply in person, Heard-Jones, Pampa

**DRIVERS NEEDED**

EXP. full-time Truck Drivers needed to haul crude oil. Must have a good driving record & at least 2 yrs. exp. on tractor trailer rigs. CDL, Tanker and HazMat endorsements will be required. Must be able to pass a DOT physical & drug screen. Local hauls and exc. benefits. Day Shift. \$500 sign-on bonus. Openings in the Pampa area. For an appl., phone: 1-800-451-1931 or 1-806-659-2571. Plains Marketing, L.P. An Equal Opportunity Employer, M/F.

**21 Help Wanted**

**MEMORY** Gardens Cemetery and Mausoleum of Pampa is looking for one or two highly motivated persons to talk to families in the Pampa area about Cemetery Pre-planning. If you're good with people and enjoy a challenge, call Daniel today at 665-8921.

**OPENING** for Heating & Air Tech, and 2 helpers. Drug test req'd. No Phone Calls Please. Come by Larry Baker Plumbing Heating & Air at 11780 Hwy 152

**FT Electronic Assembly** Work. Will train. Must be motivated to learn & work. Apply @ Guardian. 1490 S. Doyle. 665-5010. D.L. & background req.

**EXP.** Maintenance person needed. Must have own tools. Call to apply 665-4274 or 806-433-6939

**NATIONAL HOME HEALTH CARE**

is searching for a Full-Time Delivery Technician. On-Call time and heavy lifting req. Final applicant will be subject to drug screen, driving record & criminal background. 1521 N. Hobart, Pampa

**Aaron's Sales & Lease**

Will be accepting applications for Sales Mgrs. & Product Technicians. Apply Texas Workforce Comm. 1224 N. Hobart (NBC Plaza) Pampa

**NEED** energetic sales people, part-time hrs. Apply at Murphy USA (station in front of Wal-Mart) EXPERIENCED Pressers needed. Apply in person at Quality Cleaners, 410 S. Cuyler, Pampa.

**OUTSIDE** Sales People needed. Experience Preferred. Top Pay-Paid weekly. Call 665-4442.

**Car Washer / Detailer** Apply in Person Prestige Auto 101 S. Hobart, Pampa

**Auto Painter's Helper** Apply in Person Prestige Auto 101 S. Hobart, Pampa

**CNC MACHINIST** Well-established Amarillo based manufacturing firm is offering an excellent opportunity for CNC Machinists. Idea candidates will have at least 5 years machine shop experience and a minimum of 2 years experience setting up and operating CNC Machines. Ability to read blueprints and successfully work in a team oriented environment is a requirement. Familiarity with Fanuc Controller would be beneficial. We offer great pay & benefits which include paid vacations, affordable health insurance, 401k and profit sharing plan and more. Enjoy the benefits, rewards & stability our company offers.

Interested applicants should send a resume to: Amarillo Gear Company P.O. Box 17910 Amarillo, TX 79105

We are an Equal Opportunity Employer

**ASSEMBLY WORKERS**

Well-established Amarillo based manufacturing firm is offering an excellent opportunity for assembly workers. Ideal candidates will have mechanical abilities with light machine shop experience. Successful applicants should have the ability to work in a team oriented environment and the desire to learn.

We offer great pay & benefits which include paid vacations, affordable health insurance, 401k and profit sharing plan and more. Enjoy the benefits, rewards & stability our company offers.

Interested applicants should send resume to: Amarillo Gear Company P.O. Box 1789 Amarillo, TX 79105

We are an equal opportunity employer.

**NEW GE Gas Dryer.**

Never Used. Paid \$370 Will Take \$150. Call 665-5638 or (469)658-1622.

**69 Misc.**

**ADVERTISING Material** to be placed in the Pampa News **MUST** be placed through the Pampa News Office Only.

1970 series Coca Cola box. Early 60's cigarette machine. Roll top desk. Slot machine, Call 669-0343; leave message.

**SEASONED** Oak Firewood, delivered and stacked. 779-3284.

**AXYDLBAAXR**

is LONGFELLOW

One letter stands for another. In this sample, A is used for the three L's, X for the two O's, etc. Single letters, apostrophes, the length and formation of the words are all hints. Each day the code letters are different.

**CRYPTOQUOTE**

3-17  
 ZOU VJP DOW NWUKP'Z  
 CUJN FWNN MWYK OJK  
 PW JNLJPZJFU WLUC ZOU  
 VJP DOW BJP'Z CUJN ZOU

— VJCY ZDJGP  
 Yesterday's Cryptoquote: LIFE IS LIKE PLAYING THE VIOLIN IN PUBLIC AND LEARNING THE INSTRUMENT AS ONE GOES ON.

— SAMUEL BUTLER

**21 Help Wanted**

**CLERKS** Needed. Apply In Person At Davis Minit Mart. 1106 Alcock.

**GLASS** Installer needed. Will train. Come by 1432 N. Banks, Pampa, and apply in person!

**CABLE ONE Has A Job Opening for a Direct Sales Representative**

An excellent opportunity to market Cable Television & High Speed Internet door to door. Sales exp. & bi-lingual a plus. Self-motivated and a team player. Compensation \$24K to \$32K. Full benefits plus free cable & internet service. Some travel within a 100 mile radius w/ gas allowance. Pick up an application or send resume to Cable One 1423 N. Hobart Pampa, Tx. Attn: Donna Litterell Equal Opportunity Employer

**UNITED Supermarkets,** Ltd. is seeking part-time sackers, checkers, night stockers and deli clerks. Applicants interested in deli clerk must be at least 18 years of age. The ideal candidate will have a strong commitment to exceptional customer service. United Supermarkets rewards its team members with outstanding compensation and benefits. If you are interested in applying, please apply in person at United Supermarkets 1420 N. Hobart Pampa, TX 79065. No phone calls, please. EOE

**75 Feeds/Seeds**

**GOOD Wyoming Grass** & Alfalfa Hay. Call Jackie at (806)379-7130 or (806)231-0916.

**FERTILIZED** Grass Hay for sale. Gary Hall, 806-663-0740.

**48 Trees/Shrubs**

**PUTMAN'S** Quality Serv. Tree trim, custom carports, stor. bldgs., decks. Msg. 662-4583

**WE Do Tree & Lawn** Service, Shrubs, Flowerbeds, etc. David Jenkins, 2100 N. Banks, Pampa, Tx. 806-665-0480. Free Estimates, Sr. Discounts.

**50 Building Suppl.**

**White House Lumber** 101 S. Ballard 669-3291

**53 Machinery/Tools**

**TITAN TG-5500** industrial Diesel Generator and TAC-2T Industrial Dual Tank Air Compressor. Both "in the plastic." \$5500 for both. 217-0436

**60 Household**

Mattress Sets IN STOCK Extra Thick Pillow Top. T. \$190.00 F. \$230.00 Q. \$360.00 K. \$450.00 5 yr. Warr. Elite Furniture 806-677-0400

**HOT TUB** Beautiful 2006 w/Lounger Never used. Waterfall 6.5 hp, 43 jets, Aroma therapy, cover, startup kit \$4,000 806-670-9337

**Distributor Overstock** Brand name mattress sets, orthopedic & chiropractic endorsed. All brand new w/ factory warr. 40-80% Off retail. Can deliver. Pillow tops: Tw. \$176, Full \$227, Qu. \$241, Kg \$371. Push tops: Tw. \$87, Full \$115, Qu. \$151, Kg \$243. 806-517-1050.

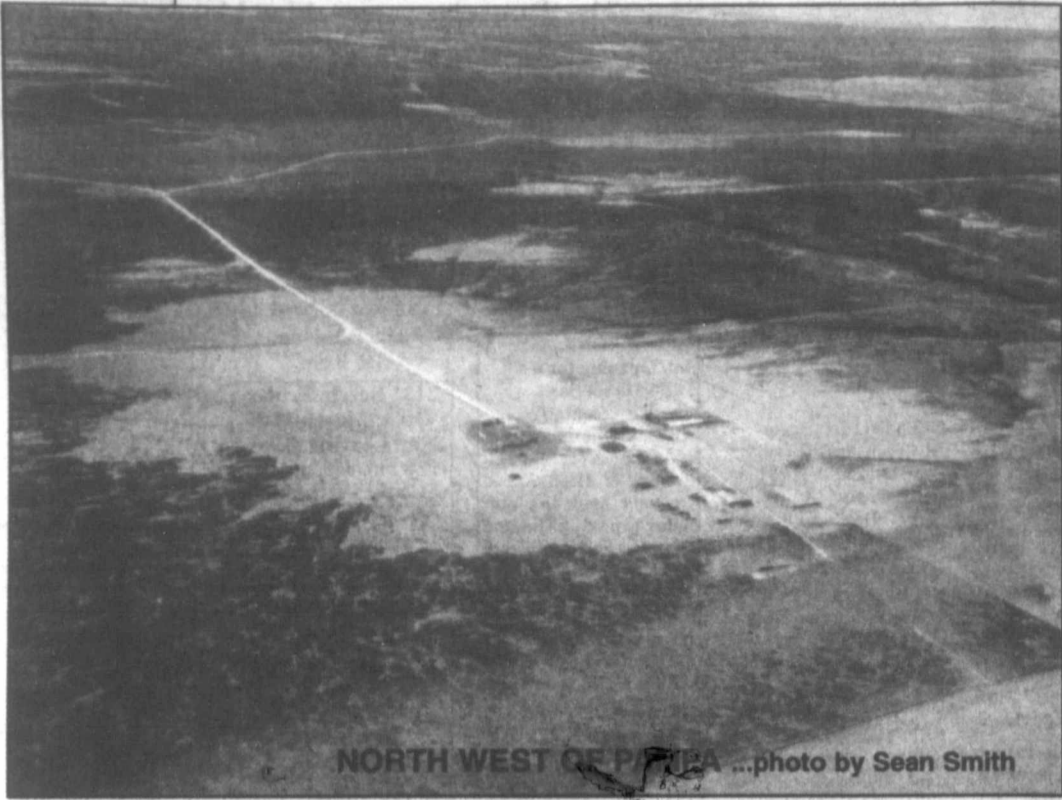
**BIG** light bl. couch \$75 obo. Never used 04 black & white gas Whirlpool Estate stove, \$350 obo. Call Brandt at 806-440-6548

**NEW GE Gas Dryer.** Never Used. Paid \$370 Will Take \$150. Call 665-5638 or (469)658-1622.

**96 Unfurn. Apts.**

**CAPROCK APARTMENTS**

1, 2, & 3 bdrm. Starting at only \$335. 6 mo. lease available. \* Pool \* Laundry \* Wash/dryer hook-ups \* Club room \* On-site management \* SOFTENED WATER



NORTH WEST OF PAMPA ...photo by Sean Smith



ARRINGTON RANCH ...photo by Paul Loyd



ARRINGTON RANCH ...photo by Paul Loyd

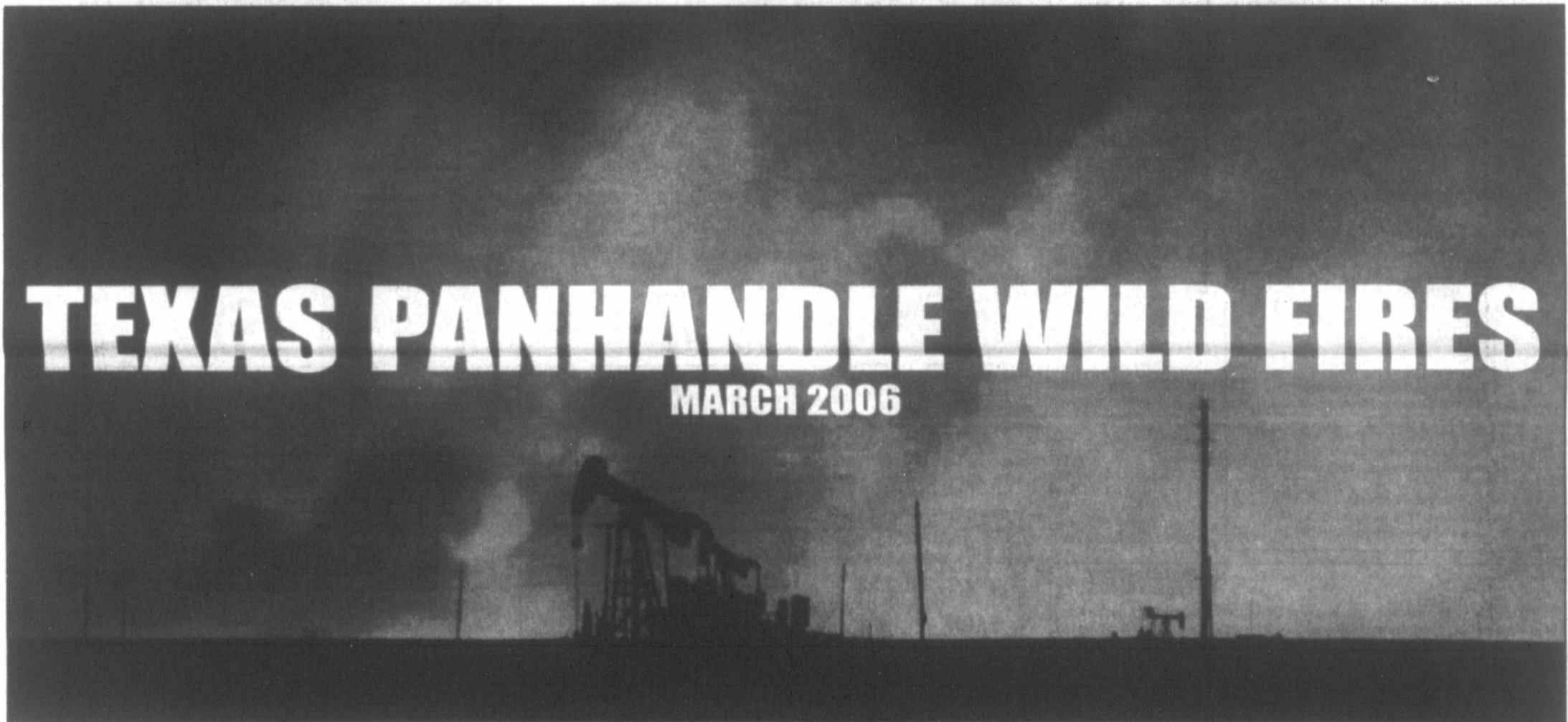


SOUTH OF LEFORS  
...photo by Gary Willoughby



SKELLYTOWN ...photo by Sean Smith

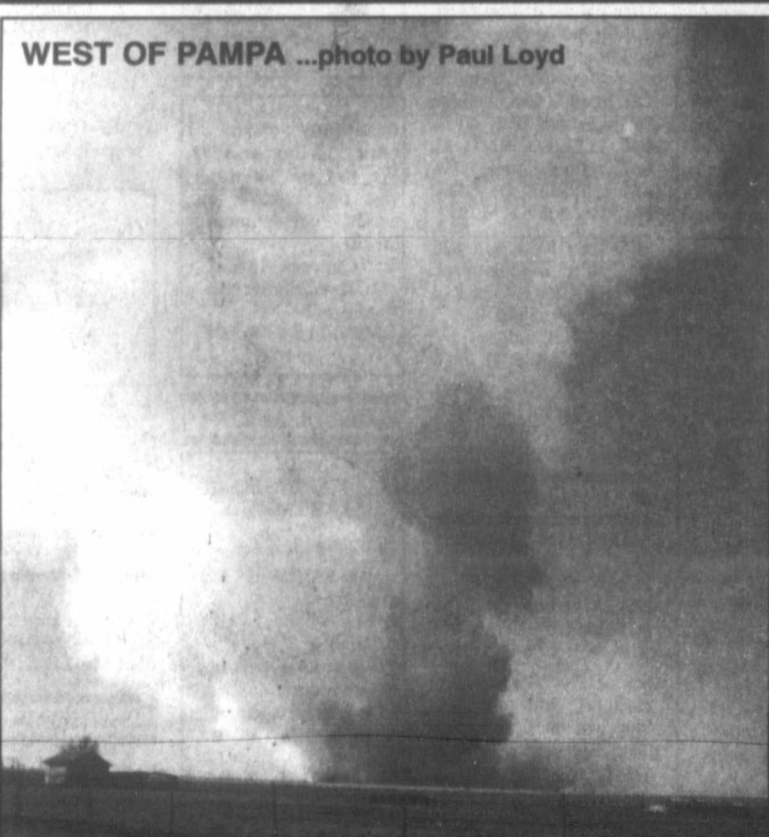
page design by brenda cook



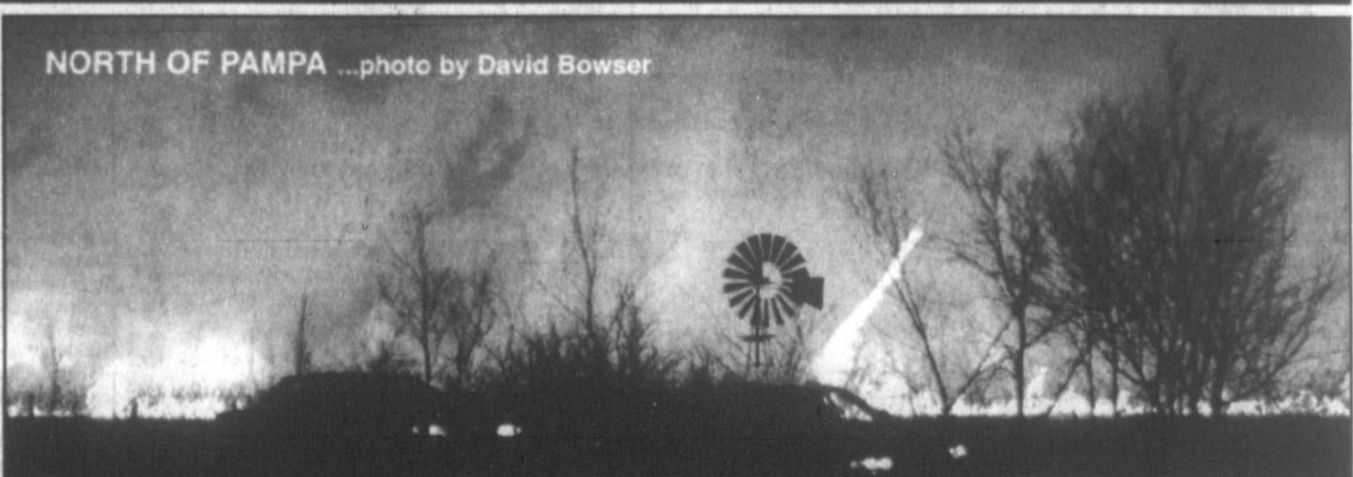
# TEXAS PANHANDLE WILD FIRES

MARCH 2006

WEST OF PAMPA ...photo by Paul Loyd



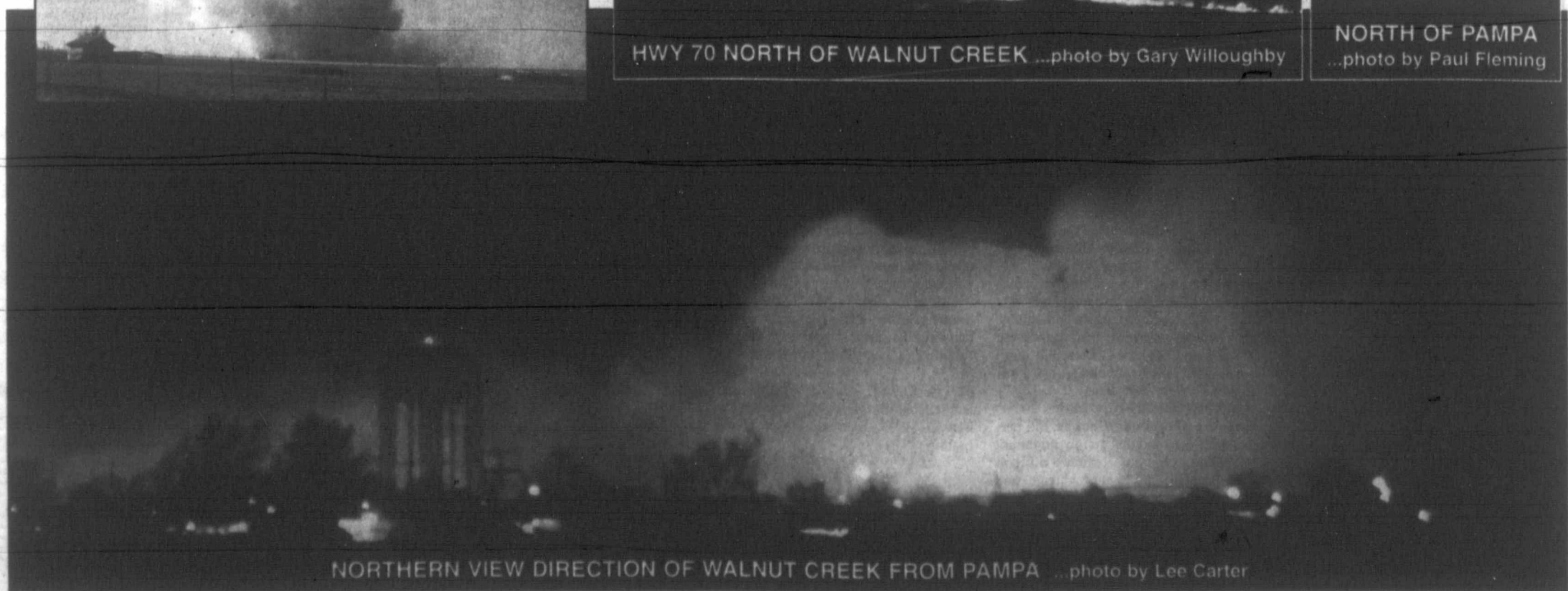
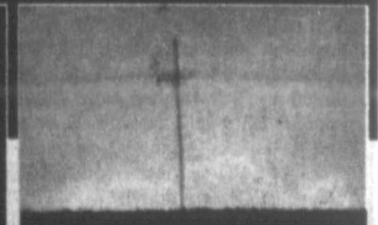
NORTH OF PAMPA ...photo by David Bowser



HWY 70 NORTH OF WALNUT CREEK ...photo by Gary Willoughby



NORTH OF PAMPA  
...photo by Paul Fleming



NORTHERN VIEW DIRECTION OF WALNUT CREEK FROM PAMPA ...photo by Lee Carter

2100  
Cerami  
CIT  
HO  
1-8  
ww  
AU  
"O  
let  
21  
O  
90  
6 M  
We A  
1  
66  
2216 C  
ALI  
I  
Wo  
Pri  
M  
M  
BO  
8  
HO  
OW  
R  
80  
K  
V