

Today's Weather

HIGH
62
LOW
39

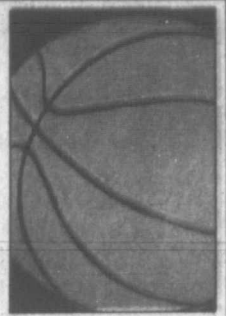
DOUG BOYD MOTOR CO.

CORNER OF HWY 60 @ HWY 70 • 806-669-6062
BUY HERE • PAY HERE • NO CREDIT CHECK • AREAS LARGEST SELECTION
WWW.DOUGBOYDMOTORS.COM

VISA & MASTERCARD ACCEPTED

March Madness

Brackets
and
schedules.
SEE PAGE 8



THE PAMPA NEWS

Tuesday, March 14, 2006

Volume 101 • No. 1218

50¢ Daily • Sunday \$1.25

THE FLOOR STORE
NOW AVAILABLE
Professional Carpet & Upholstery Cleaning Systems
MOHAWK FLOOR CARE ESSENTIALS
2100A Perryton Pkwy • 665-4455
Ceramics • Laminate • Hardwood • Vinyl-Carpet

CHILDERS BROTHERS INC
HOUSE LEVELING
Uneven Floors
Floor Bracing
Cracks In Bricks
Sticking Doors & Windows
Interior Wall Cracking
FREE ESTIMATES
1-800-299-9563
WWW.CHILDERSLEVELING.COM

THOMAS AUTOMOTIVE INC
First in Service • Quality Service
Let our trained staff help you
665-4851
277 E. HUGHSON

One STOP Flooring
On Select Purchases We Offer
90 DAYS SAME AS CASH
6 MONTHS SAME AS CASH
We Accept Visa • MasterCard • Discover
1533 N. HOBART
Mon-Fri 9-5 • Sat 10-1

The POWER OF STEAM
RUG RATS
Professional Carpet
& Air Duct Cleaning
FREE ESTIMATES
Ronnie Harvill Owner
665-1976 or 662-9219

2216 COFFEY 665-7161
ALBRACHT CHIROPRACTIC
OF PAMPA
DR. JACK S. ALBRACHT
PERSONAL & SPORTS INJURIES
WORKERS' COMP • AUTO ACCIDENTS
PREVENTATIVE FAMILY HEALTH CARE
MASTERCARD, VISA, DISCOVER ACCEPTED
HMO & PPO PROVIDER

M#10341 • LICENSED • INSURED
BOB'S PLUMBING
PAMPA, TEXAS
806-669-1940
CELL# 806-584-0809
HOURS MON-FRI 8-6 • SAT 8-12
EMERGENCY ANYTIME
OWNERS: BOBBY FAIRES / DUJCE FAIRES

Shutterbug Photography
For all your photography needs
www.shutterbug.com
Call Us Today
806-681-2840/806-665-3348
It's time for Senior Pictures & Ask
about Little One Birthday Photos
Nikki Shelton • Stephanie Kola

It's Time to Plant Trees!
West Texas Landscape
120 S Hobart St • 669-0158
Dixie Home • DAVESTONE



Pampa News photo by DAVID BOWSER

Hoover Volunteer Fire Department was one of numerous emergency personnel on the scene for some 36 hours Sunday and Monday fighting high winds and rolling grass fires across Gray County.

Firefighters take breather; more wind seen Wednesday

By DAVID BOWSER
Staff Writer

Most area firefighters and emergency personnel were taking a breather today before forecast high winds return to the Texas Panhandle on Wednesday.

"Wednesday is our critical day," said Don Hopper with the Pampa/Gray County Emergency Management Team.

The National Weather Service, Hopper said, is predicting a drop in humidity and an increase in winds for Wednesday. That, coupled with remaining hot spots and downed power poles, could bring a return of roaring wildfires that have burned off

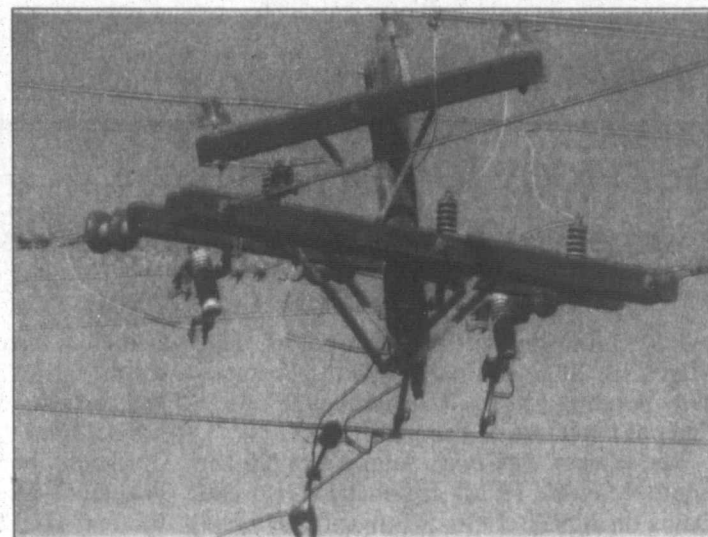
more than 663,000 acres in the past 48 hours, Hopper said.

"Typically," Hopper said, "that's what's happened in the past with large range fires."

Pampa Fire Chief Kim Powell reported that firefighters were still battling hot spots in Alanreed and that officials were calling for a water drop north of McLean to put out smoldering pastures so cattle could be moved.

More than 100 cattle were reported burned to death between Lefors and

See FIRES, Page 3



Pampa News photo by MARILYN POWERS

A utility pole burns from the bottom up as the crosspiece remains attached to power lines on State Highway 2473, one mile east of Kellerville in Wheeler County. Nearby, columns of smoke from eight smoldering fires could be seen as the second day of battling Panhandle wildfires continued Monday afternoon. Xcel Energy crews were working Monday to replace the damaged poles and restore service to customers who lost electricity due to the fires. See story on Page 3.

Oklahoma escapees caught in Hemphill

By DAVID BOWSER
Staff Writer

WHEELER -- Two escapees from Oklahoma were in Hemphill County jail today facing charges in Texas before being returned to Anadarko, Okla.

Lewis Peteet, 26, was arrested at a gas plant southeast of Canadian.

Eli Dominique Edwards, 28, was arrested by a Pampa Police officer in Wheeler Monday evening.

The two inmates escaped from the Caddo County Courthouse in Anadarko after a Sunday church service, according to Oklahoma authorities.

Peteet and Edwards were inside a judge's chambers at the courthouse when they pushed out a window and escaped on foot about 12:45 p.m. Sunday, according to Oklahoma Highway Patrol Trooper Kera Philippi.

The two men are suspected of stealing a pickup at gunpoint Sunday from a

man south of Apache.

Police say the two are also suspected of breaking into a Gracemont, Okla., home and stealing guns and a car and kidnapping a woman at the house. The woman was locked in the trunk of her car, but managed to get out and flag down a passing motorist near Wheeler, Philippi said.

Wheeler County Sheriff's Department officials said today the woman was found on FM 1046 between Briscoe and Allison. Officers later found her car abandoned northeast of Briscoe.

Peteet and Edwards are accused of breaking into the home of the Jimmy Maddox family on County Line Road, tying up the family and taking their 2003 Buick LeSabre, guns and cash.

Department of Public Safety troopers eastbound on Texas Highway 33 met

See CAPTURE, Page 3

Red Cross assistance available

By MARILYN POWERS
Staff Writer

Area residents who have been affected by the Panhandle wildfires and are in need of assistance may call the Red Cross at (806) 669-7121 or (800) 297-2270, according to Jana Gregory, executive director

of the Eastern Texas Panhandle Chapter.

"In response to the Panhandle wildfires, the American Red Cross Eastern Texas Panhandle Chapter is responding by mobilizing disaster relief workers to meet the emergency needs of

those affected," Gregory said in a news release Sunday.

The Red Cross has sheltered 274 individuals and families who have been forced from their homes, according to the release. The

See AID, Page 3

Safety tips for wildfires

By MARILYN POWERS
Staff Writer

The Eastern Texas Panhandle Chapter of the American Red Cross offers the following tips to remain safe in the event of a wildfire.

Listen regularly to local radio or television stations for updated emergency information. Follow the instructions of local officials.

See TIPS Page 3

Pampa News photo by MARILYN POWERS

Don Emmons, a Pampa resident and veteran of the Korean conflict, drove an M2A1 half track vehicle Saturday to its new home inside the fence at Freedom Museum USA. The half track was donated by a person who wishes to remain anonymous, and was brought to Pampa from Oklahoma by John Griffin, right, of Coyote Trucking Co. The M2A1 was used in Korea and Vietnam. It carries a driver and nine passengers, along with a 50 cal. Browning machine gun in a ring mount and a 30 cal. for the sides and rear. The vehicle weighs 19,800 pounds and has one-fourth inch armor, with a top speed of 45 mph.



FRIENDS OF THE PAMPA LIBRARY ANNUAL BOOK SALE
MARCH 30TH - APRIL 2ND
PAMPA LOVETT MEMORIAL LIBRARY
111 N. HOUSTON

Account deficit hits record \$804.9 billion in 2005

WASHINGTON (AP) — America's deficit in the broadest measure of international trade surged to an all-time high of \$804.9 billion last year as the country went deeper into debt to foreigners.

The Commerce Department said the deficit in the current account was up 20.4 percent from the previous record of \$668.1 billion set in 2004. The current account is the best measure of trade because it tracks not only goods and services but also investment flows between countries.

Retail sales for February fell by 1.3 percent, the biggest setback in six

months. There were big declines in sales of autos, clothing and furniture as cold weather during the month kept shoppers away from the stores.

In January, retail sales had surged by 2.9 percent, the biggest monthly increase in more than four years, as the warmest January in more than a century lured shoppers to the malls. Analysts had expected a drop in February activity due to colder weather although the decline was bigger than the 0.9 percent decrease they had expected.

Analysts discounted much of the February decline, saying it simply reflected a payback from the January jump

'A big headline drop was always in the cards after the weather-assisted surge in January, which hugely boosted retail activity.'

— Ian Shepherdson
Economist

in sales.

"A big headline drop was always in the cards after the weather-assisted surge in January, which hugely boosted retail activity," said Ian Shepherdson, chief U.S. economist at High Frequency

Economics, a private consulting firm.

In a third report, the Commerce Department said that businesses increased inventories held on shelves and backlogs by 0.4 percent in January, just half the 0.8

percent December gain. The inventory increase came as sales during the month by retailers, wholesalers and manufacturers rose by a solid 1.3 percent following a gain of 1.4 percent in December.

The 2005 current account trade deficit was a record not only in dollar terms but also as a percentage of the total economy at 6.4 percent of total economic output, up from 5.7 percent in 2004. The deficit for just the fourth quarter was also a record at \$224.9 billion, up by 21.3 percent from the third quarter, reflecting a big rise in the country's foreign oil bill.

The unprecedented flow of American assets into foreign

hands has raised economic anxieties that the United States is opening itself up too much to the rest of the world. Those concerns were evident in the uproar over the purchase of operations at six major U.S. ports by a company owned by the government of the United Arab Emirates.

The political fallout from that sale became severe as politicians worried about the national security implications of having an Arab country running U.S. port operations. DP World eventually announced that it would sell off its holdings at the six U.S. ports to an American company.

Obituaries

Services tomorrow

WILLIS, Alta Hild — 11 a.m., Priest Park Church of God, Pampa.

Ray G. Mason, 85

Ray G. Mason, 85, of Pampa, Texas, died March 14, 2006, at Amarillo, Texas. Services are pending with Carmichael-Whitley Funeral Directors of Pampa.

Mr. Mason was born Aug. 17, 1920, in South Mayde, Texas. He married Rosene Davis on June 1, 1946, in Amarillo. He had been a resident of Pampa since 1946. He retired from Celanese Corporation.

He was a member of the Wells Street Church of Christ. He was a veteran of the U.S. Air Force, serving during World War II, stationed at the Pampa Army Airfield.

Survivors include his wife, Rosene Mason, of the home; one son, Danny Mason of Amarillo; one sister, Edna Faye Hazel of Mustang, Okla.; two grandchildren,

Camellia Ann Coronado of Amarillo and Keith Elliot Mason and wife Ann of Jacksonville, N.C.; five great-grandchildren, Jarrett John Coronado and Jordan Jeffery Coronado, both of Amarillo, Dustin Mason, Jacqueline Mason and Andrew Mason, all of Jacksonville, N.C.

He was preceded in death by five brothers; and his twin, Ralph Lee Mason who died when he was 6-months-old, Troy Mason, R.D. Mason, Everett Mason and William E. (Dub) Mason.

The family requests memorials be to a favorite charity.

—Sign the on-line register book at www.carmichael-whatley.com.

Herman Albert Jack Will, 94

SKELLYTOWN — Herman Albert Jack Will, 94, of Skellytown, died March 12, 2006, at Skellytown.

Memorial services will be announced at a later date. Cremation and arrangements are under the direction of Carmichael-Whitley Funeral Directors of Pampa.

Mr. Will was a farmer and rancher who

came to Skellytown in 1933. He was born Oct. 4, 1911, at Saskatchewan, Canada.

He was preceded in death by his wife; and a sister, Stella Dillard.

Survivors include a nephew, Wilbur Smith of Borger.

—Sign the on-line register book at www.carmichael-whatley.com.

Alta Hild Willis, 89

Alta Hild Willis, 89, of Pampa, Texas, died March 13, 2006, at Pampa. Services will be at 11 a.m. Wednesday, March 15, 2006, at the Priest Park Church of God with the Rev. Eric Horton, pastor, officiating.

Graveside services will be at 2 p.m. Thursday, March 16, 2006, at the East Greenwood Cemetery in Weatherford, Texas, with the Rev. Carroll Smith, pastor of the Lakeside Church of God of Fort Worth, officiating.

Arrangements are under the direction of Carmichael-Whitley Funeral Directors.

Mrs. Willis was born Aug. 2, 1916, in Chimney Rock, N.C. She came to Skellytown in 1953 and moved to Pampa in 1955. She married Carl Jacob Hild on April 1, 1933, in Spartanburg, S.C. He preceded her in death on March 2, 1947.

She later married Raymond Edward Willis in July of 1953 in Spartanburg, S.C. He preceded her in death on Dec. 5, 1972.

She worked in the textile industry in South Carolina and was a nurse's aide in Pampa for many years. She was a member of the Church of God where she taught Sunday School for 65 years.

Survivors include five sons, Donald Hild and wife Betty Jo of Una, S.C., David Hild and wife Kay of Weatherford, Texas, Fred

Hild and wife Donna of League City, Texas, Clarence Willis of Boiling Springs, S.C., and Raymond Willis and Shirley of Truro, Iowa; three daughters, Barbara Willis and husband Earnest and Julia Willis, all of Pampa, and



Willis

Helen Movius and husband Dale of Olympia, Wash.; two brothers, James Jones and wife Ruby of Moore, S.C., and David Jones of Spartanburg, S.C.; three sisters, Georgina Berlin and Gaynor Cregor and husband Jack, all of Huntington Beach, Calif., and Rachel Strange of Boiling Springs, S.C.; 31 grandchildren; many great-grandchildren; and two great-great-grandchildren.

She was preceded in death by a daughter, Alta Jane Hild Boykin; her parents, Kue Desso and Nora Mae Jones; a sister, Cora Mae Moreno; four brothers, Zeastus Jones, Dupree Jones, Kue Desso Jones, Jr., and Benjamin Carol Jones; two grandsons, Brandon Willis and Christopher Rosenow; and three stepsons, Gene Willis, Bobby Joe Willis and Jackie Willis.

The family requests memorials be to Priest Park Church of God Ladies Auxiliary, 1123 Gwendolyn, Pampa, TX 79065; or BSA Hospice, 800 N. Sumner, Pampa, TX 79065.

—Sign the on-line register book at www.carmichael-whatley.com.

Gray County Weather

Today: Mostly sunny, with a high near 62. Wind chill values between 16 and 26 early. South wind between 5 and 15 mph.

Tonight: Partly cloudy, with a low around 39. South wind around 15 mph.

Wednesday: Partly cloudy, with a high around 70. Wind chill values between 30 and 35 early.

Windy, with a south wind 15 to 20 mph increasing to between 25 and 30 mph. Winds could gust as high as 40 mph.

Wednesday Night: Mostly clear, with a low near 38. Wind chill values between 30 and 35.

South wind 15 to 20 mph becoming north-northwest. Winds could gust as high as 30 mph.

Thursday: Mostly sunny, with a high near 56. North wind around 15 mph becoming east.

Thursday Night: Partly cloudy, with a low around 31. Southeast wind around 10 mph.

Friday: Partly cloudy, with a high around 57. South-southeast wind around 15 mph.

Friday Night: Mostly cloudy, with a low around 32. South southeast wind between 10 and 15 mph.

Saturday: A 20 percent

chance of showers. Cloudy, with a high around 53. Southeast wind around 15 mph.

Saturday Night: A 20 percent chance of showers. Mostly cloudy, with a low near 35.

Sunday: A 20 percent chance of showers and thunderstorms. Mostly cloudy, with a high around 57.

Sunday Night: A 20 percent chance of showers and thunderstorms. Mostly cloudy, with a low around 39.

Monday: A 20 percent chance of showers. Partly cloudy, with a high around 53.

Stocks

The following grain quotations are provided by Attebury Grain of White Deer.

Wheat 3.90

Milo 3.10

Corn 4.00

Soybeans 4.76

The following 9:30 a.m. N.Y. Stock Market quotations are furnished by Edward Jones & Co. of Pampa.

OXY 92.73 +0.48

BP PLC ADR 68.15 +0.56

Cabot Corp 36.00 +0.06

Celanese 20.81 -0.06

Cabot Oil Gas 45.58 +0.02

Coca Cola 42.82 +0.33

VLO 55.97 +0.32

HAL 68.60 -0.04

TRI 42.60 -0.26

KML 91.67 -0.04

XCEL 18.38 -0.02

Kerr McGee 95.76 -0.08

XOM 59.98 +0.34

Nat'l Oilwell 58.40 +0.08

Limited 23.81 +0.02

Williams 20.42 +0.07

MCD 34.38 +0.06

Atmos 26.45 -0.07

Pioneer Nat 40.07 +0.19

JCP 61.12 -0.26

COP 60.35 +0.19

SLB 116.95 -0.12

Tenneco 21.15 -0.16

CVX 55.55 +0.37

Wal-Mart 45.34 +0.07

OKE 29.53 +0.11

NS Grp 40.72 +0.21

New York Gold 546.00

Silver 10.14

West Texas Crude 61.77

Emergency Services

Pampa PD

The Pampa Police Department reported the following incidents during the 24-hour period ending at 7 a.m. today.

Monday, March 13

Two windows were reported broken and \$15 taken from Shapes/Safari Tans.

Ten dollars was reported stolen in the 1200 block of North Wells.

Telephone harassment was reported.

The back window of a 1987 Blazer was reported broken out.

An attempted fraud was reported in the 1500 block of North Hamilton.

About \$390 worth of household goods was reported stolen in the 1000 block of South Wilcox.

A forgery was reported in the 1400 block of North Hobart.

Fire

Pampa Fire Department reported the following calls in the 24-hour period ending at 7 a.m. today.

Monday, March 13

11:18 a.m. — One unit and two personnel responded to the 1300 block of Williston on a Dumpster fire.

1:50 p.m. — One unit and two personnel

responded to an area southwest of Walnut Creek on an electric pole fire.

4:24 p.m. — One unit and three personnel responded to the 1000 block of South Wells on a gas leak.

5:03 p.m. — Four units and eight personnel responded to the 900 block of East Scott on a structure fire that began as a grass fire.

9:15 p.m. — Three units and seven personnel responded to the 8300 block of Cole Road on an electrical short.

Ambulance

Guardian EMS ambulance reported the following calls during the 24-hour period ending at 7 a.m. today.

Monday, March 13

11 a.m. — A mobile ICU unit responded north of town on a fire standby.

2:04 p.m. — A mobile ICU unit responded to Pampa Regional Medical Center and transferred a patient to Northwest Texas Hospital in Amarillo.

2:37 p.m. — A mobile ICU unit responded to the 1500 block of Kentucky and transported a patient to PRMC.

4:22 p.m. — A mobile ICU unit responded to Baten prison unit and transported a patient to PRMC.

CRIME BEAT

Man gets 27-plus years for beating girlfriend to death

YAKIMA, Wash. (AP) — A man convicted of beating his girlfriend to death in their motor home outside Sunnyside has been sentenced to 27 1/2 years in prison.

Kenith Wayne Sherrill, 59, continued behaving oddly Friday in Yakima County Superior Court, rocking in his chair, sipping water and occasionally interrupting Judge Ruth E. Reukauf.

"Ho, ho, ho — away we go," Sherrill said as two guards led him out of the courtroom.

During his trial Sherrill declined to present his side of the story to the jury, arguing occasionally with

the judge and dismissing his court-appointed lawyer, whom he said was part of the prosecution.

He turned down a chance to speak before being sentenced but later said Teresa Lynn Hilton, 39, previously of Jefferson, Texas, died after an accidental fall on July 6, 2004 — an account Reukauf rejected as absurd.

The judge sentenced him to 26 1/2 years for the killing, the maximum under state guidelines, plus a year for violating a Chelan County court order that barred him from contacting Hilton.

Sheriff's detectives and other

investigators testified that the two were drinking and entertaining friends before they got into a fight in which Hilton was struck at least 42 times.

Sherrill called 911 to report that she had stopped breathing and said he had tried to revive her without success.

Hilton's relatives wrote the court that they have struggled to deal with her death and could not afford to attend the court proceedings. Her sister, Debra McGowen, wrote that the family borrowed as much money as they could to bury Hilton back home.

Sherrill's two sons said Saturday in their first public comment on the case that their father told them he blacked out from drinking during the fight in which Hilton died.

"I never saw nothing like that coming. Nobody did. They seemed like they had a good relationship," Ken Sherrill Jr. told the Yakima Herald-Republic.

"This whole situation with the death of Teresa has been hard on me and my whole family and I can only imagine what her family must be going through," Ronnie Sherrill of Grandview wrote to the newspaper in an e-mail.

CITY BRIEFS

The Pampa News is not responsible for the content of paid advertisement

EXPERIENCED PANT presser needed. Apply in person at Quality Cleaners.

REWARD. LOST Black Lab w/ one blue eye, (male). Call 669-0869 or 664-3376

THE VICARY House Tea Room will be closed March 15 & 16 to allow our employees to spend Spring Break with their families.

Scholarship recipient



Lynda Knight, a student at Clarendon College-Pampa Center, is shown accepting a scholarship check from National Bank of Commerce in the amount of \$250 from Gladys Vanderpool, first vice president of the bank. Knight currently has a 4.0 grade point average.

Xcel repairs may take two to three weeks

There was significant damage to the Xcel Energy electric systems that serve communities and rural properties across a 700,000-acre region of the northeast Texas Panhandle that was seared Sunday afternoon and night, and on Monday, by several prairie fires.

Because of the extent and nature of the damage, restoration of service to all the approximately 520 affected rural and outlying homes and businesses that can safely accept service may require as long as two to three weeks, according to Bill Crenshaw, Xcel spokesman.

On Monday morning, because of damage to a transmission line, all of the approximately 1,750 homes and businesses in Wheeler were out of service; but it is anticipated service will be

restored to Wheeler during the day.

Owners and occupants of damaged buildings may well have to hire licensed electrical contractors to repair service loops to the buildings (and perhaps internal wiring), and have code inspectors approve the new work, before Xcel Energy can again supply energy to the buildings.

"Xcel Energy emphasizes that in emergency response such as this, safety of our personnel is a primary consideration," Crenshaw said. "Because crews work long hours -- 16 hours on duty, then eight off, day after day, hustling to restore power service, possibilities for injury increase. Safety must and does take precedence over quick service restoration."

Early Monday morning

counts reported more than 275 poles, both distribution and transmission, had been burned and downed; the number of affected structures known to be damaged was expected to grow significantly higher, once personnel could access the burned farm and range lands and assess damage.

Xcel Energy's manager of operations and construction Bill Weems said the amount of damage to the SPS system was the greatest he has seen in a 35-year career. That is so especially because fire damage to conductors (power lines) can ruin them. Unlike after severe ice storm damage, when lines can be spliced, picked up and

returned to service, fire-damaged lines, as well as the burned wood poles, cross arms and related equipment, will have to be replaced.

By mid-morning Monday, Xcel Energy crews had been summoned from around the area.

401(K) ROLLOVER HEADQUARTERS



Duane Harp
1921 N. Hobart
Pampa, TX 79065
665-6753

Edward Jones
Serving Individual Investors Since 1871
Member SIPC

Fires

Continued from Page 1

McLean. Texas Animal Health agents and Texas and Southwest Cattle Raisers Association inspectors were combing the area today.

Hemphill County officials reported smaller grass fires on ranches along the Hemphill County and Roberts County line.

The Associated Press reported that firefighters continued battling a series of fires today stretching through Collinsworth, Wheeler, Carson, Hutchinson, Donley and Gray counties, called the East Amarillo Complex fire. The blaze had scorched some 652,000 acres by Monday night and was 40 percent contained, the Texas Forest Service reported.

In addition to the more than 600,000 acres of range that burned, the deaths of 11 people are being blamed on the fires along with the destruction of numerous structures, vehicular accidents, nine injured firefighters and two missing people.

Four people were killed in a multi-vehicle pile up because of poor visibility due to smoke Sunday afternoon.

The Sunday crash victims were identified as Susan Louise Schumacher, 49; Lawrence Schumacher, 56; Alexis Burroughs, 14, all of Grove, Okla., and Karen

Lachelle DeWeese, 46, of Wagoner, Okla.

Three people died inside homes in the Borger area.

Bill Pfeffer, 84, and Katherine Darnell Ryan, 64, were killed inside Pfeffer's home, and 94-year-old Jack Will died in his house, the Hutchinson County Justice of the Peace Office said. Ryan was trying to help Pfeffer evacuate.

The bodies of four oil field workers were discovered in a draw near Miami, apparently trapped by the flames.

Two people remain missing near Borger.

Two Howardwick firefighters were hurt Sunday, one critically, when their truck overturned on I-40.

Three Lefors firefighters suffered minor injuries when their truck rolled while battling a blaze Sunday near Lefors.

The Department of Public Safety reported the fire that started near Borger and spread across Gray and Roberts Counties had burned an area 40 miles long and 12 to 15 miles wide and that the fire that burned along I-40 covered an area 30 miles long and 11 miles wide.

The fires prompted evacuation of eight towns: Hoover, Lefors, McLean, Miami, Old Mobeetie, New Mobeetie, Skellytown and Wheeler. Many of about 2,000 people evacuated were returning to find their neighborhoods affected by power outages and ravaged by flames.

Pampa City Manager John Horst said the numerous fire, police and emergency personnel involved in trying to control the widespread wildfires for the past two days meshed and worked well together.

"That's what we do," Pampa Fire Chief Kim Powell said today.

Hopper said it was great to see that many people, mostly strangers, come together as a team instantly.

Hopper credited the cooperation to training. He said that the Texas Engineering Extension emergency training session last summer in Pampa was a key to the management of personnel and equipment.

"Everybody came in and knew what to do," Hopper said.

Hopper said firefighters responding to the blaze included Hoover Volunteer Fire Department, Pampa Fire Department, Skellytown Volunteer Fire Department, Lefors Volunteer Fire Department, Amarillo Fire Department, Mobeetie, Gray County, Roberts County, Potter County, Randall County, Moore County, Dumas, Dalhart, Shattuck, Okla., Pantex, Celanese, West Texas Landscape, Turkey, Tulia, Wheeler, Canyon, Sunray and Hartley.

Powell said numerous companies, particularly oil companies, donated the use of equipment and personnel.

The Texas Forest Service had at least seven firefighting aircraft at Amarillo airports today.

Capture

Continued from Page 1

and passed the westbound Buick. The troopers turned around and chased the Buick until it turned into a dirt contractor's business south of Canadian.

Stopped by broken concrete in the contractor's storage yard, the two men fled on foot and were followed to a nearby BP gas plant.

Peteet was arrested about 11:30 p.m. Sunday, cowering in the gas plant.

Acting on a tip Monday afternoon concerning a man

walking east along Texas Highway 33 east of U.S. Highway 83, Hemphill County Sheriff Gary Henderson, Pampa Police Officer Dave Thomas with the department's dog Sjeffe and Texas Ranger Bart Bivens along with other officers raced to the site the man was seen where they found Edwards standing on the south side of the road.

As the officers with drawn guns approached Edwards, the Oklahoma escapee refused to comply with the officers order to lie on the ground.

Thomas tackled Edwards, taking him to the ground as Henderson cuffed the desperado.

Wheeler County officials said the search for the duo included the Wheeler County Sheriff's Department, Pampa Police Department, Department of Public Safety, Hemphill County Sheriff's Department and Lipscomb County Sheriff's Department as well as a tracking dog team from the Texas Department of Corrections.

Wheeler County deputies today said they also had a Texas Department of Public Safety helicopter out of Lubbock.

Edwards was expected to be charged in Wheeler County later today with aggravated sexual assault in

connection with the Oklahoma kidnapping victim and aggravated kidnapping charges in connection with the Wheeler County family.

Peteet was expected to be charged with aggravated kidnapping in connection with the Wheeler County family.

Peteet also faces Oklahoma charges of unauthorized use of a motor vehicle. Edwards was sentenced on drug and weapons charges, Phillippi said.

Both men now face escape and kidnapping charges in Oklahoma and possible federal charges.

Tips

Continued from Page 1

Wildfires can change direction and speed suddenly, and a minor threat can quickly escalate to a major threat. Local officials can provide information on the safest escape route.

Back a vehicle into the garage or park it in an open space facing the direction of escape. Shut doors and roll up windows. Leave the key in the ignition.

Close garage windows and doors, but leave them unlocked. Disconnect automatic garage door openers because power may go out.

Confine pets to one room. Make plans to care for pets in case evacua-

tion is necessary.

Pets may try to run if they feel threatened by fire. Keeping them inside and in one room will make it easier to find them quickly if it becomes necessary to leave.

Arrange temporary housing at a friend's or relative's home outside the threatened area. Evacuees will feel more comfortable at the homes of friends or relatives, and many shelters will not allow pets.

Take steps to reduce the chance of your home catching fire or lessen the amount of damage from a nearby fire only if you are sure you have time to do so.

If advised to evacuate, do so immediately. There may be only minutes to act.

Wear protective clothing such as

sturdy shoes, cotton or woolen clothing, long pants, a long-sleeved shirt, gloves, and a handkerchief to protect your face. These items will help protect against hot embers and smoke.

Take a disaster supplies kit. Pack needed medications and other small supplies for everyone in the household.

Lock your home. There may be others who evacuate after you or return before you. Secure your house as you normally would.

Tell someone outside of the wildfire area where you are going. This will help relieve fear and anxiety of relatives and friends.

Choose a route away from fire hazards. Follow escape routes given by local officials, if offered. Watch for changes in the speed and direction of fire and smoke.

Aid

Continued from Page 1

organization has also provided 467 meals and snacks to disaster victims and relief workers.

All American Red Cross disaster assistance is free, made possible by voluntary donations of time and money from the American people, Gregory said in the release.

Persons wishing to help victims of the wildfires and other disasters across the country may make a financial donation to the American Red Cross

Disaster Relief Fund. The Red Cross uses donations to provide shelter, food, counseling and other assistance.

To make a donation, call 1-800-297-2270 or send a contribution to the Eastern Texas Panhandle Chapter of the American Red Cross, P.O. Box 1036, Pampa, TX 79066.

PAMPA OPTIMIST BASEBALL / SOFTBALL 2006

SIGNUPS & TRYOUTS

...

Boys & Girls Ages 5-15

Registration March 21-24

5:30pm to 7:00pm

Optimist Club Building

...

EVERYONE MUST REGISTER

...

For More Information

Ronnie Haynes 665-6859

Kevin Davis 665-7843



SPECIAL OFFER!
WEDNESDAYS ONLY!

Chicken Fried Steak Dinner

You get:

- Chicken Fried Steak with white gravy
- Individual mashed potatoes with gravy
- Individual cole slaw
- 1 baked biscuit

\$1.99

plus tax no substitutions

PAMPA
2201 N. Hobart St. ■ 665-2766

■ Dine In! ■ Drive Thru! ■ Carry Out!



The Gift Shop
at Pampa Regional Medical Center

SALE

MARCH 13th - MARCH 31st

50% OFF JEWELRY

35% OFF ALL OTHER ITEMS

excludes paper backs, candy, and baby-door decorations

Hours ... 9:00 a.m. to 4:00 p.m. Monday-Friday
One Medical Plaza ... Pampa, Texas
All Proceeds Benefit The Hospital Auxiliary

Viewpoints

Emergency services personnel a dedicated bunch

Have you ever met anyone who got rich by being a firefighter, law enforcement officer, paramedic or other emergency services worker? I haven't.

These people do what they do not to get rich, but because they want to do it.

Of course, as in any situation involving human beings, there are always going to be a few who misuse their skills, abuse their power or simply aren't capable of doing the job for some reason.

But by and large, emergency services personnel are dedicated to public service, even at the risk of their own lives.

The natural reaction when faced with a fire is to head in the opposite direction as quickly as possible. The same can be said for confronting someone wielding a gun or knife, or handling an injured person whose blood may infect you with a fatal illness.

Thank goodness there are people who are willing and even eager to do these jobs. They certainly aren't in it for the money.

I was reminded of these people's dedication during the wildfires which began Sunday in various places around the Panhandle.

The firefighters, law enforcement officers, ambulance workers

and other emergency personnel who worked those fires spent long, hard hours facing and even seeking out dangerous situations.

Marilyn Powers
Staff Writer



Some firefighters were injured in accidents while working to extinguish the flames.

Ambulance personnel drove through blinding smoke to get to

those firefighters and bring them out safely.

Law enforcement officers continually scouted for areas of danger, and kept the public away from those areas. They braved the smoke and oncoming flames to see to it that those in the path of the fires were evacuated.

Other emergency workers handled communications, public announcements and coordination of various agencies' efforts.

Volunteers traveled to provide much-needed refreshment for the emergency workers, so that they could continue the fight against the flames.

Quite a few of the firefighters and ambulance personnel were volunteers, too, meaning they don't get paid for taking these risks.

Others who volunteered include workers at the churches who offered meals and other comfort to evacuees, and businesses and individuals who provided equipment, water tankers and other means of help.

Where in the blazes would we be today without those firefighters, peace officers, ambulance personnel and other volunteers?

We'd probably have gone up in flames.

Today in History

By The Associated Press

Today is Tuesday, March 14, the 73rd day of 2006. There are 292 days left in the year.

Today's Highlight in History:

On March 14, 1743, the first recorded town meeting in America was held, at Faneuil Hall in Boston.

On this date:

In 1794, Eli Whitney received a patent for his cotton gin, an invention that revolutionized America's cotton industry.

In 1900, Congress ratified the Gold Standard Act.

In 1923, President Harding became the first chief executive to file an income tax report.

'There are only two kinds of people in the world that really count. One kind's wheat and the other kind's emeralds.'

— Edna Ferber
American author
(1887-1968)

In 1939, the republic of Czechoslovakia was dissolved, opening the way for Nazi occupation.

In 1943, Aaron Copland's orchestral work "Fanfare for the Common Man" premiered in New York, with George Szell conducting.

In 1951, during the Korean War, United Nations forces recaptured Seoul.

In 1964, a jury in Dallas found Jack Ruby guilty of murdering Lee Harvey

Oswald, the accused assassin of President Kennedy.

In 1965, Israel's cabinet formally approved establishment of diplomatic relations with West Germany.

In 1980, a Polish airliner crashed while making an emergency landing near Warsaw, killing all 87 people aboard, including 22 members of a U.S. amateur boxing team.

In 1991, a British court reversed the convictions of the "Birmingham Six," who had spent 16 years in prison for an Irish Republican Army bombing, and ordered them released.

Ten years ago: During a visit to Israel, President Clinton pledged \$100 million to the fight against terrorism. Steve Forbes dropped his quest for the Republican presidential nomination.

Five years ago: Inspectors tightened U.S. defenses against foot-and-mouth disease a day after a case was confirmed in France. Doug Swingley won the Iditarod Trail Sled Dog Race in Alaska for the third straight year.

One year ago: A judge in San Francisco ruled that California's ban on gay marriage was unconstitutional. China's parliament enacted a law authorizing force to stop rival Taiwan from pursuing formal independence. About one million people rallied in Beirut, Lebanon, demanding Syrian withdrawal and the arrest of ex-Prime Minister Rafik Hariri's killers.

U2, The Pretenders, The O'Jays, Percy Sledge and blues legend Buddy Guy were inducted into the Rock and Roll Hall of Fame.

Today's Birthdays: Former astronaut Frank Borman is 78. Singer Phil Phillips is 75. Actor Michael Caine is 73. Composer-conductor Quincy Jones is 73. Former astronaut Eugene Cernan is 72.



Condi is Hillary's worst political nightmare

Presidential aspirant Hillary Clinton used Rev. Al Sharpton's Martin Luther King Jr. birthday celebration to, as Professor Shelby Steele explains, "whistle for the black vote by pandering to the black sense of grievance."

In response to a question from the audience: "I need you to tell us what distinguishes Democrats from Republicans right now," Sen. Clinton answered, "When you look at the way the House of Representatives has been run, it has been run like a plantation, and you know what I'm talking about..."

Though the audience was largely black, I doubt whether any of the attendees had any plantation experience.

Sen. Clinton was simply employing the Democrats' political rope-a-dope for

blacks. As Professor Steele asks in his Wall Street Journal editorial, "Hillary's Plantation": "Must blacks have their slave past rubbed in their face simply for Hillary Clinton to make a little hay against modern-day Republicans?"

Steele also asks, "Does she really see us as she projects us — as a people so backward that our support can be won with a simple plantation reference, and the implication that Republicans are racist?"

Sen. Clinton is not alone with such demeaning pandering. Before a predominantly black audience, during his 2004 presidential bid, Sen. John Kerry said, in reference to so many more

blacks in prison than college, "That's unacceptable, but it's not their fault."

Aside from Kerry being factually wrong about more blacks being in prison than in college, his vision differs little

from one that holds blacks as a rudderless, victimized people who cannot control their destiny and whose best hope depends upon the benevolence of white people.

I wonder whether Kerry would have told a white audience that jailed white people were faultless. Kerry's other black-audience-only gambit was seen after he addressed the NAACP's 95th annual convention in Philadelphia; he gave the audience the black

power clenched-fist salute.

The subtitle to Professor Steele's article is "Hillary Clinton reveals her fear of Condi Rice." He explains that Democrat liberalism has survived decades past the credibility of its ideas because it captured black resentment as an exclusive source of its power. That power will be gone the very day that a significant number of blacks cease to be a people of grievance. This is potentially a Republican advantage. The Democrats and the liberal establishment know that, which is why they vilify high-profile blacks who aren't filled with resentment and grievance.

There are quite a few blacks in charge of stoking the fires of resentment and grievance. First, there's former NAACP President Kweisi Mfume, who said of

See HILLARY, Page 5

Walter Williams
Columnist



THE PAMPA NEWS
403 W. Atchison • Pampa, TX 79065
806-669-2525 • 800-687-3348
Fax: 806-669-2520
email: editor@thepampanews.com

Publisher: Sean Smith
Editor: Dennis Spies
Advertising Director: ReDonn Woods
Composing Supervisor: Brenda Cook

This newspaper (UPS 781-540) is published daily, except Saturdays, Thanksgiving and Christmas Day, by The Pampa News. Periodicals postage paid at Pampa, Texas. Postmaster: Send address changes to The Pampa News, P.O. Drawer 2198, Pampa, TX 79066-2198.

All carriers are independent contractors and The Pampa News is not responsible for advance payments of two or more months made to the carrier. Please pay directly to the Pampa News any payment that exceeds the current collection period. There are no mail subscriptions available within the city limits of Pampa. Mail subscriptions must be paid three months in advance.

Texas Thoughts

By The Associated Press

A sample of editorial opinion around Texas:

■ **March 5**

Houston Chronicle on obesity and hunger:

It is ironic that, even though more Americans than ever are overweight and suffer from obesity-related illness, hunger is on the rise. A new study shows that more than 25 million Americans last year relied on help from the country's most extensive networks of food banks to stave off the pangs of recurrent hunger.

According to America's Second Harvest The Nation's Food Bank Network, a large portion of people in need of food assistance are not unem-

ployed, the group that might come to mind in a discussion of hunger. In fact, almost 40 percent of food bank clients have at least one working adult in the household. However, most of their incomes put them below the federal poverty line, which is all of \$15,067 for a family of three.

So how is it that Americans can be getting fatter and fatter, and still more are going hungry? Actually, it's a scenario that is not at all absurd, says Houston Food Bank President and CEO Brian Greene.

"Obesity is everyday," Greene explains. "Hunger is episodic."

Unfortunately, the sort of inexpensive food that is affordable to the poor including fast foods and inexpensive, highly processed store-bought fare pro-

vides a high-calorie, low-nutrient diet. It makes poor people fat and unhealthy. But, as the Second Harvest study shows, carrying excess body fat can't stave off the pains of regularly not having enough food to eat.

The 25.3 million Americans that Second Harvest's Hunger in America study found had frequented a food bank last year included some 9 million children and 3 million seniors. The total represents an 8 percent increase since 2001.

Locally, the situation is similarly dreary. Statistics gathered by the Houston Food Bank show one in five children in this city lives at or below poverty. Every month, 250,000 area

Government fights to preserve death penalty for Moussaoui

ALEXANDRIA, Va. (AP) — A federal aviation security officer told a court Tuesday that improper witness coaching by a government lawyer would not affect her testimony in the sentencing trial of al-Qaida conspirator Zacarias Moussaoui, "because I know what I know."

Lynne Osmuss, who was head of security for the Federal Aviation Administration on Sept. 11, 2001, was among seven federal aviation witnesses called to a hearing to determine whether the government can proceed with its death-penalty case against Moussaoui.

U.S. District Judge Leonie Brinkema

said she was trying to determine "the extent to which the aviation witnesses have been tainted" by the conduct of government attorney Carla J. Martin, who coached them on their coming trial testimony.

Martin also was summoned to the hearing, but had her questioning delayed when she told the judge she had not been able to arrange for her own lawyer. Brinkema had warned her that "you violated a court order and could be held in civil or criminal contempt," and directed her to return with a lawyer by Wednesday morning.

At a hearing without the jury present,

defense attorney Edward MacMahon asked Osmuss if her testimony would be affected by receiving an e-mail last week in which Martin said the government's opening trial statement left gaps large enough "to drive a truck through."

"No, because I know what I know," she replied.

Earlier she told prosecutor David Novak the e-mails received from Martin in violation of Brinkema's rule that witnesses should not see trial transcripts or follow the case would have "absolutely no impact" on her coming testimony.

Events calendar

The Texas Department of State Health Services will be offering immunization clinics for vaccines that give protection against several childhood diseases. The TDH will charge money to help with the cost of keeping the clinic open. The amount charged will be based on family income and size, and the ability to pay. The following clinic will be offered: 9:30-11:45 a.m. and 1-4 p.m., Wednesday.

Red Hat Dollies Society will meet at 11 a.m. Thursday at Pampa Senior Citizens Center. Members are asked to bring "white elephant gifts." The group will also attend a concert at Stokes Barn at 6 p.m. March 25.

Tenor Eric Barry will perform at 7:30 p.m. Thursday during the next Third Thursday at Amarillo Museum of Art in Amarillo. Barry currently trains with opera diva Mary Jane Johnson. He was one of only six tenors invited to attend the American Institute of Musical Studies in Graz, Austria. Other events will include a documentary about Georgia O'Keefe and a coffee tasting. Third Thursdays are free and open to the public. For more information, contact the museum at (806) 371-5050.

College-bound high school students can take the ACT Assessment on April 8 the next nationwide test date. The registration postmark deadline was March 3. Late registration postmark deadline is Friday. The cost is \$29 without and \$43 with the Writing Test (an additional \$18 fee is required for late registration). Students can receive registration information from their high school guidance counselors or they can register on ACT's Web site at

www.actstudent.org.

The next Pampa Area Christian Singles Dance will feature Earl Witt between 8 and 11 p.m. Saturday at the Sportsman Club on South Barns. The event is smoke free and alcohol free. Admission is \$6 per person. Snacks are welcome. For more information, call 665-7059.

Clarendon College-Pampa Center will offer advanced Excel from 6:30-9 p.m. every Monday between March 27 and May 22. The instructor will be Connie Mondragon. Students will learn how to integrate Excel files with other applications and the Internet; how to use advanced mathematical functions; how to create and modify charts; how to analyze data; and how to create macros and hyperlinks. The class is limited to 40 students. A fee of \$60 and a textbook are required. To register or for more information, call CCPC at 665-8801.

The Association of Sons and Daughters of World War II Veterans will lead a group to England and France during April 2006 to commemorate the 62nd anniversary of the D-Day landings, the Battle of Normandy and the drive through France to Bastogne. The itinerary will include London, Portsmouth, Cherbourg, Omaha and Utah beaches, Caen, St. Mere Eglise, Caretan, Argentan, Falaise and Paris. For more information, call (561) 865-8495 or write Sy Canton 5121 B Nesting Way, Delray Beach, FL 33484.

Saint Francis Knights of Columbus, 10 miles east of Amarillo, will host two all-you-can-eat fish fries from 6-8 p.m. April 7 in observance of Lent. For questions, contact Steve Drillette at (806) 335-1121.

Hillary

Continued from Page 4

George W. Bush, "We have a president that's prepared to take us back to the days of Jim Crow segregation and dominance."

NAACP Chairman Julian Bond said President Bush has appeased "the wretched appetites of the extreme right wing and has chosen Cabinet officials whose devotion to the Confederacy is nearly canine in its uncritical affection." During the

2000 presidential campaign, Rev. Jesse Jackson regaled black audiences by telling them that a Bush win would turn the civil rights clock back to the days of Jim Crow. No one bothers to question these people about the accuracy of their predictions.

If Condoleezza Rice threw her hat into the presidential race, it would be Clinton's worse nightmare. Ms. Rice's vision represents triumph rather than grievance. Steele says that by growing up in the segregated South, Ms. Rice might have claimed title to a grievance identity, but she's chosen the older black tradition where blacks neither deny injustice

nor permit themselves to be defined by it.

Blacks like Colin Powell, Clarence Thomas and Condi Rice are of no value to modern liberalism or the Democratic Party. Why? If blacks come to embrace triumph, rather than grievance, the wound to liberal Democrats would be mortal. It wouldn't take much of a desertion of the black vote to make Democrat hopes of recapturing Washington a permanent pipe dream.

Walter Williams is a professor of economics at George Mason University.

Obesity

Continued from Page 4

residents get some portion of their food from a food bank program, the agency notes. A 2005 U.S. Agriculture Department study showed Texas, with 16 percent of households at risk of going hungry, leads the nation in food insecurity. That means not having consistent access to enough food for a healthy life for every family member.

It's not far-fetched that working families go hungry, Greene observes. The food budget is vulnerable to shortage because it's an obvious place for cuts to make ends meet. "You can't pay just 90 percent of your light bill or 90 percent of your rent,"

Greene says. "But you can skip meals."

Greene says many of his agency's clients are eligible for food stamps but don't take advantage because the application in Texas is complicated and lengthy, while benefits are skimpy. "Lots of people won't go through this for \$10 or \$20 a month," he says.

Hurricane Katrina exacerbated Houston's hunger issues. Prior to assuming his food bank post in September, Greene was executive director of America's Second Harvest of Greater New Orleans and Acadiana. He notes that many of the approximately 150,000 evacuees remaining in Houston are poor or were impoverished by having lost everything to the storm.

Providing food is a cost-effective

way to help. Unlike rent assistance and other direct monetary aid that pay \$1 of benefit for every dollar donated, food can be donated much more cheaply than its actual value to recipients. In other words, every meal that a poor family doesn't have to buy translates into money freed for utilities and other fixed costs. But the cost to donors generally grocers, producers and government is much lower.

Americans' widening girth disguises the problem of hunger, which remains acute in this rich nation. Organizations such as the Houston Food Bank do a great job addressing the needs, but they require awareness and support to continue. The next step will be ensuring that the poor get better access to foods that are not just filling, but healthful and nutritious, too.

A Newspaper Activity Page for Young People

Kid Scoop.com

This Week: Poison!

© 2006 by Vicki Whiting, Editor Jeff Schinkel, Graphics Vol. 22 No. 12

NATIONAL POISON AWARENESS WEEK: MARCH 19 - 25

POISON!

The American Association of Poison Control Centers recommends if you have a poisoning emergency, call 1-800-222-1222.

If the victim has collapsed or is not breathing, call: **911**

CUT & POST NEXT TO YOUR PHONE

Kids Save Lives

Twelve year-old Angie wasn't thinking about being a hero when she discovered that her three-year-old brother Sam had eaten an entire bottle of aspirin. She was worried that his having eaten too many aspirin could harm him. She was right.

Angie called the Poison Control Center. They told her what to do to help Sam.

Nearly everyday, kids like Angie call the Poison Control Center. Just by picking up the phone and calling, these kids often save lives.

If you think you or someone else has been poisoned, call 1-800-222-1222. If the person has collapsed or is not breathing, call 911.

Standards Link: Health: Students know when it is appropriate to call 911.

Go on a Poison Patrol

If you can read, you can help keep people safe from poisoning. Look through your house for things that can be poisonous.

Remember, even medicines and products that are good for you in the right dosage can be poisonous if taken incorrectly.

Put all potentially harmful substances out of reach of younger children.

Draw a red X over the items that are poisonous.

Watch Out for Look-alikes! Guessing can be DEADLY! Some poisons can look very similar to things that are not poisonous. Many pills and medicines look like candy. Airplane glue comes in a tube that can look a lot like a tube of toothpaste or cake frosting. Blue window cleaner can be mistaken for a flavored drink. If you are not sure of what is inside a container, ASK an adult.

Standards Link: Health: Students understand safety and injury prevention at home.

Poison Patterns

Circle the common poison at the end of each row that continues the pattern.

Check your answers at: www.kidscoop.com/kids/index.html

Thank you to poison awareness educator and Newspaper In Education manager, Brenda Street, for her help with today's Kid Scoop!

Double Double Word Search

Find the words in the puzzle, then in this week's Kid Scoop stories and activities.

POISONOUS COMMON ASPIRIN MEDICINES ILLNESS DEADLY PLANTS LEAD VENOM CRAWL SMOKE STINGS EYES INJURY SAVE

S E Y E P D O S N P
E I S L A O T L O Y
N I N E D N W I M R
I W L I A A S C M U
C E A L R O E O O J
I K P C N I O D C N
D O N O K E P I L I
E M U E V A S S L Y
M S S G N I T S A O

Standards Link: Letter sequencing. Recognized identical words. Skim and scan reading. Recall spelling patterns.

Quiz a Friend!

The answers to each of the following True/False statements can be found on today's page. Find the answers yourself, then Quiz a Friend!

- Taking too much aspirin can harm you. True False
- Some poisons look like candy. True False
- If you're not sure what something is, eat it! True False
- Eating poison is the only way to be poisoned. True False
- Poisonous things should be put up high where young children cannot reach them. True False
- Smoke is a poison. True False
- Some plants are poisonous. True False
- If someone collapses after ingesting poison or stops breathing, you should call 911. True False
- It's okay to use eye drops if a chemical or other substance gets in your eyes. True False

ANSWERS: 1. True 2. True 3. False 4. False 5. True 6. True 7. True 8. True 9. True

Four Ways to Be Poisoned

There are four ways that poison can enter our bodies. Draw a line from each danger to the way it gets into a person's body.

Swallowing
The most common kind of poisoning.

Bites and Stings
Venom is a poison.

Inhalation
Firefighters say to crawl out of a burning building because smoke can kill you before the flames do.

Splashing
Chemicals in the eyes or on the skin can be very harmful. Some soaps (and cleaning solutions) contain harsh chemicals or abrasives that can damage eyes and skin. Always call the Poison Center for help (NEVER use eye drops after an eye exposure).

Standards Link: Health: Students know the proper response to poisoning.

Common Poisons

Medicines Iron
Aspirin Lead
Poison Ivy Plants
Tobacco Gas
Antifreeze Pills
Mushrooms Bleach

Select a poison from Common Poisons on the above list. Using one page of today's newspaper, find the letters that spell that poison and connect those letters with a colored pen or marker. If you want to spell other poisons, repeat the process using a different color for each.

Standards Link: Reading Comprehension: Follow written directions. Spelling. Spell grade-level words correctly.

*Q: Are all mushrooms poisonous?
A: No, only some. Always check with an adult first.

FROM THE LESSON LIBRARY

www.kidscoop.com

Accidents and illness

Collect newspaper articles about accidents and illness. Paste them in a notebook. Underline or highlight the part of the article that mentions the illness or injury. Discuss whether these could have been prevented and how. Decide which causes more damage: accidents or illness.

Standards Link: Health: Students know injury prevention strategies.

Write On!

Poison Prevention

Tell about something that you know is poisonous. Write a paragraph to educate other children about how to avoid this poison.


Kid Scoop VOCABULARY BUILDERS

This week's word: **POISON**

The noun **poison** means something that can kill or harm living creatures if swallowed or breathed.

Antifreeze, bleach, bug spray and other poisons should be kept where children cannot reach them.

Try to use the word **poison** in a sentence today when talking with your friends and family.



**Catfish
ELECTRIC**
• Industrial Contractor


Oilfield • Industrial • Commercial • Residential
Shane "Catfish" Kennedy **663-0360**
TECL23243
Providing Electrical Service For Over Fifteen Years



**DON'T FORGET TO HAVE
YOUR PRESCRIPTIONS FILLED**

B&B PHARMACY
300 N. BALLARD • 665-5788 • 800-273-927
EMERGENCY 665-2892
• ACCEPT MOST INSURANCE • OSTOMY SUPPLIES
• OVER THE COUNTER MEDICATION

Pampa Realty Inc.
669-0007



Real Estate For The Real World

Visit CENTURY 21 COMMUNITIES™ on AOL@Keyword:CENTURY 21

Jim Davidson (BKR)662-9021
Robert Anderwald665-3357
Marie Eastham665-5436
Katrina Bigham665-4678
Twila Fisher (BKR)665-3560
Melba Musgrave669-6292
Brandi Morphis440-6548

Consuelo's
Lunch and Dinner 11 a.m. - 9 p.m.

Take-Out Available Ask About Our Sr. Citizen Discount

1328 North Hobart (806) 665-6105

WHAT A DIFFERENCE A DAY MAKES!

In just **ONE DAY** Bath Fitter will install a beautiful acrylic tub and wall right over the old one!

- Custom-formed tubs, walls and showers.
- Premium quality acrylic with 25-30 year life expectancy.
- Wide choice of colors and styles.
- Thousands of satisfied customers since 1964.

Call Now For More Information Or A Free In Home Estimate
1-888-465-4978 Toll Free

BATH FITTER®
of Amarillo

WINK'S U-HAUL

228 W Brown • 665-5710 or 665-1360

- Automatics • A/C • Power Steering • AM/FM Radio
- Low Cost Moving Protection Plan
- One-Way Rentals U.S. & Canada Mileage Included
- FREE 24-Hour Road Service • Auto Transports & Tow Dollies
- Complete Line of Moving Supplies & Towing Accessories
- Prices as Low as * \$9.95 Per Day (* plus mileage)

Eagle Carports Sold Here! starting at \$699

COMBS WORLEY BARBER SHOP
120 WEST KINGSMILL 806-595-0280

TUESDAY - FRIDAY 8:00 AM - 5:00 PM
SATURDAY 7:00 AM - 12:00 NOON
WALK INS ALWAYS WELCOMED

BOB JEFFERS ... "KEEPING A MALE TRADITION"


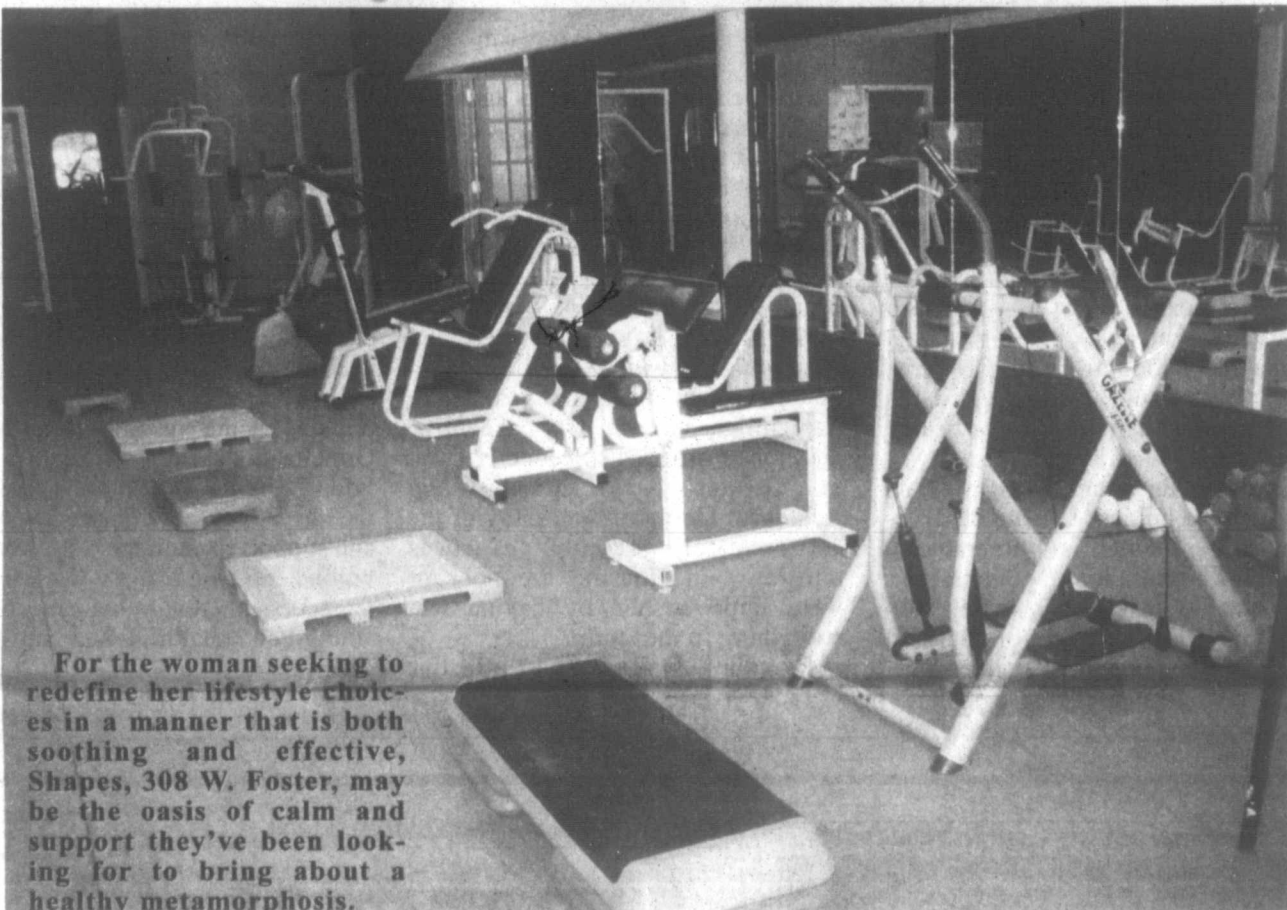
PAT GULLEY STEEL CONSTRUCTION
BARNs • HOUSes • SHEDs
CARPORTs • ETC...

PAT 806.447.9705 cell 806.205.0770
SCOOTER 806.447.1122 cell 806.930.9201
fax 806.447.1385

BUSINESS REVIEW

SHAPES

Discover a happier, healthier you at Shapes ...

Formerly Curves, Shapes fitness center for women offers between 15 and 20 hydraulic weight machines designed specifically for women. Each machine works a different muscle group or part of the body. A complete circuit of the various machines usually takes about 20 minutes and can result in a net loss of 9 to 12 inches in one month, said owner Pam Canniff.

Canniff will soon offer members an infrared-body-wrap system with multi benefits. "The system is for body shaping, skin rejuvenation, weight control and pain relief," she said. The services Shapes currently affords are varied and tailored to indulge the female spirit. After an uplifting round on the weight machines, members can actually pamper themselves to a spa-like experience.

"We have tanning," Canniff explained. "We do hair and nails (pedicures and manicures), and we also have a gift shop." The center is membership oriented. All members are required to pay a one-time \$49 fee in addition to specific membership dues. Membership is \$29 a month by draft or \$49 month-by-month. A year's membership is \$376. A three-month membership is \$147.90 and includes the \$49 one-time fee. Originally from Malibu, Calif., Canniff moved here after her car broke down in Amarillo while traveling. During her stay, she purchased two centers — one in Dumas, the other here in Pampa. "I actually started across the street in a much smaller building. Now we're in a 2,500-square foot building," Canniff said. Soon after making the transition from California to Texas, Canniff soon realized that keeping up with the two stores in such out-lying locations required too much time and travel. She opted to sell the Dumas concern and concentrated her efforts on the Pampa business. Currently under the management of Tina Tibbets, Shapes employees 12 staffers. To find out more, call Shapes at 669-7660.

Looking for affordable health insurance?

COMPARE & SAVE
with Clinton Grange

Look at us on the Web at www.valuedhealthinsurance.com or call 1-866-856-3762



THAI NOODLE RESTAURANT
THAI & CHINESE CUISINE
1201 N HOBART • 665-0006

10% OFF
with this ad (per table)

- NEW OWNERSHIP
- EXPERIENCED COOK

FORMERLY OF THE MAI THAI RESTAURANT



BUSINESS REVIEW

PAT GULLEY STEEL CONSTRUCTION



- CARPORTS
- HOUSES
- BARNES
- SHEDS
- ETC....

PAT
806.447.9705
cell 806.205.0770

SCOOTER
806.447.1122
cell 806.930.9201

fax 806.447.1385

CORONADO HEALTHCARE CENTER

1504 W. KENTUCKY
PAMPA TEXAS
806.665.5746

Let Our Family ...
Take Care Of Your Family

INNOVATIVE STAFFING SOLUTIONS, LLC

TEMPORARY
TEMP-PERM
PERMANENT

1224 N. Hobart St.
NBC Plaza II, Ste. 11
Pampa, Texas 79065
Office 806 665-2991
WWW.ISSLLC.COM

PANHANDLE
OWNED

WE CAN
DO IT!

GIVE US
A CALL!

For Any Employment or
Human Resource Need

The Vicary House Tea Room

Open to the Public Wednesday and
Thursday 11:00 am to 2:00pm



303 N Frost
Pampa Tx
806-669-0122

Luncheons and Dinner parties by reservation.

Rasco Construction

Overhead Doors Office: 1000 S. Price Rd. (806) 665-0042
Steel Frame Carports
Remodeling Gerald Rasco (806) 440-1185
Landscaping/Water Features Gary Higgins (806) 440-1076
Custom Storage Buildings

We Accept Visa And Mastercard

WE BUY INVOICES!

ARE YOU INTERESTED IN:

- Working Capital
- Substantial Accounts Receivable
- Rapid Sales Growth
- Reduced Overhead

Managing your
cash flow just
got easier.
Call Us!

DIVERSIFIED LENDERS, INC.

806.795.7782 • 800.288.3024
diversifiedlenders.com

OPEN WEDNESDAY

9:30AM - 4:30PM

100 N CUYLER SUITE 103

IN BANK OF AMERICA BUILDING

HIGH PLAINS HEARING AID CENTER

AUDIOPROSTHOLOGIST • HEARING INSTRUMENT SPECIALISTS

- In Office Repair Service Lab
- In Home SERVICE
- 30 Day Return Privilege
- 100% Digital Hearing Aids

PAMPA OFFICE 665-6246 TOLL FREE 800-753-1446

FRANK McCULLOUGH INSURANCE

1224 N. HOBART SUITE 105 NBC PLAZA

OFFICE 806-669-3311 CELL 806-440-3030

SPECIALIZING IN LIFE INSURANCE



YOU CAN SAY "I DON'T NEED IT,"
BUT CAN YOU SAY, "MY FAMILY WON'T NEED IT?"

I CAN ALSO HELP YOU WITH YOUR
INDIVIDUAL HEALTH INSURANCE NEEDS

NO ONE PLANS TO FAIL ... THEY JUST FAIL TO PLAN!

GEL-US NAILS

11746 W. Hwy 152 • 669-6245
Borger Hwy - Inside Pampa Machine Office

NANCY JACOBY
has joined our team doing hair

Call And Set Up Your Appointment Today
669-6245

Holiday Gift Certificates Available



Feature Your Business Here

Call 669-2525

Tanning
Specials

1 month unlimited \$25	1 month unlimited (with lotion) \$50	40% off all lotions come in or save!
------------------------------	---	---

Sign up for tanning & get 2
weeks of Shapes free!

Safari Tans Shapes

fitness for
women

Join Shapes this month & get
60 minutes tanning free!

Sports Day

NCAA Tournament

THE ASSOCIATED PRESS

All Times EST

OPENING ROUND

At UD Arena
Dayton, Ohio
Tuesday, March 14
Monmouth, N.J. (18-14) vs. Hampton (16-15), 7:35 p.m.

WASHINGTON REGIONAL

First Round
Thursday, March 16
At Greensboro Coliseum
Greensboro, N.C.
Wichita State (24-8) vs. Seton Hall (18-11), 12:20 p.m.
Tennessee (21-7) vs. Winthrop (23-7), 2:40 p.m.
At Cox Arena
San Diego
Illinois (25-6) vs. Air Force (24-6), 7:25 p.m.
Washington (24-6) vs. Utah State (23-8), 9:45 p.m.

Friday, March 17
At UD Arena
Dayton, Ohio
Michigan State (22-11) vs. George Mason (23-7), 7:10 p.m.
North Carolina (22-7) vs. Murray State (24-6), 9:30 p.m.
At The Wachovia Center
Philadelphia
Connecticut (27-3) vs. Albany, N.Y. (21-10), 7:25 p.m.
Kentucky (21-12) vs. UAB (24-6), 9:45 p.m.

Second Round
Saturday, March 18
At Greensboro Coliseum
Greensboro, N.C.
Tennessee-Winthrop winner vs. Wichita State-Seton Hall winner
At Cox Arena
San Diego
Illinois-Air Force winner vs. Washington-Utah State winner

Sunday, March 19
At UD Arena
Dayton, Ohio
North Carolina-Murray State winner vs. Michigan State-George Mason winner
At The Wachovia Center
Philadelphia
Connecticut-Albany, N.Y. winner vs. Kentucky-UAB winner
Semifinals
Friday, March 24
At The MCI Center
Washington
Connecticut-Albany, N.Y.—Kentucky-UAB winner vs. Illinois-Air Force—Washington-Utah State winner
Tennessee-Winthrop—Wichita State-Seton Hall winner vs. North Carolina-Murray State—Michigan State-George Mason winner
Championship
Sunday, March 26
At The MCI Center
Washington
Semifinal winners

ATLANTA REGIONAL

First Round
Thursday, March 16
At Greensboro Coliseum
Greensboro, N.C.
George Washington (26-2) vs. North Carolina-Wilmington (25-7), 7:10 p.m.
Duke (30-3) vs. Southern University (19-12), 9:30 p.m.

At Jacksonville Veterans Memorial Arena
Jacksonville, Fla.
LSU (23-8) vs. Iona (23-7), 7:10 p.m.
Syracuse (23-11) vs. Texas A&M (21-8), 9:40 p.m.

Friday, March 17
At American Airlines Center
Dallas
California (20-10) vs. N.C. State (21-9), 7:20 p.m.
Texas (27-6) vs. Pennsylvania (20-8), 9:40 p.m.

At The Palace of Auburn Hills
Auburn Hills, Mich.
Iowa (25-8) vs. Northwestern State (25-7), 12:25 p.m.
West Virginia (20-10) vs. Southern Illinois (22-10), 2:45 p.m.

Second Round
Saturday, March 18
At Greensboro Coliseum
Greensboro, N.C.
Duke-Southern University winner vs. George Washington-North Carolina-Wilmington winner
At Jacksonville Veterans Memorial Arena
Jacksonville, Fla.
LSU-Iona winner vs. Syracuse-Texas A&M winner

Sunday, March 19
At American Airlines Center
Dallas
Texas-Pennsylvania winner vs. California-N.C. State winner
At The Palace of Auburn Hills
Auburn Hills, Mich.
Iowa-Northwestern State winner vs. West Virginia-Southern Illinois winner
Semifinals
Thursday, March 23
At The Georgia Dome
Atlanta
Duke-Southern University—George Washington-North Carolina-Wilmington winner vs. LSU-Iona—Syracuse-Texas A&M winner
Texas-Pennsylvania—California-N.C. State winner vs. Iowa-Northwestern State—West Virginia-Southern Illinois winner
Championship
Saturday, March 25
At The Georgia Dome
Atlanta
Semifinal winners

MINNEAPOLIS REGIONAL

First Round
Thursday, March 16
At Jacksonville Veterans Memorial Arena
Jacksonville, Fla.
Oklahoma (20-8) vs. Wisconsin-Milwaukee (21-8), 12:25 p.m.
Florida (27-6) vs. South Alabama (24-6), 2:45 p.m.

At The Jon M. Huntsman Center
Salt Lake City
Boston College (26-7) vs. Pacific (24-7), 12:40 p.m.
Nevada (27-5) vs. Montana (23-6), 3 p.m.
Friday, March 17
At UD Arena
Dayton, Ohio
Ohio State (25-5) vs. Davidson (20-10), 12:15 p.m.
Georgetown (21-9) vs. Northern Iowa (23-9), 2:35 p.m.

At The Wachovia Center
Philadelphia
Arizona (19-12) vs. Wisconsin (19-11), 12:30 p.m.
Villanova (25-4) vs. Monmouth, N.J.—Hampton winner, 2:50 p.m.

Second Round
Saturday, March 18
At Jacksonville Veterans Memorial Arena
Jacksonville, Fla.
Florida-South Alabama winner vs. Oklahoma-Wisconsin-Milwaukee winner
At The Jon M. Huntsman Center
Salt Lake City
Boston College-Pacific winner vs. Nevada-Montana winner

Sunday, March 19
At UD Arena
Dayton, Ohio
Ohio State-Davidson winner vs. Georgetown-Northern Iowa winner
At The Wachovia Center
Philadelphia
Villanova—Monmouth, N.J.—Hampton winner vs. Arizona-Wisconsin winner

Semifinals
Friday, March 24
At The Hubert H. Humphrey Metrodome
Minneapolis
Villanova-Monmouth, N.J.—Hampton—Arizona-Wisconsin winner vs. Boston College-Pacific—Nevada-Montana winner
Ohio State-Davidson—Georgetown-Northern Iowa winner vs. Florida-South Alabama—Oklahoma-Wisconsin-Milwaukee winner
Championship
Sunday, March 26
At The Hubert H. Humphrey Metrodome
Minneapolis
Semifinal winners

OAKLAND REGIONAL

First Round
Thursday, March 16
At The Jon M. Huntsman Center
Salt Lake City
Gonzaga (27-3) vs. Xavier (21-10), 7:20 p.m.
Indiana (18-11) vs. San Diego State (24-8), 9:40 p.m.

At Cox Arena
San Diego
Marquette (20-10) vs. Alabama (17-12), 2:40 p.m.
UCLA (27-6) vs. Belmont (20-10), 4:55 p.m.
Friday, March 17
At American Airlines Center
Dallas
Arkansas (22-9) vs. Bucknell (26-4), 12:30 p.m.
Memphis (30-3) vs. Oral Roberts (21-11), 2:50 p.m.

At The Palace of Auburn Hills
Auburn Hills, Mich.
Pittsburgh (24-7) vs. Kent State (25-8), 7:10 p.m.
Kansas (25-7) vs. Bradley (20-10), 9:30 p.m.

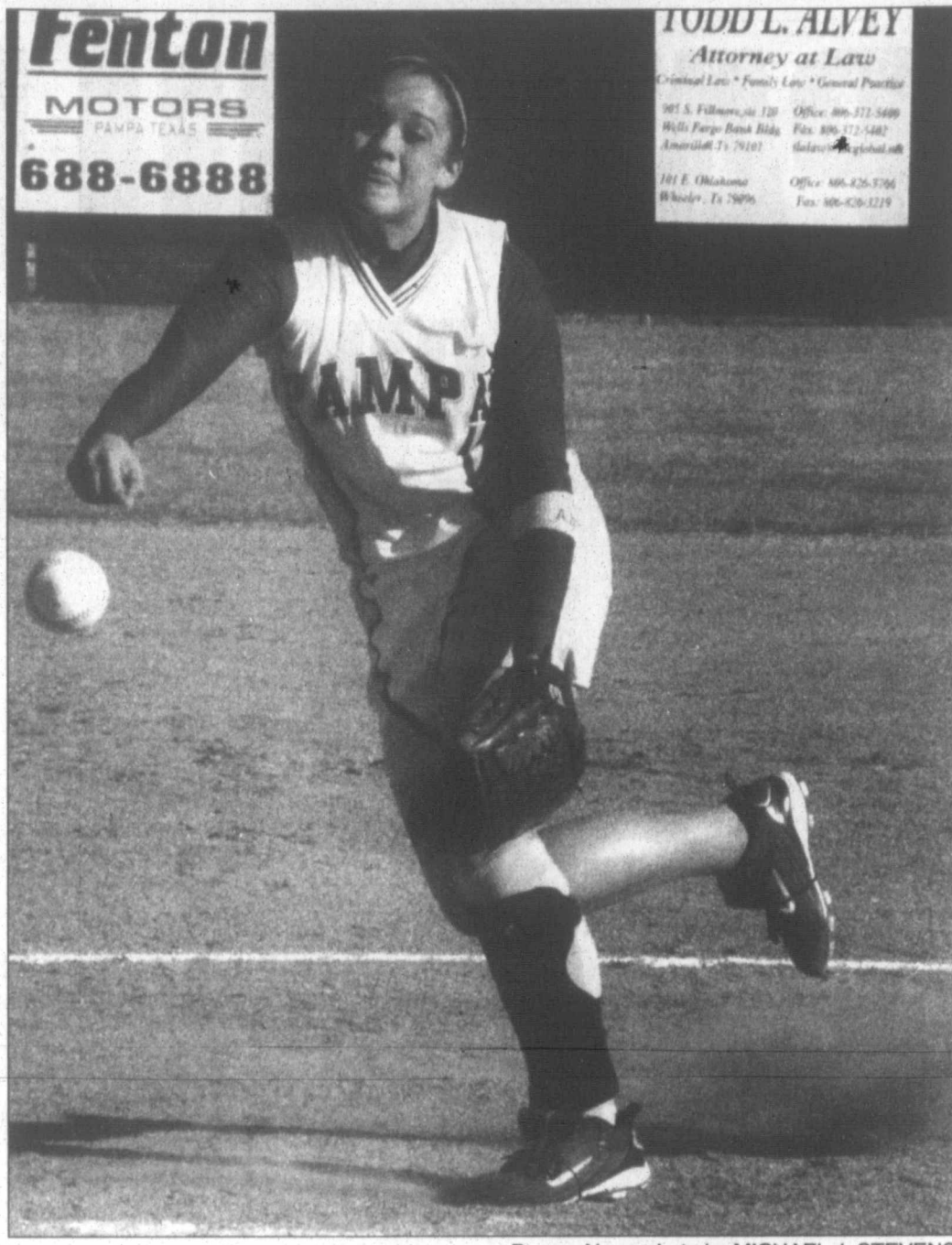
Second Round
Saturday, March 18
At The Jon M. Huntsman Center
Salt Lake City
Gonzaga-Xavier winner vs. Indiana-San Diego State winner
At Cox Arena
San Diego
UCLA-Belmont winner vs. Marquette-Alabama winner

Sunday, March 19
At American Airlines Center
Dallas
Memphis-Oral Roberts winner vs. Arkansas-Bucknell winner
At The Palace of Auburn Hills
Auburn Hills, Mich.
Kansas-Bradley winner vs. Pittsburgh-Kent State winner
Semifinals
Thursday, March 23
At Oakland Arena
Oakland
UCLA-Belmont—Marquette-Alabama winner vs. Gonzaga-Xavier—Indiana-San Diego State winner

Memphis-Oral Roberts—Arkansas-Bucknell winner vs. Kansas-Bradley—Pittsburgh-Kent State winner
Championship
Saturday, March 25
At Oakland Arena
Oakland
Semifinal winners

FINAL FOUR
At The RCA Dome
Indianapolis
National Semifinals
Saturday, April 1
Atlanta champion vs. Oakland champion
Washington champion vs. Minneapolis champion
Championship
Monday, April 3
Semifinal winners

Lady Harvester hurler



Pampa News photo by MICHAEL J. STEVENS

Pampa junior Nicole Clark sends a pitch plateward Friday afternoon during the game between the Lady Harvesters and Lady Eagles of Canyon. Clark and her teammates will compete in the Arlington Tournament Wednesday through Saturday. The boys host Perryton this afternoon at 4:30.

Central Hockey League standings

THE ASSOCIATED PRESS

NORTHERN CONFERENCE

Northeast Division						
	W	L	OTL	Pts	GF	GA
y-Bossier-Shreveport	36	14	8	80	198	159
Youngstown	21	33	5	47	192	225
Memphis	21	31	4	46	184	219
Fort Worth	16	35	8	40	145	225

Northwest Division						
	W	L	OTL	Pts	GF	GA
y-Colorado	40	12	6	86	225	171
Oklahoma City	34	22	3	71	219	193
Wichita	32	18	7	71	207	185
Tulsa28	24	5	61	191	197	

SOUTHERN CONFERENCE

Southeast Division						
	W	L	OTL	Pts	GF	GA
y-Laredo	38	14	6	82	211	142
Austin	32	25	3	67	181	197
Rio Grande Valley	29	23	6	64	181	169
Corpus Christi	21	32	5	47	133	184

Southwest Division						
	W	L	OTL	Pts	GF	GA
Odessa	32	19	6	70	196	173
Amarillo	28	25	3	59	179	186
Lubbock	25	27	4	54	159	176

y-clinched division
NOTE: Two points are awarded for a win, one point for loss in overtime or shootout. Overtime or shootout losses are only denoted in the OTL column, not the loss column.

Monday's Games
No games scheduled
Tuesday's Games
Amarillo at Odessa
Colorado at Tulsa
Memphis at Bossier-Shreveport
Lubbock at Rio Grande Valley
Wednesday's Games
No games scheduled
Thursday's Game
Memphis at Corpus Christi

HOUSTON TEXANS

Walker waived after four seasons

HOUSTON (AP) — The Houston Texans have waived defensive end Gary Walker, the two-time Pro Bowl lineman who'd been with the team since its inaugural season. The 11-year veteran, who battled through injuries last year, told Houston television station KRIV that he may retire. "If that's my final decision, just to be healthy, I can go out and play with my kids now," Walker told the station Monday. Walker had 19 tackles and one sack in 11 games this season. He was lost for the season in December after severing his

right triceps. Walker was an expansion draft selection off Jacksonville's roster and almost left the Texans before the 2004 season because of the drain his salary would have placed on the team that season. He wound up signing a six-year deal to stay put. In the Texans' inaugural year, he had 115 tackles and 6 1/2 sacks and made the Pro Bowl. Drafted by the Houston Oilers in 1995, Walker signed with the Jaguars in 1999 and came to the Texans in the expansion draft along with defensive tackle Seth Payne and offensive tackle Tony Boselli.

5 Spec
ADVER
al to b
Pampa
placed t
pa New
10 Los
FOUND
Yorkie
FOUND
puppy
REWAF
Lab w/
669-086
13 Bus
AREA
Execut
Inv
Accou
86
14d Ca
Carpn
placem
siding
olas 669
OVERI
REPAI
structur
OWEN
Additio
patios
guar. 66
14e Ca
NU-W/
ice, ca
walls,
doesn't
steam
owner-
3541,
town, 8

The Pampa News Classifieds

5 Special Notices

ADVERTISING Material to be placed in the Pampa News, **MUST** be placed through the Pampa News Office Only.

10 Lost/Found

FOUND small female Yorkie. Call 669-2801.

FOUND female Husky puppy. Call 440-1610.

REWARD. Male Black Lab w/ one blue eye. Call 669-0869 or 664-3376

13 Bus. Opp.

AREA REP. No Selling Executive Level Income Invest \$13K for Accounts & Inventory 800-373-5470

14d Carpentry

Carpentry, Roofing, Replacement windows, steel siding & trim Jerry Nicholas 669-9991, 662-8169

OVERHEAD DOOR REPAIR

Kidwell Construction. Call 669-6347.

OWENS CARPENTRY

Additions, remodeling, patios & decks. Work guar. 665-0619, 662-3380

14e Carpet Serv.

NU-WAY Cleaning service, carpets, upholstery, walls, ceilings. Quality doesn't cost...It pays! No steam used. Bob Marx owner-operator. 665-3541, or from out of town, 800-536-5341.

14g Elec. Contr.

CATFISH Electric & Industrial Contractor. Serving oilfield, industrial, commercial, & residential, with over 15 years experience. Call Shane Kennedy at 663-0360.

14h Gen. Serv.

COX Fence Company. Repair old fence or build new. Free estimates. Call 669-7769.

IS your House or Foundation Settling? Cracks in bricks or walls? Door won't close? Call Childers Brothers, Inc. Stabilizing & Foundation Leveling. 1-800-299-9563 or 806-352-9563 Amarillo.

D. R. Shelton

Sheet rock, carpentry, painting, ceramic tile, free estimates. 806-664-4056.

HANDYMAN

Landscaping, Carpentry, Painting, Tree Trimming, Clean Up, Fencing. Most Odd Jobs. Call for Free Estimates. (806)662-7692

14r Plowing/Yard

ALL types of yard, plowing, haul off and landscaping. Free estimates. Call 806-665-5529.

14s Plumbing/Heat

JACK'S Plumbing & Faucet Shop. 715 W. Foster, 665-7115. faucets, plumbing supplies, new const., repair, remodeling, sewer / drain cleaning, septic systems installed. Visa/MC

14s Plumbing/Heat

Larry Baker Plumbing Heating/Air Conditioning Borger Hwy. 665-4392

19 Situations

DOMESTIC. 25 yrs exp. Yes I do windows! Excellent ref. Work guaranteed. Carey, 806-733-2492

21 Help Wanted

NOTICE

Readers are urged to fully investigate advertisements which require payment in advance for information, services or goods.

Immediate Openings LVN's & CNAs Needed For All Shifts

McLean Care Center Call 806-779-2469 Ask For Administrator Billy Ray Johnston

Front Office / Insurance

Team Members needed in a busy chiropractic office Put your "people skills" to work. Fax resume to (806)665-0537

CRALL PRODUCTS

Immediate Openings *Welders *Painter/Sandblaster 40hrs + wk. Salary based on exp. Apply in Person: W. Hwy 152, Pampa

21 Help Wanted

CRALL PRODUCTS 2930 W. Hwy. 152 ASME Code Welder-Fabricators for Pressure Vessels Needed. Apply in person or Fax resume to: 665-9736

Summer Employment

Fun Valley Family Resort. South Fork Co. Needs students to work all types of jobs, kitchen, dining room, house keeping, stores, maintenance, horse wrangler & office salary. Room, Board, Bonus. For info. & appl. Write to Personnel Director, 6315 Westover Dr., Granbury Tx. 76049

Full-Time Employment!

Must be 18 Insurance Vacation Sick Leave Retirement Offered Bartlett Lumber 500 W. Brown Pampa

EXCEL Production

is accepting resumes and/or application for an Exp. Field Pumper. Individual must have knowledge and exp. in the operations of oil & gas wells, compressors & tank batteries. No Phone Calls will be accepted. Please bring resume or pick up application at 1050 N. Price Rd. or mail resume to: Attn: Personal Excel Production P.O. Box 1800 Pampa, TX 79066-1800

NOW HIRING FOR CAREER OPPORTUNITIES

POSITIONS NOW AVAILABLE: * Roustabout * Utility Maintenance * Warehousemen/Delivery * Pen Rider * Mechanic Trainee * Inside Sales * Warehousing * Staffing Coordinator * Licensed Professional Counselor * Part-time Clerical

Part-time and Full-time Temp and Temp to Perm.

Drug Screens Required Never a Fee to Applicants Apply Now!

INNOVATIVE STAFFING SOLUTIONS, LLC

1224 N. Hobart St., NBC Plaza II, Ste. 11 Pampa, TX 79065 Phone (806) 665-2991

CDL position open.

Dump truck experience preferred. Day hauls only. Pre-employment drug test is required. Apply in person. West Texas Landscape. 120 S. Hobart.

OUTREACH Health Services

hiring home health providers in Pampa area. Must be 18 yrs. of age. No exp. necessary. Please contact Regina or Dee 800-800-0697. EOE.

21 Help Wanted

SUMMER EMPLOYMENT Fun Valley Family Resort. South Fork Co. Needs retirees w/ own RV for all types of jobs. Office, house keeping, cooks, maintenance & RV parks. For info & application. Write to Personnel Director, 6315 Westover Dr., Granbury Tx. 76049

PT Evening Cook's Help-

er needed at St. Ann's Nursing Home. Must be able to work weekends. More info., call 537-3194, ask for Linda or Phyllis.

SIVALLS Inc.

is looking for welder fabricators, and paint test service tech. Welding and drug tests req. Benefits: health ins., profit sharing, 401K, 8 paid holidays and 10 days vacation per year. 806-665-7111, Pampa.

NOW accepting applications

for Cooks, Wait Staff & Dish Washer. No interviews. Apply in person at Dos Caballeros.

NOW hiring Service Tech/Mgr. & installers.

Send resume to Po Box 672, Pampa, 665-1212.

WANTED

I need one person to help me with my business in Pampa. If you have a sales personality and desire an above average income, call 669-7605.

EXP. Compressor Mechanic.

Competitive Wages and Benefits. Send Resume to Attn: Human Resources, P.O. Box 562, Pampa, TX 79066, or apply in person. Fluid Compressor Partners, 2538 W. Kentucky.

PAMPA Nursing Center

needs LVN/RN & Laundry Aide. Apply in person, 1321 W. Kentucky. No Phone Calls Please.

Children's Home Healthcare

is accepting applications for RN's and LVN's with pediatric exp. for Borger & Pampa areas. Full time and part time positions avail. Home health exp. a plus. We offer benefits to full time employees and shift differentials. Please come by: 1612 S. Van Buren, Amarillo, TX. for an application or call 806-367-6612

FOUNTAIN help.

Great hours. Clean, Neat & Dependable. Apply in person, Heard-Jones, Pampa

SECRETARY/Bookkeeper,

computer exp. necessary, part-time. 669-9661, 8 am. - noon for appl.

DRIVERS NEEDED

EXP. full-time Truck Drivers needed to haul crude oil. Must have a good driving record & at least 2 yrs. exp. on tractor trailer rigs; CDL req. Tanker and HazMat endorsements will be required. Must be able to pass a DOT physical & drug screen. Local hauls and exc. benefits. Day Shift. \$500 sign-on bonus. Openings in the Pampa area. For an appl., phone: 1-800-451-1931 or 1-806-659-2571. Plains Marketing, L.P. An Equal Opportunity Employer, M/F.

OPENING for Heating & Air Tech,

and 2 helpers. Drug test req'd. No Phone Calls Please. Come by Larry Baker Plumbing Heating & Air at 11780 Hwy 152

69 Misc.

ADVERTISING Material to be placed in the Pampa News **MUST** be placed through the Pampa News Office Only.

21 Help Wanted

JANITORIAL Service taking appli., drivers license required, will train. 669-9186, 665-2667.

FT Pharmacy Technician

needed Send Resume to Box 13 C/o of The Pampa News, PO Box 2198, Pampa TX 79066

PT Evening Cook's Help-

er needed at St. Ann's Nursing Home. Must be able to work weekends. More info., call 537-3194, ask for Linda or Phyllis.

SIVALLS Inc.

is looking for welder fabricators, and paint test service tech. Welding and drug tests req. Benefits: health ins., profit sharing, 401K, 8 paid holidays and 10 days vacation per year. 806-665-7111, Pampa.

NOW accepting applications

for Cooks, Wait Staff & Dish Washer. No interviews. Apply in person at Dos Caballeros.

NOW hiring Service Tech/Mgr. & installers.

Send resume to Po Box 672, Pampa, 665-1212.

WANTED

I need one person to help me with my business in Pampa. If you have a sales personality and desire an above average income, call 669-7605.

EXP. Compressor Mechanic.

Competitive Wages and Benefits. Send Resume to Attn: Human Resources, P.O. Box 562, Pampa, TX 79066, or apply in person. Fluid Compressor Partners, 2538 W. Kentucky.

PAMPA Nursing Center

needs LVN/RN & Laundry Aide. Apply in person, 1321 W. Kentucky. No Phone Calls Please.

Children's Home Healthcare

is accepting applications for RN's and LVN's with pediatric exp. for Borger & Pampa areas. Full time and part time positions avail. Home health exp. a plus. We offer benefits to full time employees and shift differentials. Please come by: 1612 S. Van Buren, Amarillo, TX. for an application or call 806-367-6612

FOUNTAIN help.

Great hours. Clean, Neat & Dependable. Apply in person, Heard-Jones, Pampa

SECRETARY/Bookkeeper,

computer exp. necessary, part-time. 669-9661, 8 am. - noon for appl.

DRIVERS NEEDED

EXP. full-time Truck Drivers needed to haul crude oil. Must have a good driving record & at least 2 yrs. exp. on tractor trailer rigs; CDL req. Tanker and HazMat endorsements will be required. Must be able to pass a DOT physical & drug screen. Local hauls and exc. benefits. Day Shift. \$500 sign-on bonus. Openings in the Pampa area. For an appl., phone: 1-800-451-1931 or 1-806-659-2571. Plains Marketing, L.P. An Equal Opportunity Employer, M/F.

OPENING for Heating & Air Tech,

and 2 helpers. Drug test req'd. No Phone Calls Please. Come by Larry Baker Plumbing Heating & Air at 11780 Hwy 152

21 Help Wanted

KITCHEN help needed. Apply in person at Dyer's Barbeque, Pampa.

CLERKS Needed.

Apply In Person At Davis Minit Mart. 1106 Alcock.

FT Electronic Assembly

Work. Will train. Must be motivated to learn & work. Apply @ Guardian. 1490 S. Doyle. 665-5010. D.L. & background req.

EXP. Maintenance person

needed. Must have own tools. Call to apply 665-4274 or 806-433-6939

NATIONAL HOME HEALTH CARE

is searching for a Full-Time Delivery Technician. Computer skills a must. On-Call time and heavy lifting req. Final applicant will be subject to drug screen, driving record & criminal background. Call: 669-0000 for Phone Interview

Aaron's Sales & Lease

Will be accepting applications for Sales Mgrs. & Product Technicians Apply Texas Workforce Comm. 1224 N. Hobart (NBC Plaza) Pampa

NEED energetic sales

people, part-time hrs. apply at Murphy USA (a station in front of Wal-Mart)

48 Trees/Shrubs

WE Do Tree Trimming, Shrubs, Flowerbeds, etc. David Jenkins 2100 N. Banks, Pampa, Tx. 806-665-0480. Free Estimates, Senior Discounts.

PUTMAN'S Quality

Serv. Tree trim, custom carports, stor. bldgs., decks. Msg. 662-4583

50 Building Suppl.

White House Lumber 101 S. Ballard 669-3291

53 Machinery/Tools

TITAN TG-5500 industrial Diesel Generator and TAC-2T Industrial Dual Tank Air Compressor. Both "in the plastic." \$5500 for both. 217-0436

59 Guns

MODEL 11 Remington 12 gauge auto. Model 11 Remington 20 gauge auto. 806-665-0583 or 405-824-3647.

60 Household

Mattress Sets IN STOCK Extra Thick Pillow Top. T. \$190.00 F. \$230.00 Q. \$360.00 K. \$450.00 5 yr. Warr. Elite Furniture 806-677-0400

HOT TUB Beautiful 2006

w/Lounger Never used. Waterfall 6.5 hp, 43 jets, Aroma therapy, cover, startup kit \$4,000 806-670-9337

Distributor Overstock

Brand name mattress sets, orthopedic & chiropractic endorsed. All brand new w/ factory warr. 40-80% Off retail. Can deliver. Pillow tops: Tw. \$176, Full \$227, Qu. \$241, Kg \$371. Plush tops: Tw. \$87, Full \$115, Qu. \$151, Kg \$243. 806-517-1050.

BIG light bl. couch \$75

obo. Never used 04 black & white gas Whirlpool Estate stove, \$350 obo. Call Brandi at 806-440-6548

69 Misc.

ADVERTISING Material to be placed in the Pampa News **MUST** be placed through the Pampa News Office Only.

69 Misc.

1970 series Coca Cola box. Early 60's cigarette machine. Roll top desk. Slot machine. Call 669-0343, leave message.

MEMORY Gardens Cemetery

plot in Section E, \$650. Serious inquiries only. 806-376-6362.

8X10 storage building

for sale. \$450. Call 806-669-1361.

69a Garage Sales

DEBBIE'S Used Furniture. We buy & sell 1 piece or complete house. 903 S. Main, Borger, 273-2905, 886-0268 Tues-Sat.

75 Feeds/Seeds

FERTILIZED Grass Hay for sale. Gary Hall, 806-663-0740.

77 Livest/Equip.

REGISTERED Angus 12-15 Months: 32 Bulls @ \$1,150, 37 Heifers \$1,050. Bill Helton. Residence: (806)355-0509. Ranch: (806)248-7552

80 Pets & Suppl.

FREE 2 Britanys, 1 Setter and 1 Pointer. Call 669-6860 or 440-1322.

95 Furn. Apts.

NEED energetic sales people, part-time hrs. apply at Murphy USA (a station in front of Wal-Mart)

Equal Housing Opportunity

All real estate advertised herein is subject to the Federal Fair Housing Act, which makes it illegal to advertise "any preference, limitation, or discrimination because of race, color, religion, sex, handicap, familial status or national origin, or intention to make any such preference, limitation, or discrimination." State law also forbids discrimination based on these factors. We will not knowingly accept any advertising for real estate which is in violation of the law. All persons are hereby informed that all dwellings advertised are available on an equal opportunity basis.

Beautifully furn. 1

bdms. starting at \$375. We pay gas & water, you pay elec. 6 mo. leases. Pool & laundry on site. Caprock Apts. 1601 W. Somerville 665-7149 Mon.-Fri. 8:30-5:30 Sat 10-4

96 Unfurn. Apts.

CAPROCK APARTMENTS 1, 2, & 3 bdrn. Starting at only \$335. 6 mo. lease available. * Pool * Laundry * Wash/dryer hook-ups * Club room * On-site management * SOFTENED WATER M-F 8:30-5:30, Sat. 10-4 1601 W. Somerville 806-665-7149

GWENDOLEN Plaza

Apts., 1&2 bdr. Gas / water pd. 3, 6 mo.-1yr. lease. 800 N. Nelson, 665-1875.

LAKEVIEW Apt. 1 & 2

bdr. unfurn. apt. avail. Ref., dep. req. 669-2981 or 669-4386

MOVE-IN Special \$275 +

dep. Fresh paint, appliances inc. Come check out the New Coffee St. Duplexes \$300 1st mo. ("Going Fast") Candy or Tim 433-6939 or 665-4274.

98 Unfurn. Houses

PICK up rental list from Gray Box on front porch of 125 S. Houston, Pampa. Update each Fri.

1 bedroom with attached

garage. Remodeled. Nice area in Pampa. Call cell# 806-290-7836.

2 bedroom with attached

garage. Remodeled. Nice area in Pampa. Call cell# 806-290-7836.

1 bdr. house, 438 N. Cuyler.

Suitable for single or couple. 662-3510, 440-1969.

99 Stor. Bldgs.

TUMBLEWEED Acres, self storage units. Various sizes. 665-0079, 665-2450.

102 Bus. Rent. Prop.

OFFICE Space for rent, ask about 3 months free rent. 669-6841.

LOWEST Rents in City!

Downtown locations, stores, warehouses, rec. facilities. Call 665-4274.

103 Homes For Sale

Twila Fisher Century 21 Pampa Realty 665-3560, 440-2314 669-0007

2 bdr., dbl. gar. For sale

by owner. No financing. Call 440-2892 or 779-8876, 662-8570.

2323 Evergreen, 3/2/2.

1821 sq. ft., sunroom, lrg. shop in back. 669-4258.

3800 sq. ft. 4 bd, 3 car gar.

Keller Estates Home on 10.5 acres w/2900 sq. ft. horse barn Call 669-4327 Serious Inquires Only.

For sale By Owner 1212 DARBY

3/1/1 OWNER WILL NOT FINANCE 665-3379

HOME Sites-Price Acres-

\$30,000, 10 Acre plats. 5 Acres Bowers City Hwy. \$10,000. Chaumont Bldg Sites. Century 21, Pampa Realty 669-0007.

Dear Abby...

By Pauline & Jeanne Phillips

DEAR ABBY: I couldn't believe your response to the widow who wanted to participate in the throwing of the wedding bouquet. It is meant for single women only, not widows or women who've run through a legion of husbands. For goodness' sake, is it too much to ask that only TRULY single women participate in this ritual? It amazes me that you sided with the writer. The daughter-in-law who objected was right on the money. The woman should have respected that, sat down and tried to remember that the wedding was not about her. — LAURIE F., ODESSA, FLA.

DEAR LAURIE F.: That's exactly what the wounded widow did. She retreated to her table, and the wedding was no longer a happy celebration for her. I felt, and still do, that being allowed to join the throng to participate would have impinged on no one, and the daughter-in-law was out of line. Read on:

DEAR ABBY: Good for you regarding the Texas widow! At my daughter's wedding reception, my 80-plus-year-old widowed mother caught the bouquet and immediately shoved it into the hands of a 60-year-old widow. I wish you could see the video. What I think is wrong is letting anyone under 18 out there. — ALL FOR THE TEXAS WIDOW

DEAR ABBY: At my son's wedding, my 85-year-old widowed mother, who was walking with a cane at the time, got up and caught the bouquet. The man who caught the garter put it on my mom like she was a 25-year-old woman, and Mom blushed like a schoolgirl. We were all delighted for her. She died at the age of 92, and this is one of my fondest memories of my son's wedding. In our golden years, we deserve to enjoy life as much as any young person. Please tell that Texas widow not to let anyone stop her from doing things that will give her pleasure. — M.J. IN CHATTANOOGA

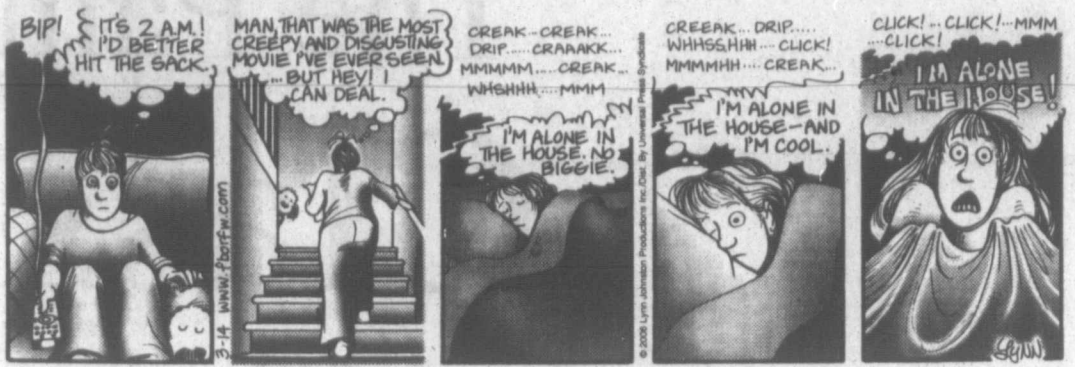
DEAR ABBY: A dear friend of my mother's attended our wedding. She was 70 at the time, and brought her 80-year-old gentleman friend to the celebration. (Both had been widowed.) Whether it was quietly planned, I don't know, but she caught the bouquet, and he caught the garter. They were married within a year. Whenever I see a video of other receptions, I remember that gracious and loving couple — and my guests, who stood quietly and made only "token" motions toward the items. — GINA IN FT. COLLINS, COLO.

DEAR ABBY: That daughter in-law needs a sense of humor and to ease up a bit. Weddings are about celebrating family, love and happiness. She showed none of these when she chastized her mother-in-law. She owes the bride and her mother-in-law an apology. — CELEBRATING BRIDE, GREAT FALLS, MONT.

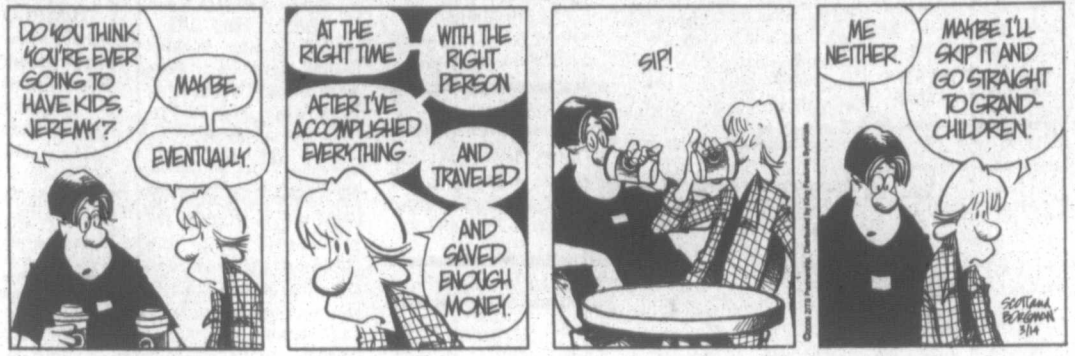
DEAR ABBY: A woman in her 60s caught the bouquet at my wedding. The younger women didn't have a chance. Actually, TWO 60-year-old women fought over it. It's one of the most memorable memories from our reception. We have a great picture of the best man putting the garter on her. She was wearing knee-highs and granny glasses. — CELESTE IN ENFIELD, CONN.

DEAR ABBY: That daughter-in-law was certainly a pill. The family should feel lucky to have a grandmother who is able to participate physically. My dad was in a wheelchair and didn't have that privilege. I lost him two years ago, and I would give anything to have him here to hold his hand and tell him how much I love him. That daughter-in-law should reorganize her priorities, thank her lucky stars, and keep her mouth shut. You go, Grandma! Thanks for letting me vent, Abby. — PATRICIA IN PUEBLO, COLO.

For Better Or For Worse



Zits



Garfield



Beetle Bailey



Marvin



Crossword Puzzle

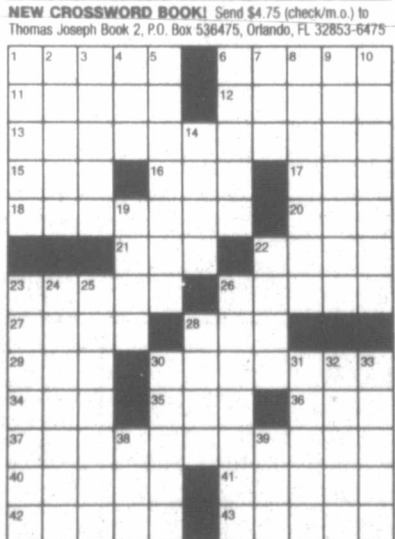
CROSSWORD

By THOMAS JOSEPH

- ACROSS** 42 Haste
1 Inhumane 43 Content
6 Sneaker parts
11 Cost
12 Chinos fabric
13 "Tiny Alice" writer
15 Diner dessert
16 Jamie Foxx movie
17 Eden name
18 Choice morsels
20 Eminem's music
21 Pro vote
22 Past due
23 Arguments
26 School-bag item
27 Mosaic piece
28 Skirt edge
29 Wholly
30 Fleef's base
34 Earth prefix
35 Play-ground game
36 Early auto
37 "Down the River" writer
40 Cuban dance
41 Artless
- DOWN**
1 Moved stealthily
2 Circle spokes
3 Single Greek
4 Greek vowel
5 Trucks, in London
6 Doesn't go
7 Symbol of wisdom
8 Conservative's foe
9 Raise
10 Surprise hit
11 Pro vote
14 Almanac fill
19 Memory unit
22 Oatmeal problem
23 Play
24 Accumulated
25 Door opener's words
26 First family of the 1980s
28 Nail part
30 Valuable fiddle
31 Round-the-world trip
32 "Superman" star
33 Trifled
38 Tad's dad
39 Sheep call



Yesterday's answer



Marmaduke



The Family Circus

By Bil Keane



B.C.



Hagar The Horrible



Peanuts



Blondie



Flo & Friends

