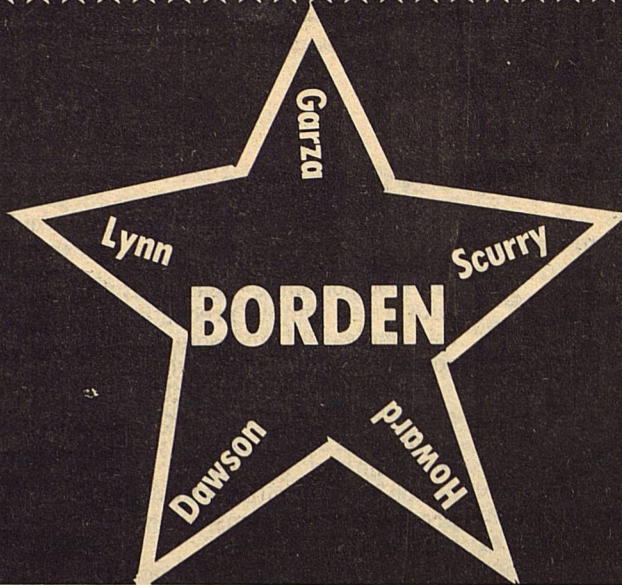


# THE

July 18, 1984



# STAR

Volume XI No. 42

Serving the Counties of Borden, Dawson, Garza, Howard, Lynn & Scurry

## Jerry B. Clayton prominent ranchers dies

Jerry B. Clayton, prominent Borden Co. and New Mexico rancher and business man, died Monday, July 9, 1984 in a Lubbock hospital where he had been confined the last ten days of his life.

Mr. Clayton was born March 3, 1901 in Lubbock to R. M. Clayton, Sr. and Josephine Roy Clayton. He moved with his family to the Muleshoe Ranch in Borden Co. at the age of 12. Clayton, Sr., along with his partner, W. D. Johnson, had acquired the Borden Co. ranch in 1913. Jerry attended San Marcos Academy in San Marcos, Texas and New Mexico Military Institute in Roswell, New Mexico. He left the ranch at 17 to work as a cowboy on the A. K. Warren ranch at Muleshoe Texas. At 19 he went to work on the U-Bar ranch at Hachita, New Mexico, becoming wagon boss of that ranch at age 21.

Jerry married the former Mary Dickinson of Lubbock in 1924. They bought their own place out of Silver City, N.M. in 1927 where they ranched until January, 1938. At that time the Claytons moved to the Jornada Del Muerte out of Las Cruces. In 1939, Mr. Clayton leased a ranch at Caprock, New Mexico and moved his family to Roswell. In the early 1940's, Mr. Clayton bought the old McClure Place at Lovington, N.M. He ranched that place until his death.



Jerry B. Clayton

In 1945, Clayton bought the original portion of the Clayton and Johnson ranch in Borden CO. He ranched there and in New Mexico until 1957 when his daughters, Jere Hubbard and Barbara Anderson acquired the Borden County property. The Andersons still operate the Muleshoe Ranch Company.

Mary Clayton died in 1956 and Jerry married the former Daisy Chambers in Lovington in 1959. They had continued operating ranches in New Mexico.

Jerry Clayton was honored for his outstanding achievements in the ranching industry in 1979 by being named the Cattleman of the Year by the New Mexico Cattle Growers Assoc. He was a member of that organization of long standing and served as a Director for many years.

He had served on the Foreign Trade Commission of the New Mexico Association as well as the National Cattlemen's Association. Clayton had also served as a Director of the Liberty National Bank in Lovington for many years. He was a member of St. Mary's Episcopal church in Lovington.

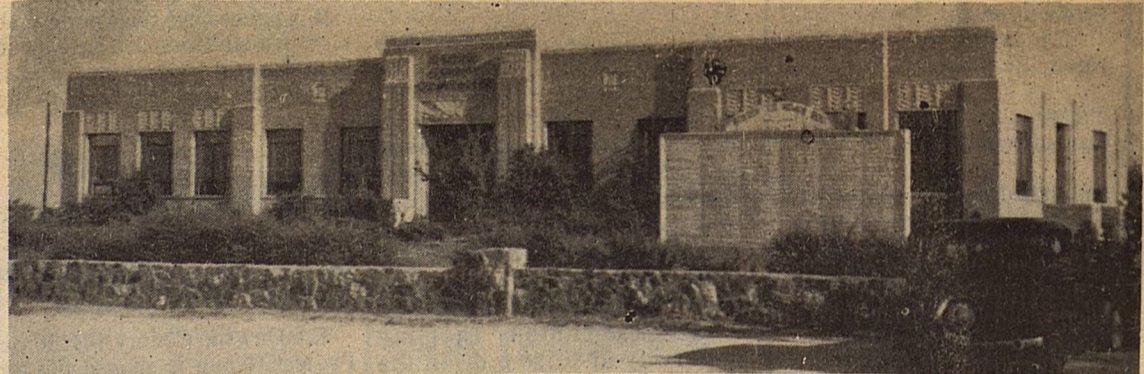
Mr. Clayton is survived by his wife Daisy, his two daughters, Jere (Mrs. W. C. Hubbard of Midland, Barbara (Mrs. Rich) Anderson of Gail, six grand children Clayton and Craig Hubbard, Mary, Martha, and John Anderson, and Sally Anderson Bland. Four great grandchildren John, Sarah, Rebekah, and Brooks Bland. Also several nieces and nephews. He was the last survivor of the R. M. Clayton, Sr. family of 7 boys and 2 girls. The oldest of that family, A. M. Clayton, Sr. was also a prominent Borden County rancher.

Funeral services were held for Mr. Clayton in St. Mary's Church in Lovington at 2 p.m. Wednesday, July 11, 1984. Dean Haverland of Albuquerque, New

Continued on Page 2



Pictured above is the Borden County Courthouse as it stands in 1984 and below is a picture taken in the early 40's, notice the Board of Service men in front.



## County courthouses are community landmarks

County courthouses were the earliest permanent buildings to appear on public squares during the Republic of Texas. They represented organization, prosperity, and selfgovernment, and stood as the focus of counties and communities.

Many of the earliest courthouses built in Texas were replaced in the late 19th century with more permanent and elaborate structures. Courthouses built during this time, many of which are still in use, featured statues of the goddesses of liberty or justice and included such architectural styles as Victorian Gothic, Classical, Renaissance Revival, Romanesque, and Second Empire. Architects J. Riely Gordon, W. C. Dodson, and Nicholas Clayton are responsible for many of the courthouse designs of this time, known as the

"Golden Era of Courthouse Construction."

The Borden County Courthouse was built in 1939 A.D. under the Federal Emergency Administration of Public Works with Franklin D. Roosevelt, President of the United States and Harold L. Ickes as administrator of Public Works. It is the main building on the main street in Gail.

Gail has the distinction of not only being the county seat of Borden County but as also being the only town in the county.

Today, more than 140 late 19th and early 20th century courthouses still stand. Many of these courthouses, however, have been expanded, renovated, and or remodeled to keep up with recent demands associated with growth or convenience. In appropriate modifications often have resulted in much damage

to the historical integrity and beauty of the courthouses. Neglected maintenance also has taken a toll on these fine public buildings a \$400,000 repair job if neglected for 10 years. Some counties have even met modern day demands by destroying their historic courthouses and constructing new ones in their places approximately 30 county courthouses have been built since 1950.

In 1939 the Borden County courthouse was erected for approximately \$50,000 and it cost around \$100,000 to renovate it in 1979, 80, and 82.

The Texas Historical Commission (THC), the state agency for historic preservation, encourages counties to consider alternatives to demolishing

Continued on Page 4

## Annual competition set for working cowboys

The working cowboy and the great cattle ranches are still a part of the Texas landscape and not just American folklore. Tough skilled men continue to ride in the legendary kingdoms of cows and horses, unwilling to surrender their place of honor in the Lone Star state to TV's J.R.s or any urban counterpart.

Once again, these descendants of the Wild West will gather to compete in traditional contests in the fourth annual Texas Ranch Round-up, scheduled for August 17-18, at the Wichita County Mounted Patrol Arena in Wichita Falls.

More than 200 real working cowboys, wagon bosses, cooks and immediate ranch family members will pit their skills against each other in roundup competition, which features events patterned after activities on a working ranch. The roundup will benefit three state charities.

In addition to selecting the "Best Ranch in Texas" and "Top Hand," judges this year will also pick a "Top Horse."

Roundup participants will represent fourteen of Texas'

largest ranches, boasting a combined acreage totalling about 2.5 million, or more than half the size of New Jersey.

The Lewis Ranches of Clarendon will return to defend the best ranch title they won twice -- in 1981 and in 1983. If they win for a third time, the Lewis ranch hands will ride home with a replica of the prized Lex Graham traveling trophy for keeps.

Others included in the competition will be the R.A. Brown Ranch, Coldwater Cattle Co., Inc., Cowan & Son Circle Bar Ranch, Double U Hereford Ranch, Moorehouse Ranch (1982 winner), Pitchfork Land & Cattle Co., Scharbauer Ranches, Rennerbrook-Spade Ranch, Swen R. Swenson Cattle Co., Tongue River Ranch Corp., Triangle Ranch-Burnett Ranches, Inc., U Lazy S Ranch and the W. T. Waggoner Estate.

The roundup opens Friday, August 17, at 7:30 p.m. Teams of cowboys from each ranch will compete in saddle bronc riding, team roping, team branding, wild cow milking, team penning and a wild horse race. A country and western dance will begin at 9 p.m.

On Saturday, jackpot roping and barrel racing, two events outside regular competition, will begin at 8 a.m. A ranch food cookoff, talent contest and the first lady contest will be held Saturday afternoon before the final roundup events begin at 7:30 p.m. Another dance will begin at 9 p.m., with the awards ceremony getting underway at 10:30 p.m. in the arena.

Points will be awarded on a team basis in each event to determine the ranch, that will take home a traveling trophy, a bronze sculpture by Lex Graham. Judges will cast ballots for the top hand, who receives a hand-tooled saddle. Team members of individual events also will receive awards.

Roundup tickets are available for \$9, reserved seats, and \$4, general admission. Tickets to the dances are \$5 per person per evening. Tickets to the Saturday afternoon contests are \$4 for adults and \$1 for children.

## The Kandyland Express

By Kandy McWhorter

### DON'T TAKE FOOD POISONING ON PICNIC

July begins the peak picnic -- and food poisoning -- season. But with a few simple precautions, this unpleasant and sometimes serious illness can be avoided.

The "poison" is actually produced by a certain bacteria, a type of sraphylococcus, which contaminates the food. The poison is eaten with the food and produces symptoms such as nausea and vomiting.

For most people, food poisoning is just a miserable experience, but it can be serious for babies, elderly people and those with other illnesses.

The bacteria often reach food from the hands of the person preparing it. But even when you are careful to wash your hands, bacteria from the skin, hair or throat, can be spread to food.

Since these bacterial are especially fond of protein, it is recommended that precautions be taken when taking high protein foods--such as meat, poultry, salads containing egg, custards and some baked foods--on picnics.

The most likely sources of food poisoning are those that you do not normally heat or reheat before serving on a picnic.

It is never wise to assume that high-protein foods are safe after being kept at room temperature. Since refrigeration prevents the

bacteria from making their poison, the most effective way to avoid food poisoning is to eat them right away or else keep them cold until they are served.

Refrigeration temperatures should be below 45 degrees Fahrenheit, which may be difficult to maintain in an ice chest or other type of cooler.

Contrary to myth, mayonnaise is not commonly the main culprit in food poisoning. So it is important to keep all hot foods hot and cold foods cold to reduce the chances of taking food poisoning along on your picnic.

### PICNIC PIZZAS

4 Kentucky Fried Chicken

Buttermilk Biscuits,

halved horizontally

1 can (8 ounces) Del Monte

Tomato Sauce

1 teaspoon oregano leaves

1 pepperoni link (3-1/2

ounces), sliced

4 medium fresh mushrooms,

sliced lengthwise

1 cup (4 ounces) shredded

mozzarella cheese

Flatten biscuit halves

with your palm and place

halves cut-side-down on grill

or cut-side-up under broiler

to toast. Combine tomato

sauce and oregano leaves.

Spread 2 tablespoons tomato

mixture over each toasted

biscuit half. Top each with

three pepperoni and three

mushroom slices. Sprinkle 2

tablespoons shredded cheese

on each. Wrap each in foil.

Put packets on grill over hot

coals 5 to 8 minutes or under

broiler 2 to 3 minutes until

cheese is melted. 8 servings.

## Dawson County 4-H'ers announce horse show

The Dawson County 4-H Horse Project Group is sponsoring an Open Invitational Horse Show this coming Saturday beginning at 9 a.m. at the Lamesa Rodeo Arena.

There will be both halter and performance classes for pee wee divisions (eight years old and under), junior class (nine through 13 years old), and an open division for all ages.

Belt buckles will be awarded for all-around winners in all four age divisions. Trophies will be awarded to all first place winners.

Entry blanks may be picked up in most county Extension

offices surrounding Dawson County. Entries may be submitted in advance to Judy McGee, Route D, Lamesa, TX. 79331. For additional information contact Mrs. McGee at 872-7478 or the county Extension office at 872-2444.

Profits from the horse show and the concession stand are spent for awards for the annual 4-H Horse Group banquet.

"We need greater virtues to sustain good fortune than bad."

-LaRoche foucauld

## Garza County "Off the Hook"

County Judge Giles Dalby was informed by John Simek, chairman of the board of directors of the Texas Low-Level Radioactive Waste Disposal Authority, that the authority has withdrawn from consideration a potential disposal site located two miles South of Kalgary in Northeast Garza County.

The reason for withdrawal was given as geological inadequacies.

Initial data indicated the possible existence of deep clays at the site, but after finding sand at a depth of approximately 40 feet, the technical requirements could not be met at the site and withdrew the site from consideration.

State Senator John Montford, whose district include: Garza County, agreed with Simek, stating, "the authority has assured me all along that if the site didn't meet the technical requirements, they would walk away from it.

The authority has been working closely with Senato Montford and Representative Steve Carriker who have both expressed interest in the authority's activities in Garza County.

The Garza County site is the fifth tract of land examined in detail by the authority. Four of the five sites have failed to meet the authority's strict technical criteria. The other potential site is located in Dimmit County, three miles south of Asherton, Texas.

### Clayton

Continued from Page 1

Mexico officiated. A family burial service was held at sunrise on the Muleshoe ranch at the base of a sandstone outcropping where he and his brother, Buster went as kids to "rest". They had carved their names on the rocks in 1914. Mr. Clayton had requested to be buried there. Pall bearers included his three grandsons, his grandson-in-law and Daisy's two nephews..

The Borden Star  
Publication No. 895520  
(USPS 895-520)  
Publication No. 895520

Editor  
Barbara Anderson

Published weekly, except for Christmas and New Years, on Wednesday at Gail, Borden County, Texas 79738, Box 137, Kincaid Street, Second Class postage paid at Gail, Texas.

Any errors that we make reflecting on the reputation or standing of any Firm, Corporation, or individual that may appear in the columns of the Borden Star will be gladly corrected when called to the attention of the staff.

Subscription Rates:  
\$8.00 per year

Borden Star Owners  
James McLeroy, Barbara Anderson, Doris Rudd, Pat Porter, Bob Dyess, Edna Miller, Ruth Weathers, Mrs. Nathan Zant, Sonny Tucker, Eddie Simer, Loreen Jones, Martin Parks, Dan Turner, Lela Porter, and Marge Toombs.

## T&E's Electric Co.

EXPERT ELECTRICAL WORK

Elizabeth Musgrove  
(915)263-8568

Christeen Ledbetter  
(806)439-6653



## Security State Bank

1411 Gregg

Big Spring, Texas

Member F.D.I.C.

## Your County Agent Says... by Alan Day

### DISTRICT 6 4-H SHOOT

Ten 4-H shooters traveled to Odessa July 14th for the District 6 4-H Trap & Skeet Shoot.

Mickey Burkett shot a 73 of 75 targets in senior trap. This tied him for second but in the resulting shoot off he wound up in 3rd place.

Amando Soto, Billy Massing-

ill, Michael Murphy, David Holmes & Will Phinizy comprised a 5 man Jr. trap team which placed 3rd. Michael shot 46 of 50 targets and tied for 4th.

In sub-junior trap, Patrick Herridge shot 44 of 50 targets and tied Amanda Anderson for 3rd. In the resulting shoot off Patrick ended up 4th but only after 2 shootoff events.



Five man Jr. trap team placed 3rd in the District 6 4-H shoot in Odessa. Team members were Michael Murphy, Will Phinizy, David Holmes, Billy Massingill and Amando Soto.



Five man Jr. trap team placed 1st in the District Trap & Skeet shoot in Lubbock. Team members were Will Phinizy, Billy Massingill, David Holmes, Michael Murphy and Brice Key.

Lance Telchik & Patrick placed 3rd in 2 man trap. Jason Mize and Kristi Adcock also shot in the 2 man trap competition.

### DISTRICT 2 4-H SHOOT

The Borden County 4-H Trap Club members came away from the District Trap & Skeet shoot with 15 of the 30 trophies awarded. The shoot was held July 13th at the South Plains BGun Club in Lubbock.

In the Sub-Junior competition, Lance Telchik placed 5th in trap, was high individual in skeet and won the high overall trophy in the sub junior division. Armando Soto and Lance teamed up to place 1st in two man skeet with Armando placing 2nd in skeet competition. The sub-junior 5 man trap team placed 1st. Team members were Lance Telchik, Armando Soto, Kristi Adcock, Patrick Herridge and Jason Sharp. Kate Porter and Jason Mize also shot in the sub junior division.

In the Junior division, Michael Murphy shot a 47 out of 50 to place as high individual in trap. The 5 man Jr. trap team placed 1st. Team members were Brice Key, Billy Massingill, David Holmes, Michael Murphy and Will Phinizy. David Holmes also placed 2nd in Jr. skeet, he and Murphy placed 22nd in 2 man skeet.

In Senior competition, Mickey Burkett placed 3rd in trap. He and Glen Bacon placed 2nd in the 2 man trap and they also placed 2nd in 2 man skeet. Samantha Porter also shot senior trap.

Congratulations to those youth for such a fine showing.

## Brown attends clerks conference

The 89th Annual Conference of the County and District Clerk's Association of Texas was held in El Paso from June 26th through June 30th, 1984. Dorothy Browne, County and District Clerk of Borden County attended the conference. She represented Are Two at the Cabinet Meeting on June 26th and presented the Invocation at the Opening Session on June 27th.

While attending the conference she was elected to again serve Area Two as a Leader and has been appointed to serve on the District Clerk's Legislative Committee for the 1984-1985 year.

There were 433 Clerks, Deputies and Guests registered at the conference.



The deer family includes about 60 species, ranging in size from the huge Alaska moose down to the Chilean pudu, which is almost as small as a rabbit.

## Midway Baptist slates revival July 16-22

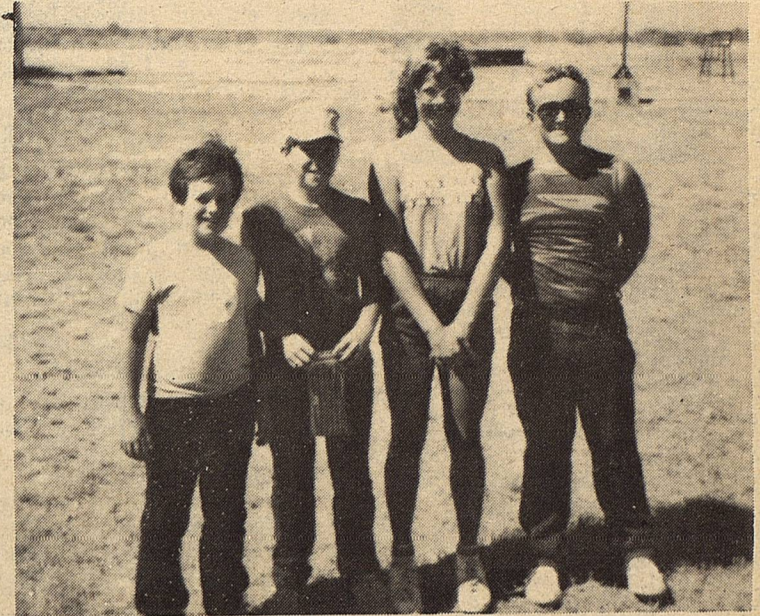
Revival services at Midway Baptist Church are slated to begin July 16 and continue through the 22nd with Jess Little, pastor from Quitaque as the evangelist for the meeting.

Kenneth Riddle will direct the singing during the week-long

revival at Midway Baptist Church located on Route B.

Services will be held Monday through Saturday at 7:30 each evening, and on Sunday at 10:45 a.m. and 7 p.m.

The public is cordially invited to attend the services.



Jason Mize, Patrick Herridge, Kristi Adcock and Lance Telchik at the Odessa shoot.

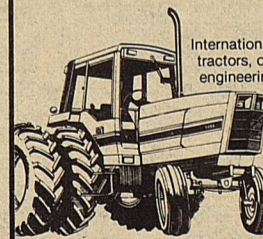


Italians in Italy consume a million and a half tons of pasta every year.

## Advanced design gives you top performance, productivity and reliability

### International®

5088 - 136.1 PTO hp\*  
5288 - 162.6 PTO hp\*  
5488 - 187.2 PTO hp\*



### International 50 Series

tractors, offer you advanced engineering and design concepts... give you a level of performance and reliability that's probably higher than you've ever known before.

Just look at some of the outstanding features you get with 50 Series tractors. Proven, high-torque, turbocharged diesel engines... a totally new drive train... fully synchronized transmission, with Synchro Tri-Six shifting, provides 18 uniformly spaced forward speeds... hydraulic-powered mid-mount

master clutch... exclusive Forward Air Flow cooling... Power Priority hydraulics... right-hand command controls... and a high level of operator comfort and convenience—all of which add up to more acres per hour... top fuel economy... plus reliability that's backed by a 3-year or 2500-hour extended warranty on the engine and drive train. So why wait? Stop in, see them now. Drive the International tractor that's power matched to your acreage.



Finance plans available.



### INTERNATIONAL HARVESTER

BROUGHTON & WISE  
IMPLEMENT CO.

P. O. Box 2197  
Lamesa Highway  
Big Spring, Texas 79721-2197  
(915) 267-5284  
Res.: 263-3527

# Claiborne's

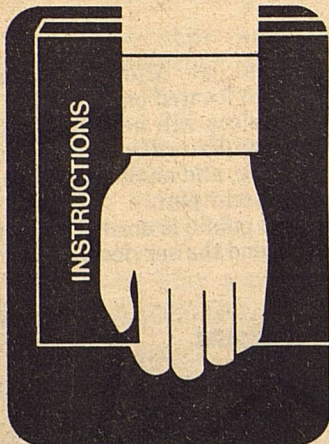
THRIFTWAY

## Visit Our Deli

Party Trays      Pastries      Custom Cakes

710 N. 4th

Lamesa



**Harvest Safety**

Machinery manufacturers have taken the drudgery out of harvesting. Despite this progress, people often get careless and suffer needlessly from harvesting mishaps.

- Read the manufacturer's instruction manuals so you are thoroughly familiar with your equipment.
- Train your help so they are competent and can do their jobs safely.
- Keep shields and guards in place, and stay away from unguarded moving parts.
- Stop all machinery before trying to unclog, adjust or service.
- Keep children and non-workers off of and away from machinery.
- Take work breaks and non-alcoholic refreshments to maintain alertness and reduce fatigue.

**Thank You**

The Jerry Clayton family wishes to express their gratitude and thanksgiving to all of the many friends who expressed their condolences during the time of their bereavement. The sympathies were a comfort and a blessing.

Daisy Clayton  
Thew Hubbard family  
The Anderson family  
The Bland family

**POLITICAL  
CALENDAR**

The following individuals have authorized the Borden Star to list them as candidates for election to the respective offices shown as follows in the November 6, 1984 Borden County Democratic Primary Election. (Paid political advertising by candidates listed below.)

**FOR SHERIFF**  
Slick Sneed

**FOR COMMISSIONER PRECINCT NO. 1**  
Frank Currey

**FOR COMMISSIONER PRECINCT NO. 3**  
Vernon Wolf

**FOR DISTRICT JUDGE**  
Gene Delaney R

**FOR DISTRICT ATTORNEY**  
Borden and Scurry Counties  
Ernie Armstrong D

**ASCS News**

by Jerry Stone

**ACP SIGNUP**

Additional ACP funds are available for conservation cost sharing. If you are interested in completing conservation measures on your farm or ranch, make your application now.

**ACR MAINTENANCE**

Land designated as ACR must be protected from wind and water erosion and weeds must be controlled. Maintenance checks of ACR are being made so please keep your ACR in good shape. Failure to maintain ACR will result in loss of all program benefits.

**INTEREST**

The CCC loan interest rate for July is 12.0 percent.

**1985 WHEAT PROGRAM**

Program provisions for the 1985 wheat program have been announced and are as follows:

1. Signup-October 15 through March 1.
2. Target Price -\$4.38 bushel.
3. Loan Rate - \$3.30 bushel.
4. Maximum permitted acreage - 70 percent of farm's wheat base.

**Notice**

COUNTY OF BORDEN  
STATE OF TEXAS

**BID NOTICE**

Bids will be accepted by the Borden County Commissioners' Court for a self-propelled broom for Borden County Road & Bride No. 2 Bids will be opened August 13 at 10:00 a.m.

For further information or specifications contact County Judge's Office, 915-856-4391.

Borden County reserves the right to reject any or all bids.

By Order Of The Commissioners' Court  
Van L. York  
County Judge  
Borden County

**CLASSIFIED**

**AIRLINES NOW HIRING.** Reservationists, stewardesses and ground crew positions available. Call 1-619-569-6214 for details. 24 hrs.

**For Sale**

RCA Video disc player and 9 disc for \$325.00 -2 years old.  
Call Sue Mize 915-399-4343.

**PIANO FOR SALE**

Wanted: Responsible party to assume small monthly payments on spinet-console piano. Can be seen locally. Write: (include phone number) Credit Manager, P.O. Box 478 Lockhart, TX 78644-0478.

5. Total set-aside-10 percent of base diverted plus 28.57 percent of seeded acres.

6. Advance payment-one half of the \$2.70 bu. diversion payment will be available at signup.

7. Bases for 1985 will be the average of the 1983 and 1984 planted and considered planted acreages.

**Grain checks never cashed**

**By the Associated Press**  
Farmers usually have something to complain about, whether its low prices, high interest rates or a lack of rain.

But there are some western grain growers who apparently have so few cares they don't bother cashing their grain checks.

The Canadian Wheat Board, which handles the export of western wheat, oats and barley, reports that more than 29,000 checks issued in the last 50 years and worth a whopping \$1.8 million have never been cashed by farmers.

Those uncashed checks represent a tiny percentage of the 26 million payments the board has mailed out in the last half-century to farmers who sell their grain through the board.

About half the outstanding checks, whether lost, mislaid or forgotten, were issued in the last couple of years.

But other uncashed checks date as far back as the first payments the board made 50 years ago when it was founded.

**POLICY MEETING**

The fifth in a series of USDA "listening sessions" to discuss future food and agricultural policy will be July 19 in Dallas. It will be designed to give the public an opportunity to express views to the Secretary of Agriculture and other USDA policy leaders. The session will begin at 10:00 a.m. at the Ramada Hotel, 1055 Regal Row in Dallas.

**Courthouses**

Continued from Page 2.

Nineteenth and early 20th century courthouses were well built, constructed with care, and designed to last. They are outstanding examples of Texas' architectural and cultural heritage, and through careful planning with professional restoration consultants, courthouses can be modernized without losing their original character or integrity. Even when new courthouses must be built, old structures can be preserved and used for other purposes.

**Anyone under the sun can get cancer.**

If you work in the sun, watch it. Day after beautiful day of sunshine can result in overexposure which can lead to skin cancer. So cover up in the sun. And remember that a yearly health checkup is your best insurance against cancer. Call your doctor for an appointment today.

American Cancer Society

THIS SPACE CONTRIBUTED BY THE PUBLISHER

"He who has health has hope and he who has hope has everything."  
Proverb

**PUBLIC NOTICE**

AT&T Communications has filed with the Public Utility Commission (PUC) of Texas to introduce a new intrastate, optional long distance service to begin August 1, 1984, the same date "Reach Out® America" plan will be available for interstate calls.\*

A new service designed to give customers the opportunity to reduce the cost of long distance in Texas has been filed with the state PUC by AT&T Communications of the Southwest, Inc.

"Reach Out" Texas is an optional calling plan which will provide additional discounts on long distance rates for Texas customers who frequently place calls in the evening, weekend, and night time calling periods.

The new "Reach Out" Texas plan for the first time extends the benefits of competition to many Texas consumers who previously have not had any discounted long distance service available to them.

AT&T Communications customers who choose this new optional service will pay a monthly charge of \$14 which entitles them to one hour of intrastate "Direct Dialed" (1 + ) calling during the weekend and night rate period.

An additional customer savings for those participating in the plan will be that any Direct Dialed calls placed during the weekend and night rate period that exceeds the one hour period will be charged at an hourly rate of \$12, or \$ .20 per minute.

Customers selecting this option also receive an additional 15 percent discount for intrastate Direct Dialed calls during the evening discount rate period for a total savings of approximately 38 percent.

A one-time charge of \$6 is billed when a customer orders the "Reach Out" Texas plan. The \$6 is collected by AT&T Communications and paid to the local telephone company to establish the service. This charge will be waived during the first 90 days that the offering is available.

AT&T Communications is proud to offer this optional service for its Texas long distance customers and will in the future continue to introduce cost cutting programs to help Texans reduce their long distance bills.

A complete copy of the "Reach Out" Texas tariff and rate schedule is on file with the Texas Public Utility Commission at Austin, Texas.

AT&T Communications estimates that the revenue impact of this new service would be significantly less than 2.5 percent of annual gross revenues.

Persons who wish to intervene or otherwise participate in these proceedings should notify the Commission as soon as possible. A request to intervene or participate or for further information should be mailed to the Public Utility Commission of Texas, 7800 Shoal Creek Boulevard, Suite 400N, Austin, Texas 78757. Further information also may be obtained by calling the Public Utility Commission Consumer Affairs Division at (512) 458-0223 or (512) 458-0227, or (512) 458-0221, teletypewriter for the deaf.

\*Customer billing for the optional calling plan will be provided for AT&T Communications through billing contracts with the local telephone companies. Therefore, the introduction of these rate plans into a specific area is contingent upon local company billing capabilities. Southwestern Bell Telephone Company has agreed to handle the billing in its service areas effective August 1, 1984.



AT&T  
Communications

*Everybody's*  
**THRIFTWAY**

**A FRIENDLY Supermarket serving West Texans with Quality Foods at Competitive Prices.**

**We give S&H Green Stamps Double on Tuesday after 1 p.m. All Day Wednesday.**

**35th and College Ave.  
Snyder, Texas**