

## ENORMOUS OIL INCREASE IN YEAR CHAMBER OF COMMERCE MAKES FUTURE PLANS

### C. COOK ELECTED PRESIDENT TO FINISH UNEXPIRED TERM

Members Plan to Hold Regular Meetings on Tuesday Night of Each Week Until January

Charles C. Cook was elected president of the Chamber of Commerce at a meeting held at the Legion hall Tuesday night. He will serve until sometime in January when the general election of officers will be held.

It was decided to hold regular meetings of the organization on Tuesday night of each week. About 30 members and visitors attended the meeting Tuesday night. Work of the past was discussed, and various suggestions for the future were given.

### Santa Claus Asks For More Letters

Santa Claus was certainly tired when he came into the office this morning. He has been in the southern part of the state for the past few days and reports the roads rather muddy.

He has read all of the letters that have been received, but says that some of the children don't seem to want him to visit them. You'd better write him a letter and let him know that you want to see him and also tell him what you want for Christmas.

Address all letters to: Santa Claus, Pampa News, Pampa, Texas.

The following letters have been received and read by Santa Claus:

Pampa, Texas.  
Dec. 7, 1926

Dearest Santa Claus  
I was very pleased with the toys you gave me last Christmas, for this Christmas I want a bible, a box of ink stationery and a fountain pen with my name on it.

I have one brother, I want you to get him a bible, a wrist watch and fountain pen with his name on it.

Get mother a silverware set and a large box of chocolates.

Get daddy a watch and a shaving set.

My brother's age is 14, my age is 11 years.

Please don't forget to give the poor and smaller children their toys first.

I am hoping to see you soon.  
I am, yours truly,  
Esther Stark.

Kings Mill Tex  
Dec 8 1926

Dear Santa Claus:  
I want you to give me a few lines to tell you what I want for Christmas.

I want a little steam engine. I want a pocket knife. I want a toy fridgen and some candy and nuts.

I don't want to break you up and so I won't call for anything else.  
Your friend Virgil Frasier

Kings Mill Tex  
Dec 8 1926

Dear Santa  
I want a wagon with horses hitched on it. I want a to blade knife. I want a story book and a little car I want a pair of ice skates. I want a big sack of barbels. I want three t-ops and a little engine.

Luke Frasier, Kings Mill, eight years old.

Pampa, Tex.  
Dec the 12, 1926

Dear Santa Claus  
I want you to bring me a little neder chest and a doll and a little sewing machine so I can make my doll some close and I want some candy and nuts.

Your little  
Friend Anna Bell Allan

T. B. Solomon and Charles Spurlock of the Plains Abstract company have moved their office from West Foster avenue to the White Deer Land building.

Henry Schafer was in Pampa the first of the week on business.

### WORK ON LODGE BUILDING STARTED

Odd Fellows to Have New Quarters on Kingsmill

Excavation work for the new Odd Fellows building has been completed and work on the building will be started as soon as weather conditions permit, according to W. A. Taylor of the building committee.

The building site is across the alley west of the new postoffice building on Kingsmill avenue.

The building will be 40 by 70 feet, constructed of brick and tile. The Odd Fellow hall will be on the second floor and two store rooms will be on the ground floor. The cost of the building will be from \$10,000 to \$12,000, according to Taylor. Nalley has the contract for the building. It will be ready for occupancy within the next two months if the weather does not hold up the work.

Immediate action should be taken to start some action.

Fred Hencke suggested that a flat rate of one dollar for three months be set as membership fee, and that a budget committee be appointed to assess the members as to how much they could pay beyond that amount.

"It seems to me that now is the time to start the ball rolling," said Joe Smith. "The main thing that we need now is work."

A. H. Doucette advanced the opinion that if a man put enough money into the Chamber of Commerce, he would come to the meeting and see that his money was being expended properly.

"I don't like the idea of getting small amounts at a time," said M. K. Brown. "Get the membership and budget connected so that enough money can be obtained at one time and eliminate going around to see the people so often. I like the idea of having a fixed amount for membership fee, and then let the big companies and wealthy persons take out several of the memberships and distribute them among their employees. In that way they will have proportionate representation."

The nominating committee appointed composed of J. S. Wynne, A. Brown, C. C. Dodson, A. H. Doucette and Kelly, unanimously appointed C. C. Cook as president of the Chamber of Commerce until the next election. The members present voted unanimously to elect him.

The president was authorized to appoint a committee to meet with M. A. Turner, Thursday afternoon and work out plans for the organization. The committee appointed was composed of M. K. Brown, F. M. Zimmer, C. C. Dodson, Kelly, and J. S. Wynne. The meeting for them was scheduled for 2 o'clock Thursday afternoon at the White Deer Land office. The president was also a member of this committee.

F. P. Reid and M. A. Turner were appointed at a previous meeting to see about the road which passes through the McConnell property west of town. McConnell had asked that the road be changed to follow the section line. The estimated cost of such a change would be seven or eight hundred dollars, according to A. E. Doucette. The road might be left where it is if the fences are moved, according to Doucette.

F. M. Zimmer said that the Chamber of Commerce would have to be put over as a business organization, and the thought of donation dispensed from the minds of the people.

A complete report of the Chamber of Commerce will be given at the meeting Tuesday night, according to M. A. Turner, secretary.

### FAST INCREASE IN POSTAL BUSINESS

8,000 People Are Now Receiving Mail at Pampa

The postal business of the Pampa postoffice has more than doubled during the last six months. The money order receipts are more than four times as large as they were six months ago.

For the month of June the postal receipts totaled \$1132.32, and for the month of November they totaled \$2589.39. The money order receipts for June amounted to \$5,946.81. This amount was increased to \$39,547.03 during the past month of November.

Approximately 8,000 people are receiving mail through the office here now, according to W. A. Crawford, postmaster.

The postal employees report that considerable Christmas mail is now being received and sent at the office. "Early Christmas mail cannot be stressed too much," says Crawford. "It is better for us, the senders and the receivers if the mail is sent so that there will not be a jam and a rush during Christmas week. I believe that the people here realize the circumstances and are doing everything they can to make the service better."

### 8 ARRESTS MADE AFTER RAID HERE

Charge of Gaming Is Placed Against Victims

Sheriff E. S. Graves and his deputies arrested eight gamblers Wednesday night as the result of a raid made on a cafe in the south part of the city.

One arrest was made Wednesday of a man charged with passing 'hot' checks.

Two women were arrested the latter part of last week and charges of selling intoxicating liquor was placed against each. They both made bond to appear before the district court when it is in regular session in February. A man who was arrested recently and charged with bootlegging whiskey has also made bond and will be tried in February.

About twenty other persons have been arrested during the past week. Charges of being intoxicated and gaming were placed against them. Most of the persons arrested either paid fines or made the required bond.

### Williams Acquitted of Murder Charge

J. C. Williams, who was charged with killing L. M. Black at Kingsmill on July 8, was acquitted of the charge at his trial held at Canadian Monday, December 6.

The trial was set to be tried at LeFors while the grand jury was in session during the week of October 11, but a change of venue was granted to the Lipscomb county court.

The jury was out but two hours and returned the verdict of "not guilty."

### Work Started on New Bridge

Construction work has started on the new steel bridge on the Pampa and LeFors road. The bridge is being built at a cost of \$5000. It is expected to be complete and ready for use within the next four weeks.

Concrete piers are being used. The bridge is located about two miles this side of LeFors.

Miss Hazel White has gone to Missouri to spend Christmas.

### GRAY COUNTY CREDITED WITH GOOD PERCENTAGE OF JUMP

Crude Obtained From Pampa Pool Maintains High Quality and Continues to Top Market

The amount of oil brought to the surface in Gray county has been multiplied approximately 200 fold during the past year. A total of 33 fields in the United States have had a combined increase during the past year of 425,966 barrels a day.

Twenty of the thirty-three fields included are in Texas, and the fields in the Panhandle are credited with a good percentage of the immense increase. The other thirteen fields included are in Montana, California, Kansas, Oklahoma, Louisiana and Arkansas.

Official oil reports show that the fields in Texas and Oklahoma have averted the expected petroleum shortage in the United States that was predicted a year ago.

The crude that is obtained in the immediate Pampa pools maintains its high quality and is topping the market.

The Texas Oil company has made a new location on the east line of the northwest quarter of section 26 in the Wilcox field.

The recent rain has slowed up the activities to some extent, but with the type of trucks that are now used, the transportation of material has not been affected much.

Operators here say that they expect to continue the operations in the field here all winter. Except during short periods of severe weather, there is not much change in the operations.

The oil companies that work from a budget system usually make their budget during the month of January. It is reported here that several of the larger companies plan to make their budgets include hundreds of derricks and other necessary equipment to drill as many wells in the Pampa field.

The Roxana's McAuley which came in last Friday for 50 barrels an hour and increased to 100 barrels by Saturday night, is reported to be holding its own. This well is located near the original Roxana well number 1 which has been a faithful producer for the past few months. There are more than 25 rigs up around the original Roxana well now.

Work on the building, tracks and loading racks west of Pampa is continuing, and almost daily a rapid improvement can be observed.

### ACTION FAST AT SANTA FE DEPOT

Company Employs 80 Men in Local Yard

Click, click, click: trains in and trains out—the Santa Fe depot proves to be one of the busiest places in Pampa.

An average of 150 tickets are sold every day, but more than this number of people can be seen getting off of the train every day.

Twenty-two trains, including passenger and freight, pass through Pampa every day. A crew of men are working night and day. Officials here say that about 80 men are employed in the local yards.

The freight trains stop to leave a carload, or generally several carloads of merchandise, supplies, livestock and whatnot. Several trucks are employed to take the express from the baggage cars of the passenger trains. In a few minutes time several truck loads are unloaded and as many are loaded on.

The conductor shouts, "all aboard" and the train moves on. The Santa Fe boys are always busy, but they are always jolly.

Mrs. Tom Carver who has been ill for the past week is improving.

### FUNERAL HOME TO BE BUILT AT ONCE

Malone to Construct Building on Cuyler Street

Plans for a modern funeral home here have been completed and work on the building will begin immediately, according to G. C. Malone, who is having it built. It will be located on Cuyler street across from the school building.

The building will be constructed of brick and stucco. When complete it will include a front office, chapel, rest room, preparation room and a show room.

"Everything will be strictly modern," says Malone. "As soon as the building is completed I am going to install the most modern equipment that can be obtained. With the new limousine ambulance recently purchased and the new building and equipment, I will be able to render the best of service."

Malone has been in the undertaking business in Pampa for the past four years.

The new building will be 24 by 75 feet when completed. It will be finished and ready for use as soon as the workmen can complete the job, according to Malone.

### Divorced Couple Are Re-Married

Tahoka.—Judge C. H. Cain on Monday reunited in the bonds of wedlock a couple who had been divorced and later patched up their differences, decided to forget the disagreements of the past and to again unite their lives and their fortunes. The couple were T. W. Wilcock and Mrs. Mary Ann Wilcock, and they gave their residence as Lubbock. Just why they came to Tahoka to get married was not explained, nor did the judge ask them many questions as to their past. But they seemed happy and it is hoped that they will remain so even until death.—The Lynn County News.

### From Pampa to Minnesota and Ad Is Answered

An advertisement was run in the classified department of the News recently asking for two copies of the News of the dates of April 3 and June 11.

J. E. McCarty, Cloraine, Minn., read the advertisement and has sent us the copies.

The classified department will work for you. When you have something to sell or buy, or when you want to let the classified department results.

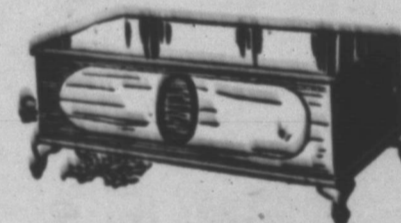
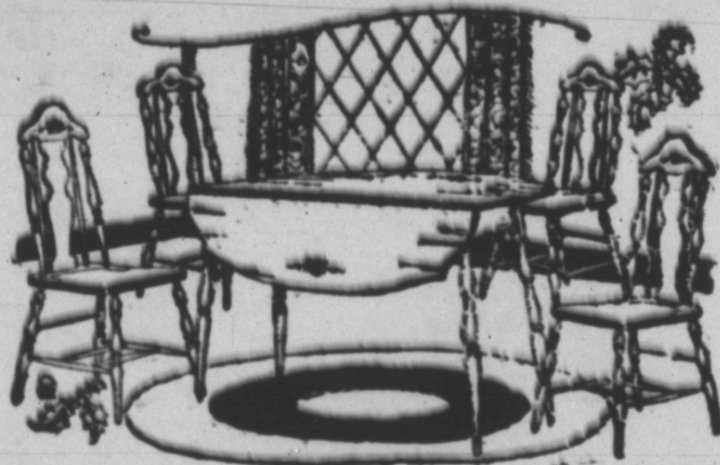
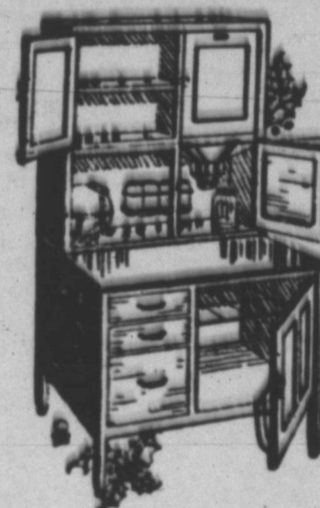
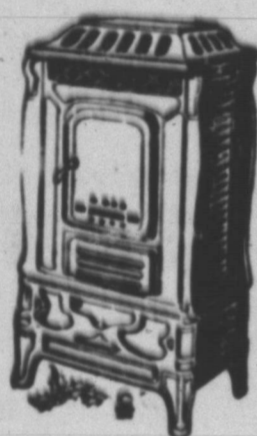
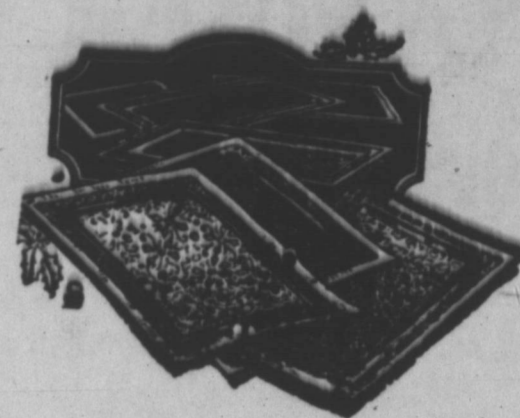
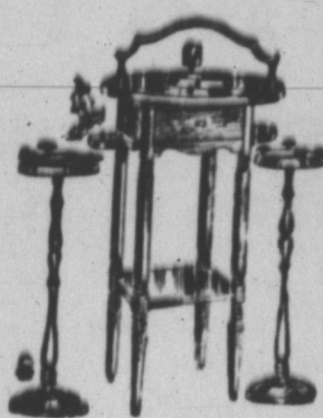
For a cent with a minimum you can get hundreds of...

# Gifts for the Home



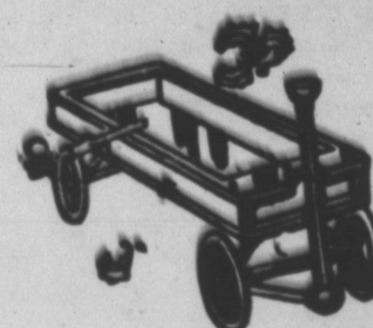
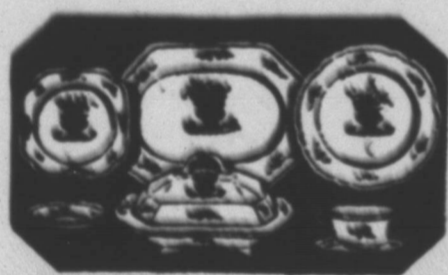
## FURNITURE

FURNITURE—the lasting, durable gift for the home, enjoyed by all the family the year 'round. Beautiful living room suites; bedroom and dining room suites; colorful breakfast sets; and odd pieces of every description all offer suggestions for appreciated gifts as well as home beautification for the holiday season. The home should come first in the hearts of all the family—and what could be more thoughtful—what could add more comfort, beauty and joy to the home than fine furniture? Especially the occasional pieces that are so inexpensive, yet so greatly loved by all. We have stocked up especially for Christmas with a host of gift pieces. Make your selection now and a small deposit will hold it—to be delivered when you say.



## In The Hardware Dept.

In this department, too, you can find many gifts sure to be appreciated—certain to lighten the household burdens of wife or mother. Kitchenware, cutlery, dishes, aluminum ware—in fact, dozens of articles inexpensive yet which aid so much in the duties of housework. Come in today—tomorrow—anytime and make your selections early in gifts really worthwhile—gifts of permanency and sure to be appreciated. You will find here a host of gifts for men and boys as well.



## SUGGESTIONS

### FURNITURE

- Rugs, Rockers,
- Floor and Table Lamps
- Living and Bedroom Suites
- Cedar Chests, Hall Trees,
- Desks, Book Cases,
- Table Ornaments,
- Kitchen Cabinets,

### HARDWARE

- Ranges and Stoves,
- Glassware, cut or plain
- Cooking Utensils in—Aluminum, Pyrex or Enamel.
- Silverware, Dishes
- Tableware, China
- Vases, Bowls
- Choppers, Roasters
- Pocket Knives, Percolators
- Toys, Flashlights.

QUALITY

SERVICE

# Dunaway Bros. Hardware & Furniture Co.

"The Home Furnishers"

PANHANDLE

PAMPA

ISOM

### Matador Ranch Reported Leased For Development

It is reported on what is considered authority that the 350,000-acre ranch belonging to the Matador Ranch and Cattle Company, in Oldham county, and coming up to within six miles of Channing, and the larger ranch in Donley county, containing 600,000 acres, has been leased to a major oil company for drilling purposes, and that a well will go down on each 20,000-acre block into which the land will be subdivided for drilling purposes.

It is said that the lessee contracted to pay \$2 per acre for the lease, with a 50-cent renewal, and that all wells are to be started within one year from date of lease. This will mean between forty-five and fifty test wells on the two ranches, and is probably the largest drilling contract ever executed in the Southwest, and will entail an expenditure of nearly two million dollars in drilling, figuring \$40,000 for each well.

John McKenzie, general manager of the properties, was in Channing from Denver this week and would neither affirm nor deny the rumor of the big lease, nor authorize a published statement but information was obtained from others who are thought to be in a position to know the facts.

At the present time there are 25,000 head of cattle on the Channing ranch, and large numbers are being shipped to market, so that it is possible that Mr. McKenzie was in Channing in connection with the dipping and shipping of cattle, rather than oil-leasing business.—Dalhart Texan.

### Cattle and Hogs Steady Lambs Are Lower

Fat steers advanced 15 to 35 cents last week and are steady this week at that advance. Trade was active. Cows and heifers were stronger, but with weather conditions rather unfavorable trade in stockers and feeders was quiet. Receipts in all divisions were about normal for this season of the year. Hog prices were unchanged compared with last week's close and 10 cents under last week's high point. The price spread was the narrowest of the season. Lambs were 25 cents lower and sheep steady.

**Beef Cattle**  
Plain to fairly good quality steers predominated in the offerings and they sold readily at steady prices. Some orders for prime yearlings could not be filled because none was offered. Most of the fed steers brought \$8.50 to \$9.50. Some warmed up from grass, on cotton seed feeds, brought \$7.25 to \$8.00. Strong and heavyweight steers brought \$8.00 to \$9.25. Choice yearlings last week brought \$11.50 to \$12.00; medium weight up to \$11.25, and heavies up to \$10.50. Similar kinds would have brought that today had they been available. Cows and heifers were lower last week, but the trade showed a better tone today. Plain quality predominated, and most shipments looked like a clean up for the season. Veal calves were steady.

**Stockers and Feeders**  
Weather conditions were not very favorable and tended to keep down demand for stockers and feeders. However prices were not notably changed from last week. There is still considerable inquiry for yearlings and good light weight stockers.

**Hogs**  
An active demand for fat hogs here held the market steady with

last week's close in the face of a decline at more eastern markets. Both packers and shippers bought freely. The movement in prices has been narrower in the past ten days than at any previous similar period this fall, and the market now seems to be well established on a winter packing basis. Today 170 to 260 pound hogs sold at \$11.50 to \$11.70; 260 to 310 pounds at \$11.40 to \$11.60; 140 to 170 pounds \$11.25 to \$11.55; packing sows \$10.25 to \$10.75; stock hogs and pigs 51.25 to \$12.00.

**Sheep and Lambs**  
Lambs were quoted off 25 cents today and are 50 to 60 cents lower than a week ago. Prices for fat sheep show no quotable change. Fat lambs brought \$11.75 to \$12.65 and ewes \$6.00 to \$6.25. Yearlings are quoted at \$9.50 to \$10.25 and wethers \$7.25 to \$8.25.

**Presbyterian Notice**  
The Rev. John W. White of Plainview, Texas will preach at 11 o'clock Sunday morning at the Rex theater. He will also assist in the ordination and installation of the newly elected elders of the church.

Rev. White is now employed as Presbyterian pastor at Plainview. He was leader in the building of the splendid brick church at Breckenridge.

It is hoped that every Presbyterian in the community will be in attendance at the Rex theater Sunday morning. The public is cordially invited to attend the services.

**To Redecorate Theater**  
The interior of the Crescent theater will be redecorated in the near future, according to H. A. Gilliland, proprietor of the show house.

"My present plan is to have scenes painted on the side walls and refinish practically all of the building," says Gilliland.

### Plains Counties Spend Millions For Good Roads

Expenditure of about \$9,000,000 in the Panhandle will be made within the next three years as a part of the transcontinental Postal Highway and connecting routes to the oil fields according to announcement of highway officials.

Potter, Hutchinson, Hall and Carson Counties will expend \$3,500,000 of this amount in the spring. North from Panhandle to the Hutchinson County line a tie-up with Highway No. 102 is to be paved, continuing north through Isom and Berger, across the river at Dixon's Point through Signal Hill to the south lines of Hansford County.

The first unit of an \$800,000 expenditure in Hutchinson County planned for next year will be a road from Memphis through Estelline to the Childress County line.

Bond issue to the amount of \$1,000,000 in addition to \$1,500,000 available for good roads is reported for Carson County.

Randall County plans to vote a \$1,000,000 issue, and Wheeler County expects to pave Highway No. 7 through the south end of the county to Shamrock.—West Texas Today.

John Brown thought out a fanatical abolition scheme. His life was a risk. He was hanged, but his soul goes marching on.

Apply the 25 per cent saving on your coat or dress at Carpenter's Dry Goods Company on your Christmas shopping.

### News Want Ads Pay

### ONLY CONTENTED HENS DECLARED PROFITABLE

Egg production is largely influenced by environment and food. They work together. Even though one be very good, the other must not be bad, for both contribute to the satisfaction of the hen.

There must be confidence. The hens must feel at home. Contentment alone can be secured through regular and kind attention. Architecture of house plays no part. Hens want a comfortable home, no matter how plain it may be. They also dislike being crowded; they want and need plenty of room. Domineering fowls in a flock add misery to the rest, and keep up constant excitement. All "bullies" should be removed.

Confidence tames stock. As soon as they learn one's presence means no harm they become friendly. They welcome the keeper, and this lack of fear attaches them to their home.

While the hen is devoid of the sense of smell, she still objects to filthy quarters.

Environment is a big word with a big meaning. It opposes exposed and damp locations, poorly ventilated quarters, unclean premises. It calls for anything and everything that applies to comfort.

The food must be of the best quality. It must be given in such quantities as the stock may properly digest. Food builds up waste tissues; it supplies heat to the body; it produces fat and meat to the carcass; it grows eggs and feathers.

The value of the food given is measured by the manner in which it is digested. Unless the digestive organs are in good working condition, there can be no hope for a successful egg yield.

We improve our stock and increase its usefulness by the quantity of attention given. There must be a happy, beautiful home, and there must be confidence.

Tame hens speak in loud terms for the makeup of their attendant, and screechy hens voice a bad recommendation for the temper and ways of their keeper.

### Fire Extinguisher and Flat Iron Used on Woman by Man

A fire extinguisher and a flat iron were thrown at a woman at Shelly Sunday, she declared in a complaint filed Tuesday at the office of County Attorney J. McKim.

The woman was badly hurt and she had a number of bandages as she appeared at the county attorney's office. She said she was unable to come to Panhandle and file a complaint against the man until today.

She said the man, a carpenter, was badly intoxicated when he became angry and threw the extinguisher and flat iron. The carpenter had been working on a rooming house for the woman, she said.



## THE GIFT EXQUISITE!

Things of beauty and a joy forever—silken undergarments and negligees are the most truly acceptable of all feminine gifts. Teddies, nightgowns, pajamas, slips, step-ins and bloomers, in all shades.

We are all dressed up in our holiday attire and cordially invite your inspection. Our Art section is brimming full of new novelties which have been carefully selected for the holiday trade, not the ordinary kind of gifts but things that are new and different.

### A FEW SUGGESTIONS

- Writing Sets
- Smoker Sets
- Bridge Sets
- Bridge Score Books
- Jeweled Compacts
- Gifts for the Baby
- Bull Bowls
- Vases
- Christmas Stickers
- Cards, Ribbons
- String Boxes
- Fancy Pillows
- Scarfs
- Hand Bags
- Collar and Cuff Sets
- Sweaters
- Telephone Screens
- Telephone Shields
- Hats
- Coats
- Dresses
- Stickers

We carefully pack any article for shipment free of charge

## Mitchell's

THE LADIES' STORE  
Pampa, Texas

BEAUTY PARLOR PAMPA PHONE 234

"Her Big Night" proved to be a big night for many here Wednesday night, and especially those who have taken the matrimonial steps. The moral revealed by Laura La Plante in the picture at the Rex theater was that circumstantial evidence is not always enough for conviction.

A man and his wife, a girl and her sweetheart, all had their doubts until the climax when each found that there was no trifling, but just one of those times when an explanation was hard to make.

## NEW AND USED FURNITURE

Everything for the Home—You furnish the girl and we will furnish the Home.

**DON'T MISS OUR BIG SALE NOW GOING ON**

## Home Furniture

AND AUCTION CO.  
145 Tyng Street

## OYSTERS—FISH

WE SELL THEM RAW OR SERVE THEM COOKED

## Y & M MARKET

E. F. YOUNG, Manager  
One-half Block East White House Lbr. Co.

"It is always well to build a kitchen in your aircastles."

## Who's Who TODAY



MARY PICKFORD

### Have Two Strings to Your Financial Bow

Your personal earnings and the earnings your savings will earn. By and by your power to earn will cease but your savings will never cease to earn. Having two sources of revenue while you can will make certain of one when you can't. Savings invested in our Certificates of Deposit will earn interest whether you earn or not.

**"There is no Substitute For Safety"**

## GRAY COUNTY STATE BANK

C. L. THOMAS, President W. H. DOYLE, Cashier

## RANGER HOTEL

Just South of Depot  
35 Rooms

Reasonable rates by day, week or month

Hot and Cold Running Water  
in All Rooms

Bath to Public 50c

**THE PAMPA NEWS**  
 Published Tuesday and Friday  
 at Pampa, Texas

DAVID M. WARREN  
 Publisher  
 W. E. LOWE  
 Manager  
 BEN F. RENO  
 Editor

Office in News Building  
 Phone No. 100

**SUBSCRIPTION RATES**  
 in Texas

One year	\$2.00
Six months	1.25
Three months	.65

Outside Texas

One year	\$2.50
Six months	1.50
Three months	.85

Advertising Rates Upon Application

Entered at the Pampa, Texas  
 Postoffice as Second Class Mail

**JUDGE FOR YOURSELF**  
 What would you do if there was a pile of unsightly trash piled in front of your home on the terrace? Would you leave it lay there from day to day? No. You would clean it up.

Why not keep the space in front of a business house clean? People get the same impression from a pile of trash in front of a business house as they do of a pile of trash in front of a home.

To some of us the trash piles have become land marks, due to their age, but to a visitor they are different. They signify a general indifference as to appearance. Could they wrongly judge a business by the appearance of the front?

**NOW IT'S UP TO YOU**  
 About thirty citizens of Pampa met at the Legion hall Tuesday night and discussed the matter of our Chamber of Commerce. Various suggestions were offered. One suggestion was that we would never have a Chamber of Commerce that was at its maximum until the people got behind it and pushed.

Another outstanding suggestion that seems to total everything, was to do less, talking and more work.

If the citizens of Pampa will get behind the organization, and then work, Pampa can boast of the best Chamber of Commerce in the Panhandle of Texas. Until they do, though, there is nothing to brag about.

Committees have been appointed and are working out plans for the future. Every citizen of Pampa will be given an opportunity to do his bit for his home town. What are you going to do?

Many persons seem to have the idea that the Chamber of Commerce is a charitable institution that goes around and begs for money. Such an idea is wrong, in fact it is foolish. The Chamber of Commerce of Pampa, or of any city, is a business institution. No one ever donated a dime to a Chamber of Commerce if it was functioning properly. Peo-

ple invest in the Chamber of Commerce—an institution that pays the highest daily dividends.

**FIRE PREVENTION EASY**  
 Response to fire prevention week was greater this year than ever before.

If the public ever properly awakes to the idea that the damaging losses in life and property, caused by fire, are largely a matter of individual control, our annual fire loss will show a decrease instead of a constant increase.

The fact that fire losses fall off during fire prevention week, proves that when the public has its mind focused on elimination of useless fires, good results are always obtained.

If the same enthusiasm went into fire prevention during the whole year, instead of just during fire prevention week, thousands of lives and hundreds of millions of dollars would be saved annually from the fire demon.

**HOW MUCH SPEED?**  
 There have been many theories advanced as to the results which will follow Henry Ford's five-day week. Mr. Ford is credited with saying that a five-day week will give people more time for leisure and buying, and that this in turn will make a greater demand for manufactured goods.

This does not explain how a man with simply more time to spend money if going to be able to spend more money with his wages cut from six to five days. The Ford plan does not contemplate six days' wages for five days' time, without increased production.

If idleness is merely to breed the desire to spend more money, the results will be disastrous. Mere money-making, in itself, without an aim or purpose in life, would be a curse to the nation. Extravagant ideas would be developed which would soon demand artificially higher wages, which,

in turn, would result in un-called-for increases in the cost of living.

Can any but the strongest and youngest workmen maintain a pace which regularly calls for six days' work in five days' time, in an industry already traveling at high speed?

It is pretty generally accepted that as production is increased per man, workmen are entitled to their share in the profit, in the form of increased wages. This, in itself, does not mean increased prices.

Whether human activity can be forced beyond a certain point remains to be seen. The life of a racing automobile is short because it runs continually at full speed. Can the human body be driven at racing speed without disastrous results?

Mr. Ford's idea is worth watching for he generally knows what he is doing.

**SOCIETY NOTES**

Mr. and Mrs. M. K. Brown return from visit.

Mr. and Mrs. M. K. Brown returned last week-end after a ten days visit with relatives in Oklahoma.

They visited Mrs. Brown's mother, Mrs. H. C. Barnes, in Sulphur, Okla., and her two sisters, Mrs. J. C. Chitwood and Mrs. Paul Jones, in Ardmore, Okla. The trip was made by motor.

Mr. and Mrs. Schaefer plan trip to Europe.

Mr. and Mrs. Henry Schaefer and Mr. Schaefer's brother and wife, Mr. and Mrs. Schaefer of Omaha, Neb., are planning to make a trip to Europe in February.

They intend to make a tour of Italy, Germany, Norway, England, Scotland and Ireland before returning. Their present plans are to be gone about four months.

W. R. Kaufman of Amarillo, was in Pampa this week visiting friends. He is an architect and has designed several buildings here.

**James Ladd Died Here Wednesday**

James Ray Ladd, one-year old son of Mr. and Mrs. R. C. Ladd, died at the home of his parents on West Foster avenue Wednesday morning. Pneumonia was given as the cause of his death.

Funeral services were conducted by the Rev. F. A. Tipton at 1 o'clock Thursday afternoon at the Baptist church. Burial was at the Fairview cemetery. G. C. Malone directed the services.

Miss Margaret Buckler, daughter of Mr. and Mrs. C. P. Buckler, who has been ill for the past week, is improving, according to her father.

**News Want Ads Pay**

**Poultry Expert Saves Many Flocks Chickens**

Some of the poultry raisers of the Orange County Poultry association have been experiencing trouble in their flocks during the latter part of the summer. They could not locate the cause, nor cure it by general treatment. Mr. V. R. Glazener, poultry specialist for the extension service, A. and M. college, came here on the 20th and 21st of September. By making post mortem examination of ill birds, he spotted the trouble in each case. Mr. Glazener advised these people the best method of procedure in dealing with their particular troubles.

A special meeting of the O. C. P. A. was called to hear Mr. Glazener speak on diseases and their treatment, on the night of Tuesday, Sep-

tember 21, in the chamber of commerce rooms. Every raiser of the county vitally interested was present. After this excellent lecture, open discussion was quite lively and continued until very late. These people feel that Mr. Glazener knows his business, and is a God-send to them. They ask for more of him.

Several bond house representatives have been here this week investigating the proposed bond issue of the Pampa Independent School District.

**PANHANDLE OIL MAPS**  
 Blue Printing and Surveying  
**AMARILLO ABSTRACT CO.**  
 108 West Fifth Street  
 Phone 1198  
 AMARILLO, TEXAS

9142

**The First National Bank**  
 Pampa, Texas

**Better Secure a Safety Deposit Box Now for Your Valuable Papers**

B. E. FINLEY  
 President

DE LEA VICARS  
 Cashier

Make this an **ELECTRICAL CHRISTMAS**

Make a Gift of an Electrical Appliance and you lighten the labors of the recipient. For electricity is a faithful servant that will perform for the years to come. This partial list shows the wide choice and the moderate prices.

ELECTRIC IRONS  
 ELECTRIC TOASTERS  
 VACUUM CLEANERS  
 WASHING MACHINES  
 WAFFLE IRONS  
 ELECTRIC PERCOLATORS  
 Curling Irons, Heaters, Lamp and others moderately priced

**SOUTHWEST PUBLIC SERVICE**

**Special For One Week During Christmas Gift Sale**

**LIVING ROOM SUITE**  
 —Three piece over-stuffed Living Room Suite, best grade Jacquard Velour, reversable Cushions.  
**\$119.00**

**SIMMONS BEDS**  
 —Complete with a 25-year guaranteed Spring, 45-pound all cotton Mattress and seven Slats.  
**\$13.75**

**"QUANTITY BUYERS OF QUALITY STOCK"**

**G. C. MALONE FURNITURE & UNDERTAKING CO.**

# Practical Gifts

are the most Acceptable



For Him-For Her-For All The Family  
And Many Of Them At



1-4 to 1-3  
**REDUCTION**  
From Regular Price



**LADIES' HATS**

Velvet Hats, fascinating in their beauty and the lovely quality of their material. Values up to \$12.50 are now selling for only \$2.98. And we are offering Spring Hats at 10 percent reduction from the regular price.

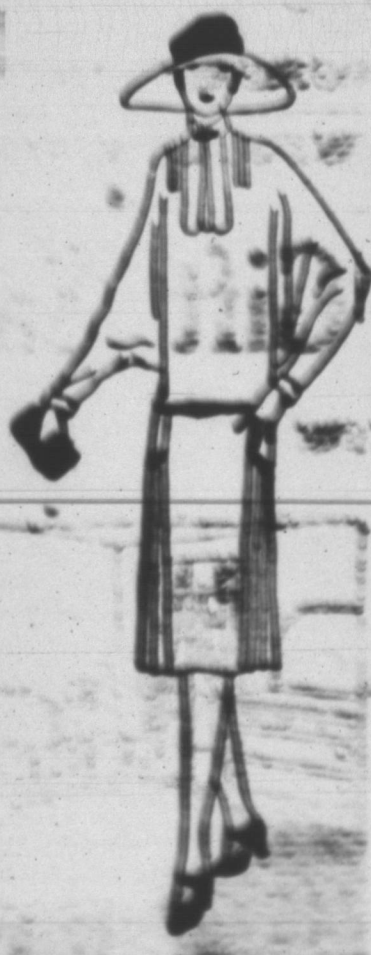


**LADIES' COATS**

Coats of excellent fabrics, latest style tendencies, handsome and very desirable as gifts. Reduced in price 10 to 25 percent.

**DRESSES**

Charming modes for semi-formal wear, fashioned of satin, taffeta and chiffon in a wide range of styles. Prices reduced one-fourth, making these dresses \$8.50 to \$49.50.

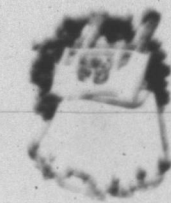


**BROKEN SHOE LOTS**

We are offering broken lots of shoes at one-third off regular price in order to clear our stock for spring footwear. These shoes are of excellent quality and priced for quick sale.

**LINGERIE**

There is no gift quite as welcome from one woman to another as dainty silken underthings. Silk Chemises, Step-ins, hand-made Philippines, night gowns—select them now while our assortments are complete.



**LUGGAGE**

A Hat Box, fitted with toilet set, a Gladstone or any item of luggage would be a very practical gift for Him or for Her. The line we are showing will help you solve your gift problem.

**DOLLS**

A Doll for every little girl—Mama Dolls, Dolls that talk, Dolls that sleep, Dolls that walk, in fact any kind of Doll necessary to delight the smaller child.



**LUMBERJACKS**

All wool Lumberjacks, the ideal cold weather gift, in desirable color combinations—stripes and checks—and they're selling at 25 percent off the regular selling price.



And in addition to the items suggested above, we have a very complete line of Gloves, Ladies Purses, Hosiery, Lounging Robes, Silk Kimonos, Toilet Sets, Men's Furnishings of all kinds—in fact you need go no further than this store to do your gift shopping.



Only twelve more shopping days before Christmas. Do your shopping now. And don't forget that we give Green Trading Stamps.

**J. E. Murfee & Co.**  
Outfitters to the Whole Family

We suggest as gifts for men, Stetson Hats, Gloves, Overcoats, Suits and clothing of all kinds.



## Dear Santa Clause

Just a few lines to let you know that we have received your enormous shipment of Xmas Toys and Gifts all O. K. There's something for every member of the family. Nobody but you, Santa, could make such a selection of Gifts. We certainly appreciate it, and want to thank you very much for making this store your headquarters. Don't forget to visit all the good little boys and girls.

Your Friend,

**WADES STORE**

## And That's A Fact Folks

Santa has made this store his headquarters—Gifts for every member of the family. If you don't believe it come and see. But listen folks—better do your Xmas shopping early this year because it's not going to last.

**THE EARLY BIRD GETS THE WORM**

**WADE'S STORE**

**IF IT'S IN TOWN WE HAVE IT**

**LARGEST STOCK OF VARIETY GOODS IN THE PANHANDLE**

OFFICE OF ROAD BOND ELECTION

COUNTY OF GRAY.

To the resident property taxpaying voters of Gray County, Texas:

TAKE NOTICE that an election will be held on the 30th day of December A. D. 1926, within Gray County, Texas, to determine if said county shall issue bonds and if a tax shall be levied in payment thereof...

On this, the 29th day of November, A. D. 1926, the commissioners court of Gray County, Texas, convened in a special session, at the regular meeting place thereof in the court house at LeFors, Texas...

- T. M. Wolf, County Judge.
C. W. Bowers, Commissioner, Precinct No. 1.
W. A. Taylor, Commissioner, Precinct No. 2.
M. M. Newman, Commissioner, Precinct No. 4.

being present, came on to be considered the petition of E. B. Hedrick and one hundred and twenty-four (124) other persons, praying that bonds be issued by said Gray County in the sum of \$1,200,000.00 bearing a rate of interest to be fixed by the commissioners court not exceeding five and one half (5 1/2) per cent and maturing at such times, as may be fixed by the commissioners court...

Highway No. 33, otherwise known as the Southwest Trail, 14 miles at \$16,500.00 per mile, or \$231,000.00.

Highway No. 75, otherwise known as the Postal Highway, 22 miles at \$14,000.00 per mile, or \$308,000.00.

Highway No. 88, otherwise known as the Clarendon Highway, 12 miles from Pampa, South, at \$16,500.00 per mile, or \$198,000.00.

Highway No. 33-A, otherwise known as the Fort Elliott Highway, 8 miles from Pampa, east, at \$15,000.00 per mile, or \$128,000.00.

Highway No. 88, otherwise known as the Clarendon Highway, 16 miles beginning at the end of the section mentioned above, at \$7,500.00 per mile, or \$120,000.00.

Highway No. 33-A, otherwise known as the Fort Elliott Highway 20 miles, beginning at the end of the 8 miles section mentioned above, at \$7,500.00 per mile, or \$150,000.00.

The sum of \$65,000.00 to be used for the construction of lateral county roads; in addition thereto, any premium or premiums derived from the sale of said bonds to be used for the construction of lateral county roads; and

It appearing to the court that said petition is signed by more than fifty of the resident property taxpaying voters of said Gray County; and

It is further appearing that the amount of bonds to be issued will not exceed one fourth of the assessed valuation of the real property of said Gray County; and

IT IS THEREFORE CONSIDERED AND ORDERED by the court that an election be held in said county, on the 30th day of December, 1926, which is not less than thirty days from the date of this order, to determine whether or not the bonds of said county shall be issued in the amount of \$1,200,000.00 bearing interest at the rate of five percent (5 per cent) per annum, interest payable semiannually, and maturing at such times as may be fixed by the commissioners court, serially or otherwise, not to exceed thirty years from date thereof; and whether or not a tax shall be levied upon the property of said county, subject to taxation, for the purpose of paying the interest on said bonds and to provide a sinking fund for the redemption thereof at maturity; and whether or not the funds derived from the sale of said bonds shall be expended according to the following schedule:

Highway No. 33, otherwise known as the Southwest Trail, 14 miles, at \$16,500.00 per mile, or \$231,000.00.
Highway No. 75, otherwise known as the Postal Highway, 22 miles, at \$14,000.00 per mile, or \$308,000.00.
Highway No. 88, otherwise known as the Clarendon Highway, 12 miles from Pampa, south, at \$16,500.00 per mile, or \$198,000.00.

Highway No. 33-A, otherwise known as the Fort Elliott Highway 20 miles, beginning at the end of the 8 miles section mentioned above, at \$7,500.00 per mile, or \$150,000.00.

Highway No. 33-A, otherwise known as the Fort Elliott Highway 8 miles from Pampa, east, at \$15,000.00 per mile, or \$128,000.00.

Highway No. 88, otherwise known as the Clarendon Highway, 16 miles beginning at the end of the section above mentioned, at \$7,500.00 per mile, or \$120,000.00.

Highway No. 33-A, otherwise known as the Fort Elliott Highway 20 miles, beginning at the end of the 8 mile section mentioned above, at \$7,500.00 per mile, or \$150,000.00.

The sum of \$65,000.00 to be used for the construction of lateral county roads; in addition thereto any premium or premiums derived from the sale of said bonds to be used for the construction of lateral county roads.

The said election shall be held under the provisions of Senate Bill Number Two Hundred Eighty-seven (287), passed by the First Called Session of the 39th Legislature, of the State of Texas, and the Constitution of the State of Texas, and the Laws of the State of Texas, as provided by and authorized by Section 52 of Article 3 of the Constitution of the State of Texas.

Said election is to be held in Gray County to determine whether or not the bonds of such county shall be issued for the purpose of construction, maintenance and operation of macadamized, graveled, or paved roads and turnpikes, or in aid thereof, and whether or not taxes shall be levied on all taxable property of said county, subject to taxation, for the purpose of paying the interest on said bonds and to provide a sinking fund for the redemption thereof at maturity, and said bonds shall be in the total amount of One Million Two Hundred Thousand (1,200,000.00) Dollars, and shall bear interest at the rate of five percent (5 per cent) per annum, interest payable semi-annually, and that an ad valorem tax to be levied annually on all taxable property within said county sufficient to pay the annual interest and provide a sinking fund to pay the bonds at maturity.

All persons who are legally qualified voters of this State and of this county, and who are resident property taxpayers in this county, shall be entitled to vote at said election, and all voters desiring to support the proposition to issue the bonds shall have written or printed on their ballots the words:

"For the issuance of bonds and the levying of the tax in payment thereof."

And those opposed shall have written or printed on their ballots the words:

"Against the issuance of bonds and the levying of the tax in payment thereof."

The polling places and the presiding officers of said Election shall be respectively as follows:

Precinct No. 1 at LeFors, the regular polling place of which is the court house, with Mr. M. B. Davis, as presiding officer;

Precinct No. 2, at Pampa, the regular polling place of which is at the Office of the White Deer Land Co., in the White Deer Land Co. building, with Mr. J. E. Marfee, Jr., as presiding officer;

Precinct No. 3, at Steed, the regular polling place of which is the Grandview School house, with Mr. Lee Fortenberry as presiding officer;

Precinct No. 4, at Albreed, the regular polling place of which is the S. L. Ball Building, next door to the Post Office, on the South, with Mr. S. R. Loftin as presiding officer;

Precinct No. 5, at McLean, the regular polling place of which is the office of M. D. Bentley in the West end of the Montgomery Drug Co. building, across from the Post Office with Mr. A. A. Callahan as presiding officer;

Precinct No. 6, at Laketon, the regular polling place of which is the Laketon School house, with Mr. W. S. Paris, as presiding officer;

Precinct No. 7, at Farrington, the regular polling place of which is the Farrington School house, with Mr. C. G. Gillis as Presiding Officer;

Precinct No. 8, at Hopkins, the regular polling place of which is the Hopkins School house, with Mr. W. E. Ginn, as Presiding Officer.

The manner of holding said election shall be governed by the general laws of the State of Texas, regulating general elections, when not in conflict with the provisions of the Statutes hereinabove referred to.

Notice of said election shall be given by publication of a copy of this order in The Pampa News and in The McLean News, newspapers published in the county, for three successive weeks before the date of said election, and, in addition thereto, there shall be posted four other copies of this order at four public places in the county, one of which shall be at the court house door, for three weeks prior to said election.

The county judge is hereby directed to cause said notices to be published and posted as hereinabove directed, and said notices shall be posted by the county clerk at four public places in the county, one of which shall be the court house door, as hereinabove directed, and further

orders are reserved until the returns of said election are made by the duly authorized election officers and received by this court.

Given under my hand, with the seal of the commissioners Court affixed, this the 29th day of November, A. D. 1926.

T. M. WOLF,

(SEAL)

County Judge.

STATE OF TEXAS, COUNTY OF GRAY.

I, Charlie Thut, Clerk of the County Court of Gray County, Texas do hereby certify that the foregoing is a true and correct copy of the Original Notice of Road Bond Election, as same appears on record in Volume 2, pages 278-279, Commissioner's Court Minutes, Gray County, Texas.

Given under my hand and seal of said Court at my office in LeFors, Texas, this the 29th day of November A. D. 1926.

CHARLIE THUT,

(SEAL)

County Clerk.

39-41-43-45

THE STATE OF TEXAS

To The Sheriff or Any Constable of Gray County—GREETING:

YOU ARE HEREBY COMMAND-

publication of this citation in some newspaper published in the County of Gray, if there be a newspaper published therein, but if not, then in any newspaper published in the 31st Judicial District; but if there be no newspaper published in said Judicial District, then in a newspaper published in the nearest district to said 31st Judicial District, for four weeks previous to the return day hereof, J. O. Nelson, whose residence is unknown, to be and appear before me, a Justice of the Peace in and for Gray County, at a regular term of the Justice's Court for Precinct No. 2 of said County, to be begun and holden at my office in Pampa, Texas, on the 27th day of December, 1926, at ten o'clock A. M., to answer the complaint of Acme Lumber Company, a corporation in a certain suit therein pending, in which Acme Lumber Company, a corporation in a certain suit therein pending in which Acme Lumber Co., a corporation, is plaintiff, and J. O. Nelson, is Defendant.

Filed on the 26th day of November, A. D. 1926, and numbered on the Docket of said Court No. 717, the nature of the Plaintiff's demand being in substance as follows: Suit to foreclose materialman's lien, alleging that plaintiff furnished material to defendant, J. O. Nelson, as per itemized account, duly filed with the County Clerk of Gray County, Texas, according to law, amounting to \$181.20. Said material being furnished by virtue of a contract between plaintiff and defendant, that due notice was given according to materialman's lien statute and plaintiff prays for foreclosure of his lien on the building on Lot No. 10, Block No. 1 of the 10-acre Addition to the city of Pampa.

HEREIN FAIL NOT, but have you then and there before said Court, at said regular term, this writ, with your return thereon, showing how you have executed the same.

GIVEN under my hand, this 26th day of November, A. D. 1926.

J. S. JAMESON,

Justice of the Peace, Precinct No. 2, Gray County, Texas.

37-39-41-43-45

NOTICE

Notice is hereby given that the partnership between R. S. Dunbar and W. C. Montgomery, and operating as "The Pampa Abstract Company, was dissolved on the 4th day of December A. D. 1926. All debts due to the said partnership are to be paid and those due from the same discharged at Rooms 5 and 7, Smith Building, Pampa, Texas, where the business will be continued by W. C. Montgomery under the firm name of "The Panhandle Abstract Company."

W. C. Montgomery.

39-41-43-45

New Confectionery To Open Here Soon

James Martins will open the Crystal Palace Confectionery in the new building at the corner of Caylor street and Kingsmill avenue, as soon as the building is completed.

The fixtures have all arrived, according to Martins, and business will be resumed at an early date. The candies and confections sold at the place will be made in Pampa. Martins formerly lived in Coffeyville, Kan., before moving to Pampa.

Texas produced 22,700,000 bushels of oats this year or more than six times as much as last year. Robert Fulton's thought-child was a steamboat. Sailing ships were at risk, as the clipper fleet was derelict.

We Are Offering JUST WHAT PAMPA NEEDS

Own your own apartment 20 months to pay for your home

Just Like Paying Rent

YOU CAN MOVE IN January 15th

to a beautiful three-room modern DeLuxe Apartment, located one-half block from school.

ONLY NINE APARTMENTS AVAILABLE

These apartments won't be available long. Take advantage of this opportunity while you can.

Come in and see us at room 3 or 6, Smith Building.

FINNICK ARMS

Date
Mr. Geo. C. Walters
Room 6, Smith Bldg.
Box 314, Pampa, Texas
Dear Sir: Without obligation on my part, kindly furnish me with particulars of your "Own your own apartment" plan.
Name
Address

**CLASSIFIED ADS**

Rates for Classified Ads: One and one-half cents per word per week, minimum twenty-five cents. Strictly cash in advance.

**FOR SALE**

**FOR SALE**—Coal range cook stoves at bargain prices, \$5.00 to \$35.00. All in good condition. G. C. Malone Furniture and Undertaking Co. 3-ftc

**FOR SALE**—Bundled sorghum cane. Ernest Baird, 5 miles southwest of Pampa. Phone 9095-F5. 38 4tp

**FOR SALE**—Pure bred White Leghorn Cockerels, Tanager 336 egg strain from the famous Estes farm. John L. Cecil. 39-4tp

**SEWING WANTED**—By Mrs. W. R. Barnett, back of Gray-Pampa hotel. 40-3tp

**ONE ROOM SHACK**—Well built; one Chevrolet touring car for sale or trade; inquire at red house one-half block east of school. 40-2tp

**FOR SALE**—Modern four chair barber shop with white enameled fixtures. W. C. Yoakley, Perryton, Texas. 40-2tp

**FOR SALE**—Splendid residence lot northeast part of town. Priced \$200 below market. Will make 100 per cent on investment in 6 months. Fisher and Twilford, Real Estate, Office over Roger Cafe. 41-2tp

**FOR SALE**—At a bargain, desirable lots in Wilcox Addition. Will trade for car, truck, tractor, cows or what have you? See Bennett, at Horn and Coffee Grocery.

**FOR RENT**

**FOR RENT**—Two well furnished

housekeeping rooms, inquire four miles east on 33 Highway. R. R. Mitchell. 39-4tp

**FOR RENT**—Sleeping room for men, with privilege of shower bath. Also large sleeping room next to bath. Second house north Pampa Laundry. Mrs. Geo. Walstead. 40-4tc

**FOR RENT**—Three furnished house-keeping rooms, one block east Jones-Everett Machine shop. W. L. Shelton. 40-2tp

**FOR RENT**—Bedroom in modern home to two gentlemen. See W. E. Coffee, phone 5. 40-2tc

**FOR RENT**—Nicely furnished front bed room only two and one-half blocks from postoffice. Mrs. G. A. Latus, phone 244. 41-1tc

**FOR RENT**—Furnished apartment and garage. Price \$35 month. Phone 325. Dr. Nicholas. 41-1tp

**FOR RENT**—Furnished apartment, Phone 135. 41-1tc

**FOR RENT**—Two modern house-keeping rooms, furnished. Phone 328. 41-1tp

**FOR RENT**—Four room house for rent to parties who will buy furniture. Mrs. Roberts, second door east of cotton gin. 41-1tp

**LOST AND FOUND**

**LOST**—Fiste dog, white with black ears, black ring around neck, long hair, black spot on hips near tail. Mason's Tourist Camp, room 41. Reward. 41-1tp

**LOST**—Small coin purse containing money and cards, on south side. Return to News office. Reward. 41-1tp

**WANTED**

**WANTED**—To buy used furniture and oil stoves. G. C. Malone Furniture and Undertaking Co. 3-ftc

**Wanted**—Clean, Cotton Rags, Pampa News.

**HELP WANTED**—Girl for general

work in modern home for family of three. Good home for young girl. Call or write A. G. Post in care of Magnolia Petroleum Co., Pampa, Texas. 40-4tp

**BOARDERS WANTED**—Good home cooking; also rooms for rent. 487 East Foster Ave. 39-4tp

**MISCELLANEOUS**

**FOR QUICK ACTION LIST YOUR** oil leases, farm and city property with Rice and Park. Located just across street from Magnolia Filling Station. 4-ftc

We are glad to assist you in planning that new home you have been contemplating building. Our motto, "Service that Satisfies." White House Lumber Co., Pampa, Texas. 11-ftc

**High and Low**  
Cotton producing areas show a variation from less than 100 pounds of low quality cotton to 300 and 400 pounds of high quality cotton per acre, says the United States department of agriculture. Statistics on milk records in the state of New York show an income over cost of feed of \$31 per cow, yielding 3000 pounds of milk up to \$133 per cow yielding 9000 pounds.

**GRAY-PAMPA HOTEL**  
"In the Heart of Pampa"  
112 S. Main St.  
A. E. SHAW, Mgr.

**BABY CHICKS FOR SALE**  
Barroa strain large type purebred White Leghorn baby chicks \$10.50 a hundred.  
Everlay strain Brown Leghorns, \$11.50 a hundred.  
Sheppard strain single comb Anconas, \$14 hundred.  
Owens and Donaldson strain Rhode Island Reds, \$14.85 hundred.  
Thompsons strain Barred Rocks, \$14.85 hundred.  
White Rocks, \$16 hundred.  
All good, healthy, strong purebred guaranteed.  
We pay postage charges and guarantee live arrival on all baby chicks.  
Pullets of any breed listed, \$1.50 each.  
Cockerels, good size, \$3 each.  
Poultry book on feeding and raising chicks and pullets, \$3 postpaid.

**THE FULGHUM HATCHERY, EMORY, TEXAS**  
31-12t-c

**SORE BLEEDING GUNS**  
Only one bottle of Leto's Pyorrhea Remedy is needed to convince you. No matter how bad your case, get a bottle, use as directed, and if you are not satisfied, druggists will return your money. H. & K. Drug Co. 5-4t-c

**Club Arouses Great Interest in Cameron**

One of Cameron counties' club boys who has had to withdraw from the club said, "You can take my name off of the roll, but you never can take away from me my interest in poultry," advises Henry L. Al-

meyer, county agent in Cameron county. Today he has a beautiful flock of white leghorns, and this spring he got his start while a club member. This story of getting a start in opultry is not only true of this boy, but of many others as the project books are being turned in. The club members were all shown how to cull poultry and then taken

out to a farm flock where they are the culling, getting the experience so that they could go home and cull their own flocks. One of the club boys won a scholarship to the State Fair at Dallas, which was a free trip and all expenses paid for selling the most tickets for the Valley Mid-Winter Fair association.

**CHEVROLET**  
"The Easiest Car for Her to Drive"

If you're choosing a low-priced car that has to meet with feminine approval—be guided by the experience of tens of thousands, and buy a Chevrolet! Like no other car of its class, Chevrolet combines those features which make a car easy for women to operate with those qualities that women instinctively demand in an automobile. It is easy to start, steer and stop. It is simple and safe to handle under all conditions. And, best of all, it offers the inimitable smartness, elegance and luxury of bodies by Fisher on all closed models. Just bring her in and let her see for herself how well Chevrolet meets her ideals of fine quality.

**PAMPA MOTOR COMPANY**  
QUALITY AT LOW COST

at low prices!  
New 1927 \$510  
Coach Coupe... \$645  
Four Door... \$735  
Landau... \$765  
Small down payment and complete service. Ask about our 5% Purchase Certificate Plan.

**Business & Professional DIRECTORY**

**V. E. VON BRUNOW**  
PHYSICIAN AND SURGEON  
Office Hours 10 to 12-3 to 5  
State License No. 7752  
PAMPA, TEXAS

**H. E. FLOREY**  
LAWYER  
Office in Smith Building  
PAMPA, TEXAS

**DRS. MARTIN & KLEIN**  
PHYSICIANS AND SURGEONS  
SHARPE BUILDING

**O'NEAL ABSTRACT CO.**  
Abstracts of Title  
PROMPT SERVICE  
PANHANDLE, TEXAS

**DR. T. M. MONTGOMERY**  
OPTOMETRIST AND OPTICIAN  
In Pampa every other Thursday  
Call Father's Drug Store for appointment

**DR. AURA W. MANN**  
CHIROPRACTOR  
OFFICE 2021, SMITH BUILDING  
Office Phone 263  
Residence Phone 213J

**BOONE SIGN CO.**  
COMMERCIAL SIGNS  
OF ALL KINDS  
115 West Tyng Street

**PAMPA ELECTRIC COMPANY**  
ELECTRICAL CONTRACTORS  
All Work Guaranteed Phone 188  
Estimates Furnished on all Classes of Wiring

**STUDER, STENNIS & STUDER**  
LAWYERS  
Office Over First National Bank  
PAMPA, TEXAS

**J. B. DUFFIELD**  
GENERAL BUILDING CONTRACTOR  
Concrete Work  
No job too large or too small.  
27, 28

**INSURE YOUR FAMILY WITH AMERICAN CENTRAL LIFE INSURANCE**  
P. B. CARLSON, Agent  
175 WALK FOSTER

**G. C. MALONE**  
FUNERAL DIRECTOR AND LICENSED EMBALMER  
Phone 181 Pampa, Texas

**DR. A. R. SAWYER**  
DENTIST  
White Deer Land Building  
Business Phone 108  
Residence Phone 58  
PAMPA, TEXAS

**W. MINOR**  
CONTRACTORS  
Brick and Concrete  
At A. B. Keahey's Office  
PAMPA, TEXAS

**DR. W. F. NICHOLAS**  
DENTIST  
Office Room 2-9 Smith Building  
Phone 232 Pampa, Texas

**DR. W. PURVIANCE**  
PHYSICIAN AND SURGEON  
Office Over First National Bank  
Office hours: 9 to 12-1 to 5  
Office phone 107. Residence 45  
PAMPA, TEXAS

**JOHN F. CANTERBURY & CO.**  
Accountants and Auditors  
Income Tax Service  
503 Amarillo Bldg. Phone 2728  
Jno. F. Canterbury, Accounting consultant, Amarillo, Texas

See **H. W. HICKMAN**  
—For—  
CONTRACTS on BUILDING  
Pencil Plans Furnished.  
Cabinet work, mill work and Truck Cabs. Bodies a specialty. Phone 225.  
HICKMAN CONST. CO.  
Ref. See customers.

**ARCHIE COLE, M. D.**  
PHYSICIAN AND SURGEON  
Office over First National Bank  
Office hours 10 to 12-3 to 5  
Residence Phone 3. Office phone 55  
PAMPA, TEXAS

**HAL B. STEWART**  
ARCHITECT  
and  
STRUCTURAL ENGINEER  
613 1/2 Polk Street Amarillo, Tex.

**W. B. WILD, M. D.**  
PHYSICIAN & SURGEON  
Office—Room 5-7 Smith Building  
Phone 232 Pampa, Texas

THE PANHANDLE'S OLDEST STORE—ESTABLISHED 1897

**Remodeling Sale**

OFFERS DRASTIC REDUCTION ON THE SEASON'S MOST DESIRED MERCHANDISE

**A STORE-WIDE EVENT**

**Beginning Dec. 10th --- Ending Dec. 24th**

It is our sincere belief that if you are interested in quality merchandise that's in season it will be to your advantage to make a special trip to Amarillo, to attend the Remodeling Sale which starts Friday morning, offering the loveliest fashions that New York can produce, wonderful collection of Silks, Woolens and Cotton Goods, Shoes, and all the smart accessories, coming as it has, just before the holidays its your opportunity to save on many gifts.

**REDUCTIONS RANGE FROM 20 Per Cent To 50 Per Cent**

We want you to visit also after the Remodeling, we are increasing the floor space 100 percent, using the entire second floor of our present location at Sixth and Polk street, giving us the much needed space, providing a most pleasant place to shop with rest rooms and all modern conveniences at your disposal when in Amarillo and we want you to feel that it is your store and let us show you our appreciation for the splendid growth that we have enjoyed for over 29 years.

**WHITE & KIRK**  
AMARILLO  
POLK STREET AT SIXTH



**REV. W. H. SHINE  
LOCATED HERE**

**Tells of Conditions as  
He Sees Them in  
New Oil Field**

The Rev. W. H. Shine has been assigned to the circuit of the Methodist Episcopal church, South, here. The following article was submitted by him:

"There are fifty-two heroic wives living out in the Gray county oil field. Most of them are mothers with from one to eight children to care for. They are crowded, of course, in their little one and two-room temporary homes, but without a single exception these wives and mothers are light-hearted and hopeful. Most of them are young in years, all of them are youthful in that they are planning for the future years when they are old and cannot work.

"I have had occasion during these last ten days to visit among the families living right in among the derricks. I have met and talked with these ladies, each of them from fifteen to thirty minutes. I have talked with more than half as many fathers and husbands in their homes and at their work. I have been told that they are 'as a rule a pretty tough class of people.' That is a plain falsehood that I do not care to hear from anybody any more. One of the men on the field told me about the whole truth of the matter. Here are substantially his words: 'When you see them things' showing me two big rows of hard corns in the palms of his hands, 'you needn't be uneasy about the moves he makes. It's these tender fisted fellows you want to keep moving on. We hate these human snakes as much as you do. We're no different from other folks.'

"These people are the kind who used to go west in the days of Forty-Nine, the kind who have transformed buffalo homes into fruitful fields throughout the Great West. If some man should ask me how he could know 'beyond the shadow of a doubt,' whether his sweetheart or wife loved him or not, I believe I could give him a sure

test. Ask her to go to one of the oil fields. Here is the test for pioneer blood.

"These ladies tell me that about the hardest test of all is the utter lack of any organized social life out on the field. 'It is too far out for us to go to Pampa,' they say. 'We wish we had a church and Sunday school out here on the field.' I found that every one of the fifty-two wives say words similar to these.

"I have found 115 children living on this field. I have not been able to see quite all the families yet. Sixty-five are boys, forty-nine are girls. Forty-five are from three weeks to three years old; forty-two are four to eight years old; and thirty are from nine to seventeen years old.

"A church building sufficiently large to house the people of this community will cost only a few hundred dollars. It is up to the people within the whole range of the circulation of this good paper to see that this church is built within the shortest time possible. That is my chief interest during these next few days. I am shaping in my mind every sill and every rafter that goes into this church home—it is all I can talk about. One man said he would give ten days of his time to help build this church; another said that he would give two lots plenty large to build on and a substantial gift of money. What will you give for the erection of such a home?"

**SANDSTORM DOES  
TERRIFIC DAMAGE**

**10,000 Bales of Cotton  
Destroyed in Lynn  
County**

Tahoka.—It was several days after the sand storm of Thursday of last week before the people generally fully realized the damage it had wrought. It is now estimated that possibly ten thousand bales of cotton were destroyed in Lynn county alone. This is possibly a high estimate, but considering the damage done to the cotton which was not utterly swept away or ruined, it

seems probable that the damage done was equivalent to the value of ten thousand bales. In some localities where there was still much cotton in the field and where the wind seems to have been a little stronger than at other places the damage was terrific. The north half of the county suffered more than the south half.

This was one of the worst gales that ever swept the plains. Such storms are more frequent in February and March but they rarely come with such force in November. We had no means of determining the velocity of the winds but it probably reached fifty miles per hour. Windmills, telephone poles, fences and outhouses were blown down here and there over the country.

High winds and storms prevailed in other parts of the country on the same day, Oklahoma, Arkansas, Louisiana, Missouri and other states reporting much property destruction and some loss of life.—The Lynn County News.

Robert Clark who was severely burned recently while trying to save his pal, Jordan Charlton, when the Worley No. 3 oil well exploded, is able to be out again.

**Fresh Florida Oranges**

Fresh Sweet Florida Oranges \$3 per box of three hundred large size. Sound fruit and satisfaction guaranteed or money back. We pay express charges. A box of these makes an appreciated Christmas gift. Re-with order.

**ACME FARMS**  
38-10 Gainesville, Florida

**Complete Line  
R C A  
RADIOLAS**  
Loud Speakers, Etc.  
**ODEN MUSIC  
SHOPPE**  
At Miller Drug Store



**GIFTS UNEXCELLED  
ANYWHERE**

We have assembled a really wonderful stock of holiday merchandise from which you may select a very desirable gift for any member of the family with perfect satisfaction. Our display of gifts makes shopping easy.

For those who wish to send gifts out of town, we will gladly wrap packages for mailing.

**PAMPA DRUG CO.**

DAY PHONE 25 NIGHT PHONE 90

**PROTECTION  
to Your Family and Property  
It's Free**

We have arranged to distribute, without charge, to our clients and friends 2000 Fire Extinguishers! This is our contribution toward a general and sensible movement to stop fires, which last year alone took fifteen thousand lives and destroyed over five hundred million dollars worth of property.

We want you to have the extinguishers you need to protect your family and property. They are yours for the asking.

Your extinguishers will then be shipped direct to you, ready to use, from the Fyr-Rite Chemical Company, which has agreed to fill them with the approved chemical for this type of extinguisher.

This chemical is not expensive, and it not only smothers an ordinary fire but is just as effective with gasoline, grease and electrical fires where the water is dangerous.

The Fyr-Rite Chemical Company's charge of \$1.95 for each filling will be collected by the postman when delivery is made.

The extinguishers are our donation in this movement. Please accept as many as you need with our compliments.

We are mailing cards to every one listed in the Pampa city directory. Many people are in the city whose names do not appear in the directory. If you do not receive a card please call at our office and we will gladly furnish as many as you like. They are free.

**FRASER & UPTON  
INSURANCE**

SHARP-REYNOLDS BLDG.

PHONE 272

PAMPA, TEXAS

## SMALLER FARMS REPLACE RANCHES

### Many New Industries Show Rapid Gain in Texas

The development of Texas' natural resources in recent years and its industrial growth has been rapid, due largely to the influx of eastern capital, and state leaders now claim for it a self-sufficiency, a capability of producing and manufacturing all of its necessities and many luxuries.

If Texas is known to the outside world more for one thing than it is for another, it probably is for its cattle industry. The average citizen who has never visited the state, usually associates it with frontier towns, trackless wastes of land, long horn steers and rough-and-ready cowboys in broad sombreros and high-heeled boots.

But this fall far short of depicting the real Texas of today, although cattle, of course, were the foundation of the state's first real prosperity, and still one of its important industries. The picture fails to take in Texas' five cities of more than 100,000 population each, Dallas, San Antonio, Houston, Fort Worth and El Paso, one of which—Dallas—is approaching the quarter-million mark.

#### Great Railway Expansion

It fails, also, to show its hundreds of thousands of acres of farm lands which annually are producing \$1,000,000,000 in new wealth; its thousands of factories, the value of whose output exceeds \$1,000,000,000 a year; its vast oil fields whose production is second only to that of California; its seaports, Galveston, Houston, Beaumont, Port Arthur, Orange, Texas City, and the new Corpus Christi port, through which pass annually exports, the aggregate value of which is second only to that of New York. It fails also to consider its vast mineral resources, other than oil, the production value of which now exceeds \$250,000,000 each year, more than 700 per cent increase over their value 10 years ago; and its forests of yellow pine from which are being manufactured annually more than 2,000,000,000 board feet of lumber.

So to be complete, a true picture of Texas, must include not only cattle and ranches, but fields of cotton, acres of grain, skyscrapers, universities, beautiful homes surrounded by trees, flowers and shrubs, railway lines, yards and shops, oil derricks, storage tanks and pipelines, smokestacks sending forth their evidence of industrial activity.

**Mines Add Their Share**  
Then there are mines yielding

forth their wealth of coal, sulphur, iron ores, lead, copper, gypsum, potash, limestone, cement, silver, a small quantity of gold and dozens of other minerals of lesser importance; millions of acres of towering pine trees; seaports crowded with steamers and schooners taking cargoes of farm products, oil and manufactured commodities for transport to the markets of the world.

The impression should not be gained, however, that livestock is a negligible quantity in the development of Texas. Far from it. True, the "longhorn steer" has passed out, but its place has been taken by herds of pure-bred Herefords, short-horns and the Aberdeen-Angus, and the state lays claim to leadership in livestock production, despite the fact that the last two decades have shown a decrease in the number of beef cattle. It still has nearly twice as many of this class of cattle as the second ranking state, Iowa.

The figures for 1924 show 6,660,000 for Texas and 3,400,000 for Iowa. The decline is due largely to the development of farming in the western portion of the state and to the general depression of the cattle markets in the last few years.

#### Pioneer Days Recalled

The industry has presented a rapidly moving panorama and there still live a few of the "old timers" who bought vast ranches for 50 cents an acre in the early days, drove their cattle in great herds to the Kansas markets before the coming of the railroads, and who have seen the westward march of progress increase their land values to a figure which forced their sale, and the habitat of the longhorn of the 70s is now a field of cotton and grain.

The average per acre value of Texas in 1900 was only \$4.70. In 1920 it was \$28.40, and while later figures and not available, the increasing taxable values of the state warrant authorities to assert that the average today is well above \$35.

Cattlemen say livestock cannot be profitably produced on such expensive land, and the result has been that millions of acres of ranch land have been cut into small farm tracts. On these small farms small herds of pure-bred cattle are being produced on an intensive scale, and this fact, cattlemen believe, will keep Texas in the forefront as the

nation's principal cattle producer. The number of farms in the state has shown a proportionate increase, rising from 352,190 to 1910 to 436,033 in 1920.

#### Once a Treeless Waste

Most of the cut-up ranches were located in the Llano Estacado, or Staked Plains, comprising most of the area of the Panhandle. Once a treeless, waterless waste, the area has been developed into one of the most fertile in the state.—Christian Science Monitor.

C. B. Hart has been visiting Nells Walberg here for several days. Hart moved to Springer, N. M., about eight years ago and had not been back to Pampa in the meantime. His friends here report that he noticed considerable change in his old home town.

#### Lettuce Fourth in Value

Lettuce shipments last season were ten times those reported in 1916, and the farm value was not much below \$25,000,000. Only three other vegetables—potatoes, sweet potatoes, and tomatoes—exceeded lettuce in farm value. A real change in American diet, especially among city consumers, apparently is responsible for the growing importance of this leading salad crop, says the United States department of agriculture. Improved grading and packing of lettuce have done much to build up demand for the product.

Miss Mary Hobart has returned from Wichita, Kan., where she has been visiting her sister, Mrs. Clyde Fatheree.

Otto Studer returned home Tuesday after a business and pleasure trip to the coast.

The corn crop of Texas this year amounts to 108,612,000 bushels or almost four times that of last year.

## PURE RICH MILK

The A. C. Brand, its purity is guaranteed by the A. C. Bottle and sold direct from the Converse Farm and sold only at King's Butcher Shop in the building occupied by the Poultry Mercantile Association and at the Piggly Wiggly Store.

## Gift Shopping Made Easy

That was the thought we had in mind when we bought such a complete line of Christmas merchandise.

Just visit our store and your Gift Shopping will be made unusually easy. And our prices are within your means.

We give and redeem Gold Bond Saving Stamps.

## Ledbetter Drug Co.

300 W. Foster St. Phone 266



#### NOTICE

Pampa Lodge No. 966, A. F. & A. M. Regular Meeting, Fourth Saturday in each month.  
Masonic Hall in White Deer Land Building.  
C. P. BUCKLER, Secretary

## Rex Theatre

All Next Week

### TOBY'S

### Comedians

And His Jazz Orchestra

Clever Plays and Good Specialties

—SATURDAY, DEC. 11—  
Hoot Gibson  
in  
"THE TEXAS STREAK"

800 Air-Cushion Seats  
Building Well Heated

Matinee Daily at 2 p. m.



The Trail to  
Christmas Cheer  
and  
TOYLAND

—and Toyland and Bookland are upstairs in a whole new Christmas store over here at our place across from the postoffice. It's an easy trail to follow. Especially if you have kids along—because they are such good scouts. Take the trail to Toyland—and take it often.

#### A REAL MOUNTAIN LOG CABIN FREE TO SOME BOY OR GIRL

Up in Toyland is a real log cabin from the Redondo country in the mountains west of Roswell, New Mexico. It's almost big enough for grown-ups and it's just right for a play log-house. Some boy or girl is going to get this house free on Christmas day. All you have to do is to be under sixteen and to register your name on a card in Toyland.

#### Five Tons of New Books

New books have been pouring in to our store for the last few days, tons of them. So you will have lots of fun looking over books for everyone, from the wee ones up all through the family.



Remember the location  
Across from the Post Office

### RUSSELL & COCKRELL, Inc.

615 TAYLOR ST. AMARILLO, TEXAS  
Printing Books, Desks, Typewriters

## Our Back From Market Sale A BIG SUCCESS

Still going strong—thousands of people have attended this sale and appreciated the savings. Our chain store buying power works for you. Trade at the Diamond "C" Store and save.

#### Here's a few of Our Prominent Bargains

- |   |  |
|---|--|
| <p><b>MENS SUITS</b><br/>\$50.00 Society Brand Suits. All brand new, in this sale ----- \$37.50</p>   | <p><b>LADIES COATS</b><br/>Four splendid groups at prices that are interesting. Fine quality, all new styles. Priced --- \$9.85<br/>\$16.85 \$26.85 \$36.85</p>                      |
| <p><b>MENS OVERCOATS</b><br/>Good warm Overcoats, good styles and colors. \$20.00 values in this sale going for only ---- \$14.95</p>                           | <p><b>FINE DRESSES</b><br/>Four price groups—representing our entire stock of fine new Dresses. Wonderful styles, fine fabrics. This sale --- \$5.85 \$14.95<br/>\$21.75 \$29.75</p> |
| <p><b>MENS LEATHER VESTS</b><br/>Genuine Cowhide and Horsehide Leather Vests, sheep and blanket linings. \$15.00 to \$16.50 values. This sale ----- \$12.75</p> | <p><b>BLANKETS</b><br/>Good size, double cotton blankets, only 15 pairs left. Pair ----- \$1.89</p>  |
| <p><b>SHEEP LINED COATS</b><br/>Moleskin sheep lined Coats, 36 inch length. Good and warm, \$10.75 values for ----- \$8.95</p>                                  | <p><b>OUTINGS</b><br/>36-inch fancy Outings. Good weight, neat patterns. Priced in this sale, yard ----- 17c</p>   |
| <p><b>WOOL SHIRTS</b><br/>Good patterns; finely made, full cut. They fit, sizes to 17-2. Buy your wool shirts here and be better pleased. Each \$3.95</p>       | <p><b>GINGHAMS</b><br/>Fine Gingham and Percale, in light and dark patterns, yard ----- 19c</p>  |
| <p><b>DRESS SHIRTS</b><br/>Fine quality printed Broadcloth Shirts. Will make splendid Christmas Gifts. Size 14 to 17. In this sale for only --- \$1.95</p>      | <p><b>HOPE MUSLIN</b><br/>The finest and best known Muslin on the market. During this sale, yard only ----- 14c</p>  |
|   | <p><b>BLOOMERS</b><br/>Rayon Silk and Sateen Bloomers in large range of colors. Pair ----- 9c</p>  |

THE STORE WITH THE RIGHT GOODS  
**Diamond C.**  
DRY GOODS CO.  
Next door north of Rogers Cafe