

Center Wrap-Up

George Smith, Director
Pampa Youth and Community Center



TEEN DANCES: The Center sponsors for the young people teen dances most every Friday and Saturday night. These dances last only from 8-11 p.m. and are well chaperoned affairs. You can send your young people here and know they are being cared for. The schedule of dances is as follows: March 3 The Chatters; March 4 Man-child's Jr. High Dance; March 9 Tiaras Dance; March 10 The Essex; March 11 The Intrigues; March 17 the Casuals from West Texas State; March 18 The Essex; March 23 The Essex; March 24 The 2 Squared and March 31 The Essex.

SWIM LESSONS: Swim lessons are offered the year around at the Center. The pool is heated during the cold months so there is no interruption of the swim program. All classes meet for 2 1/2 weeks on Monday, Wednesday, Thursday and Fridays. Mrs. Jackie Marlar, Water Safety Instructor, conducts all the classes. Classes offered are: March 13-31 at 1 p.m. Beginner and 1 p.m. Advanced Beginners; April 3-19 at 4 p.m. Poly-wogs and 5 p.m. Beginners; April 24-May 10 at 4 p.m. Poly-wogs and 5 p.m. Beginners then on May 15-31 at 4 p.m. Beginners and 5 p.m. Intermediates.

All these classes are free to Center members while non members may take the courses by paying \$3 for each person. You need only come by the front office to enroll or if a Center member you may call.

CENTER MEMBERSHIPS — The Center has two types of memberships for your convenience. An individual and a family membership is available for admittance to the activities. An individual membership is for those persons who are single, or who have just 2 in the family and are at least 8 years of age. This membership costs \$8 per year or \$5 for six months. The family membership is for those who have more than two in the group. This includes all members of the immediate family. A family membership costs \$20 per year or \$12 for six months. By becoming a Center membership member, you receive free swim lessons, admittance to all tournaments, use of the pool room, gym and recreation room at no further charge. Activities available are ping pong, trampolining, pool tables, shuffleboard, badminton, volleyball, basketball, swimming pool, TV room, dressing room facilities as well as many other quieter games.

VOLLEYBALL MEETING — The much awaited volleyball meeting for teams interested in the spring league will be held March 6 at 8 p.m. At this meeting rules and regulations as well as the drawing of the schedules will be made. All teams should have a representative present.

Offered again this year will be a women's league, men's league and a mixed league composed of 3 men and 3 women. Entry fee for all leagues is \$15.

BUSINESS MEN'S WORKOUT TIME: The Center has been experimenting with a workout time for preachers and business men on Thursdays from 1-3 p.m. At this time various men have met and played badminton, basketball, pool, ping pong and then finished the workout with a swim.

If you are interested in this workout time, just come out with your gym suits on Thursdays at 1 p.m. You need only be a Center member to participate. Memberships are always available.

WOMEN'S SWIM TIME: The women also have a workout time in the form of a swimmer. This swim period is on Monday and Fridays from 10 to 11:30 a.m. This is a time set aside just for the women away from the busy time when the other members use the pool.

If you are interested in this swim time, you are invited to come out and participate. You need only be a Center member to participate.

Youth Center Calendar

Monday
4:00Beginners Swim Lesns.
5:00Swimmers Swim Lesns.
6:00Swim Team Workout.
7:00All Ages Swim;
Gym Open Activities.
8:00Volleyball Org. Meet.
10:00Close.

Tuesday
Regular Day to Close.

Wednesday
4:00Beginners Swim Lesns.
5:00Swimmers Swim Lesns.
6:00Swim Team Workout.
7:00All Ages Swim;
Gym Open Actv.
10:00Close.

Thursday
4:00Beginners Swim Lesns.
6:00Swim Team Workout.
7:00All Ages Swim;
Gym Open Actv.
8:00Tiaras Teen Dance.

Friday
1:00Open; Gym and Rec. Hl.
6:00Swim Team Workout.
7:00All Ages Swim.
8:00Essex Teen Dance.
11:00Close.

Saturday
10:00Swim Team Workout.
12:00Close for lunch.
1:00Open; All Ages Swim.
5:00Close.
8:00Intrigues Teen Dance;
Calico Capers Dancers.

Sunday
2:00Open; All Ages Swim.
5:00Close.

In 1942, the famed Stage Door Canteen opened its doors in New York City for men in the Armed Forces.

New Books on Shelves At Public Library

"The Arrangement" — Elisa Kazan; an earth-shaking book, and the earth it shakes is the one each of us is standing on.

"The Wizard's Child" — Helga Sandbur; the author has turned to the North Carolina mountain regions of the early 20th century for a novel of country manners.

"Take My Life" — Winston Graham; a first-rate, sophisticated tale of suspense heightened by a shock of violence that bursts upon the lives of people who least expect it.

"Five Smooth Stones" — Ann Fairbairn; the story of an educated Negro who returns to the South to become a leader of his people; to help in the hard day-by-day struggle of the civil rights movement.

"Change of Heir" — Michael Innes; a lively mystery laced with wit and charm.

"The United Planets" — Victor Wadey; a science fiction novel.

"Waiting for Winter" — John O'Hara; a collection of 21 new stories.

"White House Brides" — Marie Smith; a new and revealing history of romance and courtship in the president's mansion.

"Draft and the Vietnam War" — Jacquin Sanders; essential reading not only to the potential draftees but to the millions of wives and parents facing an uncertain future.

"The Narrow Path" — Francis Sciermey; an evocation of childhood so true, written with such immediacy that the reader's response is one of instant recognition — this is exactly how it felt to be a child.

"La-Cuisine Chantraîne" — Charles Chantraîne; the complete collection of original recipes created at the restaurant Chantraîne in Brussels.

CHANGE OF PACE
CARSON CITY, Nev. (UPI) — The cry of "seven come eleven" will soon be replaced at the Nevada state prison by "knit one, purl two."

The new Warden Carl Hocker said he plans to eliminate the "bull pen," which has served as a gambling casino for prisoners for more than three decades.

Hocker said he would institute other recreation programs, such as leatherwork, braiding, beadwork, crocheting and knitting.

Wall Street Chatter

NEW YORK (UPI)—Eldon A. Grimm of Walston & Co. says the reason the stock market is ignoring the "recession" evident in many businesses is that much of the slowdown already was discounted by the sharp declines of last year.

Grimm fees may science and technology and glamor stocks are staging their own private bull market, ignoring any slowdown.

Bache & Co. says a cautious attitude on the part of the consumer is behind the lag in sales of autos and other durable goods. The company however, says the money is there and some softening by the administration on President Johnson's surtax proposal could prompt an accelerated wave of consumer spending. It feels, therefore, one must follow the Washington signposts to obtain

a more accurate feel for the course of the economy.

Newton D. Zidar of E.F. Hutton & Co. says selectivity in choosing stocks is quite important at the present time since at this time some of the key averages, such as the Dow Jones industrial, may only make limited upward progress. The analyst contends there still appears to be substantial investment and trading funds on the sidelines awaiting market setbacks.

In 1801, the third President of the United States, Thomas Jefferson, was the first chief executive to be inaugurated in Washington.

**Ask The Man
from Equitable
about
guaranteed
income
for your family**
E. L. "Smiley"
Henderson, C.L.U.
419 E. Foster
MO 4-2943
The EQUITABLE Life Assurance
Society of the United States
NEW YORK, N.Y.

WOMAN DRIVER
LARAMIE, Wyo. (UPI) — A service station operator said a woman drove into his station and asked him to:
—Check the air in a tire.
—Wash the windows.
—Check the oil and replace two quarts of it with a motor oil she had in the back of the car.
—She did smile and thank me," he said. "I guess that's something."

SUNDAY
SPECIALS
ICE CREAM
Lane's
Pint Carton .. **10¢**
LARGE EGGS
Doz. **29¢**
BACON
Swift's Premium
1-Lb. Pkg. **59¢**
Ward's
Minit Marts OPEN EVERY DAY **ELEVEN**

Today And Every Sunday
Phone These Numbers for Your
PRESCRIPTIONS
Tom Perkins MO 4-7286
Phyllis Cherry MO 5-2700
Lyle Gage MO 4-4328
Hi-land Pharmacy
QUALITY SERVICE
1307 N. Hobart MO 4-2504

In Observance of Our
60th ANNIVERSARY
and as part of our continuing
contribution to the Religious Life of
Pampa and the Panhandle
FIRST METHODIST CHURCH
PAMPA, TEXAS
Invites you to
"DAYS OF DECISION"
Bishop Paul V. Galloway, Preaching
Bishop Galloway was resident Bishop for this area of Texas 1960-64 and is now Bishop of the State of Arkansas.
SERVICES WILL BE
**SUNDAY MARCH 5 — 8:45 and 11 a.m.
6:15 p.m.**
**MONDAY thru THURSDAY March 6-9
7:00 a.m. and 7:30 p.m.**
SPECIAL MUSIC FOR EVENING SERVICES

Bishop Paul V. Galloway
COFFEE and DONUTS IN FELLOWSHIP HALL AFTER THE 7:00 a.m. SERVICES
Nursery Open For SUNDAY and EVENING SERVICES

Get a jump
on spring...
with money to
**REPAIR-
REMODEL, now!**

BRIGHTEN UP your home early, with improvements that can be done now. Good time to rejuvenate the kitchen or bath, panel a rec room—any number of "inside" jobs!
Borrow up to \$5,000. Repay in easy monthly installments over as long as 8 years. No fuss or red tape. Just bring your plans to us for quick cash at low cost.

SECURITY FEDERAL
SAVINGS & LOAN ASSOCIATION
221 N. Gray MO 4-8451
Member Federal Home Loan Bank System

TO DI
ministe
Baptist
today's
thcompi
at 2 p.
Church
rehears
April 1
Dr. Ric
cle Ch
Utah,
be pres
under
Pampa
tion.

Fou
In C

CANAI
have fi
school b
in the b
The p
dent of
cant, bu
for re-e
Jack I
going tr
Three
Gene
Dunn fil
of the b

Pamp
Nam
Of P

Mrs.
Somerv
treasure
Photogr
during
nual con
Hotel T
The S
nization
grapher
ana, Nev
Texas.
Mrs. S
woman
groups

Seven
File f
School
GROO
for the
system
1. Seven
candida
be filled
Boyce,
Stephen
Evans,
Bivens.
Retirin
en-man
and Gly
board m
ger, Joe
Dr. Ric
Britten.

Salvat
Exec
The ex
Salvatio
regular
day in t
Cabot C
accordi
building
chairma



Mainly About People

The News invites readers to phone in or mail letters about the comings and goings of themselves or friends for inclusion in this column.

TO DIRECT - Sam Allen, minister of music for the First Baptist Church, will direct today's rehearsal of the forthcoming 'Messiah' beginning at 2 p.m. in Central Baptist Church.

Affiliate 81, Hairdressers and Cosmetologists, will meet at 7:30 p.m. Monday in the Bobette Beauty Salon, 2110 Perryton Pkwy.

Free lubrication with each oil and filter change, March 4, 5 and 6. Ed's Texaco Station, 1404 N. Hobart.

Treble Clef Club will entertain with its Patroness Tea at 7:45 p.m. Tuesday in the City Club Room.

Beauty Counselor's 38th Anniversary sale now on. Gift items included. MO 4-4602.

Rummage sale, 321 S. Cuyler, Monday and Tuesday.

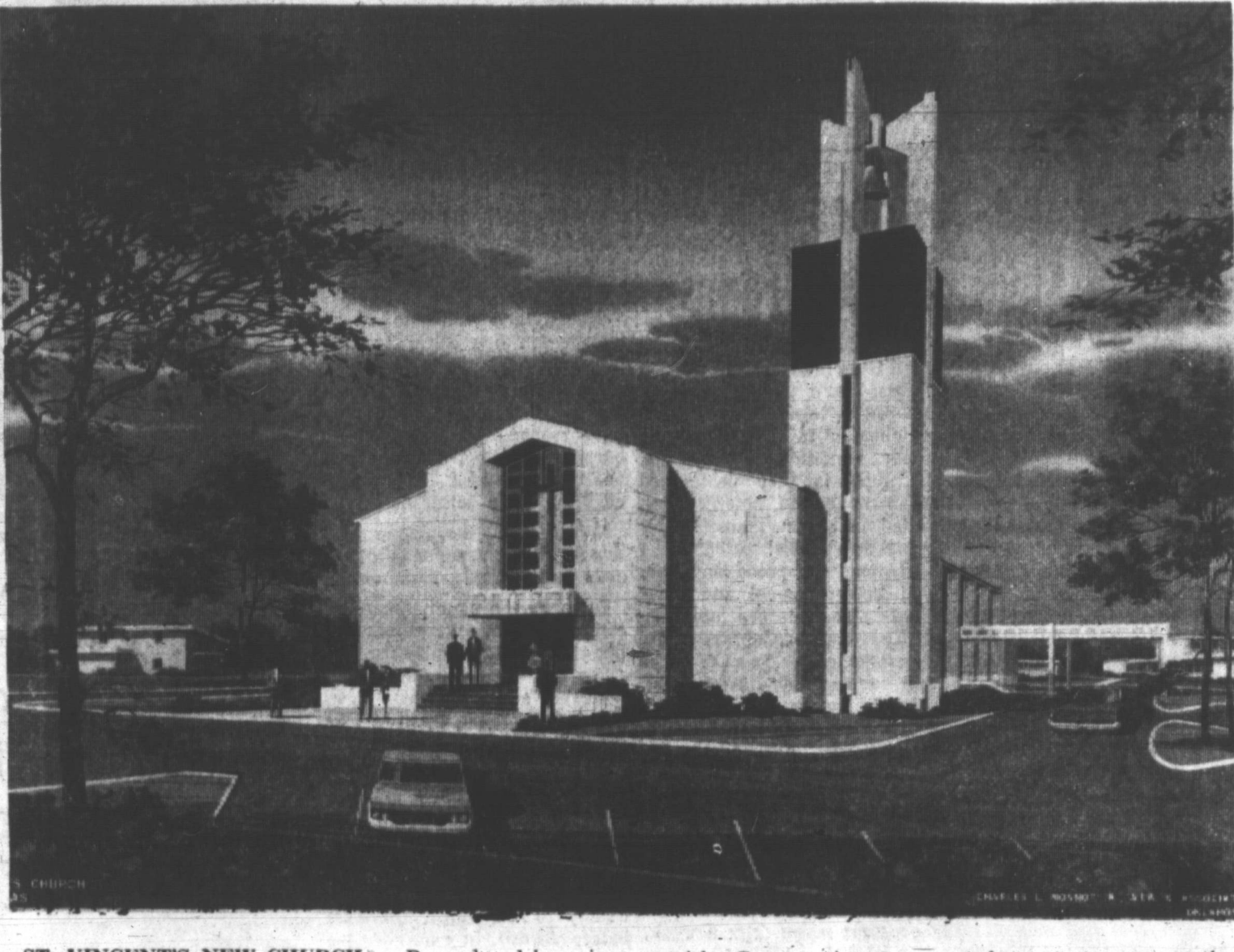
Four File In Canadian

CANADIAN (Spl) - Four men have filed here for the two school board posts to be filled in the trustee election April 4.

Pampa Woman Named to Office Of Photo Group - Mrs. Irene Smith, 1008 N. Somerville was elected treasurer of the Southwestern Photographers' Association, Inc.

Seven Candidates File for Groom School Trustee - GROOM (Spl) - Two trustees for the Groom Public School system will be elected on April 1.

Salvation Army Sets Exec Meet Monday - The executive committee of the Salvation Army has scheduled a regular meeting for 4 p.m. Monday in the conference room of Cabot Corporation's sixth floor.



ST. VINCENT'S NEW CHURCH - Reproduced here is an architect's drawing of the beautiful church edifice to be built by members of St. Vincent de Paul Catholic parish.

Price Asks Ag Members To 'Stop Playing Politics'

Panhandle Congressman Bob Price Friday asked members of the House Agricultural Committee to "start thinking about the American Farmer and stop playing politics with farm legislation."

Price's remarks came as an official of one farmer's organization told the committee that the American farmer has become the "wholesale cog" in transactions between the U. S. government and foreign government.

The 18th District congressman reminded the committee that "no other American industry is asked to produce more and more of their product for the world market at a cost of 26 per cent higher than the price they received."

Light weight Hampshire, top five were Doc Cornutt, Earnest Baggerman, Debbie Richardson, Mickey Richardson, all of Pampa and Bryan Mays of McLean.

AUSTIN (UPI) - Two airline service requests for South Texas and West Texas will be heard Thursday by the Texas Aeronautics Commission.

PHS Rates 20 UIL Choir Winners

Pampa High School rated 20 class one winners in the solo and ensemble University Interscholastic League contests yesterday at West Texas State University.

Class one winners were Fred Barber, Susan Patrick, Gail Craddock, Jeanne Prock, Polly Wagner, Linda Gunn, Mary Jane Rose, Ricky Roach, David Harris, Chris Kenny, Kenneth Taylor, Sherry Kouri, Jeanne Turner, Jan Autry, Marilyn Gregory, Wanetta Bayless and Carolyn McKinley.

Robbery

Cloyd had no more than noticed the wrecked vehicle when he saw a man about 50 yards down the road waving his arms.

"He pulled a sawed-off shotgun from under his coat and told me he hated to do it but he had to have the bank's money," Bean said.

Approximately \$22,000, all of which was later recovered, was stuffed into a white pillow case and given to the man.

When the squeal of tires was heard an alarm was telephoned into the sheriff's office.

Race for City Posts Now Tight Contest

Since two new candidates filed Friday for the two posts in the city election April 4, Pampa voters will have a choice in three offices: the mayor's and two commission posts, Ward 3 and 4.

The Ward 3 spot will have a three-way race between Leon Holmes, former city commissioner; Joe Taylor, Pampa automobile dealer and Fred Carrothers, motel manager.

Dr. M. McDaniel in Ward 1 and Hugh Burdette in Ward 2 are the only two candidates not to draw an opponent.

The original building committee was composed of Fred J. Neslage, chairman, James B. Massa, E. J. Dunigan Jr., and the late Roy E. McKernan.

The overall plant includes a ten-classroom school with library, cafeteria and other facilities; an eleven-room convent; and an eight room, two-story rectory.

Some 225 students attend daily classes at St. Vincent from kindergarten through the sixth grade.

When the pair had entered the bank, according to Bean Huff went to the teller, called him over and said, "I want to show you something."

Just where the pair planned to go had they been successful is still a mystery but there is much speculation.

Another officer said if the pair had ever made a back road on the ranch, which runs to the Oklahoma line, they would have been hard to track.

Beauty Counselor's 38th Anniversary Sale

Beauty Counselor's 38th Anniversary sale now on. Gift items included. MO 4-4602.

Garage Sale, 933 Wilcox

Garage sale, 933 Wilcox, antiques, furniture, dishes, and clothes.

Permanents \$6.50 thru March 11

Permanents \$6.50 thru March 11. Kon Tinki Beauty Salon, VI 8-2566.

3 month old Kenmore gas range

3 month old Kenmore gas range, completely automatic. Call MO 5-3612.

New Officers will be elected

New Officers will be elected at the Democratic Club of Gray County meeting at 7:30 p.m. Monday in the Gray County courtroom.

Repair service on washers and dryers

Repair service on washers and dryers. Call Lowell Stevens, MO 4-7570.

NO EXCUSE

BLENNES, France (UPI) - A court fined a farmer \$1.80 Thursday because his three ducks went trout fishing out of season.

Police said they found the ducks standing in the Orvanne River. Beside them on the bank lay six dead trout.

Advertisement for Duenkel Burial Association and Gray County Life Insurance Company. Includes contact info: AMBULANCE SERVICE... PHONE MO 4-3311. 40 Years of Dedicated Service. Serving All Faiths.

Advertisement for Miller-Hood Pharmacy. Includes text: MARCH 19-25 IS POISON PREVENTION WEEK. All the health professions are uniting to explain to people why this is a dangerous age for those who are careless with medicine and household products.

HOPE FOR RAIN

State's Farmers Watch the Skies

COLLEGE STATION (UPI) — With two months of 1967 already in the record books, the state's farmers and ranchers are still waiting for soil moisture. With planting time fast approaching, small grain in poor condition and most pastures and ranges "bone" dry, the overall situation is not good, the Texas Agricultural Extension Service said today.

The service added that general soil soaking rains, mixed with tank fillers could change the picture in a hurry provided the moisture was followed by good growing temperatures.

Corn, cotton and grain sorghums are being planted in far South Texas and in some Coastal Bend counties and some grain sorghum and corn have been planted in Jackson County but dry soil is restricting planting in other southern areas. Dryland wheat in northwestern areas was described as in poor to critical condition and greenbugs are causing damage to irrigated wheat in some counties, the service said. Showers in Central Texas have revived some oat fields but prospects for a grain crop are not good, the service continued.

Dairy Specialist Describes Milk Sanitation Steps of Texas Farms

COLLEGE STATION (SpI) — When you pick up a carton of milk at your doorstep or grocery store, you are selecting one of the best food values available today, points out A. M. Meekma, Texas A&M Extension dairy specialist.

"Many consumers have little appreciation of the high sanitation standards observed on Texas farms," Meekma said. "People may not realize that dairy farms are rigidly inspected by both state and local health departments," he noted.

"No other country in the world produces milk under such strict supervision. For these reasons, high quality is taken for granted in the United States. In few other countries is this true," he said.

"Among the careful procedures that must be followed before milk can be sold to consumers are:

1. Dairy cows are fed balanced rations of high quality feeds.
2. They are checked regularly for infectious diseases.
3. They are mechanically milked in sanitary milking parlors.
4. The milk moves from cows to the cooling tank through stainless steel or glass pipes.
5. It is immediately cooled to prevent bacterial growth, and pumped from the cooling tank into a stainless steel tank used solely for

Nominations Are Open For Heroes

The Texas Farm and Ranch Safety Council is seeking a rural Texan who has performed a hero's deed.

The council wants to award that person their Rural Heroism plaque.

Anyone may nominate a winner for the plaque. He may have rescued someone from a burning building, saved someone from drowning, or performed some other heroic deed.

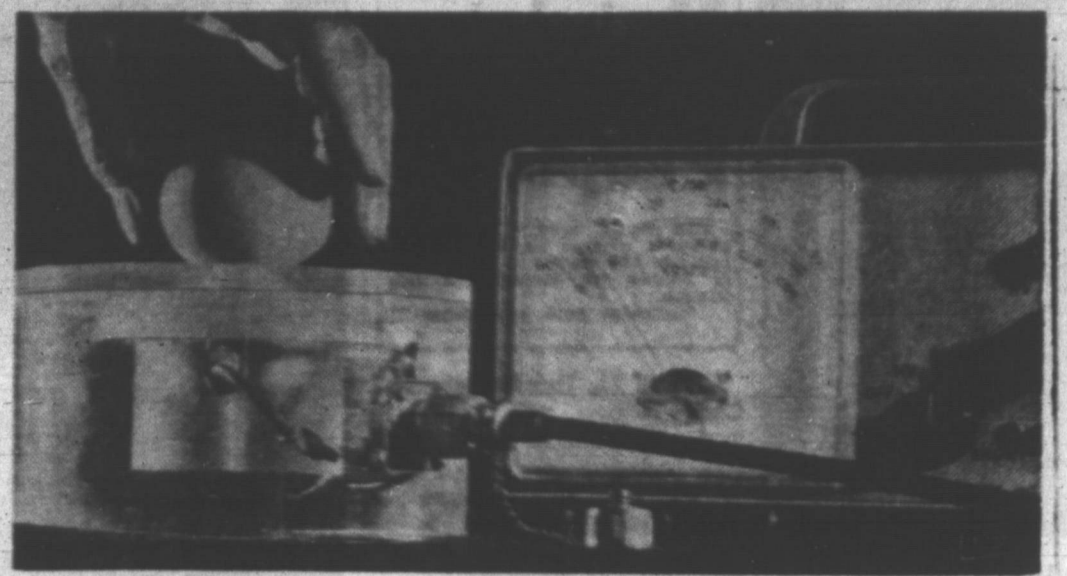
Nominees for the plaque must live in a rural area, or in a town of less than 2,500 population.

To make the nomination, submit a narrative explaining the heroic act. Remember to include full names of the persons involved, and if possible, news clippings and pictures of the event.

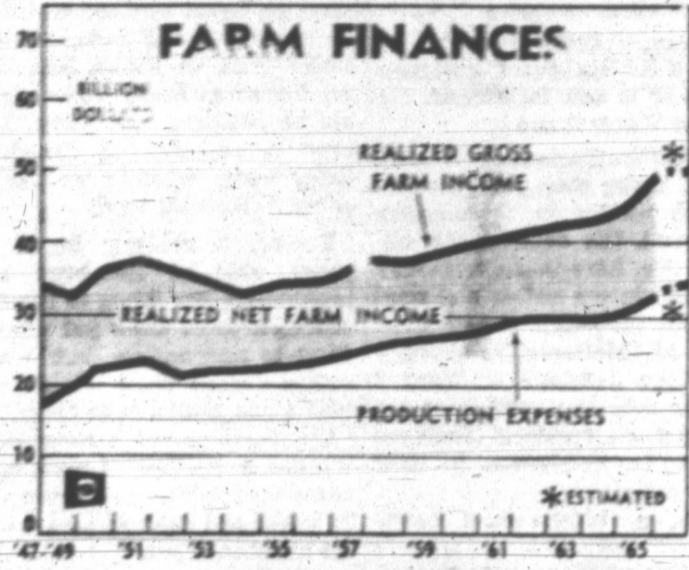
The winner may be an adult or youth, a member of your family, your neighbor, or any other person who qualifies for the award.

Entries must be mailed by Friday to the Rural Heroism Safety Award, in care of Joe Smetana, Safety Director, Texas Farm Bureau, P. O. Box 489 Waco, Tex. 76702.

Smetana is the council's secretary-treasurer. Other officers are Tony Price of Dallas, president and Bob Etherege of Fort Worth, vice president.



STRONGER EGGSHELLS may be the result of this experimental gauge developed by the U.S. Department of Agriculture. Called a backscatter gauge, it can measure the fragility of an eggshell in seconds. Such a gauge could assist poultry breeders in establishing lines of laying hens that produce better-protected eggs. An estimated 3 per cent of the 62 billion eggs marketed in 1965 were broken before reaching the consumer.



Although gross farm income has been rising, so have farm production expenses. The result, according to Department of Agriculture statistics, is that there has been little change in net farm income in recent years. General prosperity throughout the economy has not been reflected on the farms.

Deer May Spoil Research Program For Texas Aggies

SONORA (SpI) — A deer at Texas A&M University's Ranch Experiment Station here is making life a camel and in the process is spoiling a research test.

The deer, a sleek doe, has been fenced in a pasture surrounded by a seven-foot deer fence for over two years — and there's absolutely no surface water in the pasture.

As far as anyone knows, she hasn't had a drop of real water for two years, except when it rains, and that isn't often in the dry Edwards Plateau country.

The deer probably gets a little moisture from leaves and other forage it eats, says Leo Merrill, A&M range scientist at the Sonora Experiment Station.

The deer was frightened into the pasture by several horseback riders. She didn't jump over the fence, but between the wires — she probably couldn't do it again unless frightened again, says Merrill. But he's sure she hasn't been out of the pasture for over two years.

Merrill says the high fence around the pasture is to make an enclosure rather than an enclosure. The idea is to keep all livestock off the pasture to see how much range improvement occurs under the continual deferral as opposed to deferred rotation grazing systems.

"Just the one deer won't really ruin the test," says Merrill, "but all the same, she's not supposed to be there."

He has opened the gate and tried shooting the camel-like deer out-but no luck. He tried rather half-heartedly, since the deer has become kind of a pet, to shoot her during hunting season — again no luck.

Meanwhile, the deer stays put waiting for the next rain, or something.

In 1963, the U.S. Supreme Court approved a railroad anti-featherbedding rule.

In 1947, the Supreme Court upheld a lower chamber ruling that fined John L. Lewis and the United Mine Workers \$710,000 for an illegal strike the year before.

YOUR Independent INSURANCE AGENT
SERVES YOU FIRST!

You're not lost for help if you have an independent insurance agent. He's on your side when you need him most, ready to represent your interests first, ready to give you service and the call of duty. We're independent agents. Call us any time.

JOE FISCHER INSURANCE
Joe Fischer
Lindy Houck
115 N. West MO 9-949

Zale's delivers diamond values!

 Yellow and white 14K-gold combine in eight-diamond set. \$350	 Fiery diamond solitaire accented by six-prong 14K gold mounting. \$295	 14K gold bell with diamond clapper. 14K chain. \$29.95 Eleven diamonds outline 14K gold heart pendant. \$125 Exquisite diamond-solitaire in lovely pendant. \$100
 A delicate design in 14K gold with the beauty of four diamonds. \$275	 Fine diamond solitaire in six-prong setting of 14K gold. \$195	 Twelve diamonds form a double row of splendor in 14K gold band. \$225
 Individual high-rise 14K gold mounting with six diamonds. \$195	 Textured 14K gold pair set with seven beautiful diamonds. \$100	 Two-diamond 17-jewel Elgin. Textured case. \$65 17-jewel Elgin sparked by twelve fine diamonds. 14K gold case. \$190

CONVENIENT TERMS
ZALE'S JEWELERS
Jowntown, and Both Locations Open Till 8 P.M. Thursday

WELCOME to the Top O' Texas STOCK SHOW



First National Bank
IN PAMPA

Exhibitors Include
4-H CLUB
Boys & Girls
and the
FUTURE FARMERS
of
AMERICA

Member F.D.I.C.

Panhandle Water Conservation News

By FELIX W. RYALS

This columnist has reminded the irrigation farmer and water users, several times, since Jan. 1, that a number of bills would be passed by the legislature, concerning the future of water in this state. These bills will cover the use, quality and source of water.

All users of water would do well to follow the course of these bills as their enactment will definitely affect their future for a long time to come. A number of these bills have been well thought out and are needed.

Approval was given by the Senate Water and Conservation Committee to Senate Bill 204, by Sens. Charles Herring and Criss-Cole, to reorganize the Water Pollution Control Board along lines suggested by the interim committee headed by Sen. Culp Krueger, and by the Research League.

It would retain the present board and its four ex-officio members (heads of the Water Development Board, the Health Dept., Parks and Wildlife and Railroad Committee, but would strike out the occupational requirements of industry and agriculture on two of the three citizen members named by the governor.

It would give the board authority to administer construction grants, both the Federal treatment plant program now under Health and the proposed state grant program.

Local units, cities, counties, authorities and districts would have the authority to bring suits to abate pollution, but would have to make the board a party, and would have to send copies of inspection reports to the board; so it could keep informed.

Chairman William Moore told the committee of the work done so far by the board, in issuing the 1,800 statutory permits and reviewing many of them when they come up for amendment, and the Houston Ship Channel work.

He reported that 90 per cent of HSC discharges, by volume, have been covered by improvement plans submitted by the permit holders and approved by the board staff.

Sen. J. P. Word revealed that at the request of the Senate Finance Sub-committee, Moore

has asked Atty. Gen. Crawford Martin for an opinion as to the legality of the state treatment plant program of grants to local agencies proposed by Gov. John Connally.

Moore said the board's work can be increased tremendously if it is given the men and money and the new authority it is seeking. An effort to delay the bill for two weeks, made by Rep. Henry Grover of Houston and Sen. William Patman of Ganado, was defeated, and the bill went to the Senate with a favorable report.

The only change was an amendment by Sen. Ralph Hall of Rockwall putting venue on appeals from orders of the new Water Quality Board in Travis County or in the home country of the aggrieved party.

Federal and state water legislation will take the spotlight at the 23rd annual meeting of the Texas Water Conservation Association March 12-13. The usual format will be followed, with registration, reception, committee meetings, panel caucuses and the National Reclamation Association meeting Sunday night Monday morning the session will hear talks by Brig. Gen. W. T. Bradley, Southwest Division engineer, Regional Bureau of Reclamation Director Leon Hill and State Conservationist H. N. Smith. A panel on legislation, with Sen. George Parkhouse, Rep. Menion Murray and authors of water bills, comes at 11 a.m. At the luncheon U. S. Rep. Jim Wright of Fort Worth will report on water legislation in Congress. The afternoon session will deal with caucus reports and resolutions.

Gen. Mgr. J. E. Sturrock of TWCA is in South Carolina making a talk at a water meeting. The Water Development Board has called off its sale of \$15 million in bonds because the market looked bad. It will meet March 13 at 1:30 p.m. So far the only items on its agenda are formal action on the application of Boyce City for certification of eligibility for loan consideration and formalization of the Parsons and Company study on economics of importing irrigation water to the High Plains.

Three states outrank Kentucky in bluegrass seed production—South Dakota, Iowa and Missouri.



PROLIFIC EWE shown here with five lambs born within the space of 16 months is part of agricultural research by the United States Department of Agriculture. The ewe gave birth to two sets of twins plus a singly born lamb between May 1965 and September 1966. Normally sheep lamb once a year. Geneticists hope to develop a strain of sheep with year-round births, heavy fleeces, hornlessness and white, open faces.

County SCD News

By LYNN McDANIEL

Gary Doss has completed a waterway and a stock pond on a farm south of Pampa. Marvin Webster has completed a waterway and diversion terrace on his farm southwest of Pampa.

The preliminary draft of the McClellan Creek Watershed has been reviewed by the commissioners court, the Gray County SCD Board of Supervisors and the Steering Committee. We have returned our comments to the Planning Party at San Marcos.

This is a comprehensive plan and included all the problems which we are well acquainted with on the McClellan Creek Watershed. This is another step toward getting the big washout on McClellan Creek stopped.

I met with the steering committee on the Red Deer Creek Watershed Tuesday night at Miami. W. B. Jackson and John Spearman attended the meeting from Gray County. This committee is concerned about getting planning priority on Red Deer Creek to control erosion

Speeded Up Lambing

COLLEGE STATION (Sp1) — Research workers at Texas A&M University's Livestock and Forage Research Center near McGregor are getting more than the usual one lamb crop per year. They are getting about three crops in two years. They cite these developments as making speeded up lambing possible; control of the screw-worm, widespread acceptance of early weaning of lambs and the increasing use of high concentrate rations in lamb feeding.

and provide recreation on Red Deer Creek.

This is the month that has proven to be the best for planting native grasses. Grass should be covered about one-fourth inch when planted. I recommend planting now before rain and when the moisture does come the seed should germinate and come up.

If you need help in selecting the grass and amount to plant, come by the office and the Soil Conservation Service personnel will be glad to assist you.

Labor Competition

COLLEGE STATION (Sp1) — Competition for efficient farm workers is forcing more farmers to mechanize and automate more and more of their productive processes, says W. S. Allen, Extension agricultural engineer at Texas A&M University.

Because of the ever-increasing investments in machines and workers, many farm jobs are being done by commercial hire or automatic equipment. The effective use of commercial hire must be carefully planned in advance, says the engineer. Such a system cannot be turned on and off like a light switch, he warns.

Agent Gives Stock Show Schedules Here

We enjoyed the Lions Club Farmer Rancher—Day Thursday. On display at the club was an array of some 20 trophies to be presented to the 4-H—FFA exhibitors at yesterday's Gray County Junior Livestock Show. The Lions Club is doing a fine job on this project. The 4-H and FFA youngsters appreciate this very much.

The Top O' Texas Junior Livestock Show and Hereford Breeder's Show and Sale is in full swing by the time you are reading this. Weighing—and checking in—is scheduled at

9TH AR

THE PAMPA DAILY NEWS SUNDAY, MARCH 5, 1967

5

noon today. Sifting of livestock is scheduled for 1:30 p.m. to 5:00 p.m. Monday—9:00 a.m. judging swine; 1:30 p.m. judging steers; 7 p.m. Junior Exhibitor's barbecue; Tuesday—9:30 a.m. FFA Livestock Judging contest; 1 p.m.—judging of Hereford Breeding cattle; 5 p.m. Livestock judging Banquet at the Coronado Inn.

er's Sale All events will take place at Recreation Park unless otherwise indicated. Come out and see the end product of a year's hard work by many 4-H and FFA members.

In 1857, the Supreme Court handed down its famed Dred Scott decision. It ruled that Scott, a Negro slave, could not sue for his freedom in a federal court.

Read The News Classified Ads

SEE THE NATIONS FINEST! TOP O' TEXAS STOCK SHOW MARCH 6-7-8



AT RECREATION PARK, PAMPA

**PROGRAM
TOP O' TEXAS STOCK SHOW**

SUNDAY, MARCH 5
12:00 Noon Completion of weighing Junior Livestock at Recreation Park
1:30 p.m. Sifting of fat steers
1:30 p.m. Sifting of fat pigs

MONDAY, MARCH 6
9:00 a.m. Judging of Swine Division
1:30 Judging of fat calves
7:00 p.m. Top O' Texas Rodeo Association Junior Exhibitors' Barbecue, Show Barn

TUESDAY, MARCH 7
9:30 a.m. FFA Livestock Judging Contest
1:00 p.m. Judging of Hereford Breeding Cattle
5:00 p.m. Livestock Judging Banquet, Pampa Senior High School
7:30 p.m. Hereford Breeders' Banquet at Starlight Room, Coronado Inn

WEDNESDAY, MARCH 8
8:00 a.m. Junior Livestock Bidders' Breakfast, Show Barn Dining Room
9:30 a.m. Junior Livestock Sale
1:00 p.m. Hereford Breeders Sale

Top O' Texas Hereford Breeders Association Consignors

- Don L. Allred, Widorado
- Max Barth, Jr., Buffalo, Okla.
- Alex Born & Sons, Follet
- Breeding & Caldwell, Miami
- Marion A. Bryant, Texloa, Okla.
- J. P. Callham, Conway
- Frank M. Carter, Pampa
- Craig & Wool, Lark
- Andy Cole, Pampa
- Ralph Hale, Perryton
- Kay Maddox, Miami
- Wayne Maddox, Miami
- Robert L. Newton, Lark
- J. W. Thompson, Miami
- Raymond & Hazel Darrow, Shamrock
- R. H. Holland & Son, Perryton
- Richard Kiker, Allison
- Paul T. Macina, Jr., Shamrock
- Tomie M. Potts, Memphis
- Richard Kiker, Allison
- Clyde J. Magee, McLean

Free Breakfast For Junior Livestock Buyers Wed. 8 a.m.-8:45 a.m. In The Dining Room At The Sales Arena!

EXHIBITORS BARBECUE MONDAY
Mar. 6 6:30 p.m. \$1.25 Plate

BREEDERS BANQUET TUESDAY
Mar. 7 7:30 p.m. \$3.00 Plate

SALE DAY —
JUNIOR LIVESTOCK SALE
REGISTERED BREEDERS SALE
9:30 A.M. 1:00 P.M.

SEE THE LIVESTOCK SUNDAY THRU WEDNESDAY



DON'T MISS THE BIG TOP O' TEXAS STOCK SHOW



**MARCH 6-7-8
RECREATION PARK, PAMPA**

Showing The Nations
Finest . . .

We are a proud booster of the Top O' Texas Stock Show, and we offer hearty welcome to all our stock show visitors.

Citizens Bank & Trust Co.

FOR CORRECT TIME AND TEMPERATURE — THE MOST

CALLED NUMBER IN PAMPA — MO 5-5701

A Friendly Bank With Friendly Service

Corner Kingsmill & Frost

MO 4-3271



Week

YOU WERE RIGHT FRECKLES - YOUR TEMPERATURE IS SAYING YES!
I'LL PUT AN ICEBAG ON YOUR HEAD.
THE MAY HELP. I GOT SOME ICE CUBES FROM THE REFRIGERATOR.
AND THEN I LET 'EM MELT.

PEANUTS

THIS STUPID KITE-EATING TREE HAS TO BE MY KITE!
IF YOU DON'T LET GO OF THAT KITE, I'LL KICK YOU RIGHT IN THE STOMACH!!
THESE KITE-EATING TREES HAVE HARD STOMACHS...

The Born Loser

COME ON, GLADYS, TAKE MY HAND! IT'S SIMPLY A MATTER OF STEPPING FROM ONE ROCK TO THE OTHER...
BALANCE IS THE KEY WORD!

The Berrys

WHY? I'M NOT GOING INTO THE LIVING ROOM 'TIL DADDY IS FINISHED WITH HIS NAP!
DADDY IS LIKE THE GIANT THAT SAYS FE-FI-FO-FUM! HE EATS LITTLE BOYS THAT WAKE HIM FROM HIS NAP!
E-E-E-AH-HUM!
MAMA!
YOU'RE FOOLLY JACKIE!

Bugs Bunny

DO YOU THINK YOU'LL LIKE BEING A LIGHTHOUSE KEEPER, BUGS?
IT'S ONLY FOR A FEW DAYS! THE REGULAR GUY'S SICK!
WOULDN'T IT BE LONESOME WITH NOBODY TO TALK TO?
I THOUGHT OF THAT, DOC!
DO YA KNOW WHY THE ELEPHANT DIDN'T GO ON THE TRIP?
'CAUSE HE FORGOT TO PACK HIS TRUNK! YUK!

Eek and Weeks

WHERE HAVE YOU BEEN?
I'VE BEEN WATCHING TELEVISION!
WELL, IT'S TIME YOU HAD IT FIXED!

Captain Easy

SO WE'RE AFTER THE NAME OF THE MAN WHOSE LETTER WAS SENT IN THAT ENVELOPE OF YOURS?
IT IS OUR STATIONERY, BUT ON ONE I DID YOU MESS UP FOR SOMEONE?
NO. LOOKS LIKE OTTO'S WRITING MAY WE SEE OTTO?
HE QUIT MONUMENT BACK TO MEMPHIS!
HE PROBABLY DID A JOB FOR THE OLD MAN, WHOSE FIRST NAME IS JOCK!
THERE'S NO RECORD OF IT, OR OF SUCH A CUSTOMER.
THANKS, SIR. WE MUST GO NOW.

The Willets

AFTER ALL, IT TAKES A HEAP O' LUVIN' TO MAKE A HOUSE AT HOME, YOU KNOW!
ALL I SAID WAS THAT TOO MUCH OF IT GOES ON IN HERE! WHY CAN'T WE SPREAD SOME OF IT AROUND TOWN LIKE OTHER PEOPLE?

WINTHROP

YUM YUM!
BOY, IT'S A VERY RARE OCCASION WHEN YOU SEE A LICORICE WHIP ANYMORE!
BUT A LICORICE BULL WHIP? THAT'S A REAL COLLECTOR'S ITEM!

OUR BOARDING HOUSE With Major Hoops

YOU BOYS HAVE ALWAYS BEEN AMONG OUR MOST IMAGINATIVE CITIZENS! HOW ABOUT JOINING ME IN MY WAR ON SMOG?
HOW ABOUT BOTTLIN' IT AND SELLIN' IT TO TEA-GAS FACTORIES? OR MAYBE COMPRESS IT AND MAKE BOWLIN' BALLS?
IT LOOKS LIKE A GREAT CHANCE TO USE OLD CIGARETTE FILTERS! YOU JUST HAVE TO WORK OUT A FEW DETAILS!

Short Ribs

SORRY ABOUT THAT ACCIDENT IN MY TREE-YESTERDAY!
YEAH, I SPRAWLED MY BACK.
WHAT DID THE MEDICINE MAN TELL YOU TO DO ABOUT IT?
SIoux!

Blondie

WHAT A BORE IT IS TO SHAVE EVERY MORNING!
BLONDIE--WOULD YOU LOVE ME IF I GREW A BEARD?
WOULD YOU LOVE ME IF I GREW A BEARD?
NO--I WOULDN'T LOVE HER IF SHE GREW A BEARD!

Alley Oop

THESE PRISONERS WERE CAPTURED EARLY IN THE WAR... COULD YOU SEE 'EM?
NEANDERTHALS, EH?
SAY THEY WERE, BUT I DUNNO... WAHLL YOU SEE 'EM!
LOOKSST CHARACTERS 'EYER LAID EYES ON!
HOLY COW!
YOU KNOW THESE FELLAS?
OF COURSE I DO! THEY'RE TH' NEANDERTHALS!

The Finstones

MM... CORN CRACKLES SOUNDS GOOD!
IT'S TODAY'S SPECIAL!
ARE YOU SURE THEY'RE FRESH?
YOU HAVE MY WORD, SIR!

Backstage, Twins

YOU WERE GREAT, JILL!
TOO GOOD! EVEN OLD DAD SPOTTED THAT SWITCH!
BUT THE SCHOOL BOARD GUYS DIDN'T!
YOU MADE YOUR MR. LASCOLLI LOOK REAL GOOD!
I STUDIED UP IN CASE WE HAD TO DEFEND THE SHOW!
WE MAY HAVE TO REALLY DEPEND ON IT YET!
THESE PEOPLE COMING NOW LOOK LIKE THEY HATE THE SHOW BEFORE THEY'VE EVEN SEEN IT!

Mickey Finn

DO YOU EVER TAKE ONE OF THESE PILLS YOURSELF, DOCTOR?
I HAVE HAD NO REASON TO DO SO--MY NERVOUS SYSTEM IS FUNCTIONING PERFECTLY!
BUT TO PROVE THAT YOU ARE WRONG I WILL NOW TAKE--NOT ONLY ONE--BUT TWO!
GULP GULP!

Priscilla's Pop

WESTERN YOU MEAN YOU'VE ALREADY SEEN THIS MOVIE?
OH, I DON'T MIND SEEING IT AGAIN!
BESIDES, IT'S A LUCKY BREAK FOR YOU!
I'LL BE ABLE TO TELL YOU JUST WHAT'S GOING TO HAPPEN!

Debbie Deere

KENNY KAPER, AS THEY SAY IN SHOW BIZ SEEMS TO BE 'KNOCKIN' 'EM DEAD.
HE'S THE CLASSIC STAND-UP COMIC... BUT WHAT MAKES HIM UNIQUE IS HIS GREAT DELIVERY!
...AND WHEN IT COMES TO HANDLING MONEY--SHE'S A REAL DOUGH-NUT!
THEN THERE'S THE TIME BIG MOUTH GOT INTO AN ARGUMENT WITH HER MOTHER, HURRICANE ZELDA...
THE YEARS--IT!
NO, HO!

Joe Palooka

HOW CAN YOU SAY YOU DO NOT KNOW ME!
I NEVER LAID EYES ON YA IN MY LIFE, LADY! NOW CUT IT OUT!
GHOSHANEE! STOP! CAN'T YOU SEE THAT THE BLOW ON HIS HEAD HAS RESTORED HIS MEMORY!
MY NAME'S JERRY LEEMY! HOW DID I GET HERE?
IT DOES NOT MATTER! COME WITH ME... MY AIR-BORNT WILL TAKE YOU BACK TO MIAMI!

OKLA
Engle
M c L
sugge
Force
AFB,

Er
Ec

OKLAF
Second
son of M
105 E L
received
er AFB,
home to
U.S. Air
graduate
Airman
specialist
cedure t
by the U
Town-N
concerni
Force p
The al
rved t

Mon
At

Tech
land stat
Force i
China, w
month in
Major E
chief.
Morels
\$14 Orga
unit in
Month C
ed a 3-d
ved plaq

Sgt. (S
South
Techni
Grace, s
O. Grac
is now c
U. S. Al
Southeas
Sergean
tion sup
the Pac
provides
power in
ollies in
and Sou
Before
Asia, he
3800th T
at Maxv
The st
ate of
School.
His wif
ter of l
Lindsay
Calif.

Area
Famili
CANAL
Wesley
Mrs. Do
leave af
Vietnam
leave, he
Ft. Hood
Wesley
years ir

Area
Famili
CANAL
Wesley
Mrs. Do
leave af
Vietnam
leave, he
Ft. Hood
Wesley
years ir

Area
Famili
CANAL
Wesley
Mrs. Do
leave af
Vietnam
leave, he
Ft. Hood
Wesley
years ir

Area
Famili
CANAL
Wesley
Mrs. Do
leave af
Vietnam
leave, he
Ft. Hood
Wesley
years ir

Area
Famili
CANAL
Wesley
Mrs. Do
leave af
Vietnam
leave, he
Ft. Hood
Wesley
years ir

Area
Famili
CANAL
Wesley
Mrs. Do
leave af
Vietnam
leave, he
Ft. Hood
Wesley
years ir

Physicist Develops Music-Voice Transmission by Light

WASHINGTON (UPI) — A Georgetown University physicist reported today that he has developed a way of transmitting FM music and voice simultaneously over a beam of light.

According to the university, his discovery—"true frequency modulation of a laser beam"—could "revolutionize the field of communications."

The physicist, Dr. William J. Thaler, reported his invention in an application filed with the U.S. Patent Office.

In theory, light waves can be used to carry sound in much the same way radio waves do. This has long been known. But until

the advent of the laser beam a few years ago, no light source was available which was intense enough and tightly beamed enough to serve as a carrier wave in communications.

Because light frequencies are vastly greater than radio's, light should be able to carry millions of times more traffic than radio.

As a matter of fact, according to a report from Georgetown University, Thaler hopes to achieve a light modulation band width of a billion cycles. This would make possible simultaneous transmission of a half a million separate voice channels over the same laser beam.

Laser devices emit highly concentrated beams which, because the waves are all the same length, can travel long distances without appreciable spreading. Close to the source, these beams are intense enough to vaporize steel or drill holes in diamonds.

To make such beams carry communications requires that they be modulated for that purpose the way the comparatively low frequency long waves of radio are manipulated by transmitters.

Most of the work on laser communications so far, the

university said, has been devoted to intensity (amplitude) modulation. This approach has run into the same background noise (static) problems that have plagued radio AM systems.

Thaler developed a means for subjecting the laser beam to deliberately introduced disturbances which produce frequency modulation without changing the amplitude.

In 1966, 124 persons died when a British jet crashed into Japan's Mt. Fuji.



OKLAHOMA CITY — Airman Second Class John J. Engle (left), son of Mrs. Norma B. Engle, 105 E. Line, McLean, Tex., explains the working of a military suggestion which earned him a \$50 award, to his U.S. Air Force Home Town News Center Commander at Tinker AFB, Okla., Colonel James W. Ingram.

Engle's Ideal Earns Award

OKLAHOMA CITY — Airman Second Class John J. Engle, son of Mrs. Norma B. Engle, 105 E. Line, McLean, Tex., has received a \$50 award at Tinker AFB, Okla., for improving home town news coverage of U.S. Air Force basic training graduates.

Airman Engle submitted his military improvement suggestion as part of the Air Force-wide cost reduction campaign. He will depart Tinker in April, enroute to another information assignment in Vietnam.

A graduate of Enid (Okla.) High School, he attended Phillips University at Enid and Oklahoma City University.

His wife, Karen, is the daughter of Mrs. Ruth G. White of McAlester, Okla.

Moreland Selected NCO At Taiwan China AFB

Tech Sgt. Harry L. Moreland stationed with the U.S. Air Force in Taiwan Nationalist China, was selected NCO of the month in January, according to Major Ed. J. Sullivan, assistant chief.

Moreland will represent his 314 Organizational Maintenance unit in the Wing NCO of the Month Competition. He received a 3-day pass and an engraved plaque.

Sgt. Moreland and children, Alan Wayne and Brenda Sue are making their home presently in Pampa.

Sgt. Moreland is now on a 30-day assignment at Tachikawa AFB, Japan.



SGT. HARRY MORELAND

Sgt. Grace in Southeast Asia

Technical Sergeant Lowell D. Grace, son of Mr. and Mrs. W. O. Grace of 613 Magnolia St., is now on duty at a forward U. S. Air Force combat base in Southeast Asia.

Sergeant Grace, a transportation supervisor, is a member of the Pacific Air Forces which provides offensive-defensive airpower for the U. S. and its allies in the Pacific, Far East and Southeast Asia.

Before his arrival in Southeast Asia, he was assigned to the 3800th Transportation Squadron at Maxwell AFB, Ala.

The sergeant is a 1950 graduate of Pampa Senior High School.

His wife, Bonnie, is the daughter of Mr. and Mrs. Russell Lindsay of Huntington Park, Calif.

Area Soldier Visits Family During Leave

CANADIAN (Spl) — Spec. 4 Wesley Wilson, son of Mr. and Mrs. Doyle Wilson, is home on leave after spending a year in Vietnam. After his 52-day leave, he will report for duty at Ft. Hood.

Wesley served two of his three years in the armed forces in

Leonard Now Specialist 5

SAIGON, VIETNAM (AHT-NC) — William A. Leonard, 22, son of Mr. and Mrs. William Leonard, 736 N. Nelson, Pampa, was promoted to Army specialist fifth class recently while serving with Team 1, 96th Composite Service Detachment.

A shift supervisor of the detachment's card punch section, Spec. Leonard entered on active duty in Sept., 1964, and was stationed at Ft. George G. Meade, Md., before his arrival overseas last November.

Spec. Leonard is a 1964 graduate of Pampa High School.

81"x108" or 72"x108" Beautiful Printed SHEETS
Compare at 2.99 If Perf. **\$1.99** Each

Women's Cotton Knit "POOR BOY" PANT TOPS
Wear in or Out Sizes S-M-L **88¢**

FRINGED COTTON Fine-Tip TOWELS **16c**

Women's Waltz Length GOWNS **99c**

Handy Metal Cup COFFEE MAKER
Specially Priced FAST AN CONVENIENT **\$1.99**

LEVINE'S MORE *for your Money*

SEE WHAT YOU BUY!

20 BY 40" TERRY CLOTH BATH TOWELS **4 for \$1**

Women's White or Black Tie Style CANVAS CASUAL SHOES
Sizes 4 to 10 **\$1.00**

Women's Kodel Fiber Filled PADDED BRAS **88¢**
Sizes 32 to 38

36" TO 45" WIDTH SPRING FABRICS **4 Yards \$1**

FAMOUS BRAND WOMEN'S ITALIAN KNIT SWEATERS
Values to \$5.99 Sizes S-M-L **\$2.88**

THREE PIECE BRAIDED RUG ENSEMBLE
3-Piece One Low Price All Reversible **\$29.99**

Men's Ring-Top Crew Socks **17c**

Women's DRESSES Reduced to Clear '4 & '6 All Sizes

Men's SUITS **\$28.88**
100% Wool 65% Wool Dacron 55% Wool Blend Some 2 Pants Inc. Alterations Free

Boys Reg. 1.98 Long Sleeve SPORT SHIRTS **97c**

SPECIAL DELUXE 36" TOYS Heavy Quilted FABRICS
BRAIDED NOW ONLY **\$1.00**
1/2 To 3 Yard Length Make Your Own Spreads • Robes Dusters • Shams Etc.

GIRLS' BLUE 2-BAR TRICOT PANTIES **17c**
GIRLS' WHITE CREW SOCKS **22c**
POLO SHIRTS Cotton Knit **32c**
DRESS PANTS **77c**
BOYS' CREW SOCKS **19c**

BOY'S WHITE COTTON KNIT BRIEFS **19c**
Sizes 4 to 14

BOYS' SIZE 1 to 8 BOXER DENIM JEANS **97c**
3 Colors to Choose

54" to 60" Width FABULOUS BONDED KNITS
Values to 3.99 yd. **\$1.77** Yard
Assorted Links, Loops Crepes — Geometrics Hounds Tooth and Other Patterns

100% VERGIN ACRYLIC LACE SHELLS
Made to Sell at \$2.99 ONLY **\$1.66**
Sizes S-M & Large Blue • Yellow Pink

Men's New Spring SHORT SLEEVE SPORT SHIRTS
SIZES S-M-L **\$1.29** EACH
or 4 for \$5
• Drip Dry Wash 'N Wear • Solids • Stripes • Paisley Prints

LEVINE'S

R

Rheumatic Fever is Always Dangerous

It is now believed that rheumatic fever is caused by the same streptococcus germ which causes strep throat. It can make a child or adult tired and have painful joints or abdominal tenderness.

More serious results occur. The fitness inflames the heart's mitral valve. Scar tissue can form and permanent damage may result. Worse yet, a child does not grow out of this and can get rheumatic fever over and over again. Physicians know these dangers, but can protect you most if they are consulted about any sore throat as soon as possible.

YOUR DOCTOR CAN PHONE IN when you need a medicine. Pick up your prescription if shopping nearby or we will deliver promptly without extra charge. A great many people entrust us with their prescriptions. May we compound yours?

SAFETY—INTEGRITY—SERVICE

MILLER-HOOD PHARMACY

BETTER DRUG SERVICE
For Good Health For Better Living
1122 ALCOCK STREET Dial MO 4-8469
— We Deliver —
SUNDAY EMERGENCY CALL MO 4-2691



SAUSAGE BY THE FOOT — Knights of Columbus members Hub Homer, Chuck Albus and Dick Sullins, left to right, check over some of the many feet of polish sausage that will be served up at the 13th annual Knights sponsored polish sausage dinner and supper. Sausage will be served from noon to 2 p.m., and from 4 to 7:30 p.m. on Sunday March 12 at 500 N. Ward.

1040 U.S. Individual Taxpayers Ask IRS

EDITOR'S NOTE — This column of questions and answers on federal tax matters is provided by the Pampa office of the U. S. Internal Revenue Service and is published by the Pampa News as a public service to taxpayers. The column answers questions most frequently asked.

A—Instructions for claiming additional withholding allowances based on large itemized deductions are explained in Schedule A (Form W-4). Copies have been supplied to employers and are available at local IRS offices.

Q—To reduce withholding under this procedure a taxpayer must have filed return on 9166 income.

Q—Looking over some of the settlement costs I paid when I bought my house, I noticed an item for county transfer tax and another for revenue stamps. Are these deductible?

A—No, these costs are not deductible when paid in connection with the purchase of a house for personal use but they should be added into the cost basis of your home. If the house was purchased for rental or in come producing purposes then these expenses could be deducted as a business expense.

The two main items a homeowner may deduct are real estate taxes and interest paid on mortgage loans.

Q—What's the Social Security tax rate on self-employment income?

A—Net earnings from self-employment are taxed at a rate of 6.15 percent for 1966. This rate goes up to 6.4 percent for 1967 earnings.

Q—You may add the sales tax paid on the car to the amount shown in the sales tax table but not the tax paid on the television set. Of course, if you can show you actually paid an amount greater than shown by the table, you may deduct this greater amount.

Q—Our son works a paper route. Will he have to file an income tax return?

A—A return is required if he earned \$600 or more for the year. He should also file a return to get a refund if his income was less than \$600 and income tax was withheld from his pay.

A—I heard there was some new procedure for taxpayers who are over-withheld because of the new graduated rates. Where can I find out about this?

ERNE'S CLEANERS
410 S. Cuyler MO 4-2161

EVERYDAY LOW PRICES ON ALL ALTERATIONS • NEW POCKETS REPAIR OF ALL KINDS • QUALITY DRY CLEANING

Pickup & Delivery Service Any Time

59TH YEAR THE PAMPA DAILY NEWS SUNDAY, MARCH 5, 1967

Finals Scheduled
MOSCOW (UPI) — Pierre Darmon of France meets Soviet champion Alexander Metrevali today in the men's singles final of the Moscow International Indoor Tennis Tournament.

Darmon reached the finals by beating Russia's Tomas Lejus, 6-3, 6-4, 6-3, Thursday while Metrevali ousted France's Jean-Claude Barclay, 6-4, 6-4, 6-3.

Recall Roberts
DETROIT (UPI) — The Detroit Red Wings Thursday recalled Doug Roberts from their Memphis farm club of the Central Hockey League and returned center Gary Jarrett to Pittsburgh of the American Hockey League.

Read The News Classified Ads

PAMPA GETS NEW FLYING SERVICE

Aerodyne Aviation has officially opened for business in Pampa according to Don Schacht, local manager. We are doing student instruction, Charter, Rental and Aircraft sales. We have private license courses complete to qualified people for \$598. Financing available to persons with good credit.

YOUR FIRST LESSON ONLY \$5.00

AERODYNE AVIATION, INC.

Don Schacht — Manager Pampa Branch MO 5-2011

Canadian Schools To Hold Open House

CANADIAN (Spl) — Texas Public School Week will be observed here again this year with open house at both the high school and grade schools and the students are busy preparing for the event.

Open house will be held at the high school Monday, March 6, and at the grade schools Tuesday through Thursday, March 7, according to Superintendent Joe Cullender. School will be closed here Friday, March 10, so that the teachers may attend the annual teacher's meeting at Amartillo.

Ants are the oldest city dwellers.

Read The News Classified Ads

sure GENERAL ELECTRIC WHOLE HOUSE HEATING AND COOLING IS OUR BUSINESS!

Commercial and Industrial Applications too!

CALL TODAY BUILDERS PLUMBING SUPPLY CO. 535 S. Cuyler MO 4-8457

Astrological Forecast

By CARROLL RIGHTER

FOR SUNDAY, MARCH 5

GENERAL TENDENCIES: Use Sunday to attempt to amend an organized endeavor to build up new well being by long proven principles, and demonstrate expression of them. This can bring you a new satisfaction with your existence. A new practical-minded expert gives you the answers for which you have long searched.

ARIES (Mar. 21 to Apr. 20) — You can gain respect now by deliberating a vital point, and then acting right into some charitable or fascinating outside duty. Show special hospitality to whoever can help you to commercialize on them. Make the most of this free day.

TAURUS (Apr. 20 to May 20) — Listen carefully to advice given by those of wit and good character and you turn potential danger to active opportunity. Some longdistance telephone call can bring right data. Use it to increase circle of friends close by.

GEMINI (May 21 to June 21) — Listen to what experts have to suggest so that you make the future far more interesting and well-paying. Closest to expect deviation and later practical expression of your love. Don't be thoughtless where money is concerned.

MOON CHILDREN (June 22 to July 21) — Listen to what associates have to say about making certain changes that are necessary, especially with regard to employees etc. You now comprehend what the real problems are that face you. Solve them wisely.

LEO (July 22 to Aug. 23) — Handle your duties wisely instead of running off on some joyride that could bring you much trouble. A co-worker is depressed and requires your assistance. Give it. Be happy, satisfied, with yourself.

VIRGO (Aug. 23 to Sept. 22) — By scheduling your time properly you are able to perform duties efficiently as well as go out for a delightful time with congenial. You have special talents that bring happiness. Use them.

LIBRA (Sept. 23 to Oct. 22) — By keeping those promises you have made to kin without further procrastination, you show your true devotion. Be sure you get rid of whatever is outmoded. Stop cluttering up your life unnecessarily.

SCORPIO (Oct. 23 to Nov. 21) — Be sure you handle all reports accurately and you make the right impression on superiors. Don't be so lackadaisical. Keep vital appointments. Let recreation await the completion of such.

SAGITTARIUS (Nov. 22 to Dec. 21) — Show practical persons that you are equally so and make new deals. get bills paid, collect moneys owed you. Make those improvements to real estate, though you feel like procrastinating. Do the most important first.

CAPRICORN (Dec. 22 to Jan. 20) — Show your best qualities in whatever is of a social nature and add to prestige you enjoy. Instead of taking chances with it. Get your health improved. Then your whole attitude changes for the better.

AQUARIUS (Jan. 21 to Feb. 18) — Show others that you are most ethical in wise and then rid yourself of whatever is limiting you. Show charity later to those who deserve it. Take in something that is current in go.

PISCES (Feb. 19 to Mar. 20) — A pal with a chip on the shoulder would like to draw you into a "various argument, but do not permit it or there is real trouble. Forget that social affair and avoid an individual you do not particularly like. Be happy.

IF YOUR CHILD IS BORN TODAY... he or she will be one of those clever youngsters who will try to work every angle possible to gain his, or her, aims. Be sure the energetic and mind are channeled in the right directions; otherwise, your progeny can get into a great deal of trouble. Others will resent methods used. However, the main idea here is to get at the truth. Then wonderful things happen in this life.

HOT LUNCH
CARBONDALE, Ill. (UPI) — A coed who wanted a snack got firemen instead at the 17-story Neely Hall at Southern Illinois University Wednesday.

Authorities said a popper of smoking popcorn placed near an air vent set off a smoke detecting device which triggered a fire alarm, forcing 316 girls to evacuate.

FOR MONDAY, March 6

GENERAL TENDENCIES: The very early morning is the best time for this day, so organize as much as possible. Later, you find most people have poor judgment and a rather sceptical attitude, so it will be necessary to remain patient and under-



LARGE OR SMALL AN ELECTRIC Clothes Dryer DOES THEM ALL
(even the new PERMANENT PRESS)

Anything you can wash in your electric washer can be dried in an electric clothes dryer... any electric clothes dryer. Permanent press, delicate fabrics all come out sunshine perfect and without the outside dust hazard. Your wash stays clean when you dry 'em electrically. Large or small, your electric clothes dryer dries 'em all!

\$1500 Bonus Certificate

Now, through April 29, 1967, any Public Service customer buying an electric dryer from a Reddy Kilowatt Dealer will receive a \$15.00 certificate and that's like getting 300 loads of clothes dried free.

Buy at the store with Reddy on the door

Waltz THROUGH WASHDAY

Public Service Company of New York

Flexible ELECTRIC Drying

We Have Sold The IGA FOOD LINER and it will be known as **ANDY'S SUPER MARKET**

Managed by Lewis Andrews

We wish to thank our many customers for their patronage and friendship during the past 17 years. It has been 17 Happy Years

SINCERELY
Mr. & Mrs. Elmer Fisher
Geo. L. Pounds

Dunlap's

DOLLAR DAY

Coronado Center
Phone MO 4-7417

STOREWIDE SAVINGS... MONDAY ONLY 10 am to 6 pm

FAMOUS BRAND

WESTERN JEANS

Permanently Pressed

Reg. 7.95 **4.00**

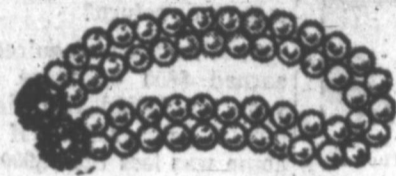
Terrific value on these men's jeans. Never needs ironing. Colors of blue, white or green. Slightly Irregular



Sheer Seamless Nylons

4 pair 1.79

Dollar Day Is The Time To Stock Up On These Fine Stockings, Long Wearing. In Neutral Beige Shade. Sizes 8 1/2 to 11.



PEARL SALE

Necklaces and Earrings in Beautiful Simulated Pearls

Reg. to 3.00 **1.00 EACH**

Nylon Half Slips

Regular \$3.00

2 FOR 3.00

Beautiful lace trimmed half slips, 100% Nylon Tricot, White, Pink, Beige or Blue, Sizes S-M-L



Mens White Crew Socks

100% Cotton

- Sizes 10 1/2 to 13
- Reg. 1.50 pkg.

3 PAIR 1.00

Mens & Boys Tennis Shoes

- Oxford Style
- Long Wearing
- Sizes 11 to 13

1.99

Boys Sport Shirts

- Long & Short Sleeve
- Assorted Plaids
- Sizes 14 to 20
- Values to 4.00

99c

Childrens Shoes

Regular to \$10.00

4.99

Over 300 pairs of famous brand shoes from regular stock. Boys and girls styles

Cheaper By The Dozen

Choose Your Favorite Style Panties

12 pair 4.00

Comfortably cut, easy washing Panties. And you may have a dozen in one style or a wardrobe of styles in any color or size.
Elastic leg brief in Calanese acetate. White, pink, blue, maize. Sizes 5 thru 10.
Elastic leg brief in rosebud print acetate. Pink, blue or maize on white. Sizes 5, 6, 7.
Women's flare leg step in acetate. White or pink. Sizes 8, 9, 10.
Elastic leg brief in acetate with Helance nylon stretch lace panels. White, pink blue. Sizes 5, 6, 7.
Elastic leg brief in nylon tricot. White, pink, blue. Sizes 5, 6, 7.
Band leg brief in Calanese acetate. White, pink, blue, maize. Sizes 5 thru 10.
Elastic leg brief in Calanese acetate with lace front. White, pink, blue. Sizes 5, 6, 7.
Double back acetate pantie in elastic or band leg style. In White, pink, blue, maize. Sizes 5 thru 10.



Sportswear Group

Values to

2 FOR 5.00

Large group of famous brand sportswear. Includes permanent press blouses and jamaicas. Cotton knit poor boys, many one of a kind items.

Bobbie Brooks Sweaters

Reg. \$10.00

2.99

Fabulous savings on these lovely sweaters. Cardigan and pullover styles. Broken Sizes

Permanently Pressed Sheets

50% Combed Cotton 50% Polyester

Twin Size Flat 4.00 if perfect Double Size Flat 5.00 if perf. Kingsize Flat 8.00 if perf.

2.00 3.00 5.00

Wonderful savings on these famous name sheets. They never need ironing. Always fresh, night after night White only

Tiny Irregularities



Martex Towels

Reg. 2.00

Bath Towel **2 FOR 3.00**

Reg. 1.29 HAND TOWEL

99c

Reg. 49c WASH CLOTH

39c

Beautiful thick terry cloth towels in a host of solid colors. Stock up Monday. Lay them away. A small deposit holds any purchase.

100% Combed Cotton

Gingham Checks

\$1.00 yd. Value **38c** yard

Dollar Day special on our all cotton gingham checks. Big selection of colors. 45 inches wide.

New Colors Just Arrived

Dacron Double Knit

Over 1000 Yards **3.98** yard

In Stock Dunlaps has just received a big shipment of brand new Spring and Summer colors. All in beautiful 100% dacron polyester double knit.

Quilted Top Bedspreads

- Solids and Florals
- Twins and Doubles
- 15.00 Value

5.00

Lined Draperies

Size 48 inches wide In 63 or 84 inch length. Antique Satin Fabric. White only

5.99

Bargain Table

Curtains, Valances Bath Towels, Throw Pillows, Shower Curtains

Your Choice **99c**

Famous Name Pumps

Values to 27.00 **12.00 PAIR**

Dunlaps is offering this big group of dress shoes Dollar Day only.

Choose valentine alligator lizards, corfam pumps, Ted Seval luxurious soft calf pumps.

Limited quantities.

AAAA to B widths Sizes 5 to 10



The Pampa Daily News

SUNDAY, MARCH 5, 1967

One Season Over, Another Begins For . . .

Pampa Community Concert Ass'n



EXECUTIVE SESSIONS — Striving ever to bring the best in concert artists to Gray County audiences are members of the Pampa Community Concert Association's executive board, from the left, Mrs. E. L. Henderson, corresponding secretary; Mrs. Macfield McDaniel, president; Mack Hiatt, vice president; Mrs. Dallas F. DeWeese, treasurer and Mrs. Tom Rose, membership secretary.

Official opening of membership renewal week for the Pampa Community Concert Association's 1967-68 season is scheduled at a tea this afternoon from 2 to 4 o'clock in the Hospitality Room of the Citizens Bank & Trust Co.

Hostesses will be Mrs. Bruce Riehart, chairman, and Mrs. George Snell, co-chairman, for this year's membership drive. Attending the tea will be some 140 campaign workers who will receive their packets and organizational instructions for the drive.

Current association members will have all of this week to renew their memberships if they so desire. Since only a limited number of memberships can be granted, 1966-67 season cardholders have first chance at renewal for the coming season.

The annual workers' kickoff dinner to launch the drive for new association members is scheduled at 7 p.m. Monday, March 13, in the Coronado Inn Starlight Room. Mrs. Lillian Kilgarriff, Columbia Artists representative, will be in Pampa to address the workers. Mrs. Leora Rose is chairman in

charge of dinner arrangements, with Mrs. Aubrey Steele, assistant chairman.

The week of March 13-17 will be devoted to enrolling new association members.

Headquarters for the concert membership campaign will be in the lobby of the Southwestern Public Service Co., 315 N. Ballard. Mrs. Kirk Duncan will serve as headquarters chairman and secretary.

Mrs. Mack Hiatt will serve as appointments chairman for women's civic organization and the men's civic clubs.

Two outstanding attractions already have been selected for the 1967-68 concert season. They are the Washington National Symphony Orchestra, under the direction of Howard Mitchell, with Michael Rabin, violin soloist, and the Robert Wagner Chorale and Orchestra.

Two additional attractions yet to be selected will be announced later.

Officers and executive board members of the Concert Association are Mrs. M. McDaniel, president; Mack Hiatt, vice president; Mrs. Tom Rose, membership secretary; Mrs. E. L. Henderson, corresponding secretary, and Mrs. Dallas F. DeWeese, treasurer.



GREETING THE artists upon their arrival in Pampa; getting them comfortably settled before their performances; and checking on costume care, auditorium facilities is the seldom-heralded, but most important function of the Community Concert's Presentation Chairman, Mrs. Bob Cur-

ry, pictured left, greeting the recent arrival of concert artists from the Columbus Boychoir, from the left, Craig Jeschke of Baltimore, Me.; Carrol Freeman of New Orleans, La.; Mark Ammons of Denver, Colo.; with their director, Don Bryant.



OVERSEEING THE drive for new Community Concert patrons, as well as those year-after-year renewal patrons, are the co-chairmen of the current membership drive, from the left, Mrs. Bruce Riehart and Mrs. George Snell.



Next Season's Hold Number

TWO HOLD numbers have been engaged by the local concert association for presentation here next season. The Washington National Symphony with its conductor, Howard Mitchell, pictured left, and Michael Rabin, violin soloists; right, will appear in Pampa during the 1967-68 concert season. Often called the "Orchestra of the Presidents" because it has played at every Presidential Inaugural since its founding. The symphony orchestra is now in its 36th season.

ALSO ENGAGED for an appearance in Pampa during the upcoming season is the Robert Wagner Chorale and Orchestra.



Art Techniques Comprise Program For El Progreso Study Club Meet

What is going on in the world today, the techniques of modern-based media, was the subject presented by Mrs. Bob Johnson, guest speaker, at the El Progreso Club meeting in the home of Mrs. Leon Patterson.

Mrs. Johnson brought several examples of her work to illustrate the different techniques of fresco, tempera, gouache, water color, acrylic and enamel. An especially interesting painting was a syntage, a combination of synthetic (acrylic) paints and materials (tage).

Mrs. Johnson explained Fresco, like Michelangelo used on the ceiling of theistine Chapel, is being revived by Mexican artists. Couache painting, the opaque water colors, is done today using a synthetic white base.

She said water colors, the pigment mixed with no other agent and the water acting only as a carrier, was the most difficult. "It is also one of the oldest media known, the cave drawings were made from berry juice, water-based. The original water colors deal with the spirit of the subject, leaving the viewer Wade, Lenora Burgin, Lynita Brown, Dianna Mitchell, Tommie Everson, Toni Howerton and Jocelyn Watson.

ducted by Mrs. Kermit Lawson with the club collect lead by Mrs. Glenn Radcliff.

Mr. Tom Perkins was named delegate and Mrs. Elmer Fisher, alternate, to the Top of Texas District convention to be held in Amarillo March 30-31. Those attending not previously mentioned included Mrs. R. E. Bray, D. V. Burion, Jess M. Clay, J. F. Curtis, V. J. Drew, Elmer Fisher, Ben Hamilton, Carlton Nance, John Damron, and Charles W. Lanehart.

Mrs. Eschle Fetes Girls SS Class

GROOM — Mrs. George Eschle entertained the Intermediate Girls Sunday School class of the Baptist Church with a slumber party Friday evening.

The girls met in the Eschle home at 7 p.m. for a Mexican dinner. Mrs. Preston Harden assisted Mrs. Eschle with the dinner.

Attending were Mary Snauwater-based. The oriental water colors deal with the spirit of the subject, leaving the viewer Wade, Lenora Burgin, Lynita Brown, Dianna Mitchell, Tommie Everson, Toni Howerton and Jocelyn Watson.



PATRIOTIC PARADE — Mrs. E. L. Henderson, guest reviewer, center, is pictured with Mrs. J. L. Chase, left, club president and Mrs. J. Zachry, tea chairman, at Twentieth Century Culture Club's annual guest day tea Tuesday in Lovett Memorial Library.

Patriotic Theme Highlights TC Culture's Guest Day Tea

Mrs. E. L. Henderson, attired in a colorful red dress with a corsage of red, white and blue carnations, presented an interesting and entertaining discussion of the life of President Herbert Clark Hoover and his wife, Lou, at the Twentieth Century Culture Club's Guest Day Tea Tuesday afternoon in Lovett Memorial Library.

The topic was a continuation of the club's course of study for the year, "The Parade Marches On."

Following an introduction by Mrs. E. E. Shelhamer, Mrs. Henderson reminded tea guests that Mr Hoover was the 31st president of the United States from 1929 to 1933. She emphasized the fact Mr Hoover was of the Quaker religion and that to a Quaker the principal command is that of the Lord's "that ye love one another."

Mrs. Henderson said, "This is the thesis on which Herbert Hoover built his life." She told the story of Herbert and Lou Hoover's lives, keeping in mind how his religion was always part of his daily life, both public and private.

She traced Hoover's active and interesting life from the time of his birth in West Branch, Iowa on Aug. 10, 1874 to the time of his death, Oct. 20, 1964. She brought out that his was a happy marriage and his wife, Lou, was a great inspiration to him.

In conclusion, Mrs. Henderson said: "Not only did he love, but he inspired others to love and serve. We can only pray that somewhere today, other young men in America wait to give such moral leadership to our nation."

Hostesses for the annual tea were Mmes. L. J. Zachry, Doyle Osborne, L. H. Hart, and Otto Specht.

Mrs. Warren Hasse presided at the guest register with Mrs. Weldon Carter and Mrs. J. L. Chase, club president, presiding at the colorful tea table. Mrs. Zachry, greeted guests at the

Blocks Assist a Child in Study

UNIVERSITY PARK, Pa. (UPI) — Black and white blocks may help a Pennsylvania State University investigator determine how children under four form concepts, and if they can be trained to develop them.

"Older children label objects verbally," explains Gloria Bernheim, research associate in educational psychology, who is conducting the study. "We want to train their younger brothers and sisters to use labels too."

For the children in the test the labels are the blocks. To show them the concept that black and white exist in a color relationship, one group of children is shown a white block and told to add another white one to it. A second group is asked to add a black block to the white.

Finally, a third group is given a white block and asked to match it with other colors.

After the children in the third group have become used to selecting a black square, the rules of the game are changed to see if they actually understand the concept.

For Your —

Easter SEWING

SILK and WORSTED

When choosing your Easter Suit, choose from six colors of Silk and worsted. 50" wide. This also can be used for "after 5" wear.

Other Italian Silks
45" wide 3.98-6.98 yd.

For the Silk Look
KERAFLEX

18 Colors	3.98
54" Wide	4.98
Prints	4.98
48" Wide	4.98

For the India Silk Look —
PUNJARO

8 Colors	2.98
48" Wide	2.98

Shop — Sew — Save At
SANDS FINE FABRICS
McCall's, Butterick, Vogue, Simplicity Patterns
225 N. Cuyler MO 4-7909
Shop Downtowns For Greater Selections

OPEN EVERY THURSDAY TIL 8

The Pampa Daily News

All About Women

doris e. wilson, women's editor

16 SUNDAY, MARCH 5, 1967 59th Year

Social Calendar

SUNDAY
2:00 to 5:00 — Community Concert Tea, Citizens Bank and Trust Co. Hospitality Room.
TUESDAY
9:30 — PTA City Council, Woodrow Wilson School auditorium.
10:30 — Pampa Art Club Workshop with Mrs. O. W. Abbleby, 1300 N. Russell.
7:30 — Mr. and Mrs. Garden Club.

FRIDAY
9:30 — Home-Art Tour Committee in the home of Mrs. George Cree Jr., 1912 Charles.

Have a First Aid Kit
A first aid kit is a handy emergency supplement to the medicine chest should you run out of needed items. It is complete, inexpensive and perfect for home use as well as travel. What's an ideal floral gift for a man? The Society of American Florists suggests an arrangement of a dozen carnations, against a background of trimmed narrow-leaf chamadorae foliage. A simulated bow of wide-leaf chamadorae foliage placed at the bottom of the arrangement provides a finishing touch.

Barefoot at Beach is 'In'
The discovery of the year is the foot. Italians are going scalzo (barefoot). And it's bound to catch on at beach resorts here. This means, naturally, it will be a big year for foot beauty care and treatments. Special creams, powders and electrical massage devices have been announced by many American beauty houses. Even leg make-up will show up in foamy, easy to spray aerosol form.

In every style, newly developed leather soles hold their shape — and the shape of the shoe — for as long as you wear them. Flexible and rugged, they won't ravel, fray or bulge at the edges, Leather Ind. of America reports.

DOLLAR DAY

Reg. 10.00 **\$4.00**

Reg. 16.00 **\$7.00**

SKIRTS

Reg. \$5.95 Now **\$3.00**

BLOUSES

1 Group Assorted Blouses
From **\$8.98** To **\$14.98** Reduced

DRESSES

Reg. 19.98 now **\$13.98**

1615 N. Hobart
MO 9-9212

Mayfayre

CLEAN UP!

Sale!

Sweeping our Racks clean of all Fall Merchandise. Sizes are not complete but values are unheard of.

DRESSES
CLOSE OUT OF ENTIRE FALL STOCK
Values to \$36.00 **\$5.00**

BLOUSES
Values to \$6.00 **\$1.00**
Size 8-10-12

SWEATERS
Values to \$16 **\$3.00**

SKIRTS
Values to \$14.00 **\$3.00**
Size 8 to 14

CAPRI PANTS
Values to \$16.00 **\$3.00**
Size 8-10-16

FORMALS
Values to \$55 **\$10.00**

SUITS
Reg. \$50 to \$80 **1/2 Price**

UNTRIMMED COATS
Values to \$60 **\$35.00**

GILBERT'S

SMART CLOTHES AT POPULAR PRICES

Richard Drug

Joe Tonley
Pampa's Synonym For Drugs

111 N. Cuyler MO 5-5747

Geritol Liquid Sale

\$4.98 Size	only \$2.98
\$2.98 Size	only \$1.98
\$1.25 Size	only 89c

Geritol Tablet Sale

\$6.00 Size	only \$3.98
\$4.98 Size	only \$3.39
\$2.98 Size	only \$1.98

ALARM CLOCKS

Guaranteed in This Store

Raco **\$2.79**
Reg. \$3.98

Raco Combination SYRINGE

Guaranteed in This Store

Reg. \$3.98 **\$2.79**

Schick Band RAZOR

Reg. \$2.95 **\$2.19**

Check these \$ DAYS SPECIALS

Hair Dressing 79c

Alberfo V O 5, Reg. \$1.09

Score HAIR CREAM	59c	Vaseline HAIR DRESSING	89c
Reg. 89c		Reg. \$1.25	
Excedrin PAIN TABLETS	\$1.49	PERMA-GRIP	39c
Reg. \$2.09		Reg. 75c	
Mexsana Medicated Powder	59c	Johnson & Johnson BABY LOTION	59c
Reg. \$1.29		Reg. \$1.00	

SPRAY NET 49c

Aqua-Net, 13 oz.

HAIR SPRAY 79c

Sudden Beauty, 18 oz.

Ronson Knife Sharpener	\$13.95	Reg. \$37.50	WATER-PIKS	\$25
Reg. \$25.00		Only		
Ronson Can Opener	\$13.95	Richard HEAT PAD	\$2.99	
Reg. \$25.00		Reg. \$3.95		
Jergens Complexion Soap	39c	Squibbs MINERAL OIL	59c	
Reg. 50c		Reg. 89c		

STEAM-IRON CLEANER 59c

SSS-T, Reg. 98c

Regular LYSOL	29c	Liquid Lysette Douche	49c
Reg. 59c		Reg. 99c	

BARAINS

Prices Good
Monday and
Tuesday

USE OUR
EASY
CREDIT
ASK FOR DETAILS

DOLLAR DAY!

**NEW
EXTRA STRENGTH
COMET
CLEANSER**

14 Oz. Can

13^c

2^c OFF
REGULAR PRICE OF 15^c

**GIBSON'S
PRICE**

Brytone Cosmetic
MIRROR

Reg. 97c

77^c

**GIBSON'S
PRICE**

Yahtzee
SCORE PADS

Reg. 77c

67^c

**GIBSON'S
PRICE**

**ALL LADIES
SWEATERS**

**1/2 OFF GIBSON'S
DISCOUNT PRICE**

**ALL
THROW RUGS and
BATH MAT SETS**

1/3 OFF GIBSON'S DISC. PRICE

**ONE GROUP LADIES
BLOUSES**

Popular
Sizes
Reg. \$3.09

\$1⁹⁸

**GIBSON'S
PRICE**

**NEW SHIPMENT OF
STRAW HAND BAGS**

ALL AT GIBSON'S DISCOUNT PRICE

Brake Fast
HEAVY DUTY
**BRAKE
FLUID**

12 Fl. oz.

25^c

**GIBSON'S
PRICE**

**MARYLAND CLUB
INSTANT
TEA**

59^c

**GIBSON'S
PRICE**

18 Oz. Jar JIF
CREAMY
PEANUT
BUTTER

66^c

**GIBSON'S
PRICE**

**SWIFTS
CHILI With BEANS**

NOW
EASY-OPEN TOP

24 oz Size

49^c

**GIBSON'S
PRICE**

**GIANT SIZE
THRILL**

FOR DISHES

59^c

**GIBSON'S
PRICE**

**NEVER
LEAK
BICYCLE TIRE FLUID**

29^c

**GIBSON'S
PRICE**

**Salvo
Power Tablets**

the simple
sure way
to a cleaner wash

**DOLLAR DAY!
GIANT
SIZE
SALVO**

73^c

**GIBSON'S
PRICE**

**ZEBCO
77**

**REEL
AND ROD**

Reg. \$8.95

\$4⁹⁹

**The First High-Quality
Tackle Ever Designed For Young Fishermen**

- A famous Zebco Reel-N-Rod
- Zebco Reel with thumb control
- Fiber glass rod
- Overall length 50"
- Practice plug, & lb. test line

**GIBSON'S
PRICE**

**ONE GROUP OF
SCREW DRIVERS**

Reg. 67c

29^c

**GIBSON'S
PRICE**

**STARFOAM
MINNOW
BUCKETS**

Reg. 95c

69^c

**GIBSON'S
PRICE**

"WHERE YOU ALWAYS BUY THE BEST FOR LESS"

**GIBSON'S
DISCOUNT CENTER**

Open Daily 9 a.m. To 9 p.m. Closed Sundays