

Congress

Senate panel ready to OK
Democratic budget plans,
Page 5

The Pampa News

Schools

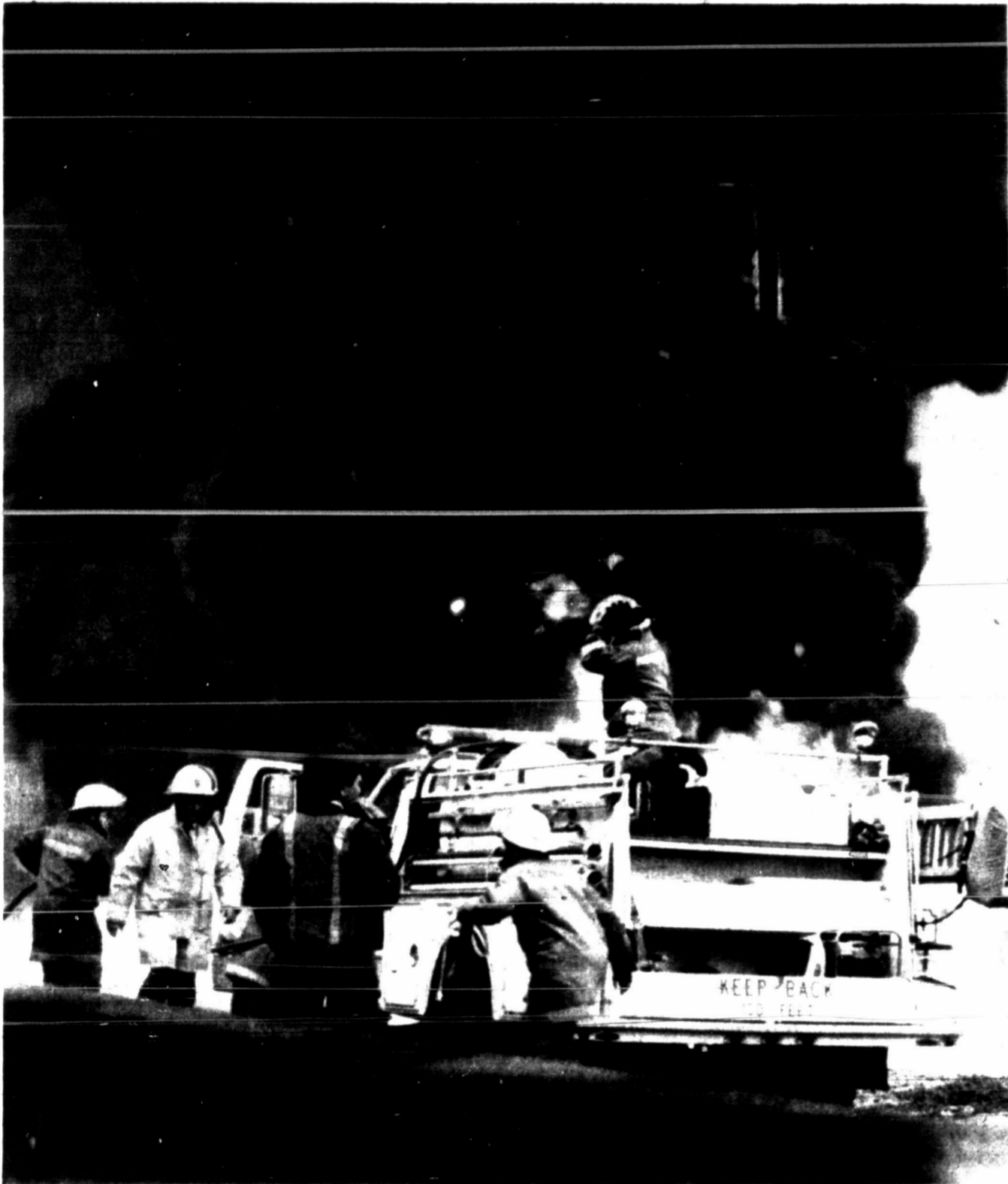
Judge grants reprieve
on finance reform plan,
Page 3

25c

VOL. 83, NO. 23, 12 PAGES

MAY 2, 1990

WEDNESDAY



(Staff photo by Beth Miller)

Firefighters organize after arriving at the scene of a train-truck accident this morning west of the city on Hwy. 60. No one was injured in the collision, which caused a giant fireball as a reported 9,000 gallons of natural gas condensate in the truck trailer erupted.

Gray County commissioners review pros and cons of self-insurance plan

By DEE DEE LARAMORE
News Editor

Gray County commissioners pondered the pros and cons of a partial self-insurance program at their regular meeting Tuesday in the second floor courtroom of Gray County Court House.

Mike Wooley, the county's agent for health insurance, discussed the benefits and problems of the county adopting a modified self-funding (MSF) insurance program — actually a large deductible health insurance policy.

Wooley said that generally when an entity adopts a MSF plan, they take out a policy from a major health insurance carrier such as Blue Cross/Blue Shield but with a \$10,000 deductible with a cap of \$100,000. The county then takes responsibility for the amount not paid by the insurance company.

Gray County employees are presently covered on a fully insured health plan carried by Blue Cross/Blue Shield.

"MSF is better when claims are low and there's not a potential for major claims out there," Wooley explained. However, he said that

MSF is less successful when the company has high claims. He added that he knows of several major claims the county has already turned in and a potential for at least one more this year.

"The flexibility of MSF is one of its strongest points," he said. By adopting such a program, the county could avoid some of the state mandates concerning health insurance and have more control in writing the specifications of the plan.

"I don't want you to think that the MSF scheme, or plan, doesn't work. They do work," Wooley said. "What gets me is that the insurance company likes them. That tells me they are benefiting from them."

He suggested that should the county decide to go to an MSF plan, that the commissioners be certain they hire a reputable third party administrator that is bonded and state certified to handle the plan, and that they deal with an agent and insurance company that has at least \$100 million in assets.

He also reminded them that they would be separating their present full coverage policy into three entities — the county, the third party administrator and the insurer.

Gray County's present policy is up for renewal on Aug. 1, Wooley said.

Following Wooley's presentation, commissioners agreed to consider advertising for health insurance bids at the next meeting.

Gray County Judge Carl Kennedy administered the oath of office to Precinct 2 Constable Chris Lockridge as he assumed his duties Tuesday. Commissioners also approved a salary of \$1,247.97 and travel allowance of \$360 for Lockridge.

Lockridge was appointed to fill the office, vacated Monday by Herman Kieth, who had resigned due to health reasons, at the April 16 Commissioners Court meeting.

When advertising for the opening, county officials inadvertently left out a \$60 deduction for longevity pay from the advertised salary, so commissioners agreed to add the \$60 to Lockridge's travel allowance.

Bids were awarded to W.R. Foreman Construction Company and Browning Heating and Air Conditioning for construction work on the fourth floor of the courthouse to

See COUNTY, Page 2



(Staff photo by Dee Dee Laramore)

Gray County Judge Carl Kennedy, left, administers the oath of office to the newly-appointed Precinct 2 constable, Chris Lockridge. Lockridge assumed his duties Tuesday.

Train collides with truck hauling natural gas condensate today; only minor injuries are reported

By BEAR MILLS
Staff Writer

A truck hauling a reported 8,820 gallons of natural gas condensate was hit by an east-bound Santa Fe train at a crossing off Hwy. 60 this morning at 9:48.

The accident occurred approximately one mile west of the Pampa city limits, three-tenths of a mile west of the Price Road and Hwy. 60 intersection.

Upon impact, witnesses said, a giant fireball erupted and started a grass fire. Several train cars were also set ablaze.

The truck, owned by Elleron Oil Co. of Houston, was being driven by Ronnie Childress, 31, whose address was given by Department of Public Safety officials as HCR 2 Box 39 in Pampa.

Childress said he walked away from the collision with only a singe on his hand. He reported seeing the train after it was too late to get the trailer out of the way and jumped clear of the cab just prior to the collision.

Childress reported shortly after the accident, "I didn't see the train coming and went on across."

Paramedics with Rural/Metro-AMT Paramedic Service attempted to transport Childress to the Coronado Hospital as a precautionary measure; however, he refused treatment.

Firefighters said a Santa Fe engineer and fireman were singed by a flash fire that swept through the engine when it hit the natural gas tank. However, the two men, who were not identified, did not require treatment, officials said.

"We dispatched our Haz-Mat team members who went in to look for victims," said John Cook of the Pampa Fire Department. "We didn't find any. It was a

textbook operation."

Cook said the train's engine was slightly damaged by the fire, as were several refrigerated piggy-back trailers. He said that while all were slightly damaged, they were still operational. None of the refrigeration units, which reportedly contained perishable items, were rendered inoperational, he said.

Kevin Foxx, an official with Elleron Oil Co. in Houston, when contacted by telephone this morning, declined to comment on the company or where it transports in the Panhandle.

Employees of Maple Corp. in Kingsmill confirmed that a truck driven by Childress had loaded approximately 30 minutes before the accident. Marvin Slaymaker of Maple Corp. said Elleron purchases the condensate from them, but he did not know where the truck was bound.

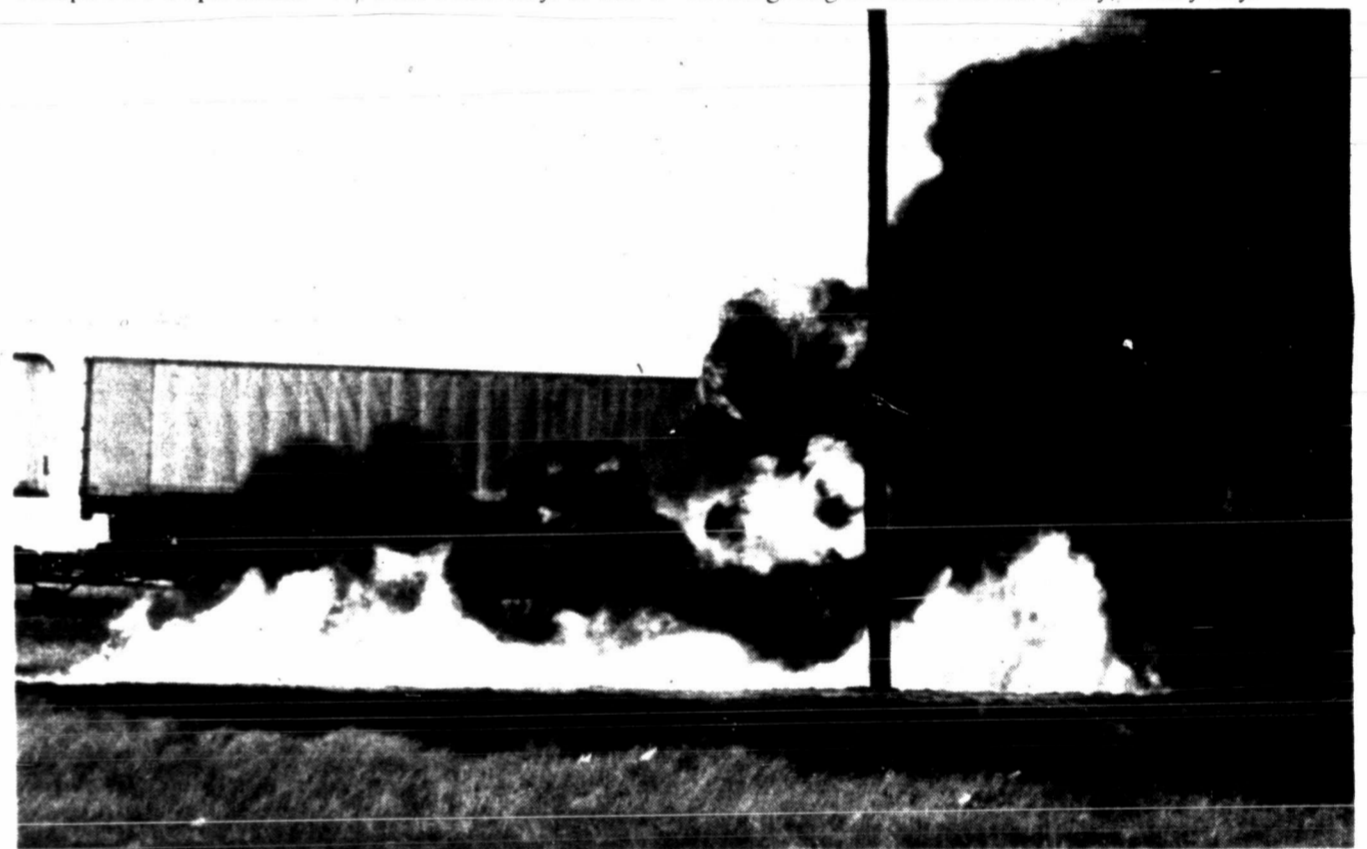
Condensate is a high gravity natural gas by-product that serves as a well treating or is refined to make motor fuels, officials said.

Because of the intensity of the explosion, officials at the scene said it did not appear much, if any, of the condensate was allowed to soak into the ground.

Shortly after the explosion, traffic was rerouted around the accident site and intersections along Price Road were blocked off while investigators checked the scene. After the fire was under control and there was a determination that no serious hazard existed, traffic was allowed to continue.

DPS troopers said an investigation into the accident is pending.

Pampa Salvation Army volunteers were on the scene at late morning providing hot coffee to those investigating the scene on this chilly, drizzly day.



(Staff photo by Bear Mills)

Natural gas condensate from the train-truck collision burns grass near the track and spreads to piggy-back refrigeration cars being hauled by Santa Fe railroad.

Two former Miami bank directors agree to cooperate with investigation into bank

By BETH MILLER
Staff Writer

AMARILLO — Two former directors of the First State Bank of Miami have agreed to cooperate fully in the U.S. government's investigation of the bank and if requested to give "truthful and complete testimony" in any related cases.

The two, E. Hobart "Hobie" Fatheree, 59, a former Pampa resident, now of Dallas, and Paul Scott Daugherty, 46, of Miami, pleaded guilty before U.S. District Judge Mary Lou Robinson in U.S. District Court in Amarillo on Tuesday.

Their guilty pleas were in exchange for plea bargains offered by the government.

A pre-sentence investigation is expected to take about three weeks and then a sentencing date will be set before Judge Robinson. Both Fatheree and Daugherty each face a maximum 10-year sentence, \$500,000 fine, a \$100 mandatory assessment and possible restitution. They were both released on personal recognizance on Tuesday.

Fatheree pleaded guilty to two counts of an information charging him with misapplication of bank funds and false entry in bank records.

Daugherty pleaded guilty to two counts of an information charging him with misapplication and embezzlement by bank officer or employee.

Both Fatheree and Daugherty, who was vice president of the bank and on its board of directors, have been aware of the charges that were pending against them before the information was filed on April 24, they told the judge. An information is a form of bringing charges against someone without taking the case before a grand jury. Neither Fatheree nor Daugherty could go on trial without an indictment; however, on Tuesday they both waived indictments.

The information charged Fatheree with misapplying and embezzling money from the bank, while he served as a director of the bank on April 18, 1985. Fatheree authorized and procured a \$97,000 loan from the bank to Vicki Gilbert, his secretary, because he had exceeded his legal lending limit at the bank. The information charges Fatheree caused all of the loan proceeds to be paid to him without the knowledge of the bank officials.

He also caused Gilbert to sign a security agreement and financing statement in connection with the April 18, 1985, loan, and used the proceeds of that loan to pay his own debt at First National Bank in Wheeler, according to a document read in court Tuesday by Assistant U.S. Attorney Sharon R. Kimball.

The other charge to which Fatheree pleaded guilty was presenting a deed of trust to the bank to secure a \$602,154.87 promissory note on Feb. 10, 1986. Fatheree had forged his wife's signature on the deed of trust.

Part of Fatheree's and Daugherty's plea bargains are that the U.S. government will not press further charges against them regarding the investigation if they cooperate fully, as they have said they will.

Other documents read in court which Fatheree agreed were correct, but for which he will not be charged, state that on Aug. 2, 1985, Fatheree had his secretary sign a second note for \$30,000.

"Again, the proceeds of that loan were deposited directly into Fatheree's account and used to cover an outstanding check Fatheree had drawn," Kimball said.

Fatheree did not tell Gilbert or other bank directors, with the exception of Max Ray Faulkner, of his interest in the proceeds of the loans. Faulkner was a director and president of the bank and Kimball said to the court Tuesday that he "participated" in the "improper transactions with Fatheree."

Faulkner has had no charges brought against him, Kimball said.

"In addition, Fatheree participated in a scheme in which he borrowed over \$330,000 from the bank at a time when he was already beyond his legal limit there," Kimball said in court.

In December of 1985, he also caused his daughter, Millie Fatheree, to borrow about \$334,000 from the bank and to turn over an estimated \$311,000 to him to get rid of personal debts and a debt of Red Deer Creek Cattle Co. for which he was liable.

He also forged his daughter's name on a signature of a renewal note, Kimball said, and secured the notes with a pledge of certificates of deposits owned by his mother, Laura Fatheree, although he had no authority to make the pledge.

See BANK, Page 2

Senate committee ready to OK 1991 Democratic budget

By ALAN FRAM
Associated Press Writer

WASHINGTON (AP) — The Senate Budget Committee is finally ready to approve a Democratic \$1.2 trillion federal budget for 1991 that gives the Pentagon \$9.8 billion less than President Bush wants, congressional sources say.

Acceptance of a package that claims to shrink the deficit by \$43 billion is expected as early as today.

The Democratic-run House on Tuesday adopted on a party-line vote a spending plan that rejects Bush's more generous plans for defense programs. The administration countered with an announcement that the cuts would cause cancellation of military projects in many lawmakers' home districts.

The chairman of the Senate Budget Committee, Sen. James Sasser, D-Tenn., has been unable for weeks to find a majority in favor of his spending plan because of

solid Republican opposition and a few Democratic defections.

But a former opponent, Sen. Charles Robb, D-Va., told Sasser on Tuesday that he would support the \$43 billion package, a congressional source said. Robb would be Sasser's 12th vote on the 23-member committee.

Sasser denied he had nailed down enough support to win, but he conceded that he was close. "Close but no cigar," he said. "But we can smell the aroma of that cigar."

The plan would set defense spending at \$294 billion in the fiscal year that begins Oct. 1. That is \$9.8 billion less than the figure Bush has proposed and about \$2 billion below this year's spending.

It also calls for \$13.9 billion in new tax revenues — the same amount Bush wants — and \$6.2 billion in new user fees and other receipts. The growth of benefit programs such as Medicare would be slowed by \$5.6 bil-

lion, while other domestic and foreign aid efforts would be cut by \$3.5 billion.

With all 174 voting Republicans opposing the package, the House adopted its own \$1.24 trillion spending plan on a 218-208 vote.

The plan's key contrast with Bush's proposal was its defense figure: \$295.5 billion, \$8.3 billion less than the president. It also spent more for social programs than the president requested.

Republicans accused Democrats of forcing through a plan that excessively weakens American military power.

"All you have to do is say, 'I'm really mad about Lithuania and I'll prove it. I'm going to gut the Navy,'" said Rep. Newt Gingrich of Georgia, the No. 2 House GOP leader.

But Democrats said their proposal merely acknowledged the obvious: The Cold War has ended and it is time for the government to focus on domestic issues.

"The key problems we face as a nation are addressed in this budget," said House Speaker Thomas S. Foley, D-Wash.

After the vote, Democratic leaders said they viewed their budget as a strong bargaining position for future talks with the Senate and the administration.

Foley, House Budget Committee Chairman Leon Panetta, D-Calif., and others conceded that negotiations with the administration will be needed for the budget's priorities to be translated into future spending and tax laws. The budget merely maps the government's fiscal plans.

The House-passed package claims to slice \$36 billion off the deficit, relying on defense cuts, \$13.9 billion in new taxes and other savings.

Meanwhile, Defense Secretary Dick Cheney ordered a review of 207 military projects for possible cancellation. He complained that some members of Congress "want to cut the defense budget even as they plead to save the projects in their own states and districts."



(AP Laserphoto)

A concerned couple listens Tuesday as school officials at Sheridan, Ark., High School detail counseling plans in the wake of three apparent suicides of school students.

Counselors assigned to classrooms as third suicide of student reported in two days at Arkansas high school

By RON FOURNIER
Associated Press Writer

SHERIDAN, Ark. (AP) — Parents and teen-agers cried and held hands and counselors were placed on 24-hour call as a shocked community attempted to recover from the suicides of three high school students in two days.

Counselors were assigned to every classroom at Sheridan High School today after a 17-year-old was found dead of a gunshot wound Tuesday.

On Monday, two of his classmates shot themselves to death. One of them killed himself in front of a history class after professing his love for a girl.

Scott Stamper, 16, said the latest suicide shook up most students. "People who didn't even know him were crying. It was quiet. I walked in school today and saw zombies," he said.

"It's going to be a tough day. I can't tell you how tough it's been," school Superintendent David Robinson said.

The body of the latest victim, Jerry Paul McCool, a 17-year-old sophomore, was discovered in his home by his father. Saline County Coroner Sam Ballard ruled the death a suicide.

Hours later, parents and students packed the school's 1,000-seat auditorium to discuss the suicides. Some held hands. Some cried.

Robinson said school would go on because routine is important "when things begin to crumble. They need something to hang on to."

In addition to calling in counselors, school officials also handed out a list of phone numbers for nearly three dozen counselors and faculty members on call around the clock.

"Our community and our school is just in the middle of a tremendous tragedy that we're all trying to deal with and get a handle on and improve," Robinson said.

McCool's death was the fourth suicide in little more than a month by high school students in the community of about 3,000, about 25

miles south of Little Rock. A 17-year-old killed himself March 28, authorities said.

"It's just too much for a town like this. This is something you hear about in a big city," said Ethel Sanders, a police clerk.

Police said the two students who died Monday had at least one class together and had been friends for years. Thomas Smith, 17, shot himself after declaring his love for a girl. Thomas M. Chidester, 19, was killed by a shot to the head late Monday.

Lt. Lenard Lewis said McCool knew the other boys but was not in any of their classes. He had spoken with his father about the boys' suicides.

"His Dad said he said something like, 'How could somebody do that? Why would they do it?'" Lewis said.

McCool had stayed home from school Tuesday, complaining of pain from a hernia operation two weeks ago, Lewis said. The boy was at school Monday when Smith killed himself but wasn't in the classroom where the shooting occurred.

Sheriff Cary Clark said the deaths of Chidester and Smith appeared connected. Both teenagers participated in the school's junior Reserve Officers Trainer Corps and were classmates for several years.

Hendrick Animal Hospital
Professional Veterinary Services
1912 Alcock 665-1873

Red October (PG)
Ernest Goes To Jail (PG)
The First Power (R)
Guardian (R)
Sunday Matinee 2:00 p.m.
Adm. 2⁰⁰ - Open Every Night
CINEMA 4
665-7141

20th Annual Rabies Vaccination Clinic

Given in Conjunction with National Pet Week
Dogs: Friday, May 4th & Saturday, May 5th
Cats: Monday, May 7th
Reduced Cost Per Animal

\$7.00

Other Vaccinations Also At Reduced Rates

Easley Animal Hospital Loop 171 and Hwy. 70 North
Hendrick Animal Hospital 1912 Alcock
Gray County Veterinary Clinic 1329 S. Hobart
Royse Animal Hospital 1939 N. Hobart

Dogs & Cats 4 months & older MUST be Vaccinated for Rabies once a year & wear the tag.

IT'S THE LAW!

SIRLOIN STOCKADE

WEDNESDAY SPECIAL

10¢ CHICKEN FRY
With Purchase Of SMORGASBAR
For \$3.99
Total Price....\$4.99

HOURS:
11 a.m.-9:30 p.m. Sun.-Thurs.
11 a.m.-10 p.m. Fri. & Sat.
518 N. Hobart 665-8351

Housewife wants Dallas TV station admonished over 'indecent' materials

FORT WORTH (AP) — A Texas woman who persuaded 105 advertisers to quit sponsoring the *Geraldo* talk show on a Dallas television station has asked the Federal Communications Commission to admonish KDFW-TV for broadcasting "indecent" materials during after-school timeslots.

Lynda Beams, a Meadowbrook mother, has teamed up with a prominent Washington law firm to take her grass roots crusade to the FCC.

Mrs. Beams, whose legal bills

are being paid by an anonymous supporter, claims the station violates FCC guidelines requiring that programming which panders to vulgar tastes not be aired before 8 p.m.

The Fort Worth homemaker's attempt to shape federal policy is in response to an official FCC inquiry regarding indecency that has drawn more than 90,000 letters and 14 legal briefs, including the one Beams filed on April 19.

"We're not trying to bar anything

from being aired," said Beams' Washington attorney David Irwin, a specialist in telecommunications law. "But as my mother told me, there's a time and a place for everything."

KDFW-TV has agreed to change *Geraldo* from its 4 p.m. time slot when the show's contract expires Sept. 1.

Station manager Jeff Rosser sounded exasperated Tuesday in discussing Beams' drive.

"Enough's enough. I keep expecting Lynda Beams to claim victory," Rosser said. "I am unaware of any brief she's filed, and I am a little bit surprised. But it's America and she's entitled."

Rosser noted that *Geraldo*, which is aired after school in about 130 markets, has toned down its topics since December. Rosser also pointed out that there has been a backlash of viewers who accuse the station of caving into the assault by Beams.

Lithuania begins food rationing to cope with blockade

By BRIAN FRIEDMAN
Associated Press Writer

MOSCOW (AP) — Lithuania began rationing food today in efforts to cope with a crippling Kremlin blockade, and its prime minister said the newly seated reformist city councils of Moscow and Leningrad have promised to help.

But pro-Moscow Communists also made themselves heard Tuesday in Lithuania, protesting secessionist moves.

Lithuania's parliamentary spokeswoman, Rita Radzevicius, said by telephone interview from the republic's capital of Vilnius that distribution of food rationing coupons was beginning today.

Rationing on certain foodstuffs went into effect Tuesday but the coupons themselves were not distributed until today because of the

May Day holiday, said Daina Kalendra, another spokeswoman for Lithuania's parliament.

She said that for the months of May and June, each person is limited to the following: sugar, 4.4 pounds; macaroni, 2.2 pounds; grains, 4.4 pounds; salt, 2.2 pounds; flour, 4.4 pounds; grease or margarine, about a half-pound.

The Kremlin halted shipments of oil, natural gas and other raw materials to Lithuania two weeks ago after the republic's Parliament refused to rescind some of the law's it enacted to bolster its March 11 independence declaration.

While unofficial May Day demonstrators in the Kremlin's Red Square were shouting "Freedom for Lithuania" Tuesday, about 4,000 members of the pro-Moscow faction of the Baltic republic's Communist Party rallied on Lenin Square in Vil-

nius and unfurled banners that read "Workers Say No to Lithuania's Secession from the U.S.S.R."

Vilnius Radio said the May Day rally lasted about 20 minutes and was neither "noisy nor disorderly."

Lithuania's Communist Party has split into two factions — a pro-independence party and a smaller, pro-Moscow party.

Lithuanian Prime Minister Kazimiera Prunskiene, visiting Toronto to try to establish closer trade ties, said new reformist city governments in Leningrad and Moscow have offered to help ease the pressure of the embargo.

"Not only do they support our independence initiatives but they also want to cooperate with us in practical terms because they receive many of their food supplies from us," she said through an interpreter.

She did not say what practical help was offered, but the Baltic

WAL-MART Sells for Less • Wal-Mart Sells for Less • Wal-Mart Sells for Less • Wal-Mart Sells for Less • Wal-Mart Sells for Less • Wal-Mart Sells for Less

WAL-MART 2225 N. Hobart Pampa Texas

ORTHO Diazinon
Use Diazinon Soil & Turf on your lawn to kill grubs and soil surface insects.

9.94

10 LB. BAG

DIAL'n SPRAY 10 YEAR GUARANTEE
Hose-End Sprayer
It's easy as 1-2-3

7.44

NO MIXING - NO MEASURING - NO CONVERSION

ORTHO UP-START Vitamin B-1 Plant Starter

Stimulate early, stronger root development in your plants.

Use on fruit trees, vegetable plants, shade trees, ornamentals and flowers.

3.67

QUART

WEED-B-GON

Kills dandelions, chickweed, plantain, wild onion and dozens of other lawn weeds.

Kills entire weed tops and roots without harming the grass.

Works fast — easy to apply.

4.77

PINT

ORTHO Kleenup KILLS FAST

Extra fast-acting contains two proven weed killers.

Systemic action kills all unwanted weeds and grasses in 1-2 weeks.

BOOTS AND ALL without harming the soil.

6.67

1/2 GAL. BOTTLE W/SP.

Diazinon PLUS Insect Spray

Kills bugs on lawns, fruits, vegetables, ornamentals and shade trees.

Also kills nuisance pests: ants, fleas, spiders outside the home.

Contains ORTHOX for more effective coverage.

1 pt. makes 48 gals of spray — covers up to 2,000 sq. ft. of lawn.

12.97

QUART

Prices Effective May 2-May 5
Hours Mon.-Sat., 9 a.m.-9 p.m., Sun. 12-6

WAL-MART Sells for Less • Wal-Mart Sells for Less • Wal-Mart Sells for Less • Wal-Mart Sells for Less • Wal-Mart Sells for Less • Wal-Mart Sells for Less

Food

Making tamales more than a Christmas tradition

When Cortez arrived in Mexico in 1519, he found native people who ate tamales to celebrate special occasions. Four hundred seventy years later the tradition lives on among families with roots in Mexico. During the Christmas holidays, many of these families gather in their kitchens to spread masa on corn husks, which are folded like carefully wrapped gifts.

Not only Hispanics, but Texans of many ethnic backgrounds identify tamales with Christmas festivities. Hungry guests snap them up at office parties and holidays buffets. Truth is, they are good any time.

Eating store-bought tamales may taste good, but it's not the same as making them," says Nell Veeder, a University of Texas graduate student specializing in culinary anthropology. "Stuffing something inside of something else is a common way of cooking food all over the world," Veeder went on to say. "Human beings seem to delight in it."

The traditional tamale filling is cabeza de puerco, ground meat from hogs' head that have been boiled and deboned. Meatier cuts of pork, beef, poultry and game are also used, as are beans, cheese and chiles and, occasionally, a sweet filling of nuts, sugar and spices.

To make masa, solid shortening is necessary to bind the cornmeal, meat stock to make it soft and pliable. "Lard is the typical shortening used in tamales," said Carol Guthrie, Texas Department of Agriculture home economist.

"It adds flavor to the dough, but it's saturated animal fat, which is the kind to avoid if you're concerned about clogged arteries and high cholesterol. You have to use fat in tamales, but it doesn't have to be animal fat."

The Aztecs whom Cortez met, in fact, probably added less fat to their tamales than is used today. Their meat was mostly wild game, which contains little fat in comparison to domestic meat.

Guthrie recommends any good polyunsaturated margarine as a lard substitute. "Margarine doesn't have the smooth consistency of lard, which makes the masa more difficult to spread. But with a little extra effort it works fine."

Tamales ordinary take 45 to 60 minutes to steam. Use a large, deep pot or Dutch oven or a roasting pan with a rack. The lid must be tight-fitting to prevent steam from escaping. When the masa turns firm and translucent, pulling away easily from the husk, the tamales are done.

Tamales can be reheated in the steamer or in a covered dish in the oven or microwave.

Tamales
2-3 dozen dried corn husks



To begin tamales, spread bottom half of pre-soaked corn husk with masa, making 1/8- to 1/4-inch-thick rectangle.



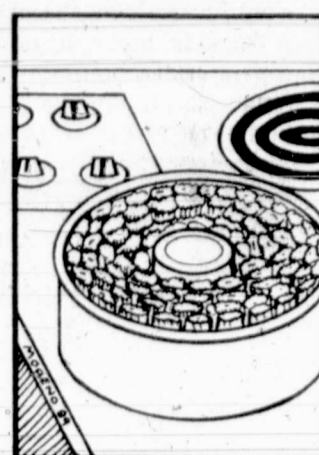
Masa should border one side of husk with an inch margin on the other. Place a strip of filling down center third of masa.



Fold husk lengthwise from masa-filled side so that it covers tamale filling. Lap one-inch margin over the tamale.



Fold top half of husk toward center of tamale. Folded this way, tamales do not have to be tied. Steam them folded end down.



Stand tamales against a cup in the center of 4-quart dutch oven. There must be enough room for steam to circulate easily.

1 C. lard or soft margarine
1 3/4 C. hot meat stock
3 C. masa harina
1 tsp. salt
Cover corn husks with hot water.

until light and fluffy. Heat 1 3/4 cups meat stock. Blend masa, salt and stock into lard. Beat mixture until dough holds together well.

Tamales: Spread bottom half of

Pork filling:
2 lb. Boston butt (pork)
2 peeled garlic cloves
1 T. salt, divided
1/2-3/4 C. chili powder
2-3 C. meat stock
Masa:

Soak 3 hours to overnight. When to use, rinse husks in cold water. Leave in fresh water while making tamales.

Filling: Put pork, garlic, 1 1/2 teaspoons salt and enough water to cover in large pot. Simmer over low heat 2 to 3 hours. When meat is tender enough to fall apart, remove from pot and set aside to cool slightly. Discard garlic and reserve stock.

Chop meat finely, discarding fat and bones. Combine chopped meat with remaining salt and chili powder to taste. Stir 2 to 3 cups stock into meat to moisten thoroughly. Heat mixture, simmering 30 minutes until thick enough to spread.

Masa: Cream lard or margarine

each husk with about 2 tablespoons masa. Make a 4x3 inch rectangle placed completely to one side, leaving a 1-inch margin on the other side. Masa should be 1/8 to 1/4 inch thick.

Place strip of pork filling down the center third of masa. Fold the side with masa over filling, lapping 1-inch margin over back of tamale. Fold top toward center. Line a 4-quart dutch oven with aluminum foil and scatter some corn husks on bottom of pot.

A steamer or any large kettle or roasting pan with a rack and tight fitting lid can also be used. Tamales must stand out of water. If using dutch oven or other large pot, stand tamales in with top fold down,

45 to 60 minutes, masa will be translucent and will loosen easily from husk. Serve tamales warm. To reheat, resteam tamales or place in covered dish in conventional or microwave oven until just heated through. Steamed tamales can be frozen. Cool them first. Then place in plastic bag or wrap securely in aluminum foil and freeze.

Flavors blend well in warm pasta salad

By NANCY BYAL
Better Homes & Gardens

Warm salads are winning fans because they're satisfying and ready quickly without chilling. They taste terrific, too, because most flavors blend better and are more pronounced at warm temperatures.

Cover any leftover warm salad and chill. To reheat, place 3 to 4 cups of the salad in a microwave-safe bowl. Cook, covered, on 100 percent power (high) for 1 to 1 1/2 minutes or until warm, stirring once.

Ham & Pasta Salad

4 ounces fully cooked ham, cut into thin strips
1 cup broken pecans
3/4 cup crumbled blue cheese (3 ounces)
1-3rd cup snipped parsley
1-3rd cup olive oil or salad oil
2 tablespoons snipped fresh rosemary or 2 teaspoons dried rosemary, crushed
1/2 teaspoon coarse ground pepper

1 clove garlic, minced
8 ounces bow tie pasta
Grated fresh Parmesan cheese
In a large salad bowl combine ham, pecans, blue cheese, parsley, oil, rosemary, pepper and garlic. Cover and let stand for 30 minutes.

Meanwhile, cook pasta according to package directions. Drain; toss with ham mixture.

Arrange on individual salad plates. Sprinkle with Parmesan cheese.

Serve immediately. Cover and chill any leftovers. Makes 5 servings.



Pesto is a popular Italian seasoning that tastes great on cold tortellini salad. Serve in a spinach-lined bowl.

Nutrition information per serving: 562 cal., 17 g pro., 40 g carb., 38 g fat, 27 mg chol., 558 mg sodium.

U.S. RDA: 10 percent vit. C, 52 percent thiamine, 19 percent riboflavin, 20 percent niacin, 16 percent calcium, 15 percent iron.

Lighter than air meringue cookies

By NANCY BYAL
Better Homes & Gardens
Food Editor

These cookies are not just low fat, they're no fat — only slightly more fattening than air, but great-tasting and festive looking. There's no fat or cholesterol in meringues like these because all the fat and cholesterol of an egg are contained in the yolk.

If you don't have space for all the cookies on one baking sheet, hold the extra batter at room temperature. Reheat oven and bake remaining cookies as soon as possible.

Meringue Stars

2 egg whites
1/2 teaspoon vanilla
1/4 teaspoon cream of tartar

1/2 cup sugar
Small silver decorative candies, small multicolored decorative candies, ground cinnamon or nutmeg, colored sugar, and/or chopped almonds

Line a large cookie sheet with brown paper or foil. In a small mixer bowl beat egg whites, vanilla and cream of tartar with an electric mixer on high speed until soft peaks form (tips curl). Gradually add sugar, beating until stiff peaks form (tips stand straight).

Put egg white mixture into a decorating bag fitted with a 1/2-inch star tip. Squeeze bag gently and make a star shape, releasing pressure as you pull up tip, and placing stars about 1 inch apart. Decorate cookies as desired with decorative

candies, spice, sugar or nuts. Bake in a 300-degree F oven for 15 minutes. Turn off oven and let cookies dry in the oven with door closed about 30 minutes. Makes 40 cookies.

Nutrition information per serving: 13 cal., 0 g pro., 3 g carb., 0 g fat, 0 mg chol., 3 mg sodium.

POTATO BOOKLET
NEW YORK (AP) — "Huston's Yukon Gold Potato Cookbook" features cooking tips plus 18 low-fat, low-cholesterol recipes. For a free copy, send a stamped, self-addressed, business-size envelope to: Cookbook Offer, Huston's Yukon Gold Potatoes, 201 W. Big Beaver Road, Suite 740, Troy, MI 48064.

WANTED... 5 HOMES

TO TRAIN SIDING & WINDOW APPLICATORS (Under Supervision-Fully Guaranteed)
TO APPLY VINYL SIDING AND INSULATION WINDOWS
CALL 1-800-477-8395
OR HURRY AND SEND COUPON BELOW FOR DETAILS!
AN OFFER YOU CAN'T REFUSE
To help us introduce a new material for brick and frame homes

★NO GIMMICKS★
Cut and Mail Coupon Today-No Obligation
Box 78
% Pampa News
Pampa, Texas
79066-2198

Name _____
Address _____
City _____ State _____ Zip _____
Phone _____

Complete Insulation Package Included

MONEY SAVING COUPONS
the Sunflower Group • 10895 Lowell, Overland Park, Kansas 66210

INTRODUCING Maxwell House RICH FRENCH ROAST INSTANT COFFEE

Coffee drinkers have said our Rich French Roast ground coffee is rich, full-flavored and delightfully smooth. Now you can savor this experience without brewing a pot. Introducing NEW Maxwell House® Rich French Roast Instant Coffee. Available in regular and naturally decaffeinated.

"We can't give you France, but we'll give you the flavor."

MANUFACTURER'S COUPON EXPIRES 7/31/90

SAVE 75¢ ON ANY JAR OF MAXWELL HOUSE® RICH FRENCH ROAST INSTANT COFFEE

This coupon good only on purchases of product indicated. Any other use constitutes fraud. COUPON NOT TRANSFERABLE. LIMIT ONE COUPON PER PURCHASE. To this retailer, GFC will reimburse you for the face value of this coupon plus 5¢ if submitted in compliance with GFC (The National Food Company) terms of reference. Void only if redeemed by retail distributors of the manufacturer or anyone specifically authorized by GFC. Cash value 1/10¢. Mail to: General Foods Corporation, P.O. Box 103, Northvale, N.J. 07647

5 43000 35075 6

SHARING IS CARING
The Salvation Army, 799 Bloomfield Avenue, Verona, New Jersey 07044

Lifestyles

Fifth six weeks honor rolls

Austin Elementary
First Grade
 Tiffany Boyd, Ashley Broadbent, Kira Chumbley, Kimberly Porter, Mandy Rains, Brooke Taylor, Vicki Williams, David Auwen, Lance Brooks, Adam Day, Reed DeFever, Kirk George, Matt Hubbell, Andy Judson, Austin Smith, Trevor Stowers, Davey Anderson, Codee Bowman, Bryan Coats, Andrew Grabato, Marcus Ross, Kristopher Jones, Jared Kochick, Kandy Odom, Sean O'Neal, B.J. Schuneman, Hulsey Smith, Aimee Stephenson, Jimmy Story, Shane Williams, Starla Willoughby, Meredith Young, Colby Brazile, Lance Burton, Jamie Clay, Colby Hale, Taylor Harris, Robert Ownby, Ryan Sells, Lindsay Langford, Martin Roberts, Damon Whaley, Reece Hartman, Stephanie Caldwell, Britany Kempf, Jennifer Valingo.

Second Grade
 Compton Bailey, Bill Campbell, J.B. Cook, Jesse Francis, Jeremy Goode, Jeremy Palmitier, Matt Rains, Kaleb Snelgrooves, Kyle Weller, Sofia Gruszcki, Cortnie Allison, Tiffany Dennis, Megan Focke, Anne Gaddis, Jennifer Hinds, Tandi Morton, Heidi Searl, Kristen Stephens, Jaclyn Turner, Bonnie Boring, Beth Buzzard, Justin Cathey, Emily Curtis, Mary Grace Fields, Hayle Garrison, Marci Hansen, Matthew Heasley, Ashley Higgs, Janee' Jacks, Lindsey, Mitchell, Haley Rex, Cassi Scott, Jared Smith, Lindsay Tidwell, Stephen Vanderpool, Rebekah Warner, Emily Waters.

Tyson Curtis, Trulyn Deeds, Aaron Fought, Shawn Funk, Donnie Keim, Trey Rogers, Kevin Smith, Sean Stowers, Becky Aderholt, Angela Bowman, Lee Carmichael, Kimberly Cory, Lindsay Cree, Layne Duggan, Lindsey Earl, Ashley Laycock, Helen Orr, Amy Spearman, Britteny Street, Nathan Alexander, John Bailey, Kelly Henderson, Danny Kirkpatrick, Eddie Love, Jeremy Nicholas, Patrick Parson, Phillip Smith, Laurie Berzanskis, Jenny Besette, Lindsey Donnell, Rainy Hopson, Susan Johnson, Kristi Walling.

Third Grade
 Adam Lamberth, Billy Rushing, Thann Scoggin, Casey Shock, Pat Stach, Josh Taylor, Christopher Mick, Sarah Brady, Sarita Mohan, Summer Morris, Chrissy Norris, Alison Piersall, Kate Roush, Linda Schwab, Tiffany Watson, Bryce Hudson, Jonathan Ladd, Celeste Chervenka, Jonna Coward, Jennifer Froggè, Valerie Lee, Jarrett Keim, Rebecca Gaddis.

Rose Fruge, Aubrea Ward, Kellen Waters, Barry Brauchi, Matt Buzzard, Jack Leland, Jennifer Mackie, Abby Gikas, Katy McComas, David Odom, Andrea Abbe, Michele, Bickle, Matthew Brown, Jody Buswell, Kris Davis, Daniel Fought, Adam Hillman, Valerie Holt, Amanda Longan, Marcus Miller, Erin Mulanax, Laura Reynolds, Amanda Wiseman, Andrea Campos, Erich Crosswhite, Adam Murtishaw, Brent Phelps, Jody Richardson, Colby Street, David Towles, Amanda Browning, Kimberly Clark, Kaci Cooper, Jennifer Fatheree, Kristen Froggè, Michelle Gandy, Lori Lindsey, Allison Watkins.

Fourth Grade
 Shelby Allison, Courtney Barton, Arvin Bhatia, Beth Brown, Dustin Chase, Katie Cook, Suzanne Gatis, Amy Harvey, Nickie Leggett, Grayson Lewis, Lindsay Lewis, April Lopez, Brooke Petty, Jason Vickery, Zack Ward, Kitzji Weller, Jordan Fruge, Matthew Kirkpatrick, Dustin Laycock, Daniel Palmitier, Kris Roth, Jennifer Ballew, Katy Cavalier, Amber Crosswhite, Jill Day, Ashlee David, Jamie Feerer.

Halley Bell, Erin Cobb, Faustine Curry, Laura Duggan, Cal Ferguson, Sarah Fields, Matt Harp, Melanie Hawkins, Chris Manning, McKinley Quarles, Mindee Stowers, Keith Vanderpool, Kevin Velez, Jonathan Cree, Mary Lee Adamson, Andrea Clark, Lori Cox, Ryan Gikas, Melissa Gindorf, Dustin Hall, Stephanie Hartsock, Kevin Henderson, Deepak Kamnani, Brandy Kempf, Todd Lancaster, Kimberlea McKandless, Aaron Whitney, Steven Wittelt.

Fifth Grade
 Ryan Bruce, Kristi Chilton, Melissa Coutts, Clint Curtis, Regina Deeds, Monica Gonzalez, Nicole Griffith, Alicia Hall, Meredith Hite, Josh Jones, Rae Anne Langley, Amber McCullough, Patti Montoya, Jonathan Smith, Cami Stone, Charles Tung, Bobby Venal, Aaron Wiseman, Ann Carmichael, Kellie Carter, Shawn Caskey, Shawn Dawes, Josh Harper, August Larson, Nicole Meason, Darby Schale, Angela Sims, Tori Street, Sean Teng, Michael Thornhill, Robbie Payne.

Kyle Easley, Ryan Froggè, Matt Rhine, Nick Shock, Brandon Skidmore, Sarah Gattis, Jennifer Jones, Kathryn Killebrew, Jo Nell Parsley, Julie Snider, Sonda Wright, Jamie Kochick.

Kindergarten
 Best Citizen: Marysol Gutierrez, Luis Gonzales, Lupita Resendiz.
 Most Improved: Billy Stambaugh, Don Shock, Betty Soria.

First Grade
 Best Citizen: Jessica Gonzales, Genna Captain, Beatriz Cabrales, Julie Ballard, Jennifer Taber.
 Most Improved: Luis Salazar, Matt Garza, April Mobbs, Antonio Estrado, Vanessa Portillo.
 Honor Roll: Derrick Cummings, Lionel Rodriguez, Gavino Armandariz, Chris Batman, Matt Garza, April Mobbs, Eddie Soto, Jimmy Giger, Jennifer Taber, Stephanie Miller, Lucas Oliva, Cinthia Cordova, Kori Ketchum, Vanessa Portillo, Jessica Gonzales, Luis Solis, Jessica Venegas.

Second Grade
 Best Citizen: Bernice Solis, Lidia Resendiz.
 Most Improved: Bryan Helms, Constance White.
 Honor Roll: Timothy Ferris, Jessica Shook, Amanda White, Sammy Ramirez, Lidia Resendiz, J.J. Solis, Glen Moon, Martha Silva, Aaron Cummings, Terra Hembre.

Third Grade
 Best Citizen: Jared White, Angie D'Jesus.
 Most Improved: Randal Perry, Juan Saldierna.
 Honor Roll: Candice Jameson, Shawn Miller, Audrey Cooper, Angie D'Jesus, Gloria Resendiz, Cecilia Solis, Randal Perry.

Fourth Grade
 Best Citizen: Mandy Thomas, Debbie Kirkin, Lupe Ramirez.
 Most Improved: Mony Rodriguez, Yasmira Ortega.
 Honor Roll: Kendra Rozier, Janie Villalon, Olivia Castillo, Wayne Bryan, James Gross, Mony Rodriguez.

Fifth Grade
 Best Citizen: Efrén Jimenez, Yesenia Hernandez.
 Most Improved: Pete Vargas.
 Honor Roll: Rachel Botello, Melissa Butcher, Stephanie Morris, Ruben Leal, Marisol Resendiz.

Kindergarten
 Best Citizen: Marysol Gutierrez, Luis Gonzales, Lupita Resendiz.
 Most Improved: Billy Stambaugh, Don Shock, Betty Soria.

First Grade
 Best Citizen: Jessica Gonzales, Genna Captain, Beatriz Cabrales, Julie Ballard, Jennifer Taber.
 Most Improved: Luis Salazar, Matt Garza, April Mobbs, Antonio Estrado, Vanessa Portillo.
 Honor Roll: Derrick Cummings, Lionel Rodriguez, Gavino Armandariz, Chris Batman, Matt Garza, April Mobbs, Eddie Soto, Jimmy Giger, Jennifer Taber, Stephanie Miller, Lucas Oliva, Cinthia Cordova, Kori Ketchum, Vanessa Portillo, Jessica Gonzales, Luis Solis, Jessica Venegas.

Second Grade
 Best Citizen: Bernice Solis, Lidia Resendiz.
 Most Improved: Bryan Helms, Constance White.
 Honor Roll: Timothy Ferris, Jessica Shook, Amanda White, Sammy Ramirez, Lidia Resendiz, J.J. Solis, Glen Moon, Martha Silva, Aaron Cummings, Terra Hembre.

Third Grade
 Best Citizen: Jared White, Angie D'Jesus.
 Most Improved: Randal Perry, Juan Saldierna.
 Honor Roll: Candice Jameson, Shawn Miller, Audrey Cooper, Angie D'Jesus, Gloria Resendiz, Cecilia Solis, Randal Perry.

Fourth Grade
 Best Citizen: Mandy Thomas, Debbie Kirkin, Lupe Ramirez.
 Most Improved: Mony Rodriguez, Yasmira Ortega.
 Honor Roll: Kendra Rozier, Janie Villalon, Olivia Castillo, Wayne Bryan, James Gross, Mony Rodriguez.

Fifth Grade
 Best Citizen: Efrén Jimenez, Yesenia Hernandez.
 Most Improved: Pete Vargas.
 Honor Roll: Rachel Botello, Melissa Butcher, Stephanie Morris, Ruben Leal, Marisol Resendiz.

Widow's romance arouses suspicion



Dear Abby
 Abigail Van Buren

DEAR ABBY: My sweet, little, naive neighbor lady, at least 70 years old, is being romanced by a 49-year-old attractive man whom she hired to help with taxes and financial matters.

Her husband died last year, leaving an estate of close to a million dollars, which, of course, this man is aware of. She has no family. She tells me that he has proposed marriage and she has said yes. No date has been set as yet, but she is on cloud nine and fitting around like a teen-ager. She says he just wants a companion and, due to a physical "problem," he cannot be a husband to a younger woman. (I presume he's impotent.)

I called the police to see if there was some way they could quietly check up on this man. They said there was nothing they could do. And since he has no criminal record, they cannot make a formal investigation.

Abby, I think I smell a rat. Is there anything I can do to protect this woman from being taken advantage of?

DEAR ILLINOIS: You are very wise. You probably need her more than she needs you.

DEAR ILLINOIS: You are very wise. You probably need her more than she needs you. Had you told her off, she might have suggested that you find another operator. This way, you dumped your anger on me, which is fine. That's what I'm here for.

WORRIED NEIGHBOR

DEAR WORRIED: Your neighbor is over 21 — several times over — and unless you have reason to believe she has a few shingles missing from her roof, she should be able to look after herself.

You may smell a rat, but I smell trouble if you continue to poke around in your neighbor's private affairs. Back off.

DEAR ABBY: I will soon be required to make an appearance in a court of law. My question concerns the oath all witnesses are required to take before testifying. It's: "Do you swear to tell the truth, the whole truth, and nothing but the truth, so help you God?"

Well, Abby, I no more believe in God than I believe in Santa Claus and the Tooth Fairy. Therefore, what is my obligation to tell the truth?

CONFIRMED ATHEIST
DEAR ATHEIST: Thank God (oops!) — make that, Be grateful that you live in a country where we have religious freedom — or freedom from religion if one prefers.

The law requires only that you promise to tell the truth. It does not require that you believe in God.

DEAR ABBY: I just returned from the beauty salon more than just a little disgusted.

The entire time the operator was setting my hair, she had the phone perched on her shoulder while she argued with her ex-husband about their children. I was so angry, I

DEAR ABBY: Your letter "Dear Church Member" reminded me of a quotation attributed to the late Bishop Fulton Sheen:

"Whenever I see a church, I stop in for a visit.

"So that, when at last they carry me in,

"God won't say, 'Who is it?'"

MADELINE UPJOHN, ARIZONA

DEAR ABBY: This is in response to the letter signed "ANYWHERE, USA," regarding courtesy to bicycle riders.

I will gladly give these people the respect I give to automobile drivers when these bicycle riders:

- 1) Obey the same rules of the road as drivers (i.e., no riding through stop signs, red lights, etc.)
- 2) Stop weaving into the path of my car.
- 3) Stop making turns or changing lanes without signaling or checking to see if the way is clear.
- 4) Start yielding the right-of-way to those who deserve it.

I'm sick and tired of listening to bicycle riders complain about how motorists are always trying to run them off the road. Law-abiding bicycle riders are few and far between. Respect is a two-way street.

The same goes for motorcycle riders!

TICKED-OFF MOTORIST

Great Texas bike ride

The American Diabetes Association will host The Great Texas Bike Ride in Amarillo on Saturday, May 5 to help raise funds for diabetes. The event will begin at 1400 Coulter at 8 a.m. The length of the ride will be 12, 25, or 50 miles.

Participants of The Great Texas Bike Ride raise funds for diabetes by enlisting sponsors, who donate a certain amount of money for every mile the participant completes on the day of the event. Participants will be eligible for prizes including locally donated gifts and the state grand prize, a \$1,000 travel gift certificate.

For more information concerning the ride contact Byron Riddle at 352-2056.

Red Cross plans May classes

The American Red Cross will be offering a variety of class opportunities in May.

Sign-up for summer Red Cross swimming will be conducted at the Pampa Mall on Saturday, May 5 from 1 to 4 p.m.

Standard first aid and adult CPR classes will be offered May 8 and 10 and May 22 and 24 at the Red Cross office at 108 N. Russell.

Community CPR classes will be offered May 15 and 17 and May 29 and 31. All class times are from 6 to 10 p.m. For more information contact the Red Cross office at 669-7121.

ROYSE ANIMAL HOSPITAL
 •Boarding, Inspection Welcome
 Mon.-Fri. 8:30 a.m.-6:00 p.m.
 Sat. 8:30 a.m.-2:00 p.m.
 1939 N. HOBART 665-2223

Dr. N.G. Kadingo
Podiatrist
 (Foot Specialist)
 819 W. Francis 665-5682

Home schooling group plan for curriculum fest

South Plains Christian Home Educators Association is sponsoring a Curriculum Festival for all home educators on Saturday, May 5 from 9 a.m. to 5 p.m. at the Trinity Church, 7002 Canton Ave. in Lubbock.

Exhibitors representing education materials from all over the United States will be on hand to visit with parents.

Workshops have been scheduled throughout the day including these topics: Math - Concrete and Conceptual; Good Science for Home Schools; An Introduction to the Classics; How Children Learn Best-Unit Studies Method; Legal Update; A Partnership for Educational Excellence - Parents and Texas Tech; Dinosaurs and Creation Science.

South Plains Christian Home Educators Association will maintain tables with starter packets containing information for those just beginning, sample copies of SPCHEA's newsletter and a list of tapes available from SPCHEA's library for rental or sale. For more information call 793-9928 or 745-0532.

Parents . . .
 Create more satisfying productive relationships with your children through STEP

Systematic Training for Effective Parenting

STEP gives you

- a practical discipline method
- guidelines for building self-esteem
- better family communication, and much more!

For more information, contact:

Tralee Crisis Center
 669-1788

SPECIAL MOMS
MOTHER'S DAY IS MAY 13, 1990

fanfares
 COMMUTERS

At Great Savings

All Styles Only..... **\$31⁹⁷**

Fashions Mother loves with the comfort she likes. And in her favorite colors: white, black patent, bone, purple, bright blue, light pink, yellow, fushia and navy blue.

Mist
 Sizes 4-10 S-N-M

Chantilly

Cacoon

119 W. Kingsmill **Hub's Booterie** 669-9291

Today's Crossword Puzzle

The World Almanac® Crossword Puzzle

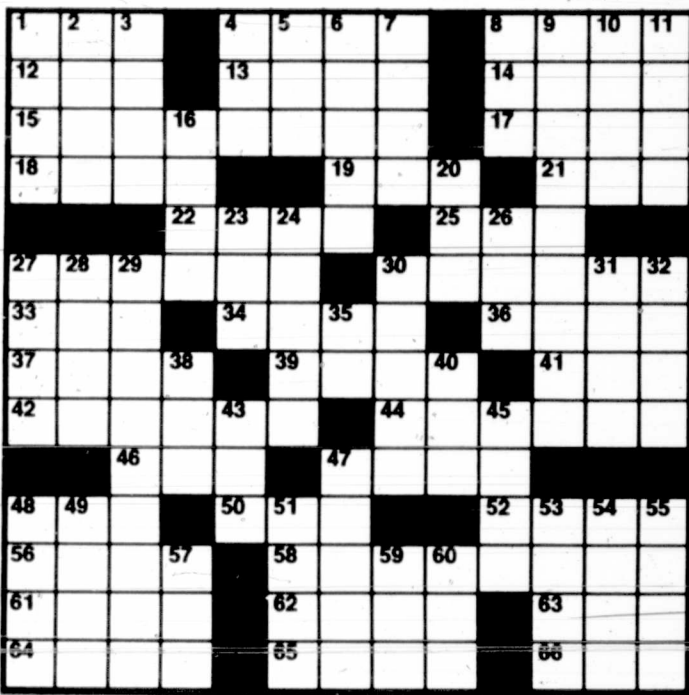
- ACROSS**
- 1 12. Roman
 - 4 Uses needle and thread
 - 8 Chopped
 - 12 Small rug
 - 13 Of grades 1-12
 - 14 Blackthorn fruit
 - 15 Representatives
 - 17 Seize
 - 18 Body
 - 19 Landing boat
 - 21 Cot
 - 22 — lens
 - 25 Workers' assn.
 - 27 Shifting course
 - 30 Boomed
 - 33 Marriage vow (2 wds.)
 - 34 Twist about
 - 36 Marquis de
 - 37 Flower
 - 39 Diminutive

- DOWN**
- 1 Dec. holiday
 - 41 suffix
 - 42 Commandments
 - 43 Seasoned
 - 44 Symbols
 - 46 Superlative suffix
 - 47 "Auld Lang"
 - 48 Actress — Ullmann
 - 50 Down and —
 - 52 — and proper
 - 56 Break in two
 - 58 Wordiness
 - 61 Bushy haired
 - 62 Needle case
 - 63 Haze
 - 64 An ex of Liz Taylor
 - 65 Concerning (2 wds.)
 - 66 Singing syllable

Answer to Previous Puzzle

FLA	FLU	FLY
OONA	LORD	LEE
ONES	UNAU	UAW
TETHER	REFER	
OGREISH		
PATOIS	AMOK	
FLO	SECT	OBT
EEN	SCHO	LOP
BAEZ	RATITE	
AUCTION		
IMPLY	LEACHY	
FDR	USDA	LOAM
CEE	ATON	LAIC
CAD	SOD	TRA

- 2 Shakespearian villain
- 3 Part of a list
- 4 Dry, as wine
- 5 Inventor
- 6 Submerge
- 7 Hissing sound
- 8 A former pres.
- 9 Fancy
- 10 Stopped sleeping
- 11 Necessity
- 16 German fascist
- 20 Dead heat
- 23 Cricket positions
- 24 Leered at
- 26 French article
- 27 Dances
- 28 Thought
- 29 City
- 30 Breakwater
- 31 Biblical garden
- 32 Lions' homes
- 35 Note of Guido's scale
- 38 Mountains (abbr.)
- 40 Long time
- 43 WWII area
- 45 Military cap
- 47 Cancels previous change
- 48 Future
- 49 L.B.'s exam
- 51 Part of the eye
- 53 Log float
- 54 Opera prince
- 55 Million (pref.)
- 57 Pea's home
- 59 Groove
- 60 Life story



(c) 1990 by NEA, Inc.

GEECH



By Jerry Bittle

Astro-Graph

by bernice bede osol

TAURUS (April 20-May 20) Don't take fun pastimes too seriously today, even if you have to compete against someone you would rather beat than be president. The more relaxed you are, the better you'll play. Trying to patch up a broken romance? The Astro-Graph Matchmaker can help you to understand what to do to make the relationship work. Mail \$2 to Matchmaker, P.O. Box 91428, Cleveland, OH 44101-3428.

GEMINI (May 21-June 20) Providing for the concerns of people for whom you are responsible should take precedence over all of your other interests today. Make them your no. 1 priority.

CANCER (June 21-July 22) Conditions in general look hopeful for you today, especially in involvements you have with friends. Collective objectives can be achieved to everyone's satisfaction.

LEO (July 23-Aug. 22) You'll be in your element today in situations that are meaningful to you financially. However, outside of purely commercial areas your judgment may be less dependable.

VIRGO (Aug. 23-Sept. 22) Although you won't be able to please everyone today, you're still likely to have a high batting average. Your fly in the ointment will be someone with whom no one can get along.

LIBRA (Sept. 23-Oct. 23) Leave the door of opportunity open today so that it is possible for persons who want to do you favors to be able to do so. Your luck could spring from the most unlikely sources.

SCORPIO (Oct. 24-Nov. 22) For best results today keep things on a purely social basis in your involvements with friends. Stay out of their business affairs and keep them out of yours.

SAGITTARIUS (Nov. 23-Dec. 21) You could be rather ingenious today in circumventing barriers that bar you from your objectives. Success is likely whether you receive cooperation from associates or not.

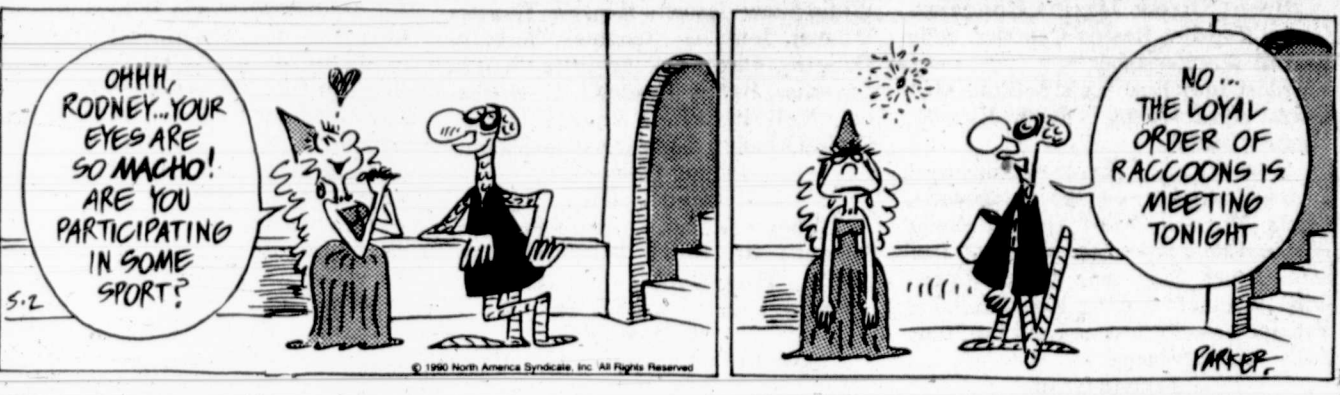
CAPRICORN (Dec. 22-Jan. 19) In order to accommodate fluctuating conditions today, it might be necessary for you to revise your original game plan. The changes you make will be both effective and constructive.

AQUARIUS (Jan. 20-Feb. 19) You should be able to manage with exceptional effectiveness today that which is necessary for your own needs. Additionally, you'll also be very clever at masterminding things for friends.

PISCES (Feb. 20-March 20) Even though you'll be a good achiever independent of others today, your greatest successes are likely to come from your partnership arrangements.

ARIES (March 21-April 19) Put your ingenuity to work for you today to devise some labor saving techniques, especially in assignments or tasks that are more physical than mental.

THE WIZARD OF ID



By Brant Parker and Johnny Hart

EEK & MEEK



By Howie Schneider

B.C.



By Johnny Hart

MARVIN



By Tom Armstrong

MARMADUKE



By Brad Anderson

KIT N' CARLYLE



By Larry Wright

ALLEY OOP



By Dave Graue

WINTHROP



By Dick Cavalli

SNAFU

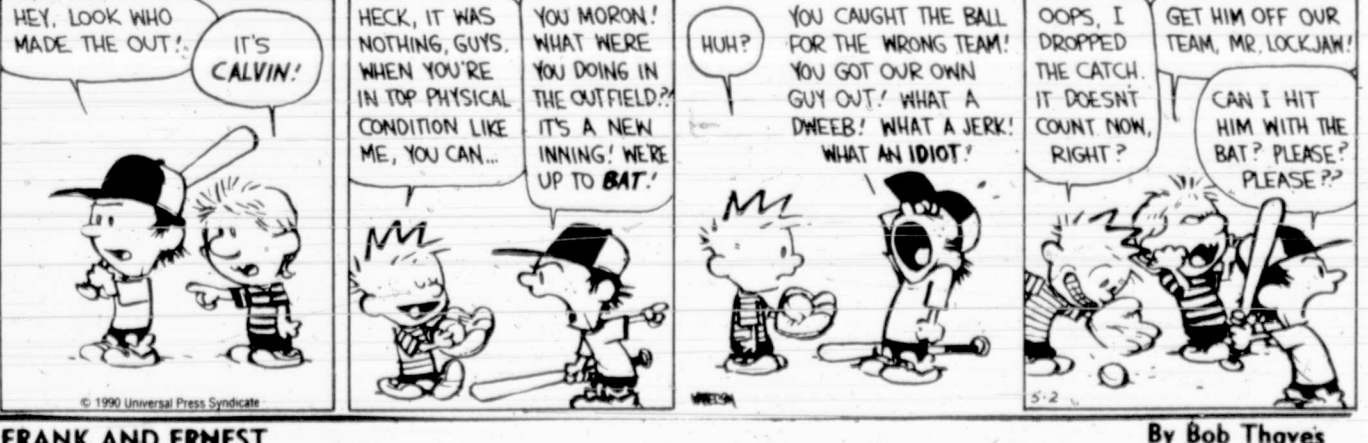


By Bruce Beattie

The Family Circus

By Bil Keane

CALVIN AND HOBBS



By Bill Watterson

THE BORN LOSER



By Art Sansom

FRANK AND ERNEST



By Bob Thaves

PEANUTS



By Charles M. Schultz

GARFIELD



By Jim Davis

White House says it won't resist resignation of FDIC Chairman Seidman

By DAVE SKIDMORE
Associated Press Writer

WASHINGTON (AP) — The White House indicated today that it would not resist a resignation by Federal Deposit Insurance Corp. Chairman L. William Seidman and hoped to install aggressive "new leadership" at the federal agency.

But White House spokesman Marlin Fitzwater disputed a published report that President Bush had encouraged Seidman to step down.

"The president has not asked him to leave or suggested a specific departure," Fitzwater said.

The Washington Post, quoting unnamed administration sources, said in Tuesday's editions that Bush wanted Seidman to retire.

In a meeting with the top savings-and-loan bailout official two weeks ago, Bush reportedly suggested now would be a good time for the 69-year old Seidman to leave, the newspaper said.

Seidman was appointed by President Reagan in 1985 and his term expires in 1991.

"Bill Seidman has talked to the president about his tenure and about the problems at the FDIC and facing the S&L industry. Bill has indicated publicly that he would not like to serve out his entire term, which expires in 1991," Fitzwater said.

"Bill has indicated he's not going to stay the whole term, and we are interested in getting new leadership there that would carry on an aggressive program when the time comes," he added.

Fitzwater said that there had been no discussions yet of who might be named to succeed Seidman. "I don't think he's given us a date" on when he will step down, the spokesman said. "He's said prior to 1991."

Seidman, in a telephone interview from Michigan, declined to comment on the story Tuesday and said he had promised not to divulge what he discussed with the president. However, he noted that in the past he has said he planned to leave his post after getting the bailout agency off to a good start.

A month ago, he announced ambitious plans to sell or close 140 S&Ls by the end of June and, Seidman said Tuesday, "That would be a good start."

An industry source, who spoke to The Associated Press on condition of anonymity, said White House

officials confirmed that they would not stand in Seidman's way if he leaves.

The chairman of the FDIC serves independently and cannot be fired by the president. But the Post, quoting "two administration sources familiar with the meeting," said Bush wants to name his own chairman.

"It's no secret we would not be upset if he leaves. It's not like we're trying to talk him into staying," the newspaper quoted a source present at the meeting as saying.

White House press spokesmen did not immediately respond to a request for comment.

Seidman, who enjoys strong support from both Democrats and Republicans in Congress, has been dropping hints for nearly a year that he would not serve out his term.

Sports book central to charges of racketeering on cruise ship

By JOEL WILLIAMS
Associated Press Writer

BROWNSVILLE (AP) — An allegedly illegal sports betting operation was central to an undercover investigation that led to racketeering charges involving the cruise ship that brought casino gambling to Texas.

Four people were arrested over the weekend after federal and state investigators searched the Port Isabel-docked ship Le Mistral II, the offices of Islander Cruises Ltd., and offices of OM Consultants, a Miami-based firm managing the ship's entertainment and casino.

The ship operates on the premise that gambling is legal when it reaches international waters.

According to an FBI complaint, Texas Department of Public Safety undercover investigators over the past four months placed bets on sporting events while the ship was still docked at Port Isabel.

They allegedly paid for the bets after the cruise began and the casino opened. Winnings would be settled after the ship returned to dock. If the events such as football and basketball games had not concluded by the end of the one-day cruises, the casino operators would send any winnings to the investors in the mail, authorities allege.

Charged in the case are Hal Templeton Fowlkes, 47, president of Islander Cruises, which directed the cruise business; Phillip Lance Newman, 40, who operated gambling on the ship; Steven Fox, 32, a card dealer; and Betty Brown Vacek, 47, an OM Consultants employee in Port Isabel.

U.S. Magistrate Robert Guerra allowed them released on \$25,000 unsecured bonds each.

Charges include conspiracy to operate an illegal gambling operation, use of the mail to promote illegal gambling, interstate transportation of illegal betting slips, and operation of an illegal gam-

bling business. Each of the alleged violations of federal law carry a maximum prison sentence of 20 years and up to a \$250,000 fine for each count. The statutes also allow for seizure of assets.

The arrests were the result of an ongoing investigation by the DPS' Criminal Intelligence Service.

Approximately \$80,000 in cash was seized during the weekend searches, said DPS spokesman David Wells.

Port Isabel is a few miles north of the Mexican border.

When the floating casino began operating out of Port Isabel in the fall of 1988, Fowlkes was a partner in an Ocean Springs, Miss.-based maritime law firm that held a 21 percent share of Islander Cruises.

Federal investigators allege that the gambling operations were illegal under state law and that the ship operators violated federal law by traveling beyond the state's nine-mile jurisdiction into federal and international waters to circumvent Texas law.

It also was illegal under federal law to conduct the bookmaking operation through the mail and to transport the betting slips across state lines, according to the FBI. Officials said they expected the case to be presented to a grand jury this week.

Meanwhile, the ship will be allowed to continue operating.

It brought casino gambling to Texas by satisfying a state law that required gambling ships operating from Texas to call on a foreign port. It complied with that requirement by passing by the remote, unpaved Mexican fishing village of El Mezquital, just south of the border.

The state Legislature in 1989 passed a law lifting the requirement to call on a foreign port. Two floating casinos started operating out of Galveston, opening the gambling when they reached international waters 12 miles offshore.

Study suggests spina bifida may be preventable through surgery

NASHVILLE, Tenn. (AP) — Spina bifida, a common and severe birth defect, may one day be prevented by surgery to patch the fetal spine inside the womb, a new study indicates.

The study conducted by Johns Hopkins University in Baltimore suggests spina bifida may result in part from exposure of the spinal cord to the womb's amniotic fluid, according to Dr. Dan S. Heffez.

Heffez, assistant professor of neurosurgery at Johns Hopkins, presented the study's findings this week to the American Association of Neurological Surgeons.

Spina bifida is caused by the failure of the spine and skin to form over the spinal cord, and the most serious form occurs in an estimated one of 1,000 births.

The study showed baby rats were paralyzed if the protective spinal cord covering was surgically removed while they were still in the womb. But if skin was sewn over the wound within 24 hours, the rats were "entirely normal," Heffez said.

Heffez said spina bifida damage may not occur until the 20th week of pregnancy, when amniotic fluid surrounding the fetus changes in a way that may jeopardize an unprotected spinal cord.

But a hole in the spine can be diagnosed through blood tests and ultrasounds by the 18th week of pregnancy, and fetal surgery has been attempted before 20 weeks to correct other problems, Heffez said.

Years of research remain before such a procedure could be attempted on a human fetus, according to Heffez. He said Johns Hopkins researchers are conducting studies to discover whether the damage is progressive in humans.

"We need first to establish beyond a doubt that in man this is a progressive problem," he said. "We have to follow (fetal) leg movements with ultrasound — something we are trying to do right now."

The damage would be considered progressive if leg movements diminished over time in fetuses diagnosed with spina bifida, Heffez said.

Spina bifida can cause paralysis of the legs, loss of bladder and bowel functions and a malformed spinal cord. The afflicted can live into adulthood, but are more susceptible to infections because of the open wound and hole in their spine. And they require lifetime care.

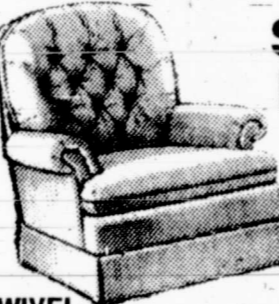
"The long-term cost is enormous," Heffez said. "I don't think you can put a number on that cost or on the wasted potential."

TEXAS FURNITURE



LA-Z-BOY
CHAIR COMPANY

SAVE NOW
RETAIL \$349.50



SWIVEL ROCKERS \$199
CHOICE OF FABRICS AND COLORS



DAYBEDS \$299
VICTORIAN STYLING, CLASSIC WHITE IRON, FREE DELIVERY AND SET-UP IN YOUR HOME



BEAUTIFUL MIRRORS \$69 and \$99

BIG SELECTION OF BEAUTIFUL SOFAS



RETAIL 799.50 TO 999.50

\$388

\$488

\$588

YOUR FAVORITE STYLES

FABRICS

IN THE VERY LATEST COLORS AND TEXTURES.

SLEEP-SOFAS

WITH JUMBO INNERSPRING MATTRESS.



RETAIL 995 AND 1095

\$588

BIG SELECTION OF STYLES AND COLORS

PUSH VELVET BIG-MAN SIZED

RECLINER

\$359

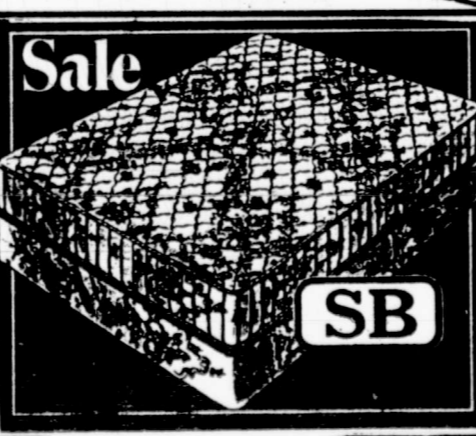


SOLID OAK SOLID VALUE DINING ROOM



48 INCH ROUND TABLE WITH 4 CHAIRS
RETAIL 1695.00

\$999



QUALITY BEDDING	TWIN	FULL	QUEEN	KING
ORTHOPEDIC SUPREME 10 YEAR WARRANTY	\$89 EACH PIECE	\$129 EACH PIECE	\$299 SET	\$429 SET
ORTHOPEDIC REGAL 15 YEAR WARRANTY	\$99 EACH PIECE	\$149 EACH PIECE	\$388 SET	\$488 SET
ORTHOPEDIC ELEGANCE PILLOW TOP	\$288 SET	\$388 SET	\$488 SET	\$588 SET
REST-O-PEDIC EXQUISITE 25 YEAR WARRANTY	\$388 SET	\$488 SET	\$588 SET	\$748 SET



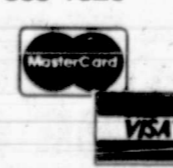
SECTIONAL WITH QUEEN-SLEEPER AND RECLINING END.

\$1388

90 DAY NO INTEREST REVOLVING CHARGE

Texas FURNITURE

LAY-A-WAY
OPEN 9:00 TO 5:30
MONDAY-SATURDAY
PHONE 665-1623



THOMASVILLE BEDROOM

CLASSIC 18TH CENTURY DRESSER, MIRROR, QUEEN BED NIGHT STAND AND CHEST.

\$1788

CONVENIENTLY LOCATED IN DOWNTOWN PAMPA SINCE 1932

Buckle up - it's the law

CITIZENS OF LEFORS
Let's Write In
LEONARD CAIN
For Mayor

GENE GEE
LEONARD CAIN

Sample Ballot

Pd. Pol. Ad. by Clayton Lock, Box 345, Lefors, Texas 79054