



## PAGE ONE

A QUICK READ OF THE NEWS

### Homeless man returns \$

TULSA, OKLA. — David Diehl might not have a home, but he is blessed with honesty and integrity.

The homeless man returned \$7,100 he found last week while sorting through donated clothes at a local shelter.

Diehl came across a wad of 50 \$100 bills in the pocket of a jacket at the John 3:16 Mission Family and Youth Ministry.

Further searching turned up another \$2,100.52 from the same batch of donated clothes.

An intentionally vague plea to the public turned up the rightful owner.

Darrell McGuire said the donated clothes came from the house of a deceased uncle who "always wanted ready cash around."

McGuire gave reward checks to Diehl and the shelter.

### LOOKING AHEAD

#### District 1-3A golf tournament

The Muleshoe High School boys and girls golf teams are scheduled to compete in the first round of the District 1-3A golf tournament at John G. Pitman Golf Course in Hereford.

#### Fine Arts Night to Shine Monday

The annual Fine Arts Night to Shine is being held at 7 p.m. Monday at the Muleshoe High School auditorium.

Highlighting the night will be a performance of Muleshoe High's one-act play "Players in a Game." The night also includes performances by the high school and junior high bands and Choir II, an art show and a silent auction.

#### Meetings

**Monday** — Bailey County Commissioner's Court, 10 a.m., County Courthouse.

**Thursday** — Boll weevil educational meeting, 10 a.m., Bailey County Coliseum.

### LOCAL WEATHER

	High	low	Pre.
Tuesday	61	38	—
Wednesday	68	25	—
Thursday	65	30	—
Total to date	2.12 inches		

### EXTENDED FORECAST

Sunny, with lows in the 40s, highs in the 70s. Slight chance of rain Tuesday.

### A friendly reminder . . .

Set your clocks ahead one hour before you go to bed Saturday night.



## Schedule for Holy Week announced

Christians throughout Muleshoe will be meeting during Holy Week to worship and praise Jesus Christ.

The Bailey County Ministerial Alliance, which is a service organization made up of representatives of the different churches in the area, have planned a week of worship.

The Community Easter

Choir will be presenting the musical, "Who Do You Say I am, An Easter Musical," at 7 p.m. Sunday at First Baptist Church of Muleshoe.

Community worship and fellowship services will be held at noon Monday through Wednesday at the First United Methodist Church.

The music will be led and

presented by local church ministers. The messages will be developed and proclaimed by local pastors. Lunch will be served.

On Easter Sunday, a sunrise service will be held at 7 a.m. at the new city park, by the tennis courts and across from 16th & D Church of Christ.

The public is invited.

### TAKING A CLOSER LOOK

Water usage rises significantly during the spring and summer months. The following are the new City of Muleshoe water rates that took effect Oct. 1.

Minimum	\$11
0-10,000 gal.	\$1.30/1,000 gal.
10,001-20,000 gal.	\$1.55/1,000 gal.
20,001-50,000 gal.	\$1.80/1,000 gal.
50,001-99,999 gal.	\$2.05/1,000 gal.
100,000 and over	\$2.30/1,000 gal.

SOURCE: CITY OF MULESHOE



### In control

Miranda Free works the mixing board during a student broadcast at Watson Junior High School.

## LIVE from WJHS

### Student news program focuses on 'at-risk' kids

By GEOFF FOLSOM  
Special to the Journal

The rush to get ready on time is over. Rehearsals went smoothly. Everyone is in place.

"Everyone knows where they're supposed to be," teacher Tom Boutell says firmly. "You know your cues. The class is in the hands of the tech board."

An American flag drops in front of the camera for the Pledge of Allegiance. The flag is removed to reveal two students sitting in front of a large yellow, red and blue backdrop.

Another edition of "Mulenews" is on the air. This is the process more than a dozen Watson Junior High School students go through every day to bring students and faculty information about

activities going on inside and outside of the school.

This particular edition of "Mulenews" features stories on everything from the next day's lunch to the dumping of dead animals in a culvert near a Slaton golf course. Most of these stories are written, edited and broadcast by the students.

While putting on a daily newscast may seem like a challenge for any student, it is even more remarkable considering that many of these students were considered "at-risk" students before they joined the class. Some were deemed likely to eventually drop out of school if their academic attitudes did not improve.

Six years ago, Boutell decided to do something to help students like these. After watching the nationally broadcast "Channel One" show, Boutell decided to bring a more localized version to Muleshoe.

see NEWS on page 7

## Cotton farmers favor new zone

By TERESA STONE  
Journal staff writer

EARTH — Farmers concerned about the local cotton economy showed up in droves Thursday to discuss the possibility of creating their own boll weevil eradication zone.

In a public forum held by the Texas Department of Agriculture, an estimated 100 cotton farmers and producers filled Earth City Hall to express their opinions about creating a new boll weevil eradication zone made up of five area counties.

"This is the most important thing we can do if we want to continue to grow cotton," said Bailey County farmer Don Bryant. "We are going to have to have a boll weevil eradication program."

Most of the growers at the forum overwhelmingly supported creating the new zone, the Northwest Plains Boll Weevil Eradication Zone.

The zone would include Bailey, Parmer, Castro, Lamb and Deaf Smith counties, which would separate from the Northern High Plains Zone.

According to the Texas Department of Agriculture, the five counties grow 450,000 acres of cotton annually, which accounts for 20 percent of the cotton on the South Plains.

Local farmers and gin operators petitioned the state to organize the smaller zone, enabling cotton producers to better deal with the area's specific infestation problems in a more economically efficient and timely manner.

Saving the cotton industry is of major importance to the farmers because, as more than one speaker said, "With the depletion of water, farmers have to rely on cotton more because of the increased difficulty in growing other crops with dryland methods."

"Infestation levels are low to moderate in our area," said Mark Williams, a farmer representing a group of growers wanting to combat the potentially dangerous boll weevil situation. "Our situation is vastly different than other counties. We are among the lowest (in the number of boll weevils) in the

see COTTON on page 7

## Panhandle wheat crop escapes damage from March cold spell

AMARILLO — It appears that the Panhandle's wheat crop has escaped any significant damage from the region's March cold snap.

Dr. Brent Bean, agronomist with the Texas Agricultural Extension Service in Amarillo, said wheat in fields to the north of the city wouldn't be harmed with anything other than possible leaf burn since the head of the plant is still below ground.

This is called the pre-jointing stage of growth in wheat.

In areas to the south, plants might be entering the first phases of jointing, and therefore more susceptible to cold or freeze damage. Once above ground, the plant becomes more vulnerable to temperature extremes.

Bailey County Extension

see WHEAT on page 7

## ELECTIONS '98

### Muleshoe newcomer running for Council

Muleshoe newcomer Sam Burke is one of two candidates running for the Muleshoe City Council District 1 seat.

Burke will challenge incumbent Cliff Black.

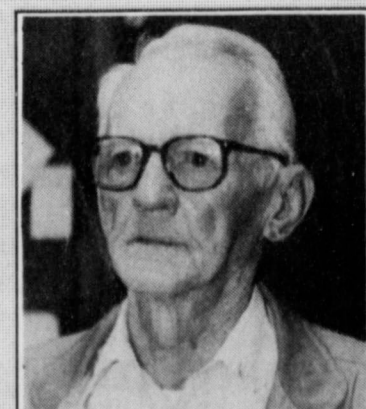
The election will be held May 2.

Burke moved to Muleshoe one year ago from Dimmitt. He retired from the building

business and for the last three years has been a professional dog trainer.

Burke decided to run for city council out of civic duty.

"Every town has things that need to be addressed — law enforcement, taxes," said Burke. "If I am voted into office, I will work with the other councilmen, city manager and mayor."



Sam Burke

## AROUND MULESHOE

### Volunteers needed for Meals on Wheels

Volunteers are needed to help deliver Meals on Wheels one hour per week. If you are interested in helping or need more information call 272-4858 or 272-3647.

### Gonzales wins advertising design award

Johnny Gonzales of Muleshoe was one of the staff members of the South Plains College student newspaper, the Plainsman Press, that brought home a total of 10 awards from the Rocky Mountain Collegiate Media Association Conference in Colorado Springs last month.

Gonzales, a sophomore commercial art student, and Jennifer Mendoza of Lubbock were awarded second place for an advertisement they designed and shot for the South Plains College Bookstore.

The newspaper staff also took home awards for on-site photography, humorous cartoons, special literary sections, editorial writing, sports writing, newspaper design, on-line newspaper award, and the slam dunk sports photo.

### Muleshoe elementary school t-shirts

Muleshoe Elementary PTA will be taking orders for Dillman and DeShazo t-shirts. The t-shirts are white and short sleeved with the schools own silk screen on the front. They are available in adult sizes S, M, L, and XL for \$12 and youth sizes 6-8, 10-12, 14-16 for \$10. Deadline to order is April 15. Shirts should be delivered the first week of May. For more information contact Lynda Washington at 272-3581.

### Muleplex Production Company meeting

The regular monthly meeting of the Muleplex Production Company will be at 7 p.m., Monday, April 6 in the Five Area Telephone Board room at 302 Uvalde.

Guests and prospective members are invited to attend. Memberships are accepted anytime, dues are \$10 a year. The membership year begins Sept. 1.

The meeting will consist mainly of plans concerning the summer play, *Keepers of the Legend*. This year the production will be directed by Sally Messenger.

*Editor's note: In the previous issue, it was incorrectly reported that Dr. Kerry Moore was to be to the director of the Keepers of Legend. Sally Messenger, who directed the production last year, will be the director again this year.*

### Muleshoe roping club meeting

The Muleshoe Roping Club is holding a regular monthly meeting at 7 p.m. Monday, April 6 at the Muleshoe Sale Barn. For more information contact Ronald Scott at 272-3842.

### Soup & sandwich luncheon

The Soup and Sandwich Luncheon meeting for April will be held Thursday, April 9, from noon to 1 p.m., at the fellowship hall of the 16th and D Church of Christ, 1600 W. Ave D.

This month's program is a seasonal program featuring a special video presentation which weaves together the Bible's historical and cultural contexts as it examines Jesus' choices of time, place, and message on the first Holy Week.

Community members, business people, and anyone else interested, are invited to enjoy this Thursday's luncheon or any of the upcoming soup and sandwich programs. The meal is always offered on a free-will donation basis. A flyer listing the remaining programs for 1998 Soup & Sandwich series, held on the second Tuesday of each month, will be available at Thursday's luncheon and is available to anyone upon request (272-4619)

### Senior league baseball sign ups

Boys ages 13-15 can register for senior league baseball from 6:30-8 p.m., Thursday, April 9 at Muleshoe State Bank. The cost is \$35. Anyone interested in coaching or helping out during the season is invited to come. For more information contact Bruce Barrett at 272-3815.



The perfect footwear for a West Texas Spring...



Great for all types of weather—sunny, sandy or sprinkled with rain!

In April, we'll shower you with savings!

**10% off all Sandals**

*Williams Athletics*



(806) 272-MULE (6853) • Fax (806) 272-4615 • 322 Main Street • Muleshoe, TX 79347

### Bailey County Journal USPS 040-200

Established March 31, 1963. Published by Triple S Publishing, Inc. Every Sunday at 304 W. Second, Box 449, Muleshoe, TX 79347.

Second Class Postage paid at Muleshoe, TX.

POSTMASTER: Send address changes to the Bailey County Journal, P.O. Box 449, Muleshoe, TX 79347.

We are qualified members of Panhandle Press Association, National Newspaper Association, West Texas Press Association and Texas Press Association

WEST TEXAS PRESS ASSOCIATION



MEMBER 1997

PPA

TEXAS PRESS ASSOCIATION

Panhandle Press Association

Scot Stinnett, Publisher

Lisa Stinnett, Vice-President/Comptroller

Rick White, Editor

Mary Ann Dominguez, Classifieds

Leah Bell, Advertising

© 1990

SUBSCRIPTIONS: Muleshoe Journal and Bailey County Journal  
By Carrier Yearly - \$22.00  
Bailey County — by mail - \$24.00  
Elsewhere - \$26.00  
Advertising Rate Cards on Application

\*Advertisers should check their ad the first day of insertion. The Journals will not be liable for failure to publish an ad or for a typographical error or errors in publications except to the extent of the cost of the ad for the first day of insertion. Adjustment for errors will be limited to the cost of that portion of the ad where the error occurred.\*



The language with the most letters in its alphabet is Cambodian, with 74.

## HOSPITAL ADMISSIONS

The Muleshoe Area Medical Center has reported admitting the following patients:

**March 26** — Loraine Cavazos, Lora Dale, Carolina Franco, Marley Hall, Wesley Hawkins, Melgie Reinholt, Shiloh Roberts, Maria Sanchez, Adam David Rosas, Donald Harrison, Joe Shipman

**March 27** — Loraine Cavazos, Steve Cisneros, Carolina Franco, Donald Harrison, Wesley Hawkins, Melgie Reinholt, Shiloh Roberts, Joe

Shipman, Yolanda Vela

**March 28** — Rheba Barrett, Dorothy Browning, Loraine Cavazos, Matthew Flores, Carolina Franco, Socorro Gallegos, Porfirio Guzman, Avanelle Lenderson, Megan Mumau, Melgie Reinholt, Shiloh Roberts, Daria Rodriguez, Joe Shipman, Girl Vela, Yolanda Vela, Alice Williams

**March 29** — Rheba Barrett, Dorothy Browning, Rex Fennell, Matthew Flores, Caro-

lina Franco, Socorro Gallegos, Magan Mumau, Melgie Reinholt, Daria Rodriguez, Joe Shipman, Alice Williams

**March 30** — Rheba Barrett, Dorothy Browning, Rex Fennell, Matthew Flores, Socorro Gallegos, Melgie Reinholt, Daria Rodriguez, Joe Shipman, Alice Williams, Janet Ethridge, Elzie Darland

**March 31** — Maria Alvarez, Dorothy Browning, Opal Durrett, Rhonda Kitchens, Melgie Reinholt, Jessie

Snell, Alice Williams

**April 1** — Gladys Bradshaw, Dorothy Browning, Waverly Coats, Opal Durrett, Melgie Reinholt, Alice Williams, Rickey Railsback, Lucia Aguirre, Bennie Claunch

**April 2** — Lucia Aguirre, Gladys Bradshaw, Dorothy Browning, Bennie Claunch, Waverly Coats, Ricky Railsback, Melgie Reinholt, Yolanda Vela, Alice Williams

## POLICE LOG

### ARRESTS

#### MULESHOE PD

**March 19** — Roberto Rodriguez, 40, arrested on immigration warrant.

**March 22** — Santos Raul Velasquez-Solis, 32, arrested on a Floyd County warrant.

**March 26** — Jesus Jessie Cumpian, 57, arrested for driving while intoxicated.

**March 29** — Jose Trinidad

Rodriguez, 55, arrested for unlawfully carrying a weapon.

#### BAILEY COUNTY SO

**March 15** — Tracy Slaton, 34, arrested for driving with a suspended license.

**March 21** — Richard Flores Jr., 18, arrested for driving while intoxicated.

**March 25** — Lazaro Martinez Munoz, 54, arrested on a Potter County warrant.

**March 26** — Tony Bert Spears, 57, arrested for driving while intoxicated.

**March 26** — James David Frazier, 23, arrested for class A family violence assault.

**March 27** — David Hernandez, 38, arrested on motion to revoke.

**March 31** — Jessie Allen Snell, 26, arrested for aggravated assault.

## Delton E. Wilhite & Associates

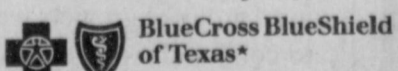
INSURANCE AND FINANCIAL SERVICES

P.O. Box 567 • 1631 West American Blvd. • Muleshoe, TX

Individual health care coverage from a name you know.

It's true. With options like PPO Select<sup>SM</sup>\* and Select 2000<sup>SM</sup>\* your worries about finding individual health care coverage could be over. It's health care coverage designed with the individual in mind. Even better, it's from Blue Cross and Blue Shield of Texas, Inc. To find out how affordable these programs can be, call me for a quote today.

Authorized Agent for



\*Select 2000 and PPO Select are part of the Select family of individual health care coverage products from Blue Cross and Blue Shield of Texas, Inc. An Independent Licensee of the Blue Cross and Blue Shield Association

Health Coverage Without All The Worry.



(Hammock not included.)

806/272-3652 • 800/658-3292

FAX 806/272-3292

## EASTERN NEW MEXICO UNIVERSITY OFFERS IN-STATE TUITION FOR WEST TEXANS

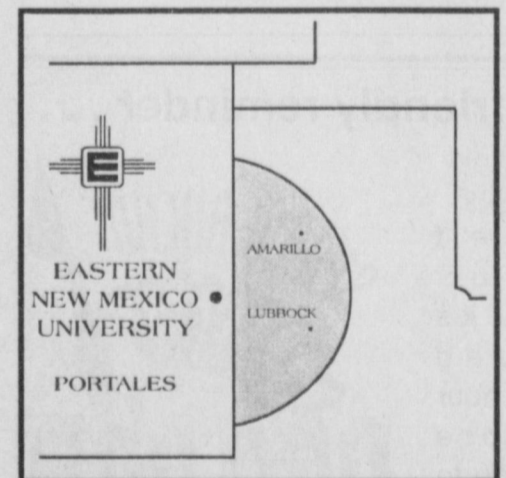
If you're a Texan who lives within 135 miles of Portales, New Mexico, you can pay New Mexico in-state tuition to attend a nationally award-winning university. Eastern New Mexico

University is one of only three national recipients of the 1997 Pew Leadership Award for the Renewal of Undergraduate Education.

Eastern has also earned a reputation as one of the friendliest, safest, most student-centered campuses in the country. And all this for tuition and fees that are more affordable. The 1997-98 in-state tuition for full-time students taking between 12 and 18 credit hours was \$585, plus \$273 for student fees, for a total of \$858\*.

To check out all that Eastern has to offer, call 1-800-FOR-ENMU, or read about us on the Internet at [www.enmu.edu](http://www.enmu.edu).

Experience it all at Eastern New Mexico University!



TUITION INFORMATION  
800-FOR-ENMU  
505-562-2178

EASTERN  
NEW MEXICO  
UNIVERSITY  
PORTALES

CAMPUS INFORMATION  
505-562-1011  
PORTALES, NM 88130

[www.enmu.edu](http://www.enmu.edu)

\* Tuition and fees are subject to change

Muleshoe Journal Classifieds  
(806) 272-4536



**DeShazo dancers**

DeShazo students Autumn Rainey and Josh Norman perform a dance called "Baile de los Panos" during the Family Fiesta talent show at Muleshoe High School. More than two dozen local students performed during the show.

**Corn, wheat inventory higher than last year**

Texas corn and wheat inventory is considerably above a year ago, but sorghum remains about the same.

According to figures released by the Texas Agricultural Statistics Service, total sorghum stocks were 26.3 million hundredweight (CWT) on March 1, about the same level as the previous year. On-farm stocks were down 4 percent.

Total stocks of wheat in all positions, at 50.7 million bushels, were up 80 percent from last year. Last year's level, however, was a near record low for March. Compared to 1995, March 1 wheat stocks were down 4 percent.

The Texas Agricultural Statistics Service no longer publishes corn stocks on farms, but the off-farm storage, at 83.4 million bushels, is up 52 percent from a year earlier. This large inventory follows the State's record corn production produced last year.

Total stocks of corn in the United States were 4.9 billion bushels in all positions up 42 percent from March 1, 1997.

Farm stocks are 399.9 million bushels, up 25 percent from last March, and off-farm stocks, at 766.3 million, are up 53 percent. U.S. stocks of sorghum totaled 128.1 million cwt, down 17 percent from March 1, 1997.

**Public AUCTION**  
 Special CONSIGNMENT AUCTION  
**One Big Day**  
**Thursday, April 9th • 9 A.M.**  
 If you wish to consign any equipment, vehicles, etc., please contact us as soon as possible so we will be able to properly advertise your merchandise.  
**WE APPRECIATE OUR CUSTOMER'S CALL DAY OR NIGHT!**  
 LOCATION: 3 miles N.E. of Portales, NM on Hwy. 70

**WHEN ONLY THE BEST WILL DO CALL**  
**Bill Johnston Auctioneers**  
 Portales, NM (505)356-5982 Days  
 Nights - Mike (505)760-6195 or Clint (505)356-5368

**Public Meeting**  
**Bailey County Coliseum**  
**Tuesday, April 14**  
**8:00 p.m.**

conducted by  
**Muleshoe Area Hospital District**  
**Board of Directors**

to discuss community needs  
 with focus on  
**Long-term Care (nursing home)**  
**and alternatives for**  
**meeting those needs.**

The public is invited  
 and encouraged to attend.

**Best course of action is usually none when it comes to animals**

By **DON CLAPP**  
 Special to the Journal

Most everyone has occasionally seen hawks or owls, but many are not aware of the importance of these birds to the natural environment and that they are protected by wildlife laws.

The Muleshoe National Wildlife Refuge has a small bird holding pen where injured birds may be kept until they are taken to authorized wildlife rehabilitation centers although injured wildlife are usually best left alone when discovered and wildlife authorities should be notified.

People with good intentions often mistakenly believe that a young animal or bird has been abandoned by its parents when actually the parent is hiding nearby or away searching for food to feed its young. Generally one should only observe wildlife from a distance and

**Outdoor tips**

allow them to remain free in their natural environment.

The most common owls seen are great horned owls and barn owls. Both owls nest in early spring. Great horned owls normally nest in trees while barn owls prefer to raise their young in the eaves or attics of old buildings.

Other owls that may be seen in this area include short-eared owls, burrowing owls, and occasionally long-eared owls.

Owls normally sleep in the daytime and hunt at night. Their diet usually consists of rabbits and small rodents. They have excellent night vision and are quite adept at hunting during darkness.

Both golden and bald eagles are found in the South Plains. Golden Eagles are the most common and are often seen

during the fall and winter. American bald eagles normally feed on fish and waterfowl and a few are usually seen in this area during January and February.

Hawks are the most commonly seen of the raptorial birds (birds of prey). Various species of hawks frequent the South Plains throughout the year. Many nest here while other species either migrate through or winter here. The northern harrier (marsh hawk), red-tailed hawk, and American kestrel are normally seen year-round while Swainson's hawks are common during the spring and fall. Other raptors that may be seen include Coopers hawk, rough-legged hawk, merlin, and prairie falcon.

All raptors as well as nearly all other birds are protected by wildlife laws.

*(Don Clapp is the manager of the Muleshoe Wildlife Refuge.)*

**Height of tick season spring to late summer**

(NAPS)—Tick, tock, tick, tock. The clock is running out on ticks. Ticks are not only a nuisance, they can transmit such diseases as Lyme disease and Rocky Mountain spotted fever. Ticks are a threat nationwide and Lyme disease is now widespread.

The height of tick season is from spring to late summer—when people and pets spend lots of time outdoors.

■ Avoid tick-infested areas. If you cannot avoid wooded, brushy or grassy areas, button up, use insect repellent and closely inspect family members and pets following each exposure.

■ Look for ticks where collars, belts, waistbands, straps, socks and boot tops restrict their passage. Check hair and hairy areas. Look behind knees.

■ Consult your veterinarian for tick-specific protection to keep ticks from invading home and family and "putting the bite" on you and the kids. Protecting your dog is the first line of defense for the whole family.

■ Remove ticks carefully with your fingers or,

preferably, blunt nosed tweezers. Grasp the tick as close to the skin as you can. Pull steadily. Do not jerk or twist the tick. Do not break down the mouthparts. Do not crush, puncture or tear attached ticks.

■ If you note symptoms, such as a skin rash, chills, fever or pain in the joints, see a physician.

To protect the family member most likely to encounter ticks, the unique Preventic Tick Collar for Dogs, available only through veterinarians, kills and detaches ticks and keeps new ticks from attaching for three months. The collar has been shown to outlast and outperform any other form of tick protection for dogs, including drops.

Effective for dogs of all sizes, three months and older, this collar kills ticks within 24 to 48 hours, which is essential because ticks need three days to transmit disease. Detachment is important, too, because dead ticks can cause infection if they stay attached.

Consult your veterinarian or call 1-800-338-3659.

**YOUR SPECIAL DAY TO SAVE - APRIL 7!**

**CLUB 50 Plus**

**TUESDAY, APRIL 7**  
**CLUB MEMBERS SAVE**

**20% OFF**

**ALL PURCHASES\***  
**REGULAR-PRICED OR SALE!**

**COME IN FOR**  
**"MEMBERS'-ONLY" SAVINGS**

\*Excludes cosmetics, fragrances, Levi's 501 jeans, JINCO jeans and designer collections

**BEALLS** **MULESHOE #649**  
**321 Main St.**  
**272-3478**

If you're 50 or older and not already a member, join today! Bring valid proof of age to Customer Service and Club 50 Plus savings are yours.

CHARGE IT!

**It's six of one and half a dozen of the other.**  
*(It makes no difference how you approach it, it's all one and the same.)*  
 -Frederick Marryat (in an 1836 novel)

# Mules rally past Tulia

## MHS pulls out 6-5 victory with two runs in 7th

Muleshoe pulled out another last inning win Tuesday, pushing across two runs in the bottom of the seventh to beat Tulia 6-5 in a District 1-3A game at the city park field.

Layne Kemp and Matt McClanahan stroked run-scoring singles in the bottom of the seventh inning as Muleshoe (8-5 overall, 2-1 in district) won a game in its last at bat for the second time in three games and the third time this season.

"It took us a while to get going at the plate," Mule coach Brad Hill said. "We got after it the last of couple innings, but we almost learned the hard way that we need to come out ready to play every game."

The Mules' third-straight win leaves them in a three-way tie for second, one game back of River Road.

Layne Kemp picked up the

### DISTRICT 1-3A

#### Boys

	Dist	All
River Road	3-0	9-5
Muleshoe	2-1	8-5
Perryton	2-1	6-6
Sanford-Fritch	2-1	5-5
Friona	1-2	6-6
Dimmitt	1-2	5-6
Dalhart	1-2	2-4
Tulia	0-3	2-5

#### Tuesday's results

Muleshoe 6, Tulia 5  
River Road 10, Sanford-Fritch 3  
Perryton 16, Dalhart 5 (6)  
Friona 17, Dimmitt 7 (6)

#### Saturday's games

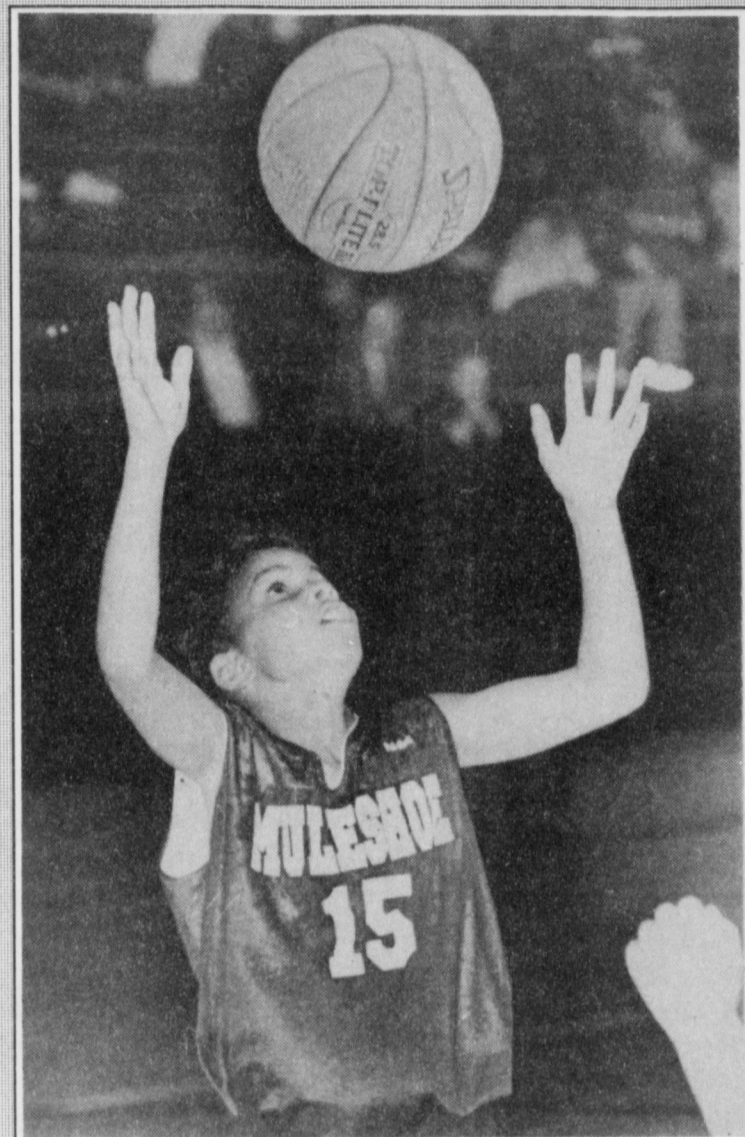
Muleshoe at Dalhart

win in relief of starter Rodney Alanis, who left in the seventh inning with runners on second and third and one out. Kemp (5-2) struck out Ches Tucker and cleanup hitter Nestor Garcia with Muleshoe trailing 5-4.

B.J. Gonzales started the Mules' game-winning rally by drawing a leadoff walk and

see **MULES** on page 5

## MINE!



Arsenio Geter of Muleshoe eyes a rebound during the Little Dribblers Junior Division regional tournament here last weekend.

## Support the Mules

## McClanahan, Kemp power Mule lineup

Layne Kemp and Matt McClanahan are drawing the ire of opposing pitchers and the eye of college coaches this spring.

They are the heart of a Muleshoe lineup that is averaging nearly 10 runs a game.

Kemp, a senior third baseman/pitcher, is hitting .621 in 13 games with three doubles, a home run and 19 runs batted in.

McClanahan, a junior center fielder, is hitting .547 with six home runs and 23 RBIs.

Muleshoe coach Brad Hill thinks both can play in college.

Hill said Kemp is just a pure hitter.

"He can just plain hit," Hill said. "He doesn't have a lot of power, but he hits the ball hard 80 percent of the time."

Kemp hit over .500 last year and was an all-district selection.

McClanahan, however, has blossomed this season.

see **LINEUP** on page 5

### MULESHOE 6, TULIA 5 Tulia (1-5, 0-3)

	ab	r	h	bi
F. Cruz, cf	4	1	1	0
Burrow, 2b	4	1	1	0
Tucker, p	4	2	2	2
Garcia, ss	4	0	0	0
Cortez, 1b	3	1	1	1
Garica, c	3	0	2	1
Gomez, 3b	3	0	0	0
R. Cruz, rf	3	0	0	0
Gibson, lf	3	0	1	0
Totals	31	5	8	4

### Muleshoe (8-5, 2-1)

Gonzales, ss	3	1	0	0
Pineda, 2b	2	0	1	0
Kemp, 3b	4	1	2	1
Alanis, p	4	1	1	0
McClanahan, cf	4	2	3	3
Nunez, dh	3	0	1	0
Purdy, c	3	0	0	0
Barrett, lf	3	1	3	1
Mason, 1b	2	0	0	0
Sinclair, rf	0	0	0	0
Totals	28	6	11	5

Tulia 000 3020 5 8 1

Muleshoe 001 2012 6 11 3

Tucker and Garica; Alanis and Purdy. WP — Alanis (3-1). LP — Tucker. 2B — Tulia, Tucker 2, Burrow, Cortez, Garza; Muleshoe, Alanis. HR — Muleshoe, McClanahan (6). Sac — Muleshoe, Pineda, Mason. SB — Muleshoe, Gonzales, Kemp 2, McClanahan, Barrett.

## Wrestling great Ricky Romero promoting local benefit event

Although he officially retired years ago, "Rapid" Ricky Romero is always up for a good tag team match — especially when it's for a good cause.

The legendary professional wrestler is teaming up with local sponsors to promote a wrestling match in Muleshoe to benefit local resident Roman Reyna.

Reyna recently had a leg amputated because of diabetes and is trying to raise enough money to cover his medical expenses.

The United States Wrestling Federation event is being held Saturday, April 11 at Watson Junior High School. Doors open at 6 p.m. and matches begin at 8 p.m.

Advanced tickets are \$7 for adults and \$3 for children ages 6-12 and are available at Mexicanita, 129 Main St. Tickets at the door are \$8 for adults and \$4 for children. Children under five are admitted free.

Romero's son, Ricky Romero, Jr., the current USWF champion, is featured in the six-match event that also includes an 8-man Battle Royal.

"Mr. Reyna called me and asked if I could help him," Romero said. "He knew I do wrestling promotions to help people."

Romero retired in 1985 as the U.S. champion after more than a quarter century in the ring. For years, he teamed with Dory Funk, Sr. of Amarillo to form a deadly tag team.

### USWF Extravaganza

Saturday, April 11  
at Watson Junior High School

- Ricky Romero vs Mexico La Parka
- Animal Biker vs Mark Young Blood
- Donik the Evil Clown vs Nature Boy Jeff Night
- El Salento vs The Fireman
- La Cobra vs Bobby Cunningham
- 8-man Battle Royal

Romero, who claims his record was 682 and 6, said he doesn't watch much wrestling nowadays.

He said it's just not the same.

"I don't learn anything from them," Romero said. "You have to be a big man, like seven-feet tall, and have big muscles or be on steroids to make any money."

"To us, it was an art. Whoever had the most holds was the winner."

Romero said his favorite holds were the body scissors, the cannonball and the sleeper.

Romero got his start in wrestling in Mexico, where he was once a good enough baseball player to draw the attention of a couple of major

see **WRESTLING** on page 5

## Vaughn reaches semis at Lubbock Invite

LUBBOCK — Chris Vaughn of Muleshoe advanced to the semifinals of the Lubbock Invitational tennis tournament held March 27-28 at five city sites.

Vaughn, a junior, was eliminated in Class C boys singles by Joshua Roberts of Seminole 6-2, 6-0. In reaching the semifinals, Vaughn twice dropped the first set of a match before rallying to win.

In other boys singles play involving Muleshoe players,

Justin Lee and Chris Shelburne both reached the second round while Joe Garcia fell in the first round.

In girls singles, Cambri Lewis reached the third round before losing to Erica Leake of Evans Junior High of Lubbock 6-1, 6-3.

In other singles play involving Muleshoe players, Cassidy Cleavinger reached the second round while Tommie Hernandez and Amy Marricle were knocked out in the first

round.

In boys doubles, the Muleshoe teams of Moises Garcia and Eric Posadas, Jeff Bruns and Delwyn Latham, and Hadley Henderson and Jeff Shelburne all were bounced in the first round.

In girls doubles, the Muleshoe teams of Amber Burns and Amanda Hahn and Rhonda Copley and Ellen Wood advanced to the third round. Kinsee Estep and Megan Tipps reached the second round.

*Home Folks Caring For Folks At Home.*

## MULESHOE AREA HOME HEALTH Agency

**Featured Patient**

Theola Hulcy was born August 16, 1911 in Knox City, TX, which is near Graham. She soon moved to Kenna, NM, where she spent most of her school years. Kenna was located near Elida, but has since become nothing but a ghost town. Mrs. Hulcy recalls the town having only a post office and a three room school house. She fondly recalls playing basketball with the other girls in her school. She enjoyed the exercise even though there were barely enough girls to make a team. Theola attended school ten years, then chose to wed.

Theola married William Daniel Hulcy. Mr. Hulcy passed away on January 5, 1965. He was a farmer. The Hulcy's farmed in Estancia, NM and Amherst, TX.

Mrs. Hulcy was a housewife for most of her married life. However, when her husband expired, she started working outside the home at "everything hard to do." She worked several years at a Dallas dry cleaners. She moved to Earth in 1978.

Mr. and Mrs. Hulcy had two children: William Hershell of Earth, and Virginia Pearl of Wills Point, TX. Theola has six grandchildren, twelve great grandchildren, and four great, great grandchildren.

Mrs. Hulcy enjoys crocheting, knitting and working in her flower garden. She used to quilt, but has given up the hobby due to illness. She is a member of the Church of Christ.

About M.A.H.H.A., Theola says with great enthusiasm that they have been great! "I love every one of them," says Theola.

**Theola Hulcy**

*Home Care*

Home is where the heart is

Affiliated with Lubbock Methodist Hospital Systems

**Out-Of-Hospital Do Not Resuscitate Packets/  
Bracelets Now Available. Call us at 272-3346  
or come by 623 W. 2nd for information.**

**24 Hour # 272-3346  
Local Nurse on call 24  
hours a day to offer  
prompt service.**

**We accept Medicare, Medicaid and Private Insurance  
It Is Your Right To Choose  
The Home Health Agency  
You Prefer.**

**To receive Home Health Services, talk with your physician  
or talk with hospital personnel  
when you are hospitalized.**



**Dedicated service**

Three outgoing members of the Muleshoe Chamber of Commerce and Agriculture's Board of Directors were honored last Saturday during the Chamber's annual banquet. Honored were (from left) Terri Hahn, former president Hugh Young and David Tipps.

**MULES**

From page 4

stealing second. After moving to third on a sacrifice bunt by Larry Pineda, Gonzales scored the tying run on Kemp's single to center.

Kemp stole second and third and scored when McClanahan laced a 2-2 pitch from Tucker into the left-center field gap.

Situational hitting is something Muleshoe practices every day and it paid off Tuesday.

"We've been hitting the ball so well that we haven't had to manufacture many runs," Hill said. "But we came through today when we needed it."

McClanahan went 3 for 4 with three RBIs, including his sixth home run of the season, a two-run blast to straightaway center in the fourth inning. Sophomore left fielder James

Barrett was 3 for 3 as Muleshoe finished with 11 hits.

Relying on his curveball and split-finger fastball, Alanis scattered eight hits and just two of Tulia's five runs were earned.

"He's really turning into a good pitcher," Hill said. "He's not overpowering, but he keeps the ball down and hits his spots."

Tucker went the distance for Tulia (1-5, 0-3) and took the loss.

Held hitless by Alanis through three innings, Tulia took a 3-1 lead in the fourth. Tucker and Efrain Garcia ripped run-scoring doubles in the three-inning uprising.

Muleshoe tied it in the bottom of the fourth on McClanahan's home run.

Tulia regained the lead at 5-3 in the sixth with the help of two Muleshoe errors. Tucker drove home one run with a double to right-center and later scored on a two-out error.

The Mules got one run back in the bottom of the sixth on Barrett's clutch two-out single.

Muleshoe was scheduled to play Saturday at Dalhart.

**LINEUP**

From page 4

"The ball just jumps off his bat," Hill said. "He has tremendous power to all fields."

The Muleshoe coach said the biggest difference is McClanahan has learned to hit the curveball this year.

The Mules (8-5 overall) have four players hitting .350 or better.

Senior catcher Aaron Purdy is hitting .450 with six doubles and 16 RBIs and senior pitcher/infielder Rodney Alanis is hitting .358.

**WRESTLING**

From page 4

league teams.

"It was a fluke," Romero said. "I went to a wrestling match in Mexico City with a friend and fell in love with it,"

The Mexico City native would not admit how old he is,

and was just as mysterious about whether wrestling matches were staged.

"My part was real," said Romero, who goes to physical therapy regularly. "I don't know about other people. All I know is I'm paying for it now."

**MHS' one-act play advances to Area**

Muleshoe High School's one-act play advanced one more step in their competitive arena with the production of "Players in a Game."

Muleshoe finished in the top two Thursday at the District 1-3A contest in Amarillo and advanced to the Area round being held next Friday in Levelland. Friona also advanced.

Kenzie Brown was named best actress at district and Scotty Mills and Nathan Keller were named to the all-star cast.

Westin Price, Steven Madrid and Cassidy Cleavinger were named to the honorable mention all-star cast.

Phillip Hardt was awarded the technical award.

**Quality Used Vehicle BLOWOUT**

Stock #	Vehicle	Price	Per Month
86142	1988 Mazda 323	\$2,995	\$113 <sup>44</sup>
5319A	1993 Mitsubishi Precis	\$4,375	\$114 <sup>00</sup>
5311A	1992 Olds Cutlass Supreme	\$4,837	\$129 <sup>00</sup>
76385B	1992 Geo Metro Convert.	\$5,995	\$156 <sup>35</sup>
5141A	1994 Pontiac Sunbird	\$6,995	\$167 <sup>31</sup>
5116	1993 Mitsubishi Mirage	\$6,995	\$167 <sup>33</sup>
5289A	1994 Chevy Cavalier	\$6,995	\$168 <sup>00</sup>
5274A	1996 Chevy Corsica	\$8,624	\$179 <sup>00</sup>
7 to choose from	1993 Buick Century	\$7,806	\$185 <sup>00</sup>
5306A	1991 Cadillac DeVille	\$6,995	\$188 <sup>00</sup>
86050B	1996 Olds Cutlass	\$9,944.51	\$197 <sup>00</sup>
2 to choose from	1997 Chevy Cavalier	\$9,995	\$199 <sup>00</sup>
71358D	1995 Mercury Mystique	\$8,995	\$199 <sup>25</sup>
5174	1994 Chevy Lumina	\$8,500	\$199 <sup>28</sup>
5110	1995 Chevy Lumina	\$9,500	\$206 <sup>73</sup>
5287A	1992 Cadillac DeVille	\$7,995	\$210 <sup>00</sup>
5278	1997 Pontiac Sunfire	\$10,995	\$213 <sup>00</sup>
5194	1994 Chevy Lumina Euro	\$9,995	\$221 <sup>91</sup>
5116	1996 Cutlass Supreme	\$10,839	\$225 <sup>00</sup>
5130	1995 Buick Regal	\$10,500	\$229 <sup>28</sup>
5243	1997 Pontiac Grand Am	\$11,995	\$237 <sup>00</sup>
51725	1996 Buick Regal	\$11,995	\$237 <sup>37</sup>
5342	1997 Buick LeSabre	\$16,995	\$329 <sup>07</sup>
1 to choose from	1996 Chevy Lumina	\$13,995	\$250 <sup>00</sup>
5177	1997 Chevy Lumina	\$12,614	\$261 <sup>89</sup>
5268A	1995 Mercury Cougar	\$12,706	\$291 <sup>00</sup>
76356A	1995 Nissan Maxima	\$17,995	\$382 <sup>07</sup>
76340A	1995 GMC Suburban 4x4	\$23,500	\$459 <sup>79</sup>
86070A	1996 Chevy Suburban	\$23,500	\$459 <sup>79</sup>
86090A	1997 Chevy Suburban	\$27,995	\$499 <sup>34</sup>

**1994 Nissan PU 4x4 Reg. Cab**  
#76209B • Reg. \$12,995  
**\$8,995**

**1992 Ford Explorer**  
#86182A  
**\$10,995**

**1996 GMC 1/2 Ton Pickup Reg. Cab**  
#76050B • Reg. \$16,995  
**\$14,995**

**1997 Chevy 1/2 Ton Reg. Cab**  
#76028A • reg. \$16,995  
**\$15,995**

**1995 Lincoln Town Car**  
#86063A • Reg. \$20,995  
**\$17,995**

**1997 Chevy Ext. Cab 1500**  
#86222A  
**\$19,995**

**1994 Chevy Suburban**  
#72216A • Reg. \$20,995  
**\$19,995**

**1997 Chevy Ext. Cab 3 Dr.**  
#5282  
**\$21,995**

**1997 Chevy Ext. Cab 3 Dr. Z71**  
#86074A  
**\$23,995**

**1994 Chevy 1 Ton Flat Bed 4x4**  
#86141A  
**\$13,995**

**1993 GMC 2500 4x4**  
#4503  
**\$10,995**

**BENDER**

*You're going to like our family!*

Chevrolet • Oldsmobile • Cadillac • 2500 Mabry Drive • (505) 763-4465

**If You Can't Come To Miracle-Ear,® Then We'll Come To You.**

Our Hearing Aid Service Center is coming to a convenient location near you. Complimentary Hearing Evaluations. We value your hearing as much as you do... Ask about our low monthly payments

**Miracle-Ear**  
Hearing Systems by Search & Lenz

Thurs. April 9, 9 a.m. - Noon  
Muleshoe Medical Center - 708 S. 1st  
Noon - 4 p.m. / In Home Visits

Call 800/808-0188

# BAILEY COUNTY DEVOTIONAL PAGE

**WES-TEX FEED YARDS, INC.**  
 Custom Cattle Feeding  
 272-7555 Muleshoe, TX

**FARWELL CONVALESCENT CENTER**  
 "In Christ's Love, Everyone Is Someone Special"  
 305 5th St.  
 481-9027 • Farwell, TX

**OECIA SUSAN'S PHOTOGRAPHY**  
 Rt. 1 Box 120 • 2 Mi. N. Hwy. 214  
 Susan Kerby  
 (806) 272-5153  
 Muleshoe, TX (806) 946-9524 mobile

**MULESHOE COOPERATIVE**  
**GINS**  
 P.O. Box 569  
 272-4794 Muleshoe, TX

**Risinger Plumbing**  
 Serving Muleshoe Area  
 All Plumbing Repairs  
**272-6772**

**FIRST TEXAS FLBA**  
**MULESHOE**  
 "Serving Farmer & Bailey Counties"  
 272-3010 • Fax 272-5388  
 316 Main • P.O. Box 424 • Muleshoe, TX

1315 W. American Blvd.  
 272-3333  
 Muleshoe, TX

**SIMNACHER NATIVE GRASSES**  
 Darwin Simmacher (505) 762-7817  
 Vince Simmacher (806) 946-3461  
 Thomas Simmacher (806) 285-2491

**PACO FEED YARD, INC.**  
 Commercial Cattle Feeders  
 P.O. Box 956 265-3281  
 Friona, TX  
 Feller Hughes-Mgr.

**MULESHOE AREA CENTER**  
 "Committed to Caring"  
 106 W. Ave. H Muleshoe 272-7578

**MULESHOE LIVESTOCK AUCTION**  
 Muleshoe, TX • Sale Every Saturday  
 Clayton Myers • 272-4201

**"THE FIVE AREA TELEPHONE COOPERATIVE ORGANIZATION"**  
 West Plains Telecommunications Co.  
 Five Area Systems, Inc., Plateau Cellular Network  
 Five Area Long Distance - Five Area Internet  
 302 Uvalde Muleshoe, USA (806) 272-5533

**MULESHOE MOTOR CO.**  
 1225 W. American Blvd. 272-4251

**BAILEY COUNTY ELECTRIC COOPERATIVE ASSOCIATION**  
 "Serving Our Members Is Our Main Priority"  
 1-800-869-7049  
 Muleshoe 272-4504 Morton 266-8600

**BRUCE, INC.**  
 AIR CONDITIONING  
 Hwy. 214 North 272-5114  
 Muleshoe, TX

**BAILEY GIN COMPANY, INC.**  
 946-3397  
 Sudan, TX  
 Peanut Hawkins, MGR

**Muleshoe Area Medical Center**  
 "Your Hospital"  
 708 S. First St. • 272-4524  
 Muleshoe, TX

**Lowe's**  
 MARKETPLACE  
 401 W. American Blvd. Muleshoe 272-4585

**AMERICAN AVIATION INC.**  
 West Hiway 84  
 272-4266 Muleshoe

**SHERLEY-ANDERSON LAZBUDDIE ELEVATOR**  
 965-2922 Lazbuddie, TX

## Facts About The BIBLE BY JOHN LEHTI

**MARK'S GOSPEL—OR IS IT?**

ST. MARK, AUTHOR OF THE SECOND GOSPEL, BELONGED TO A GREEK FAMILY FROM CYPRUS, COUSIN OF THE EVANGELIST BARNABAS, HIS SURNAME WAS MARK—GIVEN NAME, JOHN. HIS MOTHER, MARY, WAS A WOMAN OF WEALTH, IN WHOSE HOME IN JERUSALEM, MARK MET ST. PETER WHO WAS A CONSTANT VISITOR. MARK ACCOMPANIED HIS COUSIN BARNABAS AND ST. PETER ON MISSIONARY TRIPS AS AN ASSISTANT. AFTER THEIR DEATHS, HE ATTACHED HIMSELF TO PETER, FOR WHOM HE WORKED AS A LETTER WRITER AND INTERPRETER DUE TO GALILEAN-BORN PETER'S LACK OF PROFICIENCY IN GREEK AND ROMAN SPEECH.

BECAUSE MARK WROTE HIS GOSPEL WHILE AT ROME WITH PETER, MANY AUTHORITIES FELT IT WAS DONE WHOLLY UNDER PETER'S GUIDANCE—THE ANCIENT CLEMENT OF ALEXANDRIA THOUGHT SO, AS DID PAPIAS, BUT...

...WHETHER THIS IS SO OR NOT, HE WROTE WITH GREAT INDEPENDENCE! MANY THINGS CAN BE LEARNED FROM MARK THAT ARE NOT FOUND IN THE OTHER GOSPELS—FIRST, HE DID NOT WRITE HIS GOSPEL FOR THE JEWS BUT FOR THE GENTILE CONVERTS TO CHRISTIANITY...

THIS IS EVIDENT IN HIS MANNER OF TAKING TIME TO EXPLAIN CERTAIN THINGS WHICH NEEDED NO EXPLAINING TO JEWS—SUCH AS THE FACT THE "JORDAN IS A RIVER," THE PHARISEES "USED TO FAST," THE MOUNT OF OLIVES IS "OVER AGAINST THE TEMPLE," AT PASSOVER MEN "EAT UNLEAVENED BREAD"—MARK ALSO TOOK THE TROUBLE TO POINT OUT THAT MATTHEW WAS "LEVI, SON OF ALPHEUS, PETER WAS A NAME GIVEN TO SIMON BY JESUS, THAT JESUS WAS A "CARPENTER"! ALL THESE THINGS WERE COMMON KNOWLEDGE TO JEWS OF THAT DAY BUT NOT TO GENTILES. WHENEVER MARK USED ARAMAIC WORDS, HE STOPPED TO TRANSLATE THEM FOR THE GENTILE READER. IN ALL, MARK TOOK GREAT CARE TO SHOW THE HUMAN SIDE OF JESUS—HE COULD BE TIRED (IV:36), VERY ANGRY (III:5), HE COULD SIGH (VII:34, VIII:12), AND BE "GREATLY AMAZED" AND "SORE TROUBLED" (XV:37). ABOVE ALL, MARK PRESENTED JESUS AS THE MAN ON EARTH, WORKING AS GOD'S SERVANT!

SAVE THIS FOR YOUR SUNDAY SCHOOL SCRAPBOOK

This devotional & directory is made possible by these businesses who encourage all of us to attend worship services.

**MOHAWK AUTO PARTS**  
 1701 W. American Blvd.  
 272-4425 Muleshoe, TX

**Bob STOVALL Printing**  
 The Wells & Janet Hall Family  
 221 E. AVE. B • MULESHOE, TX  
 (806) 272-3373

**WESTERN DRUG**  
 114 Main 272-3106 Muleshoe

**Henry Insurance Agency, Inc.**  
 "Serving You Since 1964"  
 111 West Avenue B 272-4581  
 Muleshoe, TX

**JAMES CRANE TIRE CO., INC.**  
 107 Main 272-4594  
 Mike Hahn Muleshoe, TX

**WINKLES TRUCKS, INC.**  
 Box 757 (806) 247-2724  
 Friona, TX

**Springlake Potatoes, Inc.**  
 P.O. Box 280 • Springlake, TX  
 262-5542

Since 1957 - The Original  
**Leal's** Mexican Restaurant  
 1010 W. American Blvd. 272-3294  
 Muleshoe, TX Victor & Debbie Leal

**RONNIE HOLT INSURANCE AGENCY**  
 Specializing in Crop, Life & Health Insurance  
 Western 66 Office Bldg.  
 272-3614 Muleshoe, TX

**TERRA DISTRIBUTION**  
 Hwy. 84 • 272-4203  
 Muleshoe, Texas

**SAIN IRRIGATION & MACHINES**  
 Complete Pump Service  
 W. American Blvd. 272-4397  
 Walt Sain Muleshoe, TX 272-4148

**TINO'S**  
 104 W. American Blvd.  
 272-7528 • Muleshoe, TX  
 Daily Specials Owners: Tino & Linda Campoy

**Shipman's Body Shop**  
 Auto Painting • Wrecker Service • Free Estimates  
 Tractor Glass & Windshields  
 410 N. 1st Muleshoe, TX  
 272-4408 FAX 272-3366

**BOBO INSURANCE AGENCY**  
 108 E. Ave. C 272-4264

**MAPLE COOP GIN**  
 927-5501  
 Maple, Texas

**B/S & More Family Fun Center**  
 123 Main • Muleshoe • 272-3828

**O & C OSONS**  
 Erection Sprinkler Ser. Welding & Repair  
 Repair & Assemble  
 272-5018 909 W. American Blvd. 272-3475

**EASTER GRAIN, INC.**  
 Easter Labuddie  
 276-5255 965-2817

**Tortilla Leal's Factory, Inc.**  
 "Serving West Texas since 1957"  
 107 E. Ash 272-5772 Muleshoe, TX

**Decorators Floral & Gifts**  
 616 South First 272-4340  
 Muleshoe, TX

**ASSEMBLY OF GOD**  
**FIRST ASSEMBLY OF GOD**  
 521 South First Street • 272-3017  
 Jack Stone, Min. • 272-3984  
 S.S. 9:45 a.m., W.S. 11 a.m. & 6:30 p.m.,  
 Wed. 7:30 p.m.

**BAPTIST CALVARY BAPTIST**  
 1733 W. Ave. C. Rev. Jeff Coffman  
**CIRCLE BACK BAPTIST**  
 Intersection FM 3397 & FM 298  
 Jessie Shaver, Min. • 946-3676  
**FIRST BAPTIST**  
 220 West Ave. E.  
 Stacey Conner, Min.  
**FIRST BAPTIST**  
 Lazbuddie • 965-2126

**PRIMERA IGLESIA BAUTISTA**  
 223 E. Ave. B Roy Martinez, Min.  
**PRIMITIVE BAPTIST**  
 621 South First  
 Elder Cleveland Bass, Min.  
**PROGRESS BAPTIST**  
 Progress, TX

**PROGRESS SECOND BAPTIST**  
 Arthur Hays, Min.  
 1st & 3rd Sundays  
**RICHLAND HILLS BAPTIST**  
 17th & West Ave. D  
 George Malis, Pastor  
**ST. MATTHEWS BAPTIST**  
 Corner of W. Boston & W. Birch  
 Floyd R. Monroe, Min.  
**THREE WAY BAPTIST**  
 927-5467  
 James Sinclair, Pastor  
**TRINITY BAPTIST**  
 314 E. Ave. B  
 Robert Brown, Min.

**CATHOLIC IMMACULATE CONCEPTION CATHOLIC**  
 805 E. Hickory  
 Joseph Augustine, Min.  
**CHRISTIAN THE CHRISTIAN CENTER**  
 Morton Hwy. • 272-5105  
 Reydon Stanford, Min.

**CHURCH OF CHRIST LARIAT CHURCH OF CHRIST**  
 Sam Billingsley, Min.  
 S.S. 10 a.m.; W.S. 11 a.m. & 6 p.m.,  
 Wed. 7 p.m.

**MULESHOE FEED BARN**  
 311 W. American Blvd.  
 Muleshoe, TX  
 272-5626

**1ST BANK** MEMBER FDIC  
 202 South First 272-4515

**LAZBUDDIE CHURCH OF CHRIST**  
 Nathan Crawford, Min.  
 S.S. 9:30 a.m.; W.S. 10:20 a.m. & 5 p.m.;  
 Wed. 7 p.m.

**MULESHOE CHURCH OF CHRIST**  
 22nd & W. American Blvd.  
 John Knox, Min.  
 S.S. 9:30 a.m.; W.S. 10:20 a.m. & 6 p.m.;  
 Wed. 7:30 p.m.

**16th & AVE. D CHURCH OF CHRIST**  
 Curtis Shelburne, Min. • 272-4619  
 W.S. 10:30 a.m. & 1:30 p.m.;  
 Wed. 7:30 p.m.

**LUTHERAN ST. JOHN LUTHERAN**  
 Lariat, TX  
 Richard Greenhaner, Min.  
 S.S. 10:30 a.m.; W.S. 9:30 a.m.

**METHODIST FIRST UNITED METHODIST HISPANIC MINISTRIES**  
 E. 5th and E. Ave. D  
 Pastor Benito Cavazos  
**FIRST UNITED METHODIST**  
 507 W. 2nd St.  
 Pastor Brad Reeves  
**LAZBUDDIE METHODIST**  
 965-2121

**EL DEVINO SALVADOR**  
 814 W. Ave. C, Muleshoe, TX  
 Guadalupe Ballinas, Min.

**NAZARENE NEW VISION CHURCH OF THE NAZARENE**  
 814 W. Ave. C • 272-3622  
 David R. McIntire

**PENTECOSTAL UNITED PENTECOSTAL CHURCH**  
 207 East Ave. G • 1-800-454-6051  
 Pastor McKibben, 3 pm Sunday Service

**INTER DENOMINATIONAL NEW COVENANT**  
 Plainview Hwy. Jimmy Low, Min.  
 Steve Claybrook, Assoc. Pastor  
 W.S. 10 a.m.; Wed. 7 p.m.

The Lord is my light and my salvation; whom shall I fear? the Lord is the strength of my life; of whom shall I be afraid?  
 Wait on the Lord; be of good courage, and he shall strengthen thine heart: wait, I say, on the Lord.  
 -Psalm 27:1,14

**IRRIGATION PUMPS & POWER**  
**ZIMMATIC CENTER-PIVOTS**  
 W. Hwy. 84 272-4483

**COTTON**

From page 1

Northwest Plains zone. Whereas (other areas) are facing immediate economic infestation and need immediate attention, we need to concentrate on prevention."

Most of the speakers relayed to TDA officials that they would rather spend money on prevention than trying to control the boll weevils later.

By ignoring the boll weevil, most of the speakers said that they feared major economic damage to the area within a few years.

"Cotton is the backbone of the economy," said Jay Messenger, who is a loan officer for Muleshoe State Bank, which lends \$40-50 million to farmers in the five counties. "It is important that we join together because action needs to be taken now. It doesn't need to be put off."

One farmer pointed out that "today just about every different type of business involved in cotton is here. We have co-ops, growers, gin operators and bankers here. One thing is for certain, if we don't work together and have some sort of program, we will all be equally broke."

Working together seemed to be the easy part. No one argued that the five counties couldn't work together.

In fact, speaker after speaker was confident that the local farmers and agricultural businesses could, and more importantly would, successfully cooperate to keep the boll weevil under control.

Several speakers stressed that being in the smaller zone would be beneficial because of the area's uniform cropping method, uniform planting date, and short growing season. Also, the speakers emphasized that the farmers are organized and eager to fight the boll weevil.

Although everyone was ready to work together, not everyone was ready for the fight.

One Hale County farmer, who is a member of the Northern High Plains Zone, spoke in opposition to the entire eradication program and the split of the five counties.

"I don't understand how you think that the boll weevil can come across five counties, and you can eliminate them. Until we have a joint effort to do it, all we are doing is wasting money. We don't need another bureaucracy telling us how or when to do something."

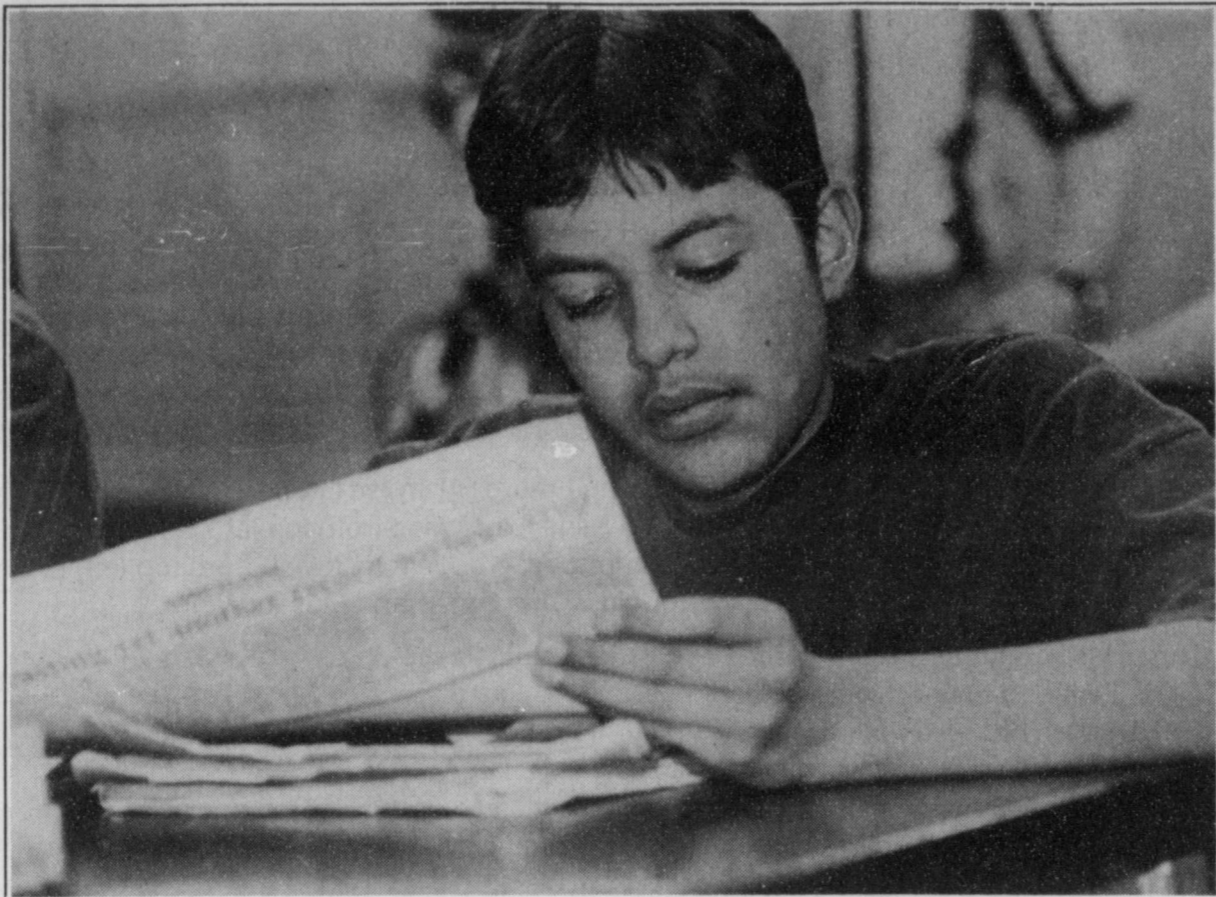
Besides being against the split, the farmer also expressed doubt over the need of the entire eradication program. The farmer said that he truly believes that when the insect becomes a major threat, cotton geneticists will create a new resistant breed of cotton.

The farmer also expressed economic concerns.

"Right now, they say the boll weevil destroys about 25 percent of the crop annually. Can you imagine what would happen if the cotton supply went up 25 percent? We can't give it away today."

The Hale County farmer found little support in the audience.

But heads across the room nodded in agreement as Needmore farmer Robert Shafer said, "I'm ready now to start something. If I have to wait for technological advances, I may not be farming in two years. I'm not sure I have time to wait."



**News hound**

Anthony Anguiano searches a newspaper for a story Thursday in preparation for a broadcast of the "Mulenews" at Watson Junior High School.

**NEWS**

From page 1

The first show was actually a commercial the students worked on at the end of English class. The commercial developed into a five-minute version of "Mulenews."

"It went for four years as part of the English class," Boutell said. "They developed it into a pretty good broadcast."

Last year, the school's principal decided to assign an entire class period for the students to work on the broadcast.

"I told her I'd give up my conference period, that's how much I wanted to do it," Boutell said.

The class debuted on an elective basis. More than 30 students applied for the class, but there was only enough space in the class for half that many. Boutell says selection for the class is done based on which students will benefit from it the most.

"We do target some at-risk students," Boutell said. "We give them a chance to succeed."

Boutell's students say they are grateful for the opportunity to work on the newscast.

"It helps me behave more, and it helps me respect my teachers a little more," said Miranda Free, who worked the mixing board during Thursday's newscast.

The students are quick to learn from their mistakes.

"We notice any little mess up other people may not

see," said Cammi Kennemer, who is also a member of the technical staff. "It puts a lot of discipline on us in this class. We have to do what we're told to or we don't get to do it."

Boutell says he is understanding of student errors.

"When kids make mistakes, they're embarrassed, they're devastated," he said. "It's a learning experience. This is not a matter of life or death, but it is important to them."

Boutell says one of the key components of the class is mixing fun with education. The news show has introduced games in which students from other classes can participate. Among these games is "Spanish Bowl," where students from Spanish class compete against each other in a Jeopardy type form.

"Kids love to be photographed or be on film," Boutell said. "If you're learning you're lesson, you get to be on the game show. It's a constant learning process."

The students also seem to understand the concept of having fun while learning.

"It's fun, and you learn how to use a VCR and cameras," food reporter Anthony Anguiano said. "If you're afraid to speak in public, you get over it."

Boutell has found creative ways to acquire equipment. He found old computer monitors in the closet of the school's computer lab and

integrated them into the newscast. He even "borrowed" a television out of principal Sheila Joyner's office.

Boutell says the show was helped tremendously by a \$5,400 grant it received last year. The grant helped pay for a new projector, a dual-deck videocassette recorder and a mixing board to switch between cameras.

Boutell says he is most proud of the improvement the students have made since joining his class.

"They get better and better as they progress," he said. "Some people are amazed that children know what a mixing board is, but they'll do anything if you teach them."

**"Hey, Fido, It's Your Move!"**

Okay, I admit it: I'm a perfectionist.

I was pretty sure that was true, but all doubt evaporated the day I caught myself spending an hour making sure the dots in the "dot leaders" in our Sunday bulletin layout lined up vertically! (You know, the

perfectionist" should be confessed in the same way a struggler at an AA meeting honestly admits, "I'm an alcoholic." But one is socially acceptable, even praised, while the other is not.

My fellow perfectionists, I must point out that our spouses and kids, coworkers and fellow church members, are probably under no illusion that our perfectionism is a virtue. Sure, when it's properly channeled, we may do some fine work, but when we get the bug really bad, we can be critical, unmerciful, judgmental, and generally impossible to live with, denying the truth of the Gospel that this is a fallen, imperfect world whose only salvation is found in a perfect Savior. Christ didn't die for perfect people!

Steve Brown, director of Key Life Network, reminds us that in this world, perfect spouses, kids, bosses, and pastors, just aren't available. When you get 51%, you file it under "Success." After all, Brown says, "When a dog plays checkers, you don't criticize his game; you're just pleased and surprised that he's playing at all! In a fallen world, dogs playing checkers and Christians growing in love and obedience are objects for praise and not criticism!"

Curtis Shelburne is minister of the 16th & Avenue D Church of Christ in Muleshoe.



**Focus On Faith**

Curtis Shelburne

dots between "Hymn" on one side and the title on the other.) Ridiculous. And maybe worse.

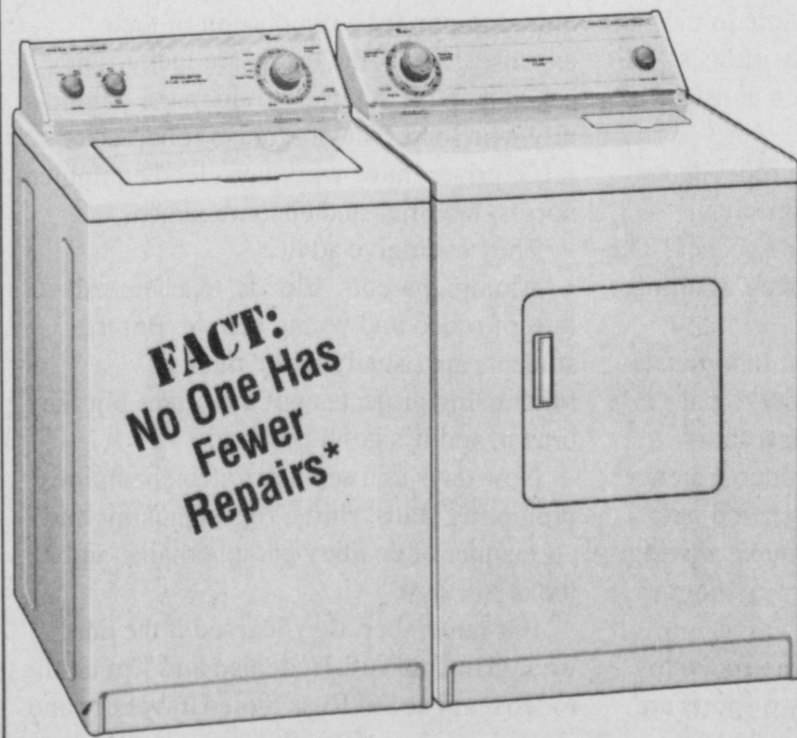
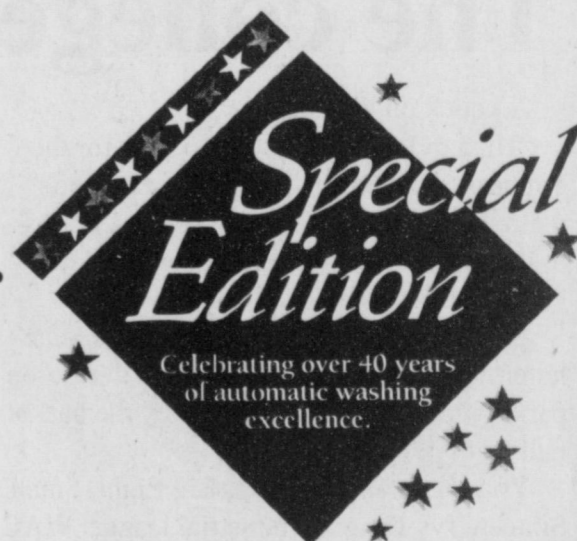
Ever notice how some "flaws" we admit with a hint of pride? "Workaholics" bemoan their plight, inwardly feeling virtuous that they work so much harder than the rest of us. They confuse productivity with clock hours, rarely admitting that work "on the job" is more fun than doing the harder but more important life tasks they use their jobs to avoid.

And perfectionists are just the same! We "admit" the flaw, all the while inwardly pleased that our standards are so much higher than those of ordinary folks. We confuse vice with virtue. "I'm a per-



Zachary Taylor refused to be inaugurated as President on March 4, 1849 because it was a Sunday. Since that left the Presidency vacant, many historians say president pro tempore of the Senate David Atchison served as President for that day. Taylor was inaugurated March 5.

**Join in Our Celebration Limited Time Offer**



**FACT: No One Has Fewer Repairs\***

**Whirlpool LXR6232E 27" Extra-Large Capacity Automatic Washer**  
 • 6 Automatic Cycles  
 • 2 Wash/Spin Speeds  
 • 3 Wash/Rinse Water Temp. Combinations

**\$349**

**Whirlpool LER3624E Extra-Large Capacity Electric Dryer**  
 • 3 Drying Cycles including Automatic Dry  
 • 2 Temperature Settings  
 • Side-Swing Door

**\$249**

\*Based on a leading consumer publication.

The Pair Only **\$598**

**WILSON APPLIANCE**

117 Main St. • Muleshoe, TX • 272-5532

**WHEAT**

From page 1

Agent Curtis Preston reported area wheat crop escaped damage.

Preston said the wheat is in good shape now but can still use a couple of good rains before the June harvest.

"We're still early in the growth period. There is excellent soil moisture and a lot of time for the plants to recover," said Bean, who is closely monitoring current wheat research trials at the Texas Agricultural Experiment Station near Bushland.

"There are 20 varieties involved in our Bushland study," he said. None of the wheat in these trials had jointed as of last Friday (March 6). The plots

were planted on Sept. 9.

According to the agronomist, cold temperatures would need to be in the single digits for a sustained period to affect pre-joined wheat significantly. Should damage occur, Bean said, only the leaves would show any ill effects. And new leaves soon replace weaker ones as part of the plant's recovery.

In fact, Bean thinks the cold weather may be a blessing since early spring freezes, such as the one last year on April 12, can do extensive damage. With this year's chilly temperatures coming just before springs' onset, the wheat's development is delayed enough to offset the impact of a later freeze.

## Lazbuddie students attend state leadership conference

Future Business Leaders of America members from Lazbuddie High School attended the State Leadership Conference held on March 12-14 in Fort Worth.

The state meeting offers workshops, general sessions with keynote speakers and presenters, the campaigns and election of state officers, and competition in 33 different business areas.

Students attending from Lazbuddie were Chris Smith, Area I State Vice-President, Cameron Turner, Joshua McDonald, Shena Seaton, Kati Mimms, Brice Foster, Dustin Weir, Amy Angeley, Scottie Brown, Marsella Jennings, Chapter Advisor, Joe Bryan (Hoppy) Jennings, and mothers Mandi Seaton, Paulette Foster, and Rita Mimms.

Shena Seaton, a junior, campaigned for Area I State vice-president. The campaign

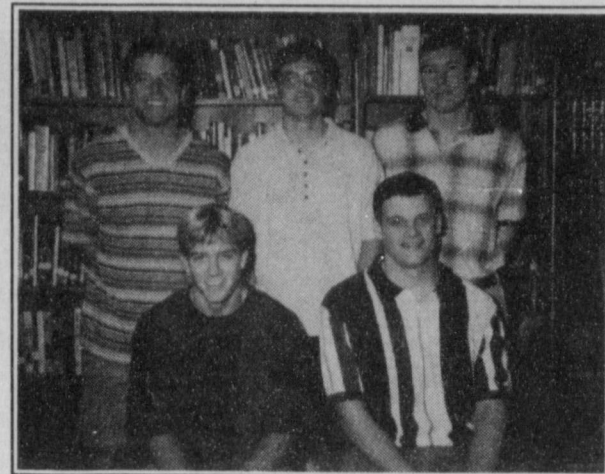
process included setting up a campaign booth, delivering a campaign speech, and participating in a caucus where she answered questions by students.

Cameron Turner, a senior, served as Shena's campaign manager. Shena was elected and will serve the Area I for the 1998-99 school year. She will attend various officer training workshops presented by TU Electric of Dallas.

In the fall, she will conduct an area workshop at the Lazbuddie school campus. As the current Area I state vice-president, Chris Smith presided over Area I meetings, caucus, and election. He was a part of the general sessions as well.

In the competition areas, Lazbuddie students competed with all classifications across the state.

Amy Angeley and Scottie Brown, both sophomores, competed in Introduction to



Lazbuddie students who recently attended the Future Business Leaders of America State Leadership Conference in Fort Worth were (girls, clockwise from top left) Scottie Brown, Shena Seaton, Amy Angeley and Kati Mimms. Also boys (clockwise from top left) Brice Foster, Cameron Turner, Joshua McDonald, Chris Smith and Dustin Weir.

Business Communication. Chris Smith, a senior, competed for Mr. FBL—a contest that includes a written test and an interview. He finished second.

In Desktop Publishing, seniors Brice Foster and Dustin Weir competed in the team event that includes a two-hour performance exam at the computer and a written exam. They finished and will advance to the national level.

In Accounting I, Shena Seaton placed fourth, and Kati Mimms, a freshman, placed second. Mimms will advance to the national level.

In Accounting II, Joshua McDonald, a junior, won first place, and Cameron Turner, a senior, finished second. Both will advance to the national level. Nationals will be July 3-9 in Orlando, Fla.

As part of their trip, students and adviser will visit NASA, Ocala—a glass-bottom boat ride, Disney World, and Florida beaches.

The Lazbuddie FBLA chapter adopted Anderson Gruhlkey, son of Jim and Melanie Gruhlkey of Muleshoe, as the poster child for the March of Dimes.

Anderson is almost four now, but at age two taught himself the entire alphabet by means of his sister Alexandria's computer.

Anderson demonstrated his computer skills to the area workshop. FBLA state resident, Sarah Lee of Ellison High School in Killeen, became acquainted with Anderson at this Area Meeting.

She created a web page for March of Dimes at the state competition and because of the outstanding impressions Anderson made on her with his computer skills, she included a picture of Anderson on the web.

The web page captured first place in the state and Lee will advance to the national level.

The Lazbuddie chapter will be conducting a Walk America fund-raiser at Lazbuddie in April. The fund-raiser is a national project for March of Dimes.

**GIVE US THIS DAY...  
OUR DAILY BREAD**

PLEASE HELP  
US DELIVER  
MEALS ON  
WHEELS.  
ONE HOUR  
PER WEEK.  
CALL 272-4858  
OR 3647

**SPRING IS AT THE  
GARDEN GATE**

Come see our...  
Bunnies, Lambs & Bird Houses

**NEW SHIPMENT OF  
BEANIE BABIES**

301 E. Main St. • Earth, TX • 257-3306

Open: Mon.-Fri. 9 am to 5 pm



### Special friend

The Lazbuddie Future Business leaders of America club adopted Anderson Gruhlkey as its poster child for the March of Dimes. Anderson, pictured with his mom Melanie, suffers from a heart condition.

## The college rodeo team

A knock on the door:

"Hi, I'm Payton Manning. I play for the Tennessee Volunteer's football team and we're havin' a raffle to pay travel expenses to the games. Would you be interested in buying some tickets?"

When was the last time the Kansas State letterman's club had a car wash in the Co-op parking lot to make money to buy the basketball team new jerseys?

You reckon any Big Ten, Big Eight, Small Sixteen, Ivy League, Industrial league, WAC, SWAC. Thwack or Humpback athletic conference has to send their players out selling cookies or magazine subscriptions to fund NCAA team expenses? More to the point, would any athlete worthy of his scholarship and pampered status even consider it? Not likely.

Unless, of course, it was the rodeo team.

Oh, well, that's different, you say.

From what, I retort. Women's soccer? The tennis teams? Gymnastics, hockey, sculling, water polo?

It is different, I guess, in that individuals can win money. But the best way to put rodeo earnings in perspective is a short conversation I overheard at a rodeo watchin' a bareback rider get his laundry aired out;

"Boy, that's a hard way to make a living."

"Yup, but it's even a harder way not to make a living."

Maybe it's not fair to compare rodeo to football or basketball. Those two sports are supposed to generate enough income to



**BAXTER  
BLACK**

ON THE EDGE OF COMMON SENSE

finance a natatorium for the swim team, a trainer for the baseball team, and swords for the fencers. But that reasoning is no longer valid since the advent of equal opportunity funding; i.e., a student golfer should be treated as well as a student running back. After all, what are they in college for.

Yet, most college rodeo teams are required to pay for a big portion of their expenses. But some teams are lucky. They have an active support group in the community who help. They organize fundraisers, raffle prizes, have workdays, lend equipment, horses, facilities and encouragement.

They even give advice. Alumni, parents, friends, teachers. All fans of rodeo and young people. But the students are usually in the thick of fundraising projects...not the brains but the brawn, and it's good training.

Now days you see pro-rodeo champions promoting jeans, shirts, ropes, pickups and all manner of cowboy paraphernalia, and it looks so easy.

But remember, they learned it the hard way, "Hi, I'm Tuff Hedeman and I'm on the rodeo team at Sul Ross State University and we're havin' a raffle..."

## DeShazo awarded Today Foundation grant

DeShazo Elementary school has received word that they have won the 1997-98 Innovative School Award.

The award includes a \$1,000 grant to be used in maintaining or expanding the school's Muleville program.

Muleville consists of several student-run operations such as a school supply store and post office.

The Today Foundation recognized DeShazo for their successful program, citing it as a benefit to both students and the community.

"We are pleased your students are learning responsibility while applying what they learn in the classroom to real-life situations," said Today Foundation chairman Richard Collins.

The DeShazo Elementary Campus Forum group wrote the grant application for this award.

## "Raising The Roof" BENEFIT GOSPEL CONCERT



**April 11, 1998  
7:00 P.M.  
Bailey Co.  
Coliseum**

Featuring:

**THE ANCHOR BROTHERS**

(Together for the first time in 3 years!)

Also Performing  
April 11th...

**Jack Stone  
Craig Stone  
Charles Schovajsa  
& many, many more...**

**For More Information Call: (806) 272-3877**

**ADMISSION IS FREE**

PROCEEDS WILL GO TO BENEFIT THE "RAISE THE ROOF" RENOVATION PROJECT ON THE OLD GIBSON BUILDING ON W. AMERICAN BLVD. IN MULESHOE.

**A DONATION WILL BE TAKEN.**

Shuttle services will be available. Please call 272-3877 to schedule a ride to this event.



# Thank You

## SHOW BUYERS' POOL CONTRIBUTORS:

A-1 Chemical Co., Inc., Hereford  
 Albus Farm Equipment, Morton  
 Alderman-Cave Feeds, Roswell, NM  
 Aleene's Executive Travel, Lubbock  
 Alex's Tire Service, Muleshoe  
 Allgood, Dr. Homer, Muleshoe  
 Altman, Ronnie, Farm, Muleshoe  
 Amherst Grain & Fertilizer, Amherst  
 Armes Equipment, Littlefield  
 Armstrong Herefords, Ft. Sumner, NM  
 Ashford, Ronald Electric Co., Muleshoe  
 Associated Farmers Delinting, Littlefield  
 Azteca Milling, L.P., Plainview  
 Bailey County Electric Cooperative Assn., Muleshoe  
 Barrett, J. Bruce, Springlake  
 Barrett, Rickey, Muleshoe  
 Barrier Farms (Tony Barrier), Muleshoe  
 Bass Appliance, Muleshoe  
 Bates, Jack & Peggy, Muleshoe  
 Beseda, Larry (Fertilizer & Chemical), Whiteface  
 Black, Mr. And Mrs. Eugene, Muleshoe  
 Blackwater Agri. Assn., Muleshoe  
 Blackwater Valley Soil Conservation, Muleshoe  
 Bobo Insurance Agency, Muleshoe  
 Bratcher Motor (Charles Bratcher), Muleshoe  
 Brown, Wanda R., Muleshoe  
 Burton's Service Center, Muleshoe  
 C&H Equipment, Muleshoe  
 Caldwell, Michael, P.C., Muleshoe  
 Caswell Cattle Co., Muleshoe  
 Central Compress, Sudan  
 Citizens State Bank, Anton  
 City Bank, Lubbock  
 Cleavinger, Criss, Muleshoe  
 Clements, Fred, Muleshoe  
 Cliff's Tire Co., Muleshoe  
 Clovis Livestock Auction, Clovis, NM  
 Cox Auto Parts, Morton  
 Cox, Reagan and Marilyn, Muleshoe  
 Crockett Pump Co., Morton  
 Dale Oil Co., Muleshoe  
 David's Farm Service (David Lamb), Morton  
 Dent & Co., Muleshoe  
 Dinner Bell Restaurant, Muleshoe  
 Double J Dairy, Rogers, NM  
 Embry, Calvin and Lona, Muleshoe  
 Energas Co., Muleshoe  
 Farmers Cooperative Elevator Assn., Levelland  
 Field Insurance Agency, Muleshoe  
 First Bank of Muleshoe, Muleshoe  
 First Federal Savings & Loan Assn., Littlefield  
 First Texas Federal Land Bank, Muleshoe  
 First United Bank, Earth  
 Five Area Telephone Cooperative, Muleshoe  
 Foster Fertilizer, Lazbuddie  
 Friona Coop Gin, Friona  
 Gallman Payloader, Friona  
 Gebo Distributing Co., Plainview  
 Genesis Farms (Vic Coker), Muleshoe  
 Grant Farms (Kevin Grant), Muleshoe  
 Grant, C.E., Muleshoe  
 Green Brothers, Inc., Muleshoe  
 Green, Gordon H. (Corky), Muleshoe  
 Hall Brothers Spraying, Sudan  
 Hartline Construction Co., Littlefield  
 Henry Insurance Agency, Muleshoe  
 Hereford Bi-Products, Hereford  
 Hereford Feed Ingredients  
 Heyco, Inc., Hereford  
 Hi-Pro Feeds, Friona  
 Holt, Ronnie, Muleshoe  
 Hunt, Robert and Nelda, Muleshoe  
 Irrigation Pump & Zimmatic, Muleshoe  
 Irrigation Supply, Muleshoe  
 Jesko, Larry, Muleshoe  
 Jinks, Tom, Muleshoe  
 Kendrick Oil Co., Friona  
 Kerr Land and Cattle Co., Muleshoe  
 King Ag Aviation, Sudan  
 Kirk, Lacie, Muleshoe  
 L&B Supply, Morton  
 Lane, Mr. and Mrs. Jack, Morton  
 Lariat Gin, Farwell  
 Leo's Blacksmith Shop, Muleshoe  
 Leopard, Robert, D.D.S., Muleshoe  
 Lewis, Tommy, Morton  
 Littlefield Butane Co., Littlefield  
 Littlefield Delinting Co., Littlefield  
 Maple Coop Gin, Maple  
 McClanahan, Dr. Mark  
 McCormick Seed & Grain Co., Muleshoe  
 Minsa Southwest Corp., Muleshoe  
 Mohawk Auto Parts, Muleshoe  
 Moore, Kerry & Pat, Muleshoe  
 Morris, Keith (Cattle Co.), Muleshoe  
 Morton Delinting, Morton  
 Morton Equipment Co., Morton  
 Muleshoe Abstract Co., Muleshoe  
 Muleshoe Rotary Club, Muleshoe  
 Muleshoe State Bank, Muleshoe  
 Needmore Coop Gin, Sudan  
 Newton, Alan Insurance, Littlefield  
 North Bailey Gas Farmers Coop Society, Muleshoe  
 Paco Feed Yard, Friona  
 Parmer County Implement, Friona  
 Pivot Products, Muleshoe  
 Plains Coop Oil Mill, Lubbock  
 Plains Cotton Growers, Lubbock  
 Plains Ford New Holland, Hereford  
 Plainview PCA, Muleshoe  
 Plateau Cellular Network, Clovis  
 Puckett, Della, Muleshoe  
 Purdy, Dr. Bruce, Muleshoe  
 Redwine, Dr. Jerry, Muleshoe  
 Riney Cattle Co., Olton  
 Roberson, Billy, Muleshoe  
 Roger's Tire & Supply, Morton  
 Roley's, John (Autocenter), Littlefield  
 Sanitary Barber Shop, Muleshoe  
 Scoggins Ag Center, Muleshoe  
 Scott's Car Wash, Muleshoe  
 Scott, R.L., Muleshoe  
 Security State Bank, Farwell  
 Shanks, Mr. And Mrs. Gerald, Muleshoe  
 Sherley-Anderson, Lazbuddie  
 Sherley-Anderson, Farwell  
 Silvers Butane Co., Morton  
 Skipworth, Jeff, Muleshoe  
 Smith, Albin (Tire Service), Clovis, NM  
 Southwestern Public Service Co., Plainview  
 Spies, Mr. and Mrs. Ronnie, Muleshoe  
 Stevenson, Joe Bob, Muleshoe  
 Sudan Livestock & Feeding, Sudan

Sudduth & Field Co., Muleshoe  
 Tammy's Kitchen, Muleshoe  
 Teague-Strebeck, Portales, NM  
 Terra Distribution, Muleshoe  
 Tooley, Howard, Maple  
 Town & Country Stores, Muleshoe  
 Trinity Co., Muleshoe  
 Vertical Turbine Service (VTS), Littlefield  
 Vise, Dale & Nellie, Farwell  
 Wallace Oil Co., Morton  
 Watson, Delbert, Muleshoe  
 Webb, Webb & Wright, Muleshoe  
 Wedel, James L., Muleshoe  
 Wedel, James P., Muleshoe  
 West Camp Gin, Muleshoe  
 West Plains Telecommunications, Inc., Muleshoe  
 Western 66 Co., Muleshoe  
 Wilbur-Ellis Co., Littlefield  
 Williams, Lee, Amarillo

## PURCHASERS ANIMALS AND PRODUCTS:

Adams, J.K., Muleshoe  
 Ag Aviation (Fred Locker), Muleshoe  
 Alderman Cave, Roswell, NM  
 All Star Texaco (Herman Morrison), Muleshoe  
 Altman Insurance Group (Barry Altman), Lubbock  
 Amn, J.G. (Dollie), Muleshoe  
 Bailey Gin (Peanut Hawkins), Muleshoe  
 Baker, Rodney, Muleshoe  
 Bamert, Nick (Bamert Farms), Muleshoe  
 Bamert Seed Co., Muleshoe  
 Barrier, Tony & Nancy, Muleshoe  
 Bayer Animal Clinic (w/Muleshoe Vet Supply), Muleshoe  
 Bell, Steve, Muleshoe  
 Bessire, Travis, Muleshoe  
 Black, Rex Family, Muleshoe  
 Brown, Mac, Muleshoe  
 Citizens Bank, Texico  
 City Bank (Melvin Chisum), Springlake  
 Clauch, Bennie, Bula  
 Clauch, Jacen, Muleshoe  
 Clauch, Jim Pat & Susie, Muleshoe  
 Clay's Corner Gin, Muleshoe  
 Corvette Farms (James Brown), Muleshoe  
 Coyote Lake Feed Yard, Muleshoe  
 Crane, Mrs. Mary, Muleshoe  
 D&S Cattle Co., Sulfur Springs, FL  
 Davis, Murray, Morton  
 Dinner Bell Restaurant, Muleshoe  
 Dream Maker Goats (Carroll Black), Muleshoe  
 Ellis, Todd, Muleshoe  
 Ellis, Todd & Frank, Muleshoe  
 Ellis Funeral Home, Muleshoe  
 Ellis, Colt, Muleshoe  
 Embry, Derrel, Muleshoe  
 Embry, Buddy, Muleshoe  
 Farmers Coop Gin, Enochs  
 Feed Services, Inc., Lubbock  
 Furgeson, Johnny, Morton  
 Gladden, Jill, Muleshoe  
 Gleason, Dr. Jerry, DVM, Levelland  
 H&W Hay Co., Muleshoe  
 Hancock, Larry & Pam, Muleshoe  
 Harrison, Kelly, Muleshoe  
 Harrison, Ted, Muleshoe  
 Harrison & Harrison, Muleshoe  
 Harrison, Dianne, Muleshoe  
 Heathington, Margaret, Muleshoe  
 Heathington, Aubrey, Muleshoe  
 Heathington, Hattie, Muleshoe  
 Higginbotham-Bartlett, Muleshoe  
 Highland Livestock (Gary Bishop), Muleshoe  
 Hooten, Gary & Family, Muleshoe  
 Hunt, Robert & Nelda, Muleshoe  
 Hurst Farms, Lorenzo  
 J.O.B. Farming, Inc., Muleshoe  
 Kennedy, Dr. Steve, Muleshoe  
 Kennedy, Ky and Keila, Muleshoe  
 Kerby, Leslie, Muleshoe  
 Kindle Farms, Sudan  
 King Ag Aviation, Sudan  
 Kirby, Reuel, Morton  
 Kirby, Craig, Sudan  
 Kirby, Betty, Morton  
 Layton, Jarroll, Morton  
 Leal's (Victor Leal), Muleshoe  
 Lee, Albert, Muleshoe  
 Lowe's Supermarkets (Roger Lowe), Littlefield  
 Maple Grass, Maple  
 Morrison Oil Co. (Herman Morrison), Muleshoe  
 Morton, Mark Insurance, Muleshoe  
 Morton Insurance Agency (W.C. Eubanks), Morton  
 Muleshoe Feed Barn, Muleshoe  
 Muleshoe Vet Supply, Muleshoe  
 Muleshoe Livestock Auction, Muleshoe  
 Muleshoe Coop Gin, Muleshoe  
 Muleshoe Journal, Muleshoe  
 Muleshoe Motor Co., Muleshoe  
 Mutchler, Derrel & Barbara, Muleshoe  
 Myers, Clayton & Gladys, Muleshoe  
 Parmer Co. Implement, Friona  
 Pay-N-Save Stores, Muleshoe  
 Pearson, Norene (JCNP Cattle Co.), Muleshoe  
 Plateau Cellular Telephone Co., Clovis, NM  
 Pollard, Terry, Portales, NM  
 Prairie View Dairy (Larry Hancock), Muleshoe  
 Preston, Curtis & Karie, Muleshoe  
 Redwine, Dr. Jerry, D.O., Muleshoe  
 Richardson, Ronnie, Maple  
 Schuster, Alec, Muleshoe  
 Simpson, Dan, Maple  
 Skiles, Cliff, dba LHP, Hereford  
 Southwest Gin Ltd., Morton  
 State Line Irrigation, Muleshoe  
 Stevenson, Joe Bob, Muleshoe  
 T&T Farms, Muleshoe  
 Texas Sesame, Muleshoe  
 Tooley, Howard, Maple  
 Treasures From The Heart (Sheila Black), Muleshoe  
 Tunnell, Wayne, Muleshoe  
 Vandiver, Monti, Muleshoe  
 W.T. Show Feeds, Muleshoe  
 West-Tex Feed Yard, Muleshoe  
 West Camp Gin, Muleshoe  
 Western Drug (Paul Wilbanks), Muleshoe  
 Whalin, Dal, Muleshoe  
 Wheeler, Joe & Letha, Muleshoe

## CENTURY CLUB MEMBERS:

ADM Specialty Grain Co.  
 Bailey Gin Co., Sudan  
 Bailey County Electric Coop.

## To all of the following contributors to the 1998 Bailey County Junior Livestock Show

Bamert Seed Co.  
 Blackwater Agri. Association  
 Bobo Insurance Agency  
 Buford-Barrier Farms  
 C&H Equipment  
 Central Compress, Sudan  
 Citizens Bank of Clovis, Texico, NM  
 Clay's Corner Gin  
 Davey Haberer Feeds, Earth  
 Della Puckett, Muleshoe  
 First Texas Federal Land Bank  
 First Bank of Muleshoe  
 Five Area Telephone Coop.  
 Foster Fertilizer, Lazbuddie  
 Gallman Payloader Service  
 Green Brothers, Inc.  
 Hereford Bi-Products  
 Irrigation Pump Co.  
 James Crane Tire Co.  
 Joe's Boot Shop  
 Kendrick Oil Co., Friona  
 Kerr Land & Cattle Co.  
 Larry Jesko, Muleshoe  
 Littlefield Delinting Co., Littlefield  
 Maple Coop Gin, Maple  
 McCormick Seed & Grain  
 Mike Caldwell, PC  
 Mohawk Auto Parts Co.  
 Morton Delinting Co.  
 Muleshoe Rotary Club  
 Muleshoe Livestock Auction  
 Muleshoe State Bank  
 Muleshoe Coop Gin  
 Muleshoe Publishing Co.  
 Needmore Coop Gin, Sudan  
 Paul Wilbanks, dba Western Drug  
 Pivot Products  
 Rickey Barrett, Muleshoe  
 Scoggins Ag Center  
 Sherley-Anderson, Lazbuddie  
 Sherley-Anderson, Farwell  
 Steve Bell, Muleshoe  
 Sudduth & Field Co.  
 Wes-Tex Feed Yard  
 Western 66 Co.  
 Wiedebush & Co.  
 Wilbur-Ellis Tide Division, Littlefield

## DONORS OF PRODUCTS & SERVICES FOR SALE:

Adrian, Lonnie Photography, Muleshoe  
 Ag Aviation (Fred Locker), Muleshoe & Tri State  
 Ag Aviation (Fred Locker), Muleshoe & American Cynamid  
 Ag Aviation (Fred Locker), Muleshoe & Monsanto  
 Ag Aviation (Fred Locker), Muleshoe & Dow Elanco  
 Ag Aviation (Fred Locker), Muleshoe & Rhone-Poulenc  
 Ag Aviation (Fred Locker), Muleshoe & Shield  
 Ag Aviation (Fred Locker), Muleshoe & Helena  
 Ag Aviation (Fred Locker), Muleshoe & BASF  
 Ag Aviation (Fred Locker), Muleshoe & Zeneca  
 Ag Aviation (Fred Locker), Muleshoe & DuPont  
 Ag Aviation (Fred Locker), Muleshoe & Novartis  
 Ag Aviation (Fred Locker), Muleshoe & Griffon  
 Ag Aviation (Fred Locker), Muleshoe & FMC  
 Anonymous "Friend of 4-H"  
 Bailey County Propane, Muleshoe  
 Bailey County Farm Bureau, Muleshoe  
 Baker, Rodney, Muleshoe  
 Benham, Jack, Muleshoe  
 Blackwater Ag (Ronnie Black, Mgr.), Muleshoe  
 C&H Equipment Co., Muleshoe  
 Clauch, Bennie, Bula  
 Cliff's Saddle Shop (Cliff Allen), Muleshoe  
 Crane, James Tire Co. (Mike Hahn), Muleshoe  
 D&L Upholstery (Larry & DeAnna Rasco), Muleshoe  
 Dent & Co., Muleshoe  
 Dollar Store, Muleshoe  
 Farm Equipment Co., Morton  
 Fig Tree (Shanna Glover), Muleshoe  
 Fry & Cox, Muleshoe  
 Gladden, Alvin, Gail & Girls, Enochs  
 Haberer, Davey Feeds, Earth  
 Harrison, Jerry, Muleshoe  
 Heathington, Don & Dani, Muleshoe  
 Herington, Jay & George Warner Seed Co., Muleshoe  
 Heritage Inn, Muleshoe  
 Hi-Tek Automotive, Muleshoe  
 Honey Comb (Nancy Barnhill), Muleshoe  
 Jan's Unique Nails (Jan Springfield), Muleshoe  
 Jarman Pioneer Seed (Gene Paul Jarman), Muleshoe  
 Joe's Boot Shop (Joe & Darla Rhodes), Muleshoe  
 Joe's Country Junction (Joe & Darla Rhodes), Muleshoe  
 K.C. Mufflers, Muleshoe  
 Kerby, Oecia Susan, Muleshoe  
 Kindle, Carolyn, Sudan  
 King Ag Aviation, Inc., Sudan & Helena  
 King Ag Aviation, Inc., Sudan & Dow Elanco  
 King Ag Aviation, Inc., Sudan & Tri-State Chemicals  
 King Ag Aviation, Inc., Sudan & Int. Humate  
 King Ag Aviation, Inc., Sudan & Terra  
 King Ag Aviation, Inc., Sudan & Wilbur-Ellis  
 King Ag Aviation, Inc., Sudan & Rhone-Poulenc  
 King Ag Aviation, Inc., Sudan & BASF  
 King Ag Aviation, Inc., Sudan & DuPont  
 Lasting Impressions (Helen Hunter), Muleshoe  
 Leal's (Victor Leal), Muleshoe  
 Lewis Farm & Ranch, Morton  
 Magby Trucking (Rich Magby), Muleshoe  
 Main Street Beauty Shop (Bernice Holdeman), Muleshoe  
 Morrison "U-Haul" (Herman Morrison), Muleshoe  
 Morrison Oil (Herman Morrison), Muleshoe  
 Muleshoe Floor Covering, Muleshoe  
 Muleshoe Feed Barn, Muleshoe  
 Muleshoe Trade Center (John Stevens & Family), Muleshoe  
 Needmore Coop Gin, Needmore  
 Pope, Gary Trucking, Muleshoe

Preston, Karie (Mary Kay Products Distributor), Muleshoe  
 Redwine, Dr. Jerry, D.O., Muleshoe  
 Scoggins Ag Center (Lewis Scoggins), Muleshoe  
 Shafer Nursery & Irrigation, Muleshoe  
 Shafer Farms, Muleshoe  
 Sheree's Attic (Sheree Hunt), Muleshoe  
 Slayden, Mike, Muleshoe  
 Sparkle Cleaners, Muleshoe  
 Terra Distribution, Muleshoe  
 Wiedebush & Co., Muleshoe  
 Williams Athletics (Roger & Dawn Williams)  
 Williams Bros. Office Supply (Roger & Dawn Williams)  
 Wilson Drilling Co., Muleshoe  
 Winkler Meat Co. (Larry Winkler), Muleshoe

## BOARD MEMBERS:

Rex Black, Chairman  
 Jim Pat Clauch, Vice President  
 Jerry Redwine, D.O., Secretary-Treasurer  
 Rodney Baker  
 Murray Davis  
 Derrel Embry  
 Mike Hahn  
 Sam Whalin  
 Don Heathington  
 Barry Cowart, DVM  
 Steve Kennedy, DVM  
 Joey Kindle  
 Kelly Harrison  
 Terry Pollard  
 Kim Black  
 Craig Kirby  
 Ronnie Altman  
 Larry Hancock

## AG SCIENCES TEACHERS:

Carl Wheeler, M.I.S.D.  
 Howard Tooley, Three Way I.S.D.

## AG BOOSTERS:

Curby Brantley, Jr., Muleshoe  
 Jack Reeves, Three Way

## COUNTY EXTENSION AGENT-AGRL:

Curtis Preston

## JUDGES:

Classifier: J.D. Ragland  
 Goat Show: Cody King  
 Sheep Show: Cody King  
 Swine Show: Eddie Puckett  
 Cattle Show: Dr. Chris Skaags  
 Dairy Heifer Show: James Duffy  
 Showmanship: James Duffy

## CONCESSION STAND WORKERS:

A very special thanks to Dani Heathington and Teri Hahn and both Bailey County 4-H Club ladies and youth who assisted, and to Jackie Wheeler and the Muleshoe FFA ladies who assisted with the concession stand again this year. We appreciate all of you!

## BAILEY COUNTY COLISEUM STAFF:

Kevin Smith  
 Marshall Cook

## ANNOUNCERS:

Alec Schuster  
 Gary Hooten

## SHOW RING HELPERS:

Kelly Harrison  
 Ronnie Black  
 Mike Hahn  
 Charles Thomason  
 Rodney Baker  
 Albert Lee  
 Dr. Jerry Redwine  
 Starla Ellis  
 Tony Barrier  
 Alvin Gladden  
 Ronnie Altman  
 Travis Bessire

## OTHER HELPERS: Lyndal Black

## BOOKKEEPERS/RECORD KEEPERS & OTHERS ASSISTING:

Thurman Myers, Auctioneer  
 Brenda Black, Auction  
 Karie Preston, Records  
 Susie Clauch, Auction  
 Gail Gladden, Records  
 Sheryl Altman, Records  
 Pat Moore, Records

## PICTURES: Scot Stinnett, Muleshoe Journal

## BUYER'S CLUB MEAL PREPARATION & SERVING:

Jack Dunham  
 Dani Heathington  
 Susie Clauch, Brenda Black, Rhonda Myers

## YOUTH WHO ASSISTED WITH AWARDING TROPHIES & RIBBONS:

Andi Black  
 Amy Burris  
 Megan Mason  
 Marlie Black  
 Cody Altman  
 Brady Black  
 Cami Jo Vandiver  
 Trissy Herington  
 Rhett Richardson  
 Kenley Baker

## NEWS MEDIA:

Scot Stinnett & Staff of the Muleshoe Journal  
 Magann Rennels and Staff of Channel 6

With "Special Thanks" to the Retired Board Members who continue to work and support the show. We appreciate you!

Travis Bessire  
 Reuel Kirby  
 Mac Brown  
 Jack Dunham  
 Rich Magby  
 Joe Wheeler  
 Alec Schuster  
 Herman Morrison  
 Dr. Jerry Gleason  
 Wayne Tunnell  
 Lyndon Huckaby  
 Jerry Harrison

We sincerely appreciate all contributions which have been made to the Bailey County Junior Livestock Show, whether monetary, by services, by donations, by purchases in the product and animal sale, or in whatever way of support you used. If we have inadvertently left anyone off of our "thank you" ad, we extend our apology. It has not been our intention to overlook anyone who supported our 4-H and FFA youth in the 1998 show.

## SCHOOL MENUS

April 6 — 10

### MULESHOE HIGH & J.R. HIGH SCHOOLS

**Breakfast**  
**Monday** — French toast sticks, fruit or juice, milk. **Tuesday** — breakfast on a stick, fruit or juice, milk. **Wednesday** — breakfast burrito, fruit or juice, milk. **Thursday** — ham biscuit, fruit or juice, milk. **Friday** — bad weather day.  
**Lunch**  
**Monday** — tacos, lettuce and tomatoes, corn, mixed fruit, milk. **Tuesday** — Szechuan chicken, white rice, egg roll, mixed vegetables, milk. **Wednesday** — Creole spaghetti, peas and carrots, sliced peaches, Italian bread, milk. **Thursday** — grilled cheese, vegetable soup, cinnamon

roll, pineapple tidbits, milk. **Friday** — bad weather day.  
**DESHAZO & DILLMAN**  
**Breakfast**  
**Monday** — French toast sticks, fruit or juice, milk. **Tuesday** — breakfast on a stick, fruit or juice, milk. **Wednesday** — breakfast burrito, fruit or juice, milk. **Thursday** — ham biscuit, fruit or juice, milk. **Friday** — bad weather day.  
**Lunch**  
**Monday** — tacos, lettuce and tomatoes, corn mixed fruit, milk. **Tuesday** — pizza, tator tots, mixed vegetables, peanut butter cookie, milk. **Wednesday** — Creole spaghetti, peas and carrots, sliced peaches, Italian break, milk. **Thursday** — grilled

cheese, vegetable soup, cinnamon roll, Easter ice cream, milk. **Friday** — bad weather day.  
**THREE WAY**  
**Breakfast**  
**Monday** — cinnamon roll, frosted Cherrios, juice, graham crackers, milk. **Tuesday** — biscuit, sausage, Cocoa Puffs, juice, graham crackers, milk. **Wednesday** — Malt o Meal, toast, apple cinnamon cereal, juice, graham crackers, milk. **Thursday** — waffle, Lucky Charms, juice, graham crackers, milk. **Friday** — no school.  
**Lunch**  
**Monday** — chicken strips, potatoes, gravy, green beans, sugar cookies, milk. **Tuesday** — tamales, pinto beans, salad, Spanish rice, applesauce,

milk. **Wednesday** — cheeseburger, potato wedge, apple, milk. **Thursday** — fajitas, salad, ranch style beans, tortillas, apricots, milk. **Friday** — no school.  
**LAZBUDDIE**  
**Lunch**  
**Monday** — steak pattie, pizza, subs, corn dogs, mashed potatoes, green beans, carrots, fruit, salad, jello, milk. **Tuesday** — enchilada, (PK-1) pig-n-blanket, burritos, tuna, tacos, pinto beans, spanish rice, hominy cassrole, fruit, salad, jello, milk. **Wednesday** — Salisbury steak, hamburgers, bbq-sausage, egg rolls, noodles, mixed vegetables, fried okra, fruit, salad, jello, milk. **Thursday** — managers special. **Friday** — Easter break.

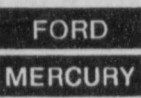
## SHAWN BUSSEY

Call for the best prices and service anywhere on

NEW 1999 Heavy Duty Ford Powerstrokes and Heavy Duty Dodge Trucks, along with a full line of other Ford and Dodge Pickups.

NEW 99's Arriving Daily! Teague-Strebeck Ford

Good selection of 98's  
 Chrysler • Plymouth • Dodge  
 Ford • Mercury



1115 North Chicago • Portales, NM • 505-356-8581 or 505-762-3845

## EASTER SUNRISE SERVICES

Sunrise service will be held at 7:00 am at the tennis courts in the park across the street from 16th and D Church of Christ. Curtis Shelburne will be ministering and Jack Stone will be leading the music.

Everyone is welcome to attend. Fellowship and doughnuts will be served afterward at the Church of Christ.



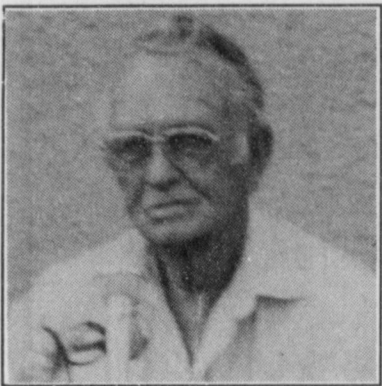
HE IS RISEN!

Sponsored by the Bailey County Ministerial Alliance

Muleshoe Journal  
 Classifieds  
 272-4536

## OBITUARIES

### RUBEN PRICE



Ruben Price, 76, of Muleshoe died Thursday, April 2, 1998 at his home.

Memorial services were held April 4, 1998 at Ellis Funeral Home Chapel with Rev. Stacy Conner, pastor of First Baptist Church officiating.

Price was born July 31, 1921 in Roswell. He married Gladys Head Nov. 3, 1939 in Roswell. He married Glenda Frazier Sept. 6, 1980 in Perryton.

Price moved to Muleshoe in 1983 from Roswell. He was a farmer and delivered milk for Clardys Milk Company in Roswell for 30 years.

He was preceded in death by one brother, Henry Lee Price.

Survivors include his wife Glenda; sons, Robert Price of Grangerville, Idaho, Kenneth Price of Clovis; daughters, Barbara Jean Moore of Roswell, Carol Darlene Hill of Las Vegas, Nev.; Ester Mae Jasper of McLean, Texas, June Bolin of Roswell, Grace Jasper of Ontario, Calif.; 14 grandchildren, 14 great-grandchildren.

### MARIE TOOMBS

MAPLE—Marie Toombs, 75, of Maple died March 31, 1998 at Methodist Hospital in Levelland.

Memorial services were held April 3, 1998 at Three Way Baptist Church in Maple with Rev. James Sinclair, pastor, and Rev. George Malis of Richland Hills

Baptist Church, Muleshoe officiating.

Burial followed in Morton Memorial Cemetery under the direction of Ellis Funeral Home.

Toombs was born August 28, 1922 in Magnum, Okla. She married Harold Toombs Feb. 4, 1945 in Maple.

Toombs had lived in Maple since 1933, moving from Davidson, Okla. She was a member of the Three Way Baptist Church, Maple and the Morton Eastern Star. She was employed with the U.S. Postal Service for 30 years in Maple.

Survivors include her two sons, Gary Mack Toombs of Muleshoe, Monte Maurice Toombs of Hewett; daughter, Janice Seals of Terrell; sister Thursie Reid of Muleshoe; brother, Dondal Basham of Avenger; six grandchildren, 4 great grandchildren. Pallbearers were Nelson

Carlisle, Jack Lane, Daniel Reeves, Marvin McCaul, Marvin "Bobo" McCaul Jr., and Leon Dupler.

### JOE RODRIGUEZ

Joe Anthony Rodriguez, 6 weeks old, died Wednesday, April 1, 1998 at Muleshoe Area Medical Center.

Memorial services were held April 4, 1998 at Muleshoe Cemetery with Father Joseph Augustine, pastor of Immaculate Conception Catholic Church officiating.

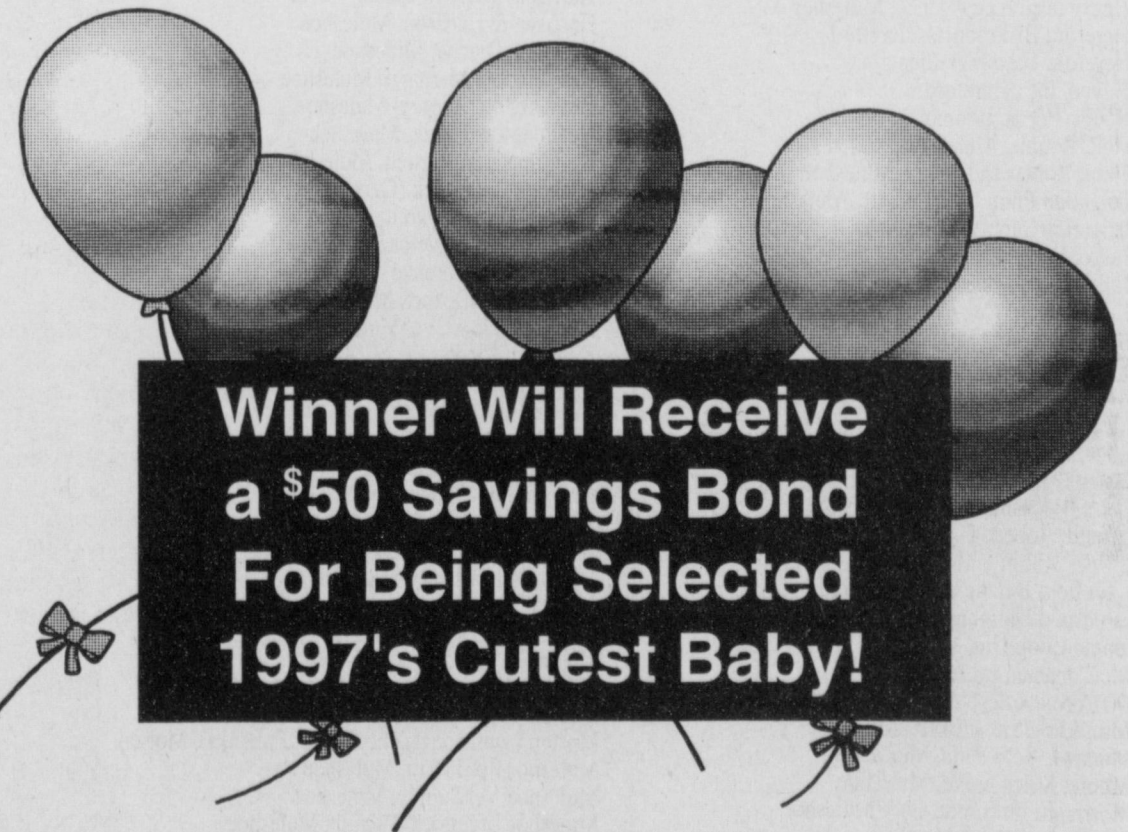
Rodriguez was born Feb. 17, 1998 in Lubbock.

Survivors include his parents, Javier H. and Berlinda Rodriguez of Muleshoe; siblings, Linda Ashley and Javier Jr.; paternal grandparents, Agustin and Rosa Rodriguez of Earth; maternal grandparents, Fred and Connie Cavazos of Muleshoe.

THE DEADLINE TO ENTER IS APRIL 7, 1998 AT 5 PM

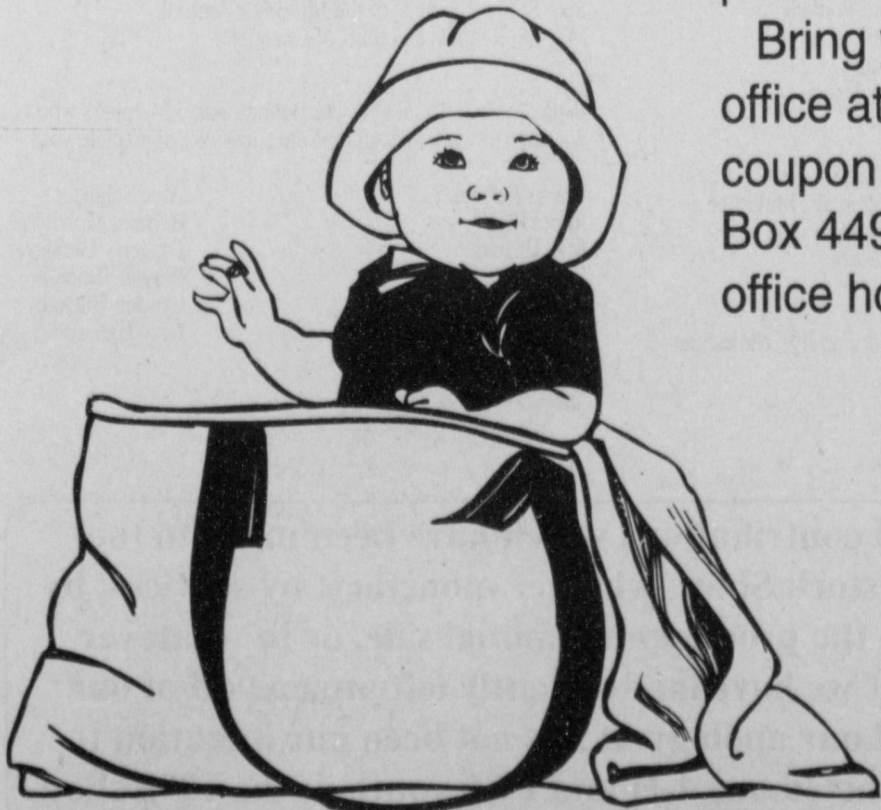
# The Muleshoe Journal's 4th Annual CUTEST BABY CONTEST

Enter any child born in 1997 that is special to you—children, grandchildren, nieces, nephews, etc.



This year's contestants will appear in the Easter (April 12th) issue of the Bailey County Journal. A panel of unbiased judges will pick the most attractive picture to be the 1997 Cutest Baby. All baby pictures will be printed. Babies need not be born in this area.

Bring your favorite child's photo along with \$9.75 to the Muleshoe Journal office at 304 W. 2nd St., Monday-Friday between 8 a.m. and 5 p.m. or mail the coupon below with your child's photo and \$9.75 to the Muleshoe Journal, P.O. Box 449, Muleshoe, TX 79347. You may pick up your baby's picture during office hours after Monday, April 13, 1998.



Please leave phone number or address (it will not be published) so that we may contact you if we need additional information.

Baby's Name: \_\_\_\_\_  
 Date of Birth: \_\_\_\_\_  
 Weight at Birth: \_\_\_\_\_  
 Place of Birth: \_\_\_\_\_  
 Length at Birth: \_\_\_\_\_  
 Mom & Dad's Name: \_\_\_\_\_  
 Grandparent's Name: \_\_\_\_\_

### NURSING HOME NEWS

Kenneth Martin was visited by his daughter Ann Williams Tuesday.

Shawna Kitchens visited and did volunteer work in the care center Tuesday.

Harold and Mary Jo Burge, Jane Reeder and Loyce Killingsworth served coffee and do-nuts to the residents Wednesday morning. Loyce Killingsworth and Irene Splawn directed our singing time.

Glenda Jennings and Jonessa Brockman came Wednesday afternoon for the weekly sing-along puppet show. Guests that participated were Jean O'Brien, Betty McCormick, her daughter Veta and her 3 children and Tennie McCormick.

Happy April birthday to Pearl Helmer on April 17, Guy

Kendall on April 14, and Kenneth Martin on April 2.

The Easter party has been scheduled for 3 p.m. Thursday, April 9. Reydon Stanford will entertain.

Beverly Wagnon, Pat Watson, Claudine Embry, Mary Jo Burge, Lanell Stancell, Ozell Cherry and Joy Stancell shampooed and set the ladies hair and gave manicures. Ozell served refreshments to the residents.

Leonard McCormick was visited Tuesday by his wife Tennie, his son Van, daughter-in-law Betty McCormick and his granddaughter and great grandchildren.

Stacey Conner of the First Baptist Church visited the care center Monday.

Wednesday, April 1 was celebrated as backward, wrongside out, unmatched and upside down day.

Guy Kendall's grand daughter Tammy and great grandson Dillion visited him over the weekend.

Ruth Clements had lunch with her husband Dee Clements Tuesday.

Joe Embry, our friendly visitor, visited the residents Tuesday afternoon.

The Muleshoe A.A.R.P. gave a donation to the care center.

Thursday morning, Pastor David McIntire, Zona Gatewood, and J.C. Shanks directed the devotional and reflection time. Clara Lou Jones was also able to attend.

Saturday afternoon Harold

and Mary Jo Burge directed the bingo party.

Each Sunday morning the American Blvd. Church of Christ comes and directs a communion service.

Clara Lou Jones taught the Sunday school class.

The Farwell Mennonite church came Sunday afternoon for church services.

Monday afternoon the residents made and decorated for their special Taco salad lunch on Tuesday.

Tuesday morning Wanda and Melvin Griffin and Ozell Cherry directed the exercise class and had friendly conversation with the residents.

Mr. Jeff Peeler visited and had coffee with his wife, and daughter, Rheta White.

**Sunday's Lunch Special**

**Roast Beef**  
w/ mashed potatoes, corn, cabbage, peach cobbler & rolls  
**\$5.95**  
(plus tax)  
*(choice of two)*

**Joe's Bar-B-Que**  
2000 Hall Ave. • Littlefield, TX • 385-3558

**Follow the Mules and Lady Mules every week in the Muleshoe Journal**  
**(806) 272-4536**

# Journal Classifieds

Deadlines are 5 p.m. Monday and Thursday      Call 272-4536      Deadlines are 5 p.m. Monday and Thursday

**STOP & SHOP**  
REAL ESTATE  
AUTOMOBILES  
HELP WANTED  
GARAGE SALES

**LEGAL**

**NOTICE**

The Bailey County Commissioners Court will sell a surplus car at public auction on April 18, 1998, in Lubbock, Texas. The car to be sold is a 1993 Ford Crown Victoria 4-door sedan, VIN 2FACP71W6PX153777, formerly operated by the Bailey County Sheriff's Office. The car will be auctioned off by the Floyd Nesbitt Auction Company at Lubbock Wrecker Service, 3209 Slaton Highway in Lubbock. The car will be auctioned at approximately 10:00 A.M. and it may be inspected at the Bailey County Courthouse until Thursday April 16, 1998.

Marilyn Cox  
County Judge  
Bailey County  
Published in the Muleshoe Journal April 2, Bailey County Journal April 5, 1998

**FOR SALE**

For Sale- 14 X 80 Mobile home 3 bedroom, 2 bath, on private fenced lot, 2 outside storage bldgs., 2 car carport. Call 272-5394. 13t-6tpd

Rebuilt vertical hollow shaft irrigation motors in stock 30 hp thru 100 hp. Ronald Ashford Electrical. (806) 272-4571. 13s-8tch

For Sale; 1997 Dodge, fully loaded, very nice, 69k, \$9,800. Day 800-299-4344 ask for Jim, night (806) 272-5291. 14s-3tch

**GOLF CART SALE** Olton Golf Cars, Sales & Service. Authorized Club Car Dealer Toll free 1-888-462-8280. 14t-18tch

Quilts for sale all sizes, or will machine quilt yours. Call 806-272-3715. 15s-2tpd

**WANTED**

**I-27 TRADERS TREASURES**  
(LOCATED ON EAST ACCESS OF I-27 SOUTH OF PLAINVIEW) Open Saturday 9-6 & Sunday 9-5  
Wood Crafts, Including Benches, Tables, Shelves, Picture Frames, Toy Boxes Or Hope Chests, Leather Crafts, Buckles, Sports Cards, Beanie Babies, Bottle Collections, Crochet, Antiques, And Your Neighbor's Garage Sale, These Are Just A Few Of The Items To Be Found At I-27 TRADERS TREASURES!!  
Booths Are Available For Vendors Who Wish To Sell Their Crafts, Antiques Or Collectibles Or For The Family Or Service Organization Planning That Yearly Garage Sale Or Fund Raiser. No Need To Worry About The Weather, All Booths Are Inside A Heated And Cooled Building.  
Call Mike Or Judy Tiner At (806) 747-7833 Or (806) 749-2202 For Details!! 15s-4tch

**HELP WANTED**

Bovina I.S.D. is accepting applications for school nurse. Requirements include: Registered nurse with valid license from Texas State Board of Nurse Examiners, and CPR certification. Bachelor's degree preferred. Send applications/resumes to Sue Nuttail, Superintendent, Bovina I.S.D., PO Box 70, Bovina, TX 79009. Deadline 4/17/98. 14t-2tch

Now hiring part-time and full-time employees. Excellent benefits, health ins., paid sick leave, 1st year 2 weeks paid vac. Retirement plan, stock purchase plan and college reimbursement program. Applications are available at your nearest Town & Country location. Drug Testing Required. 13s-5tch

Help wanted — experienced mill hand. Apply in person at Bovina Feeders. 13t-4tch

The Texas Agricultural Extension Service is hiring field scouts for the 1998 growing season. Pick up applications at the Farmer County Courthouse. 3rd floor or mail resume to P.O. Box 285, Farwell, TX 79325. Must be at least a Junior or Senior in High School. For more information call 806-481-3300. 15s-4tch

**HELP WANTED**

"AVON", Representatives Needed Now! No Inventory Required, IND/SALES/REP. Toll Free, 888-748-1759. 13t-4tpd

**Everyone should read the Muleshoe & Bailey County Journals**  
Call 272-4536 to subscribe today

**REAL ESTATE**

For Sale; 2 bedroom, 2 bath, 1 carport, central air and heat, storm cellar. 272-5291. 15s-9tpd

**GOV'T FORECLOSED** homes from pennies on \$1. Delinquent Tax, Repo's, REO's, Your Area. Toll Free (1) 800-218-9000 Ext. H-10574. For current listings. 12t-8tpd

Corner Lot! Large Deck! Large Fireplace! Sunrises! Updated Kitchen & Newly Landscaped Yard! All This & More In This Cozy 2-1-1 With Carport. Call 272-4251 8-6, or 272-4391 Evenings. 15s-tfc

**REAL ESTATE**

For Sale 3-2-2 Brick 1.35 acres. 2.5 miles from Muleshoe on State Highway #70 Call 965-2929 after 5:00 p.m. and on weekends. Shown by appointment only. 14t-9tpd

**SPRING AHEAD DAYLIGHT SAVING TIME**  
Sunday, April 5

**SERVICE**

Sewing and Alterations. Peggy 272-6764. Experienced, jeans, zippers, etc. 7s-tfc

**Singers & Songwriters**  
Nashville Production Company is providing professional recording services to up and coming new artists. Call 615-262-0110. Check us out at <http://www.baboom.com> 15s-3sunpd

**REAL ESTATE**

**James F. Hayes & Co.**  
AGRICULTURAL REAL ESTATE SERVICES

4 Labors in Bailoyboro area. Milo, wheat and cotton base. Good dryland cotton yield. Good government check. Immediate possession available.

390 Acres with 3 bdrm Austin stonehouse. Stegall area. 70 acres of native grass. 320 Acres of CRP just renewed for 10 yrs @ \$39.50 per acre. House and 70 acres can be sold separately.

160 Acres just north of Muleshoe. 2 irrigation well with new pumps. New underground pipe and wire. Late model Valley Sprinkler. Good F.S.A. payment. Immediate possession possible.

**Vic Coker, Agent**  
310 Main St. Suite 103 Muleshoe  
Office 272-3100 Home 965-2468  
WHEN LAND INVOLVES COWS AND PLOWS

The following people have announced their candidacy for the **General Election** Tuesday, Nov. 3, 1998

**DISTRICT 287TH JUDGE**

- Gordon H. Green, Democrat
- JUSTICE OF THE PEACE PRECINCT NO. 1
- Jack Bates, Democrat

**BAILEY COUNTY CLERK**

- Sherri Bessire Harrison, Republican
- Jan Pierce, Democrat

**DISTRICT CLERK**

- Elaine Parker, Democrat

**BAILEY COUNTY COMMISSIONER PRECINCT 4**

- Jerry Damron, Democrat

Paid political advertisement

**REAL ESTATE**

**AIM HIGH AIR FORCE**  
It's your life. Whatever you want to do, Air Force training, experience and education can help you reach your goals. Find out more. Call 1-800-423-USAF. 15s-13tsun

**REAL ESTATE**

**Price Reduced, Country Living at it's Best - 6 miles West of Muleshoe on Highway 1760.**  
Approx. 3500 sq. ft. Gorgeous 3-3-3 Brick home with lots of built-ins, fireplace, central heat, ref. air, sunroom with hot tub, lots of storage, large family room and utility room, every woman's dream. All on 2 1/2 acres. Also 30x50 metal barn with corrals. If you want it! This place has it!

- 320 ac. NE of Muleshoe, 2 story stucco house, very large sprinkler systems, 4 wells, lays well. Out of Area Owner says "Sell It!"
- 160 ac. SE of Lazbuddie. Excellent water area, Circular sprinkler, 100 hp elect. Motor. Excellent cash lease in effect on this farm.
- 207 ac. NW of Muleshoe. 25 hp Elect Motor, electric sprinkler. Domestic well.

New Listing: Just west of Muleshoe on pavement. Nice 3 bedroom 1 3/4 bath brick home with attached garage, 30 X 40 insulated barn, corrals and lots of storage all on 4.4 acres. Must see to appreciate. Call for more details. Great Investment Opportunity- 25 acres with 3 rent houses, 6 complete mobile home hook-ups with electricity, water and cable. Just west of Muleshoe. Reasonably Priced!! Call for more details!!

**(806) 481-3846 • Toll Free: 1-888-999-3846**  
Ronald Byrd, GRI Licensed Broker  
Home: (806) 481-9318  
Crista Bass, Sales Associate • Home: (806) 925-6464

**REAL ESTATE**

**REAL ESTATE**

**JB Sudderth Realty, Inc.**  
Daren Sudderth  
Associate Broker • State Certified Appraiser  
Res. (806) 825-3389

- \* 306 acres south of Lazbuddie with three 8" irrigation wells. 2 circle sprinklers and 2,500 head feed lot. Good water area.
- \* 550 acres south of Lazbuddie with 4 irrigation wells and 4 circle sprinklers. Good water area.
- \* 2 Quarters-CRP-SE of Muleshoe city limits. 10 - year contract in CRP. One Quarter on Highway.
- \* 404 acres In Contract Sold
- \* 160 acres southeast of Muleshoe on Highway. 2 circle irrigation wells, 2 circle sprinklers. Good water area.
- \* 160 acres southeast of Muleshoe on Highway. 1 irrigation well.
- \* 160 acres northeast of Muleshoe on Highway. 1 irrigation well.

**Nieman Realty**  
116 E. Ave. C • George Nieman, Broker • 272-5285 or 272-5286

**RICHLAND HILLS**

- 3-3-1 Brick, cent. Heat, Evap. Air, built-ins, 2000' + lv. area, fenced yd., stor. bldg, MORE!! \$60K !!! RH-2
- PARKRIDGE - NICE 3-2-2 Brick, Cent. A&H, built-ins, FP, cov. patio, fenced yd. \$50's!!
- NICE 3-2-3 Brick, corner lot, Cent. A & H, built-ins, FP, 2 stor. bldgs., storm cellar, fenced yd., MORE !!! \$60k!! RH-1

**HIGHLAND AREA**

- 3-2-2 Brick, Cent. A&H, built-ins, gas log FP, fenced yd., stor. bldg., MORE!! Price Reduced!! HL-5

**LENAU - COUNTRY CLUB AREA**

- 2-1-1 Carport Home, wall furnace, nice carpet, storm shelter, stor. bldg., fenced yd. \$20's!!! CC-3
- 2-1-1 Home, Cent. Heat, built-ins, Hardwood floors! \$19,500! L-3
- 2-1-1 Home, floor furnace, win. ref. air, fenced yd, stor. bldg., \$19,500 !!! L-1

**COMMERCIAL**

- Established Business: Land, Bldg. & Equip., \$75K!!
- 175' x 140' tract, approx. 8500' bldg. on Main. \$35K!!
- 56' x 140' tract, approx. 4700' bldg., \$35K!!!
- NICE R.V. STORAGE, 14' X 40' metal bldg. 12' doors, corner lot!!
- SNACKSHACK - Lot, Buildings, furniture, and fixtures!!!!
- LARIAT - 240 acres, 3 wells, underground tile, good productive land!!!!

**HIGH SCHOOL**

- Nice 3-2-2 Brick, Cent. A & H, built-ins, fenced yd., MORE !!! \$40's !!! HS-5
- Very Nice 3-1-1- Brick Home, cent. Heat & Air, built-ins, fans, woodburning stove, nice carpets, storage bldg., fenced yd., More !!! Price Reduced!!! HS-7
- NEWLY REMODELED 3-1-1 Home, cent. A & H, new carpet & vinyl, fenced yd., MORE !!! \$30's !!! HS-2
- VERY NICE 3-1-1 Brick, Heat pump, DW, nice carpets, fenced yd., MORE!!! \$30's !!! HS-1
- NICE 2-1-1 Brick, Heat Pump, nice carpets, well insulated, storm windows & doors. \$30's!!! HS6

**RURAL**

- 3-2-2 Home on .92 acre at edge of town, Cent. Heat, evap. air, DW, storage bldg., fenced yd., & MORE !!! \$30K!!!
- W. of SUDAN-NICE 3-3-2 Brick Home, 5 acre tract on Hwy. 298, Cent. Air & Heat, built-ins, large Quonset Barn, MORE!!! \$95K!!!
- JUST LISTED- NICE 4-1-2 Home, Heat Pump, Built-ins fenced yd., 2 Stor. Bldgs., approx. 1 acre tract, on pavement close to town!! \$ 50's !!!
- 5 Acre tract on pavement close to town!
- NICE 3-2 Home, 40 acre tract, Geo-heat Pump, built-ins, 6' well, Hi-Press. Lines, barns, corrals, tractor & equip.!!! \$75K!!!!
- LAZBUDDIE- NICE 3-2-2 CRP Brick Home on pavement, DW, Geo. Heat Pump, 4.75 ac., barns, corrals, & MORE!!! \$40's !!!
- NICE 3-2-2 Brick on pavement, 2200' t, built-ins, FP, large sunroom!! \$80's !!!

# SHURSAVING



# SALEABRATION

PRICES EFFECTIVE APRIL 1-7, 1998

## MEAT

- Fresh Boston Butt **Pork Roast** .....lb. **79¢**
- Meaty Country Style **Pork Ribs** .....lb. **\$1.29**
- Preferred Trim Boneless **Beef Arm Roast** .....lb. **\$1.29**
- Fresh **Pork Steak** .....lb. **99¢**
- Fresh **Ground Chuck** .....lb. **\$1.49**
- Bar S Boneless **Half Hams** .....lb. **\$1.39**
- Bar S Boneless-5 lb. net wt. **Whole Hams** .....lb. **\$1.29**
- Shurfine Reg. or Polish Bun Length **Smoked Sausage** .....12 oz. pkg. **89¢**
- Preferred Trim Boneless Beef Arm **Charcoal Steaks** .....lb. **\$1.59**
- Preferred Trim Boneless Beef Top **Blade Steak** .....lb. **\$1.89**
- Preferred Trim Boneless Beef **Short Ribs** .....lb. **\$1.89**
- Cubed Beef **Stew Beef** .....lb. **\$1.89**
- Shursaving Reg. or Hot **Breakfast Sausage** .....1 lb. roll. **79¢**
- Shurfine Jumbo **Meat Wieners** .....1 lb. pkg. **79¢**
- Shurfine **Meat Wieners** .....12 oz. pkg. **69¢**
- Farm Raised Raw **Catfish Nuggets** .....lb. **\$1.69**
- Shurfine • Meat Bologna • Cooked Salami • Spiced Luncheon • Garlic Bologna • P&P Loaf **Sandwich Meats** .....12 oz. pkg. **79¢**
- Shurfine Breakfast **Sausage Links** .....11 oz. pkg. **79¢**
- Shurfine **Sliced Bacon** .....1 lb. pkg. **\$1.39**
- Shurfine Thin • Ham • Beef • Turkey • Corned Beef • Pastrami • Chicken **Sliced Meats** .....2.5 oz. pkg. **39¢**
- Shurfine **Cooked Ham** .....6 oz. pkg. **\$1.49**
- Shurfine **Chopped Ham** .....6 oz. pkg. **99¢**

## PRODUCE

- Your Choice of Selected Items Only
- Texas Grapefruit • Fresh Tangy Lemons • Sweet Juicy Oranges
  - Golden Ripe Bananas • Granny Smith Apples • Red Delicious Apples • USA D'Anjou Pears • Colorado Russet Potatoes • Sweet Juicy Minneola Tangelos • Fresh Green Medium Size Bell Peppers
- Produce** .....each **10¢**

- Shursaving Saltine **Crackers** .....16 oz. box **69¢**
- Shursaving **Liquid Bleach** .....gallon jug **69¢**
- Shursaving **Salad Dressing** .....32 oz. jar **89¢**
- All Types Sprite, Dr. Pepper or **Coca-Cola** .....6 pk. 12 oz. cans **\$1.58**
- All Types Sprite, Dr. Pepper or **Coca-Cola** .....6 pk. 20 oz. btls. **\$2.88**
- All Types Sprite, Dr. Pepper or **Coca-Cola** .....3 liter btls. **\$1.88**
- Your Choice Lowe's **Drinks** .....6 pk. cans or 3 liter btls. **88¢**
- Shursaving **Salad Oil** .....48 oz. ttl. **\$1.49**
- Shursaving Asstd. **Soda Pop** .....12 pack-12 oz. cans **2/\$3**
- Shursaving Hamburger **Sliced Dills** .....32 oz. jar **\$1.39**
- Shursaving Regular **BBQ Sauce** .....18 oz. ttl. **59¢**

## FROZEN & DAIRY

- Shurfine Frozen **Orange Juice** .....16 oz. can **99¢**
- Shurfine Chocolate, Vanilla or Strawberry **Lite Ice Cream** ..1/2 gal. sq. ctns. **2/\$3**
- Shurfine **Apple Juice** .....12 oz. can **99¢**
- Shursaving Assorted **Twin Pops** .....18 ct. pack **\$1.89**
- Shurfine Select Group • Cut Green Beans • Mixed Vegetables • Green Sweet Peas • Whole Kernel Corn **Frozen Vegetables** ...32 oz. bag **\$1.89**
- Shurfine IQF Whole **Strawberries** .....16 oz. pkg. **2/\$3**
- Shursaving **French Fried Potatoes** .....80 oz. pkg. **\$1.89**
- Shurfine **Corn On The Cob** ...4 ear pkg. **2/\$3**
- Shurfine Potatoes **Hash Browns** .....32 oz. pkg. **\$1.19**
- Shurfine **Buttermilk** .....1/2 gal. jug **\$1.29**
- Shurfine **Sour Cream** .....1/2 pt. ctns. **2/\$1**
- French Onion or Green Chili **Shurfine Dips** .....1/2 pt. ctn. **69¢**
- Shurfine Buttermilk or Sweetmilk **Biscuits** .....10 ct. 7.5 oz. cans **8/\$1**
- Shurfine Chilled **Orange Juice** .....gal. jug **\$1.99**
- Shursaving **Vegetable Oil Spread** .....32 oz. tub **69¢**
- Shurfine Jumbos **Cinnamon Rolls** .....16.9 oz. can **\$1.89**
- Shurfine Cheddar, Colby Jack or Colby Longhorn **Halfmoon Cheese** ....10 oz. pkg. **\$1.69**
- Shurfine **Mozzarella Cheese** ..16 oz. pkg. **\$2.99**
- Shurfine Mozzarella or Cheddar **Shredded Cheese** ....4 oz. pkg. **89¢**
- Shursaving **Sandwich Singles** ...10.6 oz. pkg. **99¢**
- Shurfine Pimento Cheese **Spread** .....12 oz. ctn. **\$1.99**
- Shurfine Pimento **Cheese Spread** .....7 oz. ctn. **\$1.19**
- Shurfine **Corn Dogs** .....1 lb. pkg. **\$1.49**
- Shurfine **Corn Dogs** .....27 oz. pkg. **\$2.39**
- Shursaving **Coffee Filters**.....200 ct. pkg. **89¢**

## HEALTH & BEAUTY

- Western Family Assorted Gel or **Toothpaste** .....5-7 oz. tube **99¢**
- Western Family Assorted Varieties **Eye Drops** .....5 oz. ttl. **\$1.69**
- Western Family Cotton **Swabs** .....300 ct. pkg. **\$1.39**
- Western Family Nat. or w/Aloe **Baby Wipe Refills** ....80 ct. pkg. **\$1.89**
- Western Family Select Varieties Regular or Plus **Maxi Pads** .....20-24 ct. pkg. **\$1.99**
- Western Family Regular or Super **Tampons** .....32 ct. pkg. **\$2.69**
- Western Family Disposable **Razors** .....10 ct. pkg. **99¢**
- Western Family Natural or w/Aloe **Baby Wipes** .....80 ct. ctn. **\$1.99**
- Western Family Regular or Mint **Milk of Magnesia** .....12 oz. ttl. **\$1.99**
- Western Family Extra Strength Susp. **Mint Antacid** .....12 oz. ttl. **\$2.79**
- Western Family Reg./Peppermint Tablets **Antacid**.....150 ct. ttl. **\$1.99**
- Western Family Hydro Cortizone **Cream** .....1 oz. tube **\$1.69**
- Western Family Asstd. Ex-Str. Tablets **Antacid**.....96 ct. ttl. **\$1.99**
- Western Family Reg./Max. Strength **Bis-Mate** .....8 oz. ttl. **\$1.89**
- Western Family Liquid **Anti-Diarrheal** .....2 oz. ttl. **\$1.99**
- Western Family Triple Ointment **Pramoxine** .....1 oz. **\$1.99**
- Western Family **500 MG Vitamin C** ..250 ct. ttl. **\$3.99**
- Western Family **400 IU Vitamin E** ....100 ct. ttl. **\$3.99**
- Western Family Tablets **Ultra Antacid** .....72 ct. ttl. **\$1.99**
- Western Family Reg. or Extra Body **Shampoo Plus**.....15 oz. ttl. **\$1.99**
- Western Family Normal or Oily **Dandruff Shampoo** ...15 oz. ttl. **\$1.99**

- Western Family **Pain Relieving Rub** ...3 oz. tube **\$1.79**
- Western Family Regular Tablets **Enteric Aspirin** .....100 ct. ttl. **\$2.49**
- Western Family **Allergy Sinus Relief** .....24 ct. **\$2.99**
- Western Family Complete Allergy Caplets of Reg. Str. **Sinus Tablets** .....24 ct. box **\$1.99**
- Western Family **Hista Tabs Decongestant** .....24 ct. box **\$1.29**
- Western Family Liquid **Tussin Gelcaps** .....12 ct. box **\$1.89**
- 4 MG. Ctn. **Western Family Chlor Tabs** .....24 ct. box **\$1.29**
- Western Family Children's **Complete Allergy** .....4 oz. ttl. **\$1.99**
- Western Family 30 MG. Ctn. **Psudatabs** .....24 ct. box **\$1.29**
- Western Family AF Gelcaps or Max. Strength **Sinus Tablets** .....24 ct. box **\$2.49**
- Western Family Non-Coated **Aspirin** .....100 ct. ttl. **69¢**
- Western Family Decongestant or X-Moist **Nasal Spray** .....1 oz. ttl. **\$1.69**
- Western Family Caplets **Naproxen Sodium** .....50 ct. ttl. **\$3.49**
- Western Family **Sore Throat Lozenges** .....18 ct. pkg. **\$1.69**
- Western Family 5 Gr. **Coated Aspirin** .....100 ct. ttl. **\$1.29**
- Western Family Ibuprofen **Caplets or Tablets** ...100 ct. ttl. **\$2.99**
- Western Family 5 Gr. **Tri-Buffered Aspirin** ...100 ct. ttl. **\$1.99**
- Western Family Caplets or Tablets **Extra Strength Aspirin-Free** .....100 ct. ttl. **\$2.49**
- Western Family Extra Strength **Aspirin-Free Gel Caps** .....100 ct. ttl. **\$2.89**

- Shursaving **Granulated Sugar** .....4 lb. bag **\$1.19**
- All Purpose **Shursaving Flour** .....25 lb. bag **\$2.99**
- Shursaving Dinners **Mac & Cheese** ....7.25 oz. boxes **6/\$1**
- Shursaving **Tomato Sauce** .....8 oz. cans **8/\$1**
- Your Choice Shursaving Quality • Sauerkraut • Pinto Beans • CS Golden Corn • Pork & Beans • Mexican Chili Beans • WK Golden Corn • Short Cut Green Beans • White/Golden Hominy • Mixed Vegetables • Sweet Peas • Whole White Potatoes • Whole Peeled Tomatoes **Vegetables** .....14-15.2 oz. cans **4/\$1**

- Shursaving Wide Egg **Noodles** .....16 oz. pkg. **79¢**
- Shursaving White Powder **Detergent** .....32 oz. box **99¢**
- Shursaving Fabric Softener **Sheets** .....40 ct. box **99¢**
- Shursaving **Grape Jelly** .....32 oz. jar **99¢**
- Shursaving 2 Ply White **Paper Towels** .....regular roll **39¢**
- Shurfine Nacho Cheese or Restaurant Style **Tortilla Chips** .....16 oz. bags **2/\$3**
- Pre-Creamed Shursaving **Shortening** .....42 oz. can **99¢**
- Shursaving Tomato **Catsup** .....32 oz. ttl. **69¢**
- Shursaving Sliced Irregular Pears or **Peaches** .....29 oz. can **89¢**
- Shursaving Chunk Style **Dog Food** .....20 lb. bag **\$2.99**
- Shursaving Plain or Ripple **Potato Chips** .....16 oz. bags **2/\$3**
- Shursaving All Purpose **Flour** .....5 lb. bag **69¢**
- Shurfine **Basic Diapers** .....18 lg. or 24 med. **\$2.99**
- Drip, Reg. Electric Perk **Shursaving Coffee** ..11.5 oz. brick **\$1.59**
- Shursaving White **Bath Tissue** .....6 roll pkg. **99¢**
- Shursaving Flavored Chocolate **Chips** .....12 oz. pkg. **89¢**

## GET MORE FOR YOUR MONEY WITH OUR STORE BRANDS

- Shursaving Creamy/Crunchy Peanut **Spread** .....18 oz. jar **\$1.49**
- Shursaving **Grape Juice** .....48 oz. ttl. **\$1.79**
- Shursaving Cranapple **Cocktail** .....64 oz. ttl. **\$1.99**
- Shursaving Cranberry Juice **Cocktail** .....64 oz. ttl. **\$1.99**
- Shursaving Apple Juice **Cocktail** .....64 oz. ttl. **\$1.29**
- Shursaving Asstd. Sandwich **Cookies** .....32 oz. pkg. **\$1.69**
- Shursaving Cereal **Corn Flakes** .....18 oz. box **\$1.19**
- Shursaving Cereal **Crispy Rice** .....13 oz. boxes **2/\$3**
- Plain or Iodized **Shursaving Salt** .....26 oz. ctn. **29¢**
- Shursaving Filled **Evaporated Milk** .....12 oz. cans **2/89¢**

- Shursaving Long Grain **Rice** .....4 lb. bag **\$1.59**
- Shursaving White **Napkins** .....250 ct. pkg. **\$1.59**
- Shursaving **Cat Litter** .....25 lb. bag **\$2.29**
- Shursaving **Lemon Juice** .....32 oz. ttl. **\$1.49**
- Shursaving Elbow Macaroni or Long **Spaghetti** .....32 oz. pkg. **99¢**

WESTERN MONEY UNION TRANSFER<sup>SM</sup>  
"The fastest way to send money"

**Lowe's MARKETPLACE**

401 W. American Blvd. Muleshoe 272-4585

515 W. American Blvd. Muleshoe 272-4406

WE RESERVE THE RIGHT TO LIMIT QUANTITIES IN TEXAS