

COVERING EASTLAND COUNTY

EASTLAND, TEXAS, THURSDAY, MAY 3, 1962

2083-3

PRICE 10c

NO. 105

BITs



By H.V.O.

be an election square in Eastland night.

Custom that dates years and always trends from all ov-

plans to spend Saturday, and stay for

the day of recon- ment of the candi- to a man — and — they individually at they're glad. Meet- ers is fine, they being on the go from all dark is mighty

Eastland Precinct Con- will be held Saturday in the Commission- room on the second the Courthouse.

an Don Pierman says will be by the custo- receipt, stamped Democratic Primary' J. Blevins Jr., County chairman, has announce- the County Demo con- will be held May 12th in the same court-

add, that as this all of political prelim- will the Sunday ed- complete with re- want to be sure our Telegram on ing for complete

Grimes has in- \$6,000 worth of the dry cleaning er at his Sunshine 06 E. Pflimmer.

rs. Ben Hamner a trip this week railroad in Old Qimaga to Top-

thers in our city and others tion plans with ve understand.

erton was in Dal- where he receiv- from the Seiber- o., commemorat- at he is their old- number of years points out. He's ng dealer for the

AA Odessa High will give a concert p.m. at the EHS all free and you for the 30-min-

nd Band Boost- on page 2)

praisals and re soon to begin Interstate High- Eastland County, Highway Depart- ment.

of Interstate from the Calla- line to one mile. Estimated cost is \$1,880,000. Highway 20 in from junction Route 10 south- via Peecos, Fort las to the Texas- line east of Mar-

to Interstate H. 20 will be a esway on which drive all the way without meeting crossing through a or grade. Tex- tion in building portion of the

FREYSCHLAG Insurance Agency

presents the WEATHER NEWS

WARM TODAY: 85

RATE

ILE LOANS

ational Bank

"F.D.I.C." Square"

TO PASCHAL Band Director Hewett Announces Departure

Eastland's band hall wasn't a "glad-all-over" place Tuesday.

Phil Hewett, band Director here for the past three years, announced first to his band students during the afternoon that he is leaving Eastland.

Then Tuesday evening during a called meet of the Band Boosters, students' parents, he explained to them his reasons for leaving.

Hewett, who has won admirers here in the classroom, in the stadium and on the square, will leave Eastland in late July to accept the position of band director at Paschall High School in Fort Worth.

Hewett was named the Outstanding Young Man in Eastland last fall.

His reporting to that school will, in effect, be a home-coming. He graduated there, and will be replacing the band director, under whom he got his high school bandmanship. His predecessor, T. J. Retting,

He told the parents Tuesday evening, "I'm making this move for my career and my family. I'm sure I'll never have the support anywhere, as I

Civic League To Co-Sponsor Flower Show

The Civic League and Garden Club will be co-sponsors for the 4-H Flower Show to be held Saturday morning on the courthouse square.

The show will consist of vegetable or flower plants grown at home by County 4-H members. Only growing plants will be accepted.

4-H members will be given a tour of Mrs. James Horton's garden at 10 a.m. Refreshments will be served to the guests.

Judging will begin at 11:30 o'clock on the square. First place winners will be chosen in both vegetable and flower divisions and appropriate prizes awarded to each. All entries will receive ribbons.

County Candidates Report Expenses

Eastland County politicians have spent almost \$10,000 in their campaigns in the Saturday Democratic primary.

In all, \$9,400 has been reported by candidates of Eastland County seeking nominations.

Incumbent candidate for

Justice of the Peace, Prec. 1, C. E. Owen, reported \$375 during his campaign.

Cisco Justice of the Peace candidate, W. L. Lewis, spent \$146.27 and George Williams, listed no expenses in the same election.

Johnson Smith, unopposed candidate for county clerk, spent \$300.

Candidates for District Clerk named their expenses as follows: B. M. Bennett, \$668.50; Roy L. Lane, \$669.86; and Ann Justice, \$1,098.48.

H. R. (Pop) Garrett, seeking re-election as County School Superintendent, had \$407 in expenses.

Mrs. Ellen Justice, seeking the County Treasurer's office again, spent \$216 during this period.

John S. Hart, asking for re-election as County Judge, spent \$760.26. His opponents, both running for the first time, spent the following amounts: O. H. (Onous) Dick, \$863 and Ralph Lockwood, \$375.

have had here, and it's possible that we won't be as happy in Fort Worth as we are here. "I've had my sights set on (Continued on page 2)



PHIL HEWETT

First Baptist To Hear Dr. Zambus Sunday

Dr. A. James Zambus will speak at the First Baptist Church this coming Sunday here.

Dr. Zambus is associate professor of history at Hardin-Simmons University, Abilene. He will be guest speaker for both morning and evening services Sunday.

A former recipient of the Daughters of the American Revolution Award for contributions to constitutional studies and respect, he is a member of the American Church History Society and the West Texas Historical Association.

He has served as pastor of Baptist churches in Indiana, West Virginia and Virginia, and is presently a member of the First Baptist Church of Abilene and is a Training Union director and Sunday School teacher.

Justice of the Peace, Prec. 1, C. E. Owen, reported \$375 during his campaign.

Cisco Justice of the Peace candidate, W. L. Lewis, spent \$146.27 and George Williams, listed no expenses in the same election.

Johnson Smith, unopposed candidate for county clerk, spent \$300.

Candidates for District Clerk named their expenses as follows: B. M. Bennett, \$668.50; Roy L. Lane, \$669.86; and Ann Justice, \$1,098.48.

H. R. (Pop) Garrett, seeking re-election as County School Superintendent, had \$407 in expenses.

Mrs. Ellen Justice, seeking the County Treasurer's office again, spent \$216 during this period.

John S. Hart, asking for re-election as County Judge, spent \$760.26. His opponents, both running for the first time, spent the following amounts: O. H. (Onous) Dick, \$863 and Ralph Lockwood, \$375.

County Commissioner candidates from Cisco, Prec. 4, had expenses as follows: J. E. McCannell, \$352.60; Carl Lamb, \$369.81 and C. B. Dill, \$328.73.

Ranger Justice of the Peace candidate, M. D. Underwood, spent \$171 during the campaign. Another Ranger candidate for the Prec. 2 slot, Encumbent Ruby Springer, had not filed her expenses Friday, which was the deadline set for filing.

County Commissioner candidates from Gorman, Prec. 2, and their expenses Lonnie Sappers, \$345.34; M. E. Foster, \$352; Glenn Justice, \$346.13; Dick Foster, \$414.17; Charles Underwood, \$347.80; and Aubrey Bennett, \$432.00.

The candidates will file expense accounts with the county clerk again, within 10 days after Saturday's election.

ONLY PENNIES A DAY Will Rent a Safety Deposit Box Eastland National Bank Member F.D.I.C. "On the Square"

SAMPLE BALLOT

I am a Democrat and pledge myself to support the nominee of this primary.

Vote for the Candidate of your choice in each race by scratching or marking out all other names in that race.

- For Governor:**
John Connally of Tarrant Co.
Price Daniel of Liberty Co.
Marshall Formby of Hale Co.
Edwin A. Walker of Kerr Co.
Will Wilson of Dallas Co.
Don Yarborough of Harris Co.
- For Associate Justice of Supreme Court, Place No. 3:**
Zollie Steakley of Travis Co.
Willard G. (Bill) Street of Lamb County
- For Judge, Court of Criminal Appeals:**
Otis T. Dunagan of Smith County
W. A. Morrison of Milam Co.
- For Railroad Commissioner:**
William J. Murray, Jr. of Travis County
- For Railroad Commissioner: (Unexpired Term)**
Ben Ramsey of San Augustine County
Keith Wheatley of Jones Co.
- For Comptroller of Public Accounts:**
Robert S. Calvert of Travis County
- For State Treasurer:**
Jesse James of Travis Co.
- For Commissioner of General Land Office:**
Jerry Sadler of Anderson Co.
- For Commissioner of Agriculture:**
Evetts Haley, Jr. of Randall County
John C. White of Wichita Co.
- For Associate Justice, Court of Civil Appeals, 11th Supreme Judicial District:**
Esco Walter of Taylor Co.
- For Congressman, 17th District:**
Omar Burleson
- For State Senator, 22nd Senatorial District:**
Tom Creighton
Wallace Sheppard
- For State Representative, District 63:**
Scott Bailey
Wayne Gibbens
- For State Board of Education:**
Mrs. Geo. H. Swinney
- For County Judge:**
John S. Hart
O. H. (Onous) Dick
Ralph F. Lockwood
- For County Clerk:**
Johnson Smith
- For County Treasurer:**
Mrs. Ellen Justice
- For District Clerk:**
B. M. Bennett
Ann Justice
Roy L. Lane
- For County School Supt.:**
H. R. (Pop) Garrett
- For County Surveyor:**
R. T. Magness, Jr.
- For County Democratic Chairman:**
A. E. Crawley
A. J. Blevins, Jr.
- For Commissioner, Precinct 4:**
J. E. (Ed) McCannell
C. B. (Runt) Dill
Carl Lamb
- For Justice Peace, Prec. No. 2:**
M. D. Underwood
M. L. King
Ruby Springer
- For Prec. Chairman, Prec. No. 2:**
Calvin Brown
- For Justice Peace, Prec. No. 1:**
C. E. Owen
- For Prec. Chairman, Prec. No. 1:**
Don Pierson

(Scratch or mark out one statement so that the one remaining shall indicate the way you wish to vote.)

PROPOSITION NO. 1
FOR: The Legislature to submit a Constitutional Amendment to legalize parimutuel wagering on horse races.

AGAINST: The Legislature submitting a Constitutional Amendment to legalize parimutuel wagering on horse races.

PROPOSITION NO. 2
FOR: The Legislature to enact a law legalizing parimutuel wagering on horse races with the State and the tract sharing fourteen (14) per cent of the parimutuel pool, the home-county receiving two (2) per cent of the total pool, and all other counties receiving one-half of the net State share on basis of population. No racing on Sunday.

AGAINST: The Legislature enacting a law legalizing parimutuel wagering on horse races with State and the tract sharing fourteen (14) per cent of the parimutuel pool, the home-county receiving two (2) per cent of the pool, and all other counties receiving one-half of the net State share on the basis of population. No racing on Sunday.

PROPOSITION NO. 3
FOR: The Legislature to submit a Constitutional Amendment to abolish the poll tax as a prerequisite for voting.

AGAINST: The Legislature submitting a Constitutional Amendment to abolish the poll tax as a prerequisite for voting.

SHOTWELL ELECTED
Eastland Plays Host to Record District Lion Convention--422

Eastland registered a record District 2E1 Lions convention attendance and elected a new governor during the two-day festival of high jinx with closed Monday night.

A total of 422 persons signed-in on the Host Eastland registers and in so doing, tossed old district conclave attendance records out the windows.

Last year in Breckenridge, slightly over 200 attended. Lions of long standing couldn't remember when there had been a bigger turnout for a district meet.

Political overtones boiled from opening day Sunday until the closing business session Monday afternoon, when P. E. Shotwell, athletic director at McMurry College, was handily elected new governor of the district.

Shotwell, who is well known in this county for frequent speaking engagements, replaces Tom Ward of Breckenridge as chief of the Lion district.

Scoring low in the two-man race for governor was Clifford Schmidt, a certified public accountant from Mineral Wells.

Joe Weaver of Olney was elected a Crippled Children's Camp director and James Curtis of Longview was international director choice.

In all, 35 clubs in the district were represented at the Eastland convention and 163 voting delegates were certified. Cisco had 9 delegates; Eastland had 6 (Continued On Page Six)

had been a bigger turnout for a district meet.

Political overtones boiled from opening day Sunday until the closing business session Monday afternoon, when P. E. Shotwell, athletic director at McMurry College, was handily elected new governor of the district.

Shotwell, who is well known in this county for frequent speaking engagements, replaces Tom Ward of Breckenridge as chief of the Lion district.

POLLS OPEN AT EIGHT

Heavy Vote Is Expected

Absentee voting is up about 25 per cent this year for the Saturday primary.

At 5 p.m. Tuesday the County Clerk's office reported 191 Democratic votes and 2 Republican votes cast in absenteeism.

Two years ago, the first year of the early primaries, absentee voting dropped off by about 50 per cent, records show, and approximately 130 votes were cast in absenteeism.

The total county vote that year was slightly over 6,000. Eastland County voters are settling their money's worth out of their current poll taxes. The tax receipts earned votes on school, city, consolidation and now primary and later general elections, for county officers.

Ranger voters may get an extra vote out of theirs if the beer-wine election is called. Petitions with over 300 signatures are now in the County Clerk's office being checked, but at mid-week there was no

indication as to when, they would be turned over to the Commissioner's Court. The Court meets next on April 14th.

Some might contend that there's enough on the ballot to justify the price of a poll tax—even though there's a constitutional amendment proposition on the ballot, which if passed, would be an invitation to the Legislature do away with the poll.

Democratic voters will have the choice among six candidates for governor; five candidates for lieutenant governor; six candidates for attorney general; seven for congressman at large; three places to fill on the State Supreme Court; one judge, court of criminal appeals; two railroad commissioners; the uncontested offices of comptroller, treasurer and land commissioner of agriculture.

Esco Walter is uncontested for associate justice, on Eastland's Court of Civil Appeals, 11th Supreme Judicial District. Cong. Omar Burleson is unopposed for his slot from the 17th district, but there is a race between Tom Creighton and Wallace Sheppard for State senator from the 22nd Senat-

(Continued on page 2)

Voters Go To 12 Polls In County

Saturday will mark the end of vigorous campaigning for some candidates seeking nominations in the First Primary Election.

Polls will be open throughout Eastland County Saturday from 8 a.m. to 7 p.m. Serving as election chairman and their precincts are the following: Don Pierson, Prec. 1, Eastland; Calvin Brown, Prec. 2, Ranger; Mrs. Jim Everett, Prec. 3, Olden; W. G. Baker, Prec. 4, Gorman; W. H. Collins, Prec. 5, Carbon; L. E. Clark, Prec. 6, Desdemona; John C. Donaldson, Prec. 7, Kokomo; Raymond Gray, Prec. 8, Rising Star; Doss Alexander, Prec. 10, Pioneer; Ed Townsend, Prec. 11, Nimrod; J. W. Heyser Jr., Prec. 12, Cisco and Felix Boland, Prec. 13, Seranton.

The number of votes to be cast in Eastland County has been estimated at 6,000 plus.

TEAM RETURNS First Methodist Begins Weeks Revival Sunday

An evangelistic team composed of a preacher from Fort Worth and a song leader from Waco will return to Eastland for the third time to conduct a revival at the First Methodist Church, beginning Sunday.

The Rev. William Fisher, pastor, has announced that the Rev. Quay Farmer of Fort Worth and Earl L. Ward of Waco will be here for the services.

Rev. Farmer, who has conducted more than 300 meetings in 23 states during the past 15 years, is a native of Alabama and holds degrees from three universities—Bob Jones of Greenville, S. C., Southern Methodist at Dallas; and Emory at Atlanta, Ga.

Pet Miller, local chairman of the commission on membership and evangelism, has announced that coffee and doughnuts will be served in the Fellowship Hall each week-day morning at 7, preceding the early morning services. All morning services will be concluded by 7:45 a.m.

Evening services will be at 7:30 p.m. Singer Ward has 25 years experience as an evangelistic singer. He is known for distinctive style and his ability to sing the great hymns of the church.

Rev. Farmer served almost eight years as pastor in country and city churches and for years as an Army chaplain. (Continued On Page Six)

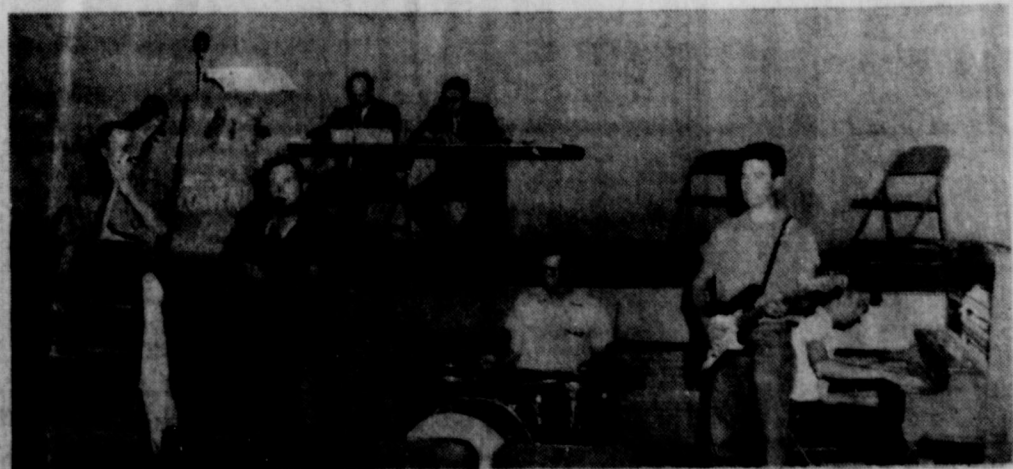
HOME IMPROVEMENT LOANS
At Lowest Rates
Eastland National Bank
Member F.D.I.C.



REV. QUAY FARMER evangelist



EARL L. WARD singer



SWINGIN' THE LIONS—Part of the District Lions Convention in Eastland early this week included some jazz of the first order. Shown here in the orchestra pit of the Majestic Theatre where the Lions met for business are the "Wild Five" from Cisco Junior College. On stage are presiding officers, D. C. Arter, chairman from Ranger, and District Governor Tom Ward of Breckenridge. (A&C Studio)

EASTLAND TELEGRAM

Eastland County Record established in 1931, consolidated August 31, 1951. Chronicle established 1887, Telegram established 1923. Entered as second class matter at the Post Office in Eastland, Texas under the Act of Congress of March 3, 1879.

Published Semi Weekly—Thursdays and Sundays
By Eastland County Newspapers, Inc.
H. V. O'BRIEN, Editor

One Week by carrier in city 15
One month by carrier in city 65
One year by mail in county 2.95
One year by mail out of state 6.95

NOTICE TO PUBLIC—Any erroneous reflection upon the character, standing or reputation of any person, firm or corporation which may appear in the columns of this newspaper will be gladly corrected upon being brought to the attention of the publishers.

BE SURE TO VOTE

(AN EDITORIAL)

Revival of the Republican Party in Texas has thrown many voters into a state of confusion over interpretation of our State's election code. For many, many years in Texas the only alternative to the voter who desired a voice in the selection of local officials was to vote in the Democratic Primary. Today this voter's plight has been compounded by the advent of the Republican candidates on the political scene at the statewide level. These men of course are going to appeal to some voters who have voted in the Democratic primary all of their lives. The question has arisen then, if it is legal to vote for the local candidates of one party in the May primary and then vote for a candidate of another party for a state wide office in the fall General Election.

Officials of both parties were contacted in regard to this question and the answer is an irrevocable "YES". There is one thing the voter cannot do legally. He cannot vote in the Democratic Primary and the Republican Primary. You may vote in the Democratic Primary and then go to the General Election and vote for a man of either party regardless of what name is stamped on your poll tax. The same is true of the Republican Primary. You may vote in the Republican Primary and vote for candidates of either party in the General Election no matter what name is stamped on your poll tax.

Why? The answer is clear. No legislature, no Congress, nor any party can deny anyone the right to go to the polls and vote as they please and for the candidate of their choice. Every man regardless of race, creed, color or party has the right to go to the polls and vote for the person he wants for every office. There is no legal or moral obligation to support the nominees of a party if one does not believe them to be the men he wants to elect. There is never a moral obligation to vote for the wrong man.

The question of voting in general does not involve a moral obligation though. Our United States Constitution guarantees that the rights and privileges given to us by God shall remain in our control. Inherent in the freedoms guaranteed by the Constitution is the moral responsibility to vote. We cannot hope to remain a free nation for long if the voting franchise is long neglected.

Heavy-

(Continued from page one)

Seeing the recently organized District 63 representative seat are Wayne Gibbens and Scott Bailey.

Mrs. George H. Sweeney of Abilene is unopposed for her seat on the state board of education.

Eastland Countians will decide between incumbent John Hart, O. H. Dick and Ralph Lockwood, for county judge.

County Clerk Johnson Smith does not have an opponent, nor does County Treasurer Mrs. Ellen Justice.

Opposing Roy Lane for District Clerk are Ann Justice and B. M. Bennett.

County School Superintendent H. R. Garrett and County Surveyor R. T. Magness Jr. are both unopposed.

A. J. Blevins Jr. and A. E. Crawley are seeking the county democratic chairmanship.

In Eastland, C. E. Owen is seeking re-election as Justice of the Peace, as is Don Pierson for Precinct Chairman.

There is one write-in campaign in Eastland, for the office of Justice of the Peace.

W. L. (Wells) Dalton, owner-operator of a Mobil Service Station, has announced that he is seeking write-in votes in the Saturday election.

There's a three-way race for peace justice in Ranger where the voters will decide between M. D. Underwood, M. L. King and incumbent Ruby Springer.

Calvin Brown is unopposed for precinct chairman in Ranger.

There's a race for County Commission seat in the Cisco precinct which includes Seranton. Carl Lamb is opposed by J. E. (Ed) McCannies and C. B. (Runt) Dill.

W. L. Lewis and George Williams are running for peace justice in Cisco, and J. V. Heysler Jr. is the uncontested precinct chairman candidate there.

Mrs. O. H. Dick is unopposed candidate as precinct chairman at Olden.

There's a 6-man commissioner's race in the Gorman precinct for the seat being vacated by B. M. Bennett, district clerk candidate.

Running are Aubrey A. Bennett, Charles Underwood, Dick Foster, Glenn Justice, Lonnie (L. E.) Capers and M. E. (Buck) Foster.

W. G. Baker is the lone precinct chairman candidate.

Carbon is in the Gorman Commissioner's precinct and will be voting in that 6-man race, and W. H. Collins is unopposed as precinct chairman, candidate.

Also voting in the Gorman Commission race will be Desdemona voters, whose precinct chairman candidate, L. E. Clark is unopposed.

Kokomo area residents vote in the Gorman race too, and precinct chairman John C. Donaldson is unopposed candidate.

Raymond Gray is the unopposed precinct chairman candidate at Rising Star, as is Ed Townsend at Nimrod, Dess Alexander at Pioneer, and F. S. Boland at Seranton.

Besides the matter of poll taxes, Texas voters will also consider legalization of parimutuel betting in two different propositions.

The first, with a "for" and "against" choice, will read: "The Legislature to submit a Constitutional Amendment to legalize parimutuel wagering on horse races."

The second, also with a "for" and "against" choice, will read: "The Legislature to enact a law legalizing parimutuel wagering on horse races with the State and the tract (sic) sharing fourteen (14) per cent of the parimutuel pool, the home-county receiving two (2) per cent of the total pool, and all other counties receiving one-half of the net State share on the basis of population. No racing on Sunday."

The third proposition, concerning poll taxes, will read, with "for" and "against" choices:

"The Legislature to submit a Constitutional Amendment to abolish the poll tax as a prerequisite for voting."

Eastland Republicans will be voting in primary too.

Their polling place will be at 207 S. Seaman St. and choices will be between Cox and Whiteburg for governor; Dibrrell and Hayes for Lieut. Governor; Barry, Miller and Phillips for congressman-at-large.

The Republican ballot has three Constitutional Amendment propositions—one concerning pari-mutuel betting, one abolishing poll tax, and the third concerning making Padre Island a seashore park.

The R publican ballot has three Constitutional Amendment propositions—one concerning pari-mutuel betting, one abolishing poll tax, and the third concerning making Padre Island a seashore park.

Another Ranger man, Sonny Sipes, and Bruce Pipkins of Eastland, tied for third place honors with 73, and Tournament Chairman Everett Plowman of Eastland followed with 73 1/2.

Pete Brashier of Ranger scored a 74 and Dr. M. E. Roth and Bob Latson, both of Cross Plains, had a 75 and a 75 1/2, respectively.

Dr. Ted Nicksick, president of Ranger College, and James Townzen, president of the Ranger Lions club both had 77s.

Another Ranger man, Sonny Sipes, and Bruce Pipkins of Eastland, tied for third place honors with 73, and Tournament Chairman Everett Plowman of Eastland followed with 73 1/2.

Pete Brashier of Ranger scored a 74 and Dr. M. E. Roth and Bob Latson, both of Cross Plains, had a 75 and a 75 1/2, respectively.

Dr. Ted Nicksick, president of Ranger College, and James Townzen, president of the Ranger Lions club both had 77s.

Another Ranger man, Sonny Sipes, and Bruce Pipkins of Eastland, tied for third place honors with 73, and Tournament Chairman Everett Plowman of Eastland followed with 73 1/2.

Pete Brashier of Ranger scored a 74 and Dr. M. E. Roth and Bob Latson, both of Cross Plains, had a 75 and a 75 1/2, respectively.

Dr. Ted Nicksick, president of Ranger College, and James Townzen, president of the Ranger Lions club both had 77s.

TidBits -

(Continued From Page One)

ers will hold their annual party Monday, May 21st at the City Park for a hot dog supper.

During a planning session this week, most were of the opinion that it will be well just to keep it simple—a few buns, some weiners, mustard, etc.

Booster Bernard Hanna—a pretty well-fed looking individual himself—asked if it would be forbidden, if say some one wanted to, to bring a nice German Chocolate cake.

All agreed that it certainly wouldn't be met with displeasure.

We're not going to tell you who told us, but we will pass along what we consider the best definition we've heard of a successful man—especially in these days.

This Eastlander told us that he considered himself a successful businessman because he began in business some 12 or 15 years ago without a dime—and today he owes \$30,000.

Did you know the temperature got DOWN to 48 night before last?

Will Wilson was third with four Rotarian straw votes, and John Connally had three. Gen. Edwin Walker, 2; Gov. Price Daniel, 1; and Don Yarborough, 0.

Frank Denton gave the program, and in a classification talk, described the operation of his business, Eastland Auto Parts.

He explained the method used in stocking the thousands of individual parts and his methods of inventing to keep that stock complete.

Waywood Cabaness of Cisco was a Rotary guest at the Tuesday luncheon at the White Elephant Restaurant.

The Olden Home Demonstration Club was guest of the Morton Valley Club, April 25 at the Club House in Morton Valley.

Mrs. R. W. Gordon assisted by her niece, Marjorie The Berge of Ranger gave a most interesting program on showing slides and describing the various European countries: England, Switzerland, Germany, France, Holland, Spain and Italy. Mr. and Mrs. R. W. Gordon made this interesting trip last fall.

During the social hour, the host club served punch, cookies, nuts and mint from the beautifully decorated table.

The following members from Olden attended: Mmes. Jessie McIvlin, Homer Lawrence, Virgil Massengill, H. E. Craven, J. D. Harrell, Louise McFarland, I. E. Tally, H. C. Fox, Rudi Marshall, and W. P. Edwards.

The club's next regular meeting will be May 10.

Accomplishments of the bands here have been phenomenal under Hewett's direction. Supt. Wendell D'estrict said Wednesday that several applications have been received but no decision has been made yet. School board members are to consider teacher received hire and placements at their next meet, expected next week.

Research revealed that 22 men applied for the Paschall job for which Hewett was chosen. Ten of the applicants hold master's degrees and most have an average of 12 years teaching experience.

Hewett replaced Kerman Bond here in 1959. A graduate of TCU, and the Navy School of Music in 1954, he distinguished himself in the Navy Band where he traveled extensively in concert.

He and his wife Joyce have one son. They will be selling their home at 404 S. Hillcrest.

Phone Today

M. H. PERRY offers this coverage:

LIFE HOSPITALIZATION (tailored plans) ACCIDENT AND SICKNESS INCOME RETIREMENT EDUCATIONAL PROGRAMS GROUP MORTGAGE CANCELLATION CANCER

(with no age limits) RANCH LOANS

107 W. Main Office Ph.: MA 9-2775 Res. Ph.: MA 9-1995

Scout Training Camp Will Be Held May 5-6

The third annual Junior Leader Training outdoor session has been set for Ringling Lake, near Eastland, for May 5 and 6, it was announced by Werner Bendorf of Breckenridge. This marks the second time the affair will have been held at the Ringling Lake.

The outdoor session is the second part of the two-part training of Junior Leaders in the Boy Scout Troops of the Comanche Trail Council. The first session was held on the campus of Howard-Payne College, Brownwood in March.

Approximately 100 boys and leaders are expected for this event.

The training will consist of the use of the compass, axeman'ship, fire building, first aid, tent pitching, rope work, tracking, nature, survival and cooking. This training is considered advance training for the boys in the troops who are Patrol Leaders, senior Patrol Leaders, and other boy leaders and virtually makes them instructors in the areas covered. These boys then take the training back and help the younger boys in the troop to attain the ranks of Second and First Class Scout.

The general public is invited out to see the young men as they go about this intense training.

County CROP Meet Set For Tuesday Night

A Christian Rural Overseas Program planning meeting for members of the County CROP Board and members of the 1962 campaign committee will be held Tuesday at 7:30 in the Carbon Methodist Church.

At this very important meeting plans will be made for the 1962 program. Necessary additions will be made to the committee as well as to the County CROP Board. The type of canvass, schedule and canvass goals will be determined.

During this meeting, duties of the officers will be clarified and decisions will be made regarding publicity and promotion.

The date, time and place of a following will be set and the Tuesday session.

Funeral Services Are Held Tues. For Mrs. Harris

Funeral services were held Tuesday at 3 p.m. in the Christoval Baptist Church for Mrs. Maggie Harris, who died Monday morning on her 90th birthday.

Survivors include one son, W. B. (Wes) Harris of Eastland and three daughters, Mrs. Al Mayfield of Eastland and Mrs. Lee Lock and Mrs. H. C. Williams, both of Christoval.

Mrs. Harris had been a frequent visitor in Eastland.

Read The Classifieds

READ THE CLASSIFIED

Special

QUILTS and BLANKETS

LAUNDRIED

3 for

CISCO STEAM LAUNDRY

In Eastland - Call MA 9-2122

EVERY DAY is DISCOUNT

at EASTLAND DISCOUNT

STORE

After Easter Special ready-to-wear

Ladies Seamless Hose Size 9 1/2-10 Reg. \$1.49 Special Just Arrived Maternity Dresses Several and Colors. Size 8 thru 18 for only

White and Pastel Dresses for Graduates Petite Sizes. 5 thru 15 for

One Group of Little Girl's Dresses. Sizes 14. Reg. 7.88

Subteen Sizes Dresses 6 thru 14 Reg. 7.88

One Group Ladies—Size 14 1/2 thru 24 1/2 Dresses Reg. 7.00 now \$6 Reg. 6.00

General Merchandise Store

Men and Boys Shoes \$3

Men and Boys Summer Shirts

Ladies Blouses \$1.97 &

Ladies Slips

SHOE STORE

Childrens Canvas Shoes. Sizes 8 1/2 thru 10 Were \$2.97 now

Little League Shoes

Teen Age League all leather (Steel Kleet)

One Table - Assorted Sizes & Styles

Eastland Discount Store

"North Side of Square" 3 Big Stores To Serve You!

REMEMBER MOTHER

On her day: May 13

Corning Ware Special Reg. \$12.88 NOW \$9.88



SEE OUR NEW LINE OF Ceramics JUST RIGHT FOR

Remembrances

Goldtone Gifts With Imagination

Picture Frames Coin Purses Lipstick Caddies Mirrors

Costume Jewelry Rogers & Gallet Colognes \$1.00

GIFTS...that say "I LOVE YOU, MOTHER"

FROM

CENTRAL DRUG

MAIN

MA 9-2681

Band-

(Continued from page 1)

a college directorship for a long time, and I feel that this is a stepping stone toward that goal," he said.

Paschall has an enrollment of 3,000 students (in three grades), with about 300 students trying out for band, from whom Hewett will choose 100 members. The school has new facilities throughout.

Ed Sarreant, president of the booster club, told Hewett, "Man, we hate to see you go. I just hope that the next man we get, will have the drive you have."

... Re Elect ...

JOHN C. WHITE

TEXAS COMMISSIONER of AGRICULTURE

EXPERIENCED QUALIFIED DEMOCRAT



John C. White will keep Texas FIRST!

METHODIST REVIVAL

First Methodist Church, Eastland MAY 6th thru 13th QUAY PARMER

of Fort Worth EVANGELIST

EARL WARD

of Waco SINGER

Morning Services 7 a.m.

Evening Services 7:30 p.m.

YOU ARE CORDIALLY INVITED TO COME HEAR, WORSHIP AND WORK!

**WORTH
FOOD
MART**



**GREEN
THUMB**



SALE

SURE SIGN OF QUALITY!

FRYERS

Prices Effective: Thursday-Friday-Saturday

CLIP AND SAVE!

50 Bonus "S&H" Stamps
With This Coupon and Purchase
of FOUR 303 Cans
Libby Peas 4 \$1.00
Void After May 5, 1962

WORTH FOOD MART

CLIP AND SAVE!

50 Bonus "S&H" Stamps
With This Coupon and Purchase
of SIX NO. 211 Cans Libby
Peach, Pear, Peach Nectar 6 39c
Void After May 5, 1962

WORTH FOOD MART

CLIP AND SAVE!

25 Bonus "S&H" Stamps
With This Coupon and Purchase
of THREE 46-oz. Cans
Libby Tomato Juice 3 89c
Void After May 5, 1962

WORTH FOOD MART

LIBBY
**FRUIT
COCKTAIL**
5 NO. 303 CANS \$1.00

CLIP AND SAVE!

50 Bonus "S&H" Stamps
With This Coupon and Purchase
of FIVE NO. 303 Cans Libby
Fruit Cocktail
Void After Sat. May 5, 1962

WORTH FOOD MART

CLIP AND SAVE!

50 Bonus "S&H" Stamps
With This Coupon and Purchase
of ANY SIZE
Game Hens
Void After May 5, 1962

WORTH FOOD MART

CLIP AND SAVE!

25 Bonus "S&H" Stamps
With This Coupon and Purchase
of THREE 303 Cans
Libby Sl. or Cut Beets 3 39c
Void After May 5, 1962

WORTH FOOD MART

CLIP AND SAVE!

25 Bonus "S&H" Stamps
With This Coupon and Purchase
of 24-oz. Can
Libby Beef Stew 4 9c
Void After May 5, 1962

WORTH FOOD MART

CLIP AND SAVE!

25 Bonus "S&H" Stamps
With This Coupon and Purchase
of FOUR 303 Cans Libby's
Golden Cream Style or
Whole Kernel Corn 4 89c
Void After May 5, 1962

WORTH FOOD MART

ARMOUR USDA Grade 'A'
So Plump So Tender
Whole Only LB. 27c

Cut-Up Fryers Swift GRADE 'A' **LB. 31c**

Worth Quality Fresh Ground Beef Swift's Premium **LB. 39c**

Perch Fillets Taste O Sea Fr. Fried **LB. Pkg. 59c**

Arm Roast W.C.Q. Heavy Beef Shoulder **LB. 59c**

Chuck Roast W. C. Q. Heavy Beef **LB. 49c**

GERBER'S-Strained
BABY FOOD 6 4 1/2-oz. Jars **55c**

Assorted-Strained
Gerber's Juices 6 4 1/2-oz. Cans **49c**

Pablum
High Protein Cereal 8-oz. Box **25c**

LIBBY - FRESH VARIETY
Blackeyed Peas 2 No. 300 Cans **33c**

LIBBY
Sauerkraut 2 No. 303 Cans **33c**

LIBBY - APRICOT - PEAR or
Peach Nectar 6 No. 211 Cans **89c**

Vigo-Horsemeat or Beef Flavor
DOG FOOD 6 1-Lb. Cans **49c**

Schick
Krona Edge Blades Pkg. of 15 **77c**

SECRET CREAM
Deodorant Plus 5c Tax **49c**

LYSOL - Regular or Pine Scent
Disinfectant **59c**

LISTERINE—Economy
Antiseptic 14-oz. Size **59c**

WORTH FOOD MART

Fresher Produce Always

Russet Potatoes Idaho No. 1's Cello Bag **10 -LB. Bag 59c**

Yellow Onions New Crop Texas **2 -LBS. 15c**

TOMATOES Ripe and Firm **Carton 19c**

GREEN ONIONS Fresh Mild Flavored **Bunch 5c**

Wash. Ex. Fancy Calif. Valencia **Winesap Apples** **LB. 19c**

Oranges **LB. 19c**

Cello Bag Crisp Stalk **Carrots** **2 1-LB. BAGS 25c**

Pascal Celery **EACH 19c**



LIBBY - FROZEN
MEAT PIES
Beef - Chicken or Turkey
5 8-oz. Pies 99c

LIBBY - FROZEN
SLICED STRAWBERRIES
10-oz. Pkg.
4 PKG. 89c

LIBBY
Red Salmon No. 1/2 Can **67c**

LIBBY-KING SIZE
Ripe Olives No. 1 Can **37c**

LIBBY
Potted Meat 2 No. 1/2 Cans **39c**

CLIP AND SAVE!

25 Bonus "S&H" Stamps
With This Coupon and Purchase
of THREE 303 Cans
Libby Early June Peas 3 59c
Void After May 5, 1962

WORTH FOOD MART

CLIP AND SAVE!

25 Bonus "S&H" Stamps
With This Coupon and Purchase
of FOUR 4 Oz. Cans
Libby Vienna Sausage 4 89c
Void After May 5, 1962

WORTH FOOD MART

CLIP AND SAVE!

50 Bonus "S&H" Stamps
With This Coupon and Purchase
of FOUR 303 Cans
Libby Cut Green Beans 4 79c
Void After May 5, 1962

WORTH FOOD MART

CLIP AND SAVE!

50 Bonus "S&H" Stamps
With This Coupon and Purchase
of FOUR 303 Cans
Libby Garden Veg. 4 76c
Void After May 5, 1962

WORTH FOOD MART

CLIP AND SAVE!

25 Bonus "S&H" Stamps
With This Coupon and Purchase
of QUART Carton Foremost
Chocolate Milk
Void After May 5, 1962

WORTH FOOD MART

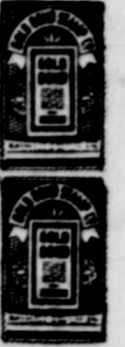
Libby's sliced or halves yellow cling
PEACHES
4 NO. 2 1/2 CANS \$1.00

CLIP AND SAVE!

50 Bonus "S&H" Stamps
With This Coupon and Purchase
of FOUR No. 2 1/2 Cans
Libby Peaches 4 \$1.00
Void After May 5, 1962

WORTH FOOD MART

FROZEN FOOD SALE



SAFEWAY



Beef for Your Freezer!

U.S. Choice Grade Heavy Beef. Cut and freezer packed to your specifications at this low price.

- Half of Beef** Stock up now, 275 to 325 pound average. Lb. **49¢**
- Quarter** Untrimmed, Top quality. Lb. **59¢**
- Beef Round** Trimmed. Stock your freezer. Lb. **59¢**
- Beef Loins** Trimmed. For your freezer. Lb. **75¢**

Bel-air

Peach Pie

Frozen large 8 inch family size. Stock your freezer.

1 1/2-Lb. Pie **35¢**

The More You Buy... The More You Save!

	2 For	6 For	12 For
Strawberries Bel-air Frozen. 10-Oz. Sliced. Pkg.	45¢	\$1.29	\$2.49
Orange Juice Scotch Treat Frozen. 6-Oz. Can	29¢	85¢	\$1.69
Lemonade Bel-air Frozen Regular or Pink. 6-Oz. Can	25¢	69¢	\$1.29
Greens Bel-air Frozen Leaf or Chopped Spinach, Chopped Collards or Turnip. Reg. Pkg.	35¢	99¢	\$1.89

Safeway Fresh Meats!

Pork Roast

Wash Picnic Cut. Choice shoulder of pork for roasting. Save your family precious portions tonight. Whole.

Lb. **25¢**



Ground Beef

Made from U.S. Government Inspected Beef. Safeway guaranteed. Lb.

39¢

Chuck Roast

U.S.A. Choice Grade Heavy Beef. (Beef Arm Roast, Lb. 55¢) Lb.

45¢

Franks

Hot or cold. Serve with sauerkraut or grill outdoors.

1-Lb. Pkg. **39¢**

Pillsbury Best Flour

For baking. 5-Lb. Bag **57¢**

Sandwich Bags

Zee. For packing lunches. 30-Ct. Pkg. **10¢**

More Meat!

Veal Cutlets

So easy to fix. Delicious and nutritious. Lb. **69¢**

Pork Sausage

Wingate. Reg. or hot. Pure Pork. 2-Lb. Pkg. **77¢**

Apple Butter

Musselman's. 28-Oz. Jar **33¢**

Nabisco Patties

Peanut Cream. 9-Pk. **39¢**

Dog Food

Ken-L-Ration. For your dog. 2-Ct. **25¢**



Garden Fresh!

Crisp Radishes

Fresh and crisp. Add zest to salads. 6-Oz. Cello **5¢**

Green Onions

Fresh and flavorful. Homegrown. Bunch **5¢**

Biscuits

Ballard Sweetmilk or Pillsbury Buttermilk. 3 8-Oz. Cans **29¢**

Wisk Liquid

For everything you wash. 32-Oz. Can **65¢**

All Detergent

For automatic washers. 7-Lb. 13-Oz. Pkg. **\$2.29**

Cane Sugar

Imperial or Domino Pure.

5-Lb. Bag **49¢**

Miracle Whip

Kraft. (Nu Made Salad Dressing... Qt. Jar 43¢)

Qt. Jar **49¢**

Edwards Coffee

All Grinds.

1-Lb. Can **49¢**

Butter & Egg Bread

Skylark. Rich, light golden bread. Regular 23c. 1-Lb. Loaf **19¢**

French Rolls

Skylark Poppyseed. Regular 24c "2¢ off." 10 1/2-Oz. Pkg. **22¢**

White Bread

Mrs. Wright's Reg. or Sandwich Sliced. 2 1 1/2-Lb. Loafs **47c**

D'Agostino Bread

Italiano. 1 1/2-Lb. Loaf **29¢**

Lux Toilet Soap

White or Ass't colors. 2 Bath Bars **29¢**

Lifebouy Soap

Coral, Pine or White. 2 Bath Bars **33¢**

Rinso Detergent

For washing clothes. Large Box **27¢**

Silver Dust

Blue Detergent. Large Box **33¢**

Breeze Detergent

For everything you wash. Large Box **33¢**

Safeway Fresh Produce!

Potatoes

U. S. No. 1 Red. Ideal all purpose potatoes. For baking, boiling or frying. 10-Lb. Bag **39¢**

Strawberries

California's Finest. Red, ripe and flavorful. Pint **35¢** or Full Pints **\$1**

Pineapple

Fresh. Naturally delicious and flavorful. Each **19¢**

Biscuits

Puffin or Betty Crocker. Sweetmilk or Buttermilk. 3 8-Oz. Cans **29¢**

Lux Liquid

Detergent for washing dishes. 22-Oz. Plastic **61¢**

Liquid Swan

So gentle and mild. 12-Oz. Plastic **35¢**

SAFEWAY COUPON
This Coupon Worth 25 FREE GOLD BOND STAMPS
Plus your regularly earned Gold Bond Stamps with the purchase of
5-Lb. Bag White Marsh Seedless GRAPEFRUIT
Coupon Expires May 5, 1962.

SAFEWAY COUPON
This Coupon Worth 50 FREE GOLD BOND STAMPS
Plus your regularly earned Gold Bond Stamps with the purchase of
FOUR - No. 303 Cans Town House FRUIT COCKTAIL
Coupon Expires May 5, 1962.

SAFEWAY COUPON
This Coupon Worth 50 FREE GOLD BOND STAMPS
Plus your regularly earned Gold Bond Stamps with the purchase of
TWO - No. 2 1/2 Cans Sundown Freestone ELBERTA PEACHES
Coupon Expires May 5, 1962.

SAFEWAY COUPON
This Coupon Worth 50 FREE GOLD BOND STAMPS
Plus your regularly earned Gold Bond Stamps with the purchase of
4-Oz. Can Crown Colony Pure BLACK PEPPER
Coupon Expires May 5, 1962.

Orange Drink

Lucerne. 2 1/2-Gal. Ctns. **49¢**

Salad

Lucerne Delicatess. Regular 39¢. 16-Oz. Ctn. **29¢**

'A' Eggs

Breakfast Gems. Small "A" Quality. Fresh. Doz. **31¢**

'A' Eggs

Breakfast Gems. Medium "A" Quality. Fresh. Doz. **35¢**

Maryland Club

Regular, drip or pulverized. 1-Lb. Can **69¢**

Maryland Club

Regular or Drip. 2-Lb. Can **\$1.37**

Detergent

A washday miracle. Large Box **25¢**

Tablets

Heavy Duty Detergent. 40-Ct. Pkg. **69¢**

Detergent

Extra fluffy. 19-Oz. Box **32¢**

Whole Chicken

Banquet Canned. 3 1/4-Lb. Can **79¢**

Dried Prunes

Town House Breakfast. 1-Lb. Cello Bag **29¢**

Prices and Coupons Effective Thurs., Fri. and Sat., May 3, 4 and 5 in Eastland. We Reserve the Right to Limit Quantities. No Sales to Dealers.



SAFEWAY



YOUR VOTE FOR ROY L. LANE FOR RE-ELECTION DISTRICT CLERK

Will Be Greatly Appreciated

He has stayed on the job. He will not sacrifice principle to appease any individual in performing his duties in accordance with the laws of our state. His record speaks for itself.

LET'S GIVE HIM A LARGE MAJORITY

SATURDAY
MAY 5TH



BUSY SIDEWALKS—Throngs of visitors packed Eastland sidewalks Sunday and Monday for the Lions meet. Shown here are a part of the delegation in front of the Majestic Theatre. The crowd moved back and forth from the theater to the Village Hotel headquarters, and around the square. (A&C)

Politicos Use 'Soft-Sell' In 'Old-Time' Cisco Rally

About 15 candidates the May 5th Primary spoke an "Old Fashioned Political Rally" in Cisco last Saturday afternoon.

Larry Miller, Cisco Chamber of Commerce manager, moderator, and pink lemonade and cookies were added attractions.

George Williams, Cisco office of the Peace candidate, spoke from his wheel car, seeking his first term.

Another Prec. 6 first candidate for JP, W. L. Lewis, said, "I don't know much, but I do know right from wrong."

Lewis is finishing an appointed term now.

District Clerk candidate A. Justice, seeking her first term, stressed the number of counties having women holding office.

B. M. Bennett, also asking for the District Clerk office for the first time, said for promotion from his present slot in the Commissioner's Court where he has served for ten years.

Roy Lane, seeking re-election as District Clerk, offered the "same" promise to voters as in former elections, he said—that he will express the duties as efficient and honestly as he can.

County Commissioner candidate for Prec. 4, Ed McCann, offered voters his six years of experience in the office and reviewed the projects and financial condition of his plans in office.

Carl Lamb, another Prec. 4 County Commissioner candidate, seeking his second term, listed the conditions of streets and roads, of which he has charge and his 20 years experience with heavy equipment.

He reviewed the courthouse re-roofing job, paid for since

bill, and his (Creighton's) entire voting record is against the rural people," Sheppard said.

Mrs. Tom Creighton spoke on her husband's behalf, and urged the voters to "send her husband, "an honorable man," back to Austin.

A. E. Crawley, retired Ranger postmaster, spoke briefly, seeking the post if County Democratic chairman.

Read the Classified Ads

Hospital News

Patients in the Eastland Memorial Hospital are the following:

From Eastland unless otherwise stated.

Fred Hale, medical

Joyce Curry, surgical, Cisco

Mrs. Clara Wingate, medical

Mrs. Lena Smith, medical

Mattie E. McPherson, medical, Cisco

Kathy Williams, surgical

Mrs. A. F. Beck, surgical

G. S. Craven, medical

Samuel Woodrow Howell,

medical, Cisco

Lela Barber, medical

Mrs. Medie Barber, medical

Charles Harlow, medical

Hugh Johnson, medical

Breckenridge

Gary Don Dan, medical

Elizabeth Carter, medical

Mrs. Lizzie Young, medical

Mrs. Bessie L. Young, medical

Georgia Hirtz, medical

Elmer McLean, medical

Ranger

Dale E. Trout, medical

Nora B. G. Howell, medical

Read The Classifieds

For Constructive Personal Representation ...



Elect Wallace Sheppard STATE SENATOR

(Pd. Pol. Adv.)

The People Will Not Be Fooled!

We have a great deal of respect for the intelligence of the voters of this county, and we are convinced that an informed electorate will elect the best qualified candidates to public office.

We would not presume, therefore, to try to tell our friends how to vote, but we do believe that it is our obligation as citizens to present our views concerning races of considerable importance. When men of proven character and ability seek public office it becomes both a privilege and a responsibility for public spirited citizens to speak out.

It is for this reason that we express our opinion that Wayne Gibbens is by far the best qualified candidate for State Representative. Wayne Gibbens has served one term in the House of Representatives and has done a remarkably good job.

Wayne Gibbens is a respected member of the House. He can get things done for our district because the other Representatives will work with him. Wayne Gibbens is an eloquent and forceful advocate in the legislature. His is a strong, clear voice in our Capitol for good, sound government for the people of this district and for Texans everywhere.

Eastland County residents will note that Wayne Gibbens has conducted his campaign in an honest, forthright manner. All of his political advertisements have been accurate and well-documented. On the other hand, the people of Eastland County can recall two years ago a legislative race in which numerous anonymous pamphlets, cartoons, and letters were scattered throughout the county under the cloak of darkness. Some of this type of campaigning has already appeared in this race and it is not unlikely that these "mid-night smear tactics" and attempts at character assassination will once more be used.

It is our belief that the people of Eastland County will resent such last minute smear tactics — that they will not be fooled by anonymous letters, cartoons, and pamphlets distributed by persons ashamed to let the public know where the material came from.

It is our hope that the people of the 63rd District will re-elect Wayne Gibbens to the Texas House of Representatives for a 2nd term. He is a fine young man of good christian character, well educated and trustworthy in all respects. Vote for him next Saturday.

(This message sponsored by Eastland County friends of Wayne Gibbens).

Eastland-

(Continued from page 1)

land, 5; and Ranger, 4.

The conventioners voted to meet in Mineral Wells next year—if a joint 2E1 and 2E2 meet is held—or at a place to be decided if a joint meet is not held.

The Eastland, Cisco and Ranger clubs registered 100 per cent of their membership. Registration began Sunday at 8 a.m. in convention headquarters set up in the Village Hotel and the lobby of that hotel remained a circus of activity throughout the meet.

Formals were held Sunday afternoon for incoming club officers and a buffet supper was served at the hotel Roof Garden, at which all club members were honored.

Necrology service at the First Methodist Church that night was followed by a district governor's reception in the basement of the church.

An eye-opener breakfast began Monday's activities with the Ranger Club in charge of entertainment, D. C. Arterzone chairman, presiding.

Later Eastland president Bill Walters presided at the opening business session in the Majestic Theater, and Chamber President Frank Deaton welcomed the Lions to Eastland.

The morning was spent in committee reports, and was high lighted at midway by a musical session by the Eastland High School "Dixie 5".

Morning speaker was Roy Maneur of Midland who outlined the work of the Crippled Children's Camp at Kerrville.

A model luncheon was served at the Roof Garden, followed by a program back at the theater, at which O. L. Stamey of Cisco presided.

The Mineral Wells and Abilene clubs presented entertainment in behalf of their candidates and Past International Director R. A. Lipscomb of Odessa was featured speaker.

After routine reports and resolutions of thanks to the Eastland Club and others for the success of the event, the "Wild Five" from Cisco Junior College entertained with music.

The elections culminated the business session.

Approximately 170 persons attended the Governor's Banquet Monday night at Lone Cedar Country Club, where Edward M. Lindsey of Lawrenceburg, Tenn., International Director, was guest speaker.

Lindsey told the audience that his state and Texas are more similar than different.

"The two are bound together in their acceptance of leadership," he said, "and the work we're doing as Lions is "serious work."

"Faith" is the universal key, and as men accept responsibility, this key opens doors.

He praised Texas for its outstanding contributions to Lionism.

"The history of Lionism and Texas Lionism are synonymous," he said.

First-

(continued from page one)

He entered fulltime evangelistic service after World War II.

The two men have been working as a team for many years.

Assisting will be Patricia Liles at the organ and Mrs. Tom Haley at the grand piano. The chancel choir will assist at each evening service.

he has been in office, and the work done in the 11th Court of Civil Appeals and closed by saying "I'm asking for second term in a democratic way".

Runt Dill, also seeking the Prec. 4 County Commissioner's slot, offered 15 years of general construction work as his qualification for office.

He stressed that he was not running against the other two candidates, who he named as "friends, but instead was merely offering himself as a candidate for the office.

County Judge John Hart, who is asking for the job again, said that it is "a sacred duty of county voters to carry through on their ideas."

He expressed great appreciation to Cisco people for support in the past, and said that his life had been an open book to Ciscoans for the past 50 years.

He cited the financial condition of the county and remarked that only five counties in the state have lower tax rates. "I've helped people in need with medical and hospital expenses, and helped to brighten the last days of cancer victims," he said.

Ralph Lockwood of Ranger, asking for the office of County Judge for the first time, cited his experience with the county and promised to move Eastland if elected and equalize county salaries.

O. H. Dick, also a first-time candidate in the County Judge race, described his message as "shortest speech in Eastland County history." Dick stated that he is a candidate asked for support.

Scot Bley, of Cisco, who is running for the newly re-organized 6th Representative District seat, said, "We're all country people. Some of us have moved to town, and the question is 'Are you satisfied?'"

He said the "corporate interests" want your seat in the state representatives, but pressed he'd work for the people, if they'd work for him on election day.

Wayne Gibbons, his opponent from Breckenridge cited this as his record:

1. Correcting the loan shark problem, which he called a disgrace now;
2. Letter law enforcement, with emphasis on Juvenile parole system;
3. Water conservation, particularly in regard to pollution;
4. Retention of the state's right-to-work law; and
5. Re-vamping of the state's welfare program.

"I believe in leaving as much government at the county level as possible," he said.

Wallace Sheppard of Denton accused his opponent, for a state senatorial seat, Echembert Tom Creighton of Mineral Well of being "lined up with private interests."

"He voted for the sales tax bill and against the loan shark



THE WINNER—P. E. (Pete) Shotwell, of Abilene, shown immediately after the announcement that he had won the race for governor of this Lion district.

ANNUAL SPRING SALE

First Reductions on Many Spring Dresses To Wear

Now and on through The Summer

EXTRA SPECIAL One Group Of Spring DRESSES NOW \$5.00

Altman's Style Shop

109 W. Main Phone MA 9-1150 Eastland

A. J. BLEVINS, JR. FOR DEMOCRATIC CHAIRMAN OF EASTLAND COUNTY

TRIBUTE

The purpose of this message is to suggest that his many friends will want to let their votes Saturday be an expression of sincere appreciation to A. J. Blevins, Jr., of Eastland for his many years of community service as our County Democratic Chairman.

Mr. Blevins permitted his name to go on the ballot for this unsalaried post at the suggestion and urging of many friends from all parts of the county who are familiar with the fine job he has done during eight years as County Chairman. Previously, he worked four years with Chairman Frank Williams and two years as Eastland precinct chairman.

A native of Ranger, Mr. Blevins has been a citizen of Eastland for 18 years. He lives with his wife, Ruby, at 1301 South Mulberry Street. Their son, Stan, 23, is a student at Southwestern Baptist Theological Seminary at Fort Worth and is serving as pastor of the Putnam Baptist Church. Judy Blevins, their 18-year old daughter, is a senior in Eastland High School and plans to attend Hardin-Simmons University.

Mr. Blevins is an active member of the First Baptist Church of Eastland and he teaches a men's Sunday School Class. He is a former Eastland city commissioner. He has been the Eastland County dealer for Chrysler, Plymouth, Valiant, and Imperial automobiles and GMC trucks for 16 years. He has earned a fine reputation as a business man through his fair dealings.

Mr. Blevins has made a diligent effort to be fair with the people and the candidates as our county chairman. He tries to return as much of their ballot fee money as possible and still pay expenses of the election.

We, who have long known Mr. Blevins, urge you to cast your vote for him Saturday to demonstrate our thanks and appreciation for his years of faithful public service.

(This Tribute Sponsored By Friends who Appreciate Mr. Blevins' Work As County Chairman)

Drive in here for...

COMPLETE AUTO CARE

Let us inspect brakes, tires, radiator, steering and electrical system to prevent costly repairs and unwanted delays later.

Leave all car worries to us.

24 HOUR WRECKER SERVICE

ALLEN AUTO REPAIR AT RUSHING MOTOR CO. 215 SOUTH SEAMAN

March Savings Bond Sales Total \$62,979

The amount of Series E and H Savings Bond sales in Eastland County during the month of March totaled \$62,979, according to a report from County Chairman Guy Parker.

Variety Program To Be Presented

The Kendrick Quartet will render selections of popular, Spanish, spiritual and gospel songs and music during a variety program Friday at 8 p.m. in the Carbon school auditorium.

The public is invited to attend this variety program.

Read The Classifieds

Personals

Mrs. Cas'leberry's grandson, Ronnie Ray, is a member of the choir and sings with the First Advanced Group.

F. B. McGough of Silver City, N. M., former resident of Eastland, was visiting this week in the homes of his aunts, Mrs. Grover Collins and Mrs. Jess Williams.

Guests in the home of Mrs. Anne Terry last week were her nieces, Mrs. Elsie Alldredge of Midland and Mrs. Lottie Butler of Older.

James E. Willman and family of Austin visited over the recent Easter weekend in the home of his parents, Mr. and Mrs. Ed Willman.

Mr. and Mrs. I. E. Talley and her father, B. F. Talley, visited in the home of her sister and family, the Max Duckworths in Knox City Sunday afternoon.

Mrs. Cross Is Honored With Silver Friday

Troy Cross was honored with a Pink and Blue shower Saturday evening from 5:30 to 8:30 p.m. in the home of Mrs. May Lyerla, Route one, Eastland.

Acting as co-hostesses were Mrs. Jeff Harbin and Mrs. C. Duncan.

The honoree was presented with a corsage made of pink and blue baby's breath and a white floral arrangement.

Refreshments were served from 7:30 to 9:00 p.m. and consisted of a light dinner.

Mitchell System Played At Bridge Club Saturday

Eight tables played Mitchell duplicate bridge at the Lone Star County Club Saturday afternoon.

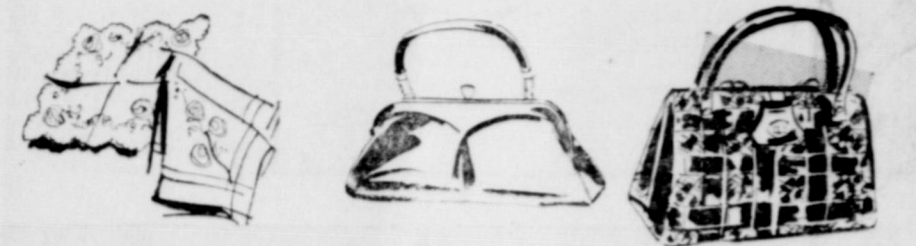
Winners for the North-South side were Nova Graham and Loyd London of Cisco, first; Olivia Carothers of Eastland and Neta Sandler of Cisco, second; Mrs. James Horton of Eastland and Mrs. Tom Horton of Chicago, third.

A series of six games will begin soon at the club. Other duplicate clubs of the County are The Cisco Kid club which meets at 7:00 p.m. on Mondays at the Cisco Junior College Library and the Gorman Duplicate Club which meets at 7:30 p.m. on Thursday at Firemen's Hall.

Wonderful Gifts For Wonderful Mom!



Mother's Day May 13th



HARELIKS inc. Gift Wrapping

Phone MA 9-1443

Eastland

WE GIVE Round-Up STAMPS

- WHITE SWAN BUTTER 2 303 Cans 49c
WHITE SWAN LUNCHEON 2 303 Cans 49c
WHITE SWAN CEREALS Pound Box 31c
WHITE SWAN EMERGENCY Giant Box 49c
WHITE SWAN EMERGENCY 3 12-Oz. Cans 49c

- WHITE SWAN BARTLETT PEARS 2 303 Cans 49c Super Special!

WHITE SWAN 49c SALE logo with a swan illustration.

- WHITE SWAN PEACH, APRICOT, PINEAPPLE PRESERVES 2 12-Oz. Tumblers 49c

- WHITE SWAN JELLY 2 12-Oz. Tumblers 49c

- WHITE SWAN GRAPE JUICE 2 24-Oz. Bottles 49c

- WHITE SWAN PORK & BEANS 5 300 Cans 49c

- WHITE SWAN CORN White or Golden Cream Style 4 303 Cans 49c

- WHITE SWAN Pork Chops Lb. 39c
WHITE SWAN Cheese 2 Lb. Box 79c
WHITE SWAN Bologna Lb. 39c
WHITE SWAN Ham Lb. 89c
WHITE SWAN Loin Lb. 79c

- HEINZ BABY ORANGE JUICE 4 1/2-Oz. Can 10c

- GERBER'S STRAINED BABY FOOD 6 Reg. Jars 69c

- GLADIOLA FLOUR 5 Pound Bag 39c

- WHITE SWAN PEACHES Halves or Sliced 2 Big 2 1/2 Cans 49c

- WHITE SWAN HOMINY White or Golden 6 300 Cans 49c

- WHITE SWAN APPLE SAUCE 4 303 Cans 49c

- WHITE SWAN STEWED TOMATOES 2 303 Cans 49c

- WHITE SWAN PEACHES Halves or Sliced 2 Big 2 1/2 Cans 49c

- WHITE SWAN HOMINY White or Golden 6 300 Cans 49c

- WHITE SWAN APPLE SAUCE 4 303 Cans 49c

- WHITE SWAN STEWED TOMATOES 2 303 Cans 49c

MELLORINE 39c

- WHITE SWAN TOMATO CATSUP 2 14-Oz. Bottles 49c

- WHITE SWAN TOMATO SAUCE 5 8-Oz. Cans 49c

- BANQUET FROZEN COMPLETE DINNERS 11-Oz. Pkg 49c

- BANQUET FROZEN FISH STICKS 2 8-Oz. Pkgs. 49c

- BANQUET FROZEN FRUIT PIES 2 Big 24-Oz. Family Size Pies 49c

- GOLDEN NIP FROZEN ORANGE JUICE 3 6-Oz. Cans 49c

WHITE SWAN COFFEE 9c, WHITE SWAN SHORTENING, SUPER DAVE MARKETS logo.

- WHITE SWAN DETERGENT CHEER Giant Box 68c

CRISP RITE CURED BACON 49c, CORN-KING COOKED BACON READY TO EAT PICNICS 3 Cans \$1.99

MacMOY'S Super Save 400 S. Seaman Home Owned—Home Operated

IT'S ALL NEW AND

Liveliest too!



Our Ford Galaxie 500XL. Biggest, liveliest Ford of them all! Lively new luxury... See all the new Lively Ones now at the liveliest place in town—your Ford Dealer's!

HOOD KING MOTOR COMPANY 100 E. Main EASTLAND Ph. MA 9-1736

Read The Classifieds

Mrs. Ella Hay Gives Lecture Here Monday

Meet the challenge of sin, sickness, and limitation by investigating the power of spiritual understanding, Ella H. Hay of Indianapolis, Ind., said in a public lecture here Monday evening.

A member of The Christian Science Board of Lectureship, she spoke under the auspices of First Church of Christ, Scientist in the church Edifice, corner of Plummer and Lamar.

Sue Hallmark Is Hostess To Meet Of Sub-Deb Club

The Sub-Deb Club held its regular meeting in the home of Sue Hallmark Thursday afternoon.

Liones Enjoy Luncheon Mon. Lring Festivities

Mrs. Florence, in dress of yesterday featured hat, etc., entered a typical program a luncheon held at the White Elephant Monday noon for venturing lionesses.

Club Officers Elected For Double Seven

New officers were elected in a meeting of the Double Seven Club Friday as follows: Judy Seaberry, president; Carole McCleskey, vice president; Kay Morton, secretary; Julie Frost, treasurer; Becky McAllister, reporter; Nora Jordan, chaplain; and Judy Lewis, parliamentarian.

Mrs. Cornelius To Host Pioneer Club Luncheon

Members of the Pioneer Club will meet Thursday, May 10, for their regular noon luncheon in the home of Mrs. Victor Cornelius.

Two Grads Are Honored With Brunch

Judy McMillen and Lynda Eldon, 1962 graduates of Eastland High School, were honored Saturday morning with a Brunch in the home of Mrs. Eldon Gattis.

Call MA 9-1707 for Classifieds



Other California designed fashions by MODE O'DAY in Juniors-Misses-Half sizes ... priced from 3.99 to 8.99.



MODE O'DAY in LOYABLE BRAS ... Bare facts ... on the tapered look ... with "Little Bare" by LOYABLE ... Sizes 32 a to 38 b - 34c to 40

NOTICE:
A&C Studio of Eastland and Cotton Studio of Cisco are not responsible for any album plans sold within the past two months, unless approved by one of these studios. 45

NOW IN OPERATION
SELF-SERVICE FRIGIDAIRE DRY CLEANING
8 lbs. \$1.50
22-minute cycle - 8 a.m. till you get through
Also coin-operated laundry service
Speed Queen washers & dryers
W. M. JEFFCOAT, Operator
1404 Avenue D Cisco

Thank You - Come Again
YOUR RESPONSE TO PLAID STAMPS WAS WONDERFUL! GET MORE CAN SAVINGS & PLAID STAMPS THIS WEEK!
A&P WHITE FLOUR 29¢
Jane Parker Bakery
PEACHES 25¢
PRUNES 45¢
CANDY 10¢
OUR OWN TEA 49¢

- JANE PARKER LEMON OR JELLY ROLL 2 For 55¢
- JANE PARKER FROSTED BALL DONUTS 1/2 doz 29c
- JANE PARKER PUMPKINICKEL OR SOUR RYE BREAD 2 10-oz. Loaves 33c
- JANE PARKER BROWN & SERVE FRENCH ROLLS Pappy Seed 2 Pkg. 39c
- JANE PARKER ORANGE TWIST COFFEE CAKE 1/2 doz 35c
- JANE PARKER PECAN PIE Jane Parker Ea. 49c
- JANE PARKER BLACKBERRY PIES Reg. Size Special Price Ea. 49¢

Save on Fresh FRUITS & VEGETABLES
U. S. NO. 1 IDAHO
Russet Potatoes 10 L. Mesh Bag 59c
White Onions 2 Lbs. 15c
Turnips & Tops 2 1/2 lbs. 15c
Fresh Pineapple 3 For 59c
Fresh Lemons 6 For 19c

BLACKEYES 10¢
A&P Mellorine 1/2 Gallon 3 For \$1
GOLDEN RISE Biscuits 3 Cans 20c
FRESH PORK SALE
ROAST Boston Butt 35c STEAK Boston Butt 39c
SPARERIBS 3-lbs. & Under 49¢
"SUPER-RIGHT" HEAVY CALF CHUCK BLADE ROAST lb. 49¢
"SUPER-RIGHT" THICK SLICED BACON 2 lb. Package ea. 99¢
"SUPER-RIGHT" HEAVY CALF SHORT RIB or BRISKET lb. 35¢
CANNED 3/4-LB. SIZE BANQUET WHOLE CHICKENS Ea. 79¢
BANQUET MEXICAN DINNERS 16-oz. } Your Choice 3 For \$100
BANQUET ENCHILADA DINNERS 12-oz. }

"SUPER-RIGHT" SMOKED PICNICS
SLICED 6 to 8-lb. Avg. 35c
WHOLE lb. 29¢
CAP'N JOHN'S Flounder Fillets 1-lb. Pkg. 55c
THE FIFTY Catfish Fillets 1-lb. Pkg. 49c
AP Food Stores

ANNOUNCING ...
L. W. (Wells) DALTON
IS A WRITE-IN CANDIDATE FOR JUSTICE of PEACE Pct. 1
In The May 5 Democratic Primary
Why Write-In?
Because Mr. Dalton was urged to seek the office by friends after filing deadline passed. Both he and the large number of supporters willing to donate the amount of the filing fee to the County Democratic Party, because he is an honest man and wants to pay his share of election costs.
Why Wells Dalton? ...
Because he is a 21-year-resident of Eastland who knows the Precinct people, and who is known as a fair and honest-dealing individual. A native of Hamilton, he is a former employe of Coca-Cola Bottling Co. and is currently operating a Mobil Service Station on West Main St. He and his wife live at 100 S. Hillcrest. They have two married daughters. He has pledged that he will conduct the Justice office as such and for every person brought to the bar there, a fair and just hearing, ending at all times, to conduct the important office in the manner it serves. Our nation's laws are based on the premise that every man innocent, until proven guilty, and Dalton believes that this code should be followed in all courts, down through and including the Justice Court.
How To Vote A Write-In? ..
Simple. When you go to vote, mark out the name of the one candidate listed on the ballot, and write in the name of
Wells Dalton
Pd. Pol. Advertisement

PERMANENTS
 Waves-Oil Waves \$6.50
 Creme-Oil Waves \$7.50
 Laminin Waves \$8.50
 Waves \$10 and up
Beauty Bar

Report On National Convention Made At DAR Luncheon Meeting

Mrs. Bernie McCrea was hostess in her home, 710 West 7th Street, Cisco, to the Char-

les Crawford Chapter of the Daughters of the American Revolution when that group held a business meeting and luncheon beginning at noon Monday, April 23. Co-hostesses with Mrs. McCrea were Mmes. Joe Clements, W. C. McDaniel and F. E. Harell. The luncheon, salad and dessert, was served buffet style and red, white and blue flower arrangements were used throughout the house.

Seated in the dining room with Mrs. McCrea, state and chapter flag officer, were Mrs. J. E. Hall of Wichita Falls, state regent; and chapter officers Mrs. Ruth Horgan of Ranger, regent; Mrs. Clements, vice regent; Mrs. Alex Spears, secretary; Mrs. T. C. Williams, chaplain; Mrs. N. A. Brown, parliamentarian; and Mrs. W. W. Wallace, corresponding secretary.

Mrs. Horgan conducted a business meeting following the luncheon with Mrs. Williams leading in prayer. Mrs. McCrea led the Pledge of Allegiance to the Flag and the American Creed was led by Mrs. Spears.

Mrs. Hall, one of 3000 members attending the 71st Continental Congress of the DAR held recently in Constitution Hall in Washington, D. C., reported that Texas won first place in Americanism; first place in DAR Magazine subscriptions; first place honors in most DAR advertising; and first place for having most CAR's (Children of the American Revolution) join the DAR organization; and received honorable mention on the Texas state scrapbook which was kept by Mrs. Joseph Morris of Arlington.

It was reported by Mrs. Hall that a Texas woman, Mrs. Felix Irwin of Corpus Christi, was elected National corresponding secretary; and that the national organization, 8,746 members strong, recently paid \$10,000 for Paul

Miss Moser and Atnip Exchange Vows Sat.

Miss Beverly Joan Moser and Fred Avery Atnip were united in marriage Saturday evening at 7:30 p.m. in a double ring ceremony read by the bride's uncle, Don Morris, president of Abilene Christian College.

Nuptial vows were repeated in the Morris home, 2002 Campus Court, Abilene. The bride is the daughter of Mr. and Mrs. Velton Moser of Eastland. Mr. and Mrs. Lofton Atnip Sr. of Shelbyville, Tenn. are parents of the bridegroom.

Traditional musical selections were rendered by Margorie Norton, pianist.

Given in marriage by her father, the bride wore a dress of imported satin embroidered with a white and blue brocade designed with a wide, scooped neckline tapering into short fitted French length sleeves. The high empire lines of the gown were bordered with dyed-to-match fabric circling the waist to end in a butterfly bow. Narrow pleats enhanced the bell-shaped skirt with additional lines caught in back pleats.

A tiny circular veil of tulle fell in short lengths from a tiny pillbox hat of matching material.

Reverend's tea pot to be placed in Constitution Hall.

A tea for 300 women was hosted by the Texas state regent, who is an accomplished violinist and for many years has been a member of the Wichita Falls Symphony Orchestra. All Texas Congressmen's wives attended the according to Mrs. Hall.

Of particular impressiveness to Mrs. Hall, was a parade of flags from the state in the union carried by pages appointed by regent and the huge U. S. flag, suspended from the ceiling of Constitution Hall.

Present for the meeting were Mmes. McDaniel, Horgan, McDaniel, Harell, Clements, Wallace, Spears, and Williams; Mrs. K. West and Eugene Breckenridge; Mrs. Perkins of Eastland; Mrs. Hattie Bragg and Virginia Gordon and Miss Marjorie Adcock, all of Ranger; Mrs. Ernest Hittson, C. Best, J. J. Tableman, T. G. Perry, Harry Donica, M. A. ... and N. A. Brown.

and chantly lace. She carried a crescent-shaped bouquet of white french lilies and white satin ribbon tied in traditional love bows. The bride was attended by Mrs. McDaniel, maid of honor, who was attired in a dress of pink peau de soie with a scoop neckline and a matching skirt. A flat bow of pink peau de soie adorned the waistline. Her bouquet was of pink lilies and pink satin heart bows. A matching circular veil held her brief circular

ton Atnip Jr. of Vergennes, Ill. served as his best man.

Mr. Moser of Eastland, sister of the bride, and Velton Moser of Eastland, brother of the bride, served as candlelighter and usher respectively.

Mr. Gordon, Mrs. Glenn of Eastland, sister of the bride and Jan Lewis also of Eastland were members of the houseparty at the reception. Mrs. Don Skaggs presided at the registry.

The bride, a graduate of Eastland High School, attended ACC.

The bridegroom, a graduate of Shelbyville Central High School, received a bachelor of science degree in civil engineering from Tennessee Polytechnic Institute. He is a second lieutenant serving with the 5th Missile Battalion, 317th Artillery, U. S. Army at Dyess Air Force Base. The couple are residing at 1345 1/2 Mulberry, Abilene.



MRS. FRED A. ATNIP

RE-ELECT
George Meade F. GRIFFIN
 to
Supreme Court
 PLACE NO. 1



Supported by the lawyers of the Bar Poll by a vote of 443. The lawyers in the county of ... unanimously for his opponent's ... of Potter voted in favor of Judge ... your attorney who ... to serve on the court. ... paid for by friends Judge Griffin

MORE GO
 PROTEIN-RICH
Boswell's MILK

There's plenty of get up and go in a tall glass of Boswell's protein-rich milk. "GO" power to keep kids on their toes—help grown-ups keep up and at 'em! Drink Boswell's Milk for the complete protein you need daily.

Now...beautiful buying days during Chevy's GOLDEN SALES JUBILEE!



is a-wasting! So why wait any longer to that new-car urge of yours? Especially your Chevrolet dealer has such beautiful hunting out all over the place. Like in Jet-smooth Chevrolets. Or eleven Chevy II models. Or a whole crew of Corvairs. So come on in and pick and to your heart's content at your Chevrolet dealer's One-Stop Shopping Center.

NEW IMPALA SPORT COUPE
 It couldn't look more like a convertible unless it were one! ... A steel top molded into the crisp contours of a convertible. Chalk it up to Body by Fisher finesse. Here's luxury and riding comfort that add up to everything you expect in an expensive car—except the expense.



CHEVY II NOVA STATION WAGON
 and spice in a new kind of saver. It's just one of three new Chevy II models. Very parkable. Very packable, too. A load floor that's over 9 ft. long with seat and tailgate down.



NEW CORVAIRE MONZA CLUB COUPE
 The trim sportster that started the bucket seat brigade. Here's rear engine scampers wedded to the road with tenacious traction and quicksilver reflexes. And this one's as easy to own as it is to drive.



BEL AIR 4-DOOR SEDAN This car priced Jet-smoothie rides like a room on wheels. Got a mammoth trunk, too, with bumper-level and a handy deep well for bulky. Plus a choice of six or V8 skedaddle.



NEW IMPALA 6-PASSENGER STATION WAGON Chevrolet wagoning at its most elegant. With up to a whopping 97.5 cu. ft. of cargo space—including a compartment in the floor where you can stow golf clubs and other valuables out of sight.

... new Chevrolet, Chevy II and Corvaire at your local authorized Chevrolet dealer's

LEN MOTOR COMPANY INC.
 205 E. MAIN EASTLAND PHONE MA 9-2676

RE-ELECT
THE Man OF PROBABILITIES.
JOHN HAN
 FOR COUNTY JUDGE ON MAY 5th

"THE RECORD IS WHAT COUNTS"

EASTLAND COUNTY FINANCES ARE IN THE BEST SHAPE, EVER—WHAT BETTER PROOF?

Paid Pol. Adv.

RE-ELECT
Tom Creighton



STATE SENATOR
 22nd SENATORIAL DISTRICT
Second Term

Pd. Pol Adv.

20 Years of Judicial Experience

ELECT
Judge Otis T. Dunagan
 TYLER, TEXAS
 Candidate For
 Judge
Court of Criminal Appeals
 STATE OF TEXAS

QUALITY TO DEMOCRATIC PRINCIPLES

Paid Pol. Adv.

For a better future...vote and work for
JOHN CONNALLY
 for GOVERNOR of TEXAS



Hard-working John Connally, who rose from farm boy to nationally-known leader, understands Texas, its people and their problems. As Governor, he will work to bring a better way of life to our elderly and our dependent. He will work to bring more opportunity to the people of our smaller communities. He will work to help provide a brighter future for our children and grandchildren. He will work to get our state out of the red.

ONLY John Connally has the experience, vision and vigor to provide the fresh, new leadership that Texas needs!

—paid pol. adv.

NEBULA EP-1 MULTI-USE GREASE CARTRIDGES LOAD IN SECONDS



It's the quick, modern way—no time wasted filling grease guns from a pail . . . no chance of getting dirt in the grease . . . no hard-to-get-at grease wasted in the pail. Just slip in a cartridge of NEBULA EP-1 and you're ready to grease all bearings.

NEBULA EP-1 is today's most advanced multi-use grease. Made especially for tough jobs, heavy loads and bad weather, it actually out-performs most special purpose greases. Saves time, work and mess!

Call me for NEBULA EP-1 grease, and for other top quality products for your farm or ranch—

BARTON OIL COMPANY
 Phone: 4-1294 MA 9-1551
 Baird Eastland

HUMBLE OIL & REFINING COMPANY
 America's Leading ENergy Company

ENCO PRODUCTS

ENCO, "NEBULA" registered trademarks Humble Oil & Refining Company

Joia Lynn Hizer visited in the home of her parents, Mr. and Mrs. H. G. Hizer over the weekend.

Donna Pugh, who is attending NTSU in Denton spent the weekend with her grandmother, Mrs. C. W. Carpenter.

Jim Pipkin, son of Mr. and Mrs. James Pipkin, was home for the Easter holidays.

David Whitten, who is attending Denton Baptist College, was a guest in the home of his mother, Mrs. Azzie Whitten, during Easter.

Mrs. J. W. Denny and Mrs. J. E. Smith have returned home from a visit to Odessa where they visited in the home of Mr. and Mrs. H. I. Swenden.

Rodgers-Graves Vows Read Ranger Double Ring Ceremony

Miss Anita Janet Rodgers became the bride of Donald Lee Graves in a double ring ceremony read in the Mesquite and Oak Church of Christ, Ranger, Friday, April 20 at eight o'clock in the evening.

Parents of the bride are Mr. and Mrs. Dee Wayne Rodgers, Ranger, and the bridegroom is the son of Mr. and Mrs. Jay Graves of Burnet.

Rev. J. H. Smith, minister of Church of Christ in Burnet read the vows before an arch of greenery, entwined with a white satin base and white wedding bells. Bells and tassels were trimmed with white satin bows flanked each side of the arch.

Wedding music was presented by Edna Stripes of Eastland, who sang "Faithful and True" and "Be-nice."

Attending the bride, as maid of honor was Louise Decker. She wore a blue cotton dress fashioned with a draped bodice and pleated skirt. Accessories were blue shoes and white gloves. She carried a bouquet of white carnations trimmed with blue gerbera.

Jerry Graves of Burnet, brother of the groom, served as

best man. Ushers were Leon Rodgers of Ranger, brother of the bride and Howardinton of Burnet.

The bride, given in marriage by her father, wore a silk tulle affair featuring a long and neck bordered with lace appliques. She wore a large veil of imported blue attached to a crown of pearls. Her bouquet was a cascade of lilies of the valley interspersed with gerberas.

For her daughter's ring, Mrs. Rodgers wore a set of blue imported cotton with matching hat, white hand gloves. Mrs. Graves was attired in a beige linen suit with matching accessories. They both wore white gaiter coverings.

A reception following the ceremony was held in the church basement. Members of the house party were Miss Carr, Mrs. Buck Wallace, Miss Ger Lee of all of Burnet, and Mrs. Robert Duke of Burnet.

When the couple left on their short wedding trip, they wore a beige two-piece suit with matching beige gloves, black patent shoes and a blue hat and jewelry.

Mrs. Graves is a graduate of Dickinson High School. She attended Bartlett State College and is a graduate of North Texas State College. She is employed as a Home Demonstration Agent, Burnet County.

Mr. Graves is a graduate of Bertrom High School and Dallas Business College. He is presently employed by Granite Corporation in Marble Falls.

The couple will make their home at 1304 North Water, Burnet.



Mrs. Donald Lee Graves ... the former Miss Janet Rodgers

RAWLINS
SINCE 1884
MONUMENTS
WEATHER-RESISTANT
PERMANENTLY BEAUTIFUL

Hamner Life Insurance Company
Ben E. Hamner, President

This company has been in operation in this section since 1942 selling policies to be used primarily for burial purposes. We write from \$100 to \$600 and our policies are paid in cash, which allows freedom in the selection of the Funeral Director of your choice.

Ages from 1 month to 90 years.

For further information come by to see us at:
Hamner Funeral Home, 101 S. Lamar, Eastland P. O. Box 431 Dial MAIn 9-2611

WILLOUGHBY AUTOMOTIVE
General Repair, Motor Tune Up, Brakes Ous Specialty!

TOWING SERVICE

GIVE US A TRIAL. Your Business will Be Greatly APPRECIATED

200 So. Green St. Eastland

why monkey with pot-juggling?

COOK WITH GAS

There's no hangover heat (to force you to move pots off the burner). Turn off the GAS flame and cooking stops! Instantly! See the new gas ranges now — with BURNER-WITH-A-BRAIN (foods won't burn); OVEN-WITH-A-BRAIN (new low-temp 140° setting); MEAT THERMOMETERS and ROTISSERIES. Save now.

SPRING GAS RANGE SALE

Korea Veterans Still Have Big Insurance Fund

Twenty-three million dollars is still available to pay dividends to some 20,000 Korean veterans who hold "RS" life insurance policies, according to Edward P. Onstot, manager of the Veterans Administration Regional Office in Dallas.

This special dividend, he pointed out, is available only to those veterans who still hold policies with the prefix "RS" in front of their policy number. No other Government life insurance policyholders are eligible.

The "RS" policyholder cannot be paid this dividend unless he takes one of the following two actions:

1. Exchange his "RS" term insurance policy for a

term policy that (a) will generally cost him only one-third of what he is now paying; and (b) the new policy cannot be renewed as term insurance after age 50—but it can be converted to a low cost permanent plan insurance at any time before the insured reaches age 50.

2. Convert his policy to a low cost permanent plan insurance policy now.

If the "RS" policyholder takes either of the above actions before September 14, 63, he will receive his special dividend. Onstot said, these dividends average about \$100, depending upon the age of the policyholder and the length of time he has held the policy.

All "RS" policyholders have received detailed information about their own policies from VA, Onstot said, and it is to their advantage to return the card sent to them or to contact their nearest VA office for assistance in obtaining their special dividend.

Otis Green was home from college to visit his mother, Mrs. Burt Savage, and Mr. Savage.

Furniture for the Entire Home

Carpet - Rugs All Prices

Be Sure To Check With

Coats Furniture
Eastland

Read The Classifieds

Southern Television Systems Corp.

Village Home

CALL US

and we

WIRE YOU

Watch Your Favorite TV Programs

- Comedy
- Sports

Ph. MA 9-2611

"I wonder if Mildred will get the car a Spring lubrication with complete friction check?"

GET A SPRING LUBRICATION with a complete friction check

Winter is hard on your car. Spring is the time to get it back in shape again with a **QUALITY LUBRICATION** and a complete friction check of door hinges, locks, generator and other points where special lubricants are required. Stop trouble before it starts. Get the job done right! Get it done by the man who knows your car best!

PIPKIN OLDS - CADILLAC RAMBLER

314 W. Main Street * Eastland MA



Let's Elect ANN JUSTICE DISTRICT CLERK

91st District Court ON **MAY 5**

Subject to action Democratic Primary

(Pl. Pol. Adv.)

It's-Time For A Change

O. H. Dick, like many people in Eastland County, has been voting the incumbent county judge for one office or another for several decades.

O. H. Dick entered the county judge's race in the belief that the had come for a change—not because he had any arguments with the incumbent.

O. H. Dick has spent practically all of his life in Eastland County, has been and is a successful business man and a substantial taxpayer. He feels that the management of his properties has qualified him to manage the county's properties.

O. H. Dick, like all citizens of Eastland County, believes that a tribute is due to the men who have served as County Commissioners because of the county's fine financial condition. As chairman of the commissioner's court, the judge votes only when there is a tie.

O. H. Dick is a resident of Olden, a church member, a taxpayer, and long has been active in community work.

O. H. Dick pledges an administration as county judge based on good business principles.



25 Years Experience Working With Boys

ELECT O. H. DICK AS COUNTY JUDGE

Fill The County's Chief Business Office With A Successful Business Man

(Pl. Pol. Adv. For By Friends of O. H. Dick)

THE CLASSIFIEDS
Insurance
 and
Real Estate
KINNAIRD
 Fire - Auto - Farm
 Policies - Bonds
 Agents in the Insurance
 Business in Eastland

Weatherford Rites For Former County Resident
 Funeral services were held in Weatherford for Mrs. Emma Miller, former Eastland County resident, who died April 11 in the Campbell Memorial Hospital, Weatherford.
 Born 1874 in Fayetteville, Ark., she was married to J. P. Miller at the age of 16. Following their marriage, the Millers moved south west of Eastland. Mrs. Miller was a resident of Eastland County for 46 years.
 Mrs. Miller had spent the last 42 years of her life in Weatherford, where she was a faithful member of the South Side Church of Christ.
 Survivors include one daughter, Miss Ollie Miller, of Weatherford and Claude Miller of Fort Worth.

T. L. FAGG
 REAL ESTATE
 Property Management
 Home and Farm Loans

CHURCH NEWS

FIRST BAPTIST CHURCH
 Rev. Haston Brewer, Pastor
 108 W. Plummer
 SUNDAY
 9:45 a.m.: Sunday School
 11 a.m.: Morning Worship
 6:15 p.m.: Training Union
 7:30 p.m.: Evening Service
 TUESDAY
 9:30 a.m. & 1 p.m.: WMU
 Mission Study and Luncheon
 WEDNESDAY
 6:45 p.m.: Sunbeam Band
 Royal Ambassadors
 Girl's Auxiliary
 S.S. Superintendents
 7 p.m.: Teacher's Meeting
 7:45 p.m.: Prayer Meeting
 8:30 p.m.: Church Choir

HOLY TRINITY EPISCOPAL CHURCH
 710 S. Seaman St.
 William Ralph Woods, Pastor
 SUNDAY
 9 a.m.: Church School
 10:30 a.m.: Morning Prayer
 10:30 a.m.: Holy Communion
 & Eucharist
 WEDNESDAY
 9 a.m. & 9:45 a.m.: Morning Prayer & Holy Communion
 7:30 p.m.: Evening Prayer & Eucharist
 CHRISTIAN SCIENCE
 Hammer and Linnar
 Sunday
 9:30 a.m.: Sunday School
 10:30 a.m.: Sunday morning services
 Wednesday
 7:30 p.m.: Mid-week Service for public is cordially invited

BETHEL BAPTIST CHURCH
 Rev. Jimmy Roberts, Pastor
 1304 W. Main
 SUNDAY
 9:45 a.m.: Sunday School
 11 a.m.: Morning Worship
 6:30 p.m.: Training Union
 7:30 p.m.: Evening Worship
 WEDNESDAY
 6:15 p.m.: Primary teachers and officers meet
 7:30 p.m.: Midweek prayer
 8:15 p.m.: Choir practice

HOLY TRINITY EPISCOPAL CHURCH
 710 S. Seaman St.
 Rev. Wm. Ralph Woods, Pastor
 SUNDAY
 9 a.m.: Church School
 10:30 a.m.: Morning Prayer
 10:30 a.m.: Holy Communion & Eucharist
 MONDAY
 7:30 p.m.: Vestry meeting at home of Joseph Neepert, 21 West 18th, Cicero.

UNITED PENTECOSTAL CHURCH
 208 N. Dixie
 Rev. Freddie Waldrep
 SUNDAY
 9:45 a.m.: Sunday School
 11 a.m.: Morning Worship
 7:45 p.m.: Evening Service
 WEDNESDAY
 7:45 p.m.: Prayer Meeting
 SATURDAY
 7:45 p.m.: Pentecostal Conquerers.

FIRST METHODIST CHURCH
 Wm. S. Fisher, Pastor
 215 S. Mulberry
 SUNDAY
 9:45 a.m.: Church School
 10:45 p.m.: Worship Service
 6:15 p.m.: Youth Fellowship
 7 p.m.: Evening Worship
 TUESDAY
 9:30 a.m.: W.E.C.S.
 WEDNESDAY
 7:30 p.m.: Choir rehearsal
 Wesleyan Guild every 1st & 3rd Wednesdays
 Official Board - Monday after 1st Tuesday
 Free Commissions - every 1st Monday

COURT OF CIVIL APPEALS
 The following proceedings were had in the court of Civil Appeals, Eleventh Supreme Judicial District of Texas:
Affirmed
 Reynaldo Mireles v. Texas Liquor Control Board. (Opinion by Judge Grissom)
 Texas Department of Public Safety v. Billy Van Williams. (Opinion by Judge Collings)
Reformed and Affirmed
 Bituminous Casualty Company v. Joe E. Whitaker. (Opinion by Judge Grissom)
Motions Submitted
 Western United Realty Company v. Joyce R. A. Shaw et vir. Appellant's motion for rehearing.
 H. S. Earp v. First State Bank of Abilene. Appellant's motion for rehearing.
 City of Abilene v. Raymond Bynum et ux. Joint motion for extension of time to file briefs.
Motions Granted
 City of Abilene v. Raymond Bynum et ux. Joint motion for extension of time to file briefs.
Motions Overruled
 Western United Realty Company v. Joyce R. A. Shaw et vir. Appellant's motion for rehearing.
 H. S. Earp v. First State Bank of Abilene. Appellant's motion for rehearing.
Cases Submitted
 City of Abilene v. Jan F. Downs et al.

FIRST PRESBYTERIAN CHURCH
 Rev. Eugene Surface, Pastor
 Sunday
 10:00 a.m. - Church School
 11:00 a.m. - Divine Worship
 12 noon - Monthly meeting of the Church Session on the Sunday after the first Wednesday.
 Tuesday
 9:30 a.m. - United Presbyterian Woman meet on the first and the third Tuesdays of each month.
OLDEN BAPTIST CHURCH
 Rev. Bill Penland, Pastor
 Olden
 Sunday
 9:45 AM Church School
 11:00 AM Morning Worship
 6:00 PM Training Union
 7:00 PM Evening Service
 WEDNESDAY
 Prayer Service 7:30 PM
CHURCH OF CHRIST
 Corner of Plummer and Daugherty
 Gary B. Adams, Minister
 SUNDAY
 9:30 a.m.—Bible Class For All Age Groups.
 10:20 a.m.—Morning Worship
 2:00 p.m.—Visitation of Shut-ins.
 6:00 p.m.—Young Peoples' Meeting.
 7:00 p.m.—Evening Worship.
 WEDNESDAY
 9:30 a.m. — Ladies' Bible Class.
 7:00 p.m. — Prayer Meeting and Bible Study.

FIRST CHRISTIAN CHURCH
 Corner Olive & Lamar
 Roy Beckendorf, Pastor
 SUNDAY
 9:45 Church School
 11:00 Morning Worship
 7:00 Evening Vespers
 WEDNESDAY
 9:30 Junior Choir
 7:30 Adult Choir

CALVARY BAPTIST
 REV. FLOYD OSBORN
 207 N. OAK ST.
 SUNDAY
 10 a.m.—Sunday School
 11 a.m.—Morning Worship
 7 p.m.—Prayer Service
 7:30 p.m.—Evening Worship
 WEDNESDAY
 7:30 p.m.—Midweek Prayer Service

CARBON BAPTIST CHURCH
 Rev. Jimmy Turner, pastor
 SUNDAY
 10 a.m.: Sunday School
 11 a.m.: Morning Worship
 6:30 p.m.: BTU
 7:30 p.m.: Evening Worship
 MONDAY
 2 p.m.: WMU
 WEDNESDAY
 7 p.m.: Prayer Service

ST. FRANCIS CATHOLIC CHURCH
 Rev. Joseph L. Van Winkle, C.L.C.M.
 SUNDAY MASS
 1st and 3rd Sunday at 9:30 a.m.
 2nd, 4th and 5th Sunday at 11 a.m.
ASSEMBLY OF GOD
 Rev. Frank Evans, Pastor
 SUNDAY
 9:45 a.m.: Sunday School
 11 a.m.: Morning Worship
 6:45 p.m.: Christ Ambassadors
 7:30 p.m.: Evening Service

HAMNER FUNERAL HOME
 Ben E. Hamner, Owner
 Serving Eastland County since 1924 with ambulance and funeral service. Our ambulances are oxygen equipped and air conditioned.
 Through our nation-wide connections with other funeral directors, we can handle a funeral from any point in America. We offer this service knowing that we can relieve the family of all burdens incident to any death away from home.
 Eastland Dial MA 9-2611

CHURCH OF GOD
 Corner Lamar and Valley
 Rev. W. E. Hellenbeck Jr., Pastor
 SUNDAY
 10 a.m.: Sunday School
 11 a.m.: Sermon
 6:45 p.m. Youth Fellowship
 7:30 p.m.: Sermon
 WEDNESDAY
 7:30 p.m.: Prayer Service

Now, That It's Spring Again -
 It's time to rejoice for the season brings to mind many joys and pleasant memories for which it is noted. But Spring, all too often, may bring hail and windstorms, too, which are neither joyous nor pleasant, and sometimes they cause death and much destruction of property, without warning. If you are not carrying insurance against these hazards, better give us a ring today. Tomorrow may be too late.
Earl Bender & Company
 Eastland (Insurance since 1924) Texas

CARBON METHODIST CHURCH
 James W. Waller, Pastor
 Carbon
 Sunday
 10:00 AM Sunday School
 11:00 AM Morning Worship
 7:00 AM Methodist Youth Fellowship
 6:00 PM Fellowship
 7:00 PM Evening Service
 Wednesday
 7:00 PM Mid-Week Service

FURNITURE CARPET APPLIANCES
 Quality Merchandise at Every Day Low Prices
 FREE DELIVERY — NO CARRYING CHARGES
 ON FURNITURE and CARPETS
 FOR 1 FULL YEAR
Ranger Furniture Exchange
 "BRASHIER'S" Ranger
 123 N. RUSK Phone MI 7-1404

ADVANCED THRUST VALUE!
 Buick LeSabre! Get the agile handling of exclusive Advanced Thrust (engine moved forward for easier steering, flatter cornering, flatter front floor), jerk-free automatic Turbine Drive, aluminum drum brakes (the safest!)—all at no extra cost only in Buick.
 Now, fast-selling Buick LeSabre costs less than many "low-priced" cars! Get value. Get LeSabre. See your Buick Dealer!



BUICK LESABRE IS THE BUY
 See the GM Exhibit at the 1962 Seattle World's Fair, April 21—October 27, 1962.
MUIRHEAD MOTOR CO.
 Commerce Street Eastland, Texas MA 9-1731
 Big selection! Big values! See your Buick Dealer for Double Check Used Car!

Labor Union Bosses And Lobbyists
 These voting records and Union Boss endorsement of Scott Bailey are contained in a pamphlet, with limited distribution, from Austin Lobbyists, and copyrighted by the Texas AFL-CIO.

Let's Elect Wayne Gibbens as our State Representative
 votes for the people of this district—not the Labor Lobbyists!
 (Pd. Pol. Ad. paid for by friends of Wayne Gibbens)

OLDEN BAPTIST CHURCH
 Rev. Bill Penland, Pastor
 Olden
 Sunday
 9:45 AM Church School
 11:00 AM Morning Worship
 6:00 PM Training Union
 7:00 PM Evening Service
 WEDNESDAY
 Prayer Service 7:30 PM
CHURCH OF CHRIST
 Corner of Plummer and Daugherty
 Gary B. Adams, Minister
 SUNDAY
 9:30 a.m.—Bible Class For All Age Groups.
 10:20 a.m.—Morning Worship
 2:00 p.m.—Visitation of Shut-ins.
 6:00 p.m.—Young Peoples' Meeting.
 7:00 p.m.—Evening Worship.
 WEDNESDAY
 9:30 a.m. — Ladies' Bible Class.
 7:00 p.m. — Prayer Meeting and Bible Study.

INGROW MAIL NURTURING YOU?
 Immediate Relief!
 A few drops of OUTGRO® bring blessed relief from tormenting psoriasis and eczema. OUTGRO® softens the skin, unclogs the pores, allows the skin to breathe, and prevents further pain and discomfort. OUTGRO® is available at all drug counters.

We Take Photographs In Your Home
 of Birthday Party's, Reunions, or Home Photographs of your family
 Fast Roll Film finishing on Black and White as well as Color.
A&C STUDIO
 102 S. Seaman Phone 9-2616

ELECT WAYNE GIBBENS YOUR STATE REPRESENTATIVE

- FOR - TEXAS RIGHT-TO-WORK LAW. (Union bosses want to repeal it).
- AGAINST - MINIMUM WAGE FOR FARM LABOR BY BIG UNION BOSSES.
- FOR - REVISION OF SALES TAX LAW
- AGAINST - STATE INCOME TAX (Supported by Labor Union Lobbyists).
- FOR - MAKING TEXAS SCHOOLS NO. 1
- FOR - IMPROVED PROGRAMS FOR SENIOR CITIZENS.
- FOR CUTTING RACKETEERS LOAFERS FROM UNEMPLOYMENT COMPENSATION LISTS. (Union Bosses violently oppose this measure).

Let's Be
For Wayne Gibbens
 As OUR STATE REPRESENTATIVE DISTRICT 63
 (Pol. adv. paid for by friends of Wayne Gibbens)

Flag Background Being Prepared At Post Office

A background for the United States Flag, is being prepared at the post office here by Mrs. Art Johnson, postmaster and J. C. Whistley and Alan Heggedahl, custodians. A sculpture of "Leo, Symbol of Strength" with his paw on an open book, which supports

the Benjamin Franklin Credo Stamp, is in the foremost part of the background. The lion and book which were made from scrap wire, iron and cement are bronzed, and the inscription of the stamp, "Fear to do ill, and you need fear nought else", will be placed on the open pages of the book.

RE-ELECT JOHN HART

JOHN HART has helped our elderly people with their medical and hospital cares and problems!

JOHN HART has helped our neglected and wayward children!

JOHN HART has co-operated with the Commissioner's Court in successfully handling the affairs of your County Government!

THE FINANCIAL CONDITION OF THIS COUNTY IS BETTER NOW THAN IT'S EVER BEEN!

(Only five other counties in the state of Texas have a lower tax rate than Eastland County!)

YEARS OF SUCCESSFUL ACCOMPLISHMENTS
SPEAK LOUDER
THAN WHISPERED PROMISES!

Doesn't A Man Who's Done A Good Job, Deserve Re-Hiring?

JOHN HART Will Appreciate Your Support Saturday
EXPERIENCE AND ACHIEVEMENTS NOT PROMISES

(Pd. Pol. Adv.)

Plans Nearing Completion For CJC Ranch Day

Plans for the annual Cisco Junior College Ranch Day are nearing completion according to General Chairman R. B. Golemon, head of education and music departments of the college.

Mr. Golemon said that the program for this year was complete and includes a full agenda for the annual affair.

The Ranch Day program officially begins at 10 a. m. when tours and games were held through 3:30 p. m. From 4 to 5:30 p. m. an assembly will be held in the college gymnasium. During the assembly, the awarding of trophies, the western wear contest, and the judging will take place.

From 4 to 7 p. m. a famous CJC barbecue will be held in the college cafeteria. From 8 to 12 p. m. the Freshman Class of the college will sponsor a western dance in the college gym. Everyone is invited and an admission fee of 25 cents will be charged to everyone. Barbecue tickets are on sale at the college business office at \$1.00 each, according to Dean E. Winice, member of the ticket-selling committee.

Card of Thanks
We would like to take this means of expressing our heartfelt gratitude to our many friends and neighbors for their love and kindness shown in the way of food, flowers and prayers during the recent illness of our beloved mother.

May God bless each one of our prayer.
The family of
Mrs. Victorine Harbin

VISITS SISTER
Mr. and Mrs. J. W. Yarbrough, Melinda and Billy Denver City visited over weekend in the home of M. Yarbrough's sister, Mrs. Charles Black.

While here they attended Six Flags Over Texas and visited another sister, Mrs. L. A. Harfield of Strawn.

Mr. and Mrs. James Smith Cynthia and Kenneth spent the weekend visiting in Cumby with her parents, Mr. and Mrs. L. D. Lewis.

While there they celebrated the 87th birthday of Mrs. R. F. Moseley, Mrs. Smith's grandmother.

CJC Summer Session Registration Set

Schedule for summer classes at Cisco Junior College has been released, according to President Grady Hogue. Two semesters of classes will run the length of the summer with the first six weeks from June 5 to July 13 and the second semester from July 17 to August 24.

Classes will be given on four days a week, Mondays and Thursdays, with the second group of classes given on Tuesdays and Fridays. All classes will be held from 6:45 to 10 p. m. Tuition and fees will be \$9.50 per semester hour, according to President Hogue.

Classes to be offered on Mondays and Thursday of the

first semester include the following: English 213 (soph. Eng.); Math 113A (college algebra); and history 213 (U.S. History from 1865).

Tuesdays and Fridays classes are as follows: English 113 (Fresh. Eng.); Government 213 (Amer. Gov.); and Education 113A (Intro. to Edu.).

Registration for the first semester will be held June 4 from 8 a. m. to 4 p. m. and from 6:45 to 7:30 p. m. Final exams will be July 12 and 13.

For the second semester, registration will be held July 16 with the same time as the first semester. Classes begin July 17 and final exams will be given on August 23 and

24. Second semester courses include the following: Mondays and Thursdays: English 223 (Soph. Eng. Cont.); Math 123 (Trig.); and History 223 (U.S. History from 1865). Tuesdays and Thursdays: English 123 (Fresh. Eng. Cont.); Government 223 (State and local); and education

113 (Education). President Hogue said that other additional courses will be offered if the need is indicated. All persons wishing to register for the summer session were asked to bring transcripts from previous institutions.

JOY DRIVE-IN Open 7:15 - Starts 7:40

Feature At 7:55
THURSDAY - FRIDAY MAY 3 - 4
The Day the Earth Caught Fire
Janet Munro - Edward Judd

SAT. - SUN. - MON. FEATURE AT 8:10
The Four Horsemen of The Apocalypse
IN-COLOR
Glen Ford - Lee J. Cobb - Paul Henreid

DIXIE Drive-In

Box office open 7:00
Show starts 7:30
Box office closes 9:30
Admission 40c
Children under 12 FREE
Each Wednesday - Adults 25c
MAY 3 - 4 - 5
Martin West - Venetia Stevenson - Bill Williams
The Sergeant Was A Lady

MAY 6 - 7 - 8
Debbie Reynolds - Steve Forrest
The Second Time Around
IN-COLOR

RANGER DRIVE-IN

Adults Still 50c. Kiddies Under 10c. Bargain Nite Each Wednesday - THURSDAY - FRIDAY - SAT.



THE BLISTERING INTERNATIONAL IS EVEN MORE EXCITING ON THE SCREEN!
SEASON OF THE WITCH

SUNDAY - MONDAY - TUESDAY



YOU HAVE TO SEE IT TO BELIEVE IT!
GLENN FORD - BETTE DAVIS
HOPE LANGE - ARTHUR O'CONNOR



FRANK CAPRA'S **Pocketful of Miracles**
PARKY
IT'S THE FUNNIEST CAPER FRANK CAPRA EVER MADE
PETER FALK - THOMAS MITCHELL
EDWARD EVERETT HORTON - MICKY SHAVER

PENNEY'S CHARGE IT AT PENNIES

Summer is tomorrow... when Penney's presents a record-breaking, coast-to-coast

CARNIVAL OF FASHION

Once, and only once a year! The U.S.A.'s smartest shoppers look for this show! Coast to coast buyers hand-picked prize fabrics, pace-setting styles! Come see... come save on day-in, day-out cottons, easy-care blends, travel-wise and evening fashions!

Charge It! It's Easier To Pick, Easier To Plan, Easier To Pay!

Fashions From Coast To Coast

Dallas
New York
Miami
Los Angeles
Come See Our Windows Full Chuck

of The Latest Summer Styles
Juniors 3 to 13
Misses 10 to 20
Half Sizes 12 1/2 to 24 1/2

6⁹⁵ TO 12⁹⁵

MAJESTIC

Now thru Saturday

RODGERS AND HAMMERSTIN'S
NEW **STATE FAIR**
PAT BOONE
BOBBY DARIN
PAMELA TIFFI
ANN-MARGRET
TOM EWELL
ALICE FAYE

Prices 75c - 50c - 25c

Starts Sunday
"HORIZONTAL LIEUTENANT"

Let's Promote

B. M. (Froggy) BENNETT
TO
District Clerk
91st District
Court
"Be For Bennett"
Pd. Pol. Adv.

PLYMOUTH WINS 8 OUT OF 10 EVENTS AGAINST FORD & CHEVROLET!

J. S. TESTING COMPANY RESULTS

EVENT	WINNER
1. ZERO-TO-60 MPH	PLYMOUTH
2. QUARTER-MILE	PLYMOUTH
3. 800-STOP, PANS	FORD
4. HALMETER RUN	PLYMOUTH
5. HIGHWAY PASSING	PLYMOUTH
6. CITY PASSING	PLYMOUTH
7. ECONOMY RUN	PLYMOUTH
8. HILL CLIMB	CHEVROLET
9. EMERGENCY STOP	PLYMOUTH
10. 3/4-MILE CLASSIC	PLYMOUTH

See your dealer for "Showdown"!

Eight decisive victories for Plymouth in "Showdown" at Riverside. One for Chevrolet. One for Ford. The place was the grueling Riverside International Raceway in California. The tester was the independent U. S. Testing Company. At Plymouth's request, they bought a Chevrolet Impala V-8, a Ford Galaxie "500" V-8, and a Plymouth Fury V-8. Professional drivers switched cars each time to eliminate the human element. A test of cars! Read the Official Results in box above! Here's proof: The Greatest Plymouth Ever Built!

TEST-DRIVE THIS PLYMOUTH YOURSELF AT

Rushing Motor Company
215 South Seaman
Blevins Motor Company
514 West Main