

# EASTLAND TELEGRAM

EASTLAND, TEXAS 76448: Today's CENTER for tomorrow's FUTURE!



Volume No. 103 Number 92

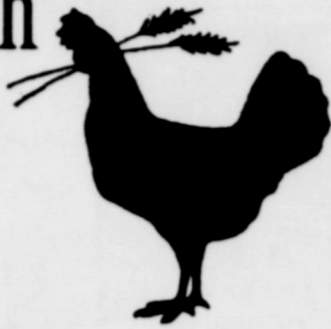
Thursday, November 18, 1971

## Maverick Machine to Meet Stamford In Bi-District Clash Friday

### Tickets Available Here To Friday at 1

### The Fable of the Little Red Hen

Tid Bits  
By HVO



BORROWED

Once upon a time there was a little red hen who scratched about and uncovered some grains of wheat. She called her barnyard neighbors and said, "If we work together and plant this wheat, we will have some bread to eat. Who will help me?"

"Not I," said the cow.

"Not I," said the duck, as did the goose.

"Then I will plant it," the little red hen said—and she did.

Much later, when the wheat started to grow, the little red hen again was denied help. At length, the wheat was ready for harvesting.

Who will help me reap the wheat?" the little red hen asked.

"Not I," said the cow. Same thing from the duck and the goose.

"Out of my classification," said the pig. So the little red hen harvested the wheat herself. Then she ground the wheat into flour. Now at last, she asked for help with the baking.

"That's overtime for me," said the cow.

"I'm a dropout and never learned how," said the duck.

"I'd lose my welfare benefits," said the pig.

"If I'm the only one helping, that would be discrimination," said the goose. "No thanks." So the little red hen baked the bread and showed her neighbors the five loaves.

"I want some," said the cow, as did the duck.

"I want my share," said the goose.

"No soap," said the little red hen. "I'll just take it easy for a while and enjoy my bread."

"Excess profits!" cried the cow.

"Company fink!" shouted the goose, while the pig also demanded equal rights.

Pretty soon the farmer came to investigate the commotion. "You must not be greedy," he told the hen.

"Look at the oppressed cow, the disadvantaged duck, the under-privileged pig, the less fortunate goose. You are making second class citizens of them."

"But I earned the bread," the little red hen said. "Exactly!" the farmer said. "That is the free enterprise system. Anybody can earn as much as he wants. In other barnyards you would have to give all five loaves to the farmer. Here, you keep one and give four loaves to your suffering neighbors."

And they all lived happily ever after? Including THE LITTLE RED HEN, WHOSE NEIGHBORS NEVER CEASED TO WONDER WHY IN THE WORLD SHE NEVER RAISED ANY MORE WHEAT OR BAKED ANY MORE BREAD.

It'll be a different pack of Bulldogs altogether that the Eastland Mavericks meet at P.E. Shotwell Stadium in Abilene Friday night for Bi-District Championship.

At the 7:30 p.m. kickoff Eastland will meet the Stamford Bulldogs, winners of District 7 AA, coached by Charlie Smith, formerly of Ranger Bulldog fame.

The Stamford 11 won their own against Haskell last Friday night 24-20, while the Mavericks were shutting out the Coleman Bluecats, 12-0, here.

Putting together a perfect season, the Mavericks amassed 443 points winning ten, which is a little below their season total of 458 two years ago when they won district, then bowed to Haskell on penetrations, in the Bi-District test.

The Mavericks out-played the Bluecats from A to Izzard, but managed to rack only 12 points here Friday, while in the Haskell-Stamford game, Haskell had it won, and through

stubborn determination, the Bulldogs lashed back and won it in spite of everything.

### Pep Rally Set at 4:30

The Eastland High School Student Body will have a parade and pep rally today-Thursday at 4:30 p.m. The parade will start at the Foremost Milk Plant on West Commerce and will travel to the square. The 100 block of W. Commerce street will be blocked off so the pep rally can be held.

ALL BUSINESS ARE URGED TO EITHER CLOSE OR SEND AS MANY PEOPLE TO THE PEP RALLY AS POSSIBLE AND SHOW THE TOWN'S SUPPORT FOR THE EASTLAND MAVERICK FOOTBALL TEAM.

REMEMBER 4:30 P.M. TODAY, THURSDAY. LET'S WIN BI-DISTRICT. BEAT STAMFORD

And that's the kind of determination the Mavericks face Friday in Abilene.

The Bulldogs ended with a 7-2-1 season, (tieing Snyder in the opener and losing to Sweet-water and Jacksboro.)

They scored 224 points to their opponents' 131, operating from the Wish-Bone T.

Outstanding in the backfield, are Randy Leavitt, Fred Washington and Wayne March. The top linemen are Robert Stevenson and Rick Medford.

A downtown pep-rally will boost the Maverick spirit Thursday afternoon, and the team and band will be bussed to Abilene via Greyhound for this important Bi-District test.

Tickets went on sale Monday morning in Eastland and will be available through Friday at 1 at \$2.00 for adults and \$1.00 for students. Only \$2.00 tickets will be sold at the gate Friday night.

RODNEY REYNOLDS, 235 lb. senior tackle was selected as outstanding offensive player, for his superb blocking of Coleman's All-State candidate Danny Birdwell all

night.

JAMES EIDSON, 190 lb. senior end, gets the defensive award for seven tackles individually and two assists and for an all-round outstanding offensive and defensive game.

STEVE LOPEZ, 160 lb. junior guard linebacker, gets a defensive award for seven tackles and two assists. He's credited with being the main

factor in stopping Coleman's Fullback Marrs.

Head Coach Shirley Frazier has this to say of the District Championship game:

"We're obviously pleased with the results and the play of the entire team. It was a truly great defensive game, and of course we made too many offensive errors that will have to be corrected before we play Stamford."

### UF Hits 135.5% WORLD RECORD?

The Eastland United Fund joins the Eastland Mavericks in sharing "winning ways".

For what is believed to be an all-state record, the Eastland UF went over on its prescribed day for a total of 135.5 percent of its goal. Nearest state record for this year is 106 percent, and only higher state report was for a town a long time ago which subscribed its goal by 200 percent, but it was a "first-year" situation, and the workers in that particular town had no way of knowing what their goal should have been, it was reported.

Either way, local and state officials were raving about the Eastland UF accomplishment, almost as much as football fans were raving about winning Maverick teams.

President Grover Hallmark said, "Gee whiz, what can you say; it's just marvelous."

Drive Chairman Don Nicholas, against with the success of the drive, was all thanks to so many who had helped make it come to pass.

Coming in for terrific praise were the employees and management of the Vassarrette plant here, who contributed a whopping \$1,601.29, matched dollar-for-dollar by the parent firm, for a total Vassarrette gift of \$3,202.58 for the Eastland UF.

A total of \$11,756.30 was on report Tuesday, Victory Day, with some sizeable contributors still to be made, making the totals far exceed the budgeted \$8,675.

"Never fear," Mr. Hallmark said, "we'll see that the money is all put to good use. We have 16 very worthwhile agencies, and we see this as an overwhelming endorsement by the people of Eastland, for the United Fund way. They like the one-drive approach."

Coming in for special thanks

from Nicholas were members of the Civic League and Garden Club who assisted with refreshments at the victory rally Tuesday; Mrs. Sue Rossander, who with the help of the Jayceettes, did a marvelous job of collecting funds; Mrs. Vivian Jones who did an outstanding job of collecting funds in her area; Special Gifts Chairman H.T. Wilson; the publicity chairman who told the UF story in Eastland; and Mrs. Herman Alsop of the Sorority for their help.

Nicholas added there's so many people we'd like to thank personally, and we see this victory as one that the entire town can take pride in. Our people never fail to respond with the appeal is made, and we know that our 16 agencies are all very deserving.

He especially thanked members of his board and the screening committee for helping set up realistic goals and then helping meet those goals.

First firm to be reported 100 percent was Aztec Mobile Homes, with others to be listed as complete records are turned in, he said.

Participating agencies

- Teenage League
- Boy Scouts
- Texas Rehabilitation
- Salvation Army
- Muscular Dystrophy
- Red Cross
- USO
- Little League
- Texas United Fund
- Cancer
- Heart
- Birth Defects and Arthritis
- Eastland Welfare Association
- Girl Scouts
- West Texas Rehabilitation
- Local Contingency Fund

## New Home Open House Set

One of many new homes being built in Eastland, a 4-bedroom Gold Medallion Home, built by H&W Development Co., will be shown in an Open House Saturday and Sunday, Nov. 20 and 21, from 10 to 6 p.m.

Located at 710 S. Dixie St., the home contains 1,480 square feet, and abasis allelectric features including central cooling and heating, dishwasher, waste disposer, range and water heater.

Texas Electric Service Co. is assisting with the showing and the public is invited to visit this modern home, partially furnished by Coats Furniture Co.

This particular home is one of several already built by H&W Development, with a great number of others on the drawing boards for construction in Eastland.

Visitors to this show home will be able to inspect the features and qualities of the All-Electric Home, and see

advances being made in the current building boom now in progress in Eastland.

### Int. 20 Open 24-Dec. 1

Best guess for opening of Interstate 20 around Eastland and Cisco is anytime from Wednesday, Nov. 24 and Dec. 1, reports Resident Highway Engineer R.P. Haun this week.

The signing company is now in the process of erecting the signs and barring bad weather or other schedule-hauling difficulty, the signs should be up and the road ready to open sometime within that period, Haun said. Foundations for the signs have been poured and are drying, he said, with major contractor Strain still with a few to erect. Contractor Cecil Ruby has completed his work at the Cisco end of the project.

The sign company will probably begin hanging the signs to the posts early next week.

Progress is moving slowly on the FM 31301 project north of Eastland across Lake Eastland where Contractor Acme Bridge Co. is a little behind schedule due to weather and completion of other projects.

The eight mile stretch will



A PART OF EASTLAND --Proving that Vassarrette, a Munsingwear affiliate that will celebrate its 25th Anniversary in Eastland Sunday with an Open House, is very much a part of the Eastland scene, is this ceremony in which the firm helps boost Eastland's United Fund over the top by a whopping figure. Employees at the Eastland plant contributed a total of \$1,601.29. This was matched dollar-for-dollar by the parent company and a total of \$3,202.58 turned over to the UF in this check-passing by from left Jack Cockerham, regional personnel supervisor of Paris, Local Manager Gene Johnson, UF Drive Chairman Don Nicholas and UF President Grover Hallmark. Vassarrette invites one and all to attend the open house Sunday, Nov. 21.

## City Employees Get 5% Pay Hike

### New Housing Is Announced

A five percent pay boost for city employees was approved, tentatively approval given for a new 28-lot housing development given, and tentatively agreement made with a neighbor for use of the city's new sanitary land-fill, all during a busy and long City Commission meeting Monday evening.

Meeting at 5:30 the commission toured the town, run from W. Main St. along N. College, across a new bridge over Lake Eastland and to Highway 183, just south of the Eastland-Cisco "Y" on that Breckenridge Highway.

looking at the developments at the land-fill project south of town where progress is being made; the city animal shelter; the new apartment complex, the new housing area; and the City Park.

Meeting back at the City Hall at 7, the commissioners, all present, heard representatives from H&W Development Co. explain plans for a new housing development, south of East Conner St. A participating plan was agreed upon similar to that utilized by the city in the development of the Valley View Addition.

Commissioners, in reviewing the budget for the coming year, were advised that the present wage-price freeze would restrict plans to raise salaries to a maximum of 5.5 percent, and a five percent across the board pay boost was approved.

The City Council was host to a delegation from Cisco including Mayor Douglas Fry, Chamber President Gene Abbot, City Attorney B.B. Wright, Commissioner Vernon Honea and City Secretary Sutton Crofts.

The City delegation is interested in developing a plan whereby that city had use the facilities of Eastland's sanitary land-fill program based on a

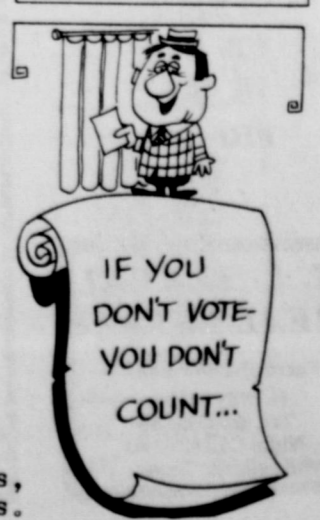
volume-cost ratio, to be worked out. The Eastland group expressed pleasure with the Cisco proposal, with the provision that it not be begun until full utilization is being achieved here. Eastland has not as yet closed its old dump ground but plans to do so as soon as an all-

Continued Inside

**FREYSLAG Insurance Presents THE WEATHER EASTLAND and vicinity: Increasing chances for showers, cooler temperatures.**

### Fullen Motor Co.

PUNCH LINE OF THE WEEK



James Reid, Mayor

# classified ads

629-1707

Thursday, November 18, 1971



Phone 629-1707  
110 W. Commerce St. Eastland, Texas 76448

Consolidated with Eastland Chronicle, established in 1887, and Eastland County Record, established in 1931

**H.V. O'BRIEN, Publisher and Editor**

**HERMAN ALSUP, Associate Editor**

Second Class Postage paid at Eastland Texas under Act of Congress on March 1870.  
Published semi-weekly - Thursdays and Sundays by Eastland County Newspapers, Inc.

**SUBSCRIPTION RATES:** By carrier in city, 15c a week or 65c a month; one year by mail in county, \$5; city PO Boxes, \$6; one year elsewhere in state, \$7; out of state, \$8.

**NOTICE:** Any erroneous reflection upon the character, standing, or reputation of any person, firm or corporation which may appear in the columns of this newspaper will be gladly corrected upon being brought to the attention of the editor.

**WANTED**  
Consultant for Luzier Cosmetics. Will train Contact Mrs. C. L. Dinsmore P. O. Box 243, Ranger, Texas 76470

"We can handle anything but litterbugs!"  
**Goode Pest Control**  
Phone 629-1179 after 3:00  
310 N. Ammerman  
roaches, ants, termites, moths, spiders  
**ALL WORK GUARANTEED**

**SUTTON'S**  
A-1 Office Machines  
Call 629-1707  
Eastland

**AMERICAN NATIONAL**  
INSURANCE COMPANY  
HOME OFFICE GALVESTON, TEXAS  
**M. W. Herweck - Agent**  
Office 629-1512 Home 629-1288  
Eastland

**ABCO**  
Plumbing & Heating  
Contracting and Repairing  
Complete Plumbing Service  
Call 629-1200  
Day or Nite  
**BOB WILLIAMS**  
Master Plumber  
Serving Texans  
25 years

**LAKE LEON PROPERTY**  
2' with home, so. side, 2 lots, cas., 4 b. rms. \$8,000.  
1 bedroom lake cabin furnished \$4,200.  
1 bedroom concrete block home, large screened in porch, furnished including 15 ft. Lone Star Boat \$6,500.  
2 vacant deeded lots, so. side. \$2500.  
2 bedroom home furnished lrg family room and fireplace overlooking Lone Cedar Country Club. North side. \$11,500.  
Furnished mobile home lge. screened porch fish pier. 2 stall boat house, excellent lot. \$8,500.  
**HOMES**  
2 bedroom home 3 lots. \$2,500.  
Mobile home, 12 x 60. \$5,100.  
2 bedroom, den, Hallbryan. \$3000.  
2 bedroom, den, Ranger. \$5500.  
2 bedroom just remodeled. \$5,500.  
2 bedroom home, extra large living area, been recently paneled, 4 lots. \$6500.  
3 bedroom, 2 bath, double garage. \$11,100.  
4 bedroom, 1 acre land. \$7350.  
Several homes with small acreage in Olden area.  
3 bedroom home, remodeled, large den, fireplace. \$13,650.  
**FARMS AND RANCHES**  
Nice 3 bedroom home, 80 acres land, improved pasture, plenty good shallow water, on pavement. \$30,000.  
3 bedroom house, 80 acres of land, 5 miles out, \$16,000.  
194 acres, some lake frontage, pecan trees, close in.  
210 acres, cleared native pasture with some pecans and creek bottom. Net fences. Will subdivide into smaller tracts. for G. I. \$150 per acre  
40 acres land all permanent pasture on pavement. 15 ac. peanut allot. good water well, and pressure system. \$10,000 will G. I.  
40 acres of land 3 bedroom home some improved grasses, so. part of county. \$17,000.  
51 acres-38 cult. balance brush. 17 acres peanut allot. water well. 6 mi. from Ranger, will G. I. or owner will finance.  
Well improved 1,000 acre ranch with cheap interest rate loan. Will consider some clear trade for equity.  
1750 acre ranch, some clear excellent hunting in good location.  
2800 acre well improved Lampasas ranch with running water.  
14,000 acre improved North Texas ranch. Will consider some trade.  
For these and other places contact:

**KINCAID**  
**REAL ESTATE**  
100 South Seaman  
Eastland, Texas 629-1781  
Robert M. Kincaid 629-2721  
J. W. Elder 647-1321

## FOR SALE FOR SALE WANTED FOR RENT

**MISC. FOR SALE - GERT'S** a gay girl-ready for a whirl after cleaning carpets with Blue Lustre. Rent electric shampooer \$1. Perry Brothers.

**FOR SALE-CLEANINGEST** carpet cleaner you ever used, so easy too. Get Blue Lustre. Rent electric shampooer \$1 Coats Furniture.

Furnished or unfurnished two bedroom house and adjacent large storeroom. TV washer, carpet, almost new furniture. 1022 Spring Road in Ranger. Tel. 647-3203 or 647-1360. tf

Corner of West Commerce, and College. Call 629-2595. tf

1965 Galaxie 500 in pretty blue with white vinyl top. Beautiful blue vinyl interior. Big engine. All power and air. Good rubber and low actual local mileage. Ideal family car. Call 629-2413. tf

**FOR SALE:** 55 gal. oil drums \$4.00 in quantities of five; \$4.50 each cut and delivered locally. We buy and sell used furniture, heaters, antiques, misc. Some odd, some good, some junk. Trading post, 311 Main St. or call Arnold Gohlke, 647-3103. tf

Large selection of suitable gift and personal books for gift giving and your own use. See the complete line at the Telegram. tf

Registered poodle puppies. Reasonable priced, ready to go. 565 East Foch street in Eastland. Call 629-1211. 97

Now's the time to clean out the garage and closet and sell your don't needs into cash through the Classifieds. The successful businessmen use 'em all the time-why shouldn't you? Up to 20 words, one time for \$1.50, each insertion thereafter for \$1. Keep one running at \$8.50 per month and change the copy to suit your needs. Use the Telegram Classifieds. tf

House in Carbon. City Water and well water. 4 bedrooms. All built in Kitchen. Large recreation room. Completely carpeted. Mary Snell at Carbon. TF

Six registered Yearling Angus Bulls. Call 629-2206. 192

Fine printing available at the Telegram: calling cards from \$9.95 for 500; your own personal letterhead from 9.20 for 500; personalized envelopes from 8.15 per 500; padded statements from 8.30 to peer Bigger values in larger lots. You can get it printed at the Telegram. tf.

Used two-tube fluorescent desk lamp with swivel arm. \$24.95, at the Telegram office where you'll also find a complete line of office supplies. Paper, files, typewriter ribbons, cash registers, adding machine tape, and much more. Just come look. If it's for your desk or office, you'll find it at the Telegram. tf.

**FOR SALE:** 1971 Chev. 4 wheel Drive, 1/2 Ton Pickup, low mileage loaded. Phone 817-758-2293, Desdemona, Texas.

16 varieties of bantams. Call 629-1859. 191.

**FOR SALE:** Fertilized Coastal Hay 75¢ a bale. Call Cruz. 653-2486.

Six Registered Yearling Bulls. Call 629-2206. T 92

3 Wheel Scooters (formerly used by Post Office) with 2 cyl. air cooled Onan engines & 12 volt elec lights, starter, etc. Just received 2 more large shipments from Gov. Your choice as is \$195.00 Repainted & reconditioned slightly higher. Johnston Truck & Supply 752-2181. Cross Plains, Texas. T 98

Take soil away the Blue Lustre way from carpet and upholstery. Rent electric shampooer \$1. Perry Brothers. 193

1969 V-8 Chevrolet Half Ton Pickup with narrow Wheel base, automatic transmission. For sale by owner. Call 629-2545. T 92

Lake cabin at Lake Leon, call or write Mrs. Joe Baucum 1815 Ave. L. Anson, Texas. Phone 823-3870. T92

A good buy - give it a try. Blue Lustre America's favorite carpet shampoo. Coats Furniture. 193

**WANTED:** Customers for our pre-Christmas Sale, Nov. 4-13. Have bargains in doubleknits, bonded acrylics, denims, fake furs, brushed nylon, remnants. Mary's Fabrics, Hwy. 80 E. in Ranger.

**HELP WANTED: MALE-** Our company is expanding its operations into this area and needs a man who is respected in the community. This man would earn from \$1000 to \$1500 per month and enjoy all company benefits, including a stock incentive plan, life and health insurance and a complete training program. Part-time considered. Write Local Representative, 100 North University, Suite 251, Ft. Worth, Texas 76107.

**TEXAS OIL COMPANY** needs good man over 40 for short trips surrounding Eastland. Contact customers. We train. Air mail A.S. Dickerson, Pres., Southwestern Petroleum Corp., Ft. Worth, Tex. T-92

Maintenance man and elevator operator. Call 629-1383. 1-92  
Wants to buy a two or three bedroom house in Eastland. Price within reason call: 629-1995. T92

**NOTICE**  
**NOTICE--Thanksgiving** Weekend in New York-Wednesday through Sunday. Special Fare \$132.00 (30 in group) Hotel and sightseeing packages available. Helen Crawford, 442-2265 or leave message 442-1499. tf

**WANTED**  
Due to expansion program in Texas Area International Co. needs dependable men and women 25 years or older to fill positions created by promotions. No experience necessary. We will train. Managerial position possible after qualification. For more information and interview appointment, send short resume to: Niagara Therapy, 824 Butternut, Abilene, Texas.

Christian lady wanted to live with elderly lady in Carbon. Very light work. Room and board plus salary. Call 629-1091. tf

**WANTED**  
**BEAUTY OPERATOR**  
Eleanor's Beauty Shop  
914 S. Bassett and Conner  
Call 629-1222

**EMMET MORREN**  
**PLUMBING**  
COMPLETE REPAIR SERVICE  
1015 W. Main  
**629-2092**  
24 Hour Service

**FOR RENT:** Conveniently located small apartment ideal for employed person. Cable and telephone bills paid. Call 629-2083 Eastland or 629-8821. 92

Nice, clean furnished, large living room, large bedroom; small kitchen and bath; utilities paid. Call 629-2362 between 10 a.m. and 5 p.m. tf

**WANTED**  
TEXAS DEPARTMENT OF MENTAL HEALTH AND MENTAL RETARDATION.  
Because of fine support in the past, we ask for help again! says the Texas Department of Mental Health and Mental Retardation. Many patients

**HAVE YOUR CAKE AND EAT IT, TOO... THROUGH CASH VALUE LIFE INSURANCE**



**M. H. PERRY**

**SOUTHLAND LIFE**  
**Insurance Company**  
100 S. SEAMAN  
629-1566  
RES. 629-1095

Bring a Heart of Gold Agent into your Life.

**GARDENHIRE OIL COMPANY**  
Yes! We can sell wholesale to you!  
See us for all your oil, grease, filters, spark plugs, brake fluid, anti-freeze, S. T. P. for oil, gasoline, diesel or radiator, tires for cars, truck or tractor. **WE HAVE TANKS** for farm or commercial gasoline and diesel fuel. See us before you trade. All major brands of Oil and Grease.  
**WHY PAY MORE??**

**FORD DRY CLEANERS**  
The freshness of autumn calls for clothes that are dry cleaned to perfection by our modern methods.  
Service is Fast! Pick-Up and Delivery  
**629-2055**  
209 S. Lamar

sympathy and advice...  
**WE ARE HEAR TO SERVE YOU**  
Whatever the hour, feel free to call on us for understanding counsel in time of sorrow.

**Arr. gton**  
**Funeral Home**

Eastland  
629-2611

have outlived their families. They are without funds. Their chairman is dependent on the concern and generosity of people like you. We have 1,400 patients. We also try to decorate the buildings and furnish Christmas trees. If every Ward has a tree, we need 50 trees. Fruit cakes and angel food cakes for diabetic patients are needed.

Another great need we have is the presence of people. If you live near enough to come carolling, please do. If your choir could take a day off and put on a Christmas program in our chapel, our patients would love it. If your Sunday School Class, Civic organization or group of friends would like to sponsor a chairman party with refreshments, singing together, you would mean so much to us!

\*\*\*\*\*  
**MASONIC LODGE NO. 467**



Meets second Thursday of each month at 7:30 p.m. in the Masonic Hall. Call Pat Miller, W. M. at 629-1077 or L. E. JHuckabay sec'y at 629-1391 for information.

\*\*\*\*\*  
**EASTLAND ROTARY CLUB**  
Saul Pullman, president



Meets each Monday at White Elephant Restaurant in Eastland 12:00 noon.

**HELP WANTED**

Registered Nurse for director of nurses. Breckenridge Nursing Home. Call 559-2717 for interview. Breckenridge, Texas

**MARY COME HOME**

**FREE**  
ESTIMATES ON new roofs only  
Repair of Your Old Roofs  
Residential and Commercial  
"ALL NEW WORK GUARANTEED"  
**TRI-CITIES ROOFING CO**  
Call  
Nobil Squiers  
629-2370  
EASTLAND

**ROY LEE SMITH**  
**PLUMBING**  
Contracting and Repairing Complete Plumbing fixtures and Supplies  
Water Systems  
Electric Motors  
Bath & Kitchen Improvements  
Trained, Adequate Staff  
Call a Licensed Plumber  
Day or Night  
629-1722

**SMITH PLUMBING**  
114 N. Seaman  
Eastland

**MAYBE YOU DON'T NEED**  
INSURANCE--

If you don't own a home, furniture, jewelry or a car, you can get along without the services of an insurance agent. But for the most of us, life is not that simple. Modern living has

become so complex that the protection of property and personal liability is a major problem and we must be insured. The individual you can always depend on for accurate solutions of your insurance problems is your local agent.

**Earl Bender & Company**  
Eastland Insurance since 1924 Texas

**Poodle Grooming**  
Telephone  
647-1288 - 647-1845

**OUR DAD WANTS TO INSURE YOUR CAR**



**D. L. KINNAIRD**  
**GENERAL INSURANCE**  
207 W. MAIN ST. - 629-2544

## REAL ESTATE

ALL TYPES  
OF REAL ESTATE:

HOMES  
farms

ranches

Financing Assistance

Listings requested and long list of good properties on hand

CALL US AND LET US SHOW YOU HOW WE CAN HELP YOU

**M. L. TERREL**  
**REAL ESTATE**

Farm Bureau Bldg.  
Hi Way 80 East  
Tel. 629-1725 Day  
Night Call 629-2443  
Eastland, Texas

**Eastland Steam Laundry**  
PICKUP & DELIVERY  
for your every laundry need  
**Mr. & Mrs. Z. W. Cook**  
210 N. Lamar 629-2613

**A-1 Fina Service**  
INT. 20 & LAKE LEON RD. ACROSS FROM DAIRY QUEEN  
DAY OR NIGHT PHONE 629-2102  
GAS & OIL GOOD AS BEST-  
BETTER THAN REST  
**FREE BOX KLEENEX**  
with 8 gallons or more of gasoline  
GROCERIES•ICE•GARAGE•POP  
EXPERIENCED SCHOOLED MECHANIC ON DUTY  
ALTERNATORS•GENERATORS  
●REBUILT●EXCHANGED  
MOTOR TUNE UP  
Most 6 \$7<sup>50</sup>LABOR Most 8 \$10<sup>50</sup>  
cylinder PLUSPARTS cylinder LABOR  
cars PLUS PARTS cars PLUS PARTS  
OVER 200 USED AND NEW TIRES IN STOCK  
EXPERT AUTO AIR COND. SERVICE & REPAIR  
FLATS FIXED + EXPERT WHEEL BALANCING  
IF YOU NEED GAS OR SOMETHING  
**A-1 FINA SERVICE**  
Lake Leon Rd. at Int. 20  
Prompt Courteous Service-Free Estimates  
WHERE QUALITY & SAVINGS GO TOGETHER

# Gordon News

Mrs. Paul Rexroat  
Box 25  
Gordon 76453

A union Thanksgiving service will be held at the First United Methodist Church Sunday, Nov. 21 at 7 p.m. Rev. Cecil Harper, pastor of the First Baptist Church will preach the Thanksgiving sermon.

The American Legion and Auxiliary will have a hot biscuit

supper Saturday, Dec. 4 at the Legion Hall, beginning at 6 p.m. Free will offerings will be the admission.

Mr. and Mrs. Leonard Pierce have been at the bedside of her father, Ben Barrett at Palo Pinto General Hospital in Mineral Wells the past weekend.

Visitors in the home of Mr. and Mrs. Hollis Wolfe Sunday

were Johnnie Wolfe of Fort Worth; Mr. and Mrs. Weldon Wolfe of Stephenville; and L.D. Wolfe and son, Mike of Everman.

Mr. and Mrs. Alvin Weidner and Mrs. M.O. Shook visited from Saturday until Monday with Mr. and Mrs. David Weidner and Joe Weidner, near Houston.

Mr. and Mrs. Rod Brown of Fort Worth visited during the weekend with Mr. and Mrs. Ralph Finch and Mr. and Mrs. Lloyd Elkins, Joe, Jan and Jim.

Mr. and Mrs. Robert Pierce and Jamie of Jayton spent the weekend with Mrs. Cora Pierce and Mr. and Mrs. Lonnie Stallings.

Seven members of the First Baptist Church attended the Baptist Workers Conference at Graford recently. Attending were Rev. and Mrs. Cecil Harper, Mr. and Mrs. H.E. Cromer, Mrs. Bennie Johnson, Mrs. Lena Rogers and Marvel Pitman.

Mr. and Mrs. D.D. Dyer of Big Spring visited Sunday with his sister and brother-in-law.

Mr. and Mrs. Webb Spear.

Billy Joe and Bobby Dale Elkins of Bedford visited during the weekend with Mr. and Mrs. Charlie Elkins and Mr. and Mrs. Lloyd Elkins.

Mr. and Mrs. Doc McQueary visited recently in Austin with their son and family, Mr. and Mrs. Eddie McQueary and Kay Lynn.

Mr. and Mrs. Bennie Stalling of Vinson, Okla. spent a few days last week with Mr. and Mrs. Tom Spear and Mr. and Mrs. Lonnie Stallings.

Mr. and Mrs. Corky Rexroat, Margaret and Linda and Miss Stephanie Stringer all of Houston visited during the weekend with Mrs. Mary Rexroat and other relatives.

Ronald Teichman has returned home after being in Dallas for two weeks attending automotive repair courses at General Motors Training Center.

He which testifieth these things saith, surely I come quickly. Amen. Even so, come, Lord Jesus.

Rev. 22:20

## FOR SALE OR TRADE

1965 FORD GALAXIE 500.

Big 8 cylinder engine with low, low mileage.

Air Conditioned. Tinted Glass. Pretty new blue paint with white vinyl top. Was originally a factory's executive's car bought and driven locally. \$995. Would consider trade for a good family type boat and motor. Call 629-2413.

# J R B

## SUPER MARKETS

PRICES GOOD at EASTLAND, RANGER, CISCO  
THRU -Saturday, NOV. 18, 19, 20



# Unbeatable prices

Look at the way we've cut prices and you get S&H Green Stamps, too!



DOUBLE STAMPS

# Unbeatable stamps

WEDNESDAY AND SATURDAY

We reserve the right to limit quantity. No sales to dealers.

# THANKSGIVING

- Dankworths Sugar Cured Hickory Smoked **Smoked Ham** Shank Portion lb. **42<sup>c</sup>**
- Dankworths Sugar Cured Hickory Smoked **Smoked Ham** Butt Portion lb. **52<sup>c</sup>**
- Dankworths Sugar Cured Hickory Smoked Shank **Smoked Ham** Half or Whole lb. **59<sup>c</sup>**
- Dankworths Sugar Cured Hickory-Smoked Lean **Smoked Ham** Center Slices lb. **88<sup>c</sup>**
- Swift Butterball **Turkey Hens** 10 to 14 lb. avg. lb. **58<sup>c</sup>**
- Honeysuckle Self-basting Grade A **Turkey Hens** 10-14 lb. avg. lb. **54<sup>c</sup>**
- U.S.D.A. Insp. **Turkey Toms** 18 to 22 lb. avg. lb. **37<sup>c</sup>**
- Ralston Purina Medallion **Turkey Hens** Brand 11-14 lb. avg. lb. **41<sup>c</sup>**
- U.S.D.A. Insp. Grade A **Chicken Hens** lb. **45<sup>c</sup>**
- Completely Cooked Gooch Blue Ribbon **Ham** lb. **89<sup>c</sup>**
- Gooch Lady Bird **Smoked Turkey** lb. **99<sup>c</sup>**

JRB MEATS ARE CUT FROM U.S. GOVERNMENT INSPECTED AND GRADED MEATS. IF FOR ANY REASON YOU ARE NOT SATISFIED WE WILL CHERFULLY REFUND YOUR MONEY.



Fine Bavarian China Club

"SPECIAL 40% SAVINGS OFFER"  
28 Pieces . . . Four 7-Piece Place Settings  
When You Complete 28-Piece Set

You Pay Only \$24.75  
(only to Club Members)

BAVARIAN PORCELAIN CHINA

Patio Mexican or Beef

**Enchilada Dinners** 12 oz. **39<sup>c</sup>**



Wolf **TAMALES** 12 oz. **29<sup>c</sup>**

Wishbone Italian

**SALAD DRESSING** 8 oz. **33<sup>c</sup>**

Foremost **COTTAGE CHEESE** 24 oz. **49<sup>c</sup>**

Nabisco Cho. Pinwheels 12 oz. **49<sup>c</sup>**

**Cookies** 12 oz. **49<sup>c</sup>**

Shurfine Waffle or Pancake **SYRUP** Qt. **49<sup>c</sup>**

Food King **FLOUR** 5 lb. bag **39<sup>c</sup>**

Sugary Sam No. 3 sq. can **Sweet Potatoes** 3 for **\$1.00**

Biltmore **Luncheon Meat** 12 oz. can **39<sup>c</sup>**

Shurfine Evaporated Tall can **EVAPORATED MILK** 2 for **37<sup>c</sup>**

Ranch Style **Beans** 5 300 can **\$1.00**

Mortons **Meat Pies** 8 oz. **4/\$1.00**

## Produce

- Golden Ripe **BANANAS** lb. **10<sup>c</sup>**
- Russets 15 lbs. **Potatoes** bag **99<sup>c</sup>**
- Cello **Carrots** 1 lb. pkg. **15<sup>c</sup>**
- Texas Sweet **Oranges** lb. **15<sup>c</sup>**
- Texas Ruby Red **Grapefruit** lb. **15<sup>c</sup>**

Cut Shurfine Frozen **Corn** 10 oz. **4 for \$1.00**

**UNITED STATES ENCYCLOPEDIA OF HISTORY**

VOLUME 12

ONLY **\$1.99**

WITH 10-DAY MONEY-BACK GUARANTEE!

Complete 16 volume set available at special savings on a volume per week plan.



## Thanksgiving at its finest.

- Del Monte Cut **GREEN BEANS** 303 can **5/\$1.00**
- Del Monte **Prune JUICE** qt. **49<sup>c</sup>**
- Del Monte 46 oz. can **TOMATO JUICE** 3 for **\$1.00**
- Shurfine Chunk **TUNA FISH** 3 No. 1/2 can **\$1.00**
- Sweet Treat **PINEAPPLE** 4 300 can for **\$1.00**
- McCormicks **Black Pepper** 4 oz. box **53<sup>c</sup>**
- Del Monte Sliced or Halves **Peaches** 2 1/2 can **3/\$1.00**

- Gooch Old Virginia 2 lb. bag **Pork Sausage** **\$1.39**
- Bacon Silver Spur Sliced lb. **58<sup>c</sup>**
- Bacon A.F. No. 1 Quality lb. **68<sup>c</sup>**
- Mrs. Weavers Asst. **Party Dips** 2 for **45<sup>c</sup>**
- Ham Plumrose Reg. 69<sup>c</sup> Pkg. **59<sup>c</sup>**
- Fryers U.S.D.A. Insp. Farm Fresh lb. **29<sup>c</sup>**
- Fryers Cut up Pan Ready lb. **35<sup>c</sup>**
- Cheese 6 oz. pkg. Mini-Blocks Cracker Size Mellow, Medium, Jack, Muenster **49<sup>c</sup>**
- Pork Steak Lean and Tender **59<sup>c</sup>**
- Pork Roast Boston Butt lb. **55<sup>c</sup>**

## Maryland Club Instant COFFEE

10 oz. jar (with coupon) **\$1.29**

## JRB WORTH 37<sup>c</sup>

When you buy a 10 ounce Jar of Maryland Club Coffee **\$1.29** with coupon  
Cash value 1/20c. Limit one per customer  
COUPON EXPIRES Nov. 23rd

# J R B

Brownwood, Brady, Cisco, Eastland, Ranger, Coleman, DeLeon Wichita Falls, Cross Plains, Abilene

# Desdemona News

Mrs. Garden Tate Corr.

Our proverb: Timely advice is as lovely as golden apples in a silver basket.

## SPECIAL NOTICE

Saturday night, Nov. 20, the Desdemona Home Demonstration Club will sponsor a chili supper at the community center. There will be beans and fried pies, tea and coffee on the food menu. It is regular 3rd Saturday night "Country style musical". Come and bring your fiddles, guitars and jews harp and all your friends. Your meal will be \$1.00 per plate

Tom Herrington of Kerrville was laid to rest in the family plot in the Desdemona Cemetery Friday afternoon Nov. 12. He was a son of the late Mr. and Mrs. Joel Herrington

Sr. who were early pioneers of our community. He will be remembered by many as a violinist in years past.

Mr. and Mrs. Felix Sparks, and Mrs. Ella Tidwell spent several days in Marfa and other places in Southwest Texas this week.

Mrs. Lucille T

Mrs. Lucille Taylor of Eastland visited her sister Mrs. Nora Lane and Mr. Lane on Sunday and attended Church at 1st Baptist.

Mr. and Mrs. T.L. Koonce visited Sunday and Monday with their nephew Phil Reid and family at their ranch near Gonzales, Texas.

Several attended the funeral of John Ellison at Stephenville, Sunday.

Coleman Weir attended church services Sunday morning with his sister Mrs. Lorene Koonce at 1st Baptist. Coleman lives in DeLeon.

Beulah DeGuire is a patient in the Dublin Hospital. She underwent surgery last Thursday.

Mrs. Julia Carter is a patient in DeLeon Hospital.

Mrs. Jewel Hallmark and Mrs. Alta Parks visited Mrs. Hallmark's mother Mrs. T.H. Key who is in Sunset Nursing Home in Stephenville.

Mrs. Inez Heeter and Mrs. Garden Tate were shopping in Stephenville Wednesday.

Mr. and Mrs. Kenneth Paul of Topeka Kansas are visiting relatives and doing some deer

hunting on the side.

Mr. and Mrs. A.S. Johnson are visiting Mr. & Mrs. Howard Culmer in Plainview.

Deer hunters from different places are to numerous to mention. Let us hope there will be nothing killed but deer.

Peanut harvest is almost over. There was a great loss as the nuts come off the vine very badly.

# GIVE



## Carbon News

Mrs. Bob Hastings

at this writing.

Word was received here that Mr. Dewey Adair of Leanders passed away Sunday morning Nov. 7. Mr. Adair and family lived in Carbon for a number of years and Mr. Adair served as Station agent for the MKT railroad. Survivors are a son, Charles of Houston, a daughter Mrs. Elvino Murray of Warren, Ohio and several grandchildren. Funeral services were held in Leanders on Tuesday with burial in Bangs Cemetery.

Mr. & Mrs. Henry Hines were in Leanders to attend the funeral of Mr. Dewey Adair.

Mrs. John Griffin and daughters of Midland spent Sunday night and Monday with their mother and grandmother, Mrs. Jewel Jackson.

Mr. & Mrs. D.D. Sandlin, Mrs. E. Dunn and Mrs. Cullen Rogers were in Bangs on Tuesday for the funeral of Mr. Adair.

Mr. & Mrs. J.E. Jackson accompanied Mrs. Jewel Jackson to Temple on Thursday where she entered Scott and White Hospital for surgery. She is reported to be doing well

Mr. & Mrs. Truman Snell made a business trip to Temple on Wednesday.

Larry Thackerson of Goodfellow Air Force Base, San Angelo visited his parents Mr. & Mrs. Bill Carlton over the weekend.

Dwayne Snell was a patient in the hospital in Comanche last week but is able to be home now.

Mr. & Mrs. Carroll Hogan and family of Albany visited Mr. & Mrs. Jim Hogan Saturday.

Mr. Clarence Wilson, Lowell and Cynthia were visiting friends in Carbon Saturday.

Mrs. Ned Morris has returned from an extended visit with her daughters and families, Mr. & Mrs. E.C. Jessen and Mr. & Mrs. Dallas Hansard of Cheyenne, Wyoming.

Mr. & Mrs. Cullen Rogers spent the weekend with their daughter and family the E.C. Huddlestons of Ft. Worth.

Mrs. H. Hall accompanied Mr. & Mrs. Athol Claborne of Trent and Mrs. Claiborne of Rising Star to Ft. Worth recently to visit her grandsons and families, the Morris Claibornes and David Claibornes. They also visited the Keith Claibornes in Arlington.

Mr. & Mrs. E.F. Barton of Waco were Sunday afternoon guests of Mrs. Clyde Hall.

Visitors in the home of Mr. & Mrs. Euell Allison Sunday were: Mrs. J.C. Crowe of Bloomfield, New Mexico; Mrs. Connie Cloud, Miss Joyce Greenwood, Mrs. Gloria Estes, Melody & Randy of Abilene; Mr. & Mrs. Alvie Allison of Stephenville, Mr. & Mrs. J.M. Greenwood of Cross Plains, Mrs. Ione Bounds of Eastland, Mr. & Mrs. Bill Brown and Kris of Gorman, Mr. Berry Greenwood, Mr. & Mrs. Henry Lovell, Mrs. Mike Morgan and Mrs. J.E. McDaniel of Carbon.

## RETURN FROM HOSPITAL STAY

Mr. & Mrs. I.E. Talley have returned home from a 12 days stay in West Texas Medical Hospital where Mr. Talley was a patient. During his illness, friends who visited were: Bill Henkins and wife, George Baker and wife, Stanley Duckworth and wife, Vernon Red, Jack Lewis Jr., Herton Talley and wife, Jerry Alford and wife, Brother Wallace Pierce, and wife, and since they've returned home, visitors, Mrs. Frank Collings, Mrs. Carl Butler, Bud Griffin and wife, Mrs. John Whisnant, E.G. Childerest, Bro. Kilbut, Mrs. Joe Bond, Bill Howard, Lewis Reese, Duke Stamford, Gene Falls, Cecil Alford, Prece Rose and wife, Bill Adams, wife, and children, many get well cards, flowers, candies, chewing gum, many telephone calls. We wish to thank all for their kindness and thoughtfulness, and many nice nurses for their kindness.



The pant suit trend has opened new doors in the Eastland County Court House, Tax Assessors Collectors Office. These six lovely ladies came to work Monday all dressed alike with the same design of pant suits on.

The ladies are Ione Bowns of Eastland with 15 years service, Mae Isabell, of Ranger with 3 years service, Bonnie Rodgers also of Ranger with 1 year service, Nancy Trout of Eastland with 10 years service and Bonnie Petty of Cisco with three years service.

A statement was made by all six, "If the Bank can do it so can the Court House."

## As It Looks From Here

by Omar Burleson

WASHINGTON, D.C. - THE U.S. SENATE'S VOTE for a reduction in U. S. financial support of the United Nations is interpreted by some as retaliation for the ouster of Nationalist China and the admission of Communist China.

ALTHOUGH THIS ACTION BY THE U.N. may have triggered and influenced the vote in the Senate, other factors are of obvious influence.

ONE IS THE FACT THAT THE Senate Finance Committee wants to have a bigger voice in the shaping of U.S. foreign policy. The greatest influence on the vote, however, is that the Senate is simply catching up with reality.

THE UNITED STATES CAN NOT afford to slip back into the old isolationism which once gripped the Country but neither can it carry the world on its shoulders forever, which we have tried to do since the end of World War II. With 5.7 percent of the world's people and 6.89 percent of the earth's area, we can not maintain the standard of living to which we have become accustomed unless we maintain world trade. Since we import nine of the basic fifteen minerals in the world, we can not sustain our industrial capacity by closing our borders. Neither can we sell our goods and commodities around the world.

AT THE SAME TIME, WE CAN NOT continue to be Santa Claus to the world and keep these standards if our imbalance of payments and our public debt mean anything and a lot of us think it does.

BACK TO THE UNITED NATIONS--members of that organization can not dodge the glaring inequities any longer in the structure of financial support. There is simply no justification for expecting the

United States to pay 1/3 of the bills when it was designed as wholly a cooperative effort.

OTHER NATIONS MUST ASSUME more of the burden of support and pay their bills when due. The Soviet Union is today \$100 million in the arrears and her eastern European satellites add another \$17 million. Some other small nations, whose votes in the General Assembly count as much as our own, have never paid a cent for U.N. support.

THE UNITED STATES SAW AN OBLIGATION 26 years ago to accept a disproportionate share of U.N. financing. At that time the world was struggling to its feet after the shock and destruction of World War II. Meanwhile the world has changed and there is absolutely no reason why the United States should pay about eight times as much towards the U.N. budget as does Japan with its booming economy.

THE ASSUMPTION OF A SEAT in the U.N. by Communist China gives occasion for the organization to review its entire operation. There is already the authority to take disciplinary action against those nations not paying their assessments and defaulting on that, should be denied all participation and finally expulsion, if they don't pay up.

THE TIME IS AT HAND when either these nations face up to their obligations or the U.N. is going the way of the League of Nations and other well-intended efforts at world peace-keeping. Never in history has it been more important to try world cooperation. Because of scientific developments, particularly in transportation and communication, this globe has shrunk from a basketball

size to a golfball size in the last three to four decades. With capabilities for immediate destruction it is vital to talk instead of fight but it is also a many-way street for all to travel safely. Isolation is not the answer but there is a limit and we've about reached it.

IMPORTANT DECISIONS HAVE TO BE REACHED AND SOON.

## Sunday's Subject

What makes happiness available? An answer to this question will be examined Sunday, Nov. 21, at Christian Science church services.

Scriptural selections in the Lesson-Sermon entitled "Soul and Body" will include these words of Christ Jesus: "And thou shalt love the Lord thy God with all thy heart, and with all thy soul, and with all thy mind, and with all thy strength."

In this supporting commentary from Science and Health with Key to the Scriptures by Mary Baker Eddy the word "Soul" is used as synonym for God: "Soul has infinite resources with which to bless mankind, and happiness would be more readily attained and would be more secure in our keeping, if sought in Soul."

Services in Eastland will begin at 11 a.m. Sunday, Nov. 21, in the First Church of Christ, Scientist, on the corner of Plummer and Lamar Streets.

Prestone \$1.89

Eastland Auto Parts  
300 So. Seaman  
629-2158

**PERRY'S EASTLAND**

Two Days Only  
Tuesday And Wednesday  
(Nov. 23-24)  
10a.m. - 5 p.m.

BEAUTIFUL  
**8"x10"**  
LIVING COLOR  
ONLY  
**79¢**

PLUS 50¢ HANDLING  
ONE PER CHILD TWO PER FAMILY  
GROUPS 79¢ PER SUBJECT  
SATISFACTION GUARANTEED

**PAUVEY ASSOCIATES**  
Arlington, Texas

**MONTGOMERY WARD**

**"Early Bird" Shoppers Night**  
Thursday,  
Nov. 18 -- 5 to 8 P. M.  
at Your Eastland Wards Catalog Store

Bring in this coupon for

**\$10.00 OFF**  
Purchase Price  
\$100.00 To \$200.00

**\$20.00 OFF**  
Purchase Price  
Over \$200.00

On Any Major Appliance from  
Any of Our Sale Catalogs,  
or General Catalog.

Offer good November 18 only

**Gift Wrap**  
Save 2.00  
Reg. 7.99  
**5.99**

**IN STOCK SPECIALS**  
Electronic  
Oven Was 449<sup>95</sup>  
Now **319<sup>00</sup>**

**Compactor**  
When you own  
one, garbage isn't  
a dirty word.  
Introductory  
Price **189<sup>88</sup>**

**Electric Range**  
With warming  
shelf Was 304<sup>95</sup>  
Now **264<sup>88</sup>**  
The Electronic  
Oven and  
Compactor will be  
demonstrated by  
Mrs. Beverly  
Nicholson of Texas  
Electric during this  
night opening.

Register for  
free door prize  
(Clock Radio)  
Liberal wiring  
allowance on all  
electric ranges  
and electric  
dryers sold.

**2 Lb. Classic Fruit Cake**  
80% FRUIT AND NUTS  
No Citron, Fruit Peel or Spice

**2/6<sup>98</sup>**  
Reg. 3.99 each  
53 35049

**WARDS BEST SELLING AM CLOCK RADIO**

**\$13<sup>49</sup>**  
REG. 27.50  
62 EW 1841

Save \$10  
Reg. 28.99  
**Blender**  
12 Speeds  
**18<sup>88</sup>**

**1/2 Price**  
Stereo  
Component  
Reg. 127.95  
**63<sup>97</sup>**  
62TW6031A

SAVE 7.00  
**BOY'S OR GIRL'S HI-RISE BICYCLE**  
**37<sup>88</sup>**  
Reg. 44.95  
Chromed trim accents  
bright blue frame.  
Dependable coaster brakes.  
Adjustable handlebar.

60 30202R Boy's  
60 31202R Girl's

**JIFFY VAC**  
Wet or Dry Pickup  
Reg. 29.88  
**19<sup>88</sup>**  
82 723M

**Fall Finals!!**  
1:30 p.m.  
**Sunday, November 21**  
**Tonkawa Downs, Inc.**  
Graham, Texas

Entries close at 5 p.m. Friday

Call 817-549-1519

"Come race with us"

# Beta Club Holds Reception



A reception was held Monday night, November 15, at 7:30 in the Eastland Elementary School Cafeteria to honor the members of the National Beta Club, of E.H.S. their parents and other special guests.

Mrs. R.P. Haun, faculty sponsor, welcomed guests and noted that the local chapter has 33 members. She stressed the importance of recognizing young people such as Beta Members who achieve outstanding goals in leadership, character and scholastics. "In a few short years these young people will be Mr. & Mrs. Eastland and we owe it to them to show our appreciation for their present efforts. Too often we read and hear about only the undesirable traits of teenagers and we neglect to praise individuals and groups of this kind for their many fine achievements." She thanked the parents for providing the stability and training in the home that is so necessary in molding young lives. She also expressed thanks to the faculty members for their dedicated efforts in guidance.

Charles Marshall, president and son of Mr. and Mrs. Charles Marshall introduced the Beta Officers and briefly

explained that membership in the National Beta Club is determined by achieving excellence in scholastic averages. Names and records of Beta members are recorded in the National Archives.

Randy Rexroat, vice-president, and son of Mr. and Mrs. J.O. Rexroat introduced Superintendent of Schools, Wendell T. Siebert, high school principal E.O. Hill, School secretary, Mrs. Andy Taylor, and the members of the high school faculty. He named Miss Kathy Bramlet as co-sponsor of the club. He also recognized Mr. and Mrs. Harold Ray, parents of last year's president, Jeff Jackson; and Mr. and Mrs. John Huffmeyer of Cisco. Mrs. Huffmeyer formerly taught Spanish at E.H.S.

Evelyn Chapman, secretary and daughter of Mrs. Dean Chapman presented the new members. As new members were recognized they introduced their parents and other special guests. Charles Marshall presented parents with a certificate of congratulations. New member, Leticia Rendon, introduced her Mr. and Mrs. Oscar Rendon who traveled to Eastland from Piodras Nigras, Coahuila

Mexico.

Becky Hanna, treasurer and daughter of Mrs. Bernard Hanna and the late Mr. Hanna, presented the other Beta members and they, too, introduced their parents and guests.

An informal visitation and refreshment period followed the program. Eighty two members and guests were present.

New members of the Beta Club are: Seniors: James Eidson, Chris Frost, Steve Hart, Mike Jones, Melinda McClous, Mike Parsons, Leticia Rendon. Juniors: Paula Lund, Sherry Staggs, Wendy Trout. Sophomores: Ann Haun, Clint Hill, Milta Kincaid, Jerry McCoy, Dollie Moseley, Deborah Whaley.

Other members of the club are: Seniors: Sarah Brewer, Evelyn Chapman, Nancy Elliott, Becky Hanna, Kathy Jones, Nancy Maynard, Charles Marshall, Ron McCleskey, Shirley Pyke, Randy Rexroat, Lynn Robertson. Junior members are Audrey England, Lisa Germany, Becky Jackson, Cherie Robinson, and Nancy Seaberry.



**EDITOR'S NOTE:** Naturally we salute the Eastland Mavericks and it's coaching staff for their great season of 10-0 wins and also for being District 8-AA Champions. I only feel that it is fitting that I devote my column today to the head coach of Eastland High School, Shirley Frazier. This article "Motivation-The Key" was written by Coach Frazier and was recently published in the November issue of the Texas Coach magazine.

### MOTIVATION+ + the Key

By Shirley Frazier  
Probably one of the most used words in the coach's language is motivation. Much has been written about team motivation. Coaches as well as administrators, heads of various departments, executives, as well as every parent, are constantly looking for, searching, and sometimes even struggling for the key to motivation. In my opinion motivation can be accomplished many ways.

There is a little irony in the fact that in practically every case we are trying to motivate other individuals to do what we want done--not necessarily what the individual that we are trying to motivate wants to do. This is especially true for coaches.

We are all easily motivated when we want something, or due to necessity we are forced to act.

Once a high school student, a friend of mine, who was a big, clumsy boy, and another friend attended a basketball game at the local high school gym. After the game one of them had to stay and clean up the concession stand, so the other left alone. There was a shortcut to their home through a graveyard that they often used. Unknown to them a grave had been dug earlier in the day and as my friend ran through the graveyard he fell into the grave.

After trying every way possible to get out, he finally gave up because he knew his friend would be along shortly. It wasn't long until the teaped boy heard his friend whistling as he walked along the same ill-fated path. He decided just to be quiet and see what would happen. Sure enough his friend stepped into the same freshly dug grave. For quite some time he sat and watched as his friend tried to climb out and then he said, "You might as well give up, you can't get out of here!" But he did!

During the first years of my coaching career, I was in a very small school in Alabama. We had 12 boys on our football squad and one of those was slightly retarded. One Friday night we went down to play a team rated in the top ten in the state. Early in the first half the score was already ridiculous,

### A RESOLUTION

WHEREAS we as citizens of a great Nation, State and County are blessed with an abundance and a quality source of food and fiber,

WHEREAS we need only 5 percent of our nation's population to provide this resource, and

WHEREAS no nation on the earth provides its people with so much for so little with an average family in the United States spending only 16 1/2 percent of its income on food, and

WHEREAS much of this abundance and quality source is produced by the agriculture industry of Texas,

NOW THEREFORE BE IT RESOLVED that the County of Eastland proclaims November 15-21 to be Food and Fiber Abundance Week, and urges all of its citizens to observe this important occasion.

Scott Bailey  
County Judge  
County of Eastland

but there were still several little kids running up and down the sidelines yelling "Hit him, Daddy, hit him."

There may be many things that motivate us, but without question the greatest single force in the world is the people we admire and respect.

I am sure that every individual who has achieved any goals they have set for themselves can attribute part of their success to some person whom they admire and respect.

Two individuals, other than my parents, who greatly influenced and still provide me with inspiration are Henry Finblea and Cliff Harper. Henry Finblea, a former junior high coach who recently returned as head of the Recreation Department in Americus, Ga., never played in a football game but had a tremendous understanding of those intangible factors of pride, attitude, and mental toughness that are so important in achieving success in any field.

Cliff Harper, a former coach and principal, also played a vital role in my life. This man, who is now an administrative assistant to Tonto Coleman in the Southeastern Conference, is to me the ideal in spiritual and moral character without losing that mental toughness that seems to be so vital today.

I am sure that neither of these individuals realize the importance that they have played in my life.

Because of the relationship with young men whom we come in contact with, we as coaches, have tremendous influence on their lives. We often times are not even aware of the influence we have. We certainly hope and pray that this influence will be one of good that will serve each individual boy as he takes his place in the world today.

## SOS Club to meet Friday

The SOS Club will meet each Friday in the basement of the 1st Methodist Church.

Present at the last meeting Nov. 12, 1971, were: A.V. Litterfield, Cleo Greenwood, Lola Ventage, Unis Laster, Denny Lolis, Paul Dietz, Fanny O'Brien, G.F. Bennette, H.P. Kirck, Mr. & Mrs. Daive Putman, C.C. Easter, W.F. Reagon, E.J. Mackie, Martha Parshion, Ora Easter, Tanny Answorth, Luna Lane, Frank N. Kirck, Miles Awalt, and Jewel Herweck.

## Letter To Senior Citizens

This has become a complex world, and there are many new problems confronting people today who have loved ones.

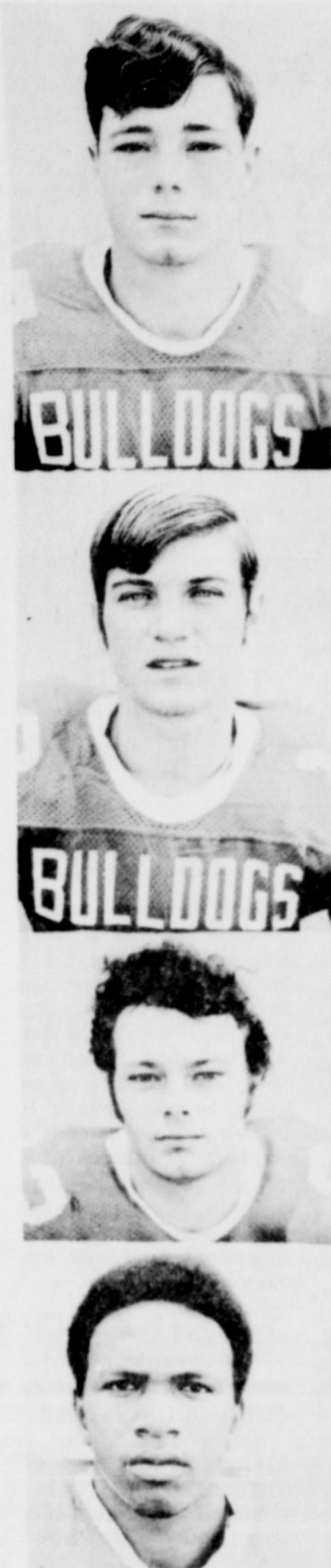
These problems include burial plans which can be underwritten by old line legal reserve insurance companies, with loan and cash values, paid-up burial coverage, guaranteed level rates, government benefits, social security and veterans benefits.

Funeral arrangements are so much easier to make while the family is still together. So, since you do care for your loved ones and while there is still time, why not take the time to contact a professional for assistance without obligation. He'll be glad to give you a full explanation of options that are available and benefits you may be entitled to receive.

Write:  
J. F. 'Jim' Faulk  
Special Burial  
Special Burial Representative & Counselor  
P. O. Box 1272  
Cisco, Texas 76357

Remember: It's much better to have a burial plan with a cash value or cash loan value, than to need one and not have it. Pd. Adv.

SHINES UP BRIGHT IN MINUTES LASTS UP TO A WEEK  
**GRIFFIN**  
WAX SHOE POLISH



# Beat Stamford

## Fall Gas Air Conditioning Deferred Payment Plan.

### Buy Now and Save No Payment Until May 1, 1972

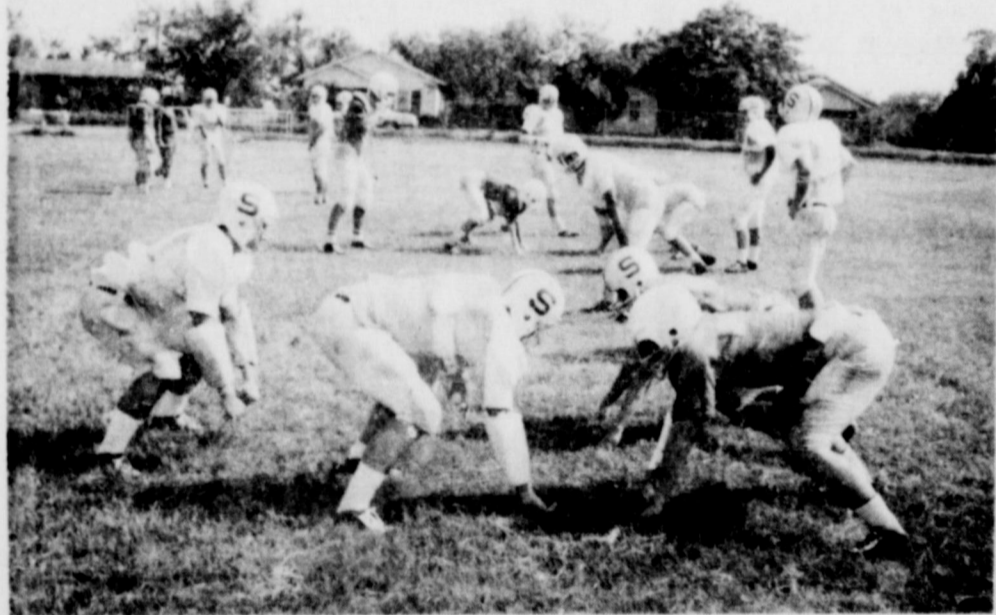
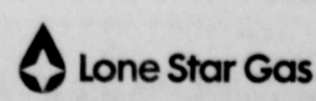
Get the jump on summer heat. Buy a residential gas air conditioner or add one to your present heating system and you won't have to pay for it until you use it!

That's right! If you purchase a gas central air conditioning system there are no payments until May 1, 1972. No need to worry about down payments, finance charges, or monthly installments. Finance charges start with your first monthly payment on May 1, 1972.

Remember, gas air conditioning offers you more! Dependable operation — no compressor to wear out. Lone Star Gas service available. Adds-on to your existing gas central heating system. Five-year warranty on the refrigeration system. Economical natural gas operation.

Convenient Lone Star Gas Financing Available.

Call Lone Star Gas Company for a FREE ESTIMATE! Attention! Set Local 629-1280 Lone Star Phone Here



### DEFENSE STRONG IN EXPERIENCE--

The main strength of the traditionally strong Bulldog defense rests in the experience of the ten returning defensive starters. The defense for Stamford utilizes both quickness and better than average size.

## PERRY'S

EASTLAND

BEAUTIFUL

# 8" x 10"

LIVING COLOR ONLY

# 79¢

PLUS 50¢ HANDLING

ONE PER CHILD TWO PER FAMILY GROUPS 79¢ PER SUBJECT

SATISFACTION GUARANTEED



Arlington, Texas

Two Days Only  
**Tuesday And Wednesday**  
Nov. 23-24  
10 a.m. - 5 p.m.





Three employees for Southwestern Bell Telephone Co. are celebrating Anniversaries today. Mrs. Gladys Cooper, with 15 years service, Mrs. Mary Ann Perkins also with 15 years and Mrs. LaVerne Kirby with 25 years service. Mrs. Cooper and Mrs. Perkins are Eastland residents and Mrs. Kirby resides in Cisco.

### 17 Girls Join G.S.s

Seventeen girls officially became Junior Girl Scouts in an Investiture held Monday November 1, at the First United Methodist Church Fellowship Hall. They are members of Troop 194.

New Junior Girl Scouts are: Elizabeth Brown, Sharon Brown, Hiardeir Dunn, Karen Glenn, Pam Golden, Tommy Jordan, Tresa Mathis, Kem Miller, Diane Moore, Kerry Petty, Sherri Phelps, Kaye Plowman, Carol Ragland, Marie Reston, Jacqueline Webster, Carolyn Wilcoxon, and Jamie Woods.

The Investiture opened with the Pledge of Allegiance to the flag. Each girl recited the Girl Scout Promise and gave the Girl Scout sign. Three candles standing for each part of the promise were lighted. Each girl lighted a candle and recited one of the 17 Girl Scout Laws which the girls will try to live by.

The Girl Scout pin and the World Association pin of Girl Scouts were awarded to each girl. The Investiture closed with the girls singing "We'll Make A Promise."

The Cadette Girl Scouts of Troop 196 were Color Guards for the occasion. Also participating in Junior Girl Scout Activities are: Mrs. James Woods, Jr., Leader; Mrs. Roy Petty and Mrs. James Glenn, Assistant leaders.

Many other activities are planned for the troop in the coming year. All fourth and fifth grade girls are invited to join our troop.

### The Future of Eastland



HELPING MAKE EASTLAND pretty right now, and holding bright hopes for days ahead are such youngsters as DARLA HAMMER, Darla is the daughter of Linda Hammer and granddaughter of Mr. and Mrs. Finis Johnson.

Thursday, November 18, 1971

**Pep Rally**  
4:30 Thursday down town  
& 2:50 Friday at the  
High School Gym.  
Beat Stamford

### Food & Fiber Week Proclaimed

To recognize the contribution made by the agricultural industry in Texas, the period of November 15-21 has been designated as Food and Fiber Abundance Week. This celebration was the idea of many people involved in the agricultural industry including farmers, ranchers and agribusiness people, according to Charles G. Scruggs, editor of The Progressive Farmer, and chairman of the state organization sponsoring the celebration. Scruggs said, "Never in the history of the world have so few fed so many so well with such a selection of foods. The average farmer in the U.S. today raises enough food to feed himself and forty-five other people."

celebration in Eastland. Scruggs said, "While telling the story of agriculture it must also be mentioned that no nation provides the consumers with food as cheaply as we do in the United States for the average family spends only sixteen and one-half percent of its income on food."

H. Leon Slaughter, projects director for the West Texas Chamber of Commerce and State Coordinator for the celebration, commented, "Perhaps the most significant fact is that we need only five percent of our entire population to provide this food and fiber. The other ninety-five percent are free to pursue other vocations that in turn help to make our standard of living something that every other nation can very well envy."

Scott Bailey, County Judge, has been appointed chairman of a committee to organize a

### Carbon Closes Season 37-35 Win Over Santo

The Carbon Wolverines beat the Santo Wildcats by a score of 37 to 35. This was the last district game for both teams. Santo finished 8 and 2 for the year while Carbon finished 1 and 8.

Allen Edwards and Raymond Proctor scored twice each for Santo. Edwards scored on a 59 yard jaunt and a 9 yard run. Proctor scored on runs of 41 and 35 yards. Ruben McPherson scored for Santo on a 6 yard run. Also scoring was Nix who kicked two extra points for Santo.

James Norris had a real good night passing for Carbon by throwing 4 touchdown passes. He threw 3 of those passes to

Darrell Carlton. They were from 10, 32, and 114 yards out. James Norris also threw a 28 yard touchdown pass to Jimmy Cook. Darrell Carlton also scored on a 8 yard run. George Casey intercepted a Santo pass and ran it 39 yards for the touchdown. Darrell Carlton also caught a pass for an extra point.

The Carbon boys played a real good game in beating district champs of District 8-B six man. Our team sure has improved over the last few games. We sure are glad they won this game. We would like to thank all the people that backed the Carbon boys at all the football games this year.

### Visitors

Friday out of town over night guests in the home of Mr. & Mrs. J.C. Allison were, Rev. & Mrs. Weems S. Dykes and Susan Jane of Colorado City. Other guests were Rev. & Mrs. W.E. Hallenbeck of Eastland. Rev. Dykes is minister of the First Christian Church in Colorado City. Rev. Hallenbeck is minister of the Church of God in Cisco. The hostess served delicious cherry cake and vanilla ice cream the Allisons enjoyed the evening very much.

### EASTLAND TELEGRAM

THE HOLIDAYS ARE COMING... And you and your family will undoubtedly be having visitors and will be visiting friends and relatives.

Your friends and neighbors would enjoy knowing about your holiday activities, so share them through The Telegram.

We welcome calls of parties, meetings, and just plain visitations, so never hesitate to let us know about them for the paper.

Our number is 629-1707, and we welcome your call.

### SERVICEMEN

FT. CAMPBELL, KY Army Private Jeffrey C. Germany, 19, son of Mr. and Mrs. Jack Germany who live at 1900 Blair Drive, Eastland, Tex., recently completed eight weeks of basic training at the U.S. Army Training Center, Ft. Campbell, Ky.

He received instruction in drill and ceremonies, weapons, map reading, combat tactics, military courtesies, military justice, first aid, and army history and traditions.

FT. KNOX, KY. Army Private Roy K. Butler, 23, son of Mr. and Mrs. Robert R. Butler, Box 156, Rising Star, Tex., recently completed eight weeks of advanced individual training as an Armor Reconnaissance Specialist at the U.S. Army Armor Center, Ft. Knox, Ky.

He received instruction in the use of various kinds of weapons, maintenance of armor vehicles, map reading, communications, artillery adjustments, and mines and demolitions.

His wife, Judy, lives in McCamey Tex.

### School Menu

Thursday Nov. 18  
Barbecue Franks  
Sauerkraut  
Whipped potatoes  
Carrot & raisin salad  
Hot rolls  
Rice pudding  
Friday Nov. 19  
Sloppy Jo Burgers  
Potato chips  
Buttered corn  
Sliced peaches

FT. CAMPBELL, KY Army Private Tony N. Lowrance 22, son of Mr. and Mrs. L.A. Lowrance Jr., Eastland, Tex., recently completed eight weeks of basic training at the U.S. Army Training Center, Ft. Campbell, Ky.

He received instruction in drill and ceremonies, weapons, map reading, combat tactics, military courtesies, military justice, first aid, and army history and traditions.

His wife, Myre, lives at Madrid Apts., Stephenville, Tex.

ORLANDO, FLA., Navy Seaman Robert C. Lawson, son of Mr. and Mrs. Robert K. Lawson of 414 S. Daugherty Eastland, Tex., has graduated from the Advanced Undersea Weapons School at the Naval Training Center, Orlando, Fla. He is a Torpedoman's Mate, and the training at Orlando was designed to give him an in-depth knowledge of the loading, handling, and launching of the torpedoes, missiles and other sophisticated undersea weapons aboard Navy submarines.

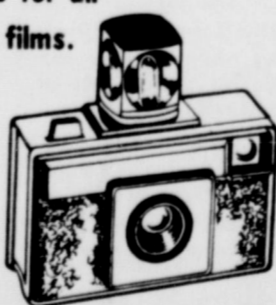
FT. CAMPBELL, KY. Army Private Jeffrey C. Germany, 19, son of Captain Jack Germany and Catherine Germany who live at 1900 Blair Drive, Eastland, Tex., recently completed eight weeks of basic training at the U.S. Army Training Center, Ft. Campbell, Ky.

He received instruction in drill and ceremonies, weapons, map reading, combat tactics, military courtesies, military justice, first aid, and army history and traditions.

SEE OUR COMPLETE LINE OF KODAK CAMERA SUPPLIES  
FILM AND FLASH BULBS

Ask about our 2 day film service for all  
black and white and colored films.

Get 1 regular print plus  
1 miniature print FREE!



# CAMERA!

Prescription Pharmacy

Telephone 629-1475

East Side of Square

### Notice B & B TV Sales and Service

is now located in the Old Leslie Building Corner of West Main and Lamar streets on the square in Downtown Eastland.

Don Baird and Randy Butler, owners & operators

We invite all our friends and customers to come in and see our new stock of Christmas merchandise. "Eastland County's only Admiral Dealer."

**FOR SALE:**  
used aluminum printing plates  
ideal for roofing, sealing.  
Sized 24x36 inches. 25c each  
at the Telegram Office, Eastland

**ANNOUNCING**  
**FOR YOUR ADDED**  
**DINING PLEASURE**  
**OPENING MONDAY NIGHT, Nov. 15**  
**HOWELL'S STEAK HOUSE**

A new addition to our Dining Room...  
..Custom-cooked Steaks of all kinds, cooked exactly to YOUR liking... SIRLOINS for 1, or a dozen; T-Bones, Clubs, Rib-Eyes, Filets, Chopped Sirloin, etc., whatever you name.  
Cut from U.S. Choice Beef and Char-Broiled exactly the way you like 'em.

Try our steak once and you'll be back for more.

R.O. Washington - Steak Chef  
Steak Hours: 6:30 to 10 p.m.,  
Monday thru Saturday

P.S.: We want to thank each of you for the wonderful reception you've already given our dining room... We're working hard to provide the kind of first-class meat market and dining center you'll always be proud to visit.

**Sledges Market & Dining Room**  
210 S. S. Lamar -- 629-2913

**Special Purchase**  
**100% Dacron Polyester**

**PANTS SUITS**

Four styles to pick from!  
You have been paying \$29.95 for similar pant suits...  
**Now \$19.99**

**HEIDENHEIMER'S**

If its insurable, we have a policy for it.

**D. L. Kinnaird**  
**GENERAL INSURANCE**  
207 W. Main St. Eastland 629-2544

## MAVETTES OFF, RUNNING

The Eastland Mavettes open their Region Basketball Season this Thursday night in the Eastland Gymnasium against Rising Star. The games will begin at 6:30 for the

### Mrs. Collins is CWF Hostess

The afternoon group of the Christian Woman's Fellowship of the First Christian Church met in the home of Mrs. Johnny Collins, November 15th.

Mrs. Joe Tow was leader for the afternoon. The meeting was opened with a prayer followed by a hymn sung by the members, accompanied on the organ by Mrs. E.A. Beskow.

A Christmas project of the C.W.F. was announced. All members are to bring a gift for the patients in the Wichita Falls State Hospital.

Plans were discussed for the Thanksgiving Fellowship Supper to be held Wednesday night in the church annex.

Mrs. E.O. Derryberry gave a Thanksgiving Devotional.

Mrs. Varge Daniel brought the lesson: "To Explore the Theological Message of Jonah".

Mrs. Collins and Mrs. Eugene Williams were hostesses for the group. Those present were Mrs. Joe Tow, Carl Garrett, W.Q. Verner, Lula Verner, Ben Bassett, E.O. Derryberry, Lee Maxwell, E.A. Beskow, Varge Daniel, and Charles Freyschlag.

One pair of ladies pearl, white framed, natural color coated, prescription sun-glasses. Please call 629-2413 if found. Edward!

Mavette "B" and 7:30 for the Varsity game. The Mavettes have had three scrimmages so far this season.

Wylie defeated us 56-41; Ranger Junior College Freshman team beat us 28-22 and we defeated Dublin 50-22 last Tuesday.

The Mavettes welcome back eight returning lettermen: Captain Cindy Allen, 5'7 Sr. Forward; JoAnn Stone, 5'4 Sr. Forward; Sherry Carey, 5'6 Sr. Forward; Joann Crawford, Jr. 5'6 Forward; and on the Guard end, co-captain Reba Crawford, 5'4 Sr. Guard; Co-captain Sarah Brewer, 5'7, Sr. Guard, and Paula Lund, 5'8, Jr. Guard.

The season outlook is bright with the returning of eight experienced athletes. Our main assets will be speed, quickness and a hustling full court press.

We probably have more experience returning than any other team in our district, other than Hamilton. Our biggest handicap is lack of height. If our offense can score consistently we should be in contention for the district championship.

**Music Club To Present Choir**

Music Study Club of Eastland will present the College Choir of Cisco Junior College, Wryley Peebles, Director, Martha Brewer Accompanist, on Sunday, November 21 at 2:30 p.m. in First Baptist Church of Eastland. Mrs. Gene V. Rhodes, president. Each and everyone is cordially invited to attend.

Marjorie Van Hooce Club Reporter

## New Arrivals at E.H.S. Library



### Texas Teenage Library Association

#### National Book Week

As Mayor of Eastland, I

Children's Book Week was organized to put emphasis on better reading for children and alerting the community that this is being done.

Mayor of Eastland, Texas November 15, 1971

District III TALA Meeting was held November 6, 1971, at Sweetwater High School.

Teenagers from San Angelo, Colorado City, Coleman, Ranger, Breckenridge, Big Spring, Eastland and other surrounding towns attended the meeting.

Registration began at 8:45 with a Get-Acquainted hour from 9:00-10:00. Sponsor's Meeting began at 9:30. At this time offices for the following year were elected. President Colorado City, Vice Pres. Eastland, Sec. Big Spring (who will host next year's mee 'ing).

Treasurer, Coleman, and Parliamentarian Breckenridge. In the General Session Mrs.

Charlie Poe reviewed "Runnels is My Country", and Mrs. Alana Olsen spoke on "Right On and Relevant".

Those attending from Eastland were: Shelia Moseley, Berette Brown, Nancy Maynard, Jim Mosley, Steve Hart, Anna Hart, Becky Jackson, Marc Kuhn and Mike Parsons.

There will be a State TALA Meeting at Arlington in February. The Spring Executive Meeting will be held in San Angelo.



Getting ready for National Book week are: Julie Reid, Timmy Glazner, Donald Reid, Larry Martin, and David Glazner. All are avid readers that regularly make trips to the Eastland public library. Timmy Glazner is the library's youngest reader.

Everyone has heard of "sit-ins", "stand-ins" and all the other "in" things, so now its time for a "Read-In", so the Council for Children's Book Week has chosen for the 1971 slogan.

The Eastland Public Library has on display some of our many children's books and invite you to visit the library. This summer during the reading program, many children got acquainted with the old favorites through the

"Classics" Reading Program sponsored by the Thursday Afternoon Study Club. Many boys and girls expressed delight in the old stories as well as the new. Stories such as "Peter Rabbit", "Wind in the Willows", "Winnie the Pooh" are still read along with "Charlotte's Web", "Stuart Little", "Charlie and the Chocolate Factory", "Pedders Summer" and many other fine new books. The books in memory of little Kelly Collins

continues to grow and are well read.

Since 1919 when Children's Book Week was first organized, the aim was and still is, to put the emphasis on better reading for children and alerting the community that this is being done.

For a great nation is a reading nation, so lets Read-In in '71!

Eastland Public Library isd open every Monday, Wednesday and Friday from 2 to 5:30 p.m.

Thursday, November 18, 1971

### HELPING TO SAFEGUARD HEALTH



Keep Health Supplies Up to Date

It makes a lot of sense. For safety sake, keep your medicine cabinet up to date. You'll be prepared for small emergencies.

Check periodically for expired prescriptions and medications. Then, restock here.

## CENTRAL DRUG

629-2681 103 W. Main St.

**EDDIE'S** PHILLIPS 66  
513 West Main  
629-8838

OFFERING THE BEST IN AUTO SERVICE

Complete Auto tune-up and repair  
Mechanic Vic Edwards

Free Pickup and Delivery  
Guaranteed Service

At Phillips 66  
its performance that counts

## HILLCREST FOOD MARKET

Open 7 a.m. - 11 p.m. 7 Days A Week

Self Service Gasoline

Discount Price

Major Brand Quality

1401 West Main Phone 629-1600

JAMES ZUSPANN

DON BARRON

## GOODYEAR SERVICE STORES

Prices Cut on Custom Wide Tread  
**POLYGLAS WHITEWALLS**  
**1/3 OFF**



USE OUR RAIN CHECK PROGRAM. Because of continued heavy demand for Goodyear tires, we may run out of some sizes during this offer, but we will be happy to order your size tire at the advertised price and issue you a rain check for future delivery of the merchandise.

GOODYEAR - THE ONLY MAKER OF POLYGLAS® TIRES

SAVE \$16.14 to \$21.59 each on wide 70 series tires

White Tubeless Size	Replaces	Regular Price With Trade	SALE PRICE No Trade Needed	Plus Fed. Ex. Tax
D-70-14	-	\$48.40	\$32.26	\$2.38
E-70-14	7.75-14	\$50.30	\$33.53	\$2.51
F-70-14	7.75-14	\$51.05	\$33.36	\$2.64
G-70-14	8.25-14	\$57.95	\$38.63	\$2.84
H-70-14	8.55-14	\$61.70	\$42.44	\$3.05
E-70-15	7.75-15	\$51.15	\$34.10	\$2.68
F-70-15	7.75-15	\$53.90	\$35.93	\$2.69
G-70-15	8.25-15	\$59.00	\$39.33	\$2.85
H-70-15	8.55-15	\$64.75	\$43.16	\$3.11

HURRY - OFFER ENDS SATURDAY NIGHT

3 WAYS TO PAY AT GOODYEAR

OUR OWN EASY PAY PLAN

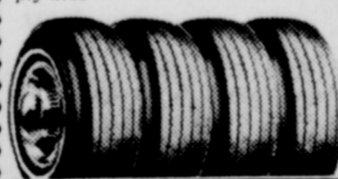
master charge

BANKAMERICARD

### WHITETALL OR BLACKWALL RETREADS

TUBELESS OR TUBE-TYPE FOR COMPACTS:

6.00x13, 6.50x13, 7.00x13, 6.95x14, 7.00x14, 7.35x14, 6.50x15, 7.35x15 same road-gripping tread design as our "Power Cushion" bias ply tires



4 FOR

\$52

plus 27¢ to 35¢ Fed. Ex. Tax per tire (depending on size) and 4 retreadable tire trade-ins. LARGER SIZES PRICED SLIGHTLY HIGHER

### 10-PT. BRAKE OVERHAUL

Includes the following parts and labor: • New brake linings all 4 wheels • New Front Grease Seals • New Return Springs • Turn Drums • Arc linings for total-contact • Add new fluid • Remove & clean front wheel bearings • Inspect, repack bearings • Adjust all 4 brakes

\$49.95

\*Except disc brakes, foreign cars - Wheel Cylinders \$7.50 ea. IF NEEDED

CHECKUP AUTO AIR-CONDITIONING \$995

Our specialists: • Inspect Cooling system • Clean coils • Check compressor, belts, head pressure • Inspect electrical components

PROFESSIONAL LUBE AND OIL CHANGE \$444



PROFESSIONAL FRONT-END ALIGNMENT \$995



"SNAP BACK" ENGINE TUNE-UP \$2988



4 cyl. U.S. auto - add \$4 for 8 cyl.

Includes all labor and these parts: • New spark plugs, condensers, points.

Now at your nearby GOODYEAR SERVICE STORE

## Goodyear Service Store

STORE HOURS: 8 a.m. to 5:30 p.m.



1971-72 Junior High School Cheerleaders for Eastland this year are Mary Jane Harbin, 7th grade; Brenda Daniels, 8th grade; Jill Price, head cheerleader, 8th grade; and Becky Kincaid, 8th grade. The girls sponsor is Mrs. Hazel Day.

These girls were voted on by the 7th and 8th grade students of Eastland. They have been doing a very good job and most of them hope to be future Cheerleaders in High School.

Head Cheerleader Jill Price says "We are behind our Junior High teams but we are also 100 percent backers of the Mighty Mavericks."

### Volunteers Sought

Persons interested in joining the Volunteer work at Eastland Manor Nursing Home are invited to meet at the Dining Hall at the Home Monday at 10 a.m. for an organizational meeting. Volunteer Chairman Mrs. Beth Frazier has announced.

Plans will be made for the month of December.

Birthday party at Eastland Manor will be held Wednesday, Nov. 24 at 9:30 a.m. with the Rev. Williams leading the singing.

### George Wallace

Governor George C. Wallace will be in Houston, Texas, Nov. 20 for a \$25. a plate dinner at which he is likely to state his intention to run for President in the '72 race.

With Sam Yorty and others already in the race it is doubted Gov. Wallace will delay coming out.

Even though the prices of tickets to American Party fund raising events were the least they were the only party to run their 68 campaign within their budget. They have stated that they will not operate any campaign in the "red".

Texas large electoral vote is considered crucial to victory in '72.

### CITY RAISES...

From pg. 1  
weather road into the new grounds can be built for all-weather operation. All the garbage being picked up by the city now goes to the new dump where it is covered. The new dump will be open seven days a week from 8 to 5 p.m., and individual dumpers will be invited to dump according to regulations there after the old dump is closed.

The Cisco group holds that they can pay to use Eastland's dump and haul their refuse from Cisco here, cheaper than they can dig holes to put it in. Officials here have assured commissioners that the capacity of the Eastland site can handle quite a bit of use for a good number of years. Carbon residents have already been invited to use the dump.

The Eastland and Cisco commissions agreed that the county should be invited to investigate the possibilities of joining the project in a county-wide effort to control garbage dumping along county roads.

The engineering firm of Yeatts and Decker will visit

here next week to inspect and decide on the possibility of using the old city dump site for the location of the city's new sewer treatment plant. If it can be utilized, it would be a multi-purpose project, in reclaiming the old siter and saving the city a great deal of money on land acquisition. The property owner has refused to sell to the city the site originally recommended by the engineering firm.

The city has averaged raising employee salaries by eight percent for the past eight years, and actually raised salaries ten percent last year.

The homes in the new development would be of a median priced range of from 1,000 square feet upwards, and would be eligible under the government's one per cent interest plan.



Thursday, November 18, 1971

### Mrs. Walter Leads Study

Mrs. Esco Walter was in charge of the study in foreign missions Tuesday, Nov. 16 at First Baptist Church. Those teaching the book, "New Drums Over Africa" were Mmes. Walter, F.L. Crawford, Bill Boles, Tommy Lawson and Haston Brewer. Mrs. Charles Harris presented facts about the Author, Milton E. Cunningham, Jr., the Southern Baptist Foreign Mission Board's radio-television representative for South Africa. Dr. Cunningham said "Unrest will continue in the African nations until a birth in faith is experienced. Across the nations of Central and East Africa today the message of Christ is receiving a more positive response than ever before. There is a growing realization among Africa's people that national life involves more than politics; that national unity, if it is to exist, must be built on a common faith." Some of the forces influencing the nation today are

Tribalism, desire for learning, training, Communism, Islam, Nationalism, and Christianity. "What tomorrow brings in these nations will be greatly influenced by the degree of commitment of the messengers of Christ. Through new channels of mass media: radio, television, publications, correspondence schools, many people will be reached for Christ," he continued.

A covered-dish lunch was served in an African setting of lush green plants, African animals and carvings. Mrs. Haston Brewer, Baptist Women President, announced all ladies of the church are invited to bring fruit and come to the church to pack cheer baskets next Tuesday morning, Nov. 23.

Others attending the study were: Mmes. A.E. Hallford, D.G. Fambrough, Mary Hood, Ed Beene, I.C. Inzer, J.O. Jolly, Lewis Abel, Flo Barber, Roy Rushing, H.W. Sims, and the Pastor, Haston Brewer. Mrs. Sims, WMU Director, led the closing prayer.



JRB Inc. has announced the appointment of Doug Underwood to the position of Store manager for the Eastland JRB Store. Doug has been associated with the JRB Company for the past several years. Mr. Underwood and family will be moving to Eastland around the first of December. Mr. Underwood has a wife, Teresa, and three children. Doug 9 years old, Stephanie 5 years old and Steve who is four. They are members of the Baptist Church. They will be living at 401 S. Dixie Street in Eastland.

## FALL SAVINGS ON YEAR ROUND USED CARS

70 L.T.D. AIR Conditioned Power Breaks and steering Low Milage

65 Plymouth V-8 Standard Transmission. Air conditioned.

70 Plymouth 1 owner Low Price

71 Ford PICKUP Ranger X.L.T. Loaded

66. FORD PICKUP 1 Ton Good Work Truck

### KING MOTOR CO.

100 E. Main Eastland 629-1786

### Homemakers Class Hold Meeting

The Homemakers Class of the First Baptist Church held a class meeting in the home of Mrs. Estelle Ross at 9:30 a.m. Wednesday. The meeting was opened with a prayer. Projects for Christmas and Thanksgiving were discussed and voted upon and an action to begin on projects was reached.

Mrs. Vane Keith, the outreach leader, brought the recommendation on prayer. Refreshments of cookies, spice tea, and coffee were served to the following: Dorothy Awalt, Winnie Young, Vana Woodard, Vana Keith, Ruth Butler, LaraLue Trammellee, Irene Dutton, and Astelle Ross.

### News

Mrs. Maggie Lou Kilbourne gave a very interesting account of Mrs. Addie Bill Mosleys life, from the time of her birth in Arkansas to the present time.

Casey and Lois Meazell have an anniversary this month and were both to give an account of how they met, and give the events that led to their marriage and until the present time.

Casey said he would first to speak, and after his event of weird tales were expounded, there was nothing left for Lois to say, everyone by that time was hysterical, and no one would listen anyway.

Punch and cookies were served, and plans for a secret pal for the holiday were made.

FURNITURE TRUCKS AUTOMOBILE

## AUCTION

SAT. - NOV. 20 1:30 P.M.

215 EAST PIONEER ST. RISING STAR, TEXAS

Owners moving - all contents from 2 homes, plus car, pickup, truck & horses will be sold by public auction.

7 pc. wrought iron Dining Room Suite (almost new)  
7 pc. King size Walnut Bedroom Suite with triple dresser & chest

Admiral frost free Refrigerator-Freezer comb.  
Admiral Stereo Radio-record player comb.  
Cab. model elec. Sewing Machine  
Spanish Oak Living Room Suite (almost new)  
Dining Table, 6 chairs & buffet  
Kenmore Elec. Sewing Machine  
Small black & white TV  
And many, many misc. items of furniture & household items.

Maple Living Room Suite  
O'Keefe Merritt Range  
Maple Buffet  
Gun Case  
Maytag Automatic Washer  
2 - Evaporative Air Cond.  
Vesta Gas Range  
3 pc. Bedroom Suite  
Poster Bedroom Suite  
Twin size metal Bed

### MISCELLANEOUS

38 cal. military special Pistol  
22 cal. Revolver  
303 British Rifle  
Murry self propelled Lawn Mower (almost new)

14 ft. Tandem Stock Trailer  
Small Child's Saddle  
Metal Water Troughs

Roan Saddle Mare

ALSO  
Sorrel Filly Colt

Shetland Pony

1965 GMC 3/4 ton Pickup (above average cond.)  
1952 2 ton Truck with 14 ft. alum. van body equipped for hauling cattle  
1962 Nova II Chevrolet Automobile

Sale conducted by

**HENRY R. STOREY AND ASSOCIATES**  
Brownwood, Texas

AUCTIONEERS

LIQUIDATORS

For information call 915 - 646-3956

THIS WAY

### THANKSGIVING HEADQUARTERS

FOR FLAVOR AND SAVINGS!

FOOD VALUES

Health & Beauty Aids

- AYER'S CHERRY CREAM \$1.19
- BAYER ASPIRIN 39¢
- Close-Up TOOTH PASTE 79¢
- BRIGHT SIDE \$1.19
- SHAVE BOMB 99¢
- ULTRA BAIN \$1.19
- POWDER 99¢
- VITAMINS \$1.09
- VITAMINS \$2.15

good and good for you...  
**vegetables**

GOLDEN RIPE  
**BANANAS**  
10¢

WASH, RED DELICIOUS APPLES 25¢  
POTATOES 59¢  
OCEAN SPRAY CRANBERRIES 29¢  
YAMS 15¢

**FREE**  
8 oz. Wish Bone Italian Dressing  
with purchase of 100 ct. Lipton Tea Bags

**Bordens Cottage Cheese 24 oz. ctn. 49¢**

Ritz Nabisco Crackers 12 oz. box 39¢

Keebler's Van. or Choc. Fluff Cookies 10 1/2 oz. pkg. 47¢

Libby's Pumpkin 303 can 15¢

Dromedary Pitted Dates 8 oz. pkg. 33¢

McCormick Pumpkin Pie 39¢

Spice Mix 1 1/4 oz. box 39¢

McCormick Rubbed Sage 7/16 oz. box 21¢

W-P Liquid Green, Pink Detergent 32 oz. plastic 39¢

W-P Powdered Detergent gt. box 59¢

White Swan Oven Ready Buttermilk Biscuits 10 ct. can 6 for 49¢

White Swan Whole Sweet Potatoes 303 can 29¢

Ocean Spray Whole Strained Cranberry Sauce 303 can 29¢

Borden's Nonesuch Mincemeat 9 oz. pkg. 29¢

Gold Medal Flour 5 lb. bag 59¢

Deckers Tall Korn Bacon 1 lb. pkg. 59¢

Deckers Sausage 2 lb. 89¢

Deckers Weiners 12 oz. pkg. 49¢

Ground Chuck lb. 69¢

Fresh Beef Ribs lb. 35¢

## SUPER SAVE

Ph. 629-1191 400 S. Seaman  
G.A. WHITE - Manager  
HOME OWNED - HOME OPERATED

We Give Gold Bond Stamps Double Stamps Every Wednesday With \$2.50 Purchase or more Excluding Cigarettes



## Trade With Our Advertisers

Don't be caught napping...

### LAYAWAY NOW FOR CHRISTMAS



Shop now while selection is at its best and then enjoy the Holiday Season!

\$100.00 in merchandise to be given away Thursday, Dec. 23. Any amount of merchandise purchased entitles customer to register for \$10, \$15, \$25, and \$50. Drawing to be held at 10:00-12:00 noon 2:00 and 4:00 on that date.

The Smart Shop

"Especially for You" Audrey Yonker

## Hospital Report

The following persons were listed as patients in Eastland Memorial Hospital Wednesday:

Estell Stephens, Midland.  
Carrie Capers, Gorman  
Lillie Hamilton.  
Judy Williams, Gorman.  
Willie Harris  
Dora Wilson, Cisco  
Maggie Davenport, Cisco  
Edna Reynolds, Cisco  
Nelda Gary, Cisco.  
Grace Brown, Cross Plains.  
Ola Bond, Cisco.  
Bertha Richardson, Strawn.  
Clara Collins, Gorman.  
Ulala May.  
Beulah Jones, Rising Star  
Mary Bayne, Cisco.  
Opal Bunton, Ranger  
Shirley Gregory, Baird.  
Clara Collins, Gorman.  
Katherine Carmack  
William Williams, Cisco.

Louis Jarmuth, Cisco.  
Dean Hendricks, Cisco  
Harold Overbey  
Robert Hodge.  
Homer Williams, Comanche.  
George Reed, DeLeon.  
Melba McKinney, Cisco.  
Annie Westmoreland, Gorman.  
Sarah Williams, Comanche.  
Willie Jo Carter  
Elizabeth Starr, Cisco.  
Mary Johnson, Cisco.  
Pearl Williams, Cisco.  
Deborah Walker, Cisco.  
Baby Girl Wimberley, Comanche  
Baby Boy O'Bannon  
Andy Taylor  
Troy Salyer.  
James Hall, Cisco  
Peggy Bullock.  
Karen Templeton, Ranger.  
Judy O'Bannon.  
Ginger Wimberley, Comanche  
Reba Swinney.  
Opal Clifton.  
Cyrus Justice.  
Lee Williamson, Olden.  
Sudie Grozier, Cisco  
Belle Jones.  
Mildred Green, Gordon.  
Gary Bowling.

Noble Squiers.  
John Rector, Rising Star.



Patients in Ranger General Hospital Wednesday morning were:

Mrs. Ed Willingham  
Mae Davis  
Cecil Carr  
Albin Fleming  
Onis Littlefield  
Sophia Freeman  
Barbara Mallory  
Earl Redwine  
Diane Sharp  
Marguerite Sipes  
Irene Finley  
Minnie Beck  
Alice Koerner  
Ruth Louks  
Lillie Robertson  
Corbett Brown  
Louise Lawson  
Verda Ward  
Erma Lee Perrin  
Opal Harrison  
J.T. Varner  
Mari-Melia Henderson

**Illuminated Past?**  
Gaslighting may have been used first in China in the tenth century when natural gas was captured in bags or bladders as it escaped from the ground. When they wanted light, the Chinese pricked holes in the bags and ignited the gas as it leaked out.

## 4-H NEWS

Eastland county 4-H Adult Leaders Association will meet on Tuesday, Nov. 16 at the Farm Bureau meeting room in Eastland at 7:30 p.m. New officers will be elected at this meeting. Plans will be made for upcoming county wide events.

The County 4-H Council, representative body of Eastland County 4-H clubs, will also meet at the Farm Bureau meeting room, Eastland at 7:30 p.m. Council chairman, Brit Ferguson will preside.

Saturday, November 6, District 4-H Council meeting was held in Gatesville with twenty counties from District 8 being represented. District vice chairman, Suzanne Harbin, and District Council members Brit Ferguson and JoAnn Stroebel (who was substituting for Dollie Moseley) attended the all day session. During the afternoon a slide series written and produced by the State 4-H Council members was presented. The slide program included five of the present situations facing America today: drugs, pollution, racism, Americanism, and poverty. State Council members did an outstanding job of depicting these problems through slides. Eastland County delegates are hopeful of getting these slides to show to

local clubs.

4-H Foods-Nutrition training meetings have been held during the past two weeks. Adult leaders are preparing for foods project meetings which are getting under way in each club. Adult leaders who have attended the meetings are: Mrs. Barbara Bostick, Mrs. Mary Donham, Mrs. Jeanne Lee, from Cisco 4-H club; Mrs. Belya Guthrie, Mrs. Johnnie Scott and Mrs. Carolyn Harris from Rising Star 4-H club; Mrs. Twila Carlile, Mrs. Jerry Bacon, Mrs. Loretta Donham, and Mrs. Ann Dickson from Nimrod 4-H club; Mrs. Phyllis Kincaid from Eastland 4-H club; and Mrs. Sandi Herod, Pat Greer, Mrs. Georgia Langford, Mrs. Darlene Dixon, Mrs. Dot Martin from Ranger 4-H club and Mrs. Faye Tucker

from Carbon 4-H club. Other leaders and parents will be helping with the foods groups throughout the project.

**Funerals of DeLeon**  
"Comanche's Legacy" - "Blue Jay Club"  
**UNWANTED HAIR**  
Removal Permanently  
By the ONLY method approved by the  
Specialists - Graduate Practitioners  
Men's - \$15 - \$20 - \$25 - \$30 - \$40  
Free - Private Consultations  
Call DeLeon 893-6377  
404 North 11th St. DeLeon, Texas

**NOTICE - Mattresses.** Complete bedding made by Western Mattress Co., San Angelo. Best quality, low price, renovate or exchange new. Every other Wednesday. They're guaranteed. For home appointment, call Lois Mezell, 629-2703, leave name.

Win Thousands of Green Stamps! Inquire Now About "Green Stamps" Derby and All new Green Stamp League.



**Make It a Family Affair**  
Active families are doing the "in" thing. They're getting in on bowling action fun.  
**Snack Bar**  
**FIESTA BOWL**

**T. K. LEWIS**  
**Taxidermy Shop**  
704 E. 20th Cisco  
Ph. 442-3249

## Auction Sale

Saturday, Nov. 20th - 1:00 P. M.

EASTLAND TRUST TRUCK STOP - Highway 80 West

EASTLAND, TEXAS

DUE TO HEALTH REASONS, MR. CLEM GILLESPIE OF EASTLAND TRUST TRUCK STOP IS GOING OUT OF BUSINESS AND IS OFFERING HIS ENTIRE EQUIPMENT AND STOCK TO BE SOLD AT PUBLIC AUCTION

### Items to Be Auctioned Include:

- McCASKEY CASH REGISTER - BEARING PULLER
- 2 WHEEL TRAILER - RIGID PIPE WRENCHES
- CRESCENT WRENCHES - AIR COMPRESSOR
- ELECTRIC REMINGTON RAN ADDING MACHINE
- 1/4 HORSE BENCH GRINDER - WORK BENCHES
- DEVILBIS PAINT GUN - ELECTRIC DRILLS
- BATEMAN REGAL ICE CRUSHER - SKILL SAW
- 10'x12' ICE HOUSE with two cooling units
- ELECTRIC DRINKING FOUNTAIN - FAN BELTS
- 8'x10' WAREHOUSE - STEEL WELDING TABLE
- 500 GALLON BUTANE TANK - SCREWDRIVERS
- 1-1/2" IMPACT WRENCH - 1/2" IMPACT WRENCH
- 3/4 INCH IMPACT WRENCH
- SEVERAL HYDRAULIC JACKS - VICES
- PORTABLE AIR TANK - TIRE EXPANDER
- BLACK & DECKER HAND GRINDER-DRILL PRESS
- TIRE CHANGING TOOLS - HAND GREASE GUNS
- ALEMITE AIR GREASE GUNS - SOCKET SETS
- GEAR OIL DISPENSERS - SAWS - HAMMERS
- SOLDERING IRONS - PLIERS - CREEPERS
- AIR CONDITIONER TOOLS AND GAUGES
- COOL CUSHIONS - BATTERY CHARGER
- TIRE BALANCER - TIRE CHANGING MACHINE
- ACETYLENE CUTTING AND WELDING RIG
- 225 AMP-AC WELDING RIG - CHAIRS
- 1962 FORD 2-DOOR SEDAN - HEATERS
- 1961 FORD PICK-UP - BOLT AND NUT BINS
- TIRE RACKS - NEW TRUCK AIR HORNS
- USED TRUCK AND AUTO TIRES - LIGHT BULBS
- TUNE-UP PARTS BIN - RADIO
- USED TRUCK AND AUTO WHEELS
- FLOOR JACKS - TRUCK JACKS - ANVIL

MANY, MANY OTHER ITEMS TOO NUMEROUS TO MENTION THEM ALL.

### PLAN NOW TO ATTEND

## WRIGHT AUCTION CO.

JAMES T. WRIGHT, LICENSED AUCTIONEER

210 So. Seaman Street—Bus. Phone 817/629-1344 — Eastland Texas — Res. Phone 817/629-1074

## RANGER DRIVE-IN THEATRE

NOV 19 20 21  
A story of the young... for the young and the young at heart!  
PICTURE STARTS 7:15

**RICHARD THOMAS**  
Trying to make a place for himself in an uncaring world!

**CATHERINE BURNS**  
Sensitive, yet impetuous... and far wiser than her years!

**DESI ARNAZ, JR.**  
He knows how to survive among the young!

**RICHARD CRENNNA**  
What can he do to bridge the gap between father and son?

**CLAIRE BLOOM**  
She needs her husband... and love, but can she have both?

**JOHN COLICOS**  
Gentleman? or gentle scoundrel? They all had their suspicions!

A remarkable film of a time... Any time!  
**HAL WALLIS RED SKY AT MORNING**  
A UNIVERSAL PICTURE TECHNICOLOR®

"Because Someone Lived"  
**RAWLINS MONUMENTS**  
Since 1884 THE NAME to look for in distinctive memorials  
Roy Taylor 500 East 8th St. Cisco  
Please Call Collect  
**CALL 442-1127**

"Christmas in Vietnam"  
In cooperation with the Ranger and Cisco Jaycees, we are asking your help in locating all the names and addresses of our Eastland County Servicemen in Vietnam.  
The Eastland County Jaycees will again send Christmas Packages to Servicemen in Vietnam. Send names and addresses of any Eastland County Serviceman in Vietnam to:  
"Christmas in Vietnam"  
% Eastland Jaycees  
PO Box 202  
Eastland, Texas 76448.

## White Elephant Restaurant

### SUNDAY BUFFET

This Sunday's Buffet features chicken and dressing with your choice of several meats, salads & vegetables served with tea or coffee

11:30 a.m. to 2:30 p.m. every Sunday

ALL YOU CAN EAT FOR \$1.75

WE CAN SEAT 250 PEOPLE.

Open 6 a.m. to 10 p.m. 7 days

Mr. Fred Guyger-Chef

Mr. and Mrs. L. C. Agnew Owners  
Eastland Phone 629-8845

## WIN YOUR TURKEY

FOR A THANKSGIVING DINNER AT THE  
**RANGER JAYCEE TURKEY SHOOT**  
NOVEMBER 18-19-20-21

- \* Thursday and Friday 5,30 p.m.-10,30 p.m.
- \* Saturday from 10,00 a.m.-10,00 p.m.

### TRAP SHOOT

- \* Sunday from 1,00-6,00 p.m. at Jaycee Rodeo Grounds
- ONE TURKEY GIVEN AWAY EACH HOUR DURING TURKEY SHOOT JAYCEE HALL - - MAIN ST.
- ONE TURKEY GIVEN FOR BEST ARCHER EACH NIGHT
- OVER ALL TROPHY PRESENTED TO HIGH SCHORER IN THE ARCHERY EVENT
- OVER ALL TROPHY PRESENED PRESENTED TO HIGH SCHORER IN THE TRAP SHOOT
- .22 Winchester Lever Action Rifle Given Away for High Pointer in Men's .22 Division . . . .22 Single Shot Rifle Given to High Scorer in Youth Division and Trophy to be Given to Best Shot in the Women's Division.

.22-31-3 shots TRAP-31-3 shots Bow and Arrow-31-5 shots

**Tom Turkeys** 35¢  
 Young, 19 to 24-Lb. Avg. USDA Grade 'A'  
 Traditional Thanksgiving Favorite! —Lb.

**Boneless Brisket** \$1.05  
 USDA Choice Grade Heavy Beef  
 Compare Quality and Trim! —Lb.

**Smoked Bacon** 45¢  
 Slab, By the Piece, 10 to 12-Lb. Avg. Flavorful  
 (Sliced Slab Ready-to-Cook —Lb. 55¢) —Lb.

**FRESH FRYERS** 29¢  
 USDA Inspected Grade 'A' Special!  
 (Baking Chickens Fresh, 3 to 3 1/2-Lb. Avg. —Lb. 37¢) Whole —Lb.



**Boneless Roast** 95¢  
 ★Chuck or ★Shoulder, USDA Choice Grade Heavy Beef  
 (Chuck Roast Full Blade Cut —Lb. 59¢) Defatted & Waste-Free! —Lb.

**Smoked Picnic** 38¢  
 6 to 8-Lb. Average Whole —Lb. 45¢ (Sliced ★Half ★Whole —Lb.)  
**Lean Ground Beef** 79¢  
 Compare —Lb.  
**Rib Steaks** \$1.09  
 USDA Choice Grade Heavy Beef —Lb.

**Heavy Beef Values!**  
**Swiss Steak** 99¢  
 ★Shoulder Arm Cut, USDA Choice Grade Heavy Beef —Lb.  
**Boneless Steak** \$1.05  
 Center Cut Chuck, USDA Choice Grade Heavy Beef —Lb.  
**Top Round Steak** \$1.29  
 Boneless, USDA Choice Grade Heavy Beef —Lb.

**Canned Ham** 3-Lb. \$2.98  
 Safeway, Fully Cooked! Can  
**Eckrich Sausage** \$1.05  
 Smoked, Heat & Serve! —Lb.

**Safeway Low Prices!**

**Leg Quarters** 39¢  
 Fresh Cut, From USDA Insp. Grade 'A' Fryers —Lb.  
**Breast Quarters** 45¢  
 Fresh Cut, From USDA Insp. Grade 'A' Fryers —Lb.  
**4-Legged Fryer** 43¢  
 Cut Up, 2 Extra Drumsticks —Lb.  
**Smoked Pork Chops** 98¢  
 Both Center Cut ★Rib or ★Loin 10-oz. —Lb.

**Holiday Favorites!**

**Hen Turkeys** 41¢  
 Young, 10 to 14-Lb. Avg. USDA Grade 'A' —Lb.  
**Self-Basting** 55¢  
 Turkeys, Safeway, 10 to 14-Lb. Avg. USDA Grade 'A' —Lb.  
**Butterball** 57¢  
 Turkeys, Swift's Deep-Basted, 10 to 16-Lb. Avg. USDA Grade 'A' —Lb.  
**Fryer-Roaster** 65¢  
 Turkey, Swift's Butterball Deep-Basted, 5 to 9-Lb. Avg. Grade 'A' —Lb.  
**Honeysuckle** 53¢  
 Turkeys, White Deep-Basted, 10 to 16-Lb. Avg. USDA Grade 'A' —Lb.  
**Pacific Oysters** 98¢  
 Fresh, Air Expressed to Safeway Tin 10-oz. —Lb.  
**Gulf Coast Oysters** \$1.05  
 Standard Size 12-oz. Tin

**Check These Values!**

**Lunch Meat** 3 6-oz. Pkgs. \$1  
 Safeway Sliced, ★Pickle-Pimiento ★All Beef Salami ★Olive ★Maceroni & Cheese ★Spiced  
**All Meat Franks** 47¢  
 Safeway, Favorite! 12-oz. Pkg.  
**Neuhoff Franks** 49¢  
 All Meat, Tender! 12-oz. Pkg.  
**Armour Franks** 59¢  
 Armour Star, All Meat 12-oz. Pkg.

**Festive Meat Values!**

**Boneless Hams** \$1.39  
 Halves, Armour parti style —Lb.  
**Cure 81 Hams** \$1.45  
 Hormel, Boneless, ★Half or ★Whole —Lb.  
**Owens Sausage** 69¢  
 Country Style ★Reg. 1-Lb. Pkg. ★Hot or ★Extra Mild  
**Fresh Pork Roast** 53¢  
 Boston Butt, Semi-Boneless —Lb.  
**Pork Loin Roast** 69¢  
 Fresh, Full Rib Half —Lb.  
**Fresh Pork Ham** 69¢  
 ★Half or ★Whole —Lb.  
**Fresh Pork Chops** 65¢  
 Economy Pack —Lb.

**SAFEWAY HAS THE LOW EVERYDAY PRICES & SPECIALS**

**SAVE**  
**Pillsbury Flour**  
 Pillsbury's Best, Special!  
 5-Lb. Bag **49¢**

**SAVE**  
**Chunk Tuna**  
 Sea Trader, Big Buy!  
 6 1/2-oz. Can **35¢**

**SAVE**  
**Paper Towels**  
 Tree Saver, White, Big Buy!  
 175-Ct. Roll **28¢**

**SAVE**  
**Plain Chili**  
 Town House, Without Beans, Special!  
 15-oz. Can **48¢**

**SAVE**  
**Cane Sugar**  
 Candi Cane, Special!  
 5-Lb. Bag **48¢**  
 (With \$5.00 or more purchase, excluding cigarettes)

**Low, Low Prices Every Day, PLUS Specials Every Day!**

**Compare These Safeway Low Prices!**

**Canned Pop** 8¢  
 Snowy Peak, Assorted Flavors 12-oz. Can  
**Salad Dressing** 37¢  
 Piedmont, Creamy Texture! Quart Jar  
**Tomato Catsup** 19¢  
 Highway, Rich Flavor! 14-oz. Bottle  
**Aluminum Foil** 25¢  
 Kitchen Craft, 12 Inches Wide 25-Ft. Roll  
**Luncheon Napkins** 10¢  
 Tree Saver, Paper, White 60-Ct. Pkg.  
**Liquid Bleach** 38¢  
 White Magic, Sparkling Whites! Gallon Plastic

**Dairy Low Prices!**

**"Choc" Milk** 58¢  
 Lucerne, Safeway Special! 1/2-Gal. Ctn.  
**Cottage Cheese** 38¢  
 Lucerne, Assorted Flavors 16-oz. Ctn.

**Fresh from the Bakery!**

**French Bread** 29¢  
 Skylark, Foil Wrapped, New Orleans Style, Special! —1-Lb. Loaf  
**Texas Toastin' White Bread** 33¢  
 Bread, 1 1/2-Lb. Mrs. Wright's Loaf  
 29¢  
 ★Regular or ★Sandwich, Sliced 1 1/2-Lb. Loaf

**Check These Values!**

**Golden Corn** 19¢  
 Highway, Whole Kernel —16-oz. Can  
**Hormel Spam** 55¢  
 Luncheon Meat 12-oz. Can  
**Vienna Sausage** 23¢  
 Libby, Tasty! 4-oz. Can  
**Pork & Beans** 16¢  
 Van Camp's 14-oz. Can  
**Potato Sticks** 10¢  
 Butterfield 2 1/4-oz. Can

**Safeway Big Buy!**

**Cake Mixes** 28¢  
 Mrs. Wright's, Assorted 18 1/2-oz. Box

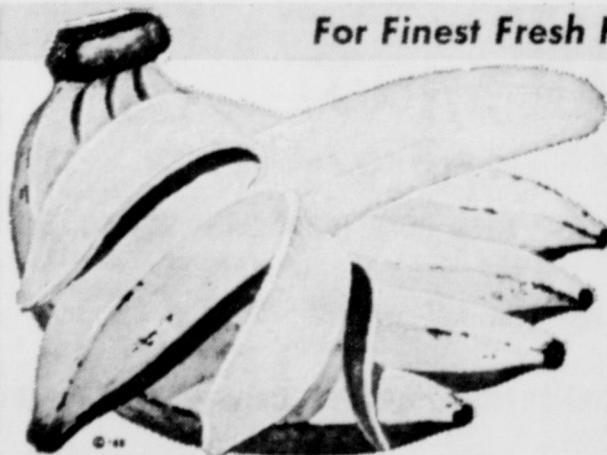
**Money-Saving Values!**

**Cream Cheese** 13¢  
 Lucerne, For Salads or Dips! —3-oz. Pkg.  
**Marshmallows** 21¢  
 Fluf-Puff, White 10-oz. Pkg.  
**Ripe Olives** 49¢  
 Lindsay, Giant Pitted 5 1/2-oz. Can  
**Pinto Beans** 29¢  
 Town House, Economical! 2-Lb. Bag  
**Saltines** 23¢  
 Melrose Soda Crackers 1-Lb. Box

**Safeway Quality Frozen Foods!**

**Orange Juice** 19¢  
 Texsun, Rich in Vitamin 'C'! Refreshing, Fresh Flavor! 6-oz. Can  
**Bel-air Waffles** 10¢  
 Quick & Easy! 5-oz. Pkg.  
**Cheese Pizza** 67¢  
 Ready to Bake! 16-oz. Pkg.  
**Sausage Pizza** 77¢  
 Spicy Flavor! —19-oz. Pkg.  
**Banquet Dinners** 38¢  
 Assorted (Except Beef) Reg. Pkg.  
**Strawberries** 25¢  
 Scotch Treat, Sliced 10-oz. Pkg.  
**French Fries** 10¢  
 Slim Jim, Shoestring Potatoes 8-oz. Pkg.  
**Meat Pies** 15¢  
 Spare Time, Assorted 6-oz. Pkg.

**For Finest Fresh Fruits and Vegetables, Shop Safeway & Save!**



**Bananas** 10¢  
 Top Quality! Golden Ripe! Large, Special! —Lb.

**Large Walnuts** 49¢  
 No. 1 Quality, In Shell. —Lb.

**Crisp Celery** 19¢  
 For Salads or Stuffing! Small Size —Each

**Cranberries** 69¢  
 Ocean Spray, Buy 2, Use One-Freeze One 2 1-Lb. Cello

**Good Every Meal!**

**Potatoes** 49¢  
 ★Russet or ★Red, US #1, Your Choice! 10-Lb. Bag

**Lettuce** 29¢  
 Head —Lb.  
**Large Tangelos** 19¢  
 New Florida Harvest, No. 1 —Lb.  
**Jonathan Apples** 59¢  
 Lunchbox Size, Tasty! 3-Lb. Bag  
**Texas Yams** 19¢  
 Texas' Finest! Medium Size —Lb.  
**Green Cabbage** 10¢  
 Texas Grown, Medium Heads —Lb.  
**Red Radishes** 10¢  
 New Crop, Tops Removed 4-oz. Cello  
**Glace Fruit Mix** 59¢  
 For Holiday Baking! 1-Lb. Pkg.  
**Mincemeat** \$1  
 Berden's None Such, Condensed 3 9-oz. Pkgs.

**Shop Safeway and Save!**

**Anti-Freeze** \$1.49  
 Peak, With Anti-Leak Get Ready For Winter! Gallon Plastic  
**Color Film** 99¢  
 Kodak Instamatic CX126-12 —Roll  
**Flash Cubes** 99¢  
 ★Norelco 3-Cube Sleeve  
**Hair Spray** 49¢  
 Truly Fine, Assorted 13-oz. Can

**Volumes 22 & 23**

**Funk & Wagnalls**  
 STANDARD REFERENCE  
**Encyclopedia**  
 VOLUME NO. 22-23 ONLY \$1.89

Prices Effective Nov. 18-20, in EASTLAND  
 No Sales to Dealers.



# Vassarette Open House To Feature Display

On View at Vassarette Open House Ferment and female are synonymous right now. Women's Lib is definitely here and with the new trends toward freedom and the stress on being yourself there has been an emergence of the real woman. But, where did she come from?

In 1897 the first ad for ladies underwear appeared in "The Ladies' Home Journal" launching a national ad campaign in consumer magazines. By 1906, thirty-two magazines carried Munsingwear ads in print. Those first ads were real ads, showing women in natural settings with their children and with their husbands. Most often they were in full color and the copy lines were direct "tell-it-like-it-is" statements of fact.

Making Munsingwear a household word was the objective of the early ad campaigns. "Don't say underwear, say Munsingwear", appeared over and over again. "Buy the sensible, Serviceable, Satisfactory Munsing Union Suits," and "Style in Fabric, Color and Design," while completely artless statements has direct impact on real

women with real values. Pragmatic facts were important—price, fit, comfort, washability, durability - these were the selling points that counted. "It's true economy to buy the best," appealed to the thrifty; "Rough underwear scratches, wrinkled underwear chafes," spelled out fit and comfort features.

Those old ads were simply great. To see them is a bit of Americana. The home office of Munsingwear (Vassarette) in Minneapolis, Minnesota maintains a gallery of the old ad campaigns. Highlights from that gallery will be on display during the Eastland Vassarette plant open house on Sunday, November 21. Vassarette points out that the "good old days", from then to now, has been a tortuous route. From flapper to flirt to pixie; from plain Jane to elegant lady; from girl through sensuous woman to Hippie-Vassarette hung in there with the conviction that beneath it all there was a real woman with a real body to be served. It now appears that woman has come the full circle and in her new-found freedom she looks for truth in advertising just as she does in

the products she buys and wears.

The ad gallery will also give visitors to the Eastland open house the opportunity to compare the modern day Munsingwear and Vassarette products lines which will be on display with the products of yesteryear.

During the open house, tours will be conducted through the manufacturing areas, and there will be musical entertainment, refreshments and door prizes. Hours of the open house are from 2:00 p.m. to 4:30 p.m.

## Gold Medallion Home Better Buy

The electrical industry has taken great pains to make sure that homes displaying the Gold Medallion emblem are built and equipped for the total-electric future, regardless of size, style or price-range. That's why families of all ages and all income brackets can be sure of a "better buy" in a Gold Medallion Home.

There are some 925 electric utilities of all types participating in the Gold Medallion Home Program throughout the country. Each one has adopted electrical standards which equal, or

# Gold Medallion Open Nov. 20 & 21,

are higher than nationally-established minimums, as the basis upon which Gold Medallion awards are made. The utility from which you receive electric service will gladly provide specific details of the standards which apply in your area.

Meanwhile, if you don't want to bother with technical details, here is what you can expect to get in a Gold Medallion Home:

1. A home in which electricity is the sole source of energy for light, heat and power. This means a flameless electric heating system.

2. An electric range or built-in electric oven and surface units, and an electric refrigerator or refrigerator-freezer in the kitchen.

3. An electric water-heater, plus at least one more major electric appliance, selected by the builder (or by you) from an approved list. The "optional" appliance might be a dishwasher, food-waste disposer, clothes dryer or, perhaps, an air conditioner.

4. A built-in ventilating fan, to control moisture and odors in the kitchen—perhaps also in the bath and laundry area.

5. Full Housepower Wiring, including at least 150 Amperes over-all capacity, plus plenty of branch circuits, convenience outlets and switches.

6. Light-for-Living, which means that lighting fixtures, or lighted coves, valances, etc., are built-in, to provide proper illumina-

tion in strategic spots. Take this check-list with you when you tour new homes opened for inspection this spring! You'll find that every house labeled as a Gold Medallion Home will meet the test!

When you find the new home that appears to be "just right" for you, it's wise to look beneath the surface before you buy. Those lovely, beautifully-furnished models can fool you! Such things as the electric wiring, for instance, are hidden in the walls. But, you'll have to live with it for years to come. How can you tell whether a house has hidden assets—or hidden liabilities?

So far as electric wiring is concerned, you need only look for the Gold Medallion! If it's identified as a Gold Medallion Home, you can be sure that the wiring inside the walls has ample capacity to permit full use of all your electric appliances, without becoming overloaded.

The wiring circuits which carry electricity to the wall outlets in kitchen, laundry and dining areas, for example, can accommodate several portable appliances at a time. What's more, these circuits serve no lights and no other outlets anywhere else in the house! They are installed for the exclusive use of toasters, irons, mixers, electric knives, can-openers—and the dozens of other plug-in devices which make total-electric living such a joy to every housewife.

In the rest of the house, square-foot area and the size of wire determine the total number of electrical circuits. (Like sewing



Frank Sayre, left, manager here for Texas Electric Service Company, and company president Burl B. Hulsey Jr. look over the program during a Program for Economic Progress (pep) meeting held in Fort Worth Nov. 11-12. The power company's PEP program is aimed at providing help in industrial development and community growth in the area it serves.

YOU LIVE BETTER  
ELECTRICALLY

Convenient  
CREDIT



Properly maintained, credit buying is a wonderful thing. Consumers are invited and urged to use it, and at the same time, advised never to abuse it. A credit agreement provides many of the finer things of life...it also is a promise to be diligent in meeting obligations and promptness is a virtue that keeps the wheels of commerce and trade turning.

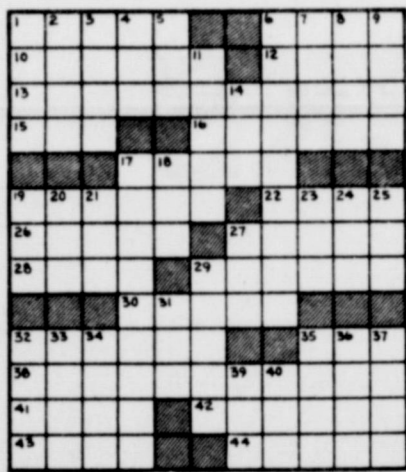
You're welcome to discuss credit needs, and utilize the many services available from these participating members of the

- Altman
- Benders Insurance
- Brays
- Central Drug
- City Garage
- Coats Furniture
- Eastland Auto Parts
- Eastland Hospital
- Eastland National Bank
- Eastland Service Parts
- Eastland Floral
- Freyshlag Insurance
- Fullen Motor Company
- G. & R. Gulf
- Goodyear
- H & R Lumber
- Higginbotham Lumber
- Hollywood Vassarette
- Humble
- King Hood Motor Company
- Kinnard Insurance
- Perkins Implement
- Montgomery Ward
- Robertsons TV
- Scott Paint & Body Works
- Smiths Plumbing
- Southern Television
- Southern Bell Telephone
- Stevens Printing Co.
- Super Save Market
- Texas Electric Service Co.
- Turner Seaberry & Walford

EASTLAND MERCHANTS CREDIT ASSOCIATION  
Mrs. James Glenn, Sec.-Treas.  
Phone 629-2156

## CROSSWORD PUZZLE

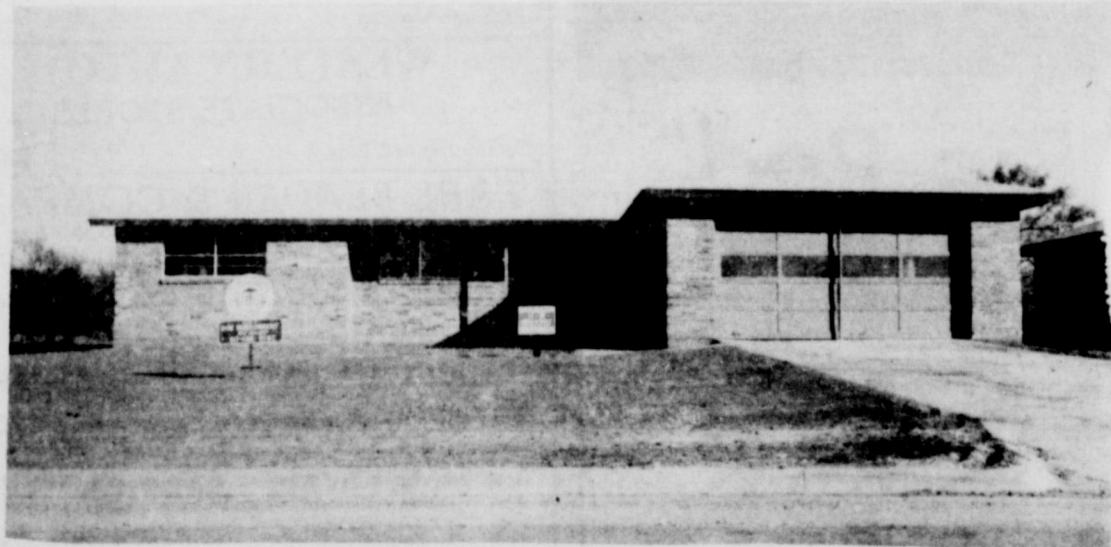
- ACROSS**
- Feminine title
  - Nelson, for one
  - Blackboard item
  - Butter's rival
  - Nursery rhyme character (2 wds.)
  - Fortune
  - Rely
  - Boxer — Carnera
  - Prized
  - Bent the truth
  - Friendship
  - Denture
  - Josp Broz
  - Oklahoman
  - Nita of the silents
  - African desert
  - Tree
  - The Amish, e.g. (2 wds.)
  - An Arab principality
  - Comprehended
  - Craggy hills
  - Indigent
- DOWN**
- Entangle
  - Operatic selection
  - Ciammy
  - Snake
  - Actor Ferrer
  - The mames (2 wds.)
  - Dancing girl
  - Trotsky
  - Affectionate
  - Made again
  - Acad.
  - Get haughty (3 wds.)
  - King (Sp.)
  - Cistern
  - "Friend," to the French
  - Illuminated
  - Gaelic for John
  - French season
  - German article
  - Seed vessel
  - Rebuffs
  - Alder tree (Scot.)
  - Quarrel
  - Likewise
  - Mane
  - Church part
  - Toboggan
  - Lamar
  - Poetical adverb
  - Buck



EVERYBODY PITCHES IN --Sewing Supervisor Pat Elliott, left and Quality Control Supervisor Ruby Guy, right, hand signed pledge cards to Vassarette Personnel Supervisor Margaret DeFord, center, in Vassarette's gigantic push to boost the Eastland United Fund over the top. The employee contributions of \$1,601.29, matched equally by the Vassarette firm, helped push the Eastland drive to a state record, 135.5 percent.

Thursday, November 18, 1971

# COME TO THE HOME SHOW:



SATURDAY & SUNDAY, NOV. 20 & 21  
1 to 6 p.m. -- 710 S. Dixie St.  
One of Many New Fine Eastland Homes!

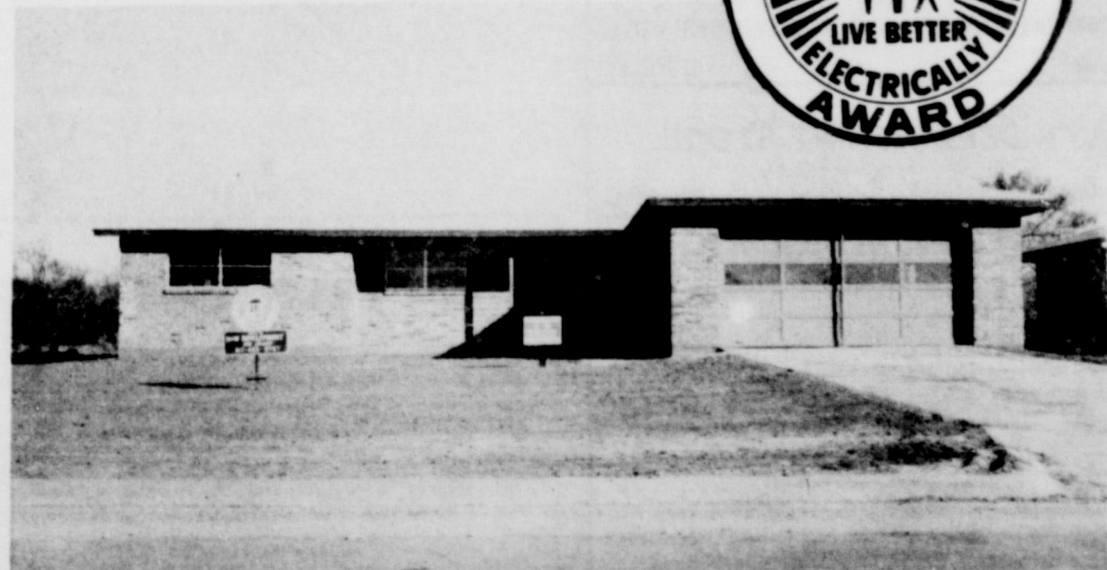
YOU'LL FIND quality in this four-bedroom Gold Medallion Home. You'll find H&W DEVELOPMENT CO. vitally involved in the current building boom in Eastland. We recognize the potentially bright future for Eastland and want to be a vital part of that expansion, by offering quality housing right now. The response that we have already received is gratifying and we are confident that we're playing an important roll in helping the home-shortage problem in Eastland. COME SEE THIS MODEL HOME AND WE THINK YOU'LL AGREE!!

Homes of Distinction by  
**H & W DEVELOPMENT CO.**

Call 629-1702 to find out about YOUR home!

1201 W. Commerce

# Discover the joys of Total Electric Living!



See this home at 710 S Dixie St.  
Saturday and Sunday, 1 to 6 p.m.

- Check These Electric Better Living Features
- Electric central cooling and heating
  - Electric dishwasher
  - Electric waste disposer
  - Built-in electric range
  - Electric water heater

TEXAS  
**ELECTRIC SERVICE COMPANY**  
People power...at your service  
F. N. SAYRE, Manager, Phone 629-2651

Here is a 4-bedroom home built for truly modern living—a home in which clean flameless electricity does everything—from operating work-saving appliances to lighting, cooling and heating the entire house. Built by H&W Development Co., Inc., this 1,400 square foot Total Electric Gold Medallion home is located at 710 S. Dixie St. You'll find it equipped with the most modern electric comforts and conveniences. Be sure to visit this home during the open house and see for yourself the joys of Total Electric living. Open from 1 to 6 p.m. Model Home partially furnished by Coats Furniture, Eastland.

# 1971 8-AA District Champions EASTLAND MAVERICKS

VS.

## 7-AA Champion STAMFORD BULLDOGS

# BI-DISTRICT CHAMPIONSHIP

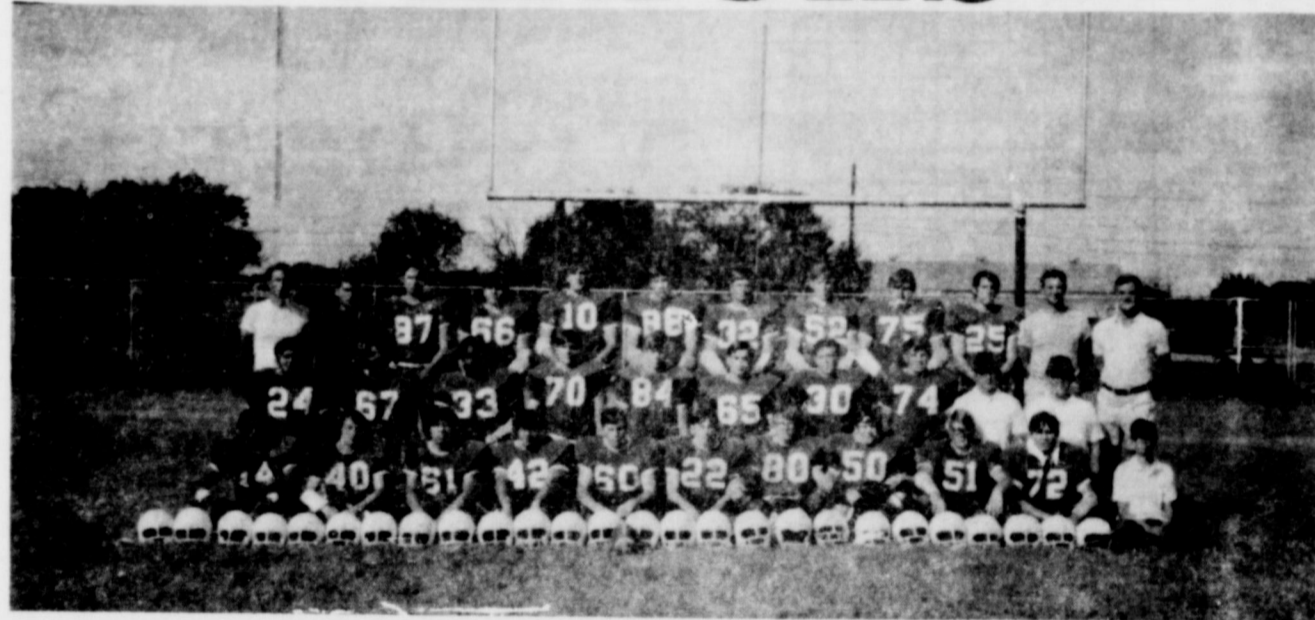
### EASTLAND MAVERICKS

NO.	NAME	Weight
10	CRAIG LUND	200
12	LEO GAETA	130
14	JOHN JIMINEZ	190
20	RALPH HARRISON	130
22	CHARLES MARSHALL	132
24	RUBEN GAETA	175
25	RANDY REXROAT	168
30	TONY THOMAS	190
32	RONALD McCLESKEY	170
33	HOWARD KING	192
40	LARRY BOLLES	142
42	JOE HERRERA	150
50	SCOTT MILLER	155
51	REX BONEY	158
52	MIKE JONES	180
60	JIM MOSELEY	180
61	STEVE LOPEZ	165
65	ALLAN JOLLY	162
66	GIL GAETA	190
67	MAC CALDWELL	170
70	STEVE HART	172
72	LARRY BARNES	174
74	MIKE PARSONS	175
75	RODNEY REYNOLDS	235
80	BOB MACE	142
84	DICKIE ANDERSON	162
86	B. W. ROBERTSON	142
87	GARRY BARNES	174
88	JAMES EIDSON	190

## FRIDAY, SHOTWELL STADIUM, ABILENE 7:30 p.m.

EASTLAND	OPPONENT
22	-- 6 Haskell
41	-- 0 Ranger
48	-- 0 De Leon
57	-- 6 Cisco
61	- 14 Comanche
50	-- 0 Clyde
59	-- 0 Hamilton
41	-- 6 Ballinger
52	-- 0 Winters
12	-- 0 Coleman
-----	
443	- 32

# MAVERICKS



'Go Big Red'

<b>ALTMAN'S STYLE SHOP</b> 109 West Main 629-1150
<b>MAVERICK BARBER SHOP</b> 104 S. Seaman
<b>ROBERTSON'S TV SALES</b> RCA VICTOR DEALER 100 West Commerce
<b>D. L. KINNAIRD</b> GENERAL INSURANCE 207 West Main 629-2544
<b>HOOD KING MOTOR CO.</b> FORD AND MERCURY- SALES AND SERVICE On the Square 629-1786
<b>BRAY'S DEPARTMENT STORE</b> 111 South Lamar 629-1789
<b>TEXAS LIGHTWEIGHT AGGREGATE</b> PRODUCERS OF CONCRETE AGGREGATION C. W. Martin, Mgr. 629-2060
<b>EASTLAND NATIONAL BANK</b> EASTLAND, TEXAS
<b>BOLES DAIRY QUEEN</b> 'WHERE THE MAVERICKS MEET' Hwy. 80 East 629-2400
<b>R. M. SNEED</b> CONTRACTOR INC. Hwy. 80 East 629-1756
<b>COMANCHE COUNTY ELECTRIC CO-OP ASSOCIATION</b> 1311 West Main 629-2088

<b>DR. AND MRS. M. A. TREADWELL, JR.</b>
<b>EASTLAND MEMORIAL HOSPITAL</b>
<b>SUPER SAVE</b> 400 South Seaman 629-1191
<b>HICKMAN NURSING HOME NO. 2</b> MRS. T. B. NIX - ADMINISTRATOR 104 South Seaman 629-1151
<b>BORDEN'S</b> J. T. GREGORY, DISTRIBUTOR 611 West Commerce 629-1100

<b>W. H. "BILL" HOFFMANN</b>
<b>EASTLAND CHAMBER OF COMMERCE</b>
<b>ARRINGTON FUNERAL HOME</b> 301 South Lamar 629-2611
<b>FREYSCHLAG INSURANCE AGENCY</b> 107 West Main 629-2275
<b>HARELIK'S DEPT. STORE</b> 212 West Main 629-1443

<b>MFA INSURANCE</b> Richard Rossander Car Financing 629-2563
<b>B &amp; B SALES AND SERVICE</b> Admiral and Craig Dealer 629-1673
<b>MR. and MRS. VICTOR CORNELIUS</b>
<b>B&amp;W CLINIC AND STAFF</b> H. J. BULGERIN, MD B.B. ALEXANDER, M.D. 400 West Plummer
<b>KINCAID REAL ESTATE FARM AND RANCH LOANS</b> 100 South Seaman 629-1781
<b>WESTERN AUTO ASSOCIATE STORES</b> Commerce and Lamar 629-2011
<b>EARL BENDER &amp; COMPANY INSURANCE</b> Pat and Annelle Miller
<b>THARP TIRE COMPANY</b> DUNLOP TIRES AND ACCESSORIES East Main Street
<b>TEXAS ELECTRIC SERVICE COMPANY</b> People power... at your service F. N. SAYRE, Manager, Phone 629-2651
<b>FOREMOST DAIRIES</b> CLYDE MANNING, MGR. 410 West Commerce 629-1701
<b>BOND ELECTRIC</b> 629-1724
<b>EASTLAND MANOR</b> E. E. FROST, ADMINISTRATOR 1405 West Commerce

## Southern Television Systems Corporation

CISCO - EASTLAND - RANGER... Inviting You To Watch All Of The Games--NCAA - AFL - NFL