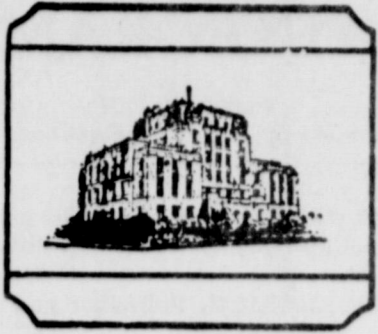


This Is Maverick Territory: Bi-District Now; Tomorrow -- ?



EASTLAND TELEGRAM

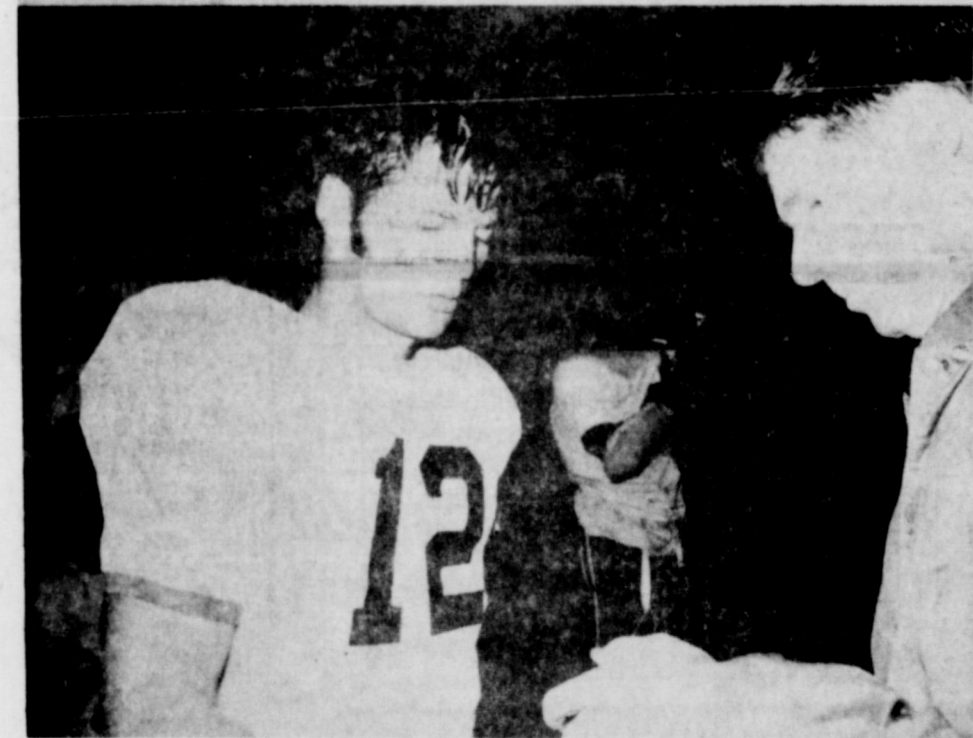
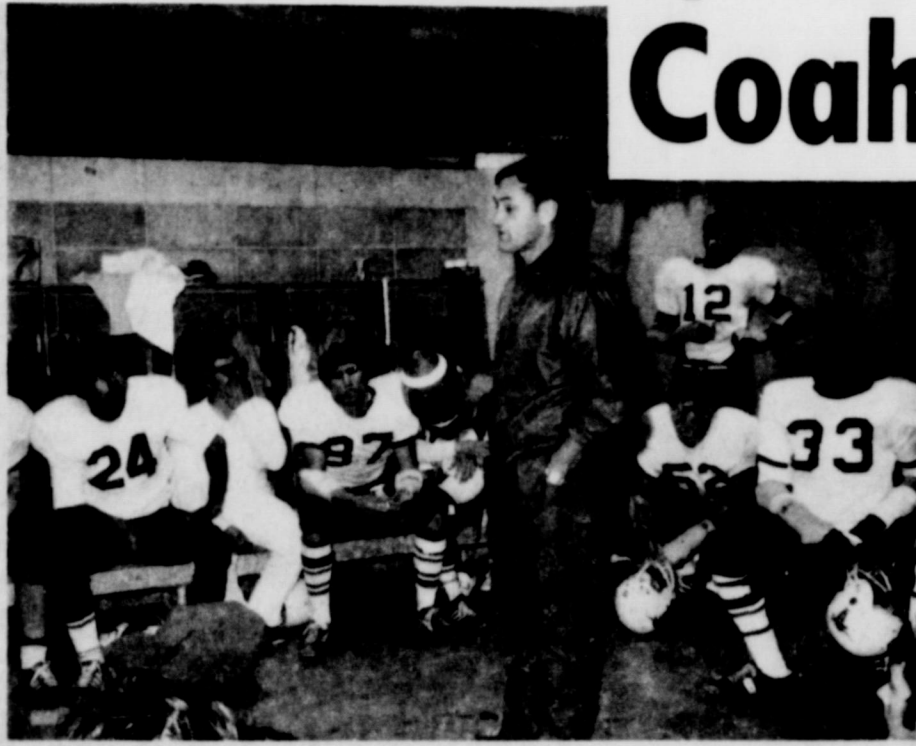


Volume No. 103 Number 93

EASTLAND, TEXAS 76448: Today's CENTER for tomorrow's FUTURE!

Sunday, November 21, 1971

Mavericks Claim Bi-District; To Meet Coahoma Friday



Regional Contest To Be In Sweetwater; Tickets here Monday

It'll be an extra-special Thanksgiving Weekend for

Band Gets II

Brady was invaded by 1,786 band students Saturday when they gathered for Region VII University Interscholastic League Marching Contest.

Eastland Maverick Band under direction of Paul Wallace received a division 2 rating. The competition started at 9 a.m. in Bulldog Stadium and ended at 5 p.m. It included schools from Class B to Class AAA.

The bands performed a routine similar to that they use at half-time of the football games and was judged by the three judges on their marching and playing.

BULLETIN

Sherry Staggs & Darla McCoy received 1st division medals in twirling.

The bands were timed in each performance and penalized if they had not finished their routine and off the field when time was up.

The bands played in the order of their class beginning with Class B.

Class B bands are Gorman and Santa Anna; Class C: Breckenridge Junior High; Class CCC: Brownwood Junior High; Class A: Bangs, Glen Rose, Ranger, DeLeon, Mason, Goldthwaite, Cross Plains, Sonora, Baird, Menard and Eldorado.

A lunch break followed the Class A bands.

Afternoon marching bands were: Class AA-Eastland, Hamilton, Granbury, Clyde, Ozona, Llano, Coleman, Ballinger, San Saba, Cisco, Breckenridge, Comanche, Brady, and Winters. Class AAA-Brownwood, Stephenville, and Lampasas.

The contest opened to the public and 2,000 interested people attended the contest.

Marching is the first step toward the coveted Sweepstakes Award which includes concert playing and sight reading which is usually held in the spring.

Eastlanders as their beloved Mavericks bring them a Regional Playoff to top-off Turkey Day in fine style.

It was Christmas a month early Friday night as the Mavericks earned a much-deserved Bi-District Championship Title by defeating Stamford, 25-8, at Shotwell Stadium. It was their 11th straight win and their point total now stands at 468 as opposed to 40.

It's been a long time since 1956 when another Maverick team went to the Semi-finals losing to Stinnett, and the post-season game Friday night was a thrill for a record Eastland crowd. A total of 1,110 reserved adult and 325 students were sold here, with many more buying at the gate.

Tickets for the Sweetwater game go on sale here Monday at 9 a.m. (\$2.00 adult and \$1.00 student, all week except Thursday. No student tickets at the gate.

Friday night, Eastland will meet Coahoma at Sweetwater Mustang Stadium with a 7:30 p.m. kickoff. The same night Childress and Lubbock Roosevelt will be playing, with the winners of the two games advancing to the semi-finals. This package is one of four playoff pictures in the state, with the finals to be played on the weekend of Dec. 17.

Continued Inside Guest Speaker at Church of God

The Church of God, corner of main and Connellee streets in Eastland, announces a special evangelistic service Sunday, November 21, at 7:30 P.M. special guest speaker for the service will be Rev. C.R. Spain, National Home Missions and Evangelism Director for the Church of God, from Cleveland, Tennessee. The service will feature special singing and old fashioned preaching. The public is invited to attend.

FREYSCHLAG Insurance Presents

THE WEATHER Fair and warmer through Sunday. High Sunday lower 70's, with light winds.

Community Thanksgiving Service Wednesday

The Annual Thanksgiving Worship Service, sponsored by the Eastland Ministerial Fellowship, will be held in the First United Methodist Church on Wednesday Evening, November 24, at 7:30 P.M. The public is invited to attend.

Rev. Ronald Bear, Pastor of the Church of God, will bring the Thanksgiving Message. Mayor, James Reid will read a Thanksgiving Proclamation. The Host church will provide for the special music. The choir will be singing two numbers, Glory and Honor by Serge Rochmaninoff, and God So Loved The World by Stainer.

Appropriate hymns and Scripture will also add to the worshipping experience.

The Ministerial Fellowship extends an invitation to all to



Tid Bits

By HVO



THIS IS a Thank You Note to the Mavericks. For 10 years, football has been sorta of a seasonal thing—you know you

worship on Wednesday Evening as a means of expressing our gratitude to God for all his blessings.

sit in the crowded press box and routinely keep statistics, then write your story. Not with this Maverick team. You sit in the stands and yell your lungs out. We'd always thought of ourselves as pretty conservative, and try to be as reserved as possible, but Mavericks '71 you've changed all that. You've made Maverick Football Nuts out of us for sure. And it's an exciting experience. Obviously there've been good teams

before, but the Make the Most of What We've Got and Play Our Hearts Out Attitude of This Herd just has to make you yell for all your worth everytime they go out. It's fun and we like it.

Oh, by the way Mavericks, we know you were confident Friday night during that first half, you proved it, but you might like to know that there was unequalled confidence in the stands too. Our 5-year-old Amy went calm to sleep after your first touchdown, and after the game when we woke her and told her we'd won, she said, "I knew we would."

That's the kind of fans the Mavericks have.

THE WINNERS CIRCLE -- Maverick Quarterback Craig Lund accepts a special victor's plaque from P.E. Shotwell at upper left after winning Bi-District Title in Shotwell Stadium Friday night; at upper right, Coach Shirley Frazier salutes his team as he tosses the Game Ball in the locker room after the Big One; Ronald McCleskey gets un-tapped by Coach Don Jones at lower left; and at right bottom, Coach Frazier appears to be saying: "This is one of the ones we've been looking for, as he receives the Victory Ball on the Field." (Photos by Herman Alsup).

YOU'LL WANT to remember the Vassarette Open House today from 2:30 to 4 p.m. and also drop by and see the All Electric, 4-bedroom home that H&W Development Co. is showing on S. Dixie St.

IMAGINATIVE INITIATIVE? You Bet. The leaves are a beautiful in Eastland now, and

beginning to fall. Some say they're not as pretty on the

Continued Inside

FULLEN MOTORS presents

LAUGH-A-DAY

When we read the stories about how stunning the bride looked, we always imagine the groom looked stunned.

Vassarette Open House Today, 2 to 4:30 p.m.



Marquesen

A quarter of a century of successful operation in Eastland will be celebrated Sunday, Nov. 21, when Vassarette marks its 25th year (to the day) with a Grand Open House from 2 to 4:30 p.m. at its plant at 202 N. College St.

Entertainment, tours, prizes and much more will be offered visitors during the Open House. The entire general public is invited and urged to attend.

It was on Nov. 21, 1946 that Hollywood-Maxwell began operation in Eastland. Over the years it has been a most successful operation and was acquired by the nationally-known Munsingwear Corp. which operates it today.

Wayne Marquesen, vice president and general manager of the Intimate Apparel Division, Dale Posey, vice president and manufacturing manager of the Intimate Apparel Division, Don Ellenberger, director of industrial and public relations and Mrs. Diane Hubbard, public relations assistant, are all making plans to make the trip for the Eastland open house. Corporate offices are in Minneapolis.

Two local employees, Stella Goforth and Tina McBee will be recognized for their 25 years of service and are the only two who have remained on the payroll since the company

opened in Eastland.

Most of the regional officials also plan to attend. They include Boyd Wollan, who on two occasions has been interim plant manager at Eastland; Jim Gilmer, Don Viergiver, production coordinator and a former Eastland plant manager; Jack Cockerham, regional personnel supervisor; and John Whistler, also a former Eastland plant and presently Paris Plant Manager.

Prizes will be awarded to lucky visitors, compliments of the company, at a drawing to be held at the open house. Frances Burns, chairman for prizes reports that several

pieces of women's apparel and items from the Munsingwear Men's and Boy's line, a stereophonic headset will be given.

One of the outstanding features of the open house will be a visual display of early underwear advertising materials and actual product samples over the years. The home office of Munsingwear maintains a gallery of the ad campaigns and highlights from that gallery will be shown in Eastland.

Local Manager Gene Johnson joined in inviting the public to the open house Sunday. Tours will be conducted during which machines will be demon-

strated, there'll be musical entertainment, refreshments; as well as the formal awards

ceremony, to be held outside, weather permitting.

Continued Inside

You are cordially invited to attend our

TWENTY-FIFTH ANNIVERSARY OPEN HOUSE

Sunday, November 21, 1971

2:00 p.m. to 4:30 p.m.

Conducted tours and refreshments

VASSARETTE
202 North College Street
Eastland, Texas

classified ads

SUTTON'S
A-1 Office
Machines
Call 629-1707
Eastland

Sunday, November 21, 1971
EASTLAND TELEGRAM
Phone 629-1707
110 W. Commerce St. Eastland, Texas 76448

FOR SALE FOR SALE WANTED

Going overseas. Must sell 1969 Oldsmobile Cutliss Supreme, four door, new radial tires, one owner. Call 629-2730. T-93

1972 New Holiday Northern Built Custom built. 22 foot self contained. Tandem wheels. Sell reasonable. May be seen at 917 W. Main. Weekend only. T-93

1969 V-8 Chevrolet Half Ton Pickup with narrow wheel base, automatic transmission. For sale by owner. Call 639-2545. T-94

1972 Sun Flower trailer 8 by 35 foot, patio door. Northern built. Four wheel brakes. Will take smaller trailer in trade. Sell reasonable. May be seen at 917 W. Main. Weekend only. T-93

Furnished or unfurnished two bedroom house and adjacent large storeroom. TV washer, carpet, almost new furniture. 1022 Spring Road in Ranger. Tel. 647-3203 or 647-1360. T-93

Corner of West Commerce, and College. Call 629-2595. T-93

1965 Galaxie 500 in pretty blue with white vinyl top. Beautiful blue vinyl interior. Big engine. All power and air. Good rubber and low actual local mileage. Ideal family car. Call 629-2413. T-93

FOR SALE: 55 gal. oil drums \$4.00 in quantities of five; \$4.50 each cut and delivered locally. We buy and sell used furniture, heaters, antiques, misc. Some old, some good, some junk. Trading post, 311 Main St. or call Arnold Gohlike, 647-3103. T-93

Large selection of suitable gift and personal books for gift giving and your own use. See the complete line at the Telegram. T-93

Registered poodle puppies. Reasonable priced, ready to go. 56 East Foch street in Eastland. Call 629-1211. 97

3 Wheel Scooters (formerly used by Post Office) with 2 cyl air cooled Onan engines & 12 volt elec. lights, starter, etc. Just received 2 more large shipments from Gov. Your choice as is \$195.00 Repainted & reconditioned slightly higher. Johnston Truck & Supply 752-281. Cross Plains, Texas. T-98

Fine printing available at the Telegram: calling cards from \$9.95 for 500; your own personal letterhead from 9.20 for 500; personalized envelopes from 8.15 per 500; padded statements from 8.30 to per 100. Bigger values in larger lots. You can get it printed at the Telegram. T-93

A good buy... give it a try. Blue Lustre America's favorite carpet shampoo. Coats Furniture. T-93

Used two-tube fluorescent desk lamp with swivel arm. \$24.95, at the Telegram office where you'll also find a complete line of office supplies. Paper, files, typewriter ribbons, cash registers, adding machine tape, and much more. Just come look. If it's for your desk or office, you'll find it at the Telegram. T-93

Take soil away the Blue Lustre way from carpet and upholstery. Rent electric shampooer \$1. Perry Brothers. T-93

House in Carbon City Water and well water. 4 bedrooms. All built in Kitchen. Large recreation room. Completely carpeted. Mary Snell at Carbon. T-93

Now's the time to clean out the garage and closet and sell your don't need items cash through the Classifieds. The successful businesses use 'em all the time - why shouldn't you? Up to 20 words, one time for \$1.50, each insertion thereafter for \$1. Keep one running at \$8.50 per month and change the copy to suit your needs. Use the Telegram Classifieds. T-93

Lady checker. Apply in person at J.R.B. in Eastland. T-94

Christian lady wanted to live with elderly lady in Carbon. Very light work. Room and board plus salary. Call 629-1091. T-93

NOTICE
NOTICE--Thanksgiving Weekend in New York--Wednesday through Sunday. Special fare \$132.00 (30 in group) Hotel and sightseeing packages available. Helen Crawford, 442-2265 or leave message 442-1499. T-93

FOR RENT
Nice, clean furnished, large living room, large bedroom; small kitchen and bath; utilities paid. Call 629-2362 between 10 a.m. and 5 p.m. T-93

School Menu
Monday Nov. 22
Beef tacos
Pinto beans
Chopped spinach
Corn bread
Fruit cobbler

Tuesday Nov. 23
Turkey & Dressing
Giblet gravy
Green beans
Candied Yams
Cranberry sauce
Apple & celery salad
Sliced bread
Pumpkin pie

Wednesday Nov. 24
Hot dogs with chili
Blackeye peas
Buttered cabbage
Tossed salad
Cake squares

Nov. 25 & 26 Thanksgiving Holidays.

MASONIC LODGE NO. 467



Meets second Thursday of each month at 7:30 p.m. in the Masonic Hall. Call Pat Miller, W. M. at 629-1077 or L. E. JHuckabay sec'y at 629-1391 for information.

EASTLAND ROTARY CLUB
Saul Pullman, president



Meets each Monday at White Elephant Restaurant in Eastland 12:00 noon.

HELP WANTED
Registered Nurse for director of nurses Breckenridge Nursing Home. Call 559-2717 for interview. Breckenridge, Texas

MARY COME HOME

FREE ESTIMATES ON
repairs only
Repair of Your Old Roofs
Residential and Commercial
"ALL NEW WORK GUARANTEED"
TRI-CITIES ROOFING CO
Call Nabil Squiers 629-2370 EASTLAND

GARDENHIRE OIL COMPANY
Yes! We can sell wholesale to you!
See us for all your oil, grease, filters, spark plugs, brake fluid, anti-freeze, S. T. P. for oil, gasoline, diesel or radiator, tires for cars, truck or tractor. WE HAVE TANKS for farm or commercial gasoline and diesel fuel. See us before you trade. All major brands of Oil and Grease.
WHY PAY MORE??

FORD DRY CLEANERS
The freshness of autumn calls for clothes that are dry cleaned to perfection by our modern methods.
Service is Fast! Pick-Up and Delivery
629-2055
209 S. Lamar

sympathy and advice...
WE ARE HEAR TO SERVE YOU
Whatever the hour, feel free to call on us for understanding counsel in time of sorrow.
Arrington Funeral Home
Eastland 629-2611

Convenient CREDIT

Properly maintained, credit buying is a wonderful thing. Consumers are invited and urged to use it, and at the same time, advised never to abuse it. A credit agreement provides many of the finer things of life...it also is a promise to be diligent in meeting obligations and promptness is a virtue that keeps the wheels of commerce and trade turning.

+++
You're welcome to discuss credit needs, and utilize the many services available from these participating members of the

- Altman's
- Benders Insurance
- Brays
- Central Drug
- City Garage
- Coats Furniture
- Eastland Auto Parts
- Eastland Hospital
- Eastland National Bank
- Eastland Service Parts
- Eastland Floral
- Freyschlag Insurance
- Fullen Motor Company
- G & R Gulf
- Goodyear
- H & R Lumber
- Higginbotham Lumber
- Hollywood Vasserette
- Humble
- King Hood Motor Company
- Kinnard Insurance
- Perkins Implement
- Montgomery Ward
- Robertsons TV
- Scott Paint & Body Works
- Smiths Plumbing
- Southern Television
- Southwestern Bell Telephone
- Stevens Printing Co.
- Super Save Market
- Texas Electric Service Co.
- Turner Seaberry & Walford

Eastland Merchants Credit Association.
Phone 629-2660
Mrs. James Glenn, Sec.-Treas.

"We can handle anything but litterbugs!"
Goode Pest Control
Phone 629-1179 after 3:00
310 N. Ammerman
roaches, ants, termites, moths, spiders
ALL WORK GUARANTEED

ROY LEE SMITH
PLUMBING
Contracting and Repairing
Complete Plumbing fixtures and Supplies
Water Systems
Electric Motors
Bath & Kitchen Improvements
Trained, Adequate Staff
Call a Licensed Plumber
Day or Night
629-1722

SMITH PLUMBING
114 N. Seaman
Eastland

MAYBE YOU DON'T NEED INSURANCE---
If you don't own a home, furniture, jewelry or a car, you can get along without the services of an insurance agent. But for the most of us, life is not that simple. Modern living has become so complex that the protection of property and personal liability is a major problem and we must be insured. The individual you can always depend on for accurate solutions of your insurance problems is your local agent.

Earl Bender & Company
Eastland Insurance since 1924 Texas

Consolidated with Eastland Chronicle, established in 1887, and Eastland County Record, established in 1931

H.V. O'BRIEN, Publisher and Editor
HERMAN ALSUP, Associate Editor

Second Class Postage paid at Eastland Texas under Act of Congress on March 1870.
Published semi-weekly - Thursdays and Sundays by Eastland County Newspapers, Inc.

SUBSCRIPTION RATES: By carrier in city, 15c a week or 65c a month; one year by mail incountry, \$5; city PO Boxes, \$6; one year elsewhere in state, \$7; out of state, \$8.

NOTICE: Any erroneous reflection upon the character, standing, or reputation of any person, firm or corporation which may appear in the columns of this newspaper will be gladly corrected upon being brought to the attention of the editor.

THE HOLIDAYS ARE COMING...
And you and your family will undoubtedly be having visitors and will be visiting friends and relatives.
Your friends and neighbors would enjoy knowing about your holiday activities, so share them through The Telegram.
We welcome calls of parties, meetings, and just plain visitations, so never hesitate to let us know about them for the paper.
Our number is 629-1707, and we welcome your call.

AMERICAN NATIONAL
INSURANCE COMPANY
HOME OFFICE GALVESTON, TEXAS
M. W. Herweck - Agent
Office 629-1512 Home 629-1288
Eastland

ABC
Plumbing & Heating
Contracting and Repairing
Complete Plumbing Service
Call 629-1200
Day or Nite
BOB WILLIAMS
Master Plumber
Serving Texans
25 years

LAKE LEG PROPERTY
2' on home, so. side. 2 lots, cas. rms. \$8,000.
1 bedroom lake cabin furnished \$4,200.
1 bedroom concrete block home, large screened in porch, furnished including 15 ft. Lone Star Boat \$6,500.
2 vacant deeded lots, so. side. \$2,500.
2 bedroom home furnished large family room and fireplace overlooking Lone Cedar Country Club. North side. \$11,500.
Furnished mobile home lge. screened porch fish pier, 2 stall house, excellent lot. \$8,500. HOMES
2 bedroom home 3 lots. \$2,500.
Mobile home, 12 x 60, \$5,100.
2 bedroom, den, Halbryan. \$3,000.
2 bedroom, den, Ranger. \$550.
2 bedroom just remodeled, \$5,500.
2 bedroom home, extra large living area, been recently paneled, 4 lots. \$6,500.
3 bedroom, 2 bath, double garage. \$11,100.
4 bedroom, 1 acre land. \$7,350.
Several homes with small acreage in Olden area.
3 bedroom home, remodeled large den, fireplace. \$13,650.
FARMS AND RANCHES
Nice 3 bedroom home, 80 acres land, improved pasture, plenty good shallow water, on pavement. \$30,000.
3 bedroom house, 80 acres of land, 5 miles out. \$16,000.
194 acres, some lake frontage, pecan trees, close in.
210 acres, cleared native pasture with some pecans and creek bottom. Net fences. Will subdivide into smaller tracts. for G. I. \$150 per acre
40 acres land all permanent pasture on pavement. 15 ac. peanut allot. good water well, and pressure system. \$10,000 will G. I.
40 acres of land 3 bedroom home some improved grasses, so. part of county. \$17,000.
51 acres-38 cult. balance brush. 17 acres peanut allot. water well. 6 mi. from Ranger, will G. I. or owner will finance.
Well improved 1,000 acre ranch with cheap interest rate loan. Will consider some clear trade for equity.
1750 acre ranch, some clear excellent hunting in good location.
2800 acre well improved Lampasas ranch with running water.
14,000 acre improved North Texas ranch. Will consider some trade.
For these and other places contact:

KINCAID REAL ESTATE
100 South Seaman
Eastland, Texas 629-1781
Robert M. Kincaid 629-8721
J. W. Elder 647-1321

REAL ESTATE
ALL TYPES OF REAL ESTATE:
HOMES
farms
ranches

Complete Electrical Wiring Home Maintenance Service
Homer H. Kirk
629-2411
508 S. Connellee

WANTED BEAUTY OPERATOR
Eleanor's Beauty Shop
914 S. Bassett and Conner
Call 629-1222

EMMET MORREN PLUMBING COMPLETE REPAIR SERVICE
1015 W. Main
629-2092
24 Hour Service

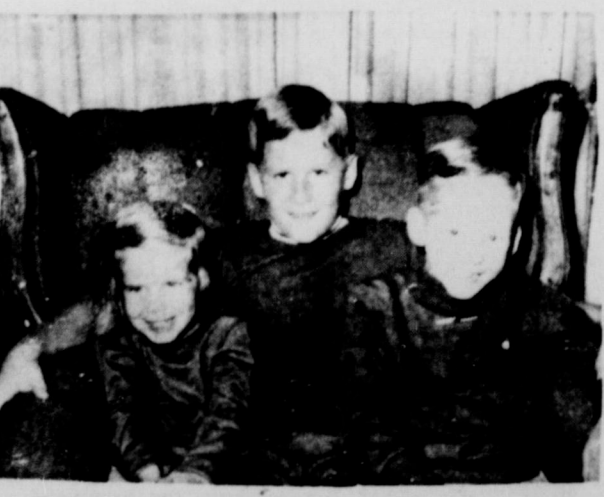
Eastland Steam Laundry
PICKUP & DELIVERY
for your every laundry need
Mr. & Mrs. Z. W. Cook
210 N. Lamar 629-2613

Listings requested and long list of good properties on hand
CALL US AND LET US SHOW YOU HOW WE CAN HELP YOU

A-1 Fina Service
INT. 20 & LAKE LEON RD. ACROSS FROM DAIRY QUEEN
DAY OR NIGHT PHONE 629-2102
GAS & OIL GOOD AS BEST - BETTER THAN REST
FREE BOX KLEENEX with 8 gallons or more of gasoline
GROCERIES • ICE • GARAGE • POP
EXPERIENCED SCHOOLED MECHANIC ON DUTY
ALTERNATORS • GENERATORS • REBUILT • EXCHANGED
MOTOR TUNE UP
Most 6 \$7.50 LABOR Most 8 \$10.50
cylinder cars PLUS PARTS cylinder cars PLUS PARTS
OVER 200 USED AND NEW TIRES IN STOCK
EXPERT AUTO AIR COND. SERVICE & REPAIR
FLATS FIXED + EXPERT WHEEL BALANCING
IF YOU NEED GAS OR SOMETHING
A-1 FINA SERVICE Lake Leon Rd. at Int. 20
Prompt Courteous Service-Free Estimates
WHERE QUALITY & SAVINGS GO TOGETHER

M. L. TERREL REAL ESTATE
Farm Bureau Bldg.
Hi Way 90 East
Tel. 629-1725 Day
Night Call 629-2443
Eastland, Texas

OUR DAD WANTS TO INSURE YOUR CAR
D. L. KINNAIRD GENERAL INSURANCE
207 W. MAIN ST. - 629-2544



Eastland 629-2611

Hospital Report

The following were listed as patients in Eastland Memorial Hospital Sunday:

Estell Stephens, Midland.	Opal Bunton, Ranger.
Carrie Caper, Gorman.	Shirley Gregory, Baird
Lillie Hamilton.	Addie Overstreet, Gorman.
Judy Williams, Gorman.	Katherine Carmack.
Willie Harris.	William Williams, Cisco.
Dora Wilson, Cisco.	Pearl Williams, Cisco.
Maggie Davenport, Cisco.	James Franklin, Cisco.
Edna Reynolds, Cisco.	Tommy Alford.
Nelda Gary, Cisco.	Robert Hodge.
Grace Brown, Cross Plains.	Homer Williams, Comanche
Ola Bond, Cisco.	Sarah Williams, Comanche.
Bertha Richardson, Strawn.	Willie Jo Carter.
Oma Collins, Ranger.	Elizabeth Starr, Cisco.
Ulala May, Eastland.	Mary Johnson, Cisco.
Annie Westmoreland, Gor-	Jessie Montgomery, Rising

Star.

Linda Wright, Gorman.
Baby Boy McWhorter.
Andy Taylor.

Troy Salyer.
James Hall, Cisco.
Peggy Bullock.

Karen Templeton, Ranger.
Myrtle Roberts, Goldthwaite.
Donna McWhorter.
Cyrus Justice.
Lee Williamson, Olden.
Shirley Leonard, Comanche.
Sudie Grozier, Cisco.
Belle Jones.
Mildred Green, Gordon.
Jay Jones, Cisco.
Larry Mahoney.
Frank Merriweather.

Patients in Ranger General Hospital Saturday morning were:

Mrs. Ed Willingham
Mae Davis
Cecil Carr
W.V. Clark
J.T. Varner
R.V. Lewis
Albin Fleming
Sophia Freeman
Mrs. E.W. Gourley
Marie Kostih
Aubrey Patton
Irene Finley
Minnie Back
Cynda Hendrix
Ruth Louks
Lillie Robertson
Corbett Brown
Owen Clark
Janie Lawson
Verda Ward
Ruby Parsons
Opal Harrison
Mrs. Jerry Webb and baby girl
Mrs. Hollis Jones
Mildred Boles
Mae Hunt.
Patients in the Graham Memorial Hospital were reported as follows:
Opal Thompkins.

Jo Gray.
Nannie Coats
Merry Copeland.
Brady Boggs.
Edna Dalton.
Beulah Brown.
Eathel Bailey.
Ruth Evetts.
Helen Drumwright.
Thomas Agnew.
Claude Simmons.
Maggie Boykin.
Henry Jackson.
Vernelle Davis.
Robert Meadow.
Baby girl Copeland.

There's more to do...



Give More to Christmas Seals

NOTICE— Mattresses. Complete bedding made by Western Mattress Co., San Angelo. Best quality, low price, renovate or exchange new. Every other Wednesday. They're guaranteed. For home appointment, call Lois Mezell, 829-2703, leave name. If.

DeLeon's of DeLeon
"Cremes' Legend Hair Care Club"
UNWANTED HAIR
Removed Permanently
"The ONLY medically approved hair removal" — Institute Practitioner
Member 828-1234-1234-1234-1234
Free - Private Consultations
Call DeLeon 823-6377
604 Nevada (W. & D. 1st) DeLeon, Texas

4-H NEWS

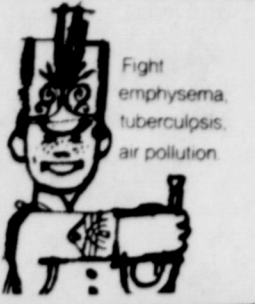
Eastland County 4-H Council met on Tuesday November 16 at the Farm Bureau meeting room in Eastland. New officers were elected to take office in January, 1972. They were Scott Miller, Chairman; JoAnn SStroebe, Vice Chairman; William Donham, Vice Chairman; Suzanne Harbin, girls treasurer; Brit Ferguson, boys treasurer; Susie Hanna,

Secretary; and David McCaghren, Information Officer.

The Adult Leaders Association met on Tuesday November 16. John Schlittler, Rising Star 4-H leader was elected president of the Association. Other officers elected were Mrs. Betty

Claborn, vice president; Bobby Tucker, Vice president; and Mrs. Twila Carlile, Sec.-Treasurer.

The Adult Leaders Association are planning the annual County Christmas party. The date has not been set. Games and folk games will be provided for recreation.



"Because Someone Lived" RAWLINS MONUMENTS

Since 1884 THE NAME to look for in distinctive memorials

Roy Taylor 500 East 8th St. Cisco

Please Call Collect
CALL 442-1127

SPECIAL

Thanksgiving Buffet Dinner

With All the Trimmings!

11:30 a.m. - 4:00 p.m.

WHITE ELEPHANT RESTAURANT

Phone 629-8845

RANGER DRIVE-IN THEATRE

Last TIMES
SUNDAY
NOV. 21st
SHOW STARTS
7:15



A story of the young...for the young and the young at heart!

HAL WALLIS
Production
RED SKY AT MORNING
A UNIVERSAL PICTURE
TECHNICOLOR
GP

Coming
FRI. - SAT. - SUN.
November
26-27-28

Peter Panada is riding again...
in the new movie
"The Great Escape"
Peter Panada - Warren Oates - Vera-Elaine
"The Great Escape"

PERRY'S EASTLAND

Two Days Only
Tuesday And
Wednesday
(Nov. 23-24)
10a.m. - 5 p.m.

BEAUTIFUL
8"x10"
LIVING COLOR
ONLY

79¢

PLUS 50¢ HANDLING
ONE PER CHILD TWO PER FAMILY
GROUPS 79¢ PER SUBJECT
SATISFACTION GUARANTEED



White Elephant Restaurant

SUNDAY BUFFET

This Sunday's Buffet features chicken and dressing with your choice of several meats, salads & vegetables served with tea or coffee

11:30 a.m. to 2:30 p.m. every Sunday

ALL YOU CAN EAT FOR \$1⁷⁵

WE CAN SEAT 250 PEOPLE.

Open 6 a.m. to 10 p.m. 7 days

Mr. Fred Guyger-Chef

Mr. and Mrs. L. C. Agnew Owners
Eastland Phone 629-8845



Carriage Club Clothes

Knit Suits and Sport Coats with the California Feel.
Enjoy the ease and comfort of today's knits.
Sport Coats from \$65. Suits from \$85.

THE MAN'S STORE
Bob Elliott
CISCO, TEXAS

MAJESTIC THEATRE

Eastland Sun. Phone 629-1120

William Holden

Ryan O'Neal

Karl Malden

In a Blake Edwards Film

Wild Rovers

METROCOLOR PANAVISION

GP

Sun. Open 1:15

Feature 1:30-3:25-5:20-7:15-9:14

Wed. Thurs. Fri. . . 24-25-26



STARRING: BOLEY THE BEAR, IRON JAW THE ALLIGATOR, CHUCK THE CHIMP, SWEET PEA THE SKUNK, OLD OWL, SPOTS THE LEOPARD

Wed-Thu-Fri 6:45

Feature 7:30-9:30

Plus

Orangutangs of Borneo 7:00-8:55

Foods for a Happy Feast



USDA CHOICE

Boneless Roast 95¢
*Chuck or *Shoulder. USDA Choice Grade Heavy Beef —Lb.

Boneless Brisket \$1.05
USDA Choice Grade Heavy Beef —Lb.

Safeway Guaranteed Meats!

Ham Slices Center Slices, Smoked —Lb. \$1.19

Fresh Pork Ham *Half or *Whole —Lb. 69¢

Fresh Pork Roast Butt Cut, Semi-Boneless —Lb. 53¢

Pork Loin Roast Fresh, Full Rib Half, (Full Loin Half—Lb. 75¢) —Lb. 69¢

All Meat Franks —Lb. 55¢

Lunch Meat Safeway Favorite! —3 4-oz. Pkg. \$1

Traditional Holiday Favorites!

Tom Turkeys 35¢
Young, 19 to 24-Lb. Average
USDA Inspected Grade 'A'
(Hen Turkeys Young, 10 to 14-Lb. Avg. —Lb. 41¢) —Lb.

Self-Basting Butterball 55¢
Turkeys, Young, Safeway, 10 to 12-Lb. Avg. USDA Inspected Grade 'A' —Lb.

Honeysuckle 57¢
Turkeys, Swift's Deep-Basted, Young, 10 to 16-Lb. Average, USDA Inspected Grade 'A' —Lb.

Fresh Pork Chops 53¢
White Turkeys, Self-Basting, Young, 10 to 16-Lb. Avg. USDA Inspected Grade 'A' —Lb.

Smoked Ham 58¢
Economic Family Pack —Lb.

Smoked Ham 45¢
Shank Portion, Firm and Lean! 14 to 18-Lb. Average —Lb.

Look For the **USDA Grade 'A' Shield of Quality!**



SAFEWAY

Check Meat Values!

Standing Rib 95¢
Roast, Large End, USDA Choice Grade Heavy Beef —Lb.

Smoked Hams 55¢
*Whole or *Full Shank Half, 14 to 18-Lb. Avg. —Lb.

Boneless Roast \$1.15
*Pikas Peak or *Seton Round, USDA Choice Heavy Beef —Lb.

Fresh Fryers 29¢
Whole, USDA Insp. Grade 'A' —Lb.

Baking Chickens 37¢
Fresh, 3 to 3 1/2-Lb. Avg. USDA Grade 'A' —Lb.

Chicken Hens 45¢
Frozen, 4 1/2 to 7-Lb. Avg. USDA Insp. Grade 'A' —Lb.

Variety & Quality!

Boneless Steak \$1.05
Center Cut Chuck, USDA Choice Heavy Beef —Lb.

Top Round Steak \$1.29
Boneless, USDA Choice Heavy Beef —Lb.

Hamburger Steaks 79¢
Freshly Ground —Lb.

Sliced Bacon 65¢
Safeway, No. 1 Quality! 1-Lb. Pkg.

Armour Bacon 69¢
Armour Star Microwave, Sliced 1-Lb. Pkg.

Owens Sausage \$1.37
Country Style, *Reg. or *Hot 2-Lb. Pkg.

Check These Values!

Lean Ground Beef 79¢
Compare Quality! —Lb.

Smoked Bacon 45¢
Slab, By The Piece —Lb.

Boneless Ham \$1.39
Armour's parti style, Halves, 3 to 4-Lb. Avg. —Lb.

Canned Ham \$2.98
Safeway, Fully Cooked 3-Lb. Can

Canned Ham \$6.98
Safeway, No Waste! 8-Lb. Can

Turkey Roast \$2.49
Roast, House, Boneless, Frozen, White & Dark Meat 2-Lb. Pkg.

All Stores Will Be **CLOSED THURSDAY** November 25 Thanksgiving Day

SAVE

Miracle Whip
Kraft Salad Dressing. Safeway Special!

32-oz. Jar **49¢**
(With \$5.00 Purchase or More, Excluding Cigarettes.)

SAVE

Enriched Flour
Kitchen Craft. Safeway Special!

5-Lb. Bag **38¢**

SAVE

Niblets Corn
Whole Kernel Golden. Safeway Special!

12-oz. Can **19¢**

SAVE

Lux Liquid
Detergent. Special! (10¢ Off Label)

22-oz. Plastic **49¢**

SAVE

Pumpkin Pie
or *Mince Pie. Bel-air Frozen. Safeway Special!

24-oz. Pkg. **29¢**

Fresh Bakery Values!

Brown & Serve 29¢
Rolls, Skyscraper, *Tale or *Cloverleaf. Special! —12-oz. Pkg.

English Muffins 35¢
Mrs. Wright's 4-Ct. Pkg.

White Bread 29¢
Mrs. Wright's *Bee or *Sandwich Sliced Loaf 1 1/2-Lb.

Shop and Compare!

Dog Food 7¢
Favorite Brand 15 1/2-oz. Can

Liquid Bleach 38¢
White Magic Sparkling Whites! Gallon Plastic

Shop, Save & Compare Low Everyday Prices!

It's Safeway For Holiday Shopping!

Cascade 49¢
Detergent For Dishwashers! (13¢ Off Label) Safeway Special! 35-oz. Pkg.

Pork & Beans 16¢
Van Camp's. Full of Flavor! Safeway Big Buy! 16-oz. Can

Chunk Tuna 35¢
Sea Trader Light Meat. Safeway Big Buy! 6 1/2-oz. Can

Salad Dressing 37¢
Piedmont. Creamy Texture! Safeway Big Buy! Quart Jar

Biscuits 8¢
Mrs. Wright's *Sweet Milk or *Buttermilk. Safeway Big Buy! 10-Ct. Can

Canned Pop 8¢
Snowy Peak. Assorted Flavors. Safeway Big Buy! 12-oz. Can

Low, Low Prices!

Cake Mixes 28¢
Mrs. Wright's Assorted Flavors 18 1/2-oz. Pkg.

Tomato Soup 10¢
Town House. Tasty! —10 1/2-oz. Can

Fresh Coffee 69¢
Safeway, Pre-Ground —1-Lb. Bag

Everyday Low Prices... Plus Specials, Too!

For A Festive Holiday!

Golden Ripe! Bananas 10¢
Top Quality! Munching Good! Safeway Special! —Lb.

Red Rome Apples 19¢
Extra Fancy! Best For Baking! Large —Lb.

Crisp Celery 19¢
For Salads or Stuffing! Crunchy Fresh. Small Size Stalks! —Each

Tomatoes 39¢
Vine Ripe! Loaded with Natural Goodness! Small Size. Vent Bag —Lb.

Variety and Quality!

Avocados 39¢
Florida Bath Variety, Extra Large —Each

Tangelos 29¢
Florida New Crop, Large 2 Lbs.

Green Onions 25¢
For Flavor! Bunch, Each 2 for

Texas Yams 19¢
Medium Size —Lb.

Artichokes 49¢
Marinated 4-oz. Jar

Walnut Meats 99¢
Diamond, New Crop 10-oz. Pkg.

Acorn Squash 19¢
Danish —Lb.

Glace Fruit Mix 59¢
For Baking! 1-Lb. Cello

Borden's None Such

Mincemeat

*Condensed *Ready to Use *Ready to Use *Brandy & Rum

3-oz. Pkg. \$1 18-oz. Jar 49¢ 20-oz. Jar 69¢ 18-oz. Jar 59¢

Frozen Values!

Corn-on-Cob 49¢
Bel-air Fresh Flavor! 4-Ear Pkg.

Strawberries 25¢
Scotch Treat. Sliced 10-oz. Pkg.

Dinners 38¢
Banquet, Assorted (Except Beef) Reg. Pkg.

More Fine Frozen Foods!

Sherbet 59¢
Lucerne Party Pride. Assorted Flavors. Safeway Special! 1/2-Gal. Carton

Bel-air Waffles 10¢
Breakfast Treat! 5-oz. Pkg.

Orange Juice 19¢
Scotch Treat. Pure. From Florida 6-oz. Can

French Fries 10¢
Slim Jim Shoestring Potatoes 8-oz. Pkg.

Don't Forget to Buy...

Heavy Duty Foil 55¢
Kitchen Craft. 18" Wide Roll

Scotkins 31¢
Dinner Napkins 50-Ct. Pkg.

Marshmallows 21¢
Fluf-Puff, White 10-oz. Pkg.

Canned Yams 39¢
Trappay's. Flavorful! 22-oz. Can

Fruit Cocktail 26¢
Town House. Five Fruits! 17-oz. Can

Ripe Olives 49¢
Lindsay. Giant Pitted 5 1/4-oz. Can

Maraschino Cherries 41¢
Empress. Red 8-oz. Glass

Poultry Seasoning 33¢
Crown Colony 1-oz. Can

Check These Values!

Party Mixers 15¢
Cragmont, Assorted 32-oz. Bottle

Mixed Nuts 69¢
Tom Scott. Crunchy! 13 1/2-oz. Can

Cream Cheese 13¢
Lucerne, Delicious! 3-oz. Pkg.

Money-Saving Values!

Pledge Polish 83¢
Furniture Polish *Reg. or *Lemon —9 1/2-oz. Bonus Can

Flashcubes 99¢
Norolco. For Holiday Pictures! 3 Count Slows Pack

Intensive Care 69¢
Vaseline. Hand Lotion 6-oz. Bottle

Volumes 24 & 25

Funk & Wagnalls
STANDARD REFERENCE

Encyclopedia \$1.89
VOLUME NO 2-25

Prices Effective Nov. 22-24, in Eastland. No Sales to Dealers.

SAFEWAY

© Copyright 1966, Safeway Stores, Incorporated.

Sunday, November 21, 1971

DeLeon
UNWANTED MAIL
Relinquish Permanently
By the ONLY nationally approved service
Specialists - Specialized Professionals
Home A.S.A. - E.S.A. - T.E.A. - F.S.E. - G.S.E.
Free - Private Consultation
Call DeLeon 893-6377
404 Newark (Rev. 4-7-70) Dallas, Texas

GARAGE SALE
3-family Collection:
Furniture, Clothes,
Antiques & Appliances,
etc. 400 Foch
Sunday & Monday.

County Farm Bureau Delegates Attend Sessions

Eastland County Farm Bureau was represented at the 38th annual meeting of the Texas Farm Bureau Nov. 14-17 in Amarillo by 6 delegates. Sessions were held in the Amarillo Civic Center.

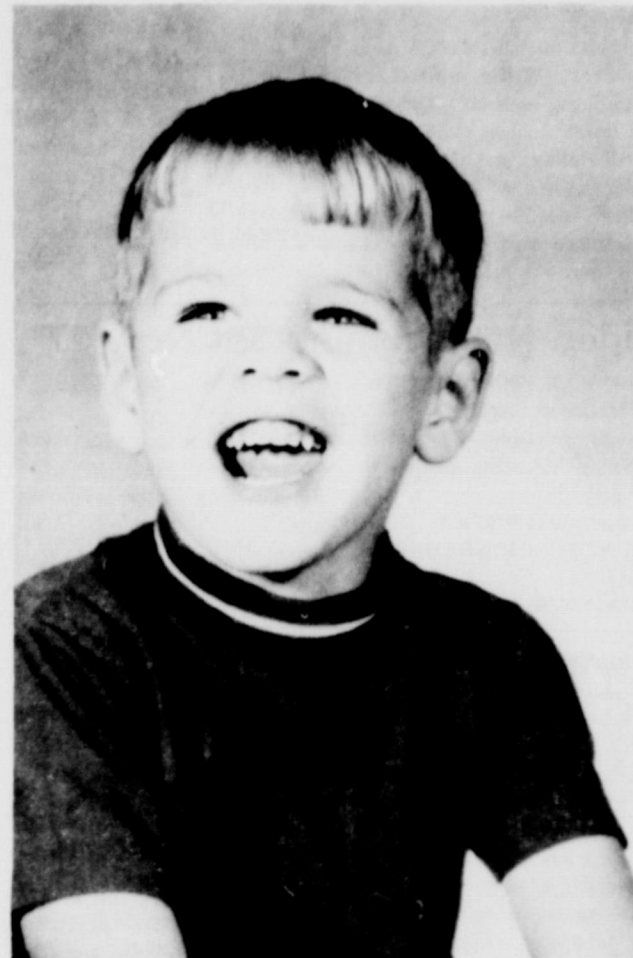
State policies and recommendations on national issues were adopted by more than 900 official voting delegates from most of the 206 organized county Farm Bureaus. Total attendance at the convention was more than 1,500.

Registration got underway Nov. 14. Highlights of that day included Discussion Meet and Talent Find competition for young people and vesper services.

The Monday morning program included the annual address by TFB President J.T. Woodson of Gober, an administrative report by Executive Director O.R. Long of Waco, and an address by William J. Kuhfuss, president of the American Farm Bureau Federation.

Special conferences on Community Services, Young Farmers and Ranchers, Livestock, Dairy, and Natural Resources were held that afternoon. The annual Queen Contest, with 13 participants, was held Monday evening.

Special conferences on Field Crops, Farm Labor, Research and Education, Services, poultry, and Farm Bureau Women were held Tuesday morning. The annual banquet was held Tuesday evening with Dr. Earl L. Butz, Dean of Continuing Education and Vice President, Purdue Research Foundation, Purdue University, as speaker.



'HELLO, EASTLAND . . .'
Says **JON CARTER**, who celebrated his fifth birthday with a party Saturday. **Big Sister JERRI ANNE** is 8 and helped him celebrate. Both are children of **Mr. and Mrs. Jerry Carter**

The business session convened at 10:30 Tuesday morning with voting on resolutions sent in by county Farm Bureaus. The voting session continued Wednesday until all recommendations were either adopted, amended, or rejected. Final order of business was election of directors and the president.

Letter To Senior Citizens

This has become a complex world, and there are many new problems confronting people today who have loved ones.

These problems include burial plans which can be underwritten by old line legal reserve insurance companies, with loan and cash values, paid-up burial coverage, guaranteed level rates, government benefits, social security and veterans benefits.

Funeral arrangements are so much easier to make while the family is still together. So, since you do care for your loved ones and while there is still time, why not take the time to contact a professional for assistance without obligation. He'll be glad to give you a full explanation of options that are available and benefits you may be entitled to receive.

Write:
J. F. 'Jim' Faulk
Special Burial
Special Burial Representative & Counselor
P. O. Box 1272
Cisco, Texas 76735

Remember: It's much better to have a burial plan with a cash value or cash loan value, than to need one and not have it.
Pd. Adv.

★ Trade With Our Advertisers ★

We Join In Saluting

VASSARETTE

ON ITS IMPORTANT

25th Anniversary

★ ★ ★

We're proud to be a part of the Vassarette Team.

ENDEBROCK

JANITORIAL SERVICE

EASTLAND — Enterprise 2326

GOODYEAR SERVICE STORES

Prices Cut on Custom Wide Tread POLYGLAS WHITEWALLS 1/3 OFF



- Polyester cord body plus fiberglass cord belts.
- The tire that's standard or optional equipment on many new cars.
- Built for today's fast action cars and for the man who wants great tire performance.

SAVE \$16.14 to \$21.59 each on wide 70 series tires

White Tubeless Size	Replaces	Regular Price With Trade	SALE PRICE No Trade Needed	Plus Fed. Ex. Tax
D-70-14	-	\$48.40	\$32.26	\$2.38
E-70-14	7.35-14	\$50.30	\$33.53	\$2.51
F-70-14	7.75-14	\$53.05	\$35.36	\$2.64
G-70-14	8.25-14	\$57.95	\$38.63	\$2.84
H-70-14	8.55-14	\$63.70	\$42.46	\$3.05
E-70-15	7.35-15	\$51.15	\$34.10	\$2.68
F-70-15	7.75-15	\$53.90	\$35.93	\$2.69
G-70-15	8.25-15	\$59.00	\$39.33	\$2.85
H-70-15	8.55-15	\$64.75	\$43.16	\$3.11

HURRY - OFFER ENDS SATURDAY NIGHT

USE OUR RAIN CHECK PROGRAM: Because of continued heavy demand for Goodyear tires, we may run out of some sizes during this offer. But we will be happy to order your size tire at the advertised price and issue you a rain check for future delivery of the merchandise.

GOODYEAR - THE ONLY MAKER OF POLYGLAS TIRES

3 WAYS TO PAY AT GOODYEAR

OUR OWN EASY PAY PLAN

master charge

BANKAMERICARD

WHITETALL OR BLACKWALL RETREADS

TUBELESS OR TUBE-TYPE FOR COMPACTS:

6.00x13, 6.50x13, 7.00x13, 6.95x14, 7.00x14, 7.35x14, 6.50x15, 7.35x15

Same road-gripping tread design as our "Power Cushion" bias ply tires

\$52 plus 27¢ to 35¢ Fed. Ex. Tax per tire depending on size and 2 retreadable tire trade-ins.

LARGER SIZES PRICED SLIGHTLY HIGHER

10-PT. BRAKE OVERHAUL

Includes the following parts and labor: • New brake linings all 4 wheels • New Front Grease Seals • New Return Springs • Turn Drums • Air linings for total contact • Add new fluid • Remove & clean front wheel bearings • Inspect, repack bearings • Adjust all 4 brakes

\$49.95

*Except disc brakes, foreign cars - Wheel Cylinders \$1.50 ea. IF NEEDED

CHECKUP AUTO AIR-CONDITIONING

\$9.95 Incl. up to 2 hrs. free if needed. PARTS, LABOR EXTRA IF REPAIR NEEDED

Our specialists

- Inspect Cooling system
- Clean coils
- Check compressor, belts, head pressure
- Inspect electrical components

PROFESSIONAL LUBE AND OIL CHANGE

\$4.44

PROFESSIONAL FRONT-END ALIGNMENT

\$9.95

Any U.S. car plus parts if needed - Add \$2 for air-cond. cars

"SNAP BACK" ENGINE TUNE-UP

\$29.88 4 cyl. U.S. auto - add \$4 for 8 cyl.

Includes all labor and these parts: • New spark plugs, condensers, points

Now at your nearby **GOODYEAR SERVICE STORE**

Goodyear Service Store
STORE HOURS: 8 a.m. to 5:30 p.m.

HILLCREST FOOD MARKET

Open 7 a.m. - 11 p.m. 7 Days A Week

Self Service Gasoline Discount Price

Major Brand Quality

1401 West Main Phone 629-1600

JAMES ZUSPANN **DON BARRON**

Sunday, November 21, 1971

OBITUARIES

Morren of Eastland; two brothers, Willie and L.V. McLamore, both of Abilene; her father John E. McLamore of 909 Halley; and five grandchildren.

Her mother Mrs. May McLamore died on August 4, 1971.

Eastland, died Thursday, November 18, in Abilene.

Funeral for Mrs. Cash was at 2 p.m. Saturday in Elliott's Chapel of Memories with the Rev. Dick Turner, pastor of Belmont Baptist Church, officiating.

Burial was held in Cedar Hills Cemetery.

Mrs. Cash died at 6:10 a.m. Thursday in West Texas Medical Center after a long illness.

Born Nannie V. McLamore Oct. 2, 1918, in Nan Alstyne, she grew up in East Texas and married Billie Cash in Texarkana, Ark. June 11, 1932. They lived in East Texas until 1935 when they moved to Abilene.

Survivors are her husband; two daughters, Mrs. Nona Holland of 2242 Grand and Mrs. Frances Pittman of 2333 Palm; one son Travis Cash of Fort Worth; one sister, Mrs. Empt

Mrs. Billie Cash, sister of Mrs. Emmet Morren of

Win Thousands of Green Stamps! Inquire Now About "Green Stamps" Derby and All new Green Stamp League



Make It a Family Affair

Active families are doing the "in" thing. They're getting in on bowling action fun.

Snack Bar

FIESTA BOWL

Olden Homecoming Set Nov. 27

The Olden Homecoming will be Saturday, November 27, 1971, at the Olden Gym. The following schedule has been planned:

registration-9:30 a.m.

LUNCH (CATERED)-12:00 noon

BUSINESS MEETING-2:00 p.m.

Lunch will be catered at \$2.00 per plate and tickets must be purchased in advance. Send check or money order to Olden Citizens Club, Olden, Texas 76466 before November 20th if you wish to attend the lunch.

Also enclose a stamped, self-addressed envelope and we'll mail your tickets to you, otherwise you may pick them up when you register.

Please mark your calendar to attend the Homecoming on

Monday, November 21, the Rebekah's meet at 7:30 P.M. in the Rebekah Hall at 300 North Lamar. After the business meeting there will be a birthday party for all members having birthdays in November.

SATURDAY, NOVEMBER 27th.

We will all be looking forward to seeing you at the Homecoming! Hope you can attend.

Sincerely,
Pat Moseley, President
Olden Citizens Club
Olden Texas 76466

Mr. and Mrs. Ronnie Caraway visited in the home of her parents Mrs. and Mrs. B.R. Sullivent over the weekend. Mr. and Mrs. Caraway live at Decatur.

David Sullivent, son of Mr. and Mrs. B.R. Sullivent returned from his weekend hunting trip with his eight point Buck which he shot Sunday afternoon.

COAHOMA:

The 5-AA Kids Grow Up

(from WEST TEXAS FOOTBALL)



Fain Sherrill - G

Last year posed a big question for Coach Bernie Hagins and his Coahoma Bulldogs. Moving from Class A into a strong AA district, it was a matter of no small concern how the elevation would affect the program.

A highly respectable 5-5 season mark and a 2-3 finish in 5-AA play may not have labeled the Bulldogs as world stoppers but it certainly erased any doubts about their being able to compete in the higher classification. If you need further convincing, just ask McCamey which finally did defeat the proud young Bulldogs, 51-50.

"We feel we're a much better team than we showed last year," says Hagins, "and I think we're now ready to compete with anyone in the district. That is the goal we're working toward."

Help in achieving that goal could come

Last Year's Results

8 Sonora 37; 24 Colorado City 18; 20 Rotan 21; 34 Hamlin 0; 51 Ranger 6; 42 Stanton 0; 28 Ozona 19; 8 Big Lake 28; 50 McCamey 51; 18 Crane 31.

Robert Nider was admitted to the Veterans Administration Hospital at Waco, Texas, for treatment on November 16. He would appreciate cards and letters. His address is Ward No. 10, Veterans Hospital, Waco, Texas 76703. Phone 817-752-6531.

from a backfield which has three starters returning and a fourth member who was first team action much of the time.

Back at quarterback is Roland Beal (6-0, 165) who will direct an attack which will feature Donnie Buchanan (6-0, 185) at fullback, Wendell Walker (5-8, 160) at one halfback and Keith Pherigo (5-8, 165) at the other halfback. Only Pherigo was not a regular last season.

Other backs lending depth to the attack will be quarterback Troy Kerby (5-8, 155), halfbacks Lynn Ashley (5-9, 165) and Tommy Arguello (5-6, 160) and fullback Freddie Franklin (5-9, 165).

Linebacking, headed by Buchanan, should be one of the Bulldog's strong points. Other veterans on hand include Steve Fraser (5-8, 180), Jeff Mitchel (6-0, 180), James Blair (5-10, 170) and Joe Elmore (5-10, 180).

While offensive tackle appears to be a trouble spot with no experienced performers on hand, there is talent aplenty at guard with Fain Sherrill (5-8, 160), Terry Meeks (5-8, 185) and Fraser on hand. Sherrill will work the same position defensively while Meeks will handle a defensive end spot.

Joe Elmore (5-10, 180) brings experience to the center duties and three lettermen ends return - Robin Headrick (5-10, 160), Mitchel and Blair. Walker and Pherigo are scheduled for duty at cornerbacks in the Bulldogs' 4-3-4 alignment.

"We feel," says Hagins, "that we can put a good starting unit on the field but are concerned about our backup strength. Depth is still a problem we have to solve."



Donnie Buchanan - FB



Wendell Walker - HB



Keith Pherigo - HB



Terry Meeks - T

Hi Ho sunshine **Bargain Breakthrough!!**

Crackers 12 oz. pkg. **39¢**

FOR AN OLD-FASHIONED **THANKSGIVING**

CLOSED THURSDAY

SUPER SAVE MARKETS

Prices good Monday thru Saturday

White Swan Halves & Sliced Peaches No. 2 1/2 can 3/\$1.00	White Swan Spinach 303 can 6/\$1.00
Soft 'N Lite Flour 5 lb. bag 39¢	White Swan Dog Food Full Dress 300 can 7¢
Bordens Reg. Assorted Flavors Ice Cream 1/2 gal. 79¢	White Swan Free Running or Iodized Salt 26 oz. box 10¢
Golden Ripe BANANAS lb. 10¢	RANCH STYLE CHILI 19-Oz. Can 69¢
Russett Potatoes 10 lb. bag 69¢	CRACKERS 1 lb. box 23¢
Fresh Cranberries 1 lb. bag 29¢	WHITE SWAN AUST. CANNED DRINKS 12 12-Oz. Cans \$1.00
Washington Red Delicious Apples lb. 25¢ Onions 10¢	DRUG SPECIALS
Bordens Whipping Cream 1/2 Pt. 29¢	Luster Creme Hard-to-Hold & Hair Spray Reg. 79¢
Half & Half Pt. 29¢	Rise Shave 11 oz. Reg. 99¢
Sour Cream 8 oz. carton ct. 29¢	Bomb Menthol-Lime 99¢
	Wilkinson Sword SS 5's 69¢
	Blades 69¢
	Wash & Care Cream 4 oz. 99¢
	Kotique Fem. Deod. Spray 3 oz. \$1.10
	Alka Seltzer 25's 69¢
	Thanksgiving HENS & TURKEYS
	Lean Fresh Pork Ribs lb. 59¢
	Lean Beef Ribs lb. 35¢
	Picnics lb. 39¢
	Deckers Tall Korn Bacon Thick Sliced 2 lbs. 99¢

END WASHDAY HANG-UPS



WITH a FLAMELESS ELECTRIC DRYER!

How many times have you dreaded seeing washday roll around - because of rain, blue northerners, dusty winds or hundred-plus sunshine?

These are hang-ups you wouldn't have to face if you owned a flameless electric clothes dryer. You'd just move the clothes from your washer into the dryer, turn a dial and forget about the weather.

And you could dry clothes any time of the day or night.

If you were drying permanent press clothes, many would come out ready for wearing. Which could save you lots of ironing.

An electric dryer really makes sense. It costs less to buy. Only one energy source is needed. And it saves you hours of work for pennies a load.



See your appliance dealer soon about a flameless electric dryer.

TEXAS **ELECTRIC SERVICE COMPANY**
People power... at your service
F. N. SAYRE, Manager, Phone 629-2651

SUPER SAVE

Ph. 629-1191 400 S. Seaman

G.A. WHITE-Manager

HOME OWNED-HOME OPERATED

We Give Gold Bond Stamps

Double Stamps

Every Wednesday With

\$2.50 Purchase or mo.

Excluding Cigarettes

Mavericks

The Eastland fans are joined by many from across the state in boosting their Mavericks. All the teams in District 7AA telegraphed their best wishes for the Mavericks Friday, and the Coleman Bulldogs, whom the Mavericks beat for District Title, to a man signed their best wishes to "a great team." The Coleman crew called the Eastland experience their finest outing and stated that "we were just beat by a better team." Neighbors, including Class A Ranger, and many others including coaches and players cabled best wishes for the Mighty Herd.

The District 8-AA Stamford Bulldogs gave the Mavericks what Head Coach Shirley Frazier says was the best game of the season. It was a scoreless first half, and wasn't clinched until late. The Mavericks put 13 points on the boards only to see Stamford hack back and rack up a dangerously close eight before it broke loose and the Mavericks made it safe with 12 more in the last quarter.

The Marvelous Maverick Defense stood pat and vetoed any chance that the Bulldogs might replay their Haskell victory, which they lost, then won in the final seconds a week earlier.

The first half was awash with fumbles and stumbles and

virtually every ground-gaining play was nullified with penalty markers, primarily against the Mavericks.

Stamford's biggest threat, one Fred Washington, a fleet one if there ever was one, was pretty well bottled up by the powerful Mav defense lead by Linebacker Joe Herrera. Stamford was held to one first down and a minus-22 yards to tail offense in the first half, and 130 yards and seven first downs in the last 24 minutes.

Some 8,000 eager fans watched the flustering first half and held their chilled breaths during the second.

Maverick Tony Thomas opened it up with a 26-yard run to the Stamford 39 on the second play. Howard King, who gained 152 yards on 26 crushing drives, during the evening, galloped for 23 more to the 16, then blasted off right tackle for the rest to give Eastland its first score.

Kicker James Eidson put it straight and true for an extra.

Ronald McCleskey recovered a Bulldog fumble after the kick the Bulldog 37. It took eight plays, but Thomas drove through right guard from a yard out for the second Eastland touchdown. A run try for extra failed.

The Bulldogs came back and put together a 63-yard drive on 12 plays to score their lone

touchdown. Their scoring for the year ended with a two-point conversation.

And at 13-8 it was dangerously close.

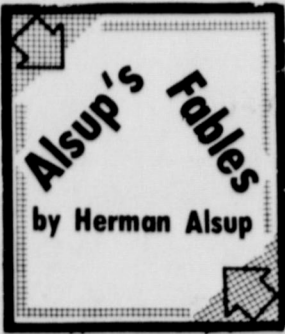
With 5:54 left in the fourth, the Mavericks put together a time-consuming 71-yard drive to score the game-breaking touchdown and a 57-yard pass interception return by Craig Lund set up an insurance TD with less than a minute remaining. Eidson's one extra-point kick was the only bonus points of the night for Eastland.

The final scoring came after the Mavericks took a punt at their own 29 early in the fourth period. Thomas who sparked the drive to life by dashing 29 yards, scoring the touchdown from a yard out eight plays later. That made it 19-8, with 5:54 showing, and when the Bulldogs went to the air, Lund bot an interception at his own 40 and rambled 57 yards to the Stamford seven.

Randy Rexroat took at option pitchout around right end for the score with 46 seconds left and Eastland had its 25-8 victory and the Bi-District Title.

GAME AT A GLANCE

20	First Downs	8
296	Yards Gained Rushing	69
77	Yards Gained Passing	44
6	14 PA SSES Completed	4 of 14
1	Passes Intercepted	by 0



Mary Hall of Ranger has been in the Tax Collector's Office in the Eastland County Court House for 1 year. Her name was left off the picture in the Thursday addition of the Telegram. Our Apologies.

"SELFISHNESS"

"If any one word characterizes this world, it is 'conflict'."

"On every level, Local, state, national and international, we see conflict between individuals, between communities, states, nations, races, religious groups, political groups, between peanut growers and grain sorghum growers, between business and labor, between city and farm.... the list has just begun!"

"Invariably this conflict is caused because people are selfish. They cannot see beyond their own little world. The

3	for 30	Punts, No., Avg.	4 for 40
4	Fumbles Lost	2
10	for 98	Yards Penalized	8 for 70.

prevailing attitude is that 'I want things arranged perfectly for my own little empire...to heck with the rest of the world!'

"The segregationist says, 'All that matters is that I be free to associate with my kink, that the world be ordered so as to fit my philosophy.'"

"The cattlemen say, 'All I want is high price for my cattle and cheap feed... also I want the government to keep out all foreign meat to protect my market...to heck with the government and its problems as a member of the family of nations!'

"Labor says, 'I want high wages, short hours, lots of fringe benefits...and cheap prices in the stores.'"

"Business says, 'We want cheap labor and good mark-up on our product.'"

"The United States says, 'We want to export lots but import little.'"

"City people say, 'We want high wages and cheap groceries.'"

"Farmers say, 'We want good prices for our products... and freedom to grow all we can produce.'"

"All this is the result of one thing--nearsightedness. People simply refuse to view this planet as one world. The world is a unit. For things to run smoothly, for conflict not to exist, every part of the world must be operated properly, just like the human body. If a man has the headache, he is sick all over. So long as one part of the body is ill, all the body is affected."

"Everything is related, is a part of the whole. No man lives on an island, isolated from the rest of the world."

"The lesson man refuses to learn is that he can never be secure, regardless of how high the fence of isolation around his little kingdom, so long as the rest of society has problems."

"Only when we learn to accept the truism that what is good for the group is good for me, will we be on the road which leads to a lessening of tension and conflict, the road to security which we all seek."

Town spirit was very good last week as we were getting ready for Stamford BUT, LET'S ALL GET BEHIND THE "HERD" THIS WEEK AS WE MEET THE COAHOMA BULLDOGS. BEAT COAHOMA!!! Let me see this will make the fourth Bulldog with the 5th coming up....

We are more discontented from failure to satisfy our desires than from failure to satisfy our wants.

Flatwood H. D. Club Tidbits

The Flatwood H.D. Club met with Mrs. Ellen Horn for their regular meeting and luncheon, Thursday, Nov. 18.

There were nine members present and three visitors, Mrs. Ethel Rowch, Bessie McCollum and Miss Amy O'Brien.

The program given by Zelma Luak was "It's Time to Use Pesticides with Caution."

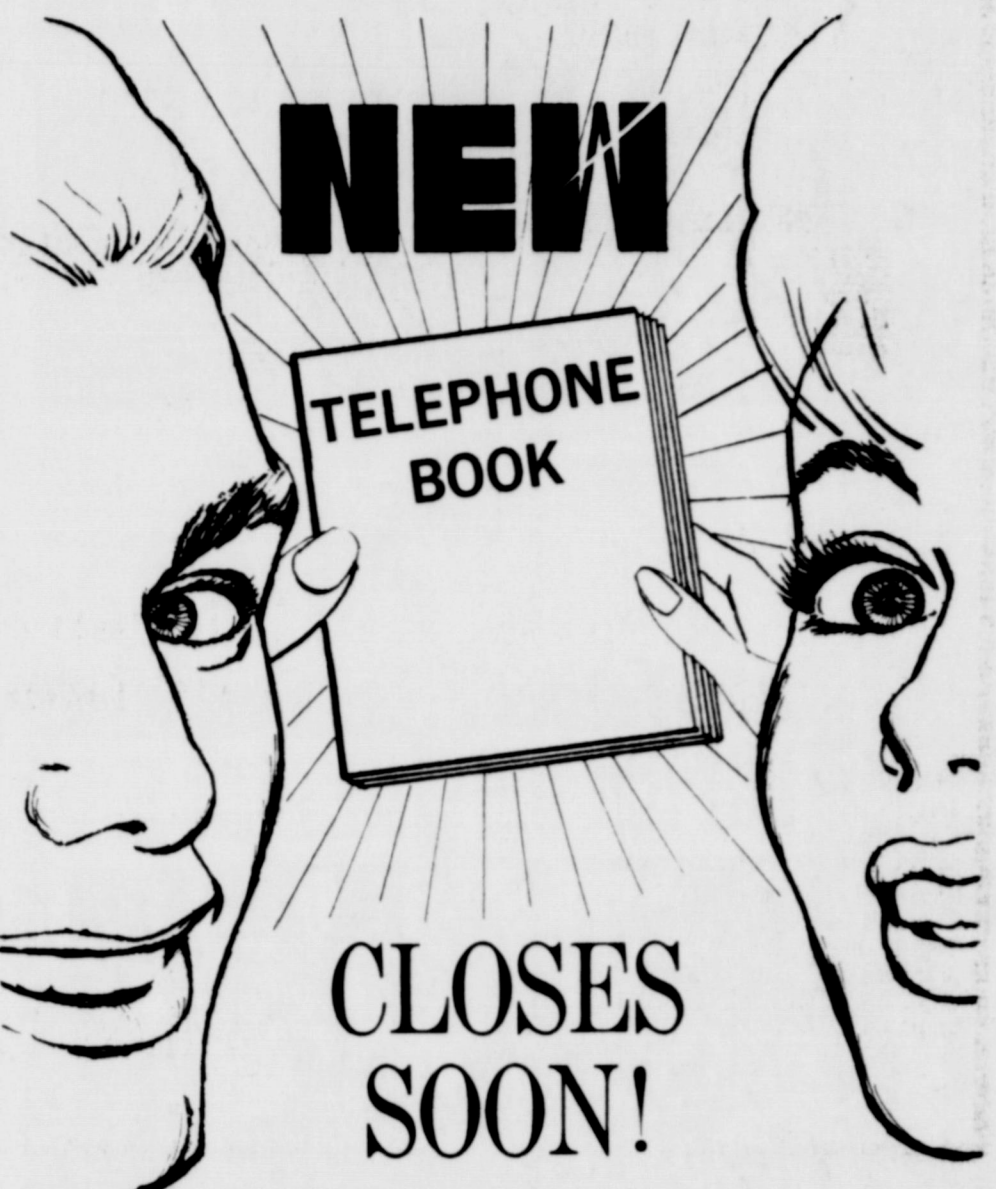
The Club's Christmas party will be held at Ellen Heru's, December 16, along with a luncheon.

ground to be picked up, as on the tree, but those with a yard full of trees, and resulting leaves, wouldn't trade 'em for anything in the world, even though the problem of picking up those pretty leaves has always been a problem.

In the back of your mind, you know there's an easier way than rake, rake, box haul, haul and all that annual trauma. Sneeze enough, leave it to a young man, one Tommy Morrien, EHS Freshman and son of Police Chief and Mrs. John

Moreen. Tommy's seen a need and he's going to provide the service. He's investing in one of these high-powered vacuum machines which is supposed to "swoosh" 'em away for you -- kinda like in Camelot, you know. We've subscribed to Tommy's new service, and if you've got a yard full of leaves, you might like to call Tommy too.

Breathes there a man who does not think more of what he is about to say, than of what has been said to him.



CALL NOW for extra listings, changes in your present listing, or to order additional service. **MR. BUSINESSMAN:** Be sure you are adequately represented in the Yellow Pages of the new directory -- make it easy for buyers to find YOU when they're ready to buy.



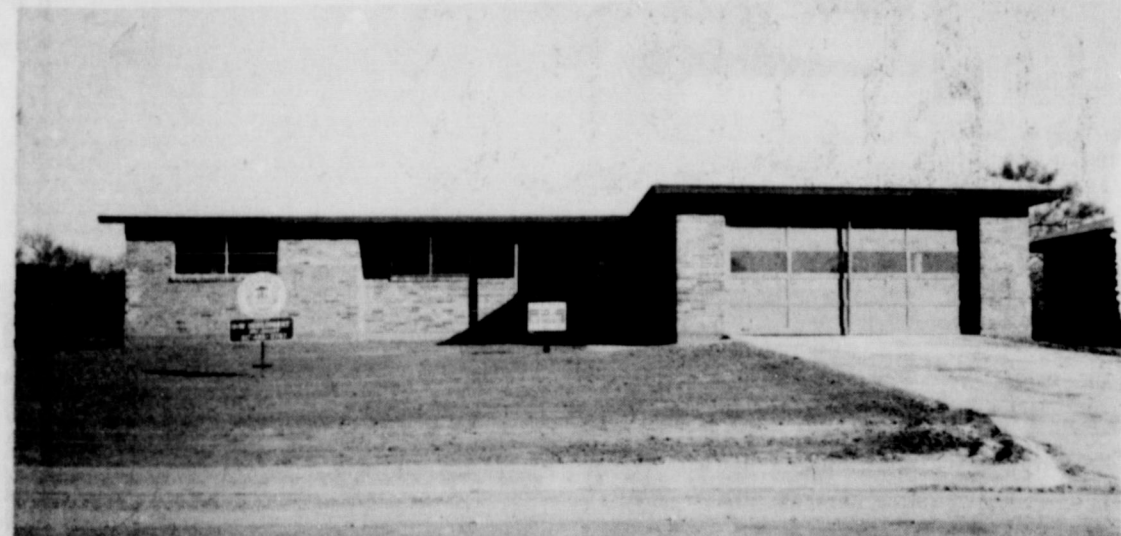
If its insurable, we have a policy for it.



**D. L. Kinnaird
GENERAL INSURANCE**

207 W. Main St. Eastland 629-2544

COME TO THE HOME SHOW:



SATURDAY & SUNDAY, NOV. 20 & 21
1 to 6 p.m. -- 710 S. Dixie St.
One of Many New Fine Eastland Homes!

YOU'LL FIND quality in this four-bedroom Gold Medallion Home. You'll find H&W DEVELOPMENT CO. vitally involved in the current building boom in Eastland. We recognize the potentially bright future for Eastland and want to be a vital part of that expansion, by offering quality housing right now. The response that we have already received is gratifying and we are confident that we're playing an important roll in helping the home-shortage problem in Eastland. **COME SEE THIS MODEL HOME AND WE THINK YOU'LL AGREE!!**

Homes of Distinction by
H & W DEVELOPMENT CO.

1201 W. Commerce Call 629-1702 to find out about YOUR home!

**Discover the joys of
Total Electric Living!**



**See this home at 710 S Dixie St.
Saturday and Sunday, 1 to 6 p.m.**

- Check These Electric Better Living Features
- Electric central cooling and heating
 - Electric dishwasher
 - Electric waste disposer
 - Built-in electric range
 - Electric water heater

Here is a 4-bedroom home built for truly modern living--a home in which clean flameless electricity does everything--from operating work-saving appliances to lighting, cooling and heating the entire house. Built by H&W Development Co., Inc., this 1,400 square foot Total Electric Gold Medallion home is located at 710 S. Dixie St. You'll find it equipped with the most modern electric comforts and conveniences. Be sure to visit this home during the open house and see for yourself the joys of Total Electric living. Open from 1 to 6 p.m.



Vassarette History . . .



ATTEND GRAND OPENING—Attending special activities for opening of the Hollywood-Maxwell Co. of Hollywood branch in Eastland Thursday night were, left to right, Herndon J. Norris, president of Hollywood-Maxwell Co.; Mrs. Stella Grigsby, Eastland operations manager of Hollywood Corset Co., a branch of Hollywood-Maxwell Co., and J. R. Dawson, vice president of Hollywood-Maxwell Co. (Staff photo by Bob Gulley)

1,200 Attend Open House At Eastland

By HAMILTON WRIGHT
Reporter-News Staff Writer
EASTLAND, Sept. 20 —Twelve hundred persons attended the open house of the Hollywood-Maxwell Corset Co., new \$65,000 plant of 18,000 square feet, here Thursday night.

The new plant will consolidate three separate factories of the concern in Eastland, which last year turned out 1,050,000 brassieres.

President Herndon J. Norris and J. H. Dawson, vice president, of Hollywood, Calif., were present.

The celebration opened on the roof garden of the Connelle Hotel with a banquet, attended by 150 persons. Hubert Westfall, chamber of commerce president, opened the banquet.

Fred Brown, owner of the Crazy Hotel in Mineral Wells, then became emcee. He presented Mr. and Mrs. Norris and Mr. and Mrs. Dawson. He read a telegram from Gov. Allan Shivers commissioning Norris an honorary citizen of Texas.

Norris said the Hollywood Co. was organized in 1931. The three branches here began Oct. 1, 1946, and now employ 250 persons with an annual payroll of \$300,000. Stetson hats were presented to Norris and Dawson.

At an open house at the new three-section plant later, Westfall introduced Brown, who in turn again introduced Norris and Dawson and their wives.

Norris spoke briefly, thanking the Eastland people for their cooperation. He said that the first units of machinery from the other plants would be moved in next week.

Florence Crabb, representing the local company's employes, spoke on how this plant employed people from Eastland and neighboring towns and what it was doing for industry of this section.

Pat Stanford, Midland, and Bill Hyde, Abilene, of the Stanford Engineering Corp., Abilene, builders of the new manufacturing building, were introduced.

Also introduced was the chamber of commerce committee that had worked to get the new building. They are Grady Pipkin, Virgil Seaberry Jr., Tom Wilson, Henry Pullman, Dr. J. C. Whittington, H. L. King, Frank Fayre, Carl Johnson, L. E. McGraw, Westfall and Herb Tanner.



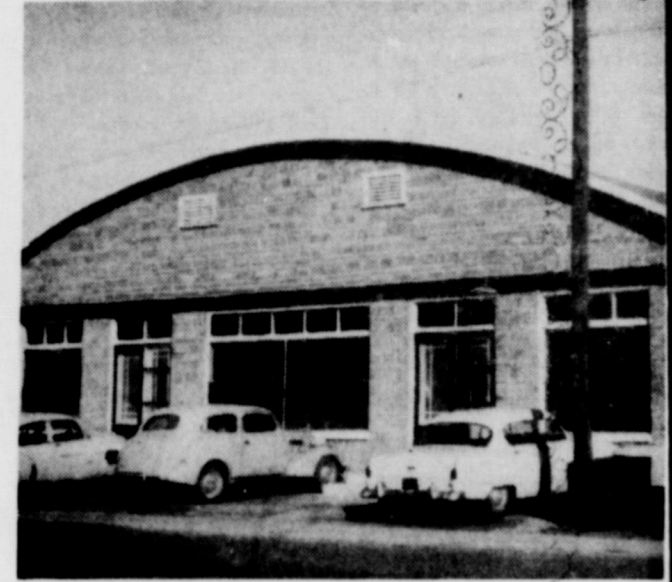
Commerce Street plant, 1956.



Mulberry Street plant about 1948.



This was made in front of the factory on Mulberry St. in November, 1947. The ladies are Virginia Clemmer, Georgia Graham, and Ruby Guy



Eastland Main plant about 1954.



The group above are inspectors, who were in a "little" group by themselves. They only used nippers to trim the strings, etc. At one time, the garments were boxed and shipped direct to the customer from the Mulberry plant.



Junior College. Eastland High School band also played several numbers. Tanner, manager of the chamber of commerce, was praised by Brown for his work in securing the new manufacturing plant building.



Birthday party for manager Stella Goforth about 1954.

With 10 employees at the start, by 1952 there were 60 employees. Another plant, the East Main Branch opened in May, 1952, and Commerce Street Plant opened in January, 1952 with a total of 180 employees at the three plants.

In 1956 The City of Eastland built a new haydite block building on College Street. For the first time in the history of the Eastland Plants, it was now operating under one roof.

In 1966 a new addition was built on the building with a new lunch room, stock room and office space.



This was taken in front of the Mulberry Street Factory in November 1947.



Long time employees at Vassarette are Tina McBee, 25 years; Ruby Guuy, 22 years; Stella Goforth, 25 years; Betty Rich, 22 years; and Odessa Hutto 22 years.

You are cordially invited to attend our
TWENTY-FIFTH ANNIVERSARY
OPEN HOUSE

Sunday, November 21, 1971

2:00 p.m. to 4:30 p.m.

- ★ *Formal Ceremony and Awards Program*
- ★ *Favors* ★ *Entertainment*
- ★ *Prizes* ★ *Fashions*
- ★ *Historical Exhibit*
- ★ *Machine Demonstrations*
- ★ *Movie "What Vassarette's All About"*
- ★ *Conducted Tours*
- ★ *Refreshments*

**Local Manager Gene Johnson
and
The Entire Vassarette Group**

Invites One and All To Visit Sunday!



VASSARETTE

**202 North College Street
Eastland, Texas**

A weekly public service feature from the Texas State Department of Health

Accent on Health

J.E. PEAVY, M.D., Commissioner of Health

A new training program, courses readily available at the local level. Heretofore, the State Health Department, Division of Public Health Education, has been providing instructors on request to train food handlers in a given community in methods of food-borne disease control. Officials at the State Health Department concluded more progress could be made if they used the "multiplier effect." State Health Department officials will train local sanitarians, health educators, and other public health personnel to teach courses of their own.

Local health officials could then supervise the training of local food handlers in the proper food hygiene techniques, giving them more training at more convenient times and with more follow-up services.

These training programs for community health officials will be conducted by the State Health Department once every quarter, or a total of four a year. The courses will be conducted in the different geographical areas of the state in an effort to eventually cover the entire state. The three-day course held in Austin this week taught its 50 participants how to teach food hygiene practices to virtually anyone who serves food.

The Texas Association of Sanitarians is cooperating in the seminars.

Sanitarians will be provided with an instructor's guide, films on various phases of food hygiene, demonstration materials, illustrative color slides, and similar materials.

Health officials hope the training program will help to reduce the incidence of food-borne disease in Texas.

A recent study by the National Restaurant Association indicates that only 8 percent of food poisoning cases result from food that has been kept too long; another 38 percent can be laid to improper refrigeration. The rest are due to improper handling or preparation, poor insect or rodent control, infection among the help, and poor sanitary practices, such as dishwashing.

There's more to do...

Give more to Christmas Seals

Prestone \$1.89

Eastland Auto Parts
300 So. Seaman
629-2158

FOR SALE OR TRADE

1965 FORD GALAXIE 500.

Big 8 cylinder engine with low, low mileage. Air Conditioning. Tinted Glass. Pretty new blue paint with white vinyl top. Was originally a factory's executive's car bought and driven locally. \$995. Would consider trade for a good family type boat and motor. Call 629-2413.

J R B

SUPER MARKETS

PRICES GOOD at EASTLAND, RANGER, CISCO
Monday through Saturday Nov. 22 - 27



Unbeatable prices

Look at the way we've cut prices and you get S&H Green Stamps, too!

DOUBLE STAMPS

Unbeatable stamps

WEDNESDAY AND SATURDAY
Brownwood, Brady, Cisco, Eastland, Ranger, Coleman, DeLeon, Wichita Falls, Cross Plains, Abilene

We reserve the right to limit quantity. No sales to dealers.

THANKSGIVING SPECIALS

Dankworths Sugar Cured Hickory Smoked

Smoked Ham Shank Portion lb. 42¢

Dankworths Sugar Cured Hickory Smoked Shank
Smoked Ham Half or Whole lb. 59¢

Dankworths Sugar Cured Hickory-Smoked Lean
Smoked Ham Center Slices lb. 88¢

Dankworths Sugar Cured Hickory Smoked
Smoked Ham Butt Portion lb. 52¢

Turkey Hens Swift Butterball 10 to 14 lb. avg. lb. 58¢

Turkey Toms U.S.D.A. Insp. 18 to 22 lb. avg. lb. 35¢

Turkey Hens Ralston Purina Medallion Brand 11-14 lb. avg. lb. 41¢

Chicken Hens U.S.D.A. Insp. Grade A lb. 45¢

Ham Completely Cooked Gooch Blue Ribbon lb. 89¢

Smoked Turkey Gooch Lady Bird 99¢

Honeysuckle Self-basting Grade A
Turkey Hens lb. 49¢
10-14 lb. avg.

Gooch Old Virginia 2 lb. bag **\$1.39**

Pork Sausage Bacon Silver Spur Sliced lb. 58¢

Bacon A.F. No. 1 Quality lb. 68¢

Mrs. Weavers Asst. Party Dips 2 for **45¢**

Ham Plumrose Reg. 69¢ Pkg. 59¢

Fryers U.S.D.A. Insp. Farm Fresh lb. 29¢

Fryers Cut up Pan Ready lb. 35¢

Cheese 6 oz. pkg. Mini-Blocks Cracker Size 49¢
Mellow, Medium, Jack, Muenster

Pork Steak Lean and Tender 59¢

Pork Roast Boston Butt lb. 55¢

JRB MEATS ARE CUT FROM U.S. GOVERNMENT INSPECTED AND GRADED MEATS. IF FOR ANY REASON YOU ARE NOT SATISFIED WE WILL CHEERFULLY REFUND YOUR MONEY.

Fine Bavarian China Club
"SPECIAL 40% SAVINGS OFFER"
28 Pieces . . . Four 7-Piece Place Settings
When You Complete 28-Piece Set
You Pay Only \$24.75
(only to Club Members)
BAVARIAN PORCELAIN CHINA

Del Monte Sweet 12 oz. jar Sweet Pickles 49¢

Pet Ritz 2 9 inch Pie Shells 39¢

Swanson 14 oz. Chicken Broth 19¢

Food King Solids Margerine 5/\$1.00

Nonesuch Ready to Use Mincemeat 9 oz. 39¢

Shurfine Frozen Orange Juice 5/\$1.00

Glace Fruit Mix For Holiday Baking 1 lb. 69¢

Ranch Oven 8 oz. can Biscuits 12/\$1.00

Krafts Miniature 10 1/2 oz. Marshmallows 27¢

Arrow 25 ft. Aluminum Foil 25¢

Cook Whip Birds Eye Topping Reg. 39¢

Tom Scott Mixed Nuts 13 oz. 83¢

Applesauce 303 can Shurfine 23¢

Del Monte Pumpkin 21¢

Canned 303 can

Mortons Frozen 20 oz. Pumpkin Pies 3/\$1.00

Shurfine Whole Spiced Peaches 2 1/2 can 37¢

Towie Red Salad Maraschino Cherries 9 oz. 39¢

Whole Gulf Belle Oysters 8 oz. can 69¢

Green Beans Del Monte 303 can 30¢

United States Encyclopedia of History Volume 12

ONLY \$1.99

WITH 10-DAY MONEY-BACK GUARANTEE!

Complete 16 volume set available at special savings on a volume per week plan.

GOBBLE-UP

With \$5 Purchase
Crisco 3 lb. can 69¢

Foremost Sour Cream 1/2 pint 29¢

Trophy Frozen Strawberries 10 oz. can 4/\$1.00

Foremost Whipping Cream 1/2 pint 29¢

Hellmans Mayonnaise 303 can 79¢

Del Monte Fruit Cocktail 4/\$1.00

Philadelphia Cream Cheese 8 oz. pkg. 39¢

Ice Cream Big Dip 1/2 gal. 49¢

Corn Meal Shurfine 5 lb. bag 49¢

Eggs Grade A Medium Dozen 39¢

TUNA FISH Carnation No. 1/2 can 39¢

Rolls JRB Brown N Serve 12 ct. pkg. 4/\$1.00

COFFEE Folgers 1 lb. can 79¢

Shurfine Whole Spiced Peaches 2 1/2 can 37¢

Towie Red Salad Maraschino Cherries 9 oz. 39¢

Whole Gulf Belle Oysters 8 oz. can 69¢

Green Beans Del Monte 303 can 30¢

United States Encyclopedia of History Volume 12

ONLY \$1.99

WITH 10-DAY MONEY-BACK GUARANTEE!

Complete 16 volume set available at special savings on a volume per week plan.



Mr. and Mrs. Amstead West were honored on their 51 Wedding anniversary at Hickman Nursing Home Wednesday morning. The West's were married at Crockett, and have lived in Eastland most of their lives.



Mrs. Stroud enjoys her 84th birthday with her great granddaughter at Hickman Nursing Home Wednesday morning.

Mrs. Nash, 85, and Mrs. Watson, 73 are not pictured but also had birthdays.



Mr. and Mrs. Durl Hunt enjoyed their 51 anniversary at Hickman Nursing Home with a party honoring them. The Hunt's are former residents of Ranger.

VASSARETTE

Eastland Mayor James Reid has issued a proclamation

regarding the day and urging citizens to visit the plant on the open house day. The employees at the

Eastland plant are busy planning and organizing their open house scheduled for Sunday.

Over 80 employees have volunteered to work on the project and they have been organized into various committees and committee chairmen have been named. The working committees and their chairmen are as follows:

Badges: Lillian Robertson, Invitations: Tina McBee, Display & Decoration: Faye Goforth; Door prizes: Frances Burns; First Aid: Virgie Jarrett; Refreshments: Connie Cate; Flowers: Vinetta Young; Hospitality: Ruby Guy; Machine Demonstration: Mary Crenshaw; Parking: Ruby Lee Jackson.

Length of service is a way of life with Munsingwear employees. Here are additional long-time employees.

22 years:
Odessa Hutto
Bettye Rich
Ruby Guy

21 years:
Edith G. Wilson
Connie F. Cate

20 years:
Grace Harrelson
Pauline B. Lewis
Faye Freeman
Hattie Mae Graves
Willie Mae Hendricks
Bessie W. Justice
Helen L. Phillips
Elva T. Lewis
Ruby Lee Jackson

The third and probably the final public school immunization program will be held at the Eastland Elementary School Tuesday beginning at 1 p.m. Principal R. N. Baize reports. The second oral polio vaccine will be given and boosters for any youngsters who need them.

BAKE SALE SET

Zeta Pi Chapter of Beta Sigma Phi will hold abake sale in front of Central Drug and Prescription Pharmacy on Tuesday, Nov. 23 beginning at 9:30 a.m. with proceeds to go toward the sorority's donation to the Eastland Goodfellows project, it has been announced.



TO BE HONORED SUNDAY

Servicemen

FT. CAMPBELL, KY. Army Private Randall L. Lowrance, 19, son of Mr. and Mrs. L.A. Lowrance, Eastland, Tex., recently completed eight weeks of basic training at the U.S. Army Training Center, Ft.

Campbell, Ky. He received instruction in drill and ceremonies, weapons, map reading, combat tactics, military courtesy, military justice, first aid, and Army history and traditions. **Inflation?** Turkey is selling now for about the same price it did 20 years ago.

ANNOUNCING FOR YOUR ADDED DINING PLEASURE OPENING MONDAY NIGHT, Nov. 15 HOWELL'S STEAK HOUSE

A new addition to our Dining Room. Custom-cooked Steaks of all kinds, cooked exactly to YOUR liking... SIRLOINS for 1, or a dozen; T-Bones, Clubs, Rib-Eyes, Fillets, Chopped Sirloin, etc., whatever you name. Cut from U.S. Choice Beef and Char-Broiled exactly the way you like 'em.

Try our steak once and you'll be back for more.

R.O. Washington - Steak Chef

Steak Hours: 6:30 to 10 p.m.,

Monday thru Saturday

P.S.: We want to thank each of you for the wonderful reception you've already given our dining room. We're working hard to provide the kind of first-class meat market and dining center you'll always be proud to visit.

Sledges Market & Dining Room

210 S. S. Lamar -- 629-2913

FALL SAVINGS ON YEAR ROUND USED CARS

- 70 L.T.D. AIR Conditioned Power Breaks and steering Low Mileage
- 65 Plymouth V-8 Standard Transmission. Air conditioned.
- 70 Plymouth 1 owner Low Price
- 71 Ford PICKUP Ranger X.L.T. Loaded
- 66 FORD PICKUP 1 Ton Good Work Truck

KING MOTOR CO.
100 E. Main Eastland 629-1786

EDDIE'S PHILLIPS 66
513 West Main 629-8838

OFFERING THE BEST IN AUTO SERVICE

Complete Auto tune-up and repair
Mechanic Vic Edwards

Free Pickup and Delivery
Guaranteed Service

At Phillips 66
its performance that counts

JRB FAMILY CENTER EASTLAND SPECIALS

reg. 59c **SALE PRICE**
PANTY HOSE 1 size fits all **2/\$1.00**

COATS & CLARKS
Rug Yarn **SALE PRICED 45¢**

playtex disposable
Bottles reg. 1.19 value **SALE PRICED 89¢**

ALUMINUM TURKEY ROASTERS
GIANT SIZES **SALE PRICED 83¢**

PERRY'S EASTLAND

Two Days Only
Tuesday And Wednesday
Nov. 23-24
10 a.m. - 5 p.m.

BEAUTIFUL
8" x 10"
LIVING COLOR
ONLY
79¢

PLUS 50¢ HANDLING
ONE PER CHILD TWO PER FAMILY
GROUPS 79¢ PER SUBJECT
SATISFACTION GUARANTEED

GAUVEY Associates
Arlington, Texas

Community Wide Thanksgiving Service
Wednesday Night 7:30 P.M.
First United Methodist Church
Everyone Welcome!

The Employees and Management of
The Eastland Telegram salute
The Employees and Management of
Vassarette,
on the occasion of your 25th Anniversary in Eastland.
Be assured that we appreciate each of you, and value your patronage and faithful service.

CONGRATULATIONS

GO BIG HERD

EASTLAND MAVERICKS

BI-DISTRICT CHAMPIONS CLASS AA, 1971

EASTLAND MAVERICKS

NO.	NAME	Weight
10	CRAIG LUND	200
12	LEO GAETA	130
14	JOHN JIMINEZ	190
20	RALPH HARRISON	130
22	CHARLES MARSHALL	132
24	RUBEN GAETA	175
25	RANDY REXROAT	168
30	TONY THOMAS	190
32	RONALD McCLESKEY	170
33	HOWARD KING	192
40	LARRY BOLLES	142
42	JOE HERRERA	150
50	SCOTT MILLER	155
51	REX BONEY	158
52	MIKE JONES	180
60	JIM MOSELEY	180
61	STEVE LOPEZ	165
65	ALLAN JOLLY	162
66	GIL GAETA	190
67	MAC CALDWELL	170
70	STEVE HART	172
72	LARRY BARNES	174
74	MIKE PARSONS	175
75	RODNEY REYNOLDS	235
80	BOB MACE	142
84	DICKIE ANDERSON	162
86	B. W. ROBERTSON	142
87	GARRY BARNES	174
88	JAMES EIDSON	190

You've got the stuff to go all the way . . .

And we're behind you

ALL THE WAY!

Mavericks, you're the **MOST!**

EASTLAND OPPONENT

22 -- 6 Haskell
41 -- 0 Ranger
48 -- 0 De Leon
57 -- 6 Cisco
61 - 14 Comanche
50 -- 0 Clyde
59 -- 0 Hamilton
41 -- 6 Ballinger
52 -- 0 Winters
12 -- 0 Coleman

443 - 32

MAVERICKS



'Go Big Red'

ALTMAN'S STYLE SHOP

109 West Main 629-1150

MAVERICK BARBER SHOP

104 S. Seaman

ROBERTSON'S TV SALES

RCA VICTOR DEALER
100 West Commerce

D. L. KINNAIRD

GENERAL INSURANCE

207 West Main 629-2544

HOOD KING MOTOR CO.

FORD AND MERCURY- SALES AND SERVICE
On the Square 629-1786

BRAY'S DEPARTMENT STORE

111 South Lamar 629-1789

TEXAS LIGHTWEIGHT AGGREGATE

PRODUCERS OF CONCRETE AGGREGATION
C. W. Martin, Mgr. 629-2060

EASTLAND NATIONAL BANK

EASTLAND, TEXAS

BOLES DAIRY QUEEN

'WHERE THE MAVERICKS MEET'
Hwy. 80 East 629-2400

R. M. SNEED

CONTRACTOR INC.

Hwy. 80 East 629-1756

COMANCHE COUNTY ELECTRIC CO-OP ASSOCIATION

1311 West Main 629-2088

DR. AND MRS. M. A. TREADWELL, JR.

EASTLAND MEMORIAL HOSPITAL

SUPER SAVE

400 South Seaman 629-1191

HICKMAN NURSING HOME NO. 2

MRS. T. B. NIX - ADMINISTRATOR
104 South Seaman 629-1151

BORDEN'S

J. T. GREGORY, DISTRIBUTOR

611 West Commerce 629-1100

W. H. "BILL" HOFFMANN

EASTLAND CHAMBER OF COMMERCE

ARRINGTON FUNERAL HOME

FREYSCHLAG INSURANCE AGENCY

107 West Main 629-2275

HARELIK'S DEPT. STORE

212 West Main 629-1443

MFA INSURANCE

Richard Rossander
Car Financing
629-2563

B & B SALES AND SERVICE

Admiral and Craig Dealer
629-1673

MR. and MRS. VICTOR CORNELIUS

B&W CLINIC AND STAFF

H. J. BULGERIN, MD B.B. ALEXANDER, M.D.
400 West Plummer

KINCAID REAL ESTATE FARM AND RANCH LOANS

100 South Seaman 629-1781

WESTERN AUTO ASSOCIATE STORES

Commerce and Lamar 629-2011

EARL BENDER & COMPANY INSURANCE

Pat and Annelle Miller

THARP TIRE COMPANY

DUNLOP TIRES AND ACCESSORIES
East Main Street

TEXAS ELECTRIC SERVICE COMPANY

People power... at your service
F. N. SAYRE, Manager, Phone 629-2651

FOREMOST DAIRIES

CLYDE MANNING, MGR.

410 West Commerce 629-1701

BOND ELECTRIC

629-1724

EASTLAND MANOR

E. E. FROST, ADMINISTRATOR
1405 West Commerce

Southern Television Systems Corporation

CISCO - EASTLAND - RANGER... Inviting You To Watch All Of The Games--NCAA - AFL - NFL