

# EASTLAND TELEGRAM



VOLUME 101, NUMBER 36

EASTLAND, TEXAS 76448 — THURSDAY, MAY 6, 1971

PRICE 10¢

## TidBits

By H.V.O.

**NATIONAL MUSIC** Week brings to mind that Eastland is indeed fortunate for the wide interest it citizens have in all types of music. Visit any number of homes, and that's pretty much the same number of different types of music you'll hear. Out our way, we're frequently accused of letting our background slip when we let go with "San Antonio Rose" or some such, but we're never ashamed of it.

We'll all want to remember the Civic Theatre's Annual Picnic and Musical this Thursday evening out at Bell Hurst Playhouse.

**OUR EARLY** morning first cup of coffee each day has been spiced with a circus of blackbirds greeting the day in a gathering at the bird bath in the back yard. They're a lot like people you know. One morning, a small one waded into the water for a drink and a dip. A bigger one lighted on the edge, just for a sip. The little one kept splashing the big one, much to the bigger ones displeasure. It finally ended in a free-for-all with both in the water, thoroughly soaked. Quite a number of looker-ons (excluding me) noisily rooted for their favorite.

**HAD OCCASION** this week to watch Texas Electric Service employe Bill Pryor operating a giant truck mounted power lift. With the skill of a surgeon or a deft magician, Mr. P. manipulated that monstrous thing with the grace of a ballerina. He boomed up a 1,000-pound load around obstacles in the alleyway and gently, oh, so gently, put the burden in place as easily as you'd sit down a tea cup. It was a pleasure to see a skilled workman doing his thing.

The Carbon Senior Boys will play against the Carbon School Faculty Monday, May 10, in the Carbon Gym. Game time will be 8:00 p.m.

Admission will be .25 for student and .50 for adults. Refreshments will be served at the concession stand.

Mary Ann Turner, junior of Eastland, is one of 13 Hardin-Simmons University students initiated into Alpha Mu Gamma, national foreign language honor society, Saturday, May 1.

Admission to the Gamma Zeta Chapter is based on overall scholastic achievement and foreign language grades, Mrs. Maria Griffith, faculty sponsor, explained.



**70 POUNDS OF CATFISH**—Truman Maynard and James Johnson proudly display three catfish taken off their trotline at Lake Lee Tuesday night, totaling 70 pounds. From left, the fish weighed in at 14, 9 and 47 pounds. The catch was taken from adjoining banks.



**TO SING HERE**—Special entertainment at the Annual Music Festival will be the Ken Mayhall family. They are (seated) Mr. Ken Mayhall, his wife, Beth, and Denise. Standing are Debbie and Donna. Ken Mayhall is a native of Ranger. He graduated from Ranger High School and Ranger Jr. College and attended North Texas State at Denton. His wife Beth is a graduate of Carbon High School. Ken is present owner of Ken Mayhall Music Company in Abilene.

## Public Invited to Civic Theatre's Annual Picnic, Musical Thursday

**By PAM PIERCE**  
Local talent, as well as special out-of-town performers will be the highlight of the program of the Annual Music Festival and picnic supper, on Thursday, May 6, at Bell Hurst Playhouse, being held in keeping with the National Music Week.

The public is invited to attend this special variety music program which will begin at 8 p.m. and the picnic which will precede it at 6:30 p.m. on the lawn beside the theatre. Families are invited to come informally and spread their picnic supper together.

## WELK-TYPE MUSICAL SET FRIDAY, MAY 14

This is National Music Week, and due to heavy scheduling this week, musical activities will continue in Eastland.

Eastland County "Stars Under the Stars" will be held at the Kendrick Amphitheater between Eastland and Cisco on Friday, May 14. Director Phil Kendrick of Kendrick Music Center has announced.

An elaborate show is planned and the musical cast is almost complete. Others wishing to perform, should contact Kendrick this week for auditions, he said. Format will include "all" music; classical, folk, religious, rock, blues, Dixie Land Jazz, and much more, all dramatically staged, much in the Lawrence Welk manner, he added.

An Eastland County Orchestra is in rehearsals for the event now, and will back up speciality number for the Music Program.

**TO PLAY HERE**  
The Eastland Whitetops will face a team from Bluffdale at the local diamond Friday night, Manager Truman Maynard has announced.

Those who attend the picnic are asked to bring food.

Bob Davenport, program chairman, has announced that the program will include numbers by James Reid who will also serve as Master of Ceremony, Larry and Gary Barnes, Nandy Rexroat, JoAnn Baker, Becky Hanna, Mickey Kendrick, Cathy Jones, Stacy Blair, the E.H.S. Tijuana Brass Band, the Eastland Quartet composed of L u c e Pittman, Don Nicholas, Helen and Woodrow Browning of Gorman accompanied by Mrs. Tom Clark, two piano students, Eddie Don Grimehan, and Deborah Casey of Carbon.

Special out-of-town performers will include Georgia and Tom Dill of Dallas, vocalist, Rita TheBerge of Ranger, flutist and the Ken Mayhall family of Abilene, gospel singer, and Mrs. Marie Shanks, organist of Merkel.

Members of the welcoming committee will be Mrs. Virginia Russell, the theatre's director, Mrs. Greg Sedillo, Susie Miller, and Sherry Staggs.

Mrs. James Dabney, John Russell, and Johnny Paul Grimes are in charge of various picnic arrangements, and Mrs. Jack Germany is publicity chairman.

Mrs. Don Pierson and Mrs. Tom Wilson are membership chairman for the organization. Annual dues are \$1.00 and are usually paid at the festival to the membership chairman.

Tired, but high in spirit, the Eastland Girls' track team came home from Anson, Saturday holding the Regional VI A team Championship.

A week earlier the girls won the district title qualifying 10 girls to the regional meet. All ten girls repeated their accomplishment, and they will next compete at the State Girls Track Meet, May 14 and 15.

In the regional meet, Eastland scored 107 points. The next closest team was Comanche with 63 points.

The team qualified all three relay teams, 440 was second, 880 relay second and mile relay 3rd.

Jo Ann Crawford and Christy Jolly were the only two Mavettes in field events but came on well by being placed third in their events for a trip to state. Jo Ann broad jumps and Christy throws a

discus in the open running events.

Dollie Mosley won the 60 yd dash with 7.4, however in the preliminaries she ripped off an outstanding 7.1.

Jerri Simms won second in the 220 with a fine time of 27.2.

Ann Haun bettered her district time by nearly a second by running a 62.4 to win first in the 440 dash.

Audrey Englund and Anna Hart managed a dual victory by both qualifying in the same event. Audrey was first in the 880 with an outstanding time of 2:27. And Anna was third with a sturdy 2:41.

Eastland did not win a relay but was a strong second to Comanche in the 440 relay.

The 440 team is Reba Crawford, Dollie Mosley, Jerri Simms, and Jo Ann Crawford.

Eastland also finished second in the 880 relay with a

1:52 run by Jerri Simms, Ann Haun, Karen Jones, and Jo Ann Crawford.

The mile relay won 3rd and a trip to State with a 4:34, Karen Jones, Christy Jolly, Ann Haun, and Cindy Allen put together a fine effort to qualify.

Eastland will compete in Abilene May 14 and 15 at ACC against the best in the State.

## Firemen, Trucks To Be 'On Review' Here Saturday, 9 to 4 On Their Day

### SBA Seminar Set for May 13

The Small Business Administration, since its inception in 1953, has been providing assistance to small businessmen through its various programs.

One of the Agency's important contributions toward helping small business is through advice, information, and guidance to community groups. Therefore, to acquaint the business and professional people of Eastland and neighboring towns and communities with procedures for economic planning, the Texas Electric Service Company and Small Business Administration are pleased to announce a Community Development Seminar and Workshop.

This will be held at the White Elephant Restaurant, 724 West Main Street, Eastland, 3 p.m. thru 9 p.m. on May 13, 1971.

The Seminar will consist of lectures, slide presentations, movies, and panel discussion designed to acquaint local leaders with community planning techniques. Program will include involvement of State and Federal Agencies, and application of principles of sound community planning.

You are cordially invited to attend this Seminar and to participate in discussions relating to your community. Please indicate on the attached reservation request whether you plan to attend as Texas Electric Service Company will be our dinner host for the evening meal and reservations need to be returned.

Your reply should be directed to Mr. Jeff Glazner, President, Chamber of Commerce, P. O. Box 145, Eastland, Texas 76448, as soon as your plans to attend are completed.

### PROCLAMATION

WHEREAS, the Eastland Volunteer Fire Department is the main line of defense for citizens of Eastland at times of emergency, when life and property are endangered by the ravages of fire;

WHEREAS the City Commission, the city administrative personnel and all citizens of Eastland appreciate the fine work done by Volunteers here;

NOW THEREFORE, I, James Reid, Mayor, declare Saturday, May 8, Volunteer Firemen Day in Eastland and encourage all citizens to avail themselves of this opportunity to visit with the Volunteers, to see their equipment on display, and to personally tell the Volunteers that their work and faithfulness here are most sincerely appreciated.

JAMES REID  
MAYOR, CITY OF EASTLAND

## 'Papa Doc's' Death Has Significance in Eastland

In one sense, Haiti and the death of Francois "Papa Doc" Duvalier there last week, is a long way from Eastland.

But on the other hand, the passing of that monarch was of vital concern to some in this area.

Particularly concerned with the stability of Haiti's new government following Duvalier's death was promoter Don Pierson, who left Friday to attend the Saturday funeral, and bank vice president Mike Collins. The two are partners in a development project on an island of Tobago.

Formal announcement of the development project was to have been made on April 26 in Laitias, when the Haitian ambassador to the United States was to come to make the official announcement. The official ceremony there was postponed one week until Monday, May 3, because of the death.

Pierson and Collins explained the proposed development to Eastland business and civic leaders about a month ago, and said at that time, that Eastland will be the official headquarters for the concern. The island will be a freeport and is held in lease by the Eastland men. It has historical significance in that it was among the first touched in this hemisphere by Christopher Columbus.

The designated successor, Jean Clause, 19, has assumed the presidency, and so far as is known here, all appears in order for a smooth transition, and it is assumed by the developers that plans will continue for the use of the island.

Collins reported Friday that he had been notified of a message to him, from President Duvalier announcing that two Haitians had been named to the Island Development Board, and expressing the president's optimism that the project would be beneficial to Haiti's struggling economy. The message could have well been the last or among the last, of the president and would therefore have historical significance.

The development board is made up of three Americans and the two Haitians. The lease became effective in early April.

It was because of declining health that Duvalier announced

The public is invited to inspect their Eastland Volunteer Fire Department Saturday in observance of Texas Volunteer Firemen's Day.

The Eastland Volunteers will have equipment downtown on the South side of the square from 9 a.m. to 4 p.m., and visitors are welcome to visit and look at the equipment. Special pumping demonstrations will be given by Volunteers at 10:30 a.m. and at 2:30 p.m.

Gov. Preston Smith has declared Saturday, May 8, Volunteers Day in Texas, and Eastland Mayor James Reid has joined in proclaiming the day here.

Volunteer Chief Jack Graham and Assistant Chief Johnny Grimes joined in extending invitations to the public to attend.

Members of the Department are: Chief Jack Graham; 1st assistant Chief Johnnie Grimes; 2nd assistant chief, Elton Simpson; Secretary, Ray Harbin; Mascot, Mack Walker; Chaplain, Eddie Pietraszek; Drill Capt., Jerry Buchanan; Lt. 1st Co., Joe Herring; Lt. 2nd Co., Jerry Buchanan; Capt. 2nd Co., Jack Mace; and Lt. 2nd Co., Floyd Williams. Capt. 3rd Co., Guy Robinson; and Lt. 3rd Co., Bud Carmack.

Members H. O. Waldon, Sam Herring, J. L. Ward, Bill Green, Terry Grimes, Wayne Jackson, Jack Willis, Don McClendon, Guy Peel, Richard Trail, Bob Castleberry, Jack Woods, D. J. Walker, Lefty Sublett, Eddie Pevehouse, Collin Campbell, Gary Butler and Phil Hunt.

Under terms of the contract Dupont Caribbean agrees to make a minimum initial investment of \$1.5 million in the development of hotels, clubs, gambling casinos, public utilities, retail establishments, housing and real estate ventures, roads, ports, airports and all other commercial developments.

Pierson, 44, is a commercial and real estate developer, former banker and automobile agency owner in Abilene, his native city.

Collins, 34-year-old Eastland native and vice president of Eastland National Bank, serves as executive vice-president of Dupont Corporation.

Pierson and Collins say that having developed control of Tortuga "is a little like inheriting your own country."

## Kokomo, Nimrod Tours Thursday

The communities of Nimrod and Kokomo have been selected as two of the district finalists in the Texas Community Improvement Program. A team of judges will be here Thursday, May 6, to attend community tours in each of these communities.

The Nimrod tour will begin Thursday at 9:30 a.m. The Kokomo tour begins at 1:30 p.m. at Larry Morrow's peanut field on FM Road 2563 three miles east of Punkin Center and will conclude at 3:30 p.m. at the Kokomo Community Center.

## HORTON TIRE Co. PRESENTS Bread of Life . . .

His compassion was not. They are new and by morning they are gone. It is their faithfulness—Lam. 3:22, 23. "Great is Thy faithfulness," O God my Father, There is no shadow Of turning with Thee.

EASTLAND NATIONAL BANK EASTLAND, TEXAS

## Freyschlag INSURANCE THE WEATHER

Fair and mild Thursday. Winds decreasing Thursday.

## FULLEN MOTOR Co. PRESENTS LAUGH-A-DAY

Christmas is my kids bringing to me twelve broken baubles, eleven puzzle pieces, ten blocks a'falling, nine books for reading, eight cookies squashed, seven cardless present, six cars a'flashin', five fights by noon, four calling chums, three fine drums, two batteries deadened and — honest — a partridge in a pear tree.

## TORNADO TIME! -- what to listen for

**By F. JAMES DABNEY**  
The tornado season is upon us again and some of the things that I will write about, have been said time and time again, but apparently they cannot be said too often.

Of all the storms that sweep the earth's surface, the tornado is by far the most terrible. Their life span is short, and their path of destruction is usually confined to a small area. A tornado funnel can reduce strong, solid buildings to matchwood, make a deadly missile out of a straw, uproot huge trees, and hurt people and animals for hundreds of yards, and completely desolate the area it strikes.

The storm last Wednesday evening April 28th about 6:10 p.m. in Carbon has not definitely been established as being a tornado, because there apparently is no witness to an actual funnel, consequently the weather bureau will, in all likelihood, classify it as a damaging storm, with wind velocities at the scene of destruction exceedingly high, there being no official anemometer in the town of Carbon. However, the storm did have all the ingredients that go to make up a tornado. . . a converging cool front mixing with warmer and more humid air, a thunderstorm in progress, and heavy hail.

quently, it is important to know the difference between a "watch" and "warning," as you may hear these phrases used over area television stations preceding and during stormy weather.

A "Tornado Watch" is the first alerting message sent out by the weather forecasting center to areas potentially threatened by tornadoes. The weather service will specify an area to be covered, and time limit involved, during which the possibility of one or more tornadoes are likely to occur.

"Tornado Warnings" are issued when one, or more, tornadoes have actually been sighted in the area, or indicated by radar service at the weather station, in our case

at Abilene. A good example of the speed and efficiency of this operation happened on the same Wednesday evening of the Carbon storm, when the weather service in Abilene informed Comanche, Texas, officials of the appearance of a tornado on the Comanche area. The Dispatcher on duty at Comanche immediately blew the town's siren warning system, and mobile units were dispatched to the northeast part of town to keep visual track of the cloud, which in this case never touched the ground.

WHEN A "TORNADO WARNING" IS ISSUED, PERSONS IN THE PATH OF THE STORM SHOULD TAKE IMMEDIATE SAFETY PRECAUTIONS.

The following is the recognized procedure for reporting a severe storm, or possible tornado: Describe the storm, (tornado or funnel cloud, heavy hail, destructive wind, or thunderstorm accompanied by heavy lightning); give the exact location; give the time observed; the intensity, whether destructive, etc.; and, be sure and give the correct speed and direction of travel.

And, above all, try to be calm, cool, and collected. However, we will admit that this is sometimes hard to do during a moment of this type. But, it is important to the lives, and safety, to others that the proper officials be notified of the foregoing facts.

(Continued on page four)

### EMERGENCY SIGNALS

These are the siren signals established to warn Eastland citizens of fire, tornadoes and other emergency situations:

- Grass or car fire in town — 1 10-second blast out of town — 1 25-second blast 1 10-second blast
- House or building fire in town—3 30-second blasts
- Distress — 2 30-second blasts
- TORNADO — 1 2-minute blast and continuous automatic 30 second blasts.

Police Chief John Morren, Civilian Civil Defense Director here, stated that during tornado alert periods, Police and Fire Dept. personnel will be stationed at strategic points for weather observation, so that quick reports and signals may be made. Fire Chief Guy Peel and Volunteer Chief Jack Graham are assistant Civil Defense Directors.



# THE EASTLAND MINISTERIAL ALLIANCE URGES YOU TO BE IN YOUR CHURCH SUNDAY

## WANT ADS WORK WONDERS

**Announcements**

**MASONIC LODGE NO. 467**  
Meets second Thursday of each month at 8:00 p.m. in the Masonic Hall. Call W. E. Tankersley, W. M., at 629-1844 or L. E. Huckabay, Sec'y., 629-1391 for information.

**EASTLAND ROTARY CLUB**  
Bill Angus, President  
Meets each Monday noon at White Elephant Restaurant in Eastland.

**Notice**

**NOTICE** — A-Notance Installation and repair. All Brands. Thirty-five years of experience. 502 S. Halbryan. Phone 629-2094.

**NOTICE** — Mattresses — Complete bedding made by Western Mattress Co., San Angelo. Best quality. Low price. renovate or exchange new. Every other Wednesday. They're guaranteed. For home appointment, call Lois Meazell, 629-2703 leave name.

**NOTICE** — Advertising doesn't cost — it pays. Use a Classified or a display space for result. The rate is low and the readerhip — GREAT! Call or come by the Telegram.

**NOTICE** — If you need irrigation equipment check with us. Largest supply in Central Texas. Look at our new pump facilities and our line of submersible pumps. Kimbrell Irrigation Supply, Inc. De Leon, Texas. Phone 817-893-6268.

**NOTICE** — The Telegram does quality commercial printing: envelopes, letterheads, billheads, cards, etc. Talk to the people at the Telegram about your next printing order.

**NOTICE** — Just received new shipment of Ed T. Cox History of Eastland County at \$4. ea. at the Telegram Office.

**For Sale**

**FOR SALE** — Electric motors; air conditioner; washing machine; well pump, some 2 speed. \$5.00 up. Will exchange. 3 miles south of Cisco, Highway 183. T. E. Weathersbee. 43

**FOR SALE** — CARPETS and life too can be beautiful if you use Blue Lustre. Rent electric shampooer \$1. At Coats Furniture. 37

**FOR SALE** — Nice 2 bedroom house. Call 629-1457. 39

**GARAGE SALE** — 4 Family, miscellaneous items; one week beginning Thursday, May 6th at 311 E. Corner. 38

**WANTED** — Middle-aged woman with variety store experience for full-time in Eastland. Call 629-1667. 38

**FOR SALE OR LEASE** — will sell or will lease 2 bedroom house at 807 S. Halbryan. Couples only. References required. See Ben Hanner at 309 S. Lamar or 1601 S. Seaman. 37

**MISC. FOR SALE** — MILIONS of rugs have been cleaned with Blue Lustre. It's America's finest. Rent electric shampooer \$1. P. E. R. Y. Brothers. 37

**FOR SALE** — Fat Hens; 3 for \$1.00. Kendrick Poulterer Farm, Between Cisco and Eastland. 36

**FOR SALE** — 1955 Ford 6-year dump truck; in excellent shape. Come by at 412 N. Green. 41

**FOR SALE** — Galbraiths-Dickinson Piano upright. \$125.00. Phone 629-1619. 36

**GARAGE SALE** — Heating stove, couch, inn tables, some clothes. 409 S. Dixie. 36

**HOUSES**

4 bdrm. 2 bath, good repair, 1 acre. Olden \$735.00.  
Large 2 bdrm. good barns, fruit trees, 11 acres. Terms.  
3 bdrm. Rising Star, \$12,600.00.  
3 bdrm. 1 bath, good corner lot, \$6,000.00.  
Corner lot, 3 bdrm. good location. Ranger \$45,000.00.  
2 bdrm. fair, 3 lots, \$25,000.00.  
3 bdrm. near school, fruit trees, 3 lots. Gorman, \$8,000.00.  
2 1/2 bdrm. edge Ranger, 1.8 acres. \$5,500.00.  
Neat 3 bdrm. ready to live in \$6,000.00.  
3 bdrm. 4 ac. 35 pecan trees \$9,000.00.  
4 bdrm. city water, fireplace, 2 acres. \$12,000.00

2 bdrm. home 2 lots, Lake Leon, paneled carpets \$8,000.  
5 room hse. ice warehouse, good commercial prop.  
Metal groc. bldg. & fixtures. Hiway 80 Ranger.  
Cafe bldg. & 2 acres just off Interstate 20, Cisco.  
160 ac. 2 mi. Eastland \$135.00 per acre.  
2 1/2 ac. Eastland bldg. site, 101 ac. Eastland \$180.00 per acre.  
144 ac. 110 cult. 55 ac. peanut allot. old house, net fences, 5 mi. NW Ranger \$38,000.00.  
640 ac. 5 mi. out. good grass, 50 ac. cult. Owner financed. KINCAID REAL ESTATE  
100 So. Seaman 629-1781  
829-2721 Nite Phone  
J. W. Elders, Salesman  
647-1321 Nite Phone

**HOUSE FOR SALE:** 2 bedroom, wall-to-wall carpet, corner lot. 525 E. Conner. 629-1660. 1f

**FOR SALE:** 1970 Yamaha 80 with low mileage. 500 Foch Street or call 629-2214 after 5:30. 1f

**FOR SALE OR RENT:** Two bedroom, unfurnished apartment. Close to School. Contact 200 E. Valley. Ph. 629-2326. 1f

**FOR SALE:** Filing cabinets, desk, work stations, office machines, and everything you need to brighten up, modernize your office, shop and home needs for the new year. See your local newspaper for big savings. Some used items, and many brand new ideas just waiting to help you do a better job. Just come by the newspaper office. 1f

**FOR SALE** — 100 acres of pasture land 5 miles East of Lake Leon on Farm Road 571. Fenced and plenty of stock water. Contact 647-1914. 1f

**FOR SALE** — 1968 Ford Fairlane Fastback. Automatic v-8 blue, wide ovals, mag wheels. Dr. W. P. Watkins, Tel 647-1112 or 647-3454 in Ranger. 1f

**FOR SALE** — Small House to be moved; Good for Lake Cabin. Call Troy Johnson RE-4-5367 night, Gorman. 1f

**FOR SALE** — Brand New Portable Typewriter, Black Vinyl Case; 117.50 plus tax. Eastland Telegram, 629-1707. 1f

**FOR SALE:** Antique maple piano. \$150.00. 629-1965. 1f

**HOME FOR SALE:** Nice inside and outside; large rooms; good location; see at 2004 W. Commerce, one lot west of Hillcrest. Call owner: 629-1538. 1f

**FOR SALE:** 1961 Oldsmobile: \$50.00. Call 629-2204. 1f

**FAR AUCTION** — H-Farmall and equipment; 1 grain drill on rubber; 1955 International PKup; 1 new 16 ft. stock trailer, goose neck; 1 1/2 ft. aluminum boat, 3 1/2 h.p. motor; 1 8 ft. broadcast binder; 1 chain saw; section harrow and other miscellaneous items. O. C. Reynolds, Sidney, Texas, 1:00 p.m. Saturday, May 8th. McConal Auction Service, Cisco and Glen Rose. Will consign other equipment. 36

The S.O.S. Club met Friday April 30, in the basement of the Methodist Church. Those present were Will Reigan, Talley Ainsworth, Jewel Herwick, Miles Await, A. J. Mackey, Mr. and Mrs. Dave Putnam, Maybel Lybeck, Jena Beene, Martha Cashion, Luna Lane.

**CARD OF THANKS**  
The family of Joe A. Lawrence wish to extend our grateful appreciation to all those friends, neighbors and acquaintances who responded with food, cards, flowers, visits and deeds during the sudden death and loss of our loved one.  
We extend a special thanks to those neighbors, as well as Dr. Alexander and the hospital nursing staff and ambulance crew who acted so promptly. In addition, we appreciate the gracious kindness extended by the Arrington Funeral Home.  
Your thoughtfulness will always be remembered.  
The Family of Joe A. Lawrence.

**CARD OF THANKS**  
We wish to express our sincere appreciation, and thanks for all the help and thoughtfulness that has been shown us during our time of tragedy of losing our home and possessions.  
May God bless each of you in a special way.  
The family of Mr. and Mrs. Duane McDaniel Mr. and Mrs. J.E. McDaniel.

**For Rent**

**FOR RENT:** Small furnished house, adults only, will be vacant May 1st. Phone 629-1361, or 629-1193. 1f

**FOR RENT** — 3 bedroom, two baths, living room, dining room, kitchen, and utility room. Call 629-1566 office; 629-1095 residents. 1f

**FOR RENT:** Furnished apartment furnished cottage also small unfurnished house. P. Motel, call 629-8878. 1f

**FOR RENT:** Nice furnished cottages with carpets. P. Motel, Highway 80 west. Telephone 629-8878. 1f

**FOR RENT:** 7 room house 1 1/2 baths; 215 S. Walnut Garage and carport. Good location. 672-7396 in Abilene. 1f

**TO LEASE:** 65.8 acres for tric pump. Big water reservoirs. 4 miles west of Duster, 3 water wells with electric, less than \$40. per acre, \$2500. Call 915 673-4181. 9 to 5 Monday through Friday. 1f

**FOR RENT:** — Three room furnished apartment. Bills and cable paid; with carport. For single or couple only. 203 N. Dixie. 1f

**TO GIVE AWAY:** One beautiful solid black, approximately 6 months old, Cocker-Spaniel looking lady dog, too cooped up in town and seeks farm residence preferably. See by appointment, 629-2413. 1f

**LOST:** Small black and white curly haired dog. A reward for his return. Contact Walter Gillian, 502 S. Halbryan or 629-2094. 136

**GARAGE SALE**  
606 South Ammerman St.  
Across from practice football field.  
Odds and Miscellaneous and many clothing items for small boys.  
**Saturday, May 8**  
**ATTENTION!**  
**HILLCREST FOOD MARKET** will be closed each Friday beginning April 16, 1971.

**"We can handle anything but litter-bugs"**  
**Goode Pest Control**  
Phone 629-1179 after 3:00  
310 N. Ammerman  
roaches, ants, termites, moths, spiders  
**ALL WORK GUARANTEED**

**HAY BAILING**  
**PLOWING**  
**Experienced Operators**  
Heulon Perrin, 647-1028  
Dwight Scuire, 647-1397  
In Ranger

**CONCRETE WORK OR WRECKING OLD BUILDINGS**  
Call 629-2195  
Eastland Texas  
Sam R. Hights  
**BUILDING REPAIR**

**DAIRY TREAT**  
814 W. Main — 629-1144  
—HOME DELIVERIES—  
Open 11 a.m. to 8 p.m.  
Closed on Tuesdays  
Try Our Home-Smoked Ham Sandwiches  
Western Steak Sandwich

**EMMET MORREN PLUMBING COMPLETE REPAIR SERVICE**  
401 South Oak  
629-2092  
—24 Hour Service—

**Wanted**  
WANTED: Need woman in this area to show beautiful line of Costume Jewelry by House of Jewels. Excellent commission. Contact Mrs. Prater, 220 N. Main, Brownwood Phone 647-0338. 1f

**JOE HERRING'S Eastland Welding Service**  
SHOP and FIELD  
206 E. Burkett 629-2353  
24 Hrs.

**NOTICE**  
Concrete work of all types  
For estimates, call  
**TOMMY ROBERTS**  
Gorman, RE 4-5739

**ROY LEE SMITH PLUMBING**  
Contracting & Repairing  
Complete plumbing fixtures and supplies.  
● Water Systems  
● Electric Motors  
● Bath & Kitchen improvements  
● Trained, adequate staff  
Call a licensed plumber  
Day or Night  
629-1722

**Smith Plumbing**  
114 N. Seaman  
Eastland

**LEGAL NOTICE**  
CONTRACTORS' NOTICE OF TEXAS HIGHWAY CONSTRUCTION

Sealed proposals for constructing 7.102 miles of Grading, Structures, Base and Surfacing From US 80 in Eastland N & W To US 183 on Highway FM 3101, covered by S3172(1)A in Eastland County, will be received at the Highway Department, Austin, until 9:00 A.M., May 26, 1971, and then publicly opened and read.

The State Highway Department, in accordance with the provisions of Title VI of the Civil Rights Act of 1964 (78 Stat. 252) and the Regulations of the U.S. Department of Transportation (15 C.F.R., Part 8), issued pursuant to such Act, hereby notifies all bidders that it will affirmatively insure that the contract entered into pursuant to this advertisement will be awarded to the lowest responsible bidder without discrimination on the ground of race, color, or national origin.

Plans and specifications including minimum wage rates as provided by Law are available at the office of R. P. Haunt, Jr., Resident Engineer, Eastland, Texas, and Texas Highway Department, Austin. Usual rights reserved. (5-6, 5-13)

**LEGAL NOTICE**  
NOTICE OF HIGHWAY  
The Texas Highway Department is planning to proceed with the development of the proposed highway improvements from the end of present FM 3101, 2.0 miles NW of U.S. 80, N & W to the Intersection of U.S. Highway 183. Since the Administration of the Highway Department has approved the route and design proposed for development of this project, work will begin on the next phase of engineering necessary for the development of this project.

This road will be approximately 5.1 miles in length and extends from the end of present FM 3101, 2.0 miles NW of U.S. 80, N & W to the Intersection of U.S. Highway 183. The new facility will be a rural type two-lane highway having a 20 ft. surfaced travelway.

Maps and other drawings showing the proposed location and any other information about the proposed project are on file and available for inspection and copying at the office of R.P. Haunt, Jr., Supvr., Resident Engineer, Texas Highway Department, Eastland, Texas. (5-6)

**EASTLAND TELEGRAM**  
Phone 629-1707  
110 W. Commerce St. — Eastland, Texas 76448  
(Consolidated with Eastland Chronicle, established in 1887, and Eastland County Record, established in 1931).  
Second Class Postage paid at Eastland, Texas under the act of Congress of March 3, 1879  
Published Semi-Weekly - Thursday and Sundays  
By Eastland County Newspapers, Inc.

**SUBSCRIPTION RATES:** By carrier in city, 15¢ week or 65¢ month; one year by mail in county, \$5. per year; one year by mail in city or elsewhere in state, \$6 per year; one year by mail outside state, \$7.

**NOTICE:** Any erroneous reflection upon the character, standing or reputation of any person, firm or Corporation which may appear in the columns of this newspaper will be gladly corrected upon being brought to the attention of the editor.

H. V. O'BRIEN, Editor

Member  
**WEST TEXAS PRESS ASSOCIATION**

**ABC Plumbing & Heating**  
Contracting & Repairing  
Complete Plumbing Service  
Call 629-1200 day or nite

**BOB WILLIAMS**  
Master Plumber  
Serving Texans 25 years

**FOR SALE**  
1970 Singer Zig-Zag  
Makes Button Holes and Fancy Stitches  
48.50 Cash or 8.83 mo.  
Call 629-1603 anytime

**PERMANENTS**  
\$10 Cold Waves — \$8.50  
—Open 8:30 to 5:30—  
Close noon Wed & Sat.  
Basham Beauty Bar

**DAIRY KING**  
CHICKEN BUCKET  
Containing Full Chicken, French Fries, salad and toast.  
**OPEN 7 DAYS A WEEK**  
**Only \$2.50**

**HOUSE FOR SALE:**  
Three Bedroom; one bath,  
\$1000.00 For more information, Call Collect, 904-396-2241, for James Moore.

**TRY THE WANT ADS FOR FAST ACTION!**

**When you need sympathy and advice...**

**WE ARE HERE TO SERVE YOU**

Whatever the hour, feel free to call on us for understanding and counsel in time of sorrow.

**Arrington Funeral Home**  
EASTLAND 629-2611

**ONE-STOP SERVICE**  
FOR Total-Car Care That's D & M

**SERVICE CENTER**  
802 W. Main St.

Humble Products  
General Repair  
Air Conditioning  
Brake Work  
and Service 9 to 5  
Open 24 Hours  
**OBIE DUNCAN**  
**ROBERT MANGUM**  
Steam Cleaning  
Wash Lubrication

Tires Batteries  
Complete line accessories  
**Dial 629-8866**

**FARM AND RANCHES**  
40 Acres, 19 Acres Peanut Allot. Will G. I. \$250.00 per acre.  
40 Acres—14 Acres Peanut Allot. \$250.00 per acre.  
Three tracts near Olden-City water. Will G. I.  
100 Acres East of Lake Leon—20 Constat.  
220 Acres Stephens County—\$132.50 per acre—Good Terms.  
240 Acre tract—Nice House and barns—Stephens County—\$157.50 per acre.  
100 Acres South of Eastland—Some new ground—50 Acres Peanuts.  
481 Acres Eastland County—A real good place.  
650 Acres—Eastland County—Some Real Bottom-Lots of Pecans—Fair Improvements.  
309 Acres—80 Peanuts—Good sand—Water—Will trade.  
1756 Acres—Interstate 20—Lots of Deer.  
877 Acres—Some River Bottom —On Pavement, Eastland County. \$137.50 per acre.  
220 Acres—West Cisco—On Pavement—65 Acres Wheat allot. 1/2 Minerals—\$147.50 per acre.—\$7090.00 Down, Balance 20 years.  
600 Acres—3 Bedroom, 2 Bath Home, Eastland County.  
250 Acres near Eastland—Good land—Good Terms.  
490 Acres—Some Cultivation—\$115.00 per acre—Good Terms—Eastland County.  
226 Acres—Eastland County—70 Cultivation—Fair Improvements.  
612 Acres—East of Eastland—On Pavement—Good Place.  
501 Acres near Desdemona—80 Peanuts—Good Terms.  
155 Acres North Eastland—House and Barns—Terms.

**M. L. TERRELL REAL ESTATE**  
FARM BUREAU BLDG.  
Highway 80 East  
629-1725  
**M. L. Terrell**  
629-2443  
**R. F. Hedge**  
629-1964  
754-5414 Gorman

**NOTICE**  
Your ability to work is your greatest asset

Protect it with a HEALTH & ACCIDENT PLAN

Something good happens when you see your "Heart of Gold" man

**M. H. PERRY**  
107 W. Main St.  
Office — 629-1568  
Residence — 629-1095

**SOUTHLAND LIFE INSURANCE COMPANY**

**ROY LEE SMITH PLUMBING**  
Contracting & Repairing  
Complete plumbing fixtures and supplies.  
● Water Systems  
● Electric Motors  
● Bath & Kitchen improvements  
● Trained, adequate staff  
Call a licensed plumber  
Day or Night  
629-1722

**NOTICE**  
Eastland Auction Co. a partnership composed of Lloyd P. Coan and J. L. Hutcherson, has been dissolved as of February 1, 1971, and the Eastland Auction Co., is now a Texas Corporation under the same management. (4-22, 4-29, 5-6, 5-13.)

**YOUR PROBLEMS ARE OUR BUSINESS** —  
... or at least some of them are. For example, we Americans can't get along without the automobile. As a consequence, we have problems some of which may be very grave and expensive. So we look to insurance—which is strictly American—for what relief it will afford. It can't solve all of our troubles, but over the years, it has saved our customers an untold amount of money by simply having the kind of insurance that paid off when needed. Are you adequately insured?

**Earl Bender & Company**  
Eastland (Insurance since 1924, Texas

**OUR DAD WANTS TO SELL YOU SOME INSURANCE HOW ABOUT SEEING HIM AT**

**D. L. KINNAIRD GENERAL INSURANCE**  
207 W. Main St. — 629-2544

**JIMMY**  
**CAROL ANN**  
**DWIGHT**



# Pam Pierce Is Eastland County Pageant Entry

Pam Pierce is one of eight contestants in the Miss Eastland County Pageant to be held May 8, at Harrell Fine Arts Auditorium, Cisco Junior College.

Miss Pierce lives in Eastland and is employed by The Eastland Telegram. Pam graduated from Jim Nea High School in Olden and attended Hardin-Simmons University, majoring in social work and minoring in psychology. She has spent a summer as a social worker for the Halfway House in Galveston, which is a home for emotionally disturbed young people. Pam enjoys playing the piano and guitar and singing. Miss Pierce is the daughter of the Reverend and Mrs. Wallace R. Pierce of Olden.

The eight pretty, talented contestants who are living or attending school in Eastland County vying for the coveted title of Miss Eastland County and a chance to become the new Miss Texas or Miss America.

Tickets for the Miss Eastland County Pageant on May 8, 1971, at 8:00 p.m. at Harrell Fine Arts Auditorium at Cisco Junior College, are \$1.50

and are on sale at the Cisco Chamber of Commerce, from Dorothy White at the First National Bank, Ronnie Ledbetter, Mrs. Beth Collins at the Ranger Chamber of Commerce, and Dorothy Harris at the Ranger Hospital. Tickets are on sale at the Eastland Telegram and KERC radio station.



PAMELA JO PIERCE

# League Tour To Visit McCloud, Wilson Homes

The Civic League and Garden Club, sponsors of Tours of Homes to be held May 12, wishes to make the following corrections to their plans.

Please meet at the home of Judge and Mrs. Austin McCloud, 515 South Lamar, at 10:30. After seeing this home, they will proceed to the home of Mr. and Mrs. Tom Wilson at 512 South Ammerman.

A luncheon, prepared and served by the hostess committee, will be held at the club house at 12 noon. The cost, which includes admission to the homes and the

luncheon, is \$1.75. Reservations may be made by calling Mrs. Jeff Glazner at 629-2127.

# Thompson to Get UofT Degree

The University of Texas College of Engineering has a 230 tentative candidates for bachelor's degrees at the close of the spring semester.

Among the list of tentative degree candidates, made public by Dean Earnest F. Gloyne, includes Charles Ross Thompson, of 213 South Walnut, in Eastland.

Commencement exercises will be held May 15.

The Women's Society of Christian Service of the First United Methodist Church of Eastland, announce that they will sponsor a Garage and White Elephant Sale, at 805 S. Seaman, May 3 from 12:00 to 6:00 p.m. Monday, May 4, from 8:00 a.m. to 6:00 p.m. Tuesday.

# HOUSE FOR SALE:

Three bedroom, den, large kitchen with dishwasher, fenced yard; extra nice and clean. See at 413 E. Conner, or call at 629-1639.

# 'Girls of Year' Named by Clubs At Founders Meet

A banquet honoring the fortieth anniversary of Beta Sigma Phi was hosted by Xi Alpha Zeta Chapter of Beta Sigma Phi at Lone Cedar Country Club, Friday, April 30. Members of this Chapter and Zeta Pi Chapter and their husbands attended the event.

Highlight of the evening was the announcement of the annual "Girl of the Year" for each chapter. Mrs. Bill Leslie, Xi Alpha Zeta outgoing president, was named as the outstanding woman for her chapter, and Mrs. H. D. Alsop was selected from Zeta Pi. Each were presented a remembrance from her chapter by Marene Johnson-Joerger, sponsor and International Honorary Member of Beta Sigma Phi.

Theme of the banquet was "The Age of Aquarius" and guests were seated according to their astrological chart. Mrs. E. R. Morton led the guests in a "Zig Zag Around the Zodiac" and explained the major character traits of twelve houses in the Zodiac.

Anna Ivory Edwards presented entertainment for the guests. Approximately fifty people attended the event.



CPL. GARY LINDSEY

# Cpl. Lindsey Returns From Vietnam Duty

Marine Cpl. Gary L. Lindsey, son of Mr. and Mrs. A. J. Lindsey, Rt. 1, Ranger, has returned to the States following an eleven-month tour of duty in Vietnam.

After a 30-day leave, Cpl. Lindsey will receive further assignment extending to November at which time he is scheduled to receive his discharge.

# Jaycee-Ettes To Assist at Carnival

Eastland Jaycee-Ettes met Wednesday, April 28 in the Jaycee Hall with president Mrs. Jerry Buchanan presiding.

Members voted to have a concession stand and game booth at the Jaycee carnival to be held May 10-15 at Maverick Stadium. Mrs. Greg Sedillo was appointed chairman for the project.

Ways and means projects for the coming year were discussed and it was decided to support the state projects of the Texas Jaycee-Ettes. In other business, purchasing name tags for members was discussed and Mrs. Greg Sedillo gave a report on attending a meeting of the Mineral Wells Jaycee-Ettes.

Mrs. Richard Rossander was appointed head of the Constitution Committee and Mrs. H. D. Alsop was appointed Awards Chairman.

Members present were Mmes. Buchanan, Sedillo, Butler, Rossander, Alsop, Robert McCoy, Mel Herweck, Larry Rollins, and Ray Dunn.

# Engagement, Wedding Date Are Announced

Mr. and Mrs. Bobby Jones of Dallas announce the engagement of their daughter Diana Gail, to Michael Darwin Miller, of Denton.

Michael is the son of Mr. and Mrs. Darwin L. Miller of 305 S. Oaklawn, Eastland. The couple plan to be married May 28, in the St. Elizabeth Catholic Church of Dallas.

# Mrs. Collings Is WSCS Hostess

The William circle WSCS of the First United Methodist Church met Tuesday morning at the home of Mrs. Cecil Collings. Coffee and sandwiches were served after a business session was presided over by Mrs. Ed Willman.

Announcements were made of a garage thrift sale May 3rd and 4th at the home of Mrs. Cecil Ellis on Seaman street, and of the senior breakfast May 4th at the Methodist church. Mrs. Carl Elliott gave a most unusual interpretation of the 23rd Psalm as the devotion.

Those present were: Mesdames Turner Collie, Pearson Grimes, Henry Van Geem, C. T. Brockman, Joe Stephen, James Horton, Claude Boles, Earl Bender, Cushman, Fred Davenport, Carl Elliott, I. C. Heck, (Heck) J. E. Loughry, O. O. Mickle, E. Willman the hostess, Mrs. Collings, and her house guest, Mrs. Herbert Keaton of Big Springs.

Red Cedar wood is used most commonly in making lead pencils.

# ROLLINS & SONS MOBIL SERVICE

Call for Appointments on Wash - Grease Oil Change

601 W. MAIN 629-8816

# Mrs. Alsop Is Installed As Zeta Pi Prexy

Officers for 1971-72 were installed at the regular meeting of Zeta Pi Chapter of Beta Sigma Phi Monday, May 1. The meeting was held in the home of Mrs. Jackie Don Simpson at Lake Leon. Mrs. Don Joiner, outgoing president, read the installation letter for the following: Mrs. H. D. Alsop, president; Mrs. Don Sedillo, treasurer; and Mrs. Kenny Payne, extens. officer.

In other business, members discussed awarding a \$125 scholarship to a graduating senior girl from Eastland High School. Applications are now being taken at the high school and the recipient will be announced during graduation exercises May 31.

Sponsoring a young lady in the Eastland County Peanut Prince Pageant to be held in Grimes June 17 was also discussed.

As a summer project the club voted to paint existing and new playground equipment at Eastland Elementary School. This will be done after the new equipment is installed.

Mrs. C. R. Kinser gave the program on "The Painter's World in Your Life" and gave her own feelings about the written word through poetry she has written for various occasions.

Refreshments of sandwiches, chips, dips, and pound cake were served to Mmes. Joiner, Alsop, Brumblow, Chick, Kinser, Payne, Rodgers, Taylor, James Fuller, Ted Martin, and Walter Loader, milk by the hostess.

# Seniors Enjoy Western Party At Church Annex

The First Christian Church hosted a Western Party for the 1971 Senior Class of Eastland High School Tuesday, April 27, in the First Christian Church Annex. All members of the class and their sponsors dressed in western clothes.

A Chuck Wagon Dinner was served consisting of Bar-B-Que Ham, Potato Salad, Baked Beans, relishes, garlic bread, coleslaw, and jello-cake.

The invocation was given by Supt. Wendell Siebert and then the Rev. Eugene Williams welcomed all the seniors.

Then the tables were moved back and Mrs. Eugene Webb of Abilene led the group in a square dance.

In closing they sang the EHS School Song, and Mr. Elvin Hill, principal, gave the Benediction.

Mrs. Imogene Haun and Mrs. Bob Thornton, Senior Class sponsors, were also present.

LOOK WHO'S NEW  
Mr. and Mrs. Ray Edwards of Mesquite are happy to announce the arrival of their second daughter, Shelia Kay, born the 19th of April. Shelia Kay has one sister, Kelly Lynn, age 3 1/2.

Maternal grandparents are Mr. and Mrs. Theo Kemp of Broken Bow, Oklahoma. Paternal grandparents are Mr. and Mrs. Vic Edwards of Eastland.

# 4 Amendments Expained Here To Lions Club

Outlining details of the four constitutional amendments to be voted on May 18 in special election was County Judge Scott Bailey for members of the Eastland Lions Club at their regular Tuesday luncheon meeting.

Tommy Warford was program chairman and introduced Bailey.

President J. B. Arther presided and announced that Lion Club members had signed up two members, Don Martin and Herman Dempsey, bringing the club's total to 60 members.

James Zusspahn will have the program next week, Chairman Clint Bray announced. The club voted to instruct delegates to the district convention in Vernon this weekend to vote against a proposed re-districting plan.

Quoting a report by the Texas Legislative Council on the amendments, Bailey stated that since 1879, there have been 320 amendments to the state constitution proposed and 200 adopted.

The four amendments to be voted on May 18 are:

1. Establishment of a state ethics commission;
2. A provision that amendments may be proposed in called as well as regular sessions of the legislature; and
3. Removing the limitation on the state's ability to appropriate for assistance grants for the needy aged, needy blind and fee needy disabled.

4. Authorizing the issuance of \$100 million in bonds to provide financial assistance to cities and other public agencies for water quality enhancement purposes, and raising the interest ceiling to six per cent.

He gave pro and con arguments on each amendment as listed in the Council report.

Also elected were Suzanne Harbin senior cheerleader; Susie Miller, junior; Shirley Ford, sophomore; and Cindy Leonard, freshman.

# Cheerleaders Are Elected

Four cheerleaders were elected head cheerleader for the 1971-72 school year in elections at Eastland High School last week.

Also elected were Suzanne Harbin senior cheerleader; Susie Miller, junior; Shirley Ford, sophomore; and Cindy Leonard, freshman.

**LUZIER**  
PERSONALIZED COSMETICS  
Unconditionally Guaranteed  
Wigs—By Abbott—Now Available  
MRS. C. L. DINSMORE  
P. O. Box 243, Ranger, Texas 76470  
1210 Young Street Telephone 647-1447

**BAIRD'S TV & RADIO SERVICE AND REPAIR**  
OFFERING SERVICE CALLS  
From 5:30 to 9:30 p.m. Ph. 629-1673  
Daytime: 8 a.m. to 5:30 p.m. 629-2662  
207 S Oaklawn Eastland, Texas  
Authorized Service  
Antenna sales and installation. Free estimates out of town, call collect — 629-1673 after six only.

**SUPER SAVE MARKETS**

Soft & Lite FLOUR 5-lb. bag <b>39c</b>	Snowdrift SHORTENING 42-oz. <b>79c</b>
Nabisco FIG NEWTONS 1-lb. pkg. <b>39c</b>	Quality Inn WHOLE UNPEELED APRICOTS No. 2 1/2 can <b>29c</b>
White Swan BISCUITS 4 10-ct. cans <b>39c</b>	Nabisco Waffle Cremes COOKIES 10-oz. pkg. <b>39c</b>
SHASTA DRINK Assorted Flavors 6 12-oz. cans <b>59c</b>	Keebler CINNAMON CRISP 14-oz. pkg. <b>45c</b>
COUPON: DIXIE DOVE LIQUID 2 1/2-oz. cans <b>39c</b>	Lipton's TEA 1/2-lb. Box <b>39c</b>
READY DIPS 8-Oz. Ctn. <b>49c</b>	Health & Beauty Aids: AQUA NET HAIR SPRAY <b>59c</b>
CHEESE 8-Oz. Pkg. <b>49c</b>	TOOTH PASTE 8-Oz. Tube <b>59c</b>
Kozy Kitten CAT FOOD 3 300-gran <b>29c</b>	BAN ROLL ON 2-Oz. Tube <b>89c</b>

FRESH Pork Ribs lb. **69c**  
Pork Steak lb. **49c**  
GOOCH German Sausage 12-oz. ring **79c**  
DECKER'S TALL KORN Sliced Bacon lb. **59c**  
DECKER'S Sliced Bacon Ends 3 lb box **69c**

MED. YELLOW Onions lb. **9c**  
HARD GREEN Cabbage lb. **5c**  
GOLDEN RIFE Bananas lb. **12 1/2c**  
RED or RUSSET Potatoes 20-lb. bag **89c**  
TEXAS KNOBBY Green Onions bunch **10c**  
GARDEN FRESH Radishes bunch **10c**

**STAMPS Every Wednesday with \$2.50 Purchase or More**

HOME OWNED — HOME OPERATED  
**SUPER SAVE**  
G. A. WHITE — Manager  
PHONE 629-1191 400 S. SEAMAN

**ANNOUNCING RELOCATION OF OFFICES**  
from 107 W. Main St. to 100 S. Seaman St.  
Phone 629-1566  
**M. H. PERRY**  
Your Southland Life Agent

**CENTRAL DRUG PHARMACY**  
for Your Drug Needs  
Harvey is a Friend at Your Door  
Always there when you need him... your pharmacist's delivery man. Quick delivery can make a big difference when you need medicine or health aids. No charge, of course.  
Call 629-2681... We Deliver



# TORNADO ...

(Continued from page One) As soon as possible, and, if repeat, as soon as possible. As of the writing of this article, Eastland's tornado warning system is not up to par, but it is hoped that this will be rectified very shortly. There are certain standards that have been established by the National Weather Service, and coordinated by the Civil Defense, with respect to the signal to be blown on sirens, and these should be standardized and locked into by the local civil defense directors of Eastland, Ranger, and Cisco, if it has not already been done.

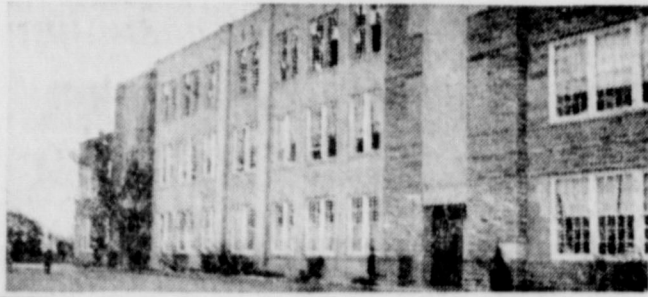
Due to the poor location of Eastland's siren, in a low spot, it is very doubtful that it can be heard any farther west in Eastland than the High School hill during an actual storm, mainly because of the prevailing wind currents from the northwest, west, and southwest during the progress of the storm. Consequently, it would be a very

desirable situation if another siren could be mounted on the City Park hill, tied in with the present existing siren, so that both would blow simultaneously. This is important, so that the persons living in the west part of town can be alerted. Sometimes these storms occur during the early morning hours, when most people are asleep, and it is very doubtful, as I have said, that the present siren could be heard in the Hillcrest area during a storm.

Once again, be very careful, and very accurate, in reporting storm clouds, and their movement.

Also, it is important to remember that the basic movement of weather fronts in the northern hemisphere, and in our part of Texas, is from east to west, or northwest to southeast, or southwest to northeast. Storm clouds and fronts do not originate in the Fort Worth - Dallas area, and migrate westerly. So, in keeping a lookout for storm clouds, look to the west, northwest, or southwest. And, in addition to this, it is well to remember, that storm clouds do not "turn around and come back." This is against the laws of nature. True, clouds within a storm seem to move in various directions, and are carried about by winds currents, but the prevailing movement will keep a storm cloud going away from you, once it has already gone over. This is not to infer that tornado clouds and funnels, themselves, always go in a straight line, as their path of destruction is very erratic. However, the storm clouds and fronts that breed tornadoes, will continue in a generally easterly direction, or some variation of easterly.

Citizens of Eastland, Ranger, and Cisco, and other area towns, should report funnel clouds in the air, or tornadoes on the ground, immediately by telephone to the local police department concerned, and, as has been previously stated, be very specific about the location, and direction of travel, and, be sure of what you are reporting. Some storm clouds have depressions hanging down from them that resemble very small funnel clouds, and these should not be confused with an actual funnel cloud. These are formed by inversions, and sometimes wind currents. They should not be reported as funnel clouds, as this could unnecessarily set off a torna-



Carbon School Storm Damage Photos by Dennis Allen

do warning whistle. And, one final thought. A tornado is most likely to occur during and immediately preceding a thunderstorm. So, be especially watchful during these times.

Spending the past weekend with Mrs. Ed. F. Willman was Mrs. Bill Willman, Mrs. Walter Willman, Mrs. A. E. Grose, Mrs. Hue Shearer, all of Mason.

**With so many Chrysler-Plymouth values coming through for you, why buy anywhere else?**

We offer you more car, and more kinds of cars within your price. There's Duster—the big enough but small enough Plymouth. America's hot selling compact.

There's Satellite. Road Test calls it the U.S. Car of the Year. Get our deal and you'll call it the year's best buy. There's Fury, featuring right now the Fury Gran Coupe—a luxury package that outclasses any car in its class.

Pick your size. Pick your price. Pick your deal. We've got 'em all. Why go anywhere else?

**RUSHING MOTOR CO.**

**\$201 OFF on Girdles\***  
**\$101 OFF on Bras**

**Sale**  
On Famous **PLAYTEX® '18 HOUR' BRAS & GIRDLES**

Both made with Spanette®, the exclusive Playtex stretch fabric with the exact combination of strength and softness for truly comfortable support.

**A. Shortie**—perfect for panty hose  
**B. Bandeau**—perfect for today's natural look. Self-adjustable cups in a unique frame of lightweight elastic, adjustable stretch straps, smooth profile seams with no see-through feature.

**Girdles \$2.01 Off\***  
Shortie—Reg \$10.95, Now \$8.94  
Average Leg Panty—Reg. \$11.95, Now \$9.94  
Long Leg Panty—Reg. \$12.95, Now \$10.94  
Girdle—Reg. \$10.95, Now \$8.94  
\*Brief—\$1.01 Off—Reg. \$8.95, Now \$7.94  
White, sizes XS, S, M, L, (XL, XXL, \$1 more)

**Bras \$1.01 Off**  
Bandeau—Reg. \$6.00, Now \$4.99  
White, Sizes A, B, C (D cups \$1 more)  
Longline—Reg. 9, Now \$7.99  
White, Sizes B, C (D cups \$1 more)

**HARLEY'S**  
EASTLAND

Cup facing: 100% Nylon. Cup and band lining: 100% Cotton. Center and side back elastic: Nylon Spandex. Band facing and back: Rubber, Nylon. Elastic: Rayon, Cotton, Nylon, Spandex. Exclusive of other elastic. MADE BY INTERNATIONAL PLAYTEX CORPORATION

**for Mom**

You'll Know Your Gift Is Right, If You Pick It At

**ALTMAN'S**  
STYLE SHOP

# ANNOUNCING... THANK YOU!

**BIG SPRING SAVINGS**

**LUMBER and BUILDING SUPPLIES**

This is to formerly announce that we have purchased HANNA HARDWARE AND LUMBER CO., at 715 W. Main St., in Eastland and look forward to the pleasure of serving your every building supply need.

We realize that we are undertaking a gigantic step in attempting to replace the Hannas as operators of this fine company, but we accept it as a challenge and will therefore work harder to see that you are served as faithfully as you have been in the past here.

You'll find that we are completely stocked in materials, and offer fast, courteous service throughout this area. Feel free to call us about your building supply needs and we'll be glad to figure with you on every job.

We'll still be operating under the Hanna Hardware and Lumber Co. name and the welcome mat is always out. Come by, get acquainted and let us have the opportunity of serving you soon.

We believe that Hanna Hardware and Lumber Co. is one of the really outstanding facilities in this area and we will work extra hard to maintain that high standard.

**TIME TO REMODEL YOUR HOME**

Your business is appreciated and we welcome the opportunity to serve you, from the smallest bag of nails to a complete construction job.

"Come, see us!"

Buddy Rogers  
Bill Harrison  
J. D. Harrison

The really hard part about selling a business is finding a way to adequately tell your friends and customers Thank You. We have sold Hanna Hardware and Lumber Co. to a group of men who we know to be capable businessmen, and recommend them to you without reservation.

We've been in the lumber yard business for 26 years and as you could guess, it's no easy matter to leave it, but after other business interests prompted the sale, we were happy to find buyers of the calibre who will be the new owners. Mr. Buddy Rogers is first-rate and you'll find him ready to serve your building needs in every way.

Now back to the matter of saying "Thanks;" First of all, words just can't do justice to the warmth we feel in our hearts. Your patronage over the years has just been the thing that helped us make a go of the lumber business. We realize that our customers are the finest people on this earth, and for as long as we live, we will be truly indebted to the fine people of the Eastland area. Selling nails and lumber doesn't do it, but having had the opportunity to work with and for people like you, has made it all worthwhile. From the bottoms of our hearts, we THANK you for having let us serve you.

We will continue to make our home in Eastland.

Mr. and Mrs. Minton Hanna and children  
Mrs. Bernard Hanna and children.

# HOME IMPROVEMENT MONTH



# J R B

## SUPER MARKET

We Give Double "S&H"  
Green Stamps on Wed.

Quantity Rights Reserved — No Sales to Dealers  
Prices Effective Through Saturday, May 8  
PRICES GOOD IN FASTLAND

# Unbeatable prices

Look at the way we've cut prices and you get S&H Green Stamps, too!

# Unbeatable stamps

PATIO

## MEXICAN DINNERS

Frozen — 12-oz.

2 FOR 89¢

FALCON

## PAPER PLATES

69¢

100-Count Package

UNBEATABLE PRICE + STAMPS

**SAUERKRAUT** Del Monte 303 can **5/\$1**

UNBEATABLE PRICE + STAMPS

Crushed or Sliced **PINEAPPLE** No. 2 can **3/\$1**

UNBEATABLE PRICE + STAMPS

Del Monte **PINEAPPLE JUICE** 46-oz. **3/\$1**

UNBEATABLE PRICE + STAMPS

**TEA** Lipton Instant 3-oz. **99¢**

UNBEATABLE PRICE + STAMPS

**TEA** Lipton 1/4-lb. **39¢**

UNBEATABLE PRICE + STAMPS

**CREAM PIES** Mortons **29¢**

UNBEATABLE PRICE + STAMPS

Mortons **BREAD DOUGH** 2-1 lb. loaves **39¢**

UNBEATABLE PRICE + STAMPS

Mortons **MEAT PIES** 3-oz. **4/\$1**

SAVE 15c WHEN YOU BUY A 1-Lb. CAN of FOLGER'S COFFEE



SPECIAL PRICE WITH THIS COUPON **69¢**

WITHOUT COUPON 84¢

Good Thru 5-8-71



HERE'S ALL YOU DO:

For every \$2.50 purchase (excluding cigarettes) you will receive a Bonus Shield to fit one of the shields on this card. You get 2 shields if your purchase totals \$5.00, 3 if it totals \$7.50, 4 if it totals \$10.00 etc.

THERE'S NO LIMIT TO THE STAMPS YOU CAN GET

Each complete horizontal or vertical line is worth 50 stamps if your card is not completely filled when you turn in. Fill as MANY CARDS AS YOU CAN! Bonus shields may end upon an announcement. All cards must be returned within ten weeks after this announcement.

**CHEESE PIZZ MIX** Krafts 30-oz. pkg. **69¢**

**TOMATO JUICE** Del Monte 46-oz. can **3/\$1**

**CATSUP** Del Monte 14-oz. bottle **4/\$1**

DEL MONTE **CUT GREEN BEANS** 303 can **5/\$1**

Del Monte Cr. Style Golden Del Monte Family Style

**CORN** 303 can **5/\$1** **CORN** 303 can **5/\$1**



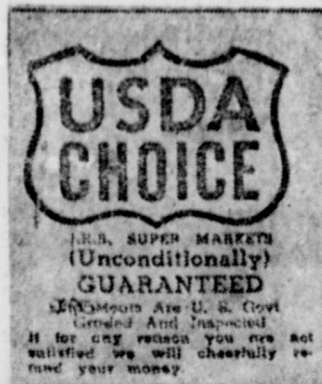
**SPINACH** Del Monte 303 can **5/\$1**

DEL MONTE **MIXED VEGETABLES** 303 can **5/\$1**

**SWEET PEAS** Del Monte 303 can **5/\$1**

**FRUIT COCKTAIL** Del Monte 303 can **4/\$1**

**TOMATO SOUP** Shurfine 10-oz. can **10/\$1**



## Unbeatable meats

LEAN & TENDER — Excellent to Bar-B-Q

**Pork Steak** LB. .... **49¢**

A.F. No. 1 Quality **SLICED BACON** lb. **63¢**

Gooch Blue Ribbon **SLICED BACON** lb. **65¢**

Armour Mira Cure Pan Size—12-oz. pkg. **57¢**

Rindless Dankworth **SLICED SLAB BACON** lb. **59¢**

Dankworth—20-oz. pkg. **BEEF PATTIES** **\$1.00**

Gooch Blue Ribbon—pkg. of 8 **CHICKEN FRIED PATTIES** **\$1.00**

USDA INSPECTED—FARM FRESH **FRYERS** WHOLE LB. **27¢**

U.S. Government Inspected Grade "A" **FRYERS** lb. **29¢**

U.S. Government Cut up Pan Ready **FRYERS** lb. **35¢**

A.F. Assorted Smoked **Smoked Sliced Meats** **3/\$1**

Deckers Bulk **Franks** pkg. of 18 **1.00**

Gooch Blue Ribbon **Hot Links** pkg. of 8 **1.00**

A.F. All Meat **Corn Dogs** pkg. of 8 **1.00**

Pre Cooked Heat and Eat **Fish Sticks** pkg. of 30 **1.00**

A.F. All Meat **Sliced Bologna** 6-oz. pkg. **3/\$1**

SHOP MADE—Seasoned Just Right **PORK SAUSAGE** **3** LBS **\$1.00**

**MELLORINE** JRB 1-gal. can **3/\$1**

**YOGURT** Foremost 8-oz. **4/\$1**

## EVERY DAY LOW PRICES

Corn Mayfield 303 CAN **6** FOR **\$1.00**

Turnip Greens Wolco

Green Beans Alien Cut

Irish Potatoes Sliced Shurfine

Mustard Greens Wolco

Hominy Van Camp—No. 2

Diced Carrots Shurfine 303 CAN **5** FOR **\$1.00**

Whole New Potatoes Del Monte

Diced Rutabagas Sunshine

Standard Tomatoes Gold Tip

Sweet Potatoes Cut Showboat

Orange Juice Shurfine No. 2

Standard Tomatoes Gold Tip

## Unbeatable produce

Texas Fresh **YELLOW SQUASH** lb. **19¢**

Texas Fresh **CORN** 5 ears **69¢**

**GREEN ONIONS** Texas Fresh bunch **10¢**

**BANANAS** Golden Ripe 2 lbs. **25¢**

**RED GRAPEFRUIT** Texas Sweet lb. **15¢**



**'SPECIALLY FOR...  
MAGNIFICENT  
MOM!  
5.99**

Pack-and-go robe in pencil slim multi color stripes tailored to slimming perfection in Arnel® triacetate jersey that's wrinkle free, washes like a hankie and needs little ironing. Pocketed on the double, brassy buttoned, and always keeps its fresh good looks. Sizes S/M/L/XL



**mode o'day**  
WEST SIDE OF SQUARE

## American Heritage -- 6th Grade Thinking

**THE FREEDOM OF OWNERSHIP**  
We have many freedoms in America. One is the freedom to own private property. When we own private property, in America, everyone respects our rights. We can be sure no one will trespass. No one can search our homes without a search warrant.

In Communist countries we can't own property. All houses, businesses, and apartments belong to the government. We can decorate our homes as we wish. We can plant any kind of flowers, trees, or shrubs in our yards. We can own many objects. We can own homes, businesses, toys, cars, and many other objects. This is a freedom to be proud of.

### MAKING MONEY AND KEEPING PROFIT

In the United States when you make money, you are able to keep the profit and spend the profit as you want to. Only a small amount of the profit goes for income tax. Many people think it is wrong, but it is not that bad because we have a well organized government, good highways, parks, welfare, social security, and many other things. Making money plays a big part in the American way of life.

### FREE TO EARN MONEY

People in America are free to earn money the way they want. They have freedom to earn money if they want to be a cow herder or a business man. People can profit from their work as much as they would like and they can do what they want with their money just so they don't break the law.

### MAKING A PROFIT

In America I am free to make a profit. I can keep any money I earn. I can earn money any way I wish. I can earn money many ways. I can earn money by mowing lawns, having garage and bake sales, and I can own a business. This is a great freedom.

### EARNING MONEY

We have the freedom to have a business and make a profit. Parents make a living by having a business and making a profit. When you are youths you work in gasoline stations, mow lawns, wash cars, and little odds and ends for money. When we do earn money, nobody can take it away.

### PROFIT FROM WORK


We are free to make our own profit from the work we

do. Some communist countries have government where the people do not earn their own money. When we make a profit, it is ours to keep. We earn money in many ways. Without our own profit we wouldn't make much progress. I think it's wonderful to make our own profit.

### WE ARE FREE TO MAKE PROFITS AND EARN MONEY

We are free to own our own business and make profits. When an owner buys a product from the factory, he is free to sell it for more than he paid for it. That way we make a profit. We are also free to earn money. We are free to do what we want and where we want. We are also free to keep the profit we make. We are free to spend this profit the way we want. We are able to share a profit for the hard work.

**EDDIE'S**



**OFFERS THE BEST IN AUTO SERVICE**

You'll enjoy depending on us to take care of all your auto service needs

**SERVICE CENTER**  
American Automobile Association  
YOU CAN DEPEND ON FREDDY PEVEHOUSE  
Call 629-8838  
—FREE PICKUP—  
GUARANTEED SERVICE & TOP PHILLIPS PRODUCTS  
West Main St.

## SOMETHING NEW HAS BEEN ADDED AT R & W TV SALES & SERVICE

All the newest records and tapes are now available at our store

Visit our NEW Stereo Record and Tape Department This Week for The Latest Hits and Singers

# MUSIC OF OUR TIME

## COLUMBIA RECORDS



### TITLES AVAILABLE

	COST
1. Pearl-Janis Joplin	4.97
2. Love Story--A. Williams	4.97
3. Abraxas--Santana	4.97
4. Chicago III (2 LP's)	7.97
5. Johnny Winter & Live	3.97
6. Rose Garden--L. Anderson	3.97
7. For Good Times--Ray Price	3.97
8. Stony End--B. Streisand	4.97
9. Bridge--Simon & Garfunkel	4.97
10. Marty's Greatest Hits	3.97
11. Different Strokes	1.00

ALL RECORDS AND TAPES ARE AT DISCOUNT PRICES!





MCTOWN - GORDY - SOUL - RARE EARTH ALBUMS

## SPECIAL SALE ALBUMS AVAILABLE

	COST
1. Diana - T.V. Sound Track - Diana Ross	\$4.97
2. Third Album - Jackson 5	4.97
3. Temptations Greatest Hits - Vol. 2	4.97
4. Ecology - Rare Earth	4.97
5. Get Ready - Rare Earth	4.97
6. Jackson 5 - ABC	4.97

WE SPECIAL ORDER RECORDS AND TAPES

**OUTSTANDING ASSORTMENT--  
COUNTRY & WESTERN  
STEREO-ALBUMS--**

**\$1.49**

**DASANIT**  
insecticide/nematicide  
gets at the "root" of your peanut problems.

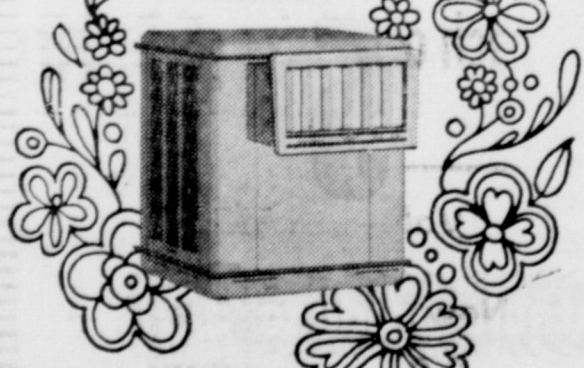


Provides outstanding control of nematodes and Southern corn rootworm.

**CHEMAGRO CORPORATION**  
KANSAS CITY, MISSOURI 64120

4-15, 4-22, 4-29, 5-6, 5-13, 5-20, 5-29

**Dearborn Deluxe**  
turns summer  
springtime  
cool



Cool one room or your whole house with a Dearborn Deluxe Air Cooler. In a range of sizes, all whisper-quiet, durable, dependable. Metered flow of water over pads gives constant level of efficient cooling, and the Deluxe has "slip stream" louvers to direct air swiftly in five directions. Rocker switch controls. Sound cushioned mountings, permanent type bearing lubrication. Rugged recirculation pump. Seamless, no-weld pan that resists rust. And the Dearborn Deluxe Air Cooler costs so little to operate and maintain.

**Dearborn**  
**WESTERN AUTO ASSOCIATE STORE**  
629-2011 -- EASTLAND

**Round** tells the world you've got the best



**Carrier**  
**\$487**

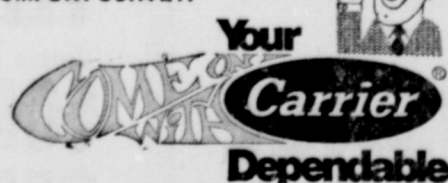
PLUS INSTALLATION  
Price is for the Carrier Rounder Model 38GC 36,000 BTU Condensing Unit.

Compare the Features and see why the Carrier Rounder is your Best Air Conditioning Buy!

- Dual Overload Devices
- Factory Wired Controls
- Low Speed Fan
- Exclusive Round Design
- Brass Service Valves
- Upflow Air Discharge
- Weather Armor Cabinet
- Fusible Plug Relief

We're another reason Carrier is your best buy. We're a Carrier Dependable. We'll be here when you need us. Our years of experience and technical training means a better total system for you. We sell and service the world's finest air conditioning equipment—made by the industry's most experienced manufacturer—Carrier.

CALL US TODAY FOR A FREE HOME COMFORT SURVEY.



**Smith Plumbing**  
Eastland



## CARBON NEWS

Rev. and Mrs. Dick Murray visited her brother, W. B. and O. J. Nowlin of Fort Worth during the weekend.

Mr. and Mrs. Jimmie Shaw of Austin and Jo Ann Been of SWTSU, San Marcos spent the weekend with the Truman Beens.

Mr. and Mrs. Pat Guy and daughters of Tahoka, spent the weekend with their parents, Mr. and Mrs. Otis Guy and Mr. and Mrs. Pete Hallmark.

Mrs. Jewell Jackson who had surgery on her foot the first of last week in Eastland Surgical and Medical Clinic, went to Temple to Scott and White Hospital.

### R&I

**Cemen\* Contrator**  
No Job Too Small or Big  
House Leveling, Carpenter  
Work and House Painting.  
Phone 629-1096 Collect  
Eastland  
Free Estimates

**A-1 OFFICE MACHINES**  
SALES & SERVICE  
All cash registers & office  
Machines

Call 629-1707 Eastland  
Call 647-1101 Ranger  
Call 442-2244 Cisco

## INCOME TAX FRANCHISE AVAILABLE

H & R Block is looking for a responsible individual capable of operating a volume tax business. Prior tax knowledge, while helpful, is not necessary. The Block franchise is compatible with most other service-oriented businesses. We furnish:

- Training
- Advertising
- Clients
- Supervision
- Supplies
- Nat'l Image

**H & R BLOCK**  
America's Largest Tax Service with Over 5,000 offices

TO: **BLOCK** Box 7187  
Dallas, Texas 75209

Please send me your brochure outlining the H & R Block franchise program. I understand there is no obligation on my part.  
Name \_\_\_\_\_  
Address \_\_\_\_\_  
City, State, Zip Code \_\_\_\_\_  
Telephone No. \_\_\_\_\_

CLIP AND MAIL TODAY

## CUSTOM HOMES

**Remodeling - Repairs**  
Quality Work - Financing Available  
Free Estimates and Planning Assistance  
**SLAUGHTER & ASSOCIATES**  
700 Ave. D - Cisco  
Phone 442-3875 Nights 442-2225

...ance to Eastland Memorial Hospital, but luckily, none were seriously injured and they were dismissed the following day.

Small garden stuff was left in shreds and all of the foliage was stripped from lots of trees. Carbon Tracing Company had extensive damage as well as a number of homes where window lights were broken and heavy roof damage, some buildings required new roofs. All in all though, we feel very fortunate that there were no lives lost nor any serious injuries.

Mrs. Fannie O'Brien of Eastland visited her brother, Bob Hastings, and family over the weekend.

Mr. and Mrs. Cliver Murray and son of Pleasanton spent the weekend with her mother, Mrs. Callie Vaughn.

Mr. and Mrs. Jake Rhyne of San Antonio visited Mrs. Mary Jackson, Mrs. Pearl Snodgrass and Mr. and Mrs. Clayton Rhyne last week and attended the funeral of her brother, Charles Redwine, in Cisco.

Visitors of Mr. and Mrs. R. D. Threat Sunday were Mr. and Mrs. Gene Barton and a little daughter, Gena, Mr. and Mrs. Bill Harris and Mrs. Nora Holt all of Breckenridge, Mr. and Mrs. Odis Dugan of Ranger visited in the home on Thursday.

Mr. and Mrs. Athol Clabern of Trent visited her mother, Mrs. Harry Hall, last week.

Mr. and Mrs. David Cozart and children spent Sunday with her parents, Mr. and Mrs. J. W. Post, of Breckenridge.

Mr. and Mrs. Floyd Couch of Stephenville visited his sister, Mr. and Mrs. Clayton Rhyne, Sunday.

## H. A. Murphys Are Anniversary Honorees

A reception in the home of Mr. and Mrs. H. A. Murphy on Sunday afternoon honored the couple on the occasion of their 50th wedding anniversary.

Hosts for the occasion were their daughters, Mrs. Josephine Stroud of Abilene, Mrs. Wesley Poyner of Ranger and their families.

It was a happy occasion as guests greeted the honorees and presented them with gifts.

The refreshment table was covered with a white crocheted cloth with underlay of gold satin. A six-branch gold candelabra was surrounded by arrangements of gold and white mums. The three-tiered cake, a masterpiece of confectioner's art, was adorned with gold roses and crowned with the anniversary date.

Hostesses served cake with gold fruit punch, salted nuts and mints.

Henry Murphy and Lois Fissel Murphy are natives of Missouri, the Murphy family coming to Texas in 1897, the Fissel family arriving at a later date. The couple exchanged wedding vows on April 27, 1921 in Eastland. They resided in Eastland where he was city mail carrier. Upon retirement fourteen years ago, they moved to Ranger and reside at 715 6th St.

With ample time for hobbies, Mrs. Murphy enjoys handwork, particularly cro-

## Rep. Joe Hanna Named to Panel To Seek Help

State Rep. Joe Hanna is one of a group named to go to Washington next week to plead for additional drought help from the Department of Agriculture, it was learned here Friday.

Rep. Hanna was named by Speaker of the House Gus Murcher along with Reps. Poerner, Carrillo, Holmes and Ligardi.

U. S. Sen. Lloyd Benson is coordinator and the Texas group will join with the Texas delegation in seeking additional help for this drought-stricken state.

The group will leave Monday and return Thursday, and Rep. Hanna reports the drought conditions to be bad throughout the state.

### FREE

ESTIMATES ON new roofs only  
Repair of Your Old Roofs  
Residential and Commercial  
"ALL N.W. WORK GUARANTEED"  
**TRI-CITIES ROOFING CO.**  
Call  
Nobil Sculera  
629-2370  
EASTLAND

Come to

## Jammie's

For Good Eating  
Every Day in the Week

MONDAY—  
Fish Night!

TUESDAY—  
Mexican Food Night!

WEDNESDAY—  
Fried Chicken!

THURSDAY—  
Barbecue!

HOME MADE PIES!

## JAMMIES RESTAURANT

200 West Interstate 20  
Cisco, Texas

## BEN FRANKLIN®

# GIFTS FOR MOM



Liquid BUBBLE BATH  
Concentrated foam, Germicidal-look plastic. 100



Create a Showcase Kitchen!  
**6-PC. CASSEROLE SETS**  
Three round, covered casseroles... 2-qt., 1 1/2-qt., and 1-qt. sizes. Delicate Meadow Green pattern on white covers by Fire-King. Reg. 5.49 4.00



Arched or Laser Blue CANDY DISHES  
Covered ceramic, 10 1/2" x 10 1/2" handled dish. Each 77¢



Cut Crystal  
**12-PC. CARD PARTY SETS**  
Everything you need for a successful party... four 10-oz. beverage tumblers, four coasters, two snack bowls, two ashtrays. Reg. 4.00 3.00



Hanging Scale with Fruit 77¢

**BEN FRANKLIN**  
master charge  
209-211 MAIN  
RANGER, TEXAS

**KEYS CUT**  
while you wait!

...Nurses' Association, Division No. 64, will meet Monday, May 10, at 7:00 p. m. in the Conference Room of the Eastland Memorial Hospital.

### NOTICE:

Back Hoe and Front End Loader Work Wanted.

Diesel Machines; Go Anywhere, Reasonable Rate.

CALL 629-1387

## MAJESTIC

FRI - SAT - SUN MAY 7-8-9  
OPEN FRIDAY AT 7:15  
MAN CALLED HORSE at 7:33 Only  
THE REIVERS at 9:32 Only  
SAT - SUN Open at 1:45  
THE REIVERS at 2:00-5:47-9:34  
MAN CALLED HORSE at 3:48-7:35



Steve McQueen  
"The Reivers"

A Cinema Center Films Presentation  
A National General Pictures Release



The most electrifying ritual ever seen!

RICHARD HARRIS as  
"A MAN CALLED HORSE"

A NATIONAL GENERAL PICTURES RELEASE A CINEMA CENTER FILMS PRESENTATION



"Because Someone Lived"

## RAWLINS MONUMENTS

Since 1884  
If We May Assist You,  
Please Call Collect

Roy Taylor 500 E. 8th St. Cisco, Tex.

Call 442-1127

## CISCO DOLLAR DAYS AT

# HEIDENHEIMER'S

ASK FOR YOUR TREASURE CHEST TICKETS

Short Sleeve

# SPORT SHIRTS

Mens or Boys

\$1.98 EACH

No-Iron Solids & Fancies

3 FOR \$5.00

Boys

No-Iron

## JEANS

Levis

Farahs

Saddle Kings  
Wranglers

Sizes 3-12

Regulars & Slims

6 Colors

Values to \$8.00

2.69 ea.

or 2 Pairs for \$5.00

MISSES and LADIES

## HOT PANTS

Solids or Stripes

\$2.99 each or 2 for \$5.00

Sizes 6 to 16

Bring a friend and Save

Values to \$10.95

Ladies  
Hi Brows  
Deb Towner  
Gisela

# SHOES

Now \$4.40 each or 2 Pairs for \$8.00

## PIECE GOODS SPECIAL

Dacron Double Knits  
60-Inch—One to Five-yard Lengths.....yd.

2.98

### Sportswear Fabrics

In Solids and Patterns  
Heavy Weight  
No-Iron  
45-Inch  
Doubled & Rolled  
Reg. 99¢ & 1.49

88¢ yd.

No-Iron

### Broadcloth

In Solid Prints  
Mostly  
45 in widths

44¢ yd.

36-Inch

### Muslin

Unbleached

Good Weight

pkg. of 5 yds. \$1



★ HOSPITAL NEWS ★

**EASTLAND HOSPITAL**  
Patients in Eastland Memorial Hospital Wednesday morning were reported as follows:

A. V. Gilmore, Gorman.  
Mary Burns, Comanche.  
Willie Terrell.  
Charles Werley.

Raymond Garza, Ranger.  
Beverly Cupps, Cisco.  
Gladys Rhodes, Olden.  
Bernice Grieger.  
Nina Hart.  
Pansy Duncan.  
Eugene Merton.  
Ralph Goodwin.  
Bascom Roberson.

Doyle Carter.  
Willie Carter.  
Inez King.  
Velma Gryder, Cisco.  
Elizabeth Pyle, Cross Plains.  
Jessie Freeman.  
Ada Franklin, Cisco.  
Gertie Lasater.  
Francis Kanady, Cisco.  
Earl Pyle, Cross Plains.  
Florence Taylor, Cisco.  
Dicy Spink, Cisco.  
Herman Schaefer, Cisco.  
Porferio Gutierrez.  
Sadie Goodie, Ranger.  
Bernie Lee.

Clara Smith, Cisco.  
Baby Girl Crawley, Ranger.  
Baby Boy Chaney.  
Julie Chaney.  
Ira Hanna.  
Lillie Brown.  
Mary Rains, Cisco.  
Agnes Hodge.  
Ralph Swan, Putnam.  
Dee Peters, Cisco.  
Carrie Capers, Gorman.  
Noble Squiers.  
Otis Lee, Brownwood.  
Laura Been, Cisco.  
Helen Crawley, Ranger.  
Billie Tarleton, Cisco.

Vara Lucille Weatherby, Cisco.  
Rufus Dennis, Gorman.  
Willie King, De Leon.  
Pansy Smith, Minneapolis.  
Burva McKelvan.

**RANGER GENERAL**  
Mrs. Frank Rodgers.  
Mrs. Viola Stroud.  
Mrs. Lupe Gomez.  
Mrs. Ellen Cole.  
Mrs. Joyce Hopson.  
Mrs. Bessie Gallihar.  
Mrs. Faye Boustead.  
Mrs. Earl Moon.


Mrs. Jim Turner.  
Mrs. Bodeca C. Boyd.  
Mrs. Maybelle Gordon.  
Mrs. Verdia Morris.  
Sam Heath.  
Claude Gilliam.  
W. M. Brown.  
Mrs. O. L. Justice.  
Albert Johnson.  
Mrs. Wanda Isabell.  
Mrs. Mary Young and baby boy.

The average weight of the human brain is 48 ounces.

**MAGNETIC CAR SIGNS**  
PHONE 442-3425  
For All Your Sign Needs  
**ADCRAFT SCREEN PRINTING**  
112 W. 6th St. Cisco, Texas

**LOW, LOW PRICES EVERY DAY Plus SPECIALS! SAFEWAY**

**Gladiola Flour**  
For All Your Baking!  
Safeway Special!



5-Lb. Bag **49¢**

**Cling Peaches**  
Sliced, Val Vita  
Safeway Big Buy!



29-oz. Can **25¢**

**Dog Food**  
Twin Pet, Dogs Love It!  
Safeway Big Buy!



15-oz. Can **8¢**

**Ivory Soap**  
Personal Size (3¢ Off Label)  
Safeway Special!



4-Bar Pkg. **25¢**

**Paper Towels**  
Truly Fine, Assorted Colors  
Safeway Big Buy!



175-Ct. Roll **29¢**

**Breeze**  
Detergent, Giant Size (15¢ Off Label)  
Safeway Special!



2-Lb., 6-oz. Box **69¢**

**USDA CHOICE**



**Fresh Pork Chops** Quarter Sliced Pork Loin —Lb. **58¢**

**Boneless Roast** \*Bottom Round or \*Pike Pork, USDA Choice Grade Heavy Beef —Lb. **\$1.19**

**Loin Tip Roast** Boneless, USDA Choice Heavy Beef —Lb. **\$1.39**

**Ground Beef** Safeway Club Pak 2-Lb. Chub **\$1.35**

**Boneless Steak** Chuck, Center Cut, USDA Choice Grade Heavy Beef —Lb. **\$1.09**

**Beef Tenderloin** White, Tully Trimmed, USDA Choice Grade Heavy Beef —Lb. **\$2.25**

**Top Sirloin Steak** Boneless, USDA Choice Grade Heavy Beef —Lb. **\$1.69**

**New York Steak** Boneless Strip, USDA Choice Grade Heavy Beef —Lb. **\$2.29**

**Rath Bacon** Sliced, Black Hawk 1-Lb. Pkg. **69¢**

**Armour Bacon** Sliced, MiraCure 1-Lb. Pkg. **69¢**

**Rath Bacon** Thick-Sliced, Black Hawk 2-Lb. Pkg. **\$1.35**

**SHOP SAFEWAY...COMPARE...SAVE!**  
Come in and Shop around, fill your cart with many bargains and Specials! Stock up on fine foods for less money.

- ★ Extra Money Saving Safeway Brands
- ★ Low Prices on Health & Beauty Aids
- ★ Tops in Dairy Foods & Fresh Baked Goods
- ★ Only USDA Choice Grade Heavy Beef
- ★ Rainchecks which guarantee you'll get advertised Specials!
- ★ Wide Selection of National Brands
- ★ Finest, Freshest Fruits & Vegetables
- ★ Plus Specials Every Day!

Remember...IT'S THE TOTAL FOOD BILL THAT COUNTS!

**EVERYDAY LOW PRICES!**

**Hormel Spam** 57¢  
For Lunches or Main Dishes —12-oz. Can

**Tomato Juice** Del Monte Rich Flavor! 46-oz. Can **37¢**

**Green Peas** Del Monte 17-oz. Can **23¢**

**Fruit Cocktail** Town House 16-oz. Can **25¢**

**Vienna Sausage** Libby Tasty Sausage! 4-oz. Can **23¢**

**Austex Beef Stew** Meat & Sauce 15 1/2-oz. Pkg. **47¢**

**Potted Meat** Armour Sandwich Spread 2/31c

**COMPARE LOW PRICES!**

**Crushed Wheat** 29¢  
Break. Skylark, Special! —1-Lb. Loaf

**Chocolate Milk** 58¢  
Lucerne, Special! —1/2-Gal. Carton

**White Bread** Mrs. Wright's \*Reg. or \*Sandwich, Sliced Loaf 1 1/2-Lb. **29¢**

**French Bread** New Orleans Style, Skylark 1-Lb. Loaf **33¢**

**Lucerne Yogurt** Assorted Flavors 8-oz. Ctn. **7c**

**Fresh Milk** Lucerne Low Fat 1/2-Gal. Carton **3c**

**Cottage Cheese** Lucerne, Assorted Ctn. 16-oz. **40c**

**Biscuits** Mrs. Wright's \*Sweet Milk or \*Buttermilk 10-Ct. Can **8¢**

**COMPARE LOW PRICES!**

**Banquet Dinners** 38¢  
Assorted, Frozen, Big Buy! —Reg. Pkg.

**Lemonade** Scotch Treat, Frozen 6-oz. Can **10¢**

**Popsicles** Assorted Flavors 4-Ct. Pkg. **29¢**

**Cream Pies** Bel-air, Assorted 14-oz. Pkg. **9c**

**Golden Corn** Whole Kernel, Bel-air 10-oz. Pkg. **22c**

**Cooked Shrimp** Peeled & Deveined, Brilliant 10-oz. Pkg. **99¢**

**Mixed Vegetables** Bel-air 10-oz. Pkg. **3c**

**Eggplant Sticks** Mrs. Potts 7-oz. Pkg. **41c**

**Honey Buns** Morton, Frozen, Sweet Treat! 9-oz. Pkg. **31¢**

**Bel-air Waffles** Frozen, Breakfast Favorite! 6-Ct. Pkg. **10¢**

**EVERYDAY LOW PRICES!**

**Toilet Tissue** 29¢  
A-1, Thrifty! Safeway Big Buy! —4-Roll Pkg.

**Sanitary Napkins** Truly Fine \*Reg. \*Super 24-Ct. Box **69¢**

**Bondware Cups** Stripe Design, 9-oz. Cold Cups Pkg. **17¢**

**Paper Plates** Brocade, White, 9-Inch 100-Ct. Pkg. **69c**


**Facial Tissues** Silk, Assorted Colors 150-Ct. Box **18¢**

**Aluminum Foil** Kitchen Craft, 12" Width 25-Ft. Roll **25¢**

**Lunch Bags** Kitchen Craft 50-Ct. Pkg. **25¢**

**Paper Napkins** Silk, Assorted Colors 60-Ct. Pkg. **10¢**

**Garden Fresh Produce!**



**Potatoes**  
Russet, US #1, Best for Baking!  
[Premium Russet 2-Lb. 29¢] **10-Lb. Bag 79¢**

Compare Safeway Variety and Quality... None Better!

**Bananas** Golden Ripe, Safeway Special! —Lb. **10¢**

**Delicious Apples** Red, Washington 3-Lb. Bag **65¢**

**Juice Oranges** For Vitamin "C" 4-Lb. Bag **49¢**

**Ruby Grapefruit** Texas Ruby, Lively Tasting! 6-Ct. Bag **65¢**

**Turnip Greens** \*Collard Greens or \*Mustard Greens, 2 Bunches **33¢**

**Pineapple** Hawaiian, Large —Each **69¢**

**Fresh Corn**  
New Texas Crop Full Ears, Each (Yellow Squash Crookneck, —Lb. 29¢) **3 Ears 29¢**

**Crisp Celery** 25¢  
Florida, Large Stalks —Each

**Cauliflower** California —Each **49¢**

**Dried Apples** Select, Town House 8-oz. Pkg. **49¢**

**Pitted Prunes** Del Monte 12-oz. Pkg. **59¢**

**Soil Conditioner** Peat, (2 Bags \$1.75) 2-Ct. Ft. Bag **89¢**

**Vertagreen** With Sevin Dust, 50-Lb. Bag **\$2.98**

**Cabbage**  
Texas Grown, Nutritious! (Red Cabbage Adds Color to Salads! —Lb. 19¢) —Lb. **7¢**

**Orange Juice**  
Scotch Treat, From Florida  
Safeway Big Buy!



6-oz. Can **18¢**

**Baby Food**  
Heinz, Assorted, Strained  
\*Fruits \*Vegetables \*Desserts  
Safeway Big Buy!



Reg. Jar **10¢**

**Cheese Spread**  
Breeze, Imitation Process  
Safeway Big Buy!



2-Lb. Pkg. **67¢**

**Liquid Bleach**  
White Magic  
Safeway Big Buy!



Gallon Plastic **38¢**

**Charcoal**  
Briquets, Grillit  
Safeway Big Buy!



10-Lb. Bag **59¢**

**Hi-C Drinks**  
Assorted Fruit Flavors  
Safeway Special!



46-oz. Can **29¢**

**Cola Drink**  
\*Diet or \*Regular, Cragmont 16-oz. Bottles  
Safeway Big Buy!



6-Pak Carton **49¢**

**Panty Hose**  
Thrifty Sheer \*Small \*Medium \*Long, \*Boise or \*Suntone  
Safeway Special!



Pair **88¢**

**Safeway Meats Are Guaranteed to Please!**

**Round Steak** 98¢  
Full Cut, USDA Choice Grade Heavy Beef. (Boneless Round Steak —Lb. \$1.08) Includes Eye of Round. —Lb. **98¢**

**Rump Roast** USDA Choice Heavy Beef Compare Quality & Trim! —Lb. **98¢**

**Smoked Ham** Full Butt Ham, No Centers Removed. —Lb. **57¢**

**Ground Chuck** Lean, Freshly Ground. —Lb. **85¢**

**Ground Round** Fresh, Extra Lean. —Lb. **\$1.09**

**Pork Chops** Center Cut Loin. —Lb. **89¢**

**Pork Spareribs** Fresh, 1 1/2 to 3-Lb. Arg. —Lb. **69¢**

**Pork Chops** Smoked, Center Cut \*Rib or \*Loin. —Lb. **89¢**

**Eckrich Sausage** Polish, 12-oz. Pkg. **89¢**

**Canadian Bacon** Marvell Old Fashion, By the Chuck. —Lb. **\$1.09**

**Canned Picnics** Armour Star 3-Lb. Can **\$2.59**

**Lunch Meat** Safeway Sliced, 5 Varieties 3 6-oz. Pkg. **\$1**

**All Meat Franks** Safeway, Cookout Favorite! (Armour Star 59¢) 12-oz. Pkg. **55¢**

**Ham Roast** Center Cut —Lb. **89¢**

**Boneless Ham** Halves, Mahawk Chieftain. —Lb. **\$1.29**

**All Beef Franks** Safeway 1-Lb. Pkg. **79¢**

**Sliced Bologna** Safeway, Jumbo \*Reg. or \*Thick Pkg. **75¢**

**Chopped Ham** Sliced, Safeway 6-oz. Pkg. **59¢**

**Eckrich Bologna** Sliced, All Meat 8-oz. Pkg. **49¢**

**Baking Chickens** 3 to 3 1/2-Lb. Avg. USDA Grade "A". —Lb. **34¢**

**Leg Quarters** Cut from USDA Insp. Grade "A" Fryers. —Lb. **39¢**

**Breast Quarters** Cut from USDA Insp. Grade "A" Fryers. —Lb. **45¢**

**Fryer Thighs** or \*Dramatics, Cut from USDA Insp. Grade "A" Fryers. —Lb. **69¢**

**COMPARE LOW PRICES!**

**Tomato Catsup** Highway, Rich Flavor! Big Buy! —14-oz. Bottle **19¢**

**French's Mustard** Spiced Just Right! 4-oz. Jar **13¢**

**Barbecue Sauce** Assorted Flavors 18-oz. Bottle **41¢**

**Chow Chow** Mild, Diselad 13-oz. Jar **38¢**

**Sno-White Salt** \*Plate or \*Iodized 26-oz. Box **9¢**

**Salad Dressing** Piedmont, Delicate Flavor! 32-oz. Jar **37¢**

**COMPARE LOW PRICES!**

**Garbage Cans** \$2.39  
Plastic, Lid, Avocado, 22-Gal. Size —Each

**Instant Shave** Gillette, \*Regular \*Lime or \*Menthol 11-oz. Can **49¢**

**Listerine** Antiseptic Mouthwash 17-oz. Bottle **99¢**

**Alka-Seltzer** Tablets, Analgesic 25-Ct. Bottle **53¢**

**Aspirin Tablets** Safeway, 6-Grains 100-Ct. Bottle **19¢**

**Smoked Ham** Shank Portion, Flavorful! (Whole Ham or \*Shank Half, Sliced —Lb. 53¢) —Lb. **43¢**

**Sliced Bacon** Slab, Rindless, Breakfast Favorite! (Safeway Sliced Bacon —1-Lb. Pkg. 65¢) —Lb. **49¢**

**FRESH FRYERS** 29¢  
Everyday Low Price! Ready to Cook Whole (Cut-Up Fryers —Lb. 35¢) —Lb. **29¢**

**SAFEWAY**

Prices Effective Thurs., Fri., Sat. and Sun., May 6, 7, 8 and 9, in... We Reserve the Right to Limit Quantities. No Sales to Dealers. Eastland