



A pair of hard working ladies are shown here at left Donna Brown and Marjorie Courtney. Both women were given special appreciation certificates for outstanding service. The awards were presented during the FFA Banquet held Thursday night in the Wendell Siebert Elementary School cafeteria. (Staff photo by Steve Haines).

Second Shakespeare Celebration To Be Offered Public

The second annual Shakespeare celebration will be offered to the public by members of the Eastland Civic Theatre on the great man's birthday, April 23, which this year falls on Wednesday.

Dessert and appropriate beverages will be served by a committee headed by Catherine Germany, Billie Bradley and Annette Pierson, beginning at half past seven in Bell Hurst Playhouse.

Scenes from *Othello*, *MacBeth*, *Romeo and Juliet* and *The Tempest* are being rehearsed by actors of E.C.T. Also area high schools and colleges have been invited to participate.

Because of this one-night only production, reservations must be made early and in the usual manner: by telephone 817-629-1141. The tickets may be paid for at the door, and will cost \$1.50 each.

EASTLAND TELEGRAM



14 Pages
In 2 Sections

Eastland, Texas 76448: Today's Center for Tomorrow's Future!

Volume 46 Number 30

Sunday, April 13, 1975

10¢ EACH

Stacy Blair To Return For Concert Thursday

Stacy Blair, 1973 winner of the Hinda Honigman Scholarship for the Blind, has been invited to appear on the program at the Biennial Convention of the National Federation of Music Clubs in Atlanta, Georgia.

The Texas Federation of Music Clubs, Executive Board agreed last fall when this invitation was extended to Stacy, to establish a fund to assist Mr. Blair with the expenses for this appearance. For several months, Mrs. J.C. Dyer, Jr. of Cisco accepted contributions for this fund, and on April 2, forwarded the balance of the account to Stacy. The Eastland Music Study Club, desiring to give the people of Eastland an opportunity to show their support and encouragement of Stacy's continuing accomplishments have arranged for Stacy to present a concert Thursday night, April 17, at 7:30 p.m. at the Eastland High School Auditorium, with all proceeds to go to Stacy.

This will be Stacy's 2nd Eastland Concert. Stacy was presented in concert, in Eastland for the first time last year and received a standing ovation from home-town music lovers and friends.

Laurene Peterson, a sophomore music major at Hardin-Simmons University will provide piano accompaniment for Stacy, at this concert and at the convention in Atlanta. Laurene will perform selections Thursday night in addition to accompanying Stacy.

Concert admission is \$2.00 for adults, \$1.00 for students and no charge for pre-schoolers. Advance tickets are available from Eastland Music Study Club members, Eastland Drug and Altman's. Tickets will be available at the auditorium prior to the concert. Door will open at 7 p.m. the concert will begin at 7:30 p.m. with seating only between selections after the concert begins.

The Eastland Music Study Club asks everyone to come hear Stacy and Laurene, and encourage these young people in their musical studies and performance.

PTO Meeting

The Wendell T. Siebert Elementary PTO meeting will be Tuesday, April 15, at 3:30.

PTO officers for the coming year will be installed.

The topic of the meeting will be "Your Child and the Transition from Elementary to Junior High School".

Music will be presented by the Cadet Band under the direction of Bobby Bingham.

An informal reception and refreshments will follow the meeting.

All members are urged to attend.

Merriman Youth To Have Garage Sale

The youth of Merriman Baptist Church will be having a garage sale at 807 S. Halbryan in Eastland all day Friday and Saturday, April 18 and 19, beginning at 9:00. Proceeds from this sale will be used for their trip to youth camp, the last week in June. The youth have been active in various fund raising projects for this trip. Each year they go to Comfort, Texas (about 40 miles from San Antonio) for a week's stay at the "Pot O' Gold" Ranch high in the mountains. They are eagerly looking forward to camp again this year, according to their pastor, J. Doyle Roberts.

Gov. Dolph Briscoe Proclaims Library Week

Gov. Dolph Briscoe has proclaimed the week of April 13-20 as National Library Week. "Information Power" is the timely theme of this year's program. At the Centennial Memorial Library we are celebrating the annual event with posters, children's displays, books with a Bicentennial theme and hope there will be many visitors during the week. National Library Week was created to draw attention of the general public to the importance of being informed by the printed word. How else can a nation or an individual know how to plan their future unless the experience and results of the past are well known?

In preparation of the Nation's 200th birthday the Library invites you to join our "1776 Club" which is not only a Bicentennial project but also the means to add much historical information to the Library. "Information is Power".

Coyote Control In Eastland County Top Subject In Meeting Tuesday

Coyote control in Eastland County will be the subject of a meeting of landowners and livestock operators Tuesday night, April 15. This is an important meeting and will be held in the County Court Room on the third floor of the Eastland County Courthouse at 8:00 p.m.

The Eastland County Program Building Committee and the Independent Cattle Raisers Association are sponsoring the meeting jointly for all livestock men who are having problems with predatory animals.

County Agent De Gordon said stockmen are losing livestock and wildlife in increasing numbers to coyotes. The Rodent and Predatory Animal Control Service will begin a program to control coyotes by aircraft on April 21 in Eastland County.

The control service will take coyotes only on land where the owner or operator requests the service and gives permission. There will be no cost to the landowner.

Euel Stephen of the Wildlife Service will be at the meeting Tuesday night to explain the program and answer questions. Cooperators will also sign requests and permission forms at the meeting.

This control program has worked successfully in Stephens, Brown, Callahan and Coleman Counties.

All interested livestock men are encouraged to attend the meeting.

Irene Petree was in Hillsboro on business last week.



Stacy Blair

Concert Choir Of Temple Junior College To Appear In Eastland Saturday April 26

The Concert Choir of Temple Junior College will appear in concert in Eastland on Saturday April 26, at First Baptist Church, performing the popular "Alleluia, a Praise Gathering of Believers".

In just two years, the Concert Choir at Temple Junior College has grown from a membership of 38. The singers perform a variety of literature ranging from the choral classics to currently popular hits. In addition to performing in concert choir a year on campus, the choir takes an annual tour lasting from five to ten days.

In 1974, the choir toured to Colorado Springs, Colo. As an added attraction this year, the choir presented two performances of Dubois' SEVEN LAST WORDS OF CHRIST at Christ Episcopal Church in Temple with faculty soloists from Baylor University and Temple Junior College.

For the 1974-75 Concert Choir, their tour will take them to Los Angeles, Cal., on a ten day excursion. The choir will visit and perform in Odessa, Deming, N.M.; Phoenix, Ariz.; Los Angeles, Las Vegas, Nev.; Dumas, Eastland, and conclude the tour with a home concert at

Immanuel Baptist Church, in Temple, at 7:00 p.m. Sunday, April 27.

Within the larger Concert Choir are two smaller ensembles, the TJC Chorale and the Chamber Singers. The Chorale is a new ensemble on campus, having been formed at the beginning of the spring semester, 1975. Its repertoire includes the TE DEUM IN C MAJOR by Mozart and CREDO by Vivaldi, in addition to other shorter choral works by Brahms, Bach, Schuetz, Palestrina and Sweelinck.

The Chamber Singers are the most widely traveled group on the TJC campus, presenting over 100 concerts yearly all over Texas and the United States. Their repertoire includes a complete program of popular music, ALLELUIA, A PRAISE GATHERING OF BELIEVERS, by Bill Gaither, and many shorter vocal chamber works. The group is accompanied in the presentation of the popular music by electric piano, bass guitar, electric guitar, steel guitar, and drums and includes such numbers as TOP OF THE WORLD by the Carpenters, LET ME BE THERE, by Olivia Newton-John, MORNING HAS

BROKEN, by Cat Stevens and many others.

Also within the Concert Choir is a small ensemble that performs the Christian musical COME TOGETHER, by Jimmy and Carol Owens, a musical that speaks to the youth of today.

Doctor Garrett To Show Slides

Dr. Robert Garrett will give a slide presentation of Missionary Work in Rhodesia in the fellowship hall of the Bethel Baptist Church April 13, at 6 p.m. The public is invited to attend.

Clean-Up Campaign

A clean-up campaign will be held in Eastland beginning April 17 sponsored by the beautification committee of the Eastland Civic League and Garden Club.

The City of Eastland and the Bicentennial Committee will also participate.

The city will run an extra truck for three weeks to pick up rubbish.

HOME COMING

June 20, 21, 22
Welcome EHS Exes!

Spring Roundup For Cub Scouts

A spring roundup for Cub Scouts will be held at 7:30 p.m. April 15 in First United Methodist Church.

Boys ages 8, 9, and 10 are invited to attend and to bring their parents. Herman Alsop is Cub Master.

Golf Scramble

There will be a golf scramble Sunday afternoon at Lone Cedar. Tee off time will be at 1:00 p.m.



Ambassador Of The Week

AMBASSADOR OF THE WEEK Glenna Hudson, (center) and co-workers at the Old Rip Cafe. They are from left to right, Agnes Sullivent, Homer Hudson, Fay Boustead, Dorris Cooper, Francis Hudson and Lena Harris. (Staff photo by Steve Haines).



SPECIAL CONGRATULATIONS are in order for Becky Jackson, daughter of Mr. and Mrs. Max Jackson, who has just been named to the President's Honor Roll list at Rice University where she is a pre-medical student.

WELCOME VISITOR in our town this week has been Dick Spalding who's in charge of music at the First Baptist Church revival through Sunday. Dick and wife Kaye, now of Abilene, look on Eastland as their home, since they came here originally in the early '60's. Their two sons were born here and Dick was one of the original members of the local Jaycee Club and a prime mover of civic projects when they lived here.

YOU'LL BE glad to know that Eastland has been entered as a Bicentennial City in the new Janey Briscoe Bicentennial Awards program. Relating to the Heritage and Horizons themes of the American Revolution Bicentennial Commission, entries will be judged in the areas of beautification, restoration, community improvement and community-wide involvement.

GAME DAY next at Lone Cedar Country Club will be May 2, our scout reports... We'll all want to make plans to attend the Stacy Blair Concert here Thursday evening. You'll find details on this page. Our best always to this talented and deserving young man

LITTLE NOTES (our own and from others) keep us going. Such as this one, tucked into our office door this week: "Please say something nice about Buddy Rogers of H&R Lumber Co. He has done so much for the repair of the Library and the Women's Club. We ALL appreciate him so much". The note was signed, but it could have come from any number of people and certainly it's no problem to say something nice about Mr. Rogers. He is a community man in every respect, and his firm is the kind of place we all like to visit. The tools, the lumber, the paint and all the things that make a good hardware store are a real pleasure to poke around, and Buddy and his staff are very helpful to those who have the desire but not always the skill for fixing up and building. The smell of fresh-sawed lumber is good, and as to a farmer, not unlike the smell of fresh-plowed ground.

IF YOU'RE GOING to operate under false pretenses or commit a crime, you've just got to be prepared for something - no matter how small or insignificant - to trip you up.

For example, Mrs. Bob (Sherry) Phillips of Eastland was the program speaker recently at an art club meeting in Eastland. She put on a wig and unusual glasses and assumed the appearance and identity of a learned artist and native of Germany. She spoke with the proper accent and mannerisms.

All went well and the audience was pleased and impressed. Midway, there was a pause for folks to refresh themselves and stretch a bit. Mrs. Phillips' Waterloo came forward in the person of Mrs. Bertha Reimer of Cisco.

Mrs. Reimer introduced herself to Mrs. Phillips. She is a member of a German family that settled south of Cisco early in the century. And to make the speaker feel that she was among friends, Mrs. Reimer spoke in German to offer compliments in the speech. And, of course, Mrs. Phillips didn't understand a word of it.

Off came the wig and glasses and the speaker finished her program as Sherry Phillips of Eastland, Texas. And everybody enjoyed it all - the program, the disguise and the unveiling.

Mrs. Phillips is an important cog in the art department wheels over at Victor Cornelius Printing Co. She's an art graduate of TWU and is well known as an artist. What is more, she'll speak Monday, April 14, at 7:30 p.m. at CJC Art Department at the monthly meeting of the Cisco Art Club.

Bet she doesn't appear in her German disguise for Mrs. Reimer is president of the Cisco Art Club.

UNDERSTAND that members of the Eastland Bass Club went fishing for cash and trophies Saturday. They met at 6 a.m. at the White Elephant in Cisco to decide where they'd compete for big bass.



Olden Baptists To Conduct Revival

The First Baptist Church of Olden will conduct revival services April 16-20. Evangelist Bill Klingle Smith of Joshua, Texas, will be preaching at each of the services.

The evangelist, Rev. Klingle Smith was born in Perry, Okla. He served in the United States Army and worked in the oil fields of Oklahoma and Texas for a number of years prior to his conversion.

Rev. Klingle Smith, prior to serving as an evangelist, pastored Baptist Churches in Seminole, Texas; Three Rivers, Texas; Groveton, Texas; Dawson, Texas; and Seardrift, Texas. He also served as associate to Evangelist Lester Roloff in Corpus Christi, Texas. He is a graduate of Southwestern Baptist Theological Seminary in Fort Worth.

Rev. Klingle Smith is married to the former Billie Graham, a preacher's daughter. They have two children, Lou Donn and Troy.

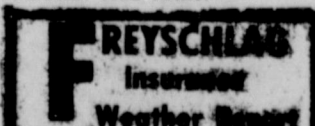
"The Meekers" will be in charge of the music. There will be special singers every service.

Services will begin at 7:30 o'clock p.m. during the week and 11:00 o'clock a.m. on Sunday morning.

The pastor of the church, Harold Meeker, has announced that the public is invited to attend these services.



A reporter asked the centenarian the inevitable, "To what do you attribute your long life?" "Not sure yet," the old-timer replied, eyes a-tinkling. "I'm still negotiating with a mattress company and two breakfast food firms."



Mostly Cloudy and Chance of Rain Sunday. High Near 60.

Phone
629-1707
 For Want Ads

FOR SALE

FOR SALE--Preston Milk \$1.25 a gallon. Large loaf of bread 45c. Taylor center, 805 W. Main. t-tf

FOR SALE--3 bedroom, 2 bath modular home on 75' x 150' lot. Central air and heat. All electric. Built in oven and cook top. Dishwasher and disposal. Owner will finance with reasonable terms. Call 629-2907. t-tf

FOR SALE--1974 Suzuki 185 Trail Bike 1400 miles. Call 629p-1016 or see at 201 N. Ammerman. t-tf

FOR SALE: 1966-23' Airstream Travel Trailer. Fully self contained. New tires-New battery. 629-1987. t-tf

FOR SALE--Canon Canoli mini desk-top electronic calculator; 10-key; 8-digit fluorescent tube display; 3 calculating registers; 8 digits in all calculations; leftmost digit priority with all-floating decimal point; true value with a minus sign; addition, subtraction, multiplication and division plus other functions; powered by four penlight batteries or with AC adaptor; size: 5 x 6 x 1 1/2; weight 12.3 ozs. COST: ONLY \$59.95 AT THE TELEGRAM OFFICE. (AC adaptor, \$4.95). Limited Supply. t-tf

FOR SALE--1972 Honda 350 CL. Like new, less than 5,000 miles. 2 helmets included. \$475.00. Call 629-2423. t-tf

FOR SALE--CLEAN carpets the save and safe way with Blue Lustre. Rent electric shampooer \$1. Coats Furniture. t-30

MISC. FOR SALE--BRACE yourself for a thrill the first time you use Blue Lustre to clean rugs. Rent electric shampooer \$1. Perry Brothers. t-30

FOR SALE--1 Massey Ferguson MF35 Tractor; 1 four disk breaking plow with three point hitch; 1 tandem disk with long brand three point hitch; 1 Allis Chalmers 8 foot drag type combine with engine and power shaft. Call Moran 915-945-2116, about 9 p.m. t-tf

FOR SALE: 1974 Monte Carlo, low mileage, loaded, with factory tape player. Call 629-2801 anytime or see at 301 N. Seaman. t-tf

FOR SALE--Peanut, candy and gum vending business in Eastland. Requires \$1,238.00 cash and few hours weekly. TEXAS KANDY COMPANY, 1327 Basse Rd., San Antonio, Texas, 78212. Call 342-9030. t-30

GARAGE SALE--All day Monday and Tuesday. Clothing, dishes, some furniture, misc. items. Corner of Commerce and Neblett. t-30

FOR SALE

FOR SALE--M Farmall tractor, 10 foot disc plow and 15 foot grain drill, \$1,500. Also 20 foot 4 wheel trailer, flat bed \$250. Call 629-1923. t-30

Extra good 4 year old Reg. Angus Bull-Revolution Breeding. Call Cisco 442-2640 at night. t-31

FOR SALE--1971 Ford Pickup 1/2 ton, 18' covered goose neck trailer, 5 pair 1st Calf Black Heifers. Call 639-2442. t-tf

FOR SALE--M Farmall tractor, 10 foot disc plow and 15 foot grain drill, \$1,500. Also 20 foot 4 wheel trailer, flat bed \$250. Call 629-1923.

FOR SALE--Good Milk Cow. Second calf 3 years old. \$300. Call 559-2991, Breckenridge. t-32

NOTICE
 THE CI 1206P ELECTRONIC PRINTING CALCULATOR. - Come in and compare these features...then compare our price, features and quality with any of the competition. If you need a good calculator and can't pass up a great deal you'll buy one! You may even buy two!

FEATURES
 * Four Function
 * 12 Digit Capacity
 * Fully Buffered Key Board
 * Constant Key
 * % calculation for mark up and discount
 * Round Off Key
 * Floating in/floating and fixed out decimal
 * Add mode
 * Roll-over key board (for fast touch operation)
 * Total recall
 * Silent start-stop operation
And Compare This \$269.00.
 A lifetime of durability for a lifetime of dependability! at THE TELEGRAM OFFICE. t-tf

FOR RENT

FOR RENT--Garden tillers, lawn mowers, many more items. See Gene at Montgomery Wards in Eastland. t-tf

FOR RENT--Streamliner carpet cleaner. (As advertised on TV). Montgomery Wards in Eastland t-tf

FOR RENT: Furnished private 3 room cottages with carports. Daily, weekly, or monthly. Pleasant Place Motel, west edge of Eastland. Call 629-8873. t-tf

FOR RENT--Mobile Homes and mobile home spaces 653-2220. t-tf

FOR RENT--In Eastland. Extra nice 1974 mobile home, 2 bedroom, 2 bath, paneled and fully carpeted. G.E. Frostfree refrigerator and gas range included. \$50 damage deposit, \$146 monthly. Citizens Realty. 629-2404. t-tf

Sunday, April 13, 1975

WANTED

WANTED--Stenographic or clerical position. Degree in English. Call 647-3590. t-31

WANTED--We are now accepting applications for LVN's at Northview Nursing Center in Eastland. Good salary and benefits. Contact Mrs. Nix, 401 W. Moss. t-tf

WHY PAY RENT? Own your own Mobile Home through FHA insured loans with low monthly payments. Plus low down payment. Many floor plans to choose from at Eastland Direct Factory Outlet, Olden, Texas. Phone 653-2432 or 629-2117. Featuring the elegant Fuqua Mobile Home. t-tf

WANT TO BUY or lease, one to one and one-half acres outside city limits with access to highway. Tel. 647-3590 after 10 a.m. t-tf

WANTED--Ranger General Hospital needs RN's as well as an RN supervisor. Excellent salary and benefits. Call 647-1156. t-tf

WANTED--Young man looking for a job of any kind. Contact 647-3428. t-31

NOTICE

CARD OF THANKS
 May we take this opportunity to express our appreciation and thanks to our friends and neighbors who helped in any way during the illness and loss of our loved one. To the ladies who prepared and served food, those who made visits, sent flowers and cards, your thoughtfulness will long be remembered.
 The Family of Luther A. Carter

THANK YOU NOTE
 We wish to express our appreciation and gratitude to all the Eastland Merchants for gifts received by 2nd runner-up Lisa Garrett in the Little Miss Eastland Pageant. Also a thanks to Zeta Pi Chapter of Beta Sigma Phi sorority. A special thanks to her sponsor, Bob Carroll Construction Co. Mr. and Mrs. Lynell Garrett

NOTICE--Want to buy some blackberries, if and when they come in. Call 629-2413 or 629-1707. t-tf

NOTICE--Now's the time to talk to me about WINDOW AWNINGS* CARPORTS* STORM WINDOWS* SCREEN & DOORS. OTIS COLEMAN, Phone 629-1644. t-tf

Do our companies give Bumper Discounts; Driver Training Credit; National Safety Council's Defensive Driving Course Credit; Second Car Credit; Dividends and Easy Payment Plans for all eligible policy holders? You bet! Come see us. Freyschlag Insurance Agency on North Side of Square.

NOTICE

Freyschlag Insurance has exactly the kind of policy that you need. Check with Charles today and see just how he can help you. Freyschlag Insurance Agency on the Square in Eastland, 629-2275, 107 W. Main Street

SCOTT'S BARN MISCELLANEOUS PAINTING 1315 S. Lamar - Eastland, Tex. I paint lawn furniture - appliances - stock trailers - metal awnings - boat trailers - metal gates - Corral panels - tractors - Also polish and wax Automobiles. Come by, or Call L.A. Scott t-tf

Scott Paint & Body Works
 * Body & Fender Work
 * Wrecks Rebuilt
 * Painting
 629-2372
 300 W. Commerce

CANCER INSURANCE
 UP TO
\$100,000
M.H. Perry
 104 N. Lamar
 629-1566

SENKEL'S CABINET SHOP
 303 N. College
 Phone 629-1269 after 5:00. Custom Built Cabinets, Mobile Home Set-up, and Repair, Remodeling and General Carpentry Work. Richard Senkel Owner

INSULATION

 OLDEN SHARP SHOP
 Hand saws, all types. Circle saws, high speed steel. Carbide saws, retipped and sharpened. Chain saws, sharpen all types. Band saws and any type cutting tool. Scissors and small electric appliances. Olden 653-2224 t-tf

So-Lo Auto Parts
 300 S. Seaman
 629-2158
 Open Sat. Till 4:00
 Doug Lucas Mgr.

NOTICE

"We handle anything but litterbugs"
GOODE PEST CONTROL
 Phone 629-1179 after 3:00
 310 N. Ammerman
 Roaches, Ants, Termites, Moths, Spiders.
ALL GUARANTEED

AIR CONDITIONING & HEATING
 Sales & Service
 Free Estimates
 Gay Shirley
 Day 817-965-7246 or
 night 817-758-2557
 "We do the complete job to your complete satisfaction"

Singer Sewing Machine Repair Center
 Servicing all makes. New and Used for Sale. Complete line of parts.
WRIGHT AUCTION COMPANY
 106 S. Seaman 629-2468

CARPET ALL TYPES
 Shags, hi-lo, commercial, sculptural, plush, level loops, etc. Free estimates. Also installation and steamliner carpet cleaning. 15 years carpet experience. Contact **JIM PATE** at 629-1781

City Cab
 629-2812

GREGORY PLUMBING & HEATING
 629-2844
 Res. 639-2340


Fiber Glass Repair Kits For Cars And Boats

So-Lo Auto Parts
 300 S. Seaman
 629-2158
 Open Sat. Till 4:00
 Doug Lucas Mgr.

NOTICE

Special Ears Pierced Maudeen Gun
Free 24 Kcar Studs \$1300
 Until April 30th
Night Appointments
 Phone 629-2526
BASHAM BEAUTY BAR

All leather steel toe safety boots \$22.50. Metal grocery carts \$7.50
 Open All day Saturday
CISCO ARMY SURPLUS
 1201 Ave. D. 442-36720

Emergency Water Extraction For Carpets
 Due To Busted Water Heater Or Pipes
24 Hr. Service

Pittmans Janitorial Service
 629-2746
 Eastland, Texas

MORE
 cars are insured with us than with any other company
 Find out why now!
 James O. Wortman
 705 W. Main St. Eastland
 Ph. 629-1096

STATE FARM
 Mutual Automobile Insurance Company
 Home Office Bloomington, Illinois
STATE FARM CAR FINANCE PLAN
 James O. Wortman
 705 W. Main St.
 Eastland Ph. 629-1096
 Like a good neighbor, State Farm is there.
 State Farm Mutual

NOTICE

SOUTHLAND LIFE INSURANCE
M.H. PERRY
 104 N. Lamar
 629-1566
 629-1095

FOR SALE
Almost New 16 ft. Hale Cattle Trailer. Deluxe Model. Enclosed Front End And Metal Cover Top.
 \$900.00
 Call 442-2325 after 6 p.m. week days; any time weekends.

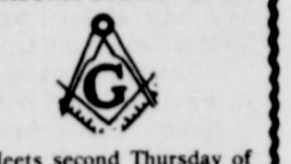
Quality And Reasonable Prices. Quantity Quickness
Relax At Hollands Drive In
 Highway 80 West Of Eastland
 Phone In Orders Dial 629-2215
 Member TRA

Custom New Homes
Quality Materials & Workmanship
Complete Service Including Financing
 Visit us at our new location and find out how easy it is to own your own home.
B.G. BROWN CONSTRUCTION CO., INC.
 Residential Specialists
 820 W. Main
 629-2404
 Nights - 442-1631

Kincaid's Real Estate Corner
FARMS
 1. 220 acres near Eastland with 150 acres cultivation, some pecan trees, on Highway, workshop, barn, 4 tanks, 1/2 minerals. Nice remodeled three bedroom house, 29 percent down.
 2. 135 acres near Rising Star on paved road with 70 - 90 acres cultivation, 70 acres sand, 46 acres peanuts, 4 wells, no house, assumable 8 1/2 percent loan.
 3. 52 acres south of Ranger with 35 acres cultivation, sandy land, well, 3/4 minerals, shinnery \$325 per acre.
 4. 125 acres sandy loam soil, 24 acres peanuts, 75 acres timber, approx. 1/2 minerals, one well, old liveable house, tank, \$315 per acre.
 5. 87 acres 8 miles from Eastland, improved grass, good sandy loam soil, tank, barn, 1/2 minerals, small loan could be assumed. 100 acres adjoining could also be leased.
 6. 175 acres with 160 acres coastal, 1/4 minerals, can be irrigated, 4 tanks, house and barn.,
 7. 340 acres with over 1000 pecan trees, 30 acres peanuts, balance improved grasses, coastal, etc. Good fences, 1/2 minerals.
 8. 200 acres 6 miles west of Eastland with 25 acres coastal, well located, good fences, 2 tanks, 1/4 minerals, front road on 2 sides. Assumable loan, \$300 per acre.,
 9. 80 acres south of Cisco, sandy land, 1 tank, 1 well, few pecan trees, 20 acres peanuts.
 10. 230 acres irrigated farm near Gorman with 70 acres peanuts, 50 acres coastal, 40 acres love grass, 90 acres timber, good fences, pens, some minerals.
 11. 127 acres near Ranger, some Coastal, old bldgs., some minerals, \$350 per acre.
 12. 100 acres improved grass, coastal and love, spring, city water, tank, corrals, good fences, 5 miles Carbon.
 13. 70 acre farm southwest on Cisco, 19 acres peanuts, \$5000 down, int. only 5 years.
 14. 550 acres near Cisco, 5 tanks, 110 cultivation, balance native pasture, well, terms.
 15. 6 acres on Interstate 20 in Ranger for commercial. \$6000.
 16. Fairly new 14 x 52 furnished mobile home Lake Leon, city water, 2 bedrooms, central heat, south side of lake.
HOMES
 Large older type 4 bedroom home, corner lot, some owner financing, \$6,400
 Small two bedroom one bath home, needs some work, 2 car garage, nice location, two car garage.
 Older well cared for three bedroom frame home on Oaklawn, 2 baths, carpet, central heat and air, 2 car garage, fenced back yard, nice shade trees, shown by appointment only.
 Nice two bedroom home with central heat and air. Two car garage with apt. \$15,000.
 Small two bedroom home in Cisco \$8,500
 Lovely three bedroom, 2 bath brick home in Crestwood. Two extra lots included, walk in closets, screened patio, wood burning fireplace, 3 car garage. Total Electric.
 Large 8 bedroom house in Cisco, turn this into apartments for extra income. Lovely trees. This could be a beautiful old home.
 We also have commercial property, motels, apartments, and large ranches for sale or trade in New Mexico, Oklahoma, Colorado and Texas.
KINCAID REAL ESTATE
 100 South Seaman, Eastland, Texas
 629-1781
 J.D. Vandergriff Res. 629-8137 Robert M. Kincaid Res. 629-2721

TELEGRAM
 H. V. OBRIEN
 PUBLISHER AND EDITOR

Second Class Postage paid at Eastland Texas under Act of Congress on March 1870. Published semi-weekly Thursdays and Sundays by Eastland County Newspapers Inc.
SUBSCRIPTION RATES: By carrier in city, 15cents a week or 65 cents a month; one year by mail in county in county \$5; city P. O. Boxes \$6; one year elsewhere in state \$7; out of state \$10.00 per year.
NOTICE: Any erroneous reflection upon the character standing or reputation of any person, firm or corporation, which may appear in the columns of this newspaper will be gladly corrected upon being brought to the attention of the editor.

MASONIC LODGE NO. 467

 Meets second Thursday of each month at 8:00 p.m. in the Masonic Hall. Call E.M. Hunt, W.M., at 629-2482 or L.E. Huckabay sec'y at 629-1391 for information.

HOW WOULD YOU EXPLAIN TO THIS INSURED



THAT HE ONLY HAD ENOUGH COVERAGE TO REBUILD THIS TYPE OF HOUSE?



SEE
D.L. Kinnaird
General Insurance
 207 West Main
 To Avoid This
 629-2544

OFFICE PHONE 629-1725
 FARM BUREAU BLDG.
 HWAY 80 EAST
 EASTLAND, TEXAS
REAL
 RODGER TERRELL
 Home Phone 629-2896
 M.L. TERRELL
 Home Phone 629-2443
 Eastland, Texas



Thurs., Fri., & Sat. At The Majestic

GETTING A LIFT... Dexter Riley (KURT RUSSELL), center, shows off his super strength by lifting Elmer (BARRY GREENBERG), in chair, and best friend Richard Schaefer (MICHAEL McGEHEE) in this scene from Walt Disney Productions' "The Strongest Man in the World," about two college students who convert a strength formula. The film, which also stars Joe Flano, Eve Arden, Cesar Romero and Phil Silvers, was produced by Bill Anderson and directed by Vincent McKeefy. In color by Technicolor, a Buena Vista release.

Manner awards have gone to Kristi Maston, Douglas Manner, Judy Trail, Paula Boyd, Kristin Collins and Bert Seaborn.

MRS. COATS SECOND GRADE

We have learned all our little letters in cursive writing. Our arithmetic lessons are about fractions and counting by 2's, 3's, 4's, and 5's. We have a new activity record called "Snap, Clap and Tap". It's lots of fun. Our new library books are very interesting. We enjoy reading when all our work is finished.

MRS. DALLAS SECOND GRADE

This week we have been talking about insects. And National Library Week. We're excited about school fixing to be out. And about the birds. We have started our cursive writing.

Kim McPherson

MRS. TURNER THIRD GRADE

We have been busy this week. We are learning how to multiply with two or three place numbers. Tuesday we went to the board for arithmetic. Mrs. Turner called out multiplication problems to us. We like working at the chalk board. We started a new chapter in English about Working With Facts. We had fun playing a listening game. We also played a game called Gossip. From this game we learned how the truth sometimes changes when it is repeated. We have several people absent this week because of sickness. Sue Maxwell is in the hospital. We are writing her letters and get well cards today. We hope she will be back in school soon. Good citizens for this week are Brad Freeman and Amy O'Brien. Luncheon manners go to Cynthia Dunn

MRS. YOUNG THIRD GRADE

We have a new boy and girl. Jose Reyes and Jeanette Reynolds. Nora Rodriguez had to have a knot taken out of her hand. We got our annuals and pictures Friday.

Your friend, Kim High

MRS. GREEN FOURTH GRADE

The boys are playing baseball now and they aren't very good at it. We have had lots of people absent this week. We have some new kids in our class. We have got our group pictures and annuals this week. We have been drawing trees and coloring birds for spring. We are drawing flowers for our bulletin board. We have had quite a few tests this week. I guess that's all for now.

June Hudson

MRS. WELCH SIXTH GRADE

This week has not been as interesting as some others. Wednesday we had a history test. We saw a film Monday called "The Story of a Patriot". We are starting to divide fractions in math. In English we are starting to learn to work with adverbs. It rained two days so we couldn't go outside. Thursday we started to make art paper strip faces. We also got some new library books. Well, that's all I have to say.

Your friend, April Nevill

MRS. LITTLE SIXTH GRADE

We had a test in English and in History. We are multiplying and dividing fractions in math. We are at the end of the chapter in health. The boys signed up for baseball. Kathy Reed and Tami Robinson entered the twirling contest and won first place.

Karen Johnson

NOTICE: Office Machine Sales and Service. See Ed Sargent at Wright's Auction, 106 S. Seaman, 629-2468. t-1f

CARBON SCHOOL NEWS

The student body, faculty, and the entire community of Carbon were shocked and grieved by the tragic death of Jody Tucker, a popular fifteen-year-old freshman, late Sunday afternoon. Jody was killed when the dune buggy in which he and his brother Gary were riding went out of control and overturned on a dirt road southwest of Carbon. Gary, a senior, was injured but was dismissed from Eastland Memorial Hospital on Tuesday. Because the students are so close at a small school like ours, we all feel as though we'd lost a part of our family. We are glad to have known him, to be able to remember how much fun he was. He was always up to something, into something, or trying to get out of something! Jody's curly hair, lop-sided grin, and mischievous eyes will not be forgotten.

On Saturday many Carbon students enjoyed a trip to Six Flags. They left early Saturday morning and came back late that night—broke and tired! Those going from the freshman class were Candi Bryant, Lisa Norris, Fran Duncan, Renae Pack, Larry Sandlin, Terry Lasater, Robert Rice and Jody Tucker. The Sophomores going were Lindell Fields, Joann Foley, Charlene Harle, Calvin Millican, Keith Reynolds, Donald Rice, Art Smith, Timmy Smith, and Terri Wood. Juniors going were Jim Cotton, Wallace McDaniel, Randy McGinn, Ricky McGinn and Lee Wood. Wayne Pinson and Robin Griffin, seniors, also went. Mr. Fred Tucker, principal, and Mr. Gene Grimshaw went as sponsors.

Carbon high school girls forfeited the bi-district volleyball game, which was to be played Monday afternoon at Ranger Junior College, to Lingleville out of respect for Jody Tucker.

Carbon FHA girls are selling cookbooks to help raise money for the Mother-Daughter Banquet. The books, which are \$3.50, contain recipes for poultry dishes or recipes from the various regions of America. Any FHA girl would be happy to take your order.

The freshmen are planning a car wash at the school on April 19 from 10-5 p.m. For \$1.50 they will wash your car, or for \$2.00 they will also clean the interior.

Karen Reynolds Carlton, a talented senior, won second place in the Region V Essay Contest sponsored by the Texas Conservation Awards Program. Students from 57 counties participated in the contest. Karen's essay, entitled "Conservation—Key to the Future", had already won first place in the Upper Leon Soil and Water Conservation District. Her award will be presented at the Region V Texas Conservation Award Banquet at Weatherford on May 16.

Carbon Junior High Girls participated in the District Track Meet at Rising Star April 10. Kim Rodgers and Karen Briggs ran the 100 yard dash. The 440 relay team consisted of Kim Rodgers, Genelle Perrier, Karen Briggs and Cari Sandlin. They were quite excited and are looking forward to next year's track program.

On April 11 the 7th and 8th graders went to Fort Worth on a science field trip with their teacher, Mr. Fred Tucker. They attended a life science program at the Natural Science and History Museum planetarium and went on a guided tour of Forest Park Zoo.

IF YOU MISS YOUR TELEGRAM CALL 629-2214

Little Miss Eastland 1975

Five year old Lisa Tyson, daughter of Mr. and Mrs. John Tyson, was named "Little Miss Eastland 1975" in the 10th annual Little Miss Eastland Pageant held Tuesday night in the Eastland High School Auditorium. She was sponsored by Rawlins Monuments, Inc.

Selected as the 1st runner-up in the contest was Melissa Reeves, daughter of Mr. and Mrs. Jerry Don Reeves, and sponsored by Patton's Fabric Shop. 2nd runner-up was Lisa Garrett, daughter of Mr. and Mrs. Lyndell Garrett, and sponsored by Bob Carroll Construction Co.

Other semi-finalists in judging were Jayna Holloway, daughter of Mr. and Mrs. J.C. Holloway, sponsored by Hillcrest Food Market; Kimberly Sharp, daughter of Mr. and Mrs. E.J. Sharp, sponsored by Bill's Auto Salvage; and Susan Tankersley, daughter of Mr. and Mrs. Neal Tankersley, sponsored by Eastland Drug. Jay Stagg of KERC Radio was emcee for the pageant and the 21 contestants appeared for judging amid stage settings and decorations from the "Land of Oz". They were assisted by three of the characters from the story—"The Scarecrow", portrayed by Randy Collins; "The Tin Woodman", portrayed by Jerry Boles; and "The Cowardly Lion" portrayed by Mack Walker. These boys are students at Eastland High School.

Judges for the pageant were all from Abilene. They were Carolyn Glosson, Glenda Hinkel and Jerilyn Yungblut.

Little Miss Eastland and the prizes that were donated by Eastland merchants. Making

Honored On 80th Birthday

Mrs. Fannie O'Brien was honored recently on the occasion of her 80th birthday and her brothers and sister, children, grandchildren and great-grandchildren were present at a reception at the Conference Room of Eastland National Bank.

Attending were her sister, Mrs. Dee Hibbs of Brownwood; her brothers, Grover Hastings of Pleasant Hill and C.P. Hastings of Eastland; her sister-in-law Mrs. Clara Bisbee of Fort Worth; her children, Otis of Stanton, Mrs. H.L. Thompson of Lewisville, Willard of St. Louis, Mrs. John Edwards of Abilene and H.V. of Eastland. One brother, Bob of Carbon, was unable to attend.

Grandchildren attending were Mr. and Mrs. Linden Thompson of Lewisville; Mr. and Mrs. John Elliott of Alameda, Calif.; Kevin, Peggy and Illene of St. Louis; Mr. and Mrs. Lewis Shell and children of Dallas; Mr. and Mrs. Ronald Carey and children of Baytown; Vance and Amy of Eastland.

Approximately 150 registered and were served by members of her Sunday School Class and other close friends. Decorations were in her chosen colors of pink and white.

For '75s Or Older Cars & Pickups & Trucks FOR SALE
Hitches (Any Make Cars)
Hitch-Balls
Tow Bars
RENTALS:
Tow-Dollies
Tow Bars
Trucks and Trailers
Hitches
Gilbert Gulf Service
500 W. Main
629-8805
Eastland, Texas
Also Farm Bureau
Tires & Batteries

cash donations were Bakker Funeral Home-\$10; and Eastland Service Parts, Fullen Motor Co., Freyschlag Insurance, Goodyear, H&W Development; KERC Radio, King Motor Co., Kinnaird Insurance, Mangum Service Center, Montgomery Ward, Pipkin Motor Co., Victor Cornelius Menus and Wanda's 7-11-\$5 each.

These contributions were used to give each contestant a silver dollar and to purchase a large doll for the three finalists. Other gifts were:

SECOND RUNNER UP
\$5 savings account at Eastland National Bank, stereo album from Robertson's TV, book from Eastland Telegram, Barbie doll case from Western Auto, necklace and bracelet sets from Perry's, doll from JRB, ball and gift certificate for drinks from Thrift Mart, certificate for hamburger, fries and coke from Dairy Queen, necklace from Eastland Auction, \$2.50 gift certificate from Rita's Fabrics, comb and hair ribbons from Super Save, pillow from Coat's Furniture, brush from the Hair Em, \$5 gift certificate from Holland's Drive In, ice cream from Foremost Dairies, milk from Borden Distributors, gift certificate for coke from Coca Cola, comb and mirror set from Janie's Beauty Shop, popsicles from Hillcrest Food Market, mirror from Valley View Grocery, hair spray from Colleen's Beauty Shop and a bowling game from Fiesta Bowl.

FIRST RUNNER UP
Crystal ball from Baird's TV and Radio Shack, purse from Altman's, necklace from Central Drug, \$5 savings account at Eastland National Bank, dishes set from Brittain's Discount Center, necklace and bracelet set from Perry's, \$2.50 gift certificate from Harelik's, doll from JRB, ball and gift certificate for drinks from Thrift Mart, doll from House of Webster Ceramics, certificate for hamurger, fries, coke from Dairy Queen, \$2.50 gift certificate from Rita's Fabrics, comb and hair ribbons from Super Save, pillow from Coat's Furniture, brush from the Hair Em, \$5 gift certificate from Holland's, ice cream from Foremost Dairies, milk from Borden's Distributors, certificate for cokes from Coca Cola, comb and mirror set from Janie's Beauty Shop, popsicles from Hillcrest Food Market, bowling game from Fiesta Bowl, necklace from Eastland Drug, floral arrangement from Poe Floral.

LITTLE MISS EASTLAND
5x7 color picture from Lloyd Armstrong, pillow from Darrell Beauty Salon, \$5 saving account from Eastland National Bank, \$5 gift certificate from Bray's, necklace set and jewelry case

from Perry's, necklace from Beskow jewelry, doll from JRB, ball and certificate for drinks from Thrift Mart, hamburger and fries and shake from Dairy Queen, birthday cake from 3-D bride shop, \$5 gift certificate from Rita's Fabrics, comb and hair ribbons from Super Save, brush from Sherry's Chic Boutique, \$5 gift certificate from Holland's Drive In, ice cream from Foremost Dairies, ice cream from Borden's Distributors, flower arrangement from Green Street Florist, certificate for cokes from Coca Cola, music box from Janie's Beauty Shop, popsicles from Hillcrest Food Market, bowling



Engagement Announced

Mrs. Luan Millican of Eastland, and Mr. V.G. Millican also of Eastland, announce the engagement and forthcoming marriage of their daughter Cynthia Gay to Steven Lee Blair, son of Mr. and Mrs. Bob D. Blair of Eastland.

The bride-elect is an active senior at Eastland High School and will graduate in May. Her plans following graduation and marriage are to further education by completing an Associate Arts Degree and minor in Business Administration.

The prospective groom is General Manager of Ramada

Inn in Eastland which is operated by Trans-America Hospitality Inc., in Arlington. He was a 1973 graduate of Eastland High School. He attended Hardin-Simmons University and Cisco Junior College and plans to complete his Business Degree in the near future.

The Garden Wedding will be held Friday, July 4, at the Ramada Inn in Eastland. Steve Church will preside. All friends of the couple and their families are invited to attend the wedding.

game from Fiesta Bowl, doll from S&H Green Stamp Store, purse from Quality Boot and Shoe Service, \$5 gift certificate from Jody's Pizza, and necklace from Quetta's.

Little Miss Eastland 1975 was crowned and presented a trophy by Little Miss Eastland 1974, Stephanie Bingham, daughter of Mr. and Mrs. Bobby Bingham. Stephanie also presented trophies to the runners-up. These were gifts from the Zeta Pi chapter of Beta Sigma Phi, sponsors of the contest.

Lisa will represent Zeta Pi and the city of Eastland in various events during the coming year.

THINK AHEAD...

Here's The Man To Help You Do It:

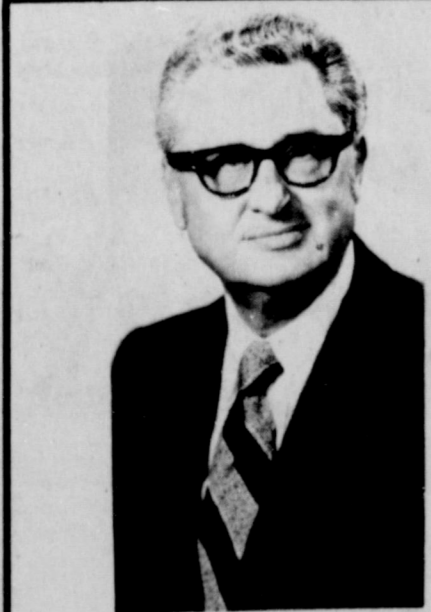
- ★ Life
- ★ Home
- ★ Business
- ★ Retirement

FARM BUREAU INSURANCE

East Main
629-1704



Buddy Aaron
District Award Winner



Rev. Jess Wallace
Evangelist

Spring Revival

April 6-13

Dick Spalding, Song Leader

10:00 A.M. & 7:30 P.M. Daily

First Baptist Church

West Plummer St.

Eastland

Rev. Haston Brewer, Pastor

Do You Remember

BY HERMAN DEMPSEY

When there is a group of people, there always seems to be a leader of the group. And so it was in the communities in the early years of the century. The leader was the one who seemed to have what was necessary for the others to respect enough for them to seek advice and council during times of need.

This was especially true among the school children in the community schools. The teachers readily recognized the leaders in the different groups. The teachers could always use the leaders as a means of communicating with the students who found it hard to receive and contain the training in school to maintain the necessary progress of the class.

During the recess period in bad weather when the children could not go outside to play games in the school yard, the leaders were used to read selected stories to the classes. Since there were no public libraries available in those days for the children, the story reading sessions were most welcome and interesting to the students. The stories were selected by the teachers who felt they could learn a lesson from the story for they could apply the development of events in the story to their own individual lives.

The leaders were trained to be masterful in the reading of the stories so that important points would be stressed while related points would support the developments of events in the story. The leader's presentation aroused the desire to hear more of the story by the class. The artful delivery of the story by the leader drew the undeniable attention of the class as the story approached the climax, after which the subjects then settled back in their seats to ponder over the events and outcome of the story. At this point, there would be almost complete silence in the room and the teacher would purposely delay remarks so as to permit a little time for the class to meditate the events of the story.

Could It Happen Again?

STATE CAPITAL Highlights AND Sidelights

by Lyndell Williams

AUSTIN—The great debate on school finance reform is shaping up in the House and Senate.

Major legislation to restructure education funding formulas has been heard before committees in both houses and is now being altered by sub-committees to meet revenue on hand and varying viewpoints of lawmakers and educators.

Gov. Dolph Briscoe's weighted pupil plan would cost an estimated \$744 million in additional state revenue and \$1,033 billion in local contributions.

The Texas State Teachers Association plan would require some \$2.2 billion in additional state money and \$520 million in local funds.

Dr. Richard Hooker, Briscoe's education consultant, acknowledges 550 districts would have to increase ad valorem taxes to meet their "fair share" of school program costs under the governor's plan (HB 1083 and SB 478).

However, Hooker notes, those districts contain only 14 per cent of the state's population, and he contends these districts have an option as to whether they will produce their "fair share."

TSTA Executive Secretary Callie Smith maintains HB 1083 would mandate minimum accreditation standards and teacher salaries, and 500 to 600 districts would have no choice but to increase taxes.

Rep. W. S. "Bill" Healy of Paducah sent constituents in his district a detailed breakdown on how the Governor's bill would affect local taxes, and said he would oppose it.

Big county school officials generally supported the Briscoe bill at the Senate committee hearing, and claimed it should provide even more money per pupil.

Teachers jammed the Sen-

ate chamber in support of their bill—and a \$10,000 a year starting pay scale.

TAX WARNINGS ISSUED

Comptroller Bob Bullock issued warnings that a record state tax bill ranging from \$320 million to more than \$2 billion seems inevitable for 1977 if lawmakers continue their spending ways.

House Speaker Bill Clayton urged his appropriations advisors to cut spending recommendations below Legislative Budget Board recommendations.

MERGER APPROVED

The Senate approved merger of the Texas Highway Department and Mass Transportation Commission into a new State Department of Highways and Public Transportation.

Senators temporarily balked, however, at taking nearly \$100 million in auto sales tax revenues during the next two years for a Public Transportation Fund to help finance mass transit projects and planning.

PRIMARY BILL ADVANCED

A presidential preference primary bill won Senate approval—but as a one-time-only measure, to expire in March 1977.

The bill (HB 679) went back to the House and into conference committee for certain revision.

COURTS SPEAK

The Third Court of Civil Appeals took under consideration (after hearing oral arguments) Southwestern Bell Telephone Company's appeal from an injunction blocking a \$45 million long distance rate increase.

Court of Criminal Appeals reversed a murder conviction

of a man who claimed a five-year-old boy left in his care died of an accidental head injury while doing "flips."

An Abilene man won a new trial on burglary charges because the trial judge refused to instruct jurors on possible probation.

AG OPINIONS

Atty. Gen. John Hill held the Texas Constitution permits a statute providing for abolition of county school superintendent's offices on a local option basis.

In the same opinion, Hill said a school superintendent may not resign his position and terminate the operation of his office.

In other recent opinions, Hill concluded:

- A bill providing for cancellation of Texas Opportunity Plan Loans of students who work for certain state agencies after getting doctorate degrees in medicine or psychology is constitutional.

- Welfare Department files on child abuse investigations are not subject to disclosure under the Open Records Act.

- Information on teachers and their numbers of children in high and average high math and reading groups should be made public on demand.

- A state university's group insurance contract is also public record.

- A county auditor must be appointed to Kerr County.

- Kinney County must pay its justices of the peace at least \$5,880 a year.

- A county court judge must appoint a court reporter on demand for cases appealable to the Court of Criminal Appeals.

APPOINTMENTS

Governor Briscoe appointed Dr. James Ray Hays of Bellaire to the State Board of Examiners of Psychologists.

Briscoe appointed to the State Board of Vocational Nurse Examiners Dr. Howell R. Gaddy Jr. of Georgetown and Mrs. Winnie O. Warhol of Marlin.

W. C. Ligon of Portland was appointed branch pilot for Port Aransas Bar, Corpus Christi Bay and tributaries.

SHORT SNORTS

President Ford declared the City of Lefors a major disaster area on request of the Governor due to tornado damage; an assistance center was set up April 2.

Bowie, Ellis, Lamar and Motley counties received U.S. Department of Agriculture designation as disaster areas due to too much or too little rainfall.

April 1 was the last day 18-year-olds had to register for the Selective Service System. New procedures for future periodical registration are being developed.

Cigarette tax revenues increased \$427,878 from March 1974 to March 1975.

Checks totalling \$511,297 were mailed last week to 141 Texas hospitals and 50 state institutions as additional court-ordered refunds on overcharges for broad spectrum antibiotics.

The Light Touch



By Clint Brav

Johnny was told to put on a clean pair of socks every morning. By Friday he couldn't get into his shoes.

... This is still the land of opportunity. Where else could you make enough to owe so much to the government?

... The trick is to control inflation without causing a depression—a challenge equivalent to sticking a pin into a balloon gradually.

... One way to solve the traffic problem would be to keep all the cars that aren't paid for off the streets.

... Executive ability is the art of getting credit for all the home runs your players hit.

... Even if you've struck out elsewhere, see us at BRAY'S in Eastland and Ranger for grand slam home runs in ready to wear.

4H CLUB

BY ARLEEN ATKINS

Several Eastland County youths will be participating in District 4-H Contests, Saturday at Tarleton State University in Stephenville. They will be competing for top honors against youth from nineteen counties in District 8.

4-Hers who will be attending were first place winners in the County 4-H Contests held in March.

Those attending from Eastland County include the following:

Bethany Gibbs and Connie Taylor of Gorman, Share-The-Fun.

Theresa Scott and Jeanne Housel of Rising Star, Clothing Educational Activity. Patricia Phillips of Olden, Foods and Nutrition—Let's Speak Out.

Paula Eaves of Gorman, Jr. Public Speaking. Jo Ann Stroebel of Cisco, Sr. Public Speaking.

Bud Jeffs, Terry Jeffs, Scotty Mauney of Gorman, and Neill Scott of Rising Star, Jr. Livestock Judging Contest.

Bennett Shortes of Cisco, Revise Laminack of Gorman and David Good of Gorman, Sr. Livestock Judging Contest.

Bart Boles, John Mathews, Marq Gordon, Rusty Freeman, all of Eastland, Jr. Entomology. Lori Williamson and Marian Breneman of Ranger, Horticulture.

Mart Tucker and Caye Little of Carbon, Jr. Poultry.

Clint Tucker of Carbon, Natural Resource Demonstration.

Shirley Kidd and Patri Spurlen of Eastland, Horticulture Preparation and Use.

Sunday,

April 13, 1975

RCG Leasing Co.

Patient Aids

South Side Of Square

Call 629-8052

RANGER DRIVE-IN THEATRE
SHOW STARTS AT DUSK
LAST TIMES SUNDAY

CARROLL O'CONNOR ERNEST BORGNINE
LAW AND DISORDER
COLUMBIA PICTURES A DIVISION OF COLUMBIA PICTURES INDUSTRIES, INC.

FRIDAY-SATURDAY-SUNDAY
APRIL 18-19-20

"THUNDER ROAD" WAS ONLY A PRACTICE RUN.
THIS IS THE REAL THING. You take a load of 200 proof corn likker through a police roadblock at 100 miles an hour and if you ain't a dead man, you're a moonrunner.

LIKE FATHER... LIKE SON...
BIG JIM MITCHUM
GEAR-GRINDING, TIRE-SCREAMING, HOT-RODGING BOOTLEG SHINE!

MOONRUNNERS
United Artists

BURT REYNOLDS
W.W. AND THE DIXIE DANCERS
PG

Majestic Theatre
Eastland 629-1220
Sun. - Mon. 8 p.m. Only

You've been COFFY-TIZED, BLACULA-RIZED and SUPERFLY-ED—but now you're gonna be glorified, unified and filled-with-pride... when you see

"FIVE ON THE BLACK HAND SIDE"
PG

Thurs. & Fri. 8 p.m. Only
Sat. 8 & 9:41 p.m. Mat. Sat. 2 p.m.

WALT DISNEY PRODUCTIONS

A SECRET FORMULA EXPLODES...
POOF!
...INSTANT MUSCLE...
...INSTANT FUN!

THE STRONGEST MAN IN THE WORLD

Technicolor

Fri. Late Show 10:30 p.m.

Barbra Streisand
in **"For Pete's Sake"**
PG

Eastland Pump & Construction

H.L. "Hoot" Ferguson
817-629-2311
Box 693
Eastland, Texas

Dirt Work-Hauling
Water Lines-Sewer Lines

Real Estate Auction Sale
Olden, Texas, Saturday, April 19, 1975
-- 10:00 a.m.

Mrs. Betty Halfacre - Owner

20 acres of land, to be sold in one piece. Located within 1/2 mile of Post Office, Olden. City Water to property with Natural Gas also, ideal for Sub-division or small grazing, farming, or just living. Location--Turn North, first road from Post Office, going .25 mile to T&P R.R. Tracks, then turning to the left, or West, and going .7 mile, then turning North again, going .45 of a mile, considering two jogs in road. Land lying on East side of road.

50 Years of Professional Auctioneering Service
We Sell Anything, Anywhere, Anytime

Don Estes 817-AC-758-2516
Desdemona, Texas 76445

Rocky Ash 915-AC-893-5663
Clyde, Texas 79510

Henry Block has 17 reasons why you should come to us for income tax help.

HENRY BLOCK
THE INCOME TAX PEOPLE

104 W. Commerce 629-8121
9-6 Mon.-Fri. 9-5 Sat.

Reason 5. If the IRS should call you in for an audit, H & R Block will go with you, at no additional cost. Not as a legal representative... but we can answer all questions about how your taxes were prepared.

CATTLEMAN'S RESTAURANT
Eastland, Texas. 629-1761

Featuring Home Cooked Meals
Steaks, With Baked Potatoes Anytime.
Sunday Thru Friday - 6 A.M. - 10 P.M.

Friday - Fish Night - All You Can Eat - \$1.95

J.R.B. Variety
These Prices Good Eastland, Ranger & Cisco

Colorful Straw
TABLE MATS
Reg. 59¢
NOW **39¢**

COFFEE FILTERS
Reg. 39¢
NOW **29¢**

Knee Hi
HOSE
Lady Star
Reg. 39¢
NOW **3/\$1.00**

Nyquil
COLD MEDICINE
Reg. \$2.00
NOW **\$1.89**

Fruit Of The Loom
BOYS BRIEFS
Reg. \$2.00
NOW **\$2.39**

J.R.B. Super Market
Green Stamps

Letters to the Editor

Editor: Please take a few minutes to write a letter to Senators Tower, Bentzen, Phillip Hart, Gaylord Nelson, Ted Kennedy, Representative Omar Bureleson, or President Ford.

Government intervention never makes medical care less expensive and always increases taxes. It would appear that a number of leaders in the pharmaceutical professions are leading their members into a terrible dead-end.

was tragically demonstrated by the "Russian roulette" involved in regard to potency variations of digitalis glycosides. Pharmacists as well as physicians would do well to recognize that in the present distribution system protection against drug disaster due to drug defects rests in the control sector of the manufacturer and liability falls on his shoulders.

The inherent illogic of the drive to replace trademarked prescription drugs at the pharmacy by "cheap" generics is implicit in the false suggestion that a generic drug costs patients but a fraction of a trademarked drug. Untrue. If a shift to generics took place on this premise, retail pharmacists would face a financial disaster.

WHO KNOWS BEST--PHARMACIST OR PHYSICIAN The advocates of the dispensing fee say the pharmacists know more about drugs than physicians. Do they? Do they also know more about the patient, or the patient's diseases? They know less about these than the physician does and may know practically nothing about the physician's therapeutic objectives.

Members of our legislatures and of government agencies that are pressing for changes in present economic patterns of drug manufacture focus on presumed economic savings that they wish to achieve as part

of their plan for either national health insurance or, ultimately, the nationalization of medicine. The pharmacists would do well to consider, "How long will the pharmacy retain economic independence if third party payments take over and/or if medicine is nationalized?"

DOCTORS' DISPENSING MAY SAVE HUNDREDS OF MILLIONS If economics is the sole issue in respect to drug prices, generic drugs and repeal of the antitrust laws, then consider the following: The greatest savings that can be made in respect to the cost of prescription drugs is not in the area of its research, of its control, or its promotion, and its production--the largest single element of cost in respect to a prescription drug is in its distribution.

What will the role of the pharmacist be if the government and third party payers propose in the interest of economy that physicians dispense fifty or one hundred of their most frequent prescriptions--and do so at a dispensing fee of one dollar (not \$2.50) over cost? With one stroke this would achieve a savings of hundreds of millions of dollars. Moreover, it would save the patient the time necessary to go to the pharmacy to have the prescription filled. It would speed the therapeutic process and afford closer patient management.

UNTESTED SYSTEMS MAY BE DANGEROUS Medical Tribune does not believe it is in the interest of either the patient or the medical or pharmaceutical professions to destroy existing channels of distribution before other systems have either been tested or put into place. Medical Tribune believes it is potentially disastrous to gut antitrust laws whose repeal will inevitably be followed by dissatisfaction when the hypothetical savings that are promised do not materialize and when preventable drug disasters ensue.

When pharmaceutical organizations play a political game pitting pharmacists and pharmaceutical manufacturers against each other and pharmacists against doctors and, ultimately, doctors against both the pharmacists and the manufacturers, they play with fire. They are exposing their constituencies to the dangers of government economy measures in the areas of prescription drugs which at the very least would place increasing economic restrictions on pharmacists, or lead to the return of drug

dispensing in the physician's office. An action contributing to increasing governmental economic regulation in the health care field will contribute ultimately to a nationalization of health services which will not be restricted to physicians but must inevitably encompass pharmacists as well. Most doctors are learning or have learned the hard way about "Medicare Fees" and "Medicare Paperwork". Will pharmacists make the same mistake the medical profession made?

H.J. Bulgerin, M.D.

Editor: My mother, Mrs. Montie C. (Elizabeth) Rowe of Cisco, is hospitalized in Fort Worth with a severely broken ankle. She had many friends in Eastland who would like to know this I believe.

She will probably be hospitalized at least thru April 19. Her address in Fort Worth until then will be Harris Hospital, Jones Building Room 278, 1300 West Cannon, Fort Worth, 76104.

Thank you very much, T. Cay Kugle

From The Pages

Of History

EASTLAND WILL HAVE ABUNDANT SUPPLY OF WATER

Two Lakes Are Completed and Two More Being Constructed; Will Hold 10,000,000 Gallons.

Special to Texas Oil Ledger. Eastland, Texas, Aug. 6--In the near future Eastland will have one of the most abundant water supplies in the oil fields.

At present, Eastland has two lakes completed and two in the process of construction. When these two lakes are completed Eastland will then have a water supply of 10,000,000 gallons. North of the city the Lake Eastland is now being worked on, this lake will cover an area of about 600 acres and will have a capacity of 3,000,000 gallons of water. This lake is being built under the supervision of the chief engineer of the Texas Pacific Railroad, who has a contract to secure water from the lake for the roundhouse and terminals that they will erect here within a short time.

Leeroy, Stephens Co., Tex., Dislaps Remarkable Growth

Three Good Wells Reported Adding Much to Daily Production There; Building Activities Rapidly Increasing.

Special to Texas Oil Ledger. Leeroy, Texas, Aug. 6--Showing three completions last week with an initial increase in production of 3,600 barrels. Leeroy, located 12 miles northeast of Cisco, is enjoying a rapid and prosperous growth in matter of new buildings and expansion.

The newest producers are the Tolle No. 2 of the Southwestern Oil Development Company, an Arizona concern, which was shot in the Caddo lime at about 2,220 feet for an initial production of about 100 barrels hourly; Tolle No. 2 of the Oriental Oil Company, of Dallas, formerly the Ajax Oil Company, shot with 330 quarts of nitro in the lime and gauging 2,400 barrels daily; the Greene No. 1 of Parker et al., shot into 600 barrels daily production. This trio of wells is located on adjoining leases located about one mile due east of Leeroy. Another recent producer is the Ray No. 2 of Rupp & Huff, headquarters Eastland, now producing 400 barrels after a shot in the lime around 2,200 feet.

Leeroy is growing with almost overnight changes from a small place in the road to a town of cement, brick and frame buildings. The population has increased three-fold during July, and is conservatively estimated at 2,500. Over half this number are now being served by the Leeroy post office, which officially opened Monday with a daily exchange of mail to and from Cisco. Among new buildings now under construction is the two-story brick block erected by Herman and Belfonz, of Cisco, at a cost of \$15,000.

PRAIRIE'S NEW HOME AT EASTLAND IS ALMOST COMPLETED Eastland, Texas, Aug. 6--The new \$1,000,000 office building of the Prairie Oil & Gas Company in Eastland that will be the state headquarters for that company is now nearly finished and it is expected that the company will soon move in.

At present temporary offices are maintained in a building that is intended for a men's dormitory as soon as the new building is completed. The Prairie Oil & Gas Company have built more than 12 beautiful homes in Eastland.

Young mother wants to do babysitting in her home. Charges by the hour, day or week. Call Debbie Stagner 629-2881. t-43

POWER ELECTRIC Residential, commercial and industrial wiring. New or old construction, house power specialists. For 220 volt appliances. Eastland. Call 629-1003. t-1

ELECTRICAL SERVICE All types. Range, dryer hook-ups, dishwasher installation, home and business wiring. Mobile home repair. Special rates. Call Mike Kelly, 647-3619.

FOR SALE: W.D. 45 Allis Chalmers Peanut tractor, weeder. Call 734-2093. t-36

FOR SALE--4 row John Deere planter, 12 disk John Deere one way plow, Peanut tractor weeder. Call 734-2093. t-37

FOR SALE--3 bedroom, 2 bath brick home. Central heat and air. On large lot. 629-2348. t-39

FOR SALE--Used Touch and Sew Singer Sewing Machine. Does everything. In fair condition. \$38.95. We also clean, oil and adjust all makes and models. Call 629-1630 for information. t-32

BATES Wood Furniture stripping and refinishing. Also repair. Take trade-in on work. Contact day or night 1508 Ave. A. 442 - 2363 Will pick up and deliver



EASTLAND MEMO:

One rare irregular, sojourner to our area is the Red Breasted Nuthatch, who has been active around our feeders for a few days. Nuthatches are kin to the creepers, titmice and chickadees, all of them being small, fast, and cute birds resembling each other to a degree. This 4 to 5 inch specie has a black cap, a blue-gray back, and a rusty breast. A white stripe above, and a black stripe through the eye, sets this member apart from the rest. Large headed, short tailed, and short legged, he is an acrobatic tree snooper, hopping, jerking, and jumping up, down and around the tree trunks. These names: "Topsy Turvy Bird", "Upside Down Bird", and "Tree Mouse" are indicative of his antics.

Featuring a strong, long woodpecker-like bill, this diminutive character cracks nuts, probes and pries pine cones for insects, larvae, and seed. Thus it earned his old English title of "Nuthack". Even so, acorns, and berries comprise part of the Nuthatch's diet. Common in conifers, our unpredictable migrator returns every second, or third year, to winter down south. Roaming flocks of titmice and chickadees welcome their cousin to foraging in woodlands, groves and trees. The Red Breast is questionably blest with a twang "Enk", or "Ank", not having a song in the classical sense.

Hollow limbs, dead trees, and bird houses accommodate soft nests where 4 to 7 creamy, pinkish eggs with reddish, brown spots are incubated, and the family raised. Around the Red Breast's nest boxes there is always a layer of plastered pitch, which they gather from pine, spruce, and balsam. With his bill he pecks and smears an area guarding the entrance. Ornithologists have no explanation for this practice, but some have speculated that the pitch wards off predators, ants, etc. More pitch plaster is added while the family is being raised.

Please try to get a glimpse of this rare visitor, with the distinct markings - long slender bill and black eye streak, recognition should be prompt.

AN EASTLAND BIRD WATCHER

4-H Clothing Guides And Dress Revue April 15

Training on new 4-H Clothing Guides and the County 4-H Dress Revue will be given Tuesday, April 15, for all interested parents and leaders. The meeting will be held at 7:00 p.m. in the Eastland National Bank Civic Room.

Everyone who would like to know more about the 4-H Clothing program or who is interested in becoming a 4-H clothing leader is urged to attend the training meeting.

WANTED--Lawn mowing and yard work. 629-2943. t-36

Just received load of out of town items. Children's shoes, men's suits, and other items. Will receive another load first of month. Thrift Shop, 510 East 7th, Cisco.

J&F POODLE GROOMING 14 MILES SOUTH OF CISCO ON HIGHWAY 206. PHONE 725-6540

Olds Flute For Sale. Call 629-1032 after 6 p.m. \$100. t-1f

FOR SALE--1970 trailer house 16 x 65. Call 629-1543. t-1f

FOR SALE--900 Z Kawasaki Motorcycle. Luggage rack, back rest and farring. Perfect condition. \$1650 or best offer. Contact John Crocker. 629-1715 after 5. 629-2778. t-36

IF YOU MISS YOUR TELEGRAM CALL 629-2214

FOR SALE--Men's steel toed work boots \$16.95 to \$24.95. See at B&H Trading Post, 311 N. Seaman, 629-2885. t-35

Mercers Appliance Repair. Dishwashers, washers, dryers, stoves, disposals, and ovens. G.R. Mercer, Olden, Texas. 653-2473

TRAVEL SERVICE REPRESENTATIVE HELEN CRAWFORD 502 Ave. D 442-2265 Cisco Cruises-Tours Airline Tickets

EXTERIOR AND INTERIOR PAINTING Ph. 647 - 1208 Free Estimate

Apartment House For Sale: 3 apartments; one unfurnished; two furnished. Has insulated siding; Pecan trees. 629-1304, 203 N. Dixie. t-1f

LOOK! MACRAME

Different Sizes, Colors, Beads, And Instruction Books.

Learn The Art Of Creative Knotting

PAPER SCULPTURE & SHADOW ART

HANDY BOXES Good For Tool Boxes, Tackle Boxes Hundreds Of Uses

COMPLETE LINE OF PLUMBING SUPPLIES Eljer Fixtures-Shower Stalls

PVC Pipe & Fittings-Sewer & Drain Pipe

Morren's Plumbing And Gift Shop 1013 West Main 629-2092

CI 1206P if you can't pass up a great buy... this is for you! Image of the calculator.

THE CI 1206P ELECTRONIC PRINTING CALCULATOR Come in and compare these features... then compare our price, features and quality with any of the competition. Features: FOUR FUNCTION, 12 DIGIT CAPACITY, FULLY BUFFERED KEY BOARD, CONSTANT KEY, % CALCULATION FOR MARK UP AND DISCOUNT, ROUND OFF KEY, FLOATING IN/FLOATING AND FIXED OUT DECIMAL, ADD MODE, ROLL-OVER KEY BOARD (FOR FAST TOUCH OPERATION), TOTAL RECALL, SILENT START-STOP OPERATION. and compare this \$269.00 ALSO: Canon Desk Calculators \$59.95 At The Telegram Office A LIFETIME OF DURABILITY FOR A LIFETIME OF DEPENDABILITY!

BUSINESS MACHINES A Division of C. ITOH ELECTRONICS, INC. FOR SALE Partly finished cabin to be moved. 106 Ave. I. 442-2337, Cisco. t-38 WHITE PINE ELECTRIC CO is now open for business. All type service work including Mobile Homes 24 hour service with licensed men on duty. 629-2881. t-1f

LIQUIDATION SALE! IRRIGATION EQUIPMENT NEW & USED WHILE IT LASTS... COME EARLY Located at WOLFE PECANLANDS Stephenville & De Leon, Texas If you come early... you'll find bargains in both new and used pipe... because it was purchased before inflation... plus no commission involved... you deal with us direct. Call now!

WHEEL SYSTEMS 19 Quarter mile units (used) 6" ALUMINUM PIPE 750 ft. (new) 16,750 ft. (used) PUMPS & MOTORS 4 Butane units (used) 5" ALUMINUM PIPE 5,940 ft. (used) 10" ALUMINUM PIPE 16,630 ft. (new) 4,690 ft. (used) 4" ALUMINUM PIPE 4,560 ft. (used) 8" ALUMINUM PIPE 4,830 ft. (new) 15,330 ft. (used) MISC. FITTINGS Assorted sizes and units Call wolve pecanlands. Ask For Gene O'Neal (817) 35-3135 or Metro 261-3481 Scotty Campbell (817) 893-6585

A THOUGHT FOR THE WEEK BY BOB BOYD

People and nations have known good times and bad. No matter what the social, economic or physical status is or will be, a crisis or confusion will always exist somewhere for some people. A crisis and confusion is a part of living. Each of us must face some sort of crisis or confusion sooner or later. To face a crisis requires courage - and courage is a personal matter. Courage cannot be leased, borrowed or bought. It must be drawn from one's self, for one's self. And when courage is shown, it often draws out the courage in others. When courage is shown, confusion can and often does disappear. Ever since time began, the greatest source for courage has been traced to a foundation on a faith. Faith creates hope. Without faith and hope, courage is difficult to come by. In spite of dark clouds - faith, hope and courage will always be the means to let us see the rays of sunshine again.

Bob Boyd Arrington Funeral Home 301 S. Lamar St., Eastland, 629 - 2611.

BRILLIANT GIANT-SCREEN PICTURE IN 25" TABLE MODEL COLOR TV! ZENITH CHROMACOLOR II 1975 SOLID-STATE 66 Brilliant Chromacolor Picture Tube! 66 100% Solid-State Chassis! 66 Zenith's Patented Power Sentry Voltage Regulator! 66 Chromatic One-button Tuning! 66 Solid-State Super Gold Video Guard Tuning System. 66 Synchromatic 70-Position UHF Channel Selection! The VAN GOGH F4740W Sturdy metal cabinet in grained Kashmir Walnut color. Automatic Fine-tuning Control, 5" Round Speaker, VHF and UHF Antennas. ZENITH quality! ZENITH dependability! Western Auto 201 S. Lamar-269-2011 Eastland

COURTHOUSE NEWS

NEW CAR REGISTRATIONS
 Fred K. Moseley -- Chev.
 Pkup -- Ranger
 Jerry Lee Williamson -- Challenger -- Ranger
 Lewis W. Landers -- Chev.
 Pkup -- Lometa
 Ford Mtr. Credit Co., Moylan Const. Co -- Merc. -- Abilene
 W.D. Cave Jr., -- Chev. -- Houston
 Clarence G. Weatherby -- Chev. -- Abilene
 Thomas E. Laughlin -- Pont. -- Blanket
 James Lane Air Conditioning Co. -- Chev. Pkup -- Wichita Falls
 Mack Davis Jr. -- Olds --

Brownwood MARRIAGE LICENSES
 Stanley Keith Day and Janice Marie Evans
 Dick Edward Williams and Donna Faye Osborn
 William Jessie Hudson and Deloris Jordan Studstill

INSTRUMENTS FILED COUNTY CLERK'S OFFICE
 Lunsford D. Adams and wife to A.C. Keller to 1st Fed. S&L Assn -- mechanics, materials lien and asgn.
 Lunsford D. Adams and wife to 1st Fed. S&L Assn. -- deed of trust
 Allison R. Avinger, dec'd and others to the public -- proof of heirship, will attached

Lela Kate Butler and husband to Archie Chamness -- warranty deed
 B.G. Brown Const. Co. to Billy T. Wilson and wife -- warranty deed
 B.G. Brown Const. Co. to Joe E. Rose and wife -- warranty deed
 B.G. Brown Const. Co. to Albert L. Hamm and wife -- warranty deed
 Elliott Bryant, Indv., and others to L.B. Sherman -- oil, gas, min. lease
 B.G. Brown Const. Co. Inc. to First Natl. Bk., Cisco -- deed of trust
 B.G. Brown to Capitol Investment Co. -- deed of trust
 M.H. Byrd and wife to Emma Lou Benton -- warranty deed
 Albert B. Byrd and wife to Gladys V. Hutton -- warranty deed
 Bernie Barnes and wife to Rhodes Drilling Co. -- oil, gas, mineral lease
 Archie Chamness to Nona Kennedy -- warranty deed
 Tommy D. Chew to 1st Natl. Bk., Cisco -- deed of trust
 Citizens Natl. Bk., Brownwood to Continental Natl Bk., Fort Worth -- asgn. D. T. V. L. Capitol Investment Co. to B.G. Brown Const. Inc. -- warranty deed
 Bob Carroll and wife to Joe L. Walraven and wife -- warranty deed
 Mary Ellen Clyatt to Marvin L. Green -- power of attorney
 Bill R. Cardwell to Wilburn McMillan and wife -- rel. vendors lien and deed of trust
 Jack D. Curtis and wife to the public -- aff'd
 Jack D. Curtis and wife to the public -- homestead designation
 Jack D. Curtis and wife to Stephenville S&L Assn -- deed of trust
 Collective Fed. S&L Assn. to Boyd Ben Porter and wife -- rel. deed of trust
 Ed L. Craig to Miller Price and wife -- r bill of sale
 Mildred Childers and others to Harlin E. Vise and wife -- warranty deed
 Cisco Jr. College to James Lee Bailey and wife -- warranty deed
 Ronald G. Davis and wife to Paul A. Foster -- warranty deed
 Roy Dennis and wife to Bobby Rich -- warranty deed
 Dixon Drilling Co. and others to G.P. Mitcham and others -- rel. oil, gas lease
 Dyess Fed. Cred. Union to Gene E. Ellison and wife -- rel. deed of trust and vendors lien
 O.H. Dick and wife to W. Roy Sharrack and other -- oil, gas lease
 E.O. Derryberry to Kathy L. Taylor -- subordination agreement
 Ronald G. Davis and wife to 1st Fed. S&L Assn. -- deed of trust
 Eastland Natl Bk. to Eastland Co. Broadcasting Co. -- rel. deed of trust
 Eastland Natl Bk., to B.G. Brown Const. Co. -- rel. deed of trust
 Eastland Natl Bk. to Roger J. Berry and wife -- rel. deed of trust
 Myrtle May House Everett to W. Roy Sharrack and others -- oil, gas lease
 Erna Eifert to Southwestern Resources Corp -- oil, gas lease
 Eastland Natl Bk. to Charles Petree and wife -- rel. deed of trust
 Catherine Elliott to the public -- aff'd
 Paul A. Foster to 1st Natl Bk., Cisco -- deed of trust
 T.C. Fisher and wife to 1st St. Bk., Ranger -- deed of trust

1st Natl. Bk., Cisco to B.G. Brown Const. Co. -- rel. deed of trust
 1st Natl. Bk., Cisco to Kent Bowden -- rel. deed of trust
 1st St. Bk., Ranger to Billy R. Herod -- rel. deed of trust
 George W. Fields and wife to James T. W. Wright and wife -- warranty deed
 1st Natl. Bk., Odessa to Clifton B. Schooler and wife -- rel. asgn. of rent
 Fed. Ld. Bk., Houston to L.B. Sherman -- subordination deed of trust
 First Natl Bk., Cisco to W.B. Notgrass -- rel. deed of trust
 John R. Forshee and wife to 1st Fed. S&L Assn -- deed of trust
 1st St. Bk., Ranger to Billy R. Herod and wife -- rel. vendors lien and deed of trust
 Horace V. Gage, dec'd to the public -- proof of heirship
 Ruben R. Gaeta and wife to Santos Martinez Jr., and wife -- warranty deed
 James D. George and wife to James A. Jackson and wife -- warranty deed
 Joe T. Gray, Receiver, to Olympic Pet. Corp. -- oil, gas lease
 Veta Barton Peery Guenther, dec'd to the public -- proof of heirship
 Sallie Day Garrett to Eastland Natl. Bk., -- subordination agreement
 R.H. Haddaway to Rhodes Drilling Co. -- oil, gas lease
 Ruth M. Haney, dec'd to the public -- proof of heirship, will attached
 Albert L. Hamm and wife to Lomas and Nettleton Co. -- deed of trust
 Leonard L. Hollander to Tom B. Stark and others -- warranty deed
 Maurice O. Hazard and wife to Donald L. Kinnaird Jr., -- warranty deed
 Hollinsworth Oil Co. to Tom Gautier -- asgn. oil, gas lease
 N.H. Holliday to Elbert A. Kaplan -- asgn. oil, gas lease
 Lula Castleberry Jones, dec'd to the public -- proof of heirship
 Jack Johnson and wife to Kathy L. Taylor -- oil, gas lease
 D.D. Kolp and others to J.C. Wilhite Jr., -- oil, gas, mineral lease
 Joseph D. Kennedy and wife to the public -- homestead designation
 Joseph D. Kennedy and wife to Continental Natl. Bk., Fort Worth -- deed of trust
 John S. Kimble and wife to G.C. Acrea -- warranty deed
 Viola Langlitz to W. Roy Sharrack and others -- oil, gas lease
 John G. Lee and wife to Sterlin C. Tucker and wife -- warranty deed
 H.B. Murphy to Annie E. Bryan -- quit claim deed
 Charles Mainord to 1st Fed. S&L Assn. -- deed of trust
 Harold Martindale to Tommy D. Chew -- quit claim deed
 Lloyd Edgar Miller, dec'd to the public -- proof of heirship
 Santos Martinez Jr., and wife to Ruben Gaeta -- deed of trust
 O.L. Meador and wife to Ronald Davis and wife -- warranty deed
 M.L. McMinn and wife to W. Roy Sharrack and others -- oil, gas lease
 Ross McCaghren and wife to Southwestern Resources Corp. -- oil, gas lease
 Lloyd McGrew and wife to Leonard E. Tipton and wife -- warranty deed
 Mary Rachel McNew to James D. George -- warranty deed
 Minnie Lee McMillan (dec'd) to the public -- certified copy probate

Hospital News

Patients in the Ranger General Hospital Saturday morning were:
 Andrew Byrd
 Erma Gage
 Herman Nerger
 Jacob Sims
 Nettie Wombie

Olympic Pet. Corp to Cisco Trust -- asgn. oil, gas lease
 Vernon Phillips and others to L.B. Sherman -- oil, gas, mineral lease
 Saul Pullman to J.D. Speck and wife -- deed of trust
 Producing Zones Co. to G.P. Mitcham Jr., -- part. rel. oil, gas, lease
 Geo. M. Peery and others to M.L. Terrell -- warranty deed
 Bobby Rich to 1st Natl. Bk., Gorman -- deed of trust
 Joe E. Rose and wife to Lomas and Nettleton Co. -- deed of trust
 R.C. Roberts and wife to Tex. Oil and Gas Corp. -- asgn. oil, gas lease
 Darryl F. Rutledge and wife to Jesse D. Rutledge and wife -- warranty deed
 Riley R. Robbins to D.C. Wilston and others -- warranty deed
 Eula L. Stacy, dec'd to the public -- certified copy probate
 Sheriff of Eastland to J.T. McMillan -- sheriff's deed
 Gertrude Murrell Sue, dec'd to the public -- certified copy probate
 Stephenville S&L Assn to J.L. Kelsey and other -- rel. deed of trust
 Travis Starr and others to Bobby J. Moore -- oil, gas lease
 B.E. Simpson and wife to Zena Simpson -- warranty deed
 J.D. Speck and wife to Saul Pullman -- warranty deed
 Mrs. M.C. Terry to the public -- proof of heirship
 Leonard E. Tipton and wife to Lomas and Nettleton -- deed of trust
 M.L. Terrell to 1st St. Bk., Ranger -- deed of trust
 Sterlin C. Tucker and wife to U.S.A. -- deed of trust
 Mary E. Williams and husband to Carlos Mainord and wife -- warranty deed
 Billy T. Wilson and wife to Lomas and Nettleton Co. -- deed of trust
 Billy T. Wilson and wife to B.G. Brown Const. Co. Inc. -- warranty deed
 Hattie Edna Ward, dec'd to the public -- proof of heirship, will attached
 Jim R. Wright to the public -- aff'd
 Glenn E. Winfrey to the public -- aff'd
 Glenn E. Winfrey and wife to L.B. Sherman -- oil, gas, mineral lease
 Joe L. Walraven and wife to Bob Carroll and wife -- deed of trust
 Joe L. Walraven and wife to 1st St. Bk., Ranger -- deed of trust
 L.D. Yielding and wife to David J.D. Morehead and wife -- rel. vendors lien and deed of trust
 Starla Lavanna Fox Howard vs. Harvey Howard -- divorce
 Della Ann Fox Lynch vs. Mark Allen Lynch -- divorce
 Virginia Theford vs. Otis Theford -- divorce
 Oscar T. Weeks vs. Betty Jo Weeks -- divorce
 Christy Justice vs. Cy Doug Justice -- divorce
 Charles Wayne Jones -- change of name

Hugh Johnston
 Homer Meek
 Mary Harden
 Sue Maxwell
 Doy Reynolds
 James Ward
 Artis Rachels

Connie Lawson
 Ida Parrish
 Lillian Woody
 Thelma Lindsey
 Dicie Fonville

Lou Ballenger
 Willie Wylie
 Leo Pitts
 James Jones
 Lee Snow
 Henry Swindle
 Willie Walker
 Betty Regian
 Linda Ramirez
 Josephine Brister
 Richard Kurkin
 D.J. Walker
 Baby Boy Ballenger

Jody's Pizza
 If You Want A Change Of Atmosphere And Think Eating Out Should Be Fun Come To Jody's Pizza
 West Side Of Square - Eastland
 Ph. 629-8838

FREE HEARING TEST
REPAIR-SERVICE FOR-ALL-BRANDS
BATTERIES FOR ALL BRANDS

If You're Interested In Top Quality And The Possibility Of Savings Of A \$100⁰⁰ Or More On The Purchase Of A New Hearing Aid. Contact Me.

Clinton Hearing Aid Service
 "Where SERVICE Is The the Key Word"
 442-2168-609 W. 11th-Cisco, Texas

The Home of Your Dreams — for Real!

7 3/4% VA & FHA Available!

Nothing Down On VA Loans
 Low Down On FHA Loans
 Conventional Loans Also Available
 Choice Location Still Available

H & W Development Co.
 216 S. Seaman Eastland
 629-1702

25 YEARS OF SERVICE TO EASTLAND COUNTY

City Garage
 24 Hour WRECKER SERVICE
 Phone 629-1709 Night 629-1479
 Gil Biggs 629-1210
 Eastland, Texas

INTERNATIONAL HARVASTER (Dealer) J.J. Finley, Owner

CAFE & RESTAURANT EQUIPMENT AUCTION SALE
 Ranger, Texas
 Saturday, April 19, 1975 1:00 p.m.

Dispersion of all equipment of Regal Cafe, plus equipment of another cafe that have been operating. Sale will be held at the Regal Cafe, one block West of signal light on Highway 80 in Ranger, Texas. E.R. Overstreet, owner.

There is enough equipment in this Auction to equip two cafes consisting of gas ranges, refrigerators, booths, tables, utensils, dishes, and all the furnishings necessary to operate a good Cafe business.

50 Years of Professional Auctioneering Experience.

We Sell Anything, Anywhere, Anytime

Don Estes 817-AC-758-2516 Desdemona, Texas 76445
 Rocky Ash 915-AC-893-5663 Clyde, Texas 79510

Wrestling
 Eastland, Tex.
 Fri. April 18th
 8:30 p.m.
Battle Of The Super Stars

Dory Funk Jr.
 Ex World Champ
 Vs.
Red Bastein

Tage Team
Black Gordman & E L Gran Goliath
 Vs.
The Lawman
 Don Slatton From Eastland & Scott Casey

Plus 1
Other Match

Sponsored By
Eastland Jaycees
 Old High School Gym

Reservations
Baird T.V. & Radio Shack
 Ringside \$3.50
 Gen. Adm. \$2.50
 Kids 3 & 11 \$1.50

Free Hearing Test In Your Home Or Our Office
Free Service On All Makes
 If Hearing Is Your Problem Beltone Is Your Answer

Jim Graves
 Consultant

New Office Hours
 9 - 5 Tuesday Only
 In Eastland

629-8159 (104 Commerce)
 South Side Of Square
 Eastland, Texas

673-5109
 1333 North 2nd
 Next To First Baptist Church
 Abilene, Texas

Two Offices
Beltone

CITIZENS REALTY
 YOUR RESIDENTIAL SPECIALIST
 629-1769 629-2404

Lovely new home going up one block from Cisco High School and across from the proposed City Park. Three bedroom, two full baths, large two car garage, loaded with extras, on corner lot.

Would you like to build a new home, but dread the waiting period for construction? We have a three month old home with improvements. Seller moving out of city. Pay equity and assume the original loan of 7 3/4 percent. No credit check required. Situated on a nice large corner lot in Cisco.

Excellent mobil home site. 65' x 150'. Close to schools, Eastland.

Pleasant neighborhood and walking distance to all Eastland schools. Three bedroom, one and a half baths, one car garage, central heat and air. Only \$175 monthly.

Eastland Rental Property: Two large bedrooms and two full baths in this 1000 sq. ft., six month old mobil home. Only \$146 monthly, lot included. Kitchen appliances, attractive paneling, central heat and shag carpet add to the enjoyment of occupancy.

Country home on hill, Morton Valley area. 1 acre of land, three bedroom, 1 bath, two car garage, paneling with a large wood burning fireplace in living room, kitchen is equipped with cook-top and eye level oven for convenience, fully carpeted. GOOD FINANCING.

Only \$800 down to assume this two year old modular home. Three large bedrooms, two full baths, carpeting throughout, fully furnished with all kitchen appliances including Kenmore washer and dryer. Central heat and air unit.

Excellent location in Cisco, two blocks from high school. Three year old three bedroom home, two baths and two car garage. Total Electric, with central heat and air, range, dishwasher, disposal. Only \$750 down. 8 percent interest.

IN STRAWN, TEXAS 4366 sq. ft. A colonial dream, six bedrooms, three full baths, formal living room 20' x 40' with fireplace. Formal dining room, large kitchen with range, dishwasher, built in ironing board in laundry with washer and dryer connections. Breakfast nook off of kitchen and service entry. Gas furnace and extra nice fireplace in master bedroom. Situated on almost one acre of land with landscaped garden and greenhouse. EXTRA LARGE EXTRA NICE.

Corner lot in Eastland, near center of town. Ideal for mobile home or new home. 50 x 150. \$250 down. Close to schools. 135 acres - 46.7 acres peanut allotment. 4 irrigation wells. Good terms. Located north of Cross Plains.

116 acres Southwest of Cisco. Large older home. 35 acres of cultivated land. Two springs. Two tanks, numerous outbuildings. TERMS

Wayne Durham - Associate 629-2743
 B.G. Brown - Broker 442-1631

Doris Norton - Associate 653-2263
 Karla Brown - Broker 442-1631

JRB

SUPERMARKETS

BROWNWOOD, COLEMAN, CROSS PLAINS, ABILENE, RANGER, EASTLAND, CISCO, DE LEON, BRADY, WICHITA FALLS, STAMFORD, LLANO, HAMLIN
NO SALES TO DEALERS

Unbeatable Values!

We feature national brands! And you get  Green Stamps, too!

Unbeatable Stamps!

We Honor U.S. Government Food Stamps

DOUBLE STAMPS
Wednesday & Saturday
Prices Effective
Thru Sat., April 19
Hours: 8 a.m. to 8 p.m.
Eastland Store Only

We Reserve The Right To Limit Quantity
NO SALES TO DEALERS

COME OVER & SAVE

TENDER FED HEAVY BEEF

CHUCK ROAST

BLADE CUT

lb. **59¢**

PLUS  **STAMPS**

JRB Meats Are U.S. Government Inspected. If For Any Reason You Are Not Satisfied, We Will Cheerfully Return Your Money.

SWIFT PREMIUM BACON PAN SIZE 12 oz. lb. 99¢	MOREHEAD CHEESE SPREAD 8 oz. PLAIN OR JALPENO each 69¢
ARMOUR STAR FRANKS 12 oz. ALL MEAT OR ALL BEEF each 79¢	DECKER QUALITY HOT LINKS lb. 89¢
TENDER FED HEAVY BEEF FAMILY STEAK lb. 89¢	SWIFT SMOKED SAUSAGE EXCELLENT FOR BARBECUE lb. \$1.29
BONELESS LEAN STEW BEEF lb. 99¢	TEXAS CERVELOT SUMMER SAUSAGE lb. 89¢
FAMILY PACK GROUND BEEF 3 lb. OR MORE lb. 59¢	DECKER JUMBO FRANKS 1 lb. PACKAGE lb. 99¢
SWIFT PREMIUM BOLOGNA 1 lb. CELLO each 99¢	BORDEN CHEESE 9 oz. LONGHORN each 89¢
LAND-O-FROST 3 oz. ASSORTED SLICED MEAT PACKAGE each 39¢	LITE LINE CHEESE 12 oz. SLICED each 99¢
BORDEN CHEESE 8 oz. SINGLE WRAPPED CHEESE FOOD each 59¢	BORDEN CHEESE 6 oz. PROCESSED AMERICAN each 49¢

LOW, LOW PRICE!

TENDER FED HEAVY BEEF

ARM ROAST

ROUND BONE

lb. **79¢**

PLUS  **STAMPS**

LOW, LOW PRICE!

TENDER FED HEAVY BEEF

CHUCK ROAST

7- BONE

lb. **69¢**

PLUS  **STAMPS**

BAKERITE 3 lb. CAN **\$1.39**

DEL MONTE SWEET PICKLE RELISH 12 oz. JAR **2/\$1.00**

DEL MONTE TOMATO JUICE 46 oz. CAN **59¢**

DEL MONTE PINEAPPLE JUICE 46 oz. CAN **59¢**

DEL MONTE PRUNE JUICE 32 oz. BOTTLE **59¢**

DEL MONTE PRUNE JUICE 40 oz. TWIN PACK **69¢**

PRINGLES **79¢**

DASH DETERGENT **\$2.99**
30c OFF LABEL JUMBO BOX

THRILL LIQUID DETERGENT **59¢**
13c OFF LABEL GIANT SIZE

COME OVER & SAVE

TENDER FED HEAVY BEEF

SWISS STEAK

lb. **99¢**

PLUS  **STAMPS**

PARADE DETERGENT GIANT BOX **2/\$1.00**

DAIRY & FROZEN FOODS

MINUTE MAID ORANGE JUICE 6 oz. 3/\$1.00	MINUTE MAID ORANGE JUICE 12 oz. 59¢
MINUTE MAID ORANGE JUICE 16 oz. 79¢	MINUTE MAID ORANGE JUICE 32 oz. \$1.57

DEL MONTE CUT & TIP ASPARAGUS 8 oz. CAN 47¢	DEL MONTE SAUERKRAUT 8 oz. CAN 23¢
FRENCH STYLE DEL MONTE GREEN BEANS 303 CAN 37¢	DEL MONTE SPINACH 303 CAN 29¢
DEL MONTE SWEET PEAS 303 CAN 39¢	WHOLE NEW DEL MONTE POTATOES 303 CAN 31¢
FRUIT COCKTAIL 8 oz. 2/\$5.50	DEL MONTE PEACH HALVES 303 CAN 43¢
DEL MONTE SPICED PEACHES 2 1/2 JAR 89¢	DEL MONTE PEAR HALVES 303 CAN 51¢
DEL MONTE APRICOT NECTAR 46 oz. 79¢	SWEET CUCUMBER CHIPS 55¢
PICKLES 15 oz. JAR 65¢	KOSHER OR WHOLE DILLS 69¢
FRESH WHOLE DILLS 49¢	BOUTIQUE KLEEXEX 125 Ct. BOX 49¢
DEL MONTE SOUERKRAUT 303 CAN 4/\$1.00	KIMBIES OVERNIGHT 12's \$1.37
	OVERNIGHT TODDLER 12's \$1.51
	DAYTIME 24's \$2.45
	DAYTIME TODDLER 30's \$2.41

DEL MONTE TUNA FLAT CANS **2/\$1.00**

DEL MONTE FRUIT COCKTAIL 303 CAN **3/\$1.00**

MORTONS FROZEN POT PIES **4/\$1.00**

PILLSBURY BISCUITS BUTTERMILK OR SWEETMILK 8 oz. **8/\$1.00**

JRB BUTTERMILK 1/2 GAL. CTN. **59¢**

MORTONS FROZEN DINNERS EXCLUDING HAM & BEEF **39¢**

CHIFFON REG. MARGARINE Two 8 oz. TUBS **69¢**

IMPERIAL SOFT SPREAD MARGARINE Two 8 oz. Tubs **69¢**

PROMISE MARGARINE 1 lb. QTRS. **69¢**

FOLGERS COFFEE ALL GRINDS 1 lb. CAN **89¢**

UNBEATABLE VALUE

DEL MONTE CATSUP 14 oz. BOTTLE **3/\$1.00**

PLUS  **STAMPS**

EFFERDENT 60's DENTURE CLEANSER **\$1.09**
Reg. \$1.89

LISTERINE 14 oz. **99¢**
Reg. \$1.45

STAYFREE 10's MINI PADS **49¢**
Reg. 65c

POTTED IVY **\$1.89**
each Eastland Store Only

UNBEATABLE VALUE

BOUNTY TOWELS JUMBO ROLL **2/\$1.00**

PLUS  **STAMPS**

DEL MONTE GREEN BEANS ITALIAN OR CUT 303 CAN **3/\$1.00**

UNBEATABLE VALUE

DEL MONTE CORN GOLDEN WHOLE KERNEL ONLY 303 CAN **3/\$1.00**

PLUS  **STAMPS**

GARDEN FRESH PRODUCE

Russet 10 lb. Bag POTATOES Bag **49¢**

Large Ears CORN **3/39¢**

CELERY Large Stalks **25¢**

Rome Or Red Delicious BAG APPLES **89¢** Bag

RED POTATOES New Crop 2 lb. **25¢**

UNBEATABLE VALUE

DEL MONTE TOMATO SAUCE 300 CAN **4/\$1.00**

PLUS  **STAMPS**

DUNCAN HINES CAKE MIXES EXCLUDING ANGEL FOOD **2/\$1.00**

Glenn M. Hart Presented 20 Year Pin

In recognition of 20 years of active service with Gulf Oil Corporation, Glenn M. Hart was recently presented with a certificate of award and a gold

Deadline Monday For Parade Entries

The Parade Committee for the Cisco Frontier Jubilee has asked that any organization, business, or individual planning to enter a float, golf cart, or any kind of unit in the Jubilee Parade on Saturday morning, April 19, please inform the parade chairman Eris Ritchie of their intentions to do so.

Chairman Ritchie stated that the committee would like to know all units planning to be in the parade no later than noon Monday, April 14, if at all possible. This does not apply to entries for the children's division, however, he emphasized.

Mr. Ritchie also said that the Cisco Frontier Jubilee would present a plaque to the outstanding golf cart entry in the parade, and other plaque to the outstanding float other than golf cart. There will also be first and second place trophies for riding clubs, he said.

Mr. Ritchie may be contacted at his office at CJC at 817-442-2500 or at his residence in Cisco, 442-1613.

Sherry Phillips To Bring Program For Cisco Art Club

Sherry (Jennings) Phillips of Eastland will demonstrate portrait painting with charcoal as the program feature at the monthly meeting of the Cisco Art Club at the CJC Art Department at 7:30 p.m. Monday.

Mrs. Herman Reimer, president of the Cisco club, urged all members to attend and invite others interested to attend. Non-members will pay \$1 for tickets.

Mrs. Phillips, well known as an artist, has been active in the Eastland Civic Theater since its organization in 1967 and in community affairs. She is a member of the Cisco Art Club and of the Eastland County Art Association.

Interested in drawing since childhood, Mrs. Phillips studied art in high school and graduated with an art degree from Texas Woman's University. She is qualified to teach art in elementary, junior high and high school and has taught private classes. She works with oils, water colors and charcoal.

WANTED--Old farm house with barns, approximately 3 acres. Prefer Cisco-Carbon-Gorman area. Phone collect B.W. Alexander (213) 835-2470. t-33

We maintain a wide selection of carpet and linoleum in stock. We can order anything not in stock for you. We also offer expert installation. See us for all your floor covering needs. Higginbotham's, Gorman, 743-2227. t-36

SUNSHINE LAUNDRY Pick up and delivery service within city or bring your laundry by 106 East Plummer Street and pick up later. For further information call 629-2098 after 6:30 p.m. t-30

ALL SIZES Wash jeans, corduroy and permanent press work - pants, \$2.50 pr. Ladies and girls shoes, choice \$2.00 pr.; 3 prs. for \$5. Ladies nylon hoses, 4 prs. for \$1. CISCO ARMY SURPLUS, 1201 Ave. D. 442-3620.

Mike's Carpet Care
CARPETS & FURNITURE
STEAM CLEANED
Free Estimates
Call 629-8129

pin at a special dinner in his honor. The pin was designed especially for the Gulf companies by Gordon B. Miller of Cincinnati, Ohio, to be worn as a lapel pin or the tie tac. Engraved in raised gold letters are the words "Gulf 20", in the center, flanked by a diamond on either side, each depicting ten years service with the company. Representing the company Mr. Willy Bryant of Dallas made the presentation and hosted the dinner party at Hubbard's Restaurant in Breckenridge. Also attending were Mrs. Hart and Mr. and Mrs. G.L. Lowrance.

Prior to becoming a transport driver, which is his present job, Mr. Hart was employed by Gulf pipeline and then as a loader at the Gulf terminal, located north of Eastland, when it opened in 1955. He began his driving career in 1956. He graduated from Gorman High School in 1944 and spent a year in the United States Army. Mr. Hart attended Ranger Junior College. He is the son of the late James A. Hart Sr., and Mrs. J.A. Hart of Ranger. He and his wife Donna have one son, Barry Max, age 17, a senior at Eastland High School. The Hart family resides at 505 East Foch in Eastland.

FOR RENT--Attractive 1 and 2 bedroom apartments. Also nice bedroom and bath. All bills paid including cable. Call 629-1731 or 629-2125. t-1f

HILLSIDE APARTMENTS
Attractive one bedroom and efficiencies. All utilities paid including TV cable. Call 629-8097. t-1f

HARELIKS, Inc.

212 West Main Street
Eastland, Texas

Now you can be cool and shapely, with

Cool Shape

Fiberfill Bra by Playtex®

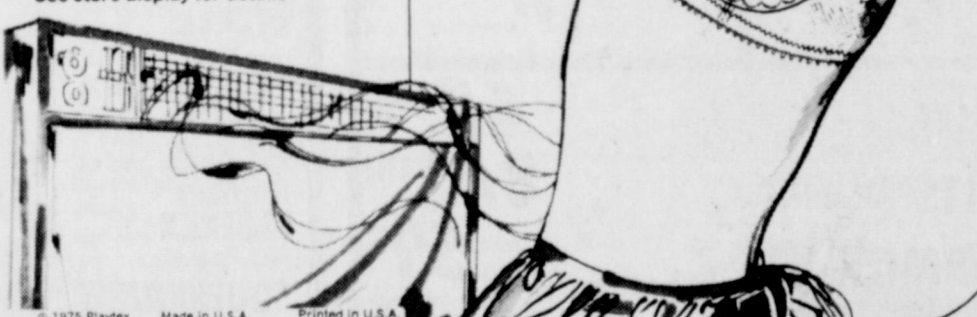
The first 'air-conditioned' fiberfill bra that's cool and comfortable, yet gives you the shaping you've always wanted.

The secret is exclusive "Ventex™" —the space age fiberfill that lets body heat out... as it shapes you beautifully.

With adjustable stretch straps and sides for comfortable around-the-body fit.

Available in tricot or lace cups. 32-36A, 32-40B, 32-40C \$7.95

SPECIAL INTRODUCTORY OFFER
Buy one and Playtex will send you a 1/2 PRICE CASH REFUND.
Offer ends May 10, 1975
See store display for details



BAKKER FUNERAL HOME
629-1726

Big Country CB Club Visits Cisco CB

Eastland members of the Big Country CB Club visited the Cisco Kid CB club Thursday night at Cisco Armory.

Speaker Larry E. Moody of Fort Worth, showed films and slides on tornado statistics and what to look for and what to do in case of a storm. The film was prepared by the National Weather service.

About 75 attended from over Eastland County. Twenty-six members of Cisco Pack 101 attended.

Those present from Eastland CB club were Mr. and Mrs. R.D. Arnold, Mr. and Mrs.

H.E. Basham, Mr. and Mrs. Albert Honea, David Parkhill, Freddie Pevehouse, and James Wortman.

Next meeting of Big Country CB Club will be April 14, in Texas Electric Reddy Room. Refreshments were served to all. H.E. Basham, Reporter

Wrestling Friday Night

Wrestling comes to Eastland, Texas, Friday night, April 18, at 8:30 p.m. in the old Eastland High School Gym. These matches will be sponsored by the Eastland Jaycees. Some of the biggest names in professional wrestling will be here.

The main event will be the Battle of the Super Stars. Ex-World Champion Dory Funk Jr., will be going against Red Bastien. Dory Funk Jr., one of the most popular wrestlers ever to wrestle in Texas, will be making his first appearance in Eastland. He held the World Championship for 4 1/2 years. He will be going against another top name in Texas, Red Bastien, who has been wrestling for the past few months around the Dallas, Fort Worth area.

Plus there will be one other great match. For reservations call or go by Don Baird's TV and Radio Shop, phone 629-1334. Ringside tickets are \$3.50. General Admission is \$2.50 and kids 3-11 is \$1.50.



Williams Opens Gun Shop

Gun owners and sportsmen will have a new business in Eastland from which to buy, sell and have their firearms serviced.

The new business is actually a sideline for Jim Williams, Eastland County Deputy Sheriff and will be called Jim's Guns. The business will be located directly behind 607 S. Mulberry and will be open evenings six days a week Monday thru

Saturday. Jim will be doing all types of gun repairs, including gun bluing and will offer guaranteed work.

Also at Jim's Guns you can find ammunition and a full line of equipment and accessories.

Eastland is proud to welcome the arrival of another business and hopes are that the people of Eastland and surrounding area will support Jim and Jim's Guns.

Congratulations To The New Home Demonstration Council Officers

Congratulations to the new Home Demonstration Council officers. They are: Chairman--Mrs. Bernard Campbell, Vice chairman--Mrs. Gerald Tucker, Secretary--Mrs. T.L. Hale, Treasurer--Mrs. Zelma Lusk, and Parliamentarian--Mrs. R.W. Gordon. These ladies will take office on July 1, 1975.

Following a picnic lunch in the State Park, the group will travel to the Bangs community and tour a lamp factory.

The forecast for canning equipment and supplies looks good for this year with no shortages anticipated. Adequate supplies of glass jars are expected this summer. There will be more metal lids on the market this season than last. Production will be increased as new machinery for shaping lids becomes available in late 1975 or early 1976.

Jars and lids are now becoming available in grocery stores in the county.

There's more good news! No shortages are expected in pressure and water bath canners. Canners and other equipment are sold in hardware stores and from your mail order companies.

The annual Home Demonstration Fund Day Tour will be on Tuesday, April 15. This year's tour will include touring the newly completed State 4-H Center at Lake Brownwood. Mr. Marshall Crouch, State 4-H Specialist, will conduct the tour.

State 4-H Center Completed

The new State 4-H Center in Brownwood is completed and all interested persons from Eastland County are invited to tour the new facilities on Tuesday, April 15.

The tour will leave from the County Courthouse (east side) at 9:15 a.m. Cisco area residents may join the tour at 9:30 a.m. at Jammie's Restaurant and at 9:45 a.m. at the Nimrod cut-off on the Cross Plains Highway. The tour will begin at 10:30 a.m.

Members of the State 4-H Staff will be on hand to conduct the tour of the new center.

Area 4-H youth have participated in several fund raising campaigns to help build the center. Eastland County youth are fortunate to have the center located nearby, and plans are being made at present to hold County 4-H Camp at the new facilities.

The new complex will accommodate 200 people and will be used on the county, district, and state-wide basis for both youth and adult educational programs and activities.

4 County Youths To Demonstrate Skills Food Show April 19

Four Eastland County youths will demonstrate skills and knowledge in foods and nutrition against those of youth from 19 counties when they vie for honors in the District 4-H Food Show April 19, in Clifton.

Competing in four food entry classes will be Sherry Kidd, daughter of Mr. and Mrs. John Kidd of Eastland, senior main dishes; Karen Plowman, daughter of Mr. and Mrs. Everett Plowman of Eastland, senior breads and desserts; Brenda Kidd, daughter of Mr. and Mrs. John Kidd of Eastland, junior breads and desserts; and Kaye Plowman, daughter of Mr. and Mrs. Everett Plowman of Eastland, junior side dishes.

They earned the right to compete at the district level when they took first place honors in the Eastland County 4-H Food Show held in February.

For the main dish class, Sherry Kidd prepared "Cowboy Lasagne". For Breads and Desserts, Karen Plowman created "Banana Split Cake".

Brenda Kidd will enter "Pumpkin Squares" in the breads and desserts class, and Kaye Plowman will compete with "Green Bean Casserole" in the side dish class.

County and district 4-H food show are sponsored by the Texas Agricultural Extension Service, the Texas A&M University System.

Services For Idu S. Echols Held Thursday

Idus S. Echols, 82, of Gorman, died at 7:50 p.m. Tuesday in the Eastland Memorial Hospital. Services were at 10:30 a.m. Thursday in Higginbotham Funeral Home Chapel.

Roy Phemister, assisted by the Rev. Bill Wilson of Gorman, officiated. Burial was in the Oakland Cemetery.

Born March 4, 1893, in Sebastian County, Ark., he came with his family to Comanche County in 1895. He was a farmer, rancher and oil company field manager in Crane, Monahans and Eastland counties for decades.

He was honored for his role in starting rural electrification in Eastland County and was active in the Texas Farm Bureau. He had lived in Clyde until 1974, when he moved to the Eastland Manor Nursing Home in Eastland.

Survivors include a sister, Cora Echols of Eastland; five nephews, Don Echols of Fort Worth, Arland Merritt of Moran, Gayland Merritt of Carbon, Edwin Merritt of Cisco, and Elmo Merritt of Great Bend, Kans.; and two nieces, Sible Fletcher and Jane Bowman, both of Irving.

Irene Petree visited friends in Kearns over the weekend.

Festival Of Strings

Eastland Music Study Club will present Festival of Strings April 16, by the Eastland County String Quartet--Nancy Frost and Mildred Pickrell, violins; Winifred Hittson, viola; and Nettie Wilson, violocello.

They will play Quartet-Opus 76 No. 2--Haydn Allegro, andante, Menuetto and Trio, and Finale. Divertimento, K. 136--Mozart Allegro, andante, Presto.

The program will be at 3:30 at the Woman's Club.

Hostesses will be Mmes. Collins, Kinnaird Jr., Susan Johnston. It is Guest Day. Members please bring guests.

Marjorie van Hoose Club Reporter



Engagement Announced

Mr. and Mrs. Earl C. Bradley Jr., of Eastland, announce the engagement of their daughter, Leslie, to James L. Keffer, son of Mr. and Mrs. James E. Keffer of Dallas. Leslie is a

junior at Texas Tech University, Lubbock. She is a member of Delta Delta Delta social sorority and Daughters of the Diamond, Little Sisters of Beta Theta Pi. Jim is a senior at Texas Tech and a member of Beta Theta Pi, social fraternity, Kappa Tau Alpha honorary telecommunications fraternity, and Phi Alpha Delta, honorary history fraternity. They will be married May 31, 1975, at Canyon Creek Presbyterian Church, Richardson, Texas.

JIM GARNER CONSTRUCTION CO. All types concrete work; patios, porches, sidewalks, foundations. P.O. Box 582, Eastland, Texas, 76448. Tel. Olden 653-2295.

Caution!



A medicine chest that's a jumble of old medicines and other health supplies can be a danger instead of a help. Clean up and clear out now, then stock up with us.

Central Drug North Side Of Square

A-1 SALES

BETWEEN PERRYS AND MODE-O-DAY

BUSINESS 629-2102 HOME 629-2464

TERRY - JERRY and DALE MASTON

VINAL STORM WINDOWS

- Mount outside your present windows
- Provides Double Window Insulation
- Saves on fuel consumption

ALUMINUM REPLACEMENT WINDOWS AND STORM DOORS

- Economical · Lasting Beauty
- Practical · Stops Drafts

CUSTOM BUILT-CAR PORTS PATIOS-PORCHES-STORAGE

SIDING-VINAL-INSULATED

All Types Of Remodleing Inside-Outside- Foundations Roofing - We Will Work By The Hour At Reasonable Rates Or We Will Give You A Turn Key Price On Labor & Material

WE WILL USE YOUR MATERIAL OR WILL FURNISH THE MATERIAL

WE OFFER YOU SKILLED WORMANSHIP AT REASONABLE PRICES-CALL US NOW - FOR

FREE ESTIMATE

Phone 629-2102

FURNISHED OR UNFURNISHED APARTMENTS FOR RENT at Royal Oaks Apartments 1304 Royal Lane, Cts 442-3232 442-2709

EASTLAND

The Friendly City Wants You To Help In The Selection Of Ambassador Of The Week



Eastland's first Ambassador of the Week, Glenna Hudson is pictured above with her framed certificate. Glenna is employed as a waitress in the Old Rip Cafe in Eastland and has worked there the past six years. She resides at 1311 Slay in Eastland and with Glenna as with so many other in Eastland, friendly service is a way of life.

Join in saying a big THANK YOU to the nice people who serve us in Eastland...There's many friendly clerks, service attendants and waitresses who deserve our votes of thanks...Here's our chance: just use the handy coupon to nominate your choice. Mail or bring your vote to the Eastland Telegram...The person who gets the most votes each week will be awarded a framed certificate, a \$10 bill and have his or her picture printed on this page the next week. Now's the time to get busy...you may nominate anyone you like, whether they are employed by the firms listed below or not, but they must be employed in Eastland. Join the fun and do something nice for people who do nice things for us.

COUPON

Send In Your Nomination
For The "Ambassador Of The Week"
To Eastland Telegram Box 29 Eastland

Your Nomination

Name

Employer

Mail It In Or Drop It By.

These Eastland Merchants Sincerely Thank You

<p>Eastland Fina</p> <p>207 E. Main - 629-2133</p> <p>A Service Station With Experience And Dependable Service</p>	<p style="text-align: center;">We Try Harder At HOLLAND'S DRIVE IN With Prompt Courteous Service Highway 80 West</p> <p>TRA 629-2215 10 a.m.-8 p.m.</p>	<p style="text-align: center;">Friendly Courteous Service</p> <p style="text-align: center;">Altman's</p> <p style="text-align: center;">North Side Of Square</p> <p>109 W. Main Eastland</p>	<p style="text-align: center;">J R B</p> <p style="text-align: center;">200 E. Main Eastland</p>
<p>JIM'S GUNS</p> <p>607 SOUTH MULBERRY STREET EASTLAND, TEXAS 76448 PHONE 817/629-8098</p> <p>BLUEING AND REPAIRS ALL TYPES BUY - SELL - TRADE ALL TYPES OF GUNS LIFE MEMBER NRA</p>	<p>BAIRD'S T.V. & RADIO SHACK OWNER - DON BAIRD SALES REP. - PHILLIP ARTHUR</p> <p>BUS 629-1334 115 W. MAIN EASTLAND NIGHT 629-8036</p> <p>COMPLETE LINE OF CITIZEN BAND EQUIPMENT</p> <p>Admiral HITACHI TV STEREO APPLIANCES REALISTIC</p>	<p>CHRISLER BILL ROBERTS Dodge Plymouth PHONE 817/629-8151</p> <p>McCATHREN MOTOR CO. of Eastland 215 SOUTH SEAMAN STREET</p> <p>After Hours Phone: 817 559-3100 817 559-9751 EASTLAND, TEXAS 76448</p>	<p style="text-align: center;">Thrift Mart</p> <p style="text-align: center;">Complements Of Thrift Mart Be Sure And Register For Our Weekly Jackpot</p> <p style="text-align: center;">504 E. Main Eastland</p>
<p>G.E. Westinghouse</p> <p style="text-align: center;">GOOD YEAR</p> <p>Glenn Dickson, Mgr. 315 W. Main Eastland</p> <p>Tappan Zenith</p>	<p style="text-align: center;">The Fashion Barn</p> <p>Rita's Fashion Quetta's Fabric Sportswear Boutique</p> <p>629-8020 629-8030</p> <p>IH-20 Eastland Next To Ramada Inn</p>	<p style="text-align: center;">Freds Meat Market With Good Heavy Beef</p> <p style="text-align: center;">Three D Shop Donna Brown Owner "Eastland Master Cakemaker"</p> <p>411 E. Main 629-1371</p>	<p style="text-align: center;">H & R Lumber WE WANT YOU TO KNOW: We appreciate our customers We want to serve our customers We want you to be one of our customers!</p> <p>This is to say: We appreciate your business over the years, and look forward to serving your every building, repairing and remodeling need beginning right now!</p> <p style="text-align: center;">GIVE US AN OPPORTUNITY TO SERVE YOU - YOU'LL BE GLAD YOU DID!</p> <p>629-2104 West Main St. Eastland</p>
<p style="text-align: center;">Harelik's Inc.</p> <p style="text-align: center;">Eastland Special Hanes Support Panty Hose \$1.00 Off</p>	<p style="text-align: center;">BILL WYATT TIRE SERVICE ... HOME OWNED ...</p> <p style="text-align: center;">TIRE TRUING AND TRACTOR TIRE VULCANIZING</p> <p>PHONE 817 629-2235 702 WEST MAIN STREET NIGHT 817 629-1024 EASTLAND, TEXAS 76448</p>	<p style="text-align: center;">Bray's BANKAMERICARD DEPARTMENT STORE</p> <p style="text-align: center;">EASTLAND - RANGER EASTLAND COUNTY'S FAMILY STORE FEATURING NATIONALLY ADVERTISED BRANDS OF MERCHANDISE Store Hours - 9 a.m. - 5 p.m.</p>	<p style="text-align: center;">Hillcrest Food Market</p> <p style="text-align: center;">1401 W. Main Open 7 Days A Week 7 a.m. To 11 p.m.</p>
<p style="text-align: center;">perry's</p> <p>107 S. Lamar Eastland</p> <p>BANKAMERICARD</p> <p>629-1400</p>	<p style="text-align: center;">Western Auto</p> <p style="text-align: center;">Zenith Television & Dearborn Air Conditioners Sportswear & Fishing Equipment Plus Yard And Garden Tools</p>	<p style="text-align: center;">HERRERA SIGN CO.</p> <p style="text-align: center;">Erection 75 Miles Radius ROAD SIGNS * * * RENTALS</p> <p>Truck & Window Lettering Bus Phone 817/629-8094 Commercial Art Res. Phone 817/629-1180 GOLD LEAF 16 & 22 K Eastland, Texas 76448</p>	<p style="text-align: center;">Southern T.V. Cable Systems</p> <p style="text-align: center;">201 N. Seaman Eastland</p>



AFFECTED COUNTIES - Transfer of the seven counties indicated by the broken line (Brown, Eastland, Stephens, Young, Jack, Wise and Montague) from the Inland - Northwest Zone (the general Panhandle area), to the Inland - Central zone, should result in some lower extended coverage insurance rates for residents in these counties. This map shows that \$20,000 worth of extended coverage (not fire) in the old zone would cost \$465, and \$130 for the same amount, same term, in the new zone.

Realignment Of Counties Could Reduce Insurance Bills

AUSTIN, TEXAS - State Senator Tom Creighton of Mineral Wells Wednesday disclosed that the realignment of several counties in the 22nd State Senatorial District could reduce homeowners insurance bills.

"I believe there was sufficient evidence to show that residents in these counties should be given the opportunity to purchase insurance at the lower Central Territory rates," he said.

in part on weather factors that contribute to storm damage claims and the state is divided into four rating territories for insurance purposes.

The seven - county area has been in the North - Northwest Territory for more than a decade.

Rates on homeowners, fire, farm and ranchowners, multi-peril and allied lines are based

Morton Valley H.D. Club Meet April 9

The Morton Valley H.D. Club met Wednesday, April 9, at 2 p.m. for their first meeting in April with Emily Hartsell presiding. Mrs. Moseley led the group in the opening exercise. Mrs. Bessie Peoples gave the Devotional from the 15th Chapter of Proverbs.

Roll call was answered with "A Neighborly Act I Appreciated". Leta Brockman gave the council report. Ada Tankersley read the previous minutes that were approved.

We discussed our fun day for next Tuesday. Ruby Bond read a pamphlet on the best and

cheapest kinds of meats and ways to prepare them.

Mrs. Brockman brought and served refreshments for Josie Nix who became ill at the last minute. Twelve members enjoyed cookies and punch sent by Mrs. Nix. Present were Ada Tankersley, Addie B. Moseley, Emily Hartsell, Evie Blair, Bessie Peoples, Flora Kincaid, Mabelle Gordon, Bertha Asher, Ruby Bond, Mabel Garrett, Bernice Tankersley, and Leta Brockman.

FFA Chapter Banquet Held Thursday

The Eastland FFA Chapter Parent and Student Banquet was held Thursday night, April 10, in the Wendell T. Siebert Elementary School. One-hundred-forty-six attended.

Fred McClure, former National FFA secretary and state president brought the address. Fred is presently attending Texas A&M where he is majoring in agriculture. His home is in San Augustine, Texas.

Greenhand pins and certificates were presented to those members present. Also presented were the Chapter Farmer pins and certificate.

Appreciation Awards were presented to persons assisting the chapter and its members during the year. Those receiving awards were: Dr. John Foster, Jay Carter, Fred and Donna and Jim Cole Brown, Lester Atkinson, Gary Thomas, Gary Mathis, Bob Perkins and Marjorie Courtney.

Honorary chapter farmer degrees were presented to Tom Crowder and Don Griffin for

Mrs. Ray Kanady Resigns Position Carbon Secretary

The City Commission of Carbon reports that Mrs. Ray Kanady who has held the position of City Secretary and Bookkeeper since January 1, resigned effective April 1, due to family and other responsibilities. The position was filled by the City Commission at that time by hiring Mrs. Robbie Stuteville as City Secretary and Bookkeeper.

Mrs. Stuteville resides in the new modular home one block east of the Carbon Farm Supply. Her home is centrally located and should be easy to find if someone needs to contact her personally concerning city or water business.

She will be responsible for recording donations and giving receipts for the Carbon Law Enforcement Fund, as well as collecting water bills and city taxes. Water users who wish to pay in person, will notice, as usual, on the water bill for March a collection date and time. At this specified time Mrs. Stuteville will be at the Fire Station in Carbon to collect these bills.

The telephone number of the new City Secretary is 639 - 2505.

Any person who needs to contact her in regard to city or water business may call Mrs. Stuteville at this number. Mrs. Stuteville states that she desires to be of service to city residents at a water users in a fair and efficient manner to help eliminate problems.

their loyal support. This degree is the highest degree a local chapter can give.

Proficiency awards were presented to Clyde Houson and Steve Morgan for sheep production; Lurah Johnson-beef production; Jim Owen and Mike Stutts-swine production; John Hill-crop production; Lurah Johnson-ornamental horticulture; Mack Walker Ronnie Pinkerton-ag mechanics; Steve Williams-horse proficiency; and Larry Mathis-dairy productions.

Methodist Women Meets In Regular Session

The United Methodist Women met in regular session at the Church for the second study on the book of Jonah, led by the pastor the Rev. Ben Marney. The meeting opened with prayer and a short business session in which Mrs. H.L. Hassell, President, announced that the committees for the Senior Breakfast were planning for the breakfast to be on April 30. Mrs. Hassell also stated that reservations for the Spiritual Retreat at Glen Rose on April 18 and 19 must be made soon.

Mrs. A.E. Cushman based her Devotion on a 17th Century Article, by an Anglican Bishop entitled "How to Cure an Evil Nature", and drew the comparison of then and now and concluded that human nature has remained about the same.

Bro. Marney began the Study of Jonah with the meaning of names; and that Jonah really was symbolic for Israel. Many questions were discussed and comparisons of present day problems of racial prejudices, escaping God, activists, separation from evil, comparison with Jeremiah, basic missions and forgiveness were all discussed during a question and answer period. The Study will continue next week. Eighteen members were present.

Mrs. A.E. Cushman, Reporter



Two more Honorary Chapter Farmers are added to the list this year. They are, at left, Tom Crowder and Don Griffin. Both men were awarded the honorary plaques for service to the chapter. These men add leadership to the chapter when Vo. Ag. instructor is limited. (Staff photo by Steve Haines).



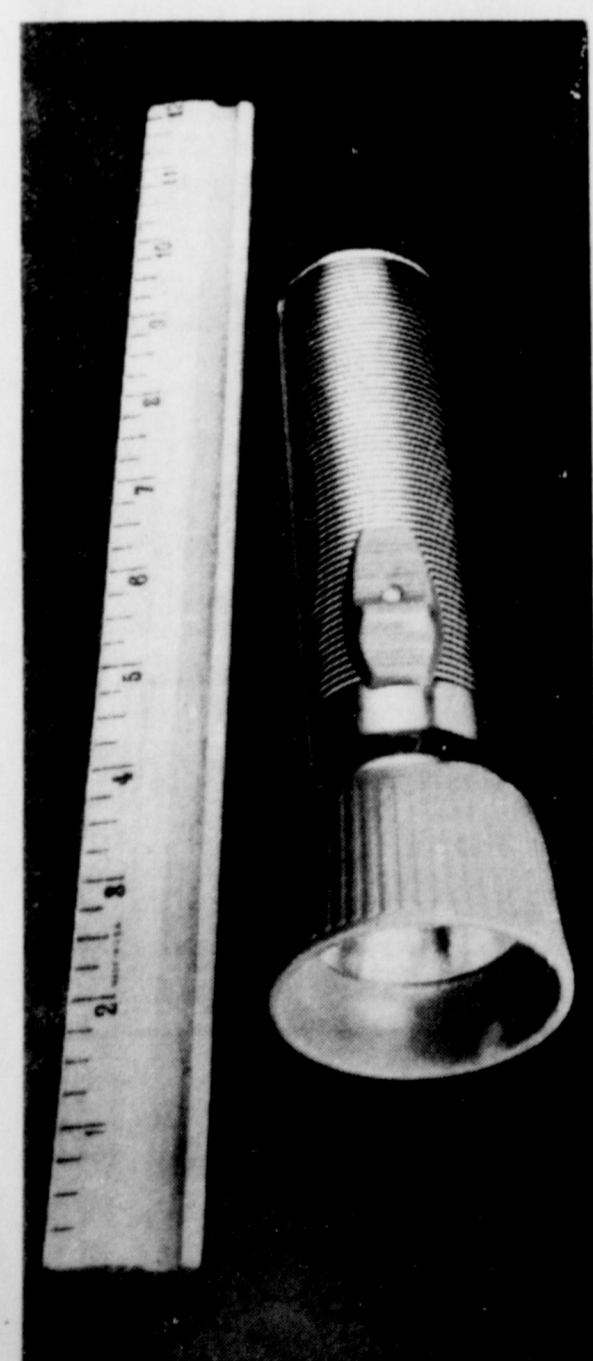
Special awards winner in the Eastland Chapter of the Future Farmers of America for special achievements are from l to r, Clyde Henson, Jim Owens, Mike Stutts, Mack Walker, John Hill and Steve Williams. (Staff photo by Steve Haines).

FOR SALE--Preston Milk \$1.30 a gallon. Large loaf of bread 45c. TAYLOR CENTER. 805 W. Main. t-1

5-10-20 Acre Ranchettes. 15 minutes from town. Take Hwy. 101 to FM 1852-go north on 1852 for 6 miles. Follow signs from there. 817-292-1246 or 817-594-0011. t-6

Custom Farm Work. We dig and sell coastal springs. Also do coastal springing. E.D. [Lige] Williams. 817-893-6730 or 817-893-6870 t-32

WATKINS DEALER Vera Sherrill 406 S. Bassett, Eastland. Contact before 9 a.m. or after 5 p.m. Leave name and address during day. Phone 629-8019.



Since higher fuel costs are pushing the price of electricity up, it's important to use it wisely.

These two simple tools can help.

Proper insulation and weatherstripping will help you use electricity more efficiently for air conditioning. You can check the insulation and weatherstripping in your home with just a ruler and a flashlight.

Inadequate insulation is the single biggest cause of energy loss in most homes—in both summer and winter. Experts recommend about six inches of insulation in your attic.

If your attic insulation doesn't measure up, you can add more of either loose, blown-in insulation or "batts" (long strips). The loose kind of insulation settles, so it may be necessary to add more after several years.

To check the weatherstripping around exterior doors, have someone shine a flashlight around the edges of each closed door. If you can see light, it means you may have to add or replace worn weatherstripping.

Saving electric energy takes very little energy on your part, and, since electricity is costing more, it's worth the effort.

TEXAS **ELECTRIC SERVICE COMPANY**
F. N. SAYRE, Manager, Phone 629-2651

SUPER \$AVE MARKETS

APRIL FOOD SAVINGS

Borden's Buttermilk 69¢ 1/2 Gal.

FRANK'S BACON 12-Oz. Pkg. 59¢

COOKED HAM 1-lb. Pkg. 89¢

SMOKIES 12-Oz. Pkg. 89¢

GROUND BEEF LEAN Pkg. 89¢

ROUND STEAK Pkg. \$1.19

MARYLAND CLUB COFFEE 1-Lb. Can 89¢

SMOKED HAM SALE

WHOLE HAMS 89¢

SHANK PORTION 69¢

BUTT PORTION 89¢

CENTER SLICES 39¢

BOLOGNA 4-Oz. Pkg. 49¢

CHOPPED HAM 4-Oz. Pkg. 79¢

YELLOW ONIONS Pkg. 19¢

AVOCADOS Each 19¢

POTATOES 10-Lb. Bag 59¢

SHORTENING CRISCO 3-Lb. Can \$1.59

DOMINO PURE CANE SUGAR 5-Lb. Bag \$1.39

MARGARINE 1-Lb. Tub 69¢

GOLD MEDAL FLOUR 5-Lb. Bag 89¢

BOUNTY White or Assorted TOWELS Jumbo Roll 49¢

DEL MONTE SPINACH 4 15-Oz. Cans \$1.00

BORDEN'S INSTANT POTATOES 16-Oz. Box 79¢

CAMPBELL'S CHUNKY CHICKEN SOUP 10 1/2-Oz. Can 39¢

GLAD STORAGE FOOD BAGS 75-Ct. Box 89¢

GLAD WRAP 200-Ft. Roll 69¢

GLAD 3 mil TRASH BAGS 8-Ct. Box \$1.19

Hi-C 46-Oz. Can 49¢

SAVE 10¢ WITH 10¢ COUPON

KEEBLER CRACKERS **Deluxe Graham** 4.22 SUPER \$AVE MKTS.

DEL MONTE CATSUP 14-Oz. Btle. 39¢

SAVINGS

ALSO ASS'D. VARIETIES

DOG FOOD 3 8oz. Cans \$1.00

POTATO CHIPS PRINGLES 9-Oz. Can 89¢

WESSON OIL 48-Oz. Btle. \$1.99

DEL MONTE FRUIT COCKTAIL 17-Oz. Can 39¢

WHITE SWAN COUNTRY STYLE or BUTTERMILK BISCUITS 9 8-Oz. Cans \$1.00

MERICO HOT DOG or CORN DOG BLANKETS 2 8-Oz. Cans 39¢

SUNSHINE CHIP & BODS COOKIES 15-Oz. Pkg. 69¢

BETTY CROCKER BROWNIE MIX 22-Oz. Box 89¢

MARYLAND CLUB CHILI 11-Oz. Can 59¢

CRACKER BBQ SAUCE 24-Oz. Can 89¢

NESTLE'S CHOC. QUIK 7-Oz. Box \$1.99

INSTANT COFFEE 10-Oz. Jar \$1.99

KUMBY'S BLACKEY PEAS 3 14-Oz. Cans 79¢

ROOT BEER 8-Pk. 12-Oz. Cans \$1.19

Health & Beauty Aids

RIGHT GUARD DEOD. 3.24 Value \$1.89

TOOTH PASTE \$1.02 Value 89¢

TECHMATIC RAZOR \$3.50 Value \$2.19

SINAREST \$1.49 Value 99¢

PLAT. PLUS BLADES \$1.19 Value 98¢

TECHMATIC BANDS \$1.19 Value 98¢

MENNEN PROTEIN 33 HAIR SPRAY 12-Oz. \$3.39 Value \$1.99

SHAMPOO \$3.30 Value \$2.29

FOOT POWDER \$2.29 Value \$1.69

SHAMPOO \$3.30 Value \$2.29

TOOTHBRUSH 79¢ Value 49¢

MINI PADS \$2.19 Value \$1.89

SUPER \$AVE G.A. WHITE Manager 629-1191 400 S. Seaman