



## 6 Families Choose Eastland As Home During October

May we say "welcome" to the six families who during October chose Eastland as their home.

Three Texans, two families from New Mexico, and one from Oklahoma make up the group.

Coming from Gorman are Mr. and Mrs. Ardis M. Porter and their 15-year-old daughter and 13-year-old son. They are living at 1001 W. Commerce.

Porter is a farmer and Mrs. Porter works for Eastland Memorial Hospital. They are Baptists.

Moving here from Albuquerque, New Mexico are Mr. and Mrs. T. L. Powell of 701 W. Plummer. He is connected with Rio Grande Insurance Co. They are members of the Methodist Church.

Also moving to Eastland from New Mexico are Mr. and Mrs. A. G. Stanley and Judy Brinegar, sister of Mrs. Stanley, their three boys, 13, 11, and 4, and their daughter, 7. They live on Highway 80 East. He is an oil field driller and they are Baptist.

Mr. and Mrs. S. A. Scott and their son, 6 months, of 705 W. Commerce moved here from Midland in October. He works for R. M. Sneed. They are Baptist.

Also a Baptist, coming from

Oklahoma City, was C. Jason Spangnagel and his son, 12, of 303 S. Conlee. He works for the Mobil Oil Co.

Now living at 701 W. Plummer are Mr. and Mrs. S. J. Norris formerly of Ft. Worth. Norris works as an aluminum salesman for Home Improvement Sales of Fort Worth. They too are Baptists.

## 6 Eastlanders Attend TGCB

Several Baptists from Eastland are attending the Texas Baptist General Convention convening at Austin this week.

Messengers from First Baptist Church are Rev. and Mrs. Haston Brewer and Rev. and Mrs. M. A. Treadwell, Sr.

Those representing Bethel Baptist Church are Rev. James Roberts and J. C. Allison.

The W.M.U. Convention was held Monday and Tuesday, and the General Convention got underway Tuesday evening and continues through today.

## EHS Maverick Band Gets 'Best' at Hurst

Eastland High School Band, under the direction of Phillip Hewett, received the "best band" award in class A at the band competition held Tuesday at Hurst.

Twenty-eight bands participated in the meet with four bands in the Class A division.

Last Saturday the band ran up an impressive record when each of the 13 local ensembles placed in one of the two bands selected at the district band competition in Comanche.

Five of Director Phil Hewett's bandmen placed on the first band and eight made the second band. Placing first were Gracie Tankersley, first chair, tenor saxophone; Patricia Liles, first, bells; Mickey Sargent, second chair, snare drum; Jan Taylor, third chair, snare drum; and Jeanie Hanna, clarinet section.

Winning places on the second

band were Judy Phillips, third chair, clarinet; Janice Beck, first chair, baritone saxophone; Terry Treadwell, Eddie Sargent and Floyd Robertson, all in trumpet section; Cy Frost, first chair, snare drum; Sharon Wilson, fourth chair, snare drum and Janice Deady, first, cymbal.

The 13 Eastland members were among the 170 picked for first and second band honors from the 28 bands competing in the district competition.

## LOCAL ACS MEETS TUES.

A reorganizational meeting of the Eastland County Unit of the Texas Division of the American Society was held in the Texas Electric Service Company's Conference Room here, November 6, at 7:30 p.m.

The purpose of the board is to supervise and conduct a year-round program of education and service for the people of Eastland County. Funds for this program come from volunteer contributions solicited annually during April.

Mrs. Rosco Hopper is the president of the Eastland County Unit of the Texas Division of the American Cancer Society.

## Correction,

The final balance due on the Carla quota as of November 7 was \$213.14. The goal set is \$1,500, and \$1,352.45 of this has been received.

The amounts raised by the various towns in the county are as follows: Eastland, \$422.31 (in an earlier addition, we said \$22.31 which was wrong); Cisco, \$371.94; Gorman, \$116.50; Ranger,

and tile and decorative items gratis from Horton Ceramics. Total cost to the chamber was \$795.

The entire office has been painted in muted beige tones at (Continued on Page Two)

## VOLUNTEER SURVEY

## Desdemona Students on School Consolidation

At least six students from Desdemona High School and a teacher there oppose the consolidation of the nine school districts in Eastland County, as is being proposed and studied at this time.

Recently the Eastland Telegram wrote a letter to each of the principals in each of the nine districts, asking that students in the high schools write the paper expressing their views on the subject.

It was the feeling of the news-

paper that the students might like to have their say in the matter although most high school students now, will have graduated before such central high school could be instituted, should it be approved.

The replies from Desdemona were the first received, and excerpts from the six students' letters follow.

One was signed "Mr. X" and is therefore not printed. Comments are welcomed from students and teachers from other (Continued on page four)

See and Drive the 1962 PONTIAC... fresh paint! view and wide track too! MUIRHEAD MOTOR CO.

EASTLAND NATIONAL BANK "On The Square" MEMBER F.D.I.C.



"Today, those who protect freedom are besieged from many directions, are forced to face many demands. But when Americans see their duty and respond to it, as the war veterans have done, then freedom need have no fear."

—John F. Kennedy

"Among the resources from which our country draws her strength we hold in high esteem the more than twenty-two million living veterans of our military, naval, and air services, and we treasure the freedom preserved for us by the sacrifice of many."

—Dwight D. Eisenhower

"To us in America, the reflections of this day will be filled with solemn pride in the heroism of those who died in the country's service and with gratitude for the victory both because of the thing from which it has freed us and because of the opportunity it has given America to show her sympathy with peace and justice in the councils of the nations."

—Woodrow Wilson

## DEDICATED TO WORLD PEACE

Originally celebrated as Armistice Day to mark the ending of World War I, (then the most destructive and far-reaching conflict in the annals of history) November 11th has become, by Act of Congress in 1954, a day dedicated to world peace. To quote the legislation:

It is fitting that the recurring anniversary of this date should be commemorated with thanksgiving and prayer and exercises to perpetuate peace through good will and mutual understanding between nations.

## VETERANS DAY VALUE TODAY

Veterans of America do not want to be congratulated for their achievements in war and in peace. They are reluctant to be singled out; they don't consider themselves to be heroes. Moreover, they know they didn't serve all alone. People were needed to back them up—wives, mothers, fathers, farmers, factory workers. Millions of American lives were changed during America's war efforts.

But—especially in today's world so full of menace, so fateful for mankind—Veterans Day brings to focus a great American truth...

Ordinary Americans—the everyday people with whom we live and work—are capable of greatness when great challenges are set before them!

When the preservation of America and the defense of our ideals are at stake, patriotic men and women in every generation will respond to the demands necessary. They will again, as they have before, bring forth the courage, sacrifice and loyalty that has made our land so great.

## THE RED CROSS

## Here's How Part of Your United Fund Gift Is Used

By GAY NELL O'BRIEN

The Eastland County Chapter of the American Red Cross has participated in some way in all of the service programs of the organization during the past year.

The Red Cross offers its services to the armed forces and their families. This service is carried out at military installations, service in military and veterans hospitals, supplemental recreational activities overseas, and armed forces reporting and communications and through home service in local Red Cross chapters.

In Eastland County last year in home service, there were 75 cases served. Of these, 61 were reporting for the military, or communications between military personnel and their families; 12 veterans were served and 1 civilian. There were 16 cases of counseling in personal and family problems and 13 other inquiries and requests, not counted as cases.

The Red Cross provides to veterans and their families the services it gives to civilians generally and certain other services that are designed to meet the particular needs of ex-servicemen and their dependents. Specialized assistance is given through home service in local chapters, service at veterans' administration offices, and service in military and veterans hospitals.

Red Cross disaster assistance is given free of charge. The Red Cross disaster program provides assistance before disaster strikes, then disaster strikes, and after disaster strikes.

One example of this might be given in connection with Red Cross work during the Hurricane Carla disaster.

It took Hurricane Carla only ours to complete her devastation with 173 miles-per-hour winds and record tides, but the work of the Red Cross in helping stricken people back to normal living again is only beginning and will take weeks.

During the emergency days, immediately following Carla, the Red Cross spent more than \$1,000,000 shattering, feeding and clothing 251,886 refugees and

providing food for 33,370 emergency workers.

This is less than one-fifth of what Red Cross total expenditures will be in the days ahead as Red Cross workers give an estimated 17,450 families financial assistance. (Continued on Page Two)

## Muscular Dystrophy Drive To Get Under Way Here

The Muscular Dystrophy drive, sponsored in Eastland by the Volunteer Fire Dept., will get under way Monday, Nov. 20th, at 7 p.m.

The firemen will be assisted by Boy Scouts of Troops 103 and 6.

The Zeta Phi and Xi Alpha Zeta Chapters of Beta Sigma Phi are placing the canisters for the campaign.

Eastland is in the Abilene Muscular Dystrophy Chapter area, which organized this year.

The local contributions will go to the Abilene chapter where 25 per cent will be retained for patient service in this area.

This service includes physical therapy, orthopedic devices, and clinical services.

The remaining 75 per cent goes

## Kay Anderson Is Honor Society Member at MH-B

Miss Kay Anderson, Junior from Eastland, was recently initiated as a new member of Alpha Chi national senior honor society of Mary Hardin-Baylor College. Miss Anderson was one of 15 students selected for membership in the annual tapping ceremony.

Miss Anderson, daughter of Mrs. Jack Townsend, Eastland, is a 1959 graduate of Eastland High School.

## AT SCOUT BANQUET

## District Officers Installed And Awards Presented

"Boys are our business", approximately 125 representatives from towns throughout the Northeast Scouting District were told Tuesday night at the annual dinner meeting in Eastland.

Installation of new district officers and awarding of important

Scouting achievement trophies, as well as an address by Kirk Henry, scout executive of Fort Worth, were highlights of the evening.

Scout leaders from Eastland, Ranger, Cisco, Olden, Stephenville, Dub in and Breckenridge ate barbecued chicken in the fellowship

Hall of First Baptist Church.

Harry Jordan catered the event. Scout Troop 103 of Eastland conducted the opening ceremonies and Troop 6, also of Eastland, was in charge of closing ceremonies.

Eagle Scout Jimmy Drennan of Ranger installed Frank Sayre of Eastland, as district chairman, to replace Aaron Kuperman of Breckenridge, who was master of ceremonies.

Other officers installed were: Dr. E. E. Addy of Cisco, W. L. Garner of Eastland, Fred Bennett of Ranger, Dr. Nathan Cedar of Stephenville and Jimmy Duval of Breckenridge, vice chairman, and Claude Boles of Eastland, district commissioner.

Ranger virtually stole the show with awards.

The Good Turn Unit award was presented to Fred Bennett, scoutmaster of Troop 10 of Ranger. It was the first time that this award has gone to a Comanche Trail Council troop.

The same Ranger troop took the National Camping Award. The troop is sponsored by the First Methodist Church.

Doraine Dennis, Ranger Troop 15 Scoutmaster, was awarded the Scouter's Key Award. Another Ranger award was taken by Pat Collins, Cubmaster of Pack 34. He also was given the Scouter's Lapel pin.

Mrs. J. P. Cox, Denmother for Eastland Cub den, was awarded the district's Den Mother citation for three-years work of the den.

Roundup award pins went to Carey Hightower of Olden, a Cubmaster, and to Charles Mosley, also of Olden, a Scoutmaster.

In his talk, Henry, a veteran 25-year professional Scouter, outlined five points for the district: 1. Expand boy opportunity; 2. professional leadership; 3. effective district; 4. create financial support; and 5. unit service.

"If it is to be, then it's up to me," he challenged the Scouters.

The organizational meeting of the district will be held in Eastland Jan. 11th.

## Eastland Faces Clyde Friday at 7:30 Here

The Eastland Mavericks, who've had little to cheer about this year, will be attempting to close out on a brighter note against the Clyde Bulldogs here Friday night.

And even the finale will be a rough one for the locals because the Bulldogs have had a good year.

There's only about eleven reasons why the Clyde team

couldn't have had the District crown—the Albany squad.

Albany was the one stumbling block for the Bulldogs when they were defeated 40-6, by the powerful Albany Lions.

It's been strictly low-voltage for the Mavericks this year with only 12 points in the locals' column and no victories.

The plans haven't clicked and the opponents have found holes all season but the Red and Black will be out to show their mettle Friday night at 7:30 p.m. Coach Jimmy Hughes says.

In District play Clyde has done this:

Lost to Albany; beat Early, 27-0; beat Cross Plains, 41-6; and Santa Anna, 10-0.

The Mavericks have lost to Early, 33-6; Albany, 56-0; Cross Plains, 6-0; and Santa Anna, 42-0.

## THE STANDINGS

Team	W	L	T	Pct.
Albany	9	0	0	1.000
Clyde	8	1	0	.889
Santa Anna	5	3	1	.611
Early	5	4	0	.556
Cross Plains	2	7	0	.222
Eastland	0	9	0	.000

## (DISTRICT)

Team	W	L	T	Pct.
Albany	4	0	0	1.000
Clyde	3	1	0	.750
Santa Anna	2	2	0	.500
Early	2	2	0	.500
Cross Plains	1	3	0	.250
Eastland	0	4	0	.000

## This Week's Schedule

Clyde at Eastland  
Santa Anna at Early  
Cross Plains at Albany

## Longtime Carbon Resident Dies; Services Today

Funeral services for Mrs. Overton Stone, 72, of Carbon who died at 2 a.m. Sunday in Green Acres Nursing Home, will be held at Hamner Funeral Home Chapel this afternoon at 2 p.m. with interment in Restland Cemetery, Carbon.

Officiating the services will be Rev. Lee Fields of Carbon, pastor of the Okra Baptist Church and lifelong friend of the family, assisted by Rev. Haston Brewer, pastor of the First Baptist Church of Eastland, and Rev. Jim Turner, pastor of the First Baptist Church, Carbon.

Mrs. Stone was the grand daughter of general Ben McCullough, Texas hero. She moved to Carbon in 1924 and was a member of the First Baptist Church of Carbon.

Mr. and Mrs. Stone's children honored their parents on their golden wedding anniversary, Nov. 27, 1960.

Survivors include her husband; three children, Mrs. J. C. Poe of Eastland, Mrs. Tom Ireland of Lubbock and Air Force Major James S. Stone of Spokane, Washington.

Also surviving are six grandchildren—Mrs. Paluh Green of Midland, Janice Kathleen Ireland, James William, Kenneth Alan, Eric Overton and Michael Stone and also one great-granddaughter, Vicki Jo Green.

## Tickets Go on Sale For Policeman's Ball

Tickets will go on sale Monday for the 14th Annual Policeman's Ball to be held Thursday night, Dec. 7th at the American Legion Hall.

Ducats will be going for \$1.50 per couple and may be purchased from any policeman.

Music for the event will be by Ray Herbin and his Musical Ramblers featuring Lyle Mace on the steel guitar.

Proceeds from the annual ball go to buy special equipment and supplies for the police department.

In the past the funds have been used to add such items as a camera, tape recorder and radio equipment used in police work, Chief Ray Laney said.

Texas Department of Public Safety patrolmen cooperate on the night of the annual ball, by taking over the patrol duties of the city so that the policemen may participate.

Tickets may be bought from either Laney or members of his coloring event, sponsored by the Majestic Theatre and the Eastland Telegram.

Each artist received a free ticket to the movie by the same name, (Continued on page four)

## 'Bobby' Artist Named

Listed below are the participants in the "Grey Friars Bobby" coloring event, sponsored by the Majestic Theatre and the Eastland Telegram.

Each artist received a free ticket to the movie by the same name, (Continued on page four)

## IN MUNSINGWEAR SHIRTS

## Hollywood-Vasarette Co. Here Not To Be Affected By Changes

Realignment of top echelon staff executives of Munsingwear isn't expected to have any significant bearing on the operation of the Hollywood-Vasarette Co. here in Eastland, Manager Mike George said this week.

Hollywood Vasarette is a subsidiary of Munsingwear Inc.

The parent company has announced major changes in its sale program involving the realignment of staff executives who are general managers of the in three individual divisions, selling merchandise under the firm's label.

A. B. Reed, a vice-president, who has been general manager of the women's and girls' division in Minneapolis, Minn., will transfer to Chicago to become general

manager of the Hollywood-Vasarette division.

L. D. Dawes, formerly former vice-president of H.V., will become general manager of the men's and boys' division.

In the past, all Munsingwear products were sold by salesman reporting to a staff vice-president. Now, each division will have its own sales manager who will report to the division general manager according to George D. McConnell, president.

Field salesmen will be supervised by regional sales manager reporting to the divisional sales managers.

To complete the autonomous position of the separate division for Munsingwear products, the fabric making plants, which formerly served both the men's and women's divisions have been realigned during this past year. Now the facilities making fabrics for one

division or the other can be assigned directly to each respective division, it is said, thus giving the divisional general managers complete authority and responsibility over their products from development through manufacturing, as well as merchandising and selling.

**FREYSLAG**  
Insurance Agency  
presents the  
**WEATHER NEWS**

**FROSTS**  
Sun rises 6:36; Sets 4:50  
Moon Sets 6:09

**dBeTs**  
By I.V.O.

Hale of the Hillside a salesman for about 1932, called this week now that he heads the from cover to cover."

Mr. Hale tells us to do a great deal of in Stephenville is selling for a firm is a native of Eastland.

sign of holidays the delivery trucks big bundles for the town.

and merchants open in their showcases, as a world of finery.

add your family play license game? you haven't played it the way it goes.

the country side, you the passengers in the the lookout for number in auto plates.

and occupied as away the miles.

of a sudden, one of the usually the youngest it is about "five fives" in breaks up the ballgame, suggesting that we all game, except for this use poll tax receipts, truly will start the with "333." That's

Mr. J. C. Allison, Collector, filled out we were No. 333.

combination of three even Mrs. who had two threes

if you haven't paid taxes, it's going to be to play the game, isn't

going to be a little the next spring too, isn't

to County Clerk Smith, these are the off- will be voted on next (based on page four)

## TO PUBLIC

## e-Decorated C-C Office Formally 'Opened' Sunday

lected officers of the Chamber of Commerce honored guests at an open Sunday from 3 to 5 the chamber office. The was given by Horace out-going president.

honored were Bill Sam-; Dick Spalding,; and Ronald Bur-; president and secretary.

honored guests included past and potential Cham-; Commerce members, of-; directors, junior Cham-; Commerce members, city; and those who have; connected with the cham-; ber ways.

public services of the; are the bulletin board in; window and the con-; room available for civic; meetings with-; out private conference; room created by making; room smaller by pushing; back. The room; to make the office seem; however, the conference; office may be divided; into a lounge cherrywood

decorated office

**MOBILE LOANS**  
At Lowest Rates  
AND NATIONAL BANK  
Square—Member FDIC



# Eastland Telegram

Published Semi-Weekly—Thursdays and Sundays  
Eastland County Record established in 1931, consolidated August 31, 1951. Chronicle established 1887, Telegram established 1923. Entered as second class matter at the Post Office in Eastland, Texas under the Act of Congress of March 3, 1879.

By Eastland County Newspapers, Inc.  
H. V. O'Brien, Editor

One week by carrier in city	.16
One month by carrier in city	.65
One year by mail in County	2.95
One year by mail in state	4.95
One year by mail out of state	6.95

NOTICE TO PUBLIC—Any erroneous reflection upon the character standing or reputation of any person, firm or corporation which may appear in the columns of this newspaper will be gladly corrected upon being brought to the attention of the publishers.

## CLASSIFIED CALL MA 9-1707

Cards of Thanks charged for at rate of \$2.00 Each

### For Rent

FOR RENT: Furnished two bedroom apartment in duplex. 611 W. Plummer. tf

FOR RENT: Small house. Bills paid. Close in 209 W. Patterson. tf

FOR RENT: Four room house. Close in. Unfurnished. Apply 210 N. Valley after 6 p.m.

FOR RENT: Redecorated three room, hall, bath, and 2 walk-in closets furnished garage apartment at 1201 S. Searman. \$50. paid. MA 9-2413.

FOR RENT: Newly decorated three room apartment. Phone MA 9-1559.

FOR RENT: Large five room house. Newly decorated, nice neighborhood. Reasonable. Inquire at 308 East Main St. tf.

FOR RENT: Modern furnished four room apartment. Phone MA 9-1602.

FOR RENT—Four-room furnished duplex. Call MA 9-2186.

FOR RENT: Three large furnished rooms and bath. Phone MA 9-1569.

FOR RENT—Lovely furnished or unfurnished apartments, any size, bills paid, maid and hotel services included, very reasonable. Also comfortable rooms with tile baths only \$39.95 monthly. Throw away your high bills and troubles and come live with us. Mrs. Robinson, manager, Village Hotel, MA 9-1716.

FOR RENT: Furnished duplex. Phone MA 9-2326.

FOR RENT: Furnished apartment 315 E. Main.

FOR RENT: 6-room, 2-bath house. Lower rate to responsible couple. Phone MA 9-2523.

FOR RENT: Unfurnished 5 room house. 806 S. Connelley. 23

### Special Notice

NOTICE: Water well drilling. All sizes - all depths. Phone HI 2-3704, Cisco. R. F. Caraway.

NOTICE: Electrolysis sales and service. Vaughn Pritchard, Phone MI 7-1810, Ranger. 30

NOTICE: Let us break and (or) sow your land. No gardens. Contact-B. H. Courtney. Main 9-1340 or Bill Cagle, Main 9-1663 after 6 p.m. tf

Patience is the ability to idle your motor when you feel like stripping your gears.  
NOTICE: Any type hay baled promptly efficiently. I. B. Walker, Phone 2501, Olden.

SPECIAL NOTICE: Green Kindergarten. Tuesday, Wednesday and Thursday. Phone MA 9-2460.

### Misc. For Sale

FOR SALE: Sweet Sudan Hay 65¢ bale. Weaver Aishman Phone MI 7-1189.

## ANNOUNCEMENTS

**EASTLAND ROTARY CLUB**  
Meets in White Elephant for noon luncheon each Monday. Call Mike George, 9-1435, for information.

**EASTLAND JAYCEES**  
Meet at 7 p.m. in Texas Electric Conference Room each second and fourth Thursday. For information call Grover Hallmark, 9-1751 or 9-1379.

**LADIES GOLF AUXILIARY**  
Meets at Lakeside Country Club for noon luncheon the second Tuesday of each month. For information call Mrs. Max Beazley, 9-2478.

**ATTEND THE CHURCH OF YOUR CHOICE EACH SUNDAY**

FOR SALE: Three bedroom, two tile baths, one year old, 306 S. Oaklawn. Business property 214 South Seaman. Phone MA 9-17-42.

FOR SALE: Farmall-B tractor with 2-row equipment. Recently overhauled. Call Cisco, HI 2-3159 after 6 p.m. tf

FOR SALE: 1959 Chevrolet pickup, fleetside radio, heater, automatic transmission, overload springs, two mirrors, H. D. Grill-guard, new white side wall tires chrome hub caps, H. D. Rear bumper very clean. MA 9-1736.

FOR SALE: Will sacrifice three years equity in modern, three-bedroom Ailene home for \$700. Down-drought air, central heating, chain-link fence. MA 9-1707. tf

SPECIAL—Mexican food cook books on sale at Eastland Telegram. At \$1 each, they are perfect for using and gifting. tf

FOR SALE: Bargain—\$1,395.00 1960 Fairlane 500 Ford. Air, white side walls, radio, heater, two tone, standard shift. Call MA 9-2716, Eastland.

FOR SALE: 9 by 12 wool rug. In good shape. \$15. C. J. Langlitz, Olden. 23

FOR SALE: Burkett pecans. 40c per pound. 212 W. Patterson. 24

BARGAIN: Fat hens. 3 for \$1 on foot while they last. Kendrick's Drive In Dairy. 24

FOR SALE: 1960 Cushman Eagle scooter. Like new. Company guarantee all parts. 1003 W. Plummer. Phone MA 9-2256. 23

### Misc. Wanted

WANTED: Old newspapers. Clean. 50 cents a hundred pounds. MA 9-2647.

WAN T TO TRADE: Goldbond stamps for Green stamps. Call MA 9-1189. 24

### For Lease

FOR LEASE: Gulf Service station at E. Main and Bassett St. Contact Harry Gurney, Cisco.

**KELLER'S FIX-IT SHOP**  
Eastland, Texas  
MOTOR REWINDING  
No Motor too Small or too Large.

### FREE Estimates On RE-ROOFING

Or Repair Your Old Roof.  
Residential and Commercial  
**Eastland Roofing Co.**  
Noble Squires  
Phone MA 9-2370

## ANNOUNCEMENTS

**EASTLAND REBEKAH LODGE**  
NO. 177  
Meets at 7:30 p.m. in the 160F Hall on the second and fourth Tues. of each month.  
For information call Corrie Harlow, vice grand, MA 9-1429.

**MASONIC LODGE NO. 467**  
Meets second Thursday of each month at 7:30 p.m. in the Masonic Hall. Call Floyd B. Nichols, W. M. Phone MA 9-1227, or L. E. Huckabay, Sec., 9-1391, for information.

**EASTLAND CHAPTER NO. 280 O. E. S.**  
Meets the first Tuesday of each month at 8:00 p.m. in the Masonic Hall. Call Mrs. Nelle Earley W. M. 9-2044, for information. Mrs. Helen Shaw, Sec.

### Real Estate

FOR SALE: Choice South Dixie living room, dining room kitchen, den, two bedrooms pretty bath, central heat, trees, garage, lots of storage. Easy to finance. M. A. Treadwell. Phone MA 9-2017.

FOR SALE: 219 acre farm. Phone MA 9-1826 after 5:30 p.m. 22

FOR SALE: Two bedroom house. 310 North Daugherty. Phone 2745 Olden for appointment.

FOR SALE: House and lot., 500 block of East Commerce St. Cash or terms. Call collect, Modern Homes Construction Co., PE 2-4469, Fort Worth.

### Help Wanted

WANTED: Man or woman to sell Raleigh products. Contact 301 E. Main or call MA 9-2066.

WANTED: Help wanted. Eastland Steam Laundry. Phone MA 9-2613

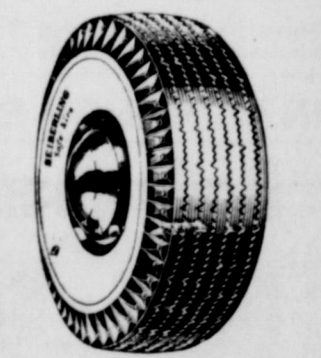
WANTED: Reliable young man to work night shift and Sundays. Inquire at Romeo Eastland Manufacturing Co., Eastland, Texas. MA 9-2647.

**SINGER**  
Sales - Service - Rentals and Repairs  
**D. L. MORTON**  
Phone MA 9-2084

**WOOTEN'S MOBIL STATION**  
Local Moving  
301 East Main  
Prompt Service—We Fix flats, wash, grease and polish.  
We Sell Raleigh Products  
All Business Appreciated  
JUST CALL  
MA 9-2066

**- NOTICE -**  
MRS. VERA MAYERS now associated with Lula Mae E-sham Complete Beauty Service Open Every Week Day 1416 S. Lamar MA 9-2526  
**Basham Beauty Bar**

**NOTICE**  
FRESH DRESSED FRYERS and Fresh Dressed Hens  
At The Plant WALKER Dressing Plant  
PHONE MA 9-1200

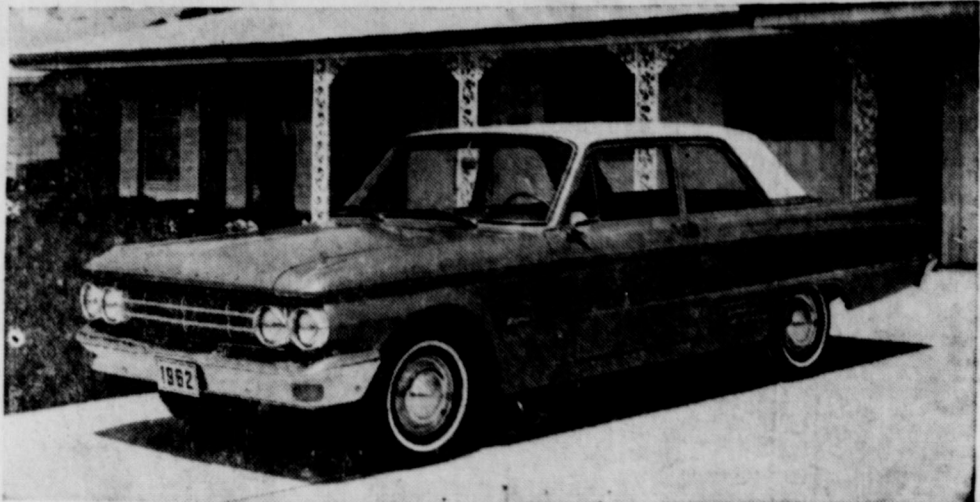


Save Money On Good Clean Rejects

6.70x15	\$10.00
7.10x15	11.50
7.60x15	13.00
8.00x15	14.50
7.50x14	10.00
8.00x14	12.50
8.50x14	13.00
9.00x14	15.00

(All prices plus tax)

**HORTON TIRE SERVICE**  
East Main St. MA 9-1420  
Eastland, Texas



**ALL NEW**—A new car in a new size—the Mercury Meteor—will be introduced this year as a solution for buyers who want a smaller car without sacrificing the comfort and convenience of a big car. The new Meteor will be a full-proportioned family car with an overall length which is nine inches longer than the compact Comet and nearly a foot shorter than the Mercury Monterey. The Mercury Meteor, will be available in four body styles, including the two-door sedan shown above, at Hood King Motor Co. in Eastland.

### New Mercury Introduction Next Month

A completely new car embodying the best characteristics of compact and big cars in one package—the Mercury Meteor—will be introduced in Eastland at Hood King Motor Co., early next month.

The Mercury Meteor will appeal to consumers who desire a car challenging the economy of the compact, the interior room of the regular-size cars and the riding comfort of the bigger cars, according to Ben D. Mills, vice president of Ford Motor Company and general manager of the Lincoln-Mercury Division.

"The Meteor fills a gap in the market for people who want to move into a smaller car but do not want to sacrifice the convenience and comfort of a big car," Mills said. "It is the answer also for those who want something bigger and better than compact or imported cars."

The new standard-sized Meteor rounds out Mercury's offerings for 1962 with three distinct cars in three sizes. The new Meteor is 203.8 inches in overall length—nine inches longer than the Mercury Comet and 11.7 inches shorter than the Mercury Monterey. The 116 1/2-inch wheelbase is 2 1/2 inches more than the Comet and 3 1/2 inches less than the Monterey.

Built as a full-proportioned family car, the Meteor has extra head-room front and rear and generous luggage compartment room. Its styling theme blends

Meteor's own distinctive lines with identifiable Mercury appearance features.

Engineers developed a suspension system for the Meteor which utilizes Mercury's "Cushion-Link" principle in both front and rear suspensions to give a soft ride. The Meteor suspension permits both vertical and horizontal movement of the wheels to reduce the harshness from bumps and road irregularities.

The body is of fully unitized construction with structural components designed as an integral part of the basic body. For greater durability a total of 136 pounds of galvanized steel is used for rust protection.

Body pillars are welded directly to side rails, not to the floor pan, to give a more solid base for door mountings and body sides. Doors are double paneled. New interlocking door latches provide unusually firm door closings.

Contributing substantially to the big-car feel of the Meteor is the extensive use of a variety of insulation materials for sound-deadening.

Self-adjusting brakes are standard on the Meteor.

Interiors incorporate trim schemes, materials and colors which are complemented by a distinctive instrument panel, cluster and applique. Standard interior features include front and rear arm rests and ash trays and door operated dome light. The instrument cluster has gauges rather than warning lights for oil pressure and ammeter, in addition to fuel and engine temperature gauges.

Tandem electric windshield wipers which leave no center blind spot are standard, with two-speed wipers optional.

The latest techniques in foundry precision molding have been utilized to develop a new lightweight V-8 engine of 221 cubic inches which is offered as a Meteor option. 170-cubic-inch six-cylinder engine is standard.

The short-stroke, low-friction Meteor V-8 is a ruggedly designed overhead valve engine which gives top performance with standard fuel. Hydraulic tappets provide quiet valve operation and eliminate the need for adjustment. Horsepower of the new V-8 is rated at 145. The six-cylinder engine delivers 101 horsepower.

Three-speed manual transmission is standard and automatic transmission is optional with both engines. Overdrive is available with the V-8 as an option.

See Me For Your Real Estate Needs  
Will Build To Suit You  
**M. A. TREADWELL, SR.**  
Phone MA 9-2017

**NOTICE**  
Look Who is Coming to Town!  
**OLD MAN WINTER**  
That Mean's It's Time To Put in ANTI FREEZE  
It's time to have your car checked for winter driving. Have a complete winterize job for care-free driving.  
We Specialize in Wash and Lubrications

See Us For Any Car Needs In The Way of Tires, Batteries, Etc.

**Mobil**  
**Wells Dalton**  
Phone MA 9-2220  
Phone MA 9-2220

### Here's How—

(Continued from page One)  
ance in repairing, rebuilding their homes, replacing household goods, furnishings and meeting medical bills.

Who provides this staggering sum? All Red Cross funds come solely from contributions by the American people, and every person who gives shares directly in his neighborly help to Carla victims. This help is given as an outright gift of the people through the Red Cross.

More than 13,500 families already have registered for long term help at Red Cross offices open in the 17 affected Texas coastal counties and in four Louisiana parishes. Other additional offices have been opened near badly-damaged communities convenient to families. Each family's recovery problems is being treated individually by the Red Cross and help is given on the basis of need, not loss. Like the good neighbor it is, the Red Cross will stay on the job until all basic family needs are met.

Volunteer workers from Eastland County alone have collected \$1,010.75 for the Hurricane Carla Relief fund.

The Red Cross Blood Program provides services so designed that they may meet the entire blood needs of a community or supplement existing blood supplies.

The service is not the same in all communities because appropriate responsible community agencies decide how local needs should be met. The blood service collects blood from volunteer donors and provides the product without charge to physicians for use in treating patients.

The Blood Program is licensed by the National Institutes of Health and operates on a regional basis through programs from single-chapter to multiple-chapter operations.

Red Cross nursing services help complement community health activities. Since community needs vary, Red Cross chapters do not have identical nursing programs. The American Red Cross Nursing Services provide instructional programs and emergency services for all parts of the country.

Home nursing courses were taught last year in Eastland, Cisco and Gorman by homemaking teachers of the area from ARC Nursing books furnished by the chapter.

Certain programs of the American Red Cross are designed specifically to help reduce the tragic toll of accidental death and injury each year in the United States through its First Aid Service.

First Aid classes were taught in Eastland through which 25 fishermen took courses conducted by Mr. A. D. Taylor (Eastland County's Authorized Instructor) and received certified first aid cards which are nationally recognized.

The Red Cross is concerned with reducing loss of life by drowning and increasing enjoyment in swimming and other water activities.

In the Water Safety Program, Craig Meglasson of Cisco was sent to Aquatic School to become a water safety instructor. After Young Meglasson returned, he taught swimming classes both in Eastland and Cisco. As a result of these classes 75 youngsters re-

ceived ARC swim caps. A part of all Red Cross programs are community service projects carried out by Red Cross chapters in their community service projects.

In conducting its community service projects, the American Red Cross works with other Red Cross chapters and groups throughout the world, participating in national conferences and annual activities. American Red Cross assistance is given to Red Cross societies in all 48 states and in 100 foreign countries. Junior members of the Red Cross take part in Red Cross service projects which young people find very interesting.

In addition to the series of service projects and schools throughout the country, Red Cross chapters operate for U. S. military units.

Some of their activities are concerned with community needs; others are educational service projects which members finance through their own contributions.

During the past year, Red Cross chapters in Eastland County have been ordered to schools for the American Red Cross, St. Louis.

### Woolens Made Dried With Shrinkage

After laundering, sweaters and other garments are dried without shrinkage in automatic dryers.

Bright sun and breeze are great for drying clothes, but they are not always available. Clothes hung outside are dried in the sun. Loosely knit or woolen garments may be gently dried with a bling action in an automatic clothes dryer. These are also useful for drying hand knit socks, and sweater nylon. Fine wool should be removed from the dryer slightly moist and completed at room temperature.

### Post Office Help County Livestock

Rural mail carriers Eastland post office some livestock survey on their routes beginning Monday.

"Information reported cards is used to set the inventory of livestock on Texas farms," Johnson explained.

Rural carriers distribute cards at random in their routes. "This means that you will get a card," Johnson said. "For this reason, it is important for everyone who has a farm to return it filled out as soon as possible. The State's livestock holding

**SALE**

**GUNS** Deer Rifles - Shotguns - NEW OR USED **20% OFF**

**Insulated Underware** Reg. 9.95 **Now \$7.95**

**PARKAS** INSULATED—LIGHT WEIGHT Rain Resistant Fur Trimmed Hood Reg. 14.95 **Now \$11.95**

**Thermo Underware** Reg. 5.95 **Now \$4.95**

**Rain Coveralls \$5.50** **Sleeping Bags 1/3 OFF**

**TOYS 40% OFF**

**Game Calls** • SQUIREL • FOX • QUAIL \$1.00  
• DUCK • CAT

**Ammo** Reg. 3.75 308 30-06  
30-30 Reg. 4.75  
Now 3.50 Now 4.50

**Camp Cots** Reg. 6.95 **Now \$4.95**

**Foul Weather Suits** -2 Pc. Reg. 10.95 **Now \$7.95**

**BICYCLES** Chrome Frame - Fenders - Handbrakes, 3 Speed In Box \$49.95

**Used Golf Clubs Each \$6.50** **Putters \$7.95**

THESE PRICES GOOD THRU 12:00 NOON NOVEMBER 15TH — WE WILL BE CLOSED UNTIL MONDAY NOVEMBER 20TH

**Bruce Pipkin's SPORTCENTER**









THE AN/VRC-12, the U. S. Army's new mobile, transistorized radio communications system is demonstrated by Sfc Ewen MacDiarmid (Sacramento, Calif.) of the U. S. Army Signal Research and Development Command, Ft. Monmouth, N. J. Developed by the Army Signal Corps, the VRC (Vehicular Radio Communication) system provides for voice communication among tanks and similar vehicles up to 25 miles distance and covers 920 different channels. Weighing approximately 102 pounds, the VRC is produced for the Army by the Avco Corp., Cincinnati, O.

### Desdemona Students—

(Continued from page One)

The students wrote:

Dear Sir:

I am a seventeen-year-old student in the Desdemona High School. It is probable that I will finish high school before a plan of consolidation could be completed, but my schoolmates and I feel we and our successors would not profit by consolidation.

I think the advocates of consolidation are not considering fully the advantages of smaller schools and disadvantages of the larger ones.

My father, J. J. Grimshaw, is a member of the Desdemona school and is definitely against consolidation.

C. S. Grimshaw  
Sincerely,

Dear Sir:

I don't believe I would care to go to school with just one school in our county.

There would be very few pupils that would have a chance to participate in sports.

The students that are slower than others wouldn't have as good a chance to learn as they do in the smaller school.

I have gone to both large and small schools, and I prefer the smaller school. It would cost more to send all of the kids to one place.

The kids would have to be on the road so much they would be too tired to study.

I think it is stupid, ignorant, crazy, and horrible for anyone to even think of such a thing.

The advocates of consolidation should see a psychiatrist.

My name is Sheryl Caudle, I am seventeen years of age and a Junior at Desdemona High School, my mother's name is Mrs. V. M. Caudle, she is a cox in our school and is definitely against consolidation.

Sheryl Caudle

Dear Sir:

It would be better to leave well enough alone.

The students will have a better chance of learning in small schools. There will be a better chance for everyone to participate in sports.

I'm sixteen years old and I'm a Junior in Desdemona High School. My parents are Mr. and Mrs. E. Ted Hall. My name is Linda Charlene Hall.

Linda

Dear Sir:

I am very much against the consolidation idea and think everyone who is really interested in our county's schools and the children should be also.

For eight years I went to Olden, lived three miles from school, and rode a bus for an hour twice a day and sometimes in bad weather a lot longer than that.

How long would the kids who live in the far corners of our county have to ride if we all consolidated into just one high school in the center of the county?

### 'Preparedness' Is Theme of Civic League Meet Wednesday

'Preparedness' was the prominent theme when members of the Civic League and Garden Club met Wednesday at 3 p.m. in the Woman's Club.

Mrs. Pat Crawford, program leader, presented a film, "That They May Live", a film on mouth to mouth resuscitation, which was furnished by the Texas Electric Service Company.

"That They May Live" demonstrated the procedure of actually saving lives by transferring oxygen from one person to another.

Mrs. Frank Sayre, president, presided and informative business session at which time complete reports were given by all officers

enough in good weather, what would they be in rainy weather?

Kids would be forced, unless they had a car which they drove to school, to ride the buses for long hours in winter.

If our county was more thickly populated and had better roads the project might be forth while but in the present condition it would be neither wise nor profitable.

The man at the head of the project is very wealthy and has lots of influence, but I don't think that the parents and the kids of our county should let him blind us to the truth.

A school the size of one for all the kids of the tenth, eleventh, and twelfth grades in our county would cost probably around \$1,000,000 and probably more after everything was finished.

The maintenance of one high school and our grammar schools would have to raise the peoples taxes even though there would be aid coming from the state.

People gripe now about how large their taxes are, but what would they be if we tried to build a school like the one proposed.

Personally, I think the head of this idea is just trying to show how big and powerful he is.

A big high school like the one proposed would have so many students that everyone couldn't possibly get the help from the teachers that they need.

Sure, there could be more courses offered but there would be so many students that it wouldn't really help anyone unless they really were outstanding students.

The schools as we have them now can have basketball, football, etc. games with each other and more students have a chance to participate.

If we were a big 4-AAAA school, very few students could play, and we'd have to go from fifty to maybe seventy-five miles just for a practice game with another school.

Of course, the school consolidation has a few good points but I think that the bad points are more prominent and numerous.

Lets wake up and get busy or the head of this project will have us in such a school before we realize it.

Sincerely,  
Carol Fox, 14

Dear Sir:

I think they should leave the schools as they are, for it sounds rather stupid to me.

I think that the consolidation advocates should not try to tell everyone what they should do in our public schools.

They should not try to enforce something that they do not really know anything about.

If all the schools in Eastland County should consolidate there would be a lot of friction between the pupils.

Also if the schools consolidate there will be fewer pupils participating in sports and other activities.

For most of them would think that all the others were better

than them and not even try. I am sixteen years of age, and I belong to the Junior class at Desdemona High School. My parent is Mrs. Murrell Fonville. My name is Linda Faye Fonville.

If all the schools in Eastland County consolidate there will be so many pupils in each class that the teachers will not have sufficient time for each pupil.

Therefore, it will not only be harder on the pupils, but also on the teacher.

Some children who live in the farthest part of the county will have to ride the bus for so long they will have to get up at four o'clock in the morning.

Therefore they would not get enough sleep unless they go to bed at seven or eight o'clock.

Boys and girls who live on farms and have chores to do before and after school would have to get up so early and stay up so late they would not look so well and would probably become ill before long.

Sincerely,  
Linda F. Fonville

Dear Sir:

I would like to say that I do not like the idea of school consolidation. Our school needs some improvements, but consolidation will not make the needed improvements.

We are working to become better informed so that we can be citizens who will help our nation to be a better place in which to live. We know that it is impossible to learn all there is to know in the twelve years of public school.

It is not possible to learn all about everything even in a lifetime.

Every school in the county offers some vocational training. More might be helpful, but how many students of high school age have really decided what kind of a job they want as a lifetime work? I would say very few know what they want to do.

The boys have the chance to know about welding, mechanics, plumbers, electricians, and get some idea of what it would be like to be a doctor or other white collar worker.

Girls are taught the fundamentals of nursing, home management, decoration, child care and many other things that help them to find their own interests.

Here in Desdemona High School we are studying English, history, science, algebra, typing, agriculture, home economics, general math, health, and the physical education program is one of the best in the county.

The boys' basketball team went to regional last year and I believe that they have a good start to do that or better this year.

The subjects which are offered give the student the basic foundation study that would prepare them for entrance into most colleges in the state. The student is on his own after he gets into college work. Hard work and applied know how will carry them right into the job that is desired.

I am not an expert on economics, but do have a major in business and know something about it. People are largely conditioned by environment and not by the arbitrary theories formulated in economic texts.

The best educated man is not always the wisest. It looks like poor economy for Eastland county to consolidate the schools and build a big new building when the schools we have are doing the job just fine.

With a declining population, who knows, there may not be any school students here in a few years.

Who will pay for the new school? Let us all work a little harder to make the needed improvements and leave our schools where they are. If we had a school with only four or five students, then it might be wise to take them to another place, but all the schools have a much larger number and are doing an excellent job of giving them an education to meet the needs of the present and the future. These kids are not as dumb as you think they are.

They do keep up with the latest things just as the kids in Dallas, Fort Worth or Abilene.

With the proposed central high school many of the students would have to ride the bus for hours because of the distance. It would take many of the students here out of the county because there are two schools closer than where the new school might be if it is a central school.

The booklet "A Key To Better Education" which was sent to me by Dr. Whittington, contains many things which do not apply to Eastland County.

Today, rural students are transported to a school which provides education comprehensive enough to meet the needs of all the students in the area served. Every thing considered they permit efficient and economical school administration and the citizens are given an active share in shaping the policies of schools serving their communities unless a Mr. So and So comes along and tries to push things his way so he can be Mr. Big.

There may be thousands of school districts where the education offered is not good enough, but for Eastland county, the large numbers of successful young men and women from this area prove that it is up to par here.

Under "Remarks of a good District", page 8, of the booklet, I find all 4 points favorable in

### Courthouse News And Records

The following instruments were filed for record in the County Clerk's office last week:

E. E. Ables to James K. Smith, warranty deed. G. A. Bloomquist to Frank F. Urban, deed. John C. Brooks to Coastal States Gas Prod. Co. oil, gas and mineral lease. O. L. Burns to The Public, affidavit of non-production. O. L. Burns to The Public, affidavit of non-production.

Bobby E. Blackwell to Bob Hallmark, warranty deed. Charles deed of trust. Z. W. Cook to Henry E. Potter, dba Brickstone vs. Robert Lee Carroll, et al, abstract of judgment. G. C. Clark to First National Bank of Clark, deed of trust. Commercial State Bank of Ranger to R. V. Robinson, release of vendor's lien.

Fred H. Englehardt to Sam Rosen, extension of deed of trust. Eastland County Newspapers, Inc. to O. H. Dick, deed of trust. Herman E. Eison to Veterans Land Board of Texas, warranty deed. Eastland National Bank to Joe Dennis, et al, dba Times Publishing Co., release of deed of trust. First National Bank of Gorman to W. M. Brogdon, vendor's lien.

First Federal S&L Assn. of Ranger to H. H. Oliver, release of deed of trust. First National Bank of Baird to Alfred E. Green, release of deed of trust. First National Bank of Cisco to Luther H. McCrea, III, release of note and deed of trust. William L. Gary to D. O. Edwards to First National Bank of Cisco, MML. Jessie Lee Holladay to Henry E. Potter, dba Brickstone of Ft. Worth, MML.

James M. Hendricks to Arnold W. Breslers, warranty deed. G. C. Hammett to Weldon Tankersly, release of vendor's lien. George B. Hull to Sam Hull, warranty deed. G. C. Kendrick to The Public, affidavit. Martha Alene Lawson to Monroe T. Byrd, warranty deed. John G. Lee to Higginbotham Bros. & Co., MML. Lone Star Gas Co. to Marshall Thomas, release of right-of-way easement.

Linz Brother vs. M. C. Williamson, abstract of judgment. Methodist Home to W. D. Turner, warranty deed. Ewing Mitchell to H. L. King, mineral deed. W. J. Mitchell to H. L. King, mineral deed. Morris Mitchell to H. L. King mineral deed. R. C. Massey to First National Bank of Cisco, deed of trust.

Robert E. L. Moon to J. B. Truesdell, warranty deed. W. L. Moore to The Public, affidavit of non-production. W. M. Morgan to The Public, MML affidavit. W. L. Morgan to The Public, MML affidavit. Jess J. Mitchell to H. L. King, mineral deed. A. V. McCall, Jr. to J. E. Connally, assignment of oil and gas lease.

A. V. McCall, Jr. to J. E. Connally, assignment of oil and gas lease. James Larry McCollum to Martha Alene Lawson, warranty deed. Luther H. McCrea, III to Veterans Land Board, warranty deed. National Life & Accident Insurance Co. to Marion M. Whately, release of deed of trust. A. J. Needham to The Public, plat. W. J. Oglesby to J. M. McMillan, warranty deed.

Henry E. Potter to Grinnin Mortgage Co., assignment of MML. Don Pierson to A. V. Notgrass, warranty deed. Cecil G. Shults to The Public, affidavit. Scott & White Memorial Hospital, et al vs T. S. Holden, abstract of judgment. Phil K. Sheets, Jr. to Louise W. Sheets, warranty deed. Secretary of State to Graridge Corp., certificate of merger. J. W. Stevens to C. G. Clark, warranty deed. Jesse Stuart to Grady Hogue, lease agreement. Hattie Sue Spicer to C. M. McCain, warranty deed. Genevieve Calvin Thomas to Minnie L. Hill, release of vendor's lien. Texas Pacific Coal & Oil Co. to Wiley Thompson, release oil and gas lease. T. V. Service Co. to The Public, assumed name. Times Publishing Co. to Eastland County News papers, Inc., warranty deed. Euthia B. Altman, contract B. Moore, contract of sale & Veterans Land Board to Willie of sale & purchase.

PROBATE  
Nettie Smith, deceased, application to probate will.

SUITS FILED  
The following suits were filed for record in the 91st District Court last week:  
Odell Samuel vs. Roy Samuels, divorce.  
Wylie Funeral Home vs. Alfred M. George, suit on debt.  
Austrian Grazing & Pastoral Co., Lt., vs Joe Spradlin, suit on debt.  
Dorice Leach vs. William Benjamin Leach, divorce.

CLERK'S MEET CANCELLED  
POSTAL CLERKS TO MEET  
Eastland Chapter of the Retired Postal Clerk Assoc., No. 555, will not meet Saturday, it was announced today by Ed Willman, president.

### Look Who's New

Rev. and Mrs. Dave Cooper of 501 Mary Lou Lane, Mansfield, 1-2, announce the arrival of a daughter, Catherine Elaine, who was born Nov. 2 at 1:33 a.m. At birth she weighed eight pounds and four ounces.

Catherine Elaine has one sister, Cheryl, and one brother, Guy. The Coopers are former residents of Eastland and Rev. Cooper was formerly pastor of the Bethel Baptist Church. He is presently associate pastor of the First Baptist Church of Mansfield.

### HOSPITAL

Bob Hallmark, surgical Pauline Ramsey, medical Mrs. Alberta Mitchell, medical Mrs. Betty Norris, medical H. Z. Matthews, medical Mrs. Lou Morgan, medical Mrs. Joyce Ray and baby boy Mrs. Laverne Carlisle and baby girl.

Mrs. Alta Jobe, medical Clyde Barbee, surgical Lucille Hopson, surgical Velma Caraway, surgical Claude Dabbs, surgical Mrs. Vera James, surgical E. L. Perkins, medical J. C. Whately, medical Jessie Wood, medical Betty Brashear, medical Dora Fambrough, medical Bess Hoffmann, medical William Obel, medical Dismissed were Maybelle Trout, Mrs. Mary Woodall, Miss Estelle Rice, Mrs. Burva McKelvin, Mrs. Odella O'Neal, R. E. Floyd, Mrs. Lou Taylor, Dewey Webb and Alvin Seay.

### Cisco Wranglers Blank Rangers Saturday Nite

The Wranglers of Cisco Junior College assured themselves of at least a tie for the Texas Junior College Conference championship when a 23-0 victory over Ranger Junior College last Saturday night at Ranger.

A comparatively large crowd turned out for the game, which was played in crisp fall weather. It was a much better game than the score might indicate with the two teams fighting hard all the way.

Big Steve Howell, the power driving Wrangler fullback, was the top Cisco man as he personally made 135 yards and scored two of his team's touchdowns. He carried the ball 23 times. Phil Graham, a CJC scat-back, gained a respectable 61 yards in five tries, and Jerry Reeves made 79 yards in eight bucks.

Standing out in the Cisco line were Tackle Ralph Widocki, who dealt Ranger QB Dub Higginbotham a lot of trouble, Guard Jimmy Walker and Center Delbert Brewster.

William McAlister, Ranger's fullback was one of the game's outstanding performers. He gained the bulk of his team's net yardage and played a fine defensive game. Also standing out defensively for Ranger were James Potts, Winfrey Shipp and James Lee.

The first Cisco score came near the end of the first quarter. The Wranglers took a punt on the 38. Graham got loose for 37 yards to the Ranger 21. Howell picked up eight yards in two bucks, and Reeves got loose for 13 yards and the TD. Reeves missed the uprights for the extra point.

Ranger took the kickoff and as the second period opened, they had to punt to the Cisco 29. Gary Josey got 11 yards, and Cisco drew a 15-yard penalty. After Willie Rotten hit End Rodney Russell with a 12 yard pass, Howell made a first down in two bucks. Graham got loose for 13 yards, and Howell drove for 20. Josey then went 12 yards and on the next play he went over the goal line. Reeves kicked goal.

After kicking off to Ranger, Cisco drew a 15 yard penalty to midfield and Charles Sims intercepted a pass for the Wranglers on the Cisco 25. Howell got 8 yards, Graham made 6, and Howell drove to the 50. QB Billy Porter then lateraled to Reeves who passed to Graham, and the scatback got to the Ranger 5 before he was stopped. Howell needed two bucks for the TD. Reeves kicked the goal for a 20-0 half-time score.

Ranger started the second half in a convincing manner with Potts driving for 8 yards and McAlister for 28 to the Cisco 26. McAlister then got 5 and Higginbotham got loose to the Cisco 15.

With Widocki doing much of the hard work, Cisco held for downs on the 11-yard line. The balance of the quarter was a defensive battle.

Near the end of the game, Cisco recovered a Ranger fumble on the Cisco 42. Josey made 17 yards in two bucks, and Reeves ran to the 12. Howell went over for a score in two bucks. Rotten

### Bobby Artist—

(Continued from page one)

which begins Thursday at the Majestic.

Mike Trout, 6, West Ward; Linda Kay Hallmark, 10, West Ward; David Sullivan, 8, West Ward; William Harden, 11, West Ward; David Cox, 10, South Ward; Bobby Frank Williams, 6, West Ward; Deborah A. Ables, 8, West Ward; Lillian Jane Bailley, 10, South Ward; Becky Max Jackson, 7, West Ward; Nancy J. Seaberry, 6, West Ward; Billie Jean Jones, 11, Eastland Jr. High; Mary Ann Turner, 11, Eastland Jr. High; Vickie Carolyn Houghton, 8, South Ward; Jacquelyn Neme Whitley, 12, Eastland Jr. High; Carolyn Sue Goldston; 11, Eastland Jr. High; Clara June Smith, 12, Eastland Jr. High.

### Local Men Attend Utility Course At A&M College

K. R. Watson and D. A. Weems, Texas Electric Service Company employees, recently attended a Public Utility Short Course for Electrical Metormen at Texas A & M College.

More than 100 men enrolled in the course which was sponsored by the Texas A&M electrical engineering department and ended Nov. 3. Prof. Norman Rode was chairman for the short course.

Men from Louisiana, Georgia and New Mexico were among those enrolled for the course which covered math, electrical circuitry and theory, transformers, safety and laws affecting electrical employees. Speakers were authorities from electrical power and supply companies and Texas A&M electrical engineering faculty members.

### Cisco Wranglers Blank Rangers Saturday Nite

The Wranglers of Cisco Junior College assured themselves of at least a tie for the Texas Junior College Conference championship when a 23-0 victory over Ranger Junior College last Saturday night at Ranger.

A comparatively large crowd turned out for the game, which was played in crisp fall weather. It was a much better game than the score might indicate with the two teams fighting hard all the way.

Big Steve Howell, the power driving Wrangler fullback, was the top Cisco man as he personally made 135 yards and scored two of his team's touchdowns. He carried the ball 23 times. Phil Graham, a CJC scat-back, gained a respectable 61 yards in five tries, and Jerry Reeves made 79 yards in eight bucks.

Standing out in the Cisco line were Tackle Ralph Widocki, who dealt Ranger QB Dub Higginbotham a lot of trouble, Guard Jimmy Walker and Center Delbert Brewster.

William McAlister, Ranger's fullback was one of the game's outstanding performers. He gained the bulk of his team's net yardage and played a fine defensive game. Also standing out defensively for Ranger were James Potts, Winfrey Shipp and James Lee.

The first Cisco score came near the end of the first quarter. The Wranglers took a punt on the 38. Graham got loose for 37 yards to the Ranger 21. Howell picked up eight yards in two bucks, and Reeves got loose for 13 yards and the TD. Reeves missed the uprights for the extra point.

Ranger took the kickoff and as the second period opened, they had to punt to the Cisco 29. Gary Josey got 11 yards, and Cisco drew a 15-yard penalty. After Willie Rotten hit End Rodney Russell with a 12 yard pass, Howell made a first down in two bucks. Graham got loose for 13 yards, and Howell drove for 20. Josey then went 12 yards and on the next play he went over the goal line. Reeves kicked goal.

After kicking off to Ranger, Cisco drew a 15 yard penalty to midfield and Charles Sims intercepted a pass for the Wranglers on the Cisco 25. Howell got 8 yards, Graham made 6, and Howell drove to the 50. QB Billy Porter then lateraled to Reeves who passed to Graham, and the scatback got to the Ranger 5 before he was stopped. Howell needed two bucks for the TD. Reeves kicked the goal for a 20-0 half-time score.

Ranger started the second half in a convincing manner with Potts driving for 8 yards and McAlister for 28 to the Cisco 26. McAlister then got 5 and Higginbotham got loose to the Cisco 15.

With Widocki doing much of the hard work, Cisco held for downs on the 11-yard line. The balance of the quarter was a defensive battle.

Near the end of the game, Cisco recovered a Ranger fumble on the Cisco 42. Josey made 17 yards in two bucks, and Reeves ran to the 12. Howell went over for a score in two bucks. Rotten

### TidBits—

(Continued from page one)

spring (They moved up, you know.) County Clerk, Geo. District Clerk, Geo. County Commissioner 4 (Cisco), President County School Board and Associate Justice of Civil Appeals, Judicial District.

Also in the front on the city commission on the Eastland One Can you beat this?

The Telegram was appreciated among the Texas United States during the party luncheon at which any of Abilene was The paper was its series of articles participating agencies ive support from the

The staff accepted signed by Maurer president, with says, It's been our plea U.F.

### DESDEMONA NEWS

#### Halloween Carnival Royalties Reign

Miss Mary Catherine Stacy and Tommy Mcasters were elected Halloween King and Queen at the carnival here last week.

Miss Brenda Gayle Roberts, daughter of Mr. and Mrs. Morgan Roberts underwent an appendectomy early Sunday night in the Blackwell Hospital, Gorman. At this writing Brenda is reported doing nicely.

Bob Koonce is a patient in the Gorman Hospital and is reported to be improved.

The annual Thanksgiving supper will be held at the school gym Monday, Nov. 20th. Everyone is cordially invited to attend. Ernest Key, son of Mrs. Ethel May, left Friday by plane for Japan where he will be for approximately one month with the Tempco Co.

Hugh Abel, who suffered a heart attack more than a month ago, has been up and around for the past two or three days.

Mr. and Mrs. A. M. Hale of Alexander spent Sunday afternoon with her brother, Mr. and Mrs. Hugh Abel.

Mrs. Stell Jones was a visitor at the Church services Sunday. Mrs. George White, Ray, left Saturday for a week in Okemaw. Wayne Whitlock, will also visit other Eddie Fox, son of Mrs. Shorty Fox, who is in an L.B.M. School for the weekend.

Clyde Johnson, student at the IBM who was at home, over the Visiting in the and Mrs. Bud Garner end were most of the and grandchildren.

The Charles Skyles, thwaite, were here with old friends.

Mr. and Mrs. Bern girls, Vickie and Tan go spent Sunday with Gutherys and Ethel

The Chubbie, Form dren, Glenda and Bob spent the weekend with parents, Mr. and Mrs. ery.

### here's new life to your sheers!



seamless stockings

are made a new way  
as sheer as they are  
they last longer by far  
wear and compare!

FROM 1.50

Remember the name of your favorite sheers ask for them by SOUTH PACIFIC BARELY THERE TOWN TAUPE BALI ROSE BLACK.

James Miller  
The James Miller  
Cisco Texas



**CHURCH OF CHRIST**  
 Sunday  
 Bible Study  
 Morning Service  
 Visitation of sick and  
 Evening worship.

# CHURCH NEWS

## FIRST CHRISTIAN CHURCH

Ray Heckendorn  
 215 S. Lamar  
**THURSDAY**  
 9:00 Rachel Group  
**SUNDAY**  
 9:45 a.m.: Church school  
 11 a.m.: Morning Worship  
 7 p.m.: Evening vespers  
**MONDAY**  
 5 p.m.: Jr. choir  
 6:30 p.m.: Fellowship dinner

## UNITED PENTECOSTAL CHURCH

208 N. Dixie  
 Rev. Freddie Waldrep  
**SUNDAY**  
 9:45 a.m.: Sunday School  
 11 a.m.: Morning Worship  
 7:45 p.m.: Evening Service  
**WEDNESDAY**  
 7:45 p.m.: Prayer Meeting  
**SATURDAY**  
 7:45 p.m.: Pentecostal Conquer-

## CHURCH OF THE NAZARENE

Rev. Clarence Manners  
 631 W. Main  
**SUNDAY**  
 10—Sunday School  
 11—Morning Worship  
 6:15 p.m.—N.V.P.S.  
 7 p.m.—Evening Services  
**Wednesday**  
 7 p.m.—Mid-week Prayer Service  
**Friday**  
 Noon—Prayer and Fasting  
 3:15 p.m.—Children's Hour

## BETHEL BAPTIST CHURCH

Rev. Jimmy Roberts, Pastor  
 1304 W. Main  
**SUNDAY**  
 9:45 a.m.: Sunday School  
 11 a.m.: Morning worship  
 6:30 p.m.: Training Union  
 7:30 p.m.: Evening Worship  
**WEDNESDAY**  
 6:15 p.m.: Primary teachers and officers meet  
 7:30 p.m.: Midweek prayer  
 8:15 p.m.: Choir practice

## FIRST BAPTIST CHURCH

Rev. Haston Brewer, Pastor  
 108 W. Plummer  
**SUNDAY**  
 9:45 a.m.: Sunday School  
 11 a.m.: Morning Worship  
 6:15 p.m.: Training Union  
 7:30 p.m.: Evening Service  
**TUESDAY**  
 9:30 a.m. & 1 p.m.: WMU  
 Mission Study and Luncheon  
**WEDNESDAY**  
 6:45 p.m.: Sunbeam Band  
 Royal Ambassadors  
 Girl's Auxiliary  
 S.S. Superintendents  
 7 p.m.: Teacher's Meeting  
 7:45 p.m.: Prayer Meeting  
 8:30 p.m.: Church Choir

## CHURCH OF GOD

Corner Lamar and Valley  
 Rev. W. E. Hallenbeck Jr., Pastor  
**SUNDAY**  
 10 a.m.: Sunday School  
 11 a.m.: Sermon  
 6:45 p.m.: Youth Fellowship  
 7:30 p.m.: Sermon  
**WEDNESDAY**  
 7:30 p.m.: Prayer Service

## CHRISTIAN SCIENCE

Plummer and Lamar  
**Sunday**  
 9:45 a.m.: Sunday School  
 11 a.m.: Sunday morning service.  
**Wednesday**  
 7:30 p.m.: Mid-week Service  
 The public is cordially invited.

## JEHOVAH'S WITNESSES

CURTIS BOASE  
 204 N. Dixie St.  
**SUNDAY**  
 3 p.m.: Watchtower Bible Study  
**WEDNESDAY**  
 8 p.m.: Mid-week Bible study  
**FRIDAY**  
 7:30 p.m.: Service meeting  
 8:30 p.m.: Theocratic Ministry school

Beautiful Park surrounds quiet spacious home for the aged or chronically ill. Large sitting and recreation room, clean attractive dining hall. 24 hr. nursing care. State and National membership. Call Hillcrest 2-3458, Cisco, Texas.

# Personals

Mr. and Mrs. Aubrey Patton of Olden spent the weekend in Comanche with his parents, Mr. and Mrs. W. A. Patton.

Miss Sandy Drake of Abilene spent Saturday with her aunt and uncle, Mr. and Mrs. Eddie Gallagher.

Mr. and Mrs. L. W. Dalton spent Sunday in Hamilton with his parents, Rev. and Mrs. Len Dalton.

Mrs. Rudy Adams of Royce City is here visiting with her sister and brother-in-law, Mr and Mrs. J. W. Dendy.

## Zelma Hendricks Feted Saturday At Bridal Shower

Miss Zelma Hendricks, bride-elect of David Willoughby, was honored with a bridal shower Saturday evening from 7:30 to 9 p.m. in the home of Mrs. Frank Evans.  
 Members of the hostess committee were Mrs. Evans, Mrs. Willis Hughes, Mrs. Richard Hopson and Miss Carolyn Collins.  
 Guests were registered in the white bridal book by Miss Collins. Guests were served cookies and punch from a table laid with white lace and centered with a floral arrangement flanked with white tapers in crystal candleholders.

## FIRST METHODIST CHURCH

215 S. Mulberry  
 WM. S. FISHER, PASTOR  
**SUNDAY**  
 9:45 a.m.: Church School  
 10:55 p.m.: Worship Service  
 6:15 p.m.: Youth Fellowship  
 7 p.m.: Evening Worship  
**TUESDAY**  
 9:30 a.m.: W.S.C.S.  
**WEDNESDAY**  
 7:30 p.m.: Choir rehearsal  
 Wesleyan Guild every 1st & 3rd Wednesdays  
 Official Board Monday after 1st Tuesday  
 Five Commissions — every 1st Monday

## CALVARY BAPTIST

REV. FLOYD OSBORN  
 207 N. OAK ST.  
**SUNDAY**  
 10 a.m.—Sunday School  
 11 a.m.—Morning Wor-ship  
 7 p.m.—Prayer Service  
 7:30 p.m.—Evening Worship  
**WEDNESDAY**  
 7:30 p.m.—Midweek Prayer Service

## HOLY TRINITY EPISCOPAL

710 So. Seaman St.  
 The Rev. Wm. Ralph Woods, Vicar  
**SUNDAY**  
 9:15 a.m.—Church School  
 10:00 a.m.—Morning Prayer  
 10:15 a.m.—Holy Communion and Sermon

## FIRST PRESBYTERIAN CHURCH

Rev. Eugene Surface, Pastor  
**Sunday**  
 10:00 a.m. - Church School  
 11:00 a.m. - Divine Worship  
 12 noon - Monthly meeting of the Church Session on the Sunday after the first Wednesday.  
**Tuesday**  
 9:30 a.m. - United Presbyterian Women meet on the first and third Tuesdays of each month.  
**Wednesday**  
 9:00 a.m. - Worship with Sermon over KERC radio.

Mrs. L. D. Harris, Mrs. Adams' daughter and her husband, Capt. and Mrs. Hal O'Neal and Susanne, also visited in the Harris home enroute to San Francisco where they will leave for over seas duty in Tokyo, Japan. They have been stationed in Biloxi, Miss.

Mr. and Mrs. W. F. Fetty of Lubbock were recent guests in the home of her sister and her husband, Mr. and Mrs. George Par-rack.

Mr. and Mrs. Bailey Bryant accompanied Mr. and Mrs. Rudi Marshall to Fredrickburg and Hopper where they visited in the home of Mr. Marshall's brother and his wife, Mr. and Mrs. V. Marshall.

Mrs. Newt Lewis visited recently in Fort Worth with her son and daughter-in-law, Mr. and Mrs. Clarence Lewis.

Mr. and Mrs. D. H. Henderson, Pat and Chris of Fort Worth spent Sunday visiting in the home of Mr. and Mrs. Clyde Manning.

Mr. and Mrs. C. T. Brockman were guests in the home of Mr. and Mrs. C. P. Halbert in Throckmorton Sunday.

Mrs. Roxie Bankhead of Santo is visiting in the home of her sister and her husband, Mr. and Mrs. A. M. Hearn.

Mr. and Mrs. R. G. Hollowell,

Glenn and Marta of Dallas spent the weekend in the home of her mother and sister, Mrs. Zinnah Bourland and Betty. Mrs. Bourland and Betty accompanied the Hollowell to Eastland after a visit in Dallas.

Mrs. J. W. Dendy and Mrs. J. E. Smith spent the weekend in De Leon in the home of Mrs. Dendy's son and daughter-in-law, Mr. and Mrs. Bill Dendy.

Mr. and Mrs. L. D. Harris spent Sunday visiting with their daughter, Mrs. Kathy Weems and Randy in Abilene.

Sp-4 and Mrs. Don Carlisle of Fort Hood have announced the arrival of their first baby daughter, Neani Javerne, who was born Saturday at 1 p.m. in the Eastland Memorial Hospital. She weighed 8 pounds and 3 ounces.

Mr. and Mrs. Curtis Koen of Eastland are the paternal grandparents and Mr. and Mrs. Hull of Cisco are the maternal grandparents.

Mrs. George Mason of Goldthwaite is the great-grandmother of the new baby.

# Logan Circle Presents Program to First Baptist Women Tuesday A. M.

The women of the First Baptist Church met Tuesday morning, Nov. 7th, for their monthly mission and business meeting.

Mrs. A. G. Goldston, president, presided over the business session. Meses. Don Farnsworth and Carol Shelton were in charge of music for the meeting.

Mrs. A. F. Hallford led the opening prayer. The circle and committee chairmen brought their monthly report and emphasis on this month's work.

The youth leaders brought inspiring information on the work of their youth in the youth missions organizations.

The program was presented by the Logan Circle of the Women's Missionary Union.

The interest center consisted of posters on a screen shaded with a background of gold on which black silhouettes were painted representing mission work in the countries which were presented in the program, "I Am The Way".

An introductory skit was given by Meses. Jo Ann Ingram and Neel Edwards in which they were having tea.

The devotional period was led by Mrs. Carol Shelton.

The following people represent-

ed the countries designated: Mrs. Gene Rhodes, France; Mrs. Jo Ann Ingram, Portugal; Mrs. Gene Rhodes, Okinawa; Mrs. H. V. O'Brien, Vietnam and Sumatra. Mrs. Esco Walters presented the calendar of prayer for the month.

The meeting was closed with a hymn and Mrs. M. A. Treadwell, Jr. led the benediction.

## MATTRESSES

Save up to 50% renovating choice of color and firmness. Complete bedding. Made and guaranteed by WESTERN MATTRESS CO., San Angelo, Phone MA 9-2689, Eastland and leave address.

## T. L. FAGG

REAL ESTATE  
 Property Management  
 Home and Farm Loans

**VICTOR**  
 TV SALES & Service  
 VICTOR DEALER  
 Corner of Square  
 Ph. Main 9-1625

**ALEX RAWLINS & SONS**  
 Since 1934... quality workmanship and efficient service, approved throughout this area.  
 Phone LY 4-2726  
 Designers and Builders of Monuments Since 1884

**Southern Television Systems Corp.**  
 Village Hotel  
 CALL US and we will WIRE YOU  
 Watch Your Favorite TV Program  
 • Comedy • Western • Sports • Drama  
 Phone MA 9-1716

**TWO-IN-ONE**  
 Bookcase-Room Divider with double sliding glass doors  
 YOU ASSEMBLE IT! QUICKLY! EASILY! FOR LASTING GOOD LOOKS, GOOD USE!  
 \$19.88  
 Perfect as serving buffet! Buy two for use as modern room divider! Woodgrained mar-resistant top resists scratches, stains, alcohol. See how much room you have for books, dishes, stemware, what-nots. 36" long, 12" deep, 32" high. Choose modern walnut, mahogany or limed oak finish with carpet protecting brass tipped legs. Adjustable shelf to accommodate encyclopedia or records.  
 Coats Furniture Ltd

**BETTER**  
 "Ready for Winter?" - "No?" - CALL  
  
**Smith's PLUMBING**  
 MA 9-2422 114 N. Seaman St.

Don't let an accident make you dependent after you reach age 65!  
 Investigate **SOUTHLAND LIFE'S** PREFERRED ACCIDENT PLAN  
 Call me today for complete details on this economical Accident Protection Plan.  
 M. H. PERRY  
 107 W. Main  
 Office Ph. MA 9-2275  
 Res. Ph. MA 9-1095  
**Southland Life**  
 LIFE • ACCIDENT • HEALTH • HOSPITALIZATION • GROUP

**WE GIVE Round-Up STAMPS**  
**ORGAN DAYS**  
 PRE-THANKSGIVING  
 FOR BEST SELECTION... Order Your **THANKSGIVING TURKEY** Now!  
**AUSTEX PLAIN CHILI** 300 Can **39¢**  
 PRICES GOOD THROUGH SATURDAY, NOVEMBER 11  
**RATH BLACKHAWK Sliced Bacon** Lb. **59¢**  
**Rath Blackhawk Pure Pork Sausage** 2 Lb. Bag **79¢**  
**RIDLEYS SKINLESS Weiners** 3 Lb. Bag **89¢**  
**FRESH Ground Beef** 3 1/2 \$1  
**WHITE SWAN or SNOWDRIFT SHORTENING** 3 Pound Can **69¢**  
**POT PIES** 8-Oz. Pkg. **19¢**  
**Russet Potatoes** 10 Lbs. **49¢**  
**Firm Head Green Cabbage** .... Lb. **5¢**  
**Red Delicious Apples** ..... Lb. **19¢**  
**Pascal Celery** ... stalk **17¢**  
**McCORMICK VANILLA** Extract 2-Oz. Bottle **43¢**  
**McCORMICK RUBBED SAGE** 1/2-Oz. Box **19¢**  
**McCORMICK NUTMEG** Ground 1 1/2-Oz. Box **43¢**  
**MAXWELL HOUSE COFFEE** 59¢  
**MARGARINE** 35¢  
**HUNT'S WHOLE SPICED PEACHES** 25¢  
**IMPERIAL PURE CANE SUGAR** 49¢  
**WHITE SWAN EVAPORATED MILK** 39¢  
**WHITE SWAN APPLESAUCE** 303 Can **15¢**  
**WHITE SWAN LUNCHEON MEAT** 12-Oz. Can **39¢**  
**DEL MONTE GOLDEN CORN** 35¢  
**WHITE SWAN CRANBERRY SAUCE** 19¢  
**IMPERIAL CRACKERS** 31¢  
**STARKIST GREEN LABEL TUNA** 29¢  
**WHITE SWAN PRESERVES** \$1.  
**WHITE SWAN PORK & BEANS** 49¢  
**SWEETHEART FLOUR** 39¢  
**DEL MONTE GOLDEN CORN** 35¢  
**WHITE SWAN CRANBERRY SAUCE** 19¢  
**NEWHOFF LONE STAR THICK SLICED BACON** 2 Lbs. **99¢**  
**MacMOY'S Super Save** Lb. **69¢**  
 400 S. Seaman Home Owned—Home Operated



# Good Demand Expected For Cattle in November

According to the Monthly Summary Texas Feedlot Report:

**Slaughter cattle**—A generally steady market with only small price fluctuation was the situation in the Texas slaughter cattle trade during October.

Demand has been good throughout the month and number of fed cattle which have reached marketing finish continues in short supply.

Indications are that both a good demand and short supply of fed cattle will continue during November.

This situation favors slaughter cattle price increases during the next 60 days.

Feedlot operators report that supply of heavy cattle, which were a problem early in the fall, have

been reduced to the point that packer buyers are making inquiries about this type cattle.

The demand for light weight cattle (500-800 pound) has continued strong. A number of feeders are gearing their operations to only the production of this weight cattle.

Most carcass beef was selling below \$40. At \$40 on the rail and assuming a 61% dressing percentage, packers can pay \$24.40 per CWT for the live animal. This, of course, assumes that returns from by-products will meet the packers overhead.

**Feeder cattle**—The demand for feeder cattle for feedlot replacement continued strong during the month.

Prices were generally steady to strong with a slacking of demand late in the month as the lack of rain in wheat areas retarded wheat pasture development.

A high percentage of the cattle going into Texas feedlots are on the calf order. Some increase in the number of yearlings being placed on feed was noted late in the month.

Some purchases of stocker cattle for the stocking of oats fields was begun during the month. Additional rain is needed for the best development of these pastures.

Even if general rains come it is too late for these pastures to make the necessary growth to carry large numbers of cattle.

The major movement of feeder cattle is complete and feeders will find the selection reduced.

The strong demand for stocker and feeder cattle prevented the normal seasonal price decline this fall. The average price for good feeder steers 500-800 pound at Kansas City during the week ending October 21, was 1.87 per CWT below the same week in 1960.

**WE BUY AND SELL USED FURNITURE**  
Phone MA 9-1740  
**WAYNE JACKSON**

**CANCER Insurance**

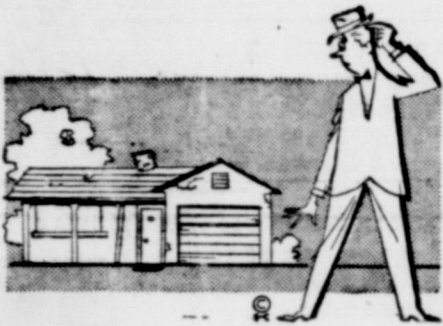
Coverage for the individual or the family. (No Age Limit)

**CANCER ACCOUNTS FOR ALMOST 1/5th OF ALL DEATHS IN USA**

**M. H. PERRY**

107 West Main  
Office Phone MA 9-2275  
Res. Phone MA 9-1095

## FINANCIALLY EMBARRASSED?



see us for a **LOW COST**

**HOME IMPROVEMENT LOAN**

We'll help you raise the roof! But, we're not restricted to roof-raising loans only; we offer all types of home improvement financing. Get an estimate of work to be done, then come to us. A loan, with our few interest charge, can be conveniently arranged to fit your budget — quickly!

**First Federal Savings & Loan Association of Ranger**

204 Main Ranger, Texas Phone MI 7-1611

Enjoy your home town paper and The Dallas News

- Top World, National and State News Coverage!
- Finest All Year Sports Coverage!
- Texas' Best Farm Market News!
- America's Most Popular Comics!
- Daily Women's Section—2nd to None!
- State's Top Editorial Page!
- Finest Special Features!
- Complete Daily Market Coverage!
- "This Week" Magazine—Sundays!
- "TV Channels"—Sundays!

**The Dallas Morning News**

ALL THIS FOR ONLY \$1.95 A MONTH (plus 4¢ tax)

SUBSCRIBE TO

**The Dallas Morning News**

CALL Marlin Cagle — 9-1064

**YOUR LOCAL DALLAS NEWS DISTRIBUTOR**

FILL OUT AND MAIL THIS COUPON.

Circulation Dept., The Dallas Morning News, Dallas, Texas

Please send me The Dallas Morning News, DAILY and SUNDAY, for which I agree to pay \$1.95 per month, plus 4¢ tax, total \$1.99.

Check or money order is enclosed for:

1 month, \$1.99  3 months, \$5.97

NAME \_\_\_\_\_

ADDRESS \_\_\_\_\_ PHONE NO. \_\_\_\_\_

CITY \_\_\_\_\_ TEXAS



A good terrace is one which will carry a flood and yet be easily farmed. Terraces inspected here by Paul Norris on his farm northeast of Carbon, are an example of terraces with a big water capacity and smooth flat side slopes adapted to modern farming equipment. Steps in the construction of these terraces are shown in the lower photos.



In this photo the bulldozer is making the first trip along the terrace pushing the dirt from the channel to the ridge of the terrace. Terrace channel has already been chiseled to loosen the soil.



This photo shows the second trip with the dozer. The next step is the final grading of the terrace channel and bridge by running the dozer lengthwise of the terrace.

## Terrace Construction Assistance Available Through SCS Office

Terraces are among the oldest of conservation measures, yet a large portion of the crop land in this area is still in dire need of terracing.

Many acres have been terraced in past years although in many cases the style of terraces constructed are actually adapted only to horse and mule farming.

Much of this land needs new terrace systems as many old systems are impractical to farm and maintain with modern machinery, Upper Leon Soil Conservation Authorities say.

In recent years there has been

an adaption of terrace design to modern farming methods.

Terraces are being built with flatter side slopes and broader bases to fit bigger equipment.

They are being built with less height yet still retaining adequate water capacity to dispose of the heaviest of rainfall in a safe manner.

Channel type terraces under most conditions in this area have proven to more nearly full fill these requirements.

Another somewhat recent development in terrace design is the use of parallel terraces.

Parallel terraces eliminate point rows and lesson turning in all farming operations.

Point rows were really not much problem in horse and mule farming, but with four row equipment they become a major hindrance.

Parallel terraces are not practical on all cropland, but they can be installed on many fields with very little extra cost.

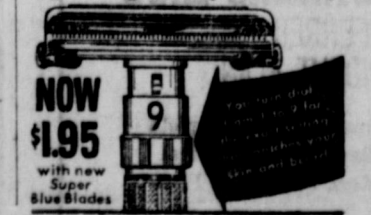
Parallel terraces generally need more water ways or other outlets than regular terrace systems.

Assistance in the layout and design of terrace systems is available through the local Soil Conservation Service work unit office assisting the Upper Leon Conservation District.

Cost sharing for terrace construction is available through the county A. C. P. program.

—READ THE CLASSIFIED—

**New! Gillette Adjustable Razor**  
9 Settings for Superb Shaves!



NOW \$1.95 with new Super Blue Blades

## Publisher's REPORT

• People and Things  
• News and Views  
by JWS

WE ARE GRATEFUL to the many folks in Cisco, Eastland and Ranger who have offered their good wishes since we took over Oct. 30 as publisher of the three newspapers. Operating the three newspapers is a real challenge and an opportunity that we appreciate.

The decision to buy the Eastland and Ranger papers was made easier by the fact that each has a very fine crew. H. V. O'Brien at Eastland and Dwayne Dennis at Ranger and their staffs have the confidence of and are a credit to their communities.

WHEN THE opportunity to acquire the newspapers was first presented to us, we began doing a lot of studying. The three towns have a lot in common, and the three newspapers do a lot of dealings with the same things. By working together, perhaps the newspapers can do things better than ever before. At least, that is the aim.

We did a lot of studying about the future. Finally, we concluded that it would be worthwhile to accept the opportunity and help the good people in Cisco, Eastland and Ranger keep and make the future bright.

EACH OF THE three newspapers will try very hard to be the best home town paper it can. In addition, it will seek to contribute in every way possible to the general cooperation and progress of Eastland County.

A certain amount of competition among towns, schools and communities is healthy. But there are many instances where cities with things in common can accomplish much more by working together.

ENJOYED ATTENDING the football game between the Cisco and Ranger colleges at Ranger last Saturday night. At half-time, a group of some 15 junior girls presented a twirling and marching routine. They have been taught during the past few months by Misses Sandi Halbrook and Donna Drennon, twirlers with the Ranger High School band. The little girls practice on Saturday mornings and occasionally after school.

Misses Halbrook and Drennon were in the press box to play recorded music and to direct their pupils. It all went well, too. And Misses Halbrook and Drennon are due much credit for their work with the little girls.

Miss Halbrook got a good-natured ribbing about her marching with the Ranger High band Friday night. She threw her baton high in the air as the twirlers do, and she lost it in the field lights. The baton fell on her head.

The Ranger schools, by the way, have at their 1st, 2nd and 3rd graders in one building; the 4th, 5th and 6th graders in another, and the others together

at high school. And it works good, they tell us.

DROPPED IN Sunday afternoon to join a good many others in playing respects to the CoC officers at Eastland. The officers have just undergone a complete redecorating job with most of the work being done by volunteers, we understand.

Mr. Bill Samuels, the new president, is well qualified for the job to which he was elected recently. He was sent to Eastland about six months ago by Interstate Theaters to manage the Majestic Theater. Bill is an old pro at public relations, and community work. He should fit very nicely in civic harness.

First time we ran into Bill was at Kilgore in East Texas where we spent several years as an editor before World War II. Bill was a big wheel with the theater chain that operated all over East Texas and he visited there often. His reputation for being a man who gets things done has been growing with the years.

The good crowd at the open house was evidence aplenty that the CoC program has public support. Mr. Horace Horton was given many "well done's" for his work as president during the past year by the callers.

SEE BY THE papers that the Chevy dealers are offering a re-

coding of popular music real collector's item while they celebrate anniversary. The supply limited and the demand when we dropped by for Chevrolet people are golden anniversary open all week, too.

## Contest Planned For School Girls

All schools of Eastland have been contacted to girls in a "Miss Pepper" contest that will be held stage at the Majestic in Eastland on Sunday according to an announcement by Manager Bill Samuels.

A girl from each school compete in the final Majestic. The winners receive a number of prizes including a 90-day pass to the Majestic, a record clock radio, a \$20 per wave, and an \$10 per wave.

Each school winner receive a 30-day pass to the Majestic, Mr. Samuels. All school girls between 18 years of age, including eligible. They will appear street or dinner clothes theater stage.

READ THE CLASSIFIED

## PEANUT DRYING

We have installed peanut drying equipment. We store them in bags, eliminating any possibility of loss. Drying service costs you only \$8.00 per ton.

We Pay Top Prices For Peanuts And Pecans

**Farm & Ranch Supply Co.**

Phone HI 2-2535 CISCO 103 East 7th

## LOVELACE



—Local and Long Distance Moving Since 1929—

## HAMNER FUNERAL HOME

Ben E. Hamner, Owner

Serving Eastland County since 1924. Ambulance and funeral service. Our ambulances oxygen equipped and air conditioned.

Through our nation-wide connections with other funeral directors, we can handle a funeral from any point in America. We offer this service knowing we can relieve the family of all burdens incident to any death away from home.

Eastland Dial MA 9-2611

SIGN UP TODAY! WIN!



## HOLIDAY DRAWING

REGENT

## SPORTS SET

complete Don Budge badminton set • Bobby Shantz baseball glove

Sam Huff football • scholastic basketball

EFFANBEE

## DOLL PLAYSET

with complete layette and your own nurse's uniform

NOTHING TO BUY!

## Gifts Galore

Amity... Bourjois... Jewelite... Sylvania... Timex... Westclox Schick... Wrisley... Parker... Ronsop and many others!

DRAWING WILL BE HELD CHRISTMAS EVE!

## CENTRAL DRUG

DALE TROUTT, Owner



# Compare all prices and discover why we say: FOR CASH SAVINGS as you go ...go **SAFEWAY**

More Savings!

- Kraft Spaghetti Dinner 29¢
- Chicken Noodle Dinner 39¢
- Commercial Margarine 39¢
- Ballard Biscuits 3 29¢



Cash Savings at Safeway!

- La Lani Drink **2 29¢** (Pineapple-Grapsfruit)
- Pudding **3 19¢** (Jell-Well Vanilla, Chocolate, Butterscotch, Vanilla Tapioca, Chocolate Tapioca or Orange-Cocoanut Tapioca)
- Mexican Dinner **2 39¢** (Patio Frozen)
- Margarine **2 25¢** (Coldbrook)

**Bakery Features!**

- French Bread 1-Lb. Loaf **19¢** (Stylerk Foil Wrapped, Reg. 25¢ value)
- Fruit Snails 7-Oz. Pkg. **23¢** (Mrs. Wright's, Regular 25¢ value, "2¢ off.")
- Mrs. Wright's Bread 1 1/2-Lb. Sliced Loaf **25¢** (White)
- Italian Bread 1 1/2-Lb. Loaf **27¢** (Stylerk)
- Fresh Milk 2 1/2-Gal. Ctns. **92¢** (Blossom Time, Homogenized)
- Grade 'A' Eggs 1-Doz. **39¢** (Breakfast Eggs, Grade "A" Quality, Medium size)
- Macaroni Salad 16-Oz. Ctn. **39¢** (Lucerne Delicatess.)
- Lucerne Salad 16-Oz. Ctn. **39¢** (Carrot & Raisin Delicatess.)

Always Fresh at Safeway!

- Cornish Game Hens 20-Oz. Hens Armour's Frozen, Each **69¢**
- Aluminum Foil Kitchen Craft, 12 inch size, 25-Ft. Roll **29¢**
- Salad Dressing Piedmont, Made fresh! Sold fresh! Pint Jar **21¢** (SAVE 6¢)
- Tooth Paste Clear, With GL-70, Econ. Size **49¢**
- Sour Cream Dressing 8-Oz. Jar **29¢** (Anchorglass)

- Tumblers 4 For **88¢** (Georgian Desert Gold, Forest Green or Crystal Milk White, 4 Doz. \$2.49)

**Safeway Gift Certificate!**  
Give a gift that's sure to please... give a Safeway Gift Certificate. Available at all Safeway Stores.  
★ \$10.00 Denomination ★ Turkey  
★ \$ 5.00 Denomination ★ Ham

- Cake Mix Betty Crocker Country Kitchen, Assorted flavors, 19-Oz. Box **39¢**
- Cake Mix Gold Medal Chocolate Fudge, Butterscotch or Applesauce Spice, 14-Oz. Box **43¢**
- Chicken Pies Banquet Frozen, 4-Oz. Pie **25¢**
- Banquet Dinner Frozen Beef, Chicken or Turkey, 7 1/2-Oz. Pkg. **55¢**
- Starkist Tuna Chunk Style, 2 1/2-Oz. Can **35¢**
- Folger's Coffee Drip, 2-Lb. Can **\$1.30**
- Barbecue Sauce Kraft Hickory Smoke, 18-Oz. Bottle **39¢**
- Snowdrift Shortening For all your cooking needs, 3-Lb. Can **72¢**
- Pillsbury Best Flour For baking, 5-Lb. Bag **55¢**
- Kraft Macaroni Dinner So easy to serve, 7 1/2-Oz. Pkg. **19¢**

- Sugar Imperial or Domino Pure Cane, 5-Lb. Bag **49¢** (SAVE 10¢)
- Flour Kitchen Craft Enriched, 10-Lb. Bag **79¢**
- Biscuits Mrs. Wright's Sweetmilk or Buttermilk, 2 8-Oz. Cans **15¢**
- Rinso Blue Detergent, (White Magic Giant Gt. Box 55¢) **65¢**

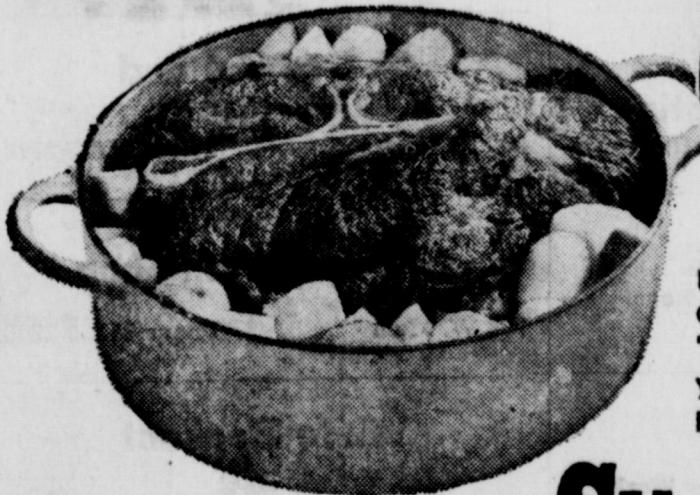
- Blueberry Pie **49¢** (Bel-air Pie Special! Frozen, Family size, Large 8 inch, 1 1/2-Lb. Pie, SAVE 8¢)
- Kraft Cheese Sliced American or Pimento, 1/2-Lb. Pkg. **35¢**
- Dash Detergent For automatics, 25-Oz. Box **35¢**
- Liquid Ivory Detergent, So gentle to your hands, 12-Oz. Bot. **35¢**
- Liquid Joy Detergent For dishes, 12-Oz. Bot. **31¢**
- Zest Beauty Bar Get that Zest glow from head to toe, 2 Bath Bars **39¢**
- Comet Cleanser Removes stains, 2 14-Oz. Cans **33¢**
- Mr. Clean Cleaner All purpose liquid, 15-Oz. Bottle **39¢**



**Tomatoes**  
Red, ripe and firm. Perfect for slicing or serve in a lettuce and tomato salad.  
**2 10-Oz. Ctns. 25¢**

Safeway Fruit Special!

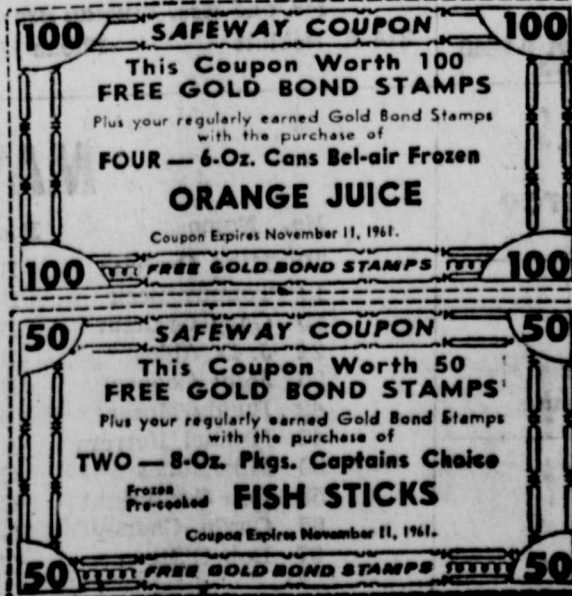
- Jonathan Apples Extra Fancy, 4-Lb. Bag **39¢** (Your Choice)
- Texas Oranges Full of juice, 5-Lb. Bag **39¢**
- Grapefruit Texas Finest Ruby Red, 5-Lb. Bag **39¢**
- Pascal Celery Add variety to your salads, Pkg. **15¢**
- Radishes Add zest to salads, 6-Oz. Pkgs. **15¢**



**Chuck Roast**  
U.S.D.A. Choice Grade Heavy Beef. "Naturally Aged." Serve your family generous portions of Chuck Roast.  
**Lb. 39¢**

More Buys!

- Round Steak or Sirloin, Baby Beef, Lb. **85¢**
- T-Bone Steak Baby Beef, Tender and flavorful, Lb. **89¢**
- Pork Sausage Wingate Regular or Hot, 2-Lb. Pkg. **85¢**
- Sliced Bacon Safeway Thick Sliced, 2-Lb. Pkg. **99¢**
- Arm Roast U.S.D.A. Choice Grade Heavy Beef, Lb. **49¢** (Safeway Lamb!)
- Pork Cutlets Menor House, Lb. **59¢**
- Lamb Shoulder For roasting, Lb. **49¢**
- Leg-O-Lamb Add variety to your menu, Lb. **69¢**
- Lamb Chops Rib or Loin, Lb. **85¢**



SAVE GOLD BOND STAMPS FOR CHRISTMAS GIFTS



Prices and Coupons Effective Thurs., Fri. and Sat. In Eastland



**SAFEWAY**



TO OUR TEAM . . . WE'RE BEHIND YOU ALL THE WAY

**EASTLAND vs CLYDE**

**FRIDAY NIGHT**

**7:30 P. M.**

**GAME TO BE PLAYED HERE**



**Central Drug**

FREE DELIVERY  
Dale Trout, Owner

**Texas Lightweight  
Aggregate Company**

Producers of Concrete Aggregates  
C. W. Martin Phone MA 9-2060

**Eastland National Bank**

"On the Square" Member F. D. I. C.

**Muirhead Motor Co.**

BUICK — PONTIAC — OPAL  
Sales and Service Phone MA 9-1731

**Jordon's Drive In**

Hwy. 80 East Louise and Harry Jordan

**Lovlace  
Transfer & Storage**

Local and Long Distance Moving  
Since 1929

**Altman's**

Smart Women's Wear  
North Side of Square

**Reed Oil Company**

13 Major Brands Oil — Quart 35c  
501 E. Main Phone MA 9-8890

**R. M. Sneed**

General Oil Field Construction  
Office Phone MA 9-1756  
Res. Phone MA 9-2424

**Western Auto  
Associate Store**

J. L. Pittman, Owner  
East Side of Square Phone MA 9-2011

**SOUTHERN TELEVISION SYSTEMS CORPORATION**

**Freyschlag Insurance  
Agency**

North Side of Square Phone MA 9-2275

**Koen Salvage**

Your Scrap Iron and Metal Dealer  
Highway 80 West Phone MA 9-2649

**Hood King Motor Co.**

FORD SALES AND SERVICE  
On The Square  
Phone MA 9-1786

**Miller's  
Phillips 66 Service Station**

513 W. Main Phone MA 9-1644

**Gregory  
Milk Distributing Co.**

Bordens Dairy Products  
Serving Eastland, Stephens, Brown,  
Comanche and Coleman Counties  
Phone MA 9-1100 Eastland

**Texas Electric  
Service Company**

F. N. Sayre, Mgr.  
Phone MA 9-2651

**Obie and Doc  
Humble Service Station**

802 West Main Phone MA 9-8866

**Scott Paint and  
Body Works**

300 W. Commerce Phone MA 9-2372

**Smith  
Plumbing and Tin**

114 S. Seaman Phone MA 9-2422

**Eastland  
Auction Company**

Hwy. 80 East Phone MA 9-1750

**Condye Barber Shop**

Located in Village Hotel

**The Men's Shop**

Correct Styles for Men and Boys  
James Smith, Owner

**Graham's Trim Shop**

708 W. Main Phone MA 9-2266

**Perkins Implement Co.**

116 E. Main Phone MA 9-2666

**Modern Dry Cleaners**

Approved Sanitone Service  
210 S. Seaman MA 9-1344

**Hill Crest Food Market**

When You Run 'Out — Run In  
1401 West Main Phone MA 9-1600

**City Garage**

J. J. Finley, Proprietor  
Engine, Starter and Generator Work  
103 White St. Phone MA 9-1709

**White Elephant  
Cafe**

724 W. Main Phone MA 9-8881

**Eastland  
Steam Laundry**

Home Owned—Phone MA 9-2613  
B. W. Lasater, Owner

**Standlee McCracken  
Consignee  
Mobil Oil Co.**

**Pools Dry Cleaners**

"City Wide Delivery"  
209 S. Lamar Phone MA 9-2055

**Foremost Dairy Products**

Clyde Manning, Mgr.  
Eastland Phone MA 9-1701

**Eastland Supply Co.**

"Oil Field Supplies"  
115 E. Main Box 671 Phone MA 9-1595

**Jeanette's Shop**

Mr. and Mrs. L. D. Harris  
West Side of Square

**Poe Floral**

"When It's Flowers—Say It With Ours"  
609 W. Main Phone 9-1711

**Otis Coleman**

HUMBLE PRODUCTS  
400 East Main Phone MA 9-1741

**Alma's Beauty Parlor**

311 W. Main Phone MA 9-1060

**Lindley  
Paint & Body Works**

"All Work Guaranteed"  
110 S. Bassett Phone MA 9-2240

**Brown Plumbing Co.**

Mr. and Mrs. Truman Brown  
214 E. Neblett Phone MA 9-1736

**Roy's Repair Service**

Roy and Stella Gann  
205 S. Lamar Phone MA 9-2474

**MAVERICK 1961 SCHEDULE**

Sept. 1—Comanche 21, Mavs 0  
Sept. 8—Cisco 41 Mavs. 0  
Sept. 15—Ranger 14 Mavs. 0  
Sept. 22—Dublin, 52 Mavs 0  
Sept. 29—Open  
Oct. 6—De Leon 45 Mavs 6

Oct. 13—Early\* 33 Mavs 6  
Oct. 20—Albany\* 56 Mavs 0  
Oct. 27—Cross Plains 7 Mavs 0  
Nov. 3—Santa Anna\* There  
Nov. 3—Santa Anna 42 Mavs 0  
\*Conference Games—Begin at 7:30 p.m.

**Eastland  
Chamber of Commerce**

**Eastland  
Iron & Metal Co.**

Henry, Tillie and Saul Pullman

**Barton Oil Co.**

(Reseller)  
Humble Products

**MAVERICK ROSTER**

No.	Name	Pos.	Wt.
10	Mike Graham	B	140
12	Tommy Beck	B	150
20	Gary Graham	B	160
24	J. D. Ables	B	135
25	Jody Cooper	B	145
42	Buddy Moser	B	160
40	Manuel Herrera	B	130
50	Mike Jones	C	145
52	Bob Cartwright	C	200
65	Gayle Chaney	G	160
67	Bob O'Steen	T	195

69 Dickie Byars G 155  
70 Jimmie Moylan T 185  
80 Clark Conner E 145  
82 Johnny Shoemaker E 130  
86 Lupe Fuentez E 135  
84 Larry Howle E 155  
Coaches: Jimmy Hughes, Howard Payne; Bennett Ragsdale, Texas A & M; Joe Ingram, Baylor.  
Managers: Mike Perry, Joe Morris, Mike Lewis and Woody Shaw.



**Use News Records**

Instruments were filed in the County last week:

to Hiawatha oil and gas lease. Louisiana Gas Discover Trust Co. Indenture. Tom deceased to The Buf. of heirship. Nat. Citizens Nat. Aliene. assignment. H. C. Bow-Gray, warranty to N. M. Dillard, oil and gas lease. to N. M. Dillard, oil and gas lease. to H. L. Bil-

hartz & Assoc., extension oil and gas lease. Hettie Bell Cardwell to Coastal States Gas Prod. Co., oil, gas and mineral lease. F. L. Campbell to Nell Carmichael, warranty deed. Dewey Cox Jr., receiver for Tom E. Cranfill, et al to H. L. Bilhartz & Assoc., oil and gas lease.

Ike M. Chism to B. W. Martin, release of vendor's lien and deed of trust. Taylor Carlisle to Hiawatha Oil & Gas Co., oil and gas lease. Mrs. Mary Carlisle to Hiawatha Oil & Gas Co., oil and gas lease. E. A. Carlisle, Jr. to Hiawatha Oil & Gas Co., oil and gas lease. Fletcher Dalton Chambers to R. G. Rice, oil and gas and mineral lease. Floyd W. Casebolt to O. H. Dck, warranty deed.

E. M. Curry, deceased to The Public, proof of heirship. City of Eastland to H. C. Ables, release of judgment. N. M. Dillard to Buffalo Gap Corp., as-

ignment production payment. Neal M. Dillard vs. W. E. (Bill) Tyler, et al, notice Les Pendants. Joe M. Daniels to Commercial State Bank, Ranger, deed of Trust. A. K. Doss, Jr. to R. G. Rice, oil, gas and mineral lease. Matt Lester Davis to Ray E. Hubbard, mineral deed. Milton E. Daniel, deceased to The Public, c-c certificate.

Milton E. Daniel, deceased to The Public, c-c federal tax receipt. Kenneth G. Eoff to Rutherford & Steel Co., MML. Grace Eakin to Mrs. Jessie Curry, warranty deed. First Federal S & L Assn. of Ranger to B. H. King, release MML and deed of trust. Vernon L. Frasier to J. W. Roach, warranty deed. Raymond Farley to Callarman Roffing & Siding Co., to First National Bank, Cisco, MML. Gene M. Gardner to James L. Patterson, mineral deed. (3 of these). Charlotte Beth Gillespie to W. E. Tyler, warranty deed. Jessie Floyd Guynes, deceased to The Public, proof of heirship. Frank Gray to Stephenville S & L, deed of trust. General Land Office of Texas to Ruben G. Marsh, grazing lease.

Jack Gibson to C. C. Rose to First Federal S & L Assn. of Ranger, MML. John C. Gregg to Hiawatha Oil & Gas Co., oil and gas lease. Great Western Drig. Co. to The Public, affidavit. J. B. Hartsfield, deceased to The Public, c-c probate. Reba L. Hale to Bilhartz Operating Co., Inc., oil and gas lease. Charles B. Hill to Billy Bacon, warranty deed. Ada Howard to Coastal States

Gas Prod. Co., oil, gas and mineral lease. Beuja Harper to Coastal States Gas Prod. Co., oil gas and mineral lease. Billy Wayne Hester to Certified Aluminum Prod., Inc. MML. Nora Holmes Harley to Coastal States Gas Prod. Co., oil, gas and mineral lease. Clara Ivy to Veterans Land Board of Texas, warranty deed. C. E. Joyce to Joyce Oil Intrests, Inc., assignment oil and gas lease.

Mrs. Shannon Jones to Hiawatha Oil & Gas Co., oil and gas lease. J. W. Key, deceased to The Public, proof of heirship. Mrs. Maggie C. Lewelling to Tom Bryant, oil and gas lease. Landa Middle East Oil Co. to The Public, c-c by-lays. B. M. Martin to First National Bank, Cisco, deed of trust. Mrs. R. M. Millsaps to Hiawatha Oil & Gas Co., oil and gas lease. O. Y. Miller to R. G. Rice, oil, gas and mineral lease.

W. E. Moore to Haskell J. Moore, warranty deed. L. W. Mitchell to H. L. King, mineral deed. J. D. McCoy to M. J. Barton, warranty deed. Fred McCright to R. G. Rice, assignment oil and gas lease. Julia McGuire to R. G. Rice, oil, gas and mineral lease. Willie Ray McDonald to R. G. Rice, oil, gas and mineral lease. J. W. McCaskill, Jr. to Tom Bryant, oil and gas lease.

Valena P. Olson to R. G. Rice, oil, gas and mineral lease. John B. Popalio to Cisco Lumber & Supply Co. to Abilene Savings Assn., MML. Carl H. Priddy, trustee to Hiawatha Oil & Gas Co., oil and gas lease. Delcie Quarles to Russell A. Neal, warranty deed. Raymond Reson to Belhartz Operating Co., Inc. oil and gas lease. The Ren. Co. to State of Texas, notice of Franchise Tax lien. Marie N. Snead to H. L. Bilhartz & Assoc. extension oil and gas lease.

Marie N. Snead to H. L. Bilhartz & Assoc., extension oil and gas lease. Sue Sargent to Evelyn Moveta Brown- ing, warranty deed. Southwest National Bank, Dallas to Bilhartz Operating Co., oil, gas and mineral lease.

Southwest Natural Gas Co. to Arkansas Louisiana Gas Co., assignment. Mrs. Eugenia Shirley to Veterans Land Board, warranty deed. Tom B. Slick, Jr. by trustees to Tom B. Slick, Jr., mineral deed. Mattie Schackelford to Coastal States Gas Prod. Co., oil, gas and mineral lease. Harlan L. Thomas to Annie Harper, quit claim deed. James H. Turner to State of Texas, notice of tax lien. James H. Turner to State of Texas, notice of tax lien. United States of America to Earl Houston Redwine, release MML. Bertie J. Utley to Jack Gibson, lease amendment. United States of America to Ray L. Laney, partial release of deed of trust. C. F. Urschel to Tom B. Slick, Jr., survice deed. Veterans Land Board of Texas to Vernon E. Ables, contract of sale & Purchase.

Veterans Land Board of Texas to James E. Wheat, contract of sale & purchase. F. A. Wieser to Bilhartz Operating Co., oil and gas lease. Elizabeth Wright by W. B. Wright to Jim L. Webb, release deed of trust. Laura E. Williams to Jim L. Webb, warranty deed. Jim L. Webb to J. W. Roach, warranty deed. Jim L. Webb to J. W. Roach, warranty deed. Clinton T. Wilson to R. G. Rice, oil gas and mineral lease. H. H. Wilkinson, trustee to R. G. Rice, oil, gas and mineral lease.



**NEW COMPANIONS**—Bobby, the Skye terrier, brings hope and laughter to Edinburgh urchins in Walt Disney's Technicolor production of the world famous story of "Greyfriars Bobby." The true tale of a dog's lasting devotion stars Donald Crisp, Laurence Naismith, Alex Mackenzie and Kay Walsh. Starts Thursday at the Majestic Theatre in Eastland.

**Life Insurance Company**  
Ben E. Hamner, President

Company has been in operation in this section since 1942 selling policies to be used primarily for life insurance. We write from \$100 to \$600 and our rates are paid in cash, which allows freedom in the use of the money.

For information come by to see us at  
301 S. Lamar, Eastland, Texas  
Dial MAin 9-2611

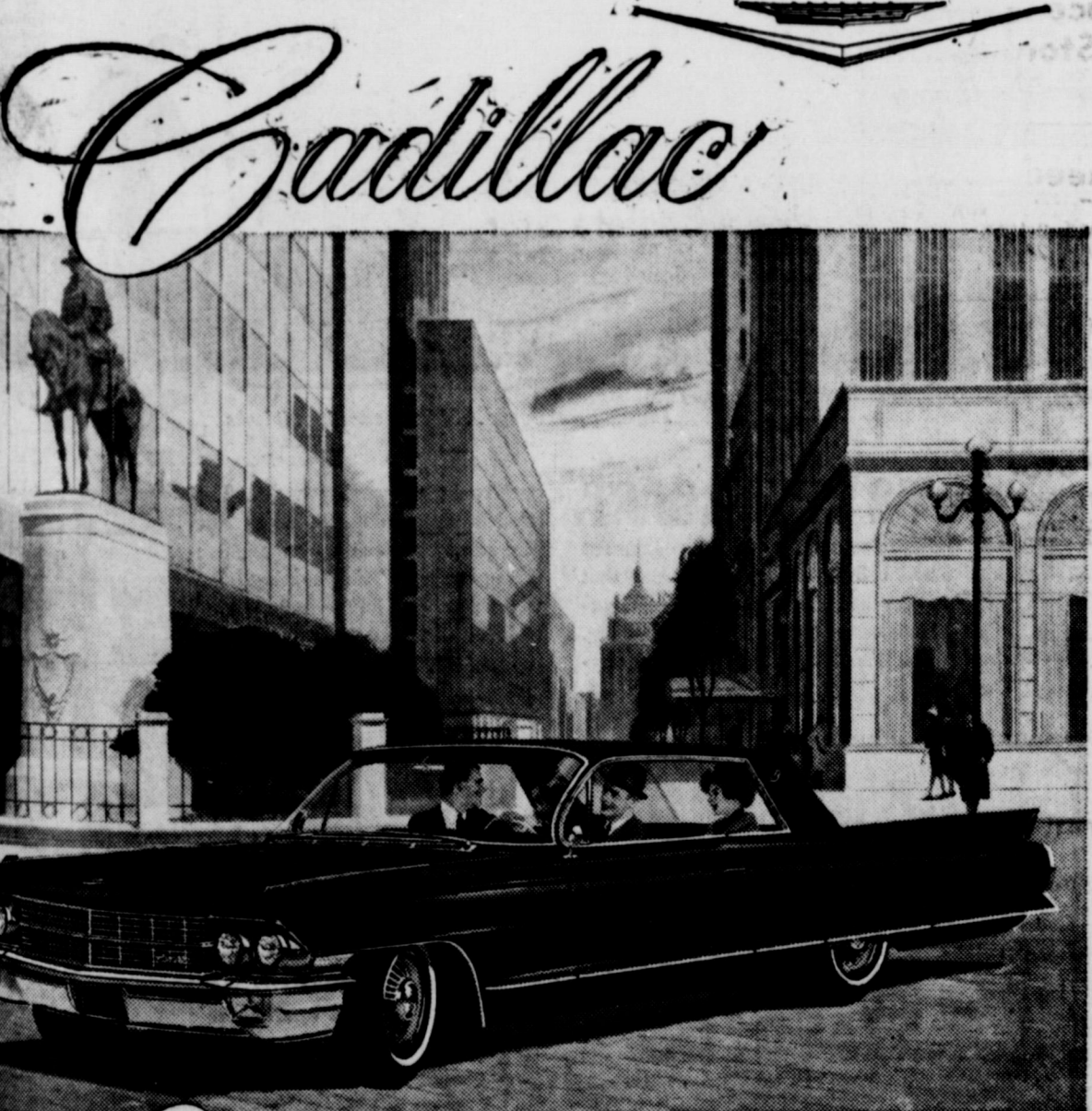
**EARL BENDER & COMPANY**  
INSURANCE

Serving Eastland Since 1924

PRESENTING ONLY OLD LINE CAPITAL STOCK COMPANIES

Pat Miller, Manager

Eastland, Texas



*What a difference a year makes!*

If anyone had told him, a short while ago, that his 1961 Cadillac could be improved on—he would have regarded them with disbelief.

And yet, after only half an hour in the newest "car of cars", he knows that a year of Cadillac progress has made a world of difference.

In fact, the list of Cadillac advancements for 1962 embraces each of the great motoring virtues.

For added beauty, there is a lower, longer silhouette... greater simplicity and dignity of line... and new interior elegance and luxury.

For improved comfort, there is increased spaciousness... new convenience of appointments... and a ride that is unbelievably quiet and smooth.

For finer performance, there is greater power... more responsive handling... and a degree of all-around road ableness that is new even to Cadillac.

For increased safety, there is a new dual braking system... a new three-phase rear warning light system... and new cornering lights that illuminate your way around turns.

And we would like to say that even Cadillac quality has been enhanced for 1962. But the truth is simply that the car continues to be built to the highest standards that can be brought to the production of an automobile.

Stop by your dealer's showroom soon, won't you? He'll be happy to demonstrate to you what a difference a year can make—when the year is this one and the car is Cadillac.

VISIT YOUR LOCAL AUTHORIZED CADILLAC DEALER  
**PIPKIN OLDSMOBILE-CADILLAC**  
314 WEST MAIN STREET • EASTLAND, TEXAS  
FOR SIXTY YEARS THE STANDARD OF THE WORLD

**PROBATE**  
Mattie M. Jennings, deceased, application to probate will.

James Winslow Weatherman, deceased, application to probate will.

**MARRIAGE LICENSES**  
Roy Gene Vaughn and Ellen Patricia Black.  
Jerry De Wayne Taylor and Anna Lee Townsend.  
Perry Edward Miller and Mrs. Betty Carolyn Kirkpatrick.  
Darwin Douglas Atwood and Irene La Nette Clark.

**SUITS FILED**  
The following suits were filed for record in the 91st District Court last week:

In Re: Sherrie M. Lloyd E. Tony E. and Rickey E. Andrews, to declare minor children.  
Pauline Welch vs. Otis Welch, divorce and child custody.

**ORDERS AND JUDGMENTS**  
The following orders and judgments were rendered from the 91st District Court last week:

Ruby Mae Johnson vs. Barney Johnson, judgment.  
Wenona Burns vs. James C. Burns, judgment.  
First State Bank, Rising Star vs. G. W. Shults, et al, order.  
First State Bank, Rising Star vs. Lillian Morrison, order.  
In the matter of: Sherrie M. Lloyd E., Joseph L., Tony E. and Rickey E. Andrews, order.  
Pauline Welch vs. Otis Welch, order.  
Inez M. Dumith vs. George Dumith, judgment.

**Insurance and Real Estate**  
**D. L. KINNAIRD**  
Life - Fire - Auto - Farm - Polio - Bonds  
42 years in the Insurance Business in Eastland

**CONCRETE SEPTIC TANKS**  
Steel Reinforced  
TRI-CITIES  
TRANSIT MIX  
CONCRETE  
401 South Halbryan  
Phone MA 9-1795  
Eastland, Texas

**Second Monthly Meeting of 4-H Club Is Held**

Olden 4-H girls in Mrs. L. J. Williamson's sewing class met Friday, Oct. 27 at 4 p.m. in her home for their second monthly meeting.

Mrs. Williamson presented the program on "Care for the Fingernails." She showed the girls how to polish their nails and how to file them. They were also given good tips on keeping the nails clean and how to keep from biting them. Following the program members practiced what they had been taught.

Refreshments of cakes and candy were served to the following girls: Carolyn Thomas, Linda Cagle and Pam Williamson.

— READ THE CLASSIFIEDS —

**PRE-INVENTORY REDUCTION**

**Sale**

EFFECTIVE THROUGH DECEMBER 5, 1961

PLYWOODS OF ALL DESCRIPTIONS  
GOAT WIRE  
HOG WIRE  
BARB WIRE  
NAILS AND STAPLES  
CREOSOTED POLES AND STEEL POST PANTS

PRICES ON ABOVE WILL BE QUOTED WITH NO OBLIGATION

**Higginbotham-Bartlett Company**  
Jack Elliott, Mgr.  
301 W. Main — Phone MA 9-1311

**Olden 4-H Girls Attend Sewing Meet Recently**

Four Olden 4-H girls met Monday, Oct. 23, in the home of Mrs. J. D. Cagle for their second monthly meeting in sewing.

Mrs. Cagle demonstrated on "How to use a sewing machine." The girls then practiced what they had been shown using paper. Members were directed to make sewing boxes at the last meeting. Having completed their boxes, the girls presented them to Mrs. Cagle.

Following the meeting, refreshments of green and white cookies representing the 4-H colors were served by Linda Cagle.

Those present were Cathy Hooks, Stephanie Pogue, Carla Boustead, Patsy Moseley, Linda Cagle and Mrs. Cagle.

READ THE CLASSIFIEDS

**FURNITURE**  
for the Entire Home  
★  
**Carpet - Rugs**  
All Prices  
★  
Be Sure To Check With

**Coats**

Eastland

**CAN YOU STOP IN TIME!**

**BRAKE SPECIAL**

Our reline special includes: cleaning and inspecting all four brake drums; adjusting all wheels; adding the necessary fluid and repacking front bearings; Don't gamble on stopping any longer, drive in today!

★ FAST AND EXPERT SERVICE!  
Official Inspection Station

**ALLEN AUTO REPAIR**  
Phone MA 9-2270—Night Phone MA 9-2224  
AT RUSHING MOTOR CO.—215 SOUTH SEAMAN

**TELEPHONE TALK**

by Archer H. Marx, Jr., Manager

**CHRISTMAS SUPRISSES FROM PHONELAND!**

It's not too soon to start thinking about your Christmas shopping list.

If you have as much trouble as I do in selecting just the right thing for those especially close to you, why don't you visit or call our Christmas Phoneland in the telephone business office? You'll find a host of exciting, new and colorful telephone services that are sure to surprise and please.

Here are a few suggestions: A Colorful extension phone for Mother in the bedroom, kitchen or sewing room... or in the den or workshop for Dad. You can be sure a phone for the teenagers will be well received. Choose from a table model, a wall phone, or the lovely little Princess phone with the light-up dial.

For family, we offer Home Interphone. It lets you talk from room to room, answer the door, and take outside calls with out racing through the house—a real step-saver for everyone. Or maybe you want the pleasant musical tone of the Bell chime.

To announce your surprise, be sure to ask for the free bantam Princess phone to place under the tree. It makes a wonderful child's toy, too.

Why not visit or call our Christmas Phoneland in the business office and order the telephone gifts you want this week?

**"HOLD THE PHONE"**

Did you know color telephones are designed to give you a place to leave the receiver when you're called away from the phone in the midst of an unfinished conversation?

If you have a handsome wall phone you may have noticed it has a ridge on the top at each side. If you are called away, just hang the receiver over the ridge. This offers two advantages: it gives you a handy place to hold the phone, and it keeps the spring cord from stretching out of shape and becoming unsightly in your home.

If you have a table model, place the receiver across the front of the instrument just above the dial, so that it rests on the recessed shoulders of the phone base. No need to worry about it falling off—these phones are designed to give you this extra convenience.

**GOING AND COMING**

I would like to take this opportunity to say goodbye to Shirley Lou Morgan, who will be leaving her business office job for a new job at home—that of preparing for her first baby. Lou has worked in the Eastland business office since June, 1958.

Replacing Lou is Betty Hart. Many of you know Betty from her friendly voice answering your call for long distance. Betty has been employed by the Company since March 17, 1947 and is a lifelong resident of Eastland. We certainly hate to lose Lou, but on the other hand, we are glad to welcome Betty to her new assignment in our Eastland Business office.

**SOUTHWESTERN BELL TELEPHONE COMPANY**



GORMAN GATHERINGS

Panthers Score Over Rising Star 22 to 14

The Gorman Panthers rang up another victory when they played Rising Star Friday night. The game, played in Rising Star, ended with a score of 22 to 14. This marked the third conference game of the season.

Mrs. Ben Burdett returned home Thursday from California where she has been with her children since the death of her

husband. She has rented her home to the Oda Brightwells while their new home is being completed.

Mr. and Mrs. R. C. Boswell visited with her brother, Perry St. Clair, in Comanche Sunday.

Guests in the home of Mr. and Mrs. T. G. Gray over the weekend were their daughter and hus-

band, Mr. and Mrs. Preston Lightfoot, and Mr. and Mrs. Paul Cain of Sweetwater.

Mr. and Mrs. M. H. Fairbetter and Melton visited with their son, Manning, and family in Sweetwater Thursday.

Mr. and Mrs. Frank Kinney of Fort Worth visited with his mother, Mrs. Ada Kinney, who is a patient in the Reid Nursing Home. They were enroute to Big Spring to visit with one of Mrs. Kinney's brothers.

Mrs. R. L. Cooper, her daughter and husband, Mr. and Mrs. Russel Lewis of Abilene, visited with Mrs. Cooner's sister, Mrs. Ada Kenney. They are former residents of Gorman. Mrs. Cooner and Mrs. Lewis are former teachers of Gorman

high school and grade school. Mrs. Lewis is an ex-student of Gorman High.

Mr. and Mrs. Blanton Moseley and family of DeLeon visited his mother, Mrs. Bunk Lewis, over the weekend.

Joe Cook is visiting his mother, Mrs. Seytha Bagwell. Joe is with the Air Corps and has been stationed in Maine but has recently been transferred to Altus, Okla. Cook has had 18 years service.

Mrs. Earl Pittman of Breckenridge spent Friday night, with her mother and brother, Mrs. Vera Hamrick and Whatley.

Mr. and Mrs. Bob Hicks of Lamesa visited here with friends Sunday. Mr. Hicks spent Saturday

night with his mother in Stephenville.

Mr. and Mrs. Joe Nix of Daingerfield visited with his brother and wife, Mr. and Mrs. Marvin Nix, Tuesday through Friday.

Pvt. Ronald R. Vaught of Bloomfield, N. M. visited Wednesday through Thursday noon with his uncle and aunt, Mr. and Mrs. R. E. Boucher. Ronald is the son of B. M. Vaught. He was enroute to Fort Hood, where he was to report for duty on Nov. 3. He had been stationed in the state of Washington for two years but was home on leave when notified to report to Fort Hood.

Mr. and Mrs. Earl Stone Jr. and sons, Lee and Randy, were weekend visitors in the homes of their parents and grandparents, Mr. and Mrs. H. H. Pullig and Mr. and Mrs. Earl Stone Sr.

Mrs. Lou McComant of Abilene spent the weekend with Mrs. Ed Wyatt.

The Gorman Baptist Women's Missionary Union will have an Enrollment Tea Nov. 16 in the Educational Building of the church from 3:30 to 10:30 a.m.

Ladies of the church are invited to attend the tea and entertaining program as well as refreshments.

A warm welcome is extended to members of the rural churches, New Hope, Kokomo and Midway, and any others who would like to attend.

Mrs. Parks Hosts Bunyan Thursday Club Luncheon

Members of the Bunyan Thursday Club met Thursday in the home of Mrs. Edd Parks in Desdemona for a covered dish luncheon.

The Bunyan Thursday Club was organized in 1936.

Season flower arrangements were noted throughout the house. Mrs. James Howell, president, presided over a short business meeting during which plans were discussed for a Thanksgiving supper to be held Nov. 23.

The meeting was then adjourned followed by a recreation period.

Attending were Mrs. Melvin Logan, Mrs. Edd Gryder of Bunyan, Mrs. Mildred Mayfield of Dublin, Mrs. Ollie Shillingburg of Dublin, Mrs. James Howell of Dublin, Mrs. Charles Hadderton and Carey of Desdemona, Mrs. Sam Chatham of Bunyan, Mrs. W. M. Wright of Dublin, Mrs. O. H. Dick of Olden, Mrs. Baker Martin of Desdemona, Mrs. Pearl Crouch of Dublin, Mrs. Earnest Shillingburg of Dublin, Mrs. Alta Parks, Mrs. J. C. Howard of Bunyan and Mrs. Mrs. Charlene Howell of Dublin.

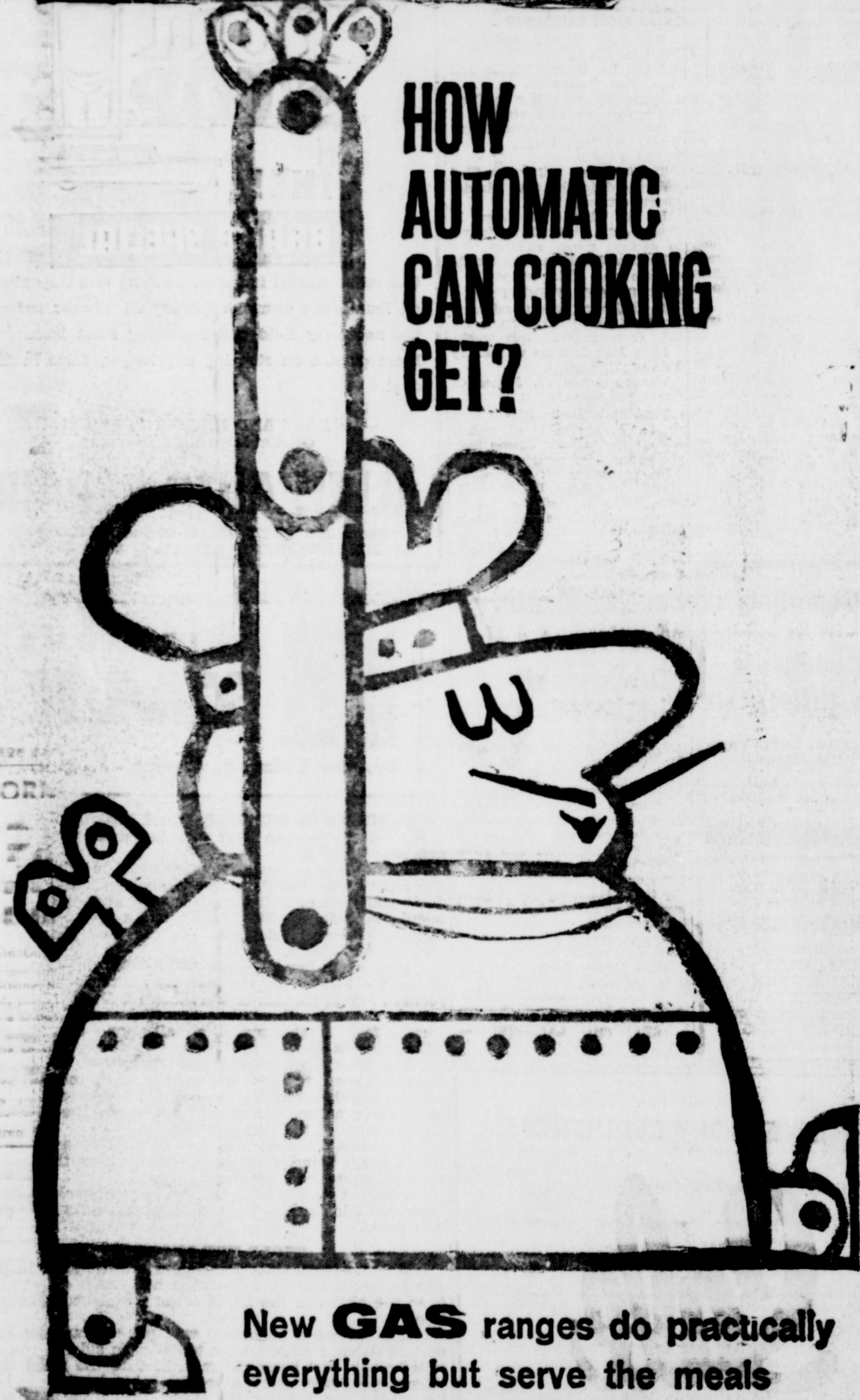
Program on "Care For Sheep" Given For 4-H Members

Fourteen 4-Hers and five parents attended the second meeting on sheep Monday, Oct. 23 in Olden school Agriculture Building.

C. E. Bridge presented the program on "Care for Sheep." They discussed ration for their sheep, shelter, expenses, size of pens and some of the problems faced by 4-H members.

Members attending Harrell, Mari Lynn, met Thomas, Bob Howell, Alton Howell, Kenneth Foster, Laverne Gate, Jay Royce Miller, Lee Pat Miller, Lee Parents attending Cagle, J. C. Foreman, Pete Miller and C. E. Bridge.

— READ THE CLASSIFIEDS —



HOW AUTOMATIC CAN COOKING GET?

New GAS ranges do practically everything but serve the meals

- AUTOMATIC "BURNER-WITH-A-BRAIN"** maintains any temperature you select. Set it — and forget it . . . no burned food or boilovers, no pot-watching!
- AUTOMATIC CLOCK-CONTROLLED OVEN** starts cooking at the time you dial, turns itself off at the proper moment. No need to be a "kitchen captive"!
- AUTOMATIC MEAT THERMOMETER** regulates heat so that roasts, ham, fowl are done to perfection every time!
- AUTOMATIC "OVEN-WITH-A-BRAIN"** holds a precise 140° low temperature — ideal for keeping meals warm without over-cooking or drying out.
- AUTOMATIC SELF-BASTING ROTISSERIE** means richly browned, moist, flavorful results — with no fuss or smoke. (Smokeless closed-door broiling is only guaranteed in modern GAS ranges.)

See for yourself how a new gas range gives you new help (and new time) for creative cooking! Look for the Gold Star Award on the new gas ranges — it tells you they're the very best buy!

CASH IN ON THE GAS RANGE-O-RAMA . . . AT GAS APPLIANCE DEALERS AND LONE STAR GAS COMPANY

Be our guest... SAMPLE A NEW '62 CHEVROLET

Come in and drive any (or all three) of these new cars for '62



Impala Sport Coupe . . . goes as smooth as it looks

**1 '62 CHEVROLET** If you've a yen for room, refinement and riding comfort (at a price that takes the high cost out of feeling luxurious), take a guest drive in this one. You'll see why this is all the car any-

one could reasonably want. That head-in-the-clouds Jet-smooth ride. The power choices up to a pulse-racing 409 h.p.\* The whopping deep-we'l trunk. Fact is, the more you get to know this built-for-keeps beauty, the more you'll find to like.

\*Optional at extra cost



Chevy II Nova 400 Sport Coupe . . . gay blade on a budget

**2 NEW CHEVY II** Sample this savvy cover and you'll discover just how dapper dependability can be. Here's a brand-new line of cars, sensibly designed to save you money on service, maintenance and operation. The ride is wonderfully gentle and precise, thanks to new Moto-Plate rear springs. Roominess, for people and stuff, is remarkable. Discover all the happy details for yourself — at your Chevrolet dealer's.

**3 '62 CORVAIR** A common reaction among Corvair samplers is "Why didn't I try this sooner?" Here's a fleet-footed blend of sports car spirit and thrifty practicality. Along with some neat new refinements, Corvair's rally-proved four-wheel independent suspension, rear-engine design, tenacious traction and split-second reflexes are all back, as rarin' to go as ever. If you haven't had a go in Corvair, see your Chevrolet dealer.



Monza Club Coupe . . . sporty goes with savings galore

It's as easy as 1-2-3 to pick the car you want at your local authorized Chevrolet dealer's New World of World

FULLEN MOTOR COMPANY INC. 305 E. MAIN EASTLAND PHONE MA 9-2876