

FIRST DISTRICT GAME

# Wildcats cripple Mules, 35-13

JERRY TIDWELL  
awakened from a deep  
mid-way into the second  
and then slapped Mule-

shoe 35-13 Friday night in the  
3-AA lid-lifter.  
Things looked bad for the 'Cats  
early. Muleshoe moved the ball

easily and the Wildcats could not  
get their Maroon Machine rolling.  
The Mules chalked up a 13-0  
lead before the 'Cats awakened

and then Littlefield completely  
dominated the contest.  
The Wildcats travel to Friona  
Friday night in hopes of maintain-  
ing their share for the district lead.

**FIRST QUARTERS**

Muleshoe took the opening kick-  
off and scored in 10 plays. Jeep  
Shanks netted 20 yards on four  
consecutive rushes. Then quarter-  
back Randy Whalin pinpointed  
Billy James with a 24-yard pass to  
move the Mules to the Littlefield  
18.

Whalen hit Marcus Beversdorf  
for a gain to the six. Shanks bulled  
in from the six with 7:58 remaining  
in the quarter. Tony Vela added  
the PAT and the Mules led 7-0.

**SECOND QUARTER**

The Wildcats and Mules  
swapped two punts and a fumble  
each before Muleshoe scored  
again. Following a fumble recov-  
ery, Muleshoe went to work on  
their own 40. An incomplete pass  
and two rushing plays netted  
seven yards and brought up fourth  
and three.

The Mules went into deep form-  
ation with the ball on their 47.

Dean Northcutt set up to block for  
punter Mark Washington. The ball  
was snapped to Northcutt and he  
bolted past the surprised 'Cats for  
a 37-yard run all the way to the 16.

Shanks gained eight before  
Northcutt added five and then  
scored from three yards. Vela's  
kick was wide and with 6:05 left in  
the half the 'Cats trailed 13-0.

At this point the 'Cats roared to  
life and clearly dominated the rest  
of the game.

Rudy Ayala, the Littlefield man-  
under, got down to business after  
the kick-off. Ayala made 10 yards  
to the 30 on a keeper around right  
end, then made 15 yards on a  
keeper around left end. He then hit  
Ralph Mendez with passes good  
for 21 and 30 yards. The second  
pass resulted in the TD. Mendez  
took the pass at the 17 and was  
promptly hit by a Mule defender.  
He refused to go down and then  
ran over another defender at the 15  
and skipped down the sideline for  
the score. Mendez booted the  
extra and the 'Cats trailed 13-7  
with 4:08 to go in the half.  
The 'Cats defense held and on

fourth down the Mules attempted  
to punt. Bradley Allen raced in to  
down punter Washington for a  
14-yard loss when the snap was

See WILDCATS, Page 8



MENDEZ, Littlefield tight  
shown in the grasp of a  
defender. Mendez broke

the tackle and then bowled over  
another Mule to score a 30-yard  
touchdown in action Friday night.

Littlefield won the district contest  
35-13.

[Photo by Daryl LeBoeuf]

★ **inside:**  
**AREA SCORES**

ANTON	22
AMHERST	6
OLTON	7
DIMMITT	7
SUDAN	47
NAZARETH	14
WHITHARRAL	41
WELLMAN	20
SPRINGLAKE-EARTH	7
VEGA	0
THREE WAY	67
LOOP	22

See Pages 8-11

**Square Shootin'**  
by Jerry Tidwell

all men can stand adver-  
if you want to test a man's  
er, give him power.

-SS-  
ipped the following from  
cent Park Church of Christ  
and thought it should be

one of those days when  
was creating the Earth. He  
working on Texas as darkness  
the end of the day, and had

ave the Great Plains of  
Texas a soothing stroke  
to Himself. "In the morn-  
come back and make it  
like the rest of the world,  
es and streams and moun-  
d trees."

the next morning when He  
el it had hardened like  
overnight. As He thought  
aving to tear it all out and  
over, he had a happy  
"I know what I'll do," He  
"I'll just make some people  
it this way."

that is how it came about  
people who live in the  
like it this way.

-George Autry

-SS-  
chool board met four times  
ok. Three of the meetings  
irely devoted to reviewing  
g and alcohol policy. The  
ession was a regular meet-  
half of it was spent on the

ere impressed with their  
for both the youngster  
ht violate the policy and  
s of the big majority of the  
who will abide by the

ard is to be applauded for  
orts. The policy is firm and

-SS-

er is Fire Prevention  
it's natural to ask WHAT  
EMAN?

the guy next door.  
a man's man with the  
emory of a little boy who  
ot over the excitement of  
and sirens and smoke and

guy like you and me with  
d worries and unfulfilled

stands taller than most of  
firemarz.

ts it all on the line when  
See SHOOTIN', Page 2

## Career Day set Tuesday

Littlefield High School students  
will be observing Career Day all  
day Tuesday.

They will gather at 9 a.m. in the  
auditorium for roll call, followed by  
the showing of a career educa-  
tional film by Dr. Charles Henry.

Then at 9:55, the first session on  
college choices will begin in class-  
rooms. The second college choice  
session will begin at 10:40 and the  
third at 11:25.

Students will convene again  
in the auditorium immediately  
following the lunch hour, at 12:45  
for roll check.

Then at 1:05 p.m., freshmen and  
sophomores will remain in the  
auditorium to hear Shirley Foster  
of South Plains College, explain  
how to prepare for college or  
vocational school studies after high  
school graduation.

At the same time, juniors and  
seniors will gather in the gym to  
hear a Mr. Akins from Texas Tech  
explain how to get financial aid for  
attending college.

Beginning at 1:55, students will  
choose their fourth session of the  
day to learn of various trades. The  
fifth session on trades will open at  
2:40 and the sixth session will  
begin at 3:10.

Persons who will help with the  
trades portion of the career day in  
the afternoon include, Kip Cut-  
shall of Chisholm Floral, Pat  
Bradley of the Denim Textile  
Plant; James Grimes, motorcycles;  
Barbara Branum of McKelsey's,

interior design; Oecia Pointer,  
photography; Ray Cannon, police;  
Glenna Cooper, nursing; Jerry  
Tidwell, newspaper; Dr. Howard  
Head, veterinary; Bill McAlister,  
television; Jack York, teacher edu-  
cation; Dr. Charles Henry, medi-  
cine; Gene Wilcox, Aero Technical  
Institute (airplanes); Sgt. Jimmy  
DeLaGarza, Army; Tom Herman-  
son, Navy; Capt. Larry Trenne-  
pohl, Air Force Academy; Sgt.  
Mike Greenwood, Marines; and  
Bob Carpenter, Air Force.

Colleges to be represented in  
the morning session include:  
Southern Methodist University at  
Dallas, Mary Hardin Baylor at  
Belton, Incarnate Word of San  
Antonio, Lubbock Christian Col-  
lege, Wayland Baptist College of  
Plainview, University of Texas at  
El Paso, St. Mary's University of  
San Antonio, Texas Woman's Uni-  
versity of Denton, University of  
Oklahoma at Norman, Angelo  
State University of San Angelo,  
Columbia College at Columbia,  
Mo., Northwood of Texas at Dal-  
las, West Texas State University at  
Canyon, North Texas State at  
Denton, South Plains College at  
Levelland, Texas Tech at Lubbock,  
Texas State Technical Institute at  
Amarillo, Schreiner College of  
Kerrville, McMurry College at  
Abilene, Tyler Junior College,  
Hardin-Simmons University of  
Dallas, Rice University of Houston  
and University of Texas at Austin.

## School Board adopts new drug policy

The Littlefield school board  
adopted new alcohol beverage and  
drug policies Thursday night in a  
called meeting.

Essentially the drug policy and  
the penalty for violation remained  
the same. Violators are expelled  
for the quarter and do not receive  
credit.

The new alcoholic beverage  
policy requires that first-time of-  
fenders be expelled for five days,  
lose 15 points in each class, in  
addition to not being able to make

up missed work or tests.  
Second-time offenders will be  
expelled for the quarter.

Students suspended have a right  
to a hearing by the school board.

Board member Micky Ratliff  
opposed changing the policy, and  
favored keeping the punishment  
for a drug or alcoholic beverage  
violation the same.

The policy revision came after  
the board met four times during  
the week and discussed the issue  
for approximately nine hours.



## Lamb County Leader-News

LITTLEFIELD, LAMB COUNTY, TEXAS, SUNDAY, OCT. 17, 1976 15¢  
VOLUME 54 NUMBER 48 20 PAGES, 2 SECTIONS TAX INCLUDED

## Two hearings slated on housing

The City of Littlefield anticipates  
filing a pre-application with the  
U.S. Department of Housing and  
Urban Development for a Commu-  
nity Development Block Grant to  
satisfy some of the development  
needs in Littlefield.

Two public hearings are sche-  
duled to disseminate information  
concerning program requirements,  
the amount of funds that may be  
available, the range of eligible  
activities, and to provide citizens  
with an opportunity to participate  
in the development of the pre-  
application by voicing their views  
on community development, hous-  
ing needs, and their related prior-  
ity.

Further information concerning  
program requirements will be  
available in the city manager's

office of the City Hall.  
The public hearings will be held  
at 7 p.m. Monday, Oct. 18, in the  
Littlefield Junior High Library and

at 7 p.m., Oct. 19, in the Lamb  
County Agriculture and Commu-  
nity Center on Hall Ave. in  
Littlefield.

### Absentee voting now through 29th

Absentee in the November gen-  
eral election is underway in the  
county clerk's office. Absentee  
voting will continue through 5 p.m.  
Friday, Oct. 29.

Persons who will be away from  
home on election day may vote  
Monday through Friday from 9  
a.m. until 5 p.m., including the  
noon hour.

Parents who have sons or  
daughters in college may make  
application for absentee ballots to  
be sent to them by supplying the  
necessary information over the  
phone. Ballots will then be mailed  
for absentee voting.

For further information, tele-  
phone the county clerk's office.

## Adult Education classes start Monday night

Adult Education Classes begin  
Monday, Oct. 18, at 7 p.m. in  
Room 108 at Littlefield Junior High  
School. Classes will be meeting  
each Monday and Tuesday night.

Late registration is encouraged.  
This program provides adults  
the opportunity to learn to read,  
write, and speak the English  
language; or to improve their  
abilities in these basic education  
skills, learn arithmetic or improve  
their ability in mathematics.

Good reading, writing, speak-  
ing, and mathematical abilities  
increase their employability.

They will also receive valuable  
information regarding good health  
practices, citizenship rights and  
responsibilities, good homemaking  
principles, family relationships,  
community relationships and in-  
formation valuable to them in  
relation to employment and job  
opportunity.

For further information contact  
Ruby Reid at 385-3102 or come to  
the night session at Littlefield  
Junior High.



'WE, THE WOMEN' are sponsoring  
a Hallowe'en Costume Review  
Thursday, Oct. 28, and are seeking  
entries for boys and girls in several  
categories and age groups. An  
entry blank may be found on page  
15 of this issue. Here, Shayne

Campbell, 9-month-old son of Mr.  
and Mrs. Jay Campbell Jr. gets a  
treat from his grandmother, Reta  
Cook, and will be wearing this  
clown's suit in the Review.

[Staff Photo]

# OBITUARIES

## ROBERT BURGESS

Services for Robert A. Burgess, 72, of Plainview, were conducted Thursday afternoon at Wood-Dunning Funeral Home Colonial Chapel in Plainview with Rev. Robert Field, pastor of the Bolton Street Baptist Church in Amarillo, and Rev. M. O. Evans, assistant pastor of the First Baptist Church of Plainview, officiating.

Burgess died at 10:30 p.m. Tuesday, Oct. 13, in a Plainview hospital following a sudden illness.

A native of Sterling, Kan., Burgess came to West Texas in 1927, from Oklahoma. He settled in the Hart community, and in 1949 moved west of Plainview. He moved to Plainview in 1969.

The retired farmer was a member of the First Baptist Church of Plainview. He married the former Vina Lee Kirby on Feb. 15, 1932, in Anton.

Survivors include his wife; a son, Fred of Olton; a daughter, Mrs. Leo Hyman of Amarillo; two sisters, Mrs. Howard Ballard of San Mateo, Calif., and Mrs. Claude Liener of Ringwood, Okla.; two brothers, Roy and Fred, both of San Carlos, Calif.; and five grandchildren.

## P. L. POLLARD

Services for P. L. Pollard, 64, former mayor of Hale Center, were conducted Friday afternoon at the First United Methodist Church in Hale Center with Rev. Lewis Holland, pastor, and Rev. Elton Wyatt, pastor of the First United Methodist Church in Olton, officiating.

Burial was in Hale Center Cemetery under the direction of Freeman Funeral Home of Hale Center.

Pollard died at 6 a.m. Wednesday, Oct. 13, in High Plains Hospital following an apparent heart attack.

Pollard served as mayor of Hale Center for 11 years in the 1950s and early 1960s. He had served on the school board and was a charter member of the Hale Center Lions Club. He was a member of the Lemond Masonic Lodge No. 832 and the First United Methodist Church.

At the time of his death, Pollard was the director of the Hale Center Chamber of Commerce. He had previously served as that organization's president. He helped to establish the High Plains Hospital here. He was manager of the Hale Center Garment Company when he died, and had been in the dry cleaning business most of his life.

The Hill County native moved from there to Hale Center in 1929. He married Dorothy Evelyn Monroe on July 12, 1930, in Hale Center.

Survivors include his wife; a son, Kent of Dallas; a daughter, Mrs. Lou Kirby of Olton; a brother, John Hollis of Mount Pleasant; and four grandchildren.

## G. C. REED

Services for G. C. Reed, 88, of Tulia, were conducted Friday afternoon at the First Baptist Church

in Tulia with Rev. Charles Davenport, pastor, officiating.

Burial was in Rose Hill Cemetery near Tulia under the direction of Wallace Funeral Home.

Reed died at 3 p.m. Wednesday, Oct. 13, in Swisher Memorial Hospital following a long illness.

The McKinney native moved to Tulia in 1966, from Anton. He married Velva Wallace on Dec. 23, 1911, in McKinney. He was a member of the First Baptist Church here and had been a deacon for more than 50 years.

Survivors include his wife; a daughter, Mrs. A. D. Lee of Tulia; and three grandchildren.

## LLOYD G. RUSSELL

Services for Lloyd G. Russell, 86, of Levelland, were conducted Friday morning at the First Baptist Church in Levelland with Rev. J. Prentis McGee, pastor, officiating.

Burial was in the City of Levelland Cemetery under the direction of George C. Price Funeral Directors.

Russell was dead at 3:30 p.m. Tuesday on arrival at West Plains Hospital in Muleshoe following a sudden illness.

A native of Cook County, Russell moved from Tillman County, Oklahoma to near the Fairview in Hockley County, in 1923. He farmed there until his retirement in 1971, when he moved to Levelland. His wife, Jessie Robinson Russell, died in October, 1947. Russell was a member of the First Baptist Church in Levelland.

Survivors include two daughters, Mrs. John H. (Mable) Strother of Pasadena, and Mrs. Howard A. (Nellie) Kemp of Levelland; two sons, Major Russell of Burkburnett and Stillwell Russell of Littlefield; a sister, Mrs. Homer (Editha) Wilson of Fredrick, Okla.; eight grandchildren and 18 great-grandchildren.

Pallbearers were Gordon Martin, J. W. Evans, Horace Gilmore, Harry Mann, E. R. Daniell and Kenneth Sheppard.

## H. C. SHAKESPEARE

Services for Hershel C. Shakespeare, 70, of Morton were conducted Thursday morning in the First Missionary Baptist Church at Morton, with Rev. Jerry Allen, pastor of the College Avenue Baptist Church in Levelland, and Rev. Phil Knott, pastor, officiating.

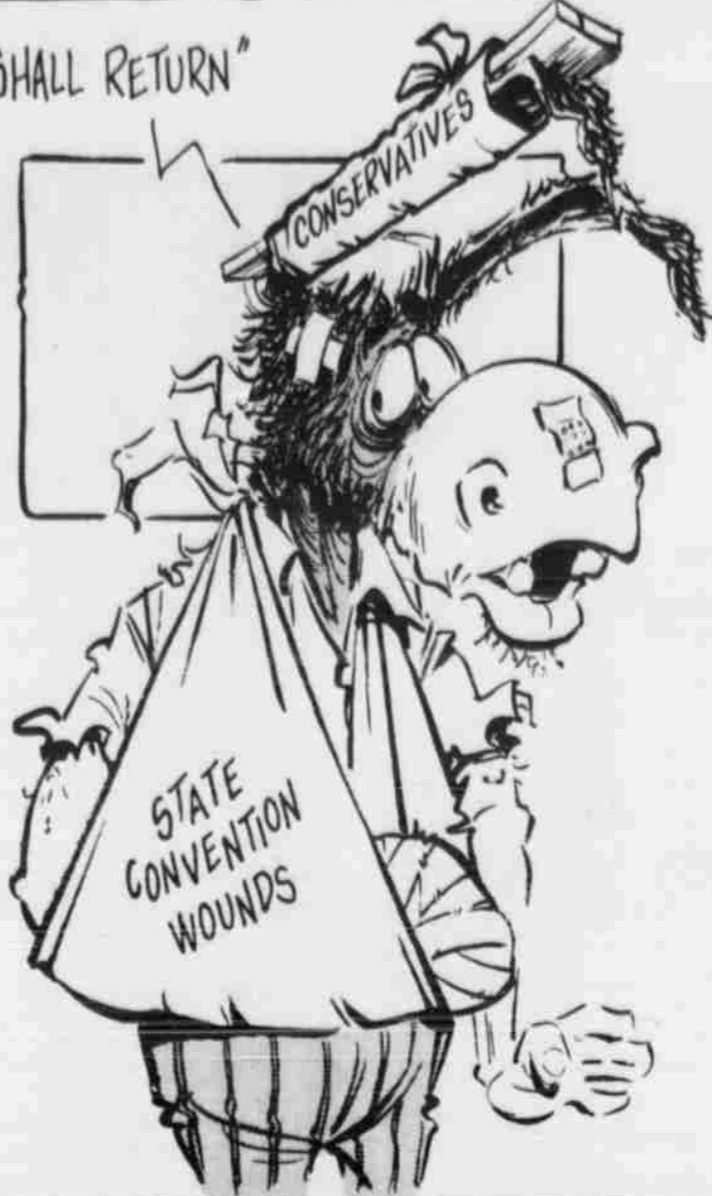
Burial was in Morton Cemetery under the direction of Singleton Funeral Home of Morton.

Shakespeare died at 2:30 a.m. Thursday in Methodist Hospital.

He moved to Cochran County in 1929, and was a retired oil field worker.

Survivors include his wife, Agnes; four daughters, Mrs. Ray Wright of Odessa, Mrs. David Barnes of Levelland, Mrs. Donnie Baker of Morton and Mrs. John Autrey of Enochs; two sons, H. L. of Levelland and Jimmy of Odessa; and 14 grandchildren.

"I SHALL RETURN"



## A Woman's View

By Pearl Brandon

WHEN YOU GET up feeling blue in the morning, what do you do about it?

I used to fly in and clean the house from top to bottom. I'd work off the blues and then feel good over my clean house.

Now I can't do that. My health won't allow it.

SO NOW I take my Bible and read it.

I used to wonder why so many old people read their Bibles more than young people.

They have to sit and the heart calls out for solace.

Reading the Bible is the perfect answer, however there are many old people who can't see well enough to read.

That is where young people can be of real service—reading to those who cannot see.

MY SON used to read to me when he was a teenage boy growing up. I would be tired and lying on the couch to rest.

He would come along and say, "Mother, would you like me to read to you?"

Of course I would say, "Yes". He had a good voice and liked to read out loud. He would read poetry and the Bible.

To me there is nothing more beautiful than the sound of your son's voice reading the Bible.

ONCE WHEN he was a tiny boy three or four years old, he came to

me one day and said, "Mother, why did God make me." That is an age-old question which all of us have asked at one time or another, "Who am I? Why am I here? What is the purpose of my life?"

Hard questions coming from anyone, much less a tiny boy. After he had left the room I wrote this poem.

"Mother, why did God make me?"  
I looked up in surprise,  
And there beheld my little son,  
With earnest sweet brown eyes.

I searched my heart deep within  
To find an answer true;  
"Why you were made to work,  
my boy,  
Because He needed you."

Then off he rushed with childish glee  
And went to work with vim,  
"I'm going to do my job right now,  
I'll get my kindling in."

My heart was full as off he went.  
My eyes were filled with tears,  
I breathed a prayer to God above  
To keep him through the years.

"Oh, God, protect my little son  
And make him strong and true,  
To not forget as life goes on  
He has a job to do."

THANK GOD my prayers have been answered. It was his son who visited us two weeks ago from California. One is six foot, three inches and the other is six foot, four inches.

Both are Christians carrying their Bibles to church.

If I could have seen into the future I would have been very happy about my family.

I HOPE YOU don't get tired of my poems, or religious views. Neither of them are very popular now at this particular time in history.

But if I had to leave God out of my writing, I wouldn't have much to write about.

Again, I say, "God bless you all."

INCIDENTALLY, my grandsons are Dal and Kieth Brandon.

They are grandsons of Mr. and Mrs. Bill Elliott also, and sons of Dal and Ray Brandon of Orange, Calif.

## Rep. Bill Clayton, renew that sticker!

By NILAH RODGERS

Texas Department of Public Safety trooper Daniel Alvarado was traveling along U.S. 385 near Springlake when he met a woman driving a late model car with an expired inspection sticker on the windshield.

He turned around and pulled her over and asked to see her driver's license. Politely, he explained that her inspection sticker needed to be renewed.

She asked him how he could tell it was expired when meeting her

## Whitharral Lions set chili supper

The Whitharral Lions Club has scheduled their annual chili supper Friday night, Oct. 22, in the school cafeteria from 5:30 to 7:30, prior to the Homecoming game with Grady.

Tickets may be purchased from any Whitharral Lion, or at the door, for \$1.50.

Coffee and doughnuts will be served to all ex students and teachers following the game, in the school cafeteria.

on the highway like that. He told her her inspection sticker expired in June, that if it was current it would have two digits and not a single number 6, and that he was trained to notice things like that.

The trooper wrote out the ticket, writing in Delma Dennis Clayton like it appeared on her driver's license. He handed it to her to sign. She signed it Mrs. Billy W. Clayton.

Even though a relatively new comer to Lamb County, Alvarado realized immediately that he had given a ticket to the wife of the Speaker of the House.

Alas, even dignitaries like representatives and speakers must have valid inspection stickers.

A MEMORIAL GIFT to the American Heart Association honors the memory of a loved one and provides hope for the living. See Carol Black, Security State Bank

LAMB COUNTY LEADER-NEWS  
ESTABLISHED IN 1932  
Lamb County Leader and County Wide News, Combined Feb. 13, 1969  
JERRY TOWELL, Publisher  
NILAH RODGERS, Editor  
DORIS WYATT, Business Manager  
GEOFFREY BARNWELL, Advertising Manager  
TINA MARTINEZ, Type Setter  
Second Class Postage Paid at Littlefield, Texas 75880  
PUBLISHED semi-weekly each Thursday and Sunday  
Lamb County, Texas, 75880  
Subscription rates: Lamb County only, \$6.00 a year and \$1.00 a month. Single copy 15¢.  
Outside Lamb County, Texas, \$7.00 a year and \$1.00 a month. Single copy 15¢.  
Copyright © 1976 by Lamb County Leader-News, Inc.  
Telephone 362-4401

To The EDITOR  
LETTERS

Littlefield, Texas  
Route 2  
Lamb County Leader-News  
313 West 4th Street  
Littlefield, Texas

This should be enough  
Subject closed.  
s/Wilson E. Vaughn  
Wilson E. Vaughn

Dear Editor:

I am not going to use your paper for a running argument with Mr. Blevins.

But since he devoted his article to me, and asked for enlightenment, which I think he surely needs, I will oblige him this one time.

Also Corn Ball misleads the reader as to what I wrote. I did not say "Man or government is out of place to question mans behavior regardless of what he does". I said "no person should be put to death for their sins".

Of course, when pesons commit crimes against the society in which they live, they must be removed from society, put in prison, but not exterminated. Nowhere in the New Testament, does Christ or his disciples teach or even intimate, that it is permissible for one human being to take the life of another.

I won't even try to unravel Corn Ball's thinking about the laws for the man of flesh and the laws for the spiritual man. Strange reasoning indeed. Hum m m.

I will say this, the Laws of God certainly apply to the man of flesh, as he puts it. Because how we live in the flesh, whether we accept Jesus Christ or reject him, surely determines our eternal destiny. There is a Scripture to the effect that governments are ordained by God, but they are administered by people, and people are fallible. Certainly we are to obey the laws of the land, except, if they conflict with our loyalty to God.

Remember Daniel and the Lions den, The Hebrew Children and the Fiery Furnace.

And in the New Testament, Paul and Silas, many of Paul's letters were written while he was in prison. Peter was put in prison and finally put to death, all because of their loyalty to God, above the law of the land.

## Continued from Page 1

## -shootin'-

the bell rings.

A fireman is at once the most fortunate and the least fortunate of men.

He's a man who savors life because he has seen too much death.

He's a gentle man because he has seen too much of the awesome power of violent forces out of control. He's man responsive to a child's laughter because his arms have held too many small bodies that will never laugh again.

He's a man who appreciates the simple pleasures of life... hot

coffee held in numbed, unbending fingers... the flush of fresh pumping through smoke and convulsed lungs... a warm bone and muscle compelled yond feeling... the comrades brave men... the divine peerless service and a job well done in the name of all men.

He doesn't wear buttons or flags or short obscurities when he marches, it is to honor fallen comrade.

He doesn't preach the hood of man.  
He lives it.

## Reception Wednesday for George Mahon

Congressman George Mahon will be honored at a public reception in Littlefield from 10 to about 11:30 Wednesday morning in the XIT Room of Security State Bank.

Mahon represents the 19th district in the U.S. Senate.

Tom Tollett, Democratic Chairman for Lamb County and the county campaign chairman for George Mahon for Congress, is chairman for the reception in Littlefield. Tollett will be assisted by Brenda Davis and Carolyn Harmon of Amherst. Mrs. Harmon

is a member of the Mahon Congress Committee.

The public is invited to come and shake hands, ask questions and visit with the congressman.

Several Littlefield High School civics and government classes plan to attend. Other area school classes have been invited.

Refreshments of cookies, cold and cold drinks will be served.

At 2 p.m. Wednesday, Mahon will be in Olton for reception. Francis Redinger, chairman for the Olton reception

## Free Diabetes program

The South Plains Hospital and Clinic at Amherst is sponsoring a free Diabetes program for interested persons in the area, beginning Monday, Oct. 18, and continuing on the following Monday nights, Oct. 25, Nov. 1 and Nov. 8.

Registration for the Diabetes program will be at 6 p.m. Monday night, Oct. 18, at the First Baptist Church in Amherst in the Fellowship Hall. The first class will be conducted from 7 p.m. until 9 p.m. the same night in the Fellowship Hall.

Hammons Funeral Home  
Tom Sawyer, manager  
503 E. 5th, 385-5121

Amherst, 246-3351

**and Mrs. Buck Hodges celebrate anniversary**

sons of Mr. V. D. (Buck) will host a reception for their parents on their wedding anniversary, Oct. 24, from 10 to 11 p.m. at the Whitharral Club Building. The hosts are Mr. and Mrs. Buck Hodges of Littlefield. Mrs. Hodges is the daughter of Mr. and Mrs. C. Hodges of Littlefield. The couple has 11 grandchildren and two great-granddaughters.



MR. AND MRS. BUCK HODGES

**WHITHARRAL NEWS**

**THE SOUTHSIDE** Church of Christ had a fellowship Sunday night after church in home of Mr. and Mrs. Louis McCormack. Those attending were: Mr. and Mrs. Darrell Corkery and family, Mr. and Mrs. Wylie Kaye and family, Mr. and Mrs. Rodney Marchall and daughter, Mr. and Mrs. Fred Smith, Mr. and Mrs. Daryl Pults and family, Tim Marchall, Margaret Cooper, and Bobby Avery.

**Whitharral Homemakers hosts kidnap breakfast**

**WHITHARRAL**— Young Homemakers held a breakfast Saturday morning, Oct. 2, in the Home Ec Cottage for the FHA Girls. Each girl was "kidnapped" at 7:30 by a young homemaker. Lana Dukatnik was chosen as the "sexiest", Susan Corkery the "Cutest" and Carolyn Benton the "funniest".

FHA girls who were kidnapped were: Kim White, Suzy Polk, Roxann Polk, Judy Hollendeck, Stacy Pelfrey, Mary Jo Hoelscher, Cheri Hisaw, Kristin and Susan Corkery, Lana Dukatnik, Rose and Mary Perez, Mary Helen and Mary Ann Trevino, Janet Kristinek, Billie Dockery, Frances Fagan, Jodie Doshier, Bridgette Hewitt, Aurora and Stella Barrera, Esmeralda Andrede, and Rhonda Bryant.

Young Homemakers present were: Fredda Kristinek, Kathy Roberts, Rosetta Polk, Doris Kaye, Trudie Bryant, Jonnye Polk, Lois Avery, Peggy Lorenz, Joyce Clevenger, Rosemary Corkery, Patti Tripp, Esta Mae Hisaw, and Armanda Trevino.

**Jamie Chronister honored with birthday party**

**WHITHARRAL** Jamie Chronister, son of Mr. and Mrs. Danny Chronister of Abernathy, was honored on his third birthday with a party in the home of Mr. and Mrs. Jimmy Hisaw Friday night, Oct. 8.

Hallowe'en decorations were used throughout the house. His cake was decorated with clowns and was made by Dorothy Hodges.

Others attending the party were: Mr. and Mrs. Jack Chronister, Mr. and Mrs. Joe Bitner, Jackie Chronister, Charla Birkelbach, Stefanie Benner, all of Littlefield, Dorothy, and Robin and Jay Hodges and Cheri Hisaw.

**Wee Ones**

**FISHER** ANTON— Mr. and Mrs. Jerry Fisher are parents of a new son, Shayne Marlett, who was born at 3:42 a.m. Friday, Oct. 1, in St. Mary's Hospital in Lubbock. He weighed 8 lbs., 1 oz.

Maternal grandparents are Mrs. Bettie Herrin of Anton and Neal Herrin of Houston.

The paternal grandparents are Mr. and Mrs. Norman Fisher of Anton.

Great-grandparents include Virginia Hart of Anton and Mr. and Mrs. Walter Herrin of Lubbock.

S/Sgt. Jerry Fisher is scheduled to leave for Germany for overseas assignment with the U.S. Air Force early in November.

**EXTRA CALORIES**  
In buying poultry, fat adds extra flavor— but also extra calories.

**PIZZA INN**  
EVERY WEDNESDAY NIGHT IS SPAGHETTI NIGHT.  
SAVE 50%  
ONLY \$1.39

1908 Hall Ave.  
385-5242  
Sedell Black, Owner

**KIRBY VACUUM CLEANERS**  
SALES AND SERVICE  
**PAT'S RECORD CENTER**  
APPLIANCE DEPARTMENT

**Engagement announced**

and Marjorie of Breckenridge the engagement. The bride-to-be is Cheryll Randal Wayne of Mr. and Mrs. Spade. The wedding will be at 7 p.m., Jan. 17, at the First Baptist Church of Breckenridge.

Friends and relatives are invited.

Miss Duncan is a 1975 graduate of Breckenridge High School and is a student at West Texas State University. The prospective bridegroom is a 1974 graduate of Spade High School and is also attending West Texas State University.



CHERYLL DUNCAN AND RANDAL GRAY

**Berryhill celebrates 95th**

Mrs. Anna May Berryhill passed away two years ago. She continues to maintain her home. Her hobbies are piecing quilts, crocheting, and she always enjoys company.

Mrs. Berryhill has no children, her only surviving relative is a sister, Mrs. Willie Tibbit of Rochester.

Friends calling on her special day were Mrs. Jessie Hastey, Mrs. Imogene Merriott, Mrs. Tommy Duncan, Mrs. Luke Aldridge, Mr. and Mrs. J. R. Teaff.

SHOP CATALOG  
385-5166

**One great sale after another. Plus terrific special buys. Come save!**

**JCPenney days**

**Cotton denim pantsuits. Now 7.88**  
Orig. \$15 and \$16. Two great denim looks for girls in easy-care cotton. Choose brushed two-tone patchwork pantsuit or a vested look. Both styles for girls' sizes 7-14. Little girls' patchwork pantsuit, sizes 4-6X. Orig. \$12. Now 5.88

**Sale 7.20**  
Reg. \$9. Pull-on doubleknit pants with flare styling and stitched front crease. Polyester in basic fall or dusty tone colors. Sizes: petite 6-18, average 8-20. Extra size pants; sizes 32-42; reg. \$10. Sale \$8

**Save 30% on Super Denim® jeans for boys and girls.**

**Sale 3.85**  
Reg. \$5.50. Brushed Super Denim® jeans of polyester cotton. Solids. Girls' regulars and slims, 4 to 6X.

**Sale 5.60**  
Reg. \$8. Super Denim® braided jeans in brushed polyester/cotton. Girls' sizes regular and slim, 7-14.

**Sale 4.20**  
Reg. \$6. Boys' western Super Denim® jeans of tough polyester/cotton. 5 pockets; reinforced stress points. Lots of colors. Regular/slim sizes 8-16. Husky sizes 8-20, reg. \$7. Sale 4.90

**Sale 3.50**  
Reg. \$5. Boys' western Super Denim® jeans of tough polyester/cotton. 5 pockets; reinforced stress points. Great colors for regular, slim 3-7.

**WOW! YOU LOST WEIGHT!**

Members may join at any class. Call 800-692-1316 Monday thru Friday 8 AM to 5:30 PM for answers to program questions, class schedule or other information. JOIN TODAY!

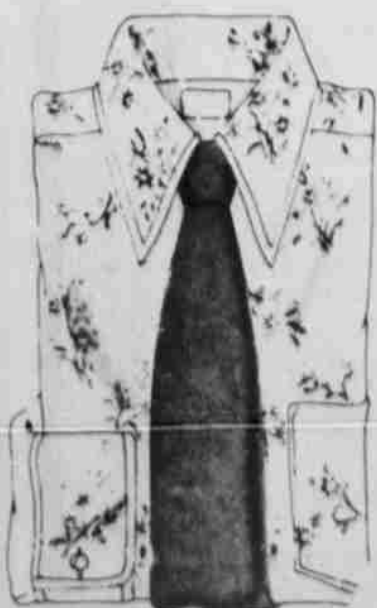
FIRST PRESBYTERIAN CHURCH  
LEVELLAND HIGHWAY  
LITTLEFIELD, TEXAS

Tuesday... 7 PM

**WEIGHT WATCHERS**  
The Authority

**Sale \$16** twin; reg. \$19  
Our electric blankets of napped acrylic/polyester are soft, plush. Snap-fit bottom, nylon binding. Machine washable. UL listed. Full, single control; reg. \$24. Sale \$20

**Entire Mens Dress Shirts 20% Off**



**Sale 6.40**  
Reg. \$8. Men's fashion print dress shirt of polyester/cotton. The latest prints and colors. Sizes 14 1/2-17. Short sleeve style reg. \$7. Sale 5.60

**20% Off On These Boys Shirts**

**Sale 2.39**  
Reg. 2.99. Little boys' long sleeve sportshirt of polyester/cotton. Solids with contrast stitching. Sizes 3-7. Short sleeve style, reg. 2.49. Sale 1.99. Sizes 8-18. Reg. 3.49 Sale 2.79. Reg. 2.99 Sale 2.39



# Bagwell-McCain vows pledged in chapel

Tamri Carol Bagwell of Lubbock and Douglas Glenn McCain of Sudan exchanged double-ring wedding vows Saturday night, Oct. 16, in the Chapel of First Baptist Church in Littlefield.

Parents of the couple are Mr. and Mrs. Max Bagwell of Lubbock and Mr. and Mrs. Larry McCain of Rt. 1, Sudan.

stood at the altar of the chapel which was decorated with pastel flowers in arched candelabrum. As Max Bagwell presented his daughter for marriage, she wore a formal-length gown of ivory

organza, fashioned with a keyhole neckline edged with heavy Venise lace, and full-length angel sleeves edged with a narrow band of lace. The empire bodice was accented with Venise lace, and the softly-gathered A-line skirt had a deep pleat in the front of the skirt, which flowed into a chapel-length train. The head-piece was a Juliet cap of matching lace holding three tiers of lace-edged illusion.

For "something old", she wore pennies minted in the years of the bride and groom's birthdates in her shoe; "something new" was her wedding gown; "something borrowed" was a lace handkerchief from the bride's grandmother; and "something blue", the traditional garter.

She carried multi-colored fresh flowers in a long bouquet.

Mrs. Elaine Hall played the piano and Mrs. Carol McDole sang musical selections, including "The Lord's Prayer".

At the close of the ceremony, the couple lit the memory candle signifying their becoming one in marriage.

Mrs. John Ayer of Kansas City, Kans. was her sister's matron of honor. Kim Bridwell of Littlefield and Letty Strength of Lubbock were her maids of honor. They wore full-length blue knit gowns with V-necklines and cap sleeves. Their headpieces were made of baby's breath, and they carried nosegays of pastel multi-colored flowers.

Stanley Miller of Amherst was best man. Groomsmen were Randy Posey of Littlefield and Ed Yoakum of Fieldton.

Ushering the guests to their pews were two brothers of the groom, Dennis McCain and Keith McCain, both of Sudan.

For her son's wedding, Mrs. McCain wore a full-length dress of pink knit, with a pink full-length lace jacket.

The bride's step-mother wore a full-length pink knit dress with long sleeved short jacket.

Following the ceremony, a reception was served in the church parlor. Serving the wedding cake and punch from a table accented with multi-colored flowers arranged in a silver candelabrum, were Cloris Ham, step sister of the bride; Regina Williams and Sharrise Cowen of Littlefield and Lennis Cowen of Tyler.

Cloris Ham also registered the guests.

For their wedding trip to San Antonio, the bride wore away a one-piece red jumpsuit with a scarf accent.

They are residing in Littlefield.

\*\*\*\*\*

PEP— A bridal shower honoring Miss Tammy Bagwell of Lubbock, bride-elect of Douglas McCain was held at Bula Baptist Church Hall Saturday afternoon, Oct. 2.

Her colors of pastel blue and white were carried out. The serving table was laid with white net over a blue cloth with an arrangement of blue and white flowers as a centerpiece.

The cake was decorated with white icing with blue decor. Punch, nuts and mints were served to the guests.

The bride-elect's mother, Mrs. Max Bagwell of Lubbock and groom's grandmothers, Mrs. Audrey McCain of Littlefield, Mrs. Edna Bums of Bula and mother, Mrs. Larry McCain

of Pep were present.

Hostesses gift was a 10-piece brown aluminum cookware and Presto Cooker.

Hostesses were: Marcy, Mary and Ruth Demel, Lydia Green and Ida Simnacher, all of Pep and Mrs. Jimmy Cannon, Mrs. Phillip Pierce, Mrs. Royce Teaff, Mrs. Ashel Richardson, Mrs. Robert Claunch, Mrs. Dewitt Tiller, Mrs. Eddy Riley, Mrs. Clyde Hogue, Mrs. Euell Battles, Mrs. Fred Locker, Mrs. Edward Crume, and Mrs. Lorene Latham.

The couple plans to be married on Oct. 16 at 7:30 p.m. at the First Baptist Chapel in Littlefield.

## CB'ers to monitor channel 1

The Lamb County CB'ers met Thursday night, Oct. 7, at the CB Building just east of B&C Pump with 41 members attending.

The officers were elected and projects for the club were discussed.

The Lamb County CB'ers plan to monitor channel 1. Anyone needing help or assistance can go to Channel 1 and get it.

Their project for October is to patrol the Littlefield area Hallowe'en night.

This club is a non-profit organization formed to help the city of Littlefield and surrounding areas.

Anyone interested is invited to attend the next meeting, which will be discussed Thursday night at the officers' meeting, or contact one of the members for more details.

## SUDAN

MRS. CLAUDE COOK of Allenread is visiting her sister, Mrs. Polly Kent.



MRS. DOUGLAS GLENN McCain

## Sorority planning Hallowe'en carnival

The Alpha Lambda Zeta chapter of Beta Sigma Phi is sponsoring a Hallowe'en Carnival Saturday, Oct. 30, from 6 to 10 p.m. in the Lamb County Ag and Community Center and they are seeking organizations who wish to enter a booth for the festivities.

Deadline for entering a booth in the carnival is Saturday, Oct. 23. Organizations should describe of the booth along with the \$10 fee to Alpha Lambda Zeta, in care of Richardson, 606 E. Littlefield.

Fees must be paid before booths will be officially registered.

**SAVE - SAVE - SAVE**  
ON ALL SEWING MACHINES...  
\*Reposited \*Demonstrators \*Trade-ins  
As Much As \$100.00 Off On Some Machines  
Service On All Parts  
**Robison's Upholstery & Sewing Co.**  
308 W. 4th Littlefield 385-4621

**DON'T MISS THIS!**

New Shipment Of  
**Faded Glory Sweaters**  
Just Arrived

**Landluber Overalls**

Only **\$23.00** Sizes 3-13



"You Can't Go Around Saying You're Terrific,  
So Let Our Clothes Say It For You!"



## Check-Mate

the automatic savings account.  
It makes saving as easy as 1, 2, & 3

1. Come to First Federal in Littlefield or Levelland and tell us how much you'd like to save each month.
2. Sign our very uncomplicated authorization card so that we can begin transferring your savings deposit automatically each month (on the date you choose) from your account at the bank to your Check-Mate Savings account at First Federal.
3. Forget about the third step. Check-Mate is so simple, you only need two.



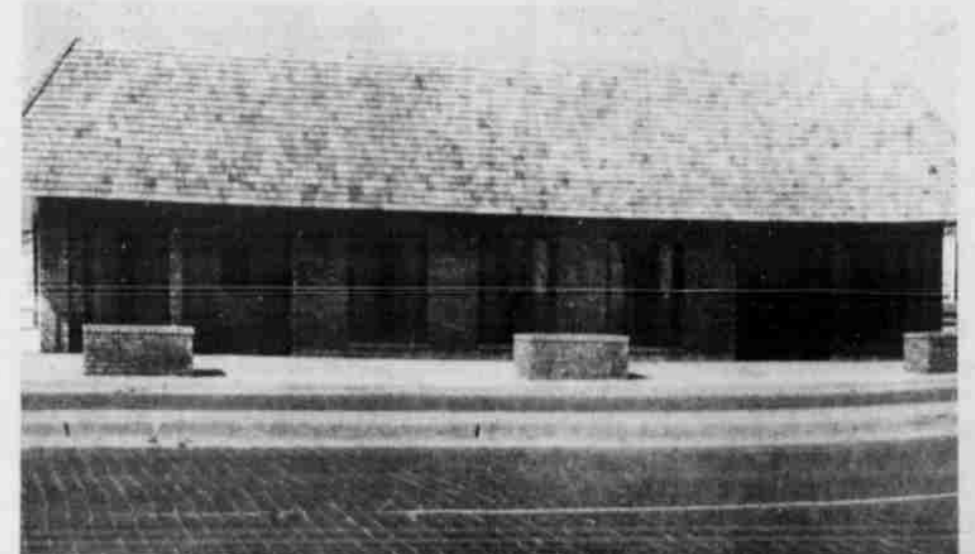
home office 301 XIT Dr. Littlefield 385-5197  
branch office 707 8th St. Levelland 894-4926

member FSLIC

Check-Mate Is A Transmatic Service



## OPEN HOUSE



HAMMONS FUNERAL HOME-Amherst

You Are Invited To The Open House

Of The New

**HAMMONS FUNERAL HOME**

Facilities Located At 1000 Main St.

In Amherst

Sunday, Oct. 17

1 TO 5 P.M.

**HAMMONS FUNERAL HOME**

AMHERST

# Arlene Smiley, bride of Richard L. Jones

Charlene Smiley, Richard L. Jones, and the bride and groom at the wedding ceremony.

groom's birth in each shoe. To complete her wedding attire she wore a white gold and diamond bracelet and a diamond drop necklace, gifts from the bridegroom's aunt, Mrs. Ernestine Adams, Springdale, Ark.

Mrs. W. Bruce Webster served her sister as matron of honor. She wore a floral gown of silk organza over yellow satin. The full flowing gown had a wide ruffle added 12 inches from the floor. Where the gown and ruffle met a narrow green velvet ribbon covered the seam. A wide green velvet ribbon encircled the natural waistline with a large bow in the back with streamers to the ruffle. The head dress was a cascade of net to the shoulder length with green beading covering the securing comb. The bride's matrons, Mrs. Joe Carlisle of Littlefield, Mrs. Pat Smiley of San Antonio, sister-in-law of the bride, wore identical attire to that of the matron of honor. Each carried a bouquet of talisman glamelias with baby's breath and streamers of yellow ribbon.

Little Miss Andrea Smiley of San Antonio, niece of the bride, served as flower girl. Andrea's gown was made of yellow organza over satin and her hair was tied with a yellow notted ribbon and flowers falling down the back. She carried a white basket of glamelias petals. Todd Grissom, nephew of the bridegroom, served as ring bearer. He wore a green leisure suit with white and green shirt. He carried a white satin pillow with rings attached. The altar was centered with a large arrangement of talisman gladiolus with a memory candle centered and tall white candles on either side, on the communion table in front of the arrangement. This decoration was flanked with spiral candelabras decorated with huckleberry and baby's breath and yellow candles. Candles were lighted by Misses Kendra and Melissa Myatt of Levelland, cousins of the bride. They were attired in floor-length

gowns of lemon yellow organza over satin fashioned very similar to the matron of honor's formal. Their head dress of lemon yellow net rose buds and ribbon streaming down their hair from a crown-centered comb. Each wore wrist corsages of talisman glamelias. Kendra and Melissa passed out rice bags during the reception. The bridegroom was attended by his cousin, Mike Grissom of Littlefield, as best man. Groomsmen were his uncle, Landom Grissom of Littlefield, and Pat Smiley of San Antonio, brother of the bride.

Mrs. Mike Grissom of Littlefield registered guests in the church foyer at a table decorated with a hand-embroidered cloth in the bride's chosen colors of orange, yellow and green on natural linen made by the bride's mother. On the table was a white invitational candle and a yellow feathered pin and the bride's book. Guests were seated by Joe Carlisle and Buster Owens of Littlefield, Pat Smiley of San Antonio, and W. Bruce Webster of Carrollton. The mother of the bride wore a shaded green brocaded satin crepe floor-length gown with accessories of white. She wore a yellow orchid corsage. Mrs. Jones, mother of the groom, chose a formal-length gown of frost peau de soie with matching lace jacket. Her accessories were off white, and she wore an orchid corsage. Mrs. L. C. Grissom, grandmother of the bridegroom, wore a formal-length gown of royal blue polyester jersey, and her accessories were white. She wore an orchid corsage. Organist was Mrs. Buster Owens, and pianist was Miss Christa Beth Bradley of Littlefield, who presented traditional wedding music. Preceding the seating of the mothers, Mrs. Rhea Bradley and Mrs. Mike Cotter sang "Sunlight and Sunset". After the vows were exchanged, Mr. and Mrs. Webster sang, "One Hand, One Heart," accompanied by the organist. Then the bride and bridegroom lit the memory candle and knelt at the altar while the minister repeated a prayer for the couple, and Mrs. Webster sang "The Lord's Prayer." The ceremony was concluded with the groom kissing the bride and

the minister introducing Mr. and Mrs. Jones to the congregation. Following the ceremony, a reception was held in the church parlor. The bride's table was laid with a formal-length full-tiered lace-over-satin cloth, centered with a silver candelabra with four lighted candles decorated with talisman gladiolus and baby's breath. The appointments were crystal and silver. The three-tiered cake rested on Gothic columns, then on a base of English ivy surrounded with three footed cakes. All the cake was decorated in white with yellow rose buds. The cake featured a top of satin and net wedding bells and butterflies. Serving at the bride's table were Mrs. Robert Bolton and Mrs. Mike Grissom. The groom's table was laid with a Belgian linen and lace table runner with a center arrangement of bronze mums, yellow gladiolus and baby's breath. A chocolate three-tiered cake intertwined with doves at the centering point, and coffee, were served by Miss Debi Daniel of Littlefield and Ms. Janis Evans of Lubbock. The coffee service and appointments were gold. Serving in the house party were Mmes. Gladys Joplin, Glen Robertson, Buck Oldham, Rhea Bradley, Mike Cotter, Buster Owens, Elnora Hicks, Katherine Holmes, Joann Williams, Edna Mae Mangum of Littlefield. Each lady in the house party and serving food wore glamelias corsages. For their wedding trip to Lubbock for the weekend, the bride wore a gold-brown polyester suit with matching floral blouse, and matching accessories. She carried a bag of the same fabric of her suit which was made by Mrs. Webster. To complete her wardrobe she wore a gold drop-rocket with a diamond on a tiny chain necklace, the groom's gift to the bride. She wore an orchid corsage lifted from her bouquet. Mr. and Mrs. Jones will take a delayed trip to the southeast portion of the states and to Washington, D.C. later in the fall. The couple is at home at 1100 S. Wicker, Apt. 25. The bride is a graduate of Littlefield High School, graduated from Rutherford-Metropolitan School of Business at Dallas, attended South Plains College at Levelland, and she is presently employed at Reese Air Force Base, Lubbock. The bridegroom attended school in Littlefield. He graduated from Carruth-Memorial Rehabilitation Center at Dallas, and attended Dallas Baptist College. He is a farmer.

yellow daisies and baby's breath in a beautiful gold and silver bowl. Serving coffee and punch, sausage balls, cookies and nuts from gold appointments were Mrs. Joann Williams and Mrs. Rhea Bradley. Mrs. Welsey Daniel registered the 98 guests, plus the hostesses who were: Mmes. Carlisle, Rhea Bradley, Wesley Daniel, Stacy Hart, Tom Hilbun, Charles Hinds, Gladys Joplin, Dewey Kilby, W. R. Kimbrough, Jimmie Latimer, Buck Oldham, Glen Robertson, Irlene Sisson, C. Roy Stevens, Joann Williams, Rose Zyburra. In the receiving line were Mrs. Carlisle, the honoree Charlene Smiley; her mother; Mrs. C. R. Smiley; the groom's mother, Mrs. Dick L. Jones of Kerrville; and the groom's maternal grandmother, Mrs. L. C. Grissom. The hostess gift was a stainless steel mixer.

Square dance lessons begin

When selections are from McAnally's Jewelry

Denise Bassett, Bride Elect of Raymond Sides

Cindie Huber, Bride Elect of Tim Walker



MRS. RICHARD L. JONES

**BACHELOR'S DEGREES**  
More than half of college-level trainees under the GI Bill received bachelor's degrees.

## PIZZA INN

EVERYTHING WE SERVE CAN BE MADE TO CARRY OUT OR DINE IN OUR DINING ROOM.

CALL 385-5242

1908 Hall Ave.

385-5242

Sedell Black, Owner

## HAPPY IS THE BRIDE CAUGHT IN A SHOWER



DENISE BASSETT  
Bride Elect Of  
RAYMOND SIDES

WHEN SELECTIONS ARE FROM

McAnally's Jewelry



CINDIE HUBER  
Bride Elect Of  
TIM WALKER

# Fall Kick-off SALE of Foods

## MEAT PRICES ARE LOWER AT MERLIN'S

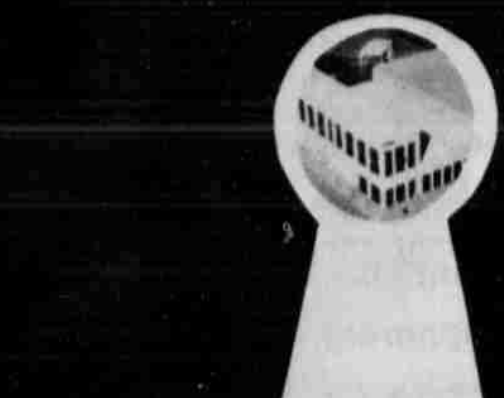
CENTER SLICES	ROUND STEAK	LB \$1.19	CENTER SLICES	PORK CHOPS	LB \$1.19
CHOICE CUTS	SIRLOIN STEAK	LB \$1.19	GOOCH'S	BACON	THICK SLICED 2 LB \$1.89
CHOICE	RIB STEAKS	LB 98¢			
BLADE CUT	CHUCK ROAST	LB 59¢			
	7-BONE ROAST	LB 79¢			
	ARM ROAST	LB 98¢			
	RUMP ROAST	LB 89¢			

SHURFRESH MILK  
1/2 GALLON 79¢  
GALLON \$1.57

RUSSET NO. 2 POTATOES 10 LB BAG 69¢  
BORDEN'S ICE CREAM ROUND CARTON 1/2 GALLON \$1.29

NEW STORE HOURS:  
MON., THRU SAT. 8-8, SUN. 8 A.M.-1 P.M.  
QUALITY MEATS COST NO MORE AT  
**MERLIN'S FOOD**  
Double Gun Broc. Stamps, Tuesday & Wednesday  
9th & Levelland Highway  
OPEN 7 DAYS A WEEK PRICES GOOD MON. THRU SUN. WE REDEEM FOOD STAMPS

**Robison's**  
Carpet & Vinyl Floors  
Complete Floor Covering Service  
Sales, Installation, Repairs  
Featuring Burlington House Carpet  
Vinyl, Counter Tops, Ceramic Tile  
Charles Robison 308 W. 4th



COMING SOON

Centered in the serving table was an arrangement of bronze and gold mums.

## Patsy Lively Chapter installs officers

The Future Homemakers of America, Patsy Lively Chapter of Littlefield High School, had their installation of officers Tuesday, Oct. 5th, in the Homemaking Department.

Those who were installed are: president, Janice Co-

wan; first vice-president, Mary Ellen Echavarría; second vice-president, Penny Jones; third vice-president, Jill Hinckley; secretary-treasurer, Tana Ratliff; and historian-reporter, Tony Aguilar.

Officers lighted candles

of their representation of club purposes and recited their duties.

After the installation a business meeting followed, and plans for a Halloween booth were made.

Numerous committees were appointed for oncoming events.

Refreshments were served following the meeting to members and guests.

### AMHERST

MR. AND MRS. Raymond Humphreys and Mrs. W. N. Humphreys attended funeral services Tuesday for Robert A. Wilson, 63, in the Bacon Heights Baptist Church in Lubbock Bureau was Ralls, his former home. He was the father of Mrs. Carl Don Humphreys. Other survivors are his wife, and four brothers.



KEVIN BELL is an Eagle Scout candidate, and will receive his Eagle Progress Award this afternoon at 3 p.m. in the high school auditorium. All friends are invited to attend. He is a member of Troop 641, of which his father, Roland Bell, is Scoutmaster. [Photo by David Roden]

### Gary L. Miller is recipient of scholarship

Gary Lynn Miller of Whitharral is one of 11 students at South Plains College in Levelland who have received \$125 scholarships to the automotive-diesel mechanics program at SPC.

Scholarship recipients this fall in the two-year program include James Hines of Levelland, Ray Brown and Ezekiel Alvarado, both of Brownfield; Ricky Brownlow of Lamesa; Lee Moreland of Lubbock; David Miller of Whiteface; Gary Lynn Miller of Whitharral; Victor Garza and Joe Gonzales, both of Aberrath; Arthur Madrid of Muleshoe, and Lawny Cannon of Lockney.

Seventeen firms donated the scholarships.

The announcement was made by Claude Kirkpatrick, program coordinator. He noted that this is the third year for some firms to provide scholarships.

### School Menu

OCT. 18-22

MONDAY: Mexican casserole, tossed salad, Spanish rice, buttered cornbread, peanut butter cookies and milk.

TUESDAY: Chicken fried steak, congealed salad, June peas, hot rolls, cinnamon rolls and milk.

WEDNESDAY: Pizza, green salad, green beans, twinkle salad and milk.

THURSDAY: Tacos and crackers, lettuce-tomato salad, pinto beans, fruit cocktail and milk.

FRIDAY: Hamburgers, cheese slices, French fries, catsup, peach cobbler, milk and orange juice.

## Texas Tau Chi Chapter views Denim Textile Plant

Texas Tau Chi Chapter of the Beta Sigma Phi Sorority met Monday night, Oct. 11.

Hostesses for the evening, Cynthia Roberts and Gerry Thomas, presented the cultural program on physical science. After a brief discussion of the chemistry and physics field of science, a special guest for the evening was introduced, Sid Mack.

Mack is the training coordinator for South Plains Junior College and the American Cotton Growers' Denim Plant. After a brief description of the history into the art of making thread and material, and

the progress of the Denim Plant, Mack took members on a tour of the plant showing the progress from the time the cotton bales are delivered to the mill, until the denim is packaged for shipment.

Seeing and learning about each step, one could understand the application of each field, chemistry and physics, as used.

"We would like to extend our deepest appreciation to Sid Mack for the time he took in giving us this fascinating and educational opportunity to view the plant in operation," said a

spokesperson.

Upon returning to the Reddy Room, the hostesses served finger sandwiches, dips, a pickle and olive tray, and a "denim pocket" cake to members Kris Bean, Freddie Duke, Janice Graves, Pat Stubbs, Kay Kendall, Beverly Trimmer, and Bobbie Wagley.

The meeting was opened when all repeated the Opening Ritual.

After the roll call, minutes of the last meeting were read and approved.

Gerry Thomas, treasurer, reported that there was a discrepancy in the checkbook balance and the bank statement. Upon notification from the bank she would complete her report at the next meeting.

A "thank you" note from Shellie Wagley for the book she received during her stay in the hospital was read.

It was reported that the

City Council's Thanksgiving Dinner will be can Buffet in the Room, the evening Thursday, Nov. 18. During unfinishedness, the booth of Halloween Carnival discussed further. Members were that there is a Sudan who needs aid for daily medical plies. Members after further investigation to donate some special service parties for the School was discussed motion was made to continue with the help, but to direct energies toward Green's class. The was seconded and the meeting was to a close by all and repeating the Ritual and Mizpah.



SID MACK, training coordinator for South Plains College at the American Cotton Growers' Denim Plant, speaks to members of Texas Tau Chi Chapter of Beta Sigma Phi Monday night. Those shown are, seated left to right, Pat Stubbs, Cynthia Roberts and Gerry Thomas. [Personal Photo]

## 1-plus dialing makes its debut

Wednesday, Oct. 13, 1-plus dialing became available to Littlefield General Telephone customers.

General's customers in Anton, Whitharral, Spade, Sudan, and Olton will receive this service Oct. 20, and customers in Amherst, Earth, Muleshoe, and Springlake will receive this service Oct. 27.

"This new telephone convenience, sometime called Direct Distance Dialing or DDD, is an improved long distance service which offers station-to-station calling," said Bryan Galloway, customer service manager in Littlefield. "General Telephone customers will discover the many advantages of 1-plus dialing, such as considerable savings, and faster and more convenient service," he continued.

To use the service, calls are made by dialing 1, plus the area code (if different from your own) plus the seven-digit directory number. The telephone equipment automatically routes, times, and bills your call—saving time and insuring accuracy.

"Complete instructions and information on other benefits of 1-plus dialing are being mailed to each

customer," Galloway advises. He suggests reading closely the 1-plus dialing steps to receive the benefits of this service.

### HOTTEST FOOD VALUES IN TOWN

TUESDAY	Chicken	2.49
WEDNESDAY	Dinner Steak	2.79
THURSDAY	Mexican Dinner	2.69
FRIDAY	Fish or Shrimp	2.89
SATURDAY	T-Bones	4.99

All Specials Include Salad Bar

### SAGEBRUSH INN

1030 W. 10th 385-5300

SERVING THE FINEST SUNDAY BUFFET IN WEST TEXAS



### Security State Bank Is The Only Name

You Need To Know For All Of Your Financial Services

Here Are A Few Of

Security State's Services For You.

1. Auto Loans
2. Home Improvement Loans
3. Farm Loans
4. Checking Accounts
5. Saving Accounts
6. Safe Deposit Boxes
7. BankClub

The One Name To Remember

**SECURITY STATE BANK**



Member FDIC

The People's Bank - People Serving People



MAYOR J. E. CHISHOLM placed the first Direct Distance Dialed call from Littlefield Wednesday morning immediately after the system was switched over from operator-controlled dialing. [Staff Photo]



The nearest star to earth (with the exception of our own sun) is Proxima Centauri, which is 25 trillion miles away!

## Super Savings Sale

### New 1977 Pontiac Astre 2 Dr.

Ralley Wheels - Auto. Transmission - White Bucket Seats - Accent Stripes - WSW - Air Cond - EZEYE - Power Steering

To Be Sold At Dealer Invoice Plus \$50.00

**\$4337.<sup>74</sup>**

ONLY ONE IN STOCK. BABY BLUE COLOR

1- 1976 GMC H.D. HALF TON PICKUP TO BE SOLD AT BIG SAVINGS

Good Selection Of 1977 Cars & Trucks In Stock AND MORE ARRIVING DAILY "Before You Buy Give Us A Try!"

David Bell

801 Hall Ave. Littlefield 385-5171

OLDS - CADILLAC - PONTIAC - GMC, INC

## Get Acquainted Special

Meet The David Bell Service Team

Service Manager DAROLD HARDIN Mechanics

Jerry Reagan-Bill David-Bobby Couch

### Every Day Service Specials

#### Minor Tune-up on 8 Cylinder

Plugs, Points, Condensor, Gas Filter \$27.50  
Less Discount 5.50  
Parts 22.00  
Labor 16.00  
Total **\$38.00**  
plus tax

Extra for Air Cleaner Elements.  
General Motors Vehicles Only

#### Front End Alignment

Spin balance and rotate 4 tires, and align the front end.

**\$18.00**

Reg. \$26.00

General Motors Vehicles Only

#### Automatic Trans. Service

Filter & Fluid Transmission Conditioner 12.50  
Labor 8.00  
Total **\$20.50**  
plus tax

400 Trans. 28.50  
350 Trans. 17.50  
General Motors Vehicles Only

David Bell

801 Hall Ave. Littlefield 385-5171

OLDS - CADILLAC - PONTIAC - GMC, INC

**PEP NEWS**

**CONRAD DEMEL** 1st. MRS. CONRAD Demel, Dorothea, Roxanna and Liz and grandchildren, Thor and Monique visited in the home of Mr. and Mrs. Carroll Bowen and Mr. and Mrs. Billy Demel of Levelland on the afternoon of Oct. 3rd.

MR. AND MRS. Billy Witt Jungman of Shallowater visited in the home of Mr. and Mrs. A. H. Jungman of Pep and her parents, Mr. and Mrs. Emil Marek of Morton over the weekend of Oct. 2-3rd.

MR. AND MRS. Richard Lupton of Hereford and Mrs. E. J. Meyer of Buffalo, Mo. visited in the home of Mr. and Mrs. Conrad Demel Tuesday evening of Oct. 5th. Mrs. Meyer is the mother of Mary Demel and Katy Lupton. Mrs. Meyer visited in the home of her daughter, Mrs. Conrad Demel from Oct. 5th till Oct. 18. During her visit, Miki Demel of Lubbock and Mr. and Mrs.

Billy Demel of Levelland visited on Oct. 6th. Mr. and Mrs. Eugene Demel and Christy of Littlefield visited on Oct. 8th. On Oct. 9th, Mr. and Mrs. Conrad Demel, Tim, Liz and Mrs. Meyer visited and were supper guests in the home of Mr. and Mrs. Billy Demel at Levelland, other supper guests were Mr. and Mrs. Eugene Demel and Christy of Littlefield. After 6:30 p.m. mass, we all enjoyed a short visit with Yonnie Meyer, Paul and Betty Meyer and girls, Mrs. Herman Greener and Mary, Jimmy and Jeanette Homer and family, all of Levelland.

MR. AND MRS. William Albus and son of Lubbock

visited in the home of his parents, Mr. and Mrs. Leo parents, Mr. and Mrs. Leonard Albus over weekend of Oct. 9-10.

MR. AND MRS. Wes Herring visited for a little while in the home of Mr. and Mrs. Conrad Demel when they pick up their children, Thor and Monique on Tuesday, Oct. 5.

**SUNDAY DINNER** guests in the home of Mr. and Mrs. Conrad Demel, were Mr. and Mrs. Billy Demel of Levelland and Mrs. Meyer of Buffalo, Mo. and Dorothea Demel, a student at South Plains Junior College of Levelland. Supper guests were Mr. and Mrs. Eugene Demel and Christy of Little-

field. They all enjoyed playing card games.

MR. AND MRS. Gaubert Demel, Mr. and Mrs. Charle Burt of Pep and Mrs. Viola Miller of Levelland attended the funeral of John Langhamer at Schulenburg on Tuesday, Oct. 12.

MRS. EVELYN ALBUS and Terry left Sunday, Oct.

10, to Schulenburg. She received a death message of her father, John Langhamer that passed away after a brief illness at San Antonio on the day of Oct. 10th.

MR. AND MRS. Marvin Kuhler of Amarillo visited with his mother, Mrs. Hilda Frances Kuhler on Oct. 11th.



**COMING QUEEN** candidates for Amherst High were Tammy Tomes, junior, daughter of Mr. and Mrs. Keith Tomes; Kathy Kelly, senior, daughter of Mr. and Mrs. Lamar Kelly; Gina Patterson, junior, daughter of Mr. and Mrs. Harvey Patterson; and Sandra Duvall, senior, daughter of Mr. and Mrs. Raymond Duvall. [Personal Photo]



**QUAD KING** candidates and escorts for homecoming at Amherst were Johnny Rosemond, son of Mrs. Nish Rosemond; Jamie McDaniel, son of Mr. and Mrs. Dick McDaniel; Gary Johnson, senior, son of Mr. and Mrs. Lynn McDaniel; and Ular Johnson, senior, son of Mr. and Mrs. Ular Johnson. [Personal Photo]

**ARREST & CLARICE PRICE**  
THE OLD DEALERS OF WESTERN AUTO  
BACK AS THE NEW DEALERS OF WESTERN AUTO  
WE INVITE ALL OUR MANY FRIENDS AND CUSTOMERS TO STOP BY AND SAY "HI".

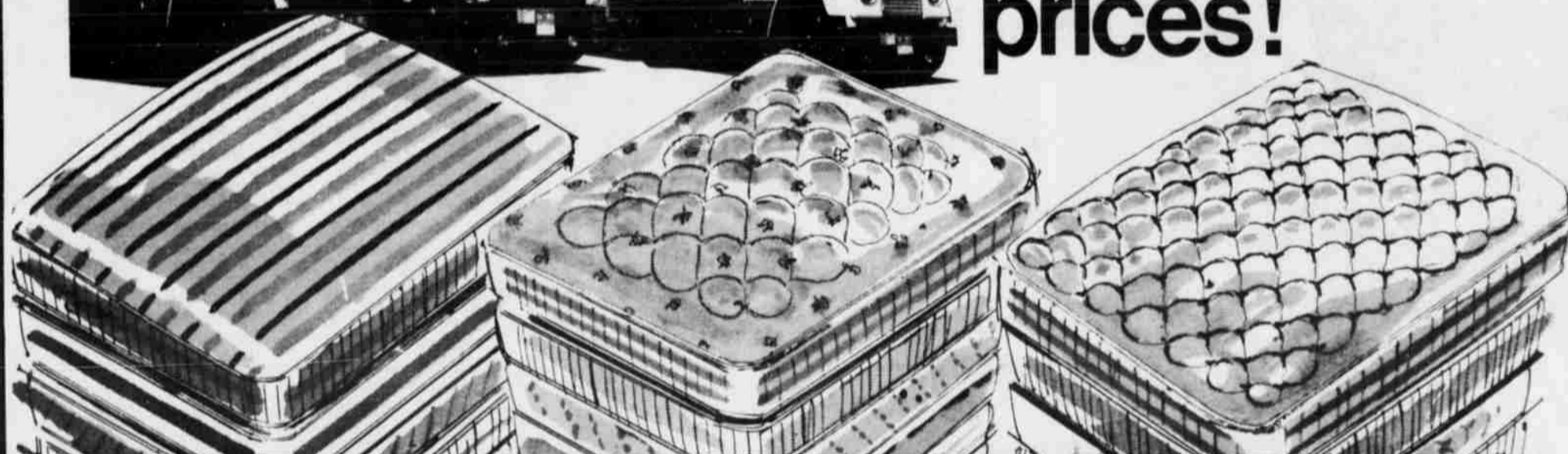
**Swing Bike**

SWING BIKE... The Newest, Safest Thing on Two Wheels!  
The only bicycle made with a rear wheel that has a mind of its own! Come in for a test ride, and find out why boys and girls across the country are lining up for SWING BIKES.

**WESTERN AUTO**  
302 Phelps 385-4214

# SEALY SALE

Truckloads of Sealy at our lowest prices!



**Quilt Top**  
REG. \$59<sup>95</sup>  
**\$39<sup>00</sup>**  
Twin Size ea.pc.  
Full Size ea.pc..... \$59<sup>00</sup>  
**Hurry In, Quantities Are Limited!**

**Firm Quilt**  
REG. \$69<sup>95</sup>  
**\$49<sup>00</sup>**  
Twin Size ea.pc.  
Full Size ea.pc..... \$69<sup>00</sup>  
Queen Size ea.pc.... \$199<sup>00</sup>  
King Size 3-pc.set... \$259<sup>00</sup>

**Luxury Quilt**  
REG. \$89<sup>95</sup>  
**\$69<sup>00</sup>**  
Twin Size ea.pc.  
Full Size ea.pc..... \$89<sup>00</sup>  
Queen Size ea.pc.... \$239<sup>00</sup>  
King Size 3-pc.set... \$329<sup>00</sup>

**Quilt Top**  
**\$149<sup>00</sup>**  
**2 Piece Queen Set**

**Quilt Top**  
**\$199<sup>00</sup>**  
**3 Piece King Set**



Take advantage of our special purchase! Sealy factory overstock allowed us to make an exceptional buy on this selected group of mattresses and box springs. We can pass the savings on to you — and you'll sleep better for it! Compare...

Quality-built with hundreds of specially tempered coils, durable foundations, puffy cushioning. Choose from smooth tops, firm quilts, luxury quilts, elegant designer covers. Sure to go fast at these remarkably low prices, so shop early!



BROWNFIELD LEVELLAND LITTLEFIELD ODESSA  
**STACY-MASON Inc.**  
HOME FURNISHINGS

## Perry's Halloween Spook-Tacular!



SHOPPING BAG TYPE,  
**Trick Or Treat Bags**  
WERE 15c-NOW **9¢**

**Plastic Trick Or Treat Bags**  
WERE 15c-NOW **10¢**

**Witch Hats** FRINGED, WERE 25c-NOW **18¢**

TRICK OR TREAT SMALL SIZE  
**Pumpkin** WERE 66c-NOW **57¢**

TRICK OR TREAT LARGE SIZE  
**Pumpkin** WERE \$1.29-NOW **99¢**

**Collegeville Costume** WITH MASK, WERE 99c-NOW **77¢**

**Tiny Tot Costume** WITH MASK, WERE \$2.99-NOW **\$2<sup>33</sup>**

**Spooky Spooks Costume** WITH MASK, WERE \$1.99-NOW **\$1<sup>33</sup>**

**White For Night Costume** WITH MASK, WERE \$1.99-NOW **\$1<sup>33</sup>**

**TV Comic Costume** WITH MASK, WERE \$2.33-NOW **\$1<sup>77</sup>**

**Monster Costume** WITH MASK, WERE \$3.17-NOW **\$2<sup>33</sup>**

### ALL 39¢ HALLOWEEN MASKS NOW ONLY 27¢

WHOOP!

**Make-Up Kit** SAFE AND HARMLESS, WERE 39c-NOW **27¢**

**Play Blood** SAFE AND HARMLESS, WERE 49c-NOW **37¢**

**Vampire Kit** TEETH AND BLOOD, WERE \$1.29-NOW **99¢**

**Jack-O-Lantern Goblin** JOINTED WERE \$1.00-NOW **77¢**

**Blow Outs** FOR FUN OR PARTIES, WERE 10c-NOW **5¢**

**Halloween Mobile Decorations** WERE \$1.00-NOW **77¢**

**Surprise Pumpkin** WITH CANDY, WERE 29c-NOW **23¢**

**Mellowcreme Pumpkins** 12 OZ. BAG, WERE 63c-NOW **53¢**

**Sweetarts Trick Or Treat Candy** WERE 66c-NOW **57¢**

ALL OTHER TRICK OR TREAT CANDY AT REDUCED PRICES!

# perry's

# 'Cats cripple Mules

Continued from Page 1

low and the 'Cats were in business on the 16.

Two running plays resulted in no gain, and on third down Ayala threw over the middle to Mendez. Mendez couldn't control the ball and then it bounced off a Mule and back to Mendez for the six pointer. Mendez added the PAT and the 'Cats enjoyed a 14-13 half-time advantage.

### THIRD QUARTER

Littlefield took the second half kick-off and made a first down before being forced to punt. Ayala's 32-yard punt to the Mules' 35 took a crazy bounce and struck a Mule. Half-a-dozen 'Cats went for the ball while the shocked Mules looked on. The fumble recovery gave the 'Cats another scoring opportunity and they took advantage of it.

Ayala and Mendez teamed again for an 11-yard gain to the 20. Then Jett West got the call. West carried six straight times and the last time he went in untouched from the one. Mr. Automatic Mendez added the PAT and Littlefield was up 21-13 with 4:31 remaining in the third stanza.

Muleshoe punted and then recovered a Wildcat fumble on the Littlefield 26. On the final play of the period, Ayala intercepted a long pass on the two-yard line and returned it all the way to the 43.

This Wildcat drive belonged to Rudolph Smith and Ayala. The pair combined for successive eight-yard gains on pass play. Smith then made eight yards running.

On second and 10 from the 31, Ayala headed around right end and then pitched back to the trailing Smith. The sophomore speedster turned the corner and saw a host of Mules pursuing him. He angled toward mid-field and picked up his blockers and went in untouched. Mr. Automatic's kick was again good and the 'Cats led 28-13 with 9:35 showing on the clock.

Muleshoe marched to the 'Cats 15 in just five plays. At this point the 'Cat defense turned more stubborn than a mule and refused to yield an inch. A running play and three passes netted the Mules nothing and the ball went over on downs and for all practical reasons the 'Cats had won the game.

Running the clock down the 'Cats moved to the 44 in seven



RUDY AYALA follows the blocking of Jett West for a big gainer. The play went for 70 yards but was

rubbed out by a penalty. The came from behind to lead Mules 35-13 in the district. [Leader-News Photo]

rushes before fumbling. Muleshoe had good field position but on a pass play Jack Speck zipped up the middle to separate Whalin from the ball and Vernon Johnson pounced on the pigskin.

Littlefield again began to march on the ground. With only 20 ticks left on the clock Smith duplicated his earlier touchdown. He took an option pitch from Ayala around right end, cut back across the grain to the middle of the field for the final score. Mendez toed the EP and final score was 35-13.

The Quarterback Club will meet Tuesday at 7:30 p.m. to view the Muleshoe film and to hear a scouting report on the upcoming tilt with Friona.

### SCORING

**FIRST QUARTER**  
Muleshoe-Jeep Shanks, 6-yard run (Tony Vela kick), 7:58.

**SECOND QUARTER**  
Muleshoe-Dean Northcutt, 3-yard run (kick failed), 6:05.

Littlefield-Ralph Mendez, 30-yard pass from Rudy Ayala (Mendez kick), 4:08.

Littlefield-Mendez, 16-yard pass from Ayala (Mendez kick), 1:21.

**THIRD QUARTER**  
Littlefield-Jett West, one-yard run (Mendez kick), 4:31.

**FOURTH QUARTER**  
Littlefield-Rudolph Smith, 31-

yard run (Mendez kick), 0:20. Littlefield-Smith, 33-yard (Mendez kick), 0:20.

### SCORE BY QUARTER

	1	2	3	4
Lfd.	0	14	7	14
Muleshoe	7	6	0	0

### STATISTICS

First Downs	23
Yds. Rushing	280
Yds. Passing	137
Total Yds.	417
Pass.c/a	10-20
Punts, Avg.	3-36
Fumbles Lost	5
Intercepted By	2
Penalties	6-50

### RUSHING

Littlefield-Smith, 15	carries
101 yards; Ayala, 11	for 96
15 for 55; Jay Lee, 7	for 22
Wood, 3	for 12.

Muleshoe-Northcutt, 12	carries
Shanks, 16	for 63; Julian Guez, 1
for 3; Randy Whalin, 3;	Mark Washington, 1
for 14.	

### PASSING

Littlefield-Ayala, 10	for 137.
Muleshoe-Whalin, 6	for 18.

### RECEIVING

Littlefield-Mendez, 7	for 137.
Smith 3	for 32.
Muleshoe-Billy James, 4	for 29.
Billy Donaldson, 1	for 29.
Beversdorf, 2	for 26.
Northcutt, 1	for 2.

# Mustangs tie Dimmitt, 7-7

By RICHARD ROGERS

The Olton Mustangs assumed the role of David when they edged The Goliath Dimmitt Bobcats before a jubilant homecoming crowd Friday night.

A brief explanation is needed, however, to determine how the "giant-killers" can be classified the victor, even though the game ended in a 7-7 deadlock.

In a district 3-AA game, which ends in a tie, the game will be recorded as such unless the deadlocked teams finish tied for first after the completion of district play.

In that case, the winner is determined by the team who penetrates the 20-yard line the greater number of times. But the Mustangs and the Bobcats tied in that category, 2-2, so the winner had to be determined by the number of total first downs which gives ascendancy to Olton, 21-15. Whew!

The sling for the Mustangs was tailback Mark Williamson who rushed for 90 yards and scored the Olton tally from inside the

one. The scoring burst was set up by a brilliant, 20-play drive that covered 73 yards and consumed over eight minutes during the fourth quarter. Brad Allcorn added the extra point that tied the pre-district favorites.

Dimmitt's score was also the end result of a sustained drive. Aided by a late hit penalty that gave the Bobcats a first down on the Olton 21, the visiting team went the distance of 64-yards on eight plays. Thompson Mayberry sneaked in from the one, and Matt Howell booted the extra point which put Dimmitt on top 7-0, with 10:43 left to play in the contest. It was on the following kick-off that Olton began its scoring drive.

Dimmitt threatened first in the game when they recovered an Olton fumble on the Mustang 12 in the waning moments of the first quarter. But the inspired Olton defense stopped the assault on a crucial fourth down and one play from the three.

Olton also had a scoring opportunity in the first half when they drove 80 yards to the Dimmitt four with only eight seconds remaining on the clock. Allcorn's 18-yard field goal attempt soared to the right of the cross bar, and both teams retreated to the locker room tied 0-0.

Special credit has to be ascribed to the Olton de-



DIMMITT'S Eddy Chavers is wrestled down by Ruben Saldivar after a short gain. The Olton defense shut-down the Bobcats and gave Olton a tie with the district favorites. [Leader-News Photo]

fense which held the explosive Bobcat offense to 160 total yards. Head coach Ed Miller chose not to single out an outstanding defensive player, but rather praised the entire unit.

After the game, Coach Miller stated: "You can't force your team to play good, but you can impel them to play hard, and I think everyone will agree that our young men extended themselves last night."

### GAME AT A GLANCE

Olton	Yds. Rushing
214	Yds. Passing
20	Total Yds.
234	
4-1	Pass Att./Comp.
3-38	Punts
10-125	Penalties
1	Fumbles Recovered
21	First Downs

In School Colors



**Sports World**  
429 Phelps 385-3243



# Anton chews Amherst battle of Bulldogs

MACHA Bulldog pit Friday, Bulldogs chewed Amherst Bulldogs, were a homecoming Amherst. defensive duel be fatal for the team after stand- to Anton eight times as he victors within the Am- yard line. The were able to ver the goal line erent times. Am- red once on their trations in Anton

was Bearden who stopped the Anton drive on the 13. Timms took his turn in carrying the ball for Anton and was stopped by Ricky Yantis on the 13. On the third down, Butler bombed one to Sammy Peacock in the endzone for the first score of the ball game with 8:01 left in the first half. Timms PAT was no good and Anton led, 6-0.

Amherst lost the ball again by a fumble on the third down as Timms snagged it on the three-yard line. Timms then took a screen pass from Butler and bounced over from the three to make the score- board read "Anton 12, Amherst 0" with 7:09 left in the first half.

The points after the touchdown, Butler faked a kick and passed to Belcher for a two pointer and a 14-point lead for Anton.

The remainder of the half was ball swap as Amherst gave up the ball after three incomplete passes in a row. Then Anton fumbled and Amherst got the ball back again after Jim Bagwell recovered an Anton fumble. Amherst was unable to move the ball and had to punt after Bearden was sacked for a loss by Anton's Matt Grace on the Amherst 29.

Anton had the ball for another series of downs before being stopped on a fourth down situation.

Blake Cate stopped Amherst's offensive drive on the 35 after snagging a pass to give Anton the ball for the final ticks of the half.

At intermission, Anton led Amherst, 14-0.

The third quarter was scoreless as each team gambled on fourth downs and lost. Timms sacked Bearden behind the line to stop Amherst's first possession in the third stanza.

Amherst then stopped Anton about seven plays later as Rosemond recovered an Anton fumble on the 41. The remainder of the quarter was faultless with the exception that neither team could penetrate the others defense as each had to give up the ball on downs.

The first half of the last quarter was a repeat of the third quarter with each team swapping the ball a couple of times on fourth down situations. However, Gary McDaniel did get the ball for Amherst about a mid way in the half when he recovered an Anton fumble on their 15.

Scott Goen again charged in on a fourth down to sack Amherst's Bearden behind the line of scrimmage on the 21. The next play Anton crossed over the goal line. Again the play was called back and Anton was penalized 15 yards, thus setting the ball on the 38. Three plays later Butler hit Timms with another screen pass and Timms scored again for Anton from 35 yards out.

The points after came on a fake kick and then a pass from Butler to Rex Jones for the two points to give Anton a 22-0 lead of Amherst with 2:39 left in the game.

Anton was charged with unsportsman like conduct after the two-pointer and had to kick from their 25. On the kick-off, Sterling took the ball on the Amherst 40 and zig-zagged down field for 60 yards before scoring for Amherst. Anton led 22-6.

Anton had to give up the ball on downs after Cate covered an on-side kick-off at the mid-field strip. Amherst was trekking back downfield when the final buzzer sounded.

In the defensive dual, Anton's Timms was the

leading ball carrier with 99 yards in 28 carries. Amherst was paced by Sterling who carried the ball 12 times for 54 yards.

GAME AT A GLANCE

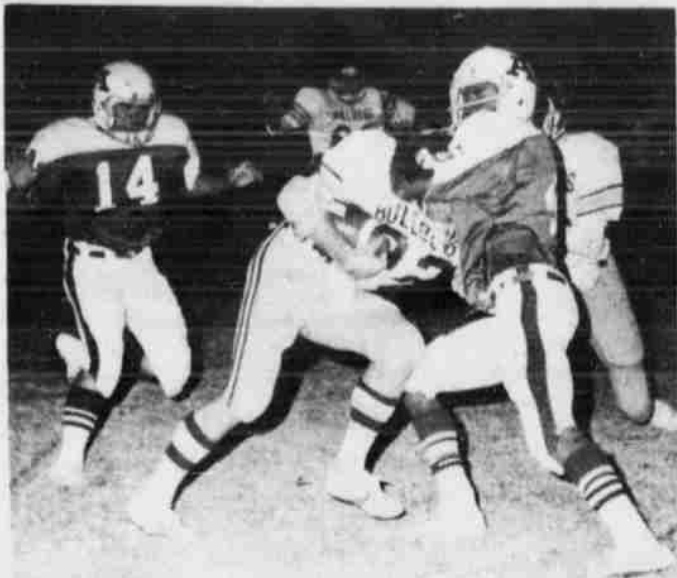
Amherst	Anton
8 First Downs	18
111 Yards Rushing	181
38 Yards Passing	56
149 Total Offense	237
12 Passes Attempted	14
5 Passes Completed	4
0 Passes Completed	4
0 Passes Intercepted	1
2/20 Punts/Average	4/33
5 Fumbles Recovered	3
5/30 Penalties	6/70



TERRY STERLING [25] tries the left side to get extra yardage for Amherst. Lonnie Timms [32] makes the stop for Anton. Other defenders in the action are Matt Grace [51], Keith Stolk [75], Steve Green [20] and Richard Alvarado [47]. Amherst players in the dark jerseys are Ronnie Bearden [14], Johnny Rosemond, [45], Jamie McDaniel [69], and Brad Enloe [65]. Anton won the game, 22-6.

SCORE BY QUARTERS

	1	2	3	4	Total
Anton	1	14	1	8	22
Amherst	0	0	0	6	6



BULLDOGGING A BULLDOG is Amherst's Johnny Rosemond as he takes down Anton's Lonnie Timms. Ronnie Bearden [14] is the other Amherst Bulldog in the action. Charging in for the Anton Bulldogs are Sammy Peacock [84] and Ray Stone [25].

## Whitharral Panthers defeat Wellman, 41-20

The Whitharral Panthers continued their way upward as they defeated Wellman 41-20 Friday night for their seventh consecutive victory of the season in six-man football.

Whitharral tallied in the first quarter on a pass from Bobby Avery to brother, Jimmy Avery. The extra point was no good.

In the second quarter, J. Avery caught a TD pass from Jimmy Polk. The extra point was again no good to give Whitharral a 12-0 half-time lead.

Both teams scored in the third quarter as Whitharral's John Dukatnik tallied on a 20-yard run. Gary Chavez completed the extra point pass to J. Avery.

Wellman finally came up with some points on a 4-yard run by Larry Newsum. Doug Matney kicked the extra point.

Dukatnik scored his second TD for the Panthers on an 8-yard run. Chavez came

on the field to kick the extra point.

Hector Nunez connected on a 30-yard TD pass to Brad Tankersly.

B. Avery displayed his TD ability as he scored two TD's for the Panthers in the final quarter of action.

B. Avery's first score in the fourth quarter came on a 6-yard run. His final TD was on a 15-yard sprint to the goal line. Chavez was successful on one of the extra points attempt.

Newsum scored Wellman's final TD on a 4-Yard run to give them a 41-20 loss.

The entire defensive unit was named as outstanding. ffensive standouts for the Panthers were B. Avery, who carried the ball 19 times for 161 yards. Dukatnik carried the ball 12 times for a total of 117 yards.

Whitharral had 19 first downs to Wellman's 14, and 9 penetrations for the Panthers and 4 for Wellman.

## Sudan takes Nazareth

Sudan chalked up another zone win as they soundly defeated Nazareth 47-14.

The Hornets scored the only points of the opening quarter when Kyle Martin bulled his way into the end zone from 3 yards out. Jerry Williams kicked the extra point.

Sudan scored a total of 20 points, compared to Nazareth's 7 in the second quarter. Greg Pickett started up the offensive machine in the second quarter when he hit Edgar Tamplin on a 45 TD-pass play. The extra point was no good.

Joel Williams scored his first of four TD's in the second quarter on a 40-yard gallop. Martin was successful on the 2-point conversion.

It was Joel Williams again on a TD—this time from 37 yards out. The extra point kick was no good.

Don Hugesman scored Nazareth's first Td on a 24-yard run. Hugesman kicked the extra point.

It wasn't long before Joel Williams scored again in the third quarter on a

3-yard run. The extra point was no good.

In the same quarter, John Miles rambled 75 yards for a Td. Jerry Williams ran the 2-point conversion.

Joel Williams rounded out Sudan's scoring on a 51-yard TD run. The try for the 2 points was no good.

Kenny Brockman hit Hugesman on a 30-yard TD pass to finish the scoring for the Swifts. Hugesman kicked the extra point.

Standouts on defense for the Hornets were Steve Richardson, Dennis Flowers, Roy Don Duggun, and Lonnie Simpson.

Outstanding on offense was Joel Williams, who carried the ball 17 times for 210 yards and John Miles, who carried the ball 9 times for 148 yards.

STATISTICS

Sudan	Nazareth
20 First Downs	11
452 Yds. Rushing	161
45 Yds. Passing	44
497 Total Yds.	205
0 Fumbles Lost	0
0 Interceptions By	1
3/45 Penalties/Yds.	1/15
3/30No. of Punts/Avg.	6/29

## Springlake-Earth blanks Vega, 7-0

Before a Homecoming crowd, the Springlake-Earth Wolverines eased by the Vega Longhorns 7-0 Friday night.

Most of the game was a battle of the defenses as three of the four quarters were scoreless.

Mark Barton was the man of the game as he plunged over the one-yard line to score the first and last points of the game in the second quarter. George Flores booted the extra point.

Rodney Geissler was tabbed as the offensive standout of the game as he

toted the pigskin for 64 yards on 24 carries.

Deensive standouts for the Wolverines were Keith Clayton who recovered 2 of 5 fumbles for the Wolverines. The other standout was Joe Fulller who had 2 interceptions. Fulller's second interception stopped Vegas final drive.

STATISTICS

S-E	Vega
11 First Downs	10
141 Yds. Rushing	115
7/16 Yds. Passing	9/6
147 Total Yds.	121
1 Fumbles Lost	5
2 Interceptions By	1
7/50 Penalties/Yds.	4/60
8/27No. of Punts/Avg.	3/28

## Three Way Eagles destroy Loop, 67-22

The Three Way Eagles amassed a total of 67 points Friday night to destroy Loop 67-22.

Louie Key ran for 26 yards and a Td to put the Eagles on the scoreboard in the first quarter. Albert Rand ran the extra point conversion.

Rand started to score his sixth TD in the first quarter for his first of the night as he scampered from 41 yards out. The extra point was no good.

Rand came right back and scored again on 15 and scored again on a 15-yard TD pass from Adam Rodriguez. Key kicked the extra point.

Loop scored in the second quarter on 20-yard run by Clay Freeman. The extra point was no good.

Key broke through the line and rambled for 70 yards for the next Eagle tally. The extra point was no good.

This time it was Rand again as he went in for a 20-yard TD. The extra point was again no good.

Loop tallied for the second time in the second quarter on a 13-yard run by Joe Basquez. The kick for

the extra point was blocked.

Donnie Young came up with a tally of his own as he scored from 18 yards out for the Eagles. Key ran the extra point conversion to take a 40-14 halftime lead.

In the start of the second half Rand ran for a 12-yard TD. Rand also ran the extra point conversion.

Ken Eubanks tallied the Eagles' next score on a 30-yard TD pass from Young.

Loop scored his final TD in the third quarter when Joe Gibson caught an 11-yard TD pass from Grey Enieht. Basquez ran the ball for the extra point conversion.

The defensive standouts for the Eagles were Young, Ernest Cantu, and Craig Kerby. On offensive it was Rand who carried the ball 22 times for 228 yards and Key who carried 14 times for 150 yards.

STATISTICS

Three Way	Loop
16 First Downs	9
396 Yds. Rushing	100
93 Yds. Passing	86
489 Total Yds.	186
1 Fumbles Lost	5
4 Interceptions By	1
0 No. of Punts/Avg.	1/35



SPRINGLAKE-EARTH'S Terry Hood takes a pass in front of Vega defender Ricky Brainerd. The Wolverines delighted a big Homecoming crowd with a 7-0 win. [Leader-News Photo]

SUBSCRIBE TO THE LEADER-NEWS FOR TOTAL AREA SPORTS COVERAGE

# Harvest of Savings!

<p>SHURFRESH SLICED CHEESE 12 OZ 98¢</p> <p>MAXWELL HOUSE COFFEE 1 LB \$1.79</p> <p>6 BOTTLE CARTON COCA COLA 32 OZ \$1.39</p> <p>SWIFT PREMIUM CHILI NO BEANS 15 OZ 2/79¢</p> <p>SHURFINE FLOUR 5 LB 59¢</p> <p>SHURFINE SUGAR 5 LB 95¢</p> <p>BANQUET FROZEN POT PIES 8 OZ 2/49¢</p> <p>YELLOW ONIONS LB 10¢</p>	<p>PRESTONE ANTI-FREEZE GALLON \$3.89</p> <p>CURTIS JR BARS 9.1 OZ PKG BABY RUTH, BUTTERFINGER 89¢</p> <p>LISA MORNAY SHAMPOO-CREME RINSE 1/2 GAL 89¢</p> <p>SHURFRESH HAMS 5 LB CAN \$7.99</p> <p>WISCONSIN LONGHORN CHEESE LB \$1.39</p> <p>SHURFRESH BACON LB \$1.29</p> <p>FIRST CUTS PORK CHOPS LB 99¢</p>
--	---

We Reserve The Right To Limit Quantities. We Redeem USDA Food Stamps. We Give Gunn Bros. Stamps. Double Stamps On Tuesday & Wednesday With \$2.50 Purchase Or More Excluding Cigarettes.

## PIONEER SUPERMARKET

# Football Contest

Enter Our Contest Each Week

Nothing To Buy

Just Pick Winners



Win Cash Prizes Each Week

FIRST PLACE PRIZE

\$10

SECOND PLACE PRIZE

\$3

THIRD PLACE PRIZE

\$2

GRAND PRIZE

2 TICKETS TO THE

Cotton Bowl

NEW YEAR'S GAME

Plus \$25.00 Expense Money

SANDRA DUVALL, second from left was crowned Amherst's Homecoming Queen Friday night. Her court included, Kathy Kelly, left of the queen, Tammy Tomes and Gina Patterson on the right. Plaque and flower bearers are Lynn Talbert and Misty Maxfield. Gary McDaniel was named Football King.

It's so easy...

Anyone can enter!

Read the rules...

Start Winning

RULES OF THE

CONTEST:

All you have to do to be eligible for the weekly cash prizes is to complete the form below and place (or mail) it in the designated box at the Leader-News office. It is the contestants responsibility to see that the form has been placed in the entry box and the Leader-News assumes no responsibility

One game is listed in each advertisement. Pick the winner and insert the name of that team in the OFFICIAL ENTRY BLANK below. Then in the "Tie Breaker" section, put the total score you believe the teams will make. Weekly judging will be based on the total number guessed correctly. In case of a tie, the tie-breaker will be used to determine the top winners. Decision of the Leader-News scoring judges will be final.

To be eligible for the 2 free tickets to the New Year's Game at the COTTON BOWL, the total number of correct guesses will be totaled through the season.

LIMIT— One entry per contestant per week.

BE SURE to complete the forms by PRINTING plainly your name and complete address and turning in the entry blank only. Contest winners will be announced in each Thursday's issue of the Leader-News.

All tied games are considered wrong unless called as a tie.

## OFFICIAL ENTRY BLANK

Lamb County Leader-News Football Contest

Deadline 5:30 Friday

Game No.

Winner

1. \_\_\_\_\_
2. \_\_\_\_\_
3. \_\_\_\_\_
4. \_\_\_\_\_
5. \_\_\_\_\_
6. \_\_\_\_\_
7. \_\_\_\_\_
8. \_\_\_\_\_
9. \_\_\_\_\_
10. \_\_\_\_\_
11. \_\_\_\_\_
12. \_\_\_\_\_

TIE BREAKER TOTAL SCORE

Chicago vs. Dallas

New England vs. Buffalo

Name \_\_\_\_\_

Address \_\_\_\_\_

JANET DEPRENG, center was named Olton's Homecoming Queen in ceremonies Friday. Attendant Lorenda Couch is shown on the left and Alanna Spain is on the right. [Leader-News Photo]



KIM CLAYTON, center was crowned Springlake-Earth Homecoming Queen Friday. Shown with her, from left to right, Sherri Winders, Susan Clayton, Ranae Winder, the Queen, Hortencia Rodriguez, Debbie Daniel and Flory Rivas. [Leader-News Photo]

### Ernest Mills Cotton Co.

RARE COINS & COIN SUPPLIES

"Always A Fair Price"

1517 E. 9th 806-385-5178

Game No. 1

Amherst vs. Ropes



### GOODYEAR SERVICE STORE

A DIVISION OF THE GOODYEAR TIRE & RUBBER CO.

304 N. 4TH

Dale Mauldin, Mgr. 385-5162

Game No. 2

Anton vs. O'Donnell

### Shook Tire Co.

1028 East 9th 385-5126

Game No. 3

Littlefield vs. Friona

### LITTLEFIELD SEED & DELINTING

"Home Of Fine Cotton Seeds"

In The Old Oil Mill Location Phone 385-5444

385-5388

Game No. 4

Olton vs. Morton

### THE ORIGINAL TASTY TACO

OPEN SEVEN DAYS A WEEK

OPEN TIL MIDNIGHT ON WEEKENDS

Authentic Mexican Food, Also American Food

Ralph Mendez, Owner 621 Hall 385-3764

Game No. 5

Springlake-Earth vs. Bovina

### ARMES EQUIPMENT CO.

Your John Deere Dealer

East Loop 84

Phone 385-4121

Game No. 6

Sudan vs. Lazbuddie

### Platt's Jewelry

& TROPHIES

5th AND 10th DRIVE

CUSTOM MADE

PLAQUES AND

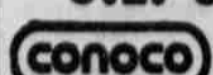
TROPHIES OUR

SPECIALTY

Game No. 7

Three Way vs. Wellman

### J.L. Jones Oil Co.



DISTRIBUTOR

AMHERST

Joe Miller

Bob Clayton

David Jenkins

Game No. 8

Whitharral vs. Grady

BULA Dale Middlebrooks

### Armes Chevrolet Co.

610 East 4th

New & Used Cars, Trucks, Pickups

Phone 385-4437

Game No. 9

Texas Tech vs. Arizona

### LITTLEFIELD FARMERS COOP

Gins, Elevators & Fertilizer

"OWNED BY THOSE WE SERVE"

Game No. 10

Notre Dame vs. South Carolina

### KOUNTRY BOY

DOUBLE S&H GREEN STAMPS

TUESDAY & SATURDAY

Littlefield Plaza

Marshall Howard Blvd.

Game No. 11

Missouri vs. Nebraska



### SPORTSWORLD

Your Local Dealer For Wilson Sporting Goods

& Athletic Equipment

429 Phelps 385-3243

Game No. 12

Cincinnati vs. Houston

# Bowling News

LEAGUE	Pizza Hut	13	11	men Marilyn Wells 177
Utane	Flores Upholstery	12 1/2	11 1/2	AMATEURS LEAGUE
Ben	Powell's Uphl.	10 1/2	13 1/2	Larrabee's
Bank	Pay & Save	7 1/2	16 1/2	Home Imp.
	Kut Hut	6	18	Purdy Mt. Mach.
Leveling	Hi Team Series Flores			Jim's Body Shop
Peak House	2379			Lamb Bowl
13 15	Hi Team Game Powells			A.C.G.
11 17	857			Denim Duds
8 20	Hi Individual Series Wo-			Jim's Conoco
Series Fieldton	men Paula 475			Karen's Hair-em
232	Hi Individual Game Wo-			Crescent Club
Game Fieldton				

Hi Team Series A.C.G.	2465
Hi Team Game A.C.G.	854
Hi Individual Series Men	Bruce Timms 601
Hi Individual Game Men	Bruce Timms 217
Hi Individual Series Wo-	men Sherri Stewart 549
Hi Individual Game Wo-	men Sherri Stewart 202

# Amherst Junior High defeats Bovina

The Amherst Junior High defeated the Bovina Junior High team in Amherst, 40-0, Tuesday.

The Amherst B team also was victorious over Bovina by a score of 22 to 0.

The junior high win was the first for the team.

The Bulldogs scored first on the first play of the game when Ishmel Zamora raced

60 yards for the first score in the contest.

Manuel Montoya added a touchdown of his own late in the first quarter. Before the half arrived, the opponents saw Zamora go in for his second TD in the game to take a 20-0 half-time lead.

Zamora was not through scoring as he opened the third quarter with a TD.

Zamora's scoring partner, Montoya, came up with two

TD's in the final quarter to give the Bulldogs a 40-0 win.

Junior High Coach Jerry Gray said he game was a team effort, and the offensive line opened up huge holes for the backs. Coach Gray also stated that the defensive unit had a great

night in holding the Bovina offense scoreless.

In School Colors



**Sports World**  
429 Phelps 385-3243



**Pay-n-Save**  
QUALITY AND SERVICE

# SHOP AND SAVE!

U.S.D.A. GRADE 'A' COUNTRY PRIDE	CUT-UP FRYERS	49¢
U.S.D.A. GRADE 'A'	FRYER BREASTS	89¢
U.S.D.A. GRADE 'A'	FRYER DRUMSTICKS	79¢
U.S.D.A. GRADE 'A'	FRYER THIGHS	79¢
U.S.D.A. CHOICE	CHUCK ROAST	69¢



U.S.D.A. GRADE 'A' COUNTRY PRIDE

# WHOLE FRYERS

Lb. **43¢**

THE ORIGINAL	Chili Bowl Chili	1 LB. PKG.	\$1.39
SENIOR BLUE'S BEEF 'N BEAN	Burritos	1 LB. PKG.	89¢
BETTAWAY BREADED CHICKEN FRIED	Beef Patties	Lb.	\$1.09
BETTAWAY BREADED CHICKEN FRIED	Beef Fingers	Lb.	\$1.09

Short Ribs	Lb.	59¢	
EXTRA LEAN	Ground Beef	Lb.	69¢

U.S.D.A. CHOICE BONELESS	Family Steak	Lb.	99¢
OSCAR MAYER (Round-Square-All Beef-Garlic)	Sliced Bologna	8 OZ. PKG.	79¢

**Dairy And Frozen Food**

**Grocery Specials**

PIZZA **79¢**

COFFEE **\$1.59**

PILLSBURY	Hot Loaf	4 PAK PKG.	99¢
FOOD KING	Solid Oleo	3 1 LB. PKG.	\$1

BETTY CROCKER	Pound Cake Mix	16 OZ. BOX	69¢
TERI	Paper Towels	JUMBO ROLL	59¢

CHEF'S DELIGHT

Cheese Spread **\$1.59**

BEST MAID	Pickles	32 OZ.	69¢
STOVE TOP	Stuffing Mix	6 OZ. BOX	59¢

LYNDEN FARMS SHOESTRING

POTATOES **49¢**

FRISKIE	Cat Food	15 OZ. CAN	19¢
DEL MONTE (GLASS)	Sliced Beets	303 JAR	39¢

MINUTE MAID

ORANGE JUICE **59¢**

TREE TOP

APPLE CIDER **\$1.09**



**TOMATOES**

CALIFORNIA VINE RIPPENED **39¢**

WASHINGTON	D'Anjou Pears	Lb.	29¢
RED DELICIOUS	X-Fancy Apples	3 LB. BAG	79¢

CALIFORNIA PURPLE TOP	Turnips	Lb.	25¢
NEW CROP	Portales Yams	Lb.	29¢

DR PEPPER **\$1.29**

COCA COLA **\$1.29**

WOLF CHILI **79¢**

GREEN BEANS **\$1.00**

TOMATO CATSUP **69¢**

TIDE DETERGENT **\$1.19**

PALMOLIVE **69¢**

Tendercrust Bread	1 1/2 LB LOAF	37¢
-------------------	---------------	-----

Milk	SHURFINE GRADE "A"	1/2 GALLON	78¢	GALLON	\$1.55
------	--------------------	------------	-----	--------	--------

PRICES EFFECTIVE OCTOBER 18-24 1976

We Reserve The Right To Limit.



**Pay-n-Save**  
QUALITY AND SERVICE

**Health And Beauty Aid Specials**

COUGH DROPS **19¢**

SINUS RELIEF **\$1.09**

HAND LOTION **\$1.39**

BATH POWDER **\$1.09**

WE GIVE GUNN BROS STAMPS

DOUBLE STAMPS TUESDAY & WEDNESDAY WITH \$2.50 OR MORE PURCHASE (EXCLUDING CIGARETTES) WE RESERVE THE RIGHT TO LIMIT QUANTITIES WE REDEEM AND GIVE STAMPS ON FOOD STAMPS WE SELL AFFILIATED MONEY ORDERS. PAYROLL CHECKS CASHED

## New church building dedication set 24th

The new Highway 54 & Duggan Ave. Church of Christ will be dedicated in a 2:30 p.m. service next Sunday. Formerly this was the Ninth Street Church of

Christ before the new brick veneer building was constructed in its present, better located site.

The dedication will highlight a three-day gospel meeting Friday through Sunday, Oct. 22-24, with Don Lacy of Canyon Hills Church of Christ doing the preaching.

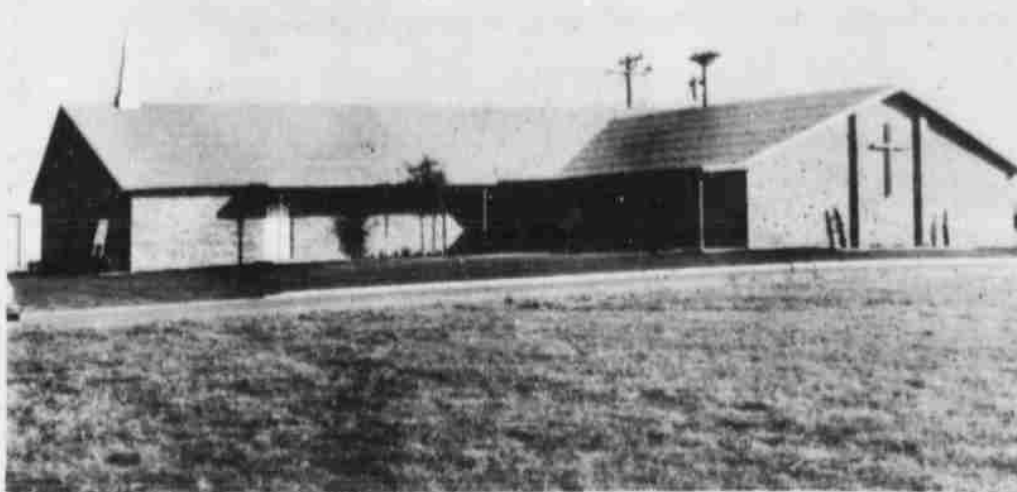
Friday and Saturday evening services begin at 7:30. The Sunday morning worship begins at 10:30. There

will be a basket lunch at 1 p.m. before the dedication at 2:30. The meeting will close with the 6 p.m. Sunday service.

The public is invited to attend all of the services.

At the Sunday afternoon dedication, everyone is invited to tour the kitchen, fellowship hall and auditorium. Refreshments will be served.

The 6,000 square-foot building has all new furniture, and the large parking lot is completely paved. Appropriate landscaping has been added to complete the finishing touches prior to the formal dedication.



HWY. 54 AND DUGGAN AVE. CHURCH OF CHRIST

## BULA NEWS

Monday visiting with the John Blackmans. Mr. and Mrs. Jones lived in the Bula community several years before moving to Fort Worth. He managed a lumber yard at Bula several years. Saturday Mrs. Dudley Cash and boys Darryl of Portales and Dennis of Las Cruces came over for lunch

and a visit.

CECIL JONES returned home Monday from the Littlefield Hospital, where he had spent the past three weeks.

MRS. V. C. WEAVER continues to be a patient in the Amherst Hospital, but is reported to be feeling much better.

## Circus to be here Wednesday

Very few circuses appear in tents now. All of the acts have a strong Mexican flavor. The equestrians for instance are in full charro costume. Background for all the acts is Mexican. Even the clowns on the ground and high wire use traditional routines popular south of the border.

Advance tickets will be available at Pioneer Grocery Monday, Tuesday, and Wednesday. Twenty percent of the advance ticket sales go to the meals on wheels program, and 10 percent of the gate goes to the program.

A circus is coming to Littlefield Wednesday for two performances at the Fair Grounds at 4 p.m. and 9 p.m., and part of the proceeds will be used to benefit the Meals on Wheels program sponsored by the Dunbar Club in Littlefield.

The circus will be complete with high wire dare devils, equestrians, clowns, and a special attraction called General Urko, allegedly from "the Planet of the Apes."

The Oscanian Brothers

three-ring circus is actually owned by three Ramos brothers from Mexico City. The big top will be near the free camping ground on Hall Ave.

**MARTIN'S TRACTOR SERVICE**  
1200 Delano 385-4039 or 385-4262

- \*Major Overhaul
- \*Hydraulics
- \*Painting Tractors
- \*We Make Service Calls To Your Farm
- \*17 Years Of Tractor Experience
- \*Open Monday Thru Saturday
- \*Air Conditioning
- \*General Repair

**66 CAR WASH**  
1120 East 9th Littlefield

**8-6 MONDAY-FRIDAY**  
**8-12 SATURDAY**

- \$2.50 exterior wash w/free use of vacuum
- \$5.00 full service wash (Mon., - Thurs.)
- \$1.00 spray wax
- \$1.50 wash mud from underneath
- \$1.50 wash engine

### AARP to meet Thursday night

The Lamb County Chapter of the American Association of Retired Persons will meet Thursday night, Oct. 21, at 7 p.m. in the Willy Room of the Lamb County Electric Coop building.

The Sheppard Brothers of Lubbock will present a musical program.

Everyone who is 55 years old or older is invited to attend and bring a covered dish for the meal.

# 1+ DIALING IS HERE

Now that Littlefield has 1 + Dialing, it is important that you know the many advantages of dialing your own long distance calls.

Since an operator is not required to handle your station-to-station calls when you dial it yourself, we pass this savings on to you by charging a lower dial-it-yourself rate. Station-to-station, collect, credit card and calls charged to a third number—which are placed with the operator—cost more than station-to-station calls you dial yourself. Person-to-person calls are even more costly than other operator handled calls.

This savings—along with the faster service and the convenience of dialing your own call—is not all. For example, to get an unknown number in any distant city, you can dial directory assistance yourself at no charge. Just dial 1 + the area code (if different from yours) + 555-1212. This Universal Directory Assistance number can be dialed from anywhere in the United States.

So remember to use this convenient new long distance service.

**GTE**  
**GENERAL TELEPHONE**

## PEP NEWS

THE PEP Senior will have their Senior nival on Oct. 30th in High Auditorium. King Queen were chosen each classroom and those representing classroom are: first second, Kyle Dickson Cynthia Green; third fourth, Michael Martin Deidra Dicker; fifth sixth, Marty Demel Darcie Hilton; seventh Thomas Glumpler and rie Decker; eighth, Hilton and Elizabeth mel; ninth, Lawrence and Lisa Burke; tenth, othy Demel and Glumpler; eleventh, Albus and Roxanna De The Senior Carnival have carnival activities throughout the evening presenting Grade School readings of 24:28 on 7th. All farmers were hit by the early

In School Colors **SNUG BUG** Sports World 429 Phelps 385-3808

**YOU'VE TRIED THE REST, NOW TRY THE BEST!**

**JIM'S PLUMBING CO.**

**PLUMBING, HEATING AND AIR CONDITIONING**

**24 HOUR SERVICE**

**LICENSED & BONDED**

**385-3808 385-3700**

**CHECK OUR LOW PRICES ON**

**20% Off On All Lamps In Store**

**A NEW SHIPMENT OF TOWELS BY FIELDCREST**

**ROLL TOP DESK**  
Reg. \$112.00  
Only **95.99**

**FREE GIFT WRAPPING!**

**Western Mattress**

Phone 386-3010  
318 Phelps  
Littlefield, Texas



FAVER, son of Mr. and Mrs. Dean Faver, is shown in a field of corn. Kerry and his family live about 15 miles west of Littlefield. He has been engaged in agriculture for two years, has been in FFA two years, and is a member at Littlefield High School. (Personal Photo)

**BULA NEWS**

J. R. TEAFF was the speaker at the lesson given when the WMU held their weekly study. The lesson was taken from the Service magazine with the topic "Current Mission Groups". Mrs. Teaff also read scripture reading from Isaiah 17:9-14. Mrs. Price read the call to prayer in the absence of Richardson, prayer man, and Mrs. Wilkoff. Mrs. Teaff offered the opening prayer for the service. Mrs. Pierce gave the benediction. Attending were Mrs. P. R. Pierce, Williams, J. R. Teaff, Battles and Fred

TOM BOGARD, Mrs. F. L. Simmons and in Littlefield Tuesday also visited with Mrs. Gaston. A. P. FRED continues to be confined in the Lubbock Methodist Hospital. Fred has spent so much time in the hospital this year. GUESTS TUESDAY afternoon with the J. R. Teaffs were his cousin and wife, Mr. and Mrs. Burnel Teaff from Merkel. Mr. and Mrs. Lary Teaff and Mr. Deverl Teaff spent Wednesday night with them, they were also from Merkel. MR. AND MRS. Hulon Clawson of Vista, Calif. arrived Monday for a visit with his sister and husband, the J. D. Rowlands, and his brother, Mr. and Mrs. Ivan Clawson and other relatives in the community.

# INFLATION BLASTED

Home Of Quality - Plus \$ Savings



- |                    |  |               |                          |                  |               |
|--------------------|--|---------------|--------------------------|------------------|---------------|
| <b>FRYERS</b>      | USDA INSPECTED, LB.                          | <b>39¢</b>    | <b>CLUB STEAK</b>        | USDA CHOICE, LB. | <b>\$1.39</b> |
| <b>HAMS</b>        | BONELESS, ARMOUR STAR, SPEEDY CUT, LB.       | <b>\$1.69</b> |                          |                  |               |
| <b>PICNICS</b>     | GOLD COIN, CUDAHY, 3-LB. CAN                 | <b>\$3.99</b> | <b>ARM ROAST</b>         | USDA CHOICE, LB. | <b>79¢</b>    |
| <b>FRANKS</b>      | RANCH BRAND, 12 OZ. PKG.                     | <b>59¢</b>    | <b>ENGLISH CUT ROAST</b> | USDA CHOICE, LB. | <b>79¢</b>    |
| <b>BOLOGNA</b>     | RANCH BRAND, 12 OZ. PKG.                     | <b>59¢</b>    | <b>RUMP ROAST</b>        | USDA CHOICE, LB. | <b>98¢</b>    |
| <b>BACON</b>       | WRIGHTS, SMOKED CENTER CUT, SLICED SLAB, LB. | <b>\$1.29</b> | <b>SIRLOIN STEAK</b>     | USDA CHOICE, LB. | <b>98¢</b>    |
| <b>CHEESE</b>      | KRAFT, AMERICAN SINGLES, 12 OZ. PKG.         | <b>99¢</b>    |                          |                  |               |
| <b>GROUND BEEF</b> | USDA CHOICE, FRESH DAILY, LB.                | <b>59¢</b>    |                          |                  |               |
| <b>CHUCK ROAST</b> | USDA CHOICE, BLADE CUT, LB.                  | <b>59¢</b>    |                          |                  |               |
| <b>CHUCK ROAST</b> | USDA CHOICE, CENTER CUT, LB.                 | <b>69¢</b>    |                          |                  |               |

IF YOU'RE NOT SATISFIED WITH YOUR BEEF, TRY OURS. WE GUARANTEE SATISFACTION. WE SELL ONLY USDA CHOICE BEEF. NO CHEMICALS ADDED TO OUR BEEF. IN STOCK DAILY: RIB EYES, BONELESS CLUBS, CUT-UP FRYERS & CHICKEN PARTS. WE INVITE YOUR ORDER FOR SPECIAL CUTS. WE SELL THE BEST FOR LESS.  
Freezer Beef Always Available.  
Cut & Wrapped To Your Specifications.

- |                     |   |               |                     |  |               |
|---------------------|---|---------------|---------------------|--|---------------|
| <b>BREAD</b>        | SOFT & LITE, 1 1/2 LB. LOAF                           | <b>2/77¢</b>  | <b>FLOUR</b>        | GLADIOLA, 5 LB. BAG                      | <b>66¢</b>    |
| <b>MILK</b>         | PLAINS, VALLEY FRESH, 1/2 GAL.                        | <b>79¢</b>    | <b>MIRACLE WHIP</b> | KRAFT, QUART                             | <b>99¢</b>    |
| <b>MILK</b>         | PLAINS, VALLEY FRESH, GALLON                          | <b>\$1.57</b> | <b>CHILI</b>        | RANCH STYLE, 19 OZ. CAN                  | <b>79¢</b>    |
| <b>SHORTENING</b>   | SNOW DRIFT, PURE VEG.                                 | <b>\$1.29</b> | <b>COFFEE</b>       | M.J.B., 1 LB. CAN                        | <b>\$1.69</b> |
| <b>BISCUITS</b>     | WHITE SWAN, SWEET MILK OR BUTTERMILK, 8 OZ.           | <b>8/\$1</b>  | <b>PRESERVES</b>    | STRAWBERRY, SAVORY, 18 OZ.               | <b>79¢</b>    |
| <b>BUBBLE UP</b>    | 6-BOTTLE CRTN., 32 OZ. NEW FROM PEPSI COLA            | <b>99¢</b>    | <b>CRACKERS</b>     | WHITE SWAN, 1 LB. BOX                    | <b>44¢</b>    |
| <b>COCA COLA</b>    | 6-BOTTLE CRTN., 32 OZ. WITH PURCHASE OF \$10. OR MORE | <b>\$1.29</b> | <b>BANANAS</b>      | DOLE GOLDEN RIPE, LB.                    | <b>19¢</b>    |
| <b>DR. PEPPER</b>   |   |               | <b>GRAPES</b>       | TOKAY, LB.                               | <b>39¢</b>    |
| <b>POTATO CHIPS</b> | PRINGLES, TWIN PAC, 9 OZ.                             | <b>69¢</b>    | <b>AVOCADOS</b>     | FUERTE                                   | <b>3/51</b>   |
| <b>SUGAR</b>        | WHITE SWAN, PURE CANE, 5 LB. BAG                      | <b>97¢</b>    | <b>LETTUCE</b>      | CALIFORNIA, ICE BURG, LB.                | <b>39¢</b>    |
| <b>ORANGE DRINK</b> | RICH - N - READY, GALLON                              | <b>88¢</b>    | <b>POTATOES</b>     | COLORADO, RUSSET, ALL PURPOSE 10-LB. BAG | <b>69¢</b>    |

**Produce SAVINGS PRICED!**

**24 Karat Kar Loans**

Buy yourself a gold plated limousine or basic transportation. Whatever car you choose, we can take care of the gold. Our 24 Karat Kar loan offers you easy, low-cost financing. Each loan is personally arranged to arrive at the most convenient terms for you. If you've got your heart set on new wheels, the bank with the heart of gold is all set to roll 'em!

**THE BANK WITH The Heart of Gold**

**CITIZENS STATE BANK OF ANTON**  
Close to you

MIX OR MATCH  
**CORN**  
Our Darling, C/S Or W/K, 17 Oz.  
**RANCH STYLE BEANS**  
15 Oz.  
**EARLY PEAS**  
Joan Of Arc, 17 Oz.

**Laundry Detergent**  
SUPER SUDS, GIANT SIZE  
**77¢**

**Laundry Detergent**  
DYNAMO, HEAVY DUTY FAMILY SIZE, 128 OZ.  
**\$3.99**  
REG. \$4.57

**BATHROOM TISSUE**  
2-PLY, 4-ROLL PKG.  
**69¢**

**TOWELS**  
BRAUNY, LARGE ROLL  
**57¢**

Specials Good Sunday, Oct. 17, Thru Saturday, Oct. 23. We Give Gunn Brothers Stamps - Double Tuesday & Wednesday, Excluding Cigarettes. We Sell Travelers Express Money Orders & Redeem USDA Food Stamps. We Reserve The Right To Limit Quantities. Open 7 Days A Week. 8 A.M. THRU 9 P.M.

**We put Holes in High Prices!**



Littlefield's Full Service Super Market  
100% Home Owned & Home Operated

# LITTLEFIELD SUPER MARKET

## Alpha Lambda Zeta forms new chapter

The Alpha Lambda Pledge Ritual for the newly-formed Nu Phi Mu chapter, hosted a formal tea and Sunday, Oct. 10, in Tri-

County Savings and Loan. The new chapter makes the fourth Beta Sigma Phi Chapter in Littlefield, but is the first for young women between the ages of 17 and 22.

Nu Phi Mu is the first degree of Beta Sigma Phi, and after three years, members can progress to the next degree, Ritual of Jewels. Alpha Lambda Zeta and Tau Chi are Ritual of Jewels chapters. This degree requires four years of active membership before a member can progress to the Exemplar Degree.

Xi Nu Nu is the highest degree in Littlefield at this time.

Although, there are two other degrees, members of Beta Sigma Phi can work toward—they are Preceptor and Laureate.

Beta Sigma Phi has 250,000 active members in 10,500 chapters in 24 countries.

The keynote of Beta Sigma Phi is friendship and self-development.

Each chapter adapts plans for social, service and cultural activities to fit the interests of its own members.

The Pledge Ritual for Nu Phi Mu of Beta Sigma Phi was given to: Nancy Allen, Gina Beth Bartley, Lisa

Batson, Loretta Benton, Christy Donathan, Beth Durham, Cecilia McCamish, Lisa Matthews, Janice Muller, Terri Peel, and Cindy Ratliff.

## AMHERST NEWS

MR. AND MRS. W. C. Lightsey visited their daughter and family, Major and Mrs. Benton E. Morris, Mike and Billy at Williams AFB, Phoenix, several days last week.

MR. AND MRS. Robert L. Campbell of Hurst, are parents of a baby boy, Christopher Scott. He was adopted at age 14 months. Mrs. R. H. Campbell is the great-grandmother.

DONNA GILLILAND of Lubbock visited her parents, Mr. and Mrs. Troy Gilliland and sister and husband, Mr. and Mrs. Larry Edwards last weekend.

MR. AND MRS. Sam Harmon were at their place in Ruidoso several days. Mr. and Mrs. George Harmon and Mrs. Trudy White were their guests.

MR. AND MRS. H. C. Slate of Luling returned home Wednesday after a visit with his mother at Amherst Manor here and Littlefield with other relatives.

MR. AND MRS. B. L. Dent of Salem, Ore., visited her father, Willis White and sister and husband, Mr. and Mrs. Randall Crawford (Chick) while they were in Texas recently.



NU PHI MU Chapter Pledges formed a new sorority and received their Pledge Ritual Sunday afternoon at Tri County Savings and Loan. On the front row, left to right, are Beth Durham, Nancy Allen, Lisa Batson, Terri Peel, Janice Muller and Loretta Benton. Back row, left to right, are Christy Donathan, Cindy Ratliff, Gina Beth Bartley, Cecilia McCamish and Lisa Matthews. [Staff Photo]

**The Carrier All Electric piggy back Heat Pump Makes It Possible!**

385 385-5020  
Campbell's Plumbing Company  
1022 East 9th

In School Colors **SNUG BUG** Sports World  
429 Phelps 385-3243

## LITTLEFIELD NEWS

By JUDY BOLTON 385-4542

VISITING in the home of Mrs. Jimmy Minor last week were her son and family, Mr. and Mrs. Ronnie Minor of Ute Park, N.M.

MR. AND MRS. Ray Cannon are the proud parents of a baby girl born Thursday, Oct. 7. She has been named Jennifer, and has two brothers, Lance and Trent.

MR. AND MRS. Ellis Wilson of California visited last week in the home of Mr. and Mrs. Robert Wilson, Mr. and Mrs. John Clayton and Mr. and Mrs. W. H. Berry. They also visited his mother, Mrs. Katherine Wilson. Then they traveled to Ft. Worth and visited his brother, Mr. and Mrs. Howell Wilson and also his son, Mr. and Mrs. Leon Wilson.

MR. AND MRS. W. H. Robison have returned from a four-week vacation. They traveled to Colorado where they visited her brother, Mr. and Mrs. Doyle McCain. Then they toured Utah, Idaho, and Oregon, where they were guests of Mr. and Mrs. Eli Charbonneau. They traveled to Washington and went deep sea fishing. They saw the Ofelia, the Bulgarian craft, that was recently seized off the coast of Washington. From there they went to California, Arizona and New Mexico.

VISITING this week with Mrs. Katherine Wilson were her son, Mr. and Mrs. Howell Wilson of Ft. Worth. They also visited in the homes of Mr. and Mrs. Robert Wilson, Mr. and Mrs. John Clayton and Mr. and Mrs. W. H. Berry.

VISITING in the home of Mr. and Mrs. Levi Coble were Mr. and Mrs. Watsel Givens of Killen.

MRS. JEWELL Willett has been a patient in Littlefield Hospital.

W. B. GAGE has been a patient in Medical Arts Hospital.

MR. AND MRS. David Bawcom of Austin are the proud parents of a baby girl, born Monday, Oct. 11. She weighed 8 lbs., 14 ozs. and is named Debra Glynn. Grandparents are Mr. and Mrs. Deb Bawcom and Mr. and Mrs. Lloyd Spencer.

THE YOUTH of the First Baptist Church went to the movies in Lubbock Saturday night.

W.M.U. Circles of First Baptist Church meet Wednesday at 9:30 a.m. as follows: Bess Coen Circle in chapel; Patsy Carter Circle in home of Marilyn Bivins; and Elouise Lovelace Circle in home of Naomi Bridwell.

LYNN REAMS has been a patient in Methodist Hospital.

THE U.M.W. Circle #1 of the First Methodist Church

will meet Monday night in the church parlor.

MR. AND MRS. Dennis Wolfe are the proud parents of a baby girl, Julie Marie, born Sept. 22. Maternal grandparents are Mr. and Mrs. John Richey.

THE FIRST Presbyterian Church hosted a farewell dinner in honor of Mrs. Ann Rutledge Thursday night. Mrs. Rutledge moved to Littlefield in 1913 and has been an active member of the Presbyterian Church for 53 years. She is moving to Rolla, Mo. where her son, Warren H. Rutledge, pastors the First Presbyterian Church there.

LYNN REAMS entered Methodist Hospital Wednesday for tests and surgery.

MR. AND MRS. Carl Kasten spent Thursday evening and overnight with Rev. and Mrs. Al McElharen in Snyder. Friday morning the Kastens drove to San Antonio for the Gideon Convention headquartered

## Whitharral Homecoming scheduled next Friday

WHITHARRAL—Homecoming will be held Friday, Oct. 22nd. Activities will begin Thursday night with a huge bonfire.

Friday afternoon at 2, there will be a parade.

From 5 until 7 p.m. the Whitharral Lions Club will serve a chili supper in the lunchroom prior to the football game between Whit-

harral and Grady.

At half time, former homecoming queens and football heroes will be recognized and a new homecoming queen and football hero named.

This year's candidates are Rhonda Bryant, cheri Hisaw and Susan Corkery. Football hero candidates are Walter Kristinek, Bobby Avery and Marcus Salinas.

## AMHERST NEWS

ROGER HUMPHREYS attends classes at South Plains College, Levelland mornings and works at his farming here afternoons.

MRS. FAY GOREE and her friend, Mrs. Frances Brown of Plainview visited Mrs. Goree's niece, Mrs. Artie Jewel Humphreys, Wednesday.

RECENT GUESTS of Mr. and Mrs. A. A. Royal were his twin sisters, Faye Thompson and Maye Easter of Elk City, Okla. Other

guests were Mr. and Mrs. Wilford Polk and granddaughter, Varina Ann Walker of Shreveport, La.

MR. AND MRS. "Chic" Crawford were in Amarillo for the weekend with their daughter, Charlotte. Plans are underway to move Charlotte to the West Texas Rehabilitation in Abilene.

MR. AND MRS. Delvin Batson were in Ruidoso for the weekend.

## Hammons scheduled open house

Hammons Funeral Home of Amherst will be having an open house there from 1 to 5 p.m. at the new facility at 1001 Street.

Pryor Hammons of Littlefield is owner of the home, and has been in Littlefield and the Texas area since 1963.

The Amherst home was formerly known as Payne Funeral Home and was sold to Pryor shortly after Lee's death.

Tom Sawyer is the son and has been with Hammons in Littlefield 13 years.

Other employees of Amherst facility are Sharp, who was employed by Payne Funeral Home past 14 years; James man, who was employed there 13 years; Mrs. Payne, wife of the owner, who had owned business since 1920; Mrs. Claire Sawyer.

"Hammons Funeral Home is pleased and excited at being a part of Amherst community states Sawyer. "All personnel extend an invitation to all area citizens come by this afternoon tour our all-new facility he concluded.

## Amherst

WHEN the Crawfords were in last week, they saw Co. Baird who grew up in Amherst Community and well remembered here and Porter Neault, excellent football player for the high school football team and "connected with passes not to be gotten. Connie is a baller in Abilene and has forgotten Amherst and people here.

CLYDE BROWN, pharmacist at South Plains Hospital, has been chosen to be on the state planning committee of the Texas Society of Hospital Pharmacists. He will represent hospitals with less than 100 beds. Meetings of the committee will be held in Methodist Hospital, Lubbock. Brownlow graduated with honors from the College of Pharmacy, January 1965 and came to hospital here in August 1967.

## PIZZA INN

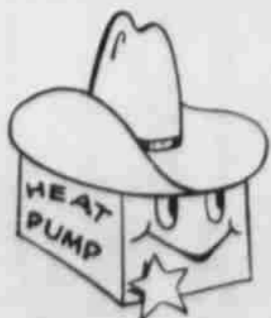
OPEN FRIDAY NIGHT AFTER THE WILDCAT GAME COME OUT AND MEET YOUR FRIENDS.

1908 Hall Ave. 385-5242 Sedell Black, Owner

# LOST HEAT BITES THE DUST



When you buck Lost Heat... you save money on heating bills. The best way is with an electric heat pump. The heat pump is an electric heating system that squeezes warmth from outside air even at very cold temperatures. The electric heat pump is the most efficient way to have clean, modern heating and also save energy. And when you save energy, you save money. Call the Electric Company for complete information on the heat pump.



ELECTRICITY-IT DOES SO MUCH GOOD

The **ELECTRIC** Company

FOR SO MANY PEOPLE

"Lifestyles for women today have become versatile, changeable, chooseable. And often beset with financial cares. Let's talk realities. Professionally."



Hubert Henry  
514 E. 12th.  
385-6260

Southwestern Life  
Helping people - prosper to prosper.

## Meinecke pecan orchards a source of constant joy

CIRCLE— Mr. and Mrs. Robert Meinecke of Olton have an orchard of 1,200 producing pecan trees northeast of Olton.

They bought the trees in 1956 from Dean Staham, Las Cruces, N.M. and do not expect them to die because of age as pecan trees planted by George Washington are still producing.

Meinecke planted three varieties of trees, Western Shley, San Saba and Burkett, the most popular at that time but at present several other varieties are approved.

It is best to plant pecan trees from January to March. Fertilizer should be applied not at the roots, but at the line around which rain drips off the branches.

At one convention of pecan growers Meinecke learned the soil of Lamb County is the poorest for pecan production. That was the year Meineckes won first place in the state for their Western Shley pecan from Lamb County's "poorest soil".

For the deficiency of the soil the trees are sprayed several times annually with zinc chelate which produces lush foliage. This is beneficial as it takes one hundred leaves to produce one pecan.

Mrs. Meinecke states that there is nearly always a pecan crop which is now harvested by machinery and sold by truck load on a wholesale basis.

About 20,000 pounds of pecans are harvested annually in spite of wind, hail, ice storms and "finger blight," from people who take the nuts from the trees without permission.

Mrs. Meinecke said, "The orchard is a source of constant joy to us and we've never regretted having it. The trees may have wished they didn't have us, but fortunately, plants don't talk to people."

## Income tax workshop scheduled at WTSU

Representatives from the Internal Revenue Service will hold an "Income Tax Preparers' Workshop" at West Texas State University Nov. 15-16.

Basic and advanced tax procedures, and corporate tax problems will be examined in three concurrent sessions in the WTSU Activities Center from 8 a.m. to 5 p.m. each day.

The first section will be an introduction to tax preparation, and will involve a run-through of the Form 1040. Filing status and requirements, exemption, gross income, tax computations, tax rate schedules and tables will be discussed.

The second section will look at the more complex aspects of the tax structure. This section will cover basis and depreciation, IRS Sec-

tions 1245 and 1250, investment credit, travel and entertainment, installment sales and pensions and annuities.

The third is a section on corporate tax problems, and will follow the basic outline of the first section.

Registration for the workshop will be \$25, which includes study materials.

Interested individuals should send their names, addresses, phone number, registration fee and first and second choices for sections to the Accounting Department, Box 187, West Texas State University, Canyon, TX 79016.

Applications will be accepted in the order in which they are received. Registrants will be notified of acceptance and the section to which they are assigned.

## The Promises of God

By CARL F. KASTEN

"A new heart also will I give you, and a new spirit will I put within you: and I will take away the stony heart out of your flesh, and I will give you a heart of flesh." Ezekiel 36:26

I was interested in a report given by Don Oakley in his newspaper column "Viewpoint," and I quote as follows: "NEW STUDY BLAMES CRIMINALS FOR CRIME." What has been called a major new study of the causes of crime amounts almost to heresy to today's crazy standards. "The Criminal Personality," by psychiatrist Samuel Yochelson and clinical psychologist Stanton E. Samenow, actually blames crime on criminals instead of society.

The authors in fact state flatly that the belief that mental illness, a poor home environment and other factors outside the control of the individual are responsible for criminal behaviour are "simply excuses". What is needed to combat crime, they say, is not so much society's improvement or conventional therapy, but an offender's "conversion" to an entirely new lifestyle, along with a rigorous moral education, end of quote.

This is nothing new to those who have read the Bible, for one of the basic doctrines of the Christian faith is "the total depravity of man." In Jer. 17:9 we read, "The heart is deceitful above all things, and

desperately wicked; who can know it."

No amount of reformation, turning over a new leaf, good resolutions, religious exercises, improved environment, or better education can change the heart.

Jesus said, "Ye must be born again," John 3:7. The natural man cannot do anything but evil because of his nature. "A good man out of the good treasure of the heart bringeth forth good things; and an evil man out of the evil treasure bringeth forth evil things." Matt. 12:35

Thought: The power of the Lord's promise is enough to break through the grip of sin into the newness of life in Christ Jesus.

### PEP NEWS

KING AND QUEEN from 7th and 8th representing Junior High and King and Queen from 9th to 11th representing High School. Class rooms and classes will sell chances on items to give away the night of the carnival. You need not be present to win, however the public is invited to attend. The crowning of king and queen will be held around 9 p.m.

CHRIS KITTEN, son of Mr. and Mrs. Roy Kitten of Lubbock has spent the past several days in the home of his grandmother, Mrs. Hilda France Kuhler, while his little brother is in the hospital at Lubbock.



SHERRY CAMPBELL, right, manager of the Littlefield Seed and Delinting, receiving a certificate for completing a financial management seminar for agribusiness firms from Robert Meinecke, economist with the Texas Agricultural Extension Service. The seminar was held at Texas A&M University, was attended by agribusiness representatives from five states who discussed accounting rules and practices, financial analysis, and business organization. The seminar was put on by the Texas Agricultural Extension Service with the support of the Texas Experiment Station and the Littlefield Charitable Trust. [TAES Photo]

"Halloween Costume Review" Entry Form

Name \_\_\_\_\_

Birthdate \_\_\_\_\_ Age \_\_\_\_\_

Address \_\_\_\_\_ Phone \_\_\_\_\_

Parents Name \_\_\_\_\_

Mail To: Sherry Campbell  
Box 507  
Littlefield, Texas 79339

Adv. Pd. By "We, The Women"

OPEN SUNDAY 1-6

BUY-A-WAY NOW FOR CHRISTMAS WHILE OUR FANTASTIC TOY TAB SALE LASTS!

Down Payments For Lay-A-Ways This Week

WHERE YOU ALWAYS BUY THE BEST FOR LESS

# GIBSON'S DISCOUNT CENTER

OPEN SUNDAY 1-6 MONDAY Thru SATURDAY 9-7



Get Your Auto Parts Here

America rides MONROE

MONROE-MATIC SHOCK ABSORBER

REG. \$12.00 NOW \$8.95

# S&J AUTO PARTS

201 E 9th 385-5194

## TELEVISION OCTOBER 17-23, 1976

CH. 11 KCBD	CH. 13 KLBK	CH. 28 KMCC
<b>6:30</b> * News Weather Sports <b>6:45</b> * Sacred Heart <b>7:00</b> * Dusty's Treehouse <b>7:30</b> * Rev. Jimmy Swaggart <b>8:00</b> * Day of Discovery <b>8:30</b> * James Robinson Presents <b>9:00</b> * Rex Humbard <b>10:00</b> * Oral Roberts <b>10:30</b> * Living Your Religion <b>11:00</b> * A Better Life <b>11:30</b> * Garner Ted Armstrong <b>12:00</b> * Meet the Press <b>1:30</b> * Laredo <b>2:30</b> * Grandstand <b>3:00</b> * NFL Football <b>Houston at San Diego</b> <b>5:00</b> * The Campaign & the Candidates <b>5:30</b> * Weekend Report <b>6:00</b> * World of Disney <b>7:00</b> * World Series, Game 2 <b>10:00</b> * Weekend Wrap-Up <b>10:30</b> * Steve Sloan Football Show <b>11:00</b> * "Deadlier Than the Male" <b>12:45</b> * News Weather Sports	<b>SUNDAY</b> <b>CH. 13 KLBK</b> <b>7:00</b> * This Is the Life <b>7:30</b> * Uncle Waldo <b>8:00</b> * Hudson Brothers <b>8:30</b> * Amazing Grace Bible Class <b>9:00</b> * Old Time Gospel Hour <b>10:00</b> * A Place To Talk <b>10:30</b> * Face the Nation <b>11:00</b> * Tom Landry Show <b>11:30</b> * NFL Today <b>12:00</b> * Dallas vs. Giants <b>1:30</b> * The Avengers <b>3:00</b> * Festival Of Lively Arts <b>5:00</b> * Last Of The Wild <b>5:30</b> * CBS Evening News <b>6:00</b> * 60 Minutes <b>7:00</b> * Sonny & Cher <b>8:00</b> * Kojak <b>9:00</b> * Delvecchio <b>10:00</b> * Channel 13 News <b>10:30</b> * CBS Sunday Night News <b>10:40</b> * All In the Family <b>11:15</b> * "Georgy Girl"	<b>7:30</b> * Cartoon Carnival <b>8:00</b> * Jimmy Swaggart <b>8:30</b> * Life is Worth the Living <b>9:00</b> * Home Show <b>9:30</b> * New Adventures of Gilligan <b>10:00</b> * Oddball Couple <b>10:30</b> * Animals, Animals, Animals <b>11:00</b> * First Baptist Church <b>12:00</b> * Let the Bible Speak <b>12:30</b> * Issues & Answers <b>1:30</b> * Si Se Puede <b>2:30</b> * Hymns of Praise <b>3:00</b> * Ken Calloway Outdoors <b>3:30</b> * Art's Sports World <b>4:00</b> * Championship Wrestling <b>5:00</b> * Rays of Hope <b>5:30</b> * Darrell Royal Show <b>6:00</b> * Cos <b>7:00</b> * Six Million Dollar Man <b>8:00</b> * ABC Sunday Night Movie <b>10:00</b> * '28 Sunday Great Movie <b>12:45</b> * ABC Weekend News
<b>6:45</b> * Today in Texas & New Mexico <b>7:30</b> * Today Show <b>7:55</b> * Weather <b>8:00</b> * Today Show <b>8:25</b> * News & Weather <b>8:30</b> * Today Show <b>9:00</b> * People Place <b>9:30</b> * Hollywood Squares <b>10:00</b> * Wheel Of Fortune <b>10:30</b> * Stumpers <b>11:00</b> * 50 Grand Slam <b>11:30</b> * The Gong Show <b>11:55</b> * NBC News <b>12:00</b> * Somerset <b>12:30</b> * Days Of Our Lives <b>1:30</b> * The Doctors <b>2:00</b> * Another World <b>3:00</b> * Marcus Welby, M.D. <b>4:00</b> * Luke Was There <b>5:00</b> * Hazel <b>5:30</b> * NBC News <b>6:00</b> * Evening Report	<b>MORNING &amp; AFTERNOON-MONDAY through FRIDAY</b> <b>CH. 13 KLBK</b> <b>6:30</b> * Farm & Ranch News <b>7:00</b> * CBS Morning News <b>8:00</b> * Captain Kangaroo <b>9:00</b> * Sunshine Solly <b>9:30</b> * Not For Women Only <b>10:00</b> * Sunbelt <b>10:30</b> * Love Of Life <b>11:00</b> * The Young & Restless <b>11:30</b> * Search For Tomorrow <b>12:00</b> * Channel 13 News <b>12:30</b> * As the World Turns <b>1:30</b> * The Guiding Light <b>2:00</b> * All In the Family <b>2:30</b> * Match Game <b>3:00</b> * Tatletales <b>3:30</b> * Price Is Right <b>4:30</b> * Bonanza <b>5:30</b> * CBS Evening News <b>6:00</b> * Channel 13 News <b>6:30</b> * To Tell The Truth	<b>7:00</b> * Good Morning America <b>8:30</b> * The PTL Club <b>10:30</b> * Happy Days <b>11:00</b> * Hot Seat <b>11:30</b> * All My Children <b>12:00</b> * TFO Show <b>12:30</b> * Family Feud <b>1:30</b> * \$20,000 Pyramid <b>1:30</b> * Break the Bank <b>2:00</b> * General Hospital <b>2:30</b> * One Life To Live <b>3:00</b> * Edge Of Night <b>3:30</b> * Brady Bunch <b>4:00</b> * Lucy Show <b>4:30</b> * Partridge Family <b>5:00</b> * ABC Evening News <b>5:30</b> * Andy Griffith <b>6:00</b> * KMCC News 28 <b>6:30</b> * Bewitched
<b>6:30</b> * Sanford & Son <b>7:00</b> * Little House on Prairie <b>8:00</b> * Monday Night on the Movies <b>10:00</b> * Weekday Wrap-Up <b>10:30</b> * Tonight Show <b>12:00</b> * Tomorrow <b>1:00</b> * News Weather Sports	<b>MONDAY EVENING</b> <b>CH. 13 KLBK</b> <b>7:00</b> * Rhoads <b>7:30</b> * Phyllis <b>8:00</b> * Maude <b>8:30</b> * All in a Fair <b>9:00</b> * Executive Suite <b>10:00</b> * Channel 13 News <b>10:30</b> * CBS Late Movie	<b>CH. 28 KMCC</b> <b>7:00</b> * Captain & Tennille <b>8:00</b> * NFL Football <b>10:45</b> * KMCC News 28 <b>11:10</b> * Paul Harvey <b>11:15</b> * Mary Hartman <b>11:45</b> * Grant Tinker Show
<b>6:30</b> * Adam 12 <b>7:00</b> * World Series, Game 3 <b>10:00</b> * Weekday Wrap-Up <b>10:30</b> * Tonight Show <b>12:00</b> * Tomorrow <b>1:00</b> * News Weather Sports	<b>TUESDAY EVENING</b> <b>CH. 13 KLBK</b> <b>7:00</b> * Tony Orlando & Dawn <b>8:00</b> * M.A.S.H. <b>9:00</b> * Switch <b>10:00</b> * Channel 13 News <b>10:30</b> * CBS Late Movie	<b>CH. 28 KMCC</b> <b>7:00</b> * Happy Days <b>7:30</b> * Laverne & Shirley <b>8:00</b> * Rich Man Poor Man <b>9:00</b> * Family <b>10:00</b> * KMCC News 28 <b>10:25</b> * Paul Harvey <b>10:35</b> * Mary Hartman <b>11:05</b> * Tuesday Movie of the Week
<b>6:30</b> * Adam 12 <b>7:00</b> * World Series, Game 4 <b>10:00</b> * Weekday Wrap-Up <b>10:30</b> * Tonight Show <b>12:00</b> * Tomorrow <b>1:00</b> * News Weather Sports	<b>WEDNESDAY EVENING</b> <b>CH. 13 KLBK</b> <b>7:00</b> * Good Times <b>7:30</b> * Ball Four <b>8:00</b> * All In the Family <b>8:30</b> * SWC Highlights <b>9:00</b> * The Blue Knight <b>10:00</b> * Channel 13 News <b>10:30</b> * CBS Late Movie	<b>CH. 28 KMCC</b> <b>7:00</b> * Bionic Woman <b>8:00</b> * Barell <b>9:00</b> * Charlie's Angels <b>10:00</b> * KMCC News 28 <b>10:25</b> * Paul Harvey <b>10:35</b> * Mary Hartman <b>11:05</b> * Rockies/Mystery of the Week
<b>6:30</b> * Adam 12 <b>8:00</b> * Gemini Man <b>8:00</b> * Captain & the Kings <b>9:00</b> * Van Dyke & Company <b>10:00</b> * Weekday Wrap-Up <b>10:30</b> * Tonight Show <b>12:00</b> * Tomorrow <b>1:00</b> * News Weather Sports	<b>THURSDAY EVENING</b> <b>CH. 13 KLBK</b> <b>7:00</b> * The Waltons <b>8:00</b> * Hawaii Five-O <b>9:00</b> * Barnaby Jones <b>10:00</b> * Channel 13 News <b>10:30</b> * CBS Late Movie	<b>CH. 28 KMCC</b> <b>7:00</b> * Welcome Back, Kotter <b>7:30</b> * Barney Miller <b>8:00</b> * Tony Randall Show <b>8:30</b> * Nancy Walker Show <b>9:00</b> * Streets of San Francisco <b>10:00</b> * KMCC News 28 <b>10:25</b> * Paul Harvey <b>10:35</b> * Mary Hartman <b>11:05</b> * Streets of San Francisco-Dan August
<b>6:30</b> * Gomer Pyle <b>7:00</b> * Ironside <b>8:00</b> * The Practice <b>8:30</b> * Presidential Debates <b>10:00</b> * Weekday Wrap-Up <b>10:30</b> * The Debate Analysis <b>10:45</b> * Tonight Show <b>12:00</b> * Midnight Special <b>1:30</b> * News Weather Sports	<b>FRIDAY EVENING</b> <b>CH. 13 KLBK</b> <b>7:00</b> * Spencer's Pilots <b>8:00</b> * CBS Friday Night Movie <b>10:00</b> * Channel 13 News <b>10:30</b> * CBS Late Movie <b>11:05</b> * Night Cap Theater	<b>CH. 28 KMCC</b> <b>7:00</b> * Danny & Marie <b>8:00</b> * Holmes & Yojo <b>8:30</b> * Presidential Debate <b>10:00</b> * KMCC News 28 <b>10:25</b> * Paul Harvey <b>10:35</b> * Mary Hartman <b>11:05</b> * "Battle for the Whitehouse" <b>12:05</b> * PTL Club
<b>6:45</b> * News Weather Sports <b>7:00</b> * Woody Woodpecker <b>7:30</b> * Pink Panther <b>9:00</b> * McDuff, the Talking Dog <b>9:30</b> * Monster Squad <b>10:00</b> * Land of the Lost <b>10:30</b> * Big John, Little John <b>11:00</b> * Kids from CAPER <b>11:30</b> * World Series, Game 6 <b>3:00</b> * Laredo <b>4:00</b> * Porter Wagoner <b>4:30</b> * Good Ole Nashville <b>5:00</b> * Wild Kingdom <b>5:30</b> * NBC News <b>6:00</b> * Lawrence Walk <b>7:00</b> * Emergency <b>8:00</b> * "Dirty Harry" <b>10:00</b> * Weekend Report <b>10:30</b> * Saturday Night <b>12:00</b> * News Weather Sports	<b>SATURDAY</b> <b>CH. 13 KLBK</b> <b>6:30</b> * The Jetsons <b>7:00</b> * Sylvester & Tweety <b>7:30</b> * Bugs Bunny Road Bumper Hour <b>8:30</b> * Tarzan <b>9:00</b> * Shazam, Isis <b>10:00</b> * Ark II <b>10:30</b> * Clue Club <b>11:00</b> * Fat Albert <b>11:30</b> * Way Out Games <b>12:00</b> * Master of the World <b>1:00</b> * The Avengers <b>2:00</b> * Bonanza <b>3:00</b> * NFL Game of the Week <b>3:30</b> * Sports Spectacular <b>5:00</b> * Music Hall America <b>8:00</b> * Hee Haw <b>7:00</b> * It's The Great Pumpkin <b>7:30</b> * Charlie Brown <b>7:30</b> * The Jeffersons <b>8:00</b> * Mary Tyler Moore <b>8:30</b> * Bob Newhart <b>9:00</b> * Carol Burnett <b>10:00</b> * Channel 13 News <b>10:30</b> * "Last Command" <b>12:40</b> * Sonny & Company	<b>CH. 28 KMCC</b> <b>7:00</b> * Tom & Jerry-Grape Ape <b>8:00</b> * Poppre Theater <b>8:30</b> * Scooby Doo-Dynomutt <b>9:30</b> * Kraft Super Show <b>11:00</b> * Jr. Almost Anything Goes <b>11:30</b> * American Bandstand <b>12:30</b> * NCAA Football <b>4:00</b> * Wide World of Sports <b>5:00</b> * Rip <b>6:00</b> * Space: 1999 <b>7:00</b> * Holmes & Yojo <b>7:30</b> * Mr. T & Tina <b>8:00</b> * Starsky & Hutch <b>8:30</b> * Blue's Clues <b>10:00</b> * Big Valley <b>11:00</b> * "Folk Force" <b>12:30</b> * ABC Weekend News

# Quasar

100% SOLID STATE • WORKS IN A DRAWER COLOR TV

23" diagonal Screen

- Popular Mediterranean styling, expressed in a massive, bold credenza design
- High performance solid state modular chassis
- Instant Picture and Sound
- Energy Saver Switch
- Pushbutton UHF Tuning

\$698.88

Model WL8024LP

## PAT'S RECORD CENTER

385-4664  
515 Phelps Ave.

<b>CH. 11 KCBD</b> <b>6:30</b> * Adam 12 <b>7:00</b> * World Series, Game 4 <b>10:00</b> * Weekday Wrap-Up <b>10:30</b> * Tonight Show <b>12:00</b> * Tomorrow <b>1:00</b> * News Weather Sports	<b>WEDNESDAY EVENING</b> <b>CH. 13 KLBK</b> <b>7:00</b> * Good Times <b>7:30</b> * Ball Four <b>8:00</b> * All In the Family <b>8:30</b> * SWC Highlights <b>9:00</b> * The Blue Knight <b>10:00</b> * Channel 13 News <b>10:30</b> * CBS Late Movie	<b>CH. 28 KMCC</b> <b>7:00</b> * Bionic Woman <b>8:00</b> * Barell <b>9:00</b> * Charlie's Angels <b>10:00</b> * KMCC News 28 <b>10:25</b> * Paul Harvey <b>10:35</b> * Mary Hartman <b>11:05</b> * Rockies/Mystery of the Week
<b>CH. 11 KCBD</b> <b>6:30</b> * Adam 12 <b>8:00</b> * Gemini Man <b>8:00</b> * Captain & the Kings <b>9:00</b> * Van Dyke & Company <b>10:00</b> * Weekday Wrap-Up <b>10:30</b> * Tonight Show <b>12:00</b> * Tomorrow <b>1:00</b> * News Weather Sports	<b>THURSDAY EVENING</b> <b>CH. 13 KLBK</b> <b>7:00</b> * The Waltons <b>8:00</b> * Hawaii Five-O <b>9:00</b> * Barnaby Jones <b>10:00</b> * Channel 13 News <b>10:30</b> * CBS Late Movie	<b>CH. 28 KMCC</b> <b>7:00</b> * Welcome Back, Kotter <b>7:30</b> * Barney Miller <b>8:00</b> * Tony Randall Show <b>8:30</b> * Nancy Walker Show <b>9:00</b> * Streets of San Francisco <b>10:00</b> * KMCC News 28 <b>10:25</b> * Paul Harvey <b>10:35</b> * Mary Hartman <b>11:05</b> * Streets of San Francisco-Dan August
<b>CH. 11 KCBD</b> <b>6:30</b> * Gomer Pyle <b>7:00</b> * Ironside <b>8:00</b> * The Practice <b>8:30</b> * Presidential Debates <b>10:00</b> * Weekday Wrap-Up <b>10:30</b> * The Debate Analysis <b>10:45</b> * Tonight Show <b>12:00</b> * Midnight Special <b>1:30</b> * News Weather Sports	<b>FRIDAY EVENING</b> <b>CH. 13 KLBK</b> <b>7:00</b> * Spencer's Pilots <b>8:00</b> * CBS Friday Night Movie <b>10:00</b> * Channel 13 News <b>10:30</b> * CBS Late Movie <b>11:05</b> * Night Cap Theater	<b>CH. 28 KMCC</b> <b>7:00</b> * Danny & Marie <b>8:00</b> * Holmes & Yojo <b>8:30</b> * Presidential Debate <b>10:00</b> * KMCC News 28 <b>10:25</b> * Paul Harvey <b>10:35</b> * Mary Hartman <b>11:05</b> * "Battle for the Whitehouse" <b>12:05</b> * PTL Club
<b>CH. 11 KCBD</b> <b>6:45</b> * News Weather Sports <b>7:00</b> * Woody Woodpecker <b>7:30</b> * Pink Panther <b>9:00</b> * McDuff, the Talking Dog <b>9:30</b> * Monster Squad <b>10:00</b> * Land of the Lost <b>10:30</b> * Big John, Little John <b>11:00</b> * Kids from CAPER <b>11:30</b> * World Series, Game 6 <b>3:00</b> * Laredo <b>4:00</b> * Porter Wagoner <b>4:30</b> * Good Ole Nashville <b>5:00</b> * Wild Kingdom <b>5:30</b> * NBC News <b>6:00</b> * Lawrence Walk <b>7:00</b> * Emergency <b>8:00</b> * "Dirty Harry" <b>10:00</b> * Weekend Report <b>10:30</b> * Saturday Night <b>12:00</b> * News Weather Sports	<b>SATURDAY</b> <b>CH. 13 KLBK</b> <b>6:30</b> * The Jetsons <b>7:00</b> * Sylvester & Tweety <b>7:30</b> * Bugs Bunny Road Bumper Hour <b>8:30</b> * Tarzan <b>9:00</b> * Shazam, Isis <b>10:00</b> * Ark II <b>10:30</b> * Clue Club <b>11:00</b> * Fat Albert <b>11:30</b> * Way Out Games <b>12:00</b> * Master of the World <b>1:00</b> * The Avengers <b>2:00</b> * Bonanza <b>3:00</b> * NFL Game of the Week <b>3:30</b> * Sports Spectacular <b>5:00</b> * Music Hall America <b>8:00</b> * Hee Haw <b>7:00</b> * It's The Great Pumpkin <b>7:30</b> * Charlie Brown <b>7:30</b> * The Jeffersons <b>8:00</b> * Mary Tyler Moore <b>8:30</b> * Bob Newhart <b>9:00</b> * Carol Burnett <b>10:00</b> * Channel 13 News <b>10:30</b> * "Last Command" <b>12:40</b> * Sonny & Company	<b>CH. 28 KMCC</b> <b>7:00</b> * Tom & Jerry-Grape Ape <b>8:00</b> * Poppre Theater <b>8:30</b> * Scooby Doo-Dynomutt <b>9:30</b> * Kraft Super Show <b>11:00</b> * Jr. Almost Anything Goes <b>11:30</b> * American Bandstand <b>12:30</b> * NCAA Football <b>4:00</b> * Wide World of Sports <b>5:00</b> * Rip <b>6:00</b> * Space: 1999 <b>7:00</b> * Holmes & Yojo <b>7:30</b> * Mr. T & Tina <b>8:00</b> * Starsky & Hutch <b>8:30</b> * Blue's Clues <b>10:00</b> * Big Valley <b>11:00</b> * "Folk Force" <b>12:30</b> * ABC Weekend News

**WE GIVE**  **WE GIVE**  **WE GIVE** 

**WE GIVE**  **WE GIVE**  **WE GIVE**  **WE GIVE**  **WE GIVE**  **WE GIVE**  **WE GIVE**  **WE GIVE**  **WE GIVE**  **WE GIVE**  **WE GIVE**  **WE GIVE**  **WE GIVE**  **WE GIVE**  **WE GIVE**  **WE GIVE**  **WE GIVE**  **WE GIVE**  **WE GIVE**  **WE GIVE**  **WE GIVE**  **WE GIVE** 

**NO SALES TO DEALERS, PLEASE**  
WE RESERVE THE RIGHT TO LIMIT QUANTITIES.

# More **BONUS** savings

## SPECIALS

Come in and save on these four 'Bonus-Specials' features!  
One filled Booklet for each item... redeemable at check-out.

'Bonus-Specials' Booklets fill 'Big Ten' S&H Green Stamps to fill. Super-easy savings on super-specials. So hurry on in and...

PRICES EFFECTIVE OCTOBER 18 THROUGH OCTOBER 24, 1976

### DOUBLE S&H GREEN STAMPS SATURDAY AND TUESDAY

#### MEAT SPECIALS

- BACON** PEYTON, 1 LB PKG **\$1.29**
- BOLOGNA** PEYTON, 12 OZ PKG **69¢**
- FRANKS** PEYTON, 12 OZ PKG **69¢**
- SAUSAGE** GLOVER'S, 2 LB BAG **\$1.79**

- SHORT RIBS** BEEF, LB **49¢**
- HOT LINKS** POUND **99¢**
- RIB STEAK** USDA CHOICE, LB **89¢**

#### DAIRY SPECIALS

- MILK** KOUNTRY FRESH, GALLON **\$1.57**
- MILK** 1/2 GALLON **79¢**
- AMERICAN CHEESE** KOUNTRY FRESH, INDIVIDUALS 16 OZ **\$1.29**
- BISCUITS** KOUNTRY FRESH, 10 COUNT **5/69¢**
- MARGARINE** PARKAY, 1 LB QUARTERS **59¢**

#### FROZEN FOOD SPECIALS

- PIE SHELLS** KOLD KOUNTRY, PACKAGE **29¢**
- DONUTS** MORTON'S, LEMON, CHOCOLATE, GLAZED, BAVARIAN CREME, PKG **59¢**
- COOL WHIP** 9 OZ CARTON **59¢**
- GREEN PEAS** KOUNTRY KIST, 20 OZ **2/\$1**

**CHOCOLATE FLAVORED CHIPS**  
JOHNSTON, 12 OZ **59¢**

- BREAD** KOUNTRY FRESH 1 1/2 LB LOAF **39¢**
- CORN** JOAN OF ARC, WK, NO. 303 CAN **4/\$1**
- CATSUP** DEL MONTE, 38 OZ **99¢**
- TUNA** DEL MONTE CHUNK LIGHT, 1/2 FLAT **59¢**
- PEACHES** VAL VITA, 2 1/2 CAN **2/89¢**
- TOWELS** BOUNTY, JUMBO **59¢**
- NESTEA** INSTANT TEA, 3 OZ **\$1.29**
- BATH TISSUE** CHARMIN, 4 ROLL **79¢**

- SWEET PEAS** DEL MONTE, 303 CAN **3/\$1**
- PINEAPPLE** DEL MONTE, CRUSHED, SLICED, CHUNKS, NO. 2 CAN **49¢**
- DESSERT CUPS** DEL MONTE, PUDDING FRUIT, 4 PACK **69¢**
- WHITE SYRUP** BLACKBURN, QUART **69¢**
- TOMATO JUICE** DEL MONTE, 46 OZ CAN **53¢**
- TOMATO SOUP** CAMPBELL, NO. 1 CAN **6/\$1**
- MIXED NUTS** TOM SCOTT, 12 OZ **89¢**
- SALAD DRESSING** KIMBELL, QUART **69¢**
- MIXED VEGETABLES** DEL MONTE, 303 CAN **29¢**
- RANCH STYLE BEANS** 300 CAN **3/89¢**
- LUNCHEON MEAT** SPAM, 12 OZ **99¢**

#### PRODUCE SPECIALS

- APPLES** NEW CROP RED DELICIOUS, LB **19¢**  
LONG AS 80 BOXES LAST.....29¢ LB THEREAFTER.
- ORNAMENTAL CORN OR GOURDS** YOUR CHOICE **2/98¢**
- PUMPKINS** JACK-O-LANTERN OR COOKING, LB **10¢**
- ORANGES** TEXAS, 5 LB BAG **69¢**
- PEANUTS** NEW CROP 1/2 LB BAG FROM FLOYD DALES, N.M. **\$1.29**

**BONUS SPECIAL**  
**COFFEE**  
MJB  
1 LB CAN **\$1.69**  
Without Booklet  
With Booklet.....\$1.19  
**WITH 1 FILLED BONUS SPECIALS BOOKLET**

**BONUS SPECIAL**  
**SHORTENING**  
JEWEL, 42 OZ **99¢**  
Without Booklet  
With Booklet.....49¢  
**WITH 1 FILLED BONUS SPECIALS BOOKLET**

**BONUS SPECIAL**  
**TIDE**  
LAUNDRY DETERGENT, FAMILY SIZE **\$3.99**  
Without Booklet  
With Booklet.....\$3.49  
**WITH 1 FILLED BONUS SPECIALS BOOKLET**

**BONUS SPECIAL**  
**MR COFFEE FILTERS**  
100 COUNT **89¢**  
Without Booklet  
With Booklet.....39¢  
**WITH 1 FILLED BONUS SPECIALS BOOKLET**

# KOUNTRY BOY

OPEN 8 A.M. TIL 9 P.M. 7 DAYS A WEEK LITTLEFIELD PLAZA





COME CELEBRATE

**Anthony's**  
C. R. ANTHONY CO.

SAVE 40-50-60% & MORE

# Anniversary Sale

MONDAY-TUESDAY-WEDNESDAY 9 A.M. - 6 P.M.

OUR BIGGEST SALE EVER CONTINUES THROUGH WEDNESDAY. All Prices In Thursday's Ad Good Through Wednesday Or While Quantities Last, Plus These Additional Regular Line Items.



## MEN'S SUITS

- \* 2-Peice
- \* 100% Polyester
- \* Western & Traditional Styles
- \* Sizes 36-46
- Regs & Longs
- \* Many Colors

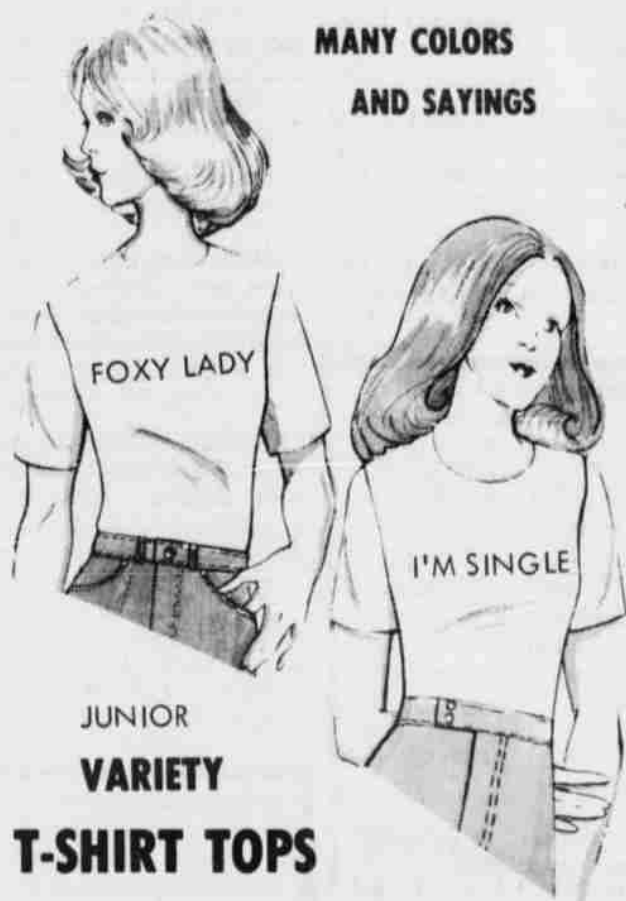
REG. \$55<sup>00</sup>

**\$39<sup>00</sup>**

3 DAYS ONLY

Swedish knit, 100% polyester. Three button front, center vent. Contrast stitch.

Sizes 36 thru 46



MANY COLORS AND SAYINGS

JUNIOR VARIETY T-SHIRT TOPS

**\$2<sup>97</sup>**

REG. \$4 S, M, L

## LADIES & JUNIORS COATS



3 DAYS ONLY

MANY STYLES

REG. PRICE \$49 TO \$89

**\$39<sup>00</sup>**

3 DAYS ONLY

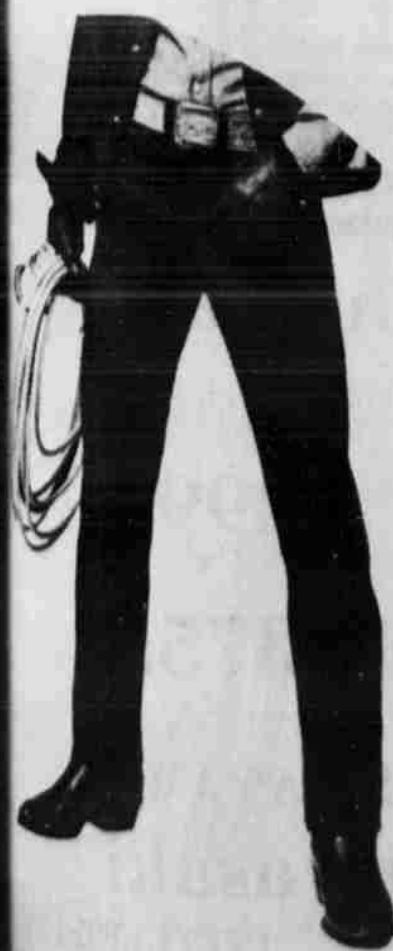
HANES "SECOND SELECTION" BRIEFS, T-SHIRTS, V-NECKS & A-SHIRTS



**\$2<sup>22</sup>**

PKG OF 3

NOW... "Buckhide" Boot Cut Jeans



**\$5<sup>76</sup>**

**3 FOR \$15**

Men's 13<sup>3</sup>/<sub>4</sub> oz. all cotton blue denim boot cut jean. Specially designed for cowboys, truckers, construction workers, farmers, ranchers and all outdoor activities. Sizes 30 to 42.

## STYLISH WOMEN'S... SOFTEE OXFORD

**\$2<sup>22</sup>**



Two eyelet soft patent oxford with crepe sole and heel. Sizes 5-10. Available in black, navy, bone, white, and red.



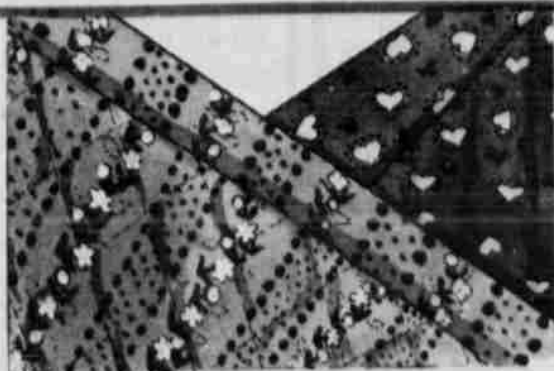
BOYS & GIRLS

STYLES SIMILAR TO ILLUSTRATION

## LEATHER LOOK JACKETS

COMPARE AT \$14<sup>00</sup>

**\$8<sup>88</sup>**



## Calico America Quilts and Matching Prints

Adorable matching quilts and prints for a multitude of new looks in fashion ideas. Quilts are 100% cotton with polyester fill. Prints are 100% cotton permanent press. Machine washable. Doubled and rolled.

Quilts Reg. 2.69  
187 YARD  
Prints Reg. 1.39  
97¢ YARD

COMPARE AT \$24<sup>00</sup>



LIMITED SUPPLY THE "MOON" SHOE

**\$9<sup>88</sup>**

MEN'S, LADIES & YOUTHS



REG. \$1.19

CANNON WASH CLOTHS

Bright and cheery 100% cotton 12" x 12" wash cloths in bold stripes, checks, and solid colors.

PKG OF 5 **88¢**



# SEEK

To place your  
**SEEK Classified Ad**  
Call 385-4481  
**SEEK ads work!!!**

## Classified Ad

### Deadlines . . . .

Tuesday Noon For Thursday's Edition.  
Friday Noon For Sunday's Edition.

#### CLASSIFIED ADVERTISING RATES

11 Cents Per Word - 1st. Insertion - \$1.65 Minimum  
9 Cents Per Word - 2nd Insertion - \$1.35 Minimum

#### CLASSIFIED DISPLAY AD RATES

\$1.40 Per Column Inch First Insertion  
And \$1.15 Per Column Inch For Additional Insertions.

#### CARD OF THANKS 1 Time

Maximum Of 20 Words, \$1.65.

Over 20 Words Are Charged At Regular Classified Rates.

### Wanted

**CARPENTRY** work wanted. Skilled in all remodeling and repair work. large or small. Call 997-5021. 11-7-B

**WANT TO** buy junked cars, scrap iron, metal batteries. Will pick up. Lamb Salvage. Ray Franklin, owner, 905 W. Delano, phone 385-5505, nights, 385-6156. TF-F

**CARPENTER** work. Painting, panelling, roofing, general repair. 385-4336. 1121 W. 10th. TF-R

**WILL BUY** clean furniture, antiques and appliances. 385-3714 or 385-5979. TF-Y

**CUSTOM** wheat sowing. 385-5756, nights only. TF-R

**WILL BUY**, sell, trade or rent utility trailers. Phone 385-3590. TF-N

**BE A FASHION** Show Director for Sarah Coventry Jewelry. No investment. Call 806-246-3379. 10-17-S

### Help Wanted

**MOTOR MACHINIST** or will train. Apply in person. Chandler Motor Machine, 385-4431. TF-C

**COOK NEEDED** at Amherst Manor Nursing Home. Must have experience. 246-3583. TF-A

**Career Sales Opportunity.** Farm Bureau, seeks outstanding person to sell and service established farm and ranch accounts. Our good first year people earn \$15,000 plus, and can expect steady increase during a 3-year training program leading to management. No travel, over 200 hours of professional training. For confidential interview call 385-4489. TF-J

**LVN** wanted at the Amherst Manor. Apply in person at Amherst Manor. TF-A

**NURSES AID** 7-3 and 3-11. Apply in person. Knight's Rest Home, 520 Ash. TF-K

**NEED L.V.N.'S.** GOOD WORKING CONDITIONS, EXTRA GOOD PAY. PHONE 385-3921 OR 385-3378.

### Bus. Opp.

**HALLMARK CARD AND GIFT SHOP**  
Hallmark Cards seeks individual to own and operate a Hallmark Card & Gift Shop in Littlefield. \$34,000.00 Cash investment required and store should net 11% on investment first year and 38% third year, in addition to \$12,000.00 payroll. Excellent location available in downtown area. Contact Paul Plunkett, Tucson, Ariz., (602) 299-3303. 10-31-P

For Classifieds  
Dial 385-4481

### Card Of Thanks

I wish to express my thanks for all the prayers, flowers, cards and visits during my stay in the hospital, also for all the friends and neighbors who stayed with me in the afternoons. Rowena Richardson

### Notice

I WILL NOT be responsible for any other debts by anyone other than myself. Gary Layman. 10-17-P

### Miscellaneous

**LITTLEFIELD** Self Storage, 1/2 mile east of Littlefield on Spade Hwy. 24 hour self service, you keep key-night lights, economical personal and commercial storage, individual storage 7x12 to 10x24, household good, merchandise, boats, campers, tools. Call 385-4533 or come by Littlefield Delinting Co. TF-S

**Taxi Service.**  
7 a.m.-7 p.m.  
385-5011.

**SOON TO OPEN**  
DESPRES PRIVATE INVESTIGATION AND SECURITY GUARD CO. FOR INFORMATION CALL 385-5011. JOHN L. DESPRES SR., OWNER.

### Help Wanted

Help wanted for year round employees in cotton industry. No experience needed. Apply at Texas Employment Commission, 1212 Houston St. Levelland, Texas. Equal Opportunity Employer.

### CHALLENGE YOURSELF!

Today's Army is looking for young men and women, 17-34, who want a challenging job with a future. We'll pay \$361 a month to those who qualify for one of these:

JOB	OPENINGS
Truck mechanics	17
Stenographers	16
Sheet Metal Workers	10
Inventory clerks	42
Infantrymen	552
Television Repairmen	83
Combat Engineers	37
Radar Mechanics	21
Military Policemen	23
Signal Intelligence	63
Power Plant Operators	47

Ask your local army recruiter about enlisting now or reserving a job for up to 270 days.

Accept the Challenge  
Call Collect  
SSG Jim De La Garza  
(806) 296-9228

### Real Estate

**FOR SALE:** 40 acres- irrigated farm, has underground tile and large barn. 3 bedroom, 2 baths, brick home, carpeted throughout. Also double garage and school bus and mail route with natural gas. 2 miles southeast of Littlefield. Call 385-3314. TF-O

**192 ACRES,** 5 miles North of Littlefield on Hiway 385. 2 wells, both on natural gas. 24" tile underground pipe. 1/2 mineral rights. No Johnson grass. Title clear. Contact Clyde Brock, 385-4355. 10-17-B

**Owner leaving town.** Needs to sell. Large 2 bedroom, 1 1/2 bath home. New carpet, freshly painted, stucco, on corner lot. Close to downtown. 2 car carport.

3 bedroom, carport, large fenced yard, storage house, cellar.

2 bedroom, 2 baths, corner lot, fenced yard. Close to town.

2 bedroom house with 9 acres on Highway 84.

2 bedroom house with filling station and extra lot.

Drive in food service in Sudan. See us for details.

12 acres, Mobile home set up on loop.

We have sold for others. Let us sell for you. We Need Your Listings.  
Equal Housing Opportunity

**Otis Bennett**  
Real Estate  
385-4215 385-3575

### FLOYD ROWELL REAL ESTATE

178 acres dry land, a good one. \$225.00

178 acres dry land, some grass and windmill. \$210.

156. 2 miles from Amherst, 8 in. well. \$425.00

177. 3 miles from Amherst, 8 in. well, all but about 40 acres sowed to wheat and up. \$80,000.00

151.7. 1/2 mile from Amherst. 2-6 in. wells lays good. \$425.00

80 acres, northeast of Amherst, good 8 in. well. \$600.00 per acre.

Large 3 bedroom house, with 2.25 acres in Amherst. \$22,000.00.

10 x 50, 2 bedroom, mobile home, living, dining, and kitchen, 1 bath, on 50 x 150 lot furnished.

8 x 35 mobile home, partly furnished.

Box 428  
Amherst, Texas 79312  
Phone office 806-246-3441  
Res. 246-3648  
No Answer 246-3310

### ROBERT RICHARDS REAL ESTATE

509 Phelps  
385-3293  
Nice, 3 bedroom, carpeted, central heat, \$15,800.

Just completed new 3 bedroom, 2 bath, double garage, on corner lot. \$33,950.

4 bedroom, 3 bath, brick, double garage, corner lot, 402 East 7th.

Gilbert Lemmons 385-3622  
Sandra Richards 385-5719

Equal Housing Opportunity

### Real Estate

**189 ACRES,** 5 irrigation wells, 3 bedroom, 2 bath, kitchen-dinette combination, large basement, 2 car garage home with extra 1 bedroom and 2 bedroom houses, with several out buildings. Call 246-3645 or 385-5187 for appointment. TF-K

**CUSTOM MADE DRAPES.** Hundreds of colors and styles. Compare quality and price. C. R. Anthony's, Littlefield, 385-3535. TF-A

**LARGE HOUSE** with barn and 5 acres inside of city limits. 1521 W. 9th or call 385-3480. TF-L

**FOR SALE!** 1 1/4 acres of land adjoining the east side of John Deere House. clear title. Call R.E. Pugh, 817-559-3903. 10-17-P

**ONE LOT** for sale. 50 x 140. 722 E. 12th. Call 385-5506. TF-D

Irrigated  
477 and 408 acres, Hart Camp.

324 and 160 acres, N. West of Spade.

177 acres, Southwest of Amherst.

Dry Land  
177 acres West of Littlefield.

177 acres North of Maps.

3 bedroom, exceptionally nice in Littlefield.

3 bedroom, den, kitchen, central heat and air. 62nd and University, Lubbock.

**G.D. Harlan**  
Real Estate  
103 E. 4th  
Bus. 385-4265  
Res. 262-4270

2 bedroom, panel heat, 1 bath, carpeted, living room, garage, storage room, 2 lots close to school. Very neat.

3 lots close to school.

160 acres, 2 wells, sprinkler goes. 1/2 minerals. Bailey County.

177 acres, good water, sprinkler goes, 2 bedroom house. 29% down. Lamb County.

462 acres, 5 wells, on pavement, 3 bedroom home. Lamb County.

Let us sell your property  
Need Your Listings

**WINGO**  
Real Estate  
Telephone (806) 385-4684  
143 N. Westside Avenue  
Littlefield, Texas 79339  
Equal Housing Opportunity

SEEK ADS  
WORK

### House For Rent

**TWO BEDROOM** unfurnished house at Littlefield Country Club. Bills paid. Call Alvin Webb, 385-5181. TF-L

### Houses For Sale

**TWO bedroom** brick, in Littlefield with one bedroom brick apartment, extra for extra income. Sale or trade farm, livestock or equipment. 246-3645.

**1972 McGREGOR** mobile home. 12 x 60. Partially furnished. \$6,000. 385-5224. 11-4-H

**BRICK HOME** in Cres. Park. Call Allen Purdy at 385-4811 or 385-6131, or Glyn 385-4319. TF-P

**FOR SALE:** 3 bedroom, brick-stucco, car port. 385-4019. TF-Mc

**THREE** bedroom, 1 bath, panel heat, carpeted, washer and dryer connections. Fenced back yard. Wingo Real Estate, 143 N. Westside, 385-4684. 10-17-W

**THREE BEDROOMS,** 2 baths, carpet, dishwasher, range, vent, disposal, central heat and refrig. air. J. E. Chisholm, 620 E. 5th, days- 385-4461; nights 385-4894. TF-C

**1976 YOUNG** American mobile home. 14 x 65, 2 bedroom, 1 bath, extra nice. Partially furnished. 385-3442. TF-K

Most House For The Money  
3 bedroom, 2 baths, fireplace, shag carpet, dishwasher and stove, on 2 lots, fenced. Have to see inside to appreciate—really special!! \$18,500. Phone 385-5848 or 385-5255

### Real Estate

Large, 2 bedroom, 1 bath, attached garage. Priced to sell. 816 E. 7th.

2 bedroom, brick veneer, 1 1/2 bath, den and living room, attached garage. 702 E. 18th.

3 bedroom, 1 bath, central heat, large patio. Fenced back yard. 1205 W. 4th.

Want to sell your home—call us first. We need your listing.

**Curtis Chisholm**  
Real Estate  
Office 385-6017  
Home 385-3425  
Claude Burnett 385-5102  
Home 385-3989

**PRICE REDUCED**  
Owner's moving to Amarillo—3 bedroom home—8 acres land, just out of city limits, close to American Cotton Growers Plant. This acreage is fenced. Has sheds and corrals—2 wells, irrigation equipment. All for only \$26,900.

Two story house, 3 lots, corner of Hall Avenue and 12th Street, good buy at \$13,900.00.

Good 3 bedroom home to be moved.

100 ft. frontage on Hall Avenue just north of Pizza Inn.

177.1 acres dry land 5 miles south of Lumsden Gin—\$210.00 acre.

To settle estate, 189.9 acres irrigated land, 2 north and 2 east of Littlefield.

**Mills Real Estate**  
109 East 4th Street—385-3459  
Member—Texas Farm & Ranch Agency  
Lola L. Mills, Broker—285-3342  
Bob J. Mills—233-2561  
Ricky L. Mills—262-4425  
Equal Housing Opportunity. 10-17-M

### Farm Equipment

**YOUR** neighbors trade at State Line Irrigation for all their irrigation needs. Why not you? Littlefield, Levelland, Muleshoe. TF-S

**PVC PIPE** and fittings. 1/2" thru 10". State Line Irrigation. Levelland, Littlefield, and Muleshoe. TF-S

**3-282 JOHN** Deere Strippers with 70 basket. 385-3129. TF-T

**SMALL FORD** tractor. Excellent shape. 246-3645.

New water well acid stick. For better water yields for summer irrigation. Irrigation well's should be treated at end of pumping season while water table is lowest. Rex McFadden Co., 792-4446 or Lamb County Sales Representative, Shannon McWilliams, 797-9653. TF-McF

### Autos For Sale

**GOOD** 1971 Kawasaki 500 motorcycle. Call 233-2265. TF-Mc

**1969 FORD** pickup, 1/2 ton, 360 V8, good tires. Won't use any oil. Only \$775. 1015 W. 9th. 385-3671. Call or see after 4 p.m. 10-17-S

**1-1973** Kawasaki, 75 CC. \$145.  
**2-1972** Hondas, 70 CC. \$125. each.  
**1-1972** Honda, 100 CC. \$150.  
**1-1973** Yamaha, 175 CC. \$395.  
**1-1971** Yamaha, 250 CC. \$245.  
**1-1974** Honda, 250 CC. \$495.  
**1-1975** Kawasaki 400, \$995.  
**1-1975** Kawasaki, 125 Dirt Bike. \$295.

South 385 Hiway  
385-3049

### Garage Sale

**THURSDAY** and Friday- 21 & 22, 517 W. 3rd St. Exerciser, hair dryer, make up mirror. All like new, clothing and other items. 10-17-A

**MON., Tues.** Vacant house, 717 W. 3rd. House plants, quilt scraps, coats, mis. and free grab box. 10-17-B

**For Rent:** Mobile home spaces. Sunset Slope Mobile Home Park. 100 N. Sunset-Littlefield Laundry, storm cellar, paved streets, parking pads, lighted streets, quiet neighborhood. Call 385-3683 or 385-3983 nights.

**SHOP**  
LITTLEFIELD  
FIRST

**Garland Motor Co.**  
1969 Ford pickup, 6 cyl., std. tran., short bed, green. \$495.00  
1968 Chev. pickup, long wheel base, 396 eng., air and power, yellow. \$895  
1969 Chev pickup, long wheel base, 396 eng., air con. and auto power steering, blue. \$1,050.00  
1972 Ford, 361 eng., auto trans., eng. runs like new, red. \$1,295.00  
1974 Dodge, 1/2 ton pickup, 318 eng., auto., red and white. \$2,695.00  
385-4454

720 E. 3rd

### Personal

**GRAPEFRUIT** Pill with Diodax, eat satisfying meals and lose weight, now extra strength formula Rodens Drug. 10-21-O

**AT 60 I HAD** arthritis so bad I had to have help to dress. I am now 89 and I don't have arthritis. Do you want to know why? Send a stamped self-addressed envelope to J. J. Womack Company, 5700 Bransford, Grapevine, Texas, 76051.

**PERSONAL:** Lose weight and excess water with Fluidex Plus plan, convenient 2 in 1 tablet. Roden Drug. 10-21-R

**Beauty By MARY KAY**  
Call: Freddie Duke  
385-5064  
1318 W. 14th

### Pets

**AKC** tri-colored Bassett puppies for sale. 8 weeks old. Free delivery. 285-2182. 10-24-S

### Livestock

**GENTLE HORSE** and saddle. 246-3645. TF-K

### For Rent

**For Rent:** Mobile home spaces. Sunset Slope Mobile Home Park. 100 N. Sunset-Littlefield Laundry, storm cellar, paved streets, parking pads, lighted streets, quiet neighborhood. Call 385-3683 or 385-3983 nights.

**G & C**  
AUTO SUPPLY  
700 E. 14th  
385-4431

### For Rent

**For Rent:** Mobile home spaces. Sunset Slope Mobile Home Park. 100 N. Sunset-Littlefield Laundry, storm cellar, paved streets, parking pads, lighted streets, quiet neighborhood. Call 385-3683 or 385-3983 nights.

**SHOP**  
LITTLEFIELD  
FIRST

**Garland Motor Co.**  
1969 Ford pickup, 6 cyl., std. tran., short bed, green. \$495.00  
1968 Chev. pickup, long wheel base, 396 eng., air and power, yellow. \$895  
1969 Chev pickup, long wheel base, 396 eng., air con. and auto power steering, blue. \$1,050.00  
1972 Ford, 361 eng., auto trans., eng. runs like new, red. \$1,295.00  
1974 Dodge, 1/2 ton pickup, 318 eng., auto., red and white. \$2,695.00  
385-4454

720 E. 3rd

### Bus. Serv.

"DECORATE your home for the holidays!" Save money with quality Tru-Test Paints. Choose from latest Garden Magazine colorations. Nelson Truck Hardware Store.

**RENT CONVAILABLE** equipment at Bransford macy. Wheel chairs, hospital beds, other Complete line complete needs.

**Buy-Sell-Repair**  
Anderson Appliances & pair Kenmore-Washing and most other brands. Service Day on Monday. 806-744-4038.

\*Conventional Loans  
\*Home Impr. Loans  
\*Installation Loans

Littlefield Office  
7th and XII  
Ph. 385-5149

**Industrial BEARING & BELT**  
Forney Welding & Supplies  
\*Farm Equip.

**CAMPBELL PLUMBING**  
Heating Air Conditioning  
Sheet Metal Work

Complete stock of parts for all major line plumbing, heating, conditioning products. Service on all major heating and air conditioning equipment. Service Installation. Bus. Phone 385-5200 1022 E. 9th

### For Rent

**Wedding** or any occasion cakes. Will cater weddings or you rent. Appliances. Call 385-6008. After 3:00 p.m. Gayle Simpson

**LITTLEFIELD ROOFING**  
All types built-up asphalt roofs. Composition shingles. All work guaranteed. Call Ron Foshell 385-5680, Littlefield, Tex.

## Trampoline Sale

9 Only At This Sale Price

REG. \$395. **\$299.**  
6X12 Deluxe Trampoline

REG. \$499. **\$375.**  
13X13 Circular Trampoline

**USE OUR XMAS LAYAWAY**  
**Grimes Kawasaki**

# PEP NEWS

MR. AND MRS. Conrad Demel took Mrs. E. J. Meyer of Buffalo, Mo. and met Mrs. Mary Snyder of Reserve, N.M. in Littlefield with Mr. and Mrs. Walter Lupton of Shallowater and went to Hereford to visit with Mr. and Mrs. Richard Lupton. Mrs. Meyer and Mrs. Snyder will visit there for a few days and go on a vacation to California with the Luptons for a two week sightseeing and visit with Mrs. Jean Lunch at San Francisco, Calif. before returning home.

PEP P-TA meeting was held in Pep School Auditorium on Oct. 11th at 7:30 p.m. with Mrs. Max Demel, presiding, Mrs. Gary Skaggs read the minutes and treasurer's report was given by Mrs. Raymond Marek. The program was a film on "Health". Refreshments were served to all members present. Nov. 8 will be the next meeting.

ST. PHILIP Altar Society will have their meeting on Oct. 20th after the 7:30 p.m. mass. Plans for the Thanksgiving will be discussed. All the members are urged to attend the meeting.

## Armstrong Circle meets

AMHERST— Mrs. Glenn Willson was hostess for the Annie Armstrong Circle, Baptist W.M.U. Monday night, Oct. 11.

Mrs. James Holland offered the opening prayer and Mrs. Willson reviewed the book "The Richest Woman in Town" by Joyce Landorf. She read from Ephesians which tells of our inheritance from Christ. She had a "safety deposit box" of cards from which she drew to emphasize how an abundant life is had with this qualification and she can be "the richest woman in town".

Mrs. Dorothy Abbott, the new Circle chairman, presided. The mission action for October is to send cards to the shut-ins and elderly. Mrs. Charles Mixon read the prayer calendar and offered prayer for missionaries having birthdays.

Refreshment of an orange frosted drink, finger sandwiches and cake were served to Mmes. Bill Bradley, Marie Payne, Dorothy Abbott, James Holland, Charles Mixon, Elton Faust, Bill Phillips and the hostess.



GIRL SCOUT Troop 214 meets each Wednesday after school, and are under the leadership of Janie Raney. Troop members are, left to right, Venus Aguilar, Melinda Mansell, Jackie VanMatre, Sharlotte Dempsey, Vicki Raney and Christy Seeman. [Staff Photo]

## Arthur Duggan speaks for Study Club

ANTON— Arthur Duggan Jr. of Littlefield was guests speaker for the Anton Study Club meeting Monday night in the home of Mrs. Jim Copeland southwest of Anton.

Duggan is a commissioner of the Canadian River Compact. He talked about the ways and means of getting water from Arkansas to the Canadian River by canals, etc. The states involved with the project are Arkansas, Oklahoma, New Mexico, and Texas.

Mrs. Jack Conkin, city secretary, reviewed the use of the \$100,000 funds from South Plains Association of Governments earmarked for improving and expanding the Anton sewer system.

Caprock District, TFWC, members attending the fall board meeting in Ralls Saturday are Mrs. Orval Williams, Mrs. Sidney Landers, Mrs. Leon Wooten, Mrs. Reece Pritchard, Mrs. Everette Butler, and Mrs. E. C. Sliger.

The next meeting of the club will be Oct. 18 in the home of Mrs. Orval Williams at 7:30 p.m.

## Amherst News

GEORGE HARMON took Doyle Harmon to Lubbock for an eye check-up. Doyle successfully underwent eye surgery several weeks ago.

KURT AND KALETTE Copeland of Anton spent the weekend with their grandmother and aunt, Mrs. Mae Copeland and Mrs. Virginia Turner. Their parents attended the Tech-A&M game.

## Whitharral HD Club hears about child abuse

WHITHARRAL— The Whitharral Home Demonstration Club met Tuesday, Oct. 5, in the home of Opal Mixon.

Vice president, Marcy Clevenger, had charge of the meeting and led in the round table discussion about child abuse.

Alma Kilgore won the door prize which was a relish dish. Opal served

punch and cake to: Iva Pair, Alma Kilgore, Marcy Clevenger, Mary Munselle, Vera Rodgers, and Pearl White. Also visiting was: Willie Bryant and Frankie Dusek of Littlefield.

The next meeting will be in the home of Azalee Johnson Tuesday, Oct. 19. It will be show and tell meeting given by the members.

## Sisters return from tour

CIRCLE— Mrs. A. W. Kersh of Olton and her sister, Mrs. Ola Curry of Clovis, N.M. returned Saturday night from a ten-day tour of Hawaiian Islands. They were among the 155 of a group sponsored by Travel Systems International on a flight from Los Angeles, Calif. to the Islands.

After staying in Honolulu three nights, they went to the island of Hawaii. The party found the hotels to be fabulous. The people are extremely gracious. They enjoy good health probably due to the purity of the water which has no chemicals added and to their diet which includes fruit as "snacks" and juice of the coconut in place of soft drinks.

As there are no insects, use of sprays is unnecessary. Neither are there snakes in that section of our nation. Fertilizer used there is solely of volcanic ash which is believed to produce more healthful plants and foods than the chemical fertilizers. As there are no weeds all plants are edible.

Mrs. Kersh describes the flowers and plants as being so perfect one has to touch in order to believe they are real and not plastic.

The people have beautiful skin texture due to the absence of wind and dust. Except in the mountains the average annual temperature of the region is 75 degrees making heating systems unnecessary.

They viewed Pearl Harbor and the "Arizona" Memorial. They were taken to Polynesian Cultural Center and had the experience of riding in glass bottom boats.

From bus tours they saw Macademian nut farms and sugar cane fields. The group was shown a weaving factory coffee mill, Macademia nut processing system and sugar mills from which the product is taken in liquid form to the mainland for refining.

When the party returned to California members were taken on a tour of Disneyland.

In relating her experiences of the trip Mrs. Kersh is indeed enthusiastic and grateful for the opportunity.

## WHITHARRAL NEWS

MR. AND MRS. James Kilpatrick of Artesia, N.M. and Mr. and Mrs. Ralph Parker of San Angelo visited with the Tom Doshiers over the weekend.

MR. AND MRS. Jerry Miller and family, and Mr. and Mrs. Ronnie Miller and family attended a family outing at Silver Springs Sunday.

MR. AND MRS. Don Stafford, Brad and Mike, Kip and Dana Grant, visited in Lubbock on Sunday with Mr. and Mrs. Curtis Stafford.

MR. AND MRS. T. C. Wade attended the Steer Roping at Post Saturday.

LILLIE THETFORD is a patient in University Hospital in Lubbock.

MR. AND MRS. V. D. Hodges flew to Houston with the other REA directors to attend the state REA Convention.

ALL THE children of Mr. and Mrs. Tom Doshier were here over the weekend because of the seriousness of Doshier, who is a patient in Cook Memorial Hospital in Levelland.

EDNA WATERS underwent ear surgery in Lubbock Tuesday. her sister, Beth Bennet of Dallas is visiting with her this week.

In School Colors  
**SNUG BUG**  
Sports World  
429 Phelps 385-3243

**LOST OUR SEED TRAILERS**  
If You Have One or Know Where Is  
**CALL 385-4533**  
**Littlefield Delinting**  
385-4533 Spade Hwy.

**HERBERT DUNN**  
TAX ASSESSOR-COLLECTOR  
LAMB COUNTY  
LITTLEFIELD, TEXAS

**NOTICE**

I will be at the City Hall of the following towns on the dates indicated for the purpose of collecting State and County taxes:

Amherst - - - - -	Oct. 18
Sudan - - - - -	Oct. 19
Earth - - - - -	Oct. 20
Olton - - - - -	Oct. 21
Springlake - - - - -	Oct. 22 A.M.

3% discount allowed for October payment of State and County Taxes.

*Herbert Dunn*  
Herbert Dunn  
Tax Assessor-Collector,  
Lamb County.

Sponsored by  
THE DUNBAR CLUB  
for Senior Citizen's  
Meals on Wheels

**OSCARIAN BROS. CIRCUS**

A GREAT NEW CIRCUS  
WORLDS FOREMOST STARS  
HIGH AERIAL THRILLS

RIDING MARVELS  
CRAZY CLOWNS  
WIRE ARTISTS - WONDERS

**SPECIAL ATTRACTION—HERE IN PERSON**  
GENERAL URKO OF THE PLANET OF THE APES

**WED. & THURS. SHOW TIMES:**  
OCTOBER 20 & 21  
4 pm & 8 pm

•LOCATION•  
Littlefield  
Fair Grounds

50¢ Discount  
on Adult Tickets  
with this ad.  
Good for any show.

Advance Tickets At Pioneer Super Market

**FREE!** Children's tickets available in all local stores

## MORE SEEK ADS

### Service Notice

Stopped up? Let us run your sewer line with Rooter Service. Harrell Supply, Anton. TF-H

Shop in Spade. Tractor and irrigation pumps. Call 233-2151. 385-4315 or 233-2265. TF-McC

Trug shampooer for rug. Harrell Building. Anton. TF-H

GRAY roofing, painting, carpentry. All guaranteed. Call 385-4315. TF-G

24-hour service, no contract. Free estimate. See Mike Daw, 601 E. 9th. 385-3590. TF-N

Welding, skill, chain saws, work guaranteed. E. Wood, 209 E. 9th. 385-4348. TF-W

REPAIR at my home. E. 9th. 385-4986. TF-H

TELE overhauled, inside and out. Look like a new. Total labor - \$7.50 plus work guaranteed. Lloyd White, District. 10-17-K

BARGAINS. Free-by the case. For the entire house. 385-6184. TF-T

OUTLET. Anton, Tex. 10 a.m.-5 p.m. on Thurs. 4 p.m. on Fri. and Sat. 385-3196

CS. For Sale. 4 chrome reverse. 12" and 2 10" with lug nuts. 385-6184. TF-T

INES for sale. Reg. size. See them at Kawasaki. 385-3049. TF-G

washer, avocado. 2 term. press. 5 years. 385-3878 after 4:30 on 10-17-E

Products. W.J. Ward. 715 E. 6th. 385-3196

HANDICAP. Offered one of our major handicaps. Problems rob at least one of every 15 persons of their ability to communicate clearly with loved ones.

BUSINESS-COMMERCE. Business and commerce is the major field of study among college-level students training under the GI Bill.

Now Buying Sunflower Seeds  
Call 385-3588  
385-5450  
747-7231

**LITTLEFIELD SEED & DELINTING**  
Bennett Dick Hopping Tommy Thrash



# TRUST FURR'S TO SAVE YOU MONEY!

WE RESERVE THE RIGHT TO LIMIT QUANTITIES

**WE REDEEM USDA FOOD STAMPS**

☆ YOU PAY THE LOWER PRICE AT FURR'S  
 ☆ WE WILL NOT CHANGE A PRICE ON A MARKED CAN OR PACKAGE EXCEPT TO LOWER THE PRICE.  
 ☆ ONCE PRICED . . . ALWAYS PRICED.

PRICES EFFECTIVE 8-17-76 THRU 10-20-76

RED DEL. OR RED ROME

**Avocados**

CALIF. FINEST, EACH

**29¢**

**APPLES**

**3 \$1**

**BANANAS**

CENTRAL AMERICAN FRESH, LB

**5 \$1**

**GRAPEFRUITS**

RUBY RED SWEET JUICY, LB

**29¢**

**CUCUMBERS**

LONG GREEN SLICERS LB

**29¢**

**Cranberries**

OCEAN SPRAY, LB

**49¢**

**ROUND STEAK**

FURR'S PROTEN LB Last Count ADV SPECIAL

**RIB STEAK**

FURR'S PROTEN LB Large End ADV SPECIAL

**CLUB STEAK**

FURR'S PROTEN LB ADV SPECIAL

**T-BONE STEAK**

FURR'S PROTEN LB ADV SPECIAL

**CHUCK STEAK**

FURR'S PROTEN LB ADV SPECIAL

**RANCH STEAK**

FURR'S PROTEN LB ADV SPECIAL

**CUBE STEAK**

Furr's Proten, Lb \$1.69 STEW MEAT Furr's Proten Boneless, Lb

**ARM ROAST**

Furr's Proten Round Bone, Lb 98¢ PORK LOIN Country Style Ribs, Lb

**SHOULDER**

Furr's Proten Roast, Lb 79¢ SIRLOIN STEAK Furr's Protin

**PORK CHOPS**

Family Pack 1st & Center Cut, Lb \$1.49 BACON Farm Pac Lb

**Grapefruit Juice**

FOOD CLUB 46 OZ CAN 49¢

**PEAS**

ROSEDALE 303 CAN 4 \$1

**JUICE**

FOOD CLUB PRUNE QUART SIZE 59¢

**Orange Drink**

RICH-N-READY, 1 GALLON 89¢

**DOUBLE GOLD BOND STAMPS**  
 TUESDAYS AND WEDNESDAYS

**Frozen Food Favorites**  
**ICE CREAM** TOP FROST, ASST. FLAVOR, 1/2 GAL. SQ. 99¢  
**PIZZA** TOP FROST, FRESH FROZEN, ASST. FLAVORS, PKG 89¢  
**BROCCOLI SPEARS** TOP FROST 10 OZ PACKAGE 39¢

**BREAD**  
 FARM PAC  
 1/2 lb. LOAF **39¢**

**MILK**  
 HOMOGENIZED  
 FARM PAC  
 1/2 GAL. **79¢**

**GREEN BEANS**

FOOD CLUB CUT, NO. 303 CAN 4 \$1

**PEACHES**

BARONET YELLOW CLING, 2 1/2 CAN 49¢

**TOPPING**

FOOD CLUB 8 OZ PACKAGE 79¢

**SPINACH**

FOOD CLUB NO. 303 CAN 4 \$1

**Tomato Sauce**

FOOD CLUB 8-OZ. CAN 6 \$1

**CORN**

Jean Of Arc 303 Can 3/\$1 CUPS Dixie "X" Refills 5 Oz Size, 100 Count \$1.07

Remarkable  
**PEARS** 2 1/2 Can  
**APRICOTS** 2 1/2 Can Yellow Bow  
**PINEAPPLE** Food Club, 5 sliced Or Chunk, in Syrup #2 Can  
**WISK** Quart  
**MIXED VEGETABLES** Food Club 303  
**HOMINY** Gaylord, Yellow Or White, 300 Can  
**GELATIN** Food Club, Asst. Flavors, 3 Oz. Pkg.  
**Marshmallow Creme** Kidd's 7 Oz. Jar  
**CEREAL** Ralston  
**DOG FOOD** Purina Chuck Wagon  
 Instant 18 Oz. 51¢  
 Regular 22 Oz. 49¢  
 Beef Chicken Or Puppy 5 Lb.

**ALUMINUM BAKEWARE**  
 TOPCREST  
  
 Ready Mix Oblong Cake Pan  
 Giant Muffin Pan, Super  
 Broiler Pan, Pizza Pan, 9 In.  
 Pir Pan, Round Cake Pan, Loaf Pan, Square Cake Pan  
 Baby Loaf  
 Your Choice **59¢**

"GEE YOUR HAIR SMELLS TERRIFIC"  
**HAIR CONDITIONER**  
**\$1.75**

**FLEA COLLAR**  
 Geisler Sizes For All Dogs & Cats  
 Each **\$1.19**

**FINAL NET**  
 Hair Spray Regular Or Unscented  
 8 Oz Size **\$1.48**

**LONG & SILKY**  
 Hair Conditioner Reg Or Extra Body  
 8 Oz Size **\$1.93**

**CASHMERE TALCUM**  
 7.5 Oz **69¢**

**POTTING SOIL**  
 8 Qt. **\$1.29**

**LIGHT DAYS**  
 Kotex, Economy Box Of 30 Pads **99¢**

**HAND LOTION**  
 Vaseline Intensive Care Regular Or Herbal  
 15 Oz **\$1.52**

**AFRIN NASAL SPRAY**  
 1/2 Oz Size **\$1.44**

**SHOP Furr's MIRACLE PRICES**