

LITTLEFIELD LEADER

Published in the Interest of Littlefield and Lamb County

VOL. 1

Littlefield, Lamb County, Texas. Thursday, August 9, 1923

No.

VALUE OF COMMUNITY SCHOOL PLAN IS WELL DEMONSTRATED HERE

That the Littlefield Community school is proving a great success, is evident from the recapitulation of last year's work handed the Leader this week by the local directors.

Only one year old, yet the value of community education over the old rural system of several little school houses dotted over the country every few miles, has been thoroughly demonstrated. During the first year of the local school 71-2 credits were received toward state affiliation, and it is hoped this year to make the affiliation complete.

Departments of domestic science and vocational agriculture are being installed this year, and a letter was received from the State Department last week to the effect that state aid would be allowed in defraying the expenses of these two departments.

There are a number of surrounding counties that have been keeping a close eye on the Littlefield school system, since it is rather a new departure, and considered more or less experimental. But the value of the experiment is now thoroughly demonstrated. This year the teaching force will be increased to ten, and with new and additional equipment and departments of learning, a far greater success is anticipated. The financial expense of the school year was as follows:

RECAPITULATION OF EXPENSES Littlefield Public School Year of 1922-23

Teachers,	\$100.00
Coal, 47 tons,	10.00
Drayage on coal,	2.00
Transportation,	1.00
Janitor,	1.00
Assessor's commission,	1.00
Collector's	1.00
Telephone,	1.00
Fire insurance,	1.00
Interest & sinking fund-Bonds,	1.00
Interest to Lfd. State Bank,	1.00
Miscellaneous,	1.00
Total,	\$120.00

Average attendance,	100
Children transported,	100
Cost per child,	1.20
Cost per child in toto,	120.00

Rogers is Defeated First Time in 18

Last Friday, on the diamond, the local ball team had a fast game with the Rogers team, reputed to be the best amateur ball team in New Mexico.

It was the occasion of the annual Old Settler's Regatta the first time in the history of the Rogers team had a defeat. Rogers made a score in the first inning. Brannon muffed a ball to the right field. In the second inning Blackburn came to bat and tied the score with three runs and swatted the ball into the field for a home run on himself and the bases. For the rest of the game the playing field was a level of Littlefield.

Sunday, August 12th, the Rogers team will play a game with Littlefield on the diamond. This is the first season. It will be a considerable team here, but they will be well worth the support of all the boys with plans to attend with-

ASIDE REMARKS

All the world practices the art of acting.

Suspect not a friend's words, but rather his meaning.

A sheriff would hate to be known by the company he keeps.

The statesman in his flights of oratory merely speeds his opinions.

A jackpot is a vessel sometimes used for the cooking of "greens."

The hunter who tells a bear story doesn't always stick to the naked truth.

LUBBOCK GETS TECH.

Lubbock was unanimously awarded the Texas Technological College Wednesday afternoon by the official locating board session at Ft. Worth.

This institution is destined to become one of the great schools of the Southwest. It will mean a greater Lubbock and a greater South Plains country. It will mean that the children of the Panhandle-Plains will be assured a first-class education in agricultural, mechanical and textile lines.

The placing of this school above the cap rock is one of the greatest endorsements to the character and future of the Plains country that has ever been given. With the college goes the establishing of a 2,000-acre farm. That that farm was picked on the South Plains, within 35 miles of Littlefield speaks volume for the character of the soil in this particular vicinity. Littlefield agricultural conditions are identical with those of Lubbock. It was not because the town was named "Lubbock" that it received the new college, but because Lubbock represented more perfectly the virtues and assets necessary for such an institution.

Kitchen Warming

On Thursday night, Aug. 16th the women's Auxiliary will give a party to open the new kitchen in the basement of the First Presbyterian Church.

Refreshments will be served, and a social hour enjoyed. Admission: Any article or utensil useful for the kitchen.

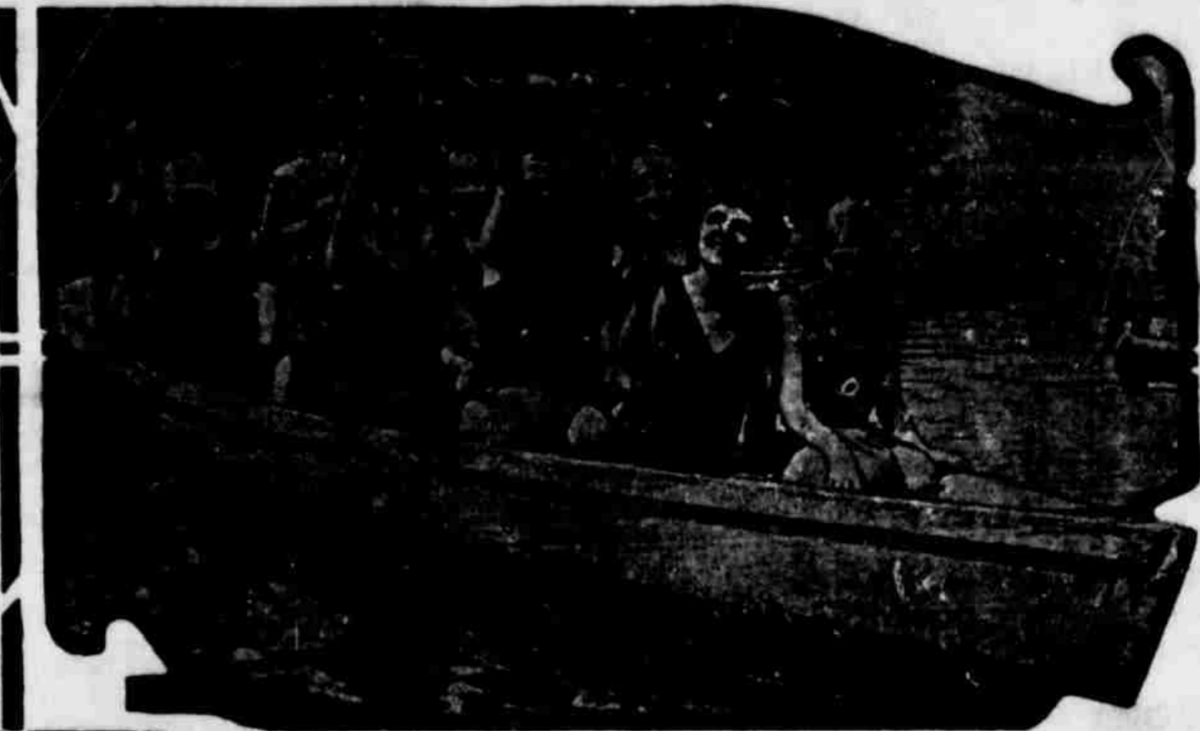
Every one in the community is invited. Come and enjoy a pleasant time with the women's auxiliary.

With the Movies.

"The Prince and the Pauper," a juvenile play, especially appealing to children. Also two reels of Charley Chaplin Comedy.

Why a Jug Club in a prohibition country!

Blind Girls Also Now Enjoy Camp Life



For the first time, sightless girls are this summer enjoying camp life just like the thousands of summer camping girls of normal vision—hiking, swimming, boating, calisthenic drill, even to building the camp fire, doing the dishes and caring for their own beds and clothes. The experiment is being conducted at Camp Munger, near Lake Barnes, in the Palisades Interstate park by the New York Association for the Blind. The girls in the illustration are taking a boat ride before their daily swim.

LAND BUYERS NOW COMING WEST IN GREAT NUMBER.

Apparently the eyes of the whole country are upon Littlefield. Judging from information available Littlefield and Lamb county is more widely known today than ever before. Hundreds of tourists are passing through here every week over some of the state highways leading thru the town, and with scarcely an exception they all know something about Littlefield and Littlefield lands before arriving. Many of them spend an extra day or so here "looking around, and not a few of them, destined for some other point, have remained long enough to purchase some of these fine lands and express their intention of coming here at some early future date to make their permanent home.

Aside from the incidental purchaser every day witnesses numerous persons arriving with Littlefield as their objective point. They have heard or read about Littlefield and Lamb county before leaving home, perhaps they have received descriptive literature from some of the local and agents; they have gained information through the columns of the local newspaper, of which hundreds of copies are sent out every week, or else they have come at the solicitation of some friend or relative who has been here or who now resides here and well knows the opportunities now being offered in this vicinity.

People wanting good investments where land rapidly increases in value are coming here. People looking for small homesteads, people desirous of opening new arms in a new but well proven country where they can raise as much per acre as they can on the high priced lands of the East; people with enough money to live on in the future looking for a healthful climate, where the air is clean and the water pure—these are the people who are coming to Littlefield every day, making purchases of this land and going away happy to come back in the near future to establish their homes and begin their improvements.

More and more it is becoming realized that there never will be but one crop of land and that the Almighty went out of the real estate business several years ago. More and more people are coming to realize the necessity of securing a home while land prices are within their reach. More and more the cattle barons of these western plains are coming to realize the impossibility of retaining their big pastures intact in the face of rising values and increased taxes. And it is the combining of these potent influences which is now making it possible for people to secure satisfactory homes in this choice country where everything is propitious to permanency and prosperity.

decade ago was little known is today having its virtues extolled to the four corners of the nation, and rapidly being converted into one of the most attractive and prosperous sections of the United States.

Man with his aims and ambitions, his energy and enterprise, working an improvement on Nature has made it so.

— Sweet the Film —

Man's Improvement of Nature

Nature has never produced anything man has not been able to improve. It is not that man is wiser than Nature, but man knowing what he desires sets about to use Nature as a means toward the accomplishment of his great aims. Potentially, much of Nature is of little value to man. It is only as he has changed, modified or improved it that it has come to meet his urgent demands.

MADE WOMAN'S RECORD



Mrs. Bertha A. Horchem of Ransom, Kan., was less excited over the fact that she piloted an airplane higher than the elevation of Mount Blanc, at St. Louis field, to make an official world's record for a woman, than many persons are about their first aerial hop. Mrs. Horchem attained an altitude of 16,900 feet, 400 feet more than three miles. Mount Blanc is 15,781 feet high.

In Memorial

Friday afternoon, between the hours of three and four it is requested that all places of business be entirely closed in memory of Warren G. Harding, deceased president of the United States.

Auxiliary Meeting

Hot weather makes no difference to the women's auxiliary of the Presbyterian church, as there were 13 ladies attended the meeting at the home of Mrs. Besie Baze last Tuesday.

Mrs. Wright and Mrs. Jordan were in charge of the program. "The Debt Eternal" is the new study book. Send your subscription to Mrs. Jordan.

If you are not a member you are cordially invited to attend our next meeting, Aug. 21st at the home of Mrs. W. a. man.

IN SOCIETY SOON



Miss Evelyn Gordon, attractive and charming daughter of United States Attorney and Mrs. Peyton Gordon. Miss Gordon makes her bow to society this coming season.

big enough for an ordinary state—that is attracting the attention of man as no other section has ever done before. Once a land where roamed the mighty buffalo and the swift antelope, then an open range where grazed multiplied thousands of white faced cattle, today it is being rapidly converted into an agricultural domain second to none in the Great Southwest.

Here on this wide plateau, lifted up above the miasma and malaria into the region of pure ozone, fanned by the tempered breezes from the Gulf Coast every month of the year, with a soil unexcelled nowhere for fertility and an abundance of water of incomparable purity, it is now being populated by a people the very pick and flower America affords.

The land Nature made is being rapidly improved, the plains are being adorned, community settlements are springing up, delightful homes are being reared, magnificent farms are being developed, and a country which a

A LINE OF CHEER

By John Kendrick Bangs.

LIFE

ONWARD, onward speed the years;
With their weight of hopes and fears;
Trials lurking here and there,
Joys to ease the pain of care;
Light and shadow, sun and rain,
Alternating power and pain—
But beneath the stress and strife
Sense of rich, pulsating life,
In whose depths we find the stir
Leading us to Character.
(© by McClure Newspaper Syndicate.)

Your County Paper—only \$1.50 a Year

**It Will Soon Be School Time
Better Buy that Gingham
And Be Ready When
School Begins.**

As a special inducement we will place on sale Saturday and run five days, two assortments of Gingham.

ASSORTMENT NO. ONE

All Gingham that sold for 25 and 29 cents, **19c.**
Priced Special, at

ASSORTMENT NO. TWO

All Gingham that sold for 35 and 39 cents, **29c.**
Priced Special, at

Lamb County Merc. Company
The Pioneer Store

**Come to the Wonderful
New Cotton Country**

—Where Boll Weevil is Unknown

The Halsell Ranch, Lamb Co., Texas

HAve you heard of the wonderful crop cotton farmers are raising in Lamb County, Texas?

Do you know that in Lamb County one-fourth to one-half bale to the acre can be raised and that one man can attend 100 acres?

A New Farming Country with Every Advantage
Corn, Wheat, Stock-Raising and Dairying are very profitable—Plenty of good water at shallow depth.

Lamb County is the place to make money, for neighbors else are such returns from land that can be purchased at \$25 per acre on such easy terms as ours.

This Land Is On and Near Santa Fe Railroad
The Halsell Ranch is being subdivided. First buyers secure choicest locations.

Write today for Descriptive Literature and Full Particulars

Halsell Farms Company
Lamb County, Texas

Address us at our General Offices at Vinita, Oklahoma

66,000 ACRES

Fine Cat Claw Land

The noted Sod House Pasture is now on the market.

ONLY \$25 PER ACRE
15 YEARLY PAYMENTS
Only Six Per Cent Interest

There is no better water in Texas, at from 30 to 90 feet, and there are now 20 wells scattered over the entire tract with windmills pumping this pure, cold water, proving to you the supply is inexhaustible and that you don't have to pick a place to dig your well, but may locate your improvements to suit your desire.

REMEMBER: The Sod House Pasture is a part of the Halsell Lands.

The Neal Douglass Land Company of Littlefield will be glad to show you these lands. Write to them for further information.

**NEAL DOUGLASS
LAND COMPANY**

Littlefield, Texas

Fine Commercial Printing is our hobby. Let the Leader office do your next job.

POULTRY

CHICKEN LICE WORRY FOWLS

Application of Blue Ointment is Efficacious—Sodium Fluorid Also Works Well.

A study of the life of chicken lice shows that there are a dozen different kinds infecting the same bird. Most of them, however, frequent the rear part of the body at least once in every twenty-four hours where they obtain the necessary moisture for their life and growth. This moisture is obtained from around the vent. This habit of lice would answer one method of treatment, the use of blue ointment.

Blue ointment applied around the vent and under the wing of each fowl affected seems to get rid of the lice in a very short time. A piece the size of a good sized pea is plenty for one bird. If the blue ointment is thick and heavy it should be melted so that it can be applied in a very thin layer. It is well to make a second application two weeks after the first, especially if the birds are badly affected.

We find that about two applications a year seem to be sufficient to control the lice.

Any of the advertised lice powders and many of the home made powders seem to work very well for a short time. Their results, however, are only temporary, thus involving considerable



Applying Sodium Fluoride.

labor in holding down this trouble. Good dust wallow handy to the poultry house also adds considerably to controlling this pest.

Sodium fluoride can also be used to control lice. This is a common preparation which can be obtained at any drug store. It is applied by what is known as the pinch method. A pinch should be worked into the fluff of the tail, a pinch under each wing, a pinch on the back, and a pinch worked into the neck feathers. This treatment seems to work very well. By Harry Emberton, Professor of Poultry Husbandry, Oklahoma A. and M. College.

FATAL DISEASE OF TURKEYS

First Symptom of Blackhead is Slowness of Movement—Poult Need Clean Quarters.

The first symptom of that fatal disease of turkeys, blackhead, is slowness of movement. A poult coming down with this disease will show no symptoms in the early stages, but he will come trailing in after the rest of the poult have come in to roost; at first just a few feet behind, gradually getting further and further in the rear of the house-coming poult, until finally the evening comes when he stops by the wayside.

When the first lagging is seen, shut the poult up, give him only sour milk to eat, and give a dose of epsom salts. He can have all the chopped nettles, dandelions or onions he will eat, but that is all. The droppings of affected poult should be buried. Poult will not thrive if fed where there is the stink of other poultry. Keep them clean—that is, free from lice and mites; feed them clean food on a clean board or trough, and give them drinking water that has not been fouled.

POULTRY NOTES

The hen that lays 150 eggs a year is doing very good work.

Winter eggs should be the constant object of poultry flock owners.

It is not so much what is fed as how it is given that brings results.

Frozen combs are a good sign of poor ventilation in the henhouse. It's not so much the cold as the humidity.

Chickens that are sick or anemic and doing poorly should be culled out at all times. The spine-legged, long-headed, shallow-bodied pullets should be eliminated as soon as discovered.

Use one male bird to every ten or fifteen hens of the heavier breeds, and one to every fifteen or twenty Leghorn hens to give good fertility.

Wyandottes have a standard weight of 8½ pounds for cocks; 6½ pounds for hens; 7½ pounds for cockerels, and 5½ pounds for the pullets.

Geese generally mate in pairs, but occasionally where you have two or three ganders you can work in an extra goose and find that the eggs will be fertile; otherwise not.

Land Sales Reported

During the past few weeks about the busiest place in town has been in and around the office of the Littlefield Land Co. With more than twenty counties in the state thoroughly organized and with thousands of pieces of literature descriptive of the virtues of Littlefield lands being carefully distributed throughout the state the response now being made is indeed gratifying. Scores of prospectors and land buyers have visited the local land office during the past week, many have entered into contract for future delivery and a large number have closed deals for land. Among the sales reported by this company during the past week are the following:

J. W. Kelsey, Runnels county, 177 acres; A. A. Moran, Runnels county, 177 acres; J. E. White, Runnels county, 177 acres; A. F. Hamilton, Dawson county, 177 acres; J. E. Kevil, Runnels county, 194 acres; E. M. Akin, Runnels county, 24 acres.

Others who are interested in Littlefield lands and have sales pending are J. M. Roberson, C. W. Petit, N. S. Fulfer, H. M. Work, S. C. Vineyard, J. E. Vineyard, P. A. Gressett and Claude Cotton, all of Jones county; John T. Hotria, Coffman county; W. L. Luederhage and O. H. Cox, Dawson county; J. D. Landers, O. Y. Helms, Runnels county; J. B. Johnson, Montague county; T. P. Levy, Bell county; L. Fickel, Lampasas county; G. J. Pet us, Walter Graf, Walter Herchman, Wilbarger county; Fred Ming, Hardeman county; W. E. Stanford, Hale county; Wm. Meinscher, Paul Hoeldtke, John Lauder, McLellen county; W. J. Staten, Van Zant county, and Luther Bird, Cimmaron county, Okla.

The Jugs at The Dam

Last Thursday night a number of young people met at the home of the Misses Northington and motored to Goat Dam for a picnic, as guests of the Jug Club. Games were played and the big game of "eats" was entered into every one present.

A most enjoyable evening was had, despite the fact that several were bothered with corns and others left their energy at home.

Baptist Meeting

Announcement is made that the local Baptist meeting will be started on the fourth Sunday of this month, or possibly the Friday before.

The services will be conducted by Rev. J. W. Saffie, of Plainview.

Returns From Market

G. M. Shaw, of the Lamb County Merc., Co. returned Sunday from the Eastern markets where he had been to lay in a supply of fall goods for the Company store and the Shaw Furniture store.

Mr. Shaw reports the market firm with a tendency toward higher prices on account of probable rise in cotton. He says he ran into some of the hottest weather in Central Texas he has experienced for years.

While stopping in Dallas he was surprised to awake with the flames streaming through his bedroom window. Clad in pajamas and a necktie (Charlie Chaplain style) he made good his escape. The hotel however, was not damaged, but a large cafe next door was a complete loss.

Pies!

Home made pies on Wednesday and Saturday. Order the day before.—Mrs. Bessie Baze.

IT'S HOT!

But that should not keep you from Church on Sunday morning.

During August the Sunday School and Morning Pleading will be the only services of the lay.

Sunday School, 10:00 A. M.
Morning Worship, 11:00 A. M.

Good Music A Cordi Welcome Interesting Sermons

First Presbyterian Church

H. J. JORDAN, Minister

BEISEL BROS.

MACHINE SHOP

Disc Rolling
Boilers Refined
Acetylene Welding
General Repair Work
Lace Work of all kinds
Agents for Emerson Lantingham Implement Co.,
Alice-Chalmers and Rumley Tractors.

Beisel Bros

Littlefield, Texas

Miller Week

In Our Baby Goods Department

You will find articles of the highest quality, done especially for your baby's health and comfort.

Just arrived!! **The Miller Nipple Applicator.** Puts nipple on bottle without spilling. Sanitary, convenient.

You will also want **Miller Baby Comfort Kit**—new, practical and essential. A complete assortment necessary for the new baby's life.

Other Baby Specials

Nursery Kit	Crib Sets	Water Bottle
Teddy Pants	Sponges	and Syringe
Nursery Aprons	Nipples	Balls and Dolls

Miller Rubber Goods for All of the Family

Black Beauty Water	and Household Aprons
Bottles and Syringes	thing Caps and Bathingwear
Douches	ages Belts

Visit Our Sa Fountain

Stokes & Alexander Drug Co.

The Retail Store

"In Business for Health."

Littlefield, Texas

Saturday Specials

Unusual Offerings From Our GROCERY DEPARTMENT

10 lb. can Calumet Baking powder	\$1.98
3 cans Mississippi Sweet Potatoes	.25
10 cans No. 2 Hominy	.90
48 lb. sack Chrystal White Flour	1.69
Armours Corn Flakes	.10
No. 2 Cedarburg sifted peas	.16
No. 2 Standard Corn	.09
Gallon Apples	.59
Gallon Preserves	1.89
Gallon Extracted Honey	1.75
1-2 Gallon Extracted Honey	.95
Full Quart Bluing	.22
Tall Can Gold Bar Slice Pine Apples	.23
16 oz. Pure Fruit Preserves	.27
12 oz. Pure Fruit Preserves	.21
5 Cans Coco (Baker's)	.25
1-4 lb. Can Ridgeway's Tea	.22
22 Bars Walkers Laundry Soap	1.00
6 Bars Hand Soap	.29
1 Can Hooker Lye	.10

LAMB COUNTY MERCANTILE CO.

The Pioneer Store

LITTLEFIELD LEADER

Published every Thursday afternoon at Littlefield, Texas.
Subscription: \$1.50 per year; 75 cents for six months.
Advertising rates given upon application.

No. 27. Entered as second-class matter May 24, 1923, at the post office at Littlefield, Texas, under the Act of March 3, 1879.

JESS. MITCHELL,

Editor and Publisher

Subscribers who change their addresses, fail to get their paper, should immediately notify this office, giving both new and old addresses. Communications of local interest are solicited. They should be briefly written, on one side of the paper, and must reach this office not later than Thursday noon of each week. The right of revision or return is reserved by the publisher. Advertising that does not show in its type typographic that it is paid for must be marked as an advertisement. All local advertisements remain in this paper for the time specified or until ordered out. All notices of matters not by whom nor for what purpose, if the object is to raise money by subscription, must be paid for at the regular advertising rate per line for each issue printed. Obituaries, cards of thanks, and resolutions, standing or reputation of any person, firm or corporation which may appear in the columns of the Littlefield Leader will be gladly corrected upon its being brought to the attention of the publisher.

A Weekly Thought

The idea of teaching every girl to thump the piano and every boy to be a book-keeper will make potatoes worth about \$10 a bushel in twenty years.

The Community Builder

Newspapers are the greatest medium of publicity for the communities in which they are published. The press should have the unqualified support of the citizenship through subscriptions and advertising not because of any spirit of charity but because of good business. —Amarillo News.

The people of Lamb county have a great deal at stake in seeing that the Leader grows and becomes of greater and wider influence every week. Every subscriber added to the Leader means at least 500 more people who are reading the story of the virtues and opportunities. The more people who can be told the story of this wonderful healthful and productive country the more opportunities we have an enlarged citizenship, quicker our lands will be sold the sooner our country will come a well settled and prosperous section.

Spirit of the West

The Leader stands unreservedly for the advancement of the whole of Lamb county. It is your county's spokesman. It speaks every week with emphasis and authority. Again and again it has been proven the conviction they utterances by the people of this county because of the spirit of the West. It is the Leader. Many of us are now making this our permanent home. They are the old folks, looking forward to their greater happiness and that they are now here.

Every purchaser brings to Lamb county another vitally interested in our section. Every

Concealation for Short-Sighted. Short-sighted people are said to be the most intelligent section of the population.

FLOUNCES OF 1880

Decoration is Applied Anywhere Between the Waistline and the Hem.

Last autumn the assertion was heard on all sides: there is nothing new in the styles of women's clothes. This statement, asserts a fashion writer in the New York Tribune, was an unfair criticism of the work of artists who are constantly laboring not only for the betterment of women's dress, but to give fresh impetus to all trades and industries pertaining thereto.

As far back as last summer clever designers advanced many new ideas which were to bring about striking changes in women's dress. The ideas at that time were kept exclusive but as time went on they took root and their fruits are now seen everywhere.

Distinct and definite fashion notes are apparent in fabrics, in designs for dresses, suits and in millinery. The 1880 silhouette was brought forward last autumn, but not stressed. Now the flounces of 1880 are having a re-incarnation in this season's dresses.

Skirts of 1923 may be flounced anywhere between the waistline and the hem. Flounces appear in unexpected places, such as on the front of the



White Crepe de Chine Frock Showing One of the Many Versions of Flounced Skirt, a Pronounced Style Feature.

skirt only, directly over the hips at either side. Skirts may be flounced all around in straight lines, or wide frills may slant low on one hip and high on the other.

Every dressmaker now has his or her own version of the ruffle. A white crepe de chine frock has flounces in front which begin midway between the hips and the knees. Narrow lace and tucks trim the pockets, the collar and the cuffs of this frock.

Three silhouettes in evening gowns so far are sanctioned: The 1880 silhouette, with bustle or bustle effect of big crisp sash bows. The skirt is draped at the back of the bustle, which is sometimes held out by wire framework. The Venetian or 1880 silhouette of hourglass shape, which finds various interpretations, many delightfully modern. The slender silhouette, which is the most general, and is varied ad infinitum.

Deauville Kerchief Has a Ribbon Rival

The Deauville kerchief has a ribbon rival which serves all the purposes of the handanna, and has some special features all its own.

The ribbon scarf is made of four pieces of wide ribbon which are mitered at the corners by double hemstitching or fagotting. The opening formed by the four pieces is large enough to go over the head. It can be worn as a square, can be pulled around so that one point comes down in the front, with both shoulders and the back adorned with the other points. The shoulder points can both be knotted, or only one point tied. The clever-fingered woman can make six or eight different adjustments of the ribbon berth.

When worn square across the front the side pieces can be folded over the front piece which goes across the chest in such a way as to form a vestee and collar. This is a special feature that the handanna cannot boast unless it is cut out in the center.

Flowers of Leather for Dress Trimming

Flower ornaments made of metal-finished leather in single motifs or in wreaths are used on the new spring dresses for street and afternoon wear. Roses as well as fruits are made of colored leathers which are hand-painted and gilded. The wreaths frequently serve as girdles. Other leather ornaments are studded with steel and jet. Colored leather girdles studded with jet and steel ballheads are used on dressy frocks, the girdles sometimes continuing to form an ornament for the dress.

HALSELL LANDS

70,000 ACRES

Surrounding Amherst, a new town on the South Plains, in the center of Lamb county and on the main line of the Santa Fe Railroad.

Deep Rich Soil and Level Land
No Rocks, Gravel nor Washes
Pure Water at Shallow Depth
Fine Climatic Conditions
Above the Boll Weevil Belt
Best Cotton Land in the State
Allalfa and Diversified Farming

PRICE: \$25 per acre, 15 yrs. time, only 6 per cent interest.

R. C. HOPKINS
General Agent

Littlefield, Lamb Co., Texas

ROUND THE ROUND WORLD



"I'm afraid you've been traveling crooked paths, my man."
"Dis world ain't built on de square, boss—dere ain't a straight path on it."

PLAINVIEW NURVIEW, Texas. Our trees are being all over West Eastern New Mexico years careful selection the best varieties. Replanted few trees that bear a hundreds that are not a West Texas conditions your order direct or send a catalog. Local agent wanted.

Speed of Power Belts.

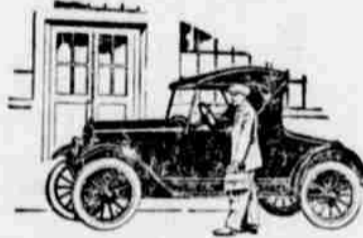
Power belts such as are used in workshops for transmitting power from a revolving shaft to a machine have been run at a rate of nearly 5,000 feet a minute, but in practice it is seldom an advantage to run them more than 3,000 feet a minute.

Save an Hour a Day With a



2-Pass. Roadster \$510

f. o. b. Flint, Mich.



For further information See Littlefield Service Station Local Agents

Foot Ball Meet

Prof. Speight desires to meet all the high school boys interested in football at the white Restaurant Saturday afternoon, at four o'clock for the purpose of organization and getting ready for fall games.

WANTED: Pasture for about 30 head of cattle. —F. W. Lichte. 2 X P

Individual Organization. To reform a world, to reform a nation, no wise man will undertake; and all but foolish men know that the only solid, though a far slower reformation, is what each man begins and perfects on himself. —Carlyle.

Littlefield State Bank

A Guaranty Fund Bank



Solicits the business of all New Settlers

No account too large for us to handle. No account too small for us to appreciate.

SHERWIN-WILLIAMS PAINT

FOR TEN DAYS We are offering the famous Sherwin-Williams Paints at a very Special Price.

We think now is the most opportune time for Littlefield to have a "Co-operative Paint-Up Campaign."

No one thing adds more to the beauty of a building than paint at the same time affording protection from sun, wind, rain and snow.

Think how our community would look with every building newly painted! Let's make it that way.

USE SHERWIN-WILLIAMS PAINTS F. A. BUTLER LUMBER CO.

We Hurry!

We Hurry!

LITTLEFIELD LANDS

The Best Farm Lands

WHERE You will find

- rich productive soil.
- abundance of pure water.
- healthful climate.
- sufficient rainfall.
- superior railway shipping facilities.
- the very best school advantages.
- churches and moral atmosphere.
- a very low tax rate.
- a bright future in a rapidly developing country.
- prices right, and terms so easy you may easily pay for your home.

NO BOLL WEEVIL HERE

A Safe Cotton Country Where One May Also Diversify Their Crops.

Littlefield Lands, "Stand the Test for the Best"

ARTHUR P. DUGGAN Sales Manager

Littlefield,

Texas

"The Best is Best"

You will find our line of Groceries, Shoes, Implements, etc., the best that affords.

Knives

Just receive the line of the famous Cattaragus Knives heading and every day use. They are guaranteed. Call and see them.

Shoes

Our line is being kept up to the latest sizes.

Groceries

Our Groceries are always fresh, and we take pleasure in serving you.

Try next bill and see the saving.

We are public to make our store their home.

Branguires Cash Store

As enemies; let's make friends!

W. H. Anderson A. B. M. D.
OFFICE ROOMS AT RESIDENCE
Preferable Hours, 9 a. m. & 3 p. m.
Littlefield, Texas

E. S. Rowe
ATTORNEY AT LAW
See me for
LAND LOANS
Office in State Bank Bldg.
LITTLEFIELD, TEXAS

F. G. BOURLAND
Contractor & Builder
Plans and Specifications
Furnished
Littlefield, Texas

Littlefield Lunch Room
Short Orders
Lunches at all Hours
Cold Drinks
Beds, 50 cents
W. H. Heinen, Prop.

Parker's Eats
Home Made Pies
Hamburgers
Pop and Bud
Milk, Coffee & Cereals
Call Us Over the Phone
and We will Deliver it to You

**LAND AND
LIVE STOCK**
Cattle Sheep
Ranches Farms
Write for Information
R. C. HOPPING
Littlefield, Texas

O. K. Transfer
Small or Big Hauls
Express, Freight or
Baggage
Phone 51, or leave order with
H.-B. Lumber Co.
O. K. Yantis
Littlefield, Texas

**Fire & Tornado
INSURANCE**
J. T. STREET
Agent
The only loss this agency
ever suffered was settled
within thirty days.

COAL
We have plenty of new
stock on hands.
Lay in your Winter
Supply Now.
Littlefield Grain Co.
P. W. Walker

Truck Hauling
Ranch Hauling a
Specialty
No Loads Too Large
Nor Too Far Away
Will Go Any Time and
Any Place.
If you need hauling call
R. S. BELL
The Truck Man

**Progressive Merchants
And Mail Order Houses**

It will interest local merchants to know that the large mail order houses have a force of girls whose sole duty is to examine country newspapers and report on the local advertising they carry.

In towns where the local merchants are poor advertisers the mail order man concentrates his fire. He avoids the town where the local merchants are sufficient-

Dr. P. W. Pillans
Office at Drug Store
Residence Phone, No. 37
Littlefield, Texas

**Well Drilling
Domestic and
Irrigation**
20 years successful experience on the Plains of West Texas.
See me for prices & date.
T. P. WRIGHT

**Restaurant &
Meat Market**
Short Orders at all
hours of the day
Candy & Cold Drinks
Bread & Pastry
**WHITE
Restaurant**

**S H A W
Furniture Co.**
Sell it for Less.

**We carry in stock
at all times a line of**
Simmons Iron Beds
Simmons Springs
Dining Tables
Kitchen Tables
Dining Chairs
Kitchen Chairs
Refrigerators
Mattresses
Pillows
Baby Beds
Baby Chairs
Sell it for Less.
We mean what we say when
we say, "We sell it for less."
Shaw Furniture Co.
Littlefield

Most Particular Customers

Give our Hercules Flour credit for being the best flour they have ever used.
Try a loaf of Golden Cream Bread.
We give our patrons satisfaction.

R. D. BOROUGH, Grocer

KEEP YOUR CLOTHES CLEAN

The Littlefield Tailor Shop is prepared to do all kinds of Cleaning and Pressing.
Ladies and Gents Clothing Altered and Repaired
Our Work Will Satisfy You.
Our Prices Will Please You.
LITTLEFIELD TAILOR SHOP
Clyde Willis, Prop.

ly astute to keep trade at home. Mail order competition need never be serious if the local merchants are alive to their opportunities. Not long ago in the Middle West one enterprising merchant, facing the mail order difficulty, bought certain articles from the mail order concern and displayed them in his store along side similar articles he himself handled, and he soon proved to his customers that they could save money by shopping at home. —American Press.

**Changes Made In Cicero
Smith Lumber Yard Here**

Several changes have been made in the last few days in the Cicero Smith Lumber yard at this place.

Fred Smith, who has been manager of the yard at this place since it was put in back in 1917, has been made district manager of the Plains section, of nine yards, with a tenth soon to open at Littlefield.

Alvin Hicks, who is now employed here will likely go to the Littlefield yard as soon as it is established. —Terry Co. (Brownfield) Herald.

Free Mail Service

Announcement comes from Washington that the Postoffice Department has granted Lubbock's application for free mail delivery, beginning October 1, with three carriers on the regular routes.

Oklahoma Avenue

Mrs. C. H. Jones and daughter Dorothy, of Des Moines, Iowa are having a delightful visit at the B. B. Moulton home this week.

The road grade out this way is being put in first class shape.

Mrs. Williams, who has been holding a meeting in Littlefield visited a few days in the Carl Tremain home.

Mrs. B. B. Moulton, who has been sick, is now improving.

Mr. and Mrs. Fred Hoover and daughter spent Saturday and Sunday in Rogers, New Mexico visiting with old friends.

Minnie Veal

A surprise party was given Mr. and Mrs. Ross by the Minnie Veal community Saturday night.

Some of the Minnie Veal people went to Bluit New Mexico Sunday to the singing convention Sunday.

Mr. and Mrs. Zed Robinson,

her father and mother, Mr. and Mrs. Blessing, Misses Thelma and Truma Pumphrey visited Mr. and Mrs. G. W. Cooper Sunday.

The Jug Club

The Jug Club met Thursday afternoon at the home of Ignatz.

Old business was attended to and one new member was initiated. The handle voted on for the new member was "Tillie the Toiler."

Music was enjoyed throughout the afternoon and delicious refreshments were served to eleven Jugs.

The public will be interested to know that Ignatz was a very delightful hostess, in refraining from using her "Bricks."

The next regular meeting will be held at the home of Tillie. —Krazy Kat.

Unclaimed Letters

Following is a list of unclaimed letters remaining in the post office at Littlefield, Texas. If not called for within 30 days from Aug. 2, 1923 they will be sent to the Dead Letter office, Washington, D. C. —Wm. Wade, P. M.

Harry Akers, Boce Aldrich, Mrs. Nida Aldrich, R. F. Clements, Mrs. McFarland Cockrel, Miss Edna Graham, P. A. Harbert, G. T. Hall, A. A. Hodge, G. Heartfield, Clyde Hegenbotham, I. R. Heckman, H. E. Homey, E. L. Kincaid, Ralphe Lake, L. Looney, John B. Monohon, Lee Marky, J. H. McKay, W. P. McGowan, Mr. and Mrs. L. V. Owens, Emery Powell, H. G. Ratliff Art Reeves, I. J. Selph, Miss Lucie Shedrick, T. P. Sutton, Westly Stories, Miss Lucile Thomas, J. L. Wiley, J. C. Whitten.

Mexicans: Frank Gardine, A. Bula, Isidore Gutierrez, Easibio Baltaz, Geronimo Satala, Urbano M. Romrez.

Baileyboro Buzzings

T. G. Gaddy and family were Muleshoe and Sudan visitors Saturday. Mable Pirtie and Juanita James accompanied Frances Gaddy home from Sudan.

Noble Blackshear and Bosie Henderson were Littlefield visitors Saturday.

The apron party at Walter Damron's, of Circleback, Saturday night was well attended by a number of visitors from both Sudan and Baileyboro. The prize for hemming the best apron was given to Dewey Howell and Miss Luia Burnett. Iced lemonade and cake were served. The guests departed at a late hour, thanking their host and hostess for an enjoyable evening.

Bosie Henderson spent Saturday night and Sunday with Noble Blackshear. They also enjoyed the company of S. T. Abney and Charlie Coffman Sunday.

Mr. and Mrs. Ed Huise and daughter, Linnie spent Sunday in the Coffman home.

Clara, Lois, Roger and Clark Harvey were the supper guests of Ida, Clarence and Carel Coffman Sunday.

Mr. and Mrs. Jim Carter, of Sudan were visitors of Mr. and Mrs. G. L. Blackshear and family Sunday afternoon.

Prayer meeting Sunday night was well attended and we feel sure it will be a success in the future.

Mrs. Walter Florence, of Ralls Texas is visiting her parents, Mr. and Mrs. G. F. Henderson this week.

Mr. Bell and family and Mrs. Florence, of Ralls, Mr. and Mrs. G. F. Henderson and Trixie Henderson spent Sunday visiting with friends around Circleback.

Grace & Yes a Brannen returned to Littlefield Wednesday from

MAGNOLIA GASOLINE

Magnolene Oils and Greases
The Dependable Lubricant
Rea Quality Products
Demand them from your Dealer

Magnolia Petroleum Company
G. W. Hargrove, Agent. Littlefield, Texas

**Here's a Mill that Works
When Others Stand Still**

This new Dempster Windmill is so perfectly balanced and automatically oiled that it pumps when other stand still. Perfect Self-Oiling, accurate balance Improved Regulating Device and Ball-Bearing Turntable keeps it pumping steadily in the slightest breeze or in strong gusty winds.

**Low, Self-Oiling
DEMPSTER
Windmill**

This is the best windmill ever shown here. No squeaking rattling, no bother. Just fill the oil reservoir a year and then forget it. The Dempster regulates itself. Wood or steel wheel. Put one of these new Self-Oiling Dempsters on a 15' Steel Tower and you will know complete mill satisfaction. Also full of Dempster pumps, cylinders and general supplies.

If you prefer wooden tower, we have in stock everything with which to build it.

**Windmill Towers and Posts
Windmill Beams and Cut-off Wire
Pump Cylinders, Water Tanks
Pipe and Well Casing**

WE HAVE EVERYTHING TO BUILD ANYTHING

Higginbotham-Bartlett Co.

Sew with a Smile
Littlefield, Texas

FRDS

THE name of the Ford will be to the public with a normal ball, on the evening August 24th. We extend a cordial invitation to all. Cord enjoy yourselves as ours.

Littlefield Co.

Baileyboro where they have been visiting Mr. and Mrs. G. Blackshear and family for several days.

W. H. McCarty, J. H. Johnson and family and Lismon Harvey arrived home Wednesday. They have been visiting in Dickens county for the past few weeks.

Quite a number of people from this and the surrounding communities motored over to Rogers, N. Mexico Friday to attend the annual Picnic.

Grace & Yes a Brannen returned to Littlefield Wednesday from

—The Busy B
Swat the Flies