

BY HOP JR.

Construction Starts On Citizens' Branch

Ground was broken and preparations for running a foundation were made the first of this week for the new branch of Citizens National Bank.

The Texico location of the Clovis bank will be at the corner of Wheeler and Anderson Streets.

R. K. Erhard of Clovis is the general contractor for the new project, and putting up the 40x60 building is expected to take about 90 days.

T. E. Willmon, Citizens vice-president, said this week that

the officer to manage the Texico branch has not yet been selected by the home office.

Citizens acquired about 200 feet on Wheeler Avenue last year. Wheeler is now Texico's "Main Street" and carries traffic for Highways 60-70-84. Conjecture about possible future routing of this traffic held up the bank's plans for a time.

New Mexico statutes permit "branch banking" which means a bank may maintain more than one location in its home county. Citizens was approved a permit

to locate in Texico some time ago. However, Willmon says the Twin City location is not a part of a county-wide system for Citizens, but merely to serve Texico are aprons.

"We have a lot of customers over there," says Willmon, "and this will mean we can be of more service to them."

THE STATE LINE TRIBUNE

"OFFICIAL PUBLICATION OF PARMER COUNTY"

10 PAGES

FIFTY FOURTH YEAR

10 CENTS

Good Crowd Attends Chamber Banquet

Farwell Chamber of Commerce sponsored the annual banquet Thursday evening, with one of the largest crowds in recent years on hand to honor the Farwell Steer bi-district basketball champions, enjoy a steak, and hear some serious comments on the Communism threat, by Dr. F.W. Mattox, president of Lubbock Christian College.

Joe W. Jones was re-elected as president of the organization and Pat Patrick is vice-president. Bob Anderson is treasurer and Wilfred Quickel, secretary. Directors to serve in 1965 include Bob Westfall, L.L. Cooper, Hurshel Harding, Car Davis, Herb Potts, Jimmy Self and Joe Camp.

Jimmie Self was master of ceremonies and Rev. Douglas Gossett of Oklahoma Lane Methodist Church, gave the invocation. Benediction was given by Rev. W.C. Strickland, pastor of Hamlin Memorial Methodist Church.

Special guests included the Steer basketball squad and their coaches, Vernon Scott and Jerry Dee Owen, and five of the team members, accompanied by Zelda Donaldson, entertained with vocal numbers. The group included Jerry and Bobby Field, Warren Gossett, Johnny Schell, and Larry Donaldson.

Wilfred Quickel introduced guests from Clovis, Littlefield, Friona, Muleshoe and Amarillo, and Ebb Randol introduced the speaker. Edd Hardage provided background organ music during the evening.

Progress was noted in the community during the year, with building permits reaching a half million dollars, including a new church, new bank building, four commercial buildings, addi-

tions to two commercial buildings, 25 new residences and 11 residence additions.

The city drilled a new water well, cable TV was added, and Gifford-Hill Western, the city's biggest employer, moved to new and expanded facilities. Also noted at the banquet was the four-lane highway from seventh street in Farwell to the Bailey County line, and improvements of Santa Fe Railroad.

Special observances included the July 4 celebration and support of the community ball park project last year.

In his remarks, Dr. Mattox touched on the attitudes of various Americans toward communism, and showed literature from various countries, which he accumulated during his world travels.

The speaker described America as the greatest country in the world, but emphasized the need to get the true story of freedom to other countries of the world.

Reminder

All Texico-Farwell area residents are reminded of the animal clinic, being held at the town hall in Texico today (Friday).

Dr. Russell, Clovis veterinarian, will be at the town hall 1 p. m. - 5 p. m., to inoculate any pets against rabies. All pets must have the shots to comply with city ordinances in the border line towns. Fee for the shots is \$2.00 each. An additional \$1.00 will be charged Texico (town residents) whose pets need a license tag.

Sam Tippit Leads Gruver To Regional Win Over Steers

After defeating Springlake twice in district playoffs and humbling Petersburg in the bi-district playoff, the Steers were unable to stop Gruver in the regional playoffs as Sam Tippit led the Gruver five to a 67-59 victory, over the Farwell Steers. Gruver later defeated Big Lake for the championship of the region and will participate in state playoffs.

The Steers got off to a slow start as Gruver jumped to a quick lead early in the first quarter. Farwell came within two points of their opponents before the quarter ended but again dropped behind, and the

game went into a half time with the Steers trailing 26-32.

The locals got off to a good start in the third quarter as they cut the opponents lead to a slim 34-32 margin. Farwell quickly closed the gap another notch as Gruver scored a free shot and Farwell got a field goal to bring the score to 35-34.

Both teams scored another field goal before Warren Gossett stepped up to the free throw line and calmly netted a goal. It was a brand new game with the score tied 37-37.

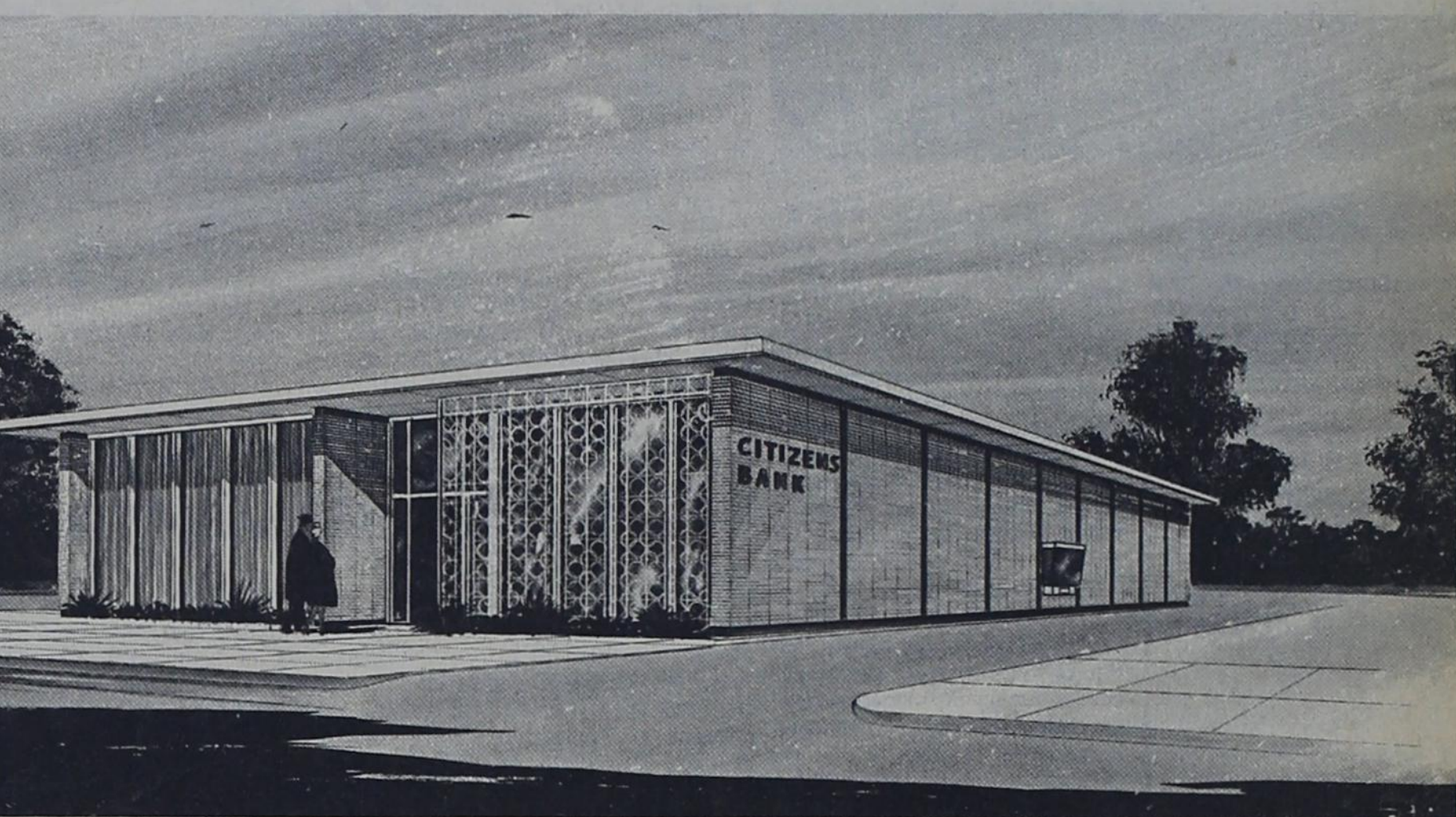
However, the Steers were unable to take advantage of this situation and once again dropped

behind, 39-37. Johnny Actkinson again tied the score as he bucketed two free shots.

Gruver scored two field goals successively before the buzzer sounded ending the third quarter, and the game entered the last quarter with the Steers trailing 44-41.

With three minutes of time remaining in the game Gruver made five points to widen their lead, and from there on it was their ball game as they put on an exhibition of ball control and team work, adding more points to end the game 67-59.

Sam Tippit was big gun for Gruver as he hit a total of 34



CITIZENS BANK - TEXICO, NEW MEXICO

School Bond Passes By 9 To 1 Vote In Texico

One hundred and fifty three patrons of the Texico school district trooped to the polls on Tuesday to vote on the school bond issue, despite the blowing snow and almost zero temperatures. The vote was a little over 9 to 1 in favor of the bond issue.

Total votes cast was 153, with 128 for the bond issue, 14 against the issue; and 11 votes marked incorrectly.

The Tuesday election marks the second time in four years the Texico school patrons have gone to the polls and voted for a bond issue. At time of the 1961 bond issue the present high school plant was built.

The bond issue voted in the amount of \$130,000 will allow the addition of five classrooms and two restrooms at the ele-

mentary building, and two classrooms and a library at the high school building. The elementary rooms will be erected directly west of the breeze-way of the present elementary building and the rooms at the high school will be added to the west side of the high school building.

Present plans call for the building program to begin in the early summer (possibly June) if at all possible and hopes are high that the additional rooms will be available for use in the late fall.

With the additional buildings authorities believe that the consolidation with Clovis (recently discussed by legislators) is in the distant future (if at all).

"Needless to say I am elated at the outcome of Tuesday's

election" said Supt. A. D. McDonald who is in his second term as administrator of the school. He has previously taught at Texico as high school English teacher and as high school principal.

Chicken Pox, Measles In Farwell School

The attendance at the Farwell elementary school has shown a sharp drop in recent days with 15 per cent to 20 per cent of children in the elementary building absent due to the chicken pox and three day measles, which have reached the epidemic stage in the Farwell area.

Children at the school had been having the disease for the past three weeks, reports Principal Jack Williams, however it was not until late last week that the decrease in attendance was noted to such a degree.

On Monday 62 children were out of school while on Tuesday the number of absences had dropped to 47, indicating that several children had recovered sufficiently to return to school.

The diseases have not reached the Texico area at this time, says Mrs. Zelfa Younger, elementary principal, who added that they have no more than the usual number of absences at this time, none which can be contributed to the childhood diseases.

"I am almost sure they (chicken pox and measles) will soon hit us" she said when told of the situation in the Farwell school.

Visitors in the home of Rev. and Mrs. Harvey Hudnall on Tuesday were Mr. and Mrs. Johnny Warrick and Rene' from Portales.

IN FARWELL-- Three File For City Post

Farwell city commission members approved and accepted a petition bearing the names of Elmer Hargrove, Woodrow Lovelace and Carl G. Davis to appear on the ballot in the forthcoming city election. Hargrove will be running for mayor and Lovelace and Davis will be seeking the commissioner's posts.

Any other person wishing his or her name to appear on the ballot for a post on the city commission has until March 6 (Saturday) to file a petition with the city clerk. Election date is April 6, with polls to be open at the city hall from 8 a. m. until 6 p. m.

Election judge will be Clyde Magness. Nell Walling will serve as alternate judge and Mrs. Ann Smith will be clerk.

Sam Aldridge, mayor, and C. C. Christian, commissioner have declined to serve as city officials for an additional year.

Sam Aldridge, mayor and C. C. Christian, commissioner have declined to run for additional time as city officials and the other incumbent, Commissioner Joe Blair is running for a position on the Farwell school board, disqualifying him for a city post.

Commissioners also approved the annexation of Ridgecrest #3 (which includes all of the property on the north side of Farm to Market 292 to the city).

All other business was of a routine nature with bills for the month approved for payment.

Breaks Hip In Fall On Icy Street

Walter Freeman, Texico, broke his hip in a fall on the icy pavement Monday morning while crossing the street on his way to town hall to assist with the school bond election.

Despite the fall, Freeman stayed at the polls throughout the day, before consenting to see a doctor. When he was examined by the doctor late in the day the hip was found to be broken. He underwent surgery to pin the hip bone together on Tuesday morning and his condition is described as satisfactory at this time.

He is hospitalized in Clovis Memorial Hospital.

G.S.P.A. Meeting Tuesday

Election of officers will highlight annual meeting of Parmer County Grain Sorghum Producers Association which is to be Tuesday night at 8 in Bovina school cafeteria.

Announcement of the meeting has been by Tom Caldwell, Oklahoma Lane farmer, who is president of the association.

Dub Anthony, Jr., Friona farmer and vice president, will be the speaker.

Directors of the association, other than Caldwell and Anthony, are Ellis Tatum of Black, Elmer Hargrove of Farwell, J.D. Kirkpatrick of Bovina and Gene Smith of Lazbuddie.

Caldwell urges all grain sorghum producers in the county to attend the annual session.

Coffee and Spudnuts will be served.

Baseball Game

First baseball game for the Farwell Steers is set for Friday, March 12 at 4 p. m. in Bell Park in Clovis.

The locals will host the Pampa high school team in the opening game. A complete schedule of games and players will be available by next week, says Coach Vernon Scott.

All home games will be played at Bell Park.

Trotting Jaycees

Clowning Lions

In Benefit Game

The Trotting Jaycees and the Clowning Lions will meet in a basketball game at the Farwell High School gym, Tuesday evening, March 9, 8 p. m. in a benefit game for the Little League Ball Park Fund.

Price of admission for the game which will star such outstanding players as James Craig, James Ussery, Joel Tankersley, and Don Geries is 50¢ for adults and 25¢ for all children.

The losers of the game will pay the expenses of the game, and 100% of the gross receipts will be presented to the ball park fund.

For an evening of hilarious entertainment be sure to attend the Tuesday game.

7 Arrested For Burglary, Destruction Of Private Property

Seven Spanish Americans were arrested by Sheriff Charley Lovelace on Sunday following a Saturday night spree,

which resulted in the burglary of Midway Fertilizer Co. (where the interior of the building was mutilated) and damage done to

an irrigation well house on the farm of Frank Hunt and a tractor belonging to Benny Bickel also of the Lazbuddie community.

Damage to the Fertilizer company building was in the amount of \$500-\$600. Tires on the tractor were slashed, head lights beat out and it was started and allowed to run into the side of the well house (wrecking it and doing additional damage to the tractor). Estimated damage to the property is in the amount of \$700-\$800.

Arrested by Sheriff Lovelace were Gilbert Bara, Anselmo I. Gonzales, Murillo Valero, Joe Gonzales, Ray Faela and Jose Mendoza all 17, 18 and 20 years of age and one juvenile, Jessie Valero.

They have been charged with burglary and destruction of private property. Their bonds were set at \$1,000 each on Tuesday morning, when they were arraigned. The men will await grand jury action, while disposition of the juvenile's case is pending.

Awaiting trial on DWI charges are Bobby Rodgers, Friona, and Lawrence Stelzig, Tulla.



Vandals burglarized the office at Midway Fertilizer company on Saturday night and did some \$500-\$600 damage to the interior of the building. Note the papers which have been emptied

from drawers and the back of the chair which was slashed before the vandals left the buildings.



Entered as second class matter at Farwell, Texas, under the act of March 3rd, 1879. Published every Thursday.

SUBSCRIPTION RATES -- Farmer and adjoining counties, \$3.00 per year; elsewhere, \$4.00 per year. Payable in advance.

The Tribune is a member of:
 NATIONAL EDITORIAL ASSOCIATION
 TEXAS PRESS ASSOCIATION
 WEST TEXAS PRESS ASSOCIATION
 PANHANDLE PRESS ASSOCIATION

Classified Ads

NOTICE
 Classified advertising rates are as follows: Three cents per word for the first insertion, two cents per word per insertion thereafter. Minimum rate, 50 cents on cash orders, \$1 on account.

Farwell Lodge
 No. 977
 --BOVINA--
 Slated Meetings
 Second Tuesday
 Of Each Month
 7:30 p. m.
 PRACTIC SESSIONS
 Each Tuesday At 7:30 p. m.
Art Mast w. M.
J.E. Sherrill, Jr. Secy.

FOR SALE: One bedroom home located on 1st St., Farwell. Contact Floyd Milstead. 41-tnc

FOR SALE: Falcon Ranchero good condition, good rubber, one owner, Economical transportation, \$675. Call Farwell 481-3315 evenings. 21-tnc

I am in Farwell every day except Sunday and holidays. I drive a star mail route from Lubbock to Farwell, and have time available to WORK from 9 a. m. until 5 p. m. I am honest, in good health, and will do any work you may have available. Leave word at The Tribune and I will get in touch with you for interview. Bart Frasier, 1711 E. 1st St., Lubbock, Texas. 23-1tp

For COLDS Take 666

FOR SALE: 1961 Silvertone TV and Stereo combination. Call 481-3322 days or 481-9190 after 6 p. m. 23-1tc

CARD OF THANKS
 We wish to express our sincere appreciation for the beautiful flowers, cards and words of comfort, and especially all your prayers during our sorrow in the loss of our loved one.

Mrs. Frank Hromas
 Mr. and Mrs. Charlie Hromas and family
 Mr. and Mrs. H. C. Atkins and family
 Mr. and Mrs. Cecil Rundell and family
 Mr. and Mrs. James Brewer and family
 23-1tc

Red Sez



Joe: "What does the Chaplain of Congress do, Red?"
 Joe: "Oh, he just gets up on a platform, looks at Congress, and prays for the country."

Let Us Service Your Car With Fuel-Oil-Wash Lube Job We Will Pick Up And Deliver

Wheeler Avenue '66' Station
 If You're Satisfied Tell Your Friends, If Not Tell Red
 Texico Ph. 482-9148

Texico Band Sets Spring Concert

The annual concert for the Texico school bands will be presented tonight (Friday) March 5, 7:30 p. m. (CST) in the old gym, announces Gerald Tiffin music director. Price of admission is 50¢ for adults and 25¢ for children.

The program will feature members of the "C" band; "B" band; "A" (high school band) and the high school chorus. Kathy White will accompany the chorus.

The "C" band will open the program playing the "Hymn Tune" -- arr. Lowell Mason. The "B" band will present three numbers from "Time for a Concert" -- Forrest Buchtel including -- "In a Canoe" -- waltz; "Sunset Hour" -- overture; and "On a Hike" -- march.

Numbers featuring the high school choir include: "Break Forth in Joy" -- Don Whitman; "Now Let Every Tongue Adore Thee" -- Bach and "The Traveler" -- arr. Wood.

After a brief intermission the high school band will present -- "Brighten Beach" (concert march) -- Latham; "La Nuit" -- Cacavas; "To a Wild Rose" from "Two Woodland Sketches" -- McDowell Johnson; "Two Courty Dances" -- Rameau-Gordon and "Green-sleeves" -- Kinyon.

For an evening of good listening don't fail to attend the spring concert at Texico on Friday (Today).

World Day Of Prayer To Be Observed

World Day of Prayer will be observed by the local WSCS (Woman's Society of Christian Service) at 2 p. m., March 5 at Hamlin Memorial Methodist church. Ladies from the Oklahoma Lane WSCS will be guests of the local group and all ladies of the Texico-Farwell community are invited to participate in the program by being present for the program.

World Theme for the program is: "What Doth the Lord Require?" for a world fraught with tensions as teeming humanity seeks freedom and fulfillment as individuals and nations. "He hath showed thee, O man, what is good; and what doth the Lord require of thee but to do justly, and to love mercy, and to walk humbly with God", Micah 6:8.

"And many nations shall come and say: 'Come, let us go up to the mountain of the Lord, that he may teach us his ways and we may walk in his paths.' . . . and they shall beat their swords into plowshares, and their spears into pruning hooks; Nations shall not lift up sword against nation, neither shall they learn war any more; But they shall sit every man under his vine and under his fig tree, and none shall make them afraid."

Through sincere prayer we can help to make this unfulfilled prophecy a reality. Let us accept the invitation to join all nations walking to the house of the Lord to seek his guidance, to learn his ways on this "World Day of Prayer," invite WSCS members.

FOR RENT: Two bedroom house, wired for washer and dryer also gas range or electric stove, just redecorated, Ave. G., East of 9th -- 481-3628. 23-4tp

FOR SALE: House and one acre just outside Farwell city limits. Any reasonable offer considered. Write or call Wayne Hawthorne, Red Oak, Okla. Route 1, phone -- code 918 Howard 5-2870. 52-tnc

CARD OF THANKS
 May I express my thanks for the flowers, visits, and many cards during my recuperation in the hospital following surgery.

Elenora Kube
 23-1tc

CARD OF THANKS
 Our hearts overflow with sincere appreciation to all who expressed their love and sympathy in so many comforting ways during the illness and at the death of our loved one. Special thanks for the prayers, visits, flowers, food and cards. From the bottom of our hearts we say "May God Bless Each of You,"

Fred Kepley
 Mr. and Mrs. Charles Smith and son
 Mr. and Mrs. Turner Paine and family
 Mr. and Mrs. J. W. Herington and family
 23-1tp

Two File For School Board Positions

No new names were added to the list of those filing for positions on the Farwell School board by deadline (March 3).

Names previously filed for the two positions were those of Joe Blair, and Clarence Johnson.

A. H. Haseloff and Jim Curtis are the members with expiring terms.
 Election date is April 3.

Board To Canvas Ballots

At the Thursday night, March 4 meeting of the Texico school board members will canvas the ballots cast in the Tuesday bond issue election.

Also on the agenda is the re-organization of the board (which follows each board election) and renewing the contracts of the two school principals.

Returns From Hospital

Walter Kaltwasser who has been hospitalized in Amarillo undergoing a series of tests returned to his home last week.

He is reported to be in satisfactory condition, but is not able to work at the present time.

IS YOUR INSURANCE PROTECTION ADEQUATE?



Let Our Professional Staff Advise You!
ALDRIDGE INSURANCE AGENCY
 Ph. 481-3431 Farwell



THE FISH WERE BITING GOOD -- So said this quartet of fishermen, left to right: Jack Fulgham, Lonnie Tharp, A. T. Watts and Gene Hardage after returning from a week spent in fishing at Falcon Lake. The fishermen brought home 600 fish (couldn't say how many pounds) and as usual the big one got away, they say. The quartet left Farwell Wednesday evening, Feb. 10 and returned Feb. 17.

Finals In Volleyball Tourny Set For Saturday

Finals in the Lions Invitational Volleyball Tournament are scheduled to begin at 6 p. m. Saturday afternoon. Prizes will be given for 1st and 2nd places and in the consolation bracket.

Price of admission is 25¢ per session (players included) and a concession stand is in operation, with Lions selling pop corn, sandwiches, hot coffee, candy and soft drinks.

Winners in the Tuesday night round were: City Cleaners, Bladettes, Lariettes, Sherley-Anderson Lazbuddie and Friona Motorettes, in the Women's Bracket.

In the men's bracket winners of the Tuesday games were Lariat Gin, Muleshoe Farm and Ranch, Claborn Funeral Home, Farwell Faculty, Farwell Jaycees.

Thursday night (tonight) play will see Farwell Fertilizer playing Campbell Electric and Bovina Dairy Freeze meeting the Kountry Kemical in the Women's brackets and Kountry Kemical playing Bradshaw Real Estate, Holiday Hawks playing the Red's 66, in the men's brackets.

Thursday night (tonight) in the women's bracket Farwell Fertilizer will meet Campbell Electric at 6 p. m.; Bovina Dairy Freeze will meet Kountry Kemical at 7 p. m. At 9 p. m. City Cleaners will pit their strength against the Bladettes.

In the men's bracket Kountry Kemical will meet Brad-

Patricia Patterson Is Teaching In Florida

Patricia Patterson, daughter of Mrs. Avis Patterson is teaching at the Vocational Rehabilitation Center in Pensacola, Fla. at the present time. Persons enrolled at the school are 16-22 years of age.

Miss Patterson completed work for her B.A. degree at end of the fall semester at Eastern New Mexico University this year. She will receive the degree with a major in speech science and psychology at the spring graduation at ENMU.

Miss Patterson is a 1961 graduate of Texico High School, where she was an honor student and has been listed on the dean's honor roll at ENMU consistently since becoming a student there.

Millie Autrey Participates In Basketball Sports Day

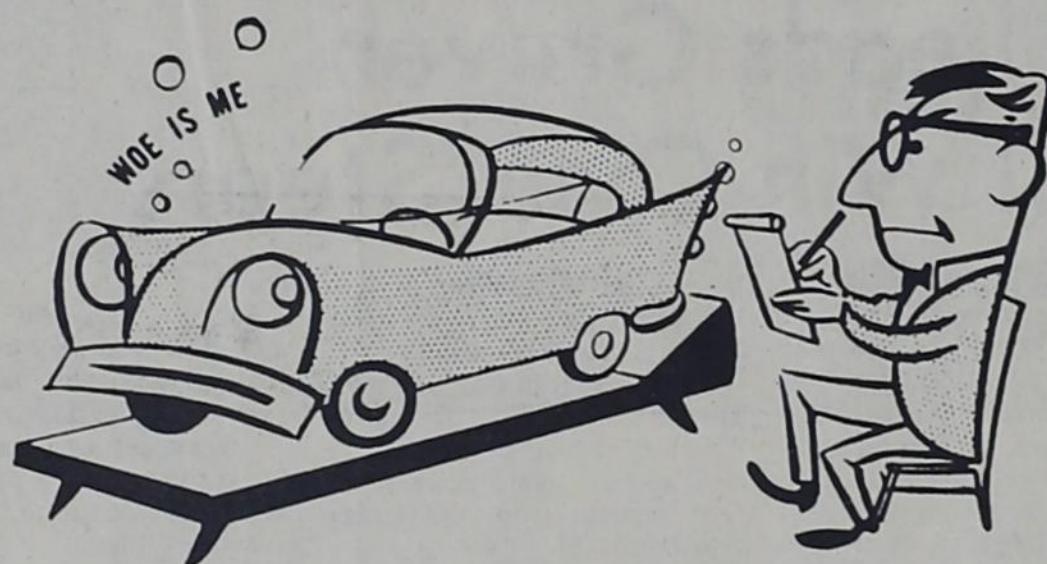
Among the group of 16 coeds from Eastern New Mexico University participating in the basketball sports day at the University of New Mexico in Albuquerque on Saturday was Millie Autrey of Texico.

Mrs. Russell (Gladys) Johnson is hospitalized in Clovis. She has been undergoing a series of tests and x-rays. Her condition is reported to be much improved by family members.

Miss Autrey, a freshman, is the daughter of Mr. and Mrs. E. E. Autrey and a 1964 graduate of Texico High School.

Mrs. J. R. Thornton was hospitalized in Friona late last week. Her condition is described as fair.

Mrs. D. O. Rolland who has been ill for the past several days was feeling much better at press time.



If your car could tell you its troubles . . .

Bothered by pounding headaches? Hard to get up in the morning? Oppressed by that "tired" feeling? Your car's troubles might be traced to an inadequate "diet".

Better prescribe a "tonic" of Flite-Fuel or Sixty-Six Gasoline.

Phillips 66 motor fuels have what it takes to make your car "feel" better fast. And perform better! You'll notice faster starting . . . no stalling . . . livelier acceleration . . . smoother power!

Get all the performance your car was designed to give you. Fill up at your Phillips 66 Station.



Headquarters For Phillips, Tires, Tubes, Batteries And Accessories

HELTON OIL CO.
 Texico - Farwell

TEXICO - FARWELL AREA CHURCH CALENDAR

"Let Us Go Into The House Of The Lord."

COME TO CHURCH

Use This Calendar To Guide Your Worship Practices

Assembly of God Robert Hutsall-pastor Sunday School-10 a. m. Morning Worship-11 a. m. Evening Worship-7:45 p. m.	Farwell First Baptist Church J. L. Bass-pastor Sunday School-10 a. m. Morning Worship-11 a. m. Evening Worship-7 p. m.
Texico-Farwell Methodist Church W. C. Strickland-pastor Church School-9:45 a. m. Morning Worship-10:55 a. m. Evening Worship-6:15 p. m.	Oklahoma Lane Baptist Carl Coffey-pastor Sunday School-10 a. m. Morning Worship-11 a. m. Evening Worship-7:30 p. m.
St. Johns Lutheran Church Herbert F. Peiman-Pastor Sunday School-9:30 a. m. Morning Worship-10:30 a. m.	Lariat Church of Christ Carroll Jackson-minister Sunday School-10 a. m. Morning Worship-11 a. m. Evening Worship-6 p. m.
Farwell Church of Christ Paul Wilkinson, Minister Sunday School-10 a. m. Morning Worship-10:50 a. m. Evening Worship-6 p. m.	United Pentecostal B. L. Barnes-pastor Sunday School-10 a. m. Morning Worship-11 a. m. Evening Worship-7:30 p. m.
Texico First Baptist Church Leroy Looper-pastor Sunday School-10 a. m. Morning Worship-11 a. m. Evening Worship-7:30 p. m.	Pleasant Hill Baptist Hugh Frazier-pastor Sunday School-9:30 a. m. (MST) Morning Worship-10:30 a. m. (MST) Evening Worship-7 p. m. (MST)
West Camp Baptist D. Casey Perry-Pastor Sunday School-10 a. m. Morning Worship-11 a. m. Evening Worship-7 p. m.	Calvary Baptist John Willson-Pastor Sunday School-10 a. m. Morning Worship-11 a. m. Evening Worship-7 p. m.
Oklahoma Lane Methodist Douglas Gossett-Pastor Sunday School-10 a. m. Morning Worship-11 a. m. Evening Worship-7 p. m.	Texico St. Joseph's Catholic Church Rev. Uhl Myron, Pastor Confession, Sunday - 9:30 a. m. (CST) Sunday Mass - 10 a. m. Christian Doctrine After Mass.

SHUMAN HASELOFF INSURANCE

SHERLEY-ANDERSON-PITMAN INC.

CAPITOL FOOD

ROSE DRUG AND GIFT SHOP

PIGGLY WIGGLY

FARWELL HARDWARE

STATE LINE GRAIN AND STATE LINE CHEMICAL

STERLYN & ESTELLENE BARBER AND BEAUTY SHOP

FARWELL MOTOR CO.

FARWELL EQUIPMENT COMPANY

WORLEY GRAIN CO.

TEXACO INC.
 Woodrow Lovelace

This Church Calendar Is Brought To You With The Above Merchants Compliment



Dr. F.W. Mattox, president of Lubbock Christian College, was speaker for the annual Farwell Chamber of Commerce banquet Thursday evening. His remarks touched on his world travels and the threat of Communism.

Records Released For Lazbuddie Junior High Girls' Team

Records for the past season for the junior high school basketball girls' team at Lazbuddie was released this week. The record reveals that Coach Earl Ellis' lassies won the district trophy from Springlake by a narrow one point margin. Nedda Foster with 22 points took scoring honors.

Record for the year. Games won --- 21--Games Lost--6.

Results Of FFA Judging Meet

The Texico FFA Chapter played host to 14 area schools for a judging meet on Saturday. The Texico chapter judging teams will participate in a meet at Elida on March 13 and will be in Portales to attend the district meet on March 20. They will attend the state judging contests in Las Cruces on April 2-3.

Winner of the livestock division in the Saturday meet was Springer with 1192.4; Grady with 1106.2 was second and Texico with 1092.5 was third. Lynn Hughes of Texico was sixth high individual.

Springer was also winner of the farm mechanics division with 1281 points; Floyd with 1279 was second and Tucumcari with 1239 was third. Jerry Smith, Springer, was high point man in this contest.

The Tucumcari chapter was winner of the poultry contest with 747.7 points. Springer was second with 739.2 and Lovington with 730.8 was third. Texico placed eighth in the contest. Paul White of Floyd took high man honors in the event.

Agriculture I boys participated in the events from Texico while Ag II and Ag III boys were in charge of the meet.

In a recent judging meet at Floyd, Texico placed fourth in livestock judging; seventh in dairy; and sixth in meats with Leslie Harelson receiving third high point honors.

The chapter also received 10th in farm mechanics and sixth in poultry.

Second place in Farwell Tournament; 2nd place in Amherst tournament; 2nd place in Springlake tournament; 1st in Muleshoe tournament, and 1st in district tournament.

Leading scorers for the year were: Nedda Foster --379 points, Vickie Broyles---170 Vicki Robinson--72; and Nancy Fuller--58.

The Lazbuddie Lassies were able to score a total of 722 points against their opponents while the opposition were only successful in scoring 479 total points.

Yearlings Win District

The Farwell Yearlings trampled the teams from Sudan and Lazbuddie this past weekend, in the finals of the District Tournament, to take home the District Championship.

The Farwell five dumped the Lazbuddie hoopsters in the first game of the playoffs by a score of 30-21.

Al Phillips led in scoring with 18 points. Kyle Sheets also hit in double figures for a total of 12 points to his favor. Rickey Lee was third with six. Others scoring were Greg Hargrove, two; Danny Prince, two; and Robert Curtis, two.

The Yearlings also defeated the Sudan team in the finals by a close score of 28-15.

Robin Mahaney was the only one to hit in the double figures as he led the scoring column with 10 points. Kyle Sheets, Al Phillips, and Rickey Lee were next with six, five and four, in that order. Danny Prince had two and Greg Hargrove got one.

Beller was high for Sudan with seven. Roberts was second with four. Underwood had three for third. Martin got one.

In overall season scoring, Al Phillips led with 193. Kyle Sheets was second with 141. Third was Robin Mahaney with 128. Rickey Lee had 110 for fourth. Greg Hargrove had 69 and Robert Curtis got 24.

The Yearlings end their season with 19 wins and four losses, three of which were to Friona.



WOLVERINE TEAM -- The Texico Wolverlines completed basketball play last week when they were defeated by Melrose in the district tournament. Five of the boys, Spearman, Hitson, Richardson, Lambert, and Rickstrew were playing their last game for Texico as they will graduate in the spring. Pictured

left to right: Mike Hitson, Tom Rickstrew, Neil Lambert, Donnie Morris, Ronnie Richardson; front row Joe Patterson, Jimmy Hill, Wesley Raulle, Mike Spearman, David Duncan and Coach Johnny Green.

Texico Defeated By Melrose In Dist. Game

The fourth seeded Texico Wolverlines were defeated by the Melrose Buffalos in their opening game in the district tournament held in Rock Staubus gym in Clovis last week.

The Buffalos (not given one of the top spots by district sportsmen) went on to win second place in the tournament, finishing behind Ft. Sumner (originally seeded second). Melrose also defeated Floyd (top seeded team) in a surprising upset.

The game which ended with Melrose on the long end of a 52-44 score was a battle for the free throw line, with neither team able to connect for field goals. The Wolves were only able to find the bucket with 17 free throws while Melrose hit a helathy 65% of its free shots. Game statistics show that Texico had 14 field goals to Melrose's 12.

At end of the first stanza the Wolves were ahead by a narrow margin but the scoring was re-

versed in the second frame and Melrose led at half time. They clung to the lead through most of the third frame but the fourth stanza opened with the teams tied 39-39.

Big gun for Texico with 23 points was Tom Rickstrew, who has been one of the leading

scorers throughout the season. He has also starred in the rebound department. George Gardono was top scorer for Melrose with 13 points.

Season record for the Wolves stands at 9 wins-10 losses. District record was 8 wins-6 losses.

Coach Johnny Green in commenting on the past season said "It is not as bad as the record would indicate -- we lost the last six games -- but I feel that the boys did a fine job and played to the best of their ability -- they never quit trying."

Young Farmers Group Organizes In Friona

Twenty-six persons were made charter members at an organizational meeting of the Friona Young Farmers Association chapter last Thursday at the school cafeteria.

Next meeting of the organization will be Thursday, March 18. Anyone joining by that date will still be considered a charter member, it was announced.

While the chapter has adapted the name of "Friona," it was pointed out that any young farmer or anyone else interested in agriculture in the county, up to age 35, may join the group. Those over 35 may become associate members.

Jarrell Wright was elected president at the organizational meeting. Jimmy Mabry was named vice president, Dwain Menefee is secretary, Larry Fairchild treasurer and Warren Conner publicity chairman.

David T. McVey and Benny Pryor, Friona's vocational agriculture instructors, are advisors to the new chapter, and are aiding in its formation.

The organization is for the purpose of continuing the educational process in connection with agriculture, as started in vocational agriculture classes in school.

Judge Hears Pleas Of Guilty

Several pleas of guilty were heard by District Judge Pat Boone Jr. on Friday and sentence was set for the offenders.

Wayne Jones was given a sentence of four years on a burglary charge. The sentence was probated and he was ordered to pay court cost. Gary Doshier charged with car theft was also given a four year probated sentence and ordered to pay court cost.

David Chapman tried with Jones on the burglary charge, (of Big T Pump Co.), was sentenced to six years in the penitentiary and was also given a six year sentence on a theft charge. The two terms are to run concurrently.

Felix Costillo was given four years on a burglary charge, and Willie Hatton, a juvenile, was sentenced to the Gatesville Boys Industrial School. Alan Oliver Tennessee received a three year penitentiary sentence on a car theft charge and Bill Garibay, Portales received the same sentence on a burglary charge.

The case of Jerald Dickie (child support) will be a jury trial and Tony Ray White, who is facing charges of theft had his trail set for August 16.

They began operation of the business on Monday morning. Mr. and Mrs. Lebow will continue to operate the cafe, which is closed at the present time for remodeling. It is scheduled to re-open on April 1.

Contract Let For Construction On Highway 84 In Three County Area

Announcement was made by the Texas Highway Commission in Austin early this week of the signing of a contract for 19.8 miles of construction on US 84 in Parmer, Bailey and Lamb counties.

The contract was awarded to a Tye firm, with J. W. Strain and Sons, Inc. submitted the low bid of \$285,871.70 on the project. Asphalt concrete paving and seal coat from Bailey county line to 7th Street in Farwell to Muleshoe to 1.8 miles southeast of the Bailey County line is expected to take 110 working days, according to O. L.

Crain, district highway engineer at Lubbock.

Rhea E. Bradley resident engineer at Littlefield will be in active charge of the project while it is under construction.

Lease Hotel

Announcement was made early this week that Mr. and Mrs. Jack Washman of Casa Grande, Ariz., have leased the Texico Hotel from Mr. and Mrs. Bob Lebow.

They began operation of the business on Monday morning. Mr. and Mrs. Lebow will

Steed Funeral Home

... Serving Clovis & Trade Territory For More Than 50 Years

Steed Funeral Home

HOWARD SMITH, FUNERAL DIRECTOR
UNA N. STEED, ASSISTANT DIRECTOR

End Of North Main Street
Clovis, N. M.

Phone PO3-5541

"HI GRAND-MOTHER"

Hearing young, bright voices is a special part of calling Long Distance. Next best thing to having them with you. Call and see.

Mountain States Telephone

Parmer Retail Sales Up

Parmer County's 113 retail establishments had \$15.7 million in sales in 1963, an increase of 44 per cent from 1958, the U.S. Bureau of the Census has just reported after tabulating data gathered from all firms in the 1963 census of business. The last previous business census conducted by the Census Bureau, an agency of the U.S. Department of Commerce, was in 1958.

Retail trade in the county meant jobs (exclusive of proprietors) for 375 men and women and a yearly payroll of \$1.4 million.

In volume of business the county's food stores had sales of \$2.7 million, an increase of 12 per cent from 1958. In other retail business--The county's eating and drinking places had sales of \$384,000 and gasoline service stations had sales of \$1.1 million.

John Dempster Rounds Up 12 Of The Wildest Horses In The West-- The MINNEAPOLIS-MOLINE HD 800-6A POWER UNITS

These Big Critters Are Proven And Ready To Work For You-- Year After Year For Peanuts-- Oops Qats

Wrangler John Say I Have 12 Of These Big Hosses Of The Irrigation Field And Will SELL-SELL, SELL!



SEE IT - TRY IT BUY IT!

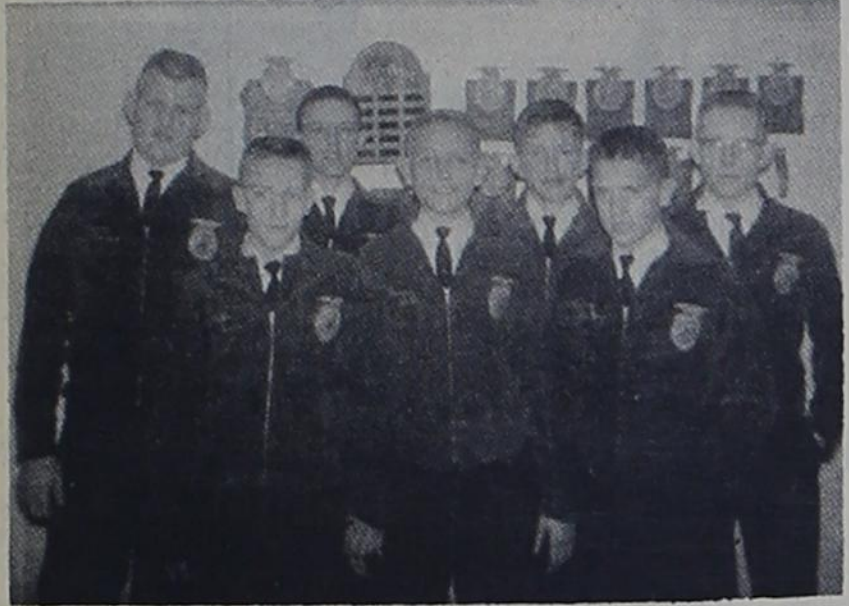
FARWELL EQUIPMENT CO.

106 3rd. St. - Ph. 481-3212 Farwell





CHAPTER OFFICERS OF TEXICO FFA -- Pictured left to right: David Duncan, Roy McDaniel, Dean Campbell, Jimmy Hill, Johnny Burford and Leon Smith.



GREENHAND OFFICERS TEXICO FFA -- left to right: Larry Combs, Lynn Hughes, Roddy Pearce, Ronnie Wall, Douglas Autrey, Rickey Stanley and Allan Breitenbach.

17 Named To Who's Who In Texico School

Seventeen students in the Texico High School were named to the coveted Who's Who list this week, as teachers in various classes picked the most outstanding students for the honor.

Named to the list in band was Terry Lovett, who has been a member of the All-State band for two consecutive years.

David Duncan, president of the FFA Chapter, was named from that division of the school and also was listed in mathematics.

Listed in mathematics were: David Farmer, Susan White, and Joe Patterson in addition to David Duncan. Representing shorthand is Cynthia Spence who was also named in book-keeping.

Susan White, Gwinette Lovett and Joe Patterson were chosen for their ability in oral and written English. Named in social science was Jill Billington. Kathy White was listed in chorus and home economics. Others listed in home economics are Cynthia Spence and Sarah Walker. Terry Lovett and Gwinette Lovett, cousins, were listed in speech.

Representing the journalism class will be Veda Wilson and Peggy Hughes; physics- Joe Patterson; Spanish-Mike Hinson; typing-Lynelle Ingram and Mike Spearman; biology-Leslie Harrelson and Susan White. Chosen as best athletes were Tom Rickstrew and Mike Spearman.



CURRY COUNTY FORTY TWO CHAMPS -- left to right back row: Larry Powell, Raymond Hadley, Truman Kittrell, Barney Harding, Clude McDaniel. Front row: co-captain-T. J. Kittrell, Lloyd Smith, James Gilllean, captain-Earl McDaniel, Lester McDaniel. This marks the first time since 1955 that the Texico team has won the county championship.

Commissioners List Election Officials

At the Monday meeting of Parmer County Commissioners election officials for the county were named. The election officials will handle all county elections, but will not necessarily handle any other elections which may be held during the year.

Election officials named are: Black - precinct I: presiding judge-Glenn Roberson, judge - J. R. Braxton and clerk - Mrs. Ralph Price; Friona-precinct II: presiding judge-Clyde V. Goodwine, judge - O. J. Beene, clerks-Mrs. Ira Holt and Mrs. Ray Landrum; Bovina-precinct III: presiding judge - E.A. Barry, judge - Mrs. Earl Richards, clerks - Tom Rhodes and A. B. Wilkinson.

Farwell-precinct IV: presiding judge-Albert Smith, judge - J. H. McDonald, clerks, J. T. Ford and Mrs. Milton Walling; Lazbuddie-precinct V: presiding judge - Harold Carpenter, judge-Clarence Johnson, clerks - Mrs. Harold Carpenter and Mrs. Vernon Symcox. Rhea-precinct VII: presiding judge - Melvin Sachs, judge -

Raymond Schueler, clerk-Mrs. Melvin Sachs; Lakeview-precinct VIII: presiding judge -

Participate In Bowling Tournament

Some 304 teams from the Texas Women's Bowling Association lined up in Dallas over the weekend in the initial effort in the female keglers tournament.

Representing Farwell at the tournament were Elsie Hardage, Jo Hammonds, Naomi Austin, Bernice Dollar, Sal Vincent and Edna Montgomery.

The ladies, with Elsie Hardage as captain competing in Class C had a team score of 2120.

Scores for the girls were: Elsie Hardage-446; Sal Vincent-356; Jo Hammonds-438; Bernice Dollar-481; Naomi Austin-404; and Edna Montgomery - 436. Their team is known as the A A Bowl team.

Otho Whitefield, judge - Mrs. George A. Jones, clerk - Mrs. Russell O'Brian; Absentee: presiding judge - V. C. Venable, judge - Mrs. R. W. Anderson and clerk - W. N. Foster. Friona State Bank was approved as the depository for the county and county school funds for an additional two years (on the four year alternating plan).

Completes Missile Course

Army Pvt. Gaylon H. Black, 18, son of Mr. and Mrs. Lendon Black of Muleshoe completed a Hawk missile crewman course at Fort Bliss on Feb. 26.

During the course Black received instruction in the preparation and firing of the Hawk missile.

The former Muleshoe High School student was engaged in farming before entering the Army last October. He completed basic training at Fort Polk, La.

Guests At Oklahoma Letter Carriers' Convention

Mr. and Mrs. Loren Wilson were guests of the Rural Letter Carriers' Association and

Auxiliary state meeting in Lawton over the weekend.

Wilson is president of the New Mexico Rural Letter Carriers' Association and his wife is the National Auxiliary Secretary.

Mrs. Wilson spoke to the Auxiliary meeting on Saturday afternoon and also spoke at the banquet on Saturday night. She stressed the importance of safety, national membership and the importance of the individual member.

Also in Oklahoma for the meeting were president of the National Auxiliary, Mrs. Rial Rainwater from Oklahoma, and president of the National Association of Letter Carriers, Floyd Huffman, Washington, D.C.

Fire Destroys Barn On A. D. Kirk Farm

Fire, of unknown origin, destroyed a box car barn, and all contents on the A.D. Kirk farm last week. In the barn, and also declared a total loss were a 1955 G.M.C. Truck, and approximately 25 bushels of seed oats and a large amount of motor oil.

The barn and its contents were valued at approximately \$7,000 and were not covered by insurance. The fire was out of control, and the building and its contents had been almost completely destroyed when firemen were called to the scene, according to George Magness, fire chief. Firemen stayed at the scene for approximately one hour to be sure the fire did not spread to other buildings, before returning to town.

Two Begin Serving Sentences

Two persons, Felix Castillo (sentenced to four years on a burglary charge); and Bill Garibay (three years on a burglary charge) were taken to Huntsville by Deputy Sheriff Tom Atkins on Sunday to begin serving their sentences.

Deputy Atkins also took a juvenile, Willie Hatton, to Gatesville to begin a sentence in the Boys' Industrial School. Deputy Atkins brought Billy Twillingler alias Harold Precure from Huntsville to Farwell to face a charge of forgery in Parmer County. He will be tried on Thursday.

Harold Nish, California, plead guilty to a burglary charge on Monday and was sentenced to three years in the penitentiary.

The charge of bigamy against Lacey Lane was reduced to adultery and the trial was held in county court on Wednesday morning. Lane was given a \$750. fine plus court cost.

In a civil suit Bob Burkett VS A.D. Bridge, a jury found in favor of the plaintiff and awarded him damages amounting to \$1,400.

Enrolls At Oklahoma State

W. Larry Finley is among the 1,845 students enrolled in vocational-technical courses at Oklahoma State Tech at Okmulgee, for studying Diesel mechanics.

Honor Roll Released By Texico School

Honor roll as released by the Texico High School for the fourth six weeks grade period included the names of 30 students.

Seniors with 11 students listed led the classes in honor students. Seniors listed include: Ellen Gajllouet, Linda Hadley, Nell Lambert, Gwinette Lovett, Mike Spearman, Cynthia Spence, Jerry Thornton, Sarah Walker, Kathy White, Marquitta Wall and Linda Waller.

Juniors listed were: David Duncan, Lynelle Ingram, Peggy Hughes, Terry Lovett, Joe Patterson and Veda Wilson.

Sophomores included are: David Farmer, Leslie Harrelson, Susan White, Jill Billington, Keith Crooks and Roy McDaniel.

Only one freshman, Janet Wilson, was listed. Shella Jacobs and Roxie Lacey were listed from the eighth grade, and four seventh grade students, Glenda Kelley, Larry Duncan, Susan Murrell and LaWanda Yell were listed.

Steer Cindermen Open Season Saturday

The Farwell Steer Cindermen open their track season against Jal, New Mexico, Saturday. All meets will be away from home. The schedule of track meets are below: March 6 -- Jal, New Mexico March 13 -- Open March 20 -- Hale Center March 27 -- Springlake April 3 -- Kress April 10 -- District at Springlake

32 boys are out for practice sessions, says Coach Toley Booth.

NOTICE

Schedule Of Dates And Places We Will Be To Register Motor Vehicles:

DATE	DAY	TIME	PLACE
3-4-65	Thursday	2-5pm	BLACK Tri-County Elevator
3-5-65	Friday	9-5	FRIONA Friona City Hall
3-10-65	Wed.	2-5pm	RHEA Sherley-Anderson Elevator
3-11-65	Thur	9-5	BOVINA Bovina City Hall
3-12-65	Friday	9-5	FRIONA Friona City Hall
3-19-65	Friday	9-5	FRIONA Friona City Hall
3-25-65	Thur	2-5	LAZBUDDIE Sherley Anderson Elevator



Be Sure To Bring Your Title And Last Year's License Receipt.

NO TITLE WORK - PLEASE!

HUGH MOSELEY

Parmer County Tax Assessor-Collector

Who-PEEE!
BIG FORD
WHITE
SALE
HERE NOW

LOADED WITH EXTRAS AT NO EXTRA COST

GET-UM LOW DOWN TODAY!

FRIONA MOTORS
 Grand & Highway 60 Friona, Texas

The **John Deere** Implement Dealer For YOU

Ingram Bros. Implement COMPANY

CLOVIS MABRY DRIVE

The Women's Page

Chris Moss, Society Editor --- Phone 481-3681



Measuring the ingredients properly is one of the determining factors in how a food preparation will turn out -- but be doubly sure to always use a standard measure when making "Party Treats" says Beverly Winkles in demonstrating the procedure as she prepares pop corn balls in a good demonstration at the Texico 4-H Club meeting recently.

Salad Supper For Golden Circle Class

Members of Golden Circle Sunday School class of Texico First Baptist Church met on Tuesday in the church basement for a salad supper and regular monthly business meeting.

Centering the serving tables were bouquets of various colored carnations.

Mrs. Leroy Looper presented a devotional using Psalm 103 as basis for the discussion on "Bless the Lord O' My Soul!"

Class members voted to send a pot plant to Mrs. Nell Autrey who has recently returned home from the hospital following surgery. She will be confined to bed for some time and members plan to assist the family by taking food and other needed items from time to time. Secret Pal gifts were exchanged by several class members.

Attending the social were members, Mesdames F.S. Thigpen, Jack Watts, Nora Day, Buck Hudson, Wesley Engram; associate members Mrs. John E. Hadley, Clarence Smith and Leroy Looper; and one guest Diane Looper.

Visiting in the home of Mrs. Crystal Moss on Sunday were her children: Mr. and Mrs. Jimmy Don Moss, Mike, Jeris and Rick; Mr. and Mrs. Jerry Henson and Jarlyn, all of Clovis; Glendon Moss, Dennis Hester and Dale Dunn all students at ENMU in Portales.

My Favorite Season Is Answer For Roll Call

Nine members of the Northside HD Club answered roll call with "My Favorite Season" when they met recently in the Friona State Bank Community Room. Each member also told of something new fashion-wise.

Mrs. Bob Wylie presented a program on "School Dropouts and Dating Problems". After hearing the discussion one member was heard to remark "I wonder if the problem isn't still juvenile parents instead of juvenile children?"

Cookies and coffee were served by the hostess, Mrs. Floyd Brookfield, and plans were made for the next meeting which will be March 11.



CLASS FAVORITES AT WTSU -- Dickie Gerles, son of Mr. and Mrs. Dick Gerles and Linda Jo Allison of Happy were presented Saturday as junior class favorites at WTSU. The couple was presented, along with the university King and Queen of Personality, area high school personalities, and favorites of other classes, at the annual Plains Personality Pageant.

Joint Celebration Marks Birthday

Family members gathered at the home of Mr. and Mrs. Ray Sharp, north of Texico, on Sunday to celebrate the birthdays of three members of the family.

Honorees were Mrs. Mike (Judy) Getz, Edith Zachrel and Clint Tharp. Birthday cakes featured different motifs, for each of the honorees. Judy's cake was chocolate, decorated with white roses. Edith had a strawberry cake, featuring a doll and pink and white trim, while Clint's cake featured a circus motif.

Edith was celebrating her eighth birthday while Mrs. Getz and Clint celebrated their birthdays on Wednesday. Clint is the four year old son of Mr. and Mrs. Butch Sharp.

Attending the Sunday social were Mrs. Ben Zachrel and

children, Edith, Ray and Steven; Mr. and Mrs. Mike Getz, Mr. and Mrs. John Getz, Mr. and Mrs. Butch Sharp and children, Clint and Rhonda and the host couple, Mr. and Mrs. Ray Sharp.

Visit With Son

Mr. and Mrs. L. L. Cooper and daughter, Leslie visited over the weekend in Abilene, with Rickey Cooper, a freshman at McMurry College.

On Sunday the group attended the First Methodist Church in Abilene.

Rickey has recently completed a tour of duty with the U. S. Navy.

Russell Wayne Freiling Arrives On Feb. 20

Mr. and Mrs. Don R. Freiling of San Antonio announce the arrival of their first born, a son on Feb. 20 at 9:16 a.m. The little boy, who weighed 7 lb. 4 1/2 oz. at birth has been named Russell Wayne.

Mrs. Freiling is the former Jeanette Hughes.

Maternal grandparents are Mr. and Mrs. B.V. (Shorty) Hughes of Farwell and paternal grandparents are Mr. and Mrs. H.R. Freiling of San Antonio.

Mrs. Poe Is Shower Honoree

Mrs. Gail Poe (Sandy Billingsley), a recent bride, was honoree for a miscellaneous shower in the parlor at Hamlin Memorial Methodist church on Monday evening.

Hostesses for the social were Mesdames C. C. Christian, Bunk Phillips, Cotton Robertson, Robert Rundell, Guy Austin, Carl Deaton, Cleo Carpenter and Arno Massey.

Blue and white, chosen colors of the honoree, were used in room decorations. Serving table was covered with a white crocheted tablecloth over blue and centered with an arrangement of blue flowers. The floral arrangement was later presented to the honoree. Crystal and silver table appointments were used.

Individual cake squares were served with punch or coffee, mints and nuts. Mrs. C. C. Christian and Mrs. Carl Deaton presided at the serving table. Guests were registred by Mrs. Arno Massey.

Mrs. Guyn Billingsley, mother of the honoree, assisted her daughter in opening gifts. Approximately 25 persons attended the social and sent gifts.

Variety Club Does Handwork

Nine members of the Varsity Club met in the home of Mrs. W.M. Roberts recently for an afternoon session.

Members embroidered cup-towels for the hostess and the afternoon was spent in informal visiting. Next meeting was set for the home of Mrs. G.A. Bandy in Bovina, March 17.

Party sandwiches, cake, coffee and punch were served. Attending the social hour were Mesdames L.M. Grissom and Lola Jean, Bovina; Lloyd Battey and Sam Sides, Hereford; C.C. Christian, G.T. Watkins, W.N. Foster, and George Lindop, all from Farwell.



MR. AND MRS. RICHARD LEE KELLEY

Wanda Carolyn Eshleman Is Bride Of Richard Lee Kelley

Wanda Carolyn Eshleman, daughter of Mr. and Mrs. Orris Eshleman, Route 1, Texico became the bride of Richard Lee Kelley, son of Mr. and Mrs. Richard P. Kelley, Clovis in a mid-afternoon ceremony on Valentine Day.

The double ring ceremony, performed by Rev. C.C. Morgan, was read at Forrest Heights Baptist Church in Clovis. Church decorations featured a spiraling candelabra holding pink tapers, flanked by palms of jade green and woodwardia fern. Centering the altar arrangement was a sunburst arrangement of pink gladioli.

Nuptial music was provided by Kathy White, organist, who also accompanied her mother, Mrs. Murray White, soloist, when she sang "Till" and "The Wedding Prayer."

Candlelighters Cindy and Carol Eshleman, nieces of the bride wore white and pink striped crepe dresses, accented by bows of pink net in their hair. They carried lighting candles, adorned with pink carnations tied with white satin bows accented by rhinestones.

Chris Eshleman, nephew of the bride carried the rings on a white heart shaped satin pillow, edged in tricot nylon.

Bridesmaids Patty Kelley, sister of the groom and Geraldine Crump, cousin of the bride wore identical dresses of deep pink crepe with matching pill box hats. They carried white satin pillows, centered by cascade arrangements of pink carnations and white Lily of the Valley accented by rhinestones.

The bride given in marriage by her father chose a floor length wedding gown of white Chantilly lace over skinner bridal satin in a Duchess design. The gown featured a scalloped sweetheart neckline and fitted petal point sleeves.

Her elbow length veil of French illusion was outlined with orange blossoms, and secured by heart rosettes of illusion. She carried a cascade arrangement of white carnations.

Conditions accented by rhinestone hearts and butterflies made from seed pearls, atop a white satin and lace covered Bible.

Serving his son as best man was Richard P. Kelley.

Groomsmen were Jay W. Eshleman, brother of the bride, Ushers were Jack Eshleman and Jim Stone.

For her daughter's wedding Mrs. Eshleman chose a two piece suit of beige with matching accessories. Her corsage was of pink carnations.

Mrs. Kelley, mother of the groom, chose a two piece suit of grey with which she wore black patent accessories. Her corsage was also of pink carnations.

Immediately following the ceremony a reception was held in the fellowship hall at the church. Serving table was covered with pink satin with an

overlay of white net. Centering the table was an arrangement of pink carnations, Boston fern, and pink baby breath accented by rhinestones, arranged in wrought iron candelabras set in hob nail holders.

The three tiered wedding cake, strawberry punch, nuts and mints were served by Linda Hadley, and Kathleen Smith, close friends of the bride.

When the newlyweds left for a wedding trip to Carlsbad, Mrs. Kelley was wearing a green and blue iridescent taffeta dress accented by accessories of black iridescent patent. Her corsage was the center from her bridal bouquet.

The couple are at home on Route 1, Texico.

Mrs. Kelley is a 1964 graduate of Texico High School and the groom is employed by Meadors-Stewart Co. in Clovis.

Dinner Honors Mr. And Mrs. H. S. Curtis On 57th Anniversary

Mr. and Mrs. H. S. Curtis were honorees for a surprise anniversary celebration, marking 57 years of marriage, when approximately 45 relatives and friends gathered at their home in Farwell Sunday for a covered dish dinner.

Children and grandchildren of the couple, Mr. and Mrs. Jim Curtis and son, Mr. and Mrs. Gerald Curtis and children all of Farwell and Mr. and Mrs. Bennie Fulgham and children Clovis were host and hostesses for the social.

Other children of the couple are Penn Curtis, Reseda, Calif., Mrs. Pearl Holbrook, Omaha, Neb., Dobb Curtis, Tempe, Ariz., and Duane Curtis, Lewis town, Neb. All of the children

Visitors in the home of Mr. and Mrs. John Getz and Mr. and Mrs. Ray Tharp over the weekend were Mr. and Mrs. Mike Getz of Canyon.

called via telephone during the day to congratulate their parents.

Special guests were Raymond Haynes, Tucumcari and Mrs. Minne Sisson, Clovis, a brother and sister of Mrs. Curtis.

GOOD SERVICE

Best Fertilizers are delivered in bulk or in bags to your dealer who has the most modern equipment available for quick distribution.

An agronomic service program aids you in selecting the right amount of fertilizer, in the right form, for your soil and crops.

This, coupled with convenient location of dealers and manufacturing plants are just part of Best's Good Service.

BETTER PERSONNEL

Personnel who are familiar with every phase and type of farming and know your soil and crop production problems, and most important, know the answer to these problems are directly responsible for formulating Best Fertilizers.

Their combined experience includes work in every phase of soil and plant science.

BEST PRODUCT

FORMULATED FOR WESTERN CROPS AND SOILS WITH AM-SUL-PHOS

This gives you greater nutrient efficiency through chemically combined ammonium nitrogen, highly soluble and controlled release phosphorus and soluble sulfate ion. Best Fertilizers are chemically formulated for your soil and crops to give you higher yields, better quality and more profit.

Ask your dealer about Preplant, Starter, Sidedress and Topdress Fertilizers formulated by Best specifically for your Cotton, Wheat, Sorghum, Forage, Vegetable and Sugar Beet crops.

8420 MANCHESTER ROAD, WA 3-6606 HOUSTON, TEX. • DIMMITT HWY., CA 3-2501, PLAINVIEW, TEXAS

You Get Results With **BEST FERTILIZERS**

120 RISKS

YOU CAN'T AVOID INCLUDING FREEZING, DROUGHT, AND INSECTS ARE ALL COVERED BY

FEDERAL CROP INSURANCE

SIGN UP NOW protect your cash investment. You don't have to pay the low FCIC premium 'til after harvest.

Federal Crop Insurance Corporation
1611 Avenue M
Lubbock, Texas

Symbol of Security

U.S. DEPARTMENT OF AGRICULTURE
Federal CROP Insurance Corp.

DRESS RIGHT... You Can't Afford Not To

JACK HOLT

"The Clothier"

304 MAIN CLOVIS

Ray Mears
Hwy 70-84
-FAR WELL-

Uncle Ray's "Hot Air"

Bath mats are little dry rugs that children like to stand beside.

Steam is water gone crazy with the heat.

Don't go crazy over high prices - Shop Uncle Ray's For Better Foods and Bigger Values.



YWA's of Farwell First Baptist Church were in Abilene (Hardin Simmons College) over the weekend attending a "House Party" for girls of the YWA organization. Four of the Farwell group were making their last trip as members of the local organization (they are seniors). Pictured left to right are: Linda Langston, Peggy Martin, Susie Blair, Martha Coffey, Donna Dunn, Peggy Eason, Sherry Bass, Mary Coffey, and sponsors: Mrs. Otis Huggins and Mrs. J.L. Bass. The group left Farwell Friday morning and returned Sunday.

Veda Wilson Wins Regional Public Speaking Contest

Veda Wilson, a Texico girl, was declared winner of the regional American Legion Public Speaking contest Friday. As winner of the contest she is now eligible to participate in the state contest.

Prize for winning the bi-district contest is a one year scholarship to a New Mexico College. She will be allowed to select the college on the basis of how she does in the state contest. Winner of the state contest will have first choice of colleges; second place will have second choice and etc.

Veda, a 17 year old junior at Texico High School, and daughter of Mr. and Mrs. Loren Wilson spoke on "Our Constitutional Rights, Our Responsibilities." In addition to the 8-10 minute speech she also was required to deliver a three-five minute extemporaneous talk on the rights and responsibilities of citizens under the Constitution.

Veda is not a member of the speech class-but is a member of the National Honor Society, a varsity cheer leader, and has been a member of the Student Council for three years. She was also selected to attend the National Congress of 4-H Club members in Chicago in the fall on basis of her records and

activities. She will attend the state 4-H Club convention in Las Cruces April 9-10.

Veda will participate in the state speaking contest on March 12, in Albuquerque. Winners of six regional contests will participate in the state event.

JOTTIN'S By Jeanne

It's surprising what the little ones are thinking sometimes. The boys are quite familiar with the story of Jesus' birth. While returning from the ball game the other night, John, the 6-year-old, wanted to know: "What Star led the wise men?" Then he turned to Andy and pointed out the brightest star, with big brother explanations, "No John," says the junior scholar, "You're wrong -- it was those German Shepherds out in the field who saw the Star first."

Chris Moss, Tribune society editor, has nothing but praise for the delicious sherbet served at the banquet given at Farwell Baptist Church for the seniors. So she followed up and obtained the recipe. I haven't tried it yet -- but Chris made the recipe for guests this past weekend. They like it too.

The recipe came from the collection of Carol Dean Huggins.

ORANGE SHERBET
(for one gallon)
2 cans Eagle Brand milk
6 orange pops
juice of 1 lemon
1 small can crushed pineapple
Mix well in electric mixer, pour into a large bowl and place in deep freezer. Allow to freeze, stirring once or twice. When frozen, may be stored in small frozen food containers for future use. May also be made in ice cream freezer.

A quick snack for the kids after school -- just add a dip or two of vanilla ice cream to peach nectar for a nectar float. It passes the 11-year-old kitchen test.

I have a new diet recipe I want to share soon. It's a little lengthy, so I'll try to get it in next week.

Then I read in one of our neighboring weekly about the husband who stayed home with the children one afternoon and kept a record of his work so he could prove to his wife how easy her job was.

He opened the door 106 times, closed same door 106 times, tied 15 shoe laces, rescued crawling baby 21 times, told 2-year-old "don't" 94 times, stopped 16 quarrels, spread 11 slices of bread with butter and jelly, issued 28 cookies, served 15 drinks of water, answered phone 7 times, wiped 19 noses, answered 145 questions, lost temper 45 times, ran 4 1/2 miles after children -- then tore up the record so the wife wouldn't see it.

The condition of Mrs. O. E. Pipkin who suffered a paralytic stroke recently is described as being much improved.

Missionary To Speak At Methodist Church

Guest speaker at Hamlin Memorial Methodist Church Sunday evening at the 6:15 service will be Miss Barbara McCalester who has recently returned from Hong Kong, where she served as a missionary for three years. Miss McCalester will speak to the young people at 5:30 p.m. (MYF). She is the first of several guest speakers who are scheduled for the evening services in the next few weeks.

Following completion of her work in Hong Kong, Miss McCalester spent six weeks touring other Methodist missions at Singapore, Sarawak, Malaya, Thailand, Korea, Taiwan and Japan. While in Hong Kong, she was head of the English department at North Point Primary School, and was in charge of planning for daily religious devotions in the school. She was also closely associated with the North Point Methodist Church. She was the only faculty member of 17 who was not Chinese.

Before going to Hong Kong, Miss McCalester was employed by San Diego Gas and Electric Company and taught for one year in the Lydia Patterson Institute in El Paso. (A Methodist Mission School).

She applied for permission to do "short-term missionary" work in 1961 (an arrangement which allows young people to spend two or three years in the mission field). Her application was accepted that same year and she spent a brief period in New York taking special training before going to Hong Kong.

She is a 1954 graduate of



MISS BARBARA MCGALESTER

El Paso High School and a 1958 graduate of McMurray College.

She is the daughter of Rev. and Mrs. H.L. McCalester of Hobbs, where Rev. McCalester serves as pastor of First Methodist Church.

Attend State YWA Convention

Representatives from the Texico First Baptist Church in attendance at YWA (Young Women's Association) state convention in Farmington over the weekend were Susan Walker, Zadene Burris, Sarah Walker and Pam Fitz. The group was accompanied to Farmington by Rev. and Mrs. Harvey Hudhall, and daughter, Sherri, Mrs. Buddy Pearce and Mrs. Ray Pate from Clovis.

Also accompanying the local people were two representatives from Clovis, one from Dora, and one from Floyd.

Susan White was elected to serve as pianist at the state convention in 1965. Site of

the next convention was not selected. The group left Texico on Friday and returned on Sunday.

Rev. and Mrs. Hudhall also visited with their daughters, Jaynell, a teacher in the Farmington school system.

Whats Cooking At Farwell School

MONDAY: vegetable soup, peanut butter with crackers, salad, dessert, milk.

TUESDAY: bean casserole, cole slaw, spinach, cornbread, butter, dessert, milk.

WEDNESDAY: chicken fried steak, potatoes, gravy, green beans, salad, hot rolls, butter, dessert.

THURSDAY: hamburgers, cheese and tomato slices, onion, pickles, potato chips, brownies, milk.

FRIDAY: school dismissed for teacher's meeting.

W. H. (Pop) Spurlin who has been hospitalized on many occasions recently returned to his home late last week. His condition remains about the same, say family members.

Coming To The **BORDER** Friday and Saturday

FRI SAT

5 6

ROBINSON CRUSOE IN MARS

TECHNICOLOR PAUL HENREID VICTOR LINDEN MONA

7

THE 7th DAWN

TECHNICOLOR WILLIAM SUSANNAH HOLLER YORK CAPUCINI

Wrights Are Parents Of Son

Mr. and Mrs. Gerald Wright of Clovis are parents of a son born at Clovis hospital recently, and named George Ernest. He weighed 7 lb. 9 oz.

Mrs. Wright, the former Laurie Cooper, was a member of The Tribune staff several years ago. The Wrights have another son, Gerald Ewel, 3. Grandparents include Ewel Wright, Byars, Okla., and Mr. and Mrs. M.M. Cooper, Portales.

HD Club Studies School Dropouts Dating Practices

School dropouts and dating practices was theme for the program of Lazbuddie H.D. Club when it met in the home of Mrs. Adrian Weir recently with nine members in attendance.

Mrs. Jimmy Briggs presented the program. She revealed that the Lazbuddie School has only had four dropouts in the past two years, compared with the state figure of 37% and the national figure of one out of each three students, who do not complete high school.

The best cure is PREVENTION stressed Mrs. Briggs, who told of some of the early danger signs and how a community is affected by the dropouts. The dating ladder was presented showing the different phases of dating and the steps that should be climbed for different age groups.

Plans were made to attend the "Home Show" in Lubbock and program changes and 4-H club demonstrations were discussed.

The March 8 meeting will feature a program on "Lighting" by the REA from Muleshoe.

Donates Books To Library

Mr. and Mrs. Virgil Stewart recently donated some 56 books to the library at the Texico school. Price of the books (if bought new) would run well into the hundreds of dollars.

The books include fiction, reference, literature and many others. Title of a few of the books are "Dickens Digest," "Cleopatra," "Post Mark to Moscow," "Nature-Recreation and Physical Development," "Sudden Glory," "Best Loved Plays of Shakespeare," "This was Tomorrow," and "Green Bough."

Mrs. Stewart, who taught in Texico a number of years ago returned to the school last year as a first grade teacher.

The school extends thanks to the family for their donation to the library.

The condition of Mrs. O. E. Pipkin who suffered a paralytic stroke recently is described as being much improved.

School Lunch Schedule AT TEXICO

MONDAY: hamburgers on buttered bun, potato chips, cheese and tomato slices, relishes, peach cobbler, with ice cream, milk.

TUESDAY: pizza, escalloped potatoes, lettuce wedge, loaf bread, butter, chocolate no-bake cookies, milk.

WEDNESDAY: steamed wieners, pinto beans, mixed greens, cornbread, butter, coconut cake, chocolate milk.

THURSDAY: baked ham, candied yams, blackeyed peas, hot rolls, butter, banana pudding, milk.

FRIDAY: enchiladas, buttered corn, shredded lettuce, French dressing, loaf bread, butter, fruit salad, milk.

Released From Hospital Visit With Daughter

Mrs. T. H. Richey of Texico, who has been hospitalized in Clovis for several weeks following a paralytic stroke was released from the hospital on Friday.

She and her husband went to Belen, where they will stay in the home of their daughter, Mrs. Joe Murphy for the next several weeks.

Mrs. Richey is doing as well as possible at this time, say family members.

GET A GOOD START Here!

SAFE CAR-KEEPING

From a complete motor tuneup to new wiper blade installation, our safety car check is fast. Invest in safer driving.

Karl's Auto Clinic
Smokey and Fred
481-3687 Farwell

CAPITOL FOODS

We Give Gunn Bros. Stamps Double On Wednesdays
PLENTY OF PARKING
9th And Ave A Farwell

Out of this World Flavor,
TENDERNESS TOO!

CLUB STEAK 59¢ Lb

ROUND STEAK Lb 69¢

T-BONES SIRLION STEAKS Lb 69¢

Chuck Roast Lb 39¢

Arm Roast Lb 45¢

Short Ribs Of Beef Lb 15¢

BEEF FOR YOUR FREEZER
47¢ Lb Whole Or Half Cut & Wrapped

Armour Star All Meat BOLOGNA Lb 39¢

Fresh Ground HAMBURGER 3# For 89¢

Armour Star Thick Sliced BACON 2# Lb \$1.09

Shurfine YOUNG MOTHER HUBBARD SALE

SURE SIGN OF Spring Savings!
NOW! FILL YOUR BARE CUPBOARD FOR LESS!

Visit In Tulsa

Mr. and Mrs. Nathan "Butch" Sharp returned Sunday from Oklahoma and Arkansas where they had spent the past week. In Oklahoma "Butch" had a checkup at the allergy clinic and in Arkansas the Sharps visited with Mrs. Tharp's brother and family, Mr. and Mrs. Glen Smith.

MEET MR. WUNSTOP DUZZIT

There was a wife who complained to her husband: "Look at the old clothes I have to wear; if anyone came to visit they would think I was the cook."

"Well, if you want them to change their minds," said the husband, "ask them to stay for dinner."

Then I read in one of our neighboring weekly about the husband who stayed home with the children one afternoon and kept a record of his work so he could prove to his wife how easy her job was.

He opened the door 106 times, closed same door 106 times, tied 15 shoe laces, rescued crawling baby 21 times, told 2-year-old "don't" 94 times, stopped 16 quarrels, spread 11 slices of bread with butter and jelly, issued 28 cookies, served 15 drinks of water, answered phone 7 times, wiped 19 noses, answered 145 questions, lost temper 45 times, ran 4 1/2 miles after children -- then tore up the record so the wife wouldn't see it.

MOVING?
Local Or Long Distance
Bonded And Experienced
BRUCE AND SONS
MOVING CO.
Ph. 762-0861 or 481-3315 Nites

MOVING?
Local Or Long Distance
Bonded And Experienced
BRUCE AND SONS
MOVING CO.
Ph. 762-0861 or 481-3315 Nites

Large Golden Ripe BANANAS Lb 9¢

Colo. Red POTATOES 10# Bag 69¢

Calif RADISH OR GREEN ONIONS Bunch 6¢

Shurfine Apple Sauce 303.....6/\$1.00
Shurfine Asparagus Sprs.-Gr. Cut-300.....4/\$1.00
Shurfresh Biscuits Sweet-Buttermilk-8 oz. 13/\$1.00
Energy Bleach 1/2 Gal.3/\$1.00
Shurfine Broccoli Froz.-Chopped 10 oz.7/\$1.00
Shurfine Cake Mix Ass'd.-Flavors-19 oz.4/\$1.00
Shurfine Catsup 20 oz.4/\$1.00
Shurfresh Cheese Spread 2 lbs.\$.69
Shurfine Cherries R.S.P. 3035/\$1.00
Shurfine Chili with Beans 15 oz.5/\$1.00
Shurfine Coffee Reg. or Drip 2 lbs.\$1.39
Shurfine Corn Vac Pak-WK Golden 12 oz.6/\$1.00
Shurfine Cucumber Chips Fr. Pak 16 oz.4/\$1.00
Roxey Dog Food Tall Can13/\$1.00
Shurfine Flour 25 lb. Print Bag\$1.79
Shurfine Fruit Cocktail 3035/\$1.00
Shurfine Grape Jelly 18 oz.3/\$1.00
Shurfine Grape Juice 24 oz.3/\$1.00
Shurfine Luncheon Meat 12 oz.3/\$1.00
Shurfine Macaroni Elbo 12 oz.2/\$.29
Shurfine Milk Tall Can8/\$1.00

Shurfine Okra Froz. Cut 10 oz.5/\$1.00
Shurfine Peaches Y C Sli. or Hlvs. 1 1/2# 4/\$1.00
Shurfine Peanut Butter 12 oz.2/\$.79
Shurfine Pears Hlvs. Bartlett 3034/\$1.00
Shurfine Peas Early Harvest Sweet 3035/\$1.00
Shurfine Pickles Whole Sweet 22 oz.2/\$.89
Shurfine Pineapple Crushed No. 24/\$1.00
Shurfine Pork & Beans 3009/\$1.00
Shurfine Potatoes Froz. Krinkle cut-32 oz. 2/\$1.00
Shurfine Swt. Potatoes Whole No. 3 Sqt.3/\$1.00
Shurfine Preserves Strawberry 18 oz.2/\$.89
Shurfine Salad Dressing Qt.\$.39
Shurfine Sauer Kraut 3037/\$1.00
Shurfine Shortening 3 lb. Can\$.69
Shurfine Spaghetti Elbo 12 oz.2/\$.29
Shurfine Spinach 3037/\$1.00
Shurfine Tomatoes Solid Pak 3035/\$1.00
Shurfine Tuna Chunk Style Flat Can4/\$1.00
Shurfine Vienna Sausage 4 oz.5/\$1.00
Shurfine Waffle Syrup Qt.2/\$.79



On The Farm In Parmer County

By JOE VAN ZANDT
County Agent

As I write this column (on Monday morning) it sure is nice to see some snow falling without much wind. However, we sure hope we don't have any snow as you read this because the Parmer County Junior Livestock Show is being held Thursday, Friday, and Saturday in Friona.

This is a big event for many of our 4-H and FFA members in the county. The show expects to have about 34 fat steers, 27 commercial steers, 150 barrows and 55 lambs entered. Pigs and lambs must arrive between 1 and 6:00 p.m. Thursday. The lambs show at 10:00 a.m. Friday and the pigs at 1:00 p.m. Friday.

Steers must arrive before 8:00 a.m. Saturday as the fat steers will be sifted at this time. Following the sifting the pens of commercial steers will be graded. Then at 9:00 a.m. the steers will be shown. The judge for the show is Paul Gross, Gaines County Assistant Agent.

The auction sale of the top animals will start around 1:00 p.m. Saturday. The show is sponsored by the Friona Lions Club and everyone is invited to any and all of the show events.

WEED CONTROL
If you missed the Chemical Weed Control meeting we had about three weeks ago and don't have a copy of the recommendations on weed control in sorghum and cotton, please drop me a card and I will be glad to send you Dr. Wiese's recommendations for use of chemicals in our Panhandle area.

As he stated in the meeting, with most chemicals we need smaller amounts in this area. If you are going to use chemicals this year, you need to read what Wise has to say.

FARM MANAGEMENT
Have you noticed your pocket book getting pinched a little more each year? Probably so I would venture to guess. Let me say right here that I don't have any magic formula for increasing net income. But, if you are interested in receiving some farm management help on ways or things you

might do to help improve your income drop me a card or come by for a visit. I really believe that the best time a farmer can spend is that spent pushing a pencil doing some figuring on ways or alternatives that might increase net income.

Our water is the most valuable asset we have and we must get the most return out of it. We can't afford to waste it or use it on something that will give us a small return. Have you ever stopped to think what this county will be like in 25 years? I would say we will either be better or worse off in a financial way, depending on how we manage our water and farm businesses.

CATTLE LICE
It costs money to feed cattle lice. These parasites, are among the most damaging to beef cattle.

Cattle infested with lice spend a lot of time rubbing against fences, posts or other objects due to the annoyance caused by the insects. Cattle on feed do not gain as they should and require more feed for a pound of gain when infested.

Infested cows lose weight and their calves become prime targets for the pests. Reduced weaning weights of calves is one spot that really hits the pocket-book hard.

Cattle lice are common over the entire state and their populations build up rapidly after cool weather arrives in the fall, and include both biting and sucking types. Many chemicals are available for controlling lice as well as other external parasites of farm livestock, says the County Agent. Because of restrictions and safety suggestions which apply to the use of the control measures, I invite stockmen to come by the office for a copy of MP-691, "Texas Guide for Controlling External Parasites of Livestock and Poultry."

FEEDING COWS CAKE
If you are feeding cottonseed cake to your beef cows, how often do you feed them? Feeding twice per week has proved to be as satisfactory as more frequent feeding. This results in savings of about 60 per cent in labor and travel as compared with daily feeding.

At the end of a four year experiment cows fed twice weekly showed a slight advantage in weight and in per cent calf crop weaned. They also tended to graze more widely over the pasture without waiting for supplemental feed when compared to those fed more frequently.

COURTHOUSE NEWS

INSTRUMENT REPORT

February 22 thru 27, 1965
WD, A. P. McGee - C. W. Dixon, S/2 Sect 33 T4S R4E, WD, First National Bank, Muleshoe - Valton Morris - Tract in Sect 70 Kelly H.

DT, Curtis E. Williams - First Federal Savings & Loan - Lot 3 Blk 5 Mimo Add, Farwell. DT, Delbert Ingersoll - First Federal Savings & Loan - Lot 1 & N/2 Lot 2 Blk 8 Staley Add, Friona.

DT, Hubert O'Dell Cole - Federal Land Bank - E/2 Sect 34 T2N R4E.

WD, L. B. McClain - I. T. Graves - Tract in Sect 18 T4S R4E.

DT, John W. Renner - Roberta Gryder Henry - S/2 Sect 5 T4S R4E.

ML Aff - Jenkins Brick & Supply - H. Hollis Horton, Jr. Horizon Homes, Inc. - W 400 ft. of 6.96 a out of SW part Sect 31 T1N R4E.

WD, Joe L. Boeckman - H. C. Wells - Lots 4 & 5 Blk 5 Lakeside Add, Friona.

DT, Eva Smith - Federal Land Bank - SE/4 Sect 4 Blk 10 Roberts Sub.

DT, Paul S. Chisholm - Federal Land Bank - SW/4 Sect 23 T6S R3E.

DT, Aubrey L. Carlton - First Fed. Savings & Loan - 85 x 150 ft. tract of Sect 6 T4S R4E.

ML Aff - Acme Brick Co. - A. C. Hays & Raymond Sudderth - S 46 ft. Lot 4 & N. 4 ft. Lot 5 Blk 2 Ridgcrest Unit #1, Farwell.

ML Aff, Acme Brick Co. - A. C. Hays & Sam Aldridge - N 50 ft. of S 96 ft. Lot 4 Blk 2 Ridgcrest Unit #1 Farwell.

DT, Bovina Gln Co. - Lubbock Cotton Oil Co. - 15 a of W part Sect 9 Synd "E".

WD, Rosa Anderson - Ben H. Estep - E/2 Lots 21 thru 24 Blk 64 O. T. Friona.

DT, Gordon Massey - John Hancock Mutual Ins. Co. - W. 200 a of S 206 a of Sect 12 T4S R4E.

DT, Joe Briggs - First Nat'l Bank, Levelland - S/2 Sect 63 Kelly "H".

ML Aff - Alex Tenorio - Horizon Homes & H. Hollis Horton, Jr. - W 400 ft of 6.96 a of SW part Sect 31 T1N R4E.

WD, Lucille Collier et ux - Charles Love et ux - Lot 3 Blk 26 O. T. Bovina.

DT, Charles Love et ux - Friona Fed. Credit Union - Lot 3 Blk 26 O. T. Bovina.

DT, Sinclair Oil & Gas Co. - Celbess Corp - See Records. Abst. Judg. Joe Helton - Woodroe W. Finley - See Records.

DT, Van B. Clark - Conn. Mut Life Ins. Co. - N 303 a Sect 6 T1N R3E All N 239.29 a Sect 19 Harding Sub.

DT, Wilbur Charles - First Fed. Sav. & Loan - Southwesterly 80 ft Lot 1 Blk 91 O. T. Bovina.

WD, Mark M. Charles - Wilbur Charles - SW 80 ft. Lot 1 Blk 91 O. T. Bovina.

WD, Valton Morris - Alton Morris - Tract in Sect 70 Kelly "H".

DT, Baimun Butane, Inc. - HI-Plains Savings & Loan - 1.48 a of NE/4 Sect 1 T3S R3E.



At Home In Parmer County

By CRICKET B. TAYLOR
County HD Agent

Alterations of Ready Made Dresses, - Is the subject for Workshops and study of the County Home Demonstration Clubs in the County this month.

Each member will wear or bring a badly fitted dress or one that has a problem in fitting. All members will share in discussing and demonstrations in the proper method of alterations.

How many of you have bought a dress, that was not really large enough, but hoping it would be an incentive for losing weight? Some buy on impulse, with regrets later. Problems in alterations naturally follows.

Whether you do alterations yourself or have someone do it for you, it is important to know how clothes should fit. What is a good fit? This will be one important question answered at these meetings. Even the most expensive clothes can never have a quality look, unless they fit well. Clothes that fit properly are comfortable, neither too tight nor too loose. Really comfort and freedom are highlights of today's fashions.

Another reason for learning alterations at home is cost of alterations continues to increase. Even hem lengths cost from \$2.00 to \$4.00. Naturally prices vary with different stores and sections of the country.

THE ART OF BEING WELL DRESSED
Here are a few points to remember in developing the art of being well dressed: *Good Taste in dress is not a question of money, but rather a question of knowledge.

*It is an expression of personal style to suit your own physical proportions, your personality, and your way of life. *Taste is what you choose (with knowledge of what is appropriate and harmonious for you). **STYLE** is how you wear it. Together, they make elegance in you.

*No amount of wealth can buy style.

*Too often the word "casual" becomes too casual. An example of this is the number of tourist who visit the Nation's Capitol in shorts and slacks. This choice of clothes is really no compliment to a public building nor the person wearing them.

*It's not alone just what you wear, but where you wear it. *Appearing on city streets in flat shoes, head scarfs, high skirts, strapless dresses or with your hair in pin curls is really no compliment to your visual proof of taste.

*A ladylike appearance may be the nicest adjective you can merit. *If modern fashion dictates a style that is not right for you - ignore it. Remember use fashion instead of fashion using

commended will prevent motion sickness for as much as 8 hours. Some dogs insist on hanging their heads out of the window while riding. The experts at the Purina Pet Care Center advise you never to permit this. Bits of grit may easily be driven into his eyes. Or, your dog may get nasal and eye inflammation just from the wind. Either make him keep his place in the car or close the window most of the way.

If Rover is driving out of the country with you, don't forget to check health requirements. Canada requires a health certificate and a rabies vaccination certificate. Or, if you and your dog travel down Mexico way, your dog must have been vaccinated against rabies within the past year. A few precautions will make it a happier trip for both of you.

"When the going seems easy, check to make sure you are not going downhill."

Riding With Rover
Some dogs just don't like to ride in cars and others get car sick. Either type will make a miserable passenger. However, you might be able to lessen or even eliminate the situation. Your dog's unhappiness might be caused by static electricity. A static belt hung from the axle and touching the pavement has cured many dogs of car sickness. It has also made riding pleasant for other dogs.

Veterinarians now have calming drugs for excitable dogs. If your dog actually gets motion sick consult the veterinarian for a remedy. Usually the drug re-

you-to develop a first rate you. Other Programs that are planned for homemakers in the County are "Line & Design for Your Figure Type." This has been planned for April, watch the announcements as to where and when. This Program is open to all homemakers in the County.

Two more programs on clothing that are available to homemakers in the County will be announced later. These are "Wardrobe Planning" and "Appropriate Accessories for Various Costumes."

Homemaker groups, and Clubs interested in these programs may contact the Home Demonstration Agents office in the Courthouse in Farwell for scheduled meetings.

Suggests Planting Pecans

If you plan to plant trees this spring, Texas' state tree, the pecan, might be a wise choice.

One of the most widely adapted trees in Texas, the pecan serves a dual purpose. Not only is it a stately shade tree, but if properly cared for, it can produce good, edible nuts, says B.G. Hancock, Extension horticulturist at Texas A&M University.

"One of the most important decisions to make is the selection of a proper variety," says Hancock. "Hundreds of varieties are available but only a few are specifically adapted to given areas and interests."

Mahan and Stuart varieties are most widely used for shade purposes because of their strength and desirable habit of growth. Mahan is the most widely distributed variety. It can be grown in practically every area of the state. Stuart is best adapted to the Gulf Coast and Eastern and Central Texas.

Choctaw, one of our new USDA varieties, shows promise of being a good all purpose shade tree in the Gulf Coast, Eastern and Central Texas.

Desirable and Success varieties are popular where production of high quality nuts is of primary importance. However, because of their structural growth habits, neither is ideal for shade purposes. They are best adapted to Central and East Texas.

Wichita, Western Schley and San Saba Improved are good varieties for nut production in West Texas.

If given the correct cultural care, ample moisture and the proper nutrient elements, pecans can add much to our lives, said Hancock. Not only do they add beauty to our homes, they also greatly increase the value of property and may well serve as a heritage to future generations.

THE HIGH PLAINS FARM AND HOME

DRILLING STATISTICS FOR JANUARY

During the month of January 116 new wells were drilled within the High Plains Water District; 12 replacement wells were drilled; and 5 wells were drilled that were either dry or non-productive for some other reason. The County Committees issued 439 new drilling permits.

Listed below by counties are permits issued and wells completed for the month of January:

County	Permits Issued	New Wells Drilled	Replacement Wells Drilled	Dry Holes
Armstrong	0	0	0	0
Bailey	11	8	1	0
Castro	20	7	3	0
Cochran	23	3	0	0
Deaf Smith	40	16	0	1
Floyd	54	17	0	0
Hockley	46	14	0	1
Lamb	25	7	2	0
Lubbock	113	27	3	2
Lynn	37	4	0	0
Parmer	45	11	3	1
Potter	0	0	0	0
Randall	25	2	0	0
TOTALS	439	116	12	5

Beef Output From Texas Feedlots Increases

During the past calendar year, 1964, 969 thousand head of cattle and calves were marketed from Texas feedlots, says Edward Uvacek, Extension livestock marketing specialist and assistant professor at Texas A&M University.

"This is a 227 per cent increase over the number of cattle marketed in 1958," Uvacek says.

Uvacek explains that most of the increase has been in the feedlots of over 1,000 head capacity. And at the present time, slightly over 90 per cent of all

Texas cattle on feed are in these larger feedlots, he adds.

Uvacek points out that the majority of the large feedlots are in the Panhandle and Gulf Coast areas of the state.

"Of course, the Panhandle area still has the greater percentage of large feedlots, but the Gulf Coast region is increasing rapidly, both in the number of head on feed and in the number of large feedlots," Uvacek reveals.

He said that in 1958 the Gulf Coast area had 13 large feedlots, while at the present time there are 42 such feedlots located in that area.

FOOTSAVING EDUCATION



by James E. Edwards

4-H Favorite Food Show To Be Held March 6

The County 4-H Food Show will be held at the Hub Community Center, March 6, starting at 1:00 p.m., according to Cricket B. Taylor, Parmer County Extension Agent.

4-H participants are to arrive early enough to have their exhibits ready for judging at 1:00 p.m.

More than 70 4-H boys and girls are enrolled in Food & Nutrition project work and will be eligible to participate in the County wide 4-H Food Show. The Show is an educational activity for members. Showing results of the project work.

The two highest scoring participants in the County Show, (Junior and Senior division), will participate in the District Favorite Food. Other appropriate awards will also be presented for this honor in the County. Ribbons will be awarded to those scoring in the blue, red and white ribbon classes. Completion certificates will also be awarded each participant.

Contestants must be enrolled, actively participating, in a 4-H Club and a Food & Nutrition subject matter group, conducted by adult project leaders during the current year.

Contestants will be judged on the following points: (1.) Knowledge of Food & Nutrition, which includes steps in preparation, why main nutrient in food is needed in the body & relative cost of food. (2.) Appearance, Quality & Flavor. (3.) The Exhibit-appropriate table appointments, color scheme & table decoration. (4.) The recipe and (5.) The Days Menu - as to pleasing combinations, balance in color and feature.

The following 4-H Adult leaders will assist with the Show: Mesdames T. A. Mills, Jimmy Charles, Bovina; Leon Billingsley, Johnnie Rundell, Melborn Jones, Oklahoma Lane; L. C. Herrington, Hurshel Harding, Farwell; Carl Schlenker, Friona and Mrs. Freeman Davis, Lazbuddie.

The public is invited to see the Show which will be open for visitors at 4:00 p.m. according to Mrs. Taylor.

BOYD'S COMPLETE BRAKE and BEAR FRONT END Service
TIRE TRUING
WHEEL BALANCING AND OVERLOAD SPRINGS
MONRO-MATIC SHOCKS
MUFFLERS AND TAIL PIPES
FACTORY REBUILT POWER BRAKE UNITS-NEW UNIT
GUARANTEE-EXCHANGED
BOYD'S BRAKE SHOP
21 Years in Clovis
221 W. Grand - 763-4326

IRRIGATION ENGINE SALE

Rebuilt & Guaranteed

- 1 - 820" Continental Nat. Gas \$1,500.00
- 1 - 602" Continental Nat. Gas 1,000.00
- 1 - 501" Continental Nat. Gas 800.00
- 1 - T427" Continental Nat. Gas 500.00

All New Continental Engines 25% Discount From Factory List Prices

NEW ENGINES IN STOCK

- 425" Oldsmobile Less Carburetor \$650.00
- 413" Chrysler Less Carburetor 679.00
- HT 413-201 H.D. Chrysler Less Carburetor 925.00

- * TURNKEY IRRIGATION PLANTS
- * DRILLING CASING
- * PUMPS
- * UNDERGROUND PIPE
- * SPRINKLER SYSTEMS
- * WAGNER SPRINKLER PIPE MOVERS
- * GATED PIPE
- * FLOW LINES

SNEED SUPPLY
Phone 3-4260 Muleshoe, Texas



Riding With Rover

Some dogs just don't like to ride in cars and others get car sick. Either type will make a miserable passenger. However, you might be able to lessen or even eliminate the situation. Your dog's unhappiness might be caused by static electricity. A static belt hung from the axle and touching the pavement has cured many dogs of car sickness. It has also made riding pleasant for other dogs.

Veterinarians now have calming drugs for excitable dogs. If your dog actually gets motion sick consult the veterinarian for a remedy. Usually the drug re-

commended will prevent motion sickness for as much as 8 hours. Some dogs insist on hanging their heads out of the window while riding. The experts at the Purina Pet Care Center advise you never to permit this. Bits of grit may easily be driven into his eyes. Or, your dog may get nasal and eye inflammation just from the wind. Either make him keep his place in the car or close the window most of the way.

THE BIB-FRONT OVERBLOUSE
Easy-care seersucker in new-season checks... used in a lighthearted overblouse and slender skirt. Stitching detail outlines the bias-check bib front. The overblouse may be worn with or without its easy tie belt and is finished with simple round neckline.

SIZES: 8-18
COLORS: Grey, Brown, Green.



THE FASHION SHOP
6th. and Main Clovis

A Taxing Situation



APRIL 15 IS NEARING - This young lady is one of the 25 million women who work, and who must file single or joint income tax returns by April 15. If you are one of these, cope with this taxing situation with the "Female Taxpayer's Survival Kit," which includes a pot of strong coffee, adding machine (unless you're a mathematical whiz), a large bottle of aspirin, a good supply of pencils and paper, a simply worded tax guide—and an appointment at the beauty shop the next day to cheer you up after a horrible night!

HIGHEST CASH PRICES PAID FOR
Copper - Radiators - Brass - Lead
Aluminum - Scrap Iron - Tubes
Steel - Cast - Batteries



Embroidered roses for Spring—
Very pretty in pale-toned newport rayon / cotton with a linen look, with matching embroidery and a flattering rolled collar. Pale aqua or pink. Sizes 8-16.

Spring Fashions For Infants Arriving Daily
Make Your Selection Now-Use Our Layaway
STORK SHOP
621 Pile 763-7145 Clovis, N. M.

COTTON TALKS

FROM PLAINS COTTON GROWERS, INC.

USA COUNTS
HIBERNATING WEEVILS
 The Texas High Plains region "stuck out like a sore thumb" in a recent report from the U.S. Department of Agriculture on the number of hibernating weevils across seven cotton-belt states. The High Plains area revealed that the number of weevils in hibernation declined by 89.2 per cent below the number recorded last year, while all but two of the seven states showed substantial increases.

Other things being equal, the number of weevils hibernating in the Winter gives an indication of the degree to which growing crops will be infested in the Spring. The survey in Louisiana and Tennessee found fewer hibernating weevils, but the Carolinas, Mississippi, Alabama and Texas (over the whole state) yielded increases ranging up to over 850 per cent. This phenomenal increase was recorded in four Central Texas counties, a jump from 517 to 4,406 weevils per acre.

additional mortality among these weevils between now and Spring. The mortality rate between January and the latter part of March of 1963 was about 70 per cent, and "we are hoping" for at least this percentage of deaths this year, Owen said.

This high reduction in hibernating weevils is especially noteworthy in light of the fact that in late summer last year the High Plains area below the Caprock registered the highest weevil populations ever recorded anywhere in the U.S. It would appear that the High Plains Boll Weevil Program is achieving success and also was begun just in the nick of time.

FARM LABOR DEVELOPMENTS
 There is still hope in some quarters that all is not yet lost to farmers in the controversy over whether the Secretary of Labor will permit the importation of supplemental farm workers when citizen labor is not available and willing to do the job.

The National Council of Agricultural Employers, of which Plains Cotton Growers is co-founder and charter member, reports from Washington that on February 18 a group of bipartisan Senators severely criticized the Department of Labor's farm labor policies from the Senate floor. Chairman of the Senate Agriculture Committee, Senator Allen J. Ellender of Louisiana opened the debate with a statement reviewing the recent hearings held by his committee. He said the Secretaries of Labor and Agriculture had heavy responsibilities to protect the interest of all concerned, and called on them to "make it plain and certain to growers that if, as, and when, crops that are to be planted become mature for harvest a sufficient number of stoop laborers will be able to come into the country should it be necessary to have those people do the work".

Senator Spessard Holland of Florida, whose constituents this year reportedly have suffered losses for lack of labor to harvest citrus crops, held the Senate floor for over three hours. He said between \$4 and \$6

million dollars had been lost from insufficient harvest labor and that there is also grave danger of sugar cane losses attributable to the same cause. The Senator termed arguments that Congress intended to end foreign supplemental labor programs as "completely inaccurate, completely false and is shown to be such by the debate (on Public Law 78) in numerous places." Senator Holland expressed sharp disagreement with the Secretary of Labor's assumption of authority to set wages and hours of farm workers, and pointed out that the farm labor was one affecting major areas of the country.

Other Senators -- Democrats and Republicans alike -- from Texas, California, Michigan, Wyoming, Colorado, Ohio, Tennessee, Arizona and Oregon expressed similar criticism of the Secretary of Labor's current farm labor policies. And, following this lashing from the Senate, a group of House members took the Labor Secretary to task on February 19.

Still, Secretary Wirtz continues to refuse to certify foreign supplemental workers. His view remains that sufficient domestic labor is now and will be available to meet growers' requirements.

On this point, Senator George Smathers of Florida, said: "It appears to me that the Secretary of Agriculture, who agrees with us on one side, and the Secretary of Labor, who does not agree with us on the other side, the eventual solution of the problem will probably come through our making an appointment, en masse perhaps, with

Food Facts And Fancies Certificate Of Appreciation Presented To Joe VanZandt

FAD DIETS

So-called short cuts to weight control have long been one of America's most popular delusions. Consider, for instance, the "Hay Diet" of the 1930's. Because of its name, many a dieter was convinced that a regular diet of hay was the key to slim, svelte figures.

Not too long ago, cider vinegar, taken in water at every meal, was believed to shed pounds magically. Vinegar was guzzled by the gallon—but overeaters remained just as plump as before.

A current fad is artificial sweeteners and low-calorie foods. According to nutritional experts, they have little or no influence on body weight, and they deprive the body of sugar, an indispensable part of the normal diet. Want to lose weight? Eat sensibly. Eat less. Exercise more. It's the most dependable formula yet.

A certificate of appreciation has been presented to Joe VanZandt, Farmer County Agricultural Agent, for his active support of the screwworm eradication program. The presentation was made by Jack McCracken chairman of the county screwworm eradication committee.

McCracken commended VanZandt and Deryl Coker, former County Agent for devoting many long hours to the popular eradication project. He noted that the agent has been the key man in the county concerned with screwworm eradication activities, serving as an important link between program officials and local farmers and ranchers. Along with keeping stockmen informed on all aspects of the program and cooperating with eradication workers in carrying out control activities within the county, the agent also served as advisor to the committee which coordinated local participation in the successful drive to raise more than \$3 million from the livestock industry to

get the campaign started nearly three years ago.

"The screwworm eradication program could not have attained its present high level of success if it had not had the wholehearted cooperation and assistance of the local county agricultural agent," McCracken said.

Dolph Briscoe Jr. of Uvalde, president of the Southwestern Animal Health Research Foundation which spearheaded the Southwest-wide fund drive, recently presented a plaque to all the county agricultural agents in Texas at the State Conference of the Texas Agricultural Extension Service at Texas A&M University.

"Never before in the history of the livestock industry have the producers of this state been so indebted to such a small group," Briscoe said, in pointing out the contributions county agents have made toward success of the eradication program.

MARCH 1964

TEXAS AVERAGE STATE SALES TAX TABLE

This table is based on the Texas general sales tax of 2 percent. It may be used when deducting sales tax on Form 1040. If the table is not used, sales tax deductions must be itemized and substantiated. Deductible sales tax on the purchase of automobiles and gasoline tax of 5 cents a gallon are not included in the table and must be itemized separately.

Income as shown on line 9, page 1	1 & 2	3 & 4	5	Over
Form 1040				
Under \$1,000	\$7	\$10	\$10	\$10
\$1,000-1,499	10	13	14	14
\$1,500-1,999	13	16	18	18
\$2,000-2,499	16	19	21	21
\$2,500-2,999	19	22	24	24
\$3,000-3,499	21	25	27	27
\$3,500-3,999	23	28	30	30
\$4,000-4,499	25	31	33	33
\$4,500-4,999	27	33	35	35
\$5,000-5,499	29	36	39	39
\$5,500-5,999	31	38	42	42
\$6,000-6,499	33	40	45	45
\$6,500-6,999	35	42	47	47
\$7,000-7,499	37	44	49	50
\$7,500-7,999	39	46	51	52
\$8,000-8,499	41	48	53	54
\$8,500-8,999	43	50	55	56
\$9,000-9,499	45	52	57	58
\$9,500-9,999	47	54	59	60
\$10,000-10,999	48	56	63	64
\$11,000-11,999	52	60	67	68
\$12,000-12,999	56	64	71	72
\$13,000-13,999	59	68	75	76
\$14,000-14,999	62	72	79	80
\$15,000-15,999	65	75	83	84
\$16,000-16,999	68	78	87	88
\$17,000-17,999	71	81	91	92
\$18,000-18,999	74	84	95	96
\$19,000-19,999	77	87	98	100
\$20,000 & over	80	90	101	104

U.S. Treasury Department Internal Revenue Service
 Doc. No. 5393 (R. 11-64) 16-78413-1 600

PRESCRIPTION FOR A SAFE TRIP

Rx Drive Carefully
 Observe All Traffic Rules
 Use Seat Belts
 Top-Condition Tires
 Perfect Brakes
 Functioning Windshield Wipers
 Check Steering
 Turning Signals in Order

BE SCARED — STAY ALIVE

The purpose of this editorial is to scare the living daylight out of you; to frighten you to the point that you will not only drive carefully but rigidly observe every safety precaution.

- Consider these 1964 facts:
- 48,000 persons were killed in traffic accidents, more than in any previous year, and within 5,000 of all the American servicemen killed in battle in World War I.
 - 587 men, women and children lost their lives in automobile accidents over the Christmas weekend, an all-time record that brought sorrow and misery to their loved ones at a time that should be given over to joyfulness.
 - Two million persons were injured in automobile mishaps and the cost of the damage hit \$8 billion.

If these stark figures do not have any effect on you, if they do not make you vow to adhere to every safety measure in the book, then nothing will. You know all the things you are supposed to do to insure a safe trip—whether you are going a few blocks or a few thousand miles. Things like driving carefully, observing all traffic rules, keeping tires in top condition, using seat belts, having brakes and steering apparatus regularly checked, seeing that signal lights are in order and having functioning windshield wipers.

One little slip from prudent roadway practice and you may be one of the fatal statistics that other people will read about—in editorials like this one.

Wildlife and fishing on Texas farms and ranches brought 20,472 landowners more than \$12 million in 1964, according to reports of Texas Agricultural Extension Service agents. This includes only money paid directly to landowners. Total amount spent by hunters and fishermen is estimated at \$383 million. Extension agents held 250 meetings and field days on farm pond management and 10,000 individual pond management problems.

INSURANCE
 SAVE MONEY ON ALL OF IT AT **RAYMOND EULER AGENCY**
 715 Main, Friona
 Ph. 247-2230

Dr. William Beane
 Optometrist
 Phone 247-3061 13th. & Cleveland
 Friona, Texas (South Of Hospital)

If You're Interested In Buying **FARM MACHINERY** Call Big Nick Trienen at **Machinery Supply**
 Highway 60, Bovina
 Phone 238-4861

ADAMS DRILLING CO.
 WATER WELL DRILLING
LAYNE PUMPS, INC. PUMP & GEAR HEAD REPAIRS ALL MAKES
 Sales & Service DIAL 247-3101
 Friona Nights 247-2513 Texas

Now **OPEN** On Mabry Drive
BROASTY JR.
 Carry Out **BROASTED CHICKEN**
 Or In Formal Self-Service Dining Room!
 Featuring Broasted Chicken And Astro-Broiled Steaks
DOLLIE And JAMES NIXON

the President of the United States and presenting to him this very real problem insofar as we are concerned, and the very real problem insofar as the cost of living is concerned... It is to be hoped that we shall obtain the relief that is so urgently needed."

At least the situation is not being allowed to burn, and so long as the fire rages, there is hope the pot will boil.

WHO IS DR. AMBERSON?
 Readers of Dr. Tom Dooley's book, "Deliver Us From Evil," will remember Dr. Amberson as the dedicated American medical officer who supervised the famed "Passage of Freedom" flight of over 1 million refugees from Communist controlled Vietnam. Dr. Amberson's medical practice over the last 35 years has taken him to virtually every corner of the world.

OUR HEALTH

by J. M. Amberson, M.D.

The Flu

"I had a touch of the 'flu,'" is an expression we hear quite often and leads many people to believe that the 'flu (influenza) is simply a bad cold.

It's not. Influenza is a potentially dangerous disease and must be recognized as such. During the 1963 influenza epidemic, 50,000 more Americans died than would have been expected under normal conditions. More than 20 million people died during the worldwide epidemic in 1918.

Symptoms
 The symptoms usually develop quite rapidly. These include chills, fever (101-103°) headache, generalized weakness and discomfort, muscular aches, and loss of appetite. The nose and throat may feel mildly irritated causing the patient to cough occasionally. Because pneumonia is a frequent complication of influenza, this disease should not be taken lightly. If symptoms that suggest influenza occur, it is wise to consult your physician. 'Flu vaccines have been developed which give protection against the common strains of 'flu viruses. As a precaution, ask your doctor if you should have a 'flu shot this year. Last year the U.S. Surgeon General advised that pregnant women, those with chronic diseases, and people over 65 be vaccinated before the beginning of the 'flu season. A similar warning probably will be issued this year.

New Medication
 There is good news for victims of minor sore throats—an illness quite common at this time of year. Chloraseptic, a non-prescription, anesthetic and antiseptic oral solution has been found to relieve the pain of minor sore throat, usually within seconds, according to clinical studies. Chloraseptic can be applied to irritated throat tissue by spraying or gargling.

Buy packaged cereals and other packaged foods by weight rather than by the size of the package, say A&M Extension home economists.

LARDY-CAMPBELL
 "Sure Sign Of Flavor"
 Quality Checkd
 DAIRY PRODUCTS

MOTOR MILESTONES



HAVE BECOME TRADITIONAL ANNUAL EVENTS IN MOST CITIES BUT THE FIRST TO BE BILLED AS A NATIONAL SHOW WAS HELD IN NOVEMBER, 1900, IN NEW YORK'S MADISON SQUARE GARDEN. A POPULAR ATTRACTION AT THE SHOW, WHERE SOME 300 VEHICLES WERE DISPLAYED, WAS A BARREL-AND-WOOD-RAMP OBSTACLE COURSE DESIGNED TO DEMONSTRATE THE MANEUVERABILITY OF THE HORSELESS CARRIAGE.

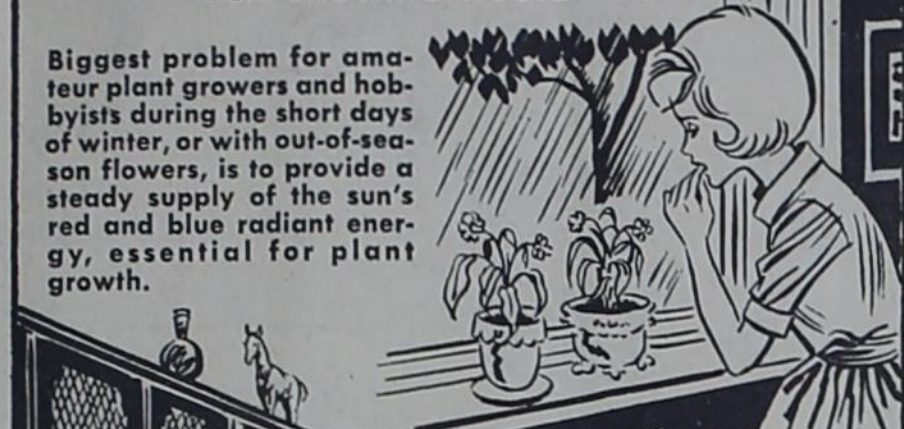
My Neighbors

"Just how big is our bill here already?"

HARTZOG SEED FARMS
 NOW BOOKING
 Certified Texas 660 Hybrid Milo Seed
 ★ Triple-Treated
 For ★ Wireworm ★ Smut ★ And Is Pre-Fertilized
 ★ Test Grown
 ★ Extremely High Germination
 "Texas 660 Does More For More Farmers"
 For Farm Delivery, See Paul Craig Or Your Elevator Or Seed Dealer
 --Certified Gregg and Austin Cotton Seed Also Available--
HARTZOG SEED FARMS
 Phone Oklahoma Lane Area Code 806 --825-2711

BRIGHT IDEAS

FOR GROWING HOUSE PLANTS



Biggest problem for amateur plant growers and hobbyists during the short days of winter, or with out-of-season flowers, is to provide a steady supply of the sun's red and blue radiant energy, essential for plant growth.

You can now grow more beautiful plants than ever before with Sylvania Gro-Lux fluorescent lamps. They supply the correct light to stimulate growth, yet use no more electricity than standard fluorescent lights. Gro-Lux units come ready-made, or you can create charming, decorative touches by building them into storage walls, room dividers, bookcases, hutch cabinets, or dry sinks.



For a particularly novel and dramatic effect, use the special lamps for lighting wall-recessed or free-standing aquariums. Either way, studies show that Gro-Lux is beneficial to water plants and enhances the color of both fish and plants.

Study Grocery Ads

For Good Buys

Supermarkets are featuring a number of good buys at present, so study grocery ads and make shopping lists accordingly, recommends Mrs. Gwen Clyatt, Extension consumer marketing specialist.

At retail meat counters, look for best beef values on ground beef, short ribs, arm and blade pot roasts, sirloin, T-bone, round steaks and beef liver. Look for more emphasis on marketing the rib and loin cuts during the next several weeks. Consider stew meat for variety in menu planning and to help stretch the budget as well.

Pork values include pork loins, picnics, hams, shoulder roasts and steaks. Pork supplies are below those of a year ago, however some markets are featuring specials on roll sausage, Boston butt roasts and chops.

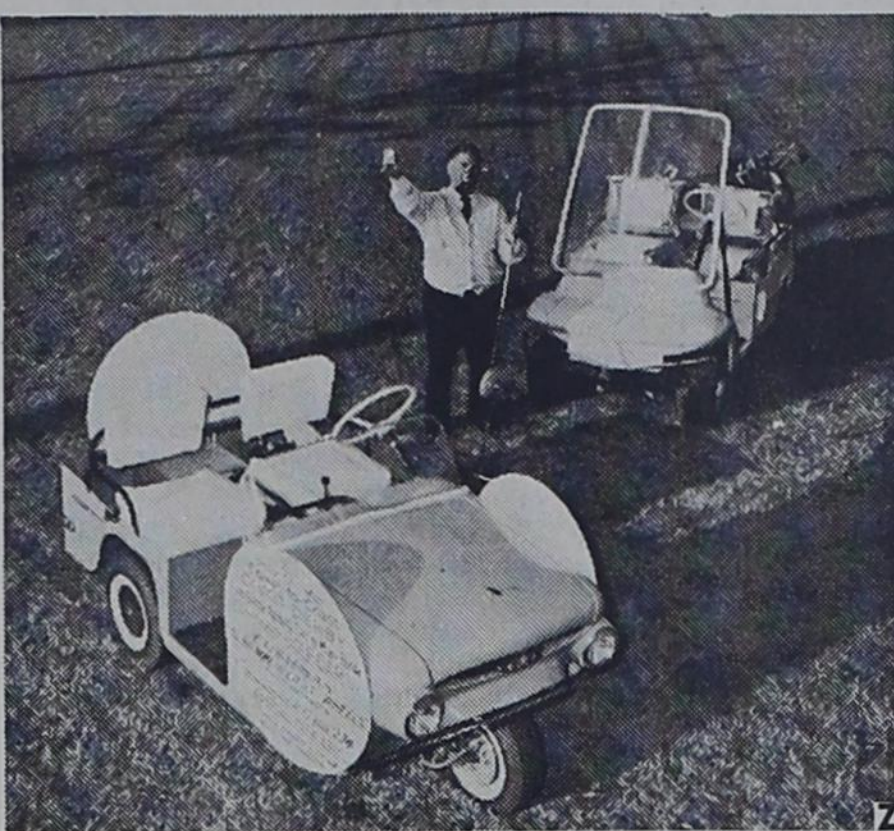
Frying chicken continues to represent a good value, and the fryers are weighing about 2 1/2 to 3 pounds, giving more meat in proportion to the bone. The Grade A large eggs offer food shoppers the most economy and quality for their money.

Plentiful supplies of dairy products are also available, and there's no price change here. Cheese is one of the valuable protein foods and is versatile.

Bananas highlighted most fruit counters, so use them generously while they are available at attractive prices. Several varieties of apples are plentiful. Just appearing on the markets in limited supply are pineapples, rhubarb, strawberries and honeydew melons. Red tart cherries and pears highlight the canned goods department.

Best vegetable buys include head lettuce, celery, cabbage, carrots, cauliflower, broccoli, green peppers, radishes and green onions. Potatoes are available at relatively higher prices since supplies are down considerably.

Coast-To-Coast "Fairway"



Ever think how long it would take to drive a golf ball across the United States? Golfer Floyd Rood recently found out when he returned from his cross-country Divot Derby starting in Santa Barbara, California and ending in Miami, Florida.

It took Rood 57 weeks to complete the par 200,001 "course." In the process of making the herculean journey, he lost 3,511 balls and registered 3,397.7 miles on his Cushman Golfster golf car. Best of all, he set a record that may stand for years—he was more than 85,000 strokes under par when he drove the last ball into the ocean at Miami Beach.

The purpose of Rood's trip is to inform people of his plan to start training schools and playgrounds for underprivileged children. His first playground will be located in Arizona City, Arizona and Rood hopes it will be dedicated by President Johnson or one of his deputies.

Starting in June, Rood swings into the second part of his golfing marathon or, as he calls it,

Use a narrow strip of cellophane tape to secure the remaining threads of a loose button on a jacket or coat, if you cannot re-sew it immediately. The tape should hold the threads in place until you can re-sew it.

New Loan Program Announced By FHA

A new loan program recently announced by the Farmers Home Administration, is designed to help rural families finance enterprises that will improve their incomes, according to County Agricultural Agent, Joe VanZandt.

The FHA County Supervisor, Bill Bolling, has informed Van-

Zandt that the new loans are a part of the Economic Opportunity Act of 1964. They can provide up to \$2,500 for up to 15 years at a 4 1/8 per cent interest rate. Rural residents can get the loans on the basis of their ability and character.

According to Bolling, the loans are for people who know a good way to increase their income, but who cannot readily get financing through regular credit channels.

The county agent said farmers can borrow for improvements, land, equipment, livestock, machinery, buildings or other items that will add to their income from farming.

Non-farm rural residents can use the same plan to finance a small business, trade or service. This includes loans to set-up such things as small repair shops.

Another provision of the new FHA program provides loans to establish cooperatives for processing, marketing and other services of benefit to farmers.

Anyone interested in additional information about the new loans should contact their county FHA supervisor, located at Farwell, or their county agricultural agent.

My Neighbors



Nylon spatulas are heat resistant and will withstand temperatures up to 430°. The skillets are rarely heated over 400°. (By comparison, water boils at 212°.) The spatulas are lightweight and easy to hold. They are white in color, and look as fresh and clean as milk pouring from a pitcher. Two companies that manufacture nylon spatulas are Flambeau of Baraboo, Wisconsin and Blissercraft of Hollywood, California.

Since the unanimous acceptance of the spoons and spatulas, other nylon items for the kitchen have been introduced.

Farm And Ranch Loans
Long Term
Low Interest
ETHRIDGE-SPRING Agency, Friona
Phone 247-2766

It's Always Playtime



For your inquisitive, adventuresome cat, anytime is playtime. And, cats are easily pleased with simple toys: empty thread spools, a ping-pong or catnip ball, a catnip or rubber mouse. Cats love to get inside paper bags and fight their way out against imaginary enemies. They adore boxes for play and napping. One playtime caution from the experts at the Purina Pet Care Center: as a kitten stalks and attacks, it's a great temptation to let him attack you, a make-believe enemy. While the kitten is tiny, no damage is done. But as the kitten's teeth and claws get sharper, you'll find these imaginary attacks leaves scratches and bites on your hands and arms. To avoid trouble in the future, do not accidentally train your kitten to be wild. Then he will grow into a gentle cat. Remember—keep playtime simple and both you and your cat will enjoy it.



Nylon In The Kitchen

The growing group of greaseless, stickless cooking enthusiasts include creative cooks who detest scouring pans, modernists with a zest for the up-to-date, people who love fried foods but in the past have had to resist for health reasons, and anyone who's ever fried a sunny-side-up egg and tried to live up to the full-color illustrations in women's magazines. All sing the praises of Teflon-coated frying pans.

While Teflon takes the bows for revolutionizing America's frying, cooking and pot-washing habits, gentle nylon works quietly in the wings doing its part to help Teflon keep its no-stick promises.

Nylon spoons and spatulas (usually sold with Teflon cookware) have a soft, soapy-like texture that will not scrape the delicate Teflon finish.

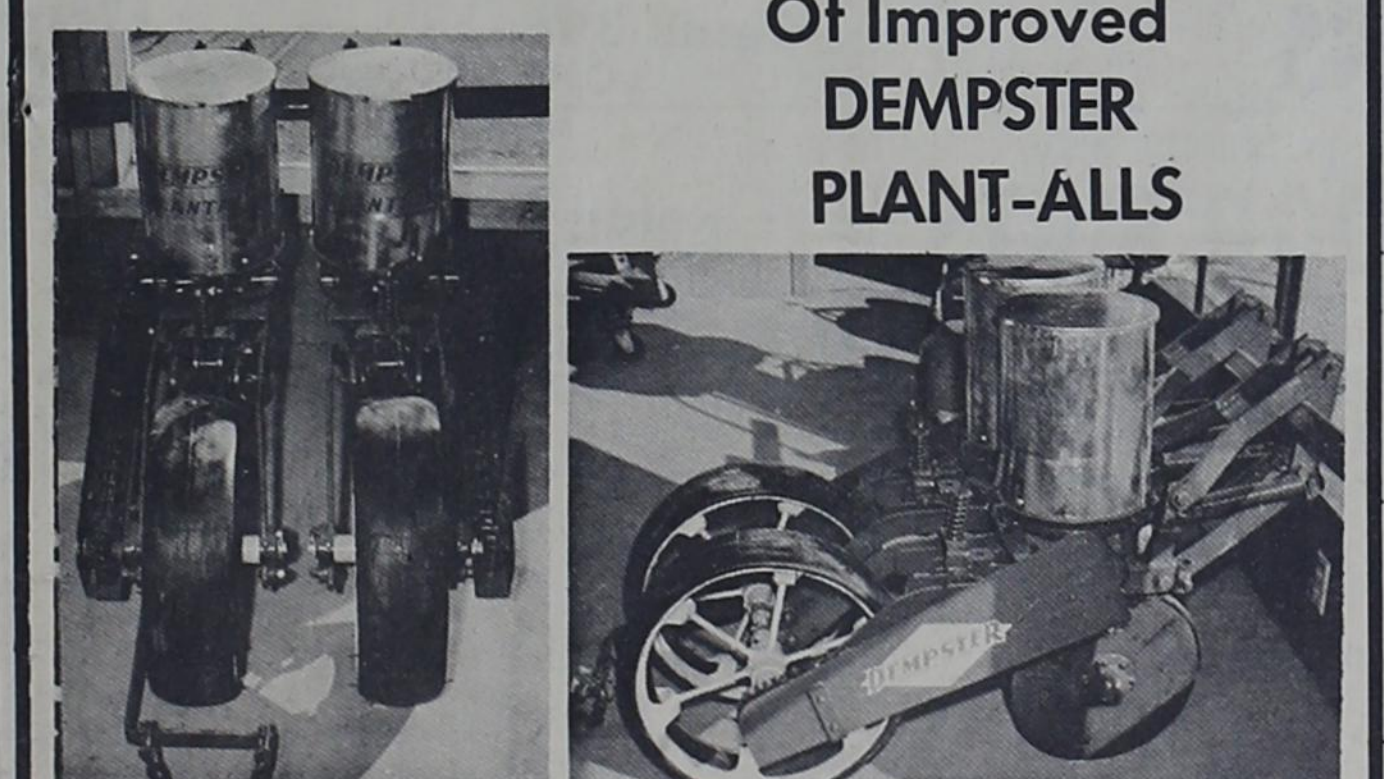
ABSTRACTS
See JOHNSON ABSTRACT COMPANY in Farwell Fast, Accurate Box 44 Ph. 481-3878

SELLS ANGUS BULL

Joe Carroll Primrose of Farwell recently sold an Aberdeen-Angus bull to M. B. Buchanan of Friona, according to a news release from the American Angus Association.

Sooner Craft, Glastron, Crestliner, Traveler, New And Used Boats Home Of Evinrude Boats And Motors
Sales And Service
CLOVIS BOAT AND MOTOR
2106 Prince Ph. 762-2641

Oklahoma Lane Farm Supply Announces A New, Large Shipment Of Improved DEMPSTER PLANT-ALLS



The 402-44 Double Disc Dempster Plant-All Is THE Answer For Precision Planting of Cotton, Milo and Sugar Beets. Improvements for 1965 include A Better Planter Box Drive.

By Ordering In Quantity, We Have Received Dempster Plant-Alls Which Are Left Or Right Hand Operated. They Will Plant On The Bed To As Close As 10 Inches. If You're Interested In A Better Way To Plant. This Is It.

We Bought In Quantity - We're Selling In Quantity Inspect The Planters Today At

OKLA. LANE FARM SUPPLY Ph. Tharp 225-4386

PEERLESS PUMPS

...to the individual requirements of your well, your crops and your land
GRAVEL-PACK OR SLIM HOLE
LARGE, HIGH-SPEED BAILER

You never get a Peerless pump off a stockpile. Each Peerless pump buyer and owner has his pump individually engineered to his own requirements, at no extra cost. And, in addition, what more could a pump buyer want than - Peerless' quick service, Peerless' complete range of pump sizes, their big staff of trained irrigation engineers, the High Plains' biggest pump repair maintenance facilities and dependable service nearby. Yes, before you buy any pump, of any size or horsepower, or have any pump repaired or rebuilt, for satisfaction's sake see Peerless Pump, America's leader in deep well pump sales and the High Plains' leader in pump repairing and rebuilding. Always call Peerless for service.

Deepwell turbine pumps - oil or water lubricated. Submersible pumps, any size. Turnkey installations. FMC financing.

SALES AND SERVICE

PEERLESS PUMP
FMC Corporation
PHONE 3-2420 MULESHOE, TEXAS

TAILOR MADE
LOOK TO THE LEADER—look to

Selecting Landscape Trees

Home grounds that are developed tastefully not only add comfort and convenience to daily living but increases the dollar value—this information comes from A. F. DeWorth, Head of the Floriculture Section, A&M University.

The selection of the proper trees for landscape developments is not an easy task and in most landscape situations it requires considerable thought. The first consideration is to determine exactly what function each tree will be required to perform in the landscape development. The functions performed by trees are wide and varied and must be carefully considered before the trees are selected. These functions are: providing shade, serving as a windbreak, producing a screen, or dominating either a large or small garden area.

When the function that is to be provided is decided upon, the next step is to carefully study the other characteristics of the tree must have to satisfy this requirement. The size, both in height and spread, must be determined, and the period of time that will be allowed for the tree selected to attain that size. The cultural requirements, winter hardiness and whether a deciduous or evergreen tree would be most desirable, and the relationship of the tree selected to the particular environment and the other plants in the landscape planting are also factors that require careful consideration.

Perhaps the two most important decisions involved in the selection of landscape trees are the height the tree will ultimately reach at maturity and how long it will take for it to reach that height. Present day homesteads as a general rule are much smaller than many of those developed years ago and the size of trees selected to landscape these properties is most important. The selection of fast growing trees that will reach 50 feet or over in a relatively few years should be made with careful thought, since the impatience with which a new home owner approaches the need for large trees often leads to disappointment and unsatisfactory results.

Many properties are not large enough to support a 50 foot tree and it is almost impossible to keep such a tree to a height of 20 feet with any degree of success. Such fast, tall growing trees will get too large for small properties in a very short period of time.

Many trees with these growth characteristics also have shallow root systems that invade drainage and sewer lines as well as all growing areas on a small property. They have brittle

wood that is easily broken in the wind. It is always very difficult to grow other plants successfully in close proximity to such trees.

When the size of the property will permit the use of large shade trees, the ideal tree for this purpose is one that will have a canopy high enough to allow sufficient light to penetrate beneath it for the growth of a strong lawn. It should also possess a growth rate that is rapid enough to provide some shade in the second or third year after it is planted. Few trees will be found, however, that have all the desirable characteristics to make them ideal for each landscape use.

Medium or small shade trees should be clean, well formed trees that produce a minimum amount of litter during the entire growing season. They must maintain their ultimate size well and should provide shade without dominating the entire garden. They should be large enough to walk under without a great deal of pruning to produce this type of structure. Today, the smaller the requirements of the tree, the larger the availability of kinds to choose from.

Trees must also be selected for the landscape functions of screening properties from sun and wind as well as for privacy. For this purpose, trees that have a tendency to branch low, or that produce a weeping effect should be selected, rather than those that naturally grow with clean trunks. For windbreaks, the screen should have a height of twelve feet or more, and it will function best for this purpose if it filters, rather than blocks the wind.

The County Extension Agents office in the Courthouse in Farwell, has available information and help to assist with the development of good landscape plans - a bulletin, for those planning their landscape is entitled - "A Planning Guide for Home Landscaping" is free for the asking, also information on trees suitable for this area.

SPORTS AFIELD

By Ted Kesting

Hunters and fishermen spend time driving on dangerous, poorly maintained roads than perhaps any other segment of the population. Sportsmen more accustomed to commuting to work than handling overloaded automobiles determinedly drive all night to save precious vacation time, with no more trip preparation than filling up with gas, checking the oil and putting fishing gear into the trunk.

Probably confronting you, if you drive on weekends or vacations to faraway hunting or fishing spots, are the twin problems of night driving and rural roads. Night driving, according to the National Safety Council, is from two to three times as hazardous as daytime driving—despite greatly reduced traffic.



For Better Pictures

Every boatman's camera should have a medium yellow filter to darken the sky and help enhance clouds and water texture.

Filters may be of the screw-on or slip-on type. Adapter rings are available to fit most any camera lens.

Small Motor Convenient

If you own an outboard motor sufficiently portable to carry in the trunk of your car, it will pay you to take it along on vacation. It will cost you \$5 to \$15 per day to rent a fishing motor. Some places won't rent motors at any price.

Boats, on the other hand are plentiful and normally rent for \$2 to \$5 per day. So, take along your motor.

Air Mattress Handy

On small boats, the soft spot for sleeping is atop an air mattress. It offers considerable comfort. Furthermore, when deflated and rolled up, it doesn't require much storage space.

Before leaving on a cruise, check the mattress for leaks. There's nothing more disgusting than a mattress that runs out of air in the middle of the night.

"Bisque a la Outboard"

Here's an easy-to-fix, delectable dish for cruise-campers. It's appropriately dubbed "Bisque a la Outboard": Mix one can each of condensed tomato soup, cream of celery soup and condensed milk, as

He should make sure there is ample gas aboard, as well as life preservers and emergency gear.

Also he should check to be doubly certain that steering controls and fuel lines are properly connected . . . points often overlooked.

Beaching the Boat

If you ordinarily run your

boat onto a beach when you come in from boating, lay an old auto tire flat on the sand with half of it in the water. Dig a depression in the beach and sink the tire to half its thickness. Then fill it with sand. This gives you a firmly-anchored rubber "landing field" and prevents scratching well as one can of either crab meat, shrimp or lobster. Combine all ingredients in the top of a double boiler. Then heat, stirring occasionally. Season to your taste.

It will serve three.

Photos Help Police

If you haven't a recent photograph of your outboard rig, better have one taken.

In the event your boat and motor are stolen, you'll have something to show police that will help them considerably in tracking down your rig.

Carlights in Camp

Trying to erect a tent after dark is an irritating business which the veteran camper avoids like poison ivy. But it happens to the best woodsman once in awhile.

If you find yourself in the predicament of setting up camp after nightfall, don't fumble around doing the job by lantern light. Use your car's headlights to illuminate the area.

Safety in Shoes

Leather-soled shoes slip very easily on boat decks, wet rocks and the pine needles and leaves that fall on forest floors.

Outfit everyone on your camping cruise with a good pair of rubber-soled boat shoes.

Check and Double Check

Before casting off, a wise skipper makes a careful inspection of his rig.



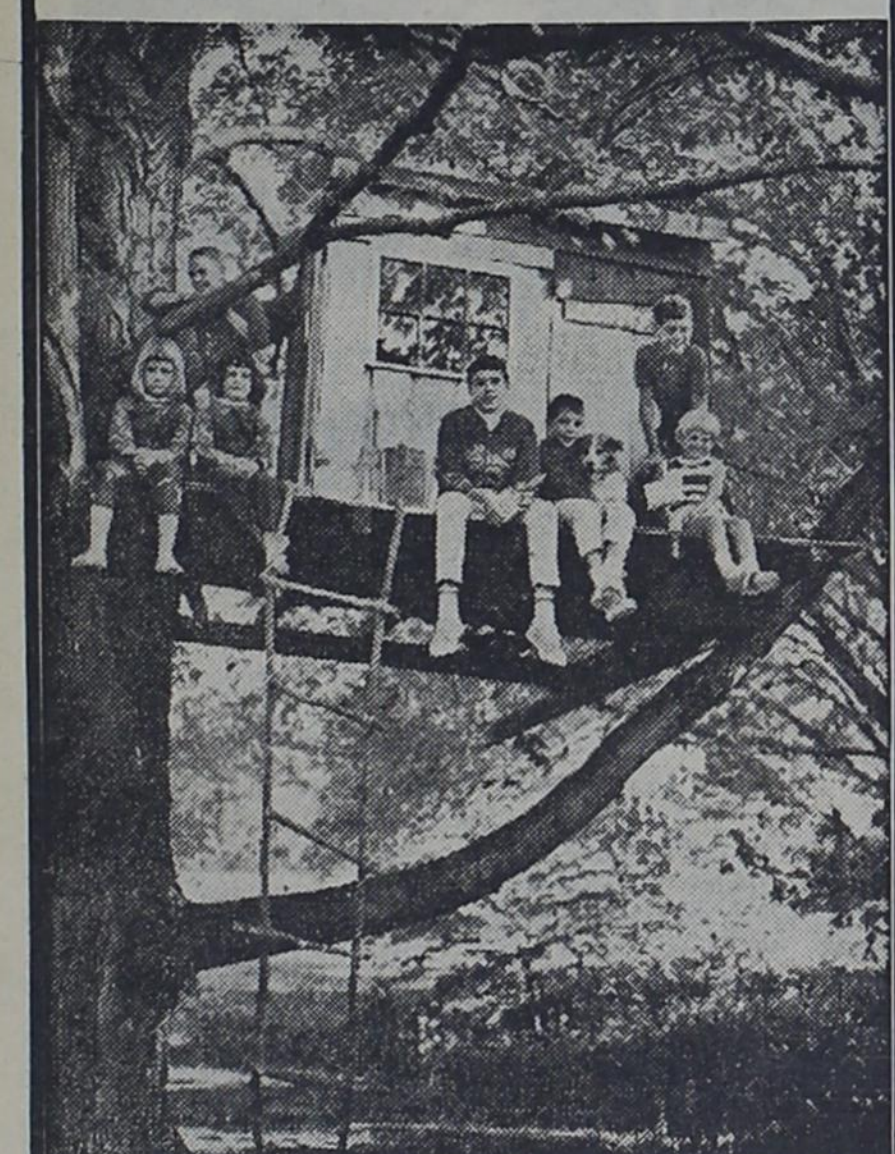
TIME TO PAY UP—The United States, Senator Herman Talmadge (D-Ga.), insists, should demand payment of the Soviet debt to the United Nations. "Any compromise which permits the Russians to escape their obligations will not be acceptable," he said. "For too long now the American people have carried the financial burdens of the U.N."

NO BURNINGS—George Washington University, located in the nation's capital, is offering a course in witchcraft and sorcery which is supposed to give students an insight into forms of modern political behavior.

LION'S SHARE?—Of the \$183 million in federal construction funds budgeted for 1966, \$109 million is to be spent in the District of Columbia and vicinity.

propped up along the road as an emergency warning signal that can't burn out.

RITEWAY JANITOR SERVICE
Clovis, N. Mex.
Carpet shampooing. Free estimate. Cleaning is our only business - not a sideline. Phone 763-6361.



When they build their real homes, we'll be here to help them with home loans. If you need a home loan now, talk it over with us today. We are home loan specialists.

MEMBER OF THE SAVINGS AND LOAN FOUNDATION
SPONSOR OF THIS ADVERTISEMENT IN LOOK MAGAZINE

First Federal Savings & Loan
HOME OFFICE: 4th & PLE CLOVIS, N.M.
BRANCH OFFICE: 2nd & ABILENE PORTALES, N.M.

HUNTING - FISHING
By Appointment Only

ELK	MODERN CABINS
DEER	
SHEEP	
MOOSE	
BEAR	
Pack Trips	GOOD FOOD

Bonded And Licensed
K-Z GUEST RANCH
Cody Wyoming
Phone 247-2888 Friona, Texas

Freeze-Dried Foods On The Way

Tomorrow's housewife may well purchase dry, packaged foods from a shelf, store in the pantry and, when mealtime comes, just add water and a meal is ready—of such foods as scrambled eggs, steak, vegetables and cottage cheese!

At least that's what researchers at Texas A&M University believe, after experimenting with their new machines—the Freeze-Drier.

This \$20,000 machine, manufactured by the American Sterilizer Co., removes practically all the moisture from foods by the process of lyophilization, or freeze-drying.

The product can already be frozen or may be frozen after being placed in a vacuum chamber in the machine. Then the temperature is raised and a vacuum draws the moisture from the product until it is almost completely dry. The dried product must then be stored in an air-tight container to prevent moisture from entering.

Freeze-dried foods may be cooked or left uncooked. There

is little spoilage since few bacteria can live without moisture. To restore to the original condition one must only add water.



"If you want something done at once, ask the busiest person you know."—Virginia Gaskill, Pennsburg (Pa.) Town and Country.

"Demand is always on the threshold of change. The most successful of all merchants are those who anticipate a change in demand and use advertising to claim a fresh market."—S. S. Talbert, King County (Mo.) Tri-County News.

"One good way to save face is to keep the lower end of it closed."—Lee Mildon, Salinas (Calif.) Monterey

The Old Timer



"Parents are people who bear infants, bore teenagers and board newly-weds."

County News.

"A politician never buries the hatchet unless he has an axe to grind."—Robert G. Campbell, Lititz (Pa.) Record-Express.

If You Have **FARM MACHINERY** TO SELL Call Big Nick Trienen at **Machinery Supply** Highway 60 Bovina Phone 238-4861

"WHERE YOU ALWAYS BUY THE BEST FOR LESS"

GIBSON'S DISCOUNT CENTER

111 Park HERFORD Em 4-2630

★ ★ ★ **HEALTH AND BEAUTY AIDS** ★ ★ ★

Mennen - Large 7 oz. SKIN BRACER Ret. \$1.10 57c	Adorn HAIR SPRAY Ret. \$2.25 \$1.27
Mennen - Large 16 oz. BABY MAGIC Ret. \$1.59 87c	So Soft - 1 Pint HAND LOTION Ret. \$1.00 27c
Mennen - Large 11 oz. SOF STROKE Ret. 98c 47c	1 Pint HALEY'S M-O 67c
Mennen - Large 12 oz. BABY OIL Ret. \$1.00 47c	6 Flavors - 8 oz. Cans METRECAL 6 Pak \$1.37
Mennen Large 14 oz. BABY POWDER Ret. 89c 37c	2 Ply - 200 ct. KLEENEX TISSUE 17c
Nutri - Tonic HOME PERMANENT Ret. \$2.00 97c	BRAND NAME MERCHANDISE

UNION - METAL TACKLE BOX REG. RET. \$1.98 97c	JUST ARRIVED! FERRY - MORSE GARDEN AND FLOWER Seed Assortments (Gibson's Discount Prices)	Gibson's - 2 Hole NOTEBOOK FILLER PAPER 300 ct. Retail 98c 43c	Bernz - O - Matic Deluxe TORCH KIT With Metal Carrying Case Retail \$10.95 \$6.44
---	--	--	---

★ ★ ★ **HOUSEWARES** ★ ★ ★

Lithograph Oblong - Retail \$1.79 Assorted Patterns

LARGE METAL SERVING TRAYS **87c**

Ekcoloy **PIZZA PANS** Retail 39c **19c**

Outdoor - Indoor 14''x 24'' **COCOA DOOR MATS** Retail \$1.87 **\$1.27**

Itallan-Aqua Marina, Smoke, Amethlyst **HOBNAIL TUMBLERS** Retail 59c **3 For 97c**

GIBSON'S MUD GRIP TIRES

670-15 TUBE TYPE SUPER WEATHER MASTER 4 PLY	\$11.00 + TAX \$1.86
800-15 TUBELESS SUPER WEATHER MASTER 4 PLY	\$13.00 + TAX \$2.37
800-14 TUBELESS GLAGIER GRIP 4 PLY	\$17.00 + TAX \$2.39

TROXELS TORSION THREE SPRING **BANANA BICYCLE SEATS** Retail \$5.95 **\$3.37**

NYLINT #5700 - 4 PIECES **CONSTRUCTION SET** Retail \$7.95 **\$4.33**

HAVE YOU TRIED--- **GIBSON'S DISCOUNT PHARMACY?**