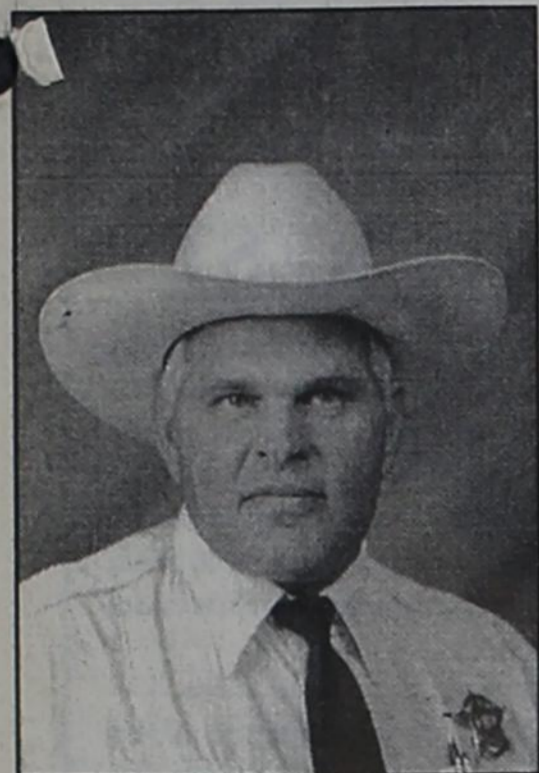


Gorman, Eastland County, Texas 76454

NUMBER SEVEN

MARCH 7, 1996

Wayne Bradford For Sheriff



My name is Wayne Bradford and I am announcing my candidacy for Sheriff in the democratic primary. I am a native of Eastland County and a former Department of Public Safety Highway Patrolman.

Since moving to Ranger I have been active in the community. I am a member of First Baptist Church where I serve as a deacon, Lions Club, Past Master of Ranger Masonic Lodge and Sheriff's Association of Texas.

On March 18, 1994 after the decline of the oil industry, I went to work for the Eastland County Sheriff's Department where I am currently employed. I have worked as a jailer and am certified as such, I became Jail Administrator for a short time before

Celebration Honors Ruth Higginbottom

Ted Higginbottom of Seminole came to tend to some business and while here had a early birthday celebration of his mother's 87th birthday.

Every day since, cards, gifts, telephone calls and flowers have been received.

Ruth has decided to try for that 88th birthday and is so thankful for all the things done for her.

being moved to a Deputy-Investigator position. I have also been trained in civil process. I am a certified peace officer and have received an Advanced Certificate from the Texas Commission of Law Enforcement Officer Standards and Education.

I feel that I am uniquely qualified for the job as Sheriff because of my years of law enforcement experience and having worked my way through the various jobs in the Sheriff's Department, including Jailer, Jail Administrator, Civil Process, Warrants and Deputy-Investigator.

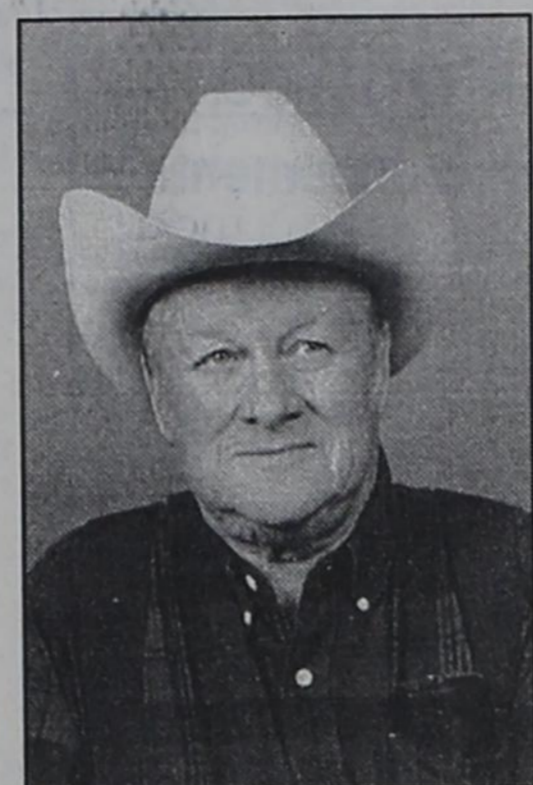
In the past few months, I have tried to meet as many of the citizens of Eastland County as possible. I have made many new friends and found a great many supporters. I would like to thank each and every one of you for your support.

I believe your Sheriff's Department should be professional in both attitude and appearance with personnel who are knowledgeable in their jobs and who carry out their duties in a fair and equitable manner to all citizens throughout the county.

Your vote on March 12 will be appreciated.

Political announcement by Wayne Bradford, Rt. 3 Box 198, Ranger TX 76470.

Edwin Lummus Issues Statement For Election



Edwin Lummus, Candidate for the Democratic Party Nomination to be the Tax Assessor/Collector of Eastland County, has authorized this statement to be published.

As a candidate for this office, I have met and talked with many of the residents of Eastland County. The question I have been asked most by these people is "why do you want to be the Tax Assessor/Collector?"

My answer has always been the same. In the first place, the title "Tax Assessor/Collector" needs to be shortened to "Tax Collector". The State of Texas mandates that all properties in nay county must be rendered at 100% of its value. It further requires that this value must be set by a duly certified and licensed appraiser.

Another reason for seeking this job is to see that the services provided by this office are available to the citizens of Eastland County anytime the Court-house doors are open, not just when the Tax Collector sees fit.

JumpRope For Heart Event March 8th

Maxfield elementary is proud to be participating in the Jump Rope for Heart fund raising event. Grades K-6 will jump for a set amount of time to raise money to benefit the American Heart Association.

We would like to invite the community to participate in this event by coming to the gym March 8th to Support all the jumpers. The event begins at 8:30 and will end at 11:15. There will be a concession stand set up during the event.

as such, the "Tax Collector" should see that all citizens in need of its services be provided those services with courtesy and efficiency.

One of the best ways to run any operation efficiently is to eliminate duplication in any and all phases of its day to day business.

I will be the first to admit to not having experience as a "Tax Collector". I do have over 30 years experience managing and operating businesses in the private sector. The only way any business can continue to operate is by making a profit.

If elected as your Tax Assessor/Collector, my objective will be to see that the three points mentioned: Service Efficiency, and Economy are always foremost. These will be my main goals.

If I can meet these goals, you can rest assured that the cost of doing county business will go down in Eastland County. If cost go down, less of your money will be required to operate the County.

Gorman School Open House On Thursday

Any time is a good time to visit your local schools, but everyone has been issued a special invitation this week during Texas Public Schools Week.

Established more than 40 years ago by the Masonic Lodge of Texas to recognize the state's outstanding public education system, Texas Public Schools Week gives community members the unique opportunity to view first hand how local schools are preparing students for the future.

To avoid conflicts with the state's TAAS testing or Spring Break, school districts were this year asked to pick any week in March to celebrate TPSW. Along the same line, Texas students have much to choose from once they open the door to education.

You don't have to be a student or a parent to be a part of TPSW. As a taxpayer, you are invited by the Gorman School to participate. Seek answers to your questions about education and local schools. What programs are available for student who need a little extra help?

Open House at the Gorman School will be held Thursday morning 7:30-8:30.

Jump Rope for Heart will be Friday morning in the gym. Everyone is welcome.

CARD OF THANKS

Once again the good people of Gorman and our community have come to our aid. Words cannot express our heartfelt appreciation to everyone that helped put the fire out that could have totally destroyed our place, during the Wednesday afternoon, February 14th fire.

We want to especially thank Gary Burgess, Howard & Georgie Iley, Ricky Rone, Wesley Spivey, and Steve & Traci Spivey for their extra efforts. And a special thanks to Lupe Torres for getting the tractor out.

It is just another reminder of how fast and unexpected things that happen in life.

Our communities are very fortunate to have the quality of volunteers for our fire departments that we have. When you see one of the fire department volunteers, please let them know that they are appreciated.

Because, God forbid, you never know when they may be coming to your rescue!

Thanks again, Chessley Atchison and Family

5 Panthers Named To All District List

Five Gorman Panthers have been named to the lists of All-District 29A players. Gorman placed two on the First Team, one on the Second Team and two on Honorable Mention.

Making the First Team All-District. Team were Donald Majors, senior, and Jason Posey, junior.

Listed on the Second Team was Nic Burleson, a senior.

On the Honorable Mention list were Justin Snider, senior and Justin Burleson, sophomore.

Co-MVP players named were Brandon Franklin, a senior from Rising, Star, and Brock Walker, a Cross Plains senior.

There were four players from Rising Star on the list; six from Cross Plains; five from Eula; five from Santa Anna; and the five from Gorman.

Two File For School Board

Freddie Gilmore and Glenn Glasson, incumbents have filed for the two, three terms up for election on the school board of trustee.

The election will be held May 4th in the school library.

Deadline for filing is March 20th. Candidates may file at the school tax office during office hours.

John Rice Files For Place On City Commission

John Rice incumbent has filed for Place 4, on the City Commission.

Places to be filled are position of Mayor, now held by Jack Simpson and Johnny Smith Place 2.

Candidate may file at the City Office during office hours. Deadline for filing is March 20th.

Commissioners are elected for two year terms.

Faculty - Students To Be Honored By Masonic Lodge

In recognition of Public School Week and to show our appreciation of their dedication to the education and guidance of the youth of our community, Gorman Masonic Lodge is again hosting breakfast for the Gorman Public School Faculty.

All employees and board members are invited to attend. A recognition program honoring selected students with citizenship awards will follow the meal. We will also be honoring a faculty member and a student with the Lamar Award.

Gorman Masonic Lodge is very proud of our education system and all who are associated with it. We believe a good education system builds a strong community.

Pat Mosley, W.M. Roscoe Reeves, Secretary

Republican Party Primary March 12th

The Republican Party Primary Election will be conducted at the Fire station meeting room on Tuesday, March 12 the polls will be open from 7 AM until 7 PM. Each person who votes in the Primary Election that day is eligible and is invited to attend the Pre-

inct Convention at the polling place immediately after the polls close on Tuesday. Delegates and alternates will be selected from the Precinct Convention to attend the Eastland County Republican Convention in Eastland on March 30.

Democratic Party Primary March 12th

The Democratic Party Primary Election is to be conducted at the Gorman Community Center on Tuesday, March 12. The polls will be open at 7:00 a.m. until 7:00 p.m. In Carbon, the democratic primary is at Carbon Community Center. In Desdemona, the democratic primary is at Desdemona Community Center.

OFFICIAL BALLOT (BOLETA OFICIAL) for Republican Party Primary Election. Lists candidates for various offices including Railroad Commissioner, Justice, District Judge, County Commissioner, County Chairman, Precinct Chairman, Constable, and State Representative.

OFFICIAL BALLOT (BOLETA OFICIAL) for Democratic Party Primary Election. Lists candidates for various offices including Judge, County Commissioner, County Chairman, Precinct Chairman, Constable, and State Representative.

ITEMS OF INTEREST. Monthly meeting of the Carbon Community Center. Eastland County Retired Teachers and Associates will meet Monday, March 11 at 11:30 a.m. SAVE BROOKSHIRE'S THRIFTMART RECEIPT TAPES FOR CASH DONATIONS.

# CARBON NEWS

It was so good to see so many children in Sunday School and Church Sunday at the Baptist Church. A program is being started for the children. Ike Whitson will be in charge of it. We hope more children in our Community will come and Worship with them.

Bro. Jack Clack will preach for us next Sunday (March 9th). Bro. Jim and Ann Poe will start their vacation this weekend. they will be observing their 45th Wedding Anniversary. We wish them many more years together.

Bro. Jim and Ann Poe were in Abilene Saturday to attend the wedding of a brother-in-law J.D. Lane and Mary Lou. Bro. Jim performed the Ceremony we wish the couple much happiness together.

Visiting with Coy and Jessie Mangum last week were Ruth and Charlie Livingston, Kessie Eakers, Nell Jessup, Renee Davis of Cisco. Karen Glenn, Roberta Connally, Sandra Robinson and April Isabell of Eastland. Coy and Jessie are not feeling well. They have had real bad colds along with their other troubles, so some of us had to stay away. We hope they get to feeling better soon.

Billie Stacy, R Lee McDaniels and Ruth Knowles of Carbon and Ima Brown of Gorman were in Stephenville Saturday to attend the Cross Timbers Country Opry, to hear Eric Monk and Le Ann Perish sing. They were great. Erics parents Beverly and Larry Sandlin and Erin also attended.

There were lots of good singers and musicians.

It is really a nice place to go, there was really a large crowd to enjoy the music.

John Rodges, who is with the Sidney School was in Houston last week for the Stock Show. He was guest in

the home of his sister Joyce and Neil Gilbert, and they also visited in the home of Glenn and Jerilyn Gilbert. He returned home Thursday.

John Rodgers visited his mother Bernice Rodgers in Gorman Saturday night.

John and La Tonne visited her parents Sunday evening for supper, and attended church services with Clyde L. Vada and Grant Lewis of Desdemona.

The Widow ladies luncheon met with R Lee McDaniel last Tuesday we will meet with Ruth Knowles this week. We always go for singing at 2:30. We wish more of you Gorman people would come out. New Hope and Kokomo Communities are helping out, so lets all make an effort to go when we can.

## Kokomo F.C.E. Club To Host County 4-H Club's

The Eastland County 4-H Club members and Leaders will meet at the Kokomo Community Center Building at 4:00 P.M. on Monday March 11. This will be a "Show and Tell" Program.

The Kokomo Family Community Education Club will present the Eastland County 4-H Club members Wynelle Brown is the Kokomo F.C.E. 4-H Chairman.

F.C.E. Club members Nancy Hendricks and Naoma Morrow are the hostesses.

Reporter: Nancy Hendricks  
President: Norma Webb

## Myrtle Clark Services Held Tuesday

Myrtle M. Clark, 94, died Sunday March 3, 1996 at a local hospital.

Services were at 10 a.m. Tuesday at Bakker Funeral Home Chapel with Milton Underwood officiating. Burial was in Eastland Cemetery.

Mrs. Clark was born and grew up near Gorman and lived in various parts of Texas before moving to Eastland in 1958. She moved to Houston in 1981 and returned to Eastland in 1992. She was a member of Daugherty Street Church of Christ and had worked for Eastland Memorial Hospital in the 1960's. She married Dewey Clark in 1919 in Gorman; he preceded her in death.

Survivors include one son, Dewey Clark of Chesapeake City, Md.; two sisters, Johnnie Reed of Eastland and Willy Holly of Seagraves; two grandchildren and two great-grandchildren.

## The Messengers To Perform Sunday At De Leon FBC

The Gospel Quartet, **The Messengers**, will present a concert at First Baptist Church, De Leon, at 7:00 p.m. on March 10, 1996. The quartet began singing together on Mother's Day 1994 and in addition to concerts in various churches has sung at the Cisco Baptist Association Meeting and the 1996 Eastland Chamber of Commerce Banquet. The members of the quartet are: Tommy Clark, Hershell Cordell, Glen Clement, and Jeff Seaton. The public is invited. Nursery facilities will be available and a Love Offering received.

Wayne Bartley  
Minister of Music

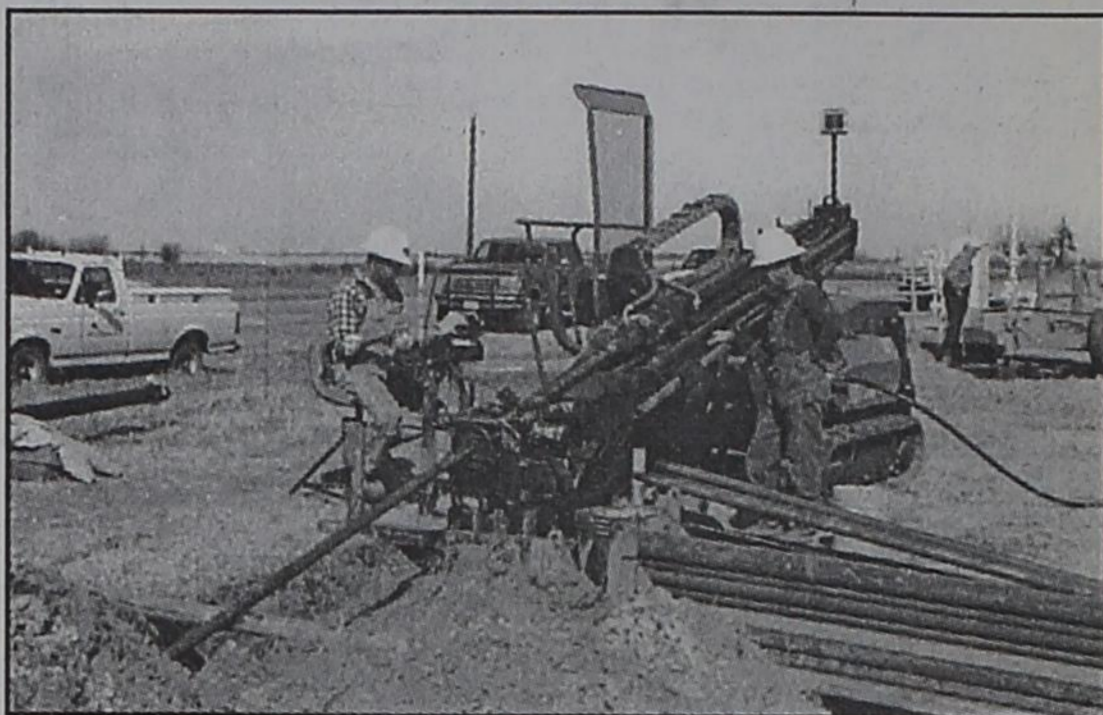
## Replacement Project Nears Completion

Work is nearing completion on a pipeline replacement project by Lone Star Pipeline Company between Gorman and Carbon. Lone Star Gas Company serves nearly 600 customers in the Gorman - Carbon area. The new line is expected to be put in service in the next few weeks.

An estimated 7,400 feet of 2" pipeline that was installed about 20 years ago is being replaced. The upgrade to 4" pipeline is necessary because of a growing demand for clean-burning natural gas in the area.

This is one of many projects undertaken by Lone Star Pipeline Company to insure that all customers continue to receive reliable natural gas service. Lone Star Pipeline Company was formally the Transmission Division of

Lone Star Gas Company and was organized separately in May 1995.



A boring machine is one piece of sophisticated equipment used in a Lone Star Pipeline Co. project between Gorman and Carbon. Over 7,400 feet of 20 year old pipeline is being replaced.

## Political Announcements

PROGRESS'S POLITICAL ANNOUNCEMENT FEES:

- U.S. Offices \$75.00
- District Offices \$60.00
- County Offices \$50.00
- Justice Prec. Offices \$40.00
- Constable \$40.00

All political advertisements paid for by friends and/or candidates must bear at least one signature and address. All ads must be paid for in advance. (Political advertising charged for at a rate of \$2.25 per column inch).

Any political advertising reflecting adversely upon the character of a person will be refused.

The Gorman Progress is authorized to make the following political announcement, subject to the action of the Primary Election, May 7, 1996.

**91st District Judge:**  
SAUL PULLMAN

**County Commissioner: Pct. 3:**  
L. T. OWENS  
(Incumbent)

**Eastland County Sheriff:**  
WAYNE BRADFORD  
(Democrat)  
GENE RUSSELL  
(Democrat)

**Tax Assessor - Collector:**  
EDWIN LUMMUS  
SANDRA CAGLE

**Texas Barber Shop**  
102 South Texas  
De Leon, Tx  
817-893-5266  
HOURS:  
9-6 Tuesday thru Friday

**Sentry Service Real Estate**  
114 East Houston Street  
Gorman, Texas 76454  
817-734-2934

**SOLD**  
3-2-2 - Brick on 10 acres, stock tank and staff water.  
2 Bedroom, 1 bath on nice corner lot. New carpet and vinyl siding. \$300 move in cost and assume note of \$30,000.

**NITA DANSBY REAL ESTATE COMPANY**  
Commercial Residential Farm Ranch  
108 S. Texas 893-6441

**COGBURN REALTY**  
893-6666 DE LEON, TX  
3-2-2 FRAME, App. 1200', A&H, \$30,000.00 - \$23,500.  
2 EAC 2 1/2 Bedroom Homes - \$10,500 Each  
83 A. App. - 30 A. Coastal, 12 Pecans; 20x50 Building, 3 wells, corals, timber, 3 miles out - \$60,000.  
80A - 30 A. Cult., 20 A. Coastal, 2 tanks - \$625.00 Per Acre.  
120 A. M/L, lots of timber, good hunting, older 3-2 mobile home, rough and rugged, leased for approximately \$3,800 per year, 3 oil wells - \$550.00 per Acre.  
99A cves - Kokomo Area, pavement, timber, Coastal, Love gear, deer, 2 good tanks, Co-Op Water available - \$575 acre.  
We **NEED** You Listings - The Market Is Good. Call Us.  
SELLING GORMAN-DELEON AREAS OVER 40 YEARS

**DE LEON INSURANCE AGENCY**  
108 S. Texas De Leon, Tx

**DIAL**  
893-6616  
AUTO, HOME OWNERS, FIRE, HEALTH, LIFE, FARM LINES, CROP, ANNUITIES, COMMERCIAL, MOBILE HOMES

## ITEMS OF INTEREST

**EASTLAND COUNTY GENEALOGICAL SOCIETY** - The ECGS will meet at Quality Computer Plus Monday, March 11 at 6:30 p.m. The program will consist of hands on use of micro-finish and micro-film: IFI, census, soundex, Revolutionary War Pension and completer: Social Security Research under the direction of Doris Cozart, president of the society. All members are urged to attend and bring pencil and papers. All visitors are invited and encouraged to become a member of our society to help preserve Eastland County Family History. Bring your question and let us try to help you find the answers that have evaded you thus far. Corresponding Secretary, Wanda Skinner.

**NOTICE!!** - Staff Water Supply Corporation will hold its Annual Membership Meeting, Thursday, April 4th in the Ranger College Auditorium at 7:00 p.m. Any member wishing to place their name on the ballot for Board Member must come by the Water Office at 211 North Austin Street in Ranger, Texas and place their name on the ballot for the area in which they own a water membership. In order to get the ballots mailed to each Stockholder we must have the names by Monday, March 11th by 5:00 p.m.

**THE GORMAN 4-H CLUB** will be having a drawing for a GIFT CERTIFICATE worth \$50.00 in Groceries at **City Grocery**. The drawing will be held at hte March 18 Club Meeting. The tickets are available for a \$1 donation for each ticket. Thank You For Your Support.

### COLLECTING BLUE PEPSI CAPS

The Maxfield Elementary School is collecting the Blue Pepsi caps as part of a Fund Raising Program with Pepsi Corporation. Pepsi will give 5 cents for every blue cap the School collects. The money will be used for school projects. Turn in your Blue Caps to J. R. in the Elementary Office from now until the end of school.

**CLASS OF 1948 REUNION** - Looking For addresses of Billy Ray Greathouse and Deliah Faye Hunter (mother married Jake Wright in 1940's). Does anyone know the where abouts of these two 1948 Classmates? If so contact - Wanda Hull. The close of 1948 of Gorman High School are planning their 50th Reunion during Homecoming of 1998 and would like to have the names and addresses of the class exes. If you were a member of the class or know the address of a '48 ex, please contact Wanda Duske Hull, 1003 South Daugherty, Eastland, Texas 76448 or call 817-629-2987.

**NOTICE TO GORMAN BUSINESS FIRMS** - If you have not received an information sheet for a brochure of Gorman. Please contact CMS or The Gorman Progress for a copy of the sheet.

**Charlie Garrett Memorial Library** - Is Open Monday - Wednesday - Thursday and Friday from 3 - 5 p.m. and Tuesdays from 3 to 5:30 p.m. STORYTIME is on Tuesdays at 10:00 a.m. for all Preschoolers.

Gorman Oaklawn Cemetery Association is accepting donations for the Care of the Cemetery. If you would like to make a donation in memory of or In Honor of someone, please send to Box 501, Gorman, or Citizens State Bank, Gorman, Texas 76454.

Gorman Masonic Lodge No. 716 A.F. & A.M. Regular stated meetings are 2nd Tuesday of each month at 7:30 p.m. Members are urged to attend. Visitors are always welcome. Bill Hagood, Worshipful Master, 734-2724 - Phillip Osborne, Secretary - 734-2807.

The Order of the Eastern Star holds its regular stated meetings on the first Monday of each month at 7:30 p.m. - Gene Grisham, Worthy Matron - 893-6777 and John Grisham, Worthy Patron 893-6777.

**Riley Gardner Memorial Represented By DOROTHY JOHNSON - 817-734-2367**  
Our Memorial Display Is Now Located Behind Higginbotham's Funeral Home. We Guarantee You Can Buy THE FINEST QUALITY Memorial At The LOWEST PRICE. All Work Guaranteed.

**Gibson Appliances**  
MDE436RB \$320  
MGF300PB \$360  
MRT15CNC \$525  
MWX445RB \$399  
154 cu.ft. Top Mount Refrigerator; 2 Full Width Sliding Epoxy Coated Wire Shelves; White Crisper; 2 Door Shelves; White Dairy Compartment; 2 Freezer Door Shelves; 2 Ice Trays; H84 25 W28 D31.25  
Electric Dryer; 3 Cycles; 3 Temperatures  
Easy slide-in; Manual Clean Oven; Electronic Ignition; lift-up top with dual support rods; color coordinated door; glide-out low broiler; porcelain broiler pan and grill H40 W29 7/8 D25 3/8  
Large Capacity

**EASTLAND COUNTY TIRE - AUTO & APPLIANCE, INC.**  
315 East Main Eastland, Tx 817-629-2662

**HOME REMODELING LOANS**  
No Application Fees and No Government Red Tape \$100 Total Closing Costs Upon Loan Approval, Up to \$50,000 Loan  
**T. J. CLARK CONSTRUCTION CO., INC.**  
(817) 734-2755 P. O. Box 176 - 111 E. Roberts St. Gorman, Tx 76454  
General Building Contractors - All Work Guaranteed - Custom Homes Remodeling - Commercial - Industrial - Farm - Free Estimates Financing - Design, Engineering and Plan Services

# Put Yourself in the Marketplace, in the Classifieds.

- DIRT WORK:** Dump Truck Service - Lot Preparation and Leveling - Driveway and Road Material - Sand - Topsoil. Reasonable. K. D. Boyd, 817-734-2122. 2-3-FNC.
- FOR SALE:** Highly Fertilized Costal Hay - 4x5 Round Bales - \$25 to \$35 per roll. Call 817-734-2221 or 817-965-5066 or 817-965-6343. 2-3-14 C.
- FOR SALE:** To be moved - 2 Bedroom, 1 bath frame house in good condition - \$4,000 or best offer. De Leon Pentecostal Church, 817-893-2795, leave message. 2-3-14 C.

**NOTICE !!!**  
Our house was broken into on Monday, February 26th between the hours of 4:30 and 7:00 p.m. If anyone was seen parked or walking near our home at 827 N. Kent, Please call 817-734-2629 or 734-3149. Jean Wooten

**NOW TAKING APPLICATIONS:** The City of Gorman will be accepting applications for those interested in running the Swimming Pool. You may pick up an application at the City Office during normal working hours. Applications will be accepted for 2 weeks. 2-3-7 C.

**CUSTOM DRAPERIES MADE:** No Labor Charge when fabrics, etc., are bought from our store. Free Estimates. W. H. Smith Department Store, Phone 817-893-2135. 5-26-fnc.

**HELP WANTED:** We are now hiring Stylist - Guaranteed \$200.00 per week. Paid Holidays - 2 Paid Vacations per year. Call Bob or Donna at 817-968-3374. 9-26-FNC.

**SAVE ON CARPET:** Buy at Wholesale plus 10% and Freight. CASH - NO STAMPS. W. H. Smith Department Store - De Leon, Tx. 5-26-FNC.

**FOR SALE:** Construction Pipe - Various lengths and sizes from 1 1/2" to 12" in diameter - Call 817-734-2848 after 7:00 p.m. 12-28-FNC.

**BUYING JUNK CARS & TRUCKS:** Call 817-893-6776 - De Leon Auto Supply. 10-19-FNC.

**THE GORMAN PROGRESS**  
P. O. Box 68  
Gorman, Texas 76454  
Phone 817-734-2410 or 2411 - Fax 817-734-2799  
Publication Number 222780  
PUBLISHER: Joe Bennett  
ASST. PUBLISHER: Lonnie (Jake) Bennett  
EDITOR: Herman Bennett  
SUBSCRIPTION RATES: By Mail in Eastland and Comanche Counties - 1 year - \$10.00; Outside Eastland and Comanche Counties but in Texas - 1 year - \$14.50; and Out of State - 1 year - \$16.50.  
Any erroneous reflection upon the character, standing, or reputation of any person, firm, or corporation which may appear in the columns of the Gorman Progress will be gladly corrected upon being brought to the attention of the publisher.  
Entered as 2nd Class Mail at the Post Office in Gorman, Tx 76454, under the Act of March 3, 1879. Published Weekly at Gorman, Eastland Co., Texas 76454. Sec. Class Postage Paid at Gorman, Tx 76454  
**DISPLAY AD RATE**  
\$2.50 Per SAU COL. INCH  
**NATIONAL AD RATE**  
\$2.90 Per SAU COL. INCH  
Advertising Line Rate - .2075  
**CLASSIFIED ADVERTISEMENTS**  
.15 Cents a Word  
Minimum Charge - \$3.00 per Issue - CASH  
Charged - \$4.00 First 20 Words plus 15c each additional word. \$4.00 Minimum Charged.  
No Commission  
Additional 50 cents for Borders  
**ADVERTISING DEADLINE - TUESDAY NOON**  
Card of Thanks - \$3.00  
An Extra Charge of 50 cents per issue will be added to Classified Ads for Tearbooks and Billing.  
**THE GORMAN PROGRESS RESERVES THE RIGHT TO REFUSE ANY ADVERTISING.**  
POSTMASTER: Please Send Change of Address To: GORMAN PROGRESS, P. O. Box 68, Gorman, Texas 76454-0068

- POSTAL JOBS**  
Start \$12.08/hr. For exam and application info, Call (219) 769-8301 ext TX711, 8:00 a.m. to 8:00 p.m., Sun.-Fri. 4-3-28 P.
- FOR RENT:** 2 Bedroom Frame, chain link fenced yard. Good Condition. Call 817-734-2982. 1-3-7 P.
- YARD SALE:** Saturday, March 9th - 350 Crescent Street - 1970 Plymouth Fury III tagged, inspection and runs good. - \$500.00. 1-3-7 P.

**PUBLIC BID NOTICE**  
The Multi-Regional Purchasing Co-op is soliciting bid quotes for Catalog Supplies and Technology Items. The MRPC is composed of school districts in Region IX, XI, XIV, and XV. Sealed bids will be received until 11:00 a.m., **Wednesday, March 20, 1996**. All bid proposals should be sent to Region IX ESC, 301 Loop 11, Wichita Falls, Texas 76305. For information concerning the bid, contact Theresa Dempsey at 915-675-8604. Bids will be awarded by the MRPC Bid Committee at 10:00 a.m. on Friday, March 29, 1996, at Region XIV ESC, 1850 Highway 351, Abilene, Texas 79601-4750. 2-3-14 C.

**FOR SALE:** 2 Bedroom - 1 bath stocco House - Shop - Garage - Carport - 4 Storage Buildings - RV Hookups. All new improvements - Close to School. Call 817-734-2347 or 817-734-2058. 6-29-FNC.

**Town & Country REAL ESTATE**  
BARBARA LOVE, Broker  
317 E. Main St.  
817-629-1725  
EASTLAND, TX 76448

**300 ACRES** East of Gorman. Some cultivation, native pasture, mesquite and oak. Fenced, 2 water wells, 3 stock tanks. Peanut Quota. Some minerals, good deer and turkey hunting!  
**NICE PLACE!** 3 bdrm, 1 bath frame on large lot. Beautiful pecan trees, garden spot.  
**GREAT LOCATION** - Close to school. 2 bdrm, 1 bath frame. Carport, storage bldg.  
**CHECK IT OUT!** 2 bdrm, 1 bath with Large kitchen, sunroom and big trees on 1/2 acre.  
**194.6 ACRES** East of Gorman. Some cultivation, brush. Fenced, 2 stock tanks, peanut quota. Good Hunting!  
**ATTENTION HUNTERS!** 32.55 acres West of Gorman. Wooded and secluded. **REDUCED FOR QUICK SALE!** 43 ACRES with 2 BR, 1 bath frame only 3 miles northwest of Gorman. Mostly cropland except home site. Co-Op water, peanut quota, pecan and fruit trees.  
**DUAL PURPOSE BLDG** with Hwy. 6 frontage. Showroom & workshop; High Traffic Flow.  
**155.3 ACRES** - South of Desdemona. Some cultivation, coastal, native pasture. Irrigation wells, stock tanks, perimeter and cross fencing. Peanut quota; good hunting **REDUCED!**  
**COUNTRY LIVING IN TOWN!** 4 bdrm, 2 1/2 bath on 1 acre. Plenty of room for garden and animals. Outbuildings and large trees.  
**36.775 ACRES** East of Carbon. Oak and Mesquite, part hilly, 1 tank, wet weather creek.

**PUBLIC BID NOTICE**  
The Multi-Regional Purchasing Coop (MRPC) consisting of school districts in Region IX, XI, XIV, and XV are requesting bids for various categories of school supplies and materials for the 96-97 school year. For a copy of the bid document, please contact Region XIV ESC, 1850 Highway 351, Abilene, Texas 79601-4750; or call Theresa Dempsey at 915-675-8604. Sealed bids will be received until 11:00 a.m. Wednesday, March 20, 1996 at Region IX ESC, 301 Loop 11, Wichita Falls, Texas 76305. Bids will be awarded by the MRPC Bid Committee at 10:00 a.m. on Friday, March 29, 1996, at Region XIV ESC, 1850 Highway 351, Abilene, Texas 79601-4750. 2-3-14 C.

**FOR RENT:** 5 acres, Pecan and Fruit Trees, graze 3 cows. Will Rent for minimum monthly with home improvements. Call 352-742-3332. 4-3-7 C.

**FOR SALE:** 20ft. Gooseneck Trailer - \$1,700.00. ~~Old Cassa Steve~~ - \$750.00; Baby Items, Portable Play Pen, Baby Walker, Baby Bath, Car Seat. Call 817-734-2221. FNNC

**FOR SALE:** MTD 5 HP Garden Tiller - Almost New - \$400.00 - Call 817-734-2869. 1-18-FNC.

**NEEDED:** 7 to 3 Charge Nurse - Call 817-893-6676. An EOE. 8-10-FNC.

**FOR SALE:** 3 Bedroom, 2 bath Mobile home on 9.54 acres. Located on Hwy. 8 (Desdemona Hwy.). 3rd. mobile home from Gorman city limits (on left). Call William Isbell - 915-672-7945. 6-29-FNC.

**ELDERLY HOUSING Available** at Hotel Apartments. Contact Brenda at Housing Authority of Call 817-734-2400. 4-6-FNC.

**LOWEST CARPET PRICES!**  
Shipped direct from Manufacturer's warehouse. Huge selections. Buy \$1,000 worth of carpet for \$32 per month. **EASTLAND COUNTY FLOORING SHOWROOM** - Eastco Building - Gorman - 817-734-2934. 11-16-FNC.

**COGBURN REALTY**  
893-6666 DE LEON, TX  
3-2-2 FRAME, App. 1200', A&H, \$30,000.00 - \$23,500.  
2 EAC 2 1/2 Bedroom Homes - \$10,500 Each  
83 A. App. - 30 A. Coastal, 12 Pecans; 20x50 Building, 3 wells, corals, timber, 3 miles out - \$60,000.  
80A - 30 A. Cult., 20 A. Coastal, 2 tanks - \$625.00 Per Acre.  
120 A. M/L, lots of timber, good hunting, older 3-2 mobile home, rough and rugged, leased for approximately \$3,800 per year, 3 oil wells - \$550.00 per Acre.  
99A cves - Kokomo Area, pavement, timber, Coastal, Love gear, deer, 2 good tanks, Co-Op Water available - \$575 acre.  
We **NEED** You Listings - The Market Is Good. Call Us.  
SELLING GORMAN-DELEON AREAS OVER 40 YEARS

**KOKOMO NEWS**

ZELDA JORDAN -- PHONE 639-2289

Today is a very typical windy March day, making the very dry conditions worse. We are praying for rain, and hoping that the good Lord will send us rain soon. This sure reminds me of the drought we had in the 1950s.

There was no special music at the Kokomo Baptist church on Sunday morning. This is our Week of Prayer for Home Missions, and Glenna Davis gave a mission emphasis urging our support in prayer and offerings for home missions.

The special music on Sunday night, was rendered by Helen and Woodrow Browning, Leona Wilson, and Jimmy Little.

Oren and Norma Webb spent Friday night with David and Judy Porter, Scarlett, Amanda and Sarah at Katy.

Enhart and Doris Ruth Sherrell of Kermit visited the first part of last week with an aunt, Naoma Morrow. Doris Ruth became ill while here and was admitted to the Eastland Memorial Hospital with pneumonia. She was to be released from the hospital today (Tuesday) and they will return to their home in Kermit. We extend get well wishes to her.

Lance Morrow of Abilene and a friend, Nievas of Midland visited on Saturday with Lance's grandmother,

Naoma Morrow.

Jerry (Bubba) Gibbs and a friend of Fort Worth visited during the week with Delmon and Joyce Eaves.

Delemon ad Joyce Eaves visited in Poolville on Saturday with Glen and Carol Laminack and Carol's mother, Mrs. Waters.

Sylvia Buchanan of Stephenville, Kelly Buchanan of Waco, Doris Bradshaw of Gorman and Hope Joiner were visitors with Nancy Hendricks.

Nancy Hendricks and Doris Bradshaw visited in Eastland with Willie Mae Cozart of Friday.

Cassie Nelson spent several days in the hospital in Brownwood last week. We extend get well wishes to her. Maggie Nelson of Bowie has been visiting with Cassie and the Clifford Nelsons.

Visitors with Ruth Bryant during the past week were Joan Foster of De Leon, Charles and Patsy Bryant of Mozelle, Bob Spauldin of Mesquite, Larry and Martha Bryant, Klye Bryant, Susie Hampton and Nancy Hendricks.

Daisy Slaton of Gorman visited with Zelda Jordan on Monday.



**ELECT**  
**WAYNE**  
**BRADFORD**  
SHERIFF OF EASTLAND COUNTY  
HONEST EXPERIENCED  
THE RIGHT MAN FOR THE JOB  
PD. POL. ADV. WAYNE BRADFORD RT. 3, BOX 194 RANGER, TX 76470



State Inspection No. 3 Now Due

Full Service  
Oil — Filter — Lubrication  
Car Washing & Waxing  
We Pickup and Deliver

### SMITH'S CHEVRON STATION

Johnny Smith, Owner  
Bus. Phone 817-734-2922 - Res. Phone 817-734-3102  
GORMAN, TEXAS  
Open 7:00 a.m. to 5:00 p.m. - Mon. - Friday  
8:00 a.m. to 12 Noon on Saturday



Debra Briscoe

**Crop  
Insurance**  
Deadline  
**March 15**

### De Leon Insurance Agency

108 So. Texas — De Leon, Tx  
Call - 817-893-6616

**Scott E. Gressett**  
**C. P. A.**

### Income Tax Preparation

Individual & Corporate  
Electronic Filing Available

(817) 734-2501 - Office  
(817) 734-2534 - Home

**DESDEMONA NEWS**

VONNIE GUTHERY - PHONE 758-2665

"Congratulations" to Moody and Hazel (Riggs) Koonce of Desdemona, who was in Austin, Texas on January 26, 1996 to receive an award plaque presented by Agriculture Commissioner, Rick Perry. The Koonce family farm was inducted into the Texas Department of Agriculture's Family Land Heritage Program - this farm being operated by the Koonce family for 100 years or more.

Bernard and Ann Keith spent the past six weeks in Mission, Texas on vacation. They reported a good trip but always glad to get back "Home".

"Congratulations" to Robert and Annette Cummings on the arrival of their new baby girl, Ragan Hope, born on Wednesday February 21, 1996 at the Harris Methodist Hospital in Stephenville, Texas, weighing 6 lbs. 10 ozs. She is welcomed by a big brother, Camron and a big sister, Ashton. Maternal grandparents are Garth and Nelda (Koonce) Priddy and great grandmother, Ruth (Williams) Daffron all of Desdemona. Paternal grandparents are Tommy and Janice Cummings of Ranger and great grandmother is Mrs. D.E. Jones of Odessa.

Irene Hillard Cook, 90, of Stephenville was buried Friday, March 1, 1996 (no details on service). Preceded in death by her husband, Arlie Cook. Hillard family are former residents of Desdemona where Irene graduated with the Class of 1926. She is a cousin of Travis Hillard of Gordon, Class of 1932 from D.H.S.

Bobby Alread, 64, of Burnet passed away on Thursday, February 29, 1996 (no details on service). Survivors include one sister, Wynon Alread Gibson of Deer Park, Texas. Preceded in death by his parents, Tom and Estelle Alread - this family were former residents of Desdemona where Wynon graduated with the Class of 1946 and Bobby was in the Class of 1949 but later graduated in Odessa. Our sympathy goes out to these families.

Mary Lou Landers had a one car accident on Friday morning coming home from Gorman. No injury - just shaken up quite a bit. She spent the weekend in Springtown with her son, Don-adn-Annette Landers. Remember Mary Lou in your prayers as she is having some health problems.

Merlene Wisdom visited the weekend of February 15 in Lovington, New

Mexico with her daughter, Marsha Johnson, Billy and Chris. They all enjoyed a trip to Ruidosa.

Theo Mitchell Barker of De Leon is a patient in the Comanche Hospital at this time. Theo attended school in Desdemona and graduated with the Class of 1928.

Kim Ryon is in the Brownwood Hospital at this time. Still lots of sickness in our area. Remember these and other shut-ins with your cards and prayers.

"Congratulations" to Garrett and Rachel Barker of Meridian on the arrival of their new baby boy, Seth Lamar born on Saturday, February 24, 1996 weighing 8 lbs. 8 ozs. He was born in the Hillcrest Hospital in Waco. He is welcomed at home by a big sister, Morgan. Grandparents are Gary and Linda Barker of Teague. Great grandparents are Bob and Merlene Wisdom of Desdemona; L. G. and Uarda Barker of De Leon. Great-great-grandparents are Eva Williams of Stephenville; Hazel Wisdom of Gorman.

### Crop Insurance Needed By Farmers

Washington Agriculture Secretary Dan Glickman today reminded growers that they need to obtain crop insurance offered under the Federal Crop Insurance Act by the local sales closing date to stay eligible for many USDA farm programs and loans.

Sales closing dates are significant because signing up for insurance, changing the crops insured or changing coverage levels must be done prior to the announced date. The upcoming spring sales closing date is March 15.

At the same time, Glickman emphasized that crop insurance for 1996 offers farmers important new opportunities to better manage their farming risks. Among other things, USDA has increased price elections on major crops and introduced two new pilot programs to test the concept of revenue insurance.

Price Elections:

"We have increased many of the commodity price elections used to pay insured losses," Glickman noted. "This action should make participating at

**American Legion**  
**DANCE — March 9th**  
featuring  
**Durwood Strube and Texas Beat**  
From 8:00 p.m. to 12:30 a.m.  
**American Legion Hall**  
Hwy. 6 East — De Leon, Texas

**GORMAN 14TH ANNUAL  
FARM  
EQUIPMENT AUCTION**  
April 6, 1996

To Consign Call:  
Troyat Underwood — 817-734-2643

### COMANCHE COUNTY TELEPHONE CO., INC.

Comanche County Telephone Company, Inc. (Comanche) wishes to inform you that on January 9, 1996, an Application for Sale, Transfer or Merger was filed with the Texas Public Utility Commission. The application seeks approval for the sale of 1,308,930 shares of Class B common stock to First American Communications Enterprises, Inc. (FACE) on October 26, 1995. As a result of the stock sale, FACE obtained controlling interest in Comanche. The application has been assigned Docket No. 15221. The Commission intends to investigate the stock purchase and its impact on the public interest pursuant to Section 1.251 of the Public Utility Regulatory Act. A copy of Comanche's application is available for inspection at the company's business office located at Highway 16 South, De Leon, Texas.

Customers of Comanche will not experience any change in service capabilities or rate change as a result of the stock purchase.

Persons with questions about this transaction should contact Toney Prather, President, Comanche County Telephone Company, Inc. (817) 893-2003. Persons who wish to intervene in the proceeding or comment upon action sought, should contact the Public Utility Commission at 7800 Shoal Creek Boulevard, Austin, Texas 78757, or call the Public Utility Commission Consumer Affairs Office at (512) 458-0256, or (512) 458-0221 for the test telephone. The deadline for intervention in the proceeding is March 28, 1996.

### Frankie Faircloth Laid To Rest

Frankie Horton Faircloth, 85, died Friday, February 23, 1996 at Eastland Memorial Hospital.

Graveside services were held at 2 p.m. Saturday, February 24, 1996 at the Eastland City Cemetery, directed by Edwards Funeral Home.

She was born July 15, 1910 in the Mangum Community to Hugh and Mollie (Ballow) Kuykendall, where she grew up and later did domestic work. She married Burl Houston in Oklahoma, where they lived for a few months before moving to Morton Valley in Eastland County where they lived for many years. She was a seamstress for Hollywood vassarette for 20 years retiring in 1980, when she moved to Eastland.

She was a member of the Harmony Baptist Church in Morton Valley. She was baptized in 1944.

She was preceded in death by her husband on February 26, 1958.

Survivors include a son and daughter-in-law, Louis Burl and Leah Houston of Siloam Springs, Arkansas; two daughters and son-in-laws, Lydia Faye and Paul Flinn of Weatherford and Lylia Pearl and Jerry Mehafeff of Carbon; two sisters, Pearl Ann Goodman of Eastland and Adele Didon of Livingston; and 8 grandchildren, Devin, Mike, Marissa, Kim, Martin, Rhonda, Lila Sue, and Jerry Paul, Jr.

### KEEPING UP WITH FRIENDS

Gerald and Beth Blakely of Cransfield Gap, Anthony, Becky and Tyler of Lott, Brian Anderson, Brandy Jackson from Waco, Gary Rhymes and Skip of Abilene were guest of Mozelle Rhymes Sunday to celebrate Beth's Birthday.

higher levels of insurance coverage more attractive to farmers. For example, the highest corn price election has been increased nearly 18 percent from \$2.25 to \$2.65 per bushel and the highest soybean price election about 23 percent from \$5.50 to \$6.75 per bushel. The wheat price election increased nearly 6 percent from \$3.35 to \$3.55 per bushel."

### Anna Rush Hosts Valentine

### Party On Feb. 16th

On February 16, 1996 the Edna Smith Class met with Anna Rush for supper and business meeting.

It was a little late for Valentine but a special friend Connie Hall a former member of our class couldn't be here except on Friday nite.

Anna's lovely home was all Valentine decorated; Beautiful white lace tablecloth with red glass ware, a beautiful center piece of red roses was a wonderful sight to behold.

Supper consisted of many different salads, sliced fresh vegetables, deviled eggs and crackers with drinks of coffee or hot spiced tea. Connie Hall asked the blessing.

After supper Louise called the business meeting to order with officers giving reports. A discussing of the visits to the shut-ins.

Estell led in prayer and Geraldene gave a beautiful devotion, a timely subject of love. She read from a book "The Golden Clasp." Discussing different kinds of love "unselfish love from John 15:12 impartial love Deut. 10:16 Sincere love Rom. 12:9 Christ's love the agape love. She always gives good devotionals.

Everyone had made homemade Valentines, we drew names and had lots of fun looking at the pretty works of our class.

Then it was time for Estell's birthday singing happy birthday to her and looking at all the lovely gifts presented to her.

Anna served cake (3 kinds) banana pudding and egg custard to Louise Geraldene, Ruth Ell, Estell, Martha, Gladys with Frankie Jo, Margaret Rush and Connie Hall as visitors.

We were delighted to have Dr. and Mrs. Joe McClain to stop by for a few minutes.

**COUNTY WIDE BURN BAN IS STILL IN EFFECT FOR EASTLAND AND COMANCHE. SO DO NOT BURN ANYTHING OUSTIDE.**

## COOK'S FISH BARN

OPEN EVERY FRIDAY  
AND SATURDAY NIGHT  
**ALL YOU CAN EAT!!!**

**Catfish & Steaks - Both Nights**  
Catfish - \$6.50 + Tax  
Sirloin - \$8.50 + Tax  
Ribeye - \$9.50 + Tax  
**Children 12 and Under Half Price**

Hwy. 36 between Rising Star and Comanche  
11 Miles East of Rising Star

Saturday Night - 6 to 10 p.m.  
Live Entertainment - Gary Smith of Comanche

### Tax Deferral Available For Over 65 Residential Homeowners

Section 33.06 of the Texas Property Tax Code requires the following information concerning the Deferral of Certain Property Taxes to be publicized.

Property taxes on the residence homestead property of those persons sixty-five (65) years of age or older may be deferred or abated if they satisfy the requirements of the Texas Property Tax Code.

The property owner must (in most cases) occupy the residence homestead on which the tax is being levied or on which a suit has been filed for collection of delinquent taxes.

To obtain a deferral, the individual must file with the Chief Appraiser for the Appraisal District in which the property is located; an affidavit stating that he or she is sixty-five (65) years of age or older and that he or she does own and reside in the residence that the tax is being levied on.

If a suit has already been filed by a tax unit, the individual must file with the court in which the suit was filed the same type of affidavit.

By filing the affidavit with the proper authority, the payment of taxes or forced collections through suit is postponed until the person filing the affidavit no longer owns or occupies the property as a residence homestead.

It is emphasized that the tax is only deferred; it is not cancelled. A tax lien remains on the property and interest in the amount of eight (8) percent per year will continue to accrue during the period that the collection of taxes is deferred.

For information concerning the tax deferral or abatement, contact the Eastland County Appraisal District. The office is located on the second floor of the Eastland County Courthouse in Eastland, Texas. The telephone number is 817-629-8597.

**HERITAGE MANOR NEWS**

NANCY HENDRICKS - REPORTING

The February Birthday Party was Thursday February 29, at 2:00 P.M. Honorees were Ollie Halcomb, Annie Hlae, Ora Mae Atchison and Patty Whitehorn. Robin Speck entertained the group. Residents present were Ora Mae Atchison, Effie Mae Brown, S.D. Gilmore, Ollie Halcomb, Veno Hale, Annie Hale, Jess Hallmark, Rubye Jones, Orlena Perdue, Vadis Phelps, Bernice Rodgers, Inez Rogers, Iris Smith, Varona Taylor, Ruby Vandergriff and Patty Whitehorn.

Guests were Robin Speck, Ima Lee Burlerson, Irene Hallmark, Anna Rush, David and Denna Halcomb.

Baking cakes were Deane Christian, Anna Rush, Ima Lee Burlerson and Nancy Hendricks.

Sending gifts were the First Baptist Church, Methodist Church, Church of Christ and Heritage Manor.

On Friday Ina Scitern had horse races for Ollie Halcomb, S.D. Gilmore, Bernice Rodgers, Varona Taylor, Effie Mae Brown, Orlena Perdue and Veno Hale.

Visiting Ora Mae Atchison were Jessie E. and Ruby Dell Atchison, Youne Atchison and Joe McClure of Ft. Worth, Ima Lee Burlerson and Georgie Iley of Desdemona.

Visiting Ruby Nowlin were John and Chris Funderburk of De Leon, Ima Lee Burlerson of Desdemona.

On Sunday morning Bro. Brent Lasater of First Baptist Church taught the Sunday School Class for Veno Hale, Effie Mae Brown, S.D. Gilmore, Ollie Halcomb, and Orlena Perdue.

Visiting Lorene Jay were Mayvis Lasater, Brent and Jean Lasater.

At 2:30 on Sunday those from the Carbon Baptist Church were Dr. Jim Poe, Rachel Johnson, Ruth Knowles, Dorothy Light, Billie Stacy, R Lee McDaniels, C.O. Sandlin and guest Neva Lee Robertson. Residents were S.D. Gilmore, Effie Mae Brown, Ora Mae Atchison, Veno Hale, Vadis Phelps, Dorothy Beaty, Orlena Perdue, Sylvia Hodges, Varona Taylor, Bernice Rodgers, Ruby Vandergriff, and Ollie Halcomb.

Visiting Varona Taylor were Billy, Janda and Tracey Taylor.

At 4:00 P.M. those coming from the church of Christ were Bro. John Payne, Fred Rodgers, Durwood Webb, Junior Baxter, George and Linda Simmons, Burma Broom, Eunice Love and Cy Cypher. Residents were Varona Taylor, Effie Mae Brown, S.D. Gilmore, Ollie Halcomb, Veno Hale, Inez Rogers, Dorothy Beaty, Ora Mae Atchison and Ruby Vandergriff.

Visiting Skinnie Lewis were Vicki and Zane Harris of Abilene, Eloise Lewis, Karen Burlerson, Ima Lee Burlerson, Jim and Karen Burlerson.

On Monday those enjoying Music with Ruth Miner with S.D. Gilmore, Effie Mae Brown, Cleo Clement, Veno Hale, Ora Mae Atchison, Ollie Newcomb, Annie Hale, Inez Rogers, Bernice Rodgers, Varona Taylor, Orlena Perdue, Ruby Nowlin, Vadis Phelps, Ruby Vandergriff and Rubye Jones.

Visiting Mary Williams were Maxine Frasier of De Leon Durwood Webb, Eunice Love, Nancy Hendricks, Bruce and Lavoyce Hurst.

On Thursday morning Ina Scitern had bingo for Veno Hale, Cynthia Earles, Patty Whitehorn, Iris Smith, Ollie Halcomb, Bernice Rodgers, Effie Mae Brown, S.D. Gilmore, Ora Mae Atchison, Rubye Jones, Varona Taylor, Orlena Perdue, and Leotis Meadows.

Visiting Patty Whitehorn were Rev. T.D. Whitehorn, Marie Cook, and Mary Estes of Carbon, Roy Parker, Robert and Frances Parker of Grandbury.

On Thursday afternoon Residents told their oven story to Ina Scitern. Those present were Ollie Halcomb, Veno Hale, Jess Hallmark, Orlena Perdue, Cynthia Earles and Iris Smith and guest Irene Hallmark.

Visiting Effie Mae Brown were Mary Ficklen and Ina Nell Brown of Desdemona, Louise Hollywood and S.D. Gilmore, Ruth Bryant, Nancy Hendricks.

On Friday morning those enjoying "Music" with Ruth Miner were Ora Mae Atchison, Effie Mae Brown, Cynthia Earles, Ollie Halcomb, S.D. Gilmore, Iris Smith, Veno Hale, Bernice Rodgers, Georgie Whitlock and Orlena Perdue.

Some of Georgie Whitlock guests were Wayne Elizabeth and Samantha Whitlock of Weatherford, Jackie Whitlock and Ray Whitlock of Desdemona.

Mrs. Marvin Jones of Dublin visited her brother Eulon Perry on Thursday.

On Friday afternoon Mary Ficklen of Desdemona read "Hound Dog Man" by Fred Gibson. (The Movie "Old

Yellow) presents were Effie Mae Brown, S.D. Gilmore, Veno Hale, Cynthia Earles, Ollie Halcomb, Jess Hallmark, Ruby Vandergriff, Varona Taylor, and Iris Smith. Guests were Irene Hallmark, Nancy Hendricks, and Ruth Bryant. Everyone enjoyed the delicious fresh apple cake with whipped cream.

Some of Bernice Rodgers guests were Mike and Cindy Rodgers of Cisco, John and La Tonne Rodgers, Billie Stacy of Carbon, Ima Brown, Ruth Bryant, Nancy Hendricks, Eunice Love, Mayvis Lasater, Jana Grice, Claude Fuller and Rickey Fuller of Lewisville.

On Monday Ina Scitern had bingo for Orlena Perdue, Jess Hallmark, (guest Irene Hallmark) Varona Taylor, Rubye Jones, Ruby Vandergriff, Vadis Phelps, Patty Whitehorn, Veno Hale, Iris Smith, Dorothy Beaty, Bernice Rodgers, Ollie Halcomb, S.D. Gilmore, Effie Mae Brown, Leotis Meadows.

Some of Sylvia Hodges guests were Diantha Dennis, Sharron Hank, Eloise Lewis and Carrie Carr of Desdemona, Rosetta Carlton.

We are sorry to report Iola Johnson is a patient in the De Leon Hospital.

Visiting S.D. Gilmore, were Durwood Webb, Effie Mae Brown, Dixie Ryan and granddaughters of Desdemona, Louise Hollywood, Wesley and Linda Warren.

On Tuesday morning Betty Duke of Desdemona came and played the keyboard and sang for S.D. Gilmore, Effie Mae Brown, Iris Smith, Ollie Halcomb, Vadis Phelps, Ora Mae Atchison, Ruby Vandergriff, Dorothy Beaty, and Rubye Jones.

Some of Cleo Clement guests were Glen Clement of Lake Leon, Marie White, Elsie Robinett of De Leon, Bernice Farley, Lester and Sue Seaton, Archie and Georgie Fae Skaggs.

Some of Agnes Hodges guests were Georgie Fae Skaggs, Shery Thornton, Ruthie Porter, Mayvis Lasater, Irene West, Nancy Hendricks, Ruth Bryant, Bertha Georgy, Roy Parker, Robert and Fran Parker of Grandbury.

Visiting Rubye Jones were Marjorie Treadway, Marie Cook, Vicki, Josh, Seth, and Tyler Johnson, Julie Cameron and Cory Clark, Jerry Brown, Eunice Love and Inez Rogers.

On Tuesday those coming for the Sing-A-Long were Irene Hallmark, Elizabeth Sandlin, Ruth Knowles, Dorothy Light, Billie Stacy, Daisy, Slaton, Marjorie Treadway, Ethel Weaver, Ernestine, Campbell, Nancy Hendricks, Willo Rice, Marie White, Elsie Robinett, Marie White, Bernice Farley, Archie and Georgie Skaggs, Alpha Mae, Andry and Marie Cook. Residents were Varona Taylor, Ruby Vandergriff, Vadis Phelps, Jess Hallmark, Bernice Rodgers, S.D. Gilmore, Effie Mae Brown, Orlena Perdue, Patty Whitehorn, Ora Mae Atchison, and Iris Smith.

Some of Ora Mae Atchison and Inez Rogers guests were Chesley Atchison, Eddie Nichols of Stephenville, Sha, Amanda and Amy Penny of Atlanta, Tex., Velma Carr, Mayvis Lasater, Fred Rogers, Buddy Rogers of Ranger.

On Wednesday morning Rev. Terry Colwell and Sue Ann Tarver brought Chapel for S.D. Gilmore, Effie Mae Brown, Veno Hale, Ollie Halcomb, and Bernice Rodgers.

Some of Olga Kinsers guests were Ruby Lee and James Kinser, Tiny and burt Frasier, Mayvis Lasater, Floydene Gilbert.

Wednesday afternoon Ina Scitern had basketball for Dorothy Beaty, Iris Smith, Jess Hallmark, Vadis Phelps, Bernice Rodgers, Veno Hale, Ollie Halcomb, Ruby Vandergriff and Effie Mae Brown.

Some of Vadis Phelps guests were Fay Tucker, Mitzi McHaha and Elnora Lindley.

Some of Cynthia Earles guests were Robert Erwin, Fay Huff, Eunice Love, David and Denna Halcomb, Eunice Love, Irene Hallmark and Nancy Hendricks.

**PRICED-TO-GO**

#3959 <b>- NEW -</b> <b>1993 Geo Storm</b> 0 miles <b>\$202.02 per mo.</b> <i>\$11,148.56 Cash Price</i> 23 Payments. 1 Final Payment of 7225.00	#6774 <b>1992 Oldsmobile 98</b> <b>Regency</b> 74,000 <b>\$246.87 per mo.***</b> <i>\$11,500 Cash Price</i>	#6603 <b>1989 Chevrolet</b> <b>Astro Van</b> <b>\$229.16*****</b> <i>\$6850 Cash Price</i>
#6918 <b>1991 Pontiac</b> <b>Grand AM</b> 61,000 Miles <b>\$156.53 per mo. ****</b> <i>\$7000 Cash Price</i>	#4885 <b>1993 Oldsmobile</b> <b>Achleva SC 2-Door</b> 17,000 <b>\$205.37**</b> <i>\$10,500 Cash Price</i>	#7047 <b>1992 Pontiac</b> <b>Grand AM 4-Door</b> <b>\$152.83***</b> <i>\$7500 Cash Price</i>
#6685 <b>1991 Geo Tracker</b> <b>4 x 4</b> <b>\$178.70 per mo. ****</b> <i>\$7850 Cash Price</i>	#6967 <b>1992 Oldsmobile</b> <b>Clerra</b> <b>\$152.83 ***</b> <i>\$7,500 Cash Price</i>	#6473 <b>1992 Chevrolet</b> <b>Cavaller 4-Dr RS</b> <b>\$105.80***</b> <i>\$5,500 Cash Price</i>
#6527 <b>1990 Buick</b> <b>LeSabre</b> <b>\$204.59 per mo. *****</b> <i>\$8000 Cash Price</i>	#6367 <b>1993 Oldsmobile 88</b> <b>Royale LS</b> 48,000 <b>\$275.62**</b> <i>\$13,750 Cash Price</i>	#5694 <b>92 Chevrolet 3/4 Ton</b> <b>Ext. Cab 4 x 4</b> <b>\$293.90***</b> <i>\$13,500 Cash Price</i>
#5459 <b>1992 Pontiac</b> <b>Sunbird 2-Door</b> 31,000 miles <b>\$152.83 per mo.***</b> <i>\$7,500 Cash Price</i>	#7068 <b>1992 Chevrolet</b> <b>Corsica</b> <b>\$137.54***</b> <i>\$6,850 Cash Price</i>	#6358 <b>93 Chevrolet 3/4 Ton</b> <b>Ext. Cab 4 x 4</b> <b>\$270.22**</b> <i>\$13,500 Cash Price</i>
#6324 <b>1994 Chevrolet</b> <b>Cavaller 4-Door</b> 23,000 miles <b>\$177.32 per mo.*</b> <i>\$9250 Cash Price</i>	#6697 <b>1994 Oldsmobile</b> <b>Achleva</b> <b>\$204.19*</b> <i>\$10,500 Cash Price</i>	#6262 <b>1992 Chevrolet S-10</b> <b>4-Door Blazer</b> 63,000 <b>\$258.63 ***</b> <i>\$12,000 Cash Price</i>
#5461 <b>1993 Chevrolet</b> <b>Lumina</b> <b>\$172.94**</b> <i>\$9000 Cash Price</i>	#6654 <b>1993 Chevrolet</b> <b>Cavaller - 4-Door</b> <b>\$140.51**</b> <i>\$7500 Cash Price</i>	#6722 <b>1992 Chev Astro</b> <b>Extended Van</b> 43,000 miles <b>\$246.87 ***</b> <i>\$11,500 Cash Price</i>
#6717 <b>1993 Chevrolet</b> <b>1/2 Ton S.W.B.</b> 57,000 Miles <b>\$226.98**</b> <i>\$11,500 Cash Price</i>	#7122 <b>1989 Plymouth</b> <b>Voyager</b> <b>\$150.82*****</b> <i>\$4,850 Cash Price</i>	#6590 <b>1992 Chevrolet</b> <b>1/2 Ton Pickup</b> SW Base Silverado <b>\$293.90 ***</b> <i>\$13,500 Cash Price</i>
#6699 <b>1994 Chevrolet</b> <b>Corsica</b> 20,000 miles <b>\$192.37*</b> <i>\$9,950 Cash Price</i>	#3852 <b>1992 Pontiac</b> <b>Grand AM 2-Door</b> 17,400 Miles <b>\$184.57***</b> <i>\$8,850 Cash Price</i>	#6324 <b>1994 Chevrolet</b> <b>Cavaller</b> <b>\$177.32 *</b> <i>\$9,250 Cash Price</i>
#7284 <b>1992 Buick</b> <b>Century</b> <b>\$176.34***</b> <i>\$8,500 Cash Price</i>	#6564 <b>1990 Chevrolet</b> <b>Beretta GT</b> <b>\$138.82*****</b> <i>\$5,750 Cash Price</i>	#7500 <b>95 Chevrolet</b> <b>1/2 Ton SWB</b> <b>\$254.96 *****</b> <i>\$13,000 Cash Price</i>
#4930 <b>1990 Chevrolet</b> <b>Astro Van</b> 66,000 Miles <b>\$233.81*****</b> <i>\$9000 Cash Price</i>	#5934 <b>1991 Chevrolet</b> <b>Lumina Eurosport</b> <b>\$143.48****</b> <i>\$6500 Cash Price</i>	#7339 <b>95 Oldsmobile</b> <b>Cutlass Cierra</b> <b>\$233.71 *****</b> <i>\$12,000 Cash Price</i>
#7038 <b>1992 Olds</b> <b>Cutlass Supreme 4-Dr</b> <b>\$161.05***</b> <i>\$7,850 Cash Price</i>	#6653 <b>1991 Chevrolet</b> <b>Suburban</b> <b>\$260.89****</b> <i>\$11,000 Cash Price</i>	#7381 <b>'93 Chevrolet</b> <b>Cavaller Wagon</b> <b>\$140.51 **</b> <i>\$7500 Cash Price</i>
#6959 <b>1991 Chevrolet</b> <b>Lumina Eurosport</b> <b>\$126.53 per mo.****</b> <i>\$5,850 Cash Price</i>	#6472 <b>1992 Oldsmobile</b> <b>Achleva 4-Door</b> 34,000 Miles <b>\$164.58***</b> <i>\$8000 Cash Price</i>	#7138 <b>'92 Chevrolet</b> <b>1/2 Ton Pickup</b> <b>\$282.14 ***</b> <i>\$13,000 Cash Price</i>

95 - 10% - 60 Months \* \* \* \* \* 92 - 10.9% - 54 Months \* \* \* \* 90 - 11.9% - 42 Months \* \* \* \* \*  
94 - 10.5% - 60 Months \* \* \* \* \* 91 - 11.5% - 48 Months \* \* \* \* \* 89 - 12.9% - 30 Months \* \* \* \* \*  
93 - 10.75% - 60 Months \* \* \* \* \* # - 9.9% - 24-Month SmartBuy

1000.00 Down Plus T.T.&L. With Approved Credit.

**BAYER MOTOR COMPANY, INC.**

218 E. Grand, Comanche, 915-356-2541 1-800-843-5230

Your Best Choice

*Celebration*

Wedding Stationery

WEDDING INVITATIONS  
SOCIAL ANNOUNCEMENTS  
In choosing your invitation

The Gorman Progress  
JOE BENNETT  
"The Appreciative Printer"  
PHONE 817 - 734-2410

