

City-wide Garage Sale Saturday, April 26th.
Call Chamber of Commerce to get on list. Go by
Chamber office Saturday morning to pick up list
and maps.

1-98
 SOUTHWEST MICRO PUBLISHING
 2627 E. YANDELL DR.
 EL PASO TX 79903
 750-1

Your
 Hometown
 Newspaper
 Since 1886

Santa Anna News

"He Profits Most Who Serves Best"

Newstand Price 50c

Volume 112 Number 16

Thursday, April 24, 1997

SAHS Student To State U.I.L. Literary Event



Wing Chen To State U.I.L.

Wing Cheng, a foreign exchange student at SAHS has advanced to state competition in U.I.L. Literary events to take place May 3 in Austin.

Wing, classified as a senior at SAHS, will be competing in computer science and will be accompanied to Austin by her faculty sponsor, Mike Wetsel.

From Hong Kong, Wing is living in the home of Mr. and Mrs. Gary Absher during her school year in Santa Anna. She hopes to remain in the United States to attend college after graduation from high school, and Principal of Schools Lee Coffman said every effort is being made to help her achieve her goal.

A'briana Collins To Run In Regional Track Meet

Santa Anna High School freshman A'briana Collins will be in Abilene on Friday and Saturday taking part in the 100m dash. A

freshman, she recently won first in the event in the district 10A Track Meet in Santo.



A'briana Collins To Regional Track Meet

National Day Of Prayer To Be Observed With Gathering In Veteran's Memorial Park

Citizens of Santa Anna will be observing National Day of Prayer, Thursday, May 1, by gathering for prayer at noon at Veteran's Memorial Park on Wallis Ave. near Holt's General Store.

The Santa Anna Ministerial Alliance will be sponsoring the event and encourages as many as can to come together as Christians. Not as Methodist, Baptist,

Presbyterian, Church of Christ, Assembly of God, Seventh Day Adventist, Catholic, or any other, but as Christians who are willing to pray for our community, country and world.

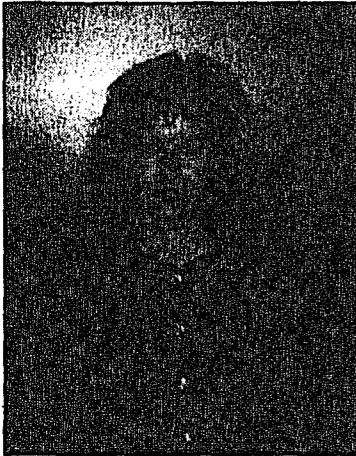
This event is vital to our country and its leadership. "Prayer is the Answer" to the problems of our nation and to our lives as children of God.

Introducing Candidates In The Santa Anna School Board Of Trustees Election See City Council Candidates Next Week

The Santa Anna News invited those seeking places on the Santa Anna School Board of Trustees to submit statements concerning their candidacy in the May 3 election.

Four candidates are running for the two places up for election. They are incumbent Sharon Guthrie, Becky Ramirez, Jerry Ellis and Mike Pritchard.

We regret that Mrs. Rameriz did not submit a statement. The following are the statements from the other three candidates.



SHARON GUTHRIE

My name is Sharon Keeney Guthrie. I graduated from Santa Anna High School in 1976 and have lived and worked in Santa Anna all my life. I have served as your elected official on the school board for the last six years.

I have currently owned and operated Sharon's Beauty Salon for the past 17 years. I have three children, Tom, who is currently attending Angelo State University; Aaron, who is a Junior at Santa Anna High School; and Shala, who is a seventh grader at Santa Anna Junior High. I am married to Lane Guthrie, who is employed by the Coleman County Telephone Cooperative. I have been an active member of the Santa Anna 4-H, the P.T.O., the Coleman County Livestock Association, the Santa Anna Chamber of Commerce, the Children's Trust Fund, Superintendent of the Presbyterian Sunday Schools and a member of the Santa Anna Fire Department Auxiliary.

Like most of you, I have paid school taxes in this community for



MIKE PRITCHARD

I am Mike Pritchard and I am seeking a position on the Santa Anna school board.

As a father of four school age children, I am very interested in our school system.

I graduated from Santa Anna High School in 1975. I have worked with my father in Pritchard Construction for the past 19 years. I am owner/operator of Pritchard Mowing Service which has been in business for 10 years. I am a member of the First Presbyterian Church in Santa Anna. I have coached baseball for many years and currently am Vice-President of the Santa Anna Little League Association.

I have served on the city council for the past two years with my term expiring in May.

In my business I employ several high school students. I listen to them talk about school. It seems they only have negative things to say about going to school. I believe they have lost their sense of pride in achievement because of a very strict set of rules set upon them. I



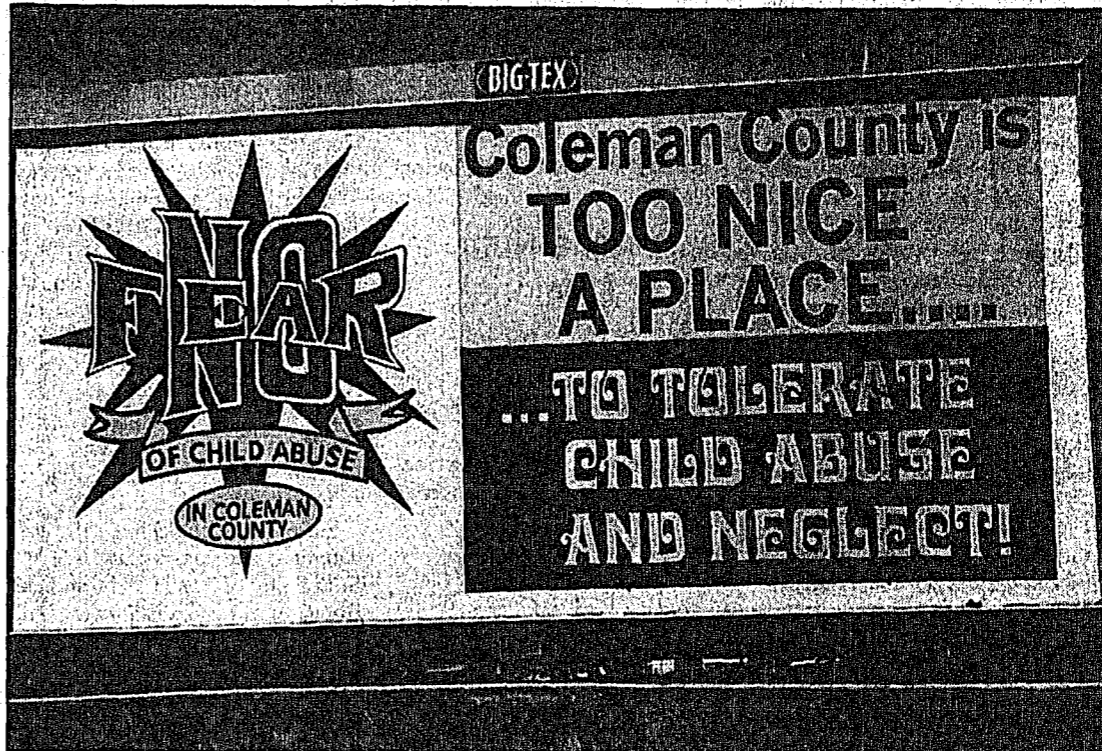
JERRY L. ELLIS

My wife Cathy and I have three children, Bryce, Jamie and Alicia. Bryce and Jamie have graduated from Santa Anna High School and Alicia is in the sixth grade. We are members of First United Methodist Church of Santa Anna. We are also property owners and taxpayers of the Santa Anna school district.

I have B. S. and M. S. degrees from Sam Houston State University, majoring in Physics with a minor in Math. After graduating in 1970, I was employed with Schlumberger Well Services for 12 years, six of which I spent training newly hired engineers.

I have taught technical courses at Bee County Jr. College, Physics and General Science at Howard Payne University, and one year of Junior High and 9th grade Science at Santa Anna.

During 1984-1993 I served on the Board of Directors for the Coleman County Telephone Coop., and am currently manager of Coleman County Broadcasting Systems. I also farm and ranch just south of Santa Anna adjacent to where I



Students Help With Child Abuse Programs

April is Child Abuse Prevention Month and has been observed this month in Santa Anna and Coleman County. The county Child Welfare Board has been sending a clear message with the billboards located throughout the county. A member of the Board presented a Child Abuse program to the students in the Santa Anna ISD last Tuesday afternoon at an assembly sponsored by the SAHS Student Council. State statistics provided by the Texas Department of Protective and Regulatory Services for Coleman County for the year ending Sept. 30, 1996 showed the following: (1) Child population of Coleman County is 2,272; (2) 368 children were identified by DPRS as "at risk"; (3) 121 children were alleged victims of child abuse and/or neglect. DPRS accepted intakes on them; (4) 55 children were confirmed as victims by DPRS; (5) This is 24.21 confirmed victims per 1,000 children; (6) There were 79 investigations by DPRS; (7) 30 of the investigations were confirmed as abuse and/or neglect; and (8) This is 38% of the investigations. Among the 254 counties in the state of Texas, Coleman County's confirmed victims per 1,000 children is the seventh largest in the state. This is in the top 1/3 of one percent of counties. Several Santa Anna students helped to design the artwork for the billboard shown here. They included Samantha Ramirez, Erica Siller, Marty Siller, Andreas Siller A'briana Collins and Yolanda Frausto with Eva Siller of Santa Anna, a member of the Coleman Co. Welfare Board, as their advisor. Staff photo

PARADE ENTRIES NEEDED FOR FUNTIER DAY, SATURDAY, MAY 3

(Contributed)

Funtier Day is set for Saturday, May 3. Funtier activities will be held north of Wallis on Second Street.

To start off the day there will be a flyover at 10:00 a.m. by the Coleman Aviation Club followed by a parade on Wallis Ave.

The Chamber of Commerce is still soliciting parade entries. Cash

prizes will be awarded in three parade categories; floats, cars and other misc. entries.

Especially being sought are floats, riding club, horses and horse drawn equipment and decorated cars. Actually Chamber officials say anyone wishing to be in the parade is welcome to join in.

Those wishing to participate may contact Dina Gonzales at the Chamber office 348-3545.

The parade will also include the SAHS Band, Santa Anna Volunteer Fire Department equipment and Miss Coleman County.

Those wishing to participate may contact the Chamber of Commerce at 348-3535.

Arts and crafts booths and game booths will be set up and ready to go following the parade.

All activities will be held on Second and 3rd streets between Wallis Ave. and Avenue B.

A street dance will be held that evening at Wallis and 2nd Street beginning at 7:30 p.m. The Western band of Willie Dub's Opera House will be providing music. Everyone is encouraged to bring their own lawn chairs.

No parking will be allowed on the Coleman County Telephone Cooperative parking lot or at the Post Office parking lot.

KSTA Radio will be broadcasting live from Funtier activities throughout the day.

Credit By Examination To Be Offered By S. A. School

On Tuesday, April 8, the Santa Anna ISD Board of Trustees adopted policies governing the use and administration of testing for the awarding of "Credit by Examination". Under this policy, students at SAISD may advance through the passing of an examination rather than actually taking a semester-long or year-long course or class.

The Board also set the dates for testing on June 2, 3, and 4.

Registration for the tests must be done in the office of the district principal at least 30 days prior to the date of the tests or no later than May 2.

Additional information may be obtained from the principal's office or the office of the school counselor.

Board members present for the meeting were Marty Donham, Edwin Hipsher, Dickie Horner, Sharon Guthrie and Gay Abernathy.

Others attending were Dean Bass, Superintendent of Schools, Debbie Bacon, Assistant Principal, Judy Hartman, Business Manager and Lee Coffman, District Principal, Sandra Guthrie, Montie Guthrie, Sybil Eubank and David Robinett. Approval for payment of the April 1997 bills was given along with the approved of the 1997-98 school year calendar as it was presented by Dean Bass.

Also approved was the Special Education course numbers for PEIMS, Update 52 (Local) to the Policy Manual and the system for Credit by Examination.

Amendments to the current oper-

More Added To VFD List

The Santa Anna Volunteer Fire Department associate membership drive is continuing. Associate memberships were received recently from Joe K. Jones, James Spillman, Robert and Helen Slusher, Hank Wise, Jack Dillingham, Joe K. Jones, The Mobeys, W. G. Stearns, Wayne Harris, Fern Hoke, Sharon Ragsdale, John and Margaret Hensley, Jerry Phillips, Leona Henderson, Jake McCreary, Mrs. John C. Gregg, Gary Absher and Coleman County Telephone Cooperative.

CONTINUED PAGE 4

-SCHOOL BOARD CANDIDATES CONTINUED PAGE 5-

Santa Anna — A Town Of Friendly People

Including
 Mr. and Mrs. Lavell Jones

A
 P
 R
 2
 4
 1
 9
 9
 7

Obituaries

Martha Dunn

Mrs. Jim (Martha) Dunn, 97, of Santa Anna, died Friday, April 18, 1997 at 7:40 p.m. at the Sears Methodist Nursing Center in Abilene.

Services were held Sunday, April 20, 1997 at 2:30 p.m. at the First Baptist Church of Santa Anna with Jay Swoveland and Rev. Marty Reed officiating directed by Henderson Funeral Home of Santa Anna. Burial followed in the Santa Anna Cemetery.

She was born in Athens, Texas to the late John and Melissa Barr Gipson on Sept. 27, 1899. She married James (Jim) Dunn in Coleman County on Oct. 15, 1916 and he preceded her in death in 1963. She had been a resident of Santa Anna since 1928 where she was a member of the First Baptist Church and a homemaker.

Survivors include five daughters, Julia Howard of Post, Ruby Box of Dallas, Fay Hunter and JoAnn McClellan, both of Abilene and Sonja Adams of Dallas; four sons, James Dunn of San Angelo, Robert (Bob) Dunn of Brownwood, J. D. Dunn of Denton and Dewey Dunn of Granbury; a sister, Opal Sumrall of Gainesville, Missouri; a number of nieces and nephews; 23 grandchildren; 35 great-grandchildren; and six great-great-grandchildren.

She was preceded in death by a grandson Kenneth Howard preceded her in death in 1973.

The family requests memorials to the First Baptist Church Building Fund and the Santa Anna Cemetery Association.

Pallbearers were James Adams, Gene Box, Gary Dunn, Kerry Dunn, Kevin Dunn, Kyle Dunn, Rennie Dunn, Ronnie Dunn, Shawn Dunn, Keith Howard, Arlee Hunter, David Hunter, Les McClellan and Robb McClellan.

Modena Munselle Hill Pounds

SAN ANGELO--Services for Modena Munselle Hill Pounds, 72, were held at 10 a.m. Thursday, April 17, 1997 at Robert Massie Funeral Home in San Angelo with the Rev. Roy Smith officiating. Burial followed at Grape Creek Cemetery.

She died Monday, April 14, 1997 in San Angelo.

She was born Feb. 22, 1925 in Thrifty. In 1941, she married Oscar Lee Hill and they resided in Santa Anna for several years. In 1963, she married Bery Pounds.

Survivors include two sons, Jackie Lee Hill and Kenneth Wayne Hill; a daughter, Sharon Kay Rushing; her mother, Ida Rutledge Stratton; two sisters, Irene Taylor and Joyce Reese; two brothers, John Munselle and Lee Munselle; and several grandchildren; and great-grandchildren.

She was preceded in death by four children.

Santa Anna Nutrition Center Memorials And Donations

The Santa Anna Nutrition Center has received the following memorials:

In memory of Red McGee, Furman Sanders and Thomas (Junior) Wristen from Betty Sue Cupps.

A donations of kitchen utensils was received from Thelma Bobskill.

Free Blood Pressure Clinic
Each 2nd & 4th
Thursday
MOUNTAIN CITY
COMMUNITY CENTER
10 - 11 A.M.

Tom Kingsbery

Tom Kingsbery, 73, of Santa Anna died Wednesday, April 16, 1997 at 4:16 a.m. at the Coleman County Medical Center.

Services were held Friday, April 18, 1997 at the First Baptist Church of Santa Anna with the Rev. John Stanislaw and Rev. Marty Reed officiating. Burial followed in the Santa Anna Cemetery under the direction of Henderson Funeral Home.

He was born to the late Howard and Mable Woodward Kingsbery in Santa Anna on July 25, 1923. He was a lifetime resident of Coleman County and attended Texas A&M and graduated from Texas Tech in 1947.

He married Barbara Sue Bruce in Santa Anna on Sept. 8, 1951 and they have celebrated over 45 years of marriage. He was an Army veteran of World War II and member of First Baptist Church of Santa Anna. He was named Coleman County Rural Citizen of the Year in 1980 and served as president of the Coleman County Telephone Cooperative for 35 years. He was director and vice-president of the Coleman County Electric Cooperative, member and past director of the Coleman Rodeo Association and the Breeder Feeder Association, and served for many years as general chairman of the Coleman County 4-H and FFA Livestock Show. He was a rancher and stockfarmer.

Survivors include his wife; two daughters and sons-in-law, Sue and John Porter of Austin and Carol and Bob Otto of Lago Vista; two granddaughters, Diana Porter of Santa Anna and Mollie Porter of Austin; and two brothers, H. W. Kingsbery of Beaumont and Jack Kingsbery of Crystal City.

Local relatives include an aunt, Mrs. C. E. Kingsbery and two cousins, Maurice Kingsbery and Kay Kingsbery Gray, all of Santa Anna.

Pallbearers were Norman Anderson, Raymond DeLeon, Frank Gray, Billy Don McCrary, Jack McCrary and Ted Taylor.

Miley Mae Geer Flowers

Miley Mae Geer Flowers, age 70, of Brownwood, died Sunday, April 13, 1997 in Brownwood. Memorial services will be 2:00 p.m. Thursday, April 24, graveside at the Eastlawn Memorial Park Cemetery. Services are under direction of Heartland Funeral Home of Early.

She was born October 22, 1926 in Keller, TX to the late Eddie and Mattie Powell Geer. She attended school at Santa Anna and at Cameron, Tex. She also attended Howard Payne University. She worked in the food service industry.

Survivors include one son, James E. Flowers of Houston; one daughter and son-in-law, Karen and Ronnie Aycox of Brownwood; four grandchildren, one great grandchild. She was preceded in death by her husband, Melvin Flowers, and her parents, Eddie and Mattie Geer.

Santa Anna Cemetery Memorials

The Santa Anna Cemetery Association has received the following memorials:

In memory of Tom Kingsbery from Mr. and Mrs. Sam Allen, Gale Allen-Brock, Derriell and Polly Warnock, Joe Wallace, Mr. and Mrs. M. L. Guthrie, Jr. and Doris and Raymond Cupps; and

In memory of Mac McElrath from Doris and Raymond Cupps and Derriell and Polly Warnock.

.....
Tis friends who make this desert world to bloom as the rose. Strew flowers o'er our rugged path. Pour sunshine o'er our woes.

WALKER FUNERAL HOME

Pre-Arranged Funerals
Phone 625-4103
Coleman, Texas

COUNTYWIDE INSURANCE AGENCY



PAUL SKELTON—AGENT

If It's Affordable...We'll Insure It



April is Child Abuse Prevention Month. The Coleman County Child Welfare Board is educating us about the problem. Mrs. Hannah Sumrall prepared the round table display at the library. Please drop in and read some of the material. Does it get your attention that this county rates number seven of victims per 1000 children in Texas. Do you recognize the signs of abuse? Do you know how to report a possible victim? There are materials on the table that answer all these questions.

A T-shirt is on the table. It can be purchased for \$10 at the Coleman Chamber of Commerce.

Betty Key has added books from this library that could help with abuse or regular parenting. Consider *Single Parenting* Robert G. Barnes *Why Young Mothers Trapped* Robert Stein *How to Really Love Your Child* Ross Campbell. Or these from children *My Body is Private* Linda Girard *Will You Come Back* Ann Tompert.

Sorry that I've been ill and haven't looked at the four boxes of books that Mr. and Mrs. W. W. Gatlin donated. A glance and I saw gardening science, golf, etc. And I didn't see the two paperbacks from Louise Taylor, two from Thelma Bobskill or a box from Ruby Parker. More later.

Santa Anna News donated a copy of *Doctor Spock's Baby and Child Care* written in Spanish. Most middle age and older parents at least read Dr. Spock. It has some good guidelines, especially in recognizing and treating illness. It's been a good reference since 1946. This is the first time that the book has been published in Spanish. If you prefer to buy it most newsstands will have a copy.

More of my hints from things I've read. William Sidney Porter better known as O. Henry lived 1/3 of his life in Texas. 39 of his short stories had a Texas setting. *Texas Highways* May issue has an excellent article about his life. Those of you planning a visit to Austin should plan to visit the museum and buildings that he frequented. This library has two books of his short stories, just the thing for rest stops this summer.

Good Housekeeping has an article reviewing books for the soul. You can study these before selecting one of the new books. Not all books appeal to all people.

Want something besides *Goosebumps* for the kids? Brothers Jake and Luke Thoenen are writing books and making videos. Sold over a million. These are all Christian themed detective stories. Anyone want to donate some for the kids this summer? It will not be long until school is out!

Santa Anna Nutrition Center Menu

FRIDAY, APRIL 25
Chicken fried steak, baked potatoes, green beans and pudding

MONDAY, APRIL 28
Vegetable soup, cheese sandwiches, saltines and cookies and fruit

.....
How can we expect someone else to keep our secret if we have not been able to keep it ourselves?

HOW TO HAVE A GREAT BODY
PART 2
Sunday's Sermon: "How's Your Heart?"

.....
NEXT SUNDAY
"Define Those Muscle Groups"

MARTY REED, PASTOR

FIRST BAPTIST CHURCH
106 S. LEE • 348-3725

Tri-County Home Landscaping School

By Marty Gibbs
County Extension Agent
Agriculture

A landscape which is both functional and pleasing to the eye should be the goal of the professional as well as the novice gardener. Many variables are involved in the selection of plant materials and their placement in the landscape. For this reason no two are alike or should be.

In an effort to assist West Texans, the Texas Agricultural Extension Service offices in Runnels, Coleman and Concho counties have planned a "Basic Home Landscaping School". John Begnaud, County Extension Agent

Horticulture from Tom Green County, will cover topics that include soil structure and modification, plant materials, design principles and maintenance guidelines, all as they pertain to our area of Texas.

This school will consist of two classes, meeting the evenings of Thursday, May 8 and Tuesday, May 13 from 7 to 9 p.m. at the Ballinger Carnegie Library. The development of an acceptable plan for your landscape will be the objective. Whether you are establishing a new landscape or renovating an existing one, this class will be educational.

An enrollment fee of \$25 per person will cover educational materials including: textbook, handouts and supplies. The school will be limited to the first 80 registrants. In order to pre-enroll or for more information, contact Marty Gibbs, County Extension Agent-Agriculture at the Coleman County Extension Office 625-4519 or call the Runnels County Extension Office 365-2219 or the Concho County Extension Office 732-4304.

FFA Awards Gathering Tonight

The annual awards gathering for the Santa Anna High School FFA will be held Thursday evening, April 14 in the Ag. Science building on the high school campus.

All FFA members, parents and special guests have been invited to share a chuck wagon meal. Awards and special recognitions will be presented following the meal.

Birthdays & Anniversaries

APRIL 24
Nona Bell Ellis

APRIL 25
Kristen Keeney
Albert Collins

APRIL 26
Ollie Wristin
Brittney Anderson

APRIL 27
Manuel Enriquez

APRIL 28
Derek Little

APRIL 29
Mildred Galloway
Glenn Lawhon
Charliese Long

APRIL 30
Randy Brown
Marybeth Michelle Dean
Paul Martin
Maribee Pritchard
Cody Craig
Chrystal Wetsel



The people of First Baptist Church invite the Christians of Santa Anna and the surrounding area to join us in a day of fasting and prayer on Friday, May 2, 1997.

We believe that God is starting some great things in our community and to truly know His will we should begin to sacrifice a meal time and spend that time in prayer.

Jesus used to fast and so did his disciples. How can we be truly obedient to the Father if we do not do the things necessary to know His will? Please join us on May 2, 1997 by taking the time that you would normally take to prepare and eat one meal and instead take nourishment from God in prayer.

In Christ,
Marty Ray Reed
Pastor, First Baptist Church



Mr. and Mrs. Troy Stanton wish to announce the arrival of a son, Zechariah Nelson Stanton. He was born April 15, 1997 at 5:37 p.m. he weighed 7 lbs. 14 oz. and was 20-3/4 inches long.

Grandparents are Mr. and Mrs. Bill Conner of Santa Anna, Mr. and Mrs. Johnny Bodine of Leesville,

LA and Bernice Stanton and the late Shorty Nelson Stanton of Odessa. Great-grandparents are Nancy Menges of Santa Anna, Mr. and Mrs. Bill Milligan of Santa Anna and the late C. E. Bartlett of Brownsfield.

The mother is the former Debra Bodine.

Coleman County COC Bass Tournament Set For April 26 At Lake Ivie

The annual Coleman County Chamber of Commerce Bass Tournament has been set for April 26 at Lake Ivie.

The tournament will be held at O. H. Ivie Reservoir with the tournament headquarters at Elm Creek Village, Kennedy Park. The entry fee is \$40.00 on a three-fish stringer with those registering prior to April 22 paying \$35.00 entry fee.

Prize money will be first \$1,280; second \$720; third \$520; and fourth \$200. Fifth through twelfth places will receive cash prizes and the 13th place winner will receive a new PRO rod from Big O's in Valera. The Big Bass of the Hour award is \$50 and the Big Bass of the Day will receive \$1,050.

A first place trophy buckle donated by JM Western Wear in Coleman will be presented to the top Junior Division fisherman. The division is for 12 and under and will have a \$5.00 entry fee.

Concessions will be available at Elm Creek Village, Ridge Rock Grocery and Concho Park Marina. For more information contact the Chamber office at 915-625-2163.

Thank You

For the many acts of kindness and love you bestowed upon us during the loss of our loved one, Mac. Thank you for the food, flowers, calls, prayers, love and concern. May God bless each of you.

Denise and Justin McElrath

Eurell and Delma Blair

Luana, Dewayne and Peyton Savarance

Thank You

To the friends and neighbors who were so thoughtful and supportive with flowers, food, visits and prayers. We will always be grateful for your kindness shown to all of us.

The family of Tom Kingsbery

COW POKES By Ace Reid

"Shoot, the devil!
I'm doin' good to jist hang on."

Santa Anna National Bank

915-348-3108

Deposits Insured By FDIC Up To \$100,000

Ask About Our Interest-Bearing Accounts

Checking Accounts
\$1,000 Minimum
Pass Book Savings
Certificate of Deposit

Substantial Interest Penalty Is Required For Early Withdrawal

WE NOW HAVE A DIRECT LINE TO BOOKKEEPING FOR YOUR SAVINGS & CHECKING ACCOUNT NEEDS
915-348-3115

MEMBER FDIC

Margaret Hensley MSN, RNCS
Family Nurse Practitioner

Family Health Care Clinic

Donald Pope M.D.
Medical Director

The really great man is the man who makes every man feel great.

Santa Anna
348-3566
106 N. 2nd

Self Cult
Enjoys B
European

Contributed
Self Culture C
April 10 at 3 p.
the Methodist Ch
Programs, this
about travel aro
keeping with th
Bowker shared s
tures in travel.
the slides of the
Europe. There w
pictures of inter
The Netherlands
Switzerland, A
Germany. Then
books from othe
Sweden and I
Canada, Alaska,
Scotia. Mrs. B
many interesting
pened during her
The business
ducted by Cathy
dent. Plans wer
nual luncheon h
and junior high s
in the UIL, even
dents are expect
luncheon is sche
May 15 at 11:
Dena Gonzales,
and Lodema Jon
new members.
Refreshments
table decorated
by hostesses
Alice Anna Sp
Key.

Attending t
guests Coyita B
Kay Gray, Allin
Rutherford and F
Club memb
Gladis Barnes, S
Baugh, Cathy
Homer, Lodema
Alice Anna Spi
Weaver.

The group
Wednesday, M
the Presbyterian
on the next day
asked to attend
luncheon a succ

Katrin
Hensley Fa
Sant

"A Carr
In A Ye
NEW E
May 12 -

CENTF
COM
CO

309 North
Brownwood
(915) 646-052
Or (214) 388

Re
Bi
Ar
Fe
Gr
E
D
9

Self Culture Club Enjoys Bowker's European Trip

Contributed
Self Culture Club met Thursday, April 10 at 3 p.m. in the annex of the Methodist Church.

Programs this year have been about travel around the world. In keeping with this theme, Coyita Bowker shared some of her adventures in travel. Everyone enjoyed the slides of the Bowker's trip to Europe. There were many beautiful pictures of interesting locations in The Netherlands, Belgium, France, Switzerland, Austria, and West Germany. There were also scrapbooks from other trips to Norway, Sweden and England, Eastern Canada, Alaska, Hawaii and Nova Scotia. Mrs. Bowker told about many interesting things that happened during her travel adventures.

The business meeting was conducted by Cathy Ellis, vice president. Plans were made for the annual luncheon honoring elementary and junior high students who placed in the UIL events. About 40 students are expected this year. The luncheon is scheduled for Thursday, May 15 at 11:30 a.m. Pat Bell, Dena Gonzales, Oma Dean Horner and Lodema Jones were accepted as new members.

Refreshments were served from a table decorated with spring flowers by hostesses Konjana Weaver, Alice Anna Spillman and Betty Key.

Attending the meeting were guests Coyita Bowker, Rose Bass, Kay Gray, Alline Rutherford, Trudi Rutherford and Pat Vance.

Club members present were Gladis Barnes, Suzie Bass, Carmilla Baugh, Cathy Ellis, Oma Dean Horner, Lodema Jones, Betty Key, Alice Anna Spillman and Konjana Weaver.

The group will meet on Wednesday, May 14 at 2 p.m. at the Presbyterian Church to decorate for the luncheon which will be held on the next day. All members are asked to attend and help make the luncheon a success.



Mr. & Mrs. Jason Wade Dean

Swift-Dean Wedding Vows Said In Midland

Bethany Joann Swift and Jason Wade Dean exchanged wedding vows on Saturday, January 11 at First United Methodist Church in Midland. Parents of the couple are Charles and Joanna Swift of Midland and Roddy and Debbie Dean of Santa Anna.

The Rev. Tom Thompson officiated at the double-ring ceremony before the altar decorated with spiral brass votive candle trees, red poinsettias and greenery. Pews were marked with red plaid bows and greenery.

Soloists for the ceremony were Nan Shackelford and Kay Hunter, with selections of "How Beautiful" and "I Will Be There".

Given in marriage by her father, the bride wore an off-white raw silk gown embroidered with pearls. The bodice featured a sweetheart neckline, short sleeves and a slim elongated waist. A self-fabric bow formed a bustle for the full skirt that extended to a chapel-length train. Her headpiece was a bandeau of miniature fabric roses and pearls, extending to a chapel-length veil of silk illusion. Her bouquet was a cascade of white roses and gardenias.

Carolina Brachetta of Midland and Ellen Hargrove of Carrolton were maids of honor; bridesmaids were Amy Walton of Sherman, Julie Maddox of Carrolton, Shannon Lollar of Abilene and Julie Easley of Turkey, sister of the groom. Their dresses were styled with fitted black tops and floor-length Christmas plaid taffeta skirts.

Adelaida Dean was flower girl, dropping dried petals from old corages of the bride. Myra and Bianca Dean were train bearers. The three

girls, sisters of the groom, were attired in long red velvet dresses. Garrett Fellers of Arlington was ring bearer, attired in black and white with a red vest and tie.

Rodney Dean served his son as best man. Groomsmen were Matt Dossey of Gatesville, Clint Easley of Turkey, Luke Swift of Lubbock, Kirk Kennedy of Abilene and Grady Clay Melver of Santa Anna. Ushers and candlelighters were John Sullivan of Midland, Cole Adams of Lamesa, Brian Roach of Collyville, Andy Peveto and Torbin Lancaster.

Men of the wedding party wore black tuxedos with white shirts. Following the wedding a reception was held in the church fellowship hall. Round tables were covered with floor-length cloths and centered with votive lights and greenery. The bride's table held a five-tier wedding cake decorated in all-white and topped with red roses and gardenias. A tall candelabra and an arrangement of red and white carnations decorated the table.

The groom's table was laid with a hunter green cloth and centered with an arrangement of fresh greenery, with Western accents. Chocolate cake topped with grapes and chocolate-dipped strawberries was served with coffee from a silver service. A buffet held party sandwiches, finger foods, vegetables, fruit and dips.

Following a wedding trip to the Caribbean and Coxumel, Mexico, the couple returned to Abilene to make their home. The bride is a 1993 graduate of Midland Christian High School and a May graduate of McMurry University. The groom is a 1992 graduate of Santa Anna High School and received his degree from McMurry in 1996. He is cur-

Mae Blue Day To Be Observed At Methodist Church Sunday

Mae Blue Day will be observed at First United Methodist Church of Santa Anna this Sunday, April 27th.

The people of the church will be celebrating the fact that Mrs. Blue has been a member there since 1921 and will be observing her 103rd birthday on Thursday, May 1.

Born in Goldthwaite, she moved to Santa Anna in 1912. Reared a Baptist, Mrs. Blue joined the Methodist Church after marrying her late husband, Hardy Blue, in 1921. She has been a faithful member since that time, serving in almost every area, and teaching

Sunday School until health problems in recent years prevented her doing so. The Hayes - Blue ladies Sunday school class is named for her and the late Anna Belle Hayes. Mrs. Blue was also a public school teacher for some years before devoting her time in helping her husband run Blue Hardware until his death. The couple raised two children, John Hardy Blue now of LaFayette, La, and Bettie Henderson of Santa Anna.

Everyone is welcome to help celebrate this special day and bring a covered dish and enjoy lunch following the morning worship service.

Local Girl Scout Leaders Among Those Being Saluted This Week

Mention the words "Girl Scouts" and many people think only of cookies and campfires. Few know that the same organization that teaches girls how to pitch a tent also teaches them how to fix a leaky faucet, play a winning game of tennis and connect to the Internet. And this year on March 12, Girl Scouts marked their 85th

anniversary as the world's largest organization for girls and women.

Girl Scouting's longevity is due mainly to its adult volunteers--without them Girl Scouting would not happen. April 22 was designated as Girl Scout Leader Appreciation Day. This year marks the sixteenth annual observance of this special day when Girl Scout leaders throughout the nation are recognized for their contributions to the young women in their communities. The Heart of Texas Girl Scout Council salutes its

leaders for a job well done. Among those who are appreciated very much are local Girl Scout leaders, Peggy Hensley of Brownie Troop 67 and Susie Voss and Pat Fellers of Junior Troop 68.

Girl Scout leaders come from all walks of life. Many juggle their time between families, careers, other volunteer work, social schedules and personal hobbies. Somehow, they still manage to spend time to plan and carry out troop meetings. Girl Scout leaders are important individuals because girls look up to, believe in and emulate them. We can only commend individuals who are willing to accept so great a responsibility.

A leader's tasks include supporting girls in their efforts to become responsible and self-reliant individuals. A leader provides girls with friendship, advice, encouragement and resources.

Today's girls are faced with many crises such as drug and alcohol abuse, early motherhood and poverty. The Girl Scout program is designed to give girls the incentive and courage to overcome such obstacles, avoid unnecessary unpleasantness in life, and develop to their fullest potential as individuals. The Girl Scout troop leaders play major roles in helping the girls achieve these goals.

The Girl Scout leader invests her time and effort in producing the leaders of tomorrow.

Thank You

We would like to thank everyone, for being there for us, during the illness and loss of our loved one. Thank you for all the flowers, food, telephone calls, and especially the prayers.

Words cannot express how much we appreciate your thoughtfulness and love. Thanks to Rev. Bill Merit, Gerald Allen Burns, and the Stevens Funeral Home staff for making everything so special.

The W. W. (Daddy Bo) Wilson Family



Katrina Guerrero Hensley Family Health Clinic Santa Anna, TX

"A Career Success In A Year Or Less" NEW ENROLLMENT May 12 - June 23, 1997

CENTRAL TEXAS COMMERCIAL COLLEGE

309 North Center Avenue Brownwood, Texas 76801 (915) 646-0521 or 1-800-889-2822 Or (214) 368-3680 Dallas Branch

HOME VIDEO OUTLET # 2
615 Walls Ave. Santa Anna 348-3192

The Rich Man's Wife

Usual Hours: Mon 2:00 to 8:00; Wed. 2:00 to 6:30; Tues. & Thurs. 2:00 to 7:00; Fri & Sat. 12:00 to 8:00

BARGAIN HUNTERS
BONANZA
Save on every Kelly tire in stock. **KELLY TIRES**

KELLY TIRES
AQUATOUR ULTRA PREMIUM TOURING RADIAL
P195/70R14...\$69.31
P205/70R14...\$77.79
P215/70R14...\$80.67
P205/70R15...\$78.48
P215/70R15...\$84.58

\$68.60
P195/70R14

- 80,000* mile limited warranty—the result of a new computer-generated tire profile and tread design
- Aluminum dual squ channels for hydroplaning protection and improved wet traction
- New tread design improves stopping distance on wet and dry roads and overall wet traction performance
- 4-4-S rated with full-depth shoulder slots for excellent all-season grip
- Two steel belts under wide tread provide large road contact area for stability and improved handling while tough polyester body plies deliver a smooth ride
- "S" speed rated to 112 mph
- Halobutyl liner for dependable air retention
- Classic sidewall styling with modern serration pattern can be used white or black sidewall out

*Subject to certain exclusions and limitations. See Limited Warranty booklet for complete details.
*Kelly-Springfield does not recommend use of any of its products in excess of legal speed limits.

KELLY TIRES
Safari MSR PREMIUM STEEL-BELTED TRACTOR RADIAL
\$103.98
LT235/75R16 (6)
NEW!

- True on-off-highway light truck M&S traction
- Deep, self-cleaning tread computer-designed for optimum mileage and even wear
- Isolated tread elements combined with wide shoulder lugs deliver maximum traction
- Double steel belts and radial ply polyester cord carcass provide strength, durability and puncture resistance

KELLY TIRES
A GOOD DEAL ON A GREAT TIRE
Kelly Farm Tires

See us for all your Farm Tire Needs!

KELLY TIRES
Safari AWR PREMIUM ALL-TERRAIN STEEL-BELTED LIGHT TRUCK RADIAL
\$89.99
LT215/75R15 AWR (6)
LT235/75R16 (6) \$97.39
LT235/85R16 (10) \$105.39
P235/85R16 (10) \$105.39

- 40,000 mile limited warranty
- Unique tread block elements deliver all-terrain, all-weather traction

KELLY TIRES
NAVIGATOR 800S PREMIUM ALL-SEASON STEEL-BELTED RADIAL
\$55.01
P175/70R14
P185/75R14...\$59.09
P195/75R14...\$62.08
P205/75R14...\$70.81
P205/75R15...\$70.81
P215/75R15...\$71.50
P225/75R15...\$76.57
P235/75R15...\$79.59
P205/70R15...\$69.88
P215/70R15...\$75.44

- 60,000 mile limited warranty by Kelly
- Good shoulder support allows uniform load across the tread for superior mileage

OD's Chuckwagon & Smokin'

Chuckwagon Meals

- Rehearsal Dinners
- Birthday Celebrations
- Anniversaries
- Family Reunions
- Graduation Parties
- Etc.....

A Variety Of Menus

Let O.D. do your custom smoking

- Brisket
- Shoulder Clod
- Ribs.....etc.

Derriell Warnock
915/348-3167 — (If no answer, call 915/348-3545)

Wheel Alignment SPECIALS

Reg. Alignment.....\$29.95
4-Wheel Drive.....\$34.95
4-Wheel.....\$44.95

Quality Workmanship on Wheel Alignments, Brake Service and Exhaust Systems

Williams Tire Store
2003 Commercial Avenue in Coleman
Phone 915-625-5152 or 1-800-588-8473

KELLY TIRES
A GOOD DEAL ON A GREAT TIRE

A good deal on a great tire.

KELLY TIRES
A GOOD DEAL ON A GREAT TIRE

WTS
Where Service & Bargains Are a Tradition!

A
P
R
2
4
1
9
9
7

News For And About Santa Anna Mountaineers



Santa Anna Elementary Students Take Part in District Literary Meet

Santa Anna Elementary School students traveled to Lometa on March 18 to take part in the District Literary Meet. Results were:

Second grade:
Justin Johnson: 1st Oral Reading and 6th Storytelling;
Kaylee Hayes: 1st Storytelling;
Amanda Hadaway: 5th Oral Reading

Third grade:
Rainey Bacon: 1st Oral Reading;
Durinda Puckett: 2nd Oral Reading and 3rd Storytelling;
Mayra Dean: 5th Oral Reading;
Wesley Reed: 1st Spelling;
Harmony Herring: 2nd Spelling and 5th Ready Writing;
Logan Lacy: 5th Spelling;

Fourth grade:
Amy Gibson: 3rd Art Contest (team), 4th Oral Reading, 5th Spelling and 6th Ready Writing;
Angel DeLeon: 2nd Oral Reading;
Jeffery Hale: 3rd Art Contest (team);
Kathy Simmons: 3rd Art Contest (team);
John Frausto: 1st Ready Writing

and 2nd Art Contest (team);
Amber Squyres: 1st Maps, Charts and Graphs, 1st Dictionary, 3rd Ready Writing, 2nd Art Contest (team), 4th Number Sense and 5th Spelling;
Tyler Morgan: 4th Ready Writing;
Kindi Cloer: 2nd Art Contest (team), 2nd Dictionary, 5th Listening, 4th Maps, Charts and Graphs and 4th Number Sense;

Sixth grade:
Jon Turney: 2nd Ready Writing, 2nd Dictionary and 2nd Spelling;
Alicia Ellis: 1st Dictionary, 3rd Calculator and 4th Spelling;
Nathan Nicholas: 4th Calculator and 4th Mathematics;
Johnny Stout: 6th Calculator and 3rd Spelling;
Jennifer Pelton: 3rd Dictionary;
Willie Gilbreath: 3rd Listening, 2nd Maps, Charts and Graphs and 3rd Mathematics;
Claire Gibson: 4th Maps, Charts and Graphs;
Heather Sims: 2nd Number Sense and 5th Mathematics;
Evan Jones: 5th Number Sense;
Kelly Voss: 1st Oral Reading;
Jamie Ellerbe: 2nd Oral Reading.

School Menu

MONDAY, APRIL 28
Breakfast: Cinnamon roll
Lunch: Chicken fried steak, seasoned potato wedge, hot rolls, gravy and honey

TUESDAY, APRIL 29
Breakfast: Waffles, sausage and syrup
Lunch: Ham and cheese sandwich w/lettuce and tomato and cookie

WEDNESDAY, APRIL 30
Breakfast: Breakfast burritos and picante sauce
Lunch: Salisbury steak, english peas, steam rice, hot rolls and brown gravy

THURSDAY, MAY 1
Breakfast: Breakfast muffins
Lunch: Burritos w/chili and cheese, whole kernel corn, crackers, cake, picante sauce and peppers

FRIDAY, MAY 2
Breakfast: Creamy rice, toast and jelly
Lunch: Chopped bar b que on bun, tator tots, pork and beans, slice pickles, cookie and catsup

Junior High District Tennis Results

Results of the District 10A Junior High Tennis tournament held here last weekend were:

B DIVISION
DOUBLES: 1st Heather Bradley and Sabrina Martin; 2nd Jala Rankin and Shala Guthrie; 3rd Jenna Hensley and Chrystal Isbell

A DIVISION
SINGLES: 2nd Buffy Martin
DOUBLES: 3rd Davia Rankin and Jaci Kuykendall

Students Placing In Junior High District U.I.L. Competition

Santa Anna junior high students recently competed in District U.I.L. Literary events with the following students placing in their field:

7TH GRADE
DICTIONARY - Chris Kershner, 2nd.
LISTENING - Daena Castillo and Chris Kershner, 6th.
NUMBER SENSE - Jenna Hensley, 1st; and Heather Bradley, 6th.
LIFE SCIENCE - Jenna Hensley, 1st; Heather Bradley 4th.
IMPROMPTU - Jenna Hensley, 5th.
MATHEMATICS - Jenna Hensley, 1st; Daena Castillo, 3rd; Heather Bradley 6th.
ORAL READING - Erwin Loyd, 1st; Heather Bradley, 4th.
SPELLING - Jenna Hensley, 3rd; Sabrina Martin, 5th.

8TH GRADE
READY WRITING - Jaci Kuykendall, 6th.

DICTIONARY - Buffy Martin, 3rd; Maegan Lishka, 4th.
IMPROMPTU - Jaci Kuykendall, 5th.
NUMBER SENSE - Jaci Kuykendall, 1st; Buffy Martin, 5th.
SCIENCE - Buffy Martin, 6th.
MODERN ORATORY - Konnie Weaver, 2nd.
SPELLING - Jaci Kuykendall, 4th.
MATHEMATICS - Jaci Kuykendall, 4th; Buffy Martin, 6th.

OOPS!

Our apologies to Adam LaPin who was mis-identified in the caption of a picture of the Junior High tennis team published in last week's edition of the NEWS. We mistakenly called him Adam Pena.

Santa Anna Junior High Volleyball Schedule

April 28	Bangs (Tentative)	Here	4:30
May 3	Santa Anna Tourney	There	5:00
May 8	Lingleville	There	5:00
May 15	DeLeon	There	5:00
May 19	Bangs	Here	4:30

SAHS Students Named "Most" And Runners-Up



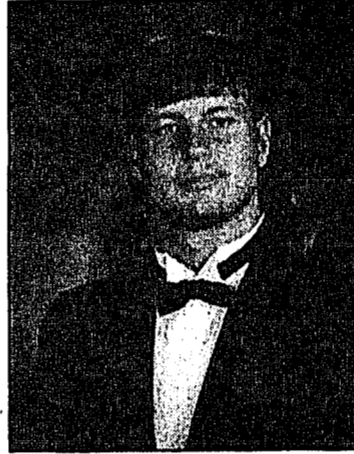
Briana Horner
Miss SAHS
Most Likely to Succeed (Girl)
Most Beautiful
Most Friendly Girl
Most Athletic Girl



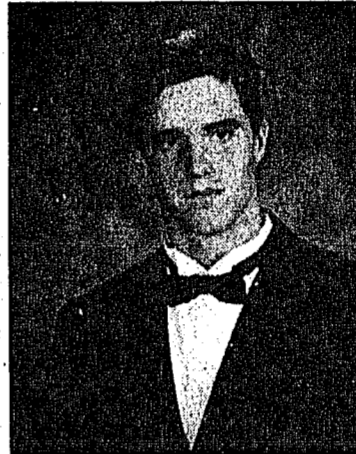
Chris Cheaney
Mr. SAHS
Most Handsome
Most Friendly Boy
Most Athletic Boy
Runner-up Most Likely to Succeed (Boy)



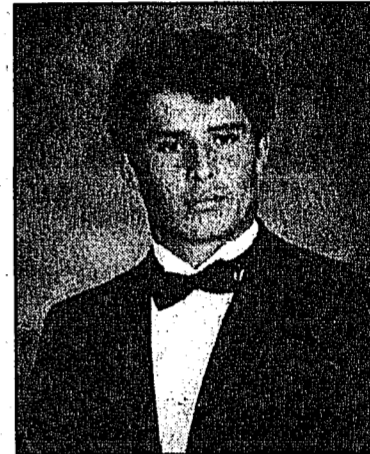
Ami Beal
Runner-up Miss SAHS
Runner-up Most Likely to Succeed (Girl)
Runner-up Most Beautiful
Runner-up Most Friendly Girl
Runner-up Most Athletic Girl



Clifton Blaine
Runner-up Most Friendly Boy



Tim Abernathy
Runner-up Mr. SAHS
Runner-up Most Handsome
Runner-up Most Athletic Boy



Cesar Patino
Most Likely to Succeed Boy



Santa Anna High School Golf Team

Members of the Santa Anna High School Golf Team for the 1997 year were front row, David Strickland, Mark Yancy, Tim Abernathy, Chris Cheaney, Josh Daniel and Shane Watson and back row, Coach Alfonso Gonzales and Chris Guerrero.

Photo by Carol Herring

SAISD Site Based Committee Looking For Improvement Ideas

Santa Anna Superintendent of Schools Dean Bass has requested the the School District's Site Based Committee submit ideas for improvements to the local facilities. To be included in the ideas are physical improvements to any part of the K-12 campus and curriculum improvements.

Suggestions from the public may be submitted to Janet Neff at the local Elementary school or Leanna Hartman at Coleman County Telephone Cooperative.

Deadline for suggestions is May 15, 1997.

School Board Meeting

Continued from page 1

ating budget were presented for review by Judy Hartman and approved as presented.

Bass updated information on the UIL Legislative Council Report, the Engineering Report of Perry Gym, Elementary roof repair and the electrical project for the elementary building.

Notes for the upcoming trustee election will be canvassed on Monday, May 5.

Enrollment as of April 8 stood at 298.

Dan Goodman was employed as teacher and coach with a one-year contract.

Alfonso Gonzales will be provided a stipend for his coaching duties.

HOST FAMILIES NEEDED!

AISE... is seeking Host Families for foreign exchange students from over 31 countries worldwide. All students are fluent in English and have their own insurance and spending money. Host Families provide a room and meals. From Russia to Brazil, Australia to Sweden, AISE offers a diverse international program. Cultural Exchange is necessary to the betterment of civilization. Don't let this opportunity pass! Call today 1-800-SIBLING



Bertha
Congratulations
Dad, Mom, Ella, Laura, Alex and Mark



Lee
We love you and are proud of you.
Dad, Mom, Kristen, Zane, Jocelyn and Sierra

Bring or mail a picture of your special graduating senior with \$15 cash, check or money order to:
Santa Anna News

609 Wallis
Box 399
Santa Anna, Tx
76878

Picture will be returned.

Congratulate your graduate this special way for only \$15. Will be included in Graduation Edition.

Deadline - May 9

Allen & Allen
INSURANCE

A Coleman County Authorized Agency For The:

AMERICAN INDEMNITY GROUP
BEACON INSURANCE GROUP
THE TRINITY COMPANIES

Serving Coleman County and the surrounding area since 1922
200 WEST PECAN STREET 625-4124 COLEMAN, TEXAS

Hollywood
Theaters

BROWNWOOD EARLY
300 Early Blvd • 915-643-3681

Liar Liar (PG13)
Sat-Sun 12:15 2:15 5:15 7:15 9:30
Fr, Mon-Thu 5:15 7:15 9:30

8 Heads In A Duffie Bag (R)
Sat-Sun 9:40 only
Fr, Mon-Thu 9:40 only

That Old Feeling (PG13)
Sat-Sun 12:10 2:30 5:10 7:25
Fr, Mon-Thu 5:10 7:25

Selena (PG)
Sat-Sun 12:00 2:30 5:00 7:30 9:50
Fr, Mon-Thu 5:00 7:30 9:50

Anadonda (PG13)
Sat-Sun 12:05 2:20 5:20 7:10 9:30
Fr, Mon-Thu 5:20 7:10 9:30

Scho

SHARON GUTH
several years and high they are bec... I am concerned ab... that is spent. My... for the children... makes me constan... preparation that w... children for the di... believe that the di... headed in, with mo... cation, has give... greater opportuni... As we all know, o

CLASSI

NURSE AID
80 hour certified nu... Starting M...
CTC
BROWNWC
1-800-861-

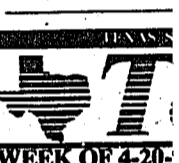
HELP WA
Need full-time cook...
Concho Park Mari...
915-357-4466 o

HOUSE FO
In Santa Anna. 2... one bath, extra l...
Call Dan Jones 91

BEAUTY SHOF
502 Ava. A, S...
915-348

PLUMBING
WESTERN
705 WALLIS

Fax Service ava
Anna News. Our... numbers are...
915-348



WEEK OF 4-20
BUSINESS OPPORTUNITY
AMERITEL PAYPHO
\$150K yearly potential...
LOCAL CANDY RO
30 vending machines...
LOG HC
DEALERSHIP. Exce...
DRIVERS WANTED
\$2,000 HIRE ON bonu...
DRIVER - ATTENT
DRIVER! The best go...
DRIVER - CALARN
INTERNATIONAL c...
DRIVER...OWNER
ERATOR and com...
DRIVERS & OWNER
ton needed. Good fr...
DRIVERS - FLATBI
state OTR. Assigned...
DRIVERS WANTED
POWELL & Son...
OK. We offer late...
Call this news

School Board Candidates

Continued from page 1

SHARON GUTHRIE

several years and am aware of how high they are becoming. Therefore, I am concerned about every dollar that is spent. My main concern is for the children. That concern makes me constantly aware of the preparation that we must give our children for the future. I truly believe that the direction we are headed in, with more class diversification, has given our children greater opportunities for learning. As we all know, our children make

choices to either go to college or choose not to go to college. Because of this, we need to prepare them for either decision. I believe that our funds should be wisely spent on their education and their ambition to learn and work, so that their future will hold more than a dependency on the welfare system. This ambition will benefit them, as well as, the nation as a whole.

Currently, the greatest problem facing the school districts is money. Many laws are mandated, which forces us to spend more

money. It appears that the State Funding methods are about to change and we are not sure how they will effect us, but I believe that we need to build a reserve fund to get us through the lean times and to continue to make us a progressive school system.

We have many employees working in our school system and I believe that we need every one of them to benefit our children and our community. The loss of our school system will ultimately mean the loss of our community.

Please get out and vote in this election. Be a voice in the decisions that will be made for all our futures. If you vote for me, I will continue to work for the education of our children and the funds that will be spent to guarantee those futures.

MIKE PRITCHARD

believe that students dwell on these rules instead of concentrating on their scholastic and athletic endeavors. Our children are expected to achieve more than we as parents were ever expected to in school. I believe a strict set of rules are very important in our school system. But, I also believe we need a very good reward system in our school. I believe that Santa Anna students would benefit from a school baseball program.

The more opportunities for scholarships that we can offer our students, the better our school system. There is a senate bill that is trying to eliminate the Rural

JERRY ELLIS

The major thing that prompted me to seek this position was attending the "Academic Report Card" meeting for Santa Anna ISD, which was advertised on the front page of this newspaper. One school staff member and myself were the only attendees! The lack of background for my two college kids aroused my concern.

Today's world requires a higher level of preparedness for our young people than ever before. It is the responsibility of the school administration, teachers, staff, parents, grandparents, students and taxpayers in this school district to meet this challenge.

I have taken a step by offering myself as a candidate for Santa Anna's school board. Please take the time to vote for the candidate of your choice.

They're Playing Ball!

1997 Little League Schedule

April 25: Angels vs. Dodgers at Coleman 8 p.m.
April 29: Giants vs. Angels at Coleman 8 p.m.
May 2: Angels vs. Ranger at Coleman 8 p.m.
May 9: Angels vs. Giants at Coleman 6 p.m.
May 13: Angels vs. Tigers at Coleman 6 p.m.
May 16: Ranger vs. Giants at Coleman 8 p.m.
May 20: Angels vs. Tigers at Coleman 6 p.m.

April 25: Hawks vs. Orange at Santa Anna 6 p.m.
April 28: Hawks vs. Yellow at Santa Anna 6 p.m.
May 2: Hawks vs. Blue at Santa Anna 6 p.m.
May 5: Hawks vs. Black at Santa Anna 6 p.m.
May 9: Hawks vs. Green at Santa Anna 6 p.m.
May 12: Hawks vs. Red at Santa Anna 6 p.m.
May 16: Hawks vs. Teal at Santa Anna 6 p.m.
May 19: Orange vs. Hawks at Coleman

1997 Minor League Schedule

April 24: Eagles vs. Stars at Santa Anna 6 p.m.
April 28: Astros vs. Stars at Santa Anna 6 p.m.
May 5: Astros vs. Stars at Coleman 8 p.m.
May 8: Stars vs. Cubs at Coleman 8 p.m.
May 15: Stars vs. Astros at Coleman 6 p.m.
May 19: Stars vs. Eagles at Coleman 6 p.m.
May 22: Stars vs. Royals at Coleman 6 p.m.
May 26: Royals vs. Stars at Santa Anna 6 p.m.
May 29: Cubs vs. Star at Santa Anna 6 p.m.
June 2: Eagles vs. Stars at Santa Anna 6 p.m.

1997 T-Bal Schedule

diagnose, typically taking 5 days to a week before it is readily apparent which tissue is destroyed and which is normal.

After looking at wheat fields throughout Coleman County and visiting with surrounding counties, it appears that the damage is very isolated and not very significant at this point. Time will tell for sure and we do not recommend harsh decisions such as plowing under or baling. Prices continue an upward trend and it seems that we may get a good price for this year's wheat crop.

Scholarship Fund. I feel that we need to fight this bill, because without scholarships many of our students would not have the opportunity to further their education.

Another issue concerning our school system is the House Bill 4. If passed, the plan provides a stable, long-term source of funds to meet the basic needs of the public schools. By increasing the state's share of school funding to 80 percent, the bill ensures a fair system which is capable of funding a quality education for every child no matter where in Texas he or she lives. Local control is maintained through the strong provisions in Senate Bill 1, passed in 1995, and the state's education code.

to various management practices, including late planting or the selection of later maturing varieties. When spring freezes occur, the less developed a wheat crop is the more likely it is to survive. Reproductive tissue (the developing head) is the most susceptible tissue to freeze injury.

Damage to leaf tissue on wheat that has not yet jointed can appear serious, but usually does not affect yield to a great degree. This injury is apparent as dried or desiccated leaves, usually the uppermost leaves. Frozen tissues often give off a distinct silage odor as they begin to decay in the field. In cases where wheat was tall and rank but not jointed, grazing will help remove damaged tissue and aid in growth of new leaves by letting sunlight in to newly developing leaves. Freeze injury is difficult to

Freeze Affects County Wheat Crop?

By Mary Gibbs, CEA-AG Coleman County

One week it's leaf rust, the next week it's Hessian fly and now it's freeze damage. Many grain producers are concerned about freeze damage to their wheat crop.

The Canadian airmass that enveloped Coleman County on April 12 caught much of the north and west Texas wheat crop in a stage of growth that is vulnerable to very cold temperatures. When wheat is in a vegetative growth stage and is only growing leaves, it is usually quite hardy, and can take temperatures as low as -5 F without much injury from the freezing temperatures, although the level of damage will vary greatly with conditions such as drought, temperature hardening and other variables. The lateness of this Arctic front, coupled with a mild and wet winter that caused an accelerated development in the wheat crop, could result in a considerable amount of freeze injury to the Texas wheat crop.

Wheat in much of Coleman County and North Texas was in the boot stage to headed, with most pre-bloom. There are undoubtedly fields that are later in maturity due

CLASSIFIED 915-348-3545
DEADLINE — 12:00 NOON, TUESDAY

NURSE AIDE CLASS
80 hour certified nurse aide classes
Starting May 12.
CTCC
BROWNWOOD, TX
1-800-861-1622.

HELP WANTED
Need full-time cook. Apply in person at Concho Park Marina on Lake Irvie.
915-357-4466 or 357-4467. 161F

HOUSE FOR SALE
In Santa Anna. 2 or 3 bedroom, one bath, extra lot. Cash only
Call Dan Jones 915-949-8352. 15-16

BEAUTY SHOP FOR RENT
502 Ave. A, Santa Anna.
915-348-3298 811-F

PLUMBING SUPPLIES
WESTERN AUTO
705 WALLIS 348-3771

Fax Service available at Santa Anna News. Our office and FAX numbers are the same:
915-348-3545

GUATAMALA PALM LEAF HATS
4 Inch brim. Roll your own crown.
Sizes 6-3/4 to 7-1/2.
\$16.99
JOHNSONS DRY GOODS
CROSS PLAINS
817-725-6211

AUTO PARTS: Everything for the "do it yourself mechanic."
WESTERN AUTO
705 WALLIS 348-3771

INCREDIBLE
All natural weight loss nutrition and energy products.
915-348-3551 13-17

STORAGE BLDG. FOR RENT
11 X 22 storage bldg in Santa Anna.
\$35/mo. Call Dan Jones,
915-949-8352 15-16

BALDWIN'S TREE SERVICE
Topping, Trimming, Removal, Cable Bracing, Farm & Ranch rates. Fence rows cleared. Mistletoe removal. Shrubbery trimmed. Free estimates.
915-643-3052
BROWNWOOD 13-17

TexSCAN

WEEK OF 4-20-97

BUSINESS OPPORTUNITIES
AMERITEL PAYPHONES
\$150K yearly potential. Local sites available. Lowest prices. Min. investment 7K. Get all the facts fast. Call toll free 1-800-800-3470 24hrs.

LOCAL CANDY ROUTE.
30 vending machines. Earn up to \$800/day. All for \$9,995. Call 1-800-998-VEHD.

LOG DEALERSHIP. HOME
Excellent earning potential. Full-time. Protection from recession. Training. Sell logs, dry-stacks, turnkeys. Must purchase or sell home start at \$19,425.00. Call C.T. McFarland, Southland Log Homes, 1-800-845-3555, Ext. 137.

DRIVERS WANTED
\$2,000 HIRE ON bonus-expensed OTR flatbed drivers. All KW conventionals. Xint. benefits. Average \$30K+/year. Training positions available. CDL, 23+, TSB 1-800-548-3120, ext. D-102.

ARROW TRUCKING COMPANY flatbed and van operation regional or long haul *Houston, Dallas, LoneStar Terminals *assigned conventional *experienced drivers - owner operators. 1-888-277-6937, CDL training available, 713-956-6259, EOB.

DIESEL MECHANICS; F R I E G H T L I N E R dealership has all shifts available for top mechanics. Relocation expenses to Kansas/Nebraska plus 32K-45K 1st year. Call Scot King 1-800-363-0440.

GRAND CANYON McDONALD'S. Now hiring. Looking for hardworking, energetic & smiling people. Good pay. Low economical down housing available. Contact Grant 520-638-2862 or send application to P.O. Box 3026, Grand Canyon, AZ 8603.

POOL COMPANY IS accepting applications for experienced contractors, floorers, electricians, plumbers, and crane operators to work on offshore rigs every Monday thru Friday from 9:00AM to 11:00AM and 1:00PM to 4:00PM. You may apply at Pool Company, 3640 Peters Road, Harvey, LA or call 504-365-3245 to request that an application be mailed to you. Provide addresses and telephone numbers of previous employers. Should possess willingness for hard work under harsh conditions. Clean drug and alcohol screens is a condition of employment. E.O.E. - minority/female/disabled/veteran. Qualified individuals only need apply!

DRIVER...OWNER OPERATOR and company driver opportunities pulling van trailers available at Dalworth. Operate regionally in 8 states around Texas/Oklahoma. Call 1-800-333-3064 for information.

DRIVERS-BEENTHERE, done that! Now it's time to come home to Dallas Carriers. You need a CDL-A and 1 year OTR. Call 1-800-727-4374, EOB.

DRIVERS & OWNER-operators needed. Good freight. Competitive pay. Run middle US and local. Call 1-800-801-4386 or 409-642-2092 for more info.

DRIVERS - FLATBED 48 state OTR. Assigned new conventional, competitive pay, benefits, \$1,000. Sign on bonus, rider program, flexible time off. Call Roadrunner Trucking 1-800-876-7784.

DRIVERS WANTED E.L. POWELL & Sons, Tulsa, OK. We offer late model equipment, good insurance, mileage pay. One year verifiable flat bed experience. 918-

446-4447, 1-800-444-3777.

HAROLD DIVER TRUCKING needs motivated individuals to enter our Training Program. Call 1-800-270-1676 for complete information. Now taking owner operators \$31 empty/loaded call 1-800-842-0853.

RAPID FREIGHT of Texas, a Texas based carrier seeking OTR teams & singles. 95 or newer conventionals. Call Chuck at 1-800-607-5695.

SRT - DRIVERS/OTR - avg. pay 37K to 40K. Conv. trks, int. 401K (no match), good home time & more. Call toll free 1-888-778-8185.

SUNSET TRANSPORTATION needs owner-ops located in East Texas, D/FW, Houston, San Antonio metropolitan to haul scrap metal. Trailers available. Home weekend!! Year around hauling! 8% Texas, 100K potential! 888-215-1AUL.

BECOME A MEDICAL transcriptionist. Opportunity to work in an office typing for doctors. Home study. Free literature. P.C.D.L. Atlanta, Georgia. 1-800-362-7070, dept. 7Y722.

DIESEL MECHANICS; FRIEIGHTLINER dealership has all shifts available for top mechanics. Relocation expenses to Kansas/Nebraska plus 32K-45K 1st year. Call Scot King 1-800-363-0440.

GRAND CANYON McDONALD'S. Now hiring. Looking for hardworking, energetic & smiling people. Good pay. Low economical down housing available. Contact Grant 520-638-2862 or send application to P.O. Box 3026, Grand Canyon, AZ 8603.

POOL COMPANY IS accepting applications for experienced contractors, floorers, electricians, plumbers, and crane operators to work on offshore rigs every Monday thru Friday from 9:00AM to 11:00AM and 1:00PM to 4:00PM. You may apply at Pool Company, 3640 Peters Road, Harvey, LA or call 504-365-3245 to request that an application be mailed to you. Provide addresses and telephone numbers of previous employers. Should possess willingness for hard work under harsh conditions. Clean drug and alcohol screens is a condition of employment. E.O.E. - minority/female/disabled/veteran. Qualified individuals only need apply!

DRIVER...OWNER OPERATOR and company driver opportunities pulling van trailers available at Dalworth. Operate regionally in 8 states around Texas/Oklahoma. Call 1-800-333-3064 for information.

DRIVERS-BEENTHERE, done that! Now it's time to come home to Dallas Carriers. You need a CDL-A and 1 year OTR. Call 1-800-727-4374, EOB.

DRIVERS & OWNER-operators needed. Good freight. Competitive pay. Run middle US and local. Call 1-800-801-4386 or 409-642-2092 for more info.

DRIVERS - FLATBED 48 state OTR. Assigned new conventional, competitive pay, benefits, \$1,000. Sign on bonus, rider program, flexible time off. Call Roadrunner Trucking 1-800-876-7784.

DRIVERS WANTED E.L. POWELL & Sons, Tulsa, OK. We offer late model equipment, good insurance, mileage pay. One year verifiable flat bed experience. 918-

446-4447, 1-800-444-3777.

HAROLD DIVER TRUCKING needs motivated individuals to enter our Training Program. Call 1-800-270-1676 for complete information. Now taking owner operators \$31 empty/loaded call 1-800-842-0853.

RAPID FREIGHT of Texas, a Texas based carrier seeking OTR teams & singles. 95 or newer conventionals. Call Chuck at 1-800-607-5695.

Freeze Affects County Wheat Crop?

By Mary Gibbs, CEA-AG Coleman County

One week it's leaf rust, the next week it's Hessian fly and now it's freeze damage. Many grain producers are concerned about freeze damage to their wheat crop.

The Canadian airmass that enveloped Coleman County on April 12 caught much of the north and west Texas wheat crop in a stage of growth that is vulnerable to very cold temperatures. When wheat is in a vegetative growth stage and is only growing leaves, it is usually quite hardy, and can take temperatures as low as -5 F without much injury from the freezing temperatures, although the level of damage will vary greatly with conditions such as drought, temperature hardening and other variables. The lateness of this Arctic front, coupled with a mild and wet winter that caused an accelerated development in the wheat crop, could result in a considerable amount of freeze injury to the Texas wheat crop.

Wheat in much of Coleman County and North Texas was in the boot stage to headed, with most pre-bloom. There are undoubtedly fields that are later in maturity due

REED MEMORIAL CO. LIMITED
Monuments of Distinction
Ft. Worth Hwy in Brownwood
Phone 915-646-7625
Sylvia Herring - Local Rep.
348-3461

Stevens Funeral Home
400 Pecan, Coleman, Texas 76834
(915) 625-2175
Lana Korzenewski, Funeral Director

City-wide Garage Sale
Saturday, April 26. Call 348-3535 to get on list

About The Santa Anna News
Published each Thursday at 609 Wallis Ave, Santa Anna, Texas 76878 and entered as second class mail under the Act of Congress of March 2, 1879. (USPS 481540) SUBSCRIPTION RATES: \$15.50 per year in Coleman County; \$17.00 elsewhere in Texas; \$18.00 outside Texas.
POSTMASTER: Send change of address to: Santa Anna News, P.O. Box 399, Santa Anna, TX 76878-0399 (Any erroneous reflection upon the character of individuals, firms or organizations appearing in this newspaper will be gladly and promptly corrected upon calling the Editor's attention to the article.)

POLLY WARNACK PUBLISHER/EDITOR
CAROL HERRING-AST. EDITOR (915) 348-3545
FAX - Same as Telephone No.

MEMBER 1997 TEXAS PRESS ASSOCIATION

Liveoak REAL ESTATE
West of Courthouse, Coleman, Tx
86 YEARS OF REAL ESTATE SALES EXPERIENCE AT YOUR SERVICE
OFFICE HOURS: Monday thru Friday 8:00 - 5:00. Open During Noon Hour. Saturday: 8:30 - 1:00
Appointments May Be Made For After Hours

RUSTAN RHONE, BROKER
DON RHONE AGENT - OWNER
RODGER RHONE, BROKER
JAMES HUNTER, BROKER 625-2232
JOYCE KIRWIN, BROKER 625-3943
ERLENE BARKER, AGENT 625-2976
SHERRY STEWART, AGENT 625-2917
915-625-4181

- HIGGINBOTHAM LUMBER YARD** In Coleman. Good business opportunity. Owner finance.
- NICE, LARGE, 3 OR 3 BR HOME:** In Coleman. Completely remodeled w/extra lot & mobile home. (Rents for \$100 month) Beautiful pecan trees. Good area - a must see. 709 E. 8th. \$59,000.
- ENJOY THE GOOD LIFE:** 18.5 acres. 2 story colonial brick home, 2820 sq. ft. Fireplace, Spa Master Bath, 3 BDR. 1 1/2 bath, Jenn Aire Range, sewing room, office w/built-in bookcases. 1800 sq. feet shop that rents for \$125 month. Near Mozelle.
- GOOD HUNTING & FISHING - 157.7** Ac, 2 tanks, **CONTRACT** near Santa Anna. \$380/Ac
- HOME W/ACREAGE - FISK Hwy.** 3BR-2B w/loft office, utility room, kitchen w/built-ins, fireplace in living area & woodburning stove in dining room, 3 carports, shop, storm cellar, Coleman Co. water, 2 acres fenced w/barn. \$75,000.
- IN NOVICE - ON PAVEMENT*** Corner lot, nice pecan and fruit trees. Large rooms, comfortable home. \$24,000
- BUY BUILDING FOR LESS THAN \$5.00 A SQUARE FOOT AND GET A GOOD COMMERCIAL LOT** Over 3,000 sq. ft. bldg. New paint and some remodeling, new plumbing. 1403 Neches, in Coleman. \$16,000.
- BUSINESS OPPORTUNITY -** Combination: Texaco service station, restaurant w/equip., bait shop, coin-operated laundry complete w/washers & dryers, on Hwy 153 near Hords Creek Lake. Property is leased, now. Possible owner finance.
- FISH OUT THE BACK DOOR*** - 1.85 Ac w/3 room cabin on Jim Ned Creek near Thrifty. \$17,900.
- 3 BR-1 1/2 B** brick home w/den and fireplace on 2 Ac on pavement, south of Santa Anna on TRICKHAM HWY. \$37,000. 22 Ac, adjoining house, w/large tank, boxcar & pens may be purchased if wanted.

RURAL LISTINGS NEEDED

SPECIAL OF THE WEEK

1995 Buick Riviera
T5050A, full neutral leather interior, power seat, CD player, automatic climate control, steering wheel controls, every luxury you can expect.

NADA Retail \$21,450.00
NADA Wholesale \$18,400.00
This Week Only \$16,995.00

Dealers Welcome
300 EAST COMMERCE
1-800-568-CARS
915-646-9511

HOLLEY AUTO SUPERSTORE
Price Good Until 4/26/97
104 EAST COMMERCE
1-800-933-3604
915-646-7425

A
P
R
2
4
1
9
9
7

Rockwood Report

By Sandra Wilson

We were under thunderstorm warnings last night, in but didn't get any rain. Gladly, we didn't get the high winds either. The sun is shining now. The wild flowers are beautiful, and the old pesky weeds, are growing very rapidly.

Mack and Pat Hambright had an anniversary this month, congratulations!! May you have many more.

The annual Rutherford family reunion, will be held, at Rockwood Community Center, Sunday, April 27. Please, bring your favorite food and join the family, for their celebration.

Cecil and Pat Vance, were in Talpa, for their roping competition during the weekend. Guy Allen, won't be competing.

Minnie Bray, hosted Bible study, Wednesday night, with Bro Jeff, Loma and Sara Dean, Blake Williams, Jr. and Nell Brusenhan, joining her. Saturday night Minnie attended Rockwood community supper. Mack and Pat Hambright visited and had lunch with Minnie, Monday.

Jack and Skeeta Cooper visited with Allene Rutherford, Sunday afternoon, then with Bill and Sadie Bryan, and their guest.

Coleta Pearson and Vivian Steward, were in Coleman, Friday, on business.

Wednesday night, Jr. and Nell Brusenhan, were at Minnie Bray's for Bible study.

Wednesday morning, Bill Connor, of Santa Anna, visited with them. Saturday, Jr. and Nell, were at Simpson Lake, visiting with Mr. and Mrs. Bailey Hull. Mr. and Mrs. Harold Underwood, also visited with the Hulls.

Hank and Darla Wise, were enjoyably busy last week with Hunter and Hayden's baseball games.

Wednesday, Rose Cooper's sister and husband, Donald and Nita Price of Lisbon, Iowa who had been

snowbound, arrived to visit. Thursday, Elec, Rose, Donald and Nita, drove the bluebonnet trail. They stopped and had lunch in Llano. Jack and Skeeta Cooper, visited with them Friday afternoon. Saturday, they visited at McGregor, with Robert and Faye Estes. David, Brandi, Kyla and Katie Cooper, Ronnie, Nola, and Cade Cooper, visited with the Estes.

Last Saturday, Faye Wise spent the night in San Antonio with Bobbie Valicek. They attended Monica Mueller's birthday party. Faye, flew to Tucson, Ariz. Sunday, to visit with Mark Wise and family and returned home Thursday. Amanda Lawrence and Nathan Wise visited with Faye Sunday. Joe Ed and Ruth Ann Wise visited Sunday night.

Blake Williams, has visited with Doris Richardson, in Hillsboro, and Carolyn Williams, in Houston via telephone this past week. Blake was a business visitor in Colernan Wednesday.

Dorothea and Mary Ann Pape, were in Abilene Monday for some shopping.

Bob, Margot and Megan Rutherford, spent the weekend with Claudia Rutherford.

Sunday evening Claudia, visited with Billie Eckles in Santa Anna. They drove to Coleman, and visited at Holiday Hill, with Gussie Wise and had supper in Coleman, before returning home. Monday afternoon Claudia played forty-two with the Gouldbusk Forty-two club. Mozelle Williams hosted this weeks party.

Pat Greener, is visiting with Bill and Sadie Bryan. James, Carol and Cody Hodges visited over the weekend. Royce and Wanda McIver Jack and Skeeta Cooper visited with them Sunday afternoon. Minnie Bray has visited several times during the week. Monday afternoon Mack and Pat Hambright and Minnie visited with Bill, Sadie and Pat.

Gayle Stewardson spent Thursday, and Friday night in San Saba. Then she went with Martha Burnham of San Saba and they met with ten other classmates in Austin for a class reunion. She visited with Chad and Kathy Oliver in San Saba Saturday before returning home that evening. Clay Hubbard spent Thursday through Saturday with Burgess. Tyler Stewardson spent Friday night with Clay and Burgess.

Pat Patterson of Shreveport, La visited with Vivian Steward from Friday until Wednesday last week.

Tuesday I visited with Fredna Horton and Gladys Slayton and her other guests, Charlotte Slayton and nieces. Wednesday Fredna took me as her guest to the 4-H center at Brownwood lake. Louise Strength and Linda Estes went with us. It

was a wonderful place with so many nice people working there and visiting. I visited with a lady that had lived in Rockwood, Wretha (Walters) Fitzgerald. It is really a small world. This session was called Spring Fling and they have a session in the Fall, October Fest. If you are over 50, (they have lowered the age limit), and like visiting with different people and doing crafts, you should plan on going to one of their sessions. Friday afternoon Christy Taylor stopped by. She had been in Abilene with her father, John Casey, who had surgery. Saturday afternoon Charlie Smith, Frances McAlister and I had a working visit.

Sunday afternoon Darlene McElrath came for a visit. She and I visited with Charlie and Frances at Waldrip. Darlene is spending several days with me.

TRICKHAM TIDBITS

By Anna York

Mr. and Mrs. R. C. Stearns of Cross Cut, Alice Wells of Coleman and Verna and Arvil Bolton had dinner on Saturday with their mother Florence Stearns. Verna was celebrating a birthday. Happy birthday wishes to her.

Naomi Nicholas of Plano and her son Ted and a friend of Ted's of Texas Tech at Lubbock spent the weekend with Leona Henderson.

Reba and Elvis Cozart attended funeral services at Santa Anna for Tom Kingsbery on Friday, and Sunday they enjoyed a picnic at Elvis' farm near Whon and later visited with Mrs. Trudi Rutherford.

Rankin and Natalie McIver were at San Antonio over the weekend attending the Anderson family reunion, they also visited Rankin's brother-in-law Roy Miller in a nursing home there and were pleased to find him doing well. Many of you will remember Mr. Miller as he lived in Coleman for many years.

Kit Dean spent the weekend with his folks Mr. and Mrs. Ray Dean and Wyndham.

Bettie Miller of Austin and Lea Mock of Post spent the weekend with their mother Mary Lea Mitchell. Saturday Peggy Miller of Eden and Marilyn Jackson of Abilene spent the day with them.

Talmadge and Laverne McClatchy attended funeral services for Euna McClatchy Bissett at Bangs on Saturday. Sunday visitors were Dr. and Mrs. Kenneth McClatchy of Littleton, Colorado and his mother Ellie McClatchy of Brownwood and Merrilee and Bob

Anderson.

Royce and Wanda McIver visited with Britt McIver and his family at Buffalo Gap on Saturday evening and on Sunday they visited at Rockwood with Mr. and Mrs. Bill Bryan and their daughter Patricia.

There were five ladies that met and quilted on Monday at the community center. They started a quilt for Tony Watson. There were eighteen present Thursday night for the regular eighty-four club meeting.

Phyllis Conner and her mother Mrs. Worley of Coleman visited on Tuesday afternoon with Annie Lou Vaughn, Candi Dockery visited Wednesday, Rodney Guthrie visited Thursday morning, mowed her lawn and had lunch and Reba Cozart visited in the afternoon.

Earlene Dockery visited with her mother Mrs. Lavada Johnson in Coleman on Monday. Saturday Earlene and Annie Lou Vaughn along with JoAnna Smith of Terrell and Mary Ola Woods of Bangs toured the bluebonnet trails in part of the hill country and had lunch in Llano. Sunday afternoon Earlene and Annie Lou visited in Bangs with Rodney and Cellena Guthrie and Mason.

A professor can never better distinguish himself in his work than by encouraging a clever pupil, for the true discoverers are among them, as comets among stars.

—Linnaeus

Rockwood Students From 1946 Picture Are Identified

According to contributor Ludy Bryan, with our reader's help, she has been able to identify all but one of the students in a picture of grades 1 - 3 of the Rockwood School taken in 1946 and published March 27 in the Santa Anna News. The students are identified as:

Front Row (seated) Left-Right: Bobbie Rehm, Olivia McIntire, Carrie Mae Blair, Shirley Hodges, Susie Estes, Patricia Bryan, Belva

Heilman, Joyce Jackson, Laquita Richardson. Back Row: Frankie Lee Hodges, Patsy Bryan, Jo Beth Cooper, Wendell Rehm, Wes Wise, Donnie Davis, Elroy Baugh, Unknown, Gariand Mcswain, Kenneth Bryan, Morris Straughan, James Steward, Mac Ross Williams, Kenneth Estes, Reginald Cooper, Wayland Blair.

The teacher is: Mary Frances (Herring) Fowler.

Margie Fleming Will Be Honored At 80th Birthday Party On Saturday

Friends and relatives are invited to help Margie Fleming celebrate her 80th birthday at a party to be held Saturday, April 26th from 2:00 to 4:00 p.m. in the annex of First United Methodist Church of Santa Anna.

Margie is a life-long resident of the Cleveland Community and still

resides on the old family home place.

Party hosts and hostesses will be nieces and nephews of the honoree: Peggy Sikes, Janette McDaniel, Betty Joyner, Margie Molden, Phyllis Dillard, Donna Mapson, Kenneth McDaniel, J.C. McDaniel, Charlie Ray Fleming, Terry Fleming and Mack Boyet.

A money tree will be available at the party for those wishing to participate.

Texas State Festival Of Ethnic Cultures And Arts And Crafts Show To Be Held In Ballinger

The 22nd annual Texas State Festival of Ethnic Cultures and Arts and Crafts Show will be held in Ballinger on April 26-27. The festival will be on the Runnels County Courthouse lawn.

Saturday the event will kick off downtown at 9 a.m. with the Colorado River Bike Fest (100k, 18 mile, 5 mile), followed by a large parade at 9:30 a.m. Ethnic food booths, hand-made arts and crafts, live entertainment, Antique Tractor and Farm Equipment Show, community booths, pony rides and games for the children and a big Saturday night dance.

Cisco Folklife Festival This Weekend

The 24th annual Cisco Folklife Festival will be held April 26-27 at Cisco Junior College.

There will be strawberry shortcake, homemade bread, entertainment, various demonstrations and exhibitors with arts and crafts available for purchase.

Grand Jury Returns Thirteen True Bills

The following cases were presented by Coleman County District Attorney Ross Jones to the January term of the 1997 Coleman County Grand Jury on Monday, March 24. True bills were returned on the following:

Jan Edward Brown, Delivery of Controlled Substance, a class 1 felony;

Christopher Don Warrick, Delivery of Controlled Substance, a class 2 felony;

Jamie Bowers, two counts of Hindering Apprehension or Prosecution, class 3 felonies;

Robert L. Cotton, Count 1: Aggravated Assault, a class 2 felony; Count II: Deadly Conduct, a class "A" misdemeanor;

Greg Warrick, Aggravated Assault, a class 2 felony;

Greg Warrick, 2 counts of Forgery, class 4 felonies;

Greg Warrick, 2 counts of Forgery, class 4 felonies;

Ernest Wayne Kohler, Burglary of a Building, a class 4 felony;

John Todd Bolds, Aggravated Assault, a class 2 felony;

Ira Dan Carraway, Felony D.W.I., a class 3 felony;

Steve M. Morgan, Theft, a class 4 felony;

Arturo Dela Rosa, Jr., 2 counts of Forgery, class 4 felonies; and

Arturo Dela Rosa, Jr., 2 counts of Forgery, class 4 felonies.

Two death investigations were also presented to the Grand Jury and no action was taken.

Three No Bills were returned.

Fishing Lake Ivie

Crappie fishermen are getting a little disgusted with results, but are catching some now and again; just not in the numbers they are used to at this time of year. Some are convinced the crappie are skipping their spawning season because of the persistent cool fronts that keep blowing through every few days.

Bass biting has also be a little slow but many are reporting several caught a day in between the fronts. Most are being taken on spinnerbaits up the rivers.

If you're looking for numbers and not size, use Watermelon French Frys fishing in the main lake. Long, sloping points are best places.

Courtesy O

Concho Park

On Lake O.H. Ivie

RV Hookups Convenience Store
Ice, Supplies, Bait, Fishing Tackle
Licenses, Permits, Gasoline
Short-order Grill

Motel (915) 357-4467
Store (915) 357-4466

We're here to lend a hand.

- Farm and Ranch Real Estate Loans
- Rural Home Lending
- Agribusiness Loans
- Investment and Recreational Properties

FEDERAL LAND BANK ASSOCIATION OF COLEMAN

215 West Elm
P.O. Box 511
Coleman, Texas 76834-0511
(915) 625-2165 Res. 625-3049
FAX (915) 625-2166

James R. Eisenhower
President



Part of the fabric of rural life.

YOUR FARM & RANCH

PRICES GOOD THRU 4/30 SAVINGS SOURCE!

PANELS & GATES



52"x16" Stock Panel
4-gauge steel. All galvanized, welded steel. (442226) **\$12**

52"x16" Combination Panel (159222) **16.50**



12' Utility Corral Panel
Powder coated in a leather brown finish. Chain connectors. (908170) **\$52**

12' Brown Entrance Panel With Gate (909018) **\$95**



4' Utility Tube Gate
50" high. Includes chain latch, adjustable hinges and lag bolts. (995363) **\$32**

8" (895966) **\$44**
10" (900098) **\$48** 14" (147991) **\$59**
12" (89973) **\$52** 16" (908008) **\$68**



52"x14" Steel Panel Gate
Hardened 24-gauge galvanized spring steel. With chain latch, hinges and lag bolts. (199352) **\$19**

52"x8" (159378) **\$36**
52"x10" (159387) **\$39** 52"x14" (159407) **\$48**
52"x12" (159395) **\$43** 52"x16" (159415) **\$57**

WIRE FENCE

48"x100' Non-Climb Horse Fence **\$79**
12-gauge galvanized wire. Stiff stay knots are smooth on both sides to prevent injury to animals. (159143)

60"x100' (159151) **\$95**
72"x100' (159178) **\$119**

39"x330' High-Tensile Field Fence **\$67**
14-gauge Class-3 galvanized wire. (340225)

47"x330' (316852) **\$75**

32"x330' Hinge Joint Field Fence **\$58**
14-gauge galvanized wire. (159021)

39"x330' Square Deal **\$74**
12-gauge (959818)

47"x330' Square Deal **\$84**
12-gauge (959883)

GATE OPENERS



Mighty Mule Gate Opener
Includes control box, transformer, transmitter and hardware. (807343) **\$459**

T-POSTS

5 1/2" Medium Duty T-Post **1.95**
Tough, resilient rail steel. Industrial quality baked-on finish. T-shape for added strength. #125 (159878)

6" (159884) **2.05**
6 1/2" (159892) **2.25**

STOCK TANKS

72-Gallon Steel Stock Tank **\$47**
Heavy galvanized steel side walls and extra heavy galvanized tank bottoms. (160946)

100-Gallon (160954) **\$54** **150-Gallon** (160962) **\$74**

100-Gallon Poly Stock Tank
Contains UV inhibitors to prevent deterioration from sunlight. (642647) **\$54**

150-Gallon (642698) **\$84**

BARBED WIRE



2-Point High-Tensile Barbed Wire
Class 3 zinc coating for rust resistance. 80 rod roll. 15 1/2 gauge. (852522) **20.75**

2 Point 12 1/2 gauge, (159888) **25.75**

Cable Twist Wire
12-gauge barless cable. Galvanized Made in the USA. 80-rod roll. (473767) **28.75**

ABILENE

200 N. Clack Rd.
Corner of North First at Winters Freeway
(915) 692-7055

Mon. thru Fri. 7:30-8 Saturday 7:30-6 Sunday 10-5

Now 5 Ways To Charge! The Project Charge Card®, MasterCard®, Visa®, Discover®, The American Express® Card & The Optima® Card

We strive to keep every item in stock. For this reason, we reserve the right to limit quantities purchased. Our Price Promise means that if you find the exact same item currently being sold by a local competitor at a lower price than ours, we'll match the lower price (no liquidations, special order or closeouts). Due to the vast array of products carried, in-store items may vary slightly from advertisement illustrations. Prices on lumber, plywood and other commodity items are subject to change without notice. Although we cannot be held responsible for printing errors, we welcome customer's comments and recommendations. Details of product warranties available in store. Copyright, 1997, Payless Cashways, Inc.