



**Santa Arrives
During Parade,
4:00 Friday**

1-98
SOUTHWEST MICRO PUBLISHING
2627 E. YANDELL DR.
EL PASO TX 79903
750-1

Your
Hometown
Newspaper
Since 1886

Santa Anna News

"He Profits Most Who Serves Best"

Newstand Price 50c

Volume 111 Number 49

Thursday, December 5, 1996

New Restaurant Set To Open 14th

Santa Anna will see the opening of a new restaurant on Saturday, December 14th, if all goes well between now and then and work on the venture continues as planned. "Mata's" will be a full line Mexican food restaurant featuring several specialties. It will be located on Wallis Ave. in the building which in recent years was the

Wagon Wheel Cafe. Armando and Laura Mata have spent the past several months on a complete remodeling of the building which will have new fixtures and a fresh new Southwest Spanish decor. Laura says the couple is not entirely new to the restaurant business as they once operated one

in San Angelo with her mother. The family has lived in Santa Anna for about 15 years where Armando has been in the landscaping business which he plans to continue.

The new venture will be a family affair for the Mata's who will be assisted in the business by some of their children.

"Mata's" will be open Wednesday thru Friday from 11 a.m. to 3 p.m. and 5 to 8 p.m. Saturday hours will be 9 a.m. to 8 p.m. The restaurant will be open on Sundays from 9 a.m. to 3:30 p.m.

Santa Anna welcomes this new business to our community.

CCMC Auxiliary To Host Christmas Tour Of Homes In Coleman Sunday

The Coleman County Medical Center auxiliary will host a Christmas Tour of Homes Sunday, Dec. 8, in Coleman.

The homes will be open from 1:30 to 4:30 p.m. They are the Donald and Mary Williams home, due south at the end of Commercial Ave.; Herbert and Ginger Graham, 217 West College; Wayne and Terri Moore, 213 Miami; J.L. and Pat Trammell, 908 S. Colorado; Clitis and Pat Sinclair, 506 Rio Grande; and the home of Buddy and Ruby Nell Neff, located nine miles north on Highway 206.

Tickets for the tour are \$5.00 each and may be obtained at the Medical Center gift shop or at any of the homes on the tour. You may visit any or all homes on the tour and in any order. All the homes will be marked with a sign or flag to designate they are part of the tour.

You can have an enjoyable afternoon and your participation will be very much appreciated by the Coleman County Medical Center Auxiliary. This is the group's largest fundraiser of the year.

Lions Club Pancake Fiesta Friday

The annual Santa Anna Lion's Club Fiesta will take place on Friday, December 6 in the Lions Club Building on Wallis Avenue. Serving will be from 11 a.m. to 7:00 p.m. Charges are \$3.00 for adults and \$2.00 for children under 12.

Public Hearing Tuesday, 10th, For Academic Excellence Indicator Report

Santa Anna ISD will conduct a public hearing to present to the public the Academic Excellence Indicator System Report.

This "report card" on SAISD is issued annually by Texas Education Agency to the public so that an evaluation of our school's performance can be made.

The hearing will take place at 6:30 p.m. on December 10, in the Administration Building of the Santa Anna ISD.

Public participation and comment is invited.

The Pancake Fiesta is the major fundraising event of the year for the local Lions Club and everyone is urged to stop by and enjoy pancakes with the Lions Club while in town for the parade and other activities taking place that day.

Christmas Opening



Friday, December 6

10 a.m. to 3 p.m. West Texas Utilities Open House
10:30 a.m. to 7:30 p.m. Lions Club Pancake Fiesta
Lions Club Building in downtown Santa Anna
4 p.m. Christmas Parade through downtown area

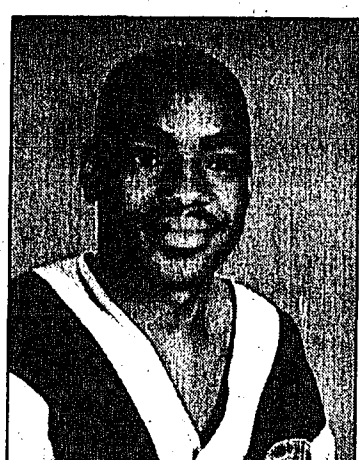
OTHER HOLIDAY EVENTS

Friday, December 13.....City of Santa Anna Open House
Sunday, December 15.....Community Cantata
Presbyterian Church, 6 p.m.
Monday, December 16.....CCTC Open House
Thursday, December 19.....School Band and Music Concert
Monday, December 23.....Santa Anna National Bank Open House

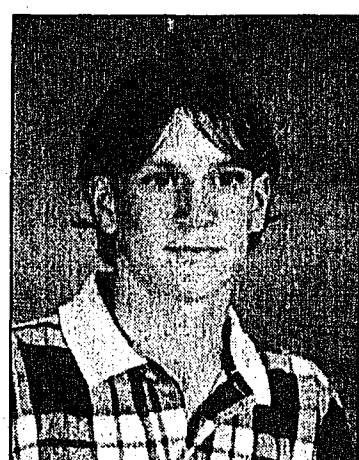
Ten Mountaineers Receive All-District Football Honors



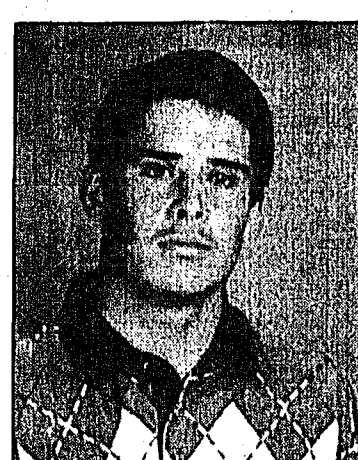
CLIFTON BLAINE, Sr.
1st team Offensive Line
1st team Defensive Line



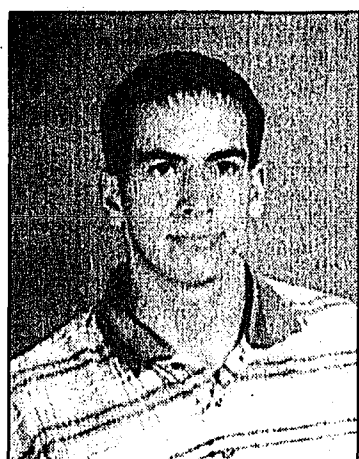
JOSH LEWIS, Jr.
1st team Defensive Line



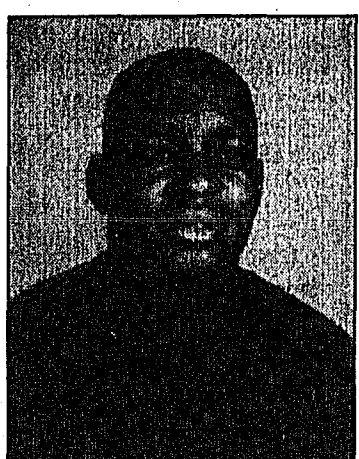
CHRIS CHEANEY, Sr.
2nd team Wide Receive
Honorable Mention Defense



CESAR PATINO, Sr.
2nd team Offensive Lineman



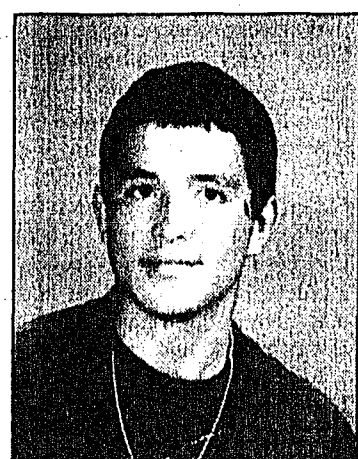
SHANE WATSON, Jr.
2nd team Defensive Back



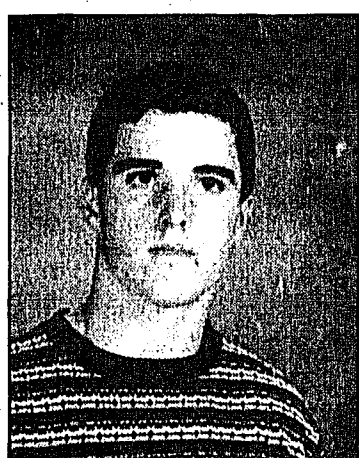
CHRIS LEWIS, Jr.
2nd team Offensive Running Back



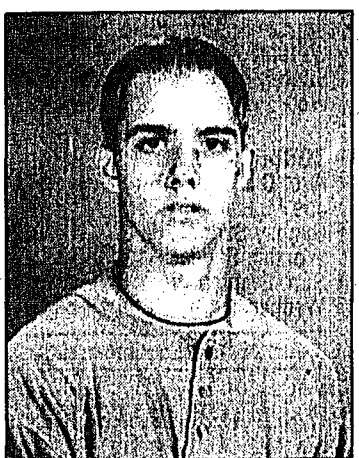
LUPE CASTILLO, Jr.
Honorable Mention Offense



HECTOR PATINO, Jr.
Honorable Mention Defense



TIM ABERNATHY, Sr.
Honorable Mention Offense



CHRIS BOYET, Soph.
Honorable Mention Defense

B'Ball Tournament Thursday - Saturday

The Santa Anna Booster Club will be the sponsor for the high school basketball tournament taking place Thursday through Saturday at Perry Gym. Play begins at 9 a.m. Thursday.

The Lady Mountaineers will play at 3 p.m. on Friday.

The boys will be taking on the

Novice Hornets at 6 p.m. on Thursday.

Teams completing in the tournament will be Albany J.V., Sidney, Panther Creek, Miles, Bangs J. V., and Blanket.

A bracket of games and times is on page 4 of this issue of the NEWS.

Fire Department Elects New Officers

David Huggins Is Selected Chief

The Santa Anna Volunteer Fire Department met on December 2 for their annual Christmas Supper.

Brisket and ham, cooked by Freddie Dodson, was served along with other delicious foods cooked by the ladies auxiliary members.

Livestock Association To Meet Wednesday, 11th

The Santa Anna Livestock Association will be meeting on Wednesday, December 11, at 7 p.m. in the High School Ag Building.

The meeting will be held to finalize plans for the Santa Anna Project Show which is slated for January 11.

It is important that everyone involved in the Livestock Association and other interested people be present for this meeting.

No fire calls were received during the month of November. The fire department assisted with the pickup and trailer wreck on November 24 on the Highway 67 overpass.

Methodists Will Serve Lunch Sunday To Benefit Burn Victim

The Aldersgate Sunday School Class of First United Methodist Church will serve a taco lunch immediately following church services Sunday to help raise funds for a local burn victim.

Everyone in the community is invited to take part in the benefit by having lunch at the Methodist Church annex. There is no set price for the meal, but donations will be

accepted. The recipient of the benefit was severely burned about a month ago and is being cared for by his daughter-in-law and son following hospitalization and treatment. He has undergone one series of skin grafts and is expected to have more in the future. The funds raised will go toward his ongoing medical expenses.



Time To Write Those Letters To Santa

Children are invited to write letters to Santa to be published in the Santa Anna News Christmas issue.

School children will write their letters at school and they will be delivered by the school. Younger children may bring their letters by the NEWS office or mail them to P. O.

Box 399, Santa Anna, Texas 76878. Letters should be signed the child's full name.

Day care providers might want to help the young ones in their care write to Santa to help mom and dad with Christmas ideas.

Letters must be received in the NEWS office on or before December 17.

Santa Anna — A Town Of Friendly People Including Vermell Young

Obituaries

Lena Mae Gunn

Lena Mae Gunn, 89, of Brownwood, died at 2:10 a.m. Thursday, Nov. 28, 1996 in the Brownwood Regional Medical Center.

Funeral services were held at 2 p.m. Saturday, Nov. 30, 1996 in the Heartland Funeral Home Chapel with Ted Kell of the Austin Avenue Church of Christ officiating. Burial followed in the Eastlawn Memorial Park in Early.

She was born Oct. 31, 1907 in Coleman County near Trickham, the daughter of the late J. K. and Grace White Wells. She married Alfred Gunn who preceded her in death. She was a homemaker, a member of the Austin Avenue Church of Christ and had been a resident of Brown County most of her life.

She is survived by a step-daughter and several nieces and nephews, including Carmleta Crawford of Brownwood and Charlene Gilbreath and Wayne Smith, both of Lake Brownwood; a brother, Alan Wells of Santa Anna; and two step-grandchildren.

She was preceded in death by a stepson.

Ethel Williams

Mrs. S. D. (Ethel) Williams, 102, of Santa Anna, died Friday evening, Nov. 29, 1996 at her residence.

Graveside services were held at 2 p.m. Sunday at Burkett Cemetery with Rev. Bill Merritt officiating, under the direction of Stevens Funeral Home.

She was born Oct. 20, 1984 in Burkett, the daughter of the late Cyrus Eugene and Mary Elizabeth Pruitt Burns and the granddaughter of Coleman County pioneer Col. T. A. Burns. She was a life-long resident of Coleman County and attended school at Comal and Burkett.

In 1912, she married Solon D. Wilson in Burkett and he preceded her in death in 1976. She was a homemaker and a member of First United Methodist Church in Santa Anna. She loved to fish and quilt.

Survivors include one daughter, Thelma Ivie of Granbury; two sons, W. C. Wilson of May and Woodrow Wilson of Santa Anna; sister-in-law, Mrs. G. A. (Melba) Burns of Crowley; five grandchildren; 11 great-grandchildren; 12 great-great-grandchildren; several step-great-grandchildren; and numerous nieces and nephews.

Pallbearers were Doug Ray, Derek Ray, Leslie "Tiger" Wilson, Terry Pickett, Dennis Franke, Lee Daws, Roy Urbon, J. W. Johnson and Bobby Harwell.

The family requests memorials be made to West Texas Rehabilitation Center.

Robert Reynolds

BANGS—Services for Robert Henry Reynolds, 81, of Bangs were held at 2 p.m. Wednesday, Dec. 3, 1996, at First Baptist Church with the Rev. Jimmy Allen officiating. Burial followed in the Bangs Cemetery under the direction of Heartland Funeral Home of Early.

He died Monday, Dec. 2, 1996, in a local nursing home following a lengthy illness.

Born March 27, 1915, in Santa Anna, he was the son of the late Edward Lewis and Cynthia Paralee Barnett Reynolds. He attended high schools and married Vada Mae Ingle in Brownwood in 1945.

He was a veteran of the U. S. Army during World War II. He served in the European Theater and received the Bronze Star Medal, Good Conduct Medal and Distinguished Unit Medal among others. He was a Baptist and a member of the American Legion Post No. 308.

Survivors include his wife; a son, Bobby Reynolds of Bangs; a daughter and son-in-law, Betty and Jimmie Ellis of Bangs; a brother, Ivan Reynolds of Brownwood; a sister, Velma Creekmore of Brownwood; four grandchildren; one great-grandchild; and several nieces and nephews.

He was preceded in death by his parents, a brother Hubbard Reynolds and a sister Edna Daniels.



Class Of 1971 Enjoys 25th Reunion During Homecoming

Eleven class members and guests enjoyed reminiscing over old annuals and paper clipping from high school on Saturday afternoon on homecoming weekend. Members attending were Kelly Honeycutt, Palmer; Nina Stiles Prosser, Farmers Branch; Janet Wells Millers, Irving; Nancy Horton Chiders, Brownwood; Ruth Ann Walker Harding, Early; Nancy Baugh Lowry, Bangs; Gail Robinett Horner, Santa Anna; Gay Rutherford Abernathy, Santa Anna; and Roddy and Debbie Horton Dean, Santa Anna. Special class member of the day was Dwight Eppler from Valrico, Florida. Class members have only spoke to Dwight over the phone during the past 25 years because he could not attend the reunions due to his military service. We all enjoyed looking at his pictures from his many travels and listening to his stories. He returned the long lost class banner (in the picture above) that was left deserted on the graduation podium 25 years ago. Other guests who attended were Sybil Fellers Eubank, Class of 1948; Dickie Horner, Class of 1968; Sue Kingsbery Porter, Class of 1970; Melinda Dean Horner, Class of 1972; and Jennifer Rutherford, Class of 1979.

Santa Anna Nutrition Center Menu

FRIDAY, DECEMBER 6

Lasagna, tossed salad, corn o brien, peaches and toasted garlic bread

MONDAY, DECEMBER 9

Tamale pie, tossed salad, refried beans, pudding w/topping

FRIDAY, DECEMBER 13

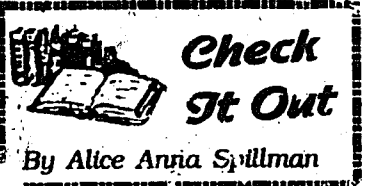
Oven fried fish, coleslaw, tator tots, pinto beans, hushpuppies and lemon cake

Santa Anna Cemetery Memorials

The Santa Anna Cemetery Association has received the following memorials:

In memory of Carrie Bible Cupps from Joe Wallace, Frank and Jean Cox and Thelma Fleming; and

In memory of Helen Cupps Williams from Thelma Fleming.



By Alice Annia Spillman

They say that the biggest thrill for an author is the first time he sees his book in print. Well that thrill has to rate a 7 plus on the Richter scale to top my feeling recently. You see I read my daughter Monique's article from the *Oncogene Magazine*. With my limited scientific knowledge I didn't fully understand but the thrill was there.

You really showered us with books this week. The Library is grateful.

Nell Hipp brought 11 books from Jennie and Tad Lee in Odessa and three books from Wayne Wristen. These are all those westerns that you love—three Long Arm Series, five from Gunsmith Series, three Louis L'Amour and three others. Thanks to all these friends for sharing books that few will give away.

Carmen Donham brought two good paperback fictions. Kathleen Woodiviss and Nora Roberts. These are favorites of this category. The Roberts book is *Daring to Dream*. One of a trilogy book about three girls who grew up in a grand house.

Shannon Abernathy brings the latest magazines. *Intensity* Dean Koonitz and *The Chamber* John Grisham have both been on the best seller lists. *Flawless* Adam Barrow is a new thriller.

Billie Wheatley brought hard bound books that deal with societies latest problems. *Shadow of Cain*. V. Bagliosi (author of *Heiter Skelter*) has co-authored a novel about the release of a paroled mass murder into an unsuspecting community. *My Father's House* S. Fraser deals with regression therapy and bad memories. *Natural Enemies* Horvitz. A man decides to murder his family. These books may give insight into some of societies most serious problems.

Another new paper back is *Silent Night* Mary Higgins Clark. This is a Christmas mystery concerning a little boy who is lost in New York.

It's hunting time so you may want to check out one of the *Outdoor Magazine* that Cynthia Philpot dropped off. Also some November issues of so called women's magazines are on the shelves.

The December issue of *Smithsonian Magazine* is on the coffee table. One of the book reviews will interest those of you who are addicted to reading. *Rained By Reading: A Life in Books* Lynne Schwartz. She described her progression from an intrigued 4-

Birthdays & Anniversaries

DECEMBER 5
Ronnie Daniel
Terry Lishka
Chris Powell
Mr.&Mrs Robert Robinett*

DECEMBER 6
Yolanda Guerrero
Buffy Jo Martin
Charles Peacock
Marixa Longoria

DECEMBER 7
Shelly Carter
Jimmy Kerpes
Carlton Watson
Tiffany Snow

DECEMBER 8
Kevin Fellers
Shelly Gray
Lonella Roesch
Michael Salazar
Mr. and Mrs. Jake McCreary*

DECEMBER 9
Bill Garrett
Kay Gray
Tanner Chamberlin

DECEMBER 10
Josh Eubank
Gale Brock
Carole Voss
Rita Morris Harris

DECEMBER 11
Amanda Lishka
Elwayne Taylor
Shirley Taylor
Richard Chaffin

DECEMBER 12
Mr. E. O. Rider
Cindy Wristen
Mary Haynes

Meals On Wheels Receives Memorials

The Santa Anna Meals on Wheels program received memorials in memory of Byron Brock from Gayle Stewardson and Era D. Walters.

year-old to being a novelist. Wouldn't you do better off reading than working the remote control until 3 a.m. Yes-Yes-Yes!

The library was never better supplied with good reading materials. Curling up with a good book on a cold night can't be beat. Come see for yourself.

Margaret Hensley MSN, RNCS Family Nurse Practitioner

Family Health Care Clinic

Donald Pope M.D. Medical Director

Time is running out! Get your flu shot while we have plenty of vaccine!

Santa Anna 348-3566 106 N. 2nd

COW POKES By Ace Reid



"Yeah, I predicted this rain. Back in March I said we'd shorely git as much as two inches by the end of the year."

Santa Anna National Bank

Deposits Insured By FDIC Up To \$100,000

Ask About Our Interest Bearing-Accounts

Checking Accounts

\$1,000 Minimum

Pass Book Savings

Certificate of Deposit

Member FDIC

Substantial Interest Penalty Is Required For Early Withdrawal

About The Santa Anna News

Published each Thursday at 609 Wallis Ave, Santa Anna, Texas 76878 and entered as second class mail under the Act of Congress of March 2, 1879. (USPS 481540) SUBSCRIPTION RATES: \$15.50 per year in Coleman County; \$17.00 elsewhere in Texas; \$18.00 outside Texas.

POSTMASTER: Send change of address to: Santa Anna News, P.O. Box 399, Santa Anna, TX 76878-0399

(Any erroneous reflection upon the character of individuals, firms, organizations appearing in this newspaper will be gladly and promptly corrected upon calling the editor's attention to the article in question)

MEMBER 1996

POLLY WARNOCK, PUBLISHER/EDITOR
CAROL HERRING-AST, EDITOR
(915) 348-3548
FAX—Same as Telephone No.

Continuing to offer you the most caring, professional service

Stevens Funeral Home

400 Pecan, Coleman, Texas 76834
(915) 625-2175

Lana Korzenewski, Funeral Director

Come Let Us Worship

ASSEMBLY OF GOD
Brady Hwy.
James Ford - Pastor
Sunday School - 9:45
Worship Service - 11:00
Sunday Evening - 6:30
Wednesday Evening - 7:00

FIRST UNITED METHODIST
405 South 1st
Mike Eflord - Pastor
Sunday School - 10:00
Worship Service - 11:00
Youth Group - Wed. 3:30 (program 5:00)

FIRST BAPTIST
106 S. Lee
Raymond Jones - Interim Pastor
Sunday School - 9:30
Worship Service - 10:45
Sunday Evening - 6:00
Mission Organizations - 6:00 Wed.
All Age Groups Bible Study 6:00 Wed.

NORTHSIDE BAPTIST
708 AVE. B
Marvin Hale - Pastor
Sunday School - 9:45
Worship Service - 10:50
Sunday Evening - 6:00
Wed. Prayer Service - 6:30

CORDERO BAPTIST
Ave. C & South 6th
Joe M. Frausto - Pastor
Sunday School - 9:45
Worship Service - 11:00
Sun. Evening Worship - 5:00
Wednesday Bible Study - 6:30

ST WILLOW BAPTIST
Brady Hwy.
R.L. Brown - Pastor
Sunday Worship - 11:00

NEW HOPE COMMUNITY
Brady Hwy.
D.C. Neal - Pastor
(Contact Mrs. Joe (Pearl) Wilson)

FIRST CHRISTIAN
Ave C & 1st Street
Clyde Majors - Pastor
Sunday School - 9:45 every Sun.
Worship Services - 3rd. Sun.

FIRST PRESBYTERIAN
1001 Willis
Dr. Richard Wood - Pastor
Sunday School - 9:45
Worship Service - 11:00
Family Night Dinner - 3rd Wed.
Fellowship Dinner Each 5th Sun.

CHURCH OF CHRIST
310 Ave. B
Aaron Lemond - Minister
Sunday Bible Classes - 9:30
Worship Service - 10:30
Sunday Evening - 6:00
Wednesday Evening 6:30

SEVENTH-DAY ADVENTIST
Ranger Park
Robert L. Stumph - Pastor
Sat. Sabbath School - 9:30
Sabbath Worship Service - 11:00
Vespers - SDA School - 4:00
Prayer Meeting - Tues. at School

Henderson Funeral Home
Santa Anna & Coleman

Sharon's Beauty Salon

Coleman County Telephone Cooperative, Inc.

Santa Anna News

GETTING TO KNOW OUR NEIGHBORS

Mr. and Mrs. Homer Greenlee



The Greenlees on their wedding day

Homer Greenlee was born near Hasse, the son of the late Henry and Estelle Greenlee. He finished tenth grade in Hasse which is located in Comanche County. From there he attended school one year in Proctor, finishing in 1930. In 1937 Homer entered Texas A&M University, completing his DVM degree in 1941. In 1938 he married Isla Pettit, the daughter of Aaron and Lillian Pettit of Gustine in Comanche County. Isla graduated from Gustine in 1935. She is also the sister of the late A. D. Pettit who taught Vocational Agriculture in Santa Anna for 36 years. After graduating from A&M, Homer spent four years overseas during World War II. He served in Africa, Italy, France and Germany with the 5th and 7th armies (which was composed of 3rd, 36th and 45th di-

visions). The couple moved to Fort Worth after the war and Homer was in the practice of veterinary medicine for 35 years. Isla was his assistant in the veterinary practice all those years. They were pioneers of the Chinchilla industry from 1950 to 1975. Homer and Isla had ranching interests in Rockwood and Oklahoma. Isla was a constant working companion in all these endeavors. Homer served on the board of directors of Texas Veterinary Medical Association for many years and was president in 1954. He was also president of Tarrant County and Dallas Veterinary Medical Association. The Greenlees have three children, Charles and wife, Sharon of Rockwood; Jim and wife, June of Ovalo; and Suzie of Austin. They are proud of

CONTINUED AT RIGHT



Homer and Isla Greenlee today

Courtesy Of
Santa Anna National Bank

Local Post Office Gives Tips For Christmas Mailing

Aaron Lemond, Officer in Charge of the Santa Anna Post Office has announced times for mailing in order that packages and Christmas cards reach their destinations by Christmas.

Regular parcel post should be mailed by December 13; priority mail by December 21; and express mail by December 23. The Santa Anna Post Office has all the packing and shipping materials you might need, along with some new gift boxes which are great to put under the tree (no wrapping). Also available are some sing-along videos.

Post holders are reminded that post office boxes need to be picked up on a regular basis and you may be required to rent a larger box if mail is left and the box is kept full. Beginning December 1, mail will not be handed out over the counter.

All mail is in the post office boxes at 8:30 a.m. and you are asked to not ask any earlier.

The employees of the Santa Anna Post Office wish everyone a safe and Merry Christmas.

Rockwood Women's Club Holds Meeting

The Rockwood Women's club met on Tuesday, November 26 with Skeeta Cooper, Minnie Bray and LaNell Brusenhan at the Community Center.

Skeeta Cooper brought the meeting to order and LaNell Brusenhan led in the salute to the Flag and gave the thought for the day. She also read the minutes of the last meeting.

The family Christmas party was discussed and it was decided to have it the third Saturday in December, at the Community Center at 6 p.m. Women will exchange gifts, men will exchange gifts, and if you have children, bring a gift for them to exchange.

Minnie Bray was hostess and served refreshment and showed how to make Christmas ornaments.

We will not meet in December, but will meet the fourth Tuesday in January with La Nell Brusenhan as hostess. New officers will be elected at that time.



Swift To Wed Dean

Mr. and Mrs. Charles W. Swift of Midland announce the engagement of their daughter Bethany Joann to Jason Wade Dean of Santa Anna. Parents of the groom are Mr. and Mrs. Roddy W. Dean of Santa Anna. Grandparents of the bride are Bob and Joan Mitchell of San Antonio and Edith Swift and the late Wayne Swift of Odessa. Grandparents of the groom are Rondo and Fredna Horton, James and Sybil Eubank and the late Rodney L. Dean, all of Santa Anna. Great-grandmother of the groom is Mrs. G. J. Slayton of Coleman. The bride-elect is a 1993 graduate of Midland Christian High School and is currently a senior at McMurry University in Abilene, where she is president of T.I.P. sorority and is studying Speech Pathology. Her fiancé is a 1992 graduate of Santa Anna High School and a 1996 graduate of McMurry University where he is an alumni to IHR Fraternity. He is employed as a juvenile probation officer for Taylor County. The ceremony will take place in Midland at the First United Methodist Church at 3 o'clock on the afternoon of January 11, 1996. All friends and relatives are invited.

Delta Omicron Learns About Customs Around The World

The Delta Omicron Sorority of Santa Anna met Monday evening in the home of Bernidine Watson.

The opening ritual was presented by president Mary B. Pritchard.

Patti Musick gave an interesting and educational program on "Christmas Customs Around The World".

Discussions on preparing the float for the Christmas parade and fixing the meal for the City Employees Christmas Party were held.

Members attending and sharing Christmas gifts were Coyita Bowker, Dorothy Harris, Patti Musick, Mary B. Pritchard, Pat Vance, Bernidine Watson and Debbie Wheatley.

Members observed closing ritual and adjournment.

Greenlee

Continued

the fact that all three children graduated from college, Charles and Jim from Texas A&M University and Suzie from Trinity University. There are three grandchildren and three great-grandchildren.

The couple is presently actively engaged in farming and ranching five miles west of Coleman.

Celebration Of Girl Scouting Held

The Heart of Texas Girl Scouts hosted its second annual Girl Scout Celebration November 2 at Howard Payne University in Brownwood. During the evening, the council recognized several Cadette Girls Scouts who had earned their Silver Award. Also recognized were people and organizations who had made large contributions to the council during the past year.

Donors from Santa Anna who were honored included Coleman County Telecommunications and West Texas Utilities.

Gift Suggestion

A subscription to the Santa Anna News

\$15.50 in county
\$17.00 out of county
\$18.00 out of state

Phone 348-3545

HOME VIDEO OUTLET # 2

615 Wallis Ave. Santa Anna 348-3192

We will open at 2 p.m. on
Thursday, December 5
and Friday, December 6
Don't forget attend the Christmas Parade

REED MEMORIAL CO. LIMITED

Monuments of Distinction
Ft. Worth Hwy. Brownwood, Tx.
Phone (915) 646-7625
Sylvia Herring—Local Rep.
Phone 348-3461

We're here to lend a hand.

- Farm and Ranch Real Estate Loans
- Rural Home Lending
- Agribusiness Loans
- Investment and Recreational Properties

FEDERAL LAND BANK ASSOCIATION OF COLEMAN

215 West Elm
P.O. Box 511
Coleman, Texas 76834-0511
(915) 625-2165 Res. 625-3049
FAX (915) 625-2166

James R. Isenhower
President



Part of the fabric of rural life.

COUNTYWIDE INSURANCE AGENCY

214 N. 2ND
SANTA ANNA
915-348-3116

PAUL SKELTON—AGENT

If It's Affordable... We'll Insure It

HOMEOWNERS
WORKER'S COMPENSATION
FIRE
AUTO
LIFE & HEALTH INSURANCE
LIABILITY
BONDS

Fellowship Club Holds Meeting

The Fellowship Club meeting was held in the home of Mrs. Eva Holloway. Hostess was Cozette Jackson, sister of Mrs. Holloway. Roanna Barton, president, opened the meeting with the song "Glory, Glory". Scripture was read by Mrs. Jackson and taken from Psalms 39:1-9. Prayer was led by Mrs. Mary Trimble.

A report was given that Mr. Mike Childress, Mrs. Rosa Terrell and Mrs. Pearl Wilson are still on the sick list. Each member gave a short talk on the goodness of God.

The next meeting will in the home of Mrs. Joy Benjamin on Jan. 1, 1997.

Hollywood Theaters

MOVIES 4

Heartland Mall • 643-3661

ADULTS \$2.00
Children & Senior Adults \$1.00
All Shows Before 6 p.m. \$1.00

Daylight (PG-13)
Fri-Sun 12:05 2:35 5:05 7:35 9:50
Mon-Thurs 5:05 7:35 9:50

Star Trek: The First Contact (PG-13)
Fri-Sun 12:00 2:30 5:00 7:30 9:50
Mon-Thurs 5:00 7:30 9:50

101 Dalmations (G)
Fri-Sun 12:05 2:40 5:10 7:25 9:40
Mon-Thurs 5:10 7:25 9:40

Ransom (R)
Fri-Sun 12:10 2:35 5:00 7:30 9:50
Mon-Thurs 5:00 7:30 9:50

WTU
710 Wallis
Santa Anna

Holiday Open House
&
CUSTOMER
Appreciation Day

Friday, December 6
10:00 a.m. - 3:00 p.m.

WEST TEXAS UTILITIES COMPANY
An Equal Opportunity Employer
WTU
A Member of The Central and South West System

D E C E M B E R 5 1 9 9 6

News For And About Santa Anna Mountaineers



School Menu

Milk, juice or fruit, cereal and graham crackers are also served during breakfast. Milk, juice and fruit are served during lunch.

MONDAY, DECEMBER 9
Breakfast: Donuts and milk
Lunch: Frito pie, pinto beans, Mexican salad, garlic toast, picante sauce and peppers

TUESDAY, DECEMBER 10
Breakfast: Pancakes, sausage and syrup
Lunch: Fish fries, blackeye peas, coleslaw, cornbread, cobbler and catsup

WEDNESDAY, DECEMBER 11
Breakfast: Breakfast burritos, picante sauce and jelly

Lunch: Western burger, seasoned diced tomatoes, toss salad w/dressing and hot rolls

THURSDAY, DECEMBER 12
Breakfast: Biscuits, sausage gravy and jelly

Lunch: Meat & bean tostados w/ lettuce and tomatoes, whole kernel corn, Spanish rice, peppers and picante sauce

FRIDAY, DECEMBER 13
Breakfast: Cream of wheat, toast and jelly

Lunch: Hamburger patty, burger salad, french fries and chocolate chip cookie

Mountaineer Basketball News

SAHS Girls

The Lady Mountaineers have started their basketball season with three wins. Last year the girls had only four regular season wins. Coach Debbie Bacon says the girls have come a long way in one year. The team has four returning seniors: Ami Beal and Briana Horner, juniors Yolanda Frausto, Amanda Lishka, Kristen Keeney, and Marty Siller and sophomore Jennifer Johnson. The girls are very disciplined this year and are focused on their team goal which is to make the playoffs in 1997. After experiencing a winning

season in volleyball, they are excited about winning in basketball also. The girls adopted a motto last year "Just Do It". Coach Bacon believes they now understand what it means.

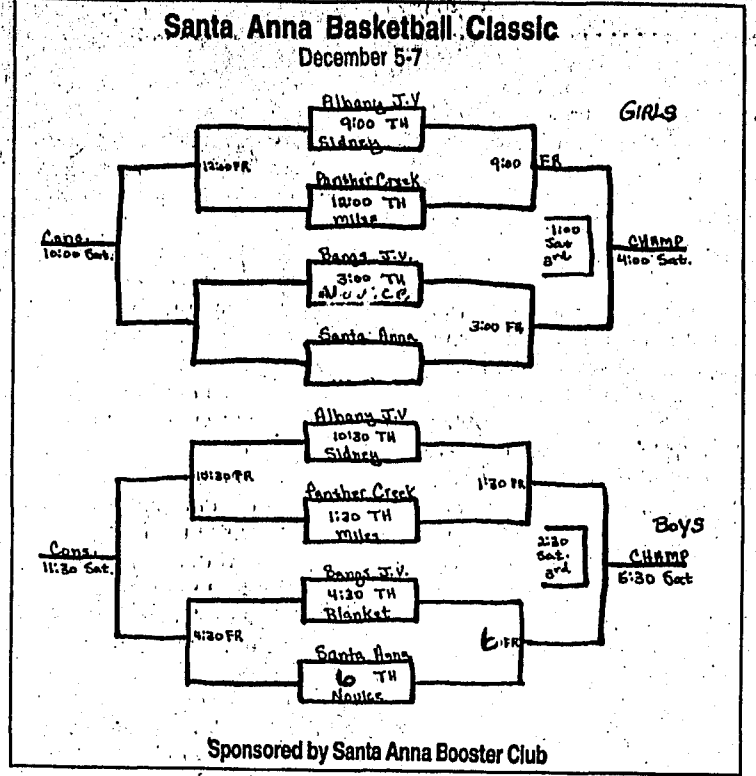
Everyone is urged to come support the Lady Mountaineers and help them achieve their goal.

Offensive Player of the Week: Ami Beal
Defensive Player of the Week: Amanda Lishka

SANTA ANNA	45
SIDNEY	39
SANTA ANNA	44
GUSTINE	30
SANTA ANNA	50
NOVICE	33

SIDNEY AND GUSTINE GAME STATS

	PTS	REB	ASST	STEALS	BLOCKS
Beal	49	17	4	4	2
Horner	26	9	9	5	
Frausto	17	6	4	3	
Siller	6	4	1	2	
Johnson	4		1	2	
Keeney	13	13			
Lishka	24	15	2	6	8



Sponsored by Santa Anna Booster Club

School Events Calendar

THURSDAY, DECEMBER 5 THROUGH SATURDAY, DECEMBER 7: Santa Anna High School Basketball Tournament, Perry Gym

MONDAY, DECEMBER 9: Junior high basketball hosts Evant, 3 games, Perry Gym, 5 p.m.

TUESDAY, DECEMBER 10: SAHS basketball team travels to Paint Rock, 3 games, 5 p.m.

THURSDAY, DECEMBER 12 THROUGH SATURDAY, DECEMBER 14: SAHS Basketball teams participating in Novice Tournament TBA

Seven Local Students Included In Who's Who

A total of seven local students are included in the 30th annual edition of *Who's Who Among American High School Students, 1995-96*.

Who's Who, published by Educational Communications, Inc., Lake Forest, Illinois, is the largest high school recognition publication in the country. Students are nominated by high school principals and guidance counselors, national youth groups, churches and educational organizations based upon students' academic achievement and involvement in extracurricular activities. Traditionally, 99% of *Who's Who* students have a grade point average of "B" or better and 97% are college bound.

The 30th edition of *Who's Who*, published in 18 regional volumes, features over 750,000 students or just 5% of the nation's 14,000,000 high school students. They represent approximately 18,000 of the 22,000 public, private and parochial high schools in the country.

Who's Who students also compete for \$150,000 in scholarship awards and participate in the publication's annual opinion poll of teen attitudes. The book is distributed to up to 15,000 high school students, colleges, universities and

Santa Anna Youth Advance To Semi-Regional Hoop Challenge Round

In the recent Hoop Challenge held November 22 at the Santa Anna school gym, 57 students from the second through eighth grade competed for berths in the semi-regional round to held Jan. 18, 1997 in the Early Elementary Gym.

Local students who have advanced to that round of competition are as follows: 8-year-olds Rainey Bacon and Ben McIver; 9-year-olds Bryan Fellers and Kayla Cloer; 10-year-old Jaryd Salazar, Jeffery Hale and Mandy Boyer; 11-year-olds Jon Turney, Willie Gilbreath, Evan Jones, Seth Salazar, Kindi Cloer, Stacie Rankin, Heather Sims and Jamie Ellerbe; 12-year-olds Johnny Stout, Nathan Nicholas, Shyler Farley and Jala Rankin; 13-year-olds Jaci Kuykendall, Maegan Lishka and Konnie Weaver.

public libraries throughout the country.

Local students selected include: Devin Brand, Beth Eisentower, Rachael Guerrero, Chris Johnson, Chris Cheaney, Chris Guerrero and Briana Horner.

Brownie Meeting

By Sierra Jock
A Brownie meeting was held December 2, 1996. We planned the investiture ceremony and we planned our slumber party. We also made bows with wire and ribbon. For snack we had cookies and chips and punch.

Present were Monica Cortez, Bianca Dean, Mayra Dean, Becca Fellers, Tracy Hale, Jesse Hensley, Harmony Herring, Audra Hubbard, Vanessa Hull, Durinda Puckett, Stevie Stenbridge, Ralee Watson, Kathy Wheeler, Amanda Fountain and Sierra Jock.

<p>SAVE ON Pepsi REG./DIET/CAFFEINE FREE</p> <p>\$1.79 3 liter Btl.</p>	<p>CHUCK WAGON COMBO 2 Corn Dogs, Potato Wedges & 32 oz. Tallsup</p> <p>\$1.99 COMBO MEAL</p>	
<p>SCOTCH PINE Christmas Trees</p> <p>\$14.99 5' 7"</p>	<p>ALL PREMIUM BRANDS Carton Cigarettes</p> <p>\$17.99 CARTON</p>	
<p>BREAKFAST COMBO Ham or Sausage & Egg Burrito, Hash Browns & 16 oz. Coffee</p> <p>\$1.69</p>	<p>ALLSUP'S White Bread 79¢ EACH OR</p> <p>2 \$1.29</p>	<p>SHURFINE Apple Juice or Cider</p> <p>\$1.49</p>
<p>ALL VARIETIES Doritos® SAVE 40¢</p> <p>\$1.79</p>	<p>DECKER Meat Franks</p> <p>69¢</p>	<p>DECKER Meat Bologna</p> <p>79¢</p>

You'll find all this and more at your Allsup's store #126--Santa Anna

MOTOR OIL Allsup's 30W - Quart 79¢	SUNNY'S COOKIES Pkg. 2/\$1.00	DISHWASHING LIQUID Sunlight \$1.29
--	-------------------------------------	--

LOW PRICES, GREAT PRODUCTS **ALLSUP'S**
24 HOURS A DAY *Always*

PRICES EFFECTIVE THROUGH DECEMBER 11 OFFER GOOD WHILE SUPPLIES LAST!

HOLIDAY OPEN HOUSE
Monday, December 16
9 a.m. - 4 p.m.

The officers, directors and employees of
Coleman County Telephone Cooperative, Inc.

Invite you to join in celebrating the season at our annual
Holiday Open House

215 North 2nd Santa Anna, Tex. 348-3124

Coleman's Big Christmas Celebration Thursday Evening

The Coleman Business People's Association will be presenting Coleman's First Annual Christmas Celebration beginning at 6 p.m. on Thursday evening, December 5.

Among the many events planned will be the lighting of the "Lights of Love" tree at 6:00, the lighted Christmas Parade starting at 6:30 and lighting of the Courthouse and musical entertainment starting at 7:00.

At about 7:15 Santa will make his way into town riding in a horse drawn surrey.

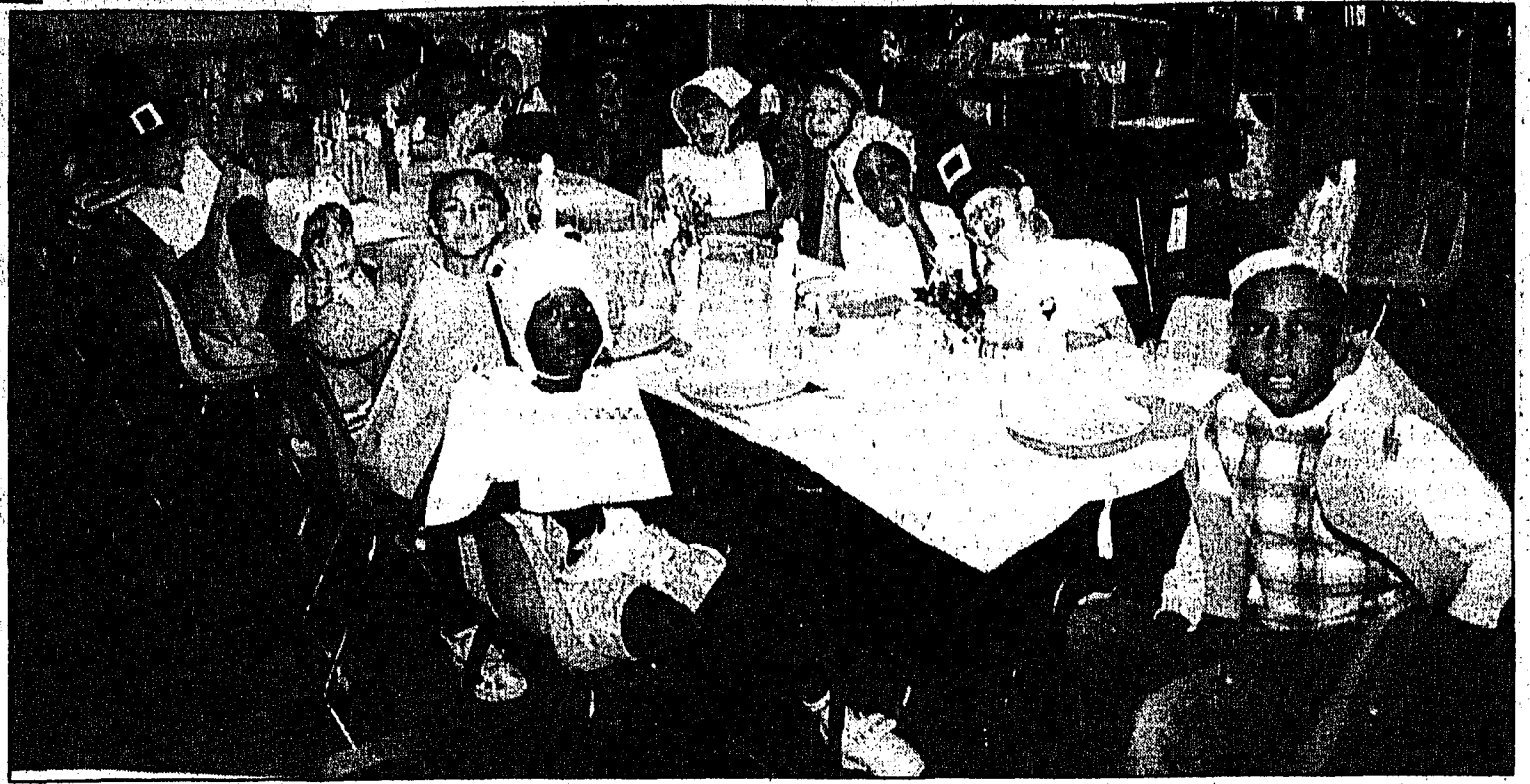
At about 7:15 Santa will make his way into town riding in a horse

drawn surrey. After that he will be at the gazebo visiting with children. Bring your cameras!

Carriage rides will be available to the public and a hayride in front of Bill's Dollar Store for kids who want to join in caroling.

From 7:45 to 9:00 there will be quartet singing at various locations in the downtown area and at 7:30 to 8:30 a live nativity on Concho street, beside the Chamber of Commerce.

Everyone is invited to come to Coleman on Thursday evening to see the Christmas lights and enjoy the entertainment.



Fighting For Our Communities

Glenn English
Chief Executive Officer
National Rural Electric
Cooperative Association

Contributed By Coleman County Electric Cooperative, Inc.

Once again, just as they have over the past 70 years, locally-owned electric cooperatives across the country are fighting for the future of the communities we serve. Because they are involved in the changes confronting the electric utility industry, they are fighting for you because you are an owner of these local, private businesses.

Recent history gives us good reason not to change too quickly. We've learned from past efforts to "deregulate" that what at first looked great to everyone, has ended up costing a lot of people more.

The natural gas industry is one example. That industry was deregulated several years ago amid great promises of reduced bills for everyone. In fact, today the average residential customer has seen their natural gas bill increase. Promises made by big corporations as they fought for "deregulation" of the natural gas business have not been kept.

A few years ago Congress deregulated the cable television industry amid great expectations of reduced monthly cable bills. Today, newspapers across the country are reporting that the average monthly cable bill is up nearly 10 percent since "deregulation".

And we can't overlook the airline industry. While it is true that some of the largest cities in the United States have benefitted, many cities and towns have seen dramatic increases in airline fares and dramatic decreases in airline service—another example of how "deregulation" has not helped everyone.

For generations, the electric utility business has been a government regulated industry. While no one can say for certain what the final outcome will be, you will certainly have a greater degree of choice and a wider variety of service options to meet your energy needs.

Already a few states are implementing pilot programs to see how different changes to the electric utility industry will affect consumers.

As these pilot programs move forward, you can be assured that your local electric cooperative, in partnership with other electric co-ops around the country, are on the front lines of the effort to make sure you benefit as much as possible from these changes.

These are six key points that are guiding our work for you:

1. All consumers should be treated equitably—no single group of consumers should benefit at the expense of others.

2. Consumers who stay with their current utility should not have to pay for investments in utility equipment left idle by consumers leaving the system.

3. All energy suppliers—not just utilities—should be subject to the same rules and standards.

4. All consumers should have access to electric service.

5. The safety and reliability of electric service must not be jeopardized.

6. Defined delivery service areas should be maintained to avoid costly duplication of utility infrastructure.

All six of these criteria must be met before we can be sure you'll get the maximum possible benefit from the proposal. Until we can be sure

'Round & About

R.C. and Pat Smith visited in Powhatan, Ark. last week with her sister, Mid Howard, and family. They had Thanksgiving dinner with Mid's son-in-law and daughter, Shorty and Lynne Lawson in Lynn, Ark. They also visited in Evening Shade, made popular by the TV program by that name. There they saw the Burt Reynolds Gymnasium, and other sights related to the show.

Returning home they were hosts over the weekend to their children and friends, Lori and Jimmy Kernes and Valerie of Lampasas, Dick and Karen Smith, Ryne, Cody and Dana of Iowa Park, Hol and Janet Tolls of Canyon, and Dave Smith of Austin.

Thanksgiving guests with Pete and Winnie Rutherford were Mr. and Mrs. Don Rutherford and Holly of Deer Park and Kevin, a student at Baylor University in Waco, Mr. and Mrs. Joe Rutherford, Julie and Shanna of Grape Creek, Kathie Rutherford and Jackie of Anson, and Stacie King of Abilene.

Joe and Ann Rutherford, Julie and Shanna also visited with Ann's parents, Mr. and Mrs. Omer Cullins.

Othal Warnock accompanied her daughter and husband, Wanda and Burl Spurlock of Stephenville, to Austin for a Thanksgiving visit with their daughter Regina and family.

Thanksgiving Feast

Mrs. Smith's first grade class at Santa Anna Elementary School concluded its study of the pilgrims by holding a Thanksgiving feast just before school was out

that will happen, we should not rush to deregulate simply because some large corporation might benefit.

Make no mistake, there are very real opportunities to change the electric utility business to give all electric co-op consumers greater flexibility and choice in the types of energy services they want. And because your local co-op is a locally owned, private business, it will continue to fight for the people who own it—you and your neighbors.

Harry and Margaret Crews were Thanksgiving guests of their daughter Dixie Aylor and her family in San Angelo.

Stanley and Judy Hartman had as Thanksgiving dinner guests Edd and Ruby Hartman, Terry and Robin Moch, Brittney and Jordan, Stephanie Hartman and Hannah and a friend, all of Cedar Hill, Bud McClellan, and Lewis Miles, Lera and David Guthrie. Stanley and Judy and family had dinner on Saturday at the family farm at Voss.

Eddie Wayne and Mary Ann Hartman's son Mike and Donna Hartman and Travis of Snyder arrived on Tuesday. They all joined son James and Tanya Hartman, Magan and Katie for Thanksgiving with Mary Ann's family in Irving.

Bessie McDonald and Oma Dean Horner spent Thanksgiving in Tom Bean, Tex. with David, Melinda, China and Chance Horner. Others visiting were Pete and Linda Simmons, Jeff Simmons, James, Stacey and Dalton Simmons, all of McKinney. They also visited Ina Williams, formerly of Santa Anna, at Collin Care Center in Plano.

Tex and Pat Wright and Alys and Sarah Pelton were in Fredericksburg for Thanksgiving dinner with Bill and Danna Smith and girls. They were in Mineral Wells on Friday shopping and stopped at Palo Pinto to visit Pat's aunt Katherine Tillotson.

Dale and Carol Herring, Casey Wade and Pete receives visits during Thanksgiving weekend from Derek Little of Brownwood and Jeff and Charlotte Herring, Jade and Summer of Slaton.

Derriel and Polly Warnock visited over the holidays with their son and daughter-in-law, Doug and Stephanie Warnock, in their new home in Houston. Joining them for Thanksgiving dinner were friends and Stephanie's parents, Mr. and Mrs. Randy Evans also of Houston.

Visiting off and on and joining them for a fish fry on Saturday were Don and Wanda Warnock, Brent and

From Commissioner's Court

.....Copied.....

All Coleman County Commissioners were present for their end-of-the-month special meeting with only two agenda items requiring action.

County Judge Sherrill Ragsdale stated that the bid opened at the last regular meeting regarding the purchase of a

pickup for the Sheriff's Department was in error as additional time was required to receive all bids. Only one bid had been received before from Bledsoe Ford, but since additional time was required, two additional bids were received...one from Hanner Chevrolet in Baird and one from Holley Chevrolet Co. in Brownwood.

Following the opening of the three bids, Coleman County Sheriff Wade Turner reviewed the three bids to determine if they met the required specifications. It was then voted unanimously to accept the low bid for a 1997 1/2 ton pickup from Holley Chevrolet of Brownwood. Their bid was \$23,189.24, less trade in of a 1993 pickup of \$9,000, bringing the total cost of the new pickup to \$14,189.24.

Turner also took a few minutes to express his appreciation to the commissioners for the purchase of this pickup for the Task Force Unit. Turner stated, "I sincerely thank the court for this and other considerations given the Task Force. I serve on the board and we appreciate your efforts on our behalf as this Task Force serves the community well."

The other item was to approve a working agreement and resolution with the Texas Narcotic Control which is pre-



Warm fronts usually move slower than fifteen miles per hour, and about half the speed of cold fronts.

Brooke of Katy, Mike and Angela Warnock, Bryan and Matthew, and Ron and Liz Warnock of Lake Jackson, Dwayne and Vicki Warnock and Amy and friend of Friendswood, Mike provided the gulf coast Redfish for the event, some he had caught earlier.

Thanksgiving guests in the home of Craig and Pat Adams were Molly Adams of Fort Worth, Amanda Adams of Starkville, Ms. Andy and Kathy Adams of Abilene, Mays and Shirley Adams, Curt, Beth, Brian, Kyle, Jodie and Anna Shultz all of Dallas, Montie Sleas of Weatherford, Jake and Francis Adams and Bill, Sloan and Cullen Ruth all of Brownwood, Kay and Butch Sheffield and Adam and Destiny Sheffield all of Fredericksburg and Kay Mortimer of Plano.

for the holidays. They made decorations for the tables, wore pilgrim customs they had made and ate traditional Thanksgiving foods.

sent each year for Commissioner's approval. Ragsdale stated that he saw no change in this from previous years. Commissioners approved the agreement as recommended by Judge Ragsdale.

Various non-agenda items were discussed with no action taken.

Bills were reviewed and approved after being presented by County Auditor Shirley Sansing.

Keeping an eye on Texas

Pizza by the acre

Americans eat 100 acres of pizza each day.

SOURCES: John Sharp, Texas Comptroller of Public Accounts, and Texas Restaurant Association.

Texas pizza facts

The average Texan spends about \$57 a year on pizza.

The pizza capital of Texas is Killen-Temple, with one of 10 restaurants serving pizza. Other top markets are El Paso, San Angelo, Wichita Falls, McAllen, Brazoria, and College Station.

2,360 retail pizzerias in Texas had annual sales of \$1 billion in 1994.

Half of all pizza orders occur from Friday to Sunday.

Each consumer eats pizza an average of two to three times a month.

The popularity of pizza decreases with consumer's age.

A Great Time To Buy, During Our...

Year-End Closeout Sale

'97 Ranger XLT Supercab
List Price \$17,550
Package Discounts \$1305
Bledsoe Discounts \$1145
Rebate \$1000
\$14,100 +T.T.B.L.

'97 Taurus GL Pkg. 204A
List Price \$20,285
Rebate \$500
Bledsoe Discount \$1040
Package Discount \$750
\$17,995 +T.T.B.L.

1996 F250 SUPERCAB XLT PACKAGE

40-20-40 Seats, automatic transmission, powerstroke diesel engine, tu-tone paint

List Price \$29,425
Package Discount \$850
Bledsoe Discount \$4875

\$23,900

(Additional \$500 discount if member of Texas Farm Bureau)

USED CARS

1995 Ford Taurus, 28,000 miles, loaded.....	\$12,500
1995 Ford T-Bird, loaded, 22,000 miles, reduced.....	\$12,500
1996 Ford Taurus, 17,000 miles.....	\$13,950
1992 Mercury Topaz, 55,000 miles.....reduced to	\$3,500
1991 Geo Prism, 55,000 miles.....	\$5,900

USED PICKUPS

1995 S-10 Extended Cab, 30,000 miles.....	\$11,200
1993 Ford F150 Supercab XLT pkg., local truck.....	\$11,850
1996 Ford F150 Supercab XLT pkg., 24,000 miles won't last long at.....	\$16,500
1991 Ford F150 Supercab XLT pkg., 48,000 miles, local truck.....	\$10,500
1995 Ford F350 Crew Cab, diesel, auto, XLT pkg.....	\$21,900

Bledsoe Ford-Mercury

Highway 84 North, Coleman
Phone 915-625-4101
HOURS: Mon.-Fri. 8-5:30;
Sat. 8 til 1:00

Ford Credit

DEER PROCESSING

- Custom Deer Processing
- Smoked Jerky, Hams or Smoked Link Sausage
- Deer Feeders
- Quality Deer Feeder Timers

Production Plus

In Coleman
DEER PROCESSING AND STORAGE
515 Apple Street (Across from
Elkin's Cut Rate on North Neches

625-3572

HENDERSON

FUNERAL HOME

Donnie & Christina Henderson
"People Who Care"

SANTA ANNA
348-3131

COLEMAN
625-2121