

Your
Hometown
Newspaper
Since 1886

Santa Anna News

"He Profits Most Who Serves Best"

Newstand Price 50c

Volume 111, Number 3

Thursday, January 18, 1996

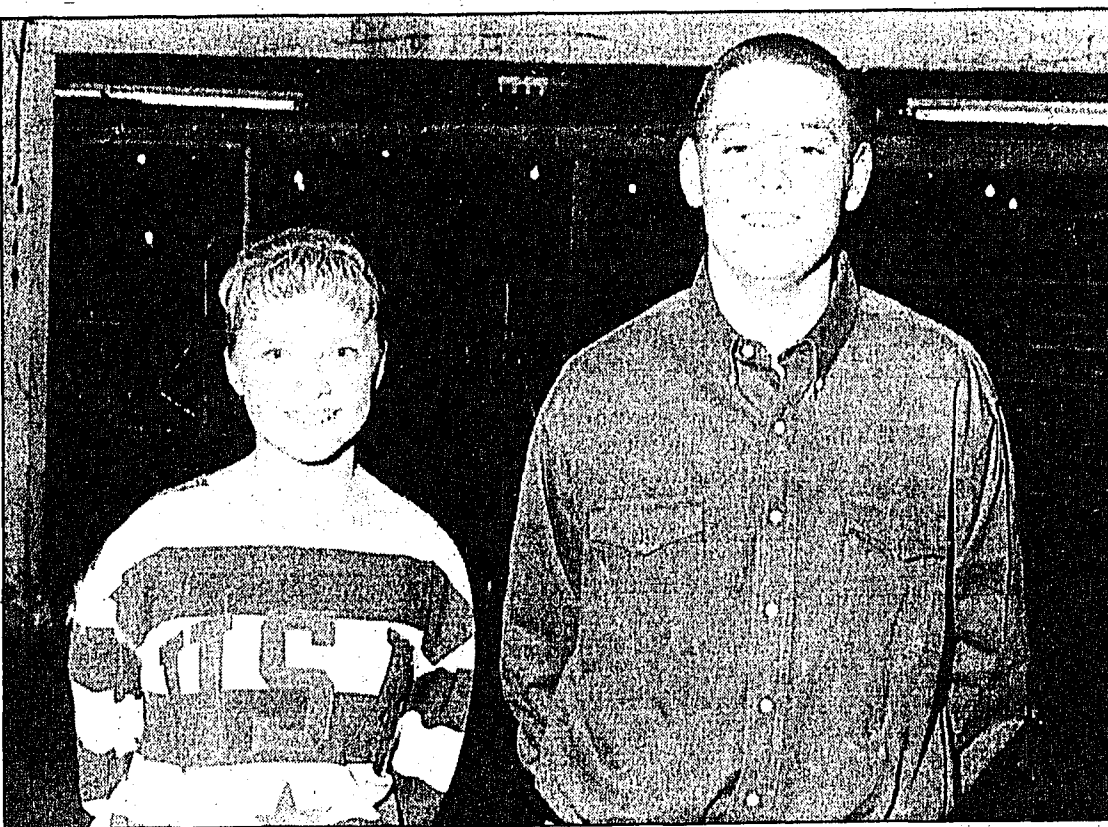


Local Winners In County Stockshow

Bo Morgan of Santa Anna, at the left in the picture above, exhibited the Grand Champion pen of rabbits at the Coleman County Livestock Show Sunday. Reserve Champion pen was shown by Darbi Neff, also of Santa Anna.

Two members of Santa Anna FFA, Buffy Martin and Josh Daniel, pictured below, were awarded the Junior and Senior Showmanship Awards at the Coleman County Livestock Show in the hog division Sunday.

Photos courtesy of Coleman Chronicle



Telephone Cooperative Replacing Aerial Lines In S.A. With Underground Facilities

According to a report from officials at Coleman County Telephone Cooperative, Inc. the cooperative is in the process of replacing all aerial telephone lines in and around the town of Santa Anna with new buried facilities. This construction will be along

streets and alleys as well as new service entrances to the houses.

The construction will be performed by C & B Associates, Inc. and Mepco, Inc. and supervised by TRC Engineering Services and Coleman County Telephone Cooperative, Inc.

Officials say, "Our wish is not to inconvenience the public but any concern should be addressed to Coleman County Telephone Cooperative, Inc. at (915) 348-3124."

Revival Services At Assembly Of God Church Friday Through Sunday

The Assembly of God Church in Santa Anna will be holding revival services Friday through Sunday morning, January 18-21. Friday and Saturday services will be at 7:00 p.m. and Sunday morning service at 11:00 a.m.

Rev. Don H. Jeter of Waxahachie, veteran missionary to Spain, will be the evangelist for the revival services. He and his wife Cyndie, an RN, were missionaries to Spain for 14 years. Rev. Jeter served as Chairman of the Missions Department at Trinity Bible College in Ellendale, North Dakota and has recently received a re-appointment by the Division of Foreign Missions of the Assemblies of God to help address the urgent need of leadership training in Latin America and the Caribbean. Before ministering in Spain, the Jeters helped establish a Bible Institute in Portugal and worked for four years among the Cubans in Miami in Bible school work and the Cuban Evangelistic Center. They have been involved in training leaders in Spain, Argentina, Mexico and the



Rev. Don H. Jeter

Caribbean, and will continue to do so.

Rev. James Ford, pastor of the Assembly of God Church, extends an invitation to everyone in the community to attend the revival services.

Cemetery Association Meets Friday

The Santa Anna Cemetery Association will hold its annual meeting on Friday, January 19, at 6:30 p.m. in the Hi Rise Community Center.

According to a report by Cemetery Secretary Coyita Bowker terms expiring this year are Billie Guthrie, Virginia Powell and Coyita Bowker.

An election of offices and planning for the new year will be among the items on the agenda for the meeting.

Other directors of the association are Jackie Watkins, president; Barbara Simmons, David Yancy, and Carmen Dopham. Mike Pritchard is the caretaker.

Jackson Improving

City Superintendent, Tommy (Tiny) Jackson, who has been ill since the middle of December was hospitalized last week in serious condition. According to family members, he is improving slowly but remains on a respirator in the I.C.U. unit of Brownwood Regional Hospital.

Tommy and his family appreciate your concern.

Church Dedicates New Addition To Building

Another milestone was reached by El Cordero Baptist Church in Santa Anna on Sunday, January 7, with a dedication service for their new sanctuary. The 2400-square-foot addition also includes a baptistry, pastor's office, library and restrooms. Joe Frausto is serving his third year as pastor of the church.

Roy Epperson, Area Baptist Missionary from Ballinger, was speaker for the occasion and special music was presented by music director Gabriel Rosales, Timorah Andrade and Robert Rocha.

William Brown, a member of First Baptist Church, spoke briefly about the sponsorship and organization of the mission church

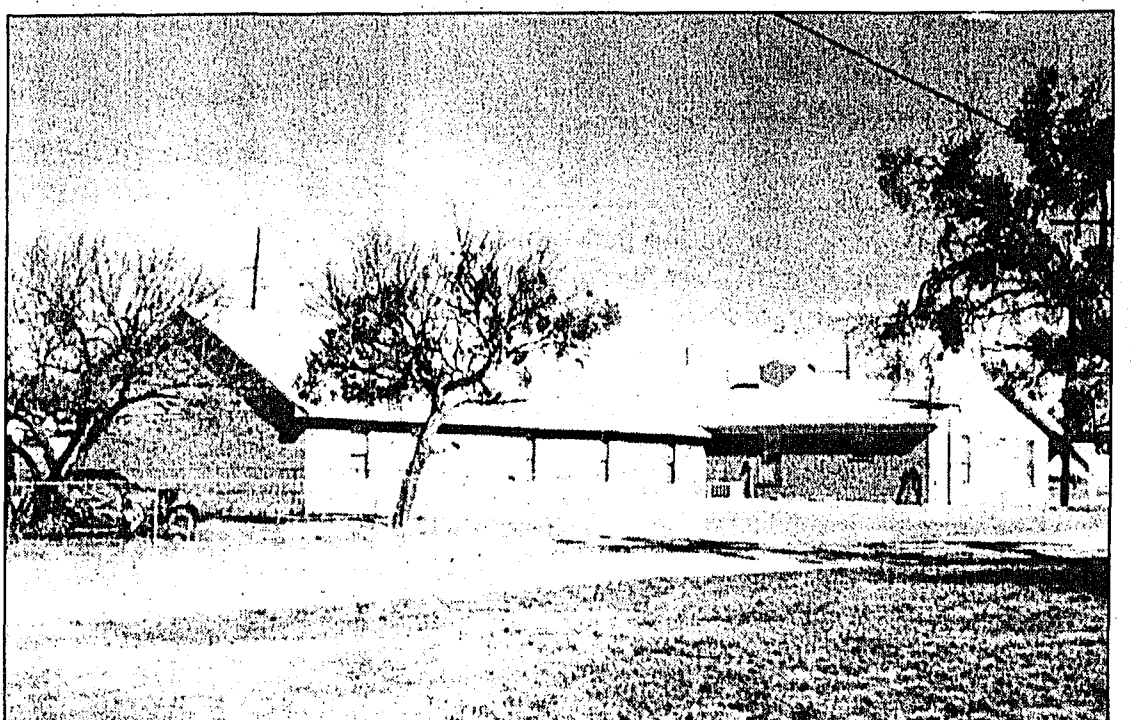
in the late 1979's.

The congregation met in various locations until a brick building was constructed at the corner of South Sixth and Avenue C in 1983. They became an independent church in 1987. The new addition extends the building to the west and the former sanctuary has now been equipped for a fellowship hall.

Men of the church built the new addition which seats 200 and valued at \$90,000 with very little outside help. The congregation of about 45 started a building fund several years ago, so only \$15,000 was borrowed from the Texas Baptist Building fund to complete the construction. The new pews were

also purchased by the church with help from a Baptist foundation grant. Features of the sanctuary include a lighted cross at the back of the raised baptistry and an ornately carved antique oak pulpit that was given for the original building from an Hispanic church in San Angelo.

In addition to ministering to the Hispanic community in Santa Anna, El Cordero members take an active part in the Coleman County Baptist Association and have involved First Baptist Church and other county Baptists in a mission project to help support a home for orphan children in Piedras Negras, Mexico.



El Cordero Baptist Church with original building at right with steeple. Extension at left is new addition.

Photo contributed

What Is A Chamber Of Commerce?

Contributed

In any community progress takes place because a group of dedicated people are making things happen. The Chamber of Commerce is the logical organization to motivate, organize, and direct this effort.

The Chamber of Commerce has the responsibility of the economic well-being of the community. To preserve our business system, to promote business growth and development. The Chamber is a dynamic living process because its people work for the betterment of the community.

It is primarily an organization of business and professional men and women who have joined together to work for the solution of their mutual business and community problems, supported by membership dues and donations from the community. In our community, as in every other area, there is a distinct need for an organized group such as the Chamber of Commerce. There are problems and opportunities which an individual by himself

cannot possibly solve; but by working with others, pooling time and resources, important accomplishments can be made.

In brief, the Chamber of Commerce is an organization through which the volunteer manpower of this community works effectively to make Santa Anna a better place to live and work. It is a marshalling ground for civic en-

deavor. It is the community's Department of Progress.

We are now collecting dues for the 1996 calendar year. Anyone wanting to join and have a part in this organization is welcome. Dues are \$12.00 per year for individuals or \$60.00 per year for businesses. Call the Chamber office at 345-3535 for more information.

Coleman Fire Suspicious

COLEMAN — A fire that claimed the life of a mother and her two children is being called suspicious by the Coleman County Sheriff's Office.

Cari Lin Gifford Harrison, 26; Michael Harrison, 5; and Jonathan Harrison, 3, were killed in the fire which broke out in a two-story farmhouse at 2:30 a.m. Friday.

"At this time, I would be able to characterize the fire as suspicious," Sheriff Wade Turner said.

Turner said investigators have taken several statements from indi-

viduals who were in the area during the course of the fire.

"We have not received any confirmation from the laboratory at this time, but we are operating under the belief that we have some questions that need to be answered right now that haven't been answered," Turner said.

Soil and debris samples from the site have been taken to the state fire marshal's lab in Austin for evaluation. Results possibly will be available this week.

An autopsy revealed the victims died of smoke inhalation.

Santa Anna — A Town Of Friendly People

Saying congratulations To Boss Estes of Fort Worth, 101 years young



Future ice skating stars pictured on their blades at the Tandy Skate Center are Kelly Voss, Jamie Ellerbe, Jennifer Pelton, Sara Frausto, Julie Garza and Claire Gibson.

Girl Scout Troop Has Adventure In Ft. Worth

Contributed

On December 9th Girl Scout Troop 68 of Santa Anna traveled to Fort Worth for an exciting adventure. Leaving early that Saturday morning, they arrived in Fort Worth around 11:00 a.m. just in time to have lunch at McDonalds. They then drove down town to the Tandy Skate Center. Although none of the girls had ever ice skated before, they all put on blades and away they went.

The group finished skating about 3:30 and then loaded up and went to the home of Randy Barstow where they were to spend the night. Randy is the brother of girl scout leader Susie Voss. He also is a very brave man, to allow eleven giggling girl scouts to sleep over at his house.

After arriving at Randy's the girls ate a snack and changed into something nice for an evening at Casa Mannana to see a play. *Frosty the Snowman* was a wonderful play. It was then on to I.H.O.P. for supper and return to Randy's for a good night's sleep.

Leaving early Sunday the group made another stop at McDonalds for breakfast on the road and then headed west for home. Girls making the trip were Jamie

Ellerbe, Jennifer Pelton, Kelly Voss, Sara Frausto, Julie Garza, Claire Gibson, Jenna Hensley, Shante' Sheppard, Tina Morris and leaders Peggy Hensley and Susie Voss.

Monroe Sisters Earn Masters

Leesa Monroe and Stephanie Monroe, daughters of Carolee Monroe of Ft. Stockton, and the late John Monroe, and granddaughters of the late W.L. (Dutch) and Ruth Campbell of Santa Anna earned their Masters degrees in December, 1995. Stephanie graduated from Sul Ross State University with a Masters in Public Administration. She currently resides in Ft. Stockton and is employed as a field supervisor for the Permian Basin Probation Department. Stephanie has also accepted a part-time instructor position at Sul Ross in the Criminal Justice Department.

Leesa graduated from East Texas State University with a Masters in Education Administration. She resides in Arlington and is employed by the Dallas Public Schools as a teacher-technologist. Both girls received their Bachelor degrees from Angelo State University in 1986.

Walker Receives Degree From Texas Tech

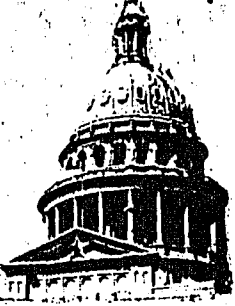
A former Colorado City student at Texas Tech University was among 2000 to receive degrees during the fall commencement exercises held December 16, 1995.

Scott Walker received a Bachelor of Science degree with a major in Biology.

Scott is the son of Mr. and Mrs. Charles Walker and grandson of R.J. Baumann all of Colorado City and Mrs. Gwendolyn Walker of Santa Anna.

There is one body who knows more than anybody, and that is everybody.

State Capital



HIGHLIGHTS

By Lyndell Williams & Ed Sterling
TEXAS PRESS ASSOCIATION

AUSTIN — After spending \$1.5 billion to increase prison capacity from 48,000 inmates to 146,000 over the last five years, the Texas Department of Criminal Justice is now launching a first-ever project to pin down what works and what doesn't work in reducing recidivism.

Soon after he took office Jan. 1, TDCJ's new executive director Wayne Scott promoted division director Dimitria Pope to a new position as his executive assistant with a high priority mission of designing a statistical analysis program to track ex-offenders to discern which prison rehabilitation treatments produce the best results.

Prison officials say recidivism numbers now available leave a lot to be desired because they aren't refined to track and correlate critical factors that heavily influence an offender's chances of staying straight, such as prison rehab programs by type and amount of time spent in them.

Pope's project will complement TDCJ's on-going recidivism reduction studies, an agency-wide effort which has been largely unheralded, but ranks as a high priority with TDCJ's governing board.

Board chairman Allan Polunsky of San Antonio says that "with more prison capacity and longer terms, we are taking violent offenders off the streets as never before, but for the long-range,

Texas cannot afford to rely on incarceration programs with those offenders who will benefit and lead crime lives, and that effort starts with building a dependable statistical foundation."

Is It, or Is It Not a Duck?

The Texas Lottery Commission approved proposed rules that would allow bingo operators to install machines that dispense a 50-cent

pull tab game, in accordance with HB 3021 passed by the state Legislature in 1995.

But the commission made it clear that the dispensers should be the manual variety, and not the casino-style slots with video display terminals that have an internal switch which converts the game from bingo to poker, blackjack or keno.

"If it looks like a duck and walks like a duck, the thought is that it probably is a duck. We need to define what is the device and keep sight of the legislative intent," said Keith Elkins of the Lottery Commission.

Three weeks remain for public comment on the proposed rules before a vote will be taken. Meanwhile, some bingo parlor operators have threatened to sue if they don't get the type of machines they want.

Insurance Rules Urged

State legislators, senior citizens' representatives and AIDS support groups urged state insurance officials to adopt rules that would regulate the resale of insurance policies by terminally ill Texans.

At a hearing last week in Austin, the groups and several "viatical" settlement companies that buy the life insurance policies for a percentage of the death benefit, endorsed rules proposed by Insurance Commissioner Elton Bomer.

Under Bomer's proposal, companies and brokers would have to tell potential policy sellers of their rights before a contract could be signed.

Those rights would be explained in a consumer booklet containing information on such issues as the settlement process, tax consequences, effects on the applicant's public health-care benefits and alternatives to viatical settlements.

Seven other states have viatical rules like those under consideration by Bomer, the *Dallas Morning News* reported.

Father 1st to Lose Permits

An El Paso funeral director became the first Texas resident to have his licenses suspended for not making court-ordered child support payments.

The Texas Attorney General's Office issued its first order suspending licenses issued to Harrison B. Johnson because he owes \$53,980 in child support.

A law that went into effect Sept. 1 allows the state to suspend the driver's licenses, professional li-

censes, hunting permits and fishing licenses of people who are behind in paying child support.

Travis County Bans Guns

Travis County joined the growing list of governmental entities to dampen Texas' new "right to carry" law, which went into effect Jan. 1.

County Commissioners voted unanimously last week to ban concealed handguns in county buildings and vehicles, or wherever county business is conducted. In enacting the ban, Travis County follows suit with the City of Austin, Capital Metro, the Texas Department of Public Safety and dozens of other cities, counties and transit authorities around the state.

Other Capital Highlights

■ Responding to a reporter's question on the probability of his seeking a second term, Gov. George W. Bush said: "I think the odds are that I'll run again, but there's no guarantee. There are a lot of possibilities. I may be like Sam Houston and go live with the Cherokee Indians."

■ After hearing three days of testimony, U.S. District Judge Sam Cummings said he hopes to decide by Feb. 2 whether one-time suspected serial killer Henry Lee Lucas should be executed.

Settin' It Straight

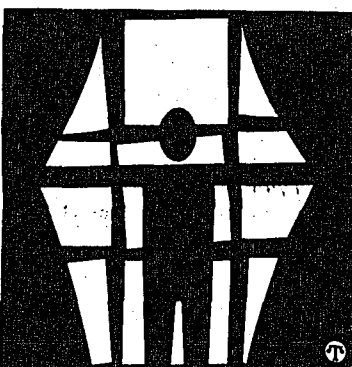
In an article we ran last week concerning Anna Pearce planning another mission adventure to Romania, we stated she would be leaving in April. Anna will be leaving March 5 on her mission.

The correct phone number for calling Anna is 915-348-9179. We gave you the fax number instead of phone number.

health hints

Winter Blues

(NAPS)—It's not unusual to feel down or melancholy during the winter.



DEPRESSION
IT'S AN ILLNESS, NOT A WEAKNESS.
The American Psychiatric Association is a sponsor of the National Public Education Campaign on Clinical Depression in cooperation with the National Mental Health Association, National Alliance for the Mentally Ill, National Depressive and Manic Depressive Association and the Depression Awareness, Recognition and Treatment (DIART) Program, National Institute of Mental Health.

However, if moods of sadness or emptiness last several weeks, and if you feel a lack of interest in normally pleasurable activities, feel worthless, fatigued, or notice a major change in eating or sleeping habits, you may be experiencing more than just the winter blues. It may be a serious medical problem: depression.

To learn more about the symptoms of and treatment for depression, manic depression, and other mental illnesses and substance use disorders, write to: American Psychiatric Association, Division of Public Affairs, Dept. NAPS2, 1400 K Street, NW, Washington, DC, 20005.

HOME VIDEO OUTLET # 2

615 Wallis Ave. Santa Anna 348-3192

Latest Movie Releases

Nine Months
The Indian in The Cupboard
Street Fighter 2 (animated)

Mon thru Thurs — Rent 2 movies get 1 free

PUBLIC NOTICE

Customer Notice of New Optional Services

Coleman County Telephone Cooperative, Inc. (CCTC) has filed a request with the Public Utility Commission of Texas (PUC) seeking approval to implement rates, terms and conditions for new Optional Caller ID Service offerings, including Caller Number Delivery Service and Anonymous Call Rejection. This request has been assigned Tariff Control Number 15146. Caller ID Service will be offered in connection with residence and business one-party service where available. This service is not provided in connection with Public, Semi-Public and Private Pay Telephone Services, and trunk side PBX Service.

Both of the proposed features are optional. Calling Number Delivery Service is a service which allows subscribers to see the phone number of most local calls and some types of long distance calls on a display unit, before they answer the phone. The display unit must be provided separately by the subscriber. Anonymous Call Rejection is a service which permits subscribers to automatically reject calls from callers who have blocked the delivery of their number.

In connection with the provision of Caller ID Services, CCTC will also offer per-call and per-line blocking to callers, free of charge. "Blocking" prevents the caller's number from appearing on the Caller ID display unit. Per-call and per-line blocking will be available when the service is deployed. CCTC will automatically establish per-call blocking free of charge to all customers when Caller ID is offered in their area. Any customer who wishes to block his or her number on a per-call basis simply needs to press *67 on their touch-tone phone, or dial 1167 on his or her rotary phone before dialing the telephone number. Per-line blocking automatically block's the customer's number on every call without the need to press *67 or dial 1167. If a customer selects per-line blocking, he or she can unblock their number free of charge on a single call by dialing *82 or 1182 on their phone before dialing the telephone number. This feature turns off per-line blocking for only the call placed after *82 or 1182 is dialed and will result in your number being received by subscribers of Caller ID. Once the call is ended, per-line blocking will be restored. Per-line blocking will be offered at no charge to anyone, upon receipt by the PUC written certification by the customer of a compelling need for per-line blocking. CCTC will be sending each customer a postage prepaid per-line blocking request before Caller ID will be offered. All requests for per-line blocking will automatically be granted free of charge. It is not necessary to subscribe to Caller ID to have per-call or per-line blocking. Per-call or per-line blocking will display a message such as "private" or "anonymous" on the Caller ID display unit. Blocking will not be provided on calls from payphones. Detailed information on these services will be sent each customer during the next few weeks.

The following rates have been proposed for these new optional services. The proposed effective date for the tariff is March 15, 1996. The estimated revenue impact to the Cooperative is an increase of \$2,538.00 for the first year of service.

Service Offering	Business Rate	Residence Rate
Calling Number Delivery	\$3.95	\$3.95
Anonymous Call Rejection		
Ordered with Calling Number Delivery	\$.50	\$.50
Ordered without Calling Number Delivery	\$ 1.00	\$ 1.00

The Cooperative is proposing packaged feature offerings which will allow customers to purchase more than one feature at a discounted price. The Cooperative will waive service connection charges associated with orders for the new features during the first 90 days after each of the services is offered.

Persons who wish to intervene or otherwise participate in this proceeding should notify the Commission as soon as possible, but no later than 10 days before effective date. A request to intervene, participate, or for further information should be mailed to the Public Utility Commission of Texas, 7800 Shoal Creek Blvd., Austin Texas 78757. Further information may also be obtained by calling the PUC Public Information Office at (512) 458-0256 or (512) 458-0221, teletypewriter for the deaf.

For information regarding the new services, customers should contact the Cooperative at 215 N. Second St., Santa Anna, TX 76878 or call (915) 348-3124.

COUNTYWIDE INSURANCE AGENCY

214 N. 2ND
SANTA ANNA
915-348-3116

PAUL SKELTON—AGENT

If It's Affordable... We'll Insure It

HOMEOWNERS
WORKER'S COMPENSATION
FIRE
AUTO
LIFE & HEALTH INSURANCE
LIABILITY
BONDS



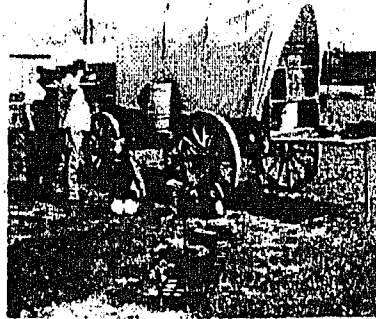
Continuing to offer you the most caring, professional service

Stevens Funeral Home

400 Pecan, Coleman, Texas 76834

(915) 625-2175

Lana Korzeniewski, Funeral Director



OD's Chuckwagon & Smokin'

Chuckwagon Meals

- Birthday Celebrations
- Anniversaries
- Family Reunions
- Church Outings
- Etc.....

— Your place or mine—

Let O.D. do
your custom
smoking



- Brisket
- Shoulder clod
- Ribs.....etc.

Derriell Warnock

915/348-3167 — (If no answer, call 915/348-3545)



School Menu

MONDAY
Breakfast: Pancake/sausage on a stick with syrup, fruit, milk
Lunch: Meat and spaghetti with cheese, green beans, apple or orange juice, chilled slice peaches, hot rolls, milk, honey.

TUESDAY
Breakfast: Scrambled eggs, toast, fruit, milk, jelly.
Lunch: Chili with cheese, pinto beans, fruit, apple or orange juice, milk, cake, peppers, catsup.

WEDNESDAY
Breakfast: Waffles, fruit, raisins, milk.
Lunch: Steakfingers, whipped potatoes, apple or orange juice, chilled fruit, hot rolls, milk, honey.

THURSDAY
Breakfast: Biscuits, fruit, raisins, milk, sausage gravy, jelly.
Lunch: Oven fried chicken, seasoned potato wedge, coleslaw, chilled fruit, apple or orange juice, hot rolls, milk, honey.

FRIDAY
Breakfast: Oatmeal, toast, fruit, raisins, milk, jelly.
Lunch: Hot dogs, pork & beans, tator tots, apple or orange juice, milk, dessert, catsup, pickle relish, mustard.

Mountaineer Basketball News

SAHS Girls

Huckabay 62, Santa Anna 54

Girls
Santa Anna 14 19 6 15-54
Huckabay 12 14 13 23-62
Santa Anna — Guerrero 2, Horner 2, Beal 12, Frausto 2, Lishka 16, Marlin 10, Keeney 7, Huckabay — McClendon 11, McCoy 4, W. Lowe 17, Valle 11, Bills 14, Madison 5
Records — Santa Anna 7-12, Huckabay 8-12.

SAHS Boys

Huckabay 91, Santa Anna 62

Boys
Santa Anna 16 19 17 10-52
Huckabay 29 18 28 16-91
Santa Anna — Guerrero 7, Cheaney 7, Abernathy 6, Lewis 8, Auito 2, Lewis 11, Maleser 7, Daniel 4
Huckabay — Seaborn 13, Scarborough 3, T. Hale 6, Seehand 6, Ricks 4, C. Hale 38, Bruce 15, Fambro 4, McQueary 2
Records — Santa Anna 8-12, Huckabay 11-9.

Friday, Jan. 12

Rising Star 41, Santa Anna 24

Girls
Santa Anna 4 4 8 8-24
Rising Star 9 12 8 12-41
Santa Anna — Johnson 4, Beal 6, Siller 2, Keany 2, Lishka 10, Rising Star — Long 25, Butler 5, Amy Collins 2, Johnson 3, Kristie Collins 6
Records — Rising Star 10-11, Santa Anna 7-13, 0-2.
JV score — Santa Anna 31, Rising Star 10.

Santa Anna 61, Rising Star 56

Boys
Santa Anna 8 19 20 14-61
Rising Star 10 22 11 13-56
Santa Anna — Cheaney 3, Abernathy 22, Aalto 14, Lewis 14, Maleser 8
Rising Star — Corey Morris 10, Franklin 24, Kobey Morris 22
Records — Santa Anna 9-12, 1-1; Rising Star 6-12, 1-2.
JV score — Santa Anna 59, Rising Star 23.

Junior High Boys 2nd At Cross Plains Tourney

Santa Anna Junior High participated in the Cross Plains Junior High Tournament last Saturday. Unfortunately we only have a report from the boy's team who defeated Eula 37-29 in the first round of play.
Individual scoring stats were as follows:
Brian Coyle 13 ; Jesse Castillo

8; Bennie Bible 4; Boone Cook 4; J.J. Beloit 2; John Smiley 2; David Gilbreath 2; Bobby Hale 2.
Defensive recognition went to Edgar Mullins, Stuart Gibson, Moses Mata and Austin.
In the championship round, DeLeon outscored Santa Anna 26-35.
Brian Coyle 9; Bobby Hale 6; J.J. Beloit 4; Boone Cook 3; Jesse Castillo 2; Edgar Mullins 2.
Defensive recognition went to Stuart Gibson, Bennie Bible, Austin Voss, Moses Mata, John Smiley and David Gilbreath.

County Stockshow Results

Market Swine Show
Lightweight Duroc — 1. Lindsay VanPelt, Panther Creek FFA; 2. Amanda Lawrence, Panther Creek FFA; 3. Bennie Bible, Santa Anna FFA. Mediumweight Duroc — 1. Gary Geeslin, Santa Anna FFA; 2. Shylar Farley, Santa Anna FFA; 3. Dustin Brown, Panther Creek FFA. Heavyweight Duroc — 1. Ashley Fitzpatrick, Coleman FFA; 2. Brian Coyle, Santa Anna FFA; 3. David Coyle, Santa Anna FFA.
* **CHAMPION DUROC — LINDSAY VANPELT, PANTHER CREEK FFA**, with lightweight.
* **RESERVE CHAMPION DUROC — AMANDA LAWRENCE, PANTHER CREEK FFA**, with lightweight.
* **Lightweight Hampshires — 1. Melissa Rankin, Coleman FFA; 2. Shylar Farley, Santa Anna FFA; 3. Gary Geeslin, Santa Anna FFA.**
* **Mediumweight Hampshires — 1. Amanda Lawrence, Panther Creek FFA; 2. Lane Barker, Coleman FFA; 3. Zackery Carter, Santa Anna FFA.**
* **Light heavyweight Hampshires — 1.2. Cody Fikes, Coleman FFA; 3. Joseph Coleman, Coleman FFA.**
* **Heavyweight Hampshires — 1. Wes Howell, Coleman FFA; 2. Gus Mays, Coleman FFA; 3. Heather Bradley, Santa Anna FFA.**
* **CHAMPION HAMPSHIRE — CODY FIKES, COLEMAN FFA**, with light heavyweight.
* **RESERVE CHAMPION HAMPSHIRE — WES HOWELL, COLEMAN FFA**, with heavyweight.
* **Lightweight white Other Pure Breeds (OPBs) — 1. Adam Huggins, Coleman FFA; 2. Gary Geeslin, Santa Anna FFA; 3. Shannon Williams, Panther Creek FFA. Mediumweight white OPBs — 1. Shannon Williams, Panther Creek FFA; 2. Scott Watson, Panther Creek FFA; 3. Mark Brown, Coleman FFA. Heavyweight white OPB — 1. Josh Daniel, Santa Anna FFA; 2. Scott Watson, Santa Anna FFA; 3. Candice Beal, Coleman 4-H.**
* **CHAMPION WHITE OPB — JOSH DANIEL, SANTA ANNA FFA**, with heavyweight.
* **RESERVE CHAMPION WHITE OPB — SCOTT WATSON, SANTA ANNA FFA**, with heavyweight.
* **Lightweight black OPBs — 1. Michael Guthrie, Santa Anna FFA; 2. Lindsay VanPelt, Panther Creek FFA; 3. Kaci Thweatt, Panther Creek FFA. Mediumweight black OPBs — 1. Josh Daniel, Santa Anna FFA; 2. Bennie Bible, Santa Anna FFA; 3. Cody Cope, Panther Creek FFA. Heavyweight black OPBs — 1. Brandon Fitzpatrick, Santa Anna FFA; 2. Josh Daniel, Santa Anna FFA; 3. Matthew Mayes, Coleman FFA.**
* **CHAMPION BLACK OPB — JOSH DANIEL, SANTA ANNA FFA**, with mediumweight.

COLEMAN COUNTY LIVESTOCK SHOW MONDAY RESULTS

Steer Show
Lightweight Angus steers — 1. Lacy Burdick, Coleman 4-H; 2. Amanda Lawrence, Panther Creek 4-H; 3. Stephen Watson, Coleman 4-H. Heavyweight Angus steers — 1. Brady Burdick, Coleman 4-H; 2. Stephanie Rankin, Coleman FFA; 3. Amanda Lawrence, Coleman 4-H.
* **CHAMPION ANGUS — BRADY BURDICK, COLEMAN 4-H.**
* **RESERVE CHAMPION ANGUS — STEPHANIE RANKIN, COLEMAN FFA.**
Lightweight Hereford steers — 1. Dusty Hunter, Coleman FFA; 2. Lacy Burdick, Coleman 4-H; 3. Derrick Tisdale, Coleman 4-H. Heavyweight Hereford steers — 1. Derrick Tisdale, Coleman 4-H; 2. Bryce Burdick, Coleman 4-H; 3. Dustin Tisdale, Coleman 4-H.
* **CHAMPION HEREFORD — DERRICK TISDALE, COLEMAN 4-H.**
* **RESERVE CHAMPION HEREFORD — BRYCE BURDICK, COLEMAN 4-H.**
Polled Hereford steers — 1. and CHAMPION DUSTIN TISDALE, COLEMAN 4-H; 2. and RESERVE CHAMPION, STEPHANIE RANKIN, COLEMAN FFA; 3. Casey Connelly, Coleman FFA.
Shorthorn steers — 1. and CHAMPION, BRADY BURDICK; 2. and RESERVE CHAMPION, RYAN PAYNE, COLEMAN FFA.
Lightweight American Cross Steers — 1. Melissa Rankin, Coleman FFA; 2. Brady Burdick, Coleman 4-H. Heavyweight American Cross Steers — 1. Hayes Edington, Coleman 4-H; 2. Melissa Rankin, Coleman FFA.
* **CHAMPION AMERICAN CROSS STEER — MELISSA RANKIN, COLEMAN FFA.**
* **RESERVE CHAMPION AMERICAN CROSS STEER — HAYES EDINGTON, COLEMAN 4-H.**
Lightweight European steers — 1. Candice Henderson, Coleman 4-H; 2. Stephen Watson, Coleman 4-H; 3. Dusty Hunter, Coleman FFA. Mediumweight European steers — 1. 2. Matthew Mayes, Coleman FFA; 3. Lea Payne, Coleman FFA. Heavyweight European steers — 1. 2. Candice Henderson, Coleman 4-H; 3. Dusty Hunter, Coleman FFA.
* **CHAMPION EUROPEAN STEER — MATTHEW MAYES, COLEMAN FFA.**
* **RESERVE CHAMPION EUROPEAN STEER — MATTHEW MAYES, COLEMAN FFA.**
* **OVERALL GRAND CHAMPION STEER — MATTHEW MAYES, COLEMAN FFA**, with European steer.
* **RESERVE GRAND CHAMPION STEER — MATTHEW MAYES, COLEMAN FFA**, with European steer.
* **JUNIOR STEER SHOWMANSHIP — HAYES EDINGTON, COLEMAN 4-H.**
* **SENIOR STEER SHOWMANSHIP — CANDICE HENDERSON, COLEMAN 4-H.**

Market Lamb Show

Lightweight fine wool — 1. Stephen Watson, Coleman 4-H; 2. Lindsay Ivy, Coleman 4-H; 3. Holly Stephenson, Panther Creek FFA. Mediumweight fine wool — 1. Allycin Ivy, Coleman FFA; 2. Traci Hipp, Coleman 4-H; 3. Lindsay Ivy, Coleman 4-H. Heavyweight fine wool — 1. Allycin Ivy, Coleman 4-H; 2. Amanda Lawrence, Panther Creek 4-H; 3. Ashley Ryan, Panther Creek 4-H.
* **CHAMPION FINE WOOL — ALLICYN IVY, COLEMAN 4-H.**
* **RESERVE CHAMPION FINE WOOL — STEPHEN WATSON, COLEMAN 4-H.**
Lightweight cross — 1. Chris Cheaney, Santa Anna 4-H; 2. Amber Johnson, Coleman 4-H; 3. Brittini McMillan, Coleman 4-H; 4. Ashley Ryan, Panther Creek 4-H; 5. Allycin Ivy, Coleman 4-H; 6. Amber Johnson, Coleman 4-H; 7. Amanda Lawrence, Panther Creek 4-H; 8. Cody Rainwater, Panther Creek 4-H.
* **CHAMPION CROSS — ASHLEY RYAN, PANTHER CREEK 4-H.**
* **RESERVE CHAMPION CROSS — STEPHEN WATSON, COLEMAN 4-H.**
Lightweight medium wool — 1. Ashley Johnson, Coleman 4-H; 2. Amber Johnson, Coleman 4-H; 3. Whitney Fitzpatrick, Coleman FFA. Mediumweight medium wool — 1. Amber Johnson, Coleman 4-H; 2. Ashley Johnson, Coleman 4-H; 3. Ashley Ryan, Panther Creek 4-H. Heavyweight medium wool — 1. Amber Johnson, Coleman 4-H; 2. Amanda Lawrence, Panther Creek 4-H; 3. Cody Rainwater, Panther Creek 4-H.
* **CHAMPION MEDIUM WOOL — ASHLEY JOHNSON, COLEMAN 4-H.**
* **RESERVE CHAMPION MEDIUM WOOL — AMBER JOHNSON, COLEMAN 4-H.**
Lightweight Southdowns — 1. Will Johnson, Coleman 4-H; 2. Chris Cheaney, Santa Anna 4-H; 3. Krystal Loggins, Panther Creek FFA. Mediumweight Southdowns — 1. Lindsay Ivy, Coleman 4-H; 2. Allycin Ivy, Coleman 4-H; 3. Will Johnson, Coleman 4-H. Heavyweight medium wool — 1. 2. Will Johnson, Coleman 4-H; 3. Brittini McMillan, Coleman 4-H.
* **CHAMPION SOUTHDOWN — LINDSAY IVY, COLEMAN 4-H.**
* **RESERVE CHAMPION SOUTHDOWN — WILL IVY, COLEMAN 4-H.**

OVERALL GRAND CHAMPION LAMB — ASHLEY JOHNSON, COLEMAN 4-H

* **RESERVE GRAND CHAMPION LAMB — ASHLEY RYAN, PANTHER CREEK 4-H**, with crossbred.
* **JUNIOR LAMB SHOWMANSHIP — BRITTINI McMILLAN, COLEMAN 4-H.**
* **SENIOR LAMB SHOWMANSHIP — ALLICYN IVY, COLEMAN 4-H.**

Meat Goat Show

Lightweight meat goats — 1. Amanda Lawrence, Panther Creek 4-H; 2. Cheyenne McDorman, Coleman 4-H; 3. Shane Wilson, Santa Anna FFA. Mediumweight meat goats — 1. Lindsay McQuarry, Panther Creek FFA; 2. Zachary Esperson, Coleman 4-H; 3. Colby Chambers, Coleman 4-H. Light heavyweight meat goats — 1. Tom Sloan, Panther Creek 4-H; 2. Asenath Horne, Coleman 4-H; 3. Logan McQuarry, Panther Creek FFA. Heavyweight meat goats — 1. Amanda Lawrence, Panther Creek 4-H; 2. Ryan Dalton, Panther Creek 4-H; 3. Shirley Thompson, Panther Creek FFA.
* **CHAMPION MEAT GOAT — AMANDA LAWRENCE, PANTHER CREEK 4-H.**
* **RESERVE CHAMPION MEAT GOAT — RYAN DALTON, PANTHER CREEK 4-H.**
* **JUNIOR MEAT GOAT SHOWMANSHIP — Tom Sloan, PANTHER CREEK 4-H.**
* **SENIOR MEAT GOAT SHOWMANSHIP — Amanda Lawrence, PANTHER CREEK 4-H.**

MOVIES 4

Heartland Mall-643-3661

ADULTS \$2.00 CHILDREN \$1.00
All Shows Before 9 p.m. \$1.00

Eye For An Eye (R)
Fri, Mon-Thurs 4:45 7:00 9:15
Sat & Sun 12:15 2:30 4:45 7:00 9:15

Lawnmower Man (PG-13)
Fri-Thurs 9:00

Bio-Dome (PG)
Fri, Mon-Thurs 5:00 7:15 9:30
Sat, Sun 12:30 2:45 5:00 7:15 9:30

Jumanji (PG)
Fri, Mon-Thurs 4:45 7:00 9:15
Sat, Sun 12:15 2:30 4:45 7:00 9:15

Tom & Huck (PG)
Fri, Mon-Thurs 5:00 7:15
Sat & Sun 12:30 2:45 5:00 7:15

ALLSUP'S

1996

IS A NEW YEAR OF SAVINGS AT ALLSUP'S

ALLSUP'S Sausage & Biscuit EACH 79¢

DECKER Meat Franks 12 OZ. PKG. 59¢

Hormel Little Sizzlers Pork Sausage ORIGINAL 12 OZ. 89¢

Shurfine Sugar 4 Lb. Bag \$1.59

Shurfine Flour 5 Lb. Bag 89¢

Sunny Cookies 5 oz. Pkg. 2/\$1.00

Kool Aid 5/\$1.00

EFFECTIVE JANUARY 14-20, 1996
STORE LOCATION

SAVE ON **Pepsi-Cola**
6 Pack Cans \$1.99

GRAB BAGS Doritos® or Lay's® Chips REGULAR 75¢ 2/\$1

JOHNNY Rib Sandwich FOR ONLY 99¢

SOFT & GENTLE Bathroom Tissue 4 ROLL PKG. 99¢

SHURFINE Plain Salt 26 OZ. 49¢

CHOPPED BEEF, CHUNK BEEF OR TRIO ALPO Dog Food 12.2 OZ. CAN 69¢

ALLSUP'S 1.5 LB. LOAF Sandwich Bread 69¢ EACH OR 2/\$1

20 LG. OR 26 MED. Cuddles Diapers PKG. \$4.99

WESTERN FAMILY Disposable Cameras 27 EXP. NO FLASH \$4.99

TABS, CAPS, & EXT. STR. Western Family Non-Aspirin 24 CT. 99¢

Allen & Allen INSURANCE

A Coleman County Authorized Agency For The:

AMERICAN INDEMNITY GROUP
BEACON INSURANCE GROUP
THE TRINITY COMPANIES

Serving Coleman County and the surrounding area since 1922
200 WEST PECAN STREET 625-4124 COLEMAN, TEXAS

PUBLIC NOTICE

STATEMENT OF NON-DISCRIMINATION.

Coleman County Telephone Cooperative, Inc. has filed with the Federal Government a Compliance Assurance in which it assures the Rural Utilities Service that it will comply fully with all requirements of Title VI of the Civil Rights Act of 1964 and the Rules and Regulations of the Department of Agriculture issued thereunder, to the end that no person in the United States shall on the ground of race, color or national origin, be excluded from participation in, be denied the benefits of, or be otherwise subjected to discrimination in the conduct of this program and the operation of its facilities. Under this Assurance, this organization is committed not to discriminate against any person on the ground of race, color or national origin in its policies and practices relating to applications for service or any other policies and practices relating to treatment of beneficiaries and participants including rates, conditions and extension of service, use of any of its facilities, attendance at and participation in any meetings of beneficiaries and participants or the exercise of any rights of such beneficiaries and participants in the conduct of the operations of this organization.

Any person who believes himself, or any specific class of individuals, to be subjected by this organization to discrimination prohibited by Title VI of the Act and the Rules and Regulations issued thereunder may, by himself or a representative, file with the Secretary of Agriculture, Washington, D. C. 20250, or the Rural Utilities Service, Washington, D. C. 20250 or this organization, or all, a written complaint.

Such complaint must be filed not later than 90 days after the alleged discrimination, or by such later date to which the Secretary of Agriculture of the Rural Utilities Service extends the time for filing. Identity of complainants will be kept confidential except to the extent necessary to carry out the purposes of the Rules and Regulations.

AVOIDING A TICKET IS A SNAP

YOU COULD LEARN A LOT FROM A DUMMIE!

Trickham News

By Anna York

Sherman and Dorothy Stearns of McGregor spent Saturday and the night with his mother Novella Stearns. They picked up Leona Henderson in the afternoon and all went to San Angelo for shopping and supper.

Bettie Martin is in Brownwood Regional Hospital recovering from a stroke. She appreciates the flowers and cards. We wish her a speedy recovery. Talmage and Laverne McClatchy visited with Bettie on Tuesday.

Ted Nichols and a friend from Plano visited a couple of times during the week with his grandmother Leona Henderson/ Sunday afternoon Leona visited with the Donnie Henderons, Candice, and with Rodney and Becky Henderson and little son Dusty of San Angelo.

Royce and Wanda McIver were Friday evening visitors with Natalie and Rankin McIver and on Saturday they visited Doyno and Wanda McIver at their place on the farm. Royce helped Doyno with some fence work. They report Doyno is doing fine from his recent bypass and can be involved in some activities, just has to take it slow.

R.C. and Ann Stearns of Cross Cut visited Tuesday afternoon with his other Florence Stearns. Majorie Sullivan of Bandera visited and had lunch with Florence on Wednesday and the R.C. Stearns visited and had dinner with her on Friday.

Janet Dunn and children of Brownwood visited with Natalie and

Rankin McIver Sunday. Visiting during the past week with Winnie Haynes were Clara Cupps, Anna York and Novella Stearns/

Doyno and Wanda McIver of San Angelo were visitors Friday night with Terry and Helen McIver and Ben. Grady Clay McIver of San Angelo spent Sunday with them.

Kit Dean and daughter Jennie of Comanche spent the weekend with Mr. and Mrs. Ray Dean and Windham.

Mrs. Lavada Johnson of Coleman is spending a few days with her daughter, Earlene and John Dockery. Earlene attended the stock show in Coleman Sunday and watched her grandchildren show livestock.

Mrs. Edna Laughlin was a Sunday dinner guest of her son and his wife, Billy Roy and Mildred Laughlin in Brownwood.

The ladies of the quilting club met Tuesday afternoon and started a quilt for Novella Stearns. There were five present. Thursday night the "84" Club met at the community center with nineteen present.

Majorie Sullivan of Bandera visited on Wednesday with Annie Lou Vaughn, Roberta McShan and grandson Chase visited a while Saturday afternoon and Rodney and Cellena Guthrie and little son Mason were supper guests on Saturday evening. Earlene Dockery was in and out several times during the week.

Rockwood News

By Sandra Wilson

Burgess Stewardson attended the Panther Creek Livestock Show Friday and the Coleman County show Saturday and Sunday. Gayle joined him on Monday and they attended the lamb show in Coleman.

Visiting during the week with Johnnie Steward was Roland Duus, Jr. Brusenhan, Charlie Smith and Tony Rehm. Olin and Ethel Horton visited during the weekend.

I was in Coleman Friday visiting with Gladys Slayton and Willie Matthews. Weekend visitors with me were Becky Brooks, Darlene McElrath and Frankie Matthews. Francis McAlister and Charlie Smith visited with us Saturday night and watched the football playoff games with us on Sunday. Sam and Mike Montgomery visited with us Sunday night.

Monday afternoon, Johnnie, Trey and Cheyenne Casey and Terry Pickett visited Bo and me.

Have I missed something? Is this really January? The past few days have not seemed at all like January. I thought maybe it was April. Guess we will have our bad weather later. We really need some moisture. I think at this point we will take it any way we can get it.

The Rockwood Club will meet Tuesday, Jan. 23 at 2:00 p.m. Sadie Bryan will be hostess.

Tex Wright called to say he had visited with Eurcell Ellis at the V.A. Nursing Home in Kerrville. Eurcell enjoyed the visit and said if

any of his friends are down that way, be sure to drop by to see him. Pat Patterson left Vivian Steward's Friday going home. Minnie Bray and Fay Wise visited Pat and Vivian while he was here.

Arlen and Quincy Allen, Gil, Elizabeth, Justin and Jordan Gregory of Temple spent the weekend with Jack and Skeeta Cooper.

Wednesday morning Jr. and Nell Brusenhan were in Brownwood on business and that night in Coleman at Bro. Jeff's for Bible study. Thursday Nell quilted with the quilting club. Friday they were at Simpson Lake visiting with the Bailey Hills. They stopped by Eden that evening to visit Freddie Polk and Tek Brusenhan. Saturday they were in Coleman visiting Dick and Johnnie Deal. Elec Copper visited Jr. and Nell Monday.

Guy and Dorothy Whisenant were in Brownwood Thursday visiting Jim, Cathy, Jimmy and Tammy Fraiser.

Thursday Elec and Rose Cooper visited in Brownwood with Darwin and Billie Lovelady. Sunday Denny and Louise Densman visited with the Coopers.

Carolyn Williams arrived Tuesday for a visit with Balke Williams. They visited with Donald and Lillian Williams in Brownwood. Carolyn returned home Sunday.

HENDERSON FUNERAL HOME

Donnie & Christina HENDERSON
"People Who Care"

SANTA ANNA
348-3131
107 S. First

COLEMAN
625-2121
1600 S. Concho

Dr. Orhan Oral

115 West Street - Coleman
(West of Courthouse in office space between Geo. D. Rhone Co. and Security Finance)

915-625-2101

915-625-2102

FAX 915-625-2445

After Hours: 915-625-3730

OFFICE HOURS: 9:00 a.m. to 5:00 p.m.
Monday through Friday

Holley Auto SuperStore

Special SALES Event

"Congratulations To All the Youth Fair Participants!"


Stk. #G4114 **1996 GMC Extended Cab Sierra**
5000 Vortec V8, Automatic Transmission, Air Bag, A/C, Cassette, Tilt, Cruise, Power Locks, Privacy Glass, Full Carpet.



MSRP \$21,234
Event Disc. -1,735
\$19,499 +TT&L

Farm Bureau members take an Extra \$500 Rebate.

Stk. #2619 **1995 Chevrolet 1/2 Ton Extended Cab**
350, Automatic, Silverado, Bucket Seats, Power Seat, Remote Keyless Entry, Deep Tint Glass, Aluminum Wheels, Cassette and CD Player.




MSRP \$23,180
Event Disc. -1,385
\$21,795 +TT&L

Farm Bureau members take an Extra \$500 Rebate.

On The Spot Financing

Stk. #2648 **1995 Chevrolet 1/2 Ton Extended Cab**
"Demo" 350, Automatic, Silverado, Bucket Seats, Power Seat, Remote Keyless Entry, Deep Tint Glass, Aluminum Wheels, Cassette and CD Player.



MSRP \$23,180
Huge Yearend Disc. -3,385
\$19,795 +TT&L

Farm Bureau members take an Extra \$500 Rebate.

Stk. #4091 **1996 Chevrolet S-10 Blazer**
Vortec 4300 V6, Automatic, Power Driver Seat, Remote Keyless Entry.



MSRP \$25,385
Event Disc. -2,035
\$23,350 +TT&L

Farm Bureau members take an Extra \$500 Rebate.

QUALITY PRE-OWNED CARS & TRUCKS

UNDER \$6,000		G2692B, '91 Chevy Blazer, red.....	11,975	3071A, '95 Chevy Monte Carlo, purple.....	14,975
K1346A, '92 Geo Metro, silver.....	4,975	3118A, '92 Chevy Chevy Astro, white.....	11,975	A2047, '95 Oldsmobile Ciera, green.....	12,475
A2046A, '86 Chevy Caprice, yellow.....	4,975	G4021A, '93 Ford F-150, black.....	11,975	A2059, '95 Oldsmobile Ciera, navy.....	12,975
G4112A, '90 Chevy Corsica, white.....	5,975	C3122B, '90 Cadillac Brougham, red.....	11,975	3134A, '95 Chevy Lumina, purple.....	14,975
C1115B, '81 Chevy Caprice, beige.....	2,975	2649A, '94 Pontiac Grand Am, blue.....	10,975	A2081, '95 Lumina APV Van, silver.....	14,975
2717B, '90 Pontiac Grand Am, maroon.....	5,975	2676A, '92 Buick Roadmaster, white.....	11,975	2646B, '91 GMC Suburban.....	12,975
T2407A, '84 Ford Ranger, tan.....	3,975	A3133A, '89 Cadillac El Dorado, white.....	11,975	2677A, '92 Dodge Custom Van, maroon.....	13,975
2060B, '90 Pontiac Transport Van, red.....	6,975	A2048, '95 Oldsmobile Achieva, green.....	11,975	4029A, '94 Chevy CK-25, blue.....	13,975
C1115B, '81 Chevy Wagon, tan.....	2,975	A2079, '95 Chevy Corsica, blue.....	10,975	4055A, '94 Chevy CK-15, red.....	13,975
UNDER \$9,000		2543A, '92 Ford F-150, gray.....	9,975	4045A, '93 Chevy Astro, silver/blue.....	14,975
1221A, '94 Nissan Pickup, red.....	8,975	T4018A, '93 Chevy CK-15, black.....	11,975	2724A, '94 Dodge Caravan, white.....	14,975
B1290A, '90 Buick LeSabre, white.....	8,975	4127A, '94 Chevy S-10, purple.....	11,475	2708B, '92 Chevy CK-15, beige.....	12,975
C4022A, '89 Lincoln Town Car, Silver.....	7,975	A2048, '95 Oldsmobile Achieva, green.....	11,975	2733A, '91 GMC SLE, white.....	13,975
2293D, '93 Ford Taurus, Silver.....	8,975	UNDER \$15,000		UNDER \$18,000	
B1200A, '91 Mercury Grand Marquis, lt. blue.....	7,975	2620B, '94 Buick Le Sabre, gray.....	14,975	A2033, '95 Pontiac Transport, white.....	17,975
1221B, '94 Nissan Pickup, red.....	8,975	A-2041A, '92 Cadillac DeVille, lt. blue.....	13,975	A2031, '95 Chevy Astro Van, blue.....	17,975
2675A, '89 Chevy CK-15, tan.....	8,975	2677A, '92 Dodge Van, maroon.....	13,975	1356B, '95 Chevy Camaro, teal.....	17,975
1393B, '89 Chevy Suburban, blue/white.....	8,975	2620B, '94 Buick Le Sabre, gray.....	14,975	B1150A, '94 Chevy Camaro, red.....	16,475
J1058A, '91 Ford Mustang, white.....	6,975	A2012A, '92 Buick Le Sabre, beige.....	12,475	K1236A, '94 Buick Le Sabre, purple.....	15,975
T3148A, '93 Ford Mercury, white.....	7,975	G2672A, '93 Mazda MX6, black.....	13,475	K1345B, '94 Pontiac Firebird, maroon.....	15,975
2718A, '92 Honda Accord, white.....	8,975	B1089A, '92 Lincoln Town Car, white.....	14,975	A2031, '95 Chevy Lumina Van, blue.....	17,975
2060B, '90 Pontiac Transport Van, red.....	6,975	K1008A, '94 Chevy Caravan, red.....	12,975	A2033, '95 Pontiac Transport, white/blue.....	17,975
UNDER \$12,000		A2066AA, '92 Cadillac DeVille, maroon.....	14,975	T3102A, '95 Toyota Camry, beige.....	16,975
A2021A, '92 Buick Le Sabre, beige.....	11,975	B1353B, '91 98 Oldsmobile, gray.....	12,975	P1994B, '94 Chevy CK-15, blue.....	15,975
2543A, '92 F-150 EXT, gray.....	9,475	A2049, '95 Pontiac Grand Am, gray.....	12,975	2612B, '94 Ford F-150, blue.....	15,975
A2016A, '93 Chevy Astro Van, gray.....	11,975	A2069, '95 Oldsmobile Achieva, silver.....	12,975	2570A, '94 Chevy GVan, gray.....	15,975
J3049A, '93 Chevy Caprice 4 Dr, white.....	11,975	B2075, '95 Buick Century, blue.....	12,975	G4125A, '94 Chevy CK-15, autumn wood.....	15,975
J3049A, '93 Chevy Caprice, white.....	11,975	A2076, '95 Buick Century, blue.....	12,975	G2704B, '94 Chevy CK-15, green.....	15,975
B1266A, '92 98 Oldsmobile, blue.....	10,975	A2077, '95 Buick Century, maroon.....	12,975	A1999A, '93 Cadillac DeVille, white.....	17,975
C2665B, '93 Mercury Cougar, silver.....	9,975	4087A, '93 Chevy CK-15, beige.....	12,975	1356B, '95 Chevy Camaro, teal.....	17,975
A2062A, '94 Buick Century, white.....	10,975	G2124A, '93 GMC SLE, blue.....	13,975	4066A, '94 Buick Roadmaster, maroon.....	16,975
B3150A, '91 Chevy Caprice LTZ, white.....	9,975	B3124A, '90 GMC Trailblazer, silver/maroon.....	13,975	3137A, '95 Chevy Caprice, gray.....	17,975
A2068, '95 Chevy Corsica, blue.....	10,975	A2072, '95 Pontiac Grand Prix, white.....	14,975	T3103A, '95 Toyota Camry, white.....	16,975
A2073, '95 Chevy Corsica, white.....	10,975	A2041A, '92 Cadillac DeVille, blue.....	14,975	A2058, '95 Oldsmobile Cutlass Supreme, white.....	15,975
A2016A, '93 Chevy Astro, gray.....	11,975	3120A, '93 Toyota Camry, silver.....	13,975	A2060, '95 Chevy Caprice, blue.....	16,975

300 E. Commerce
1-800-568-CARS
646-9511



HOLLEY
Chevrolet, Cadillac, GMC, Buick
AUTO SUPERSTORE
Toyota, Pontiac, Geo, Oldsmobile

At The "T"
104 E. Commerce
1-800-933-3604
646-7425